



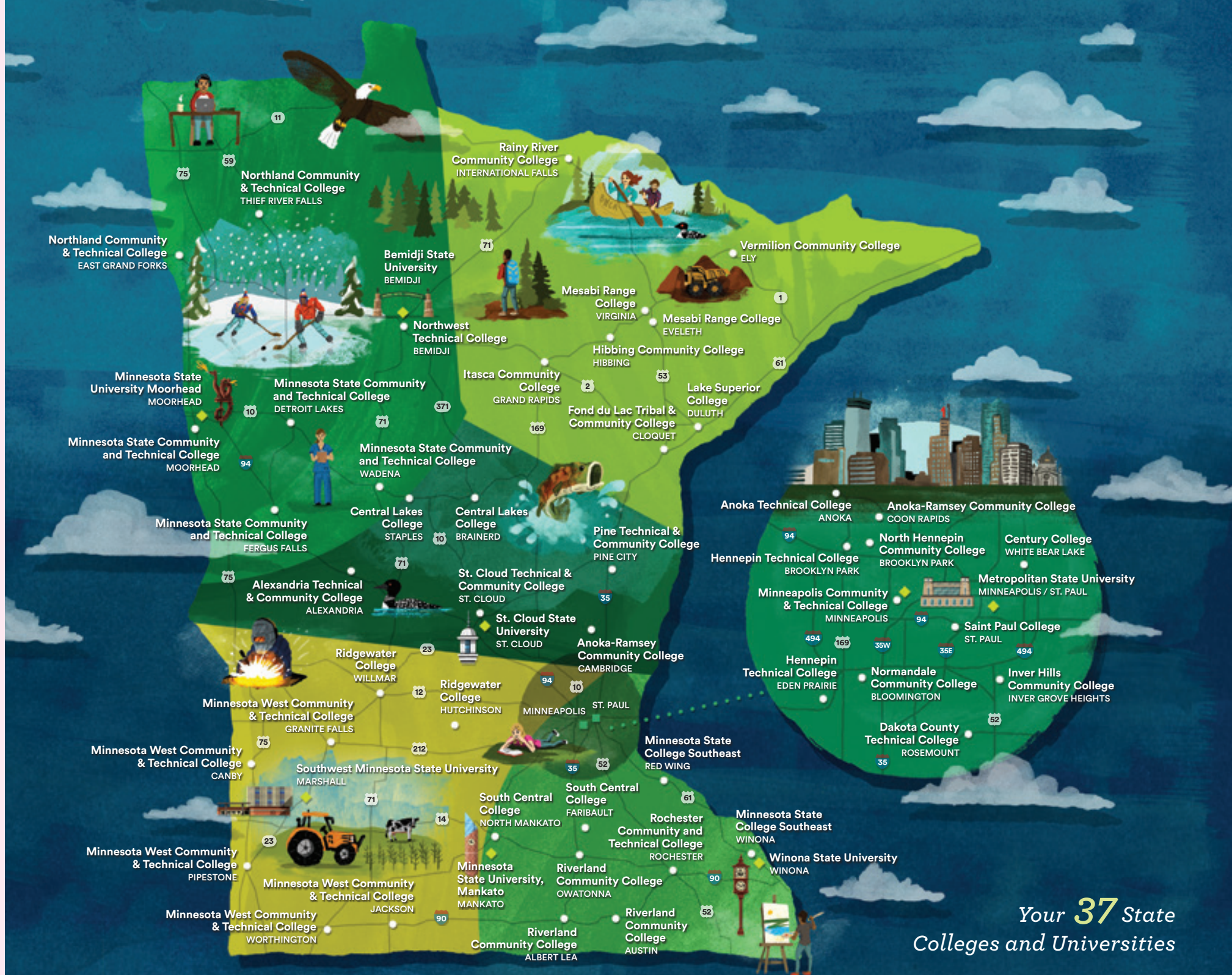
2020–2021 Guide to your 37 STATE COLLEGES AND UNIVERSITIES



MINNESOTA STATE

Extraordinary Education. Exceptional Value.

MinnState.edu



Your **37** State
Colleges and Universities



Extraordinary Education. Exceptional Value.

Nestled amidst the lakes, forests, and scenic landscapes of Minnesota are the 37 state colleges and universities of Minnesota State, your state college and university system.

More than 340,000 students choose your state colleges and universities each year, creating a brighter future to become the talent needed for Minnesota businesses and communities to grow and prosper. Minnesota State offers thousands of academic programs at the lowest tuition in the state. With our 54 campuses located in 47 Minnesota communities, you can choose to continue your educational journey close to home or across the state. We also offer a vibrant array of student life activities and experiential learning options. That's what extraordinary education at an exceptional value is all about.

Extraordinary Impact

Minnesota State is making a difference. From the students we serve, to our business partners, to those we employ, chances are good you or someone you know has benefited from the work of your state colleges and universities.



38,000+

degrees, certificates,
and diplomas awarded
each year

743



online programs to choose from

third

largest system of colleges
and universities in the
United States

9,200+



veterans and service members
attend a Minnesota State college
or university each year

13,500

customized training,
occupational, and
professional classes

Job placement in a
related field of study

89.5%



340,000

students attend our colleges
and universities each year

fifty-four

convenient campuses
across Minnesota



54%

STATE COLLEGES

62%

STATE UNIVERSITIES

Percent of students who receive financial aid



7,000

employer partnerships
across Minnesota State
colleges and universities



4,071

academic programs to choose from



65%

of Minnesota resident
students who are pursuing an undergraduate
credential are doing so at a Minnesota
State college or university

32–59%

of Minnesota State
students graduate with
no debt at all, depending
on the academic award
received

We serve more

**STUDENTS
OF COLOR**

and

**AMERICAN
INDIAN
STUDENTS**

than all other higher
education providers in
Minnesota combined

MINNESOTA STATE GRADUATES' DEBT

Fiscal Year 2019

**Note the median for all graduates with certificates/diplomas is \$0 as over half did not borrow*

DEGREE	MINNESOTA STATE GRADUATES WITH NO DEBT	MEDIAN DEBT FOR ALL GRADUATES	MEDIAN DEBT FOR GRADUATES WHO BORROWED
Certificates/Diplomas	59.2%	\$0	\$9,787
Associate Degrees	48.0%	\$2,500	\$14,934
Baccalaureate Degrees	31.8%	\$15,000	\$24,500



World-class **EDUCATION**

Extraordinary Education

Your state colleges and universities offer more than 4,000 superior academic programs taught by seasoned faculty who know you by name. Take a few classes to retool your skills. Earn a certificate, diploma, or associate degree. Or, start working on or complete your bachelor's, master's, or doctorate. Minnesota State will help you build a plan that's right for you.



» Move Quickly

Your state colleges offer options that allow you to take classes or earn a certificate, diploma, or associate degree in two years or less.

» Personalized Attention

Class sizes are small, campuses are friendly, and you are taught by faculty, not teaching assistants.

» Graduation Options

Start and finish your bachelor's degree at one of your state universities, or complete two years at a state college and transfer to one of your state universities.

» Stay Local or Explore

Minnesota State has 54 campuses in 47 Minnesota communities. Choose the one that is right for you.

» Exceptional Value

Your 37 state colleges and universities offer the lowest tuition and fees in Minnesota and a first-class education employers respect.

» Work-School-Life Balance

Explore flexible scheduling options, accelerated options, or online classes and programs that work with your schedule and fit into your life.

» Retool or Advance Your Career

Check out non-credit, short-term training options designed to help you get quick and specialized training through any Minnesota State continuing education or customized training program.

» Find Your Path

Work one-on-one with staff at any of our colleges and universities to find the program and path that is right for you.



Lowest tuition in **MINNESOTA**

Your 37 state colleges and universities offer the lowest tuition and fees in Minnesota, giving you access to first-rate education options throughout the state and the ability to avoid or limit debt.

ESTIMATED FULL-TIME NET TUITION COSTS AFTER STATE AND PELL GRANTS

Academic Year 2020–21

*30 credits for a year, 15 credits per semester at spring semester rates

INCOME LEVELS FOR STATE GRANT RECIPIENTS*	AVERAGE 2020–21 STUDENT TUITION COST	
	STATE COLLEGES	STATE UNIVERSITIES
Less than \$20,000	\$246	\$575
\$20,000 to \$39,999	\$1,064	\$1,548
\$40,000 to \$59,999	\$2,058	\$2,973
\$60,000 and above	\$3,095	\$4,978
Average for all state grant recipients	\$1,189	\$2,667
Non-state grant recipients	\$5,108	\$7,744

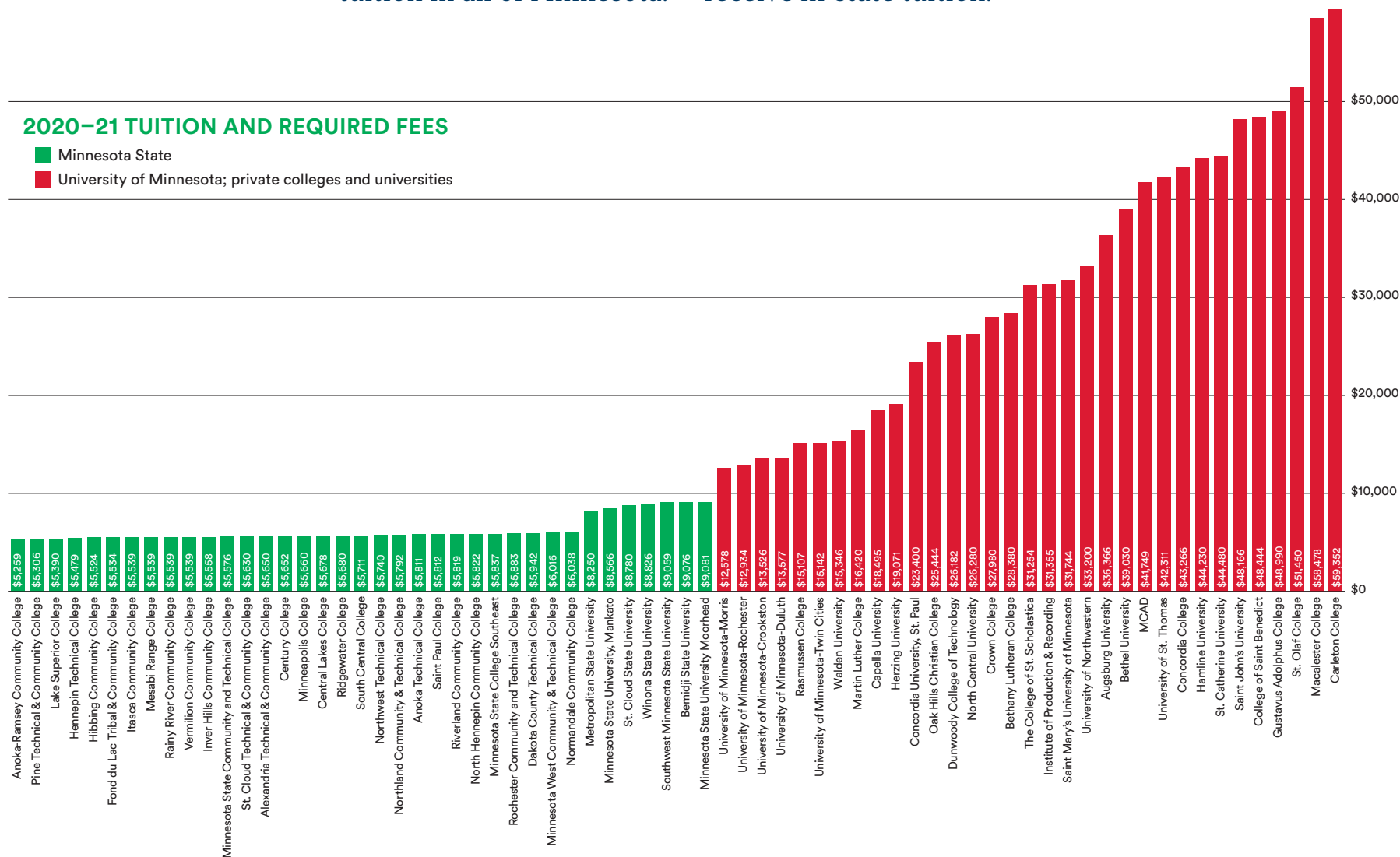
Exceptional Value

The 37 state colleges and universities that comprise Minnesota State offer the lowest tuition in all of Minnesota.

Not from Minnesota? Most colleges and universities that are part of Minnesota State offer in-state tuition rates to residents of other states. Check with the college or university you wish to attend for details. All veterans, service members, and their families receive in-state tuition.

2020-21 TUITION AND REQUIRED FEES

■ Minnesota State
■ University of Minnesota; private colleges and universities



Extraordinary Experiences

STUDENT LIFE

Choosing a state college or university also means you have access to a vibrant social scene. Check out the variety of clubs, organizations, and events. Explore varsity athletics options on **PAGES 61** and **68**. Learn about study abroad and service learning opportunities available at the college or university you are interested in attending. Or, get involved with student government on your campus or at the state level as part of Students United (*representing public state university students*) and LeadMN (*representing public community and technical college students*).





Exceptional Talent

A BRIGHT FUTURE

Your state colleges and universities are a vital resource to Minnesota employers. Not only do we help prepare students to become talented and skilled individuals, but we also work hand-in-hand with business and industry to develop relevant programs and curriculum.

GAIN RELEVANT EXPERIENCE. Employers from across the state work with our colleges and universities to offer internships and job opportunities. These same professionals also serve as advisors who help shape curriculum, obtain equipment, and develop new programs and classes.

BE THE TALENT OF TOMORROW. Your state colleges and universities award more than 38,000 certificates, diplomas, and degrees each year, and 89.5 percent of those graduates begin working in their field of study within one year.

FIND SOLUTIONS TO CHANGING BUSINESS NEEDS. All 37 state colleges and universities offer non-credit learning options through a network of experienced instructors who work with employers to develop training and education programs that allow employees to thrive in the ever-changing global marketplace and keep skills competitive.

UPDATE YOUR SKILLS AND KNOWLEDGE WITH CONTINUING EDUCATION.

Advance your career by learning new knowledge or skills, retraining, or attaining critical certification and licensures.

Extraordinary Pathways



Transfer OPTIONS

Starting at a Minnesota State college and considering transfer? Plan now to save time and money later. Check out a few of the transfer programs available through Minnesota State, or visit [MinnState.edu](https://www.minnstate.edu) for details.

EXPLORE TRANSFER PATHWAYS: Minnesota State offers transfer pathways that allow you to complete a specific associate degree and transfer to any of the seven Minnesota State universities.* If you complete a Transfer Pathway degree at a Minnesota State college and are admitted to a state university, you will be guaranteed junior status and given assurance that all 60 college credits will count toward the related bachelor's degree.** See **PAGE 62** for program details and options.

GET TO KNOW THE BACHELOR'S DEGREE PARTNERSHIP PROGRAM: The seven state universities offer selected bachelor degree programs that can be completed at various community colleges, allowing you to earn your degree from a university without leaving the comfort of the college campus setting. See the complete inventory of degree programs and participating colleges and universities on **PAGE 64**.

LEARN ABOUT THE MINNESOTA STATE TRANSFER GUARANTEE: If you complete the Minnesota Transfer Curriculum and earn an associate of arts (AA) degree from any Minnesota State college with a minimum 2.0 GPA[‡], you are guaranteed admission to any of the seven state universities with junior year status.**

* Universities within the Minnesota State system include Bemidji State University; Metropolitan State University; Minnesota State University, Mankato; Minnesota State University Moorhead; Southwest Minnesota State University; St. Cloud State University; and Winona State University.

** A student must still meet any special admission requirements for the major and is not guaranteed admission into the major itself.

‡ Winona State University requires a minimum 2.4 GPA for AA degrees to be accepted.

WANT TO LEARN MORE?

Our colleges and universities are staffed with many people who can help you find a direction that is right for you. Talk to a transfer specialist, visit a college or university in person, or visit [MinnState.edu/admissions/transfer.html](https://www.minnstate.edu/admissions/transfer.html) to learn more.



WHAT WILL TRANSFER?

AA – ASSOCIATE OF ARTS DEGREE

Designed to transfer into liberal arts four-year majors.

AS – ASSOCIATE OF SCIENCE

Two-year program designed for transfer into a specific four-year major and will likely require completing additional general education courses at a university.

AFA – ASSOCIATE OF FINE ARTS

Two-year program designed for transfer into a specific four-year major and will likely require completing additional general education courses at a university.

AAS – ASSOCIATE OF APPLIED SCIENCE

Two-year program for a specific occupation. Not designed for transfer.†

DIPLOMAS AND CERTIFICATES

Industry-driven and defined programming designed for immediate entry into the workplace. Not designed to transfer.

† While not primarily designed for transfer, individual colleges and universities may accept these courses.

Exceptional Opportunities

ACCELERATE *your degree*



POSTSECONDARY ENROLLMENT OPTIONS (PSEO)*:

PSEO are college courses offered to high school students. The courses are taught by college or university faculty and allow students to earn both high school and college credit for successfully completing the course. Contact your local state college or university for eligibility requirements and information.

CONCURRENT ENROLLMENT*: Students can complete college courses at their high school while fulfilling high school course requirements at the same time. If you are interested in this option, speak to your high school guidance counselor.

TECHNICAL COURSE OPTIONS:** Students in 10th grade may take one technical college-level course taught on a college campus. You must be enrolled in a public school and meet requirements for reading proficiency and other assessments related to the course in which you wish to enroll.

ADVANCED PLACEMENT (AP) AND INTERNATIONAL BACCALAUREATE

(IB) OPTIONS: AP or IB courses are offered at many high schools and provide a rigorous curriculum that prepares students to take college-level courses. Students who pass an AP test or the IB exam with acceptable scores will be awarded college credit at any Minnesota State college or university.

CREDIT FOR PRIOR LEARNING:


Students who demonstrate college- or university-level learning gained through non-credit or experiential settings may be eligible to earn college credit (*i.e., credit for military experience, credit for work history*). Inquire with the college or university you are considering for more information.

CREDIT FOR MILITARY TRAINING OR EXPERIENCE:

Veterans and service members should check the Veterans Education Transfer System (VETS) for eligibility information or visit [MinnState.edu/military](https://www.mnstate.edu/military).

* To be eligible for PSEO or concurrent enrollment with a Minnesota State college or university, high school juniors must be in the upper one-third of their class or earn a score at or above the 70th percentile on a test such as the ACT or SAT. Seniors must be in the upper one-half of their class or earn a score at or above the 50th percentile on a test such as the ACT or SAT. Students who do not meet these requirements may still be eligible if they can meet other college readiness standards determined by the college or university. Students in 9th or 10th grade may also be eligible to take PSEO or concurrent enrollment courses if they rank in the upper one-tenth of their class or attain a score at or above the 90th percentile on a nationally standardized, norm-referenced test, or if they have a favorable recommendation from designated high school officials. All high school students enrolling in PSEO or concurrent enrollment, regardless of grade level, must also meet all college course prerequisites.

** A student who first completed technical courses while in 10th grade and wishes to enroll in general education courses as an 11th or 12th grade student must take assessment tests and achieve the required scores prior to enrollment in additional PSEO courses. Learn more at [MinnState.edu/admissions/pseo](https://www.mnstate.edu/admissions/pseo).



Whether you are seeking help paying for college or could use help as you prepare for an exam, your 37 state colleges and universities offer a variety of resources to help you along the way. We are staffed with professionals who know and understand the process of enrolling and can help you reach your goals.

AID AND SUPPORT

Extraordinary Resources

Financial Resources

FINANCIAL AID: The Free Application for Federal Student Aid (FAFSA) is the first step in applying for assistance in financing your college education. Submit this information as soon as possible to determine your eligibility for aid. Visit fafsa.ed.gov for more information.

SCHOLARSHIPS: Scholarships are a great financial resource to students. They typically do not have to be paid back and can help offset tuition and other costs associated with college.

TAX CREDITS: Some students may benefit from federal tax credit programs. Consult with a tax professional or visit the IRS website at irs.gov for more information.

Academic Resources

ON-CAMPUS ACADEMIC ASSISTANCE: Most colleges and universities offer services such as tutors, a writing center, a math center, counseling, and more to support you. Contact the college or university you are interested in attending to learn about the resources available.

TRIO SERVICES: The federal TRIO programs are outreach and student services programs designed to identify and provide help to students from disadvantaged backgrounds.

ACCESSIBILITY SERVICES: Your state colleges and universities offer accessible facilities and provide accommodations to students with documented disabilities.

SUPPORT FOR VETERANS AND SERVICE MEMBERS: Most of your colleges and universities offer services for veterans and service members, including help to identify resources to pay for college, and have received Yellow Ribbon or military-friendly designations. Learn more at MinnState.edu/military.

CAREER PLANNING: Check out career services at your college or university campus, or use MinnState.edu/careers to explore careers, take an assessment, find programs and courses, including short-term and continuing education options, and get tips for a successful job search, and more.

» **GET STARTED TODAY!** Contact the college or university you are interested in to meet with staff who can help you find the resources right for you.

NEXT STEPS

1

Speak to friendly staff at the college or university you are considering.

2

Get to know your state colleges and universities using this guidebook or by visiting MinnState.edu.

3

Check out the hundreds of programs available on your campuses by clicking on “Campuses & Programs” at MinnState.edu or using the program grid found in the “Endless Opportunities” section of this book.

4

Visit campuses to find the college or university that is the right fit for you.



READY TO APPLY?

1. **CONTACT OR VISIT** the college or university you are considering to get specific admission requirements.
2. **SUBMIT YOUR APPLICATION.** The state universities typically accept applications in the fall, and the state colleges generally accept applications up until the start of the new semester.
3. **APPLY FOR FINANCIAL AID** by visiting fafsa.ed.gov and access the Free Application for Federal Student Aid (FAFSA).

4. **LOOK FOR SCHOLARSHIPS** by contacting the college or university you plan to attend for information and resources to begin the scholarship application process.
5. **START PLANNING** to achieve your goals by looking at the academic calendar for the college or university you wish to attend and getting to know staff that can assist you throughout your time on campus.

30 STATE COLLEGES

Minnesota State is home to 30 community, technical, and comprehensive colleges. These colleges are a great place to earn a degree and immediately start your career, or you can complete an associate degree and transfer to earn a bachelor's degree.

INTERESTED?

- » **CHECK OUT THE OPTIONS.** The profile pages that follow provide you a glimpse of all 30 colleges.
- » **VISIT CAMPUS.** The best way to find the college that is right for you is to visit.
- » **UNDERSTAND WHAT YOU NEED TO ENROLL.** Each college has an open admissions policy, meaning you need only a high school diploma or a GED to enroll. If you do not have a high school diploma or GED, you may qualify to be admitted through an approved Ability to Benefit test and may apply to enroll in a career pathway program. Details for program-specific admissions requirements can be found on the website of the college you are considering.
- » **KEEP TRANSFER IN MIND.** If you are thinking about transfer, take note of the pathway options and programs designed to ease the process. Planning ahead may save you time, money, and stress later.
- » **LET OUR STAFF AND FACULTY HELP.** You are strongly encouraged to contact the admissions department and get to know the faculty and staff at the college you plan to attend.

Alexandria Technical & Community College



alextech.edu

2020–21 Tuition and Fees: \$5,650



ALEXANDRIA

Admissions: 320-762-0221

1601 Jefferson St.
Alexandria, MN 56308

FAFSA Code: 005544



3,811 Students Served

50% Female // **50%** Male

45% Full-time // **55%** Part-time

9% Students of Color



ONLINE
LEARNING



STUDENT
ACTIVITIES



INTERCOLLEGIATE
ATHLETICS

DEGREES OFFERED

Advanced Technical Certificate, Associate of Applied Science, Associate of Arts, Associate of Science, Certificate, Diploma

PROGRAM HIGHLIGHTS

Business, communication art and design, cybersecurity, diesel mechanics, early childhood education, exercise science, interior design, law enforcement, liberal arts and sciences, machine tool, mechatronics, medical laboratory technician, nursing, paralegal, powersports, speech language pathology assistant, transfer pathways

STUDENT ACTIVITIES

New varsity sports; clay target league, Esports, and men's and women's golf. Outdoor sports storage available. 15+ student clubs, including a

new bass fishing club, organizations, intramural sports, professional development, culture, and recreation. Visit alextech.edu or MinnState.edu for a complete list.

AT A GLANCE

- » Hands-on, student-centered, experiential learning with state-of-the-art labs for relevant, industry-aligned learning
- » Transfer degrees and liberal arts curriculum provide options to bachelor's degrees
- » Located just off Interstate 94 in the heart of central Minnesota lake country, with abundant year-round recreation
- » Over 270 students have placed in the top 10 at national student competitions



- » Student housing adjacent to campus
- » \$300,000 in scholarships awarded annually by the ATCC Foundation
- » Best-in-class student retention, graduation, and job placement rates

VISIT

Visit alextech.edu/tour to schedule a program visit with one of our friendly enrollment specialists and program instructors or register for a general campus tour. Open House events are held the last Sunday in October and the first Saturday in April.

Anoka Technical College

anokatech.edu

2020-21 Tuition and Fees: \$5,811



ANOKA

Admissions: 763-576-7710

TTY: 7-1-1

1355 W. Highway 10

Anoka, MN 55303

FAFSA Code: 007350



2,503 Students Served

57% Female // **43%** Male

45% Full-time // **55%** Part-time

24% Students of Color



ONLINE
LEARNING



STUDENT
ACTIVITIES

DEGREES OFFERED

Associate of Applied Science, Certificate, Diploma

PROGRAM HIGHLIGHTS

Paramedic, robotic and laser welding, robotics and electronic engineering, automotive technician, welding, practical nursing, construction electrician, architectural 2D CAD, biomedical equipment technician, broadcast captioning, business data analyst, CNC manufacturing technology, turf and golf course management, health information technology, judicial reporting, medical coding, occupational therapy assistant, robotic and electronic engineering, surgical technology

STUDENT ACTIVITIES

Several student clubs, organizations, and activities available. Visit AnokaTech.edu or MinnState.edu for a complete list.

AT A GLANCE

- » 70+ in-demand career programs
- » 100 percent job placement: construction electrician, medical assistant, robotic and electronic engineering technology, welding fabricator
- » New programs fall 2020: CNC service technician, robotic and laser welding, irrigation and grounds management, turf and golf course management



- » Last year, the Anoka Technical College Foundation disbursed over \$165,000 in student scholarships and \$10,000 in student crisis grants
- » Variety of student support services available, including counseling, career services, tutors, disability services, enrollment and success coaches, veterans support. All services available with virtual options
- » 10 programs offered completely online: administrative office specialist, community and social services, office communication specialist, office software specialist, legal assistant, medical coding specialist, health information technology, health unit coordinator, medical office specialist, medical receptionist
- » Options to get started in most programs completely online
- » Hands-on practical education with experience using industry-leading equipment, unique to Anoka Tech, including a new five-axis mill from Matsuura Industries
- » Automotive technology program facilities updated with new hoists, lighting, vehicle exhaust system with carbon monoxide detection, and a virtual vehicle diagnostic lab
- » Remodeled surgical technology lab and classroom with industry-leading equipment, giving students training in an environment that reflects the workplace
- » Partnerships with local, state, and national businesses and industries connect students with real-world opportunities
- » Partnership with Bemidji State University offers paths from 15 associate degree programs to four-year degrees

VISIT

Visit AnokaTech.edu/visit for information on campus tours and virtual visits.

Anoka Technical College is aligned with Anoka-Ramsey Community College.

Anoka-Ramsey Community College

anokaramsey.edu

2020-21 Tuition and Fees: \$5,259



**CAMBRIDGE
COON RAPIDS**



Admissions: 763-433-1300

TTY: 7-1-1

11200 Mississippi Blvd. NW
Coon Rapids, MN 55433

FAFSA Code: 002332



11,550 Students Served

61% Female // 39% Male

38% Full-time // 62% Part-time

26% Students of Color



**ONLINE
LEARNING**



**BACHELOR'S
DEGREE PARTNER**



**STUDENT
ACTIVITIES**



**INTERCOLLEGIATE
ATHLETICS**

DEGREES OFFERED

Associate of Applied Science, Associate of Arts, Associate of Fine Arts, Associate of Science, Certificate, Diploma

PROGRAM HIGHLIGHTS

Accounting, alcohol and drug counseling studies, American Sign Language, biological sciences, biomedical technology, business, communication studies, creative writing, cybersecurity, engineering, environmental science, exercise science, fine arts, glassblowing, health sciences, integrative health and healing, liberal arts and sciences, nursing, pharmacy technician, physical therapist assistant, therapeutic massage

STUDENT ACTIVITIES

125+ student clubs, organizations, and activities available. Visit AnokaRamsey.edu or MinnState.edu for a complete list.

AT A GLANCE

- » Lowest-cost tuition in Minnesota
- » Anoka-Ramsey offers 100+ transferable courses and programs, eight available completely online, and 17 transfer pathways to seamlessly transition to a bachelor's degree
- » Anoka-Ramsey Community College was named one of 150 Top U.S. Community Colleges by the 2019 Aspen Prize for Community College Excellence

» Two campuses, beautifully situated on riverbanks; study at the Cambridge Campus near the Rum River, or at the Coon Rapids Campus on the Mississippi River

» Together, the Anoka-Ramsey Cambridge Campus and Coon Rapids Campus Foundations disbursed over \$250,000 in student scholarships last year

» Variety of student support services available, including academic advising, disability services, career services, veterans support, counseling, and tutoring. All services available with virtual options

» Unique undergraduate research opportunities in several academic areas, including biology, chemistry, communication studies, geology, philosophy, political science, and sociology

» New programs and transfer pathways for fall 2020: Elementary Education Foundations Transfer Pathway AS, the Special Education Transfer Pathway AS, and the Global Studies certificate

» Anoka-Ramsey is a fully accredited member of the Higher Learning Commission and home to nationally accredited nursing, business management and accounting, and physical therapy assistant programs

» The Coon Rapids Campus offers a 28,976-square-foot Visual Arts Center with a glassblowing studio, photography studio, ceramics, computer labs, and classrooms

» Both campuses are home to proscenium-style theatres that help support the theater program and multiple student performances annually

» The Coon Rapids Campus Music Building offers three large rehearsal spaces, six practice rooms with SmartMusic notation and recording software, and a dual Yamaha keyboard/Macintosh music technology lab

» The Coon Rapids Campus 5,000-square-foot Health and Wellness Center features a fitness center, walking track, batting cages, and several gymnasiums

VISIT

Visit AnokaRamsey.edu/visit for information on campus tours and virtual visits.

Anoka-Ramsey Community College is aligned with Anoka Technical College.

Central Lakes College

clcmn.edu

2020-21 Tuition and Fees: \$5,678



BRAINERD STAPLES

Admissions: 218-855-8000

TTY: 218-855-8224

501 W. College Dr.
Brainerd, MN 56401

FAFSA Code: 002339



5,331 Students Served

58% Female // **42%** Male

41% Full-time // **59%** Part-time

10% Students of Color



ONLINE
LEARNING



STUDENT
ACTIVITIES



INTERCOLLEGIATE
ATHLETICS



ON-CAMPUS
HOUSING

DEGREES OFFERED

Associate of Applied Science, Associate of Arts, Associate of Science, Certificate, Diploma

PROGRAM HIGHLIGHTS

Liberal arts and sciences, several transfer pathways, honors program, culinary arts, nursing, law enforcement, natural resources, computer network administration, sustainable greenhouse production, videography production, American Sign Language, heavy equipment operations and maintenance, robotics, and automated systems

SPECIAL OPTIONS

Certificates – Deaf studies, entrepreneurship, environmental studies, global studies, Latin American studies, robotic welding, wildlife tourism, and law enforcement skills

STUDENT ACTIVITIES

Numerous student clubs, organizations, sports, and activities available. An active Student Senate body on each campus. Strong student life program and opportunities for international studies. Get the four-year college experience at the two-year college price. Visit clcmn.edu or MinnState.edu for a complete list.

AT A GLANCE

- » Live Online lets students attend and participate in class in real time from anywhere across the nation
- » Affordable tuition while you begin work toward a bachelor's degree or choose from over 70 career and technical programs to start earning faster

- » Earn your AA degree without ever buying a commercial textbook with the Z-Degree
- » CLC is a leader in offering online classes, with more than 250 offerings each academic year
- » Learn and live surrounded by lakes and trees near Minnesota's premier vacation destination. With campus on the banks of the Mississippi, the region boasts more than 500 lakes and rivers, as well as beautiful parks and forests
- » 95 percent of CLC graduates find jobs related to their program of study
- » Small class sizes with expert instructors who know your name and care about you as an individual
- » CLC Foundation awards \$375,000 in scholarships each year; last spring semester, 368 scholarships were awarded
- » A Veterans Resource Center, awarded "Military Friendly" and "Military Advanced Education & Transition College" honors
- » Free tutoring services available for all students, in addition to TRIO Student Support Services
- » Convenient, newly renovated student housing available adjacent to campus
- » Home of the Central Lakes Community Performing Arts Center, providing theatre entertainment with the Cultural Arts Series and Brainerd Community Theatre Verse Like Water, a series that brings in world-renowned poets for a reading and craft talk
- » Nine-hole disc golf course located on campus
- » Students regularly outscore their peers on state and national skills tests
- » Raider athletics is home to six NJCAA DIII varsity sport teams and known nationwide for excellence, boasting four national championships
- » Ranked #2 in the nation by Great Value Colleges for an Associate's in Computer Engineering/Computer Information Science Online
- » A University Center, with five university partners, that lets students earn their bachelor's degree while staying at CLC and using the campus resources

VISIT

Campus tours are offered each week both virtually and in person. To schedule a tour, visit clcmn.edu.

Century College

century.edu

2020–21 Tuition and Fees: \$5,652



WHITE BEAR LAKE

Admissions: 651-773-1700

TTY: 651-779-3354

3300 Century Ave. N.
White Bear Lake, MN 55110

FAFSA Code: 010546



12,467 Students Served

56% Female // **44%** Male

39% Full-time // **61%** Part-time

40% Students of Color



ONLINE
LEARNING



BACHELOR'S
DEGREE PARTNER



STUDENT
ACTIVITIES



INTERCOLLEGIATE
ATHLETICS

DEGREES OFFERED

Associate of Arts, Associate of Fine Arts, Associate of Applied Science, Associate of Science, Certificate, Diploma

PROGRAM HIGHLIGHTS

Liberal arts and science transfer degrees, applied career and technical degrees, diplomas and certificates in nursing, paramedic, medical assistant, dental hygiene, automotive service technology, radiologic technology, law enforcement, cybersecurity, orthotic and prosthetic technology, solar and renewable energy, additive and digital manufacturing, engineering, computer science, HVACR, mental health and behavioral worker, translation and interpreting, interior design, kitchen and bath design, visual communications technologies, and more

STUDENT ACTIVITIES

30+ student clubs, organizations, and activities available in areas such as fine and performing arts, recreation, and career development. Visit century.edu or MinnState.edu for a complete list.

AT A GLANCE

- » Save thousands on your education through a variety of transferable options, including six Associate of Arts degrees, 19 Associate of Science degrees, three Associate of Fine Arts degrees, 16 Minnesota State Transfer Pathway degrees, and hundreds of general education courses in the liberal arts and sciences disciplines that transfer to four-year universities
- » Gain immediate employment in high-demand career fields. 33 Associate of Applied



Science degrees, 24 diplomas, and 66 certificates are offered in a wide variety of high-demand program areas. Areas include applied design, business, health sciences, human services, science, technology, engineering and mathematics (STEM), and trade and industry

- » Low tuition rates, financial aid options, and numerous scholarship opportunities make a college education affordable
- » Flexible course options, including multiple semester start dates, online, blended, day, evening, part-time, and credit for prior learning
- » State-of-the-art classrooms and laboratories provide cutting-edge technology to meet industry standards; this includes laboratories for Digital Fabrication (Fab Lab), solar and renewable energy, orthotics and prosthetics, and health sciences simulation labs
- » New Engineering and Applied Technology Center, planned to open in fall 2021, will serve an expanded engineering program and other STEM programs, as well as discipline areas across the college
- » Personalized and innovative student support services, including advising, academic tutoring, career counseling, wellness, veteran, disability, and technology services

and an on-campus student resource center supports student success

- » A variety of student clubs and organizations, collegiate athletic teams, campus recreation, art, music, and theatre experiences, discipline-specific competitions, guest speakers, and a LGBTQ, Veterans, and Multicultural Center contribute to creating a vibrant campus community
- » Strong community and business partnerships enhance academic curriculum and provide experiential student learning opportunities such as internships, service learning, and career exploration
- » The Century College Continuing Education and Customized Training department offers a wide range of non-credit, short-term continuing education courses
- » A Leader College and member since 2011 in Achieving the Dream, a national, nonprofit network that champions evidence-based institutional improvements around student success and innovative strategies to bridge the equity gap

VISIT

Attend a “Discover Century” information session, program information session, or campus event. Learn more at century.edu/visit.

Dakota County Technical College

dctc.edu

2020-21 Tuition and Fees: \$5,942



ROSEMOUNT

Admissions: 651-423-8000

TTY: 651-627-3529

1300 E. 145th St.
Rosemount, MN 55068

FAFSA Code: 010402



3,490 Students Served

42% Female // **58%** Male

53% Full-time // **47%** Part-time

26% Students of Color



ONLINE
LEARNING



BACHELOR'S
DEGREE PARTNER



STUDENT
ACTIVITIES



INTERCOLLEGIATE
ATHLETICS

DEGREES OFFERED

Associate of Applied Science, Associate of Science, Certificate, Diploma

PROGRAM HIGHLIGHTS

DCTC delivers cutting-edge education that gives you the knowledge and skills for employment. Our programs include: GM Automotive Service Educational Program, heavy duty truck tech, electrical lineworker, biomedical equipment tech, heavy construction equipment tech, health care, brewing and beer stewardship, business administration, civil engineering tech, multicultural management, early childhood and youth development, veterinary technician, and more

STUDENT ACTIVITIES

25+ student clubs, organizations, and activities available in areas such as career development, programming for veterans, student leadership, and culture. Visit dctc.edu or MinnState.edu for a complete list.

AT A GLANCE

- » DCTC provides collegiate-level education for employment that empowers individuals to enhance their opportunities for career advancement and success in a global economy. When students choose DCTC, they discover the Blue Knight life is more than just a college; it's a realm of possibility
- » Value – DCTC ranks in the Top 50 nationwide on Value College's list of best community college values



- » Choices – DCTC offers 40 degree programs and more than 60 certificate and diploma programs, in virtually every professional sector imaginable, from business to brewing, high tech to health care, and beyond
- » Support – Take advantage of free student services like tutoring, advising, career advising, computer resources, and more
- » Energy – DCTC offers a true college experience, with countless student life and leisure opportunities to connect with our campus
- » Welcoming, student-centric campus with newly remodeled central commons area
- » Flexible learning options, including credit for prior learning, short-term programs, online classes, and an Individualized Studies AS degree
- » Small class sizes, hands-on labs, real-world learning, and instructors who care
- » Strong business and industry partnerships that bring modern equipment and relevant coursework

VISIT

Experience our student-friendly campus by taking a Tuesday Campus Visit any Tuesday from 12:45 to 2:30 p.m. DCTC also offers Thursday evening Information Sessions at 5 p.m. on the third Thursday of each month for the following programs: nursing, medical assistant, early childhood, vet tech, and our bachelor's degree program in business. Visit dctc.edu to learn more.

Fond du Lac Tribal & Community College

fdltcc.edu

2020–21 Tuition and Fees: \$5,534



CLOQUET

Admissions: 218-879-0800

TTY: 800-627-3529

2101 14th St.
Cloquet, MN 55720

FAFSA Code: 031291



2,324 Students Served

57% Female // **43%** Male

30% Full-time // **70%** Part-time

23% Students of Color



ONLINE
LEARNING



STUDENT
ACTIVITIES



INTERCOLLEGIATE
ATHLETICS



ON-CAMPUS
HOUSING

DEGREES OFFERED

Associate of Applied Science, Associate of Arts, Associate of Fine Arts, Associate of Science, Certificate, Diploma

PROGRAM HIGHLIGHTS

Law enforcement, nursing, environmental science, geographic information systems, American Indian studies, clean energy technology, child development, and elementary education

STUDENT ACTIVITIES

Our engaging campus life programming provides meaningful connections to campus and student success. Opportunities are available for roles in student government and campus leadership, plus participation in student clubs based on program areas, academic excellence,

intercollegiate athletics, and special interests. Visit fdltcc.edu or MinnState.edu for a complete list.

AT A GLANCE

- » Reputation for friendly service and a comfortable campus atmosphere
- » Convenient daytime, evening, weekend, hybrid, and online courses
- » Nursing program is nationally accredited by the Accreditation Commission on Education in Nursing (ACEN) and is also approved by the Minnesota Board of Nursing
- » Cultural center, fitness areas, law enforcement, and nursing training facilities
- » Ranked #4 Most Beautiful Community College Campus in the United States



- » Emphasis on uniting cultures and creating individual and community awareness
- » Students can earn a bachelor's degree on campus through partnership programs with Winona State University and the College of St. Scholastica
- » Unique transfer programs with four-year universities make it easy to transfer credits
- » Scholarships awarded through the FDLTCC Foundation and the American Indian College Fund

- » Law enforcement program is approved by the Minnesota Peace Officers' Standards and Training Board (POST)
- » Free professional and peer tutoring available, plus TRIO Student Support Services

VISIT

One of the best ways to learn more about FDLTCC is to get a personalized tour. Visit campus anytime, during a Campus Visit Day or schedule your individual tour. Visit fdltcc.edu/visit-us for details.

Hennepin Technical College

hennepintech.edu

2020–21 Tuition and Fees: \$5,479



**BROOKLYN PARK
EDEN PRAIRIE**

Admissions: 952-995-1300
TTY: 800-627-3529

Visit HennepinTech.edu for directions to our Brooklyn Park and Eden Prairie locations.

FAFSA Code: 010491



7,008 Students Served

38% Female // **62%** Male

39% Full-time // **61%** Part-time

45% Students of Color



**ONLINE
LEARNING**



**BACHELOR'S
DEGREE PARTNER**



**STUDENT
ACTIVITIES**

DEGREES OFFERED

Associate of Applied Science, Associate of Science, Certificate, Diploma

PROGRAM HIGHLIGHTS

Automation robotics, fluid power engineering, business, IT, accounting, engineering CAD, interactive design/video production, audio production, dental assistant, practical nursing, medical assistant, culinary arts, manufacturing and engineering technology, plastics technology, HVACR, automotive technician, welding and metal fabrication, cabinetmaking, law enforcement, public works, Ford ASSET

STUDENT ACTIVITIES

Many student clubs and activities including Phi Beta Kappa, SkillsUSA, BREA (Blacks Rising in Education and Academics), and an active

student senate. Special support services for low-income students, first-generation college students, and students with disabilities. Strengths-based leadership development build students' leadership in education, career, and life. Visit HennepinTech.edu or MinnState.edu for a complete list.

AT A GLANCE

- » A college committed to equity and inclusion
- » 99 percent job placement rate
- » Ranks #22 nationally in associate degrees conferred to minority students in engineering technology fields (Diverse magazine, Dec. 2019)
- » Ford ASSET is ranked #1 in the nation for enrollment



- » Among the lowest tuition in the state
- » Convenient class offerings in-person, online, and hybrid courses
- » Close relationships with industry partners create many scholarship, internship, and career opportunities
- » Hands-on learning using state-of-the-art equipment. Labs and curriculum aligned to industry standards
- » "Beyond The Yellow Ribbon" college with resources for military veterans

- » Several programs on 2020 Best Colleges for Earning Potential (GradReports)
- » Hunger Free Campus designation
- » Students can earn a bachelor's degree at the Eden Prairie campus in partnership with Metropolitan State University

VISIT

Discover Hennepin Technical College with an in-person or virtual campus tour or attend an open house for a specific program. For more information, visit HennepinTech.edu.

Hibbing Community College

Part of the Northeast Higher Education District (NHED)

hibbing.edu

2020–21 Tuition and Fees: \$5,524



HIBBING



Admissions: 218-262-7200

TTY: 800-627-3529

1515 E. 25th St.
Hibbing, MN 55746

FAFSA Code: 002355



1,468 Students Served

57% Female // **43%** Male

52% Full-time // **48%** Part-time

18% Students of Color



ONLINE
LEARNING



STUDENT
ACTIVITIES



INTERCOLLEGIATE
ATHLETICS



ON-CAMPUS
HOUSING

DEGREES OFFERED

Associate of Applied Science, Associate of Arts, Associate of Fine Arts, Associate of Science, Certificate, Diploma

PROGRAM HIGHLIGHTS

IT networking and security, law enforcement, medical lab technician, nursing, nursing assistant, automotive technician, diesel mechanic, electrical maintenance, heating and cooling technician, dental assistant, culinary arts

STUDENT ACTIVITIES

Several student clubs, organizations, and activities available in a variety of areas, including recreation, student leadership, and culture. Visit hibbing.edu or MinnState.edu for a complete list.

AT A GLANCE

- » On-campus housing features two-bedroom, two-bathroom suites with full kitchen, living space, and on-site laundry
- » The state-of-the-art Simulation Center for nursing (RN) students is equipped with high fidelity manikins that function with all the capabilities of a human without the repercussions, allowing students to learn in a safe and controlled environment as a supplement to off-site clinical rotations
- » 16-week programs available such as Certified Nursing Assistant
- » "Yellow Ribbon Campus" proudly serving military members and their families



- » Located in the heart of the Iron Range; gorgeous scenery, outdoor recreation, and an abundance of trails and lakes
- » Program in nursing ranked among the top nursing schools in the state of Minnesota
- » Law enforcement program with over 40 years of history in training excellence; program boasts a unique indoor, on-campus firing range
- » 10-month programs such as dental assisting and heating and cooling technician
- » Associate of fine arts program allows students to take classes with a focus in drawing, painting, sculpting, and ceramics alongside general requirements
- » Culinary arts program includes opportunities to work in a commercial-style kitchen and showcase skills by providing food service to the entire campus for breakfast and lunch
- » Athletics opportunities in volleyball, softball, men's and women's basketball, baseball, and trap league
- » Brand new Pipe Bending Lab and recently updated state-of-the-art Motor Control Lab for electrical maintenance allows students to learn and practice hands-on application of the function, operation,

installation, protection, maintenance, and troubleshooting of motor controls, various starting circuits, and motors according to applicable National Electrical Code articles

- » Brand new student-centered Academic Center, Library, Bookstore, Student Services, and Resource Center
- » Free access to all campus fitness centers, including weight room, bike/running room, and CrossFit training gym
- » HCC Foundation awards student scholarships annually in amounts ranging between \$500 and \$3,000
- » Dental assisting students learn and practice skills in a shared on-campus fully functioning dental clinic

VISIT

Visit hibbing.edu to schedule a tour anytime Monday–Friday, 9 a.m. to 3 p.m.

Inver Hills Community College

inverhills.edu

2020-21 Tuition and Fees: \$5,558

Inver Hills
Community College



INVER GROVE HEIGHTS

Admissions: 651-450-3000
TTY: 800-627-3529

2500 E. 80th St.
Inver Grove Heights, MN
55076

FAFSA Code: 006935



6,369 Students Served

61% Female // **39%** Male

39% Full-time // **61%** Part-time

34% Students of Color



ONLINE
LEARNING



BACHELOR'S
DEGREE PARTNER



STUDENT
ACTIVITIES

DEGREES OFFERED

Associate of Applied Science, Associate of Arts,
Associate of Fine Arts, Associate of Science,
Certificate, Diploma

PROGRAM HIGHLIGHTS

Launch your degree or career with Inver Hills Community College. Our campus, less than 10 miles southeast of St. Paul, offers network technology and security, emergency medical services, computer science, accounting, biology, psychology, Minnesota Alliance for Nursing Education (MANE) BSN, law enforcement, Adult Success through Accelerated Learning (ASAP), Inver Prep, PSEO, engineering fundamentals, paralegal, criminal justice, project management, and more

STUDENT ACTIVITIES

25+ student clubs, organizations, and activities available in areas such as music, theater, culture, and student leadership. Visit inverhills.edu or MinnState.edu for a complete list.

AT A GLANCE

- » Why Inver Hills? Inver Hills offers the perfect setting for students looking for a balance of personal attention and opportunities to get involved. With 40 academic programs and a low faculty-to-student ratio, Inver Hills students know their instructors and fellow students
- » Inver Hills prepares students for career success through challenging courses, access to internships and community-based learning, and career development support along the way



- » Committed to student success, we provide students a variety of services, including advising, counseling, financial aid, tutoring, and more. We support our students in-person and online to meet all of their needs
- » From New Student Orientation to First Year Experience courses, we set our students up for success from day one
- » Our financial aid department and scholarship programs help thousands of students per year reach their goals while reducing their student loan debt. We are committed to making college possible for all
- » Through our Student Life and student clubs, Inver Hills offers opportunities to get involved and take on campus leadership roles. Check out the Student Life calendar for upcoming events and activities
- » Designated an MN Reconnect college, Inver Hills provides support to adults who have earned some credit but not a degree. With a dedicated Navigator and special scholarship resources for MN Reconnect students, there has never been an easier way for adult students to finish what they started

- » Known for our gorgeous grounds, the Inver Hills campus features multiple ponds, a community garden, and distinctive architecture. See campus for yourself by contacting the admissions department to schedule a personal or group visit
- » Inver Hills students are prepared to transfer to the four-year college of their choice and our students can go anywhere with easy credit transfer and advising from our well-connected team

VISIT

Campus visits are offered weekly and last about one hour. Visit inverhills.edu for details.

Itasca Community College

Part of the Northeast Higher Education District (NHED)

itascacc.edu

2020–21 Tuition and Fees: \$5,539



GRAND RAPIDS



Admissions: 218-322-2340

TTY: 218-322-2438

1851 E. Highway 169
Grand Rapids, MN 55744

FAFSA Code: 002356



1,681 Students Served

56% Female // **44%** Male

56% Full-time // **44%** Part-time

21% Students of Color



ONLINE
LEARNING



STUDENT
ACTIVITIES



INTERCOLLEGIATE
ATHLETICS



ON-CAMPUS
HOUSING

DEGREES OFFERED

Associate of Applied Science, Associate of Arts,
Associate of Science, Certificate, Diploma

PROGRAM HIGHLIGHTS

Engineering, natural resources (forestry,
law enforcement, geospatial, and wildland
firefighting tracks), K–12 education (Class Act),
early childhood education, child development,
applied psychology/human services,
environmental studies, geography and GIS,
American Indian studies, liberal arts, health
sciences, practical nursing

STUDENT ACTIVITIES

20+ student clubs, organizations, and activities
available in areas such as culture, recreation,
volunteerism, and academics. Visit itascacc.edu
or MinnState.edu for a complete list.

AT A GLANCE

- » 1,000+ lakes in beautiful Itasca County plus
easy access to thousands of acres of public
land for outdoor activities
- » One-year option for high school seniors who
have earned a variety of college credits
- » More than \$300,000 in scholarships awarded
each year complement already low tuition
- » Small classes in highly-rated programs for
less money—enter the workforce or transfer
to earn your bachelor's degree
- » On-campus housing plus a variety of nearby
off-campus options
- » Transfer seamlessly to a wide variety of
colleges and universities with personalized
advising



- » Women's volleyball, basketball, softball;
men's football, basketball, wrestling,
baseball; co-ed trap shooting (Itasca hosts
the MCAC championship)
- » Itasca is a learning community college
where students get real-world, hands-on
experience, and instructors' full attention is
devoted to teaching
- » Known as the "Best Place to Start"—advisors,
faculty, tutors, and support services staff
get to know you and guide you every step of
the way

VISIT

Schedule a visit any weekday 9 a.m. to 3 p.m.
or sign up for a Campus Preview Day. Visit
itascacc.edu/visit for details.

Lake Superior College

lsc.edu

2020-21 Tuition and Fees: \$5,390



DULUTH

Admissions: 218-733-7601

2101 Trinity Rd.
Duluth, MN 55811

FAFSA Code: 005757



7,644 Students Served

53% Female // **47%** Male

35% Full-time // **65%** Part-time

14% Students of Color



ONLINE
LEARNING



BACHELOR'S
DEGREE PARTNER



STUDENT
ACTIVITIES



INTERCOLLEGIATE
ATHLETICS

DEGREES OFFERED

Associate of Applied Science, Associate of Arts, Associate of Fine Arts, Associate of Science, Certificate, Diploma

PROGRAM HIGHLIGHTS

LSC has over 90 program offerings, including allied health and nursing, auto service technology, aviation, cybersecurity, dental hygiene, EMT, fire technology and administration, integrated manufacturing, liberal arts and sciences, paralegal studies, physical therapist assistant, truck driving, and much more

SPECIAL OPTIONS

- » LSC collaborates with many four-year institutions, including Bemidji State University, Metropolitan State University, St. Cloud State University, Minnesota State

University, Mankato, Southwest Minnesota State University, College of St. Scholastica, the University of Minnesota Duluth, and the University of Wisconsin-Superior, to provide seamless pathways for students to transition to four-year degree programs

- » LSC has 38 high school partners for the Postsecondary Enrollment Options (PSEO), Honors Online (HOL), and the College in the Schools (CITS) programs
- » LSC serves as a regional Economic Opportunity Center through the U.S. Department of Education to help marginalized individuals plan for and attend college
- » LSC and Hibbing Community College offer a dual campus partnership to provide a dental assisting program for students who live in the Twin Ports area



STUDENT ACTIVITIES

30+ student clubs, organizations, and activities available in areas such as arts, recreation, intercollegiate athletics, student leadership, and career development. Visit lsc.edu or MinnState.edu for a complete list.

AT A GLANCE

- » Generous and growing scholarship funding through the LSC Foundation awarded more than \$375,000 to students in 2019-20
- » Expanded sports programs include intercollegiate men's and women's soccer, basketball, cycling, and clay target
- » On-site specialized veterans services available through the Veterans Resource Center, Higher Education Veterans Program, and Minnesota Department of Veterans Affairs
- » LSC is the only two-year college in Minnesota designated as a National Center of Academic Excellence in Cyber Defense by the National Security Agency/Department of Homeland Security
- » Collaborative partnership with Southwest Minnesota State University provides four-year bachelor's degrees available on LSC's campus in marketing, community psychology and health promotion, and agriculture solutions

- » LSC's numerous community partnerships include connections with local, regional, and state agencies and nonprofits through workforce development grant-sharing and customized training and active advisory councils for technical and allied health programs

- » Hangar facilities for the Center for Advanced Aviation at the Duluth International Airport house both LSC's professional pilot and aviation maintenance technician programs
- » The Emergency Response Training Center provides world-class training for emergency response professionals
- » The college provides dental hygiene, massage therapy, and physical therapy services to students and uninsured residents of the region through faculty-supervised student clinics

VISIT

Campus tours are offered daily or by appointment. Visit lsc.edu for additional details and events.

Mesabi Range College

Part of the Northeast Higher Education District (NHED)

mesabirange.edu

2020–21 Tuition and Fees: \$5,539

MESABI
Range College



**EVELETH
VIRGINIA**

Admissions: 218-749-0313

TTY: 218-749-7783

1001 W. Chestnut St.
Virginia, MN 55792

FAFSA Code: 004009



1,744 Students Served

48% Female // **52%** Male

51% Full-time // **49%** Part-time

19% Students of Color



**ONLINE
LEARNING**



**STUDENT
ACTIVITIES**



**INTERCOLLEGIATE
ATHLETICS**



**ON-CAMPUS
HOUSING**

DEGREES OFFERED

Associate of Applied Science, Associate of Arts,
Associate of Science, Certificate, Diploma

PROGRAM HIGHLIGHTS

Liberal arts, business, industrial mechanical technology (IMT-Millwright), accredited nursing and paramedic programs, EMT, welding technology – AWS accredited, accredited graphics design media program, electrical controls, human services, addiction studies, carpentry, early childhood, business operations and management, and Iron Range engineering (partnership with ICC)

SPECIAL OPTIONS

Z-Degree – Mesabi Range College students are saving in textbook costs through a degree option known as Z-Degree. Beginning fall 2020,

the college will offer courses that will fulfill an AA degree (Associate of Arts) with no textbook costs.

Online Learning – Mesabi Range College also offers an Associate of Arts Degree and Minnesota Transfer Curriculum online, allowing students to earn their degree at home.

STUDENT ACTIVITIES

Student clubs: gaming, welding, nursing, human service, theater, multicultural, and Phi Theta Kappa. Activities available in areas such as student senate, student life, and the diversity committee provide student leadership opportunities. Student competitions and events allow students to showcase their skills, such as critical thinking and their ingenuity. Examples include Welding Behind the Mask competition,



SkillsUSA competition, and a technical skills fair for high school students. The Eveleth and Virginia campuses are located on the beautiful Iron Range, with activities ranging from hiking, biking, fishing, skiing, curling, snowboarding, ATV trails, and so much more. Students can enjoy exciting outdoor activities located close to the campuses, including Giants Ridge Recreation Area, Boundary Waters Canoe Area, and Iron Range Off-Highway Vehicle State Recreation Area.

AT A GLANCE

- » Personalized and innovative student support services, including advising, academic tutoring, career counseling, veteran, disability, and technology services. Student success centers are located on both of our campuses
- » Athletics – Women's volleyball, basketball, and softball; men's football, basketball, and baseball. Go Norse!
- » Small class sizes lead to personal attention and interaction with faculty and other students; college's student-to-teacher ratio of 20:1
- » Strong student life and student senate programs

- » Over \$105,000 in scholarships awarded annually
- » Semi-furnished housing—Virginia campus
- » Excellent placement rates and high-paying jobs in many career programs
- » Student Success program partnership with AEOA (Arrowhead Economic Opportunity Agency)
- » Strong relationships with area businesses and industry that provide students with internships
- » Ranked in top five best community colleges in Minnesota by BestColleges.com
- » Summer boot camps available: New student boot camp, welding and graphics boot camps, and STEM camp
- » Earn your degree entirely online: liberal arts AA degree, business diploma and AS, business operations and management diploma and AAS, early childhood/early childhood special education AAS, teacher's assistant, and construction management AS

VISIT

Contact the admissions office to schedule a campus visit with a personal guide. Visit mesabirange.edu for additional details and events.

Minneapolis College

minneapolis.edu

2020–21 Tuition and Fees: \$5,660



MINNEAPOLIS
COMMUNITY & TECHNICAL
COLLEGE™



MINNEAPOLIS

Admissions: 612-659-6200

TTY: 800-627-3529

1501 Hennepin Ave.
Minneapolis, MN 55403

FAFSA Code: 002362



10,032 Students Served

57% Female // **43%** Male

35% Full-time // **65%** Part-time

56% Students of Color



ONLINE
LEARNING



STUDENT
ACTIVITIES



BACHELOR'S
DEGREE PARTNER

DEGREES OFFERED

Associate of Applied Science, Associate of Arts, Associate of Fine Arts, Associate of Science, Certificate, Diploma

PROGRAM HIGHLIGHTS

Eight schools within the college provide simplicity in choosing a major and guidance for which courses to take first to save time and money; programs within these schools include biology, psychology, theater, business, liberal arts, nursing, and more

STUDENT ACTIVITIES

70+ student clubs, organizations, and activities available. Visit minneapolis.edu or MinnState.edu for a complete list.

AT A GLANCE

- » Nationally accredited programs in high-demand fields
- » Knowledgeable, award-winning faculty members committed to student success
- » Students from around the world who represent a broad range of ages and backgrounds
- » Small class sizes to connect with faculty and classmates
- » State-of-the-art technical, science, and world language labs
- » Award-winning Student Support Center
- » Minneapolis College collaborates with many four-year institutions, including Metropolitan State University, Augsburg University, and the



University of Minnesota, to provide seamless pathways for students to transition to four-year degree programs

- » Minneapolis College is the first college in Minnesota to offer exploratory majors for undecided students, allowing you to start making immediate progress on your educational journey while keeping your options open for multiple programs within a broad career cluster
- » The Academic Success Center offers a state-of-the-art learning environment to enhance student success
- » The Power of YOU program covers tuition and fees (after state and federal grants) for eligible public high school graduates; 2,400 students benefited from the program over the last 10 years
- » About half a million dollars was awarded to students last year in scholarships and emergency assistance through the Minneapolis College Foundation
- » Minneapolis College is an anchor partner in the Cedar Riverside Opportunity Center and 800 W. Broadway, a collaboration between public sector and private non-profit partners to provide access to educational, workforce, and career pathway services to the community
- » The Student Support Center received the Minnesota State Innovative Student Affairs Program Award for providing services for and responding to the needs of the college's diverse population
- » Seven Minneapolis College students earned USA Today Academic All-Star Awards for academic and personal achievements and using their education to benefit their communities
- » Minneapolis College instructors are frequently recognized by Minnesota State as Outstanding Educators, including four faculty receiving the top award, Educator of the Year, in 2016–17, 2017–18, and 2019–20
- » Dual credit programs are an opportunity for high school students to earn college credit while working toward their high school diploma. We offer three programs: Postsecondary Enrollment Options (college courses on our campus), concurrent enrollment (college courses at your high school), and Destination to Diploma for students enrolled in alternative high schools taking college courses on our campus

VISIT

Visit minneapolis.edu to find details about Minneapolis College and the admissions process.

Minnesota State College Southeast

southeastmn.edu

2020–21 Tuition and Fees: \$5,837



RED WING WINONA

Admissions: 877-853-8324

TTY: 507-453-2785

1250 Homer Rd.
Winona, MN 55987

FAFSA Code: 002393



2,644 Students Served

55% Female // **45%** Male

38% Full-time // **62%** Part-time

16% Students of Color



ONLINE
LEARNING



BACHELOR'S
DEGREE PARTNER



STUDENT
ACTIVITIES

DEGREES OFFERED

Associate of Arts, Associate of Applied Science, Associate of Science, Certificate, Diploma

PROGRAM HIGHLIGHTS

Accounting, auto body collision, automotive and light duty diesel, bicycle design and fabrication, band instrument repair, biomedical equipment technology, CNC machine tool, construction technology, creative writing, early childhood education, electrical engineering technology, guitar repair and building, health science broad field, liberal arts and sciences (AA), medical laboratory technician, practical nursing, radiography, software development and support, sustainable food and farming, transfer pathways, truck driving, violin repair, welding technology

STUDENT ACTIVITIES

Red Wing Student Association, Winona Student Senate, Student Music Association, medical laboratory technicians club, cosmetology club, chess club, cycling club, equestrian club, Phi Theta Kappa (PTK), Delta Epsilon Chi (Collegiate DECA), SkillsUSA, Student Guitar Show, and annual Strings, Winds & Brass concert at The Sheldon Theatre in Red Wing. Visit southeastmn.edu or MinnState.edu for a complete list.

AT A GLANCE

- » 95 percent of graduates in career programs find employment in their chosen fields
- » 100 percent online programs available in accounting, accounting transfer pathway, administrative support careers, business transfer pathway, computer aided design



(CAD) drafting, creative writing, cyber and information security, early childhood education, medical support careers, software development and support

- » Fully operational trade/technical labs simulate real-world work environment
- » Health care programs (medical laboratory technician, practical nursing, radiography) accredited by respective national agencies
- » Practical nursing program NCLEX-PN® first-time success rate of 97.56 percent in 2019
- » Transfer pathways in accounting, business, English, exercise science, history, political science, pre-social work, sociology, and psychology lead directly to related bachelor's degrees at Minnesota State universities
- » Innovative sustainable food and farming degree combines small business, agriculture, technical science, and practical hands-on training
- » Unique bicycle design and fabrication program
- » Construction technology emphasizes sustainability, energy conservation, ecofriendly building practices, and partnership with Winona Habitat for Humanity

- » Musical instrument repair and building programs on Red Wing campus
- » Health and wellness benefits, including access to Red Wing YMCA and WSU Integrative Wellness Center
- » Military Friendly School™ and Hiawatha Valley Beyond the Yellow Ribbon Company
- » More than \$125,000 in scholarships available each year
- » Free bus transportation and student-led Food Pantries support students in financial need

VISIT

Schedule a personal campus tour with an admissions advisor by calling 877-853-8324 or email enrollmentservices@southeastmn.edu.

Minnesota State Community and Technical College

minnesota.edu

2020–21 Tuition and Fees: \$5,576



**DETROIT LAKES
FERGUS FALLS
MOORHEAD
WADENA**

Admissions: 877-450-3322
TTY: 800-627-3529

Visit minnesota.edu/about/campuses for directions to our four campus locations

FAFSA Code: 005541



7,871 Students Served

60% Female // **40%** Male

39% Full-time // **61%** Part-time

20% Students of Color



**ONLINE
LEARNING**



**BACHELOR'S
DEGREE PARTNER**



**STUDENT
ACTIVITIES**



**INTERCOLLEGIATE
ATHLETICS**

DEGREES OFFERED

Associate of Applied Science, Associate of Arts, Associate of Fine Arts, Associate of Science, Diploma, Certificate, Transfer Pathways

PROGRAM HIGHLIGHTS

Autism spectrum disorder, cardiovascular technology-invasive, child and adolescent therapeutic behavioral health, cosmetology, cybersecurity, database administration, dental assisting and hygiene, digital marketing, electrical lineworker, electrical technology, limited scope radiography, medical assistant, medical laboratory technology, music, nursing, phlebotomy technician, powersports technology, purchasing and inventory management, radiologic technology, social media management, sport management, surgical technology, theatre and visual arts;

Transfer pathways are available in accounting, art, biology, business, early childhood, education, history, political science, psychology, and theatre arts

STUDENT ACTIVITIES

The four M State campuses have more than 30 student clubs, organizations, and activities focused on career skills, theatre, art, culture, recreation, entertainment, and student leadership. Visit minnesota.edu/m-state-life or MinnState.edu for a complete list.

AT A GLANCE

- » Prepare for transfer to a four-year college or university or choose from 80 career programs
- » Choose from on-campus, online, blended, or evening courses



- » More than 300 classes and 30 programs and majors can be completed entirely online
- » M State is the top transfer institution for students attending Minnesota State University Moorhead, North Dakota State University, University of North Dakota, and Concordia College
- » In 2019, M State nursing students had a licensure exam pass rate of 91 percent for the associate degree and a 95 percent pass rate for the practical nursing program. Radiologic Technology students have a licensure exam pass rate of 100 percent
- » 1,865 students attended tuition-free in 2019–20
- » College foundations award more than \$300,000 in scholarships each year
- » The Detroit Lakes campus is located at the center of a variety of outdoor activities and unique entertainment venues; the campus offers an impressive selection of hands-on technical programs that prepare you to launch your dream career
- » Experience a university-like atmosphere at our two-year college campus in Fergus Falls, which includes on-campus housing and dining, fine arts performance opportunities, collegiate athletics, a robust Student

Government Association, and engaging student life activities

- » In Moorhead, you'll experience a diverse campus in a vibrant metropolitan setting. Get involved with more than a dozen active clubs and organizations, and take advantage of the on-campus fitness center. Our innovative programs can prepare you for high-demand careers in emerging technologies
- » Our Wadena campus, with its recently renovated student services center, is known for its warm, welcoming atmosphere. Learn from experts in their fields in real-world classroom environments that prepare you for success in the job market in as little as nine months

VISIT

Our friendly enrollment managers are ready to provide an on campus or virtual campus tour, assist you with your college and financial aid applications, and answer any questions you (or your family!) may have. Sign up at minnesota.edu/visit. If you're planning to be an online-only student, get started by contacting our Support Center at enroll@minnesota.edu.

Minnesota West Community & Technical College



mnwest.edu

2020–21 Tuition and Fees: \$6,016



CANBY
GRANITE FALLS
JACKSON
PIPESTONE
WORTHINGTON

Admissions: 800-658-2330

TTY: 800-658-2330

1450 Collegeway
Worthington, MN 56187

FAFSA Code: 005263



4,782 Students Served

55% Female // **45%** Male

33% Full-time // **67%** Part-time

22% Students of Color



ONLINE
LEARNING



STUDENT
ACTIVITIES



INTERCOLLEGIATE
ATHLETICS

DEGREES OFFERED

Associate of Applied Science, Associate of Arts, Associate of Science, Certificate, Diploma, Transfer Pathways

PROGRAM HIGHLIGHTS

Nursing, mechatronics, wind energy, electrician, powerline, welding, radiology tech, precision machining, law enforcement, agriculture, biofuels, carpentry, diesel, dental, surgical tech, computers, cosmetology, child development, automotive, liberal arts, computer science, solar, plumbing, elementary education pathway

STUDENT ACTIVITIES

Intercollegiate athletics, numerous student clubs, organizations, and activities available in areas such as student leadership, academics, career

programs, and recreation. Visit mnwest.edu or MinnState.edu for a complete list.

AT A GLANCE

- » Leader in online and distance delivery for over 20 years
- » Numerous course offerings for flexible and accessible learning such as on-campus, online, and hybrid
- » Minnesota West has five campuses and two learning centers, which span a total of 19 counties and 21,000 square miles
- » \$2.55 million Powerline Technology Training Facility at the Jackson campus
- » Student housing available at the Canby and Worthington campuses



- » Student success with high graduation and persistence rates
- » Collaboration with business/workforce leaders to meet workforce demands with technical training and scholarship opportunities
- » Leader in allied health programming with learning opportunities in a hospital setting
- » Named one of the top 150 colleges in the country by the Aspen Institute (three times)
- » Military Friendly School and “Beyond the Yellow Ribbon” organization
- » Practical nursing program holds the top Minnesota State licensure passing rates

- » Over \$100,000 awarded in scholarships annually
- » Home to Bluejay and Lady Jay NJCAA Athletics
- » Number of online degree options, including AA degree 100 percent online
- » Last year we served students from 39 states and eight countries. Be a part of Minnesota West, and Learn With Purpose!

VISIT

To schedule a visit call us at 800-658-2330 or get details at mnwest.edu/get-started/schedule-a-visit.

Normandale Community College

normandale.edu

2020–21 Tuition and Fees: \$6,038



BLOOMINGTON

Admissions: 952-358-8201

TTY: 952-358-8625

9700 France Ave. S.
Bloomington, MN 55431

FAFSA Code: 007954



14,765 Students Served

57% Female // **43%** Male

42% Full-time // **58%** Part-time

39% Students of Color



ONLINE
LEARNING



BACHELOR'S
DEGREE PARTNER



STUDENT
ACTIVITIES

DEGREES OFFERED

Associate of Applied Science, Associate of Arts, Associate of Fine Arts, Associate of Science, Certificate

PROGRAM HIGHLIGHTS

Liberal arts, business, computer science, science and engineering, nursing, dental hygiene, teacher education, law enforcement, music, theatre, art, psychology, vacuum technology, world languages; advanced degree programs in business, communications, computer science, dental hygiene, education, engineering, exercise science, nursing, theatre

STUDENT ACTIVITIES

50+ student clubs, organizations, and activities available in areas such as arts, recreation, student leadership, and career development.

AT A GLANCE

- » Prepares students for full participation in diverse communities, creates pathways to other college programs, and builds community connections. Normandale is committed to quality, affordability, student access, and success
- » Normandale offers 70+ associate degree and certificate options with a number of course options available as in-person, online or hybrid formats
- » Over 14,000 students from diverse backgrounds attend classes at the college each year, making it Minnesota's largest community college
- » Normandale offers accredited music, theatre, art, and business programs—rare among two-year colleges in Minnesota and nationwide



- » Normandale awarded approximately \$30 million to students through federal and state financial aid programs during the 2018–19 academic year
- » Normandale is a top transfer institution to Metropolitan State University, Minnesota State University, Mankato, University of Minnesota, University of St. Thomas, and many other state colleges and universities
- » Normandale's College Services Renovation modernizes 27 classrooms, provides state-of-the-art labs, adds small group spaces for student collaboration, and creates a centralized and integrated Student Services model to make it easier for students to find the services and support they need
- » Normandale's Partnership Center provides access to bachelor's degree programs through partnering institutions (Metropolitan State, MSU, Mankato, and Southwest Minnesota State) on the Normandale campus. Students can obtain an associate degree at Normandale, and complete their bachelor's degree in a variety of majors
- » Normandale's Continuing Education offers courses for in-demand skills, collaborates with community industry partners to make an impact, and received the highest dollar amount (\$796,895) of MJSP/ DEED Grants of

any college or university in the system in 2018

- » Support services are provided for second language and developmental education students as well as students with disabilities
- » Normandale Tutoring Center provides services to students through the Writing Center, embedded tutors in historically difficult courses, walk-in peer tutoring, and tutoring for non-native English speakers
- » The college provides a community dental clinic that accepts public assistance and offers dental services on a sliding fee scale for those living in the southwest metro area
- » Normandale provides a Campus Cupboard for students without the financial means to eat every day
- » Normandale is a "Beyond the Yellow Ribbon" military friendly organization. Normandale has one of the largest veteran populations in the Minnesota State system
- » Normandale has one of the few authentic Japanese Gardens in the state

VISIT

Campus visits are available at different times during the year. Please check normandale.edu/visit to get the schedule and any information about campus visits.

North Hennepin Community College

nhcc.edu

2020–21 Tuition and Fees: \$5,822



North Hennepin
Community College



BROOKLYN PARK

Admissions: 763-424-0724

TTY: 800-627-3529

7411 85th Ave. N.
Brooklyn Park, MN 55445

FAFSA Code: 002370



9,400 Students Served

59% Female // **41%** Male

33% Full-time // **67%** Part-time

49% Students of Color



ONLINE
LEARNING



STUDENT
ACTIVITIES



BACHELOR'S
DEGREE PARTNER

DEGREES OFFERED

Associate of Applied Science, Associate of Arts, Associate of Fine Arts, Associate of Science, Certificate

PROGRAM HIGHLIGHTS

Liberal arts, accounting, American Sign Language (ASL), business, computer science, construction management, corrections, creative writing, criminal justice, data science, economics, education, entrepreneurship, exercise science, film, health, health sciences, history, human services, graphic design, law enforcement, literature, management, marketing, music, nursing, paralegal, pre-engineering, phlebotomy, psychology, studio arts, theatre

SPECIAL OPTIONS

- » Bachelor's degrees available on campus through NHCC's University Center partners; degrees offered include biology, exercise science, medical laboratory science, nursing, and special education. Select universities also offer classes in business, economics, human services, communication, and psychology
- » Honors program and Phi Theta Kappa (PTK) available for qualifying students
- » Undergraduate research opportunities in biology, chemistry, geology, and psychology
- » Internship opportunities in business, exercise science, graphic design, human services, paralegal, and more



STUDENT ACTIVITIES

75+ student clubs and organizations, recreational sports, wellness activities, diversity and equity initiatives, and leadership development opportunities available. Visit nhcc.edu/studentlife or MinnState.edu for a complete list.

AT A GLANCE

- » Affordable, diverse, and welcoming campus located in the northwest metro
- » 70 academic programs
- » "Beyond the Yellow Ribbon" military-friendly campus with a Veterans Resource Center
- » High-tech STEM labs in the award-winning Bioscience and Health Careers Center
- » On-campus health clinic with no out-of-pocket costs
- » Online degrees and certificates available in liberal arts, accounting, business, computer science, management, and more
- » Earn college credit in high school via PSEO and concurrent opportunities
- » Award-winning theatre productions, and student research, art, and literature publications

- » Numerous scholarship opportunities through the NHCC Foundation
- » Campus Center with student spaces such as the Game Room, Fireside Lounge, Study Lab, Reflection Room, Blackbox Theatre, and more
- » Multiple resources available to students including academic advising, access services, career services, personal counseling, tutoring, and writing center
- » Multicultural programming—American Indian, Asian Heritage, Black Men's Leadership, Global Salaam, Latino Success, Women on Wednesdays—open to all students
- » Community Connections Resource Center, connecting students to campus and community resources and opportunities

VISIT

Information Sessions: Mondays and Fridays at 10 a.m., Tuesdays at 5:30 p.m. Admissions Events: Open House (April), Fast Track (July and December). Learn more at nhcc.edu/visit.

Northland Community & Technical College

northlandcollege.edu

2020-21 Tuition and Fees: \$5,792



EAST GRAND FORKS THIEF RIVER FALLS

Admissions: 218-793-2388

TTY: 800-627-3529

1101 Highway One E.
Thief River Falls, MN 56701

FAFSA Code: 002385



4,668 Students Served

59% Female // **41%** Male

41% Full-time // **59%** Part-time

19% Students of Color



ONLINE
LEARNING



STUDENT
ACTIVITIES



INTERCOLLEGIATE
ATHLETICS

DEGREES OFFERED

Associate of Applied Science, Associate of Arts,
Associate of Science, Certificate, Diploma

PROGRAM HIGHLIGHTS

Liberal arts transfer pathways, aviation maintenance, unmanned aircraft systems technician, agriculture education, animal science, precision agriculture, auto service, auto body, architectural technology, carpentry, construction electricity, HVAC, plumbing, accounting, administrative professional, business, digital marketing, marketing & management, early childhood & paraprofessional, dietetic technician, medical office, nursing, occupational therapy assistant, paramedic, phlebotomy, pharmacy, physical therapist assistant, radiologic technology, respiratory therapist, surgical

technology, computer and network technology, cybersecurity, fire technology, law enforcement, electronics technology, mechatronics, and welding

STUDENT ACTIVITIES

Northland offers 20+ student clubs and organizations in various areas including fine arts, music, theater, athletics, leadership, program-related clubs, and more. Visit northlandcollege.edu for a complete list.

AT A GLANCE

- » A national study ranked Northland among the best two-year colleges in the nation for its combination of affordability and educational excellence
- » Northland's Liberal Arts program is ranked #24 in the nation by GradReports for



delivering impressive earning potential and the second-lowest tuition cost

- » 80+ program options offering you the focused attention and hands-on training industry wants along with the career-building opportunities you need to reach your potential
- » Northland now offers Z-Degree, a zero textbook cost degree, with the same award-winning education but one less obstacle by eliminating textbook costs. Learn more at northlandcollege.edu/zdegree
- » Over \$150,000 in scholarships awarded each year
- » Transfer made easy. Continue your education after getting a personalized, affordable education at Northland. Transfer to schools like Bemidji State University, Minnesota State University Moorhead, St. Cloud State University, University of Minnesota Crookston, University of North Dakota, and more
- » A leader in healthcare education offering over 17 high demand career programs in health and human services
- » On-campus. Online. We offer a range of flexible learning options that allow you to customize a schedule that fits your professional and personal schedule
- » Intercollegiate athletic programs, including baseball, basketball, clay target, wrestling, softball, and volleyball. Follow the action at northlandpioneers.com
- » Two great campus locations and a state-of-the-art aerospace training facility
- » Make yourself at home in the fully furnished student housing units located near the Thief River Falls campus
- » Free access to our campus fitness centers
- » The Academic Success Center provides students with free learning resources, including tutoring and disability services
- » Find the inspiration to chase your dream—and proof that achieving it is possible. See what our grads are doing in pursuing their successful careers at northlandcollege.edu/stories
- » Explore our digital viewbook, the primary guide to the Northland experience at northlandcollege.edu/viewbook

VISIT

We'd love to meet you! Schedule your visit today at northlandcollege.edu/visit. If you can't visit us in person, our guided virtual tour is the next best thing to being on campus. Take a virtual tour now at northlandcollege.edu/360.

Northwest Technical College

ntcmn.edu

2020–21 Tuition and Fees: \$5,740



BEMIDJI

Admissions: 218-333-6600

905 Grant Ave. SE
Bemidji, MN 56601

FAFSA Code: 005759



1,890 Students Served

73% Female // **27%** Male

33% Full-time // **67%** Part-time

19% Students of Color



ONLINE
LEARNING



STUDENT
ACTIVITIES



ON-CAMPUS
HOUSING

DEGREES OFFERED

Associate of Applied Science, Associate of Science, Certificate, Diploma

PROGRAM HIGHLIGHTS

Nursing (Practical Nursing, LPN Step-In Track, RN), dental assisting, community health worker, health sciences, medical coding, automotive service and performance, electrical construction, plumbing/HVAC, accounting, commercial refrigeration, computer support, general business, human resources, administrative assistant, child care and young child education, gerontology and aging studies (starts spring 2021)

STUDENT ACTIVITIES

Numerous student clubs, organizations, and activities available. Visit the college's website or MinnState.edu for a complete list.

AT A GLANCE

- » Academic programs, both on campus and online, closely match career opportunities
- » State-of-the-art technology resources and labs offer students an in-depth, hands-on learning experience
- » Labs for programmable logic controls, automotive, nursing, and commercial refrigeration all received significant upgrades during the summer of 2020



- » Most NTC students spend four hours in hands-on labs for every one hour spent in lectures
- » Dental assisting (Commission on Dental Accreditation) and nursing (Accreditation Commission for Education in Nursing) programs are fully accredited
- » Programs are guided by industry partners through active and engaged Program Advisory Committees
- » Students experience personal attention, small classes, supportive faculty, and well-equipped labs, as well as abundant parking and an on-campus café
- » Students are enabled to succeed in both the classroom and workplace through support from the Student Success Center, which offers tutoring, library assistance, academic coaching, career services, and academic advising
- » 90 percent of students who access NTC's tutoring services pass their classes and 75 percent have received letter grades of A or B
- » Through a partnership with Bemidji State University, students can live in BSU student housing and enjoy the benefits of an on-campus college experience
- » Internships and similar types of hands-on experiences are woven into program requirements, ensuring that students graduate with the skills they need to succeed
- » A comfortable student lounge called "The Roost" provides a casual spot to relax, play a game, study, or just hang out and socialize
- » Opportunities for fun and engagement through activities such as Free Coffee Thursdays and Free Popcorn Tuesdays at the Student Success Center, and through student clubs and organizations such as Student Senate and program-specific clubs for students in automotive, child care, nursing, and more
- » The Student Center for Diversity, Equity, and Inclusion and American Indian Resource Center support students through events and programming meant to increase both the understanding of diversity and inclusion and appreciation for its benefits

VISIT

Campus visits are highly encouraged for students and their families. Visits may be scheduled by calling 218-333-6600 or by visiting the college's website, ntcmn.edu.

Pine Technical & Community College

pine.edu

2020–21 Tuition and Fees: \$5,306



Pine Technical & Community College



PINE CITY

Admissions: 320-629-5100

TTY: 320-629-1030

900 Fourth St. SE
Pine City, MN 55063

FAFSA Code: 005535



2,617 Students Served

56% Female // **44%** Male

21% Full-time // **79%** Part-time

14% Students of Color



ONLINE
LEARNING



STUDENT
ACTIVITIES

DEGREES OFFERED

Associate of Arts, Associate of Science, Associate of Applied Science, Certificate, Diploma

PROGRAM HIGHLIGHTS

American Sign Language (ASL), applied engineering, associate of science degree nursing (RN), automated systems technology, automotive technology, business transfer pathway, computer programming, cyber security, early childhood development, emergency medical services, gunsmithing and firearms technology, human services eligibility worker, licensed practical nursing, management information systems, precision machining, and welding technology

STUDENT ACTIVITIES

Numerous student clubs, organizations, and activities are available at the college and in the community in areas of academics, leadership, and career development. Visit pine.edu or MinnState.edu for a complete list.

AT A GLANCE

- » Online courses available for distance learning and convenience
- » Nationally accredited programs
- » The associate of arts degree and several associate of science degree programs provide students the opportunity to pursue a four-year degree and take advantage of lower tuition rates and smaller class sizes while immediately focusing on a chosen major



- » Technical programs prepare students for job placement and employment
- » High-tech, state-of-the-art simulation labs support all nursing and health science programs
- » Vibrant student life environment provides opportunities for students from all disciplines
- » PTCC is conveniently located about an hour north of the Twin Cities, surrounded by lakes, rivers, and state forests, providing an excellent balance of access to metro opportunities, while retaining the feel of being up north
- » Small campus and friendly learning environment, where faculty and staff know students by name
- » An on-site daycare facility allows for easy pick-up and drop-off for PTCC student parents

- » PTCC's unique gunsmithing program attracts students from across the nation and abroad
- » There are many scholarship opportunities available to students, including over \$240,000 in scholarship dollars awarded annually from the PTCC Foundation
- » In 2019, PTCC's NCLEX nursing pass rates for the LPN and associate degree (RN) programs were among the highest scores of any college in Minnesota
- » With an anticipated completion date in fall 2020, PTCC is undergoing a large renovation to repurpose and rebrand student and office spaces

VISIT

The best way to learn about PTCC is to visit campus and get a personalized tour with a PTCC admission specialist. Check out pine.edu/visit to schedule your one-on-one Pine Experience.

Rainy River Community College

Part of the Northeast Higher Education District (NHED)



rainyriver.edu

2020–21 Tuition and Fees: \$5,539



INTERNATIONAL FALLS

Admissions: 218-285-7722

TTY: 800-627-3529

1501 Highway 71
International Falls, MN 56649

FAFSA Code: 006775



446 Students Served

63% Female // **37%** Male

75% Full-time // **25%** Part-time

29% Students of Color



ONLINE
LEARNING



STUDENT
ACTIVITIES



INTERCOLLEGIATE
ATHLETICS



ON-CAMPUS
HOUSING

DEGREES OFFERED

Associate of Applied Science, Associate of Arts,
Associate of Science, Certificate, Diploma

PROGRAM HIGHLIGHTS

Communication studies transfer pathway AA,
English transfer pathway AA, history transfer
pathway AA, liberal arts and sciences AA,
exercise science transfer pathway AS, coaching
certificate, fitness specialist certificate,
health sciences broad field AS, health care
pre-professional certificate, nursing assistant
certificate

STUDENT ACTIVITIES

Phi Theta Kappa, Student Senate, Voyageur
Strong Outdoor Activities, disc golf, and more.
Visit rainyriver.edu or MinnState.edu for a
complete list.

AT A GLANCE

- » Located just five minutes from Voyageurs National Park and the Canadian border
- » More than 90 percent of students receive some form of financial aid
- » Over \$200,000 in scholarships awarded annually
- » Continue to play the sport you love: volleyball, basketball, hockey, softball, baseball
- » On-campus apartments feature two bedrooms, full kitchen, bathroom, and living and dining area
- » Disc golf course and lighted cross country ski trail located on the campus grounds

VISIT

Visit rainyriver.edu/visit-request to schedule a campus visit and get details on upcoming events.



Ridgewater College

ridgewater.edu

2020-21 Tuition and Fees: \$5,680



**HUTCHINSON
WILLMAR**

Admissions: 320-222-5971

TTY: 800-627-3529

2101 15th Ave. NW
Willmar, MN 56201

FAFSA Code: 005252



4,492 Students Served

56% Female // **44%** Male

56% Full-time // **44%** Part-time

17% Students of Color



**ONLINE
LEARNING**



**BACHELOR'S
DEGREE PARTNER**



**STUDENT
ACTIVITIES**



**INTERCOLLEGIATE
ATHLETICS**

DEGREES OFFERED

Associate of Applied Science, Associate of Arts, Associate of Science, Diploma, Advanced Technical Certificate, Certificate

PROGRAM HIGHLIGHTS

Accountant, activity director, administrative support, agri-business, agricultural science and technology, agriculture power and equipment technician, agronomy technology, auto body collision repair, automation and robotics systems technology, automotive service technology, biological sciences, business, carpentry, chemical dependency counseling, chemistry, communications studies, computer-aided drafting and design, computer programmer, computer support technician, cosmetology, cyber security, dairy management, early childhood, early childhood special education,

education paraprofessional, electrician, entrepreneurship, estheology, farm business management, farm operations and management, GPS/GIS information systems, global studies, health information technology, health sciences broad field, healthcare administrative assistant, law enforcement, legal assistant, liberal arts and sciences, machine tool, marketing and design, marketing and sales management, massage therapy, medical assistant, multimedia design technology, nail care, network systems administration, nondestructive testing technology, nursing (practical, registered and bachelor degree partnership), occupational skills, paramedic, phlebotomy, photography and design, poultry, professional photography, sales and management associate, veterinary technology, web developer, and welding



STUDENT ACTIVITIES

Dozens of student clubs and activities are available. Both campuses offer active Student Senates, Phi Theta Kappa honor societies, nine-hole disc golf courses, fitness centers, multicultural clubs, and art galleries. Theater is in Willmar. Warrior varsity sports include combined men's and women's clay target trap shooting, volleyball, men's and women's basketball, wrestling, baseball, and softball. Several programs compete in leadership and skills competitions. Visit ridgewater.edu/student-services-activities/ or MinnState.edu for a complete list.

AT A GLANCE

- » 100+ degrees, diplomas and certificates, with more than a dozen convenient, fully online programs, including US #2 ranked Online Computer Aided Drafting & Design associate degree (bestcolleges.com)
- » Five Minnesota State Transfer Pathways available: business, communication studies, criminal justice, English, law enforcement, psychology
- » #1 ranked MN Community College, 2020 (niche.com)
- » Education to learn a trade and get a great internship or job in two years or less

- » Take the first two years of a four-year degree in small, affordable classes
- » Extensive partnerships with local, state, and national businesses, industries, and organizations
- » Job placement in many technical programs at or near 100 percent
- » More than \$225,000 in scholarships awarded annually
- » Outstanding support services, including academic support centers, online tutoring, and TRIO Student Support Services
- » Career and program counseling for students who are undecided on an academic path
- » Personalized advising for students transferring to and from Ridgewater
- » On-site specialized veterans services available

VISIT

Campus tours available virtually or in person by calling 320-222-5971. Schedule an appointment at ridgewater.edu/visit.

Riverland Community College

riverland.edu

2020–21 Tuition and Fees: \$5,819



ALBERT LEA
AUSTIN
OWATONNA



Admissions: 507-433-0600

TTY: 800-627-3529

1900 8th Ave. NW
Austin, MN 55912

FAFSA Code: 002335



4,609 Students Served

56% Female // **44%** Male

36% Full-time // **64%** Part-time

24% Students of Color



ONLINE
LEARNING



BACHELOR'S
DEGREE PARTNER



STUDENT
ACTIVITIES



INTERCOLLEGIATE
ATHLETICS

DEGREES OFFERED

Advanced Technical Certificate, Associate of Applied Science, Associate of Arts, Associate of Fine Arts, Associate of Science, Certificate, Diploma

PROGRAM HIGHLIGHTS

Liberal arts and sciences, nursing, human services, business, supervisory management, criminal justice – law enforcement, computer technology, accounting, business, office technology, global studies, agricultural sciences, music or theatre, musical theatre, production technician, agribusiness, food science, biotechnology, supervisory management online

STUDENT ACTIVITIES

25+ student clubs, organizations, and activities available in areas such as fine arts, recreation,

and career development. Visit riverland.edu or MinnState.edu for a complete list.

AT A GLANCE

- » Earn your AA degree or complete one of more than 50 career programs
- » More than 350 Riverland courses are offered entirely/partially online
- » Personalized student support services
- » Experience our best-in-class simulation learning centers for law enforcement, truck driving, nurses, radiographers, and lab technicians
- » Offers an associate of fine arts degree
- » Riverland offers multi-term registration, allowing students to register for more than one term at a time. It's possible for students to register for all three terms of the academic



year at once; this will allow students to plan, register, and secure their class schedule for a full academic year

- » The Honors Program at Riverland Community College offers enhanced learning opportunities and activities to students who demonstrate academic excellence and a high level of interest and initiative and consists of 12 honors credits plus a three-credit Honors Leadership Development course
- » Riverland's radiography program is a nationally ranked program, accredited by the Joint Review Committee on Education in Radiologic Technology (JRCERT). We have celebrated 100 percent job placement in the last five years. Nearly 60 percent of all radiologic technologists in our region are graduates of the Riverland radiography program. The board certification exam pass rate is above 95 percent for each of the past six years
- » Enrollment is growing in our criminal justice program; statewide law enforcement departments actively recruit our students and come to observe our training program
- » The carpentry program is the student chapter of Rochester Area Builders. The program also receives additional hours toward a journeyman's credential from the Carpenters

Local Union 1382. The program is the only DeWalt-tool-sponsored college program in the nation. First year focuses on residential carpentry and builds a home with Freeborn/ Mower Habitat for Humanity. Second year focuses on commercial carpentry: partnering with Habitat on the house build, and with industry partners for commercial projects

- » The demand for our graduates remains at an all-time high in Riverland's truck driving program. Spend less time in the classroom and more time on the road with this high-demand career
- » Human Services two-year programs are no longer available at many colleges, but Riverland has an established program where students complete the associate degree at Riverland and continue their bachelor's degree with St. Scholastica

VISIT

Schedule an individual appointment and learn about other visit opportunities by visiting riverland.edu.

Rochester Community and Technical College

rctc.edu

2020–21 Tuition and Fees: \$5,883



ROCHESTER

Admissions: 507-285-7210

TTY: 800-627-3529

851 30th Ave. SE
Rochester, MN 55904

FAFSA Code: 002373



6,983 Students Served

62% Female // **38%** Male

44% Full-time // **56%** Part-time

28% Students of Color



ONLINE
LEARNING



BACHELOR'S
DEGREE PARTNER



STUDENT
ACTIVITIES



INTERCOLLEGIATE
ATHLETICS

DEGREES OFFERED

Associate of Applied Science, Associate of Arts, Associate of Fine Arts, Associate of Science, Certificate, Diploma

PROGRAM HIGHLIGHTS

Liberal arts and sciences, aviation pilot, nursing, health information technology, business, accounting, cardiovascular invasive specialist, cancer registry management, clinical neurophysiology technology, radiography, MRI, dental hygiene, environmental science, histology technician, intensive care paramedic, surgical technology, veterinary technology, and more

STUDENT ACTIVITIES

40+ student clubs, organizations, and activities, including student government, accounting and business league, Alpha Delta Nu Nursing honor society, animal health technology club, Armed Forces and Veterans club, art club, aspiring medical professionals, automotive technology club, FAST club, CAD club, creative writing club, dance club, design club, drama club, ecology club, engineering and physics club, equestrian club, French club, LGBTQ+ alliance, geology club, international club, law enforcement club, mental health awareness club, music tech club, navigators club, Phi Theta Kappa (PTK) honor society, Starcraft II club, student support services club, and table top gaming club. For a complete list of clubs, events, and activities, visit rctc.edu or MinnState.edu.

AT A GLANCE

- » Founded in 1915 on a motion by Dr. Charles Mayo to the Rochester School Board, RCTC is Minnesota's oldest public two-year college and one of the nation's oldest original community colleges
- » 518-acre campus with 20 buildings, including the Rochester Regional Stadium which features an inflatable bubble used during winter months
- » Rochester is one of the nation's "Most Livable Cities," the third-largest city in Minnesota, and home to the world-renowned Mayo Clinic and IBM Rochester
- » RCTC offers more than 350 online classes and 62 credit-based programs with more than 90 credential options
- » Innovative academic partnership with Mayo Clinic—six joint-programs offered, including cardiovascular invasive specialist, clinical neurophysiology technology, histology technician, intensive care paramedic, radiography, and Magnetic Resonance Imaging (MRI)
- » Multiple articulation and transfer agreements with four-year universities, so RCTC credits will seamlessly transfer
- » The college has partnerships with more than 35 local organizations, including Rochester Public Schools/CTECH, Mayo Clinic, Olmsted Medical Center, Rochester Area Chamber of Commerce, plus many more
- » More than 240 scholarships are awarded to over 220 students from the RCTC Foundation

VISIT

Individual/small group visits and tours are offered weekly. Preview Days are held throughout the academic year. Go to rctc.edu/visit for details.



Saint Paul College

saintpaul.edu

2020–21 Tuition and Fees: \$5,812



ST. PAUL

Admissions: 651-846-1555

TTY: 7-1-1

235 Marshall Ave.
St. Paul, MN 55102

FAFSA Code: 005533



9,993 Students Served

56% Female // **44%** Male

35% Full-time // **65%** Part-time

65% Students of Color



ONLINE
LEARNING



BACHELOR'S
DEGREE PARTNER



STUDENT
ACTIVITIES

DEGREES OFFERED

Associate of Applied Science, Associate of Arts, Associate of Fine Arts, Associate of Science, Certificate, Diploma

PROGRAM HIGHLIGHTS

Liberal and fine arts, STEM, geographic information science (GIS), engineering, business, accounting, finance, global trade, human resources, marketing, coding/programming, IT/computer science, cybersecurity, computer networking, data science, science and engineering technology, electromechanical systems, manufacturing, welding, skilled trades, transportation, health sciences, exercise sciences, healthcare administration, health information technology, practical nursing, medical lab technician, pharmacy technician, public health, surgical

technology, culinary arts, cosmetology, child development, sign language interpreter

SPECIAL OPTIONS

MnTC Curriculum – General education curriculum courses offered include American Sign Language (ASL), anthropology, Arabic, art, Chinese, communication, drama/theater, economics, English, geography, history, humanities, music, philosophy, photography, political science, psychology, sociology, Spanish, women's and gender studies

Transfer Pathway Degree Programs – Biology AS, Business AS, Chemistry AS, Communication Studies AA, Computer Science AS, Early Childhood Education, Economics AA, English AA, History AA, Political Science AA, Spanish AA

STUDENT ACTIVITIES

20+ student clubs, organizations, and activities in areas such as culture, student leadership, and career development. Visit SaintPaul.edu or MinnState.edu for a complete list.

AT A GLANCE

- » Student-oriented campus with One Stop services, free tutoring, computer labs, pathway advising, transfer services, TRIO Student Support Services program, and career/placement services
- » One of America's Top 150 community colleges by the Aspen Institute, the only Twin Cities metro community college honored with this distinction
- » Ranked one of the Top 10 Best Community Colleges in the U.S. by TheBestSchools.org in 2015, 2017, and 2019
- » 2019 Top Associate Degree Producer by Diverse Issues in Higher Education
- » 450+ business and industry partnerships benefit students through scholarships, state-of-the-art equipment and product donations, internships, and immediate employment for our graduates
- » The Power of YOU program makes the first two years tuition-free for eligible high school students

- » 87 percent of our first-time full-time students receive financial aid or scholarships
- » 666+ high school students enrolled in PSEO classes at Saint Paul College in 2019
- » Transfer agreements with four-year private and public colleges and universities
- » Saint Paul College's esthetician program is a CIDESCO school—one of only 11 colleges in the U.S. and the only college in Minnesota with this internationally recognized esthetics credential
- » Supply chain logistics AAS degree program is ACBSP accredited—the only associate degree program of its kind in Minnesota
- » Health and Science Alliance Center provides students with state-of-the-art classroom and lab facilities and Simulation Center with specialized training rooms: ICU, isolation, long-term care, medical surgical, operating room, and pharmacy clinic
- » Health science students train on Minnesota's only SynDaver (the world's most sophisticated synthetic surgical simulation and anatomy model) newborn, infant, and adult manikins

VISIT

Connect with us and we will help you get started: SaintPaul.edu/StartHere.

South Central College

southcentral.edu

2020-21 Tuition and Fees: \$5,711



South Central
COLLEGE



**FARIBAULT
NORTH MANKATO**

Admissions: 507-389-7200

TTY: 507-389-7200

1920 Lee Blvd.
North Mankato, MN 56003

FAFSA Code: 005537



4,475 Students Served

48% Female // **52%** Male

50% Full-time // **50%** Part-time

21% Students of Color



ONLINE
LEARNING



STUDENT
ACTIVITIES

DEGREES OFFERED

Associate of Arts, Associate of Fine Arts,
Associate of Science, Associate of Applied
Science, Diploma, Certificate

PROGRAM HIGHLIGHTS

Agribusiness and farm business management,
architectural drafting and design, auto
body and collision technology, automotive
service, business, carpentry, civil engineering
technology, culinary arts, dental assisting,
early childhood education, emergency medical
services, family services, geographic information
systems, graphic design, HVAC/R, intensive care
paramedic technician, machine tool technology,
mechatronics, medical assistant, medical
laboratory technician, multimedia technology,
nursing, phlebotomy, welding

SPECIAL OPTIONS

- » Associate degree programs that enable students to complete the first two years of a bachelor's degree at South Central College and then transfer to a four-year university as a junior, including associate of arts, associate of fine arts in visual arts, biology transfer pathway, business transfer pathway, communication studies transfer pathway, economics transfer pathway, pre-social work transfer pathway
- » Arts and sciences offerings that satisfy university general education requirements and Minnesota transfer curriculum goal areas, with a wide variety of courses available in areas such as American Indian studies, art, biology, chemistry,



communication, economics, English, ethnic studies, geography, foreign language, health and wellness, history, humanities, mathematics, philosophy, physics, political science, psychology, sociology

- » Online, on campus and hybrid (combination of online and campus) course options

STUDENT ACTIVITIES

South Central College provides students with growth opportunities inside and outside the classroom, offering a wide variety of student life activities to nurture the whole person. Student clubs and organizations focus on leadership development, personal interests, and career advancement. They include: Business Professionals of America (BPA), campus activities board, collegiate DECA, dental assisting club, diversity club, film club, Phi Theta Kappa, Postsecondary Agricultural Student Organization (PSA), PRIDE, psychology club, SkillsUSA, society of leadership and success, Student Nurses Association, and Student Senate. Visit southcentral.edu/studentlife or MinnState.edu for a complete list.

AT A GLANCE

- » Since 2016, South Central College has been one of 220 colleges selected to be part of Achieving the Dream, a nationwide network focused on improving student success and narrowing the achievement gap
- » The Center for Business and Industry, a division of South Central College, has provided workforce education for more than 40 years, with more than 10,000 individuals receiving customized training and continuing education through the center each year
- » Students receive \$500,000+ in scholarships each year from SCC's campus foundations
- » South Central College has strong relationships with area businesses that provide students with internships and apprenticeships while in school and permanent employment after graduation

VISIT

Visit southcentral.edu/explore to take a virtual tour and sign up for an information session.

St. Cloud Technical & Community College

sctcc.edu

2020–21 Tuition and Fees: \$5,630



ST. CLOUD

Admissions: 320-308-5000

TTY: 320-308-5988

1540 Northway Dr.
St. Cloud, MN 56303

FAFSA Code: 005534



5,608 Students Served

56% Female // **44%** Male

49% Full-time // **51%** Part-time

27% Students of Color



ONLINE
LEARNING



STUDENT
ACTIVITIES



INTERCOLLEGIATE
ATHLETICS

DEGREES OFFERED

Advanced Technical Certificate, Associate of Applied Science, Associate of Arts, Associate of Science, Certificate, Diploma

PROGRAM HIGHLIGHTS

Liberal arts and sciences, cardiovascular technology, culinary arts, cyber security, diesel mechanic, early childhood and special education, farm management, land surveying/civil engineering, energy technology specialist – nuclear, medical coding, sonography, water environment technologies

SPECIAL OPTIONS

Transfer Degree Programs – Liberal arts and sciences AA, biology transfer pathway AS, business transfer pathway AS, psychology transfer pathway AA, elementary education

foundations transfer pathway AS, mathematics transfer pathway AA, theatre transfer pathway AFA, Spanish transfer pathway AA, special education transfer pathway AS, engineering broad field AS, environmental science AS. Transfer pathway programs are designed to fully transfer to Minnesota State universities that offer the corresponding bachelor's degree. Environmental science and engineering transfer via articulation agreements

Online Programs – SCTCC offers five programs completely online: liberal arts AA, business, finance, health information technology/medical coding, and psychology

New Manufacturing Lab Will Meet Job

Demand – With a recent investment from the U.S. Department of Commerce's Economic Development Administration, a new



manufacturing lab is set to be built to serve more students, offer new skills training, and support cross-training across manufacturing programs. The increase in graduates will help meet current and future needs of area manufacturers and train workers for high-demand jobs in energy and electronics and machine tool

STUDENT ACTIVITIES

More than 25 student clubs, organizations, and activities. The SCTCC Cyclones participate in five intercollegiate sports: volleyball, men's and women's basketball, baseball, and softball. The Cyclones are members of the Minnesota College Athletic Conference (MCAC) and the National Junior College Athletic Association (NJCAA). The Cyclones are consistently ranked in NJCAA polls. Students in auto body, automotives, medium/heavy truck, HVACR, electrical, plumbing, welding, and culinary compete in SkillsUSA competitions and regularly place in the top three at the state level, often moving on to national-level competitions. Visit sctcc.edu or MinnState.edu for a complete list.

AT A GLANCE

- » With a 96 percent job placement rate, our grads get jobs
- » At SCTCC we are committed to diversity,

equity, and inclusion and strive to foster a culture where every member of our community feels valued and supported

- » Students know their instructors with small class sizes: average of 18 students per class
- » Earn the first two years of a four-year degree with seamless transfer options
- » 90+ program options that can be completed in two years or less
- » Cutting-edge simulation labs that include equipment used in area industries
- » Highly involved advisory boards mean SCTCC is aligned for area industry needs
- » Innovative programs in water environment technologies, nuclear energy, and health
- » In 2019, more than \$213,000 in scholarships was awarded to 378 students
- » Child care facility on campus
- » Yellow Ribbon Company designation for its support of service members and military families
- » Located on the north side of St. Cloud and just a short walk from the Mississippi River

VISIT

Schedule a meeting with our Admissions team for a campus tour or to learn more about your program of interest today at sctcc.edu/visit.

Vermilion Community College

Part of the Northeast Higher Education District (NHED)

vcc.edu

2020–21 Tuition and Fees: \$5,539



ELY

Admissions: 218-235-2191

TTY: 800-627-3529

1900 E. Camp St.
Ely, MN 55731

FAFSA Code: 002350



900 Students Served

42% Female // 58% Male

66% Full-time // 34% Part-time

20% Students of Color



ONLINE
LEARNING



STUDENT
ACTIVITIES



INTERCOLLEGIATE
ATHLETICS



ON-CAMPUS
HOUSING

DEGREES OFFERED

Associate of Applied Science, Associate of Arts,
Associate of Science, Certificate, Diploma

PROGRAM HIGHLIGHTS

Natural resources technology, fisheries and
wildlife, wildlife/wildland law enforcement,
outdoor leadership, outdoor recreation therapy,
veterinary technician, wilderness and park
management, business, water quality, watershed
science, environmental technology, land
surveying, liberal arts

STUDENT ACTIVITIES

Outdoor equipment rental, seven varsity sports,
20+ clubs, campus organizations, intramural
sports, and residential campus activities. Visit
vcc.edu or MinnState.edu for a complete list.

AT A GLANCE

- » Located on the edge of the Boundary Waters Canoe Area Wilderness
- » Wide variety of natural resource programming with outdoor, hands-on experiences
- » On-campus housing with residential student life and full meal plan
- » Varsity athletics (football, men's and women's basketball, baseball, fast-pitch softball, volleyball, and co-ed clay target shooting)
- » Optional outdoor orientation trip into the Boundary Waters
- » Applied, small class, hands-on learning environment

VISIT

Schedule a visit at vcc.edu/campus-visit. Explore our open house options in fall and winter!





7 STATE UNIVERSITIES

Seven state universities are part of Minnesota State. Each provides an excellent pathway to earning your bachelor's degree or beyond and can help you launch your career.

INTERESTED?

The seven state universities will generally accept you as a first-year student if you can answer YES to at least one of these questions:

- » Did you graduate in the top half of your high school class?
- » Did you receive a combined score of 1,000 or higher on the SAT standardized test, or on its corresponding score on the redesigned SAT standardized test?
- » Did you score 21 or higher on the ACT standardized test?

Were you able to answer YES to one of the above questions and are you planning on attending a Minnesota State university?

- » **CHECK OUT THE OPTIONS.** The profile pages that follow provide you a glimpse of the seven state universities.
- » **KNOW THE ADMISSION REQUIREMENTS.** Some state universities may have slightly different admission requirements. Check with the admissions office at the university you are interested in for details. If you do not meet the minimum admission requirements, you may be considered for admission under special provisions.
- » **ASK QUESTIONS AND VISIT CAMPUS.** There's no better way to figure out which university is the right fit. Contact a member of the university's admission office to set up a visit.

Bemidji State University

bemidjistate.edu

2020–21 Tuition and Fees: \$9,076



BEMIDJI
STATE UNIVERSITY



BEMIDJI

Admissions: 218-755-2040

TTY: 800-627-3529

1500 Birchmont Dr. NE
Bemidji, MN 56601

FAFSA Code: 002336



6,354 Students Served

58% Female // **42%** Male

65% Full-time // **35%** Part-time

13% Students of Color



ONLINE
LEARNING



STUDENT
ACTIVITIES



INTERCOLLEGIATE
ATHLETICS



ON-CAMPUS
HOUSING

DEGREES OFFERED

Associate of Arts, Bachelor of Applied Science, Bachelor of Arts, Bachelor of Fine Arts, Bachelor of Science, Certificate, Graduate Certificate, Master of Arts, Master of Arts in Teaching, Master of Business Administration, Master of Science, Master of Special Education, Master of Professional Accountancy

PROGRAM HIGHLIGHTS

Nursing, business administration, biochemistry/cellular and molecular biology, accounting, computer information systems, music, education, psychology, criminal justice, design, environmental studies, marketing communications, history, indigenous sustainability studies, Ojibwe language, biology, wildlife biology, aquatic biology, wilderness management and outdoor recreation, chemistry, mathematics, economics, English, Spanish,

creative and professional writing, political science, international studies, sociology, exercise science, project management

SPECIAL OPTIONS

Minors – Leadership, applied public policy, studio arts, sustainability, engineering technology, communication studies, computer forensics, fraud examination, developmental/adapted physical education, digital writing, Earth science, fisheries biology, gender and women's studies, geographic information systems, health promotion and education, human performance, indigenous sustainability studies, international relations, management information systems, music, Ojibwe language, physics, philosophy, Spanish, substance and behavior addictions, wetlands ecology, aquatic systems

Emphases – Management, human resource management, finance, entrepreneurship, accounting information systems, exhibit design, international studies, writing, environmental health and toxicity, industrial ecology, construction management, wetlands ecology, fisheries biology, vocal performance, computer forensics, victimology, tribal justice, manufacturing technology, indigenous business

Preprofessional – 14 programs, including chiropractic, dentistry, engineering, law, medicine, mortuary science, occupational therapy, optometry, osteopathy, pharmacy, physical therapy, physician assistant, podiatry, veterinary medicine

STUDENT ACTIVITIES

Bemidji State offers 80+ student organizations and activities related to professional development, fine arts, culture, academics, and leadership, as well as intercollegiate and intramural athletics. Visit the Bemidji State website or MinnState.edu for a complete list.

AT A GLANCE

- » BSU serves 5,000 students with a student-to-faculty ratio of 20:1
- » U.S. News & World Report has ranked BSU as a top-tier Midwest University for the past 12 years

- » Our campus is located on the shore of Lake Bemidji in the beautiful north woods, with year-round outdoor recreation that includes world-class hunting and fishing and an Outdoor Program Center for canoeing, camping, skiing, bicycling, and sailing
- » In partnership with the Mitchell Hamline School of Law, students can complete their undergraduate and law degrees in six years
- » Accelerated programs allow students to complete a bachelor's plus a Master of Business Administration or Master of Professional Accountancy degree in five years
- » The Student Center for Diversity, Equity & Inclusion offers educational, social, and cultural programming
- » Our American Indian Resource Center supports American Indian students and preserves indigenous language, culture, and traditions

VISIT

Contact Admissions (admissions@bemidjistate.edu) for up-to-date information on campus tours. Information on upcoming Campus Preview events and more is available on the university's website.

Metropolitan State University

metrostate.edu

2020–21 Tuition and Fees: \$8,250

Metropolitan
State University



SAINT PAUL
MINNEAPOLIS

Admissions: 651-793-1302

TTY: 651-772-7687

700 E. Seventh St.
Saint Paul, MN 55106

FAFSA Code: 010374



10,575 Students Served

58% Female // **42%** Male

40% Full-time // **60%** Part-time

46% Students of Color



ONLINE
LEARNING



STUDENT
ACTIVITIES

DEGREES OFFERED

Bachelor of Applied Science, Bachelor of Arts, Bachelor of Human Services, Bachelor of Science, Bachelor of Science-Dental Hygiene, Bachelor of Science-Nursing, Bachelor of Science-Urban Early Childhood Education, Bachelor of Social Work, Certificate, Doctor of Business Administration, Doctor of Nursing Practice, Graduate Certificate, Master of Advocacy and Political Leadership, Master of Arts, Master of Business Administration, Master of Management Info Systems, Master of Nonprofit Leadership Management, Master of Public Administration, Master of Public and Nonprofit Administration, Master of Science, Master of Science-Advanced Dental Therapy, Master of Science-Nursing, Master of Science-Urban Education, Professional Science Master's

PROGRAM HIGHLIGHTS

Individualized studies (graduate and undergraduate), business administration, accounting, psychology, human services, criminal justice, cybersecurity, data science, nursing RN-BSN, entry-level MSN, alcohol and drug counseling, computer science, applied doctorate in nursing practice, computer forensics, nurse anesthetist, law enforcement, oral health care practitioner, supply chain and operations management, screenwriting, technical communication, theater, urban elementary education, urban early childhood, K–6, and secondary education licensures

SPECIAL OPTIONS

Minors – Advertising, applied math, applied statistics, biology, business admin, civic engagement, community organizing, computer



forensics, criminal justice, cybersecurity, digital media, entrepreneurship, environmental communication, experimental intermedia arts, gerontology, HR admin, international business, MIS, media literacy, org comm, research and info studies, UX design

Emphases – Metropolitan State's Science Education Center provides students with an extraordinary STEM experience. The university's science-related programs prepare future professionals for careers in applied scientific endeavors, health care, graduate students in science, and science teaching in K–12 schools. The College of Science's programs include natural sciences, applied mathematics, computer science, and cybersecurity

STUDENT ACTIVITIES

Metropolitan State offers 50+ student activities, clubs, and organizations related to fine arts, culture, academics, leadership, professional development, and more. Visit metrostate.edu or MinnState.edu for a complete list.

AT A GLANCE

- » Twin Cities' only public, urban, comprehensive state university
- » High-quality, affordable educational programs and services in a student-centered environment

- » More than 60 undergraduate programs (including individualized degree programs) and more than 25 graduate programs
- » Faculty bring both practical and theoretical knowledge to their instruction
- » Area's rich diversity reflected in students, faculty, staff, and community partnerships
- » Unwavering commitment to civic engagement
- » Daytime, evening, online, and weekend classes, smaller class sizes to allow greater faculty contact, and flexible scheduling
- » Credit assessment for learning gained through non-classroom experience
- » Partners with Hennepin Technical College at the Law Enforcement and Criminal Justice Education Center
- » Federally-recognized Minority-Serving Institution, as an Asian American and Native Pacific Islander-Serving Institution
- » Among the top 2.4 percent in CollegeNet's 2019 "Social Mobility Index," and number one in Minnesota, enabling students to move from lower income strata into the middle class

VISIT

Set up a campus visit or make a phone appointment. Get details at metrostate.edu.

Minnesota State University, Mankato

mnsu.edu

2020–21 Tuition and Fees: \$8,566



MANKATO

Admissions: 507-389-1822

TTY: 800-627-3529

122 Taylor Center
Mankato, MN 56001

FAFSA Code: 002360



17,357 Students Served

57% Female // **43%** Male

77% Full-time // **23%** Part-time

16% Students of Color



ONLINE
LEARNING



STUDENT
ACTIVITIES



INTERCOLLEGIATE
ATHLETICS



ON-CAMPUS
HOUSING

DEGREES OFFERED

Associate of Arts, Bachelor of Applied Science, Bachelor of Arts, Bachelor of Electrical Engineering, Bachelor of Fine Arts, Bachelor of Science, Bachelor of Science–Civil Engineering, Bachelor of Science–Computer Engineering, Bachelor of Science in Engineering, Bachelor of Science–Mechanical Engineering, Bachelor of Science in Social Work, Certificate, Doctor of Education, Doctor of Nursing Practice, Doctor of Psychology, Graduate Certificate, Master of Accounting, Master of Arts, Master of Arts in Teaching, Master of Business Administration, Master of Fine Arts, Master of Music, Master of Public Administration, Master of Science, Master of Science Nursing, Master of Social Work, Professional Science Master's, Specialist

PROGRAM HIGHLIGHTS

Nursing, psychology, elementary education, law enforcement, management, art, finance, alcohol and drug studies, American indigenous studies, automotive engineering technology, aviation, dance, ethnic studies, gender and women's studies, music industry, recreation, parks and leisure services, Scandinavian studies, Spanish for professions

SPECIAL OPTIONS

Minors – Highlights include astronomy, aviation management, community health education, creative writing, database technologies, entrepreneurship and innovation, environmental science, ethnic studies, financial planning, human resource management, military science/Army ROTC, theatre arts, urban and regional studies

Emphases – Certificates in geographic information science, information security, law enforcement management, music industry, networking technologies, nonprofit leadership, software development, technical communication

Preprofessional – Chiropractic medicine, dentistry, engineering, law, medicine, mortuary science, occupational therapy, optometry, osteopathic medicine and surgery, pharmacy, physical therapy, podiatric medicine and surgery, teaching, veterinary science

STUDENT ACTIVITIES

Minnesota State Mankato offers 200+ student activities, clubs, and organizations related to arts, culture, academics, leadership, professional development, and more, as well as intercollegiate and intramural athletics. Visit mnsu.edu or MinnState.edu for a complete list.

AT A GLANCE

- » Beautiful campus overlooking the Minnesota River Valley
- » More than \$127 million available in scholarships, assistantships, grants, work-study, and student loans
- » Four applied doctorate programs: nursing practice, educational leadership, counselor education, school psychology

» Recognized by the Council on Undergraduate Research as one of the top 20 universities in undergraduate research in the United States

» Indoor rock-climbing facility, outdoor rock-climbing pinnacle, and full ropes and challenge course

» Large student weight room, basketball and volleyball courts, indoor student walking and running track, racquetball and handball courts, group fitness and dance studios, and a martial arts room

» State's premiere college theater: 10 musicals and plays per academic year, two dance concerts, two touring productions, and four professional summer stock productions

» Nationally renowned men's and women's basketball, NCAA Division I hockey, as well as football, softball, baseball, wrestling, track, and swimming

VISIT

Campus tours are offered every weekday at 9:30 a.m., 10:30 a.m., 1 p.m., and 2 p.m. Visit mnsu.edu for details and other admissions events and information.

Minnesota State University Moorhead

mnstate.edu

2020–21 Tuition and Fees: \$9,081



MOORHEAD

Admissions: 218-477-2161

TTY: 800-627-3529

1104 7th Ave. S.
Moorhead, MN 56563

FAFSA Code: 002367



7,534 Students Served

63% Female // **37%** Male

69% Full-time // **31%** Part-time

12% Students of Color



ONLINE
LEARNING



STUDENT
ACTIVITIES



INTERCOLLEGIATE
ATHLETICS



ON-CAMPUS
HOUSING

DEGREES OFFERED

Associate of Arts, Bachelor of Arts, Bachelor of Fine Arts, Bachelor of Science, Bachelor of Science in Nursing, Bachelor of Social Work, Certificate, Doctor of Education, Graduate Certificate, Master of Arts, Master of Business Administration, Master of Health Care Administration, Master of Science, Specialist

PROGRAM HIGHLIGHTS

Elementary inclusive education, business, social work, biology, psychology, exercise science, accounting, speech/language/hearing science, biotechnology, business analytics, construction management, criminal justice, entertainment industries and technology, entrepreneurship, film production, geosciences, gerontology, graphic communications, health services administration, medical physics,

operations management, project management, sustainability, global supply chain management, animation, early childhood education, graphic design, nursing (BSN and RN-BSN), secondary education

SPECIAL OPTIONS

Minors – Art therapy, astronomy, coaching, commercial music, communication studies, entrepreneurship, entertainment business, graphic communications, health and medical sciences, human resources, juvenile justice, leadership studies, media analysis, medical physics, neuroscience, public health, social innovation and entrepreneurship, sports communication, sports medicine

Emphases – Archaeology, astrophysics, ceramics, communication training and development, event planning, geospatial analysis, litigation



Preprofessional – Athletic training, audiology, chiropractic, dentistry, engineering, law, medicine, occupational therapy, optometry, pharmacy, physical therapy, physician assistant, veterinary science

STUDENT ACTIVITIES

115+ student activities, clubs, and organizations in fine arts, culture, academics, leadership, and professional development, as well as intercollegiate and intramural athletics and club sports. Visit mnstate.edu/campuslabs/engage or MinnState.edu for a complete list.

AT A GLANCE

- » 97.9 percent success for career placement (88.8 percent) or grad school acceptance (9.1 percent) (2018 Graduate Follow-up Survey)
- » Students regularly win national awards in film, education, music, art and design, business, and journalism
- » Recent accolades: U.S. News & World Report Best Online Programs; 20 Best Online Bachelor's in Project Management Programs; 10 Most Affordable Nursing Degrees in Minnesota; Top Online Supply Chain Management Degree; Top 50 Best Value Bachelor's in Construction Management
- » Graduate programs and certificates in the areas of education, business, healthcare, counseling, and more

» Student-to-faculty ratio of 19:1 encourages undergraduate participation in faculty-mentored research and creative projects

» Paseka School of Business maintains prestigious AACSB International accreditation; project management is accredited by the Project Management Institute

» Success in athletics includes an All-American in men's cross country, four national qualifiers representing the sports of track and field, cross country and wrestling, women's tennis off to an undefeated start in 2020 before season ended with COVID-19 pandemic, plus winning seasons in men's basketball, women's basketball, and football. Women's basketball has had 20 seasons in a row with a winning record. MSUM added another CoSIDA Academic All-American last fall

» Fargo-Moorhead is a thriving, close-knit community, consistently ranked one of the safest and best communities in which to live

VISIT

We're so excited to show you our beautiful campus and to create a personalized visit that meets your needs, whether it's an in-person visit to campus or an online conversation with an admissions rep. Please go to mnstate.edu/visit to schedule your visit.

Southwest Minnesota State University

smsu.edu

2020–21 Tuition and Fees: \$9,059



MARSHALL

Admissions: 507-537-6286

TTY: 800-627-3529

1501 State St.
Marshall, MN 56258

FAFSA Code: 002375



8,718 Students Served

60% Female // **40%** Male

29% Full-time // **71%** Part-time

11% Students of Color



ONLINE
LEARNING



STUDENT
ACTIVITIES



INTERCOLLEGIATE
ATHLETICS



ON-CAMPUS
HOUSING

DEGREES OFFERED

Associate of Arts, Associate of Science, Bachelor of Applied Science, Bachelor of Arts, Bachelor of Science, Bachelor of Science in Nursing, Certificate, Education Specialist, Graduate Certificate, Master of Business Administration, Master of Science

PROGRAM HIGHLIGHTS

Business management, early childhood education, elementary teacher education, exercise science, biology, agricultural education, RN to BSN, culinology, hospitality management, agronomy, agricultural solutions, broadcasting and digital media, professional writing and communication, supply chain management, environmental science, creative writing, teachers of English as a second language, community psychology and health promotion,

data science, social work; 11 degrees offered totally online

SPECIAL OPTIONS

Minors – Advertising design, art/graphic design, criminal justice, pre-law, developmental adapted PE, coaching, physics, public administration, social welfare, acting/directing, hotel/lodging management, indigenous nations and Dakota studies, nutrition, public relations, design technical theatre, writing, Hispanic studies, human resource management, supply chain management, reading, religious studies, women's studies, filmmaking, health communication

Emphases – Sports management, recreation, public relations, farm management, ag finance, crops, soils, graphic design, human resource management, supply chain management,



music management, culinary management, hotel management, event planning, corporate wellness, allied health, coaching and human performance, financial planning and investments, health care administration

Preprofessional – Chiropractic, dentistry, engineering, law, medicine, nursing, occupational therapy, optometry, pharmacy, physical therapy, veterinary medicine

STUDENT ACTIVITIES

SMSU offers 90+ student activities, clubs, and organizations related to fine arts, culture, academics, leadership, professional development, and more, as well as intercollegiate and intramural athletics. Visit smsu.edu or MinnState.edu for a complete list.

AT A GLANCE

- » SMSU is ranked seventh nationally in 2020 for most affordable bachelor's degrees by Best Value Schools
- » A commitment to veterans: SMSU has been ranked the top university in the U.S. in its class for 2020–21 by Military Friendly® Schools
- » The same tuition rate for 12 to 18 credits; out-of-state students pay in-state tuition
- » An exercise science degree offered at a trio of Twin Cities-based community colleges: Normandale, Anoka-Ramsey, and North Hennepin

» The only Research Chefs Association-approved culinology degree offered in the U.S.

» A campus-wide Undergraduate Research Conference, where 35 percent of our students present their scholarly work

» SMSU has been named the 2020 "Safest College Campus in Minnesota" by YourLocalSecurity.com

» Mustang Promise: You'll find a job, or your first semester of graduate school is free

» Residential Living & Learning communities that share an academic or a special interest with the residents of their house: these include agriculture house; culinology house; access, opportunity, and success community; fine arts community; exercise science house; and the Mustang Traditions house

» Our Honors Program offers qualified students a rigorous, challenging curriculum with a focus on their potential talents, interests, and abilities

» SMSU graduates get jobs: 99 percent of our recent grads are employed; 10 percent continue their education following graduation

VISIT

Visit during the week, on a Mustang Saturday, or on a special visit day throughout the year. Visit smsu.edu for details.

St. Cloud State University

stcloudstate.edu

2020–21 Tuition and Fees: \$8,780



ST. CLOUD STATE
UNIVERSITY



ST. CLOUD

Admissions: 320-308-2244

TTY: 800-627-3529

720 4th Ave. S.

St. Cloud, MN 56301

FAFSA Code: 002377



16,326 Students Served

55% Female // **45%** Male

61% Full-time // **39%** Part-time

19% Students of Color



ONLINE
LEARNING



STUDENT
ACTIVITIES



INTERCOLLEGIATE
ATHLETICS



ON-CAMPUS
HOUSING

DEGREES OFFERED

Associate of Arts, Associate of Science, Bachelor of Arts, Bachelor of Elective Studies, Bachelor of Fine Arts, Bachelor of Music, Bachelor of Science, Bachelor of Science in Engineering, Certificate, Doctor of Education, Executive Masters in Engineering Management, Graduate Certificate, Master of Arts, Master of Business Administration, Master of Engineering Management, Master of Public Administration, Master of Science, Master of Science Electrical Engineering, Master of Social Work, Professional Science Master's, Specialist

PROGRAM HIGHLIGHTS

Applied behavior analysis, applied clinical research, biological sciences, business administration, criminal justice, cultural resource management (applied archaeology),

cybersecurity, education, engineering management, finance and accounting, film studies, geography, gender and women's studies, gerontology, hospitality and tourism, hydrology, management, marketing, mass communications, meteorology, nursing (RN-to-BSN completion), psychology, public administration, radiologic technology (X-ray and diagnostic imaging), real estate, regulatory affairs and services, small business management, social work, software engineering, statistics, environmental engineering, addiction counseling

SPECIAL OPTIONS

Minors – African studies, American Indian studies, art entrepreneurship, Chicano/Chicana studies, Asian Pacific American studies, East Asian studies, ethnic studies,

geographic information science, German, gerontology, human relations, military science, religious studies, technology studies, optics, teaching English as a second language, heritage preservation, forensic science

Emphases – Community counseling, astrophysics, linguistics, creative writing, construction management, electro-optics, critical applied sociology, graphic design, journalism, strategic communications, creative media production, piano performance, data analytics, biochemistry, human resources management, engineering science

Preprofessional – Chiropractic, dentistry, law, medicine, optometry, physical therapy, physician assistant, veterinary medicine, pharmacy, occupational therapy, mortuary science

STUDENT ACTIVITIES

200+ student activities, clubs, and organizations, as well as intercollegiate and intramural athletics, including NCAA Division I and II teams built on success. Visit stcloudstate.edu or MinnState.edu for a complete list.

AT A GLANCE

- » 97.5 percent of graduates employed in a related field within one year of graduation (2018)

- » More than 200 undergraduate programs and 60 graduate programs
- » A top investment in PayScale's "Best Value Colleges in Minnesota" study
- » 2020 Military Friendly Top 10 Designated school
- » 20:1 student-to-faculty ratio
- » 500+ scholarships available through Huskies Scholarships
- » Indoor rock climbing wall, fitness center, pool, and fieldhouse with a 200-meter indoor track
- » More than 1,400 international students from more than 90 countries in 2019–20
- » More than 30 Education Abroad opportunities on six continents
- » Four-time Division II Huskies Wrestling national champions
- » Nationally renowned NCAA Division I hockey at the Herb Brooks National Hockey Center
- » Located on the banks of the Mississippi River

VISIT

Go to stcloudstate.edu/visit to schedule a campus visit, check out an upcoming Preview Day, or take a virtual tour to see how you'll unleash amazing at St. Cloud State. Daily campus visits are at 9:30 a.m. and 1:30 p.m., Monday–Friday.

Winona State University

winona.edu

2020–21 Tuition and Fees: \$8,826



WINONA

Admissions: 507-457-5100

TTY: 877-627-3848

P.O. Box 5838

Winona, MN 55987

FAFSA Code: 002394



8,856 Students Served

65% Female // **35%** Male

83% Full-time // **17%** Part-time

13% Students of Color



ONLINE
LEARNING



STUDENT
ACTIVITIES



INTERCOLLEGIATE
ATHLETICS



ON-CAMPUS
HOUSING

DEGREES OFFERED

Associate of Arts, Bachelor of Applied Science, Bachelor of Arts, Bachelor of Music, Bachelor of Science, Bachelor of Science-Teaching, Bachelor of Social Work, Doctor of Education, Doctor of Nursing Practice, Graduate Certificate, Master of Arts, Master of Science, Master of Social Work, Professional Science Master's, Specialist

PROGRAM HIGHLIGHTS

Popular programs include: nursing, elementary education/K–6, business administration, biology, exercise and rehabilitative science, psychology, social work, marketing; other highlights include: composite materials engineering, clinical laboratory science, computer science, criminal justice, data science, geoscience, global studies, healthcare leadership and administration, individualized studies, management information

systems, mass communication, music, public administration, public health, recreation and tourism, RN-BSN, special education, statistics, theatre arts, therapeutic recreation

SPECIAL OPTIONS

Minors – Highlights include: adventure tourism, arts administration, bilingual/bicultural education, coaching, dance, entrepreneurship, international business, professional selling, women's, gender and sexuality studies

Emphases – Highlights include: advertising, biochemistry, clinical exercise science, creative digital media, ecology, environmental science, epidemiology, exercise science, I-Design, leadership and advocacy, movement science, public relations

Preprofessional – Athletic training, chiropractic



medicine, dentistry, engineering, forensic chemistry, law, medicine, occupational therapy, optometry, pharmacy, physical therapy, physician assistant, podiatry, veterinary medicine

STUDENT ACTIVITIES

Winona State offers 170+ student clubs and organizations related to a variety of interests, as well as intercollegiate and intramural athletics. Visit winona.edu or MinnState.edu for a complete list.

AT A GLANCE

- » Results – 98 percent of graduates are hired in a field related to their degree
- » Student Success – with the #1 student success rate within the Minnesota State system, our faculty and staff go above and beyond to ensure students achieve their goals
- » Affordable – one of America's 100 Best College Buys for 24 consecutive years, 93 percent of first-time, first-year students also benefit from some form of financial aid
- » Technology – committed to technology in the classroom, our eWarrior program provides students with a laptop and full-service tech support
- » Internships – all of our degree programs offer opportunities for internships with some of the Midwest's most prestigious organizations

- » Service Learning – community engagement is important at Winona State, with most of our programs providing students a chance to use what they've learned to help others
- » Reputation – the oldest member of the Minnesota State system, our classes are small in size and taught by expert faculty
- » Athletics – home to 14 NCAA Division II and one NCAA Division III varsity sports teams
- » Health and Wellness – our Integrated Wellness Complex aligns health, wellness, academic, and recreational programs and services into a single facility
- » Scenic Beauty – widely known for our stunning natural setting, Winona State is nestled between picturesque bluffs and the Mississippi River – meaning that rock climbing, paddle boarding, hiking, kayaking, and more, are within a mile of campus
- » Winona – the city is home to a wide range of art, music, and theatre opportunities, as well as museums, local boutiques, and festivals

VISIT

Experience the beauty of WSU's campus for yourself. We offer various opportunities to see campus and connect with an admissions counselor—both in person and online. Learn what options are currently available at winona.edu/visit.

ENDLESS OPPORTUNITIES

The following pages offer charts that show the academic program opportunities available at your state colleges and universities.

» Name Abbreviations for Minnesota State Colleges

ATCC – Alexandria Technical & Community College
CLC – Central Lakes College
DCTC – Dakota County Technical College
FDLTCC – Fond du Lac Tribal & Community College
HTC – Hennepin Technical College
HCC – Hibbing Community College
ICC – Itasca Community College
LSC – Lake Superior College
Minneapolis College – Minneapolis Community and Technical College
MSC Southeast – Minnesota State College Southeast
M State – Minnesota State Community and Technical College
NHCC – North Hennepin Community College
NCTC – Northland Community & Technical College
NTC – Northwest Technical College
PTCC – Pine Technical & Community College
RCTC – Rochester Community and Technical College
SCTCC – St. Cloud Technical & Community College
SCC – South Central College

INTERESTED?

COLLEGE ACADEMIC PROGRAM GRID [PAGES 56–60](#)

Check out the academic programs available at your state colleges that may lead to an associate degree, certificate, or diploma. These are great programs to launch a new career or get started on the path to a bachelor's degree.

BACHELOR'S DEGREE PARTNERSHIP PROGRAM [PAGE 64](#)

The seven state universities offer a selection of bachelor's degree programs that can be completed at various community college campuses, allowing you to earn your degree from a university without leaving the comfort of the college setting. This grid will help you see the programs available and locations where they are offered.

UNIVERSITY ACADEMIC PROGRAM GRID [PAGES 66–67](#)

Learn about the programs available at your state universities that may lead to a bachelor's degree and beyond, or help you launch your career.

ATHLETICS PROGRAM GRIDS [PAGES 61, 68](#)

Many of your state colleges and universities have an array of sports that provide you the opportunity to enjoy a student-athlete experience. These grids will help you quickly identify which colleges and universities offer your sport.

State College PROGRAMS

For a complete list of programs,
visit [MinnState.edu](https://www.mnstate.edu).

See page 64 for the bachelor degree programs available on college campuses.

[illegible]

For a complete list of programs, visit [MinnState.edu](https://www.minnstate.edu).

Endless Opportunities

For a complete list of programs, visit [MinnState.edu](https://www.mnstate.edu).

58 // Minnesota State

For a complete list of programs, visit [MinnState.edu](https://www.mnstate.edu).

[illegible]

For a complete list of programs, visit [MinnState.edu](https://www.mnstate.edu).

60 // Minnesota State

INTERCOLLEGIATE ATHLETICS – COLLEGES

Athletics programs at our colleges provide opportunities for many student-athletes to compete in their favorite sports and for all students to participate as fans and to show their school spirit! To learn more about the opportunities and affiliations at a particular institution, please visit its website.



		ATCC	Anoka-Ramsey	Central Lakes College	Century College	DCTC	FDLTCC	Hibbing Community College	Itasca Community College	Lake Superior College	Mesabi Range College	M State	Minnesota West	NCTC	PTCC	Rainy River	Ridgewater College	Riverland Community College	RCTC	SCTCC	Vermilion Community College
MEN'S ATHLETICS	Baseball		◆	◆	◆	◆		◆	◆		◆	◆	◆	◆		◆	◆	◆	◆	◆	◆
	Basketball		◆	◆		◆	◆	◆	◆	◆	◆	◆	◆	◆		◆	◆	◆	◆	◆	◆
	Football			◆			◆		◆		◆	◆	◆						◆		◆
	Golf	◆										◆									
	Soccer		◆			◆				◆			◆					◆			
	Wrestling								◆				◆	◆			◆		◆		
WOMEN'S ATHLETICS	Basketball		◆	◆			◆	◆	◆	◆	◆	◆	◆	◆		◆	◆	◆	◆	◆	◆
	Golf	◆										◆									
	Soccer		◆			◆				◆			◆						◆		
	Softball		◆	◆		◆		◆	◆		◆	◆	◆	◆		◆	◆	◆	◆	◆	◆
	Volleyball		◆	◆	◆	◆	◆	◆	◆		◆	◆	◆	◆		◆	◆	◆	◆	◆	◆
CO-ED	Clay Target	◆						◆	◆	◆			◆	◆	◆		◆				◆
	Cycling									◆											
	Esports	◆																			

119

different athletic teams are offered across 14 different sports at our participating colleges.





TRANSFER PATHWAYS

Minnesota State Transfer Pathways make it easy to complete a specific associate degree at a Minnesota State college and transfer to a Minnesota State university to earn a bachelor's degree without losing credits or taking extra courses.* Transfer Pathways can be a great way to save time and money as you work toward graduation.

*Students must meet special admission requirements for the major and are not guaranteed admission into the major itself. Call or visit the college or university you're interested in to learn more.



TRANSFER PATHWAYS

	DEGREE START																												DEGREE FINISH											
	ATCC	Anoka Tech	Anoka-Ramsey	CLC	Century	DCTC	FDLTCC	HCC	HTC	ICC	Inver Hills	LSC	MSC Southeast	M State	Mesabi Range	Minneapolis College	Minnesota West	Normandale	NHCC	NCTC	NTC	PTCC	Rainy River	Ridgewater	Riverland	RCTC	Saint Paul College	SCTCC	SCC	Vermilion	Bemidji State	Metropolitan State	Minnesota State Mankato	MSU Moorhead	St. Cloud State	Southwest Minnesota State	Winona State			
Accounting	♦	♦	♦	♦				♦	♦		♦		♦	♦		♦		♦	♦						♦	♦						♦	♦	♦	♦	♦	♦	♦	♦	
Art			♦	♦				♦				♦		♦		♦		♦															♦	♦	♦	♦	♦	♦	♦	
Biology	♦	♦	♦	♦	♦			♦			♦	♦		♦		♦		♦	♦								♦	♦	♦	♦	♦			♦	♦	♦	♦	♦	♦	♦
Business	♦	♦	♦		♦			♦	♦	♦	♦	♦	♦	♦		♦		♦	♦	♦	♦	♦	♦	♦	♦	♦	♦	♦	♦	♦	♦	♦	♦	♦	♦	♦	♦	♦	♦	♦
Chemistry			♦	♦	♦			♦			♦	♦				♦		♦	♦						♦	♦	♦													
Communication Arts and Literature Education																																								
Communication Studies			♦		♦			♦			♦	♦	♦			♦		♦	♦				♦	♦	♦	♦	♦	♦												
Computer Science			♦		♦						♦							♦	♦			♦					♦	♦	♦					♦	♦	♦	♦	♦	♦	♦
Criminal Justice											♦							♦						♦		♦														
Early Childhood Education	♦			♦										♦																				♦	♦	♦	♦	♦	♦	♦
Economics	♦			♦				♦			♦	♦	♦			♦		♦	♦	♦	♦							♦												
Elementary Education																	♦	♦																						
English			♦					♦				♦	♦	♦					♦				♦	♦	♦			♦												
Exercise Science			♦	♦	♦	♦					♦	♦	♦					♦	♦				♦	♦	♦	♦														
History	♦				♦			♦			♦	♦	♦	♦		♦		♦	♦	♦	♦			♦				♦												
Law Enforcement	♦							♦			♦					♦	♦	♦	♦					♦	♦	♦	♦													
Mass Communication			♦																						♦															
Management Information Systems																																								
Mathematics					♦			♦			♦	♦				♦		♦	♦																					
Political Science			♦								♦		♦	♦				♦	♦										♦											
Pre-Social Work	♦			♦							♦		♦			♦											♦													
Psychology	♦	♦	♦	♦	♦			♦			♦	♦	♦	♦		♦		♦	♦	♦				♦	♦															
Sociology	♦	♦	♦	♦	♦			♦				♦	♦					♦		♦																				
Spanish			♦	♦												♦		♦											♦	♦										
Special Education																																								
Theater, Musical Theater, Production and Design		♦			♦									♦		♦		♦	♦					♦																

For a complete list, visit [MinnState.edu](https://www.mnstate.edu).



Bachelor's Degree Partnership Program

The state universities offer a selection of bachelor's degree programs that can be completed at some two-year colleges. See [PAGE 11](#) for more details.

PROGRAM TITLE	PROGRAM LOCATION	UNIVERSITY
BUSINESS AND MANAGEMENT		
Accounting	Minneapolis College	Metropolitan State
Applied Leadership	Normandale	Minnesota State Mankato
Business	Anoka-Ramsey	St. Cloud State
Business Administration	Century College	Metropolitan State
Business Administration	Minneapolis College	Metropolitan State
Business Administration	Normandale	Metropolitan State
Business Administration	NHCC	Metropolitan State
Business Administration	RCTC	Winona State
Culinology	Saint Paul College	SMSU
Economics (General)	Minneapolis College	Metropolitan State
Economics (General)	NHCC	Metropolitan State
Finance	Minneapolis College	Metropolitan State
Human Resource Management	Minneapolis College	Metropolitan State
Human Resource Management	RCTC	Winona State
International Business	Minneapolis College	Metropolitan State
International Commerce	Minneapolis College	Metropolitan State
Management	Minneapolis College	Metropolitan State
Organizational Administration	HTC	Metropolitan State
Organizational Administration	Minneapolis College	Metropolitan State
EDUCATION		
Education	RCTC	Winona State
Education	Riverland	Winona State
Elementary Education	Anoka-Ramsey	Bemidji State
Elementary Education	Normandale	Minnesota State Mankato
Special Education	Normandale	Minnesota State Mankato
Special Education	NHCC	St. Cloud State
ENGINEERING AND ENGINEERING SCIENCE		
Integrated Engineering	Normandale	Minnesota State Mankato
Integrated Engineering	Mesabi Range	Minnesota State Mankato
Software Engineering	Anoka-Ramsey	St. Cloud State
Software Engineering	Normandale	St. Cloud State
HEALTH		
Dental Hygiene	Century College	Metropolitan State
Dental Hygiene	Lake Superior College	Metropolitan State
Dental Hygiene	M State	Metropolitan State
Dental Hygiene	Normandale	Metropolitan State
Exercise Science	Anoka-Ramsey	SMSU
Exercise Science	Normandale	SMSU
Exercise Science	NHCC	SMSU
Medical Laboratory Science	NHCC	St. Cloud State

PROGRAM TITLE	PROGRAM LOCATION	UNIVERSITY
HEALTH		
Nursing	Century College	Bemidji State
Nursing	Anoka-Ramsey	Metropolitan State
Nursing	Century College	Metropolitan State
Nursing	Inver Hills	Metropolitan State
Nursing	Normandale	Metropolitan State
Nursing	NHCC	Metropolitan State
Nursing	Ridgewater College	Metropolitan State
Nursing	RCTC	Winona State
Nursing	Anoka-Ramsey	Bemidji State
HUMAN AND PERSONAL SERVICES		
Alcohol and Drug Counseling	Minneapolis College	Metropolitan State
Human Services	Minneapolis College	Metropolitan State
Human Services	NHCC	Metropolitan State
Psychology	Normandale	Metropolitan State
Psychology	NHCC	Metropolitan State
Social Work	RCTC	Winona State
INFORMATION TECHNOLOGY		
Computer Science	Normandale	Metropolitan State
Computer Science	RCTC	Winona State
Management Information Systems	Minneapolis College	Metropolitan State
LAW, PUBLIC ADMINISTRATION AND SAFETY		
Criminal Justice	HTC	Metropolitan State
Law Enforcement	HTC	Metropolitan State
LIBERAL ARTS AND SCIENCES		
Individualized Studies	HTC	Metropolitan State
Individualized Studies	Minneapolis College	Metropolitan State
Individualized Studies	Normandale	Metropolitan State
Individualized Studies	RCTC	Winona State
Individualized Studies	Normandale	Metropolitan State
Individualized Studies – Transportation Management Focus	DCTC	Metropolitan State
Theater	Minneapolis College	Metropolitan State
Theater	Normandale	SMSU
MEDIA AND COMMUNICATIONS		
Communication Studies	Normandale	Minnesota State Mankato
Marketing	Minneapolis College	Metropolitan State

For a complete list, visit MinnState.edu.

State University UNDERGRADUATE PROGRAMS

For a complete list of programs, visit [MinnState.edu](https://www.mnstate.edu).

	Benidji State	Metropolitan State	Minnesota State Mankato	MSU Moorhead	St. Cloud State	Southwest Minnesota State	Winona State	MinnState.edu/online
Accounting	◆	◆	◆	◆	◆	◆	◆	
Advertising and Public Relations				◆				◆
Agricultural Business and Production						◆		
Agricultural Science and Technology			◆			◆		
Aircraft Pilot and Navigator			◆					
American Indigenous Studies	◆							
Anthropology/Archaeology			◆	◆	◆			
Art History			◆	◆				
Art/Studio Arts	◆	◆	◆	◆	◆	◆	◆	
Audio Technology/Sound Arts				◆				
Aviation Management and Airway Science			◆					
Banking and Finance		◆	◆	◆	◆	◆	◆	◆
Biological and Natural Sciences	◆	◆	◆	◆	◆	◆	◆	
Biotechnology/Biochemistry	◆	◆	◆	◆	◆			
Broadcasting, Radio, and Television	◆			◆	◆			
Business Administration and Management	◆	◆	◆	◆	◆	◆	◆	◆
Chemistry	◆	◆	◆	◆	◆	◆	◆	
Cinematography and Video Production				◆				
Cognitive Science			◆					
Communication Sciences and Disorders			◆	◆	◆			
Communications Studies		◆	◆	◆	◆	◆	◆	
Community Health Services	◆		◆	◆	◆	◆	◆	
Computational Science		◆				◆		
Computer Engineering Technology			◆	◆				
Computer Networking and System Administration			◆					
Computer Programming		◆	◆					
Computer Science and Information Systems	◆	◆	◆	◆	◆	◆	◆	
Computer Security and Forensics/IT Auditing			◆	◆				
Construction Management	◆		◆	◆				
Counseling – Chemical Dependency	◆	◆	◆	◆				
Criminal Justice/Corrections	◆	◆	◆	◆	◆	◆	◆	◆
Culinary Arts and Food Service						◆		
Customer Service/Call Center				◆				◆
Dance			◆					
Database Technologies and Administration								
Dental Hygienist		◆	◆					◆
Digital Arts, Computer Animation, and Multimedia				◆				
Early Childhood Studies		◆				◆		
East Asian Studies				◆				
Economics	◆	◆	◆	◆	◆	◆	◆	
Education – General	◆		◆			◆		
Education – Instructional Technology				◆				
Engineering – Automotive			◆					
Engineering – Civil and Surveying			◆	◆				
Engineering – Composite Materials							◆	
Engineering – Computer Hardware/Software			◆	◆				◆
Engineering – Electrical			◆	◆				
Engineering – General			◆	◆			◆	
Engineering – Manufacturing				◆				
Engineering – Mechanical			◆	◆				

	Benidji State	Metropolitan State	Minnesota State Mankato	MSU Moorhead	St. Cloud State	Southwest Minnesota State	Winona State	MinnState.edu/online
Engineering Management	◆							◆
Engineering Technology – Electronic			◆					
Engineering Technology – General	◆							
Engineering Technology – Manufacturing	◆		◆		◆			
English – Language, Literature, Writing	◆	◆	◆	◆	◆	◆	◆	◆
Entrepreneurship	◆	◆	◆	◆	◆	◆	◆	◆
Environmental and Earth Sciences	◆	◆	◆	◆	◆	◆	◆	◆
Ethnic and Cultural Studies		◆	◆					
Family Consumer Science			◆					
Farm Business Management					◆			
Film Studies				◆	◆	◆		◆
Food Processing Safety			◆					
Geographical Information Systems (GIS)			◆	◆				
Geography and Cartography	◆	◆	◆	◆	◆			
Gerontology			◆	◆				◆
Global Studies/International Relations			◆	◆	◆	◆	◆	
Graphic Design and Visual Communications	◆		◆	◆	◆			
Health Information Technology			◆					
Health Services Administration		◆	◆	◆	◆	◆	◆	◆
Health, Fitness, and Sport Science	◆	◆	◆	◆	◆	◆	◆	◆
History	◆	◆	◆	◆	◆	◆	◆	◆
Hotel, Restaurant, and Casino Management					◆	◆		
Human and Community Services		◆						
Human Resources Management	◆	◆	◆	◆	◆	◆	◆	◆
Humanities			◆		◆			
Individualized and Multidisciplinary Studies		◆	◆	◆	◆	◆	◆	◆
Insurance				◆	◆			
International Business		◆	◆	◆	◆	◆	◆	◆
Languages – French			◆					
Languages – German			◆	◆	◆			
Languages – Spanish	◆	◆	◆	◆	◆	◆	◆	◆
Latin American Studies					◆			
Law Enforcement	◆	◆	◆					
Legal Studies							◆	
Liberal Arts and Sciences – AA Transfer	◆	◆	◆	◆	◆	◆	◆	◆
Management Information Systems		◆	◆	◆	◆	◆	◆	◆
Manufacturing and Industrial Technology	◆				◆			
Manufacturing Operations Management	◆	◆	◆	◆				◆
Marketing and Sales	◆	◆	◆	◆	◆	◆	◆	◆
Mass Communication	◆			◆	◆	◆	◆	◆
Mass Media		◆	◆	◆	◆	◆	◆	◆
Mathematics	◆	◆	◆	◆	◆	◆	◆	◆
Medical Technology/Clinical Lab Science	◆	◆	◆	◆	◆	◆	◆	◆
Meteorology					◆			
Music	◆	◆	◆	◆	◆	◆	◆	◆
Music Industry Management		◆					◆	
Nuclear Medical Technology					◆			
Nursing	◆	◆	◆	◆	◆	◆	◆	◆
Nursing – Advanced Practice								◆
Paralegal				◆	◆	◆	◆	◆

	Benidji State	Metropolitan State	Minnesota State Mankato	MSU Moorhead	St. Cloud State	Southwest Minnesota State	Winona State	MinnState.edu/online
Parks and Recreation			◆		◆	◆	◆	◆
Philosophy	◆	◆	◆	◆	◆	◆	◆	◆
Photography/Photographic Technology				◆	◆	◆	◆	◆
Physics			◆	◆	◆	◆	◆	◆
Political Science	◆		◆	◆	◆	◆	◆	◆
Project Management				◆	◆	◆	◆	◆
Psychology	◆	◆	◆	◆	◆	◆	◆	◆
Psychology – Counseling					◆			◆
Public Administration		◆			◆		◆	◆
Publishing				◆				
Radiologic Technology					◆			
Real Estate/Property Management					◆			
Scandinavian Studies			◆					
Screenwriting		◆						
Social Sciences/Studies	◆	◆	◆	◆	◆	◆	◆	◆
Social Work	◆	◆	◆	◆	◆	◆	◆	◆
Sociology	◆	◆	◆	◆	◆	◆	◆	◆
Sports Management	◆	◆	◆	◆	◆	◆	◆	◆
Statistics			◆	◆	◆	◆	◆	◆
Surgical Technology								◆
Teaching – Agriculture						◆		
Teaching – Art					◆	◆	◆	◆
Teaching – Biology/Life Sciences	◆	◆	◆	◆	◆	◆	◆	◆
Teaching – Business Education						◆		◆
Teaching – Career and Technical	◆				◆			◆
Teaching – Chemistry	◆		◆	◆	◆	◆	◆	◆
Teaching – Communication Arts and Literature	◆	◆	◆	◆	◆	◆	◆	◆
Teaching – Early Childhood		◆	◆	◆	◆	◆	◆	◆
Teaching – Elementary	◆	◆	◆	◆	◆	◆	◆	◆
Teaching – English as a Second Language				◆	◆	◆	◆	◆
Teaching – Family Consumer Science			◆					
Teaching – French Language and Culture			◆		◆			
Teaching – German Language and Culture			◆		◆			
Teaching – Health	◆	◆	◆	◆	◆	◆	◆	◆
Teaching – Mathematics		◆	◆	◆	◆	◆	◆	◆
Teaching – Music	◆	◆	◆	◆	◆	◆	◆	◆
Teaching – Physical Education	◆	◆	◆	◆	◆	◆	◆	◆
Teaching – Physical/Earth Science	◆	◆	◆	◆	◆	◆	◆	◆
Teaching – Physics				◆	◆	◆	◆	◆
Teaching – Social Studies/History	◆	◆	◆	◆	◆	◆	◆	◆
Teaching – Spanish Language and Culture	◆	◆	◆	◆	◆	◆	◆	◆
Teaching – Special Education			◆	◆	◆	◆	◆	◆
Teaching – Theater Arts/Dance			◆					
Technology Studies					◆			
Theater Arts and Drama		◆	◆	◆	◆	◆	◆	◆
Urban Planning/Regional Studies		◆	◆	◆	◆	◆	◆	◆
Wilderness Management and Wildland Firefighter	◆							
Women and Gender Studies		◆	◆	◆	◆	◆	◆	◆
Writing – Creative and Technical	◆	◆	◆	◆	◆	◆	◆	◆

State University GRADUATE PROGRAMS

For a complete list of programs, visit [MinnState.edu](https://www.mnstate.edu).

	Bemidji State	Metropolitan State	Minnesota State Mankato	MSU Moorhead	St. Cloud State	Southwest Minnesota State	Winona State	MinnState.edu/online
Accounting	◆	◆	◆	◆			◆	◆
Anthropology/Archaeology			◆		◆			◆
Art/Studio Arts		◆						
Banking and Finance				◆				
Biological and Natural Sciences	◆	◆	◆		◆			◆
Biomedical Equipment Technology				◆				
Business Administration and Management	◆	◆	◆	◆		◆	◆	◆
Communication Sciences and Disorders			◆	◆	◆			
Communications Studies		◆						◆
Community Health Services		◆						
Computer Science and Information Systems		◆	◆		◆			◆
Computer Security and Forensics/IT Auditing		◆	◆		◆			◆
Counseling – Chemical Dependency		◆		◆	◆			◆
Counseling – College					◆			
Counseling – K–12			◆	◆	◆		◆	◆
Counseling – Marriage and Family					◆			
Counseling – Mental Health			◆				◆	
Counseling – Rehabilitation					◆			
Criminal Justice/Corrections		◆	◆		◆			◆
Data Analytics					◆			
Database Technologies and Administration		◆	◆					◆
Dental Health Specialist		◆	◆					
Economics					◆			
Education – Administration and Support			◆	◆	◆	◆	◆	◆
Education – Curriculum and Instruction				◆	◆		◆	◆
Education – General	◆	◆				◆	◆	◆
Education – Higher Education Administration			◆		◆			◆
Education – Instructional Technology			◆		◆	◆		◆
Education – Student Development and Learning					◆		◆	◆
Engineering – Computer Hardware/Software				◆				◆
Engineering – Electrical			◆		◆			◆
Engineering – General			◆					
Engineering – Mechanical			◆					
Engineering Management			◆		◆			◆
Engineering Technology – Manufacturing			◆					
English – Language, Literature, Writing	◆	◆			◆		◆	◆

	Bemidji State	Metropolitan State	Minnesota State Mankato	MSU Moorhead	St. Cloud State	Southwest Minnesota State	Winona State	MinnState.edu/online
Environmental and Earth Sciences	◆		◆					
Ethnic and Cultural Studies			◆					◆
Family Consumer Science					◆			
Geographical Information Systems (GIS)			◆		◆			
Geography and Cartography			◆					
Gerontology			◆		◆			
Health Information Technology			◆					
Health Services Administration				◆				◆
Health, Fitness, and Sport Science			◆		◆	◆	◆	
History			◆		◆			
Human and Community Services		◆					◆	
Individualized and Multidisciplinary Studies		◆	◆		◆			
Languages – French			◆					
Languages – Spanish			◆				◆	
Liberal Arts and Sciences		◆						
Management Information Systems		◆						◆
Mass Media					◆			
Mathematics		◆	◆					◆
Medical Product Regulation					◆			
Medical Technology/Clinical Lab Science					◆			
Music			◆					
Nanotechnology					◆			
Nursing		◆		◆	◆			◆
Nursing – Administration		◆					◆	◆
Nursing – Adult Health/Geriatric							◆	◆
Nursing – Advanced Practice		◆	◆				◆	◆
Nursing – Educator		◆					◆	◆
Physics			◆					
Project Management		◆	◆					
Psychology		◆	◆					◆
Psychology – Clinical			◆		◆			◆
Psychology – Counseling					◆			
Psychology – Industrial and Organizational			◆		◆			
Psychology – School			◆	◆				
Psychology – Sports			◆					
Public Administration		◆	◆		◆			◆

	Bemidji State	Metropolitan State	Minnesota State Mankato	MSU Moorhead	St. Cloud State	Southwest Minnesota State	Winona State	MinnState.edu/online
Publishing				◆				
Quality Improvement							◆	
Social Work			◆		◆			
Sociology			◆		◆			
Sports Management			◆				◆	◆
Statistics			◆		◆			
Teaching – Biology/Life Sciences	◆		◆					
Teaching – Career and Technical					◆			◆
Teaching – Communication Arts and Literature	◆	◆			◆	◆	◆	◆
Teaching – Early Childhood			◆		◆			◆
Teaching – Elementary			◆					◆
Teaching – English	◆	◆	◆					
Teaching – English as a Second Language			◆	◆	◆	◆		◆
Teaching – French Language and Culture			◆					
Teaching – Health			◆					
Teaching – Humanities/Interdisciplinary			◆					
Teaching – Library/Information Media					◆			◆
Teaching – Mathematics	◆		◆		◆	◆		◆
Teaching – Music				◆				
Teaching – Physical Education						◆		
Teaching – Physical/Earth Science	◆							
Teaching – Physics			◆					
Teaching – Reading/Literacy			◆		◆	◆		◆
Teaching – Social Studies		◆						
Teaching – Special Education	◆	◆	◆	◆	◆	◆	◆	◆
Teaching – Urban Education		◆						
Theater Arts and Drama			◆					
Urban Planning/Regional Studies			◆		◆			◆
Women and Gender Studies			◆					
Writing – Creative and Technical		◆	◆				◆	◆

INTERCOLLEGIATE ATHLETICS – UNIVERSITIES

Student-athletes attending Minnesota State universities have remarkable opportunities to join elite, nationally competitive programs. The Northern Sun Intercollegiate Conference, one of the nation's premier NCAA Division II leagues, counts six Minnesota State universities among its 16 members. And, three of our universities sponsor NCAA Division I ice hockey.

		Bemidji State	MSU Moorhead	Minnesota State Mankato	St. Cloud State	Southwest Minnesota State	Winona State
MEN'S ATHLETICS	Baseball	◆		◆	◆	◆	◆
	Basketball	◆	◆	◆	◆	◆	◆
	Cross Country		◆	◆		◆	◆
	Football	◆	◆	◆		◆	◆
	Golf	◆		◆			◆
	Hockey	◆		◆	◆		
	Soccer				◆		
	Swimming/Diving				◆		
	Track and Field		◆	◆		◆	
	Wrestling		◆	◆	◆	◆	
WOMEN'S ATHLETICS	Basketball	◆	◆	◆	◆	◆	◆
	Cross Country	◆	◆	◆	◆	◆	◆
	Dance		◆				
	Golf	◆	◆	◆		◆	◆
	Gymnastics						◆
	Hockey	◆		◆	◆		
	Nordic Ski				◆		
	Soccer	◆	◆	◆	◆	◆	◆
	Softball	◆	◆	◆	◆	◆	◆
	Swimming/Diving		◆	◆	◆	◆	
	Tennis	◆	◆	◆	◆	◆	◆
	Track and Field	◆	◆	◆	◆	◆	◆
	Volleyball	◆	◆	◆	◆	◆	◆
CO-ED	Cheerleading			◆		◆	
	Esports			◆		◆	
	Wheelchair Basketball					◆	



» CONNECT WITH US!

Contact the state college or university you are interested in to get started today, or visit MinnState.edu/askus.

COLLEGES

Alexandria Technical & Community College

ALEXANDRIA
320-762-0221
alextech.edu

Anoka Technical College

ANOKA
763-576-4850
anokatech.edu

Anoka-Ramsey Community College

CAMBRIDGE
COON RAPIDS
763-433-1300
anokaramsey.edu

Central Lakes College

BRAINERD
STAPLES
218-855-8031
clcmn.edu

Century College

WHITE BEAR LAKE
651-779-3300
century.edu

Dakota County Technical College

ROSEMOUNT
651-423-8000
dctc.edu

Fond du Lac Tribal & Community College

CLOQUET
218-879-0800
fdltcc.edu

Hennepin Technical College

BROOKLYN PARK
EDEN PRAIRIE
952-995-1300
hennepintech.edu

Hibbing Community College

HIBBING
218-262-7200
hibbing.edu

Inver Hills Community College

INVER GROVE HEIGHTS
651-450-3000
inverhills.edu

Itasca Community College

GRAND RAPIDS
218-322-2340
itascacc.edu

Lake Superior College

DULUTH
218-733-7601
lsc.edu

Mesabi Range College

EVELETH
VIRGINIA
218-749-0313
mesabirange.edu

Minneapolis Community & Technical College

MINNEAPOLIS
612-659-6200
minneapolis.edu

Minnesota State College Southeast

RED WING
WINONA
877-853-8324
southeastmn.edu

Minnesota State Community and Technical College

DETROIT LAKES
FERGUS FALLS
MOORHEAD
WADENA
877-450-3322
minnesota.edu

Minnesota West Community & Technical College

CANBY
GRANITE FALLS
JACKSON
PIPESTONE
WORTHINGTON
800-658-2330
mnwest.edu

Normandale Community College

BLOOMINGTON
952-358-8201
normandale.edu

North Hennepin Community College

BROOKLYN PARK
763-424-0724
nhcc.edu

Northland Community & Technical College

EAST GRAND FORKS
THIEF RIVER FALLS
218-683-8800
northlandcollege.edu

Northwest Technical College

BEMIDJI
218-333-6600
ntcmn.edu

Pine Technical & Community College

PINE CITY
320-629-5100
pine.edu

Rainy River Community College

INTERNATIONAL FALLS
218-285-7722
rainyriver.edu

Ridgewater College

HUTCHINSON
WILLMAR
320-222-5200
ridgewater.edu

Riverland Community College

ALBERT LEA
AUSTIN
OWATONNA
507-433-0600
riverland.edu

Rochester Community and Technical College

ROCHESTER
507-258-7210
rctc.edu

Saint Paul College

ST. PAUL
651-846-1600
saintpaul.edu

South Central College

FARIBAULT
NORTH MANKATO
507-389-7220
southcentral.edu

St. Cloud Technical & Community College

ST. CLOUD
320-308-5000
sctcc.edu

Vermilion Community College

ELY
218-235-2191
vcc.edu

UNIVERSITIES

Bemidji State University

BEMIDJI
218-755-2040
bemidjistate.edu

Metropolitan State University

MINNEAPOLIS
ST. PAUL
651-793-1302
metrostate.edu

Minnesota State University, Mankato

MANKATO
507-389-1822
mnsu.edu

Minnesota State University Moorhead

MOORHEAD
218-477-2161
mnstate.edu

Southwest Minnesota State University

MARSHALL
507-537-6286
smsu.edu

St. Cloud State University

ST. CLOUD
320-308-2244
stcloudstate.edu

Winona State University

WINONA
507-457-5100
winona.edu

NEED HELP? ASK US!

Minnesota State is available to answer your questions and connect you with resources every step of the way.

Monday–Friday: 7 a.m.–8 p.m. CST

Saturday: 9 a.m.–2:30 p.m. CST

Sunday: 11 a.m.–4:30 p.m. CST

» CALL TODAY!
800-456-8519



MINNESOTA STATE

MinnState.edu

STAY IN TOUCH!



Facebook.com/MinnStateEdu



Twitter.com/MinnStateEdu

This document is available in alternative formats to individuals with disabilities.
To request an alternate format, contact Human Resources at 651-201-1664.

Individuals with hearing or speech disabilities may contact us
via their preferred Telecommunications Relay Service.

Minnesota State is an affirmative action, equal opportunity employer and educator.