



MINNESOTA STATE

Building Talent in Your Community

2022 CAPITAL REQUEST

MinnState.edu/legislative

#FundMinnesotaState · #MinnStateCommunity



MINNESOTA STATE

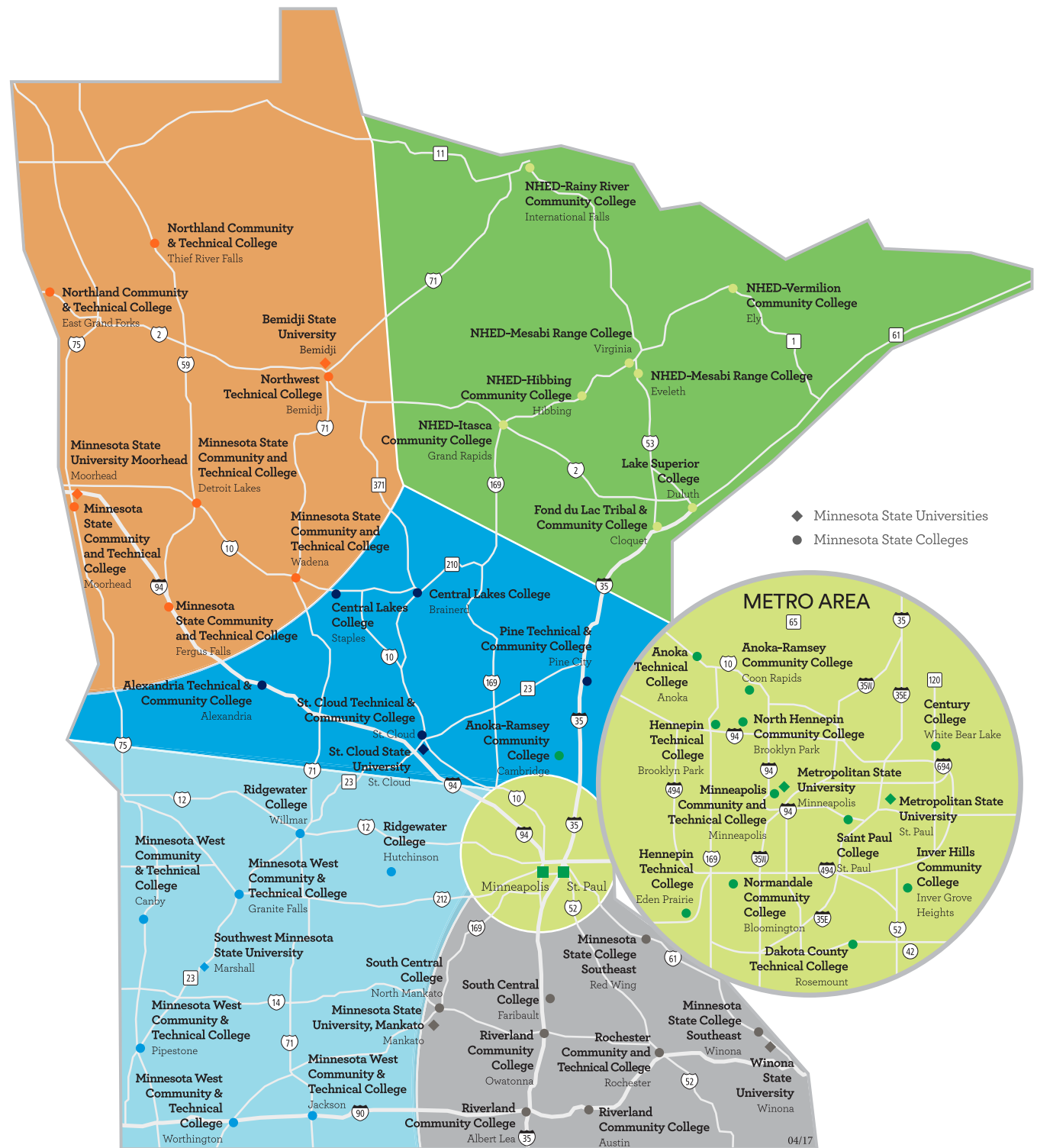
Extraordinary Education. Exceptional Value.

COLLEGES

Alexandria Technical & Community College
 Anoka Technical College
 Anoka-Ramsey Community College
 Central Lakes College
 Century College
 Dakota County Technical College
 Fond du Lac Tribal & Community College
 Hennepin Technical College
 Hibbing Community College
 Inver Hills Community College
 Itasca Community College
 Lake Superior College
 Mesabi Range College
 Minneapolis Community and Technical College
 Minnesota State College Southeast
 Minnesota State Community and Technical College
 Minnesota West Community & Technical College
 Normandale Community College
 North Hennepin Community College
 Northland Community & Technical College
 Northwest Technical College
 Pine Technical & Community College
 Rainy River Community College
 Ridgewater College
 Riverland Community College
 Rochester Community and Technical College
 Saint Paul College
 South Central College
 St. Cloud Technical & Community College
 Vermilion Community College

UNIVERSITIES

Bemidji State University
 Metropolitan State University
 Minnesota State University, Mankato
 Minnesota State University Moorhead
 Southwest Minnesota State University
 St. Cloud State University
 Winona State University



LETTER TO MINNESOTA

Across our great state, the 54 campuses of Minnesota State—

containing nearly 22.5 million square feet of academic buildings—serve Minnesotans by providing hope and opportunity through higher education. To deliver on this responsibility, we seek **\$292.9 million** in funding in the 2022 legislative session for a capital program that will **improve campus facilities, enhancing our ability to serve our more than 340,000 students**. These investments, comprising \$245.3 million in state financing and \$47.6 million in college and university support, will **reduce operating expenses** and **directly impact student success** through **improved teaching, learning, and support spaces**.

The top priority for Minnesota State is asset preservation through HEAPR funding. This request of \$150 million provides for nearly 100 campus projects across the state addressing the most basic needs for updated roofs, windows, and exterior walls, as well as efficient and effective mechanical and utility systems. This funding will help our students, faculty, and staff stay safe, warm, and dry.

In addition, our request includes \$142.9 million for 20 major, campus-specific capital projects across the state. Some of these projects are ready to begin construction, having received design funding in prior legislative sessions; the other projects will execute design and construction together or embark on the design process for construction to be funded in the future.

Together, the requested HEAPR and major capital project funding will:

- » improve campus teaching and learning environments and improve student outcomes;
- » reduce operating expenses and ease pressure on campus operating budgets;
- » enhance science, technology, engineering, math, allied health, technical, business, and education classrooms and labs; and
- » streamline student support services to increase student success.

We join our students, faculty, and staff in thanking you for your past support of the colleges and universities of Minnesota State. Your thoughtful engagement and steadfast support allow us to provide all Minnesotans with access to high-quality, affordable educational programs that prepare our students to thrive.

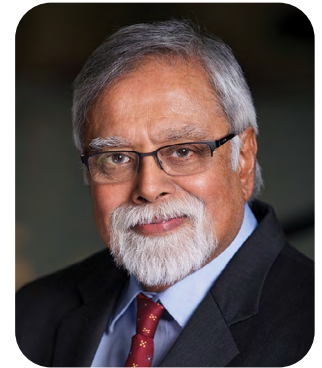
Thank you for your consideration and support.



Jay Cowles, Board of Trustees Chair



Devinder Malhotra, Chancellor



About Minnesota State

Your 30 state colleges and seven state universities educate more than 340,000 students from every part of Minnesota. We offer knowledge and skills that are essential to helping our students find high-demand, well-paying jobs—keeping Minnesota’s economy strong.

A vital element in providing an extraordinary education is offering facilities that provide an academic environment where students can effectively learn and develop their skills. With that in mind, our **2022 Capital Request** is focused on keeping our students safe and ensuring they have the learning spaces they need for success.

Our core value

- » Provide an opportunity for all Minnesotans to create a better future for themselves, for their families, and for their communities.

Our core commitments

Minnesota State colleges and universities play an essential role in growing Minnesota’s economy and opening the doors of educational opportunity to all Minnesotans. To that end, we:

- » Ensure access to an extraordinary education for all Minnesotans
 - » Deliver to students, employers, communities, and taxpayers the highest value/most affordable higher education option
 - » Serve as employers’ partner of choice to meet Minnesota’s workforce and community needs
-



EXTRAORDINARY FACTS



340,000 students served annually, including:

66,000+

Black and Indigenous students, as well as students of color

42,600

first-generation students

72,600

low-income students

8,800

veterans and service members

3,885

academic programs offered

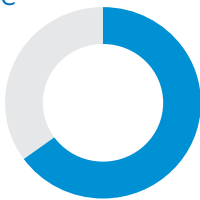


13,500

customized and specialized training, occupational, and professional classes offered

64%

of Minnesota resident students who are pursuing an undergraduate credential are doing so at a Minnesota State college or university



37,000+

degrees, certificates, and diplomas awarded annually



87%

of graduates find a job related to their field of study within one year of graduation



7,000+

employer partnerships across Minnesota State colleges and universities

About the Capital Budget

The Minnesota State 2022 Capital Request will:

- » Take care of what we have with a focus on asset preservation
- » Respond to changing demographics and learning strategies of our students
- » Emphasize adaptive reuse and repurposing space in all our projects
- » Replace obsolete classrooms, student services, offices, and labs with modern, efficient learning spaces



BY THE NUMBERS

37 state colleges and universities on **54** campuses in **47** Minnesota communities


843 academic buildings with


2,250 classrooms and


1,625 labs

301 acres
of roofs, roughly equivalent to 228 football fields

2,600
different pieces of HVAC equipment, such as boilers and air handlers

28.5 million square feet of total facility space, about one-third of the total square footage of state public buildings

22.5 million square feet dedicated to academic and student support space

6.0 million square feet comprised of residence halls, student unions, health/wellness centers, and parking ramps, which are not part of bonding bill requests

Source: EMS Campus/ISRS

Why We Need Your Support

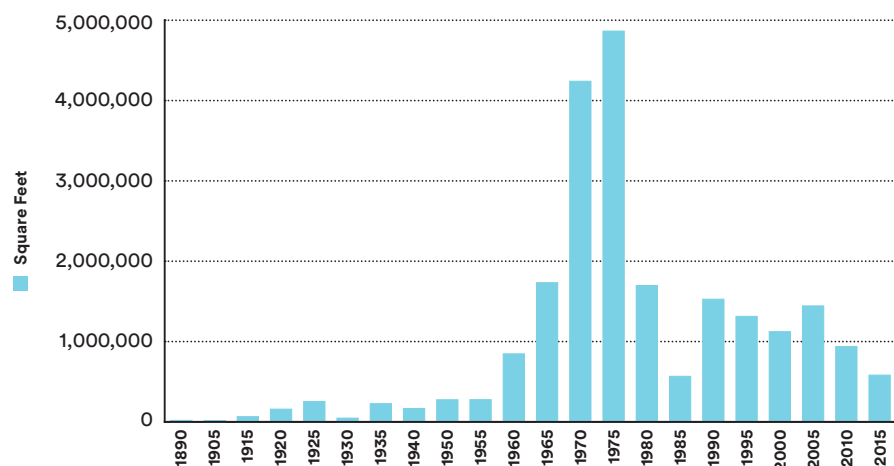
IF FULLY FUNDED, THE 2022 CAPITAL BUDGET WILL:

- » Renovate and renew 764,000 square feet on campuses
- » Positively impact over 200 classrooms and labs on colleges and universities throughout the state, improving student outcomes
- » Reduce the backlog by as much as \$276 million if all HEAPR and individual projects are fully funded
- » Improve student service and advising spaces on six campuses with direct impact to more than 8,000 FYE



APPROACHING MIDDLE AGE

The majority of the Minnesota State academic facilities and related building systems were built between 1965 and 1975, and most are “middle-aged.” While well-kept, they are less efficient than newer buildings.



Showing five-year construction summary by square footage (e.g., 2015 represents buildings built between 2011 and 2015). Source: Capital Renewal (FRRM), Sightlines (as of June 30, 2018).

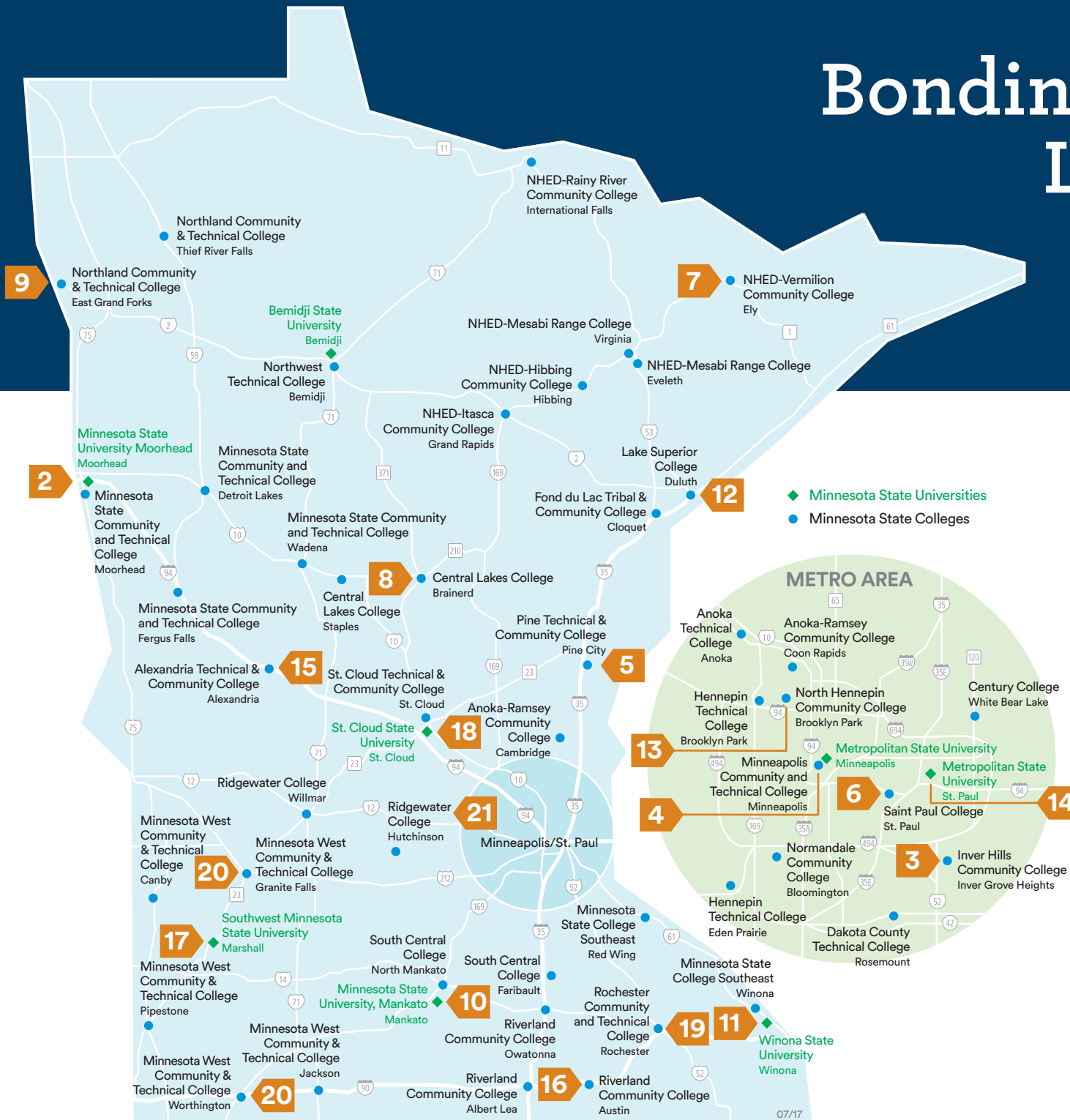
CAPITAL BUDGET PRIORITIES

The Minnesota State 2022 Capital Budget Request includes nearly \$143 million in individual capital projects focused on improving our core academic learning spaces and targeting student service spaces to better serve the needs of all students, including underrepresented and first-generation students attending our institutions.

When preparing its request, the Board of Trustees:

- » **Sets Priorities.** The Board of Trustees sets capital budget guidelines, which establish project priorities for the colleges and universities as they prepare their submittals for the capital budget cycle.
- » **Relies on Campus Plans.** Colleges and universities draw upon their comprehensive facilities plans for their capital budget requests and prepare predesigns to develop the scope, estimate costs, and prepare schedules for capital budget requests.
- » **Collects Requests from Campuses.** In an average biennium, Minnesota State considers \$250–\$400 million worth of individual capital project requests and more than \$300 million in requests for asset preservation and replacement through HEAPR.
- » **Prioritizes Most Urgent Needs.** To help prioritize what gets included on the final list, more than 60 individuals across our colleges and universities engage in a capital scoring process unique among higher education systems.

Bonding Project Locations



IF FUNDED, THE 2022 CAPITAL BUDGET INDIVIDUAL CAPITAL PROJECTS WOULD IMPACT:

20 cities

21 campuses

6 universities

14 colleges

AND FUND NEARLY 100 HEAPR PROJECTS ON 43 CAMPUSES THROUGHOUT THE STATE.

2022 Capital Budget Priority List

PRIORITY	PROJECT DESCRIPTION	COST (IN MILLIONS)	PAGE
1	Higher Education Asset Preservation and Replacement (HEAPR) – STATEWIDE	\$150.0	8
2	Minnesota State University Moorhead · Weld Hall ADDITION · RENOVATION – MOORHEAD	\$19.0	14
3	Inver Hills Community College · Technology and Business Center RENOVATION – INVER GROVE HEIGHTS	\$18.1	14
4	Minneapolis College · Management Education Center Metro Baccalaureate Initiative RENOVATION – MINNEAPOLIS	\$16.9	15
5	Pine Technical & Community College · Technical/Trades Lab ADDITION · RENOVATION – PINE CITY	\$13.9	15
6	Saint Paul College · Academic Excellence DESIGN – ST. PAUL	\$1.4	16
7	Vermilion Community College · Classroom Building DESIGN · RENOVATION – ELY	\$3.0	16
8	Central Lakes College · Student Services DESIGN · RENOVATION – BRAINERD	\$9.5	17
9	Northland Community & Technical College · Effective Teaching and Learning Labs DESIGN · RENOVATION – EAST GRAND FORKS	\$2.7	17
10	Minnesota State University, Mankato · Armstrong Hall Replacement, Phase I DESIGN · RENOVATION – MANKATO	\$7.1	18
11	Winona State University · Center for Interdisciplinary Collaboration, Engagement, and Learning DESIGN – WINONA	\$4.2	18
12	Lake Superior College · Integrated Manufacturing Workforce Labs DESIGN – DULUTH	\$1.1	19
13	North Hennepin Community College · Center for Innovation and the Arts DESIGN – BROOKLYN PARK	\$7.6	19
14	Metropolitan State University · Cybersecurity Lab DESIGN · RENOVATION – ST. PAUL	\$4.3	20
15	Alexandria Technical & Community College Transportation Center, Student Services Renovation, and Selective Campus Demolition DESIGN – ALEXANDRIA	\$0.8	20
16	Riverland Community College · Student Services Renovation DESIGN · RENOVATION – AUSTIN	\$9.9	21
17	Southwest Minnesota State University · Wellness and Human Performance Center DESIGN – MARSHALL	\$1.2	21
18	St. Cloud State University · Education and Learning Design Complex DESIGN – ST. CLOUD	\$4.5	22
19	Rochester Community and Technical College Heintz Center Renovation: Reimagining Education for a Diverse Workforce DESIGN – ROCHESTER	\$1.3	22
20	Minnesota West Community & Technical College Nursing, Public Peace Officer, and Student Service Renovation DESIGN – GRANITE FALLS AND WORTHINGTON	\$2.0	23
21	Ridgewater College · Healthcare, Construction, Student Services, and Classroom Renovation DESIGN · RENOVATION – HUTCHINSON	\$14.3	23

TOTAL	\$292.9
STATE SUPPORT	\$245.3
MINNESOTA STATE FINANCED	\$47.6

Asset Preservation and Replacement

Higher Education

SUMMARY

Minnesota State seeks **\$150 million in Higher Education Asset Preservation and Replacement (HEAPR)** funding for repair and replacement of building systems at its 54 campus locations. This request includes repair and replacement of roofs and exterior building envelopes, plumbing and electrical systems, heating, ventilation and air conditioning (HVAC), and the upgrade of life safety and code issues.

WHY IS HEAPR FUNDING CRUCIAL?

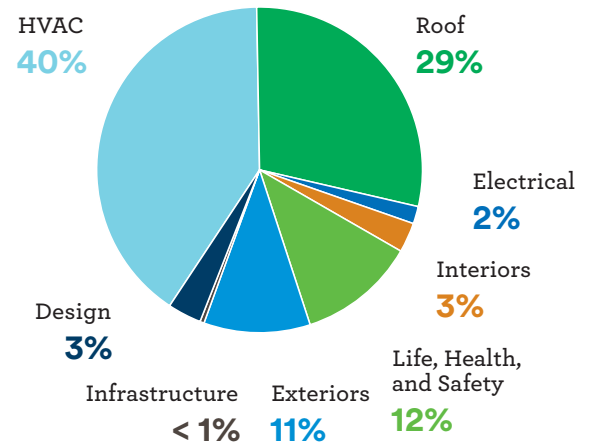
- » Keeps students and faculty safe, warm, and dry
- » Ensures that campus operating dollars are dedicated directly to improving educational outcomes instead of repairing buildings
- » Reduces total cost of ownership (operating plus capital investments) through operating efficiencies
- » Reduces the immediate deferred maintenance outlook (currently \$1.2 billion and climbing)
- » Aligns state and Minnesota State objectives for creating sustainable buildings



2022 ASSET PRESERVATION AND REPLACEMENT (HEAPR) REQUEST

HVAC and roofs represent the largest need and work volume in total dollars. Our 2022 asset preservation and replacement (HEAPR) request falls into the following categories and percentages.

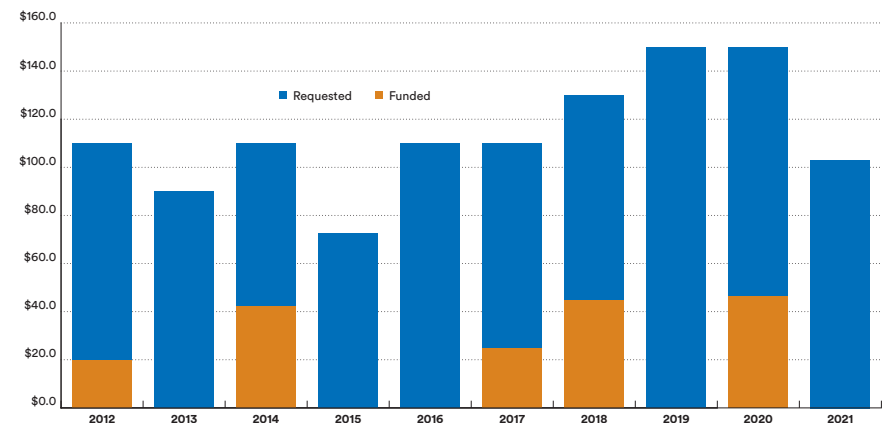
CATEGORIES OF HEAPR WORK FOR 2022



ASSET PRESERVATION AND REPLACEMENT (HEAPR) FUNDING HISTORY

Since 2012, Minnesota State has requested more than \$1 billion and received \$175.8 million in Asset Preservation and Replacement (HEAPR) appropriations to address building conditions at our colleges and universities. The graph shows the year-by-year request and appropriation levels.

HEAPR FUNDING HISTORY 2012–2021 (IN MILLIONS)





FORECASTED NEEDS BY CATEGORY

Estimated need by major building system categories in the future (next 10 years) as of June 30, 2021:



14%
Roofs and exteriors



35%
Heating, ventilation and cooling (HVAC) replacements



20%
Electrical, mechanical, and plumbing system upgrades



5%
Life, health, and safety and code compliance (hazardous materials abatement, OSHA)



26%
Renewal and emerging needs

Note: These categories are not mutually exclusive.



LOOKING AHEAD AT DEFERRED MAINTENANCE NEEDS

(preliminary condition update as of June 30, 2021)

\$1.2 billion

needed to bring building systems out of backlog status

+ \$1.3 billion

needed in the next 10 years to replace or update building systems scheduled to reach the end of their useful life

\$2.5 billion

needed over the next 10 years to address Minnesota State's backlog renewal need

AT-A-GLANCE: 2022 Asset Preservation and Replacement Projects

Projects as of July 2021, subject to change.

Alexandria Technical & Community College

PRIORITY PROJECTS: HVAC

ESTIMATED HEAPR ALLOCATION: \$5.1 million

RISK OF CONTINUED DEGRADATION: Energy inefficiencies, inadequate ventilation

Anoka Technical College

PRIORITY PROJECTS: Roof, Electrical

ESTIMATED HEAPR ALLOCATION: \$4.6 million

RISK OF CONTINUED DEGRADATION: Water leaks, interior damage, electrical and student safety

Bemidji State University

PRIORITY PROJECTS: HVAC, Roof

ESTIMATED HEAPR ALLOCATION: \$6.5 million

RISK OF CONTINUED DEGRADATION: Water leaks, interior damage, inadequate ventilation

Central Lakes College

PRIORITY PROJECTS: HVAC, Roof

ESTIMATED HEAPR ALLOCATION: \$4.0 million

RISK OF CONTINUED DEGRADATION: Energy inefficiencies, inadequate ventilation, water leaks

Century College

PRIORITY PROJECTS: HVAC, Roofs

ESTIMATED HEAPR ALLOCATION: \$3.6 million

RISK OF CONTINUED DEGRADATION: Damage to classrooms and equipment, energy inefficiencies

Dakota County Technical College

PRIORITY PROJECTS: Electrical

ESTIMATED HEAPR ALLOCATION: \$1.8 million

RISK OF CONTINUED DEGRADATION: Energy inefficiencies, electrical safety

Fond du Lac Tribal & Community College

PRIORITY PROJECT: Interiors

ESTIMATED HEAPR ALLOCATION: \$1.8 million

RISK OF CONTINUED DEGRADATION: Damaged finishes, student safety

Hennepin Technical College

PRIORITY PROJECT: Roofs

ESTIMATED HEAPR ALLOCATION: \$1.5 million

RISK OF CONTINUED DEGRADATION: Water leaks, damage, mold

Inver Hills Community College

PRIORITY PROJECTS: HVAC

ESTIMATED HEAPR ALLOCATION: \$1.6 million

RISK OF CONTINUED DEGRADATION: Energy inefficiencies, inadequate ventilation

Lake Superior College

PRIORITY PROJECTS: Roofs

ESTIMATED HEAPR ALLOCATION: \$2.9 million

RISK OF CONTINUED DEGRADATION: Water leaks, interior damage



FDLTCC: flooring deterioration



LSC: roof deterioration



MSUM: door frame deterioration



MSUM: concrete deterioration



MSUM: ramp deterioration



NORMANDALE: mechanical system

Metropolitan State University

PRIORITY PROJECTS: Life, Health, and Safety, Roof
ESTIMATED HEAPR ALLOCATION: \$1.7 million
RISK OF CONTINUED DEGRADATION: Accessibility, student safety, water leaks

Minneapolis College

PRIORITY PROJECTS: Life, Health, and Safety, Roof
ESTIMATED HEAPR ALLOCATION: \$7.6 million
RISK OF CONTINUED DEGRADATION: Electrical safety, water leaks, interior damage

Minnesota State College Southeast

PRIORITY PROJECTS: Roof, HVAC, Electrical
ESTIMATED HEAPR ALLOCATION: \$3.9 million
RISK OF CONTINUED DEGRADATION: Water leaks, energy inefficiencies, student safety

Minnesota State Community and Technical College (M State)

PRIORITY PROJECTS: HVAC
ESTIMATED HEAPR ALLOCATION: \$7.4 million
RISK OF CONTINUED DEGRADATION: Energy inefficiencies, inadequate ventilation

Minnesota State University, Mankato

PRIORITY PROJECTS: Roof, HVAC, Interiors, Exteriors
ESTIMATED HEAPR ALLOCATION: \$15.6 million
RISK OF CONTINUED DEGRADATION: Water leaks, energy inefficiencies, interior damage

Minnesota State University Moorhead

PRIORITY PROJECTS: HVAC, Exteriors
ESTIMATED HEAPR ALLOCATION: \$8.4 million
RISK OF CONTINUED DEGRADATION: Energy inefficiencies, exterior damage, accessibility

Minnesota West Community & Technical College

PRIORITY PROJECTS: HVAC
ESTIMATED HEAPR ALLOCATION: \$1.9 million
RISK OF CONTINUED DEGRADATION: Energy inefficiencies, heat failure

NHED – Itasca Community College

PRIORITY PROJECTS: HVAC
ESTIMATED HEAPR ALLOCATION: \$1.5 million
RISK OF CONTINUED DEGRADATION: Energy inefficiencies, inadequate ventilation

NHED – Mesabi Range College

PRIORITY PROJECTS: Roof
ESTIMATED HEAPR ALLOCATION: \$876,000
RISK OF CONTINUED DEGRADATION: Water leaks, interior damage

NHED – Vermilion Community College

PRIORITY PROJECTS: Roof
ESTIMATED HEAPR ALLOCATION: \$927,000
RISK OF CONTINUED DEGRADATION: Water leaks, interior damage

Normandale Community College

PRIORITY PROJECTS: HVAC, Exteriors

ESTIMATED HEAPR ALLOCATION: \$2.1 million

RISK OF CONTINUED DEGRADATION: Energy inefficiencies, exterior damage

North Hennepin Community College

PRIORITY PROJECTS: HVAC

ESTIMATED HEAPR ALLOCATION: \$911,000

RISK OF CONTINUED DEGRADATION: Energy inefficiencies, inadequate ventilation

Northland Community & Technical College

PRIORITY PROJECTS: Roof, HVAC, Electrical, Exteriors

ESTIMATED HEAPR ALLOCATION: \$3.1 million

RISK OF CONTINUED DEGRADATION: Water leaks, energy inefficiencies, interior damage

Northwest Technical College

PRIORITY PROJECTS: Life, Health, and Safety

ESTIMATED HEAPR ALLOCATION: \$782,000

RISK OF CONTINUED DEGRADATION: Physical security, student safety

Pine Technical & Community College

PRIORITY PROJECTS: HVAC, Exteriors, Life, Health, and Safety

ESTIMATED HEAPR ALLOCATION: \$774,000

RISK OF CONTINUED DEGRADATION: Energy inefficiencies, interior damage, physical security

Ridgewater College

PRIORITY PROJECTS: Roof, Exteriors

ESTIMATED HEAPR ALLOCATION: \$2.3 million

RISK OF CONTINUED DEGRADATION: Water leaks, exterior damage, interior damage

Riverland Community College

PRIORITY PROJECTS: Electrical, Roof

ESTIMATED HEAPR ALLOCATION: \$2.7 million

RISK OF CONTINUED DEGRADATION: Energy inefficiencies, student safety, water leaks

Rochester Community and Technical College

PRIORITY PROJECTS: Roof, HVAC

ESTIMATED HEAPR ALLOCATION: \$3.1 million

RISK OF CONTINUED DEGRADATION: Water leaks, energy inefficiencies, inadequate ventilation

Saint Paul College

PRIORITY PROJECTS: HVAC, Exteriors

ESTIMATED HEAPR ALLOCATION: \$6.8 million

RISK OF CONTINUED DEGRADATION: Energy inefficiencies, water leaks, exterior damage

South Central College

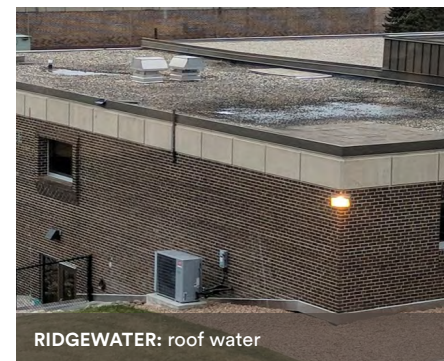
PRIORITY PROJECTS: HVAC

ESTIMATED HEAPR ALLOCATION: \$2.6 million

RISK OF CONTINUED DEGRADATION: Energy inefficiencies, inadequate ventilation, heat failure



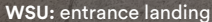
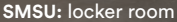
PTCC: window deterioration



RIDGEWATER: roof water



SCSU: utility tunnels



PRIORITY PROJECTS: Life, Health, and Safety
ESTIMATED HEAPR ALLOCATION: \$10.0 million
RISK OF CONTINUED DEGRADATION: Accessibility, student safety, inadequate ventilation

PRIORITY PROJECTS: Roof, Exteriors, Infrastructure, Life, Health, and Safety

ESTIMATED HEAPR ALLOCATION: \$13.4 million

RISK OF CONTINUED DEGRADATION: Water leaks, student safety, structural damage

PRIORITY PROJECTS: Roof, Interiors
ESTIMATED HEAPR ALLOCATION: \$2.8 million
RISK OF CONTINUED DEGRADATION: Water leaks, interior damage

PRIORITY PROJECTS: Roof, Exteriors, HVAC
ESTIMATED HEAPR ALLOCATION: \$7.7 million
RISK OF CONTINUED DEGRADATION: Water leaks, interior damage, energy inefficiencies

Weld Hall Renovation and Addition

ADDITION · RENOVATION

\$19,048,000



Minnesota State
University Moorhead
mnstate.edu
[@MSUMoorhead](https://twitter.com/MSUMoorhead)

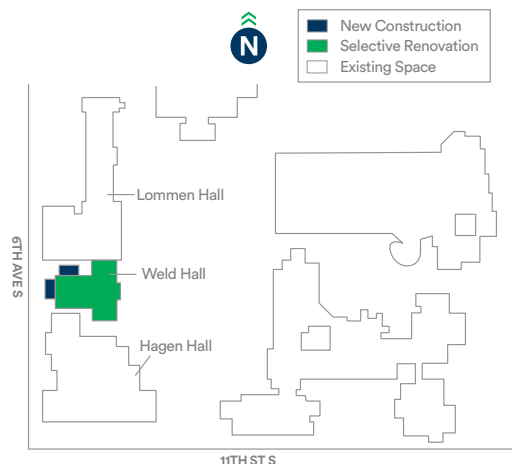
MOORHEAD



RENOVATES: 33,484 GSF
CONSTRUCTS: 2,485 GSF



**DEFERRED MAINTENANCE
REDUCTION:** \$8.2 million



SUMMARY

- » Received \$628,000 in 2018 for design
- » Addresses significant deferred maintenance, improves pedagogy, and rightsizes classrooms
- » Increases the number of multi-functional classrooms and reduces the number of offices
- » Realigns classroom sizes to better serve a variety of class sizes and pedagogical approaches
- » Solves significant ADA accessibility issues throughout the building
- » Increases classroom flexibility and availability for expanded utilization

» STUDENT IMPACT

Creates flexible, **technology-enhanced classrooms** that foster collaborative learning environments for over 2,500 students studying English, music, theater, entertainment industries and technology, and media arts and design.

Technology and Business Center RENOVATION

\$18,087,000



Inver Hills
Community College
inverhills.edu
[@InverHillsCC](https://twitter.com/InverHillsCC)

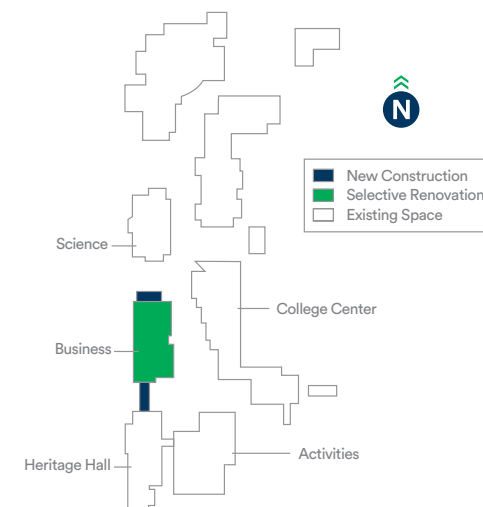
INVER GROVE HEIGHTS



RENOVATES: 31,800 GSF
CONSTRUCTS: 3,925 GSF



**DEFERRED MAINTENANCE
REDUCTION:** \$8.0 million



SUMMARY

- » Received \$698,000 in 2018 for design
- » Creates a Technology and Business Center and linkage to Heritage Hall, improving access and classroom configurations
- » Increases classroom sizes, allowing for greater flexibility in scheduling
- » Creates technologically advanced classrooms for programs that are growing
- » Improves space utilization by creating appropriately-sized “smart” classrooms to optimize class size and curriculum delivery

» STUDENT IMPACT

Directly benefits approximately 2,800 students in programs including business, accounting, paralegal, and computer science through **modernized and flexible classrooms**.

Management Education Center Metro Baccalaureate Initiative

RENOVATION
\$16,938,000



Minneapolis College
minneapolis.edu
[@mpscollege](https://twitter.com/mpscollege)

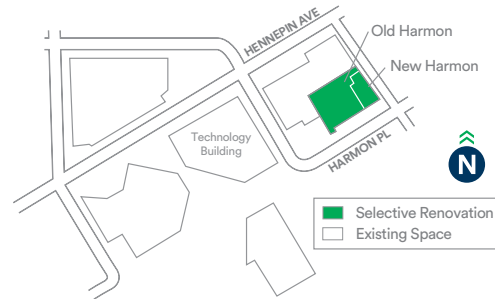
MINNEAPOLIS



RENOVATES: 51,489 GSF
RENEWS: 6,375 GSF



**DEFERRED MAINTENANCE
REDUCTION:** \$8.6 million



SUMMARY

- » Received \$990,000 in 2020 for design
- » Results in improvements to 21 classrooms and labs
- » Expands baccalaureate options through partnership with Metropolitan State University, further enhancing opportunities for underrepresented students in the Twin Cities
- » Benefits students in the business, management, and economics programs
- » Creates new student support spaces, renovates faculty and staff office space, and student collaboration spaces

» STUDENT IMPACT

Enhances baccalaureate opportunities for students through flexible, technology-enriched learning and **collaboration spaces**.



Pine Technical &
Community College

Technical/Trades Lab Addition and Renovation

ADDITION · RENOVATION

\$13,906,000



**Pine Technical &
Community College**
pine.edu
[@pinecollege](https://twitter.com/pinecollege)

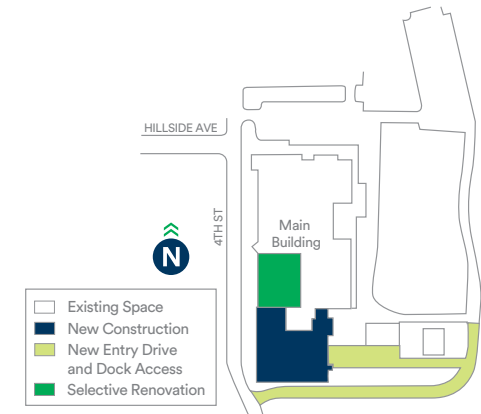
PINE CITY



RENOVATES: 15,025 GSF
DEMOLISHES: 2,886 GSF
CONSTRUCTS: 29,964 GSF



**DEFERRED MAINTENANCE
REDUCTION:** \$276,000



SUMMARY

- » Received \$635,000 in 2020 for design
- » Renovates and constructs technical/trades labs, classrooms, faculty offices, health sciences spaces, and support spaces
- » Removes temporary instructional space
- » Expands high-demand programs such as nursing and precision machining
- » Creates new student spaces for studying and collaboration
- » Highlights technical and trades programs by providing open concept, integrated manufacturing setting that allows for collaborative projects across programs

» STUDENT IMPACT

This **modernization and expansion** project will create a more sustainable, comfortable, and technologically advanced learning environment for current and future students. This project aids the college's long-term growth strategy of serving and training more than 4,000 students and reaching 1,200 FYE a year. This project will improve access to critical workforce skills for east central Minnesota residents and students, while faculty and staff are able to strengthen the support offered to students through improved educational programs and services.

Academic Excellence Renovation and Renewal

DESIGN

\$1,392,000



ST. PAUL

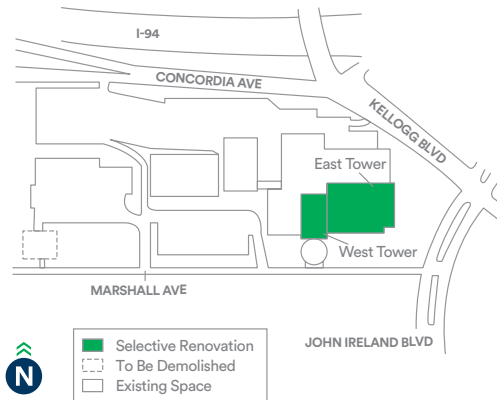
Saint Paul College
saintpaul.edu
[@StPaulCollege](https://twitter.com/StPaulCollege)



RENOVATES: 104,500 GSF
DEMOLISHES: 13,000 GSF



**DEFERRED MAINTENANCE
REDUCTION:** \$6.3 million



SUMMARY

- » Designs the renovation and renewal of over 100,000 GSF of existing classroom, laboratory, and high-use student service spaces in the aging East Tower, West Tower, and First Floor
- » Demolishes the mothballed 13,000 GSF CLC Building
- » Enhances the entire campus building core complex
- » Consolidates student services into a convenient One Stop Shop near the college's west entrance and creates a highly visible Welcome Center to simplify access to key student service areas
- » Improves classroom and lab spaces serving growing demand areas such as business, math, computer science, and other technical career programs

» STUDENT IMPACT

Ensures that the college's diverse student body has greater access to modern, relevant, functionally improved, and attractive instructional spaces for **high-demand services and programs**.



Classroom Building

DESIGN · RENOVATION

\$3,019,000



ELY

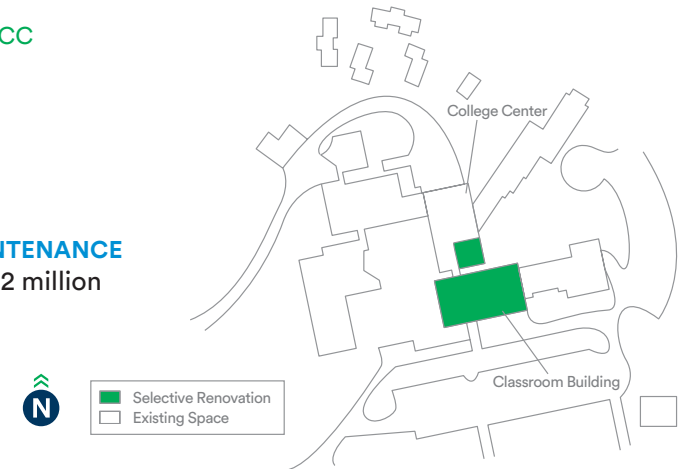
Vermilion Community College
vcc.edu
[@VermilionCC](https://twitter.com/VermilionCC)



RENOVATES: 6,925 GSF



**DEFERRED MAINTENANCE
REDUCTION:** \$1.2 million



SUMMARY

- » Renovates six classrooms, creating flexible adaptive learning environments and increasing technological capabilities
- » Brings two sets of heavily used restrooms into ADA compliance and updates adjacent corridors and lobby areas
- » Creates an identifiable entry to the Classroom Building within existing space
- » Replaces the Classroom Building roof

» STUDENT IMPACT

Student learning will be enhanced by **technology upgrades** for different instructional delivery methods.

Student Services and Academic Support

DESIGN · RENOVATION

\$9,519,000



Central Lakes
College
clcmn.edu
[@clcmnedu](https://twitter.com/clcmnedu)

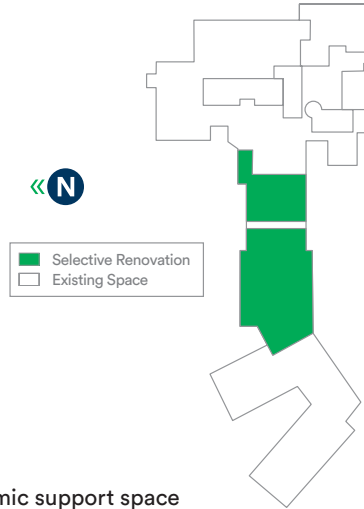
BRAINERD



RENOVATES: 27,758 GSF
RENEWS: 17,700 GSF



**DEFERRED MAINTENANCE
REDUCTION:** \$558,000



SUMMARY

- » Renovates and updates student services and academic support space to streamline students' access to services
- » Realigns the student services area and renovates physical education and athletic program locker rooms and supporting spaces to correct ADA/accessibility issues
- » Repositions the University Center closer to student services, facilitating student access to baccalaureate transfer options
- » Creates a new focal point at the main entrance to help with orientation and wayfinding

» STUDENT IMPACT

Minimizes barriers, making the prospective and ongoing student experience less daunting, while offering staff and faculty repurposed space that facilitates better communication and student-centered collaborations.

Effective Teaching and Learning Labs

DESIGN · RENOVATION

\$2,710,000



Northland Community
& Technical College
northlandcollege.edu
[@myNCTC](https://twitter.com/myNCTC)

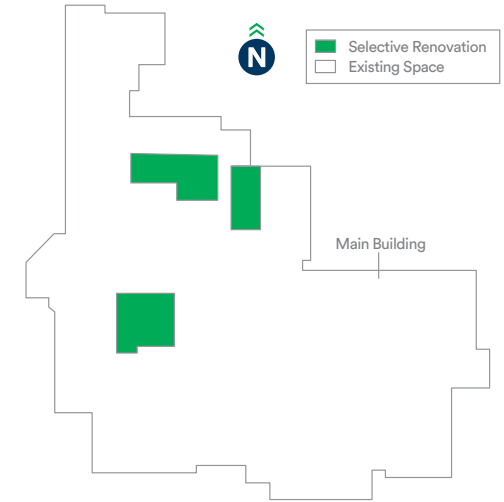
EAST GRAND FORKS



RENOVATES:
6,425 GSF



**DEFERRED MAINTENANCE
REDUCTION:** \$887,000



SUMMARY

- » Part of an ongoing effort to update campus labs
- » Received \$826,000 in 2017 to complete design and renovation in adjacent lab spaces
- » Renovates existing classroom and lab spaces to consolidate and expand the early childhood and education program, pharmacy technology program, respiratory therapist program, and computer and networking technology program
- » Creates active learning spaces that simulate real-world working environments
- » Impacts programs in high-growth, high-demand career fields in the region

» STUDENT IMPACT

Improves outdated health sciences and technology lab areas to ensure students are learning in **cutting-edge and safe spaces** that mirror industries in which they will be employed.

Armstrong Hall Replacement, Phase I

DESIGN · RENOVATION

\$7,083,000



MANKATO

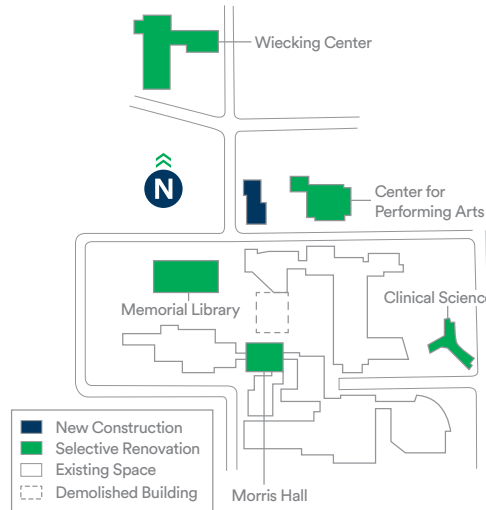
Minnesota State
University, Mankato
mnsu.edu
[@MNSUMankato](https://twitter.com/MNSUMankato)



RENOVATES: 70,000 GSF
RENEWS: 5,000 GSF
DEMOLISHES: 144,000 GSF
CONSTRUCTS: 100,000 GSF



**DEFERRED MAINTENANCE
REDUCTION:** \$26.9 million



SUMMARY

- » Over three phases, constructs new building to replace heavily used but functionally and operationally obsolete Armstrong Hall, and renovates portions of five other buildings (Wiecking, Performing Arts, Memorial Library, Clinical Science, and Morris)
- » Phase I designs Phases I–III through design development, and renovates part of the existing Clinical Science building
- » Significantly reduces campus square footage
- » Replaces half of the general purpose classrooms on campus with new flexible and innovative learning spaces
- » Creates new gathering, collaboration, and social learning spaces for students
- » Improves space utilization throughout campus

» STUDENT IMPACT

By replacing half of the classrooms on campus through the replacement of Armstrong Hall, this project impacts **nearly every student** who attends the university.

Center for Interdisciplinary Collaboration, Engagement, and Learning

DESIGN

\$4,240,000



WINONA

Winona State
University
winona.edu
[@winonastateu](https://twitter.com/winonastateu)



CONSTRUCTS: 73,017 GSF
DEMOLISHES: 78,333 GSF



**DEFERRED MAINTENANCE
REDUCTION:** \$10.3 million



SUMMARY

- » Designs the replacement of Gildemeister and Watkins Halls with a new, highly efficient and sustainable building and creates an inviting gateway into campus
- » Constructs the first Minnesota State Net Zero Energy building
- » Constructs flexible and innovative spaces, including highly visible studio/lab spaces that support collaborative learning
- » Promotes campus-wide interdisciplinary learning
- » Incorporates student support services among classrooms and labs, improving student access to services
- » Supports Winona State's focus on campus sustainability and resilience

» STUDENT IMPACT

The new building will create innovative, **interdisciplinary learning spaces** to support students and faculty in five different colleges within the university.

Integrated Manufacturing Workforce Labs

DESIGN

\$1,055,000



Lake Superior College
lsc.edu
[@LSC_Duluth](https://twitter.com/LSC_Duluth)

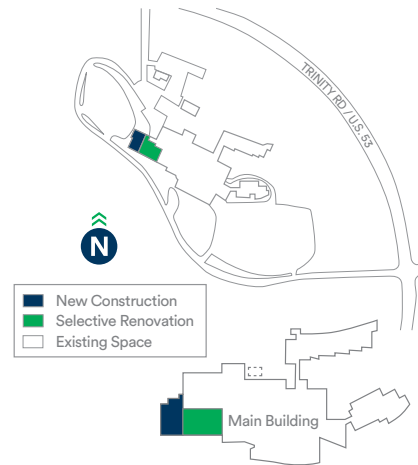
DULUTH



RENOVATES: 40,260 GSF
DEMOLISHES: 1,670 GSF
CONSTRUCTS: 12,760 GSF



DEFERRED MAINTENANCE REDUCTION: \$2.8 million



SUMMARY

- » Designs the renovation and construction of spaces to accommodate integrated manufacturing programs
- » Eliminates costly leased space and renovates underutilized campus classroom space
- » Impacts students in high-demand computer-aided design, machine tool, welding, electronics, and civil engineering programs
- » Expands manufacturing programs
- » Creates rightsized labs with updated technology and equipment

STUDENT IMPACT

Improves and expands learning spaces for the integrated manufacturing program by relocating program back to main campus for greater access to Lake Superior College's student services, student community, housing, and interdisciplinary collaboration. Further enhances student tours, recruitment efforts, community and industry collaboration, and outreach efforts at a more prominent and visible location on main campus.

Center for Innovation and the Arts

DESIGN

\$7,598,000



North Hennepin Community College
nhcc.edu
[@northhennepin](https://twitter.com/northhennepin)

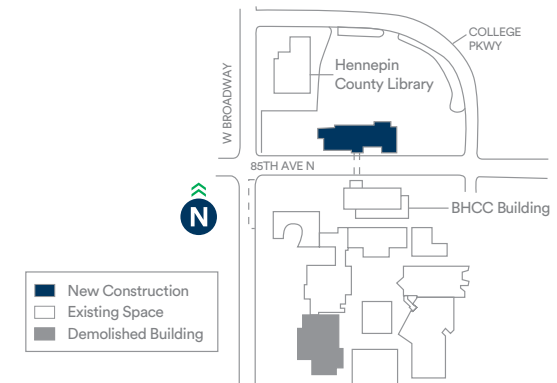
BROOKLYN PARK



DEMOLISHES: 40,639 GSF
CONSTRUCTS: 83,130 GSF



DEFERRED MAINTENANCE REDUCTION: \$6.2 million



SUMMARY

- » Designs the demolition of NHCC's dated Fine Arts Center and construction of a new building housing technology-rich arts education studios, classrooms, and performance spaces
- » Project and future operating cost funding provided through partnerships with the City of Brooklyn Park and NHCC Foundation, as well as private donations
- » Expands postsecondary pathways in the science, technology, engineering, arts, and math (STEAM) areas
- » Engages communities in the northwest metro area through access to arts and technology programming
- » Provides a site for a future adjoining STEAM magnet school through the Osseo School District
- » Future construction request to be complemented with community matching funds of approximately \$40 million

STUDENT IMPACT

Transforms and advances the learning experiences of the college's diverse student population, as well as people from surrounding communities, by creating a **destination for arts education and innovation** at a highly visible location in Brooklyn Park.

Cybersecurity Lab

DESIGN · RENOVATION

\$4,292,000



ST. PAUL

Metropolitan State
University
metrostate.edu
[@Choose_Metro](#)



RENOVATES: 3,183 GSF



DEFERRED MAINTENANCE
REDUCTION: \$3.3 million



SUMMARY

- » Renovates existing unused space to create highly technical teaching labs and certified research spaces to support high-demand cybersecurity programs
- » Creates an active learning classroom housing the Minnesota Cyber Range, a cutting-edge, secure cybersecurity simulation facility
- » Enables the university to expand the cybersecurity minor degree into a full major degree program
- » Creates dedicated research space utilizing Security Operations and Collaborative Research Center (SOCRC) and Secure Compartmentalized Information Facility (SCIF) capabilities

» STUDENT IMPACT

Repurposes existing space to **create state-of-the-art labs and classrooms** to support learning and research for students and faculty in high-demand programs.

Transportation Center, Student Services Renovation, and Selective Campus Demolition

DESIGN

\$832,000



ALEXANDRIA

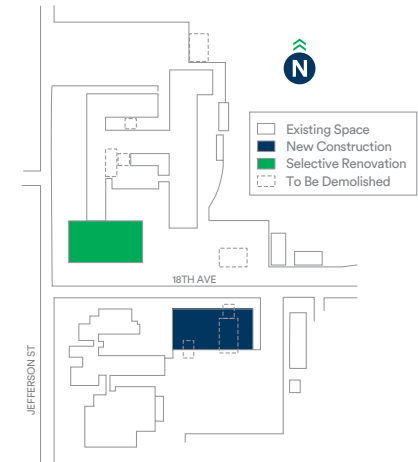
Alexandria Technical
& Community
College
alextech.edu
[@ATCCMN](#)



RENOVATES: 38,000 GSF
DEMOLISHES: 56,000 GSF
CONSTRUCTS: 43,000 GSF



DEFERRED MAINTENANCE
REDUCTION: \$4.3 million



SUMMARY

- » Designs a new Transportation Center to serve the high-demand diesel mechanics and professional truck driver programs
- » Designs the renovation of existing space to serve the powersports technician program
- » Removes obsolete space from campus
- » Renovates existing space to create a vibrant Student Union at the heart of campus
- » Creates a new primary campus entrance to create a welcoming, collegiate feel

» STUDENT IMPACT

New Transportation Center provides students in high-demand programs with **safe and technology-rich learning spaces**, while the new Student Union enhances the student experience for all students.

Student Services Renovation

DESIGN · RENOVATION

\$9,924,000



AUSTIN

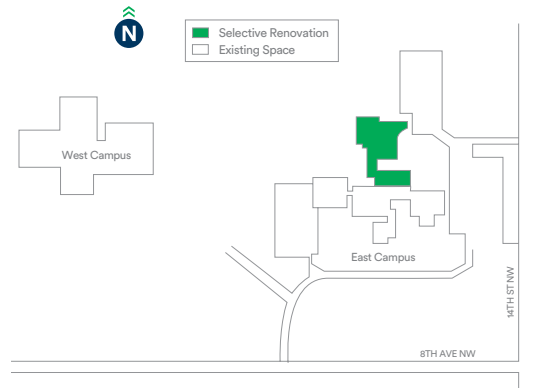
**Riverland
Community College**
riverland.edu
[@RiverlandNews](https://twitter.com/RiverlandNews)



RENOVATES: 19,981 GSF
RENEWS: 34,349 GSF
CONSTRUCTS: 220 GSF



**DEFERRED MAINTENANCE
REDUCTION:** \$1.2 million



SUMMARY

- » Designs and renovates the busiest part of the Austin East campus to create a Student Services Hub, benefiting more than 2,000 students
- » Creates technology-rich Active Learning Classrooms, tutoring spaces, and study spaces
- » Creates an inviting Student Union with a Multi-Cultural Center and food pantry

» STUDENT IMPACT

More than 2,000 students on the Austin East campus will benefit from **increased access to Student Services** and technology-rich learning spaces.

Wellness and Human Performance Center

DESIGN

\$1,156,000



MARSHALL

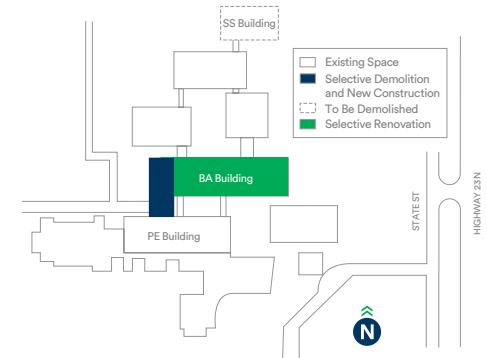
**Southwest
Minnesota State
University**
smsu.edu
[@SMSUToday](https://twitter.com/SMSUToday)



RENOVATES: 41,600 GSF
DEMOLISHES: 55,513 GSF
CONSTRUCTS: 14,700 GSF



**DEFERRED MAINTENANCE
REDUCTION:** \$16.7 million



SUMMARY

- » Designs the renovation of existing space and construction of an addition to create specialized spaces for the exercise science and physical education programs
- » Renovates space within Bellows Academic Center to create a Learning Hub with Active Learning Classrooms and student support spaces that benefit all students
- » Creates a new Fitness Center for all students
- » Creates a new public entrance on the western edge of campus

» STUDENT IMPACT

Creates new learning and student support **spaces that benefit all students**, and creates specialized lab spaces for popular programs.



ST. CLOUD STATE
UNIVERSITY

PRIORITY 18

Education and Learning Design Complex

DESIGN

\$4,487,000



ST. CLOUD

St. Cloud State
University

stcloudstate.edu
[@stcloudstate](https://twitter.com/stcloudstate)



RENOVATES: 3,740 GSF

RENEWS: 13,650 GSF

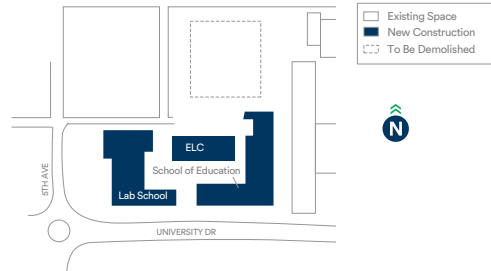
DEMOLISHES: 101,006 GSF

CONSTRUCTS: 130,475 GSF



DEFERRED MAINTENANCE

REDUCTION: \$12.7 million



SUMMARY

- » Over multiple phases, renovates existing space, demolishes the Education Building, and constructs three new buildings: School of Education, Early Learning Center (ELC), and Lab School
- » Phase I designs the new School of Education Building and Early Learning Center building, and designs and renovates existing space for the School of Health and Human Services (SHHS) relocation
- » Creates new experiential clinical buildings to provide collaborative learning experiences for SHHS students
- » Replaces the obsolete Education Building with state-of-the-art, innovative learning spaces in highly energy-efficient buildings

» STUDENT IMPACT

Creates new and innovative spaces to benefit more than 1,200 Education students. The Lab School will serve 500 children and families within the community.



ROCHESTER
COMMUNITY AND TECHNICAL COLLEGE

PRIORITY 19

Heintz Center Renovation: Reimagining Education for a Diverse Workforce

DESIGN

\$1,347,000



ROCHESTER

Rochester
Community and
Technical College

rctc.edu
[@RochesterCTC](https://twitter.com/RochesterCTC)



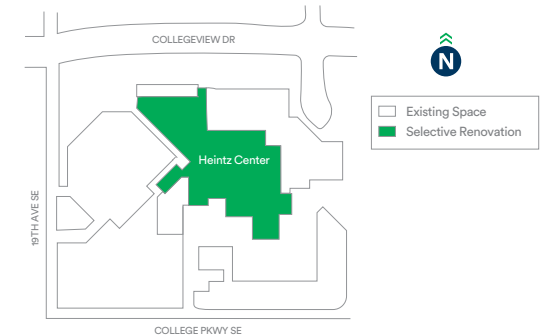
RENOVATES: 62,232 GSF

RENEWS: 33,768 GSF



DEFERRED MAINTENANCE

REDUCTION: \$1.5 million



SUMMARY

- » Designs the renovation and renewal of the 1100 and 1300 suites in Heintz Center to consolidate program spaces and create safe and modern learning spaces
- » Modernizes spaces for Career and Technical Education (CTE) programs
- » Creates greater visibility for CTE programs to increase recruitment of students
- » Renovates spaces for collaboration and student success

» STUDENT IMPACT

Creates state-of-the-art, **accessible spaces for high-demand programs** and enhances study and student support areas.



PRIORITY 20

Nursing, Public Peace Officer, and Student Service Renovation

DESIGN

\$1,963,000



Minnesota West
Community &
Technical College
mnwest.edu
[@MinnesotaWest](https://twitter.com/MinnesotaWest)

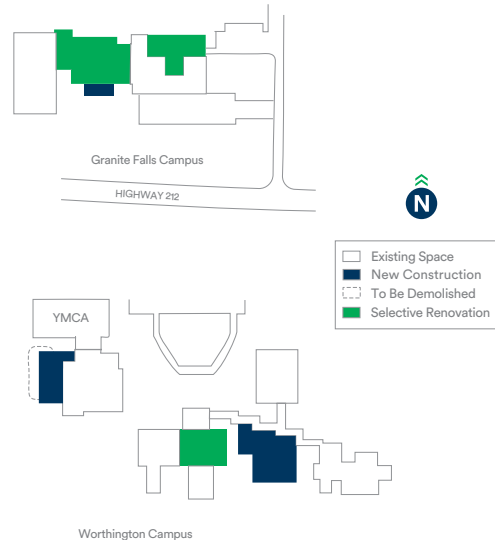
GRANITE FALLS AND WORTHINGTON



RENOVATES: 32,737 GSF
RENEWS: 7,135 GSF
DEMOLISHES: 10,000 GSF
CONSTRUCTS: 32,890 GSF



**DEFERRED MAINTENANCE
REDUCTION:** \$1.3 million



SUMMARY

- » Designs the renovation of nursing classroom and lab spaces on two campuses (Granite Falls and Worthington) as well as student service space and a relocated front entrance at Granite Falls campus
- » Designs a new addition on the Worthington campus to create new, consolidated space for the growing Public Peace Officer program
- » Removes a temporary building

» STUDENT IMPACT

Improves and expands space for students in high-demand programs while updating student service spaces that benefit all students.



RIDGEWATER
COLLEGE

PRIORITY 21

Healthcare, Construction, Student Services, and Classroom Renovation

DESIGN · RENOVATION

\$14,280,000



Ridgewater College
ridgewater.edu
[@RidgewaterColl](https://twitter.com/RidgewaterColl)

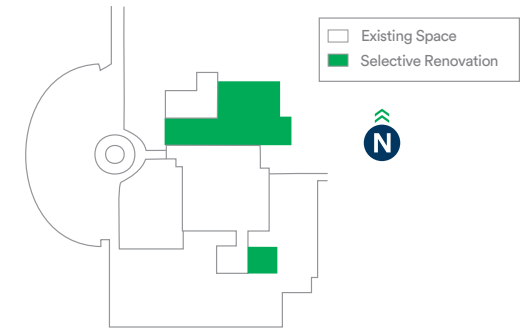
HUTCHINSON



RENOVATES: 49,300 GSF
RENEWS: 7,410 GSF



**DEFERRED MAINTENANCE
REDUCTION:** \$1.9 million



SUMMARY

- » Designs and renovates existing space on the Hutchinson campus to improve classroom and lab spaces as well as student services space
- » Updates space for automation, nursing, allied health, and early childhood programs
- » Creates updated, technology-rich general classrooms used by all students

» STUDENT IMPACT

Modernizes learning spaces for students in high-demand programs as well as general purpose classrooms and student services spaces.

NOTES

BOARD OF TRUSTEES

Asani Ajogun
Ahmitara Alwal
Alex Cirillo
Jay Cowles, Chair
Dawn Erlandson

Jerry Janezich
Roger Moe
Javier Morillo
April Nishimura
Oballa Oballa

Rudy Rodriguez,
Vice Chair
Kathy Sheran
George Soule
Cheryl Tefer
Michael Vekich

PRESIDENTS

Michael Seymour
*Alexandria Technical &
Community College*

Kent Hanson
*Anoka Technical College and
Anoka-Ramsey Community
College*

Faith Hensrud
*Bemidji State University and
Northwest Technical College*

Hara Charlier
Central Lakes College

Angelia Millender
Century College

Michael Berndt
*Dakota County Technical
College and Inver Hills
Community College*

Stephanie Hammitt
*Fond du Lac Tribal &
Community College*

Merrill Irving, Jr.
Hennepin Technical College

Patricia Rogers
Lake Superior College

Ginny Arthur
Metropolitan State University

Sharon Pierce
*Minneapolis Community
and Technical College*

Marsha Danielson
*Minnesota State College
Southeast*

Carrie Brimhall
*Minnesota State
Community and
Technical College*

Edward Inch
*Minnesota State
University, Mankato*

Anne Blackhurst
*Minnesota State
University Moorhead*

Terry Gaalswyk
*Minnesota West
Community
& Technical College*

Joyce Ester
*Normandale Community
College*

Rolando Garcia
*North Hennepin
Community College*

Michael Raich
*Northeast Higher
Education District*

Sandra Kiddoo
*Northland Community
& Technical College*

Joe Mulford
*Pine Technical &
Community College*

Craig Johnson
Ridgewater College

Adenuga Atewologun
*Riverland Community
College*

Jeffery Boyd
*Rochester Community
and Technical College*

Deidra Peaslee
Saint Paul College

Annette Parker
South Central College

Kumara Jayasuriya
*Southwest Minnesota
State University*

Robbyn Wacker
St. Cloud State University

Annesa Cheek
*St. Cloud Technical
& Community College*

Scott Olson
Winona State University



Thank you!

#FundMinnesotaState · #MinnStateCommunity



MINNESOTA STATE

Extraordinary Education. Exceptional Value.

MinnState.edu