

# 2019–2020 Guide to your 37 STATE COLLEGES AND UNIVERSITIES

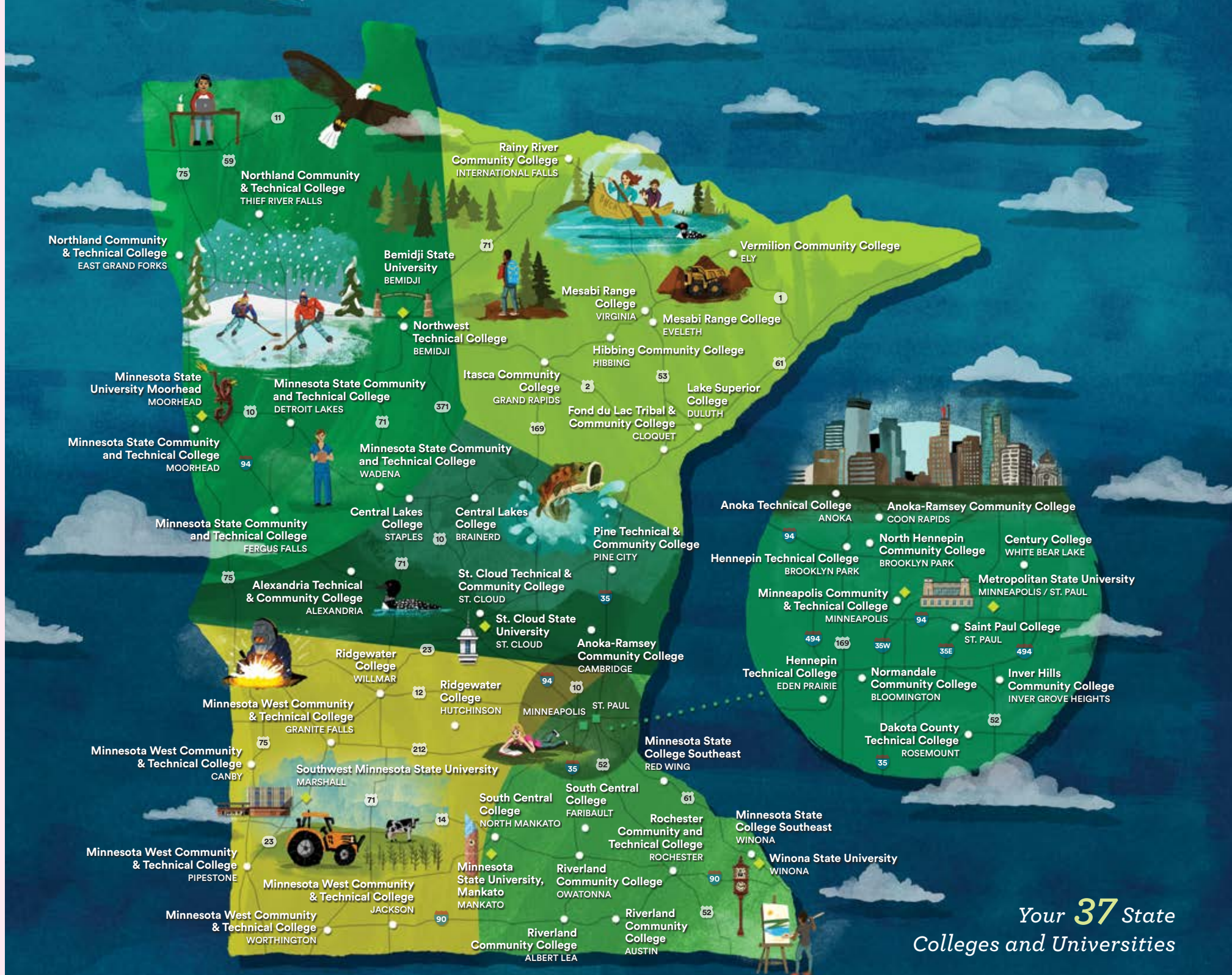


**MINNESOTA STATE**

Extraordinary Education. Exceptional Value.

[MinnState.edu](http://MinnState.edu)





Your **37** State  
Colleges and Universities





# Extraordinary Education. Exceptional Value.

Nestled amidst the lakes, forests, and scenic landscapes of Minnesota are the 37 state colleges and universities of Minnesota State, your state college and university system.

More than 350,000 students choose your state colleges and universities each year, creating a brighter future to become the talent needed for Minnesota businesses and communities to grow and prosper. Minnesota State offers thousands of superior academic programs at the lowest tuition in the state. We also offer a vibrant array of student life activities and experiential learning options that can give you the opportunity to see and engage with the world. That's what extraordinary education at an exceptional value is all about.

# Extraordinary Impact

Minnesota State is making a difference. From the students we serve, to our business partners, to those we employ, chances are good you or someone you know has benefited from the work of your state colleges and universities.



**38,000+**

degrees, certificates,  
and diplomas awarded  
each year

**710**



online programs to choose from

**third**

largest system of colleges  
and universities in the  
United States

**15,900+**

dedicated faculty and  
staff focused on  
student success



**15,000+**

customized training,  
occupational, and  
professional classes

Job placement in a  
related field of study

**87.1%**



**350,000+**

students attend our colleges  
and universities each year

**fifty four**

convenient campuses  
across Minnesota



**54%**

STATE COLLEGES

**62%**

STATE UNIVERSITIES

Percent of students who receive financial aid



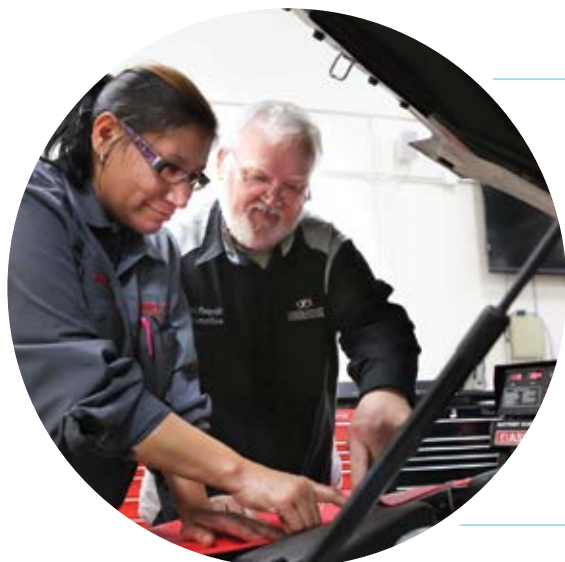
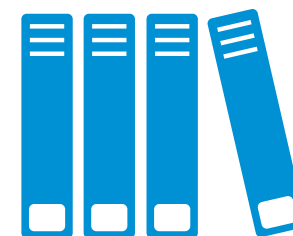
7,000+

employer partnerships  
across Minnesota State  
colleges and universities



3,900

academic programs to choose from



64.5%

of Minnesota resident  
students who are pursuing an undergraduate  
credential are doing so at a Minnesota  
State college or university

29–57%

of Minnesota State  
students graduate with  
no debt at all, depending  
on the academic award  
received

We serve more

**STUDENTS  
OF COLOR**

and

**AMERICAN  
INDIAN  
STUDENTS**

than all other higher  
education providers in  
Minnesota combined

## MINNESOTA STATE GRADUATES' DEBT

Fiscal Year 2018

*\*Note the median for all graduates with certificates/diplomas is \$0 as over half did not borrow*

DEGREE	MINNESOTA STATE GRADUATES WITH NO DEBT	MEDIAN DEBT FOR ALL GRADUATES	MEDIAN DEBT FOR GRADUATES WHO BORROWED
Certificates/Diplomas	56.8%	\$0	\$9,508
Associate Degrees	44.0%	\$5,000	\$15,500
Baccalaureate Degrees	28.7%	\$17,398	\$25,000





# *World-class* **EDUCATION**



# Extraordinary Education

Your state colleges and universities offer more than 3,900 superior academic programs taught by seasoned faculty who know students by name. Take a few classes. Earn a certificate, diploma, or associate degree. Or, start working or complete your bachelor's, master's, or doctorate. Minnesota State will help you build a plan that is right for you.



## » Move Quickly

Your state colleges offer options that allow you to take classes or earn a certificate, diploma, or associate degree in two years or less.

## » Graduation Options

Start and finish your bachelor's degree at one of your state universities, or complete two years at a state college and transfer to one of your state universities.

## » Work-School-Life Balance

Explore flexible scheduling options, accelerated options, or online classes and programs that work with your schedule or fit into your life.

## » Personalized Attention

Class sizes are small, campuses are friendly, and you are taught by faculty, not teaching assistants.

## » Stay Local or Explore

Minnesota State has 54 campuses in 47 Minnesota communities. Choose the one that is right for you.

## » Advance Your Career

Check out non-credit, short-term training options designed to help you get quick and specialized training through any Minnesota State continuing education or customized training program.

## » Exceptional Value

Your 37 state colleges and universities offer the lowest tuition and fees in Minnesota and a first-class education employers respect.

## » Find Your Path

Work one-on-one with staff at any of our colleges and universities to find the program and path that is right for you.



# Lowest tuition in MINNESOTA

Your 37 state colleges and universities offer the lowest tuition and fees in Minnesota, giving you access to first-rate education options throughout the state and the ability to avoid or limit debt.

## ESTIMATED FULL-TIME NET TUITION COSTS AFTER STATE AND PELL GRANTS

Academic Year 2019–20

\*30 credits for a year, 15 credits per semester

INCOME LEVELS FOR STATE GRANT RECIPIENTS*	AVERAGE 2019–20 STUDENT TUITION COST	
	STATE COLLEGES	STATE UNIVERSITIES
Less than \$20,000	\$218	\$615
\$20,000 to \$39,999	\$784	\$1,130
\$40,000 to \$59,999	\$1,441	\$2,256
\$60,000 and above	\$2,834	\$4,611
Average for all state grant recipients	\$893	\$2,118
Non-state grant recipients	\$4,960	\$7,518



# Exceptional Value

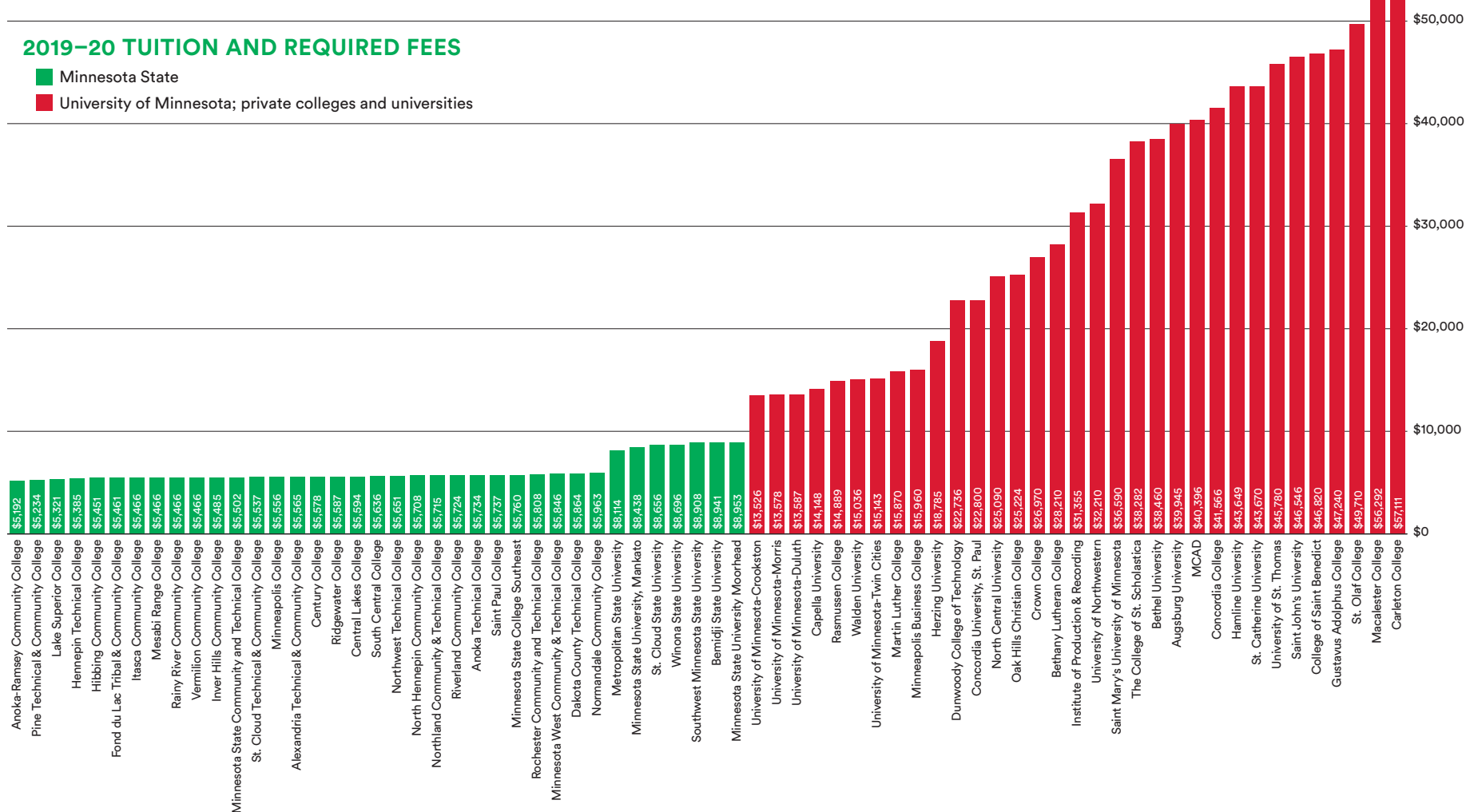
The 37 state colleges and universities that comprise Minnesota State offer the lowest tuition in all of Minnesota.

Not from Minnesota? Most colleges and universities that are part of Minnesota State offer in-state tuition rates to residents of other states. Check with the college or university you wish to attend for details. All veterans, service members, and their families receive in-state tuition.

## 2019–20 TUITION AND REQUIRED FEES

■ Minnesota State

■ University of Minnesota; private colleges and universities



## Extraordinary Experiences

# STUDENT LIFE

Choosing a state college or university also means you have access to a vibrant social scene. Check out the variety of clubs, organizations, and events. Explore varsity athletics options on **PAGES 61** and **68**. Learn about study abroad and service learning opportunities available at the college or university you are interested in attending. Or, get involved with student government on your campus or at the state level as part of Students United (*representing public state university students*) and LeadMN (*representing public community and technical college students*).





Your state colleges and universities are a vital resource to Minnesota employers. Not only do we help prepare students to become talented and skilled individuals, but we also work hand-in-hand with business and industry to develop relevant programs and curriculum.

**GAIN RELEVANT EXPERIENCE.** Employers from across the state work with our colleges and universities to offer internships and job opportunities. These same professionals also serve as advisors who help shape curriculum, obtain equipment, and develop new programs and classes.

**BE THE TALENT OF TOMORROW.** Your state colleges and universities award more than 38,000 certificates, diplomas, and degrees each year, and 87.1 percent of those graduates begin working in their field of study within one year.

**FIND SOLUTIONS TO CHANGING BUSINESS NEEDS.** All 37 state colleges and universities offer non-credit learning options through a network of experienced instructors who work with employers to develop training and education programs that allow employees to thrive in the ever-changing global marketplace and keep skills competitive.

**UPDATE YOUR SKILLS AND KNOWLEDGE WITH CONTINUING EDUCATION.**

Advance your career by learning new knowledge or skills, retraining, or attaining critical certification and licensures.



Exceptional Talent

# A BRIGHT FUTURE

# Extraordinary Pathways

A photograph of two young women in a science laboratory. The woman on the left, wearing a dark green hoodie, is pointing with a yellow pencil at a document on the lab bench. The woman on the right, wearing a pink hoodie over a light blue shirt, is looking at the document with her hand to her chin in a thoughtful pose. In the background, another student wearing a yellow hijab is visible, and several microscopes are on the lab benches.

# *Transfer* OPTIONS



Starting at a Minnesota State college and considering transfer? Plan now to save time and money later. Check out a few of the transfer programs available through Minnesota State, or visit [MinnState.edu](http://MinnState.edu) for details.

**EXPLORE TRANSFER PATHWAYS:** Minnesota State offers transfer pathways that allow you to complete a specific associate degree and transfer to any of the seven Minnesota State universities.\* If you complete a Transfer Pathway degree at a Minnesota State college and are admitted to a state university, you will be guaranteed junior status and given assurance that all 60 college credits will count toward the related bachelor's degree.\*\* See **PAGE 62** for program details and options.

**GET TO KNOW THE BACHELOR'S DEGREE PARTNERSHIP PROGRAM:** The seven state universities offer selected bachelor degree programs that can be completed at various community colleges, allowing you to earn your degree from a university without leaving the comfort of the college campus setting. See the complete inventory of degree programs and participating colleges and universities on **PAGE 64**.

**LEARN ABOUT THE MINNESOTA STATE TRANSFER GUARANTEE:** If you complete the Minnesota Transfer Curriculum and earn an associate of arts (AA) degree from any Minnesota State college with a minimum 2.0 GPA<sup>‡</sup>, you are guaranteed admission to any of the seven state universities with junior year status.\*\*

\* Universities within the Minnesota State system include Bemidji State University; Metropolitan State University; Minnesota State University, Mankato; Minnesota State University Moorhead; Southwest Minnesota State University; St. Cloud State University; and Winona State University.

\*\* A student must still meet any special admission requirement for the major and is not guaranteed admission into the major itself.

‡ Winona State University requires a minimum 2.4 GPA for AA degrees to be accepted.

## WANT TO LEARN MORE?

Our colleges and universities are staffed with many people who can help you find a direction that is right for you. Talk to a transfer specialist, visit a college or university in person, or visit [MinnState.edu/admissions/transfer.html](http://MinnState.edu/admissions/transfer.html) to learn more.



# WHAT WILL TRANSFER?

## AA – ASSOCIATE OF ARTS DEGREE

Designed to transfer into liberal arts four-year majors.

## AS – ASSOCIATE OF SCIENCE

Two-year program designed for transfer into a specific four-year major and will likely require completing additional general education courses at a university.

## AFA – ASSOCIATE OF FINE ARTS

Two-year program designed for transfer into a specific four-year major and will likely require completing additional general education courses at a university.

## AAS – ASSOCIATE OF APPLIED SCIENCE

Two-year program for a specific occupation. Not designed for transfer.†

## DIPLOMAS AND CERTIFICATES

Industry-driven and defined programming designed for immediate entry into the workplace. Not designed to transfer.

† While not primarily designed for transfer, individual colleges and universities may accept these courses.

# Exceptional Opportunities

# ACCELERATE

## *your degree*



### POSTSECONDARY ENROLLMENT OPTIONS (PSEO)\*:

PSEO are college courses offered to high school students. The courses are taught by college or university faculty and allow students to earn both high school and college credit for successfully completing the course. Contact your local state college or university for eligibility requirements and information.

**CONCURRENT ENROLLMENT\*:** Students can complete college courses at their high school while fulfilling high school course requirements at the same time. If you are interested in this option, speak to your high school guidance counselor.

**TECHNICAL COURSE OPTIONS\*\*:** Students in 10th grade may take one technical college-level course taught on a college campus. You must be enrolled in a public school and meet requirements for reading proficiency and other assessments related to the course in which you wish to enroll.

**ADVANCED PLACEMENT (AP) AND INTERNATIONAL BACCALAUREATE (IB) OPTIONS:** AP or IB courses are offered at many high schools and provide a rigorous curriculum that prepares students to take college-level courses. Students who pass an AP test or the IB exam with acceptable scores will be awarded college credit at any Minnesota State college or university.

### CREDIT FOR PRIOR LEARNING:


Students who demonstrate college- or university-level learning gained through non-credit or experiential settings may be eligible to earn college credit (*i.e., credit for military experience, credit for work history*). Inquire with the college or university you are considering for more information.

**CREDIT FOR MILITARY TRAINING OR EXPERIENCE:** Veterans and service members should check the Veterans Education Transfer System (VETS) for eligibility information or visit [MinnState.edu/military](https://MinnState.edu/military).

\* To be eligible for PSEO or concurrent enrollment with a Minnesota State college or university, high school juniors must be in the upper one-third of their class or earn a score at or above the 70th percentile on a test such as the ACT or SAT. Seniors must be in the upper one-half of their class or earn a score at or above the 50th percentile on a test such as the ACT or SAT. Students who do not meet these requirements may still be eligible if they can meet other college readiness standards determined by the college or university. Students in 9th or 10th grade may also be eligible to take PSEO or concurrent enrollment courses if they rank in the upper one-tenth of their class or attain a score at or above the 90th percentile on a nationally standardized, norm-referenced test, or if they have a favorable recommendation from designated high school officials. All high school students enrolling in PSEO or concurrent enrollment, regardless of grade level, must also meet all college course prerequisites.

\*\* A student who first completed technical courses while in 10th grade and wishes to enroll in general education courses as an 11th or 12th grade student must take assessment tests and achieve the required scores prior to enrollment in additional PSEO courses. Learn more at [MinnState.edu/admissions/pseo](https://MinnState.edu/admissions/pseo).





Whether you are seeking help paying for college or could use help as you prepare for an exam, your 37 colleges and universities offer a variety of resources to help you along the way. They are staffed with professionals who know and understand the process of enrolling and can help you reach your goals.

# AID AND SUPPORT

## Extraordinary Resources

### Financial Resources

**FINANCIAL AID:** The Free Application for Federal Student Aid (FAFSA) is the first step in applying for assistance in financing your college education. Submit this information as soon as possible to determine your eligibility for aid. Visit [fafsa.ed.gov](https://fafsa.ed.gov) for more information.

**SCHOLARSHIPS:** Scholarships are a great financial resource to students. They typically do not have to be paid back and can help offset tuition and other costs associated with college.

**TAX CREDITS:** Some students may benefit from federal tax credit programs. Consult with a tax professional or visit the IRS website at [irs.gov](https://irs.gov) for more information.

### Academic Resources

**ON-CAMPUS ACADEMIC ASSISTANCE:** Most colleges and universities offer services such as tutors, a writing center, a math center, counseling, and more to support you. Contact the college or university you are interested in attending to learn about the resources available.

**TRIO SERVICES:** The federal TRIO programs are outreach and student services programs designed to identify and provide services to individuals from disadvantaged backgrounds.

**ACCESSIBILITY SERVICES:** Your state colleges and universities offer accessible facilities and provide accommodations to students with documented disabilities.

**SUPPORT FOR VETERANS AND SERVICE MEMBERS:** Most of your colleges and universities offer services for veterans and service members, including help to identify resources to pay for college, and have received Yellow Ribbon or military-friendly designations. Learn more at [MinnState.edu/military](https://MinnState.edu/military).

**CAREER PLANNING:** Check out career services at your college or university campus, or use [MinnState.edu/careers](https://MinnState.edu/careers) to explore careers, take an assessment, find program and courses including short-term and continuing education options, get tips for a successful job search, and more.

» **GET STARTED TODAY!** Contact the college or university you are interested in to meet with staff who can help you find the resources right for you.

# NEXT STEPS

1

Speak to friendly staff at the college or university you are considering.

2

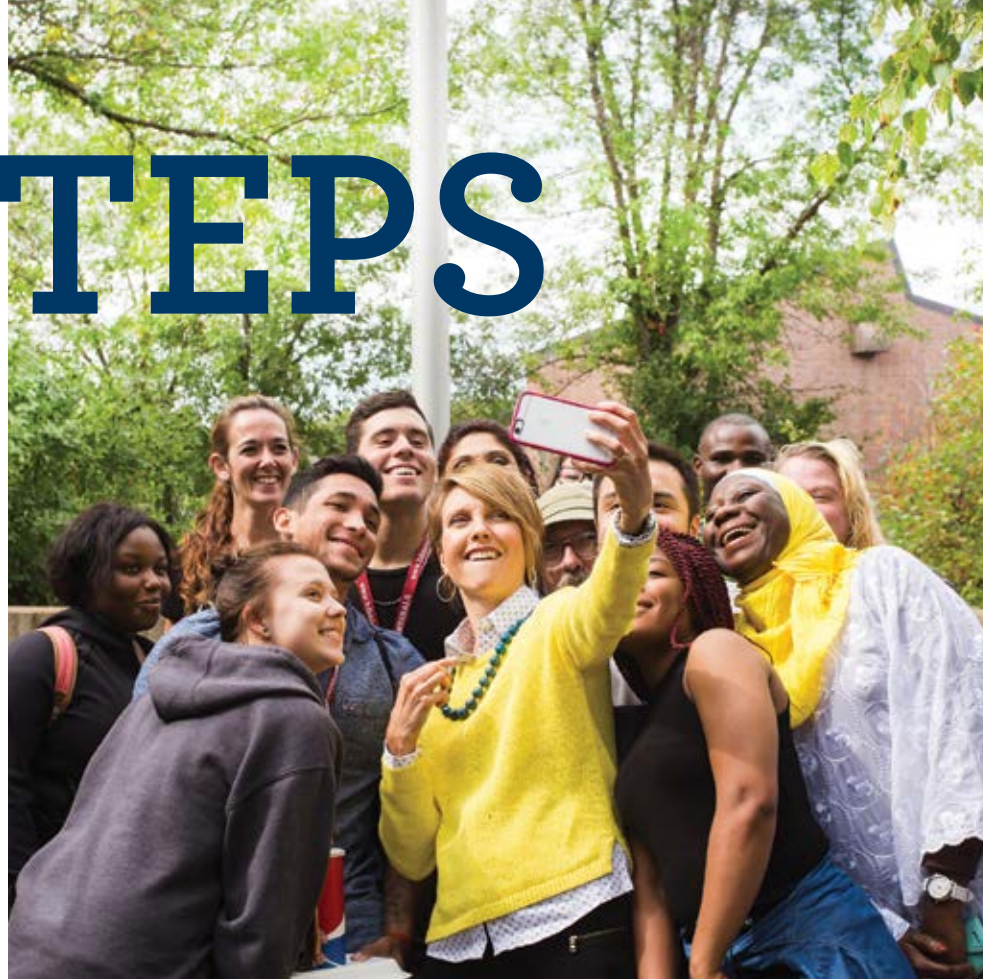
Get to know your state colleges and universities using this guidebook or by visiting [MinnState.edu](https://MinnState.edu).

3

Check out the hundreds of programs available on your campuses by clicking on “Programs” at [MinnState.edu](https://MinnState.edu) or using the program grid found in the “Endless Opportunities” section of this book.

4

Visit campuses to find the college or university that is the right fit for you.



## READY TO APPLY?

1. **CONTACT OR VISIT** the college or university you are considering to get specific admission requirements.
2. **SUBMIT YOUR APPLICATION.** The state universities typically accept applications in the fall, and the state colleges generally accept applications up until the start of the new semester.
3. **APPLY FOR FINANCIAL AID** by visiting [fafsa.ed.gov](https://fafsa.ed.gov) and access the Free Application for Federal Student Aid (FAFSA).

4. **LOOK FOR SCHOLARSHIPS** by contacting the college or university you plan to attend for information and resources to begin the scholarship application process.
5. **START PLANNING** to achieve your goals by looking at the academic calendar for the college or university you wish to attend and getting to know staff that can assist you throughout your time on campus.



# 30 STATE COLLEGES

Minnesota State is home to 30 community, technical, and comprehensive colleges. These colleges are a great place to earn a degree and immediately start your career, or you can complete an associate degree and transfer to earn a bachelor's degree.

## INTERESTED?

- » **CHECK OUT THE OPTIONS.** The profile pages that follow provide you a glimpse of all 30 colleges.
- » **VISIT CAMPUS.** The best way to find the college that is right for you is to visit.
- » **UNDERSTAND WHAT YOU NEED TO ENROLL.** Each college has an open admissions policy, meaning you need only a high school diploma or a GED to enroll. If you do not have a high school diploma or GED, you may qualify to be admitted through an approved Ability to Benefit test and may apply to enroll in a career pathway program. Details for program-specific admissions requirements can be found on the website of the college you are considering.
- » **KEEP TRANSFER IN MIND.** If you are thinking about transfer, take note of the pathway options and programs designed to ease the process. Planning ahead may save you time, money, and stress later.
- » **LET OUR STAFF AND FACULTY HELP.** You are strongly encouraged to contact the admissions department and get to know the faculty and staff at the college you plan to attend.

# Alexandria Technical & Community College



[alextech.edu](http://alextech.edu)

2019–20 Tuition and Fees: \$5,565



## ALEXANDRIA

Admissions: 320-762-0221

1601 Jefferson St.  
Alexandria, MN 56308

FAFSA Code: 005544



**3,927** Students Served

**52%** Female // **48%** Male

**46%** Full-time // **54%** Part-time

**9%** Students of Color



ONLINE  
LEARNING



STUDENT  
ACTIVITIES

## DEGREES OFFERED

Advanced Technical Certificate, Associate of Applied Science, Associate of Arts, Associate of Science, Certificate, Diploma

## PROGRAM HIGHLIGHTS

Communication art and design, cybersecurity, diesel mechanics, early childhood education, exercise science, interior design, law enforcement, liberal arts and sciences, machine tool, mechatronics, medical laboratory technician, nursing, paralegal, powersports, speech language pathology assistant

## STUDENT ACTIVITIES

Student Senate and the Student Ambassador program provide student leadership opportunities. The varsity clay target team enables students to compete in an

intercollegiate conference. In addition, there are 15+ student clubs, organizations, and activities available to engage students in areas of recreation, professional development, and culture. Visit [alextech.edu](http://alextech.edu) or [MinnState.edu](http://MinnState.edu) for a complete list.

## AT A GLANCE

- » Graduate job placement rate of 98 percent
- » Recognized as a national leader in advanced technical skills education
- » Hands-on, student-centered, experiential learning
- » In the heart of Central Minnesota lake country and conveniently located on Interstate 94
- » Abundant year-round indoor and outdoor recreation



- » Student housing adjacent to campus
- » State-of-the-art labs for relevant, industry-aligned learning
- » Over \$230,000 in scholarships awarded by the ATCC Foundation annually
- » Personalized transfer advising for students who are transferring to and from ATCC
- » Best-in-class student retention and graduation
- » 17 programs offered online
- » Faculty advisors in all associate in applied science, diploma, and certificate programs
- » Visit with program faculty and tour the program during an admissions visit
- » Extensive partnerships with local, state, national, and international businesses and industries

- » Apply for all applicable scholarships through one online application
- » Transfer degrees and liberal arts curriculum provide more options to bachelor's degrees

## VISIT

General campus tours are offered throughout the year. Visit [alextech.edu/tour](http://alextech.edu/tour) to register for a tour. Open House events are held the last Sunday in October and the first Saturday in April. The entire campus is open for exploration. Faculty, staff, current students, graduates, and industry are available to answer questions. No registration is required for Open House.



# Anoka Technical College

[anokatech.edu](http://anokatech.edu)

2019–20 Tuition and Fees: \$5,734



ANOKA

**Admissions:** 763-576-7710

**TTY:** 7-1-1

1355 W. Highway 10  
Anoka, MN 55303

**FAFSA Code:** 007350



**2,687** Students Served

**59%** Female // **41%** Male

**46%** Full-time // **54%** Part-time

**23%** Students of Color



ONLINE  
LEARNING



STUDENT  
ACTIVITIES

## DEGREES OFFERED

Associate of Applied Science, Diploma, Certificate

## PROGRAM HIGHLIGHTS

Paramedic, robotics and electronic engineering, automotive technician, welding, practical nursing, construction electrician, architectural 2D CAD, biomedical equipment technician, broadcast captioning, business data analyst, CNC manufacturing technology, golf course grounds and landscape management, health information technology, judicial reporting, medical coding, occupational therapy assistant

## STUDENT ACTIVITIES

Several student clubs, organizations, and activities available. Visit [AnokaTech.edu](http://AnokaTech.edu) or [MinnState.edu](http://MinnState.edu) for a complete list.

## AT A GLANCE

- » 70+ in-demand career programs
- » 100 percent job placement: architectural technology, community social services, construction electrician, medical assistant, supervisory management, surgical technology
- » New programs fall 2019: paramedic, office communication specialist, office software specialist, health unit coordinator, robotic and electronic engineering technology, quality inspector, information technology (IT) support, landscape entrepreneurship
- » Last year, the Anoka Technical College Foundation had \$225,000 in student scholarships and \$25,000 in student crisis grants available for award



» Variety of student support services available, including counseling, career services, tutors, disability services, enrollment and success coaches, veterans support

» Nine programs offered completely online: administrative office specialist, office communication specialist, office software specialist, legal assistant, medical coding specialist, health information technology, health unit coordinator, medical office specialist, medical receptionist

» Hands-on practical education with experience using industry-leading equipment, unique to Anoka Tech, including a new five-axis mill from Matsuura Industries

» Automotive technology program facilities updated with new hoists, lighting, vehicle exhaust system with carbon monoxide detection, and a virtual vehicle diagnostic lab

» Newly remodeled Surgical Technology lab and classroom with industry-leading equipment, giving students training in an environment that reflects the workplace

» Partnerships with local, state, and national businesses and industries connect students with real-world opportunities

» Partnership with Bemidji State University offers paths from 15 associate degree programs to four-year degrees

## VISIT

Campus visits held every Tuesday and Thursday from 10 to 11 a.m. or as scheduled. Visit [AnokaTech.edu/visit](http://AnokaTech.edu/visit) for exact dates, times, and details.

*Anoka Technical College is aligned with Anoka-Ramsey Community College.*

# Anoka-Ramsey Community College

[anokaramsey.edu](http://anokaramsey.edu)

2019–20 Tuition and Fees: \$5,192



**CAMBRIDGE  
COON RAPIDS**



**Admissions: 763-433-1300**

**TTY: 7-1-1**

11200 Mississippi Blvd. NW  
Coon Rapids, MN 55433

**FAFSA Code: 002332**



**12,008** Students Served

**61%** Female // **39%** Male

**38%** Full-time // **62%** Part-time

**24%** Students of Color



**ONLINE  
LEARNING**



**BACHELOR'S  
DEGREE PARTNER**



**STUDENT  
ACTIVITIES**



**INTERCOLLEGIATE  
ATHLETICS**

## DEGREES OFFERED

Associate of Applied Science, Associate of Arts, Associate of Fine Arts, Associate of Science, Certificate, Diploma

## PROGRAM HIGHLIGHTS

Accounting, alcohol and drug counseling studies, American Sign Language, biological sciences, biomedical technology, business, communication studies, creative writing, cybersecurity, engineering, environmental science, exercise science, fine arts, glassblowing, health sciences, integrative health and healing, liberal arts and sciences, nursing, pharmacy technician, physical therapist assistant, therapeutic massage

## STUDENT ACTIVITIES

125+ student clubs, organizations, and activities available. Visit [AnokaRamsey.edu](http://AnokaRamsey.edu) or [MinnState.edu](http://MinnState.edu) for a complete list.

## AT A GLANCE

- » Lowest-cost tuition in Minnesota
- » Anoka-Ramsey offers 100+ transferrable courses and programs, eight available completely online, and 17 transfer pathways to seamlessly transition to a bachelor's degree
- » Anoka-Ramsey Community College was named one of 150 Top U.S. Community Colleges by the 2019 Aspen Prize for Community College Excellence



- » Two campuses, beautifully situated on riverbanks; study at the Cambridge Campus near the Rum River, or at the Coon Rapids Campus on the Mississippi River
- » In fiscal year 2019, the Cambridge and Coon Rapids Campus Foundations awarded \$232,900 in scholarships to 222 students
- » Variety of student support services available, including academic advising, disability services, career services, veterans support, counseling, and tutoring
- » Unique undergraduate research opportunities in several academic areas, including biology, chemistry, communication studies, geology, philosophy, political science, and sociology
- » New programs and transfer pathways for fall 2019: creative writing, accounting transfer pathway, elementary education transfer pathway, mass communication transfer pathway, sociology transfer pathway, and special education transfer pathway
- » Anoka-Ramsey is a fully accredited member of the Higher Learning Commission and home to nationally accredited nursing, business management and accounting, and physical therapy assistant programs

- » The Coon Rapids Campus offers a 28,976 square-foot Visual Arts Center with a glassblowing studio, photography studio, ceramics, computer labs, and classrooms
- » The Coon Rapids Campus Performing Arts Center also offers proscenium-style theatre; the acoustics are excellent and the 40-foot wide stage allows for intimate box sets, and full-scale musical productions
- » The Cambridge Campus performance area is a proscenium-style theatre with 145+ seats for a variety of theatre experiences
- » The Coon Rapids Campus Music Building offers three large rehearsal spaces, six practice rooms with SmartMusic notation and recording software, and a dual Yamaha keyboard/Macintosh music technology lab
- » The Coon Rapids Campus 5,000-square-foot Health and Wellness Center features a fitness center, walking track, batting cages, and several gymnasiums

## VISIT

For a tour, call 763-433-1300 or visit [AnokaRamsey.edu/visit](http://AnokaRamsey.edu/visit).

*Anoka-Ramsey Community College is aligned with Anoka Technical College.*



# Central Lakes College

[clcmn.edu](http://clcmn.edu)

2019–20 Tuition and Fees: \$5,594



## BRAINERD STAPLES

**Admissions:** 218-855-8000

**TTY:** 218-855-8224

501 W. College Dr.  
Brainerd, MN 56401

**FAFSA Code:** 002339



**5,454** Students Served

**56%** Female // **44%** Male

**41%** Full-time // **59%** Part-time

**11%** Students of Color



ONLINE  
LEARNING



STUDENT  
ACTIVITIES



INTERCOLLEGIATE  
ATHLETICS



ON-CAMPUS  
HOUSING

## DEGREES OFFERED

Associate of Applied Science, Associate of Arts, Associate of Science, Certificate, Diploma

## PROGRAM HIGHLIGHTS

Liberal arts and sciences, honors program, nursing, law enforcement, natural resources, computer network administration, sustainable greenhouse production, videography production, American Sign Language, heavy equipment operations and maintenance, robotics, and automated systems

## SPECIAL OPTIONS

**Certificates** – Deaf studies, entrepreneurship, environmental studies, global studies, Latin American studies, robotic welding, wildlife tourism, and law enforcement skills

## STUDENT ACTIVITIES

Numerous student clubs, organizations, sports, and activities available. An active Student Senate body on each campus. Strong student life program and opportunities for international studies. Get the four-year college experience at the two-year college price. Visit [clcmn.edu](http://clcmn.edu) or [MinnState.edu](http://MinnState.edu) for a complete list.

## AT A GLANCE

- » Earn your AA degree without ever buying a commercial textbook with the Z-Degree
- » Learn and live surrounded by lakes and trees near Minnesota's premier vacation destination. With campus on the banks of the Mississippi, the region boasts more than 500 lakes and rivers, as well as beautiful parks and forests

- » 95 percent of CLC graduates find jobs related to their program of study
- » Small class sizes with expert instructors who know your name and care about you as an individual
- » CLC Foundation awards \$375,000 in scholarships each year; in spring semester alone, 368 scholarships were awarded
- » A Veterans Resource Center, awarded "Military Friendly" and "Military Advanced Education & Transition College" honors
- » Live Online lets students attend and participate in class in real time from anywhere across the nation, or watch a recording of class later when it's more convenient. Traditional online courses available as well
- » Free tutoring services available for all students, in addition to TRIO Student Support Services
- » Convenient, newly renovated student housing available adjacent to campus
- » Home of the Central Lakes Community Performing Arts Center, providing theatre entertainment with the Cultural Arts Series and Brainerd Community Theatre
- » Verse Like Water, a series that brings in world-renowned poets for a reading and craft talk
- » Nine-hole disc golf course located on campus
- » Students regularly outscore their peers on state and national skills tests
- » Raider athletics is home to six NJCAA DIII varsity sport teams and known nationwide for excellence, boasting four national championships
- » Ranked #2 in the nation by Great Value Colleges for an Associate's in Computer Engineering/Computer Information Science Online
- » A University Center, with five university partners, that lets students earn their bachelor's degree while staying at CLC and using the campus resources

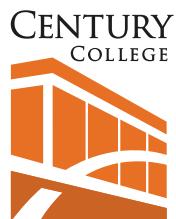
## VISIT

Campus tours are offered every Monday and Friday at the Brainerd campus and every Wednesday at the Staples campus. To schedule a tour, visit [clcmn.edu](http://clcmn.edu).

# Century College

century.edu

2019–20 Tuition and Fees: \$5,578



## WHITE BEAR LAKE

Admissions: 651-779-3300

TTY: 651-779-3354

3300 Century Ave. N.  
White Bear Lake, MN 55110

FAFSA Code: 010546



**12,346** Students Served

**55%** Female // **45%** Male

**42%** Full-time // **58%** Part-time

**39%** Students of Color



ONLINE  
LEARNING



BACHELOR'S  
DEGREE PARTNER



STUDENT  
ACTIVITIES



INTERCOLLEGIATE  
ATHLETICS

## DEGREES OFFERED

Associate of Arts, Associate of Fine Arts,  
Associate of Science, Associate of Applied  
Science, Diploma, Certificate

## PROGRAM HIGHLIGHTS

Liberal arts and science transfer degrees,  
and applied career and technical degrees,  
diplomas and certificates in nursing, paramedic,  
medical assistant, dental hygiene, automotive  
service technology, radiologic technology, law  
enforcement, cybersecurity, translation and  
interpreting, interior design, kitchen and bath  
design, visual communications technologies,  
orthotic and prosthetic technology, solar  
and renewable energy, additive and digital  
manufacturing, engineering, computer science,  
HVACR, and mental health and behavioral  
worker

## STUDENT ACTIVITIES

30+ student clubs, organizations, and activities  
available in areas such as fine and performing  
arts, recreation, and career development.  
Visit [century.edu](http://century.edu) or [MinnState.edu](http://MinnState.edu) for a  
complete list.

## AT A GLANCE

- » 63 degrees, 25 diplomas, and 66 certificates are offered in a wide variety of high-demand program areas that lead to immediate employment or transfer to four-year universities. Areas include applied design, arts and humanities, business, health sciences, human services, science, technology, engineering and mathematics (STEM), social and behavioral sciences, and trade and industry

- » Flexible course options accommodate students' busy schedules, including multiple semester start dates, online, blended, day, evening, part-time, and credit for prior learning
- » State-of-the-art classrooms and laboratories provide cutting-edge technology to meet industry standards; this includes laboratories for Digital Fabrication (Fab Lab), solar and renewable energy, orthotics and prosthetics, and health sciences simulation
- » New Engineering and Applied Technology Center, planned to open in fall 2020, will serve an expanded engineering program and other STEM programs, as well as discipline areas across the college
- » Low tuition rates, financial aid options, and numerous scholarship opportunities make a college education affordable
- » Personalized and innovative student support services, including advising, academic tutoring, career counseling, wellness, veteran, disability, and technology services and an on-campus student resource and support center help students to succeed
- » A variety of student clubs and organizations, collegiate athletic teams, campus recreation, art, music, and theatre experiences,

- discipline-specific competitions, guest speakers and a LGBTQ, Veterans, and Multicultural Center contribute to creating a vibrant campus community
- » Strong community and business partnerships enhance academic curriculum and provide experiential student learning opportunities such as internships, service learning, and career exploration
- » A Leader College and member since 2011 in Achieving the Dream, a national, nonprofit network that champions evidence-based institutional improvements around student success and innovative strategies to bridge the achievement gap
- » Nursing program ranked the #1 public nursing program in Minnesota by RegisteredNursing.org based on licensure exam success rates which consistently exceed 92 percent
- » Orthotic and prosthetic programs are two of just a few programs in the nation training workers for this rapidly growing, high-demand field

## VISIT

Attend a "Discover Century" information session, program information session, or campus event. Learn more at [century.edu/visit](http://century.edu/visit).





# Dakota County Technical College

[dctc.edu](http://dctc.edu)

2019–20 Tuition and Fees: \$5,864



## ROSEMOUNT

**Admissions:** 651-423-8000

**TTY:** 651-627-3529

1300 E. 145th St.  
Rosemount, MN 55068

**FAFSA Code:** 010402



**3,746** Students Served

**43%** Female // **57%** Male

**56%** Full-time // **44%** Part-time

**25%** Students of Color



ONLINE  
LEARNING



BACHELOR'S  
DEGREE PARTNER



STUDENT  
ACTIVITIES



INTERCOLLEGIATE  
ATHLETICS

## DEGREES OFFERED

Associate of Applied Science, Associate of Science, Certificate, Diploma

## PROGRAM HIGHLIGHTS

DCTC delivers cutting-edge education that gives you the knowledge and skills for employment. Our programs include: GM Automotive Service Educational Program, heavy duty truck tech, electrical lineworker, biomedical equipment tech, heavy construction equipment tech, health care, brewing and beer stewardship, business administration, civil engineering tech, multicultural management, early childhood and youth development, veterinary technician, and more

## STUDENT ACTIVITIES

25+ student clubs, organizations, and activities available in areas such as career development, programming for veterans, student leadership, and culture. Visit [dctc.edu](http://dctc.edu) or [MinnState.edu](http://MinnState.edu) for a complete list.

## AT A GLANCE

- » DCTC provides collegiate-level education for employment that empowers individuals to enhance their opportunities for career advancement and success in a global economy. When students choose DCTC, they discover the Blue Knight life is more than just a college; it's a realm of possibility
- » Value – DCTC ranks in the Top 50 nationwide on Value College's list of best community college values



- » Choices – DCTC offers 40 degree programs and more than 60 certificate and diploma programs, in virtually every professional sector imaginable, from business to brewing, high tech to health care, and beyond
- » Support – Take advantage of free student services like tutoring, advising, career advising, computer resources, and more
- » Energy – DCTC offers a true college experience, with countless student life and leisure opportunities to connect with our campus
- » Welcoming, student-centric campus with newly remodeled central commons area
- » Flexible learning options including credit for prior learning, short-term programs, online classes, and an Individualized Studies AS degree
- » Small class sizes, hands-on labs, real-world learning, and instructors that care
- » Strong business and industry partnerships that bring modern equipment and relevant coursework

## VISIT

Experience our student-friendly campus by taking a Tuesday Campus Visit any Tuesday from 12:45 to 2:30 p.m. DCTC also offers Thursday evening Information Sessions at 5 p.m., the third Thursday for the following programs: nursing, medical assistant, early childhood, vet tech, and business. Visit [dctc.edu](http://dctc.edu) to learn more.

# Fond du Lac Tribal & Community College



[fdltcc.edu](http://fdltcc.edu)

2019–20 Tuition and Fees: \$5,461



## CLOQUET

**Admissions:** 218-879-0800

**TTY:** 800-627-3529

2101 14th St.  
Cloquet, MN 55720

**FAFSA Code:** 031291



**2,522** Students Served

**57%** Female // **43%** Male

**32%** Full-time // **68%** Part-time

**23%** Students of Color



ONLINE  
LEARNING



STUDENT  
ACTIVITIES



INTERCOLLEGIATE  
ATHLETICS



ON-CAMPUS  
HOUSING

## DEGREES OFFERED

Associate of Applied Science, Associate of Arts, Associate of Fine Arts, Associate of Science, Certificate, Diploma

## PROGRAM HIGHLIGHTS

Law enforcement, nursing, environmental science, geospatial technologies, American Indian studies, clean energy technology

## STUDENT ACTIVITIES

Our engaging campus life programming provides meaningful connections to campus and student success. Opportunities are available for roles in student government and campus leadership, plus participation in student clubs based on program areas, academic excellence, intercollegiate athletics, and special interests. Visit [fdltcc.edu](http://fdltcc.edu) or [MinnState.edu](http://MinnState.edu) for a complete list.

## AT A GLANCE

- » Reputation for friendly service and a comfortable campus atmosphere
- » Convenient daytime, evening, weekend, and online courses
- » Cultural center, fitness areas, law enforcement and nursing training facilities
- » Emphasis on uniting cultures and creating individual and community awareness
- » Unique transfer programs with four-year universities make it easy to transfer credits

## VISIT

Visit campus anytime or during a Campus Visit Day. Visit [fdltcc.edu/visit-us](http://fdltcc.edu/visit-us) for details.





# Hennepin Technical College

[hennepintech.edu](http://hennepintech.edu)

2019–20 Tuition and Fees: \$5,385



**BROOKLYN PARK  
EDEN PRAIRIE**

**Admissions:** 952-995-1300

**TTY:** 800-627-3529

Visit [HennepinTech.edu](http://HennepinTech.edu) for directions to our Brooklyn Park and Eden Prairie locations.

**FAFSA Code:** 010491



**7,764** Students Served

**38%** Female // **62%** Male

**37%** Full-time // **63%** Part-time

**44%** Students of Color



**ONLINE  
LEARNING**



**BACHELOR'S  
DEGREE PARTNER**



**STUDENT  
ACTIVITIES**

## DEGREES OFFERED

Associate of Applied Science, Associate of Science, Certificate, Diploma

## PROGRAM HIGHLIGHTS

Automation robotics, fluid power engineering, business, IT, engineering CAD, interactive design/video production, audio production, dental assistant, practical nursing, medical assistant, culinary arts, auto body collision, manufacturing and engineering technology, plastics, welding and metal fabrication, woodworking, law enforcement, public works, Ford ASSET, light rail technician

## STUDENT ACTIVITIES

Many student clubs and activities, with strong programs in Phi Beta Kappa, SkillsUSA, and a growing initiative for BREA (Blacks Rising in Education and Academics). Experience an active

student senate and enjoy a new student fitness center. Targeted TRIO programs to help low-income and first-generation Americans enter college, overcome barriers, and earn a degree. Strengths-based leadership development to build all students' leadership in education, career, and life. Visit [hennepintech.edu](http://hennepintech.edu) or [MinnState.edu](http://MinnState.edu) for a complete list.

## AT A GLANCE

- » A college committed to equity and inclusion
- » 99 percent job placement rate
- » Ranks #29 nationally in associate degrees conferred to minority students in the Engineering Technology field (Source: Diverse magazine, December 2018)
- » Two convenient campuses—Brooklyn Park and Eden Prairie



- » Among the lowest tuition in the state
- » Short-term programs that can be completed in as little as 16 weeks
- » Convenient class offerings include on-site, online, and hybrid courses
- » Close relationships with industry partners create many program-specific scholarship and internship opportunities
- » Labs and curriculum aligned to industry standards; equipment donations allow use of cutting-edge technology
- » “Beyond The Yellow Ribbon” college with

veterans clubs and resources on each campus

- » New in 2019: Students can earn a bachelor's degree at the Eden Prairie campus in partnership with Metropolitan State University

## VISIT

The best way to discover Hennepin Technical College is to see it yourself. Schedule a campus tour or attend an open house for a specific program. For more information visit [HennepinTech.edu](http://HennepinTech.edu).

# Hibbing Community College

Part of the Northeast Higher Education District (NHED)

[hibbing.edu](http://hibbing.edu)

2019–20 Tuition and Fees: \$5,451



## HIBBING

Admissions: 218-262-7200

TTY: 800-627-3529

1515 E. 25th St.  
Hibbing, MN 55746

FAFSA Code: 002355



**1,766** Students Served

**53%** Female // **47%** Male

**54%** Full-time // **46%** Part-time

**15%** Students of Color



ONLINE  
LEARNING



STUDENT  
ACTIVITIES



INTERCOLLEGIATE  
ATHLETICS



ON-CAMPUS  
HOUSING

## DEGREES OFFERED

Associate of Applied Science, Associate of Arts, Associate of Fine Arts, Associate of Science, Certificate, Diploma

## PROGRAM HIGHLIGHTS

IT networking and security, law enforcement, medical lab technician, nursing, nursing assistant, automotive technician, diesel mechanic, electrical maintenance, heating and cooling technician, dental assistant, culinary arts, CDL truck driving

## STUDENT ACTIVITIES

Several student clubs, organizations, and activities available in a variety of areas, including recreation, student leadership, and culture. Visit [hibbing.edu](http://hibbing.edu) or [MinnState.edu](http://MinnState.edu) for a complete list.

## AT A GLANCE

- » On-campus housing features two-bedroom, two-bathroom suites with full kitchen, living space, and on-site laundry
- » The state-of-the-art Simulation Center for nursing (RN) students is equipped with high fidelity manikins that function with all the capabilities of a human without the repercussions, allowing students to learn in a safe and controlled environment as a supplement to off-site clinical rotations
- » 16-week programs available such as Commercial Truck Driving and Certified Nursing Assistant
- » "Yellow Ribbon Campus" proudly serving military members and their families
- » Located in the heart of the Iron Range;

gorgeous scenery, outdoor recreation, and an abundance of trails and lakes

- » Program in nursing ranked among the top nursing schools in the state of Minnesota
- » Law enforcement program with over 40 years of history in training excellence; program boasts a unique indoor, on-campus firing range
- » 10-month programs such as dental assisting and heating and cooling technician
- » Associate of fine arts program allows students to take classes with a focus in drawing, painting, sculpting, and ceramics alongside general requirements
- » Culinary arts program includes opportunities to work in a commercial-style kitchen and showcase skills by providing food service to the entire campus for breakfast and lunch
- » Athletics opportunities in volleyball, softball, men and women's basketball, baseball, and trap league
- » Recently updated state-of-the-art Motor Control Lab for electrical maintenance allows students to learn and practice hands-on application of the function, operation, installation, protection, maintenance, and troubleshooting of motor controls, various

starting circuits, and motors according to applicable National Electrical Code articles

- » Brand new student-centered Academic Center, Library, Bookstore, Student Services, and Resource Center
- » Free access to all campus fitness centers, including weight room, bike/running room, and CrossFit training gym
- » HCC Foundation awards student scholarships annually in amounts ranging between \$500 and \$3,000
- » Dental assisting students learn and practice skills in a shared on-campus fully functioning dental clinic

## VISIT

Visit [hibbing.edu](http://hibbing.edu) to schedule a tour anytime Monday–Friday, 9 a.m. to 3 p.m.



# Inver Hills Community College

[inverhills.edu](http://inverhills.edu)

2019–20 Tuition and Fees: \$5,485

Inver Hills  
Community College



## INVER GROVE HEIGHTS

**Admissions:** 651-450-3000

**TTY:** 800-627-3529

2500 E. 80th St.  
Inver Grove Heights, MN  
55076

**FAFSA Code:** 006935



**7,309** Students Served

**59%** Female // **41%** Male

**38%** Full-time // **62%** Part-time

**32%** Students of Color



ONLINE  
LEARNING



BACHELOR'S  
DEGREE PARTNER



STUDENT  
ACTIVITIES

## DEGREES OFFERED

Associate of Applied Science, Associate of Arts, Associate of Fine Arts, Associate of Science, Certificate, Diploma

## PROGRAM HIGHLIGHTS

Launch your degree or career with Inver Hills Community College. Our campus, less than 10 miles southeast of St. Paul, offers network technology and security, emergency medical services, computer science, accounting, biology, psychology, Minnesota Alliance for Nursing Education (MANE) BSN, law enforcement, Adult Success through Accelerated Learning (ASAP), Inver Prep, PSEO, engineering fundamentals, paralegal, criminal justice, project management, and more

## STUDENT ACTIVITIES

25+ student clubs, organizations, and activities available in areas such as music, theater, culture, and student leadership. Visit [inverhills.edu](http://inverhills.edu) or [MinnState.edu](http://MinnState.edu) for a complete list.

## AT A GLANCE

- » Why Inver Hills? Inver Hills offers the perfect setting for students looking for a balance of personal attention and lots of opportunities to get involved. With 40 academic programs and a low faculty-to-student ratio, Inver Hills students know their instructors and fellow students
- » Inver Hills prepares students for career success through challenging courses, access to internships and community-based



learning, and career development support along the way

- » Committed to student success, we provide students a variety of services, including advising, counseling, financial aid, tutoring, and more. We provide support in-person and online to meet the needs of all our students
- » From New Student Orientation to First Year Experience courses, we set our students up for success from day one
- » Our financial aid department and scholarship programs help thousands of students per year reach their goals while reducing their student loan debt. We are committed to making college possible for all students
- » Through our Student Life and student clubs, Inver Hills offers many opportunities to get involved and take on campus leadership roles. Check out the Student Life calendar for upcoming events and activities
- » Designated an MN Reconnect college, Inver Hills provides support to adults who have earned some credit but not a degree. With a dedicated Navigator and special scholarship resources for MN Reconnect students, there has never been an easier way for adult students to finish what they started

» Known for our gorgeous grounds, the Inver Hills campus features multiple ponds, a community garden, and distinctive architecture. You'll want to see campus for yourself, so contact the admissions department to schedule a personal or group visit

» Inver Hills students are prepared to transfer to the four-year college of their choice and our students can go anywhere with easy credit transfer and advising from our well-connected counseling and advising team

## VISIT

Campus visits are offered weekly and last about one hour. Visit [inverhills.edu](http://inverhills.edu) for details.



# Itasca Community College

Part of the Northeast Higher Education District (NHED)

[itascacc.edu](http://itascacc.edu)

2019–20 Tuition and Fees: \$5,466



## GRAND RAPIDS



**Admissions:** 218-322-2340

**TTY:** 218-322-2438

1851 E. Highway 169  
Grand Rapids, MN 55744

**FAFSA Code:** 002356



**1,667** Students Served

**54%** Female // **46%** Male

**57%** Full-time // **43%** Part-time

**18%** Students of Color



ONLINE  
LEARNING



STUDENT  
ACTIVITIES



INTERCOLLEGIATE  
ATHLETICS



ON-CAMPUS  
HOUSING

## DEGREES OFFERED

Associate of Applied Science, Associate of Arts,  
Associate of Science, Certificate, Diploma

## PROGRAM HIGHLIGHTS

Engineering, natural resources (forestry,  
law enforcement, geospatial, and wildland  
firefighting tracks), K–12 education (Class Act),  
early childhood education, child development,  
applied psychology/human services, industrial  
technology – process operations, geography  
and GIS, American Indian studies, liberal arts,  
health sciences, practical nursing

## STUDENT ACTIVITIES

20+ student clubs, organizations, and activities  
available in areas such as culture, recreation,  
volunteerism, and academics. Visit [itascacc.edu](http://itascacc.edu)  
or [MinnState.edu](http://MinnState.edu) for a complete list.

## AT A GLANCE

- » 1,000+ lakes in beautiful Itasca County plus  
easy access to thousands of acres of public  
land for outdoor activities
- » 1-year option for high school seniors who  
have earned a variety of college credits
- » More than \$300,000 in scholarships awarded  
each year compliment already low tuition
- » Small classes in highly-rated programs for  
less money—enter the workforce or transfer  
to earn your bachelor's degree
- » On-campus housing plus a variety of nearby  
off-campus options
- » Transfer seamlessly to a wide variety of  
colleges and universities with personalized  
advising



- » Women's volleyball, basketball, softball;  
men's football, basketball, wrestling,  
baseball; co-ed trap shooting (Itasca hosts  
the MCAC championship)
- » Itasca is a learning community college  
where students get real-world, hands-on  
experience, and instructors' full attention is  
devoted to teaching
- » Known as the "Best Place to Start"—advisors,  
faculty, tutors, and support services staff  
get to know you and guide you every step of  
the way

## VISIT

Schedule a visit any weekday 9 a.m. to 3 p.m.  
or sign up for a Campus Preview Day. Visit  
[itascacc.edu/visit](http://itascacc.edu/visit) for details.



# Lake Superior College

[lsc.edu](http://lsc.edu)

2019–20 Tuition and Fees: \$5,321



**DULUTH**

**Admissions:** 218-733-7601

2101 Trinity Rd.  
Duluth, MN 55811

**FAFSA Code:** 005757



**7,908** Students Served

**53%** Female // **47%** Male

**36%** Full-time // **64%** Part-time

**13%** Students of Color



ONLINE  
LEARNING



BACHELOR'S  
DEGREE PARTNER



STUDENT  
ACTIVITIES



INTERCOLLEGIATE  
ATHLETICS

## DEGREES OFFERED

Associate of Applied Science, Associate of Arts, Associate of Fine Arts, Associate of Science, Certificate, Diploma

## PROGRAM HIGHLIGHTS

LSC offers over 90 program offerings, including allied health and nursing, auto service technology, aviation maintenance technician, cybersecurity, dental hygiene, eco-entrepreneurship, EMT, fire technology and administration, integrated manufacturing, liberal arts and sciences, paralegal studies, physical therapist assistant, professional pilot, truck driving, and much more

## SPECIAL OPTIONS

- » LSC collaborates with many four-year institutions, including Bemidji State University, Metropolitan State University,

St. Cloud State University, College of Saint Scholastica, the University of Minnesota Duluth, and the University of Wisconsin-Superior, to provide seamless pathways for students to transition to four-year degree programs

- » LSC has 42 high school partners for the Postsecondary Enrollment Options (PSEO), Honors Online (HOL), and the College in the Schools (CITS) programs
- » LSC serves as a regional Economic Opportunity Center through the U.S. Department of Education to help marginalized individuals plan for and attend college
- » LSC and Hibbing Community College offer a dual campus partnership to provide a dental assisting program for students who live in the Twin Ports area



## STUDENT ACTIVITIES

20+ student clubs, organizations, and activities available in areas such as arts, recreation, intercollegiate athletics, student leadership, and career development. Visit [lsc.edu](http://lsc.edu) or [MinnState.edu](http://MinnState.edu) for a complete list.

## AT A GLANCE

- » Generous and growing scholarship funding through the LSC Foundation awarded more than \$340,000 to students in 2018–19
- » Expanded sports programs include intercollegiate men's and women's soccer, basketball, cycling, and clay target
- » On-site specialized veterans services available through the Veterans Resource Center, Higher Education Veterans Program, and Minnesota Department of Veterans Affairs
- » LSC is the only two-year college in Minnesota designated as a National Center of Academic Excellence in Cyber Defense by the National Security Agency/Department of Homeland Security

- » LSC's numerous community partnerships include connections with local, regional, and state agencies and nonprofits through workforce development grant-sharing and customized training and active advisory councils for technical and allied health programs

- » Hangar facilities for the Center for Advanced Aviation at the Duluth International Airport house both LSC's professional pilot and aviation maintenance technician programs
- » The Emergency Response Training Center provides world-class training for emergency response professionals
- » The college provides dental hygiene, massage therapy, and physical therapy services to students and uninsured residents of the region through faculty-supervised student clinics

## VISIT

Campus tours are offered weekdays at 10 a.m. or 2 p.m. or by appointment. Visit [lsc.edu](http://lsc.edu) for additional details and events.

# Mesabi Range College

Part of the Northeast Higher Education District (NHED)

[mesabirange.edu](http://mesabirange.edu)

2019–20 Tuition and Fees: \$5,466

**MESABI**  
*Range College*



**EVELETH  
VIRGINIA**



**Admissions: 218-749-0313**

**TTY: 218-749-7783**

1001 W. Chestnut St.  
Virginia, MN 55792

**FAFSA Code: 004009**



**1,742** Students Served

**47%** Female // **53%** Male

**48%** Full-time // **52%** Part-time

**17%** Students of Color



**ONLINE  
LEARNING**



**STUDENT  
ACTIVITIES**



**INTERCOLLEGIATE  
ATHLETICS**



**ON-CAMPUS  
HOUSING**

## DEGREES OFFERED

Associate of Applied Science, Associate of Arts,  
Associate of Science, Certificate, Diploma

## PROGRAM HIGHLIGHTS

Liberal arts, business, industrial mechanical technology (IMT-Millwright), accredited nursing and paramedic programs, welding technology – AWS accredited Welding Program, accredited graphics design media program, electrical controls, human services, human services – addiction studies, carpentry, Iron Range engineering (partnership with ICC)

## SPECIAL OPTIONS

The Addiction Studies Department at Mesabi Range College has some exciting news for individuals with bachelor's degrees looking to become Licensed Alcohol and Drug Counselors

(LADC). Mesabi Range College received a grant funded by the Minnesota Department of Human Services (DHS), to offer 64 eligible students a full scholarship for this in-demand career! Visit our website for scholarship details.

## STUDENT ACTIVITIES

Student clubs: gaming, welding, nursing, human service, theatre, and multi-cultural, Phi Theta Kappa, and activities available in areas such as student senate, student life, and the diversity committee provide student leadership opportunities. Student competitions and events allow students to test their skills, critical thinking, and ingenuity; Welding Behind the Mask competition, SkillsUSA competition, and a technical skills fair for high school students. Eveleth and Virginia's campuses are located on

the beautiful Iron Range, with activities ranging from hiking, biking, fishing, skiing, curling, snowboarding, ATV fun, and so much more. Students can enjoy exciting outdoor activities located close to the campuses, including Giants Ridge Recreation Area, Boundary Waters Canoe Area, and Iron Range Off-Highway Vehicle State Recreation Area.

## AT A GLANCE

- » Personalized and innovative student support services, including advising, academic tutoring, career counseling, veteran, disability, and technology services and student success center help students to succeed
- » Athletics – Go Norse! Women's volleyball, basketball, and softball; men's football, basketball, and baseball
- » Small class sizes lead to personal attention and interaction with faculty and other students; college's student-to-teacher ratio of 20:1
- » Strong student life and student senate programs
- » Over \$105,000 in scholarships awarded annually
- » Semi-furnished housing—Virginia campus

» Excellent placement rates and high-paying jobs in many career programs

» Student Success program partnership with AEOA (Arrowhead Economic Opportunity Agency)

» Strong relationships with area businesses and industry that provide students with internships

» Ranked in top five best community colleges in Minnesota by BestColleges.com

» Summer boot camps available: New student boot camp, welding and graphics boot camps, and STEM camp

» Earn your degree entirely online: liberal arts AA degree, business diploma and AS, business operations and management diploma and AAS, early childhood/early childhood special education AAS, teacher's assistant, and construction management AS

## VISIT

Contact the admissions office to schedule a campus visit with a personal guide. Visit [mesabirange.edu](http://mesabirange.edu) for additional details and events.



# Minneapolis Community & Technical College

[minneapolis.edu](http://minneapolis.edu)

2019–20 Tuition and Fees: \$5,556



**MINNEAPOLIS**  
COMMUNITY & TECHNICAL  
COLLEGE™



## MINNEAPOLIS

**Admissions:** 612-659-6200

**TTY:** 7-1-1

1501 Hennepin Ave.  
Minneapolis, MN 55403

**FAFSA Code:** 002362



**11,301** Students Served

**57%** Female // **43%** Male

**34%** Full-time // **66%** Part-time

**55%** Students of Color



ONLINE  
LEARNING



STUDENT  
ACTIVITIES



BACHELOR'S  
DEGREE PARTNER

## DEGREES OFFERED

Associate of Applied Science, Associate of Arts, Associate of Fine Arts, Associate of Science, Certificate, Diploma

## PROGRAM HIGHLIGHTS

Eight schools within the college provide simplicity in choosing a major and guidance for which courses to take first to save time and money; programs within these schools include biology, psychology, theater, business, liberal arts, nursing, and more

## STUDENT ACTIVITIES

70+ student clubs, organizations, and activities available. Visit [minneapolis.edu](http://minneapolis.edu) or [MinnState.edu](http://MinnState.edu) for a complete list.

## AT A GLANCE

- » Nationally accredited programs in high-demand fields
- » Knowledgeable, award-winning faculty members committed to student success
- » Students from around the world who represent a broad range of ages and backgrounds
- » Small class sizes to connect with faculty and classmates
- » State-of-the-art technical, science, and world language labs
- » Award-winning Student Support Center
- » Minneapolis College collaborates with many four-year institutions, including Metropolitan State University, Augsburg University, and the



University of Minnesota, to provide seamless pathways for students to transition to four-year degree programs

- » Minneapolis College is the first college in Minnesota to offer exploratory majors for undecided students, allowing you to start making immediate progress on your educational journey while keeping your options open for multiple programs within a broad career cluster
- » The Academic Success Center offers a state-of-the-art learning environment to enhance student success
- » The Power of YOU program covers tuition and fees (after state and federal grants) for eligible public high school graduates; 2,400 students benefitted from the program over the last 10 years
- » About half a million dollars was awarded to students last year in scholarships and emergency assistance through the Minneapolis College Foundation
- » Minneapolis College is an anchor partner in the Cedar Riverside Opportunity Center and 800 W. Broadway, a collaboration between public sector and private non-profit partners to provide access to educational, workforce, and career pathway services to the community
- » The Student Support Center received the Minnesota State Innovative Student Affairs Program Award for its Student Parent Center and other services in providing for and responding to the needs of Minneapolis College's diverse population
- » Seven Minneapolis College students earned USA Today Academic All-Star Awards for academic and personal achievements and using their education to benefit their communities
- » Minneapolis College instructors are frequently recognized by Minnesota State as Outstanding Educators, including three faculty receiving the top award, Educator of the Year, in 2016–17 and 2017–18
- » Minneapolis College helps high school students prepare for college and explore careers through a variety of programs, including Postsecondary Enrollment Options (PSEO), CollegeNOW, and Destination to Diploma (D3) programs

## VISIT

Visit [minneapolis.edu](http://minneapolis.edu) to sign up for a campus tour, talk with an advisor, or get more details about upcoming events and the admissions process.

# Minnesota State College Southeast

[southeastmn.edu](http://southeastmn.edu)

2019–20 Tuition and Fees: \$5,760



**RED WING  
WINONA**



**Admissions: 877-853-8324**

**TTY: 507-453-2785**

1250 Homer Rd.  
Winona, MN 55987

**FAFSA Code: 002393**



**2,896** Students Served

**59%** Female // **41%** Male

**40%** Full-time // **60%** Part-time

**16%** Students of Color



**ONLINE  
LEARNING**



**BACHELOR'S  
DEGREE PARTNER**



**STUDENT  
ACTIVITIES**

## DEGREES OFFERED

Associate of Arts, Associate of Science, Associate of Applied Science, Certificate, Diploma

## PROGRAM HIGHLIGHTS

Accounting, auto body collision, automotive and light duty diesel, bicycle design and fabrication, band instrument repair, biomedical equipment technology, CNC machine tool, construction technology, creative writing, early childhood education, electrical engineering technology, guitar repair and building, health science broad field, liberal arts and sciences (AA), medical laboratory technician, practical nursing, radiography, software development and support, sustainable food and farming, transfer pathways, truck driving, violin repair, welding technology

## STUDENT ACTIVITIES

Phi Theta Kappa, Collegiate DECA, SkillsUSA, Student Senate, Student Music Association, medical laboratory tech club, cosmetology club, massage therapy club, chess club, equestrian club, Student Guitar Show, and annual Strings, Winds and Brass concert at The Sheldon Theatre in Red Wing. Visit [southeastmn.edu](http://southeastmn.edu) or [MinnState.edu](http://MinnState.edu) for a complete list.

## AT A GLANCE

- » 95 percent of graduates seeking work find employment in their chosen fields
- » Red Wing and Winona campuses in beautiful bluff country along the Mississippi River
- » 15:1 student-teacher ratio, small campuses, and welcoming environment
- » Dedicated, expert instructors with

professional experience in their fields

- » All Liberal Arts and Sciences faculty have a master's degree or higher
- » Fully operational trade/technical labs simulate real-world work environment
- » Wide range of programs in high-demand, high-paying employment areas
- » Military Friendly School™ and Hiawatha Valley Beyond the Yellow Ribbon Company
- » Health care programs (medical laboratory technician, practical nursing, radiography) accredited by respective national agencies
- » Practical nursing program 2018 NCLEX first-time success rate of 96 percent
- » Transfer Pathways in accounting, business, English, exercise science, history, political science, pre-social work, sociology, and psychology lead directly to related bachelor's degrees at Minnesota State universities
- » Innovative new sustainable food and farming degree combines small business, agriculture technical science, and practical hands-on training
- » Students explore a hands-on mechanical engineering technology and design curriculum in new bicycle design and fabrication program

- » Construction technology emphasizes sustainability, energy conservation, eco-friendly building practices, and partnership with Winona Habitat for Humanity
- » 100 percent online programs available in accounting, administrative support careers, computer aided design (CAD) drafting, creative writing, cyber and information security, early childhood education, medical support careers, software development and support
- » Winona students have housing options in Winona State University dorms
- » Red Wing students eligible for free membership in Red Wing YMCA
- » Collegiate DECA—Winona Chapter students compete at international level
- » Musical instrument repair and building programs in Red Wing campus attract national and international students
- » More than \$125,000 in scholarships available to students through Minnesota State College Southeast Foundation

## VISIT

Schedule a personal campus tour with an admissions advisor by calling 877-853-8324 or email [enrollmentservices@southeastmn.edu](mailto:enrollmentservices@southeastmn.edu).



# Minnesota State Community and Technical College

[minnesota.edu](http://minnesota.edu)

2019–20 Tuition and Fees: \$5,502



**DETROIT LAKES  
FERGUS FALLS  
MOORHEAD  
WADENA**

**Admissions:** 877-450-3322  
**TTY:** 800-627-3529

Visit [minnesota.edu/campuses](http://minnesota.edu/campuses) for directions to our four campus locations

**FAFSA Code:** 005541



**8,196** Students Served

**59%** Female // **41%** Male

**39%** Full-time // **61%** Part-time

**20%** Students of Color



**ONLINE  
LEARNING**



**BACHELOR'S  
DEGREE PARTNER**



**STUDENT  
ACTIVITIES**



**INTERCOLLEGIATE  
ATHLETICS**

## DEGREES OFFERED

Associate of Applied Science, Associate of Arts, Associate of Fine Arts, Associate of Science, Diploma, Certificate

## PROGRAM HIGHLIGHTS

Autism spectrum disorder, cardiovascular technology-invasive, child and adolescent therapeutic behavioral health, cosmetology, cybersecurity, database administration, dental assisting and hygiene, digital marketing, electrical lineworker, electrical technology, medical assistant, medical laboratory technician, powersports technology, purchasing and inventory management, radiologic technology, social media management, sport management, surgical technology, theatre and

visual arts; Transfer Pathways are available in accounting, art, biology, business, political science, psychology, and theatre arts

## STUDENT ACTIVITIES

The four M State campuses have more than 20 student clubs, organizations, and activities focused on career skills, theatre, art, culture, recreation, entertainment, and student leadership. Visit [minnesota.edu](http://minnesota.edu) or [MinnState.edu](http://MinnState.edu) for a complete list.

## AT A GLANCE

- » Prepare for transfer to a four-year college or university or choose from 80 career programs
- » Choose from on-campus, online, blended, or evening courses



- » More than 300 classes and 25 programs and majors can be completed entirely online
- » M State is the top transfer institution for students attending Minnesota State University Moorhead, North Dakota State University, University of North Dakota, and Concordia College
- » Nursing and radiologic technology students have a licensure exam pass rate of 95 percent
- » 1,746 students attended M State tuition-free in 2018–19
- » College foundations award more than \$300,000 in scholarships each year
- » The Detroit Lakes campus is located at the center of a variety of outdoor activities and unique entertainment venues; the campus offers an impressive selection of hands-on technical programs that prepare you to launch your dream career
- » Experience a university-like atmosphere at our two-year college campus in Fergus Falls, which includes on-campus housing and dining, fine arts performance opportunities, collegiate athletics, a robust Student Government Association, and engaging student life activities

- » In Moorhead, you'll experience a diverse campus in a vibrant metropolitan setting. Get involved with more than a dozen active clubs and organizations, and take advantage of the on-campus fitness center. Our innovative programs can prepare you for high-demand careers in emerging technologies
- » Our Wadena campus, with its recently renovated student services center, is known for its warm, welcoming atmosphere. Learn from experts in their fields in real-world classroom environments that prepare you for success in the job market in as little as nine months

## VISIT

Our friendly enrollment managers are ready to provide a campus tour, assist you with your college and financial aid applications, and answer any questions you (or your family!) may have. Sign up at [minnesota.edu/visit](http://minnesota.edu/visit). If you're planning to be an online-only student, get started by contacting our Support Center at [enroll@minnesota.edu](mailto:enroll@minnesota.edu).

# Minnesota West Community & Technical College



[mnwest.edu](http://mnwest.edu)

2019–20 Tuition and Fees: \$5,846



CANBY  
GRANITE FALLS  
JACKSON  
PIPESTONE  
WORTHINGTON

Admissions: 800-658-2330

TTY: 800-658-2330

1450 Collegeway  
Worthington, MN 56187

FAFSA Code: 005263



**4,696** Students Served

**56%** Female // **44%** Male

**36%** Full-time // **64%** Part-time

**20%** Students of Color



ONLINE  
LEARNING



STUDENT  
ACTIVITIES



INTERCOLLEGIATE  
ATHLETICS

## DEGREES OFFERED

Associate of Applied Science, Associate of Arts,  
Associate of Science, Certificate, Diploma

## PROGRAM HIGHLIGHTS

Nursing, mechatronics, wind energy, electrician,  
powerline, welding, radiology tech, precision  
machining, law enforcement, agriculture,  
biofuels, carpentry, diesel, dental, surgical tech,  
computers, cosmetology, child development,  
automotive, liberal arts, computer science, solar,  
plumbing

## STUDENT ACTIVITIES

Intercollegiate athletics, numerous student clubs,  
organizations, and activities available in areas  
such as student leadership, academics, career  
programs, and recreation. Visit [mnwest.edu](http://mnwest.edu)  
or [MinnState.edu](http://MinnState.edu) for a complete list.

## AT A GLANCE

- » Numerous course offerings for flexible and accessible learning such as on-campus, online, and hybrid
- » Minnesota West has five campuses and two learning centers, which span a total of 19 counties and 21,000 square miles
- » Pathway opportunities with Minnesota West and SMSU Blue to Brown program
- » \$2.55 million Powerline Technology Training Facility at the Jackson campus
- » New student housing at the Worthington campus opened fall 2018
- » Student success with high graduation and persistence rates
- » Collaboration with business/workforce leaders to meet workforce demands



with technical training and scholarship opportunities

- » Leader in allied health programming with learning opportunities in a hospital setting
- » Named top 150 college in the country by the Aspen Institute (three times)
- » Military Friendly School and “Beyond the Yellow Ribbon” organization
- » Practical nursing program holds the top Minnesota State licensure passing rates
- » Over \$75,000 awarded in scholarships annually

» Home to Bluejay and Lady Jay NJCAA Athletics

- » Number of online degree options, including AA degree 100 percent online
- » Last year we served students from 31 states and 10 countries. Be a part of Minnesota West, and Learn With Purpose!

## VISIT

Campus visits are Tuesdays or Thursdays starting at 1 p.m. Get details at [mnwest.edu/get-started/schedule-a-visit](http://mnwest.edu/get-started/schedule-a-visit).



# Normandale Community College

[normandale.edu](http://normandale.edu)

2019–20 Tuition and Fees: \$5,963



## BLOOMINGTON

**Admissions:** 952-358-8201

**TTY:** 952-358-8625

9700 France Ave. S.  
Bloomington, MN 55431

**FAFSA Code:** 007954



**14,877** Students Served

**57%** Female // **43%** Male

**42%** Full-time // **58%** Part-time

**37%** Students of Color



ONLINE  
LEARNING



BACHELOR'S  
DEGREE PARTNER



STUDENT  
ACTIVITIES

## DEGREES OFFERED

Associate of Applied Science, Associate of Arts, Associate of Fine Arts, Associate of Science, Certificate

## PROGRAM HIGHLIGHTS

Liberal arts, business, computer science, science and engineering, nursing, dental hygiene, teacher education, law enforcement, music, theatre, art, vacuum technology, world languages; advanced degree programs in accounting, business, communications, computer science, dental hygiene, education, engineering, exercise science, nursing

## STUDENT ACTIVITIES

50+ student clubs, organizations, and activities available in areas such as arts, recreation, student leadership, and career development.

Visit [normandale.edu](http://normandale.edu) or [MinnState.edu](http://MinnState.edu) for a complete list.

## AT A GLANCE

- » Prepares students for full participation in diverse communities, creates pathways to other college programs, and builds community connections. Normandale is committed to quality, affordability, student access, and success
- » Over 14,000 students from diverse backgrounds attend classes at the college each year, making it Minnesota's largest community college
- » Normandale offers accredited music, theatre, art, and business programs—rare among two-year colleges in Minnesota and nationwide



- » Normandale awarded more than \$30 million to students through federal and state financial aid programs in the past year
- » Normandale is a top transfer institution to Metropolitan State University, Minnesota State University, Mankato, University of Minnesota, University of St. Thomas, and many other state colleges and universities
- » Normandale's Partnership Center provides access to bachelor's degree programs through partnering institutions on the Normandale campus. Students can obtain an associate degree at Normandale, and complete their bachelor's degree in a variety of majors. The Partnership Center includes classroom space, engineering labs, a telepresence conference room, and gathering spaces for community and academic programs
- » Normandale's Continuing Education collaborates with community industry partners to make an impact. Through these partnerships, Continuing Education provides leadership training, helps employees transition to managerial roles, and works with other community and industry partners on innovative projects. Normandale had the highest dollar amount (\$796,895) of MJSP/DEED Grants of any college or university in the system in 2018
- » Support services are provided for second language and developmental education students as well as students with disabilities
- » Normandale Tutoring Center provides services to students through the Writing Center, embedded tutors in historically difficult courses, walk-in peer tutoring, and tutoring for non-native English speakers; students utilized these services over 15,000 times in 2018–19
- » The college provides a community dental clinic that accepts public assistance and offers dental services on a sliding fee scale for those living in the southwest metro area
- » Normandale provides a campus food pantry for students without the financial means to eat every day
- » Normandale is a "Beyond the Yellow Ribbon" military friendly organization. Normandale has one of the largest veteran populations in the Minnesota State system
- » Normandale has one of the few authentic Japanese Gardens in the state

## VISIT

Campus visits are available at different times during the year. Please check [normandale.edu/visit](http://normandale.edu/visit) to get the schedule and any information about campus visits.

# North Hennepin Community College

[nhcc.edu](http://nhcc.edu)

2019–20 Tuition and Fees: \$5,708



North Hennepin  
Community College



## BROOKLYN PARK

**Admissions:** 763-424-0724

**TTY:** 800-627-3529

7411 85th Ave. N.  
Brooklyn Park, MN 55445

**FAFSA Code:** 002370



**10,173** Students Served

**58%** Female // **42%** Male

**32%** Full-time // **68%** Part-time

**48%** Students of Color



ONLINE  
LEARNING



STUDENT  
ACTIVITIES



BACHELOR'S  
DEGREE PARTNER

## DEGREES OFFERED

Associate of Applied Science, Associate of Arts, Associate of Fine Arts, Associate of Science, Certificate

## PROGRAM HIGHLIGHTS

Liberal arts, accounting, American Sign Language (ASL), business, computer science, construction management, creative writing, criminal justice, economics, education, entrepreneurship, exercise science, film, health, health sciences, history, human services, graphic design, law enforcement, literature, management, marketing, music, nursing, paralegal, pre-engineering, pre-ophthalmic technician, psychology, studio arts, theatre

## SPECIAL OPTIONS

- » Bachelor's degrees available on campus through NHCC's University Center partners; degrees offered include biology, business administration, economics, English, gender studies, exercise science, human services, medical laboratory science, nursing, professional communication, psychology, special education
- » Honors program and National Honor Society available for qualifying students
- » Undergraduate research opportunities in biology, chemistry, and geology
- » Internship opportunities in business, exercise science, graphic design, human services, paralegal, and more



## STUDENT ACTIVITIES

75+ student clubs and organizations, recreational sports, wellness activities, diversity and equity initiatives, and leadership development opportunities available.

Visit [nhcc.edu/studentlife](http://nhcc.edu/studentlife) or [MinnState.edu](http://MinnState.edu) for a complete list.

## AT A GLANCE

- » Affordable, diverse, and welcoming campus located in the northwest metro
- » 70 academic programs
- » "Beyond the Yellow Ribbon" military-friendly campus with a Veterans Resource Center
- » High-tech STEM labs in the award-winning Bioscience and Health Careers Center
- » On-campus student health clinic with no out-of-pocket costs
- » Online degrees and certificates available in liberal arts, accounting, business, computer science, management, and more
- » Earn college credit in high school via PSEO and concurrent opportunities
- » Award-winning theatre productions, and student research, art, and literature publications

- » Numerous scholarship opportunities through the NHCC Foundation
- » Campus Center with student spaces such as the Game Room, Fireside Lounge, Study Lab, Reflection Room, Blackbox Theatre, and more
- » Multiple resources available to students including academic advising, access services, career services, personal counseling, tutoring, and writing center
- » Multicultural programming—American Indian, Asian Heritage, Black Men's Leadership, Global Salaam, Latino Success, Women on Wednesdays—open to all students
- » Community Connections Resource Center, connecting students to campus and community resources and opportunities

## VISIT

Information Sessions: Mondays and Fridays at 10 a.m., Tuesdays at 5:30 p.m. Admissions Events: Open House (April), Fast Track (July and December) Learn more at [nhcc.edu/visit](http://nhcc.edu/visit).



# Northland Community & Technical College

[northlandcollege.edu](http://northlandcollege.edu)

2019–20 Tuition and Fees: \$5,715



## EAST GRAND FORKS THIEF RIVER FALLS

**Admissions:** 218-793-2388

**TTY:** 800-627-3529

1101 Highway One E.  
Thief River Falls, MN 56701

**FAFSA Code:** 002385



**4,892** Students Served

**59%** Female // **41%** Male

**38%** Full-time // **62%** Part-time

**19%** Students of Color



ONLINE  
LEARNING



STUDENT  
ACTIVITIES



INTERCOLLEGIATE  
ATHLETICS

## DEGREES OFFERED

Associate of Applied Science, Associate of Arts,  
Associate of Science, Certificate, Diploma

## PROGRAM HIGHLIGHTS

Liberal arts, liberal arts transfer pathways,  
aviation maintenance technology, small  
unmanned aircraft systems technician,  
unmanned aircraft systems technician,  
agriculture education, animal science,  
automotive service technology, auto body  
collision technician, architectural technology,  
carpentry, construction electricity, accounting,  
digital marketing, early childhood education and  
paraprofessional, dietetic technician, nursing,  
occupational therapy assistant, pharmacy  
technology, physical therapist assistant,  
radiologic technology, respiratory therapist,  
surgical technology, computer and network

technology, IT cybersecurity, criminal justice-law  
enforcement, firefighter-paramedic, electronics  
technology, and welding technology

## STUDENT ACTIVITIES

Northland offers 20+ student clubs and  
organizations in various areas, including fine  
arts, music, theater, athletics, leadership,  
program-related clubs, and more. Visit  
[northlandcollege.edu](http://northlandcollege.edu) or [MinnState.edu](http://MinnState.edu) for a  
complete list.

## AT A GLANCE

- » A national study ranked Northland among the best two-year colleges in the nation
- » 80+ program options offering you the focused attention and hands-on training industry wants along with the career building opportunities you need to reach your potential



- » Two great campus locations. Enjoy the great outdoors from your doorstep in Thief River Falls or the best shopping, restaurants, and nightlife that greater Grand Forks offers

- » Student-to-faculty ratio of 17:1

- » Over \$150,000 in scholarships awarded each year

- » Award-winning faculty committed to student success

- » *NorthernConnect* Dual Admission Program provides a seamless academic pathway to either Bemidji State University or University of Minnesota Crookston

- » Transfer made easy. Continue your education after getting a personalized, affordable education at Northland. Transfer to schools like Bemidji State University, Minnesota State University Moorhead, North Dakota State University, St. Cloud State University, University of Minnesota Crookston, University of North Dakota, and more

- » A leader in healthcare education offering over 17 high-demand career programs in health and human services

- » 86,000-square-foot state-of-the-art aerospace training facility

- » On-campus. Online. Anytime. We offer a range of flexible learning options

- » Intercollegiate athletic programs, including baseball, basketball, clay target, football, wrestling, softball, and volleyball. Follow the action at [northlandpioneers.com](http://northlandpioneers.com)

- » Make yourself at home in the fully furnished student housing units located near the Thief River Falls campus

- » Free access to our campus fitness centers

- » The Academic Success Center is dedicated to providing students with free learning resources, including tutoring and disability services

- » Find the inspiration to chase your dream—and proof that achieving it is possible. See what some of our graduates are doing today in pursuing their successful careers at [northlandcollege.edu/stories](http://northlandcollege.edu/stories)

## VISIT

Your next step should be on campus. Visit [northlandcollege.edu/visit](http://northlandcollege.edu/visit) to plan your campus tour or go on an interactive virtual campus tour from your home or phone at [northlandcollege.edu/360](http://northlandcollege.edu/360).

# Northwest Technical College

[ntcmn.edu](http://ntcmn.edu)

2019–20 Tuition and Fees: \$5,651



## BEMIDJI

**Admissions:** 218-333-6600

905 Grant Ave. SE  
Bemidji, MN 56601

**FAFSA Code:** 005759



**1,924** Students Served

**74%** Female // **26%** Male

**34%** Full-time // **66%** Part-time

**19%** Students of Color



ONLINE  
LEARNING



STUDENT  
ACTIVITIES



ON-CAMPUS  
HOUSING

## DEGREES OFFERED

Associate of Science, Associate of Applied Science, Certificate, Diploma

## PROGRAM HIGHLIGHTS

Nursing, dental assisting, community health worker, health sciences, medical coding, automotive service and performance, electrical construction, plumbing/HVAC, accounting, commercial refrigeration, computer support, general business, human resources, administrative assistant, child care, and young child education

## STUDENT ACTIVITIES

Numerous student clubs, organizations, and activities available. Visit [ntcmn.edu](http://ntcmn.edu) or [MinnState.edu](http://MinnState.edu) for a complete list.

## AT A GLANCE

- » Academic programs, both on campus and online, closely match career opportunities in northern Minnesota
- » Students experience personal attention, small classes, supportive faculty, and well-equipped labs, as well as abundant parking and an on-campus café
- » Students are enabled to succeed in both the classroom and workplace through support from the Student Success Center, which offers tutoring, library assistance, academic coaching, career services, and academic advising
- » Through a partnership with Bemidji State University, students can live at BSU and enjoy the benefits of campus housing



- » Internships and similar types of hands-on experience are woven into program requirements, ensuring that students graduate with the skills they need to succeed
- » A comfortable student lounge called "The Roost" is open whenever the college is open, providing a casual spot to relax, play a game, study, or just hang out and socialize
- » The Center for Diversity, Equity & Inclusion and American Indian Resource Center support student clubs and organizations and coordinate events and programs to increase understanding of diversity and appreciation for its benefits

## VISIT

Campus visits are highly encouraged for students and their families. Visits may be scheduled by calling 218-333-6600 or visiting [ntcmn.edu](http://ntcmn.edu).



# Pine Technical & Community College

[pine.edu](http://pine.edu)

2019–20 Tuition and Fees: \$5,234



Pine Technical & Community College



## PINE CITY

**Admissions:** 320-629-5100

**TTY:** 320-629-1030

900 Fourth St. SE  
Pine City, MN 55063

**FAFSA Code:** 005535



**2,636** Students Served

**56%** Female // **44%** Male

**17%** Full-time // **83%** Part-time

**13%** Students of Color



ONLINE  
LEARNING



STUDENT  
ACTIVITIES

## DEGREES OFFERED

Associate of Arts, Associate of Science, Associate of Applied Science, Certificate, Diploma

## PROGRAM HIGHLIGHTS

American Sign Language (ASL), applied engineering, associate of science degree nursing (RN), automated systems technology, automotive technology, business transfer pathway, computer programming, cyber security, early childhood development, emergency medical services, gunsmithing and firearms technology, human services eligibility worker, licensed practical nursing, medical assistant, precision machining, and welding technology

## STUDENT ACTIVITIES

Numerous student clubs, organizations, and activities are available at the college and in the community in areas of academics, leadership, and career development. Visit [pine.edu](http://pine.edu) or [MinnState.edu](http://MinnState.edu) for a complete list.

## AT A GLANCE

- » The associate of arts degree and several associate of science degree programs provide students the opportunity to pursue a four-year degree and take advantage of lower tuition rates and smaller class sizes while immediately focusing on a chosen major
- » Technical programs prepare students for job placement and employment



- » High-tech, state-of-the-art simulation labs support all nursing and health science programs
- » Vibrant student life environment provides opportunities for students from all disciplines
- » PTCC is conveniently located about an hour north of the Twin Cities, surrounded by lakes, rivers, and state forests, providing an excellent balance of access to metro opportunities, while retaining the feel of being up north
- » Small campus and friendly learning environment, where faculty and staff know students by name
- » An on-site daycare facility allows for easy pick-up and drop-off for PTCC student parents
- » PTCC's unique gunsmithing program attracts students from across the nation and abroad
- » There are many scholarship opportunities available to students, including over \$240,000 in scholarship dollars awarded annually from the PTCC Foundation

- » In 2018, PTCC's NCLEX nursing pass rates for the LPN and associate degree (RN) programs were among the highest scores of any public or private college in Minnesota
- » In 2018, PTCC received National League for Nursing accreditation for LPN and associate degree (RN) programs
- » With an anticipated completion date of July 2020, PTCC will undergo a large renovation to repurpose and rebrand student and office spaces

## VISIT

The best way to learn about PTCC is to visit campus and get a personalized tour with a PTCC admission specialist. Check out [pine.edu/visit](http://pine.edu/visit) to schedule your one-on-one Pine Experience.

# Rainy River Community College

Part of the Northeast Higher Education District (NHED)



[rainyriver.edu](http://rainyriver.edu)

2019–20 Tuition and Fees: \$5,466



## INTERNATIONAL FALLS

Admissions: 218-285-7722

TTY: 800-627-3529

1501 Highway 71  
International Falls, MN 56649

FAFSA Code: 006775



**458** Students Served

**63%** Female // **37%** Male

**76%** Full-time // **24%** Part-time

**24%** Students of Color



ONLINE  
LEARNING



STUDENT  
ACTIVITIES



INTERCOLLEGIATE  
ATHLETICS



ON-CAMPUS  
HOUSING

## DEGREES OFFERED

Associate of Applied Science, Associate of Arts,  
Associate of Science, Certificate, Diploma

## PROGRAM HIGHLIGHTS

Communication studies transfer pathway AA,  
English transfer pathway AA, history transfer  
pathway AA, liberal arts and sciences AA,  
exercise science transfer pathway AS, coaching  
certificate, fitness specialist certificate,  
commercial truck driving certificate, health  
sciences broad field AS, health care pre-  
professional certificate, nursing assistant  
certificate

## STUDENT ACTIVITIES

Phi Theta Kappa, Student Senate, Voyageur  
Strong Outdoor Activities, disc golf, co-ed trap  
shooting league, and more. Visit [rainyriver.edu](http://rainyriver.edu)  
or [MinnState.edu](http://MinnState.edu) for a complete list.

## AT A GLANCE

- » Located just five minutes from Voyageurs National Park and the Canadian border
- » More than 90 percent of students receive some form of financial aid
- » Over \$200,000 in scholarships awarded annually
- » Continue to play the sport you love: volleyball, basketball, hockey, softball, baseball
- » On-campus apartments feature two bedrooms, full kitchen, bathroom, and living and dining area
- » Disc golf course and lighted cross country ski trail located on the campus grounds

## VISIT

Visit [rainyriver.edu/visit-request](http://rainyriver.edu/visit-request) to schedule a campus visit and get details on upcoming events.





# Ridgewater College

[ridgewater.edu](http://ridgewater.edu)

2019–20 Tuition and Fees: \$5,587



**HUTCHINSON  
WILLMAR**

**Admissions:** 320-222-5200

**TTY:** 800-627-3529

2101 15th Ave. NW  
Willmar, MN 56201

**FAFSA Code:** 005252



**4,994** Students Served

**57%** Female // **43%** Male

**58%** Full-time // **42%** Part-time

**17%** Students of Color



ONLINE  
LEARNING



BACHELOR'S  
DEGREE PARTNER



STUDENT  
ACTIVITIES



INTERCOLLEGIATE  
ATHLETICS

## DEGREES OFFERED

Associate of Applied Science, Associate of Arts, Associate of Science, Diploma, Advanced Technical Certificate, Certificate

## PROGRAM HIGHLIGHTS

Liberal arts, mathematics, sciences, chemical dependency counseling, agricultural science and technology, agribusiness, agriculture power and equipment technician, agronomy technology, dairy management, farm operations and management, GPS/GIS information systems, veterinary technology, MANE and practical nursing, medical assistant, paramedic, business, marketing and sales management, administrative support, professional photography, auto body collision repair, automotive service technology, nondestructive testing technology, automation and robotics

systems technology, welding, machine tool, electronics, audio video systems technology, electrician, carpentry, cosmetology, estheology, massage therapy, education paraprofessional, computer programmer, computer support technician, cybersecurity, network systems administration, web programming, occupational skills, accountant, activity director, computer-aided drafting and design, early childhood, early childhood special education, health information technology, law enforcement, legal assistant, liberal arts, multimedia design technology

## STUDENT ACTIVITIES

Over 40 student clubs and activities. Active Student Senate on both campuses. Nine-hole disc golf courses located on both campuses. Free access to campus fitness centers on both campuses. Art galleries on both campuses.



Theater productions on Willmar campus. Warrior varsity sports: football, volleyball, men's and women's basketball, wrestling, baseball, and softball. Visit [ridgewater.edu/athletics](http://ridgewater.edu/athletics) or [MinnState.edu](http://MinnState.edu) for a complete list.

## AT A GLANCE

- » Two easy-to-reach campuses in Hutchinson and Willmar
- » Over 100 degrees and certificates available taught in state-of-the-art facilities
- » Learn a trade and get a great job in two years or less
- » Extensive partnerships with local, state, and national businesses and industries
- » Job placement over 94 percent
- » Earn your associate degree and transfer for your bachelor's degree
- » Health science broad field AS provides a strong foundation for any healthcare field
- » Over \$225,000 in scholarships awarded annually
- » Outstanding support services, including on-campus academic support centers, online tutoring, TRIO Student Support Services, and regular student success workshops
- » Personalized transfer advising for students enrolled at Ridgewater and students transferring to Ridgewater
- » Career and program counseling for students who are undecided on an academic path
- » Military Friendly School designation
- » On-site specialized veterans services available through the Veterans Resource Center, Higher Education Veterans Program, Minnesota Department of Veterans Affairs, on both campuses
- » 39 percent of students graduate with no debt

## VISIT

Campus tours available by calling 800-722-1151 to schedule an appointment. Visit [ridgewater.edu/visit](http://ridgewater.edu/visit) for details.

# Riverland Community College

[riverland.edu](http://riverland.edu)

2019–20 Tuition and Fees: \$5,724



ALBERT LEA  
AUSTIN  
OWATONNA



Admissions: 507-433-0600

TTY: 800-627-3529

1900 8th Ave. NW  
Austin, MN 55912

FAFSA Code: 002335



**4,387** Students Served

**56%** Female // **44%** Male

**41%** Full-time // **59%** Part-time

**21%** Students of Color



ONLINE  
LEARNING



BACHELOR'S  
DEGREE PARTNER



STUDENT  
ACTIVITIES



INTERCOLLEGIATE  
ATHLETICS

## DEGREES OFFERED

Advanced Technical Certificate, Associate of Applied Science, Associate of Arts, Associate of Fine Arts, Associate of Science, Certificate, Diploma

## PROGRAM HIGHLIGHTS

Liberal arts and sciences, nursing, human services, business, supervisory management, criminal justice – law enforcement, computer technology, accounting, business, office technology, global studies, agricultural sciences, music or theatre, musical theatre, production technician, agribusiness, food science, biotechnology, supervisory management online

## STUDENT ACTIVITIES

25+ student clubs, organizations, and activities available in areas such as fine arts, recreation,

and career development. Visit [riverland.edu](http://riverland.edu) or [MinnState.edu](http://MinnState.edu) for a complete list.

## AT A GLANCE

- » Earn your AA degree or complete one of more than 50 career programs
- » More than 350 Riverland courses are offered entirely/partially online
- » Personalized student support services
- » Experience our best-in-class simulation learning centers for law enforcement, truck driving, nurses, radiographers, and lab technicians
- » Offers an associate in fine arts degree
- » Riverland offers multi-term registration, allowing students to register for more than one term at a time. It's possible for students to register for all three terms of the academic



year at once; this will allow students to plan, register, and secure their class schedule for a full academic year

- » The Honors Program at Riverland Community College offers enhanced learning opportunities and activities to students who demonstrate academic excellence and a high level of interest and initiative and consists of 12 honors credits plus a three-credit Honors Leadership Development course
- » Riverland's radiography program is a nationally ranked program, accredited by the Joint Review Committee on Education in Radiologic Technology (JRCERT). We have celebrated 100 percent job placement in the last five years. Nearly 60 percent of all radiologic technologists in our region are graduates of the Riverland radiography program. The board certification exam pass rate is above 95 percent for each of the past six years
- » Enrollment is growing in our criminal justice program; statewide law enforcement departments actively recruit our students and come to observe our training program
- » The carpentry program is the student chapter of Rochester Area Builders. The program also receives additional hours toward a journeyman's credential from the

Carpenters Local Union 1382. The program is the only DeWalt tool sponsored college program in the nation. First year is residential carpentry and builds a home with Freeborn/Mower Habitat for Humanity. Second year is commercial carpentry who also partners with Habitat on the house build, but also partners with industry for commercial projects

- » The demand for our graduates remains at an all-time high in Riverland's truck driving program. Spend less time in the classroom and more time on the road with this high-demand career
- » Human Services two-year programs are no longer available at many colleges, but Riverland has an established program where students complete the associate degree at Riverland and continue their bachelor's degree with St. Scholastica

## VISIT

Schedule an individual appointment and learn about other visit opportunities by visiting [riverland.edu](http://riverland.edu).



# Rochester Community and Technical College

[rctc.edu](http://rctc.edu)

2019–20 Tuition and Fees: \$5,808



## ROCHESTER

**Admissions:** 507-258-7210

**TTY:** 800-627-3529

851 30th Ave. SE  
Rochester, MN 55904

**FAFSA Code:** 002373



**7,097** Students Served

**62%** Female // **38%** Male

**45%** Full-time // **55%** Part-time

**27%** Students of Color



ONLINE  
LEARNING



BACHELOR'S  
DEGREE PARTNER



STUDENT  
ACTIVITIES



INTERCOLLEGIATE  
ATHLETICS

## DEGREES OFFERED

Associate of Applied Science, Associate of Arts, Associate of Fine Arts, Associate of Science, Certificate, Diploma

## PROGRAM HIGHLIGHTS

Liberal arts and sciences, aviation, nursing, health information technology, business, accounting, biotechnology, cardiovascular invasive specialist, cancer registry management, clinical neurophysiology technology, radiography, dental hygiene, environmental science, histology technician, horticulture technology, intensive care paramedic, surgical technology, veterinary technology, and more

## STUDENT ACTIVITIES

40+ student clubs, organizations, and activities, including student government, accounting and

business league, Alpha Delta Nu Nursing honor society, animal health technology club, Armed Forces and Veterans club, art club, aspiring medical professionals, automotive technology club, FAST club, CAD club, creative writing club, dance club, design club, drama club, ecology club, engineering and physics club, equestrian club, French club, LGBTQ+ alliance, GCSAA club, geology club, horticulture club, international club, law enforcement club, mental health awareness club, music tech club, navigators club, Phi Theta Kappa (PTK) honor society, Starcraft II club, student support services club, and table top gaming club. For a complete list of clubs, events, and activities, visit [rctc.edu](http://rctc.edu) or [MinnState.edu](http://MinnState.edu).

## AT A GLANCE

- » Founded in 1915 on a motion by Dr. Charles Mayo to the Rochester School Board, RCTC is Minnesota's oldest public two-year college and one of the nation's oldest original community colleges
- » 518-acre campus with 20 buildings, including the Rochester Regional Stadium which features an inflatable bubble used during winter months
- » Rochester is one of the nation's "Most Livable Cities," the third-largest city in Minnesota, and home to the world-renowned Mayo Clinic and IBM Rochester
- » RCTC offers more than 300 online classes and 70 credit-based programs with more than 100 credential options
- » Innovative academic partnership with Mayo Clinic—five joint-programs offered, including cardiovascular invasive specialist, clinical neurophysiology technology, histology technician, intensive care paramedic, and radiography
- » Multiple articulation and transfer agreements with four-year universities, so RCTC credits will seamlessly transfer

- » The college has partnerships with more than 35 local organizations, including Rochester Public Schools/CTECH, Mayo Clinic, Olmsted Medical Center, Rochester Area Chamber of Commerce, plus many more
- » More than 240 scholarships are awarded to over 220 students from the RCTC Foundation

## VISIT

Individual/small group visits and tours are offered weekly. Preview Days are held throughout the academic year. Go to [rctc.edu/visit](http://rctc.edu/visit) for details.



## Saint Paul College

[saintpaul.edu](http://saintpaul.edu)

2019–20 Tuition and Fees: \$5,737



### ST. PAUL

**Admissions:** 651-846-1555

**TTY:** 7-1-1

235 Marshall Ave.  
St. Paul, MN 55102

**FAFSA Code:** 005533



**10,035** Students Served

**55%** Female // **45%** Male

**36%** Full-time // **64%** Part-time

**65%** Students of Color



ONLINE  
LEARNING



BACHELOR'S  
DEGREE PARTNER



STUDENT  
ACTIVITIES

### DEGREES OFFERED

Associate of Applied Science, Associate of Arts, Associate of Fine Arts, Associate of Science, Certificate, Diploma

### PROGRAM HIGHLIGHTS

Liberal and fine arts, STEM, geographic information science (GIS), engineering, business, accounting, finance, global trade, human resources, marketing, coding/programming, IT/computer science, cybersecurity, computer networking, data science, electromechanical systems, manufacturing, welding, skilled trades, transportation, health sciences, exercise sciences, health information technology, practical nursing, medical lab technician, pharmacy technician, public health, surgical

technology, culinary arts, cosmetology, child development, sign language interpreter

### SPECIAL OPTIONS

**MnTC Curriculum** – General education curriculum courses offered include American Sign Language (ASL), anthropology, art, Chinese, drama/theater, economics, English, geography, history, humanities, music, philosophy, photography, political science, psychology, sociology, Spanish, speech, women's and gender studies

**Transfer Pathway Degree Programs** – Biology AS, Business AS, Chemistry AS, Computer Science AS

### STUDENT ACTIVITIES

20+ student clubs, organizations, and activities

in areas such as culture, student leadership, and career development. Visit [SaintPaul.edu](http://SaintPaul.edu) or [MinnState.edu](http://MinnState.edu) for a complete list.

### AT A GLANCE

- » Student-oriented campus with One Stop services, free tutoring, computer labs, pathway advising, transfer services, TRIO Student Support Services program, and career/placement services
- » Ranked in Top 10 Best Community Colleges in U.S. by TheBestSchools.org
- » 400+ business and industry partnerships benefit students through scholarships, state-of-the-art equipment and product donations, internships, and immediate employment for our graduates
- » The Power of YOU program makes the first two years tuition-free for eligible high school students
- » Make it Count is a tuition-free program for first-time adult learners age 24+ for up to 60 credits, for a maximum of three years
- » 89 percent of our first-time full-time students receive financial aid or scholarships
- » 600+ high school students enroll in PSEO classes at Saint Paul College; in 2019, 87 PSEO students graduated from Saint Paul College and high school at the same time

- » Transfer agreements with four-year private and public colleges and universities provide pathways for students to continue their higher education
- » Saint Paul College's esthetician program is a CIDESCO school—one of only 11 colleges in the U.S. and the only college in Minnesota with this internationally recognized esthetics credential
- » The supply chain logistics AAS degree program is ACBSP accredited—and the only associate degree program of its kind in Minnesota
- » New Health and Science Alliance Center provides students with state-of-the-art classroom and lab facilities and Simulation Center with specialized training rooms: ICU, isolation, long term care, medical surgical, operating room, and pharmacy clinic
- » Health science students train on Minnesota's only SynDaver (the world's most sophisticated synthetic surgical simulation and anatomy model) and other high fidelity newborn, infant, and adult manikins

### VISIT

Tours and information sessions are every Tuesday at 6 p.m. and every Wednesday at 10 a.m. For more information, visit [SaintPaul.edu/StartHere](http://SaintPaul.edu/StartHere).



# South Central College

[southcentral.edu](http://southcentral.edu)

2019–20 Tuition and Fees: \$5,636



**South Central  
COLLEGE**



**FARIBAULT  
NORTH MANKATO**

**Admissions:** 507-389-7200

**TTY:** 507-389-7200

1920 Lee Blvd.  
North Mankato, MN 56003

**FAFSA Code:** 005537



**4,710** Students Served

**45%** Female // **55%** Male

**50%** Full-time // **50%** Part-time

**21%** Students of Color



ONLINE  
LEARNING



STUDENT  
ACTIVITIES

## DEGREES OFFERED

Associate of Arts, Associate of Fine Arts, Associate of Science, Associate of Applied Science, Diploma, Certificate

## PROGRAM HIGHLIGHTS

Advanced manufacturing programs: energy technical specialist, machine tool technology, mechatronics, and welding; agribusiness programs: agriculture education technology, ag chemical applicator technician, agribusiness office specialist/manager, agribusiness production, ag service and management, agribusiness service technician, AgSpark agronomy, professional swine manager, viticulture, and farm business management; allied health and nursing programs: dental assisting, emergency medical services, health sciences broad field, health unit coordinator,

intensive care paramedic technician, medical assistant, medical laboratory technician, phlebotomy, nursing assistant (CNA), practical nursing (LPN), and professional nursing (RN); arts and communications programs: graphic communications and multimedia technology; building and design programs: architectural drafting and design, carpentry, civil engineering technology, geographic information systems, and heating, ventilation, air conditioning, refrigeration (HVAC/R); business programs: accounting, business management, business transfer pathway, computer careers, culinary arts, marketing management, office administration and technology, and small business management; education and human services programs: early childhood education, family services, and pre-social work transfer pathway; liberal arts and sciences programs:

associate of arts in liberal arts and sciences, associate of fine arts in visual arts; biology transfer pathway, communication studies transfer pathway, and economics transfer pathway; transportation programs: auto body and collision technology and automotive service

## STUDENT ACTIVITIES

South Central College provides students with growth opportunities inside and outside the classroom, offering a wide variety of student life activities to nurture the whole person. Student clubs and organizations focus on leadership development, personal interests, and career advancement. They include: Business Professionals of America (BPA), campus activities board, collegiate DECA, dental assisting club, drama club, film club, Phi Theta Kappa, Postsecondary Agricultural Student Organization (PSA), psychology club, SkillsUSA, society of leadership and success, Student Nurses Association, and Student Senate. Visit [southcentral.edu/studentlife](http://southcentral.edu/studentlife) or [MinnState.edu](http://MinnState.edu) for a complete list.

## AT A GLANCE

- » Programs at SCC prepare students to start a rewarding career after graduation, transfer to a four-year university to pursue a bachelor's degree—or both

- » 93 percent of 2016–17 graduates found employment in their field and 35 percent continued their education after graduation
- » South Central College has been selected to participate in Achieving the Dream, a nationwide network of more than 220 colleges in 39 states dedicated to student success
- » Five Minnesota State Transfer Pathway degrees are available at SCC—biology, business, communication studies, economics, and pre-social work
- » The Center for Business and Industry, a division of South Central College, provides comprehensive workforce solutions, with more than 10,000 individuals receiving customized training and continuing education each year
- » Students receive \$400,000+ in scholarships each year from SCC's campus foundations
- » The college has strong relationships with area businesses that provide students with internships and apprenticeships while in school and permanent employment once they graduate

## VISIT

Visit [southcentral.edu/explore](http://southcentral.edu/explore) for information on campus locations and tours.



# St. Cloud Technical & Community College

[sctcc.edu](http://sctcc.edu)

2019–20 Tuition and Fees: \$5,537



## ST. CLOUD

**Admissions:** 320-308-5000

**TTY:** 320-308-5988

1540 Northway Dr.  
St. Cloud, MN 56303

**FAFSA Code:** 005534



**5,857** Students Served

**55%** Female // **45%** Male

**52%** Full-time // **48%** Part-time

**25%** Students of Color



ONLINE  
LEARNING



STUDENT  
ACTIVITIES



INTERCOLLEGIATE  
ATHLETICS

## DEGREES OFFERED

Advanced Technical Certificate, Associate of Applied Science, Associate of Arts, Associate of Science, Certificate, Diploma

## PROGRAM HIGHLIGHTS

Liberal arts and sciences, biomedical technology equipment repair, cardiovascular technology, community paramedic, culinary arts, cyber security, early childhood education, farm management, health data specialist, land surveying/civil engineering, energy technology specialist – nuclear, medium/heavy truck technician, medical coding, sonography, water environment technologies

## SPECIAL OPTIONS

**Transfer Pathway Degree Programs** – Biology AS, business AS, psychology AA, engineering

broad field AS, theatre AFA, Spanish AA. Transfer Pathway curriculum is designed to fully transfer to any Minnesota State university that offers the corresponding bachelor's degree

**Online Programs** – SCTCC offers five programs completely online: liberal arts AA, business, finance, health information technology/medical coding, and psychology. Many SCTCC courses are offered online and as a hybrid option

**Exploring Majors and Careers** – For undecided students or those who aren't sure they're in the right major, SCTCC offers Exploring Majors and Careers help. This includes special informational sessions, a specific advisor, and online resources

## STUDENT ACTIVITIES

More than 25 student clubs, organizations, and activities. The SCTCC Cyclones participate in



five intercollegiate sports: volleyball, men's and women's basketball, baseball, and softball. The Cyclones are members of the Minnesota College Athletic Conference (MCAC) and the National Junior College Athletic Association (NJCAA). Our athletics teams are consistently ranked at the national level in the NJCAA. Students in auto body, automotives, medium/heavy truck, HVAC/R, electrical, plumbing, welding, and culinary compete in the SkillsUSA competitions and regularly place in the top three at the state level, often moving on to national-level competitions. Visit [sctcc.edu](http://sctcc.edu) or [MinnState.edu](http://MinnState.edu) for a complete list.

## AT A GLANCE

- » With a 98 percent job placement rate, our grads get jobs
- » At SCTCC we are committed to diversity, equity, and inclusion and strive to foster a culture where every member of our community feels valued and supported
- » Students know their instructors with small class sizes: average of 18 students per class
- » Earn the first two years of a four-year degree with seamless transfer options
- » Transfer Pathways to Minnesota State universities include biology, business, engineering, psychology, theatre, and Spanish

- » 90+ program options that can be completed in two years or less
- » Cutting-edge simulation labs that include equipment used in area industries
- » Highly involved advisory boards mean SCTCC is aligned for area industry needs
- » Innovative programs in water environment technologies, nuclear energy, and health
- » In 2018, more than \$191,000 in scholarships was awarded to 232 students
- » Child care facility on campus
- » Fast, well-distributed wireless network on campus for laptop and mobile device users
- » Ranked seventh in the Military Times' Best for Vets 2019 list
- » Yellow Ribbon Company designation for its support of servicemembers and military families
- » Located on the north side of St. Cloud and just a short walk from the Mississippi River

## VISIT

Schedule a campus tour or learn more about your program of interest at an info session today—sign up at [sctcc.edu/visit](http://sctcc.edu/visit).



# Vermilion Community College

Part of the Northeast Higher Education District (NHED)

[vcc.edu](http://vcc.edu)

2019–20 Tuition and Fees: \$5,466



ELY

Admissions: 218-235-2191

TTY: 800-627-3529

1900 E. Camp St.  
Ely, MN 55731

FAFSA Code: 002350



835 Students Served

42% Female // 58% Male

60% Full-time // 40% Part-time

17% Students of Color



ONLINE  
LEARNING



STUDENT  
ACTIVITIES



INTERCOLLEGIATE  
ATHLETICS



ON-CAMPUS  
HOUSING

## DEGREES OFFERED

Associate of Applied Science, Associate of Science, Associate of Arts, Certificate, Diploma

## PROGRAM HIGHLIGHTS

Natural resources technology, fisheries and wildlife, wildlife/wildland law enforcement, outdoor leadership, outdoor recreation therapy, veterinary technician, wilderness and park management, business, water quality, watershed science, environmental technology, land surveying, liberal arts

## STUDENT ACTIVITIES

Outdoor equipment rental, seven varsity sports, 20+ clubs, campus organizations, intramural sports, residential campus activities. Visit [vcc.edu](http://vcc.edu) or [MinnState.edu](http://MinnState.edu) for a complete list.

## AT A GLANCE

- » Located on the edge of the Boundary Waters Canoe Area Wilderness
- » Wide variety of niche natural resource programming
- » On-campus housing with residential student life and full meal plan
- » Varsity athletics (football, men's and women's basketball, baseball, fast-pitch softball, volleyball, and co-ed clay target shooting)
- » Optional Boundary Waters trip college orientation
- » Hands-on learning environment

## VISIT

Schedule a visit at [vcc.edu/campus-visit](http://vcc.edu/campus-visit). Explore our open house options in fall and winter!









# 7 STATE UNIVERSITIES

Seven state universities are part of Minnesota State. Each provides an excellent pathway to earning your bachelor's degree or beyond and can help you launch your career.

## INTERESTED?

The seven state universities will generally accept you as a first-year student if you can answer YES to at least one of these questions:

- » Did you graduate in the top half of your high school class?
- » Did you receive a combined score of 1,000 or higher on the SAT standardized test, or on its corresponding score on the redesigned SAT standardized test?
- » Did you score 21 or higher on the ACT standardized test?

Were you able to answer YES to one of the above questions and are you planning on attending a Minnesota State university?

- » **CHECK OUT THE OPTIONS.** The profile pages that follow provide you a glimpse of the seven state universities.
- » **KNOW THE ADMISSION REQUIREMENTS.** Some state universities may have slightly different admission requirements. Check with the admissions office at the university you are interested in for details. If you do not meet the minimum admission requirements, you may be considered for admission under special provisions.
- » **ASK QUESTIONS AND VISIT CAMPUS.** There's no better way to figure out which university is the right fit. Contact a member of the university's admission office to set up a visit.

# Bemidji State University

[bemidjistate.edu](http://bemidjistate.edu)

2019–20 Tuition and Fees: \$8,941



**BEMIDJI**  
STATE UNIVERSITY



**BEMIDJI**

**Admissions:** 218-755-2040

**TTY:** 800-627-3529

1500 Birchmont Dr. NE  
Bemidji, MN 56601

**FAFSA Code:** 002336



**6,466** Students Served

**59%** Female // **41%** Male

**65%** Full-time // **35%** Part-time

**12%** Students of Color



**ONLINE  
LEARNING**



**STUDENT  
ACTIVITIES**



**INTERCOLLEGIATE  
ATHLETICS**



**ON-CAMPUS  
HOUSING**

## DEGREES OFFERED

Associate of Arts, Bachelor of Applied Science, Bachelor of Arts, Bachelor of Fine Arts, Bachelor of Science, Certificate, Graduate Certificate, Master of Arts, Master of Arts in Teaching, Master of Business Administration, Master of Science, Master of Special Education

## PROGRAM HIGHLIGHTS

Nursing, business administration, biochemistry/ cellular and molecular biology, accounting, computer information systems, music, education, psychology, criminal justice, design, environmental studies, mass communications, marketing communications, indigenous sustainability studies, Ojibwe language, biology, wildlife biology, aquatic biology, wilderness management and outdoor recreation, chemistry, mathematics, economics, English, creative

and professional writing, political science, international studies, sociology, exercise science, project management

## SPECIAL OPTIONS

**Minors** – Leadership, applied public policy, studio arts, sustainability, engineering technology, communication studies, computer forensics, fraud examination, developmental/ adapted physical education, digital writing, Earth science, gender and women's studies, geographic information systems, geology, health promotion and education, human performance, indigenous sustainability studies, international relations, management information systems, music, Ojibwe language, physics, philosophy, substance and behavior addictions, wetlands ecology

**Emphases** – Marketing, biochemistry/ biotechnology, management, HR management,

finance, entrepreneurship, accounting information systems, exhibit design, international studies, writing, environmental health and toxicity, industrial ecology, construction management, wetlands ecology, fisheries biology, vocal performance, computer forensics, victimology, tribal justice, manufacturing technology, medical sciences

**Preprofessional** – 14 programs: chiropractic, dentistry, engineering, law, medicine, mortuary science, occupational therapy, optometry, osteopathy, pharmacy, physical therapy, physician assistant, podiatry, veterinary medicine

## STUDENT ACTIVITIES

80+ student organizations and activities related to professional development, fine arts, culture, academics, and leadership, as well as intercollegiate and intramural athletics. Visit [bemidjistate.edu](http://bemidjistate.edu) or [MinnState.edu](http://MinnState.edu) for a complete list.

## AT A GLANCE

- » Serves 6,466 students with a student-to-faculty ratio of 19:1
- » Ranked for last 11 years as top-tier Midwest University by U.S. News & World Report
- » On the shore of Lake Bemidji, year-round recreation includes hunting, fishing, and an Outdoor Program Center for canoeing, camping, skiing, biking, and sailing



- » The university's Shared Fundamental Values include environmental stewardship, civic engagement, and international and multicultural understanding
- » Construction underway on multi-disciplinary classroom building, replacing Hagg-Sauer Hall
- » In partnership with the Mitchell Hamline School of Law, students can complete their undergraduate and law degrees in six years
- » Accelerated MBA program allows completion of bachelor's and MBA in 5 years
- » The Center for Diversity, Equity & Inclusion offers education, social, and cultural programming to encourage conversations on equity and cultural understanding
- » The American Indian Resource Center serves as a hub for American Indian students, partnerships with tribal nations, and preservation of native language, culture, and traditions
- » BSU is the only school in the nation with dual-enrollment agreements with each of Minnesota's four tribal colleges

## VISIT

Campus tours are offered weekdays at 10 a.m. and 1 p.m. You can also check out dates for upcoming Campus Previews and get more details at [bemidjistate.edu](http://bemidjistate.edu).



# Metropolitan State University

[metrostate.edu](http://metrostate.edu)

2019–20 Tuition and Fees: \$8,114



**MINNEAPOLIS  
ST. PAUL**

**Admissions:** 651-793-1302

**TTY:** 651-772-7687

700 E. Seventh St.  
St. Paul, MN 55106

**FAFSA Code:** 010374



**11,342** Students Served

**58%** Female // **42%** Male

**38%** Full-time // **62%** Part-time

**44%** Students of Color



ONLINE  
LEARNING



STUDENT  
ACTIVITIES

## DEGREES OFFERED

Bachelor of Applied Science, Bachelor of Arts, Bachelor of Human Services, Bachelor of Science, Bachelor of Science-Dental Hygiene, Bachelor of Science-Nursing, Bachelor of Social Work, Certificate, Doctor of Business Administration, Doctor of Nursing Practice, Graduate Certificate, Master of Advocacy and Political Leadership, Master of Arts, Master of Business Administration, Master of Management Info Systems, Master of Nonprofit Leadership Management, Master of Public Administration, Master of Public and Nonprofit Administration, Master of Science, Master of Science-Advanced Dental Therapy, Master of Science-Nursing, Professional Science Master's

## PROGRAM HIGHLIGHTS

Individualized studies (graduate and undergraduate), business administration, accounting, psychology, human services, criminal justice, nursing RN-BSN, entry-level MSN, alcohol and drug counseling, computer science, applied doctorate in nursing practice, computer forensics, nurse anesthetist, law enforcement, oral health care practitioner, supply chain and operations management, screenwriting, technical communication, theater, urban elementary education

## SPECIAL OPTIONS

**Minors** – Advertising, applied math, applied statistics, biology, business admin, civic engagement, community organizing, computer forensics, criminal justice, digital media, entrepreneurship, environmental



communication, experimental intermedia arts, gerontology, HR admin, international business, MIS, media literacy, org comm, research and info studies, UX design

**Emphases** – Metropolitan State's Science Education Center provides students with an extraordinary STEM experience. The university's science-related programs prepare future professionals for careers in applied scientific endeavors, health care, graduate students in science, and science teaching in K-12 schools. The College of Science's programs include natural sciences, applied mathematics, computer science, and cybersecurity

## STUDENT ACTIVITIES

Metropolitan State offers 50+ student activities, clubs, and organizations related to fine arts, culture, academics, leadership, professional development, and more. Visit [metrostate.edu](http://metrostate.edu) or [MinnState.edu](http://MinnState.edu) for a complete list.

## AT A GLANCE

- » Twin Cities' only public, urban, comprehensive state university
- » High-quality, affordable educational programs and services in a student-centered environment

- » More than 60 undergraduate programs (including individualized degree programs) and more than 19 graduate programs
- » Faculty bring both practical and theoretical knowledge to their instruction
- » Area's rich diversity reflected in students, faculty, staff, and community partnerships
- » Unwavering commitment to civic engagement
- » Daytime, evening, online, and weekend classes, smaller class sizes to allow greater faculty contact, and flexible scheduling
- » Credit assessment for learning gained through non-classroom experience
- » Partners with Hennepin Technical College at the Law Enforcement and Criminal Justice Education Center
- » Federally-recognized Minority-Serving Institution, as an Asian American and Native Pacific Islander-Serving Institution
- » Among the top 2 percent in CollegeNet's 2018 "Social Mobility Index," and number one in Minnesota, enabling students to move from lower income strata into the middle class

## VISIT

Set up an individual visit or make a phone appointment. Get details at [metrostate.edu](http://metrostate.edu).

# Minnesota State University, Mankato

[mnsu.edu](http://mnsu.edu)

2019–20 Tuition and Fees: \$8,438



## MANKATO

Admissions: 507-389-1822

TTY: 800-627-3529

122 Taylor Center  
Mankato, MN 56001

FAFSA Code: 002360



**17,970** Students Served

**56%** Female // **44%** Male

**77%** Full-time // **23%** Part-time

**16%** Students of Color



ONLINE  
LEARNING



STUDENT  
ACTIVITIES



INTERCOLLEGIATE  
ATHLETICS



ON-CAMPUS  
HOUSING

## DEGREES OFFERED

Associate of Arts, Bachelor of Science—Mechanical Engineering, Bachelor of Science—Computer Engineering, Bachelor of Applied Science, Bachelor of Arts, Bachelor of Electrical Engineering, Bachelor of Fine Arts, Bachelor of Science, Bachelor of Science—Civil Engineering, Bachelor of Science in Engineering, Bachelor of Science in Social Work, Certificate, Doctor of Education, Doctor of Nursing Practice, Doctor of Psychology, Graduate Certificate, Master of Accounting, Master of Arts, Master of Arts in Teaching, Master of Business Administration, Master of Fine Arts, Master of Music, Master of Public Administration, Master of Science, Master of Science Nursing, Master of Social Work, Professional Science Master's, Specialist

## PROGRAM HIGHLIGHTS

Nursing, psychology, elementary education, law enforcement, management, art, finance, alcohol and drug studies, American indigenous studies, automotive engineering technology, aviation, dance, ethnic studies, gender and women's studies, music industry, recreation, parks and leisure services, Scandinavian studies, Spanish for professions

## SPECIAL OPTIONS

**Minors** – Highlights include astronomy, aviation management, community health education, creative writing, database technologies, entrepreneurship and innovation, environmental science, ethnic studies, financial planning, human resource management, military science/Army ROTC, theatre arts, urban and regional studies



**Emphases** – Certificates in geographic information science, information security, law enforcement management, music industry, networking technologies, nonprofit leadership, software development, technical communication

**Preprofessional** – Chiropractic medicine, dentistry, engineering, law, medicine, mortuary science, occupational therapy, optometry, osteopathic medicine and surgery, pharmacy, physical therapy, podiatric medicine and surgery, teaching, veterinary science

## STUDENT ACTIVITIES

Minnesota State Mankato offers 200+ student activities, clubs, and organizations related to arts, culture, academics, leadership, professional development, and more, as well as intercollegiate and intramural athletics. Visit [mnsu.edu](http://mnsu.edu) or [MinnState.edu](http://MinnState.edu) for a complete list.

## AT A GLANCE

- » Beautiful campus overlooking the Minnesota River Valley
- » More than \$127 million available in scholarships, assistantships, grants, work-study, and student loans
- » Recognized as a 2018 Clean Energy Community by the Minnesota Department of Commerce

- » Four applied doctorate programs: nursing practice, educational leadership, counselor education, school psychology
- » New award-winning Dining Center and Clinical Science Building

- » Indoor rock climbing facility, outdoor rock climbing pinnacle, and full ropes and challenge course
- » Large student weight room, basketball and volleyball courts, indoor student walking and running track, racquetball and handball courts, group fitness and dance studios, and a martial arts room
- » State's premiere college theater: 10 musicals and plays per academic year, two dance concerts, two touring productions, and four professional summer stock productions
- » Nationally renowned men's and women's basketball, NCAA Division I hockey, wrestling, track, and swimming

## VISIT

Campus tours are offered every weekday at 9:30 a.m., 10:30 a.m., 1 p.m., and 2 p.m. Visit [mnsu.edu](http://mnsu.edu) for details and other admissions events and information.



# Minnesota State University Moorhead

[mnstate.edu](http://mnstate.edu)

2019–20 Tuition and Fees: \$8,953



## MOORHEAD

**Admissions:** 218-477-2161

**TTY:** 800-627-3529

1104 7th Ave. S.  
Moorhead, MN 56563

**FAFSA Code:** 002367



**7,271** Students Served

**62%** Female // **38%** Male

**72%** Full-time // **28%** Part-time

**12%** Students of Color



ONLINE  
LEARNING



STUDENT  
ACTIVITIES



INTERCOLLEGIATE  
ATHLETICS



ON-CAMPUS  
HOUSING

## DEGREES OFFERED

Associate of Arts, Bachelor of Arts, Bachelor of Fine Arts, Bachelor of Music, Bachelor of Science, Bachelor of Science in Nursing, Bachelor of Social Work, Certificate, Doctor of Education, Graduate Certificate, Master of Arts, Master of Business Administration, Master of Health Care Administration, Master of Science, Specialist

## PROGRAM HIGHLIGHTS

Elementary inclusive education, business, social work, biology, nursing (RN-BSN), psychology, exercise science, criminal justice, accounting, speech/language/hearing science, biotechnology, business analytics, construction management, criminal justice, entertainment industries and technology, entrepreneurship, film production, geosciences, gerontology, graphic communications, health services

administration, medical physics, operations management, paralegal, project management, sustainability, global supply chain management

## SPECIAL OPTIONS

**Minors** – Art therapy, astronomy, coaching, commercial music, communication studies, entrepreneurship, entertainment business, graphic communications, health and medical sciences, human resources, juvenile justice, leadership studies, media analysis, medical physics, public health, social innovation and entrepreneurship, theatre dance

**Emphases** – Archaeology, astrophysics, ceramics, communication training and development, developmental disabilities, ecology and evolutionary biology, event planning, geospatial analysis, litigation, sports communication



**Preprofessional** – Audiology, chiropractic, dentistry, engineering, law, medicine, occupational therapy, optometry, pharmacy, physical therapy, physician assistant, veterinary science

## STUDENT ACTIVITIES

115+ student activities, clubs, and organizations in fine arts, culture, academics, leadership, and professional development, and intercollegiate and intramural athletics and club sports. Visit [mnstate.campuslabs.com/engage](http://mnstate.campuslabs.com/engage) or [MinnState.edu](http://MinnState.edu) for a complete list.

## AT A GLANCE

- » 94.7 percent success for career placement or grad school acceptance (2018)
- » Students regularly win national awards in film, education, music, theatre, art and design, business, and journalism
- » Recent accolades: U.S. News & World Report Best Online Programs; 20 Best Online Bachelor's in Project Management Programs; 10 Most Affordable Nursing Degrees in Minnesota; Top Online Supply Chain Management Degree; Top 50 Best Value Bachelor's in Construction Management
- » 11 Minnesota Professors of the Year, more than any other university in a five-state area

- » Student-to-faculty ratio of 19:1 encourages undergraduate participation in faculty-mentored research and creative projects
- » Paseka School of Business maintains prestigious AACSB International accreditation; project management is accredited by the Project Management Institute
- » Success in athletics includes women's basketball winning a third straight NSIC regular-season title, setting a new single-season record for wins, and advancing to a third straight NCAA tournament; sophomore Chris Cook earning two All-American honors and two conference titles in the high jump; women's tennis advancing to the NSIC tournament championship match for a second straight year; and three All-American performances overall
- » Fargo-Moorhead is a thriving, close-knit community, consistently ranked one of the safest and best communities in which to live

## VISIT

Daily campus tours are offered at 9:30 a.m. and 1:30 p.m. Monday–Thursday, and Dragon Tour & Talk Fridays are at 9 a.m. and 1 p.m., with select Saturday programs during the year. Visit [mnstate.edu/visit](http://mnstate.edu/visit) for more details.

# Southwest Minnesota State University

[smsu.edu](https://smsu.edu)

2019–20 Tuition and Fees: \$8,908



## MARSHALL

**Admissions:** 507-537-6286

**TTY:** 800-627-3529

1501 State St.  
Marshall, MN 56258

**FAFSA Code:** 002375



**9,019** Students Served

**59%** Female // **41%** Male

**31%** Full-time // **69%** Part-time

**10%** Students of Color



ONLINE  
LEARNING



STUDENT  
ACTIVITIES



INTERCOLLEGIATE  
ATHLETICS



ON-CAMPUS  
HOUSING

## DEGREES OFFERED

Associate of Arts, Associate of Science, Bachelor of Applied Science, Bachelor of Arts, Bachelor of Science, Bachelor of Science in Nursing, Certificate, Education Specialist, Graduate Certificate, Master of Business Administration, Master of Science

## PROGRAM HIGHLIGHTS

Business management, early childhood education, elementary teacher education, exercise science, biology, agricultural education, RN to BSN, culinology, hospitality management, agronomy, agricultural solutions, broadcasting and digital media, professional writing and communication, supply chain management, environmental science, creative writing, teachers of English as a second language, social work

## SPECIAL OPTIONS

**Minors** – Advertising design, art/graphic design, criminal justice, pre-law, developmental adapted PE, coaching, physics, public administration, social welfare, acting/directing, hotel/lodging management, indigenous nations and Dakota studies, nutrition, public relations, design technical theatre, writing, Hispanic studies, human resource management, supply chain management, reading, religious studies, women's studies, filmmaking, health communication

**Emphases** – Sports management, recreation, public relations, farm management, ag finance, crops, soils, graphic design, human resource management, supply chain management, music management, culinary management, hotel management, event planning, corporate



wellness, allied health, coaching and human performance, financial planning and investments

**Preprofessional** – Chiropractic, dentistry, engineering, law, medicine, nursing, occupational therapy, optometry, pharmacy, physical therapy, veterinary medicine

## STUDENT ACTIVITIES

SMSU offers 90+ student activities, clubs, and organizations related to fine arts, culture, academics, leadership, professional development, and more, as well as intercollegiate and intramural athletics. Visit [smsu.edu](https://smsu.edu) or [MinnState.edu](https://MinnState.edu) for a complete list.

## AT A GLANCE

- » The same tuition rate for 12 to 18 credits, and out-of-state students pay in-state tuition
- » An exercise science degree offered at a trio of Twin Cities-based community colleges: Normandale, Anoka-Ramsey, and North Hennepin
- » The only Research Chefs Association-approved culinology degree offered in the U.S.
- » A campus-wide Undergraduate Research Conference, where 35 percent of our students give presentations on their scholarly work
- » Residential Living & Learning communities that share an academic or a special interest with the residents of their house: these

include agriculture house; culinology house; access, opportunity, and success community; fine arts community; exercise science house; and the Mustang Traditions house

- » Our Honors Program offers qualified students a rigorous, challenging curriculum with a focus on their potential talents, interests, and abilities
- » SMSU graduates get jobs: 100 percent of our recent grads are employed; 10 percent continue their education following graduation
- » Bang for the buck: SMSU has been honored for both its affordability and its educational return on investment
- » A Military Friendly School; a large Veterans Service Center where our military students can study and meet other veterans
- » A campus that embraces diversity; international students from 29 countries around the globe
- » Mustang athletic teams compete in the Northern Sun Intercollegiate Conference, the finest Division II conference in the country; 18 intercollegiate sports, including wheelchair basketball

## VISIT

Visit during the week, on a Mustang Saturday, or on a special visit day throughout the year. Visit [smsu.edu](https://smsu.edu) for details.



# St. Cloud State University

[stcloudstate.edu](http://stcloudstate.edu)

2019–20 Tuition and Fees: \$8,656



ST. CLOUD STATE  
UNIVERSITY



## ST. CLOUD

**Admissions:** 320-308-2244

**TTY:** 800-627-3529

720 4th Ave. S.

St. Cloud, MN 56301

**FAFSA Code:** 002377



**18,441** Students Served

**54%** Female // **46%** Male

**60%** Full-time // **40%** Part-time

**18%** Students of Color



ONLINE  
LEARNING



STUDENT  
ACTIVITIES



INTERCOLLEGIATE  
ATHLETICS



ON-CAMPUS  
HOUSING

## DEGREES OFFERED

Associate of Arts, Associate of Science, Bachelor of Arts, Bachelor of Elective Studies, Bachelor of Fine Arts, Bachelor of Music, Bachelor of Science, Bachelor of Science in Engineering, Certificate, Doctor of Education, Executive Masters in Engineering Management, Graduate Certificate, Master of Arts, Master of Business Administration, Master of Engineering Management, Master of Public Administration, Master of Science, Master of Science Electrical Engineering, Master of Social Work, Professional Science Master's, Specialist

## PROGRAM HIGHLIGHTS

Applied behavior analysis, applied clinical research, biological sciences, business administration, criminal justice, cultural resource management (applied archaeology),

cybersecurity, education, engineering management, finance and accounting, film studies, geography, gender and women's studies, gerontology, hospitality and tourism, hydrology, management, marketing, mass communications, meteorology, nursing (RN-to-BSN completion), psychology, public administration, radiologic technology (X-ray and diagnostic imaging), real estate, regulatory affairs and services, small business management, social work, software engineering, statistics

## SPECIAL OPTIONS

**Minors** – African studies, American Indian studies, art entrepreneurship, Chicano/Chicana studies, Asian Pacific American studies, East Asian studies, ethnic studies, geographic information science, German, gerontology, human relations, military science,

religious studies, technology studies, optics, teaching English as a second language, heritage preservation, forensic science

**Emphases** – Community counseling, astrophysics, linguistics, creative writing, construction management, electro-optics, critical applied sociology, graphic design, journalism, strategic communications, creative media production, piano performance, data analytics, biochemistry, human resources management, engineering science, relational communications

**Preprofessional** – Chiropractic, dentistry, law, medicine, optometry, physical therapy, physician assistant, veterinary medicine, pharmacy, occupational therapy, mortuary science

## STUDENT ACTIVITIES

200+ student activities, clubs, and organizations, as well as intercollegiate and intramural athletics, including NCAA Division I and II teams built on success. Visit [stcloudstate.edu](http://stcloudstate.edu) or [MinnState.edu](http://MinnState.edu) for a complete list.

## AT A GLANCE

- » More than 200 undergraduate and 60 graduate programs in liberal arts, science and engineering, business, education, health and human services, and public affairs
- » Top three percent of the most affordable universities in Forbes "America's Top Colleges"

- » A top investment in PayScale's "Best Value Colleges in Minnesota" study
- » Recognized by Military Times as a "Best for Vets" school
- » 500+ scholarships available through Huskies Scholarships
- » Indoor rock climbing wall, fitness center, pool, and fieldhouse with a 200-meter indoor track
- » More than 1,400 international students from more than 90 countries
- » More than 30 Education Abroad opportunities on six continents
- » Four-time Division II Huskies Wrestling national champions
- » Nationally renowned NCAA Division I hockey at the Herb Brooks National Hockey Center
- » Eight residential living options, including Coborn Plaza Apartments
- » Located on the banks of the Mississippi River

## VISIT

Visit [stcloudstate.edu/visit](http://stcloudstate.edu/visit) to schedule a campus visit, check out an upcoming Preview Day, or take a virtual tour to see how you'll unleash amazing at St. Cloud State. Daily campus visits are 9:30 a.m. and 1:30 p.m., Monday–Friday.

# Winona State University

[winona.edu](http://winona.edu)

2019–20 Tuition and Fees: \$8,696



WINONA



**Admissions:** 507-457-5100

**TTY:** 877-627-3848

P.O. Box 5838

Winona, MN 55987

**FAFSA Code:** 002394



**9,123** Students Served

**64%** Female // **36%** Male

**83%** Full-time // **17%** Part-time

**12%** Students of Color



ONLINE  
LEARNING



STUDENT  
ACTIVITIES



INTERCOLLEGIATE  
ATHLETICS



ON-CAMPUS  
HOUSING

## DEGREES OFFERED

Associate of Arts, Bachelor of Applied Science, Bachelor of Arts, Bachelor of Music, Bachelor of Science, Bachelor of Science-Teaching, Bachelor of Social Work, Doctor of Education, Doctor of Nursing Practice, Graduate Certificate, Master of Arts, Master of Science, Master of Social Work, Professional Science Master's, Specialist

## PROGRAM HIGHLIGHTS

Popular programs include: nursing, elementary education/K–6, business administration, biology, exercise and rehabilitative science, psychology, social work, marketing; other highlights include: composite materials engineering, clinical laboratory science, computer science, criminal justice, data science, global studies, healthcare leadership and administration, individualized studies, management information systems, mass

communication, music, public administration, public health, recreation and tourism, RN-BSN, sociology, special education, statistics, theatre arts, therapeutic recreation

## SPECIAL OPTIONS

**Minors** – Highlights include: adventure tourism, arts administration, bilingual/bicultural education, business law, coaching K–12, dance, entrepreneurship, international business, professional selling, women's, gender, and sexuality studies

**Emphases** – Highlights include: advertising, biochemistry, clinical exercise science, creative digital media, ecology, environmental chemistry, environmental science, epidemiology, exercise science, graphic design, I-Design, leadership and advocacy, movement science, public relations



**Preprofessional** – Chiropractic medicine, dentistry, engineering, forensic chemistry, law, medicine, occupational therapy, optometry, pharmacy, physical therapy, physician assistant, podiatry, veterinary medicine

## STUDENT ACTIVITIES

Winona State offers 160+ student clubs and organizations related to fine arts, culture, academics, leadership, professional development, and more, as well as intercollegiate and intramural athletics. Visit [winona.edu](http://winona.edu) or [MinnState.edu](http://MinnState.edu) for a complete list.

## AT A GLANCE

- » Reputation – the oldest member of the Minnesota State system, our classes are small in size and taught by expert faculty
- » Results – 95 percent of graduates are hired in a field related to their degree
- » Affordability – one of America's 100 Best College Buys for 23 consecutive years, 94 percent of first-time, first-year students also benefit from some form of financial aid
- » Scenic Beauty – widely known for our stunning natural setting, Winona State is nestled between picturesque bluffs and the Mississippi River—meaning that rock climbing, paddle boarding, hiking, kayaking, and more, are within a mile of campus

- » Laptops – our eWarrior program provides students with a laptop, with certain programs receiving additional tablets
- » Internships – all of our degree programs offer opportunities for internships with some of the Midwest's most prestigious companies and organizations
- » Service Learning – community engagement is important at Winona State, with most of our programs providing students a chance to use what they've learned to help others
- » Athletics – home to 14 NCAA Division II and one NCAA Division III varsity sports teams
- » Health and Wellness – our Integrated Wellness Complex aligns health, wellness, academic, and recreational programs and services into a single facility
- » Winona – the city is home to a wide range of art, music and theatre opportunities, as well as museums, local boutiques, and festivals galore

## VISIT

Experience the beauty of WSU's campus for yourself. Daily campus visits take place at 9 a.m. and 1 p.m., Monday through Friday, and include tours of campus and residence halls, as well as a meeting with an admissions counselor. Learn more at [winona.edu/visit](http://winona.edu/visit).



# ENDLESS OPPORTUNITIES

The following pages offer charts that show the academic program opportunities available at your state colleges and universities.

## » Name Abbreviations for Minnesota State Colleges

ATCC – Alexandria Technical & Community College  
CLC – Central Lakes College  
DCTC – Dakota County Technical College  
FDLTCC – Fond du Lac Tribal & Community College  
HTC – Hennepin Technical College  
HCC – Hibbing Community College  
ICC – Itasca Community College  
LSC – Lake Superior College  
Minneapolis College – Minneapolis Community and Technical College  
MSC Southeast – Minnesota State College Southeast  
M State – Minnesota State Community and Technical College  
NHCC – North Hennepin Community College  
NCTC – Northland Community & Technical College  
NTC – Northwest Technical College  
PTCC – Pine Technical & Community College  
RCTC – Rochester Community and Technical College  
SCTCC – St. Cloud Technical & Community College  
SCC – South Central College

## INTERESTED?

### COLLEGE ACADEMIC PROGRAM GRID [PAGES 56–60](#)

Check out the academic programs available at your state colleges that may lead to an associate degree, certificate, or diploma. These are great programs to launch a new career or get started on the path to a bachelor's degree.

### BACHELOR'S DEGREE PARTNERSHIP PROGRAM [PAGE 64](#)

The seven state universities offer a selection of bachelor's degree programs that can be completed at various community college campuses in the Twin Cities metro area, allowing you to earn your degree from a university without leaving the comfort of the college campus setting. This grid will help you see the programs available and locations they are offered.

### UNIVERSITY ACADEMIC PROGRAM GRID [PAGES 66–67](#)

Learn about the programs available at your state universities that may lead to a bachelor's degree and beyond, or help you launch your career.

### ATHLETICS PROGRAM GRIDS [PAGES 61, 68](#)

Many of your state colleges and universities have an array of sports that provide you the opportunity to enjoy a student athlete experience. These grids will help you quickly identify which colleges and universities offer your sport.

# State College PROGRAMS

For a complete list of programs,  
visit [MinnState.edu](https://www.minnstate.edu).

- Related bachelor's degree may be available on this campus.

[illegible]



For a complete list of programs, visit [MinnState.edu](https://www.mnstate.edu).

Guide to Your 37 State Colleges and Universities // 57

# State College PROGRAMS

For a complete list of programs, visit [MinnState.edu](https://www.mnstate.edu).

State College

PROGRAMS

For a complete list of programs,

visit [MinnState.edu](#).

HEALTH

Activity Director																																																																																																																																																																																																																																																																																																																																																																																																																																																																																																																																																																																																																																																																																																																																																																																																																																																																																																																																																																																																																																																																																																																																																																																																																																																																																																																																																																																												
-------------------	--	--	--	--	--	--	--	--	--	--	--	--	--	--	--	--	--	--	--	--	--	--	--	--	--	--	--	--	--	--	--	--	--	--	--	--	--	--	--	--	--	--	--	--	--	--	--	--	--	--	--	--	--	--	--	--	--	--	--	--	--	--	--	--	--	--	--	--	--	--	--	--	--	--	--	--	--	--	--	--	--	--	--	--	--	--	--	--	--	--	--	--	--	--	--	--	--	--	--	--	--	--	--	--	--	--	--	--	--	--	--	--	--	--	--	--	--	--	--	--	--	--	--	--	--	--	--	--	--	--	--	--	--	--	--	--	--	--	--	--	--	--	--	--	--	--	--	--	--	--	--	--	--	--	--	--	--	--	--	--	--	--	--	--	--	--	--	--	--	--	--	--	--	--	--	--	--	--	--	--	--	--	--	--	--	--	--	--	--	--	--	--	--	--	--	--	--	--	--	--	--	--	--	--	--	--	--	--	--	--	--	--	--	--	--	--	--	--	--	--	--	--	--	--	--	--	--	--	--	--	--	--	--	--	--	--	--	--	--	--	--	--	--	--	--	--	--	--	--	--	--	--	--	--	--	--	--	--	--	--	--	--	--	--	--	--	--	--	--	--	--	--	--	--	--	--	--	--	--	--	--	--	--	--	--	--	--	--	--	--	--	--	--	--	--	--	--	--	--	--	--	--	--	--	--	--	--	--	--	--	--	--	--	--	--	--	--	--	--	--	--	--	--	--	--	--	--	--	--	--	--	--	--	--	--	--	--	--	--	--	--	--	--	--	--	--	--	--	--	--	--	--	--	--	--	--	--	--	--	--	--	--	--	--	--	--	--	--	--	--	--	--	--	--	--	--	--	--	--	--	--	--	--	--	--	--	--	--	--	--	--	--	--	--	--	--	--	--	--	--	--	--	--	--	--	--	--	--	--	--	--	--	--	--	--	--	--	--	--	--	--	--	--	--	--	--	--	--	--	--	--	--	--	--	--	--	--	--	--	--	--	--	--	--	--	--	--	--	--	--	--	--	--	--	--	--	--	--	--	--	--	--	--	--	--	--	--	--	--	--	--	--	--	--	--	--	--	--	--	--	--	--	--	--	--	--	--	--	--	--	--	--	--	--	--	--	--	--	--	--	--	--	--	--	--	--	--	--	--	--	--	--	--	--	--	--	--	--	--	--	--	--	--	--	--	--	--	--	--	--	--	--	--	--	--	--	--	--	--	--	--	--	--	--	--	--	--	--	--	--	--	--	--	--	--	--	--	--	--	--	--	--	--	--	--	--	--	--	--	--	--	--	--	--	--	--	--	--	--	--	--	--	--	--	--	--	--	--	--	--	--	--	--	--	--	--	--	--	--	--	--	--	--	--	--	--	--	--	--	--	--	--	--	--	--	--	--	--	--	--	--	--	--	--	--	--	--	--	--	--	--	--	--	--	--	--	--	--	--	--	--	--	--	--	--	--	--	--	--	--	--	--	--	--	--	--	--	--	--	--	--	--	--	--	--	--	--	--	--	--	--	--	--	--	--	--	--	--	--	--	--	--	--	--	--	--	--	--	--	--	--	--	--	--	--	--	--	--	--	--	--	--	--	--	--	--	--	--	--	--	--	--	--	--	--	--	--	--	--	--	--	--	--	--	--	--	--	--	--	--	--	--	--	--	--	--	--	--	--	--	--	--	--	--	--	--	--	--	--	--	--	--	--	--	--	--	--	--	--	--	--	--	--	--	--	--	--	--	--	--	--	--	--	--	--	--	--	--	--	--	--	--	--	--	--	--	--	--	--	--	--	--	--	--	--	--	--	--	--	--	--	--	--	--	--	--	--	--	--	--	--	--	--	--	--	--	--	--	--	--	--	--	--	--	--	--	--	--	--	--	--	--	--	--	--	--	--	--	--	--	--	--	--	--	--	--	--	--	--	--	--	--	--	--	--	--	--	--	--	--	--	--	--	--	--	--	--	--	--	--	--	--	--	--	--	--	--	--	--	--	--	--	--	--	--	--	--	--	--	--	--	--	--	--	--	--	--	--	--	--	--	--	--	--	--	--	--	--	--	--	--	--	--	--	--	--	--	--	--	--	--	--	--	--	--	--	--	--	--	--	--	--	--	--	--	--	--	--	--	--	--	--	--	--	--	--	--	--	--	--	--	--	--	--	--	--	--	--	--	--	--	--	--	--	--	--	--	--	--	--	--	--	--	--	--	--	--	--	--	--	--	--	--	--	--	--	--	--	--	--	--	--	--	--	--	--	--	--	--	--	--	--	--	--	--	--	--	--	--	--	--	--	--	--	--	--	--	--	--	--	--	--	--	--	--	--	--	--	--	--	--	--	--	--	--	--	--	--	--	--	--	--	--	--	--	--	--	--	--	--	--	--	--	--	--	--	--	--	--	--	--	--	--	--	--	--	--	--	--	--	--	--	--	--	--	--	--	--	--	--	--	--	--	--	--	--	--	--	--	--	--	--	--	--	--	--	--	--	--	--	--	--	--	--	--	--	--	--	--	--	--	--	--	--	--	--	--	--	--	--	--	--	--	--	--	--	--	--	--	--	--	--	--	--	--	--	--	--	--	--	--	--	--	--	--	--	--	--	--	--	--	--	--	--	--	--	--	--	--	--	--	--	--	--	--	--	--	--	--	--	--	--	--	--	--	--	--	--	--	--	--	--	--	--	--	--	--	--	--	--	--	--	--	--	--	--	--	--	--	--	--	--	--	--	--	--	--	--	--	--	--	--	--	--	--	--	--	--	--	--	--	--	--	--	--	--	--	--	--	--	--	--	--	--	--	--	--	--	--	--	--	--	--	--	--	--	--	--	--	--	--	--	--	--	--	--	--	--	--	--	--	--	--	--	--	--	--	--	--	--	--	--	--	--	--	--	--	--	--	--	--	--	--	--	--	--	--	--	--	--	--	--	--	--	--	--	--	--	--	--	--	--	--	--	--	--	--	--	--	--	--	--	--	--	--	--	--	--	--	--	--	--	--	--	--	--	--	--	--	--	--	--	--	--	--	--	--	--	--	--



For a complete list of programs,  
visit [MinnState.edu](https://www.mnstate.edu).

State College

PROGRAMS

For a complete list of programs, visit [MinnState.edu](#).

	ATCC, Alexandria	Anoka Tech, Anoka	Anoka-Ramsey, Cambridge	Anoka-Ramsey, Coon Rapids	CLC, Brainerd	CLC, Staples	Century, White Bear Lake	DCTC, Rosemount	FDLTCC, Cloquet	HCC, Hibbing	HTC, Brooklyn Park	HTC, Eden Prairie	ICC, Grand Rapids	Inver Hills, Inver Grove Heights	LSC, Duluth	MSC Southeast, Red Wing	MSC Southeast, Winona	M State, Detroit Lakes	M State, Fergus Falls	M State, Moorhead	M State, Wadena	Mesabi Range, Eveleth	Mesabi Range, Virginia	Minneapolis College	Minnesota West, Canby	Minnesota West, Granite Falls	Minnesota West, Jackson	Minnesota West, Pipestone	Minnesota West, Worthington	Normandale, Bloomington	NHCC, Brooklyn Park	NCTC, East Grand Forks	NCTC, Thief River Falls	NTC, Bemidji	PTCC, Pine City	Rainy River, International Falls	Ridgewater, Hutchinson	Ridgewater, Willmar	Riverland, Albert Lea	Riverland, Austin	Riverland, Owatonna	RCTC, Rochester	Saint Paul College	SCTCC, St. Cloud	SCC, Faribault	SCC, North Mankato	Vermilion, Ely	MinnState.edu/online
HUMAN AND PERSONAL SERVICES	American Sign Language/Interpreter																																															
	Child Care/Development																																															
	Cosmetology, Manicurist, and Barbering																																															
	Counseling – Chemical Dependency																																															
	Human and Community Services																																															
	Mental Health Services																																															
	Occupational Skills																																															
	Psychology – Counseling																																															
	Social Work																																															
Translating and Interpreting																																																
INFORMATION TECHNOLOGY	Computer Engineering Technology																																															
	Computer Networking and Administration																																															
	Computer Programming																																															
	Computer Science and Information Systems																																															
	Computer Security and Forensics/IT Auditing																																															
	Computer Technology and Support Services																																															
	Database Technologies and Administration																																															
	Management Information Systems																																															
	Web Design, Development, and Visualization																																															
Webmaster and Web Administration																																																
LAW, PUBLIC ADMIN AND SAFETY	Criminal Justice/Corrections																																															

For a complete list of programs, visit [MinnState.edu](https://www.mnstate.edu).

60 // Minnesota State



# INTERCOLLEGIATE ATHLETICS

Athletics programs at our colleges provide opportunities for many student-athletes to compete in their favorite sports and for all students to participate as fans and to show their school spirit! To learn more about the opportunities and affiliations at a particular institution, please visit its website.



		Anoka-Ramsey	Central Lakes College	Century College	DCTC	FDLTCC	Hibbing Community College	Itasca Community College	Lake Superior College	Mesabi Range College	M State	Minnesota West	NCTC	PTCC	Rainy River	Ridgewater College	Riverland Community College	RCTC	SCTCC	Vermilion Community College
MEN'S ATHLETICS	Baseball	◆	◆	◆	◆		◆	◆		◆	◆	◆	◆		◆	◆	◆	◆	◆	◆
	Basketball	◆	◆		◆	◆	◆	◆	◆	◆	◆	◆	◆		◆	◆	◆	◆	◆	◆
	Football		◆			◆		◆		◆	◆	◆	◆					◆		◆
	Golf										◆									
	Soccer	◆			◆				◆			◆					◆			
	Wrestling							◆				◆	◆			◆		◆		
WOMEN'S ATHLETICS	Basketball	◆	◆			◆	◆	◆	◆	◆	◆	◆	◆		◆	◆	◆	◆	◆	◆
	Hockey														◆					
	Soccer	◆			◆				◆			◆						◆		
	Softball	◆	◆		◆	◆	◆	◆		◆	◆	◆	◆		◆	◆	◆	◆	◆	◆
	Volleyball	◆	◆	◆	◆	◆	◆	◆		◆	◆	◆	◆		◆	◆	◆	◆	◆	◆
CO-ED	Clay Target						◆	◆	◆			◆	◆	◆	◆	◆				◆
	Cycling								◆											

# 118

different athletic teams are offered across 13 different sports at our participating colleges.





# TRANSFER PATHWAYS


Minnesota State Transfer Pathways make it easy to complete a specific associate degree at a Minnesota State college and transfer to a Minnesota State university to earn a bachelor's degree without losing credits or taking extra courses.\* Transfer Pathways can be a great way to save time and money as you work toward graduation.

\*Students must meet special admission requirements for the major and are not guaranteed admission into the major itself. Call or visit the college or university you're interested in to learn more.





# TRANSFER PATHWAYS



# TRANSFER PATHWAYS

	DEGREE START																												DEGREE FINISH										
	ATCC	Anoka Tech	Anoka-Ramsey	CLC	Century	DCTC	FDLTCC	HCC	HTC	ICC	Inver Hills	LSC	MSC Southeast	M State	Mesabi Range	Minneapolis College	Minnesota West	Normandale	NHCC	NCTC	NTC	PTCC	Rainy River	Ridgewater	Riverland	RCTC	Saint Paul College	SCTCC	SCC	Vermilion	Bemidji State	Metropolitan State	Minnesota State Mankato	MSU Moorhead	St. Cloud State	Southwest Minnesota State	Winona State		
Accounting	♦		♦		♦				♦		♦		♦	♦		♦		♦	♦						♦	♦					♦	♦	♦	♦	♦	♦	♦	♦	
Art			♦					♦				♦		♦		♦		♦															♦	♦	♦	♦	♦	♦	♦
Biology			♦		♦			♦			♦	♦		♦		♦		♦	♦							♦	♦	♦	♦	♦			♦	♦	♦	♦	♦	♦	♦
Business or Business Management	♦		♦		♦			♦	♦	♦	♦	♦	♦	♦		♦		♦	♦	♦	♦	♦	♦	♦	♦	♦	♦	♦	♦	♦	♦	♦	♦	♦	♦	♦	♦	♦	♦
Chemistry			♦		♦			♦			♦	♦				♦		♦	♦						♦	♦	♦						♦	♦	♦	♦	♦	♦	♦
Communication Arts and Literature Education																																							
Communication Studies			♦		♦			♦			♦	♦				♦		♦	♦				♦	♦	♦					♦									
Computer Science			♦		♦						♦							♦	♦			♦				♦	♦	♦						♦	♦				
Criminal Justice											♦							♦								♦													
Early Childhood Education (Fall 2020)																																							
Economics	♦			♦				♦			♦	♦				♦		♦	♦	♦	♦										♦								
Elementary Education																		♦																					
English			♦					♦				♦	♦	♦					♦	♦			♦	♦															
Exercise Science			♦	♦	♦	♦					♦	♦	♦					♦	♦				♦	♦	♦														
History	♦				♦			♦			♦	♦	♦	♦		♦		♦	♦	♦	♦			♦															
Law Enforcement	♦							♦			♦					♦		♦	♦					♦	♦	♦	♦												
Mass Communication			♦																							♦													
Management Information Systems																																							
Mathematics					♦			♦			♦	♦				♦		♦	♦							♦													
Political Science			♦								♦		♦	♦				♦	♦																				
Pre-Social Work											♦		♦			♦										♦					♦								
Psychology	♦		♦	♦	♦						♦	♦	♦	♦		♦		♦	♦	♦				♦	♦														
Sociology	♦		♦	♦	♦			♦				♦	♦					♦		♦																			
Spanish			♦													♦		♦											♦										
Special Education																																							
Theater, Musical Theater, Production and Design			♦		♦									♦		♦		♦	♦					♦				♦											

For a complete list, visit [MinnState.edu](https://www.mnstate.edu).



# Bachelor's Degree Partnership Program



The state universities offer a selection of bachelor's degree programs that can be completed at some two-year colleges. See **PAGE 11** for more details.

PROGRAM TITLE	PROGRAM LOCATION	UNIVERSITY
<b>BUSINESS AND MANAGEMENT</b>		
Accounting	Minneapolis College	Metropolitan State
Applied Leadership	Normandale	MSU, Mankato
Business	Anoka-Ramsey	St. Cloud State
Business Administration	Century College	Metropolitan State
Business Administration	Minneapolis College	Metropolitan State
Business Administration	Normandale	Metropolitan State
Business Administration	NHCC	Metropolitan State
Business Administration	RCTC	Winona State
Culinology	Saint Paul College	SMSU
Economics (General)	Minneapolis College	Metropolitan State
Economics (General)	NHCC	Metropolitan State
Finance	Minneapolis College	Metropolitan State
Human Resource Management	Minneapolis College	Metropolitan State
Human Resource Management	RCTC	Winona State
International Business	Minneapolis College	Metropolitan State
International Commerce	Minneapolis College	Metropolitan State
Management	Minneapolis College	Metropolitan State
Organizational Administration	HTC	Metropolitan State
Organizational Administration	Minneapolis College	Metropolitan State
<b>EDUCATION</b>		
Education	RCTC	Winona State
Education	Riverland	Winona State
Elementary Education	Anoka-Ramsey	Bemidji State
Elementary Education	Normandale	MSU, Mankato
Special Education	Normandale	MSU, Mankato
Special Education	NHCC	St. Cloud State
<b>ENGINEERING AND ENGINEERING SCIENCE</b>		
Integrated Engineering	Normandale	MSU, Mankato
Integrated Engineering	Mesabi Range	MSU, Mankato
Software Engineering	Anoka-Ramsey	St. Cloud State
Software Engineering	Normandale	St. Cloud State
<b>HEALTH</b>		
Dental Hygiene	Century College	Metropolitan State
Dental Hygiene	Lake Superior College	Metropolitan State
Dental Hygiene	M State	Metropolitan State
Dental Hygiene	Normandale	Metropolitan State
Exercise Science	Anoka-Ramsey	SMSU
Exercise Science	Normandale	SMSU
Exercise Science	NHCC	SMSU
Medical Laboratory Science	NHCC	St. Cloud State

PROGRAM TITLE	PROGRAM LOCATION	UNIVERSITY
<b>HEALTH</b>		
Nursing	Century College	Bemidji State
Nursing	Anoka-Ramsey	Metropolitan State
Nursing	Century College	Metropolitan State
Nursing	Inver Hills	Metropolitan State
Nursing	Normandale	Metropolitan State
Nursing	NHCC	Metropolitan State
Nursing	Ridgewater College	Metropolitan State
Nursing	RCTC	Winona State
Nursing	Anoka-Ramsey	Bemidji State
<b>HUMAN AND PERSONAL SERVICES</b>		
Alcohol and Drug Counseling	Minneapolis College	Metropolitan State
Human Services	Minneapolis College	Metropolitan State
Human Services	NHCC	Metropolitan State
Psychology	Normandale	Metropolitan State
Psychology	NHCC	Metropolitan State
Social Work	RCTC	Winona State
<b>INFORMATION TECHNOLOGY</b>		
Computer Science	Normandale	Metropolitan State
Computer Science	RCTC	Winona State
Management Information Systems	Minneapolis College	Metropolitan State
<b>LAW, PUBLIC ADMINISTRATION AND SAFETY</b>		
Criminal Justice	HTC	Metropolitan State
Law Enforcement	HTC	Metropolitan State
<b>LIBERAL ARTS AND SCIENCES</b>		
Individualized Studies	HTC	Metropolitan State
Individualized Studies	Minneapolis College	Metropolitan State
Individualized Studies	Normandale	Metropolitan State
Individualized Studies	RCTC	Winona State
Individualized Studies	Normandale	Metropolitan State
Individualized Studies – Transportation Management Focus	DCTC	Metropolitan State
Theater	Minneapolis College	Metropolitan State
Theater	Normandale	SMSU
<b>MEDIA AND COMMUNICATIONS</b>		
Communication Studies	Normandale	MSU, Mankato
Marketing	Minneapolis College	Metropolitan State

For a complete list, visit [MinnState.edu](http://MinnState.edu).

# State University UNDERGRADUATE PROGRAMS

For a complete list of programs, visit [MinnState.edu](https://www.mnstate.edu).

	Benidji State	Metropolitan State	Minnesota State Mankato	MSU Moorhead	St. Cloud State	Southwest Minnesota State	Winona State	MinnState.edu/online
Accounting	◆	◆	◆	◆	◆	◆	◆	◆
Advertising and Public Relations				◆				
Agricultural Business and Production						◆		
Agricultural Science and Technology						◆		
Aircraft Pilot and Navigator				◆				
American Indigenous Studies	◆							
Anthropology/Archaeology			◆	◆	◆			
Art History			◆	◆	◆			
Art/Studio Arts		◆	◆	◆	◆	◆	◆	
Audio Technology/Sound Arts			◆	◆				
Aviation Management and Airway Science			◆					
Banking and Finance		◆	◆	◆	◆	◆	◆	◆
Biological and Natural Sciences	◆	◆	◆	◆	◆	◆	◆	◆
Biotechnology/Biochemistry			◆	◆	◆			
Broadcasting, Radio, and Television				◆	◆			
Business Administration and Management		◆	◆	◆	◆	◆	◆	◆
Chemistry	◆	◆	◆	◆	◆	◆	◆	◆
Cinematography and Video Production				◆				
Cognitive Science			◆					
Communication Sciences and Disorders			◆	◆	◆			
Communications Studies			◆	◆	◆	◆	◆	◆
Community Health Services	◆		◆	◆	◆	◆	◆	◆
Computational Science		◆				◆		
Computer Engineering Technology			◆					
Computer Networking and System Administration			◆					
Computer Programming		◆	◆					
Computer Science and Information Systems	◆	◆	◆	◆	◆	◆	◆	◆
Computer Security and Forensics/IT Auditing			◆	◆				
Construction Management			◆	◆				
Counseling – Chemical Dependency	◆	◆	◆	◆				
Criminal Justice/Corrections	◆	◆	◆	◆	◆	◆	◆	◆
Culinary Arts and Food Service						◆		
Customer Service/Call Center				◆				◆
Dance			◆					
Database Technologies and Administration								
Dental Hygienist		◆	◆					◆
Digital Arts, Computer Animation, and Multimedia				◆				
Early Childhood Studies		◆						
East Asian Studies				◆				
Economics	◆	◆	◆	◆	◆	◆	◆	◆
Education – General						◆		
Education – Instructional Technology					◆			
Engineering – Automotive			◆					
Engineering – Civil and Surveying			◆	◆				
Engineering – Composite Materials							◆	
Engineering – Computer Hardware/Software			◆	◆				◆
Engineering – Electrical			◆	◆				
Engineering – General			◆	◆			◆	
Engineering – Manufacturing				◆				
Engineering – Mechanical			◆	◆				

	Benidji State	Metropolitan State	Minnesota State Mankato	MSU Moorhead	St. Cloud State	Southwest Minnesota State	Winona State	MinnState.edu/online
Engineering Management	◆							◆
Engineering Technology – Electronic			◆					
Engineering Technology – General	◆							◆
Engineering Technology – Manufacturing			◆		◆			
English – Language, Literature, Writing	◆	◆	◆	◆	◆	◆	◆	◆
Entrepreneurship								
Environmental and Earth Sciences		◆	◆	◆	◆	◆	◆	◆
Ethnic and Cultural Studies		◆	◆					
Family Consumer Science			◆					
Farm Business Management						◆		
Film Studies				◆	◆	◆		◆
Food Processing Safety			◆					
Geographical Information Systems (GIS)			◆	◆				
Geography and Cartography	◆			◆	◆			
Gerontology			◆	◆				◆
Global Studies/International Relations			◆	◆	◆	◆	◆	◆
Graphic Design and Visual Communications	◆		◆	◆	◆			
Health Information Technology			◆					
Health Services Administration		◆		◆				◆
Health, Fitness, and Sport Science	◆	◆	◆	◆	◆	◆	◆	◆
History	◆	◆	◆	◆	◆	◆	◆	◆
Hotel, Restaurant, and Casino Management					◆	◆		
Human and Community Services			◆			◆		
Human Resources Management			◆	◆		◆	◆	◆
Humanities			◆					
Individualized and Multidisciplinary Studies	◆	◆	◆	◆	◆	◆	◆	◆
Insurance				◆	◆			
International Business			◆	◆	◆			◆
Languages – French			◆		◆			
Languages – German			◆	◆				
Languages – Spanish	◆	◆	◆	◆	◆	◆	◆	◆
Latin American Studies					◆			
Law Enforcement		◆	◆			◆		
Legal Studies								◆
Liberal Arts and Sciences – AA Transfer	◆	◆	◆	◆	◆	◆	◆	◆
Management Information Systems					◆	◆		
Manufacturing and Industrial Technology	◆				◆			
Manufacturing Operations Management		◆	◆	◆				◆
Marketing and Sales	◆	◆	◆	◆	◆	◆	◆	◆
Mass Media	◆	◆	◆	◆	◆	◆	◆	◆
Mathematics	◆	◆	◆	◆	◆	◆	◆	◆
Medical Technology/Clinical Lab Science			◆	◆	◆			
Meteorology					◆			
Music	◆	◆	◆	◆	◆	◆	◆	◆
Music Industry Management			◆					◆
Nuclear Medical Technology					◆			
Nursing	◆	◆	◆	◆	◆	◆	◆	◆
Nursing – Advanced Profile								◆
Paralegal				◆				
Parks and Recreation			◆	◆	◆			

	Benidji State	Metropolitan State	Minnesota State Mankato	MSU Moorhead	St. Cloud State	Southwest Minnesota State	Winona State	MinnState.edu/online
Philosophy		◆	◆	◆	◆	◆	◆	◆
Photography/Photographic Technology				◆				
Physics			◆	◆	◆	◆	◆	◆
Political Science	◆	◆	◆	◆	◆	◆	◆	◆
Project Management	◆	◆	◆	◆	◆	◆	◆	◆
Psychology			◆	◆	◆	◆	◆	◆
Psychology – Counseling					◆			
Public Administration		◆			◆		◆	◆
Publishing				◆				
Radiologic Technology					◆			
Real Estate/Property Management						◆		
Scandinavian Studies			◆					
Screenwriting			◆					
Social Sciences/Studies	◆	◆	◆					
Social Work	◆	◆	◆	◆	◆	◆	◆	◆
Sociology	◆	◆	◆	◆	◆	◆	◆	◆
Sports Management	◆	◆	◆	◆	◆	◆	◆	◆
Statistics			◆		◆		◆	◆
Surgical Technology								◆
Teaching – Agriculture						◆		
Teaching – Art			◆		◆	◆	◆	◆
Teaching – Biology/Life Sciences			◆	◆	◆	◆	◆	◆
Teaching – Business Education								◆
Teaching – Career and Technical	◆				◆			
Teaching – Chemistry			◆	◆	◆	◆	◆	◆
Teaching – Communication Arts and Literature	◆	◆	◆	◆	◆	◆	◆	◆
Teaching – Early Childhood		◆	◆	◆	◆	◆	◆	◆
Teaching – Elementary	◆	◆	◆	◆	◆	◆	◆	◆
Teaching – English as a Second Language					◆	◆	◆	◆
Teaching – Family Consumer Science			◆					
Teaching – French Language and Culture						◆		
Teaching – German Language and Culture			◆			◆		
Teaching – Health	◆	◆	◆	◆	◆	◆	◆	◆
Teaching – Mathematics	◆	◆	◆	◆	◆	◆	◆	◆
Teaching – Music	◆	◆	◆	◆	◆	◆	◆	◆
Teaching – Physical Education	◆	◆	◆	◆	◆	◆	◆	◆
Teaching – Physical/Earth Science	◆	◆	◆	◆	◆	◆	◆	◆
Teaching – Physics			◆	◆	◆	◆	◆	◆
Teaching – Social Studies/History	◆	◆	◆	◆	◆	◆	◆	◆
Teaching – Spanish Language and Culture	◆	◆	◆	◆	◆	◆	◆	◆
Teaching – Special Education					◆	◆	◆	◆
Teaching – Theater Arts/Dance			◆					
Technology Studies						◆		
Theater Arts and Drama		◆	◆	◆	◆	◆	◆	◆
Urban Planning/Regional Studies			◆		◆			◆
Wilderness Management and Wildland Firefighter	◆							
Women and Gender Studies		◆	◆	◆	◆	◆	◆	◆
Writing – Creative and Technical	◆	◆	◆	◆	◆	◆	◆	◆



# State University GRADUATE PROGRAMS

For a complete list of programs, visit [MinnState.edu](https://www.mnstate.edu).

	Bemidji State	Metropolitan State	Minnesota State Mankato	MSU Moorhead	St. Cloud State	Southwest Minnesota State	Winona State	MinnState.edu/online
Accounting		♦						♦
Anthropology/Archaeology		♦		♦				♦
Art/Studio Arts		♦						
Banking and Finance				♦				
Biological and Natural Sciences	♦	♦		♦				
Biomedical Equipment Technology				♦				
Business Administration and Management		♦	♦	♦	♦	♦	♦	♦
Communication Sciences and Disorders			♦	♦	♦			
Communications Studies		♦						
Community Health Services		♦						♦
Computer Science and Information Systems		♦	♦		♦			♦
Computer Security and Forensics/IT Auditing		♦			♦			♦
Counseling – Chemical Dependency		♦		♦	♦			♦
Counseling – College					♦			
Counseling – K–12			♦	♦	♦		♦	♦
Counseling – Marriage and Family					♦			
Counseling – Mental Health							♦	
Counseling – Rehabilitation			♦		♦			
Criminal Justice/Corrections			♦		♦			♦
Data Analytics					♦			
Database Technologies and Administration		♦	♦					♦
Dental Health Specialist		♦						
Economics					♦			
Education – Administration and Support			♦	♦	♦	♦	♦	♦
Education – Curriculum and Instruction					♦	♦	♦	♦
Education – General	♦		♦			♦	♦	♦
Education – Higher Education Administration					♦			♦
Education – Instructional Technology					♦			
Education – Student Development and Learning			♦		♦		♦	♦
Engineering – Computer Hardware/Software					♦			♦
Engineering – Electrical			♦		♦			♦
Engineering – General			♦					
Engineering – Mechanical			♦					
Engineering Management			♦		♦			♦
Engineering Technology – Manufacturing			♦					
English – Language, Literature, Writing	♦				♦			♦

	Bemidji State	Metropolitan State	Minnesota State Mankato	MSU Moorhead	St. Cloud State	Southwest Minnesota State	Winona State	MinnState.edu/online
Environmental and Earth Sciences	♦		♦					
Ethnic and Cultural Studies			♦					♦
Family Consumer Science					♦			
Geographical Information Systems (GIS)			♦		♦			
Geography and Cartography			♦					
Gerontology			♦		♦			
Health Information Technology			♦					
Health Services Administration								♦
Health, Fitness, and Sport Science			♦		♦		♦	
History			♦		♦			
Human and Community Services		♦	♦				♦	
Individualized and Multidisciplinary Studies		♦	♦		♦			
Languages – French			♦					
Languages – Spanish			♦				♦	
Liberal Arts and Sciences		♦						
Management Information Systems		♦						♦
Mass Media					♦			
Mathematics			♦					
Medical Product Regulation					♦			
Medical Technology/Clinical Lab Science					♦			
Music			♦					
Nanotechnology					♦			
Nursing		♦			♦		♦	
Nursing – Administration		♦					♦	♦
Nursing – Adult Health/Geriatric							♦	♦
Nursing – Advanced Practice		♦	♦				♦	♦
Nursing – Educator		♦					♦	♦
Parks and Recreation			♦					
Physics			♦					
Project Management		♦	♦					
Psychology			♦					♦
Psychology – Clinical			♦		♦			♦
Psychology – Counseling					♦			
Psychology – Industrial and Organizational			♦		♦			
Psychology – School			♦	♦				
Psychology – Sports		♦						

	Bemidji State	Metropolitan State	Minnesota State Mankato	MSU Moorhead	St. Cloud State	Southwest Minnesota State	Winona State	MinnState.edu/online
Public Administration		♦	♦					♦
Publishing				♦				
Quality Improvement							♦	
Social Work			♦		♦			
Sociology			♦		♦			
Sports Management			♦		♦			♦
Statistics			♦		♦			
Teaching – Biology/Life Sciences		♦	♦					
Teaching – Career and Technical						♦		♦
Teaching – Communication Arts and Literature	♦		♦		♦	♦	♦	♦
Teaching – Early Childhood			♦				♦	♦
Teaching – Elementary								♦
Teaching – English		♦						
Teaching – English as a Second Language		♦	♦	♦	♦	♦		♦
Teaching – French Language and Culture			♦					
Teaching – Health			♦					
Teaching – Humanities/Interdisciplinary			♦					
Teaching – Library/Information Media					♦			♦
Teaching – Mathematics	♦	♦	♦		♦	♦		
Teaching – Music				♦				
Teaching – Physical Education						♦		
Teaching – Physical/Earth Science	♦							
Teaching – Physics			♦					
Teaching – Reading/Literacy					♦	♦		♦
Teaching – Social Studies		♦						
Teaching – Special Education	♦	♦	♦		♦	♦	♦	♦
Teaching – Urban Education		♦						
Theater Arts and Drama			♦					
Urban Planning/Regional Studies			♦		♦			♦
Women and Gender Studies			♦					
Writing – Creative and Technical		♦	♦				♦	♦

# INTERCOLLEGIATE ATHLETICS

Student-athletes attending Minnesota State universities have remarkable opportunities to join elite, nationally competitive programs. The Northern Sun Intercollegiate Conference, one of the nation's premier NCAA Division II leagues, counts six Minnesota State universities among its 16 members. And, three of our universities sponsor NCAA Division I ice hockey.

		Bemidji State	MSU Moorhead	Minnesota State Mankato	St. Cloud State	Southwest Minnesota State	Winona State
MEN'S ATHLETICS	Baseball	◆		◆	◆	◆	◆
	Basketball	◆	◆	◆	◆	◆	◆
	Cross Country		◆	◆		◆	◆
	Football	◆	◆	◆	◆	◆	◆
	Golf	◆		◆	◆		◆
	Hockey	◆		◆	◆		
	Swimming/Diving				◆		
	Track and Field		◆	◆		◆	
	Wrestling		◆	◆	◆	◆	
WOMEN'S ATHLETICS	Basketball	◆	◆	◆	◆	◆	◆
	Cross Country	◆	◆	◆	◆	◆	◆
	Golf	◆	◆	◆	◆	◆	◆
	Gymnastics						◆
	Hockey	◆		◆	◆		
	Nordic Ski				◆		
	Soccer	◆	◆	◆	◆	◆	◆
	Softball	◆	◆	◆	◆	◆	◆
	Swimming/Diving		◆	◆	◆	◆	
	Tennis	◆	◆	◆	◆	◆	◆
	Track and Field	◆	◆	◆	◆	◆	◆
	Volleyball	◆	◆	◆	◆	◆	◆
CO-ED	Wheelchair Basketball					◆	





# » CONNECT WITH US!

Contact the state college or university you are interested in to get started today, or visit [MinnState.edu/askus](http://MinnState.edu/askus).

## COLLEGES

### Alexandria Technical & Community College

ALEXANDRIA  
320-762-0221  
[alextech.edu](http://alextech.edu)

### Anoka Technical College

ANOKA  
763-576-4850  
[anokatech.edu](http://anokatech.edu)

### Anoka-Ramsey Community College

CAMBRIDGE  
COON RAPIDS  
763-433-1300  
[anokaramsey.edu](http://anokaramsey.edu)

### Central Lakes College

BRAINERD  
STAPLES  
218-855-8031  
[clcmn.edu](http://clcmn.edu)

### Century College

WHITE BEAR LAKE  
651-779-3300  
[century.edu](http://century.edu)

### Dakota County Technical College

ROSEMOUNT  
651-423-8000  
[dctc.edu](http://dctc.edu)

### Fond du Lac Tribal & Community College

CLOQUET  
218-879-0800  
[fdltcc.edu](http://fdltcc.edu)

### Hennepin Technical College

BROOKLYN PARK  
EDEN PRAIRIE  
952-995-1300  
[hennepintech.edu](http://hennepintech.edu)

### Hibbing Community College

HIBBING  
218-262-7200  
[hibbing.edu](http://hibbing.edu)

### Inver Hills Community College

INVER GROVE HEIGHTS  
651-450-3000  
[inverhills.edu](http://inverhills.edu)

### Itasca Community College

GRAND RAPIDS  
218-322-2340  
[itascacc.edu](http://itascacc.edu)

### Lake Superior College

DULUTH  
218-733-7601  
[lsc.edu](http://lsc.edu)

### Mesabi Range College

EVELETH  
VIRGINIA  
218-749-0313  
[mesabirange.edu](http://mesabirange.edu)

### Minneapolis Community & Technical College

MINNEAPOLIS  
612-659-6200  
[minneapolis.edu](http://minneapolis.edu)

### Minnesota State College Southeast

RED WING  
WINONA  
877-853-8324  
[southeastmn.edu](http://southeastmn.edu)

### Minnesota State Community and Technical College

DETROIT LAKES  
FERGUS FALLS  
MOORHEAD  
WADENA  
877-450-3322  
[minnesota.edu](http://minnesota.edu)

### Minnesota West Community & Technical College

CANBY  
GRANITE FALLS  
JACKSON  
PIPESTONE  
WORTHINGTON  
800-658-2330  
[mnwest.edu](http://mnwest.edu)

### Normandale Community College

BLOOMINGTON  
952-358-8201  
[normandale.edu](http://normandale.edu)

### North Hennepin Community College

BROOKLYN PARK  
763-424-0724  
[nhcc.edu](http://nhcc.edu)

### Northland Community & Technical College

EAST GRAND FORKS  
THIEF RIVER FALLS  
218-683-8800  
[northlandcollege.edu](http://northlandcollege.edu)

### Northwest Technical College

BEMIDJI  
218-333-6600  
[ntcmn.edu](http://ntcmn.edu)

### Pine Technical & Community College

PINE CITY  
320-629-5100  
[pine.edu](http://pine.edu)

### Rainy River Community College

INTERNATIONAL FALLS  
218-285-7722  
[rainyriver.edu](http://rainyriver.edu)

### Ridgewater College

HUTCHINSON  
WILLMAR  
320-222-5200  
[ridgewater.edu](http://ridgewater.edu)

### Riverland Community College

ALBERT LEA  
AUSTIN  
OWATONNA  
507-433-0600  
[riverland.edu](http://riverland.edu)

### Rochester Community and Technical College

ROCHESTER  
507-258-7210  
[rctc.edu](http://rctc.edu)

### Saint Paul College

ST. PAUL  
651-846-1600  
[saintpaul.edu](http://saintpaul.edu)

### South Central College

FARIBAULT  
NORTH MANKATO  
507-389-7220  
[southcentral.edu](http://southcentral.edu)

### St. Cloud Technical & Community College

ST. CLOUD  
320-308-5000  
[sctcc.edu](http://sctcc.edu)

### Vermilion Community College

ELY  
218-235-2191  
[vcc.edu](http://vcc.edu)

## UNIVERSITIES

### Bemidji State University

BEMIDJI  
218-755-2040  
[bemidjistate.edu](http://bemidjistate.edu)

### Metropolitan State University

MINNEAPOLIS  
ST. PAUL  
651-793-1302  
[metrostate.edu](http://metrostate.edu)

### Minnesota State University, Mankato

MANKATO  
507-389-1822  
[mnsu.edu](http://mnsu.edu)

### Minnesota State University Moorhead

MOORHEAD  
218-477-2161  
[mnstate.edu](http://mnstate.edu)

### Southwest Minnesota State University

MARSHALL  
507-537-6286  
[smsu.edu](http://smsu.edu)

### St. Cloud State University

ST. CLOUD  
320-308-2244  
[stcloudstate.edu](http://stcloudstate.edu)

### Winona State University

WINONA  
507-457-5100  
[winona.edu](http://winona.edu)

## NEED HELP? ASK US!

Minnesota State is available to answer your questions and connect you with resources every step of the way.

Monday–Friday: 7 a.m.–8 p.m. CST

Saturday: 9 a.m.–2:30 p.m. CST

Sunday: 11 a.m.–4:30 p.m. CST

» CALL TODAY!

**800-456-8519**



# MINNESOTA STATE

[MinnState.edu](http://MinnState.edu)

STAY IN TOUCH!



This document is available in alternative formats to individuals with disabilities.  
To request an alternate format, contact Human Resources at 651-201-1664.

Individuals with hearing or speech disabilities may contact us  
via their preferred Telecommunications Relay Service.

Minnesota State is an affirmative action, equal opportunity employer and educator.