



Annual Class Size Study

A Report of Class Size Patterns
2019-2020 School Year

February 2020

Metro ECSU
2 Pine Tree Drive, Suite 101
Arden Hills, Minnesota 55112

612-638-1500
www.metroecs.org

FOREWARD

The Metro ECSU 2019-2020 Class Size Study reports data describing both regional and local norms. We hope that the information contained in this report will be useful to decision makers and interested citizens served by Metro ECSU. Though this data was carefully collected, we wish to caution readers from making assumptions about a district's staffing pattern based on class size statistics alone.

Questions or comments about this report should be directed to Angela Skrade at angela.skrade@metroecsu.org or 612-638-1528.

Julie Frame
Executive Director, Metro ECSU

Angela Skrade
Class Size Study Coordinator, Metro ECSU

TABLE OF CONTENTS

Introduction	4
Glossary of Terms.....	6
Reports with Tables	8
List of Tables.....	9
A. Regionwide Class Size Statistics & Data Observations: Trends.....	10
B. Regionwide Class Size Statistics.....	14
C. Elementary Class Size Statistics & Data Observations.....	19
D. Junior Secondary Class Size Statistics & Data Observations.....	24
E. Senior Secondary Class Size Statistics & Data Observations.....	31
Appendix	38
A. List of Participating Districts	39
B. Memo to District Contacts: Directions for the Annual Class Size Study	40
C. Data Collection Formats (data was collected in Excel)	43

INTRODUCTION

This report describes class size statistics for 33 school districts in the metro Twin Cities area that submitted data to Metro ECSU. To enable the reader to interpret this report accurately, it is necessary to describe the report briefly in terms of data collection and reporting procedures.

Sources of Data

The method of collecting class size information was an electronic format. All metro area superintendents were sent an invitation to authorize participation and appoint a staff member to be in direct contact with Metro ECSU staff for the study.

District contacts received the “Memo to District Contacts: Directions for the Annual Class Size Study” (pages 40-42) and three Excel spreadsheet formats (pages 43-45), one for each school type (elementary, junior secondary, and senior secondary). The designated contact person appointed by the superintendent in each district was responsible for collecting data from each building in the district, aggregating the data in each Excel file, and returning the data to Metro ECSU for data processing and analysis. More details about this process are available in the memo located in the Appendix of this document.

Organization of the Report

For an overview, please refer to the Table of Contents at the beginning of the study. The Class Size Study contains a glossary (pages 6-7) which should be read prior to viewing the tables. The study contains an introduction, a middle section with tables and results, and a summary section. The “Reports with Tables” section consists of statistical highlights for metro schools aggregated as “regionwide” data and by school type—elementary, junior secondary, and senior secondary. The highlights represent regional norms for all class size categories and are calculated by aggregating local data plus reports focusing on elementary, junior secondary, and senior secondary programs.

Data were reported in some cases excluding special education students, and, in others, including special education students. It should also be noted that consistent grade groupings have not been used for each district. (Of special note here is the fact that grades 5 and 6 may be included with elementary or junior secondary data depending upon local district configuration.)

Limitations

The following considerations should be taken into account when reviewing data in the Annual Class Size Study:

- Class size data included in this report are based on fall student counts submitted as of October 1, 2019.

- At the junior and senior secondary levels, no attempt has been made to include all subjects offered by all schools; only subject areas that are most typically offered at the secondary level have been included.

It is tempting to interpret inter-district comparisons in terms of relationships which suggest cause and effect. The reader should be careful in making such comparisons. Class size data among school districts will be different due to many factors, including educational philosophy, school facility design, school district organizations, economic stability, school district size, management methods, and utilization of specialists or paraprofessionals in conjunction with professional staff. Although the descriptions contained within the tables of this report demonstrate normative comparisons, the data reported simply describe *what* exists, not *why* differences exist among the districts.

GLOSSARY OF TERMS

1. Average (Mean) Class Size

Average (Mean) Class Size represents the class size which equals the arithmetic average of class sizes reported. The average is the total of reported class sizes divided by the number of classes reported. Averages are reported to the nearest one hundredth.

2. Class Size

Class Size refers to the number of students in a group or class organized for the purpose of instruction.

3. Class Size Range

Class Size Range represents the maximum and minimum class sizes reported for a given grade or subject area.

4. Class Types

Class Types counted for this study differ for each school type. Class types for each are as follows:

Elementary	Junior Secondary	Senior Secondary
Kindergarten	Art	Art
Grade 1	Business Ed/Marketing	Business Ed/Marketing
Grade 2	Family & Consumer Science	Family & Consumer Science
Grade 3	Health Education	Health Education
Grade 4	Interdisciplinary Courses	Language Arts/English
Grade 5	Language Arts/English	Math
Grade 6	Math	Music
Special Education	Music	Physical Education
Combo or Ungraded	Physical Education	Science
	Science	Social Studies
	Social Studies	Special Education
	Special Education	Technology Ed/Computer Science
	Technology Ed/Computer Science	Work Experience Program
	World Languages	World Languages

5. Elementary

This grouping *may* include the following grades: K, 1, 2, 3, 4, 5, and 6. Combination grades/ungraded and special education classes may also be included. Depending on individual district grade organization, “elementary” *may not* include grades 5 or 6.

6. Grade Group

Grade Groups include the school types—elementary, junior secondary, and senior secondary, but also part of and combinations of those school type groups. For example, some of the data is reported for a combination of junior and senior secondary as one grade group.

7. Junior Secondary

Junior Secondary includes students in middle schools, junior high schools, or the first part of an eight-year secondary program (i.e., grades 5-12).

8. Participating Districts

Participating Districts includes school districts in the metro Twin Cities area that submitted data for the current year of the study. These districts may or may not be members of Metro ECSU.

9. School Type

School Types for this study are Elementary, Junior Secondary, and Senior Secondary.

10. Senior Secondary

Senior Secondary includes students in senior high school or in the second part of an eight-year secondary program (i.e., grades 5-12).

REPORTS WITH TABLES

LIST OF TABLES

Table		Page
1	Elementary Regionwide Class Size Trends.....	11
2	Jr Secondary Regionwide Class Size Trends.....	12
3	Sr Secondary Regionwide Class Size Trends.....	13
4	Class Size Regionwide by Class Type.....	15
5	Class Size Regionwide by Grade Group (Excluding Special Education).....	16
6	Class Size Regionwide by Grade Group (Including Special Education).....	16
7	Average Class Size by Grade Group (Excluding Special Education).....	17
8	Average Class Size by Grade Group (Including Special Education).....	18
9	Elementary Average Class Size by Class Type.....	20
10	Elementary Maximum/Minimum Class Size by Class Type.....	22
11	Jr Secondary Average Class Size by Class Type.....	25
12	Jr Secondary Maximum/Minimum Class Size by Class Type.....	28
13	Sr Secondary Average Class Size by Class Type.....	32
14	Sr Secondary Maximum/Minimum Class Size by Class Type.....	35

A. REGIONWIDE CLASS SIZE STATISTICS & DATA OBSERVATIONS: TRENDS

The regionwide class size averages by class type from the last five years were included in the study. The graphs include data from the 2015-16 school year through the 2019-20 school year.

Table 1 (page 11) reports the average Elementary class sizes for each year by class type. The following trends were observed:

- This year 2nd Grade, 4th Grade, and Combo or Ungraded reported a five-year-low class size.
- This year 6th Grade reported a five-year-high class size.

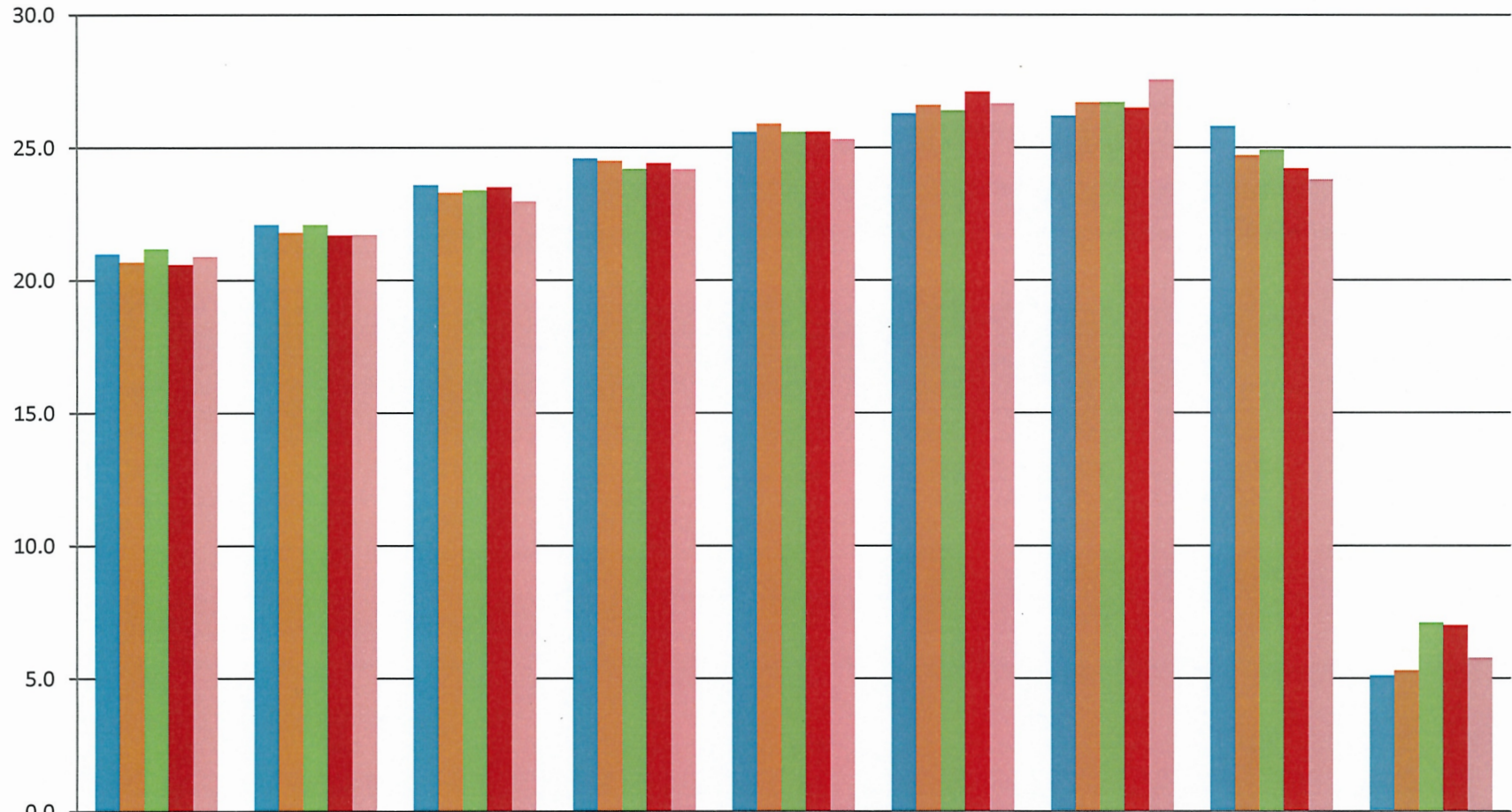
Table 2 (page 12) reports the average Jr Secondary class sizes for each year by class type. The following trends were observed:

- This year Tech Ed/Comp Science reported a five-year-high class size.
- Of the core subjects, Language Arts/English and Math are consistently lower in class size than Science and Social Studies.

Table 3 (page 13) reports the average Sr Secondary class sizes for each year by class type. The following trends were observed:

- This year Health Education, and Science reported a five-year-low class size.
- Of the core subjects, Social Studies classes have consistently had the highest class sizes at the Sr Secondary level.

Table 1. Elementary Regionwide Class Size Trends



	Kindergarten	1st Grade	2nd Grade	3rd Grade	4th Grade	5th Grade	6th Grade	Combo or Ungraded	Special Ed
2015-16	21.0	22.1	23.6	24.6	25.6	26.3	26.2	25.8	5.1
2016-17	20.7	21.8	23.3	24.5	25.9	26.6	26.7	24.7	5.3
2017-18	21.2	22.1	23.4	24.2	25.6	26.4	26.7	24.9	7.1
2018-19	20.6	21.7	23.5	24.4	25.6	27.1	26.5	24.2	7.0
2019-20	20.9	21.7	23.0	24.2	25.3	26.7	27.6	23.8	5.8

Table 2. Jr Secondary Regionwide Class Size Trends

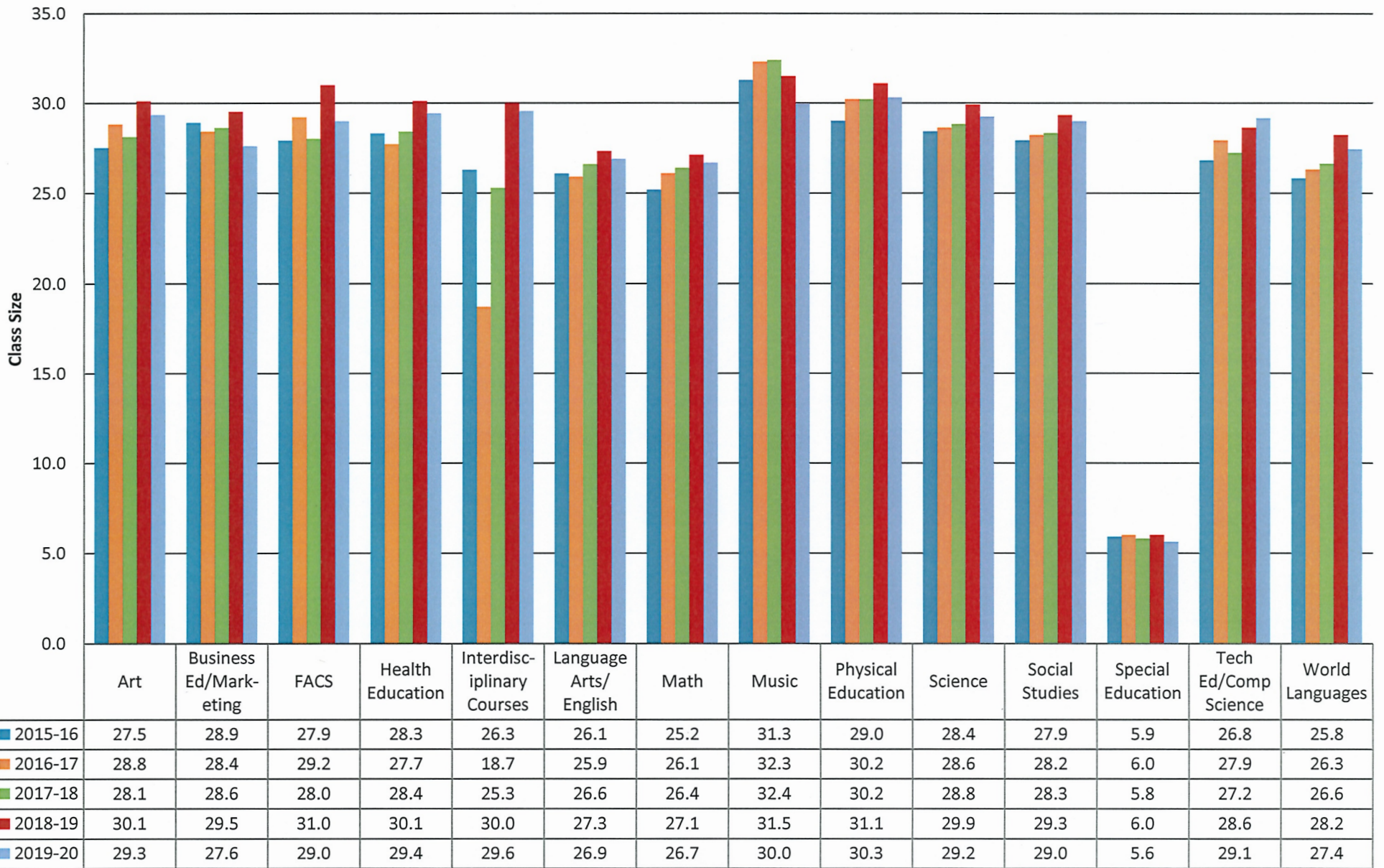
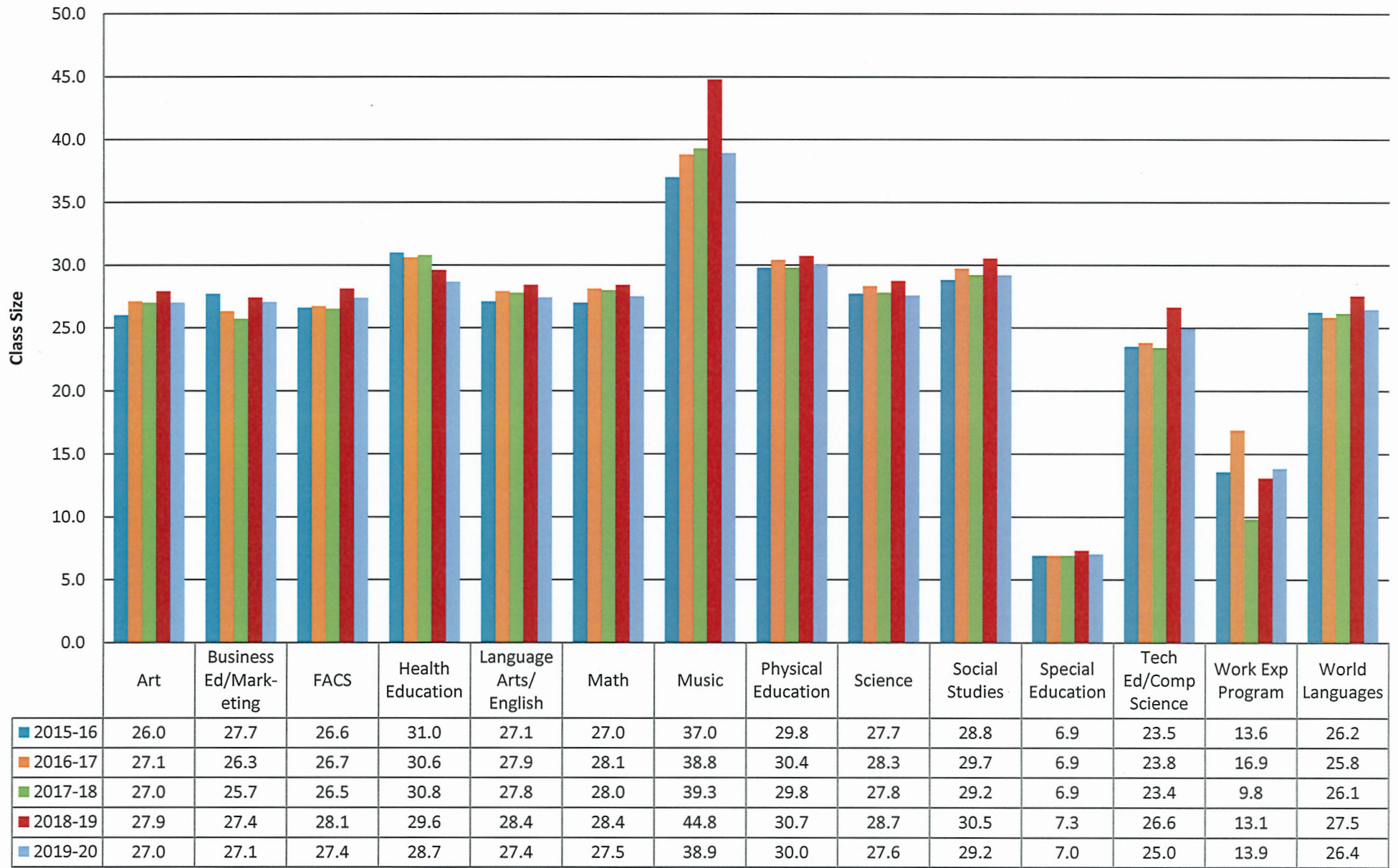


Table 3. Sr Secondary Regionwide Class Size Trends



B. REGIONWIDE CLASS SIZE STATISTICS

Averages and class size ranges for specific school types and selected subject areas for the participating districts as a whole are reported in Table 4 (page 15). Summary data for the entire region excluding special education and including special education are shown in Table 5 and Table 6 (page 16) respectively.

Average class size data by selected grade groupings (i.e., Elementary, Junior Secondary, Senior Secondary, Junior and Senior Secondary combined, and for all K - 12) for class sizes excluding special education and including special education are shown in Table 7 (page 17) and Table 8 (page 18) respectively. Individual district data are available in these tables by district number (see key on page 39).

Table 4. Class Size Regionwide by Class Type

Elementary

Class Type	Avg.	Min.	Max.
Kindergarten	20.9	12	27
Grade 1	21.7	11	28
Grade 2	23.0	12	29
Grade 3	24.2	13	31
Grade 4	25.3	12	34
Grade 5	26.7	5	37
Grade 6	27.6	13	35
Combo or Ungraded	23.8	16	29
Special Education	5.8	1	13

Jr Secondary

Class Type	Avg.	Min.	Max.
Art	29.3	9	61
Business Ed/Marketing	27.6	12	35
Family & Consumer Science	29.0	12	37
Health Education	29.4	10	43
Interdisciplinary Courses	29.5	14	46
Language Arts/English	26.9	5	40
Math	26.7	2	45
Music	30.0	3	133
Physical Education	30.3	13	49
Science	29.2	5	43
Social Studies	29.0	5	40
Special Education	5.6	1	18
Technology Ed/Computer Science	29.1	12	60
World Languages	27.4	10	41

Sr Secondary

Class Type	Avg.	Min.	Max.
Art	27.0	2	42
Business Ed/Marketing	27.0	2	40
Family & Consumer Science	27.4	1	40
Health Education	28.7	10	42
Language Arts/English	27.4	7	40
Math	27.5	3	44
Music	38.9	2	126
Physical Education	30.0	10	49
Science	27.6	1	40
Social Studies	29.2	8	42
Special Education	7.0	1	21
Technology Ed/Computer Science	24.9	1	53
Work Experience Program	13.9	1	38
World Languages	26.4	2	42

Table 5. Class Size Regionwide by Grade Group (Excluding Special Education)

	Avg.	Min.	Max.
Elementary	23.6	5	37
Jr Secondary	28.5	2	133
Sr Secondary	28.1	1	126

Table 6. Class Size Regionwide by Grade Group (Including Special Education)

	Avg.	Min.	Max.
Elementary	23.3	1	37
Jr Secondary	25.9	1	133
Sr Secondary	25.9	1	126

Table 7. Average Class Size by Grade Group (Excluding Special Education)

Elementary		Jr Secondary		Sr Secondary		Jr & Sr Secondary		K-12	
Dist.	Avg.	Dist.	Avg.	Dist.	Avg.	Dist.	Avg.	Dist.	Avg.
831	21.47	108	24.31	108	21.88	108	22.98	108	22.92
6	21.60	284	24.42	278	24.24	13	24.58	13	24.45
276	21.61	13	24.92	13	24.35	717	25.15	280	24.86
200	21.91	280	25.00	717	24.78	280	25.15	717	24.99
108	22.39	717	25.52	111	25.04	6	25.53	6	25.02
272	22.51	6	25.61	280	25.27	284	25.63	284	25.15
277	22.51	277	26.40	6	25.44	721	26.55	276	25.81
278	22.60	197	26.66	110	25.91	276	26.72	721	26.07
716	22.64	270	26.87	276	26.19	278	26.74	278	26.26
284	22.69	721	26.96	721	26.21	277	26.99	624	26.38
717	22.85	831	27.23	624	26.45	111	27.00	277	26.52
624	22.90	624	27.61	282	26.65	624	27.02	111	26.57
280	23.00	282	27.61	200	27.11	282	27.04	282	26.63
721	23.01	200	28.09	832	27.29	197	27.24	270	26.83
111	23.08	111	28.13	277	27.34	200	27.61	197	26.87
720	23.14	14	28.15	284	27.62	270	27.65	200	27.07
270	23.21	276	28.18	197	28.03	110	27.92	110	27.33
282	23.23	192	28.23	716	28.10	832	28.31	272	27.39
283	23.28	272	28.52	283	28.11	283	28.37	831	27.51
719	23.32	283	28.62	279	28.22	14	28.44	716	27.62
13	23.38	138	29.00	11	28.48	192	28.78	283	27.71
192	23.71	11	29.17	14	28.72	272	28.85	832	27.95
197	23.80	832	29.29	12	29.09	11	28.86	14	27.98
110	23.83	719	29.35	272	29.14	716	28.87	192	28.06
833	23.90	720	29.58	270	29.26	831	29.10	11	28.20
279	23.99	110	29.60	719	29.49	279	29.12	279	28.39
11	24.04	15	29.89	192	29.57	719	29.42	719	28.54
15	24.36	833	30.14	720	29.78	720	29.66	720	28.65
623	24.40	716	30.23	831	30.39	833	30.37	833	29.40
14	24.55	279	30.26	833	30.62	138	30.59	15	29.76
832	24.56	278	30.33	138	31.44	15	30.78	623	30.08
12	25.70	623	31.65	623	31.66	12	31.22	12	30.44
138	32.39	12	33.55	15	31.80	623	31.66	138	31.10
Reg wide	23.58	Reg wide	28.52	Reg wide	28.11	Reg wide	28.31	Reg wide	27.61

Table 8. Average Class Size by Grade Group (Including Special Education)

Elementary		Jr Secondary		Sr Secondary		Jr & Sr Secondary		K-12	
Dist.	Avg.	Dist.	Avg.	Dist.	Avg.	Dist.	Avg.	Dist.	Avg.
276	20.97	717	20.77	108	18.81	108	19.84	108	20.06
716	21.28	108	21.10	278	20.73	717	21.43	717	21.51
831	21.47	277	21.65	717	22.18	277	22.56	277	22.55
6	21.60	280	22.19	13	22.30	280	22.58	280	22.63
200	21.91	197	22.21	111	22.44	13	22.88	278	22.91
833	21.98	284	22.68	280	22.88	278	22.95	13	22.93
111	22.24	276	23.53	277	23.09	197	23.00	197	23.07
108	22.39	13	23.78	110	23.31	284	23.65	284	23.51
272	22.51	14	24.12	197	24.11	14	24.44	111	24.26
277	22.51	270	24.78	624	24.46	111	24.49	14	24.27
278	22.60	15	25.08	282	24.62	282	24.84	276	24.46
284	22.69	282	25.15	716	24.72	270	25.00	282	24.68
719	22.78	192	25.30	14	24.74	276	25.19	270	24.70
717	22.85	720	25.31	720	25.15	720	25.24	624	24.91
15	22.88	6	25.61	284	25.21	624	25.25	716	24.96
624	22.90	138	25.69	138	25.25	110	25.33	720	24.97
14	22.93	111	25.70	721	25.27	138	25.39	6	25.02
280	23.00	272	25.72	270	25.42	6	25.53	110	25.14
721	23.01	624	26.11	6	25.44	721	25.69	721	25.34
720	23.14	278	26.19	832	25.71	716	25.83	272	25.46
192	23.20	721	26.21	276	25.91	272	26.24	831	25.63
270	23.21	831	26.28	279	26.22	192	26.25	192	25.84
282	23.23	11	26.29	12	26.30	11	26.43	283	26.11
283	23.28	283	26.41	283	26.59	283	26.49	11	26.13
13	23.38	110	27.06	11	26.60	831	26.60	15	26.26
197	23.80	279	27.15	272	26.68	279	26.64	279	26.30
110	23.83	716	27.90	831	26.79	15	26.84	832	26.70
279	23.99	200	28.09	200	27.11	832	26.92	138	26.78
11	24.04	832	28.12	719	27.24	200	27.61	200	27.07
623	24.40	833	28.42	192	27.66	719	27.87	719	27.15
832	24.56	719	28.52	623	28.92	12	28.10	833	27.75
12	25.70	623	29.35	15	29.05	833	28.82	12	27.79
138	31.02	12	30.10	833	29.26	623	29.12	623	28.18
Reg wide	23.25	Reg wide	25.92	Reg wide	25.88	Reg wide	25.90	Reg wide	25.54

C. ELEMENTARY CLASS SIZE STATISTICS & DATA OBSERVATIONS

Elementary class size data are reported for each participating district for grades K, 1, 2, 3, 4, 5, 6, combo or ungraded, and Special Education.

Table 9 (pages 20-21) reports the average class sizes for each school district. Districts are ranked from low to high according to the average calculated.

Table 10 (pages 22-23) reports class size maximums and minimums for each school district. Districts are ranked from low to high based upon the maximum class size.

Individual districts that did not submit data required for these tables were excluded from that portion of a table.

Data observations:

- Average class size generally increases with grade level.
- Regionwide, elementary settings most commonly end with 5th grade.
- Average class size shows wide variability across districts.
- Class size range shows wide variability across districts.

Table 9. Elementary Average Class Size by Class Type

Kindergarten		Grade 1		Grade 2		Grade 3		Grade 4	
Dist.	Avg.	Dist.	Avg.	Dist.	Avg.	Dist.	Avg.	Dist.	Avg.
831	18.86	716	18.00	276	19.75	276	20.76	280	22.27
6	18.92	272	18.97	270	20.95	831	20.86	6	22.73
200	19.07	831	19.24	108	21.00	6	21.30	270	22.84
282	19.17	717	19.33	278	21.14	278	21.67	108	23.00
716	19.20	284	20.57	6	21.20	272	22.45	282	23.20
272	19.67	15	20.58	831	21.26	280	22.91	276	23.55
720	20.15	200	20.85	283	21.56	716	23.00	272	23.56
11	20.17	276	21.11	111	21.60	624	23.31	278	23.67
721	20.19	278	21.14	277	21.67	719	23.46	721	23.79
623	20.21	721	21.29	197	21.85	284	23.53	831	23.94
284	20.38	108	21.33	284	22.09	282	23.60	624	24.14
278	20.44	11	21.35	200	22.14	200	23.62	720	24.17
15	20.87	277	21.38	719	22.41	108	23.67	200	24.50
13	20.91	719	21.50	14	22.50	111	23.75	283	24.73
108	21.00	13	21.78	624	22.52	110	24.00	719	24.92
276	21.09	280	21.79	192	22.64	13	24.00	111	25.00
192	21.14	832	21.89	272	22.71	277	24.00	716	25.00
833	21.21	283	21.93	716	23.00	279	24.00	284	25.26
277	21.22	6	22.00	280	23.07	717	24.00	277	25.29
14	21.30	833	22.11	13	23.22	192	24.23	279	25.42
719	21.36	623	22.20	279	23.30	720	24.55	192	25.47
111	21.40	14	22.33	720	23.32	833	24.65	13	25.67
717	21.50	192	22.35	833	23.38	270	24.89	717	25.80
832	21.56	624	22.59	110	23.46	14	25.00	11	26.39
624	21.56	720	22.60	282	23.60	832	25.00	14	26.50
12	21.65	110	22.67	623	23.70	623	25.50	833	26.55
110	21.85	279	22.90	721	23.71	11	25.58	197	26.60
280	21.92	197	22.94	15	23.85	283	25.91	110	26.75
283	22.00	270	23.42	832	24.00	721	26.00	623	26.88
279	22.22	12	23.72	11	24.53	197	26.47	832	27.00
197	22.32	111	23.80	717	24.60	12	26.83	12	27.65
270	22.84	282	24.80	12	26.05	138	26.86	15	28.30
138	25.14	138	25.29	138	28.33	15	28.73	138	32.33
Reg wide	20.91	Reg wide	21.72	Reg wide	22.97	Reg wide	24.18	Reg wide	25.32

Table 9. Elementary Average Class Size by Class Type

Grade 5		Grade 6		Combo or Ungraded		Special Education	
Dist.	Avg.	Dist.	Avg.	Dist.	Avg.	Dist.	Avg.
270	23.32	831	23.33	13	19.00	15	1.40
6	23.64	270	24.38	276	20.18	111	2.00
624	23.68	716	25.00	624	22.00	276	3.13
721	24.00	272	25.16	278	22.50	138	5.60
831	24.00	623	28.06	833	23.91	192	5.75
110	24.17	138	34.40	280	24.33	833	6.21
108	24.33	Reg wide	27.56	716	24.67	14	6.40
276	24.52			192	24.86	719	8.00
720	24.52			623	26.00	716	9.00
283	24.60			Reg wide	23.79	Reg wide	5.78
716	25.00						
284	25.35						
280	25.69						
15	25.75						
282	25.80						
13	26.00						
833	26.25						
192	26.52						
279	26.74						
623	27.00						
719	27.04						
272	27.22						
278	27.50						
11	28.03						
832	28.22						
12	29.50						
14	30.75						
138	35.83						
Reg wide	26.66						

Table 10. Elementary Maximum/Minimum Class Size by Class Type

Kindergarten			Grade 1			Grade 2			Grade 3			Grade 4		
Dist.	Max	Min	Dist.	Max	Min	Dist.	Max	Min	Dist.	Max	Min	Dist.	Max	Min
282	20	19	716	18	18	108	22	19	278	23	21	108	24	22
716	20	18	717	21	18	111	22	21	6	23	20	282	24	22
108	21	21	108	22	21	278	22	21	716	23	23	6	24	21
200	21	17	272	22	15	200	23	21	108	24	23	278	25	22
278	21	20	277	22	20	277	23	20	111	24	23	716	25	25
6	21	17	278	22	21	716	23	23	282	24	23	111	26	24
111	22	20	832	22	21	197	24	19	831	24	15	200	26	23
272	22	17	14	23	21	283	24	19	200	25	22	280	26	19
277	22	20	200	23	19	6	24	19	717	25	23	717	26	25
717	22	21	111	24	23	110	25	22	832	25	25	720	27	21
720	22	18	15	24	17	192	25	19	110	26	23	721	27	20
721	22	18	284	24	17	270	25	16	272	26	17	832	27	27
832	22	21	6	24	20	276	25	12	277	26	22	110	28	24
12	23	19	721	24	18	282	25	23	14	27	23	192	28	23
13	23	18	110	25	20	284	25	19	280	27	19	270	28	17
15	23	19	192	25	20	624	25	17	284	27	19	277	28	23
192	23	19	624	25	18	717	25	24	624	27	19	624	28	19
284	23	15	719	25	17	719	25	19	720	27	23	14	29	24
831	23	16	720	25	21	720	25	21	721	27	25	197	29	24
11	24	15	831	25	16	721	25	21	13	28	20	272	29	19
110	24	21	138	26	24	14	26	20	138	28	24	276	29	12
14	24	20	197	26	20	15	26	23	276	28	13	284	29	22
283	24	20	276	26	11	272	26	17	279	28	15	719	29	19
623	24	16	282	26	24	280	26	18	719	28	17	831	29	20
624	24	19	283	26	19	831	26	17	192	29	19	13	30	21
197	25	19	11	27	16	832	26	23	270	29	22	11	31	14
719	25	17	12	27	20	13	27	19	283	29	20	279	31	17
833	25	18	13	27	19	279	27	17	623	29	19	283	31	20
138	26	25	270	27	19	12	28	24	11	30	21	12	32	23
276	26	12	280	27	18	11	29	19	197	30	22	15	32	27
280	26	17	623	27	16	138	29	28	833	30	16	623	32	22
270	27	18	833	27	18	623	29	18	12	31	20	138	33	32
279	27	15	279	28	17	833	29	16	15	31	26	833	34	20
Reg wide	27	12	Reg wide	28	11	Reg wide	29	12	Reg wide	31	13	Reg wide	34	12

Table 10. Elementary Maximum/Minimum Class Size by Class Type

Grade 5			Grade 6			Combo or Ungraded			Special Education		
Dist.	Max	Min	Dist.	Max	Min	Dist.	Max	Min	Dist.	Max	Min
108	25	24	716	25	25	13	19	19	111	2	2
110	25	22	270	30	20	276	23	19	15	2	1
270	25	21	272	31	21	278	24	21	192	7	5
716	25	25	623	31	25	624	24	20	276	7	2
282	26	25	831	31	13	280	25	23	833	8	4
283	26	20	138	35	34	192	28	20	14	10	4
720	26	22	Reg wide	35	13	716	28	21	716	10	8
13	27	25				833	28	16	138	11	1
6	27	19				623	29	20	719	13	7
721	27	19				Reg wide	29	16	Reg wide	13	1
15	28	24									
624	28	19									
278	29	25									
284	29	22									
831	29	16									
832	29	28									
276	30	21									
280	30	21									
719	30	23									
192	31	19									
833	31	19									
14	32	27									
272	32	21									
623	32	20									
12	33	26									
11	34	5									
279	35	15									
138	37	35									
Reg wide	37	5									

D. JUNIOR SECONDARY CLASS SIZE STATISTICS & DATA OBSERVATIONS

Junior Secondary class size data are reported for each participating district in selected subject areas (see page 6 in the Glossary of Terms for a list).

Table 11 (page 25-27) reports the average class sizes for each school district. Districts are ranked from low to high according to the average calculated.

Table 12 (pages 28-30) reports class size maximums and minimums for each school district. Districts are ranked from low to high based upon the maximum class size.

Individual districts that did not submit data required for these tables were excluded from that portion of a table.

Data observations:

- The highest average class sizes regionwide are Music and Physical Education.
- Of the core subjects, Language Arts/English and Math are lower in class size than Science and Social Studies.
- Average class size shows wide variability across districts.
- Class size range shows wide variability across districts.

Table 11. Jr Secondary Average Class Size by Class Type

Art		Business Ed/Marketing		Family & Consumer Science		Health Education		Interdisciplinary Courses	
Dist.	Avg.	Dist.	Avg.	Dist.	Avg.	Dist.	Avg.	Dist.	Avg.
108	20.60	108	20.40	717	18.83	624	25.10	111	26.43
717	22.30	831	25.71	108	22.00	284	25.55	277	27.22
282	24.67	192	27.00	831	24.44	282	25.60	833	28.96
138	25.00	720	28.00	624	24.82	110	26.67	14	32.09
13	26.06	6	28.44	270	25.25	717	27.00	13	33.50
284	26.07	716	29.00	110	26.83	108	27.67	Reg wide	29.55
200	26.12	11	30.91	200	27.00	280	27.71		
624	26.16	623	33.00	284	27.47	720	28.13		
197	26.20	Reg wide	27.59	282	27.50	276	28.43		
720	26.50			720	27.50	272	28.86		
110	26.88			192	27.85	279	29.42		
192	27.18			279	27.90	11	29.76		
280	27.62			6	28.00	111	30.00		
6	28.27			111	29.00	192	30.00		
831	28.33			719	29.41	719	30.00		
277	28.67			11	30.19	15	30.60		
833	28.94			276	30.67	14	31.10		
283	29.13			15	32.00	832	31.31		
270	29.44			832	32.29	833	31.38		
832	30.30			623	32.30	716	32.50		
721	30.42			12	35.55	721	32.50		
272	30.50			Reg wide	28.98	623	32.82		
279	30.54					12	33.80		
719	30.55					Reg wide	29.43		
276	30.67								
14	31.00								
716	31.00								
111	31.25								
11	31.38								
623	32.54								
12	34.63								
278	35.80								
15	40.00								
Reg wide	29.34								

Table 11. Jr Secondary Average Class Size by Class Type

Language Arts/English		Math		Music		Physical Education		Science	
Dist.	Avg.	Dist.	Avg.	Dist.	Avg.	Dist.	Avg.	Dist.	Avg.
13	19.11	280	20.41	721	16.50	108	24.44	108	24.22
108	21.50	13	21.56	284	16.95	717	25.75	6	25.17
280	21.69	108	23.22	831	22.83	270	26.61	13	26.30
14	23.35	15	23.29	277	24.00	197	26.88	717	26.58
6	23.67	282	23.59	6	26.54	6	27.30	111	26.61
717	25.00	138	24.00	197	27.75	624	27.62	284	26.67
15	25.32	6	24.03	13	27.78	280	27.79	624	26.83
284	25.61	277	24.05	270	28.00	284	28.52	721	27.50
197	25.83	197	24.32	283	28.10	192	28.55	832	27.50
11	25.90	192	24.50	276	29.72	719	28.72	280	27.53
200	25.96	717	24.88	279	30.45	276	28.94	277	27.67
277	26.00	284	24.94	624	30.70	279	29.00	270	27.80
716	26.13	111	25.33	272	30.81	278	29.37	138	28.00
721	26.20	270	25.47	719	31.12	832	29.44	200	28.06
110	26.69	200	26.00	832	31.60	200	29.61	831	28.18
111	26.95	11	26.44	138	31.89	831	29.67	110	28.56
270	27.06	721	26.56	11	31.96	277	29.72	278	28.63
282	27.20	831	26.70	833	31.97	111	30.00	716	28.71
272	27.35	272	26.71	717	32.08	272	30.10	283	28.75
624	27.48	283	26.82	15	33.21	14	30.33	192	28.77
832	27.57	719	27.06	280	33.69	283	30.59	282	28.80
192	27.76	832	27.30	192	34.40	720	31.20	197	29.11
831	27.90	624	27.71	623	36.44	110	31.24	276	29.31
276	28.00	716	27.75	111	37.60	282	31.44	272	29.53
283	28.02	276	28.03	720	37.91	833	31.81	11	30.00
720	28.37	110	28.12	282	41.57	11	32.30	720	30.13
138	28.46	720	28.13	14	42.50	716	32.50	14	30.38
278	28.58	14	28.31	200	43.05	721	33.03	719	30.51
833	28.87	278	28.38	12	43.22	623	33.24	833	30.53
719	29.41	833	29.05	716	44.20	138	34.11	623	31.03
12	29.60	623	29.25	108	45.40	15	36.04	279	31.24
279	30.24	12	30.09	110	50.53	13	39.25	15	32.72
623	31.21	279	30.46	278	54.70	12	39.67	12	35.08
Reg wide	26.90	Reg wide	26.68	Reg wide	29.96	Reg wide	30.31	Reg wide	29.22

Table 11. Jr Secondary Average Class Size by Class Type

Social Studies		Special Education		Technology Ed/Computer Science		World Languages	
Dist.	Avg.	Dist.	Avg.	Dist.	Avg.	Dist.	Avg.
108	24.11	108	2.85	108	18.00	13	14.00
6	24.97	719	2.88	13	23.20	14	22.57
282	25.25	276	3.22	717	24.25	831	23.31
284	25.65	15	3.35	270	24.50	717	23.75
111	25.71	278	3.43	192	25.00	270	24.02
717	25.83	12	3.72	624	25.56	278	24.53
13	26.26	197	3.73	110	25.67	276	24.59
280	26.54	832	3.92	200	26.25	6	25.12
200	26.75	111	4.00	6	26.67	283	25.25
276	26.86	282	4.00	831	26.67	282	25.80
197	27.04	717	4.41	284	26.91	192	25.82
277	27.47	110	4.62	720	27.15	720	26.15
624	27.77	138	4.85	280	27.33	284	26.48
721	27.94	277	5.09	282	27.50	197	26.56
716	28.00	284	5.11	276	27.88	110	26.93
278	28.46	624	5.24	283	29.09	111	27.00
832	28.52	623	5.35	719	29.21	272	27.46
272	28.78	192	5.49	833	29.33	138	28.00
192	28.80	833	5.95	721	29.42	624	28.03
270	29.08	720	6.02	11	29.76	833	28.63
831	29.27	272	6.14	272	29.80	280	29.00
11	29.54	721	6.22	716	30.17	719	29.16
14	29.81	270	6.28	14	30.29	279	29.68
110	30.00	14	6.29	111	30.38	721	29.80
720	30.00	283	6.29	623	30.54	623	29.88
719	30.03	831	6.30	279	30.95	11	30.08
279	30.33	280	6.55	832	31.00	832	30.10
283	30.51	279	6.73	278	33.10	12	30.79
833	31.47	11	6.93	12	33.18	Reg wide	27.41
15	31.52	13	9.14	15	34.07		
623	31.69	716	10.57	Reg wide	29.12		
12	31.98	Reg wide	5.62				
138	32.46						
Reg wide	28.96						

Table 12. Jr Secondary Maximum/Minimum Class Size by Class Type

Art			Business Ed/Marketing			Family & Consumer Science			Health Education			Interdisciplinary Courses		
Dist.	Max	Min	Dist.	Max	Min	Dist.	Max	Min	Dist.	Max	Min	Dist.	Max	Min
108	22	18	108	22	19	108	22	22	110	28	25	111	30	24
138	25	25	716	29	29	270	27	22	282	29	23	277	31	25
282	27	22	831	30	12	282	28	27	108	30	24	14	37	23
717	27	12	192	32	18	111	29	29	111	30	30	833	37	14
110	30	24	623	33	33	717	29	12	276	30	24	13	46	14
277	31	27	720	33	20	110	30	17	280	31	23	Reg wide	46	14
200	32	19	11	34	26	831	30	12	284	31	19			
831	32	23	6	35	21	200	32	18	717	31	25			
14	33	27	Reg wide	35	12	192	33	23	272	32	26			
197	33	11				276	33	23	720	33	20			
270	33	23				284	33	21	832	33	28			
272	33	29				6	33	22	15	34	26			
276	33	25				720	33	19	624	34	15			
280	33	18				832	33	27	719	34	20			
283	33	17				624	34	13	721	34	31			
284	33	18				11	35	14	192	35	24			
624	33	20				623	35	23	623	35	26			
716	33	29				279	36	16	716	35	30			
720	33	19				719	36	15	14	36	21			
719	34	25				12	37	33	833	36	21			
832	34	28				15	37	29	11	37	17			
192	35	15				Reg wide	37	12	12	38	28			
623	35	24							279	43	10			
721	35	27							Reg wide	43	10			
13	36	11												
6	36	19												
111	37	25												
11	38	21												
12	38	27												
279	39	9												
833	39	16												
15	40	40												
278	61	28												
Reg wide	61	9												

Table 12. Jr Secondary Maximum/Minimum Class Size by Class Type

Language Arts/English			Math			Music			Physical Education			Science		
Dist.	Max	Min	Dist.	Max	Min	Dist.	Max	Min	Dist.	Max	Min	Dist.	Max	Min
108	28	11	138	25	23	721	20	13	108	30	19	108	28	19
138	29	28	108	31	17	138	33	31	280	32	22	138	28	28
282	30	22	277	31	12	277	36	11	270	33	16	277	30	24
716	30	23	721	31	22	13	38	12	716	33	32	282	30	26
277	31	20	284	32	16	6	38	11	717	33	15	280	31	21
721	31	24	6	32	13	832	39	19	272	34	24	110	32	25
276	32	23	110	33	24	270	40	16	277	35	23	200	32	18
284	32	14	111	33	12	717	42	18	283	35	21	284	32	18
717	32	20	197	33	8	283	43	14	721	35	30	717	32	21
110	33	12	270	33	15	284	45	3	831	35	23	721	32	24
111	33	12	278	33	22	831	46	14	192	36	16	831	32	16
197	33	11	280	33	11	624	47	20	6	36	19	111	33	12
200	33	17	716	33	24	197	48	11	719	36	18	270	33	21
270	33	18	192	34	7	719	49	19	111	37	26	283	33	15
278	33	24	200	34	10	282	50	26	197	37	15	624	33	14
832	33	21	272	34	20	280	51	17	276	37	19	14	34	23
14	34	10	282	34	5	272	52	17	279	37	13	192	34	19
280	34	11	717	34	17	833	52	11	282	37	26	197	34	21
6	34	10	831	34	18	111	53	25	284	37	16	276	34	16
272	35	16	283	35	21	15	55	15	138	38	31	716	34	25
283	35	18	719	35	11	276	55	12	200	38	22	832	34	18
624	35	19	720	35	10	12	57	29	624	38	16	13	35	5
719	35	11	832	35	18	11	58	12	832	38	17	272	35	21
720	35	19	276	36	19	623	58	25	14	39	22	278	35	19
831	35	19	11	37	6	14	60	33	278	39	25	719	35	11
11	36	6	14	37	11	108	63	30	11	40	17	11	36	22
192	36	17	13	38	5	279	63	4	110	41	19	6	36	17
623	36	22	624	38	11	110	69	32	623	41	23	623	36	15
13	37	5	12	39	18	200	75	19	720	42	21	12	37	30
833	37	13	623	39	12	716	76	25	833	42	15	720	37	20
12	38	13	833	39	15	192	79	12	15	44	23	279	39	13
15	40	13	15	40	2	720	81	22	12	45	31	833	39	18
279	40	18	279	45	14	278	133	25	13	49	27	15	43	22
Reg wide	40	5	Reg wide	45	2	Reg wide	133	3	Reg wide	49	13	Reg wide	43	5

Table 12. Jr Secondary Maximum/Minimum Class Size by Class Type

Social Studies			Special Education			Technology Ed/Computer Science			World Languages		
Dist.	Max	Min	Dist.	Max	Min	Dist.	Max	Min	Dist.	Max	Min
108	30	18	282	5	1	108	19	17	13	14	14
282	31	5	110	6	3	831	28	24	111	27	27
284	31	17	278	6	1	110	29	17	138	28	28
110	32	28	719	6	1	13	29	16	14	29	14
200	32	18	108	7	1	282	29	25	278	29	15
277	32	21	832	8	2	270	30	20	270	30	12
280	32	18	15	9	1	717	30	13	276	30	15
721	32	24	276	9	1	272	31	29	282	30	23
111	33	12	284	9	1	276	31	22	284	31	18
13	33	5	831	10	3	280	31	22	197	32	21
138	33	32	111	11	1	192	32	12	831	32	11
278	33	23	138	11	2	283	32	23	110	33	21
716	33	22	197	11	1	200	33	19	192	33	14
717	33	18	277	11	1	6	33	20	272	33	14
832	33	21	623	11	1	624	33	14	280	33	20
276	34	10	717	11	1	716	33	28	717	33	13
283	34	21	720	11	1	720	33	18	283	34	16
6	34	14	14	12	2	721	33	25	6	34	14
831	34	22	283	12	1	111	34	27	721	34	27
11	35	22	13	13	2	284	34	20	832	34	19
14	35	22	192	13	1	623	34	25	624	35	20
197	35	15	721	13	1	832	34	27	719	35	16
272	35	19	279	14	2	719	35	16	623	36	22
719	35	11	624	15	1	14	36	19	720	36	10
720	35	19	716	15	3	11	38	19	11	37	21
192	36	19	12	16	1	833	38	13	12	37	21
624	36	17	280	16	1	12	39	27	833	40	10
12	37	21	833	16	1	15	40	24	279	41	18
623	37	22	270	17	2	279	40	16	Reg wide	41	10
279	38	11	272	17	2	278	60	23			
833	39	16	11	18	1	Reg wide	60	12			
15	40	25	Reg wide	18	1						
270	40	17									
Reg wide	40	5									

E. SENIOR SECONDARY CLASS SIZE STATISTICS & DATA OBSERVATIONS

Senior Secondary class size data are reported for each participating district in selected subject areas (see page 6 in the Glossary of Terms for a list).

Table 13 (pages 32-34) reports the average class sizes for each school district. Districts are ranked from low to high according to the average calculated.

Table 14 (pages 35-37) reports class size maximums and minimums for each school district. Districts are ranked from low to high based upon the maximum class size.

Individual districts that did not submit data required for these tables were excluded from that portion of a table.

Data observations:

- The highest average class sizes regionwide are Health Education and Music.
- Of the core subjects, Language Arts/English, Math, and Science are lower in class size than Social Studies.
- Average class size shows wide variability across districts.
- Class size range shows wide variability across districts.

Table 13. Sr Secondary Average Class Size by Class Type

Art		Business Ed/Marketing		Family & Consumer Science		Health Education		Language Arts/English	
Dist.	Avg.	Dist.	Avg.	Dist.	Avg.	Dist.	Avg.	Dist.	Avg.
108	16.25	276	20.17	278	5.00	108	24.57	108	19.40
111	16.50	200	21.60	717	20.25	831	24.83	276	22.33
278	19.57	6	22.00	200	20.80	624	25.96	280	23.55
716	21.00	280	23.50	282	21.67	13	26.40	278	24.49
284	21.75	279	23.63	276	22.07	276	26.97	717	24.50
717	21.86	716	23.75	111	23.50	721	27.00	111	24.75
721	21.91	719	24.36	721	24.00	277	27.67	13	25.05
6	22.20	110	24.50	832	24.00	717	28.17	6	25.24
110	22.29	278	25.13	110	24.43	832	28.20	200	25.78
276	22.72	721	25.38	272	25.13	272	28.25	624	26.00
13	23.52	717	25.67	192	25.55	270	29.50	716	26.29
200	24.29	192	26.10	270	25.80	833	29.50	277	26.38
277	24.60	197	26.17	284	26.30	279	29.86	721	26.73
14	25.64	111	26.33	279	26.65	110	30.00	284	26.74
624	25.67	13	26.83	831	27.27	11	30.08	282	27.08
832	25.76	283	27.00	624	27.44	200	30.14	832	27.15
272	26.00	284	27.42	11	27.89	282	30.17	12	27.21
270	26.25	277	28.13	6	28.18	284	30.30	11	27.41
282	27.70	11	28.15	15	28.40	720	30.43	14	27.56
280	27.71	108	28.33	12	28.67	15	30.80	110	27.62
719	27.88	138	28.83	280	29.25	12	32.00	272	27.77
279	28.12	12	29.14	108	29.50	283	32.50	279	27.77
11	28.30	833	29.25	719	29.82	192	32.67	283	27.98
283	28.59	272	29.85	197	30.25	719	33.33	197	28.58
720	29.14	624	29.89	720	30.31	623	33.50	192	28.73
192	29.74	623	30.75	833	30.41	138	34.00	720	28.87
623	29.75	14	31.17	14	31.25	197	34.17	719	29.25
833	30.89	720	31.43	623	31.33	280	34.25	15	29.77
12	30.92	270	32.56	13	34.00	111	39.00	270	30.08
197	31.27	831	32.93	138	34.50	Reg wide	28.67	833	30.43
831	33.29	15	35.50	Reg wide	27.40			623	30.56
15	34.17	Reg wide	27.05					138	31.08
138	36.50							831	31.67
Reg wide	26.99							Reg wide	27.41

Table 13. Sr Secondary Average Class Size by Class Type

Math		Music		Physical Education		Science		Social Studies	
Dist.	Avg.	Dist.	Avg.	Dist.	Avg.	Dist.	Avg.	Dist.	Avg.
108	20.15	280	19.00	111	21.60	108	20.23	108	22.93
111	21.79	13	25.00	108	24.71	13	22.31	13	23.14
282	23.93	721	25.29	110	25.13	717	23.46	280	24.15
716	24.69	832	27.44	721	26.33	6	23.51	110	25.94
278	25.08	14	28.33	6	26.35	278	24.77	717	26.00
6	25.10	197	28.42	832	26.78	280	24.98	282	26.04
110	25.21	719	30.41	716	27.17	197	25.02	624	26.16
624	25.58	110	32.50	272	27.35	12	25.52	278	27.50
717	25.86	138	35.50	200	27.88	111	25.58	721	28.00
13	26.12	200	36.55	624	27.96	110	25.69	6	28.30
721	26.40	278	36.58	11	28.43	624	25.95	284	28.37
277	26.43	277	36.67	717	28.54	276	26.12	276	28.54
280	26.60	6	37.33	833	28.54	832	26.85	277	28.78
270	26.73	283	38.38	282	29.00	721	26.90	720	28.80
200	26.84	624	38.59	278	29.36	200	26.94	716	29.00
284	27.08	833	38.79	270	29.44	14	27.25	283	29.04
832	27.12	276	39.44	279	29.46	277	27.29	832	29.19
279	27.16	831	40.64	284	29.77	282	27.31	200	29.27
15	27.29	284	40.83	280	29.88	283	27.45	11	29.48
720	27.29	108	41.00	719	29.93	270	27.46	192	29.70
11	27.43	717	41.17	197	30.57	716	27.50	279	29.70
276	27.44	270	42.15	276	30.92	192	27.89	12	30.05
12	27.45	11	42.23	831	31.39	284	27.91	272	30.25
197	27.59	279	43.87	13	31.85	272	27.94	719	30.38
283	27.71	111	44.25	277	32.50	11	28.04	197	30.47
138	28.04	272	44.95	192	33.90	279	28.25	111	30.75
272	28.84	282	46.20	283	34.40	720	28.73	270	30.82
831	29.38	15	48.38	12	34.75	623	29.74	623	30.83
192	29.44	623	51.36	138	34.88	831	30.06	14	31.67
14	29.94	720	54.25	14	35.94	719	30.27	831	31.73
623	30.74	192	58.91	720	36.16	833	30.56	833	31.98
833	31.29	716	59.20	623	36.63	138	30.58	15	32.08
Reg wide	27.50	12	60.91	15	37.33	15	33.21	138	33.96
		Reg wide	38.94	Reg wide	30.03	Reg wide	27.56	Reg wide	29.18

Table 13. Sr Secondary Average Class Size by Class Type

Special Education		Technology Ed/Computer Science		Work Experience Program		World Languages	
Dist.	Avg.	Dist.	Avg.	Dist.	Avg.	Dist.	Avg.
108	2.59	111	15.50	716	4.50	108	13.40
111	3.70	278	17.20	284	5.17	111	19.14
278	3.82	197	17.70	278	6.60	278	19.56
717	4.48	280	18.20	717	7.00	13	21.80
624	4.88	717	19.25	12	13.20	6	22.05
282	5.13	110	19.67	272	14.00	717	22.18
270	5.45	108	21.67	279	14.00	14	23.00
832	5.79	192	22.13	110	14.50	282	23.93
719	5.80	138	22.33	13	15.40	831	24.19
138	6.18	276	22.47	192	19.20	283	24.44
277	6.21	13	22.85	15	34.75	110	24.56
110	6.24	721	22.86	Reg wide	13.85	276	25.02
197	6.34	624	23.00			277	25.24
14	6.50	282	23.40			200	25.28
15	6.64	11	23.84			270	25.29
276	6.82	831	24.44			721	25.68
284	6.83	832	24.67			192	25.87
192	6.94	720	25.14			624	25.89
831	7.02	200	25.24			280	25.91
833	7.05	284	25.45			720	26.68
11	7.14	270	26.00			719	27.14
720	7.40	272	26.29			833	27.19
716	7.44	277	26.50			832	27.20
623	7.76	279	26.50			272	27.34
283	8.16	6	27.00			279	27.54
12	8.36	719	27.17			15	28.00
279	8.42	15	28.25			11	28.31
721	8.50	283	28.33			197	28.54
272	8.94	14	28.50			716	29.80
13	10.16	623	29.12			12	30.19
280	10.17	833	29.44			284	30.37
Reg wide	7.02	12	30.08			138	30.82
		716	31.75			623	31.30
		Reg wide	24.95			Reg wide	26.41

Table 14. Sr Secondary Maximum/Minimum Class Size by Class Type

Art			Business Ed/Marketing			Family & Consumer Science			Health Education			Language Arts/English		
Dist.	Max	Min	Dist.	Max	Min	Dist.	Max	Min	Dist.	Max	Min	Dist.	Max	Min
108	22	12	200	26	10	278	5	5	717	30	19	108	28	11
111	23	10	6	27	12	111	24	23	108	31	14	12	32	22
717	27	15	111	28	23	200	25	15	272	32	12	276	32	17
200	28	20	716	29	11	282	26	18	282	32	26	716	32	14
716	29	15	276	30	13	717	27	11	284	32	27	197	33	17
721	29	4	280	30	20	276	28	15	832	32	23	278	33	9
110	30	14	110	31	17	108	30	29	200	33	23	624	33	12
282	31	18	721	31	15	721	30	15	283	33	32	717	33	13
278	32	4	624	32	27	831	30	19	720	33	25	721	33	11
284	32	2	717	32	7	272	31	18	276	34	22	832	33	11
13	33	6	719	32	14	270	32	18	721	34	18	282	34	11
272	33	5	13	33	19	110	33	12	192	35	30	6	34	9
624	33	14	108	34	25	12	33	20	270	35	14	110	35	14
832	33	7	12	34	23	192	33	16	624	35	11	200	35	11
277	34	13	192	34	17	279	34	14	831	35	21	272	35	14
280	34	14	197	34	19	284	34	1	110	36	22	277	35	10
283	34	22	272	34	22	719	34	26	12	36	27	279	35	12
6	34	10	277	34	19	720	34	16	13	36	21	283	35	15
192	35	14	278	34	2	832	34	15	197	36	33	111	36	18
197	35	25	284	34	8	14	35	25	277	36	17	192	36	12
276	35	12	623	34	24	197	35	25	279	37	10	270	36	17
720	35	20	14	35	25	6	35	24	719	37	25	284	36	8
12	36	14	283	35	12	13	36	33	623	38	30	719	36	16
15	36	33	720	35	27	280	36	12	833	38	24	720	36	17
270	36	12	833	35	20	623	36	21	11	39	11	11	38	7
279	36	15	11	36	10	833	36	16	111	39	39	14	38	11
14	37	2	15	36	35	11	37	12	15	40	23	280	38	14
623	37	15	270	36	21	624	38	15	280	40	31	623	38	16
719	37	18	279	36	12	15	39	5	138	42	21	138	39	22
833	37	12	138	39	15	138	40	23	Reg wide	42	10	833	39	13
11	38	10	831	40	18	Reg wide	40	1				13	40	8
831	41	22	Reg wide	40	2							15	40	21
138	42	31										831	40	19
Reg wide	42	2										Reg wide	40	7

Table 14. Sr Secondary Maximum/Minimum Class Size by Class Type

Math			Music			Physical Education			Science			Social Studies		
Dist.	Max	Min	Dist.	Max	Min	Dist.	Max	Min	Dist.	Max	Min	Dist.	Max	Min
111	32	9	280	37	2	108	31	14	717	28	7	108	32	9
278	32	13	721	40	13	282	31	25	276	31	15	282	32	18
276	33	11	13	42	15	832	31	24	108	32	6	717	32	20
282	33	9	719	48	14	278	33	19	272	32	21	284	33	22
716	33	12	277	49	21	721	34	17	12	33	15	721	33	12
721	33	8	14	51	5	276	35	21	6	33	11	276	34	16
200	34	13	197	51	13	624	35	18	721	33	15	277	34	23
284	34	7	717	52	28	11	37	10	200	34	10	12	35	23
624	34	14	624	59	14	110	37	11	277	34	16	200	35	19
717	34	13	278	61	9	270	37	18	278	34	9	278	35	13
832	34	16	276	62	17	279	37	11	282	34	19	624	35	16
110	35	13	283	64	24	6	37	15	832	34	11	720	35	16
12	35	11	110	65	11	716	37	17	111	35	10	832	35	11
272	35	21	138	67	16	717	37	18	13	35	8	13	36	8
277	35	16	282	67	20	111	38	10	14	35	16	192	36	15
283	35	18	111	68	31	200	38	12	192	35	10	283	36	14
6	35	11	833	68	12	272	38	16	197	35	1	716	36	19
720	35	16	108	70	14	277	38	24	284	35	15	110	37	16
108	36	12	270	70	21	283	38	28	716	35	12	272	37	18
270	36	13	831	71	12	831	38	19	720	35	18	279	37	17
623	36	14	832	72	9	833	38	17	110	36	10	11	38	10
192	37	14	623	74	24	12	39	30	279	36	10	111	38	21
831	37	9	720	74	35	197	41	15	283	36	13	197	38	15
279	38	11	200	76	10	623	41	32	624	36	13	270	38	21
280	38	15	716	77	31	13	42	15	11	37	12	6	38	15
11	39	8	6	84	10	15	42	26	270	38	16	623	38	15
138	40	10	12	86	40	280	42	16	831	38	15	831	38	17
14	40	11	192	87	20	719	42	10	15	39	21	15	40	15
197	40	10	11	96	9	14	43	30	719	39	17	280	40	14
833	40	10	15	100	12	720	43	25	138	40	15	719	40	18
15	41	11	284	105	7	284	45	17	280	40	13	833	40	16
13	44	3	279	119	5	192	47	23	623	40	11	138	41	21
Reg wide	44	3	272	126	12	138	49	12	833	40	14	14	42	19
			Reg wide	126	2	Reg wide	49	10	Reg wide	40	1	Reg wide	42	8

Table 14. Sr Secondary Maximum/Minimum Class Size by Class Type

Special Education			Technology Ed/Computer Science			Work Experience Program			World Languages		
Dist.	Max	Min	Dist.	Max	Min	Dist.	Max	Min	Dist.	Max	Min
717	6	2	111	21	10	717	7	7	108	18	7
108	7	1	280	22	12	716	8	1	717	28	10
282	8	3	278	24	10	110	15	14	278	29	2
111	9	1	108	25	17	284	15	1	282	31	18
276	9	3	138	25	21	272	17	11	200	32	16
278	9	1	110	27	14	278	19	1	272	32	15
15	10	1	6	27	27	12	26	2	283	32	3
719	11	2	717	27	12	192	26	13	111	33	11
110	12	2	831	27	20	13	30	1	192	33	8
14	12	1	721	28	15	279	32	3	276	33	10
624	12	1	832	28	19	15	38	31	6	33	7
270	13	1	282	29	17	Reg wide	38	1	721	33	14
716	14	5	270	30	21				110	34	16
12	15	3	192	31	16				270	34	13
138	15	1	272	31	21				277	34	9
284	15	1	284	31	11				14	35	2
623	15	3	13	32	11				284	35	17
720	15	2	624	32	13				716	35	23
831	15	1	197	33	1				832	35	18
277	16	1	200	33	14				623	36	24
832	16	1	276	33	15				719	36	12
197	17	1	277	33	8				720	36	12
721	17	4	283	33	22				197	37	12
11	18	1	720	33	15				831	37	10
272	18	5	12	35	23				13	38	11
283	18	1	15	35	19				15	38	18
279	19	2	14	36	22				624	38	11
280	19	2	623	36	15				11	39	10
833	19	1	716	36	26				12	39	15
192	20	1	719	37	18				833	40	12
13	21	3	833	37	17				138	41	20
Reg wide	21	1	11	39	11				280	41	14
			279	53	13				279	42	12
			Reg wide	53	1				Reg wide	42	2

APPENDIX

33 PARTICIPATING DISTRICTS

Alphabetical Listing

11 Anoka-Hennepin
716 Belle Plaine
12 Centennial
108 Central Public Schools
13 Columbia Heights
272 Eden Prairie
192 Farmington
831 Forest Lake
14 Fridley
200 Hastings
270 Hopkins
717 Jordan
832 Mahtomedi
276 Minnetonka
721 New Prague
138 North Branch
278 Orono
279 Osseo
719 Prior Lake-Savage
280 Richfield
623 Roseville
720 Shakopee
6 South St. Paul
833 South Washington County
282 St. Anthony-New Brighton
15 St. Francis
283 St. Louis Park
110 Waconia
111 Watertown-Mayer
284 Wayzata
277 Westonka
197 West St. Paul
624 White Bear Lake

District Number Listing

6 South St. Paul
11 Anoka-Hennepin
12 Centennial
13 Columbia Heights
14 Fridley
15 St. Francis
108 Central Public Schools
110 Waconia
111 Watertown-Mayer
138 North Branch
192 Farmington
197 West St. Paul
200 Hastings
270 Hopkins
272 Eden Prairie
276 Minnetonka
277 Westonka
278 Orono
279 Osseo
280 Richfield
282 St. Anthony-New Brighton
283 St. Louis Park
284 Wayzata
623 Roseville
624 White Bear Lake
716 Belle Plaine
717 Jordan
719 Prior Lake-Savage
720 Shakopee
721 New Prague
831 Forest Lake
832 Mahtomedi
833 South Washington County



Metro ECSU
2 Pine Tree Drive, Suite 101
Arden Hills, MN 55112

www.metroecsus.org
612-638-1500

DATE: September 27, 2019
TO: Class Size Study District Contact Persons
FROM: Angela Skrade, Class Size Study Coordinator
RE: Directions for the Annual Class Size Study 2019-2020

Metro ECSU is collecting school district data for the 7-county metro area Class Size Study. This study will give districts a point of comparison for class size across the metro area for the 2019-2020 school year. Metro ECSU would greatly appreciate your help in collecting the data for this study. All districts that submit data will receive a copy of the Metro ECSU Class Size Study when it is released in February.

Class Size Reported as of October 1, 2019:

District data should reflect fall semester class sizes as of October 1, 2019. Please do not update your data to reflect changes made after October 1. It is important that all districts report data from the same time period.

Reporting Format:

With this letter you should have three different Excel spreadsheets for data reporting. Each file is designed for one school level as follows:

- Elementary
- Junior Secondary, Middle School, or First Part of Six-Year Secondary
- Senior Secondary or Second Part of Six-Year Secondary

Each entry in Excel consists of: District Number, Class Type (elementary grades or secondary subjects), Number of Classes and Class Size. These are called fields.

Each file contains a data entry sample and a list of acceptable values for the Class Type field. Note that the Class Type field has a drop-down list of values from which to choose; you do not have to type them.

Example:

Suppose St. Paul Public Schools (district 625) had the following Language Arts/English classes in a middle school: one class of 18, four classes of 22, and twelve classes of 24.

- Use the Junior Secondary Excel Spreadsheet.
- Enter three lines of data, as follows.

District Nbr	Class Type	Nbr Classes	Class Size
625	Language Arts/English	1	18
625	Language Arts/English	4	22
625	Language Arts/English	12	24

Mode of Collection:

If data is compiled at the district level (as is often the case in smaller districts), use one of each of the three Excel files to record the data.

If data is collected from a number of building level contacts, please distribute the appropriate Excel file(s) to each school. Also include a copy of this letter. Instruct building contacts to respond in a timely fashion—we suggest that you give them a due date of November 15, 2019. Data is due to Metro ECSU by November 22, 2019.

Once the data from each building is collected, please aggregate (copy and paste) school data for the district into the three school level Excel files (elementary, jr secondary and sr secondary). Please send only the three *district* aggregate data files (along with any comments) to Metro ECSU.

Do not commingle elementary, junior secondary or senior secondary data. Keep each type of data in its respective Excel file.

Detailed Guidance for Reporting Data:

Please review the Detailed Guidance for Reporting Data on page 3 of this letter. We've included specific examples and instructions to help you accurately report your data.

Deadline:

Submit your data to Metro ECSU by November 22, 2019. Please include your contact information in the space provided in the Excel files so that we know who to contact with questions about the data.

If you do not submit your data by November 22, we cannot guarantee that it will be included in the study. All districts that submit data will receive a copy of the Metro ECSU Class Size Study when it is released in February.

Questions:

If you have any questions or are unsure how to report particular data, please contact Angela Skrade, Class Size Study Coordinator, at angela.skrade@metroecsu.org or 612-638-1528. Thank you for your cooperation and assistance.

Detailed Guidance for Reporting Data

Class Type Options

Provide class size information for the Class Types listed in the drop-down menu only. Metro ECSU does not attempt to include all possible Class Types. Rather, it is a snapshot of classes most frequently offered at each grade level across the metro Twin Cities public schools. Examples of Class Types not collected are: Independent Study, Alternative Learning Programs, ELL, and College Readiness Classes (e.g. AVID).

If your school does not offer a particular Class Type, do not list it or enter any data.

If you are unsure how to classify a specific course, please contact Angela Skrade, Class Size Study Coordinator.

Combo or Ungraded Class Type (elementary only)

Include classes that combine grade levels (combo) or arrange classes by student achievement level (ungraded).

Interdisciplinary Class Type (jr secondary only)

Include classes that combine 2 or more Class Types at the jr secondary level. This is for entire courses, not just units of study.

Special Education Class Type

Special education students should be counted with the general education class to which they are assigned. Students in special education classes are counted separately if they are comprised only of special education students who spend the majority of their time in that class.

Multiple Groups per Teacher (jr and sr secondary only)

Include classes that combine students with the same teacher in the same classroom with students learning material at different levels. For example, if the same teacher provides instruction for German 5 and German 6 in the same classroom at the same time, this should be considered one World Languages class.

Multiple Teachers per Group

In situations where there are two or more certified teachers assigned to a section or group of students, this should be reported as if there were multiple sections of the class with one teacher each. It would be assumed that teachers share essentially equal student "loads." Examples:

- 2 certified teachers/41 students: Report as 1 class of 20 and 1 class of 21
- 4 certified teachers + 1 half-time teacher/90 students: Report as 4 classes of 20 and 1 class of 10 (allows for the half-time person to have half the # of students)

$$4n + .5n = 90$$

$$n = \# \text{ students for full time teacher}$$

Some rounding may be necessary to maintain # students (n) as whole numbers.

Questions

If you have any questions or are unsure how to report particular data, please contact Angela Skrade, Class Size Study Coordinator, at angela.skrade@metroecsu.org or 612-638-1528.

