

# BIENNIAL REPORT

Fiscal Years 2019-2020

This document is made available electronically  
by the Minnesota Legislative Reference Library  
as part of an ongoing digital archiving project.  
<http://www.leg.state.mn.us/lrl/lrl.asp>



DEPARTMENT OF IRON RANGE  
RESOURCES & REHABILITATION

To the Governor and Legislature  
of the State of Minnesota



It is my privilege to present the 39th Department of Iron Range Resources & Rehabilitation biennial report to the Honorable Governor Tim Walz and members of the Minnesota Legislature.

As we reflect upon our agency’s activities over the past two years, it is through the lens of the global COVID-19 pandemic. The world’s fight against the coronavirus has directly affected every region of our nation, including northeastern Minnesota. Our businesses, schools, communities, people of every age, health care systems and governments have been impacted and will continue to be impacted in the months ahead.

The need for our agency’s programs and services has become even more apparent during these difficult times. The agency provided \$9.1 million in business loans, which generated a total project investment of \$40 million, mainly in the manufacturing sector. In our communities, the agency invested \$36.1 million, which leveraged a total project investment of over \$321.1 million. Investments in infrastructure and community social assets, such as downtowns, parks, recreation, trails, culture and the arts, enhanced the quality of life in the region. Major investments in broadband and child care have been key to addressing critical needs both before and during the pandemic. The agency also supported workforce development programs that prepared skilled workers for in-demand positions and provided training for incumbent workers.

To address continued needs related to the pandemic, the agency made \$7 million in loan and grant funding available to area businesses and communities that have been negatively impacted by COVID-19. The agency’s board voted unanimously at its June 2020 meeting to approve the two new programs as part of the FY21 budget.

Our agency’s support to the region’s communities, businesses and workforce will continue to grow and evolve as we move forward through the pandemic. I am completely confident that we are up for the challenge.

Sincerely,

Mark Phillips  
Commissioner





# TABLE OF CONTENTS

- 1 Letter from the Commissioner
- 3 Table of Contents
- 5 Mission and Vision
- 7 Funding and Service Area
- 9 Iron Range Resources & Rehabilitation Board
- 10 Business Development
- 16 Community Development
- 22 Workforce Development
- 26 Solving Regional Issues
- 30 Agency Budget
- 31 Grants
- 43 Loans
- 45 Douglas J. Johnson Economic Protection Trust Fund
- 48 Taconite Economic Development Fund
- 49 Iron Range Higher Education Account
- 50 Iron Range School Collaboration





# MISSION AND VISION

The Department of Iron Range Resources & Rehabilitation is a State of Minnesota economic development agency that reinvests local taconite production taxes back into northeastern Minnesota businesses and communities in order to strengthen and diversify the economy.

## MISSION

Invest in resources to foster vibrant growth and economic prosperity in northeastern Minnesota.

- Enhance livable communities.
- Maximize collaborations and partnerships.
- Strengthen businesses and worker education.

## VISION

Long-term economic growth increases the well-being of all people in northeastern Minnesota.

## GUIDING PRINCIPLES

- **Servant Leadership:** We believe a servant-leader is servant first, and we focus on what we can do for others.
- **People:** We respect, value and celebrate the unique attributes, characteristics and perspectives that make each person who they are.
- **Commitment:** We are committed to providing great service that impacts lives.
- **Empowerment:** We encourage employees to take initiative, engage in continuous improvement and give their best.
- **Collaboration:** We seek out and promote diverse alliances because we value others’ knowledge, opinions and abilities, and together we can more effectively address the issues that face our region.
- **Equity:** We strive toward equity, and our intention is that our partners, strategies and investments reflect this.

## GOALS

- Communities invest in their foundational, business and social assets to ensure quality of life.
- Businesses invest in northeastern Minnesota.
- Workers have the education and training to meet business needs.
- Agency investments in Giants Ridge increase its economic impact and contribute to the quality of life in the region.





## FUNDING

The Department of Iron Range Resources & Rehabilitation is funded by a portion of a local taconite production tax paid by mining companies on each ton of iron ore pellets produced. The tax is paid by mining companies in lieu of property taxes. Prior to the agency receiving funding, dedicated amounts of the tax are legislatively distributed to local governments, schools and counties. The commissioner presents an annual budget for approval to the Iron Range Resources & Rehabilitation Board and governor.

## SERVICE AREA

Our service area is a 13,000 square-mile portion of northeastern Minnesota, including 53 cities, 134 townships, portions of four tribal nations and 14 school districts. The service area is defined by school district borders.

Minnesota Statutes Section 273.1341





# IRON RANGE RESOURCES & REHABILITATION BOARD

The Iron Range Resources & Rehabilitation Board is an advisory board composed of the state senators and state representatives elected from senatorial or legislative districts in which one-third or more of the residents live within the agency’s service area. One additional state senator is appointed by the Majority Leader of the senate. The members are appointed in January of odd-numbered years and serve until January of the next odd-numbered year. All expenditures and projects made by the commissioner are submitted to the advisory board. The advisory board then recommends approval, disapproval or modification of expenditures and projects.



SENATOR  
Tom Bakk



REPRESENTATIVE  
Rob Ecklund



SENATOR  
Justin Eichorn



REPRESENTATIVE  
Sandy Layman



REPRESENTATIVE  
Dave Lislegard



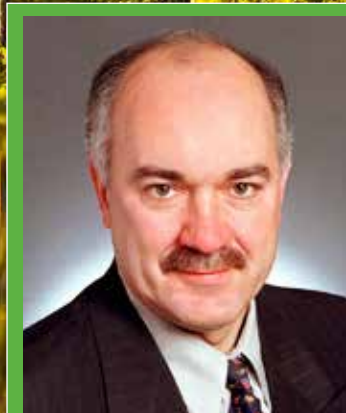
REPRESENTATIVE  
Dale Lueck



SENATOR  
Carrie Ruud



REPRESENTATIVE  
Julie Sandstede



SENATOR  
Dave Tomassoni





# BUSINESS DEVELOPMENT

## Businesses invested in northeastern Minnesota

During the biennium Iron Range Resources & Rehabilitation provided 37 flexible custom low-interest loans to businesses relocating or expanding in the region. The loans totaled \$9.1 million and generated a total project investment of \$40 million. Most of the businesses to which the agency granted loans were in the manufacturing segment of the economy, specifically manufacturing of power, precision metal products, wood products, metal sheeting, peat-based products, roofing and siding parts, stone, printing, devices, food, plastics and machinery. The loans were used for:

- Land and building acquisition.
- Building renovation.
- New building construction.
- Land improvements.
- Machinery and equipment purchases.
- Inventory purchases.
- Equity capital.





“Demand for peat has increased over the past several years. We produced 785 truckloads of peat in 2018 and about 1,000 truckloads in 2019. The new equipment will enable us to produce up to 1,400 truckloads. The bank participation loan enabled us to acquire custom equipment at a much lower cost due to the low interest rate. We can meet our customers’ growing demands by harvesting peat at a much more rapid rate and in much greater volumes.”

*Doug Green, APT president*

## **BUSINESS DEVELOPMENT:**

### **American Peat extends harvest season with equipment innovation**

American Peat Technology (APT) is adding new equipment to its fleet that will extend its harvest season from eight weeks to eight months to further its competitive advantage in the global peat market. Through a bank participation loan from Iron Range Resources & Rehabilitation, the Aitkin-based company secured a custom-built excavator that is configured with float-based sectional barges designed to operate over swampy and water-based surfaces.

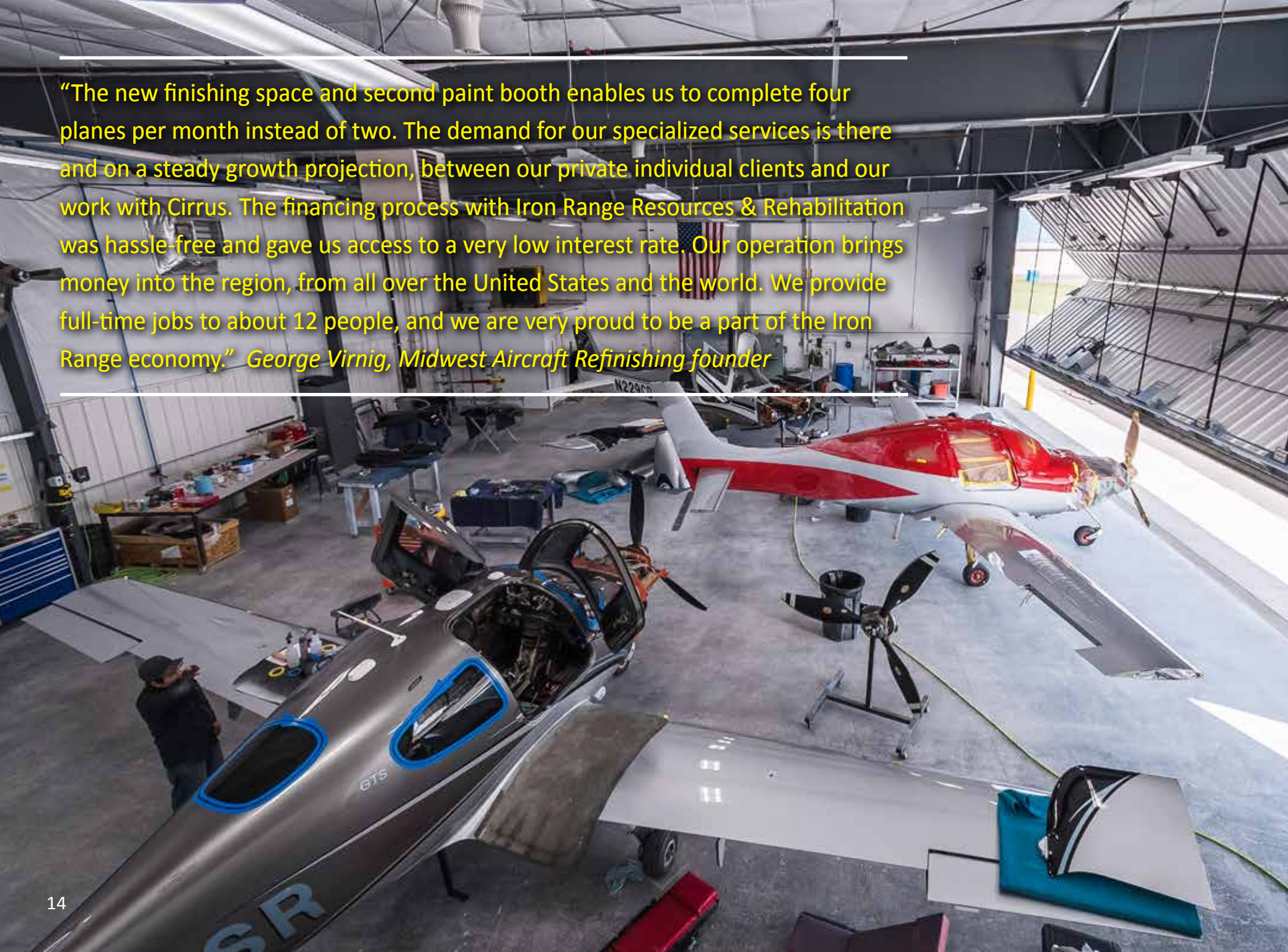
Prior to the new equipment, APT harvested peat in January and February when temperatures are well below freezing allowing winter roads to be built across the frozen peat surface. The new equipment will float on water during the warmer months and eliminate the need for winter roads.

The new equipment will excavate thousands of yards of raw peat and transport it back to the APT plant where the peat is dewatered, dried and transformed into a granular product. It is then sold to the agricultural market for use as a carrier for nitrogen-fixing bacteria that improves yields for crops such as peanuts, soybeans, lentils, field peas and alfalfa. APT also has another granular peat product line that is used by industries requiring water treatment to remove heavy metals from water.

Peat is a natural organic material composed of partially decayed plant matter. It is found in specific bog ecosystems around the globe, including in the northern United States, Canada and northern Europe. Minnesota has one of the largest peat deposits in the United States. APT is currently permitted to harvest peat on 480 acres in Spencer Township in Aitkin County. Peat is considered a “slowly-renewable” resource and is not only used as a microbial carrier, but also as a soil amendment. It is also used as an energy and fuel source in parts of Europe.

APT was founded in 2003 by a group of partners. The majority of the partners are local residents, and eight of the partners are APT employees. The group purchased the assets of a former business known as Peat Technologies, began operating as APT in 2004 and has approximately 43 full-time employees. The company works closely with the Minnesota Department of Natural Resources, Minnesota Pollution Control Agency and Aitkin County Environment Services for permitting its operations and reclaiming post-harvested peatland back into peat-producing ecosystems. APT revegetates the harvested area and creates a shallow water wetland.





“The new finishing space and second paint booth enables us to complete four planes per month instead of two. The demand for our specialized services is there and on a steady growth projection, between our private individual clients and our work with Cirrus. The financing process with Iron Range Resources & Rehabilitation was hassle-free and gave us access to a very low interest rate. Our operation brings money into the region, from all over the United States and the world. We provide full-time jobs to about 12 people, and we are very proud to be a part of the Iron Range economy.” *George Virnig, Midwest Aircraft Refinishing founder*

## **BUSINESS DEVELOPMENT: Midwest Aircraft Refinishing doubles production capability with space expansion**

Hibbing-based Midwest Aircraft Refinishing (MAR) expanded its operation and doubled its production capability by adding 10,000 square feet of new finishing space including a second paint booth. Iron Range Resources & Rehabilitation provided financing for the expansion through a bank participation loan.

The company’s location at Range Regional Airport in Hibbing makes it a convenient choice for its client base of private small engine aircraft owners and its largest commercial client, Cirrus Aircraft of Duluth. Over 90% of MAR’s clients are from out-of-state, and over 50% are from the nation’s coastal areas. It also has a significant amount of international clients from countries such as Germany, Australia, Brazil and Canada.

MAR provides complete restoration, damage repair and upgrade services to the exteriors and interiors of composite and aluminum aircraft including homebuilts, singles, twins, light jets and turboprops.

MAR was founded in 2010 by three former Cirrus employees: Kris Carlson, Ross Robillard and George Virnig. The men have Iron Range roots and close to 30 years of experience working at Cirrus. They obtained permission from Cirrus management to start an independent spinoff refinishing company. MAR is now a Cirrus Authorized Service Center, and the two companies share a strong business relationship. Cirrus builds new airplanes approximately ten times faster than MAR can refinish them, and that results in a healthy inventory of planes that will need refurbishing at least once in their lifespan.





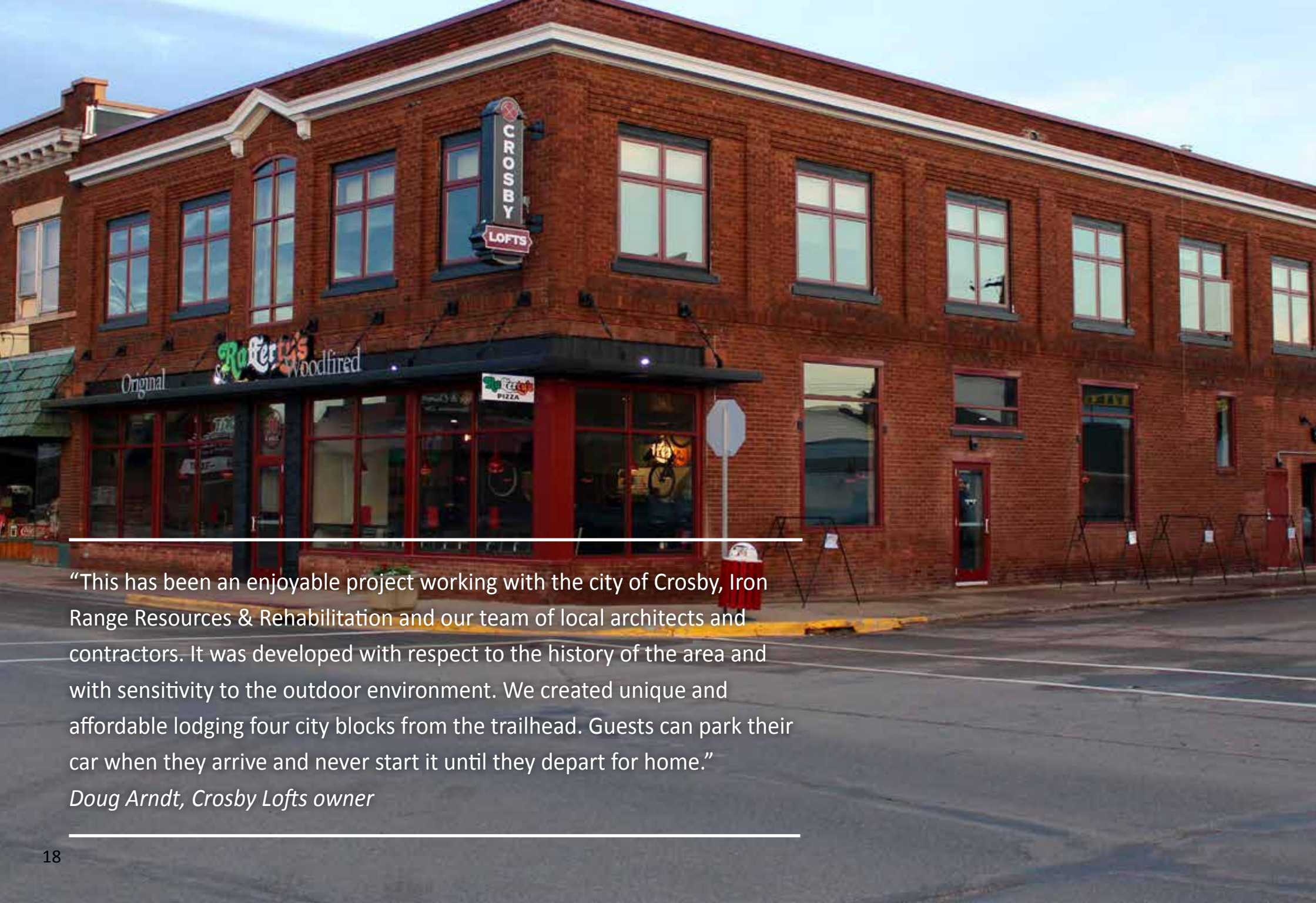
# COMMUNITY DEVELOPMENT

## Communities invested in their foundational, business and social assets to ensure quality of life for all residents

During the biennium Iron Range Resources & Rehabilitation provided over 320 community development grants to cities, tribal nations, townships, counties and nonprofits across northeastern Minnesota that advanced community vitality and growth. The agency’s investment of \$36,177,400 leveraged a total project investment in the region of \$321,116,765.

Infrastructure funds were invested to improve, replace and modernize community foundational assets such as sewer, water, electric, transportation and broadband. The region’s businesses, homes and schools gained greater access to service that meets the State of Minnesota’s broadband statutory speed goals of 100 Mbps/20 Mbps. Community social assets were improved such as downtowns, parks, recreation, trails, culture and the arts. Child care facilities also were expanded to meet the needs of families and businesses.





---

“This has been an enjoyable project working with the city of Crosby, Iron Range Resources & Rehabilitation and our team of local architects and contractors. It was developed with respect to the history of the area and with sensitivity to the outdoor environment. We created unique and affordable lodging four city blocks from the trailhead. Guests can park their car when they arrive and never start it until they depart for home.”

*Doug Arndt, Crosby Lofts owner*

---

## COMMUNITY DEVELOPMENT: Crosby Lofts meets lodging demand of mountain bikers

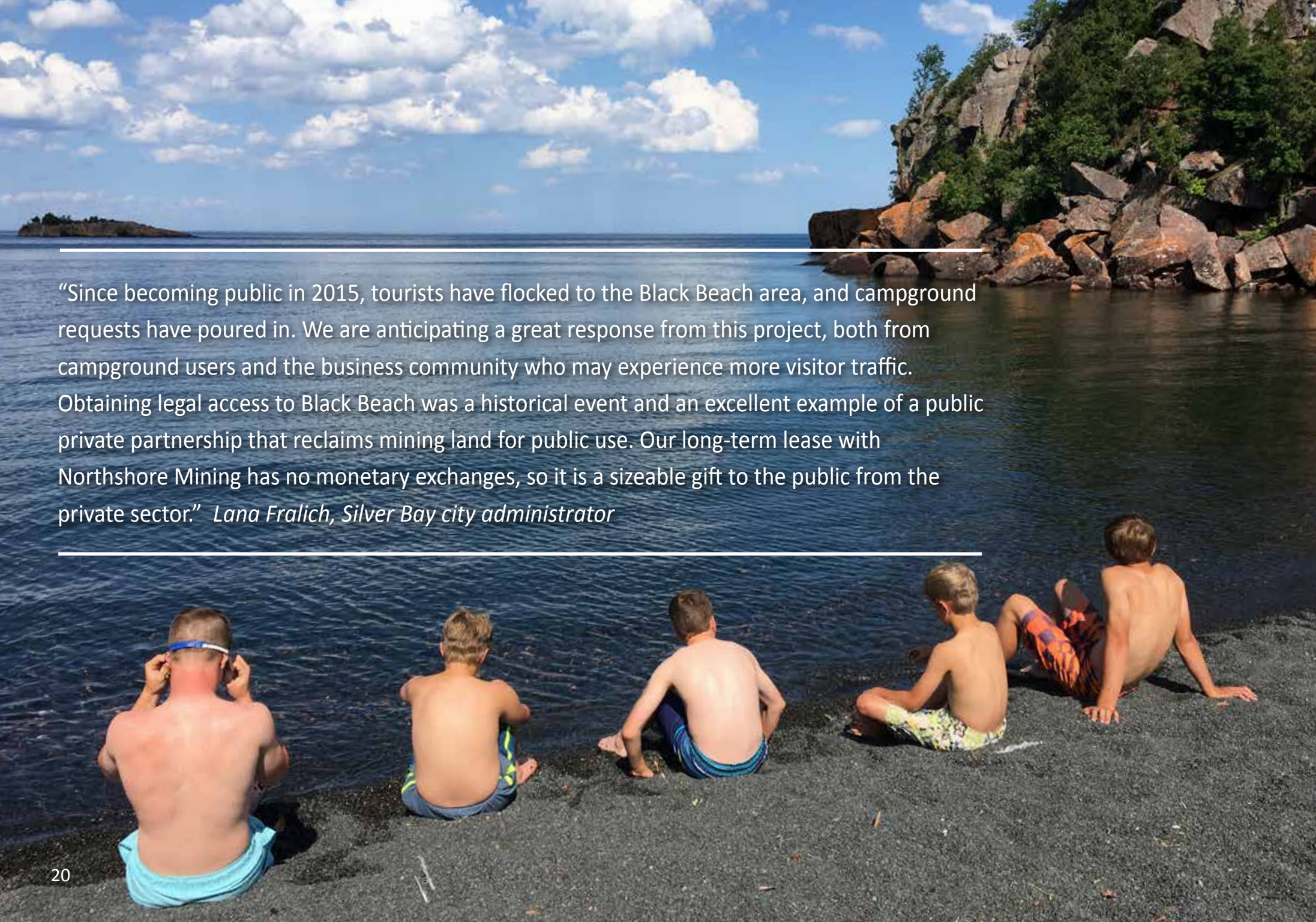
Doug Arndt, his wife and four adult children are avid mountain bikers and alpine skiers. Their permanent home is in the Twin Cities, and they have spent a lot of time in the western United States with their children competing in USSA ski events. It was in Crested Butte, Colorado and Park City, Utah that Arndt saw the resurgence of former mining towns and recognized the same potential in Crosby where the family mountain bikes and owns a cabin.

Arndt is a 40-year veteran of the commercial/industrial construction industry and a commercial real estate broker. He recently founded Cuyuna Hospitality Company (CHC) with business partner Nick Summers, formerly of Cargill, Inc. CHC purchased “30 West Main,” a 9,400-square-foot brick building that was built in 1900 and transformed it into Crosby Lofts through a complete remodel. Crosby Lofts includes eight short-term rental units with en suite bathrooms on the second level, along with a secure bike storage room and a bike wash station.

CHC leased the first level to Rafferty’s, a small pizza chain with locations in nearby Brainerd, Crosslake and Nisswa. Rafferty’s operates a wood fired pizza restaurant and tap room at the Lofts.

Crosby Lofts and Rafferty’s opened in 2019. It is Crosby’s first lodging facility and a \$1.38 million project that created 11 full-time jobs between the two operations. Iron Range Resources & Rehabilitation supported this project through a commercial redevelopment grant to the city of Crosby which helped repurpose the building in the central business district.





---

“Since becoming public in 2015, tourists have flocked to the Black Beach area, and campground requests have poured in. We are anticipating a great response from this project, both from campground users and the business community who may experience more visitor traffic. Obtaining legal access to Black Beach was a historical event and an excellent example of a public private partnership that reclaims mining land for public use. Our long-term lease with Northshore Mining has no monetary exchanges, so it is a sizeable gift to the public from the private sector.” *Lana Fralich, Silver Bay city administrator*

---

## COMMUNITY DEVELOPMENT: Post-mining land use: New campground in Silver Bay

A 15-acre municipal campground with 49 new campsites for recreational vehicles adjacent to Black Beach in Silver Bay on the North Shore opened in 2020.

Black Beach is 31.6 acres with 3,500 feet of shoreline. It is known for its black hue and diamond like sparkling sand that was created by the natural sediment transport of past taconite mine tailings. There is no other beach or shoreline like it on Lake Superior.

North Shore Mining Company owns the Black Beach shoreline and co-leased the beach to the city of Silver Bay and Minnesota Department of Natural Resources (DNR). Silver Bay owns the campground land and operates it within its Parks and Recreation department.

Black Beach’s location in Silver Bay centrally places it between Duluth, Grand Marias and the Iron Range. Nearby amenities include the Silver Bay Marina, Silver Bay Golf Course and the new North Shore Adventure Park, an aerial ropes course and zip line. There is an abundance of biking, hiking, ATV and snowmobile trails, as well as four state parks including Gooseberry Falls, Split Rock Lighthouse, Tettegouche and Temperance River.

Iron Range Resources & Rehabilitation supported this project with a Development Infrastructure grant to the city of Silver Bay. Other funding partners included the city of Silver Bay, State of Minnesota Capital Bonds and Minnesota Department of Natural Resources.







## WORKFORCE DEVELOPMENT

### Workers had the education and training to meet business needs

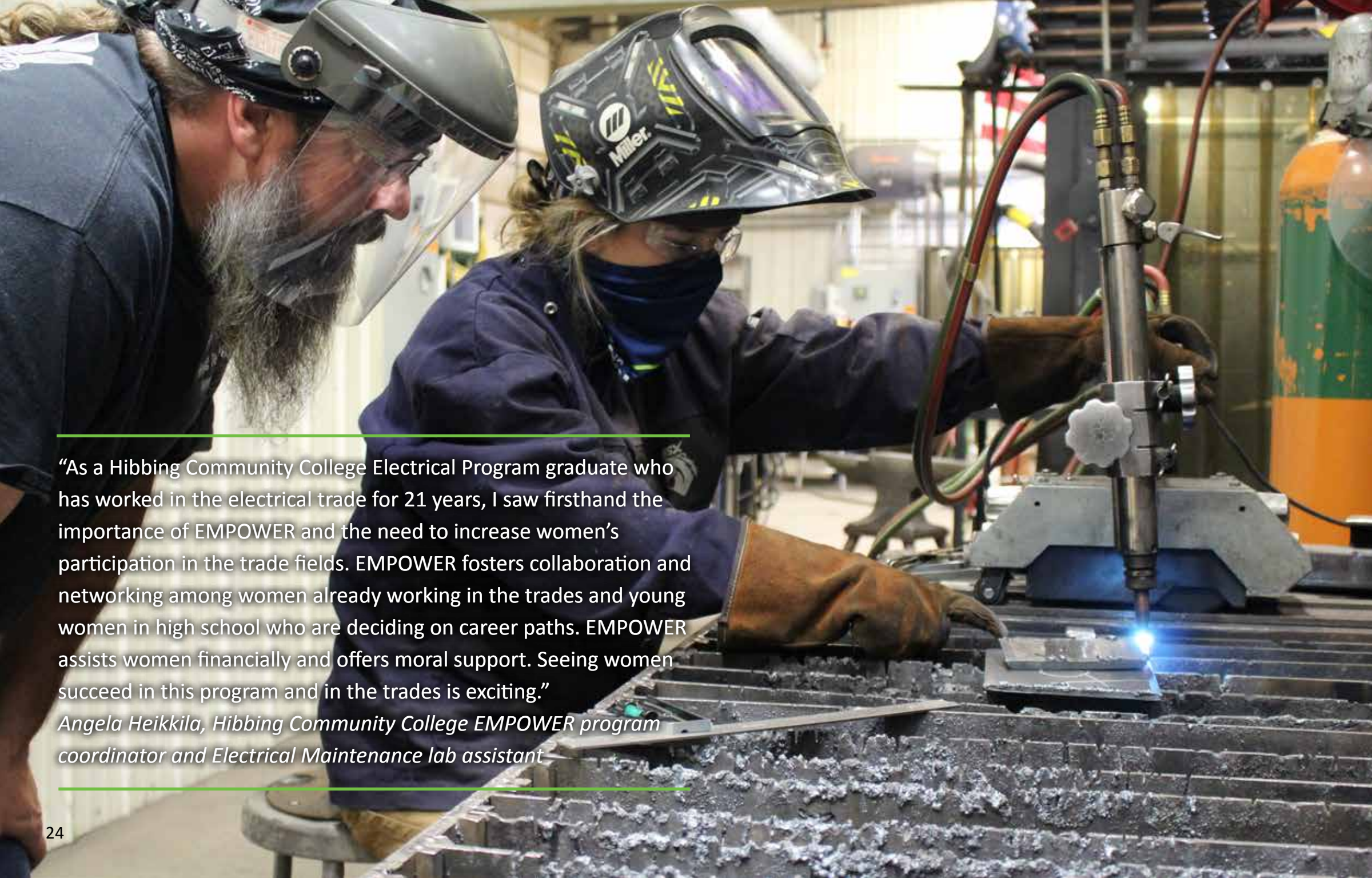
During the biennium Iron Range Resources & Rehabilitation supported workforce programs that produced skilled workers to fill jobs in demand and provided training for incumbent workers.

Workforce continued to be a barrier to regional economic growth, a challenge that was not unique to northeastern Minnesota. Businesses across the state were increasingly in need of skilled workers.

The agency also collaborated with educational institutions to strengthen career pathway programs available to the region's middle and secondary school students.

To help solve the region's child care shortage, the agency funded a child care worker certification program that awarded scholarships to area child care center workers to help them become credentialed Child Development Associates.





---

“As a Hibbing Community College Electrical Program graduate who has worked in the electrical trade for 21 years, I saw firsthand the importance of EMPOWER and the need to increase women’s participation in the trade fields. EMPOWER fosters collaboration and networking among women already working in the trades and young women in high school who are deciding on career paths. EMPOWER assists women financially and offers moral support. Seeing women succeed in this program and in the trades is exciting.”

*Angela Heikkila, Hibbing Community College EMPOWER program coordinator and Electrical Maintenance lab assistant*

---

## WORKFORCE DEVELOPMENT: Empowering workers through training in skilled trades

The Northeast Higher Education District (NHED) is a unique governance structure for five, autonomous yet interdependent, two-year colleges in northeastern Minnesota. These colleges include: Hibbing Community College, Itasca Community College, Mesabi Range College, Rainy River Community College and Vermilion Community College. This unique governance structure promotes strong regional alignment as they work with partners in K-12, higher education, business and industry, government and the private sector throughout the region.

NHED used Workforce Development grants from Iron Range Resources & Rehabilitation:

- To expand the EMPOWER program from Hibbing Community College to other colleges including Mesabi Range campuses in Virginia and Eveleth. EMPOWER is designed to increase women’s enrollment in high-demand nontraditional fields of study such as welding, auto mechanics, diesel and heavy equipment mechanics, electrical maintenance, law enforcement, heating and cooling technician, industrial mechanics and carpentry. These fields are in high demand across the region and support mining, construction, transportation and heavy industry sectors. EMPOWER can potentially increase the earning capability of low-income women in northeastern Minnesota as well as fill job openings at area businesses.
- To provide skilled trades training in basic and advanced manufacturing, basic and advanced welding, simulation training in heavy equipment, basic hydraulics and troubleshooting, CNC and rigging. The grant helped regional employers upskill their incumbent workers and helped develop job-ready workers to fill job openings for assemblers, fabricators, welders, heavy equipment operators, maintenance mechanics, auto diesel mechanics and electricians. Advanced Minnesota, NHED’s customized training enterprise, provided the training.



---

“Broadband is fundamental to economic development in rural Minnesota. Our region’s exceptional outdoor recreation is a major quality of life draw for people wanting to relocate here. High-speed broadband enables people to live rural and work remotely for employers around the world. It allows business in our area to expand and compete. It allows our youth to learn online with colleges across the country.” *Commissioner Mark Phillips, Iron Range Resources & Rehabilitation*

---

## SOLVING REGIONAL ISSUES

### Rural broadband: An economic necessity, not a luxury

Fast, reliable and affordable broadband access in northeastern Minnesota is an economic necessity for businesses, homes, and community and government institutions. Large, small and home-based businesses rely on it. Entrepreneurs and telecommuters rely on it. Schools, colleges and online learners rely on it. Health care facilities and telemedicine rely on it. Almost every facet of daily life relies on uninterrupted, high-speed internet. Without it businesses, schools, health systems and families become constricted to conduct both simple and complex tasks.

Currently most of northeastern Minnesota is considered either unserved or underserved by broadband service. Major efforts are underway to overcome the most significant barrier, which is the high cost of deploying broadband infrastructure to rural communities. Since 2015 Iron Range Resources & Rehabilitation has financially supported broadband infrastructure to households and businesses throughout the region. During the biennium broadband projects included:

- 2020: **\$105,450 grant** to extend broadband to Ash River.
- 2020: **\$224,800 grant** to extend broadband to Morcom Township.
- 2020: **\$236,050 grant** to extend broadband to Elephant Lake & Black Duck Lake.
- 2020: **\$236,400 grant** to extend broadband to the Kabetogama area.
- 2020: **\$150,000 grant** to extend broadband to the Morse Township shoreline areas of Burntside Lake, Little Long Lake and Wolf Lake.
- 2020: **\$579,272 grant** to extend broadband in the Bois Forte Band of Chippewa.
- 2019: **\$714,000 grant** for Blandin Broadband Communities Partnership to support broadband initiatives in six alumni communities and four new communities.
- 2019: **\$150,000 grant** to extend broadband throughout Aitkin County.





---

“The opening of new child care centers and the upgrades of existing centers are extremely important to our area families, employers and workforce. Quality child care is a tremendous economic development and quality of life asset to our region.” *Commissioner Mark Phillips, Iron Range Resources & Rehabilitation*

---

## SOLVING REGIONAL ISSUES

### Growing the availability of quality child care in northeastern Minnesota

The regional child care shortage is a critical economic issue. The shortage is not unique to northeastern Minnesota; it is happening across the state and nation. The need for additional and more flexible child care was clearly identified by employers, employees, families and child care providers in the region. The agency responded and engaged with numerous public and private partners to work towards solutions to the child care shortage and provided financial assistance through:

- Child care worker certification: Ten scholarships were awarded to help pay for area child care center workers to become a credentialed Child Development Associate (CDA) while still employed at area centers. Twenty high school students and community members took college-level coursework in early childhood education with the option to earn their CDA. **Workforce Development grant: \$39,764.**
- Cook County Community YMCA in Grand Marais adjacent to the K-12 Cook County school campus added new restrooms with child-size accommodations and an outdoor play space for children ages 0-5. Thirty-three new child care slots were created, and capacity was increased from 42 to 75 children. **Development Infrastructure grant: \$70,000.**
- City of Eveleth redeveloped the inside of a former commercial building to pave the way for opening the new Brandie’s Little Bear Center with 142 new slots. **Commercial Redevelopment grant: \$30,480.**
- Brandie’s Little Bear Center in Eveleth made energy efficiency upgrades to its HVAC, lighting, doors and insulation. **Business Energy Retrofit grant: \$20,000.**
- Drop-In Daycare of Virginia made energy efficiency upgrades to its HVAC. **Business Energy Retrofit grant: \$1,914.**
- City of Cohasset developed a new child care center with 84 new slots adjacent to an elementary school. The child care space is within a new community center that also houses a senior center. **Community Infrastructure grants: \$500,000.**



APPENDICES

AGENCY BUDGET

RESOURCES	FY 2019 BUDGET	FY 2020 BUDGET
Carryforward In	\$13,391,699	\$8,827,156
Current Resources		
Taconite Production Taxes	\$14,779,046	\$18,678,752
Investment Earnings	2,185,688	2,915,706
Loan Revenues	2,113,773	2,400,763
Facilities Revenues	5,468,359	5,523,155
Occupation Tax Region III	481,646	524,015
Taconite Property Tax Relief Account	3,210,974	0
DJJ Corpus Trust	7,000,000	6,000,000
Subtotal Current Resources	\$35,239,486	\$36,042,391
Total Resources	\$48,631,185	\$44,869,547
ESTIMATED EXPENDITURES		
Projects		
Development Projects	7,000,000	5,500,000
Public Works	5,500,000	6,500,000
Public Works - DJJ Corpus Trust	3,530,147	2,000,000
Regional Trails Program - DJJ Corpus Trust	3,469,853	2,500,000
Total Projects	\$19,500,000	\$16,500,000
Programs		
Program Grants	7,424,000	6,305,000
Occupation Tax Region III	481,646	524,015
Total Programs	\$7,905,646	\$6,829,015
Giants Ridge	10,030,212	9,590,764
Giants Ridge Capital - DJJ Corpus Trust	0	1,500,000
Total Giants Ridge	\$10,030,212	\$11,090,764
Operations & Development Fixed Costs	\$6,989,343	\$7,450,354
Total Budget	\$44,425,201	\$41,870,133
Estimated Carryforward Out	\$4,205,984	\$2,999,414

GRANTS

COMMERCIAL REDEVELOPMENT

FY19	AGENCY INVESTMENT	TOTAL PROJECT INVESTMENT
Biwabik Township - demolish old town hall	\$30,000	\$862,500
Crosby - demolish (internal) buildings for new retail business	35,772	581,712
Crosby - demolish (internal) buildings for new lodging/restaurant	40,126	1,380,000
Eveleth - demolish (internal) building for new child care center	30,480	1,175,661
Grand Rapids - demolish commercial building for mental health facility	15,900	5,357,450
Grand Rapids - prepare site for development	17,200	13,807,000
Hibbing - demolish building for business expansion	53,000	17,675,947
Ironton - demolish (internal) building for new restaurant	33,850	622,000
Nashwauk - demolish (internal) buildings for new multi-purpose store	36,000	2,350,000
Nashwauk Township - remove gas tanks at convenience store	12,162	151,960
Virginia - demolish (internal) building for a business	18,800	500,000
Virginia - prepare site for development	25,215	300,000
Virginia - demolish (internal) building for a new business	30,300	977,030
Virginia - demolish (internal) building for a business	48,756	416,000
Virginia - demolish (internal) building for retail business	306,978	1,057,283
Total	\$734,539	\$47,214,543
FY20		
Aurora - demolish (internal) business center	\$74,889	\$1,519,415
Cook County/Grand Marais EDA - demolish (internal) downtown building	19,800	164,500
Crosby - demolish (internal) building for business expansion	80,000	475,900
Eveleth - demolish (internal) commercial building for new business	18,900	470,500
Grand Rapids - demolish two commercial buildings	86,175	747,350
Grand Rapids - demolish buildings for student center	175,000	5,475,000
Hibbing - demolish (internal) building for business expansion	22,500	1,095,171
Hibbing - demolish (internal) building for business expansion	50,000	1,300,000
Nashwauk - demolish (internal) building for business upgrade	18,198	113,353
Town of Kelsey - demolish building	6,900	336,421
Virginia - demolish (internal) building for business expansion	50,388	211,295
Virginia - demolish stadium for new development	147,250	0
Total	\$750,000	\$11,908,905



COMMUNITY INFRASTRUCTURE

FY19

	AGENCY INVESTMENT	TOTAL PROJECT INVESTMENT
Aitkin County - extend broadband	\$150,000	\$653,900
Biwabik - upgrade city-wide infrastructure	250,000	2,500,000
Biwabik - repair water and sewer lines	534,970	700,488
Breitung Township - upgrade infrastructure and ADA accessibility	220,000	1,150,000
Buhl - upgrade infrastructure and street	250,000	3,222,400
Calumet - upgrade infrastructure and street	250,000	813,000
Chisholm - upgrade infrastructure and street	130,000	1,986,113
Cohasset - upgrade infrastructure and construct community center	250,000	2,180,000
Coleraine - upgrade infrastructure	250,000	2,255,000
Deerwood - upgrade infrastructure, street and water tower	150,000	2,260,000
Ely - upgrade infrastructure and street	250,000	1,418,315
Eveleth - recondition water tower	250,000	1,458,323
Gilbert - upgrade wastewater facility	250,000	11,997,600
Goodland Township - upgrade infrastructure, road and emergency services building	150,000	442,000
Iron Junction - upgrade infrastructure and street	225,000	305,750
Ironton - improve water system	62,000	340,000
McKinley - upgrade water main	50,000	129,220
Nashwauk - upgrade water main	220,000	2,478,236
Town of Kelsey - construct emergency services facility	175,000	378,521
Two Harbors - upgrade infrastructure and construct performing arts center	300,000	2,811,671
Virginia - upgrade infrastructure and street	240,000	2,098,982

Total \$4,606,970 \$41,579,519

FY20

Aitkin - construct community building	\$65,000	\$456,705
Aitkin - upgrade infrastructure and reconstruct street	85,000	449,797
Aurora - upgrade wastewater treatment facility	250,000	1,150,000
Biwabik - reconstruct main street - Phase I	250,000	3,133,958
Bois Forte Band of Chippewa - upgrade infrastructure and construct public works facility	250,000	1,358,000
Breitung Township - upgrade wastewater treatment facility	250,000	3,000,000
Chisholm-Hibbing Airport Authority - upgrade fencing	88,000	224,672
Cohasset - construct community center	250,000	1,295,595

FY20 COMMUNITY INFRASTRUCTURE - CONTINUED

Cook - upgrade ADA accessibility to community building	63,400	199,481
Ely - upgrade infrastructure and reconstruct street	200,000	3,794,500
Embarrass Township - upgrade ADA accessibility restrooms	45,000	92,500
Eveleth - upgrade infrastructure and reconstruct street	210,000	1,378,413
Eveleth-Virginia Airport Authority - reconstruct aircraft apron	200,000	1,722,598
Gilbert - reconstruct main street - Phase I	250,000	6,359,000
Grand Marais - reconstruct main street - Phase I	250,000	10,200,480
Grand Rapids - construct radio tower	50,000	1,049,500
Hoyt Lakes - upgrade infrastructure and reconstruct street	240,000	1,448,140
Keewatin - construct sewer line	250,000	1,500,053
Lake County - upgrade ADA accessibility	125,000	897,000
Meadowlands - upgrade storm sewer	52,500	105,000
Nashwauk - upgrade wastewater facility	250,000	3,945,408
Silver Bay - upgrade waste treatment facility	250,000	4,805,495
Virginia - upgrade ADA accessibility	250,000	1,044,000
Virginia - upgrade infrastructure for convention center	500,000	38,792,456

Total \$4,673,900 \$88,402,751



CULTURE AND TOURISM

	AGENCY INVESTMENT	TOTAL PROJECT INVESTMENT
<b>FY19</b>		
American Bear Association - expand observation deck and marketing campaign	\$14,267	\$30,645
Chisholm KIDS PLUS - create downtown mural	5,000	18,000
Crane Lake Visitor & Tourism Bureau - construct information kiosk and ADA accessibility	7,398	18,000
Curl Mesabi Foundation - install cameras and monitors	8,191	16,383
Deerwood Civic & Commerce - construct splash pad	19,814	125,556
Dorothy Molter Museum - restore exhibit cabins	5,000	10,594
Ely Community Resource, Inc. - construct skateboard wheel park	20,000	40,000
Ely Folk School - expand programming and marketing campaign	17,000	43,863
Finland Minnesota Historical Society - construct workshop	5,000	18,500
Friends of the Finland Community - marketing campaign	3,000	6,000
Grand Marais Art Colony - marketing campaign	5,000	20,000
Grand Rapids Itasca Mountain Bicycling Association - marketing campaign	17,500	50,000
Hibbing Dylan Project - create Bob Dylan monument	20,000	69,275
Hibbing Foundation - construct splashpad	20,000	131,000
Itasca County Historical Society - create veterans database and exhibit	9,000	18,000
John Beargrease Sled Dog Marathon - expand cultural programming and marketing campaign	7,002	27,500
Mesabi Musical Theatre - purchase equipment and marketing campaign for “Matilda The Musical”	3,000	24,000
North House Folk School - upgrade classroom	10,000	215,000
North Superior Ski and Run Club - purchase utility vehicle	8,500	29,317
Olcott Park Brewfest - purchase equipment and signage	20,000	141,350
Pelican Lake Resort Association - marketing campaign	17,935	35,870
Region 2 Minnesota United Snowmobilers Association - purchase trail grooomer	20,000	77,885
Screen Porch Productions - create “Sit Outside” locations	9,689	19,378
Sisu Heritage, Inc. - purchase gas furnace	955	1,911
Tourist Center Senior Citizens, Inc - upgrade roof and parking lot	15,000	36,425
Tower Soudan Historical Society - restore historic fire hall	6,000	14,000
Two Harbors Curling Club - replace carpet	5,000	11,860
Voyageurs Trail Society, Inc. - purchase trail groomer	20,000	239,900
Wild North Golf - marketing campaign	5,000	16,000
<b>Total</b>	<b>\$324,251</b>	<b>\$1,506,212</b>

FY20 CULTURE AND TOURISM GRANTS

	AGENCY INVESTMENT	TOTAL PROJECT INVESTMENT
American Bear Association - marketing campaign and equipment	\$11,249	\$22,499
American Legion Post 432 Auxiliary - upgrade campground	12,997	25,995
Bigfork Valley Community Foundation - mapping project	5,544	13,065
Caring For The Kids Community - construct splash pad	20,000	234,805
Coalition of Recreational Trail Users (CRTU) - create trail map	20,000	50,000
Donald G. Gardner Humanities Trust - Arts in Ely - purchase equipment	20,000	48,458
Ely Chamber of Commerce - upgrade ADA accessibility	9,530	19,060
Ely Folk School - marketing campaign, workshop programming and map production	9,066	45,183
Ely’s Historic State Theater - purchase equipment	20,000	45,860
Friends of Sax Zim Bog - construct pool/garden and signage	4,500	11,000
Hoyt Lakes Chamber of Commerce - upgrade entrance sign	20,000	40,000
International Wolf Center - marketing campaign	15,000	30,000
Iron Range Off-Road Cyclists - purchase equipment	3,253	6,647
Iron Range Partnership for Sustainability - marketing campaign	2,500	6,350
Iron Range Tourism Bureau - marketing campaign	20,000	76,400
Itasca County Agricultural Association - replace rafter and upgrade electric	12,000	71,400
Itasca Economic Development Corporation - marketing campaign	20,000	67,500
Laurentian Arts and Culture Alliance - upgrade doors and install sprinkler system	20,000	209,040
Lion’s Club of Babbitt - upgrade entrance sign	6,692	13,385
MacRostie Art Center - renovate gallery shop	8,000	28,531
Mesabi Musical Theatre - marketing campaign and purchase equipment	3,000	24,650
Orr Recreation & Resource Center, Inc. - repair roof	18,193	36,386
Range Trail Committee Inc - purchase equipment	15,000	30,000
Ranger Snowmobile and ATV Club - replace bridge	10,000	20,000
Reif Arts Council - marketing campaign	12,000	40,000
Tourist Center Senior Citizens, Inc - renovate floor and bathroom	14,250	33,483
Two Harbors Curling Club - purchase equipment	5,000	15,943
Visit Grand Rapids - mapping project	5,000	12,000
<b>Total</b>	<b>\$342,774</b>	<b>\$1,277,640</b>



DEVELOPMENT INFRASTRUCTURE

	AGENCY INVESTMENT	TOTAL PROJECT INVESTMENT
FY19		
Babbitt - upgrade campground - Phase I	\$250,000	\$1,038,000
Cook County/Grand Marais EDA - upgrade bathrooms at child care center	70,000	166,000
Cook County/Grand Marais EDA - upgrade infrastructure for housing development	63,901	283,000
Cook County/Grand Marais EDA - increase FY18 grant - workforce housing infrastructure	88,000	88,000
Mountain Iron - upgrade infrastructure for clinic	159,000	1,235,792
Silver Bay - construct welcome center and storage building	250,000	765,625
Total	\$880,901	\$3,576,417
FY20		
Aurora - upgrade infrastructure for grocery store	\$135,000	\$1,519,425
Grand Rapids - place new infrastructure for housing development	250,000	1,399,321
Grand Rapids - upgrade wastewater treatment facility	300,000	860,000
Grand Rapids - place new infrastructure for mental health facilities	350,000	5,521,450
Hibbing - place new infrastructure for industrial recycling center	350,000	2,425,355
Two Harbors - construct sanitary sewer monitoring station	85,000	200,000
Total	\$1,470,000	\$11,925,551
DEVELOPMENT PARTNERSHIPS		
FY19		
Cohasset - update comprehensive plan	\$5,000	\$15,000
East Range Joint Powers Board - economic development services	55,000	145,807
Enterprise Minnesota Inc. - manufacturing consulting services	25,000	57,764
Northspan Group Inc. - Upper Minnesota Film Office	2,000	23,400
Northspan Group Inc. - Northlandconnection.com	20,000	119,500
Northspan Group Inc. - NORTHFORCE.org	50,000	175,816
Quad Cities - Small Business Development Center - UMD	60,000	597,438
Total	\$217,000	\$1,134,725

FY20 DEVELOPMENT PARTNERSHIP GRANTS

	AGENCY INVESTMENT	TOTAL PROJECT INVESTMENT
East Range Joint Powers Board - economic development services	\$50,000	\$155,967
Enterprise Minnesota Inc. - manufacturing consulting services	25,000	50,889
Itasca Economic Development Corporation - emergency business recruitment	11,000	22,000
Laurentian Arts and Culture Alliance - Artspace study	5,000	11,000
National Lead for America, Inc. - train community leaders	30,000	170,232
Northland Foundation - Small Business Development Center	60,000	808,080
Northspan Group Inc. - Upper Minnesota Film Office	5,000	26,400
Northspan Group Inc. - Minnesota Opportunity Collaborative	10,000	157,857
Northspan Group Inc. - Northlandconnection.com	20,000	103,517
Northspan Group Inc. - NORTHFORCE.org	50,000	180,900
Two Harbors Development Fund - business assistance	100,000	200,000
Wabana Township - update comprehensive plan	9,000	23,000
Total	\$375,000	\$1,909,842
DOWNTOWN STREETSCAPES		
FY19		
Cook County/Grand Marais EDA - improve downtown lighting	\$50,000	\$250,000
Ely - construct pocket park	50,000	146,000
Keewatin - construct community bulletin board	5,500	14,699
Silver Bay - improve corridor lighting and signage	50,000	107,000
Virginia - construct pass through park	44,500	118,135
Total	\$200,000	\$635,834
FY20		
Cook County/Grand Marais EDA - construct arbor	\$50,000	\$300,000
Eveleth - construct pocket park	50,000	225,000
Hoyt Lakes - construct shelter	50,000	300,408
Tower - improve sidewalks and signage	50,000	109,760
Total	\$200,000	\$935,168



LAURENTIAN VISION PARTNERSHIP/MINE PIT LAKESHORE ENHANCEMENT

Renamed to Mineland Reclamation beginning FY2020

	AGENCY INVESTMENT	TOTAL PROJECT INVESTMENT
FY19		
Gilbert - master plan and improve parking lot at campground	\$100,000	\$211,000
Hibbing - relocate and enhance mine view	150,000	1,190,197
Mountain Iron - develop site for solar project	50,000	495,255
Total	\$300,000	\$1,896,452

MINELAND RECLAMATION

FY20		
Ely - design and construct retaining wall	\$12,000	\$24,000
Eveleth - improve overlook amenities	50,000	100,000
Great Scott Township - improve recreation area	43,250	86,510
Hibbing - plant vegetation and trees	32,000	732,695
Hibbing - relocate disc golf course	65,000	130,000
Mountain Iron - develop site for solar project	62,000	615,000
Virginia - plant trees	85,000	446,505
Total	\$349,250	\$2,134,710

RESIDENTIAL REDEVELOPMENT

FY19		
Babbitt - demolish one house	\$5,472	\$21,206
Bigfork - demolish one house and two accessory structures	7,326	16,965
Chisholm - demolish two houses, one garage and two accessory structures	14,553	20,060
Chisholm - demolish four houses and four garages	21,708	40,482
Eveleth - demolish three houses and one garage	24,749	49,033
Grand Rapids - demolish one house	4,860	12,032
Hibbing - demolish two houses and one garage	3,276	4,689
Hibbing - demolish three houses and two garages	17,874	27,868
Keewatin - demolish one house	3,436	4,581
Mountain Iron - demolish one house and one garage	9,000	15,011

FY19 RESIDENTIAL REDEVELOPMENT GRANTS - CONTINUED

	AGENCY INVESTMENT	TOTAL PROJECT INVESTMENT
Nashwauk - demolish one house	5,820	10,240
Virginia - demolish one house	6,891	21,903
Virginia - demolish one house	7,605	27,326
Virginia - demolish two houses and one garage	12,618	52,021
Virginia - demolish four houses and three garages	29,802	86,985
Virginia - demolish five houses and four garages	38,673	129,117
Warba - demolish one house	2,808	7,111
Total	\$216,471	\$546,630

FY20

Aitkin - demolish one house	\$13,134	\$24,060
Chisholm - demolish five garages and one accessory structure	7,485	8,250
Crow Wing County Land Services - demolish three houses, one garage and one accessory structure	10,749	21,830
Crystal Bay Township - demolish one house and one garage	3,975	8,000
Ely - demolish one house and one garage	5,253	11,000
Ely - demolish one house	7,041	25,000
Ely - demolish one house	8,121	25,000
Grand Rapids - demolish one house	7,146	11,650
Hibbing - demolish one house, three garages and two structures	15,057	32,168
Hibbing - demolish three houses, four garages and three accessory structures	27,255	38,611
McKinley - demolish one house and one garage	5,308	7,077
Tower - demolish one structure	1,350	1,800
Tower - demolish two houses	4,613	6,150
Tower - demolish one house and one accessory structure	7,431	11,950
Town of Cherry - demolish one garage	875	1,167
Two Harbors - demolish one house and one accessory structure	6,315	17,500
Virginia - demolish one house	4,683	13,500
Virginia - demolish one house and one accessory structure	11,106	21,125
Virginia - demolish two houses and two garages	14,445	37,500
Virginia - demolish one house and one garage	15,138	25,500
Virginia - demolish two houses	16,005	60,522
Warba - demolish one house	5,400	13,200
Total	\$197,885	\$422,560



WORKFORCE DEVELOPMENT

	AGENCY INVESTMENT	TOTAL PROJECT INVESTMENT
FY19		
Cook County Higher Education - culinary program marketing campaign and recruiter	\$50,000	\$110,000
Northeast Higher Education District - MSHA safety training	10,000	25,000
Northeast Higher Education District - robotic process automation training	52,000	234,000
Northeast Higher Education District - child care worker certification	39,764	159,392
Northeast Minnesota Office of Job Training - skilled trades awareness campaign and career exploration	75,000	151,419
Total	\$226,764	\$679,811
FY20		
Northeast Higher Education District - workforce training	\$50,000	\$55,000
Northeast Higher Education District - EMPOWER Program - Women in non-traditional fields	60,000	122,700
Northeast Higher Education District - workforce training	60,000	182,660
Northeast Higher Education District - Workforce Solutions for the trades	150,000	350,000
Summer Work Outreach Project (SWOP) - summer youth programs	30,000	120,000
Total	\$350,000	\$830,360

OTHER

FY19		
Arrowhead Economic Opportunity Agency (AEOA) - Downtown Building Rehabilitation program	\$250,000	\$2,579,666
Arrowhead Economic Opportunity Agency (AEOA) - Business Energy Retrofit program	1,250,000	8,643,598
Charles K. Blandin Foundation - Blandin Broadband Communities Partnership program	714,000	1,191,820
Cook - construct foundation for grocery store	250,000	4,500,000
Cook County Community Radio - WTIP - upgrade Uninterrupted Power Source unit	10,000	14,560
Fayal - construct storage building	28,189	56,378
Grand Marais Art Colony - acquire building	97,000	475,000
Grand Rapids Area Community Foundation - upgrade field	50,000	1,320,000
Hoyt Lakes - implement business training	40,000	44,228
Independent Television Festival, Inc. - create production guide	49,998	250,000
Iron Range Partnership for Sustainability - conduct local food study	24,975	50,000
Ironworld Development Corporation - operating expenses and capital improvements	1,350,000	1,713,000

FY19 OTHER GRANTS - CONTINUED

	AGENCY INVESTMENT	TOTAL PROJECT INVESTMENT
Kabetogama Township - install helipad lighting	16,000	19,398
Minnesota Dental Foundation - loan forgiveness program	240,000	240,000
MN Film & TV - administer film incentive program	250,000	250,000
Mountain Iron - upgrade manufacturing facility	44,340	8,800,000
Natural Resources Research Institute - Enterprise for Strategic Resources	250,000	500,000
Northern Lights Music Festival - acquire building	45,000	90,000
Northshore Business Enterprise Center - remodel and improve business center	259,345	267,658
Range Trail Committee Inc - upgrade emergency trail	7,500	17,700
Swan Lake Country Club - upgrade HVAC and parking lot	40,000	290,885
United Way of Northeastern Minnesota - promote youth meal program	2,557	20,685
Vermillion Gold, Inc - drilling exploration	26,500	72,000
Virginia - develop downtown redevelopment program	20,000	1,282,242
Voyageurs National Park Association - upgrade park trail	5,000	18,525
Winton - upgrade post office	20,000	26,346
Total	\$5,340,404	\$32,733,689

FY20

Arrowhead Economic Opportunity Agency (AEOA) - Downtown Building Rehabilitation (DBR)	\$250,000	\$1,584,819
Arrowhead Economic Opportunity Agency - Business Energy Retrofit (BER)	750,000	5,036,153
Biwabik Township - remove asbestos at town hall	14,075	29,075
Bois Forte Band of Chippewa - upgrade technology	10,000	10,314
Bois Forte Band of Chippewa - dam feasibility study	20,850	24,150
Breitung Township - engineering costs for road reconstruction	12,500	237,307
Buhl - maintenance and heating at school	50,000	72,000
Ely Area Senior Citizens, Inc. - upgrade ADA accessibility	30,000	102,651
Eveleth - water study - Eveleth, Gilbert, Mountain Iron and Virginia	16,000	32,000
Independent Feature Project (FilmNorth) - produce “Way of the Warrior” film	350,000	7,500,000
Ironworld Development Corporation - operating expenses and capital improvements	1,450,000	1,926,350
Mountain Iron-Buhl Schools - ISD 712 - upgrade facility for business to occupy and social distance due to COVID-19	28,850	260,850
Northland Foundation - economic impact study of mining in northeastern Minnesota	5,000	45,000



	AGENCY INVESTMENT	TOTAL PROJECT INVESTMENT
<b>FY20 OTHER GRANTS - CONTINUED</b>		
Northland Foundation - small business relief fund due to COVID-19	100,000	150,000
Vermillion Gold, Inc - drilling exploration	85,538	213,847
Virginia - remove asbestos at hotel	17,725	21,182
Virginia - reclaim mine stockpile	49,750	92,125
Virginia Economic Development Authority - downtown commercial rehabilitation program	250,000	550,000
<b>Total</b>	<b>\$3,490,288</b>	<b>\$17,887,823</b>
<b>FY19 TOTAL</b>	<b>\$13,047,300</b>	<b>\$131,503,832</b>
<b>FY20 TOTAL</b>	<b>\$12,199,097</b>	<b>\$137,635,310</b>
<b>GRAND TOTAL</b>	<b>\$25,246,397</b>	<b>\$269,139,142</b>

LOANS

FY19

	TYPE	LOAN AMOUNT	TOTAL PROJECT INVESTMENT
Airmark, Inc. (d/b/a Nelson Wood Shims) - expansion and purchase equipment	Participation	\$255,000	\$579,700
American Peat Technology, LLC - purchase equipment	Participation	750,000	7,375,000
API Outsourcing, Inc. - expansion	Participation	200,000	3,000,000
Cast Corporation - purchase equipment	Participation	305,000	610,000
First Call for Help of Itasca County	Loan Guaranty	75,000	222,000
Hibbing EDA - purchase building	Direct Loan	600,000	600,000
Hibbing Fabricators, Inc - purchase equipment	Participation	115,000	230,000
Hibbing Heating & Air Conditioning	Loan Guaranty	69,118	92,157
K-M Corner Store	Loan Guaranty	75,000	200,000
Midwest Manufacturing and Mechanical - purchase equipment	Participation	115,177	264,354
Range Cornice and Roofing Company - purchase equipment	Participation	207,000	742,173
RKG Enterprises, Inc. - construct paint booth	Participation	200,000	600,000
Spectrun Community Companies	Loan Guaranty	75,000	100,000
Spectrum Community Health, Inc.	Loan Guaranty	75,000	100,000
Swan Machine , Inc. - purchase equipment	Participation	497,100	1,158,211
Vertex Properties, LLC - purchase building	Participation	256,600	1,025,000
Vertex Properties, LLC - purchase equipment	Participation	41,643	
Vertex Roofing, Inc.	Loan Guaranty	60,000	945,000
Virginia Plastics	Loan Guaranty	13,500	27,000
Zakobe, LLC - purchase equipment	Participation	75,000	150,000
<b>Total</b>		<b>\$4,060,138</b>	<b>\$18,020,595</b>

FY20

3rd Avenue Apartments, LLC	Loan Guaranty	\$75,000	\$169,000
Amptek, Inc.	Loan Guaranty	75,000	500,000
Aw Enterprises/Hali-brite, Inc. - expansion	Participation	1,000,000	8,138,000
Biwabik Mary Ellen Stone - purchase equipment	Participation	200,000	732,080
Biwabik Mary Ellen Stone	Loan Guaranty	37,500	50,000
Cast Corporation - purchase equipment	Participation	125,000	250,000
Dirty Dog Manufacturing, LLC - purchase building	Participation	150,000	672,800
Heliene, Inc. - purchase equipment	Direct	600,000	600,000



	TYPE	LOAN AMOUNT	TOTAL PROJECT INVESTMENT
FY20 LOANS - CONTINUED			
MossNaturally, LLC - purchase equipment	Direct	250,000	656,600
North Homes Children & Family Services - expansion	Participation	1,000,000	7,034,044
Northern Opportunities dba RSF Industries, Inc. - expansion and purchase equipment	Participation	760,000	1,925,000
John Tanner Ott (Ely State Theatre) - bridge loan	Direct	300,000	300,000
Ruth’s Vegetarian Gourmet - working capital	Direct	250,000	500,000
Stern Assembly, Inc. - purchase equipment	Participation	125,000	250,000
Sundberg Properties (Sawmill Restaurant)	Loan Guaranty	57,500	115,000
Superior Nano, LLC	Loan Guaranty	26,250	35,000
Three Families Brewing	Loan Guaranty	75,000	100,000
	Total	\$5,106,250	\$22,027,524
FY19 TOTAL		\$4,060,138	\$18,020,595
FY20 TOTAL		\$5,106,250	\$22,027,524
	GRAND TOTAL	\$9,166,388	\$40,048,119

Douglas J. Johnson Economic Protection Trust Fund

The Douglas J. Johnson Economic Protection Trust Fund is devoted to economic rehabilitation and diversification with priority for projects and programs designed to create and maintain productive permanent, skilled employment including employment in technologically innovative businesses; to encourage diversification of the economy; and, to promote the development of minerals, alternative energy sources utilizing indigenous fuels, forestry, small business and tourism; and, projects and programs for which technological and economic feasibility have been demonstrated.

Minnesota Statutes Section 298.291-298.297

	AGENCY INVESTMENT	TOTAL PROJECT INVESTMENT
Public Works	\$2,988,307	\$21,601,513
Regional Trails	3,464,853	10,106,227
Northeast Higher Education District - Iron Range Engineering Bell Program	5,000,000	5,000,000
Total	\$11,453,160	\$36,707,740
PUBLIC WORKS		
Aitkin - upgrade infrastructure and street	\$250,000	\$2,430,700
Babbitt - upgrade campground - Phase II	250,000	3,078,400
Chisholm - upgrade infrastructure and street	190,000	1,007,804
Chisholm-Hibbing Airport Authority - improve parking and security	154,680	2,000,000
Cook - upgrade infrastructure for grocery store	350,000	3,800,000
Cook - construct water main loop	350,000	388,000
Cook County/Grand Marais EDA - increase FY18 grant - expand North House Folk School	100,000	100,000
Crosby - relocate sewer main	120,000	1,732,953
Ely - extend broadband	120,000	240,000
Grand Rapids - upgrade infrastructure for fitness facility	57,800	1,530,920
Greenway Joint Recreation Association - upgrade arena and ADA accessibility	47,412	94,825
Meadowlands - replace storm water	34,481	71,443
McKinley - upgrade water and sewer lines	113,934	698,154
Mountain Iron - reconstruct street	350,000	765,000
Silver Bay - upgrade water and sewer lines	250,000	1,838,365
Silver Bay - upgrade infrastructure for campground	250,000	1,824,949
Total	\$2,988,307	\$21,601,513



FY19 DJJ ECONOMIC PROTECTION TRUST FUND - CONTINUED

REGIONAL TRAILS	AGENCY INVESTMENT	TOTAL PROJECT INVESTMENT
Cook County/Grand Marais EDA - construct mountain bike trails, trailhead enhancements and signage	\$375,000	\$1,205,500
Crosby - construct multi-use trail tunnel	134,000	1,334,560
Ely - construct regional ATV trail system	2,315,900	5,115,800
Ely - construct skills mountain bike trail	20,000	40,000
Grand Rapids - construct multi-use paved trail	250,000	700,000
Iron Range Tourism Bureau - construct ATV trail	60,897	138,227
Lake County - construct mountain bike trails	300,000	1,537,585
Northern Lights Nordic Ski Club - construct nordic ski trail and kiosk	9,056	34,555
Total	\$3,464,853	\$10,106,227
FY20		
Public Works	\$2,656,872	\$14,084,050
Regional Trails Program	1,820,971	6,185,833
Giants Ridge - Capital Projects	1,500,000	1,500,000
Total	\$5,977,843	\$21,769,883
PUBLIC WORKS		
Bigfork - reconstruct access road	\$99,900	\$1,076,900
Biwabik - reconstruct main street - Phase II	250,000	2,750,000
Bois Forte Band of Chippewa - extend broadband	579,272	2,317,090
Chisholm - place new infrastructure for assisted living facility	300,000	2,432,000
Fond du Lac Band of Lake Superior Chippewa - construct water tower	250,000	1,347,123
Morse Township - extend broadband	150,000	450,000
Paul Bunyan Communications - extend broadhand Ash River	105,450	421,800
Paul Bunyan Communications - extend broadband Elephant Lake & Black Duck Lake	236,050	944,200
Paul Bunyan Communications - extend broadband Kabetogama	236,400	945,600
Paul Bunyan Communications - extend broadband Morcom Township	224,800	899,200
Silver Bay - upgrade infrastructure and street for new child care center	225,000	500,137
Total	\$2,656,872	\$14,084,050

FY20 DJJ ECONOMIC PROTECTION TRUST FUND - CONTINUED	AGENCY INVESTMENT	TOTAL PROJECT INVESTMENT
REGIONAL TRAILS		
Arrowhead Regional Development Commission - design and plan hiking trail route	\$17,621	\$35,242
Chisholm - design and plan ATV trail route	30,000	65,000
Cuyuna - construct connector to trail system	82,000	610,000
Ely - construct mountain bike trail	190,000	380,601
Friends of Sax-Zim Bog - construct bog walk	20,000	47,744
Grand Rapids - construct multi-use trail	250,000	688,932
Iron Range Tourism Bureau - fund trails maintenance grant program	50,000	100,000
Lady Slipper Scenic Byway - construct bridge	200,000	740,000
Orr - reconstruct bog walk and signage	196,350	392,700
Over the Hills Gang ATV Club - construct ATV trail	25,000	200,000
St. Louis & Lake County Regional Railroad Authority - construct multi-use trail	450,000	1,900,000
Supeior Hiking Trail Association - construct hiking trail connector	60,000	130,000
Virginia - design and reconstruct trail	250,000	895,614
Total	\$1,820,971	\$6,185,833



Taconite Economic Development Fund

The Taconite Economic Development Fund was established by the 1992 Minnesota Legislature. Currently in years when total industry production exceeds 30 million tons, up to 25.1 cents-per-ton of the taconite production tax may be rebated to northeastern Minnesota iron ore mining operations. The rebate must be used for:

- Workforce development and associated public facility improvement.
- Acquisition of plant and stationary mining equipment and facilities.
- Research and development in Minnesota on new mining or production technology.

Minnesota Statutes Section 298.227

	AGENCY INVESTMENT
<b>FY19</b>	
ArcelorMittal Minora Mine, Inc. - multi-clone replacement	\$690,864
Hibbing Taconite Company - mill gear and pinion replacement	1,936,497
Northshore Mining Company - new heating steam generation equipment	1,232,195
United Taconite, LLC - Mustang Fluxstone handling system	836,855
USS-Keetac - tails basin reclamation, dust control and primary screening upgrade	558,062
USS-Minntac - step 1 & 2 cleaner magnetic separators, mine extension, indurating line 4 OCS system, agglomerator step 1 reclaim pump, crusher slope doors, seeding and mulching, concentrator classifier upgrades, boiler management system upgrades and troughers	3,176,000
<b>Total</b>	<b>\$8,430,473</b>
<b>FY20</b>	
ArcelorMittal Minora Mine, Inc. - structural steel replacements on the Flux plant, pellet plant and classifier/cobber area, support structural steel on four remaining finishers and C Filter cake bin replacement	\$682,024
Hibbing Taconite Company - SD-1 seepage cutoff wall basin	1,913,180
Northshore Mining Company - yard conveyor for transportation	1,398,015
United Taconite, LLC - Ball Mill #3 shell replacement	991,169
USS-Keetac - main transformer upgrade and mine extension	908,797
USS-Minntac - Lines 3 & 4 pre-classification, mine extension and Dark River seeps collection	3,331,402
<b>Total</b>	<b>\$9,224,587</b>

Iron Range Higher Education Account

Created by the 2008 Minnesota Legislature, the Iron Range Higher Education Committee advises the commissioner on providing higher education programs to the service area. Programs are funded by five cents of the Taconite Production Tax that are placed in the Iron Range Higher Education Account. Upon recommendation of the commissioner and the Iron Range Higher Education Committee, the Iron Range Resources & Rehabilitation Board approves expenditures from the account.

Minnesota Statutes Section 298.28 Subd. 9d

	AGENCY INVESTMENT
<b>FY19</b>	
Northeast Higher Education District - Iron Range Engineering	\$1,000,000
Northeast Higher Education District - Research & Planning for Transportation Center	85,000
Northeast Higher Education District - Veterinarian Technician Program at Vermilion Community College	175,000
<b>Total</b>	<b>\$1,260,000</b>
<b>FY20</b>	
Northeast Higher Education District - Center of Excellence in Transportation	\$900,000
Northeast Higher Education District - Iron Range Engineering (FY20 School Year)	870,000
Northeast Higher Education District - Iron Range Engineering (FY21 School Year)	860,000
Northeast Higher Education District - VisionNE Phase I and Phase II	820,000
<b>Total</b>	<b>\$3,450,000</b>



Iron Range School Collaboration

The Iron Range School Collaboration grant program supports multi-district collaborative initiatives that result in increased availability and access to high quality education and training for students, teachers and communities within the service area.

Minnesota Statutes Section 298.28 Subd. 7a

1. Bricks and Mortar Projects:

- Partnership with one additional school district.
- Bricks and mortar projects are capped at \$2 million annual contributions based upon approval of voter referendum.
- Evidence of new and increased curriculum opportunities for students.

2. Innovative Academic Programming:

- Partnership with one additional school district or NHED member college.
- Programming examples include but are not limited to: ALI, EIP, STEM initiatives and early childhood.
- Evidence of new and increased curriculum opportunities for students.

Bricks and Mortar Projects	AGENCY INVESTMENT
FY19	
Virginia Schools - ISD 706 - Eveleth-Gilbert and Virginia Career Academy	\$98,000,000
Total	\$98,000,000
FY20	
Ely Schools - ISD 696 - infrastructure for new building	\$7,062,000
Total	\$7,062,000
Innovative Academic Programming Projects	
FY19	
Mountain Iron-Buhl Schools - ISD 712 - Chinese language course	\$21,921
Chisholm Public Schools - District 695 - connected classroom project	700,000
Total	\$721,921
FY20	
Chisholm Public Schools - District 695 - summer academic institutes	\$350,000
Education Innovation Partners - distance learning and telemedicine technology	247,825
Total	\$597,825



The 2019-2020 Biennial Report recaps  
the Department of Iron Range Resources & Rehabilitation  
activities from July 1, 2018 through June 30, 2020.

Cover: Floe Matte Cover, 100#  
Body: Floe Matte Text, 80#



10% post-consumer recycled content





DEPARTMENT OF IRON RANGE  
RESOURCES & REHABILITATION

[IRRRB.ORG](http://IRRRB.ORG)