

Building Connections—Creating Opportunities

2020 CAPITAL REQUEST

MinnState.edu/legislative

#FundMinnesotaState · #MinnStateConnections · #MinnStateOpportunities



MINNESOTA STATE

Extraordinary Education. Exceptional Value.

COLLEGES

Alexandria Technical & Community College
 Anoka Technical College
 Anoka-Ramsey Community College
 Central Lakes College
 Century College
 Dakota County Technical College
 Fond du Lac Tribal & Community College
 Hennepin Technical College
 Hibbing Community College
 Inver Hills Community College
 Itasca Community College
 Lake Superior College
 Mesabi Range College
 Minneapolis Community and Technical College
 Minnesota State College Southeast
 Minnesota State Community and Technical College
 Minnesota West Community & Technical College
 Normandale Community College
 North Hennepin Community College
 Northland Community & Technical College
 Northwest Technical College
 Pine Technical & Community College
 Rainy River Community College
 Ridgewater College
 Riverland Community College
 Rochester Community and Technical College
 Saint Paul College
 South Central College
 St. Cloud Technical & Community College
 Vermilion Community College

UNIVERSITIES

Bemidji State University
 Metropolitan State University
 Minnesota State University, Mankato
 Minnesota State University Moorhead
 Southwest Minnesota State University
 St. Cloud State University
 Winona State University



LETTER TO MINNESOTA

Across our great state, the 54 campuses of the Minnesota State system—containing nearly 22.5 million square feet of academic buildings—serve Minnesotans by providing hope and opportunity through higher education. To deliver on this responsibility, we seek **\$271.2 million** in funding in the 2020 legislative session for a capital program that will **improve campus facilities, enhancing our ability to serve our more than 350,000 students.** These investments, comprising \$230.8 million in state financing and \$40.4 million in college and university support, will **reduce operating expenses and directly impact student success** through **improved teaching, learning, and support spaces.**

Our request is straightforward: Our top priority is asset preservation through HEAPR funding. This request of \$150 million provides for more than 100 campus projects across the state addressing the most basic needs for updated roofs, windows, and exterior walls, as well as efficient and effective mechanical and utility systems.

In addition, our request includes \$121.2 million for 15 major, campus-specific capital projects across the state. Some of these projects are ready to begin construction, having received design funding in prior legislative sessions; the other projects will execute design and construction together or embark on the design process for construction to be funded in the future.

Together, the requested HEAPR and major capital project funding will:

- » improve campus teaching and learning environments and improve student outcomes;
- » reduce operating expenses and ease pressure on campus operating budgets;
- » enhance science, technology, engineering, math, allied health, technical, business, and education classrooms and labs; and
- » streamline student support services to increase student success.

We join our students, faculty, and staff in thanking you for your past support of the colleges and universities of Minnesota State. Your thoughtful engagement and steadfast support allow us to provide all Minnesotans with access to high quality, affordable educational programs that prepare our students to thrive.

Thank you for your consideration and support.

Jay Cowles, Board of Trustees Chair

Devinder Malhotra, Chancellor



About Minnesota State

Your 30 state colleges and seven state universities educate more than 350,000 students from every part of Minnesota. We offer knowledge and skills that are essential to helping our students find high-demand, well-paying jobs—keeping Minnesota's economy strong.

A vital element in providing an extraordinary education is offering facilities that provide an academic environment where students can effectively learn and develop their skills. With that in mind, our 2020 Capital Request is focused on keeping our students safe and ensuring they have the learning spaces they need for success.

Our core value

- » Provide an opportunity for all Minnesotans to create a better future for themselves, for their families, and for their communities.

Our core commitments

Minnesota State colleges and universities play an essential role in growing Minnesota's economy and opening the doors of educational opportunity to all Minnesotans. To that end, we:

- » Ensure access to an extraordinary education for all Minnesotans
- » Deliver to students, employers, communities, and taxpayers the highest value/most affordable higher education option
- » Serve as employers' partner of choice to meet Minnesota's workforce and community needs



EXTRAORDINARY FACTS



350,000+ students served annually, including:

63,000
students of color and American Indian students

48,500
first-generation students

84,000
low-income students

10,000
veterans and service members

3,900
academic programs offered



15,000
customized and specialized training, occupational, and professional classes offered

64.5%

of all of Minnesota resident students who are pursuing an undergraduate credential are doing so at a Minnesota State college or university



38,000

degrees, certificates, and diplomas awarded annually

87%

of graduates find a job related to their field of study within one year of graduation

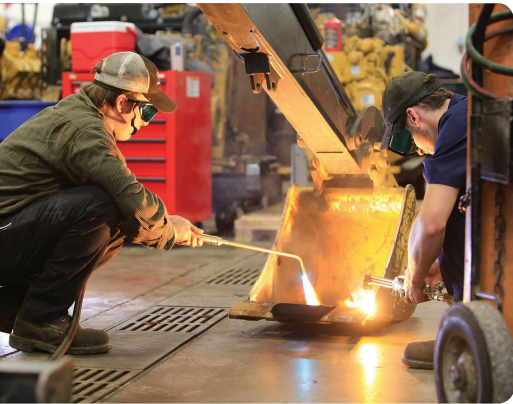
7,000+

employer partnerships across Minnesota State colleges and universities

About the Capital Budget

The Minnesota State 2020 Capital Request will:

- » Take care of what we have with a focus on asset preservation
- » Respond to changing demographics and learning strategies of our students
- » Emphasize adaptive reuse and repurposing space in all our projects
- » Replace obsolete classrooms, student services, offices, and labs with modern, efficient learning spaces



BY THE NUMBERS

37 state colleges and universities on **54** campuses in **47** Minnesota communities

843 academic buildings with

2,250 classrooms and

1,625 labs

301 acres

of roofs, roughly equivalent to 228 football fields

2,600

different pieces of HVAC equipment, such as boilers and air handlers

28.5 million square feet of total facility space, about one-third of the total square footage of state public buildings

22.5 million square feet dedicated to academic and student support space

6.0 million square feet comprised of residence halls, student unions, health/wellness centers, and parking ramps, which are not part of bonding bill requests

Source: EMS Campus/ISRS

Why We Need Your Support

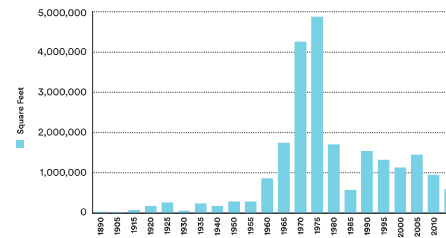
IF FULLY FUNDED, THE 2020 CAPITAL BUDGET WILL:

- » Renovate and renew 549,000 square feet on campuses
- » Positively impact over 200 classrooms and labs on colleges and universities throughout the state, improving student outcomes
- » Improve student service and advising spaces on three campuses with direct impact to nearly 14,000 FYE
- » Reduce the backlog by as much as \$250 million if all HEAPR and individual projects are fully funded



APPROACHING MIDDLE AGE

The majority of the Minnesota State academic facilities and related building systems were built between 1965 and 1975, and most are “middle-aged.” While well-kept, they are less efficient than newer buildings.



Showing five-year construction summary by square footage (e.g., 2015 represents buildings built between 2011 and 2015). Source: Capital Renewal (FRRM), Sightlines (as of June 30, 2018).

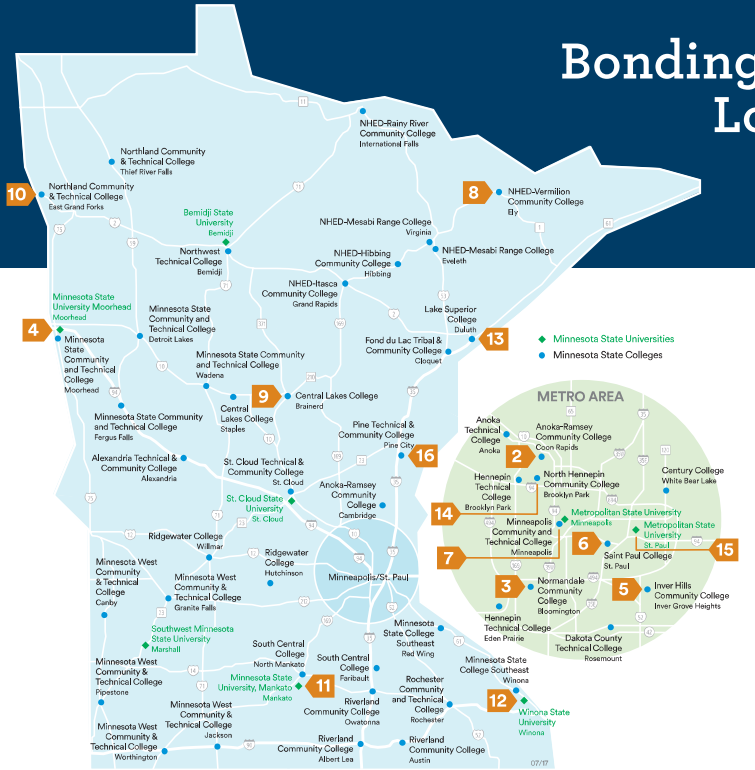
CAPITAL BUDGET PRIORITIES

The Minnesota State 2020 Capital Budget Request includes over \$121 million in individual capital projects focused on improving our core academic learning spaces and targeting student service spaces to better serve the needs of all students, including underrepresented and first-generation students attending our institutions.

When preparing its request, the Board of Trustees:

- » **Sets Priorities.** The Board of Trustees sets capital budget guidelines, which establish project priorities for the colleges and universities as they prepare their submittals for the capital budget cycle.
- » **Relies on Campus Plans.** Colleges and universities draw upon their comprehensive facilities plans for their capital budget requests and prepare pre-designs to develop the scope, estimate costs, and prepare schedules for a capital budget request.
- » **Collects Requests from Campuses.** In an average biennium, Minnesota State considers \$250–\$400 million worth of individual capital project requests and more than \$300 million of asset preservation and replacement requests.
- » **Prioritizes Most Urgent Needs.** To help prioritize what gets included on the final list, more than 100 individuals across our colleges and universities engage in a capital scoring process unique among higher education systems.

Bonding Project Locations



IF FUNDED, THE 2020 CAPITAL BUDGET INDIVIDUAL CAPITAL PROJECTS WOULD IMPACT:

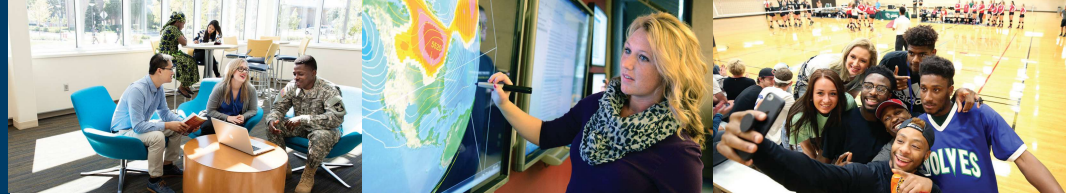
14 cities

15 campuses

4 universities

11 colleges

AND FUND OVER 100 HEAPR PROJECTS ON 43 CAMPUSES THROUGHOUT THE STATE.



2020 Capital Budget Priority List

PRIORITY	PROJECT DESCRIPTION	COST (IN MILLIONS)	PAGE
1	Higher Education Asset Preservation and Replacement (HEAPR) - STATEWIDE	\$150.0	8
2	Anoka-Ramsey Community College - Nursing and Business RENOVATION - COON RAPIDS	\$16.3	14
3	Normandale Community College - Classroom and Student Services RENOVATION - BLOOMINGTON	\$26.6	14
4	Minnesota State University Moorhead - Weld Hall RENOVATION - MOORHEAD	\$17.3	15
5	Inver Hills Community College - Technology and Business Center RENOVATION - INVER GROVE HEIGHTS	\$14.7	15
6	Saint Paul College - Academic Excellence DESIGN - ST. PAUL	\$0.9	16
7	Minneapolis Community and Technical College Management Education Center Metro Baccalaureate Initiative DESIGN - RENOVATION - MINNEAPOLIS	\$10.3	16
8	Vermilion Community College - Classroom Building DESIGN - RENOVATION - ELY	\$2.6	17
9	Central Lakes College - Student Services and Academic Support DESIGN - RENOVATION - BRAINERD	\$8.3	17
10	Northland Community & Technical College - Effective Teaching and Learning Labs DESIGN - RENOVATION - EAST GRAND FORKS	\$2.2	18
11	Minnesota State University, Mankato - Armstrong Hall Replacement DESIGN - RENOVATION - MANKATO	\$6.7	18
12	Winona State University - Center for Interdisciplinary Collaboration, Engagement, and Learning DESIGN - WINONA	\$3.2	19
13	Lake Superior College - Integrated Manufacturing Workforce Labs DESIGN - DULUTH	\$1.0	19
14	North Hennepin Community College - Center for Innovation and the Arts @ Brooklyn Park DESIGN - BROOKLYN PARK	\$6.6	20
15	Metropolitan State University - Cyber Security Program DESIGN - RENOVATION - ST. PAUL	\$3.9	20
16	Pine Technical & Community College - Technical/Trades Lab Addition and Renovation DESIGN - PINE CITY	\$0.6	21

TOTAL	\$271.2
STATE SUPPORT	\$230.8
MINNESOTA STATE FINANCED	\$40.4

Asset Preservation and Replacement

Higher Education

SUMMARY

Minnesota State seeks **\$150 million in Higher Education Asset Preservation and Replacement (HEAPR)** funding for repair and replacement of building systems at its 54 campus locations. This request includes repair and replacement of roofs and exterior building envelopes, plumbing and electrical systems, heating, ventilation and air conditioning (HVAC), and the upgrade of life safety and code issues.

WHY IS ASSET PRESERVATION AND REPLACEMENT (HEAPR) FUNDING CRUCIAL?

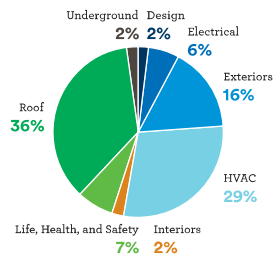
- Keeps students and faculty safe, warm, and dry
- Ensures that campus operating dollars are dedicated directly to improving educational outcomes instead of repairing buildings
- Reduces total cost of ownership (operating plus capital investments) through operating efficiencies
- Reduces the system's immediate deferred maintenance outlook (currently \$1.2 billion and climbing)
- Aligns state and system objectives for creating sustainable buildings



2020 ASSET PRESERVATION AND REPLACEMENT (HEAPR) REQUEST

Roofs and HVAC represent the largest need and work volume in total dollars. Our 2020 asset preservation and replacement (HEAPR) request falls into the following categories and percentages.

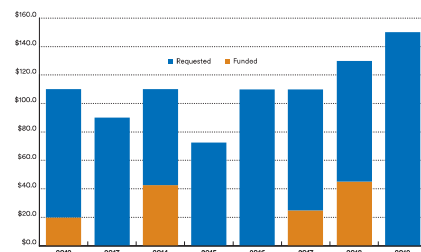
CATEGORIES OF HEAPR WORK FOR 2020



ASSET PRESERVATION AND REPLACEMENT (HEAPR) FUNDING HISTORY

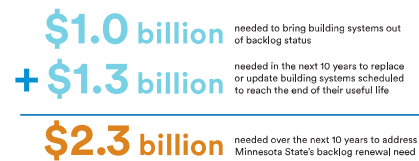
Since 2012, Minnesota State has requested \$882 million and received \$132.5 million in Asset Preservation and Replacement (HEAPR) appropriations to address building conditions at our colleges and universities. The graph shows the year-by-year request and appropriation levels.

HEAPR FUNDING HISTORY 2012–2019 (IN MILLIONS)



LOOKING AHEAD AT DEFERRED MAINTENANCE NEEDS

(preliminary condition update as of June 30, 2019)



FORECASTED NEEDS BY CATEGORY

Estimated need by major building system categories in the future (next 10 years) as of June 30, 2019:



Note: These categories are not mutually exclusive.

LEGISLATIVE INVESTMENT SCENARIOS FOR HEAPR

\$0 PER BIENNIUM INVESTMENT

» Campuses required to use operating dollars to make temporary repairs; backlog grows to \$2.3 billion in 10 years

\$30 MILLION PER BIENNIUM INVESTMENT (HISTORICAL LEVELS)

» Campuses required to use operating dollars to make temporary repairs; backlog grows to \$1.9 billion in 10 years

\$50 MILLION PER BIENNIUM INVESTMENT

» Campuses required to use operating dollars to make temporary repairs; backlog grows to \$1.78 billion in 10 years

\$150 MILLION PER BIENNIUM INVESTMENT

» Target investment to catch up and keep up with asset preservation needs; maintains "good" facilities condition



REINVESTMENT STRATEGY

Minnesota State seeks predictable and sustained asset preservation funding. Unpredictable funding creates uncertainty in reinvestment priorities, forcing campuses to use operating funds to address breakdowns and extra maintenance and energy costs instead of academic initiatives. A sustained, consistent reinvestment will start to improve facilities conditions. Two of the three (HEAPR and capital project) funding sources are dependent on the successful outcome of a bonding bill:

	BIENNIUM	YEAR
HEAPR	\$150 million	\$75 million/year
Capital Projects (est. backlog reduction)	\$100 million	\$50 million/year
Average campus R&R spending	\$66 million	\$33 million/year

Areas of Focus

ROOFS

Minnesota State maintains nearly 13.1 million square feet of roofs on its academic buildings—an area equivalent to the size of 228 football fields. Roofing is one of the most critical waterproofing elements of a building and often is neither seen nor given much attention until failures occur. Campus impacts include:

- » Costly structural damage
- » Impaired insulation
- » Damage to interior finishes
- » Indoor air quality and mold problems



At Rochester Community and Technical College, the college no longer installs ceiling-mounted projectors due to roof leaks in its Science and Technology Building. The college now relies on mobile projectors as we await funding to replace the roof, so as not to risk water leaks damaging our technology.

— Steve Schmall, CFO, Rochester Community and Technical College



At North Hennepin Community College, the main boilers that heat eight of the nine campus buildings are over 50 years old and getting temperamental. The controls for the boilers are getting hard to find and need to be replaced soon. With the upcoming weather, supplying and retaining the heat within our buildings is getting more difficult.

— Stephen Kent, Vice President of Finance and Facilities, North Hennepin Community College

BOILERS AND CHILLERS

Campus boilers and chillers are well beyond their useful lives on many campuses and operating inefficiently. Campus impacts include:

- » Inefficient boilers cost more campus operating dollars
- » Limited operating redundancy
- » Potential for equipment failures during volatile weather
- » Degraded indoor air quality

ELECTRICAL GRIDS

Failing (50+ year old) campus electrical grids are an emerging issue at our campuses. Old cabling, replacement part scarcity, and design obsolescence all create a need for the updating of campus power grids. Campus impacts include:

- » Power failures causing canceled classes
- » Difficulty in obtaining replacement parts
- » Safety concerns when servicing equipment



At Bemidji State University, the medium voltage electrical cabling is the electrical life line to every building on campus. The cabling is located in many of the pedestrian tunnels of the campus and causes major safety concerns when a failure occurs. We've had four power failures impacting campus buildings in the last four years due to equipment wearing out.

— Travis Barnes, Director of Facilities, Bemidji State University

AT-A-GLANCE: 2020 Asset Preservation and Replacement Projects

Projects as of July 2019, subject to change.

Alexandria Technical & Community College

PRIORITY PROJECTS: HVAC, Roof, Exteriors
ESTIMATED HEAPR ALLOCATION: \$7.7 million
RISK OF CONTINUED DEGRADATION: Energy inefficiency, water damage, further deterioration

Anoka-Ramsey Community College and Anoka Technical College

PRIORITY PROJECTS: Electrical, Roof, Exteriors
ESTIMATED HEAPR ALLOCATION: \$6.4 million
RISK OF CONTINUED DEGRADATION: Electrical brown outs, outages, and potential for fires, water damage

Bemidji State University

PRIORITY PROJECTS: Energy, Life, Health, and Safety, Roof
ESTIMATED HEAPR ALLOCATION: \$5.8 million
RISK OF CONTINUED DEGRADATION: Energy inefficiency, possible mold, electrical and student safety

Central Lakes College

PRIORITY PROJECTS: HVAC, Roof
ESTIMATED HEAPR ALLOCATION: \$7.5 million
RISK OF CONTINUED DEGRADATION: Water leaks and damage, energy inefficiency

Century College

PRIORITY PROJECTS: HVAC, Roof
ESTIMATED HEAPR ALLOCATION: \$10.2 million
RISK OF CONTINUED DEGRADATION: Damage to classrooms and equipment, water damage, mold

Dakota County Technical College

PRIORITY PROJECTS: Life, Health, and Safety, Roof
ESTIMATED HEAPR ALLOCATION: \$1.5 million
RISK OF CONTINUED DEGRADATION: Inadequate ventilation, water damage, mold

Hennepin Technical College

PRIORITY PROJECT: Roofs
ESTIMATED HEAPR ALLOCATION: \$4.0 million
RISK OF CONTINUED DEGRADATION: Water leaks, damage, mold

Inver Hills Community College

PRIORITY PROJECTS: HVAC, Roof
ESTIMATED HEAPR ALLOCATION: \$3.5 million
RISK OF CONTINUED DEGRADATION: Water leaks, interior damage, inefficiencies

Lake Superior College

PRIORITY PROJECTS: Exteriors, Roof
ESTIMATED HEAPR ALLOCATION: \$5.2 million
RISK OF CONTINUED DEGRADATION: Water leaks, water damage, damage to interiors

Metropolitan State University

PRIORITY PROJECTS: Exterior
ESTIMATED HEAPR ALLOCATION: \$400,000
RISK OF CONTINUED DEGRADATION: Corrosion and degrading steel



ANOKA-RAMSEY: electrical panels



ANOKA-RAMSEY: transformer



MSUM: concrete

FOR A FULL OVERVIEW ON THE CAPITAL REQUEST, VISIT: MinnState.edu/legislative

AT-A-GLANCE: 2020 Asset Preservation and Replacement Projects (cont.)

Minneapolis Community and Technical College

PRIORITY PROJECTS: Exteriors, Life, Health, and Safety, Roof
ESTIMATED HEAPR ALLOCATION: \$9.4 million
RISK OF CONTINUED DEGRADATION: Interior damage, water damage, mold

Minnesota State College Southeast

PRIORITY PROJECTS: Electrical, Exteriors, Roof
ESTIMATED HEAPR ALLOCATION: \$3.2 million
RISK OF CONTINUED DEGRADATION: Electrical brown outs, outages, and potential for fire, water damage, mold

Minnesota State Community and Technical College (M State)

PRIORITY PROJECTS: HVAC, Life, Health, and Safety
ESTIMATED HEAPR ALLOCATION: \$10.7 million
RISK OF CONTINUED DEGRADATION: Energy inefficiency

Minnesota State University, Mankato

PRIORITY PROJECTS: Exterior, Interior, Mechanical/Electrical, Roof
ESTIMATED HEAPR ALLOCATION: \$1.5 million
RISK OF CONTINUED DEGRADATION: Electrical fire, mold, water damage

Minnesota State University Moorhead

PRIORITY PROJECTS: Exterior, HVAC, Roof
ESTIMATED HEAPR ALLOCATION: \$9.0 million
RISK OF CONTINUED DEGRADATION: Interior damage, mold, water damage

Minnesota West Community & Technical College

PRIORITY PROJECTS: HVAC, Life, Health, and Safety, Roof
ESTIMATED HEAPR ALLOCATION: \$2.9 million
RISK OF CONTINUED DEGRADATION: Accessibility, inadequate ventilation, water damage, energy inefficiency

NHED – Itasca Community College

PRIORITY PROJECTS: Exterior, Roof
ESTIMATED HEAPR ALLOCATION: \$1.2 million
RISK OF CONTINUED DEGRADATION: Water damage, roof leaks and failures, mold

NHED – Mesabi Range College

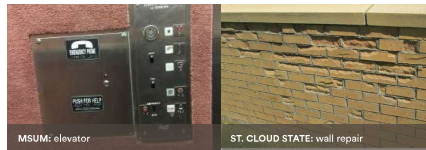
PRIORITY PROJECTS: Exterior, Roof
ESTIMATED HEAPR ALLOCATION: \$1.5 million
RISK OF CONTINUED DEGRADATION: Water damage, roof failures, mold

Normandale Community College

PRIORITY PROJECTS: Life, Health, and Safety, Exteriors
ESTIMATED HEAPR ALLOCATION: \$723,000
RISK OF CONTINUED DEGRADATION: Water damage, mold, energy inefficiency, elevator malfunctions and outages

North Hennepin Community College

PRIORITY PROJECTS: HVAC
ESTIMATED HEAPR ALLOCATION: \$2.9 million
RISK OF CONTINUED DEGRADATION: Energy inefficiency, lack backup boiler capacity, heat failure



Northland Community & Technical College

PRIORITY PROJECTS: Life, Health, and Safety, Roof
ESTIMATED HEAPR ALLOCATION: \$1.6 million
RISK OF CONTINUED DEGRADATION: Water damage, energy inefficiency, mold

Northwest Technical College

PRIORITY PROJECTS: HVAC, Life, Health, and Safety
ESTIMATED HEAPR ALLOCATION: \$1.2 million
RISK OF CONTINUED DEGRADATION: Energy inefficiency, student safety

Pine Technical & Community College

PRIORITY PROJECTS: Life, Health, and Safety, HVAC
ESTIMATED HEAPR ALLOCATION: \$1.6 million
RISK OF CONTINUED DEGRADATION: Student safety, energy inefficiency, indoor air quality

Ridgewater College

PRIORITY PROJECTS: Roof, Exterior
ESTIMATED HEAPR ALLOCATION: \$3.75 million
RISK OF CONTINUED DEGRADATION: Mold, water damage, energy inefficiency

Riverland Community College

PRIORITY PROJECTS: Electrical, Roof
ESTIMATED HEAPR ALLOCATION: \$3.7 million
RISK OF CONTINUED DEGRADATION: Power outages, electrical fire, energy inefficiency

Rochester Community and Technical College

PRIORITY PROJECTS: Exteriors, Roof
ESTIMATED HEAPR ALLOCATION: \$3.6 million
RISK OF CONTINUED DEGRADATION: Interior damage, mold, water damage

Saint Paul College

PRIORITY PROJECTS: Exteriors
ESTIMATED HEAPR ALLOCATION: \$2.4 million
RISK OF CONTINUED DEGRADATION: Mold, water infiltration, energy inefficiency

South Central College

PRIORITY PROJECTS: Roof
ESTIMATED HEAPR ALLOCATION: \$1.5 million
RISK OF CONTINUED DEGRADATION: Water damage, mold

Southwest Minnesota State University

PRIORITY PROJECTS: Exteriors, Life, Health, and Safety
ESTIMATED HEAPR ALLOCATION: \$6.5 million
RISK OF CONTINUED DEGRADATION: Water damage, mold, energy inefficiency

St. Cloud State University

PRIORITY PROJECTS: HVAC, Roof, Exteriors, Life, Health, and Safety
ESTIMATED HEAPR ALLOCATION: \$10.6 million
RISK OF CONTINUED DEGRADATION: Mold, water, insufficient ventilation

St. Cloud Technical & Community College

PRIORITY PROJECTS: HVAC, Interiors, Life, Health, and Safety
ESTIMATED HEAPR ALLOCATION: \$2.1 million
RISK OF CONTINUED DEGRADATION: Mold, water damage, energy inefficiency

Winona State University

PRIORITY PROJECTS: Roofs, Exteriors, HVAC, Underground (Tunnels)
ESTIMATED HEAPR ALLOCATION: \$11.6 million
RISK OF CONTINUED DEGRADATION: Mold, water damage, energy inefficiency

PRIORITY 2

Business and Nursing RENOVATION

\$16,282,000

Anoka-Ramsey Community College
anokaramsey.edu
@anokaramseycc

COON RAPIDS

RENOVATES: 34,505 GSF
 DEFERRED MAINTENANCE REDUCTION: \$4.9 million

- SUMMARY**
- » Received \$569,000 in 2018 for design
 - » Renovates nursing classrooms and labs as well as general classrooms within the Business and Nursing Building
 - » Accommodates an expanding nursing program, the second-largest in the state, with updated facilities that meet the needs of current pedagogy
 - » Expands capacity in the nursing program to admit 120 students per cohort, a 50 percent expansion of enrollment
 - » Includes flexible learning classroom environments for general use by all departments
 - » Provides updated technology to enhance simulation labs for nursing
 - » Impacts 19 classrooms and labs, four suites of offices

STUDENT IMPACT

Modernizes, enhances, and repurposes classrooms and labs to **increase enrollment** and provide flexible learning options as well as a welcoming, synergistic environment for one of the largest nursing programs in Minnesota.

PRIORITY 3

Classroom and Student Services Renovation, Phase II RENOVATION

\$26,634,000

Normandale Community College
normandale.edu
@normandale_cc

BLOOMINGTON

RENOVATES: 66,340 GSF
 RENEWS: 21,606 GSF (Phase II)
 DEFERRED MAINTENANCE REDUCTION: \$5.4 million

- SUMMARY**
- » Received \$12,636,000 in 2018 for design and Phase I construction
 - » Phase II completes renovations
 - » Together with Phase I, the project will improve 32 classrooms, a math lab, an open computer lab, and related support spaces
 - » Improves wayfinding and access between building floors, increases space utilization with classroom reconfiguration and right-sizing, reconfigures classrooms for active learning and collaboration, updates technology in classrooms, and adds additional student study areas for individual study and collaboration
 - » Impacts 36 percent of the college's unduplicated headcount (seats)
 - » Creates a centralized Student Service Hub to simplify the academic support process
 - » Increases the space available for Veteran's Resource Center, Diversity Center, and Center for Experiential Education to increase success of underrepresented populations

STUDENT IMPACT

Twenty nine different departments are affected by the classroom renovations, including computer technology, computer science, economics, math, and reading programs.

PRIORITY 4

Weld Hall Renovation and Addition RENOVATION

\$17,290,000

Minnesota State University Moorhead
mnstate.edu
@MSUMoorhead

MOORHEAD

RENOVATES: 33,484 GSF
 CONSTRUCTS: 2,821 GSF
 DEFERRED MAINTENANCE REDUCTION: \$8.4 million

- SUMMARY**
- » Received \$628,000 in 2018 for design
 - » Addresses significant deferred maintenance, improves pedagogy, and rightsizes classrooms
 - » Increases the number of multi-functional classrooms and reduces the number of offices
 - » Realigns classroom sizes to better serve a variety of class sizes and pedagogical approaches
 - » Solves significant ADA accessibility issues throughout the building
 - » Increases classroom flexibility and availability for expanded utilization

STUDENT IMPACT

Creates flexible, **technology-enhanced classrooms** that foster collaborative learning environments for over 2,500 students studying English, music, theater, entertainment industries and technology, and media arts and design.

PRIORITY 5

Technology and Business Center RENOVATION

\$14,653,000

Inver Hills Community College
inverhills.edu
@InverHillsCC

INVER GROVE HEIGHTS

RENOVATES: 25,200 GSF
 CONSTRUCTS: 2,400 GSF
 DEFERRED MAINTENANCE REDUCTION: \$7.4 million

- SUMMARY**
- » Received \$698,000 in 2018 for design
 - » Creates a Technology and Business Center and linkage to Heritage Hall, improving access and classroom configurations
 - » Increases classroom sizes, allowing for greater flexibility in scheduling
 - » Creates technologically advanced classrooms for programs that are growing
 - » Improves space utilization by creating appropriately-sized "smart" classrooms to optimize class size and curriculum delivery

STUDENT IMPACT

Directly benefits approximately 2,800 students in programs including business, accounting, paralegal, and computer science through **modernized and flexible classrooms**.



PRIORITY 6

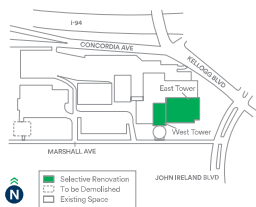
Academic Excellence Renovation and Renewal

DESIGN

\$937,000



Saint Paul College
saintpaul.edu
@StPaulCollege



- ▶ **RENOVATES:** 18,000 GSF
- ▶ **RENEWS:** 106,000 GSF
- ▶ **DEMOLISHES:** 13,000 GSF
- ▶ **DEFERRED MAINTENANCE REDUCTION:** \$3.8 million

SUMMARY

- ▶ Designs the renovation and renewal of 124,000 GSF of existing classroom, laboratory, and high-use student service spaces in the aging East Tower, West Tower, and First Floor
- ▶ Demolishes the mothballed 13,000 GSF CLC Building
- ▶ Enhances the entire campus building core complex
- ▶ Consolidates student services into a convenient One Stop Shop near the college's west entrance and creates a highly visible Welcome Center to simplify access to key student service areas
- ▶ Improves classroom and lab spaces serving growing demand areas such as business, math, computer science, and other technical career programs

STUDENT IMPACT

Ensures that the college's diverse student body has greater access to modern, relevant, functionally improved, and attractive instructional spaces for **high-demand services and programs**.



PRIORITY 7

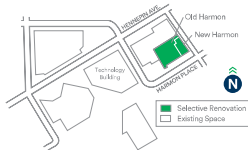
Management Education Center Metro Baccalaureate Initiative, Phase I

DESIGN · RENOVATION

\$10,254,000



Minneapolis Community and Technical College
minneapolis.edu
@mplscollge



- ▶ **RENOVATES:** 51,489 GSF
- ▶ **RENEWS:** 6,375 GSF
- ▶ **DEFERRED MAINTENANCE REDUCTION:** \$9.6 million

SUMMARY

- ▶ Together, Phases I and II renovate the Old and New Harmon buildings, collectively known as the Management Education Center (MEC)
- ▶ Phase I funds design of both phases as well as renovation of the Old Harmon building and roofing of New Harmon
- ▶ When the two phases are complete, the project will result in improvements to 21 classrooms and labs
- ▶ Expands baccalaureate options through partnership with Metropolitan State University, further enhancing opportunities for underrepresented students in the Twin Cities
- ▶ Benefits students in the business, management, and economics programs
- ▶ Creates new student support spaces, renovates faculty and staff office space, and student collaboration spaces

STUDENT IMPACT

Enhances baccalaureate opportunities for students through flexible, technology-enriched learning and **collaboration spaces**.



PRIORITY 8

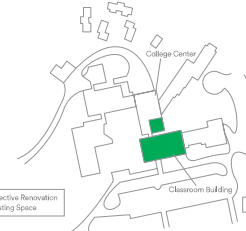
Classroom Building

DESIGN · RENOVATION

\$2,576,000



Vermilion Community College
vcc.edu
@VermilionCC



- ▶ **RENOVATES:** 6,925 GSF
- ▶ **DEFERRED MAINTENANCE REDUCTION:** \$1.3 million

SUMMARY

- ▶ Renovates six classrooms, creating **flexible adaptive learning environments** and increasing **technological capabilities**
- ▶ Brings two sets of heavily used restrooms into ADA compliance and updates adjacent corridors and lobby areas
- ▶ Creates an identifiable entry to the Classroom Building within existing space
- ▶ Replaces the Classroom Building roof

STUDENT IMPACT

Student learning will be enhanced by **technology upgrades** for different instructional delivery methods.



PRIORITY 9

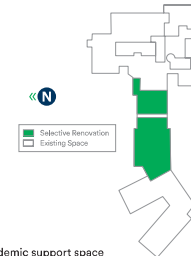
Student Services and Academic Support

DESIGN · RENOVATION

\$8,275,000



Central Lakes College
clcmn.edu
@clcmnedu



- ▶ **RENOVATES:** 27,758 GSF
- ▶ **RENEWS:** 17,700 GSF
- ▶ **DEFERRED MAINTENANCE REDUCTION:** \$516,000

SUMMARY

- ▶ Renovates and updates student services and academic support space to **streamline students' access** to services
- ▶ Realigns the student services area and renovates physical education and athletic program locker rooms and supporting spaces to correct ADA/accessibility issues
- ▶ Repositions the University Center closer to student services, facilitating student access to baccalaureate transfer options
- ▶ Creates a new focal point at the main entrance to help with orientation and wayfinding

STUDENT IMPACT

Minimizes barriers, making the prospective and ongoing student experience less daunting, while offering staff and faculty repurposed space that facilitates better communication and student-centered collaborations.

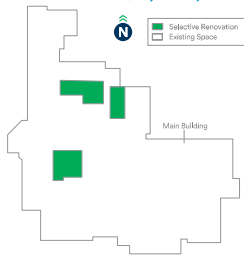


PRIORITY 10

Effective Teaching and Learning Labs

DESIGN · RENOVATION

\$2,220,000



Northland Community & Technical College
northlandcollege.edu
@myNCTC
EAST GRAND FORKS

- RENOVATES: 6,425 GSF
- DEFERRED MAINTENANCE REDUCTION: \$776,000

SUMMARY

- Part of an ongoing effort to update campus labs
- Received \$826,000 in 2017 to complete design and renovation lab funding in adjacent lab spaces
- Renovates existing classroom and lab spaces to consolidate and expand the early childhood and education program, pharmacy technology program, respiratory therapist program, and computer and networking technology program
- Creates active learning spaces that simulate real-world working environments
- Impacts programs in high-growth, high-demand career fields in the region

STUDENT IMPACT

Improves outdated health sciences and technology lab areas to ensure students are learning in **cutting edge and safe spaces** that mirror industries in which they will be employed.

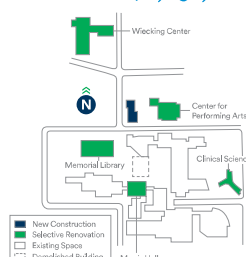


PRIORITY 11

Armstrong Hall Replacement, Phase I

DESIGN · RENOVATION

\$6,691,000



Minnesota State University, Mankato
msu.edu
@MNSUMankato
MANKATO

- RENOVATES: 70,100 GSF
- RENEWS: 5,000 GSF
- DEMOLISHES: 144,000 GSF
- CONSTRUCTS: 100,000 GSF
- SQUARE FOOTAGE REDUCTION: 44,000 GSF
- DEFERRED MAINTENANCE REDUCTION: \$36.5 million

SUMMARY

- Over three phases, constructs new building to replace heavily used but functionally and operationally obsolete Armstrong Hall, and renovates portions of five other buildings (Wrecking, Performing Arts, Memorial Library, Clinical Science, and Morris)
- Phase I designs Phases I–III through design development, and renovates part of the existing Clinical Science building
- Significantly reduces campus square footage
- Replaces half of the general purpose classrooms on campus with new flexible and innovative learning spaces
- Creates new gathering, collaboration, and social learning spaces for students
- Improves space utilization throughout campus

STUDENT IMPACT

By replacing half of the classrooms on campus through the replacement of Armstrong Hall, this project impacts **nearly every student** who attends the university.



PRIORITY 12

Center for Interdisciplinary Collaboration, Engagement, and Learning

DESIGN

\$3,218,000



Winona State University
winona.edu
@winonastateu
WINONA

- CONSTRUCTS: 73,017 GSF
- DEMOLISHES: 78,333 GSF
- SQUARE FOOTAGE REDUCTION: 5,316 GSF
- DEFERRED MAINTENANCE REDUCTION: \$9.2 million

SUMMARY

- Designs the replacement of Gildemeister and Watkins Halls with a new, highly efficient and sustainable building and creates an inviting gateway into campus
- Constructs the first Minnesota State Net Zero Energy building
- Constructs flexible and innovative spaces, including highly visible studio/lab spaces that support collaborative learning
- Promotes campus-wide interdisciplinary learning
- Incorporates student support services among classrooms and labs, improving student access to services
- Supports Winona State's focus on campus sustainability and resilience

STUDENT IMPACT

The new building will create innovative, **interdisciplinary learning spaces** to support students and faculty in five different colleges within the university.

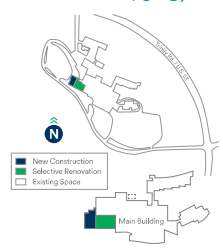


PRIORITY 13

Integrated Manufacturing Workforce Labs

DESIGN

\$985,000



Lake Superior College
lsc.edu
@LSC_Duluth
DULUTH

- RENOVATES: 27,900 GSF
- DEMOLISHES: 1,670 GSF
- CONSTRUCTS: 12,360 GSF
- DEFERRED MAINTENANCE REDUCTION: \$2.5 million

SUMMARY

- Designs the renovation and construction of spaces to accommodate integrated manufacturing programs
- Eliminates costly leased space and renovates underutilized campus classroom space
- Impacts students in high-demand computer-aided design, machine tool, welding, electronics, and civil engineering programs
- Expands manufacturing programs
- Creates rightsized labs with updated technology and equipment

STUDENT IMPACT

Improves and expands learning spaces for the integrated manufacturing program by relocating program back to main campus for greater access to Lake Superior College's student services, student community, housing, and interdisciplinary collaboration. Further enhances student tours, recruitment efforts, community and industry collaboration, and outreach efforts at a more prominent and visible location on main campus.



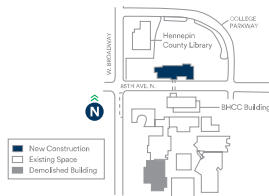
PRIORITY 14

Center for Innovation and the Arts @ Brooklyn Park

DESIGN

\$6,598,000

North Hennepin Community College
nhcc.edu
@northhennepin
BROOKLYN PARK



- DEMOLISHES: 40,639 GSF
- CONSTRUCTS: 83,130 GSF
- DEFERRED MAINTENANCE REDUCTION: \$6.2 million

SUMMARY

- » Designs the demolition of NHCC's dated Fine Arts Center and construction of a new building housing technology-rich arts education studios, classrooms, and performance spaces
- » Project and future operating cost funding provided through partnerships with the City of Brooklyn Park, Metropolitan State University Foundation, and NHCC Foundation, as well as private donations
- » Expands postsecondary pathways in the science, technology, engineering, arts, and math (STEAM) areas via partnership with Metropolitan State University
- » Engages communities in the northwest Metro area through access to arts and technology programming
- » Takes advantage of the future light rail station located next to campus
- » Provides a site for a future adjoining STEAM magnet school through the Osseo School District

STUDENT IMPACT

Transforms and advances the learning experiences of the college's diverse student population, as well as people from surrounding communities, by creating a **destination for arts education and innovation** at a highly visible location in Brooklyn Park.



PRIORITY 15

Cyber Security Program

DESIGN · RENOVATION

\$3,923,000

Metropolitan State University
metrostate.edu
@Choose_Metro
ST. PAUL



- RENOVATES: 3,183 GSF
- DEFERRED MAINTENANCE REDUCTION: \$326,000

SUMMARY

- » Renovates existing unused space to create highly technical teaching labs and certified research spaces to support high-demand cyber security programs
- » Creates an active learning classroom housing the Minnesota Cyber Range, a cutting-edge, secure cyber security simulation facility
- » Enables the university to expand the cyber security minor degree into a full major degree program
- » Creates dedicated research space utilizing Security Operations and Collaborative Research Center (SOCRC) and Secure Compartmentalized Information Facility (SCIF) capabilities

STUDENT IMPACT

Repurposes existing space to **create state-of-the-art labs and classrooms** to support learning and research for students and faculty in high-demand programs.



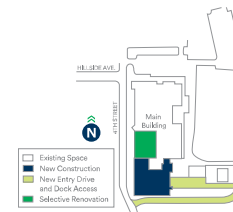
PRIORITY 16

Technical/Trades Lab Addition and Renovation

DESIGN

\$635,000

Pine Technical & Community College
pine.edu
@pinecollege
PINE CITY



- RENOVATES: 15,025 GSF
- DEMOLISHES: 2,886 GSF
- CONSTRUCTS: 29,964 GSF
- DEFERRED MAINTENANCE REDUCTION: \$276,000

SUMMARY

- » Designs the renovation and new construction of technical/trades labs, classrooms, faculty offices, health sciences spaces, and support spaces
- » Removes temporary instructional space
- » Expands high-demand programs such as nursing and precision machining
- » Creates new student spaces for studying and collaboration
- » Highlights technical and trades programs by providing open concept, integrated manufacturing setting that allows for collaborative projects across programs

STUDENT IMPACT

This **modernization and expansion** project will create a more sustainable, comfortable, and technologically advanced learning environment for current and future students. This project aids the college's long-term growth strategy of serving and training more than 4,000 students and reaching 1,200 FYE a year. This project will improve access to critical workforce skills for east central, Minnesota residents and students, while faculty and staff are able to strengthen the support offered to students through improved educational programs and services.

BOARD OF TRUSTEES

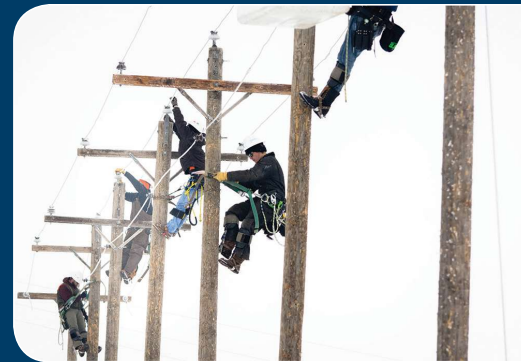
Abdulrahmane Abdul-Aziz	Robert Hoffman	George Soule
Ashlyn Anderson	Jerry Janezich	Louise Sundin
Alex Cirillo	Roger Moe <i>Vice Chair</i>	Cheryl Tefer
Jay Cowles <i>Chair</i>	April Nishimura	Michael Vekich
Dawn Erlandson	Rudy Rodriguez	Samson Williams

PRESIDENTS

Michael Seymour <i>Alexandria Technical & Community College</i>	Sharon Pierce <i>Minneapolis Community & Technical College</i>	Dennis Bona <i>Northland Community & Technical College</i>
Kent Hanson <i>Anoka Technical College and Anoka-Ramsey Community College</i>	Larry Lundblad <i>Minnesota State College Southeast</i>	Joe Mulford <i>Pine Technical & Community College</i>
Faith Hensrud <i>Bemidji State University and Northwest Technical College</i>	Carrie Brimhall <i>Minnesota State Community and Technical College</i>	Craig Johnson <i>Ridgewater College</i>
Hara Charlier <i>Central Lakes College</i>	Richard Davenport <i>Minnesota State University, Mankato</i>	Adenuga Atewologun <i>Riverland Community College</i>
Angelia Millender <i>Century College</i>	Anne Blackhurst <i>Minnesota State University Moorhead</i>	Jeffery Boyd <i>Rochester Community and Technical College</i>
Michael Berndt <i>Dakota County Technical College and Inver Hills Community College</i>	Terry Gaalswyk <i>Minnesota West Community & Technical College</i>	Deida Peaslee <i>Saint Paul College</i>
Stephanie Hammitt <i>Fond du Lac Tribal & Community College</i>	Joyce Ester <i>Normandale Community College</i>	Annette Parker <i>South Central College</i>
Merrill Irving, Jr. <i>Hennepin Technical College</i>	Jeffery Williamson <i>North Hennepin Community College</i>	Kumara Jayasuriya <i>Southwest Minnesota State University</i>
Patricia Rogers <i>Lake Superior College</i>	Michael Raich <i>Northeast Higher Education District</i>	Robbyn Wacker <i>St. Cloud State University</i>
Ginny Arthur <i>Metropolitan State University</i>		Anessa Cheek <i>St. Cloud Technical & Community College</i>
		Scott Olson <i>Winona State University</i>

Thank you!

#FundMinnesotaState · #MinnStateConnections · #MinnStateOpportunities



MINNESOTA STATE

Extraordinary Education. Exceptional Value.

MinnState.edu