



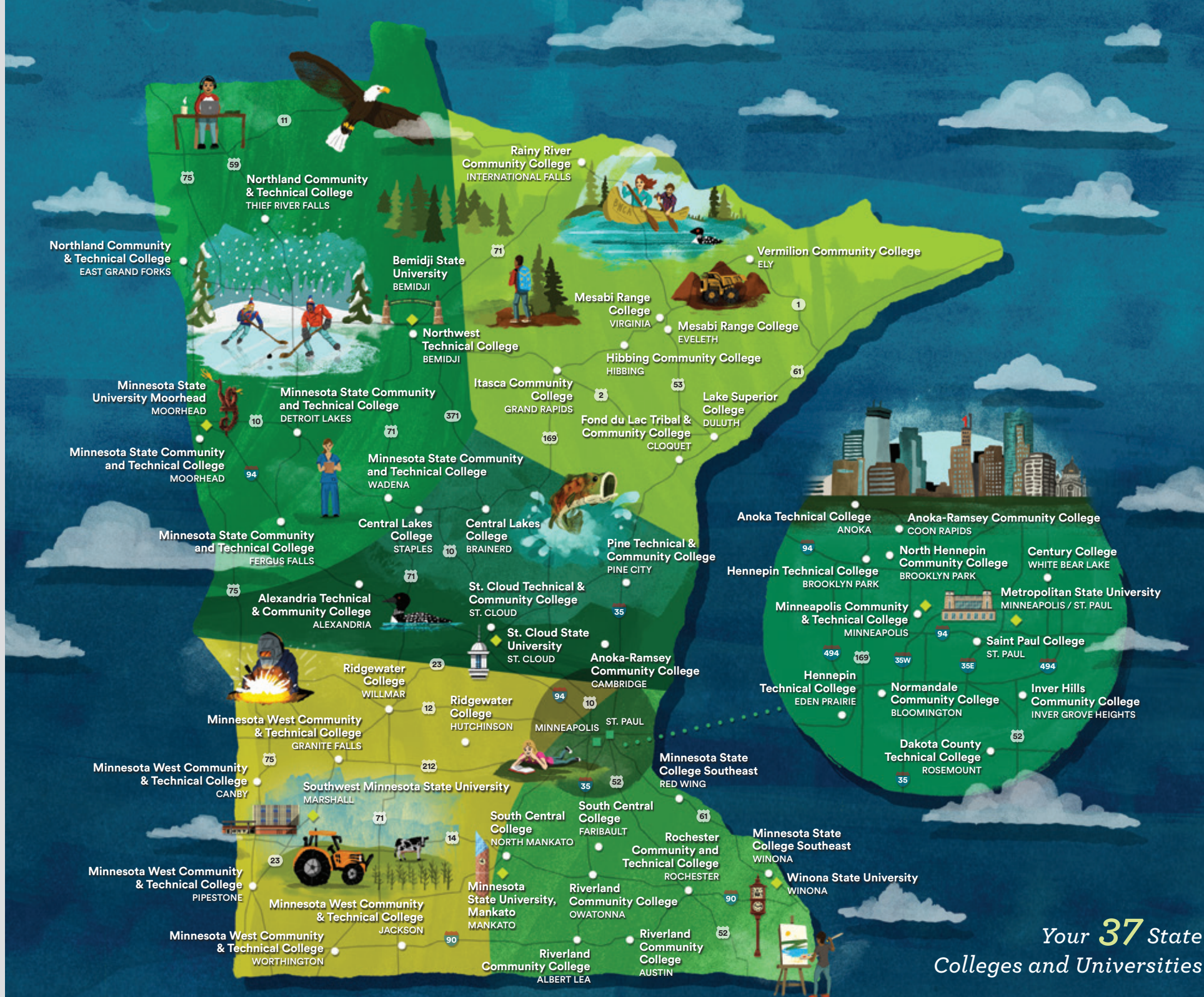
2018–2019 Guide to your 37 STATE COLLEGES AND UNIVERSITIES



MINNESOTA STATE

Extraordinary Education. Exceptional Value.

MinnState.edu



Your 37 State
Colleges and Universities



Extraordinary Education. Exceptional Value.

Nestled amidst the lakes, forests, and scenic landscapes of Minnesota are the 37 state colleges and universities of Minnesota State, your state college and university system.

More than 375,000 students choose your state colleges and universities each year, creating a brighter future to become the talent needed for Minnesota businesses and communities to grow and prosper. Minnesota State offers thousands of superior academic programs at the lowest tuition in the state. We also offer a vibrant array of student life activities and experiential learning options that can give you the opportunity to see and engage with the world. That's what extraordinary education at an exceptional value is all about.

Extraordinary Impact

Minnesota State is making a difference. From the students we serve, to our business partners, to those we employ, chances are good you or someone you know has benefited from the work of your state colleges and universities.



39,000+

degrees, certificates,
and diplomas awarded
each year

649 
online programs to choose from

fourth

largest system of colleges
and universities in the
United States

15,600+

dedicated faculty and
staff focused on
student success



15,000+ customized training,
occupational, and
professional classes

Job placement in a
related field of study

87.2% 

375,000+ students attend our colleges
and universities each year

fifty four

convenient campuses
across Minnesota



55.1%

STATE COLLEGES

61.3%

STATE UNIVERSITIES

Percent of students who receive financial aid



13,000+

online courses are
available through
Minnesota State colleges and universities



3,850

academic programs to choose from



65%

of Minnesota resident students
are pursuing an undergraduate credential
at a Minnesota State college or university

28–53%

of Minnesota State students
graduate with no debt at all,
depending on the academic
award received

We serve more

**STUDENTS
OF COLOR**

and

**AMERICAN
INDIAN
STUDENTS**

than all other higher
education providers in
Minnesota combined

MINNESOTA STATE GRADUATES' DEBT

Fiscal Year 2017

**Note the median for all graduates with certificates/diplomas is \$0 as over half did not borrow*

DEGREE	MINNESOTA STATE GRADUATES WITH NO DEBT	MEDIAN DEBT FOR ALL GRADUATES	MEDIAN DEBT FOR GRADUATES WHO BORROWED
Certificates/Diplomas	53.4%	\$0	\$11,000
Associate Degrees	40.0%	\$6,500	\$15,750
Baccalaureate Degrees	28.4%	\$17,357	\$25,000



World-class **EDUCATION**

Extraordinary Education

Your state colleges and universities offer more than 3,800 superior academic programs taught by seasoned faculty. Take a few classes. Earn a certificate, diploma, or associate degree. Or, start working or complete your bachelor's, master's, or doctorate. Minnesota State will help you build a plan that is right for you.



» Move Quickly

Your state colleges offer options that allow you to take classes or earn a certificate, diploma, or associate degree in two years or less.

» Graduation Options

Start and finish your bachelor's degree at one of your state universities, or complete two years at a state college and transfer to one of your state universities.

» Work-School-Life Balance

Explore flexible scheduling options, accelerated options, or online classes and programs that work with your schedule or fit into your life.

» Personalized Attention

Class sizes are small, campuses are friendly, and you are taught by faculty, not teaching assistants.

» Stay Local or Explore

Minnesota State has 54 campuses in 47 Minnesota communities. Choose the one that is right for you.

» Advance Your Career

Check out non-credit, short-term training options designed to help you get quick and specialized training through any Minnesota State continuing education or customized training program.

» Exceptional Value

Your 37 state colleges and universities offer the lowest tuition and fees in Minnesota and a first-class education employers respect.

» Find Your Path

Work one-on-one with staff at any of our colleges and universities to find the program and path that is right for you.



Lowest tuition in **MINNESOTA**

Your 37 state colleges and universities offer the lowest tuition and fees in Minnesota, giving you access to first-rate education options throughout the state and the ability to avoid or limit debt.

ESTIMATED FULL-TIME NET TUITION COSTS AFTER STATE AND PELL GRANTS

Academic Year 2018–19

*30 credits for a year, 15 credits per semester

INCOME LEVELS FOR STATE GRANT RECIPIENTS*	AVERAGE 2018–19 STUDENT TUITION COST	
	STATE COLLEGES	STATE UNIVERSITIES
Less than \$20,000	\$296	\$732
\$20,000 to \$39,999	\$888	\$1,212
\$40,000 to \$59,999	\$1,400	\$2,224
\$60,000 and above	\$2,635	\$4,415
Average for all state grant recipients	\$944	\$2,102
Non-state grant recipients	\$4,815	\$7,287

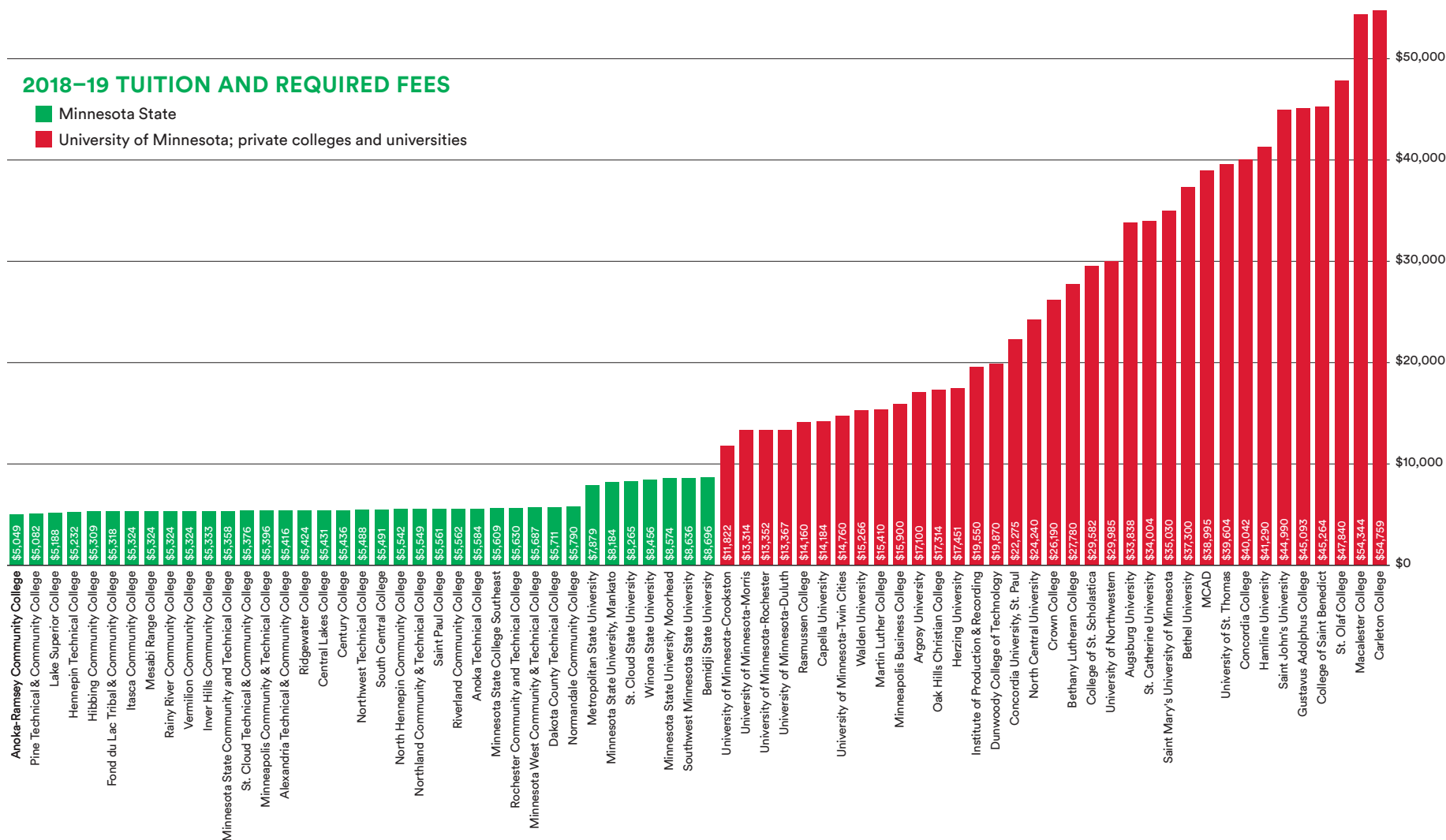
Exceptional Value

The 37 state colleges and universities that comprise Minnesota State offer the lowest tuition in all of Minnesota.

Not from Minnesota? Most colleges and universities that are part of Minnesota State offer in-state tuition rates to residents of other states. Check with the college or university you wish to attend for details. All veterans, service members, and their families receive in-state tuition.

2018–19 TUITION AND REQUIRED FEES

■ Minnesota State
■ University of Minnesota; private colleges and universities



Extraordinary Experiences

STUDENT LIFE

Choosing a state college or university also means you have access to a vibrant social scene. Check out the variety of clubs, organizations, and events. Explore varsity athletics options on **PAGES 46** and **65**. Learn about study abroad and service learning opportunities available at the college or university you are interested in attending. Or, get involved with student government on your campus or at the state level as part of Students United (*representing public state university students*) and LeadMN (*representing public community and technical college students*).





Exceptional Talent

A BRIGHT FUTURE

Your state colleges and universities are a vital resource to Minnesota employers. Not only do we help prepare students to become talented and skilled individuals, but we also work hand-in-hand with business and industry to develop relevant programs and curriculum.

GAIN RELEVANT EXPERIENCE. Employers from across the state work with our colleges and universities to offer internships and job opportunities. These same professionals also serve as advisors who help shape curriculum, obtain equipment, and develop new programs and classes.

BE THE TALENT OF TOMORROW. Your state colleges and universities award more than 39,000 certificates, diplomas, and degrees each year, and 87.2% of those graduates begin working in their field of study within one year.

FIND SOLUTIONS TO CHANGING BUSINESS NEEDS. All 37 state colleges and universities offer non-credit learning options through a network of experienced instructors who work with employers to develop training and education programs that allow employees to thrive in the ever-changing global marketplace and keep skills competitive.

UPDATE YOUR SKILLS AND KNOWLEDGE WITH CONTINUING EDUCATION.

Advance your career by learning new knowledge or skills, retraining, or attaining critical certification and licensures.

Extraordinary Pathways



Transfer OPTIONS

Starting at a Minnesota State college and considering transfer? Plan now to save time and money later. Check out a few of the transfer programs available through Minnesota State, or visit [MinnState.edu](https://www.mnstate.edu) for details.

EXPLORE TRANSFER PATHWAYS: Minnesota State offers transfer pathways that allow you to complete a specific associate degree and transfer to any of the seven Minnesota State universities.* If you complete a Transfer Pathway degree at a Minnesota State college and are admitted to a state university, you will be guaranteed junior status and given assurance that all 60 college credits will count toward the related bachelor's degree.** See **PAGE 61** for program details and options.

GET TO KNOW THE BACHELOR'S DEGREE PARTNERSHIP PROGRAM: The seven state universities offer selected bachelor degree programs that can be completed at various community colleges, allowing you to earn your degree from a university without leaving the comfort of the college campus setting. See the complete inventory of degree programs and participating colleges and universities on **PAGE 62**.

LEARN ABOUT THE MINNESOTA STATE TRANSFER GUARANTEE: If you complete the Minnesota Transfer Curriculum and earn an associate of arts (AA) degree from any Minnesota State college with a minimum 2.0 GPA[‡], you are guaranteed admission to any of the seven state universities with junior year status.**

* Universities within the Minnesota State system include Bemidji State University; Metropolitan State University; Minnesota State University, Mankato; Minnesota State University Moorhead; Southwest Minnesota State University; St. Cloud State University; and Winona State University.

** A student must still meet any special admission requirement for the major and is not guaranteed admission into the major itself.

‡ Winona State University requires a minimum 2.4 GPA for AA degrees to be accepted.

WANT TO LEARN MORE?

Our colleges and universities are staffed with many people who can help you find a direction that is right for you. Talk to a transfer specialist, visit a college or university in person, or visit [MinnState.edu](https://www.mnstate.edu) or [transferology.com](https://www.transferology.com) to learn more.



WHAT WILL TRANSFER?

AA – ASSOCIATE OF ARTS DEGREE

Designed to transfer into liberal arts four-year majors.

AS – ASSOCIATE OF SCIENCE

Two-year program designed for transfer into a specific four-year major and will likely require completing additional general education courses at a university.

AFA – ASSOCIATE OF FINE ARTS

Two-year program designed for transfer into a specific four-year major and will likely require completing additional general education courses at a university.

AAS – ASSOCIATE OF APPLIED SCIENCE

Two-year program for a specific occupation. Not designed for transfer.†

DIPLOMAS AND CERTIFICATES

Industry-driven and defined programming designed for immediate entry into the workplace. Not designed to transfer.

† While not primarily designed for transfer, individual colleges and universities may accept these courses.

Exceptional Opportunities

ACCELERATE

your degree



POST-SECONDARY ENROLLMENT OPTIONS (PSEO)*:

PSEO are college courses offered to high school students. The courses are taught by college or university faculty and allow students to earn both high school and college credit for successfully completing the course. Contact your local state college or university for eligibility requirements and information.

CONCURRENT ENROLLMENT*: Students can complete college courses at their high school while fulfilling high school course requirements at the same time. If you are interested in this option, speak to your high school guidance counselor.

TECHNICAL COURSE OPTIONS:** Students in 10th grade may take one technical college-level course taught on a college campus. You must be enrolled in a public school and meet requirements for reading proficiency and other assessments related to the course in which you wish to enroll.

ADVANCED PLACEMENT (AP) AND INTERNATIONAL BACCALAUREATE (IB) OPTIONS: AP or IB courses are offered at many high schools and provide a rigorous curriculum that prepares students to take college-level courses. Students who pass an AP test or the IB exam with acceptable scores will be awarded college credit at any Minnesota State college or university.


CREDIT FOR PRIOR LEARNING:

Students who demonstrate college- or university-level learning gained through non-credit or experiential settings may be eligible to earn college credit (*i.e., credit for military experience, credit for work history*). Inquire with the college or university you are considering for more information.

CREDIT FOR MILITARY TRAINING OR EXPERIENCE: Veterans and service members should check the Veterans Education Transfer System (VETS) for eligibility information or visit MinnState.edu/military.

* To be eligible for PSEO or concurrent enrollment with a Minnesota State college or university, high school juniors must be in the upper one-third of their class or earn a score at or above the 70th percentile on a test such as the ACT or SAT. Seniors must be in the upper one-half of their class or earn a score at or above the 50th percentile on a test such as the ACT or SAT. Students who do not meet these requirements may still be eligible if they can meet other college readiness standards determined by the college or university. Students in 9th or 10th grade may also be eligible to take PSEO or concurrent enrollment courses if they rank in the upper one-tenth of their class or attain a score at or above the 90th percentile on a nationally standardized, norm-referenced test, or if they have a favorable recommendation from designated high school officials. All high school students enrolling in PSEO or concurrent enrollment, regardless of grade level, must also meet all college course prerequisites.

** A student who first completed technical courses while in 10th grade and wishes to enroll in general education courses as an 11th or 12th grade student must take assessment tests and achieve the required scores prior to enrollment in additional PSEO courses. Learn more at MinnState.edu/admissions/pseo.



Whether you are seeking help paying for college or could use help as you prepare for an exam, your 37 colleges and universities offer a variety of resources to help you along the way. They are staffed with professionals who know and understand the process of enrolling and can help you reach your goals.

AID AND SUPPORT

Extraordinary Resources

Financial Resources

FINANCIAL AID: The Free Application for Federal Student Aid (FAFSA) is the first step in applying for assistance in financing your college education. Submit this information as soon as possible to determine your eligibility for aid. Visit fafsa.ed.gov for more information.

SCHOLARSHIPS: Scholarships are a great financial resource to students. They typically do not have to be paid back and can help offset tuition and other costs associated with college.

TAX CREDITS: Some students may benefit from federal tax credit programs. Consult with a tax professional or visit the IRS website at irs.gov for more information.

Academic Resources

ON-CAMPUS ACADEMIC ASSISTANCE: Most colleges and universities offer services such as tutors, a writing center, a math center, counseling, and more to support you. Contact the college or university you are interested in attending to learn about the resources available.

TRIO SERVICES: The federal TRIO programs are outreach and student services programs designed to identify and provide services to individuals from disadvantaged backgrounds.

ACCESSIBILITY SERVICES: Your state colleges and universities offer accessible facilities and provide accommodations to students with documented disabilities.

SUPPORT FOR VETERANS AND SERVICE MEMBERS: Most of your colleges and universities offer services for veterans and service members, including help to identify resources to pay for college, and have received Yellow Ribbon or military-friendly designations. Learn more at MinnState.edu/military.

CAREER PLANNING: Check out career services at your college or university campus, or use careerwise.MinnState.edu to explore careers, take an assessment, find program and courses including short-term and continuing education options, get tips for a successful job search, and more.

» **GET STARTED TODAY!** Contact the college or university you are interested in to meet with staff who can help you find the resources right for you.

NEXT STEPS

1

Speak to friendly staff at the college or university you are considering.

2

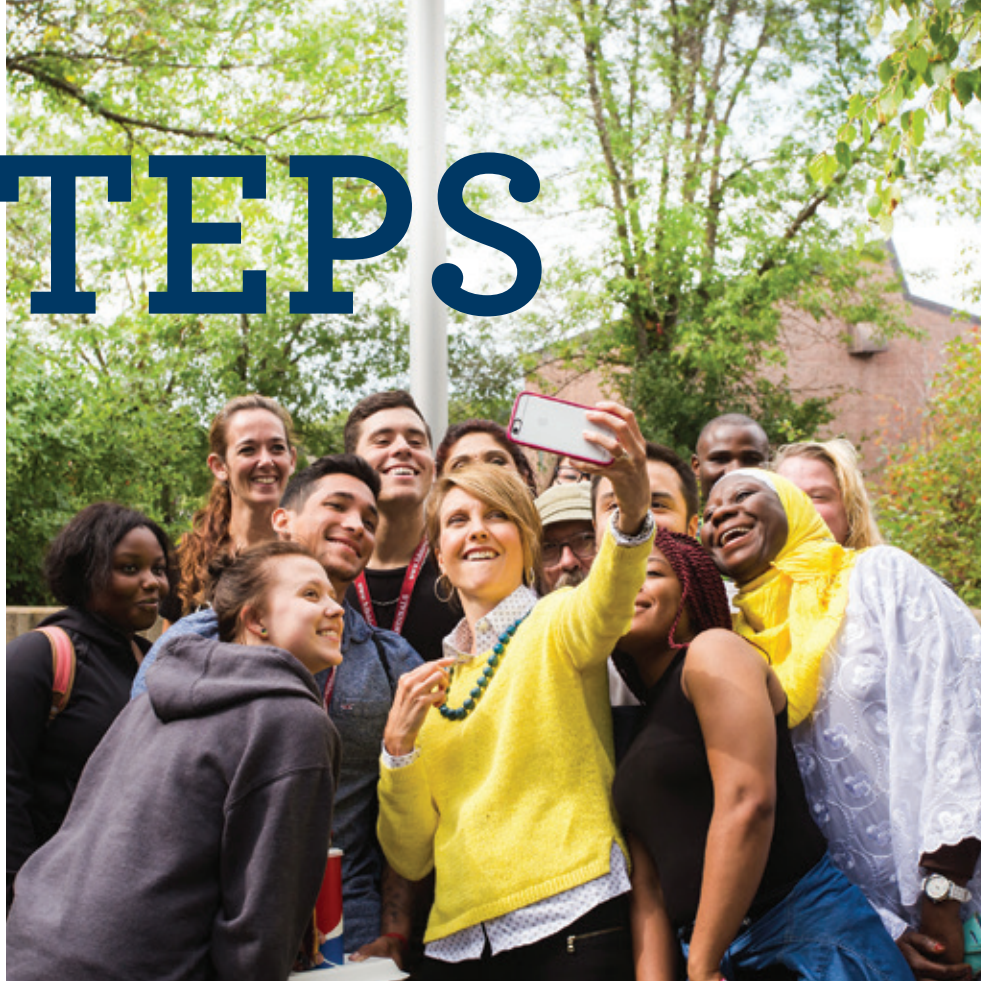
Get to know your state colleges and universities using this viewbook or by visiting MinnState.edu.

3

Check out the hundreds of programs available on your campuses by clicking on “Programs” at MinnState.edu or using the program grid found in the “Endless Opportunities” section of this book.

4

Visit campuses to find the college or university that is the right fit for you.



READY TO APPLY?

1. **CONTACT OR VISIT** the college or university you are considering to get specific admission requirements.
2. **SUBMIT YOUR APPLICATION.** The state universities typically accept applications in the fall, and the state colleges generally accept applications up until the start of the new semester.
3. **APPLY FOR FINANCIAL AID** by visiting fafsa.ed.gov and access the Free Application for Federal Student Aid (FAFSA).

4. **LOOK FOR SCHOLARSHIPS** by contacting the college or university you plan to attend for information and resources to begin the scholarship application process.
5. **START PLANNING** to achieve your goals by looking at the academic calendar for the college or university you wish to attend and getting to know staff that can assist you throughout your time on campus.

30 STATE COLLEGES

Minnesota State is home to 30 community, technical, and comprehensive colleges. These colleges are a great place to earn a degree and immediately start your career, or you can complete an associate degree and transfer to earn a bachelor's degree.

INTERESTED?

- » **CHECK OUT THE OPTIONS.** The profile pages that follow provide you a glimpse of all 30 colleges.
- » **VISIT CAMPUS.** The best way to find the college that is right for you is to visit.
- » **UNDERSTAND WHAT YOU NEED TO ENROLL.** Each college has an open admissions policy, meaning you need only a high school diploma or a GED to enroll. If you do not have a high school diploma or GED, you may qualify to be admitted through an approved Ability to Benefit test and may apply to enroll in a career pathway program. Details for program-specific admissions requirements can be found on the website of the college you are considering.
- » **KEEP TRANSFER IN MIND.** If you are thinking about transfer, take note of the pathway options and programs designed to ease the process. Planning ahead may save you time, money, and stress later.
- » **LET OUR STAFF AND FACULTY HELP.** You are strongly encouraged to contact the admissions department and get to know the faculty and staff at the college you plan to attend.

Alexandria Technical & Community College



alextech.edu

2018-19 Tuition and Fees: \$5,416



ALEXANDRIA

Admissions: 320-762-0221

1601 Jefferson St.
Alexandria, MN 56308

FAFSA Code: 005544



3,927 Students Served

50% Female // **50%** Male

50% Full-time // **50%** Part-time

9% Students of Color



ONLINE
LEARNING



STUDENT
ACTIVITIES

DEGREES OFFERED

Advanced Technical Certificate, Associate of Applied Science, Associate of Arts, Associate of Science, Certificate, Diploma

PROGRAM HIGHLIGHTS

Diesel mechanic, law enforcement, liberal arts and sciences, nursing, communication art and design, health and fitness specialist, interior design, mechatronics, cybersecurity, speech-language pathology assistant, machine tool, powersports, medical laboratory technician, paralegal, early childhood education

STUDENT ACTIVITIES

Student Senate and the Student Ambassador program provide student leadership opportunities. The varsity trap team enables students to compete in an intercollegiate

conference. 15+ student clubs, organizations, and activities available in areas such as recreation, professional development, and culture. Visit the college's website or MinnState.edu for a complete list.

AT A GLANCE

- » Job placement rate of 98%
- » Recognized as a national leader in advanced technical skills education
- » Hands-on, student-centered, experiential learning
- » Student housing adjacent to campus
- » Best-in-class student retention and graduation
- » Over 270 students have placed in the top 10 at national student competitions



- » Faculty advisors in all associate in applied science, diploma, and certificate programs
- » Visit with program faculty and tour the program during an admissions visit
- » Extensive partnerships with local, state, national, and international businesses and industries
- » Apply for all applicable scholarships through one online application
- » Transfer degrees and liberal arts curriculum provide more options to bachelor's degrees
- » Personalized transfer advising for students who are transferring to and from ATCC

VISIT

General campus tours are offered throughout the year. Visit alextech.edu/tour to register for a tour. Open House events are held the last Sunday in October and the first Saturday in April. The entire campus is open for exploration. Faculty, staff, current students, graduates, and industry are available to answer questions. No registration is required for Open House.

Anoka Technical College

anokatech.edu

2018–19 Tuition and Fees: \$5,584



ANOKA

Admissions: 763-576-7710

TTY: 7-1-1

1355 W. Highway 10

Anoka, MN 55303

FAFSA Code: 007350



2,687 Students Served

60% Female // **40%** Male

43% Full-time // **57%** Part-time

23% Students of Color



ONLINE
LEARNING



STUDENT
ACTIVITIES

DEGREES OFFERED

Associate of Applied Science, Diploma, Certificate

PROGRAM HIGHLIGHTS

Architectural 2D CAD, automotive technician, biomedical equipment technician, broadcast captioning, business data analyst, CNC manufacturing technology, golf course grounds management, health information technology, judicial reporting, medical coding, medical scribe specialist, multimedia and gaming, occupational therapy assistant, practical nursing, surgical technician, welding

STUDENT ACTIVITIES

Several student clubs, organizations, and activities available. Visit the college's website or MinnState.edu for a complete list.

AT A GLANCE

- » 26 applied associate degrees
- » 23 technical certificates
- » 20 technical diplomas
- » Automotive technology program facilities updated with new hoists, lighting, vehicle exhaust system with carbon monoxide detection, workbenches, and wall cabinets
- » 100% Job Placement: Automotive Technician, Biomedical Technician, CAD Drafter CNC Design and Manufacturing, CNC Machinist, Judicial Reporting, Practical Nursing, Surgical Technology, and Welding Fabricator
- » In fiscal year 2017, the Anoka Technical College Foundation awarded \$256,950 in student scholarships and \$15,494 in student crisis grants



- » In 2018, 14 students were awarded \$2,500 Workforce Development Scholarships (WDS); two students were awarded \$1,000 WDS
- » Legal administrative program 100% online
- » New five-axis mill from Matsuura Industries
- » Information technology programs with convenient start dates to suit your schedule
- » Partnerships with local, state, and national businesses and industries
- » New partnership with Bemidji State University to offer a path from 15 associate degree programs to a four-year degree

VISIT

Campus visits held every Tuesday and Thursday from 10 to 11 a.m. Visit the college's website for exact dates, times, and details.

Anoka Technical College is aligned with Anoka-Ramsey Community College.

Anoka-Ramsey Community College

anokaramsey.edu

2018–19 Tuition and Fees: \$5,049



CAMBRIDGE COON RAPIDS

Admissions: 763-433-1300

TTY: 7-1-1

11200 Mississippi Blvd. NW
Coon Rapids, MN 55433

FAFSA Code: 002332



12,008 Students Served

61% Female // **39%** Male

37% Full-time // **63%** Part-time

22% Students of Color



ONLINE
LEARNING



BACHELOR'S
DEGREE PARTNER



STUDENT
ACTIVITIES



INTERCOLLEGIATE
ATHLETICS

DEGREES OFFERED

Associate of Applied Science, Associate of Arts, Associate of Fine Arts, Associate of Science, Certificate, Diploma

PROGRAM HIGHLIGHTS

Accounting, alcohol and drug counseling studies, American Sign Language, biological sciences, biomedical technology, business, communication studies, creative writing, cybersecurity, engineering, environmental science, exercise science, fine arts, glassblowing, health sciences, integrative health and healing, liberal arts and sciences, nursing, pharmacy technician, physical therapist assistant, therapeutic massage

STUDENT ACTIVITIES

125+ student clubs, organizations, and activities available. Visit the college's website or MinnState.edu for a complete list.

AT A GLANCE

- » 28 associate degrees
- » 18 certificates
- » 8 advanced degrees on its campuses
- » 1 diploma
- » In fiscal year 2018, the Cambridge Campus Foundation awarded \$87,750 in scholarships to 87 students
- » In fiscal year 2018, the Coon Rapids Campus Foundation awarded \$160,575 in scholarships to 152 students

- » Anoka-Ramsey Community College was named one of 150 Top U.S. Community Colleges by the 2019 Aspen Prize for Community College Excellence
- » Both campuses are located on rivers; study at the Cambridge Campus on the Rum River, or at the Coon Rapids Campus on the Mississippi River
- » The Coon Rapids Campus offers a 28,976 square-foot Visual Arts Center with a glassblowing studio, photography studio, ceramics, computer labs, and classrooms
- » The Coon Rapids Campus Performing Arts Center also offers proscenium-style theatre; the acoustics are excellent and the 40-foot-wide stage allows for intimate box sets, full-scale musicals, opera, and ballet
- » The Cambridge Campus performance area is a proscenium-style theatre with 145-plus seats for a variety of theatre experiences
- » The Coon Rapids Campus Music Building offers two large rehearsal rooms, one small rehearsal room, six practice rooms with SmartMusic notation and recording software, and a dual Yamaha keyboard/Macintosh music technology lab

- » New programs fall 2018: alcohol and drug counseling studies, cybersecurity, therapeutic massage
- » Bachelor's degrees can be earned on campus from several partnering universities
- » Unique undergraduate research opportunities in several academic areas including biology, chemistry, communication studies, philosophy, and sociology
- » 3,000+ nursing graduates since 1967
- » Cambridge Campus nursing program honored with official day of celebration by City of Cambridge

VISIT

For a tour, call 763-433-1300 or visit anokaramsey.edu/admissions/visit-the-college.

Anoka-Ramsey Community College is aligned with Anoka Technical College.

Central Lakes College

clcmn.edu

2018-19 Tuition and Fees: \$5,431



BRAINERD STAPLES

Admissions: 218-855-8000

TTY: 218-855-8224

501 W. College Dr.
Brainerd, MN 56401

FAFSA Code: 002339



5,454 Students Served

57% Female // **43%** Male

40% Full-time // **60%** Part-time

10% Students of Color



ONLINE
LEARNING



STUDENT
ACTIVITIES



INTERCOLLEGIATE
ATHLETICS



ON-CAMPUS
HOUSING

DEGREES OFFERED

Associate of Applied Science, Associate of Arts, Associate of Science, Certificate, Diploma

PROGRAM HIGHLIGHTS

Liberal arts and sciences, honors program, nursing, law enforcement, natural resources, computer network administration, sustainable greenhouse production, videography production, American Sign Language, heavy equipment operations and maintenance, robotics and automated systems

SPECIAL OPTIONS

Certificates – Deaf studies, entrepreneurship, environmental studies, global studies, Latin American studies, robotic welding, special education, welding technology, wildlife tourism

STUDENT ACTIVITIES

Numerous student clubs, organizations, sports, and activities available. An active Student Senate body on each campus. Strong student life program and opportunities of international studies. Get the four-year college experience at the two-year college price. Visit clcmn.edu for a complete list.

AT A GLANCE

- » Earn your AA degree without ever buying a commercial textbook with the Z-Degree
- » Learn and live surrounded by lakes and trees near Minnesota's premier vacation destination. With campus on the banks of the Mississippi, the region boasts more than 500 lakes and rivers, as well as beautiful parks and forests



- » 95% of CLC graduates find jobs related to their program of study
- » Small class sizes with expert instructors who know your name and care about you as an individual
- » CLC Foundation awards \$350,000 in scholarships each year; in spring semester alone, 368 scholarships were awarded
- » A Veterans Resource Center, awarded "Military Friendly" and "Military Advanced Education & Transition College" honors
- » Live Online lets students attend and participate in class in real time from anywhere across the nation, or watch a recording of class later when it's more convenient. Traditional online courses available as well
- » Free tutoring services available for all students, in addition to TRIO Student Support Services
- » Convenient, newly renovated student housing available adjacent to campus
- » Home of the Central Lakes Community Performing Arts Center, providing theatre entertainment with the Cultural Arts Series and Brainerd Community Theatre

- » Verse Like Water, a series that brings in world-renowned poets for a reading and craft talk
- » Nine-hole disc golf course located on campus
- » Students regularly outscore their peers on state and national skills tests
- » Raider athletics is home to six NJCAA DIII varsity sport teams and known nationwide for excellence, boasting four national championships
- » Ranked #2 in the nation by Great Value Colleges for an Associate's in Computer Engineering/Computer Information Science Online

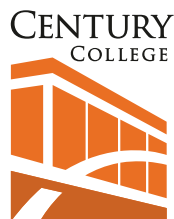
VISIT

Campus tours are offered every Monday and Friday at the Brainerd campus and every Wednesday at the Staples campus. To schedule a tour, visit clcmn.edu.

Century College

century.edu

2018–19 Tuition and Fees: \$5,436



WHITE BEAR LAKE

Admissions: 651-779-3300

TTY: 651-779-3354

3300 Century Ave. N.
White Bear Lake, MN 55110

FAFSA Code: 010546



12,346 Students Served

56% Female // **44%** Male

40% Full-time // **60%** Part-time

39% Students of Color



ONLINE
LEARNING



BACHELOR'S
DEGREE PARTNER



STUDENT
ACTIVITIES



INTERCOLLEGIATE
ATHLETICS

DEGREES OFFERED

Associate of Arts, Associate of Fine Arts,
Associate of Science, Associate of Applied
Science, Diploma, Certificate

PROGRAM HIGHLIGHTS

Liberal arts and science transfer degrees,
applied career and technical degrees, diplomas
and certificates in nursing, paramedic,
medical assistant, dental hygiene, automotive
service technology, radiologic technology, law
enforcement, cybersecurity, translation and
interpreting, interior design, kitchen and bath
design, visual communications technologies,
orthotic and prosthetic technology, solar
and renewable energy, additive and digital
manufacturing, engineering, computer science,
HVACR, and mental health behavioral aide II

STUDENT ACTIVITIES

30+ student clubs, organizations, and activities
available in areas such as fine and performing
arts, recreation, and career development.

AT A GLANCE

- » 58 degrees, 24 diplomas, and 61 certificates are offered in a wide variety of high-demand program areas that lead to immediate employment or transfer to four-year universities. Areas include applied design, arts and humanities, business, health sciences, human services, science, technology, engineering and mathematics (STEM), social and behavioral sciences, and trade and industry
- » Flexible course options accommodate students' busy schedules, including online,



blended, day, evening, part-time, and credit
for prior learning

- » State-of-the-art classrooms and laboratories provide cutting-edge technology to meet industry standards; this includes laboratories for Digital Fabrication (Fab Lab), solar and renewable energy, orthotics and prosthetics, and health sciences simulation
- » New Engineering and Applied Technology Center, planned to open in fall 2020, will serve an expanded engineering program and other STEM programs, as well as discipline areas across the college
- » Low tuition rates, financial aid options, and numerous scholarship opportunities make a college education affordable
- » Personalized and innovative student support services, including advising, academic tutoring, career counseling, wellness, veteran, disability, and technology services and an on-campus student resource and support center help students to succeed
- » A variety of student clubs and organizations, collegiate athletic teams, campus recreation, art, music and theatre experiences, discipline-specific competitions, guest speakers, and an LGBTQ, Veterans and Multicultural Center contribute to creating a vibrant campus community

- » Strong community and business partnerships enhance academic curriculum and provide experiential student learning opportunities such as internships, service learning, and career exploration
- » A Leader College and member since 2011 in Achieving the Dream, a national, nonprofit network that champions evidence-based institutional improvements around student success and innovative strategies to bridge the achievement gap
- » Nursing program ranked the #2 nursing program in Minnesota by RegisteredNursing.org based on licensure exam success rates which consistently exceed 92%
- » Orthotics and prosthetics programs are two of a few programs in the nation training workers for this rapidly growing, high-demand field

VISIT

Attend a “Discover Century” information session, program information session, or campus event. Learn more at century.edu/visit.

Dakota County Technical College

dctc.edu

2018–19 Tuition and Fees: \$5,711



ROSEMOUNT

Admissions: 651-423-8000

TTY: 651-627-3529

1300 E. 145th St.
Rosemount, MN 55068

FAFSA Code: 010402



3,746 Students Served

39% Female // **61%** Male

49% Full-time // **51%** Part-time

22% Students of Color



ONLINE
LEARNING



BACHELOR'S
DEGREE PARTNER



STUDENT
ACTIVITIES



INTERCOLLEGIATE
ATHLETICS

DEGREES OFFERED

Associate of Applied Science, Associate of Science, Certificate, Diploma

PROGRAM HIGHLIGHTS

DCTC delivers cutting-edge education that gives you the knowledge and skills for employment. Our programs include: GM Automotive Service Educational Program, heavy duty truck tech, electrical lineworker, biomedical equipment tech, heavy construction equipment tech, health care, brewing and beer stewardship, business administration, civil engineering tech, multicultural management, early childhood and youth development, veterinary technician

STUDENT ACTIVITIES

25+ student clubs, organizations, and activities available in areas such as career development,

student leadership, and culture. Visit the college's website or MinnState.edu for a complete list.

AT A GLANCE

- » DCTC provides collegiate-level education for employment that empowers individuals to enhance their opportunities for career advancement and success in a global economy. When students choose DCTC, they discover the Blue Knight life is more than just a college; it's a realm of possibility
- » **Value** – DCTC ranks in the Top 50 nationwide on Value College's list of best community college values
- » **Choices** – DCTC offers 55 degree programs and more than 90 certificate and diploma programs, in virtually every professional



sector imaginable, from business to brewing, high tech to health care, and beyond

- » **Support** – Take advantage of free student services like tutoring, counseling, career advising, computer resources, and more
- » **Energy** – DCTC offers a true college experience, with countless student life and leisure opportunities to connect with our campus
- » Welcoming, student-centric campus with newly remodeled central commons area
- » Flexible learning options including credit for prior learning, short-term programs, online classes, and an Individualized Studies AS degree

» Small class sizes, hands-on labs, real-world learning, and instructors that care

» Strong business and industry partnerships that bring modern equipment and relevant coursework

VISIT

Experience our student-friendly campus by taking a Tuesday Campus Visit any Tuesday from 12:45 to 2:30 p.m.

Fond du Lac Tribal & Community College



fdltcc.edu

2018–19 Tuition and Fees: \$5,318



CLOQUET

Admissions: 218-879-0800

TTY: 800-627-3529

2101 14th St.
Cloquet, MN 55720

FAFSA Code: 031291



2,522 Students Served

57% Female // **43%** Male

32% Full-time // **68%** Part-time

21% Students of Color



ONLINE
LEARNING



STUDENT
ACTIVITIES



INTERCOLLEGIATE
ATHLETICS



ON-CAMPUS
HOUSING

DEGREES OFFERED

Associate of Applied Science, Associate of Arts, Associate of Fine Arts, Associate of Science, Certificate, Diploma

PROGRAM HIGHLIGHTS

Law enforcement, nursing, environmental science, geospatial technologies, American Indian studies, clean energy technology

STUDENT ACTIVITIES

Our engaging campus life programming provides meaningful connections to campus and student success. Opportunities are available for roles in student government and campus leadership, plus participation in student clubs based on career and program areas, academic excellence, intercollegiate athletics, and special interests.

AT A GLANCE

- » Reputation for friendly service and a comfortable campus atmosphere
- » Convenient daytime, evening, weekend, and online courses
- » Cultural center, fitness areas, law enforcement and nursing training facilities
- » Emphasis on uniting cultures and creating individual and community awareness
- » Unique transfer programs with four-year universities make it easy to transfer credits

VISIT

Visit campus anytime or during a Campus Visit Day. Check out the “Visit Us” page on our website for details.



Hennepin Technical College

hennepintech.edu

2018-19 Tuition and Fees: \$5,232



Hennepin Technical College™



**BROOKLYN PARK
EDEN PRAIRIE**

Admissions: 952-995-1300

TTY: 800-627-3529

Visit HennepinTech.edu for directions to our Brooklyn Park and Eden Prairie locations.

FAFSA Code: 010491



7,764 Students Served

39% Female // **61%** Male

34% Full-time // **66%** Part-time

43% Students of Color



ONLINE
LEARNING



BACHELOR'S
DEGREE PARTNER



STUDENT
ACTIVITIES

DEGREES OFFERED

Associate of Applied Science, Associate of Science, Certificate, Diploma

PROGRAM HIGHLIGHTS

Automation robotics, fluid power engineering, business, IT, engineering CAD, interactive design/video production, audio production, dental assistant, practical nursing, medical assistant, culinary arts, auto body collision, manufacturing and engineering technology, plastics, welding and metal fabrication, woodworking, law enforcement, public works, Ford ASSET, light rail technician

STUDENT ACTIVITIES

Many student clubs and activities, with strong programs in Phi Beta Kappa, SkillsUSA, and a growing initiative for BREA (Blacks Rising in

Education and Academics). Experience active student senate and enjoy a new student fitness center. Targeted TRIO programs to help low-income and first-generation Americans enter college, overcome barriers, and earn a degree. Strengths-based leadership development to build all students' leadership in education, career, and life.

AT A GLANCE

- » A college committed to equity and inclusion
- » 99% job placement rate
- » Ranks #36 nationally in associate degrees conferred to minority students in the Engineering Technology field (Source: Diverse magazine, December 2017)
- » Two convenient campuses – Brooklyn Park and Eden Prairie



- » Among the lowest tuition in the state
- » Short-term programs that can be completed in as little as 16 weeks
- » Convenient class offerings include on-site, online, and hybrid courses
- » Close relationships with industry partners create many program-specific scholarship and internship opportunities
- » Labs and curriculum aligned to industry standards; equipment donations allow use of cutting-edge technology
- » "Beyond The Yellow Ribbon" college with

veterans clubs and resources on each campus

- » New in 2019: Students can earn a Bachelor's degree at the Eden Prairie campus in partnership with Metropolitan State University

VISIT

The best way to discover Hennepin Technical College is to see it yourself. Schedule a campus tour or attend an open house for a specific program. For more information visit HennepinTech.edu.

Hibbing Community College

Part of the Northeast Higher Education District (NHED)

hibbing.edu

2018–19 Tuition and Fees: \$5,309



HIBBING



Admissions: 218-262-7200

TTY: 800-627-3529

1515 E. 25th St.
Hibbing, MN 55746

FAFSA Code: 002355



1,766 Students Served

51% Female // **49%** Male

57% Full-time // **43%** Part-time

14% Students of Color



ONLINE
LEARNING



STUDENT
ACTIVITIES



INTERCOLLEGIATE
ATHLETICS



ON-CAMPUS
HOUSING

DEGREES OFFERED

Associate of Applied Science, Associate of Arts, Associate of Fine Arts, Associate of Science, Certificate, Diploma

PROGRAM HIGHLIGHTS

IT networking and security, law enforcement, medical lab technician, nursing, nursing assistant, pharmacy technician, automotive technician, diesel mechanic, electrical maintenance, heating and cooling technician, dental assistant, culinary arts, CDL truck driving

STUDENT ACTIVITIES

Several student clubs, organizations, and activities available in a variety of areas including recreation, student leadership, and culture.

AT A GLANCE

- » On-campus housing features two-bedroom, two-bathroom suites with full kitchen, living space, and on-site laundry
- » The state-of-the-art Simulation Center for nursing (RN) students is equipped with high fidelity mannequins that function with all the capabilities of a human without the repercussions, allowing students to learn in a safe and controlled environment as a supplement to off-site clinical rotations
- » 16-week programs available such as Commercial Truck Driving and Certified Nursing Assistant
- » "Yellow Ribbon Campus" proudly serving military members and their families
- » Located in the heart of the Iron Range;



gorgeous scenery, outdoor recreation, and an abundance of trails and lakes

- » Recipient of over \$150,000 in Women's Foundation Grants to assist women in non-traditional career routes
- » Program in nursing ranked among the top nursing schools in the state of Minnesota with over 90% first try pass rate for the NCLEX exam (*based on most recent semester*)
- » Law enforcement program with over 40 years of history in training excellence; program boasts a unique indoor, on-campus firing range
- » 10-month programs such as dental assisting and heating and cooling technician
- » Associate of Fine Arts program allows students to take classes with a focus in drawing, painting, sculpting, and ceramics alongside general requirements
- » Culinary arts program includes opportunities to work in a commercial style kitchen and showcase skills by providing food service to the entire campus for breakfast and lunch
- » Athletics opportunities in volleyball, softball, men and women's basketball, baseball, and trap league
- » Recently updated state-of-the-art Motor Control Lab for electrical maintenance allows students to learn and practice hands-on application of the function, operation, installation, protection, maintenance, and troubleshooting of motor controls, various starting circuits, and motors according to applicable National Electrical Code articles
- » Highly anticipated campus renovation project to be completed spring of 2019 includes a brand new student-centered Academic Center, library, bookstore, Student Services and Resource Center
- » Free access to all campus fitness centers including weight room, bike/running room, and CrossFit training gym
- » HCC Foundation awards student scholarships annually in amounts ranging between \$500 and \$3,000
- » Dental assisting students learn and practice skills in a shared on-campus fully functioning dental clinic

VISIT

Visit HCC's website to schedule a tour anytime Monday–Friday 9 a.m. to 3 p.m.

Inver Hills Community College

inverhills.edu

2018–19 Tuition and Fees: \$5,333

Inver Hills
Community College



INVER GROVE HEIGHTS

Admissions: 651-450-3000

TTY: 800-627-3529

2500 E. 80th St.
Inver Grove Heights, MN
55076

FAFSA Code: 006935



7,309 Students Served

59% Female // **41%** Male

36% Full-time // **64%** Part-time

33% Students of Color



ONLINE
LEARNING



BACHELOR'S
DEGREE PARTNER



STUDENT
ACTIVITIES

DEGREES OFFERED

Associate of Applied Science, Associate of Arts, Associate of Fine Arts, Associate of Science, Certificate, Diploma

PROGRAM HIGHLIGHTS

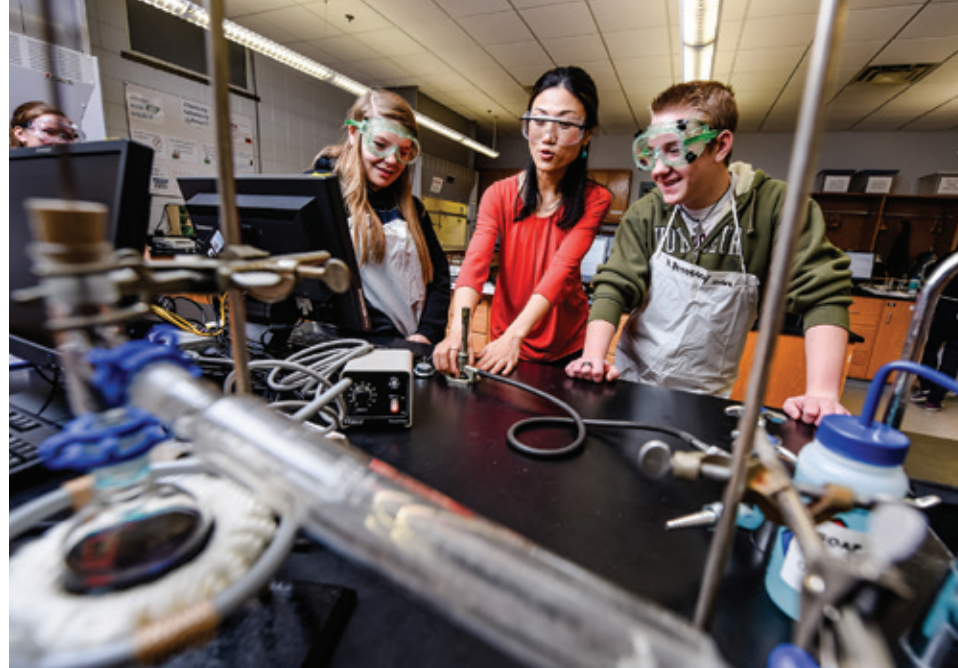
Launch your degree or career with Inver Hills Community College. Our campus, less than 10 miles southeast of St. Paul, offers network technology and security, emergency medical services, computer science, accounting, biology, psychology, Minnesota Alliance for Nursing Education (MANE) BSN, law enforcement, Adult Success through Accelerated Learning (ASAP), Inver Prep, InCollege, engineering fundamentals, paralegal, criminal justice, project management

STUDENT ACTIVITIES

25+ student clubs, organizations, and activities available in areas such as music, theater, culture, and student leadership. Visit the college's website or MinnState.edu for a complete list.

AT A GLANCE

- » Inver Hills is dedicated to the power and promise of education; we inspire students, build careers, and strengthen communities. When students choose Inver Hills, they've chosen the right place to steer their lives and careers in the right direction
- » **The Right Career** – Inver Hills grads are doing great things in business, industry, and the community



- » The college's programs in nursing, paralegal, EMS, and business hold specialty accreditation and are ranked among the top in the state
- » **The Right University** – Students are able to enter their four-year program with plenty of confidence, and less debt, with a start at Inver Hills
- » A smaller campus means smaller class sizes, more opportunities to get involved and take leadership roles, and get to know faculty and staff
- » **The Right Support** – No one is alone at Inver Hills. Our friendly staff is here for tutoring, advising, financial aid, application assistance, and more
- » Between Admissions and the Enrollment Center, students will get needed support to ensure they're taking the right steps, filling out the right forms, and getting started in the right direction at Inver Hills
- » **The Right Connections** – Students can build personal and professional relationships that will last a lifetime

- » Student Life and student clubs plan an average of one to two events per week during fall and spring semester, with opportunities for free food, lecture series, movies, music, and more
- » Gorgeous campus with small class sizes and instructors that know your name
- » More than 50 degree and certificate programs ideal for transfer or launching your dream career
- » Complete the first two years of a bachelor's degree for a fraction of the cost
- » Convenient and accessible services on campus with staff dedicated to your academic and career success
- » National designation as an adult-friendly learning institution and one of the best colleges for veterans

VISIT

Campus visits are offered weekly and last about one hour. Visit the Inver Hills website for details.

Itasca Community College

Part of the Northeast Higher Education District (NHED)

itascacc.edu

2018–19 Tuition and Fees: \$5,324



GRAND RAPIDS

Admissions: 218-322-2340

TTY: 218-322-2438

1851 E. Highway 169
Grand Rapids, MN 55744

FAFSA Code: 002356



1,667 Students Served

51% Female // **49%** Male

60% Full-time // **40%** Part-time

18% Students of Color



ONLINE
LEARNING



STUDENT
ACTIVITIES



INTERCOLLEGIATE
ATHLETICS



ON-CAMPUS
HOUSING

DEGREES OFFERED

Associate of Applied Science, Associate of Arts,
Associate of Science, Certificate, Diploma

PROGRAM HIGHLIGHTS

Engineering, natural resources, wildland
firefighting, K–12 education (Class Act), early
childhood education, applied psychology/
human services, industrial technology – process
operations, geography and GIS, American Indian
studies, liberal arts, health sciences, practical
nursing

STUDENT ACTIVITIES

20+ student clubs, organizations, and activities
available in areas such as culture, recreation,
volunteerism, and academics. Visit the college's
website or MinnState.edu for a complete list.

AT A GLANCE

- » 1,000+ lakes in beautiful Itasca County plus easy access to thousands of acres of public land for outdoor activities
- » On-campus housing plus a variety of nearby off-campus options
- » Women's volleyball, basketball, softball; men's football, basketball, wrestling, baseball
- » Trap shooting (co-ed) is now an MCAC varsity sport, and Itasca hosts the championship
- » Itasca is a learning community college where students get real-world, hands-on experience, and instructors' full attention is devoted to teaching
- » More than \$150,000 in scholarships awarded each year complement already low tuition



VISIT

Schedule a visit any weekday 9 a.m. to 3 p.m.
or sign up for a Campus Preview Day. See the
college's website for details.

Lake Superior College

lsc.edu

2018–19 Tuition and Fees: \$5,188



DULUTH

Admissions: 218-733-7601

2101 Trinity Rd.
Duluth, MN 55811

FAFSA Code: 005757



7,908 Students Served

53% Female // **47%** Male

36% Full-time // **64%** Part-time

12% Students of Color



ONLINE
LEARNING



BACHELOR'S
DEGREE PARTNER



STUDENT
ACTIVITIES



INTERCOLLEGIATE
ATHLETICS

DEGREES OFFERED

Associate of Applied Science, Associate of Arts, Associate of Fine Arts, Associate of Science, Certificate, Diploma

PROGRAM HIGHLIGHTS

Auto service technology, aviation maintenance technician, cybersecurity, dental hygiene, dialysis patient care technician, fire technology and administration, integrated manufacturing, liberal arts and sciences, medical assistant, paralegal studies, physical therapist assistant, practical nursing, professional pilot, truck driving

SPECIAL OPTIONS

- » LSC collaborates with many four-year institutions, including the College of St. Scholastica, the University of Wisconsin-

Superior, St. Cloud State University, Metropolitan State University, Bemidji State University, and the University of Minnesota Duluth, to provide seamless pathways for students to transition to four-year degree programs

- » LSC has 42 high school partners for the Postsecondary Enrollment Options (PSEO), Honors Online (HOL), and the College in the Schools (CITS) programs
- » LSC serves as a regional Economic Opportunity Center through the U.S. Department of Education to help marginalized individuals plan for and attend college
- » LSC and Hibbing Community College offer a dual campus partnership to provide a dental assisting program for students who live in the Twin Ports area



STUDENT ACTIVITIES

20+ student clubs, organizations, and activities available in areas such as arts, recreation, intercollegiate athletics, student leadership, and career development. Visit the college's website or MinnState.edu for a complete list.

AT A GLANCE

- » Generous and growing scholarship funding through the LSC Foundation awarded more than \$200,000 to students in 2017–18
- » Expanded sports programs include intercollegiate men's and women's soccer, basketball, cycling, and clay target
- » On-site specialized veteran's services available through the Veterans Resource Center, Higher Education Veterans Program, Minnesota Department of Veterans Affairs, on main campus
- » LSC is the only two-year college in Minnesota designated as a National Center of Academic Excellence in Cyber Defense by the National Security Agency/Department of Homeland Security
- » LSC's numerous community partnerships include connections with local, regional, and state agencies and nonprofits through workforce development grant-sharing and

customized training and active advisory councils for technical and allied health programs

- » Hangar facilities for the Center for Advanced Aviation at the Duluth International Airport house both LSC's professional pilot and aviation maintenance technician programs
- » The Emergency Response Training Center provides world-class training for emergency response professionals
- » The college provides dental hygiene, massage therapy, and physical therapy services to students and uninsured residents of the region through faculty-supervised student clinics

VISIT

Campus tours are offered weekdays at 10 a.m. or 2 p.m. or by appointment. Visit the college's website for additional details and events.

Mesabi Range College

Part of the Northeast Higher Education District (NHED)



mesabirange.edu

2018-19 Tuition and Fees: \$5,324



EVELETH
VIRGINIA



Admissions: 218-749-0313

TTY: 218-749-7783

1001 W. Chestnut St.
Virginia, MN 55792

FAFSA Code: 004009



1,742 Students Served

48% Female // 52% Male

51% Full-time // 49% Part-time

17% Students of Color



ONLINE
LEARNING



STUDENT
ACTIVITIES



INTERCOLLEGIATE
ATHLETICS



ON-CAMPUS
HOUSING

DEGREES OFFERED

Associate of Applied Science, Associate of Arts,
Associate of Science, Certificate, Diploma

PROGRAM HIGHLIGHTS

Transfer programs, industrial mechanical
technology, nursing, welding technology,
human services, human services – addiction
studies, graphic design media, Iron Range
Engineering (partnership with ICC)

STUDENT ACTIVITIES

Several student clubs, organizations, and
activities available in areas such as student
leadership, academics, career programs,
and recreation. Visit the college's website or
MinnState.edu for a complete list.

AT A GLANCE

- » Small class sizes that lead to personal attention and interaction with other students
- » Women's volleyball, basketball, softball, and golf; men's football, basketball, baseball, and golf; co-ed club trap team; e-sports club
- » Strong student life program
- » Over \$105,000 in scholarships awarded annually
- » Semi-furnished apartments on the Virginia campus
- » Excellent placement rates and high-paying jobs in many career programs



VISIT

Contact the admissions office to schedule a campus visit with a personal guide. Visit the college's website for additional details and events.

Minneapolis Community & Technical College

minneapolis.edu

2018–19 Tuition and Fees: \$5,396



MINNEAPOLIS
COMMUNITY & TECHNICAL
COLLEGE™



MINNEAPOLIS

Admissions: 612-659-6200

TTY: 7-1-1

1501 Hennepin Ave.
Minneapolis, MN 55403

FAFSA Code: 002362



11,301 Students Served

56% Female // **44%** Male

33% Full-time // **67%** Part-time

56% Students of Color



ONLINE
LEARNING



STUDENT
ACTIVITIES



BACHELOR'S
DEGREE PARTNER

DEGREES OFFERED

Associate of Applied Science, Associate of Arts, Associate of Fine Arts, Associate of Science, Certificate, Diploma

PROGRAM HIGHLIGHTS

Eight schools within the college provide simplicity in choosing a major and guidance for which courses to take first to save time and money; programs within these schools include biology, psychology, theater, business, liberal arts, nursing, and more

STUDENT ACTIVITIES

70+ student clubs, organizations, and activities available. Visit the college's website or MinnState.edu for a complete list.

AT A GLANCE

- » Knowledgeable, award-winning faculty members committed to student success
- » Students from around the world who represent a range of ages and backgrounds
- » Small class sizes to connect with faculty and classmates
- » State-of-the-art technical, science, and world language labs
- » Nationally accredited programs in high-demand fields
- » Award-winning Student Support Center
- » Minneapolis College is the first college in Minnesota to offer exploratory majors for undecided students, allowing you to start making immediate progress on your

educational journey while keeping your options open for multiple programs within a broad career cluster

- » The new Academic Success Center offers a state-of-the-art learning environment geared specifically to enhance student success
- » The Power of YOU program covers tuition and fees (after state and federal grants) for eligible public high school graduates; 2,400 students have come through the program over the last 10 years
- » About half a million dollars was awarded to students during fiscal year 2017 in scholarships and emergency assistance through the Minneapolis College Foundation
- » Minneapolis College is an anchor partner in the Cedar Riverside Opportunity Center and 800 W. Broadway, a collaboration between public sector and private non-profit partners to provide access to educational, workforce, and career pathway services to the community
- » The Student Support Center received the Minnesota State Innovative Student Affairs Program Award for its Student Parent Center and other services in providing for and responding to the needs of Minneapolis College's diverse population
- » Seven Minneapolis College students earned USA Today Academic All-Star Awards for academic and personal achievements and using their education to benefit their communities
- » Minneapolis College instructors are frequently recognized by Minnesota State as Outstanding Educators, including three faculty receiving the top award, Educator of the Year, in 2016–17 and 2017–18
- » Minneapolis College collaborates with many four-year institutions, including Metropolitan State University, Augsburg University, and the University of Minnesota, to provide seamless pathways for students to transition to four-year degree programs
- » Minneapolis College helps high school students prepare for college and explore careers through a variety of programs, including Postsecondary Enrollment Options (PSEO), CollegeNOW, and Destination to Diploma (D3) programs

VISIT

Visit the college's website to sign up for an Information Session and get more details about upcoming events and the admissions process.

Minnesota State College Southeast

southeastmn.edu

2018–19 Tuition and Fees: \$5,609



**RED WING
WINONA**



Admissions: 877-853-8324

TTY: 507-453-2785

1250 Homer Rd.
Winona, MN 55987

FAFSA Code: 002393



2,896 Students Served

60% Female // **40%** Male

39% Full-time // **61%** Part-time

15% Students of Color



**ONLINE
LEARNING**



**BACHELOR'S
DEGREE PARTNER**



**STUDENT
ACTIVITIES**

DEGREES OFFERED

Associate of Arts, Associate of Science, Associate of Applied Science, Certificate, Diploma

PROGRAM HIGHLIGHTS

Accounting, auto body collision, automotive and light duty diesel, band instrument repair, biomedical equipment technology, CNC machine tool, construction technology, creative writing, early childhood education, electrical engineering technology, guitar repair and building, health science broad field (AS), liberal arts and sciences (AA), medical laboratory technology, nursing, radiography, software development and support, transfer pathways, truck driving, violin repair program, welding technology

STUDENT ACTIVITIES

Collegiate DECA – Winona Chapter, Phi Theta Kappa, Student Senate, SkillsUSA, Student Music Association, Strings, Winds & Brass (annual music/talent showcase at Red Wing's historic Sheldon Theatre), Student Guitar Show.

AT A GLANCE

- » Campuses in Red Wing and Winona located in beautiful Minnesota bluff country along the Mississippi River
- » 15:1 student-teacher ratio, small campuses, and welcoming environment mean faculty and staff will know you by name
- » Dedicated, expert instructors with professional experience in their fields
- » Highly qualified and experienced Liberal Arts and Sciences faculty



- » Fully operational trade/technical labs simulate real-world work environment
- » Wide range of programs in high-demand, high-paying employment areas
- » Health care programs (Medical Laboratory Technician, Practical Nursing, Radiography) accredited by respective national agencies
- » Practical nursing program 2017 NCLEX first-time success rate of 88.89%
- » Transfer Pathways associate degrees in Accounting, Business, Exercise Science, History, Pre-Social Work, and Psychology lead directly to related bachelor's degrees at Minnesota State universities
- » Health Science Broad Field AS provides strong foundation for major in any health care field
- » New Construction Technology degree emphasizes sustainability, energy conservation, eco-friendly building practices, and partnership with Habitat for Humanity
- » 100% online programs available in Accounting, Administrative Support Careers, Computer Aided Design (CAD) Drafting, Creative Writing, Cyber and Information Security, Early Childhood Education, Medical Support Careers, Software Development and Support

- » Winona students have housing options in Winona State University dorms and access to WSU Integrated Wellness Complex
- » Red Wing students eligible for free membership in Red Wing YMCA
- » Active Collegiate DECA – Winona Chapter competes at international level
- » Musical instrument repair programs on Red Wing campus attract national and international students
- » Minnesota State College Southeast Foundation awards more than \$125,000 in scholarships annually
- » 95% of graduates seeking work find employment in their chosen fields

VISIT

Schedule a personal campus tour with an admissions advisor by calling 877-853-8324 or email enrollmentservices@southeastmn.edu.

Minnesota State Community and Technical College



minnesota.edu

2018–19 Tuition and Fees: \$5,358



**DETROIT LAKES
FERGUS FALLS
MOORHEAD
WADENA**

Admissions: 877-450-3322
TTY: 800-627-3529

Visit minnesota.edu/campuses for directions to our four campus locations

FAFSA Code: 005541



8,196 Students Served

60% Female // **40%** Male

41% Full-time // **59%** Part-time

18% Students of Color



**ONLINE
LEARNING**



**BACHELOR'S
DEGREE PARTNER**



**STUDENT
ACTIVITIES**



**INTERCOLLEGIATE
ATHLETICS**

DEGREES OFFERED

Associate of Applied Science, Associate of Arts, Associate of Fine Arts, Associate of Science, Diploma, Certificate

PROGRAM HIGHLIGHTS

Cosmetology, dental assisting and hygiene, electrical technology, electrical lineworker, equine science, gas utility construction and service, medical laboratory technology, nursing, phlebotomy technician, powersports technology, radiologic technology, cardiovascular technology-invasive, mental health behavioral aide II, surgical technology, music/theatre/visual arts, purchasing and inventory management, social media management, sport management, medical assistant, database administration. Transfer

Pathways available in accounting, biology, business, criminal justice, history, political science, psychology, and theatre arts.

STUDENT ACTIVITIES

The four M State campuses have 50+ student clubs, organizations, and activities focused on career skills, theatre, art, culture, recreation, entertainment, and student leadership.

AT A GLANCE

- » Prepare for transfer to a four-year college or university or choose from 70 career programs
- » Choose from on-campus, online, blended, or evening courses
- » More than 200 classes and 40 programs and majors can be completed entirely online



» M State is the top transfer institution for students attending MSUM, NDSU, UND, and Concordia College.

» Nursing and radiologic technology students have a licensure exam pass rate of 95%

» 1,700 students attended M State tuition-free in 2017–18

» Campus foundations award more than \$300,000 in scholarships each year

» The **Detroit Lakes** campus is located at the center of a variety of outdoor activities and unique entertainment venues; the campus offers an impressive selection of hands-on technical programs to launch your dream career

» Experience a university-like atmosphere at our two-year college campus in **Fergus Falls**, which includes on-campus housing and dining, collegiate athletics, year-round student life events, and a robust Student Government Association

» On the **Moorhead** campus you'll experience a diverse campus in a metropolitan setting. Get involved with active clubs and organizations, an on-campus fitness center, and get to know your student resources, including an academic advising and tutoring center

» The **Wadena** campus's reputation for being friendly and welcoming is the first thing you'll notice when you walk into the newly renovated student services area. Learn from experts in the field in real-world classroom environments

VISIT

Our friendly enrollment managers are ready to take you on a tour of the campus, assist you with your college and financial aid applications, and answer the questions you (or your family) may have! Visit minnesota.edu/visit to sign up. If you're planning to be an online-only student, contact our Support Center at enroll@minnesota.edu to get started.

Minnesota West Community & Technical College



mnwest.edu

2018-19 Tuition and Fees: \$5,687



CANBY
GRANITE FALLS
JACKSON
PIPESTONE
WORTHINGTON

Admissions: 800-658-2330

TTY: 800-658-2330

1450 Collegeway
Worthington, MN 56187

FAFSA Code: 005263



4,696 Students Served

59% Female // **41%** Male

36% Full-time // **64%** Part-time

19% Students of Color



ONLINE
LEARNING



STUDENT
ACTIVITIES



INTERCOLLEGIATE
ATHLETICS

DEGREES OFFERED

Associate of Applied Science, Associate of Arts,
Associate of Science, Certificate, Diploma

PROGRAM HIGHLIGHTS

Nursing, mechatronics, wind energy, electrician,
powerline, welding, radiology tech, precision
machining, law enforcement, agriculture,
biofuels, carpentry, diesel, dental, surgical tech,
computers, cosmetology, child development,
automotive, liberal arts, computer science, solar

STUDENT ACTIVITIES

Intercollegiate athletics, numerous student
clubs, organizations, and activities available in
areas such as student leadership, academics,
career programs, and recreation. Visit the
college's website or MinnState.edu for a
complete list.

AT A GLANCE

- » Numerous course offerings for flexible and accessible learning such as on-campus, online, and hybrid
- » Pathway opportunities with Minnesota West and SMSU Blue to Brown program
- » Fall 2017 opened a new \$2.55 million Powerline Technology Training Facility at the Jackson campus
- » New student housing at the Worthington campus to open fall 2018
- » Student success with high graduation and persistence rates
- » Collaboration with business/workforce leaders to meet workforce demands with technical training and scholarship opportunities



- » Leader in allied health programming with learning opportunities in a hospital setting
- » Named top 150 college in the country by the Aspen Institute (three times)
- » Military Friendly School and "Beyond the Yellow Ribbon" organization
- » Practical nursing program holds the top Minnesota State licensure passing rates
- » Over \$100,000 awarded in scholarships annually

- » Minnesota West has five campuses and two learning centers, which span a total of 19 counties and 21,000 square miles

VISIT

Campus visits are Tuesdays or Thursdays starting at 1 p.m. Get details at mnwest.edu/get-started/visit-us.

Normandale Community College

normandale.edu

2018–19 Tuition and Fees: \$5,790



BLOOMINGTON

Admissions: 952-358-8201

TTY: 952-358-8625

9700 France Ave. S.
Bloomington, MN 55431

FAFSA Code: 007954



14,877 Students Served

56% Female // **44%** Male

42% Full-time // **58%** Part-time

36% Students of Color



ONLINE
LEARNING



BACHELOR'S
DEGREE PARTNER



STUDENT
ACTIVITIES

DEGREES OFFERED

Associate of Applied Science, Associate of Arts, Associate of Fine Arts, Associate of Science, Certificate

PROGRAM HIGHLIGHTS

Liberal arts, business, computer science, science and engineering, nursing, dental hygiene, teacher education, law enforcement, music, theatre, art, vacuum technology; advanced degree programs in accounting, business, communications, computer science, dental hygiene, education, engineering, exercise science, nursing

STUDENT ACTIVITIES

50+ student clubs, organizations, and activities available in areas such as arts, recreation, student leadership, and career development.

Visit the college's website or MinnState.edu for a complete list.

AT A GLANCE

- » Prepares students for full participation in diverse communities, creates pathways to other college programs, and builds community connections. Normandale is committed to quality, affordability, student access, and success
- » Over 14,000 students from diverse backgrounds attend classes at the college each year, making it Minnesota's largest community college
- » Normandale offers accredited music, theatre, art, and business programs – rare among two-year colleges in Minnesota and nationwide
- » Normandale awarded more than \$33 million



to students through federal and state financial aid programs in the past year

- » Normandale is a top transfer institution to Minnesota State University, Mankato, University of Minnesota, University of St. Thomas, and many other state colleges and universities
- » Normandale's Partnership Center provides access to bachelor's and master's degree programs through partnering institutions on the Normandale campus. Students can obtain an associate degree at Normandale, and complete their bachelor's or master's degree in a variety of majors. The Partnership Center includes classroom space, engineering labs, a telepresence conference room, and gathering spaces for community and academic programs
- » Normandale's Continuing Education program collaborates with community industry partners to make an impact; through these partnerships, Continuing Education provides leadership training, helps employees transition to managerial roles, and works with other community and industry partners on innovative projects
- » Support services are provided for second language and developmental education students as well as students with disabilities
- » Normandale Tutoring Center provides services to students through the Writing Center, embedded tutors in historically difficult courses, walk-in peer tutoring, and tutoring for non-native English speakers; students utilized these services over 15,000 times in 2017–18
- » The college provides a community dental clinic that accepts public assistance and offers dental services on a sliding fee scale for those living in the southwest metro area
- » Normandale provides a campus food pantry for students without the financial means to eat every day
- » Normandale is a "Beyond the Yellow Ribbon" military friendly organization. Normandale has one of the largest veteran populations in the Minnesota State system
- » Normandale has one of the few authentic Japanese Gardens in the state. The garden has received commendation from Japan for its dedication and work with growing "Spring Wonder," the first cherry tree hardy enough to withstand Minnesota's cold winters

VISIT

Campus visits are available at different times during the year. Please check normandale.edu/visit to get the schedule and any information about campus visits.

North Hennepin Community College

nhcc.edu

2018–19 Tuition and Fees: \$5,542



North Hennepin
Community College



BROOKLYN PARK

Admissions: 763-424-0724

TTY: 800-627-3529

7411 85th Ave. N.
Brooklyn Park, MN 55445

FAFSA Code: 002370



10,173 Students Served

59% Female // **41%** Male

29% Full-time // **71%** Part-time

46% Students of Color



ONLINE
LEARNING



STUDENT
ACTIVITIES



BACHELOR'S
DEGREE PARTNER

DEGREES OFFERED

Associate of Applied Science, Associate of Arts, Associate of Fine Arts, Associate of Science, Certificate

PROGRAM HIGHLIGHTS

Liberal arts, accounting, American Sign Language (ASL), business, computer science, construction management, creative writing, criminal justice, economics, education, entrepreneurship, exercise science, film, health, health sciences, history, human services, graphic design, history, law enforcement, literature, management, marketing, music, nursing, paralegal, pre-engineering, psychology, studio arts, theatre

SPECIAL OPTIONS

- » Bachelor's degrees available on campus through NHCC's University Center partners; degrees offered include biology, business administration, economics, English, gender studies, exercise science, human services, medical laboratory science, nursing, professional communication, psychology, special education
- » Honors program and National Honor Society available for qualifying students
- » Undergraduate research opportunities in biology, chemistry, and geology
- » Internship opportunities in business, exercise science, graphic design, human services, paralegal, and more



STUDENT ACTIVITIES

75+ student clubs and organizations, recreational sports, wellness activities, diversity and equity initiatives, and leadership development opportunities available. Visit nhcc.edu/studentlife for a complete list.

AT A GLANCE

- » Affordable, diverse, and welcoming campus located in the northwest metro
- » 70 academic programs
- » "Beyond the Yellow Ribbon" military-friendly campus with a Veterans Resource Center
- » High-tech STEM labs in the award-winning Bioscience and Health Careers Center
- » On-campus student health clinic with no out-of-pocket costs
- » Online degrees and certificates available in liberal arts, accounting, business, computer science, management, and more
- » Earn college credit in high school via PSEO and concurrent opportunities
- » Award-winning theatre productions, and student research, art and literature publications

- » Numerous scholarship opportunities through the NHCC Foundation
- » Renovated Campus Center with student spaces such as the Game Room, Fireside Lounge, Study Lab, Reflection Room, Blackbox Theatre, and more
- » Multiple resources available to students including academic advising, access services, career services, personal counseling, tutoring, and writing center
- » Multicultural programming – American Indian, Asian Heritage, Black Men's Leadership, Global Salaam, Latino Success, Women on Wednesdays – open to all students
- » Community Connections Resource Center connecting students to campus and community resources and opportunities

VISIT

Information Sessions: Mondays and Fridays at 10 a.m., Tuesdays at 5:30 p.m.

Admissions Events: Open House (April), Fast Track (July, December)

Learn more at nhcc.edu/visit.

Northland Community & Technical College

northlandcollege.edu

2018–19 Tuition and Fees: \$5,549



EAST GRAND FORKS THIEF RIVER FALLS

Admissions: 218-793-2388

TTY: 800-627-3529

1101 Highway One E.
Thief River Falls, MN 56701

FAFSA Code: 002385



4,892 Students Served

58% Female // **42%** Male

40% Full-time // **60%** Part-time

19% Students of Color



ONLINE
LEARNING



STUDENT
ACTIVITIES



INTERCOLLEGIATE
ATHLETICS

DEGREES OFFERED

Associate of Applied Science, Associate of Arts,
Associate of Science, Certificate, Diploma

PROGRAM HIGHLIGHTS

Liberal arts, aviation maintenance technology, geospatial intelligence analysis, small unmanned aircraft systems technician, agriculture education, animal science, precision agriculture equipment technician, automotive service technology, auto body collision technician, commercial vehicle operator, architectural technology, carpentry, construction electricity, accounting, digital marketing, early childhood education and paraprofessional, dietetic technician, nursing, occupational therapy assistant, pharmacy technology, physical therapist assistant, radiologic technology, respiratory therapist, surgical technology,

computer and network technology, criminal justice-law enforcement, firefighter-paramedic, electronics technology, manufacturing process technology, and welding technology

STUDENT ACTIVITIES

NCTC offers 20+ student clubs and organizations in various areas including fine arts, music, theater, athletics, leadership, and more. Visit the college's website or MinnState.edu for a complete list.

AT A GLANCE

» 80+ program options offering you the focused attention and hands-on training you want, along with the state-of-the-art resources and career building opportunities you need to meet the demands of the rapidly changing world



» Two great campus locations; enjoy the great outdoors from your doorstep in Thief River Falls or the best shopping, restaurants, and nightlife that greater Grand Forks offers

» With a student/faculty ratio of 17:1, students receive hands-on and personalized instruction

» Over \$150,000 in scholarships awarded each year

» Award-winning faculty committed to student success

» NorthernConnect Dual Admission Program provides a seamless academic pathway to either Bemidji State University or University of Minnesota Crookston

» Transfer made easy. Continue your education after getting a personalized, affordable education at NCTC. Transfer to schools like Bemidji State University, Minnesota State University Moorhead, North Dakota State University, St. Cloud State University, University of Minnesota Crookston, University of North Dakota, and more

» Leader in healthcare education offering over 17 high-demand career programs in health and human services

» 86,000 square-foot state-of-the-art aerospace training facility

» On-campus. Online. Anytime. We offer a range of flexible learning options that allow you to customize a schedule that fits your professional and personal schedule

» Intercollegiate athletic programs including baseball, basketball, clay target, football, wrestling, softball, and volleyball

» Make yourself at home in the newly renovated and fully furnished student housing units located near the Thief River Falls campus

» Free access to our campus fitness centers

» The Academic Success Center is dedicated to providing students with free learning resources including tutoring and disability services

» NCTC is made up of pioneers who every day follow their passion by making a difference in our communities and beyond. These are their stories: NCTCStories.com

VISIT

Your next step should be on campus. Visit the NCTC website to plan your campus tour or go on an interactive, virtual campus tour from your home or phone at NorthlandCollege.edu/360.

Northwest Technical College

ntcmn.edu

2018-19 Tuition and Fees: \$5,488



BEMIDJI

Admissions: 218-333-6600

905 Grant Ave. SE
Bemidji, MN 56601

FAFSA Code: 005759



1,924 Students Served

74% Female // **26%** Male

33% Full-time // **67%** Part-time

20% Students of Color



ONLINE
LEARNING



STUDENT
ACTIVITIES



ON-CAMPUS
HOUSING

DEGREES OFFERED

Associate of Science, Associate of Applied Science, Certificate, Diploma

PROGRAM HIGHLIGHTS

Nursing, dental assisting, community health worker, health sciences, medical coding, automotive service and performance, electrical construction, plumbing/HVAC, accounting, commercial refrigeration, computer support, general business, human resources, administrative assistant, child care and young child education

STUDENT ACTIVITIES

Numerous student clubs, organizations, and activities available. Visit the college's website or MinnState.edu for a complete list.

AT A GLANCE

- » Academic programs, both on campus and online, closely match career opportunities in northern Minnesota
- » A new diploma program in commercial refrigeration has been added for fall 2018
- » Students experience personal attention, small classes, supportive faculty, and well-equipped labs, as well as abundant parking and an on-campus café
- » Through a partnership with Bemidji State University, students can live at BSU and enjoy the benefits of campus housing
- » Internships and similar types of hands-on experience are woven into program requirements, ensuring that students graduate with the skills they need to succeed



- » A comfortable student lounge called "The Roost" is open whenever the college is open, providing a casual spot to relax, play a game, study, or just hang out and socialize
- » The Center for Diversity, Equity & Inclusion supports student clubs and organizations and coordinates events and programs to increase understanding of diversity and appreciation for its benefits

VISIT

Campus visits are highly encouraged for students and their families. Visits may be scheduled by calling 218-333-6600 or by going to the college's website, ntcmn.edu.

Pine Technical & Community College

pine.edu

2018-19 Tuition and Fees: \$5,082



Pine Technical & Community College



PINE CITY

Admissions: 320-629-5100

TTY: 320-629-1030

900 Fourth St. SE
Pine City, MN 55063

FAFSA Code: 005535



2,636 Students Served

56% Female // **44%** Male

24% Full-time // **76%** Part-time

14% Students of Color



ONLINE
LEARNING



STUDENT
ACTIVITIES

DEGREES OFFERED

Associate of Arts, Associate of Science, Associate of Applied Science, Certificate, Diploma

PROGRAM HIGHLIGHTS

Advanced manufacturing, American Sign Language, automated systems technology, automotive technology, business administration transfer pathway, cybersecurity, early childhood development, gunsmithing and firearms technology, human services eligibility worker, liberal arts, medical assisting, network administration, nursing, welding technology

STUDENT ACTIVITIES

Numerous student clubs, organizations, and activities available in areas such as academics, leadership, and career development. Business

club, computer club, shooters association, SkillsUSA, student-parent club, fabrication club and, LGBTQ club. Visit the college's website or MinnState.edu for a complete list.

AT A GLANCE

- » The Associate of Arts degree and several Associate of Science degree programs provide students the opportunity to pursue a four-year degree and take advantage of lower tuition rates and smaller class sizes while immediately focusing on a chosen major
- » Technical programs prepare students for job placement and employment
- » High-tech, state-of-the-art simulation labs support all nursing and health science programs



- » Vibrant student life environment provides opportunities for students from all disciplines
- » PTCC is conveniently located about an hour north of the Twin Cities, surrounded by lakes, rivers, and state forests, providing an excellent balance of access to metro opportunities, all while retaining the feel of being up north
- » Small campus and friendly learning environment, where faculty and staff know students by name
- » An on-site daycare facility allows for easy pick-up and drop-off for PTCC student parents
- » PTCC's gunsmithing program attracts students from across the nation and abroad
- » There are many different scholarship opportunities available to students, including over \$61,000 in scholarship dollars awarded annually from the PTCC Foundation
- » PTCC's practical nursing program and Associate Degree Mobility Nursing Program had a first-time student success rate of 91.67% for both the NCLEX-PN and NCLEX-RN programs in 2017

VISIT

The best way to learn about PTCC is to visit campus and get a personalized tour with a PTCC admission specialist. Check out pine.edu/visit to schedule your one-on-one Pine Experience.

Rainy River Community College

Part of the Northeast Higher Education District (NHED)



rainyriver.edu

2018–19 Tuition and Fees: \$5,324



INTERNATIONAL FALLS

Admissions: 218-285-7722

TTY: 800-627-3529

1501 Highway 71

International Falls, MN 56649

FAFSA Code: 006775



458 Students Served

60% Female // 40% Male

67% Full-time // 33% Part-time

29% Students of Color



ONLINE
LEARNING



STUDENT
ACTIVITIES



INTERCOLLEGIATE
ATHLETICS



ON-CAMPUS
HOUSING

DEGREES OFFERED

Associate of Applied Science, Associate of Arts,
Associate of Science, Certificate, Diploma

PROGRAM HIGHLIGHTS

Liberal arts and sciences, communication
studies, exercise science, health science, fitness
specialist, coaching

STUDENT ACTIVITIES

Phi Theta Kappa, Student Senate, Voyageur
Strong Outdoor Activities, Disc Golf, Co-ed Trap
Shooting League, and more. Visit the college's
website or MinnState.edu for a complete list.

AT A GLANCE

- » Located just five minutes from Voyageurs
National Park and the Canadian border

- » More than 90% of students receive some
form of financial aid
- » Over \$200,000 in scholarships awarded
annually
- » Continue to play the sport you love: volleyball,
basketball, hockey, softball, baseball
- » On-campus apartments feature two
bedrooms, full kitchen, bathroom, and living
and dining area
- » On-site recreational facilities include a
volleyball court, basketball court, bicycle
trail, lighted cross-country ski trail, disc golf
course

VISIT

Visit rainyriver.edu/visit-request to schedule
a campus visit and get details on upcoming
events.



Ridgewater College

ridgewater.edu

2018–19 Tuition and Fees: \$5,424



HUTCHINSON WILLMAR

Admissions: 320-222-5200

TTY: 800-627-3529

2101 15th Ave. NW
Willmar, MN 56201

FAFSA Code: 005252



4,994 Students Served

56% Female // **44%** Male

57% Full-time // **43%** Part-time

16% Students of Color



ONLINE
LEARNING



BACHELOR'S
DEGREE PARTNER



STUDENT
ACTIVITIES



INTERCOLLEGIATE
ATHLETICS

DEGREES OFFERED

Associate of Applied Science, Associate of Arts, Associate of Science, Diploma, Advanced Technical Certificate, Certificate

PROGRAM HIGHLIGHTS

Liberal arts, mathematics, sciences, chemical dependency counseling, agricultural science and technology, agribusiness, agriculture power and equipment technician, agronomy technology, dairy management, farm operations and management, GPS/GIS information systems, veterinary technology, MANE and practical nursing, medical assistant, paramedic, business, marketing and sales management, administrative support, professional photography, auto body collision repair, automotive service technology, nondestructive testing technology, automation and robotics

systems technology, welding, machine tool, electronics, audio video systems technology, electrician, carpentry, cosmetology, estheology, massage therapy, education paraprofessional, computer programmer, computer support technician, cybersecurity, network systems administration, web programming, occupational skills, accountant, activity director, computer-aided drafting and design, early childhood, early childhood special education, health information technology, law enforcement, legal assistant, liberal arts, multimedia design technology

STUDENT ACTIVITIES

Over 40 student clubs and activities. Active Student Senate on both campuses. Nine-hole disc golf courses located on both campuses. Free access to campus fitness centers on both campuses. Art galleries on both campuses.



Theater productions on Willmar campus. Warrior Varsity sports: football, volleyball, men's and women's basketball, wrestling, baseball, and softball. Visit ridgewater.edu/athletics or MinnState.edu for a complete list.

AT A GLANCE

- » Two easy-to-reach campuses in Hutchinson and Willmar
- » Over 100 degrees and certificates available taught in state-of-the-art facilities
- » Learn a trade and get a great job in two years or less
- » Extensive partnerships with local, state, and national businesses and industries
- » Job placement over 94%
- » Earn your associate degree and transfer for your bachelor's degree
- » Health Science Broad Field AS provides a strong foundation for any healthcare field
- » Over \$225,000 in scholarships awarded annually
- » Outstanding support services, including on-campus academic support centers, online tutoring, TRIO Student Support Services, and regular student success workshops
- » Personalized transfer advising for students

enrolled at Ridgewater and students transferring to Ridgewater

- » Career and program counseling for students who are undecided on an academic path
- » Military Friendly School designation
- » On-site specialized veteran's services available through the Veterans Resource Center, Higher Education Veterans Program, Minnesota Department of Veterans Affairs, on both campuses
- » 39% of students graduate with no debt

VISIT

Campus tours available by calling 800-722-1151 to schedule an appointment. Visit ridgewater.edu for details.

Discover Ridgewater: Saturday, October 27, 2018 and Friday, March 15, 2019 (both campuses). PSEO Information Session: Monday, February 4, 2019 and Monday, April 1, 2019 (both campuses).

Riverland Community College

riverland.edu

2018-19 Tuition and Fees: \$5,562



ALBERT LEA
AUSTIN
OWATONNA

Admissions: 507-433-0600

TTY: 800-627-3529

1900 8th Ave. NW
Austin, MN 55912

FAFSA Code: 002335



4,387 Students Served

56% Female // **44%** Male

41% Full-time // **59%** Part-time

21% Students of Color



ONLINE
LEARNING



BACHELOR'S
DEGREE PARTNER



STUDENT
ACTIVITIES



INTERCOLLEGIATE
ATHLETICS

DEGREES OFFERED

Advanced Technical Certificate, Associate of Applied Science, Associate of Arts, Associate of Fine Arts, Associate of Science, Certificate, Diploma

PROGRAM HIGHLIGHTS

Liberal arts and sciences, nursing, human services, business, supervisory management, criminal justice – law enforcement, computer technology, accounting, business, office technology, global studies, agricultural sciences, music or theater concentration, production technician, agribusiness, food science, biotechnology, supervisory management online

STUDENT ACTIVITIES

25+ student clubs, organizations, and activities available in areas such as fine arts, recreation,

and career development. Visit the college's website or MinnState.edu for a complete list.

AT A GLANCE

- » Earn your AA degree or complete one of more than 50 career programs
- » More than 350 Riverland courses are offered entirely/partially online
- » Personalized student support services
- » Experience our best-in-class simulation learning centers for law enforcement, truck driving, nurses, radiographers, and lab technicians
- » Offers an Associate in Fine Arts degree
- » Riverland offers multi-term registration, allowing students to register for more than one term at a time. It's possible for students to register for all three terms of the academic

year at once; this will allow students to plan, register, and secure their class schedule for a full academic year

- » The Honors Program at Riverland Community College offers enhanced learning opportunities and activities to students who demonstrate academic excellence and a high level of interest and initiative and consists of 12 honors credits plus a three credit Honors Leadership Development course
- » Riverland's radiography program is a nationally ranked program, accredited by the Joint Review Committee on Education in Radiologic Technology (JRCERT). We have celebrated 100% job placement in the last five years. Nearly 60% of all radiologic technologists in our region are graduates of Riverland radiography program. Board certification exam pass rate is above 95% for each of the past six years
- » Enrollment is growing in our criminal justice program; statewide law enforcement departments actively recruit our students and come to observe our training program
- » The carpentry program is the student chapter of the Rochester Area Builders. The program also receives additional hours toward a journeyman's credential from the Carpenters Local Union 1382. The program

is the only DeWalt tool sponsored college program in the nation. First year is residential carpentry and builds a home with Freeborn/Mower Habitat for Humanity. Second year is commercial carpentry who also partners with Habitat on the house build, but also partners with industry for commercial projects

- » The truck driving program: uniquely expensive, but nationally the demand for our graduates remains at an all-time high. All of the equipment in the program is provided through industry partnerships either free of charge or via a \$1 lease. Retail value of the equipment if purchased new would exceed \$600,000
- » Human Services two-year programs are closing at many of our sister colleges, but Riverland continues and has established a two-plus-two program where students complete the associate degree at Riverland and continue their bachelor's degree with St. Scholastica

VISIT

Schedule an individual appointment and learn about other visit opportunities by visiting Riverland's website.

Rochester Community and Technical College

rctc.edu

2018–19 Tuition and Fees: \$5,630



ROCHESTER

Admissions: 507-258-7210

TTY: 800-627-3529

851 30th Ave. SE
Rochester, MN 55904

FAFSA Code: 002373



7,097 Students Served

62% Female // **38%** Male

47% Full-time // **53%** Part-time

25% Students of Color



ONLINE
LEARNING



BACHELOR'S
DEGREE PARTNER



STUDENT
ACTIVITIES



INTERCOLLEGIATE
ATHLETICS

DEGREES OFFERED

Associate of Applied Science, Associate of Arts, Associate of Fine Arts, Associate of Science, Certificate, Diploma

PROGRAM HIGHLIGHTS

Liberal arts and sciences, nursing, health information technology, business, accounting, biotechnology, cardiovascular invasive specialist, cancer registry management, clinical neurophysiology technology, dental hygiene, environmental science, histology technician, horticulture technology, intensive care paramedic, surgical technology, veterinary technology, and many more

STUDENT ACTIVITIES

40+ student clubs, organizations, and activities, including student government, accounting and

business league, Alpha Delta Nu Nursing honor society, animal health technology club, Armed Forces and Veterans club, art club, aspiring medical professionals, automotive technology club, BUM club, CAD club, creative writing club, dance club, design club, drama club, ecology club, engineering and physics club, equestrian club, French club, LGBTQ+ alliance, GCSAA club, geology club, horticulture club, international club, law enforcement club, mental health awareness club, music tech club, navigators club, Phi Theta Kappa (PTK) honor society, starcraft II club, student support services club, table top gaming club. For a complete list of clubs, events, and activities, visit the college's website or MinnState.edu.

AT A GLANCE

- » Founded in 1915 on a motion by Dr. Charles Mayo to the Rochester School Board, RCTC is Minnesota's oldest public two-year college and one of the nation's oldest original community colleges
- » 518-acre campus with 20 buildings including the Rochester Regional Stadium which features an inflatable bubble used during winter months
- » Rochester is one of the nation's "Most Livable Cities," the third-largest city in Minnesota, and home to the world-renowned Mayo Clinic and IBM Rochester
- » RCTC offers more than 300 online classes and 70 credit-based programs with more than 100 credential options
- » Innovative academic partnership with Mayo Clinic – five joint-programs offered including Cardiovascular Invasive Specialist, Clinical Neurophysiology Technology, Histology Technician, and Intensive Care Paramedic
- » Multiple articulation and transfer agreements with four-year universities, so RCTC credits will seamlessly transfer
- » The college has partnerships with more than 35 local organizations including Rochester Public Schools/CTECH, Mayo Clinic, Olmsted Medical Center, Rochester Area Chamber of Commerce, plus many more
- » More than 240 scholarships are awarded to over 220 students from the RCTC Foundation

VISIT

Small group visits are offered most weekdays. Preview Days are offered once per month. Visit RCTC's website for details.



Saint Paul College

saintpaul.edu

2018–19 Tuition and Fees: \$5,561



ST. PAUL

Admissions: 651-846-1555

TTY: 7-1-1

235 Marshall Ave.
St. Paul, MN 55102

FAFSA Code: 005533



10,035 Students Served

56% Female // **44%** Male

37% Full-time // **63%** Part-time

63% Students of Color



ONLINE
LEARNING



BACHELOR'S
DEGREE PARTNER



STUDENT
ACTIVITIES

DEGREES OFFERED

Associate of Applied Science, Associate of Arts, Associate of Fine Arts, Associate of Science, Certificate, Diploma

PROGRAM HIGHLIGHTS

Liberal and fine arts, STEM, Geographic Information Science (GIS), engineering, business, accounting, finance, global trade, human resources, marketing, coding/programming, IT/computer science, cybersecurity, computer networking, data science, electromechanical systems, manufacturing, welding, skilled trades, transportation, health sciences, exercise sciences, health information technology, practical nursing, medical lab technician, pharmacy technician, public health, surgical technology, culinary arts, cosmetology, child

development, sign language interpreter

SPECIAL OPTIONS

MnTC curriculum – General education curriculum courses offered include American Sign Language (ASL), anthropology, art, Chinese, drama/theater, economics, English, geography, history, humanities, music, philosophy, photography, political science, psychology, sociology, Spanish, speech, women's and gender studies

Emphases for Associate of Arts –

Communication studies, criminology, history, social science/public affairs

STUDENT ACTIVITIES

20+ student clubs, organizations, and activities in areas such as culture, student leadership, and career development. Visit SaintPaul.edu or

MinnState.edu for a complete list.

AT A GLANCE

- » Student-oriented campus with One Stop services, free tutoring, computer labs, pathway advising, transfer services, TRIO Student Support Services program, and career/placement services
- » Ranked in Top 10 Best Community Colleges in U.S. by TheBestSchools.org
- » 500+ business and industry partnerships benefit students through scholarships, state-of-the-art equipment and product donations, internships, immediate employment for our graduates
- » The Power of YOU program makes the first two years tuition-free for eligible high school students
- » Make it Count is a tuition-free program for first-time adult learners age 24+ for up to 60 credits, for a maximum of three years
- » 86% of our first-time full-time students receive financial aid or scholarships
- » 600+ high school students enroll in PSEO classes at Saint Paul College; in 2018, 71 PSEO students graduated from Saint Paul College and high school at the same time
- » Transfer agreements with four-year private

and public colleges and universities provide pathways for students to continue their higher education

- » Saint Paul College's esthetician program is a CIDESCO school, one of only 11 colleges in the U.S. and the only college in Minnesota with this internationally recognized esthetics credential
- » The Supply Chain Logistics AAS degree program is ACBSP accredited, and the only associate degree program of its kind in Minnesota
- » New Health and Science Alliance Center provides students with state-of-the-art classroom and lab facilities, and Simulation Center with specialized training rooms: ICU, Isolation, Long Term Care, Medical Surgical, Operating Room, and Pharmacy Clinic
- » Health science students train on the only SynDaver in Minnesota, the world's most sophisticated synthetic surgical simulation and anatomy model, and other hi-fidelity newborn, infant, and adult manikins

VISIT

Tour and information sessions are every Tuesday at 6 p.m. and every Wednesday at 10 a.m. Go to SaintPaul.edu/StartHere.

South Central College

southcentral.edu

2018–19 Tuition and Fees: \$5,491



**South Central
COLLEGE**



**FARIBAULT
NORTH MANKATO**

Admissions: 507-389-7200

TTY: 507-389-7200

1920 Lee Blvd.
North Mankato, MN 56003

FAFSA Code: 005537



4,710 Students Served

47% Female // **53%** Male

50% Full-time // **50%** Part-time

20% Students of Color



ONLINE
LEARNING



STUDENT
ACTIVITIES

DEGREES OFFERED

Associate of Arts, Associate of Fine Arts, Associate of Science, Associate of Applied Science, Diploma, Certificate

PROGRAM HIGHLIGHTS

Advanced manufacturing programs: energy technical specialist, machine tool technology, mechatronics, and welding; agribusiness programs: agriculture education technology, ag chemical applicator technician, agribusiness office specialist/manager, agribusiness production, ag service and management, agribusiness service technician, AgSpark agronomy, professional swine manager, viticulture, and farm business management; allied health and nursing programs: dental assisting, emergency medical services, health sciences broad field, health unit coordinator,

intensive care paramedic technician, medical assistant, medical laboratory technician, phlebotomy, nursing assistant/home health aid, practical nursing (LPN), and professional nursing (RN); arts and communications programs: graphic communications and multimedia technology; building and design programs: architectural drafting and design, carpentry, civil engineering technology, geographic information systems, and heating, ventilation, air conditioning, refrigeration (HVAC/R); business programs: accounting, business management, business transfer pathway, computer careers, culinary arts, marketing management, office administration and technology, and small business management; human services programs: child development careers, family services specialist, and pre-social work transfer pathway; liberal arts and sciences



programs: associate of arts in liberal arts and sciences, associate of arts in communication studies, and associate of fine arts in visual arts; transportation programs: auto body and collision technology and automotive service

STUDENT ACTIVITIES

South Central College provides students with growth opportunities inside and outside the classroom, offering a wide variety of student life activities to nurture the whole person. Student clubs and organizations focus on leadership development, personal interests, and career advancement. They include: Business Professionals of America (BPA), campus activities board, collegiate DECA, dental assisting club, drama club, film club, Phi Theta Kappa, Postsecondary Agricultural Student Organization (PSA), psychology club, SkillsUSA, society of leadership and success, Student Nurses Association, and Student Senate. For details, visit southcentral.edu/studentlife.

AT A GLANCE

- » South Central College has been selected to participate in Achieving the Dream, a nationwide network of more than 220 colleges in 39 states dedicated to student success
- » Students receive \$400,000+ in scholarships each year from SCC's campus foundations

- » Programs at SCC prepare students to start a rewarding career after graduation, transfer to a four-year university to pursue a bachelor's degree – or both
- » 93% of 2015–16 graduates found employment in their field and 35% continued their education after graduation
- » Three Minnesota State Transfer Pathway degrees are available at SCC – business, communication studies, and pre-social work
- » The Center for Business and Industry, a division of South Central College, provides comprehensive workforce solutions, with more than 10,000 individuals receiving customized training and continuing education each year
- » The college has strong relationships with area businesses that provide students with internships and apprenticeships while in school and permanent employment once they graduate

VISIT

Visit southcentral.edu/explore for more information on tours and information sessions.

St. Cloud Technical & Community College

sctcc.edu

2018–19 Tuition and Fees: \$5,376



ST. CLOUD

Admissions: 320-308-5000

TTY: 320-308-5988

1540 Northway Dr.
St. Cloud, MN 56303

FAFSA Code: 005534



5,857 Students Served

55% Female // **45%** Male

50% Full-time // **50%** Part-time

22% Students of Color



ONLINE
LEARNING



STUDENT
ACTIVITIES



INTERCOLLEGIATE
ATHLETICS

DEGREES OFFERED

Advanced Technical Certificate, Associate of Applied Science, Associate of Arts, Associate of Science, Certificate, Diploma

PROGRAM HIGHLIGHTS

Liberal arts and sciences, accounting, business management, biomedical technology equipment repair, computer programming, land surveying/civil engineering, energy technology specialist – nuclear, sonography, medium/heavy truck technician, water environment technology

SPECIAL OPTIONS

Online Programs – SCTCC offers four programs completely online: liberal arts AA, business management, finance and credit, and health information technology/medical coding. About 22% of other courses are offered online

Career Advising – SCTCC offers career advising for students who need guidance in choosing the right career path. This includes special info sessions, a specific advisor, and many resources online and face-to-face

Community College Connection Program – This program is offered to first-year applicants who don't qualify for admission to St. Cloud State University or plan to begin at SCTCC and transfer to SCSU. Students take classes taught by SCTCC faculty on SCSU's campus and are encouraged to live in SCSU housing, but they pay SCTCC tuition. Students will need to pay SCSU activity fees and a program participation fee

STUDENT ACTIVITIES

More than 25 student clubs, organizations, and activities. The SCTCC Cyclones participate in

five intercollegiate sports: volleyball, men's and women's basketball, baseball, and softball. The Cyclones are members of the Minnesota College Athletic Conference (MCAC) and the National Junior College Athletic Association (NJCAA). Our athletics teams are consistently ranked at the national level in the NJCAA.

AT A GLANCE

- » With a 97% job placement rate, our grads get jobs
- » Students know their instructors with small class sizes: average of 18 students per class
- » Earn the first two years of a four-year degree with seamless transfer options
- » Transfer Pathways to Minnesota State universities include biology, engineering, and psychology
- » 90+ program options that can be completed in two years or less
- » Cutting-edge simulation labs that include equipment shared from area industry
- » Highly involved advisory boards mean SCTCC is aligned for area industry needs
- » Innovative programs in water environment technologies, nuclear energy, and health
- » In 2017, more than \$175,000 in scholarships was awarded to 235 students

- » Child care facility on campus
- » Fast, well-distributed wireless network on campus for laptop and mobile device users
- » Ranked sixth in the national Digital Community College 2017–18 Awards
- » Ranked fifth in the Military Times' Best for Vets 2018 list
- » Practical nursing program ranked as the third-best program in Minnesota in 2018 by practicalnursing.org
- » Located on the north side of St. Cloud and just a short walk from the Mississippi River

VISIT

Schedule a campus tour or learn more about your program of interest at an info session today – sign up at sctcc.edu/visit.

Vermilion Community College

Part of the Northeast Higher Education District (NHED)

vcc.edu

2018–19 Tuition and Fees: \$5,324



ELY



Admissions: 218-235-2191

TTY: 800-627-3529

1900 E. Camp St.
Ely, MN 55731

FAFSA Code: 002350



835 Students Served

41% Female // **59%** Male

63% Full-time // **37%** Part-time

19% Students of Color



ONLINE
LEARNING



STUDENT
ACTIVITIES



INTERCOLLEGIATE
ATHLETICS



ON-CAMPUS
HOUSING

DEGREES OFFERED

Associate of Applied Science, Associate of Science, Associate of Arts, Certificate, Diploma

PROGRAM HIGHLIGHTS

Natural resources technology, fisheries and wildlife, wildlife/wildland law enforcement, outdoor leadership, outdoor recreation therapy, veterinary technician, wilderness and park management, business, water quality, watershed science, environmental technology, land surveying, liberal arts

STUDENT ACTIVITIES

Outdoor equipment rental, seven varsity sports, 20+ clubs, campus organizations, intramural sports, residential campus activities. Visit the college's website or MinnState.edu for a complete list.

AT A GLANCE

- » Located on the edge of the Boundary Waters Canoe Area Wilderness
- » Wide variety of niche natural resource programming
- » On-campus housing with residential student life and full meal plan
- » Varsity athletics (football, men's and women's basketball, baseball, fast-pitch softball, volleyball, and co-ed clay target shooting)
- » Optional Boundary Waters trip college orientation
- » Hands-on based learning environment

VISIT

Schedule a visit at vcc.edu/visiting-campus. Explore our open house options in fall and winter!



INTERCOLLEGIATE ATHLETICS

Athletics programs at our colleges provide opportunities for many student-athletes to compete in their favorite sports and for all students to participate as fans and to show their school spirit! To learn more about the opportunities and affiliations at a particular institution, please visit its website.



		Anoka-Ramsey	Central Lakes College	Century College	DCTC	FDLTOC	Hibbing Community College	Itasca Community College	Lake Superior College	Mesabi Range College	M State	Minnesota West	NCTC	PTCC	Rainy River	Ridgewater College	Riverland Community College	RCTC	SCTCC	Vermilion Community College
MEN'S ATHLETICS	Baseball	◆	◆	◆	◆		◆	◆		◆	◆	◆	◆		◆	◆	◆	◆	◆	◆
	Basketball	◆	◆		◆	◆	◆	◆	◆	◆	◆	◆	◆		◆	◆	◆	◆	◆	◆
	Football		◆			◆		◆		◆	◆	◆	◆			◆		◆		◆
	Golf									◆	◆									
	Soccer	◆			◆				◆			◆					◆			
	Wrestling							◆				◆	◆			◆		◆		
WOMEN'S ATHLETICS	Basketball	◆	◆			◆	◆	◆	◆	◆	◆	◆	◆		◆	◆	◆	◆	◆	◆
	Golf									◆	◆									
	Hockey														◆					
	Soccer	◆			◆				◆			◆						◆		
	Softball	◆	◆	◆	◆	◆	◆	◆		◆	◆	◆	◆		◆	◆	◆	◆	◆	◆
	Volleyball	◆	◆		◆	◆	◆	◆		◆	◆	◆	◆		◆	◆	◆	◆	◆	◆
CO-ED	Clay Target						◆	◆	◆	◆		◆	◆	◆	◆					◆

121

different athletic teams are offered across 13 different sports at our participating colleges.



7 STATE UNIVERSITIES

Seven state universities are part of Minnesota State. Each provides an excellent pathway to earning your bachelor's degree or beyond and can help you launch your career.

INTERESTED?

The seven state universities will generally accept you as a first-year student if you can answer YES to at least one of these questions:

- » Did you graduate in the top half of your high school class?
- » Did you receive a combined score of 1,000 or higher on the SAT standardized test, or on its corresponding score on the redesigned SAT standardized test?
- » Did you score 21 or higher on the ACT standardized test?

Were you able to answer YES to one of the above questions and are you planning on attending a Minnesota State university?

- » **CHECK OUT THE OPTIONS.** The profile pages that follow provide you a glimpse of the seven state universities.
- » **KNOW THE ADMISSION REQUIREMENTS.** Some state universities may have slightly different admission requirements. Check with the admissions office at the university you are interested in for details. If you do not meet the minimum admission requirements, you may be considered for admission under special provisions.
- » **ASK QUESTIONS AND VISIT CAMPUS.** There's no better way to figure out which university is the right fit. Contact a member of the university's admission office to set up a visit.

Bemidji State University

bemidjistate.edu

2018–19 Tuition and Fees: \$8,696



BEMIDJI
STATE UNIVERSITY



BEMIDJI

Admissions: 218-755-2040

TTY: 800-627-3529

1500 Birchmont Dr. NE
Bemidji, MN 56601

FAFSA Code: 002336



6,466 Students Served

59% Female // **41%** Male

68% Full-time // **32%** Part-time

12% Students of Color



ONLINE
LEARNING



STUDENT
ACTIVITIES



INTERCOLLEGIATE
ATHLETICS



ON-CAMPUS
HOUSING

DEGREES OFFERED

Associate of Arts, Bachelor of Applied Science, Bachelor of Arts, Bachelor of Fine Arts, Bachelor of Science, Certificate, Graduate Certificate, Master of Arts, Master of Arts in Teaching, Master of Business Administration, Master of Science, Master of Special Education

PROGRAM HIGHLIGHTS

Nursing, business administration, accounting, computer information systems, music, education, psychology, criminal justice, design, environmental studies, mass communications, marketing communications, indigenous studies, Ojibwe language, biology, wildlife biology, aquatic biology, wilderness management and outdoor recreation, chemistry, mathematics, economics, English, creative and professional writing, political science, international

studies, sociology, exercise science, project management

SPECIAL OPTIONS

Minors – Those not corresponding to major field names include leadership, applied public policy, studio arts, sustainability, engineering technology, chemical dependency, computer forensics, fraud examination, developmental/adapted physical education, health promotion and education, human performance, Earth science, electronic writing, geographic information systems, geology, wetlands ecology, physics, philosophy, women's studies/gender studies

Emphases – Marketing, management, finance, entrepreneurship, accounting information systems, exhibit design, international studies,

writing, environmental health and toxicity, industrial ecology, construction management, wetlands ecology, vocal performance, computer forensics, victimology, tribal justice, manufacturing technology, medical sciences

Preprofessional – 14 programs, including chiropractic, dentistry, engineering, law, medicine, mortuary science, occupational therapy, optometry, osteopathy, pharmacy, physical therapy, physician assistant, podiatry, veterinary medicine

STUDENT ACTIVITIES

Bemidji State offers 80-plus student organizations and activities related to professional development, fine arts, culture, academics, and leadership, as well as intercollegiate and intramural athletics. Visit the Bemidji State website or MinnState.edu for a complete list.

AT A GLANCE

- » With a student/faculty ratio of 19:1, ranked as a “top-tier” Midwest University by U.S. News & World Report for the past 10 years
- » On the shore of Lake Bemidji in the beautiful north woods, with year-round outdoor recreation that includes world-class hunting and fishing and an Outdoor Program Center

for canoeing, camping, skiing, bicycling, and sailing

- » Construction will begin in 2019 on a new multi-disciplinary classroom building complete that will replace the current Hagg-Sauer. The new building is scheduled to open in fall 2020
- » In partnership with the Mitchell Hamline School of Law, students can complete their undergraduate and law degrees in six years
- » The Accelerated MBA program allows students to complete both a bachelor's degree and a Master of Business Administration degree in five years
- » The American Indian Resource Center serves as a hub for Native American students, partnerships with tribal nations, and preservation of native language, culture, and traditions

VISIT

Campus tours are offered weekdays at 10 a.m. and 1 p.m. You can also check out dates for upcoming Campus Previews and get more details on the university's website.



Metropolitan State University



metrostate.edu

2018–19 Tuition and Fees: \$7,879



**MINNEAPOLIS
ST. PAUL**

Admissions: 651-793-1302

TTY: 651-772-7687

700 E. Seventh St.
St. Paul, MN 55106

FAFSA Code: 010374



11,342 Students Served

58% Female // **42%** Male

36% Full-time // **64%** Part-time

42% Students of Color



ONLINE
LEARNING



STUDENT
ACTIVITIES

DEGREES OFFERED

Bachelor of Applied Science, Bachelor of Arts, Bachelor of Human Services, Bachelor of Science, Bachelor of Science in Nursing, Bachelor of Science-Dental Hygiene, Bachelor of Social Work, Certificate, Doctor of Business Administration, Doctor of Nursing Practice, Graduate Certificate, Master of Arts, Master of Business Administration, Master of Management Info Systems, Master of Public and Nonprofit Administration, Master of Public Administration, Master of Science, Master of Science Nursing, Master of Science-Advanced Dental Therapy, Master of Advocacy and Political Leadership, Master of Nonprofit Leadership Management, Professional Science Master's

PROGRAM HIGHLIGHTS

Individualized studies, business administration,

accounting, psychology, human services, criminal justice, nursing RN-BSN, alcohol and drug counseling, computer science, elementary education, applied doctorate in business administration, applied doctorate in nursing practice, computer forensics, dental hygiene, law enforcement, oral health care practitioner, screenwriting, technical communication, theater, urban elementary education

SPECIAL OPTIONS

Minors – Advertising, applied math, applied statistics, biology, business admin, civic engagement, community organizing, computer forensics, criminal justice, digital media, entrepreneurship, environmental communication, experimental intermedia arts, gerontology, HR admin, international business, MIS, media literacy, org comm, research and info studies, UX design

Emphases – Metropolitan State's Science Education Center provides students with an extraordinary science education at an affordable cost. The university's growing science-related programs prepare future professionals in applied scientific endeavors, health care, and science teaching for K–12 schools. College of Sciences' programs include science, applied mathematics, statistics, computer science and information technology

STUDENT ACTIVITIES

Metropolitan State offers 50+ student activities, clubs, and organizations related to fine arts, culture, academics, leadership, professional development, and more, as well as intramural club athletics. Visit the Metropolitan State website or MinnState.edu for a complete list.

AT A GLANCE

- » Twin Cities' only public, urban, comprehensive state university
- » High-quality, affordable educational programs and services in a student-centered environment
- » More than 50 undergraduate programs (including individualized degree programs) and several graduate programs
- » Faculty bring both practical and theoretical knowledge to their instruction

- » Area's rich diversity reflected in students, faculty, staff, and community partnerships
- » Unwavering commitment to civic engagement
- » Daytime, evening, online, and weekend classes, comfortable class sizes, and flexible, innovative scheduling
- » Credits awarded for college-level learning gained through non-classroom experience
- » Partners with Hennepin Technical College on the Law Enforcement and Criminal Justice Education Center
- » Enables Peace Corps volunteers to earn bachelor's degrees while serving
- » National Academic Advising Association's Outstanding Advising Technology Innovation winner for the university's online orientation

VISIT

Set up an individual visit, make a phone appointment, attend a Drop-in Session, or set up a group visit. Get details at metrostate.edu.



Minnesota State University, Mankato

mnsu.edu

2018–19 Tuition and Fees: \$8,184



MANKATO

Admissions: 507-389-1822

TTY: 800-627-3529

122 Taylor Center
Mankato, MN 56001

FAFSA Code: 002360



17,970 Students Served

55% Female // **45%** Male

77% Full-time // **23%** Part-time

15% Students of Color



ONLINE
LEARNING



STUDENT
ACTIVITIES



INTERCOLLEGIATE
ATHLETICS



ON-CAMPUS
HOUSING

DEGREES OFFERED

Associate of Arts, Bachelor of Science—Mechanical Engineering, Bachelor of Science—Computer Engineering, Bachelor of Applied Science, Bachelor of Arts, Bachelor of Electrical Engineering, Bachelor of Fine Arts, Bachelor of Science, Bachelor of Science—Civil Engineering, Bachelor of Science in Engineering, Bachelor of Science in Social Work, Certificate, Doctor of Education, Doctor of Nursing Practice, Doctor of Psychology, Graduate Certificate, Master of Accounting, Master of Arts, Master of Arts in Teaching, Master of Business Administration, Master of Fine Arts, Master of Music, Master of Public Administration, Master of Science, Master of Science Nursing, Master of Social Work, Professional Science Master's, Specialist

PROGRAM HIGHLIGHTS

Nursing, psychology, elementary education, law enforcement, management, art, finance, alcohol and drug studies, American indigenous studies, automotive engineering technology, aviation, dance, ethnic studies, gender and women's studies, music industry, recreation, parks and leisure services, Scandinavian studies, Spanish for professions

SPECIAL OPTIONS

Minors – Highlights include astronomy, aviation management, community health education, creative writing, database technologies, entrepreneurship and innovation, environmental science, ethnic studies, financial planning, human resource management, military science/Army ROTC, theatre arts, urban and regional studies



Emphases – Certificates in geographic information science, information security, law enforcement management, music industry, networking technologies, nonprofit leadership, software development, technical communication

Preprofessional – Chiropractic medicine, dentistry, engineering, law, medicine, mortuary science, occupational therapy, optometry, osteopathic medicine and surgery, pharmacy, physical therapy, podiatric medicine and surgery, teaching, veterinary science

STUDENT ACTIVITIES

Minnesota State Mankato offers 200+ student activities, clubs, and organizations related to arts, culture, academics, leadership, professional development, and more, as well as intercollegiate and intramural athletics. Visit the Minnesota State Mankato website or MinnState.edu for a complete list.

AT A GLANCE

- » Beautiful campus overlooking the Minnesota River Valley
- » More than \$127 million available in scholarships, assistantships, grants, work-study, and student loans
- » Recognized as a 2018 Clean Energy Community by the Minnesota Department of Commerce

- » Four applied doctorate programs: nursing practice, educational leadership, counselor education, school psychology
- » New award-winning Dining Center and Clinical Science Building

- » Indoor rock climbing facility, outdoor rock climbing pinnacle, and full ropes and challenge course
- » Large student weight room, basketball and volleyball courts, indoor student walking and running track, racquetball and handball courts, group fitness and dance studios, and a martial arts room
- » State's premiere college theater: 10 musicals and plays per academic year, two dance concerts, two touring productions, and four professional summer stock productions
- » Nationally renowned men's and women's basketball, NCAA Division I hockey, wrestling, track, and swimming

VISIT

Campus tours are offered every weekday at 9:30 a.m., 10:30 a.m., 1 p.m., and 2 p.m. Visit the university's website for details and other admissions events and information.

Minnesota State University Moorhead

mnstate.edu

2018–19 Tuition and Fees: \$8,574



MOORHEAD

Admissions: 218-477-2161

TTY: 800-627-3529

1104 7th Ave. S.
Moorhead, MN 56563

FAFSA Code: 002367



7,271 Students Served

62% Female // **38%** Male

75% Full-time // **25%** Part-time

11% Students of Color



ONLINE
LEARNING



STUDENT
ACTIVITIES



INTERCOLLEGIATE
ATHLETICS



ON-CAMPUS
HOUSING

DEGREES OFFERED

Associate of Arts, Bachelor of Arts, Bachelor of Fine Arts, Bachelor of Music, Bachelor of Science, Bachelor of Science in Nursing, Bachelor of Social Work, Certificate, Doctor of Education, Graduate Certificate, Master of Arts, Master of Business Administration, Master of Health Care Administration, Master of Science, Specialist

PROGRAM HIGHLIGHTS

Elementary inclusive education, business, social work, biology, nursing (RN-BSN), psychology, exercise science, criminal justice, accounting, speech/language/hearing science, biotechnology, business analytics, construction management, criminal justice, entertainment industries and technology, entrepreneurship, film production, geosciences, gerontology, graphic communications, health services

administration, law enforcement, medical physics, operations management, paralegal, project management, sustainability

SPECIAL OPTIONS

Minors – Art therapy, astronomy, coaching, commercial music, communication studies, construction management, entrepreneurship, film production, graphic communication, health and medical sciences, health services administration, human resources, juvenile justice, leadership studies, media analysis, project management, strength and conditioning, teaching English as a second language, wellness

Emphases – Archaeology, astrophysics, ceramics, communication training and development, developmental disabilities, ecology and evolutionary biology, geospatial analysis, litigation, medical physics, sports communication



Preprofessional – Audiology, chiropractic, dentistry, engineering, law, medicine, occupational therapy, optometry, pharmacy, physical therapy, physician assistant, veterinary science

STUDENT ACTIVITIES

MSUM offers 110+ student activities, clubs, and organizations related to fine arts, culture, academics, leadership, professional development, and more, as well as intercollegiate and intramural athletics and club sports.

Visit MSU Moorhead's Dragon Central website at mnstate.campuslabs.com/engage or MinnState.edu for a complete list.

AT A GLANCE

- » 91.3% success for career placement or grad school acceptance (2017)
- » Students regularly win national awards in film, education, music, theater, art and design, business, and journalism
- » Recent accolades: U.S. News & World Report Best Online Programs; 20 Best Online Bachelor's in Project Management Programs; Top 30 Affordable Master's Degrees in Healthcare Administration Online Programs; Affordable Online Master's Degrees in Curriculum and Instruction; 10 Most Affordable Nursing Degrees in Minnesota

- » 11 Minnesota Professors of the Year, more than any other university in a five-state area
- » Student-faculty ratio of 19:1 encourages undergraduate participation in faculty-mentored research and creative projects; 75% of classes have fewer than 30 students
- » Paseka School of Business maintains prestigious AACSB International accreditation
- » Success in athletics includes senior Brian Huber winning the national outdoor long jump championship; women's basketball winning the NSIC regular-season title and earning a second straight trip to the NCAA tournament; a first-ever trip to the NSIC tournament championship for women's tennis, and five All-American performances
- » Fargo-Moorhead is a thriving, close-knit community located off I-94. Consistently ranked one of the safest and best communities in which to live, it's a bustling college town with more than 30,000 students

VISIT

Daily campus tours are offered 9:30 a.m. and 1:30 p.m. Monday–Thursday, and Dragon Tour & Talk Fridays are at 9 a.m. and 1 p.m., with select Saturday programs during the year. Visit mnstate.edu/visit for more details.

Southwest Minnesota State University

smsu.edu

2018–19 Tuition and Fees: \$8,636



MARSHALL

Admissions: 507-537-6286

TTY: 800-627-3529

1501 State St.
Marshall, MN 56258

FAFSA Code: 002375



9,019 Students Served

59% Female // **41%** Male

32% Full-time // **68%** Part-time

10% Students of Color



ONLINE
LEARNING



STUDENT
ACTIVITIES



INTERCOLLEGIATE
ATHLETICS



ON-CAMPUS
HOUSING

DEGREES OFFERED

Associate of Arts, Associate of Science, Bachelor of Applied Science, Bachelor of Arts, Bachelor of Science, Bachelor of Science in Nursing, Certificate, Education Specialist, Graduate Certificate, Master of Business Administration, Master of Science

PROGRAM HIGHLIGHTS

Business management, early childhood education, elementary teacher education, exercise science, biology, agricultural education, RN to BSN, culinology, hospitality management, agronomy, agricultural solutions, broadcasting and digital media, professional writing and communication, supply chain management, environmental science, creative writing, teachers of English as a second language

SPECIAL OPTIONS

Minors – Advertising design, art/graphic design, criminal justice, pre-law, developmental adapted PE, coaching, physics, public administration, social welfare, acting/directing, hotel/lodging management, indigenous nations and Dakota studies, nutrition, public relations, design technical theatre, writing, Hispanic studies, human resource management, supply chain management, reading, religious studies, women's studies, filmmaking, health communication

Emphases – Sports management, recreation, public relations, farm management, ag finance, crops, soils, graphic design, human resource management, supply chain management, music management, culinary management, hotel management, event planning, corporate

wellness, allied health, coaching and human performance, financial planning and investments

Preprofessional – Chiropractic, dentistry, engineering, law, medicine, nursing, occupational therapy, optometry, pharmacy, physical therapy, veterinary medicine

STUDENT ACTIVITIES

SMSU offers 90+ student activities, clubs, and organizations related to fine arts, culture, academics, leadership, professional development, and more, as well as intercollegiate and intramural athletics. Visit the SMSU website or MinnState.edu for a complete list.

AT A GLANCE

- » The same tuition rate for 12 to 18 credits, and out-of-state students pay in-state tuition
- » An exercise science degree offered at a trio of Twin-Cities-based community colleges: Normandale, Anoka-Ramsey, and North Hennepin
- » The world's first bachelor's degree in culinology, approved by the Research Chefs Association
- » A campus-wide Undergraduate Research Conference, where 35% of our students give presentations on their scholarly work

- » Residential communities that share an academic or a special interest with the residents of their house: these include agriculture house; culinology house; access, opportunity and success community; fine arts community; exercise science house; and the Mustang Traditions house
- » Our Honors Program offers qualified students a rigorous, challenging curriculum with a focus on their potential talents, interests, and abilities
- » SMSU graduates get jobs: 99% of our recent grads are employed; 10% continue their education following graduation
- » Bang for the buck: SMSU has been honored for both its affordability and its educational return on investment
- » A Military Friendly School; a large Veteran's Service Center where our military students can study and meet other veterans
- » A campus that embraces diversity; international students from 28 countries from around the globe

VISIT

Visit during the week, on a Mustang Saturday, or on a special visit day throughout the year. Visit smsu.edu for details.

St. Cloud State University

stcloudstate.edu

2018–19 Tuition and Fees: \$8,265



ST. CLOUD STATE
UNIVERSITY



ST. CLOUD

Admissions: 320-308-2244

TTY: 800-627-3529

720 4th Ave. S.

St. Cloud, MN 56301

FAFSA Code: 002377



18,441 Students Served

54% Female // **46%** Male

60% Full-time // **40%** Part-time

17% Students of Color



ONLINE
LEARNING



STUDENT
ACTIVITIES



INTERCOLLEGIATE
ATHLETICS



ON-CAMPUS
HOUSING

DEGREES OFFERED

Associate of Arts, Associate of Science, Bachelor of Arts, Bachelor of Elective Studies, Bachelor of Fine Arts, Bachelor of Music, Bachelor of Science, Bachelor of Science in Engineering, Certificate, Doctor of Education, Executive Masters in Engineering Management, Graduate Certificate, Master of Arts, Master of Business Administration, Master of Engineering Management, Master of Public Administration, Master of Science, Master of Science Electrical Engineering, Master of Social Work, Professional Science Master's, Specialist

PROGRAM HIGHLIGHTS

Applied behavior analysis, applied clinical research, biological sciences, business administration, criminal justice, cultural resource management (applied archaeology),

cybersecurity, education, engineering management, finance and accounting, film studies, geography, gender and women's studies, gerontology, hospitality and tourism, hydrology, management, marketing, mass communications, meteorology, nursing (RN-to-BSN completion), psychology, public administration, radiologic technology (X-ray and diagnostic imaging), real estate, regulatory affairs and services, small business management, social work, software engineering, statistics

SPECIAL OPTIONS

Minors – Developmental and adapted physical education, African studies, American Indian studies, art entrepreneurship, Chicano/Chicana studies, Asian Pacific American studies, East Asian studies, ethnic studies, geographic



information science, German, gerontology, human relations, military science, religious studies, technology studies, optics, teaching English as a second language, heritage preservation, forensic science

Emphases – Rehabilitation counseling, community counseling, astrophysics, public history, public relations, advertising, broadcast, news editorial, linguistics, piano pedagogy, creative writing, applied statistics, actuarial science, construction management, electro-optics, applied sociology, graphic design

Preprofessional – Chiropractic, dentistry, law, medicine, optometry, physical therapy, physician assistant, veterinary, pharmacy, occupational therapy, mortuary science

STUDENT ACTIVITIES

200+ student activities, clubs, and organizations, as well as intercollegiate and intramural athletics, including NCAA Division I and II teams built on success.

AT A GLANCE

- » More than 200 undergraduate and 60 graduate programs in liberal arts, science and engineering, business, education, health and human services, and public affairs
- » Top 3% of the most affordable universities in Forbes "America's Top Colleges"

- » A top investment in PayScale's "Best Value Colleges in Minnesota" study
- » Five-time HEED Award recipient for outstanding commitment to diversity and inclusion

- » 550+ scholarships available through Huskies Scholarships
- » Indoor rock climbing wall, fitness center, pool, and fieldhouse with a 200-meter indoor track
- » More than 1,500 international students from more than 80 countries
- » More than 30 Education Abroad opportunities on six continents
- » 2015, 2016, and 2018 Division II Huskies Wrestling national champions
- » Nationally renowned NCAA Division I hockey at the Herb Brooks National Hockey Center
- » Eight residential living options including Coborn Plaza Apartments
- » Located on the banks of the Mississippi River

VISIT

Visit the St. Cloud State website to schedule a daily campus visit, check out upcoming Preview Day events, take a virtual tour, and get other admissions information at stcloudstate.edu/scsu4u.

Winona State University

winona.edu

2018–19 Tuition and Fees: \$8,456



WINONA



Admissions: 507-457-5100

TTY: 877-627-3848

P.O. Box 5838

Winona, MN 55987

FAFSA Code: 002394



9,123 Students Served

63% Female // 37% Male

84% Full-time // 16% Part-time

11% Students of Color



ONLINE
LEARNING



STUDENT
ACTIVITIES



INTERCOLLEGIATE
ATHLETICS



ON-CAMPUS
HOUSING

DEGREES OFFERED

Associate of Arts, Bachelor of Applied Science, Bachelor of Arts, Bachelor of Music, Bachelor of Science, Bachelor of Science-Teaching, Bachelor of Social Work, Doctor of Nursing Practice, Graduate Certificate, Master of Arts, Master of Science, Professional Science Master's, Specialist

PROGRAM HIGHLIGHTS

Popular programs include: nursing, business administration, biology, elementary education/K–6, exercise and rehabilitative sciences, psychology, social work, computer science; other highlights include: composite materials engineering, clinical laboratory science, criminal justice, data science, global studies, healthcare leadership and administration, individualized studies,

management information systems, marketing, mass communication, music, public administration, public health, recreation and tourism, RN-BSN, sociology, special education, statistics, theatre arts, therapeutic recreation

SPECIAL OPTIONS

Minors – Highlights include: adventure tourism, arts administration, bilingual/bicultural education, business law, coaching K–12, dance, entrepreneurship, international business, professional selling, women's, gender and sexuality studies

Emphases – Highlights include: advertising, biochemistry, clinical exercise science, creative digital media, ecology, environmental chemistry, environmental science, epidemiology, exercise science, graphic design, I-Design, leadership and advocacy, movement science, public relations



Preprofessional – Chiropractic medicine, dentistry, engineering, law, medicine, occupational therapy, optometry, pharmacy, physical therapy, physician assistant, podiatry, veterinary medicine

STUDENT ACTIVITIES

Winona State offers 200+ student clubs and organizations related to fine arts, culture, academics, leadership, professional development, and more, as well as intercollegiate and intramural athletics. Visit winona.edu or MinnState.edu for a complete list.

AT A GLANCE

- » Reputation – the oldest member of the Minnesota State system, our classes are small in size and taught by expert faculty
- » Results – 96.7% of graduates are hired in a field related to their degree
- » Affordable – one of America's 100 Best College Buys for 22 consecutive years, 94.5% of first-time, first-year students also benefit from some form of financial aid
- » Scenic Beauty – widely known for our stunning natural setting, Winona State is nestled between picturesque bluffs and the Mississippi River – meaning that rock climbing, paddle boarding, hiking, kayaking, and more, are within a mile of campus

- » Laptops – our eWarrior program provides students with a laptop, with certain programs receiving additional tablets
- » Internships – all of our degree programs offer opportunities for internships with some of the Midwest's most prestigious companies and organizations
- » Service Learning – community engagement is important at Winona State, with most of our programs providing students a chance to use what they've learned to help others
- » Athletics – home to 14 NCAA Division II and one NCAA Division III varsity sports teams
- » Health and Wellness – our Integrated Wellness Complex aligns health, wellness, academic, and recreational programs and services into a single facility
- » Winona – the city is home to a wide range of art, music and theatre opportunities, as well as museums, local boutiques, and festivals galore

VISIT

Experience the beauty of WSU's campus for yourself. Daily campus visits take place at 9 a.m. and 1 p.m., Monday through Friday, and include tours of campus and residence halls, as well as a meeting with an admissions counselor. Learn more at winona.edu/visit.

ENDLESS OPPORTUNITIES

The following pages offer charts that show the academic program opportunities available at your state colleges and universities.

» Name Abbreviations for Minnesota State Colleges

ATCC – Alexandria Technical & Community College
CLC – Central Lakes College
DCTC – Dakota County Technical College
FDLTCC – Fond du Lac Tribal & Community College
HTC – Hennepin Technical College
HCC – Hibbing Community College
ICC – Itasca Community College
LSC – Lake Superior College
MSC Southeast – Minnesota State College Southeast
M State – Minnesota State Community and Technical College
NHCC – North Hennepin Community College
NCTC – Northland Community & Technical College
NTC – Northwest Technical College
PTCC – Pine Technical & Community College
RCTC – Rochester Community and Technical College
SCTCC – St. Cloud Technical & Community College
SCC – South Central College

INTERESTED?

COLLEGE ACADEMIC PROGRAM GRID [PAGES 56–60](#)

Check out the academic programs available at your state colleges that may lead to an associate degree, certificate, or diploma. These are great programs to launch a new career or get started on the path to a bachelor's degree.

BACHELOR'S DEGREE PARTNERSHIP PROGRAM [PAGE 62](#)

The seven state universities offer a selection of bachelor's degree programs that can be completed at various community college campuses in the Twin Cities metro area, allowing you to earn your degree from a university without leaving the comfort of the college campus setting. This grid will help you see the programs available and locations they are offered.

UNIVERSITY ACADEMIC PROGRAM GRID [PAGES 63–64](#)

Learn about the programs available at your state universities that may lead to a bachelor's degree and beyond, or help you launch your career.

UNIVERSITY ATHLETICS PROGRAM GRID [PAGE 65](#)

Your state universities have an array of sports that provide you the opportunity to enjoy a student-athlete experience. This grid will help you quickly identify which universities offer your sport. (College athletic programs can be found on page 46.)

State College PROGRAMS

For a complete list of programs,
visit [MinnState.edu](https://www.minnstate.edu).

- Related bachelor's degree may be available on this campus.

[illegible]

For a complete list of programs, visit [MinnState.edu](https://www.minnstate.edu).

Guide to Your 37 State Colleges and Universities // 57

For a complete list of programs, visit [MinnState.edu](https://www.mnstate.edu).

58 // Minnesota State

For a complete list of programs, visit [MinnState.edu](https://www.mnstate.edu).

[illegible]

State College PROGRAMS

For a complete list of programs, visit [MinnState.edu](https://www.mnstate.edu).

State College

PROGRAMS

For a complete list of programs,

visit [MinnState.edu](#).

	ATCC, Alexandria	Anoka Tech, Anoka	Anoka-Ramsey, Cambridge	Anoka-Ramsey, Coon Rapids	CLC, Brainerd	CLC, Staples	Century, White Bear Lake	DCTC, Rosemount	FDLTCC, Cloquet	HCC, Hibbing	HTC, Brooklyn Park	HTC, Eden Prairie	ICC, Grand Rapids	Inver Hills, Inver Grove Heights	LSC, Duluth	MSC Southeast, Red Wing	MSC Southeast, Winona	M State, Detroit Lakes	M State, Fergus Falls	M State, Moorhead	M State, Wadena	Mesabi Range, Eveleth	Mesabi Range, Virginia	Minneapolis College	Minnesota West, Canby	Minnesota West, Granite Falls	Minnesota West, Jackson	Minnesota West, Pipestone	Minnesota West, Worthington	Normandale, Bloomington	NHCC, Brooklyn Park	NCTC, East Grand Forks	NCTC, Thief River Falls	NTC, Bemidji	PTCC, Pine City	Rainy River, International Falls	Ridgewater, Hutchinson	Ridgewater, Willmar	Riverland, Albert Lea	Riverland, Austin	Riverland, Owatonna	RCTC, Rochester	Saint Paul College	SCTCC, St. Cloud	SCC, Faribault	SCC, North Mankato	Vermilion, Ely	MinnState.edu/online					
LIBERAL ARTS AND SCIENCES	Individualized and Multidisciplinary Studies	◆	◆	◆	◆		◆	◆			◆	◆		◆	◆	◆	◆	◆	◆	◆	◆							◆	◆	◆	◆		◆	◆					◆	◆							◆						
	Languages – Spanish																												◆	◆																							
	Latin American Studies					◆																																															
	Liberal Arts and Sciences – AA Transfer	◆		◆	◆	◆	◆		◆	◆			◆	◆	◆	◆	◆	◆	◆	◆	◆				◆	◆	◆	◆	◆	◆	◆				◆	◆	◆	◆	◆	◆	◆	◆	◆	◆	◆	◆	◆	◆	◆				
	Mathematics																						◆							◆	◆																						
	Music		◆	◆			◆							◆					◆											◆	◆																						
	Philosophy																												◆																								
	Theater Arts and Drama		◆	◆			◆							◆					◆					◆					◆	◆																							
Women and Gender Studies				◆		◆																																															
Writing – Creative and Technical		◆	◆			◆							◆			◆	◆											◆	◆																								
MANUFACTURING, MAINTENANCE, AND REPAIR	Apparel and Textile Manufacturing																						◆																														
	Gunsmithing																																	◆																			
	Heavy Equipment Maintenance							◆		◆																																											
	Industrial Maintenance								◆		◆	◆										◆																															
	Machining	◆	◆			◆				◆				◆	◆	◆	◆	◆	◆	◆	◆			◆	◆	◆	◆	◆					◆	◆																			
	Manufacturing Operations Management																																																				
	Manufacturing and Industrial Technology													◆											◆			◆																									
	Musical Instrument Design and Repair																◆																																				
Plastics Technology										◆																																											
Welding	◆	◆			◆	◆	◆	◆		◆				◆	◆	◆	◆	◆	◆	◆	◆	◆	◆	◆	◆	◆	◆			◆				◆																			
MEDIA AND COMMUNICATIONS	Advertising and Public Relations																	◆	◆	◆	◆																																
	Audio Technology/Sound Arts											◆											◆																														
	Broadcasting, Radio, and Television													◆																																							
	Cinematography and Video Production				◆	◆	◆																	◆																													
	Digital Arts, Computer Animation, and Multimedia		◆				◆	◆			◆																			◆																							
	Graphic Design and Visual Communications	◆				◆	◆	◆	◆		◆									◆				◆						◆																							
	Judicial Reporting/Broadcast Captioning		◆																																																		
	Library and Information Technology																							◆																													
Music Industry Management																																																					
Photography/Photographic Technology						◆	◆																◆																														
Screenwriting																																																					
Video Production										◆																																											
TRANSPORTATION AND DISTRIBUTION	Aircraft Pilot and Navigator													◆																																							
	Auto Body Repair						◆	◆			◆	◆		◆			◆																																				
	Aviation Maintenance/Avionics																																																				
	Mechanic – Auto Technician		◆			◆		◆	◆	◆	◆	◆		◆			◆			◆						◆																											
	Mechanic – Diesel Engine/Truck	◆					◆				◆							◆																																			
	Mechanic – Marine, Motor Sports, and Small Engine	◆			◆							◆							◆									◆																									
	Railroad Conductor																																																				
	Truck Driving	◆									◆				◆		◆														◆																						

TRANSFER PATHWAYS

Minnesota State Transfer Pathways make it easy to complete a specific associate degree at a Minnesota State college and transfer to a Minnesota State university to earn a bachelor's degree without losing credits or taking extra courses.* Transfer Pathways can be a great way to save time and money as you work toward graduation.



TRANSFER PATHWAYS

* Students must meet special admission requirements for the major and are not guaranteed admission into the major itself. Call or visit the college or university you're interested in to learn more.

	DEGREE START																												DEGREE FINISH															
	ATCC, Alexandria	Anoka-Ramsey, Cambridge	Anoka-Ramsey, Coon Rapids	CLC, Brainerd	CLC, Staples	Century, White Bear Lake	HTC, Brooklyn Park	HTC, Eden Prairie	Inver Hills, Inver Grove Heights	LSC, Duluth	MSC Southeast, Red Wing	MSC Southeast, Winona	M State, Detroit Lakes	M State, Fergus Falls	M State, Moorhead	M State, Wadena	Minneapolis College	Normandale, Bloomington	NHCC, Brooklyn Park	NCTC, East Grand Forks	NCTC, Thief River Falls	PTCC, Pine City	Rainy River, International Falls	Ridgewater, Hutchinson	Ridgewater, Willmar	Riverland, Albert Lea	Riverland, Austin	Riverland, Owatonna	RCTC, Rochester	Saint Paul College	SCTCC, St. Cloud	SCC, Faribault	SCC, North Mankato	Vermilion, Ely	Bemidji State	Metropolitan State	Minnesota State Mankato	MSU Moorhead	St. Cloud State	Southwest Minnesota State	Winona State			
* Students must meet special admission requirements for the major and are not guaranteed admission into the major itself. Call or visit the college or university you're interested in to learn more.																																												
Accounting																																												
Art																																												
Biology																																												
Business																																												
Chemistry																																												
Communication Studies																																												
Computer Science																																												
Economics																																												
English																																												
Exercise Science																																												
History																																												
Law Enforcement																																												
Management Information Systems																																												
Mathematics																																												
Political Science																																												
Pre-Social Work																																												
Psychology																																												
Spanish																																												
Theater																																												

BACHELOR'S DEGREE PARTNERSHIP PROGRAM

The state universities offer a selection of bachelor's degree programs that can be completed at some two-year colleges. See [PAGE 11](#) for more details.

PROGRAM TITLE	PROGRAM LOCATION	UNIVERSITY
BUSINESS AND MANAGEMENT		
Accounting	Minneapolis College	Metropolitan State
Business Administration	Century College	Metropolitan State
Business Administration	Minneapolis College	Metropolitan State
Business Administration	Normandale	Metropolitan State
Business Administration	NHCC	Metropolitan State
Business Administration	Saint Paul College	Metropolitan State
Business Administration	RCTC	Winona State
Economics	NHCC	Metropolitan State
Economics (General)	Minneapolis College	Metropolitan State
Finance	Minneapolis College	Metropolitan State
Human Resource Management	Minneapolis College	Metropolitan State
Human Resource Management	RCTC	Winona State
International Business	Minneapolis College	Metropolitan State
International Commerce	Minneapolis College	Metropolitan State
Management	Minneapolis College	Metropolitan State
Organizational Administration	HTC	Metropolitan State
Organizational Administration	Minneapolis College	Metropolitan State
EDUCATION		
Education	RCTC	Winona State
Education	Riverland	Winona State
Elementary Education	Anoka-Ramsey	Bemidji State
Elementary Education	Normandale	MSU, Mankato
Special Education	Normandale	MSU, Mankato
Special Education	NHCC	St. Cloud State
ENGINEERING AND ENGINEERING SCIENCE		
Integrated Engineering	Mesabi Range	MSU, Mankato
Integrated Engineering	Normandale	MSU, Mankato
HEALTH		
Dental Hygiene	Century College	Metropolitan State
Dental Hygiene	Lake Superior College	Metropolitan State
Dental Hygiene	M State	Metropolitan State
Dental Hygiene	Normandale	Metropolitan State
Dental Hygiene	RCTC	Metropolitan State
Exercise Science	Anoka-Ramsey	SMSU
Exercise Science	Normandale	SMSU
Exercise Science	NHCC	SMSU
Medical Laboratory Science	NHCC	St. Cloud State
Nursing	Anoka-Ramsey	Bemidji State
Nursing	Century College	Bemidji State
Nursing	Anoka-Ramsey	Metropolitan State

PROGRAM TITLE	PROGRAM LOCATION	UNIVERSITY
HEALTH		
Nursing	Century College	Metropolitan State
Nursing	Inver Hills	Metropolitan State
Nursing	MSC Southeast	Winona State
Nursing	Normandale	Metropolitan State
Nursing	NHCC	Metropolitan State
Nursing	Ridgewater	Metropolitan State
Nursing	Riverland	Metropolitan State
Nursing	Riverland	Winona State
Nursing	RCTC	Winona State
HUMAN AND PERSONAL SERVICES		
Alcohol and Drug Counseling	Minneapolis College	Metropolitan State
Human Services	NHCC	Metropolitan State
Psychology	Inver Hills	Metropolitan State
Psychology	Normandale	Metropolitan State
Psychology	NHCC	Metropolitan State
Social Work	RCTC	Winona State
INFORMATION TECHNOLOGY		
Computer Information Technology	Normandale	Metropolitan State
Computer Science	Normandale	Metropolitan State
Computer Science	RCTC	Winona State
Management Information Systems	Minneapolis College	Metropolitan State
LAW, PUBLIC ADMINISTRATION AND SAFETY		
Criminal Justice	HTC	Metropolitan State
Law Enforcement	HTC	Metropolitan State
LIBERAL ARTS AND SCIENCES		
Applied Organizational Studies	Normandale	MSU, Mankato
Biology	NHCC	Bemidji State
Individualized Studies	HTC	Metropolitan State
Individualized Studies	Minneapolis College	Metropolitan State
Individualized Studies	Normandale	Metropolitan State
Individualized Studies	RCTC	Winona State
Individualized Studies – Transportation Management Focus	DCTC	Metropolitan State
Theater	Minneapolis College	Metropolitan State
Theater	Normandale	SMSU
MEDIA AND COMMUNICATIONS		
Communication Studies	Normandale	MSU, Mankato
Marketing	Minneapolis College	Metropolitan State

State University UNDERGRADUATE PROGRAMS

For a complete list of programs, visit MinnState.edu.

	Bemidji State	Metropolitan State	Minnesota State Mankato	MSU Moorhead	St. Cloud State	Southwest Minnesota State	Winona State	MinnState.edu/online
Accounting	◆	◆	◆	◆	◆	◆	◆	◆
Advertising and Public Relations			◆					
Agricultural Business and Production						◆		
Agricultural Science and Technology						◆		
Aircraft Pilot and Navigator			◆					
American Indigenous Studies	◆							
Anthropology/Archaeology			◆	◆	◆			
Art History			◆	◆	◆			
Art/Studio Arts		◆	◆	◆	◆	◆		
Audio Technology/Sound Arts			◆	◆				
Aviation Management and Airway Science			◆					
Banking and Finance		◆	◆	◆	◆	◆	◆	◆
Biological and Natural Sciences	◆	◆	◆	◆	◆	◆	◆	◆
Biotechnology/Biochemistry			◆	◆	◆			
Broadcasting, Radio, and Television				◆		◆		
Business Administration and Management	◆	◆	◆	◆	◆	◆	◆	◆
Chemistry	◆	◆	◆	◆	◆	◆	◆	◆
Cognitive Science			◆					
Communication Sciences and Disorders			◆	◆	◆			
Communications Studies		◆	◆	◆	◆	◆	◆	◆
Community Health Services	◆	◆	◆	◆	◆	◆	◆	◆
Computational Science		◆					◆	
Computer Engineering Technology			◆	◆				
Computer Networking and System Administration				◆				
Computer Programming		◆	◆	◆				
Computer Science and Information Systems	◆	◆	◆	◆	◆	◆	◆	◆
Computer Security and Forensics/IT Auditing		◆	◆	◆				
Construction Management			◆	◆	◆	◆	◆	◆
Counseling – Chemical Dependency	◆	◆	◆	◆	◆	◆	◆	◆
Criminal Justice/Corrections	◆	◆	◆	◆	◆	◆	◆	◆
Culinary Arts and Food Service						◆		
Customer Service/Call Center				◆			◆	
Dance			◆					
Database Technologies and Administration			◆					
Dental Hygienist		◆	◆				◆	
Digital Arts, Computer Animation, and Multimedia			◆	◆				
Early Childhood Studies		◆			◆			
East Asian Studies			◆					
Economics	◆	◆	◆	◆	◆	◆	◆	◆
Education – General						◆		
Education – Instructional Technology						◆		
Engineering – Automotive			◆					
Engineering – Civil and Surveying			◆	◆				
Engineering – Composite Materials							◆	
Engineering – Computer Hardware/Software			◆	◆			◆	
Engineering – Electrical			◆	◆				
Engineering – General			◆	◆			◆	
Engineering – Manufacturing					◆			
Engineering – Mechanical			◆	◆				
Engineering Management	◆							◆

	Bemidji State	Metropolitan State	Minnesota State Mankato	MSU Moorhead	St. Cloud State	Southwest Minnesota State	Winona State	MinnState.edu/online
Engineering Technology – Electronic			◆					
Engineering Technology – General	◆							◆
Engineering Technology – Manufacturing			◆	◆	◆	◆	◆	◆
English – Language, Literature, Writing	◆	◆	◆	◆	◆	◆	◆	◆
Entrepreneurship		◆	◆	◆	◆	◆	◆	◆
Environmental and Earth Sciences	◆	◆	◆	◆	◆	◆	◆	◆
Ethnic and Cultural Studies		◆	◆					
Family Consumer Science			◆					
Farm Business Management						◆		
Film Studies			◆	◆	◆	◆	◆	◆
Food Processing Safety			◆					
Geographical Information Systems (GIS)			◆	◆				
Geography and Cartography	◆		◆	◆	◆			
Gerontology			◆	◆	◆		◆	◆
Global Studies/International Relations	◆		◆	◆	◆	◆	◆	◆
Graphic Design and Visual Communications	◆		◆	◆	◆			
Health Information Technology			◆					
Health Services Administration				◆			◆	◆
Health, Fitness, and Sport Science	◆	◆	◆	◆	◆	◆	◆	◆
History	◆	◆	◆	◆	◆	◆	◆	◆
Hotel, Restaurant, and Casino Management					◆	◆	◆	◆
Human and Community Services		◆		◆				◆
Human Resources Management			◆	◆			◆	◆
Humanities			◆					
Individualized and Multidisciplinary Studies	◆	◆	◆	◆	◆	◆	◆	◆
Insurance				◆	◆			
International Business		◆	◆	◆	◆	◆	◆	◆
Languages – French			◆	◆	◆			
Languages – German			◆	◆	◆			
Languages – Spanish	◆	◆	◆	◆	◆	◆	◆	◆
Latin American Studies				◆				
Law Enforcement		◆	◆					
Legal Studies							◆	
Liberal Arts and Sciences – AA Transfer	◆	◆	◆	◆	◆	◆	◆	◆
Management Information Systems				◆	◆	◆	◆	◆
Manufacturing and Industrial Technology	◆			◆				
Manufacturing Operations Management		◆		◆			◆	◆
Marketing and Sales	◆	◆	◆	◆	◆	◆	◆	◆
Mass Media	◆	◆	◆	◆	◆	◆	◆	◆
Mathematics	◆	◆	◆	◆	◆	◆	◆	◆
Medical Technology/Clinical Lab Science	◆	◆	◆	◆	◆	◆	◆	◆
Meteorology								
Music	◆		◆	◆	◆	◆	◆	◆
Music Industry Management			◆				◆	◆
Nuclear Medical Technology					◆			
Nursing	◆	◆	◆	◆	◆	◆	◆	◆
Nursing – Advanced Profile								◆
Paralegal				◆				
Parks and Recreation			◆	◆	◆	◆	◆	◆
Philosophy		◆	◆	◆	◆	◆	◆	◆

	Bemidji State	Metropolitan State	Minnesota State Mankato	MSU Moorhead	St. Cloud State	Southwest Minnesota State	Winona State	MinnState.edu/online
Photography/Photographic Technology				◆				
Physics			◆	◆	◆	◆	◆	◆
Political Science	◆					◆	◆	◆
Project Management	◆			◆				◆
Psychology	◆	◆	◆	◆	◆	◆	◆	◆
Psychology – Counseling								
Public Administration		◆				◆	◆	◆
Publishing				◆				
Radiologic Technology					◆			
Real Estate/Property Management					◆			
Scandinavian Studies			◆					
Screenwriting		◆						
Social Sciences/Studies	◆	◆						
Social Work	◆	◆	◆	◆	◆	◆	◆	◆
Sociology	◆		◆	◆	◆	◆	◆	◆
Sports Management	◆							
Statistics			◆	◆			◆	◆
Surgical Technology								◆
Teaching – Agriculture						◆		
Teaching – Art				◆	◆	◆	◆	◆
Teaching – Biology/Life Sciences			◆	◆	◆	◆	◆	◆
Teaching – Business Education							◆	◆
Teaching – Career and Technical						◆		
Teaching – Chemistry				◆	◆	◆	◆	◆
Teaching – Communication Arts and Literature	◆	◆	◆	◆	◆	◆	◆	◆
Teaching – Early Childhood		◆	◆	◆	◆	◆	◆	◆
Teaching – Elementary	◆	◆	◆	◆	◆	◆	◆	◆
Teaching – English as a Second Language				◆	◆	◆	◆	◆
Teaching – Family Consumer Science			◆					
Teaching – French Language and Culture			◆	◆	◆	◆	◆	◆
Teaching – German Language and Culture								
Teaching – Health	◆		◆	◆	◆	◆	◆	◆
Teaching – Mathematics	◆		◆	◆	◆	◆	◆	◆
Teaching – Music	◆		◆	◆	◆	◆	◆	◆
Teaching – Physical Education				◆	◆	◆	◆	◆
Teaching – Physical/Earth Science	◆		◆	◆	◆	◆	◆	◆
Teaching – Physics			◆	◆	◆	◆	◆	◆
Teaching – Social Studies/History	◆	◆	◆	◆	◆	◆	◆	◆
Teaching – Spanish Language and Culture			◆	◆	◆	◆	◆	◆
Teaching – Special Education				◆	◆	◆	◆	◆
Teaching – Theater Arts/Dance			◆					
Technology Studies						◆		
Theater Arts and Drama		◆	◆	◆	◆	◆	◆	◆
Urban Planning/Regional Studies				◆				◆
Wilderness Management and Wildland Firefighter	◆							
Women and Gender Studies		◆	◆	◆	◆	◆	◆	◆
Writing – Creative and Technical	◆	◆	◆	◆	◆	◆	◆	◆

State University GRADUATE PROGRAMS

For a complete list of programs, visit [MinnState.edu](https://www.mnstate.edu).

	Bemidji State	Metropolitan State	Minnesota State Mankato	MSU Moorhead	St. Cloud State	Southwest Minnesota State	Winona State	MinnState.edu/online
Accounting			◆					◆
Anthropology/Archaeology			◆		◆			◆
Art/Studio Arts			◆					
Banking and Finance				◆				
Biological and Natural Sciences	◆	◆	◆		◆			
Biomedical Equipment Technology					◆			
Business Administration and Management		◆	◆	◆	◆	◆	◆	◆
Communication Sciences and Disorders			◆	◆	◆			
Communications Studies			◆					
Community Health Services			◆				◆	
Computer Science and Information Systems		◆	◆		◆		◆	
Computer Security and Forensics/IT Auditing		◆			◆		◆	
Counseling – Chemical Dependency				◆			◆	
Counseling – College					◆			
Counseling – K-12			◆	◆	◆		◆	◆
Counseling – Marriage and Family			◆		◆			
Counseling – Mental Health							◆	
Counseling – Rehabilitation			◆		◆			
Criminal Justice/Corrections		◆	◆		◆			◆
Data Analytics					◆			
Database Technologies and Administration		◆	◆					◆
Dental Health Specialist		◆						
Economics					◆			
Education – Administration and Support			◆	◆	◆	◆	◆	◆
Education – Curriculum and Instruction					◆		◆	◆
Education – General	◆		◆			◆	◆	◆
Education – Higher Education Administration					◆		◆	
Education – Instructional Technology			◆		◆		◆	
Education – Student Development and Learning			◆		◆		◆	
Engineering – Computer Hardware/Software				◆			◆	
Engineering – Electrical			◆		◆		◆	
Engineering – General			◆					
Engineering Management			◆		◆		◆	
Engineering Technology – Manufacturing			◆					
English – Language, Literature, Writing	◆			◆			◆	◆
Environmental and Earth Sciences	◆		◆					

	Bemidji State	Metropolitan State	Minnesota State Mankato	MSU Moorhead	St. Cloud State	Southwest Minnesota State	Winona State	MinnState.edu/online
Ethnic and Cultural Studies			◆					◆
Family Consumer Science					◆			
Geographical Information Systems (GIS)			◆		◆			
Geography and Cartography			◆		◆			
Gerontology			◆		◆			
Health Information Technology			◆					
Health Services Administration							◆	
Health, Fitness, and Sport Science			◆		◆		◆	
History			◆		◆			
Human and Community Services		◆	◆					
Individualized and Multidisciplinary Studies		◆	◆		◆			
Languages – French			◆					
Languages – Spanish			◆				◆	
Liberal Arts and Sciences – AA Transfer		◆						
Management Information Systems		◆					◆	
Mass Media					◆			
Mathematics		◆	◆					
Medical Product Regulation					◆			
Medical Technology/Clinical Lab Science					◆			
Music			◆					
Nanotechnology					◆			
Nursing		◆			◆		◆	
Nursing – Administration		◆					◆	◆
Nursing – Adult Health/Geriatric							◆	◆
Nursing – Advanced Practice		◆	◆				◆	◆
Nursing – Educator		◆	◆				◆	◆
Parks and Recreation			◆					
Physics			◆					
Project Management		◆	◆					
Psychology		◆	◆					◆
Psychology – Clinical			◆		◆		◆	
Psychology – Counseling					◆			
Psychology – Industrial and Organizational			◆		◆			
Psychology – School			◆	◆				
Psychology – Sports			◆					
Public Administration		◆	◆		◆		◆	

	Bemidji State	Metropolitan State	Minnesota State Mankato	MSU Moorhead	St. Cloud State	Southwest Minnesota State	Winona State	MinnState.edu/online
Publishing				◆				
Quality Improvement							◆	
Social Work			◆		◆			
Sociology			◆					
Sports Management			◆		◆			◆
Statistics			◆					
Teaching – Biology/Life Sciences			◆					
Teaching – Career and Technical					◆			◆
Teaching – Communication Arts and Literature	◆		◆		◆		◆	◆
Teaching – Early Childhood			◆		◆		◆	◆
Teaching – Elementary								◆
Teaching – English as a Second Language				◆	◆	◆	◆	◆
Teaching – French Language and Culture			◆					
Teaching – Health			◆					
Teaching – Humanities/Interdisciplinary			◆					
Teaching – Library/Information Media			◆		◆			◆
Teaching – Mathematics	◆		◆		◆			
Teaching – Music				◆				
Teaching – Physical Education						◆		
Teaching – Physical/Earth Science	◆							
Teaching – Physics			◆					
Teaching – Reading/Literacy					◆		◆	
Teaching – Special Education	◆		◆		◆	◆	◆	◆
Teaching – Urban Education		◆						
Theater Arts and Drama			◆					
Urban Planning/Regional Studies			◆		◆			◆
Women and Gender Studies			◆					
Writing – Creative and Technical		◆	◆				◆	◆

INTERCOLLEGIATE ATHLETICS

Student-athletes attending Minnesota State universities have remarkable opportunities to join elite, nationally competitive programs. The Northern Sun Intercollegiate Conference, one of the nation's premier NCAA Division II leagues, counts six Minnesota State universities amongst its 16 members. And, four of our universities sponsor NCAA Division I ice hockey.

		Bemidji State	MSU Moorhead	Minnesota State Mankato	St. Cloud State	Southwest Minnesota State	Winona State
MEN'S ATHLETICS	Baseball	◆		◆	◆	◆	◆
	Basketball	◆	◆	◆	◆	◆	◆
	Cross Country		◆	◆		◆	◆
	Football	◆	◆	◆	◆	◆	◆
	Golf	◆		◆	◆		◆
	Hockey	◆		◆	◆		
	Swimming/Diving				◆		
	Track and Field		◆	◆		◆	
	Wrestling		◆	◆	◆	◆	
WOMEN'S ATHLETICS	Basketball	◆	◆	◆	◆	◆	◆
	Cross Country	◆	◆	◆	◆	◆	◆
	Golf	◆	◆	◆	◆	◆	◆
	Gymnastics						◆
	Hockey			◆	◆		
	Nordic Ski				◆		
	Soccer	◆	◆	◆	◆	◆	◆
	Softball	◆	◆	◆	◆	◆	◆
	Swimming/Diving		◆	◆	◆	◆	
	Tennis	◆	◆	◆	◆	◆	◆
	Track and Field	◆	◆	◆	◆	◆	◆
	Volleyball	◆	◆	◆	◆	◆	◆
CO-ED	Wheelchair Basketball					◆	



» CONNECT WITH US!

Contact the state college or university you are interested in to get started today. For more resources, visit MinnState.edu.

COLLEGES

Alexandria Technical & Community College

ALEXANDRIA
320-762-0221
alextech.edu

Anoka Technical College

ANOKA
763-576-4850
anokatech.edu

Anoka-Ramsey Community College

CAMBRIDGE
COON RAPIDS
763-433-1300
anokaramsey.edu

Central Lakes College

BRAINERD
STAPLES
218-855-8037
clcmn.edu

Century College

WHITE BEAR LAKE
651-779-3300
century.edu

Dakota County Technical College

ROSEMOUNT
651-423-8000
dctc.edu

Fond du Lac Tribal & Community College

CLOQUET
218-879-0800
fdltcc.edu

Hennepin Technical College

BROOKLYN PARK
EDEN PRAIRIE
952-995-1300
hennepintech.edu

Hibbing Community College

HIBBING
218-262-7200
hibbing.edu

Inver Hills Community College

INVER GROVE HEIGHTS
651-450-3000
inverhills.edu

Itasca Community College

GRAND RAPIDS
218-322-2340
itascacc.edu

Lake Superior College

DULUTH
218-733-7601
lsc.edu

Mesabi Range College

EVELETH
VIRGINIA
218-749-0313
mesabirange.edu

Minneapolis Community & Technical College

MINNEAPOLIS
612-659-6200
minneapolis.edu

Minnesota State College Southeast

RED WING
WINONA
877-853-8324
southeastmn.edu

Minnesota State Community and Technical College

DETROIT LAKES
FERGUS FALLS
MOORHEAD
WADENA
877-450-3322
minnesota.edu

Minnesota West Community & Technical College

CANBY
GRANITE FALLS
JACKSON
PIPESTONE
WORTHINGTON
800-658-2330
mnwest.edu

Normandale Community College

BLOOMINGTON
952-358-8201
normandale.edu

North Hennepin Community College

BROOKLYN PARK
763-424-0724
nhcc.edu

Northland Community & Technical College

EAST GRAND FORKS
THIEF RIVER FALLS
218-683-8800
northlandcollege.edu

Northwest Technical College

BEMIDJI
218-333-6600
ntcmn.edu

Pine Technical & Community College

PINE CITY
320-629-5100
pine.edu

Rainy River Community College

INTERNATIONAL FALLS
218-285-2236
rainyriver.edu

Ridgewater College

HUTCHINSON
WILLMAR
320-222-5200
ridgewater.edu

Riverland Community College

ALBERT LEA
AUSTIN
OWATONNA
507-433-0600
riverland.edu

Rochester Community and Technical College

ROCHESTER
507-258-7210
rctc.edu

Saint Paul College

ST. PAUL
651-846-1600
saintpaul.edu

South Central College

FARIBAULT
NORTH MANKATO
507-389-7220
southcentral.edu

St. Cloud Technical & Community College

ST. CLOUD
320-308-5000
stccc.edu

Vermilion Community College

ELY
218-235-2191
vcc.edu

UNIVERSITIES

Bemidji State University

BEMIDJI
218-755-2040
bemidjistate.edu

Metropolitan State University

MINNEAPOLIS
ST. PAUL
651-793-1302
metrostate.edu

Minnesota State University, Mankato

MANKATO
507-389-1822
mnsu.edu

Minnesota State University Moorhead

MOORHEAD
218-477-2161
mnstate.edu

Southwest Minnesota State University

MARSHALL
507-537-6286
smsu.edu

St. Cloud State University

ST. CLOUD
320-308-2244
stcloudstate.edu

Winona State University

WINONA
507-457-5100
winona.edu

HERE FOR YOU EVERY STEP OF THE WAY!

Our call center, Ask Us, is available to answer questions and connect you to any of your state colleges and universities:

Monday–Friday: 7 a.m.–8 p.m. CST

Saturday: 9 a.m.–2:30 p.m. CST

Sunday: 11 a.m.–4:30 p.m. CST

» CALL TODAY!

800-456-8519





MINNESOTA STATE

MinnState.edu

STAY IN TOUCH!



This document is available in alternative formats to individuals with disabilities.
To request an alternate format, contact Human Resources at 651-201-1664.

Individuals with hearing or speech disabilities may contact us
via their preferred Telecommunications Relay Service.

Minnesota State is an affirmative action, equal opportunity employer and educator.