

2018 MINNESOTA

CHILD SUPPORT PERFORMANCE REPORT



DEPARTMENT OF
HUMAN SERVICES

651-431-4400

Attention. If you need free help interpreting this document, call the above number.

ያስተውሉ: ካለምንም ክፍያ ይህንን ደኩመንት የሚተረጎም ለ አስተርጓሚ ከፈለጉ ከላይ ወደተጻፈው የስልክ ቁጥር ይደውሉ።

ملاحظة: إذا أردت مساعدة مجانية لترجمة هذه الوثيقة، اتصل على الرقم أعلاه.

သတိ။ ဤစာရွက်စာတမ်းအားအခမဲ့ဘာသာပြန်ပေးခြင်း အကူအညီလိုအပ်ပါက၊ အထက်ပါဖုန်းနံပါတ်ကိုခေါ်ဆိုပါ။

កំណត់សំគាល់ ។ បើអ្នកត្រូវការជំនួយក្នុងការបកប្រែឯកសារនេះដោយឥតគិតថ្លៃ សូមហៅទូរស័ព្ទតាមលេខខាងលើ ។

請注意，如果您需要免費協助傳譯這份文件，請撥打上面的電話號碼。

Attention. Si vous avez besoin d'une aide gratuite pour interpréter le présent document, veuillez appeler au numéro ci-dessus.

Thov ua twb zoo nyeem. Yog hais tias koj xav tau kev pab txhais lus rau tsab ntaub ntawv no pub dawb, ces hu rau tus najnpawb xov tooj saum toj no.

ဟ်သုဉ်ဟ်သးဘဉ်တက့ၢ်. ဝဲနမ့ၢ်လိဉ်ဘဉ်တၢ်မၤစၢၤကလိလၢတၢ်ကကျိးထံဝဲဒၣ်လံာ် တီလံာ်မိတခါအံၤန့ၣ်, ကိးဘဉ်လိတဲစီနီၢ်ဂံၢ်လၢထးအံၤန့ၣ်တက့ၢ်.

알려드립니다. 이 문서에 대한 이해를 돕기 위해 무료로 제공되는 도움을 받으시려면 위의 전화번호로 연락하십시오.

ໄປຣດຊາບ. ຖ້າທາກ ທ່ານຕ້ອງການການຊ່ວຍເຫຼືອໃນການແປເອກະສານນີ້ພຣີ, ຈົ່ງໂທຣໄປທີ່ ໝາຍເລກຂ້າງເທິງນີ້.

Hubachiisa. Dokumentiin kun tola akka siif hiikamu gargaarsa hoo feete, lakkoobsa gubbatti kenname bilbili.

Внимание: если вам нужна бесплатная помощь в устном переводе данного документа, позвоните по указанному выше телефону.

Digniin. Haddii aad u baahantahay caawimaad lacag-la' aan ah ee tarjumaadda qoraalkan, lambarka kore wac.

Atención. Si desea recibir asistencia gratuita para interpretar este documento, llame al número indicado arriba.

Chú ý. Nếu quý vị cần được giúp đỡ dịch tài liệu này miễn phí, xin gọi số bên trên.

LB2 (8-16)



For accessible formats of this publication or additional equal access to human services, write to DHS.info@state.mn.us, call 651-431-3040, or use your preferred relay service. (ADA1 [9-15])



Contents

Co-foreword	ii
Executive Summary	1
Minnesota Child Support Services.....	2
Vision and Mission	4
Payments.....	5
Initiatives.....	7
Intergovernmental Cases.....	8
Guide and Introduction to Performance Data.....	9
Federal Performance Measures: County Results.....	13
County Results: Paternities Established.....	16
County Results: Orders Established.....	19
County Results: Collections on Current.....	22
County Results: Collections on Arrears	25
County Results: Cost Effectiveness	28
Minnesota County Distributions, Total Expenditures and Reinvestments	31
Distributions Per Open Support Cases and Per Cases With Court Order	34
Caseload and Full-Time Equivalent (FTE) Summary	37
Current / Former / Never Assistance Case Analysis	40
County Case Flow Analysis	43
Collections to and from Other States	46
Collections Sources.....	49
National Federal Performance Measures.....	52
National: Paternities Established.....	52
National: Orders Established	53
National: Collections on Current	54
National: Collections on Arrears.....	55
National: Cost Effectiveness	56
Child Support Strategic Plan	57
Resources	58

Co-foreword

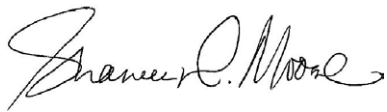
Thank you for your interest in the 2018 Minnesota Child Support Performance Report. Based on preliminary 2018 Federal Fiscal Year (FFY) data, the state continues to rank in the top five nationally in percentage of current support collected, 74.94 percent, which surpassed the record mark set in 2017; and in the percentage of cases with a payment toward past due support, at 72.45 percent. Overall, Minnesota's federal performance measures increased in three categories and decreased in two.

Over the past year, efforts to improve the program included:

- Enacting the new parenting expense adjustment law to change how courts adjust basic child support based on the number of court-ordered overnights parents spend with their children*
- Expanding options for parents without bank accounts to pay their child support more easily*
- Establishing a team to ensure equity within program policies, practices and procedures.*

The drive towards continuous improvement plays an important part in the child support program's success. Anoka County launched a software program called Scoresheet in 2018. The county-developed software tracks case reviews to improve quality, reporting, and make case management more consistent for the families being served. By having a more systemized way to review case activity, agency work will be more accurate, provide better service, and prevent errors. This tool will also help to recognize staff who are performing well and acknowledge their excellent service.

Thanks again for learning more about the child support program. Staff is proud of the work being done to help children and families as they look forward to 2019.



*Shaneen Moore
Child Support Division Director*



*Erin Hansen
Anoka County Child Support Program Manager*

Executive Summary

In FFY 2018, Minnesota’s child support program provided services to 340,452 parents and 235,564 children through 1,472 county and state workers. The program collected and disbursed \$573.2 million. For every \$1 spent on Minnesota’s child support program, it collected \$3.26 in support of children.

Minnesota’s 2018 Child Support Performance Report presents the program’s status and highlights accomplishments during FFY 2018. The Child Support Division (CSD) reports the most recent data showing statewide and individual county performance, and a five-year history for the five federal performance measures.

The five performance measures are:

1. Paternity establishments
2. Child support order establishment
3. Collections on current support
4. Collections on arrears
5. Program cost effectiveness

Minnesota’s Federal Performance Measures					
Performance Measures	FFY 2018	FFY 2017	FFY 2016	FFY 2015	FFY 2014
Paternities Established	101.23%	101.05%	100.77%	99.00%	100.42%
Orders Established	88.32%	88.56%	88.91%	88.70%	88.00%
Collections on Current	74.94%	74.53%	74.29%	73.43%	72.46%
Collections on Arrears	72.45%	72.26%	72.36%	72.11%	70.99%
Cost Effectiveness	\$3.26	\$3.30	\$3.30	\$3.54	\$3.58

Minnesota’s child support program participates in and competes with other states in the federal incentive funding system evaluated by the federal Office of Child Support Enforcement (OCSE). States maximize federal incentives by reaching performance thresholds on the five measures. Minnesota maximized its federal incentives on two of five measures: paternities established, at 101.23 percent, and orders established, at 88.32 percent. Minnesota has opportunities to earn additional incentives based on collections which maximize at 80.00 percent and cost effectiveness at \$5.00. For FFY 2018, collections on current support were 74.94 percent, collections on cases with arrears were 72.45 percent and cost effectiveness at \$3.26.

Minnesota’s child support program in FFY 2018:

- Served 235,564 children, with fewer than 12 percent of them receiving public assistance as of Sept. 30, 2018.
- Collected \$578.2 million, including:
 - \$424.9 million from employers withholding child support from parents’ paychecks
 - \$30.4 million through tax intercepts
 - \$1.4 million from financial institution data match levies
 - \$37.8 million received from other states’ and countries’ collections
 - The remainder from other sources
 - Received \$129.4 million for payment on child support debt, with more than 72 percent of cases with arrears receiving at least some payment toward arrears during the year
 - Managed cumulative past due support or arrears of \$1.5 billion, owed as of Sept. 30, 2018.

In FFY 2018, Minnesota child support workers:

- Established paternity through 2,623 court orders and 1,166 Recognition of Parentage forms signed at county offices
- Established 12,373 orders for support; 88.32 percent of Minnesota child support cases have an order in place
- Adjusted 47,080 cases for cost of living, which increases the amount of child support ordered due every two years
- Modified more than 8,483 child support orders.

States compete against each other for incentive funds based on federal performance measures.

Minnesota Child Support Services

Together with county and tribal agency staff, the child support program serves more than 340,452 parents and 235,564 children across 87 counties and 11 tribes. The Minnesota Department of Human Services, Child Support Division (CSD), supervises the program. County offices administer services by working with parents to establish and enforce support orders. Congress enacted child support programs in 1975 under Title IV-D of the Social Security Act.

Child support staff, including 1,472 employees statewide, work in partnership to serve the needs of Minnesota families, providing support to children. The number of staff is important to the Cost Effectiveness performance measure. Every year, CSD gathers staff counts through a survey that reports full time equivalencies (FTE). FTEs are staff dedicated to working directly on and supporting child support cases such as supervisors, managers and directors, child support officers, financial, administrative, training, technology and legal specialists, contractors, system programmers and others. Some staff included in the FTE count work outside the program under cooperative agreements. These agreements are initiated by county child support offices for resources outside the agency and include county attorneys, legal staff, office support, sheriff's personnel, public health workers and others.



Minnesota's child support program benefits children by:

- Locating parents and establishing parentage.
- Establishing and reviewing child support orders for modification.
- Helping children receive financial basic support, medical support and child care support, needed to enhance their growth and development.
- Working with other state agencies to help families when one parent lives outside of Minnesota.
- Helping families work toward becoming and remaining self-sufficient, ensuring parents establish a financial partnership. Child support is money parents are court ordered to pay to their child's other parent or caregiver for support of their child. Support may be part of an interim, temporary, permanent, or modified court order in a divorce or legal separation, paternity action, order for protection, child custody action or separate child support action.

Child support services are available to:

- Parents of minor children if one parent does not live with their child.
- Parents who pay child support through court-ordered income withholding.
- People who have court-ordered physical custody of a minor child.
- People who receive public assistance for a minor child who lives in their home. Child support cases open when either parent applies for services, or when a county public assistance office refers a case.

Minnesota's child support program benefits children by helping families work toward becoming and remaining self-sufficient.

(Continued on next page)

Minnesota Child Support Services

County child support agencies provide services to:

- Locate parents
- Establish parentage
- Establish court orders for basic support, medical and child care support
- Enforce court orders for support
- Review and modify court orders for support
- Enforce support when one parent does not live in Minnesota
- Collect and process support payments.



The state office:

- Partners with the federal Office of Child Support Enforcement (OCSE)
- Operates the federally required Central Case Registry that manages intergovernmental inquiries, and cases received from other state agencies
- Maintains a central payment center that collected and distributed \$573.2 million in FFY 2018
- Supports a statewide computer system, PRISM, and is preparing for system modernization by simplifying case management activities and policies
- Maintains [Minnesota Child Support Online](#) (MCSO), a secure website that provides clients with case-specific information, and employers a tool to remit child support withheld from parents' income
- Maintains an online [child support calculator](#) to help parents estimate the amount of child support that the court may order on a case
- Develops child support policies and procedures
- Provides training and technical assistance
- Operates a help desk, which includes both general and payment information lines
- Reports information and statistics to OCSE
- Evaluates and monitors statewide and county performance
- Receives data from other state and federal agencies
- Convenes various work groups and meetings, including an advisory board and bi-monthly meetings with representatives from the largest nine county agencies to discuss and plan for program performance
- Interacts with stakeholders such as the [Minnesota Family Support and Recovery Council](#), Minnesota's professional association for child support workers; [Minnesota Association of County Attorneys](#); the [Minnesota Association of County Social Services Administrators](#); and others.

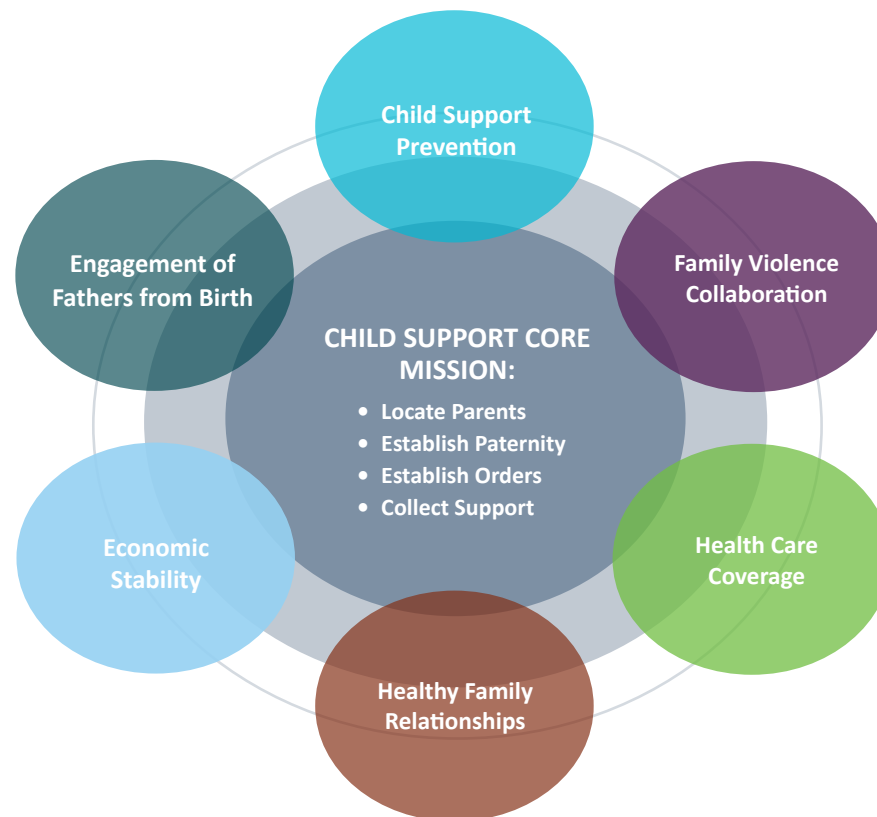
Most of the child support cases in Minnesota are non-public assistance cases. Children on these cases either never received or are no longer receiving public assistance.

Vision and Mission

The Child Support Division strives to allow children to depend on their parents for the support they need. In carrying out its vision, workers promote children's well-being and family self-sufficiency by delivering quality child support services. Its work reflects the division's core mission and values and shows commitment to:

- **Children**
- **Quality customer service**
- **Integrity, respect and ethics**
- **Innovation and excellence**
- **Collaborative relationships**

Supporting children is at the core of state and federal child support programs. OCSE's simple diagram of innovative partnerships and initiatives that federal, state, county and tribal child support programs have developed demonstrates a shift to a more family-centered approach to delivering child support services. Together, staff help parents support their children. By intervening early, child support programs address the underlying reasons for nonsupport – whether it is unemployment, parental conflict, or disengagement. By broadening strategies and partnering with other programs, child support can do more to assure that parents provide their children with financial and emotional support throughout childhood.



Payments

Partnership



The child support program helps parents establish a financial partnership by offering services for children to receive basic support, medical and child care support they need to enhance their growth and development. These three elements combine to form a monthly child support obligation. Child support is money parents are court ordered to pay to their child's other parent or caregiver for support of their child. The child support program provides services to parents who apply, and to those who are referred to the program from county financial assistance programs.

Once a parent applies for services, or after financial workers refer a case because a family receives public assistance, all child support payments must come through the Child Support Payment Center (CSPC). States are required to have a central payment center that receives and disburses child support collections so that a parent gets credit for making payments, and payments are disbursed correctly. Many state and federal agencies, employers, and other service programs help the child support program operate effectively and efficiently.

Processing

Division staff receipt payments. In most cases, they send the support collected and owed to the custodial parent within two business days

by direct deposit into a checking or savings account or stored value card. Staff may hold funds collected through certain tax refund offsets for up to six months to make sure the refund was properly intercepted.

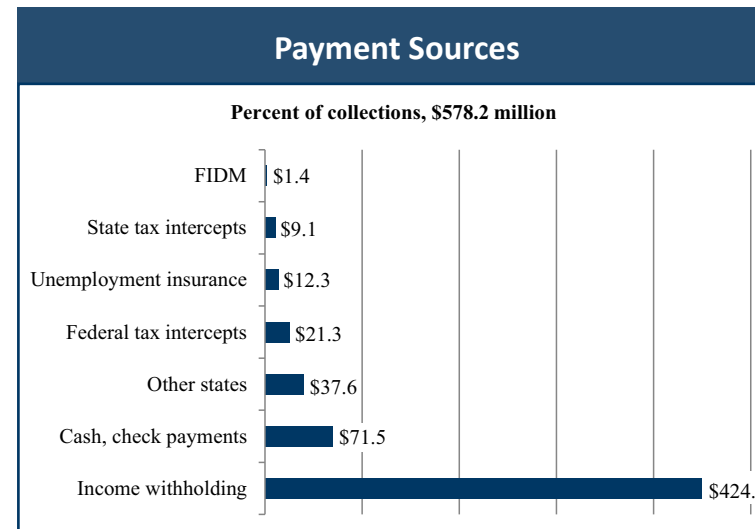
In FFY 2018, the program collected \$578.2 million.

Payment center staff:

- Processed \$592 million in payments, about \$49 million each month
- Received 2,972,182 transactions, of which 895,683 were paper items such as checks, and 2,076,499 through automated clearing houses
- Deposited 96 percent of collections disbursed directly into parents' accounts.

Sources

The Child Support Division tracks the sources of child support payments to measure the effectiveness of enforcement activities and collection tools. The graph, Payment Sources, shows the payment sources for FFY 2018.



A family-centered approach to supporting children is at the core of the child support program.

(Continued on next page)

Payments

Income withholding

Most new or modified child support orders require income withholding where employers and payors of funds automatically withhold child support obligations from a parent's pay, or other sources of income, and send withholdings to the state. Through income withholding, employers collected \$424.9 million from parents' paychecks, 73.5 percent of all support disbursed.

Employers play a pivotal role in Minnesota's child support efforts, making a valuable contribution to the lives of children. Employers are also required to report new hires to the [Minnesota New Hire Reporting Center](#) which helps match working parents with child support obligations. Cooperation among employers and child support agencies encourages parental responsibility, reduces taxpayer costs for public assistance, and helps families provide for their children.

Most parents who owe child support pay their obligation regularly and on time.



Cash, check payments

Parents who are self-employed or do not pay through income withholding send their child support to the CSPC by check, cashier's check, money order or automatic-recurring withdrawals. In FFY 2018, \$71.5 million, 12.4 percent of collections, were paid in this manner.

Other states

Child support provides services to many families with complex and changing needs. Promises of increased income opportunities and job availability may influence a parent's decision to move to and from Minnesota while child support services continue. For parents who owe support and work outside of Minnesota, other states collected \$37.6 million, 6.5 percent of collections, of child support in FFY 2018.

Other sources

Sometimes child support obligations go unpaid or are collected only when child support workers enforce orders. Some parents experience circumstances that make them unable to pay their obligation, some make choices that prevent payment, and some may evade payment. In these situations, child support workers must use appropriate tools and activities to enforce orders. In addition to the enforcement methods below, parents who do not comply with their child support orders may be denied approval or renewal of a passport, reported to a credit bureau, be subject to civil contempt proceedings, charged with criminal nonsupport, or have their driver's license suspended.

The remaining payment sources include:

- 3.7 percent from intercepts of federal tax refunds, \$21.3 million
- 2.1 percent from withholdings from Unemployment Insurance, \$12.3 million
- 1.6 percent from intercepts of state tax refunds, \$9.1 million.

On page 49, the Collections – Sources chart breaks down payment sources per county.

Initiatives

New Parenting Expense Adjustment Law

On Aug. 1, 2018, the new parenting expense adjustment law took effect and changed how courts adjust child support for parenting time expenses based on the number of overnights parents spend with their children. The new law better reflects the expenses parents incur when taking care of their children during court-ordered parenting time.



Point-of-sale and Alternative Payments

Early in 2018, Minnesota expanded the options for noncustodial parents without bank accounts to pay their child support more easily. Starting with PayNearMe and later MoneyGram, the program created a cash payment process at retail outlets across the country.

The University of Minnesota recognized this project in August with a 2018 State Government Innovation Award. The project has also been nominated for two additional awards in Human Services Information Technology and a Better Government Award.

Equity Team

To ensure equity in its policies, practices, and procedures, Minnesota's child support program established an Equity Team in spring 2018. The goal of the team is to mitigate bias in service delivery, and build a platform of respectful engagement with internal and external partners and participants.

Federal Digital Marketing Grant Award

The federal Office of Child Support Enforcement awarded Minnesota's Child Support Division with a *Using Digital Marketing to Increase Participation in the Child Support Program* demonstration grant in October 2018. The goals of the two-year grant are to reach parents who could benefit from child support services through outreach or one-way communication, and to create or improve two-way digital communication and engagement with parents in the child support program.

The child support program helps parents establish a financial partnership by offering services for children to receive basic support, medical and child care support they need to enhance their growth and development.

Employers reported information on more than two million new hires to Minnesota's New Hire Reporting Center. Because Minnesota's center is convenient and efficient, some employers that operate in multiple states choose to report all of their new hire information to Minnesota.

Intergovernmental Cases

Approximately one out of every seven child support cases involves a parent who lives in another state. A case is considered intergovernmental when one party lives in a jurisdiction different from the other, when a child support order is from a jurisdiction other than the one where both parties live, or when there is more than one child support order covering the same parties. Intergovernmental child support cases are governed by provisions of the Uniform Interstate Family Support Act (UIFSA). The 2007 international Hague Convention outlined changes, known as the UIFSA 2008 amendments. States are in the process of enacting or have enacted provisions of UIFSA 2008.

Minnesota's child support program demonstrates achievements in intergovernmental case establishment and collections.



Of the 87 Minnesota counties, 35 share a border with another jurisdiction. Working on cases that cross jurisdictional lines continues to be part of essential services provided by the child support program. By law, although each state has an independent court system with varying laws, policies and procedures, agencies must cooperate in handling requests for assistance. When a Minnesota agency requests assistance from another jurisdiction for child support services, that case is referred to as the “initiating” case. Alternatively, when an agency in another jurisdiction asks Minnesota for assistance, that case is referred to as a “responding” case. Minnesota’s child support program demonstrates achievements in intergovernmental case establishment and collections.

Initiating cases

There were 20,528 initiating intergovernmental cases open in Minnesota in FFY 2018; of those, 19,163 had a child support order. This data shows an intergovernmental initiating ratio of 93.35 percent of cases with an order established either prior to or after Minnesota initiated to another jurisdiction.

For intergovernmental cases where Minnesota is the initiating state, the average case with a child support order collected \$2,551.68 in FFY 2018.

Responding cases

In FFY 2018, there were 8,817 open intergovernmental cases where the Minnesota Child Support Division was responding to another jurisdiction; of those, 8,280 had a child support order. This is a high establishment percentage for intergovernmental responding cases at 93.91 percent.

For intergovernmental cases where Minnesota is the responding state, the average case with a child support order collected \$2,997.53 in FFY 2018.

On page 46, the Collections to and from Other States chart displays how much money each county distributes to other states, how much is received from other states, and size of initiating and responding caseloads.

Guide and Introduction to Performance Data

Calculations

The 2018 Child Support Performance Report highlights accomplishments and presents program performance measures for FFY 2018. It reports the most recent data showing statewide and individual county performance, and a five-year history for the five federal performance measures. CSD participates in the federal incentive funding system based on program performance, as required by the Personal Responsibility and Work Opportunity Act of 1996. The federal Office of Child Support Enforcement evaluates states competing for federal incentive funds based on five federal performance measures. The five measures are:

Paternity Establishments – the number of open Title IV-D cases with paternity established during the federal fiscal year divided by the number of children in open Title IV-D cases born outside of marriage during the prior federal fiscal year.

Child Support Order Establishment – the number of cases open at the end of the federal fiscal year with support orders established divided by the number of cases open at the end of the federal fiscal year.

Collections on Current Support – the total amount of support distributed as current support during the federal fiscal year divided by the total amount of current support due for the federal fiscal year.

Collections on Arrears – the number of total cases with support distributed as arrears during the federal fiscal year divided by the number of total cases with arrearages due during the federal fiscal year.

Program Cost Effectiveness – for the federal fiscal year, the amount of collections forwarded to other states plus total collections distributed, plus fees retained by other states divided by total Title IV-D dollars expended during the federal fiscal year.

Unlike other performance measures, OCSE allows state agencies to choose between two methods of reporting paternity establishment percentages. One method uses all children born in the state. The second method, which is used by Minnesota, uses only children in the Title IV-D state system. Both methods involve paternitys and births that span more than one 12-month period. The paternitys established by child support workers during the federal fiscal year, therefore, are not necessarily for the same children born of non-marital births in the same federal fiscal year. This explains why some states have a paternity establishment percentage exceeding 100 percent. For the federal performance incentive, Minnesota’s percentage is 101.23.

Paternitys Established =	<p>Children in open Title IV-D cases with paternity established ¹</p> <p>÷</p> <p>Children in open Title IV-D cases born outside of marriage ¹ in previous year</p>
Order Established =	<p>Cases open at the end of fiscal year with support orders established ²</p> <p>÷</p> <p>Cases open at end of fiscal year ²</p>
Collections on Current Support =	<p>Total amount of support distributed as current support during fiscal year ²</p> <p>÷</p> <p>Total amount of current support due for the fiscal year ²</p>
Collections on Arrears =	<p>Total cases with support distributed as arrears during fiscal year ²</p> <p>÷</p> <p>Total cases with arrearages due during fiscal year ²</p>
Cost Effectiveness =	<p>Collections forwarded to other states + total collections distributed + fees retained by other states ³</p> <p>÷</p> <p>Total Title IV-D dollars expended ⁴</p>

Sources: ¹QQ320920, ²QQ320921, ³QQ640201, ⁴DHS Financial Operations Division Report

Minnesota maximized its federal incentives in two of the five measures.

(Continued on next page)

Guide and Introduction to Performance Data

Federal incentives

States are able to maximize federal incentives by reaching performance thresholds on each of the five measures. Minnesota maximized its federal incentives on two of five measures: Paternity establishment at 101.23 percent, and order establishment at 88.32 percent. Minnesota has opportunities to earn additional incentives based on collections which maximize at 80.00 percent and cost effectiveness at \$5.00. For FFY 2018, collections on current support was 74.94 percent, collections on cases with arrears was 72.45 percent, and cost effectiveness at \$3.26.

The federal government matches 66 percent of state and county spending. It also provides funding based on performance, outcomes and collection base, which CSD passes on to county agencies. CSD determines a county's share using the same methodology that OCSE uses for states. County agencies are required to reinvest incentives in the Title IV-D program.

Secure, accurate and reliable data is critical to the child support program's success and funding. In addition to meeting OCSE's performance standards, a state's data must meet a 95 percent data reliability standard. Reliable data is sufficiently complete and error-free. Federal auditors assess completeness, reliability and security of data, as well as accuracy of the reporting systems used in calculating performance measures.

Failure to meet any of the five federal performance standards, or the 95 percent data reliability standard, puts a state program at risk. Failure can mean loss of eligibility for incentive funds and the possibility of incurring significant penalties to the Temporary Assistance for Needy Families (TANF) grant – the Minnesota Family Investment Program (MFIP) – if no improvement is made during the corrective action year.

If a state falls below one or more of the performance measures, or does not meet data reliability criteria, OCSE imposes an automatic corrective action period of one year. If corrections are not made during that year, OCSE imposes a penalty at the end of the year, which reduces payments by 1 to 2 percent of the state TANF grant for the first finding; 2 to 3 percent for the second consecutive

finding; and 3 to 5 percent for the third and subsequent consecutive findings. Total penalties may not exceed 25 percent of a state's TANF grant.

Historically, Minnesota has performed well in federal audits. OCSE's annual Data Reliability Audit validates that performance and financial reporting are accurately reflected in reviewing the child support system. Minnesota has not had a corrective action or penalty in any of its audits regarding data reliability.

Performance relative to other states

To show how Minnesota compares to other states, the most recent national data is included in tables in the report. Federal rankings are based on FFY 2017 data; Minnesota ranked third for collections on current support nationally, and fourth in collections on arrears. National information is available online from OCSE. The table below shows Minnesota's performance measures for FFY 2017 compared to the four bordering states.

Performance Measures	MN	IA	ND	SD	WI
Paternities Established	101.1%	94.2%	105.3%	105.0%	100.5%
Orders Established	88.5%	92.5%	92.7%	92.6%	87.0%
Collections on Current	74.5%	73.0%	73.2%	64.2%	74.6%
Collections on Arrears	72.2%	69.5%	63.4%	61.2%	69.4%
Cost Effectiveness	\$3.30	\$5.46	\$6.08	\$10.42	\$5.56

(Continued on next page)

Guide and Introduction to Performance Data

Funding

OCSE provides funding to states by matching qualifying expenditures, and by basing funding on performance, outcomes, and the state's collection base. The collection base is the "baseline" of the incentive structure. Once established, OCSE applies performance on the five federal performance measures to the collection base for a national total. OCSE awards each state a prorated portion of the total incentive pool. Dollars in the incentive pool are limited. Each state's share is affected by how every other state performs under the incentive formula.

Table tips

Tips for the tables in the 2018 report:

- Statewide data appears at the bottom of tables for convenient comparison on each page.
- Statewide data figures include all county and tribal shared interest case data.
- A dash indicates no data applicable.
- Historical FFY data shows recently merged counties as single county agencies. Percentage comparisons have been calculated using historical data from the agencies. Multiple county agencies are reported as follows:
 - Faribault-Martin is listed as one agency.
 - Southwest Health and Human Services is listed as SWHHS (Lincoln, Lyon and Murray (LLM) with the addition of Rock on Jan. 1, 2012, and Pipestone and Redwood on Jan. 1, 2013).
 - Des Moines Valley (Cottonwood and Jackson merged on Jan. 1, 2014).
 - MNPrarie (Dodge, Steele and Waseca merged on Jan. 1, 2015).
- Data sources are listed at the bottom of tables.
- National data for state ranking is for FFY 2017.



The federal government matches 66 percent of state and county spending.

When circumstances change, child support obligations continue. Parents who experience a change, or anticipate a change, should contact their county caseworker immediately.

(Continued on next page)

Guide and Introduction to Performance Data

Data sources

The Child Support Division used internal and external data sources to compile the 2018 report, which include:

- Standard Data Warehouse reports – regularly scheduled reports, with most produced on a monthly or quarterly schedule. County agencies can access these reports through an interface with CSD.
- Ad Hoc Minnesota Department of Human Services Child Support Data Warehouse reports – special request for reports that access multi-source data stored at the department. Reports are approved and run once for state and county agency use.



Federal Performance Measures: County Results

County	Paternities Established Measure FFY2018 (%)	Orders Established Measure FFY2018 (%)	Collections on Current Measure FFY2018 (%)	Collections on Arrears Measure FFY2018 (%)	Cost Effectiveness Measure FFY2018 (\$)
Aitkin	100.89	93.80	76.20	68.95	2.76
Anoka	104.32	91.27	76.17	74.41	4.76
Becker	100.08	90.91	72.54	67.72	2.89
Beltrami	95.94	87.82	71.02	58.77	3.50
Benton	104.90	93.03	76.72	75.42	4.44
Big Stone	107.81	91.18	75.62	79.41	4.61
Blue Earth	103.59	92.62	72.10	73.88	4.67
Brown	105.05	91.91	82.86	80.63	5.69
Carlton	101.75	92.98	74.34	64.43	3.09
Carver	104.33	94.14	79.72	77.56	5.14
Cass	97.73	83.29	66.26	59.33	2.12
Chippewa	98.81	91.26	80.09	73.88	4.16
Chisago	105.79	95.66	80.00	81.43	7.07
Clay	101.52	86.78	73.31	68.61	4.63
Clearwater	103.27	93.33	70.32	63.26	4.59
Cook	89.71	92.59	72.93	73.57	2.80
Crow Wing	107.09	92.13	74.33	74.03	4.86
Dakota	98.00	86.36	72.76	73.71	4.37
Douglas	102.96	94.26	73.65	73.79	4.48
Fillmore	100.97	90.20	77.84	78.80	7.73
Freeborn	103.90	92.78	70.80	72.88	5.99
Goodhue	104.70	87.79	77.89	75.41	4.10
Grant	95.03	95.34	83.67	80.00	3.22
Hennepin	101.01	82.02	71.88	69.64	2.87
Houston	109.85	92.98	77.06	69.36	4.08
Hubbard	100.51	93.01	74.43	70.54	7.31
Isanti	104.55	95.41	78.19	77.23	4.56
Itasca	106.65	94.69	76.87	72.78	3.15
Des Moines Valley	105.42	95.80	81.69	81.97	5.96
Statewide	101.23	88.32	74.94	72.45	3.26

Federal Performance Measures: County Results

County	Paternities Established Measure FFY2018 (%)	Orders Established Measure FFY2018 (%)	Collections on Current Measure FFY2018 (%)	Collections on Arrears Measure FFY2018 (%)	Cost Effectiveness Measure FFY2018 (\$)
Kanabec	100.99	94.05	74.94	74.89	3.76
Kandiyohi	101.31	91.34	77.75	74.85	4.31
Kittson	109.72	96.12	84.37	84.51	3.20
Koochiching	111.38	97.46	82.89	84.70	4.53
Lac qui Parle	114.29	97.31	82.41	82.32	6.34
Lake	99.64	93.90	75.65	78.15	3.58
Lake of the Woods	94.50	89.04	75.77	75.51	3.06
Le Sueur	105.78	94.14	77.58	82.39	4.78
SWHHS	106.51	91.48	77.40	76.87	5.75
McLeod	103.65	92.22	81.40	80.75	6.63
Mahnomen	91.60	75.98	67.37	61.03	2.69
Marshall	109.66	95.12	82.82	82.53	4.06
Faribault/Martin	108.31	93.14	76.41	77.59	4.36
Meeker	103.96	92.42	75.72	81.08	5.57
Mille Lacs	107.08	93.85	79.38	77.53	4.82
Morrison	100.32	94.27	72.42	72.92	4.76
Mower	101.07	91.28	75.20	71.30	4.31
Nicollet	102.28	93.59	76.55	78.96	4.03
Nobles	107.03	88.71	80.45	78.71	6.90
Norman	105.45	90.94	72.57	69.92	5.14
Olmsted	101.23	87.05	77.95	77.74	4.40
Otter Tail	99.40	89.17	71.58	71.33	3.67
Pennington	99.10	88.73	77.93	72.94	3.38
Pine	104.22	95.34	78.66	75.81	4.44
Polk	108.39	93.54	78.73	68.15	3.82
Pope	100.76	95.76	79.37	77.55	3.98
Ramsey	95.05	84.64	68.49	66.17	2.84
Red Lake	110.89	92.75	79.64	81.74	4.67
Renville	97.84	83.33	78.81	77.01	5.08
Statewide	101.23	88.32	74.94	72.45	3.26

Federal Performance Measures: County Results

County	Paternities Established Measure FFY2018 (%)	Orders Established Measure FFY2018 (%)	Collections on Current Measure FFY2018 (%)	Collections on Arrears Measure FFY2018 (%)	Cost Effectiveness Measure FFY2018 (\$)
Rice	98.44	89.07	78.19	77.33	4.76
Roseau	105.94	95.95	81.39	82.80	4.09
St. Louis	102.25	92.21	73.65	67.50	4.05
Scott	103.69	91.29	80.19	80.86	4.90
Sherburne	105.04	91.68	81.17	77.48	6.75
Sibley	98.22	88.71	79.37	79.49	5.00
Stearns	100.19	88.03	77.33	78.75	4.94
MN Prairie	106.80	92.70	77.20	77.71	5.91
Stevens	106.41	91.00	77.85	80.86	6.69
Swift	104.13	92.84	78.03	75.25	4.92
Todd	111.09	89.67	77.56	78.18	5.05
Traverse	138.71	91.36	77.46	77.50	4.37
Wabasha	101.18	92.62	79.50	78.07	7.42
Wadena	103.41	95.38	73.47	72.09	7.49
Washington	102.77	95.03	76.60	71.96	5.68
Watonwan	103.37	90.74	76.93	76.15	4.68
Wilkin	104.74	91.06	77.44	76.47	3.91
Winona	97.79	89.67	74.16	71.22	4.79
Wright	105.01	93.82	80.45	77.55	6.34
Yellow Medicine	102.63	94.25	81.59	81.82	5.07
Statewide	101.23	88.32	74.94	72.45	3.26

Source: CSD InfoPac QQ320920: Annual OCSE157 Paternity Establishment - Summary, CSD InfoPac QQ320921: Annual OCSE157 Federal Performance - Summary, CSD InfoPac QQ640201: Quarterly OCSE34A Collect and Disburse - Summary, Division Operations - Quarterly County Admin. Reports

County Results: Paternities Established

County	Children in Open IV-D Cases with Paternities Established FFY2018	Children in Open IV-D Cases Not Born in Marriage FFY2017	Federal Performance Measures: Paternities Established				
			FFY2018 (%)	FFY2017 (%)	FFY2016 (%)	FFY2015 (%)	FFY2014 (%)
Aitkin	567	562	100.89	102.65	106.68	101.90	105.55
Anoka	8,906	8,537	104.32	104.10	103.13	102.87	104.65
Becker	1,193	1,192	100.08	93.04	101.84	97.35	98.75
Beltrami	1,961	2,044	95.94	94.28	98.44	92.80	91.08
Benton	1,628	1,552	104.90	105.18	105.77	105.59	104.44
Big Stone	138	128	107.81	123.81	109.01	97.67	97.04
Blue Earth	1,905	1,839	103.59	104.65	103.63	100.70	104.32
Brown	811	772	105.05	103.84	107.72	102.73	107.43
Carlton	1,395	1,371	101.75	105.15	102.98	99.72	101.04
Carver	1,325	1,270	104.33	104.56	107.05	104.22	105.06
Cass	1,462	1,496	97.73	99.87	100.79	99.55	102.22
Chippewa	416	421	98.81	98.03	105.58	108.04	106.65
Chisago	1,534	1,450	105.79	107.20	105.69	104.88	108.27
Clay	2,133	2,101	101.52	99.86	103.13	101.59	104.71
Clearwater	411	398	103.27	95.28	104.94	104.73	105.88
Cook	122	136	89.71	104.10	93.02	95.45	97.84
Crow Wing	2,537	2,369	107.09	104.36	102.21	102.22	102.33
Dakota	9,632	9,829	98.00	99.59	99.80	97.29	99.02
Dodge			-	-	-	-	106.47
Douglas	1,045	1,015	102.96	103.98	104.59	102.56	102.83
Fillmore	518	513	100.97	101.83	102.71	104.85	106.18
Freeborn	1,358	1,307	103.90	104.05	106.21	102.69	102.27
Goodhue	1,538	1,469	104.70	106.69	107.83	102.23	104.34
Grant	172	181	95.03	95.74	100.55	97.35	100.52
Hennepin	40,752	40,343	101.01	99.59	97.18	98.20	98.76
Houston	502	457	109.85	111.98	104.14	106.73	105.73
Hubbard	795	791	100.51	103.71	107.09	103.74	104.23
Isanti	1,379	1,319	104.55	102.16	100.80	101.68	102.80
Statewide	*171,564	*169,485	101.23	101.05	100.77	99.00	100.42

Paternities Established Measure FFY2018 Rank Order by (%)	
Traverse	138.71
Lac qui Parle	114.29
Koochiching	111.38
Todd	111.09
Red Lake	110.89
Houston	109.85
Kittson	109.72
Marshall	109.66
Polk	108.39
Faribault/Martin	108.31
Big Stone	107.81
Crow Wing	107.09
Mille Lacs	107.08
Nobles	107.03
MN Prairie	106.80
Itasca	106.65
SWHHS	106.51
Stevens	106.41
Roseau	105.94
Chisago	105.79
Le Sueur	105.78
Norman	105.45
Des Moines Valley	105.42
Brown	105.05
Sherburne	105.04
Wright	105.01
Benton	104.90
Wilkin	104.74

County Results: Paternities Established

County	Children in Open IV-D Cases with Paternities Established FFY2018	Children in Open IV-D Cases Not Born in Marriage FFY2017	Federal Performance Measures: Paternities Established				
			FFY2018 (%)	FFY2017 (%)	FFY2016 (%)	FFY2015 (%)	FFY2014 (%)
Itasca	1,829	1,715	106.65	102.63	103.25	102.91	100.75
Des Moines Valley	836	793	105.42	102.93	110.81	105.56	108.93
Kanabec	613	607	100.99	104.65	107.27	102.56	104.21
Kandiyohi	1,630	1,609	101.31	98.52	98.98	102.53	99.94
Kittson	79	72	109.72	109.72	113.24	105.56	106.85
Koochiching	558	501	111.38	112.70	111.88	109.04	110.53
Lac qui Parle	168	147	114.29	112.77	101.30	99.37	104.17
Lake	280	281	99.64	108.24	101.84	99.33	103.24
Lake of the Woods	103	109	94.50	101.89	108.08	111.00	104.55
Le Sueur	842	796	105.78	109.42	109.47	103.17	105.42
SWHHS	2,601	2,442	106.51	104.46	106.30	101.47	102.66
McLeod	1,165	1,124	103.65	105.18	106.62	104.06	103.14
Mahnomen	218	238	91.60	71.51	97.14	114.22	100.00
Marshall	227	207	109.66	109.28	102.76	110.19	108.21
Faribault/Martin	1,433	1,323	108.31	108.64	108.45	107.50	107.19
Meeker	604	581	103.96	112.99	101.79	101.21	101.59
Mille Lacs	1,300	1,214	107.08	104.48	105.08	106.00	104.07
Morrison	1,235	1,231	100.32	98.99	101.64	100.00	102.81
Mower	1,799	1,780	101.07	104.88	104.95	103.88	96.56
Nicollet	1,075	1,051	102.28	104.49	103.25	102.83	102.63
Nobles	913	853	107.03	102.63	106.43	101.14	105.86
Norman	213	202	105.45	110.26	117.58	107.14	105.77
Olmsted	4,692	4,635	101.23	101.48	98.45	100.69	100.62
Otter Tail	1,663	1,673	99.40	99.34	105.08	101.06	102.28
Pennington	552	557	99.10	98.93	102.44	97.69	99.05
Pine	1,285	1,233	104.22	107.85	104.56	102.14	101.99
Polk	1,498	1,382	108.39	109.93	106.92	109.09	103.02
Pope	264	262	100.76	99.24	102.65	105.99	101.89
Statewide	*171,564	*169,485	101.23	101.05	100.77	99.00	100.42

Paternities Established Measure FFY2018 Rank Order by (%)	
Goodhue	104.70
Isanti	104.55
Carver	104.33
Anoka	104.32
Pine	104.22
Swift	104.13
Meeker	103.96
Freeborn	103.90
Scott	103.69
McLeod	103.65
Blue Earth	103.59
Wadena	103.41
Watonwan	103.37
Clearwater	103.27
Douglas	102.96
Washington	102.77
Yellow Medicine	102.63
Nicollet	102.28
St. Louis	102.25
Carlton	101.75
Clay	101.52
Kandiyohi	101.31
Olmsted	101.23
STATEWIDE	101.23
Wabasha	101.18
Mower	101.07
Hennepin	101.01
Kanabec	100.99

County Results: Paternities Established

County	Children in Open IV-D Cases with Paternities Established FFY2018	Children in Open IV-D Cases Not Born in Marriage FFY2017	Federal Performance Measures: Paternities Established				
			FFY2018 (%)	FFY2017 (%)	FFY2016 (%)	FFY2015 (%)	FFY2014 (%)
Ramsey	21,576	22,699	95.05	93.82	95.20	94.77	94.66
Red Lake	112	101	110.89	109.71	115.69	115.89	104.27
Renville	499	510	97.84	102.05	104.63	105.20	103.10
Rice	1,455	1,478	98.44	98.60	103.75	99.23	104.02
Roseau	464	438	105.94	112.86	108.15	99.77	98.25
St. Louis	7,863	7,690	102.25	101.64	102.99	102.14	102.52
Scott	2,330	2,247	103.69	109.47	104.91	107.61	107.31
Sherburne	2,500	2,380	105.04	106.48	103.82	101.32	102.01
Sibley	442	450	98.22	102.97	104.74	102.80	106.94
Stearns	4,172	4,164	100.19	102.98	105.87	103.22	104.12
MN Prairie	3,063	2,868	106.80	108.11	106.37	105.23	108.47
Stevens	166	156	106.41	97.74	101.60	105.41	111.05
Swift	378	363	104.13	103.87	105.43	103.14	106.34
Todd	761	685	111.09	106.10	103.71	102.08	102.78
Traverse	86	62	138.71	98.86	116.28	98.91	113.13
Wabasha	516	510	101.18	103.72	106.20	99.80	95.87
Wadena	607	587	103.41	101.63	107.77	105.98	108.21
Waseca			-	-	-	-	106.50
Washington	4,816	4,686	102.77	104.38	106.10	103.69	102.10
Watonwan	521	504	103.37	101.37	96.85	100.18	103.31
Wilkin	221	211	104.74	107.41	100.92	102.87	109.95
Winona	1,369	1,400	97.79	99.00	100.99	100.14	99.80
Wright	2,979	2,837	105.01	108.56	104.61	103.58	105.46
Yellow Medicine	234	228	102.63	110.36	99.19	105.28	104.68
Statewide	*171,564	*169,485	101.23	101.05	100.77	99.00	100.42

Paternities Established Measure FFY2018 Rank Order by (%)	
Fillmore	100.97
Aitkin	100.89
Pope	100.76
Hubbard	100.51
Morrison	100.32
Stearns	100.19
Becker	100.08
Lake	99.64
Otter Tail	99.40
Pennington	99.10
Chippewa	98.81
Rice	98.44
Sibley	98.22
Dakota	98.00
Renville	97.84
Winona	97.79
Cass	97.73
Beltrami	95.94
Ramsey	95.05
Grant	95.03
Lake of the Woods	94.50
Mahnomen	91.60
Cook	89.71

Source: CSD InfoPac QQ320920: Annual OCSE157 Paternity Establishment - Summary , *CSD InfoPac QQ710305: Unduplicated Paternity Establishment Report

County Results: Orders Established

County	Open Cases with Orders Established FFY2018	Open Cases FFY2018	Federal Performance Measures: Orders Established				
			FFY2018 (%)	FFY2017 (%)	FFY2016 (%)	FFY2015 (%)	FFY2014 (%)
Aitkin	711	758	93.80	92.41	94.61	94.59	92.99
Anoka	10,599	11,613	91.27	91.38	92.43	92.43	91.72
Becker	1,380	1,518	90.91	89.70	90.92	92.85	92.96
Beltrami	2,163	2,463	87.82	84.04	82.50	76.98	76.16
Benton	1,788	1,922	93.03	93.66	93.32	94.28	91.94
Big Stone	155	170	91.18	86.36	89.02	95.06	89.56
Blue Earth	2,310	2,494	92.62	92.62	94.19	94.03	94.14
Brown	920	1,001	91.91	93.45	95.46	93.63	94.64
Carlton	1,788	1,923	92.98	93.75	94.41	93.57	93.02
Carver	1,638	1,740	94.14	92.04	91.64	93.70	93.34
Cass	1,440	1,729	83.29	86.03	86.73	87.23	86.79
Chippewa	501	549	91.26	91.78	89.29	90.15	91.81
Chisago	1,941	2,029	95.66	95.42	95.37	95.53	94.85
Clay	2,173	2,504	86.78	86.51	87.05	86.95	85.55
Clearwater	532	570	93.33	94.60	95.70	97.65	96.33
Cook	150	162	92.59	87.21	84.21	86.55	89.47
Crow Wing	3,139	3,407	92.13	93.92	94.23	94.09	94.29
Dakota	10,794	12,499	86.36	88.03	90.37	90.59	88.90
Dodge			-	-	-	-	94.46
Douglas	1,395	1,480	94.26	92.77	93.55	93.57	93.22
Fillmore	617	684	90.20	90.56	90.48	92.35	89.97
Freeborn	1,517	1,635	92.78	93.30	95.75	94.97	93.04
Goodhue	1,711	1,949	87.79	88.76	91.16	94.22	94.61
Grant	225	236	95.34	94.58	93.06	95.58	96.41
Hennepin	39,767	48,482	82.02	83.66	84.31	83.74	82.93
Houston	583	627	92.98	93.51	94.72	96.17	96.19
Hubbard	918	987	93.01	91.80	93.21	92.97	90.55
Isanti	1,748	1,832	95.41	94.02	94.08	92.99	94.26
Statewide	*187,963	*212,822	88.32	88.56	88.91	88.70	88.00

Orders Established Measure FFY2018 Rank Order by (%)	
Koochiching	97.46
Lac qui Parle	97.31
Kittson	96.12
Roseau	95.95
Des Moines Valley	95.80
Pope	95.76
Chisago	95.66
Isanti	95.41
Wadena	95.38
Pine	95.34
Grant	95.34
Marshall	95.12
Washington	95.03
Itasca	94.69
Morrison	94.27
Douglas	94.26
Yellow Medicine	94.25
Le Sueur	94.14
Carver	94.14
Kanabec	94.05
Lake	93.90
Mille Lacs	93.85
Wright	93.82
Aitkin	93.80
Nicollet	93.59
Polk	93.54
Clearwater	93.33
Faribault/Martin	93.14

County Results: Orders Established

County	Open Cases with Orders Established FFY2018	Open Cases FFY2018	Federal Performance Measures: Orders Established				
			FFY2018 (%)	FFY2017 (%)	FFY2016 (%)	FFY2015 (%)	FFY2014 (%)
Itasca	2,248	2,374	94.69	94.26	94.59	93.21	92.53
Des Moines Valley	1,004	1,048	95.80	96.75	94.78	96.89	95.68
Kanabec	759	807	94.05	94.36	94.08	94.85	92.43
Kandiyohi	1,836	2,010	91.34	89.65	89.28	88.68	88.72
Kittson	99	103	96.12	99.05	96.36	92.52	98.17
Koochiching	615	631	97.46	95.19	97.55	96.09	98.83
Lac qui Parle	181	186	97.31	95.77	97.38	96.10	96.40
Lake	400	426	93.90	90.32	91.24	93.82	87.97
Lake of the Woods	130	146	89.04	89.58	92.42	94.70	92.14
Le Sueur	884	939	94.14	90.35	93.35	95.59	94.18
SWHHS	2,964	3,240	91.48	91.45	92.20	92.88	92.38
McLeod	1,339	1,452	92.22	92.89	92.90	93.65	92.63
Mahnomen	193	254	75.98	87.66	91.74	88.95	93.93
Marshall	273	287	95.12	93.99	95.44	95.19	93.23
Faribault/Martin	1,548	1,662	93.14	93.12	94.73	95.15	96.37
Meeker	829	897	92.42	90.80	94.18	93.30	94.36
Mille Lacs	1,801	1,919	93.85	94.30	93.84	94.64	93.28
Morrison	1,760	1,867	94.27	95.32	94.25	93.76	93.03
Mower	1,999	2,190	91.28	90.72	91.86	91.66	88.32
Nicollet	1,256	1,342	93.59	93.10	92.95	94.13	92.89
Nobles	809	912	88.71	91.02	88.72	88.34	87.72
Norman	251	276	90.94	92.88	92.96	91.51	95.07
Olmsted	4,719	5,421	87.05	87.29	89.12	87.33	87.50
Otter Tail	1,985	2,226	89.17	89.56	91.50	92.98	92.90
Pennington	630	710	88.73	89.68	90.44	92.14	89.72
Pine	1,577	1,654	95.34	94.07	94.60	96.31	96.19
Polk	1,593	1,703	93.54	93.80	91.92	93.48	93.30
Pope	339	354	95.76	93.04	93.09	91.51	87.50
Statewide	*187,963	*212,822	88.32	88.56	88.91	88.70	88.00

Orders Established Measure FFY2018 Rank Order by (%)	
Benton	93.03
Hubbard	93.01
Houston	92.98
Carlton	92.98
Swift	92.84
Freeborn	92.78
Red Lake	92.75
MN Prairie	92.70
Blue Earth	92.62
Wabasha	92.62
Cook	92.59
Meeker	92.42
McLeod	92.22
St. Louis	92.21
Crow Wing	92.13
Brown	91.91
Sherburne	91.68
SWHHS	91.48
Traverse	91.36
Kandiyohi	91.34
Scott	91.29
Mower	91.28
Anoka	91.27
Chippewa	91.26
Big Stone	91.18
Wilkin	91.06
Stevens	91.00
Norman	90.94

County Results: Orders Established

County	Open Cases with Orders Established FFY2018	Open Cases FFY2018	Federal Performance Measures: Orders Established				
			FFY2018 (%)	FFY2017 (%)	FFY2016 (%)	FFY2015 (%)	FFY2014 (%)
Ramsey	19,754	23,340	84.64	83.44	82.14	81.30	80.15
Red Lake	128	138	92.75	91.85	93.71	94.20	95.14
Renville	515	618	83.33	81.72	86.41	83.55	81.70
Rice	1,613	1,811	89.07	87.75	86.63	86.30	84.64
Roseau	545	568	95.95	95.12	89.74	90.32	91.17
St. Louis	8,796	9,539	92.21	91.39	89.98	90.71	90.14
Scott	2,546	2,789	91.29	90.67	90.58	90.68	90.88
Sherburne	3,216	3,508	91.68	93.21	93.89	95.84	94.34
Sibley	550	620	88.71	90.63	93.11	95.36	96.33
Stearns	4,617	5,245	88.03	88.45	88.88	90.90	89.46
MN Prairie	3,456	3,728	92.70	93.19	94.47	93.86	93.54
Stevens	192	211	91.00	95.54	95.56	94.62	91.98
Swift	441	475	92.84	90.57	94.06	94.38	92.96
Todd	911	1,016	89.67	91.30	93.31	95.93	95.89
Traverse	74	81	91.36	93.02	83.78	83.05	79.49
Wabasha	640	691	92.62	89.56	90.76	88.45	85.71
Wadena	806	845	95.38	95.10	95.16	96.06	96.51
Waseca			-	-	-	-	93.42
Washington	5,832	6,137	95.03	94.07	93.17	95.60	95.26
Watonwan	647	713	90.74	90.31	93.42	93.35	92.24
Wilkin	224	246	91.06	87.13	86.83	86.03	89.11
Winona	1,806	2,014	89.67	91.19	93.01	93.29	93.52
Wright	3,671	3,913	93.82	92.83	93.96	94.49	93.99
Yellow Medicine	295	313	94.25	93.18	91.92	85.60	86.91
Statewide	*187,963	*212,822	88.32	88.56	88.91	88.70	88.00

Orders Established Measure FFY2018 Rank Order by (%)	
Becker	90.91
Watonwan	90.74
Fillmore	90.20
Winona	89.67
Todd	89.67
Otter Tail	89.17
Rice	89.07
Lake of the Woods	89.04
Pennington	88.73
Sibley	88.71
Nobles	88.71
STATEWIDE	88.32
Stearns	88.03
Beltrami	87.82
Goodhue	87.79
Olmsted	87.05
Clay	86.78
Dakota	86.36
Ramsey	84.64
Renville	83.33
Cass	83.29
Hennepin	82.02
Mahnomen	75.98

Source: CSD InfoPac QQ320921: Annual OCSE157 Federal Performance - Summary, *CSD InfoPac QQ710309: Unduplicated Performance Report

County Results: Collections on Current

County	Current Support Distributed FFY2018	Current Support Due FFY2018	Federal Performance Measures: Collections on Current				
			FFY2018 (%)	FFY2017 (%)	FFY2016 (%)	FFY2015 (%)	FFY2014 (%)
Aitkin	1,175,691.24	1,542,891.99	76.20	75.42	75.09	77.13	74.17
Anoka	30,008,218.15	39,395,246.76	76.17	75.87	74.88	74.43	73.39
Becker	2,641,029.33	3,640,818.52	72.54	68.31	69.27	69.68	68.23
Beltrami	3,189,617.14	4,491,224.65	71.02	69.23	67.06	66.35	64.69
Benton	4,122,441.47	5,373,546.89	76.72	76.25	75.97	75.39	75.84
Big Stone	433,819.30	573,718.78	75.62	73.10	76.81	82.28	78.89
Blue Earth	5,507,442.27	7,638,863.31	72.10	71.58	71.14	71.12	69.03
Brown	2,906,694.58	3,508,136.31	82.86	82.20	81.79	82.48	83.45
Carlton	3,521,631.07	4,737,314.46	74.34	74.52	73.27	74.74	73.73
Carver	6,392,757.41	8,018,774.23	79.72	79.42	79.52	79.45	78.72
Cass	1,569,174.36	2,368,188.78	66.26	67.88	67.30	66.32	64.45
Chippewa	1,279,177.21	1,597,205.00	80.09	78.32	74.66	76.30	75.95
Chisago	5,716,661.15	7,145,967.26	80.00	80.85	80.51	79.00	78.26
Clay	6,056,195.69	8,260,664.94	73.31	72.15	72.67	74.44	74.13
Clearwater	813,866.24	1,157,422.25	70.32	68.48	70.28	73.85	71.57
Cook	274,250.76	376,039.91	72.93	76.09	70.61	64.86	64.87
Crow Wing	6,300,285.91	8,476,297.68	74.33	73.92	72.87	72.05	72.37
Dakota	31,672,407.54	43,529,049.56	72.76	72.65	72.72	71.92	71.56
Dodge			-	-	-	-	80.29
Douglas	3,139,409.41	4,262,699.72	73.65	74.13	76.03	76.42	75.49
Fillmore	1,750,548.64	2,248,961.18	77.84	78.77	77.60	78.38	78.16
Freeborn	3,454,078.44	4,878,500.16	70.80	71.32	72.09	73.04	70.50
Goodhue	4,469,132.75	5,738,017.17	77.89	77.09	78.49	76.64	75.94
Grant	708,874.25	847,221.60	83.67	82.60	81.62	79.87	80.00
Hennepin	72,445,679.10	100,788,614.78	71.88	71.58	71.47	69.41	68.27
Houston	1,463,476.98	1,899,185.16	77.06	77.94	78.19	77.69	76.48
Hubbard	1,420,618.22	1,908,641.25	74.43	74.75	73.16	69.53	64.44
Isanti	4,960,522.13	6,344,554.30	78.19	77.87	77.68	78.05	76.01
Statewide	434,341,241.37	579,608,329.13	74.94	74.53	74.29	73.43	72.46

Collections on Current FFY2018 Rank Order by (%)	
Kittson	84.37
Grant	83.67
Koochiching	82.89
Brown	82.86
Marshall	82.82
Lac qui Parle	82.41
Des Moines Valley	81.69
Yellow Medicine	81.59
McLeod	81.40
Roseau	81.39
Sherburne	81.17
Wright	80.45
Nobles	80.45
Scott	80.19
Chippewa	80.09
Chisago	80.00
Carver	79.72
Red Lake	79.64
Wabasha	79.50
Mille Lacs	79.38
Sibley	79.37
Pope	79.37
Renville	78.81
Polk	78.73
Pine	78.66
Rice	78.19
Isanti	78.19
Swift	78.03

County Results: Collections on Current

County	Current Support Distributed FFY2018	Current Support Due FFY2018	Federal Performance Measures: Collections on Current				
			FFY2018 (%)	FFY2017 (%)	FFY2016 (%)	FFY2015 (%)	FFY2014 (%)
Itasca	4,237,818.18	5,513,286.51	76.87	74.91	74.06	74.55	71.72
Des Moines Valley	2,462,758.57	3,014,675.87	81.69	78.33	77.78	76.80	75.97
Kanabec	1,729,558.42	2,307,830.96	74.94	76.39	76.53	74.84	75.34
Kandiyohi	4,427,589.92	5,694,470.10	77.75	75.57	75.79	75.73	76.37
Kittson	290,986.65	344,889.76	84.37	84.25	87.29	85.84	86.87
Koochiching	1,525,074.22	1,839,880.49	82.89	82.77	81.64	81.85	82.05
Lac qui Parle	574,755.57	697,414.13	82.41	78.61	81.65	80.18	81.00
Lake	899,639.29	1,189,257.58	75.65	74.83	73.18	74.43	74.27
Lake of the Woods	257,502.00	339,841.23	75.77	74.30	76.45	76.95	76.46
Le Sueur	2,784,703.61	3,589,474.50	77.58	75.60	75.43	74.91	75.12
SWHHS	7,334,142.09	9,475,407.77	77.40	77.31	78.36	78.91	77.73
McLeod	3,717,388.30	4,566,740.09	81.40	79.64	79.48	79.39	79.08
Mahnomen	292,972.76	434,880.26	67.37	61.25	59.05	61.81	65.85
Marshall	908,941.40	1,097,528.32	82.82	83.13	82.98	81.93	85.26
Faribault/Martin	4,210,292.75	5,509,930.54	76.41	76.14	75.34	74.40	72.92
Meeker	2,134,303.12	2,818,567.98	75.72	77.52	78.65	76.38	76.81
Mille Lacs	2,690,560.82	3,389,465.25	79.38	75.63	74.38	75.35	73.44
Morrison	3,208,510.86	4,430,531.95	72.42	70.72	70.11	68.09	66.90
Mower	4,470,730.72	5,944,829.27	75.20	74.95	74.90	73.69	71.81
Nicollet	3,476,291.97	4,540,992.15	76.55	75.30	74.42	73.47	72.14
Nobles	2,380,414.95	2,959,008.61	80.45	76.14	73.96	74.90	73.98
Norman	610,708.24	841,556.19	72.57	69.76	71.81	73.86	73.76
Olmsted	14,044,373.84	18,016,775.93	77.95	78.57	78.26	78.16	78.27
Otter Tail	4,635,880.87	6,476,403.48	71.58	72.94	73.05	73.08	71.88
Pennington	1,581,837.59	2,029,857.34	77.93	72.77	74.87	76.02	75.63
Pine	3,380,916.43	4,298,232.79	78.66	76.80	75.41	74.48	73.75
Polk	3,438,900.97	4,367,822.57	78.73	79.04	80.39	78.94	80.05
Pope	848,526.91	1,069,111.84	79.37	79.57	79.85	78.35	78.29
Statewide	434,341,241.37	579,608,329.13	74.94	74.53	74.29	73.43	72.46

Collections on Current FFY2018 Rank Order by (%)	
Olmsted	77.95
Pennington	77.93
Goodhue	77.89
Stevens	77.85
Fillmore	77.84
Kandiyohi	77.75
Le Sueur	77.58
Todd	77.56
Traverse	77.46
Wilkin	77.44
SWHHS	77.40
Stearns	77.33
MN Prairie	77.20
Houston	77.06
Watonwan	76.93
Itasca	76.87
Benton	76.72
Washington	76.60
Nicollet	76.55
Faribault/Martin	76.41
Aitkin	76.20
Anoka	76.17
Lake of the Woods	75.77
Meeker	75.72
Lake	75.65
Big Stone	75.62
Mower	75.20
Kanabec	74.94

County Results: Collections on Current

County	Current Support Distributed FFY2018	Current Support Due FFY2018	Federal Performance Measures: Collections on Current				
			FFY2018 (%)	FFY2017 (%)	FFY2016 (%)	FFY2015 (%)	FFY2014 (%)
Ramsey	34,025,135.28	49,679,830.21	68.49	67.79	67.59	66.64	64.61
Red Lake	456,867.88	573,673.80	79.64	80.74	79.65	78.79	79.57
Renville	1,487,297.64	1,887,272.71	78.81	78.47	79.27	79.60	78.89
Rice	4,958,307.23	6,341,184.19	78.19	76.51	76.20	75.79	75.46
Roseau	1,504,597.15	1,848,684.93	81.39	77.84	75.55	78.60	78.05
St. Louis	17,164,968.82	23,306,502.12	73.65	72.75	71.86	71.09	70.70
Scott	9,321,009.07	11,624,365.59	80.19	80.29	79.92	79.08	78.41
Sherburne	9,656,140.10	11,896,338.33	81.17	80.92	81.52	80.17	79.18
Sibley	1,441,138.39	1,815,699.90	79.37	78.41	78.60	77.62	77.30
Stearns	11,567,647.54	14,958,012.05	77.33	78.72	78.76	77.53	77.23
MN Prairie	8,731,402.58	11,309,807.73	77.20	77.44	77.41	77.86	73.88
Stevens	557,612.85	716,244.46	77.85	70.74	71.58	72.10	75.75
Swift	1,009,855.03	1,294,119.92	78.03	75.22	74.62	73.86	76.59
Todd	2,155,889.24	2,779,808.13	77.56	77.59	79.26	77.44	75.12
Traverse	248,551.88	320,872.62	77.46	75.90	71.20	71.68	74.77
Wabasha	1,951,408.95	2,454,708.36	79.50	80.55	81.31	79.75	78.88
Wadena	1,850,568.07	2,518,932.25	73.47	73.02	72.56	71.87	69.06
Waseca			-	-	-	-	78.98
Washington	17,860,056.87	23,315,290.28	76.60	77.23	76.56	74.67	73.87
Watonwan	1,575,854.84	2,048,455.18	76.93	77.50	77.50	78.18	75.53
Wilkin	728,290.58	940,511.06	77.44	77.63	77.88	79.19	79.93
Winona	3,284,247.66	4,428,387.07	74.16	75.59	75.03	74.94	75.64
Wright	11,873,640.82	14,758,479.38	80.45	79.50	79.93	78.59	77.23
Yellow Medicine	970,896.15	1,189,896.70	81.59	81.95	80.81	78.54	77.21
Statewide	434,341,241.37	579,608,329.13	74.94	74.53	74.29	73.43	72.46

Collections on Current FFY2018 Rank Order by (%)	
STATEWIDE	74.94
Hubbard	74.43
Carlton	74.34
Crow Wing	74.33
Winona	74.16
St. Louis	73.65
Douglas	73.65
Wadena	73.47
Clay	73.31
Cook	72.93
Dakota	72.76
Norman	72.57
Becker	72.54
Morrison	72.42
Blue Earth	72.10
Hennepin	71.88
Otter Tail	71.58
Beltrami	71.02
Freeborn	70.80
Clearwater	70.32
Ramsey	68.49
Mahnomen	67.37
Cass	66.26

Source: CSD InfoPac QQ320921: Annual OCSE157 Federal Performance - Summary

County Results: Collections on Arrears

County	Open Cases with Arrears Distributed FFY2018	Cases with Arrears Due During FFY2018	Federal Performance Measures: Collections on Arrears				
			FFY2018 (%)	FFY2017 (%)	FFY2016 (%)	FFY2015 (%)	FFY2014 (%)
Aitkin	422	612	68.95	64.66	68.37	72.85	70.10
Anoka	7,646	10,275	74.41	74.69	75.60	75.26	72.24
Becker	839	1,239	67.72	65.46	66.88	67.68	68.51
Beltrami	1,190	2,025	58.77	58.62	56.84	58.75	59.01
Benton	1,120	1,485	75.42	75.51	79.64	76.67	77.50
Big Stone	108	136	79.41	76.39	80.00	78.71	83.67
Blue Earth	1,601	2,167	73.88	75.18	74.10	74.35	73.70
Brown	695	862	80.63	82.43	84.32	85.09	82.82
Carlton	1,056	1,639	64.43	64.56	66.53	68.92	67.03
Carver	1,206	1,555	77.56	78.71	78.62	82.13	81.22
Cass	674	1,136	59.33	56.52	58.45	59.34	57.41
Chippewa	331	448	73.88	73.46	72.90	75.47	74.00
Chisago	1,491	1,831	81.43	81.87	83.58	82.59	80.93
Clay	1,451	2,115	68.61	67.47	69.75	70.25	72.17
Clearwater	303	479	63.26	63.81	61.76	66.22	67.40
Cook	103	140	73.57	66.67	69.92	73.61	64.83
Crow Wing	2,178	2,942	74.03	72.96	75.31	73.14	73.63
Dakota	7,527	10,211	73.71	73.12	73.56	72.74	70.89
Dodge			-	-	-	-	84.97
Douglas	887	1,202	73.79	74.88	78.91	79.45	81.79
Fillmore	435	552	78.80	77.27	79.57	82.92	79.97
Freeborn	1,051	1,442	72.88	73.49	75.33	75.50	71.05
Goodhue	1,190	1,578	75.41	74.77	75.40	75.09	73.97
Grant	160	200	80.00	79.89	84.24	80.00	81.64
Hennepin	22,784	32,716	69.64	69.81	68.60	66.90	65.68
Houston	378	545	69.36	68.49	73.32	76.91	75.84
Hubbard	589	835	70.54	69.24	71.60	71.68	64.24
Isanti	1,248	1,616	77.23	75.91	79.16	77.63	77.34
Statewide	122,604	169,227	72.45	72.26	72.36	72.11	70.99

Collections on Arrears Measure FFY2018 Rank Order by (%)	
Koochiching	84.70
Kittson	84.51
Roseau	82.80
Marshall	82.53
Le Sueur	82.39
Lac qui Parle	82.32
Des Moines Valley	81.97
Yellow Medicine	81.82
Red Lake	81.74
Chisago	81.43
Meeker	81.08
Stevens	80.86
Scott	80.86
McLeod	80.75
Brown	80.63
Grant	80.00
Sibley	79.49
Big Stone	79.41
Nicollet	78.96
Fillmore	78.80
Stearns	78.75
Nobles	78.71
Todd	78.18
Lake	78.15
Wabasha	78.07
Olmsted	77.74
MN Prairie	77.71
Faribault/Martin	77.59

County Results: Collections on Arrears

County	Open Cases with Arrears Distributed FFY2018	Cases with Arrears Due During FFY2018	Federal Performance Measures: Collections on Arrears				
			FFY2018 (%)	FFY2017 (%)	FFY2016 (%)	FFY2015 (%)	FFY2014 (%)
Itasca	1,401	1,925	72.78	71.34	72.56	71.79	65.18
Des Moines Valley	709	865	81.97	81.10	77.78	79.87	77.83
Kanabec	492	657	74.89	75.37	76.70	78.71	78.14
Kandiyohi	1,250	1,670	74.85	75.00	74.97	76.41	75.61
Kittson	60	71	84.51	83.33	85.90	89.29	87.06
Koochiching	476	562	84.70	87.37	84.21	84.35	87.32
Lac qui Parle	135	164	82.32	86.55	80.90	88.11	83.08
Lake	279	357	78.15	74.86	73.01	77.07	75.64
Lake of the Woods	74	98	75.51	78.00	78.22	80.00	79.13
Le Sueur	683	829	82.39	80.76	79.67	79.70	78.60
SWHHS	2,024	2,633	76.87	78.02	76.64	78.93	78.22
McLeod	1,032	1,278	80.75	81.33	83.77	84.40	80.91
Mahnomen	83	136	61.03	54.25	53.16	56.67	50.92
Marshall	189	229	82.53	79.13	80.89	82.40	84.23
Faribault/Martin	1,174	1,513	77.59	75.96	78.95	80.04	78.74
Meeker	613	756	81.08	77.26	80.72	77.48	78.21
Mille Lacs	1,242	1,602	77.53	79.51	78.51	80.95	78.94
Morrison	1,147	1,573	72.92	71.57	71.81	71.95	73.22
Mower	1,349	1,892	71.30	73.70	73.45	71.57	71.11
Nicollet	908	1,150	78.96	75.71	76.21	77.55	76.19
Nobles	599	761	78.71	80.10	79.33	78.25	76.97
Norman	165	236	69.92	76.21	79.46	76.47	76.29
Olmsted	3,279	4,218	77.74	77.46	78.65	78.20	78.49
Otter Tail	1,254	1,758	71.33	72.27	72.80	74.27	73.34
Pennington	399	547	72.94	74.32	74.32	76.22	76.84
Pine	1,147	1,513	75.81	72.23	72.38	74.64	73.25
Polk	933	1,369	68.15	70.56	73.21	73.08	74.16
Pope	228	294	77.55	79.73	76.90	78.70	81.19
Statewide	122,604	169,227	72.45	72.26	72.36	72.11	70.99

Collections on Arrears Measure FFY2018 Rank Order by (%)	
Carver	77.56
Wright	77.55
Pope	77.55
Mille Lacs	77.53
Traverse	77.50
Sherburne	77.48
Rice	77.33
Isanti	77.23
Renville	77.01
SWHHS	76.87
Wilkin	76.47
Watonwan	76.15
Pine	75.81
Lake of the Woods	75.51
Benton	75.42
Goodhue	75.41
Swift	75.25
Kanabec	74.89
Kandiyohi	74.85
Anoka	74.41
Crow Wing	74.03
Chippewa	73.88
Blue Earth	73.88
Douglas	73.79
Dakota	73.71
Cook	73.57
Pennington	72.94
Morrison	72.92

County Results: Collections on Arrears

County	Open Cases with Arrears Distributed FFY2018	Cases with Arrears Due During FFY2018	Federal Performance Measures: Collections on Arrears				
			FFY2018 (%)	FFY2017 (%)	FFY2016 (%)	FFY2015 (%)	FFY2014 (%)
Ramsey	12,133	18,336	66.17	66.82	65.53	64.98	63.16
Red Lake	94	115	81.74	82.50	72.58	77.42	83.90
Renville	345	448	77.01	79.65	82.05	82.37	80.57
Rice	1,143	1,478	77.33	77.99	78.02	78.60	76.70
Roseau	414	500	82.80	76.36	79.73	79.65	83.77
St. Louis	6,024	8,925	67.50	64.96	64.43	65.60	65.29
Scott	1,871	2,314	80.86	79.99	81.11	81.25	79.18
Sherburne	2,095	2,704	77.48	76.41	77.05	77.73	77.96
Sibley	407	512	79.49	74.32	79.77	75.65	75.00
Stearns	3,313	4,207	78.75	79.00	80.12	79.87	78.93
MN Prairie	2,455	3,159	77.71	78.47	79.37	80.44	78.03
Stevens	169	209	80.86	76.13	73.62	77.82	80.62
Swift	301	400	75.25	77.02	78.40	76.71	74.40
Todd	634	811	78.18	80.24	81.11	81.20	79.81
Traverse	62	80	77.50	75.90	75.76	72.22	69.61
Wabasha	445	570	78.07	77.39	77.12	77.16	79.39
Wadena	558	774	72.09	76.60	75.07	76.97	77.61
Waseca			-	-	-	-	83.24
Washington	3,663	5,090	71.96	72.42	73.48	71.19	71.64
Watonwan	447	587	76.15	76.21	78.42	76.97	76.36
Wilkin	156	204	76.47	74.03	74.60	69.42	74.90
Winona	1,178	1,654	71.22	70.97	71.01	72.62	72.29
Wright	2,474	3,190	77.55	76.83	77.40	78.59	77.57
Yellow Medicine	225	275	81.82	81.75	80.07	79.33	80.94
Statewide	122,604	169,227	72.45	72.26	72.36	72.11	70.99

Collections on Arrears Measure FFY2018 Rank Order by (%)	
Freeborn	72.88
Itasca	72.78
STATEWIDE	72.45
Wadena	72.09
Washington	71.96
Otter Tail	71.33
Mower	71.30
Winona	71.22
Hubbard	70.54
Norman	69.92
Hennepin	69.64
Houston	69.36
Aitkin	68.95
Clay	68.61
Polk	68.15
Becker	67.72
St. Louis	67.50
Ramsey	66.17
Carlton	64.43
Clearwater	63.26
Mahnomen	61.03
Cass	59.33
Beltrami	58.77

Source: CSD InfoPac QQ320921: Annual OCSE157 Federal Performance - Summary

County Results: Cost Effectiveness

County	Collections Distributed FFY2018	Expenditures FFY2018	Federal Performance Measures: Cost Effectiveness				
			FFY2018 (\$)	FFY2017 (\$)	FFY2016 (\$)	FFY2015 (\$)	FFY2014 (\$)
Aitkin	1,635,339	592,928	2.76	2.92	3.31	3.53	3.04
Anoka	40,245,791	8,456,490	4.76	4.82	4.88	5.07	5.49
Becker	3,513,489	1,213,825	2.89	2.81	2.67	3.33	3.41
Beltrami	4,439,606	1,268,228	3.50	3.60	3.64	3.64	4.33
Benton	5,140,396	1,158,272	4.44	4.36	4.16	4.92	4.69
Big Stone	576,284	124,880	4.61	4.84	4.10	4.64	4.63
Blue Earth	7,186,684	1,537,370	4.67	5.00	5.24	5.66	5.65
Brown	3,608,182	633,779	5.69	5.20	5.61	6.61	5.96
Carlton	4,624,249	1,497,758	3.09	3.29	3.23	3.74	3.55
Carver	8,300,791	1,615,577	5.14	5.21	5.15	5.49	4.95
Cass	2,259,639	1,065,543	2.12	2.23	2.35	2.65	2.79
Chippewa	1,588,812	382,103	4.16	3.96	3.61	4.21	3.99
Chisago	7,314,107	1,035,192	7.07	7.23	7.47	7.82	6.88
Clay	7,733,971	1,670,861	4.63	4.86	5.06	5.35	5.84
Clearwater	1,092,441	238,224	4.59	4.79	4.20	3.91	3.68
Cook	397,931	142,345	2.80	3.00	2.73	2.72	2.62
Crow Wing	8,403,331	1,730,617	4.86	5.25	5.63	5.62	5.14
Dakota	42,714,356	9,778,317	4.37	4.04	4.23	4.40	4.25
Dodge			-	-	-	-	4.37
Douglas	4,133,987	921,902	4.48	4.35	4.82	4.92	5.66
Fillmore	2,162,048	279,853	7.73	8.61	7.18	9.52	7.13
Freeborn	4,449,044	742,289	5.99	6.40	6.18	6.49	6.35
Goodhue	5,691,110	1,388,975	4.10	4.39	3.85	4.03	4.22
Grant	839,907	260,715	3.22	4.00	4.19	3.92	4.20
Hennepin	97,600,749	33,970,075	2.87	2.89	2.97	3.07	3.24
Houston	1,855,656	454,999	4.08	4.68	4.45	5.49	4.55
Hubbard	1,952,643	267,114	7.31	6.69	4.74	4.94	6.21
Isanti	6,365,060	1,395,448	4.56	4.60	4.69	4.65	5.11
Statewide	573,164,172	175,475,786	3.26	3.30	3.30	3.54	3.58

Cost Effectiveness Measure FFY2018 Rank Order (\$)	
Fillmore	7.73
Wadena	7.49
Wabasha	7.42
Hubbard	7.31
Chisago	7.07
Nobles	6.90
Sherburne	6.75
Stevens	6.69
McLeod	6.63
Lac qui Parle	6.34
Wright	6.34
Freeborn	5.99
Des Moines Valley	5.96
MN Prairie	5.91
SWHHS	5.75
Brown	5.69
Washington	5.68
Meeker	5.57
Norman	5.14
Carver	5.14
Renville	5.08
Yellow Medicine	5.07
Todd	5.05
Sibley	5.00
Stearns	4.94
Swift	4.92
Scott	4.90
Crow Wing	4.86

County Results: Cost Effectiveness

County	Collections Distributed FFY2018	Expenditures FFY2018	Federal Performance Measures: Cost Effectiveness				
			FFY2018 (\$)	FFY2017 (\$)	FFY2016 (\$)	FFY2015 (\$)	FFY2014 (\$)
Itasca	5,712,851	1,815,946	3.15	3.16	3.38	3.12	3.69
Des Moines Valley	3,108,063	521,655	5.96	6.74	7.20	6.17	5.58
Kanabec	2,324,108	618,686	3.76	4.24	5.15	5.79	5.75
Kandiyohi	5,667,511	1,314,192	4.31	4.45	5.47	5.27	5.46
Kittson	333,700	104,240	3.20	3.62	3.11	4.37	4.26
Koochiching	1,988,304	439,005	4.53	4.58	4.17	4.38	4.43
Lac qui Parle	706,050	111,305	6.34	6.48	7.11	6.80	7.23
Lake	1,208,648	337,390	3.58	3.61	3.80	5.16	3.97
Lake of the Woods	300,873	98,448	3.06	3.30	3.26	3.38	3.52
Le Sueur	3,526,485	737,870	4.78	5.67	5.55	7.58	8.04
SWHHS	9,462,450	1,645,902	5.75	5.49	5.77	6.79	6.21
McLeod	4,667,894	704,318	6.63	6.92	6.86	6.60	7.02
Mahnomen	365,640	136,094	2.69	2.03	1.91	2.04	1.61
Marshall	1,109,733	273,572	4.06	3.83	4.22	5.70	6.10
Faribault/Martin	5,229,451	1,200,153	4.36	4.79	5.20	5.32	5.39
Meeker	2,966,552	533,019	5.57	6.01	6.82	7.66	7.21
Mille Lacs	3,724,072	772,115	4.82	4.63	4.21	4.88	4.75
Morrison	4,401,803	925,260	4.76	5.16	5.02	5.05	4.96
Mower	5,744,430	1,331,916	4.31	4.56	4.92	5.08	4.45
Nicollet	4,323,356	1,073,761	4.03	4.42	4.16	4.57	4.31
Nobles	3,010,657	436,406	6.90	6.97	7.31	8.42	6.70
Norman	771,353	149,965	5.14	5.32	6.05	6.36	8.24
Olmsted	17,979,105	4,087,139	4.40	4.52	4.34	4.77	5.11
Otter Tail	6,008,787	1,635,064	3.67	3.85	3.42	3.98	3.90
Pennington	1,953,636	577,531	3.38	3.57	3.81	3.81	3.64
Pine	4,534,274	1,022,307	4.44	4.23	4.41	4.97	5.49
Polk	4,301,304	1,125,227	3.82	3.89	3.64	4.55	4.93
Pope	1,039,813	261,528	3.98	4.37	4.43	4.83	5.00
Statewide	573,164,172	175,475,786	3.26	3.30	3.30	3.54	3.58

Cost Effectiveness Measure FFY2018 Rank Order (\$)	
Mille Lacs	4.82
Winona	4.79
Le Sueur	4.78
Anoka	4.76
Rice	4.76
Morrison	4.76
Watonwan	4.68
Blue Earth	4.67
Red Lake	4.67
Clay	4.63
Big Stone	4.61
Clearwater	4.59
Isanti	4.56
Koochiching	4.53
Douglas	4.48
Benton	4.44
Pine	4.44
Olmsted	4.40
Traverse	4.37
Dakota	4.37
Faribault/Martin	4.36
Mower	4.31
Kandiyohi	4.31
Chippewa	4.16
Goodhue	4.10
Roseau	4.09
Houston	4.08
Marshall	4.06

County Results: Cost Effectiveness

County	Collections Distributed FFY2018	Expenditures FFY2018	Federal Performance Measures: Cost Effectiveness				
			FFY2018 (\$)	FFY2017 (\$)	FFY2016 (\$)	FFY2015 (\$)	FFY2014 (\$)
Ramsey	48,223,917	17,004,296	2.84	2.92	3.02	3.26	3.34
Red Lake	531,509	113,884	4.67	4.58	3.40	2.99	2.91
Renville	1,893,224	372,815	5.08	5.54	5.82	6.00	5.16
Rice	6,414,574	1,348,320	4.76	5.42	5.33	5.73	6.09
Roseau	1,964,995	480,490	4.09	4.48	3.96	4.68	5.28
St. Louis	23,217,310	5,734,298	4.05	4.50	4.83	4.86	5.17
Scott	12,438,472	2,536,573	4.90	5.23	5.44	5.64	5.84
Sherburne	12,319,042	1,823,838	6.75	6.78	7.15	7.17	6.68
Sibley	1,831,099	366,181	5.00	5.09	6.11	6.40	6.56
Stearns	14,640,739	2,962,722	4.94	4.60	4.63	4.83	4.47
MN Prairie	11,057,405	1,871,564	5.91	5.17	4.27	5.28	4.58
Stevens	722,056	107,924	6.69	4.08	3.86	5.04	4.63
Swift	1,316,578	267,699	4.92	5.41	5.10	4.96	4.80
Todd	2,813,720	556,986	5.05	5.43	5.79	5.35	4.58
Traverse	323,968	74,063	4.37	4.19	3.16	13.97	12.80
Wabasha	2,497,076	336,708	7.42	8.00	7.09	7.13	5.81
Wadena	2,461,222	328,561	7.49	7.35	6.87	7.68	6.55
Waseca			-	-	-	-	3.87
Washington	22,360,624	3,934,110	5.68	6.35	6.13	6.87	6.27
Watsonwan	1,993,864	426,118	4.68	6.30	7.01	6.52	6.99
Wilkin	909,567	232,372	3.91	3.29	3.27	3.89	4.39
Winona	4,496,004	937,977	4.79	4.88	5.17	4.89	4.66
Wright	15,047,849	2,373,734	6.34	6.56	6.66	7.33	6.99
Yellow Medicine	1,317,024	259,566	5.07	5.09	5.52	5.73	4.54
Statewide	573,164,172	175,475,786	3.26	3.30	3.30	3.54	3.58

Cost Effectiveness Measure FFY2018 Rank Order (\$)	
St. Louis	4.05
Nicollet	4.03
Pope	3.98
Wilkin	3.91
Polk	3.82
Kanabec	3.76
Otter Tail	3.67
Lake	3.58
Beltrami	3.50
Pennington	3.38
STATEWIDE	3.26
Grant	3.22
Kittson	3.20
Itasca	3.15
Carlton	3.09
Lake of the Woods	3.06
Becker	2.89
Hennepin	2.87
Ramsey	2.84
Cook	2.80
Aitkin	2.76
Mahnomen	2.69
Cass	2.12

Source: CSD InfoPac QQ320921: Annual OCSE157 Federal Performance - Summary, and DHS Financial Operations Report, Division Operations - Quarterly County Admin. Reports

Minnesota County Distributions, Total Expenditures and Reinvestments

County	Collections Distributed FFY2018	Expenditures FFY2018	Cost Effectiveness Ratio FFY2018	Collections Distributed FFY2017	Expenditures FFY2017	Cost Effectiveness Ratio FFY2017	Federal Incentives FFY2018*	State Incentives FFY2018	Reinvestment FFY2018
Aitkin	1,635,339	592,928	2.76	1,698,704	581,356	2.92	32,332	4,568	36,900
Anoka	40,245,791	8,456,490	4.76	41,109,099	8,526,296	4.82	810,000	108,550	918,550
Becker	3,513,489	1,213,825	2.89	3,560,475	1,268,558	2.81	64,784	8,981	73,765
Beltrami	4,439,606	1,268,228	3.50	4,414,138	1,224,729	3.60	88,308	11,266	99,574
Benton	5,140,396	1,158,272	4.44	5,146,431	1,181,661	4.36	107,916	14,311	122,227
Big Stone	576,284	124,880	4.61	612,044	126,537	4.84	12,764	1,828	14,592
Blue Earth	7,186,684	1,537,370	4.67	7,293,987	1,458,290	5.00	153,092	20,096	173,188
Brown	3,608,182	633,779	5.69	3,565,679	685,301	5.20	81,227	10,657	91,884
Carlton	4,624,249	1,497,758	3.09	4,784,492	1,456,024	3.29	85,789	11,723	97,512
Carver	8,300,791	1,615,577	5.14	8,330,537	1,599,405	5.21	161,294	21,162	182,456
Cass	2,259,639	1,065,543	2.12	2,412,675	1,080,069	2.23	44,015	5,938	49,953
Chippewa	1,588,812	382,103	4.16	1,590,231	401,695	3.96	32,530	4,415	36,945
Chisago	7,314,107	1,035,192	7.07	7,277,276	1,007,097	7.23	160,212	20,553	180,765
Clay	7,733,971	1,670,861	4.63	7,807,799	1,607,560	4.86	147,171	19,944	167,115
Clearwater	1,092,441	238,224	4.59	1,087,254	226,837	4.79	19,647	2,893	22,540
Cook	397,931	142,345	2.80	411,098	136,878	3.00	7,002	1,066	8,068
Crow Wing	8,403,331	1,730,617	4.86	8,366,808	1,592,594	5.25	191,741	24,054	215,795
Dakota	42,714,356	9,778,317	4.37	43,479,596	10,772,256	4.04	829,109	106,114	935,223
Douglas	4,133,987	921,902	4.48	4,273,417	982,378	4.35	90,431	11,723	102,154
Fillmore	2,162,048	279,853	7.73	2,146,813	249,208	8.61	45,255	5,938	51,193
Freeborn	4,449,044	742,289	5.99	4,576,256	714,568	6.40	98,514	12,941	111,455
Goodhue	5,691,110	1,388,975	4.10	5,712,638	1,300,116	4.39	112,518	15,072	127,590
Grant	839,907	260,715	3.22	802,222	200,774	4.00	18,527	2,283	20,810
Hennepin	97,600,749	33,970,075	2.87	99,086,232	34,323,583	2.89	1,829,797	238,254	2,068,051
Houston	1,855,656	454,999	4.08	1,823,087	389,314	4.68	29,932	4,719	34,651
Hubbard	1,952,643	267,114	7.31	2,067,568	309,090	6.69	45,295	5,938	51,233
Isanti	6,365,060	1,395,448	4.56	6,351,477	1,380,956	4.60	135,725	17,813	153,538
Statewide	573,164,172	175,475,786	3.26	580,554,676	175,983,512	3.30	11,603,849	1,522,431	13,126,280

Minnesota County Distributions, Total Expenditures and Reinvestments

County	Collections Distributed FFY2018	Expenditures FFY2018	Cost Effectiveness Ratio FFY2018	Collections Distributed FFY2017	Expenditures FFY2017	Cost Effectiveness Ratio FFY2017	Federal Incentives FFY2018*	State Incentives FFY2018	Reinvestment FFY2018
Itasca	5,712,851	1,815,946	3.15	5,618,155	1,779,956	3.16	114,799	14,920	129,719
Des Moines Valley	3,108,063	521,655	5.96	3,071,898	455,813	6.74	23,932	7,155	31,087
Kanabec	2,324,108	618,686	3.76	2,531,665	596,755	4.24	55,738	7,004	62,742
Kandiyohi	5,667,511	1,314,192	4.31	5,743,379	1,291,985	4.45	128,882	16,442	145,324
Kittson	333,700	104,240	3.20	350,414	96,842	3.62	6,962	1,066	8,028
Koochiching	1,988,304	439,005	4.53	2,041,050	445,738	4.58	45,334	5,784	51,118
Lac qui Parle	706,050	111,305	6.34	716,450	110,516	6.48	16,206	2,131	18,337
Lake	1,208,648	337,390	3.58	1,202,630	332,694	3.61	19,528	3,197	22,725
Lake of the Woods	300,873	98,448	3.06	324,347	98,364	3.30	6,962	913	7,875
LeSueur	3,526,485	737,870	4.78	3,512,377	619,627	5.67	77,706	10,201	87,907
SWHHS	9,462,450	1,645,902	5.75	9,790,754	1,782,162	5.49	215,871	28,774	244,645
McLeod	4,667,894	704,318	6.63	4,899,243	707,507	6.92	110,474	14,311	124,785
Mahnomen	365,640	136,094	2.69	356,124	175,059	2.03	5,802	913	6,715
Marshall	1,109,733	273,572	4.06	1,092,546	285,315	3.83	20,808	2,893	23,701
Faribault/Martin	5,229,451	1,200,153	4.36	5,358,646	1,118,795	4.79	114,680	15,225	129,905
Meeker	2,966,552	533,019	5.57	2,959,795	492,103	6.01	68,542	8,679	77,221
Mille Lacs	3,724,072	772,115	4.82	3,458,764	747,759	4.63	74,423	9,895	84,318
Morrison	4,401,803	925,260	4.76	4,521,304	875,742	5.16	101,191	12,789	113,980
Mower	5,744,430	1,331,916	4.31	5,805,094	1,273,391	4.56	124,003	16,442	140,445
Nicollet	4,323,356	1,073,761	4.03	4,466,947	1,010,649	4.42	90,431	12,331	102,762
Nobles	3,010,657	436,406	6.90	2,943,890	422,515	6.97	69,742	8,830	78,572
Norman	771,353	149,965	5.14	748,540	140,773	5.32	17,406	2,131	19,537
Olmsted	17,979,105	4,087,139	4.40	17,889,189	3,953,893	4.52	372,880	48,565	421,445
Otter Tail	6,008,787	1,635,064	3.67	6,087,442	1,579,507	3.85	119,480	16,291	135,771
Pennington	1,953,636	577,531	3.38	2,020,703	566,094	3.57	38,253	5,024	43,277
Pine	4,534,274	1,022,307	4.44	4,342,698	1,025,615	4.23	89,231	12,028	101,259
Polk	4,301,304	1,125,227	3.82	4,431,674	1,140,547	3.89	86,712	12,179	98,891
Statewide	573,164,172	175,475,786	3.26	580,554,676	175,983,512	3.30	11,603,849	1,522,431	13,126,280

Minnesota County Distributions, Total Expenditures and Reinvestments

County	Collections Distributed FFY2018	Expenditures FFY2018	Cost Effectiveness Ratio FFY2018	Collections Distributed FFY2017	Expenditures FFY2017	Cost Effectiveness Ratio FFY2017	Federal Incentives FFY2018*	State Incentives FFY2018	Reinvestment FFY2018
Pope	1,039,813	261,528	3.98	1,108,044	253,506	4.37	26,768	3,197	29,965
Ramsey	48,223,917	17,004,296	2.84	49,099,055	16,839,594	2.92	912,669	118,902	1,031,571
Red Lake	531,509	113,884	4.67	572,418	124,887	4.58	14,004	1,674	15,678
Renville	1,893,224	372,815	5.08	1,951,752	352,107	5.54	46,415	5,784	52,199
Rice	6,414,574	1,348,320	4.76	6,415,748	1,184,735	5.42	140,525	17,508	158,033
Roseau	1,964,995	480,490	4.09	1,988,123	444,039	4.48	35,893	5,177	41,070
St. Louis	23,217,310	5,734,298	4.05	23,770,357	5,279,610	4.50	475,164	62,419	537,583
Scott	12,438,472	2,536,573	4.90	12,531,563	2,396,620	5.23	246,121	32,733	278,854
Sherburne	12,319,042	1,823,838	6.75	12,080,457	1,780,767	6.78	262,485	33,798	296,283
Sibley	1,831,099	366,181	5.00	1,774,427	348,423	5.09	40,653	5,024	45,677
Stearns	14,640,739	2,962,722	4.94	15,063,767	3,277,013	4.60	333,268	43,085	376,353
MN Prairie	11,057,405	1,871,564	5.91	10,968,676	2,120,843	5.17	230,996	31,057	262,053
Stevens	722,056	107,924	6.69	696,245	170,591	4.08	12,685	1,828	14,513
Swift	1,316,578	267,699	4.92	1,288,390	238,031	5.41	31,330	3,806	35,136
Todd	2,813,720	556,986	5.05	2,882,760	530,815	5.43	67,223	8,830	76,053
Traverse	323,968	74,063	4.37	315,640	75,273	4.19	6,962	913	7,875
Wabasha	2,497,076	336,708	7.42	2,465,485	308,051	8.00	55,857	6,851	62,708
Wadena	2,461,222	328,561	7.49	2,433,180	330,851	7.35	54,538	7,307	61,845
Washington	22,360,624	3,934,110	5.68	23,208,834	3,654,523	6.35	467,386	59,072	526,458
Watonwan	1,993,864	426,118	4.68	1,952,634	309,849	6.30	45,215	5,938	51,153
Wilkin	909,567	232,372	3.91	948,817	288,009	3.29	19,766	2,588	22,354
Winona	4,496,004	937,977	4.79	4,579,384	938,160	4.88	96,272	12,789	109,061
Wright	15,047,849	2,373,734	6.34	14,993,615	2,286,502	6.56	300,500	39,432	339,932
Yellow Medicine	1,317,024	259,566	5.07	1,320,039	259,504	5.09	30,249	3,806	34,055
Statewide	573,164,172	175,475,786	3.26	580,554,676	175,983,512	3.30	11,603,849	1,522,431	13,126,280

*Federal incentives are based on program performance two years prior. Source: CSD InfoPac QQ640201: Quarterly OCSE34A Collect and Disburse - Summary, and DHS Financial Operation Report, Division Operations - Quarterly County Admin. Reports

Distributions Per Open Support Cases and Per Cases With Court Order

County	Collections Distributed FFY2018	Court Order Caseload FFY2018	Distributed per Court-Ordered Case FFY2018	Distributed per Court-Ordered Case FFY2017	Percentage Change	Cases with a Collection FFY2018	Distributed per Case with a Collection FFY2018	Distributed per Case with a Collection FFY2017	Percentage Change
Aitkin	1,635,339	711	2,300	2,324	-0.01	524	3,121	3,089	0.01
Anoka	40,245,791	10,599	3,797	3,755	0.01	9,040	4,452	4,410	0.01
Becker	3,513,489	1,380	2,546	2,523	0.01	1,040	3,378	3,315	0.02
Beltrami	4,439,606	2,163	2,053	1,987	0.03	1,414	3,140	2,997	0.05
Benton	5,140,396	1,788	2,875	2,901	-0.01	1,400	3,672	3,554	0.03
Big Stone	576,284	155	3,718	4,027	-0.08	139	4,146	4,403	-0.06
Blue Earth	7,186,684	2,310	3,111	3,194	-0.03	1,934	3,716	3,656	0.02
Brown	3,608,182	920	3,922	3,846	0.02	860	4,196	3,975	0.06
Carlton	4,624,249	1,788	2,586	2,491	0.04	1,284	3,601	3,581	0.01
Carver	8,300,791	1,638	5,068	4,970	0.02	1,488	5,578	5,532	0.01
Cass	2,259,639	1,440	1,569	1,612	-0.03	822	2,749	2,903	-0.05
Chippewa	1,588,812	501	3,171	3,029	0.05	415	3,828	3,795	0.01
Chisago	7,314,107	1,941	3,768	3,675	0.03	1,732	4,223	4,154	0.02
Clay	7,733,971	2,173	3,559	3,509	0.01	1,855	4,169	4,000	0.04
Clearwater	1,092,441	532	2,053	2,002	0.03	352	3,104	3,080	0.01
Cook	397,931	150	2,653	2,741	-0.03	118	3,372	3,671	-0.08
Crow Wing	8,403,331	3,139	2,677	2,724	-0.02	2,647	3,175	3,227	-0.02
Dakota	42,714,356	10,794	3,957	3,898	0.02	9,073	4,708	4,698	0.00
Douglas	4,133,987	1,395	2,963	3,001	-0.01	1,111	3,721	3,762	-0.01
Fillmore	2,162,048	617	3,504	3,391	0.03	568	3,806	3,740	0.02
Freeborn	4,449,044	1,517	2,933	2,933	0.00	1,284	3,465	3,436	0.01
Goodhue	5,691,110	1,711	3,326	3,289	0.01	1,403	4,056	4,046	0.00
Grant	839,907	225	3,733	3,534	0.06	203	4,137	3,991	0.04
Hennepin	97,600,749	39,767	2,454	2,458	0.00	26,291	3,712	3,682	0.01
Houston	1,855,656	583	3,183	3,165	0.01	481	3,858	3,690	0.05
Hubbard	1,952,643	918	2,127	2,226	-0.04	719	2,716	2,699	0.01
Isanti	6,365,060	1,748	3,641	3,572	0.02	1,511	4,212	4,192	0.00
Statewide	573,164,172	*187,963	3,049	2,935	0.04	146,795	3,905	3,855	0.01

Distributions Per Open Support Cases and Per Cases With Court Order

County	Collections Distributed FFY2018	Court Order Caseload FFY2018	Distributed per Court-Ordered Case FFY2018	Distributed per Court-Ordered Case FFY2017	Percentage Change	Cases with a Collection FFY2018	Distributed per Case with a Collection FFY2018	Distributed per Case with a Collection FFY2017	Percentage Change
Itasca	5,712,851	2,248	2,541	2,477	0.03	1,668	3,425	3,324	0.03
Des Moines Valley	3,108,063	1,004	3,096	3,035	0.02	863	3,601	3,564	0.01
Kanabec	2,324,108	759	3,062	3,292	-0.07	594	3,913	4,038	-0.03
Kandiyohi	5,667,511	1,836	3,087	3,001	0.03	1,503	3,771	3,672	0.03
Kittson	333,700	99	3,371	3,369	0.00	82	4,070	3,937	0.03
Koochiching	1,988,304	615	3,233	3,324	-0.03	579	3,434	3,501	-0.02
Lac qui Parle	706,050	181	3,901	3,958	-0.01	170	4,153	4,048	0.03
Lake	1,208,648	400	3,022	2,999	0.01	343	3,524	3,644	-0.03
Lake of the Woods	300,873	130	2,314	2,514	-0.08	98	3,070	3,060	0.00
Le Sueur	3,526,485	884	3,989	3,907	0.02	835	4,223	3,964	0.07
SWHHS	9,462,450	2,964	3,192	3,271	-0.02	2,509	3,771	3,764	0.00
McLeod	4,667,894	1,339	3,486	3,507	-0.01	1,237	3,774	3,819	-0.01
Mahnomen	365,640	193	1,895	1,729	0.10	109	3,354	3,267	0.03
Marshall	1,109,733	273	4,065	4,107	-0.01	253	4,386	4,370	0.00
Faribault/Martin	5,229,451	1,548	3,378	3,385	0.00	1,372	3,812	3,795	0.00
Meeker	2,966,552	829	3,578	3,659	-0.02	710	4,178	4,071	0.03
Mille Lacs	3,724,072	1,801	2,068	2,010	0.03	1,446	2,575	2,436	0.06
Morrison	4,401,803	1,760	2,501	2,579	-0.03	1,312	3,355	3,295	0.02
Mower	5,744,430	1,999	2,874	2,840	0.01	1,667	3,446	3,323	0.04
Nicollet	4,323,356	1,256	3,442	3,562	-0.03	1,137	3,802	3,908	-0.03
Nobles	3,010,657	809	3,721	3,500	0.06	728	4,136	3,910	0.06
Norman	771,353	251	3,073	2,868	0.07	214	3,604	3,402	0.06
Olmsted	17,979,105	4,719	3,810	3,754	0.02	4,089	4,397	4,358	0.01
Otter Tail	6,008,787	1,985	3,027	3,047	-0.01	1,609	3,734	3,683	0.01
Pennington	1,953,636	630	3,101	3,099	0.00	511	3,823	3,647	0.05
Pine	4,534,274	1,577	2,875	2,740	0.05	1,359	3,336	3,203	0.04
Polk	4,301,304	1,593	2,700	2,765	-0.02	1,219	3,529	3,537	-0.00
Statewide	573,164,172	*187,963	3,049	2,935	0.04	146,795	3,905	3,855	0.01

Distributions Per Open Support Cases and Per Cases With Court Order

County	Collections Distributed FFY2018	Court Order Caseload FFY2018	Distributed per Court-Ordered Case FFY2018	Distributed per Court-Ordered Case FFY2017	Percentage Change	Cases with a Collection FFY2018	Distributed per Case with a Collection FFY2018	Distributed per Case with a Collection FFY2017	Percentage Change
Pope	1,039,813	339	3,067	3,317	-0.08	281	3,700	3,795	-0.02
Ramsey	48,223,917	19,754	2,441	2,370	0.03	14,346	3,361	3,282	0.02
Red Lake	531,509	128	4,152	4,616	-0.10	121	4,393	4,770	-0.08
Renville	1,893,224	515	3,676	3,797	-0.03	450	4,207	4,153	0.01
Rice	6,414,574	1,613	3,977	3,812	0.04	1,433	4,476	4,394	0.02
Roseau	1,964,995	545	3,605	3,519	0.02	502	3,914	3,809	0.03
St. Louis	23,217,310	8,796	2,640	2,547	0.04	6,900	3,365	3,355	0.00
Scott	12,438,472	2,546	4,885	4,740	0.03	2,357	5,277	5,204	0.01
Sherburne	12,319,042	3,216	3,831	3,779	0.01	2,565	4,803	4,634	0.04
Sibley	1,831,099	550	3,329	3,163	0.05	492	3,722	3,651	0.02
Stearns	14,640,739	4,617	3,171	3,235	-0.02	3,751	3,903	3,841	0.02
MN Prairie	11,057,405	3,456	3,199	3,170	0.01	2,897	3,817	3,758	0.02
Stevens	722,056	192	3,761	3,253	0.16	212	3,406	3,331	0.02
Swift	1,316,578	441	2,985	2,915	0.02	369	3,568	3,427	0.04
Todd	2,813,720	911	3,089	3,192	-0.03	764	3,683	3,617	0.02
Traverse	323,968	74	4,378	3,945	0.11	78	4,153	4,047	0.03
Wabasha	2,497,076	640	3,902	3,781	0.03	562	4,443	4,411	0.01
Wadena	2,461,222	806	3,054	2,985	0.02	698	3,526	3,356	0.05
Washington	22,360,624	5,832	3,834	3,900	-0.02	4,595	4,866	4,896	-0.01
Watonwan	1,993,864	647	3,082	3,037	0.01	529	3,769	3,506	0.08
Wilkin	909,567	224	4,061	4,003	0.01	222	4,097	4,003	0.02
Winona	4,496,004	1,806	2,489	2,486	0.00	1,393	3,228	3,259	-0.01
Wright	15,047,849	3,671	4,099	3,980	0.03	3,049	4,935	4,792	0.03
Yellow Medicine	1,317,024	295	4,464	4,204	0.06	286	4,605	4,583	0.00
Statewide	573,164,172	*187,963	3,049	2,935	0.04	146,795	3,905	3,855	0.01

Source: CSD InfoPac QQ320921: Annual OCSE157 Federal Performance - Summary, *CSD InfoPac QQ710309: Unduplicated Performance Report and CSD InfoPac QQ640201: Quarterly OCSE34A Collect and Disburse - Summary

Caseload and Full-time Equivalent (FTE) Summary

County	Open Cases FFY2018	Open Cases FFY2017	Percent Change	Child Support Workers FFY2018	Open Caseload to Worker Ratio FFY2018	Cooperative Agreement Workers FFY2018	Total Staff FFY2018	Total Children in IV-D Caseload FFY2018	Average Children per Open Case FFY2018
Aitkin	758	791	-0.04	6.0	126	0.1	6.1	720	0.9
Anoka	11,613	11,981	-0.03	57.0	204	19.3	76.3	12,575	1.1
Becker	1,518	1,573	-0.03	11.0	138	0.4	11.4	1,654	1.1
Beltrami	2,463	2,644	-0.07	14.3	172	0.2	14.5	2,480	1.0
Benton	1,922	1,894	0.01	9.5	202	0.5	10.0	2,261	1.2
Big Stone	170	176	-0.03	1.1	155	0.1	1.2	191	1.1
Blue Earth	2,494	2,466	0.01	11.7	213	0.5	12.2	2,718	1.1
Brown	1,001	992	0.01	6.4	156	0.2	6.6	1,186	1.2
Carlton	1,923	2,049	-0.06	13.0	148	0.7	13.7	1,968	1.0
Carver	1,740	1,821	-0.04	11.5	151	1.4	12.9	2,098	1.2
Cass	1,729	1,740	-0.01	7.0	247	0.1	7.1	1,833	1.1
Chippewa	549	572	-0.04	3.6	153	0.1	3.7	634	1.2
Chisago	2,029	2,075	-0.02	7.8	260	0.5	8.3	2,267	1.1
Clay	2,504	2,572	-0.03	12.6	199	0.4	13.0	3,082	1.2
Clearwater	570	574	-0.01	2.5	228	0.2	2.7	563	1.0
Cook	162	172	-0.06	0.0	-	0.0	0.0	184	1.1
Crow Wing	3,407	3,271	0.04	15.3	223	0.1	15.4	3,598	1.1
Dakota	12,499	12,671	-0.01	55.3	226	15.9	71.2	14,132	1.1
Douglas	1,480	1,535	-0.04	9.9	149	0.2	10.1	1,601	1.1
Fillmore	684	699	-0.02	2.2	311	0.2	2.4	829	1.2
Freeborn	1,635	1,672	-0.02	7.1	230	0.1	7.2	1,828	1.1
Goodhue	1,949	1,957	0.00	10.6	184	0.6	11.2	2,052	1.1
Grant	236	240	-0.02	1.1	215	0.8	1.9	274	1.2
Hennepin	48,482	48,193	0.01	254.0	191	26.0	280.0	52,427	1.1
Houston	627	616	0.02	4.3	146	0.3	4.6	726	1.2
Hubbard	987	1,012	-0.02	3.7	267	0.2	3.9	1,153	1.2
Isanti	1,832	1,891	-0.03	10.8	170	1.2	12.0	2,072	1.1
Statewide	*212,822	*216,908	-2.50%	1,156.7	184.2	315.6	1,472.3	*235,564	1.1

Caseload and Full-time Equivalent (FTE) Summary

County	Open Cases FFY2018	Open Cases FFY2017	Percent Change	Child Support Workers FFY2018	Open Caseload to Worker Ratio FFY2018	Cooperative Agreement Workers FFY2018	Total Staff FFY2018	Total Children in IV-D Caseload FFY2018	Average Children per Open Case FFY2018
Itasca	2,374	2,406	-0.01	14.0	170	2.0	16.0	2,558	1.1
Des Moines Valley	1,048	1,046	0.00	4.5	233	0.3	4.8	1,185	1.1
Kanabec	807	815	-0.01	5.8	161	0.3	6.1	866	1.1
Kandiyohi	2,010	2,135	-0.06	10.3	178	0.2	10.5	2,277	1.1
Kittson	103	105	-0.02	1.3	69	0.2	1.5	143	1.4
Koochiching	631	645	-0.02	4.0	158	0.3	4.3	691	1.1
Lac qui Parle	186	189	-0.02	1.2	155	0.2	1.4	241	1.3
Lake	426	444	-0.04	2.0	213	0.1	2.1	420	1.0
Lake of the Woods	146	144	0.01	1.4	133	0.1	1.5	179	1.2
LeSueur	939	995	-0.06	6.0	157	0.3	6.3	1,134	1.2
SWHHS	3,240	3,273	-0.01	16.7	183	0.5	17.2	3,738	1.2
McLeod	1,452	1,504	-0.03	6.8	196	1.0	7.8	1,656	1.1
Mahnomen	254	235	0.08	1.8	67	0.1	1.9	283	1.1
Marshall	287	283	0.01	1.9	151	0.1	2.0	377	1.3
Faribault/Martin	1,662	1,700	-0.02	8.3	179	0.1	8.4	1,987	1.2
Meeker	897	891	0.01	4.8	187	0.1	4.9	964	1.1
Mille Lacs	1,919	1,825	0.05	7.5	256	1.0	8.5	1,725	0.9
Morrison	1,867	1,839	0.02	8.0	217	0.5	8.5	1,816	1.0
Mower	2,190	2,253	-0.03	11.0	199	0.2	11.2	2,389	1.1
Nicollet	1,342	1,347	0.00	8.5	153	1.8	10.3	1,557	1.2
Nobles	912	924	-0.01	3.6	261	0.1	3.7	1,125	1.2
Norman	276	281	-0.02	0.5	552	0.2	0.7	335	1.2
Olmsted	5,421	5,460	-0.01	24.0	213	3.0	27.0	6,636	1.2
Otter Tail	2,226	2,231	0.00	12.0	202	0.0	12.0	2,531	1.1
Pennington	710	727	-0.02	4.9	148	0.2	5.1	786	1.1
Pine	1,654	1,685	-0.02	11.0	150	0.0	11.0	1,700	1.0
Polk	1,703	1,709	-0.00	10.0	170	0.6	10.6	1,983	1.2
Statewide	*212,822	*216,908	-2.50%	1,156.7	184.2	315.6	1,472.3	*235,564	1.1

Caseload and Full-time Equivalent (FTE) Summary

County	Open Cases FFY2018	Open Cases FFY2017	Percent Change	Child Support Workers FFY2018	Open Caseload to Worker Ratio FFY2018	Cooperative Agreement Workers FFY2018	Total Staff FFY2018	Total Children in IV-D Caseload FFY2018	Average Children per Open Case FFY2018
Pope	354	359	-0.01	2.3	154	0.3	2.6	414	1.2
Ramsey	23,340	24,831	-0.06	128.0	182	19.3	147.3	26,648	1.1
Red Lake	138	135	0.02	0.5	276	0.2	0.7	189	1.4
Renville	618	629	-0.02	3.5	177	0.0	3.5	762	1.2
Rice	1,811	1,918	-0.06	10.0	181	2.0	12.0	2,179	1.2
Roseau	568	594	-0.04	5.0	114	0.4	5.4	679	1.2
St. Louis	9,539	10,213	-0.07	42.6	224	7.8	50.4	9,877	1.0
Scott	2,789	2,916	-0.04	14.8	188	2.4	17.2	3,537	1.3
Sherburne	3,508	3,430	0.02	14.8	237	0.9	15.7	4,026	1.1
Sibley	620	619	0.00	3.3	188	0.2	3.5	715	1.2
Stearns	5,245	5,265	0.00	15.5	338	2.2	17.7	6,252	1.2
MN Prairie	3,728	3,713	0.00	19.0	196	2.0	21.0	4,322	1.2
Stevens	211	224	-0.06	1.4	151	0.0	1.4	238	1.1
Swift	475	488	-0.03	2.3	207	0.0	2.3	523	1.1
Todd	1,016	989	0.03	6.6	154	0.3	6.9	1,128	1.1
Traverse	81	86	-0.06	0.6	135	0.1	0.7	129	1.6
Wabasha	691	728	-0.05	3.0	230	0.0	3.0	772	1.1
Wadena	845	857	-0.01	3.4	249	0.2	3.6	924	1.1
Washington	6,137	6,326	-0.03	29.0	212	5.1	34.1	7,064	1.2
Watonwan	713	712	0.00	3.4	210	0.1	3.5	738	1.0
Wilkin	246	272	-0.10	2.0	123	0.2	2.2	298	1.2
Winona	2,014	2,020	0.00	7.0	288	1.0	8.0	2,016	1.0
Wright	3,913	4,058	-0.04	21.9	179	0.6	22.5	4,703	1.2
Yellow Medicine	313	337	-0.07	2.7	116	0.3	3.0	341	1.1
State Admin	-	-	-	73.0	-	186.2	259.2	-	-
Statewide	*212,822	*216,908	-2.50%	1,156.7	184.2	315.6	1,472.3	*235,564	1.1

Source: CSD InfoPac QQ320920: Annual OCSE157 Paternity Establishment - Summary, CSD InfoPac QQ320921: Annual OCSE157 Federal Performance - Summary, *Unduplicated InfoPac QQ710305: Paternity Establishment Report and Full-Time Equivalent Survey Cook County contracts with Carver County to perform Child Support functions

Current / Former / Never Assistance Case Analysis

County	FFY2018						FFY2017			Annual Percentage Change		
	Current Assistance		Former Assistance		Never Assistance		Current Assistance Cases	Former Assistance Cases	Never Assistance Cases	Current Assistance Cases	Former Assistance Cases	Never Assistance Cases
	Cases	%	Cases	%	Cases	%						
Aitkin	87	11.5	420	55.4	251	33.1	91	440	260	0.0	0.0	0.0
Anoka	958	8.2	5,441	46.9	5,214	44.9	1,006	5,642	5,333	0.0	0.0	0.0
Becker	168	11.1	716	47.2	634	41.8	232	730	611	-0.3	0.0	0.0
Beltrami	428	17.4	1,381	56.1	654	26.6	501	1,478	665	-0.1	-0.1	0.0
Benton	188	9.8	865	45.0	869	45.2	199	842	853	-0.1	0.0	0.0
Big Stone	10	5.9	74	43.5	86	50.6	12	69	95	-0.2	0.1	-0.1
Blue Earth	158	6.3	1,182	47.4	1,154	46.3	172	1,176	1,118	-0.1	0.0	0.0
Brown	59	5.9	410	41.0	532	53.1	68	411	513	-0.1	0.0	0.0
Carlton	155	8.1	811	42.2	957	49.8	201	836	1,012	-0.2	0.0	-0.1
Carver	87	5.0	666	38.3	987	56.7	92	701	1,028	-0.1	0.0	0.0
Cass	394	22.8	879	50.8	456	26.4	400	884	456	0.0	0.0	0.0
Chippewa	47	8.6	224	40.8	278	50.6	49	241	282	0.0	-0.1	0.0
Chisago	149	7.3	824	40.6	1,056	52.0	162	845	1,068	-0.1	0.0	0.0
Clay	237	9.5	990	39.5	1,277	51.0	235	1,016	1,321	0.0	0.0	0.0
Clearwater	50	8.8	310	54.4	210	36.8	60	319	195	-0.2	0.0	0.1
Cook	18	11.1	80	49.4	64	39.5	28	75	69	-0.4	0.1	-0.1
Crow Wing	312	9.2	1,532	45.0	1,563	45.9	286	1,513	1,472	0.1	0.0	0.1
Dakota	838	6.7	5,552	44.4	6,109	48.9	943	5,641	6,087	-0.1	0.0	0.0
Douglas	87	5.9	631	42.6	762	51.5	102	662	771	-0.1	0.0	0.0
Fillmore	33	4.8	272	39.8	379	55.4	39	278	382	-0.2	0.0	0.0
Freeborn	132	8.1	809	49.5	694	42.4	121	828	723	0.1	0.0	0.0
Goodhue	141	7.2	801	41.1	1,007	51.7	143	813	1,001	0.0	0.0	0.0
Grant	18	7.6	101	42.8	117	49.6	13	114	113	0.4	-0.1	0.0
Hennepin	6,643	13.7	26,709	55.1	15,130	31.2	7,197	26,776	14,220	-0.1	0.0	0.1
Houston	59	9.4	252	40.2	316	50.4	61	252	303	0.0	0.0	0.0
Hubbard	127	12.9	428	43.4	432	43.8	131	439	442	0.0	0.0	0.0
Isanti	114	6.2	793	43.3	925	50.5	105	863	923	0.1	-0.1	0.0
Statewide	*22,001	11.3	*102,835	48.4	*87,986	40.4	*24,432	*104,898	*87,578	-0.03	-0.04	-0.01

Current / Former / Never Assistance Case Analysis

County	FFY2018						FFY2017			Annual Percentage Change		
	Current Assistance		Former Assistance		Never Assistance		Current Assistance Cases	Former Assistance Cases	Never Assistance Cases	Current Assistance Cases	Former Assistance Cases	Never Assistance Cases
	Cases	%	Cases	%	Cases	%						
Itasca	226	9.5	1,128	47.5	1,020	43.0	279	1,171	956	-0.2	0.0	0.1
Des Moines Valley	57	5.4	431	41.1	560	53.4	56	452	538	0.0	0.0	0.0
Kanabec	77	9.5	357	44.2	373	46.2	65	385	365	0.2	-0.1	0.0
Kandiyohi	142	7.1	1,088	54.1	780	38.8	180	1,144	811	-0.2	0.0	0.0
Kittson	13	12.6	33	32.0	57	55.3	10	37	58	0.3	-0.1	0.0
Koochiching	48	7.6	272	43.1	311	49.3	52	276	317	-0.1	0.0	0.0
Lac qui Parle	15	8.1	73	39.2	98	52.7	11	72	106	0.4	0.0	-0.1
Lake	30	7.0	171	40.1	225	52.8	37	177	230	-0.2	0.0	0.0
Lake of the Woods	9	6.2	49	33.6	88	60.3	4	51	89	1.3	0.0	0.0
LeSueur	70	7.5	399	42.5	470	50.1	90	408	497	-0.2	0.0	-0.1
SWHHS	238	7.3	1,345	41.5	1,657	51.1	263	1,370	1,640	-0.1	0.0	0.0
McLeod	85	5.9	531	36.6	836	57.6	82	576	846	0.0	-0.1	0.0
Mahnomen	71	28.0	122	48.0	61	24.0	62	118	55	0.1	0.0	0.1
Marshall	10	3.5	88	30.7	189	65.9	18	86	179	-0.4	0.0	0.1
Faribault/Martin	103	6.2	649	39.0	910	54.8	109	672	919	-0.1	0.0	0.0
Meeker	42	4.7	388	43.3	467	52.1	37	402	452	0.1	0.0	0.0
Mille Lacs	196	10.2	844	44.0	879	45.8	207	823	795	-0.1	0.0	0.1
Morrison	126	6.7	925	49.5	816	43.7	125	929	785	0.0	0.0	0.0
Mower	199	9.1	1,029	47.0	962	43.9	200	1,086	967	0.0	-0.1	0.0
Nicollet	91	6.8	675	50.3	576	42.9	104	653	590	-0.1	0.0	0.0
Nobles	67	7.3	399	43.8	446	48.9	60	426	438	0.1	-0.1	0.0
Norman	16	5.8	114	41.3	146	52.9	20	119	142	-0.2	0.0	0.0
Olmsted	540	10.0	2,502	46.2	2,379	43.9	562	2,493	2,405	0.0	0.0	0.0
Otter Tail	153	6.9	948	42.6	1,125	50.5	191	934	1,106	-0.2	0.0	0.0
Pennington	49	6.9	303	42.7	358	50.4	64	316	347	-0.2	0.0	0.0
Pine	159	9.6	788	47.6	707	42.7	171	812	702	-0.1	0.0	0.0
Polk	128	7.5	971	57.0	604	35.5	145	942	622	-0.1	0.0	0.0
Statewide	*22,001	11.3	*102,835	48.4	*87,986	40.4	*24,432	*104,898	*87,578	-0.03	-0.04	-0.01

Current / Former / Never Assistance Case Analysis

County	FFY2018						FFY2017			Annual Percentage Change		
	Current Assistance		Former Assistance		Never Assistance		Current Assistance Cases	Former Assistance Cases	Never Assistance Cases	Current Assistance Cases	Former Assistance Cases	Never Assistance Cases
	Cases	%	Cases	%	Cases	%						
Pope	22	6.2	153	43.2	179	50.6	22	164	173	0.0	-0.1	0.0
Ramsey	3,404	14.6	13,365	57.3	6,571	28.2	4,118	13,915	6,798	-0.2	0.0	0.0
Red Lake	10	7.2	49	35.5	79	57.2	10	45	80	0.0	0.1	0.0
Renville	46	7.4	232	37.5	340	55.0	43	247	339	0.1	-0.1	0.0
Rice	125	6.9	829	45.8	857	47.3	176	880	862	-0.3	-0.1	0.0
Roseau	31	5.5	195	34.3	342	60.2	32	202	360	0.0	0.0	-0.1
St. Louis	1,181	12.4	5,103	53.5	3,255	34.1	1,361	5,435	3,417	-0.1	-0.1	0.0
Scott	186	6.7	941	33.7	1,662	59.6	226	978	1,712	-0.2	0.0	0.0
Sherburne	193	5.5	1,358	38.7	1,957	55.8	207	1,322	1,901	-0.1	0.0	0.0
Sibley	44	7.1	260	41.9	316	51.0	48	246	325	-0.1	0.1	0.0
Stearns	449	8.6	2,242	42.7	2,554	48.7	495	2,237	2,533	-0.1	0.0	0.0
MN Prairie	355	9.5	1,601	42.9	1,772	47.5	423	1,531	1,759	-0.2	0.0	0.0
Stevens	13	6.2	87	41.2	111	52.6	16	95	113	-0.2	-0.1	0.0
Swift	53	11.2	220	46.3	202	42.5	46	224	218	0.2	0.0	-0.1
Todd	58	5.7	478	47.0	480	47.2	68	477	444	-0.1	0.0	0.1
Traverse	7	8.6	33	40.7	41	50.6	7	39	40	0.0	-0.2	0.0
Wabasha	38	5.5	252	36.5	401	58.0	51	254	423	-0.3	0.0	-0.1
Wadena	66	7.8	426	50.4	353	41.8	67	438	352	0.0	0.0	0.0
Washington	335	5.5	2,444	39.8	3,358	54.7	405	2,481	3,440	-0.2	0.0	0.0
Watonwan	48	6.7	316	44.3	349	48.9	67	310	335	-0.3	0.0	0.0
Wilkin	19	7.7	98	39.8	129	52.4	19	109	144	0.0	-0.1	-0.1
Winona	227	11.3	938	46.6	849	42.2	201	931	888	0.1	0.0	0.0
Wright	234	6.0	1,317	33.7	2,362	60.4	281	1,387	2,390	-0.2	-0.1	0.0
Yellow Medicine	16	5.1	104	33.2	193	61.7	14	117	206	0.1	-0.1	-0.1
Statewide	*22,001	11.3	*102,835	48.4	*87,986	40.4	*24,432	*104,898	*87,578	-0.03	-0.04	-0.01

Source: CSD InfoPac QQ320921: Annual OCSE157 Federal Performance – Summary, *CSD InfoPac QQ710309: Unduplicated Performance report

County Case Flow Analysis

County	Case Count Beginning FFY2018	Case Activity			Total Case Transactions FFY2018	Case Count End FFY2018
		New Cases Added FFY2018	Cases Reopened FFY2018	Cases Closed FFY2018		
Aitkin	797	64	23	138	225	763
Anoka	12,192	1,342	707	2,497	4,546	11,814
Becker	1,585	268	112	365	745	1,530
Beltrami	3,818	745	213	1,369	2,327	3,314
Benton	1,904	239	66	274	579	1,929
Big Stone	178	30	11	50	91	172
Blue Earth	2,484	322	96	416	834	2,515
Brown	993	150	48	197	395	1,006
Carlton	2,077	243	79	447	769	1,956
Carver	1,852	271	66	419	756	1,776
Cass	1,756	256	107	359	722	1,747
Chippewa	574	46	20	99	165	550
Chisago	2,095	246	81	383	710	2,051
Clay	2,592	345	138	666	1,149	2,523
Clearwater	586	133	17	128	278	579
Cook	172	16	4	30	50	162
Crow Wing	3,283	546	132	555	1,233	3,420
Dakota	12,848	1,443	542	2,218	4,203	12,686
Douglas	1,547	162	41	273	476	1,489
Fillmore	705	72	15	107	194	688
Freeborn	1,682	175	50	288	513	1,649
Goodhue	1,975	296	93	406	795	1,964
Grant	240	33	5	43	81	236
Hennepin	48,812	8,313	3,678	11,937	23,928	49,103
Houston	628	87	29	107	223	640
Hubbard	1,017	114	39	178	331	991
Isanti	1,901	196	60	326	582	1,840
Statewide	222,858	31,950	11,843	47,973	91,766	218,812

County Case Flow Analysis

County	Case Count Beginning FFY2018	Case Activity			Total Case Transactions FFY2018	Case Count End FFY2018
		New Cases Added FFY2018	Cases Reopened FFY2018	Cases Closed FFY2018		
Itasca	2,476	395	130	553	1,078	2,456
Jackson	1,053	137	34	171	342	1,053
Kanabec	820	86	41	131	258	816
Kandiyohi	2,146	214	105	474	793	2,018
Kittson	105	14	1	18	33	104
Koochiching	654	106	50	172	328	639
Lac qui Parle	189	15	7	29	51	186
Lake	451	62	10	88	160	432
Lake of the Woods	144	9	3	12	24	147
Le Sueur	1,003	127	44	218	389	948
SWHHS	3,297	480	174	732	1,386	3,269
McLeod	1,521	197	57	319	573	1,468
Mahnomen	237	27	2	26	55	256
Marshall	283	26	6	39	71	288
Faribault/Martin	1,705	249	108	405	762	1,673
Meeker	904	113	44	149	306	914
Mille Lacs	1,834	327	77	283	687	1,929
Morrison	1,854	175	28	193	396	1,885
Mower	2,271	265	100	471	836	2,203
Nicollet	1,360	175	37	227	439	1,356
Nobles	935	143	50	218	411	921
Norman	284	49	20	77	146	278
Olmsted	5,498	724	225	1,060	2,009	5,470
Otter Tail	2,253	275	76	396	747	2,243
Pennington	738	75	19	115	209	725
Pine	1,703	200	91	358	649	1,665
Polk	1,719	233	97	373	703	1,715
Statewide	222,858	31,950	11,843	47,973	91,766	218,812

County Case Flow Analysis

County	Case Count Beginning FFY2018	Case Activity			Total Case Transactions FFY2018	Case Count End FFY2018
		New Cases Added FFY2018	Cases Reopened FFY2018	Cases Closed FFY2018		
Pope	359	42	9	60	111	354
Ramsey	25,108	3,438	1,250	6,518	11,206	23,591
Red Lake	136	22	17	35	74	139
Renville	633	85	27	123	235	622
Rice	1,942	204	107	441	752	1,831
Roseau	604	75	35	143	253	582
St. Louis	10,300	1,015	371	2,222	3,608	9,615
Scott	2,979	363	150	681	1,194	2,843
Sherburne	3,457	468	110	524	1,102	3,539
Sibley	623	60	15	76	151	626
Stearns	5,326	1,009	202	1,306	2,517	5,304
MN Prairie	3,767	581	224	799	1,604	3,775
Stevens	227	40	11	71	122	216
Swift	489	79	19	116	214	476
Todd	995	170	45	180	395	1,024
Traverse	90	21	5	36	62	85
Wabasha	732	69	29	127	225	696
Wadena	858	96	23	150	269	849
Washington	6,436	587	263	1,103	1,953	6,246
Watonwan	720	91	23	122	236	723
Wilkin	275	29	13	78	120	248
Winona	2,038	279	81	370	730	2,033
Wright	4,113	475	136	772	1,383	3,966
Yellow Medicine	340	20	7	64	91	316
Statewide	222,858	31,950	11,843	47,973	91,766	218,812

Source: CSD InfoPac QW260104: Caseflow Analysis Report - Monthly (does not balance to QQ3209/QQ7103 reports)

Collections to and from Other States

County (Bold Italicized = Border County)	Collections Distributed FFY2018	Open Initiating Caseload FFY2018	Collections Received from Other States FFY2018	Percent of State Collections to Other States	Open Responding Caseload FFY2018	Collections Sent to Other States FFY2018	Percent of State Collections to Other States
Aitkin	1,635,339	70	99,878	6.11	26	65,506	4.01
Anoka	40,245,791	1,125	2,077,052	5.16	358	897,533	2.23
Becker	3,513,489	150	227,200	6.47	97	160,247	4.56
Beltrami	4,439,606	141	204,522	4.61	74	89,876	2.02
Benton	5,140,396	163	333,036	6.48	58	100,727	1.96
Big Stone	576,284	43	127,687	22.16	8	18,116	3.14
Blue Earth	7,186,684	218	351,110	4.89	89	151,320	2.11
Brown	3,608,182	98	230,336	6.38	25	89,740	2.49
Carlton	4,624,249	185	289,131	6.25	62	111,581	2.41
Carver	8,300,791	182	430,373	5.18	68	195,937	2.36
Cass	2,259,639	69	126,806	5.61	60	83,735	3.71
Chippewa	1,588,812	29	38,093	2.40	20	52,208	3.29
Chisago	7,314,107	166	395,313	5.40	65	191,819	2.62
Clay	7,733,971	550	1,269,390	16.41	329	573,508	7.42
Clearwater	1,092,441	54	80,850	7.40	26	50,695	4.64
Cook	397,931	12	7,831	1.97	9	24,585	6.18
Crow Wing	8,403,331	236	416,572	4.96	111	288,994	3.44
Dakota	42,714,356	1,153	2,586,098	6.05	513	1,273,020	2.98
Douglas	4,133,987	190	377,767	9.14	56	109,885	2.66
Fillmore	2,162,048	85	134,954	6.24	42	91,855	4.25
Freeborn	4,449,044	146	268,328	6.03	94	151,030	3.39
Goodhue	5,691,110	255	390,857	6.87	77	218,232	3.83
Grant	839,907	25	31,893	3.80	11	18,802	2.24
Hennepin	97,600,749	4,210	6,823,847	6.99	1,716	3,439,586	3.52
Houston	1,855,656	202	301,916	16.27	37	147,321	7.94
Hubbard	1,952,643	77	132,441	6.78	50	99,203	5.08
Isanti	6,365,060	136	231,409	3.64	45	111,696	1.75
Statewide	573,164,172	20,499	37,595,296	6.56	8,820	19,231,664	3.36

Collections to and from Other States

County (Bold Italicized = Border County)	Collections Distributed FFY2018	Open Initiating Caseload FFY2018	Collections Received from Other States FFY2018	Percent of State Collections to Other States	Open Responding Caseload FFY2018	Collections Sent to Other States FFY2018	Percent of State Collections to Other States
Itasca	5,712,851	153	277,942	4.87	74	174,660	3.06
<i>Des Moines Valley</i>	3,108,063	187	320,215	10.30	61	141,310	4.55
Kanabec	2,324,108	50	103,262	4.44	22	52,688	2.27
Kandiyohi	5,667,511	241	302,637	5.34	79	211,974	3.74
<i>Kittson</i>	333,700	16	39,582	11.86	3	6,456	1.93
<i>Koochiching</i>	1,988,304	56	132,214	6.65	28	86,229	4.34
<i>Lac qui Parle</i>	706,050	28	103,639	14.68	13	32,002	4.53
<i>Lake</i>	1,208,648	23	45,383	3.75	21	52,772	4.37
<i>Lake of the Woods</i>	300,873	12	18,237	6.06	9	23,051	7.66
LeSueur	3,526,485	114	264,076	7.49	29	76,147	2.16
SWHHS	9,462,450	469	1,016,382	10.74	207	476,312	5.03
McLeod	4,667,894	128	285,231	6.11	55	147,605	3.16
Mahnomen	365,640	19	50,358	13.77	18	40,327	11.03
<i>Marshall</i>	1,109,733	25	60,697	5.47	37	87,442	7.88
<i>Faribault/Martin</i>	5,229,451	211	424,084	8.11	94	226,085	4.32
Meeker	2,966,552	76	141,364	4.77	23	34,812	1.17
Mille Lacs	3,724,072	93	131,749	3.54	49	128,222	3.44
Morrison	4,401,803	114	188,270	4.28	55	78,436	1.78
Mower	5,744,430	304	558,345	9.72	109	220,229	3.83
Nicollet	4,323,356	123	304,224	7.04	36	90,696	2.10
<i>Nobles</i>	3,010,657	176	441,698	14.67	74	209,971	6.97
<i>Norman</i>	771,353	51	102,939	13.35	34	88,356	11.45
Olmsted	17,979,105	719	1,473,948	8.20	220	490,978	2.73
Otter Tail	6,008,787	226	501,155	8.34	155	337,544	5.62
Pennington	1,953,636	37	73,337	3.75	38	59,175	3.03
<i>Pine</i>	4,534,274	167	296,408	6.54	69	131,979	2.91
<i>Polk</i>	4,301,304	358	548,442	12.75	111	246,679	5.73
Statewide	573,164,172	20,499	37,595,296	6.56	8,820	19,231,664	3.36

Collections to and from Other States

County (Bold Italicized = Border County)	Collections Distributed FFY2018	Open Initiating Caseload FFY2018	Collections Received from Other States FFY2018	Percent of State Collections to Other States	Open Responding Caseload FFY2018	Collections Sent to Other States FFY2018	Percent of State Collections to Other States
Pope	1,039,813	24	41,226	3.96	15	26,106	2.51
Ramsey	48,223,917	2,239	3,331,244	6.91	1,148	2,226,520	4.62
Red Lake	531,509	12	42,803	8.05	7	13,455	2.53
Renville	1,893,224	60	126,042	6.66	20	55,850	2.95
Rice	6,414,574	192	412,792	6.44	75	210,355	3.28
Roseau	1,964,995	61	152,153	7.74	39	87,649	4.46
St. Louis	23,217,310	703	1,232,108	5.31	466	776,918	3.35
Scott	12,438,472	271	713,902	5.74	115	293,101	2.36
Sherburne	12,319,042	280	576,513	4.68	109	314,957	2.56
Sibley	1,831,099	67	89,508	4.89	19	71,352	3.90
Stearns	14,640,739	498	782,197	5.34	186	372,127	2.54
MN Prairie	11,057,405	321	450,949	4.08	134	293,308	2.65
Stevens	722,056	23	52,030	7.21	11	30,078	4.17
Swift	1,316,578	62	103,324	7.85	21	47,374	3.60
Todd	2,813,720	81	158,486	5.63	24	61,018	2.17
Traverse	323,968	14	60,310	18.62	4	2,060	0.64
Wabasha	2,497,076	100	183,130	7.33	25	58,692	2.35
Wadena	2,461,222	99	202,626	8.23	39	88,560	3.60
Washington	22,360,624	526	1,229,558	5.50	203	635,964	2.84
Watonwan	1,993,864	94	160,599	8.05	36	91,269	4.58
Wilkin	909,567	59	198,397	21.81	31	101,201	11.13
Winona	4,496,004	310	479,247	10.66	86	182,620	4.06
Wright	15,047,849	223	536,703	3.57	131	383,058	2.55
Yellow Medicine	1,317,024	34	88,946	6.75	24	49,179	3.73
Statewide	573,164,172	20,499	37,595,296	6.56	8,820	19,231,664	3.36

Source: CSD InfoPac QQ320921: Annual OCSE157 Federal Performance - Summary

Collections – Sources

County	FFY2018 Collections	Income Withholding	Re-employment	Federal Tax	State Tax	Other States	Other Sources (Cash, Checks)	FIDM*
Aitkin	1,634,435	1,156,772	37,562	37,772	22,030	99,878	279,735	637
Anoka	40,424,583	30,909,008	826,680	1,288,879	570,928	2,077,052	4,736,876	110,288
Becker	3,514,837	2,336,133	93,384	167,965	68,670	227,200	621,485	3,751
Beltrami	4,447,098	3,123,643	147,407	285,559	81,951	204,522	604,015	32,240
Benton	5,137,069	3,716,891	131,133	151,828	77,211	333,036	723,694	58,053
Big Stone	574,264	366,050	11,849	18,898	3,816	127,687	45,964	0
Blue Earth	7,357,206	5,584,410	164,399	313,647	109,909	351,110	832,782	15,944
Brown	3,614,082	2,801,563	98,624	123,963	51,937	230,336	307,659	10,553
Carlton	4,624,456	3,555,361	138,407	142,770	67,950	289,131	430,073	17,264
Carver	8,463,647	6,196,024	150,833	232,165	90,808	430,373	1,363,444	5,020
Cass	2,300,292	1,549,153	73,531	166,791	54,029	126,806	326,724	8,417
Chippewa	1,587,123	1,267,303	41,013	53,595	23,827	38,093	163,292	1,246
Chisago	7,354,436	5,581,711	214,873	239,646	96,952	395,313	825,659	23,943
Clay	7,694,007	5,126,821	67,308	290,293	85,343	1,269,390	838,189	43,769
Clearwater	1,092,914	704,485	91,131	74,975	25,505	80,850	115,968	1,555
Cook	395,278	297,978	939	14,848	8,978	7,831	64,704	2,529
Crow Wing	8,417,428	6,045,202	209,704	399,284	173,597	416,572	1,167,535	16,686
Dakota	42,694,543	31,452,970	711,214	1,520,969	623,402	2,586,098	5,779,649	80,324
Douglas	4,144,257	2,784,089	95,517	172,096	64,725	377,767	647,223	13,997
Fillmore	2,148,102	1,619,578	38,761	58,763	28,478	134,954	267,569	732
Freeborn	4,497,995	3,543,315	91,879	228,742	94,404	268,328	271,327	691
Goodhue	5,730,617	4,210,826	96,635	230,361	71,041	390,857	730,898	20,225
Grant	832,552	637,411	24,175	14,089	12,756	31,893	112,229	818
Hennepin	100,442,931	72,445,622	1,462,206	3,631,531	1,647,473	6,823,847	14,399,892	146,546
Houston	1,936,100	1,314,951	33,115	45,960	17,791	301,916	222,368	1,069
Hubbard	1,969,085	1,336,030	51,891	116,973	48,717	132,441	283,034	174
Isanti	6,344,699	4,852,850	191,269	206,585	103,237	231,409	759,349	4,031
Statewide	578,212,450	424,854,865	12,321,781	21,316,601	9,096,329	37,609,167	72,832,138	1,371,964

Collections – Sources

County	FFY2018 Collections	Income Withholding	Re-employment	Federal Tax	State Tax	Other States	Other Sources (Cash, Checks)	FIDM*
Itasca	5,776,605	4,337,825	243,874	278,664	96,752	277,942	541,549	20,446
Des Moines Valley	3,106,115	2,349,775	38,017	112,906	42,577	320,215	242,625	6,154
Kanabec	2,325,294	1,669,357	132,287	82,294	37,725	103,262	300,369	62,016
Kandiyohi	5,655,337	4,207,894	151,048	261,247	112,054	302,637	620,456	10,399
Kittson	331,067	226,462	7,570	4,918	812	39,582	51,724	481
Koochiching	1,992,317	1,405,902	83,180	57,904	29,807	132,214	255,217	4,590
Lac qui Parle	710,945	458,190	12,018	24,675	5,238	103,639	99,980	2,294
Lake	1,218,179	910,917	30,535	48,024	21,140	45,383	162,179	1,261
Lake of the Woods	300,875	203,442	2,228	6,054	3,811	18,237	62,804	0
LeSueur	3,528,218	2,638,839	122,090	117,068	44,885	264,076	341,258	6,800
SWHHS	9,437,166	6,884,329	240,691	347,172	139,374	1,016,382	809,217	45,376
McLeod	4,699,511	3,653,755	100,945	136,465	86,406	285,231	436,708	5,706
Mahnomen	369,701	216,303	96	24,078	6,138	50,358	72,728	0
Marshall	1,113,282	806,651	46,607	37,940	13,670	60,697	147,717	5,167
Faribault/Martin	5,239,581	4,003,440	88,753	177,431	68,879	424,084	476,992	502
Meeker	2,961,747	2,220,239	80,902	107,485	58,152	141,364	353,607	10,117
Mille Lacs	3,721,792	2,801,858	108,618	187,846	78,126	131,749	412,849	12,450
Morrison	4,396,726	3,112,300	157,596	234,416	105,004	188,270	599,140	237
Mower	5,765,464	4,156,646	65,431	245,315	85,364	558,345	654,362	16,222
Nicollet	4,335,208	3,377,651	112,286	140,203	69,881	304,224	329,773	4,745
Nobles	3,016,153	2,133,255	28,258	129,375	46,038	441,698	237,530	4,205
Norman	772,336	478,261	15,076	25,662	11,045	102,939	139,354	0
Olmsted	17,990,221	12,845,891	336,225	607,586	235,040	1,473,948	2,491,531	26,272
Otter Tail	6,012,923	4,295,444	171,555	243,407	120,828	501,155	679,764	9,884
Pennington	1,979,830	1,533,129	75,497	86,456	24,322	73,337	187,089	2,870
Pine	4,534,943	3,501,432	185,566	166,015	68,386	296,408	315,787	2,188
Polk	4,329,772	2,900,982	97,219	155,003	45,263	548,442	577,926	8,841
Statewide	578,212,450	424,854,865	12,321,781	21,316,601	9,096,329	37,609,167	72,832,138	1,371,964

Collections – Sources

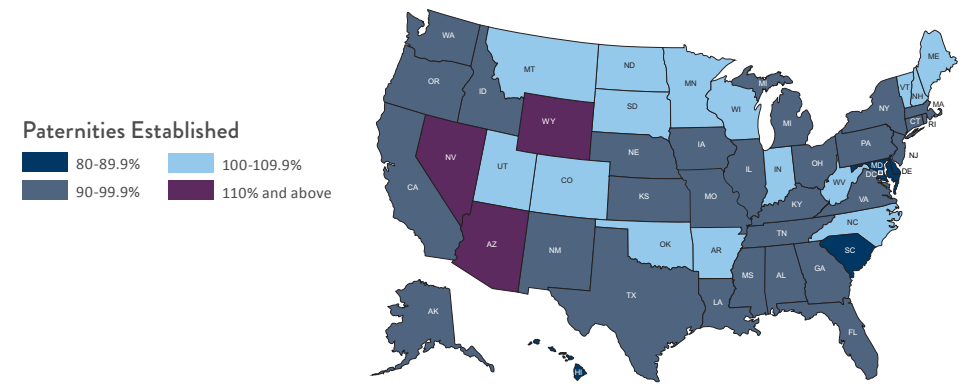
County	FFY2018 Collections	Income Withholding	Re-employment	Federal Tax	State Tax	Other States	Other Sources (Cash, Checks)	FIDM*
Pope	1,039,408	753,801	20,640	31,917	15,257	41,226	176,566	0
Ramsey	48,352,609	34,631,758	828,210	2,132,933	944,664	3,331,244	6,474,947	156,803
Red Lake	533,777	400,126	18,004	11,745	5,859	42,803	55,241	0
Renville	1,896,080	1,421,864	40,704	72,887	24,330	126,042	210,253	0
Rice	6,406,082	4,830,815	121,854	199,085	111,505	412,792	730,031	21,231
Roseau	1,952,390	1,453,217	21,100	47,636	30,076	152,153	244,571	736
St. Louis	23,277,669	17,324,313	726,263	1,034,873	370,098	1,232,108	2,574,486	62,946
Scott	12,418,575	8,569,683	256,620	297,031	146,602	713,902	2,434,738	21,471
Sherburne	12,396,357	9,352,638	374,237	404,232	172,466	576,513	1,516,271	37,069
Sibley	1,813,661	1,382,030	60,656	51,842	26,477	89,508	203,149	8,431
Stearns	14,680,107	11,116,923	341,751	460,248	245,718	782,197	1,730,315	0
MN Prairie	11,088,057	8,775,358	250,767	363,308	182,371	450,949	1,065,305	26,076
Stevens	732,131	548,378	25,641	35,547	8,870	52,030	61,665	0
Swift	1,312,521	1,033,111	32,761	39,702	23,344	103,324	80,278	1,169
Todd	2,819,968	1,948,673	58,438	125,749	53,720	158,486	474,901	3,880
Traverse	323,678	194,003	1,808	19,602	5,846	60,310	42,109	187
Wabasha	2,479,288	1,772,048	60,525	78,843	30,491	183,130	354,251	12,475
Wadena	2,442,731	1,756,057	68,461	131,910	36,116	202,626	247,561	3,991
Washington	23,434,354	17,797,299	497,260	665,841	333,651	1,229,558	2,910,745	40,763
Watonwan	1,996,221	1,532,294	46,225	102,847	34,729	160,599	119,527	375
Wilkin	912,375	599,496	3,221	33,361	7,455	198,397	70,445	12,347
Winona	4,486,055	3,117,110	52,914	203,751	79,060	479,247	553,972	20,006
Wright	15,049,020	11,780,605	354,339	435,023	200,483	536,703	1,741,867	45,958
Yellow Medicine	1,316,084	883,871	29,774	58,342	23,930	88,946	231,221	6,327
Statewide	578,212,450	424,854,865	12,321,781	21,316,601	9,096,329	37,609,167	72,832,138	1,371,964

Source: CSD InfoPac QQ640201: Quarterly OCSE34A Collect and Disburse - Summary, *FIDM is included (subset) in Other Sources

National Federal Performance Measures

National: Paternities Established

State	FFY2017 (%)	Children* (2016)	Paternity Established (2017)	FFY2016 (%)	FFY2015 (%)
Arizona	149.2	113,302	169,031	145.0	139.5
Wyoming	128.2	15,656	20,063	122.1	121.4
Nevada	124.1	66,042	81,968	126.4	118.6
New Hampshire	108.9	27,550	30,005	106.8	107.9
Vermont	107.5	11,989	12,891	108.9	105.9
North Dakota	105.3	28,115	29,608	106.1	104.3
Indiana	105.2	195,253	205,494	105.3	104.4
Montana	105.2	24,889	26,178	106.3	104.8
South Dakota	105.0	29,338	30,814	110.5	110.9
Oklahoma	104.7	17,233	18,046	112.3	108.5
Colorado	104.3	13,984	14,580	104.9	106.8
Maine	103.7	42,278	43,826	103.9	102.8
Utah	103.5	9,543	9,873	101.5	106.0
West Virginia	102.2	65,220	66,638	100.5	100.8
Virgin Islands	101.5	539	547	67.4	71.5
Minnesota	101.1	172,036	173,845	100.7	98.9
Arkansas	100.9	76,930	77,639	100.8	99.5
North Carolina	100.7	297,485	299,444	99.9	99.1
Wisconsin	100.5	279,392	280,857	104.8	104.8
Pennsylvania	99.8	57,076	56,965	95.6	99.6
Rhode Island	98.8	42,315	41,796	93.2	92.3
New Mexico	98.7	65,163	64,330	97.4	98.1
Washington	98.7	195,756	193,126	99.1	98.6



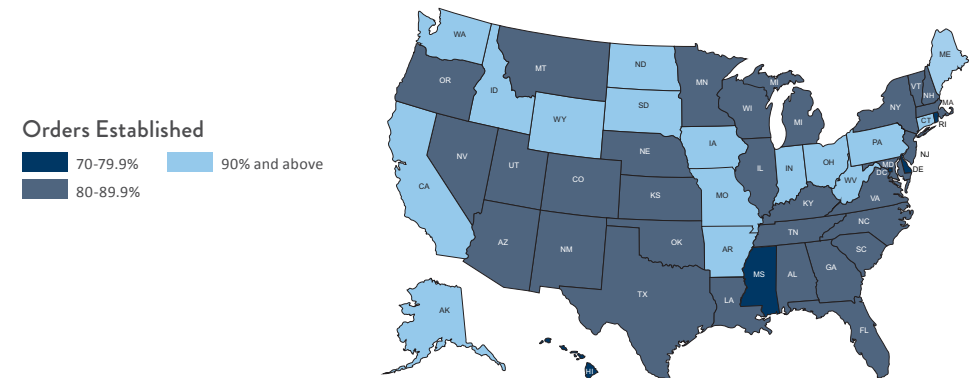
State	FFY2017 (%)	Children* (2016)	Paternity Established (2017)	FFY2016 (%)	FFY2015 (%)
New Jersey	98.7	34,107	33,647	99.9	100.5
Connecticut	97.6	115,427	112,669	96.4	94.4
Mississippi	97.2	268,838	261,428	96.5	93.8
Georgia	97.2	58,763	57,104	93.9	90.2
Idaho	97.1	82,347	79,925	98.7	97.5
Oregon	96.5	16,438	15,859	98.6	98.6
Nebraska	96.3	8,742	8,419	95.7	99.3
Texas	96.3	166,936	160,735	93.8	94.6
Alabama	96.1	129,079	124,081	96.7	95.1
Michigan	96.1	48,230	46,353	97.5	98.4
Tennessee	95.8	37,628	36,058	92.0	96.4
Kentucky	95.7	179,328	171,529	96.9	94.4
Louisiana	95.7	228,975	219,020	94.1	91.3
California	94.3	185,184	174,589	98.6	97.9
Iowa	94.2	13,942	13,130	97.3	98.0
Alaska	94.0	3,963	3,739	105.2	106.3
Kansas	92.9	14,435	13,413	92.7	93.3
Ohio	92.7	59,188	54,837	93.4	90.7
Virginia	92.0	35,190	32,376	96.4	109.9
Illinois	91.7	60,628	55,609	83.1	90.4
Massachusetts	90.9	23,648	21,492	90.6	91.4
Guam	90.7	7,750	7,028	90.7	92.2
Florida	90.6	107,215	97,121	91.3	91.0
Missouri	90.4	30,208	27,320	90.2	93.1
New York	90.2	91,772	82,818	92.0	93.4
Washington, DC	90.0	6,434	5,791	90.0	90.0
Maryland	89.2	27,670	24,685	89.9	90.9
Delaware	88.4	64,809	57,318	79.4	82.9
Hawaii	88.3	6,887	6,078	96.2	94.5
Puerto Rico	83.9	20,582	17,274	87.5	90.1
South Carolina	80.0	25,968	20,773	80.2	91.7

* Children born outside of marriage

National Federal Performance Measures

National: Orders Established

State	FFY2017 (%)	Open Cases (2017)	Established Cases (2017)	FFY2016 (%)	FFY2015 (%)
Maine	95.3	45,782	43,655	95.0	95.4
Indiana	93.9	265,593	249,398	93.6	93.2
Wyoming	93.7	27,085	25,403	93.4	94.2
Washington	93.2	324,231	302,458	93.3	93.1
Connecticut	92.8	156,616	145,418	91.1	86.7
North Dakota	92.7	33,930	31,471	93.1	93.3
South Dakota	92.6	40,742	37,731	92.1	92.2
Alaska	92.5	44,814	41,482	92.8	91.4
Iowa	92.5	165,810	153,407	91.7	90.5
Arkansas	91.8	101,119	92,863	91.3	90.5
Idaho	91.7	102,955	94,410	87.8	86.7
California	91.1	1,187,333	1,082,721	90.3	89.4
Missouri	90.8	327,766	297,921	91.0	90.1
Ohio	90.8	827,116	751,402	90.0	89.4
Pennsylvania	90.6	370,004	335,378	90.7	89.9
West Virginia	90.3	110,445	99,788	91.6	90.9
Georgia	89.9	411,491	370,037	89.3	89.6
Kentucky	89.5	270,200	242,006	90.1	90.7
Vermont	89.4	15,045	13,460	90.0	90.1
Arizona	89.3	167,310	149,489	87.8	87.6
Virginia	88.8	297,548	264,515	88.8	89.9
Montana	88.7	34,666	30,776	88.7	89.5
Massachusetts	88.6	207,687	184,211	87.3	85.7



State	FFY2017 (%)	Open Cases (2017)	Established Cases (2017)	FFY2016 (%)	FFY2015 (%)
Minnesota	88.5	216,908	192,098	88.9	88.7
Alabama	88.1	214,147	188,766	87.5	86.6
Nevada	87.9	91,461	80,465	86.4	87.0
Utah	87.9	90,909	79,915	86.7	87.7
Colorado	87.7	149,982	131,557	88.6	88.6
Nebraska	87.7	106,796	93,673	86.3	86.3
Oregon	87.6	176,149	154,357	86.5	83.6
Kansas	87.4	138,895	121,469	86.0	87.6
Puerto Rico	87.3	213,254	186,288	86.0	83.4
Louisiana	87.2	280,267	244,531	86.7	84.9
Wisconsin	87.0	361,406	314,518	87.1	87.1
New York	86.8	828,866	720,153	85.5	82.5
New Jersey	86.4	316,969	274,074	85.4	83.3
Maryland	86.0	196,867	169,366	84.8	84.5
Texas	85.5	1,519,357	1,299,103	83.1	82.9
North Carolina	85.4	406,774	347,508	85.7	85.7
Tennessee	84.4	367,379	310,223	83.9	83.4
South Carolina	83.2	184,937	153,946	81.1	81.9
Oklahoma	83.0	196,915	163,443	81.8	82.5
Florida	82.9	644,056	534,251	82.9	82.8
Illinois	82.8	473,011	391,843	82.6	81.7
New Hampshire	82.1	38,066	31,269	81.3	80.6
New Mexico	81.4	63,844	51,985	83.6	84.1
Michigan	81.1	844,133	685,058	81.5	81.0
Mississippi	78.9	284,963	224,855	76.7	74.2
Washington, DC	78.9	44,051	34,777	73.2	71.3
Hawaii	77.2	74,168	57,266	76.1	74.9
Rhode Island	77.0	49,953	38,494	78.8	76.4
Guam	75.1	6,662	5,007	75.1	75.8
Delaware	72.3	81,176	58,722	75.3	70.5
Virgin Islands	70.4	8,887	6,257	69.7	69.4

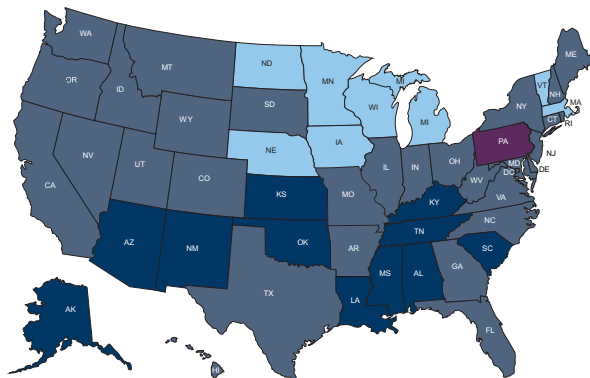
National Federal Performance Measures

National: Collections on Current

State	FFY2017 (%)	Due (2017) Thousand (\$)	Paid (2017) Thousand (\$)	FFY2016 (%)	FFY2015 (%)
Pennsylvania	84.1	1,253	1,054	84.3	84.0
Wisconsin	74.6	698	521	74.4	74.1
Minnesota	74.5	590	440	74.2	73.4
Vermont	73.8	46	34	74.2	72.7
North Dakota	73.2	112	82	72.7	74.0
Iowa	73.0	335	245	73.5	74.2
Massachusetts	72.4	711	515	71.3	70.7
Michigan	71.5	1,381	988	71.2	70.5
Nebraska	70.9	236	168	71.5	71.3
Ohio	69.5	1,841	1,279	69.4	68.9
Maryland	69.0	640	441	68.9	68.5
North Carolina	68.0	782	531	68.0	67.0
New Jersey	67.6	1,387	937	67.2	66.4
West Virginia	67.2	207	139	66.9	66.6
California	66.5	2,380	1,582	66.9	66.5
New York	66.4	2,028	1,346	65.9	65.7
Washington	66.3	728	487	66.3	65.5
Wyoming	66.2	75	49	66.1	68.1
Indiana	66.0	599	395	65.3	64.7
Nevada	65.9	226	149	64.0	62.1
Utah	65.0	269	175	71.6	63.2
Virginia	64.8	712	462	64.5	64.3
New Hampshire	64.7	91	59	66.1	65.6

State	FFY2017 (%)	Due (2017) Thousand (\$)	Paid (2017) Thousand (\$)	FFY2016 (%)	FFY2015 (%)
Texas	64.6	4,825	3,118	64.3	65.0
Idaho	64.5	210	136	64.4	63.1
Arkansas	64.4	271	175	63.9	64.3
South Dakota	64.2	118	76	65.9	67.9
Colorado	64.1	399	256	64.2	64.4
Montana	63.8	76	49	63.1	63.5
Oregon	63.2	422	267	62.5	61.3
Maine	63.1	106	67	62.3	59.8
Illinois	63.1	896	565	62.7	62.2
Florida	63.0	1,784	1,124	63.2	62.5
Hawaii	62.5	117	73	62.6	62.0
Rhode Island	61.8	94	58	61.7	61.2
Connecticut	61.6	278	171	61.6	61.0
Washington, DC	61.5	60	37	61.6	61.9
Guam	61.1	11	7	62.0	64.3
Georgia	60.3	950	573	61.2	61.2
Missouri	60.2	739	445	60.2	59.5
Delaware	60.2	99	60	60.1	59.0
Kentucky	58.2	472	275	58.4	58.2
Arizona	58.1	358	208	57.2	55.8
Tennessee	56.5	761	430	56.6	57.4
Kansas	55.9	247	138	55.4	54.4
Alaska	55.8	110	62	56.5	57.3
South Carolina	55.3	368	204	54.8	54.6
Puerto Rico	54.9	498	273	55.2	54.1
New Mexico	54.8	157	86	54.7	54.9
Oklahoma	54.6	460	251	54.2	55.0
Alabama	54.0	452	244	54.0	53.4
Mississippi	53.7	467	250	53.5	53.2
Louisiana	52.8	570	301	53.3	55.5
Virgin Islands	48.2	10	5	53.3	51.5

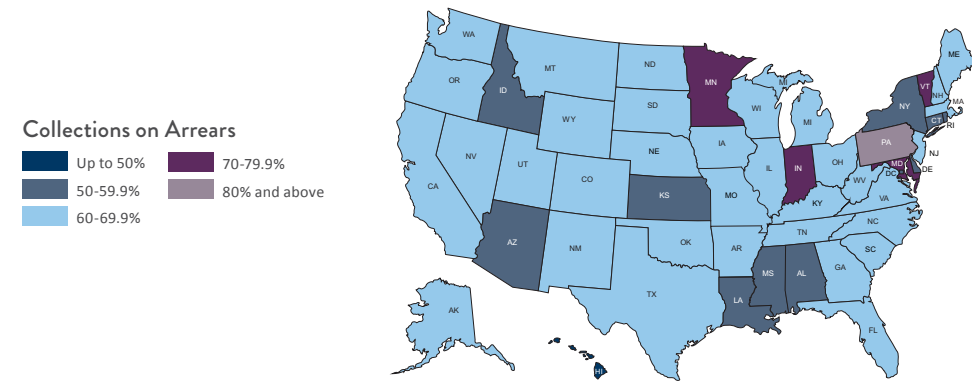
Collections on Current



National Federal Performance Measures

National: Collections on Arrears

State	FFY2017 (%)	Cases with Arrears (2017)	Cases with Payment Towards Arrears (2017)	FFY2016 (%)	FFY2015 (%)
Pennsylvania	84.1	265,642	223,557	84.5	83.9
Vermont	76.3	13,228	10,094	75.5	73.4
Indiana	72.3	227,437	164,490	73.2	71.8
Minnesota	72.2	173,626	125,457	72.3	72.1
Maryland	70.4	160,982	113,368	70.4	69.6
Florida	69.7	515,925	359,631	70.2	67.3
Iowa	69.5	132,430	92,053	70.3	70.9
Wisconsin	69.4	254,248	176,451	69.0	67.6
Wyoming	69.2	26,334	18,234	70.5	71.8
Arkansas	68.9	95,505	65,805	69.4	69.0
Nebraska	68.4	76,808	52,585	69.4	69.8
Colorado	68.1	129,945	88,543	68.9	70.1
Ohio	67.0	618,864	408,313	67.0	66.6
North Carolina	66.8	313,820	209,856	67.2	66.5
New Jersey	66.6	264,663	176,302	65.3	64.1
California	66.4	872,403	579,461	66.7	66.1
Nevada	66.2	83,893	55,612	64.6	62.2
Michigan	66.1	548,163	362,510	64.5	61.4
Virginia	65.6	268,313	176,157	65.7	64.7
Maine	65.3	44,229	28,910	65.2	63.7
New Hampshire	65.3	27,752	18,147	63.1	64.3
Alaska	65.1	42,214	27,498	65.6	67.0
Montana	64.8	32,763	21,232	64.9	67.0



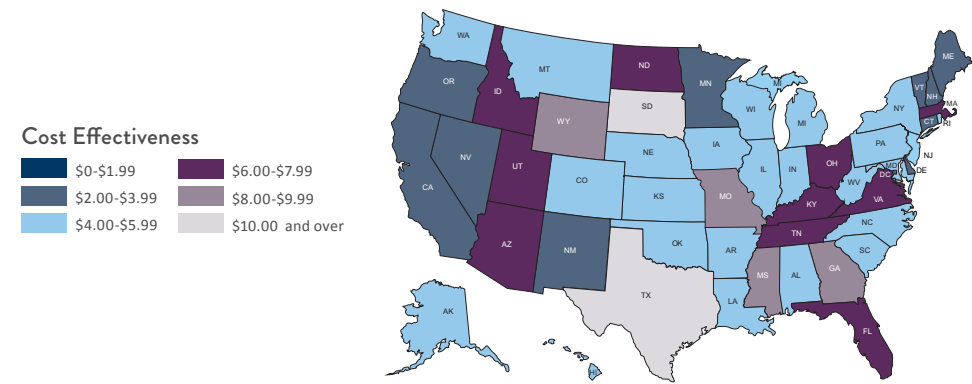
State	FFY2017 (%)	Cases with Arrears (2017)	Cases with Payment Towards Arrears (2017)	FFY2016 (%)	FFY2015 (%)
Utah	64.5	72,875	46,638	64.5	64.7
Georgia	64.4	315,364	203,261	65.5	65.7
New Mexico	64.2	49,970	32,092	64.8	65.4
Massachusetts	64.1	160,426	102,951	63.0	61.1
North Dakota	63.4	29,142	18,490	65.1	65.8
Tennessee	63.3	280,691	177,914	63.9	62.2
Texas	62.9	1,155,037	727,565	63.0	63.8
South Carolina	62.1	148,038	91,948	62.2	60.4
Oklahoma	61.9	166,348	103,113	60.7	61.8
Washington	61.8	309,498	191,491	61.8	61.6
Illinois	61.7	309,490	190,969	62.3	62.4
South Dakota	61.2	36,724	22,491	63.8	66.7
Kentucky	60.9	207,161	126,186	61.5	60.8
Oregon	60.5	149,015	90,281	60.5	58.8
West Virginia	60.5	87,178	52,767	61.4	60.7
Missouri	60.4	261,633	158,246	61.1	60.8
Alabama	59.8	184,609	110,455	60.5	59.4
Connecticut	59.8	124,263	74,334	61.1	59.7
Kansas	57.8	108,432	62,733	58.7	58.0
Washington, DC	57.7	27,654	15,979	56.8	55.2
Idaho	57.5	81,943	47,196	58.5	58.7
New York	57.3	588,260	337,277	58.1	57.8
Mississippi	57.2	201,144	115,148	58.1	57.6
Arizona	57.1	135,077	77,233	56.2	55.2
Delaware	55.0	44,364	24,405	54.7	53.6
Louisiana	53.5	199,158	106,552	53.3	55.5
Guam	53.4	4,195	2,242	55.4	58.6
Rhode Island	53.2	35,383	18,827	55.4	56.4
Hawaii	43.6	46,572	20,347	44.7	45.6
Puerto Rico	42.6	169,684	72,415	44.3	43.5
Virgin Islands	38.3	5,195	1,992	46.6	45.1

National Federal Performance Measures

National: Cost Effectiveness

State	FFY2017 (\$)	Total Distributed (2017) Thousand (\$)	Total Expended (2017) Thousand (\$)	FFY2016 (\$)	FFY2015 (\$)
Puerto Rico	12.53	348	28	10.55	9.75
South Dakota	10.42	100	10	10.69	10.78
Texas	10.33	4,222	409	11.21	12.26
Mississippi	9.50	343	36	9.36	7.94
Missouri	8.59	612	71	8.76	8.33
Wyoming	8.55	68	8	7.48	7.22
Georgia	8.04	768	96	7.61	8.37
Tennessee	6.74	638	95	7.00	7.99
Ohio	6.51	1,653	254	8.25	6.31
Utah	6.49	225	35	6.40	6.53
Kentucky	6.33	387	61	6.32	6.33
Florida	6.24	1,597	256	6.15	5.89
Virginia	6.20	654	106	6.21	6.42
Arizona	6.15	346	56	4.98	5.35
Idaho	6.13	182	30	7.03	7.78
North Dakota	6.08	104	17	6.15	6.20
Massachusetts	6.06	654	108	6.03	5.40
Oklahoma	5.97	358	60	4.89	5.07
Rhode Island	5.85	79	13	5.38	5.86
Kansas	5.72	204	36	5.69	5.80
Wisconsin	5.56	666	120	8.43	6.76
Michigan	5.56	1,340	241	6.74	5.75
Louisiana	5.46	428	78	5.56	5.51

State	FFY2017 (\$)	Total Distributed (2017) Thousand (\$)	Total Expended (2017) Thousand (\$)	FFY2016 (\$)	FFY2015 (\$)
Iowa	5.46	322	59	5.73	5.71
Indiana	5.25	566	108	5.88	5.56
Nebraska	5.23	215	41	5.97	5.97
Illinois	5.19	849	163	4.75	4.68
Pennsylvania	5.02	1,261	251	5.43	5.10
New York	4.99	1,831	367	5.15	4.75
West Virginia	4.91	189	39	4.86	5.29
Arkansas	4.84	246	51	4.87	4.94
Hawaii	4.83	104	22	4.92	4.93
Maryland	4.64	572	123	4.65	4.54
South Carolina	4.51	301	67	4.62	5.62
North Carolina	4.50	702	156	4.89	5.07
Montana	4.39	70	16	4.24	4.48
Alabama	4.30	349	81	6.54	5.17
Colorado	4.30	353	82	4.59	4.83
Washington	4.27	675	158	4.27	4.54
New Jersey	4.12	1,162	282	4.20	4.45
Alaska	4.07	102	25	4.10	4.02
Nevada	3.91	217	55	3.83	4.13
Oregon	3.88	380	98	3.44	4.50
New Hampshire	3.55	80	23	3.86	3.46
New Mexico	3.50	132	38	3.26	3.14
Maine	3.47	103	30	3.46	3.50
Minnesota	3.30	581	176	3.30	3.55
Connecticut	3.27	257	79	3.13	3.22
Vermont	2.84	44	16	2.89	3.06
Delaware	2.54	82	32	2.28	1.89
California	2.52	2,438	969	2.51	2.51
Washington, DC	2.01	54	27	2.00	2.07
Guam	1.64	10	6	1.46	1.74
Virgin Islands	0.98	7	7	1.82	1.14



Child Support Strategic Plan

Minnesota's child support mission complements the Office of Child Support Enforcement (OCSE) National Strategic Plan for 2015-2019 by reinforcing the importance of child support income to child well-being. OCSE's plan provides the program's principles and goals and identifies strategies to meet those goals.



Mission

The purpose and mission of the national child support program are derived from Title IV-D of the Social Security Act:

To encourage responsible parenting, family self-sufficiency and child well-being, the national child support program provides assistance in locating parents; establishing paternity; establishing, modifying, and enforcing support obligations; and obtaining child support for children.

Vision

Children can count on their parents for the financial and emotional support they need to be healthy and successful.

Principles

Families First

A family-centered child support program partners with parents to promote consistent support payments.

Case-specific Tools

An effective child support program uses the right tools to meet the needs of the specific case.

Modern Technology

An efficient child support program incorporates modern technology.

Resourceful Leadership

An enterprising child support program leverages sufficient resources to meet its mission.

Evidence-based

A high-performing child support program is evidence-based.

Click here to read the [National Child Support Strategic Plan for 2015-2019](#).

Resources

The 2018 report, in its electronic form, includes Internet hyperlinks to sources and websites including:

Minnesota Association of County Attorneys:

<http://www.mcaa-mn.org/>

Minnesota Association of County Social Services

Administrators:

<http://www.macssa.org/>

Minnesota Child Support Calculator:

<http://childsupportcalculator.dhs.state.mn.us/>

Minnesota Child Support Online (MCSO):

<http://www.childsupport.dhs.state.mn.us/Action/Welcome>

**Minnesota Department of Employment
and Economic Development:**

<http://mn.gov/deed/>

Minnesota Department of Human Services:

<http://mn.gov/dhs/>

- Minnesota Child Support: Keyword search on the department's homepage: Child Support
- Minnesota Child Support Debt and Arrears Management: Keywords on Child Support homepage search: debt and arrears
- Minnesota Child Support ezDocs: Keyword on Child Support homepage search: ezDocs

Minnesota Family Support and Recovery Council:

<http://www.mfsrc.org/>

Minnesota New Hire Reporting Center:

<http://newhire-reporting.com/MN-Newhire/default.aspx>

**United States Department of Health and Human Services,
Office of Child Support Enforcement:**

[http://www.acf.hhs.gov/programs/css/resource-library/search?type\[3058\]=3058](http://www.acf.hhs.gov/programs/css/resource-library/search?type[3058]=3058)

United States Department of Labor:

Bureau of Labor Statistics:

<http://www.dol.gov/>

