

service to the **STATE**

MEMBERSHIP

79 counties
45,717 member families

SCHOOL GROUP VISITS

55 counties
69,179 students

FREE TO EXPLORE

80+ counties
89,314 admissions

ZOOMOBILE / OUTREACH PROGRAMS

42 counties
51,529 participants

minnesota zoological garden **FINANCIALS**

Statement of Revenue and Expenses for the Fiscal Year Ending June 30, 2018, Unaudited

Revenue

State General Fund and Natural Resources Fund Appropriations	\$9,227,000
Contributions	\$1,586,000
LCCMR & Legacy Appropriations	\$2,441,000
Earned Income	\$15,098,243
Federal Grant	\$78,225

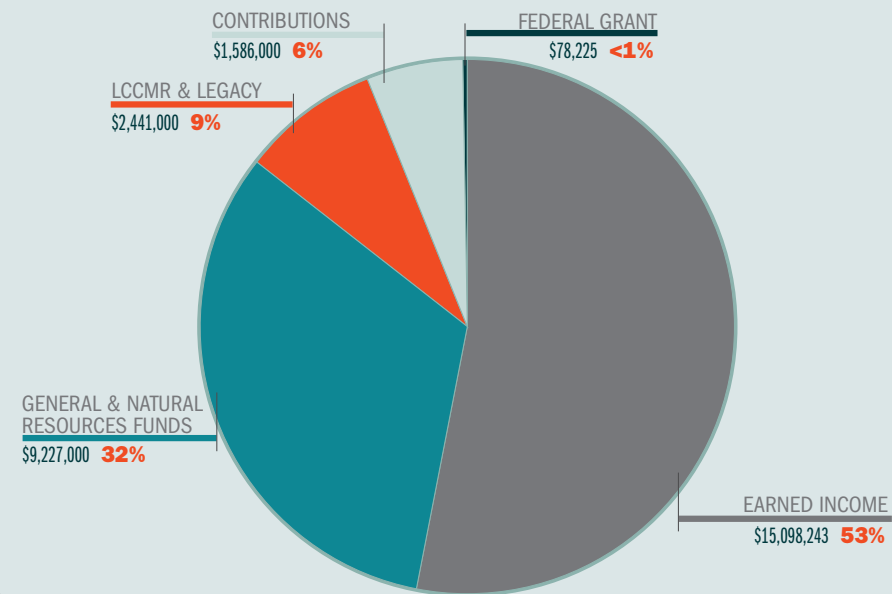
TOTAL \$28,430,000

Operating Expenses

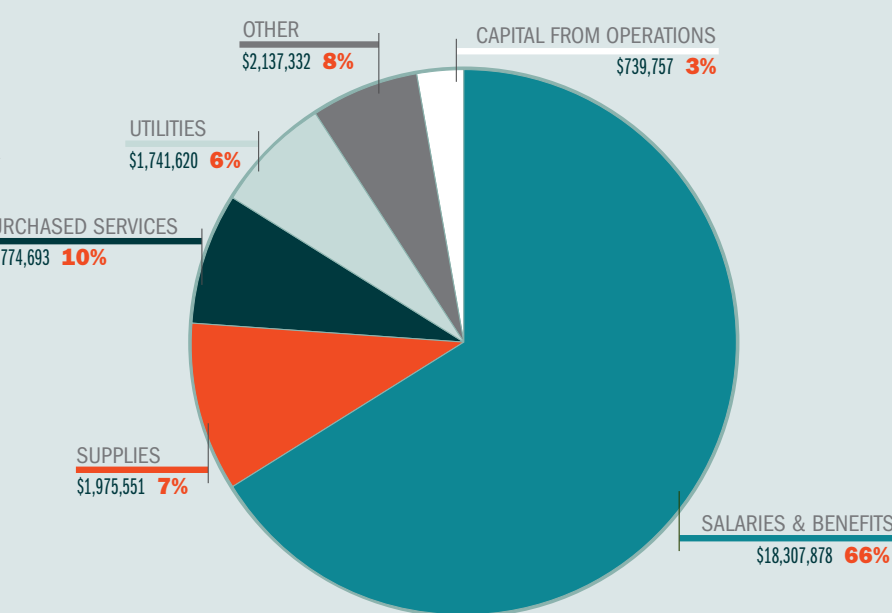
Salaries & Benefits	\$18,307,878
Supplies	\$1,975,551
Purchased Services	\$2,774,693
Utilities	\$1,741,620
Other	\$2,137,332
Capital from Operations	\$739,757

TOTAL Operating Expenses and Capital Funded from Operations \$27,680,000

REVENUE



EXPENSES



by the **NUMBERS**

354
Staff

276
Full-time employees

45,717
Household memberships

4,422
Donors

1,302,915
Total number of visitors

89,314
Number of free admissions through the *Free to Explore* program

29%
of Zoo admissions are free or reduced price.

485
Number of acres of entire Zoo campus

121
Buildings

644,000
Square feet of buildings

25
Miles of fencing

10
Miles of roads and pathways

\$227.7 MILLION
Gross economic output

2,200
Jobs supported

\$20.66
Returned to the economy for every

\$1
of State investment

1,285
Number of volunteers donating time to the Zoo

114,786
Hours donated by volunteers

4,990
Animals

533
Species

73
Threatened and endangered species at the Minnesota Zoo

69,179
Students participating in school programs

993
Minnesota schools visited the Minnesota Zoo on a field trip

dear FRIENDS

In FY 2018, the "New Zoo" turned forty! While we celebrated forty years of connecting people, animals and the natural world to save wildlife, we also turned our focus to the future as we began a formal master planning process to ensure the Minnesota Zoo is a zoo for all Minnesotans.

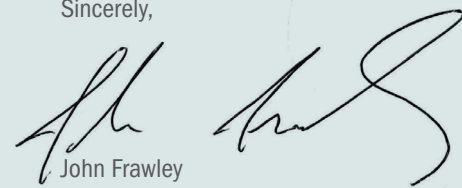
Our Nature Task Force completed its report, Pathway to Nature. This report lays out a blueprint for how we will use the unique resources of our campus, staff and animals to deliver a world-class nature experience for our guests that and inspire them to take action for conservation.

In addition to big plans for the future, FY 2018 brought many of its own successes. Our dedicated zookeepers continued to push the envelope in husbandry, leading to key births. This year saw the birth of a very rare Malayan tapir, and the first rhinoceros hornbill chick ever successfully hatched and fledged at the Minnesota Zoo.

Staff continued work on projects funded by the Legislative-Citizen Commission on Minnesota Resources from the Environment and Natural Resources Trust Fund (ENRTF) to research and conserve native prairie butterflies, rear native mussels and build water quality awareness, and engage high school students in Southwestern Minnesota in wildlife and habitat conservation education.

FY 2018 was a busy year for the Zoo, with 1.3 million visitors, including a record 89,000 free admissions through our access program, *Free to Explore*. I hope you will join us in the future as we continue on our pathway to nature and fulfilling our vision: A future where wildlife thrives in Minnesota and beyond.

Sincerely,



John Frawley
Director, Minnesota Zoo
President, Minnesota Zoo Foundation



13000 Zoo Boulevard
Apple Valley, MN 55124
952.431.9200

MNZOO.ORG

FY 2018 ANNUAL REPORT

PRODUCTION

EDITOR

Claudia Hochstein

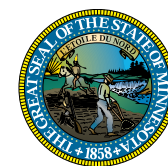
GRAPHIC DESIGN

Kim Quam



World Association of Zoos and Aquariums | WAZA
United for Conservation

ACCREDITED BY THE
**ASSOCIATION
OF ZOOS &
AQUARIUMS**



FY 2018 ZOO BOARD OF TRUSTEES

CHAIR

Richard S. Vogel

VICE CHAIR

Frank Weidner

MEMBERS

Cynthia A. Arnold

Laura Bordelon

Charlene Briner

Robert Burch

Al Cady

Carmen Campbell

Rebecca Crooks-Stratton

Eleanor R. Crosby

Ken Cutler

Mike Erlandson

Robert Freeman

Ryan Gage

Leigh "LJ" Johnson

Chuck Koosmann

Rahul Korrane, Ph.D.

Lori Marco

Peter Maritz

Rob Marlotte

Sarah Psick

Heather Rein

Anna Ross

Doug Stang

Mark Utz

Chang Wang

Todd Watchmaker

EX-OFFICIO

John Frawley, Zoo Director



MINNESOTA ZOO

This document is made available electronically by the Minnesota Legislative Reference Library as part of an ongoing digital archiving project.
<http://www.leg.state.mn.us/lrl/lrl.asp>

40
YEARS
OF...

AMAZING.

annual REPORT FY 2018