

FY2018-FY2019 Legislative Request



396,000 STUDENTS AT
54 CAMPUSES IN
47 COMMUNITIES

WE ARE MINNESOTA STATE
minnstate.edu/legislative

Follow us on Twitter: @mnscu
#FundMinnesotaState



MINNESOTA STATE



We are Minnesota State

Minnesota State serves more veterans, servicemembers, and nontraditional students, as well as racially and economically diverse students, than all other higher education providers in Minnesota combined, including:

63,400

Students of Color and American Indian Students

48,500

First-Generation College Students

84,000

Low-Income Students

95,000

Students Aged 25 Years or Older

10,000

Veterans and Servicemembers

Minnesota State is the fifth largest system of colleges and universities in the nation with 30 colleges and seven universities across the state. As the largest provider of higher education in Minnesota, we also are an essential partner to the workforce and employers due to our ability to provide skilled employees and essential training and education for the jobs of the future. Through our work, Minnesota State:

- Serves 396,000 students annually.
- Serves more students of color, first-generation college students, and students of modest financial means than anyone else in the state.
- Offers the lowest tuition in Minnesota.
- Offers 54 campuses that are conveniently located throughout Minnesota, as well as online options.
- Produces more graduates for jobs in critical, high-demand fields such as health care and information technology than anyone else in the state.
- Provides essential training and specialized certification options for business, industry, and professionals throughout Minnesota.

Our core value

Provide an opportunity for all Minnesotans to create a better future for themselves, for their families, and for their communities.

Our core commitments

Minnesota State colleges and universities play an essential role in growing Minnesota's economy and opening the doors of educational opportunity to all Minnesotans. To that end, we:

- Ensure access to an extraordinary education for all Minnesotans.
- Are the partner of choice to meet Minnesota's workforce and community needs.
- Deliver to students, employers, communities and taxpayers the highest value/most affordable higher education option.



We are the Workforce Partner

Homegrown talent is the key to Minnesota's future and prosperity

The Georgetown University Center on Education and the Workforce reports that 74% of Minnesota's jobs will require some level of postsecondary training by 2020. Currently, Minnesota is not producing the number of graduates it takes to help every region thrive. We need to make sure all Minnesotans have the opportunity to prepare for the careers of the future so businesses across the state can grow, communities can thrive, and families can realize a better future.

Minnesota State develops the talent businesses and communities need

Each year, the 37 state colleges and universities that are part of Minnesota State provide an opportunity to more than 396,000 students to develop the talents they need to better their lives. Through more than 3,700 academic programs, our students learn technical skills as well as soft skills, such as the ability to think critically, communicate effectively, and develop creative solutions to be successful.

Minnesota State is the partner to business and industry

We partner with business and industry to make sure we have the right programs, in the right places, turning out the right number of graduates who are prepared with the necessary knowledge and capabilities. More than 40,000 students graduate from our colleges and universities each year and use their know-how to help businesses, industries, public-sector organizations, nonprofits, and communities across the state to grow and thrive. Additionally, our colleges and universities provide specialized and customized training to nearly 2,000 businesses and organizations throughout Minnesota.

Minnesota State is addressing racial and economic disparities

The most effective strategy we have for narrowing the prosperity gap in Minnesota is to ensure all Minnesotans get the education they need to secure a better future for themselves, their families, and their communities. Our colleges and universities lead the way in serving students of color, first-generation colleges students, and students of modest financial means.

Employers across Minnesota rely on Minnesota State for talent and training:

85.5%

Percentage of graduates employed in a field related to their degree program

2,000

Number of businesses and organizations partnered with Minnesota State

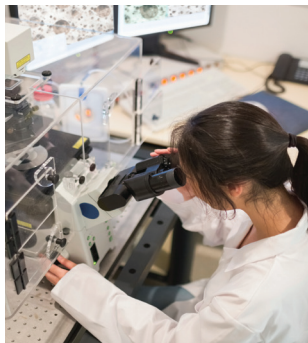
15,380

Number of customized and specialized training, occupational, and professional classes offered

126,000+

Number of students who take customized training or continuing education courses

FY2018-FY2019 Budget Request



\$178 million in new funding over the biennium

\$143 million to support and protect campuses

By funding inflationary costs at 3% each year of the biennium, your investment will enable Minnesota State to:

- Help meet Minnesota's critical need for talent.
- Reduce economic and racial disparities.
- Improve student success (particularly for underrepresented students).
- Protect access and affordability (funding another two years of tuition freezes).
- Support the financial health of every campus, especially in greater Minnesota.



\$25 million for critical technology replacement (ISRS Next Generation)

(Seven-year project timeline, proposed 50/50 cost sharing)

Replace the 20-year-old core information system (ISRS) with a more cost effective tool to ensure:

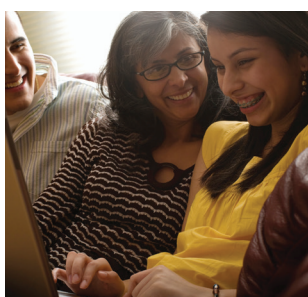
- Our ability to process the more than 100,000 financial transactions that occur per business day, as well as the more than one million student logins that take place at the start of each semester.
- An optimal user experience for our students, faculty, and staff.
- Our ability to add the latest features for analytics, reporting, mobile use, and most importantly, for monitoring and promoting student success.
- Efficiencies in cost and operation, and reduction in risk.
- A more secure (cloud-based), agile, essential enterprise-wide technology infrastructure.



\$10 million for student incentive grants

Targeted financial support to reduce outcome disparities and improve student success:

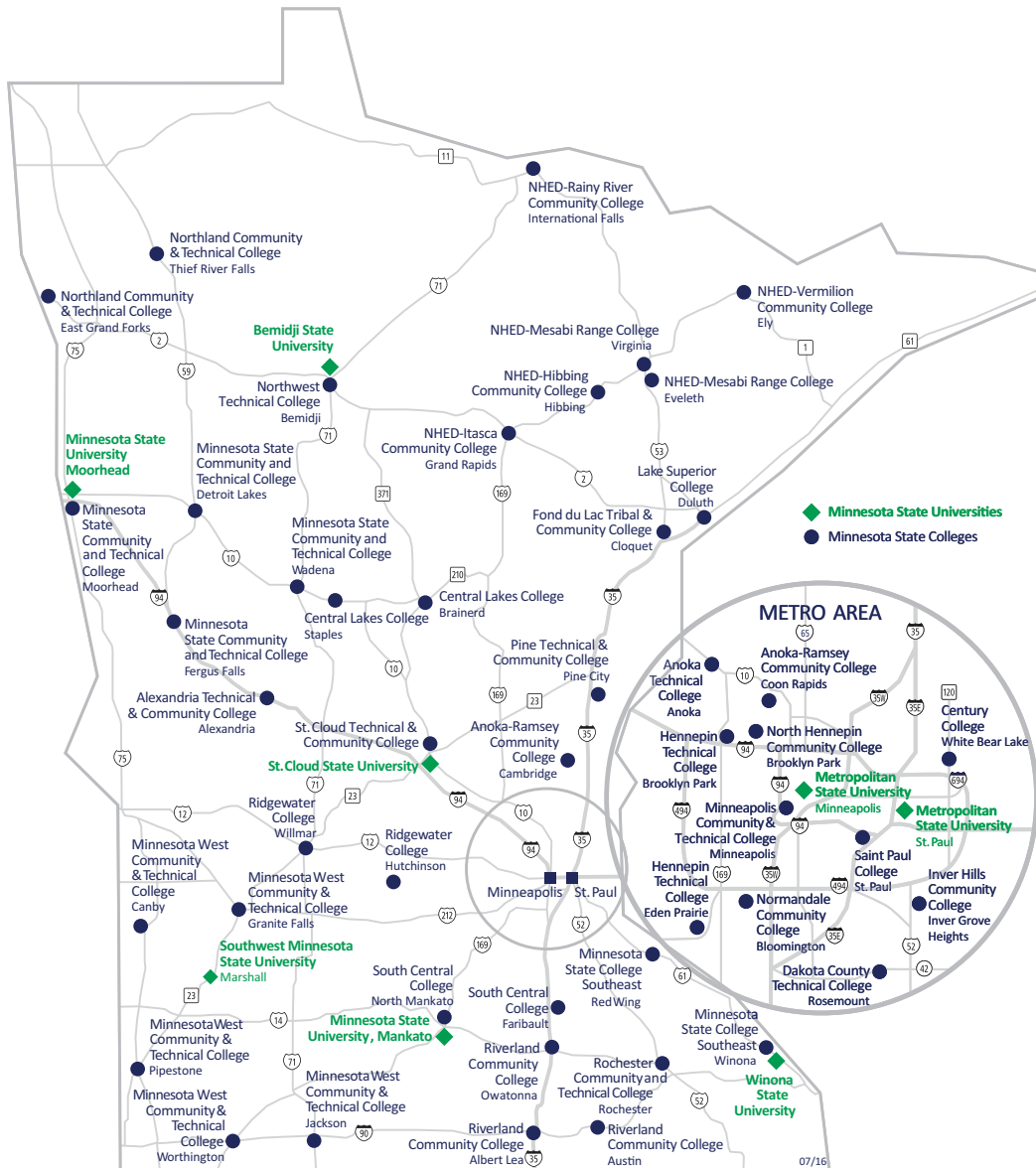
- Provide one-time \$500 incentive grant to students making satisfactory academic progress but identified as at-risk for dropping out.
- Provide one-time \$500 scholarship incentives for college students who complete a two-year transfer pathway degree and enroll in the related bachelor's degree program at one of our universities.





MINNESOTA STATE

We are the 47 Minnesota Communities We Serve



Campus Locations:

Albert Lea
Alexandria
Anoka
Austin
Bemidji
Bloomington
Brainerd
Brooklyn Park
Cambridge
Canby
Cloquet
Coon Rapids
Detroit Lakes
Duluth
East Grand Forks
Eden Prairie
Ely
Eveleth
Faribault
Fergus Falls
Grand Rapids
Granite Falls
Hibbing
Hutchinson
International Falls
Inver Grove Heights
Jackson
Mankato
Marshall
Minneapolis
Moorhead
North Mankato
Owatonna
Pine City
Pipestone
Red Wing
Rochester
Rosemount
St. Paul
Staples
Thief River Falls
Virginia
Wadena
White Bear Lake
Willmar
Winona
Worthington

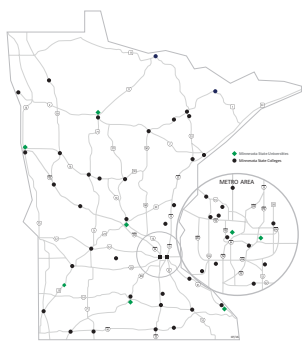


Minnesota State is responsible for the maintenance of more than 28 million square feet of facility space, much of which has significant deferred maintenance that requires attention.

Extraordinary Facts



MINNESOTA STATE



54 Campuses
47 Communities
30 Colleges
7 Universities

\$8.3 Billion Economic Impact

A 2013 Wilder Research study revealed Minnesota State operations and student spending generated an annual economic impact of \$8.3 billion in the state.



396,000
Students Served



3700+ academic programs, including **nearly 600** offered entirely online

\$5,364 Average Minnesota State College Tuition & Fees
(Before grants and scholarships)

Our 30 state colleges are **1/3 the cost** of private trade schools.

\$8,028 Average Minnesota State University Tuition & Fees
(Before grants and scholarships)

Our 7 state universities are **1/2 the cost** of the University of Minnesota and **1/5 the cost** of private colleges and universities.



105 New and Innovative Programs Developed in FY16 to Meet Workforce Demand

40,000+
Degrees, Certificates, and Diplomas Awarded Annually



Providing a Skilled Minnesota Workforce



- **9 out of 10** mechanics
- **9 out of 10** in manufacturing
- **8 out of 10** in law enforcement
- **7 out of 10** in trades
- **7 out of 10** in agriculture
- **4 out of 10** in business
- **3 out of 4** nurses
- **1 out of 2** teachers
- **1 out of 2** IT professionals



Responsible for more than 28 million square feet of facility space, which is equivalent to five Malls of America, but spread across 54 campuses.

5th Largest System of Colleges and Universities in the United States

16,000+
Dedicated faculty and staff focused on student success





Location:
Alexandria



alextech.edu | Laura Urban, President

FY16 Student Profile: 7,953 Total Students Served | 22% Pell Eligible | 9% Students of Color

REQUEST DETAILS

Dollar amounts are estimates and subject to change

- \$2.5 million of \$143 million in campus support
- 234 students supported by incentive grants (estimated)

WHAT'S AT STAKE?

A fully funded request will:

- Continue the leveraged equipment program that funds the purchase of equipment to keep technical programs relevant.
- Grow new and expand existing healthcare programs.

Not fully funding the request will:

- Delay implementation of a mobile-responsive website.
- Defer replacement of existing information technology infrastructure, hampering student recruitment and retention efforts.
- Put the college at financial risk.
- Further defer maintenance on existing facilities, resulting in safety issues.

ABOUT THE COLLEGE

Alexandria Technical and Community College (ATCC) is a two-year comprehensive college offering technical and transfer degrees, as well as diplomas. We serve regional high school students through PSEO, Online College in the High School. We also serve regional industries including manufacturing, healthcare, retail, and transportation. Our largest programs include diesel mechanic, law enforcement, nursing, liberal arts and sciences, machine tool, and welding technology.

SERVICE TO MINNESOTA

- 98% job placement rate provides employers with a skilled workforce.
- PSEO and concurrent enrollment programs serve regional high school students.
- Online College in the High School gives students in rural school districts statewide access to college courses that can reduce the cost of college.

- Transfer programs continue to expand and become easier to navigate with the implementation of Transfer Pathways.
- We offer unique programs in computer and voice networking, mechatronics, speech-language pathology assistant, communication art and design, and interior design.

PARTNERSHIPS

- **3M:** Supplies grant money to encourage high school students to enter high-skill, high-demand fields.
- **Ziegler-CAT:** Provides diesel mechanic students with sponsorships and internships.
- **Knute Nelson:** Partners with the college and local high schools in providing a certified nursing assistant program.
- **SUPERVALU, Coburns, and Herberger's:** Support the new Retail Management Certificate.
- **MN Dept. of Public Safety:** Partners for emergency dispatch training statewide.

2017 CAPITAL REQUEST

- \$4.5 million in asset preservation

A FEW WORDS FROM A STUDENT



"The opportunities I am presented every day is one reason why I know I made the right decision to transfer to Alexandria Technical & Community College to pursue my degree in interior design. The curriculum, instruction, and experiences I have received at ATCC have prepared and enlightened me beyond my expectations for the future."

- Leah Ramon, Interior Design Student,
Alexandria Technical & Community College



Locations:
Coon Rapids
Cambridge

NOTE: *Anoka-Ramsey Community College is aligned with Anoka Technical College and has a combined budget request.*



anokaramsey.edu | Kent Hanson, President

FY16 Student Profile: **13,216** Total Students Served | **28%** Pell Eligible | **21%** Students of Colors

REQUEST DETAILS

Dollar amounts are estimates and subject to change

- \$6 million of \$143 million in campus support (with Anoka Technical College)
- 748 students supported by incentive grants

WHAT'S AT STAKE?

A fully funded request will:

- Maintain student tutors, counselors, and advisors who help close the achievement gap for underrepresented students and assist all students in achieving success.
- Support transfer, completion, and baccalaureate initiatives.
- Allow for continued modernization of classrooms and labs.

Not fully funding the request will:

- Impair ability to expand success strategies for at-risk students.
- Limit purchase of instructional equipment necessary to supply a talented workforce.
- Limit facilities improvements, jeopardizing continued operation of relevant learning environments.

2017 CAPITAL REQUEST

- \$4 million in asset preservation (with Anoka Technical College)
- \$4.97 million for Nursing & Active Learning Center Design and Humanities Renovation - System Priority #12

ABOUT THE COLLEGE

Anoka-Ramsey Community College (ARCC) is one of the largest community colleges in Minnesota. We were recently named one of the Top 10 Community Colleges in the nation by The Aspen Institute.

SERVICE TO MINNESOTA

- We annually contribute \$327 million to the regional economy.
- We demonstrate results in closing the achievement gap through innovative programming.
- Our assigned advising model incorporates appreciative advising practices and focuses on relationship building and student success.
- Metro North Adult Basic Education (ABE) offers classes on campus for adults studying for their GED, preparing for college-level coursework, and assisting with test prep, as well as providing support and supplemental instruction

to English Language Learner students.

- Daily orientations accommodate as many new students as possible.
- Alignment with Anoka Technical College increases efficiencies and strengthens impact of service to the local communities.

PARTNERSHIPS

- **Anoka County Workforce Center (ACWC):** Offers employment-related services to job seekers and employers.
- **Allina Health Systems:** Partners with our nursing program to provide clinical experiences, scholarships, and service on the program advisory board.
- **K-12 School Districts:** We partner with 12 high schools and 58 high school teachers in the delivery of concurrent enrollment courses.

A FEW WORDS FROM A FACULTY MEMBER



"I have the joy of watching students learn to love learning, helping students use critical thinking skills to positively impact their future and the world around them, and help them see themselves as competent and successful in ways they never imagined."

- Heidi Croatt, Ph.D., Communications Studies Instructor, Anoka-Ramsey Community College



Location:
Anoka

NOTE: Anoka Technical College is aligned with Anoka-Ramsey Community College and has a combined budget request.



anokatech.edu | Kent Hanson, President

FY16 Student Profile: 5,147 Total Students Served | 41% Pell Eligible | 21% Students of Color

REQUEST DETAILS

Dollar amounts are estimates and subject to change

- \$6 million of \$143 million in campus support (with Anoka-Ramsey Community College)
- 309 students supported by incentive grants

WHAT'S AT STAKE?

A fully funded request will:

- Maintain student tutors, counselors, and advisors who help close the achievement gap for underrepresented students and assist all students in reaching their potential.
- Reinvest in classrooms and labs to reflect current industry trends to maintain student preparedness and job placement.

Not fully funding the request will:

- Delay the launch of strategic enrollment management initiatives and limit enrollment services.
- Downsize academic offerings that will directly impact responsiveness to industry and student workforce success.
- Suspend work on key strategic planning initiatives.

2017 CAPITAL REQUEST

- \$4 million in asset preservation (with Anoka-Ramsey Community College)

ABOUT THE COLLEGE

Anoka Technical College (Anoka Tech) is a stand-alone career and technical college providing high quality skills-based training in fields that meet economic and employer demands. With an average student age of 27, we serve traditional students coming directly from high school, as well as career changers, displaced workers, and other adults wishing to upgrade technical skills.

SERVICE TO MINNESOTA

- Our job placement rate of more than 90%, with many programs at 100%, supplies work-ready talent for Minnesota's workforce.
- The Early Middle College Program with Anoka-Hennepin Technical High School has created on-site pathways for five Anoka Tech programs (medical assistant, architectural technology, landscaping, golf course grounds management, and administrative specialist), assuring greater access to higher education for high school students.

- We annually contribute more than \$78 million to the regional economy.
- Alignment with Anoka Technical College increases efficiencies and strengthens impact of service to the local communities.

PARTNERSHIPS

- **Anoka-Hennepin School District 11:** Increased opportunities for earning college credit and pursuing career pathways.
- **Graco USA:** Equipment donation provides machining students with industry-standard learning. Graco also provides paid internships, hires graduates, and participates on the advisory committee and foundation board.
- **Allina Health Systems:** Provides clinical and internship sites for health program students and participates on advisory committees and foundation board.

A FEW WORDS FROM A BUSINESS PARTNER



"As a court reporting and captioning firm owner in Minnesota, I feel extremely fortunate to have one of the top schools in the nation right here in our backyard. We are pleased and, in fact, impressed, with the quality of graduates coming out of Anoka Tech...so much so that we have hired six to date."

- Jan Ballman, RPR, CMRS, DSA-MN
President, Paradigm Reporting and Captioning



NOTE: Bemidji State University is aligned with Northwest Technical College and has a combined budget request.



bemidjistate.edu | Faith Hensrud, President

FY16 Student Profile: 7,080 Total Students Served | 30% Pell Eligible | 11% Students of Color

REQUEST DETAILS

Dollar amounts are estimates and subject to change

- **\$5.3 million (with Northwest Technical College) of \$143 million in campus support**
- **381 students supported by incentive grants**

WHAT'S AT STAKE?

A fully funded request will:

- Protect support services vital to student success and graduation.
- Maintain programs that meet the demand for highly qualified teachers, nurses, and law enforcement officers across MN.

Not fully funding the request will:

- Force a reduction in faculty and staff positions, reduce course availability, increase class sizes, diminish student support, and increase student costs because more time will be required to complete a degree or other credential.
- Fail to resolve facilities issues that impact teaching and learning and hinder disability access.

2017 CAPITAL REQUEST

- **\$8.1 million in asset preservation**
- **\$18.9 million for Academic Learning Center and Campus Renovation and Hagg-Sauer Demolition - System Priority #6**

ABOUT THE UNIVERSITY

Bemidji State University provides the academic guidance, education, and personal encouragement students need to exceed their own expectations. We offer 48 undergraduate degrees, nine graduate degrees, 15 teacher licensure fields, 14 pre-professional programs, and six certificates.

SERVICE TO MINNESOTA

- Bemidji State is one of two U.S. schools offering a degree in 3-D design for exhibits, conferences, and industry. Thanks to a strong partnership with industry professionals and alumni support, the program is a source of talent for the entire nation.
- Our innovative biology program has been expanded to include two new majors – aquatic biology and wildlife biology. Students pursue careers in fish and wildlife management, invasive species eradication, and conservation.
- We are a leader in the

graduation of American Indian students, including 45 in 2016.

PARTNERSHIPS

- **Sanford Bemidji Medical Center:** Provides hands-on learning opportunities for nursing students, who serve patients and strengthen the quality of care available to patients.
- **360 Manufacturing Center of Excellence:** Serves as headquarters and provides leadership for a consortium with 14 technical and community colleges to meet the needs of the region's manufacturing employers by preparing individuals for rewarding careers in manufacturing.
- **Marketing Assistance and Research Solutions:** This student-staffed and faculty-led marketing agency creates hands-on learning opportunities while offering affordable analysis and strategic consulting for businesses and non-profit organizations.

A FEW WORDS FROM A STUDENT



"Here at BSU, I've had a lot of opportunities to lead and learn real-world skills from exceptional faculty. My experience here has challenged me to re-imagine where my future could take me."

- Jordan Morgan, Environmental Studies and Sociology Student. Bemidji State University



Locations:
Brainerd
Staples



clcmn.edu | Hara Charlier, President

FY16 Student Profile: 7,122 Total Students Served | 28% Pell Eligible | 10% Students of Color

REQUEST DETAILS

Dollar amounts are estimates and subject to change

- **\$3.3 million of \$143 million in campus support**
- **348 students supported by incentive grants**

WHAT'S AT STAKE?

A fully funded request will:

- Provide resources for enhancing student success through intentional advising, targeted retention efforts to close the achievement gap, expanded course offerings, and new program development.

Not fully funding the request will:

- Continue significant budget reductions such as those already impacting FY18: 14 retirements with limited replacement, three position reductions, and \$350,000 in operating reductions.
- Impair ability to implement student success strategies focused on retention and advising to close the achievement gap.
- Further reductions in course offerings and academic program closures.

2017 CAPITAL REQUEST

- **\$2.1 million in asset preservation**

ABOUT THE COLLEGE

Nestled in the premier recreational area of Minnesota, Central Lakes College (CLC) is a comprehensive community and technical college offering the full college experience through cultural events, theatre, athletics, student housing, an active Student Senate, honors courses, and the Phi Theta Kappa Honor Society.

SERVICE TO MINNESOTA

- We have added more than 5,000 graduates to our region over the past five years.
- More than 95% of graduates are employed in a field related to their study, which fuels the economic engine of central and greater Minnesota by providing graduates who serve as police officers, teachers, welders, nurses, IT professionals, and more.
- We partner with more than 30 area high schools to offer College in the Schools.
- Collaborations with industry leaders and community partners

ensure student success and community satisfaction.

- Partnerships with area businesses get students working in the field before graduation.

PARTNERSHIPS

- **Minnesota DNR Enforcement, DNR Forestry, Camp Ripley, and Crow Wing County:** Partnership for students in the Natural Resources program.
- **Clow Stamping, Brunswick, Pequot Tool and Manufacturing, and Ryerson:** Donate steel and supplies to the welding program.
- **Cragun's Resort and Essentia Health:** Sponsor the theatre and cultural arts programs.
- **Local health care partners such as Lakewood Health System, St. Gabriel's Hospital, and many more:** Provide clinical experiences for nursing and allied health programs.

A FEW WORDS FROM A FACULTY MEMBER



"I believe one of the most important strategies of working with all students is convincing them early that they matter and that I recognize that they are individual people with stories, skills, and talents. I get to know them, their hobbies, their families, and their personal educational goals."

- Adam Marcotte, 2016 Minnesota State Educator of the Year, English Faculty & Honors Program Coordinator, Central Lakes College



Location:
White Bear Lake/Mahtomedi



century.edu | Patrick Opatz, Interim President

FY16 Student Profile: 19,617 Total Students Served | 24% Pell Eligible | 39% Students of Color

REQUEST DETAILS

Dollar amounts are estimates and subject to change

- **\$5.4 million of \$143 million in campus support**
- **1,049 students supported by incentive grants**

WHAT'S AT STAKE?

A fully funded request will:

- Provide continued investment in services to improve student retention and completion, especially through academic pathways, reducing the time for students to attain their degree and enter the workforce or transfer.
- Provide continued investment in new program development in high-demand fields such as manufacturing, healthcare, and IT.

Not fully funding the request will:

- Limit our ability to develop and offer new academic programs.
- Negatively impact direct services to students. Few other options are available as we have cut and reallocated \$13 million in the past five years, resulting in the elimination of 125 employee positions.

2017 CAPITAL REQUEST

- **\$7.8 million in asset preservation**
- **\$5.5 million for an Applied Technology Center (east campus)**
- System Priority #13

ABOUT THE COLLEGE

Century College is a two-year community and technical college offering degrees, diplomas, certificates, and courses in general education and transfer, business, human services, health sciences, technology, engineering, applied design, industrial, and non-credit workforce training.

SERVICE TO MINNESOTA

- Lead college on the national Hope Consortium, a collaboration bringing innovation and highly trained employees to the orthotics and prosthetics industry.
- Strengthening the pipeline to post-secondary education and expanding concurrent enrollment, this year adding 15 courses and serving more than 600 students.
- Reducing the time needed for students to complete their degree by redesigning developmental education and streamlining academic

programming, which improves student success.

- Connecting hundreds of student interns to area businesses and making more than 1,900 service learning placements in local organizations. Students contribute 37,000 hours of service to their communities.

PARTNERSHIPS

- **International Paper, Owens Corning, and Mission Foods:** Among 20 manufacturing companies working with Century College through the Minnesota Jobs Skills Partnership program to deliver automation skill-based training.
- **Neighborhood House, Hmong American Partnership, and Resource Inc.:** Partnering with the college and local manufacturers to provide pathways to employment.
- **FedEx:** Contributes financial gifts, hires students, provides scholarships, and participates on the Century College Foundation board.

A FEW WORDS FROM A STUDENT



"The affordable tuition rate really helped me make the decision to go to Century College... [My future plan] is to become a police officer. I get my energy from the community and being a part of it. [As a police officer] I would be protecting my community and serving them."

- Eluid Garcia, Student,
Century College



DAKOTA COUNTY
TECHNICAL COLLEGE



Location:
Rosemount



MINNESOTA STATE

dctc.edu | Tim Wynes, President

FY16 Student Profile: 9,342 Total Students Served | 30% Pell Eligible | 21% Students of Color

REQUEST DETAILS

Dollar amounts are estimates and subject to change

- \$2.6 million of \$143 million in campus support
- 316 students supported by incentive grants

WHAT'S AT STAKE?

A fully funded request will:

- Continue to meet student and employer needs for technology-rich educational opportunities, including emerging industries that employ energy technicians, civil technicians, and information technology professionals.
- Invest in student success to meet identified educational services including veteran services, learning center, and the library.

Not fully funding the request will:

- Limit ability to develop new programs in response to the needs of business and industry.
- Jeopardize occupational programs, possibly resulting in the closure of up to three programs that provide skilled talent to Minnesota's workforce.

2017 CAPITAL REQUEST

- \$2.7 million in asset preservation

ABOUT THE COLLEGE

Dakota County Technical College (DCTC) provides high-quality education that prepares students for rewarding careers in a variety of technical fields including automotive technician, electrical lineworker, HVAC, and heavy duty truck technology.

SERVICE TO MINNESOTA

- We serve high school students with college potential through Upward Bound, a program funded by the U.S. Department of Education. Upward Bound assists high school students with graduation requirements while preparing them for enrollment in and completion of postsecondary education.
- 81% of graduates are employed in a field related to their study (2014).
- A network of student support services provides resources for students to thrive academically and become contributing members of the workforce.

PARTNERSHIPS

- **Zeigler Caterpillar, Xcel Energy, RDO (largest John Deere dealer), Luther Automotive Group, Raytheon, General Motors, and Hysitron:** Provide crucial industry insight for creating program curriculum that meets workforce needs and often provide job placement opportunities for graduates.
- **Apple Valley High School:** E3 STEM provides students in grades 10-13 the opportunity to explore technical career pathways through career counseling and work-based experiences.
- **Dakota County Workforce Center:** Partners with DCTC, Inver Hills, and Metro State to best serve Dakota and Scott counties' workforce needs.
- **Douglas Differt Difference Makers:** Endowed scholarship for students studying Science, Technology, Engineering, and Mathematics with the goal of refining career pathways so graduates have the skills to compete in a global marketplace.

A FEW WORDS FROM A BUSINESS PARTNER



"The quality of graduates from this [DCTC electric lineworkers] program is outstanding. We bring in recent DCTC graduates to intern, and quite often our operations supervisors say our interns are excellent, are more mature, and are ready to transition to having a career."

- Greg Miller, CEO and President,
Dakota Electric Association



fdltcc.edu | Larry Anderson, President

FY16 Student Profile: **3,389** Total Students Served | **28%** Pell Eligible | **22%** Students of Color

REQUEST DETAILS

Dollar amounts are estimates and subject to change

- \$1.2 million of \$143 million in campus support
- 176 students supported by incentive grants

WHAT'S AT STAKE?

A fully funded request will:

- Support programming for at-risk students, particularly intrusive advising programs that require hands-on staffing such as our Nandagikendan (Seek to Learn) Academies for high school students entering college, transfer students, and staffing for our learning communities: Weekend College, DegreeMe, and the Academic Excellence Academy.

Not fully funding the request will:

- Threaten retention and completion initiatives for at-risk college and high school students, including staffing essential to carrying out the work.

2017 CAPITAL REQUEST

- \$220,000 in asset preservation

ABOUT THE COLLEGE

Fond du Lac Tribal and Community College (FDLTCC) brings together a tribal college and state community college. We offer a postsecondary education to honor the past, for those living in the present and dreaming the future through a spirit of respect, cooperation, and unity. We provide postsecondary education in a culturally diverse, welcoming environment, and we look forward to the new opportunities ahead.

SERVICE TO MINNESOTA

- The college has added more than 1,200 graduates to our region the past five years, more than 200 of whom are American Indians.
- We annually graduate more than fifty law enforcement students who enter careers in public safety and protection.
- We offer Environmental Institute programs, including research and land grant extension education featuring a STEM emphasis.

PARTNERSHIPS

- **Fond du Lac Band of Lake Superior Chippewa:** Partnership ranging from student preparation to curriculum to employment and occupational training.
- **Sappi Fine Paper:** FDLTCC supports training for 560 paper mill employees in a Knowledge Management and Training System.
- **Inter-Faith Training Center:** Trains 150 employees to increase skills and positively impact quality of residents' care.
- **Mille Lacs Band of Ojibwe:** Provides academic outreach and occupational training via ITV and on-site training.
- **Carlton, Fond du Lac Ojibwe, and South Ridge High Schools:** FDLTCC provides College Bound and College Connect, college preparation programs for students who otherwise would not have access to an introduction to postsecondary education.

A FEW WORDS FROM AN ALUMNA



"I would like to give praise to the incredible diversity the college offers. I also would like to thank all the faculty and staff who helped me whenever I was in need, even the littlest question was treated with respect and kindness. It was an amazing experience for me, considering I am not a traditional age student."

- Carrie Kulas, Alumna, Class of 2016,
Fond du Lac Tribal and Community College



Hennepin Technical College™



Locations:
Brooklyn Park
Eden Prairie



hennepintech.edu | Merrill Irving Jr., President

FY16 Student Profile: 18,532 Total Students Served | 44% Pell Eligible | 43% Students of Color

REQUEST DETAILS

Dollar amounts are estimates and subject to change

- \$4.9 million of \$143 million in campus support
- 727 students supported by incentive grants

WHAT'S AT STAKE?

A fully funded request will:

- Ensure continued investment in student support initiatives to meet identified educational goals, including veteran services and retooling the workforce to meet current market needs.
- Support services to improve completion rates and accelerate time to completion.

Not fully funding the request will:

- Result in a reduction in the investment of instructional equipment and critical preventive facility maintenance, and a reduction in the development of new programs.
- Jeopardize technical program offerings.
- Adversely impact dual enrollment/PSEO programs by decreasing access.

ABOUT THE COLLEGE

Hennepin Technical College (HTC) is the largest stand-alone technical college of higher education in Minnesota. We offer more than 45 high-quality programs that provide a gateway to promising futures for students from diverse backgrounds, many of whom are first generation and lower income. We build communities, individuals, and families by reducing the skills gap and raising the knowledge and expertise of our students as evidenced by our 98% job placement rate.

SERVICE TO MINNESOTA

- The college has the largest customized training and business solutions division in Minnesota that addresses business and industry needs.
- Multi-partner community-based agreements work to reduce youth violence, increase high school graduation rates, and increase college enrollment.
- M-Powered, a fast-track, industry standard training in CNC lathe/mill and precision

metalforming, continues to prepare men and women from diverse backgrounds for manufacturing careers with life-sustaining wages and benefits, as well as opportunities for continued advancement.

PARTNERSHIPS

- **Twin Cities RISE, Metro Transit and Metropolitan Council:** Develop and design a unique Metro Transit technician program to reduce the mechanic labor shortage.
- **Ford ASSET:** Innovative Ford sponsored program uniquely combines automotive training and internship experiences at sponsoring dealerships.
- **Imagine!:** Develop and deliver courses to 196 employees at the Imagine! MN headquarters.
- **Great Lakes Higher Education Guaranty Corporation:** Foster relationships with organizations building tomorrow's workforce by establishing 66 paid internships that will support classroom learning, build employment skills, and provide students real-world experience.

2017 CAPITAL REQUEST

- \$5.4 million in asset preservation

A FEW WORDS FROM A STUDENT



"The [metro transit bus maintenance technician] program makes me feel good about myself. It gives me a better outlook on life. This is the best decision I have ever made. I can raise a family and retire with a pension"

- Marques Solomon, Student,
Hennepin Technical College



Location:
Inver Grove Heights



inverhills.edu | Tim Wynes, President

FY16 Student Profile: 15,599 Total Students Served | 30% Pell Eligible | 31% Students of Color

REQUEST DETAILS

Dollar amounts are estimates and subject to change

- \$3.1 million of \$143 million in campus support
- 540 students supported by incentive grants

WHAT'S AT STAKE?

A fully funded request will:

- Continue investment in student success to meet identified educational goals, including veteran services and retooling adult learners to current workforce needs.
- Expand and strengthen STEM course offerings, supporting transfer initiatives and workforce talent demands.
- Help close the achievement gap for students of color and at-risk students.

Not fully funding the request will:

- Reduce course offerings, causing a delay in students' ability to graduate.
- Limit purchase of instructional equipment necessary to keep programs on the cutting edge.

ABOUT THE COLLEGE

Inver Hills Community College offers nearly 40 degree options, including an AA with nine emphasis areas, an AS and an AAS, as well as an AFA in art, theatre, and music. Nursing and EMS are flagship programs. In 2016, we were recognized nationally for providing exemplary service to military veterans and adult learners.

SERVICE TO MINNESOTA

- Minnesota Training Connection delivers high-quality, responsive technical/professional education customized for nonprofits, private businesses, and government agencies.
- TRIO SSS provides support to first-generation college students, students from low-income families, and students with disabilities.
- The Center for Experiential Learning and the Inver Hills Foundation continue to create internships for students.
- Student success is fostered through established, student-focused events, as well as full-

service, on-campus counseling and advising. Our institutional research department provides data and analyses to support planning and policy development.

PARTNERSHIPS

- **Dakota County Burnsville WorkForce Center:** Provides support for the South of the River Education Center.
- **Goodwill/Easter Seals Minnesota via the Career Navigator program:** Provide one-on-one academic and career guidance.
- **Travelers via the Travelers EDGE program:** Provides scholarships and internships.
- **CHS via the Agricultural Sciences Pipeline program:** Spotlights careers in agriculture.
- **Douglas Differt Difference Makers:** Endowed scholarship for students studying Science, Technology, Engineering, and Mathematics with the goal of refining career pathways so graduates have the skills to compete in a global marketplace.

2017 CAPITAL REQUEST

- \$3.5 million in asset preservation
- \$1 million for a Technology and Business Center (Design) - System Priority #16

A FEW WORDS FROM A STUDENT



"I am a first-generation college student. My plan is to transfer to the U of M or UND to earn a BS in civil engineering, gain in experience working here and then return to Haiti. I want to serve as a bridge between the U.S. and my homeland."

- Jean Donald Douglas, Student & 2010 Haiti Earthquake Survivor, Inver Hills Community College



Location:
Duluth



lsc.edu | Patrick Johns, President

FY16 Student Profile: 11,315 Total Students Served | 26% Pell Eligible | 12% Students of Color

REQUEST DETAILS

Dollar amounts are estimates and subject to change

- \$3.4 million of \$143 million in campus support
- 405 students supported by incentive grants

WHAT'S AT STAKE?

A fully funded request will:

- Provide students continued access to affordable tuition.
- Maintain staff and services in student support functions.
- Ensure technology replacement continues to meet student needs.
- Continue initiatives on campus that benefit underrepresented, diverse, first-generation, and other historically disadvantaged at-risk students.

Not fully funding the request will:

- Result in staff and faculty reductions.
- Postpone efforts to develop new academic programming in emerging high-demand, high-wage fields.

ABOUT THE COLLEGE

Lake Superior College offers a fully transferable AA degree and more than 60 career-oriented technical certificate, diploma, and degree programs, including aviation, nursing and healthcare specialties, manufacturing, and IT. We also provide workforce training and continuing education for business and industry.

SERVICE TO MINNESOTA

- We address workforce needs for aviation maintenance technicians with AAR Aircraft Services.
- We provide training and services for women interested in construction or truck-driving careers with the City of Duluth, the WorkForce Center, SOAR Career Solutions, and Adult Basic Education.
- We partner with healthcare providers and K-12 schools to provide summer career camps in nursing, cybersecurity, aviation, robotics, and more.
- We serve as a National Security Agency/Department of Homeland Security Center of

Academic Excellence in Cyber Defense, offering a network administration and cybersecurity degree with a transfer agreement to complete a bachelor's degree.

- We offer a practical nursing degree in six months for veterans with military medic training.

PARTNERSHIPS

- **MnDOT Technical Certification program:** We provide statewide construction competency and safety training to personnel working on bridges and roads.
- **Enbridge Energy Partners:** We provide industrial fire and safety training to a major oil and gas employer.
- **Essentia Health and St. Luke's Health Care System:** We provide crucial training such as health certifications, refresher coursework, and clinical partnerships.
- **Area Partnership for Economic Expansion (APEX):** We partner to promote economic and talent development in the region via engagement with local businesses.

2017 CAPITAL REQUEST

- \$1.4 million in asset preservation

A FEW WORDS FROM AN ALUMNA



"As a Property Services Specialist for the city of Duluth, I work on lease and license agreements, resolve property and title issues, and acquire and sell real estate for the city of Duluth. I use my paralegal education from Lake Superior College every day at work."

- Danielle Erjavec, Alumna, Paralegal Certificate at Lake Superior College at 29, LSC Student of the Year



FY16 Student Profile: 11,836 Total Students Served | 42% Pell Eligible | 40% Students of Color

REQUEST DETAILS

Dollar amounts are estimates and subject to change

- **\$6.2 million of \$143 million in campus support**
- **1,018 students supported by incentive grants**

WHAT'S AT STAKE?

A fully funded request will:

- Support more courses that students seek in high-demand fields—cybersecurity, biology, finance, computer science, nursing, law enforcement, and accounting.
- Expand online programs.
- Support the needed expansion of high-demand STEM programs, building on the opening of our Science Education Center.

Not fully funding the request will:

- Result in fewer sections of high-demand major courses, which could delay students' graduation and increase student debt.
- Further delay filling critical faculty and advising positions, slowing students' degree progress and increasing their debt load.

2017 CAPITAL REQUEST

- **\$700,000 in asset preservation**

ABOUT THE UNIVERSITY

Metropolitan State University (Metro State) offers bachelor's, master's, and doctoral programs to transfer and returning students across the metro region and online. Our students have access to experiential instruction and convenient program delivery enriched by a diverse environment, community engagement, and service learning.

SERVICE TO MINNESOTA

- We offer dual admission programs for new students, as well as on-site bachelor's degree completion programs and student services for community college students.
- We enlist practitioner faculty with current professional experience to prepare students for fields with strong demand for talent, like cyber-security.
- Our faculty prepare diverse classes of students to close the impending talent gap in the state. Small classes and diverse faculty and staff create a campus climate that keeps students from Minnesota's

growing underrepresented communities engaged to complete their programs.

- Student and industry demand for nursing graduates have made our BSN program the second largest in the state. MSN and DNP programs prepare high-demand nursing managers and faculty.

PARTNERSHIPS

- **Children's Minnesota, Hennepin County Medical Center, Mercy Hospital, Regions Hospital, Unity Hospital, VA Medical Center:** Offer clinical sites for nursing students.
- **The Nerderly, LogicPD, Maverick Software Consulting, Veritas Technologies, Black Data Processing Associates, MN High-Tech Association, Blue Cross Blue Shield, Thomson Reuters, Unisys, and Microsoft:** Regularly work with the Advance IT MN Center of Excellence.
- **Travelers EDGE Program:** Provides career guidance, internships, job-shadowing, and scholarships for students interested in insurance and risk management industries.

A FEW WORDS FROM AN ALUMNUS



"I was deputy director of the civil rights department at the city of Minneapolis and I had a lot of credits, but didn't have a degree. Metropolitan State walked me through the courses that I would have to take to graduate. It is a powerful moment when you can see the path going forward."

- Gary Cunningham, Alumnus,
President and CEO of MEDA



Location:
Minneapolis

minneapolis.edu | Sharon Pierce, President

FY16 Student Profile: 13,511 Total Students Served | 50% Pell Eligible | 56% Students of Color

REQUEST DETAILS

Dollar amounts are estimates and subject to change

- \$5.4 million of \$143 million in campus support
- 1,239 students supported by incentive grants

WHAT'S AT STAKE?

A fully funded request will:

- Continue to funnel diverse, highly qualified individuals into Minnesota's workforce in high-wage earning, high-demand fields.
- Allow continued service as the only open access college in Minneapolis.

Not fully funding the request will:

- Impair our ability to contribute graduates to the 74% of jobs in MN estimated to require some post-secondary credentials by 2020.
- Impair our ability to help bridge the state's employment gap with underrepresented students that constitute the majority of its student body.
- Place us at financial risk.

2017 CAPITAL REQUEST

- \$4.4 million in asset preservation
- \$4.5 million for Hennepin Skyway Renovation - System Priority #18

ABOUT THE COLLEGE

As a comprehensive public community and technical college, Minneapolis Community & Technical College (MCTC) offers 110 credentials in 44 liberal arts and career and technical programs. We have strong ties to corporate and industry partners that help fund student scholarships, provide state-of-the-art training and equipment, and offer internship and employment opportunities.

SERVICE TO MINNESOTA

- Destination: Diploma to Degree (D3), PSEO, TRiO and concurrent enrollment programs serve high school students from underserved communities.
- We contribute greatly to economic security for the city by providing skilled workforce for in-demand fields such as our welding and metal fabrication and CNC machining programs, providing 100% placement for job-seekers. In some cases, work is available while in school with tuition reimbursement and top earning potential.

- We provide assistance for transit, meals, clothing, and childcare. Expanded healthcare offerings supporting student success and retention.

PARTNERSHIPS

- **Graco, Target, Hennepin County, Hennepin County Medical Center, Fairview Health Services, Children's Hospital, Augustana:** Actively recruit and hire graduates.
- **Minneapolis Public Schools, Hennepin County, Northside Achievement Zone, YouthLink, local workforce centers, local employers, and Project for Pride in Living:** Support the tripartite goal of increased retention, sustainability, and relevancy with resources for guided pathways to living-wage employment and four-year degrees.
- **The Power of YOU:** Free college program that boosts college-going behavior in Minneapolis and increases a student's odds of successfully completing college by as much as 67%.

A FEW WORDS FROM A STUDENT



"MCTC has made it easier for me to realize my dream of being the first in my family to graduate. The low cost gives me the opportunity to go to school without having to borrow. I have been able to choose my schedule so that I can work and study at the same time. The MCTC location is very convenient because I can arrive by car, bicycle or bus from my house."

- Estefania Navarro, Student and Star Scholar Advisor, Minneapolis Community & Technical College



Locations:
Red Wing
Winona



southeastmn.edu | Dorothy Duran, President

FY16 Student Profile: 4,618 Total Students Served | 35% Pell Eligible | 14% Students of Color

REQUEST DETAILS

Dollar amounts are estimates and subject to change

- \$2 million of \$143 million in campus support
- 228 students supported by incentive grants

WHAT'S AT STAKE?

A fully funded request will:

- Maintain academic quality, including the technology necessary to ensure students learn relevant skills.
- Allow for more dedicated student services staff to support retention and student outcomes.
- Expand recruitment opportunities in an increasingly competitive environment.
- Provide direct financial support to students in immediate, serious need through incentive grants.

Not fully funding the request will:

- Delay or reduce maintenance and facility upgrades needed to ensure a safe, effective learning environment.
- Divert critical funding from instruction and student support services to basic college operations.
- Result in further staff reductions to an already stressed employee pool.

2017 CAPITAL REQUEST

- \$2.8 million in asset preservation

ABOUT THE COLLEGE

Minnesota State College Southeast (MSCS) prides itself in being a friendly, student-centered college. Whether a recent high school graduate or an adult seeking to upgrade skills, every student is important. Among our largest programs are two of our most unique: band instrument repair and guitar repair and building.

SERVICE TO MINNESOTA

- Our mission is to provide education for employment, skill enhancement, retraining, and transfer.
- By working closely with business and industry leaders through program advisory committees, we stay current with the equipment and skills needed to place successful graduates in the regional workforce.
- Our new associate of arts degree expands our mission beyond technical education and allows students to complete a transferable two-year degree.
- A recent study by the Wilder

Foundation estimated our economic impact on the regional economy to be \$69 million and 848 jobs, generating \$4 million in state and local tax revenue.

PARTNERSHIPS

- **Southeast Perkins IV Regional Consortium:** A major player in developing partnerships with regional schools.
- **Every Hand Joined:** A cradle-to-career project designed to ensure at-risk students are recognized and supported.
- **Red Wing Manufacturers Association:** Partner to develop skilled manufacturing workforce.
- **Project FINE:** Reaches ethnically diverse populations through education, information, and resources.
- **7Rivers Alliance:** A tri-state leadership council dedicated to regional economic growth by fostering collaboration in Southwest Wisconsin, Southeast Minnesota, and Northeast Iowa.

A FEW WORDS FROM AN ALUMNA



"Southeast helped me realize I could achieve my goal. I knew I did the right thing when I got my first A. At that point I knew I could make a change for the better. "

- Jacki Swagger, Medical Support Careers Alumna
(Current title Health Unit Coordinator, St. Mary's Hospital, Rochester)



Locations:
Fergus Falls, Detroit Lakes,
Moorhead, Wadena



minnesota.edu | Peggy Kennedy, President

FY16 Student Profile: 13,544 Total Students Served | 36% Pell Eligible | 16% Students of Color

REQUEST DETAILS

Dollar amounts are estimates and subject to change

- \$4.9 million of \$143 million in campus support
- 740 students supported by incentive grants

WHAT'S AT STAKE?

A fully funded request will:

- Develop new programs needed by regional health care and manufacturing industries.
- Expand workforce development services offerings to train the incumbent workforce and new Americans.

Not fully funding the request will:

- Require M State to further review academic programs and student services, possibly resulting in the elimination or reduction of programs critical to the region.
- Require vacancies to remain unfilled, thereby impacting our ability to serve our students and the region.

ABOUT THE COLLEGE

Minnesota State Community and Technical College (M State) offers 70 career and liberal arts degrees and certificates, including unique programs such as gas utility construction and service, equine science, power sports technology, dialysis technician, cardiovascular technology, and music.

SERVICE TO MINNESOTA

- The college creates and delivers on-site certifications in areas such as soft skills, diversity training, and supervisory leadership.
- We deliver free workplace readiness classes for new Americans in the Fargo-Moorhead region.
- We have developed new programs to ensure alignment with regional workforce needs.
- We annually serve more than 1,700 students earning college credit through M State's NACEP-accredited concurrent enrollment program.
- We deliver courses through

eCampus in the High School, a unique online concurrent enrollment program.

- We expanded nursing assistant training in high schools.

PARTNERSHIPS

- **American Crystal Sugar:** We offer training in a variety of skill areas and delivering a 16-credit industrial workforce certificate to employees.
- **Marvin Windows:** We provide on-site skills-based training to employees.
- **United Way of Cass Clay and Lakes and Prairie Community and Action Partnership:** We provide an occupational workforce readiness certificate and welding certificate.
- **North Star Electric Cooperative and Baudette Economic Development:** We deliver a full electrical line worker technology program.
- **Essentia, Ecumen, Sanford, Lake Regions and Tri-County Hospitals:** Provide funds for capital projects and student scholarships.

2017 CAPITAL REQUEST

- \$2.2 million in asset preservation
- 978,000 for Center for Workforce Success - System Priority #3
- \$820,000 for Library and Student Development Renovation - System Priority #4

A FEW WORDS FROM AN ALUMNA



"Not everyone knows what they want to do right out of high school, and that is okay. M State was a second chance at completing my college degree but, more importantly, it was an education that I was excited about for the first time."

-Erin Fischer, 2016 alumna,
Graphic Design Technology



mnsu.edu | Richard Davenport, President

FY16 Student Profile: 20,246 Total Students Served | 24% Pell Eligible | 15% Students of Color

REQUEST DETAILS

Dollar amounts are estimates and subject to change

- \$13.1 million of \$143 million in campus support
- 822 students supported by incentive grants

WHAT'S AT STAKE?

A fully funded request will:

- Continue work to meet the increasing demand for an educated workforce needed to fuel the growing regional and state economy while providing affordable access to higher education for Minnesotans.

Not fully funding the request will:

- Result in possible cost reduction measures that would encompass all financial, physical, and human resources. Such reductions could lead to decreased access and affordability.

ABOUT THE UNIVERSITY

Since its founding in 1868, Minnesota State University, Mankato, has been an institution where real-world thinking helps students transform their big ideas into rewarding futures. It is the second largest public university in Minnesota, with 140 undergraduate, 80 graduate, and five doctoral programs. The faculty, staff, and students at Minnesota State Mankato are committed to finding solutions that make life better for people throughout our state, our region, and our world.

SERVICE TO MINNESOTA

- Maverick Software Consulting provides real-world experience to dozens of Information Technology and Computer Engineering students each year.
- The Minnesota Educators Partnership, a consortium of 10 partner school districts and the College of Education, works to advance student success from pre-K through college.

- The MavCLASS app, which launched in 2016, is a student success tool that alerts learners via mobile devices to important deadlines and campus events.
- Future Maverick partnerships with South Central College and Riverland Community College create seamless transfer pathways for students.

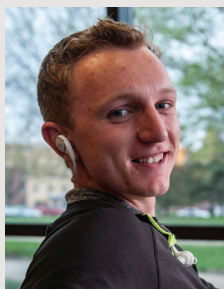
PARTNERSHIPS

- **Open Door Health Center:** A non-profit community health center where dental hygiene students learn real-world skills as they provide care to patients of all ages.
- **Minnesota Corn Growers Association:** Works with the automotive and manufacturing engineering technology department to research expanded uses for ethanol.
- **Bolton & Menk:** An engineering and infrastructure company that mentors civil engineering students as they complete their senior projects.

2017 CAPITAL REQUEST

- \$1.9 million in asset preservation
- \$6.5 million for Clinical Sciences Phase II - System Priority #11

A FEW WORDS FROM A STUDENT



"Minnesota State Mankato supplies its students with countless valuable opportunities—whether it be starting a business with your Integrated Business Experience classmates in a low-risk environment, leading 30-40 new students as a Community Advisor during their transition to college, or joining a club or organization that presents critical values, beliefs, and support."

- Harley Ries, Student,
Minnesota State University, Mankato



Location:
Moorhead



mnstate.edu | Anne Blackhurst, President

FY16 Student Profile: 6,983 Total Students Served | 26% Pell Eligible | 10% Students of Color

REQUEST DETAILS

Dollar amounts are estimates and subject to change

- \$7.1 of \$143 million in campus support
- 306 students supported by incentive grants

WHAT'S AT STAKE?

A fully funded request will:

- Offset general inflation costs and preserve our ability to meet critical workforce and community needs at a time when education is more necessary than ever to the economic and social well-being of our region.

Not fully funding the request will:

- Result in a budget reduction that will limit the course sections available to students and potentially delay graduation, jeopardize critical academic and student support services necessary to recruit and serve the needs of an increasingly diverse student body, defer investments in technology and equipment that support our high quality academic environment, and defer facilities work critical to safety, security, and operational efficiencies.

2017 CAPITAL REQUEST

- \$5.9 million in asset preservation
- \$775,000 for Weld Hall Renovation (Design) - System Priority #15

ABOUT THE UNIVERSITY

MSU Moorhead offers a tradition in the liberal arts combined with innovation and technology for today's challenging careers. Several graduate programs are included the 2016 U.S. News & World Report Best Online Programs rankings. Faculty establish close relationships with students and take pride in teaching, receiving more Carnegie Professors of the Year awards than any higher education institution in the five-state area.

SERVICE TO MINNESOTA

- We offer online programs for high school teachers to earn advanced degrees for teaching college classes within their high school.
- Hundreds of high school students from across the region participate in field research at our Regional Science Center.
- Our faculty partner with John Deere engineers to mentor a high school robotics team.
- Lakes Country Service Cooperative holds classes for its

alternative high school in space leased on our campus.

- Hearing screenings are offered by speech language and hearing sciences students in regional high schools, child care centers, and senior centers.
- Hundreds of K-12 students learn about astronomy at the our planetarium each year.

PARTNERSHIPS

- **Microsoft:** The third largest Microsoft campus is in Fargo-Moorhead, and through several partnerships, students become sought-after applicants for technology careers.
- **Moorhead Economic Development Authority and Moorhead Business Association:** We are an active member in downtown redevelopment.
- **Greater Fargo-Moorhead Economic Development Corporation:** Collaborates for listening sessions with key business/industry sectors.

A FEW WORDS FROM A STUDENT



"I didn't have the perfect high school experience. But through all the people I've met and all I've been involved in, MSUM has given me the best possible college experience. I'm thankful for how my experience has transformed me."

- Macie Miller, Student (project manager, Mound MN), Minnesota State University Moorhead



Locations:
**Canby, Granite Falls,
Jackson, Pipestone, Worthington**



mnwest.edu | Terry Gaalswyk, President

FY16 Student Profile: 10,107 Total Students Served | 28% Pell Eligible | 18% Students of Color

REQUEST DETAILS

Dollar amounts are estimates and subject to change

- **\$2.8 million of \$143 million in campus support**
- **285 students supported by incentive grants**

WHAT'S AT STAKE?

A fully funded request will:

- Expand and revitalize programming in manufacturing, healthcare, and STEM related areas in response to workforce demands.
- Expand career pathways in partnership with local industry and high schools to meet employment needs and fill the skills gap.
- Provide additional education and career support for students from diverse backgrounds, particularly in the Worthington area, the second most diverse community in greater MN.

Not fully funding the request will:

- Stall investments in new programming to meet the needs of employers in southwest MN.
- Cause continued deterioration in the condition of our facilities.

2017 CAPITAL REQUEST

- **\$1.8 million in asset preservation**

ABOUT THE COLLEGE

Minnesota West Community & Technical College (Minnesota West) has five campuses and two learning centers offering more than 60 majors online and on-campus. Named a top 150 college in the nation by the Aspen Institute, we are an educational leader in allied health, agriculture, energy, and manufacturing programs, as well as online education.

SERVICE TO MINNESOTA

- 83% of our graduates live, work, and contribute to Minnesota.
- President's Advisory Committee collaborates with business/workforce leaders to meet workforce demands with technical-based programming.
- We offer accessibility to students through multiple class delivery options such as online, on-campus, and hybrid courses.
- We have strong ties with high schools through the NACEP accreditation program, partnering with 52 high schools

and serving nearly 900 students last year for concurrent and dual enrollment courses.

- Service and success in our students is demonstrated by our graduation and persistence rates.

PARTNERSHIPS

- **JBS, Monogram Meat Snacks, Chandler Industries, Schwan's Global Food Chain, Bedford Industries, Toro Windom Plant, AGCO Jackson Plant, Ziegler, and SW MN Workforce Partner:** Develop long-term training partnerships that include workforce development, extended equipment purchases, and academic advising that have ensured more than 1500 employees are receiving updated and relevant training.
- **Nobles County Integration Collaborative, SW MN Adult Basic Education, Bremer Foundation, K-12 partners:** Offer joint programming, services to students, opportunity for educational growth, and workforce connections.

A FEW WORDS FROM A STUDENT



"Minnesota West is preparing me for my career pathway to nursing with hands-on learning as well as, opportunities through work-study to helping me reach my goals!"

- Nancy Phongkeo, Nursing Student,
Minnesota West Community & Technical College



NORMANDALE
COMMUNITY COLLEGE



Location:
Bloomington



MINNESOTA STATE

normandale.edu | Joyce Ester, President

FY16 Student Profile: 17,771 Total Students Served | 30% Pell Eligible | 35% Students of Color

REQUEST DETAILS

Dollar amounts are estimates and subject to change

- **\$4.9 of \$143 million in campus support**
- **966 students supported by incentive grants**

WHAT'S AT STAKE?

A fully funded request will:

- Provide support for moving our advisor-to-student ratio from 856-to-1 closer to the national average of 296-to-1 to better serve students.
- Create opportunities to provide accelerated development courses that help students develop college success skills.

Not fully funding the request will:

- Result in reduced availability of advising and other student support services, slowing student progress toward degree completion.
- Require balancing building repairs with other critical academic and student support functions.

2017 CAPITAL REQUEST

- **\$4.8 million in asset preservation**
- **\$1.1 million for Classroom & Student Services Renovation Project (Design) - System Priority #14**

ABOUT THE COLLEGE

Normandale Community College provides two-year degrees and certificates, is a top transfer school for Minnesota four-year colleges and universities, and partners with Minnesota State University, Mankato, Metropolitan State University, and Southwest Minnesota State University to offer bachelor's and master's degrees on campus.

SERVICE TO MINNESOTA

- Developmental education to prepare students for college-level work.
- Partnerships with area high schools to offer PSEO, concurrent enrollment, articulated credit, and other opportunities.
- Programs are closely tied to local, state and federal workforce agencies to leverage economic development resources.
- We strive to ensure education and training is aligned with the state's changing economy.

PARTNERSHIPS

- **The Donaldson Company:** Contributes scholarships to our Academy of Math and Science, which provides a financial and advising support system for students pursuing STEM fields.
- **The Otto Bremer Foundation's Finish Line Program:** Provide support, experiences, and wrap-around services to encourage degree completion at the post-secondary level.
- **HIRED (via the Carlson Family Foundation):** Our partner to provide Optimizing Talent and Opportunities, a program for un- and underemployed workers interested in management positions in the hospitality industry.
- **ReSound, a Bloomington-based hearing-aid manufacturer:** We work to develop courses that enhance company growth and help ReSound prepare mentors, coaches, and trainers within the organization.

A FEW WORDS FROM AN ALUMNA



"While I was at Normandale, I became much more than I ever imagined I would be. I am living my dream because I was continually told by Normandale mentors that I could do it. They never doubted my success. I will be forever thankful to my Normandale support team."

- Olya Homonchuk, Alumna and 2013 Jack Kent Scholar,
Currently Attending the University of Oxford



North Hennepin
Community College



Location:
Brooklyn Park



MINNESOTA STATE

nhcc.edu | Barbara McDonald, President

FY16 Student Profile: 10,424 Total Students Served | 41% Pell Eligible | 46% Students of Color

REQUEST DETAILS

Dollar amounts are estimates and subject to change

- **\$3.6 million of \$143 million in campus support**
- **888 students supported by incentive grants**

WHAT'S AT STAKE?

A fully funded request will:

- Positively impact our goals of closing the opportunity gap and advancing completion, transfer, and baccalaureate degree attainment.
- Maintain campus facilities, technology, and other essential services that ensure student retention and success.
- Allow for innovation and program development to support Minnesota's workforce needs.

Not fully funding the request will:

- Result in elimination of programs and services to students, threatening student completion and success rates.
- Cause further layoffs and jeopardize our ability to deliver quality programs and services.

2017 CAPITAL REQUEST

- **\$3.1 million in asset preservation**

ABOUT THE COLLEGE

North Hennepin Community College (NHCC) has been engaging students and changing lives for 50 years. We offer nearly 70 associate degrees and certificates designed to transfer to four-year universities or prepare students for the workplace, as well as bachelor's degrees through university partnerships on campus.

SERVICE TO MINNESOTA

- The college has been proclaimed a Yellow Ribbon Company, reinforcing our commitment to being a military-friendly campus.
- We have launched initiatives to help close the achievement gap, including the Excellence in Education with Equity program, focused on replicating proven classroom strategies that close the achievement gap.
- We are increasing baccalaureate-prepared graduates going into the workforce by delivering 12 bachelor degree programs on campus via partnerships with four-year universities with 10

more programs scheduled by the fall of 2018.

- We launched a new human services program to address talent demand.
- We collaborate with seven high schools to offer concurrent enrollment courses.

PARTNERSHIPS

- **METRO Blue Line Extension:** Collaborate on light rail plans that will provide accessibility to the college beginning 2021.
- **Hennepin County Leadership Workforce Council, The Manufacturers Consortium, the North Hennepin Chamber of Commerce, the cities of Brooklyn Park, Brooklyn Center, and Maple Grove:** Collaboration to identify and address workforce needs that shape programming.
- **Brooklyn Bridge Alliance for Youth:** Collaboration to narrow the achievement gap of underrepresented students.
- **More than 20 K-12 districts:** Participation in PSEO programming with NHCC.

A FEW WORDS FROM A FACULTY MEMBER



"I have created an opportunity for 'at-risk' students to take ownership of their learning. Each voluntary member of this program focuses as much on practicing positive student behaviors as they do on content mastery. They have exceeded their own expectations!"

- Lisa Smith, Chemistry Faculty,
North Hennepin Community College



Northeast Higher Education District

Member of Minnesota State Colleges and Universities



Locations:
Ely, Eveleth,
Grand Rapids, Hibbing,
International Falls, Virginia

nhed.edu | Bill Maki, President



MINNESOTA STATE

FY16 Student Profile: 16,560 Total Students Served | 38% Pell Eligible | 15% Students of Color

REQUEST DETAILS

Dollar amounts are estimates and subject to change

- \$4.8 million of \$143 million in campus support
- 676 students supported by incentive grants

WHAT'S AT STAKE?

A fully funded request will:

- Ensure quality access to higher education can be provided in a 13,000 square mile rural landscape that has an economically disadvantaged population.
- Replace leaky roofs that are well beyond life expectancy to mitigate interior damage through asset repair funding.
- Sustain financially viable colleges in northeastern MN through operational funding.

Not fully funding the request will:

- Significantly reduce the workforce and services provided to students.
- Continue deterioration of buildings and limit space for instructional use.

ABOUT NHED

The Northeast Higher Education District (NHED) is comprised of five, autonomous yet interdependent, two-year colleges in Northeast Minnesota: Hibbing Community College, Itasca Community College, Mesabi Range College, Rainy River Community College, and Vermilion Community College. Many NHED specialty programs focus on environmental fields and local industry. Our student success rate is 72% and the three-year graduation rate is 61%.

SERVICE TO MINNESOTA

- NHED has had the lead role in the Recharge the Range initiative by facilitating an educational and talent development work group that brings together private and public sectors.
- We have developed a new collective marketing strategy

and hiring a shared regional recruiter to reach out to larger population bases to increase student diversity.

- We provide college in the schools, including technical education opportunities to seventeen northeastern Minnesota school districts with 25 high schools.
- We have implemented best practices in intrusive advising, supplemental instruction, early alert systems, behavioral intervention, and learning communities to strengthen advising with the goal of increasing student success.
- We have implemented financial literacy programs with the goal of limiting student loan debt. Programming is administered from the point of entry in school to the point of loan repayment after graduation.

2017 CAPITAL REQUEST

- \$6.1 million in asset preservation (roof replacements - part of total NHED request)
- \$11.2 million for Campus Rightsizing at Hibbing Community College - System Priority #8





NOTE: Hibbing Community College is part of the Northeast Higher Education District (NHED).



hibbing.edu | Bill Maki, President

FY16 Student Profile: 11,701 Total Students Served | 46% Pell Eligible | 12% Students of Color

REQUEST DETAILS

Dollar amounts are estimates and subject to change

- \$4.8 million (as part of NHED) of \$143 million in campus support
- 202 students supported by incentive grants

WHAT'S AT STAKE?

A fully funded request will:

- Ensure quality access to higher education can be provided in a 13,000 square mile rural landscape that has an economically disadvantaged population.
- Replace leaky roofs well beyond life expectancy to mitigate interior damage through asset repair funding.
- Sustain financially viable colleges in northeastern MN through operational funding.

Not fully funding the request will:

- Significantly reduce the workforce and services provided to students.
- Continue deterioration of building and limit space for instructional use.

2017 CAPITAL REQUEST

- \$6.1 million in asset preservation (roof replacements - part of total NHED request)
- \$11.2 million for Campus Rightsizing - System Priority #8

ABOUT THE COLLEGE

Hibbing Community College (HCC) is a two-year comprehensive community college. We offer transfer options as well as a wide variety of career programs leading to immediate employment, including nursing, diesel mechanics, culinary arts, dental assisting, and automotive mechanics.

SERVICE TO MINNESOTA

- We consistently graduates students in technical programs serving local employers.
- We strive to create an inclusive and equitable environment from recruitment through retention and graduation, including implementation of best practices in course instruction and delivery to improve the student experience and success rates.
- We offer programs such as PSEO, College in the Schools, and Upward Bound to foster strong relationships with local high school students.

- We offer student success-focused programs on campus such as TRIO work to ensure students get the most out of their college experience.
- We prepare students for success in the classroom and their career through two campus leadership events, intrusive advising, financial literacy, and tools such as Strengths Quest.

PARTNERSHIPS

- **Fairview Range:** This comprehensive healthcare network provides grants, work opportunities, and more to healthcare programs.
- **Ziegler CAT:** Provides diesel mechanic students job opportunities.
- **Iron Range Resources and Rehabilitation Board:** State of Minnesota development agency located in Eveleth provides valuable support and resources to HCC in the form of collaborative partnerships and monetary grants.

A FEW WORDS FROM A STUDENT



"The instructors and staff at HCC have provided every opportunity for me to learn and feel accomplished in the field of study that I have chosen. I feel prepared as I enter into my chosen career because of the great people there."

- Quinn Vork, Electrical Maintenance Student,
Hibbing Community College



Location:
Grand Rapids

NOTE: *Itasca Community College is part of the Northeast Higher Education District (NHED).*



itascacc.edu | Bill Maki, President

FY16 Student Profile: **1,734** Total Students Served | **38%** Pell Eligible | **16%** Students of Color

REQUEST DETAILS

Dollar amounts are estimates and subject to change

- \$4.8 million (as part of NHED) of \$143 million in campus support
- 186 students supported by incentive grants

WHAT'S AT STAKE?

A fully funded request will:

- Ensure access to high-quality, meaningful education in the Grand Rapids area that will transform lives of the disadvantaged and contribute to the economic sustainability of the region.

Not fully funding the request will:

- Jeopardize facilities critical to student success, including large portions of the heavily used library will be forced to close due to roof leaks and structural deterioration of buildings.

ABOUT THE COLLEGE

Itasca Community College (ICC) is a two-year community college where students gain hands-on, practical experiences relating to their chosen field, including practicums, participation in conferences, and project-based learning. We offer a wide variety of transfer programs as well as career programs in industries with high employment demand.

SERVICE TO MINNESOTA

- Partner with four local school districts to develop interdisciplinary career pathways education in five occupational areas aligned with regional workforce needs.
- Foundational partner in developing Itasca Diversity Alliance, a community group committed to strengthening relationships and supporting a growing minority population.
- Educational partner in Blandin Foundation's countywide regional workforce development initiative.
- College provost serves as a representative on Recharge the Range, a large business team

committed to public-private partnerships in education and talent development.

PARTNERSHIPS

- **Arrowhead Economic Opportunity Agency:** Partner with Adult Basic Education to provide full suite of services directly on campus, reducing barriers for at risk students.
- **Grand Rapids High School:** We developed local lab space at the high school for partnered use for ICC's industrial technology-process operations program, interdistrict high school career pathways instruction, and local industry for training operations.
- **Second Harvest North Central Food Bank:** Support food shelf on campus to meet student needs, reducing hunger as a barrier to success.
- **Northeast Minnesota Office of Job Training:** Shares a workforce coordinator with ICC, creating workforce development strategies and intermediating between businesses and public sector.

2017 CAPITAL REQUEST

- \$6.1 million in asset preservation (roof replacements - part of total NHED request)

A FEW WORDS FROM AN ALUMNUS



"Itasca Community College has made innovative changes to their curriculum over the years in order to stay relevant with changes that are happening in the local economy. This allows Itasca alumni to bring new perspectives and ideas to the workforce."

- Tom McBride, Alumnus, Itasca Community College



Locations:
Virginia
Eveleth

NOTE: Mesabi Range College is part of the Northeast Higher Education District (NHED).



mesabirange.edu | Bill Maki, President

FY16 Student Profile: 1,882 Total Students Served | 34% Pell Eligible | 14% Students of Color

REQUEST DETAILS

Dollar amounts are estimates and subject to change

- \$4.8 million (as part of NHED) of \$143 million in campus support
- 163 students supported by incentive grants

WHAT'S AT STAKE?

A fully funded request will:

- Ensure that quality access to higher education can be provided in a 13,000 square mile rural landscape that has an economically disadvantaged population.
- Replace leaky roofs that are well beyond life expectancy to mitigate interior damage through asset repair funding.
- Sustain financially viable colleges in northeastern MN through operational funding.

Not fully funding the request will:

- Significantly reduce the workforce and services provided to students.
- Continue deterioration of buildings and limit space for instructional use.

ABOUT THE COLLEGE

Mesabi Range College offers an AA degree as well as numerous technical programs such as industrial mechanical technology (millwright), welding, early childhood/early childhood special education, welding, practical nursing, and graphic design media.

SERVICE TO MINNESOTA

- A robust diversity committee of faculty, staff, and students enhances the college's mission and vision of inclusivity to address the achievement gap.
- We host an annual skills fair competition where an average of 300 students in grades 10-12 compete in more than 14 skills areas as a way to experience career and technical education.
- The college is on-campus host to Lutheran Social Services, North East Minnesota Office of Job Training, GED testing

services, and the University of Minnesota Duluth Small Business Development Center.

- The college serves as the center for the visual/performing arts within the Northeast Higher Education District.

PARTNERSHIPS

- **East Range Consortium Partnership:** Collaborates with Vermilion Community College, Mesabi Range College, Rainy River Community College, and 14 local school districts to distribute Perkins funding to create pathways and opportunities in career and technical education.
- **Applied Learning Institute:** Serves 17 regional high schools to provide career pathways in the high schools for college credit.

2017 CAPITAL REQUEST

- \$6.1 million in asset preservation (roof replacements - part of total NHED request)

A FEW WORDS FROM A STUDENT



"After being laid off because of the recent downturn in the mining industry, I found myself at Mesabi Range College. The friendly staff really understood the hardship I was in and worked with me every step of the way to get on a path that would be best for me for the new career I was interested in...with a second-to-none education."

- Laura Holter, Student, Mesabi Range College



Location:
International Falls

NOTE: Rainy River Community College is part of the Northeast Higher Education District (NHED).



rainyriver.edu | Bill Maki, President

FY16 Student Profile: **441** Total Students Served | **49%** Pell Eligible | **22%** Students of Color

REQUEST DETAILS

Dollar amounts are estimates and subject to change

- **\$4.8 million** (as part of NHED) of **\$143 million** in campus support
- **43 students** supported by incentive grants

WHAT'S AT STAKE?

A fully funded request will:

- Ensure our continued ability to provide quality higher education to the communities in rural far-northern MN, where the next closest campus is 100 miles away.
- Provide community enrichment and workforce development to help retain our cultural opportunities and promote employment growth.
- Supply the means for continued high-quality, dual-credit options for our secondary educational partners.

Not fully funding the request will:

- Result in budget and personnel reductions impacting access, opportunity, and service to our students and community.
- Negatively impact Koochiching County, which is already disadvantaged in terms of readily available graduates.

2017 CAPITAL REQUEST

- **\$6.1 million** in asset preservation (roof replacements - part of total NHED request)

ABOUT THE COLLEGE

Rainy River Community College (RRCC) offers high-quality academics, on-campus housing, athletics, student organizations, and the opportunity for life-long friendships! Our students tell us how much they appreciate the small class sizes and individual attention they get from our instructors and staff.

SERVICE TO MINNESOTA

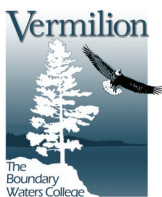
- The Voyage Forward Strategic Planning initiative serving Koochiching County identifies our college as an important driver in the mission to grow a vibrant and thriving region.
- We are the primary higher education provider to develop a skilled, trained, and educated workforce to meet area demand.
- We provide dual-credit opportunities to our secondary partners through concurrent enrollment, including recent approval to offer the full associate of arts degree at Falls High School.
- **Rural Health Care Initiative:** RRCC partners with Essentia Health, Rainy Lake Medical Center, City of International Falls, Koochiching County Economic Development Agency, and the United States Department of Agriculture to develop short- and long-term strategies addressing the healthcare worker shortage in rural Minnesota.
- **Voyageurs National Park:** Training for seasonal staff; students from underrepresented populations get to experience the outdoors.
- **Minnesota Workforce Center and Northeast Minnesota Office of Job Training:** On-campus services including career counseling, retraining assistance, and resources.
- **Arrowhead Economic Opportunity Agency | Adult Basic Education:** RRCC offers college-prep, GED curriculum, and English as a Second Language instruction.

A FEW WORDS FROM AN ALUMNUS



"The community college system is underappreciated for the important work it does. It truly sets the standard for value in post-secondary education. I wish more people took advantage of this opportunity – it's an effective way to expand people's horizons, particularly when time and funds are limited."

- David C. Herman, MD, Essentia Health CEO and Rainy River Community College Alumnus



NOTE: Vermilion Community College is part of the Northeast Higher Education District (NHED).



vcc.edu | Bill Maki, President

FY16 Student Profile: 802 Total Students Served | 31% Pell Eligible | 14% Students of Color

REQUEST DETAILS

Dollar amounts are estimates and subject to change

- \$4.8 million (as part of NHED) of \$143 million in campus support
- 81 students supported by incentive grants

WHAT'S AT STAKE?

A fully funded request will:

- Continue to provide students from throughout the state access to educational opportunities and career paths in the natural resources arenas.
- Protect past investments currently threatened by aging roofs and infrastructure.

Not fully funding the request will:

- Impact our ability to continue to be a strong partner in providing highly trained employees for multiple MN agencies and businesses.
- Greatly restrict our ability to reinvest in our academic programming and state-of-the-art equipment for in-field training, as our limited resources will need to be directed towards infrastructure replacement.

2017 CAPITAL REQUEST

- \$6.1 million in asset preservation (roof replacements - part of total NHED request)

ABOUT THE COLLEGE

Vermilion Community College is located in the heart of Superior National Forest on the doorstep of the Boundary Waters Canoe Area Wilderness. We are nationally recognized for our niche programming in the areas of natural resource use and natural resource protection. Our most popular degrees include fisheries and wildlife biology, natural resource technology, wildland/wildlife law enforcement, wilderness and parks management, outdoor leadership, and watershed science. Our unique location affords students a million acre outdoor laboratory out our back door. More than three-fourths of the college's students come from beyond the immediate commuting area, which makes Vermilion a true residential college.

SERVICE TO MINNESOTA

- Unique programming focused on training students for careers working directly with Minnesota's natural resources.
- Degree specific internships with

a wide variety of Minnesota and federal agencies, including water districts, state parks, Department of Natural Resources, and forestry offices.

- Active community involvement through campus activities, clubs, and service learning projects in which our students volunteer time and effort.

PARTNERSHIPS

- **National Park Service:** Vermilion is one of seven colleges in the country with an accredited pathway to provide National Park Rangers.
- **Minnesota Department of Natural Resources:** The college conducts a number of wildlife research studies for the DNR, benefiting the state and providing research opportunities for our students.
- **Minnesota Pollution Control Agency:** Over the past three years we have facilitated over a quarter of a million dollars in MPCA water quality/research projects for the state.

A FEW WORDS FROM AN ALUMNA



"The Vermilion faculty and staff are not only helpful but inspiring. They are easily approachable and can relate well to student's interests. It is the faculty and staff that set Vermilion apart."

- Melissa Thompson,
MNDNR Wildlife Lakes Specialist and Vermilion
Community College Alumna



Locations:
East Grand Forks
Thief River Falls



northlandcollege.edu | Dennis Bona, President

FY16 Student Profile: 7,736 Total Students Served | 30% Pell Eligible | 18% Students of Color

REQUEST DETAILS

Dollar amounts are estimates and subject to change

- \$2.9 million of \$143 million in campus support
- 322 students supported by incentive grants

WHAT'S AT STAKE?

A fully funded request will:

- Invest in supporting students, make critical equipment and facilities upgrades, and continue to support the needs of business and industry.

Not fully funding the request will:

- Result in continued staff and service cuts, including 10 positions already scheduled for layoff in FY18.
- Put us at serious financial risk as expenses have already been significantly reduced.

2017 CAPITAL REQUEST

- \$3.9 million in asset preservation
- \$826,000 for Laboratory Renovations - System Priority #5

ABOUT THE COLLEGE

Northland Community & Technical College (NCTC) is a comprehensive community and technical college featuring a strong liberal arts transfer program as well as technical programming in nursing, allied health, construction trades, manufacturing, and nationally acclaimed aerospace programs that include the nation's first unmanned aerial systems maintenance program. Athletics is also a point of pride for NCTC, with seven NJCAA varsity sports fielding 220+ student athletes.

SERVICE TO MINNESOTA

- \$85 million annual economic impact in the region.
- The college works with employer community to define programs offered and provide training to prospective employees.
- We have developed pathways for students regardless of past academic success, taking some from illiteracy to the capacity to pursue an advanced degree.
- We instill in students the value of public service, citizenship, and

the importance of giving back.

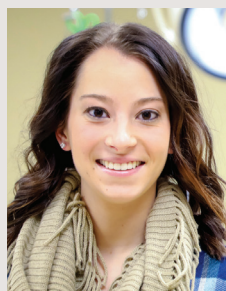
- We actively partner and collaborate with all K-12 schools in our service area.

PARTNERSHIPS

Our extensive partner network donates funds and equipment for programs, and are the primary employers for many graduates. Partners provide curriculum expertise and offer internship and clinical opportunities.

- **Altru and Sanford Health Systems:** Support nursing and allied health programs.
- **Crystal Sugar, Digi-Key, Arctic Cat, Polaris, Philadelphia Macaroni, and Simplot:** Support manufacturing and industry programs.
- **United States Air Force, Northrop Grumman, and University of North Dakota:** Support the aerospace programs.
- **Cities of East Grand Forks, Thief River Falls, Roseau:** Support the public sector law and public safety programs.

A FEW WORDS FROM A STUDENT



"After one year and three major changes at a four-year college in North Dakota, I decided to try Northland. I would choose Northland 100 times over!"

- Kaitlyn LaPorte, Surgical Technology Student,
Northland Community & Technical College
See Kaitlyn's story at northlandcollege.edu/stories



Location:
Bemidji

NOTE: Northwest Technical College is aligned with Bemidji State University and has a combined budget request.



ntcmn.edu | Faith Hensrud, President

FY16 Student Profile: 2,316 Total Students Served | 29% Pell Eligible | 19% Students of Color

REQUEST DETAILS

Dollar amounts are estimates and subject to change

- \$5.3 million (with Bemidji State University) of \$143 million in campus support
- 120 students supported by incentive grants

WHAT'S AT STAKE?

A fully funded request will:

- Protect support services vital to student success and graduation.
- Maintain programs and teaching tools to meet demand for highly qualified dental assistants, nurses, child care providers, and building tradespeople in northern MN.

Not fully funding the request will:

- Force a reduction in employee positions, reduce course availability, increase class sizes, diminish student support, and increase student costs because more time will be required to complete a degree or other credential.
- Cause region-wide disruption of new career pathways designed to help adults move off public assistance and provide alternatives for high school students who choose not to pursue a four-year degree.

2017 CAPITAL REQUEST

- \$1.9 million in asset preservation

ABOUT THE COLLEGE

Northwest Technical College (NTC) is a technologically focused learning environment that is highly responsive to workforce needs in northern Minnesota. Collaborative relationships are key to our ability to meet the needs of students and employers in the Bemidji region and beyond.

SERVICE TO MINNESOTA

- Major regional provider of trained professionals for a variety of rapidly growing health-related fields, with about 60% of all NTC students studying practical or associate degree nursing, dental assisting, health care administrative support, and medical coding and transcription.
- Child Care and Education programs meet a constant need for highly trained child care providers throughout northern Minnesota, with graduates becoming child care providers and teaching paraprofessionals,

or continuing their education.

- One of a few schools in the country offering training in high-performance engine machining.

PARTNERSHIPS

- **Greater Bemidji:** NTC provides customized, timely mechatronics training for employees of regional manufacturing companies.
- **Beltrami County Health and Human Services Department:** NTC is the host partner for Workforce Impact, a new countywide workforce training initiative.
- **Bemidji-based 360 Manufacturing Center of Excellence:** NTC is a member of consortium with BSU and 13 other Minnesota State colleges to meet the needs of the region's manufacturing employers.
- **Distance Minnesota:** Lead partner in an online higher education consortium that serves NTC, BSU, and the state colleges in the region.

A FEW WORDS FROM AN ALUMNA



"Being someone who had moved to Bemidji, started a job, and went to school all at the same time, there was always someone there who supported me and helped with whatever I was doing all along the way. They have a good handle on what they're offering."

- Connie Norman, Alumna,
Northwest Technical College



Pine Technical &
Community College



Location:
Pine City



MINNESOTA STATE

pine.edu | Joe Mulford, President

FY16 Student Profile: 3,322 Total Students Served | 22% Pell Eligible | 12% Students of Color

REQUEST DETAILS

Dollar amounts are estimates and subject to change

- \$919,000 of \$143 million in campus support
- 124 students supported by incentive grants

WHAT'S AT STAKE?

A fully funded request will:

- Expand program offerings to students and ensure we have state-of-the-industry technology and equipment available.
- Provide opportunity to grow new programs to align with changing regional workforce needs.

Not fully funding the request will:

- Delay new program development necessary for meeting today's regional workforce needs.
- Further reduce student support services critical for supporting first-generation students.
- Limit continuation of leadership role in regional economic development.
- Result in both a reduction of staff and potential program closures.

2017 CAPITAL REQUEST

- \$668,554 in asset preservation

ABOUT THE COLLEGE

Pine Technical & Community College (PTCC) is a vibrant comprehensive college and community resource, empowering learners and partnering with local communities. We offer a diverse program mix, including unique programs in gunsmithing, human services eligibility worker, cybersecurity, and American Sign Language.

SERVICE TO MINNESOTA

- The college offers continuing education to child care providers and administers scholarships and grants for Child Care Aware, Department of Human Services.
- We provide regional technology and infrastructure support to 13 school districts, the East Central Library System, Pine County, and Pine City through East Central Minnesota Data Center.
- Our incubator is currently housing a new start-up projected to bring 200 jobs to the region and is funded in partnership

with the East Central Regional Development Commission.

- Pearson Vue affiliated testing center provides certification exams, reducing travel for students and graduates who are seeking certification, and credentialing exams for students in healthcare fields.

PARTNERSHIPS

- **East Central Minnesota Educational Cable Cooperative:** We provide leadership and technical assistance to the 14 member school districts.
- **Wyoming Machine:** PTCC delivers on-site training to employees through mediated telepresence.
- **First Light, Allina Health, and Essentia Health Systems:** Ensure qualified healthcare professionals are educated to meet talent needs.
- **Mid-continent Engineering, Eaton Hydraulics, Bayer Interior Woods, Ryan Companies, Stantec, SEH, Kendall Howard, and Atscott Manufacturing:** We provide manufacturing training.

A FEW WORDS FROM A STUDENT



"I was completely clueless as a first generation student on what I needed to do for the career I wanted. [PTCC staff] helped me identify all the steps I needed to take. As a PSEO student, I took a lot of general education credits. So when I started Computer Programming, I could actually jump into classes for my program."

- Brianna Bixby, Computer Programming Student,
Pine Technical & Community College



MINNESOTA STATE



Locations:
Hutchinson
Willmar

ridgewater.edu | Douglas Allen, President

FY16 Student Profile: 11,946 Total Students Served | 35% Pell Eligible | 14% Students of Color

REQUEST DETAILS

Dollar amounts are estimates and subject to change

- **\$3.6 million of \$143 million in campus support**
- **387 students supported by incentive grants**

WHAT'S AT STAKE?

A fully funded request will:

- Enable us to continue to award over 1,100 degrees and certificates annually and provide essential workforce development.

Not fully funding the request will:

- Limit or cut student support services necessary to continue to improve student success and student retention efforts.
- Limit or cut efforts to recruit and serve the needs of an increasingly diverse student body.
- Prevent facilities improvements and limit our ability to provide equipment necessary to deliver relevant programming.
- Force the college to reduce personnel and cut programs in order to offset the additional cost associated with employee pay and benefits.

2017 CAPITAL REQUEST

- **\$2 million in asset preservation**

ABOUT THE COLLEGE

Ridgewater College believes that higher education is the path that enables people to achieve their dreams. We believe our role is to help students find that path. We value inclusiveness, active learning, affordability, continuous improvement, lifelong learning, and ethical behavior—all delivered in a supportive student success-focused environment.

SERVICE TO MINNESOTA

- The college assists with pre-college academic preparation for underserved students and new Americans to attend college via partnerships with Adult Basic Education and partnerships with CMJTS and DEED.
- We partner with the Department of Public Safety to deliver motorcycle rider training program for the State of Minnesota.

- We award an average of 1,100 degrees and certificates annually, helping fill critical workforce needs for our communities and region, ensuring the economic vitality of Minnesota.

PARTNERSHIPS

- **3M and dozens of other manufacturing businesses:** We provide a variety of education and training in manufacturing.
- **Jennie-O Turkey and dozens of agricultural businesses:** The college partners to provide training in everything from truck driving to human resources to production line processes.
- **More than 100 healthcare providers from long-term care facilities to hospitals to clinics:** We partner to provide education in healthcare, ranging from continuing education to paramedic degrees to nursing.

A FEW WORDS FROM A STUDENT



"As a first generation student, I was uncertain which path to take to achieve my educational goals. Coming to Ridgewater was the best decision that I could have made. My instructors are so amazing; their number one goal is the success of their students."

- Jonathan Garcia, Liberal Arts Student,
Ridgewater College



Locations:
Albert Lea
Austin
Owatonna



riverland.edu | Adenuga Atewologun, President

FY16 Student Profile: 8,954 Total Students Served | 33% Pell Eligible | 19% Students of Color

REQUEST DETAILS

Dollar amounts are estimates and subject to change

- **\$2.8 million of \$143 million in campus support**
- **272 students supported by incentive grants**

WHAT'S AT STAKE?

A fully funded request will:

- Allow full implementation of the new food, agricultural, and biological (FAB) systems programs.
- Provide for the development of new programs and maintain current programs with relevant technology to meet regional workforce needs.
- Continue recently implemented enrollment management plan initiatives that have increased our fall 2016 enrollment by 3.2%.

Not fully funding the request will:

- Cut more than \$2 million from the college budget over the biennium, jeopardizing up to 12 full-time faculty and staff positions and reducing departments' non-personnel budgets.

ABOUT THE COLLEGE

Riverland serves students, 70% of whom are underrepresented, through Best in Class programs. The college offers 76 Quality Matters™ Certified online programs and has received HLC re-accreditation until 2026. Riverland has a vibrant liberal arts and science curriculum, partners with 16 area high schools, and offers a Theater AFA degree with two full musicals annually.

SERVICE TO MINNESOTA

- More than 60% of radiologic technologists in the SE Minnesota region are graduates of our radiography program.
- Criminal justice and corrections program supplies a high percentage of sworn officers in local police departments.
- New food, agricultural, and biological (FAB) systems program prepares students for the agriculture and food manufacturing industries.
- Farm business management program annually provides customized management and

financial consulting to 500+ local farmers.

- We partner with 16 regional high schools in concurrent/PSEO courses, lead an active Perkins Consortium, and support Northfield High School's TORCH program.
- Our truck driving program recently expanded partnerships and training to increase safety and provide a specialized-endorsement curriculum to assist in addressing Minnesota's acute industry shortage.

PARTNERSHIPS

- **Habitat for Humanity:** Partner with the construction program to build homes each year.
- **Hormel Foods, Lou Rich, and Viracon:** We train hundreds of incumbent workers at these companies annually.
- **The Hormel Foundation:** Provide support to enroll at-risk students in Cycles for Success/Be Your Best programs.
- **Waseca Correctional Facility:** Partners with the college to offer a cosmetology degree.

2017 CAPITAL REQUEST

- **\$2.7 million in asset preservation**
- **\$7.4 million for Transportation, Trade, and Industrial Education Center renovation (System Priority #17)**

A FEW WORDS FROM A BUSINESS PARTNER



"With the high demand for skilled labor, it is important for Lou-Rich, Inc. to partner with Riverland to enhance the learning environment for the students and better prepare them for the local workforce."

- Steve Tufte, General Manager of Lou-Rich, Inc.



rctc.edu | Mary Davenport, Interim President

FY16 Student Profile: 12,060 Total Students Served | 40% Pell Eligible | 24% Students of Color

REQUEST DETAILS

Dollar amounts are estimates and subject to change

- \$3.8 million of \$143 million in campus support
- 629 students supported by incentive grants

WHAT'S AT STAKE?

A fully funded request will:

- Allow employers to continue to rely on RCTC for filling critical open positions in the rapidly growing southeastern MN economy.
- Continue innovative, interactive learning styles to provide relevant, accessible and affordable educational opportunities to our diverse and growing community.

Not fully funding the request will:

- Cause course cancellations and possible program suspensions or closures in high-demand areas.
- Increase the backlog of deferred maintenance and cause energy efficiencies to be unrealized, causing safety and standards issues impacting learning environments.

ABOUT THE COLLEGE

Rochester Community & Technical College (RCTC) is the oldest public two-year college in Minnesota, combining the best in liberal arts, technical, and life-long learning with more than 70 credit-based programs and more than 100 credential options.

SERVICE TO MINNESOTA

- The college provides skilled workers ready to enter the fast-growing, high-tech workforce.
- We work with students and area K-12, alternative learning providers, and four-year institutions to map educational and career goals and create a plan to best achieve them.
- The college is the education choice for our region, with programs that can be completed in one semester, or one or two years. Students can be trained and enter the workforce with a smaller investment of time and money compared to traditional four-year universities.

- We offer counseling, advising, financial assistance, health services, and tutoring all aimed at our top priority of seeing our students succeed.

PARTNERSHIPS

- **Mayo School of Health Sciences and Mayo Clinic:** Provide clinical/internship experiences for students, offers annual financial program support, and serves on many program advisory committees.
- **Kemps, Inc.:** RCTC provides training on mechanical and electrical for maintenance staff.
- **Rochester Chamber of Commerce:** RCTC sponsors and supports initiatives including Leadership Greater Rochester and the STEAM summit (science, technology, engineering, arts, and math) for high school juniors.
- **Destination Medical Center:** RCTC leadership serves to align educational opportunities with planned community and economic growth.

2017 CAPITAL REQUEST

- \$2.5 million in asset preservation
- \$21.7 million for Memorial and Plaza Halls Demolition Design and Renovation - System Priority #7

A FEW WORDS FROM A STUDENT



"After enrolling at RCTC, I ran for Student Senate secretary, and this year I was elected Student Senate president. Running for these leadership positions was one of the best decisions I made for myself. I represent students on committees that have a major impact on the quality of education they receive. I have developed professionally and continue to do so."

- Sofia Alston, Student Senate President,
Rochester Community & Technical College



Location:
St. Paul



saintpaul.edu | Rassoul Dastmozd, President

FY16 Student Profile: 11,351 Total Students Served | 53% Pell Eligible | 61% Students of Color

REQUEST DETAILS

Dollar amounts are estimates and subject to change

- \$3.6 million of \$143 million in campus support
- 1,137 students supported by incentive grants

WHAT'S AT STAKE?

A fully funded request will:

- Provide support for high-demand programs and maintain course offerings that supply skilled graduates to the workforce.
- Maintain essential support services personnel who ensure student access to college and success.

Not fully funding the request will:

- Reduce 400-500 graduates annually in high-demand STEM programs.
- Cut specialized courses and support services for underprepared students, potentially reducing retention and completion rates.
- Reduce funding for the Power of YOU and Make It Count programs, decreasing access for 50 full-time underrepresented students annually.

2017 CAPITAL REQUEST

- \$2.5 million in asset preservation

ABOUT THE COLLEGE

Ranked no. 1 in the nation by Washington Monthly in 2010 and 2013 for student engagement, collaborative learning, faculty interaction, support for learning, and first-year retention rates, Saint Paul College is focused on offering innovative programs, training, quality instruction, and student success leading directly to employment or transfer to four-year institutions.

SERVICE TO MINNESOTA

- Power of YOU™ for new high school graduates and Make It Count for students over age 24 provide tuition and support for underserved populations.
- College Readiness Academy and intensive math tutoring enable students to bypass some developmental coursework and save on tuition.
- With funding from Minnesota DEED, skilled trade unions, and philanthropic foundations, the Trading Up™ program creates pathways to construction and trade careers for women, veterans, and students of color.

- We are the number one college choice of students in Saint Paul Public Schools. Programs such as Early College and Postsecondary Education Options (PSEO) allow high school students to earn college credits, reducing time and tuition debt.

PARTNERSHIPS

- **3M:** Provides scholarships for students interested in high-skill, high-demand STEM careers.
- **Baker Tilly Virchow Krause, LLP:** Provides scholarships and internships for accounting students; serves on the technical program advisory committee.
- **Productivity Inc.:** Supplier of high-tech automated manufacturing systems, provides scholarships and plays an advisory role to ensure programs are relevant to employer needs.
- **Graco USA, Huot Manufacturing Co., and Mo-Tech Corp:** All three firms employ graduates, donate equipment, support scholarships and provide technical advice to ensure students receive industry standard training.

A FEW WORDS FROM AN ALUMNA



"My instructors were so knowledgeable and dedicated. Saint Paul College has a supportive and inclusive environment that values all students. I know they wanted me to succeed."

- Michelle, '16 Alumna, Practical Nursing,
Saint Paul College



Locations:
North Mankato
Faribault

southcentral.edu | Annette Parker, President



FY16 Student Profile: 15,164 Total Students Served | 36% Pell Eligible | 18% Students of Color

REQUEST DETAILS

Dollar amounts are estimates and subject to change

- \$3 million of \$143 million in campus support
- 362 students supported by incentive grants

WHAT'S AT STAKE?

A fully funded request will:

- Continue basic services and provide innovative opportunities for our changing student population.
- Establish new programs aimed at closing the achievement gap.
- Sustain and grow programs that meet the significant workforce needs in this growing region.

Not fully funding the request will:

- Continue significant cuts made during the current biennium that have included reducing operating expenses by \$2 million and eliminating positions.
- Delay work on a critical strategic enrollment management plan.
- Continue to defer maintenance, putting facilities at further risk.

2017 CAPITAL REQUEST

- \$4.2 million in asset preservation
- \$9.6 million for STEM and Healthcare Renovation - System Priority #2

ABOUT THE COLLEGE

South Central College (SCC) is a comprehensive community and technical college offering liberal arts and sciences programs that enable students to earn their associate degree before transferring to pursue a bachelor's degree, as well as a wide array of technical career and professional programs that prepare students for their chosen career.

SERVICE TO MINNESOTA

- The college leads the Minnesota Advanced Manufacturing Partnership (MnAMP), a consortium working to close the manufacturing skills gap through the *Learn Work Earn* program that implements industry-recognized credentials, career pathways, and apprenticeships.
- We run the Southern Minnesota Center of Agriculture, aligned with industry to provide resources to students and develop and sustain a talented workforce.
- We have established an industry-leading distance learning model that enables mechatronics students to gain

hands-on experience wherever they are located.

PARTNERSHIPS

- **Minnesota Department of Transportation District 7:** Partners with civil engineering technology to meet workforce demand by licensing the instructor to teach certification courses essential for employment.
- **Mayo Clinic Health System and other healthcare providers:** Enable nursing and allied health students to gain real-world clinical experience at a variety of healthcare sites.
- **Pepsi Cola of Mankato:** Provides repairable soda machines and parts to HVAC students to gain experience.
- **Local and National Industry Partners:** Contributed equipment in FY16 with a value of \$229,537, \$216,890 of which was matched through the Minnesota leveraged equipment program, resulting in a total of \$446,427 in student equipment.

A FEW WORDS FROM AN ALUMNUS



"I was a shy and timid person and when I came here I became more active and social and advanced all the way up to state officer for SkillsUSA. My instructors and classmates helped me grow into the person I am today."

- Robert Ulrich, 2016 South Central College Alumnus and Current Minnesota State University, Mankato Student



smsu.edu | Connie Gores, President

FY16 Student Profile: 9,094 Total Students Served | 11% Pell Eligible | 9% Students of Color

REQUEST DETAILS

Dollar amounts are estimates and subject to change

- \$4.3 million of \$143 million in campus support
- 222 students supported by incentive grants

WHAT'S AT STAKE?

A fully funded request will:

- Sustain new investments in key academic programs such as agriculture education, agronomy, exercise science and education.
- Help maintain necessary support programs for student retention and completion.

Not fully funding the request will:

- Jeopardize the quality of programs and service to students.
- Result in faculty and staff reductions.
- Lead to fewer sections and electives offered, which will hinder a timely path to student degree completion.

2017 CAPITAL REQUEST

- \$3.5 million in asset preservation

ABOUT THE UNIVERSITY

Southwest Minnesota State University (SMSU) prepares students for personal and professional success with high-quality professional programs offered in the liberal arts tradition. In response to industry demand, we have renewed emphasis on agriculture programs. New initiatives also include a four-year exercise science program delivered on Twin Cities two-year campuses; strategic partnerships addressing shortfalls in special education licensure across the state; and the only four-year degree program in culinology in the country.

SERVICE TO MINNESOTA

- SMSU is the regional education hub for southwest MN, with nearly 40% of degree-seeking students coming from the region.
- Annual economic impact on Marshall and surrounding communities is more than \$140 million.
- Graduates have a 99%

employment rate.

- We are the largest provider of concurrent enrollment programs in the state, serving more than 5,000 students annually through College Now, our nationally accredited (NACEP) program.

PARTNERSHIPS

- **Schwan Food Company:** Lends industry expertise and student intern opportunities.
- **Ralco:** Partners for faculty and student research projects and invests in significant scholarship and internship support.
- **City of Marshall:** Partners with SMSU to share valuable technology, space, and student services on campus.
- **SWWC Service Cooperative and SMSU:** Partner for a paraprofessional-to-special-education licensure program that addresses MN's teacher shortage.
- **AURI:** Partners with the culinology program to build a food sensory lab to increase the capacity for product development.

A FEW WORDS FROM A STUDENT



"I chose SMSU to get a better job to support my family. At SMSU, the professors always talk to me. They treat me like a person, and they know how to teach the way I learn...I get the personal attention from my professors to help me succeed. I want to help children in [Burma], and the U.S., go to school to get an education."

-Mu Mu Aye, Sociology Student,
Southwest Minnesota State University



Location:
St. Cloud



stcloudstate.edu | Ashish Vaidya, Interim President

FY16 Student Profile: 29,121 Total Students Served | 26% Pell Eligible | 16% Students of Color

REQUEST DETAILS

Dollar amounts are estimates and subject to change

- \$14.6 million of \$143 million in campus support
- 904 students supported by incentive grants

WHAT'S AT STAKE?

A fully funded request will:

- Fulfill goals to advance graduation rates, deepen industry partnerships, and build a sustainable level of program offerings and community engagement as we continue our commitment to helping our changing student body succeed and prepare for life, work, and citizenship in the 21st century.

Not fully funding the request will:

- Cause open positions resulting from retirements or resignations to remain unfilled, leading to increased class sizes and fewer class time options.
- Hinder our ability to invest in new technology and maintain our built infrastructure.

2017 CAPITAL REQUEST

- \$3.3 million in asset preservation
- \$18.6 for Student Health and Academic Renovation - System Priority #10

ABOUT THE UNIVERSITY

St. Cloud State University offers more than 200 highly accredited academic programs that emphasize hands-on learning in real-world settings. At the graduate level the university's more than 60 programs include degrees in regulatory affairs and services, applied clinical research, and medical technology programs that tap a growing demand in this industry.

SERVICE TO MINNESOTA

- Our RN to BSN online nursing degree completion program is helping nurses further their careers.
- Our paraprofessional residency program in partnership with District 742 is creating alternate pathways for people of color to become teachers.
- A new STEM education graduate certificate is preparing elementary, early childhood education, and special education teachers to integrate STEM concepts into their classrooms.
- Redesign the first year of

college to improve success rates for low income, first generation, and students of color.

- Living communities for students in recovery, LGBT students, transfer students, and student veterans help students make the transition to college life.

PARTNERSHIPS

- **Microbiologics:** Distributor technical program uses the Integrated Science and Engineering Laboratory Facility (ISELF) for training.
- **GeoComm:** Works with ISELF's visualization lab students to design software to help 911 operators pinpoint a caller's location in a building.
- **CentraCare Health:** Works with the School of Public Affairs Research Institute to measure its economic impact.
- **More than 75 global partnerships:** Offer education abroad and faculty exchange opportunities.
- **Husky Productions:** Partners with Fox Sports North to produce live hockey broadcasts.

A FEW WORDS FROM A STUDENT



"St. Cloud State offers experiences that give students the skills they need to join the region's workforce and create a better future for our community. It has given me the opportunity to grow in ways I never imagined and gave me proficiency in more than just my degree."

- Mikaela Johnson, Graphic Design Major and Student Government President, St. Cloud State University



Education that works



Location:
St. Cloud



sctcc.edu | Joyce Helens, President

FY16 Student Profile: 10,325 Total Students Served | 43% Pell Eligible | 19% Students of Color

REQUEST DETAILS

Dollar amounts are estimates and subject to change

- \$3.1 million of \$143 million in campus support
- 678 students supported by incentive grants

WHAT'S AT STAKE?

A fully funded request will:

- Increase flipped advising and tutoring support services for at-risk student populations.
- Provide investment for critical technology to ensure a strong IT infrastructure is in place to support academic access and instruction.
- Invest in up-to-date instructional equipment that aligns with the needs of today's workforce.

Not fully funding the request will:

- Reduce student resource and advising services, cause faculty and staff layoffs, delay program expansions in high-demand programs, and prolong investments in technology and equipment that impact our ability to provide a skilled workforce.

2017 CAPITAL REQUEST

- \$2 million in asset preservation

ABOUT THE COLLEGE

St. Cloud Technical & Community College (SCTCC) provides career, technical, and transferable education. More than 90 program options closely match the region's job demand, confirming our commitment to meet community needs. Within a year of program completion, 98% of our graduates are employed in their fields of study.

SERVICE TO MINNESOTA

- We actively engage and collaborate with approximately 40 program advisory groups to ensure academic courses are relevant to industry requirements.
- We provide e-orientation, flipped advising, and individualized assistance to address barriers to student success.
- We have connected area K-12 superintendents with local business and industry partners at a college-hosted event to help superintendents envision how technical careers are pathways for their students.

- We implemented an early alert system to ensure students receive the immediate help they need to be successful.
- We provide free Summer Bootcamps to prepare students for college.

PARTNERSHIPS

- **CentraCare:** Provides students on-campus training access to EPIC, (electronic healthcare software), student internships, access to clinical sites, and donated equipment.
- **Cold Spring:** Local granite company hires students enrolled in skilled trade and industry programs for part-time employment with flexible hours at \$12/hour.
- **Talon Innovations:** We partner to provide training in management, engineering, and production to newly hired employees.
- **Xcel Energy:** Partners to develop the nuclear energy technician program, provide job shadowing, and scholarships.

A FEW WORDS FROM A BUSINESS PARTNER



"SCTCC is so important not just to Park Industries' success but our community's success because of the opportunities the college provides for people to be educated, furthering their career growth and creating a strong labor pool for business across the St. Cloud area."

- Joan Schatz, COO, Park Industries



Location:
Winona



winona.edu | Scott Olson, President

FY16 Student Profile: 10,964 Total Students Served | 25% Pell Eligible | 10% Students of Color

REQUEST DETAILS

Dollar amounts are estimates and subject to change

- **\$8.3 million of \$143 million in campus support**
- **443 students supported by incentive grants**

WHAT'S AT STAKE?

A fully funded request will:

- Continue commitment and investments in high-demand professions such as nursing, teacher education and business.
- Bolster investments in serving the expanding higher education market in the Rochester area.

Not fully funding the request will:

- Potentially result in reductions of personnel, dramatically impacting the ability to serve students and the region.
- Significantly limit the ability to respond to the urgent needs of employers in southeastern MN.

ABOUT THE UNIVERSITY

To many, Winona State University (WSU) represents the promise of an exceptional education in a beautiful residential campus environment at an affordable cost. Additionally, we are a great innovator. Our integration of technology into learning is nationally recognized, and regional partners in education, business, and industry value our responsiveness to their needs.

SERVICE TO MINNESOTA

- **Center of Excellence (Healthforce Minnesota)** collaborates to increase and diversify healthcare workers, integrate health science education practice and research, and enhance the quality of patient care.
- **Success Coach Program** pairs underrepresented students with mentors to improve retention and graduation.
- **WSU-Rochester's Elementary Education** courses at Riverside Central Elementary School prepare teacher candidates to engage with diverse,

elementary-age students.

- **Partnership with RTP Company** awards scholarships for composite materials engineering students.
- **More than 92% of graduates** are employed in their field of study within one year of graduation.

PARTNERSHIPS

- **Mayo Clinic:** WSU is a major provider of nurses and other professionals.
- **Hawthorne Learning Center and Hiawatha Valley Mental Health Center in Rochester:** On-site training allows counselor education students to provide supervised counseling.
- **Austin 2+2 Teacher Preparation Program:** Delivered entirely face-to-face and on-site in partnership with Austin Public Schools and Riverland Community College.
- **Business and industry across southern Minnesota:** WSU supplies engineering talent to the composite materials industry cluster in southeastern MN and is a key partner for specialized and customized training.

2017 CAPITAL REQUEST

- **\$3.2 million in asset preservation**
- **\$25.3 million for Education Village Phase II Renovation - System Priority #9**

A FEW WORDS FROM AN ALUMNA



"In the Hmong culture, the son takes care of the mom in her old age, but because I don't have any brothers, it's up to my sisters and me. Receiving a degree means I will be able to provide a better future not only for myself, but for my mother."

- Ka Vang, Alumna,
Winona State University



Minnesota State Board of Trustees

Michael Vekich, Chair

Jay Cowles, Treasurer

Basil Ajuo

Ann Anaya

Elise Bourdeau

Alex Cirillo

Dawn Erlandson

Amanda Fredlund

Robert Hoffman

Jerry Janezich

Roger Moe

Rudy Rodriguez

Louise Sundin

Cheryl Tefer

Follow Minnesota State on Twitter

@mnscu

#FundMinnesotaState

Visit Minnesota State online

minnstate.edu



MINNESOTA STATE

minnstate.edu

On Twitter via @mnscu

This document is available in alternative formats to individuals with disabilities.

To request an alternate format, contact Minnesota State Human Resources at 651-201-1664.

Individuals with hearing or speech disabilities may contact us via their preferred Telecommunications Relay Service.

Minnesota State is an affirmative action, equal opportunity employer and educator