



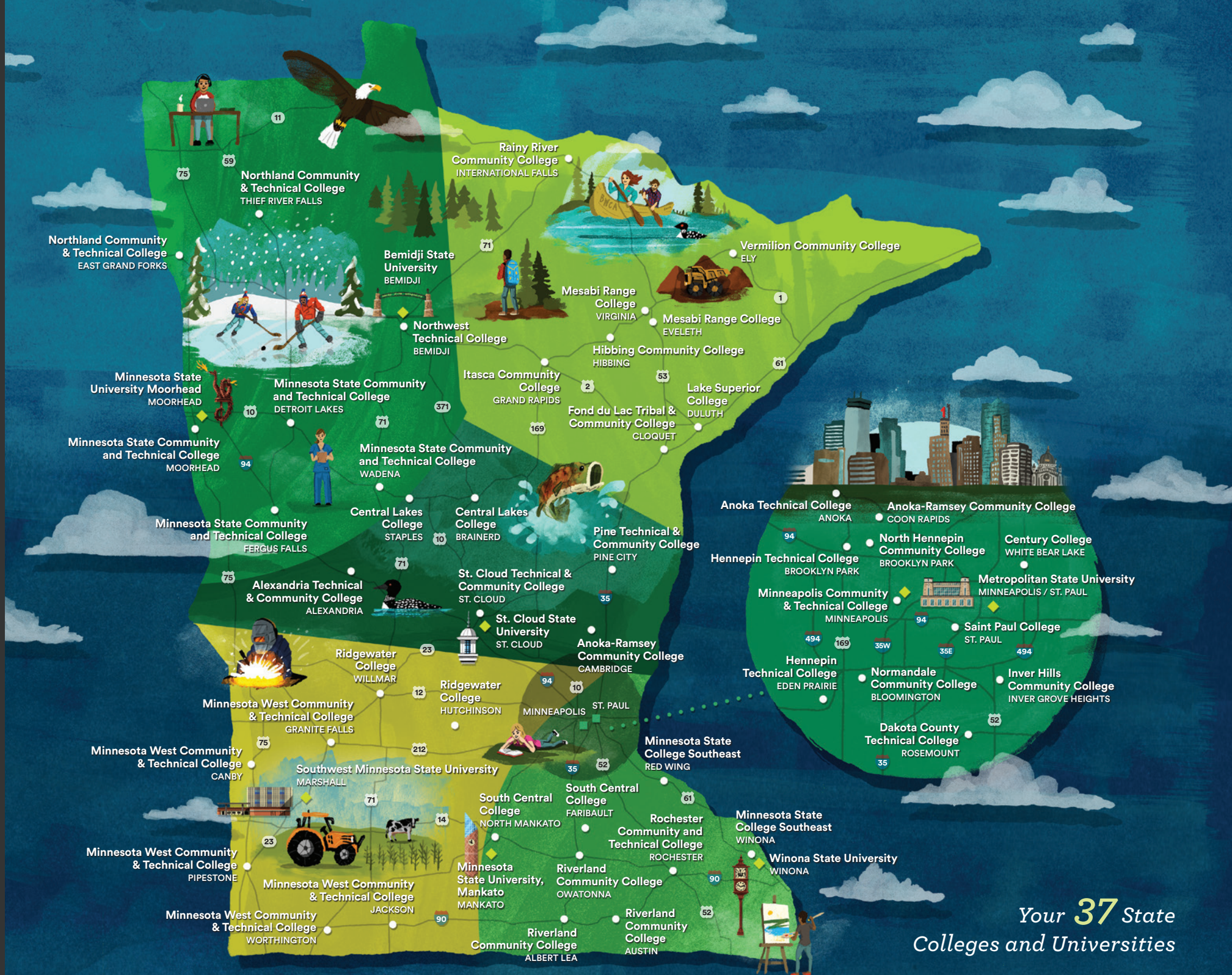
2017–2018 Guide to your 37 STATE COLLEGES AND UNIVERSITIES



MINNESOTA STATE

Extraordinary Education. Exceptional Value.

MinnState.edu



Your 37 State
Colleges and Universities



Extraordinary Education. Exceptional Value.

Nestled amidst the lakes, forests, and scenic landscapes of Minnesota are 37 distinct state colleges and universities that comprise Minnesota State, your state college and university system.

More than 375,000 students choose your state colleges and universities each year, creating a brighter future to become the talent needed for Minnesota businesses and communities to grow and prosper. Minnesota State offers thousands of superior academic programs at the lowest tuition in the state. We also offer a vibrant array of student life activities and experiential learning options that can give you the opportunity to see and engage with the world. That's what extraordinary education at an exceptional value is all about.

Extraordinary Impact

Minnesota State is making a difference. From the students we serve, to our business partners, to those we employ, chances are good you or someone you know has benefited from the work of your state colleges and universities.



40,000+

degrees, certificates,
and diplomas awarded
each year

602 
online programs to choose from

fourth

largest system of colleges
and universities in the
United States

16,000+

dedicated faculty and
staff focused on
student success




15,403 customized training,
occupational, and
professional classes

fifty four

convenient campuses
across Minnesota



Job placement in a
related field of study

87.4% 

375,000+ students attend our colleges
and universities each year

57.6%

STATE COLLEGES

61.9%

STATE UNIVERSITIES

Percent of students who receive financial aid



13,517

online courses are
available through
Minnesota State colleges and universities



3,786

academic programs to choose from



65.2%

of Minnesota resident students
are pursuing an undergraduate credential
at a Minnesota State college or university

26–46%

of Minnesota State students
graduate with no debt at all,
depending on the academic
award received

We serve more
**STUDENTS
OF COLOR**
and

**AMERICAN
INDIAN
STUDENTS**

than all other higher
education providers in
Minnesota combined

MINNESOTA STATE GRADUATES' DEBT

Fiscal Year 2016

DEGREE	MINNESOTA STATE GRADUATES WITH NO DEBT	MEDIAN DEBT FOR ALL GRADUATES	MEDIAN DEBT FOR GRADUATES WHO BORROWED
Certificates/Diplomas	46.4%	\$2,055	\$11,030
Associate Degrees	34.3%	\$8,390	\$16,000
Baccalaureate Degrees	26.3%	\$18,616	\$25,560



World-class
EDUCATION

Extraordinary Education

Your state colleges and universities offer more than 3,700 superior academic programs taught by seasoned faculty. Take a few classes. Earn a certificate, diploma, or associate degree. Or, start working or complete your bachelor's, master's, or doctorate. Minnesota State will help you build a plan that is right for you.



» Move Quickly

Your state colleges offer options that allow you to take classes or earn a certificate, diploma, or associate degree in two years or less.

» Graduation Options

Start and finish your bachelor's degree at one of your state universities, or complete two years at a state college and transfer to one of your state universities.

» Work-School-Life Balance

Explore flexible scheduling options, accelerated options, or online classes and programs that work with your schedule or fit into your life.

» Personalized Attention

Class sizes are small, campuses are friendly, and you are taught by faculty, not teaching assistants.

» Stay Local or Explore

Minnesota State has 54 campuses in 47 Minnesota communities. Choose the one that is right for you.

» Advance Your Career

Check out non-credit, short-term training options designed to help you get quick and specialized training through any Minnesota State continuing education or customized training program.

» Exceptional Value

Your 37 state colleges and universities offer the lowest tuition and fees in Minnesota and a first-class education employers respect.

» Find Your Path

Work one-on-one with staff at any of our colleges and universities to find the program and path that is right for you.



Lowest tuition in **MINNESOTA**

Your 37 state colleges and universities offer the lowest tuition and fees in Minnesota, giving you access to first-rate education options throughout the state and the ability to avoid or limit debt.

ESTIMATED FULL-TIME NET TUITION COSTS AFTER STATE AND PELL GRANTS

Academic Year 2017–18

*30 credits for a year, 15 credits per semester

INCOME LEVELS FOR STATE GRANT RECIPIENTS*	AVERAGE 2017–18 STUDENT TUITION COST	
	STATE COLLEGES	STATE UNIVERSITIES
Less than \$20,000	\$391	\$851
\$20,000 to \$39,999	\$970	\$1,405
\$40,000 to \$59,999	\$1,553	\$2,530
\$60,000 and above	\$2,789	\$4,620
Average for all state grant recipients	\$991	\$2,225
Non-state grant recipients	\$4,815	\$7,289

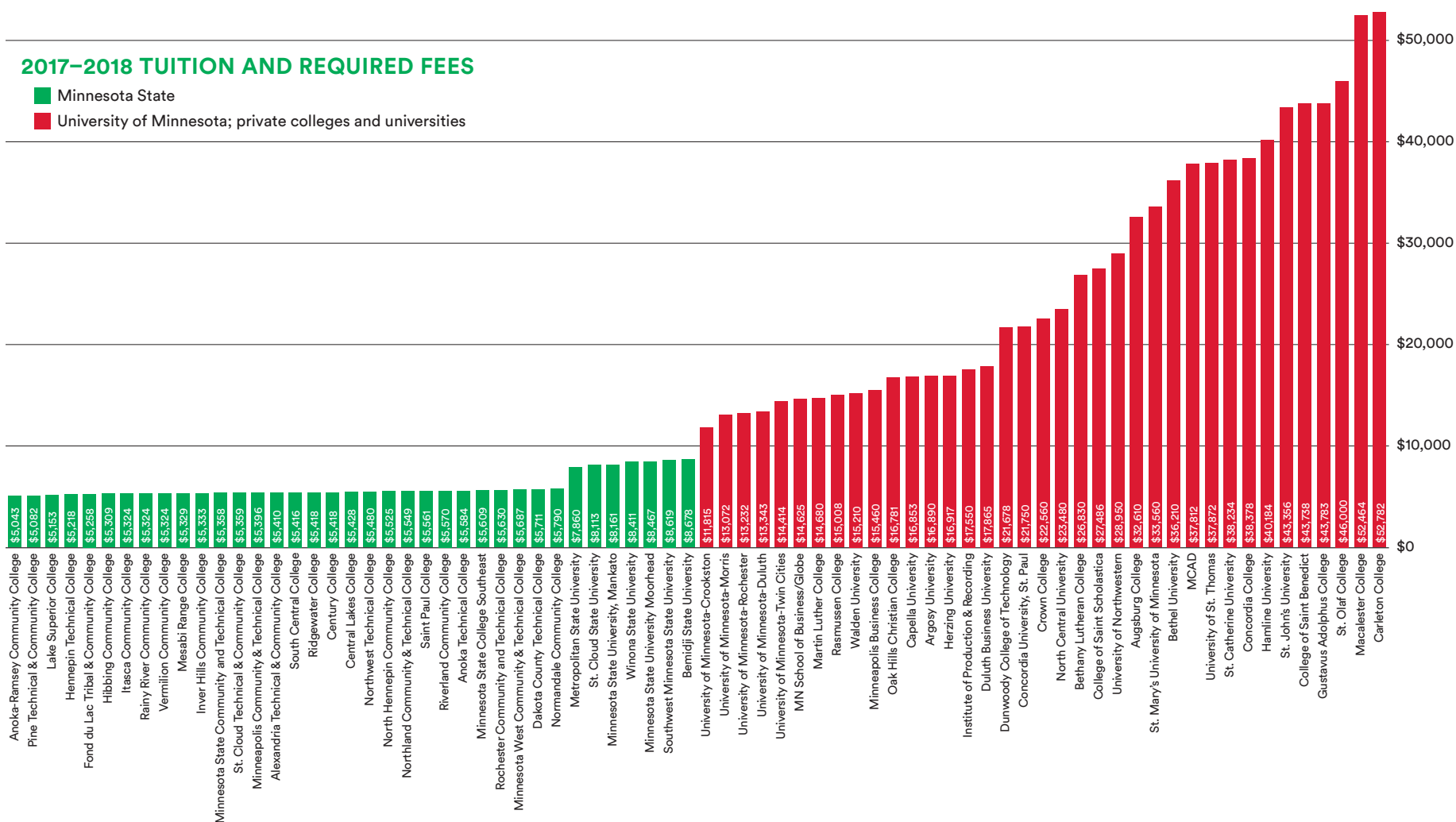
Exceptional Value

The 37 state colleges and universities that comprise Minnesota State offer the lowest tuition in all of Minnesota.

Not from Minnesota? Most colleges and universities that are part of Minnesota State offer in-state tuition rates to residents of other states. Check with the college or university you wish to attend for details. All veterans, service members, and their families receive in-state tuition.

2017–2018 TUITION AND REQUIRED FEES

■ Minnesota State
■ University of Minnesota; private colleges and universities



Extraordinary Experiences

STUDENT LIFE

Choosing a state college or university also means you have access to a vibrant social scene. Check out the variety of clubs, organizations, and events. Explore varsity athletics options on [PAGE 47](#). Learn about study abroad and service learning opportunities available at the college or university you are interested in attending. Or, get involved with student government on your campus or at the state level as part of Students United (*representing public state university students*) and LeadMN (*representing public community and technical college students*).





Exceptional Talent

A BRIGHT FUTURE

Your state colleges and universities are a vital resource to Minnesota employers. Not only do we help prepare students to become talented and skilled individuals, but we also work hand-in-hand with business and industry to develop relevant programs and curriculum.

GAIN RELEVANT EXPERIENCE. Employers from across the state work with our colleges and universities to offer internships and job opportunities. These same professionals also serve as advisors who help shape curriculum, obtain equipment, and develop new programs and classes.

BE THE TALENT OF TOMORROW. Your state colleges and universities award more than 40,000 certificates, diplomas, and degrees each year, and 87.4% of those graduates begin working in their field of study within one year.

FIND SOLUTIONS TO CHANGING BUSINESS NEEDS. All 37 state colleges and universities offer non-credit learning options through a network of experienced instructors who work with employers to develop training and education programs that allow employees to thrive in the ever-changing global marketplace and keep skills competitive.

UPDATE YOUR SKILLS AND KNOWLEDGE WITH CONTINUING EDUCATION.

Advance your career by learning new knowledge or skills, retraining, or attaining critical certification and licensures.

Extraordinary Pathways

A photograph of two women sitting at a table, looking at a large sheet of paper. The woman on the left is a young Asian woman with long dark hair, wearing a grey sweater, smiling and holding a pen. The woman on the right is a white woman with short blonde hair and glasses, wearing a black blazer over a purple top, holding the paper. A name tag on her blazer reads "Metropolitan State University Karin Jax College of Health, Community and Professional Studies". In the background, there is a quilted blanket with a blue and white star pattern and a framed plaque on the wall.

Transfer **OPTIONS**

Starting at a Minnesota State college and considering transfer? Plan now to save time and money later. Check out a few of the transfer programs available through Minnesota State, or visit [**MinnState.edu**](https://www.mnstate.edu) for details.

EXPLORE TRANSFER PATHWAYS: Minnesota State offers transfer pathways that allow you to complete a specific associate degree and transfer to any of the seven Minnesota State universities.* If you complete a Transfer Pathway degree at a Minnesota State college and are admitted to a state university, you will be guaranteed junior status and given assurance that all 60 college credits will count toward the related bachelor's degree.**

GET TO KNOW THE TWIN CITIES BACCALAUREATE PROGRAM: The seven state universities offer selected bachelor degree programs that can be completed at various community colleges in the Twin Cities metro area, allowing you to earn your degree from a university without leaving the comfort of the college campus setting. See the complete inventory of degree programs and participating colleges and universities on [**PAGE 48**](#).

LEARN ABOUT THE MINNESOTA STATE TRANSFER GUARANTEE: If you complete the Minnesota Transfer Curriculum and earn an associate of arts (AA) degree from any Minnesota State college with a minimum 2.0 GPA[‡], you are guaranteed admission to any of the seven state universities with junior year status.**

* Universities within the Minnesota State system include Bemidji State University; Metropolitan State University; Minnesota State University, Mankato; Minnesota State University Moorhead; Southwest Minnesota State University; St. Cloud State University; and Winona State University.

** A student must still meet any special admission requirement for the major and is not guaranteed admission into the major itself.

‡ Winona State University requires a minimum 2.4 GPA for AA degrees to be accepted.

WANT TO LEARN MORE?

Our colleges and universities are staffed with many people who can help you find a direction that is right for you. Talk to a transfer specialist, visit a college or university in person, or visit [**MinnState.edu**](https://www.mnstate.edu) or [**transferology.com**](https://www.transferology.com) to learn more.



WHAT WILL TRANSFER?

AA – ASSOCIATE OF ARTS DEGREE

Designed to transfer into liberal arts four-year majors.

AS – ASSOCIATE OF SCIENCE

Two-year program designed for transfer into a specific four-year major and will likely require completing additional general education courses at a university.

AFA – ASSOCIATE OF FINE ARTS

Two-year program designed for transfer into a specific four-year major and will likely require completing additional general education courses at a university.

AAS – ASSOCIATE OF APPLIED SCIENCE

Two-year program for a specific occupation. Not designed for transfer.^{‡‡}

DIPLOMAS AND CERTIFICATES

Industry-driven and defined programming designed for immediate entry into the workplace. Not designed to transfer.

^{‡‡} While not primarily designed for transfer, individual colleges and universities may accept these courses.

Exceptional Opportunities

ACCELERATE *your degree*



POST-SECONDARY ENROLLMENT OPTIONS (PSEO)*:

PSEO are college courses offered to high school students. The courses are taught by college or university faculty and allow students to earn both high school and college credit for successfully completing the course. Contact your local state college or university for eligibility requirements and information.

CONCURRENT ENROLLMENT*: Students can complete college courses at their high school while fulfilling high school course requirements at the same time. If you are interested in this option, speak to your high school guidance counselor.

TECHNICAL COURSE OPTIONS:** Students in 10th grade may take one technical college-level course taught on a college campus. You must be enrolled in a public school and meet requirements for reading proficiency and other assessments related to the course in which you wish to enroll.

ADVANCED PLACEMENT (AP) AND INTERNATIONAL BACCALAUREATE

(IB) OPTIONS: AP or IB courses are offered at many high schools and provide a rigorous curriculum that prepares students to take college-level courses. Students who pass an AP test or the IB exam with acceptable scores will be awarded college credit at any Minnesota State college or university.

CREDIT FOR PRIOR LEARNING:


Students who demonstrate college- or university-level learning gained through non-credit or experiential settings may be eligible to earn college credit (*i.e., credit for military experience, credit for work history*). Inquire with the college or university you are considering for more information.

CREDIT FOR MILITARY TRAINING OR EXPERIENCE:

Veterans and service members should check the Veterans Education Transfer System (VETS) for eligibility information or visit MinnState.edu/military.

* To be eligible for PSEO or concurrent enrollment with a Minnesota State college or university, high school juniors must be in the upper one-third of their class or earn a score at or above the 70th percentile on a test such as the ACT or SAT. Seniors must be in the upper one-half of their class or earn a score at or above the 50th percentile on a test such as the ACT or SAT. Students who do not meet these requirements may still be eligible if they can meet other college readiness standards determined by the college or university. Students in 9th or 10th grade may also be eligible to take PSEO or concurrent enrollment courses if they rank in the upper one-tenth of their class or attain a score at or above the 90th percentile on a nationally standardized, norm-referenced test, or if they have a favorable recommendation from designated high school officials. All high school students enrolling in PSEO or concurrent enrollment, regardless of grade level, must also meet all college course prerequisites.

** A student who first completed technical courses while in 10th grade and wishes to enroll in general education courses as an 11th or 12th grade student must take assessment tests and achieve the required scores prior to enrollment in additional PSEO courses. Learn more at www.MinnState.edu/admissions/pseo.



Whether you are seeking help paying for college or could use help as you prepare for an exam, your 37 colleges and universities offer a variety of resources to help you along the way. They are staffed with professionals who know and understand the process of enrolling and can help you reach your goals.

AID AND SUPPORT

Extraordinary Resources

Financial Resources

FINANCIAL AID: The Free Application for Federal Student Aid (FAFSA) is the first step in applying for assistance in financing your college education. Submit this information as soon as possible to determine your eligibility for aid. Visit fafsa.ed.gov for more information.

SCHOLARSHIPS: Scholarships are a great financial resource to students. They typically do not have to be paid back and can help offset tuition and other costs associated with college.

TAX CREDITS: Some students may benefit from federal tax credit programs. Consult with a tax professional or visit the IRS website at irs.gov for more information.

Academic Resources

ON-CAMPUS ACADEMIC ASSISTANCE: Most colleges and universities offer services such as tutors, a writing center, a math center, counseling, and more to support you. Contact the college or university you are interested in attending to learn about the resources available.

TRIO SERVICES: The federal TRIO programs are outreach and student services programs designed to identify and provide services to individuals from disadvantaged backgrounds.

ACCESSIBILITY SERVICES: Your state colleges and universities offer accessible facilities and provide accommodations to students with documented disabilities.

SUPPORT FOR VETERANS AND SERVICE MEMBERS: Most of your colleges and universities offer services for veterans and service members, including help to identify resources to pay for college, and have received Yellow Ribbon or military-friendly designations. Learn more at MinnState.edu/military.

CAREER PLANNING: Check out career services at your college or university campus, or use careerwise.MinnState.edu to explore careers, take an assessment, find program and courses including short-term and continuing education options, get tips for a successful job search, and more.

» **GET STARTED TODAY!** Contact the college or university you are interested in to meet with staff who can help you find the resources right for you.

NEXT STEPS

1

Speak to friendly staff at the college or university you are considering.

2

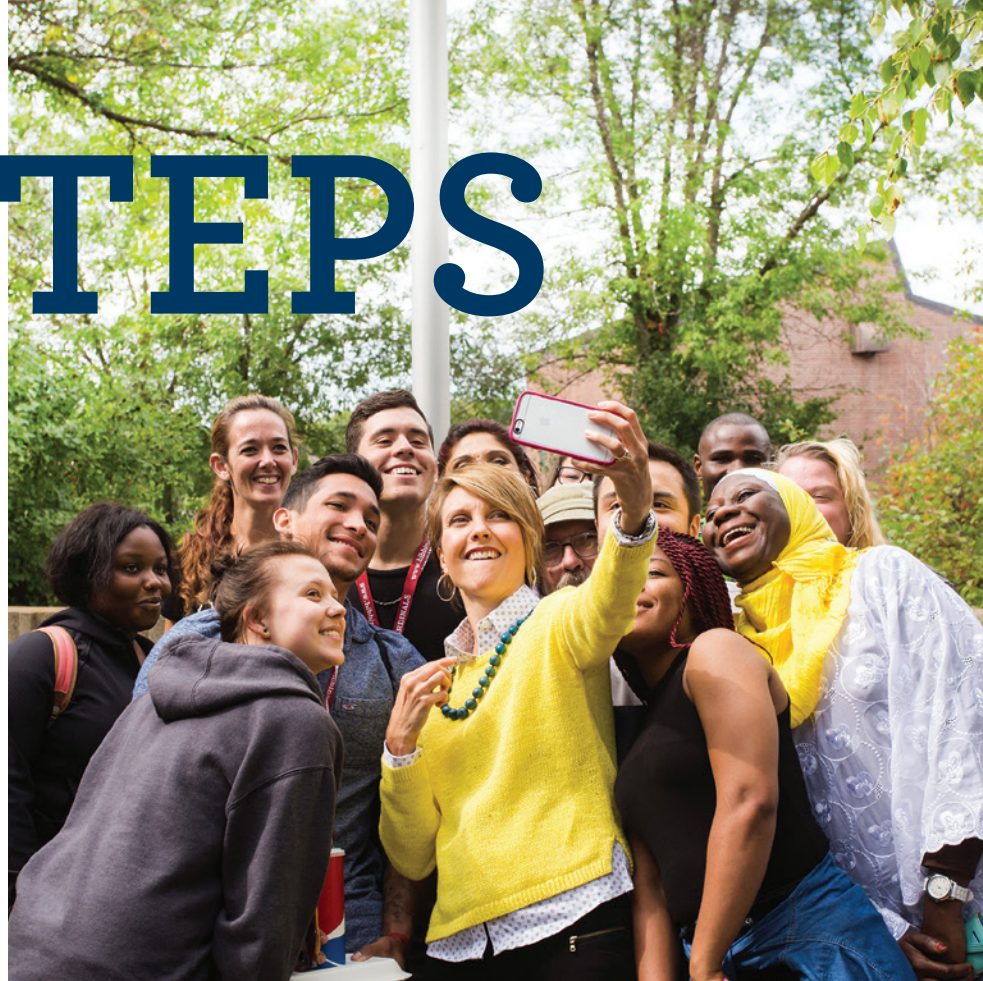
Get to know your state colleges and universities using this viewbook or by visiting MinnState.edu.

3

Check out the hundreds of programs available on your campuses by clicking on “Programs” at MinnState.edu or using the program grid found in the “Endless Opportunities” section of this book.

4

Visit campuses to find the college or university that is the right fit for you.



READY TO APPLY?

1. **CONTACT OR VISIT** the college or university you are considering to get specific admission requirements.
2. **SUBMIT YOUR APPLICATION.** The state universities typically accept applications in the fall, and the state colleges generally accept applications up until the start of the new semester.
3. **APPLY FOR FINANCIAL AID** by visiting fafsa.ed.gov and access the Free Application for Federal Student Aid (FAFSA).

4. **LOOK FOR SCHOLARSHIPS** by contacting the college or university you plan to attend for information and resources to begin the scholarship application process.
5. **START PLANNING** to achieve your goals by looking at the academic calendar for the college or university you wish to attend and getting to know staff that can assist you throughout your time on campus.

30 STATE COLLEGES

Minnesota State is home to 30 community, technical, and comprehensive colleges. These colleges are a great place to earn a degree and immediately start your career, or you can complete an associate degree and transfer to earn a bachelor's degree.

INTERESTED?

- » **CHECK OUT THE OPTIONS.** The profile pages that follow provide you a glimpse of all 30 colleges.
- » **VISIT CAMPUS.** The best way to find the college that is right for you is to visit.
- » **UNDERSTAND WHAT YOU NEED TO ENROLL.** Each college has an open admissions policy, meaning you need only a high school diploma or a GED to enroll. If you do not have a high school diploma or GED, you may qualify to be admitted through an approved Ability to Benefit test and may apply to enroll in a career pathway program. Details for program-specific admissions requirements can be found on the website of the college you are considering.
- » **KEEP TRANSFER IN MIND.** If you are thinking about transfer, take note of the pathway options and programs designed to ease the process. Planning ahead may save you time, money, and stress later.
- » **LET OUR STAFF AND FACULTY HELP.** You are strongly encouraged to contact the admissions department and get to know the faculty and staff at the college you plan to attend.

Alexandria Technical & Community College



alextech.edu

2017-18 Tuition and Fees: \$5,410



ALEXANDRIA

Admissions: 320-762-0221

1601 Jefferson St.
Alexandria, MN 56308

FAFSA Code: 005544



3,958 Students Served

49% Female // **51%** Male

50% Full-time // **50%** Part-time

9% Students of Color



ONLINE
LEARNING



STUDENT
ACTIVITIES

DEGREES OFFERED

Advanced Technical Certificate, Associate of Applied Science, Associate of Arts, Associate of Science, Certificate, Diploma

PROGRAM HIGHLIGHTS

Diesel mechanic, law enforcement, liberal arts and sciences, nursing, communication art and design, health and fitness specialist, interior design, mechatronics, cybersecurity, virtualization, and networking, speech-language pathology assistant, machine tool, powersports, early childhood education

STUDENT ACTIVITIES

15+ student clubs, organizations, and activities available in areas such as recreation, professional development, and culture. Visit the college's website or MinnState.edu for a complete list.

AT A GLANCE

- » Job placement rates average more than 98%
- » Ranked 4th in the nation for graduation rates
- » Recognized as a national leader in advanced technical skills education
- » Hands-on, student-centered, experiential learning
- » Student housing adjacent to campus
- » Extensive partnerships with local, state, national, and international businesses and industries
- » Transfer degrees and liberal arts curriculum provide more options to bachelor's degrees

VISIT

General campus tours are offered throughout the year. Visit alextech.edu/tour for details.

Anoka Technical College



anokatech.edu

2017-18 Tuition and Fees: \$5,584



ANOKA

Admissions: 763-576-7710

TTY: 7-1-1

1355 W. Highway 10
Anoka, MN 55303

FAFSA Code: 007350



2,781 Students Served

60% Female // **40%** Male

44% Full-time // **56%** Part-time

21% Students of Color



ONLINE
LEARNING



STUDENT
ACTIVITIES

DEGREES OFFERED

Associate of Applied Science, Certificate, Diploma

PROGRAM HIGHLIGHTS

Automotive technician, broadcast captioning, business data analyst, CNC manufacturing technology, golf course grounds management, health information technology, judicial reporting, logistics, medical coding, medical scribe specialist, multimedia and gaming, occupational therapy assistant, practical nursing

STUDENT ACTIVITIES

Several student clubs, organizations, and activities available. Visit the college's website or MinnState.edu for a complete list.

Anoka Technical College is aligned with Anoka-Ramsey Community College.

AT A GLANCE

- » 90% overall job placement rate
- » Practical nursing and nursing assistant programs ranked among top 20 in nation
- » Legal administrative program 100% online
- » Welding program on campus and in Cambridge area
- » Information technology programs with convenient start dates to suit your schedule

VISIT

Campus visits held every Tuesday and Thursday from 10 to 11 a.m. Visit the college's website for exact dates, times, and details.

Anoka-Ramsey Community College

anokaramsey.edu

2017-18 Tuition and Fees: \$5,043



**CAMBRIDGE
COON RAPIDS**

Admissions: 763-433-1300
TTY: 7-1-1

11200 Mississippi Blvd. NW
Coon Rapids, MN 55433

FAFSA Code: 002332



12,211 Students Served

60% Female // **40%** Male

39% Full-time // **61%** Part-time

21% Students of Color



ONLINE
LEARNING



TWIN CITIES
BACCALAUREATE



STUDENT
ACTIVITIES



INTERCOLLEGIATE
ATHLETICS

DEGREES OFFERED

Associate of Applied Science, Associate of Arts, Associate of Fine Arts, Associate of Science, Certificate

PROGRAM HIGHLIGHTS

Accounting, American Sign Language, biological sciences, biomedical technology, business, communication studies, creative writing, engineering, environmental science, exercise science, fine arts, glassblowing, health sciences, integrative health and healing, liberal arts and sciences, nursing, pharmacy technician, physical therapist assistant

STUDENT ACTIVITIES

125+ student clubs, organizations, and activities available. Visit the college's website or MinnState.edu for a complete list.

AT A GLANCE

- » Named one of the Top 10 Community Colleges in the nation by the Aspen Institute
- » English instructor William Breen honored with the Teacher of Excellence Award
- » Bachelor's degrees can be earned on campus from several partnering universities
- » Unique undergraduate research opportunities in several academic areas including biology, chemistry, communication studies, philosophy, and sociology
- » 3,000+ nursing graduates since 1967

VISIT

For a tour, call 763-433-1300 or visit anokaramsey.edu/admissions/visit-the-college.

Anoka-Ramsey Community College is aligned with Anoka Technical College.

Central Lakes College

clcmn.edu

2017-18 Tuition and Fees: \$5,428



**BRAINERD
STAPLES**

Admissions: 218-855-8000
TTY: 218-855-8224

501 W. College Dr.
Brainerd, MN 56401

FAFSA Code: 002339



5,499 Students Served

58% Female // **42%** Male

39% Full-time // **61%** Part-time

10% Students of Color



ONLINE
LEARNING



STUDENT
ACTIVITIES



INTERCOLLEGIATE
ATHLETICS



ON-CAMPUS
HOUSING

DEGREES OFFERED

Associate of Applied Science, Associate of Arts, Associate of Science, Certificate, Diploma

PROGRAM HIGHLIGHTS

Liberal arts and sciences, honors program, nursing, law enforcement, natural resources, computer network administration, mobile application development, sustainable greenhouse production, videography production, American Sign Language, heavy equipment operations and maintenance, robotics and automated systems

STUDENT ACTIVITIES

Numerous student clubs, organizations, and activities available. Visit clcmn.edu for a complete list.

AT A GLANCE

- » Learn and live surrounded by lakes and trees – Minnesota's premier vacation destination
- » 95% of CLC graduates find jobs related to their program of study
- » Small class sizes with expert instructors
- » CLC Foundation awards \$350,000 in scholarships each year
- » Military friendly with active Veterans Resource Center

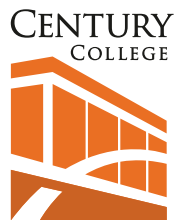
VISIT

Campus tours are offered every Monday and Friday at the Brainerd campus and every Wednesday at the Staples campus. To schedule a tour, visit clcmn.edu.

Century College

century.edu

2017–18 Tuition and Fees: \$5,418



WHITE BEAR LAKE



Admissions: 651-779-3300
TTY: 651-779-3354
3300 Century Ave. N.
White Bear Lake, MN 55110
FAFSA Code: 010546



12,395 Students Served

56% Female // **44%** Male

41% Full-time // **59%** Part-time

39% Students of Color



ONLINE
LEARNING



TWIN CITIES
BACCALAUREATE



STUDENT
ACTIVITIES



INTERCOLLEGIATE
ATHLETICS

DEGREES OFFERED

Associate of Applied Science, Associate of Arts, Associate of Fine Arts, Associate of Science, Certificate, Diploma

PROGRAM HIGHLIGHTS

Liberal arts and sciences, nursing, emergency medical technician, medical assistant, dental assistant, radiologic technology, medical office support, law enforcement, information and telecommunications, interior design, kitchen and bath design, visual communication technologies, sports management, prosthetic technology, solar and renewable energy

STUDENT ACTIVITIES

30+ student clubs, organizations, and activities available in areas such as arts, recreation, and career development. Visit the college's website or MinnState.edu for a complete list.

AT A GLANCE

- » 76 certificates, 21 diplomas, and 47 degrees offered in the liberal arts and sciences, as well as career and technical areas
- » A welcoming and diverse campus community with students attending from local communities, across the country, and around the world
- » The only college in Minnesota to participate in the "Achieving the Dream" initiative, a national program focused on student success

VISIT

Attend a "Discover Century" information session, program information session, or campus event. Learn more at century.edu/visitcampus.

Dakota County Technical College

dctc.edu

2017–18 Tuition and Fees: \$5,711



ROSEMOUNT



Admissions: 651-423-8000
TTY: 651-627-3529
1300 E. 145th St.
Rosemount, MN 55068
FAFSA Code: 010402



4,171 Students Served

41% Female // **59%** Male

47% Full-time // **53%** Part-time

21% Students of Color



ONLINE
LEARNING



STUDENT
ACTIVITIES



INTERCOLLEGIATE
ATHLETICS

DEGREES OFFERED

Associate of Applied Science, Associate of Science, Certificate, Diploma

PROGRAM HIGHLIGHTS

GM Automotive Service Educational Program, heavy duty truck tech, electrical lineworker, biomedical equipment tech, heavy construction equipment tech, health care, brewing & beer stewardship, business administration, civil engineering tech, multicultural management, early childhood and youth development, veterinary technician

STUDENT ACTIVITIES

25+ student clubs, organizations, and activities available in areas such as career development, student leadership, and culture. Visit the college's website or MinnState.edu for a complete list.

AT A GLANCE

- » Welcoming, student-centric campus with newly remodeled central commons area
- » Flexible learning options including credit for prior learning, short-term programs, online classes, and an Individualized Studies AS degree
- » Small class sizes, hands-on labs, real-world learning, and instructors that care
- » Strong business and industry partnerships that bring modern equipment and relevant coursework

VISIT

Experience our student-friendly campus by taking a Tuesday Campus Visit any Tuesday from 12:45 to 2:30 p.m.

Fond du Lac Tribal & Community College

fdltcc.edu

2017–18 Tuition and Fees: \$5,258



CLOQUET

Admissions: 218-879-0800
TTY: 800-627-3529
 2101 14th St.
 Cloquet, MN 55720
FAFSA Code: 031291



2,682 Students Served

57% Female // **43%** Male

35% Full-time // **65%** Part-time

23% Students of Color



ONLINE
LEARNING



STUDENT
ACTIVITIES



INTERCOLLEGIATE
ATHLETICS



ON-CAMPUS
HOUSING

DEGREES OFFERED

Associate of Applied Science, Associate of Arts, Associate of Fine Arts, Associate of Science, Certificate, Diploma

PROGRAM HIGHLIGHTS

Law enforcement, nursing, environmental science, geospatial technologies, American Indian studies, clean energy technology

STUDENT ACTIVITIES

Our engaging campus life programming provides meaningful connections to campus and student success. Opportunities are available for roles in student government and campus leadership, plus participation in student clubs based on career and program areas, academic excellence, intercollegiate athletics, and special interests.

AT A GLANCE

- » Reputation for friendly service and a comfortable campus atmosphere
- » Convenient daytime, evening, weekend, and online courses
- » Cultural center, fitness areas, law enforcement and nursing training facilities
- » Emphasis on uniting cultures and creating individual and community awareness
- » Unique transfer programs with four-year universities make it easy to transfer credits

VISIT

Visit campus anytime or during a Campus Visit Day. Check out the “Visit Us” page on our website for details.

Hennepin Technical College

hennepintech.edu

2017–18 Tuition and Fees: \$5,218



Hennepin Technical College™



BROOKLYN PARK EDEN PRAIRIE

Admissions: 952-995-1300
TTY: 800-627-3529
 9000 Brooklyn Blvd.
 Brooklyn Park, MN 55445
FAFSA Code: 010491



7,813 Students Served

40% Female // **60%** Male

19% Full-time // **81%** Part-time

42% Students of Color



ONLINE
LEARNING



TWIN CITIES
BACCALAUREATE



STUDENT
ACTIVITIES

DEGREES OFFERED

Associate of Applied Science, Associate of Science, Certificate, Diploma

PROGRAM HIGHLIGHTS

Business, IT, architectural technology, audio and video production, culinary arts, dental/nursing/medical assistant, pharmacy technology, EMS, law enforcement, fire protection, community paramedic, manufacturing and engineering technology, automation robotics, fluid power, plastics, carpentry, HVAC, plumbing, welding, Ford ASSET, light rail transit technician

STUDENT ACTIVITIES

Several student clubs, organizations, and activities available in areas such as career development and student leadership. Visit the college's website or MinnState.edu for a complete list.

AT A GLANCE

- » Largest stand-alone technical college in Minnesota, with more than 400 programs
- » Small class sizes with a 25-to-1 student-faculty ratio
- » Labs and curriculum meet industry standards and use cutting-edge technology
- » Current job placement rate is 98%
- » Industry partners fund scholarships
- » Offers short-term programs that can be completed in as few as 16 weeks

VISIT

The best way to discover HTC is to see it yourself. Register for a campus visit or learn more via the college's website.

Hibbing Community College

Part of the Northeast Higher Education District (NHED)

hibbing.edu

2017–18 Tuition and Fees: \$5,309



HIBBING



Admissions: 218-262-7200

TTY: 800-627-3529

1515 E. 25th St.
Hibbing, MN 55746

FAFSA Code: 002355



1,733 Students Served

55% Female // **45%** Male

55% Full-time // **45%** Part-time

12% Students of Color



ONLINE
LEARNING



STUDENT
ACTIVITIES



INTERCOLLEGIATE
ATHLETICS



ON-CAMPUS
HOUSING

DEGREES OFFERED

Associate of Applied Science, Associate of Arts, Associate of Fine Arts, Associate of Science, Certificate, Diploma

PROGRAM HIGHLIGHTS

IT networking and security, law enforcement, medical lab technician, nursing, nursing assistant, pharmacy technician, automotive technician, diesel mechanic, electrical maintenance, heating & cooling, pharmacy technician, dental assistant, culinary arts, CDL truck driving

STUDENT ACTIVITIES

Several student clubs, organizations, and activities available in a variety of areas including recreation, student leadership, and culture. Visit the college's website or MinnState.edu for a complete list.

AT A GLANCE

- » On-campus housing features two-bedroom, two-bathroom suites with full kitchen and living space
- » State-of-the-art Simulation Center for Nursing (RN) students
- » 16-week programs available
- » State-of-the-art simulators in industrial programs
- » "Yellow Ribbon Campus" proudly serving military members and their families
- » Located in the heart of the Iron Range; gorgeous scenery, outdoor recreation, and an abundance of lakes

VISIT

Visit HCC's website to schedule a tour any Monday–Friday from 9 a.m. to 3 p.m.

Inver Hills Community College

inverhills.edu

2017–18 Tuition and Fees: \$5,333



INVER GROVE HEIGHTS



Admissions: 651-450-3000

TTY: 800-627-3529

2500 E. 80th St.
Inver Grove Heights, MN 55076

FAFSA Code: 006935



8,093 Students Served

59% Female // **41%** Male

35% Full-time // **65%** Part-time

31% Students of Color



ONLINE
LEARNING



TWIN CITIES
BACCALAUREATE



STUDENT
ACTIVITIES

DEGREES OFFERED

Associate of Applied Science, Associate of Arts, Associate of Fine Arts, Associate of Science, Certificate, Diploma

PROGRAM HIGHLIGHTS

Network technology and security, emergency medical services, computer science, accounting, biology, psychology, Minnesota Alliance for Nursing Education (MANE) BSN, law enforcement, Adult Success through Accelerated Learning (ASAP), Inver Prep, InCollege, engineering fundamentals, paralegal, criminal justice, project management

STUDENT ACTIVITIES

25+ student clubs, organizations, and activities available in areas such as music, theater, culture, and student leadership. Visit the college's website or MinnState.edu for a complete list.

AT A GLANCE

- » Gorgeous campus with small class sizes and instructors that know your name
- » More than 50 degree and certificate programs ideal for transfer or launching your dream career
- » Complete the first two years of a bachelor's degree for a fraction of the cost
- » Convenient and accessible services on campus with staff dedicated to your academic and career success
- » National designation as an adult-friendly learning institution and one of the best colleges for veterans

VISIT

Campus visits are offered weekly and last about one hour. Visit the Inver Hills website for details.

Itasca Community College

Part of the Northeast Higher Education District (NHED)

itascacc.edu

2017-18 Tuition and Fees: \$5,324



GRAND RAPIDS

Admissions: 218-322-2340

TTY: 218-322-2438

1851 E. Highway 169
Grand Rapids, MN 55744

FAFSA Code: 002356



1,630 Students Served

50% Female // **50%** Male

60% Full-time // **40%** Part-time

16% Students of Color



ONLINE
LEARNING



STUDENT
ACTIVITIES



INTERCOLLEGIATE
ATHLETICS



ON-CAMPUS
HOUSING

DEGREES OFFERED

Associate of Applied Science, Associate of Arts,
Associate of Science, Certificate, Diploma

PROGRAM HIGHLIGHTS

Engineering, natural resources, wildland
firefighting, GIS, Class Act - Education, early
childhood, applied psychology/human services,
industrial technology - process operations,
liberal arts, practical nursing

STUDENT ACTIVITIES

20+ student clubs, organizations, and activities
available in areas such as culture, recreation,
and academics. Visit the college's website or
MinnState.edu for a complete list.

AT A GLANCE

- » Itasca's affordable cost saves you money

- » More than \$150,000 in scholarships awarded
- » Northwoods Minnesota location is perfect for outdoor activities
- » On-campus housing as well as nearby off-campus options
- » Women's volleyball, basketball, softball; men's football, basketball, wrestling, baseball; co-ed trap shooting
- » Itasca is a learning community college where students get hands-on experience working in small groups, and instructors' full attention is devoted to teaching

VISIT

Request an individual visit or check out dates for Campus Preview Days. Visit the college's website for details.

Lake Superior College

lsc.edu

2017-18 Tuition and Fees: \$5,153



DULUTH

Admissions: 218-733-7601

2101 Trinity Rd.
Duluth, MN 55811

FAFSA Code: 005757



8,118 Students Served

53% Female // **47%** Male

40% Full-time // **60%** Part-time

12% Students of Color



ONLINE
LEARNING



STUDENT
ACTIVITIES



INTERCOLLEGIATE
ATHLETICS

DEGREES OFFERED

Associate of Applied Science, Associate of Arts,
Associate of Fine Arts, Associate of Science,
Certificate, Diploma

PROGRAM HIGHLIGHTS

Nursing, dental hygiene, physical therapist
assistant, practical nursing, integrated
manufacturing, professional pilot, paralegal
studies, dialysis patient care technician,
fire technology and administration, aviation
maintenance technician, cyber defense and
cyber security

STUDENT ACTIVITIES

20+ student clubs, organizations, and activities
available in areas such as arts, culture, and
career development. Visit the college's website
or MinnState.edu for a complete list.

AT A GLANCE

- » Hangar facilities for the Center for Advanced Aviation at the Duluth International Airport house both LSC's professional pilot and aviation maintenance technician programs
- » The Emergency Response Training Center provides world-class training for emergency response professionals
- » The college provides dental hygiene, massage therapy, and physical therapy services to students and uninsured residents of the region through faculty-supervised student clinics

VISIT

Campus tours are offered weekdays at 10 a.m. or 2 p.m. or by appointment. Visit the college's website for additional details and events.

Mesabi Range College

Part of the Northeast Higher Education District (NHED)

mesabirange.edu

2017–18 Tuition and Fees: \$5,329



EVELETH
VIRGINIA

Admissions: 218-749-0313

TTY: 218-749-7783

1001 W. Chestnut St.
Virginia, MN 55792

FAFSA Code: 004009



1,882 Students Served

48% Female // 52% Male

54% Full-time // 46% Part-time

15% Students of Color



ONLINE
LEARNING



STUDENT
ACTIVITIES



INTERCOLLEGIATE
ATHLETICS



ON-CAMPUS
HOUSING

DEGREES OFFERED

Associate of Applied Science, Associate of Arts,
Associate of Science, Certificate, Diploma

PROGRAM HIGHLIGHTS

Transfer programs, industrial mechanical
technology, nursing, welding technology,
human services, human services – chemical
dependency specialist, graphic design media,
Iron Range Engineering (partnership with ICC)

STUDENT ACTIVITIES

Several student clubs, organizations, and
activities available in areas such as student
leadership, academics, career programs,
and recreation. Visit the college's website or
MinnState.edu for a complete list.

AT A GLANCE

- » Small class sizes that lead to personal attention and interaction with other students
- » Awards \$105,000 in scholarships annually
- » Women's volleyball, basketball, softball, and golf; men's football, basketball, baseball, and golf; co-ed club trap team
- » Strong student life program and international study opportunities
- » Semi-furnished apartments on the Virginia campus
- » Excellent placement rates and high-paying jobs in many career programs

VISIT

Contact the admissions office to schedule a campus visit with a personal guide. Visit the college's website for additional details and events.

Minneapolis Community & Technical College

minneapolis.edu

2017–18 Tuition and Fees: \$5,396



MINNEAPOLIS

Admissions: 612-659-6200

TTY: 7-1-1

1501 Hennepin Ave.
Minneapolis, MN 55403

FAFSA Code: 002362



12,255 Students Served

56% Female // 44% Male

34% Full-time // 66% Part-time

56% Students of Color



ONLINE
LEARNING



STUDENT
ACTIVITIES



TWIN CITIES
BACCALAUREATE

DEGREES OFFERED

Associate of Applied Science, Associate of Arts,
Associate of Fine Arts, Associate of Science,
Certificate, Diploma

PROGRAM HIGHLIGHTS

Eight schools within the college provide
simplicity in choosing a major and guidance
for which courses to take first to save time and
money. Programs within these schools include
biology, psychology, theater, business, liberal
arts, nursing, and more

STUDENT ACTIVITIES

70+ student clubs, organizations, and
activities available. Visit the college's website
or MinnState.edu for a complete list.

AT A GLANCE

- » Knowledgeable, award-winning faculty members committed to student success
- » Students from around the world who represent a range of ages and backgrounds
- » Small class sizes to connect with faculty and classmates
- » State-of-the-art technical, science, and world language labs
- » Nationally accredited programs in high-demand fields
- » Award-winning Student Support Center

VISIT

Visit the college's website to sign up for an Information Session and get more details about upcoming events and the admissions process.

Minnesota State College Southeast

southeastmn.edu

2017–18 Tuition and Fees: \$5,609



RED WING
WINONA

Admissions: 877-853-8324

TTY: 507-453-2785

1250 Homer Rd.
Winona, MN 55987

FAFSA Code: 002393



2,779 Students Served

61% Female // 39% Male

43% Full-time // 57% Part-time

14% Students of Color



ONLINE
LEARNING



STUDENT
ACTIVITIES

DEGREES OFFERED

Associate of Applied Science, Associate of Arts,
Associate of Science, Certificate, Diploma

PROGRAM HIGHLIGHTS

Accounting, band instrument repair, biomedical
equipment technology, cyber and information
security, diesel maintenance, electrical
engineering technology, guitar repair and
construction, massage therapy, nursing, truck
driving, violin repair

STUDENT ACTIVITIES

Collegiate DECA, Phi Theta Kappa, Student
Senate, SkillsUSA, Student Music Association,
Student Guitar Show, annual music/talent
showcase at Red Wing's historic Sheldon Theatre.

AT A GLANCE

- » 15:1 student-teacher ratio

- » Fully operational labs simulate real-world job settings
- » Expert instructors are eager to train the next generation
- » Day, evening, and online classes offer flexibility for nontraditional students
- » Associate of Arts and MN Transfer Curriculum prepare students for transfer to Minnesota State universities
- » 94% of graduates find jobs in their chosen fields
- » Campuses located in beautiful southeast Minnesota along the Mississippi River

VISIT

Schedule a personal campus tour with an admissions advisor by calling 877-853-8324 or email enrollmentservices@southeastmn.edu.

Minnesota State Community and Technical College

minnesota.edu

2017–18 Tuition and Fees: \$5,358



DETROIT LAKES
FERGUS FALLS
MOORHEAD
WADENA

Admissions: 877-450-3322

TTY: 800-627-3529

Visit minnesota.edu for
directions to our four
campus locations

FAFSA Code: 005541



8,422 Students Served

60% Female // 40% Male

42% Full-time // 58% Part-time

16% Students of Color



ONLINE
LEARNING



STUDENT
ACTIVITIES



INTERCOLLEGIATE
ATHLETICS

DEGREES OFFERED

Associate of Applied Science, Associate of Arts,
Associate of Fine Arts, Associate of Science,
Diploma, Certificate

PROGRAM HIGHLIGHTS

Cosmetology, dental assisting and hygiene,
electrical technology, line worker, equine
science, gas utility construction/service,
medical lab technician, nursing, phlebotomy,
powersports, radiologic technology,
cardiovascular technology-invasive, marine
engine, mental health behavioral aide II, surgical
technology, music/theatre/visual arts

STUDENT ACTIVITIES

The four campuses have 50+ student clubs,
organizations, and activities focused on
career skills, theatre, art, culture, recreation,
entertainment, and student leadership.

AT A GLANCE

- » Prepare for transfer to a four-year school, or choose from 70 career programs
- » Choose from on-campus, online, blended, or evening courses; 25 of our programs can be completed entirely online
- » M State is the top transfer institution for students attending MSUM, NDSU, UND, and Concordia College
- » Nursing and radiologic technology students have a licensure exam pass rate of 91%
- » Campus foundations award more than \$200,000 in scholarships each year

VISIT

Visit minnesota.edu to register for a campus tour, check out upcoming events, or get more information.

Minnesota West Community & Technical College



mnwest.edu

2017-18 Tuition and Fees: \$5,687



CANBY
GRANITE FALLS
JACKSON
PIPESTONE
WORTHINGTON

Admissions: 800-658-2330

TTY: 800-658-2330

1450 College Way
Worthington, MN 56187

FAFSA Code: 005263



4,707 Students Served

55% Female // **45%** Male

37% Full-time // **63%** Part-time

18% Students of Color



ONLINE
LEARNING



STUDENT
ACTIVITIES



INTERCOLLEGIATE
ATHLETICS

DEGREES OFFERED

Advanced Technical Certificate, Associate of Applied Science, Associate of Arts, Associate of Science, Certificate, Diploma

PROGRAM HIGHLIGHTS

Nursing, mechatronics, wind energy, electrician, powerline, welding, radiology tech, precision machining, law enforcement, agriculture, biofuels, carpentry, diesel, dental, surgical tech, computers, cosmetology, child development, automotive

STUDENT ACTIVITIES

20+ student clubs, organizations, and activities available throughout all campuses in areas such as recreation, arts, culture, and career development. Visit the college's website or MinnState.edu for a complete list.

AT A GLANCE

- » State leader in online, distance delivery, and technology
- » #1 Community College in Minnesota 2017 and #3 Best Online Community College nationally 2017 by bestcolleges.com
- » Leader in allied health programming with learning opportunities in hospital setting
- » Named top 150 colleges in the country by the Aspen Institute (3x)
- » Military Friendly School since 2014
- » 83% of our graduates live, work, and contribute to a Minnesota community

VISIT

Campus visits are Tuesdays or Thursdays starting at 1 p.m. and lasting about one hour. Get details by visiting the college's website.

Normandale Community College



NORMANDALE
COMMUNITY COLLEGE

normandale.edu

2017-18 Tuition and Fees: \$5,790



BLOOMINGTON

Admissions: 952-358-8201

TTY: 952-358-8625

9700 France Ave. S.
Bloomington, MN 55431

FAFSA Code: 007954



14,632 Students Served

55% Female // **45%** Male

42% Full-time // **58%** Part-time

35% Students of Color



ONLINE
LEARNING



TWIN CITIES
BACCALAUREATE



STUDENT
ACTIVITIES

DEGREES OFFERED

Associate of Applied Science, Associate of Arts, Associate of Fine Arts, Associate of Science, Certificate

PROGRAM HIGHLIGHTS

Liberal arts, business, computer science, science and engineering, nursing, dental hygiene, teacher education, law enforcement, music, theatre, art, vacuum technology. Advanced degree programs in accounting, business, communications, computer science, dental hygiene, education, engineering, exercise science, nursing

STUDENT ACTIVITIES

50+ student clubs, organizations, and activities available in areas such as arts, recreation, student leadership, and career development. Visit the college's website or MinnState.edu for a complete list.

AT A GLANCE

- » Accredited music, theatre, art, and business programs
- » Partnership Center provides bachelor's and master's degrees through partnering institutions on campus
- » Support services for second language and developmental education students and students with disabilities
- » Tutoring Center provides embedded tutors in difficult courses, peer tutoring, and tutoring for non-native speakers
- » A "Beyond the Yellow Ribbon" organization

VISIT

Visit Normandale's website to get more information on the admissions process and to see dates for Information Sessions.

North Hennepin Community College

nhcc.edu

2017–18 Tuition and Fees: \$5,525



BROOKLYN PARK

Admissions: 763-424-0724

TTY: 800-627-3529

7411 85th Ave. N.
Brooklyn Park, MN 55445

FAFSA Code: 002370



10,424 Students Served

58% Female // **42%** Male

28% Full-time // **72%** Part-time

46% Students of Color



ONLINE
LEARNING



STUDENT
ACTIVITIES



TWIN CITIES
BACCALAUREATE

DEGREES OFFERED

Associate of Applied Science, Associate of Arts, Associate of Fine Arts, Associate of Science, Certificate

PROGRAM HIGHLIGHTS

Liberal arts, American Sign Language, accounting, computer science, construction management, creative writing, criminal justice, economics, education, entrepreneurship, exercise science, film, health sciences, human services, graphic design, history, law enforcement, music, paralegal, pre-engineering, psychology, studio arts, theatre

STUDENT ACTIVITIES

75+ student clubs, cultural organizations, recreational sports, and fine arts activities available. Visit the college's website or MinnState.edu for a complete list.

AT A GLANCE

- » We are an affordable, diverse, welcoming, and "Beyond the Yellow Ribbon" military-friendly campus conveniently located in Brooklyn Park
- » Choose from 70 academic programs to study
- » Complete a bachelor's degree on campus through NHCC's University Center partners
- » Access high-tech STEM labs in the award-winning Bioscience & Health Careers Center
- » Visit the on-campus student health clinic for a variety of services with no out-of-pocket costs

VISIT

Mondays and Fridays at 10 a.m., Tuesdays at 5:30 p.m. Learn more at nhcc.edu/visit.

Northland Community & Technical College

northlandcollege.edu

2017–18 Tuition and Fees: \$5,549



EAST GRAND FORKS THIEF RIVER FALLS

Admissions: 218-683-8800

TTY: 800-627-3529

1101 Highway 1 E.
Thief River Falls, MN 56701

FAFSA Code: 002385



4,936 Students Served

59% Female // **41%** Male

39% Full-time // **61%** Part-time

18% Students of Color



ONLINE
LEARNING



STUDENT
ACTIVITIES



INTERCOLLEGIATE
ATHLETICS

DEGREES OFFERED

Advanced Technical Certificate, Associate of Applied Science, Associate of Arts, Associate of Science, Certificate, Diploma

PROGRAM HIGHLIGHTS

Unmanned aerial systems, dietetic technician, firefighter-paramedic, precision agriculture equipment technician, digital marketing, criminal justice-law enforcement, respiratory therapist, aviation maintenance technology, electronics technology

STUDENT ACTIVITIES

Intercollegiate athletics, Phi Theta Kappa, intramural sports, student senate, chorus, community band, VEX robotics, student ambassadors.

AT A GLANCE

- » Online. On-campus. In the evening. Flexible learning options so you can customize a schedule that fits your lifestyle
- » 86,000 square-foot state-of-the-art aerospace training facility
- » Fine arts opportunities in visual art, music, and theater
- » Enjoy the great outdoors from your doorstep in Thief River Falls or the best shopping, restaurants, and nightlife that greater Grand Forks offers

VISIT

Take a tour with a current student, visit with faculty and advisors, and enjoy lunch on us. Go on an interactive, virtual campus tour from your home or phone at northlandcollege.edu/360.

Northwest Technical College

ntcmn.edu

2017–18 Tuition and Fees: \$5,480



BEMIDJI



Admissions: 218-333-6600

905 Grant Ave. SE
Bemidji, MN 56601

FAFSA Code: 005759



2,011 Students Served

74% Female // **26%** Male

29% Full-time // **71%** Part-time

19% Students of Color



ONLINE
LEARNING



STUDENT
ACTIVITIES



ON-CAMPUS
HOUSING

DEGREES OFFERED

Associate of Science, Associate of Applied Science, Certificate, Diploma

PROGRAM HIGHLIGHTS

Nursing, dental assisting, community health worker, health sciences, automotive service and performance, welding, construction, electrical construction, plumbing/HVAC, industrial maintenance, accounting, computer support, general business, human resources, administrative assistant, management and entrepreneurship, childcare and young child education

STUDENT ACTIVITIES

Numerous student clubs, organizations, and activities available. Visit the college's website or MinnState.edu for a complete list.

AT A GLANCE

- » Academic programs, both on campus and online, closely match career opportunities in northern Minnesota
- » Students experience personal attention, small classes, supportive faculty, and well-equipped labs, as well as abundant parking and an on-campus café
- » Through a partnership with Bemidji State University, students can live at BSU and enjoy the benefits of campus housing

VISIT

Campus visits are highly encouraged for students and their families. Visits may be scheduled by calling 218-333-6600 or by going to the college's website, ntcmn.edu.

Pine Technical & Community College

pine.edu

2017–18 Tuition and Fees: \$5,082



Pine Technical & Community College



PINE CITY



Admissions: 320-629-5100

TTY: 320-629-1030

900 Fourth St. SE
Pine City, MN 55063

FAFSA Code: 005535



2,547 Students Served

59% Female // **41%** Male

25% Full-time // **75%** Part-time

12% Students of Color



ONLINE
LEARNING



STUDENT
ACTIVITIES

DEGREES OFFERED

Associate of Arts, Associate of Science, Associate of Applied Science, Certificate, Diploma

PROGRAM HIGHLIGHTS

American Sign Language, automotive technology, business administration transfer pathway, cyber security, gunsmithing and firearms technology, human services eligibility worker, human services child support, early childhood development, medical assisting, nursing, advanced manufacturing

STUDENT ACTIVITIES

Numerous student clubs, organizations, and activities available in areas such as academics, leadership, and career development. Visit the college's website or MinnState.edu for a complete list.

AT A GLANCE

- » The Associate of Arts degree and several Associate of Science degree programs provide students the opportunity to pursue a four-year degree and take advantage of lower tuition rates and smaller class sizes while immediately focusing on a chosen major
- » Technical programs prepare students for job placement and employment
- » High-tech, state-of-the-art simulation labs support all nursing and health science programs
- » Vibrant student life environment provides opportunities for students from all disciplines

VISIT

Visit pine.edu/visit to RSVP for a Discover Pine Information Session and Tour.

Rainy River Community College

Part of the Northeast Higher Education District (NHED)



rainyriver.edu

2017–18 Tuition and Fees: \$5,324



INTERNATIONAL FALLS

Admissions: 218-285-7722

TTY: 800-627-3529

1501 Highway 71
International Falls, MN 56649

FAFSA Code: 006775



441 Students Served

58% Female // **42%** Male

67% Full-time // **33%** Part-time

22% Students of Color



ONLINE
LEARNING



STUDENT
ACTIVITIES



INTERCOLLEGIATE
ATHLETICS



ON-CAMPUS
HOUSING

DEGREES OFFERED

Associate of Applied Science, Associate of Arts,
Associate of Science, Certificate, Diploma

PROGRAM HIGHLIGHTS

Liberal arts and sciences, health sciences,
fitness specialist and coaching

STUDENT ACTIVITIES

Numerous student clubs, organizations, and
activities available in areas such as recreation,
student government, and culture. Visit the
college's website or MinnState.edu for a
complete list.

AT A GLANCE

- » Located just five minutes from Voyageurs
National Park and the Canadian border
- » More than 90% of students receive some
form of financial aid

- » Awards more than \$150,000 in scholarships
annually
- » Transfer-ready and career-direct programs
- » Continue to play the sport you love or get
involved with Student Senate, Phi Theta
Kappa honor society, Black Association of
Students, Anishinaabe Student Coalition,
Health Care Career Club, and other activities
- » On-campus apartments feature two
bedrooms, full kitchen, bathroom, and living
and dining area
- » On-site recreational facilities include a
volleyball court, basketball court, bicycle
trail, lighted cross-country ski trail, disc golf
course, and more

VISIT

Visit Rainy River's website to schedule a campus
visit and get details on upcoming events.

Ridgewater College



RIDGEWATER
COLLEGE

ridgewater.edu

2017–18 Tuition and Fees: \$5,418



HUTCHINSON WILLMAR

Admissions: 320-222-5200

TTY: 800-627-3529

2101 15th Ave. NW
Willmar, MN 56201

FAFSA Code: 005252



4,979 Students Served

54% Female // **46%** Male

56% Full-time // **44%** Part-time

14% Students of Color



ONLINE
LEARNING



STUDENT
ACTIVITIES



INTERCOLLEGIATE
ATHLETICS

DEGREES OFFERED

Advanced Technical Certificate, Associate of
Applied Science, Associate of Arts, Associate of
Science, Certificate, Diploma

PROGRAM HIGHLIGHTS

Liberal arts/sciences, agriculture, nursing/allied
health, business, veterinary technology, auto
body collision repair, nondestructive testing
technology. Online degrees – computer aided
drafting and design, early childhood, health
information technology, activity director, law
enforcement, multimedia design technology,
liberal arts, legal administrative assistant

STUDENT ACTIVITIES

50+ student clubs in a variety of areas, varsity
athletics, and intramural athletics. Visit the
college's website or MinnState.edu for a
complete list.

AT A GLANCE

- » Learn a trade and get a great job in two
years or less
- » Earn your associate degree and transfer for
your bachelor's degree
- » Students and alumni note the caring and
helpful nature of staff and faculty
- » Outstanding support services, including
on-campus academic support centers, online
tutoring, TRIO Student Support Services, and
regular student success workshops

VISIT

Campus tours available by calling to schedule
an appointment. Visit the college's website for
details.

Riverland Community College

riverland.edu

2017-18 Tuition and Fees: \$5,570



ALBERT LEA
AUSTIN
OWATONNA

Admissions: 507-433-0600

TTY: 800-627-3529

1900 8th Ave. NW
Austin, MN 55912

FAFSA Code: 002335



4,138 Students Served

57% Female // **43%** Male

40% Full-time // **60%** Part-time

19% Students of Color



ONLINE
LEARNING



STUDENT
ACTIVITIES



INTERCOLLEGIATE
ATHLETICS

DEGREES OFFERED

Advanced Technical Certificate, Associate of Applied Science, Associate of Arts, Associate of Fine Arts, Associate of Science, Certificate, Diploma

PROGRAM HIGHLIGHTS

Liberal arts and sciences, nursing, human services, business, supervisory management, law enforcement, computer technology, accounting, business, office technology, global studies, agricultural sciences, music or theater concentration, production technician, agribusiness, food science, biotechnology, supervisory management online

STUDENT ACTIVITIES

25+ student clubs, organizations, and activities available in areas such as fine arts, recreation,

and career development. Visit the college's website or MinnState.edu for a complete list.

AT A GLANCE

- » Earn your AA degree or complete one of more than 50 career programs
- » More than 350 Riverland courses are offered entirely/partially online
- » Personalized student support services
- » Experience our best-in-class health science education simulation learning center for nurses, radiographers, and lab technicians
- » Offers an Associate in Fine Arts degree

VISIT

Schedule an individual appointment, check out Discover the River events for high school juniors and seniors, and learn about other visit opportunities by visiting Riverland's website.

Rochester Community and Technical College

rctc.edu

2017-18 Tuition and Fees: \$5,630



ROCHESTER

Admissions: 507-258-7210

TTY: 800-627-3529

851 30th Ave. SE
Rochester, MN 55904

FAFSA Code: 002373



7,515 Students Served

61% Female // **39%** Male

47% Full-time // **53%** Part-time

24% Students of Color



ONLINE
LEARNING



STUDENT
ACTIVITIES



INTERCOLLEGIATE
ATHLETICS

DEGREES OFFERED

Associate of Applied Science, Associate of Arts, Associate of Fine Arts, Associate of Science, Certificate, Diploma

PROGRAM HIGHLIGHTS

Liberal arts and sciences, nursing, health information technology, business, accounting, biotechnology, cardiovascular invasive specialist, cancer registry management, clinical neurophysiology technology, dental hygiene, environmental science, equine science, histology technician, horticulture technology, intensive care paramedic, surgical technology, veterinary technology, and many more

STUDENT ACTIVITIES

40+ student clubs, organizations, and activities available in areas such as fine arts, culture,

recreation, and academics. Visit the college's website or MinnState.edu for a complete list.

AT A GLANCE

- » Minnesota's oldest public two-year college and one of the nation's oldest original community colleges
- » Rochester is one of the nation's "Most Livable Cities," the third-largest city in Minnesota, and home to the world-renowned Mayo Clinic and IBM Rochester
- » Offers more than 300 online classes and 70 credit-based programs with more than 100 credential options

VISIT

Small group visits are offered most weekdays. Preview Days are offered once per month. Visit RCTC's website for details.

Saint Paul College

saintpaul.edu

2017–18 Tuition and Fees: \$5,561



ST. PAUL

Admissions: 651-846-1600

TTY: 7-1-1

235 Marshall Ave.
St. Paul, MN 55102

FAFSA Code: 005533



9,452 Students Served

54% Female // **46%** Male

39% Full-time // **61%** Part-time

61% Students of Color



ONLINE
LEARNING



TWIN CITIES
BACCALAUREATE



STUDENT
ACTIVITIES

DEGREES OFFERED

Associate of Applied Science, Associate of Arts, Associate of Fine Arts, Associate of Science, Certificate, Diploma

PROGRAM HIGHLIGHTS

Liberal arts and STEM, business, finance, global trade, coding/programming, IT/computer science, manufacturing, technical, trade and transportation, health sciences, medical office, practical nursing, respiratory care, medical lab technician, culinary arts, esthetics, cosmetology, child development, sign language interpreter

STUDENT ACTIVITIES

20+ student clubs, organizations, and activities in areas such as culture, student leadership, and career development. Visit SaintPaul.edu or MinnState.edu for a complete list.

AT A GLANCE

- » Student-oriented campus with support services including free tutoring, computer labs, academic advising, transfer services, TRIO program, and career services
- » The Power of YOU and Make it Count tuition-free scholarship programs
- » New Health and Science Alliance Center provides students with state-of-the-art classroom and lab facilities
- » Transfer agreements with four-year private and public colleges and universities provide pathways for students to transfer and continue their higher education

VISIT

Tour and information sessions are every Tuesday at 10 a.m. and every Wednesday at 6 p.m. Go to SaintPaul.edu/StartHere.

South Central College

southcentral.edu

2017–18 Tuition and Fees: \$5,416



FARIBAULT
NORTH MANKATO

Admissions: 507-389-7200

TTY: 507-389-7200

1920 Lee Blvd.
North Mankato, MN 56003

FAFSA Code: 005537



4,792 Students Served

49% Female // **51%** Male

49% Full-time // **51%** Part-time

18% Students of Color



ONLINE
LEARNING



STUDENT
ACTIVITIES

DEGREES OFFERED

Advanced Technical Certificate, Associate of Applied Science, Associate of Arts, Associate of Fine Arts, Associate of Science, Certificate, Diploma

PROGRAM HIGHLIGHTS

Advanced manufacturing, agribusiness, allied health and nursing, arts and communications, building and design, business, human services, transportation, liberal arts and sciences, workforce development through the college's Center for Business and Industry

STUDENT ACTIVITIES

20+ student clubs, organizations, and activities available based on student interests, career areas, and leadership development. Visit the college's website or MinnState.edu for a complete list.

AT A GLANCE

- » Liberal Arts & Sciences programs enable you to earn an associate degree at SCC and transfer your credits to a university to pursue a bachelor's degree
- » Technical Career and Professional programs prepare you to immediately start in a rewarding career after graduation
- » \$350,000+ in scholarships are awarded annually by South Central College's Foundations

VISIT

Explore SCC Sessions are a great way to experience South Central College. Visit southcentral.edu/explore for more information.

St. Cloud Technical & Community College

sctcc.edu

2017-18 Tuition and Fees: \$5,359



ST. CLOUD

Admissions: 320-308-5000

TTY: 320-308-5988

1540 Northway Dr.
St. Cloud, MN 56303

FAFSA Code: 005534



6,336 Students Served

53% Female // **47%** Male

49% Full-time // **51%** Part-time

19% Students of Color



ONLINE
LEARNING



STUDENT
ACTIVITIES



INTERCOLLEGIATE
ATHLETICS

DEGREES OFFERED

Advanced Technical Certificate, Associate of Applied Science, Associate of Arts, Associate of Science, Certificate, Diploma

PROGRAM HIGHLIGHTS

Liberal arts and sciences, accounting, business management, biomedical technology equipment repair, computer programming, sonography, water environment technology

STUDENT ACTIVITIES

25+ student clubs, organizations, and activities, and five intercollegiate sports. Visit the college's website or MinnState.edu for a complete list.

AT A GLANCE

- » Cutting-edge simulation labs

- » Earn the first two years of a four-year degree with seamless transfer options
- » 90+ program options that can be completed in two years or less
- » 97% job placement or successful transfer rate
- » Pioneering programs in water environment technologies, nuclear energy, and nursing
- » More than \$150,000 in scholarships awarded annually
- » Child care facility on campus
- » Recreational spaces only a few steps from campus in local parks and Mississippi River

VISIT

Visit the college's website to set up a campus tour or to attend a Program Infosession.

Vermilion Community College

Part of the Northeast Higher Education District (NHED)

vcc.edu

2017-18 Tuition and Fees: \$5,324



ELY

Admissions: 218-235-2191

TTY: 800-627-3529

1900 E. Camp St.
Ely, MN 55731

FAFSA Code: 002350



802 Students Served

41% Female // **59%** Male

61% Full-time // **39%** Part-time

14% Students of Color



ONLINE
LEARNING



STUDENT
ACTIVITIES



INTERCOLLEGIATE
ATHLETICS



ON-CAMPUS
HOUSING

DEGREES OFFERED

Associate of Applied Science, Associate of Arts, Associate of Science, Certificate, Diploma

PROGRAM HIGHLIGHTS

Natural resource technology, fisheries/wildlife, wildlife/wildland law enforcement, outdoor leadership, veterinary technician, seasonal park law enforcement ranger training, wilderness and park management, entrepreneurship, water sciences

STUDENT ACTIVITIES

20+ student clubs, organizations, and activities. Visit the college's website or MinnState.edu for a complete list.

AT A GLANCE

- » Varsity athletics programs

- » Enjoy the many programs and activities that can be offered only on the edge of the Boundary Waters Canoe Area Wilderness
- » Specializing in environmental programs for students interested in outdoor careers such as forestry, fisheries, wildlife, wilderness management, outdoor leadership, and land surveying
- » On-campus apartment-style housing; a full meal plan is available
- » Academic and social clubs including wildlife, wilderness, wingshooters, and outdoor pursuits

VISIT

Check out dates for upcoming Open House sessions or schedule a one-on-one Campus Visit by visiting the college's website.

7 STATE UNIVERSITIES

Seven state universities are part of Minnesota State. Each provides an excellent pathway to earning your bachelor's degree or beyond and can help you launch your career.

INTERESTED?

The seven state universities will generally accept you as a first-year student if you can answer YES to at least one of these questions:

- » Did you graduate in the top half of your high school class?
- » Did you receive a combined score of 1,000 or higher on the SAT standardized test, or on its corresponding score on the redesigned SAT standardized test?
- » Did you score 21 or higher on the ACT standardized test?

Were you able to answer YES to one of the above questions and are you planning on attending a Minnesota State university?

- » **CHECK OUT THE OPTIONS.** The profile pages that follow provide you a glimpse of the seven state universities.
- » **KNOW THE ADMISSION REQUIREMENTS.** Some state universities may have slightly different admission requirements. Check with the admissions office at the university you are interested in for details. If you do not meet the minimum admission requirements, you may be considered for admission under special provisions.
- » **ASK QUESTIONS AND VISIT CAMPUS.** There's no better way to figure out which university is the right fit. Contact a member of the university's admission office to set up a visit.

Bemidji State University

bemidjistate.edu

2017–18 Tuition and Fees: \$8,678



BEMIDJI
STATE UNIVERSITY



BEMIDJI

Admissions: 218-755-2040

TTY: 800-627-3529

1500 Birchmont Dr. NE
Bemidji, MN 56601

FAFSA Code: 002336



6,396 Students Served

58% Female // **42%** Male

68% Full-time // **32%** Part-time

11% Students of Color



ONLINE
LEARNING



STUDENT
ACTIVITIES



INTERCOLLEGIATE
ATHLETICS



ON-CAMPUS
HOUSING

DEGREES OFFERED

Associate of Arts, Bachelor of Applied Science, Bachelor of Arts, Bachelor of Fine Arts, Bachelor of Science, Certificate, Graduate Certificate, Master of Arts, Master of Arts in Teaching, Master of Business Administration, Master of Science, Master of Special Education

PROGRAM HIGHLIGHTS

Nursing, business administration, accounting, computer information systems, music, education, psychology, criminal justice, design, environmental studies, mass communications, marketing communications, indigenous studies, Ojibwe, biology, wildlife biology, aquatic biology, wilderness management and outdoor recreation, chemistry, mathematics, economics, English, creative and professional writing, political

science, international studies, sociology, exercise science, project management

SPECIAL OPTIONS

Minors – Those not corresponding to major field names include leadership, applied public policy, studio arts, sustainability, engineering technology, chemical dependency, computer forensics, fraud examination, developmental/adapted physical education, health promotion and education, human performance, Earth science, electronic writing, geographic information systems, geology, wetlands ecology, physics, philosophy, women's studies/gender studies

Emphases – Marketing, management, finance, entrepreneurship, accounting information



systems, exhibit design, international studies, writing, environmental health and toxicity, industrial ecology, construction management, wetlands ecology, vocal performance, computer forensics, victimology, tribal justice, manufacturing technology, medical sciences

Preprofessional – 14 programs, including chiropractic, dentistry, engineering, law, medicine, mortuary science, occupational therapy, optometry, osteopathy, pharmacy, physical therapy, physician assistant, podiatry, veterinary medicine

STUDENT ACTIVITIES

Bemidji State offers 80-plus student organizations and activities related to professional development, fine arts, culture, academics, and leadership, as well as intercollegiate and intramural athletics. Visit the Bemidji State website or MinnState.edu for a complete list.

AT A GLANCE

- » With a student/faculty ratio of 19:1, ranked as a “top-tier” Midwest University by U.S. News & World Report for the past nine years
- » On the shore of Lake Bemidji in the beautiful north woods, with year-round outdoor recreation that includes world-class hunting

and fishing and an Outdoor Program Center for canoeing, camping, skiing, bicycling, and sailing

- » In partnership with the Mitchell Hamline School of Law, students can complete their undergraduate and law degrees in six years
- » The Accelerated MBA program allows students to complete both a bachelor's degree and a Master of Business Administration degree in five years
- » A \$1 million Student Media Center, opened in 2016, includes an expanded television studio and a multimedia hub for a student-run radio station, television station, film festival, and magazine
- » The American Indian Resource Center serves as a hub for Native American students, partnerships with tribal nations, and preservation of native language, culture, and traditions

VISIT

Campus tours are offered weekdays at 10 a.m. and 1 p.m. You can also check out dates for upcoming Campus Previews and get more details on the university's website.

Metropolitan State University

metrostate.edu

2017–18 Tuition and Fees: \$7,860



**MINNEAPOLIS
ST. PAUL**

Admissions: 651-793-1302

TTY: 651-772-7687

700 E. Seventh St.
St. Paul, MN 55106

FAFSA Code: 010374



11,494 Students Served

57% Female // **43%** Male

35% Full-time // **65%** Part-time

40% Students of Color



ONLINE
LEARNING



STUDENT
ACTIVITIES

DEGREES OFFERED

Bachelor of Applied Science, Bachelor of Arts, Bachelor of Human Services, Bachelor of Science, Bachelor of Science in Nursing, Bachelor of Science-Dental Hygiene, Bachelor of Social Work, Certificate, Doctor of Business Administration, Doctor of Nursing Practice, Graduate Certificate, Master of Arts, Master of Business Administration, Master of Management Info Systems, Master of Public and Nonprofit Administration, Master of Public Administration, Master of Science, Master of Science Nursing, Master of Science-Advanced Dental Therapy, Master of Advocacy and Political Leadership, Master of Nonprofit Leadership Management, Professional Science Master's

PROGRAM HIGHLIGHTS

Individualized studies, business administration,

accounting, psychology, human services, criminal justice, nursing RN-BSN, alcohol and drug counseling, computer science, elementary education, applied doctorate in business administration, applied doctorate in nursing practice, computer forensics, dental hygiene, law enforcement, oral health care practitioner, screenwriting, technical communication, theater, urban elementary education

SPECIAL OPTIONS

Minors – Advertising, applied math, applied statistics, biology, business admin, civic engagement, community organizing, computer forensics, criminal justice, digital media, entrepreneurship, environmental communication, experimental intermedia arts, gerontology, HR admin, international business, MIS, media literacy, org comm, research and info studies, UX design

Emphases – Metropolitan State's Science Education Center provides students with an extraordinary science education at an affordable cost. The university's growing science-related programs prepare future professionals in applied scientific endeavors, health care, and science teaching for K–12 schools. College of Sciences' programs include science, applied mathematics, statistics, computer science and information technology.

STUDENT ACTIVITIES

Metropolitan State offers 50+ student activities, clubs, and organizations related to fine arts, culture, academics, leadership, professional development, and more, as well as intramural club athletics. Visit the Metropolitan State website or MinnState.edu for a complete list.

AT A GLANCE

- » Twin Cities' only public, urban, comprehensive state university
- » High-quality, affordable educational programs and services in a student-centered environment
- » More than 50 undergraduate programs (including individualized degree programs) and several graduate programs

- » Faculty bring both practical and theoretical knowledge to their instruction
- » Area's rich diversity reflected in students, faculty, staff, and community partnerships
- » Unwavering commitment to civic engagement
- » Daytime, evening, online, and weekend classes, comfortable class sizes, and flexible, innovative scheduling
- » Credits awarded for college-level learning gained through non-classroom experience
- » Partners with Hennepin Technical College on the Law Enforcement and Criminal Justice Education Center
- » Enables Peace Corps volunteers to earn bachelor's degrees while serving
- » National Academic Advising Association's Outstanding Advising Technology Innovation winner for the university's online orientation

VISIT

Set up an individual visit, make a phone appointment, attend a Drop-in Session, or set up a group visit. Get details at metrostate.edu.



Minnesota State University, Mankato

mnsu.edu

2017–18 Tuition and Fees: \$8,161



MANKATO

Admissions: 507-389-1822

TTY: 800-627-3529

122 Taylor Center
Mankato, MN 56001

FAFSA Code: 002360



18,090 Students Served

54% Female // **46%** Male

77% Full-time // **23%** Part-time

15% Students of Color



ONLINE
LEARNING



STUDENT
ACTIVITIES



INTERCOLLEGIATE
ATHLETICS



ON-CAMPUS
HOUSING

DEGREES OFFERED

Associate of Arts, Bachelor of Science - Mechanical Engineering, Bachelor of Science - Computer Engineering, Bachelor of Applied Science, Bachelor of Arts, Bachelor of Electrical Engineering, Bachelor of Fine Arts, Bachelor of Science, Bachelor of Science - Civil Engineering, Bachelor of Science in Engineering, Bachelor of Science in Social Work, Certificate, Doctor of Education, Doctor of Nursing Practice, Doctor of Psychology, Graduate Certificate, Master of Accounting, Master of Arts, Master of Arts in Teaching, Master of Business Administration, Master of Fine Arts, Master of Music, Master of Public Administration, Master of Science, Master of Science Nursing, Master of Social Work, Professional Science Master's, Specialist

PROGRAM HIGHLIGHTS

Nursing, psychology, elementary education, law enforcement, management, art, finance, alcohol and drug studies, American indigenous studies, automotive engineering technology, aviation, dance, ethnic studies, gender and women's studies, music industry, recreation, parks and leisure services, Scandinavian studies, Spanish for professions

SPECIAL OPTIONS

Minors – Highlights include astronomy, aviation management, community health education, creative writing, database technologies, entrepreneurship and innovation, environmental science, ethnic studies, financial planning, human resource management, military science/Army ROTC, theatre arts, urban and regional studies

Emphases – Certificates in geographic information science, information security, law enforcement management, music industry, networking technologies, nonprofit leadership, software development, technical communication

Preprofessional – Chiropractic medicine, dentistry, engineering, law, medicine, mortuary science, occupational therapy, optometry, osteopathic medicine and surgery, pharmacy, physical therapy, podiatric medicine and surgery, teaching, veterinary science

STUDENT ACTIVITIES

Minnesota State Mankato offers 200+ student activities, clubs, and organizations related to arts, culture, academics, leadership, professional development, and more, as well as intercollegiate and intramural athletics. Visit the Minnesota State Mankato website or MinnState.edu for a complete list.

AT A GLANCE

- » Beautiful campus overlooking the Minnesota River Valley
- » More than \$127 million available in scholarships, assistantships, grants, work-study, and student loans
- » Recognized as a national leader in undergraduate research by the Council on Undergraduate Research

- » Four applied doctorate programs: nursing practice, educational leadership, counselor education, school psychology
- » New Clinical Sciences Building and Dining Center

- » Indoor rock climbing facility, outdoor rock climbing pinnacle, and full ropes and challenge course
- » Large student weight room, basketball and volleyball courts, indoor student walking and running track, racquetball and handball courts, group fitness and dance studios, and a martial arts room
- » State's premiere college theater: 10 musicals and plays per academic year, two dance concerts, two touring productions, and four professional summer stock productions
- » Nationally-renowned men's and women's basketball, NCAA Division I hockey, wrestling, track, and swimming

VISIT

Campus tours are offered every weekday at 9:30 a.m., 10:30 a.m., 1 p.m., and 2 p.m. Visit the university's website for details and other admissions events and information.

Minnesota State University Moorhead

mnstate.edu

2017–18 Tuition and Fees: \$8,467



MOORHEAD

Admissions: 218-477-2161

TTY: 800-627-3529

1104 7th Ave. S.
Moorhead, MN 56563

FAFSA Code: 002367



6,972 Students Served

62% Female // **38%** Male

77% Full-time // **23%** Part-time

10% Students of Color



ONLINE
LEARNING



STUDENT
ACTIVITIES



INTERCOLLEGIATE
ATHLETICS



ON-CAMPUS
HOUSING

DEGREES OFFERED

Associate of Arts, Bachelor of Arts, Bachelor of Fine Arts, Bachelor of Music, Bachelor of Science, Bachelor of Science in Nursing, Bachelor of Social Work, Certificate, Doctor of Education, Graduate Certificate, Master of Arts, Master of Business Administration, Master of Health Care Administration, Master of Science, Specialist

PROGRAM HIGHLIGHTS

Elementary inclusive education, business, social work, biology, nursing (RN-BSN), psychology, exercise science, criminal justice, accounting, speech/language/hearing science, biotechnology, business analytics, construction management, criminal justice, entertainment industries and technology, entrepreneurship, film production, geosciences, gerontology,

graphic communications, health services administration, law enforcement, medical physics, operations management, paralegal, project management, sustainability

SPECIAL OPTIONS

Minors – Art therapy, astronomy, coaching, commercial music, communication studies, construction management, entrepreneurship, film production, graphic communication, health and medical sciences, health services administration, human resources, juvenile justice, leadership studies, media analysis, project management, strength and conditioning, teaching English as a second language, wellness

Emphases – Acting, archaeology, astrophysics, career-adaptive communication, ceramics, communication training and development,

developmental disabilities, ecology and evolutionary biology, geospatial analysis, litigation, medical physics, sports communication

Preprofessional – Audiology, chiropractic, dentistry, engineering, law, medicine, occupational therapy, optometry, pharmacy, physical therapy, physician assistant, veterinary science

STUDENT ACTIVITIES

MSUM offers 100+ student activities, clubs, and organizations related to fine arts, culture, academics, leadership, professional development, and more, as well as intercollegiate and intramural athletics and club sports. Visit MSU Moorhead's Dragon Central website at mnstate.campuslabs.com/engage or MinnState.edu for a complete list.

AT A GLANCE

- » 88.6% of graduates hired in a field of their choice
- » Students regularly win national awards in film, education, music, theater, art and design, business, and journalism
- » Recent accolades: U.S. News & World Report Best Online Programs; Top 50 Best Value Online Undergraduate Business School; Best Online Colleges in Minnesota (Affordable Colleges Online)

- » 11 Minnesota Professors of the Year, more than any other university in a five-state area
- » Student-faculty ratio of 19:1 encourages undergraduate participation in faculty-mentored research and creative projects; 73% of classes have fewer than 30 students
- » Paseka School of Business maintains prestigious AACSB International accreditation
- » Success in athletics includes NSIC regular-season titles and trips to the NCAA tournament for both women's and men's basketball; a third-straight trip to nationals for men's cross country; 21 individuals who competed at national competitions
- » Fargo-Moorhead is a thriving, close-knit community located off I-94. Consistently ranked one of the safest and best communities in which to live, it's a bustling college town with more than 30,000 students

VISIT

Daily campus tours are offered 9:30 a.m. and 1:30 p.m. Monday–Thursday, and Dragon Tour & Talk Fridays are at 9 a.m. and 1 p.m., with select Saturday programs during the year. Visit mnstate.edu for more details.



Southwest Minnesota State University



smsu.edu

2017–18 Tuition and Fees: \$8,619



MARSHALL

Admissions: 507-537-6286

TTY: 800-627-3529

1501 State St.
Marshall, MN 56258

FAFSA Code: 002375



8,780 Students Served

59% Female // **41%** Male

32% Full-time // **68%** Part-time

9% Students of Color



ONLINE
LEARNING



STUDENT
ACTIVITIES



INTERCOLLEGIATE
ATHLETICS



ON-CAMPUS
HOUSING

DEGREES OFFERED

Associate of Arts, Associate of Science, Bachelor of Applied Science, Bachelor of Arts, Bachelor of Science, Bachelor of Science in Nursing, Certificate, Education Specialist, Graduate Certificate, Master of Business Administration, Master of Science

PROGRAM HIGHLIGHTS

Business management, early childhood education, elementary teacher education, exercise science, biology, agricultural education, RN to BSN, culinology, hospitality management, agronomy, agricultural solutions, broadcasting and digital media, professional writing and communication, supply chain management, environmental science, creative writing, teachers of English as a second language

SPECIAL OPTIONS

Minors – Advertising design, art/graphic design, criminal justice, pre-law, developmental adapted PE, coaching, physics, public administration, social welfare, acting/directing, hotel/lodging management, indigenous nations and Dakota studies, nutrition, public relations, design technical theatre, writing, Hispanic studies, human resource management, supply chain management, reading, religious studies, women's studies, filmmaking, health communication

Emphases – Sports management, recreation, public relations, farm management, ag finance, crops, soils, graphic design, human resource management, supply chain management, music management, culinary management, hotel management, event planning, corporate

wellness, allied health, coaching and human performance, financial planning and investments

Preprofessional – Chiropractic, dentistry, engineering, law, medicine, nursing, occupational therapy, optometry, pharmacy, physical therapy, veterinary medicine

STUDENT ACTIVITIES

SMSU offers 90+ student activities, clubs, and organizations related to fine arts, culture, academics, leadership, professional development, and more, as well as intercollegiate and intramural athletics. Visit the SMSU website or MinnState.edu for a complete list.

AT A GLANCE

- » 99% of our recent grads are employed and 10% go on to graduate school
- » The world's first bachelor's degree in culinology, approved by the Research Chefs Association
- » A campus-wide Undergraduate Research Conference: 35% of our students present their scholarly work
- » A full complement of agricultural programs, including agricultural education, agribusiness management, agricultural solutions, and agronomy and agriculture, a 2+2 program

with seamless credit transfer opportunities

- » Military Friendly School with a large Veteran's Service Center
- » A campus that embraces diversity; 265 international students representing 26 countries
- » Interconnected academic buildings means 72 degrees, even in the middle of winter
- » The Mustangs compete in the NCAA Division II Northern Sun Intercollegiate Conference
- » The Mustang wheelchair basketball team is one of just nine intercollegiate programs in the nation

VISIT

Major visit days include SMSU Homecoming Sept. 30; Mustang Days, Oct. 19–20; A Day at SMSU, Nov. 18; Hawaiian Night, Feb. 3, 2018; Junior Visit Day, March 24, 2018. You can also visit during the week, on a Mustang Saturday, or on a special visit day throughout the year. Visit smsu.edu for details.



St. Cloud State University

stcloudstate.edu

2017–18 Tuition and Fees: \$8,113



ST. CLOUD STATE
UNIVERSITY



ST. CLOUD

Admissions: 320-308-2244

TTY: 800-627-3529

720 4th Ave. S.

St. Cloud, MN 56301

FAFSA Code: 002377



18,856 Students Served

54% Female // **46%** Male

61% Full-time // **39%** Part-time

16% Students of Color



ONLINE
LEARNING



STUDENT
ACTIVITIES



INTERCOLLEGIATE
ATHLETICS



ON-CAMPUS
HOUSING

DEGREES OFFERED

Associate of Arts, Associate of Science, Bachelor of Arts, Bachelor of Elective Studies, Bachelor of Fine Arts, Bachelor of Music, Bachelor of Science, Bachelor of Science in Engineering, Certificate, Doctor of Education, Executive Masters in Engineering Management, Graduate Certificate, Master of Arts, Master of Business Administration, Master of Engineering Management, Master of Public Administration, Master of Science, Master of Science Electrical Engineering, Master of Social Work, Professional Science Master's, Specialist

PROGRAM HIGHLIGHTS

Applied behavior analysis, applied clinical research, criminal justice, cultural resource management (applied archaeology), engineering management, finance and

accounting, hydrology, land surveying and mapping, management, mass communications, meteorology, radiologic technology (X-ray and diagnostic imaging), real estate, regulatory affairs and services, small business management, statistics, travel and tourism, women's studies

SPECIAL OPTIONS

Minors – Developmental and adapted physical education, African studies, American Indian studies, Chicano/Chicana studies, Asian Pacific American studies, community health, computer networking and applications, East Asian studies, ethnic studies, geographic information science, gerontology, human relations, military science, religious studies, technology studies, optics, teaching English as a second language, heritage preservation, forensic science



Emphases – Rehabilitation counseling, community counseling, astrophysics, public history, public relations, advertising, broadcasting, news editorial, linguistics, piano pedagogy, creative writing, applied statistics, actuarial science, construction management, electro-optics, applied sociology, graphic design

Preprofessional – Chiropractic, dentistry, law, medicine, optometry, physical therapy, physician assistant, veterinary, pharmacy, occupational therapy, mortuary science

STUDENT ACTIVITIES

200+ student activities, clubs, and organizations, as well as intercollegiate and intramural athletics, including NCAA Division I and II teams built on success.

AT A GLANCE

- » More than 200 undergraduate and 60 graduate programs in liberal arts, science and engineering, business, education, health and human services, and public affairs
- » Top 1% of the most affordable universities in Forbes "America's Top Colleges"
- » Five-time HEED Award recipient for outstanding commitment to diversity and inclusion

» 530+ scholarships available through Huskies Scholarships

» Indoor rock climbing wall, fitness center, pool, and fieldhouse with a 200-meter indoor track

» More than 1,000 international students from more than 90 countries

» More than 30 Education Abroad opportunities on six continents

» 2015 and 2016 Division II Huskies Wrestling national champions

» Nationally-renowned NCAA Division I hockey at the Herb Brooks National Hockey Center

» Seven residential living options including Coborn Plaza Apartments

» Located on the banks of the Mississippi River

VISIT

Visit the St. Cloud State website to schedule a daily campus visit, check out upcoming Preview Day events, take a virtual tour, and get other admissions information.

Winona State University

winona.edu

2017-18 Tuition and Fees: \$8,411



WINONA



Admissions: 507-457-5100

TTY: 877-627-3848

P.O. Box 5838

Winona, MN 55987

FAFSA Code: 002394



9,483 Students Served

62% Female // **38%** Male

85% Full-time // **15%** Part-time

10% Students of Color



ONLINE
LEARNING



STUDENT
ACTIVITIES



INTERCOLLEGIATE
ATHLETICS



ON-CAMPUS
HOUSING

DEGREES OFFERED

Associate of Arts, Bachelor of Applied Science, Bachelor of Arts, Bachelor of Music, Bachelor of Science, Bachelor of Science-Teaching, Bachelor of Social Work, Doctor of Nursing Practice, Graduate Certificate, Master of Arts, Master of Science, Professional Science Master's, Specialist

PROGRAM HIGHLIGHTS

Nursing, business, biology, biochemistry, composite materials engineering, creative digital design, criminal justice, data science, economics, elementary education/K-12, exercise and rehabilitative sciences, ecology, epidemiology, environmental science, finance, human resources, leadership and advocacy, legal studies, management information systems, marketing, music business,

organizational leadership, public relations, public administration, social work, psychology, computer science, recreational tourism

SPECIAL OPTIONS

Minors – Adventure tourism, arts administration, dance, data science, entrepreneurship, electronics, ethnic studies, film studies, geography, global studies, individualized studies, intercultural communication, international business, nutrition, professional selling, public health, sustainability, war, peace and terrorism

Emphases – Biochemistry, clinical exercise science, ecology, epidemiology, environmental science, leadership and advocacy, nursing and organizational leadership, public relations, school counseling, creative digital media



Preprofessional – Dentistry, engineering, law, medicine, optometry, pharmacy, physical therapy, physician assistant, podiatry, veterinary medicine

STUDENT ACTIVITIES

Winona State offers 300+ student activities, clubs, and organizations related to fine arts, culture, academics, leadership, professional development, and more, as well as intercollegiate and intramural athletics.

Visit winona.edu or MinnState.edu for a complete list.

AT A GLANCE

- » Top Ranked – U.S. News & World Report's "Best Colleges" second best public institution in Minnesota and named "Best in the Midwest" by The Princeton Review
- » Best College Buy – recognized as America's 100 Best College Buys
- » Scenic Beauty – access to outdoor activities like hiking, rock climbing, paddle boarding, canoeing, and kayaking all within one square mile of campus
- » Athletics – home to 14 NCAA Division II and one NCAA Division III varsity sports teams
- » Laptops – students offered laptops to support their studies, with certain programs receiving additional tablets

- » Community Service – university-wide commitment to service – more than one million volunteer hours logged
- » Health and Wellness – Integrated Wellness Complex aligns health, wellness, academic, and recreational programs and services into a single facility on WSU's tobacco-free campus
- » Floating Classroom – the Cal Fremling, a state-of-the-art floating classroom, offers experiential learning on the Mississippi
- » Education Village – provides teachers the preparation they need to be successful in the 21st century classroom
- » Outstanding Academics – flagship Child Advocacy Studies program, the only accredited undergraduate composite materials engineering program in the U.S., bachelor's, master's, and doctorate programs in nursing, as well as one of only fifty undergraduate institutions accredited by the Association to Advance Collegiate Schools of Business

VISIT

Experience the beauty of WSU's campus for yourself. Daily campus visits take place 9 a.m. to 1 p.m. Visits include campus/residence hall tours and a meeting with an admissions counselor. Visit winona.edu/visit for more details.

ENDLESS OPPORTUNITIES

The following pages provide you with grids that show the academic programs available at your state colleges and universities, as well as a grid of athletic programs and the options offered through the Twin Cities Baccalaureate program.

» Name Abbreviations for Minnesota State Colleges

ATCC – Alexandria Technical & Community College
CLC – Central Lakes College
DCTC – Dakota County Technical College
FDLTCC – Fond du Lac Tribal & Community College
HTC – Hennepin Technical College
HCC – Hibbing Community College
ICC – Itasca Community College
LSC – Lake Superior College
MCTC – Minneapolis Community & Technical College
MSC Southeast – Minnesota State College Southeast
M State – Minnesota State Community and Technical College
NHCC – North Hennepin Community College
NCTC – Northland Community & Technical College
NTC – Northwest Technical College
PTCC – Pine Technical & Community College
RCTC – Rochester Community and Technical College
SCTCC – St. Cloud Technical & Community College
SCC – South Central College

INTERESTED?

COLLEGE ACADEMIC PROGRAM GRID [PAGES 40–44](#)

Check out the academic programs available at your state colleges that may lead to an associate degree, certificate, or diploma. These are great programs to launch a new career or get started on the path to a bachelor's degree.

UNIVERSITY ACADEMIC PROGRAM GRID [PAGES 45–46](#)

Learn about the programs available at your state universities that may lead to a bachelor's degree and beyond, or help you launch your career.

ATHLETICS PROGRAM GRID [PAGE 47](#)

Many of your state colleges and universities have an array of sports that provide you the opportunity to enjoy a student athlete experience. This grid will help you quickly identify which colleges and universities offer your sport.

TWIN CITIES BACCALAUREATE GRID [PAGE 48](#)

The seven state universities offer a selection of bachelor's degree programs that can be completed at various community college campuses in the Twin Cities metro area, allowing you to earn your degree from a university without leaving the comfort of the college campus setting. This grid will help you see the programs available and locations they are offered.

State College PROGRAMS

For a complete list of programs, visit [MinnState.edu](https://www.minnstate.edu).

[illegible]

For a complete list of programs, visit [MinnState.edu](https://www.minnstate.edu).

Endless Opportunities

For a complete list of programs, visit [MinnState.edu](https://www.minnstate.edu).

42 // Minnesota State

For a complete list of programs, visit [MinnState.edu](https://www.mnstate.edu).

Endless Opportunities

For a complete list of programs, visit [MinnState.edu](https://www.mnstate.edu).

44 // Minnesota State

State University UNDERGRADUATE PROGRAMS

For a complete list of programs, visit MinnState.edu.

	Bemidji State	Metropolitan State	Minnesota State Mankato	MSU Moorhead	St. Cloud State	Southwest Minnesota State	Winona State	MinnesotaOnline.org
Accounting	◆	◆	◆	◆	◆	◆	◆	◆
Advertising and Public Relations	◆			◆				
Agricultural Business and Production						◆		
Agricultural Science and Technology						◆		
Aircraft Pilot and Navigator			◆					
American Indigenous Studies	◆							
Anthropology/Archaeology			◆	◆	◆			
Art History			◆	◆	◆			
Art/Studio Arts		◆	◆	◆	◆	◆		
Audio Technology/Sound Arts			◆	◆				
Aviation Management and Airway Science			◆					
Banking and Finance		◆	◆	◆	◆	◆	◆	◆
Biological and Natural Sciences	◆	◆	◆	◆	◆	◆		
Biotechnology/Biochemistry			◆	◆	◆			
Broadcasting, Radio, and Television				◆		◆		
Business Administration and Management	◆	◆	◆	◆	◆	◆	◆	◆
Chemistry	◆	◆	◆	◆	◆	◆		
Cognitive Science			◆					
Communication Sciences and Disorders			◆	◆	◆			
Communications Studies		◆	◆	◆	◆	◆		
Community Health Services	◆	◆	◆	◆	◆			
Computational Science						◆		
Computer Engineering Technology			◆					
Computer Networking and System Administration								
Computer Programming	◆	◆	◆					
Computer Science and Information Systems	◆	◆	◆	◆	◆	◆	◆	◆
Computer Security and Forensics/IT Auditing			◆	◆	◆			
Construction Management			◆	◆				
Counseling – Chemical Dependency	◆	◆	◆	◆				
Counseling – Mental Health		◆						
Criminal Justice/Corrections	◆	◆	◆	◆	◆	◆	◆	◆
Culinary Arts and Food Service						◆		
Customer Service/Call Center							◆	
Dance		◆						
Database Technologies and Administration			◆					
Dental Hygienist		◆	◆				◆	
Digital Arts, Computer Animation, and Multimedia			◆					
Early Childhood Studies		◆		◆				
East Asian Studies				◆				
Economics	◆	◆	◆	◆	◆		◆	
Education – General						◆		
Education – Instructional Technology					◆			
Engineering – Automotive			◆					
Engineering – Civil, Land Surveying, and Mapping			◆	◆				
Engineering – Composite Materials						◆		
Engineering – Computer Hardware/Software			◆	◆			◆	
Engineering – Electrical			◆	◆				
Engineering – General			◆	◆		◆		
Engineering – Manufacturing				◆				
Engineering – Mechanical			◆	◆				

	Bemidji State	Metropolitan State	Minnesota State Mankato	MSU Moorhead	St. Cloud State	Southwest Minnesota State	Winona State	MinnesotaOnline.org
Engineering Management	◆							◆
Engineering Technology – Electronic			◆					
Engineering Technology – General	◆							◆
Engineering Technology – Manufacturing			◆		◆			
English – Language, Literature, Writing	◆	◆	◆	◆	◆	◆	◆	◆
Entrepreneurship		◆	◆	◆	◆			
Environmental and Earth Sciences	◆	◆	◆	◆	◆	◆	◆	◆
Ethnic and Cultural Studies		◆	◆					
Family Consumer Science			◆					
Farm Business Management					◆			
Film Studies			◆	◆	◆		◆	
Food Processing Safety			◆					
Geology				◆			◆	
Geographical Information Systems (GIS)			◆	◆				
Geography and Cartography	◆	◆	◆	◆				
Gerontology			◆	◆	◆		◆	
Global Studies/International Relations	◆		◆	◆	◆		◆	
Graphic Design and Visual Communications	◆		◆	◆	◆		◆	
Health Services Administration				◆	◆		◆	
Health, Fitness, and Sport Science	◆	◆	◆	◆	◆	◆	◆	◆
History	◆	◆	◆	◆	◆	◆	◆	◆
Hotel, Restaurant, and Casino Management						◆		
Human and Community Services		◆						
Human Resources Management		◆	◆	◆	◆		◆	
Humanities			◆					
Individualized and Multidisciplinary Studies	◆	◆	◆	◆	◆	◆	◆	◆
Insurance				◆	◆			
International Business		◆	◆	◆	◆		◆	
Languages – French			◆					
Languages – German			◆					
Languages – Spanish	◆	◆	◆	◆	◆		◆	
Latin American Studies				◆	◆		◆	
Law Enforcement	◆	◆	◆				◆	
Legal Studies							◆	
Liberal Arts and Sciences – AA Transfer	◆	◆	◆	◆	◆	◆	◆	◆
Management Information Systems		◆	◆	◆	◆		◆	
Manufacturing and Industrial Technology	◆		◆		◆			
Manufacturing Operations Management		◆	◆	◆			◆	
Marketing and Sales	◆	◆	◆	◆	◆	◆	◆	◆
Mass Media	◆	◆	◆	◆	◆	◆	◆	◆
Mathematics	◆	◆	◆	◆	◆	◆	◆	◆
Medical Technology/Clinical Lab Science	◆		◆					
Meteorology				◆				
Music	◆	◆	◆	◆	◆	◆	◆	◆
Music Industry Management and Business			◆	◆	◆			
Nuclear Medical Technology				◆	◆			
Nursing	◆	◆	◆	◆	◆	◆	◆	◆
Paralegal				◆				
Parks and Recreation			◆	◆	◆			
Philosophy	◆	◆	◆	◆	◆			

	Bemidji State	Metropolitan State	Minnesota State Mankato	MSU Moorhead	St. Cloud State	Southwest Minnesota State	Winona State	MinnesotaOnline.org
Photography/Photographic Technology				◆				
Physics			◆	◆	◆	◆	◆	◆
Political Science	◆					◆		
Project Management	◆			◆				◆
Psychology	◆	◆	◆	◆	◆	◆	◆	◆
Psychology – Counseling					◆			
Public Administration		◆			◆		◆	◆
Publishing				◆				
Radiologic Technology					◆			
Real Estate/Property Management					◆			
Scandinavian Studies			◆					
Screenwriting		◆						
Social Sciences/Studies	◆	◆	◆					
Social Work	◆	◆	◆	◆	◆	◆	◆	◆
Sociology	◆		◆	◆	◆	◆	◆	◆
Sports Management	◆							
Statistics			◆	◆	◆		◆	
Surgical Technology								◆
Teaching – Agriculture						◆		
Teaching – Art			◆	◆	◆	◆	◆	◆
Teaching – Biology/Life Sciences	◆	◆	◆	◆	◆	◆	◆	◆
Teaching – Business Education							◆	◆
Teaching – Career and Technical					◆			
Teaching – Chemistry	◆	◆	◆	◆	◆	◆	◆	◆
Teaching – Communication Arts and Literature	◆	◆	◆	◆	◆	◆	◆	◆
Teaching – Early Childhood		◆	◆	◆	◆	◆	◆	◆
Teaching – Elementary	◆	◆	◆	◆	◆	◆	◆	◆
Teaching – English as a Second Language				◆	◆	◆	◆	◆
Teaching – Family Consumer Science			◆					
Teaching – French Language and Culture			◆					
Teaching – German Language and Culture								
Teaching – Health	◆	◆	◆	◆	◆			
Teaching – Mathematics	◆	◆	◆	◆	◆	◆	◆	◆
Teaching – Music	◆	◆	◆	◆	◆	◆	◆	◆
Teaching – Physical Education		◆	◆	◆	◆	◆	◆	◆
Teaching – Physical/Earth Science	◆		◆	◆	◆	◆	◆	◆
Teaching – Physics			◆	◆	◆	◆	◆	◆
Teaching – Social Studies/History	◆	◆	◆	◆	◆	◆	◆	◆
Teaching – Spanish Language and Culture				◆	◆	◆	◆	◆
Teaching – Special Education				◆	◆	◆	◆	◆
Teaching – Theater Arts/Dance			◆					
Technology Studies					◆			
Theater Arts and Drama		◆	◆	◆	◆	◆	◆	◆
Travel Planner/Tourism					◆			
Urban Planning/Regional Studies			◆		◆		◆	◆
Wilderness Management and Wildland Firefighter	◆							
Women and Gender Studies		◆	◆	◆	◆			
Writing – Creative and Technical	◆	◆	◆	◆	◆	◆	◆	◆

State University GRADUATE PROGRAMS

For a complete list of programs, visit MinnState.edu.

	Bemidji State	Metropolitan State	Minnesota State Mankato	MSU Moorhead	St. Cloud State	Southwest Minnesota State	Winona State	MinnesotaOnline.org
Accounting								
Anthropology/Archaeology								
Art/Studio Arts								
Banking and Finance								
Behavior Analysis								
Biological and Natural Sciences								
Biomedical Equipment Technology								
Business Administration and Management								
Communication Sciences and Disorders								
Communications Studies								
Community Health Services								
Computer Science and Information Systems								
Computer Security and Forensics/IT Auditing								
Counseling – Chemical Dependency								
Counseling – College								
Counseling – K–12								
Counseling – Marriage and Family								
Counseling – Mental Health								
Counseling – Rehabilitation								
Criminal Justice/Corrections								
Data Analytics								
Database Technologies and Administration								
Dental Health Specialist								
Economics								
Education – Administration and Support								
Education – Curriculum and Instruction								
Education – General								
Education – Higher Education Administration								
Education – Instructional Technology								
Education – Student Development and Learning								
Engineering – Electrical								
Engineering – General								
Engineering Management								
Engineering Technology – Manufacturing								
English – Language, Literature, Writing								
Environmental and Earth Sciences								

	Bemidji State	Metropolitan State	Minnesota State Mankato	MSU Moorhead	St. Cloud State	Southwest Minnesota State	Winona State	MinnesotaOnline.org
Ethnic and Cultural Studies								
Family Consumer Science								
Geographical Information Systems (GIS)								
Geography and Cartography								
Gerontology								
Global Supply Chain								
Health Services Administration								
Health, Fitness, and Sport Science								
History								
Human and Community Services								
Individualized and Multidisciplinary Studies								
Industrial Management								
Information Assurance								
Information Assurance Security								
International Commerce								
Languages – French								
Languages – Spanish								
Management Information Systems								
Mass Media								
Mathematics								
Medical Product Regulation								
Medical Technology/Clinical Lab Science								
MIS System Analysis and Design								
Music								
Nanotechnology								
Nursing								
Nursing Practice								
Nursing – Administration								
Nursing – Adult Health/Geriatric								
Nursing – Educator								
Organizational Administration								
Parks and Recreation								
Physics								
Project Management								
Psychology								
Psychology – Clinical								

	Bemidji State	Metropolitan State	Minnesota State Mankato	MSU Moorhead	St. Cloud State	Southwest Minnesota State	Winona State	MinnesotaOnline.org
Psychology – Industrial and Organizational								
Psychology – Sports								
Public Administration								
Publishing								
Quality Improvement								
Social Work								
Sociology								
Sports Management								
Statistics								
Teaching – Biology/Life Sciences								
Teaching – Career and Technical								
Teaching – Communication Arts and Literature								
Teaching – Early Childhood								
Teaching – Elementary								
Teaching – English as a Second Language								
Teaching – French Language and Culture								
Teaching – Health								
Teaching – Humanities/Interdisciplinary								
Teaching – Library/Information Media								
Teaching – Mathematics								
Teaching – Music								
Teaching – Physical Education								
Teaching – Physical/Earth Science								
Teaching – Physics								
Teaching – Reading/Literacy								
Teaching – Spanish Language and Culture								
Teaching – Special Education								
Teaching – Traffic Safety								
Teaching – Urban Education								
Theater Arts and Drama								
Urban Planning/Regional Studies								
Women and Gender Studies								
Writing Center Administration								
Writing – Creative and Technical								

INTERCOLLEGIATE ATHLETICS

Athletics programs at our colleges and universities provide opportunities for many student-athletes to compete in their favorite sports — and for all students to participate as fans and to show their school spirit! To learn more about the opportunities and affiliations at a particular institution, please visit its website.



		Anoka-Ramsey	Central Lakes College	Century College	DCTC	FDLTCC	Hibbing Community College	Itasca Community College	Lake Superior College	Mesabi Range College	M State	Minnesota West	NCTC	Rainy River	Ridgewater College	Riverland Community College	RCTC	SCTCC	Vermilion Community College		Bemidji State	MSU Moorhead	Minnesota State Mankato	St. Cloud State	Southwest Minnesota State	Winona State
MEN'S ATHLETICS	Baseball	◆	◆	◆	◆		◆	◆		◆	◆	◆	◆	◆	◆	◆	◆	◆	◆		◆		◆	◆	◆	◆
	Basketball	◆	◆		◆	◆	◆	◆		◆	◆	◆	◆	◆	◆	◆	◆	◆	◆		◆	◆	◆	◆	◆	◆
	Cross Country																					◆	◆		◆	◆
	Football		◆			◆		◆		◆	◆	◆	◆		◆		◆		◆		◆	◆	◆	◆	◆	◆
	Golf									◆	◆						◆				◆		◆	◆		◆
	Hockey																				◆		◆	◆		
	Soccer	◆		◆	◆				◆			◆				◆										
	Swimming/Diving																							◆		
	Tennis																									
	Track and Field																					◆	◆		◆	
	Wrestling							◆				◆	◆		◆		◆					◆	◆	◆	◆	
WOMEN'S ATHLETICS	Basketball	◆	◆			◆	◆	◆		◆	◆	◆	◆	◆	◆	◆	◆	◆	◆		◆	◆	◆	◆	◆	◆
	Cross Country																				◆	◆	◆	◆	◆	◆
	Golf									◆							◆				◆	◆	◆	◆	◆	◆
	Gymnastics																									◆
	Hockey													◆									◆	◆		
	Nordic Ski																							◆		
	Soccer	◆		◆	◆				◆			◆					◆				◆	◆	◆	◆	◆	◆
	Softball	◆	◆	◆	◆	◆	◆	◆		◆	◆	◆	◆	◆	◆	◆	◆	◆	◆		◆	◆	◆	◆	◆	◆
	Swimming/Diving																					◆	◆	◆		
	Tennis																				◆	◆	◆	◆	◆	◆
	Track and Field																				◆	◆	◆	◆	◆	◆
COED	Volleyball	◆	◆		◆	◆	◆	◆		◆	◆	◆	◆	◆	◆	◆	◆	◆	◆		◆	◆	◆	◆	◆	◆
	Wheelchair Basketball																								◆	

TWIN CITIES BACCALAUREATE

The seven state universities offer a selection of bachelor's degree programs that can be completed at various community colleges in the Twin Cities metro area, allowing you to earn your degree from a university without leaving the comfort of the college campus setting.

PROGRAM TITLE	PROGRAM LOCATION	UNIVERSITY
BUSINESS AND MANAGEMENT		
Accounting	MCTC	Metropolitan State
Accounting	Normandale	Metropolitan State
Advertising and Business Management	MCTC	Metropolitan State
Business Administration	Anoka-Ramsey	Bemidji State
Business Administration	MCTC	Metropolitan State
Business Administration	Normandale	Metropolitan State
Business Administration	NHCC	Metropolitan State
Economics (General)	MCTC	Metropolitan State
Economics (General)	NHCC	Metropolitan State
Finance	MCTC	Metropolitan State
Human Resource Management	MCTC	Metropolitan State
International Business	MCTC	Metropolitan State
International Commerce	MCTC	Metropolitan State
Management	MCTC	Metropolitan State
Organizational Administration	MCTC	Metropolitan State
EDUCATION		
Elementary Education	Anoka-Ramsey	Bemidji State
Elementary Education	Normandale	Minnesota State Mankato
Special Education	Anoka-Ramsey	MSU Moorhead
Special Education	Normandale	Minnesota State Mankato
ENGINEERING AND ENGINEERING TECHNOLOGIES		
Integrated Engineering	Normandale	Minnesota State Mankato

PROGRAM TITLE	PROGRAM LOCATION	UNIVERSITY
HEALTH		
Clinical Lab Science	Saint Paul College	Winona State
Dental Hygiene	Century College	Metropolitan State
Dental Hygiene	Normandale	Metropolitan State
Exercise Science	Anoka-Ramsey	SMSU
Exercise Science	Normandale	SMSU
Exercise Science	NHCC	SMSU
Medical Laboratory Science	NHCC	St. Cloud State
Nursing	Anoka-Ramsey	Bemidji State
Nursing	Anoka-Ramsey	Metropolitan State
Nursing	Century College	Bemidji State
Nursing	Century College	Metropolitan State
Nursing	Inver Hills	Metropolitan State
Nursing	MCTC	Metropolitan State
Nursing	Normandale	Metropolitan State
Nursing	NHCC	Metropolitan State
HUMAN AND PERSONAL SERVICES		
Alcohol and Drug Counseling	MCTC	Metropolitan State
Human Services	NHCC	Metropolitan State
Psychology	Inver Hills	Metropolitan State
Psychology	Normandale	Metropolitan State
Psychology	NHCC	Metropolitan State
INFORMATION TECHNOLOGY		
Computer Information Technology	Normandale	Metropolitan State
Computer Science	Normandale	Metropolitan State
Management Information Systems	MCTC	Metropolitan State
LAW, PUBLIC ADMINISTRATION AND SAFETY		
Criminal Justice	HTC-Brooklyn Park	Metropolitan State
Law Enforcement	HTC-Brooklyn Park	Metropolitan State
LIBERAL ARTS AND SCIENCES		
Biology	NHCC	Bemidji State
Individualized Studies	MCTC	Metropolitan State
Individualized Studies	Normandale	Metropolitan State
Theater	MCTC	Metropolitan State
Theater	Normandale	SMSU
MEDIA AND COMMUNICATIONS		
Communication Studies	Normandale	Minnesota State Mankato
Marketing	MCTC	Metropolitan State

» CONNECT WITH US!

Contact the state college or university you are interested in to get started today. For more resources, visit MinnState.edu.

COLLEGES

Alexandria Technical & Community College

ALEXANDRIA
320-762-0221
alextech.edu

Anoka Technical College

ANOKA
763-576-4850
anokatech.edu

Anoka-Ramsey Community College

CAMBRIDGE
COON RAPIDS
763-433-1300
anokaramsey.edu

Central Lakes College

BRAINERD
STAPLES
218-855-8037
clcmn.edu

Century College

WHITE BEAR LAKE
651-779-3300
century.edu

Dakota County Technical College

ROSEMOUNT
651-423-8000
dctc.edu

Fond du Lac Tribal & Community College

CLOQUET
218-879-0800
fdltcc.edu

Hennepin Technical College

BROOKLYN PARK
EDEN PRAIRIE
952-995-1300
hennepintech.edu

Hibbing Community College

HIBBING
218-262-7200
hibbing.edu

Inver Hills Community College

INVER GROVE HEIGHTS
651-450-3000
inverhills.edu

Itasca Community College

GRAND RAPIDS
218-322-2340
itascacc.edu

Lake Superior College

DULUTH
218-733-7601
lsc.edu

Mesabi Range College

EVELETH
VIRGINIA
218-749-0313
mesabirange.edu

Minneapolis Community & Technical College

MINNEAPOLIS
612-659-6200
minneapolis.edu

Minnesota State College Southeast

RED WING
WINONA
877-853-8324
southeastmn.edu

Minnesota State Community and Technical College

DETROIT LAKES
FERGUS FALLS
MOORHEAD
WADENA
877-450-3322
minnesota.edu

Minnesota West Community & Technical College

CANBY
GRANITE FALLS
JACKSON
PIPESTONE
WORTHINGTON
800-658-2330
mnwest.edu

Normandale Community College

BLOOMINGTON
952-358-8201
normandale.edu

North Hennepin Community College

BROOKLYN PARK
763-424-0724
nhcc.edu

Northland Community & Technical College

EAST GRAND FORKS
THIEF RIVER FALLS
218-683-8800
northlandcollege.edu

Northwest Technical College

BEMIDJI
218-333-6600
ntcmn.edu

Pine Technical & Community College

PINE CITY
320-629-5100
pine.edu

Rainy River Community College

INTERNATIONAL FALLS
218-285-2236
rainyriver.edu

Ridgewater College

HUTCHINSON
WILLMAR
320-222-5200
ridgewater.edu

Riverland Community College

ALBERT LEA
AUSTIN
OWATONNA
507-433-0600
riverland.edu

Rochester Community and Technical College

ROCHESTER
507-258-7210
rctc.edu

Saint Paul College

ST. PAUL
651-846-1600
saintpaul.edu

South Central College

FARIBAULT
NORTH MANKATO
507-389-7220
southcentral.edu

St. Cloud Technical & Community College

ST. CLOUD
320-308-5000
sctcc.edu

Vermilion Community College

ELY
218-235-2191
vcc.edu

UNIVERSITIES

Bemidji State University

BEMIDJI
218-755-2040
bemidjistate.edu

Metropolitan State University

MINNEAPOLIS
ST. PAUL
651-793-1302
metrostate.edu

Minnesota State University, Mankato

MANKATO
507-389-1822
mnsu.edu

Minnesota State University Moorhead

MOORHEAD
218-477-2161
mnstate.edu

Southwest Minnesota State University

MARSHALL
507-537-6286
smsu.edu

St. Cloud State University

ST. CLOUD
320-308-2244
stcloudstate.edu

Winona State University

WINONA
507-457-5100
winona.edu

HERE FOR YOU EVERY STEP OF THE WAY!

Our call center is available to answer questions and connect you to any of your state colleges and universities:

Monday–Friday: 7 a.m.–8 p.m. CST

Saturday: 9 a.m.–2:30 p.m. CST

Sunday: 11 a.m.–4:30 p.m. CST

» CALL TODAY!
800-456-8519



MINNESOTA STATE

MinnState.edu

STAY IN TOUCH!



This document is available in alternative formats to individuals with disabilities.
To request an alternate format, contact Human Resources at 651-201-1664.

Individuals with hearing or speech disabilities may contact us
via their preferred Telecommunications Relay Service.

Minnesota State is an affirmative action, equal opportunity employer and educator.