

2017 MINNESOTA CHILD SUPPORT PERFORMANCE REPORT



651-431-4400

Attention. If you need free help interpreting this document, call the above number.

የስተውሉ፡ ካለምንም ክፍያ ይህንን ደኩመንት የሚተረጎምሎ አስተርጓሚ ክፈለጉ ከላይ ወደተጻፈው የስልክ ቁጥር ይደውሉ።

ملاحظة: إذا أردت مساعدة مجانية لترجمة هذه الوثيقة، اتصل على الرقم أعلاه.

သတိ။ ဤစာရွက်စာတမ်းအားအခမဲ့ဘာသာပြန်ပေးခြင်း အကူအညီလိုအပ်ပါက၊ အထက်ပါဖုန်းနံပါတ်ကိုခေါ်ဆိုပါ။

កំណត់សំគាល់ ។ បើអ្នកត្រូវការជំនួយក្នុងការបកប្រែឯកសារនេះដោយឥតគិតថ្លៃ សូមហៅទូរស័ព្ទតាមលេខខាងលើ ។

請注意，如果您需要免費協助傳譯這份文件，請撥打上面的電話號碼。

Attention. Si vous avez besoin d'une aide gratuite pour interpréter le présent document, veuillez appeler au numéro ci-dessus.

Thov ua twb zoo nyeem. Yog hais tias koj xav tau kev pab txhais lus rau tsab ntaub ntawv no pub dawb, ces hu rau tus najnpawb xov tooj saum toj no.

ဟ်သုဉ်ဟ်သးဘဉ်တက့ၢ်. ဖဲနမ့ၢ်လိဉ်ဘဉ်တၢ်မၤစၢၤကလိလၢတၢ်ကကျိးထံဝဲဒၣ်လံာ် တိလံာ်မိတခါအံၤန့ၣ်, ကိးဘဉ်လိတဲစိနီၢ်ဂံၢ်လၢထးအံၤန့ၣ်တက့ၢ်.

알려드립니다. 이 문서에 대한 이해를 돕기 위해 무료로 제공되는 도움을 받으시려면 위의 전화번호로 연락하십시오.

ໂປຣດຊາບ. ຖ້າທ່ານ ທ່ານຕ້ອງການການຊ່ວຍເຫຼືອໃນການແປເອກະສານນີ້ພຣີ, ຈົ່ງໂທໂປທ໌ ພາຍເລກຂ້າງເທິງນີ້.

Hubachiisa. Dokumentiin kun tola akka siif hiikamu gargaarsa hoo feete, lakkoobsa gubbatti kenname bilbili.

Внимание: если вам нужна бесплатная помощь в устном переводе данного документа, позвоните по указанному выше телефону.

Digniin. Haddii aad u baahantahay caawimaad lacag-la' aan ah ee tarjumaadda qoraalkan, lambarka kore wac.

Atención. Si desea recibir asistencia gratuita para interpretar este documento, llame al número indicado arriba.

Chú ý. Nếu quý vị cần được giúp đỡ dịch tài liệu này miễn phí, xin gọi số bên trên.

LB2 (8-16)



For accessible formats of this publication or additional equal access to human services, write to DHS.info@state.mn.us, call 651-431-3040, or use your preferred relay service. (ADA1 [9-15])



Table of Contents

Foreword.....	ii
Executive Summary	1
Minnesota Child Support Services	2
Vision and Mission.....	4
Payments.....	5
Initiatives	7
Intergovernmental Cases.....	8
Guide and Introduction to Performance Data.....	9
Federal Performance Measures: County Results.....	13
County Results: Paternities Established.....	16
County Results: Orders Established	19
County Results: Collections on Current.....	22
County Results: Collections on Arrears	25
County Results: Cost Effectiveness	28
Minnesota County Distributions, Total Expenditures and Reinvestments.....	31
Distributions per Open Support Cases and per Cases with Court Order.....	34
Caseload and Full-time Equivalent (FTE) Summary	37
Current/Former/Never Assistance Case Analysis	40
County Case Flow Analysis	43
Collections to and from Other States	46
Collections Sources.....	49
National Federal Performance Measures.....	52
National: Paternities Established.....	52
National: Orders Established	53
National: Collections on Current.....	54
National: Collections on Arrears	55
National: Cost Effectiveness	56
Changes and Opportunities Ahead	57
Resources	58

Co-foreword

Thank you for your interest in the 2017 Minnesota Child Support Performance Report. Based on preliminary 2017 Federal Fiscal Year (FFY) data, Minnesota's federal performance measures increased in two categories and decreased in two. We continue to rank in the top five nationally in the percentage of cases with a payment toward past due support, 72.26 percent, and in the percentage of current support collected, 74.53 percent, which surpassed the record set last year.

Over the past year, efforts to continue moving our program forward included:

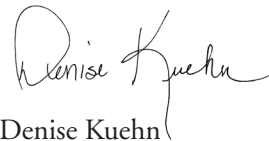
- Releasing a new parentage video entitled *Establishing Parentage - What Every Mother and Father Need to Know*
- Reaching out to parents with a suspended driver's license during Child Support Awareness Month in August
- Launching an awareness and education campaign with KMOJ, a Twin Cities-based, non-profit radio station.

Collaboration is one reason Minnesota's program is successful. In southern Minnesota, Brown County used collaboration to meet all five federal performance measures again in 2017. Years ago, our program structure required child support officers to manage everything from paternity establishments to contempt actions. We reorganized to a more specialized framework which helped each staff person feel responsible for the total county caseload. Together, six child support staff members, county attorneys, court administration staff, and judicial officers, collaborate on all cases and work as a team to resolve difficult issues, and help parents more effectively. As a result, our performance numbers have gone up.

Thanks again for learning more about our program. We're proud of the work we do to help children and families as we look forward to 2018.



Jeff Jorgenson
Child Support Division Director



Denise Kuehn
Brown County Child Support Supervisor

Executive Summary

In FFY 2017, Minnesota’s Child Support program provided services to 345,946 parents and 239,540 children through 1,500 county and state workers. The program collected and disbursed \$580.6 million. For every \$1 spent on Minnesota’s child support program, it collected \$3.30 in support of children.

Minnesota’s 2017 Child Support Performance Report presents the program’s status and highlights accomplishments during FFY 2017. The Child Support Division (CSD) reports the most recent data showing statewide and individual county performance, and a five-year history for the five federal performance measures.

The five performance measures are:

1. Paternity establishments
2. Child support order establishment
3. Collections on current support
4. Collections on arrears
5. Program cost effectiveness

Minnesota’s Federal Performance Measures					
Performance Measures	FFY 2017	FFY 2016	FFY 2015	FFY 2014	FFY 2013
Paternities Established	101.05%	100.77%	99.00%	100.42%	102.48%
Orders Established	88.56%	88.91%	88.70%	88.00%	86.61%
Collections on Current	74.53%	74.29%	73.43%	72.46%	71.81%
Collections on Arrears	72.26%	72.36%	72.11%	70.99%	70.48%
Cost Effectiveness	\$3.30	\$3.30	\$3.54	\$3.58	\$3.63

Minnesota’s child support program participates in and competes with other states in the federal incentive funding system evaluated by the federal Office of Child Support Enforcement (OCSE). States maximize federal incentives by reaching performance thresholds on the five measures. Minnesota maximized its federal incentives on two of five measures: Paternities established, at 101.05 percent, and orders established, at 88.56 percent. Minnesota has opportunities to earn additional incentives based on collections which maximize at 80.00 percent and cost effectiveness at \$5.00. For FFY 2017 collections on current support was 74.53 percent, collections on cases with arrears was 72.26 percent and cost effectiveness is at \$3.30.

Minnesota’s child support program in FFY 2017:

- Served 239,540 children, with fewer than 13 percent of those children receiving public assistance as of Sept. 30, 2017.
- Collected \$586.3 million, including:
 - \$431.5 million from employers withholding child support from parents’ paychecks
 - \$31.9 million through tax intercepts
 - \$1.7 million from financial institution data match levies
 - \$37.9 million received from other state’s and counties’ collections
 - The remainder from other sources
 - Received \$131.7 million for payment on child support debt, with over 72 percent of cases with arrears receiving at least some payment toward arrears during the year
 - Managed cumulative past due support or arrears of \$1.5 billion, owed as of Sept. 30, 2017.

In FFY 2017, Minnesota child support workers:

- Established paternity through 2,570 court orders and 1,214 Recognition of Parentage forms signed at county offices
- Established 12,411 orders for support; 88.56 percent of Minnesota child support cases have an order in place
- Adjusted 47,507 cases for cost of living, which increases the amount of child support ordered due every two years
- Modified more than 8,691 child support orders.

States compete against each other for incentive funds based on federal performance measures.



Minnesota Child Support Services

In Minnesota, together with county and tribal agency staff, the child support program serves more than 345,946 parents and 239,540 children across 87 counties and 11 tribes. The Minnesota Department of Human Services, Child Support Division (CSD), supervises the program. County offices administer services by working with parents to establish and enforce support orders. Congress enacted child support programs in 1975 under Title IV-D of the Social Security Act.

Child support staff, which includes 1,500 employees statewide, work in partnership to serve the needs of Minnesota families and get support to children. The number of staff is important to the Cost Effectiveness performance measure. Every year, CSD gathers staff counts through a survey that reports full time equivalencies (FTE). FTEs are staff dedicated to working directly on and supporting child support cases such as supervisors, managers and directors, child support officers, financial, administrative, training, technology and legal specialists, contractors, system programmers and others. Some staff included in the FTE count work outside the program under cooperative agreements. These agreements are initiated by county child support offices for resources outside the agency and include county attorneys, legal staff, office support, sheriff's personnel, public health workers and others.

Minnesota's child support program benefits children by:

- Locating parents and establishing parentage.
- Establishing and reviewing child support orders for modification.
- Helping children receive the financial basic support, medical support and child care support, needed to enhance their growth and development.
- Working with other states to help families when one parent lives outside of Minnesota.
- Helping families work toward becoming and remaining self-sufficient.

- Ensuring parents establish a financial partnership. Child support is money parents are court ordered to pay to their child's other parent or caregiver for the support of their child. Support may be part of an interim, temporary, permanent, or modified court order in a divorce or legal separation, paternity action, order for protection, child custody action or separate child support action.

Child support services are available to:

- Parents of minor children if one parent does not live with their child.
- Parents who pay child support through court-ordered income withholding.
- People who have court-ordered physical custody of a minor child.
- People who receive public assistance for a minor child who lives in their home. Child support cases open when either parent applies for services, or when a county public assistance office refers a case.



(Continued on next page)



Minnesota Child Support Services

County child support agencies provide services to:

- Locate parents
- Establish parentage
- Establish court orders for basic support, medical and child care support
- Enforce court orders for support
- Review and modify court orders for support
- Enforce support when one parent does not live in Minnesota
- Collect and process support payments.

The state office:

- Partners with the federal Office of Child Support Enforcement (OCSE)
- Operates the federally required Central Case Registry that manages intergovernmental inquiries and cases received from other states
- Maintains a central payment center that collected and distributed \$580.6 million in FFY 2017
- Supports a statewide computer system, PRISM, and is preparing for system modernization by simplifying case management activities and policies
- Maintains [Minnesota Child Support Online](#) (MCSO), a secure website that provides clients with case-specific information, and employers a tool to remit child support withheld from parents' income
- Maintains an online [child support calculator](#) to help parents estimate the amount of child support that the court may order on a case

Minnesota's child support program benefits children by helping families work toward becoming and remaining self-sufficient.

- Develops child support policies and procedures
- Provides training and technical assistance
- Operates a help desk, which includes both general and payment information lines
- Reports information and statistics to OCSE
- Evaluates and monitors statewide and county performance
- Receives data from other state and federal agencies
- Convenes various work groups and meetings, including an advisory board and bi-monthly meetings with representatives from the largest nine counties to discuss and plan program performance
- Interacts with stakeholders such as the [Minnesota Family Support and Recovery Council](#), Minnesota's professional association for child support workers, [Minnesota Association of County Attorneys](#), the [Minnesota Association of County Social Services Administrators](#) and others.



Most of the child support cases in Minnesota are non-public assistance cases. The children on these cases either never received public assistance or are no longer receiving public assistance.

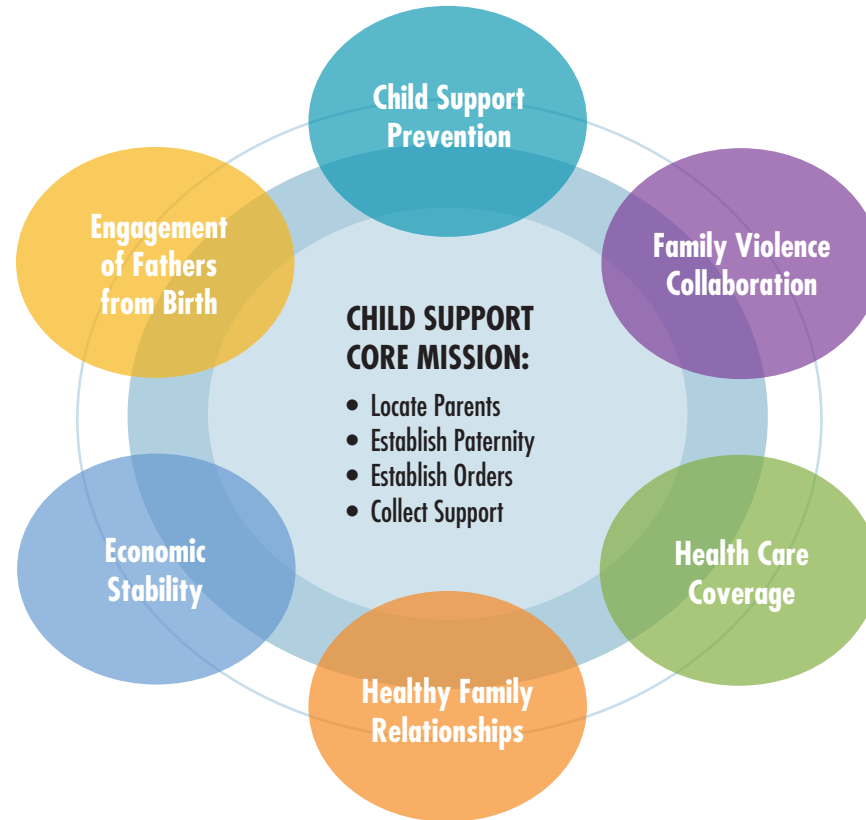


Vision and Mission

The division strives for a program that allows children to depend on their parents for the support they need. In carrying out its vision, workers promote children's well-being and family self-sufficiency by delivering quality child support services. Its work reflects the core mission and values and shows commitment to:

- **Children**
- **Quality customer service**
- **Integrity, respect and ethics**
- **Innovation and excellence**
- **Collaborative relationships**

Supporting children is at the core of state and federal child support programs. OCSE's simple diagram of innovative partnerships and initiatives that federal, state, county and tribal child support programs have developed demonstrates a shift to a more family-centered approach to delivering child support services. Together, staff help parents support their children. By intervening early, child support programs address the underlying reasons for nonsupport – whether it is unemployment, parental conflict, or disengagement. By broadening strategies and partnering with other programs, child support can do more to assure that parents provide their children with financial and emotional support throughout childhood.



Payments

Partnership



The child support program helps parents establish a financial partnership by offering services for children to receive basic support, medical and child care support they need to enhance their growth and development. These three elements combine to form a monthly child support obligation. Child support is money parents are court ordered to pay to their child's other parent or caregiver for support of their child. The child support program provides services to parents who apply, and to those who are referred to the program from county financial assistance programs.

Once a parent applies for services, or after financial workers refer a case because a family receives public assistance, all child support payments must come through the Child Support Payment Center (CSPC). States are required to have a central payment center that receives and disburses child support collections so that a parent gets credit for making payments, and payments are disbursed correctly. Many state and federal agencies, employers, and other service programs help the child support program operate effectively and efficiently.

Processing

Division staff receipt payments. In most cases, they send the support collected and owed to the custodial parent within two business days by direct deposit into a checking or savings account or stored value card account. The staff may hold funds collected through certain tax refund offsets for up to six months to make sure the refund was properly intercepted.

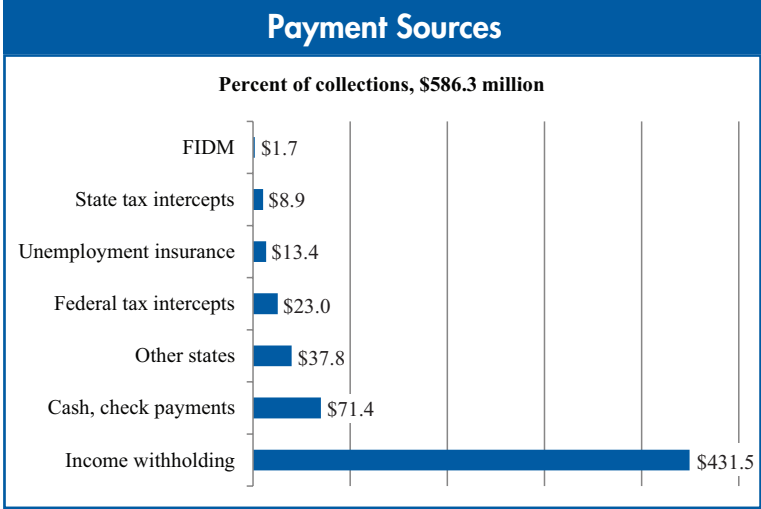
In FFY 2017, the program collected \$586.3 million.

Payment center staff:

- Processed \$599.5 million in payments, about \$50 million each month
- Received 3,030,978 transactions, of which 974,163 were paper items such as checks, and 2,056,815 through automated clearing houses
- Deposited 95 percent of collections disbursed directly into parents' accounts.

Sources

The Child Support Division tracks the sources of child support payments to measure the effectiveness of enforcement activities and collection tools. The graph, Payment Sources, shows the payment sources for FFY 2017.



(Continued on next page)

A family-centered approach to supporting children is at the core of the program.



Payments

Income withholding

Most new or modified child support orders require income withholding where employers and payors of funds automatically withhold child support obligations from a parent's pay, or other sources of income, and send withholdings to the state. Through income withholding, employers collected \$431.5 million from parents' paychecks, 73.6 percent of all support disbursed.

Employers play a pivotal role in Minnesota's child support efforts, making a valuable contribution to the lives of children. Employers are also required to report new hires to the [Minnesota New Hire Reporting Center](#) which helps match working parents with child support obligations. Cooperation among employers and child support agencies encourages parental responsibility, reduces taxpayer costs for public assistance, and helps families provide for their children.

Most parents who owe child support pay their obligation regularly and on time.



Cash, check payments

Parents who are self-employed or do not pay through income withholding send their child support to the CSPC by check, cashier's check, money order or automatic-recurring withdrawals. In FFY 2017, \$71.4 million, 12 percent of collections, were paid in this manner.

Other states

Child support provides services to many families with complex and changing needs. Promises of increased income opportunities and job availability may influence a parent's decision to move to and from Minnesota while child support services continue. For parents who owe support and work outside of Minnesota, other states collected \$37.8 million, 6.5 percent of collections, of child support in FFY 2017.

Other sources

Sometimes child support obligations go unpaid or are collected only when child support workers enforce orders. Some parents experience circumstances that make them unable to pay their obligation, some make choices that prevent payment, and some may evade payment. In these situations, child support workers must use appropriate tools and activities to enforce orders. In addition to the enforcement methods below, parents who do not comply with their child support orders may be denied approval or renewal of a passport, reported to a credit bureau, be subject to civil contempt proceedings, charged with criminal nonsupport, or have their driver's license suspended.

The remaining payment sources include:

- 3.9 percent from intercepts of federal tax refunds, \$23.0 million
- 2.3 percent from withholdings from Unemployment Insurance, \$13.4 million
- 1.5 percent from intercepts of state tax refunds, \$8.9 million.

On page 49, the Collections-Sources chart breaks down payment sources per county.

Initiatives

New parentage video

This summer, the program released a new parentage video entitled *Establishing Parentage - What Every Mother and Father Need to Know*. The video explains parents' rights and responsibilities before signing the Recognition of Parentage form; it replaces the Power of Two video which was produced more than 15 years ago.



Driver's license outreach

In August, during Child Support Awareness month, county agencies and the division sent nearly 10,000 letters to parents who had fallen behind on their child support and had their driver's license suspended. The letter offered these parents another chance to start paying their support and get their license back if they worked with county child support staff and met specific conditions.

KMOJ Awareness and Education campaign

Late in 2017, the division launched a 10-month awareness and education campaign with KMOJ, a Twin Cities-based, non-profit radio station. Through this campaign, the program will reach KMOJ's audience and others with information about the child support program and resources to help.

Child Support Task Force

The program continued to facilitate the work of the Child Support Task Force on maintaining and improving Minnesota's child support guidelines which included soliciting public comments from child support program participants at four locations around the state.

The child support program helps parents establish a financial partnership by offering services for children to receive basic support, medical and child care support they need to enhance their growth and development.

Employers reported information on more than two million new hires to Minnesota's New Hire Reporting Center. Because Minnesota's center is convenient and efficient, some employers that operate in multiple states choose to report all of their new hire information to Minnesota.



Intergovernmental Cases

Approximately one out of every seven child support cases involves a parent who lives in another state. A case is considered intergovernmental when one party lives in a jurisdiction different from the other, when a child support order is from a jurisdiction other than the one where both parties live, or when there is more than one child support order covering the same parties. Intergovernmental child support cases are governed by provisions of the Uniform Interstate Family Support Act (UIFSA). The 2007 international Hague Convention outlined changes, known as the UIFSA 2008 amendments. States are in the process of enacting or have enacted provisions of UIFSA 2008.

Of the 87 counties in Minnesota, 35 share a border with another jurisdiction. Working on cases that cross jurisdictional lines continues to be part of the essential services provided by the child support program. By law, although each state has an independent court system with varying laws, policies and procedures, agencies must cooperate in handling requests for assistance. When Minnesota requests assistance from another jurisdiction for child support services, that case is referred to as the “initiating” case. Alternatively, when another jurisdiction asks Minnesota for assistance, that case is referred to as a “responding” case. Minnesota’s child support program demonstrates achievements in intergovernmental case establishment and collections.



Initiating cases

There were 21,390 initiating intergovernmental cases open in Minnesota in FFY 2017; of those, 19,927 had a child support order. This data shows an intergovernmental initiating ratio of 93.16 percent of cases with an order established either prior to or after Minnesota initiated to another jurisdiction.

For intergovernmental cases where Minnesota is the initiating state, the average case with a child support order collected \$2,465.48 in FFY 2017.

Responding cases

In FFY 2017, there were 8,981 open intergovernmental cases where Minnesota was responding to another jurisdiction; of those, 8,384 had a child support order. Again, a high establishment percentage for intergovernmental responding cases at 93.35 percent.

For intergovernmental cases where Minnesota is the responding state, the average case with a child support order collected \$2,927.73 in FFY 2017.

On page 46, the Collections to and from Other States chart displays how much money each county distributes to other states, how much is received from other states, and size of initiating and responding caseloads.

Minnesota’s child support program demonstrates achievements in intergovernmental case establishment and collections.



Guide and Introduction to Performance Data

Calculations

The 2017 Child Support Performance Report highlights accomplishments and presents program performance measures for FFY 2017. It reports the most recent data showing statewide and individual county performance, and a five-year history for the five federal performance measures. CSD participates in the federal incentive funding system based on program performance, as required by the Personal Responsibility and Work Opportunity Act of 1996. The federal Office of Child Support Enforcement evaluates states competing for federal incentive funds based on five federal performance measures. The five measures are:

- **Paternity Establishments** - the number of open Title IV-D cases with paternity established during the federal fiscal year divided by the number of children in open Title IV-D cases born outside of marriage during the prior federal fiscal year.
- **Child Support Order Establishment** - the number of cases open at the end of the federal fiscal year with support orders established divided by the number of cases open at the end of the federal fiscal year.
- **Collections on Current Support** - the total amount of support distributed as current support during the federal fiscal year divided by the total amount of current support due for the federal fiscal year.
- **Collections on Arrears** - the number of total cases with support distributed as arrears during the federal fiscal year divided by the number of total cases with arrearages due during the federal fiscal year.
- **Program Cost Effectiveness** - for the federal fiscal year the amount of collections forwarded to other states plus total collections distributed, plus fees retained by other states divided by total Title IV-D dollars expended during the federal fiscal year.

Unlike other performance measures, OCSE allows state agencies to choose between two methods of reporting paternity establishment percentages. One method uses all children born in the state. The second method, which is used by Minnesota, uses only children in the Title IV-D state system. Both methods involve paternitys and births that span more than one 12-month period. The paternitys established by child support workers during the federal fiscal year, therefore, are not necessarily for the same children born of non-marital births in the same federal fiscal year. This explains why some states have a paternity establishment percentage exceeding 100 percent. For the federal performance incentive, Minnesota's percentage is 101.05.

Paternitys Established =	$\frac{\text{Children in open Title IV-D cases with paternity established}^1}{\text{Children in open Title IV-D cases born outside of marriage}^1 \text{ in previous year}}$
Order Established =	$\frac{\text{Cases open at the end of fiscal year with support orders established}^2}{\text{Cases open at end of fiscal year}^2}$
Collections on Current Support =	$\frac{\text{Total amount of support distributed as current support during fiscal year}^2}{\text{Total amount of current support due for the fiscal year}^2}$
Collections on Arrears =	$\frac{\text{Total cases with support distributed as arrears during fiscal year}^2}{\text{Total cases with arrearages due during fiscal year}^2}$
Cost Effectiveness =	$\frac{\text{Collections forwarded to other states + total collections distributed + fees retained by other states}^3}{\text{Total Title IV-D dollars expended}^4}$

Sources: ¹QQ320920, ²QQ320921, ³QQ640201, ⁴DHS Financial Operations Division Report

(Continued on next page)

Minnesota maximized its federal incentives on two of the five measures.



Guide and Introduction to Performance Data

Federal incentives

States are able to maximize federal incentives by reaching performance thresholds on each of the five measures. Minnesota maximized its federal incentives on two of five measures: Paternity establishment at 101.05 percent, and order establishment at 88.56 percent. Minnesota has opportunities to earn additional incentives based on collections which maximize at 80.00 percent and cost effectiveness at \$5.00. For FFY 2017 collections on current support was 74.53 percent, collections on cases with arrears was 72.26 percent and cost effectiveness is at \$3.30.

The federal government matches 66 percent of state and county spending. It also provides funding based on performance, outcomes and collection base, which CSD passes on to county agencies. CSD determines a county's share using the same methodology that OCSE uses for states. County agencies are required to reinvest incentives in the Title IV-D program.

Secure, accurate and reliable data is critical to the child support program's success and funding. In addition to meeting OCSE's performance standards, a state's data must meet a 95 percent data reliability standard. Reliable data is sufficiently complete and error-free. Federal auditors assess completeness, reliability and security of data, as well as accuracy of the reporting systems used in calculating performance measures.

Failure to meet any of the five federal performance standards, or the 95 percent data reliability standard, puts a state program at risk. Failure can mean loss of eligibility for incentive funds and the possibility of incurring significant penalties to the Temporary Assistance to Needy Families (TANF) grant—the Minnesota Family Investment Program (MFIP)—if no improvement is made during the corrective action year.

If a state falls below one or more of the performance measures, or does not meet data reliability criteria, OCSE imposes an automatic corrective action period of one year. If corrections are not made during that year, OCSE imposes a penalty at the end of the year,

which reduces payments by 1 to 2 percent of the state TANF grant for the first finding; 2 to 3 percent for the second consecutive finding; and 3 to 5 percent for the third and subsequent consecutive findings. Total penalties may not exceed 25 percent of a state's TANF grant.

Historically, Minnesota has performed well in federal audits. OCSE's annual Data Reliability Audit validates that performance and financial reporting is accurately reflected in reviewing the child support system. Minnesota has not had a corrective action or penalty in any of its audits regarding data reliability.

Performance relative to other states

To show how Minnesota compares to other states, the most recent national data is included in tables in the report. Federal rankings are based on FFY 2016 data; Minnesota ranked third for collections on current support nationally, and fourth in collections on arrears. National information is available online from OCSE. The table below shows Minnesota's performance measures for FFY 2016 compared to the four bordering states.

FFY 2016 Federal Performance Measures – Border State Comparison					
Performance Measures	MN	IA	ND	SD	WI
Paternities Established	100.7%	97.3%	106.1%	110.5%	104.8%
Orders Established	88.9%	91.7%	93.1%	92.1%	87.1%
Collections on Current	74.2%	73.5%	72.7%	65.9%	74.4%
Collections on Arrears	72.3%	70.3%	65.1%	63.8%	69.0%
Cost Effectiveness	\$3.30	\$5.73	\$6.15	\$10.69	\$8.43

(Continued on next page)



Guide and Introduction to Performance Data

Funding

OCSE provides funding to states by matching qualifying expenditures, and by basing funding on performance, outcomes and the state's collection base. The collection base is the "baseline" of the incentive structure. Once established, OCSE applies performance on the five federal performance measures to the collection base for a national total. OCSE awards each state a prorated portion of the total incentive pool. Dollars in the incentive pool are limited. Each state's share is affected by how every other state performs under the incentive formula.



Table tips

Tips for the tables in the 2017 report:

- Statewide data appears at the bottom of tables for convenient comparison on each page.
- Statewide data figures include all county and tribal shared interest case data.
- A dash indicates no data applicable.
- Historical FFY data shows recently merged counties as single county agencies. Percentage comparisons have been calculated using historical data from the agencies. Multiple county agencies are reported as follows:
 - Faribault-Martin is listed as one agency.
 - Southwest Health and Human Services is listed as SWHHS (Lincoln, Lyon and Murray (LLM) with the addition of Rock on Jan. 1, 2012, and Pipestone and Redwood on Jan. 1, 2013).
 - Des Moines Valley (Cottonwood and Jackson merged on Jan. 1, 2014).
 - MNPrairie (Dodge, Steele and Waseca merged on Jan. 1, 2015).
- Data sources are listed at the bottom of tables.
- National data for state ranking is for FFY 2016.

The federal government matches 66 percent of state and county spending.

When circumstances change, child support obligations continue. Parents who experience a change, or anticipate a change, should contact their county caseworker immediately.

(Continued on next page)



Guide and Introduction to Performance Data

Data sources

- The division used internal and external data sources to compile the 2017 report, which include:
- Standard Data Warehouse reports—regularly scheduled reports, with most reports produced on a monthly or quarterly schedule. County agencies can access these reports through an interface with CSD.
- Ad Hoc Minnesota Department of Human Services Child Support Data Warehouse reports—special request for reports that access multi-source data stored at the department. Reports are approved and run once for state and county agency use.
- InfoPac reports—access data through a mainframe application created by MAXIS, MMIS and PRISM.



Federal Performance Measures: County Results

County	Paternities Established Measure FFY2017 (%)	Orders Established Measure FFY2017 (%)	Collections on Current Measure FFY2017 (%)	Collections on Arrears Measure FFY2017 (%)	Cost Effectiveness Measure FFY2017 (\$)
Aitkin	102.65	92.41	75.42	64.66	2.92
Anoka	104.10	91.38	75.87	74.69	4.82
Becker	93.04	89.70	68.31	65.46	2.81
Beltrami	94.28	84.04	69.23	58.62	3.60
Benton	105.18	93.66	76.25	75.51	4.36
Big Stone	123.81	86.36	73.10	76.39	4.84
Blue Earth	104.65	92.62	71.58	75.18	5.00
Brown	103.84	93.45	82.20	82.43	5.20
Carlton	105.15	93.75	74.52	64.56	3.29
Carver	104.56	92.04	79.42	78.71	5.21
Cass	99.87	86.03	67.88	56.52	2.23
Chippewa	98.03	91.78	78.32	73.46	3.96
Chisago	107.20	95.42	80.85	81.87	7.23
Clay	99.86	86.51	72.15	67.47	4.86
Clearwater	95.28	94.60	68.48	63.81	4.79
Cook	104.10	87.21	76.09	66.67	3.00
Crow Wing	104.36	93.92	73.92	72.96	5.25
Dakota	99.59	88.03	72.65	73.12	4.04
Douglas	103.98	92.77	74.13	74.88	4.35
Fillmore	101.83	90.56	78.77	77.27	8.61
Freeborn	104.05	93.30	71.32	73.49	6.40
Goodhue	106.69	88.76	77.09	74.77	4.39
Grant	95.74	94.58	82.60	79.89	4.00
Hennepin	99.59	83.66	71.58	69.81	2.89
Houston	111.98	93.51	77.94	68.49	4.68
Hubbard	103.71	91.80	74.75	69.24	6.69
Isanti	102.16	94.02	77.87	75.91	4.60
Itasca	102.63	94.26	74.91	71.34	3.16
Des Moines Valley	102.93	96.75	78.33	81.10	6.74
Statewide	101.05	88.56	74.53	72.26	3.30



Federal Performance Measures: County Results

County	Paternities Established Measure FFY2017 (%)	Orders Established Measure FFY2017 (%)	Collections on Current Measure FFY2017 (%)	Collections on Arrears Measure FFY2017 (%)	Cost Effectiveness Measure FFY2017 (\$)
Kanabec	104.65	94.36	76.39	75.37	4.24
Kandiyohi	98.52	89.65	75.57	75.00	4.45
Kittson	109.72	99.05	84.25	83.33	3.62
Koochiching	112.70	95.19	82.77	87.37	4.58
Lac qui Parle	112.77	95.77	78.61	86.55	6.48
Lake	108.24	90.32	74.83	74.86	3.61
Lake of the Woods	101.89	89.58	74.30	78.00	3.30
Le Sueur	109.42	90.35	75.60	80.76	5.67
SWHHS	104.46	91.45	77.31	78.02	5.49
McLeod	105.18	92.89	79.64	81.33	6.92
Mahnomen	71.51	87.66	61.25	54.25	2.03
Marshall	109.28	93.99	83.13	79.13	3.83
Faribault/Martin	108.64	93.12	76.14	75.96	4.79
Meeker	112.99	90.80	77.52	77.26	6.01
Mille Lacs	104.48	94.30	75.63	79.51	4.63
Morrison	98.99	95.32	70.72	71.57	5.16
Mower	104.88	90.72	74.95	73.70	4.56
Nicollet	104.49	93.10	75.30	75.71	4.42
Nobles	102.63	91.02	76.14	80.10	6.97
Norman	110.26	92.88	69.76	76.21	5.32
Olmsted	101.48	87.29	78.57	77.46	4.52
Otter Tail	99.34	89.56	72.94	72.27	3.85
Pennington	98.93	89.68	72.77	74.32	3.57
Pine	107.85	94.07	76.80	72.23	4.23
Polk	109.93	93.80	79.04	70.56	3.89
Pope	99.24	93.04	79.57	79.73	4.37
Ramsey	93.82	83.44	67.79	66.82	2.92
Red Lake	109.71	91.85	80.74	82.50	4.58
Renville	102.05	81.72	78.47	79.65	5.54
Statewide	101.05	88.56	74.53	72.26	3.30



Federal Performance Measures: County Results

County	Paternities Established Measure FFY2017 (%)	Orders Established Measure FFY2017 (%)	Collections on Current Measure FFY2017 (%)	Collections on Arrears Measure FFY2017 (%)	Cost Effectiveness Measure FFY2017 (\$)
Rice	98.60	87.75	76.51	77.99	5.42
Roseau	112.86	95.12	77.84	76.36	4.48
St. Louis	101.64	91.39	72.75	64.96	4.50
Scott	109.47	90.67	80.29	79.99	5.23
Sherburne	106.48	93.21	80.92	76.41	6.78
Sibley	102.97	90.63	78.41	74.32	5.09
Stearns	102.98	88.45	78.72	79.00	4.60
MN Prairie	108.11	93.19	77.44	78.47	5.17
Stevens	97.74	95.54	70.74	76.13	4.08
Swift	103.87	90.57	75.22	77.02	5.41
Todd	106.10	91.30	77.59	80.24	5.43
Traverse	98.86	93.02	75.90	75.90	4.19
Wabasha	103.72	89.56	80.55	77.39	8.00
Wadena	101.63	95.10	73.02	76.60	7.35
Washington	104.38	94.07	77.23	72.42	6.35
Watonwan	101.37	90.31	77.50	76.21	6.30
Wilkin	107.41	87.13	77.63	74.03	3.29
Winona	99.00	91.19	75.59	70.97	4.88
Wright	108.56	92.83	79.50	76.83	6.56
Yellow Medicine	99.19	93.18	81.95	81.75	5.09
Statewide	101.05	88.56	74.53	72.26	3.30

Source: CSD InfoPac QQ320920: Annual OCSE157 Paternity Establishment - Summary, CSD InfoPac QQ320921: Annual OCSE157 Federal Performance – Summary, and CSD InfoPac QQ640201: Quarterly OCSE34A Collect and Disburse – Summary, and DHS Financial Operations and Division Operations – Quarterly County Admin. report



County Results: Paternities Established

County	Children in Open IV-D Cases with Paternities Established FFY2017	Children in Open IV-D Cases Not Born in Marriage FFY2016	Federal Performance Measures: Paternities Established				
			FFY2017 (%)	FFY2016 (%)	FFY2015 (%)	FFY2014 (%)	FFY2013 (%)
Aitkin	582	567	102.65	106.68	101.90	105.55	106.96
Anoka	9,098	8,740	104.10	103.13	102.87	104.65	107.43
Becker	1,256	1,350	93.04	101.84	97.35	98.75	104.99
Beltrami	2,059	2,184	94.28	98.44	92.80	91.08	90.34
Benton	1,603	1,524	105.18	105.77	105.59	104.44	108.06
Big Stone	130	105	123.81	109.01	97.67	97.04	103.62
Blue Earth	1,892	1,808	104.65	103.63	100.70	104.32	103.25
Brown	812	782	103.84	107.72	102.73	107.43	106.26
Carlton	1,450	1,379	105.15	102.98	99.72	101.04	102.06
Carver	1,306	1,249	104.56	107.05	104.22	105.06	107.14
Cass	1,512	1,514	99.87	100.79	99.55	102.22	102.51
Chippewa	447	456	98.03	105.58	108.04	106.65	110.39
Chisago	1,549	1,445	107.20	105.69	104.88	108.27	110.05
Clay	2,168	2,171	99.86	103.13	101.59	104.71	103.88
Clearwater	424	445	95.28	104.94	104.73	105.88	110.47
Cook	127	122	104.10	93.02	95.45	97.84	100.00
Cottonwood	-	-	-	-	-	-	105.91
Crow Wing	2,468	2,365	104.36	102.21	102.22	102.33	108.83
Dakota	9,834	9,874	99.59	99.80	97.29	99.02	102.15
Dodge	-	-	-	-	-	106.47	115.43
Douglas	1,046	1,006	103.98	104.59	102.56	102.83	105.57
Fillmore	502	493	101.83	102.71	104.85	106.18	103.86
Freeborn	1,363	1,310	104.05	106.21	102.69	102.27	105.29
Goodhue	1,532	1,436	106.69	107.83	102.23	104.34	106.40
Grant	180	188	95.74	100.55	97.35	100.52	105.35
Hennepin	40,391	40,556	99.59	97.18	98.20	98.76	100.51
Houston	486	434	111.98	104.14	106.73	105.73	109.65
Hubbard	838	808	103.71	107.09	103.74	104.23	103.84
Statewide	173,845*	172,036*	101.05	100.77	99.00	100.42	102.48

Paternities Established Measure FFY2017 Rank Order by (%)	
Big Stone	123.81
Meeker	112.99
Roseau	112.86
Lac qui Parle	112.77
Koochiching	112.70
Houston	111.98
Yellow Medicine	110.36
Norman	110.26
Polk	109.93
Kittson	109.72
Red Lake	109.71
Scott	109.47
Le Sueur	109.42
Marshall	109.28
Faribault/Martin	108.64
Wright	108.56
Lake	108.24
MN Prairie	108.11
Pine	107.85
Wilkin	107.41
Chisago	107.20
Goodhue	106.69
Sherburne	106.48
Todd	106.10
Benton	105.18
McLeod	105.18
Carlton	105.15
Mower	104.88



County Results: Paternities Established

County	Children in Open IV-D Cases with Paternities Established FFY2017	Children in Open IV-D Cases Not Born in Marriage FFY2016	Federal Performance Measures: Paternities Established				
			FFY2017 (%)	FFY2016 (%)	FFY2015 (%)	FFY2014 (%)	FFY2013 (%)
Isanti	1,369	1,340	102.16	100.80	101.68	102.80	107.59
Itasca	1,793	1,747	102.63	103.25	102.91	100.75	99.84
Des Moines Valley	842	818	102.93	110.81	105.56	108.93	106.57
Kanabec	652	623	104.65	107.27	102.56	104.21	107.85
Kandiyohi	1,730	1,756	98.52	98.98	102.53	99.94	101.85
Kittson	79	72	109.72	113.24	105.56	106.85	112.86
Koochiching	559	496	112.70	111.88	109.04	110.53	111.40
Lac qui Parle	159	141	112.77	101.30	99.37	104.17	104.32
Lake	289	267	108.24	101.84	99.33	103.24	102.84
Lake of the Woods	108	106	101.89	108.08	111.00	104.55	109.62
Le Sueur	848	775	109.42	109.47	103.17	105.42	110.45
SWHHS	2,602	2,491	104.46	106.30	101.47	102.66	103.97
McLeod	1,157	1,100	105.18	106.62	104.06	103.14	105.29
Mahnomen	256	358	71.51	97.14	114.22	100.00	118.94
Marshall	212	194	109.28	102.76	110.19	108.21	105.91
Faribault/Martin	1,396	1,285	108.64	108.45	107.50	107.19	106.98
Meeker	609	539	112.99	101.79	101.21	101.59	105.22
Mille Lacs	1,236	1,183	104.48	105.08	106.00	104.07	105.46
Morrison	1,275	1,288	98.99	101.64	100.00	102.81	104.42
Mower	1,850	1,764	104.88	104.95	103.88	96.56	101.97
Nicollet	1,094	1,047	104.49	103.25	102.83	102.63	101.79
Nobles	899	876	102.63	106.43	101.14	105.86	104.58
Norman	215	195	110.26	117.58	107.14	105.77	109.52
Olmsted	4,604	4,537	101.48	98.45	100.69	100.62	102.57
Otter Tail	1,664	1,675	99.34	105.08	101.06	102.28	108.71
Pennington	557	563	98.93	102.44	97.69	99.05	99.68
Pine	1,347	1,249	107.85	104.56	102.14	101.99	103.39
Polk	1,483	1,349	109.93	106.92	109.09	103.02	107.91
Statewide	173,845*	172,036*	101.05	100.77	99.00	100.42	102.48

Paternities Established Measure FFY2017 Rank Order by (%)	
Kanabec	104.65
Blue Earth	104.65
Carver	104.56
Nicollet	104.49
Mille Lacs	104.48
SWHHS	104.46
Washington	104.38
Crow Wing	104.36
Cook	104.10
Anoka	104.10
Freeborn	104.05
Douglas	103.98
Swift	103.87
Brown	103.84
Wabasha	103.72
Hubbard	103.71
Stearns	102.98
Sibley	102.97
Des Moines Valley	102.93
Aitkin	102.65
Itasca	102.63
Nobles	102.63
Isanti	102.16
Renville	102.05
Lake of the Woods	101.89
Fillmore	101.83
St. Louis	101.64
Wadena	101.63



County Results: Paternities Established

County	Children in Open IV-D Cases with Paternities Established FFY2017	Children in Open IV-D Cases Not Born in Marriage FFY2016	Federal Performance Measures: Paternities Established				
			FFY2017 (%)	FFY2016 (%)	FFY2015 (%)	FFY2014 (%)	FFY2013 (%)
Pope	260	262	99.24	102.65	105.99	101.89	105.28
Ramsey	22,749	24,247	93.82	95.20	94.77	94.66	95.43
Red Lake	113	103	109.71	115.69	115.89	104.27	113.82
Renville	497	487	102.05	104.63	105.20	103.10	107.16
Rice	1,481	1,502	98.86			104.02	108.01
Roseau	474	420	112.86	108.15	99.77	98.25	99.32
St. Louis	8,363	8,228	101.64	102.99	102.14	102.52	104.26
Scott	2,405	2,197	109.47	104.91	107.61	107.31	110.05
Sherburne	2,466	2,316	106.48	103.82	101.32	102.01	104.74
Sibley	451	438	102.97	104.74	102.80	106.94	109.91
Stearns	4,251	4,128	102.98	105.87	103.22	104.12	106.52
MN Prairie	3,039	2,811	108.11	106.37	105.23	108.47	110.39
Stevens	173	177	97.74	101.60	105.41	111.05	107.77
Swift	376	362	103.87	105.43	103.14	106.34	108.31
Todd	696	656	106.10	103.71	102.08	102.78	106.83
Traverse	87	88	98.86	116.28	98.91	113.13	132.94
Wabasha	502	484	103.72	106.20	99.80	95.87	103.20
Wadena	624	614	101.63	107.77	105.98	108.21	107.45
Waseca	-	-	-	-	-	106.50	106.28
Washington	4,885	4,680	104.38	106.10	103.69	102.10	104.04
Watonwan	519	512	101.37	96.85	100.18	103.31	102.96
Wilkin	232	216	107.41	100.92	102.87	109.95	105.85
Winona	1,388	1,402	99.00	100.99	100.14	99.80	102.84
Wright	3,018	2,780	108.56	104.61	103.58	105.46	107.83
Yellow Medicine	245	222	110.36	99.19	105.28	104.68	103.91
Statewide	173,845*	172,036*	101.05	100.77	99.00	100.42	102.48

Paternities Established Measure FFY2017 Rank Order by (%)	
Olmsted	101.48
Watonwan	101.37
Statewide	101.05
Cass	99.87
Clay	99.86
Dakota	99.59
Hennepin	99.59
Otter Tail	99.34
Pope	99.24
Winona	99.00
Morrison	98.99
Pennington	98.93
Traverse	98.86
Rice	98.60
Kandiyohi	98.52
Chippewa	98.03
Stevens	97.74
Grant	95.74
Clearwater	95.28
Beltrami	94.28
Ramsey	93.82
Becker	93.04
Mahnomen	71.51

Source: CSD InfoPac QQ320920: Annual OCSE157 Paternity Establishment – Summary

*CSD InfoPac QQ710305: Unduplicated Paternity Establishment report



County Results: Orders Established

County	Open Cases with Orders Established FFY2017	Open Cases FFY2017	Federal Performance Measures: Orders Established				
			FFY2017 (%)	FFY2016 (%)	FFY2015 (%)	FFY2014 (%)	FFY2013 (%)
Aitkin	731	791	92.41	94.61	94.59	92.99	91.26
Anoka	10,948	11,981	91.38	92.43	92.43	91.72	90.23
Becker	1,411	1,573	89.70	90.92	92.85	92.96	88.80
Beltrami	2,222	2,644	84.04	82.50	76.98	76.16	73.73
Benton	1,774	1,894	93.66	93.32	94.28	91.94	91.22
Big Stone	152	176	86.36	89.02	95.06	89.56	89.94
Blue Earth	2,284	2,466	92.62	94.19	94.03	94.14	93.05
Brown	927	992	93.45	95.46	93.63	94.64	94.33
Carlton	1,921	2,049	93.75	94.41	93.57	93.02	90.80
Carver	1,676	1,821	92.04	91.64	93.70	93.34	92.85
Cass	1,497	1,740	86.03	86.73	87.23	86.79	85.86
Chippewa	525	572	91.78	89.29	90.15	91.81	90.47
Chisago	1,980	2,075	95.42	95.37	95.53	94.85	93.58
Clay	2,225	2,572	86.51	87.05	86.95	85.55	86.76
Clearwater	543	574	94.60	95.70	97.65	96.33	93.95
Cook	150	172	87.21	84.21	86.55	89.47	86.26
Cottonwood	-	-	-	-	-	-	92.86
Crow Wing	3,072	3,271	93.92	94.23	94.09	94.29	93.46
Dakota	11,154	12,671	88.03	90.37	90.59	88.90	88.66
Dodge	-	-	-	-	-	94.46	94.16
Douglas	1,424	1,535	92.77	93.55	93.57	93.22	92.02
Fillmore	633	699	90.56	90.48	92.35	89.97	94.15
Freeborn	1,560	1,672	93.30	95.75	94.97	93.04	92.13
Goodhue	1,737	1,957	88.76	91.16	94.22	94.61	93.28
Grant	227	240	94.58	93.06	95.58	96.41	93.08
Hennepin	40,316	48,193	83.66	84.31	83.74	82.93	82.55
Houston	576	616	93.51	94.72	96.17	96.19	92.76
Hubbard	929	1,012	91.80	93.21	92.97	90.55	87.71
Statewide	192,098*	216,908*	88.56	88.91	88.70	88.00	86.61

Orders Established Measure FFY2017 Rank Order by (%)	
Kittson	99.05
Des Moines Valley	96.75
Lac qui Parle	95.77
Stevens	95.54
Chisago	95.42
Morrison	95.32
Koochiching	95.19
Roseau	95.12
Wadena	95.10
Clearwater	94.60
Grant	94.58
Kanabec	94.36
Mille Lacs	94.30
Itasca	94.26
Washington	94.07
Pine	94.07
Isanti	94.02
Marshall	93.99
Crow Wing	93.92
Polk	93.80
Carlton	93.75
Benton	93.66
Houston	93.51
Brown	93.45
Freeborn	93.30
Sherburne	93.21
MN Prairie	93.19
Yellow Medicine	93.18



County Results: Orders Established

County	Open Cases with Orders Established FFY2017	Open Cases FFY2017	Federal Performance Measures: Orders Established				
			FFY2017 (%)	FFY2016 (%)	FFY2015 (%)	FFY2014 (%)	FFY2013 (%)
Isanti	1,778	1,891	94.02	94.08	92.99	94.26	92.12
Itasca	2,268	2,406	94.26	94.59	93.21	92.53	88.32
Des Moines Valley	1,012	1,046	96.75	94.78	96.89	95.68	96.91
Kanabec	769	815	94.36	94.08	94.85	92.43	91.21
Kandiyohi	1,914	2,135	89.65	89.28	88.68	88.72	87.26
Kittson	104	105	99.05	96.36	92.52	98.17	94.02
Koochiching	614	645	95.19	97.55	96.09	98.83	98.24
Lac qui Parle	181	189	95.77	97.38	96.10	96.40	92.50
Lake	401	444	90.32	91.24	93.82	87.97	87.94
Lake of the Woods	129	144	89.58	92.42	94.70	92.14	89.40
Le Sueur	899	995	90.35	93.35	95.59	94.18	93.25
SWHHS	2,993	3,273	91.45	92.20	92.88	92.38	91.97
McLeod	1,397	1,504	92.89	92.90	93.65	92.63	91.38
Mahnomen	206	235	87.66	91.74	88.95	93.93	73.64
Marshall	266	283	93.99	95.44	95.19	93.23	90.10
Faribault/Martin	1,583	1,700	93.12	94.73	95.15	96.37	94.56
Meeker	809	891	90.80	94.18	93.30	94.36	93.12
Mille Lacs	1,721	1,825	94.30	93.84	94.64	93.28	89.31
Morrison	1,753	1,839	95.32	94.25	93.76	93.03	91.41
Mower	2,044	2,253	90.72	91.86	91.66	88.32	81.56
Nicollet	1,254	1,347	93.10	92.95	94.13	92.89	93.36
Nobles	841	924	91.02	88.72	88.34	87.72	87.91
Norman	261	281	92.88	92.96	91.51	95.07	92.93
Olmsted	4,766	5,460	87.29	89.12	87.33	87.50	86.64
Otter Tail	1,998	2,231	89.56	91.50	92.98	92.90	92.15
Pennington	652	727	89.68	90.44	92.14	89.72	86.23
Pine	1,585	1,685	94.07	94.60	96.31	96.19	93.26
Polk	1,603	1,709	93.80	91.92	93.48	93.30	93.31
Statewide	192,098*	216,908*	88.56	88.91	88.70	88.00	86.61

Orders Established Measure FFY2017 Rank Order by (%)	
Faribault/Martin	93.12
Nicollet	93.10
Pope	93.04
Traverse	93.02
McLeod	92.89
Norman	92.88
Wright	92.83
Douglas	92.77
Blue Earth	92.62
Aitkin	92.41
Carver	92.04
Red Lake	91.85
Hubbard	91.80
Chippewa	91.78
SWHHS	91.45
St. Louis	91.39
Anoka	91.38
Todd	91.30
Winona	91.19
Nobles	91.02
Meeker	90.80
Mower	90.72
Scott	90.67
Sibley	90.63
Swift	90.57
Fillmore	90.56
Le Sueur	90.35
Lake	90.32



County Results: Orders Established

County	Open Cases with Orders Established FFY2017	Open Cases FFY2017	Federal Performance Measures: Orders Established				
			FFY2017 (%)	FFY2016 (%)	FFY2015 (%)	FFY2014 (%)	FFY2013 (%)
Pope	334	359	93.04	93.09	91.51	87.50	86.02
Ramsey	20,719	24,831	83.44	82.14	81.30	80.15	77.40
Red Lake	124	135	91.85	93.71	94.20	95.14	91.39
Renville	514	629	81.72	86.41	83.55	81.70	80.00
Rice	1,683	1,918	87.75	86.63	86.30	84.64	81.40
Roseau	565	594	95.12	89.74	90.32	91.17	87.63
St. Louis	9,334	10,213	91.39	89.98	90.71	90.14	88.69
Scott	2,644	2,916	90.67	90.58	90.68	90.88	88.28
Sherburne	3,197	3,430	93.21	93.89	95.84	94.34	92.50
Sibley	561	619	90.63	93.11	95.36	96.33	93.31
Stearns	4,657	5,265	88.45	88.88	90.90	89.46	87.06
MN Prairie	3,460	3,713	93.19	94.47	93.86	93.54	92.86
Stevens	214	224	95.54	95.56	94.62	91.98	91.57
Swift	442	488	90.57	94.06	94.38	92.96	90.97
Todd	903	989	91.30	93.31	95.93	95.89	92.21
Traverse	80	86	93.02	83.78	83.05	79.49	80.51
Wabasha	652	728	89.56	90.76	88.45	85.71	85.70
Wadena	815	857	95.10	95.16	96.06	96.51	94.92
Waseca	-	-	-	-	-	93.42	92.83
Washington	5,951	6,326	94.07	93.17	95.60	95.26	93.18
Watonwan	643	712	90.31	93.42	93.35	92.24	91.70
Wilkin	237	272	87.13	86.83	86.03	89.11	87.21
Winona	1,842	2,020	91.19	93.01	93.29	93.52	91.60
Wright	3,767	4,058	92.83	93.96	94.49	93.99	92.19
Yellow Medicine	314	337	93.18	91.92	85.60	86.91	87.03
Statewide	192,098*	216,908*	88.56	88.91	88.70	88.00	86.61

Orders Established Measure FFY2017 Rank Order by (%)	
Watonwan	90.31
Becker	89.70
Pennington	89.68
Kandiyohi	89.65
Lake of the Woods	89.58
Wabasha	89.56
Otter Tail	89.56
Goodhue	88.76
Statewide	88.56
Stearns	88.45
Dakota	88.03
Rice	87.75
Mahnomen	87.66
Olmsted	87.29
Cook	87.21
Wilkin	87.13
Clay	86.51
Big Stone	86.36
Cass	86.03
Beltrami	84.04
Hennepin	83.66
Ramsey	83.44
Renville	81.72

Source: QQ320921: Annual OCSE157 Federal Performance – Summary

*CSD InfoPac QQ710309: Unduplicated Performance report



County Results: Collections on Current

County	Current Support Distributed FFY2017	Current Support Due FFY2017	Federal Performance Measures: Collections on Current				
			FFY2017 (%)	FFY2016 (%)	FFY2015 (%)	FFY2014 (%)	FFY2013 (%)
Aitkin	1,237,971.39	1,641,520.14	75.42	75.09	77.13	74.17	71.28
Anoka	30,833,232.53	40,639,262.19	75.87	74.88	74.43	73.39	72.35
Becker	2,603,252.68	3,811,036.91	68.31	69.27	69.68	68.23	68.21
Beltrami	3,249,917.52	4,694,205.10	69.23	67.06	66.35	64.69	63.74
Benton	4,139,135.16	5,428,332.75	76.25	75.97	75.39	75.84	74.95
Big Stone	415,517.70	568,410.90	73.10	76.81	82.28	78.89	81.23
Blue Earth	5,622,788.65	7,855,172.60	71.58	71.14	71.12	69.03	68.79
Brown	2,942,568.30	3,579,678.22	82.20	81.79	82.48	83.45	83.30
Carlton	3,608,880.41	4,842,842.44	74.52	73.27	74.74	73.73	72.18
Carver	6,362,494.72	8,011,632.39	79.42	79.52	79.45	78.72	78.93
Cass	1,652,758.30	2,434,648.68	67.88	67.30	66.32	64.45	64.13
Chippewa	1,285,201.03	1,641,024.77	78.32	74.66	76.30	75.95	76.66
Chisago	5,816,329.53	7,194,133.98	80.85	80.51	79.00	78.26	78.79
Clay	5,968,225.17	8,272,027.63	72.15	72.67	74.44	74.13	73.65
Clearwater	793,884.38	1,159,342.63	68.48	70.28	73.85	71.57	69.19
Cook	278,864.18	366,487.70	76.09	70.61	64.86	64.87	69.15
Cottonwood	-	-	-	-	-	-	72.01
Crow Wing	6,207,672.98	8,398,165.87	73.92	72.87	72.05	72.37	72.42
Dakota	32,467,004.69	44,690,543.79	72.65	72.72	71.92	71.56	70.81
Dodge	-	-	-	-	-	80.29	79.27
Douglas	3,192,826.34	4,306,874.99	74.13	76.03	76.42	75.49	75.60
Fillmore	1,783,239.19	2,263,796.26	78.77	77.60	78.38	78.16	79.77
Freeborn	3,531,874.38	4,952,425.46	71.32	72.09	73.04	70.50	71.70
Goodhue	4,500,475.02	5,838,269.50	77.09	78.49	76.64	75.94	74.33
Grant	685,385.19	829,737.41	82.60	81.62	79.87	80.00	81.17
Hennepin	73,349,064.13	102,474,748.78	71.58	71.47	69.41	68.27	67.28
Houston	1,428,275.45	1,832,468.49	77.94	78.19	77.69	76.48	78.10
Hubbard	1,469,811.52	1,966,264.72	74.75	73.16	69.53	64.44	64.47
Statewide	439,693,408.09	589,961,648.58	74.53	74.29	73.43	72.46	71.81

Collections on Current FFY2017 Rank Order by (%)	
Kittson	84.25
Marshall	83.13
Koochiching	82.77
Grant	82.60
Brown	82.20
Yellow Medicine	81.95
Sherburne	80.92
Chisago	80.85
Red Lake	80.74
Wabasha	80.55
Scott	80.29
McLeod	79.64
Pope	79.57
Wright	79.50
Carver	79.42
Polk	79.04
Fillmore	78.77
Stearns	78.72
Lac qui Parle	78.61
Olmsted	78.57
Renville	78.47
Sibley	78.41
Des Moines Valley	78.33
Chippewa	78.32
Houston	77.94
Isanti	77.87
Roseau	77.84
Wilkin	77.63



County Results: Collections on Current

County	Current Support Distributed FFY2017	Current Support Due FFY2017	Federal Performance Measures: Collections on Current				
			FFY2017 (%)	FFY2016 (%)	FFY2015 (%)	FFY2014 (%)	FFY2013 (%)
Isanti	4,939,519.90	6,343,680.31	77.87	77.68	78.05	76.01	74.49
Itasca	4,141,687.04	5,528,873.26	74.91	74.06	74.55	71.72	71.39
Des Moines Valley	2,466,685.58	3,148,900.50	78.33	77.78	76.80	75.97	77.11
Kanabec	1,894,623.77	2,480,258.87	76.39	76.53	74.84	75.34	74.70
Kandiyohi	4,442,560.32	5,878,566.56	75.57	75.79	75.73	76.37	75.96
Kittson	299,542.96	355,534.91	84.25	87.29	85.84	86.87	85.69
Koochiching	1,521,515.25	1,838,251.08	82.77	81.64	81.85	82.05	81.21
Lac qui Parle	568,056.03	722,623.63	78.61	81.65	80.18	81.00	80.95
Lake	896,820.17	1,198,532.77	74.83	73.18	74.43	74.27	71.67
Lake of the Woods	273,557.04	368,159.74	74.30	76.45	76.95	76.46	79.21
Le Sueur	2,802,268.59	3,706,639.02	75.60	75.43	74.91	75.12	75.98
SWHHS	7,577,454.51	9,801,864.45	77.31	78.36	78.91	77.73	75.98
McLeod	3,724,993.41	4,677,475.78	79.64	79.48	79.39	79.08	78.78
Mahnomen	278,336.40	454,395.80	61.25	59.05	61.81	65.85	64.53
Marshall	920,493.87	1,107,257.96	83.13	82.98	81.93	85.26	81.47
Faribault/Martin	4,271,626.63	5,610,101.51	76.14	75.34	74.40	72.92	74.54
Meeker	2,164,394.67	2,792,206.99	77.52	78.65	76.38	76.81	74.91
Mille Lacs	2,501,802.29	3,307,854.99	75.63	74.38	75.35	73.44	70.91
Morrison	3,198,529.68	4,523,093.23	70.72	70.11	68.09	66.90	68.12
Mower	4,526,230.57	6,038,966.24	74.95	74.90	73.69	71.81	71.82
Nicollet	3,539,369.77	4,700,097.04	75.30	74.42	73.47	72.14	71.24
Nobles	2,353,961.30	3,091,749.65	76.14	73.96	74.90	73.98	73.42
Norman	586,285.75	840,378.72	69.76	71.81	73.86	73.76	74.25
Olmsted	13,974,981.47	17,786,418.86	78.57	78.26	78.16	78.27	78.41
Otter Tail	4,713,033.37	6,461,440.85	72.94	73.05	73.08	71.88	71.71
Pennington	1,567,981.76	2,154,582.05	72.77	74.87	76.02	75.63	75.80
Pine	3,245,862.78	4,226,148.14	76.80	75.41	74.48	73.75	72.71
Polk	3,536,818.33	4,474,660.07	79.04	80.39	78.94	80.05	79.14
Statewide	439,693,408.09	589,961,648.58	74.53	74.29	73.43	72.46	71.81

Collections on Current FFY2017 Rank Order by (%)	
Todd	77.59
Meeker	77.52
Watonwan	77.50
MN Prairie	77.44
SWHHS	77.31
Washington	77.23
Goodhue	77.09
Pine	76.80
Rice	76.51
Kanabec	76.39
Benton	76.25
Faribault/Martin	76.14
Nobles	76.14
Cook	76.09
Traverse	75.90
Anoka	75.87
Mille Lacs	75.63
Le Sueur	75.60
Winona	75.59
Kandiyohi	75.57
Aitkin	75.42
Nicollet	75.30
Swift	75.22
Mower	74.95
Itasca	74.91
Lake	74.83
Hubbard	74.75
Statewide	74.53



County Results: Collections on Current

County	Current Support Distributed FFY2017	Current Support Due FFY2017	Federal Performance Measures: Collections on Current				
			FFY2017 (%)	FFY2016 (%)	FFY2015 (%)	FFY2014 (%)	FFY2013 (%)
Pope	861,983.65	1,083,344.40	79.57	79.85	78.35	78.29	74.26
Ramsey	34,356,414.68	50,679,550.98	67.79	67.59	66.64	64.61	63.54
Red Lake	496,766.04	615,300.87	80.74	79.65	78.79	79.57	82.88
Renville	1,491,668.59	1,901,055.34	78.47	79.27	79.60	78.89	75.82
Rice	4,983,949.76	6,514,468.33	76.51	76.20	75.79	75.46	75.47
Roseau	1,529,228.13	1,964,457.37	77.84	75.55	78.60	78.05	77.67
St. Louis	17,619,898.99	24,220,910.60	72.75	71.86	71.09	70.70	70.63
Scott	9,657,176.02	12,027,704.33	80.29	79.92	79.08	78.41	77.93
Sherburne	9,574,589.76	11,832,500.12	80.92	81.52	80.17	79.18	78.63
Sibley	1,395,992.43	1,780,277.68	78.41	78.60	77.62	77.30	79.13
Stearns	11,818,267.24	15,012,838.11	78.72	78.76	77.53	77.23	76.43
MN Prairie	8,653,486.05	11,174,356.13	77.44	77.41	77.86	73.88	73.45
Stevens	531,969.23	751,976.04	70.74	71.58	72.10	75.75	77.60
Swift	990,434.36	1,316,724.68	75.22	74.62	73.86	76.59	73.36
Todd	2,160,537.71	2,784,453.67	77.59	79.26	77.44	75.12	76.22
Traverse	253,368.79	333,804.05	75.90	71.20	71.68	74.77	73.21
Wabasha	1,998,278.43	2,480,834.73	80.55	81.31	79.75	78.88	79.65
Wadena	1,846,532.75	2,528,642.11	73.02	72.56	71.87	69.06	69.68
Waseca	-	-	-	-	-	-	78.37
Washington	18,464,315.01	23,907,026.72	77.23	76.56	74.67	73.87	73.58
Watonwan	1,562,695.88	2,016,432.35	77.50	77.50	78.18	75.53	77.84
Wilkin	767,449.40	988,595.68	77.63	77.88	79.19	79.93	81.44
Winona	3,415,732.60	4,518,739.23	75.59	75.03	74.94	75.64	75.17
Wright	11,860,976.68	14,918,724.11	79.50	79.93	78.59	77.23	76.18
Yellow Medicine	1,016,670.05	1,240,654.17	81.95	80.81	78.54	77.21	78.90
Statewide	439,693,408.09	589,961,648.58	74.53	74.29	73.43	72.46	71.81

Collections on Current FFY2017 Rank Order by (%)	
Carlton	74.52
Lake of the Woods	74.30
Douglas	74.13
Crow Wing	73.92
Big Stone	73.10
Wadena	73.02
Otter Tail	72.94
Pennington	72.77
St. Louis	72.75
Dakota	72.65
Clay	72.15
Blue Earth	71.58
Hennepin	71.58
Freeborn	71.32
Stevens	70.74
Morrison	70.72
Norman	69.76
Beltrami	69.23
Clearwater	68.48
Becker	68.31
Cass	67.88
Ramsey	67.79
Mahnomen	61.25

Source: CSD InfoPac QQ320921: Annual OCSE157 Federal Performance – Summary



County Results: Collections on Arrears

County	Open Cases with Arrears Distributed FFY2017	Cases with Arrears Due During FFY2017	Federal Performance Measures: Collections on Arrears				
			FFY2017 (%)	FFY2016 (%)	FFY2015 (%)	FFY2014 (%)	FFY2013 (%)
Aitkin	419	648	64.66	68.37	72.85	70.10	70.47
Anoka	7,919	10,603	74.69	75.60	75.26	72.24	71.94
Becker	868	1,326	65.46	66.88	67.68	68.51	69.21
Beltrami	1,228	2,095	58.62	56.84	58.75	59.01	57.89
Benton	1,150	1,523	75.51	79.64	76.67	77.50	77.88
Big Stone	110	144	76.39	80.00	78.71	83.67	83.64
Blue Earth	1,630	2,168	75.18	74.10	74.35	73.70	72.58
Brown	713	865	82.43	84.32	85.09	82.82	84.23
Carlton	1,084	1,679	64.56	66.53	68.92	67.03	65.33
Carver	1,231	1,564	78.71	78.62	82.13	81.22	81.60
Cass	672	1,189	56.52	58.45	59.34	57.41	57.13
Chippewa	335	456	73.46	72.90	75.47	74.00	76.76
Chisago	1,504	1,837	81.87	83.58	82.59	80.93	81.63
Clay	1,485	2,201	67.47	69.75	70.25	72.17	71.93
Clearwater	298	467	63.81	61.76	66.22	67.40	64.22
Cook	94	141	66.67	69.92	73.61	64.83	66.43
Cottonwood	-	-	-	-	-	-	81.75
Crow Wing	2,118	2,903	72.96	75.31	73.14	73.63	73.66
Dakota	7,734	10,577	73.12	73.56	72.74	70.89	70.64
Dodge	-	-	-	-	-	84.97	83.07
Douglas	918	1,226	74.88	78.91	79.45	81.79	79.70
Fillmore	425	550	77.27	79.57	82.92	79.97	80.59
Freeborn	1,081	1,471	73.49	75.33	75.50	71.05	70.24
Goodhue	1,209	1,617	74.77	75.40	75.09	73.97	74.41
Grant	151	189	79.89	84.24	80.00	81.64	80.47
Hennepin	23,336	33,429	69.81	68.60	66.90	65.68	65.06
Houston	376	549	68.49	73.32	76.91	75.84	72.04
Hubbard	619	894	69.24	71.60	71.68	64.24	65.67
Statewide	125,457	173,626	72.26	72.36	72.11	70.99	70.48

Collections on Arrears Measure FFY2017 Rank Order by (%)	
Koochiching	87.37
Lac qui Parle	86.55
Kittson	83.33
Red Lake	82.50
Brown	82.43
Chisago	81.87
Yellow Medicine	81.75
McLeod	81.33
Des Moines Valley	81.10
Le Sueur	80.76
Todd	80.24
Nobles	80.10
Scott	79.99
Grant	79.89
Pope	79.73
Renville	79.65
Mille Lacs	79.51
Marshall	79.13
Stearns	79.00
Carver	78.71
MN Prairie	78.47
SWHHS	78.02
Lake of the Woods	78.00
Rice	77.99
Olmsted	77.46
Wabasha	77.39
Fillmore	77.27
Meeker	77.26



County Results: Collections on Arrears

County	Open Cases with Arrears Distributed FFY2017	Cases with Arrears Due During FFY2017	Federal Performance Measures: Collections on Arrears				
			FFY2017 (%)	FFY2016 (%)	FFY2015 (%)	FFY2014 (%)	FFY2013 (%)
Isanti	1,235	1,627	75.91	79.16	77.63	77.34	76.97
Itasca	1,389	1,947	71.34	72.56	71.79	65.18	65.08
Des Moines Valley	708	873	81.10	77.78	79.87	77.83	81.30
Kanabec	511	678	75.37	76.70	78.71	78.14	75.50
Kandiyohi	1,302	1,736	75.00	74.97	76.41	75.61	75.94
Kittson	60	72	83.33	85.90	89.29	87.06	81.61
Koochiching	491	562	87.37	84.21	84.35	87.32	88.46
Lac qui Parle	148	171	86.55	80.90	88.11	83.08	82.24
Lake	271	362	74.86	73.01	77.07	75.64	72.05
Lake of the Woods	78	100	78.00	78.22	80.00	79.13	84.82
Le Sueur	680	842	80.76	79.67	79.70	78.60	81.27
SWHHS	2,108	2,702	78.02	76.64	78.93	78.22	76.97
McLeod	1,076	1,323	81.33	83.77	84.40	80.91	79.11
Mahnomen	83	153	54.25	53.16	56.67	50.92	62.22
Marshall	182	230	79.13	80.89	82.40	84.23	87.77
Faribault/Martin	1,204	1,585	75.96	78.95	80.04	78.74	80.77
Meeker	581	752	77.26	80.72	77.48	78.21	76.88
Mille Lacs	1,242	1,562	79.51	78.51	80.95	78.94	73.70
Morrison	1,188	1,660	71.57	71.81	71.95	73.22	71.79
Mower	1,435	1,947	73.70	73.45	71.57	71.11	72.57
Nicollet	885	1,169	75.71	76.21	77.55	76.19	75.34
Nobles	628	784	80.10	79.33	78.25	76.97	77.54
Norman	173	227	76.21	79.46	76.47	76.29	77.92
Olmsted	3,268	4,219	77.46	78.65	78.20	78.49	77.42
Otter Tail	1,264	1,749	72.27	72.80	74.27	73.34	72.85
Pennington	434	584	74.32	74.32	76.22	76.84	77.13
Pine	1,134	1,570	72.23	72.38	74.64	73.25	71.56
Polk	973	1,379	70.56	73.21	73.08	74.16	72.29
Statewide	125,457	173,626	72.26	72.36	72.11	70.99	70.48

Collections on Arrears Measure FFY2017 Rank Order by %	
Swift	77.02
Wright	76.83
Wadena	76.60
Sherburne	76.41
Big Stone	76.39
Roseau	76.36
Watonwan	76.21
Norman	76.21
Stevens	76.13
Faribault/Martin	75.96
Isanti	75.91
Traverse	75.90
Nicollet	75.71
Benton	75.51
Kanabec	75.37
Blue Earth	75.18
Kandiyohi	75.00
Douglas	74.88
Lake	74.86
Goodhue	74.77
Anoka	74.69
Sibley	74.32
Pennington	74.32
Wilkin	74.03
Mower	73.70
Freeborn	73.49
Chippewa	73.46
Dakota	73.12



County Results: Collections on Arrears

County	Open Cases with Arrears Distributed FFY2017	Cases with Arrears Due During FFY2017	Federal Performance Measures: Collections on Arrears				
			FFY2017 (%)	FFY2016 (%)	FFY2015 (%)	FFY2014 (%)	FFY2013 (%)
Pope	232	291	79.73	76.90	78.70	81.19	77.74
Ramsey	12,838	19,212	66.82	65.53	64.98	63.16	62.29
Red Lake	99	120	82.50	72.58	77.42	83.90	80.99
Renville	364	457	79.65	82.05	82.37	80.57	80.51
Rice	1,173	1,504	77.99	78.02	78.60	76.70	74.92
Roseau	407	533	76.36	79.73	79.65	83.77	84.49
St. Louis	6,121	9,423	64.96	64.43	65.60	65.29	65.20
Scott	1,935	2,419	79.99	81.11	81.25	79.18	80.07
Sherburne	2,080	2,722	76.41	77.05	77.73	77.96	76.74
Sibley	382	514	74.32	79.77	75.65	75.00	76.08
Stearns	3,326	4,210	79.00	80.12	79.87	78.93	77.07
MN Prairie	2,485	3,167	78.47	79.37	80.44	78.03	77.19
Stevens	169	222	76.13	73.62	77.82	80.62	79.39
Swift	315	409	77.02	78.40	76.71	74.40	75.85
Todd	658	820	80.24	81.11	81.20	79.81	79.67
Traverse	63	83	75.90	75.76	72.22	69.61	67.35
Wabasha	445	575	77.39	77.12	77.16	79.39	79.55
Wadena	586	765	76.60	75.07	76.97	77.61	73.60
Waseca	-	-	-	-	-	83.24	82.63
Washington	3,736	5,159	72.42	73.48	71.19	71.64	71.30
Watonwan	455	597	76.21	78.42	76.97	76.36	76.02
Wilkin	171	231	74.03	74.60	69.42	74.90	81.74
Winona	1,198	1,688	70.97	71.01	72.62	72.29	71.67
Wright	2,540	3,306	76.83	77.40	78.59	77.57	76.30
Yellow Medicine	224	274	81.75	80.07	79.33	80.94	79.04
Statewide	125,457	173,626	72.26	72.36	72.11	70.99	70.48

Collections on Arrears Measure FFY2017 Rank Order by (%)	
Crow Wing	72.96
Washington	72.42
Otter Tail	72.27
Statewide	72.26
Pine	72.23
Morrison	71.57
Itasca	71.34
Winona	70.97
Polk	70.56
Hennepin	69.81
Hubbard	69.24
Houston	68.49
Clay	67.47
Ramsey	66.82
Cook	66.67
Becker	65.46
St. Louis	64.96
Aitkin	64.66
Carlton	64.56
Clearwater	63.81
Beltrami	58.62
Cass	56.52
Mahnomen	54.25

Source: CSD InfoPac QQ320921: Annual OCSE157 Federal Performance – Summary



County Results: Cost Effectiveness

County	Collections Distributed FFY2017	Expenditures FFY2017	Federal Performance Measures: Cost Effectiveness				
			FFY2017 (\$)	FFY2016 (\$)	FFY2015 (\$)	FFY2014 (\$)	FFY2013 (\$)
Aitkin	1,698,704	581,356	2.92	3.31	3.53	3.04	3.38
Anoka	41,109,099	8,526,296	4.82	4.88	5.07	5.49	5.14
Becker	3,560,475	1,268,558	2.81	2.67	3.33	3.41	3.37
Beltrami	4,414,138	1,224,729	3.60	3.64	3.64	4.33	4.03
Benton	5,146,431	1,181,661	4.36	4.16	4.92	4.69	4.71
Big Stone	612,044	126,537	4.84	4.10	4.64	4.63	5.44
Blue Earth	7,293,987	1,458,290	5.00	5.24	5.66	5.65	5.51
Brown	3,565,679	685,301	5.20	5.61	6.61	5.96	5.53
Carlton	4,784,492	1,456,024	3.29	3.23	3.74	3.55	3.31
Carver	8,330,537	1,599,405	5.21	5.15	5.49	4.95	4.75
Cass	2,412,675	1,080,069	2.23	2.35	2.65	2.79	2.78
Chippewa	1,590,231	401,695	3.96	3.61	4.21	3.99	3.96
Chisago	7,277,276	1,007,097	7.23	7.47	7.82	6.88	7.79
Clay	7,807,799	1,607,560	4.86	5.06	5.35	5.84	5.73
Clearwater	1,087,254	226,837	4.79	4.20	3.91	3.68	2.88
Cook	411,098	136,878	3.00	2.73	2.72	2.62	4.00
Cottonwood	-	-	-	-	-	-	5.67
Crow Wing	8,366,808	1,592,594	5.25	5.63	5.62	5.14	4.68
Dakota	43,479,596	10,772,256	4.04	4.23	4.40	4.25	4.04
Dodge	-	-	-	-	-	4.37	4.87
Douglas	4,273,417	982,378	4.35	4.82	4.92	5.66	5.19
Fillmore	2,146,813	249,208	8.61	7.18	9.52	7.13	7.99
Freeborn	4,576,256	714,568	6.40	6.18	6.49	6.35	7.08
Goodhue	5,712,638	1,300,116	4.39	3.85	4.03	4.22	3.94
Grant	802,222	200,774	4.00	4.19	3.92	4.20	3.42
Hennepin	99,086,232	34,323,583	2.89	2.97	3.07	3.24	3.28
Houston	1,823,087	389,314	4.68	4.45	5.49	4.55	5.30
Hubbard	2,067,568	309,090	6.69	4.74	4.94	6.21	6.54
Statewide	580,554,676	175,983,512	3.30	3.30	3.54	3.58	3.63

Cost Effectiveness FFY2017 Rank Order (\$)	
Fillmore	8.61
Wabasha	8.00
Wadena	7.35
Chisago	7.23
Nobles	6.97
McLeod	6.92
Sherburne	6.78
Des Moines Valley	6.74
Hubbard	6.69
Wright	6.56
Lac qui Parle	6.48
Freeborn	6.40
Washington	6.35
Watsonwan	6.30
Meeker	6.01
Le Sueur	5.67
Renville	5.54
SWHHS	5.49
Todd	5.43
Rice	5.42
Swift	5.41
Norman	5.32
Crow Wing	5.25
Scott	5.23
Carver	5.21
Brown	5.20
MN Prairie	5.17
Morrison	5.16



County Results: Cost Effectiveness

County	Collections Distributed FFY2017	Expenditures FFY2017	Federal Performance Measures: Cost Effectiveness				
			FFY2017 (\$)	FFY2016 (\$)	FFY2015 (\$)	FFY2014 (\$)	FFY2013 (\$)
Isanti	6,351,477	1,380,956	4.60	4.69	4.65	5.11	5.04
Itasca	5,618,155	1,779,956	3.16	3.38	3.12	3.69	4.08
Des Moines Valley	3,071,898	455,813	6.74	7.20	6.17	5.58	5.50
Kanabec	2,531,665	596,755	4.24	5.15	5.79	5.75	5.08
Kandiyohi	5,743,379	1,291,985	4.45	5.47	5.27	5.46	4.66
Kittson	350,414	96,842	3.62	3.11	4.37	4.26	5.38
Koochiching	2,041,050	445,738	4.58	4.17	4.38	4.43	4.53
Lac qui Parle	716,450	110,516	6.48	7.11	6.80	7.23	7.27
Lake	1,202,630	332,694	3.61	3.80	5.16	3.97	3.80
Lake of the Woods	324,347	98,364	3.30	3.26	3.38	3.52	3.79
Le Sueur	3,512,377	619,627	5.67	5.55	7.58	8.04	8.62
SWHHS	9,790,754	1,782,162	5.49	5.77	6.79	6.21	6.60
McLeod	4,899,243	707,507	6.92	6.86	6.60	7.02	6.64
Mahnomen	356,124	175,059	2.03	1.91	2.04	1.61	1.66
Marshall	1,092,546	285,315	3.83	4.22	5.70	6.10	6.38
Faribault/Martin	5,358,646	1,118,795	4.79	5.20	5.32	5.39	5.50
Meeker	2,959,795	492,103	6.01	6.82	7.66	7.21	7.16
Mille Lacs	3,458,764	747,759	4.63	4.21	4.88	4.75	4.67
Morrison	4,521,304	875,742	5.16	5.02	5.05	4.96	5.02
Mower	5,805,094	1,273,391	4.56	4.92	5.08	4.45	4.81
Nicollet	4,466,947	1,010,649	4.42	4.16	4.57	4.31	5.00
Nobles	2,943,890	422,515	6.97	7.31	8.42	6.70	7.28
Norman	748,540	140,773	5.32	6.05	6.36	8.24	7.78
Olmsted	17,889,189	3,953,893	4.52	4.34	4.77	5.11	5.38
Otter Tail	6,087,442	1,579,507	3.85	3.42	3.98	3.90	4.12
Pennington	2,020,703	566,094	3.57	3.81	3.81	3.64	4.05
Pine	4,342,698	1,025,615	4.23	4.41	4.97	5.49	5.56
Pipestone	-	-	-	-	-	-	5.47
Statewide	580,554,676	175,983,512	3.30	3.30	3.54	3.58	3.63

Cost Effectiveness FFY2017 Rank Order (\$)	
Sibley	5.09
Yellow Medicine	5.09
Blue Earth	5.00
Winona	4.88
Clay	4.86
Big Stone	4.84
Anoka	4.82
Clearwater	4.79
Faribault/Martin	4.79
Houston	4.68
Mille Lacs	4.63
Isanti	4.60
Stearns	4.60
Red Lake	4.58
Koochiching	4.58
Mower	4.56
Olmsted	4.52
St. Louis	4.50
Roseau	4.48
Kandiyohi	4.45
Nicollet	4.42
Goodhue	4.39
Pope	4.37
Benton	4.36
Douglas	4.35
Kanabec	4.24
Pine	4.23
Traverse	4.19



County Results: Cost Effectiveness

County	Collections Distributed FFY2017	Expenditures FFY2017	Federal Performance Measures: Cost Effectiveness				
			FFY2017 (\$)	FFY2016 (\$)	FFY2015 (\$)	FFY2014 (\$)	FFY2013 (\$)
Polk	4,431,674	1,140,547	3.89	3.64	4.55	4.93	5.13
Pope	1,108,044	253,506	4.37	4.43	4.83	5.00	4.17
Ramsey	49,099,055	16,839,594	2.92	3.02	3.26	3.34	3.39
Red Lake	572,418	124,887	4.58	3.40	2.99	2.91	3.90
Redwood	-	-	-	-	-	-	3.63
Renville	1,951,752	352,107	5.54	5.82	6.00	5.16	5.16
Rice	6,415,748	1,184,735	5.42	5.33	5.73	6.09	5.63
Roseau	1,988,123	444,039	4.48	3.96	4.68	5.28	5.25
St. Louis	23,770,357	5,279,610	4.50	4.83	4.86	5.17	5.19
Scott	12,531,563	2,396,620	5.23	5.44	5.64	5.84	5.75
Sherburne	12,080,457	1,780,767	6.78	7.15	7.17	6.68	6.96
Sibley	1,774,427	348,423	5.09	6.11	6.40	6.56	6.23
Stearns	15,063,767	3,277,013	4.60	4.63	4.83	4.47	4.59
MN Prairie	10,968,676	2,120,843	5.17	4.27	5.28	4.58	6.30
Stevens	696,245	170,591	4.08	3.86	5.04	4.63	4.54
Swift	1,288,390	238,031	5.41	5.10	4.96	4.80	4.20
Todd	2,882,760	530,815	5.43	5.79	5.35	4.58	4.70
Traverse	315,640	75,273	4.19	3.16	13.97	12.80	5.10
Wabasha	2,465,485	308,051	8.00	7.09	7.13	5.81	7.04
Wadena	2,433,180	330,851	7.35	6.87	7.68	6.55	6.41
Waseca	-	-	-	-	-	3.87	4.41
Washington	23,208,834	3,654,523	6.35	6.13	6.87	6.27	7.26
Watonwan	1,952,634	309,849	6.30	7.01	6.52	6.99	7.23
Wilkin	948,817	288,009	3.29	3.27	3.89	4.39	4.33
Winona	4,579,384	938,160	4.88	5.17	4.89	4.66	4.82
Wright	14,993,615	2,286,502	6.56	6.66	7.33	6.99	6.17
Yellow Medicine	1,320,039	259,504	5.09	5.52	5.73	4.54	5.09
Statewide	580,554,676	175,983,512	3.30	3.30	3.54	3.58	3.63

Cost Effectiveness Measure FFY2017 Rank Order (\$)	
Stevens	4.08
Dakota	4.04
Grant	4.00
Chippewa	3.96
Polk	3.89
Otter Tail	3.85
Marshall	3.83
Kittson	3.62
Lake	3.61
Beltrami	3.60
Pennington	3.57
Statewide	3.30
Lake of the Woods	3.30
Wilkin	3.29
Carlton	3.29
Itasca	3.16
Cook	3.00
Aitkin	2.92
Ramsey	2.92
Hennepin	2.89
Becker	2.81
Cass	2.23
Mahnomen	2.03

Source: CSD InfoPac QQ320921: Annual OCSE157 Federal Performance – Summary, and DHS Financial Operations and Division Operations – Quarterly County Admin. report



Minnesota County Distributions, Total Expenditures and Reinvestments

County	Collections Distributed FFY2017	Expenditures FFY2017	Cost Effectiveness Ratio FFY2017	Collections Distributed FFY2016	Expenditures FFY2016	Cost Effectiveness Ratio FFY2016	Federal Incentives FFY2017*	State Incentives FFY2017	Reinvestment FFY2017
Aitkin	1,698,704	581,356	2.92	1,815,532	547,821	3.31	40,644	5,036	45,680
Anoka	41,109,099	8,526,296	4.82	42,743,484	8,755,036	4.88	890,929	114,402	1,005,331
Becker	3,560,475	1,268,558	2.81	3,745,747	1,401,687	2.67	78,630	9,598	88,228
Beltrami	4,414,138	1,224,729	3.60	4,457,270	1,225,625	3.64	85,622	11,487	97,109
Benton	5,146,431	1,181,661	4.36	5,239,034	1,258,016	4.16	109,625	14,634	124,259
Big Stone	612,044	126,537	4.84	569,768	139,111	4.10	14,881	1,731	16,612
Blue Earth	7,293,987	1,458,290	5.00	7,559,746	1,441,903	5.24	168,684	21,087	189,771
Brown	3,565,679	685,301	5.20	3,614,142	644,435	5.61	88,617	11,015	99,632
Carlton	4,784,492	1,456,024	3.29	4,867,731	1,506,331	3.23	91,991	11,959	103,950
Carver	8,330,537	1,599,405	5.21	8,481,691	1,645,774	5.15	173,601	21,874	195,475
Cass	2,412,675	1,080,069	2.23	2,522,120	1,072,436	2.35	48,908	6,294	55,202
Chippewa	1,590,231	401,695	3.96	1,538,981	426,370	3.61	35,521	4,249	39,770
Chisago	7,277,276	1,007,097	7.23	7,465,700	998,984	7.47	171,450	21,401	192,851
Clay	7,807,799	1,607,560	4.86	7,861,764	1,554,013	5.06	156,812	20,771	177,583
Clearwater	1,087,254	226,837	4.79	1,133,837	270,213	4.20	22,493	2,990	25,483
Cook	411,098	136,878	3.00	362,369	132,889	2.73	6,387	787	7,174
Crow Wing	8,366,808	1,592,594	5.25	8,492,940	4,081,670	2.08	187,291	24,862	212,153
Dakota	43,479,596	10,772,256	4.04	44,531,574	10,683,513	4.17	835,307	109,996	945,303
Douglas	4,273,417	982,378	4.35	4,331,873	899,343	4.82	87,237	12,589	99,826
Fillmore	2,146,813	249,208	8.61	2,172,693	302,648	7.18	48,589	6,137	54,726
Freeborn	4,576,256	714,568	6.40	4,789,910	775,580	6.18	111,630	13,847	125,477
Goodhue	5,712,638	1,300,116	4.39	5,831,187	1,514,792	3.85	119,585	15,421	135,006
Grant	802,222	200,774	4.00	884,529	211,260	4.19	17,930	2,675	20,605
Hennepin	99,086,232	34,323,583	2.89	101,128,466	34,106,246	2.97	1,883,705	243,916	2,127,621
Houston	1,823,087	389,314	4.68	1,934,082	434,931	4.45	46,423	5,036	51,459
Hubbard	2,067,568	309,090	6.69	2,152,352	454,015	4.74	47,393	5,979	53,372
Isanti	6,351,477	1,380,956	4.60	6,512,981	1,389,490	4.69	133,644	18,568	152,212
Statewide	580,554,676	175,983,512	3.30	594,711,443	179,981,020	3.30	12,143,931	1,573,619	13,717,550



Minnesota County Distributions, Total Expenditures and Reinvestments

County	Collections Distributed FFY2017	Expenditures FFY2017	Cost Effectiveness Ratio FFY2017	Collections Distributed FFY2016	Expenditures FFY2016	Cost Effectiveness Ratio FFY2016	Federal Incentives FFY2017*	State Incentives FFY2017	Reinvestment FFY2017
Itasca	5,618,155	1,779,956	3.16	5,847,884	1,732,200	3.38	125,967	15,894	141,861
Des Moines Valley	3,071,898	455,813	6.74	3,117,456	432,941	7.20	51,816	5,036	56,852
Kanabec	2,531,665	596,755	4.24	2,550,674	494,891	5.15	51,630	7,396	59,026
Kandiyohi	5,743,379	1,291,985	4.45	5,775,379	1,056,189	5.47	127,817	17,153	144,970
Kittson	350,414	96,842	3.62	354,985	114,164	3.11	7,601	944	8,545
Koochiching	2,041,050	445,738	4.58	2,011,824	482,605	4.17	43,482	5,822	49,304
Lac qui Parle	716,450	110,516	6.48	774,511	108,924	7.11	18,216	2,360	20,576
Lake	1,202,630	332,694	3.61	1,297,076	341,551	3.80	31,528	3,462	34,990
Lake of the Woods	324,347	98,364	3.30	332,492	102,058	3.26	6,096	944	7,040
LeSueur	3,512,377	619,627	5.67	3,713,489	668,648	5.55	87,379	10,700	98,079
SWHHS	9,790,754	1,782,162	5.49	9,950,567	1,724,253	5.77	191,879	29,111	220,990
McLeod	4,899,243	707,507	6.92	4,765,190	694,426	6.86	110,167	14,006	124,173
Mahnomen	356,124	175,059	2.03	362,906	189,950	1.91	5,178	787	5,965
Marshall	1,092,546	285,315	3.83	1,169,855	277,453	4.22	22,202	3,147	25,349
Faribault/Martin	5,358,646	1,118,795	4.79	5,553,942	1,067,533	5.20	137,420	16,367	153,787
Meeker	2,959,795	492,103	6.01	3,014,570	442,267	6.82	67,419	8,970	76,389
Mille Lacs	3,458,764	747,759	4.63	3,321,034	788,621	4.21	71,969	9,441	81,410
Morrison	4,521,304	875,742	5.16	4,470,823	890,355	5.02	99,841	12,747	112,588
Mower	5,805,094	1,273,391	4.56	6,119,578	1,242,872	4.92	147,039	17,467	164,506
Nicollet	4,466,947	1,010,649	4.42	4,518,954	1,085,679	4.16	107,713	12,589	120,302
Nobles	2,943,890	422,515	6.97	2,961,509	404,960	7.31	73,391	8,970	82,361
Norman	748,540	140,773	5.32	840,329	138,967	6.05	17,920	2,360	20,280
Olmsted	17,889,189	3,953,893	4.52	18,046,205	4,158,887	4.34	365,084	48,940	414,024
Otter Tail	6,087,442	1,579,507	3.85	6,155,528	1,798,911	3.42	128,709	16,367	145,076
Pennington	2,020,703	566,094	3.57	2,050,130	538,745	3.81	42,499	5,351	47,850
Pine	4,342,698	1,025,615	4.23	4,532,759	1,027,637	4.41	91,808	12,589	104,397
Polk	4,431,674	1,140,547	3.89	4,648,509	1,275,926	3.64	102,422	13,061	115,483
Statewide	580,554,676	175,983,512	3.30	594,711,443	179,981,020	3.30	12,143,931	1,573,619	13,717,550



Minnesota County Distributions, Total Expenditures and Reinvestments

County	Collections Distributed FFY2017	Expenditures FFY2017	Cost Effectiveness Ratio FFY2017	Collections Distributed FFY2016	Expenditures FFY2016	Cost Effectiveness Ratio FFY2016	Federal Incentives FFY2017*	State Incentives FFY2017	Reinvestment FFY2017
Pope	1,108,044	253,506	4.37	1,131,024	255,485	4.43	22,455	3,304	25,759
Ramsey	49,099,055	16,839,594	2.92	50,642,728	16,790,964	3.02	961,188	126,046	1,087,234
Red Lake	572,418	124,887	4.58	563,783	165,726	3.40	13,039	1,574	14,613
Renville	1,951,752	352,107	5.54	2,070,817	355,688	5.82	47,929	6,294	54,223
Rice	6,415,748	1,184,735	5.42	6,722,343	1,261,394	5.33	138,975	18,568	157,543
Roseau	1,988,123	444,039	4.48	2,002,143	506,034	3.96	38,655	5,193	43,848
St. Louis	23,770,357	5,279,610	4.50	25,171,268	5,216,190	4.83	503,163	66,879	570,042
Scott	12,531,563	2,396,620	5.23	12,723,538	2,337,188	5.44	258,269	32,889	291,158
Sherburne	12,080,457	1,780,767	6.78	12,277,259	1,717,286	7.15	262,227	34,619	296,846
Sibley	1,774,427	348,423	5.09	1,830,498	299,638	6.11	41,888	5,351	47,239
Stearns	15,063,767	3,277,013	4.60	15,289,048	3,301,077	4.63	349,496	44,219	393,715
MN Prairie	10,968,676	2,120,843	5.17	11,134,467	2,606,895	4.27	253,962	31,001	284,963
Stevens	696,245	170,591	4.08	772,852	200,094	3.86	14,892	2,045	16,937
Swift	1,288,390	238,031	5.41	1,383,917	271,348	5.10	30,932	4,249	35,181
Todd	2,882,760	530,815	5.43	2,997,982	517,515	5.79	76,418	9,441	85,859
Traverse	315,640	75,273	4.19	349,778	110,547	3.16	7,287	944	8,231
Wabasha	2,465,485	308,051	8.00	2,453,428	346,037	7.09	54,871	6,924	61,795
Wadena	2,433,180	330,851	7.35	2,453,005	357,277	6.87	59,754	7,396	67,150
Washington	23,208,834	3,654,523	6.35	23,291,661	3,798,320	6.13	457,190	59,640	516,830
Watonwan	1,952,634	309,849	6.30	2,059,268	293,750	7.01	52,203	6,294	58,497
Wilkin	948,817	288,009	3.29	967,503	296,219	3.27	17,030	2,517	19,547
Winona	4,579,384	938,160	4.88	4,659,361	900,920	5.17	99,960	13,219	113,179
Wright	14,993,615	2,286,502	6.56	15,354,147	2,303,994	6.66	315,596	40,914	356,510
Yellow Medicine	1,320,039	259,504	5.09	1,349,944	244,610	5.52	28,831	3,777	32,608
Statewide	580,554,676	175,983,512	3.30	594,711,443	179,981,020	3.30	12,143,931	1,573,619	13,717,550

*Federal incentives are based on program performance two years prior.

Source: CSD InfoPac QQ640201: Quarterly OCSE34A Collect and Disburse – Summary, and DHS Financial Operations and Division Operations - Quarterly County Admin. report



Distributions per Open Support Cases and per Cases with Court Order

County	Collections Distributed FFY2017	Court Order Caseload FFY2017	Distributed per Court-Ordered Case FFY2017	Distributed per Court-Ordered Case FFY2016	Percentage Change	Cases with a Collection FFY2017	Distributed per Case with a Collection FFY2017	Distributed per Case with a Collection FFY2016	Percentage Change
Aitkin	1,698,704	731	2,324	2,405	-0.03	550	3,089	3,180	-0.03
Anoka	41,109,099	10,948	3,755	3,733	0.01	9,322	4,410	4,402	0.00
Becker	3,560,475	1,411	2,523	2,351	0.07	1,074	3,315	3,235	0.02
Beltrami	4,414,138	2,222	1,987	1,846	0.08	1,473	2,997	2,948	0.02
Benton	5,146,431	1,774	2,901	2,975	-0.02	1,448	3,554	3,574	-0.01
Big Stone	612,044	152	4,027	3,903	0.03	139	4,403	4,129	0.07
Blue Earth	7,293,987	2,284	3,194	3,239	-0.01	1,995	3,656	3,757	-0.03
Brown	3,565,679	927	3,846	3,737	0.03	897	3,975	3,812	0.04
Carlton	4,784,492	1,921	2,491	2,550	-0.02	1,336	3,581	3,603	-0.01
Carver	8,330,537	1,676	4,970	5,088	-0.02	1,506	5,532	5,533	0.00
Cass	2,412,675	1,497	1,612	1,664	-0.03	831	2,903	2,831	0.03
Chippewa	1,590,231	525	3,029	2,931	0.03	419	3,795	3,579	0.06
Chisago	7,277,276	1,980	3,675	3,776	-0.03	1,752	4,154	4,271	-0.03
Clay	7,807,799	2,225	3,509	3,305	0.06	1,952	4,000	3,884	0.03
Clearwater	1,087,254	543	2,002	1,958	0.02	353	3,080	3,124	-0.01
Cook	411,098	150	2,741	2,516	0.09	112	3,671	3,294	0.11
Crow Wing	8,366,808	3,072	2,724	2,709	0.01	2,593	3,227	3,093	0.04
Dakota	43,479,596	11,154	3,898	3,854	0.01	9,254	4,698	4,628	0.02
Douglas	4,273,417	1,424	3,001	3,046	-0.01	1,136	3,762	3,699	0.02
Fillmore	2,146,813	633	3,391	3,411	-0.01	574	3,740	3,720	0.01
Freeborn	4,576,256	1,560	2,933	2,955	-0.01	1,332	3,436	3,412	0.01
Goodhue	5,712,638	1,737	3,289	3,384	-0.03	1,412	4,046	4,089	-0.01
Grant	802,222	227	3,534	3,880	-0.09	201	3,991	4,133	-0.03
Hennepin	99,086,232	40,316	2,458	2,459	0.00	26,909	3,682	3,712	-0.01
Houston	1,823,087	576	3,165	3,369	-0.06	494	3,690	3,642	0.01
Hubbard	2,067,568	929	2,226	2,178	0.02	766	2,699	2,697	0.00
Isanti	6,351,477	1,778	3,572	3,624	-0.01	1,515	4,192	4,186	0.00
Statewide	580,554,676	197,799	2,935	3,007	-0.02	150,592	3,855	3,862	0.00



Distributions per Open Support Cases and per Cases with Court Order

County	Collections Distributed FFY2017	Court Order Caseload FFY2017	Distributed per Court-Ordered Case FFY2017	Distributed per Court-Ordered Case FFY2016	Percentage Change	Cases with a Collection FFY2017	Distributed per Case with a Collection FFY2017	Distributed per Case with a Collection FFY2016	Percentage Change
Itasca	5,618,155	2,268	2,477	2,535	-0.02	1,690	3,324	3,374	-0.01
Des Moines Valley	3,071,898	1,012	3,035	3,068	-0.01	862	3,564	3,567	0.00
Kanabec	2,531,665	769	3,292	3,088	0.07	627	4,038	3,936	0.03
Kandiyohi	5,743,379	1,914	3,001	2,820	0.06	1,564	3,672	3,517	0.04
Kittson	350,414	104	3,369	3,349	0.01	89	3,937	3,776	0.04
Koochiching	2,041,050	614	3,324	3,158	0.05	583	3,501	3,282	0.07
Lac qui Parle	716,450	181	3,958	4,164	-0.05	177	4,048	4,209	-0.04
Lake	1,202,630	401	2,999	3,275	-0.08	330	3,644	3,815	-0.04
Lake of the Woods	324,347	129	2,514	2,725	-0.08	106	3,060	3,197	-0.04
Le Sueur	3,512,377	899	3,907	4,010	-0.03	886	3,964	4,108	-0.03
SWHHS	9,790,754	2,993	3,271	3,214	0.02	2,601	3,764	3,807	-0.01
McLeod	4,899,243	1,397	3,507	3,436	0.02	1,283	3,819	3,577	0.07
Mahnomen	356,124	206	1,729	1,127	0.53	109	3,267	2,649	0.23
Marshall	1,092,546	266	4,107	4,301	-0.05	250	4,370	4,606	-0.05
Faribault/Martin	5,358,646	1,583	3,385	3,356	0.01	1,412	3,795	3,804	0.00
Meeker	2,959,795	809	3,659	3,654	0.00	727	4,071	4,101	-0.01
Mille Lacs	3,458,764	1,721	2,010	1,946	0.03	1,420	2,436	2,408	0.01
Morrison	4,521,304	1,753	2,579	2,502	0.03	1,372	3,295	3,252	0.01
Mower	5,805,094	2,044	2,840	2,931	-0.03	1,747	3,323	3,353	-0.01
Nicollet	4,466,947	1,254	3,562	3,569	0.00	1,143	3,908	3,923	0.00
Nobles	2,943,890	841	3,500	3,424	0.02	753	3,910	3,846	0.02
Norman	748,540	261	2,868	3,348	-0.14	220	3,402	3,927	-0.13
Olmsted	17,889,189	4,766	3,754	3,684	0.02	4,105	4,358	4,309	0.01
Otter Tail	6,087,442	1,998	3,047	3,009	0.01	1,653	3,683	3,713	-0.01
Pennington	2,020,703	652	3,099	3,097	0.00	554	3,647	3,667	-0.01
Pine	4,342,698	1,585	2,740	2,752	0.00	1,356	3,203	3,273	-0.02
Polk	4,431,674	1,603	2,765	3,003	-0.08	1,253	3,537	3,568	-0.01
Statewide	580,554,676	197,799	2,935	3,007	-0.02	150,592	3,855	3,862	0.00



Distributions per Open Support Cases and per Cases with Court Order

County	Collections Distributed FFY2017	Court Order Caseload FFY2017	Distributed per Court-Ordered Case FFY2017	Distributed per Court-Ordered Case FFY2016	Percentage Change	Cases with a Collection FFY2017	Distributed per Case with a Collection FFY2017	Distributed per Case with a Collection FFY2016	Percentage Change
Pope	1,108,044	334	3,317	3,356	-0.01	292	3,795	3,696	0.03
Ramsey	49,099,055	20,719	2,370	2,307	0.03	14,962	3,282	3,313	-0.01
Red Lake	572,418	124	4,616	4,207	0.10	120	4,770	4,510	0.06
Renville	1,951,752	514	3,797	3,786	0.00	470	4,153	4,434	-0.06
Rice	6,415,748	1,683	3,812	3,915	-0.03	1,460	4,394	4,461	-0.01
Roseau	1,988,123	565	3,519	3,694	-0.05	522	3,809	3,941	-0.03
St. Louis	23,770,357	9,334	2,547	2,499	0.02	7,085	3,355	3,472	-0.03
Scott	12,531,563	2,644	4,740	4,780	-0.01	2,408	5,204	5,230	0.00
Sherburne	12,080,457	3,197	3,779	3,877	-0.03	2,607	4,634	4,768	-0.03
Sibley	1,774,427	561	3,163	3,223	-0.02	486	3,651	3,625	0.01
Stearns	15,063,767	4,657	3,235	3,162	0.02	3,922	3,841	3,818	0.01
MN Prairie	10,968,676	3,460	3,170	3,212	-0.01	2,919	3,758	3,772	0.00
Stevens	696,245	214	3,253	3,261	0.00	209	3,331	3,646	-0.09
Swift	1,288,390	442	2,915	3,015	-0.03	376	3,427	3,558	-0.04
Todd	2,882,760	903	3,192	3,357	-0.05	797	3,617	3,697	-0.02
Traverse	315,640	80	3,945	3,761	0.05	78	4,047	3,975	0.02
Wabasha	2,465,485	652	3,781	3,786	0.00	559	4,411	4,461	-0.01
Wadena	2,433,180	815	2,985	3,043	-0.02	725	3,356	3,455	-0.03
Washington	23,208,834	5,951	3,900	3,945	-0.01	4,740	4,896	4,823	0.02
Watonwan	1,952,634	643	3,037	3,019	0.01	557	3,506	3,544	-0.01
Wilkin	948,817	237	4,003	3,493	0.15	237	4,003	3,998	0.00
Winona	4,579,384	1,842	2,486	2,482	0.00	1,405	3,259	3,198	0.02
Wright	14,993,615	3,767	3,980	4,029	-0.01	3129	4,792	4,837	-0.01
Yellow Medicine	1,320,039	314	4,204	4,397	-0.04	288	4,583	4,639	-0.01
Statewide	580,554,676	197,799	2,935	3,007	-0.02	150,592	3,855	3,862	0.00

Source: CSD InfoPac QQ320921: Annual OCSE157 Federal Performance – Summary, and CSD InfoPac QQ640201: Quarterly OCSE34A Collect and Disburse – Summary



Caseload and Full-time Equivalent (FTE) Summary

County	Open Cases FFY2017	Open Cases FFY2016	Percent Change	Child Support Workers SFY2017	Open Caseload to Worker Ratio FFY2017	Cooperative Agreement Workers SFY2017	Total Staff SFY2017	Total Children in IV-D Caseload FFY2017	Average Children per Open Case FFY2017
Aitkin	791	798	-0.01	6.0	132	0.0	6.0	760	1.0
Anoka	11,981	12,388	-0.03	57.0	210	19.3	76.3	12,947	1.1
Becker	1,573	1,752	-0.10	9.7	162	0.4	10.1	1,705	1.1
Beltrami	2,644	2,926	-0.10	14.0	189	1.0	15.0	2,726	1.0
Benton	1,894	1,887	0.00	9.5	199	0.5	10.0	2,200	1.2
Big Stone	176	164	0.07	1.1	160	0.1	1.2	202	1.1
Blue Earth	2,466	2,478	0.00	11.7	211	1.5	13.2	2,680	1.1
Brown	992	1,013	-0.02	6.3	157	0.2	6.5	1,190	1.2
Carlton	2,049	2,022	0.01	13.0	158	0.9	13.9	2,071	1.0
Carver	1,821	1,819	0.00	12.4	147	1.4	13.8	2,166	1.2
Cass	1,740	1,748	0.00	9.0	193	0.3	9.3	1,866	1.1
Chippewa	572	588	-0.03	3.6	159	0.1	3.7	646	1.1
Chisago	2,075	2,073	0.00	7.8	266	0.5	8.3	2,333	1.1
Clay	2,572	2,733	-0.06	12.6	204	0.4	13.0	3,121	1.2
Clearwater	574	605	-0.05	2.5	230	0.2	2.7	573	1.0
Cook	172	171	0.01	0.1	-	0.1	0.2	194	1.1
Crow Wing	3,271	3,327	-0.02	14.5	226	0.1	14.6	3,507	1.1
Dakota	12,671	12,787	-0.01	63.8	199	17.2	81.0	14,258	1.1
Douglas	1,535	1,520	0.01	9.9	155	0.2	10.1	1,654	1.1
Fillmore	699	704	-0.01	2.2	318	0.2	2.4	813	1.2
Freeborn	1,672	1,693	-0.01	7.4	226	0.3	7.7	1,850	1.1
Goodhue	1,957	1,890	0.04	9.5	206	0.6	10.1	2,085	1.1
Grant	240	245	-0.02	1.9	126	2.1	4.0	286	1.2
Hennepin	48,193	48,771	-0.01	250.0	193	25.0	275.0	52,153	1.1
Houston	616	606	0.02	4.3	143	0.3	4.6	709	1.2
Hubbard	1,012	1,060	-0.05	3.6	281	0.2	3.8	1,191	1.2
Isanti	1,891	1,910	-0.01	11.5	164	0.6	12.1	2,114	1.1
Statewide	216,908	222,472	-2.50%	1,177.5	184.2	322.2	1,499.7	239,540**	1.1



Caseload and Full-time Equivalent (FTE) Summary

County	Open Cases FFY2017	Open Cases FFY2016	Percent Change	Child Support Workers SFY2017	Open Caseload to Worker Ratio FFY2017	Cooperative Agreement Workers SFY2017	Total Staff SFY2017	Total Children in IV-D Caseload FFY2017	Average Children per Open Case FFY2017
Itasca	2,406	2,439	-0.01	14.0	172	1.0	15.0	2,585	1.1
Des Moines Valley	1,046	1,072	-0.02	4.5	232	0.3	4.8	1,207	1.2
Kanabec	815	878	-0.07	5.0	163	1.0	6.0	898	1.1
Kandiyohi	2,135	2,294	-0.07	11.3	189	0.2	11.5	2,407	1.1
Kittson	105	110	-0.05	1.5	70	0.1	1.6	140	1.3
Koochiching	645	653	-0.01	4.0	161	0.3	4.3	694	1.1
Lac qui Parle	189	191	-0.01	1.2	158	0.2	1.4	246	1.3
Lake	444	434	0.02	2.0	222	0.0	2.0	453	1.0
Lake of the Woods	144	132	0.09	1.1	131	0.1	1.2	182	1.3
LeSueur	995	992	0.00	6.0	166	0.3	6.3	1,190	1.2
SWHHS	3,273	3,358	-0.03	17.7	185	0.5	18.2	3,749	1.1
McLeod	1,504	1,493	0.01	7.4	203	1.0	8.4	1,704	1.1
Mahnomen	235	351	-0.33	3.8	62	0.0	3.8	285	1.2
Marshall	283	285	-0.01	1.9	149	0.1	2.0	359	1.3
Faribault/Martin	1,700	1,747	-0.03	9.3	183	0.1	9.4	1,996	1.2
Meeker	891	876	0.02	4.8	186	0.1	4.9	989	1.1
Mille Lacs	1,825	1,819	0.00	7.5	243	1.0	8.5	1,676	0.9
Morrison	1,839	1,896	-0.03	8.6	214	0.8	9.4	1,852	1.0
Mower	2,253	2,273	-0.01	11.0	205	0.3	11.3	2,508	1.1
Nicollet	1,347	1,362	-0.01	8.8	153	1.9	10.7	1,562	1.2
Nobles	924	975	-0.05	3.5	264	0.1	3.6	1,144	1.2
Norman	281	270	0.04	0.5	562	0.2	0.7	337	1.2
Olmsted	5,460	5,497	-0.01	25.5	214	3.0	28.5	6,672	1.2
Otter Tail	2,231	2,236	0.00	11.0	203	0.5	11.5	2,547	1.1
Pennington	727	732	-0.01	4.8	151	0.2	5.0	806	1.1
Pine	1,685	1,741	-0.03	11.0	153	0.0	11.0	1,762	1.0
Polk	1,709	1,684	0.01	10.0	171	0.4	10.4	1,962	1.1
Statewide	216,908	222,472	-2.50%	1,177.5	184.2	322.2	1,499.7	239,540**	1.1



Caseload and Full-time Equivalent (FTE) Summary

County	Open Cases FFY2017	Open Cases FFY2016	Percent Change	Child Support Workers SFY2017	Open Caseload to Worker Ratio FFY2017	Cooperative Agreement Workers SFY2017	Total Staff SFY2017	Total Children in IV-D Caseload FFY2017	Average Children per Open Case FFY2017
Pope	359	362	-0.01	2.0	180	1.2	3.2	426	1.2
Ramsey	24,831	26,719	-0.07	134.8	184	14.6	149.4	27,968	1.1
Red Lake	135	143	-0.06	0.5	270	0.2	0.7	188	1.4
Renville	629	633	-0.01	3.5	180	0.0	3.5	799	1.3
Rice	1,918	1,982	-0.03	11.0	174	3.0	14.0	2,290	1.2
Roseau	594	604	-0.02	4.8	124	0.3	5.1	699	1.2
St. Louis	10,213	11,194	-0.09	42.6	240	7.8	50.4	10,358	1.0
Scott	2,916	2,939	-0.01	14.8	197	2.4	17.2	3,705	1.3
Sherburne	3,430	3,373	0.02	13.8	249	0.9	14.7	3,963	1.2
Sibley	619	610	0.01	3.3	188	0.2	3.5	711	1.1
Stearns	5,265	5,440	-0.03	22.2	237	2.0	24.2	6,298	1.2
MN Prairie	3,713	3,669	0.01	19.0	195	2.0	21.0	4,345	1.2
Stevens	224	248	-0.10	1.6	140	0.2	1.8	244	1.1
Swift	488	488	0.00	2.0	244	0.0	2.0	540	1.1
Todd	989	957	0.03	5.6	177	0.3	5.9	1,083	1.1
Traverse	86	111	-0.23	0.5	172	0.1	0.6	124	1.4
Wabasha	728	714	0.02	3.0	243	0.0	3.0	829	1.1
Wadena	857	847	0.01	3.4	252	0.2	3.6	940	1.1
Washington	6,326	6,337	0.00	29.0	218	5.1	34.1	7,260	1.1
Watonwan	712	730	-0.02	3.3	216	0.1	3.4	743	1.0
Wilkin	272	319	-0.15	2.0	136	0.2	2.2	336	1.2
Winona	2,020	2,018	0.00	7.0	289	1.0	8.0	2,007	1.0
Wright	4,058	4,056	0.00	20.5	198	1.5	22.0	4,823	1.2
Yellow Medicine	337	334	0.01	2.7	125	0.3	3.0	380	1.1
State Admin	-	-	-	72.0	-	191.2	263.2	-	-
Statewide	216,908	222,472	-2.50%	1,177.5	184.2	322.2	1,499.7	239,540**	1.1

Source: CSD InfoPac QQ320920: Annual OCSE157 Paternity Establishment – Summary, CSD InfoPac QQ320921: Annual OCSE157 Federal Performance – Summary and Full-time Equivalent Survey

**CSD InfoPac QQ710305: Paternity Establishment report

Cook County contracts with Carlton County to perform child support functions.



Current/Former/Never Assistance Case Analysis

County	FFY2017						FFY2016			Annual Percentage Change		
	Current Assistance		Former Assistance		Never Assistance		Current Assistance Cases	Former Assistance Cases	Never Assistance Cases	Current Assistance Cases	Former Assistance Cases	Never Assistance Cases
	Cases	%	Cases	%	Cases	%						
Aitkin	91	11.5	440	55.6	260	32.9	76	454	268	0.2	0.0	0.0
Anoka	1,006	8.4	5,642	47.1	5,333	44.5	1,042	5,872	5,474	0.0	0.0	0.0
Becker	232	14.7	730	46.4	611	38.8	279	853	620	-0.2	-0.1	0.0
Beltrami	501	18.9	1,478	55.9	665	25.2	653	1,545	728	-0.2	0.0	-0.1
Benton	199	10.5	842	44.5	853	45.0	170	870	847	0.2	0.0	0.0
Big Stone	12	6.8	69	39.2	95	54.0	8	71	85	0.5	0.0	0.1
Blue Earth	172	7.0	1,176	47.7	1,118	45.3	167	1,220	1,091	0.0	0.0	0.0
Brown	68	6.9	411	41.4	513	51.7	52	452	509	0.3	-0.1	0.0
Carlton	201	9.8	836	40.8	1,012	49.4	173	887	962	0.2	-0.1	0.1
Carver	92	5.1	701	38.5	1,028	56.5	106	667	1,046	-0.1	0.1	0.0
Cass	400	23.0	884	50.8	456	26.2	387	891	470	0.0	0.0	0.0
Chippewa	49	8.6	241	42.1	282	49.3	54	245	289	-0.1	0.0	0.0
Chisago	162	7.8	845	40.7	1,068	51.5	159	852	1,062	0.0	0.0	0.0
Clay	235	9.1	1,016	39.5	1,321	51.4	241	1,133	1,359	0.0	-0.1	0.0
Clearwater	60	10.5	319	55.6	195	34.0	73	343	189	-0.2	-0.1	0.0
Cook	28	16.3	75	43.6	69	40.1	41	70	60	-0.3	0.1	0.2
Crow Wing	286	8.7	1,513	46.3	1,472	45.0	277	1,584	1,466	0.0	0.0	0.0
Dakota	943	7.4	5,641	44.5	6,087	48.0	953	5,769	6,065	0.0	0.0	0.0
Douglas	102	6.6	662	43.1	771	50.2	122	675	723	-0.2	0.0	0.1
Fillmore	39	5.6	278	39.8	382	54.6	47	276	381	-0.2	0.0	0.0
Freeborn	121	7.2	828	49.5	723	43.2	131	848	714	-0.1	0.0	0.0
Goodhue	143	7.3	813	41.5	1,001	51.1	120	825	945	0.2	0.0	0.1
Grant	13	5.4	114	47.5	113	47.1	16	113	116	-0.2	0.0	0.0
Hennepin	7,197	14.9	26,776	55.6	14,220	29.5	7,220	27,443	14,108	0.0	0.0	0.0
Houston	61	9.9	252	40.9	303	49.2	49	273	284	0.2	-0.1	0.1
Hubbard	131	12.9	439	43.4	442	43.7	138	497	425	-0.1	-0.1	0.0
Isanti	105	5.6	863	45.6	923	48.8	117	883	910	-0.1	0.0	0.0
Statewide	24,432*	11.3	104,898*	48.4	87,578*	40.4	25,076*	109,193*	88,203*	-0.03	-0.04	-0.01



Current/Former/Never Assistance Case Analysis

County	FFY2017						FFY2016			Annual Percentage Change		
	Current Assistance		Former Assistance		Never Assistance		Current Assistance Cases	Former Assistance Cases	Never Assistance Cases	Current Assistance Cases	Former Assistance Cases	Never Assistance Cases
	Cases	%	Cases	%	Cases	%						
Itasca	279	11.6	1,171	48.7	956	39.7	268	1,242	929	0.0	-0.1	0.0
Des Moines Valley	56	5.4	452	43.2	538	51.4	76	455	541	-0.3	0.0	0.0
Kanabec	65	8.0	385	47.2	365	44.8	72	435	371	-0.1	-0.1	0.0
Kandiyohi	180	8.4	1,144	53.6	811	38.0	167	1,226	901	0.1	-0.1	-0.1
Kittson	10	9.5	37	35.2	58	55.2	12	38	60	-0.2	0.0	0.0
Koochiching	52	8.1	276	42.8	317	49.1	56	292	305	-0.1	-0.1	0.0
Lac qui Parle	11	5.8	72	38.1	106	56.1	5	81	105	1.2	-0.1	0.0
Lake	37	8.3	177	39.9	230	51.8	36	176	222	0.0	0.0	0.0
Lake of the Woods	4	2.8	51	35.4	89	61.8	6	46	80	-0.3	0.1	0.1
LeSueur	90	9.0	408	41.0	497	49.9	74	419	499	0.2	0.0	0.0
SWHHS	263	8.0	1,370	41.9	1,640	50.1	262	1,435	1,661	0.0	0.0	0.0
McLeod	82	5.5	576	38.3	846	56.3	101	553	839	-0.2	0.0	0.0
Mahnomen	62	26.4	118	50.2	55	23.4	152	154	45	-0.6	-0.2	0.2
Marshall	18	6.4	86	30.4	179	63.3	9	92	184	1.0	-0.1	0.0
Faribault/Martin	109	6.4	672	39.5	919	54.1	106	736	905	0.0	-0.1	0.0
Meeker	37	4.2	402	45.1	452	50.7	49	408	419	-0.2	0.0	0.1
Mille Lacs	207	11.3	823	45.1	795	43.6	196	814	809	0.1	0.0	0.0
Morrison	125	6.8	929	50.5	785	42.7	157	953	786	-0.2	0.0	0.0
Mower	200	8.9	1,086	48.2	967	42.9	189	1,125	959	0.1	0.0	0.0
Nicollet	104	7.7	653	48.5	590	43.8	113	654	595	-0.1	0.0	0.0
Nobles	60	6.5	426	46.1	438	47.4	61	454	460	0.0	-0.1	0.0
Norman	20	7.1	119	42.3	142	50.5	20	111	139	0.0	0.1	0.0
Olmsted	562	10.3	2,493	45.7	2,405	44.0	556	2,561	2,380	0.0	0.0	0.0
Otter Tail	191	8.6	934	41.9	1,106	49.6	155	965	1,116	0.2	0.0	0.0
Pennington	64	8.8	316	43.5	347	47.7	62	314	356	0.0	0.0	0.0
Pine	171	10.1	812	48.2	702	41.7	178	899	664	0.0	-0.1	0.1
Polk	145	8.5	942	55.1	622	36.4	153	947	584	-0.1	0.0	0.1
Statewide	24,432*	11.3	104,898*	48.4	87,578*	40.4	25,076*	109,193*	88,203*	-0.03	-0.04	-0.01



Current/Former/Never Assistance Case Analysis

County	FFY2017						FFY2016			Annual Percentage Change		
	Current Assistance		Former Assistance		Never Assistance		Current Assistance Cases	Former Assistance Cases	Never Assistance Cases	Current Assistance Cases	Former Assistance Cases	Never Assistance Cases
	Cases	%	Cases	%	Cases	%						
Pope	22	6.1	164	45.7	173	48.2	34	157	171	-0.4	0.0	0.0
Ramsey	4,118	16.6	13,915	56.0	6,798	27.4	4,264	14,990	7,465	0.0	-0.1	-0.1
Red Lake	10	7.4	45	33.3	80	59.3	11	46	86	-0.1	0.0	-0.1
Renville	43	6.8	247	39.3	339	53.9	42	255	336	0.0	0.0	0.0
Rice	176	9.2	880	45.9	862	44.9	177	896	909	0.0	0.0	-0.1
Roseau	32	5.4	202	34.0	360	60.6	28	227	349	0.1	-0.1	0.0
St. Louis	1,361	13.3	5,435	53.2	3,417	33.5	1,701	5,811	3,682	-0.2	-0.1	-0.1
Scott	226	7.8	978	33.5	1,712	58.7	237	987	1,715	0.0	0.0	0.0
Sherburne	207	6.0	1,322	38.5	1,901	55.4	197	1,357	1,819	0.1	0.0	0.0
Sibley	48	7.8	246	39.7	325	52.5	48	252	310	0.0	0.0	0.0
Stearns	495	9.4	2,237	42.5	2,533	48.1	491	2,365	2,584	0.0	-0.1	0.0
MN Prairie	423	11.4	1,531	41.2	1,759	47.4	362	1,528	1,779	0.2	0.0	0.0
Stevens	16	7.1	95	42.4	113	50.4	19	106	123	-0.2	-0.1	-0.1
Swift	46	9.4	224	45.9	218	44.7	48	219	221	0.0	0.0	0.0
Todd	68	6.9	477	48.2	444	44.9	66	475	416	0.0	0.0	0.1
Traverse	7	8.1	39	45.3	40	46.5	16	42	53	-0.6	-0.1	-0.2
Wabasha	51	7.0	254	34.9	423	58.1	30	277	407	0.7	-0.1	0.0
Wadena	67	7.8	438	51.1	352	41.1	62	450	335	0.1	0.0	0.1
Washington	405	6.4	2,481	39.2	3,440	54.4	406	2,517	3,414	0.0	0.0	0.0
Watonwan	67	9.4	310	43.5	335	47.1	56	333	341	0.2	-0.1	0.0
Wilkin	19	7.0	109	40.1	144	52.9	25	133	161	-0.2	-0.2	-0.1
Winona	201	10.0	931	46.1	888	44.0	157	971	890	0.3	0.0	0.0
Wright	281	6.9	1,387	34.2	2,390	58.9	282	1,468	2,306	0.0	-0.1	0.0
Yellow Medicine	14	4.2	117	34.7	206	61.1	18	110	206	-0.2	0.1	0.0
Statewide	24,432*	11.3	104,898*	48.4	87,578*	40.4	25,076*	109,193*	88,203*	-0.03	-0.04	-0.01

Source: CSD InfoPac QQ320921: Annual OCSE157 Federal Performance – Summary

*CSD InfoPac QQ710309: Unduplicated Performance report



County Case Flow Analysis

County	Case Count Beginning FFY2017	Case Activity			Total Case Transactions FFY2017	Case Count End FFY2017
		New Cases Added FFY2017	Cases Reopened FFY2017	Cases Closed FFY2017		
Aitkin	802	88	30	123	241	797
Anoka	12,581	1,471	674	2,542	4,687	12,192
Becker	1,767	365	85	422	872	1,585
Beltrami	3,788	817	239	1,014	2,070	3,818
Benton	1,893	227	69	296	592	1,904
Big Stone	165	43	7	43	93	178
Blue Earth	2,493	357	106	478	941	2,484
Brown	1,020	130	45	201	376	993
Carlton	2,054	386	91	459	936	2,077
Carver	1,853	256	65	360	681	1,852
Cass	1,762	281	135	374	790	1,756
Chippewa	589	55	33	114	202	574
Chisago	2,093	266	102	392	760	2,095
Clay	2,751	403	96	718	1,217	2,592
Clearwater	615	79	15	80	174	586
Cook	172	36	15	48	99	172
Crow Wing	3,341	375	72	544	991	3,283
Dakota	12,962	1,389	548	2,128	4,065	12,848
Douglas	1,529	220	35	228	483	1,547
Fillmore	715	63	22	113	198	705
Freeborn	1,707	205	45	279	529	1,682
Goodhue	1,909	350	106	356	812	1,975
Grant	245	32	9	44	85	240
Hennepin	49,419	7,958	3,364	11,926	23,248	48,812
Houston	625	115	20	134	269	628
Hubbard	1,065	160	47	258	465	1,017
Isanti	1,918	201	55	272	528	1,901
Statewide	227,633	33,047	11,679	49,670	94,396	222,858



County Case Flow Analysis

County	Case Count Beginning FFY2017	Case Activity			Total Case Transactions FFY2017	Case Count End FFY2017
		New Cases Added FFY2017	Cases Reopened FFY2017	Cases Closed FFY2017		
Itasca	2,481	404	127	539	1,070	2,476
Des Moines Valley	1,076	103	34	164	301	1,053
Kanabec	884	98	30	196	324	820
Kandiyohi	2,304	284	84	537	905	2,146
Kittson	110	13	7	21	41	105
Koochiching	660	128	54	179	361	654
Lac qui Parle	192	21	24	46	91	189
Lake	442	59	14	67	140	451
Lake of the Woods	132	16	13	20	49	144
Le Sueur	998	150	52	222	424	1,003
SWHHS	3,390	512	148	773	1,433	3,297
McLeod	1,508	242	54	296	592	1,521
Mahnomen	354	135	49	97	281	237
Marshall	285	29	8	48	85	283
Faribault/Martin	1,753	274	114	432	820	1,705
Meeker	890	138	48	162	348	904
Mille Lacs	1,825	261	67	321	649	1,834
Morrison	1,914	233	53	342	628	1,854
Mower	2,287	336	93	475	904	2,271
Nicollet	1,375	211	51	260	522	1,360
Nobles	983	151	43	244	438	935
Norman	273	49	19	52	120	284
Olmsted	5,548	790	229	1,117	2,136	5,498
Otter Tail	2,251	292	67	375	734	2,253
Pennington	736	111	8	116	235	738
Pine	1,754	295	91	461	847	1,703
Polk	1,695	307	109	407	823	1,719
Statewide	227,633	33,047	11,679	49,670	94,396	222,858



County Case Flow Analysis

County	Case Count Beginning FFY2017	Case Activity			Total Case Transactions FFY2017	Case Count End FFY2017
		New Cases Added FFY2017	Cases Reopened FFY2017	Cases Closed FFY2017		
Pope	362	42	5	52	99	359
Ramsey	27,031	3,888	1,298	7,167	12,353	25,108
Red Lake	144	11	7	28	46	136
Renville	637	103	16	127	246	633
Rice	2,003	236	85	407	728	1,942
Roseau	610	105	45	162	312	604
St. Louis	11,280	1,281	378	2,728	4,387	10,300
Scott	2,995	524	160	762	1,446	2,979
Sherburne	3,397	475	113	543	1,131	3,457
Sibley	614	64	14	84	162	623
Stearns	5,536	1,046	205	1,520	2,771	5,326
MN Prairie	3,712	548	204	706	1,458	3,767
Stevens	252	30	11	63	104	227
Swift	490	79	27	105	211	489
Todd	960	148	38	142	328	995
Traverse	115	16	3	47	66	90
Wabasha	718	112	25	121	258	732
Wadena	848	127	41	147	315	858
Washington	6,442	797	243	1,103	2,143	6,436
Watonwan	740	79	28	125	232	720
Wilkin	321	41	3	89	133	275
Winona	2,041	262	58	336	656	2,038
Wright	4,117	548	168	751	1,467	4,113
Yellow Medicine	337	39	11	52	102	340
Statewide	227,633	33,047	11,679	49,670	94,396	222,858

Source: CSD InfoPac QW260104: Caseflow Analysis monthly report (does not balance to QQ3209/QQ7103 reports)



Collections to and from Other States

County <i>*Bold Italicized – Border County</i>	Collections Distributed FFY2017	Open Initiating Caseload FFY2017	Collections Received from Other States FFY2017	Percent of State Collections from Other States	Open Responding Caseload FFY2017	Collections Sent to Other States FFY2017	Percent of State Collections to Other States
Aitkin	1,698,704	76	116,153	6.84	25	55,657	3.28
Anoka	41,109,099	1,162	2,054,500	5.00	375	894,152	2.18
Becker	3,560,475	156	265,236	7.45	100	188,113	5.28
Beltrami	4,414,138	154	212,551	4.82	75	101,929	2.31
Benton	5,146,431	171	332,835	6.47	60	103,173	2.00
<i>Big Stone</i>	612,044	43	95,970	15.68	9	22,074	3.61
Blue Earth	7,293,987	221	338,332	4.64	93	120,208	1.65
Brown	3,565,679	95	161,577	4.53	24	76,967	2.16
<i>Carlton</i>	4,784,492	182	309,724	6.47	64	111,253	2.33
Carver	8,330,537	186	402,196	4.83	72	190,567	2.29
Cass	2,412,675	69	167,186	6.93	58	87,317	3.62
Chippewa	1,590,231	26	42,702	2.69	24	57,364	3.61
<i>Chisago</i>	7,277,276	180	397,539	5.46	76	170,617	2.34
<i>Clay</i>	7,807,799	581	1,338,176	17.14	316	586,806	7.52
Clearwater	1,087,254	47	64,166	5.90	29	94,486	8.69
<i>Cook</i>	411,098	10	20,825	5.07	8	18,041	4.39
Crow Wing	8,366,808	237	400,801	4.79	126	291,693	3.49
<i>Dakota</i>	43,479,596	1,189	2,577,363	5.93	524	1,217,503	2.80
Douglas	4,273,417	192	383,167	8.97	58	144,951	3.39
<i>Fillmore</i>	2,146,813	83	145,433	6.77	47	81,488	3.80
<i>Freeborn</i>	4,576,256	165	330,638	7.23	97	158,701	3.47
<i>Goodhue</i>	5,712,638	267	382,511	6.70	78	187,364	3.28
Grant	802,222	26	35,386	4.41	9	15,474	1.93
Hennepin	99,086,232	4,358	6,780,157	6.84	1,738	3,381,190	3.41
<i>Houston</i>	1,823,087	198	290,176	15.92	43	102,846	5.64
Hubbard	2,067,568	84	153,337	7.42	59	143,409	6.94
Isanti	6,351,477	115	226,333	3.56	50	123,176	1.94
Statewide	580,554,676	21,358*	37,837,797	6.52	8,979*	19,156,134	3.30



Collections to and from Other States

County *Bold Italicized – Border County	Collections Distributed FFY2017	Open Initiating Caseload FFY2017	Collections Received from Other States FFY2017	Percent of State Collections from Other States	Open Responding Caseload FFY2017	Collections Sent to Other States FFY2017	Percent of State Collections to Other States
Itasca	5,618,155	158	271,942	4.84	74	134,227	2.39
<i>Des Moines Valley</i>	3,071,898	189	308,214	10.03	61	171,994	5.60
Kanabec	2,531,665	50	102,439	4.05	23	52,436	2.07
Kandiyohi	5,743,379	248	318,082	5.54	74	205,203	3.57
<i>Kittson</i>	350,414	15	46,575	13.29	5	10,288	2.94
<i>Koochiching</i>	2,041,050	68	134,965	6.61	30	76,496	3.75
<i>Lac qui Parle</i>	716,450	32	102,949	14.37	9	25,052	3.50
<i>Lake</i>	1,202,630	28	46,906	3.90	18	35,118	2.92
<i>Lake of the Woods</i>	324,347	13	22,855	7.05	8	22,920	7.07
LeSueur	3,512,377	115	259,523	7.39	30	76,054	2.17
<i>SWHHS</i>	9,790,754	482	1,045,223	10.68	208	488,435	4.99
McLeod	4,899,243	130	263,087	5.37	57	124,715	2.55
Mahnomen	356,124	23	45,584	12.80	13	39,655	11.14
<i>Marshall</i>	1,092,546	25	44,820	4.10	30	65,234	5.97
<i>Faribault/Martin</i>	5,358,646	217	405,913	7.57	103	226,101	4.22
Meeker	2,959,795	87	164,873	5.57	20	47,604	1.61
Mille Lacs	3,458,764	82	118,175	3.42	50	113,891	3.29
Morrison	4,521,304	115	165,409	3.66	57	95,422	2.11
<i>Mower</i>	5,805,094	349	508,591	8.76	107	225,110	3.88
Nicollet	4,466,947	149	307,803	6.89	37	99,763	2.23
<i>Nobles</i>	2,943,890	191	453,023	15.39	70	206,573	7.02
<i>Norman</i>	748,540	50	102,811	13.73	33	81,323	10.86
Olmsted	17,889,189	749	1,489,037	8.32	231	536,788	3.00
Otter Tail	6,087,442	251	461,914	7.59	152	362,384	5.95
Pennington	2,020,703	42	69,839	3.46	40	66,185	3.28
<i>Pine</i>	4,342,698	161	257,364	5.93	65	126,050	2.90
<i>Polk</i>	4,431,674	385	578,027	13.04	114	248,638	5.61
Statewide	580,554,676	21,358*	37,837,797	6.52	8,979*	19,156,134	3.30



Collections to and from Other States

County <i>*Bold Italicized – Border County</i>	Collections Distributed FFY2017	Open Initiating Caseload FFY2017	Collections Received from Other States FFY2017	Percent of State Collections from Other States	Open Responding Caseload FFY2017	Collections Sent to Other States FFY2017	Percent of State Collections to Other States
Pope	1,108,044	26	41,112	3.71	14	28,322	2.56
Ramsey	49,099,055	2,320	3,588,219	7.31	1,171	2,266,471	4.62
Red Lake	572,418	12	38,681	6.76	6	29,676	5.18
Renville	1,951,752	64	127,669	6.54	20	46,754	2.40
Rice	6,415,748	177	365,467	5.70	75	196,684	3.07
<i>Roseau</i>	1,988,123	64	113,457	5.71	34	64,680	3.25
<i>St. Louis</i>	23,770,357	860	1,181,687	4.97	498	796,938	3.35
Scott	12,531,563	288	686,896	5.48	119	299,714	2.39
Sherburne	12,080,457	276	517,749	4.29	98	302,995	2.51
Sibley	1,774,427	68	123,089	6.94	17	52,332	2.95
Stearns	15,063,767	494	864,408	5.74	184	345,359	2.29
MN Prairie	10,968,676	309	476,592	4.35	118	267,648	2.44
Stevens	696,245	26	44,008	6.32	15	39,283	5.64
Swift	1,288,390	68	104,831	8.14	18	57,277	4.45
Todd	2,882,760	80	148,046	5.14	29	65,461	2.27
<i>Traverse</i>	315,640	18	63,980	20.27	0	11,021	3.49
<i>Wabasha</i>	2,465,485	113	218,137	8.85	27	55,774	2.26
Wadena	2,433,180	111	237,303	9.75	39	93,641	3.85
<i>Washington</i>	23,208,834	546	1,275,476	5.50	207	604,078	2.60
Watonwan	1,952,634	94	141,197	7.23	30	101,264	5.19
<i>Wilkin</i>	948,817	64	199,332	21.01	33	98,204	10.35
<i>Winona</i>	4,579,384	306	486,468	10.62	98	223,810	4.89
Wright	14,993,615	257	566,657	3.78	151	356,309	2.38
<i>Yellow Medicine</i>	1,320,039	40	88,082	6.67	20	60,998	4.62
Statewide	580,554,676	21,358*	37,837,797	6.52	8,979*	19,156,134	3.30

Source: CSD InfoPac QQ320921: Annual OCSE157 Federal Performance – Summary

*CSD InfoPac QQ710309: Unduplicated Performance Report



Collections - Sources

County	Collections FFY2017	Income Withholding	Re-employment	Federal Tax	State Tax	Other States	Other Sources (Cash, Checks)	FIDM
Aitkin	1,687,753	1,211,455	40,910	69,113	25,476	116,153	220,858	3,465
Anoka	41,397,094	31,827,229	922,096	1,376,056	607,153	2,054,500	4,592,377	56,151
Becker	3,572,996	2,311,118	97,667	167,515	54,336	265,236	677,123	16,875
Beltrami	4,414,612	3,136,848	138,533	244,101	81,124	212,551	589,796	18,317
Benton	5,162,173	3,780,669	121,227	197,186	71,172	332,835	655,997	346
Big Stone	615,372	351,731	5,949	28,659	4,186	95,970	128,877	0
Blue Earth	7,318,336	5,592,177	170,905	261,262	102,467	338,332	853,193	4,485
Brown	3,571,096	2,838,283	99,209	120,756	43,572	161,577	307,699	11,184
Carlton	4,799,190	3,620,968	165,792	183,508	69,691	309,724	446,955	13,664
Carver	8,485,059	6,263,737	201,815	271,240	108,818	402,196	1,237,254	47,795
Cass	2,417,752	1,576,397	96,679	152,609	45,899	167,186	378,827	19,440
Chippewa	1,586,226	1,288,909	35,134	57,157	23,396	42,702	138,928	5,688
Chisago	7,290,270	5,625,337	190,279	219,881	85,617	397,539	771,279	15,922
Clay	7,865,943	4,959,024	95,982	334,300	89,153	1,338,176	1,040,187	105,055
Clearwater	1,087,417	730,023	80,602	48,008	20,625	64,166	143,994	0
Cook	416,719	309,447	2,693	21,894	9,752	20,825	52,107	4,022
Crow Wing	8,369,841	6,085,671	236,141	374,941	172,041	400,801	1,095,368	30,000
Dakota	43,626,469	32,002,716	811,186	1,651,039	623,661	2,577,363	5,895,734	96,709
Douglas	4,270,544	2,904,889	101,621	171,844	63,540	383,167	643,073	11,507
Fillmore	2,158,317	1,589,138	45,000	76,656	28,076	145,433	274,013	7,128
Freeborn	4,570,850	3,514,976	79,042	231,015	82,745	330,638	332,434	2,061
Goodhue	5,762,632	4,308,706	156,190	203,979	69,586	382,511	641,661	6,155
Grant	808,056	587,538	21,309	32,008	8,098	35,386	123,095	3,779
Hennepin	102,113,823	74,325,659	1,535,673	3,878,245	1,580,338	6,780,157	13,979,235	200,178
Houston	1,901,790	1,308,159	29,081	58,758	12,442	290,176	203,175	3,094
Hubbard	2,094,442	1,386,378	65,656	146,693	57,068	153,337	285,308	5,614
Isanti	6,353,191	4,802,614	229,301	210,574	87,105	226,333	797,264	2,898
Statewide	586,298,094	431,432,215	13,374,067	22,997,108	8,959,741	37,815,527	71,472,642	1,752,813



Collections - Sources

County	Collections FFY2017	Income Withholding	Re-employment	Federal Tax	State Tax	Other States	Other Sources (Cash, Checks)	FIDM
Itasca	5,672,237	4,160,367	336,499	295,698	82,394	271,942	525,337	36,462
Des Moines Valley	3,074,041	2,279,074	54,200	118,369	40,705	308,214	273,479	3,688
Kanabec	2,520,885	1,860,671	137,699	93,624	32,948	102,439	293,504	19,672
Kandiyohi	5,755,878	4,312,613	152,499	280,151	117,749	318,082	574,785	2,028
Kittson	350,222	238,138	2,934	6,900	2,532	46,575	53,144	375
Koochiching	2,040,330	1,451,797	88,019	70,901	29,456	134,965	235,774	8,831
Lac qui Parle	717,782	454,138	12,638	33,424	11,019	102,949	96,923	0
Lake	1,202,715	902,727	26,604	55,674	17,649	46,906	153,155	16,178
Lake of the Woods	323,592	203,268	6,560	7,884	3,435	22,855	74,365	0
LeSueur	3,528,101	2,694,353	119,350	105,246	44,840	259,523	304,790	5,129
SWHHS	9,836,873	7,217,352	231,899	399,328	138,998	1,045,223	804,074	20,795
McLeod	4,937,602	3,695,669	102,486	201,444	95,683	263,087	579,234	51,030
Mahnomen	352,371	208,537	3,030	20,625	7,688	45,584	66,907	0
Marshall	1,096,403	807,756	42,763	42,377	10,002	44,820	148,685	0
Faribault/Martin	5,368,699	4,137,900	128,856	211,673	77,327	405,913	406,921	447
Meeker	2,978,073	2,264,757	95,922	120,763	38,154	164,873	293,604	9,027
Mille Lacs	3,468,614	2,638,847	112,496	154,938	75,232	118,175	367,279	17,282
Morrison	4,560,522	3,101,457	156,128	310,824	115,588	165,409	710,716	8,891
Mower	5,798,672	4,252,755	74,109	223,785	100,192	508,591	639,239	22,003
Nicollet	4,462,391	3,375,215	122,902	181,444	75,368	307,803	398,311	2,711
Nobles	2,950,373	2,080,311	27,312	113,489	28,355	453,023	247,885	20,579
Norman	746,759	451,972	16,838	25,278	12,554	102,811	137,307	0
Olmsted	17,920,528	12,911,396	345,487	626,456	233,644	1,489,037	2,314,507	26,445
Otter Tail	6,086,189	4,457,226	136,626	285,503	116,734	461,914	625,253	7,380
Pennington	2,011,513	1,507,015	96,707	127,630	40,223	69,839	170,100	1,774
Pine	4,350,028	3,336,342	167,642	152,863	66,177	257,364	367,388	3,698
Polk	4,434,467	3,050,932	105,114	164,045	45,049	578,027	486,355	10,652
Statewide	586,298,094	431,432,215	13,374,067	22,997,108	8,959,741	37,815,527	71,472,642	1,752,813



Collections - Sources

County	Collections FFY2017	Income Withholding	Re-employment	Federal Tax	State Tax	Other States	Other Sources (Cash, Checks)	FIDM
Pope	1,120,025	785,709	15,831	49,244	12,199	41,112	215,932	0
Ramsey	49,223,028	35,129,067	923,533	2,516,072	929,646	3,588,219	6,125,122	239,882
Red Lake	572,449	412,166	30,802	21,685	9,538	38,681	59,577	0
Renville	1,946,095	1,507,228	41,763	82,058	26,609	127,669	160,768	3,937
Rice	6,436,908	4,846,441	135,770	222,344	76,513	365,467	785,580	84,394
Roseau	2,004,394	1,516,838	46,730	51,136	30,860	113,457	242,544	4,695
St. Louis	23,808,302	17,615,460	914,902	1,102,695	403,619	1,181,687	2,582,758	125,031
Scott	12,568,068	8,882,377	260,567	336,946	143,022	686,896	2,258,260	25,475
Sherburne	12,217,503	9,320,430	318,220	446,534	145,366	517,749	1,457,194	4,986
Sibley	1,807,538	1,345,860	46,769	77,605	27,174	123,089	187,041	4,867
Stearns	15,069,264	11,284,633	434,637	561,776	238,053	864,408	1,682,877	4,204
MN Prairie	11,047,858	8,765,611	221,121	387,991	164,590	476,592	1,031,953	49,030
Stevens	688,510	497,819	25,979	21,309	18,474	44,008	80,922	10,228
Swift	1,293,648	978,305	20,711	43,493	27,021	104,831	119,287	3,976
Todd	2,886,099	2,030,363	52,150	154,948	43,849	148,046	456,743	6,151
Traverse	314,901	217,034	2,928	6,005	399	63,980	24,556	2,842
Wabasha	2,489,411	1,726,439	62,266	88,043	29,829	218,137	364,698	15,017
Wadena	2,450,119	1,738,294	54,218	136,727	50,181	237,303	233,395	8,751
Washington	24,212,839	18,558,192	472,597	732,857	303,060	1,275,476	2,867,308	62,508
Watonwan	1,962,505	1,529,619	57,340	75,579	30,828	141,197	127,941	2,832
Wilkin	947,270	637,548	4,018	20,455	7,347	199,332	78,569	3,469
Winona	4,596,269	3,213,674	88,698	214,236	70,590	486,468	522,602	20,286
Wright	14,985,114	11,695,282	429,837	396,182	181,785	566,657	1,715,370	72,873
Yellow Medicine	1,319,763	929,414	33,110	38,753	23,301	88,082	207,103	0
Statewide	586,298,094	431,432,215	13,374,067	22,997,108	8,959,741	37,815,527	71,472,642	1,752,813

Source: CSD InfoPac QQ640201: Quarterly OCSE34A Collect and Disburse – Summary



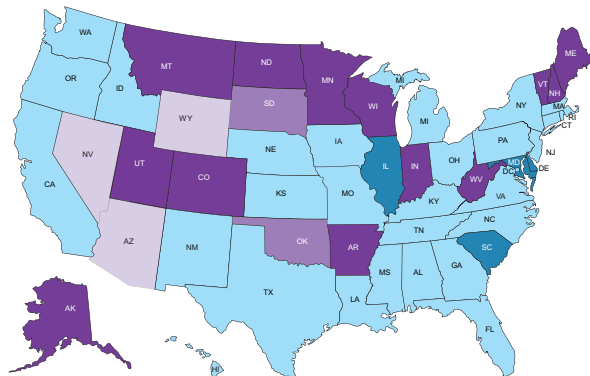
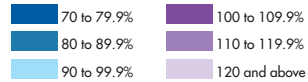
National Federal Performance Measures

National: Paternities Established

State	FFY2016 (%)	Children* (2015)	Paternity Established (2016)	FFY2015 (%)	FFY2014 (%)
Arizona	145.0	118,250	171,537	139.5	134.5
Nevada	126.4	64,948	82,122	118.6	116.4
Wyoming	122.1	15,734	19,211	121.4	137.9
Oklahoma	112.3	17,540	19,708	108.5	114.8
South Dakota	110.5	27,950	30,907	110.9	106.1
Vermont	108.9	12,431	13,544	105.9	102.1
New Hampshire	106.8	27,360	29,239	107.9	106.6
Montana	106.3	24,871	26,441	104.8	104.9
North Dakota	106.1	28,350	30,085	104.3	107.0
Indiana	105.3	199,766	210,526	104.4	103.6
Alaska	105.2	3,963	4,169	106.3	110.1
Colorado	104.9	13,865	14,555	106.8	104.3
Wisconsin	104.8	274,934	288,237	104.8	105.4
Maine	103.9	45,357	47,138	102.8	102.7
Utah	101.5	9,786	9,939	106.0	98.1
Arkansas	100.8	79,884	80,595	99.5	98.5
Minnesota	100.7	173,986	175,334	98.9	100.4
West Virginia	100.5	69,789	70,179	100.8	106.9
New Jersey	99.9	34,922	34,891	100.5	99.0
North Carolina	99.9	300,849	300,565	99.1	98.6
Washington	99.1	200,617	198,932	98.6	97.1
Idaho	98.7	81,922	80,869	97.5	100.1
California	98.6	189,265	186,631	97.9	98.1

State	FFY2016 (%)	Children* (2015)	Paternity Established (2016)	FFY2015 (%)	FFY2014 (%)
Oregon	98.6	16,343	16,127	98.6	99.9
Michigan	97.5	47,766	46,582	98.4	93.7
New Mexico	97.4	65,192	63,540	98.1	110.7
Iowa	97.3	14,059	13,680	98.0	104.2
Kentucky	96.9	181,211	175,640	94.4	94.6
Alabama	96.7	131,641	127,296	95.1	94.3
Mississippi	96.5	282,085	272,327	93.8	90.3
Connecticut	96.4	126,315	121,773	94.4	92.6
Virginia	96.4	35,399	34,157	109.9	101.9
Hawaii	96.2	6,792	6,534	94.5	99.1
Nebraska	95.7	8,968	8,587	99.3	97.9
Pennsylvania	95.6	58,191	55,659	99.6	96.5
Louisiana	94.1	237,280	223,358	91.3	90.2
Georgia	93.9	59,715	56,086	90.2	94.1
Texas	93.8	171,462	160,959	94.6	101.7
Ohio	93.4	60,365	56,416	90.7	94.8
Rhode Island	93.2	44,617	41,607	92.3	93.2
Kansas	92.7	14,530	13,481	93.3	90.6
New York	92.0	92,754	85,385	93.4	91.1
Tennessee	92.0	37,591	34,602	96.4	95.2
Florida	91.3	105,457	96,303	91.0	88.3
Guam	90.7	7,870	7,144	92.2	94.9
Massachusetts	90.6	22,573	20,472	91.4	91.5
Missouri	90.2	30,772	27,759	93.1	94.4
Washington, DC	90.0	6,247	5,623	90.0	90.0
Maryland	89.9	28,217	25,384	90.9	90.0
Puerto Rico	87.5	22,513	19,702	90.1	87.9
Illinois	83.1	62,679	52,136	90.4	88.7
South Carolina	80.2	26,218	21,044	91.7	94.3
Delaware	79.4	70,576	56,078	82.9	78.5
Virgin Islands	67.4	921	621	71.5	77.8

Paternities Established

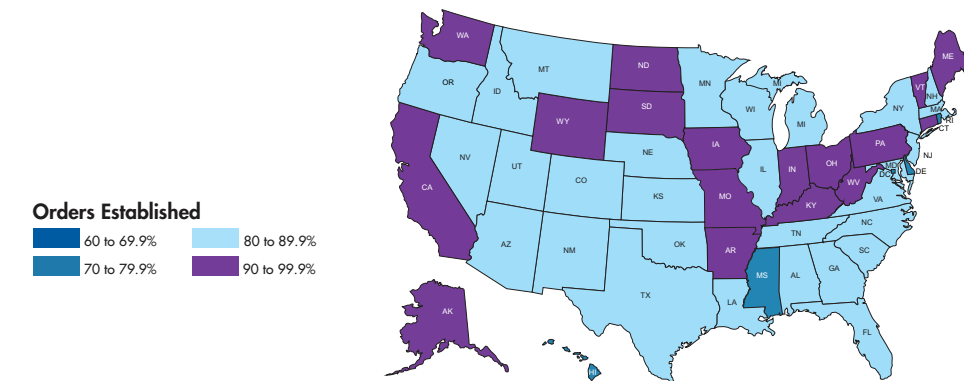


*Children born outside of marriage



National: Orders Established

States	FFY2016 (%)	Open Cases (2016)	Established Cases (2016)	FFY2015 (%)	FFY2014 (%)
Maine	95.0	49,450	47,017	95.4	94.3
Indiana	93.6	272,789	255,349	93.2	92.3
Wyoming	93.4	27,600	25,801	94.2	94.5
Washington	93.3	329,878	307,951	93.1	92.6
North Dakota	93.1	35,807	33,359	93.3	93.2
Alaska	92.8	46,650	43,312	91.4	91.1
South Dakota	92.1	40,326	37,146	92.2	93.3
Iowa	91.7	167,846	153,986	90.5	89.6
West Virginia	91.6	115,509	105,874	90.9	87.1
Arkansas	91.3	104,747	95,678	90.5	89.2
Connecticut	91.1	166,495	151,734	86.7	81.1
Missouri	91.0	332,815	303,143	90.1	88.1
Pennsylvania	90.7	380,439	345,295	89.9	89.7
California	90.3	1,214,712	1,097,510	89.4	89.2
Kentucky	90.1	271,491	244,631	90.7	90.1
Ohio	90.0	840,653	757,204	89.4	88.3
Vermont	90.0	15,740	14,176	90.1	89.5
Georgia	89.3	411,151	367,392	89.6	89.3
Minnesota	88.9	222,472	197,799	88.7	88.0
Virginia	88.8	303,413	269,547	89.9	89.7
Montana	88.7	35,446	31,466	89.5	89.1
Colorado	88.6	150,405	133,305	88.6	87.4



State	FFY2016 (%)	Open Cases (2016)	Established Cases (2016)	FFY2015 (%)	FFY2014 (%)
Arizona	87.8	170,491	149,709	87.6	86.7
Idaho	87.8	118,870	104,461	86.7	84.6
Alabama	87.5	216,144	189,238	86.6	85.1
Massachusetts	87.3	216,777	189,347	85.7	85.7
Wisconsin	87.1	361,169	314,870	87.1	86.9
Louisiana	86.7	283,871	246,383	84.9	80.1
Utah	86.7	92,678	80,371	87.7	89.3
Oregon	86.5	187,756	162,437	83.6	76.8
Nevada	86.4	94,458	81,682	87.0	85.4
Nebraska	86.3	108,674	93,839	86.3	86.9
Kansas	86.0	141,082	121,337	87.6	82.4
Puerto Rico	86.0	219,449	188,746	83.4	82.5
North Carolina	85.7	407,651	349,511	85.7	85.8
New York	85.5	856,038	732,610	82.5	82.1
New Jersey	85.4	333,535	284,895	83.3	80.8
Maryland	84.8	203,452	172,625	84.5	85.2
Tennessee	83.9	366,632	307,937	83.4	81.4
New Mexico	83.6	62,497	52,289	84.1	81.0
Texas	83.1	1,548,329	1,287,064	82.9	83.2
Florida	82.9	656,801	544,505	82.8	81.3
Illinois	82.6	475,543	393,055	81.7	81.5
Oklahoma	81.8	203,269	166,459	82.5	81.5
Michigan	81.5	846,279	689,925	81.0	79.6
New Hampshire	81.3	38,509	31,315	80.6	85.4
South Carolina	81.1	194,451	157,783	81.9	79.3
Rhode Island	78.8	50,369	39,713	76.4	71.3
Mississippi	76.7	291,717	224,009	74.2	72.2
Hawaii	76.1	76,222	58,018	74.9	73.9
Delaware	75.3	77,728	58,544	70.5	70.5
Guam	75.1	6,654	5,000	75.8	76.8
Washington, DC	73.2	47,282	34,649	71.3	68.2
Virgin Islands	69.7	8,939	6,233	69.4	68.4

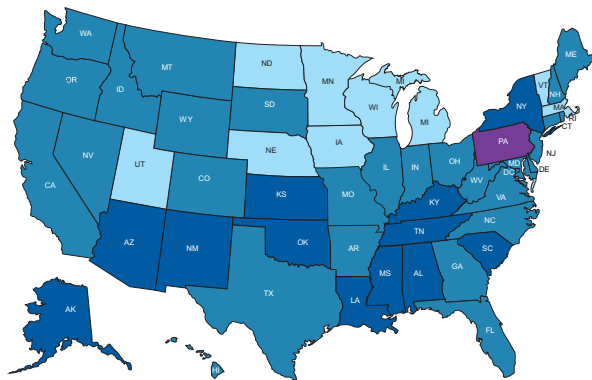
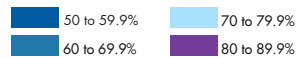


National: Collections on Current

State	FFY2016 (%)	Due (2016) Million (\$)	Paid (2016) Million (\$)	FFY2015 (%)	FFY2014 (%)
Pennsylvania	84.3	1,264	1,066	84.0	83.5
Wisconsin	74.4	696	518	74.1	73.0
Minnesota	74.2	604	449	73.4	72.4
Vermont	74.2	48	35	72.7	70.8
Iowa	73.5	333	245	74.2	73.9
North Dakota	72.7	112	82	74.0	74.1
Utah	71.6	242	173	63.2	62.5
Nebraska	71.5	235	168	71.3	71.0
Massachusetts	71.3	731	522	70.7	69.4
Michigan	71.2	1,391	991	70.5	68.8
Ohio	69.4	1,872	1,300	68.9	67.9
Maryland	68.9	643	443	68.5	67.7
North Carolina	68.0	787	536	67.0	65.8
New Jersey	67.2	1,470	988	66.4	65.4
California	66.9	2,315	1,551	66.5	64.9
West Virginia	66.9	218	146	66.6	65.4
Washington	66.3	742	492	65.5	64.5
New Hampshire	66.1	91	60	65.6	63.8
Wyoming	66.1	76	50	68.1	67.9
New York	65.9	2,075	1,369	65.7	65.7
South Dakota	65.9	114	75	67.9	68.9
Indiana	65.3	622	406	64.7	63.2
Virginia	64.5	721	466	64.3	63.9

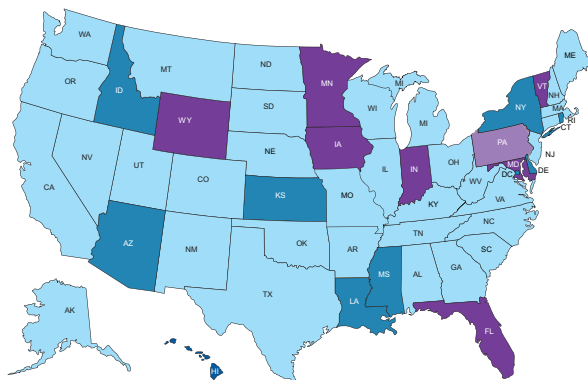
State	FFY2016 (%)	Due (2016) Million (\$)	Paid (2016) Million (\$)	FFY2015 (%)	FFY2014 (%)
Idaho	64.4	210	135	63.1	62.3
Texas	64.3	4,712	3,031	65.0	65.0
Colorado	64.2	398	256	64.4	63.5
Nevada	64.0	229	147	62.1	59.5
Arkansas	63.9	279	178	64.3	62.7
Florida	63.2	1,782	1,127	62.5	58.3
Montana	63.1	78	49	63.5	62.7
Illinois	62.7	915	574	62.2	60.9
Hawaii	62.6	119	74	62.0	61.6
Oregon	62.5	433	271	61.3	60.5
Maine	62.3	110	68	59.8	58.8
Guam	62.0	11	7	64.3	64.8
Rhode Island	61.7	94	58	61.2	60.3
Connecticut	61.6	285	175	61.0	58.2
Washington, DC	61.6	61	37	61.9	61.5
Georgia	61.2	929	569	61.2	60.9
Missouri	60.2	755	455	59.5	57.9
Delaware	60.1	101	61	59.0	58.1
Kentucky	58.4	484	283	58.2	57.2
Arizona	57.2	368	211	55.8	54.6
Tennessee	56.6	766	434	57.4	56.8
Alaska	56.5	113	64	57.3	57.8
Kansas	55.4	242	134	54.4	54.0
Puerto Rico	55.2	503	278	54.1	55.7
South Carolina	54.8	367	202	54.6	52.8
New Mexico	54.7	157	86	54.9	54.5
Oklahoma	54.2	467	253	55.0	54.8
Alabama	54.0	451	243	53.4	52.4
Mississippi	53.5	463	248	53.2	53.2
Louisiana	53.3	568	303	55.5	56.4
Virgin Islands	53.3	10	5	51.5	57.1

Collections on Current



National: Collections on Arrears

State	FFY2016 (%)	Cases with Arrears (2016)	Cases with Payment Towards Arrears (2016)	FFY2015 (%)	FFY2014 (%)
Pennsylvania	84.5	274,727	232,184	83.9	83.5
Vermont	75.5	14,038	10,607	73.4	71.6
Indiana	73.2	233,432	171,016	71.8	70.3
Minnesota	72.3	179,267	129,721	72.1	70.9
Wyoming	70.5	27,011	19,065	71.8	70.7
Maryland	70.4	163,695	115,255	69.6	69.3
Iowa	70.3	133,237	93,708	70.9	71.0
Florida	70.2	515,878	362,290	67.3	58.6
Arkansas	69.4	98,345	68,254	69.0	67.9
Nebraska	69.4	77,114	53,583	69.8	69.1
Wisconsin	69.0	259,628	179,275	67.6	66.0
Colorado	68.9	132,368	91,258	70.1	69.7
North Carolina	67.2	318,247	214,124	66.5	65.4
Ohio	67.0	624,976	418,711	66.6	65.1
California	66.7	880,141	587,258	66.1	65.8
Virginia	65.7	272,733	179,353	64.7	62.2
Alaska	65.6	42,896	28,174	67.0	66.2
Georgia	65.5	311,551	204,259	65.7	65.1
New Jersey	65.3	273,135	178,527	64.1	63.2
Maine	65.2	45,313	29,567	63.7	59.2
North Dakota	65.1	29,469	19,185	65.8	66.4
Montana	64.9	33,144	21,516	67.0	65.6



Collections on Arrears

- Up to 50%
- 50 to 59.9%
- 60 to 69.9%
- 70 to 79.9%
- 80 to 83.9%

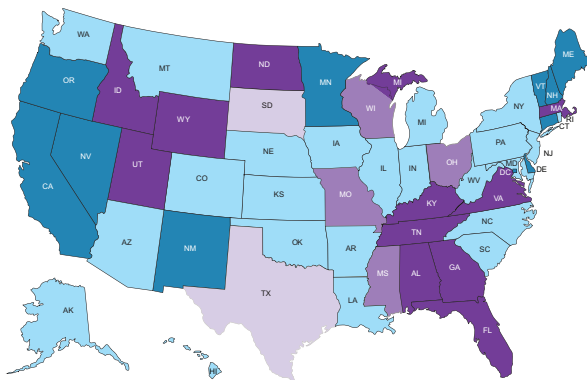
State	FFY2016 (%)	Cases with Arrears (2016)	Cases with Payment Towards Arrears (2016)	FFY2015 (%)	FFY2014 (%)
New Mexico	64.8	49,461	32,073	65.4	65.0
Nevada	64.6	84,826	54,817	62.2	60.0
Michigan	64.5	554,108	357,485	61.4	60.4
Utah	64.5	75,197	48,499	64.7	64.1
Tennessee	63.9	281,005	179,780	62.2	61.4
South Dakota	63.8	36,280	23,147	66.7	65.7
New Hampshire	63.1	28,189	17,790	64.3	64.0
Massachusetts	63.0	168,461	106,251	61.1	60.0
Texas	63.0	1,142,508	720,474	63.8	64.4
Illinois	62.3	314,349	196,118	62.4	60.3
South Carolina	62.2	147,890	92,073	60.4	58.5
Washington	61.8	316,989	196,106	61.6	60.4
Kentucky	61.5	211,844	130,308	60.8	59.6
West Virginia	61.4	90,901	55,890	60.7	60.5
Connecticut	61.1	127,496	77,974	59.7	59.0
Missouri	61.1	270,403	165,260	60.8	59.4
Oklahoma	60.7	176,415	107,196	61.8	61.2
Alabama	60.5	185,745	112,467	59.4	57.8
Oregon	60.5	153,138	92,712	58.8	57.6
Kansas	58.7	108,655	63,858	58.0	60.1
Idaho	58.5	83,642	48,991	58.7	57.9
Mississippi	58.1	203,430	118,214	57.6	57.1
New York	58.1	601,440	349,554	57.8	56.7
Washington, DC	56.8	27,886	15,850	55.2	55.1
Arizona	56.2	137,501	77,388	55.2	55.1
Guam	55.4	4,245	2,354	58.6	62.3
Rhode Island	55.4	35,567	19,710	56.4	56.0
Delaware	54.7	44,281	24,252	53.6	55.5
Louisiana	53.3	196,593	104,805	55.5	55.6
Virgin Islands	46.6	5,329	2,487	45.1	44.3
Hawaii	44.7	47,566	21,292	45.6	43.7
Puerto Rico	44.3	168,639	74,714	43.5	46.4



National: Cost Effectiveness

State	FFY2016 (\$)	Total Distributed (2016) Million (\$)	Total Expended (2016) Million (\$)	FFY2015 (\$)	FFY2014 (\$)
Texas	11.21	4,104,408,975	366,219,809	12.26	11.34
South Dakota	10.69	99,107,009	9,268,495	10.78	11.08
Puerto Rico	10.55	357,781,443	33,899,170	9.75	9.72
Mississippi	9.36	343,593,990	36,721,993	7.94	9.62
Missouri	8.76	627,428,547	71,642,501	8.33	7.73
Wisconsin	8.43	664,311,385	78,826,905	6.76	6.46
Ohio	8.25	1,692,338,407	205,082,217	6.31	7.34
Georgia	7.61	763,563,836	100,354,743	8.37	7.65
Wyoming	7.48	69,644,890	9,312,038	7.22	8.20
Idaho	7.03	183,558,192	26,106,230	7.78	7.28
Tennessee	7.00	643,603,440	91,996,627	7.99	7.74
Michigan	6.74	1,359,721,732	201,816,738	5.75	6.26
Alabama	6.54	352,873,794	53,975,857	5.17	4.85
Utah	6.40	225,850,819	35,314,967	6.53	6.47
Kentucky	6.32	399,362,164	63,159,611	6.33	6.45
Virginia	6.21	660,043,486	106,335,223	6.42	6.59
Florida	6.15	1,602,588,262	260,476,815	5.89	5.75
North Dakota	6.15	105,056,678	17,092,080	6.20	6.37
Massachusetts	6.03	661,036,605	109,700,444	5.40	5.40
Nebraska	5.97	217,423,125	36,449,464	5.97	5.37
Indiana	5.88	585,357,194	99,527,981	5.56	5.69
Iowa	5.73	324,017,634	56,588,188	5.71	5.58
Kansas	5.69	204,368,109	35,931,472	5.80	5.89

State	FFY2016 (\$)	Total Distributed (2016) Million (\$)	Total Expended (2016) Million	FFY2015 (\$)	FFY2014 (\$)
Louisiana	5.56	425,356,646	76,437,395	5.51	5.44
Pennsylvania	5.43	1,288,242,815	237,339,631	5.10	5.48
Rhode Island	5.38	78,920,096	14,657,843	5.86	5.55
New York	5.15	1,868,798,442	363,159,144	4.75	5.10
Arizona	4.98	347,087,972	69,743,637	5.35	5.87
Hawaii	4.92	106,058,328	21,564,841	4.93	5.42
North Carolina	4.89	708,617,465	144,900,099	5.07	4.98
Oklahoma	4.89	365,746,968	74,737,105	5.07	4.81
Arkansas	4.87	251,160,815	51,597,195	4.94	4.50
West Virginia	4.86	199,369,360	41,033,423	5.29	5.03
Illinois	4.75	873,013,706	183,646,612	4.68	4.61
Maryland	4.65	577,925,954	124,380,397	4.54	4.21
South Carolina	4.62	299,602,578	64,845,216	5.62	4.53
Colorado	4.59	356,131,388	77,609,371	4.83	4.90
Washington	4.27	682,352,465	159,695,662	4.54	4.56
Montana	4.24	69,607,489	16,424,900	4.48	4.40
New Jersey	4.20	1,204,984,813	286,639,568	4.45	4.25
Alaska	4.10	112,067,612	28,469,500	4.02	3.82
New Hampshire	3.86	82,002,665	21,229,515	3.46	3.97
Nevada	3.83	213,238,735	55,742,128	4.13	4.00
Maine	3.46	105,755,737	30,522,363	3.50	3.59
Oregon	3.44	384,750,721	111,965,838	4.50	5.18
Minnesota	3.30	594,711,438	179,890,312	3.55	3.58
New Mexico	3.26	131,540,115	40,389,743	3.14	3.37
Connecticut	3.13	262,611,930	83,991,576	3.22	3.33
Vermont	2.89	45,923,092	15,910,005	3.06	3.04
California	2.51	2,408,331,862	959,131,565	2.51	2.43
Delaware	2.28	82,925,431	36,344,109	1.89	2.03
Washington, DC	2.00	53,853,052	26,922,390	2.07	1.99
Virgin Islands	1.82	8,201,845	4,517,888	1.14	1.14
Guam	1.46	10,577,418	7,247,472	1.74	2.02



Cost Effectiveness

- \$0 to \$1.99
- \$2.00 to \$3.99
- \$4.00 to \$5.99
- \$6.00 to \$7.99
- \$8.00 to \$9.99
- \$10.00 to \$12.26

Child Support Strategic Plan

Minnesota's child support mission complements the Office of Child Support Enforcement (OCSE) National Strategic Plan for 2015-2019 by reinforcing the importance of child support income to child well-being. OCSE's plan provides the program's principles, goals and identifies strategies to meet those goals.



Mission

The purpose and mission of the national child support program are derived from Title IV-D of the Social Security Act:

To encourage responsible parenting, family self-sufficiency and child well-being, the national child support program provides assistance in locating parents; establishing paternity; establishing, modifying, and enforcing support obligations; and obtaining child support for children.

Vision

Children can count on their parents for the financial and emotional support they need to be healthy and successful.

Principles

Families First

A family-centered child support program partners with parents to promote consistent support payments.

Case-specific Tools

An effective child support program uses the right tools to meet the needs of the specific case.

Modern Technology

An efficient child support program incorporates modern technology.

Resourceful Leadership

An enterprising child support program leverages sufficient resources to meet its mission.

Evidence-based

A high-performing child support program is evidence-based.

Click here to read the [National Child Support Strategic Plan for 2015-2019](#).



Resources

The 2017 report, in its electronic form, includes Internet hyperlinks to sources and websites including:

Minnesota Association of County Attorneys:

<http://www.mcaa-mn.org/>

Minnesota Association of County Social Services

Administrators:

<http://www.macssa.org/>

Minnesota Child Support Calculator:

<http://childsupportcalculator.dhs.state.mn.us/>

Minnesota Child Support Online (MCSO):

<http://www.childsupport.dhs.state.mn.us/Action/Welcome>

**Minnesota Department of Employment
and Economic Development:**

<http://mn.gov/deed/>

Minnesota Department of Human Services:

<http://mn.gov/dhs/>

- Minnesota Child Support: Keyword search on the department's homepage: Child Support
- Minnesota Child Support Debt and Arrears Management: Keywords on Child Support homepage search: debt and arrears
- Minnesota Child Support ezDocs: Keyword on Child Support homepage search: ezDocs

Minnesota Family Support and Recovery Council:

<http://www.mfsrc.org/>

Minnesota New Hire Reporting Center:

<http://newhire-reporting.com/MN-Newhire/default.aspx>

**United States Department of Health and Human
Services, Office of Child Support Enforcement:**

[http://www.acf.hhs.gov/programs/css/resource-library/search?type\[3058\]=3058](http://www.acf.hhs.gov/programs/css/resource-library/search?type[3058]=3058)

United States Department of Labor:

Bureau of Labor Statistics:

<http://www.dol.gov/>

