

Report on 2013 SCORE Programs

A summary of recycling and waste management in Minnesota



Minnesota Pollution Control Agency

February 2015

Legislative charge

In 1989, the Legislature adopted comprehensive waste reduction and recycling legislation based on recommendations of the Governor's Select Committee on Recycling and the Environment (SCORE). This set of laws, Minn. Stat. § 115A.551-115A.557, commonly referred to as SCORE, initiated a stable source of state funding for recycling programs, as well as waste reduction and the improved management of household hazardous wastes, yard waste, and problem materials. SCORE legislation provides grant dollars, along with funding to counties and local government for long-term flexible programs.

Authors

Arlene Vee, MPCA

Contributors/acknowledgements

Anna Kerr, MPCA

Garth Hickle, MPCA

Tim Farnan, MPCA

Mark Rust, MPCA

Peder Sandhei, MPCA

The MPCA is reducing printing and mailing costs by using the Internet to distribute reports and information to wider audience. Visit our website for more information.

MPCA reports are printed on 100% post-consumer recycled content paper manufactured without chlorine or chlorine derivatives.

Editing and graphic design

PIO staff

Graphic design staff

Administrative Staff

Minnesota Pollution Control Agency

520 Lafayette Road North | Saint Paul, MN 55155-4194 | www.pca.state.mn.us | 651-296-6300

Toll free 800-657-3864 | TTY 651-282-5332

This report is available in alternative formats upon request, and online at www.pca.state.mn.us.

SCORE background

In 1989, the Governor's Select Committee on Recycling and the Environment (SCORE) recommended to the Legislature to adopt a comprehensive set of laws, commonly referred to as SCORE. This act initiated a state funding source for recycling programs, as well as waste reduction, management of household hazardous wastes, and problem materials. SCORE legislation and grant dollars, along with funding from counties and local government, provide the basis for long-term, flexible programs.

This Report on 2013 SCORE Programs summarizes information submitted by all 87 counties and the Western Lake Superior Sanitary District (WLSSD) on waste management efforts, including funding and costs, waste reduction activities, recycling, composting, household hazardous waste programs, problem materials collection, and waste processing and disposal. This information is used to calculate the state's recycling rates and the cost of managing waste and recycling. The report and information on SCORE programs are available at <http://www.pca.state.mn.us/score>.

1989 was the first year the Minnesota Pollution Control Agency (MPCA) collected data, and in 1991 counties began collecting data on a calendar year basis, instead of a fiscal year. By year 1991 the collection and format had greatly improved, making the quality of the data better. Since then, SCORE reporting was placed on-line for easier reporting by the counties and management by the State.

"Problem materials not recycled" (PMNR) includes five materials that have been banned from disposal in Minnesota (vehicle batteries, tires, major appliances, motor oil, and oil filters). The PMNR number is that portion of the materials that is not recycled, but is assumed to be disposed of somewhere else, legally or not, as they are banned from MSW disposal facilities. It is assumed that they are not being counted in landfill or incinerator tonnages.

In 2007 Legislation Law (Chapter 37, Article 1, Section 62 (1,2) requiring the MPCA in consultation with the Association of Minnesota Counties (AMC), the Solid Waste Administrators Association (SWAA), the Solid Waste Management Coordinating Board (SWMCB), and other interested parties to make recommendations that improve and abbreviate SCORE reporting.

The MPCA's first step was in abbreviating the online 2009 SCORE reporting by preloading previous year data and eliminating some survey questions, along with consolidating expense reporting. The second step will begin in 2015 (Reporting year 2014) SCORE will be entered online and tracked through ReTRAC software. This moves the MPCA to facility reporting through its permit process. As an effort to relieve the burden from counties and to ensure that there is less estimation, the entities directly in charge of the waste will also be reporting. The MPCA continues to work with the hauling community to develop a data reporting mechanism that will provide information regarding transport of Municipal Solid Waste (MSW), recyclables, and organics from generation to facility. A standard reporting form has been developed at the request of the haulers in order to simplify the reporting that haulers currently provide to counties. Counties will continue to be responsible for any data that they handle directly, such as drop-off events and materials handled outside of the traditional hauling system. The MPCA will be scheduling a training opportunity and the information for that training will be sent out through the SWAA, Counties Involved in Source Reduction and Recycling (CISRR), and Association of Minnesota Recyclers Managers. (MPCA Contact: Peder Sandhei)

The MPCA uses SCORE information to detail trends in waste generation and disposal. The MPCA Strategic Plan, 2013 to 2017, set a vision that Minnesota's land supports healthy ecosystems and sustainable land uses. To reach this vision, solid waste is to be managed to conserve materials, resources and energy; by ensuring waste is reduced, recycling and organic recovery is increased, resource recovery capacity is maintained, and landfilling is reduced.

Contents

Legislative charge.....	2
Authors.....	2
Contributors/acknowledgements.....	2
Editing and graphic design.....	2
SCORE background.....	1
Contents.....	2
Summary report.....	1
Minnesota counties diverted 68% of its waste from landfills	1
MSW generation in Minnesota.....	2
Per capita MSW generation.....	5
Recycling and composting	6
Materials collected for composting and recycling: tons and trends	7
MSW processing and disposal	9
Resource recovery and landfilling.....	9
Illegal on-site disposal and problem materials not recycled	10
Problem materials not recycled.....	12
SCORE funding	12
2014 activities.....	13
SCORE reporting.....	13
SCORE audit	14
Source separated organic composting rule change.....	14
Paint stewardship	14
2014 Legislation	15
MPCA Solid Waste Policy Report	15
Appendix A: County Score Survey Responses.....	16

Summary report

A snap shot of 2013 SCORE data, is showing less waste is being burnt or buried illegally onsite, more MSW waste is being sent to surrounding states, reversing the trend we have seen since 2005. This shift is showing an increase to North Dakota landfills and Wisconsin landfills and waste to energy facility. However, contrary to this less waste is going to Iowa landfills from Minnesota.

In 2013, MSW generation saw an increase of 1.5% from 2012. This increase was seen in the amount recycled and processed at Waste to Energy (WTE) facilities, not disposed of at landfills.

- Recycling decreased by 0.3%
- Organics increased by 44%
- WTE increased by 1%
- Landfilling decreased by 1%

The tonnage of recyclables collected increased slightly in 2013 compared to 2012 however, there were declines in the amount of material captured for a number of materials types including glass, paper, plastic and textiles. That dynamic, in combination with the increase in overall generation resulted in a decline in the percentage of traditional recyclables captured. Organics collection increased by 44% therefore, the combined recycling rate-including organics and traditional recyclables and it did increase.

A portion of the increase in organics can be attributed to expanded collections of SSOC; however, a substantial portion is due to reporting practices. 2013 is the first year that counties were asked to track and report yard waste. In previous year's yard waste was not documented through SCORE reporting, credits up to 5% were added to recycling rates dependent on county programs.

The amount of dollars spent to implement the county programs increased by 3.5% from 2012. In 2013, 78% of the costs were funded with county funds. SCORE Disbursement dollars covered only 22% of county program costs. 2014 Legislation increased these funds for Fiscal Year 2015 with a one-time \$4 million dollars. Beginning in Fiscal Year 2016, an additional \$3 million will be added to the annual base funding for SCORE grants. These additional funds are to assist counties with waste reuse, reduction, and recycling efforts. The Metropolitan Area counties must use half of these new funds for composting activities.

Minnesota counties diverted 68% of its waste from landfills

The waste hierarchy

Preferred environmental option



Least preferred environmental option

The amount of municipal solid waste diverted from landfilling includes the amount of waste that was collected and recycled, composted, and processed at resource recovery facilities in 2013.

Waste management in Minnesota is guided by the Minnesota Waste Management Act, Minn. Stat. §115A, an integrated waste management systems hierarchy that protects the state's land, air, water and public health. This Statute identifies the most to least preferred management, a hierarchy that prioritizes waste reduction, recycling, composting, and resource recovery.

SCORE is a measurement of total generation of Mixed Municipal Solid Waste (MMSW). This includes wastes composted, recycled, tons sent to landfills and resource recovery facilities, including materials disposed of illegally on-site (burn barrels or farm dumps), and an estimated calculation of the amount of problem materials not recycled by disposed of.

1989 Minnesota Legislation set county recycling goals to be reached by Greater Minnesota Counties and the seven Metropolitan Counties. Each County outside of the metropolitan area has a minimum of 35% by weight of total solid waste generation. The seven metropolitan counties currently have a 50% by weight goal, however, passed by the 2014 Legislation, by 2030 a goal of 75% recycling rate.

MSW generation in Minnesota

Mixed MSW is defined by statute as “garbage, refuse, and other solid waste from residential, commercial, industrial, and community activities that the generator of the waste aggregates for collection.” It includes common materials found in household and commercial garbage such as packaging materials, containers, food discards, plastic, paper, etc.

Municipal solid waste does not include auto hulks, street sweepings, ash, construction debris, mining waste, sludges, tree and agricultural wastes, tires, lead acid batteries, motor and vehicle fluids and filters, and other materials collected, processed, and disposed of as separate waste streams (Minn. Stat. § 115A.03, subd. 21).

Figure 1. Total MSW generation in MN

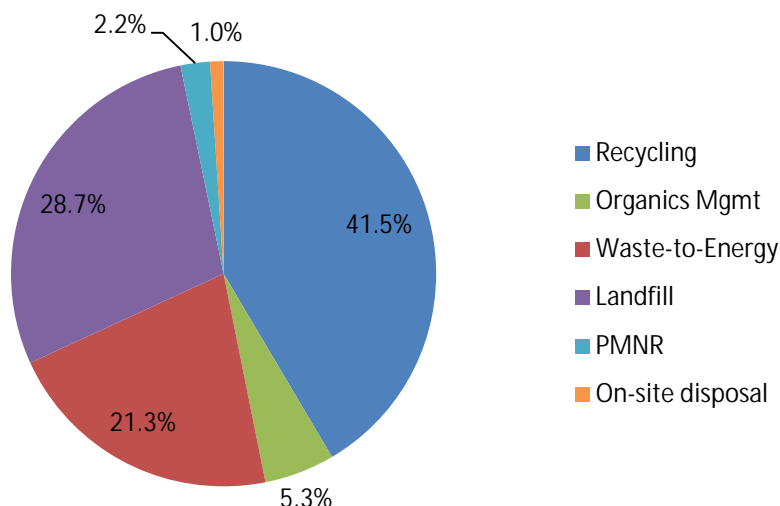
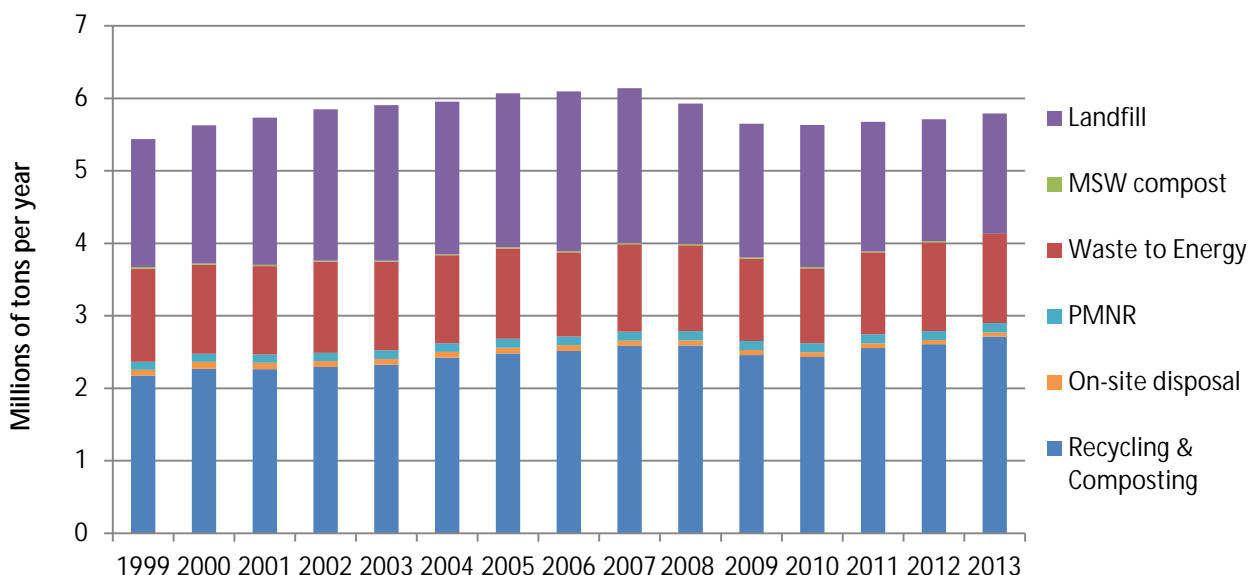


Table 1. Total MSW generation in MN

Recycling	2,405,005 tons
Organics	309,615 tons
On-site disposal	57,113 tons
PMNR	125,086 tons
Waste-to-Energy	1,233,994 tons
Landfill	1,658,834 tons
Total	5,789,647 tons

Total MSW generation in Minnesota is 5,789,647 tons. In 2013, approximately 5.8 million tons of MMSW was generated in Minnesota. Statewide this represents 1.5% increase over 2012. This trend of increased generation continues to rise after the recession seen during the years of 2008 through 2010.

Figure 2. MSW generation trends



The economy has grown, businesses are expanding and rebuilding. In a recent Department of Employment and Economic Development (DEED) survey 82% of Minnesota businesses expect their profits to increase or remain stable in the year ahead. In May, Minnesota gained 10,300 jobs; bringing the total jobs created since January 2011 to 154,300. According to DEED, with more than 2.8 million jobs, Minnesota now has more jobs than ever before. For the first time in state history, private sector employment in Minnesota has surpassed 2.4 million.

The Total MSW generation is a total of tons reported by the 87 counties and the WLSSD. The tons reported by counties are gathered by individual counties. The tonnages reported for recycling, waste to energy and landfilling are as accurate as counties can tabulate. These tonnages are dependent on the cooperation of haulers, waste to energy facilities, landfills, resource recovery facilities, and commercial businesses.

The other pieces of the total waste generated are estimated and calculated tonnages, on-site disposal and problem materials not recycled. Counties enter the amount of county population they believe that have no collection and burn or bury on-site. The MPCA uses a formula of, # of persons X 2.3 lbs./person X 365 days/2000 lbs./ton. The other, problem materials not recycled (PMNR), is a MPCA calculated tonnage that is added to the counties submitted totals to take into account the five banned problem materials (vehicle batteries, tires, major appliances, motor oil, and oil filters). The PMNR number is that portion of the materials that is not recycled, but is assumed to be disposed of

Landfills are sited in Greater Minnesota, scattered throughout the State. Locations of these landfills are in rural and remote areas, closer to and used by Greater Minnesota Counties for disposal. Resource Recovery Facilities are also located in Greater Minnesota Counties; however, in larger populace areas and municipalities, are designed mainly to process the waste that is generated by that area, with limited capacity.

somewhere else, legally or not, as they are banned from MSW disposal facilities. It is assumed that they are not being counted in landfill or incinerator tonnages.

Greater Minnesota has a total population of 2.5 million compared to 5.4 million statewide; with an estimated 96,064 people that live outside of municipalities and are thought to have no collection services available. It is estimated 56,832 tons of MSW is being burnt or buried on-site. In comparison, the Metropolitan Area has a population of 2.9 million, with an estimated 670 people that are thought to burn and bury approximately 281 tons of MSW onsite. Recycling per capita in Greater Minnesota populace is 2.1 tons, and in the Metropolitan Area it is 1.9 tons.

Figure 3. Greater MN MSW generation

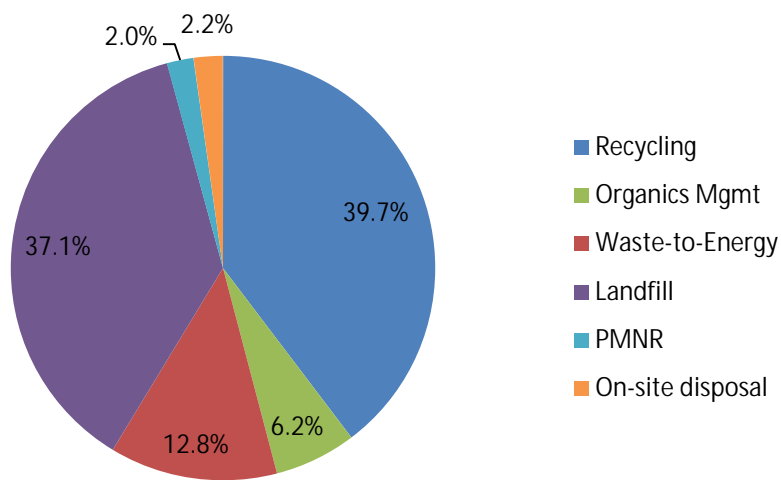


Table 2. Greater MN MSW generation

Recycling	1,011,470.42
Organics	158,638.00
On-site disposal	56,831.63
PMNR	51,614.66
Waste-to-Energy	325,359.22
Landfill	945,092.81
Total Greater MN MSW generation	2,549,007.00

Figure 4. Metropolitan MSW generation

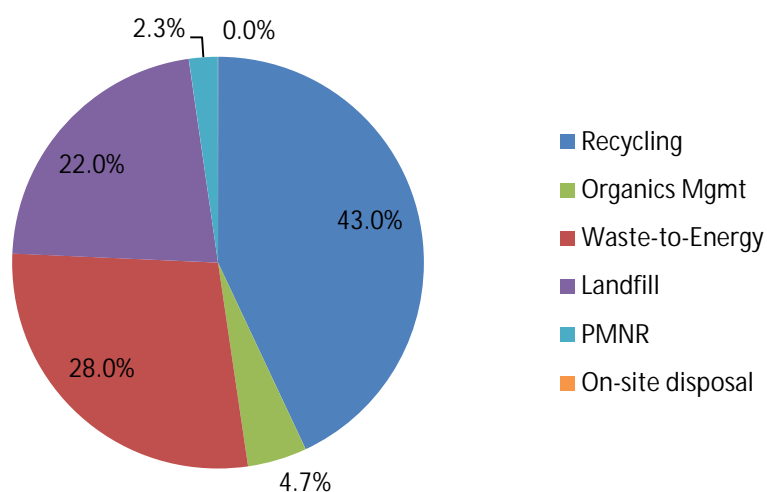


Table 3. Metropolitan MSW generation

Recycling	1,393,531.67
Organics	150,980.00
On-site disposal	281.23
PMNR	73,471.15
WTE	908,635.64
Landfilled	713,741.26
Total Metropolitan MSW Generation	3,240,640.95

Per capita MSW generation

In order to determine if the amount of waste created each year is from an increase in population or an increase in consumption, the MPCA calculates the amount of waste generated by the current population.

In 2013, the Minnesota per capita rate increased to 1.07 tons per person (2,137 Pounds/person/year or an increase of 0.4% from 2012). This is consistent with Minnesota growing economy and low unemployment.

Minnesota population increased to 5.4 million, or by 0.9% from 2012. The Twin Cities Metropolitan area increased to 2.9 million people (1.4% increase) compared to Greater Minnesota increase to 2.5 million people (0.3% increase).

To further determine where the increase of the amount of waste is we examine Greater Minnesota versus Metropolitan area per capita rate. Greater Minnesota per capita rate is 1.03 Tons (2,067 Pounds/person/year), an increase of approximately 28 pounds/person/year from 2012. Metropolitan Area's per capita rate is 1.098 Tons (2,196 pounds/person/year), a decrease of approximately 9 pounds/person/year from 2012.

Recycling and composting

In 2013, Minnesota's combined recycling and composting rate increased to 46.9%, from 2012's recycling rate of 45.6%. Minnesota's recycling programs are among the Nation's most successful. In 2013, over 2.7 tons were recycled, and composted and recycled, an increase of over 108,193 tons.

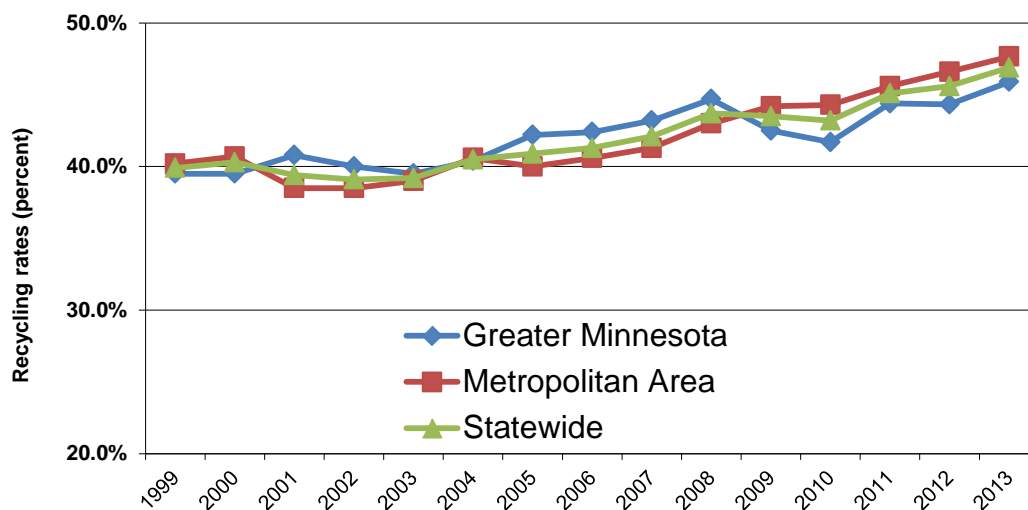
The role organics recycling programs play in influencing the overall recycling rate is increasingly important. To meet legislative goals for recycling both traditional recyclables and organics will need to be captured more effectively in the future. As such, there is value in tracking both categories independently so performance of both types of recycling can be monitored. Recycling of items like glass, paper, plastic and textiles appears to have declined in 2013. In pulling out the 309,615 tons of organic waste that was recovered through Food to Livestock, Food to People, SSO composting and yard waste from the total amount of traditional recycling materials (paper, metal, glass, plastics, and other) we can show a more informative rate. The recycling rate of traditional materials is 41.5%, an additional 5.3% organic recycling was captured, for a total Minnesota combined recycling rate of 46.8%.

Minnesota's combined recycling rate is calculated by dividing the total tons recycled or composted by the total tons of MSW generated. This calculation uses actual weights of collected recyclables and solid waste, as well as tonnage estimates of wastes that are not recorded—on-site disposal of waste and problem materials that are disposed of improperly.

As a region, the Greater Minnesota combined recycling rate was 45.9%; an increase of 1.5 percentage points from 2012. The Metropolitan Area's combined recycling rate was 47.7%; an increase of 1.1 percentage points from 2012. The combined recycling rate includes both traditional recyclables and organics.

Figure 5, below shows the positive changes we have seen in the last five years, after the low during the economic depression experienced 2008 to 2010 and stagnant rates from 1999 through the mid-2000s. Looking at the last five years, we began in 2009 with a base recycling rate of 43% and 2013's was 47%, an increase of four percentage points. Ten years ago in 2004 the base recycling rate was 41%. Many of those increases and decreases can be pointed to markets, better reporting, county program changes, education and public participation.

Figure 5. Minnesota's combined recycling and composting rate



Materials collected for composting and recycling: tons and trends

Over 2.7 million tons of compostable and recyclable materials were collected in 2013, which is an increase from 2012's total of 2.6 million tons.

Figure 6. Materials collected for recycling and composting

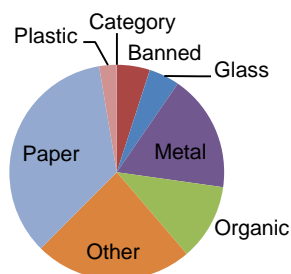


Table 5. Materials collected by category with change from 2012

Category	Tons	Change from 2012
Banned	134,841.14	3,197.47 (2.4%)
Glass	125,022.65	-7,958.65 (-6.0%)
Metal	476,540.84	16,553.39 (3.6%)
Organic	309,615.00	95,364.09 (44.3%)
Other	642,236.30	39,113.41 (6.5%)
Paper	943,375.70	-31,873.36 (-3.3%)
Plastic	71,132.46	-2,066.19 (-2.8%)
Textiles	11,053.95	-4,136.96 (-27.2%)

Recycling by category shows the total of those grades of materials and the efforts of the state and counties to remove these materials from the disposal stream. The largest growth in recycling over the past year was a result of increased organics diversion, due to a large increase of materials to Food to Livestock and Source Separated Organic Composting in 2013.

Portion of the organic recycling increase can be attributed to expanded collections of source separated organics for composting. There were new collection programs established and new composting facilities that opened in the past several years. However, 2013, is also the first year that counties were asked to track and report yard waste. In previous years yard waste was not documented through SCORE reporting, counties that had yard waste collection programs were able to apply a 5% credit to their recycling rates without documentation. So, a substantial portion of the increase is likely attributable to the changes in reporting practice.

Communities throughout the state have made investments in expanding organics recycling. Some of these investments likely impacted 2012 and 2013 data, while other impacts are expected to materialize in 2014 and beyond. Several new composting facilities have opened in the past three years.

Access to organics recycling did expand in 2013, but many Minnesotans still do not have opportunities to recycle their food waste, non-recyclable paper, and compostable plastics. Some additional curbside collection programs launched in 2013, and several cities have announced plans for establishing similar programs in the future. Residents also have more access than ever before to organics recycling drop-sites, a trend that appears to have accelerated in early 2014.

The MPCA has also been working to revise the regulations for compost facilities. The revisions are intended to support the development of additional facilities and to expand capacity at existing facilities. The new rules will be finalized by late 2014 pending approval of the MPCA's Citizens' Board.

A number of cities participated in a voluntary MPCA survey in 2013 which included questions about access to curbside organics recycling and access to drop-site organics recycling. The results from that survey suggest that only about 8%-9% of the state's population has access to curbside organics collection. Most of the curbside access is through subscription based programs where residents opt in and pay a fee to participate. The survey results also suggest access to organics recycling drop sites is

more prominent, but still only about 23% of the state's population have an organics recycling drop-site in their city. Several counties and WLSSD host drop-sites open to any residents within the county or district, so additional residents could also participate if they are willing to transport their organics to other nearby cities.

Minimal data is currently available to evaluate statewide access to organics recycling for commercial businesses. Recycling of organics is certainly happening in the commercial sector, but there are likely still many areas of the state where collection services are not available. Commercial organics recycling options including food donation efforts and food-to-livestock programs remain an important part of the overall organics diversion effort.

2013 SCORE data is showing an increase in recycling and a decrease in landfilling. However, as seen in a Minnesota Statewide Waste Characterization Study (2013) found that Minnesota still has the opportunity to recycle more. Based on sampling at six sites around the state, the data reveals that Minnesota waste has changed over the last 13 years. Paper, plastics, and organics are still the top three components of our garbage, but the proportions have changed-plastic is up, food is up, but paper is down. This Study shows that there is an opportunity to increase recycling, as 70% of what is now disposed of could be recycled or composted. The 2013 Minnesota Statewide Waste Characterization study can be found at: <http://www.pca.state.mn.us/ac966ux>

2013



Below is a break out of recycling by Category with the tonnages recycled by Greater Minnesota and Metropolitan counties in 2013. Metro counties are at times unable to ascertain the reported tonnages by category, so they place in "Unspecified or Other" grade.

Table 6. Metropolitan and Greater MN materials collected for composting and recycling

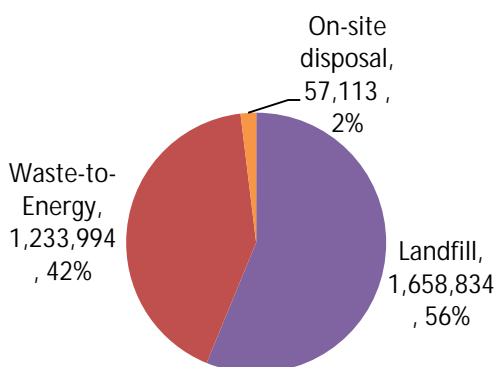
Category	Greater	Metropolitan
Banned	74,836.04	60,005.10
Glass	66,387.85	58,634.80
Metal	304,627.51	171,913.33
Organic	159,437.38	150,979.59
Other	70,644.50	571,591.80
Paper	448,835.36	494,540.34
Plastic	39,260.23	31,872.23
Textiles	6,079.55	4,974.40
Total	1,170,108.42	1,544,511.59

MSW processing and disposal

Minnesota is now down to three main disposal methods: landfilling, resource recovery facilities and illegal on-site disposal. Prairieland Solid Waste Management Facility in the first quarter of 2013 switched its processing from MSW composting to making Refuse Derived Fuel (RDF).

In 2013, MSW processed at resource recovery facilities or disposed of in landfills or onsite totaled over 2.9 million (2,949,941.70) tons, a decrease of approximately 1% from 2012.

Figure 7. MSW disposal



Resource recovery and landfilling

MSW processed at resource recovery facilities, including RDF burnt for energy totaled 1.2 million tons (1,233,994.86). These facilities are located in Minnesota and at the NRG French Island (NSP, LaCrosse, and Wisconsin) incinerator in 2013.

In 2013, the amount of waste burnt for energy increased by 1%, due to the Prairieland Compost Facility in Truman changing its operation over to making RDF and a one year project of plastic to oil closing. The seven Metropolitan Counties increased the amount burnt for energy by approximately 7,000 tons from 2012, for a total of 908,636 tons for 2013. The Greater Minnesota Counties amount burnt for energy decreased by 9,000 tons.

However, in 2013 the total amount of MSW processed by composting, plastic to oil, and burnt for energy totaled 4,000 tons less than 2012.

Table 7. MSW processing comparison

MSW Processing	2012	2013
MSW Composting	15,826.37	0
Resource Recovery	1,220,841.94	1,233,994.86
Plastic to Oil	660	0
Total	1,237,328.31	1,233,994.86

MSW landfilled in Minnesota and the surrounding states totaled 1.6 million tons (1,658,834.07). Minnesota landfills received 1.3 million tons (1,343,689.52), with the landfills in Wisconsin receiving 164,272.86 tons, North Dakota receiving 78,784.48, Iowa receiving 69,137.63, and South Dakota receiving 2,949.58 tons.

The amount of waste leaving Minnesota in 2013 rose, reversing the trend we have seen since 2005. This shift shows an increase to North Dakota landfills (increase of 7,192 tons) and Wisconsin landfills and waste to energy facility (increase of 4,942 tons). However, contrary to this less waste is going to Iowa landfills from Minnesota (decrease of 2,240).

To break the processing and landfilling trends by region, below is a table that shows the disposal methods of MSW by Greater Minnesota and of the Metropolitan Counties in 2013.

Table 8. Greater and Metropolitan MSW disposal

Dest. Facility Type	Greater	Metropolitan
Landfill	945,092.81	713,741.26
Resource Recovery	325,359.22	908,635.64
MSW Total	1,270,452.03	1,622,376.90

Illegal on-site disposal and problem materials not recycled

On-site disposal of MSW, either burning or burying, has been an on-going practice for many years. Although it is against the law for most people, some farmers are still allowed to burn or bury household garbage under existing Min. Stat. §§88.171 and 17.135. However, it should be noted that nearly all materials found in modern garbage are considered prohibited materials (Minn.Stat.88.171) and as a result, are illegal to burn for all Minnesotans regardless of the farmer exemption found in Minn.Stat.17.135.

In the 2013 SCORE survey, counties estimated that 57,113 tons of waste was disposed of on-site representing 1% of the total MSW generated in Minnesota. This estimate may be very conservative. According to a 2005 baseline study on backyard garbage burning in Minnesota, 45% of all rural residents (625,129 persons or 251,056 households) burned their garbage on-site totaling 228,172 tons each year.

Figure 8. On-site disposal

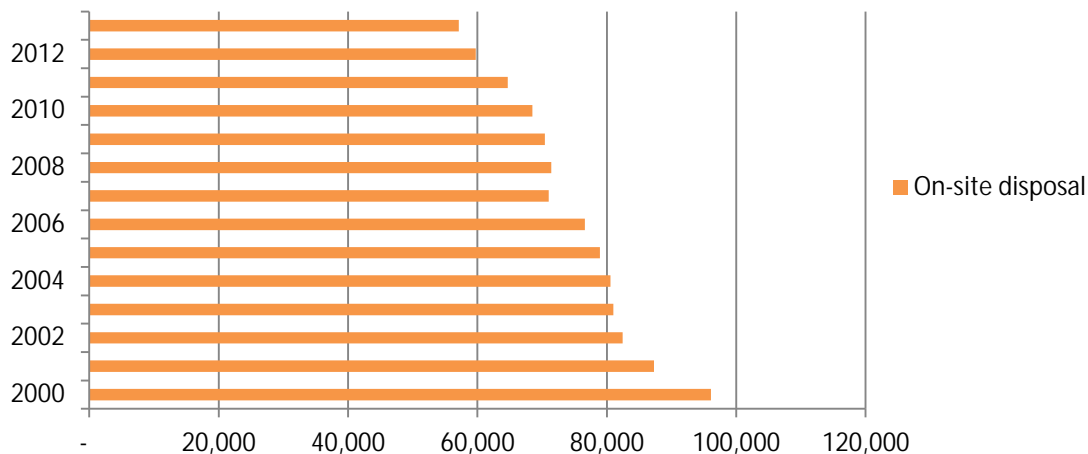


Table 9. On-Site disposal by MPCA Region

MPCA Region	2013
Metropolitan	281
North Central	9,363
Northeast	3,863
Northwest	7,210
Southeast	19,947
Southwest	16,449
Total Tons	57,113

A follow-up study on backyard garbage burning in Minnesota was done in 2010 to determine whether education, outreach and collection infrastructure activities implemented by the MPCA during its Burn Barrel Reduction Campaign from 2007 to 2010 had any impact on disposal behavior. The study determined that the use of open burning, burn barrels, etc. as a means of garbage disposal had fallen 12% or 30,657 households. Although these are impressive results, 39% of all rural residents (550,797 persons) and 228,000 households practice some type of on-site burning. The amount of waste burned on-site would be 201,041 tons. The latest 2010 Study may be seen at <http://www.pca.state.mn.us/index.php/view-document.html?gid=14316>.

At the time of this writing, the MPCA is preparing to develop and implement a similar study in 2015 to determine whether additional reductions in on-site garbage burning occurred since 2010 and what were the motivating factors behind these reductions.

In Minnesota, 31 counties have formally banned garbage burning at the local level, passing a county board resolution stating garbage service is reasonably available to all residents and making onsite disposal illegal for county residents. MPCA has available at its website facts and resources to help in reducing the amount of illegal backyard burning. <http://www.pca.state.mn.us/index.php/living-green/living-green-citizen/reduce-reuse-recycle/dont-burn-your-garbage.html>

Problem materials not recycled

Problem materials not recycled (PMNR) makes up 2% or 125,086 tons of all MSW generated in 2013. PMNR includes five materials that have been banned from disposal in Minnesota (vehicle batteries, tires, major appliances, motor oil, oil filters). The PMNR number is that portion of the materials that is not recycled, but is assumed to be disposed of somewhere else, legally or not, as they are banned from MSW disposal facilities. It is assumed that they are not being counted in landfill or incinerator tonnages.

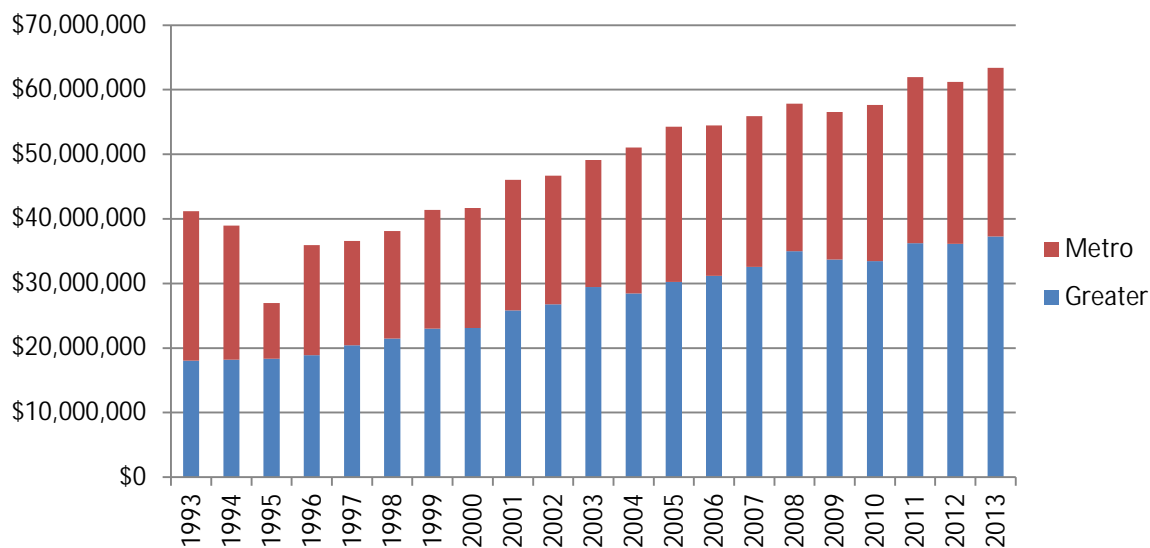
SCORE funding

Funding of SCORE programs in 2013, revenues supporting county SCORE programs totaled \$ 68,138,308. The majority of revenues supporting the counties SCORE programs are from County Service Fees (35%), with SCORE dollars coming in second at 20%, and General Revenues 14% of total revenues. The remaining 30% of revenues is from: revenues carried over, materials sales, land disposal facility surcharge, grants, other, HHW funding, adjustment to carry/over and processing facility tip fees making up the remaining revenues respectively.

SCORE reported county and city expenses for 2013 total \$ 63,361,532.45. In looking closer to what the counties are spending their dollars on: 34% of the \$63 million is being spent on recycling, 26% is being spent on administration and oversight and 20% is being spent on HHW and problem material programs management. The remaining 20% is divided between grants to others, education, yard waste, market development, source reduction, and litter prevention respectively.

This investment is in addition to undocumented dollars spent by other local units of government, such as townships, on programs such as recycling, household hazardous waste collection, and waste education.

Figure 9. Minnesota expenses



Money from the State is passed onto the county level in the form of annual block grants. Each county is required to match the funding from the Legislature with a local contribution of at least 25%.

2014 Legislation took up the issue of SCORE disbursement dollars not keeping up with inflation and the underfunding of SCORE. Legislators reinvested in SCORE by passing HF3172/SF2785, Omnibus Supplemental Finance Bill, with an additional \$4 million for Fiscal Year 2015, then in Fiscal Year 2016 and thereafter it will be \$3 million to be added to the annual base funding of SCORE grants to assist counties with waste reuse, reduction and recycling efforts.

As a result with this renewed investment counties will be able to address the challenges, growing costs and increased demands they have been experiencing in managing and collecting compost and recycling materials.

2014 activities

Solid waste, recycling, organic composting and funding received a great deal of attention, study, and ultimate change during 2014. This work will affect future SCORE reporting and data going forward.

SCORE reporting

In 2015 (Reporting year 2014), SCORE will be entered online and tracked through ReTRAC software. This moves the MPCA to facility reporting through its permit process. As an effort to relieve the burden from counties and to ensure that there is less estimation, the entities directly in charge of the waste will also be reporting. The MPCA continues to work with the hauling community to develop a data reporting mechanism that will provide information regarding transport of MSW, recyclables, and organics from generation to facility. A standard reporting form has been developed at the request of the haulers in order to simplify the reporting that haulers currently provide to counties. Counties will continue to be responsible for any data that they handle directly, such as drop-off events and materials handled outside of the traditional hauling system.

The MPCA will be scheduling training opportunities. Information for this training will be sent out through the Solid Waste Administrators Association, Counties Involved in Source Reduction and Recycling (CISRR), and Association of Minnesota Recyclers Managers.

The 2013 SCORE report for the first time includes organics as a separate and distinct category. Effectively capturing both organics and traditional recyclables will be essential to meeting the state's recycling goals. However, looking at each category individually will provide more insight into performance for both processes.

Terminology used to describe these activities will also be part of this evaluation. Organics recycling is comprised of Food-to-People, Food-to-Livestock, and Composting. Food-to-People is essentially a reuse strategy. Composting has some similarities to recycling in that it involves capturing source separated material that is collected to manufacture a produce, but also has some different characteristics. Ensuring that we use terminology and data management practices that allow us to distinguish these activities from each other and traditional recycling will help ensure that progress in one area does not mask declining performance in another. As such reporting practices and terminology for the 2014 SCORE report will be evaluated to help ensure SCORE will provide policy makers and the public with an accurate assessment of the state's recycling performance.

SCORE audit

Office of the Legislative Auditor is auditing SCORE, focusing of the 2014 audit is the effectiveness of Minnesota's waste abatement efforts, specifically source reduction, reuse, recycling and composting programs and policies. Some of the questions being asked are:

- How effective are Minnesota's waste abatement efforts?
- Does the current funding structure incentivize effective waste abatement?
- How effective are Minnesota's solid waste policies and how do they compare to other states?

OLA staff are currently reviewing solid waste data and having discussions with state and local entities to answer these questions which will be summarized in their final audit report, anticipated in January of 2015. A similar audit was conducted in 2002 in which the focus was primarily the SCORE program (grant pass-through dollars, solid waste data, etc.).

Source separated organic composting rule change

The MPCA has been working on revising the regulations for organic compost facilities. The revisions impact Chapters 7001 and 7035 and support efforts to increase composting while being adequately protective of the environment. The proposed changes:

1. Create the Source Separated Organic Material (SSOM) Compost facilities category. The proposed rule establishes requirements appropriate to the composting of SSOM, which will differ from requirements applicable to Solid Waste Composting facilities. Regulations for Solid Waste Composting facilities are designed for organics that have been co-mingled with MMSW. SSOM compost facilities will be able to accept items like food waste, non-recyclable paper and compostable plastics that are not acceptable at yard waste facilities. The MPCA expects that the proposed requirements will reduce costs to build and operate SSOM facilities. A permit will still be required.
2. Establish a new category of facilities called small compost sites. Small compost sites must have no more than 120 cubic yards of material on site at any given time and meet other general requirements. Under the proposed rule, small compost sites may accept materials that backyard compost sites cannot. Small compost sites, like backyard compost sites, will not require a state permit to operate.
3. Modify the existing backyard compost site definition. Apartment buildings and commercial office complexes that compost on-site are now incorporated into the small compost site definition. A permit is still not required, but the larger entities do have some increased responsibility to operate as good neighbors.

No changes will be made to the existing rules for yard waste composting and solid waste composting. Under the existing and proposed rules, local governments continue to have the option of enacting ordinances to establish more stringent requirements. The proposed rules will be finalized by late 2014 pending approval of the MPCA's Citizens' Board.

Paint stewardship

Paint Stewardship Program/PaintCare – The Minnesota paint stewardship program operated by industry funded and managed organization, PaintCare, will launch on November 1, 2014. The program is expected to result in an expanded number of collection locations for unwanted paint across the state as well as reduce the costs currently shouldered by the county HHW programs. For more information on the program, please see <http://www.pca.state.mn.us/ycx948u>.

2014 Legislation

2014 legislation passed a number of Bills that will have positive effects on recycling and organic composting, along with the management of solid waste in the future. Legislation was passed for a one-time \$4 million (Environmental Fund) beginning in Fiscal Year (FY) 2015, in the future \$3 million of which will be for annual base funding for SCORE grants to assist counties with waste reuse, reduction, and recycling efforts. The Metropolitan Counties must use half of the new funds for composting activities.

Legislation was also passed to increase the Metropolitan Area goal for recycling to be increased from a 50% goal to a 75 % goal by the end of 2030. This Bill adds sport facilities by January 1, 2015, all college and professional sports venues, to the commercial and public entity recycling requirements throughout the State of Minnesota.

Legislation specific to Commercial and State Agencies was passed regarding reuse, recycling, waste reduction efforts. Two specific additional recycling amendments were made, including: State Agencies recycling rate goals, reporting, and recycling improvements; and Commercial buildings within the seven county metropolitan areas, generating more than 4 cubic yards of solid waste per week, to offer recycling opportunities to their employees, tenants, and customers starting in 2016. This Bill received a second amendment which added prohibition of sharps from being placed with recyclable materials.

MPCA Solid Waste Policy Report

MPCA Solid Waste Policy Report (SWPR) is a legislative report providing policy analysis and recommendations related to solid waste. The SWPR is prepared for the legislature by the MPCA every four years and brings forward recommendations for solid waste-related initiatives with the goal of advancing Minnesota's materials management objectives. Previous reports have included themes such as addressing on-site disposal and burn barrels, beverage container recycling, developing commercial recycling requirements, and creating product stewardship laws. Progress has been made on many fronts as a result of the SWPR recommendations. The next report is due December 31, 2015. The MPCA staff is currently working on the scope and topics to be addressed in the 2015 report and will be working with a variety of stakeholders throughout the process.

Appendix A: County Score Survey Responses

County Survey Responses
Finances: Revenues (part 1)

County	CY2012 revenue carried over	Adjustment to carry over	General revenue	Service fee	Processing facility tip fee	Land disposal facility surcharge
Aitkin	\$267,006	0	\$165,624	\$0	\$0	\$0
Anoka	\$0	0	\$0	\$1,809,459	\$0	\$0
Becker	(\$121,019)	121,019	\$0	\$219,287	\$0	\$0
Beltrami	\$0	0	\$739,500	\$0	\$0	\$0
Benton	\$33,779	0	\$0	\$171,205	\$0	\$0
Big Stone	\$1,992	0	\$122,832	\$2,336	\$0	\$0
Blue Earth	\$0	0	\$150,034	\$236	\$0	\$0
Brown	\$330	0	\$341,989	\$15,652	\$0	\$0
Carlton	(\$58,301)	58,301	\$0	\$0	\$37,358	\$0
Carver	\$0	0	\$0	\$425,771	\$0	\$0
Cass	\$0	0	\$0	\$831,354	\$0	\$0
Chippewa	\$0	0	\$126,992	\$0	\$0	\$0
Chisago	\$0	0	\$0	\$269,665	\$10,172	\$0
Clay	\$46,401	0	\$0	\$504,416	\$0	\$0
Clearwater	\$0	0	\$0	\$107,594	\$0	\$0
Cook	\$0	0	\$343,093	\$0	\$0	\$0
Cottonwood	\$27,315	0	\$0	\$183,042	\$0	\$0
Crow Wing	\$0	0	\$508,907	\$0	\$86,016	\$0
Dakota	(\$1)	1	\$0	\$0	\$0	\$1,290,269
Dodge	\$0	0	\$238,675	\$0	\$44,500	\$0
Faribault	\$79,750	0	\$175,066	\$0	\$0	\$0
Fillmore	(\$4,094)	4,094	\$13,988	\$0	\$0	\$0
Freeborn	\$70,335	0	\$394,220	\$0	\$0	\$0
Goodhue	\$0	0	\$357,324	\$0	\$0	\$0
Grant	\$103,245	9	\$36,433	\$121,350	\$0	\$0
Hennepin	\$0	0	\$0	\$5,621,247	\$267,427	\$0
Houston	\$0	0	\$188,448	\$0	\$0	\$0
Hubbard	\$0	0	\$312,417	\$0	\$0	\$0
Isanti	\$103,287	0	\$23,356	\$0	\$0	\$0
Itasca	\$0	0	\$381,577	\$0	\$0	\$0
Jackson	\$190,222	0	\$13,988	\$0	\$0	\$0
Kanabec	\$111,421	0	\$13,868	\$0	\$0	\$0
Kandiyohi	\$0	0	\$10,345	\$292,400	\$0	\$0
Kittson	\$7,785	0	\$13,988	\$0	\$0	\$0
Koochiching	\$108	0	\$85,233	\$85,233	\$16,032	\$0
Lac qui Parle	\$248,836	0	\$105,000	\$0	\$0	\$0
Lake	\$0	0	\$170,618	\$4,771	\$0	\$0
Lake of The Woods	\$0	0	\$162,715	\$0	\$0	\$0
Le Sueur	\$104,958	0	\$144,306	\$0	\$0	\$0
Lincoln	\$27,723	0	\$165,740	\$0	\$0	\$0
Lyon	\$0	0	\$0	\$234,321	\$0	\$114,000
Mahnomen	\$32,635	0	\$13,988	\$0	\$0	\$0
Marshall	\$0	0	\$0	\$1,504	\$0	\$0
Martin	\$67,038	0	\$624,492	\$0	\$0	\$0
McLeod	\$0	0	\$0	\$75,360	\$520,388	\$990,224
Meeker	\$17,394	0	\$15,000	\$0	\$0	\$0
Mille Lacs	\$97,970	0	\$30,400	\$0	\$0	\$0
Morrison	\$0	0	\$244,576	\$0	\$0	\$0

County Survey Responses
Finances: Revenues (part 1)

County	CY2012 revenue carried over	Adjustment to carry over	General revenue	Service fee	Processing facility tip fee	Land disposal facility surcharge
Mower	\$0	0	\$0	\$309,721	\$0	\$0
Murray	(\$17,545)	17,545	\$13,750	\$0	\$0	\$0
Nicollet	\$24,035	0	\$292,649	\$0	\$0	\$0
Nobles	\$82,244	0	\$0	\$184,031	\$0	\$191,330
Norman	\$0	0	\$59,213	\$0	\$0	\$0
Olmsted	(\$373,144)	373,144	\$0	\$0	\$0	\$0
Otter Tail	\$15,300	0	\$0	\$772,412	\$0	\$0
Pennington	\$175,913	0	\$13,988	\$0	\$0	\$0
Pine	\$100,527	0	\$70,000	\$0	\$0	\$0
Pipestone	(\$174,924)	174,924	\$190,467	\$3,640	\$0	\$0
Polk	\$317,998	0	\$0	\$260,471	\$0	\$0
Pope/Douglas	\$37,708	0	\$290,000	\$0	\$0	\$0
Ramsey	\$625,759	0	\$0	\$5,339,340	\$0	\$0
Red Lake	\$0	0	\$12,379	\$0	\$0	\$0
Redwood	\$548,199	0	\$347,637	\$1,750	\$0	\$0
Renville	\$185,492	58,988	\$315,000	\$12,408	\$3,001	\$0
Rice	\$386,522	0	\$0	\$654,718	\$0	\$0
Rock	(\$32,736)	32,736	\$63,212	\$0	\$15,886	\$0
Roseau	(\$293)	293	\$0	\$0	\$0	\$0
Scott	\$680,597	0	\$80,330	\$0	\$0	\$0
Sherburne	\$257,542	0	\$0	\$0	\$0	\$54,418
Sibley	\$15,853	0	\$130,495	\$0	\$0	\$0
St. Louis - partial	\$0	0	\$0	\$1,003,817	\$0	\$0
Stearns	\$105,661	0	\$0	\$0	\$0	\$0
Steele	\$0	0	\$515,728	\$0	\$0	\$0
Stevens	(\$8,516)	8,516	\$106,809	\$0	\$0	\$0
Swift	(\$109,839)	109,839	\$179,834	\$0	\$0	\$0
Todd	\$0	0	\$0	\$300,542	\$0	\$0
Traverse	(\$47,050)	47,050	\$13,988	\$0	\$0	\$0
Wabasha	\$0	0	\$21,995	\$0	\$0	\$0
Wadena	\$0	0	\$0	\$187,042	\$23,062	\$0
Waseca	(\$143,797)	143,797	\$0	\$0	\$0	\$0
Washington	\$0	0	\$0	\$933,354	\$0	\$0
Watonwan	\$357,723	0	\$14,508	\$173,233	\$0	\$0
Wilkin	\$0	0	\$0	\$82,593	\$0	\$0
Winona	(\$83,853)	83,853	\$286,929	\$618,375	\$0	\$0
WLSSD	\$0	0	\$0	\$1,659,715	\$380,871	\$0
Wright	\$889,107	0	\$77,219	\$16,288	\$0	\$0
Yellow Medicine	\$30,053	0	\$0	\$54,223	\$0	\$20,940
Metro Area	\$883,300	\$1	\$0	\$14,129,170	\$267,427	\$1,344,687
Greater Minn.	\$4,417,351	\$1,234,108	\$9,530,861	\$9,414,704	\$1,137,286	\$1,316,494
Minnesota	\$5,300,651	\$1,234,109	\$9,530,861	\$23,543,874	\$1,404,713	\$2,661,181

County Survey Responses
Finances: Revenues (part 2)

County	SCORE pass-through	Grants	HHW funding	Material sales	Other	Total revenue
Aitkin	\$55,950	\$26,513	\$3,568	\$0	\$19,321	\$537,981
Anoka	\$818,409	\$270,275	\$0	\$13,194	\$74,824	\$2,986,161
Becker	\$40,144	\$0	\$34,271	\$312,841	\$7,632	\$614,174
Beltrami	\$110,461	\$0	\$9,035	\$0	\$0	\$858,996
Benton	\$94,455	\$0	\$444	\$0	\$10,435	\$310,318
Big Stone	\$55,950	\$0	\$2,400	\$0	\$700	\$186,210
Blue Earth	\$157,961	\$0	\$52,749	\$0	\$0	\$360,980
Brown	\$62,609	\$479	\$3,372	\$0	\$14,305	\$438,736
Carlton	\$86,499	\$13,797	\$7,349	\$150	\$803	\$145,956
Carver	\$226,544	\$260,526	\$0	\$0	\$219,572	\$1,132,412
Cass	\$69,234	\$0	\$4,227	\$22,804	\$0	\$927,619
Chippewa	\$55,950	\$3,443	\$2,400	\$0	\$9,004	\$197,788
Chisago	\$131,165	\$1,307	\$21,330	\$5,402	\$7,920	\$446,962
Clay	\$146,176	\$0	\$9,506	\$3,607	\$404	\$710,510
Clearwater	\$55,950	\$0	\$4,727	\$0	\$0	\$168,271
Cook	\$0	\$0	\$2,573	\$96,613	\$0	\$442,279
Cottonwood	\$55,950	\$0	\$0	\$3,345	\$62,897	\$332,549
Crow Wing	\$153,265	\$0	\$10,097	\$0	\$0	\$758,285
Dakota	\$983,009	\$0	\$212,939	\$0	\$0	\$2,486,217
Dodge	\$55,950	\$0	\$600	\$82,464	\$4,274	\$426,463
Faribault	\$0	\$0	\$0	\$0	\$3,571	\$258,387
Fillmore	\$55,950	\$0	\$0	\$0	\$0	\$69,938
Freeborn	\$75,873	\$0	\$5,779	\$910	\$7,832	\$554,949
Goodhue	\$0	\$0	\$10,757	\$171,340	\$10,798	\$550,219
Grant	\$55,950	\$0	\$0	\$0	\$8,743	\$325,730
Hennepin	\$2,858,773	\$613,532	\$70,995	\$843,471	\$79,870	\$10,355,315
Houston	\$55,950	\$0	\$3,750	\$0	\$89,961	\$338,109
Hubbard	\$55,950	\$0	\$3,143	\$45,578	\$0	\$417,087
Isanti	\$93,267	\$0	\$1,313	\$0	\$0	\$221,223
Itasca	\$165,258	\$0	\$4,649	\$6,924	\$0	\$558,408
Jackson	\$55,950	\$0	\$618	\$8,977	\$0	\$269,755
Kanabec	\$55,950	\$0	\$164	\$0	\$89	\$181,492
Kandiyohi	\$103,013	\$0	\$48,938	\$369,116	\$137,188	\$961,000
Kittson	\$55,950	\$0	\$0	\$0	\$26,236	\$103,959
Koochiching	\$55,950	\$0	\$3,053	\$33,200	\$0	\$278,809
Lac qui Parle	\$55,950	\$0	\$2,400	\$0	\$2,595	\$414,781
Lake	\$55,950	\$0	\$4,762	\$17,970	\$0	\$254,071
Lake of The Woods	\$55,950	\$0	\$0	\$18,331	\$0	\$236,996
Le Sueur	\$67,504	\$0	\$3,054	\$24,238	\$18,054	\$362,114
Lincoln	\$55,950	\$0	\$0	\$0	\$27,068	\$276,480
Lyon	\$62,979	\$0	\$51,758	\$0	\$52,402	\$515,460
Mahnomen	\$27,975	\$0	\$2,764	\$0	\$0	\$77,362
Marshall	\$55,950	\$0	\$0	\$0	\$36,446	\$93,900
Martin	\$0	\$0	\$0	\$0	\$9,983	\$701,513
McLeod	\$88,570	\$0	\$17,838	\$663,215	\$25,255	\$2,380,850
Meeker	\$56,488	\$0	\$2,879	\$0	\$641	\$92,402
Mille Lacs	\$63,135	\$0	\$3,699	\$0	\$0	\$195,204
Morrison	\$80,844	\$0	\$4,933	\$0	\$144,765	\$475,118
Mower	\$95,891	\$0	\$7,856	\$167,635	\$4,423	\$585,526
Murray	\$55,950	\$0	\$0	\$0	\$18,611	\$88,311

County Survey Responses
Finances: Revenues (part 2)

County	SCORE pass-through	Grants	HHW funding	Material sales	Other	Total revenue
Nicollet	\$80,483	\$0	\$6,634	\$0	\$0	\$403,801
Nobles	\$55,950	\$0	\$0	\$0	\$6,650	\$520,205
Norman	\$55,950	\$0	\$2,959	\$0	\$0	\$118,122
Olmsted	\$356,863	\$0	\$133,212	\$0	\$184,601	\$674,676
Otter Tail	\$139,746	\$0	\$36,841	\$647,906	\$0	\$1,612,205
Pennington	\$55,950	\$0	\$0	\$1,176	\$15,933	\$262,960
Pine	\$71,857	\$0	\$1,134	\$0	\$0	\$243,518
Pipestone	\$55,950	\$0	\$0	\$0	\$32,320	\$282,377
Polk	\$0	\$22,366	\$4,744	\$94,326	\$27,516	\$727,420
Pope/Douglas	\$144,589	\$0	\$13,817	\$0	\$600	\$486,714
Ramsey	\$1,254,451	\$348,205	\$0	\$0	\$82,024	\$7,649,779
Red Lake	\$55,950	\$0	\$3,916	\$887	\$1,133	\$74,264
Redwood	\$55,950	\$0	\$0	\$193,460	\$48,797	\$1,195,793
Renville	\$55,950	\$0	\$0	\$0	\$1,801	\$632,640
Rice	\$157,954	\$0	\$38,697	\$354,062	\$100,401	\$1,692,354
Rock	\$55,950	\$0	\$0	\$0	\$19,530	\$154,578
Roseau	\$55,950	\$0	\$4,464	\$0	\$57,584	\$117,998
Scott	\$323,165	\$0	\$0	\$0	\$0	\$1,084,092
Sherburne	\$217,670	\$1,018	\$4,196	\$0	\$61	\$534,905
Sibley	\$55,950	\$0	\$2,188	\$18,909	\$12,361	\$235,756
St. Louis - partial	\$55,950	\$25,000	\$13,989	\$390,258	\$94,637	\$1,583,651
Stearns	\$369,173	\$445,859	\$0	\$0	\$0	\$920,693
Steele	\$88,857	\$0	\$0	\$0	\$1,223	\$605,808
Stevens	\$55,950	\$0	\$0	\$0	\$214	\$162,973
Swift	\$27,975	\$0	\$2,400	\$128,421	\$0	\$338,630
Todd	\$60,211	\$0	\$4,731	\$90,783	\$0	\$456,267
Traverse	\$55,950	\$0	\$0	\$0	\$0	\$69,938
Wabasha	\$55,950	\$0	\$3,709	\$0	\$0	\$81,654
Wadena	\$55,950	\$0	\$0	\$0	\$0	\$266,054
Waseca	\$0	\$0	\$3,048	\$207,326	\$1,093	\$211,467
Washington	\$590,442	\$239,511	\$0	\$0	\$129,852	\$1,893,159
Watonwan	\$0	\$0	\$2,655	\$0	\$10,103	\$558,222
Wilkin	\$55,950	\$0	\$0	\$107,159	\$1,100	\$246,802
Winona	\$125,603	\$0	\$24,120	\$0	\$15,192	\$1,070,219
WLSSD	\$253,510	\$88,723	\$250,278	\$100,253	\$92,105	\$2,825,456
Wright	\$308,874	\$8,019	\$11,700	\$5,924	\$512	\$1,317,643
Yellow Medicine	\$55,950	\$0	\$0	\$0	\$1,014	\$162,179
Metro Area	\$6,949,298	\$1,733,066	\$288,130	\$856,665	\$586,204	\$27,037,948
Greater Minn.	\$6,611,776	\$635,506	\$917,990	\$4,395,510	\$1,488,775	\$41,100,360
Minnesota	\$13,561,074	\$2,368,572	\$1,206,120	\$5,252,175	\$2,074,979	\$68,138,308

County Survey Responses
Finances: Revenue summary

County	Adjusted CY2012 revenue (carried over)	CY2012 revenue	Total revenue
Aitkin	\$267,006	\$270,975	\$537,981
Anoka	\$0	\$2,986,161	\$2,986,161
Becker	\$0	\$614,174	\$614,174
Beltrami	\$0	\$858,996	\$858,996
Benton	\$33,779	\$276,539	\$310,318
Big Stone	\$1,992	\$184,218	\$186,210
Blue Earth	\$0	\$360,980	\$360,980
Brown	\$330	\$438,406	\$438,736
Carlton	\$0	\$145,956	\$145,956
Carver	\$0	\$1,132,412	\$1,132,412
Cass	\$0	\$927,619	\$927,619
Chippewa	\$0	\$197,788	\$197,788
Chisago	\$0	\$446,962	\$446,962
Clay	\$46,401	\$664,109	\$710,510
Clearwater	\$0	\$168,271	\$168,271
Cook	\$0	\$442,279	\$442,279
Cottonwood	\$27,315	\$305,234	\$332,549
Crow Wing	\$0	\$758,285	\$758,285
Dakota	\$0	\$2,486,217	\$2,486,217
Dodge	\$0	\$426,463	\$426,463
Faribault	\$79,750	\$178,637	\$258,387
Fillmore	\$0	\$69,938	\$69,938
Freeborn	\$70,335	\$484,614	\$554,949
Goodhue	\$0	\$550,219	\$550,219
Grant	\$103,254	\$222,476	\$325,730
Hennepin	\$0	\$10,355,315	\$10,355,315
Houston	\$0	\$338,109	\$338,109
Hubbard	\$0	\$417,087	\$417,087
Isanti	\$103,287	\$117,936	\$221,223
Itasca	\$0	\$558,408	\$558,408
Jackson	\$190,222	\$79,533	\$269,755
Kanabec	\$111,421	\$70,071	\$181,492
Kandiyohi	\$0	\$961,000	\$961,000
Kittson	\$7,785	\$96,174	\$103,959
Koochiching	\$108	\$278,701	\$278,809
Lac qui Parle	\$248,836	\$165,945	\$414,781
Lake	\$0	\$254,071	\$254,071
Lake of The Woods	\$0	\$236,996	\$236,996
Le Sueur	\$104,958	\$257,156	\$362,114
Lincoln	\$27,723	\$248,758	\$276,480
Lyon	\$0	\$515,460	\$515,460
Mahnomen	\$32,635	\$44,727	\$77,362
Marshall	\$0	\$93,900	\$93,900
Martin	\$67,038	\$634,475	\$701,513
McLeod	\$0	\$2,380,850	\$2,380,850
Meeker	\$17,394	\$75,008	\$92,402
Mille Lacs	\$97,970	\$97,234	\$195,204
Morrison	\$0	\$475,118	\$475,118

County Survey Responses
Finances: Revenue summary

County	Adjusted CY2012 revenue (carried over)	CY2012 revenue	Total revenue
Mower	\$0	\$585,526	\$585,526
Murray	\$0	\$88,311	\$88,311
Nicollet	\$24,035	\$379,766	\$403,801
Nobles	\$82,244	\$437,961	\$520,205
Norman	\$0	\$118,122	\$118,122
Olmsted	\$0	\$674,676	\$674,676
Otter Tail	\$15,300	\$1,596,905	\$1,612,205
Pennington	\$175,913	\$87,047	\$262,960
Pine	\$100,527	\$142,991	\$243,518
Pipestone	\$0	\$282,377	\$282,377
Polk	\$317,998	\$409,422	\$727,420
Pope/Douglas	\$37,708	\$449,006	\$486,714
Ramsey	\$625,759	\$7,024,020	\$7,649,779
Red Lake	\$0	\$74,264	\$74,264
Redwood	\$548,199	\$647,594	\$1,195,793
Renville	\$244,480	\$388,160	\$632,640
Rice	\$386,522	\$1,305,832	\$1,692,354
Rock	\$0	\$154,578	\$154,578
Roseau	\$0	\$117,998	\$117,998
Scott	\$680,597	\$403,495	\$1,084,092
Sherburne	\$257,542	\$277,363	\$534,905
Sibley	\$15,853	\$219,903	\$235,756
St. Louis - partial	\$0	\$1,583,651	\$1,583,651
Stearns	\$105,661	\$815,032	\$920,693
Steele	\$0	\$605,808	\$605,808
Stevens	\$0	\$162,973	\$162,973
Swift	\$0	\$338,630	\$338,630
Todd	\$0	\$456,267	\$456,267
Traverse	\$0	\$69,938	\$69,938
Wabasha	\$0	\$81,654	\$81,654
Wadena	\$0	\$266,054	\$266,054
Waseca	\$0	\$211,467	\$211,467
Washington	\$0	\$1,893,159	\$1,893,159
Watsonwan	\$357,723	\$200,499	\$558,222
Wilkin	\$0	\$246,802	\$246,802
Winona	\$0	\$1,070,219	\$1,070,219
WLSSD	\$0	\$2,825,456	\$2,825,456
Wright	\$889,107	\$428,535	\$1,317,643
Yellow Medicine	\$30,053	\$132,126	\$162,179
Metro Area	\$883,301	\$26,154,647	\$27,037,948
Greater Minn.	\$5,651,458	\$35,448,902	\$41,100,360
Minnesota	\$6,534,759	\$61,603,549	\$68,138,308

County Survey Responses
Finances: Expenditures by program area (part 1)

County	Planning & administration	Recycling	Yard waste	HHW and problem materials	Source reduction
Aitkin	\$153,330	\$107,252	\$300	\$10,070	\$1,317
Anoka	\$763,771	\$52,909	\$78,528	\$476,645	\$82,371
Becker	\$214,498	\$584,649	\$0	\$63,286	\$0
Beltrami	\$0	\$832,433	\$0	\$22,855	\$0
Benton	\$124,690	\$270	\$0	\$91,126	\$0
Big Stone	\$70,559	\$109,729	\$0	\$5,985	\$0
Blue Earth	\$82,028	\$169,970	\$4,457	\$88,456	\$0
Brown	\$49,630	\$346,280	\$0	\$47,612	\$0
Carlton	\$56,259	\$71,039	\$4,882	\$29,717	\$0
Carver	\$486,463	\$110,700	\$43,866	\$380,722	\$0
Cass	\$125,000	\$678,000	\$0	\$102,581	\$0
Chippewa	\$16,733	\$159,136	\$0	\$18,822	\$0
Chisago	\$200,311	\$50,000	\$0	\$170,038	\$0
Clay	\$138,842	\$335,505	\$38,489	\$101,424	\$0
Clearwater	\$21,322	\$109,774	\$1,356	\$34,116	\$0
Cook	\$247,147	\$184,164	\$0	\$10,533	\$0
Cottonwood	\$17,832	\$558,534	\$0	\$1,949	\$0
Crow Wing	\$214,517	\$14,192	\$26,543	\$121,924	\$0
Dakota	\$435,262	\$17,447	\$0	\$1,468,282	\$0
Dodge	\$50,209	\$302,800	\$24,622	\$12,538	\$24,622
Faribault	\$26,890	\$48,754	\$200	\$16,933	\$300
Fillmore	\$0	\$70,420	\$0	\$0	\$0
Freeborn	\$64,416	\$306,209	\$0	\$17,636	\$0
Goodhue	\$333,850	\$178,548	\$0	\$43,277	\$0
Grant	\$0	\$229,024	\$0	\$19,621	\$0
Hennepin	\$2,109,697	\$2,091,179	\$26,361	\$2,630,554	\$1
Houston	\$53,087	\$281,251	\$0	\$3,771	\$0
Hubbard	\$27,779	\$249,019	\$12,027	\$121,318	\$0
Isanti	\$63,130	\$49,900	\$0	\$7,345	\$0
Itasca	\$110,041	\$367,449	\$0	\$42,177	\$0
Jackson	\$20,889	\$25,556	\$0	\$3,700	\$0
Kanabec	\$3,387	\$50,936	\$0	\$2,984	\$0
Kandiyohi	\$264,392	\$598,891	\$0	\$97,717	\$0
Kittson	\$32,157	\$0	\$0	\$4,466	\$0
Koochiching	\$116,605	\$128,331	\$2,763	\$24,598	\$0
Lac qui Parle	\$29,065	\$74,184	\$0	\$19,654	\$0
Lake	\$37,499	\$149,489	\$475	\$66,108	\$0
Lake of The Woods	\$4,264	\$182,064	\$1,275	\$48,864	\$0
Le Sueur	\$57,045	\$46,037	\$0	\$74,680	\$0
Lincoln	\$35,815	\$205,769	\$0	\$12,128	\$0
Lyon	\$52,212	\$263,881	\$0	\$152,578	\$4,000
Mahnomen	\$44,850	\$14,834	\$0	\$8,142	\$0
Marshall	\$28,968	\$0	\$0	\$14,045	\$0
Martin	\$40,103	\$320,302	\$1,150	\$13,468	\$670
McLeod	\$711,148	\$1,311,243	\$253	\$149,074	\$0
Meeker	\$11,196	\$13,250	\$0	\$16,746	\$0
Mille Lacs	\$3,564	\$57,094	\$0	\$10,533	\$0
Morrison	\$22,664	\$127,546	\$12,092	\$264,949	\$0

County Survey Responses
Finances: Expenditures by program area (part 1)

County	Planning & administration	Recycling	Yard waste	HHW and problem materials	Source reduction
Mower	\$96,954	\$488,063	\$0	\$8,127	\$0
Murray	\$60,198	\$37,213	\$0	\$3,225	\$0
Nicollet	\$58,130	\$204,571	\$0	\$82,065	\$0
Nobles	\$128,005	\$213,451	\$0	\$63,397	\$0
Norman	\$8,816	\$50,041	\$0	\$56,292	\$0
Olmsted	\$77,437	\$721,413	\$120,579	\$552,729	\$155,657
Otter Tail	\$757,376	\$522,169	\$3,420	\$212,145	\$7,935
Pennington	\$20,000	\$34,605	\$0	\$12,590	\$0
Pine	\$47,278	\$108,207	\$0	\$8,154	\$0
Pipestone	\$57,361	\$215,037	\$0	\$13,474	\$0
Polk	\$155,244	\$224,095	\$2,511	\$65,245	\$0
Pope/Douglas	\$215,331	\$82,994	\$39,928	\$57,123	\$0
Ramsey	\$2,242,199	\$500,950	\$1,007,006	\$1,404,097	\$0
Red Lake	\$19,314	\$46,706	\$0	\$7,104	\$0
Redwood	\$215,681	\$274,290	\$0	\$52,762	\$0
Renville	\$94,786	\$175,149	\$0	\$47,622	\$0
Rice	\$345,031	\$434,484	\$40,200	\$151,335	\$200
Rock	\$71,099	\$88,227	\$2,888	\$24,312	\$900
Roseau	\$16,493	\$72,000	\$0	\$21,205	\$0
Scott	\$22,825	\$1,697	\$0	\$137,400	\$262
Sherburne	\$2,567	\$97,479	\$67,076	\$92,046	\$0
Sibley	\$50,450	\$64,200	\$0	\$37,850	\$0
St. Louis - partial	\$236,318	\$1,062,950	\$11,719	\$169,143	\$17,840
Stearns	\$186,107	\$56,783	\$16,012	\$292,419	\$16,012
Steele	\$13,619	\$579,450	\$0	\$8,166	\$0
Stevens	\$62,908	\$83,114	\$0	\$20,059	\$0
Swift	\$357,372	\$138,364	\$5,930	\$14,685	\$1,160
Todd	\$119,017	\$255,200	\$2,000	\$75,616	\$1,500
Traverse	\$77,147	\$37,505	\$0	\$8,000	\$0
Wabasha	\$16,250	\$60,486	\$0	\$9,286	\$0
Wadena	\$92,624	\$137,623	\$2,779	\$31,951	\$0
Waseca	\$119,095	\$225,546	\$7,252	\$56,693	\$0
Washington	\$318,101	\$10,339	\$0	\$1,124,644	\$0
Watsonwan	\$2,291	\$192,644	\$0	\$26,886	\$0
Wilkin	\$34,657	\$166,218	\$4,753	\$39,363	\$1,434
Winona	\$314,812	\$917,842	\$0	\$76,338	\$0
WLSSD	\$1,661,839	\$404,701	\$134,210	\$339,289	\$0
Wright	\$81,627	\$2,067	\$9,692	\$60,688	\$0
Yellow Medicine	\$1,500	\$130,269	\$0	\$6,388	\$0
Metro Area	\$6,358,060	\$2,881,004	\$1,222,837	\$7,576,990	\$82,372
Greater Minn.	\$9,872,914	\$18,473,083	\$534,756	\$5,038,672	\$233,810
Minnesota	\$16,230,974	\$21,354,087	\$1,757,593	\$12,615,662	\$316,182

County Survey Responses
Finances: Expenditures by program area (part 2)

County	Education	Market development	Litter prevention	County grants to other local units of government
Aitkin	\$6,002	\$0	\$0	\$0
Anoka	\$48,722	\$0	\$0	\$1,483,214
Becker	\$6,311	\$0	\$0	\$57,823
Beltrami	\$3,708	\$0	\$0	\$0
Benton	\$20,276	\$0	\$0	\$96,925
Big Stone	\$1,500	\$0	\$0	\$0
Blue Earth	\$14,002	\$0	\$2,068	\$0
Brown	\$2,337	\$0	\$0	\$0
Carlton	\$3,414	\$0	\$0	\$15,000
Carver	\$5,135	\$0	\$15,251	\$90,276
Cass	\$0	\$0	\$0	\$0
Chippewa	\$3,097	\$0	\$0	\$0
Chisago	\$26,612	\$0	\$0	\$0
Clay	\$15,135	\$0	\$0	\$0
Clearwater	\$1,703	\$0	\$0	\$0
Cook	\$436	\$0	\$0	\$0
Cottonwood	\$0	\$0	\$0	\$0
Crow Wing	\$24,758	\$0	\$4,023	\$352,328
Dakota	\$128,193	\$0	\$0	\$437,031
Dodge	\$40,768	\$900	\$0	\$0
Faribault	\$5,933	\$159,077	\$300	\$0
Fillmore	\$0	\$0	\$0	\$0
Freeborn	\$13,501	\$0	\$0	\$0
Goodhue	\$5,153	\$0	\$0	\$0
Grant	\$0	\$0	\$0	\$0
Hennepin	\$638,750	\$0	\$0	\$2,858,773
Houston	\$0	\$0	\$0	\$0
Hubbard	\$5,445	\$0	\$1,500	\$0
Isanti	\$0	\$0	\$0	\$2,450
Itasca	\$1,241	\$0	\$0	\$37,500
Jackson	\$10,135	\$0	\$0	\$0
Kanabec	\$434	\$0	\$0	\$0
Kandiyohi	\$0	\$0	\$0	\$0
Kittson	\$0	\$0	\$0	\$25,000
Koochiching	\$6,405	\$0	\$128	\$0
Lac qui Parle	\$4,900	\$0	\$0	\$0
Lake	\$0	\$0	\$0	\$500
Lake of The Woods	\$529	\$0	\$0	\$0
Le Sueur	\$32,014	\$0	\$0	\$23,400
Lincoln	\$2,738	\$0	\$0	\$0
Lyon	\$42,789	\$0	\$0	\$0
Mahnomen	\$796	\$0	\$0	\$0
Marshall	\$0	\$0	\$0	\$25,000
Martin	\$10,693	\$229,193	\$550	\$0
McLeod	\$30,878	\$145,699	\$816	\$31,739
Meeker	\$19,465	\$0	\$0	\$21,294
Mille Lacs	\$5,920	\$0	\$0	\$0
Morrison	\$1,042	\$0	\$0	\$46,825
Mower	\$8,402	\$0	\$0	\$0

County Survey Responses
Finances: Expenditures by program area (part 2)

County	Education	Market development	Litter prevention	County grants to other local units of government
Murray	\$6,872	\$0	\$0	\$0
Nicollet	\$31,050	\$0	\$0	\$0
Nobles	\$6,733	\$0	\$0	\$0
Norman	\$1,116	\$0	\$0	\$0
Olmsted	\$151,916	\$0	\$0	\$0
Otter Tail	\$87,794	\$0	\$2,645	\$3,420
Pennington	\$396	\$0	\$0	\$0
Pine	\$0	\$0	\$0	\$0
Pipestone	\$7,799	\$0	\$2,910	\$0
Polk	\$15,821	\$0	\$0	\$15,000
Pope/Douglas	\$28,632	\$0	\$0	\$0
Ramsey	\$816,958	\$0	\$0	\$1,049,876
Red Lake	\$1,141	\$0	\$0	\$0
Redwood	\$5,220	\$0	\$0	\$0
Renville	\$596	\$0	\$0	\$0
Rice	\$15,000	\$1,950	\$200	\$0
Rock	\$5,391	\$0	\$0	\$0
Roseau	\$0	\$0	\$0	\$0
Scott	\$54,294	\$0	\$0	\$0
Sherburne	\$38,667	\$0	\$0	\$0
Sibley	\$12,860	\$0	\$0	\$53,037
St. Louis - partial	\$66,431	\$19,250	\$0	\$0
Stearns	\$25,517	\$16,012	\$16,012	\$135,410
Steele	\$4,573	\$0	\$0	\$0
Stevens	\$6,000	\$0	\$0	\$0
Swift	\$7,670	\$0	\$0	\$0
Todd	\$1,637	\$0	\$0	\$1,296
Traverse	\$345	\$0	\$0	\$2,000
Wabasha	\$0	\$0	\$0	\$0
Wadena	\$1,077	\$0	\$0	\$0
Waseca	\$0	\$0	\$0	\$0
Washington	\$53,866	\$0	\$0	\$386,209
Watsonwan	\$1,127	\$0	\$0	\$0
Wilkin	\$377	\$0	\$0	\$0
Winona	\$21,647	\$0	\$0	\$0
WLSSD	\$194,244	\$0	\$900	\$90,273
Wright	\$497	\$0	\$0	\$246,191
Yellow Medicine	\$7,325	\$0	\$0	\$0
Metro Area	\$1,730,291	\$0	\$15,251	\$6,305,378
Greater Minn.	\$1,149,570	\$572,081	\$32,052	\$1,282,411
Minnesota	\$2,879,861	\$572,081	\$47,303	\$7,587,789

County Survey Responses
Finances: Balance Sheet

County	Total revenues	Total expenditures	Balance
Aitkin	\$537,981	\$278,272	\$259,710
Anoka	\$2,986,161	\$2,986,161	\$0
Becker	\$614,174	\$926,567	(\$312,393)
Beltrami	\$858,996	\$858,996	\$0
Benton	\$310,318	\$333,287	(\$22,969)
Big Stone	\$186,210	\$187,773	(\$1,563)
Blue Earth	\$360,980	\$360,980	\$0
Brown	\$438,736	\$445,859	(\$7,123)
Carlton	\$145,956	\$180,310	(\$34,354)
Carver	\$1,132,412	\$1,132,412	\$0
Cass	\$927,619	\$905,581	\$22,038
Chippewa	\$197,788	\$197,788	\$0
Chisago	\$446,962	\$446,962	\$0
Clay	\$710,510	\$629,395	\$81,115
Clearwater	\$168,271	\$168,271	(\$0)
Cook	\$442,279	\$442,279	\$0
Cottonwood	\$332,549	\$578,315	(\$245,766)
Crow Wing	\$758,285	\$758,285	\$0
Dakota	\$2,486,217	\$2,486,215	\$2
Dodge	\$426,463	\$456,459	(\$29,996)
Faribault	\$258,387	\$258,387	\$0
Fillmore	\$69,938	\$70,420	(\$482)
Freeborn	\$554,949	\$401,762	\$153,187
Goodhue	\$550,219	\$560,828	(\$10,609)
Grant	\$325,730	\$248,645	\$77,085
Hennepin	\$10,355,315	\$10,355,315	\$0
Houston	\$338,109	\$338,109	\$0
Hubbard	\$417,087	\$417,087	\$0
Isanti	\$221,223	\$122,825	\$98,398
Itasca	\$558,408	\$558,408	\$0
Jackson	\$269,755	\$60,281	\$209,475
Kanabec	\$181,492	\$57,740	\$123,752
Kandiyohi	\$961,000	\$961,000	\$0
Kittson	\$103,959	\$61,623	\$42,336
Koochiching	\$278,809	\$278,830	(\$21)
Lac qui Parle	\$414,781	\$127,802	\$286,979
Lake	\$254,071	\$254,071	\$0
Lake of The Woods	\$236,996	\$236,996	\$0
Le Sueur	\$362,114	\$233,176	\$128,938
Lincoln	\$276,480	\$256,450	\$20,030
Lyon	\$515,460	\$515,460	\$0
Mahnomen	\$77,362	\$68,622	\$8,740
Marshall	\$93,900	\$68,013	\$25,887
Martin	\$701,513	\$616,129	\$85,384
McLeod	\$2,380,850	\$2,380,850	\$0
Meeker	\$92,402	\$81,951	\$10,452
Mille Lacs	\$195,204	\$77,111	\$118,093
Morrison	\$475,118	\$475,118	\$0
Mower	\$585,526	\$601,547	(\$16,021)

County Survey Responses
Finances: Balance Sheet

County	Total revenues	Total expenditures	Balance
Murray	\$88,311	\$107,507	(\$19,196)
Nicollet	\$403,801	\$375,816	\$27,985
Nobles	\$520,205	\$411,586	\$108,619
Norman	\$118,122	\$116,266	\$1,856
Olmsted	\$674,676	\$1,779,731	(\$1,105,055)
Otter Tail	\$1,612,205	\$1,596,905	\$15,300
Pennington	\$262,960	\$67,591	\$195,369
Pine	\$243,518	\$163,639	\$79,879
Pipestone	\$282,377	\$296,581	(\$14,204)
Polk	\$727,420	\$477,916	\$249,505
Pope/Douglas	\$486,714	\$424,008	\$62,706
Ramsey	\$7,649,779	\$7,021,087	\$628,692
Red Lake	\$74,264	\$74,264	\$0
Redwood	\$1,195,793	\$547,953	\$647,840
Renville	\$632,640	\$318,153	\$314,487
Rice	\$1,692,354	\$988,400	\$703,953
Rock	\$154,578	\$192,817	(\$38,239)
Roseau	\$117,998	\$109,698	\$8,300
Scott	\$1,084,092	\$216,478	\$867,614
Sherburne	\$534,905	\$297,835	\$237,070
Sibley	\$235,756	\$218,397	\$17,359
St. Louis - partial	\$1,583,651	\$1,583,651	\$0
Stearns	\$920,693	\$760,284	\$160,409
Steele	\$605,808	\$605,808	\$0
Stevens	\$162,973	\$172,081	(\$9,109)
Swift	\$338,630	\$525,181	(\$186,551)
Todd	\$456,267	\$456,267	\$0
Traverse	\$69,938	\$124,997	(\$55,059)
Wabasha	\$81,654	\$86,021	(\$4,368)
Wadena	\$266,054	\$266,054	\$0
Waseca	\$211,467	\$408,586	(\$197,119)
Washington	\$1,893,159	\$1,893,159	\$0
Watonwan	\$558,222	\$222,948	\$335,274
Wilkin	\$246,802	\$246,802	\$0
Winona	\$1,070,219	\$1,330,639	(\$260,420)
WLSSD	\$2,825,456	\$2,825,456	\$0
Wright	\$1,317,643	\$400,763	\$916,880
Yellow Medicine	\$162,179	\$145,483	\$16,697
Metro Area	\$27,037,948	\$26,172,184	\$865,764
Greater Minn.	\$41,100,360	\$37,189,349	\$3,911,011
Minnesota	\$68,138,308	\$63,361,532	\$4,776,775

County Survey Responses:
Paper collected for recycling (tons)

County	Computer paper	Corrugated	Magazine/catalog	Mixed paper	Newsprint	Office paper	Other paper	Phone book	Total paper
Aitkin	0	599	697	0	0	0	0	0	1,296
Anoka	20	55,704	570	10,605	14,014	1,227	6,367	10	88,516
Becker	0	2,785	56	1,066	1,410	205	0	5	5,526
Beltrami	0	3,055	0	831	0	52	0	0	3,938
Benton	0	1,231	8,438	207	549	129	8	2	10,564
Big Stone	0	107	0	182	195	0	0	0	483
Blue Earth	0	14,933	1,038	3,886	368	500	0	0	20,725
Brown	0	4,186	0	4,522	844	270	95	0	9,916
Carlton	0	2,111	238	857	596	95	0	0	3,896
Carver	0	6,357	0	15,153	3,204	64	0	0	24,778
Cass	0	3,938	0	735	1,755	0	0	0	6,428
Chippewa	0	1,141	11	37	245	22	0	0	1,456
Chisago	0	2,252	0	13	2,063	413	25	0	4,767
Clay	0	2,703	105	604	981	337	0	22	4,752
Clearwater	0	195	0	72	0	0	0	2	269
Cook	0	478	89	33	64	0	0	0	664
Cottonwood	0	613	0	242	259	0	0	0	1,114
Crow Wing	0	5,166	116	2,671	575	0	0	0	8,529
Dakota	0	27,164	210	59,555	21,405	1,592	0	0	109,926
Dodge	0	793	13	930	0	125	0	0	1,862
Faribault	0	3,452	0	2,749	0	0	0	0	6,201
Fillmore	0	0	0	0	0	0	1,856	0	1,856
Freeborn	0	8,846	1,000	0	591	0	0	0	10,436
Goodhue	0	3,379	85	2,457	3,571	4	0	0	9,496
Grant	0	157	17	0	75	39	0	0	288
Hennepin	0	55,319	3,223	40,004	37,690	9,672	39	6	145,953
Houston	0	512	0	429	215	0	0	0	1,156
Hubbard	0	1,928	0	118	429	1	0	0	2,475
Isanti	0	2,732	8	42	1,034	9	0	0	3,825
Itasca	0	3,014	0	896	1,312	237	0	0	5,458
Jackson	0	1,024	0	0	152	148	0	0	1,324
Kanabec	0	643	0	0	183	73	0	0	900
Kandiyohi	0	3,885	246	395	653	94	0	15	5,288
Kittson	0	116	68	0	90	1	0	0	275
Koochiching	0	4,548	0	709	95	101	0	0	5,453
Lac qui Parle	0	541	0	0	0	526	0	0	1,067
Lake	0	636	59	148	221	36	0	0	1,100
Lake of The Woods	0	32	0	0	0	0	0	0	32
Le Sueur	0	1,348	0	1,025	9	26	0	9	2,417
Lincoln	0	400	0	119	128	0	0	0	646
Lyon	0	3,674	0	559	1,290	0	0	0	5,523
Mahnomen	0	156	9	0	30	17	0	0	211
Marshall	0	63	56	26	97	4	0	2	247
Martin	0	7,153	0	3,934	0	0	0	0	11,087
McLeod	0	2,947	2	10	983	73	203	0	4,217
Meeker	0	1,627	2	462	281	60	0	0	2,431
Mille Lacs	0	561	6	327	117	0	0	0	1,011

County Survey Responses:
Paper collected for recycling (tons)

County	Computer paper	Corrugated	Magazine/catalog	Mixed paper	Newsprint	Office paper	Other paper	Phone book	Total paper
Morrison	0	1,954	1,150	0	1,341	502	0	0	4,947
Mower	0	15,363	56	0	717	258	0	11	16,405
Murray	0	512	366	26	726	12	0	0	1,641
Nicollet	34	3,207	0	5,026	903	2,739	400	28	12,337
Nobles	0	2,871	0	572	883	230	23	0	4,579
Norman	0	32	0	4	0	0	0	0	36
Olmsted	53	6,887	90	417	315	1,810	4,878	0	14,448
Otter Tail	0	3,789	98	0	723	0	130	0	4,740
Pennington	0	1,166	43	0	217	171	0	0	1,597
Pine	150	1,483	0	362	0	217	0	0	2,213
Pipestone	4	1,059	7	328	144	8	29	0	1,580
Polk	0	1,273	0	310	0	0	0	0	1,583
Pope/Douglas	0	5,439	0	1,200	1,418	13	0	0	8,070
Ramsey	0	7,281	1,671	6,884	15,450	36	0	391	31,714
Red Lake	0	246	8	0	30	2	0	0	286
Redwood	0	2,112	103	435	223	415	0	0	3,288
Renville	0	635	0	803	12	0	0	3	1,452
Rice	0	14,260	0	3,593	0	0	0	0	17,853
Rock	0	716	0	24	207	10	0	0	956
Roseau	0	2,509	95	0	144	71	0	0	2,819
Scott	0	16,120	137	9,371	3,086	1,391	936	0	31,041
Sherburne	0	184	0	7,853	0	0	0	0	8,037
Sibley	0	210	0	281	50	107	0	0	648
St. Louis - partial	0	6,519	182	2,985	984	942	459	0	12,071
Stearns	0	12,365	8,871	3,105	2,716	364	85	11	27,517
Steele	2	1,798	0	2,387	0	63	1,799	0	6,049
Stevens	4	517	31	115	185	0	0	9	861
Swift	35	718	69	0	537	116	0	4	1,479
Todd	0	1,226	0	9,062	0	0	0	0	10,287
Traverse	0	110	8	0	51	12	0	0	181
Wabasha	0	2,332	0	292	29	5	0	0	2,659
Wadena	0	1,250	0	98	0	1	0	0	1,348
Waseca	0	4,520	66	258	126	553	39,085	7	44,615
Washington	11,188	5,713	86	14,770	17,529	13,061	251	15	62,613
Watsonwan	0	2,990	0	311	1,080	0	0	0	4,381
Wilkin	0	473	9	0	235	66	0	1	785
Winona	0	8,006	0	5,593	429	0	0	0	14,028
WLSSD	0	13,798	647	1,883	5,703	1,257	543	0	23,831
Wright	0	10,900	35	1,522	5,197	0	0	0	17,653
Yellow Medicine	0	546	26	0	397	0	0	0	970
Metro Area	11,208	173,658	5,897	156,342	112,377	27,042	7,593	423	494,540
Greater Minn.	282	233,634	24,317	80,134	47,178	13,541	49,617	131	448,835
Minnesota	11,490	407,292	30,214	236,476	159,556	40,584	57,210	554	943,376

County Survey Responses
Metal collected for recycling (tons)

County	Aluminum	Co-mingled alum/steel/tin	Other ferrous & non-ferrous	Steel/tin cans	Total metal
Aitkin	61	0	332	34	428
Anoka	1,690	374	30,932	4,464	37,460
Becker	0	177	752	0	929
Beltrami	117	0	1,148	83	1,348
Benton	287	181	4,792	407	5,667
Big Stone	13	0	433	20	466
Blue Earth	9,899	392	7,899	2,330	20,520
Brown	240	0	21,206	179	21,626
Carlton	186	146	135	0	466
Carver	211	101	3,066	565	3,943
Cass	57	0	0	69	126
Chippewa	40	14	0	28	82
Chisago	214	0	576	223	1,013
Clay	164	4,267	0	69	4,501
Clearwater	18	30	551	0	599
Cook	14	0	80	31	125
Cottonwood	17	0	9	26	53
Crow Wing	198	0	14,035	379	14,612
Dakota	2,535	15,641	16,602	3,984	38,762
Dodge	33	0	488	133	654
Faribault	210	581	1,077	0	1,868
Fillmore	0	156	1,351	0	1,507
Freeborn	601	0	26	994	1,621
Goodhue	344	0	955	0	1,299
Grant	10	0	2	17	29
Hennepin	6,277	913	46,129	2,639	55,958
Houston	87	21	1,422	0	1,530
Hubbard	18	177	759	100	1,055
Isanti	395	0	10,826	278	11,500
Itasca	165	120	3,715	203	4,202
Jackson	36	0	2,733	25	2,794
Kanabec	6	0	0	105	112
Kandiyohi	322	0	7	64	393
Kittson	5	48	32	0	85
Koochiching	49	400	5	14	468
Lac qui Parle	28	4	120	10	162
Lake	36	0	154	54	244
Lake of The Woods	1	260	0	1	263
Le Sueur	22	1,434	873	410	2,739
Lincoln	62	0	16	19	96
Lyon	312	0	6,126	299	6,737
Mahnomen	12	8	50	0	70
Marshall	12	143	270	0	425
Martin	1,476	1,852	2,623	0	5,951
McLeod	32	0	525	115	672
Meeker	207	127	538	35	907
Mille Lacs	29	23	0	0	52
Morrison	28	0	6,384	229	6,640

County Survey Responses
Metal collected for recycling (tons)

County	Aluminum	Co-mingled alum/steel/tin	Other ferrous & non-ferrous	Steel/tin cans	Total metal
Mower	164	0	0	178	342
Murray	72	132	213	25	442
Nicollet	314	1,233	652	296	2,495
Nobles	39	65	0	0	104
Norman	12	13	606	0	631
Olmsted	45	2,262	3,657	86	6,050
Otter Tail	138	0	25,750	119	26,007
Pennington	0	56	0	0	56
Pine	270	30	4,300	62	4,662
Pipestone	30	25	88	0	143
Polk	177	817	84	101	1,178
Pope/Douglas	339	0	1,973	1,092	3,404
Ramsey	885	105	8,775	1,011	10,776
Red Lake	0	31	250	0	281
Redwood	481	0	1,476	52	2,009
Renville	10	181	0	0	191
Rice	234	0	7,521	676	8,431
Rock	18	0	614	22	654
Roseau	52	0	1,755	87	1,894
Scott	302	1,424	8,067	7,266	17,058
Sherburne	0	2,420	5,865	0	8,285
Sibley	185	270	375	1,507	2,337
St. Louis - partial	712	379	44,991	1,155	47,237
Stearns	1,347	1,147	18,582	1,914	22,990
Steele	27	48	2,962	146	3,183
Stevens	62	0	298	108	468
Swift	151	0	47	100	298
Todd	0	0	184	19	203
Traverse	0	10	250	0	260
Wabasha	55	98	0	156	308
Wadena	0	193	4,628	0	4,821
Waseca	77	0	986	22	1,085
Washington	2,025	142	4,936	854	7,956
Watonwan	31	28	0	0	59
Wilkin	33	0	0	12	45
Winona	735	0	3,510	3,275	7,520
WLSSD	564	0	10,817	474	11,856
Wright	281	0	4,270	995	5,545
Yellow Medicine	3	0	2,434	80	2,517
Metro Area	13,925	18,700	118,507	20,782	171,913
Greater Minn.	22,721	20,003	242,159	19,744	304,628
Minnesota	36,646	38,703	360,666	40,526	476,541

County Survey Responses
Glass collected for recycling (tons)

County	Food & beverage	Other glass	Total glass
Aitkin	244	0	244
Anoka	5,864	26	5,890
Becker	535	0	535
Beltrami	878	19	897
Benton	920	265	1,185
Big Stone	123	0	123
Blue Earth	982	0	982
Brown	367	0	367
Carlton	677	0	677
Carver	2,270	0	2,270
Cass	877	0	877
Chippewa	54	0	54
Chisago	903	0	903
Clay	502	0	502
Clearwater	2	0	2
Cook	221	0	221
Cottonwood	164	0	164
Crow Wing	1,162	0	1,162
Dakota	10,870	1,802	12,673
Dodge	533	383	916
Faribault	228	0	228
Fillmore	510	0	510
Freeborn	488	0	488
Goodhue	469	0	469
Grant	95	0	95
Hennepin	23,586	0	23,586
Houston	181	0	181
Hubbard	427	0	427
Isanti	368	0	368
Itasca	1,247	0	1,247
Jackson	80	0	80
Kanabec	42	0	42
Kandiyohi	339	0	339
Kittson	0	0	0
Koochiching	95	0	95
Lac qui Parle	59	0	59
Lake	394	0	394
Lake of The Woods	0	16	16
Le Sueur	256	0	256
Lincoln	86	0	86
Lyon	373	0	373
Mahnomen	30	0	30
Marshall	0	0	0
Martin	882	0	882
McLeod	386	0	386
Meeker	201	0	201
Mille Lacs	197	0	197
Morrison	432	0	432
Mower	353	0	353

County Survey Responses
Glass collected for recycling (tons)

County	Food & beverage	Other glass	Total glass
Murray	157	0	157
Nicollet	275	0	275
Nobles	370	0	370
Norman	53	0	53
Olmsted	161	1,168	1,329
Otter Tail	681	0	681
Pennington	92	0	92
Pine	341	0	341
Pipestone	171	0	171
Polk	245	0	245
Pope/Douglas	1,908	0	1,908
Ramsey	10,191	0	10,191
Red Lake	34	0	34
Redwood	239	0	239
Renville	190	0	190
Rice	1,035	1,645	2,680
Rock	117	0	117
Roseau	0	1,806	1,806
Scott	708	0	708
Sherburne	2,178	0	2,178
Sibley	69	0	69
St. Louis - partial	849	1	850
Stearns	4,732	1,232	5,965
Steele	450	19,136	19,586
Stevens	129	0	129
Swift	318	0	318
Todd	133	0	133
Traverse	34	0	34
Wabasha	344	0	344
Wadena	161	0	161
Waseca	107	0	107
Washington	3,317	0	3,317
Watonwan	177	0	177
Wilkin	71	0	71
Winona	734	0	734
WLSSD	3,479	0	3,479
Wright	3,087	0	3,087
Yellow Medicine	233	0	233
Metro Area	56,806	1,829	58,635
Greater Minn.	(56,806)	25,671	66,388
Minnesota		27,499	125,023

County Survey Responses:
Plastic collected for recycling (tons)

County	Film plastic	HDPE	Mixed plastic	Other plastic	PET	Polystyrene	Total Plastic
Aitkin	0	0	128	0	0	0	128
Anoka	422	324	1,358	235	128	24	2,489
Becker	76	1	287	300	1	0	664
Beltrami	13	0	180	0	0	0	193
Benton	9	397	44	137	29	0	616
Big Stone	0	1	32	0	0	0	33
Blue Earth	1,488	21	2,682	0	0	0	4,191
Brown	10	0	851	4	0	0	864
Carlton	7	0	275	30	0	0	312
Carver	14	2	1,145	0	12	16	1,189
Cass	0	0	84	0	94	0	178
Chippewa	12	0	85	88	2	34	222
Chisago	2	0	337	0	0	0	339
Clay	20	0	195	0	0	0	215
Clearwater	0	0	1	0	0	0	1
Cook	0	0	55	0	0	0	55
Cottonwood	0	0	43	0	0	0	43
Crow Wing	0	0	1,651	0	0	0	1,651
Dakota	201	3	7,674	0	8	0	7,886
Dodge	0	0	216	117	0	0	334
Faribault	3	26	240	0	0	0	269
Fillmore	0	0	145	0	0	0	145
Freeborn	0	0	3,496	0	0	0	3,496
Goodhue	231	98	0	0	101	0	430
Grant	0	0	32	0	0	0	32
Hennepin	0	181	14,627	361	413	0	15,582
Houston	0	0	35	0	0	0	35
Hubbard	11	0	121	0	0	0	132
Isanti	60	102	149	0	1	0	312
Itasca	64	23	189	0	56	0	331
Jackson	0	0	39	0	0	0	39
Kanabec	0	0	0	312	0	0	312
Kandiyohi	50	103	53	0	106	0	312
Kittson	0	0	24	0	0	0	24
Koochiching	0	4	16	14	17	0	50
Lac qui Parle	0	0	63	2	0	0	64
Lake	0	63	3	0	16	0	82
Lake of The Woods	0	0	0	0	0	0	0
Le Sueur	7	0	241	35	30	0	313
Lincoln	0	0	30	0	0	0	30
Lyon	0	0	202	0	0	0	202
Mahnomen	0	0	7	0	0	0	7
Marshall	0	0	26	0	0	0	26
Martin	15	70	937	0	0	0	1,022
McLeod	2,882	53	143	0	127	450	3,655
Meeker	0	0	126	0	0	0	126
Mille Lacs	0	0	89	0	0	0	89
Morrison	55	17	519	0	0	0	590

County Survey Responses:
Plastic collected for recycling (tons)

County	Film plastic	HDPE	Mixed plastic	Other plastic	PET	Polystyrene	Total Plastic
Mower	34	131	0	65	12	0	242
Murray	2	3	58	0	0	0	63
Nicollet	0	45	540	200	88	0	873
Nobles	101	6	98	221	0	0	427
Norman	0	0	23	0	0	0	23
Olmsted	102	2	147	189	2	57	500
Otter Tail	0	116	0	117	206	0	439
Pennington	0	18	54	10	0	0	81
Pine	9	52	65	28	88	0	242
Pipestone	261	1	72	0	7	12	353
Polk	0	0	123	0	0	0	123
Pope/Douglas	140	1	271	101	1	0	513
Ramsey	265	423	1,059	68	498	0	2,314
Red Lake	0	0	9	0	0	0	9
Redwood	150	77	201	0	50	0	478
Renville	0	0	81	0	0	0	81
Rice	130	276	132	138	276	0	952
Rock	0	3	0	20	38	0	62
Roseau	321	0	69	57	0	0	447
Scott	8	112	489	0	256	0	865
Sherburne	0	0	1,105	0	0	0	1,105
Sibley	0	0	42	24	10	0	76
St. Louis - partial	109	276	41	0	323	0	749
Stearns	183	1,847	184	701	139	1	3,055
Steele	95	1	188	134	1	17	436
Stevens	0	0	44	0	0	0	44
Swift	0	67	0	0	83	0	150
Todd	0	0	61	0	0	0	61
Traverse	0	0	14	0	0	0	14
Wabasha	0	23	21	0	38	0	82
Wadena	12	0	225	0	0	0	238
Waseca	0	18	0	47	34	0	99
Washington	218	30	1,102	0	198	0	1,548
Watonwan	0	0	442	0	0	0	442
Wilkin	0	0	20	0	0	0	20
Winona	0	0	349	0	0	0	349
WLSSD	223	316	437	11	348	0	1,335
Wright	42	1	2,813	0	1	0	2,858
Yellow Medicine	0	0	74	0	0	0	74
Metro Area	1,128	1,074	27,453	664	1,513	40	31,872
Greater Minn.	6,930	4,259	22,073	3,100	2,327	571	39,260
Minnesota	8,059	5,333	49,526	3,763	3,840	611	71,132

County Survey Responses
Organics collected for recycling (tons) - Part 1

County	Food to livestock	Food to people	Source-separated organics	Yard waste	Total organics
Aitkin	0	0	0	0	0
Anoka	8,048	0	7,316	0	15,364
Becker	0	18	169	0	187
Beltrami	188	0	53	0	241
Benton	0	0	0	0	0
Big Stone	0	0	110	0	110
Blue Earth	0	18	128	0	146
Brown	1,761	0	0	0	1,761
Carlton	0	35	175	0	210
Carver	6,186	0	1,314	0	7,500
Cass	0	0	0	0	0
Chippewa	5	9	22	0	35
Chisago	290	0	2,870	0	3,160
Clay	5,730	211	0	0	5,941
Clearwater	0	0	0	0	0
Cook	0	0	0	0	0
Cottonwood	0	0	0	0	0
Crow Wing	457	0	1,981	0	2,438
Dakota	13,945	2,476	1,493	0	17,914
Dodge	0	0	30	0	30
Faribault	0	0	2	0	2
Fillmore	0	0	0	0	0
Freeborn	0	0	19	0	19
Goodhue	0	0	0	802	802
Grant	0	0	0	0	0
Hennepin	30,703	283	14,024	0	45,010
Houston	0	0	0	0	0
Hubbard	13	0	35	0	49
Isanti	481	47	13	0	540
Itasca	0	16	19	0	34
Jackson	39	0	0	0	39
Kanabec	0	0	0	0	0
Kandiyohi	156	0	0	0	156
Kittson	0	0	0	0	0
Koochiching	0	0	0	0	0
Lac qui Parle	123	0	2	0	125
Lake	0	0	0	0	0
Lake of The Woods	0	0	104	0	104
Le Sueur	2,900	0	0	0	2,900
Lincoln	0	8	0	0	8
Lyon	121	260	11	0	391
Mahnomen	0	0	0	0	0
Marshall	0	0	0	0	0
Martin	0	0	2	0	2
McLeod	0	76	1,929	0	2,006
Meeker	0	0	14	0	14
Mille Lacs	0	0	0	0	0

County Survey Responses
Organics collected for recycling (tons) - Part 1

County	Food to livestock	Food to people	Source-separated organics	Yard waste	Total organics
Morrison	10	9	33	0	52
Mower	0	0	1,831	0	1,831
Murray	0	0	27	0	27
Nicollet	0	0	125	0	125
Nobles	82	11	25	0	118
Norman	0	0	0	0	0
Olmsted	60,892	143	83	0	61,119
Otter Tail	19,431	0	0	0	19,431
Pennington	0	0	0	0	0
Pine	673	40	23	0	736
Pipestone	89	1	238	0	327
Polk	2,294	0	1,103	0	3,396
Pope/Douglas	8	24	1,470	0	1,503
Ramsey	46,789	1,671	1,832	0	50,292
Red Lake	0	0	0	0	0
Redwood	1,251	437	0	0	1,688
Renville	650	220	0	0	870
Rice	27,674	0	711	0	28,385
Rock	0	0	0	0	0
Roseau	0	0	0	0	0
Scott	0	0	1,478	0	1,478
Sherburne	550	0	149	0	699
Sibley	0	2,600	0	0	2,600
St. Louis - partial	9	9	221	0	239
Stearns	0	38	107	0	145
Steele	18	0	0	0	18
Stevens	0	0	34	0	34
Swift	0	0	1,620	0	1,620
Todd	0	0	0	0	0
Traverse	0	0	0	0	0
Wabasha	0	0	0	0	0
Wadena	0	0	18	0	18
Waseca	0	0	0	0	0
Washington	11,477	1,387	558	0	13,422
Watsonwan	0	0	0	0	0
Wilkin	0	0	0	0	0
Winona	9,055	0	0	0	9,055
WLSSD	104	617	3,141	0	3,862
Wright	0	0	44	0	44
Yellow Medicine	0	0	47	0	47
Metro Area	117,148	5,817	28,014	-	150,980
Greater Minn.	135,053	4,846	18,736	802	158,635
Minnesota	252,202	10,663	46,751	802	309,615

County Survey Responses
Textiles, other collected for recycling (tons) - Part 2

County	Carpet	Textiles	Mattresses & box springs	Pallets	Unspecified or Other	Total
Aitkin	0	79	0	190	0	269
Anoka	50	2,406	49	3,886	8,142	14,534
Becker	0	235	0	22	0	257
Beltrami	0	0	0	8	0	8
Benton	0	0	0	0	0	0
Big Stone	0	3	0	0	0	3
Blue Earth	0	223	0	13,451	0	13,674
Brown	0	4	0	902	151	1,057
Carlton	0	67	30	0	5	102
Carver	33	98	0	1,053	0	1,184
Cass	0	17	0	0	973	990
Chippewa	0	13	0	0	723	737
Chisago	1	4	28	25	0	58
Clay	0	0	0	0	0	0
Clearwater	0	0	0	0	0	0
Cook	0	0	0	0	0	0
Cottonwood	0	23	0	0	0	23
Crow Wing	0	253	97	3,027	2	3,379
Dakota	0	1,195	13	14,123	45,855	61,186
Dodge	6	6	0	427	50	488
Faribault	0	12	0	0	0	12
Fillmore	1	18	1	0	0	20
Freeborn	0	1	0	20	0	21
Goodhue	0	0	10	14	0	24
Grant	0	0	0	0	51	51
Hennepin	0	0	0	325	292,437	292,762
Houston	0	0	0	0	0	0
Hubbard	0	90	0	0	0	90
Isanti	4	0	26	0	0	30
Itasca	0	0	0	69	2	71
Jackson	0	22	0	188	0	209
Kanabec	1	0	1	0	0	2
Kandiyohi	0	0	0	0	0	0
Kittson	0	0	0	0	0	0
Koochiching	0	0	0	2	0	2
Lac qui Parle	0	32	0	8	1	41
Lake	0	0	3	0	20	23
Lake of The Woods	0	0	0	0	0	0
Le Sueur	0	4	1	1,894	1	1,899
Lincoln	0	75	0	2	0	77
Lyon	0	11	0	0	3,614	3,625
Mahnomen	0	0	0	0	320	320
Marshall	0	0	0	0	0	0
Martin	0	120	0	12	0	132
McLeod	0	0	8	553	4,594	5,155
Meeker	0	0	0	0	68	68
Mille Lacs	0	0	0	0	0	0
Morrison	0	77	0	653	0	730

County Survey Responses
Textiles, other collected for recycling (tons) - Part 2

County	Carpet	Textiles	Mattresses & box springs	Pallets	Unspecified or Other	Total
Mower	0	84	0	3,075	0	3,159
Murray	0	152	0	115	0	267
Nicollet	0	10	0	1,561	0	1,572
Nobles	0	156	0	721	0	877
Norman	0	0	0	0	0	0
Olmsted	0	511	0	568	0	1,080
Otter Tail	0	0	39	455	236	730
Pennington	0	0	0	0	0	0
Pine	1	10	0	1	0	12
Pipestone	0	132	0	1,987	0	2,119
Polk	0	0	0	70	1,000	1,070
Pope/Douglas	120	367	0	53	125	665
Ramsey	0	1,187	9	961	197,404	199,561
Red Lake	0	0	0	0	0	0
Redwood	26	1,266	7	2,221	2,758	6,278
Renville	20	45	0	4	0	69
Rice	0	94	0	10,656	60	10,810
Rock	0	37	0	0	0	37
Roseau	0	0	0	2,094	0	2,094
Scott	0	0	0	2,454	0	2,454
Sherburne	0	36	0	139	3,883	4,059
Sibley	6	0	1	20	1	27
St. Louis - partial	0	27	97	4	114	242
Stearns	0	0	0	1,317	1	1,318
Steele	0	0	0	1,274	478	1,752
Stevens	0	15	3	0	0	18
Swift	0	0	0	0	0	0
Todd	0	0	0	0	0	0
Traverse	0	0	0	0	0	0
Wabasha	0	0	0	0	0	0
Wadena	0	0	18	6	0	25
Waseca	0	60	0	57	0	117
Washington	0	5	0	151	4,728	4,884
Watsonwan	0	2	0	0	0	2
Wilkin	0	0	0	0	0	0
Winona	0	0	0	1,331	564	1,895
WLSSD	28	1,452	0	537	691	2,708
Wright	0	6	0	56	0	62
Yellow Medicine	0	16	0	0	0	16
Metro Area	83	4,891	71	22,954	548,566	576,566
Greater Minn.	213	5,867	370	49,789	20,486	76,724
Minnesota	295	10,758	441	72,743	569,052	653,290

County Survey Responses
Problem materials (banned) collected for recycling (tons)

County	Antifreeze	Electronics	Fluorescent & HID lamps	HHW	Latex paint	Major appliances	Used oil	Used oil filters	Vehicle batteries	Waste tires	Total problem matls
Aitkin	2	38	2	5	2	107	100	8	102	162	527
Anoka	77	680	52	6	143	2,049	273	160	2,096	683	6,218
Becker	2	96	45	12	19	199	206	16	204	382	1,181
Beltrami	3	178	5	18	18	274	37	21	280	234	1,069
Benton	0	17	0	1	9	353	31	18	241	78	749
Big Stone	0	12	1	1	1	31	33	4	31	27	141
Blue Earth	39	835	23	38	47	391	632	30	1,126	1,745	4,907
Brown	2	84	2	7	3	153	91	12	156	124	635
Carlton	6	63	3	5	9	213	157	24	218	108	806
Carver	5	459	12	75	92	573	76	45	586	191	2,114
Cass	1	95	9	13	7	172	23	13	176	127	635
Chippewa	0	32	2	0	0	73	17	6	75	242	446
Chisago	4	127	3	124	57	322	51	25	330	107	1,151
Clay	25	129	17	7	16	378	270	38	371	303	1,554
Clearwater	0	16	1	2	1	0	7	4	54	59	145
Cook	0	10	0	0	1	31	11	2	32	10	98
Cottonwood	0	42	0	0	0	70	9	5	71	67	266
Crow Wing	22	221	32	2	21	507	51	48	411	126	1,442
Dakota	55	5,526	88	130	348	2,452	327	191	2,509	817	12,442
Dodge	4	32	0	0	0	122	16	10	125	48	357
Faribault	2	36	1	2	1	102	15	9	92	44	304
Fillmore	4	266	6	8	2	125	23	10	128	69	641
Freeborn	3	40	1	7	5	187	36	14	191	62	547
Goodhue	0	32	0	20	14	279	37	22	285	93	782
Grant	0	12	2	3	4	36	5	3	37	12	113
Hennepin	42	2,690	36	84	791	7,170	956	558	7,335	2,390	22,053
Houston	0	172	3	1	0	113	15	9	116	179	607
Hubbard	0	179	3	2	2	127	38	10	126	343	830
Isanti	0	121	1	11	0	229	31	18	235	77	722
Itasca	3	106	2	17	15	2,585	36	21	280	223	3,287
Jackson	0	10	2	1	5	62	9	5	63	21	178
Kanabec	1	0	0	0	0	96	40	8	98	32	275
Kandiyohi	0	0	0	0	0	254	34	20	260	85	653
Kittson	0	3	2	2	3	27	4	2	30	15	88
Koochiching	0	31	1	4	2	79	11	6	81	39	256
Lac qui Parle	2	28	2	7	13	72	20	3	44	44	236
Lake	6	9	5	0	4	67	68	13	66	79	318
Lake of The Woods	0	0	2	0	1	24	0	2	24	170	222
Le Sueur	8	83	11	6	8	167	59	13	171	147	673
Lincoln	0	14	1	6	0	35	43	3	39	63	202
Lyon	0	71	5	0	32	156	21	12	159	52	509
Mahnomen	0	6	0	0	1	33	4	3	34	11	92
Marshall	0	6	1	2	3	57	8	5	60	40	181
Martin	8	65	60	7	6	160	32	16	134	98	586
McLeod	2	106	6	2,203	9	217	29	17	222	72	2,881
Meeker	0	48	5	0	5	317	80	11	143	126	734
Mille Lacs	0	5	0	2	10	155	21	0	0	0	192
Morrison	5	82	5	0	0	198	164	15	203	249	922
Mower	8	45	0	0	6	236	32	18	242	79	666

County Survey Responses
Problem materials (banned) collected for recycling (tons)

County	Antifreeze	Electronics	Fluorescent & HID lamps	HHW	Latex paint	Major appliances	Used oil	Used oil filters	Vehicle batteries	Waste tires	Total problem matls
Murray	0	6	1	3	0	51	7	4	53	17	142
Nicollet	4	138	23	7	7	198	55	15	203	103	753
Nobles	0	50	4	6	8	130	25	10	136	62	431
Norman	0	20	2	1	2	45	7	4	51	13	145
Olmsted	12	392	79	60	121	895	119	70	6,508	298	8,555
Otter Tail	9	126	2	290	372	346	917	27	353	573	3,016
Pennington	0	33	4	4	5	85	11	7	87	28	263
Pine	2	30	9	3	3	175	23	14	251	118	628
Pipestone	0	83	3	3	4	60	27	4	60	31	276
Polk	0	49	2	14	8	189	25	63	194	114	658
Pope/Douglas	31	394	24	11	32	372	276	26	631	132	1,929
Ramsey	12	181	26	329	304	3,151	420	245	3,223	1,050	8,942
Red Lake	0	8	1	2	1	25	11	3	25	40	116
Redwood	44	434	30	21	8	95	161	10	316	934	2,052
Renville	20	87	4	0	3	92	12	7	95	127	448
Rice	10	186	7	8	52	388	52	30	412	175	1,320
Rock	0	51	2	1	2	57	8	5	59	344	528
Roseau	2	25	14	6	3	93	23	11	108	81	366
Scott	13	137	22	111	74	822	939	64	840	394	3,416
Sherburne	0	289	4	10	80	541	72	42	554	180	1,773
Sibley	5	18	5	6	7	99	12	7	93	125	376
St. Louis - partial	55	314	15	164	29	609	1,903	116	496	1,764	5,464
Stearns	9	56	0	0	0	912	122	71	933	304	2,407
Steele	0	30	0	6	6	219	29	17	224	73	604
Stevens	0	30	1	9	0	59	8	5	60	20	192
Swift	0	27	3	0	0	58	8	5	59	19	179
Todd	0	29	1	0	3	147	20	12	151	49	412
Traverse	0	0	0	0	0	21	3	2	21	7	53
Wabasha	0	0	0	0	0	129	17	10	132	43	331
Wadena	1	44	2	3	7	83	11	6	92	28	276
Waseca	0	0	4	3	0	114	15	13	117	335	602
Washington	12	805	0	0	181	1,489	198	116	1,523	496	4,820
Watonwan	0	0	0	0	0	67	9	5	69	22	172
Wilkin	0	1	2	1	0	40	5	3	40	13	104
Winona	0	0	0	0	0	309	41	24	317	103	794
WLSSD	61	705	26	92	21	909	96	101	734	239	2,985
Wright	1	99	2	19	26	771	335	60	788	257	2,358
Yellow Medicine	0	19	2	2	0	206	8	5	63	21	326
Metro Area	215	10,478	236	734	1,933	17,705	3,190	1,379	18,113	6,022	60,005
Greater Minn.	430	7,378	551	3,297	1,170	18,178	7,131	1,385	22,049	13,268	74,836
Minnesota	645	17,856	787	4,031	3,104	35,884	10,321	2,763	40,161	19,290	134,841

County Survey Responses
Rate with no credits

County	Tons collected for recycling	Total MSW generated	Percent of MSW collected for recycling
Aitkin	2,892	12,060	24.0%
Anoka	170,472	359,232	47.5%
Becker	9,278	29,320	31.6%
Beltrami	7,693	30,464	25.3%
Benton	18,781	39,841	47.1%
Big Stone	1,360	4,279	31.8%
Blue Earth	65,145	104,150	62.5%
Brown	36,225	50,061	72.4%
Carlton	6,470	19,290	33.5%
Carver	42,978	95,168	45.2%
Cass	9,235	22,422	41.2%
Chippewa	3,031	12,579	24.1%
Chisago	11,391	38,970	29.2%
Clay	17,465	49,280	35.4%
Clearwater	1,016	5,422	18.7%
Cook	1,163	4,473	26.0%
Cottonwood	1,662	10,832	15.3%
Crow Wing	33,212	73,198	45.4%
Dakota	260,788	484,962	53.8%
Dodge	4,641	13,409	34.6%
Faribault	8,884	16,831	52.8%
Fillmore	4,679	13,421	34.9%
Freeborn	16,628	38,779	42.9%
Goodhue	13,301	39,323	33.8%
Grant	606	3,571	17.0%
Hennepin	600,904	1,365,411	44.0%
Houston	3,509	13,531	25.9%
Hubbard	5,057	18,970	26.7%
Isanti	17,297	43,094	40.1%
Itasca	14,630	37,239	39.3%
Jackson	4,662	11,357	41.1%
Kanabec	1,641	9,276	17.7%
Kandiyohi	7,141	35,912	19.9%
Kittson	471	2,345	20.1%
Koochiching	6,322	14,158	44.7%
Lac qui Parle	1,754	6,622	26.5%
Lake	2,161	8,797	24.6%
Lake of The Woods	636	3,142	20.2%
Le Sueur	11,198	25,874	43.3%
Lincoln	1,145	3,396	33.7%
Lyon	17,360	33,513	51.8%
Mahnomen	730	2,195	33.3%
Marshall	880	6,249	14.1%
Martin	19,662	29,831	65.9%

County Survey Responses

Rate with no credits

McLeod	18,973	40,218	47.2%
Meeker	4,481	16,275	27.5%
Mille Lacs	1,542	16,894	9.1%
Morrison	14,313	27,537	52.0%
Mower	22,998	46,090	49.9%
Murray	2,739	7,510	36.5%
Nicollet	18,428	37,109	49.7%
Nobles	6,906	16,673	41.4%
Norman	888	4,328	20.5%
Olmsted	93,082	186,275	50.0%
Otter Tail	55,044	87,938	62.6%
Pennington	2,090	15,747	13.3%
Pine	8,833	25,658	34.4%
Pipestone	4,969	9,620	51.6%
Polk	8,254	27,111	30.4%
Pope/Douglas	17,993	46,736	38.5%
Ramsey	313,790	622,617	50.4%
Red Lake	726	2,308	31.4%
Redwood	16,032	24,763	64.7%
Renville	3,301	12,376	26.7%
Rice	70,431	115,487	61.0%
Rock	2,355	6,887	34.2%
Roseau	9,426	19,055	49.5%
Scott	57,020	110,577	51.6%
Sherburne	26,135	67,506	38.7%
Sibley	6,134	12,746	48.1%
St. Louis - partial	66,851	118,794	56.3%
Stearns	63,396	134,246	47.2%
Steele	31,628	60,716	52.1%
Stevens	1,746	8,351	20.9%
Swift	4,044	8,627	46.9%
Todd	11,097	22,572	49.2%
Traverse	542	2,027	26.7%
Wabasha	3,725	11,028	33.8%
Wadena	6,887	13,812	49.9%
Waseca	46,625	58,541	79.6%
Washington	98,561	202,674	48.6%
Watsonwan	5,234	13,696	38.2%
Wilkin	1,026	2,976	34.5%
Winona	34,375	63,236	54.4%
WLSSD	50,056	106,361	47.1%
Wright	31,607	104,422	30.3%
Yellow Medicine	4,183	9,281	45.1%
Minnesota	2,714,620	5,789,648	46.9%
Metro Area	1,544,512	3,240,641	47.7%
Greater Minn.	1,170,108	2,549,007	45.9%

County Survey Responses
Finances: Revenues (part 1)

County	CY2012 revenue carried over	Adjustment to carry over	General revenue	Service fee	Processing facility tip fee	Land disposal facility surcharge
Aitkin	\$267,006	0	\$165,624	\$0	\$0	\$0
Anoka	\$0	0	\$0	\$1,809,459	\$0	\$0
Becker	(\$121,019)	121,019	\$0	\$219,287	\$0	\$0
Beltrami	\$0	0	\$739,500	\$0	\$0	\$0
Benton	\$33,779	0	\$0	\$171,205	\$0	\$0
Big Stone	\$1,992	0	\$122,832	\$2,336	\$0	\$0
Blue Earth	\$0	0	\$150,034	\$236	\$0	\$0
Brown	\$330	0	\$341,989	\$15,652	\$0	\$0
Carlton	(\$58,301)	58,301	\$0	\$0	\$37,358	\$0
Carver	\$0	0	\$0	\$425,771	\$0	\$0
Cass	\$0	0	\$0	\$831,354	\$0	\$0
Chippewa	\$0	0	\$126,992	\$0	\$0	\$0
Chisago	\$0	0	\$0	\$269,665	\$10,172	\$0
Clay	\$46,401	0	\$0	\$504,416	\$0	\$0
Clearwater	\$0	0	\$0	\$107,594	\$0	\$0
Cook	\$0	0	\$343,093	\$0	\$0	\$0
Cottonwood	\$27,315	0	\$0	\$183,042	\$0	\$0
Crow Wing	\$0	0	\$508,907	\$0	\$86,016	\$0
Dakota	(\$1)	1	\$0	\$0	\$0	\$1,290,269
Dodge	\$0	0	\$238,675	\$0	\$44,500	\$0
Faribault	\$79,750	0	\$175,066	\$0	\$0	\$0
Fillmore	(\$4,094)	4,094	\$13,988	\$0	\$0	\$0
Freeborn	\$70,335	0	\$394,220	\$0	\$0	\$0
Goodhue	\$0	0	\$357,324	\$0	\$0	\$0
Grant	\$103,245	9	\$36,433	\$121,350	\$0	\$0
Hennepin	\$0	0	\$0	\$5,621,247	\$267,427	\$0
Houston	\$0	0	\$188,448	\$0	\$0	\$0
Hubbard	\$0	0	\$312,417	\$0	\$0	\$0
Isanti	\$103,287	0	\$23,356	\$0	\$0	\$0
Itasca	\$0	0	\$381,577	\$0	\$0	\$0
Jackson	\$190,222	0	\$13,988	\$0	\$0	\$0
Kanabec	\$111,421	0	\$13,868	\$0	\$0	\$0
Kandiyohi	\$0	0	\$10,345	\$292,400	\$0	\$0
Kittson	\$7,785	0	\$13,988	\$0	\$0	\$0
Koochiching	\$108	0	\$85,233	\$85,233	\$16,032	\$0
Lac qui Parle	\$248,836	0	\$105,000	\$0	\$0	\$0
Lake	\$0	0	\$170,618	\$4,771	\$0	\$0
Lake of The Woods	\$0	0	\$162,715	\$0	\$0	\$0
Le Sueur	\$104,958	0	\$144,306	\$0	\$0	\$0
Lincoln	\$27,723	0	\$165,740	\$0	\$0	\$0
Lyon	\$0	0	\$0	\$234,321	\$0	\$114,000
Mahnomen	\$32,635	0	\$13,988	\$0	\$0	\$0
Marshall	\$0	0	\$0	\$1,504	\$0	\$0
Martin	\$67,038	0	\$624,492	\$0	\$0	\$0
McLeod	\$0	0	\$0	\$75,360	\$520,388	\$990,224
Meeker	\$17,394	0	\$15,000	\$0	\$0	\$0
Mille Lacs	\$97,970	0	\$30,400	\$0	\$0	\$0
Morrison	\$0	0	\$244,576	\$0	\$0	\$0

County Survey Responses
Finances: Revenues (part 1)

County	CY2012 revenue carried over	Adjustment to carry over	General revenue	Service fee	Processing facility tip fee	Land disposal facility surcharge
Mower	\$0	0	\$0	\$309,721	\$0	\$0
Murray	(\$17,545)	17,545	\$13,750	\$0	\$0	\$0
Nicollet	\$24,035	0	\$292,649	\$0	\$0	\$0
Nobles	\$82,244	0	\$0	\$184,031	\$0	\$191,330
Norman	\$0	0	\$59,213	\$0	\$0	\$0
Olmsted	(\$373,144)	373,144	\$0	\$0	\$0	\$0
Otter Tail	\$15,300	0	\$0	\$772,412	\$0	\$0
Pennington	\$175,913	0	\$13,988	\$0	\$0	\$0
Pine	\$100,527	0	\$70,000	\$0	\$0	\$0
Pipestone	(\$174,924)	174,924	\$190,467	\$3,640	\$0	\$0
Polk	\$317,998	0	\$0	\$260,471	\$0	\$0
Pope/Douglas	\$37,708	0	\$290,000	\$0	\$0	\$0
Ramsey	\$625,759	0	\$0	\$5,339,340	\$0	\$0
Red Lake	\$0	0	\$12,379	\$0	\$0	\$0
Redwood	\$548,199	0	\$347,637	\$1,750	\$0	\$0
Renville	\$185,492	58,988	\$315,000	\$12,408	\$3,001	\$0
Rice	\$386,522	0	\$0	\$654,718	\$0	\$0
Rock	(\$32,736)	32,736	\$63,212	\$0	\$15,886	\$0
Roseau	(\$293)	293	\$0	\$0	\$0	\$0
Scott	\$680,597	0	\$80,330	\$0	\$0	\$0
Sherburne	\$257,542	0	\$0	\$0	\$0	\$54,418
Sibley	\$15,853	0	\$130,495	\$0	\$0	\$0
St. Louis - partial	\$0	0	\$0	\$1,003,817	\$0	\$0
Stearns	\$105,661	0	\$0	\$0	\$0	\$0
Steele	\$0	0	\$515,728	\$0	\$0	\$0
Stevens	(\$8,516)	8,516	\$106,809	\$0	\$0	\$0
Swift	(\$109,839)	109,839	\$179,834	\$0	\$0	\$0
Todd	\$0	0	\$0	\$300,542	\$0	\$0
Traverse	(\$47,050)	47,050	\$13,988	\$0	\$0	\$0
Wabasha	\$0	0	\$21,995	\$0	\$0	\$0
Wadena	\$0	0	\$0	\$187,042	\$23,062	\$0
Waseca	(\$143,797)	143,797	\$0	\$0	\$0	\$0
Washington	\$0	0	\$0	\$933,354	\$0	\$0
Watonwan	\$357,723	0	\$14,508	\$173,233	\$0	\$0
Wilkin	\$0	0	\$0	\$82,593	\$0	\$0
Winona	(\$83,853)	83,853	\$286,929	\$618,375	\$0	\$0
WLSSD	\$0	0	\$0	\$1,659,715	\$380,871	\$0
Wright	\$889,107	0	\$77,219	\$16,288	\$0	\$0
Yellow Medicine	\$30,053	0	\$0	\$54,223	\$0	\$20,940
Metro Area	\$883,300	\$1	\$0	\$14,129,170	\$267,427	\$1,344,687
Greater Minn.	\$4,417,351	\$1,234,108	\$9,530,861	\$9,414,704	\$1,137,286	\$1,316,494
Minnesota	\$5,300,651	\$1,234,109	\$9,530,861	\$23,543,874	\$1,404,713	\$2,661,181

County Survey Responses
Finances: Revenues (part 2)

County	SCORE pass-through	Grants	HHW funding	Material sales	Other	Total revenue
Aitkin	\$55,950	\$26,513	\$3,568	\$0	\$19,321	\$537,981
Anoka	\$818,409	\$270,275	\$0	\$13,194	\$74,824	\$2,986,161
Becker	\$40,144	\$0	\$34,271	\$312,841	\$7,632	\$614,174
Beltrami	\$110,461	\$0	\$9,035	\$0	\$0	\$858,996
Benton	\$94,455	\$0	\$444	\$0	\$10,435	\$310,318
Big Stone	\$55,950	\$0	\$2,400	\$0	\$700	\$186,210
Blue Earth	\$157,961	\$0	\$52,749	\$0	\$0	\$360,980
Brown	\$62,609	\$479	\$3,372	\$0	\$14,305	\$438,736
Carlton	\$86,499	\$13,797	\$7,349	\$150	\$803	\$145,956
Carver	\$226,544	\$260,526	\$0	\$0	\$219,572	\$1,132,412
Cass	\$69,234	\$0	\$4,227	\$22,804	\$0	\$927,619
Chippewa	\$55,950	\$3,443	\$2,400	\$0	\$9,004	\$197,788
Chisago	\$131,165	\$1,307	\$21,330	\$5,402	\$7,920	\$446,962
Clay	\$146,176	\$0	\$9,506	\$3,607	\$404	\$710,510
Clearwater	\$55,950	\$0	\$4,727	\$0	\$0	\$168,271
Cook	\$0	\$0	\$2,573	\$96,613	\$0	\$442,279
Cottonwood	\$55,950	\$0	\$0	\$3,345	\$62,897	\$332,549
Crow Wing	\$153,265	\$0	\$10,097	\$0	\$0	\$758,285
Dakota	\$983,009	\$0	\$212,939	\$0	\$0	\$2,486,217
Dodge	\$55,950	\$0	\$600	\$82,464	\$4,274	\$426,463
Faribault	\$0	\$0	\$0	\$0	\$3,571	\$258,387
Fillmore	\$55,950	\$0	\$0	\$0	\$0	\$69,938
Freeborn	\$75,873	\$0	\$5,779	\$910	\$7,832	\$554,949
Goodhue	\$0	\$0	\$10,757	\$171,340	\$10,798	\$550,219
Grant	\$55,950	\$0	\$0	\$0	\$8,743	\$325,730
Hennepin	\$2,858,773	\$613,532	\$70,995	\$843,471	\$79,870	\$10,355,315
Houston	\$55,950	\$0	\$3,750	\$0	\$89,961	\$338,109
Hubbard	\$55,950	\$0	\$3,143	\$45,578	\$0	\$417,087
Isanti	\$93,267	\$0	\$1,313	\$0	\$0	\$221,223
Itasca	\$165,258	\$0	\$4,649	\$6,924	\$0	\$558,408
Jackson	\$55,950	\$0	\$618	\$8,977	\$0	\$269,755
Kanabec	\$55,950	\$0	\$164	\$0	\$89	\$181,492
Kandiyohi	\$103,013	\$0	\$48,938	\$369,116	\$137,188	\$961,000
Kittson	\$55,950	\$0	\$0	\$0	\$26,236	\$103,959
Koochiching	\$55,950	\$0	\$3,053	\$33,200	\$0	\$278,809
Lac qui Parle	\$55,950	\$0	\$2,400	\$0	\$2,595	\$414,781
Lake	\$55,950	\$0	\$4,762	\$17,970	\$0	\$254,071
Lake of The Woods	\$55,950	\$0	\$0	\$18,331	\$0	\$236,996
Le Sueur	\$67,504	\$0	\$3,054	\$24,238	\$18,054	\$362,114
Lincoln	\$55,950	\$0	\$0	\$0	\$27,068	\$276,480
Lyon	\$62,979	\$0	\$51,758	\$0	\$52,402	\$515,460
Mahnomen	\$27,975	\$0	\$2,764	\$0	\$0	\$77,362
Marshall	\$55,950	\$0	\$0	\$0	\$36,446	\$93,900
Martin	\$0	\$0	\$0	\$0	\$9,983	\$701,513
McLeod	\$88,570	\$0	\$17,838	\$663,215	\$25,255	\$2,380,850
Meeker	\$56,488	\$0	\$2,879	\$0	\$641	\$92,402
Mille Lacs	\$63,135	\$0	\$3,699	\$0	\$0	\$195,204
Morrison	\$80,844	\$0	\$4,933	\$0	\$144,765	\$475,118
Mower	\$95,891	\$0	\$7,856	\$167,635	\$4,423	\$585,526
Murray	\$55,950	\$0	\$0	\$0	\$18,611	\$88,311

County Survey Responses
Finances: Revenues (part 2)

County	SCORE pass-through	Grants	HHW funding	Material sales	Other	Total revenue
Nicollet	\$80,483	\$0	\$6,634	\$0	\$0	\$403,801
Nobles	\$55,950	\$0	\$0	\$0	\$6,650	\$520,205
Norman	\$55,950	\$0	\$2,959	\$0	\$0	\$118,122
Olmsted	\$356,863	\$0	\$133,212	\$0	\$184,601	\$674,676
Otter Tail	\$139,746	\$0	\$36,841	\$647,906	\$0	\$1,612,205
Pennington	\$55,950	\$0	\$0	\$1,176	\$15,933	\$262,960
Pine	\$71,857	\$0	\$1,134	\$0	\$0	\$243,518
Pipestone	\$55,950	\$0	\$0	\$0	\$32,320	\$282,377
Polk	\$0	\$22,366	\$4,744	\$94,326	\$27,516	\$727,420
Pope/Douglas	\$144,589	\$0	\$13,817	\$0	\$600	\$486,714
Ramsey	\$1,254,451	\$348,205	\$0	\$0	\$82,024	\$7,649,779
Red Lake	\$55,950	\$0	\$3,916	\$887	\$1,133	\$74,264
Redwood	\$55,950	\$0	\$0	\$193,460	\$48,797	\$1,195,793
Renville	\$55,950	\$0	\$0	\$0	\$1,801	\$632,640
Rice	\$157,954	\$0	\$38,697	\$354,062	\$100,401	\$1,692,354
Rock	\$55,950	\$0	\$0	\$0	\$19,530	\$154,578
Roseau	\$55,950	\$0	\$4,464	\$0	\$57,584	\$117,998
Scott	\$323,165	\$0	\$0	\$0	\$0	\$1,084,092
Sherburne	\$217,670	\$1,018	\$4,196	\$0	\$61	\$534,905
Sibley	\$55,950	\$0	\$2,188	\$18,909	\$12,361	\$235,756
St. Louis - partial	\$55,950	\$25,000	\$13,989	\$390,258	\$94,637	\$1,583,651
Stearns	\$369,173	\$445,859	\$0	\$0	\$0	\$920,693
Steele	\$88,857	\$0	\$0	\$0	\$1,223	\$605,808
Stevens	\$55,950	\$0	\$0	\$0	\$214	\$162,973
Swift	\$27,975	\$0	\$2,400	\$128,421	\$0	\$338,630
Todd	\$60,211	\$0	\$4,731	\$90,783	\$0	\$456,267
Traverse	\$55,950	\$0	\$0	\$0	\$0	\$69,938
Wabasha	\$55,950	\$0	\$3,709	\$0	\$0	\$81,654
Wadena	\$55,950	\$0	\$0	\$0	\$0	\$266,054
Waseca	\$0	\$0	\$3,048	\$207,326	\$1,093	\$211,467
Washington	\$590,442	\$239,511	\$0	\$0	\$129,852	\$1,893,159
Watonwan	\$0	\$0	\$2,655	\$0	\$10,103	\$558,222
Wilkin	\$55,950	\$0	\$0	\$107,159	\$1,100	\$246,802
Winona	\$125,603	\$0	\$24,120	\$0	\$15,192	\$1,070,219
WLSSD	\$253,510	\$88,723	\$250,278	\$100,253	\$92,105	\$2,825,456
Wright	\$308,874	\$8,019	\$11,700	\$5,924	\$512	\$1,317,643
Yellow Medicine	\$55,950	\$0	\$0	\$0	\$1,014	\$162,179
Metro Area	\$6,949,298	\$1,733,066	\$288,130	\$856,665	\$586,204	\$27,037,948
Greater Minn.	\$6,611,776	\$635,506	\$917,990	\$4,395,510	\$1,488,775	\$41,100,360
Minnesota	\$13,561,074	\$2,368,572	\$1,206,120	\$5,252,175	\$2,074,979	\$68,138,308

County Survey Responses
Finances: Revenue summary

County	Adjusted CY2012 revenue (carried over)	CY2012 revenue	Total revenue
Aitkin	\$267,006	\$270,975	\$537,981
Anoka	\$0	\$2,986,161	\$2,986,161
Becker	\$0	\$614,174	\$614,174
Beltrami	\$0	\$858,996	\$858,996
Benton	\$33,779	\$276,539	\$310,318
Big Stone	\$1,992	\$184,218	\$186,210
Blue Earth	\$0	\$360,980	\$360,980
Brown	\$330	\$438,406	\$438,736
Carlton	\$0	\$145,956	\$145,956
Carver	\$0	\$1,132,412	\$1,132,412
Cass	\$0	\$927,619	\$927,619
Chippewa	\$0	\$197,788	\$197,788
Chisago	\$0	\$446,962	\$446,962
Clay	\$46,401	\$664,109	\$710,510
Clearwater	\$0	\$168,271	\$168,271
Cook	\$0	\$442,279	\$442,279
Cottonwood	\$27,315	\$305,234	\$332,549
Crow Wing	\$0	\$758,285	\$758,285
Dakota	\$0	\$2,486,217	\$2,486,217
Dodge	\$0	\$426,463	\$426,463
Faribault	\$79,750	\$178,637	\$258,387
Fillmore	\$0	\$69,938	\$69,938
Freeborn	\$70,335	\$484,614	\$554,949
Goodhue	\$0	\$550,219	\$550,219
Grant	\$103,254	\$222,476	\$325,730
Hennepin	\$0	\$10,355,315	\$10,355,315
Houston	\$0	\$338,109	\$338,109
Hubbard	\$0	\$417,087	\$417,087
Isanti	\$103,287	\$117,936	\$221,223
Itasca	\$0	\$558,408	\$558,408
Jackson	\$190,222	\$79,533	\$269,755
Kanabec	\$111,421	\$70,071	\$181,492
Kandiyohi	\$0	\$961,000	\$961,000
Kittson	\$7,785	\$96,174	\$103,959
Koochiching	\$108	\$278,701	\$278,809
Lac qui Parle	\$248,836	\$165,945	\$414,781
Lake	\$0	\$254,071	\$254,071
Lake of The Woods	\$0	\$236,996	\$236,996
Le Sueur	\$104,958	\$257,156	\$362,114
Lincoln	\$27,723	\$248,758	\$276,480
Lyon	\$0	\$515,460	\$515,460
Mahnomen	\$32,635	\$44,727	\$77,362
Marshall	\$0	\$93,900	\$93,900
Martin	\$67,038	\$634,475	\$701,513
McLeod	\$0	\$2,380,850	\$2,380,850
Meeker	\$17,394	\$75,008	\$92,402
Mille Lacs	\$97,970	\$97,234	\$195,204
Morrison	\$0	\$475,118	\$475,118

County Survey Responses
Finances: Revenue summary

County	Adjusted CY2012 revenue (carried over)	CY2012 revenue	Total revenue
Mower	\$0	\$585,526	\$585,526
Murray	\$0	\$88,311	\$88,311
Nicollet	\$24,035	\$379,766	\$403,801
Nobles	\$82,244	\$437,961	\$520,205
Norman	\$0	\$118,122	\$118,122
Olmsted	\$0	\$674,676	\$674,676
Otter Tail	\$15,300	\$1,596,905	\$1,612,205
Pennington	\$175,913	\$87,047	\$262,960
Pine	\$100,527	\$142,991	\$243,518
Pipestone	\$0	\$282,377	\$282,377
Polk	\$317,998	\$409,422	\$727,420
Pope/Douglas	\$37,708	\$449,006	\$486,714
Ramsey	\$625,759	\$7,024,020	\$7,649,779
Red Lake	\$0	\$74,264	\$74,264
Redwood	\$548,199	\$647,594	\$1,195,793
Renville	\$244,480	\$388,160	\$632,640
Rice	\$386,522	\$1,305,832	\$1,692,354
Rock	\$0	\$154,578	\$154,578
Roseau	\$0	\$117,998	\$117,998
Scott	\$680,597	\$403,495	\$1,084,092
Sherburne	\$257,542	\$277,363	\$534,905
Sibley	\$15,853	\$219,903	\$235,756
St. Louis - partial	\$0	\$1,583,651	\$1,583,651
Stearns	\$105,661	\$815,032	\$920,693
Steele	\$0	\$605,808	\$605,808
Stevens	\$0	\$162,973	\$162,973
Swift	\$0	\$338,630	\$338,630
Todd	\$0	\$456,267	\$456,267
Traverse	\$0	\$69,938	\$69,938
Wabasha	\$0	\$81,654	\$81,654
Wadena	\$0	\$266,054	\$266,054
Waseca	\$0	\$211,467	\$211,467
Washington	\$0	\$1,893,159	\$1,893,159
Watsonwan	\$357,723	\$200,499	\$558,222
Wilkin	\$0	\$246,802	\$246,802
Winona	\$0	\$1,070,219	\$1,070,219
WLSSD	\$0	\$2,825,456	\$2,825,456
Wright	\$889,107	\$428,535	\$1,317,643
Yellow Medicine	\$30,053	\$132,126	\$162,179
Metro Area	\$883,301	\$26,154,647	\$27,037,948
Greater Minn.	\$5,651,458	\$35,448,902	\$41,100,360
Minnesota	\$6,534,759	\$61,603,549	\$68,138,308

County Survey Responses
Finances: Expenditures by program area (part 1)

County	Planning & administration	Recycling	Yard waste	HHW and problem materials	Source reduction
Aitkin	\$153,330	\$107,252	\$300	\$10,070	\$1,317
Anoka	\$763,771	\$52,909	\$78,528	\$476,645	\$82,371
Becker	\$214,498	\$584,649	\$0	\$63,286	\$0
Beltrami	\$0	\$832,433	\$0	\$22,855	\$0
Benton	\$124,690	\$270	\$0	\$91,126	\$0
Big Stone	\$70,559	\$109,729	\$0	\$5,985	\$0
Blue Earth	\$82,028	\$169,970	\$4,457	\$88,456	\$0
Brown	\$49,630	\$346,280	\$0	\$47,612	\$0
Carlton	\$56,259	\$71,039	\$4,882	\$29,717	\$0
Carver	\$486,463	\$110,700	\$43,866	\$380,722	\$0
Cass	\$125,000	\$678,000	\$0	\$102,581	\$0
Chippewa	\$16,733	\$159,136	\$0	\$18,822	\$0
Chisago	\$200,311	\$50,000	\$0	\$170,038	\$0
Clay	\$138,842	\$335,505	\$38,489	\$101,424	\$0
Clearwater	\$21,322	\$109,774	\$1,356	\$34,116	\$0
Cook	\$247,147	\$184,164	\$0	\$10,533	\$0
Cottonwood	\$17,832	\$558,534	\$0	\$1,949	\$0
Crow Wing	\$214,517	\$14,192	\$26,543	\$121,924	\$0
Dakota	\$435,262	\$17,447	\$0	\$1,468,282	\$0
Dodge	\$50,209	\$302,800	\$24,622	\$12,538	\$24,622
Faribault	\$26,890	\$48,754	\$200	\$16,933	\$300
Fillmore	\$0	\$70,420	\$0	\$0	\$0
Freeborn	\$64,416	\$306,209	\$0	\$17,636	\$0
Goodhue	\$333,850	\$178,548	\$0	\$43,277	\$0
Grant	\$0	\$229,024	\$0	\$19,621	\$0
Hennepin	\$2,109,697	\$2,091,179	\$26,361	\$2,630,554	\$1
Houston	\$53,087	\$281,251	\$0	\$3,771	\$0
Hubbard	\$27,779	\$249,019	\$12,027	\$121,318	\$0
Isanti	\$63,130	\$49,900	\$0	\$7,345	\$0
Itasca	\$110,041	\$367,449	\$0	\$42,177	\$0
Jackson	\$20,889	\$25,556	\$0	\$3,700	\$0
Kanabec	\$3,387	\$50,936	\$0	\$2,984	\$0
Kandiyohi	\$264,392	\$598,891	\$0	\$97,717	\$0
Kittson	\$32,157	\$0	\$0	\$4,466	\$0
Koochiching	\$116,605	\$128,331	\$2,763	\$24,598	\$0
Lac qui Parle	\$29,065	\$74,184	\$0	\$19,654	\$0
Lake	\$37,499	\$149,489	\$475	\$66,108	\$0
Lake of The Woods	\$4,264	\$182,064	\$1,275	\$48,864	\$0
Le Sueur	\$57,045	\$46,037	\$0	\$74,680	\$0
Lincoln	\$35,815	\$205,769	\$0	\$12,128	\$0
Lyon	\$52,212	\$263,881	\$0	\$152,578	\$4,000
Mahnomen	\$44,850	\$14,834	\$0	\$8,142	\$0
Marshall	\$28,968	\$0	\$0	\$14,045	\$0
Martin	\$40,103	\$320,302	\$1,150	\$13,468	\$670
McLeod	\$711,148	\$1,311,243	\$253	\$149,074	\$0
Meeker	\$11,196	\$13,250	\$0	\$16,746	\$0
Mille Lacs	\$3,564	\$57,094	\$0	\$10,533	\$0
Morrison	\$22,664	\$127,546	\$12,092	\$264,949	\$0

County Survey Responses
Finances: Expenditures by program area (part 1)

County	Planning & administration	Recycling	Yard waste	HHW and problem materials	Source reduction
Mower	\$96,954	\$488,063	\$0	\$8,127	\$0
Murray	\$60,198	\$37,213	\$0	\$3,225	\$0
Nicollet	\$58,130	\$204,571	\$0	\$82,065	\$0
Nobles	\$128,005	\$213,451	\$0	\$63,397	\$0
Norman	\$8,816	\$50,041	\$0	\$56,292	\$0
Olmsted	\$77,437	\$721,413	\$120,579	\$552,729	\$155,657
Otter Tail	\$757,376	\$522,169	\$3,420	\$212,145	\$7,935
Pennington	\$20,000	\$34,605	\$0	\$12,590	\$0
Pine	\$47,278	\$108,207	\$0	\$8,154	\$0
Pipestone	\$57,361	\$215,037	\$0	\$13,474	\$0
Polk	\$155,244	\$224,095	\$2,511	\$65,245	\$0
Pope/Douglas	\$215,331	\$82,994	\$39,928	\$57,123	\$0
Ramsey	\$2,242,199	\$500,950	\$1,007,006	\$1,404,097	\$0
Red Lake	\$19,314	\$46,706	\$0	\$7,104	\$0
Redwood	\$215,681	\$274,290	\$0	\$52,762	\$0
Renville	\$94,786	\$175,149	\$0	\$47,622	\$0
Rice	\$345,031	\$434,484	\$40,200	\$151,335	\$200
Rock	\$71,099	\$88,227	\$2,888	\$24,312	\$900
Roseau	\$16,493	\$72,000	\$0	\$21,205	\$0
Scott	\$22,825	\$1,697	\$0	\$137,400	\$262
Sherburne	\$2,567	\$97,479	\$67,076	\$92,046	\$0
Sibley	\$50,450	\$64,200	\$0	\$37,850	\$0
St. Louis - partial	\$236,318	\$1,062,950	\$11,719	\$169,143	\$17,840
Stearns	\$186,107	\$56,783	\$16,012	\$292,419	\$16,012
Steele	\$13,619	\$579,450	\$0	\$8,166	\$0
Stevens	\$62,908	\$83,114	\$0	\$20,059	\$0
Swift	\$357,372	\$138,364	\$5,930	\$14,685	\$1,160
Todd	\$119,017	\$255,200	\$2,000	\$75,616	\$1,500
Traverse	\$77,147	\$37,505	\$0	\$8,000	\$0
Wabasha	\$16,250	\$60,486	\$0	\$9,286	\$0
Wadena	\$92,624	\$137,623	\$2,779	\$31,951	\$0
Waseca	\$119,095	\$225,546	\$7,252	\$56,693	\$0
Washington	\$318,101	\$10,339	\$0	\$1,124,644	\$0
Watsonwan	\$2,291	\$192,644	\$0	\$26,886	\$0
Wilkin	\$34,657	\$166,218	\$4,753	\$39,363	\$1,434
Winona	\$314,812	\$917,842	\$0	\$76,338	\$0
WLSSD	\$1,661,839	\$404,701	\$134,210	\$339,289	\$0
Wright	\$81,627	\$2,067	\$9,692	\$60,688	\$0
Yellow Medicine	\$1,500	\$130,269	\$0	\$6,388	\$0
Metro Area	\$6,358,060	\$2,881,004	\$1,222,837	\$7,576,990	\$82,372
Greater Minn.	\$9,872,914	\$18,473,083	\$534,756	\$5,038,672	\$233,810
Minnesota	\$16,230,974	\$21,354,087	\$1,757,593	\$12,615,662	\$316,182

County Survey Responses
Finances: Expenditures by program area (part 2)

County	Education	Market development	Litter prevention	County grants to other local units of government
Aitkin	\$6,002	\$0	\$0	\$0
Anoka	\$48,722	\$0	\$0	\$1,483,214
Becker	\$6,311	\$0	\$0	\$57,823
Beltrami	\$3,708	\$0	\$0	\$0
Benton	\$20,276	\$0	\$0	\$96,925
Big Stone	\$1,500	\$0	\$0	\$0
Blue Earth	\$14,002	\$0	\$2,068	\$0
Brown	\$2,337	\$0	\$0	\$0
Carlton	\$3,414	\$0	\$0	\$15,000
Carver	\$5,135	\$0	\$15,251	\$90,276
Cass	\$0	\$0	\$0	\$0
Chippewa	\$3,097	\$0	\$0	\$0
Chisago	\$26,612	\$0	\$0	\$0
Clay	\$15,135	\$0	\$0	\$0
Clearwater	\$1,703	\$0	\$0	\$0
Cook	\$436	\$0	\$0	\$0
Cottonwood	\$0	\$0	\$0	\$0
Crow Wing	\$24,758	\$0	\$4,023	\$352,328
Dakota	\$128,193	\$0	\$0	\$437,031
Dodge	\$40,768	\$900	\$0	\$0
Faribault	\$5,933	\$159,077	\$300	\$0
Fillmore	\$0	\$0	\$0	\$0
Freeborn	\$13,501	\$0	\$0	\$0
Goodhue	\$5,153	\$0	\$0	\$0
Grant	\$0	\$0	\$0	\$0
Hennepin	\$638,750	\$0	\$0	\$2,858,773
Houston	\$0	\$0	\$0	\$0
Hubbard	\$5,445	\$0	\$1,500	\$0
Isanti	\$0	\$0	\$0	\$2,450
Itasca	\$1,241	\$0	\$0	\$37,500
Jackson	\$10,135	\$0	\$0	\$0
Kanabec	\$434	\$0	\$0	\$0
Kandiyohi	\$0	\$0	\$0	\$0
Kittson	\$0	\$0	\$0	\$25,000
Koochiching	\$6,405	\$0	\$128	\$0
Lac qui Parle	\$4,900	\$0	\$0	\$0
Lake	\$0	\$0	\$0	\$500
Lake of The Woods	\$529	\$0	\$0	\$0
Le Sueur	\$32,014	\$0	\$0	\$23,400
Lincoln	\$2,738	\$0	\$0	\$0
Lyon	\$42,789	\$0	\$0	\$0
Mahnomen	\$796	\$0	\$0	\$0
Marshall	\$0	\$0	\$0	\$25,000
Martin	\$10,693	\$229,193	\$550	\$0
McLeod	\$30,878	\$145,699	\$816	\$31,739
Meeker	\$19,465	\$0	\$0	\$21,294
Mille Lacs	\$5,920	\$0	\$0	\$0
Morrison	\$1,042	\$0	\$0	\$46,825
Mower	\$8,402	\$0	\$0	\$0

County Survey Responses
Finances: Expenditures by program area (part 2)

County	Education	Market development	Litter prevention	County grants to other local units of government
Murray	\$6,872	\$0	\$0	\$0
Nicollet	\$31,050	\$0	\$0	\$0
Nobles	\$6,733	\$0	\$0	\$0
Norman	\$1,116	\$0	\$0	\$0
Olmsted	\$151,916	\$0	\$0	\$0
Otter Tail	\$87,794	\$0	\$2,645	\$3,420
Pennington	\$396	\$0	\$0	\$0
Pine	\$0	\$0	\$0	\$0
Pipestone	\$7,799	\$0	\$2,910	\$0
Polk	\$15,821	\$0	\$0	\$15,000
Pope/Douglas	\$28,632	\$0	\$0	\$0
Ramsey	\$816,958	\$0	\$0	\$1,049,876
Red Lake	\$1,141	\$0	\$0	\$0
Redwood	\$5,220	\$0	\$0	\$0
Renville	\$596	\$0	\$0	\$0
Rice	\$15,000	\$1,950	\$200	\$0
Rock	\$5,391	\$0	\$0	\$0
Roseau	\$0	\$0	\$0	\$0
Scott	\$54,294	\$0	\$0	\$0
Sherburne	\$38,667	\$0	\$0	\$0
Sibley	\$12,860	\$0	\$0	\$53,037
St. Louis - partial	\$66,431	\$19,250	\$0	\$0
Stearns	\$25,517	\$16,012	\$16,012	\$135,410
Steele	\$4,573	\$0	\$0	\$0
Stevens	\$6,000	\$0	\$0	\$0
Swift	\$7,670	\$0	\$0	\$0
Todd	\$1,637	\$0	\$0	\$1,296
Traverse	\$345	\$0	\$0	\$2,000
Wabasha	\$0	\$0	\$0	\$0
Wadena	\$1,077	\$0	\$0	\$0
Waseca	\$0	\$0	\$0	\$0
Washington	\$53,866	\$0	\$0	\$386,209
Watsonwan	\$1,127	\$0	\$0	\$0
Wilkin	\$377	\$0	\$0	\$0
Winona	\$21,647	\$0	\$0	\$0
WLSSD	\$194,244	\$0	\$900	\$90,273
Wright	\$497	\$0	\$0	\$246,191
Yellow Medicine	\$7,325	\$0	\$0	\$0
Metro Area	\$1,730,291	\$0	\$15,251	\$6,305,378
Greater Minn.	\$1,149,570	\$572,081	\$32,052	\$1,282,411
Minnesota	\$2,879,861	\$572,081	\$47,303	\$7,587,789

County Survey Responses
Finances: Balance Sheet

County	Total revenues	Total expenditures	Balance
Aitkin	\$537,981	\$278,272	\$259,710
Anoka	\$2,986,161	\$2,986,161	\$0
Becker	\$614,174	\$926,567	(\$312,393)
Beltrami	\$858,996	\$858,996	\$0
Benton	\$310,318	\$333,287	(\$22,969)
Big Stone	\$186,210	\$187,773	(\$1,563)
Blue Earth	\$360,980	\$360,980	\$0
Brown	\$438,736	\$445,859	(\$7,123)
Carlton	\$145,956	\$180,310	(\$34,354)
Carver	\$1,132,412	\$1,132,412	\$0
Cass	\$927,619	\$905,581	\$22,038
Chippewa	\$197,788	\$197,788	\$0
Chisago	\$446,962	\$446,962	\$0
Clay	\$710,510	\$629,395	\$81,115
Clearwater	\$168,271	\$168,271	(\$0)
Cook	\$442,279	\$442,279	\$0
Cottonwood	\$332,549	\$578,315	(\$245,766)
Crow Wing	\$758,285	\$758,285	\$0
Dakota	\$2,486,217	\$2,486,215	\$2
Dodge	\$426,463	\$456,459	(\$29,996)
Faribault	\$258,387	\$258,387	\$0
Fillmore	\$69,938	\$70,420	(\$482)
Freeborn	\$554,949	\$401,762	\$153,187
Goodhue	\$550,219	\$560,828	(\$10,609)
Grant	\$325,730	\$248,645	\$77,085
Hennepin	\$10,355,315	\$10,355,315	\$0
Houston	\$338,109	\$338,109	\$0
Hubbard	\$417,087	\$417,087	\$0
Isanti	\$221,223	\$122,825	\$98,398
Itasca	\$558,408	\$558,408	\$0
Jackson	\$269,755	\$60,281	\$209,475
Kanabec	\$181,492	\$57,740	\$123,752
Kandiyohi	\$961,000	\$961,000	\$0
Kittson	\$103,959	\$61,623	\$42,336
Koochiching	\$278,809	\$278,830	(\$21)
Lac qui Parle	\$414,781	\$127,802	\$286,979
Lake	\$254,071	\$254,071	\$0
Lake of The Woods	\$236,996	\$236,996	\$0
Le Sueur	\$362,114	\$233,176	\$128,938
Lincoln	\$276,480	\$256,450	\$20,030
Lyon	\$515,460	\$515,460	\$0
Mahnomen	\$77,362	\$68,622	\$8,740
Marshall	\$93,900	\$68,013	\$25,887
Martin	\$701,513	\$616,129	\$85,384
McLeod	\$2,380,850	\$2,380,850	\$0
Meeker	\$92,402	\$81,951	\$10,452
Mille Lacs	\$195,204	\$77,111	\$118,093
Morrison	\$475,118	\$475,118	\$0
Mower	\$585,526	\$601,547	(\$16,021)

County Survey Responses
Finances: Balance Sheet

County	Total revenues	Total expenditures	Balance
Murray	\$88,311	\$107,507	(\$19,196)
Nicollet	\$403,801	\$375,816	\$27,985
Nobles	\$520,205	\$411,586	\$108,619
Norman	\$118,122	\$116,266	\$1,856
Olmsted	\$674,676	\$1,779,731	(\$1,105,055)
Otter Tail	\$1,612,205	\$1,596,905	\$15,300
Pennington	\$262,960	\$67,591	\$195,369
Pine	\$243,518	\$163,639	\$79,879
Pipestone	\$282,377	\$296,581	(\$14,204)
Polk	\$727,420	\$477,916	\$249,505
Pope/Douglas	\$486,714	\$424,008	\$62,706
Ramsey	\$7,649,779	\$7,021,087	\$628,692
Red Lake	\$74,264	\$74,264	\$0
Redwood	\$1,195,793	\$547,953	\$647,840
Renville	\$632,640	\$318,153	\$314,487
Rice	\$1,692,354	\$988,400	\$703,953
Rock	\$154,578	\$192,817	(\$38,239)
Roseau	\$117,998	\$109,698	\$8,300
Scott	\$1,084,092	\$216,478	\$867,614
Sherburne	\$534,905	\$297,835	\$237,070
Sibley	\$235,756	\$218,397	\$17,359
St. Louis - partial	\$1,583,651	\$1,583,651	\$0
Stearns	\$920,693	\$760,284	\$160,409
Steele	\$605,808	\$605,808	\$0
Stevens	\$162,973	\$172,081	(\$9,109)
Swift	\$338,630	\$525,181	(\$186,551)
Todd	\$456,267	\$456,267	\$0
Traverse	\$69,938	\$124,997	(\$55,059)
Wabasha	\$81,654	\$86,021	(\$4,368)
Wadena	\$266,054	\$266,054	\$0
Waseca	\$211,467	\$408,586	(\$197,119)
Washington	\$1,893,159	\$1,893,159	\$0
Watsonwan	\$558,222	\$222,948	\$335,274
Wilkin	\$246,802	\$246,802	\$0
Winona	\$1,070,219	\$1,330,639	(\$260,420)
WLSSD	\$2,825,456	\$2,825,456	\$0
Wright	\$1,317,643	\$400,763	\$916,880
Yellow Medicine	\$162,179	\$145,483	\$16,697
Metro Area	\$27,037,948	\$26,172,184	\$865,764
Greater Minn.	\$41,100,360	\$37,189,349	\$3,911,011
Minnesota	\$68,138,308	\$63,361,532	\$4,776,775

County Survey Responses:
Paper collected for recycling (tons)

County	Computer paper	Corrugated	Magazine/catalog	Mixed paper	Newsprint	Office paper	Other paper	Phone book	Total paper
Aitkin	0	599	697	0	0	0	0	0	1,296
Anoka	20	55,704	570	10,605	14,014	1,227	6,367	10	88,516
Becker	0	2,785	56	1,066	1,410	205	0	5	5,526
Beltrami	0	3,055	0	831	0	52	0	0	3,938
Benton	0	1,231	8,438	207	549	129	8	2	10,564
Big Stone	0	107	0	182	195	0	0	0	483
Blue Earth	0	14,933	1,038	3,886	368	500	0	0	20,725
Brown	0	4,186	0	4,522	844	270	95	0	9,916
Carlton	0	2,111	238	857	596	95	0	0	3,896
Carver	0	6,357	0	15,153	3,204	64	0	0	24,778
Cass	0	3,938	0	735	1,755	0	0	0	6,428
Chippewa	0	1,141	11	37	245	22	0	0	1,456
Chisago	0	2,252	0	13	2,063	413	25	0	4,767
Clay	0	2,703	105	604	981	337	0	22	4,752
Clearwater	0	195	0	72	0	0	0	2	269
Cook	0	478	89	33	64	0	0	0	664
Cottonwood	0	613	0	242	259	0	0	0	1,114
Crow Wing	0	5,166	116	2,671	575	0	0	0	8,529
Dakota	0	27,164	210	59,555	21,405	1,592	0	0	109,926
Dodge	0	793	13	930	0	125	0	0	1,862
Faribault	0	3,452	0	2,749	0	0	0	0	6,201
Fillmore	0	0	0	0	0	0	1,856	0	1,856
Freeborn	0	8,846	1,000	0	591	0	0	0	10,436
Goodhue	0	3,379	85	2,457	3,571	4	0	0	9,496
Grant	0	157	17	0	75	39	0	0	288
Hennepin	0	55,319	3,223	40,004	37,690	9,672	39	6	145,953
Houston	0	512	0	429	215	0	0	0	1,156
Hubbard	0	1,928	0	118	429	1	0	0	2,475
Isanti	0	2,732	8	42	1,034	9	0	0	3,825
Itasca	0	3,014	0	896	1,312	237	0	0	5,458
Jackson	0	1,024	0	0	152	148	0	0	1,324
Kanabec	0	643	0	0	183	73	0	0	900
Kandiyohi	0	3,885	246	395	653	94	0	15	5,288
Kittson	0	116	68	0	90	1	0	0	275
Koochiching	0	4,548	0	709	95	101	0	0	5,453
Lac qui Parle	0	541	0	0	0	526	0	0	1,067
Lake	0	636	59	148	221	36	0	0	1,100
Lake of The Woods	0	32	0	0	0	0	0	0	32
Le Sueur	0	1,348	0	1,025	9	26	0	9	2,417
Lincoln	0	400	0	119	128	0	0	0	646
Lyon	0	3,674	0	559	1,290	0	0	0	5,523
Mahnomen	0	156	9	0	30	17	0	0	211
Marshall	0	63	56	26	97	4	0	2	247
Martin	0	7,153	0	3,934	0	0	0	0	11,087
McLeod	0	2,947	2	10	983	73	203	0	4,217
Meeker	0	1,627	2	462	281	60	0	0	2,431
Mille Lacs	0	561	6	327	117	0	0	0	1,011

County Survey Responses:
Paper collected for recycling (tons)

County	Computer paper	Corrugated	Magazine/catalog	Mixed paper	Newsprint	Office paper	Other paper	Phone book	Total paper
Morrison	0	1,954	1,150	0	1,341	502	0	0	4,947
Mower	0	15,363	56	0	717	258	0	11	16,405
Murray	0	512	366	26	726	12	0	0	1,641
Nicollet	34	3,207	0	5,026	903	2,739	400	28	12,337
Nobles	0	2,871	0	572	883	230	23	0	4,579
Norman	0	32	0	4	0	0	0	0	36
Olmsted	53	6,887	90	417	315	1,810	4,878	0	14,448
Otter Tail	0	3,789	98	0	723	0	130	0	4,740
Pennington	0	1,166	43	0	217	171	0	0	1,597
Pine	150	1,483	0	362	0	217	0	0	2,213
Pipestone	4	1,059	7	328	144	8	29	0	1,580
Polk	0	1,273	0	310	0	0	0	0	1,583
Pope/Douglas	0	5,439	0	1,200	1,418	13	0	0	8,070
Ramsey	0	7,281	1,671	6,884	15,450	36	0	391	31,714
Red Lake	0	246	8	0	30	2	0	0	286
Redwood	0	2,112	103	435	223	415	0	0	3,288
Renville	0	635	0	803	12	0	0	3	1,452
Rice	0	14,260	0	3,593	0	0	0	0	17,853
Rock	0	716	0	24	207	10	0	0	956
Roseau	0	2,509	95	0	144	71	0	0	2,819
Scott	0	16,120	137	9,371	3,086	1,391	936	0	31,041
Sherburne	0	184	0	7,853	0	0	0	0	8,037
Sibley	0	210	0	281	50	107	0	0	648
St. Louis - partial	0	6,519	182	2,985	984	942	459	0	12,071
Stearns	0	12,365	8,871	3,105	2,716	364	85	11	27,517
Steele	2	1,798	0	2,387	0	63	1,799	0	6,049
Stevens	4	517	31	115	185	0	0	9	861
Swift	35	718	69	0	537	116	0	4	1,479
Todd	0	1,226	0	9,062	0	0	0	0	10,287
Traverse	0	110	8	0	51	12	0	0	181
Wabasha	0	2,332	0	292	29	5	0	0	2,659
Wadena	0	1,250	0	98	0	1	0	0	1,348
Waseca	0	4,520	66	258	126	553	39,085	7	44,615
Washington	11,188	5,713	86	14,770	17,529	13,061	251	15	62,613
Watsonwan	0	2,990	0	311	1,080	0	0	0	4,381
Wilkin	0	473	9	0	235	66	0	1	785
Winona	0	8,006	0	5,593	429	0	0	0	14,028
WLSSD	0	13,798	647	1,883	5,703	1,257	543	0	23,831
Wright	0	10,900	35	1,522	5,197	0	0	0	17,653
Yellow Medicine	0	546	26	0	397	0	0	0	970
Metro Area	11,208	173,658	5,897	156,342	112,377	27,042	7,593	423	494,540
Greater Minn.	282	233,634	24,317	80,134	47,178	13,541	49,617	131	448,835
Minnesota	11,490	407,292	30,214	236,476	159,556	40,584	57,210	554	943,376

County Survey Responses
Metal collected for recycling (tons)

County	Aluminum	Co-mingled alum/steel/tin	Other ferrous & non-ferrous	Steel/tin cans	Total metal
Aitkin	61	0	332	34	428
Anoka	1,690	374	30,932	4,464	37,460
Becker	0	177	752	0	929
Beltrami	117	0	1,148	83	1,348
Benton	287	181	4,792	407	5,667
Big Stone	13	0	433	20	466
Blue Earth	9,899	392	7,899	2,330	20,520
Brown	240	0	21,206	179	21,626
Carlton	186	146	135	0	466
Carver	211	101	3,066	565	3,943
Cass	57	0	0	69	126
Chippewa	40	14	0	28	82
Chisago	214	0	576	223	1,013
Clay	164	4,267	0	69	4,501
Clearwater	18	30	551	0	599
Cook	14	0	80	31	125
Cottonwood	17	0	9	26	53
Crow Wing	198	0	14,035	379	14,612
Dakota	2,535	15,641	16,602	3,984	38,762
Dodge	33	0	488	133	654
Faribault	210	581	1,077	0	1,868
Fillmore	0	156	1,351	0	1,507
Freeborn	601	0	26	994	1,621
Goodhue	344	0	955	0	1,299
Grant	10	0	2	17	29
Hennepin	6,277	913	46,129	2,639	55,958
Houston	87	21	1,422	0	1,530
Hubbard	18	177	759	100	1,055
Isanti	395	0	10,826	278	11,500
Itasca	165	120	3,715	203	4,202
Jackson	36	0	2,733	25	2,794
Kanabec	6	0	0	105	112
Kandiyohi	322	0	7	64	393
Kittson	5	48	32	0	85
Koochiching	49	400	5	14	468
Lac qui Parle	28	4	120	10	162
Lake	36	0	154	54	244
Lake of The Woods	1	260	0	1	263
Le Sueur	22	1,434	873	410	2,739
Lincoln	62	0	16	19	96
Lyon	312	0	6,126	299	6,737
Mahnomen	12	8	50	0	70
Marshall	12	143	270	0	425
Martin	1,476	1,852	2,623	0	5,951
McLeod	32	0	525	115	672
Meeker	207	127	538	35	907
Mille Lacs	29	23	0	0	52
Morrison	28	0	6,384	229	6,640

County Survey Responses
Metal collected for recycling (tons)

County	Aluminum	Co-mingled alum/steel/tin	Other ferrous & non-ferrous	Steel/tin cans	Total metal
Mower	164	0	0	178	342
Murray	72	132	213	25	442
Nicollet	314	1,233	652	296	2,495
Nobles	39	65	0	0	104
Norman	12	13	606	0	631
Olmsted	45	2,262	3,657	86	6,050
Otter Tail	138	0	25,750	119	26,007
Pennington	0	56	0	0	56
Pine	270	30	4,300	62	4,662
Pipestone	30	25	88	0	143
Polk	177	817	84	101	1,178
Pope/Douglas	339	0	1,973	1,092	3,404
Ramsey	885	105	8,775	1,011	10,776
Red Lake	0	31	250	0	281
Redwood	481	0	1,476	52	2,009
Renville	10	181	0	0	191
Rice	234	0	7,521	676	8,431
Rock	18	0	614	22	654
Roseau	52	0	1,755	87	1,894
Scott	302	1,424	8,067	7,266	17,058
Sherburne	0	2,420	5,865	0	8,285
Sibley	185	270	375	1,507	2,337
St. Louis - partial	712	379	44,991	1,155	47,237
Stearns	1,347	1,147	18,582	1,914	22,990
Steele	27	48	2,962	146	3,183
Stevens	62	0	298	108	468
Swift	151	0	47	100	298
Todd	0	0	184	19	203
Traverse	0	10	250	0	260
Wabasha	55	98	0	156	308
Wadena	0	193	4,628	0	4,821
Waseca	77	0	986	22	1,085
Washington	2,025	142	4,936	854	7,956
Watonwan	31	28	0	0	59
Wilkin	33	0	0	12	45
Winona	735	0	3,510	3,275	7,520
WLSSD	564	0	10,817	474	11,856
Wright	281	0	4,270	995	5,545
Yellow Medicine	3	0	2,434	80	2,517
Metro Area	13,925	18,700	118,507	20,782	171,913
Greater Minn.	22,721	20,003	242,159	19,744	304,628
Minnesota	36,646	38,703	360,666	40,526	476,541

County Survey Responses
Glass collected for recycling (tons)

County	Food & beverage	Other glass	Total glass
Aitkin	244	0	244
Anoka	5,864	26	5,890
Becker	535	0	535
Beltrami	878	19	897
Benton	920	265	1,185
Big Stone	123	0	123
Blue Earth	982	0	982
Brown	367	0	367
Carlton	677	0	677
Carver	2,270	0	2,270
Cass	877	0	877
Chippewa	54	0	54
Chisago	903	0	903
Clay	502	0	502
Clearwater	2	0	2
Cook	221	0	221
Cottonwood	164	0	164
Crow Wing	1,162	0	1,162
Dakota	10,870	1,802	12,673
Dodge	533	383	916
Faribault	228	0	228
Fillmore	510	0	510
Freeborn	488	0	488
Goodhue	469	0	469
Grant	95	0	95
Hennepin	23,586	0	23,586
Houston	181	0	181
Hubbard	427	0	427
Isanti	368	0	368
Itasca	1,247	0	1,247
Jackson	80	0	80
Kanabec	42	0	42
Kandiyohi	339	0	339
Kittson	0	0	0
Koochiching	95	0	95
Lac qui Parle	59	0	59
Lake	394	0	394
Lake of The Woods	0	16	16
Le Sueur	256	0	256
Lincoln	86	0	86
Lyon	373	0	373
Mahnomen	30	0	30
Marshall	0	0	0
Martin	882	0	882
McLeod	386	0	386
Meeker	201	0	201
Mille Lacs	197	0	197
Morrison	432	0	432
Mower	353	0	353

County Survey Responses
Glass collected for recycling (tons)

County	Food & beverage	Other glass	Total glass
Murray	157	0	157
Nicollet	275	0	275
Nobles	370	0	370
Norman	53	0	53
Olmsted	161	1,168	1,329
Otter Tail	681	0	681
Pennington	92	0	92
Pine	341	0	341
Pipestone	171	0	171
Polk	245	0	245
Pope/Douglas	1,908	0	1,908
Ramsey	10,191	0	10,191
Red Lake	34	0	34
Redwood	239	0	239
Renville	190	0	190
Rice	1,035	1,645	2,680
Rock	117	0	117
Roseau	0	1,806	1,806
Scott	708	0	708
Sherburne	2,178	0	2,178
Sibley	69	0	69
St. Louis - partial	849	1	850
Stearns	4,732	1,232	5,965
Steele	450	19,136	19,586
Stevens	129	0	129
Swift	318	0	318
Todd	133	0	133
Traverse	34	0	34
Wabasha	344	0	344
Wadena	161	0	161
Waseca	107	0	107
Washington	3,317	0	3,317
Watonwan	177	0	177
Wilkin	71	0	71
Winona	734	0	734
WLSSD	3,479	0	3,479
Wright	3,087	0	3,087
Yellow Medicine	233	0	233
Metro Area	56,806	1,829	58,635
Greater Minn.	(56,806)	25,671	66,388
Minnesota		27,499	125,023

**County Survey Responses:
Plastic collected for recycling (tons)**

County	Film plastic	HDPE	Mixed plastic	Other plastic	PET	Polystyrene	Total Plastic
Aitkin	0	0	128	0	0	0	128
Anoka	422	324	1,358	235	128	24	2,489
Becker	76	1	287	300	1	0	664
Beltrami	13	0	180	0	0	0	193
Benton	9	397	44	137	29	0	616
Big Stone	0	1	32	0	0	0	33
Blue Earth	1,488	21	2,682	0	0	0	4,191
Brown	10	0	851	4	0	0	864
Carlton	7	0	275	30	0	0	312
Carver	14	2	1,145	0	12	16	1,189
Cass	0	0	84	0	94	0	178
Chippewa	12	0	85	88	2	34	222
Chisago	2	0	337	0	0	0	339
Clay	20	0	195	0	0	0	215
Clearwater	0	0	1	0	0	0	1
Cook	0	0	55	0	0	0	55
Cottonwood	0	0	43	0	0	0	43
Crow Wing	0	0	1,651	0	0	0	1,651
Dakota	201	3	7,674	0	8	0	7,886
Dodge	0	0	216	117	0	0	334
Faribault	3	26	240	0	0	0	269
Fillmore	0	0	145	0	0	0	145
Freeborn	0	0	3,496	0	0	0	3,496
Goodhue	231	98	0	0	101	0	430
Grant	0	0	32	0	0	0	32
Hennepin	0	181	14,627	361	413	0	15,582
Houston	0	0	35	0	0	0	35
Hubbard	11	0	121	0	0	0	132
Isanti	60	102	149	0	1	0	312
Itasca	64	23	189	0	56	0	331
Jackson	0	0	39	0	0	0	39
Kanabec	0	0	0	312	0	0	312
Kandiyohi	50	103	53	0	106	0	312
Kittson	0	0	24	0	0	0	24
Koochiching	0	4	16	14	17	0	50
Lac qui Parle	0	0	63	2	0	0	64
Lake	0	63	3	0	16	0	82
Lake of The Woods	0	0	0	0	0	0	0
Le Sueur	7	0	241	35	30	0	313
Lincoln	0	0	30	0	0	0	30
Lyon	0	0	202	0	0	0	202
Mahnomen	0	0	7	0	0	0	7
Marshall	0	0	26	0	0	0	26
Martin	15	70	937	0	0	0	1,022
McLeod	2,882	53	143	0	127	450	3,655
Meeker	0	0	126	0	0	0	126
Mille Lacs	0	0	89	0	0	0	89
Morrison	55	17	519	0	0	0	590

**County Survey Responses:
Plastic collected for recycling (tons)**

County	Film plastic	HDPE	Mixed plastic	Other plastic	PET	Polystyrene	Total Plastic
Mower	34	131	0	65	12	0	242
Murray	2	3	58	0	0	0	63
Nicollet	0	45	540	200	88	0	873
Nobles	101	6	98	221	0	0	427
Norman	0	0	23	0	0	0	23
Olmsted	102	2	147	189	2	57	500
Otter Tail	0	116	0	117	206	0	439
Pennington	0	18	54	10	0	0	81
Pine	9	52	65	28	88	0	242
Pipestone	261	1	72	0	7	12	353
Polk	0	0	123	0	0	0	123
Pope/Douglas	140	1	271	101	1	0	513
Ramsey	265	423	1,059	68	498	0	2,314
Red Lake	0	0	9	0	0	0	9
Redwood	150	77	201	0	50	0	478
Renville	0	0	81	0	0	0	81
Rice	130	276	132	138	276	0	952
Rock	0	3	0	20	38	0	62
Roseau	321	0	69	57	0	0	447
Scott	8	112	489	0	256	0	865
Sherburne	0	0	1,105	0	0	0	1,105
Sibley	0	0	42	24	10	0	76
St. Louis - partial	109	276	41	0	323	0	749
Stearns	183	1,847	184	701	139	1	3,055
Steele	95	1	188	134	1	17	436
Stevens	0	0	44	0	0	0	44
Swift	0	67	0	0	83	0	150
Todd	0	0	61	0	0	0	61
Traverse	0	0	14	0	0	0	14
Wabasha	0	23	21	0	38	0	82
Wadena	12	0	225	0	0	0	238
Waseca	0	18	0	47	34	0	99
Washington	218	30	1,102	0	198	0	1,548
Watonwan	0	0	442	0	0	0	442
Wilkin	0	0	20	0	0	0	20
Winona	0	0	349	0	0	0	349
WLSSD	223	316	437	11	348	0	1,335
Wright	42	1	2,813	0	1	0	2,858
Yellow Medicine	0	0	74	0	0	0	74
Metro Area	1,128	1,074	27,453	664	1,513	40	31,872
Greater Minn.	6,930	4,259	22,073	3,100	2,327	571	39,260
Minnesota	8,059	5,333	49,526	3,763	3,840	611	71,132

County Survey Responses
Organics collected for recycling (tons) - Part 1

County	Food to livestock	Food to people	Source-separated organics	Yard waste	Total organics
Aitkin	0	0	0	0	0
Anoka	8,048	0	7,316	0	15,364
Becker	0	18	169	0	187
Beltrami	188	0	53	0	241
Benton	0	0	0	0	0
Big Stone	0	0	110	0	110
Blue Earth	0	18	128	0	146
Brown	1,761	0	0	0	1,761
Carlton	0	35	175	0	210
Carver	6,186	0	1,314	0	7,500
Cass	0	0	0	0	0
Chippewa	5	9	22	0	35
Chisago	290	0	2,870	0	3,160
Clay	5,730	211	0	0	5,941
Clearwater	0	0	0	0	0
Cook	0	0	0	0	0
Cottonwood	0	0	0	0	0
Crow Wing	457	0	1,981	0	2,438
Dakota	13,945	2,476	1,493	0	17,914
Dodge	0	0	30	0	30
Faribault	0	0	2	0	2
Fillmore	0	0	0	0	0
Freeborn	0	0	19	0	19
Goodhue	0	0	0	802	802
Grant	0	0	0	0	0
Hennepin	30,703	283	14,024	0	45,010
Houston	0	0	0	0	0
Hubbard	13	0	35	0	49
Isanti	481	47	13	0	540
Itasca	0	16	19	0	34
Jackson	39	0	0	0	39
Kanabec	0	0	0	0	0
Kandiyohi	156	0	0	0	156
Kittson	0	0	0	0	0
Koochiching	0	0	0	0	0
Lac qui Parle	123	0	2	0	125
Lake	0	0	0	0	0
Lake of The Woods	0	0	104	0	104
Le Sueur	2,900	0	0	0	2,900
Lincoln	0	8	0	0	8
Lyon	121	260	11	0	391
Mahnomen	0	0	0	0	0
Marshall	0	0	0	0	0
Martin	0	0	2	0	2
McLeod	0	76	1,929	0	2,006
Meeker	0	0	14	0	14
Mille Lacs	0	0	0	0	0

County Survey Responses
Organics collected for recycling (tons) - Part 1

County	Food to livestock	Food to people	Source-separated organics	Yard waste	Total organics
Morrison	10	9	33	0	52
Mower	0	0	1,831	0	1,831
Murray	0	0	27	0	27
Nicollet	0	0	125	0	125
Nobles	82	11	25	0	118
Norman	0	0	0	0	0
Olmsted	60,892	143	83	0	61,119
Otter Tail	19,431	0	0	0	19,431
Pennington	0	0	0	0	0
Pine	673	40	23	0	736
Pipestone	89	1	238	0	327
Polk	2,294	0	1,103	0	3,396
Pope/Douglas	8	24	1,470	0	1,503
Ramsey	46,789	1,671	1,832	0	50,292
Red Lake	0	0	0	0	0
Redwood	1,251	437	0	0	1,688
Renville	650	220	0	0	870
Rice	27,674	0	711	0	28,385
Rock	0	0	0	0	0
Roseau	0	0	0	0	0
Scott	0	0	1,478	0	1,478
Sherburne	550	0	149	0	699
Sibley	0	2,600	0	0	2,600
St. Louis - partial	9	9	221	0	239
Stearns	0	38	107	0	145
Steele	18	0	0	0	18
Stevens	0	0	34	0	34
Swift	0	0	1,620	0	1,620
Todd	0	0	0	0	0
Traverse	0	0	0	0	0
Wabasha	0	0	0	0	0
Wadena	0	0	18	0	18
Waseca	0	0	0	0	0
Washington	11,477	1,387	558	0	13,422
Watonwan	0	0	0	0	0
Wilkin	0	0	0	0	0
Winona	9,055	0	0	0	9,055
WLSSD	104	617	3,141	0	3,862
Wright	0	0	44	0	44
Yellow Medicine	0	0	47	0	47
Metro Area	117,148	5,817	28,014	-	150,980
Greater Minn.	135,053	4,846	18,736	802	158,635
Minnesota	252,202	10,663	46,751	802	309,615

County Survey Responses
Textiles, other collected for recycling (tons) - Part 2

County	Carpet	Textiles	Mattresses & box springs	Pallets	Unspecified or Other	Total
Aitkin	0	79	0	190	0	269
Anoka	50	2,406	49	3,886	8,142	14,534
Becker	0	235	0	22	0	257
Beltrami	0	0	0	8	0	8
Benton	0	0	0	0	0	0
Big Stone	0	3	0	0	0	3
Blue Earth	0	223	0	13,451	0	13,674
Brown	0	4	0	902	151	1,057
Carlton	0	67	30	0	5	102
Carver	33	98	0	1,053	0	1,184
Cass	0	17	0	0	973	990
Chippewa	0	13	0	0	723	737
Chisago	1	4	28	25	0	58
Clay	0	0	0	0	0	0
Clearwater	0	0	0	0	0	0
Cook	0	0	0	0	0	0
Cottonwood	0	23	0	0	0	23
Crow Wing	0	253	97	3,027	2	3,379
Dakota	0	1,195	13	14,123	45,855	61,186
Dodge	6	6	0	427	50	488
Faribault	0	12	0	0	0	12
Fillmore	1	18	1	0	0	20
Freeborn	0	1	0	20	0	21
Goodhue	0	0	10	14	0	24
Grant	0	0	0	0	51	51
Hennepin	0	0	0	325	292,437	292,762
Houston	0	0	0	0	0	0
Hubbard	0	90	0	0	0	90
Isanti	4	0	26	0	0	30
Itasca	0	0	0	69	2	71
Jackson	0	22	0	188	0	209
Kanabec	1	0	1	0	0	2
Kandiyohi	0	0	0	0	0	0
Kittson	0	0	0	0	0	0
Koochiching	0	0	0	2	0	2
Lac qui Parle	0	32	0	8	1	41
Lake	0	0	3	0	20	23
Lake of The Woods	0	0	0	0	0	0
Le Sueur	0	4	1	1,894	1	1,899
Lincoln	0	75	0	2	0	77
Lyon	0	11	0	0	3,614	3,625
Mahnomen	0	0	0	0	320	320
Marshall	0	0	0	0	0	0
Martin	0	120	0	12	0	132
McLeod	0	0	8	553	4,594	5,155
Meeker	0	0	0	0	68	68
Mille Lacs	0	0	0	0	0	0
Morrison	0	77	0	653	0	730

County Survey Responses
Textiles, other collected for recycling (tons) - Part 2

County	Carpet	Textiles	Mattresses & box springs	Pallets	Unspecified or Other	Total
Mower	0	84	0	3,075	0	3,159
Murray	0	152	0	115	0	267
Nicollet	0	10	0	1,561	0	1,572
Nobles	0	156	0	721	0	877
Norman	0	0	0	0	0	0
Olmsted	0	511	0	568	0	1,080
Otter Tail	0	0	39	455	236	730
Pennington	0	0	0	0	0	0
Pine	1	10	0	1	0	12
Pipestone	0	132	0	1,987	0	2,119
Polk	0	0	0	70	1,000	1,070
Pope/Douglas	120	367	0	53	125	665
Ramsey	0	1,187	9	961	197,404	199,561
Red Lake	0	0	0	0	0	0
Redwood	26	1,266	7	2,221	2,758	6,278
Renville	20	45	0	4	0	69
Rice	0	94	0	10,656	60	10,810
Rock	0	37	0	0	0	37
Roseau	0	0	0	2,094	0	2,094
Scott	0	0	0	2,454	0	2,454
Sherburne	0	36	0	139	3,883	4,059
Sibley	6	0	1	20	1	27
St. Louis - partial	0	27	97	4	114	242
Stearns	0	0	0	1,317	1	1,318
Steele	0	0	0	1,274	478	1,752
Stevens	0	15	3	0	0	18
Swift	0	0	0	0	0	0
Todd	0	0	0	0	0	0
Traverse	0	0	0	0	0	0
Wabasha	0	0	0	0	0	0
Wadena	0	0	18	6	0	25
Waseca	0	60	0	57	0	117
Washington	0	5	0	151	4,728	4,884
Watsonwan	0	2	0	0	0	2
Wilkin	0	0	0	0	0	0
Winona	0	0	0	1,331	564	1,895
WLSSD	28	1,452	0	537	691	2,708
Wright	0	6	0	56	0	62
Yellow Medicine	0	16	0	0	0	16
Metro Area	83	4,891	71	22,954	548,566	576,566
Greater Minn.	213	5,867	370	49,789	20,486	76,724
Minnesota	295	10,758	441	72,743	569,052	653,290

County Survey Responses
Problem materials (banned) collected for recycling (tons)

County	Antifreeze	Electronics	Fluorescent & HID lamps	HHW	Latex paint	Major appliances	Used oil	Used oil filters	Vehicle batteries	Waste tires	Total problem matls
Aitkin	2	38	2	5	2	107	100	8	102	162	527
Anoka	77	680	52	6	143	2,049	273	160	2,096	683	6,218
Becker	2	96	45	12	19	199	206	16	204	382	1,181
Beltrami	3	178	5	18	18	274	37	21	280	234	1,069
Benton	0	17	0	1	9	353	31	18	241	78	749
Big Stone	0	12	1	1	1	31	33	4	31	27	141
Blue Earth	39	835	23	38	47	391	632	30	1,126	1,745	4,907
Brown	2	84	2	7	3	153	91	12	156	124	635
Carlton	6	63	3	5	9	213	157	24	218	108	806
Carver	5	459	12	75	92	573	76	45	586	191	2,114
Cass	1	95	9	13	7	172	23	13	176	127	635
Chippewa	0	32	2	0	0	73	17	6	75	242	446
Chisago	4	127	3	124	57	322	51	25	330	107	1,151
Clay	25	129	17	7	16	378	270	38	371	303	1,554
Clearwater	0	16	1	2	1	0	7	4	54	59	145
Cook	0	10	0	0	1	31	11	2	32	10	98
Cottonwood	0	42	0	0	0	70	9	5	71	67	266
Crow Wing	22	221	32	2	21	507	51	48	411	126	1,442
Dakota	55	5,526	88	130	348	2,452	327	191	2,509	817	12,442
Dodge	4	32	0	0	0	122	16	10	125	48	357
Faribault	2	36	1	2	1	102	15	9	92	44	304
Fillmore	4	266	6	8	2	125	23	10	128	69	641
Freeborn	3	40	1	7	5	187	36	14	191	62	547
Goodhue	0	32	0	20	14	279	37	22	285	93	782
Grant	0	12	2	3	4	36	5	3	37	12	113
Hennepin	42	2,690	36	84	791	7,170	956	558	7,335	2,390	22,053
Houston	0	172	3	1	0	113	15	9	116	179	607
Hubbard	0	179	3	2	2	127	38	10	126	343	830
Isanti	0	121	1	11	0	229	31	18	235	77	722
Itasca	3	106	2	17	15	2,585	36	21	280	223	3,287
Jackson	0	10	2	1	5	62	9	5	63	21	178
Kanabec	1	0	0	0	0	96	40	8	98	32	275
Kandiyohi	0	0	0	0	0	254	34	20	260	85	653
Kittson	0	3	2	2	3	27	4	2	30	15	88
Koochiching	0	31	1	4	2	79	11	6	81	39	256
Lac qui Parle	2	28	2	7	13	72	20	3	44	44	236
Lake	6	9	5	0	4	67	68	13	66	79	318
Lake of The Woods	0	0	2	0	1	24	0	2	24	170	222
Le Sueur	8	83	11	6	8	167	59	13	171	147	673
Lincoln	0	14	1	6	0	35	43	3	39	63	202
Lyon	0	71	5	0	32	156	21	12	159	52	509
Mahnomen	0	6	0	0	1	33	4	3	34	11	92
Marshall	0	6	1	2	3	57	8	5	60	40	181
Martin	8	65	60	7	6	160	32	16	134	98	586
McLeod	2	106	6	2,203	9	217	29	17	222	72	2,881
Meeker	0	48	5	0	5	317	80	11	143	126	734
Mille Lacs	0	5	0	2	10	155	21	0	0	0	192
Morrison	5	82	5	0	0	198	164	15	203	249	922
Mower	8	45	0	0	6	236	32	18	242	79	666

County Survey Responses
Problem materials (banned) collected for recycling (tons)

County	Antifreeze	Electronics	Fluorescent & HID lamps	HHW	Latex paint	Major appliances	Used oil	Used oil filters	Vehicle batteries	Waste tires	Total problem matls
Murray	0	6	1	3	0	51	7	4	53	17	142
Nicollet	4	138	23	7	7	198	55	15	203	103	753
Nobles	0	50	4	6	8	130	25	10	136	62	431
Norman	0	20	2	1	2	45	7	4	51	13	145
Olmsted	12	392	79	60	121	895	119	70	6,508	298	8,555
Otter Tail	9	126	2	290	372	346	917	27	353	573	3,016
Pennington	0	33	4	4	5	85	11	7	87	28	263
Pine	2	30	9	3	3	175	23	14	251	118	628
Pipestone	0	83	3	3	4	60	27	4	60	31	276
Polk	0	49	2	14	8	189	25	63	194	114	658
Pope/Douglas	31	394	24	11	32	372	276	26	631	132	1,929
Ramsey	12	181	26	329	304	3,151	420	245	3,223	1,050	8,942
Red Lake	0	8	1	2	1	25	11	3	25	40	116
Redwood	44	434	30	21	8	95	161	10	316	934	2,052
Renville	20	87	4	0	3	92	12	7	95	127	448
Rice	10	186	7	8	52	388	52	30	412	175	1,320
Rock	0	51	2	1	2	57	8	5	59	344	528
Roseau	2	25	14	6	3	93	23	11	108	81	366
Scott	13	137	22	111	74	822	939	64	840	394	3,416
Sherburne	0	289	4	10	80	541	72	42	554	180	1,773
Sibley	5	18	5	6	7	99	12	7	93	125	376
St. Louis - partial	55	314	15	164	29	609	1,903	116	496	1,764	5,464
Stearns	9	56	0	0	0	912	122	71	933	304	2,407
Steele	0	30	0	6	6	219	29	17	224	73	604
Stevens	0	30	1	9	0	59	8	5	60	20	192
Swift	0	27	3	0	0	58	8	5	59	19	179
Todd	0	29	1	0	3	147	20	12	151	49	412
Traverse	0	0	0	0	0	21	3	2	21	7	53
Wabasha	0	0	0	0	0	129	17	10	132	43	331
Wadena	1	44	2	3	7	83	11	6	92	28	276
Waseca	0	0	4	3	0	114	15	13	117	335	602
Washington	12	805	0	0	181	1,489	198	116	1,523	496	4,820
Watsonwan	0	0	0	0	0	67	9	5	69	22	172
Wilkin	0	1	2	1	0	40	5	3	40	13	104
Winona	0	0	0	0	0	309	41	24	317	103	794
WLSSD	61	705	26	92	21	909	96	101	734	239	2,985
Wright	1	99	2	19	26	771	335	60	788	257	2,358
Yellow Medicine	0	19	2	2	0	206	8	5	63	21	326
Metro Area	215	10,478	236	734	1,933	17,705	3,190	1,379	18,113	6,022	60,005
Greater Minn.	430	7,378	551	3,297	1,170	18,178	7,131	1,385	22,049	13,268	74,836
Minnesota	645	17,856	787	4,031	3,104	35,884	10,321	2,763	40,161	19,290	134,841

County Survey Responses
Rate with no credits

County	Tons collected for recycling	Total MSW generated	Percent of MSW collected for recycling
Aitkin	2,892	12,060	24.0%
Anoka	170,472	359,232	47.5%
Becker	9,278	29,320	31.6%
Beltrami	7,693	30,464	25.3%
Benton	18,781	39,841	47.1%
Big Stone	1,360	4,279	31.8%
Blue Earth	65,145	104,150	62.5%
Brown	36,225	50,061	72.4%
Carlton	6,470	19,290	33.5%
Carver	42,978	95,168	45.2%
Cass	9,235	22,422	41.2%
Chippewa	3,031	12,579	24.1%
Chisago	11,391	38,970	29.2%
Clay	17,465	49,280	35.4%
Clearwater	1,016	5,422	18.7%
Cook	1,163	4,473	26.0%
Cottonwood	1,662	10,832	15.3%
Crow Wing	33,212	73,198	45.4%
Dakota	260,788	484,962	53.8%
Dodge	4,641	13,409	34.6%
Faribault	8,884	16,831	52.8%
Fillmore	4,679	13,421	34.9%
Freeborn	16,628	38,779	42.9%
Goodhue	13,301	39,323	33.8%
Grant	606	3,571	17.0%
Hennepin	600,904	1,365,411	44.0%
Houston	3,509	13,531	25.9%
Hubbard	5,057	18,970	26.7%
Isanti	17,297	43,094	40.1%
Itasca	14,630	37,239	39.3%
Jackson	4,662	11,357	41.1%
Kanabec	1,641	9,276	17.7%
Kandiyohi	7,141	35,912	19.9%
Kittson	471	2,345	20.1%
Koochiching	6,322	14,158	44.7%
Lac qui Parle	1,754	6,622	26.5%
Lake	2,161	8,797	24.6%
Lake of The Woods	636	3,142	20.2%
Le Sueur	11,198	25,874	43.3%
Lincoln	1,145	3,396	33.7%
Lyon	17,360	33,513	51.8%
Mahnomen	730	2,195	33.3%
Marshall	880	6,249	14.1%
Martin	19,662	29,831	65.9%

County Survey Responses

Rate with no credits

McLeod	18,973	40,218	47.2%
Meeker	4,481	16,275	27.5%
Mille Lacs	1,542	16,894	9.1%
Morrison	14,313	27,537	52.0%
Mower	22,998	46,090	49.9%
Murray	2,739	7,510	36.5%
Nicollet	18,428	37,109	49.7%
Nobles	6,906	16,673	41.4%
Norman	888	4,328	20.5%
Olmsted	93,082	186,275	50.0%
Otter Tail	55,044	87,938	62.6%
Pennington	2,090	15,747	13.3%
Pine	8,833	25,658	34.4%
Pipestone	4,969	9,620	51.6%
Polk	8,254	27,111	30.4%
Pope/Douglas	17,993	46,736	38.5%
Ramsey	313,790	622,617	50.4%
Red Lake	726	2,308	31.4%
Redwood	16,032	24,763	64.7%
Renville	3,301	12,376	26.7%
Rice	70,431	115,487	61.0%
Rock	2,355	6,887	34.2%
Roseau	9,426	19,055	49.5%
Scott	57,020	110,577	51.6%
Sherburne	26,135	67,506	38.7%
Sibley	6,134	12,746	48.1%
St. Louis - partial	66,851	118,794	56.3%
Stearns	63,396	134,246	47.2%
Steele	31,628	60,716	52.1%
Stevens	1,746	8,351	20.9%
Swift	4,044	8,627	46.9%
Todd	11,097	22,572	49.2%
Traverse	542	2,027	26.7%
Wabasha	3,725	11,028	33.8%
Wadena	6,887	13,812	49.9%
Waseca	46,625	58,541	79.6%
Washington	98,561	202,674	48.6%
Watsonwan	5,234	13,696	38.2%
Wilkin	1,026	2,976	34.5%
Winona	34,375	63,236	54.4%
WLSSD	50,056	106,361	47.1%
Wright	31,607	104,422	30.3%
Yellow Medicine	4,183	9,281	45.1%
Minnesota	2,714,620	5,789,648	46.9%
Metro Area	1,544,512	3,240,641	47.7%
Greater Minn.	1,170,108	2,549,007	45.9%