

Dear Governor Dayton and Members of the Minnesota Legislature,

Pursuant to Minnesota Statute Chapter 240.02, Subd. 6, the Minnesota Racing Commission is required to submit an Annual Report to the Governor and the Minnesota Legislature. However, pursuant to Minnesota Statute Chapter 3.195 (1996) Subd. 1b, the Commission shall not send a copy to you unless you desire one. In compliance with this statute, we accordingly ask that should you be interested in receiving a paper copy of the Commission's 2016 Annual Report, you contact us indicating where the report should be sent.

As you know, the Minnesota Racing Commission operates to ensure the integrity of horse racing and card playing, to administer the proper distribution of funds back to the industry, and to oversee the safety and welfare of the human and equine participants. We also promote the Minnesota racing and breeding industry to increase its economic benefit to the State.

I would like to highlight some achievements from the past year in carrying out our mission. The commission issued over 5600 occupational licenses, analyzed over 2500 equine urine and blood samples, conducted over 8800 pre-race veterinary exams, and issued 236 rulings. We distributed over \$50,000 in grants toward race-horse retirement aftercare and substance abuse services. Most notably, we distributed over \$600,000 in breeders' fund awards, an increase of over \$200,000 from the prior year attributable in large part to the recently-passed legislation authorizing advance deposit wagering.

The commission continues to maintain tight control over expenses while still providing strong regulatory oversight. Our relationships with the tracks and horse persons' groups are positive and the Minnesota racing industry continues to grow despite national trends that are relatively stagnant. The health of Minnesota's racing industry is attributable to progressive-thinking management at both tracks, the hard work of Minnesota's horse persons, and public policy approaches that have supported industry growth.

I believe you will find the annual report to be interesting and informative. On behalf of the commissioners and staff, I wish to express our thanks to the Governor's office and the Legislature for your continuing support.

Sincerely,

Tom DiPasquale, Executive Director

MINNESOTA RACING COMMISSION

ANNUAL REPORT

2017

A YEAR OF ACCOMPLISHMENTS



Table of Contents

Commissioners.....	2
A Letter from the Chairman and Executive Director.....	3-4
MRC Dedicated Staff.....	5
What We Do and Our Mission.....	6
2017 Minnesota Breeders' Awards Distribution.....	7-8
Running the MRC...By the Numbers.....	9-10
2017 Champions.....	11
Advance Deposit Wagering.....	12
Racing Cares.....	13-14
Protecting Racehorse Welfare.....	15-16
Canterbury Park and Running Aces Horseracing.....	17-18
Canterbury Park and Running Aces Cardroom Revenues.....	19-20
People You Should Know.....	21



Acknowledgement

The Minnesota Racing Commission would like to thank Alex Burcum Photography, Brett Davelaar, Coady Photography, Dee Leftwich Photography, Kristin Boice, Lisa Duoos, "Snapshots by Sarah" Sarah B. Danks, Taro Ito and Ulf Holm-Johansen for their outstanding photography and contributions to our Annual Report.

This annual report is being submitted to the Governor and the Legislature pursuant to Minnesota Statute §240.02, Subd. 6 and to the Secretary of Senate, the Chief Clerk of the House of Representatives and the Legislative Reference Library pursuant to Minnesota Statute §3.195. In compliance with the Laws of 1994, Chapter 559, Section 1, it is estimated that it cost \$1,500 to prepare this report.

Minnesota Racing Commission Commissioners

Diverse, engaged, accomplished leadership			Past Performances
1		CHAIRMAN RALPH STRANGIS	Returned to MRC in 2013 after previously serving as Chair 1989-1992 ...BSL degree and JD (magna cum laude) from U of M...Founding member of Kaplan, Strangis and Kaplan, P.A...Serves on numerous public and non-profit boards.
2		FIRST CHAIR JIM LANE	Joined MRC in 2009...Graduate of The Blake School, Princeton University, and William Mitchell College of Law... Practiced law, including equine law, in Minneapolis for 20 years...Founding member of Minnesota Horse Welfare Coalition...Former member of Animal Humane Society Board of Directors...Played polo for 20 years.
3		SECOND CHAIR BARBARA COLOMBO	Appointed to the MRC in 2015...Professor at Mitchell Hamline School of Law...Honors graduate, William Mitchell College of Law...Prior to practicing law was a critical care registered nurse...Former member of Animal Humane Society Board of Directors, focusing on equine matters.
4		COMMISSIONER JERRY BELL	Appointed to the MRC in 2015...Served as Chair of the Executive Board and President of Minnesota Twins... Oversaw design and construction of Target Field...Former Exec. Director of Metropolitan Sports Facilities Commission... Member of Rochester Destination Medical Center Economic Development Agency Board.
5		COMMISSIONER DAN ERHART	Appointed to MRC in 2012...U of M graduate...30-year Anoka County Commissioner, including 18 years as Chair...Business owner with management experience in finance, production and governmental relations.
6		COMMISSIONER ALAN GINGOLD	Appointed to MRC in 2014...Holds Master of Science degree in Finance and is a Chartered Financial Analyst...CFO and co-owner of Lorenz Bus Service since 1994...Served as investment banker, principally with Piper, Jaffray & Hopwood for more than 20 years, and also spent time as a private investor.
7		COMMISSIONER LISA GOODMAN	Appointed to MRC in 2014...Graduate of UW-Madison... Member of Minneapolis City Council, serves on Economic Development and Regulatory Services Committee... Serves on boards of directors of Family Housing Fund, Meet Minneapolis, Midwest Legacy Fund, and founder, Dog Grounds LLC, building off-leash dog parks in Minneapolis.
8		COMMISSIONER ROY JOHNSON	Appointed to MRC in 2017...Responsible for horse feed development for Cargill Feed and Nutrition...Creates education and support materials used by equine consultants worldwide...Instructor/assistant professor at U of M for 17 years, teaching equine management and nutrition...Licensed show horse judge for 39 years.
9		COMMISSIONER DR. CAMILLE McCARDLE	Earned doctorate in veterinary medicine from The Ohio State University...Served as official regulatory vet at Hialeah, Calder and Gulfstream race tracks and at the Pompano harness meet...Served as MRC Chief Vet from 1985 until appointment as MRC commissioner in 1993...Currently serves as a shelter vet.

The Racing Commission is comprised of nine members appointed by the Governor and confirmed by the Senate for six-year terms.

A Letter from the Chairman and Executive Director

*Dear Governor Dayton and Members
of the Minnesota Legislature:*

We are pleased to provide you with this 2017 annual report on the commission's activities and the state of the Minnesota racing industry.

We start with the make-up of the commission itself. Governor Dayton's appointment of Roy Johnson and re-appointment of Dr. Camille McArdle and Dan Erhart, whose brief bios are provided in this report, ensures that Minnesota will continue to be served by commissioners with a broad range of relevant experience and commitment to public service.

The commission also welcomed three new staff employees in 2017—Nicole Edstrom (Breeders Fund Administration and Licensing); Kevin Hoese (Pari-Mutuel Auditing); and Lexie Morrison (Communications and Licensing). Nicole, Kevin, and Lexie have helped broaden the commission's expertise in their respective areas. We thank all our commissioners, staff, and seasonal employees for their contributions to making this past year a success. In terms of personnel, the commission is stronger than ever.

The same can be said of the commission's finances. Changes to our enabling statute and Deputy Director Joe Scurto's capable budgetary management have addressed for the foreseeable future the structural budget problems that we faced two



Tom DiPasquale
Executive Director



Ralph Strangis
Chairman

years ago. Advance deposit wagering legislation that was passed in 2016 has brought increased revenues to owners, breeders, racetracks and the commission with little adverse impact on live and simulcast handle. Detailed budget information is provided in our report.

Another legislative change allowed the commission to use monetary fines imposed on licensees, which had previously gone to the State's general fund, for the benefit of retired racehorses. In 2017, the commission granted over \$47,000 to help feed, shelter and re-home retired racehorses. The racetracks and horse persons' groups are doing their part as well, and have been for many years, as shown in the section on racehorse retirement.

The subject of equine welfare has a prominent place in this report because it reflects a strongly held commitment of commission members and the Minnesota racing Industry.

It is not unusual to find fans at our racetracks who express interest, and even concerns, about the welfare of the horses. Those concerns should be invited and addressed head-on by the racing industry.

*Public attitudes about
animal welfare
and our relationship
to animals have
evolved over the years.*

From an agrarian society that depended on exploitation of animals for commercial purposes, we have become a society many generations removed from the agricultural lifestyle and one in which a majority of American households have pets with whom we enjoy deeply personal connections.



For most people, animal welfare entails a duty to provide for the physical and mental needs of the animal to ensure it is safe, healthy, able to express its innate behavior, and free from suffering. This ethical imperative applies to everyone in racing. As one commentator put it,

“Horses are very easy to love, so that makes it very hard for people to tolerate misuse, abuse, or bad outcomes.”

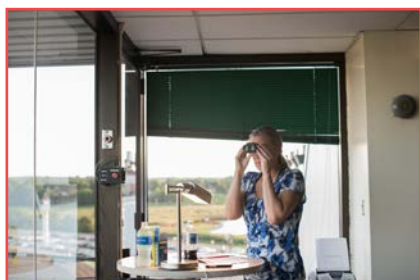
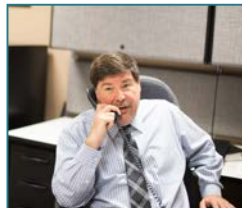
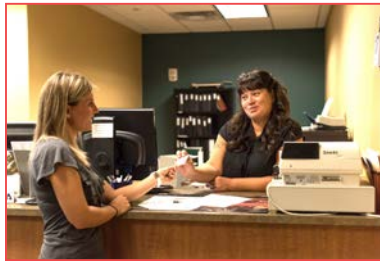
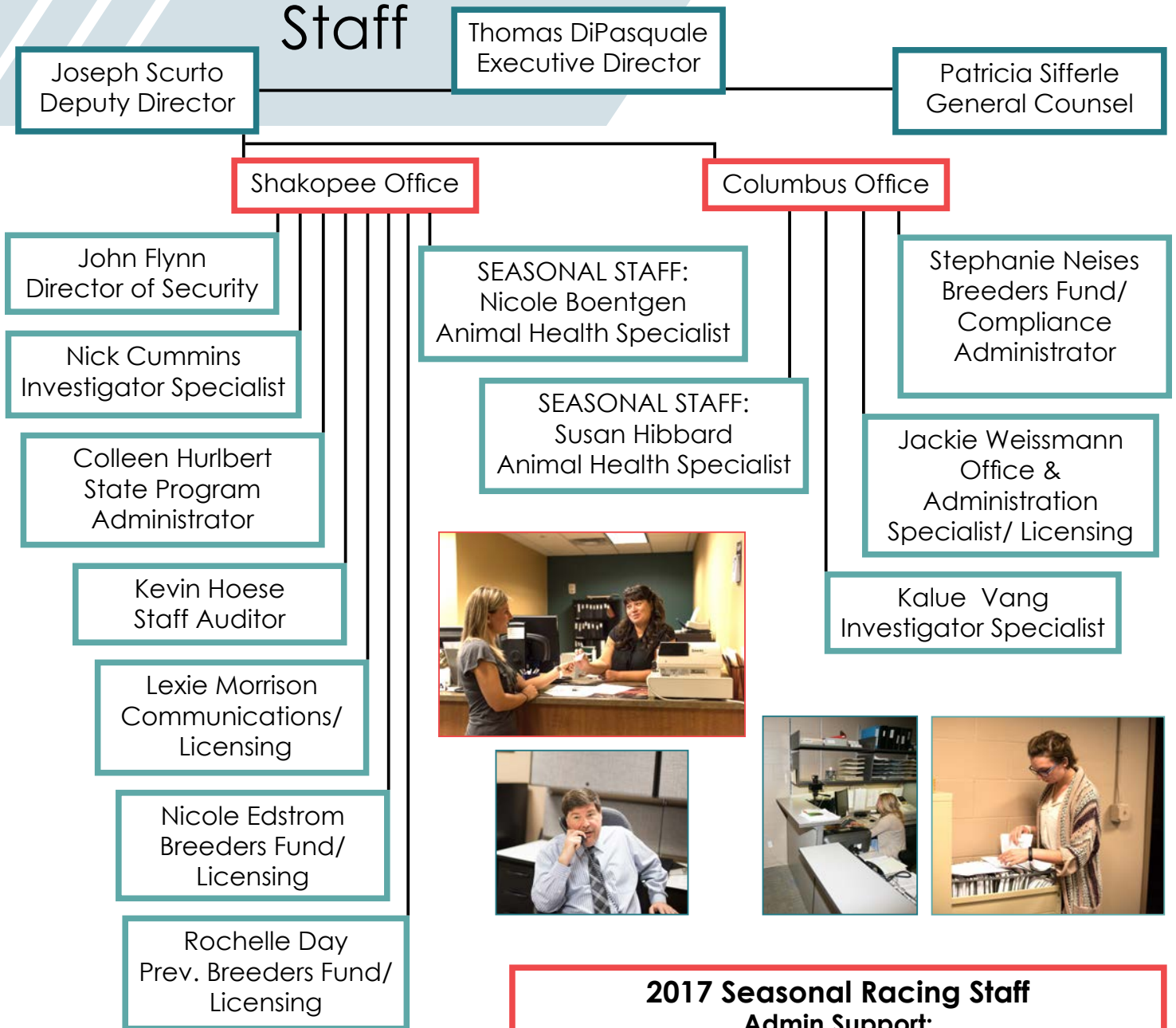
Sensible regulation is a necessary element of race-horse welfare, but is insufficient by itself. Racetrack management and employees also have an important role to play. However, the people who care for the horses day-in and day-out, who know each of them in the same way that many of us know our pets, bear the heaviest burden for meeting the sport's ethical obligations to the horse. For much of the country, horse racing is the first Saturday in May and perhaps a few other prominent dates that attract mainstream media and national attention. For the breeders, owners, trainers, grooms, hot walkers and all those whose livelihood depends on sending a physically and emotionally sound horse to the starting gate, proper year-round care is imperative. Unfortunately, those who fail to meet this responsibility do untold damage to the public's perception of racing, even if the numbers of such instances are few.

Racing is a multi-billion dollar industry with significant direct and indirect economic impact in agriculture, entertainment, tourism and hospitality, construction, professional services and other sectors. The economic benefits may help assure racing's survival, but it will not thrive unless those responsible for safeguarding the sport listen to legitimate concerns about the health and safety of its human and equine participants and respond to those concerns with changes that engender trust and confidence. We hope this report provides you with assurance that the MRC and the Minnesota racing industry take this obligation seriously.

Finally, we wish to thank the Governor's office and the Minnesota Legislature for their ongoing support of the MRC. We look forward to continuing to work with you to keep the Minnesota racing industry a positive contributor to the Minnesota entertainment and business landscape.



Dedicated Staff



2017 Seasonal Racing Staff Admin Support:

Tricia Stobbs - Office & Administration Specialist
Nicole Edstrom - Office & Administration Specialist

2017 Seasonal Racing Contractors

Lynn Hovda DVM - Chief Veterinarian
Richard Bowman, DVM Commission Veterinarian
Christy Klatt, DVM Commission Veterinarian
David Radechel, DVM Commission Veterinarian
Jennifer Durenberger - Steward
David Hooper - Chief Steward
David Smith - Steward
Eric Beach - Judge
Michael Peterson - Judge
Renee Sheward - Presiding Judge

What we do

Issue
Licenses

Officiate Horse
Racing

Carry Out
Background
Checks

Conduct
Investigations



Initiate
Legislation,
Write Rules

5,689

Licenses were issued in 2017, including
1,357 for licensed horseowners



Conduct Financial
and Operational
Audits



2,576



Equine Drug Tests
(both urine and blood)
were sent for analysis



Protect the Safety and Welfare
of Humans/Equines

MRC Horse Racing Stewards and Judges issued over

236 rulings

during the 2017 racing season



Administer Breeders Fund
Revenues and Payments



8,812

Pre-Race equine
examinations were
conducted by MRC
Veterinary staff



Our Mission:

The Minnesota Racing Commission operates in the public interest to ensure the **integrity** of horse racing and card playing, to oversee the proper distribution of funds back into the industry, and to provide for the **safety and welfare** of the human and equine participants. The Commission works to **promote the horse racing and breeding industry** in Minnesota in order to provide economic stimulus, offer residents and visitors an exciting entertainment option, and support agriculture and rural agribusiness.

Meet Ulf Edvard Holm-Johansen



Ulf Holm-Johnasen has been a Standardbred owner/trainer/breeder for 45 years. He started training in Norway before relocating to his wife's home state of Minnesota. The biggest challenge he faces training in Minnesota is training horses during the winter. His favorite part of training horses is working with the young horses. He enjoys getting them ready to race and teaching them the things they need to know to be successful.

2017 Breeders' Awards Distribution Overview

Thoroughbred

Breeders' Awards

\$442,505

Stallion Awards

\$83,660

Purse Supplements

\$337,445

Quarter Horse

Breeders' Awards

\$59,320

Stallion Awards

\$5,875

Purse Supplements

\$43,368

Standardbred

Breeders' Awards

\$59,625

Purse Supplements

\$313,675



2017 Thoroughbred Breeders' Awards

\$442,505 vs. \$322,610 in 2016

- 249 Minnesota Bred Thoroughbred racehorses earned qualifying purses at the Canterbury Park meet for their breeders
- 229 mares earned awards for their owners
- 130 breeders and breeder groups received awards



2017 Thoroughbred Stallion Awards

\$83,660 vs. \$82,672 in 2016

- 59 Minnesota Bred Thoroughbred racehorses earned qualifying purses at Canterbury Park meet for their stallion owners
- 13 stallions earned awards for their owners
- KELA retained his title as top earning stallion in Minnesota for the last five years

Minnesota Thoroughbred breeders benefited from a **37% increase** in awards.



Minnesota Quarter Horse breeders benefited from a **153% increase** in awards.



2017 Quarter Horse Breeders' Awards

\$59,320 vs. \$23,455 in 2016

- 42 Minnesota Bred Quarter Horses earned qualifying purses at the Canterbury Park meet for their breeders
- 35 mares earned awards for their owners



2017 Quarter Horse Stallion Awards \$5,875 vs. \$5,852 in 2016

- 7 Minnesota Bred Quarter Horses earned qualifying purses at Canterbury Park meet for their owners
- 5 stallions earned awards for their owners



2017 Standardbred Breeders' Awards \$59,625 vs. \$5,364 in 2016

- 154 Minnesota Bred Standardbred racehorses earned qualifying purses at Running Aces for their breeders
- 111 mares earned awards for their owners
- Minnesota Standardbred breeders benefited from a 10-fold increase in awards



Did
YOU know?

Minnesota Derby winner HOT SHOT KID earned top Minnesota bred Thoroughbred, earning **\$204,660** for his owner and breeder Warren Bush.

Mare PAINT OR MORE earned Lunderborg, LLC **\$13,034** in Minnesota Quarter Horse Breeders' Fund payments thanks to her offspring PYC JESS BITE MYDUST and DICKEY BOB.

Wisconsin resident Alvin Martin was the top Standardbred breeder and earned **\$8,458** in awards.

Minnesota Bred Registered Foals



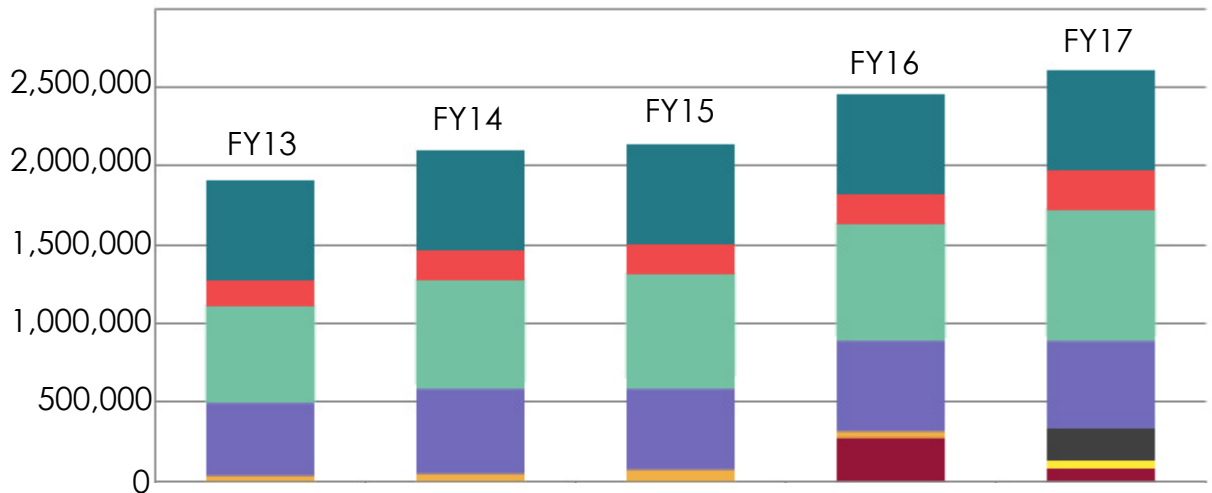
Running the Minnesota Racing Commission ... By the Numbers

Fiscal Year 2017 Sources and Uses of Funds

The Commission's operations are funded virtually entirely by the industry itself. License fees on industry participants, reimbursements from the tracks for the costs of veterinary services, drug testing and card room oversight, and the new revenue from ADW providers constitute the sources of funds for MRC operations per Minnesota Statute Chapter 240.

Fiscal year 2017 concluded the biennium budget period and ended the General Fund appropriation approved in 2015 for fiscal years 2016 and 2017.

MRC- Sources of Funds FY13-FY17

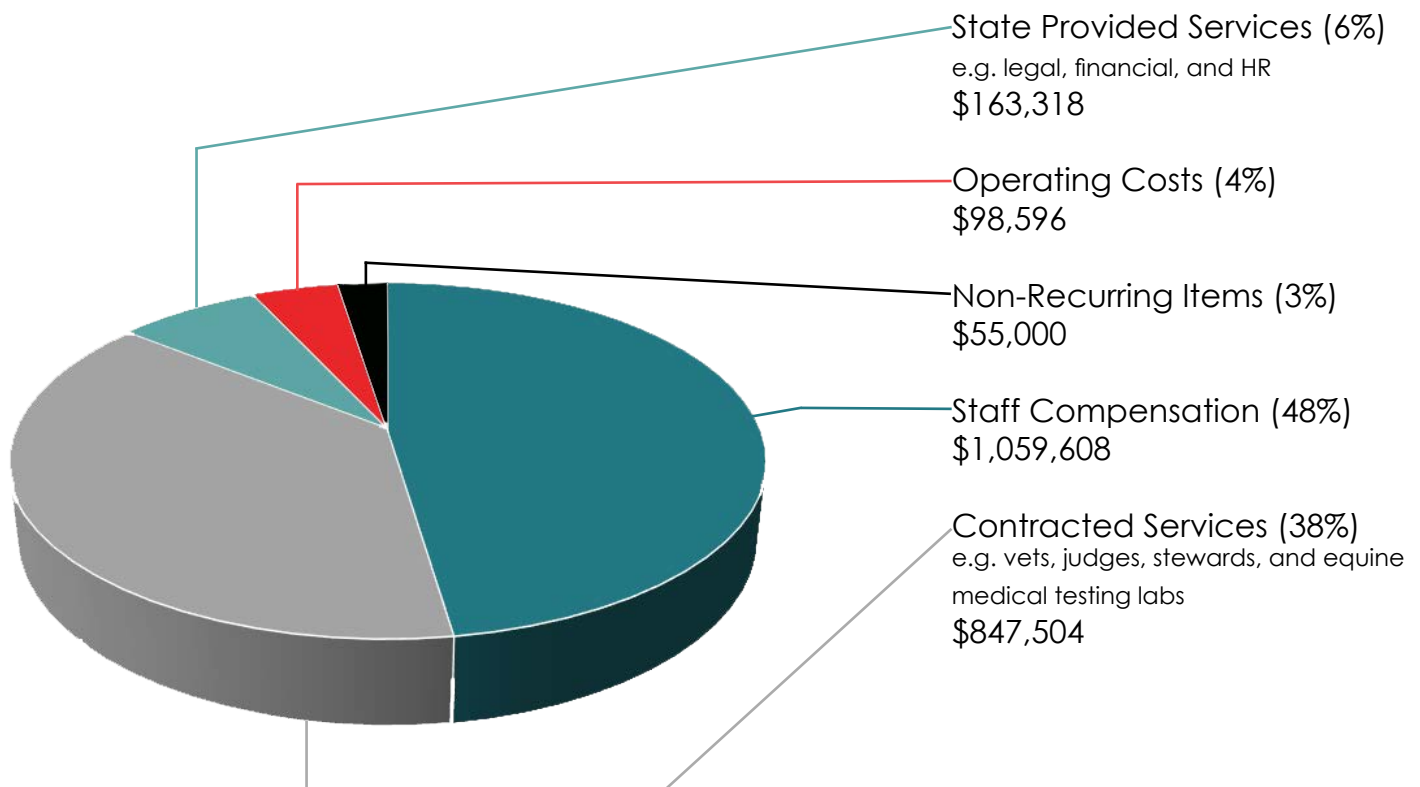


Class B Licensing (Racetracks)	\$635,300	\$639,800	\$640,300	\$640,200	\$639,800
Class C Licensing (Occupations)	\$165,060	\$196,607	\$182,146	\$188,453	\$258,225
Canterbury Reimbursements	\$608,811	\$680,162	\$731,115	\$740,885	\$818,438
Running Aces Reimbursements	\$471,505	\$553,351	\$518,222	\$585,448	\$558,133
Breeders Fund Admin Reimbursements	\$28,479	\$33,851	\$64,947	\$30,425	\$10,485
ADW Regulatory Fees					\$203,199
ADW Breeders Fund Admin Fees					\$50,800
General Fund Appropriation				\$269,000	\$72,000
TOTAL	\$1,909,155	\$2,103,771	\$2,136,730	\$2,454,411	\$2,611,080

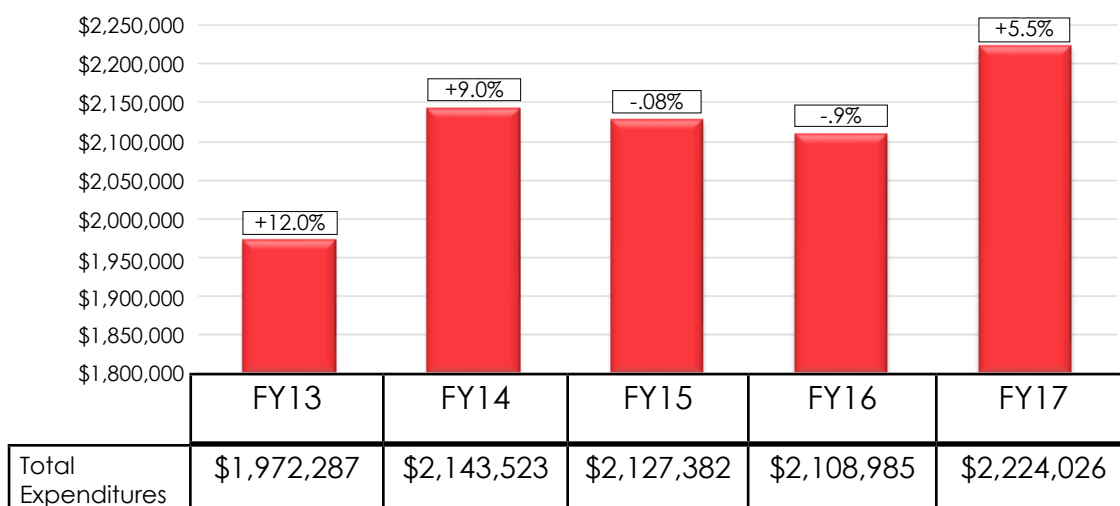
Reining in Spending

Since Fiscal Year 2014, the commission has reduced spending by more than 10% when adjusting for inflation. This was accomplished while still adding eleven part-time seasonal staff previously compensated by Canterbury Park, and also adding two key full-time employees. By creating operational efficiencies, maintaining tight control over expenses, and drastically reducing IT costs we were able to provide better regulatory oversight and still keep costs from escalating.

FY17 Uses of Funds by Major Spending Category



Total Usage of Funds FY13-FY17



2017 Champions



Top Thoroughbred Jockey
Jareth Loveberry

Top Quarter Horse Jockey
Oscar Delgado



Top Standardbred Driver
Steve Wiseman



Top Thoroughbred Trainer
Mac Robertson

Top Quarter Horse Trainer
Jason Olmstead



Top Standardbred Trainer
Kathie Pledsted



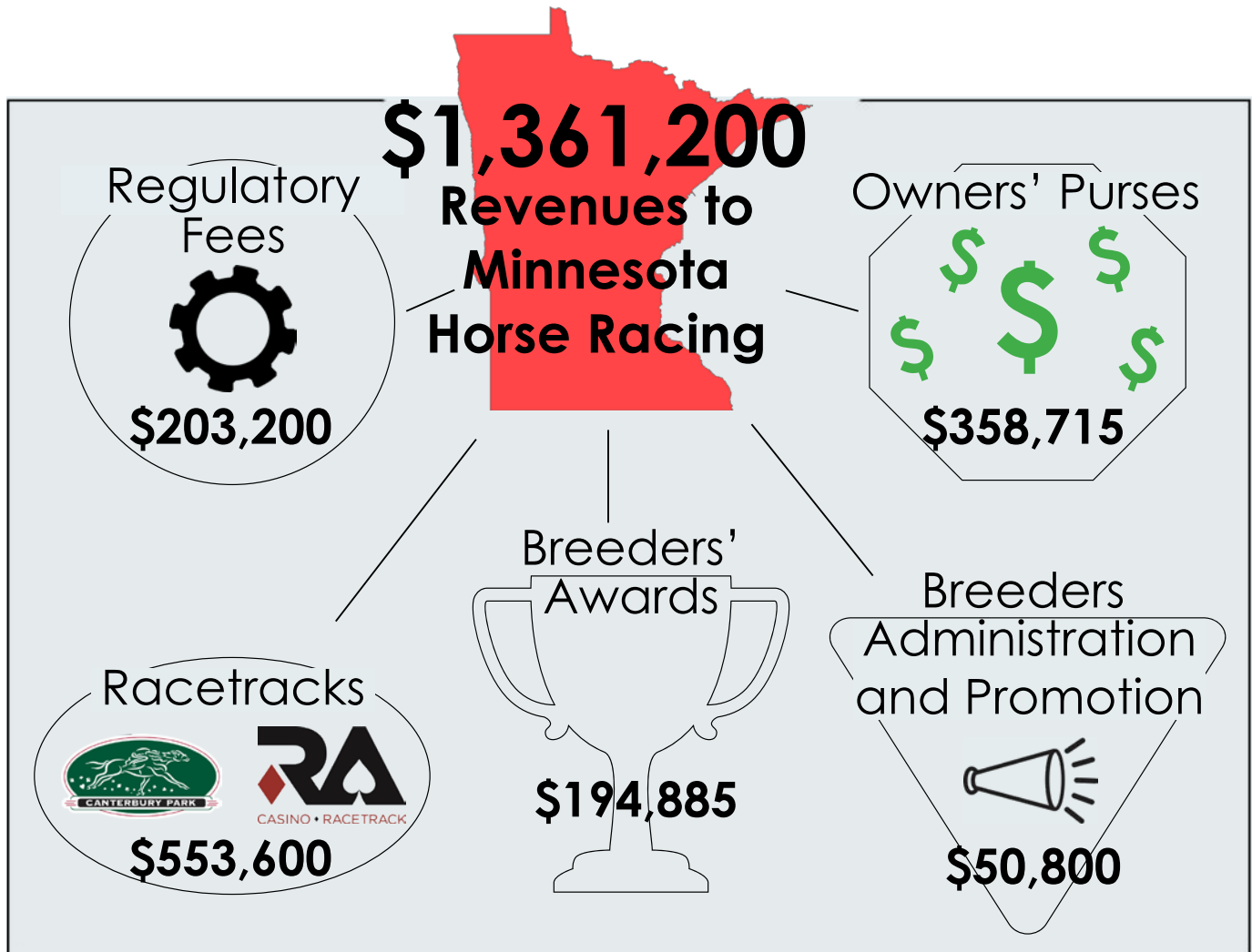
Top Thoroughbred Owner
Joe Novogratz

Top Quarter Horse Owners
Thomas J. Scheckel
and
Dean Frey



Advance Deposit Wagering

In 2016, the Minnesota legislature authorized advance deposit wagering (ADW), which allows Minnesota residents to place pari-mutuel wagers on live races conducted in other states by funding betting accounts before placing wagers online or by phone. This new law has benefited racetracks, owners, breeders, and the commission by requiring ADW providers to be licensed and to share their revenues with Minnesota's racing industry.



Licensed ADW Providers:

BETAMERICA

twinspires.com
a Churchill Downs company

xpressbet

watch and wager

**NYRA
BETS**

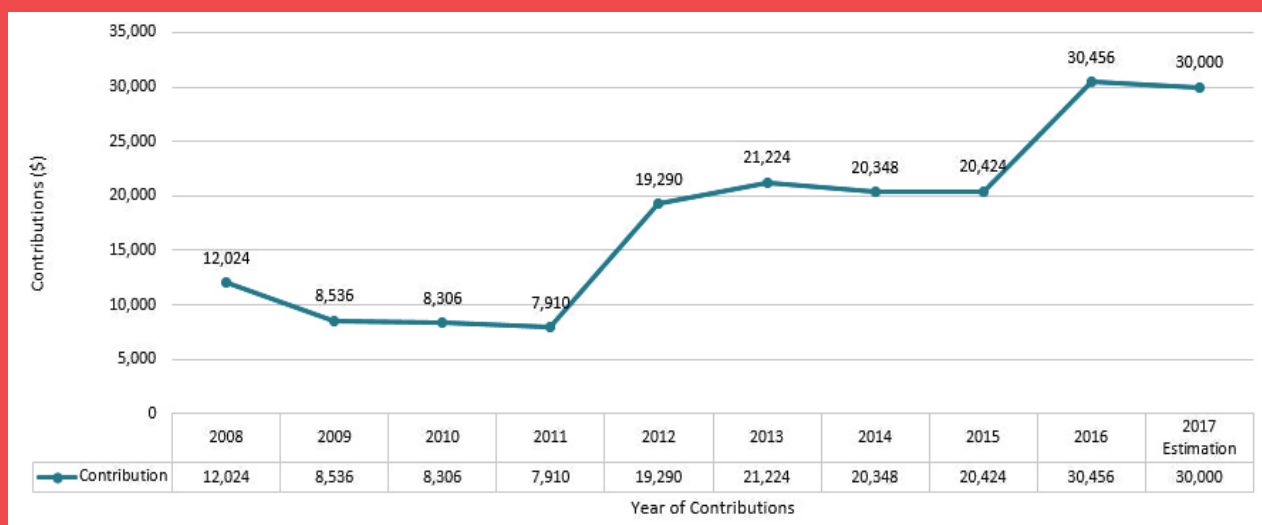
TVG

Racing Cares

Racetrack Contributions for Racehorse Retirement

The tracks, horsepersons' groups, and the commission work together to provide for the aftercare and transition of retired racehorses to new careers. In 2008, Canterbury Park and the Minnesota Horsemen's Benevolent and Protective Association were among the first in the industry to work together to set up a dedicated funding mechanism for racehorse retirement through voluntary contributions from owners which were matched by Canterbury Park. As shown below, the parties have combined to contribute over \$180,000 toward equine retirement in the past decade. In 2018, the fee for owners who race at Canterbury Park will be increased from the current \$3 per start to \$5 per start. This change will provide approximately \$50,000 per year for retired racehorse aftercare.

Racehorse Retirement Contributions 2008-Present



Contributions are made up of HBPAs donations and matched by Canterbury Park

*Data collected from Canterbury Park and HBPAs

Meet Wesley and Purest Form

WESLEY (buckskin QH) was a pony horse for trainer Mike Biehler until the end of this race season. He led hundreds of racehorses to and from the racetrack in his career. This was Wesley's first horse show and first time going in an English Saddle. Wesley placed 5th in hunter equitation and 3rd in hunter under saddle. PUREST FORM (Black TB) raced successfully across the country and at Canterbury Park. He had 40 career starts and \$129,719 in career earnings. His last start was at CBY in July 2015. He placed second in hunter under saddle and open hunter equitation.



Wesley



Purest Form

Commission Grants

Since 2016, fines imposed on licensees and paid to the MRC are also dedicated to racehorse retirement.

In 2017, **\$47,150** was awarded to four 501(c)(3) retirement/aftercare groups

Eligibility criteria for racehorse adoption, retirement and repurposing organizations:

- ✓ MUST be a 501(c)(3) in good standing for at least a year.

Decision-Making Criteria:

- ✓ Number of horses previously taken from Minnesota racetracks
- ✓ Number of horses previously re-homed
- ✓ A complete and detailed application
- ✓ How the funds will be used
 - Preference is given to requests for hay, grain and veterinary care
 - Second tier preference is given to requests that directly benefit horses, such as shelter, fencing and other capital needs.

2017 Racehorse Retirement Fund Recipients



Bowman Second Chance Thoroughbred Adoption (BSCTA) in North Dakota received \$40,000 towards the cost of feeding retired Minnesota racehorses.



This Old Horse in Hastings, Minnesota received \$5,400 for the development of a training course for those who seek to adopt a retired racehorse.



Finger Lakes Thoroughbred Adoption (FLTAP) in New York received \$1,000 towards the cost of purchasing and installing fans in the barn.



Sundown Horse Shelter in Hugo, Minnesota received \$750 to purchase a new generator.

Quality of Life Grant

The Quality of Life Foundation was established at Canterbury Park in 1990. In 2017, the commission granted \$5,000 to the Foundation to support drug and alcohol abuse services for licensed personnel on the backside of Canterbury Park through the Five Star Recovery Center of Chaska.



Protecting Racehorse Welfare

Most casual racegoers are unaware of what goes on behind the scenes prior to and during the races to protect horses and humans alike. In addition to the daily care each horse receives from its trainer and barn help, the commission and racetracks work together to provide safety at the tracks.

Pre-Race Examination

All horses undergo an assessment of race readiness by an MRC veterinarian, who may see the need to keep a horse from running that day. From the time the horses arrive at the receiving barn until they leave the track, they are observed by MRC veterinarians and state stewards.



Post-Race and Post-Workout Tests

Of the 2,591 post-race and post-workout blood and urine tests conducted by the MRC, only 20 horses tested positive and most of those positives involved slight overages of therapeutic medications. MRC contracts with an outside accredited laboratory that supports our robust drug testing program. The lab routinely screens for several hundred substances and can detect picogram (part per billion) levels in the blood and urine. These tests are conducted to protect the integrity of racing.

Equine Injury Database

The MRC veterinarians participate in the Jockey Club's Equine Injury Database by providing timely and accurate reporting of all injuries and fatalities into a national database. The database is used to identify ways to lessen the incidence and severity of race-related injuries.



Track Maintenance

The racetracks hire a track superintendent who maintains the racing surfaces to precise specifications. The MRC Chief Veterinarian and outside engineering and soil experts are consulted on track safety.



Stewards

A panel of three commission-appointed stewards is assigned to each track to enforce rules and procedures, conduct administrative hearings, and impose penalties for medication or racing violations.



Emergency Procedures

A specially-designed, air conditioned equine ambulance is on-site to immediately transport a horse in distress to the state detention barn for veterinary care.

Safety and Integrity Alliance

Canterbury Park is accredited by the National Thoroughbred Racing Association's Safety and Integrity Alliance, which conducts a safety review of track facilities to ensure best practices are in place for equine and rider safety. Similar safety and integrity practices are in place at Running Aces.



The **MRC's four full-time commission veterinarians**

act solely in the interests of the horses and have no economic relationship with anyone but the MRC. They examine each horse and its background for vaccinations, diseases, injuries, non-permitted medications and any other medical conditions. They also monitor the safety of the track surface.

Dr. Lynn Hovda, primary advisor to the commission on all veterinary matters, has been the MRC Chief Veterinarian for 25 years and is widely recognized as one of the best equine regulatory veterinarians in the country. Many states look to Dr. Hovda to model their practices and procedures.

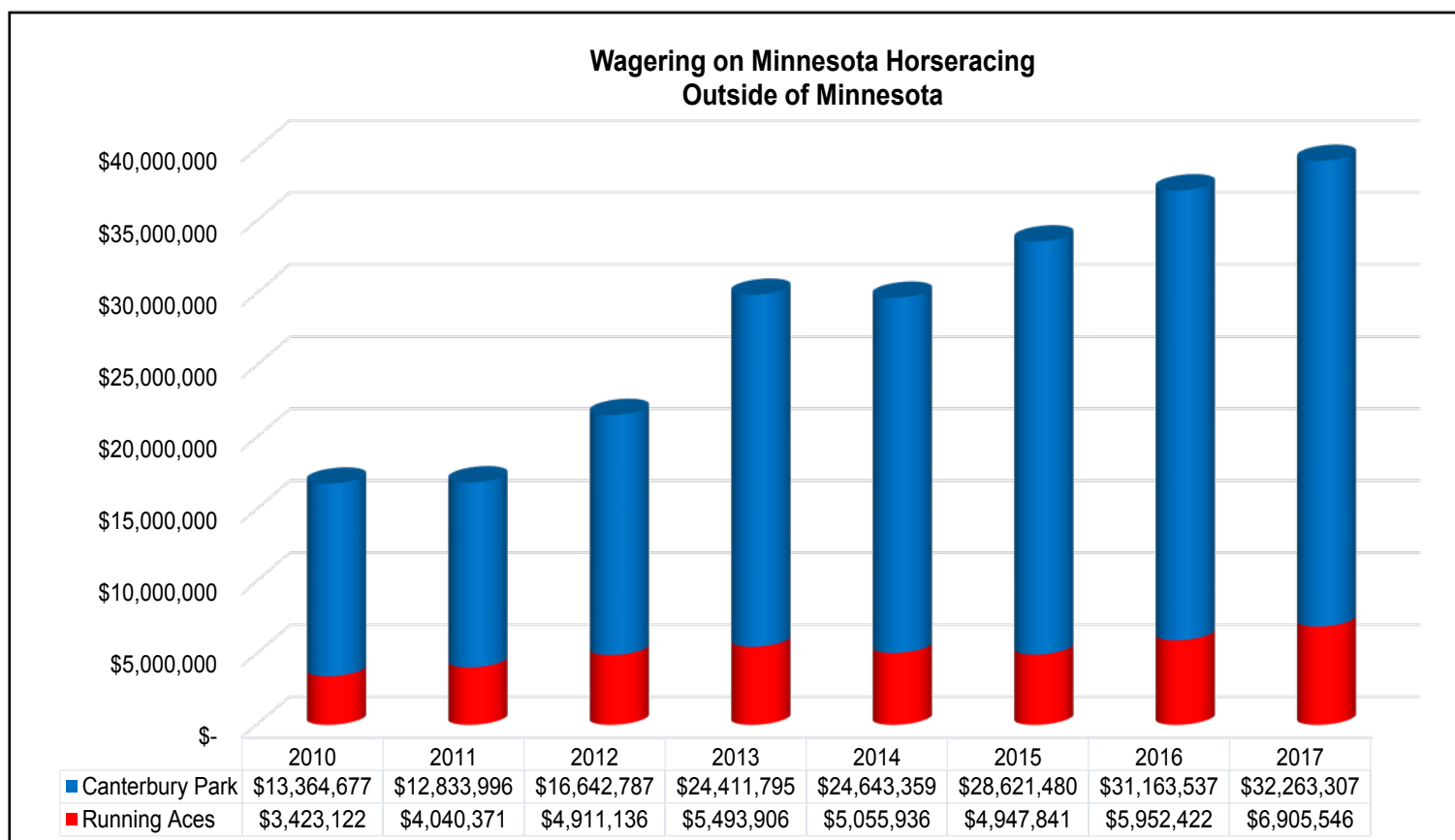
We also wish to acknowledge the work of **Dr. Jennifer Durenberger**, whose presentation on ethics and animal welfare at the University of Albany Summer Racing and Gaming Symposium was both informative and inspiring. Dr. Durenberger is a native Minnesotan and licensed veterinarian and lawyer. She was a steward at Canterbury Park during the 2016 and 2017 seasons and is now the Chief Veterinarian for the New York Racing Association. Dr. Durenberger has dedicated her career to equine welfare and has shown courage in calling upon the racing industry to address the issue directly and honestly. We thank her for her contributions.

Canterbury Park and Running Aces Horseracing

The Export of Minnesota Horseracing

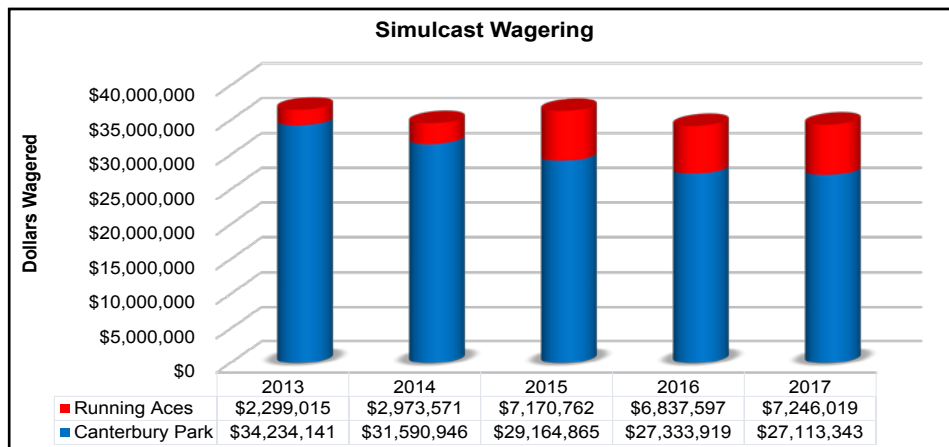
Minnesota horseracing is becoming another attractive made-in-Minnesota product. Canterbury Park and Running Aces broadcast their races to 42 out of the 50 states, plus Canada, Australia, and Europe. A percentage of the total money wagered outside of Minnesota, generally between 3%-5%, is invested back into purses for horse owners, capital improvements at the racetracks, and enhanced marketing of the sport.

Reaching an all-time high of nearly \$40 million in 2017, there has been a 133% increase in dollars wagered by out-of-state players on Minnesota horseraces since 2010. This increase in popularity is attributable to an increased number of live race days, increased distribution to out-of-state and ADW wagering outlets, and a more attractive racing product.



Simulcast Wagering

Despite some concerns that advance deposit wagering would negatively impact simulcast wagering on out-of-state races at the two Minnesota racetracks, those fears were abated based on 2017's wagering figures. The amount wagered at Minnesota racetracks on these races actually increased slightly over 2016. It was the industry's hope to recapture lost revenue and introduce new fans to the sport of horseracing via advance deposit wagering. So far so good!



Live Racing

Minnesota Racing Commission

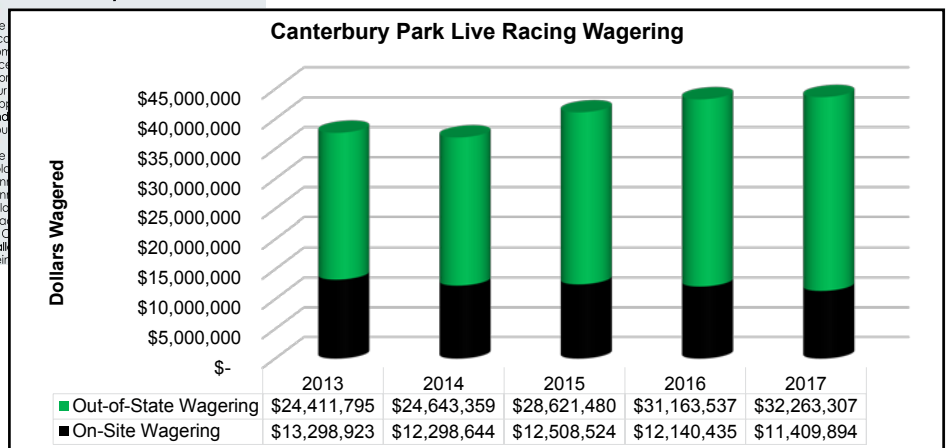
Canterbury Park's total average daily wagering on live races rose by 3.9%



The inc...
race...
Thor...
Our...
sup...
and...
cou...

The ho...
Mini...
Mini...
foli...
spai...
at C...
stall...
beir...

**Canterbury Park
raced 67 days in 2017**



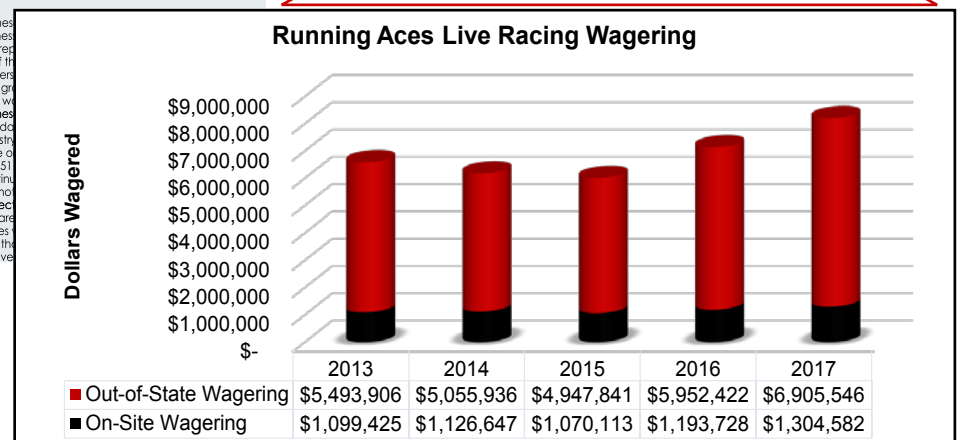
Minnesota Racing Commission

Running Aces daily average live on-track handle increased 11%



Minnes...
Harnes...
Inc. rep...
all of 11...
trainers...
and gra...
who we...
Minnes...
Standi...
industry...
were o...
in 1951...
contin...
promot...
protect...
welfare...
horses...
and the...
involve...

**Running Aces
raced 52 days in 2017**



Cardroom Revenues

Legislation passed in 1999 created a new source of revenue for purses at Minnesota's racetracks. In 2017, the State's two racetracks recorded record cardroom revenues and added almost \$9 million dollars to the heartbeat of the industry....purses!



13.3%
of cardroom
revenues
went to purses



Minnesota racetracks
generated
\$67,301,738
in cardroom revenue



"The combination of offering lower minimums, providing a new mix of games, and marketing toward the local market has resulted in strong growth over the last two years."

-Taro Ito, President and CEO of Running Aces

Cardroom Revenue Sources

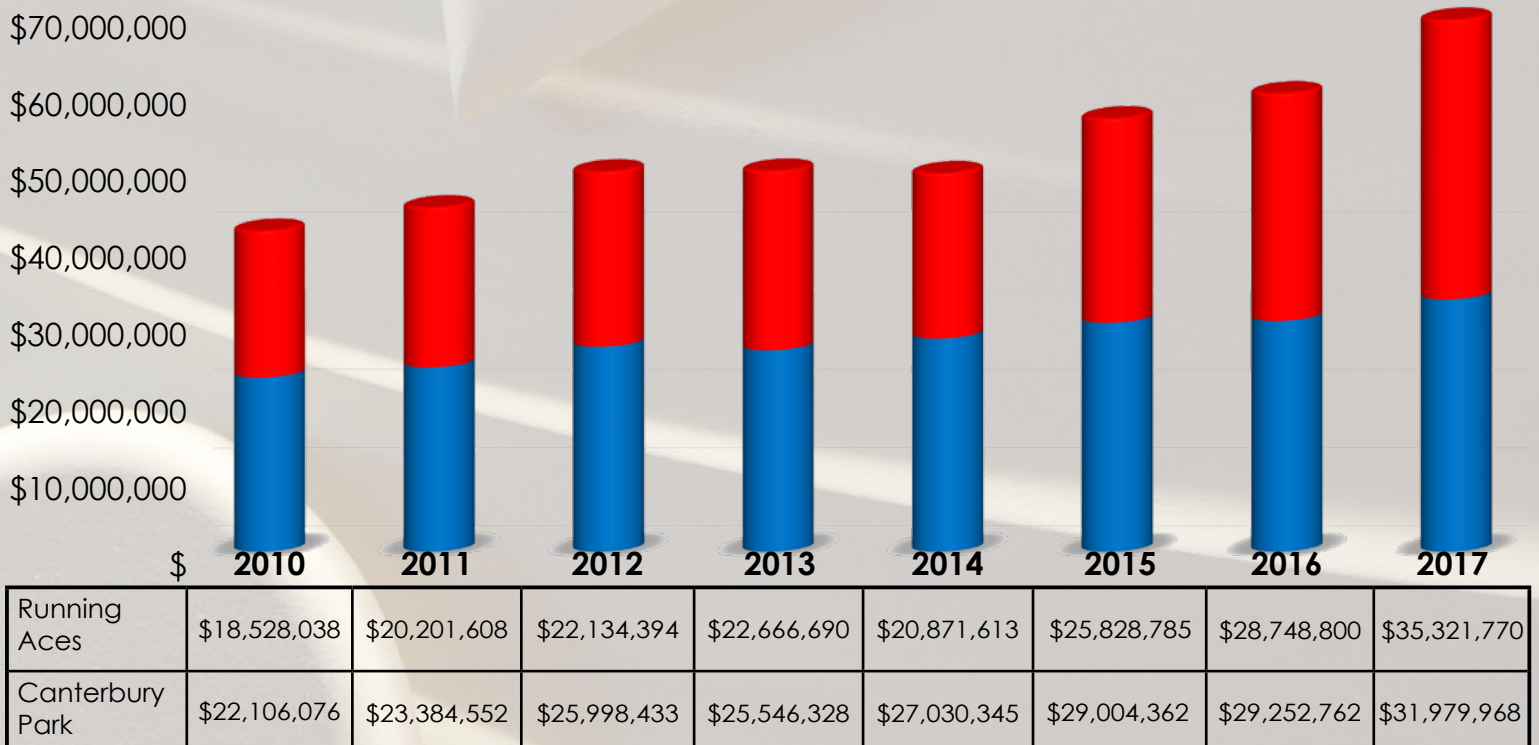


Canterbury Park
Cardroom Revenue
Grew by **9.3%** vs. 2016

Running Aces'
Cardroom Revenue
Grew by **22.9%**
vs. 2016



Cardroom Revenues Canterbury Park & Running Aces



People You Should Know

Get to know Kristin Boice



Kristin Boice (third from the left) is a first-time breeder from Phoenix, Arizona. Her horse Mr. Jagermeister, who is trained by Kristin's sister,

Valorie Lund, won his first race by 11^{1/2} lengths. After that, Kristin said she knew she had something special. "I've always wanted a Minnesota-bred horse. Minnesota is my second home," she explained. "The atmosphere at Canterbury Park is amazing, the purses are good, the fields are good and there are lots of activities for my three-year-old!" laughed Kristin. Mr. Jagermeister, a two-year-old bay colt Thoroughbred, won the Northern Lights Futurity on August 20, 2017. Being a champion is "everything I've dreamt of and more than I've hoped for," Kristin said humbly.

Meet the Bergruds



Gary, Brenda and their son TJ of Rolla, North Dakota started breeding as a family in 2004. Their horse *Pinup Girl*, a three-year-old Thoroughbred, won the Glitter Star Minnesota Distaff Classic Championship on August 20, 2017.

When asked what it feels like to own a champion, Brenda answered by saying "we feel very blessed. Every win is a special win, but a stakes day win is very special. We are grateful for our trainer, Sandra Sweere, and the barn crew for taking such good care of our horses." Seeing the horses they breed in Minnesota succeed is like "the icing on the cake," said Gary. "You plan the breeding, you watch them foal, you raise them and watching them win makes it all worth it."

Racing's Impact on Local Businesses



Pablo's Mexican Restaurant has continued its success since opening in Shakopee in 1986. Today Pablo's also has a small food booth at Canterbury Park to increase visibility with the racing crowd. "With the continued success of live racing, Pablo's will have its best year ever in 31 years of being a part of Shakopee due in part to attractions like Canterbury Park," said Pablo's owner, Edward Schwaesdall. "The impact of live racing and other attractions in the area help to increase our business in the summer months by 30%. This allows Pablo's to hire more people and also allows us to give back to the community in many ways. We hope to see continued support of live racing at Canterbury Park."



Rush City Bakery in Rush City, Minnesota and the New Generation Bakery in Mora, Minnesota have recently been able to expand, due in large part to their sales with Running Aces. "The combined contribution of sales that companies like Running Aces provide ensure job stability and growth for my company," said President John Bourgeois. "I am very proud to supply such a fine organization as Running Aces. They not only provide work for my employees, but also do a great service to the community."



*See you
this
Summer!*

Racetracks/Cardrooms



Canterbury Park

1100 Canterbury Park Rd.
Shakopee, MN 55379
952-445-7223
www.canterburypark.com



CASINO • RACETRACK

Running Aces Casino and Racetrack

15201 Zurich St.
Columbus, MN 55025
6521-925-4600
www.runaces.com

Horsepersons Organizations



Minnesota HBPA

1100 Canterbury Park Rd.
Shakopee, MN 55379
952-496-6442
www.mnhbpa.com



Minnesota Harness Racing, Inc

414-379-2494
www.mnharness.com



MINNESOTA QUARTER HORSE RACING ASSOCIATION

Minnesota Quarter Horse Racing Association

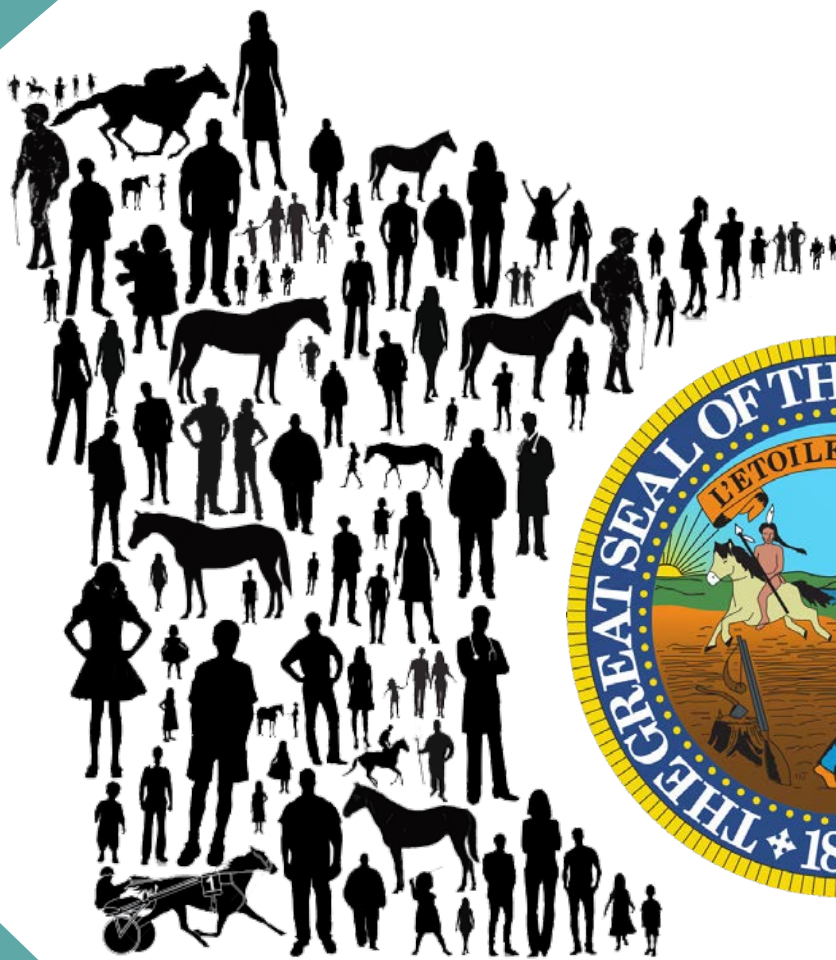
www.mqhra.com



MINNESOTA
THOROUGHBRED ASSOCIATION

Minnesota Thoroughbred Association

1100 Canterbury Park Rd.
Shakopee, MN 55379
952-233-4802
www.minnesotabred.com



Canterbury Park
Location
Thoroughbred &
Quarter Horse Racing
1100 Canterbury Road
Ste. 100
Shakopee, MN 55379
952.496.7950

Website: www.mrc.state.mn.us



Running Aces Location
Standardbred Racing
15201 Zurich Street
Ste. 212
Columbus, MN 55025
651.925.3951