

Lake Vermilion

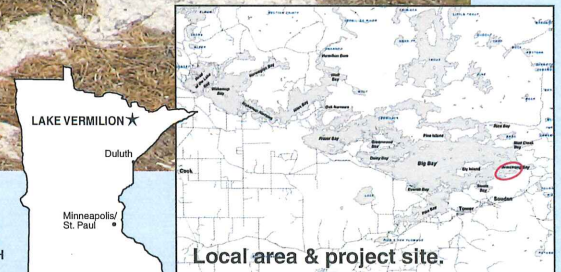


Vision for a State Park

View across Cable Bay, Lake Vermilion



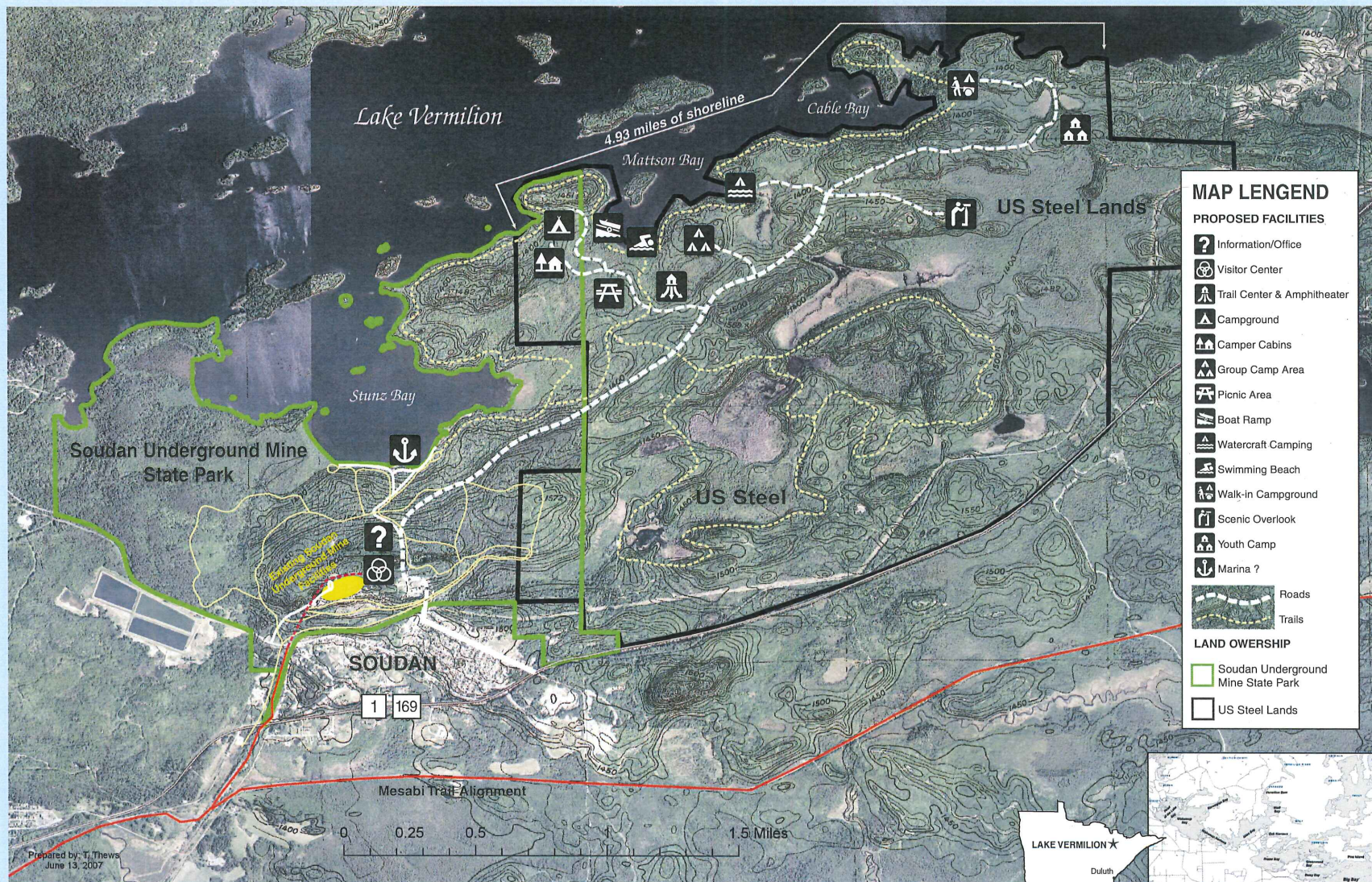
Minnesota Department of Natural Resources
Division of Parks & Recreation



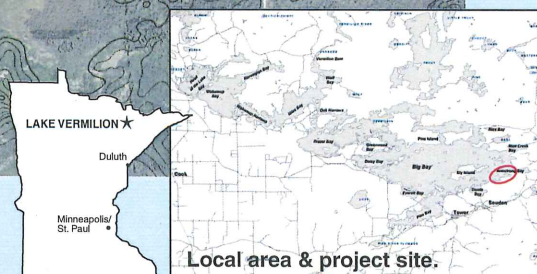
Lake Vermilion



Conceptual State Park Development



Minnesota Department of Natural Resources
Division of Parks & Recreation

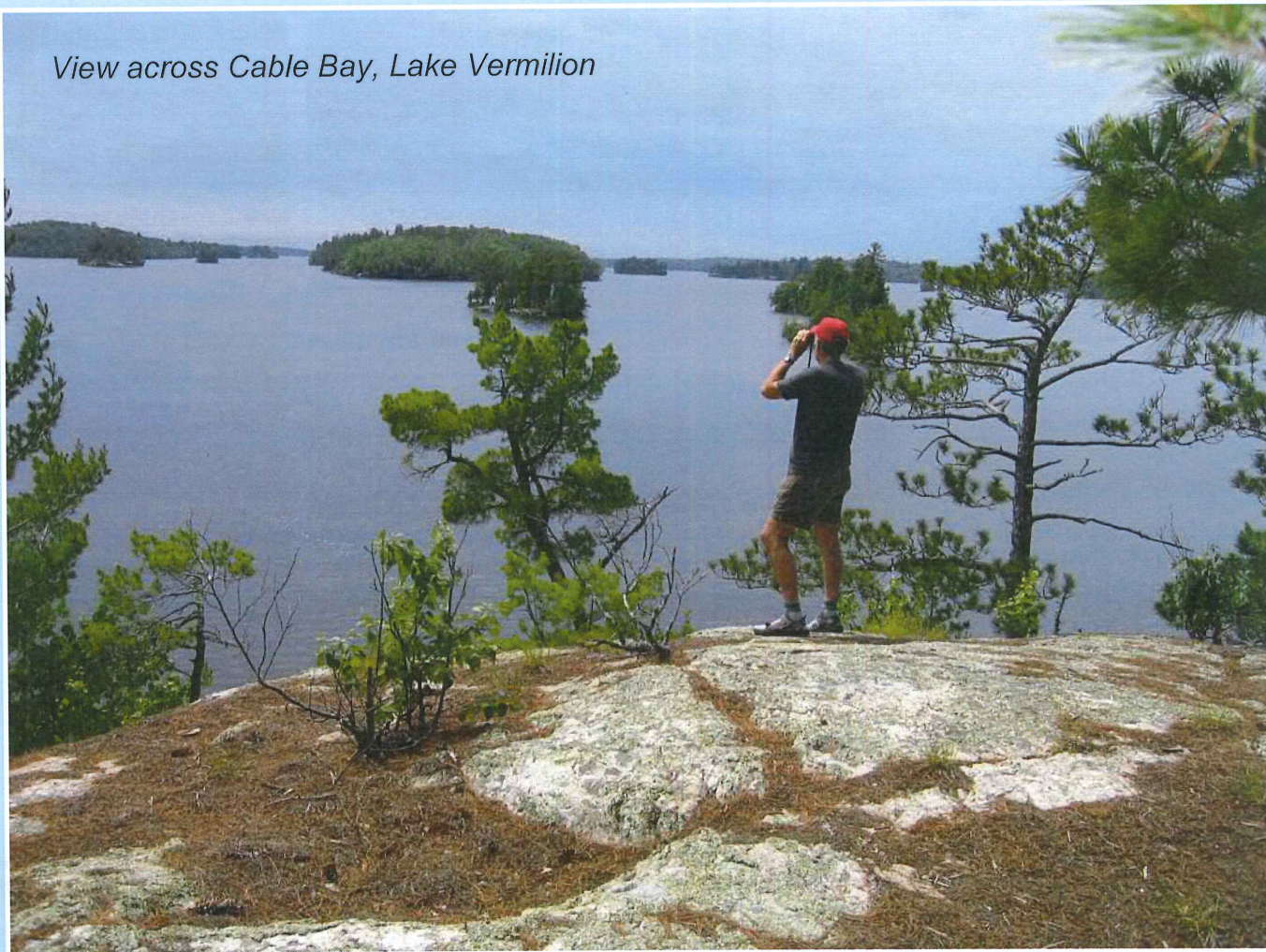


Lake Vermilion



Vision for a New State Park

View across Cable Bay, Lake Vermilion



July 2007

Lake Vermilion



Existing Views of Undeveloped Shoreline



Minnesota Department of Natural Resources
Division of Parks & Recreation

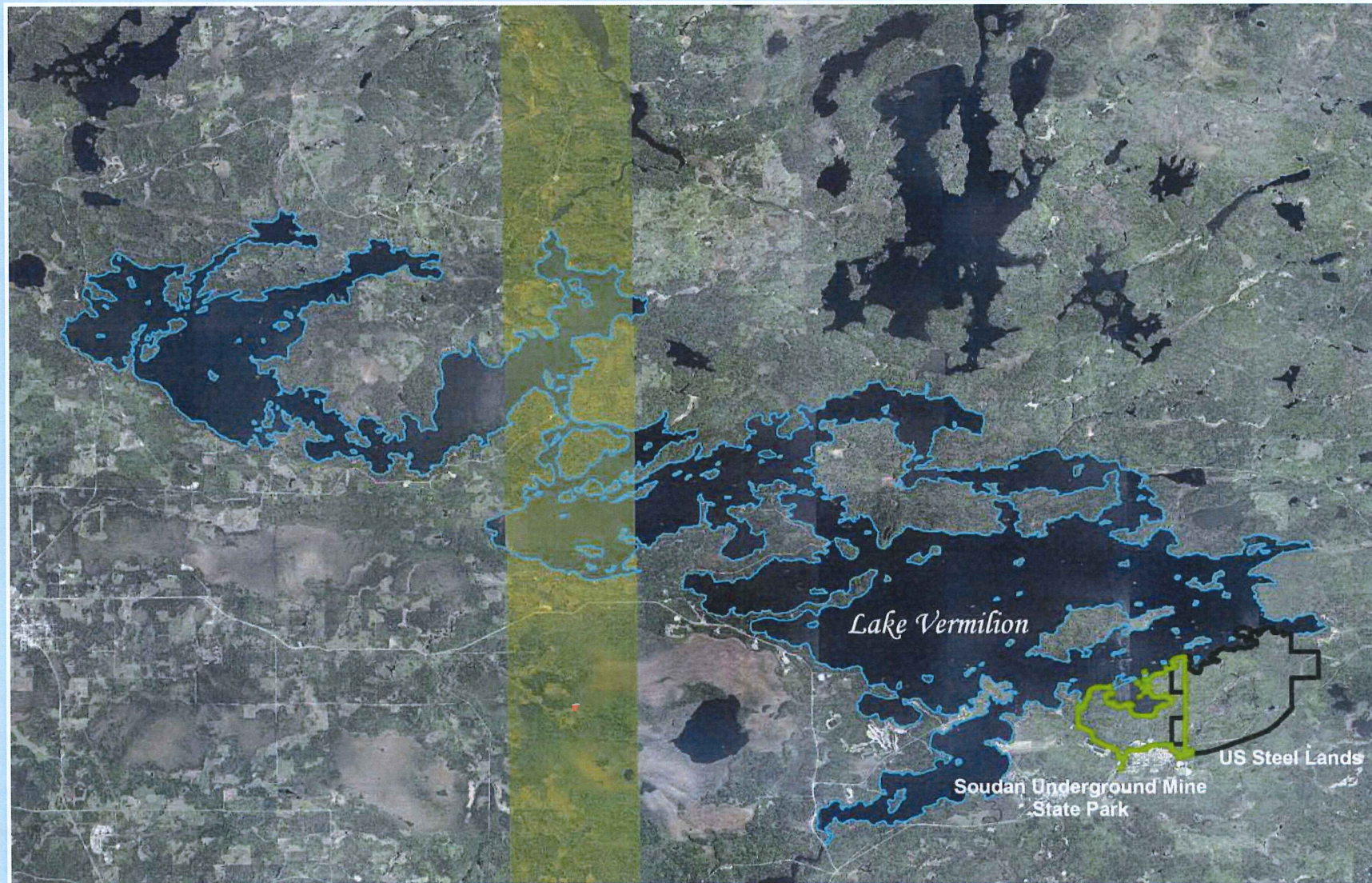


Local area & project site.

Lake Vermilion



Lake Vermilion Area





Department of Natural Resources Proposal:

Goal - Preserve the undeveloped lands along Lake Vermilion and create a flagship state park that showcases Minnesota's classic lake country.

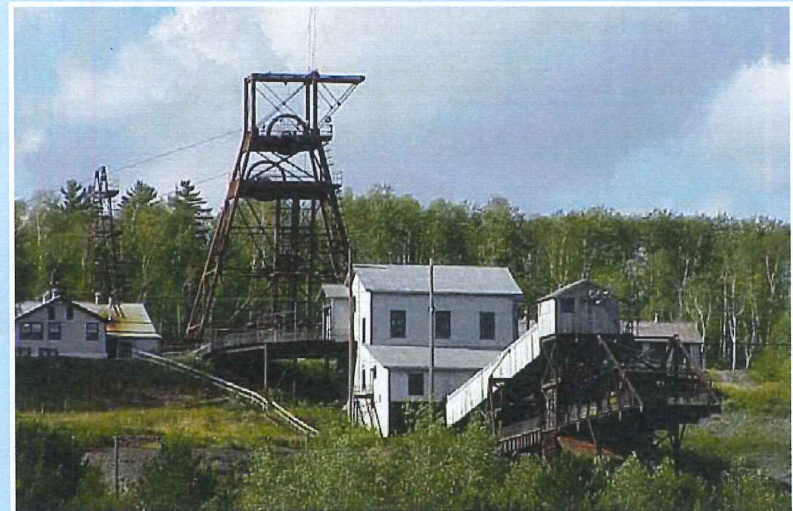
Action - Develop a "***Next Generation Park***" with new facilities and amenities:

- Meets growing demand for overnight use
- Attracts new users
- Complements opportunities offered at Soudan Underground Mine State Park



Soudan Underground Mine State Park – existing facilities:

- Historic mine and physics tours
- University of Minnesota MINOS Laboratory
- Interpretive and hiking trails
- Old growth forest and protected shoreline

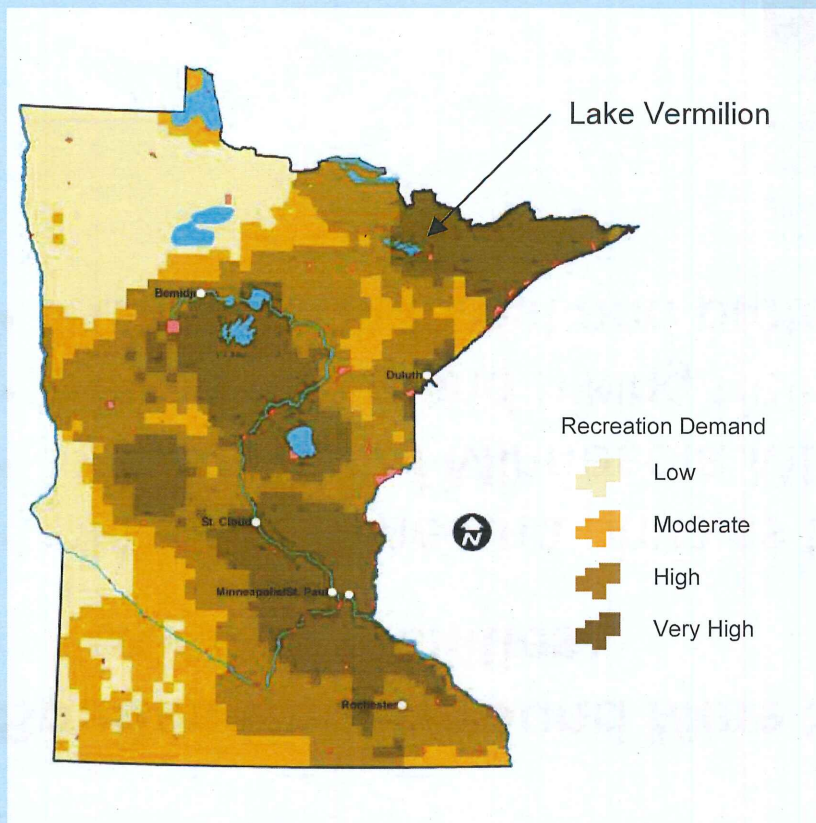


Lake Vermilion



Outdoor Recreation Demand in Northeast Minnesota

Outdoor recreation demand:



Projected recreation demand for 2025 in the Lake Vermilion area is very high.

Minnesota State Park System Land Study (2000)



Top 10 Northeast Minnesota Attractions:

5 of the top 10 tourist attractions are state parks -

Rank	Region	Attraction	2005 Attendance
1	Northeast	Grand Casino Hinkley	3,490,000
2	Northeast	Gooseberry Falls State Park	590,031
3	Northeast	Tettegouche State Park	400,355
4	Northeast	Lake Superior Maritime Visitor Center	358,142
5	Northeast	Split Rock Lighthouse State Park	296,487
6	Northeast	Temperance River State Park	238,850
7	Northeast	Voyagers National Park	237,158
8	Northeast	Spirit Mountain Recreation Area	233,000
9	Northeast	Jay Cooke State Park	216,266
10	Northeast	BWCA Wilderness	200,000

Lake Vermilion



Proposal for a New State Park

Public process already supports the concept:

Soudan Underground Mine State Park Management Plan



Minnesota Department of Natural Resources
Division of Parks and Recreation

January 2002

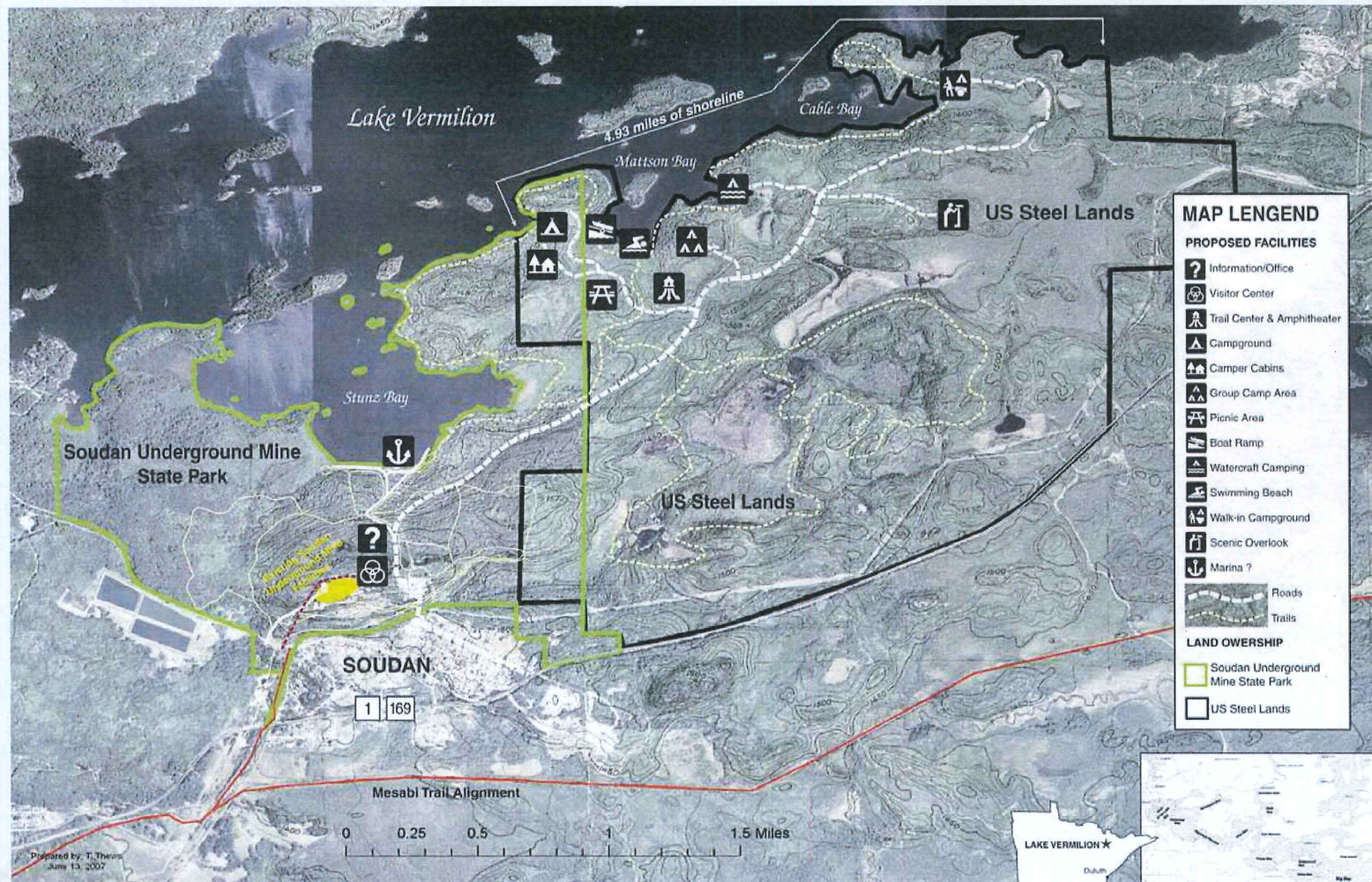
“Continue to work with U.S. Steel Group concerning the possibility of adding the properties east of the park to the statutory park boundary.”

*Soudan Underground Mine State
Park Management Plan (2002)*

Lake Vermilion



Conceptual State Park Development



MAP LEGEND

PROPOSED FACILITIES

- ? Information/Office
- Visitor Center
- Trail Center & Amphitheater
- Campground
- Camper Cabins
- Group Camp Area
- Picnic Area
- Boat Ramp
- Watercraft Camping
- Swimming Beach
- Walk-in Campground
- Scenic Overlook
- Marina ?



LAND OWNERSHIP

- Soudan Underground Mine State Park
- US Steel Lands



Minnesota Department of Natural Resources
Division of Parks & Recreation



Local area & project site.

Estimated Annual Economic Benefits:

Economic benefit/visitor spending –

<i>Overnight</i>	\$1,220,770
<u><i>Day Use</i></u>	<u>\$7,425,000</u>
<i>Total</i>	\$8,645,770

Direct income –

<i>Overnight</i>	
<i>Camping</i>	\$335,070
<i>Camper cabins</i>	\$105,120
<u><i>Day Use</i></u>	<u>\$75,000</u>
<i>Total</i>	\$515,190

* *Additional tour revenue
at Soudan Underground
Mine State Park* \$75,000





When proposal moves forward, the process for establishing a new state park will be followed:

- **Identify lands to include as part of the new park**
Work with U.S. Steel on property descriptions, etc.
- **Work with the Minnesota State Legislature and local officials to establish the new state park**
All state parks are established and their boundaries determined by acts of the State Legislature.
- **Purchase the lands for the new state park**
Finalize an agreement with U.S. Steel for the acquisition of the land.