



MINNESOTA SNOWMOBILE

SAFETY LAWS, RULES & REGULATIONS

2016-2017



Minnesota Department of Natural Resources
1-888-MINNDNR • www.mndnr.gov

#MESABI IS MAGIC



THE TRAILS ARE CALLING.

EMBARRASS
★
MOUNTAIN IRON ★
CHISHOLM ★
BUHL ★
HIBBING ★
VIRGINIA ★
EVELETH ★
BIWABIK ★
AURORA ★
HOYT LAKES ★
GILBERT ★



MESABI. WHERE WILDERNESS MEETS ADVENTURE.



Mesabi is Minnesota's snowmobiling destination for exploring the remote and scenic Northwoods. With miles of winding, looping trails, you can ride for days without ever repeating a route. It's a true Northern Minnesota wintertime adventure.

And we make planning easy. Visit www.ironrange.org for trail maps, and trailside lodging and dining options. Then, let the fun begin!

EXPLORE OUR LODGING PARTNERS FOR YOUR OVERNIGHT ADVENTURE.



Super 8: 218-744-1661
Eveleth | super8.com



Holiday Inn: 218-741-7411
Mountain Iron | hiexpress.com



Northern Comfort B&B: 218-984-2014
Embarrass | northerncomfortmn.com



Villas
AT GIANTS RIDGE

The Lodge at Giants Ridge: 218-865-7170
Villas at Giants Ridge: 218-865-4155
Biwabik | giantsridgeresorts.com



AmericInn: 218-741-7839
Virginia | americinn.com

MESABI
IronRange.org

TABLE OF CONTENTS

This is a summary of the 2016-2017 Minnesota snowmobile regulations. For complete regulations, consult the state statutes and rules and check for any local ordinances.

Did You Know?	5
Registering Your Snowmobile	8
How to Register Your Snowmobile	8
Fees	8
Registration Numbers and Validation Decals	8
Snowmobile State Trail Sticker	12
Rules of the Road and Trail	15
Signs	16
Equipment Requirements	18
Safety Training Requirements	19
Youth Operation Requirements	20
General Operation	21
Where You May Ride	21
Where You May Not Ride	22
Other Prohibitions	23
Snowmobiling While Intoxicated	24
Speed Limits	25
Accidents	25
Enforcement	26
Penalties	26
Minnesota Trespass Laws	27
Game Laws Related to Snowmobiling	28
For More Information	29
Grant-In-Aid Program	30
Sunrise/Sunset Table	30



MOTORFIST



[509]

We're Geared Up for Winter!

We've got all the Clothing, Parts & Accessories you need to get you and your sled ready to hit the trails this winter.



CountryCat.com • (320) 352-3534 • Sauk Centre, MN

COUNTRY CAT®



25 Years of Excellence • 1991-2016



Paid Advertisement

Did you know?

Current registration needs to be displayed on a snowmobile while being transported on any trailer, in truck beds, or on any conveyance that can haul a snowmobile.

Under Minnesota Law:

“A person may not operate or transport a snowmobile unless the snowmobile has been registered.”

Exemptions to registration - see page 7.

A Message from Your DNR Conservation Officers:



During the 2014-2015 winter months, 4 people lost their lives in a snowmobile accident. Last season, 75% of snowmobile accident deaths involved alcohol use that impaired the driver. Alcohol use slows a driver's reaction time so that stopping distance increases and drivers are more likely to strike a fixed object and be killed from the impact. Stay away from alcohol and ride smart. Alcohol alters your judgement and slows physical ability to quickly react to hazards out on the trail. You need to be alert and aware when riding, especially on the trails. **Stay Alert and Stay Right!**

2015 Snowmobile Safety Instructor of the Year

Red Wing snowmobile safety Instructor Larry Perkins has been named the Minnesota Department of Natural Resources (DNR) Snowmobile Volunteer Instructor of the Year for 2015. Perkins has been a certified DNR Safety Instructor for nearly 40 years, but has instructed young snowmobile riders since 1972. “Larry takes pride in his teaching, as evidenced by his welcoming of questions, and using real-life examples to reinforce concepts”.

If you are interested in becoming a volunteer DNR youth instructor:



This publication is paid for through the sale of advertising. The State of Minnesota and the Department of Natural Resources can neither endorse products or services advertised nor accept any liability arising from the use of these products or services. Equal opportunity to participate in and benefit from programs of the Minnesota Department of Natural Resources is available to all individuals regardless of race, color, creed, religion, national origin, sex, marital status, public assistance status, age, sexual orientation, disability, or activity on behalf of a local human rights commission. Discrimination inquiries should be sent to MN DNR, 500 Lafayette Road, St. Paul, MN 55155-4031 or the Equal Opportunity Office, Department of the Interior, Washington, DC 20240.

Copyright 2016, State of Minnesota, Department of Natural Resources.

RECYCLABLE: This coated paper protects your regulations from water and the wear and tear of constant use.

To recycle, remove the staples and then recycle.

This information is available in an alternative format upon request.

WELCOME TO SNOWMOBILING

The sense of freedom you get while riding a snowmobile over Minnesota's snow-covered lands and frozen lakes can be exhilarating. Yet with that freedom comes responsibility. Minnesota's system of more than 22,000 miles of snowmobile trails depends on the cooperation of landowners, non-motorized trail users, other recreationists, and local units of government. The vast majority of trails are groomed and maintained by snowmobile club volunteers.

Keep in mind that trespass is the most frequent complaint landowners have against snowmobilers. Trespass seriously impacts the ability of clubs to get private landowners to allow grant-in-aid trails on their property. We recommend that all recreational users ask first before entering private lands, even if the land is not posted. That simple courtesy will go a long way to improve relationships between landowners and snowmobilers.

Please read this booklet to learn your legal obligations as a snowmobiler. By driving safe, smart, and legal you protect the future of your sport.

Before you ride

- Read your Minnesota snowmobile regulations and your owner's manual.
- Check your snowmobile and equipment.
- Wear a helmet, eye protection, and proper clothing.
- Find out about ice and snow conditions.
- Tell someone where you are going and when you expect to return.

Be sure to

- Let weather, lighting, and trail conditions determine a safe speed.
- Ride straight—no alcohol or drugs.
- Stay to the right on trails and use your headlight and taillight.
- Maintain adequate spacing between machines to avoid collision.
- Reduce your speed when riding at night to less than 40 MPH. Studies have shown speed over 40 MPH results in overdriving your headlights.
- Always yield to other motor vehicles.
- Stay clear of thin ice and lake inlets — never cross open water.
- Never ride alone—use the buddy system.
- Stay on groomed area of trails.

Obey all laws and regulations

- Maximum speed in Minnesota is 50 MPH. (see page 25)
- Display current snowmobile registration.
- Display separate Snowmobile State Trail Sticker, if required, for operation on state or grant-in-aid trails (see pages 12 & 14).
- Stay off the roadway, shoulder, and inside slope of state and county roads (see page 15).
- Be sure any youth operating your snowmobile has a safety certificate.
- Check local ordinances on when and where you may ride.

Registering Your Snowmobile

Snowmobiles operated or transported in Minnesota must be registered with the DNR. If your snowmobile is not registered, you may not operate, transport, or permit it to be operated. You must be at least 18 years old to register a snowmobile.

The definition of a snowmobile is a self-propelled vehicle originally manufactured and designed for travel on snow or ice and is steered by skis or runners. Snowmobile does not include the following vehicles equipped with aftermarket ski and track configurations:

ATV, OHV, ORV, mini truck, “utility task vehicle” (per MN statute 169.011), and any other vehicle being operated off road.

Snowmobiles do not need to be registered with the DNR if:

- being used to groom a state or grant-in-aid trail
- owned and used by the federal government, an Indian tribal government, another state, or a political subdivision
- if the snowmobile is registered by tribal members through the tribal government.
- registered in a country other than the U.S. being used temporarily in Minnesota
- currently registered in another state and not kept in Minnesota for more than 30 consecutive days
- used exclusively in organized track-racing events
- in transit by a manufacturer, distributor, or dealer
- at least 15 years old in transit by an individual for use on land owned or leased by the individual
- used exclusively for agricultural purposes
- a snowmobile with an engine displacement that is 125 cubic centimeters or less and the snowmobile is not operated on a state or grant-in-aid trail.

Non-Trail Snowmobile Registration is now an option for snowmobilers who do not operate on state or grant-in-aid state trails. A unique non-trail registration number will be assigned which will need to be displayed on the snowmobile. Snowmobiles with 125cc or less engine displacement do not need registration (including non-trail registration) if NOT operated on state and grant-in-aid trails. Non-trail registration does not allow for operation on state or grant-in-aid state trails even if you have a one-year trail sticker on the snowmobile. If a road right-of-way is part of a state or grant-in-aid state trail, you cannot operate a non-trail registered snowmobile on it. If a non-trail registered snowmobile is changed to the regular trail registration, new registration numbers will be assigned which will need to be displayed on the snowmobile. Non-trail snowmobile registrations are non-transferrable.

A majority of the revenue generated from snowmobile registration will be used for snowmobile grant-in-aid trails, trail maintenance, grooming, and easement acquisition.

Fees

Snowmobile registration fees:

Type of Registration	Fee
Trail Use Registration	\$ 78.50 every three years
Non-trail Registration	\$ 48.50 every three years
Duplicate Registration Card	\$ 13.50
Duplicate Decal	\$ 1.50
Transfer – Trail Use Registration only	\$ 13.50
Dealer	\$ 53.50 every year
Manufacturer	\$ 153.50 every year
Collector Unlimited Use	\$ 9.50

How to Register Your Snowmobile

Register your snowmobile in person at any deputy registrar of motor vehicles or at the DNR License Center in St. Paul. When you register your snowmobile you will need the make, model, year, serial number, engine size, and sales receipt that shows the proof of sales tax payment. Sales between private parties do not require payment of sales tax.

A person may not sell a snowmobile without furnishing the buyer with a bill of sale that includes the serial number of the snowmobile. Transfers and registration renewal fees are the responsibility of the new owner.

Snowmobiles purchased from a retail dealer must be registered by the purchaser at the dealer. The dealer will issue a temporary 21-day registration.

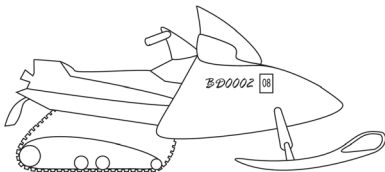
Registration Numbers and Validation Decals

When you register your snowmobile, you will be assigned a snowmobile registration number and receive a registration card. When you receive your registration card, sign it and keep it handy. You do not have to carry it with you, but if an enforcement officer asks to see it, you must produce it within a reasonable amount of time. The current registration number and validation decal must be displayed.

Display of Registration Number and Validation Decals

Where:

- Display in the 3” x 7” space provided by the manufacturer on the cowling or pan, or
- If no space is provided, place on each side of the snowmobile on the upper half, forward of the handlebars in a visible location.





MotorSportsMN.com



ONE TEAM. TWO LOCATIONS.

ski-doo®



ST. BONI MOTOR SPORTS
4120 STEINER STREET
ST. BONIFACIUS, MN 55375
952 446-1554
www.stboni.com

MINNEAPOLIS MOTOR SPORTS
801 LOUISIANA AVE. SOUTH
MINNEAPOLIS, MN 55426
763 634-0244
www.mplsmotor.com

How:

The DNR issued validation decal must be placed to immediately follow your registration numbers.

Numbers and letters must be:

- 1- 7/8" high
- 3/16" stroke width
- contrasting color of the snowmobile
- in the English language
- placed to read left to right.

Expiration, Renewal, and Duplicate

The expiration date appears on both the registration card and the registration validation decal. All snowmobile registrations expire on June 30 of the last year the registration **expires**.

You should receive a notice by mail to renew your registration. Please notify the DNR of any address change. Whether you are notified or not, you are responsible for renewing your snowmobile registration.

The renewal fee is the same as the first-time registration fee. When you pay it, you will receive new validation decals and a registration card. You may renew your registration at www.mndnr.gov/snowmobiling.

To obtain a duplicate registration card or decal, contact the DNR License Center or your local deputy registrar. For fees, see page 8.

Transfer of Ownership

If you buy a snowmobile that is currently registered for trail use in Minnesota, you may use a transferred registration for the time remaining on the previous owner's registration.

Simply obtain a bill of sale that includes the serial number of the snowmobile from the previous owner and send it, along with a transfer application and the transfer fee, to the DNR License Center or a deputy registrar. Transfer applications must be made within 15 days after the transfer or sale actually occurs. A transferred registration is only valid until the previous owner's registration expires. Non-trail registration is non-transferrable. If you buy a snowmobile that is currently registered for non-trail use, you must either apply for a new non-trail or trail registration.

TRANSFER OR TERMINATION OF SNOWMOBILE OWNERSHIP: Within 15 days after the transfer of ownership, an application for transfer must be executed by the registered owner and the purchaser using a bill of sale that includes the vehicle serial number. An owner must report the destruction or abandonment of any snowmobile by written notice to the commissioner in such form as the commissioner shall prescribe.

DON'T BLINK. THE WORLD'S FASTEST SNOWMOBILE IS HERE.



THE NEW ZR SNO PRO.® WHY WE RIDE MORE.™

We call it the all-new 2017 ZR® 9000 Turbo Sno Pro.® With its 998cc Turbo Triple 4-stroke engine, most just call it the world's fastest snowmobile. Add in the SLIDE-ACTION Rear Suspension™ and adjustable FOX® 1.5 ZERO RC shocks, and you've got a ride every trail rider and ditch banger craves. See it while you can. This one will go fast.



Cities Edge Motorsports
Shakopee
952-224-2054
www.citiesedge.com

Country Cat
Sauk Centre
320-352-3534
www.countrycat.net

Lighthouse Motorsports and Marine
Rosemount
651-322-4420
www.lighthousemotorsports.com

MotoProz, Inc.
Mazeppa
507-843-2855
www.motoproz.com

RV Sports, Inc.
Thief River Falls
218-681-1007
www.rvsports.com

Thomas Sno Sports
Ogilvie
320-556-3467
www.thomassnosports.com

Waconia Powersports
Waconia
952-442-2126
www.ufcfarmsupply.com

Westside Sports
Wadena
218-631-1113
www.westsidesports.biz



Always wear a helmet and don't drink and ride.

Paid Advertisement

Collector Snowmobile

• Special Permit

A **special permit** may be issued to a person or organization to operate or transport a collector snowmobile without registration for parades or organized group outings, such as races, rallies, and other promotional events, and for up to 10 days each year for personal transportation. “Collector snowmobile” means a snowmobile that is 25 years old or older, was originally produced as a separate identifiable make by a manufacturer, and is owned and operated solely as a collector’s item.

• Collector Registration (Optional)

Snowmobiles 25 years old or older may be registered for unlimited use. This registration is non-transferable. The collector registration does not expire and is valid until the ownership of the snowmobile is transferred. A **Snowmobile State Trail sticker** is required if you operate on a state or grant-in-aid trail.

Destroyed, Abandoned, or Stolen Snowmobile

If your snowmobile is destroyed, abandoned, or stolen or you no longer register it in Minnesota, notify the DNR License Center at 500 Lafayette Rd, St. Paul, MN 55155-4026, (651) 296-2316 or 1-800-285-2000 within 15 days.

Dealer and Manufacturer Registration

Dealers must register snowmobiles they own and use for demonstration purposes. A registration plate will be issued along with a registration certificate that must be displayed conspicuously in the place of business. Additional plates are available for \$4.00, plus filing fees.

Manufacturers must register snowmobiles they own and operate for research, testing, experimentation, or demonstration. A registration plate will be issued along with a registration certificate that must be displayed conspicuously in the place of manufacture.

A valid registration number plate must be displayed on snowmobiles operated, or permitted to be operated, by a dealer or manufacturer. The registrations are not transferable. Dealer and manufacturer registrations are valid from July 1 - June 30.

Snowmobile State Trail Sticker

Snowmobiles registered in another state or country must have a Snowmobile State Trail Sticker when operating on state and grant-in-aid trails. A Snowmobile State Trail Sticker costs \$36.00 and is valid November 1 – June 30 of each year. Anyone operating a snowmobile in violation of this law will be required to purchase an annual penalty sticker for \$71.00 in addition to any ticket or fine.

Snowmobiles with the collector registration for unlimited use are required to have a State Trail Sticker to operate on a state or a grant-in-aid trail.

OUR NEXT RENEGADE. YOUR NEXT ADVENTURE.

WHAT MATTERS IS WHAT'S NEXT

The Next Ski-Doo Renegade*. All-new REV* GenII platform, with revolutionary forward-leaning position. New Rotax® 950 E-TEC* engine, the most powerful 2-stroke engine in the industry*. Designed around you whether you are trailing centers or carving your way through the trees. Which means there are more answers than ever for that never-ending question, "What's next?" Find out more at ski-doo.com.



RENEGADE ADRENALINE with 900 E-TEC



RENEGADE BACKCOUNTRY*



RENEGADE ENDURO*

Danner Sales
Inver Grove Heights
651-451-0121
www.dannersales.com

Leo's South
Lakeville
952-435-5371
www.leosouth.com

Miller Sellner
Sleepy Eye
507-794-2131
www.millersellner.com

Minneapolis Motor Sports
Minneapolis
763-634-0244
www.mplsmotor.com

Ollie's Service Inc.
Alexandria
320-763-4455
www.oliesservice.com

St. Boni Motorsports
St. Bonifacius
952-446-1554
www.stbonimotorsports.com

©2016 Bombardier Recreational Products Inc. (BRP). All rights reserved. * and the BRP logo are trademarks of BRP or its affiliates. Products in the United States (US) are distributed by BRP US Inc. Always ride safely and responsibly. *Observed HP measured on Internal Dyno test in optimal conditions for 2-stroke engines.

ski-doo



Paid Advertisement

2017



THE **2017**
MODEL LINEUP



St. Boni Motorsports
St. Bonifacius
952-446-1554
www.stbonimotorsports.com

Waldoch Sports, Inc.
Columbus
651-464-5776
www.waldochsports.com

©2016 Yamaha Motor Corporation, U.S.A. All Rights Reserved.

Paid Advertisement

State Trail Stickers

One-Year Trail Sticker - \$36.00

Penalty Annual Trail Sticker - \$71.00 (Required to purchase if found operating on state or grant-in-aid trail without a sticker)

Dealer/Manufacturer Trail Sticker - \$16.00

Duplicates - \$2.50

These stickers are available at; Deputy Registrar locations, Game and Fish Licensing agents, DNR License Center, Online www.mndnr.gov or by phone 1-888-MNLICENSE

Note: For Online purchases, add 3% plus a \$1.65 service fee. For phone purchases, add \$3.50

A Snowmobile State Trail Sticker is not required for:

- a snowmobile while being used to groom a state or grant-in-aid trail
- a snowmobile owned by the federal government, Indian tribal government, state, and political subdivisions
- operating a collector snowmobile with a permit
- operating a snowmobile on portions of a trail owned by the person or the person's spouse, child, or parent.

The Snowmobile State Trail Sticker must be displayed in one of the following ways:

- on the forward half of the snowmobile, directly above or below the headlight
- above the expiration year on the top portion of the registration validation decal
- on the lower right corner of a dealer or manufacturer plate.



ATTENTION SNOWMOBILERS:

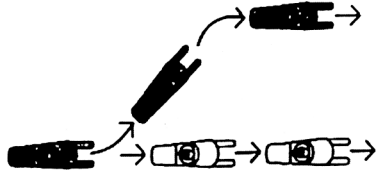
Operating a snowmobile is much more challenging than driving a car. Snowmobiling takes place in unpredictable and uncontrollable natural settings. Statewide and nationwide reports show the consumption of alcohol is a contributing factor in many snowmobile fatalities. That's why DNR conservation officers strongly encourage every snowmobiler to practice 'Zero Alcohol' as part of their own regular safe riding habits. Many snowmobilers already choose to ride alcohol free. Practicing 'Zero Alcohol' before and during your ride will save lives and reduce injuries.

'Zero Alcohol:' it's your smart choice for safer snowmobiling.

Rules of the Road and Trail

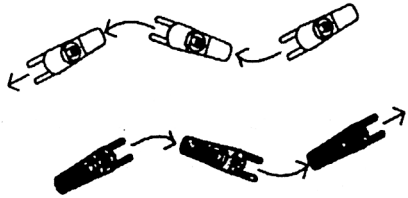
Passing

When overtaking another snowmobile going in the same direction, always pass on the left.



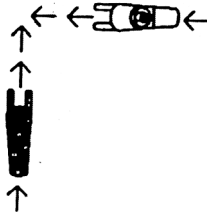
Meeting

When meeting another snowmobile, always slow down and stay to the right.

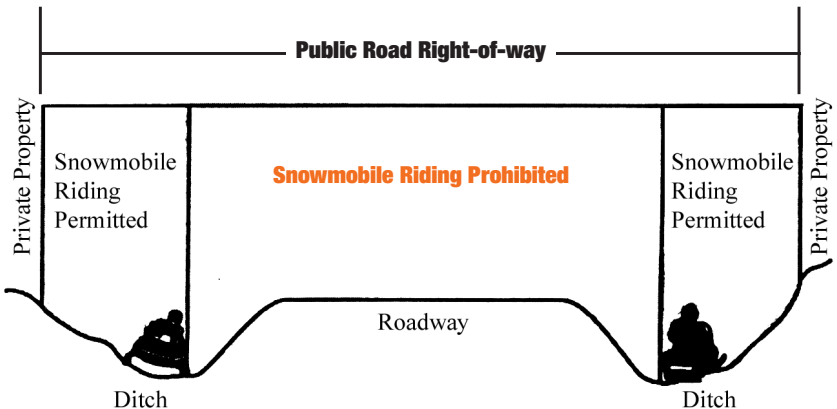


Meeting at an intersection

When meeting at an intersection, the operator to the right has the right of way.



Operation Along State and County Roads



It is illegal to operate on the inside slope, shoulder, and roadway of state or county roads.

Signs

Snowmobile operators should be familiar with the meaning of the following trail signs.

Informational sign:

indicates intersections or major changes in trail direction.



Directional blazer:

indicates changes in trail direction.



Reassuring blazer:

placed at intervals along the trail reassures users that they are still on the trail.



Stop sign:

placed at a road or highway crossing indicates a snowmobile must come to a complete stop.



No-snowmobiling sign:

indicates a trail or area where snowmobiling is prohibited.



No-studded tracks sign:

indicates no metal traction devices allowed on trail.



Two-way trail sign:

indicates trails with permitted two-way travel during nighttime hours within the public road right-of-way.



SNOCAPS

TRAILER ENCLOSURES
844-223-8148

*Get dirty on the trail,
not on the trailer!*



Paid Advertisement

**5 Year
Warranty!**



**VISIT OUR WEBSITE AT
WWW.SNOCAPS.NET**



PROTECT YOUR TRAILS JOIN!
**Minnesota United
Snowmobilers Association**
www.mnsnowmobiler.org

Paid Advertisement

Equipment Requirements

All snowmobiles operated on public lands, waters, or roadways must be equipped as follows:

Helmet

- Operators or riders under 18 years of age must wear an approved helmet, except when participating in a parade or operating on land belonging to a parent, grandparent, sibling, uncle, or aunt.

An approved helmet must meet federal law, which requires the helmet to display the symbol DOT. DOT is the manufacturer's certification that the helmet conforms to motor vehicle safety standards. Standard bicycle and hockey helmets are not legal helmets for snowmobiling.

Lights

- Headlights and taillights must be on during hours of darkness.
- Headlights must be able to reveal people and vehicles 100 feet ahead and aimed so they will not blind an oncoming snowmobiler.
- Colored lenses on headlights are NOT lawful when the snowmobile is operated on roads or road rights-of-way, including crossing roads and operating in ditches or outside slopes.
- Red taillights must be visible for 500 feet to the rear of the snowmobile.

Brakes

- Brakes must be able to control movement and to stop and hold the snowmobile track.

Reflector Material

- Snowmobiles must have at least 16 square inches of reflector material on each side forward of the handle bars.
- Any sled, trailer, or other device that is towed by a snowmobile during hours of darkness must display visible reflector material on each side and at the rear.

Mufflers

- Snowmobiles must be equipped with mufflers that are in good working order and that do not produce sharp popping or cracking sounds or excessive or unusual noise. After-market exhaust systems may not meet this requirement and may not be lawful to operate.
- You may not operate or sell a snowmobile built on or after April 1, 1975, that exceeds 78 decibels on the A scale at 50 feet, except under a permit of the DNR or county sheriff.
- No snowmobile shall be modified by any person in any manner that shall amplify or otherwise increase total noise level above that emitted by the snowmobile as originally equipped, regardless of date of manufacture.

Snowmobile Safety Training Requirements

Residents born after **December 31, 1976**, must complete a Minnesota snowmobile safety training course to operate a snowmobile in Minnesota. While operating a snowmobile you must have either:

- a snowmobile safety certificate in your possession or
- a snowmobile safety certificate indicator on your driver's license or on your Minnesota ID card.

The MN DNR Snowmobile Safety class includes topics on: Basic operation, common parts and controls, operating safely and responsibly, trail riding, rules and laws, riding skills and protecting the environment.

Youth ages 11 to 15 years can complete safety certification by selecting one of the following choices. Either choice will have a required "hands on" riding performance course.

Choice 1: Attend a Traditional classroom snowmobile course:

- Minimum 8 hr course provided by DNR Instructor
- Meets two or more times in a classroom setting
- Required "hands on" riding performance course

Choice 2: Select an Online snowmobile safety course:

- Complete one of the online courses:
 - snowmobilecourse.com [*Family/group pricing]
 - snowmobile-ed.com

Required for online students: Student attends a one day class room review and riding performance course, which is lead by trained volunteer instructors.

Course Fees

To find a location offering the Hands-On Snowmobile class on the DNR website:

Snowmobile Safety Course	Course Fee	Family/Group rates
www.snowmobile.com	\$29.95*	Yes
www.snowmobile-ed.com	\$29.50*	No
Traditional Classroom	\$5.00*	No
*Additional fees may apply attending the Hands-On course. Contact the lead Instructor.		

From DNR homepage, click on Education & Safety and then under recreational vehicle safety classes find and click Snowmobile Safety to find the Hands-On Snowmobile class calendar.

Adult Snowmobile Safety Training (16 years and older)

Complete one of the online courses:

- www.snowmobilecourse.com [Family/group pricing]
- www.snowmobile-ed.com

*Adults are not required to participate in the "hands-on" riding performance course.

Where do I find a training course? To learn the times and dates of a snowmobile safety course in your community, check the DNR website www.mndnr.gov/snowmobiling; or call the DNR Information Center 1-888-646-6367, metro area (651)296-6157, or the Snowmobile Safety Training Program Headquarters at 1-800-366-8917.

Non-residents certified in snowmobile safety training in another state will be recognized in Minnesota.

Youth Operation Requirements

- The owner or person in lawful control of a snowmobile is jointly responsible for laws broken by a minor on that snowmobile.
- Anyone under 18 years old must wear an approved helmet.
- To register a snowmobile you must be at least 18 years old.

Snowmobile Safety Certificate

Minnesota Residents

Any resident of Minnesota born after **December 31, 1976**, must have a snowmobile safety certificate to operate a snowmobile in Minnesota. Youth must be 11 years old to take a snowmobile safety course, the certificate is not valid until the 12th birthday.

Residents and Non-Residents

- Under Age 12** (Without safety certificate)
- May drive snowmobiles on public lands, public waters, or grant-in-aid trails if accompanied by an adult*
 - May not drive a snowmobile across state or county roads
 - May not drive snowmobiles on streets or highways in a municipality

- Ages 12 & 13**
- May drive snowmobiles on public lands, public waters, or grant-in-aid trails **IF** Accompanied by an adult* **OR** In possession of a valid snowmobile safety certificate
 - May not drive a snowmobile across state or county roads
 - May not drive snowmobiles on streets or highways in a municipality

- Ages 14 to 18**
- May drive a snowmobile across state or county roads **IF** in possession of a snowmobile safety certificate or driver's license or ID card with valid snowmobile indicator
 - May drive snowmobiles on public lands, public waters, or grant-in-aid trails **WITH** a snowmobile safety certificate
 - May drive snowmobiles on streets or highways in municipalities, if not contrary to ordinance

- Over Age 18**
- Residents born after December 31, 1976, who operate a snowmobile in Minnesota must possess a valid snowmobile safety certificate or a driver's license or ID card with a valid snowmobile indicator.

** Accompanied by an adult means a parent, legal guardian, or other person 18 years of age or older designated by the parent or guardian who needs to be close enough to be able to direct the youth's operation of their snowmobile.*

Exception for Residents and Non-Residents

Without a snowmobile safety certificate, a person under the age of **14 years** may operate a snowmobile only if they are supervised or accompanied by one of the following: parent, legal guardian, or other person 18 years of age or older designated by the parent or guardian. The supervising or accompanying adult needs to be close enough to be able to direct the youth's operation of their snowmobile. This exception does not allow an operator under the age of 14 to cross a public road.

Non-residents who are **18 years old and older** do not need a snowmobile safety certificate.

General Operation

Where You May Ride

Anywhere in the state you may ride:

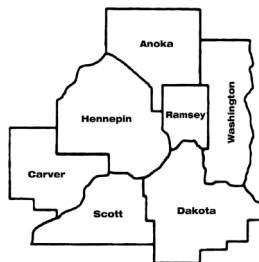
- in the bottom or outside slope of a ditch of a county or state road (see page 15)
- in the same direction as road traffic in the ditch from one-half hour after sunset to one-half hour before sunrise (other than this time, you can ride in either direction)
- one-half hour after sunset to one-half hour before sunrise on two-way snowmobile trails that are located within the ditches or adjacent to streets or highways when specifically permitted by the road authority (look for posted two-way signs, see page 16)
- on a bridge, other than a bridge that is part of the main-traveled lanes of an interstate highway, in order to avoid obstructions to travel when absolutely necessary (the snowmobile must be operated in the extreme right-hand lane, the entrance to the roadway must be made within 100 feet of the bridge, and crossing must be made as quickly as possible)
- on state and local trails (see pages 12 & 14 for Snowmobile State Trail Sticker requirements)
- on iced-over waters that have legal access (if not restricted by law or local ordinances)
- on township roads when not restricted by local ordinance
- on public lands that are open to motorized vehicles. Land uses vary. Be sure to check all federal, state, and local ordinances
- on your own land.

Inside the seven-county metro area, you may ride:

- on land that is posted with signs stating “snowmobiles allowed”
- on land other than your own, with written or verbal permission of the landowner, occupant, or lessee
- on the groomed area of a snowmobile trail.

Outside the seven-county metro area, you may ride:

- on agricultural land with permission of the landowner
- on land, other than agricultural land, that you have not been told verbally, by written warning, or by posted signs, that riding is prohibited
- on the groomed area of a snowmobile trail.



When making a direct crossing of a street or road, you **must :**

- bring the snowmobile to a complete stop before crossing, whether there is a stop sign or not
- yield to all oncoming traffic
- have both front and rear lights on when crossing between one-half hour after sunset to one-half hour before sunrise, or during periods of reduced visibility (see page 30 for sunrise/sunset table)
- cross at a 90-degree angle with respect to the road
- cross a divided road at an intersection

State forest lands classified as “closed” are open to off-trail snowmobile use unless specifically posted closed to snowmobiling.

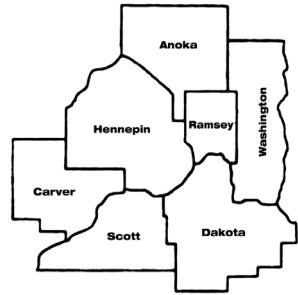
Where You May NOT Ride

- on the roadway, shoulder, or inner slope of the ditch of a state or county road
- on the median of a four-lane roadway
- within the right-of-way of any interstate
- on the right-of-way between opposing lanes of traffic
- against traffic at night within the road right-of-way *Except when two-way trail travel signs permit use
- at airports
- in any state park, state recreation area, state historic site, wildlife management area, or state scientific and natural area with the exception of posted snowmobile trails and areas
- in any wildlife management area south of U.S. Highway 2 from Grand Forks east to Bemidji, then south along U.S. Highway 71 to Wadena, then east along U.S. Highway 10 to Staples and U.S. Highway 210 to the eastern boundary of the state, without written permission from the DNR
- on any iced-over waters located in a restricted area or iced-over waters where you don't have legal access
- in any areas restricted by local ordinances or municipalities
- in a tree nursery or planting area
- on state forest lands that are posted or designated closed to snowmobiling
- on state forest lands located in the Boundary Waters Canoe Area Wilderness, including all of Lake Isabella and Insula; and portions of Lake Jeanette and Burntside State Forests
- in National Wildlife Refuges, Waterfowl Production Areas, or the Boundary Waters Canoe Area Wilderness. For more information, contact your local U.S. Fish and Wildlife Service.

Municipalities, counties, school districts, and other political subdivisions or state agencies may impose further restrictions on snowmobiling on property not owned by the operator. Check local ordinances where you want to ride.

Inside the seven-county metro area, you may **NOT** ride:

- on land that you do not own, unless given written or verbal permission to ride on that land by the owner, occupant, or lessee, or unless signs are posted stating snowmobiling is allowed.



Outside the seven-county metro area, you may **NOT** ride:

- on land that you have been told not to verbally, in writing, or by posted signs
- on agricultural land without the permission of the owner.

Other Prohibitions

It is unlawful to:

- operate your snowmobile in a careless, reckless, or heedless manner that endangers the operator, or property of another, or causes injury or damage (intentionally driving over open water, or water skipping, may be considered careless or reckless unless done as an event under special permit issued by the local sheriff's office)
- litter
- enter or leave lands by cutting wire or tearing down a fence
- mutilate, destroy, damage, or remove any shelter, comfort station, or facility on any state or grant-in-aid trail
- post, damage, or remove any signs on any lands or waters unless you are the landowner, occupant, or lessee of the property
- operate on state forest lands in a manner that causes erosion or rutting, damages or destroys trees or growing crops
- operate on a state forest trail that is posted for non-motorized use
 - Special Provision - Richard J. Dorer Memorial Hardwood Forest:** Motor vehicles and snowmobiles may operate only on forest roads that are not posted closed and on forest trails that are designated for motorized use. No motorized travel is allowed off designated trails under any circumstances.
- operate a snowmobile with metal traction devices on paved public trails when posted closed by state or local government.

Metal traction device means any metal device, or array of metal devices, attached to a snowmobile track to enhance traction. This includes metal components that extend more than one-fourth inch from the bottom of the track. Note: Metal cleats affixed perpendicular to the direction of travel of a 1981 or earlier snowmobile are not considered a metal traction device.

Sunken Snowmobiles

Minnesota law requires snowmobiles and motor vehicles (including cars, trucks, watercraft and ATVs) that sink in a lake or river, be removed by the owner within 30 days. Owners must also notify the county sheriff within 48 hours. If the snowmobile or vehicle is not removed, the local unit of government can remove it and charge the owner two to five times the cost of removal.

Snowmobiling While Intoxicated (SWI)

Operating a snowmobile while under the influence of alcohol, a controlled substance or its metabolite, or other hazardous substance is unlawful. Operators who are impaired may be required to submit to tests by an enforcement officer to determine the presence of these substances. There is a separate additional criminal penalty for refusal to submit to the tests, and the person's snowmobiling privileges will be suspended for one year upon refusal. SWI convictions and refusals are recorded on the violator's driver's license record and may affect their driver's license privileges.

An operator who is found to be impaired or has an alcohol concentration of .08 or more, can be charged with a misdemeanor, gross misdemeanor, or felony level Driving While Intoxicated (DWI). Persons convicted of a misdemeanor will be subject to: up to \$1,000 fine (plus surcharges); possible jail sentence; and loss of snowmobile operating privileges for one year.

In addition to the above misdemeanor penalties, the following gross misdemeanor penalty provisions may apply if the person has any prior DWI violations, has an alcohol concentration of twice the legal limit, or has a child under 16 years of age with them on the snowmobile:

- up to \$3,000 fine
- longer, mandatory jail time
- chemical use assessment and long-term monitoring programs
- loss of motor vehicle driver's license privileges
- motor vehicle plate impoundment of all motor vehicles owned or leased individually or jointly by the person
- forfeiture of the snowmobile, substantially higher fines, and mandatory jail time.

If a person has three or more DWI convictions or revocations in the last 10 years, or has a prior felony conviction, he or she can be sentenced to 3-7 years in jail, up to \$14,000 fine, or both. Longer license revocations also would be imposed.

Open Bottle Law

It is unlawful for a person to drink or consume alcoholic beverages when operating a snowmobile on a roadway or shoulder of a roadway that is not a part of a designated snowmobile trail.

Speed Limits

It is unlawful to operate a snowmobile in excess of:

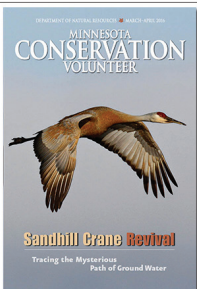
- **50 MPH** on any public lands or waters
- the posted speed limits on a trail
- a speed greater than various trail, terrain and visibility conditions dictate
- the posted road speed limit or **50 MPH**, whichever is **LOWER**, while operating in the ditch
- any governmental unit snowmobile speed limit. Governmental units include any city, county, municipality, township, or conservation district.

A county may enact a daytime 65 MPH speed limit for marked trails on frozen lakes that are over 10,000 acres. The county would need to pass an ordinance and receive approval by the DNR Commissioner. Individual counties will have more information on the location and status of any designated 65 MPH trails.

Accidents

Minnesota has worked hard to reduce snowmobiling accidents, injuries, and fatalities through education and safety training programs. The largest contributing factor to crashes is excessive speed, followed by alcohol use.

If you are involved in a snowmobile accident that results in injury requiring medical attention, death, or damage of more than \$500, you must file an official accident report with the Department of Natural Resources **within 48 hours of the accident**. Accident report forms are available at www.mndnr.gov/enforcement or call 1-800-366-8917.



YOUR GUIDE TO MINNESOTA'S WOODS, WATERS, AND WILDLIFE

Minnesota Conservation Volunteer magazine is uniquely supported by contributions from readers. Subscribe and donate today at www.mndnr.gov/mcvmagazine or call 888-646-6367

MINNESOTA
CONSERVATION
VOLUNTEER

Enforcement

Conservation officers, state troopers, deputy sheriffs, police officers and other peace officers are responsible for the enforcement of Minnesota's snowmobile laws. Whenever an enforcement officer signals you, you must stop. Fleeing an enforcement officer is a felony and the snowmobile used may be forfeited.

Part of a conservation officer's duty is to ensure your safety while snowmobiling. If you need an enforcement officer, contact your nearest State Patrol dispatch center. Your local conservation officer can also be found at www.mndnr.gov/officerpatrolareas.

Penalties

Violation of most snowmobile statutes and rules are misdemeanors and carry a fine of up to \$1,000 and imprisonment for up to 90 days. Youth violations may result in snowmobile safety certificate suspension. Also, snowmobiles used in burglaries, fleeing a peace officer, or a DWI, may be subject to seizure and confiscation or forfeiture.

The owner or person in lawful control of a snowmobile is subject to penalties if he or she knowingly allows the snowmobile to be operated by someone physically or mentally unable to drive the vehicle safely, or is under the influence of drugs or alcohol.

A person operating a snowmobile with metal traction devices on any paved trail is guilty of a petty misdemeanor punishable by a civil penalty or criminal fine of \$50 for the first offense, \$200 for the second offense, and \$500 for the third or subsequent offense. Criminal fines will be subject to court surcharges and fees in addition to this penalty amount.

Anyone operating a snowmobile in violation of the Snowmobile State Trail Sticker law will be required to purchase an annual penalty sticker for \$71.00, in addition to any ticket or fine.

Minnesota Law on Registration

"A person may not operate or transport a snowmobile unless the snowmobile has been registered." Violation of this law is a misdemeanor punishable by fines up to \$1,000 and a jail sentence of up to 90 days.



STAY RIGHT! Trails are two-way, always watch out for others!

Minnesota Trespass Laws

Trespass is the most frequent complaint landowners have against snowmobilers. Always ask for permission before entering private land.



Respect private lands. **ASK FIRST!**

- Always ask first before entering private lands even if it's not posted. You will improve relationships between landowners and snowmobilers.
- Just because property isn't posted that doesn't mean you have a right to enter someone else's private property. The posted signs indicate the landowner's intention to prevent unauthorized entry.

If you violate Minnesota's trespass laws, you will be guilty of a misdemeanor or gross misdemeanor, or may be charged with a civil penalty. A misdemeanor is punishable by fines of up to \$1,000 and a jail sentence of up to 90 days. Civil penalties range from \$50 for a first time violation to \$500 and loss of registration for a third violation.

You are guilty of a gross misdemeanor when you:

- knowingly disregard signs prohibiting trespass
- trespass after the landowner tells you not to
- violate the trespass law twice in three years.

If you are convicted of a gross misdemeanor, you will be subject to fines up to \$3,000 and up to one year in jail, your snowmobile registration will be null and void, and you will lose all hunting privileges for two years.

You must have permission to:

- enter posted land
- enter land inside the seven-county metro area that you do not own, unless given written or verbal permission to ride on that land by the owner, occupant, or lessee, or unless signs are posted stating snowmobiling is allowed
- enter agricultural land. Agricultural land is land that is plowed or tilled; has standing crops or crop residue; is within a maintained fence for enclosing domestic livestock; is planted native or introduced hay land or grassland; or is planted to short rotation woody crops (hybrid poplar and other woody plants that are harvested for their fiber within 15 years of planting).

Offender Snowmobile Safety Training

A person who is convicted of careless or reckless operation, or two or more speeding violations in a snowmobile season, must successfully complete a snowmobile safety training course before operating a snowmobile.

All planted grassland, hay land, and short rotation woody cropland meet the definition of agricultural land, including grasslands enrolled in the federal Conservation Reserve Program (CRP), Conservation Reserve Enhancement Program (CREP), or the state Reinvest in Minnesota (RIM) Reserve Program and Walk In Access Areas. These lands do not need to be posted to prevent unauthorized trespass.

It is unlawful to:

- wound or kill another person's domestic animal or destroy private property
- pass through a closed gate without returning it to the original position
- stray off the groomed portions of marked state trails.

Game Laws Related to Snowmobiling

General Restrictions

A person licensed to take deer must not operate a snowmobile or an off-highway vehicle on public or private property in an area open for the taking of deer by firearms on a day that they are licensed to take deer in that area except:

- Before legal shooting hours (one-half hour before sunrise)
- From 11am until 2pm.
- After legal shooting hours (one-half hour after sunset).
- On property that they own.
- On someone else's private property with the landowner's permission.
- Under a permit issued by a conservation officer to operate these vehicles in an emergency, medical, or other unusual situation during the restricted hours.

Recreational Snowmobile and OHV Riders

Snowmobile trails and OHV trails and routes on state forest lands are closed to ALL recreational snowmobile and off-highway vehicle (ATV, OHM, & ORV) riding during the firearms deer season where deer may be taken by rifle during the A season only:

- Series 100 permit areas (November 5 - November 20, 2016)
- Portions of Series 200 (November 5 - November 13, 2016)

Forest roads remain open to snowmobile and OHV use.

See the Minnesota Hunting and Trapping Regulations Handbook for more detailed information.

Firearms Transportation in Motor Vehicles

- A person may transport an unloaded and uncased shotgun or rifle in a motor vehicle, including a snowmobile, while: 1) at a shooting range with permission;

2) lawfully hunting on public or private land; or 3) traveling to or from a site the person intends to hunt that day or has hunted that day.

- However, a person MAY NOT transport an uncased shotgun or rifle within:
 - 1) Anoka, Hennepin, or Ramsey counties; 2) a city with a population of 2,500 or more; 3) school grounds; 4) game refuges; or 5) as regulated under shining and night vision laws.
- A handgun/pistol cannot be transported uncased without a valid permit to carry.

It is unlawful to:

- use a snowmobile to chase, run over, or kill a wild animal
- shoot or attempt to shoot a wild animal from a snowmobile.

For operation restrictions during firearms deer season, please see the current Minnesota Hunting and Trapping Regulations Handbook.

Special Permits for Disabled Hunters

A permit may be issued to shoot from a standing motor vehicle including a snowmobile to a licensed hunter who has a permanent physical disability and is unable to step from a vehicle without the aid of wheelchair, crutches, braces, or other mechanical support or prosthetic device; or is required to use supplemental oxygen because of a permanent lung, heart, or other internal disease. For more details contact the Department of Natural Resources Information Center in the Twin Cities (651) 296-6157, or toll-free 1-888-MINNDNR (646-6367).

For More Information

For information on snowmobile trails; maps of state parks, forests, and state trails; weekly snow reports; and other information, contact:

DNR Information Center

500 Lafayette Road
St. Paul, MN 55155-4040
Twin Cities: (651)296-6157
Toll-free 1-888-MINNDNR (646-6367)

Hearing impaired

Twin Cities: (651)296-5484
Toll-free: 1-800-657-3929

DNR Website

www.mndnr.gov

For information about snowmobile registration, contact:

DNR License Center

500 Lafayette Road
St. Paul, MN 55155-4026
(651)296-2316 • Toll-free: 1-800-285-2000

To report a violation, contact:

Your local DNR conservation officer, sheriff's office, police department, or the state patrol. Conservation officers are dispatched through the state patrol.

For information on scheduled snowmobile safety classes statewide:

- www.mndnr.gov/snowmobiling
- DNR Information Center: Twin Cities (651) 296-6157
Toll-free 1-888-MINNDNR (646-6367)
- Snowmobile Safety Training Program Headquarters
Camp Ripley, Little Falls, MN: 1-800-366-8917.



Connect instantly to the conservation officer locator web page by scanning this code with your smart phone.

To find your local conservation officer, visit:

www.mndnr.gov/officerpatrolareas

Grant-In-Aid Program

The Grant-in-Aid Program is a cooperative effort between the Minnesota DNR, local governments, local snowmobile organizations, and private landowners who provide the majority of Minnesota's 22,000 miles of snowmobile trails. Funded through snowmobile registration and Snowmobile State Trail Sticker fees and gas taxes, the grant-in-aid program helps local groups and clubs develop and maintain trails.

- Grant-in-aid trails are open each year from December 1 through April 1.
- Many grant-in-aid trails throughout the state run through private property. Stay on good terms with these landowners by staying on marked trails. Don't jeopardize your ability to use private lands.
- Remember you need a Trail Use Registration sticker when operating on grant-in-aid trails

Sunrise/Sunset Table

To find the sunrise and sunset times in your area, use the link to the U.S. Naval Observatory website:

http://aa.usno.navy.mil/data/docs/RS_OneYear.php

Note: Sunrise and sunset times are shown in a table format and can be printed for viewing or saved to your computer's desktop.

Daylight Time

Daylight time is not implemented in time tables. When daylight time is in use, add one hour to the times listed in the tables.

WORLD'S BIGGEST SNOWMOBILE EVENT

51st
Annual



Saturday & Sunday
September 9th & 10th 2017

“WORLD’S LARGEST SNOWMOBILE EVENT”

2018 SNOWMOBILE DISPLAYS

2018 ATV DISPLAYS

200+ DEALER SITES

1000'S OF SWAP VENDORS

ATV DEMO TRACK & RIDES

VINTAGE SLED DISPLAYS

FREE KIDS SNOWMOBILE RAFFLE

ADULT DRAWINGS/RAFFLE/ PRIZES

EXTREME EXPO:

SNOWMOBILE, ATV, MC JUMPS & TRICKS

GRASS DRAG & ATV RACING STARTS AT

9 AM DAILY

The Sno-Barons Snowmobile Club has a long-standing commitment of supporting snowmobile, youth and safety in Minnesota. Proceeds from Haydays fund training, trails, charities and club efforts.

Sno-Barons Hotline 763-274-0235
Check Out Our Website: www.snobarons.com



Paid Advertisement



JUST KNOWING YOU HAVE
THIS MUCH POWER IS POWERFUL.

ZR SNO PRO



WHY WE **RIDE MORE™**

There's a feeling that comes with owning the world's fastest snowmobile. And you get it only on a new 2017 ZR® 9000 Turbo Sno Pro®. Not surprising, considering its all-new, racetrack-inspired, 998cc Turbo Triple 4-stroke engine. Plus, we back it with legendary service. No wonder our riders ride more. Visit arcticcat.com.



Always wear a helmet and don't drink and ride. ©2016 Arctic Cat Sales Inc., Thief River Falls, MN 56701.

Paid Advertisement