

MINNESOTA HOUSING
AFFIRMATIVE ACTION PLAN 2016-2018

STATE OF MINNESOTA

Minnesota Housing Finance Agency

Affirmative Action Plan

August 2016 – August 2018

400 N Sibley Street Suite 300

St. Paul, MN 55101

This document can be made available upon request in alternative formats by contacting
Kim Luchsinger at kim.luchsinger@state.mn.us or 651-296-1509.

MINNESOTA HOUSING
AFFIRMATIVE ACTION PLAN 2016-2018

Table of Contents

EXECUTIVE SUMMARY..... 3

STATEMENT OF COMMITMENT 4

INDIVIDUALS RESPONSIBLE FOR DIRECTING/IMPLEMENTING 5

THE AFFIRMATIVE ACTION PLAN..... 5

COMMUNICATION OF THE AFFIRMATIVE ACTION PLAN..... 10

STATEWIDE POLICY PROHIBITING DISCRIMINATION AND HARASSEMENT 11

COMPLAINT PROCEDURE FOR PROCESSING COMPLAINTS FOR ALLEGED 13

DISCRIMINATION/HARASSMENT 13

REASONABLE ACCOMMODATION POLICY 16

EVACUATION PROCEDURES FOR INDIVIDUALS WITH DISABILITIES..... 28

GOALS AND TIMETABLES..... 31

AFFIRMATIVE ACTION PROGRAM OBJECTIVES 34

METHODS OF AUDITING, EVALUATING, AND REPORTING 37

PROGRAM SUCCESS 37

RECRUITMENT PLAN..... 39

RETENTION PLAN..... 44

APPENDIX..... 46

EXECUTIVE SUMMARY

A review revealed underutilization of the following protected group(s) in the following job categories:

Table 1: UNDERUTILIZATION ANALYSIS OF PROTECTED GROUPS

Job Categories	Women	Racial/Ethnic Minorities	Individuals With Disabilities
Officials/Administrators		2	
Professionals			
Protected Services: Sworn			
Protected Services: Non-sworn			
Office/Clerical			
Technicians			
Skilled Craft			
Service Maintenance			

Once approved, information about how to obtain or view a copy of this plan will be provided to every employee of the Agency. Our intention is that every employee is to be aware of Minnesota Housing’s commitments to affirmative action and equal employment opportunity. The plan will also be posted on the Agency’s website and maintained in the Human Resources Office.

This Affirmative Action Plan meets the requirements as set forth by Minnesota Management and Budget, and contains affirmative action goals and timetables, as well as reasonable and sufficiently assertive hiring and retention methods for achieving these goals.



7/28/16

Kim Luchsinger, Affirmative Action Officer

Date Signed



7/27/16

Dan Boomhower, Human Resources Director

Date Signed



7/28/16

Mary Tingerthal, Commissioner

Date Signed

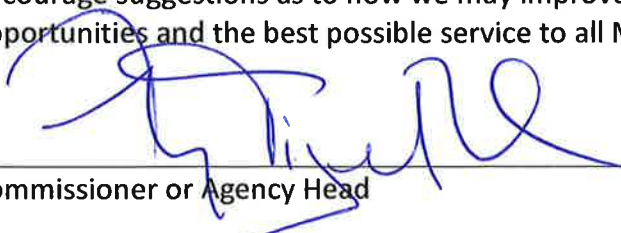
STATEMENT OF COMMITMENT

This statement reaffirms that Minnesota Housing is committed to Minnesota's statewide affirmative action efforts and providing equal employment opportunity to all employees and applicants in accordance with equal opportunity and affirmative action laws.

I affirm my personal and official support of these policies which provide that:

- No individual shall be discriminated against in the terms and conditions of employment, personnel practices, or access to and participation in programs, services, and activities with regard to race, sex, color, creed, religion, age, national origin, sexual orientation, disability, marital status, status with regard to public assistance, or membership or activity in a local human rights commission.
- This Agency is committed to the implementation of the affirmative action policies, programs, and procedures included in this plan to ensure that employment practices are free from discrimination. Employment practices include, but are not limited to the following: hiring, promotion, demotion, transfer, recruitment or recruitment advertising, layoff, disciplinary action, termination, rates of pay or other forms of compensation, and selection for training, including apprenticeship. We will provide reasonable accommodation to employees and applicants with disabilities.
- This Agency will continue to actively promote a program of affirmative action, wherever minorities, women, and individuals with disabilities are underrepresented in the workforce, and work to retain all qualified, talented employees, including protected group employees.
- This Agency will evaluate its efforts, including those of its directors, managers, and supervisors, in promoting equal opportunity and achieving affirmative action objectives contained herein. In addition, this Agency will expect all employees to perform their job duties in a manner that promotes equal opportunity for all.

It is the Agency's policy to provide an employment environment free of any form of discriminatory harassment as prohibited by federal, state, and local human rights laws. I strongly encourage suggestions as to how we may improve. We strive to provide equal employment opportunities and the best possible service to all Minnesotans.



Commissioner or Agency Head

7/28/16

Date Signed

**INDIVIDUALS RESPONSIBLE FOR DIRECTING/IMPLEMENTING
THE AFFIRMATIVE ACTION PLAN**

A. Commissioner or Agency Head

Mary Tingerthal, Commissioner

Responsibilities:

The Commissioner is responsible for the establishment of an Affirmative Action Plan that complies with all federal and state laws and regulations.

Duties:

The duties of the Commissioner shall include, but are not limited to the following:

- Appoint the Affirmative Action Officer or designee and include accountability for the administration of the Agency's Affirmative Action Plan in his or her position description;
- Take action, if needed, on complaints of discrimination and harassment;
- Ensure the Affirmative Action Plan is effectively communicated to all employees on an annual basis;
- Make decisions and changes in policy, procedures, or accommodations as needed to facilitate effective affirmative action and equal employment opportunity;
- Actively promote equal opportunity employment; and
- Require that all Agency directors, managers, and supervisors are responsible for supporting affirmative action, equal opportunity, diversity, and/or cultural responsiveness, which they will be rated on in annual performance reviews.

Accountability:

The Commissioner is accountable directly to the Governor and the Board and indirectly to the Minnesota Management and Budget Commissioner on matters pertaining to equal opportunity and affirmative action.

B. Affirmative Action Officer or Designee

Kim Luchsinger, Affirmative Action Officer

Responsibilities:

The Affirmative Action Officer or designee is responsible for implementation of the policy's contained in the Agency's affirmative action plan, and oversight of the Agency's compliance with equal opportunity and affirmative action laws.

MINNESOTA HOUSING
AFFIRMATIVE ACTION PLAN 2016-2018

Duties:

The duties of the Affirmative Action Officer or designee shall include, but are not limited to the following:

- Prepare and oversee the Affirmative Action Plan, including development and setting of Agency-wide goals;
- Monitor the compliance and fulfill all affirmative action reporting requirements;
- Inform the Agency's Commissioner of progress in affirmative action and equal opportunity and report potential concerns;
- Review the Affirmative Action Plan at least annually and provide updates as appropriate;
- Provide an Agency-wide perspective on issues relating to affirmative action and equal opportunity and assist in the identification and development of effective solutions in problem areas related to affirmative action and equal opportunity;
- Identify opportunities for infusing affirmative action and equal opportunity into the Agency's considerations, policies, and practices;
- Participate in and/or develop strategies to recruit individuals in protected groups for employment, promotion, and training opportunities;
- Stay current on changes to equal opportunity and affirmative action laws and interpretation of the laws;
- Provide consultation, technical guidance, and/or training to directors, managers, supervisors, and staff regarding best practices in recruitment, selection, and retention, progress on hiring goals, reasonable accommodations, and other opportunities for improvement; and
- Serve as the Agency liaison with Minnesota Management and Budget's Office of Equal Opportunity and Diversity and enforcement agencies.

Accountability:

The Affirmative Action Officer is accountable directly to the Human Resources Director and indirectly to the Commissioner on matters pertaining to affirmative action and equal opportunity.

C. Americans with Disabilities Act Coordinator or Designee

Kim Luchsinger, ADA Coordinator

Responsibilities:

MINNESOTA HOUSING
AFFIRMATIVE ACTION PLAN 2016-2018

The Americans with Disabilities Act Coordinator or designee is responsible for the oversight of the Agency's compliance with the Americans with Disabilities Act Title I – Employment and Title II – Public Services, in accordance with the Americans with Disabilities Act - as amended, the Minnesota Human Rights Act, and Executive Order 96-09.

Duties:

The duties of the Americans with Disabilities Act Coordinator shall include, but not limited to the following:

- Provide guidance, coordination, and direction to Agency management with regard to the Americans with Disabilities Act in the development and implementation of the Agency's policy, procedures, practices, and programs to ensure they are accessible and nondiscriminatory;
- Provide consultation, technical guidance, and/or training to directors, managers, supervisors, and staff regarding best practices in recruitment, selection, and retention of individuals with disabilities, provisions of reasonable accommodations for employees and applicants, and other opportunities for improvement; and
- Track and facilitate requests for reasonable accommodations for employees and applicants, as well as members of the public accessing the Agency's services, and reports reasonable accommodations annually to Minnesota Management and Budget.

Accountability:

The Americans with Disabilities Act Coordinator reports directly to the Human Resources Director.

D. Human Resources Director

Dan Boomhower, Human Resources Director

Responsibilities:

The Human Resources Director is responsible for ensuring equitable and uniform administration of all personnel policies including taking action to remove barriers to equal employment opportunity with the Agency.

Duties:

The duties of the Human Resources Director include, but are not limited to the following:

- Provide leadership to human resources staff and others to ensure personnel decision-making processes adhere to equal opportunity and affirmative action principles;
- Ensure, to the extent possible, development and utilization of selection criteria that is objective, uniform, and job-related;

MINNESOTA HOUSING
AFFIRMATIVE ACTION PLAN 2016-2018

- Initiate and report on specific program objectives contained in the Affirmative Action Plan;
- Ensure pre-hire review process is implemented and receives support from directors, managers, and supervisors;
- Include the Affirmative Action Officer in the decision-making process regarding personnel actions involving protected group members, including hiring, promotion, disciplinary actions, reallocation, transfer, termination, and department and division-wide classification studies;
- Include responsibility statements for supporting affirmative action, equal opportunity, diversity, and/or cultural responsiveness in position descriptions and annual objectives;
- Assist in recruitment and retention of individuals in protected groups, and notify directors, managers, and supervisors of existing disparities;
- Make available to the Affirmative Action Officer and Americans with Disabilities Act Coordinator or designee all necessary records and data necessary to perform duties related to equal opportunity and affirmative action.

Accountability:

The Human Resources Director is directly accountable to the Deputy Commissioner.

E. Directors, Managers, and Supervisors

Responsibilities:

Directors, Managers, and Supervisors are responsible for implementation of equal opportunity and affirmative action within their respective areas of supervision and compliance with the Agency's affirmative action programs and policies to ensure fair and equal treatment of all employees and applicants.

Duties:

The duties of directors, managers, and supervisors include, but are not limited to the following:

- Assist the Affirmative Action Officer in identifying and resolving problems and eliminating barriers which inhibit equal employment opportunity;
- Communicate the Agency's affirmative action policy to assigned staff;
- Carry out supervisory responsibilities in accordance with the equal employment opportunity and affirmative action policies embodied in this plan;

MINNESOTA HOUSING
AFFIRMATIVE ACTION PLAN 2016-2018

- Maintain a consistent standard within the workforce so that employees are evaluated, recognized, developed, and rewarded on a fair and equitable basis;
- Require that all Agency employees are responsible for supporting affirmative action, equal opportunity, diversity, and/or cultural responsiveness, which they will be rated on in annual performance reviews.
- To provide a positive and inclusive work environment; and
- To refer complaints of discrimination and harassment to the appropriate parties.

Accountability:

Directors, managers, and supervisors are accountable directly to their designated supervisor and indirectly to the Agency's Commissioner.

F. All Employees

Responsibilities:

All employees are responsible for conducting themselves in accordance with the Agency's equal opportunity and Affirmative Action Plan and policies.

Duties:

The duties of all employees shall include, but are not limited to the following:

- Exhibit an attitude of respect, courtesy, and cooperation towards fellow employees and the public; and
- Refrain from any actions that would adversely affect the performance of a coworker with respect to their race, sex, color, creed, religion, age, national origin, disability, marital status, status with regard to public assistance, sexual orientation, gender identity, gender expression, or membership or activity in a local human rights commission.

Accountability:

Employees are accountable to their designated supervisor and indirectly to the Agency's Commissioner.

COMMUNICATION OF THE AFFIRMATIVE ACTION PLAN

The following information describes the methods that the Agency takes to communicate the Affirmative Action Plan to employees and the general public:

A. Internal Methods of Communication

- A memorandum detailing the location of the Affirmative Action Plan and the responsibility to read, understand, support, and implement equal opportunity and affirmative action will be sent from the Agency's leadership or alternatively, the Affirmative Action Officer, to all staff on an annual basis.
- The Agency's Affirmative Action Plan is available to all employees on the Agency's internal website at [Intranet > Human Resources > Employee Toolbox](#) or in print copy to anyone who requests it. As requested, the Agency will make the plan available in alternative formats.
- Nondiscrimination and equal opportunity statements and posters are prominently displayed and available in areas frequented and accessible to employees.

B. External Methods of Communication

- The Agency's Affirmative Action Plan is available on the Agency's external website at <http://www.mnhousing.gov/> > [Jobs](#) or in print copy to anyone who requests it. As requested, the Agency will make the plan available in alternative formats.
- The Agency's website homepage, letterhead, publications, and all job postings, will include the statement "an equal opportunity employer."
- Nondiscrimination and equal opportunity statements and posters are prominently displayed and available in areas frequented by and accessible to members of the public. Examples of posters displayed include: Equal Employment Opportunity is the law, Employee Rights under the Fair Labor Standards Act, and the Americans with Disabilities Act Notice to the Public.

STATEWIDE POLICY PROHIBITING DISCRIMINATION AND HARASSMENT

It is the policy of the of the State of Minnesota to prohibit harassment of its employees based on race, color, creed, religion, national origin, sex, marital status, status with regard to public assistance, membership or activity in a local human rights, disability, sexual orientation, or age. This prohibition with respect to harassment includes both overt acts of harassment and those acts that create a negative work environment.

Any employee subjected to such harassment should file a complaint internally with the Agency's Affirmative Action Officer or designee. If the employee chooses, a complaint can be filed externally with the Minnesota Department of Human Rights, the Equal Employment Opportunity Commission, or through other legal channels. These agencies have time limits for filing complaints, so individuals should contact the agencies for more information. In extenuating circumstances, the employee should contact the State Affirmative Action Program Coordinator in the Office of Equal Opportunity and Diversity at Minnesota Management and Budget for information regarding the filing of a complaint. Any unintentional or deliberate violation of this policy by an employee will be cause for appropriate disciplinary action.

Each employee is responsible for the application of this policy. This includes initiating and supporting programs and practices designed to develop understanding, acceptance, commitment, and compliance within the framework of this policy. All employees must be informed that harassment is unacceptable behavior. The Affirmative Action Officer or designee will be expected to keep Minnesota Housing and its employees apprised of any changes in the law or its interpretation regarding this form of discrimination. The Affirmative Action Officer or designee is also responsible for:

- Notifying all employees and applicants of this policy; and
- Informing all employees of the complaint procedure and ensuring that all complaints will be investigated promptly and carefully.

Definitions:

Discriminatory harassment is any behavior based on protected class status which is not welcome, which is personally offensive, which, therefore, may effect morale and interfere with the employee's ability to perform. For example, harassment based on national origin has been defined by the U.S. Equal Employment Opportunity Commission as "Ethnic slurs and other verbal or physical conduct relating to an individual's national origin."

Sexual harassment has also been specifically defined by the Minnesota Human Rights Act, which states in regard to employment, that:

"Sexual harassment" includes unwelcome sexual advances, requests for sexual favors, sexually motivated physical contact or other verbal or physical conduct or communication of a sexual nature when:

MINNESOTA HOUSING
AFFIRMATIVE ACTION PLAN 2016-2018

- Submission to that conduct or communication is made a term or condition, either explicitly or implicitly, of obtaining employment;
- Submission to or rejection of that conduct or communication by an individual is used as a factor in decision affecting that individual's employment; or
- That conduct or communication has the purpose or effect of substantially interfering with an individual's employment, and in the case of employment, the employer knows or should know of the existence of the harassment and fails to take timely and appropriate action.

It is possible for discriminatory harassment to occur:

- Among peers or coworkers;
- Between managers and subordinates; or
- Between employees and members of the public.

Employees who experience discrimination or harassment should bring the matter to the attention of Minnesota Housing's Affirmative Action Officer or designee. In fulfilling our obligation to maintain a positive and productive work environment, the Affirmative Action Officer or designee and all employees are expected to address or report any suspected harassment or retaliation.

Varying degrees of discriminatory harassment violations can occur and require varying levels of progressive discipline. Individuals who instigate harassment are subject to serious disciplinary actions up to and including suspension, demotion, transfer, or termination. Additionally, inappropriate behaviors that do not rise to the level of discriminatory harassment, but are none the less disruptive, should be corrected early and firmly in the interests of maintaining a barrier-free work place. Individuals who participate in inappropriate behaviors at work are also subject to disciplinary actions.

Any employee or applicant who believes that they have experienced discrimination or harassment based on race, color, creed, religion, national origin, sex, marital status, status with regard to public assistance, membership or activity in a local human rights commission, disability, sexual orientation, or age may file a complaint of discrimination.

Complaints of discrimination or harassment can be filed using the internal complaint procedure included in this Affirmative Action Plan.

COMPLAINT PROCEDURE FOR PROCESSING COMPLAINTS FOR ALLEGED DISCRIMINATION/HARASSMENT

Minnesota Housing has established the following discrimination/harassment complaint procedure to be used by all employees and applicants. Coercion, reprisal, or intimidation against anyone filing a complaint or serving as a witness under this procedure is prohibited.

Responsibility of Employee:

All employees shall respond promptly to any and all requests by the Affirmative Action Officer or designee for information and for access to data and records for the purpose of enabling the Affirmative Action Officer or designee to carry out responsibilities under this complaint procedure.

Who May File:

Any employees or applicants who believes that they have been discriminated against or harassed by reason of race, color, creed, religion, national origin, sex, marital status, status with regard to public assistance, membership or activity in a local human rights commission, disability, sexual orientation, or age may file a complaint. Employees who are terminated are encouraged to file their internal complaint prior to their actual separation; however, complaints will be taken for a reasonable period of time subsequent to the actual separation date.

Complaint Procedure:

The internal complaint procedure provides a method for resolving complaints involving violations of this Agency's policy prohibiting discrimination and harassment within the Agency. Employees and applicants are encouraged to use this internal complaint process. Retaliation against a person who has filed a complaint either internally or through an outside enforcement Agency or other legal channels is prohibited. The Affirmative Action Officer or designee may contact the Office of Diversity and Equal Opportunity if more information is needed about filing a complaint.

Filing Procedures:

1. The employee or applicant completes the "Complaint of Discrimination/Harassment Form" provided by the Affirmative Action Officer or designee. Employees are encouraged to file a complaint within a reasonable period of time after the individual becomes aware that a situation may involve discrimination or harassment. The Affirmative Action Officer or designee will, if requested, provide assistance in filling out the form.
2. The Affirmative Action Officer or designee determines if the complaint falls under the purview of Equal Employment Opportunity law, i.e., the complainant is alleging discrimination or harassment on the basis of race, color, creed, religion, national origin, sex, marital status, status with regard to public assistance, membership or activity in a local human rights commission, disability, sexual orientation, or age; or if the complaint is

MINNESOTA HOUSING
AFFIRMATIVE ACTION PLAN 2016-2018

of a general personnel concern. The Affirmative Action Officer or designee shall also discuss other options for resolution, such as the workplace mediation.

- If it is determined that the complaint is not related to discrimination but rather to general personnel concerns, the Affirmative Action Officer designee will inform the complainant, in writing, within ten (10) working days.
 - If the complaint is related to discrimination, the Affirmative Action Officer or designee will, within ten (10) working days, contact all parties named as respondents and outline the basic facts of the complaint. The respondents will be asked to provide a response to the allegations within a specific period of time.
3. The Affirmative Action Officer or designee shall then investigate the complaint. At the conclusion of the investigation, the Affirmative Action Officer or designee shall notify the complainants and respondents that the investigation is completed. The Affirmative Action Officer or designee shall then review the findings of the investigation.
 - If there is sufficient evidence to substantiate the complaint, appropriate action will be taken.
 - If insufficient evidence exists to support the complaint, a letter will be sent to the complainants and the respondents dismissing the complaint.
 4. A written answer will be provided to the parties within sixty (60) days after the complaint is filed. The complainants will be notified should extenuating circumstances prevent completion of the investigation within sixty (60) days.
 5. Disposition of the complaint will be filed with the Commissioner of the Minnesota Management and Budget within thirty (30) days after the final determination.
 6. All documentation associated with a complaint shall be considered investigative data under the Minnesota Government Data Practices Act. The status of the complaint will be shared with the complainants and respondents. After an investigation is completed and all appeals are exhausted, all documentation is subject to the provisions of the Minnesota Government Data Practices Act.
 7. All data collected may at some point become evidence in civil or criminal legal proceedings pursuant to state or federal statutes. An investigation may include, but is not limited to, the following types of data:
 - Interviews or written interrogatories with all parties involved in the complaint, i.e., complainants, respondents, and their respective witnesses; officials having pertinent records or files, etc.; and
 - All records pertaining to the case i.e., written, recorded, filmed, or in any other form.

MINNESOTA HOUSING
AFFIRMATIVE ACTION PLAN 2016-2018

8. The Affirmative Action Officer or designee shall maintain records of all complaints and any pertinent information or data for three (3) years after the case is closed.

REASONABLE ACCOMMODATION POLICY

State agencies must comply with all state and federal laws that prohibit discrimination against qualified individuals with disabilities in all employment practices. All state agencies must provide reasonable accommodations to qualified applicants and employees with disabilities unless to do so would cause an undue hardship or pose a direct threat. Agencies must provide reasonable accommodation when:

- A qualified applicant with a disability needs an accommodation to have an equal opportunity to compete for a job;
- A qualified employee with a disability needs an accommodation to perform the essential functions of the employee's job; and

A qualified employee with a disability needs an accommodation to enjoy equal access to benefits and privileges of employment (e.g., trainings, office sponsored events).

Applicant

A person who expresses interest in employment and satisfies the minimum requirements for application established by the job posting and job description.

Americans with Disabilities Act (ADA) Coordinator

Each agency is required to appoint an ADA coordinator or designee, depending on agency size, to direct and coordinate agency compliance with Title I of the ADA.

Direct Threat

A significant risk of substantial harm to the health or safety of the individual or others that cannot be eliminated or reduced by reasonable accommodation.

The determination that an individual poses a direct threat shall be based on an individualized assessment of the individual's present ability to safely perform the essential functions of the job.

Essential Functions

Duties so fundamental that the individual cannot do the job without being able to perform them. A function can be essential if:

- The job exists specifically to perform the function(s); or
- There are a limited number of other employees who could perform the function(s); or
- The function(s) is/are specialized and the individual is hired based on the employee's expertise.

Interactive Process

A discussion between the employer and the individual with a disability to determine an effective reasonable accommodation for the individual with a disability. To be interactive, both sides must communicate and exchange information.

Individual with a Disability

An individual who:

- Has a physical, sensory, or mental impairment that substantially limits one or more major life activities; or
- Has a record or history of such impairment; or
- Is regarded as having such impairment.

Qualified Individual with a Disability

An individual who:

- Satisfies the requisite skill, experience, education, and other job-related requirements of the job that the individual holds or desires; and
- Can perform the essential functions of the position with or without reasonable accommodation.

Major Life Activities

May include, but are not limited to, caring for oneself, performing manual tasks, seeing, hearing, eating, sleeping, walking, standing, lifting, bending, speaking, breathing, learning, reading, concentrating, thinking, communicating, and working.

Major life activities also include the operation of a major bodily function, including but not limited to, functions of the immune system, normal cell growth, digestive, bowel, bladder, neurological, brain, respiratory, circulatory, endocrine, and reproductive functions.

Medical Documentation

Information from the requestor's treating provider which is sufficient to enable the employer to determine whether an individual has a disability and whether and what type of reasonable accommodation is needed when the disability or the need for accommodation is not obvious.

Medical documentation can be requested using the standardized [Letter Requesting Documentation for Determining ADA Eligibility from a Medical Provider.](#)

Reasonable Accommodation

An adjustment or alteration that enables a qualified individual with a disability to apply for a job, perform job duties, or enjoy the benefits and privileges of employment. Reasonable accommodations may include:

- Modifications or adjustments to a job application process to permit a qualified individual with a disability to be considered for a job; or
- Modifications or adjustments to enable a qualified individual with a disability to perform the essential functions of the job; or
- Modifications or adjustments that enable qualified employees with disabilities to enjoy equal benefits and privileges of employment.

Modifications or adjustments may include, but are not limited to:

- Providing materials in alternative formats like large print or Braille;
- Providing assistive technology, including information technology and communications equipment, or specially designed furniture;
- Modifying work schedules or supervisory methods;
- Granting breaks or providing leave;
- Altering how or when job duties are performed;
- Removing and/or substituting a marginal function;
- Moving to a different office space;
- Providing telework;
- Making changes in workplace policies;
- Providing a reader or other staff assistant to enable employees to perform their job functions, where a reasonable accommodation cannot be provided by current staff;
- Removing an architectural barrier, including reconfiguring work spaces;
- Providing accessible parking; or
- Providing a reassignment to a vacant position.

Reassignment

Reassignment to a vacant position for which an employee is qualified is a “last resort” form of a reasonable accommodation. This type of accommodation must be provided to an employee, who, because of a disability, can no longer perform the essential functions of the position, with or without reasonable accommodation, unless the employer can show that it will be an undue hardship.

Support Person

Any person an individual with a disability identifies to help during the reasonable accommodation process in terms of filling out paperwork, attending meetings during the interactive process to take notes or ask clarifying questions, or to provide emotional support.

Undue Hardship

A specific reasonable accommodation would require significant difficulty or expense. Undue hardship is always determined on a case-by-case basis considering factors that include the nature and cost of the accommodation requested and the impact of the accommodation on the operations of the agency. A state agency is not required to provide accommodations that would impose an undue hardship on the operation of the agency.

General Standards and Expectations

Individuals who may request a reasonable accommodation include

- Any qualified applicant with a disability who needs assistance with the job application procedure or the interview or selection process; or
- Any qualified agency employee with a disability who needs a reasonable accommodation to perform the essential functions of the position; or
- A third party, such as a family member, friend, health professional or other representative, on behalf of a qualified applicant or employee with a disability, when the applicant or employee is unable to make the request for reasonable accommodation. When possible, the agency must contact the applicant or employee to confirm that the accommodation is wanted. The applicant or employee has the discretion to accept or reject the proposed accommodation.

The agency must abide by the [Minnesota Government Data Practices Act, Chapter 13](#), in obtaining or sharing information related to accommodation requests.

How to request a reasonable accommodation

An agency applicant or employee may make a reasonable accommodation request to any or all of the following:

- Immediate supervisor or manager in the employee's chain of command;
- Agency Affirmative Action Officer/Designee;
- Agency ADA Coordinator;
- Agency Human Resources Office;

MINNESOTA HOUSING
AFFIRMATIVE ACTION PLAN 2016-2018

- Any agency official with whom the applicant has contact during the application, interview and/or selection process.

Timing of the request

An applicant or employee may request a reasonable accommodation at any time, even if the individual has not previously disclosed the existence of a disability or the need for an accommodation. A request is any communication in which an individual asks or states that he or she needs the agency to provide or change something because of a medical condition.

The reasonable accommodation process begins as soon as possible after the request for accommodation is made.

Form of the request

The applicant or employee is responsible for requesting a reasonable accommodation or providing sufficient notice to the agency that an accommodation is needed.

An initial request for accommodation may be made in any manner (e.g., writing, electronically, in person or orally).

The individual requesting an accommodation does not have to use any special words and does not have to mention the ADA or use the phrase "reasonable accommodation" or "disability."

Oral requests must be documented in writing to ensure efficient processing of requests.

Agency request forms can be found at: "[Employee/Applicant Request for Reasonable Accommodation Form](#)".

When a supervisor or manager observes or receives information indicating that an employee is experiencing difficulty performing the job due to a medical condition or disability, further inquiry may be required. Supervisors or managers should consult with the agency ADA Coordinator for advice on how to proceed.

When an employee needs the same reasonable accommodation on a repeated basis (e.g., the assistance of a sign language interpreter), a written request for accommodation is required the first time only. However, the employee requesting an accommodation must give appropriate advance notice each subsequent time the accommodation is needed. If the accommodation is needed on a regular basis (e.g., a weekly staff meeting), the agency must make appropriate arrangements without requiring a request in advance of each occasion.

The interactive process entails

Communication is a priority and encouraged throughout the entire reasonable accommodation process. The interactive process is a collaborative process between the employee and/or

MINNESOTA HOUSING
AFFIRMATIVE ACTION PLAN 2016-2018

applicant and the agency to explore and identify specific reasonable accommodation(s). (For information on the Interactive Process see the U.S. Department of Labor, Job Accommodation Network at <http://askjan.org/topics/interactive.htm>). This process is required when:

- The need for a reasonable accommodation is not obvious;
- The specific limitation, problem or barrier is unclear;
- An effective reasonable accommodation is not obvious;
- The parties are considering different forms of reasonable accommodation;
- The medical condition changes or fluctuates; or,
- There are questions about the reasonableness of the requested accommodation.

The interactive process should begin as soon as possible after a request for reasonable accommodation is made or the need for accommodation becomes known.

The process should ensure a full exchange of relevant information and communication between the individual and the agency. An individual may request that the agency ADA Coordinator, a union representative, or support person be present.

The agency ADA Coordinator shall be consulted when:

- Issues, conflicts or questions arise in the interactive process; and
- Prior to denying a request for accommodation.

Agency responsibilities for processing the request

As the first step in processing a request for reasonable accommodation, the person who receives the request must promptly forward the request to the appropriate decision maker. At the same time, the recipient will notify the requestor who the decision maker is.

Commissioner

The commissioner of the agency or agency head has the ultimate responsibility to ensure compliance with the ADA and this policy and appoint an ADA Coordinator.

ADA Coordinator

The agency ADA Coordinator is the agency's decision maker for reasonable accommodation requests for all types of requests outside of the supervisors' and managers' authority. The agency ADA Coordinator will work with the supervisor and manager, and where necessary, with agency Human Resources, to implement the approved reasonable accommodation.

MINNESOTA HOUSING
AFFIRMATIVE ACTION PLAN 2016-2018

Supervisors and Managers

Agencies have the authority to designate the level of management approval needed for reasonable accommodation requests for low-cost purchases. For example:

- Requests for standard office equipment that is needed as a reasonable accommodation and adaptive items costing less than \$100. [Agencies can adjust the dollar amount based on their needs]; and
- Requests for a change in a condition of employment such as modified duties, or a change in schedule, or the location and size of an employee's workspace. [Agencies can choose to delegate specific requests to supervisors or managers or require these types of requests to work through the agency ADA Coordinator].

Analysis for processing requests

Before approving or denying a request for accommodation, the agency decision maker with assistance from the agency ADA Coordinator will:

1. Determine if the requestor is a qualified individual with a disability;
2. Determine if the accommodation is needed to:
 - Enable a qualified applicant with a disability to be considered for the position the individual desires;
 - Enable a qualified employee with a disability to perform the essential functions of the position; or
 - Enable a qualified employee with a disability to enjoy equal benefits or privileges of employment as similarly situated employees without disabilities;
3. Determine whether the requested accommodation is reasonable;
4. Determine whether there is a reasonable accommodation that will be effective for the requestor and the agency; and
5. Determine whether the reasonable accommodation will impose an undue hardship on the agency's operations.

An employee's accommodation preference is always seriously considered, but the agency is not obligated to provide the requestor's accommodation of choice, so long as it offers an effective accommodation, or determines that accommodation would cause an undue hardship.

Obtaining medical documentation in connection with a request for reasonable accommodation

In some cases, the disability and need for accommodation will be reasonably evident or already known, for example, where an employee is blind. In these cases, the agency will not seek further medical documentation. If a requestor's disability and/or need for reasonable accommodation are not obvious or already known, the agency ADA Coordinator may require medical information showing that the requestor has a covered disability that requires accommodation. The agency ADA Coordinator may request medical information in certain other circumstances. For example when:

- The information submitted by the requestor is insufficient to document the disability or the need for the accommodation;
- A question exists as to whether an individual is able to perform the essential functions of the position, with or without reasonable accommodation; or
- A question exists as to whether the employee will pose a direct threat to himself/herself or others.

Where medical documentation is necessary, the agency ADA Coordinator must make the request and use the [Letter Requesting Documentation for Determining ADA Eligibility from a Medical Provider](#). The agency ADA Coordinator must also obtain the requestor's completed and signed [Authorization for Release of Medical Information](#).

Only medical documentation specifically related to the employee's request for accommodation and ability to perform the essential functions of the position will be requested. When medical documentation or information is appropriately requested, an employee must provide it in a timely manner, or the agency may deny the reasonable accommodation request. Agencies must not request medical records; medical records are not appropriate documentation and cannot be accepted. **Supervisors and managers *must not* request medical information or documentation from an applicant or employee seeking an accommodation.** Such a request will be made by the agency ADA Coordinator, if appropriate.

Confidentiality requirements

Medical Information

Medical information obtained in connection with the reasonable accommodation process must be kept confidential. All medical information obtained in connection with such requests must be collected and maintained on separate forms and in separate physical or electronic files from non-medical personnel files and records. Electronic copies of medical information obtained in connection with the reasonable accommodation process must be stored so that access is limited to only the agency ADA Coordinator. Physical copies of such medical information must be stored in a locked cabinet or office when not in use or unattended. Generally, medical

MINNESOTA HOUSING
AFFIRMATIVE ACTION PLAN 2016-2018

documentation obtained in connection with the reasonable accommodation process should only be reviewed by the agency ADA Coordinator.

The agency ADA Coordinator may disclose medical information obtained in connection with the reasonable accommodation process to the following:

- Supervisors, managers or agency HR staff who have a need to know may be told about the necessary work restrictions and about the accommodations necessary to perform the employee's duties. However, information about the employee's medical condition should only be disclosed if strictly necessary, such as for safety reasons;
- First aid and safety personnel may be informed, when appropriate, if the employee may require emergency treatment or assistance in an emergency evacuation;
- To consult with the State ADA Coordinator or Employment Law Counsel at MMB, or the Attorney General's Office about accommodation requests, denial of accommodation requests or purchasing of specific assistive technology or other resources; or
- Government officials assigned to investigate agency compliance with the ADA.

Whenever medical information is appropriately disclosed as described above, the recipients of the information must comply with all confidentiality requirements.

Accommodation Information

The fact that an individual is receiving an accommodation because of a disability is confidential and may only be shared with those individuals who have a need to know for purposes of implementing the accommodation, such as the requestor's supervisor and the agency ADA Coordinator.

General Information

General summary information regarding an employee's or applicant's status as an individual with a disability may be collected by agency equal opportunity officials to maintain records and evaluate and report on the agency's performance in hiring, retention, and processing reasonable accommodation requests.

Approval of requests for reasonable accommodation

As soon as the decision maker determines that a reasonable accommodation will be provided, the agency ADA Coordinator will process the request and provide the reasonable accommodation in as short of a timeframe as possible. The time necessary to process a request will depend on the nature of the accommodation requested and whether it is necessary to obtain supporting information. If an approved accommodation cannot be provided within a reasonable time, the decision maker will inform the requestor of the status of the request

MINNESOTA HOUSING
AFFIRMATIVE ACTION PLAN 2016-2018

before the end of 30 days. Where feasible, if there is a delay in providing the request, temporary measures will be taken to provide assistance.

Once approved, the reasonable accommodation should be documented for record keeping purposes and the records maintained by the agency ADA Coordinator.

Funding for reasonable accommodations

The agency must specify how the agency will pay for reasonable accommodations.

Procedures for reassignment as a reasonable accommodation

Reassignment to a vacant position is an accommodation that must be considered if there are no effective reasonable accommodations that would enable the employee to perform the essential functions of his/her current job, or if all other reasonable accommodations would impose an undue hardship.

The agency ADA Coordinator will work with agency Human Resources staff and the requestor to identify appropriate vacant positions within the agency for which the employee may be qualified and can perform the essential functions of the vacant position, with or without reasonable accommodation. Vacant positions which are equivalent to the employee's current job in terms of pay, status, and other relevant factors will be considered first. If there are none, the agency will consider vacant lower level positions for which the individual is qualified. The EEOC recommends that the agency consider positions that are currently vacant or will be coming open within at least the next 60 days.

Denial of requests for reasonable accommodation

The agency ADA Coordinator must be contacted for assistance and guidance prior to denying any request for reasonable accommodation. The agency may deny a request for reasonable accommodation where:

- The individual is not a qualified individual with a disability;
- The reasonable accommodation results in undue hardship or the individual poses a direct threat to the individual or others. Undue hardship and direct threat are determined on a case-by-case basis with guidance from the agency ADA Coordinator; or
- Where no reasonable accommodation, including reassignment to a vacant position, will enable the employee to perform all the essential functions of the job.

The explanation for denial must be provided to the requestor in writing. The explanation should be written in plain language and clearly state the specific reasons for denial. Where the decision maker has denied a specific requested accommodation, but has offered a different accommodation in its place, the decision letter should explain both the reasons for denying the

MINNESOTA HOUSING
AFFIRMATIVE ACTION PLAN 2016-2018

accommodation requested and the reasons that the accommodation being offered will be effective.

Consideration of undue hardship

An interactive process must occur prior to the agency making a determination of undue hardship. Determination of undue hardship is made on a case-by-case basis and only after consultation with the agency's ADA Coordinator. In determining whether granting a reasonable accommodation will cause an undue hardship, the agency considers factors such as the nature and cost of the accommodation in relationship to the size and resources of the agency and the impact the accommodation will have on the operations of the agency.

Agencies may deny reasonable accommodations based upon an undue hardship. Prior to denying reasonable accommodation requests due to lack of financial resources, the agency will consult with the State ADA Coordinator at MMB.

Determining direct threat

The determination that an individual poses a "direct threat," (i.e., a significant risk of substantial harm to the health or safety of the individual or others) which cannot be eliminated or reduced by a reasonable accommodation, must be based on an individualized assessment of the individual's present ability to safely perform the essential functions of the job with or without reasonable accommodation. A determination that an individual poses a direct threat cannot be based on fears, misconceptions, or stereotypes about the individual's disability. Instead, the agency must make a reasonable medical judgment, relying on the most current medical knowledge and the best available objective evidence.

In determining whether an individual poses a direct threat, the factors to be considered include:

- Duration of the risk;
- Nature and severity of the potential harm;
- Likelihood that the potential harm will occur; and
- Imminence of the potential harm.

Appeals process in the event of denial

In addition to providing the requestor with the reasons for denial of a request for reasonable accommodation, agencies must designate a process for review when an applicant or employee chooses to appeal the denial of a reasonable accommodation request. This process:

- Must include review by an agency official;
- May include review by the State ADA Coordinator; and/or

MINNESOTA HOUSING
AFFIRMATIVE ACTION PLAN 2016-2018

- Must inform the requestor of the statutory right to file a charge with the Equal Employment Opportunity Commission or the Minnesota Department of Human Rights.

Information tracking and records retention

Agencies must track reasonable accommodations requested and report once a year by September 1st to MMB the number and types of accommodations requested, approved, denied and other relevant information.

Agencies must retain reasonable accommodation documentation according to the agency's document retention schedule, but in all cases for at least one year from the date the record is made or the personnel action involved is taken, whichever occurs later. 29 C.F.R. § 1602.14.

EVACUATION PROCEDURES FOR INDIVIDUALS WITH DISABILITIES

A copy of the Agency's weather and emergency evacuation plans can be found in the [Policy and Procedure Manual](#).

Knowledge and preparation by both individuals needing assistance and those who don't is key to reducing the impact of emergencies. When developing a plan, safety needs should be determined on a case-by-case basis because it varies with each individual and building.

Everyone has a responsibility to develop their own personal emergency evacuation plan, this includes individuals with disabilities or individuals who will need assistance during evacuation. The Americans with Disabilities Act Coordinator or designee in each Agency will work to develop a plan and consult the appropriate building and safety personnel.

Directors, managers, and supervisors should review the emergency evacuation procedures with staff, including informing all staff that if additional assistance may be needed, and individuals with disabilities should contact the Agency contact(s) below to request the type of assistance they may need.

Debbi Larson, Controller
debbi.larson@state.mn.us
651-296-2063

Kim Luchsinger, Affirmative Action Officer
Kim.luchsinger@state.mn.us
651-296-1509

Evacuation Options:

Individuals with disabilities have four basic, possibly five, evacuation options:

- Horizontal evacuation: Using building exits to the outside ground level or going into unaffected wings of multi-building complexes;
- Stairway evacuation: Using steps to reach ground level exits from building;
- Shelter in place: Unless danger is imminent, remain in a room with an exterior window, a telephone, and a solid or fire resistant door. If the individual requiring special evacuation assistance remains in place, they should dial 911 immediately and report their location to emergency services, who will in turn relay that information to on-site responders. The shelter in place approach may be more appropriate for sprinkler protected buildings where an area of refuge is not nearby or available. It may be more appropriate for an individual who is alone when the alarm sounds;
- Area of rescue assistance: Identified areas that can be used as a means of egress for individuals with disabilities. These areas, located on floors above or below the building's

MINNESOTA HOUSING
AFFIRMATIVE ACTION PLAN 2016-2018

exits, can be used by individuals with disabilities until rescue can be facilitated by emergency responders.

Evacuation Procedures for Individuals with Mobility, Hearing, or Visual Disabilities:

Individuals with disabilities should follow the following procedures:

- Mobility disabilities (individuals who use wheelchairs or other personal mobility devices (“PMDs”)): Individuals using wheelchairs should be accompanied to an area of rescue assistance by an employee or shelter in place when the alarm sounds. The safety and security staff will respond to each of the areas of rescue assistance every time a building evacuation is initiated to identify the individuals in these areas and notify to emergency responders how many individuals need assistance to safely evacuate.
- Mobility disabilities (individuals who do not use wheelchairs): Individuals with mobility disabilities, who are able to walk independently, may be able to negotiate stairs in an emergency with minor assistance. If danger is imminent, the individual should wait until the heavy traffic has cleared before attempting the stairs. If there is no immediate danger (detectable smoke, fire, or unusual odor), the individual with a disability may choose to wait at the area of rescue assistance until emergency responders arrive to assist them.
- Hearing disabilities: The Agency’s buildings are equipped with fire alarm horns/strobes that sound the alarm and flash strobe lights. The strobe lights are for individuals with who are deaf and/or hard of hearing. Individuals with hearing disabilities may not notice or hear emergency alarms and will need to be alerted of emergency situations.
- Visual disabilities: The Agency’s buildings are equipped with fire alarm horn/strobes that sound the alarm and flash strobe lights. The horn will alert individuals who are blind or have visual disabilities of the need to evacuate. Most individuals with visual disabilities will be familiar with their immediate surroundings and frequently traveled routes. Since the emergency evacuation route is likely different from the common traveled route, individuals with visual disabilities may need assistance in evacuating. The assistant should offer assistance, and if accepted, guide the individual with a visual disability through the evacuation route.

Severe Weather Evacuation Options:

Individuals with disabilities or who are in need of assistance during an evacuation have three evacuation options based on their location in their building:

- Horizontal evacuation: If located on the ground or basement floor, severe weather shelter areas are located throughout each floor;
- Elevator evacuation: If there are no safe areas above the ground floor, the elevator may be used to evacuate to the ground or basement levels; and/or

MINNESOTA HOUSING
AFFIRMATIVE ACTION PLAN 2016-2018

- Shelter in Place: Seeking shelter in a designated severe weather shelter and remaining there until the all clear is used.

GOALS AND TIMETABLES

Through the utilization analysis, the Agency has determined which job categories are underutilized for women, minorities, and individuals with disabilities within the Agency and has set the following hiring goals for the next two years (Reference Table 2).

Table 2. Underutilization Analysis and Hiring Goals for 2016-2018

The second, third, and fourth columns of this chart show the number of underutilized individuals of each group in each category at this Agency. The fifth, sixth, and seventh columns show the Agency’s hiring goals for each group in each category.

Job Categories	Underutilization - # of Individuals			Hiring Goals for 2016-2018		
	Women	Racial/Ethnic Minorities	Individuals With Disabilities	Women	Racial/Ethnic Minorities	Individuals With Disabilities
Officials/Administrators		2			2	
Professionals						
Office/Clerical						
Technicians						

Availability:

Officials and Managers - Approximately half of the employees hired to this group are recruited externally, from the Minneapolis – St. Paul area. The other half are recruited internally, from the professionals group. In order to account for both of these recruitment pools, a 2 factor analysis was conducted. The internal Professionals group was one factor, and the external Minneapolis – St. Paul statistical area was the second factor.

Professionals – The vast majority of employees hired to this group are external and come from the Minneapolis – St. Paul area, so the Minneapolis – St. Paul statistical area was used to calculate availability. Since there is a diverse set of job titles in this category, a Composite Availability Analysis was conducted to weigh the availability for each job title and determine overall availability.

Office/Clerical and Technicians – The vast majority of employees hired to this group are external and come from the Minneapolis – St. Paul area, so the Minneapolis – St. Paul statistical area was used to calculate availability. Since there is less variation in the job duties (compared to the Professionals category), a composite availability was not used. Office/Clerical availability came from Occupation Code 43-000. Technicians availability came from Occupation Code 43-9021.

MINNESOTA HOUSING
AFFIRMATIVE ACTION PLAN 2016-2018

Underutilization Analysis worksheets are attached in the appendix. Numbers less than 10 are indicated with “<10” in accordance with Minnesota Management and Budget’s guidance on data privacy.

Women:

At the Agency, the population of women has remained the same, with no underutilization indicated. For the next year’s goals, the Agency will continue to review the number of women in each job category and ensure that the percentage of females does not significantly drop.

Minorities:

Officials and Administrators – While underutilization is still indicated in this category, in the past plan year, a minority employee was promoted from a manager level to a senior manager level, and two minority professionals were promoted to supervisor positions. However, the senior level manager was already part of the Officials and Administrators category, so did not count as an added member. And the two minority supervisors are considered part of the Professionals category, so they did count towards the overall goal.

One factor that makes this goal more challenging is that there has been significantly less turnover. There were only six promotions and hires in this group during the year. Three of these positions were senior leadership positions. One did result in a minority employee being promoted (as previously mentioned), and the other two had a candidate pool did not include any qualified minority candidates. The other three positions are at the management level, required highly specialized skills, and we were unable to find any minority candidates who were even close to as qualified as the candidates who were hired or promoted.

In order to meet the goal of hiring two minority employees to the Officials and Administrators job category, the Agency will have to continue to build external relationships and develop internal talent, paying particular attention to ensuring minority employees have opportunities to succeed, and ensuring that any barriers to advancement are being addressed. One initiative that the Agency has invested in is sending employees to the Emerging Leaders Institute. 60% of the candidates recommended to MMB were minorities.

Technicians - At the Agency, the population of minorities has increased in the Technicians job category. There were a large number of hires and promotions to this group – 26 altogether between July 1, 2014-June 30, 2016. 23% of these hires have been minorities.

Professionals and Office/Clerical – In these two categories, the population of minority employees has remained the same, with no underutilization indicated. For the next year’s goals, the Agency will continue to review the number of minorities to ensure that the percentage of minorities does not significantly drop.

MINNESOTA HOUSING
AFFIRMATIVE ACTION PLAN 2016-2018

Individuals with Disabilities:

The Agency conducts an anonymous survey to ask employees to indicate whether or not they are an individual with a disability. At the Agency, the population of individuals with disabilities has dropped from 15.72% to 11.76%, but with no underutilization indicated. For the next year's goals, the Agency will continue to review the number of individuals with disabilities in each job category and analyze what steps need to be taken so that the percentage of individuals with disabilities does not significantly drop.

AFFIRMATIVE ACTION PROGRAM OBJECTIVES

In pursuing the Agency's commitment to affirmative action, the Agency will take the following actions during 2016-2018:

Objective #1: Provide training, education, and ongoing resources to hiring managers and employees to ensure understanding of, and compliance with, Affirmative Action goals and timetables.

Action Steps:

- Create training materials for managers on Affirmative Action plan, the plan goals, as well as their role/responsibility in achieving the plan goals, as part of their training on recruitment.
- Assist managers with hiring strategies to attract and retain diverse employees.
- Keep managers up to date on underutilization in their department as they have recruitment needs.
- Provide training to new hires on the Affirmative Action Plan and their roles and responsibilities in regards to the plan.

Evaluation:

This objective was in the previous affirmative action plan. Training was offered to new managers on the Affirmative Action Plan, and will continue to be offered. In the previous year, a lack of effective tracking tools made it challenging to closely track underutilization, but with improved tools in Recruiting Solutions, it is anticipated that underutilization information can be provided in a more timely and effective manner.

Objective #2: Provide training and career development opportunities to employees that meet their professional development needs and develop an internal talent pool of qualified candidates for promotional opportunities, particularly women, minorities, and employees with disabilities.

Action Steps:

- Continue to provide Tuition Assistance Program to employees.
- Continue to provide the Mentor Program to employees.
- Encourage employees to apply for Emerging Leaders Institute, Senior Leadership Institute, Essentials of Supervision, Essentials of Management, and other leadership development courses to develop leadership bench strength within the Agency.
- Ensure sufficient funds are made available for training and development.

MINNESOTA HOUSING
AFFIRMATIVE ACTION PLAN 2016-2018

- Provide opportunities for employees to request training and encourage employees to proactively seek out training opportunities.
- Analyze develop opportunities to ensure women, minorities, and employees with disabilities are receiving equitable access to training.
- Provide an Individual Growth Plan template to assist employees with career planning.

Evaluation:

A similar objective was in the previous affirmative action plan, and all of the action steps listed were carried out. Highlights included:

- During the process of reviewing and recommending employees to participate in the Emerging Leaders Program, Agency leadership ensured that minority and female staff were represented. In 2015, 60% of the recommended employees were minorities, and 80% were female. In 2016, 60% of the recommended employees were minorities, and 100% were female.
- In the past two years, 19 employees have participated in the Tuition Assistance Program. 26% of these participants were minority employees and 68% were female.
- In the previous fiscal year, the Agency sponsored four employee and manager-related in-house trainings, and in the current fiscal year, the Agency will sponsor six employee and manager-related in-house trainings.

Objective #3: Promote a diverse and inclusive workplace atmosphere where employees feel valued and problems are solved effectively.

Action Steps:

- Offer trainings in variety of diversity-related topics for employees.
- Provide opportunities for learning through educational displays, enjoyable activities such as a themed potluck, and celebrations of diversity-related holidays.
- Conduct an employee engagement survey and create an action plan based on the results.
- The Cultural Competency Committee will continue to develop and implement an Agency-wide framework to foster a more culturally competent staff. The Cultural Competency Committee will work with management to build a more welcoming and inclusive workplace for all employees at Minnesota Housing.
- Assess all employees annually on their performance reviews on how well they've met the organizational objective of demonstrating commitment to building a professional, inclusive workplace that values cultural diversity.

MINNESOTA HOUSING
AFFIRMATIVE ACTION PLAN 2016-2018

- Ensure that reasonable accommodations are provided on a timely basis, with an efficient process that is not overly cumbersome for employees to navigate.

Evaluation:

A similar objective was in the previous affirmative action plan, and the action steps listed were carried out. Highlights included:

- A four-part training series on “Race: The Power of an Illusion” was offered to staff, with extremely positive response from employees.
- The Cultural Competency Committee was formed.
- The Committee completed an Organization Assessment to measure staff’s perceptions towards cultural competence, and conducted focus groups to follow up on issues raised during the assessment.
- The Committee began promoting information about various holidays, traditions, and celebrations.
- A work plan for the Committee has been developed, which includes additional diversity-related training for employees and manager.

METHODS OF AUDITING, EVALUATING, AND REPORTING PROGRAM SUCCESS

A. Pre-Employment Review Procedure/Monitoring the Hiring Process

The Agency will evaluate its selection process to determine if its requirements unnecessarily screen out a disproportionate number of women, minorities, individuals with disabilities, or veterans. Directors, managers, and supervisors will work closely with human resources and the Affirmative Action Officer in reviewing the requirements for the position, posting the position, and interviewing and selection to ensure that equal opportunity and affirmative action is carried out. Directors, managers, and supervisors will be asked to document their hiring decisions and equal opportunity professionals will review for bias. If a non-affirmative hire can't be justified, it will be documented as a missed opportunity. Agency leadership will be asked to authorize the missed opportunity. The Agency will report the number of affirmative and non-affirmative hires as well as missed opportunities to Minnesota Management and Budget on a quarterly basis.

When candidates are offered interviews, employees scheduling interviews will describe the interview format to the candidate and provide an invitation to request a reasonable accommodation for individuals with disabilities to allow the candidate equal opportunity to participate in the interview process. For example, describe if interview questions are offered ahead of time or what technology may be used during the interview process. This allows for an individual with a disability to determine if they may need a reasonable accommodation in advance of the interview.

All personnel involved in the selection process will be trained and accountable for the Agency's commitment to equal opportunity and the affirmative action program and its implementation.

B. Pre-Review Procedure for Layoff Decisions

The Affirmative Action Officer, in conjunction with the Agency's human resources office, shall be responsible for reviewing all pending layoffs to determine their effect on the Agency's affirmative action goals and timetables.

If it is determined that there is an adverse impact on protected groups, the Agency will document the reasons why the layoff is occurring, such as positions targeted for layoff, applicable personnel policies or collective bargaining agreement provisions, or other relevant reasons. The Agency will determine if other alternatives are available to minimize the impact on protected groups.

C. Other Methods of Program Evaluation

The Agency submits the following compliance reports to Minnesota Management and Budget as part of the efforts to evaluate the Agency's affirmative action program:

MINNESOTA HOUSING
AFFIRMATIVE ACTION PLAN 2016-2018

- Quarterly Monitoring the Hiring Process Reports;
- Biannual Affirmative Action Plan;
- Annual Americans with Disabilities Act Report;
- Annual Internal Complaint Report; and
- Disposition of Internal Complaint (within 30 days of final disposition).

The Agency also evaluates the Affirmative Action Plan in the following ways:

- Monitors progress toward stated goals by job category;
- Analyzes employment activity (hires, promotions, and terminations) by job category to determine if there is adverse impact;
- Analyzes compensation program to determine if there are patterns of discrimination;
- Reviews the accessibility of online systems, websites, and ensures that reasonable accommodations can be easily requested; and
- Discusses progress with Agency leadership on a periodic basis and makes recommendations for improvement.

RECRUITMENT PLAN

The objective of this recruitment plan is to ensure the Agency's recruitment programs are publicly marketed, attract, and obtain qualified applicants, enhance the image of state employment, and to assist in meeting the affirmative action goals to achieve a diverse workforce.

Recruitment costs incurred during the 2014-2016 plan year total: \$33,832.

Below are various recruitment methods or strategies utilized by the Agency during the past year.

A. Advertising Sources

During the 2014-2016 plan year, the Agency used a variety of advertising sources including:

LinkedIn. All jobs are posted on the Agency's LinkedIn page.

Jobs in Minneapolis. The Agency has a subscription and posts all jobs on this job board. This has been a very effective recruitment resource, yielding the highest number of applicants. Jobs in Minneapolis passes on all job postings to a variety of diversity and community resources to increase diversity outreach. In a recent three month period, 191 different diversity-related community organizations were contacted. A sample of recent diversity resources include:

- Accessibility, Inc.
- Achieve Minneapolis
- African Assistance Program
- Career Transitions for Women
- CLUES
- Disabled American Veterans
- Hmong American Partnership
- Minnesota Workforce Center
- Project for Pride in Living
- The Jeremiah Program
- Twin Cities Rise
- Veteran's Employment and Training Service
- Veterans Services
- Vocational Rehabilitation
- Women's Advocates
- YWCA

MINNESOTA HOUSING
AFFIRMATIVE ACTION PLAN 2016-2018

Monster.com. For some of our hard-to-fill positions, we utilize Monster.com to get the information out to a wide variety of potential candidates. We've found this to be a good resource for getting candidates.

Housing Resources. Most Agency jobs are in the housing industry and a variety of housing-specific advertising resources are used. These community groups and professional organizations do not tend to provide many applicants, so these are used on a more limited basis.

- HousingLink
- Metropolitan Consortium of Community Developers
- Minnesota Multihousing Association
- National Association of Housing and Redevelopment Officers
- National Council of State Housing Agencies

Employee Referrals. The Agency has a good track record of current employees referring applicants to the Agency. Hiring managers will work with current employees to see if there are any potential candidates in their network, particularly for hard-to-fill positions. When we survey our new hires, about 1/3 were encouraged to apply for a job by a current employee.

Agency website. When we survey our new hires, about 1/3 find out about the job they are ultimately hired from the Agency website. Many applicants indicate that they regularly check the Agency website for job postings. The website has become an effective tool for reaching out to potential candidates.

B. Job and Community Fairs

Minnesota Housing has opted not to participate in any job fairs or community events in the past year. Because most of the Agency's jobs require housing experience, these types of resources tend to not provide a good pipeline of candidates for the amount of investment involved.

In the next year, Agency staff may participate in job or community fairs if any occur that seem likely to include candidates from a housing background. The Agency will participate in any State-sponsored job fairs.

C. College and University Recruitment Events

Minnesota Housing staff attend the Humphrey School of Public Affairs Career Engagement Fair every year to recruit interns for the Agency's summer intern program. Humphrey School of Public Affairs has been a good source of interns, and many graduates have an interest in working for Minnesota Housing. This has been an effective strategy, and we will continue to

MINNESOTA HOUSING
AFFIRMATIVE ACTION PLAN 2016-2018

utilize it. In the past 2 years, the Agency has hired 4 total interns from Humphrey, including 1 minority intern.

D. Recruitment for Individuals with Disabilities

- Review of job postings for physical and sensory requirements and follow the Guidelines for Inclusive Job Postings.
 - Our Agency will review all job postings for physical and sensory requirements and determine if the qualifications for the position are job-related and consistent with business necessity. Additionally, our Agency will edit language pertaining to physical and sensory requirements and change this language to reflect more inclusive language for job qualifications.
- Self-Identification
 - At the time of application and once a year, our Agency will communicate to our employees that we collect summary data related to the number of individuals who have applied for positions and who are in our workforce. We will inform employees that we collect this summary data to make determinations about where we need to improve in terms of recruitment, selection, or retention of individuals with disabilities.
- Supported Worker
 - When our Agency posts a position, we will review the position for tasks that can be completed by a supported worker. We will work with VRS or the MMB State ADA Coordinator to assist us in our efforts.
- 700-Hour Program
 - Where possible, our Agency will utilize the 700-hour program which allows our Agency to hire an individual with a disability and provide them training. At the end of this period, our Agency can hire the individual.
- Reasonable Accommodation
 - We will prominently display on our career site that we will provide reasonable accommodation to qualified individuals with a disability who apply for our positions where needed. Once hired, we will educate employees and supervisors and managers on accommodating employees in the workplace.
- Strategic Partnerships
 - Our Agency will build strategic partnerships with DEED - Vocational Rehabilitation Services (“VRS”), DEED - State Services for the Blind (“SSB”), and other state Agency partners to conduct job evaluations and to assist in recruitment or referral of candidates to open positions. Our Agency will work to inform VRS or SSB when a position is posted or prior to a posting if possible about the positions. Additionally, we will post positions for at least 7 days to ensure equal opportunity to apply for the position.

MINNESOTA HOUSING
AFFIRMATIVE ACTION PLAN 2016-2018

- Self-Analysis
 - Our Agency will conduct periodic self-checks to determine if our systems or documents are accessible, language in our job postings is inclusive, and reasonable accommodations have been provided and staff have been trained on how to provide reasonable accommodations.
- Reporting
 - Our Agency will conduct a quarterly analysis of the number of individuals with disabilities who have applied for positions and the number of individuals with disabilities hired.

E. Relationship Building and Outreach

In order to best fill some hard-to-fill positions, networking resources were utilized in the past year. Recruiters from the Agency reached out to community organizations and local colleges with programs that relate closely to the work Minnesota Housing does in order to better develop a pool of candidates. These relationships have been an important tool for the Agency to connect to potential candidates. The Agency will continue to work on outreach efforts, particularly with colleges that have related programs.

F. Internships

The Research department successfully hired two summer interns during summer 2015 and two for summer 2016. These interns have been students from local colleges with an interest in housing. Agency staff have built relationships with local colleges in order to successfully recruit new interns.

Another source of interns has been the City of Minneapolis Step Up Program, which places disadvantaged high school students with paid internships. The Agency utilized a Step Up Intern in both 2015 and 2016.

In 2015, the Agency recruited a summer intern to help with a community engagement project about communities disproportionately affected by homelessness. In 2016, the Agency recruited an intern to assist the Agency during the legislative session. The intern came from the Capitol Pathways program, which places students of color with state agencies, nonprofits, and lobbying organizations that work on issues at the Capitol.

The majority of the interns and student workers hired have been minorities, which allows the Agency to expand its minority recruitment pool. The Agency will continue to evaluate and encourage the use of interns.

G. Supported Employment (M.S. 43A.191, Subd. 2(d))

The Agency supports the employment of individuals with disabilities and will review vacant positions to determine if job tasks can be performed by a supported employment workers.

MINNESOTA HOUSING
AFFIRMATIVE ACTION PLAN 2016-2018

We will work with community organizations that provide employment services to individuals with disabilities to recruit for these positions.

H. Additional Recruitment Activities

We survey our new hires to ask how they heard about the position they were hired to. We've found that this information is helpful in determining which recruitment resources and strategies to use.

RETENTION PLAN

The Agency is committed to not just the recruitment of women, minorities, individuals with disabilities, and veterans, but also to the retention of these protected groups.

A. Individual(s) Responsible for the Agency's Retention Program/Activities

Barb Sporlein, Deputy Commissioner
651-297-3125
Barb.sporlein@state.mn.us

Kim Luchsinger, Affirmative Action Officer
651-296-1509
Kim.luchsinger@state.mn.us

B. Separation and Retention Analysis by Protected Groups

- The percentage of women who separated from the Agency over the past two years is lower than the total percentage of women at the Agency. (58.82% separations or 40 total versus 71% female employees.)
- The percentage of employees with disabilities who separated from the Agency over the past two years is exactly equal to the total percentage of employees with disabilities at the Agency. (11.76% separations or 8 total versus 11.76% employees with disabilities.)
- The percentage of minorities who separated from the Agency over the past two years is higher than the total percentage of minority employees. (23.53% separations or 16 total versus 15.55% minority employees.) However, of the minorities who left the Agency, five were minority student workers, who were specifically hired for short-term appointments. Analyzing only the permanent minority employees who separated (11), there was 16.17% separation rate, which is similar to the total number of minority employees.

C. Methods of Retention of Protected Groups

Over the next two years, the Agency will focus on a variety of initiatives to ensure that protected groups are being retained. A few methods include:

- The Cultural Competency Committee will continue to develop and implement an Agency-wide framework to foster a more culturally competent staff, with the goal of building a more welcoming and inclusive workplace for all employees at Minnesota Housing.
- Provide training opportunities around diversity related topics.

MINNESOTA HOUSING
AFFIRMATIVE ACTION PLAN 2016-2018

- Continue to provide assistance and support with ergonomics and reasonable accommodation requests to ensure accessibility for all.
- Continue to offer a mentorship program to build internal capacity and help newer employees prepare for leadership or advancement opportunities.
- Continue to offer Tuition Assistance Program and pay for up to \$10,000 of tuition assistance for job-related degrees.
- Continue to administer the Employee Engagement Survey and use the results of the feedback to inform the Internal Engagement and Improvement Plan.
- Continue to support employees who apply for the Emerging Leaders and Senior Leader Institute. In 2015, 60% of the recommended employees were minorities, and 80% were female. In 2016, 60% of the recommended employees were minorities, and 100% were female.

APPENDIX

Complaint of Discrimination/Harassment Form

Minnesota Housing Finance Agency
400 N Sibley Street Suite 300
St. Paul, MN 55101
1-800-657-3769

Please Read Before Completion of Form

Any complaint of discrimination/harassment is considered confidential data under Minnesota Statute 13.39, Subd. 1 and 2. This information is being collected for the purpose of determining whether discrimination/harassment has occurred. You are not legally required to provide this information, but without it, an investigation cannot be conducted. This information may only be released to the Affirmative Action Officer or designee, the complainant, the respondent and appropriate personnel.

Complainant (You)		
Complainant's Name	Job Title	
Work Address	Telephone	
Agency	Division	Manager

Respondent (Individual Who Discriminated Against/Harassed You)		
Respondent's Name	Respondent's Job Title	
Respondent's Work Address	Respondent's Telephone	
Respondent's Agency	Division	Manager

MINNESOTA HOUSING
AFFIRMATIVE ACTION PLAN 2016-2018

The Complaint		
Basis of Complaint Place an "X" in the box for all that apply:		
<input type="checkbox"/> Race	<input type="checkbox"/> Disability	<input type="checkbox"/> Sexual Orientation
<input type="checkbox"/> Sex	<input type="checkbox"/> Marital Status	<input type="checkbox"/> Status with Regard to Public Assistance
<input type="checkbox"/> Age	<input type="checkbox"/> National Origin	<input type="checkbox"/> Membership or Activity in a Local Human Rights Commission
<input type="checkbox"/> Color	<input type="checkbox"/> Creed	<input type="checkbox"/> Religion
Date most recent act of discrimination/harassment took place:		If you filed this complaint with another Agency, give the name of that Agency:
Describe how you believe that you have been discriminated/harassed against (names, dates, places, etc.). Use a separate sheet of paper if needed and attach to this form.		

Information on Witnesses Who Can Support Your Case		
Witness Names	Witness Work Addresses	Witness Work Telephones

MINNESOTA HOUSING
AFFIRMATIVE ACTION PLAN 2016-2018

Additional witnesses may be listed in "Additional Information" or on a separate sheet attached to this form.		

This complaint is being filed on my honest belief that the State of Minnesota has discriminated against/harassed me. I hereby certify that the information I have provided in this complaint is true, correct, and complete to the best of my knowledge and belief.

Complainant Signature

Date

Affirmative Action Officer Signature

Date

Employee/Applicant Request for ADA Reasonable Accommodation Form



State of Minnesota – Minnesota Housing Finance Agency
Employee/Applicant Request for ADA Reasonable Accommodation Form

The State of Minnesota is committed to complying with the Americans with Disabilities Act (“ADA”) and the Minnesota Human Rights Act (“MHRA”). To be eligible for an ADA accommodation, you must be 1) qualified to perform the essential functions of your position and 2) have a disability that limits a major life activity or function. The ADA Coordinator/Designee will review each request on an individualized case-by-case basis to determine whether or not an accommodation can be made.

Employee Name

Job Title

Work Location

Data Privacy Statement: This information may be used by your Agency human resources representative, ADA Coordinator or designee, your Agency legal counsel, or any other individual who is authorized by your Agency to receive medical information for purposes of providing reasonable accommodations under the ADA and MHRA. This information is necessary to determine whether you have a disability as defined by the ADA or MHRA, and to determine whether any reasonable accommodation can be made. The provision of this information is strictly voluntary; however, if you refuse to provide it, your Agency may refuse to provide a reasonable accommodation.

Questions to clarify accommodation requested.

1. What specific accommodation are you requesting?
2. If you are not sure what accommodation is needed, do you have any suggestions about what options we can explore.
 - a. If yes, please explain.

Questions to document the reason for the accommodation request *(please attach additional pages if necessary).*

MINNESOTA HOUSING
AFFIRMATIVE ACTION PLAN 2016-2018

1. What, if any job function are you having difficulty performing?
2. What, if any employment benefit are you having difficulty accessing?
3. What limitation as result of your physical or mental impairment is interfering with your ability to perform your job or access an employment benefit?
4. If you are requesting a specific accommodation, how will that accommodation be effective in allowing you to perform the functions of your job?

Information Pertaining to Medical Documentation

In the context of assessing an accommodation request, medical documentation may be needed to determine if the employee has a disability covered by the ADA and to assist in identifying an effective accommodation.

The ADA Coordinator or designee in each Agency is tasked with collecting necessary medical documentation. In the event that medical documentation is needed, the employee will be provided with the appropriate forms to submit to their medical provider. The employee has the responsibility to ensure that the medical provider follows through on requests for medical information.

This authorization does not cover, and the information to be disclosed should not contain, genetic information. "Genetic Information" includes: Information about an individual's genetic tests; information about genetic tests of an individual's family members; information about the manifestation of a disease or disorder in an individual's family members (family medical history); an individual's request for, or receipt of, genetic services, or the participation in clinical research that includes genetic services by the individual or a family member of the individual; and genetic information of a fetus carried by an individual or by a pregnant woman who is a family member of the individual and the genetic information of any embryo legally held by the individual or family member using an assisted reproductive technology.

Employee Signature

Date

Agency Profile and Organizational Chart

For 40 years, Minnesota Housing has worked to provide access to safe, decent and affordable housing and to build stronger communities across the state. It has a national reputation as one of the finest housing finance agencies in the country and has built an enduring alliance among partners in the for-profit, non-profit and government sectors to achieve its mission.

Minnesota Housing offers products and services to help Minnesotans buy and fix up their homes and to stabilize neighborhoods, communities and families. It also supports the development and preservation of affordable rental housing through both financing and long term asset management.

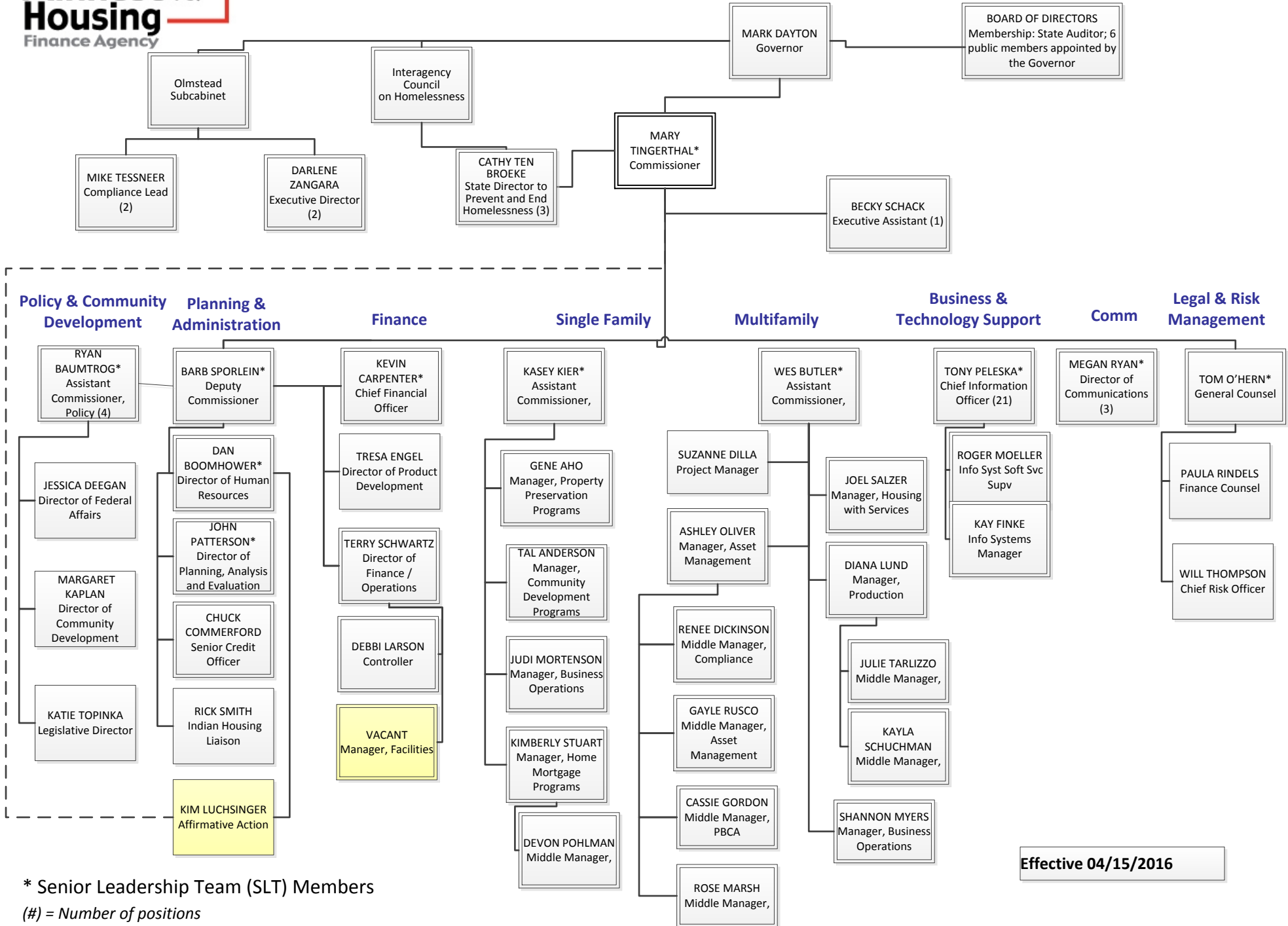
It has pioneered a successful model for supportive housing that helps stabilize the lives of some of the state's most vulnerable citizens.

Minnesota Housing Strategic Priorities

- Preserve housing with federal project-based rent assistance.
- Reduce Minnesota's racial and ethnicity homeownership disparity.
- Prevent and end homelessness.
- Finance housing responsive to Minnesota's changing demographics.
- Address specific and critical local housing needs.



AGENCY MANAGEMENT



Effective 04/15/2016

* Senior Leadership Team (SLT) Members
 (#) = Number of positions

Minnesota Housing Finance Agency

JOB CATEGORY AVAILABILITY/UTILIZATION/UNDERUTILIZATION ANALYSIS & ANNUAL GOALS

Worksheet for comparing incumbency to availability and setting goals to correct underutilization.

WOMEN									
Job Categories	Total Employees in Job Group	Total Number of Women in Group	% of Women in the Group	Availability %	Availability Number	AAP 2016-2018 Number Underutilized	AAP 2014-2016 Underutilized	Improved, Not Improved, Same	Numerical Difference in the Two Plans
Officials/Administrators	34	19	55.88%	54.86%	19	0	0	Same	
Professionals	159	111	69.81%	51.26%	82	0	0	Same	
Protective Services: Sworn			#DIV/0!		0	0			
Protective Services: Non-sworn			#DIV/0!		0	0			
Office/Clerical	19	17	89.47%	72.50%	14	0	0	Same	
Technicians	26	22	84.62%	79.80%	21	0	0	Same	
Skilled Craft			#DIV/0!		0	0			
Service Maintenance			#DIV/0!		0	0			
Totals	238	169	71.01%						

MINORITIES									
Job Categories	Total Employees in Job Group	Total Number of Minorities in Group	% of Minorities in the Group	Availability %	Availability Number	AAP 2016-2018 Number Underutilized	AAP 2014-2016 Underutilized	Improved, Not Improved, Same	Numerical Difference in the Two Plans
Officials/Administrators	34	2	5.88%	13.09%	4	2	2	Same	0
Professionals	159	27	16.98%	10.75%	17	0	0	Same	
Protective Services: Sworn			#DIV/0!		0	0			
Protective Services: Non-sworn			#DIV/0!		0	0			
Office/Clerical	19	5	26.32%	14.30%	3	0	0	Same	
Technicians	26	3	11.54%	12.90%	3	0	2	Improved	2
Skilled Craft			#DIV/0!		0	0			
Service Maintenance			#DIV/0!		0	0			
Totals	238	37	15.55%						

INDIVIDUALS WITH DISABILITIES									
Job Categories	Total Employees in Job Group	Total Number of Indiv./ with Disabilities in Group	% of Indiv. w/ Disabilities in the Group	Availability %	Availability Number	AAP 2016-2018 Number Underutilized	AAP 2014-2016 Underutilized	Improved, Not Improved, Same	Numerical Difference in the Two Plans
Officials/Administrators	34	6	17.65%	8.53%	3	0	0	Same	
Professionals	159	16	10.06%	7.00%	11	0	0	Same	
Protective Services: Sworn			#DIV/0!	7.00%	0	0			
Protective Services: Non-sworn			#DIV/0!	7.00%	0	0			
Office/Clerical	19	2	10.53%	7.00%	1	0	0	Same	
Technicians	26	4	15.38%	7.00%	2	0	0	Same	
Skilled Craft			#DIV/0!	7.00%	0	0			
Service Maintenance			#DIV/0!	7.00%	0	0			
Totals	238	28	11.76%						

Source: American Fact Finder, operated by the U.S. Census Bureau. Labor Statistics for women and minorities compiled from the American Community Survey (2006-2010)., released in March of 2013. Statistics for individuals with disabilities are taken from OFCCP (Office of Federal Contract Compliance Programs) and are based upon data derived from the American Community Surveys (2006-2010). Officials and Managers Group - taken from 2 factor analysis.

Composite Availability Worksheet

Worksheet for calculating average external availability percentages for a job group, weighted by the relative sizes of the job titles within the group.

Company name: Minnesota Housing Finance Agency

Job Group: Professionals

Job Titles	Occupation Code Used	Number of employees in job title	Women		Minorities	
			% Available (census data)	Weighted % (C x D)	% Available (census data)	Weighted % (C x E)
Architect 2	17-1010	3	24.00	72	6.20	18.6
Buyer 1	13-1022	1	56.10	56.1	10.10	10.1
ISS Mgr, ISS Supv	11-3021	2	34.70	69.4	12.10	24.2
HR Spec	13-1070	2	74.50	149	15.20	30.4
Hsg Prog Supv	11-9141	7	59.90	419.3	9.10	63.7
Accountant	13-2011	7	56.30	394.1	9.80	68.6
Hsg Dev Officer, Int, Sr, Spec	13-1041	106	55.70	5904.2	7.10	752.6
Hsg Financial Analyst	13-2051	8	35.50	284	14.50	116
Info Tech Spec	15-000	17	26.90	457.3	19.10	324.7
State Prog Admin, Mgt Analyst	27-3090	5	66.90	334.5	58.20	291
Systems Architect (Admin Systems Supv)	15-1143	1	9.70	9.7	9.40	9.4
				0		0
				0		0
Totals		159		8149.6		1709.3

F

G

H

Labor Area (county, metropolitan area, state, or other source of statistics)
DEED 2010 Minneapolis - St. Paul Metropolitan Statistical Area

Job Group Availability		
Women		Minorities
(G ÷ F)		(H ÷ F)
51.26		10.75

Use the percentages above right to complete the 2 Factor Availability Analysis and/or the Job Group Availability/Utilization/ Underutilization and Goals Analysis. Include this worksheet with your AAP.

Minnesota Housing Finance Agency

TWO-FACTOR AVAILABILITY ANALYSIS

Worksheet for calculating job group availability percentages, considering internal and external availability.

Job Category: _____ Officials and Managers

A		ASSIGNED WEIGHT (%)
Internal Availability		50.00%
External Availability		50.00%
Total Assigned Weight (must equal 100%)		100.00%

		WOMEN	
		Initial Statistics (%)	Weighted Statistics
Internal Availability	B	69.81%	34.91%
External Availability	C	39.90%	19.95%

		MINORITIES	
		Initial Statistics (%)	Weighted Statistics
	D	16.98%	8.49%
	E	9.20%	4.60%

		INDIVIDUALS WITH DISABILITIES	
		Initial Statistics (%)	Weighted Statistics
	F	10.06%	5.03%
	G	7.00%	3.50%

JOB GROUP AVAILABILITY (%)		
Women	Minorities	Individuals with Disabilities
54.86%	13.09%	8.53%

J		SOURCE OF INITIAL STATISTICS
Internal Availability		Agency Professional Group
External Availability		DEED 2010 Minneapolis - St. Paul Metropolitan Statistical Area

Use the percentages above to complete the Job Category Availability/Utilization/Underutilization Analysis and Goals worksheet. Include this worksheet with your AAP.

Minnesota Housing Finance Agency

SEPARATION ANALYSIS

Worksheet for conducting separation analysis of protected group members as total separations and in each job category.

July 1, 2014-June 30, 2016

TOTAL SEPARATIONS								
Types of Separation	Total Number	Total Percentage	Total Number of Women	Percentage of Women	Total Number of Minorities	Percentage of Minorities	Total Number of Indiv w/Disabilities	Percentage of Indiv w/Disabilities
Dismissal or Non-Certification	2	2.94%	2	100.00%	1	50.00%	1	50.00%
Resignations	27	39.71%	17	62.96%	9	33.33%	1	3.70%
Enhanced Separation		0.00%		0.00%		0.00%		0.00%
Retirement	20	29.41%	9	45.00%	0	0.00%	3	15.00%
Deaths		0.00%		0.00%		0.00%		0.00%
Lay-off	4	5.88%	4	100.00%	1	25.00%	2	50.00%
Termination without Rights (Temporary Appt End)	15	22.06%	8	53.33%	5	33.33%	1	6.67%
Total Separations	68	100.00%	40	58.82%	16	23.53%	8	11.76%

OFFICIALS/ADMINISTRATORS								
Types of Separation	Total Number	Total Percentage	Total Number of Women	Percentage of Women	Total Number of Minorities	Percentage of Minorities	Total Number of Indiv w/Disabilities	Percentage of Indiv w/Disabilities
Dismissal or Non-Certification		0.00%		0.00%		0.00%		0.00%
Resignations	3	21.43%	1	33.33%	0	0.00%		0.00%
Enhanced Separation		0.00%		0.00%		0.00%		0.00%
Retirement	7	50.00%	3	42.86%	0	0.00%	1	14.29%
Deaths		0.00%		0.00%		0.00%		0.00%
Lay-off		0.00%		0.00%		0.00%		0.00%
Termination without Rights (Temporary Appt End)	4	28.57%	1	25.00%	0	0.00%	1	25.00%
Total Separations	14	100.00%	5	35.71%	0	0.00%	2	14.29%

PROFESSIONALS								
Types of Separation	Total Number	Total Percentage	Total Number of Women	Percentage of Women	Total Number of Minorities	Percentage of Minorities	Total Number of Indiv w/Disabilities	Percentage of Indiv w/Disabilities
Dismissal or Non-Certification		0.00%		0.00%		0.00%		0.00%
Resignations	19	57.58%	11	57.89%	8	42.11%	1	5.26%
Enhanced Separation		0.00%		0.00%		0.00%		0.00%
Retirement	11	33.33%	5	45.45%	0	0.00%	1	9.09%
Deaths		0.00%		0.00%		0.00%		0.00%
Lay-off	1	3.03%	1	100.00%	0	0.00%		0.00%
Termination without Rights (Temporary Appt End)	2	6.06%	1	50.00%	0	0.00%		0.00%
Total Separations	33	100.00%	18	54.55%	8	24.24%	2	6.06%

PROTECTIVE SERVICES: SWORN								
Types of Separation	Total Number	Total Percentage	Total Number of Women	Percentage of Women	Total Number of Minorities	Percentage of Minorities	Total Number of Indiv w/Disabilities	Percentage of Indiv w/Disabilities
Dismissal or Non-Certification		0.00%		0.00%		0.00%		0.00%
Resignations		0.00%		0.00%		0.00%		0.00%
Enhanced Separation		0.00%		0.00%		0.00%		0.00%
Retirement		0.00%		0.00%		0.00%		0.00%
Deaths		0.00%		0.00%		0.00%		0.00%
Lay-off		0.00%		0.00%		0.00%		0.00%
Termination without Rights (Temporary Appt End)		0.00%		0.00%		0.00%		0.00%
Total Separations	0	0.00%	0	0.00%	0	0.00%	0	0.00%

PROTECTIVE SERVICES: NON-SWORN								
Types of Separation	Total Number	Total Percentage	Total Number of Women	Percentage of Women	Total Number of Minorities	Percentage of Minorities	Total Number of Indiv w/Disabilities	Percentage of Indiv w/Disabilities
Dismissal or Non-Certification		0.00%		0.00%		0.00%		0.00%
Resignations		0.00%		0.00%		0.00%		0.00%
Enhanced Separation		0.00%		0.00%		0.00%		0.00%
Retirement		0.00%		0.00%		0.00%		0.00%
Deaths		0.00%		0.00%		0.00%		0.00%
Lay-off		0.00%		0.00%		0.00%		0.00%
Termination without Rights (Temporary Appt End)		0.00%		0.00%		0.00%		0.00%
Total Separations	0	0.00%	0	0.00%	0	0.00%	0	0.00%

OFFICE/CLERICAL								
Types of Separation	Total Number	Total Percentage	Total Number of Women	Percentage of Women	Total Number of Minorities	Percentage of Minorities	Total Number of Indiv w/Disabilities	Percentage of Indiv w/Disabilities
Dismissal or Non-Certification	2	25.00%	2	100.00%	1	50.00%	1	50.00%
Resignations	2	25.00%	2	100.00%	1	50.00%		0.00%
Enhanced Separation		0.00%		0.00%		0.00%		0.00%
Retirement		0.00%		0.00%		0.00%		0.00%
Deaths		0.00%		0.00%		0.00%		0.00%
Lay-off	3	37.50%	3	100.00%	1	33.33%	2	66.67%
Termination without Rights (Temporary Appt End)	1	12.50%	1	100.00%		0.00%		0.00%
Total Separations	8	100.00%	8	100.00%	3	37.50%	3	37.50%

TECHNICIANS								
Types of Separation	Total Number	Total Percentage	Total Number of Women	Percentage of Women	Total Number of Minorities	Percentage of Minorities	Total Number of Indiv w/Disabilities	Percentage of Indiv w/Disabilities
Dismissal or Non-Certification		0.00%		0.00%		0.00%		0.00%
Resignations	3	27.27%	3	100.00%		0.00%		0.00%
Enhanced Separation		0.00%		0.00%		0.00%		0.00%
Retirement	2	18.18%	1	50.00%		0.00%	1	50.00%
Deaths		0.00%		0.00%		0.00%		0.00%
Lay-off		0.00%		0.00%		0.00%		0.00%
Termination without Rights (Temporary Appt End)	6	54.55%	3	50.00%	3	50.00%		0.00%
Total Separations	11	100.00%	7	63.64%	3	27.27%	1	9.09%

SKILLED CRAFT								
Types of Separation	Total Number	Total Percentage	Total Number of Women	Percentage of Women	Total Number of Minorities	Percentage of Minorities	Total Number of Indiv w/Disabilities	Percentage of Indiv w/Disabilities
Dismissal or Non-Certification		0.00%		0.00%		0.00%		0.00%
Resignations		0.00%		0.00%		0.00%		0.00%
Enhanced Separation		0.00%		0.00%		0.00%		0.00%
Retirement		0.00%		0.00%		0.00%		0.00%
Deaths		0.00%		0.00%		0.00%		0.00%
Lay-off		0.00%		0.00%		0.00%		0.00%
Termination without Rights (Temporary Appt End)		0.00%		0.00%		0.00%		0.00%
Total Separations	0	0.00%	0	0.00%	0	0.00%	0	0.00%

SERVICE MAINTENANCE								
Types of Separation	Total Number	Total Percentage	Total Number of Women	Percentage of Women	Total Number of Minorities	Percentage of Minorities	Total Number of Individ w/Disabilities	Percentage of Individ w/Disabilities
Dismissal or Non-Certification		0.00%		0.00%		0.00%		0.00%
Resignations		0.00%		0.00%		0.00%		0.00%
Enhanced Separation		0.00%		0.00%		0.00%		0.00%
Retirement		0.00%		0.00%		0.00%		0.00%
Deaths		0.00%		0.00%		0.00%		0.00%
Lay-off		0.00%		0.00%		0.00%		0.00%
Termination without Rights (Temporary Appt End)		0.00%		0.00%		0.00%		0.00%
Total Separations	0	0.00%	0	0.00%	0	0.00%	0	0.00%