

Drive
SAFE

Work
SAFE

Live
SAFE

TM

Minnesota Safety Council 2016 Annual Report

Making a Difference . . .



Making a Difference in 2016

Making a difference: It's the title of our annual report — and it's our purpose.

How can the Minnesota Safety Council make a difference? That's the question we ask in staff and board meetings, when we meet with members, when we meet with our partners, when we gather with other safety councils from across the country. It's a tough one to answer.

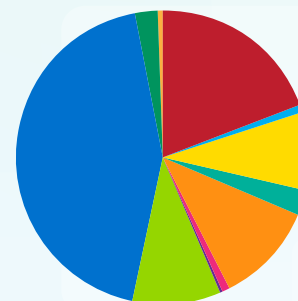
It's easier to point out where we need to focus. Driving is still a huge risk for teenagers and young adults. Poisoning, largely via misuse of prescription drugs, is the serious concern in middle age. Falls are a major threat for older adults. In the workplace, lifting, sprains, falls, fractures and cuts — all the usual suspects — remain key issues.

So how can we make a difference? We reach out, we train, we connect safety professionals, we speak out about safety issues, we find partners and we look for strategies, programs and tools that work. As we report on 2016 and look to 2017, we know the Safety Council staff, board, partners and colleagues will all continue to work hard to make a difference for Minnesotans.

– Michael Dougherty
CHAIRMAN
BOARD OF DIRECTORS

– Paul Aasen
PRESIDENT

MSC Reach FY 2016



TOTAL: 191,838

+124,130 visitors to our website

Injury in Minnesota

On average each year,
unintentional injuries/accidents cause:

2,130
DEATHS

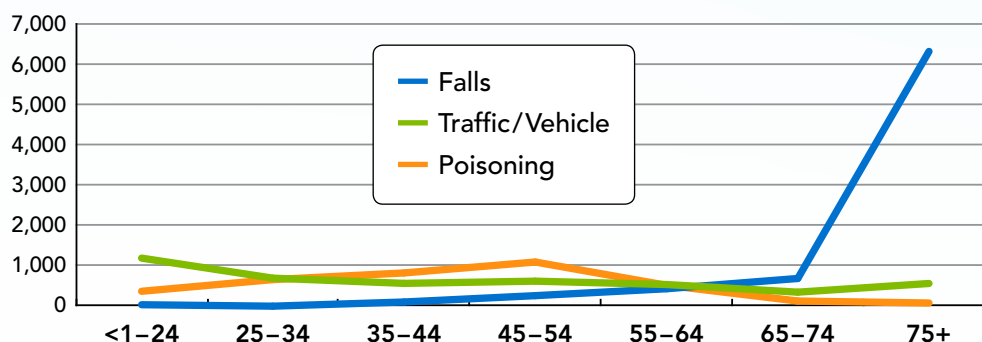
21,000
HOSPITAL STAYS

233,000

EMERGENCY DEPARTMENT VISITS

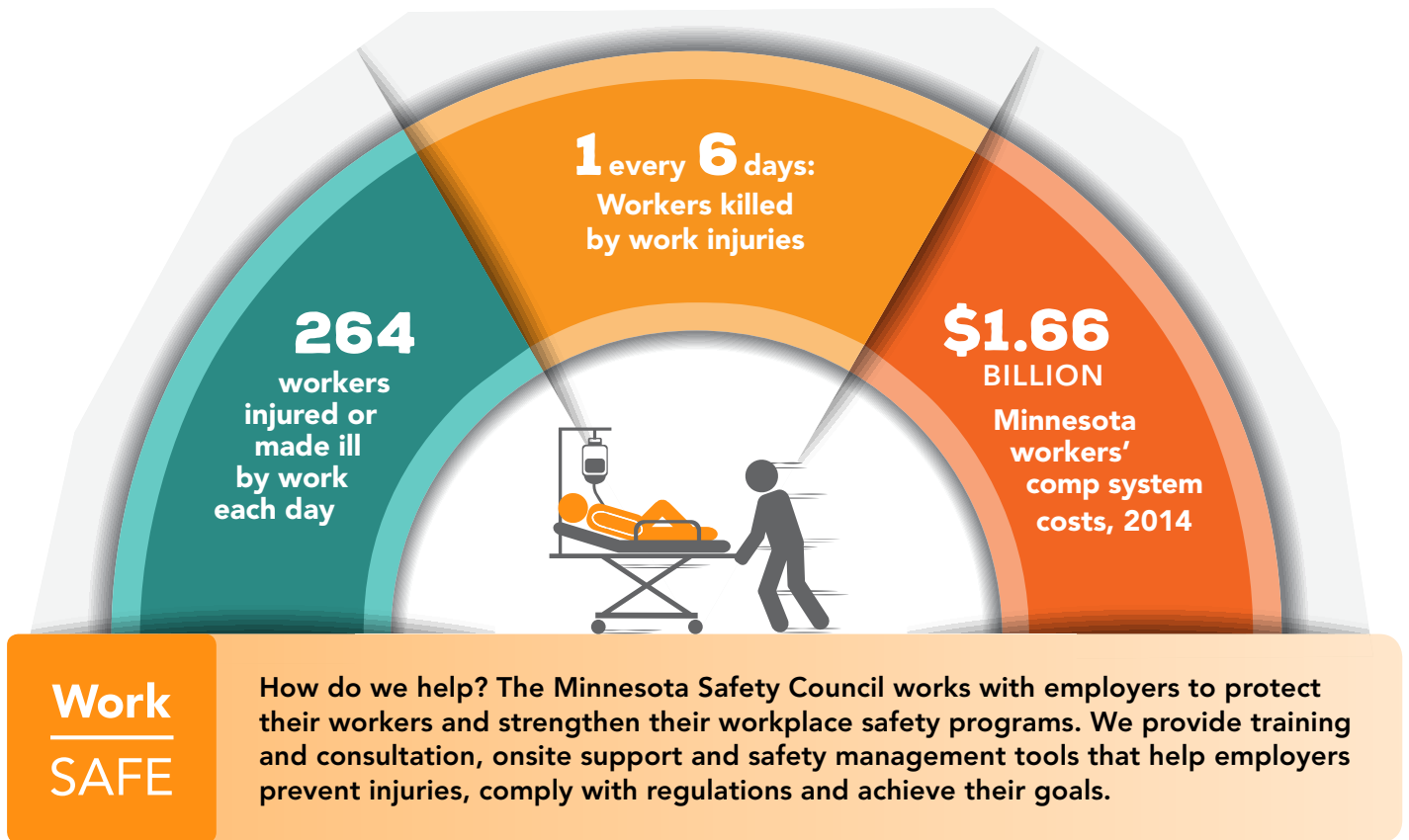
What's the cost? **\$1.77** BILLION
IN TRAFFIC CRASHES ALONE (2015)

Leading Causes of Unintentional Injury Death in MN, by Age, 2005–2014



Source: Minnesota Department of Health

Making a Difference... in Minnesota's Workplaces



Partners in Safety: Our Members

2,000+
member organizations

300,000+
employees

95%
member retention rate

- ▶ **8** regional member groups
- ▶ **32** regional group meetings
- ▶ **5,000** safety professionals connect in online community
- ▶ **6,600** people reached at 29 safety and health events

First Aid/CPR/AEDs

262 instructors statewide

13,178 people trained

25% increase from 2015



Occupational Safety Training & Consultation

150
workplace
safety topics

308
classes
statewide

7,433
workers
trained

89
onsite
consultations

- ▶ **1,443** attendees at the Minnesota Safety & Health Conference
- ▶ **289** attendees at regional conferences in Bemidji and Duluth
- ▶ **316** employers recognized through the Governor's Safety Awards
- ▶ Minnesota's only OSHA Education Center host site

Capacity Building

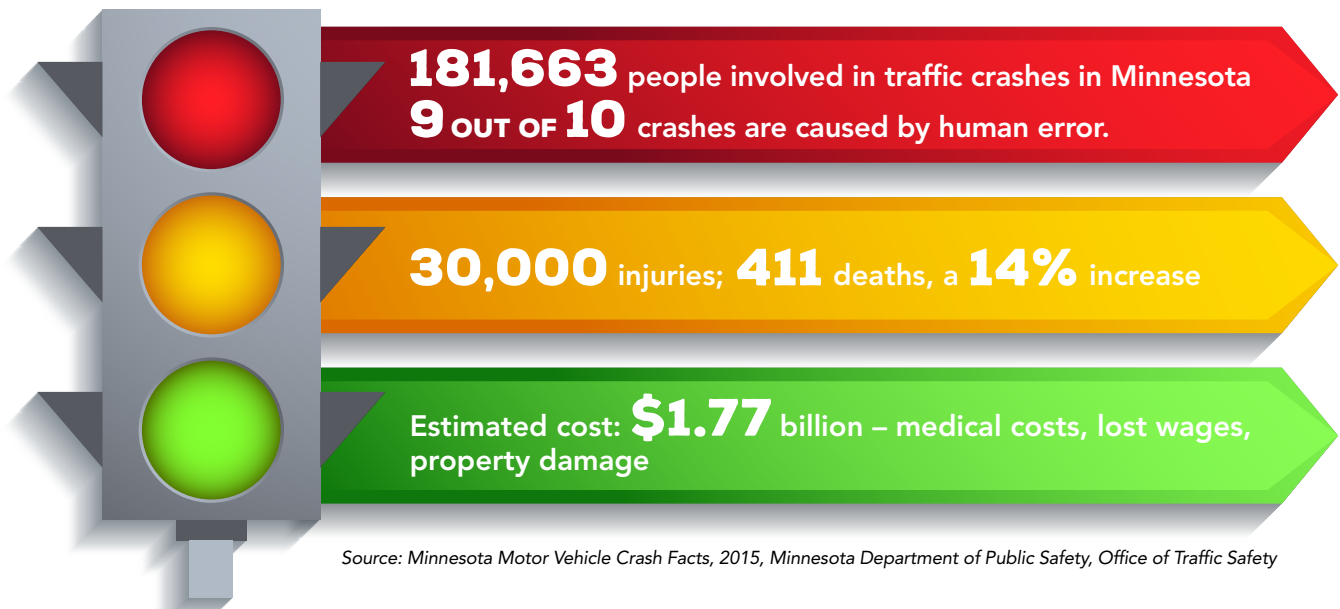
40% increase in Train-the-Trainer PLUS attendance

20 training videos loaned/week

Provided access to critical online tools:

- Learning systems
- Chemical management
- Safety management

Making a Difference... on the Road



Drive SAFE

The Safety Council helps drivers, passengers, bikers and walkers make safer choices on our roads. We offer workplace- and community-based defensive driving courses; professional driver/commercial vehicle training and consultation; and work/community/web-based strategies, programs and resources that help reduce traffic injuries and deaths.

Workplace Training and Consultation

3,575 received defensive driving/traffic safety education

2,204 onsite consultations: DOT compliance, HazMat transport, customized training

2,018 employees took part in 37 presentations on impaired/distracted/drugged driving through the Network of Employers for Traffic Safety (NETS)

"Five of my staff and I were at a Defensive Driving course . . . we were so pleased with it! We all felt like we learned a lot, and our on-site trainers feel like they have a lot more knowledge as they assess our van drivers. It really was an excellent class."

– Carol Kampfer, Training Coordinator, Chrestomathy, Inc.

Safer Roads for Kids, Teens and Seasoned Drivers

21,818 seniors refreshed defensive driving skills

Statewide network of **300+** community-based instructors

3,070 safe driving pledges collected through AT&T "It can Wait" campaign for teens and employers

Child car seat checks offered twice a month through Safe Kids MN

Partnerships

WE WORK WITH:

- ▶ Minnesota Toward Zero Deaths
- ▶ Safe Routes to School
- ▶ Minnesota Operation Lifesaver railroad safety program
- ▶ Mobility for Minnesota's Aging Population

Making a Difference... in our Homes & Communities



Live SAFE

The Safety Council provides information, strategies, injury-prevention programs, and tools like bike helmets and smoke alarms. We work directly with children and families, and in partnership with other safety and health programs to save lives, prevent disabling injuries and help all of us live to our full potential.

Safe Kids and Families

1,089 people reached, 523 car seats checked at 23 Safe Kids car seat events statewide

500 students benefited from a Safe Kids grant to Weaver Elementary that funded improvements to make walking and biking to school safer

350 children on Summer Safety Safari at Como Zoo earned free bike helmets from AAA

Collaborating for Strategies & Solutions

COORDINATOR OF:
Safe Kids Minnesota,
including five
coalitions statewide



A PARTNER IN:

- ▶ Minnesota Fall Prevention Coalition
- ▶ Farm Safety Working Group

Safety Tools for Home, Work and Play

DELIVERED THROUGH MEMBERS AND OTHER PARTNERS:

1,495
bicycle
helmets

508
first aid
kits

279
vehicle
safety kits

210
cooling
cloths

181
carbon monoxide
alarms

plus weather radios,
battery-free flashlights,
smoke alarms



"Thank you so very much for the bike helmets for our children in the Rochester Literacy Program. [It] is very much appreciated and will help to keep our children safe!"

– Peggy O'Toole-Martin,
Program Manager

Contributions

The following individuals and organizations contributed to the mission of the Minnesota Safety Council in fiscal year 2016:

Lakeland Foundation
Minnesota Safety Council Board
of Directors
Minnesota Safety Council Staff

Paul Aasen
Debra Boardman
Bryan Bruley
Vicki Daca
Michael Dougherty
Janet Fedora
Mark Helland
Regina Hoffman
Lisa Kons
Ann Kulenkamp
Angie Kupczak
Jeffery Lovig
Robert T. Lund
Linda McNurlin
Mike Noonan
Bradley Oachs
Jeffrey Ogden
Erin Petersen
Ken Peterson
Susan Rankin
Steven Rauh
Kristin Rebertus
Walter (Rocky) Rockenstein
Wade Salstrom
Joy Schreder
Cary Swenson
Alan Terwedo
Sheila Thao
Jason Ward
Susan Woodhall
Kristy Zack

GIFTS IN KIND

Lloyd Grooms

Traffic Safety Programs

AAA Minnesota/Iowa
Minnesota Department of Public
Safety/Office of Traffic Safety
(NETS)
State Farm Insurance Company

Minnesota Safety & Health Conference

PRESENTING SPONSORS

AAA Minnesota/Iowa
Andersen Corporation
CenterPoint Energy
Minnesota Power and
ALLETE Company
Otter Tail Power Company
Sanford Health Occ Med
SFM Companies
Xcel Energy

GIFTS IN KIND

Bluestem Brands, Inc.
Hilton Minneapolis
J.J. Keller & Associates
MANCOMM
MSDS Online
Pearson's Candy Company
Philips Corporation
Red Wing Shoes
SOS Technologies
Totally Chocolate

Family Safety Including Safe Kids Minnesota

GENERAL SUPPORT

American Society of Safety
Engineers, Northwest Chapter
The Margaret Rivers Fund
Martha Wilcox
Safe Kids Worldwide

CHILDHOOD INJURY SUMMIT

Children's Hospitals and Clinics
of Minnesota
Emergency Medical Services
for Children
Hennepin County Medical Center
Johnson & Johnson
Mayo Clinic
Minnesota Department of Health
North Memorial Medical Center
Regions Hospital/Gillette
Children's Specialty Health Care
University of Minnesota
Masonic Children's Hospital

These committed Minnesota Safety Council members contributed generously over and above their membership dues to support our Family Safety Programs

Adolfson & Peterson, Inc.
All Home Health, Inc.
Arvig
Baldinger Baking Company
Bituminous Roadways, Inc.
E. J. Ajax & Sons, Inc.
Electronic Design Company (EDC)
Engineering America, Inc.
Eye Kraft Optical, Inc.
Ingersoll Rand
Lakes Gas Company
Long Prairie Packing Company

Malco Products, Inc.
Minncast, Inc.
North Central Door Company
Northern Foundry, LLC
Pace Industries
POET Biorefining - Glenville
Quality Pork Processors, Inc.
Savanna Pallets
SFM Mutual Insurance Company
SunOpta Food Group
Thiele Technologies, Inc.
W.P. & R.S. Mars Company

The Minnesota Safety Council is a 501(c)(3) organization; all gifts are tax deductible.

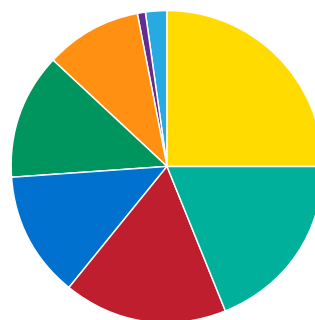
2016 YEAR ENDED JUNE 30

Statement of Financial Position

TOTAL ASSETS	\$3,034,930
LIABILITIES AND NET ASSETS	
Accounts payable and other current liabilities	\$310,309
Long-term liabilities	\$1,476,174
Unrestricted net assets	\$1,211,701
Temporarily restricted net assets	\$36,746
TOTAL LIABILITIES AND NET ASSETS	\$3,034,930

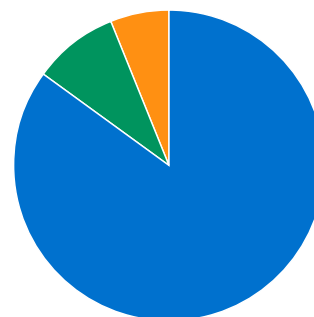
Statement of Activities

REVENUE AND SUPPORT	
Earned income	\$3,865,472
Other	\$135,548
TOTAL REVENUE AND SUPPORT	\$4,001,020
TOTAL EXPENSES	\$3,972,523
Change in unrestricted net assets	\$28,497
Change in temporarily restricted net assets	(\$9,729)
Change in net assets	\$18,768



SOURCES OF REVENUE

- Occupational (25%)
- Membership (19%)
- First Aid (17%)
- Traffic (13%)
- Conference (13%)
- Safety Products (10%)
- Community Programs (1%)
- Other (2%)



EXPENSES

- Program Services (85%)
- Management and General (9%)
- Fund Development (6%)

MINNESOTA SAFETY COUNCIL BOARD OF DIRECTORS

OFFICERS

CHAIR

BOARD OF DIRECTORS

Michael Dougherty

Retired (formerly of Valspar, 3M, MNSCU)

CHAIR-ELECT

BOARD OF DIRECTORS

Bradley W. Oachs

Chief Operating Officer, Minnesota Power, an ALLETE Company

CHAIR

BOARD OF TRUSTEES

Robert T. Lund

President and CEO, SFM Mutual Insurance Company

PRESIDENT

Paul W. Aasen

CEO, Minnesota Safety Council

SECRETARY

Debra Boardman

President and CEO, Fairview Range Regional Health Services

VICE PRESIDENT FINANCE

Susan D. Woodhall

Vice President, Bremer Financial Services, Inc.

VICE PRESIDENTS

Bryan Bruley

Regional Operations Director, CenterPoint Energy

Mark Helland

Vice President, Customer Service, Otter Tail Power Company

Jeffrey S. Ogden

Chief Administrative Officer, University of Minnesota School of Dentistry

DIRECTORS

Paul L. Acito

Vice President and General Manager, 3M Traffic Safety and Security Division

Jean Bye

President and CEO, Dotson Iron Castings

Jamison Harrell-Latham

President, Northwest Chapter, American Society of Safety Engineers

Phillip L. Jensen

President, Upper Midwest Section, American Industrial Hygiene Association

Ginny Kremer

Senior Vice President, Compliance and Credit Exam, Bremer Financial Services, Inc.

Mike Noonan

Vice President, Business Services, Red Wing Brands of America, Inc.

Ken Peterson

Commissioner, Minnesota Department of Labor and Industry

Shelly Peterson

Vice President and General Manager, Minnesota Office, Oscar J. Boldt Construction Company

Susan Rankin

Vice President Manufacturing, Land O'Lakes, Inc.

Kristin Rebertus

Director, Enterprise Risk Management, CHS, Inc.

Joy Schreder

Vice President, State Farm Insurance

Ron Vetter

President, Vetter Stone Company

Jason Ward

President, AAA Minnesota/Iowa

Paul Weirtz

President, AT&T Minnesota

NOT A MEMBER OF THE MINNESOTA SAFETY COUNCIL?

Join the 2,000-plus employers who take advantage of membership to support their safety programs, increase productivity and stay competitive. We help members prevent employee injuries, reduce costs and achieve their safety goals. Members are eligible for free programs, resources and services; special rates on training and consulting; regional meetings; our online member community and much, much more. To learn more, contact Jeff Lovig at jeff.lovig@minnesotasafetycouncil.org; 651-228-7307/800-444-9150.

Our Mission

To make Minnesota a safer and healthier place to live by helping you prevent unintentional injuries at work, on the road, at home and at play.

CONNECT WITH US



MINNESOTA
SAFETY
COUNCIL



Making Minnesota A Safer Place To Live
 Chapter of the National Safety Council

474 Concordia Avenue
Saint Paul, MN 55103
Phone: 651-291-9150/800-444-9150
Fax: 651-291-7584

minnesotasafetycouncil.org