

June 2011



Minnesota State Grant End-of-Year Statistics Fiscal Year 2010



Author

Meredith Fergus

Policy Analyst

Tel: 651-259-3963

Meredith.Fergus@state.mn.us

About the Minnesota Office of Higher Education

The Minnesota Office of Higher Education is a cabinet-level state agency providing students with financial aid programs and information to help them gain access to post-secondary education. The agency serves as the state's clearinghouse for data, research and analysis on post-secondary enrollment, financial aid, finance and trends.

The Minnesota State Grant Program, which is administered by the agency, is a need-based tuition assistance program for Minnesota students. The agency oversees tuition reciprocity programs, a student loan program, Minnesota's 529 College Savings Program, licensing and an early awareness outreach initiative for youth. Through collaboration with systems and institutions, the agency assists in the development of the state's education technology infrastructure and shared library resources.

Minnesota Office of Higher Education

1450 Energy Park Drive, Suite 350
St. Paul, MN 55108-5227

Tel: 651.642.0567 or 800.657.3866

TTY Relay: 800.627.3529

Fax: 651.642.0675

E-mail: info@ohe.state.mn.us

www.getreadyforcollege.org

www.ohe.state.mn.us

MINNESOTA
OFFICE OF
HIGHER
EDUCATION

reach higher

Table of Contents

Introduction.....	5
Fiscal Year 2010 Applicants.....	6
Fiscal Year 2010 Recipients	7
Postsecondary Institution Choice.....	9
Family Circumstances.....	12
Registration Load.....	13
Special Analysis.....	17
What happened in Fiscal Year 2010?	17
Minnesota State Grant Fiscal Year 2010	23
Additional Tables: Number of Recipients, Combined Pell and State Grant Awarded and State Grant Amount Awarded by Family Type, Registration Load, Institution Type, and Family Adjusted Gross Income.....	23
Number of Recipients and Amount Awarded by Institution	35

Introduction

The Minnesota State Grant program is a need-based financial aid program created to assist Minnesota resident undergraduates attending public and private postsecondary institutions in Minnesota. The program was first established in 1969 and in Fiscal Year 2010 awarded approximately \$168 million in gift aid to 103,000 students. The program is designed to complement the federal Pell grant program and provide choice and access to undergraduate students to attend the postsecondary institutions that best meet their needs.

Since 1983, Minnesota State Grant policy has been based on the Design for Shared Responsibility model. This model was initially built on the work of the Carnegie Commission on Policy Studies in Higher Education. The goal of the program is established in Minnesota Statute 136A. 095:

The legislature finds and declares that the identification of men and women of the state who are economically disadvantaged and the encouragement of their educational development in eligible institutions of their choosing are in the best interests of the state and of the students.

This policy statement guides Minnesota policy makers in responding to changes in tuition and fees and living expenses faced by students. State Grant policy distributes the price of postsecondary education based on family income and attendance choices among students, families, and taxpayers.

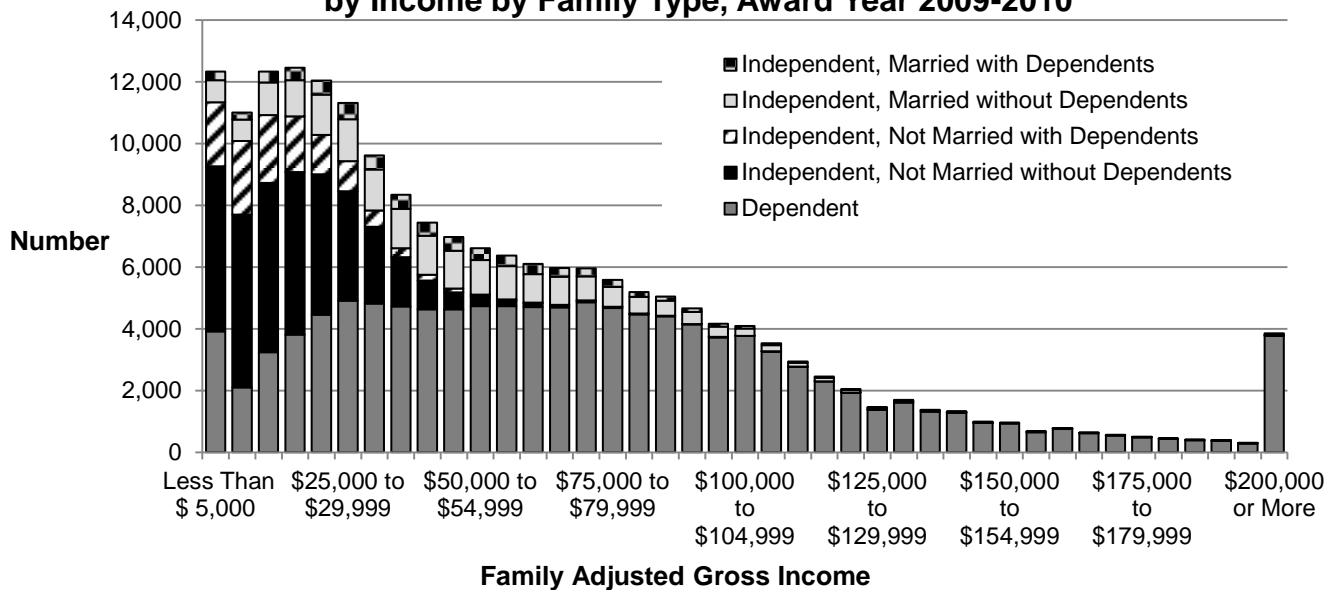
This report contains data on the number and dollar amounts of Minnesota State Grants received by Minnesota undergraduate students for Fiscal Year 2010 (July 1, 2009 to June 30, 2010). Minnesota State Grants are coordinated with federal Pell Grants, therefore the tables and graphs include combined federal Pell and State Grant awards received by State Grant recipients. Data are reported by the adjusted gross income of the student's family. The report also includes information on three categories of student characteristics that affect State Grant awards: family circumstances, institution choice and registration load. All tables and charts in this report show family adjusted gross income of Minnesota State Grant recipients as reported on federal individual income tax forms on the FAFSA. For dependent students, the parents' adjusted gross income was used; for independent students, the students', and spouses' if married, adjusted gross incomes were used.

In May 2009 the Legislature established appropriations for the State Grant program of \$144.14 million each year for Fiscal Years 2010 and 2011. The state received additional resources for the program through the federal LEAP and SLEAP programs of approximately \$1.3 million each Fiscal Year. Thus total resources for the Minnesota State Grant program were \$145.4 million. As program demand for Fiscal Year 2010 (\$168 million) exceeded available resources (\$145 million) the Office transferred funds from Fiscal Year 2011 to Fiscal Year 2010 to cover the difference as authorized in law.

The data in this report are based on State Grant research data as of December 15, 2010. The totals may differ slightly from other documents published by the Minnesota Office of Higher Education, which could be the result of adjustments made before or after this date.

Fiscal Year 2010 Applicants

Figure 1
Minnesota Undergraduate FAFSA Filers
Eligible to Apply for a Minnesota State Grant
by Income by Family Type, Award Year 2009-2010



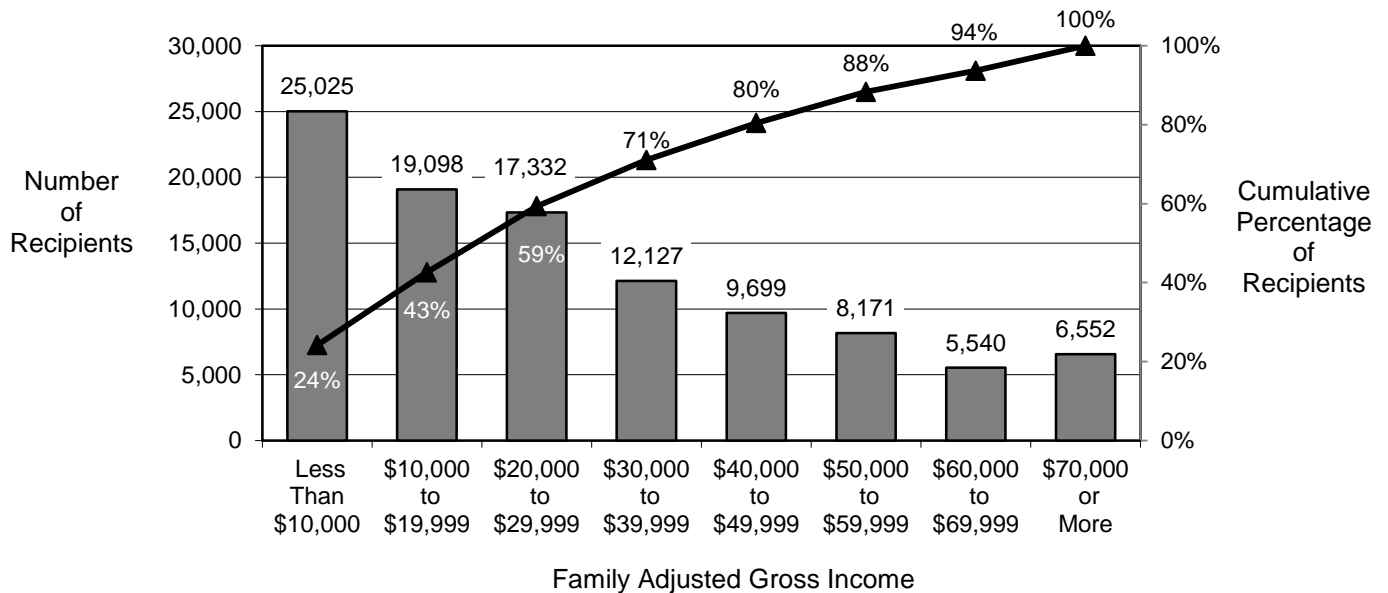
Students applying for financial aid complete a Free Application for Federal Student Aid (FAFSA). The FAFSA asks students and their parents to supply information regarding wages, income, assets and household composition. This information is used as part of a federal need analysis formula called Federal Methodology that determines the student's and parents' financial resources expected to be contributed towards college costs. The formula calculates an expected Parent Contribution (PC), an expected Student Contribution (SC), and an Expected Family Contribution (EFC) which is used to determine the student's eligibility for federal student aid, and in Minnesota the student's eligibility for the Minnesota State Grant program.

For Fiscal Year 2010 (academic year 2009-2010), 201,865 students completed the FAFSA and were determined to be eligible to apply for a Minnesota State Grant. Sixty percent of applicants were dependent students with family adjusted gross incomes ranging from \$0 to \$200,000 or more as shown in Figure 1. The remaining 40 percent of applicants were independent students. Independent students display a smaller range of family adjusted gross incomes (\$0 to \$100,000).

Minnesota State Grant awards are based on the difference between what students and their families are expected to contribute to pay for the education and the actual price of attending a particular college or university. However, all applicants are required to contribute at least 46 percent of their price of attendance out of savings, earnings, loans or other assistance from school or private sources. For dependent students, the remaining 54 percent of the price of attendance is met by a contribution from the parents as determined by the federal need analysis (FAFSA) and by the combination of Federal Pell Grant and State Grant awards. For independent students, the remaining 54 percent of the price of attendance is met by a contribution from the student's and spouse's, if applicable, income and assets (as determined by the federal need analysis) and by the combination of Pell and State awards.

Fiscal Year 2010 Recipients

Figure 2
Number and Cumulative Percentage
of Minnesota State Grant Recipients, Fiscal Year 2010



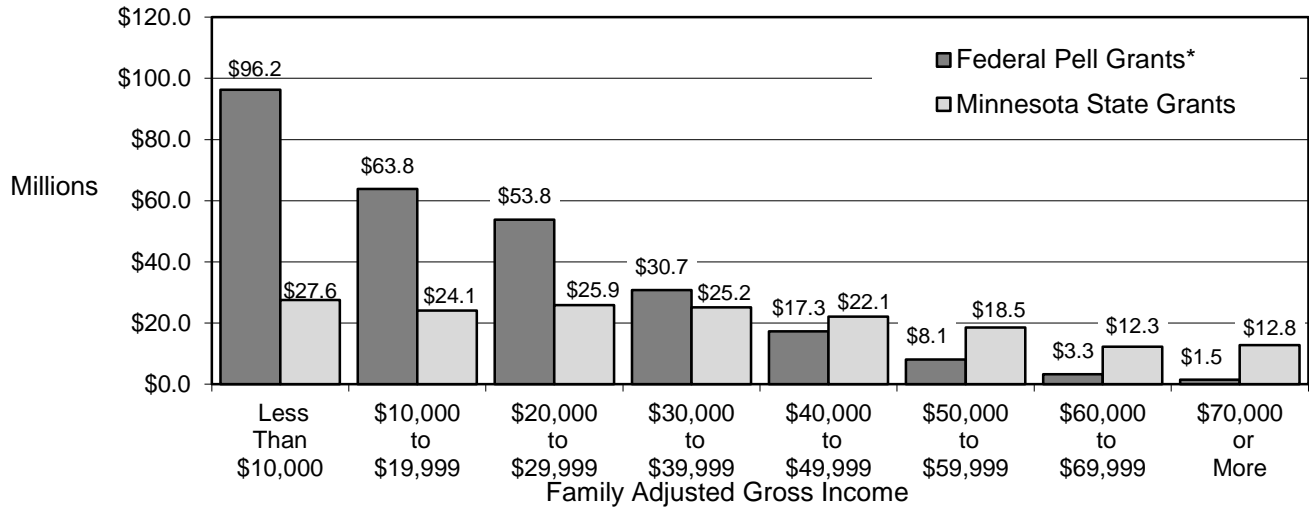
The Minnesota State Grant program is based solely on financial need. However, students must continue to make satisfactory academic progress in their degree or certificate programs in order to continue to receive the award.

For the 2008-2009 academic year, Minnesota's State Grant program was the 18th largest in the nation when both need-based and non-need based grant aid were considered. The program ranks ninth in the nation in need-based grant dollars per full-time student. Minnesota's State Grant program ranked 18th in the nation in overall grant aid per capita. The state's rank was also 18th in grant dollars awarded per population age 18 through 24. Minnesota State Grant awards are targeted to students and families with lower incomes. Figure 2 illustrates the income distribution of the 103,544 grant recipients. Fifty-nine percent of students reported annual family adjusted gross incomes of less than \$30,000.

Of the \$168 million in Minnesota State Grants awarded in Fiscal Year 2010, \$28 million was awarded to students from families earning less than \$10,000 as shown in Figure 3. Of the \$275 million in combined federal Pell and Minnesota State Grants received by State Grant recipients, \$96 million in Pell Grants and \$28 million in State Grants were awarded to students from families earning less than \$10,000 annually, as shown in Figure 3.

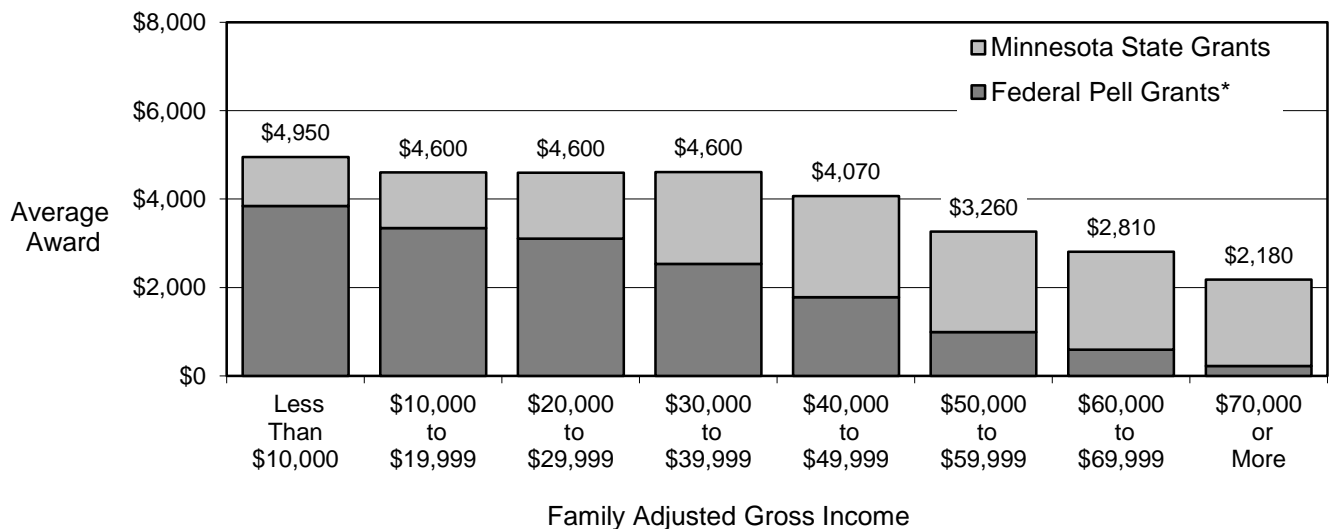
Calculations for the Minnesota State Grant take into account the student's federal Pell Grant award. Students from families earning less than \$10,000 annually received the highest combined average award (\$4,900). Figure 4 shows the average combined award for the Federal Pell Grant and the Minnesota State Grant by income.

Figure 3
Federal Pell and Minnesota State Grant Awards
Received by State Grant Recipients, Fiscal Year 2010



*Includes only Federal Pell Grants received by Minnesota State Grant recipients

Figure 4
Average Combined Federal Pell and Minnesota State Grant Award
Received by State Grant Recipients, Fiscal Year 2010



*Includes only Federal Pell Grants received by Minnesota State Grant recipients

Postsecondary Institution Choice

The institutions students choose to attend determine the price of attendance used in calculating Minnesota State Grant awards. Institutions are grouped into five categories for this report:

- Minnesota State Colleges and Universities - two-year colleges
- Minnesota State Colleges and Universities - four-year universities
- University of Minnesota
- Minnesota private non-profit institutions
- Minnesota private for-profit institutions

Institutions operated by government entities besides Minnesota State Colleges and Universities and the University of Minnesota are included in the “private non-profit” category for reporting purposes.

Table 1
Minnesota State Grant Statistics, Fiscal Year 2010
All State Grant Recipients

Type of Institution Attended	Number of Recipients (%)	Combined Federal Pell and Minnesota State Grants (millions)	Minnesota State Grants (millions) (%)
MnSCU Two-Year Colleges	41,727 (40%)	\$146.96	\$30.15 (33%)
MnSCU Four-Year Universities	15,928 (15%)	\$68.10	\$27.04 (15%)
University of Minnesota	11,942 (12%)	\$69.37	\$41.16 (16%)
Private Non-Profit Institutions	14,833 (14%)	\$83.16	\$47.31 (19%)
Private For-Profit Institutions	19,114 (18%)	\$75.65	\$22.83 (17%)
Total	103,544 (100%)	\$443.24	\$168.50 (100%)

Under the current model, the percent of recipients receiving a Minnesota State Grant will rarely equal the percent of state grant dollars by type of institution attended. State grant awards are based on the average tuition and fees charged to a student or the tuition and fee maximums established in law. Thus students receive a state grant in proportion to the tuition and fees charged. Students with lower average tuition and fee charges will receive a smaller percentage of state grant funds (e.g. MnSCU Two-Year Colleges). Students with higher average tuition and fee charges will receive a greater percentage of state grant funds (e.g. University of Minnesota). State Grants also vary based on enrollment level. Institutions with a higher percentage of full-time students enrolled will be shown as receiving a higher percentage of state grant funds as compared to other institutions.

The maximum tuition and fees allowed for two-year programs is significantly lower than the maximum tuition and fees allowed for four-year programs. Tables 2 and 3 display the number of recipients by type

of institution attended separated by two-year and four-year program. Analysis of state grant recipients at two-year programs indicates that 71 percent of recipients enrolled at MnSCU two-year colleges and received 68 percent of state grant funds. The remaining 29 percent of two-year program recipients were enrolled at private colleges, both for-profit (26%) and not-profit (3%).

Table 2
Two-year Program Recipients -- Minnesota State Grant Statistics, Fiscal Year 2010

Type of Institution Attended (Tuition & Fees)	Program Length	Number of Recipients (%)	Combined Federal Pell and Minnesota State Grants (millions)	Minnesota State Grants (millions) (%)
MnSCU Two-Year Colleges (\$4,717)	2-year	41,727 (71%)	\$146.96	\$30.15 (68%)
Private Non-Profit Institutions (Cap at \$5,808)	2-year	1,569 (3%)	\$5.85	\$1.65 (4%)
Private For-Profit Institutions (Cap at \$5,808)	2-year	15,085 (26%)	\$54.76	\$12.65 (28%)
Total	2-year	58,382 (100%)	\$207.58	\$44.46 (100%)

Among recipients at four-year programs the distribution of recipients enrolled is similar: MnSCU four-year colleges (35%), the University of Minnesota (26%) and the private non-profit colleges (29%). The distribution of grant funds is weighted more towards the University of Minnesota (33%) and the private non-profit colleges (37%) as opposed to the MnSCU four-year colleges (22%) due to the differences in the average tuition and fee charges used to calculate grant awards. The remaining nine percent of recipients (8% of grant funds) attended private for-profit institutions.

Table 3
Four-year Program Recipients -- Minnesota State Grant Statistics, Fiscal Year 2010

Type of Institution Attended (Tuition & Fees)	Program Length	Number of Recipients (%)	Combined Federal Pell and Minnesota State Grants (millions)	Minnesota State Grants (millions) (%)
MnSCU Four-Year Universities (\$6,589)	4-year	15,928 (35%)	\$68.10	\$27.04 (22%)
University of Minnesota (Cap at \$10,488)	4-year	11,942 (26%)	\$69.37	\$41.16 (33%)
Private Non-Profit Institutions (Cap at \$10,488)	4-year	13,264 (29%)	\$77.31	\$45.66 (37%)
Private For-Profit Institutions (Cap at \$10,488)	4-year	4,029 (9%)	\$20.89	\$10.18 (8%)
Total	4-year	45,162 (100%)	\$235.66	\$124.05 (100%)

Table 4

Fiscal Year 2010

All Minnesota State Grant Recipients

Minnesota State Grant Statistics

Adjusted Gross Income		All institutions	MnSCU Two-Year Colleges	MnSCU Four-Year Universities	University of Minnesota	Minnesota Private Non-Profit Institutions	Minnesota Private For-Profit Institutions
Less than \$10,000	Number of Recipients	25,025	11,775	2,859	2,015	2,417	5,959
	Combined federal Pell and Minnesota State Grants	\$123.83	\$48.32	\$16.26	\$15.69	\$17.24	\$26.31
	Minnesota State Grants	\$27.60	\$5.11	\$3.53	\$6.73	\$6.73	\$5.49
\$10,000 to \$19,999	Number of Recipients	19,098	9,135	2,448	1,483	1,655	4,377
	Combined federal Pell and Minnesota State Grants	\$87.92	\$34.95	\$12.60	\$10.98	\$11.33	\$18.06
	Minnesota State Grants	\$24.08	\$5.55	\$3.57	\$5.35	\$4.97	\$4.65
\$20,000 to \$29,999	Number of Recipients	17,332	7,902	2,401	1,536	1,870	3,623
	Combined federal Pell and Minnesota State Grants	\$79.65	\$28.68	\$12.20	\$11.58	\$12.77	\$14.42
	Minnesota State Grants	\$25.88	\$5.59	\$3.95	\$5.79	\$6.02	\$4.53
\$30,000 to \$39,999	Number of Recipients	12,127	4,769	2,062	1,368	1,871	2,057
	Combined federal Pell and Minnesota State Grants	\$55.94	\$16.71	\$9.69	\$9.16	\$12.19	\$8.19
	Minnesota State Grants	\$25.19	\$5.18	\$4.39	\$5.56	\$6.83	\$3.23
\$40,000 to \$49,999	Number of Recipients	9,699	3,400	1,884	1,352	1,743	1,320
	Combined federal Pell and Minnesota State Grants	\$39.43	\$9.72	\$7.47	\$7.68	\$10.03	\$4.53
	Minnesota State Grants	\$22.13	\$3.81	\$4.18	\$5.38	\$6.58	\$2.18
\$50,000 to \$59,999	Number of Recipients	8,171	2,516	1,775	1,297	1,651	932
	Combined federal Pell and Minnesota State Grants	\$26.66	\$5.26	\$5.06	\$5.85	\$7.97	\$2.52
	Minnesota State Grants	\$18.53	\$2.77	\$3.48	\$4.73	\$6.07	\$1.48
\$60,000 to \$69,999	Number of Recipients	5,540	1,359	1,170	1,098	1,405	508
	Combined federal Pell and Minnesota State Grants	\$15.56	\$2.31	\$2.80	\$3.99	\$5.47	\$0.99
	Minnesota State Grants	\$12.29	\$1.40	\$2.15	\$3.47	\$4.53	\$0.75
\$70,000 or more	Number of Recipients	6,552	871	1,329	1,793	2,221	338
	Combined federal Pell and Minnesota State Grants	\$14.26	\$1.00	\$2.04	\$4.44	\$6.15	\$0.64
	Minnesota State Grants	\$12.80	\$0.75	\$1.79	\$4.16	\$5.58	\$0.53
Total	Number of Recipients	103,544	41,727	15,928	11,942	14,833	19,114
	Combined federal Pell and Minnesota State Grants	\$443.24	\$146.96	\$68.10	\$69.37	\$83.16	\$75.65
	Minnesota State Grants	\$168.50	\$30.15	\$27.04	\$41.16	\$47.31	\$22.83

Note: Dollars are in millions; Award amounts for categories with fewer than 10 recipients are reported as zero. Totals include amounts for all categories.

Adjusted gross income of Minnesota State Grant recipients is as reported on federal individual income tax forms. For dependent students, the parents' income was used; for others, the student's, and their spouse's if married, were used.

Family Circumstances

Recipients are classified by family circumstances. The ability to pay is assessed differently for each family category. Family categories are:

- Dependent students (usually students less than 24 years old who were not married and not supporting their own children; not veterans/military service members)
- Married independent students with dependents (usually children)
- Unmarried independent students with dependents
- Married independent students with no other dependents
- Unmarried independent students with no dependents

Table 5
Minnesota State Grant Statistics, Fiscal Year 2010
All State Grant Recipients

Family Status	Number of Recipients	Combined Federal Pell and Minnesota State Grants (million)	Minnesota State Grants (million)
Dependent Students	54,700	\$252.51	\$121.55
Married Independent Students with Dependents (Children)	10,277	\$38.78	\$8.74
Unmarried Independent Students with Dependents (Children)	18,791	\$79.10	\$13.30
Married Independent Students with No Other Dependents	2,747	\$10.03	\$3.82
Unmarried Independent Students with No Dependents	17,029	\$62.81	\$21.10
Total	103,544	\$443.24	\$168.50

Registration Load

The registration load (number of course credits) chosen by the student affects the price of attendance used in calculating Minnesota State Grant awards. The Minnesota State Grant program defines full-time attendance as a registration load of 15 semester credits per term or the equivalent. Registration load varies by income and family status for state grant recipients. Dependent students register for more credits annually on average than independent students. Recipients from higher income families register for more credits annually on average than lower income recipients, even when family type is taken into account.

Table 6
Minnesota State Grant Statistics, Fiscal Year 2010
Average Registration Load for All State Grant Recipients by Income

Family Adjusted Gross Income	Number of Recipients	Average Annual Registration Load
Less Than \$10,000	25,025	21.46
\$10,000 to \$19,999	19,098	22.13
\$20,000 to \$29,999	17,332	22.95
\$30,000 to \$39,999	12,127	24.14
\$40,000 to \$49,999	9,699	25.48
\$50,000 to \$59,999	8,171	26.31
\$60,000 to \$69,999	5,540	27.03
\$70,000 or More	6,552	28.01
Total	103,544	23.62

Table 7
Minnesota State Grant Statistics, Fiscal Year 2010
Average Registration Load for All State Grant Recipients by Income

Family Status	Number of Recipients	Average Annual Registration Load
Dependent Students	54,700	26.07
Married Independent Students with Dependents (Children)	10,277	21.27
Unmarried Independent Students with Dependents (Children)	18,791	19.56
Married Independent Students with No Other Dependents	2,747	22.37
Unmarried Independent Students with No Dependents	17,029	21.84
Total	103,544	23.62

Table 8
Minnesota State Grant Statistics, Fiscal Year 2010
All State Grant Recipients by Term by Registration Load

Registration Load (number of credits)	Number of Recipients	Combined Federal Pell and Minnesota State Grants (millions)	Minnesota State Grants (millions)	Registration Load (number of credits)	Number of Recipients	Combined Federal Pell and Minnesota State Grants (millions)	Minnesota State Grants (millions)
Summer I Term (2009)				Spring Term (2010)			
3	16	\$0.01	\$0.00	3	62	\$0.05	\$0.01
4	89	\$0.07	\$0.03	4	626	\$0.52	\$0.13
5	21	\$0.02	\$0.01	5	679	\$0.69	\$0.26
6	68	\$0.08	\$0.03	6	510	\$0.63	\$0.20
7	662	\$0.71	\$0.16	7	2,983	\$4.05	\$0.60
8	1,688	\$2.00	\$0.71	8	4,301	\$5.91	\$1.72
9	484	\$0.66	\$0.11	9	1,462	\$2.05	\$0.57
10	370	\$0.52	\$0.11	10	2,866	\$5.16	\$0.81
11	603	\$0.93	\$0.30	11	2,884	\$5.34	\$1.29
12	1,390	\$2.41	\$0.58	12	8,685	\$16.47	\$5.42
13	373	\$0.68	\$0.19	13	7,543	\$17.04	\$4.75
14	385	\$0.82	\$0.24	14	7,137	\$17.48	\$6.20
15 or more	2,034	\$4.54	\$1.86	15 or more	37,653	\$104.50	\$52.22
Total	8,183	\$13.45	\$4.33	Total	77,391	\$179.88	\$74.17
Fall Term (2009)				Summer II Term (2010)			
3	55	\$0.04	\$0.01	3	307	\$0.11	\$0.07
4	519	\$0.43	\$0.10	4	1,195	\$0.81	\$0.32
5	522	\$0.53	\$0.20	5	553	\$0.50	\$0.23
6	451	\$0.56	\$0.17	6	1,096	\$0.75	\$0.39
7	2,506	\$3.39	\$0.52	7	1,928	\$1.88	\$0.53
8	4,038	\$5.55	\$1.59	8	1,609	\$1.82	\$0.87
9	1,366	\$1.99	\$0.51	9	702	\$0.75	\$0.33
10	2,753	\$4.94	\$0.77	10	815	\$0.93	\$0.35
11	2,701	\$5.04	\$1.21	11	358	\$0.45	\$0.22
12	8,849	\$17.69	\$5.52	12	748	\$0.91	\$0.46
13	7,831	\$17.99	\$4.87	13	334	\$0.49	\$0.22
14	7,860	\$19.56	\$6.91	14	227	\$0.38	\$0.18
15 or more	40,547	\$114.27	\$56.86	15 or more	1,021	\$1.77	\$1.00
Total	79,998	\$191.95	\$79.26	Total	10,893	\$11.54	\$5.16
Winter Term (2010)							
3	0	\$0.00	\$0.00				
4	48	\$0.03	\$0.01				
5	17	\$0.01	\$0.00				
6	93	\$0.09	\$0.03				
7	694	\$0.74	\$0.16				
8	1,791	\$2.05	\$0.71				
9	752	\$1.01	\$0.18				
10	470	\$0.65	\$0.14				
11	695	\$1.07	\$0.34				
12	2,307	\$3.91	\$1.06				
13	487	\$0.87	\$0.26				
14	519	\$0.94	\$0.32				
15 or more	2,515	\$5.14	\$2.36				
Total	10,388	\$16.51	\$5.57				

For the Minnesota State Grant program, the state fiscal year begins on July 1 and ends on June 30. Summer I terms are the first term of the fiscal year. Summer II terms are the last term of the fiscal year.

Table 9 displays number of recipients by the number of credits enrolled per term as follows:

- Full-Time Full-Year: Recipients who registered for 15 or more credits during both fall and spring terms if semester based calendar is used; 15 or more credits during fall, winter and spring terms if quarter based calendar is used.
- Full-Time Part-Year: Recipients who registered for 15 or more credits during either fall and spring terms if semester based calendar is used; 15 or more credits during either fall, winter or spring terms if quarter based calendar is used AND the student did not register or registered for fewer than 15 credits for the other terms.
- Part-Time Full-Year: Recipients who registered for fewer than 15 credits during both fall and spring terms if semester based calendar is used; fewer than 15 credits during fall, winter and spring terms if quarter based calendar is used.
- Part-Time Part-Year: Recipients who registered for fewer than 15 credits during either fall and spring terms if semester based calendar is used; fewer than 15 credits during either fall, winter or spring terms if quarter based calendar is used AND the student did not register for at least one of the other terms.
- Summer only: Recipients who registered at any level for either summer term and did not register in fall, winter or spring terms.

Approximately 25 percent of all state grant recipients are enrolled full-time for fall and spring semesters (or the equivalent quarter terms). An additional 26 percent of recipients registered for 15 or more credits in either fall or spring term. Forty-seven percent of recipients were enrolled for less than 15 credits. An additional two percent of recipients enrolled in summer term only.

Table 9
Minnesota State Grant Statistics, Fiscal Year 2010
All State Grant Recipients by Registration Pattern

Registration Pattern	Number of Recipients (%)	Combined Federal Pell and Minnesota State Grants (millions)	Minnesota State Grants (millions)
Full-Time Full-Year	26,227 (25%)	\$153.13	\$80.65
Full-Time Part-Year	26,741 (26%)	\$121.12	\$47.69
Part-Time Full-Year	24,453 (24%)	\$98.82	\$22.24
Part-Time Part-Year	23,832 (23%)	\$66.33	\$17.00
Summer only	2,291 (2%)	\$3.83	\$0.92
Total	103,544 (100%)	\$443.24	\$168.50

In tables 10 and 11, recipients are grouped by the cumulative number of credits enrolled per fiscal year as follows:

- Recipients who registered for fewer than 30 credits during Fiscal Year 2010.
- Recipients who registered for at least 30 credits during Fiscal Year 2010.

Thirty or more credits can be earned in any combination across all the terms during the Fiscal Year. Data presented in Tables 10 and 11 are consistent with Table 6 in that recipients from higher income families register for more credits annually, on average, than lower income recipients.

Table 10
Minnesota State Grant Statistics, Fiscal Year 2010
State Grant Recipients Registered for Fewer than 30 Credits

Family Adjusted Gross Income	Number of Recipients	Combined Federal Pell and Minnesota State Grants (million)	Minnesota State Grants (million)
Less Than \$10,000	18,979	\$78.17	\$13.45
\$10,000 to \$19,999	14,246	\$54.15	\$12.04
\$20,000 to \$29,999	12,288	\$45.23	\$12.19
\$30,000 to \$39,999	7,891	\$28.53	\$11.00
\$40,000 to \$49,999	5,696	\$17.54	\$8.49
\$50,000 to \$59,999	4,465	\$10.63	\$6.60
\$60,000 to \$69,999	2,704	\$5.40	\$3.94
\$70,000 or More	2,692	\$4.06	\$3.51
Total	68,961	\$243.72	\$71.22

Table 11
Minnesota State Grant Statistics, Fiscal Year 2010
State Grant Recipients Registered for 30 Credits or More

Family Adjusted Gross Income	Number of Recipients	Combined Federal Pell and Minnesota State Grants (million)	Minnesota State Grants (million)
Less Than \$10,000	6,046	\$45.66	\$14.14
\$10,000 to \$19,999	4,852	\$33.77	\$12.04
\$20,000 to \$29,999	5,044	\$34.41	\$13.69
\$30,000 to \$39,999	4,236	\$27.40	\$14.18
\$40,000 to \$49,999	4,003	\$21.89	\$13.64
\$50,000 to \$59,999	3,706	\$16.03	\$11.93
\$60,000 to \$69,999	2,836	\$10.16	\$8.35
\$70,000 or More	3,860	\$10.20	\$9.30
Total	34,583	\$199.53	\$97.28

Special Analysis

What happened in Fiscal Year 2010?

An analysis of the impact of economic changes and higher education enrollment on program demand

Throughout the spring of 2009, Minnesota State Grant spending for Fiscal Year 2010 was projected to be within available appropriations for the biennium, \$144 million. By February of 2010 projected State Grant spending for fiscal year 2010 had risen to \$168 million creating a budget shortfall of \$24 million. Theories for the higher than anticipated projected growth in demand for program grants included:

- An increase in financial aid applications, as indicated by preliminary fall data from institutions. While applications and eligibility were anticipated to increase due to a stressed economy, the actual volume increase exceeded even conservative projections.
- Enrollment increases projected by the public two-year colleges and the University of Minnesota were significantly higher than previously estimated by the systems.
- While no increase in wages and income of Minnesota students and families was anticipated, financial aid directors reported a significant increase in students reporting family job losses and other factors resulting in a decline in income.

This section analyzes fiscal year 2010 applicant data and economic indicators to determine if the above theories were correct.

The increase in financial aid applicants

Students can apply for financial aid beginning January 1 prior to the start of the academic year in which they enroll (January 1, 2009 for the 2009-2010 academic year/ fiscal year 2010). Analysis of application data for fiscal year 2010 as of August 15, 2009 indicated that the increase in number of financial aid applications was 14.4 percent higher as compared to fiscal year 2009 (August 15, 2008).

Table 12
Minnesota FAFSA Applications by Month (January – August 15)

Fiscal Year	2009	2010	% Change
January	7,204	8,462	+17.5%
February	33,302	38,590	+15.9%
March	42,251	48,054	+13.7%
April	36,109	39,635	+9.8%
May	23,909	26,879	+12.4%
June	23,738	28,615	+20.5%
July	28,287	32,967	+16.5%
August	15,728	17,623	+12.0%
Total as of August 15	210,528	240,825	+14.4%

More enrolled students applied for financial aid

Initially the agency theorized that students were applying earlier for financial aid. The reality was that significantly more students were applying. Data comparing FAFSA filing rates of Minnesota resident undergraduates enrolled in the fall term found that the percent of students completing the FAFSA increased 4.88 percentage points between fiscal years 2009 and 2010. This increase was seen among both new entering undergraduates and continuing students.

Students did not apply earlier for financial aid

The percent increase in financial aid applications was fairly consistent across months (January to August). This indicates that the increase in applications early in the year was not the result of students applying earlier for financial aid; rather more students applied in all months of the year.

Students did not apply to more institutions

Students can send their financial aid application information to up to ten institutions. This is helpful for students who have not yet chosen an institution of enrollment. The mean number of institutions listed on the FAFSA application was 1.33 for both fiscal years 2009 and 2010 indicating that on average, students sent their aid application data to the same number of institutions as students in the prior year.

The increase in financial aid applications exceeded expectations and was partially responsible for the increased demand on program resources. However, many students who apply for financial aid do not enroll in college. For program spending to exceed available resources, students must apply for financial aid, be eligible for aid and enroll in a Minnesota institutions of their choosing.

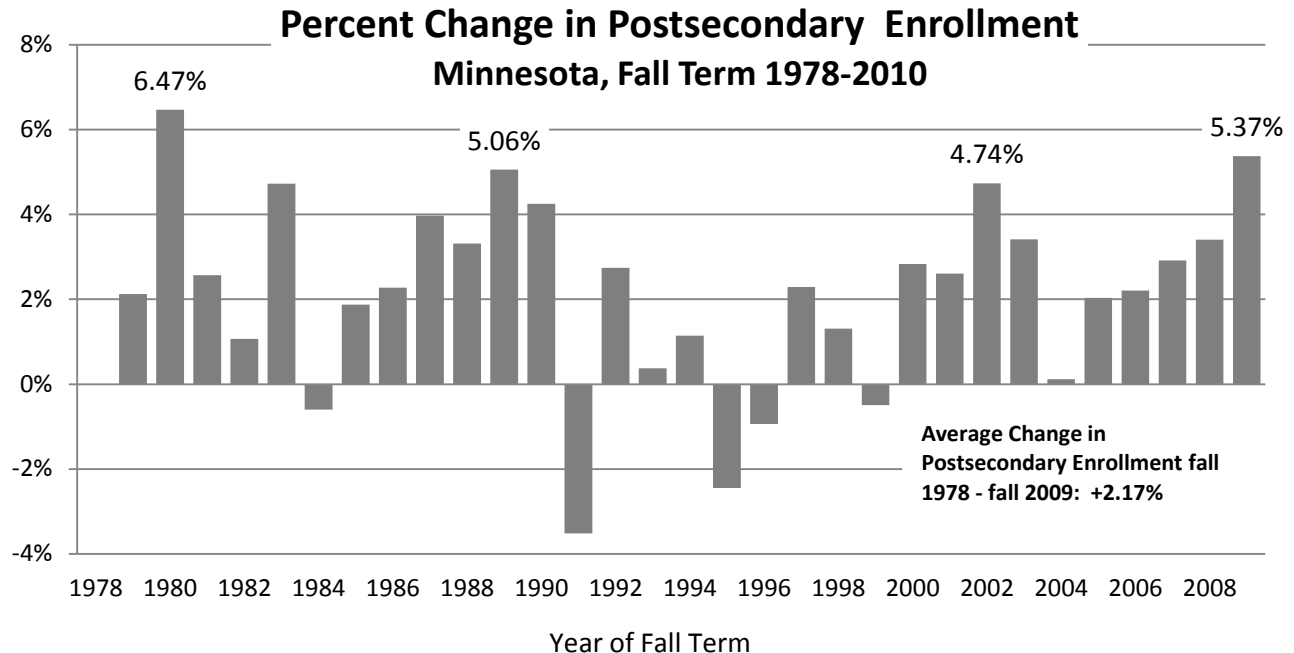
The increase in enrollment in higher education

Enrollment increases projected at Minnesota institutions exceeded estimates. Information about actual enrollment changes for the current fiscal year and estimates of enrollment increases for future fiscal years are obtained from institutional and system representatives in November and February of each fiscal year. Change in undergraduate enrollment is used as a proxy for changes in the number of Minnesota resident aid applicants. For fiscal year 2010 initial enrollment estimates significantly underestimated the actual rate of increased enrollment.

Table 13

Change in Minnesota Resident Undergraduate Enrollment	FY2009	FY2010	
	Fall 2008	Fall 2009	
System	Actual	Projected	Actual
MnSCU Two-Year Institutions	+1.8%	+1.6%	+10.0%
MnSCU Four-Year Institutions	+0.7%	+0.4%	+2.0%
University of Minnesota	-0.4%	+0.0%	+4.3%
Private Not-for-Profit Institutions	+0.0%	+0.0%	+0.0%
Private For-Profit Institutions	+9.8%	+8.0%	+17.0%

Figure 5



Source: Minnesota Office of Higher Education, Basic Data Series

■ % Change in Fall Enrollment (excluding online)

While enrollment increases do not appear to be as dramatic as the increase in financial aid applications, the enrollment increase beginning in fall 2009 created a spending surge in the Minnesota State Grant program. Excluding enrollments at Walden and Capella Universities (both online only institutions), enrollment at Minnesota institutions in fall 2009 increased by 5.37 percent – the highest overall increase recorded since fall 1980.

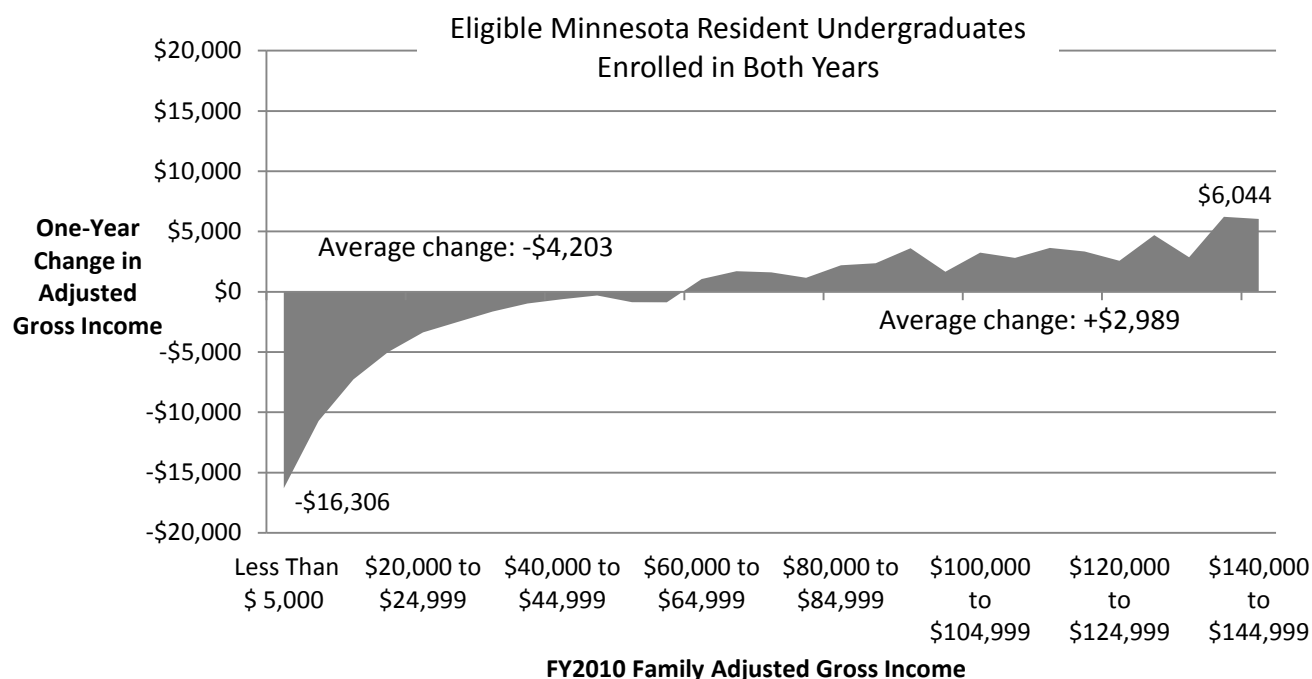
As more students enrolled, more students were eligible for financial aid

Students are eligible for a Minnesota State Grant if they are Minnesota residents who:

- Are graduates of a secondary school or its equivalent or are 17 years of age.
- Will be enrolled as undergraduates for at least three credits at one of more than 130 eligible schools in Minnesota.
- Are not in default on a student loan or are not more than 30 days behind for child support owed to a public agency, unless they have established payment plans with the appropriate agency.
- Have not yet completed eight full-time semesters of postsecondary education or the equivalent; this limit was increased to nine semesters for fiscal year 2010.
- Have not received a baccalaureate degree.

From fiscal year 2000 to fiscal year 2009, the number of eligible students applying for a Minnesota State Grant increased on average 4.89 percent per year. For fiscal year 2010, the number of students eligible for the Minnesota State Grant increased 18.33 percent. This increase was due in part to changes in the program awarding criteria. Students could apply for a State Grant for their ninth semester of enrollment and eligibility parameters allowed more middle income students to qualify for a State Grant.

Figure 6
Change in Family Adjusted Gross Income
 Fiscal Year 2009 to 2010



Sharp decline in wages and income

For fiscal year 2010 wages of Minnesota tax filers were anticipated to grow (+3.2 percent as of February 2009) and family adjusted gross income was expected to decline by 0.5 percent according to estimates from Minnesota Management and Budget. However, initial reports from institutional financial aid directors indicated a significant increase in students reporting family job losses and other events resulting in a sharp decline in income.

Analysis of income data for grant-eligible students in fiscal year 2009 and 2010 determined that average family adjusted gross income declined by approximately 1 percent. Median family adjusted gross income declined by 4 percent. The pattern of decline indicates that losses in family income were concentrated among lower income families. The average change in family AGI was a decline of \$4,200 for students with 2010 family incomes of \$60,000 or less and an increase of \$3,000 for students with 2010 family incomes of \$60,000 or more. This income pattern was found for all sectors of higher education and for both dependent and independent students and correlated with the income profile of the population analyzed.

Professional judgment activity increased.

For students and families who experienced changes in their financial status due to special circumstances, such as the loss of a job, serious illness, disability, separation or divorce, or death in the family, the campus financial aid administrator can adjust the information used to calculate the student's expected family contribution which may result in increased financial aid eligibility. This adjustment is called a "professional judgment". Campus financial aid administrators reported to the agency that professional judgments for Minnesota students increased dramatically in fiscal year 2010. While the agency does not track the number of professional judgments, the aggregate change in financial need would impact program spending totals.

Parent and Student Contributions declined.

While changes in income and wages are key in understanding student and family financial circumstances in the current economy, the Minnesota State Grant award formula utilizes financial measures determined by the FAFSA: the expected family contribution (EFC), the parent contribution (PC) and the student contribution (SC).

For dependent students, the Minnesota State Grant program requires a contribution from the parents as determined by the federal need analysis (FAFSA) in the form of a Parent Contribution. As income declines due to job loss, the amount of the parent contribution would also decline. This was the trend occurring in fiscal year 2010. As the parent contribution declined, the student may have become eligible for greater amounts of need-based aid through the federal Pell Grant program or the Minnesota State Grant. Both programs saw spending increases during fiscal year 2010.

For students enrolled in both fiscal year 2009 and 2010, the average Parent Contribution declined by \$485 or 4.1 percent compared to the prior year. Median Parent Contributions declined by 5.5 percent. Changes in parent contributions were negative for lower income families and positive for higher income families. The pattern of decline indicates that changes in parent contributions were also concentrated among lower income families.

A similar contribution is required from independent students and similar declines occurred for independent students enrolled in both years. For independent students the average Student Contribution declined by \$1,374 or 28.9 percent. Median student contributions declined from \$1,374 to \$0. Changes in student contributions were negative for lower income families and positive for higher income families. The pattern of decline indicates that changes in SC were more equal across incomes for independent students.

Quantifying enrollment and the economy: A spending gap analysis

Moving beyond the spending theories, the agency estimated what portion of the \$24 million spending gap for the Minnesota State Grant program in fiscal year 2010 was the result of enrollment increases, more financial aid applications and family financial changes.

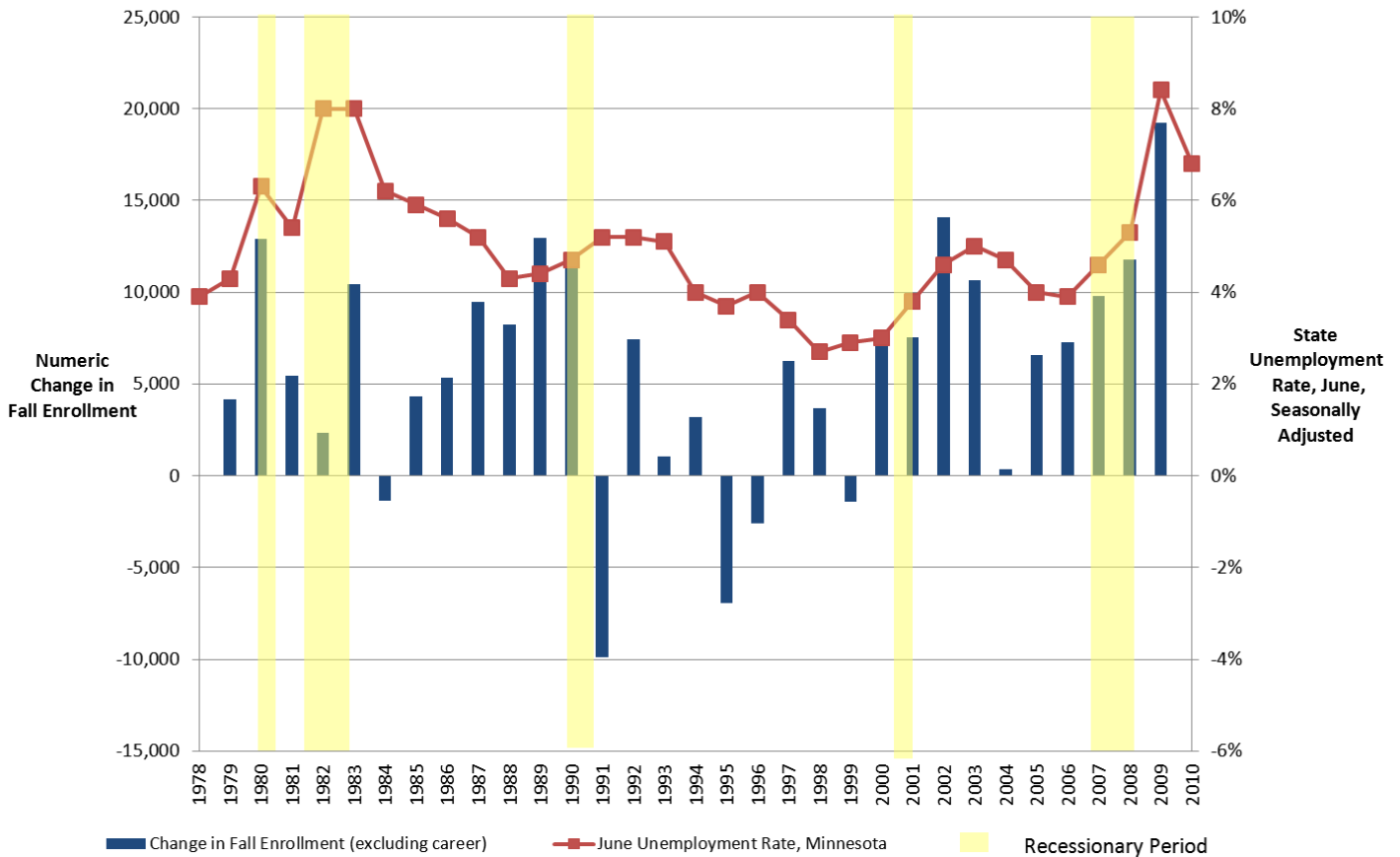
The enrollment surge and the increase in financial aid applications were estimated as a single change in the model. Of the \$24 million spending gap approximately 81 percent or \$19.4 million was the result of more students enrolling, applying for financial aid and qualifying for a Minnesota State Grant. The remaining 19 percent or \$4.6 million was the result of change in family financial circumstances. These figures are only estimates based on projected Minnesota State Grant spending for fiscal year 2010 as of May 2009 and actual Minnesota State Grant spending for fiscal year 2010 as of December 15, 2010.

Higher education enrollment, particularly enrollment at public two-year colleges, increases as the economy declines^{1 2}. The unemployment rate is correlated with increases in college enrollment during a

¹ Betts, Julian R., and Laurel L. McFarland. 1995. "Safe Port in a Storm: The Impact of Labor Market Conditions on Community College Enrollments." *Journal of Human Resources* 30(4):741-765.

² Kantrowitz, Mark. 2010. *Countercyclicality of College Enrollment Trends*. Retrieved from: <http://www.finaid.org/educators/studentaidpolicy.phtml> on January 13, 2011.

Figure 7
Postsecondary Enrollment & Unemployment Rates
Minnesota 1978 - 2010



Source: Minnesota Office of Higher Education, Basic Data Series; U.S. Department of Labor, Bureau of Labor Statistics

recession. There are several reasons hypothesized for the correlation including retraining due to layoffs, job stability or mobility; and college bound or college graduates who have limited job opportunities and thus remain enrolled in higher education. Higher education in essence acts as a sponge for excess labor.

For Minnesota, the overall changes in both unemployment and higher education enrollment present similar patterns. If prior recessionary activity repeats, then higher education enrollment will remain strong for the next several years to come. Preliminary analysis of fiscal year 2011 data indicates that enrollment will continue to increase at Minnesota institutions and family income will continue to decline for students pursuing higher education. Should enrollment remain high and incomes continue to be uncertain into fiscal years 2012 and 2013, then projected spending for need-based financial aid programs such as the Minnesota State Grant will likely continue to outpace historical growth patterns.

Minnesota State Grant Fiscal Year 2010

Additional Tables:

Number of Recipients, Combined Pell and State Grant Awarded and State Grant Amount Awarded by Family Type, Registration Load, Institution Type, and Family Adjusted Gross Income

Table 14
All Minnesota State Grant Recipients

Fiscal Year 2010
Minnesota State Grant Statistics

Family Type	Credit Level		All institutions
Dependent Students	Fewer than 30 credits	Number of Recipients Combined federal Pell and Minnesota State Grants Minnesota State Grants	29,623 \$108.35 \$42.28
	30 or more credits	Number of Recipients Combined federal Pell and Minnesota State Grants Minnesota State Grants	25,077 \$144.16 \$79.27
Married Independent Students with Dependents (Children)	Fewer than 30 credits	Number of Recipients Combined federal Pell and Minnesota State Grants Minnesota State Grants	8,151 \$27.25 \$5.49
	30 or more credits	Number of Recipients Combined federal Pell and Minnesota State Grants Minnesota State Grants	2,126 \$11.53 \$3.25
Unmarried Independent Students with Dependents (Children)	Fewer than 30 credits	Number of Recipients Combined federal Pell and Minnesota State Grants Minnesota State Grants	15,956 \$60.47 \$9.19
	30 or more credits	Number of Recipients Combined federal Pell and Minnesota State Grants Minnesota State Grants	2,835 \$18.63 \$4.11
Married Independent Students with No Other Dependents (Children)	Fewer than 30 credits	Number of Recipients Combined federal Pell and Minnesota State Grants Minnesota State Grants	2,038 \$6.27 \$2.09
	30 or more credits	Number of Recipients Combined federal Pell and Minnesota State Grants Minnesota State Grants	709 \$3.76 \$1.73
Unmarried Independent Students with No Dependents (Children)	Fewer than 30 credits	Number of Recipients Combined federal Pell and Minnesota State Grants Minnesota State Grants	13,193 \$41.37 \$12.18
	30 or more credits	Number of Recipients Combined federal Pell and Minnesota State Grants Minnesota State Grants	3,836 \$21.45 \$8.92
Total	Fewer than 30 credits	Number of Recipients Combined federal Pell and Minnesota State Grants Minnesota State Grants	68,961 \$243.72 \$71.22
	30 or more credits	Number of Recipients Combined federal Pell and Minnesota State Grants Minnesota State Grants	34,583 \$199.53 \$97.28

Note: Dollars are in millions; Award amounts for categories with fewer than 10 recipients are reported as zero.
Totals include amounts for all categories.

Adjusted gross income of Minnesota State Grant recipients is as reported on federal individual income tax forms.
For dependent students, the parents' income was used; for others, the student's, and their spouse's if married, were used.

Table 15
Dependent Students

Fiscal Year 2010

Students Registered for Fewer than 30 credits			Minnesota State Grant Statistics				
Adjusted Gross Income		All institutions	MnSCU Two-Year Colleges	MnSCU Four-Year Universities	University of Minnesota	Minnesota Private Non-Profit Institutions	Minnesota Private For-Profit Institutions
Less than \$10,000	Number of Recipients	4,673	2,509	662	405	349	748
	Combined federal Pell and Minnesota State Grants	\$21.73	\$10.08	\$3.54	\$2.82	\$2.23	\$3.06
	Minnesota State Grants	\$4.25	\$0.93	\$0.71	\$1.14	\$0.83	\$0.64
\$10,000 to \$19,999	Number of Recipients	3,501	1,800	577	373	247	504
	Combined federal Pell and Minnesota State Grants	\$16.89	\$7.44	\$3.13	\$2.59	\$1.60	\$2.14
	Minnesota State Grants	\$3.71	\$0.85	\$0.67	\$1.09	\$0.62	\$0.47
\$20,000 to \$29,999	Number of Recipients	4,658	2,408	826	462	366	596
	Combined federal Pell and Minnesota State Grants	\$22.31	\$9.76	\$4.47	\$3.21	\$2.31	\$2.56
	Minnesota State Grants	\$5.93	\$1.59	\$1.22	\$1.45	\$0.93	\$0.74
\$30,000 to \$39,999	Number of Recipients	4,739	2,313	906	492	433	595
	Combined federal Pell and Minnesota State Grants	\$18.26	\$7.25	\$3.86	\$2.82	\$2.35	\$1.97
	Minnesota State Grants	\$8.69	\$2.89	\$1.78	\$1.72	\$1.28	\$1.02
\$40,000 to \$49,999	Number of Recipients	4,040	1,802	892	550	375	421
	Combined federal Pell and Minnesota State Grants	\$12.61	\$4.24	\$3.05	\$2.63	\$1.65	\$1.04
	Minnesota State Grants	\$7.27	\$1.99	\$1.69	\$1.84	\$1.10	\$0.64
\$50,000 to \$59,999	Number of Recipients	3,436	1,397	855	525	361	298
	Combined federal Pell and Minnesota State Grants	\$8.27	\$2.50	\$2.02	\$1.85	\$1.28	\$0.62
	Minnesota State Grants	\$5.69	\$1.41	\$1.38	\$1.52	\$0.95	\$0.42
\$60,000 to \$69,999	Number of Recipients	2,163	764	538	416	278	167
	Combined federal Pell and Minnesota State Grants	\$4.58	\$1.16	\$1.10	\$1.21	\$0.83	\$0.29
	Minnesota State Grants	\$3.48	\$0.73	\$0.80	\$1.05	\$0.68	\$0.23
\$70,000 or more	Number of Recipients	2,413	519	611	695	459	129
	Combined federal Pell and Minnesota State Grants	\$3.70	\$0.54	\$0.74	\$1.34	\$0.86	\$0.21
	Minnesota State Grants	\$3.27	\$0.40	\$0.64	\$1.26	\$0.79	\$0.18
Total	Number of Recipients	29,623	13,512	5,867	3,918	2,868	3,458
	Combined federal Pell and Minnesota State Grants	\$108.35	\$42.99	\$21.90	\$18.47	\$13.11	\$11.89
	Minnesota State Grants	\$42.28	\$10.79	\$8.88	\$11.07	\$7.19	\$4.34

Note: Dollars are in millions; Award amounts for categories with fewer than 10 recipients are reported as zero. Totals include amounts for all categories.

Adjusted gross income of Minnesota State Grant recipients is as reported on federal individual income tax forms. For dependent students, the parents' income was used; for others, the student's, and their spouse's if married, were used.

Table 16**Dependent Students****Fiscal Year 2010**

Students Registered for 30 or more credits			Minnesota State Grant Statistics				
Adjusted Gross Income		All institutions	MnSCU Two-Year Colleges	MnSCU Four-Year Universities	University of Minnesota	Minnesota Private Non-Profit Institutions	Minnesota Private For-Profit Institutions
Less than \$10,000	Number of Recipients	2,787	648	499	614	748	278
	Combined federal Pell and Minnesota State Grants	\$22.51	\$3.99	\$3.65	\$5.86	\$6.96	\$2.05
	Minnesota State Grants	\$8.06	\$0.59	\$1.05	\$2.67	\$3.17	\$0.59
\$10,000 to \$19,999	Number of Recipients	2,309	535	484	509	593	188
	Combined federal Pell and Minnesota State Grants	\$18.54	\$3.31	\$3.52	\$4.80	\$5.51	\$1.39
	Minnesota State Grants	\$6.84	\$0.60	\$1.06	\$2.25	\$2.51	\$0.42
\$20,000 to \$29,999	Number of Recipients	3,235	709	692	720	867	247
	Combined federal Pell and Minnesota State Grants	\$25.49	\$4.26	\$4.88	\$6.72	\$7.82	\$1.81
	Minnesota State Grants	\$10.17	\$0.92	\$1.65	\$3.23	\$3.72	\$0.64
\$30,000 to \$39,999	Number of Recipients	3,424	660	751	717	1,045	251
	Combined federal Pell and Minnesota State Grants	\$23.43	\$3.26	\$4.49	\$5.75	\$8.29	\$1.63
	Minnesota State Grants	\$12.84	\$1.37	\$2.24	\$3.45	\$4.85	\$0.94
\$40,000 to \$49,999	Number of Recipients	3,530	633	807	710	1,142	238
	Combined federal Pell and Minnesota State Grants	\$19.68	\$2.38	\$3.81	\$4.73	\$7.52	\$1.24
	Minnesota State Grants	\$12.85	\$1.27	\$2.32	\$3.33	\$5.07	\$0.86
\$50,000 to \$59,999	Number of Recipients	3,363	534	766	739	1,121	203
	Combined federal Pell and Minnesota State Grants	\$14.79	\$1.38	\$2.63	\$3.88	\$6.12	\$0.77
	Minnesota State Grants	\$11.32	\$0.93	\$1.90	\$3.13	\$4.77	\$0.58
\$60,000 to \$69,999	Number of Recipients	2,667	317	564	659	1,013	114
	Combined federal Pell and Minnesota State Grants	\$9.74	\$0.70	\$1.59	\$2.73	\$4.38	\$0.34
	Minnesota State Grants	\$8.07	\$0.47	\$1.28	\$2.37	\$3.66	\$0.29
\$70,000 or more	Number of Recipients	3,762	216	686	1,083	1,675	102
	Combined federal Pell and Minnesota State Grants	\$9.98	\$0.29	\$1.25	\$3.06	\$5.10	\$0.27
	Minnesota State Grants	\$9.12	\$0.26	\$1.13	\$2.87	\$4.64	\$0.23
Total	Number of Recipients	25,077	4,252	5,249	5,751	8,204	1,621
	Combined federal Pell and Minnesota State Grants	\$144.16	\$19.58	\$25.82	\$37.54	\$51.72	\$9.51
	Minnesota State Grants	\$79.27	\$6.42	\$12.61	\$23.31	\$32.38	\$4.54

Note: Dollars are in millions; Award amounts for categories with fewer than 10 recipients are reported as zero. Totals include amounts for all categories.

Adjusted gross income of Minnesota State Grant recipients is as reported on federal individual income tax forms. For dependent students, the parents' income was used; for others, the student's, and their spouse's if married, were used.

Table 17**Married Independent Students with Dependents (Children)****Fiscal Year 2010**

Students Registered for Fewer than 30 credits				Minnesota State Grant Statistics			
Adjusted Gross Income		All institutions	MnSCU Two-Year Colleges	MnSCU Four-Year Universities	University of Minnesota	Minnesota Private Non-Profit Institutions	Minnesota Private For-Profit Institutions
Less than \$10,000	Number of Recipients	820	438	55	21	47	259
	Combined federal Pell and Minnesota State Grants	\$3.01	\$1.47	\$0.23	\$0.12	\$0.21	\$0.98
	Minnesota State Grants	\$0.49	\$0.17	\$0.03	\$0.05	\$0.06	\$0.18
\$10,000 to \$19,999	Number of Recipients	1,222	698	102	20	59	343
	Combined federal Pell and Minnesota State Grants	\$4.71	\$2.46	\$0.44	\$0.13	\$0.31	\$1.37
	Minnesota State Grants	\$0.70	\$0.24	\$0.07	\$0.05	\$0.08	\$0.24
\$20,000 to \$29,999	Number of Recipients	1,656	913	144	35	85	479
	Combined federal Pell and Minnesota State Grants	\$6.51	\$3.34	\$0.60	\$0.21	\$0.43	\$1.92
	Minnesota State Grants	\$1.01	\$0.33	\$0.10	\$0.08	\$0.13	\$0.37
\$30,000 to \$39,999	Number of Recipients	1,539	803	134	31	119	452
	Combined federal Pell and Minnesota State Grants	\$5.80	\$2.85	\$0.49	\$0.17	\$0.57	\$1.72
	Minnesota State Grants	\$0.99	\$0.29	\$0.08	\$0.07	\$0.19	\$0.36
\$40,000 to \$49,999	Number of Recipients	1,209	587	102	26	113	381
	Combined federal Pell and Minnesota State Grants	\$3.93	\$1.86	\$0.34	\$0.11	\$0.45	\$1.17
	Minnesota State Grants	\$0.83	\$0.24	\$0.07	\$0.05	\$0.18	\$0.29
\$50,000 to \$59,999	Number of Recipients	919	370	90	21	104	334
	Combined federal Pell and Minnesota State Grants	\$2.17	\$0.76	\$0.21	\$0.07	\$0.32	\$0.81
	Minnesota State Grants	\$0.81	\$0.19	\$0.08	\$0.04	\$0.17	\$0.32
\$60,000 to \$69,999	Number of Recipients	513	186	50	16	86	175
	Combined federal Pell and Minnesota State Grants	\$0.78	\$0.24	\$0.07	\$0.03	\$0.17	\$0.26
	Minnesota State Grants	\$0.43	\$0.09	\$0.04	\$0.03	\$0.12	\$0.15
\$70,000 or more	Number of Recipients	273	94	27	9	64	79
	Combined federal Pell and Minnesota State Grants	\$0.35	\$0.09	\$0.03	\$0.00	\$0.11	\$0.10
	Minnesota State Grants	\$0.24	\$0.05	\$0.02	\$0.00	\$0.08	\$0.07
Total	Number of Recipients	8,151	4,089	704	179	677	2,502
	Combined federal Pell and Minnesota State Grants	\$27.25	\$13.06	\$2.42	\$0.86	\$2.57	\$8.34
	Minnesota State Grants	\$5.49	\$1.61	\$0.49	\$0.37	\$1.01	\$2.00

Note: Dollars are in millions; Award amounts for categories with fewer than 10 recipients are reported as zero. Totals include amounts for all categories.

Adjusted gross income of Minnesota State Grant recipients is as reported on federal individual income tax forms. For dependent students, the parents' income was used; for others, the student's, and their spouse's if married, were used.

Table 18**Married Independent Students with Dependents (Children)****Fiscal Year 2010**

Students Registered for 30 or more credits			Minnesota State Grant Statistics				
Adjusted Gross Income		All institutions	MnSCU Two-Year Colleges	MnSCU Four-Year Universities	University of Minnesota	Minnesota Private Non-Profit Institutions	Minnesota Private For-Profit Institutions
Less than \$10,000	Number of Recipients	176	103	19	5	11	38
	Combined federal Pell and Minnesota State Grants	\$1.16	\$0.63	\$0.13	\$0.00	\$0.10	\$0.26
	Minnesota State Grants	\$0.22	\$0.08	\$0.03	\$0.00	\$0.04	\$0.06
\$10,000 to \$19,999	Number of Recipients	280	153	34	10	25	58
	Combined federal Pell and Minnesota State Grants	\$1.91	\$0.94	\$0.25	\$0.09	\$0.22	\$0.40
	Minnesota State Grants	\$0.41	\$0.13	\$0.07	\$0.04	\$0.09	\$0.09
\$20,000 to \$29,999	Number of Recipients	394	245	35	15	18	81
	Combined federal Pell and Minnesota State Grants	\$2.64	\$1.52	\$0.25	\$0.14	\$0.14	\$0.59
	Minnesota State Grants	\$0.54	\$0.21	\$0.07	\$0.06	\$0.05	\$0.15
\$30,000 to \$39,999	Number of Recipients	368	214	40	8	20	86
	Combined federal Pell and Minnesota State Grants	\$2.28	\$1.18	\$0.28	\$0.00	\$0.17	\$0.58
	Minnesota State Grants	\$0.55	\$0.18	\$0.08	\$0.00	\$0.08	\$0.18
\$40,000 to \$49,999	Number of Recipients	342	176	31	11	20	104
	Combined federal Pell and Minnesota State Grants	\$1.77	\$0.79	\$0.18	\$0.08	\$0.13	\$0.58
	Minnesota State Grants	\$0.55	\$0.18	\$0.06	\$0.05	\$0.07	\$0.19
\$50,000 to \$59,999	Number of Recipients	310	181	44	4	27	54
	Combined federal Pell and Minnesota State Grants	\$1.14	\$0.57	\$0.16	\$0.00	\$0.15	\$0.23
	Minnesota State Grants	\$0.53	\$0.22	\$0.10	\$0.00	\$0.09	\$0.11
\$60,000 to \$69,999	Number of Recipients	160	87	15	3	16	39
	Combined federal Pell and Minnesota State Grants	\$0.41	\$0.20	\$0.04	\$0.00	\$0.07	\$0.08
	Minnesota State Grants	\$0.27	\$0.10	\$0.03	\$0.00	\$0.06	\$0.06
\$70,000 or more	Number of Recipients	96	40	5	6	22	23
	Combined federal Pell and Minnesota State Grants	\$0.22	\$0.07	\$0.00	\$0.00	\$0.07	\$0.05
	Minnesota State Grants	\$0.18	\$0.04	\$0.00	\$0.00	\$0.06	\$0.04
Total	Number of Recipients	2,126	1,199	223	62	159	483
	Combined federal Pell and Minnesota State Grants	\$11.53	\$5.91	\$1.30	\$0.50	\$1.05	\$2.77
	Minnesota State Grants	\$3.25	\$1.13	\$0.44	\$0.25	\$0.54	\$0.88

Note: Dollars are in millions; Award amounts for categories with fewer than 10 recipients are reported as zero. Totals include amounts for all categories.

Adjusted gross income of Minnesota State Grant recipients is as reported on federal individual income tax forms. For dependent students, the parents' income was used; for others, the student's, and their spouse's if married, were used.

Table 19**Unmarried Independent Students with Dependents (Children)****Fiscal Year 2010**

Students Registered for Fewer than 30 credits			Minnesota State Grant Statistics				
Adjusted Gross Income		All institutions	MnSCU Two-Year Colleges	MnSCU Four-Year Universities	University of Minnesota	Minnesota Private Non-Profit Institutions	Minnesota Private For-Profit Institutions
Less than \$10,000	Number of Recipients	6,353	3,263	341	124	278	2,347
	Combined federal Pell and Minnesota State Grants	\$24.31	\$11.80	\$1.56	\$0.70	\$1.33	\$8.93
	Minnesota State Grants	\$3.45	\$1.06	\$0.25	\$0.26	\$0.35	\$1.53
\$10,000 to \$19,999	Number of Recipients	4,881	2,569	294	62	209	1,747
	Combined federal Pell and Minnesota State Grants	\$19.04	\$9.48	\$1.28	\$0.37	\$1.01	\$6.90
	Minnesota State Grants	\$2.70	\$0.86	\$0.20	\$0.14	\$0.28	\$1.22
\$20,000 to \$29,999	Number of Recipients	3,204	1,624	211	53	169	1,147
	Combined federal Pell and Minnesota State Grants	\$12.28	\$5.67	\$0.84	\$0.29	\$0.86	\$4.61
	Minnesota State Grants	\$1.92	\$0.53	\$0.13	\$0.10	\$0.25	\$0.91
\$30,000 to \$39,999	Number of Recipients	1,095	440	100	15	104	436
	Combined federal Pell and Minnesota State Grants	\$3.79	\$1.39	\$0.30	\$0.06	\$0.41	\$1.63
	Minnesota State Grants	\$0.76	\$0.14	\$0.05	\$0.03	\$0.14	\$0.41
\$40,000 to \$49,999	Number of Recipients	318	109	20	10	49	130
	Combined federal Pell and Minnesota State Grants	\$0.86	\$0.25	\$0.05	\$0.03	\$0.17	\$0.36
	Minnesota State Grants	\$0.27	\$0.04	\$0.01	\$0.02	\$0.08	\$0.11
\$50,000 to \$59,999	Number of Recipients	81	21	10	3	18	29
	Combined federal Pell and Minnesota State Grants	\$0.16	\$0.03	\$0.02	\$0.00	\$0.04	\$0.06
	Minnesota State Grants	\$0.08	\$0.01	\$0.01	\$0.00	\$0.02	\$0.03
\$60,000 to \$69,999	Number of Recipients	18	3	0	1	6	8
	Combined federal Pell and Minnesota State Grants	\$0.03	\$0.00	\$0.00	\$0.00	\$0.00	\$0.00
	Minnesota State Grants	\$0.02	\$0.00	\$0.00	\$0.00	\$0.00	\$0.00
\$70,000 or more	Number of Recipients	6	2	0	0	1	3
	Combined federal Pell and Minnesota State Grants	\$0.00	\$0.00	\$0.00	\$0.00	\$0.00	\$0.00
	Minnesota State Grants	\$0.00	\$0.00	\$0.00	\$0.00	\$0.00	\$0.00
Total	Number of Recipients	15,956	8,031	976	268	834	5,847
	Combined federal Pell and Minnesota State Grants	\$60.47	\$28.63	\$4.05	\$1.47	\$3.83	\$22.50
	Minnesota State Grants	\$9.19	\$2.64	\$0.65	\$0.55	\$1.13	\$4.22

Note: Dollars are in millions; Award amounts for categories with fewer than 10 recipients are reported as zero. Totals include amounts for all categories.

Adjusted gross income of Minnesota State Grant recipients is as reported on federal individual income tax forms. For dependent students, the parents' income was used; for others, the student's, and their spouse's if married, were used.

Table 20**Unmarried Independent Students with Dependents (Children)****Fiscal Year 2010**

Students Registered for 30 or more credits			Minnesota State Grant Statistics				
Adjusted Gross Income		All institutions	MnSCU Two-Year Colleges	MnSCU Four-Year Universities	University of Minnesota	Minnesota Private Non-Profit Institutions	Minnesota Private For-Profit Institutions
Less than \$10,000	Number of Recipients	1,065	445	127	52	95	346
	Combined federal Pell and Minnesota State Grants	\$7.31	\$2.72	\$0.90	\$0.49	\$0.80	\$2.41
	Minnesota State Grants	\$1.62	\$0.35	\$0.22	\$0.21	\$0.29	\$0.55
\$10,000 to \$19,999	Number of Recipients	905	477	93	36	47	252
	Combined federal Pell and Minnesota State Grants	\$6.07	\$2.92	\$0.66	\$0.35	\$0.42	\$1.73
	Minnesota State Grants	\$1.24	\$0.37	\$0.16	\$0.16	\$0.17	\$0.39
\$20,000 to \$29,999	Number of Recipients	550	298	34	12	27	179
	Combined federal Pell and Minnesota State Grants	\$3.64	\$1.82	\$0.23	\$0.12	\$0.23	\$1.24
	Minnesota State Grants	\$0.72	\$0.24	\$0.05	\$0.05	\$0.09	\$0.29
\$30,000 to \$39,999	Number of Recipients	214	103	21	6	19	65
	Combined federal Pell and Minnesota State Grants	\$1.20	\$0.50	\$0.12	\$0.00	\$0.14	\$0.40
	Minnesota State Grants	\$0.34	\$0.09	\$0.03	\$0.00	\$0.06	\$0.13
\$40,000 to \$49,999	Number of Recipients	76	40	6	4	8	18
	Combined federal Pell and Minnesota State Grants	\$0.33	\$0.15	\$0.00	\$0.00	\$0.00	\$0.09
	Minnesota State Grants	\$0.13	\$0.04	\$0.00	\$0.00	\$0.00	\$0.04
\$50,000 to \$59,999	Number of Recipients	17	4	1	0	6	6
	Combined federal Pell and Minnesota State Grants	\$0.06	\$0.00	\$0.00	\$0.00	\$0.00	\$0.00
	Minnesota State Grants	\$0.04	\$0.00	\$0.00	\$0.00	\$0.00	\$0.00
\$60,000 to \$69,999	Number of Recipients	7	2	2	2	0	1
	Combined federal Pell and Minnesota State Grants	\$0.00	\$0.00	\$0.00	\$0.00	\$0.00	\$0.00
	Minnesota State Grants	\$0.00	\$0.00	\$0.00	\$0.00	\$0.00	\$0.00
\$70,000 or more	Number of Recipients	1	0	0	0	0	1
	Combined federal Pell and Minnesota State Grants	\$0.00	\$0.00	\$0.00	\$0.00	\$0.00	\$0.00
	Minnesota State Grants	\$0.00	\$0.00	\$0.00	\$0.00	\$0.00	\$0.00
Total	Number of Recipients	2,835	1,369	284	112	202	868
	Combined federal Pell and Minnesota State Grants	\$18.63	\$8.11	\$1.93	\$1.04	\$1.66	\$5.89
	Minnesota State Grants	\$4.11	\$1.08	\$0.47	\$0.47	\$0.66	\$1.42

Note: Dollars are in millions; Award amounts for categories with fewer than 10 recipients are reported as zero. Totals include amounts for all categories.

Adjusted gross income of Minnesota State Grant recipients is as reported on federal individual income tax forms. For dependent students, the parents' income was used; for others, the student's, and their spouse's if married, were used.

Table 21**Married Independent Students with No Other Dependents (Children)****Fiscal Year 2010**

Students Registered for Fewer than 30 credits			Minnesota State Grant Statistics				
Adjusted Gross Income		All institutions	MnSCU Two-Year Colleges	MnSCU Four-Year Universities	University of Minnesota	Minnesota Private Non-Profit Institutions	Minnesota Private For-Profit Institutions
Less than \$10,000	Number of Recipients	569	276	50	40	45	158
	Combined federal Pell and Minnesota State Grants	\$2.27	\$0.95	\$0.24	\$0.24	\$0.23	\$0.61
	Minnesota State Grants	\$0.43	\$0.10	\$0.04	\$0.10	\$0.07	\$0.11
\$10,000 to \$19,999	Number of Recipients	539	257	71	35	45	131
	Combined federal Pell and Minnesota State Grants	\$2.00	\$0.81	\$0.30	\$0.19	\$0.25	\$0.45
	Minnesota State Grants	\$0.50	\$0.12	\$0.07	\$0.09	\$0.10	\$0.11
\$20,000 to \$29,999	Number of Recipients	500	228	72	35	48	117
	Combined federal Pell and Minnesota State Grants	\$1.34	\$0.51	\$0.21	\$0.13	\$0.18	\$0.31
	Minnesota State Grants	\$0.64	\$0.17	\$0.11	\$0.09	\$0.12	\$0.15
\$30,000 to \$39,999	Number of Recipients	281	114	47	28	34	58
	Combined federal Pell and Minnesota State Grants	\$0.49	\$0.13	\$0.08	\$0.08	\$0.10	\$0.10
	Minnesota State Grants	\$0.37	\$0.10	\$0.06	\$0.08	\$0.08	\$0.06
\$40,000 to \$49,999	Number of Recipients	110	36	21	18	18	17
	Combined federal Pell and Minnesota State Grants	\$0.13	\$0.03	\$0.01	\$0.04	\$0.03	\$0.02
	Minnesota State Grants	\$0.12	\$0.02	\$0.01	\$0.04	\$0.03	\$0.02
\$50,000 to \$59,999	Number of Recipients	29	5	5	4	9	6
	Combined federal Pell and Minnesota State Grants	\$0.03	\$0.00	\$0.00	\$0.00	\$0.00	\$0.00
	Minnesota State Grants	\$0.03	\$0.00	\$0.00	\$0.00	\$0.00	\$0.00
\$60,000 to \$69,999	Number of Recipients	10	0	0	1	5	4
	Combined federal Pell and Minnesota State Grants	\$0.01	\$0.00	\$0.00	\$0.00	\$0.00	\$0.00
	Minnesota State Grants	\$0.01	\$0.00	\$0.00	\$0.00	\$0.00	\$0.00
\$70,000 or more	Number of Recipients	0	0	0	0	0	0
	Combined federal Pell and Minnesota State Grants	\$0.00	\$0.00	\$0.00	\$0.00	\$0.00	\$0.00
	Minnesota State Grants	\$0.00	\$0.00	\$0.00	\$0.00	\$0.00	\$0.00
Total	Number of Recipients	2,038	916	266	161	204	491
	Combined federal Pell and Minnesota State Grants	\$6.27	\$2.43	\$0.85	\$0.68	\$0.80	\$1.51
	Minnesota State Grants	\$2.09	\$0.53	\$0.30	\$0.39	\$0.42	\$0.46

Note: Dollars are in millions; Award amounts for categories with fewer than 10 recipients are reported as zero. Totals include amounts for all categories.

Adjusted gross income of Minnesota State Grant recipients is as reported on federal individual income tax forms. For dependent students, the parents' income was used; for others, the student's, and their spouse's if married, were used.

Table 22**Married Independent Students with No Other Dependents (Children)****Fiscal Year 2010**

Students Registered for 30 or more credits			Minnesota State Grant Statistics				
Adjusted Gross Income		All institutions	MnSCU Two-Year Colleges	MnSCU Four-Year Universities	University of Minnesota	Minnesota Private Non-Profit Institutions	Minnesota Private For-Profit Institutions
Less than \$10,000	Number of Recipients	161	68	25	17	27	24
	Combined federal Pell and Minnesota State Grants	\$1.16	\$0.40	\$0.17	\$0.16	\$0.24	\$0.18
	Minnesota State Grants	\$0.32	\$0.06	\$0.04	\$0.07	\$0.10	\$0.05
\$10,000 to \$19,999	Number of Recipients	189	64	36	19	40	30
	Combined federal Pell and Minnesota State Grants	\$1.29	\$0.35	\$0.23	\$0.17	\$0.34	\$0.20
	Minnesota State Grants	\$0.48	\$0.07	\$0.08	\$0.09	\$0.17	\$0.08
\$20,000 to \$29,999	Number of Recipients	176	71	30	14	28	33
	Combined federal Pell and Minnesota State Grants	\$0.82	\$0.24	\$0.15	\$0.10	\$0.17	\$0.16
	Minnesota State Grants	\$0.47	\$0.12	\$0.08	\$0.07	\$0.12	\$0.09
\$30,000 to \$39,999	Number of Recipients	115	56	15	14	16	14
	Combined federal Pell and Minnesota State Grants	\$0.35	\$0.11	\$0.04	\$0.08	\$0.08	\$0.05
	Minnesota State Grants	\$0.31	\$0.10	\$0.04	\$0.07	\$0.07	\$0.04
\$40,000 to \$49,999	Number of Recipients	49	16	5	11	10	7
	Combined federal Pell and Minnesota State Grants	\$0.10	\$0.03	\$0.00	\$0.02	\$0.03	\$0.00
	Minnesota State Grants	\$0.09	\$0.02	\$0.00	\$0.02	\$0.03	\$0.00
\$50,000 to \$59,999	Number of Recipients	16	4	4	1	5	2
	Combined federal Pell and Minnesota State Grants	\$0.04	\$0.00	\$0.00	\$0.00	\$0.00	\$0.00
	Minnesota State Grants	\$0.04	\$0.00	\$0.00	\$0.00	\$0.00	\$0.00
\$60,000 to \$69,999	Number of Recipients	2	0	1	0	1	0
	Combined federal Pell and Minnesota State Grants	\$0.00	\$0.00	\$0.00	\$0.00	\$0.00	\$0.00
	Minnesota State Grants	\$0.00	\$0.00	\$0.00	\$0.00	\$0.00	\$0.00
\$70,000 or more	Number of Recipients	1	0	0	0	0	1
	Combined federal Pell and Minnesota State Grants	\$0.00	\$0.00	\$0.00	\$0.00	\$0.00	\$0.00
	Minnesota State Grants	\$0.00	\$0.00	\$0.00	\$0.00	\$0.00	\$0.00
Total	Number of Recipients	709	279	116	76	127	111
	Combined federal Pell and Minnesota State Grants	\$3.76	\$1.13	\$0.60	\$0.54	\$0.88	\$0.61
	Minnesota State Grants	\$1.73	\$0.37	\$0.24	\$0.32	\$0.51	\$0.29

Note: Dollars are in millions; Award amounts for categories with fewer than 10 recipients are reported as zero. Totals include amounts for all categories.

Adjusted gross income of Minnesota State Grant recipients is as reported on federal individual income tax forms. For dependent students, the parents' income was used; for others, the student's, and their spouse's if married, were used.

Table 23**Unmarried Independent Students with No Other Dependents (Children)****Fiscal Year 2010**

Students Registered for Fewer than 30 credits				Minnesota State Grant Statistics			
Adjusted Gross Income		All institutions	MnSCU Two-Year Colleges	MnSCU Four-Year Universities	University of Minnesota	Minnesota Private Non-Profit Institutions	Minnesota Private For-Profit Institutions
Less than \$10,000	Number of Recipients	6,564	3,292	788	481	529	1,474
	Combined federal Pell and Minnesota State Grants	\$26.85	\$11.85	\$3.80	\$2.84	\$2.59	\$5.76
	Minnesota State Grants	\$4.84	\$1.15	\$0.64	\$1.12	\$0.78	\$1.16
\$10,000 to \$19,999	Number of Recipients	4,103	2,062	551	287	301	902
	Combined federal Pell and Minnesota State Grants	\$11.52	\$5.09	\$1.76	\$1.27	\$1.06	\$2.33
	Minnesota State Grants	\$4.44	\$1.43	\$0.68	\$0.78	\$0.56	\$0.99
\$20,000 to \$29,999	Number of Recipients	2,270	1,072	261	121	213	603
	Combined federal Pell and Minnesota State Grants	\$2.79	\$0.97	\$0.32	\$0.33	\$0.41	\$0.76
	Minnesota State Grants	\$2.69	\$0.91	\$0.32	\$0.32	\$0.40	\$0.74
\$30,000 to \$39,999	Number of Recipients	237	34	28	41	62	72
	Combined federal Pell and Minnesota State Grants	\$0.20	\$0.01	\$0.01	\$0.05	\$0.06	\$0.06
	Minnesota State Grants	\$0.19	\$0.01	\$0.01	\$0.05	\$0.06	\$0.06
\$40,000 to \$49,999	Number of Recipients	19	1	0	9	5	4
	Combined federal Pell and Minnesota State Grants	\$0.01	\$0.00	\$0.00	\$0.00	\$0.00	\$0.00
	Minnesota State Grants	\$0.01	\$0.00	\$0.00	\$0.00	\$0.00	\$0.00
\$50,000 to \$59,999	Number of Recipients	0	0	0	0	0	0
	Combined federal Pell and Minnesota State Grants	\$0.00	\$0.00	\$0.00	\$0.00	\$0.00	\$0.00
	Minnesota State Grants	\$0.00	\$0.00	\$0.00	\$0.00	\$0.00	\$0.00
\$60,000 to \$69,999	Number of Recipients	0	0	0	0	0	0
	Combined federal Pell and Minnesota State Grants	\$0.00	\$0.00	\$0.00	\$0.00	\$0.00	\$0.00
	Minnesota State Grants	\$0.00	\$0.00	\$0.00	\$0.00	\$0.00	\$0.00
\$70,000 or more	Number of Recipients	0	0	0	0	0	0
	Combined federal Pell and Minnesota State Grants	\$0.00	\$0.00	\$0.00	\$0.00	\$0.00	\$0.00
	Minnesota State Grants	\$0.00	\$0.00	\$0.00	\$0.00	\$0.00	\$0.00
Total	Number of Recipients	13,193	6,461	1,628	939	1,110	3,055
	Combined federal Pell and Minnesota State Grants	\$41.37	\$17.92	\$5.90	\$4.49	\$4.13	\$8.92
	Minnesota State Grants	\$12.18	\$3.50	\$1.65	\$2.28	\$1.80	\$2.95

Note: Dollars are in millions; Award amounts for categories with fewer than 10 recipients are reported as zero. Totals include amounts for all categories.

Adjusted gross income of Minnesota State Grant recipients is as reported on federal individual income tax forms. For dependent students, the parents' income was used; for others, the student's, and their spouse's if married, were used.

Table 24
Unmarried Independent Students with No Other Dependents (Children)

Fiscal Year 2010

Students Registered for 30 or more credits				Minnesota State Grant Statistics			
Adjusted Gross Income		All institutions	MnSCU Two-Year Colleges	MnSCU Four-Year Universities	University of Minnesota	Minnesota Private Non-Profit Institutions	Minnesota Private For-Profit Institutions
Less than \$10,000	Number of Recipients	1,857	733	293	256	288	287
	Combined federal Pell and Minnesota State Grants	\$13.51	\$4.43	\$2.05	\$2.41	\$2.56	\$2.07
	Minnesota State Grants	\$3.92	\$0.63	\$0.53	\$1.10	\$1.05	\$0.62
\$10,000 to \$19,999	Number of Recipients	1,169	520	206	132	89	222
	Combined federal Pell and Minnesota State Grants	\$5.96	\$2.17	\$1.03	\$1.00	\$0.61	\$1.16
	Minnesota State Grants	\$3.07	\$0.87	\$0.51	\$0.66	\$0.39	\$0.63
\$20,000 to \$29,999	Number of Recipients	689	334	96	69	49	141
	Combined federal Pell and Minnesota State Grants	\$1.82	\$0.59	\$0.24	\$0.34	\$0.21	\$0.44
	Minnesota State Grants	\$1.78	\$0.56	\$0.24	\$0.34	\$0.21	\$0.44
\$30,000 to \$39,999	Number of Recipients	115	32	20	16	19	28
	Combined federal Pell and Minnesota State Grants	\$0.14	\$0.02	\$0.01	\$0.04	\$0.03	\$0.04
	Minnesota State Grants	\$0.14	\$0.02	\$0.01	\$0.04	\$0.03	\$0.04
\$40,000 to \$49,999	Number of Recipients	6	0	0	3	3	0
	Combined federal Pell and Minnesota State Grants	\$0.00	\$0.00	\$0.00	\$0.00	\$0.00	\$0.00
	Minnesota State Grants	\$0.00	\$0.00	\$0.00	\$0.00	\$0.00	\$0.00
\$50,000 to \$59,999	Number of Recipients	0	0	0	0	0	0
	Combined federal Pell and Minnesota State Grants	\$0.00	\$0.00	\$0.00	\$0.00	\$0.00	\$0.00
	Minnesota State Grants	\$0.00	\$0.00	\$0.00	\$0.00	\$0.00	\$0.00
\$60,000 to \$69,999	Number of Recipients	0	0	0	0	0	0
	Combined federal Pell and Minnesota State Grants	\$0.00	\$0.00	\$0.00	\$0.00	\$0.00	\$0.00
	Minnesota State Grants	\$0.00	\$0.00	\$0.00	\$0.00	\$0.00	\$0.00
\$70,000 or more	Number of Recipients	0	0	0	0	0	0
	Combined federal Pell and Minnesota State Grants	\$0.00	\$0.00	\$0.00	\$0.00	\$0.00	\$0.00
	Minnesota State Grants	\$0.00	\$0.00	\$0.00	\$0.00	\$0.00	\$0.00
Total	Number of Recipients	3,836	1,619	615	476	448	678
	Combined federal Pell and Minnesota State Grants	\$21.45	\$7.20	\$3.33	\$3.79	\$3.41	\$3.72
	Minnesota State Grants	\$8.92	\$2.08	\$1.29	\$2.14	\$1.68	\$1.73

Note: Dollars are in millions; Award amounts for categories with fewer than 10 recipients are reported as zero. Totals include amounts for all categories.

Adjusted gross income of Minnesota State Grant recipients is as reported on federal individual income tax forms. For dependent students, the parents' income was used; for others, the student's, and their spouse's if married, were used.

Minnesota State Grant **Number of Recipients and Amount Awarded by Institution** **Fiscal Year 2010**

MnSCU Two-Year Colleges

Participating Institutions	Number of Minnesota State Grant Recipients	Combined Federal Pell and Minnesota State Grants Received	Minnesota State Grants Received
Alexandria Technical College	906	\$3,630,000	\$969,000
Anoka Technical College	906	\$3,113,000	\$649,000
Anoka-Ramsey Community College	1,932	\$5,809,000	\$1,148,000
Central Lakes College	1,786	\$6,940,000	\$1,377,000
Century College	3,343	\$11,064,000	\$1,913,000
Dakota County Technical College	910	\$3,242,000	\$838,000
Fond du Lac Tribal & Community College	426	\$1,600,000	\$267,000
Hennepin Technical College	1,818	\$5,953,000	\$1,148,000
Hibbing Community College	743	\$2,999,000	\$564,000
Inver Hills Community College	1,458	\$4,842,000	\$899,000
Itasca Community College	481	\$1,965,000	\$387,000
Lake Superior College	1,204	\$4,068,000	\$830,000
Mesabi Range Community & Technical College	602	\$2,559,000	\$489,000
Minneapolis Community & Technical College	4,097	\$13,585,000	\$2,391,000
Minnesota State College Southeast Technical	792	\$2,818,000	\$598,000
Minnesota State Community & Technical College	1,723	\$6,559,000	\$1,498,000
Minnesota West Community & Technical College	1,154	\$4,576,000	\$1,023,000
Normandale Community College	2,680	\$9,029,000	\$1,907,000
North Hennepin Community College	2,177	\$7,172,000	\$1,359,000
Northland Community & Technical College	946	\$3,421,000	\$876,000
Northwest Technical College	535	\$2,120,000	\$420,000
Pine Technical College	345	\$1,212,000	\$188,000

Award amounts for institutions with fewer than 10 recipients are reported as zero.

MnSCU Two-Year Colleges

Participating Institutions	Number of Minnesota State Grant Recipients	Combined Federal Pell and Minnesota State Grants Received	Minnesota State Grants Received
Rainy River Community College	117	\$473,000	\$96,000
Ridgewater College	1,860	\$6,882,000	\$1,677,000
Riverland Community College	1,111	\$4,036,000	\$858,000
Rochester Community and Technical College	2,010	\$7,140,000	\$1,641,000
South Central Technical College	1,486	\$5,061,000	\$1,186,000
St. Cloud Technical College	1,957	\$7,033,000	\$1,699,000
St. Paul College	2,026	\$7,270,000	\$1,065,000
Vermilion Community College	196	\$788,000	\$193,000
Sub-Total	41,727	\$146,962,000	\$30,155,000

MnSCU Four-Year Universities

Participating Institutions	Number of Minnesota State Grant Recipients	Combined Federal Pell and Minnesota State Grants Received	Minnesota State Grants Received
Bemidji State University	1,700	\$7,743,000	\$3,266,000
Metropolitan State University	1,628	\$5,673,000	\$1,429,000
Minnesota State University Mankato	3,754	\$16,499,000	\$6,645,000
Minnesota State University Moorhead	1,611	\$6,991,000	\$2,966,000
Southwest Minnesota State University	967	\$4,390,000	\$1,854,000
St. Cloud State University	4,631	\$19,298,000	\$7,116,000
Winona State University	1,637	\$7,509,000	\$3,768,000
Sub-Total	15,928	\$68,103,000	\$27,044,000

Award amounts for institutions with fewer than 10 recipients are reported as zero.

University of Minnesota

Participating Institutions	Number of Minnesota State Grant Recipients	Combined Federal Pell and Minnesota State Grants Received	Minnesota State Grants Received
University of Minnesota Crookston	445	\$2,489,000	\$1,347,000
University of Minnesota Duluth	2,943	\$16,060,000	\$9,826,000
University of Minnesota Morris	631	\$3,820,000	\$2,217,000
University of Minnesota Twin Cities	7,923	\$46,997,000	\$27,772,000
Sub-Total	11,942	\$69,366,000	\$41,162,000

Minnesota Private Non-Profit Institutions

Participating Institutions	Number of Minnesota State Grant Recipients	Combined Federal Pell and Minnesota State Grants Received	Minnesota State Grants Received
American Indian Opportunities Industrialization Center	99	\$375,000	\$56,000
Augsburg College	1,133	\$6,847,000	\$3,870,000
Bethany Lutheran College	250	\$1,534,000	\$942,000
Bethel University	1,094	\$5,952,000	\$3,541,000
Carleton College	118	\$766,000	\$447,000
College of Saint Benedict	611	\$3,600,000	\$2,252,000
College of St. Scholastica	1,054	\$6,138,000	\$3,727,000
College of Visual Arts	99	\$614,000	\$388,000
Concordia College	823	\$4,722,000	\$2,992,000
Concordia University	496	\$3,102,000	\$1,652,000
Crossroads College	59	\$366,000	\$185,000
Crown College	342	\$1,838,000	\$974,000
Dunwoody College of Technology	877	\$3,406,000	\$1,233,000
Gustavus Adolphus College	728	\$4,291,000	\$2,693,000
Hamline University	737	\$4,583,000	\$2,735,000

Award amounts for institutions with fewer than 10 recipients are reported as zero.

Minnesota Private Non-Profit Institutions

Participating Institutions	Number of Minnesota State Grant Recipients	Combined Federal Pell and Minnesota State Grants Received	Minnesota State Grants Received
Leech Lake Tribal College	70	\$314,000	\$33,000
Macalester College	111	\$741,000	\$433,000
Martin Luther College	51	\$262,000	\$185,000
Minneapolis College of Art and Design	184	\$1,068,000	\$606,000
North Central University	295	\$1,780,000	\$990,000
Northwestern College	906	\$5,269,000	\$3,075,000
Northwestern Health Sciences University	23	\$90,000	\$27,000
Oak Hills Christian College	72	\$431,000	\$210,000
Presentation College	52	\$306,000	\$143,000
Saint John's University	464	\$2,771,000	\$1,759,000
Saint Mary's University of Minnesota	464	\$2,370,000	\$1,406,000
St. Catherine University	1,501	\$7,549,000	\$3,657,000
St. Olaf College	489	\$2,920,000	\$1,814,000
Summit Academy Opportunity Industrialization Center	143	\$435,000	\$102,000
University of St. Thomas	1,477	\$8,679,000	\$5,182,000
White Earth Tribal College	11	\$37,000	\$2,000
Sub-Total	14,833	\$83,157,000	\$47,311,000

Award amounts for institutions with fewer than 10 recipients are reported as zero.

Minnesota Private For-Profit Institutions

Participating Institutions	Number of Minnesota State Grant Recipients	Combined Federal Pell and Minnesota State Grants Received	Minnesota State Grants Received
Academy College	107	\$379,000	\$92,000
Allure School of Cosmetology	31	\$144,000	\$45,000
Argosy University, Twin Cities Campus	468	\$1,833,000	\$496,000
Art Institutes International Minnesota	951	\$4,679,000	\$2,347,000
Avalon School of Cosmetology	15	\$71,000	\$16,000
Aveda Institute Minneapolis	183	\$869,000	\$298,000
Brown College	733	\$4,051,000	\$1,943,000
Central Beauty School Cambridge	16	\$68,000	\$25,000
Central Beauty School Minneapolis	3	\$0	\$0
Cosmetology Careers Unlimited Duluth	42	\$186,000	\$35,000
Cosmetology Careers Unlimited Hibbing	30	\$137,000	\$27,000
Cosmetology Training Center Mankato	27	\$118,000	\$41,000
Duluth Business University	304	\$955,000	\$178,000
Empire Beauty School Bloomington	176	\$758,000	\$144,000
Empire Beauty School St. Paul	181	\$775,000	\$133,000
Everest Institute	564	\$2,100,000	\$144,000
Globe University	802	\$3,160,000	\$1,067,000
Hastings Beauty School	24	\$117,000	\$33,000
Healing Touch School of Massage	2	\$0	\$0
Herzing College	260	\$1,301,000	\$403,000
High Tech Institute	332	\$1,275,000	\$260,000
Ingénue Beauty School	9	\$0	\$0
Institute of Production & Recording	121	\$423,000	\$139,000
ITT Technical Institute	326	\$1,149,000	\$281,000

Award amounts for institutions with fewer than 10 recipients are reported as zero.

Minnesota Private For-Profit Institutions

Participating Institutions	Number of Minnesota State Grant Recipients	Combined Federal Pell and Minnesota State Grants Received	Minnesota State Grants Received
LA Beauty School	16	\$81,000	\$22,000
Le Cordon College of Culinary Arts Minneapolis St. Paul	379	\$1,575,000	\$492,000
Masters Recording Institute	3	\$0	\$0
McNally Smith College of Music	145	\$670,000	\$315,000
Minneapolis Business College	271	\$1,361,000	\$368,000
Minneapolis Media Institute	19	\$79,000	\$18,000
Minnesota School of Barbering	15	\$81,000	\$26,000
Minnesota School of Beauty	49	\$222,000	\$81,000
Minnesota School of Business	4,590	\$17,222,000	\$5,535,000
Minnesota School of Cosmetology	88	\$378,000	\$73,000
Model College of Hair Design	77	\$328,000	\$119,000
Moler Barber School of Hairstyling	54	\$220,000	\$72,000
MRI School of Minnesota	2	\$0	\$0
National American University	1,117	\$4,286,000	\$1,096,000
Nova Academy of Cosmetology	42	\$178,000	\$52,000
NTI School of CAD Technology	60	\$240,000	\$122,000
Park Avenue School of Cosmetology	24	\$118,000	\$22,000
Pro-Image Beauty School	8	\$0	\$0
Professional Salon Academy	25	\$117,000	\$36,000
Rasmussen College Blaine	7	\$0	\$0
Rasmussen College Brooklyn Park	1,015	\$3,419,000	\$850,000
Rasmussen College Eagan	681	\$2,460,000	\$741,000
Rasmussen College Eden Prairie	529	\$1,781,000	\$484,000

Award amounts for institutions with fewer than 10 recipients are reported as zero.

Minnesota Private For-Profit Institutions

Participating Institutions	Number of Minnesota State Grant Recipients	Combined Federal Pell and Minnesota State Grants Received	Minnesota State Grants Received
Rasmussen College Lake Elmo	440	\$1,717,000	\$469,000
Rasmussen College Mankato	715	\$2,668,000	\$702,000
Rasmussen College Moorhead	271	\$830,000	\$207,000
Rasmussen College St. Cloud	981	\$3,536,000	\$880,000
Regency Beauty Institute Blaine	556	\$2,533,000	\$696,000
Rochester School of Hair Design	43	\$173,000	\$66,000
Salon Professional Academy New Hope	36	\$173,000	\$33,000
Salon Professional Academy Waite Park	32	\$122,000	\$37,000
Transportation Center for Excellence	64	\$104,000	\$32,000
University of Phoenix Minneapolis St. Paul	1,044	\$4,286,000	\$1,008,000
Zegis Beauty School	9	\$0	\$0
Sub-Total	19,114	\$74,504,000	\$22,551,000
All Institutions	Number of Minnesota State Grant Recipients	Combined Federal Pell and Minnesota State Grants Received	Minnesota State Grants Received
Total	103,544	\$442,092,000	\$168,222,000

Award amounts for institutions with fewer than 10 recipients are reported as zero.

Totals include amounts for all institutions.

