



# EXTRAORDINARY EDUCATION, EXCEPTIONAL VALUE

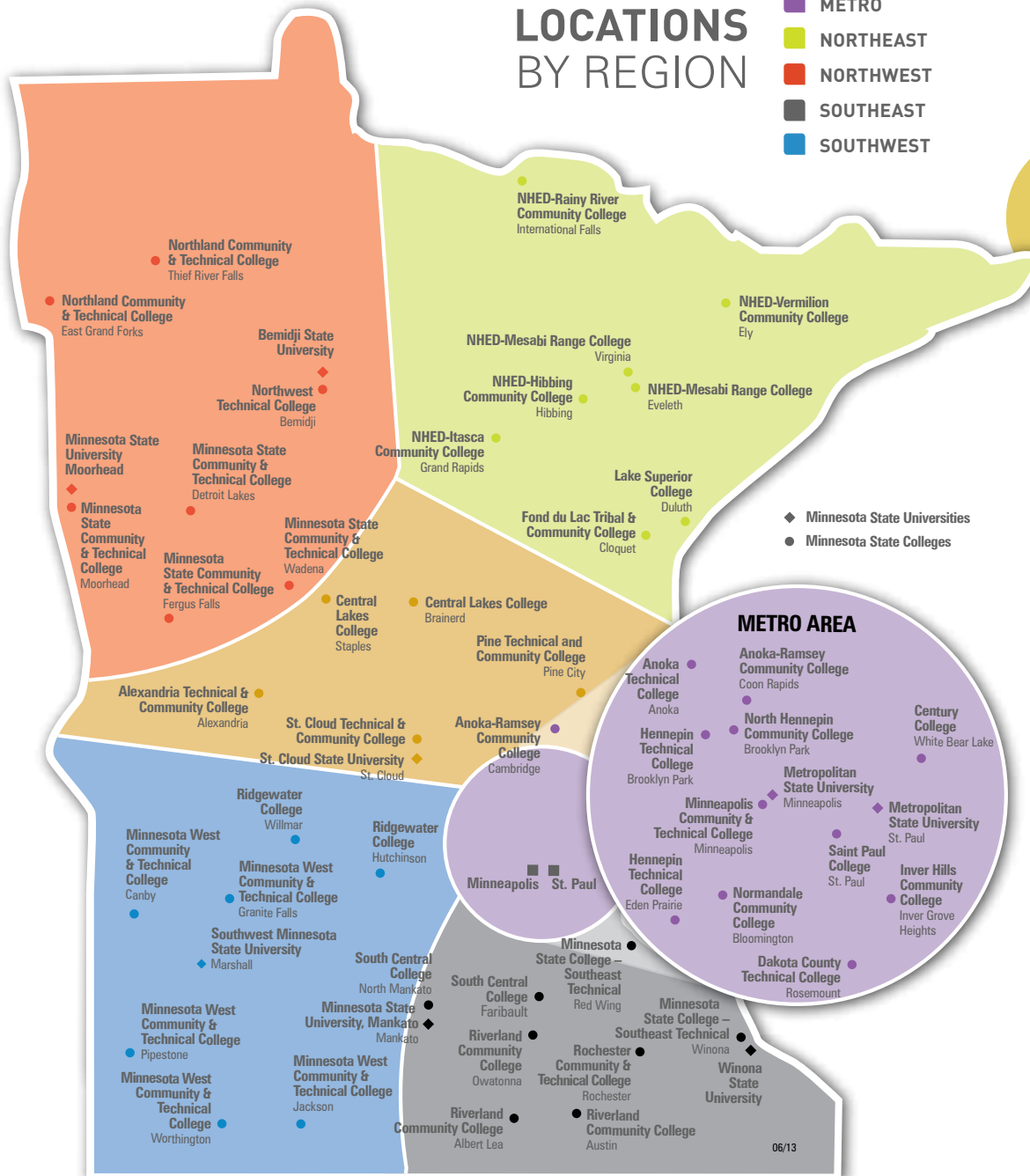
YOUR **2015-16** GUIDE TO

# MINNESOTA STATE

COLLEGES AND  
UNIVERSITIES

# CAMPUS LOCATIONS BY REGION

- CENTRAL
- METRO
- NORTHEAST
- NORTHWEST
- SOUTHEAST
- SOUTHWEST



**54**  
convenient campus  
locations in

**47**  
Minnesota  
communities

## Table of Contents

Introduction .....	1
Extraordinary Education .....	2
Comparing Costs .....	3
Financial Aid Can Work for You .....	6
Earn College Credit in High School .....	8
Online Education, Services and Study Abroad .....	9
Transfer Credits .....	10
Choosing a State College .....	11
State College: Associate Degree, Transfer and Technical Programs .....	12
State College Profiles .....	17
Choosing a State University .....	31
State University Undergraduate Programs .....	32
State University Graduate Programs .....	33
State University Profiles .....	34
Continuing Education and Customized Training .....	41

# Minnesota State

## COLLEGES AND UNIVERSITIES

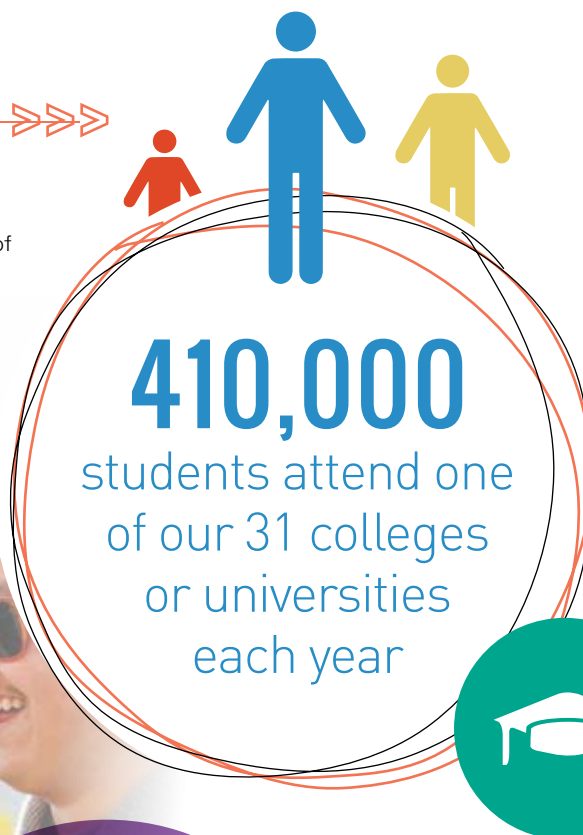
- > Ensuring access to an extraordinary education for all Minnesotans
- > Meeting the needs of Minnesota's workforce and communities
- > Delivering the most affordable, highest value higher education option



**THE 5<sup>TH</sup> LARGEST**  
system of public colleges and  
universities in the country

### MINNESOTA STATE COLLEGES AND UNIVERSITIES

includes 24 public community, technical and comprehensive colleges and seven state universities. Currently, 65% of all Minnesota residents pursuing an undergraduate credential attend one of Minnesota's 31 affordably-priced state colleges and universities, which are conveniently located on 54 campuses in 47 communities across the state.



**42,000**  
degrees, certificates  
and diplomas  
awarded each year

# Extraordinary Education

AT AN AFFORDABLE PRICE

## Many Options

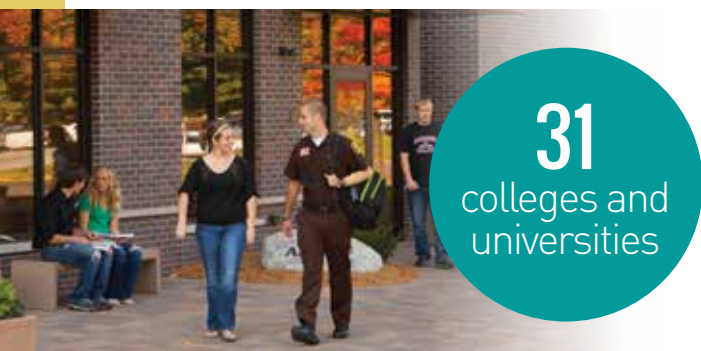
Some campuses are small and some have thousands of students, but all Minnesota State College and University campus professors bring outstanding credentials, industry experience, and a passion for teaching into the classroom.

## In-State Tuition for All Students at Most Colleges and Universities

Most Minnesota State Colleges and Universities offer in-state tuition rates to residents of other states; check individual college and university websites for this information. All Veterans, service members and their families receive in-state tuition at all of our colleges and universities.

## Room and Board Costs

The cost for a double room and board at a state university averages \$7,761 for one year. Some state colleges also have housing on-campus or nearby, and many others can help you find housing in the area. The costs of these options will vary.



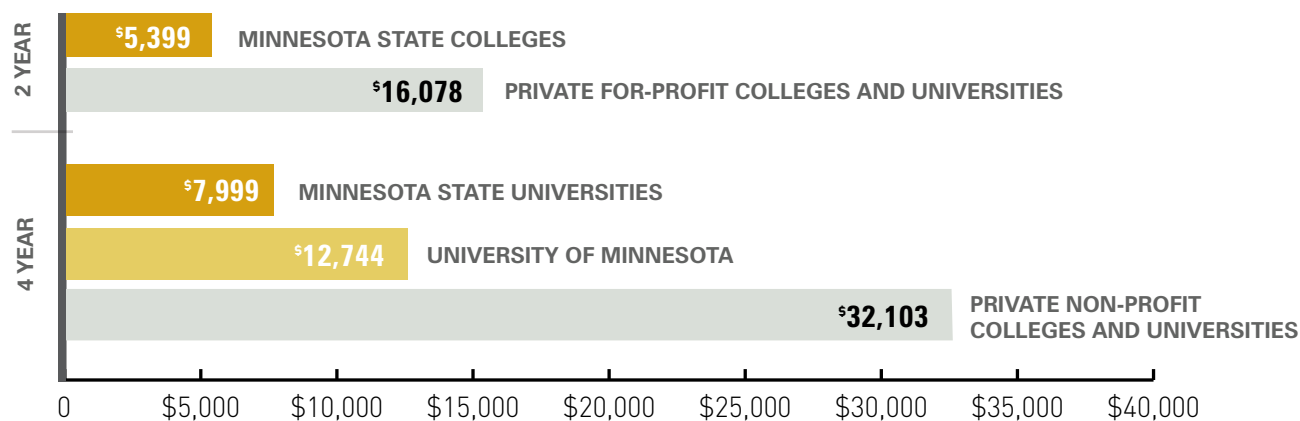
## MINNESOTA STATE COLLEGES AND UNIVERSITIES

offer excellent, affordable education in 47 communities across the state. You can stay close to home or explore a new area of the state to pursue the knowledge and career skills that fit your interests.



## The Most Affordable Option

Average Annual Tuition and Fees for Full-Time Students (before scholarships & grants)





# Comparing Costs

## ANNUAL TUITION AND FEES FOR 2015-2016 FULL-TIME STUDENTS

**80 %  
SAVINGS**

pay 1/5<sup>th</sup> the  
cost of private  
colleges

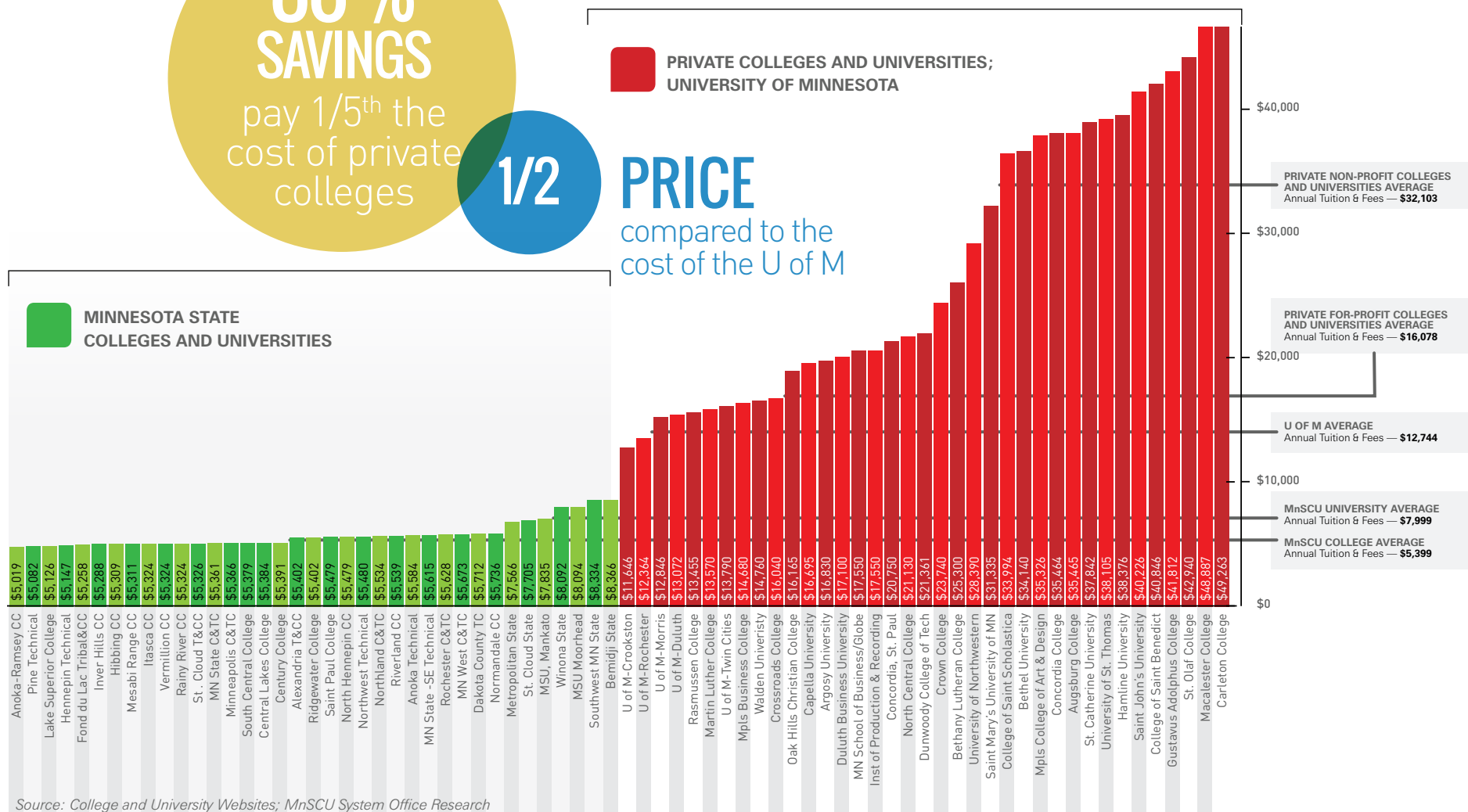
**1/2**

**PRICE**

compared to the  
cost of the U of M

## TUITION FREEZE CONTINUES FOR COMMUNITY AND TECHNICAL COLLEGES

For the third year in a row, tuition remains frozen, making your degree even more affordable. All Minnesota State Colleges and Universities continue to provide you with the opportunity to earn an affordable degree while keeping college debt levels as low as possible.



The costs for Minnesota State Colleges and Universities are for average full-time tuition and fees per year for Minnesota residents. Some colleges and universities charge additional fees. Fees vary depending on the program. For exact tuition and fees, contact the admissions office at the college or university that interests you. The costs do not include room and board for any institution listed.

# Alternative Costs

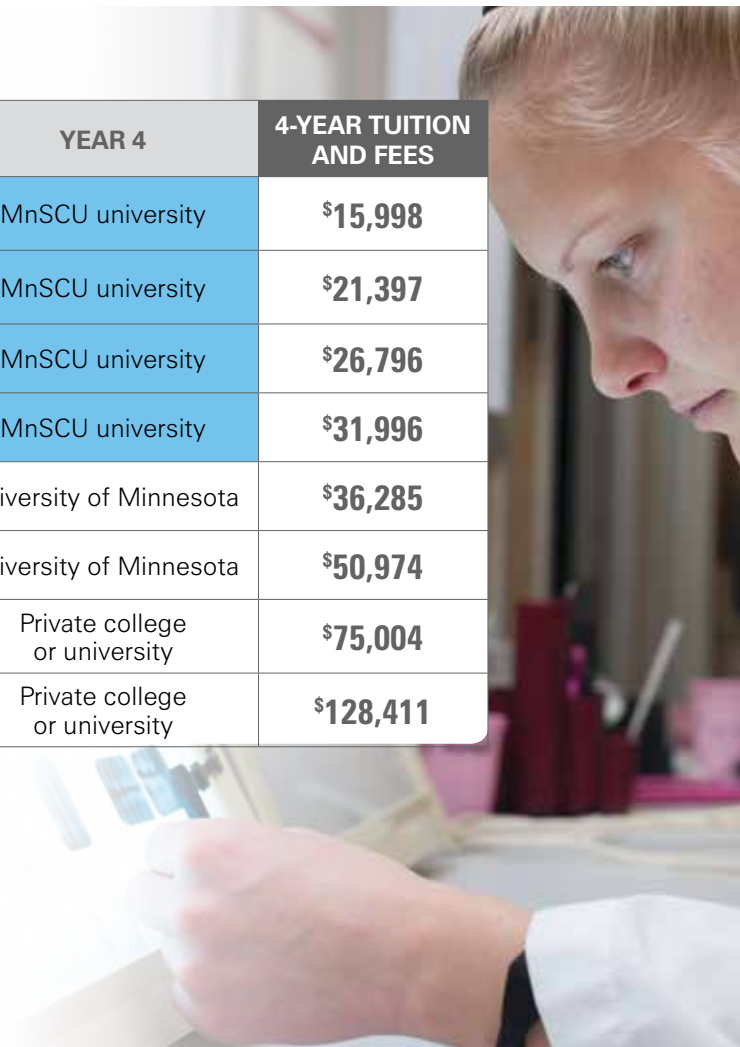
## AND AFFORDABLE OPTIONS FOR GETTING A BACHELOR'S DEGREE

**MINNESOTA STATE COLLEGES AND UNIVERSITIES** are the highest value, most affordable higher education option, with tuition that is significantly lower than private non-profit and for-profit colleges, universities and trade schools. A four-year degree can cost anywhere from \$15,998 to \$128,411, depending on the path you choose.



SCENARIO	YEAR 1	YEAR 2	YEAR 3	YEAR 4	4-YEAR TUITION AND FEES
<b>A</b>	PSEO high school	PSEO high school	MnSCU university	MnSCU university	<b>\$15,998</b>
<b>B</b>	PSEO high school	MnSCU college	MnSCU university	MnSCU university	<b>\$21,397</b>
<b>C</b>	MnSCU college	MnSCU college	MnSCU university	MnSCU university	<b>\$26,796</b>
<b>D</b>	MnSCU university	MnSCU university	MnSCU university	MnSCU university	<b>\$31,996</b>
<b>E</b>	MnSCU college	MnSCU college	University of Minnesota	University of Minnesota	<b>\$36,285</b>
<b>F</b>	University of Minnesota	University of Minnesota	University of Minnesota	University of Minnesota	<b>\$50,974</b>
<b>G</b>	MnSCU college	MnSCU college	Private college or university	Private college or university	<b>\$75,004</b>
<b>H</b>	Private college or university	Private college or university	Private college or university	Private college or university	<b>\$128,411</b>

Cost comparisons from 2015-16, before grants and scholarships.



# GET MORE for your money WITH MnSCU

## Lower Tuition Costs WITH STATE AND PELL GRANTS



### Estimated Net Student Tuition Cost Academic Year 2015-2016

2015-16 tuition rate for full-time students (30 credits, 15 per term) minus estimated state and Pell grants:

#### MnSCU COLLEGE STUDENTS

#### MnSCU UNIVERSITY STUDENTS

INCOME LEVELS FOR GRANT RECIPIENTS	AVERAGE 2015-16 STUDENT TUITION COST	AVERAGE 2015-16 STUDENT TUITION COST
Less than \$20,000	\$525	\$841
\$20,000 to \$39,999	\$1,075	\$1,409
\$40,000 to \$59,999	\$1,742	\$2,869
\$60,000 and above	\$2,903	\$4,653
Cost without grants	\$4,816	\$7,016

### Undocumented Students

State legislation passed in 2013 makes students who are undocumented immigrants eligible for state resident tuition at all MnSCU colleges and universities. To qualify, undocumented students must:

- :: Have attended a Minnesota high school for three years and have graduated from high school or attained the equivalent of high school graduation in Minnesota;
- :: Provide documentation of having complied with selective service requirements; and
- :: Provide documentation of having applied to obtain lawful immigration status, if a process for obtaining such status has been established by the federal government. (Note: At the present time this federal process has not been established, therefore such documentation is not currently required)

In addition to resident tuition, undocumented students who meet the conditions above may also be eligible to receive a Minnesota State Grant and/or private scholarships from Minnesota State College and University foundations. Contact the financial aid office at the college or university you plan to attend for more information.

### Debt of MnSCU Graduates Academic Year 2013-2014

Compared to their counterparts at other higher education institutions in Minnesota, more MnSCU students graduate with less or no debt.

	MnSCU % WITH NO DEBT	MnSCU % WITH DEBT	MEDIAN DEBT FOR THOSE WITH DEBT	MEDIAN DEBT FOR ALL GRADUATES
Certificates/ Diplomas	46%	54%	\$11,028	\$2,778
Associate Degree	34%	66%	\$15,940	\$8,777
Baccalaureate Degree	26%	74%	\$26,057	\$19,064

# Financial Aid

## CAN WORK FOR YOU

### YOUR KEY TO FINANCIAL AID — FREE APPLICATION FOR FEDERAL STUDENT AID, OR FAFSA:

All applicants should complete the FAFSA as soon as possible - after Jan. 1 for high school seniors - or as early as possible in the enrollment process. Find the form online at [www.fafsa.ed.gov](http://www.fafsa.ed.gov). For help with completing the form, go to the financial aid office at the college or university you plan to attend. The FAFSA determines your eligibility for one or more of the following types of financial aid:

#### Grants

You may be eligible to receive federal and state grants of \$200 to more than \$9,000 per year. You do not need to pay these back.

#### Work-study

Work-study programs give you the opportunity to work on campus or with approved off-campus employers to earn money to pay for college. Work-study jobs are often very flexible, allowing you to work around your classes and personal schedules.

#### Student loans

You also may be eligible for student loans, which must be paid back. Student loans often have a lower interest rate than other kinds of loans.

#### Scholarships

Scholarships are a great source of aid, and you do not need to pay them back. Many scholarships are available for students with special interests and backgrounds. Talk to your financial aid office advisors at your chosen college or university about what kind of scholarships you can get.

#### Tax Credits

Some college students also benefit from two federal tax credit programs: the American Opportunity Tax Credit and the Lifetime Learning Tax Credit. These may apply to you or your family, depending on your financial circumstances.



**65%**

of state university undergraduate students received financial aid in 2014

**61%**

of state college students received financial aid in 2014

### 2015-2016

## FAFSA Deadlines

#### :: FEDERAL

July 1, 2016 by midnight, central time

#### :: MINNESOTA

30 days after term start, by midnight, central time

#### :: COLLEGE/UNIVERSITY

Check with the campus financial aid office for dates specific to the college or university of your choice



# HOW FINANCIAL AID CAN Offset College Costs

When comparing college costs, financial aid estimates need to be figured into the equation.

Below are four different financial aid scenarios that outline 2015-2016 net college costs for full-time (30 credits) MnSCU students with different circumstances and family income levels. Part-time MnSCU students (enrolled in fewer than 15 credits per term) can receive Pell Grants pro-rated to their enrollment credit level.

## Joaquin (state college) student

Joaquin lives on his own and has a sister in college. His parents own a home but have no other significant savings.

**Annual Family Income of \$45,000.**

### TUITION AND FEES

2015-2016 tuition ..... \$4,816  
Fees ..... \$583  
**Total Tuition + Fees ..... \$5,399**

### FINANCIAL AID

#### Federal Pell Grant

(does not need to be paid back) ..... \$4,625

#### Minnesota State Grant

(does not need to be paid back) ..... \$1,372

**Total Financial Aid ..... \$5,997**

### NET COLLEGE COSTS =

**FREE + \$598 REMAINING FOR BOOKS**

Joaquin has estimated room and board expenses of \$7,114 and living expenses of \$9,241, but actual costs could be much lower if he lives with his parents or shares an apartment. In addition to grants (that don't have to be paid back), Joaquin qualifies for loans of up to \$5,500, which must be paid back after graduation, and for \$5,000 in work-study earnings to pay for room and board and living expenses (transportation, books, clothing, and social activities).

## Sasha (state college) student

Sasha lives on her own and has a brother in high school. Her single mother has no significant savings.

**Annual Family Income of \$30,000.**

### TUITION AND FEES

2015-2016 tuition ..... \$4,816  
Fees ..... \$583  
**Total Tuition + Fees ..... \$5,399**

### FINANCIAL AID

#### Federal Pell Grant

(does not need to be paid back) ..... \$5,775

#### Minnesota State Grant

(does not need to be paid back) ..... \$1,374

**Total Financial Aid ..... \$7,149**

### NET COLLEGE COSTS =

**FREE + \$1,750 REMAINING FOR BOOKS**

Sasha has estimated room and board expenses of \$5,200 and living expenses of \$7,100, but actual costs could be much less if she lives with her family or shares an apartment. Living expenses include transportation, books, clothing and social activities. She qualifies for loans of up to \$5,500, which must be paid back after graduation, and for work-study earnings up to \$3,000.

## Linda (state university) student

Linda lives on-campus and has a brother in high school. Her single mother has no significant savings.

**Annual Family Income of \$30,000.**

### TUITION AND FEES

2015-2016 tuition ..... \$7,016  
Fees ..... \$983  
**Total Tuition + Fees ..... \$7,999**

### FINANCIAL AID

#### Federal Pell Grant

(does not need to be paid back) ..... \$5,725

#### Minnesota State Grant

(does not need to be paid back) ..... \$2,390

**Total Financial Aid ..... \$8,115**

### NET COLLEGE COSTS =

**FREE + \$116 REMAINING FOR BOOKS**

Linda has estimated residence hall room and board of \$7,761 and living expenses of \$4,252. Linda qualifies for \$5,500 in Federal Direct Loans, which must be paid back after graduation, and \$2,650 in work-study earnings to pay for room and board and living expenses, which include books, clothing, social activities and transportation.

## Max (state university) student

Max lives on campus and has a brother in college. His parents own a home but have no other significant assets or savings.

**Annual Family Income of \$60,000.**

### TUITION AND FEES

2015-2016 tuition ..... \$7,016  
Fees ..... \$983  
**Total Tuition + Fees ..... \$7,999**

### FINANCIAL AID

#### Federal Pell Grant

(does not need to be paid back) ..... \$3,510

#### Minnesota State Grant

(does not need to be paid back) ..... \$2,547

**Total Financial Aid ..... \$6,057**

### NET COLLEGE COSTS =

**\$1,942**

Max has estimated residence hall room and board of \$7,761 and living expenses of \$4,252. Max qualifies for \$5,500 in Federal Direct Loans, which must be paid back after graduation, and \$3,000 in work-study earnings to pay for room and board and living expenses, which include books, clothing, social activities and transportation.

For all four scenarios above, federal and state grants (which do not need to be paid back) cover a significant part of the cost. Tuition and fees are the only costs paid directly to the college or university. The total costs are estimates that could be much lower, depending on your circumstances. Some families take out a bank loan to pay some costs of college. Costs are for average full-time tuition and fees (30 credits) per year for Minnesota residents.

# Earn College Credit IN HIGH SCHOOL

**POST-SECONDARY ENROLLMENT OPTIONS (PSEO):** Students can get a jump start on earning college credits by taking college courses while they are still in high school through Minnesota's PSEO program. This program allows students to take college courses tuition free, saving both time and money on completing a college degree. PSEO courses may also fulfill high school course requirements and count toward a high school diploma.

## Post-Secondary Enrollment Options

The PSEO program allows high school students to earn college credits while still in high school. Students can take college courses on a college or university campus. Students can even take PSEO classes online. Students interested in taking PSEO courses on the college or university campus should contact the campus they are interested in attending to find out more about the application process and deadlines.

Another form of PSEO is concurrent enrollment. This option allows high school students to remain on the high school campus and earn college credits by enrolling in college courses offered at the high school. To be eligible to take PSEO and concurrent enrollment courses within the Minnesota State College and University system, high school juniors must be in the upper one-third of their class or earn a score at or above the 70th percentile on a test such as the ACT or SAT. Seniors must be in the upper half of their class or score at or above the 50th percentile on a test such as the ACT or SAT. Students who do not meet these requirements may still be eligible if they can meet other college readiness standards determined by the college or university. Students in 9th or 10th grade may also be eligible to take concurrent enrollment courses.

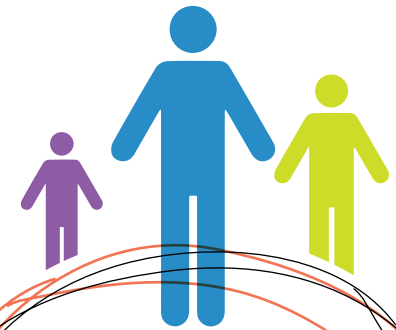
If you are interested in PSEO, talk to your high school guidance counselor and college/university admissions staff or go to [www.mnscu.edu/pseo](http://www.mnscu.edu/pseo).

## Technical Course Options

Students who are interested in technical courses may take one technical college level course taught on a college campus as early as grade 10. To be eligible to do so, they must be enrolled in a public school, and meet requirements for reading proficiency and any other assessment requirements related to the course they wish to enroll in. If a student successfully completes the technical course with a C or higher, the student can take additional technical courses as long as he or she meets the assessment requirement for those courses.

## AP and IB Options

Advanced Placement (AP) or International Baccalaureate (IB) courses are offered at many high schools and provide a rigorous curriculum that prepares students to take college level courses. Students who pass an Advanced Placement test or the International Baccalaureate examination with acceptable scores will be awarded college credit at any MnSCU college or university.



More than  
**112,000**  
MnSCU students  
take online  
classes





18,600

online courses  
available now!

555

online  
programs  
to choose from



# Online Education

## HELPING BUSY STUDENTS MEET THEIR GOALS

Supplement your on-campus class schedule with online classes, or complete a degree, certificate or diploma program entirely online. Through **[www.mnscu.edu/online](http://www.mnscu.edu/online)** you can find thousands of courses and 555 online programs offered by Minnesota State Colleges and Universities.



## Student Services



### Study Abroad

Explore new countries, meet local residents and learn about their cultures through study abroad programs offered by Minnesota State Colleges and Universities. Programs range from a few weeks to a full semester abroad, and many programs feature volunteer projects in communities and local schools that let you contribute your talents while you learn.

You can visit ancient ruins and elegant castles, and learn first-hand about the history, economy, and culture of countries such as China, Italy, England, Denmark, Australia and Mexico. Ask about study abroad information at the colleges or universities that interest you.



### TRIO Services Help Students Succeed

The Federal TRIO Programs are outreach and student services programs designed to identify and provide services for individuals from disadvantaged backgrounds. TRIO programs serve and assist low-income individuals, first-generation college students and individuals with disabilities to successfully enroll and complete academic goals.



### Services for Students with Disabilities

Minnesota State Colleges and Universities all have accessible buildings for students with disabilities, and they provide accommodations to help students who have documented physical and learning disabilities. To learn more, talk with the disability coordinator at the college or university you're interested in attending.



### Services for Veterans

Veterans are welcomed at Minnesota State Colleges and Universities. If you've served in the armed forces, you might be eligible for help with paying for college. Stop by one of the on-campus veterans centers for information, support and assistance. Also, check the Veterans Education Transfer System (VETS) for the opportunity to receive academic credit for your military training and experience. Learn more at **[www.mnscu.edu/military](http://www.mnscu.edu/military)**.



### Career Planning Resources

Career planning tools, job information, educational programs:  
**[www.iseek.org](http://www.iseek.org)**  
Guide to career and educational exploration:  
**[www.iseek.org/mncareers](http://www.iseek.org/mncareers)**

# Transfer Credits

**STUDENTS OFTEN DECIDE TO TRANSFER CREDITS** to a different college or university while completing a degree. Minnesota State Colleges and Universities work together to make transferring as easy as possible. All of our 31 state colleges and universities offer all or part of the Minnesota Transfer Curriculum, a 40-credit package of general education courses accepted for transfer to other state colleges and universities, the University of Minnesota, and some private colleges and universities.



## Plan Ahead to Transfer Successfully

Any course has the potential to transfer; however, general education (Minnesota Transfer Curriculum) courses are the most commonly accepted. Credits will transfer from one institution to another, however, they may not fulfill the specific requirements of your new degree program.

When enrolling at a two-year college with the intention to transfer to a four-year university, it is important to know which degree path is right for you, and to talk with an advisor about how to make your path as smooth as possible. Associate degree programs vary in transferability.

- ∴ Associate of Arts (AA) degrees are designed to transfer most readily into most baccalaureate (four-year) majors; however, some baccalaureate majors may require specific pre-major courses to be taken as part of this degree.
  - ∴ Associate of Science (AS) degrees often transfer into a specific four-year degree major at partnering universities through articulation agreements.
  - ∴ Associate of Fine Arts (AFA) degrees transfer into a specific four-year degree major at partnering universities through articulation agreements.
  - ∴ Associate of Applied Science (AAS) degrees, technical diplomas and technical certificates are designed for immediate entry into the workplace and may have more limited transferability. AAS degrees are not designed for transfer to baccalaureate (four-year) degree majors.
- Note: Transfer occurs without articulation agreements. Please keep in mind that an articulation agreement usually states how an AS or AFA degree transfers into a specific university's major. Make sure to find out what university major accepts the college program covered by the agreement as soon as possible. An articulation agreement database is maintained on MnTransfer.org: [www.mntransfer.org/students/plan/s\\_agreements.php](http://www.mntransfer.org/students/plan/s_agreements.php)

## Seek Advice

Transfer specialists at each campus can help you with course selection and transfer plans. Talk to a transfer specialist and your academic advisor as early as possible and every semester about your degree plans and about where you wish to transfer. Also be sure to review your degree audit report (DARS) every semester. It will help you track your progress towards completing your current program or major.

Visit Transferology [www.transferology.com](http://www.transferology.com) to see how courses at one participating institution are accepted into specific programs or majors at other participating institutions. Transferology also lets you know how standardized exams and military credit transfers into programs or majors.

public community,  
technical and  
comprehensive  
colleges



of MN residents  
pursuing an  
undergraduate  
credential attend  
a MnSCU college  
or university





# Choosing a State College

**Minnesota state colleges offer associate degrees, the Minnesota Transfer Curriculum (MnTC), certificates and diplomas.**

The state community and technical colleges have an open admissions policy. This means all you need to enroll is a high school diploma or a GED. If you don't have a high school diploma or GED, you may take a standardized test to be admitted. You can complete two years at a state college and transfer to another college or university, or you can complete a one-year or two-year career program and go to work right away. Either option is a great value. MnSCU tuition costs are the lowest in the state, and community and technical college tuition rates will remain frozen through the 2015-2016 academic year.



**42,000**

degrees, certificates, and  
diplomas awarded each year

**\$5,399**  
Average annual  
MnSCU college tuition  
and fees for a full-  
time student

For a complete list of programs,  
visit **[www.mnscu.edu](http://www.mnscu.edu)**.

12 [www.mnscu.edu](http://www.mnscu.edu)

For a complete list of programs,  
visit **[www.mnscu.edu](http://www.mnscu.edu)**.

Your 2015-2016 Guide To MnSCU 13

# State College PROGRAMS

For a complete list of programs,  
visit [www.mnscu.edu](http://www.mnscu.edu).

Nanotechnology																																																																																																																																																																																																																																																																																																																																																																																																																																																																																																																																																																																																																																																																																																																																																																																																																																																																																																																																																																																																																																																																																																																																																																																																																																																																																																																																																																																																																																																																																																																																																																																																																																																																				
----------------	--	--	--	--	--	--	--	--	--	--	--	--	--	--	--	--	--	--	--	--	--	--	--	--	--	--	--	--	--	--	--	--	--	--	--	--	--	--	--	--	--	--	--	--	--	--	--	--	--	--	--	--	--	--	--	--	--	--	--	--	--	--	--	--	--	--	--	--	--	--	--	--	--	--	--	--	--	--	--	--	--	--	--	--	--	--	--	--	--	--	--	--	--	--	--	--	--	--	--	--	--	--	--	--	--	--	--	--	--	--	--	--	--	--	--	--	--	--	--	--	--	--	--	--	--	--	--	--	--	--	--	--	--	--	--	--	--	--	--	--	--	--	--	--	--	--	--	--	--	--	--	--	--	--	--	--	--	--	--	--	--	--	--	--	--	--	--	--	--	--	--	--	--	--	--	--	--	--	--	--	--	--	--	--	--	--	--	--	--	--	--	--	--	--	--	--	--	--	--	--	--	--	--	--	--	--	--	--	--	--	--	--	--	--	--	--	--	--	--	--	--	--	--	--	--	--	--	--	--	--	--	--	--	--	--	--	--	--	--	--	--	--	--	--	--	--	--	--	--	--	--	--	--	--	--	--	--	--	--	--	--	--	--	--	--	--	--	--	--	--	--	--	--	--	--	--	--	--	--	--	--	--	--	--	--	--	--	--	--	--	--	--	--	--	--	--	--	--	--	--	--	--	--	--	--	--	--	--	--	--	--	--	--	--	--	--	--	--	--	--	--	--	--	--	--	--	--	--	--	--	--	--	--	--	--	--	--	--	--	--	--	--	--	--	--	--	--	--	--	--	--	--	--	--	--	--	--	--	--	--	--	--	--	--	--	--	--	--	--	--	--	--	--	--	--	--	--	--	--	--	--	--	--	--	--	--	--	--	--	--	--	--	--	--	--	--	--	--	--	--	--	--	--	--	--	--	--	--	--	--	--	--	--	--	--	--	--	--	--	--	--	--	--	--	--	--	--	--	--	--	--	--	--	--	--	--	--	--	--	--	--	--	--	--	--	--	--	--	--	--	--	--	--	--	--	--	--	--	--	--	--	--	--	--	--	--	--	--	--	--	--	--	--	--	--	--	--	--	--	--	--	--	--	--	--	--	--	--	--	--	--	--	--	--	--	--	--	--	--	--	--	--	--	--	--	--	--	--	--	--	--	--	--	--	--	--	--	--	--	--	--	--	--	--	--	--	--	--	--	--	--	--	--	--	--	--	--	--	--	--	--	--	--	--	--	--	--	--	--	--	--	--	--	--	--	--	--	--	--	--	--	--	--	--	--	--	--	--	--	--	--	--	--	--	--	--	--	--	--	--	--	--	--	--	--	--	--	--	--	--	--	--	--	--	--	--	--	--	--	--	--	--	--	--	--	--	--	--	--	--	--	--	--	--	--	--	--	--	--	--	--	--	--	--	--	--	--	--	--	--	--	--	--	--	--	--	--	--	--	--	--	--	--	--	--	--	--	--	--	--	--	--	--	--	--	--	--	--	--	--	--	--	--	--	--	--	--	--	--	--	--	--	--	--	--	--	--	--	--	--	--	--	--	--	--	--	--	--	--	--	--	--	--	--	--	--	--	--	--	--	--	--	--	--	--	--	--	--	--	--	--	--	--	--	--	--	--	--	--	--	--	--	--	--	--	--	--	--	--	--	--	--	--	--	--	--	--	--	--	--	--	--	--	--	--	--	--	--	--	--	--	--	--	--	--	--	--	--	--	--	--	--	--	--	--	--	--	--	--	--	--	--	--	--	--	--	--	--	--	--	--	--	--	--	--	--	--	--	--	--	--	--	--	--	--	--	--	--	--	--	--	--	--	--	--	--	--	--	--	--	--	--	--	--	--	--	--	--	--	--	--	--	--	--	--	--	--	--	--	--	--	--	--	--	--	--	--	--	--	--	--	--	--	--	--	--	--	--	--	--	--	--	--	--	--	--	--	--	--	--	--	--	--	--	--	--	--	--	--	--	--	--	--	--	--	--	--	--	--	--	--	--	--	--	--	--	--	--	--	--	--	--	--	--	--	--	--	--	--	--	--	--	--	--	--	--	--	--	--	--	--	--	--	--	--	--	--	--	--	--	--	--	--	--	--	--	--	--	--	--	--	--	--	--	--	--	--	--	--	--	--	--	--	--	--	--	--	--	--	--	--	--	--	--	--	--	--	--	--	--	--	--	--	--	--	--	--	--	--	--	--	--	--	--	--	--	--	--	--	--	--	--	--	--	--	--	--	--	--	--	--	--	--	--	--	--	--	--	--	--	--	--	--	--	--	--	--	--	--	--	--	--	--	--	--	--	--	--	--	--	--	--	--	--	--	--	--	--	--	--	--	--	--	--	--	--	--	--	--	--	--	--	--	--	--	--	--	--	--	--	--	--	--	--	--	--	--	--	--	--	--	--	--	--	--	--	--	--	--	--	--	--	--	--	--	--	--	--	--	--	--	--	--	--	--	--	--	--	--	--	--	--	--	--	--	--	--	--	--	--	--	--	--	--	--	--	--	--	--	--	--	--	--	--	--	--	--	--	--	--	--	--	--	--	--	--	--	--	--	--	--	--	--	--	--	--	--	--	--	--	--	--	--	--	--	--	--	--	--	--	--	--	--	--	--	--	--	--	--	--	--	--	--	--	--	--	--	--	--	--	--	--	--	--	--	--	--	--	--	--	--	--	--	--	--	--	--	--	--	--	--	--	--	--	--	--	--	--	--	--	--	--	--	--	--	--	--	--	--	--	--	--	--	--	--	--	--	--	--	--	--	--	--	--	--	--	--	--	--	--	--	--	--	--	--	--	--	--	--	--	--	--	--	--	--	--	--	--	--	--	--	--	--	--	--	--	--	--	--	--	--	--	--	--	--	--	--	--	--	--	--	--	--	--	--	--	--	--	--	--	--	--	--	--	--	--	--	--	--	--	--	--	--	--	--	--	--	--	--	--	--	--	--	--	--	--	--	--	--	--	--	--	--	--	--	--	--	--	--	--	--	--	--	--	--	--	--	--	--	--	--	--	--	--	--	--	--	--	--	--	--	--	--	--	--	--	--	--	--	--	--	--	--	--	--	--	--	--	--	--	--	--	--	--	--	--	--	--	--	--	--	--	--	--	--	--	--	--	--	--	--	--	--	--	--	--	--	--	--	--	--	--	--	--	--	--	--	--	--	--	--	--	--	--	--	--	--	--	--	--	--	--	--	--	--	--	--	--	--	--	--	--	--	--	--	--	--	--	--	--	--	--	--	--	--	--	--	--	--	--	--	--	--	--	--	--	--	--	--	--	--	--	--	--	--	--	--	--	--	--	--	--	--	--	--	--	--	--	--	--	--	--	--	--	--	--	--	--	--	--	--	--	--	--	--	--	--	--	--	--	--	--	--	--	--	--	--	--	--	--	--	--	--	--	--	--	--	--	--	--	--	--	--	--	--	--	--	--	--	--	--	--	--	--	--	--	--	--	--	--	--	--	--	--	--	--	--	--	--	--	--	--	--	--	--	--	--	--	--	--	--	--	--	--	--	--	--	--	--	--	--	--	--	--	--	--	--	--	--	--	--	--	--	--	--	--	--	--	--	--	--	--	--	--	--	--	--	--	--	--	--	--	--	--	--	--	--	--	--	--	--	--	--	--



For a complete list of programs,  
visit **[www.mnscu.edu](http://www.mnscu.edu)**.

Your 2015-2016 Guide To MnSCU 15

For a complete list of programs,  
visit **[www.mnscu.edu](http://www.mnscu.edu)**.

[illegible]



**Admissions:** (320) 762-4520  
**Toll-Free:** 1-888-234-1222



**Mailing Address:** 1601 Jefferson St, Alexandria, MN 56308  
**City/Population:** Alexandria / 13,008

**Tuition and Fees (2015-2016):** \$5,402  
**FAFSA Code:** 005544

#### ENROLLMENT:

Total number students served .....4,128  
Full-time .....52%  
Part-time .....48%  
Percent female .....48%  
Percent male .....52%  
Percent students of color .....7%

**DEGREES OFFERED:** Advanced Technical Certificate, Associate of Applied Science, Associate of Arts, Associate of Science, Certificate, Diploma

**LARGEST PROGRAMS:** Communication art and design, diesel mechanic, law enforcement, liberal arts and sciences, practical nursing, welding technology

**UNIQUE PROGRAMS:** Communication art and design, computer and voice networking, fashion management, health and fitness specialist, interior design, mechatronics, speech-language pathology assistant

**STUDENT ACTIVITIES:** American Society of Interior Designers, Anime Club, Book Club, Business Professionals of America (BPA), Collegiate DECA, Creative Writing Club, Diesel Club, Early Childhood Education Club, G.A.T. Gamers of ATCC, Intercultural Club, International Interior Design Assn, Intramural Sports, Law Enforcement Club, National Kitchen and Bath Association, Phi Theta Kappa (PTK) Honor Society, SkillsUSA, Special Interest and Program Clubs, Student Ambassadors, Student Senate, Veteran's Center, Vocational Industrial Clubs of America

**HOUSING:** Student housing is adjacent to the campus, and many community rental options are within walking distance of the campus. Visit [www.alextech.edu/housing](http://www.alextech.edu/housing) to explore these options.

#### Highlights

- Job placement rates have averaged more than 95 percent
- The college is recognized as a national leader in advanced technical skills education
- Most programs include hands-on, student-centered, experiential learning
- Students receive outstanding personal attention
- Highest graduation rate of all Minnesota public two-year colleges
- A rich history includes exceptional instruction, high academic expectations and extensive partnerships with local, state, national, and international businesses and industries
- Associate of Science, Associate of Arts, and many of the Associate of Applied Science degrees transfer toward completion of bachelor's degrees at many universities



**Admissions:** (763) 576-4850  
**TTY:** (800) 627-3529



**Mailing Address:** 1355 W. Highway 10  
Anoka, MN 55303  
**City/Population:** Anoka / 17,345

**Tuition and Fees (2015-2016):** \$5,584  
**FAFSA Code:** 007350

#### ENROLLMENT:

Total number students served .....2,921  
Full-time .....45%  
Part-time .....55%  
Percent female .....60%  
Percent male .....39%  
Percent students of color .....20%

**DEGREES OFFERED:** Associate of Applied Science, Certificate, Diploma

**LARGEST PROGRAMS:** Health information technology, information technology management, CNC manufacturing technology, medical coding, automotive technician, practical nursing

**UNIQUE PROGRAMS:** Medical scribe specialist, logistics, broadcast captioning, judicial reporting, occupational therapy assistant, golf course grounds management, health information technology, multimedia and gaming, information technology

**STUDENT ACTIVITIES:** Multicultural Student Center, Phi Theta Kappa, Student Senate

**HOUSING:** Anoka Technical College does not have on-campus student housing, but roommate and housing lists are available.

#### Highlights

- Located just outside of the Twin Cities, the college has more than 35 career programs that respond to today's contemporary and traditional technical industry needs
- Many programs can be completed in two years or less
- Partnerships with four-year universities that allow students to transfer into bachelor's degree programs

- Multiple degree options in computer networking and telecommunications and computer science
- Teaching method focuses on hands-on learning
- Small class sizes, with a 22-to-1 student-teacher ratio, include hands-on, lecture and group learning experiences
- Online class offerings
- Full- and part-time student scholarships and financial aid available to those who qualify
- 100% job placement rate in Accounting, Advanced Welding, Construction Electrician and Electronic Engineering programs
- Only accredited two-year Judicial Reporting program in Minnesota
- Practical Nursing and Nursing Assistant programs ranked among top 20 in the nation
- Occupational Therapy Assistant program ranked among the top four in the nation

**Anoka Technical College is aligned with Anoka-Ramsey Community College.**

# Anoka-Ramsey Community College

www.anokaramsey.edu



**Admissions:** (763) 433-1300  
**Toll-Free:** 1-866-433-5590  
**TTY:** (763) 433-1450



**Mailing Address:** 11200 Mississippi Blvd. N.W.,  
 Coon Rapids, MN 55433  
**City/Population:** Coon Rapids / 61,850; Cambridge / 8,236

**Tuition and Fees (2015-2016):** \$5,019  
**FAFSA Code:** 002332

## ENROLLMENT:

Total number students served ..... 12,297  
 Full-time ..... 34%  
 Part-time ..... 66%  
 Percent female ..... 61%  
 Percent male ..... 38%  
 Percent students of color ..... 20%

**DEGREES OFFERED:** Associate of Applied Science  
 Associate of Arts, Associate of Science, Associate of  
 Fine Arts, Certificate

**LARGEST PROGRAMS:** Liberal arts and sciences,  
 nursing, business, engineering, accounting, health sciences

**UNIQUE PROGRAMS:** Biological sciences,  
 biomedical technology, creative writing, communication  
 studies, engineering, environmental science, exercise  
 science, fine arts (art, music and theater), glass-blowing,  
 integrative health and healing, pharmacy technician,  
 physical therapist assistant, American Sign Language

**INTERCOLLEGIATE SPORTS:** Women's  
 basketball (CR), fast pitch softball (CC), volleyball (CR),  
 soccer (CR); Men's baseball (CR), basketball (CR),  
 soccer (CR)

**STUDENT ACTIVITIES:** Adult Learning Club  
 (CR), African Student Association (CR), Art Club (CC &  
 CR), Astronomy Club (CR), Badminton (CR), Basketball  
 (CR), Billiards Club (CR), Biology Club (CR), BizTech (CC  
 & CR), Black Student Union (CR), Bowling (CR), Boxing  
 Club (CR), Campus Activities Board (CC), Campus  
 Democrats & Progressives (CR), Campus Republicans and  
 Conservatives (CR), and many more — visit [http://www.  
 anokaramsey.edu/lifeoutside/activities.aspx](http://www.anokaramsey.edu/lifeoutside/activities.aspx) for a  
 complete list.

**HOUSING:** The college has no on-campus student  
 housing, but rental units are available within walking  
 distance.

## Highlights

Anoka-Ramsey Community College offers unique  
 campuses on the Rum River in Cambridge and the  
 Mississippi River in Coon Rapids. Call 763-433-1300 or  
 visit [www.anokaramsey.edu/tour](http://www.anokaramsey.edu/tour) for a tour.

- Among the most affordable tuition and fees among  
 Minnesota state colleges and universities, with free  
 tutoring, personal attention, small class sizes, and  
 dedicated faculty and staff. Ask about scholarships and  
 financial aid packages
- Advanced degrees through other system institutions on  
 its campuses, including bachelor's degrees in business  
 administration, FasTrack license for secondary teacher  
 certification, nursing, teacher education K-8 license,  
 DLITE program (undergraduate major in teaching)
- More than 100 online courses and complete online  
 programs: Associate of Arts degree, Associate of  
 Science degrees in accounting and business; certificates  
 in business computer applications and business  
 generalist
- Undergraduate research opportunities in biology,  
 ecology, environmental science, genetics and  
 microbiology
- State-of-the art Health and Wellness Center fitness  
 facility
- Biomedical Technology programs that prepare students  
 to design, manufacture or repair equipment
- Second largest Nursing program in Minnesota

**Anoka-Ramsey Community College is  
 aligned with Anoka Technical College.**  
*Campus Codes: CR = Coon Rapids Campus,  
 CC = Cambridge Campus*

# Central Lakes College

www.clcmn.edu



**Admissions:** (218) 855-8037  
**Toll-Free:** 1-800-933-0346  
**TTY:** (218) 855-8224



**Mailing Address:** 501 W. College Drive  
 Brainerd, MN 56401  
**City/Population:** Brainerd / 13,621; Staples / 2,705

**Tuition and Fees (2015-2016):** \$5,384  
**FAFSA Code:** 002339

## ENROLLMENT:

Total number students served ..... 6,000  
 Full-time ..... 50%  
 Part-time ..... 50%  
 Percent female ..... 56%  
 Percent male ..... 44%  
 Percent students of color ..... 9%

**DEGREES OFFERED:** Advanced Technical  
 Certificate, Associate of Applied Science, Associate  
 of Arts, Associate of Science, Associate of Fine Arts,  
 Certificate, Diploma

**LARGEST PROGRAMS:** Liberal Arts for transfer to  
 a four-year school, College in the (High) Schools, PSEO,  
 nursing, heavy equipment operations and maintenance,  
 law enforcement, computer technology, natural  
 resources, business, media technologies, environmental,  
 health and human services, manufacturing,  
 transportation

**UNIQUE PROGRAMS:** Computer network  
 administration CyberSecurity, law enforcement  
 skills, sustainable greenhouse production, healthcare  
 administrative specialist, videography production, robotic  
 welding, child development care and guidance, American  
 Sign Language, robotics and automated systems and  
 special education

**INTERCOLLEGIATE SPORTS:** NJCAA Division  
 III – Women's basketball, softball, volleyball; Men's  
 baseball, basketball, football

**STUDENT ACTIVITIES:** Choir, band, drama, visual  
 and literary art observances, student government, Phi  
 Theta Kappa honor society, intramural sports, and more  
 than 20 academic clubs and organizations: Accounting  
 Club, AD Nursing Club, ASL 'PAH' Club, Creative Imaging  
 Association, Dental Assistants Club, Diesel Club, Equality  
 Coalition, Graphic Design Club, Green Club, Heavy

Equipment Club, Horticulture Club, International Club, IT  
 Club, Law Enforcement Club, Medical Assistants Club,  
 Natural Resources Club, PN Nursing Club, Psychology  
 Club, Robotics Club, Science Club, Spanish Club, Veterans  
 Club and Welding Club

**HOUSING:** Student housing is available within  
 walking distance of the campus.

## Highlights

At many colleges and universities, you're just another  
 face in the crowd. At Central Lakes College your  
 education is a personalized experience with small  
 classes, supportive faculty and staff. CLC is located  
 in the premier recreational area of Minnesota, and  
 the central location provides for easy access to the  
 campuses.

- Leading the way for continuity of credits, from high  
 school through postsecondary career paths
- Day, evening and online classes offer flexibility for  
 nontraditional students. On-campus daycare available
- Small class sizes to connect with faculty and classmates
- A variety of student support services, including: Career  
 services, multicultural student services, TRIO Student  
 Support Services, disability services, Veterans Resource  
 Center, English for Speakers of Other Languages  
 Program, and The Learning Center, with several tutors  
 on-hand
- On-campus fitness center, greenhouse and disc golf  
 course
- Travel study opportunities
- Cultural Thursday series, which features speakers on  
 several cultural topics
- Verse Like Water series, which brings in renowned  
 poets from across the country





**Admissions:** (651) 779-3300  
**Toll-Free:** 1-800-228-1978  
**TTY:** (651) 779-3354



**Mailing Address:** 3300 Century Avenue North  
White Bear Lake, MN 55110  
**City/Population:** White Bear Lake / 24,074

**Tuition and Fees (2015-2016):** \$5,391  
**FAFSA Code:** 010546

#### ENROLLMENT:

Total number students served ..... 13,821  
Full-time ..... 40%  
Part-time ..... 60%  
Percent female ..... 55%  
Percent male ..... 45%  
Percent students of color ..... 37%

**DEGREES OFFERED:** Associate of Applied Science, Associate of Arts, Associate of Science, Associate of Fine Arts, Diploma, Certificate

**LARGEST PROGRAMS:** Liberal arts and sciences, nursing, emergency medical technician, accounting, criminal justice, medical assistant, dental assistant, medical office support, law enforcement, information and telecommunications, radiologic technology

**UNIQUE PROGRAMS:** Interior design, kitchen and bath design, visual communication technologies, sports management, orthotic technology, prosthetic technology, translating and interpreting, solar and renewable energy

**INTERCOLLEGIATE SPORTS:** Women's NJCAA Div. III softball and soccer; Men's NJCAA Div. III baseball and soccer

**STUDENT ACTIVITIES:** African American Assn, Alpha Omega Christian Club, Arabic Club, Asian Student Assn, Choir, Creative Arts Alliance, Dental Assistant Club, Dental Hygiene Club, Education Club, Engineering Club, Flag Football Intramurals, Hyper Media Video Club, Information Telecommunications Club, Intercultural Club, Interior Design Club, Law Enforcement Club, Math Club "E=mc<sup>2</sup>", Newspaper - Century Times, Nursing Club, Orthotic & Prosthetic Student Assn, PTK - Phi Theta Kappa, Q & S - The Queer and the Straight Club,

Radiology Club, Recreational Club Sports, Intramurals, "Rock It" Science Club, Sign Language Club, Spanish Club, Student Senate, Table Tennis Club, Theatre Club, Veterans Club, Veterans Dependents

**HOUSING:** The college has no on-campus housing, but rental units are within walking distance.

#### Highlights

Century College is located in White Bear Lake, MN and is one of the largest two-year community and technical colleges in Minnesota, serving over 21,000 credit and non-credit students per year. A leader in the area of student success, Century College offers a warm, welcoming, vibrant learning community. With affordable tuition, and certificates, diplomas and degrees that lead to employment or transfer to four-year universities, Century College provides exceptional value:

- 76 certificates, 21 diplomas and 47 degrees are offered and taught by expert faculty. Each year, 8 out of 10 Century College graduates gain employment in their related program of study and hundreds more transfer to four-year universities
- Students attend Century College from 38 states and 46 countries. The average age of Century College students is 26
- Century College is the only college in Minnesota to participate in the "Achieving the Dream" initiative, a national program focused on student success
- A variety of student services support student success, including advising and counseling, free tutoring, career services, GPS LifePlan and much more



**Admissions:** (651) 423-8301  
**Toll-Free:** 1-877-937-3282  
**TTY:** (651) 423-8621



**Mailing Address:** 1300 145th Street East,  
Rosemount, MN 55068  
**City/Population:** Rosemount / 22,384

**Tuition and Fees (2015-2016):** \$5,712  
**FAFSA Code:** 010402

#### ENROLLMENT:

Total number students served ..... 4,433  
Full-time ..... 48%  
Part-time ..... 52%  
Percent female ..... 42%  
Percent male ..... 56%  
Percent students of color ..... 19%

**DEGREES OFFERED:** Associate of Applied Science Associate of Science, Certificate, Diploma

**LARGEST PROGRAMS:** Business and management, design and technology, health and human services, industry careers, transportation

**UNIQUE PROGRAMS:** Brewing & beer steward technology, broadband systems tech industrial & energy plant maintenance, interior design, entrepreneurship/ small business, health care tech, nanoscience tech, railroad conductor tech, civil engineering tech, energy tech specialist w/ nuclear emphasis, heavy construction equipment tech, GM automotive service educational program, landscape horticulture, multicultural management, spa & resort management, social media specialist, biomedical equipment tech, heavy duty truck tech

**INTERCOLLEGIATE SPORTS:** Women's fastpitch softball, soccer, volleyball; Men's baseball, basketball, soccer

**STUDENT ACTIVITIES:** American Marketing Association, Automobile Club, Business Professionals of America, Chess Club, Christians on Campus, Coral Reef Ecology Club, Design Connection, Early Childhood & Youth Dev Club, Gay Straight Alliance, Hospitality Alumni Network, Innovative Engineers Club, Lions Club,

Meeting Professionals Intl, Minnesota Nursery and Landscape Association, Multicultural Student Leadership Association, Music Club, Phi Theta Kappa Honor Society, Photons (Photography Club), Skills USA, Student Ambassador, Student Senate, US Green Building Council, Veterans Club, Visual Communications Club, Writers Club

**HOUSING:** DCTC has no on-campus housing, but offers a list of housing options at [dctc.edu/go/housing](http://dctc.edu/go/housing).

#### Highlights

Dakota County Technical College is located at the convergence of two worlds. The main campus in Rosemount, Minn., borders the Minneapolis/St. Paul metropolitan area to the north and the rural heartland of Dakota County to the south. Offering more than 50 programs and majors under six academic departments - from Software Development to Social Media Marketing to Architectural Technology to Sport Management to Nanoscience Technology to Heavy Duty Truck Technology, DCTC is made to order for students who want to build strong skills quickly and get to work.

- Watch short clips of campus life, programs and student services at DCTC Videos to get a better sense of our campus community
- Socialize with current students, faculty, staff and alumni at DCTC on Facebook and DCTC on Twitter
- Experience our student-friendly campus in Rosemount, Minn., by taking a Tuesday Campus Visit any Tuesday from 12:45 to 2:30 p.m.
- Visit Online Learning to explore numerous classes offered online or in hybrid format, the latter a mix of online and classroom learning
- Discover Credit for Prior Learning, Short-term Programs, the Individualized Studies AS degree and our other flexible learning options



**Admissions:** (218) 879-0800  
**Toll-Free:** 1-800-657-3712



**Mailing Address:** 2101 14th St., Cloquet, MN 55720  
**City/Population:** Cloquet / 12,156

**Tuition and Fees (2015-2016):** \$5,258  
**FAFSA Code:** 031291

#### ENROLLMENT:

Total number students served .....	2,727
Full-time .....	36%
Part-time .....	64%
Percent female .....	55%
Percent male .....	45%
Percent students of color .....	22%

**DEGREES OFFERED:** Associate of Applied Science  
Associate of Arts, Associate of Science, Associate of  
Fine Arts, Certificate, Diploma

**LARGEST PROGRAMS:** Liberal arts and transfer  
programs, law enforcement, nursing, human services,  
environmental science

**UNIQUE PROGRAMS:** Geospatial technologies,  
American Indian studies, law enforcement skills,  
environmental science, clean energy technology

**INTERCOLLEGIATE SPORTS:** Women's  
basketball, softball, volleyball; Men's basketball, football

**STUDENT ACTIVITIES:** American Indian Business  
Leaders, Anishinaabe Student Congress, Human Services  
Club, Law Enforcement Club, Student Senate

**HOUSING:** Spectacular residence hall owned and  
operated by the college features large apartment-  
style units with kitchens and private bathrooms. Units  
are furnished and have high-speed Internet access,  
air conditioning and cable television. Competitive  
rental rates are an excellent value. Early application is  
recommended as the limited space fills quickly each year.

#### Highlights

Fond du Lac Tribal and Community College brings  
together a tribal college and a state community college in  
partnership. The beautiful campus setting and buildings  
are unlike any other college campus.

- Reputation for friendly service and a comfortable campus atmosphere
- Convenient daytime, evening, weekend and online courses
- Super-fast wireless network on campus for laptop and hand-held device users
- Cultural center and physical education space, plus law enforcement and nursing training facilities
- High rate of law enforcement graduates pass the Minnesota Peace Officers Standards and Training Board exam
- Students learn from award-winning instructors and friendly staff
- 2,000-acre Environmental Study Area is only five minutes from campus
- Comfortable class sizes, convenient access to instructors
- Ruth A. Myers Library/Ojibwe Archives
- Well-equipped science labs and computer labs
- Fine arts opportunities in visual art, music and theater courses
- Emphasis on uniting cultures and creating individual and community awareness of each other
- Unique transfer programs with four-year colleges make it easy to transfer credits
- Several award-winning student clubs and activities



**Admissions:** (952) 995-1300



**Mailing Address:** 9000 Brooklyn Blvd.  
Brooklyn Park, MN 55445

**City/Population:** Brooklyn Park / 77,446 Eden Prairie / 62,004

**Tuition and Fees (2015-2016):** \$5,147  
**FAFSA Code:** 010491

#### ENROLLMENT:

Total number students served .....	8,969
Full-time .....	36%
Part-time .....	64%
Percent female .....	42%
Percent male .....	57%
Percent students of color .....	39%

**DEGREES OFFERED:** Associate of Applied  
Science, Associate of Science, Certificate, Diploma

**LARGEST PROGRAMS:** Automotive technology,  
information technology, law enforcement, machine  
trades, practical nursing

**UNIQUE PROGRAMS:** Accounting, architectural  
technology, audio production, automation robotics  
engineering technology, culinary arts, fire protection,  
fluid power, Ford ASSET (Automotive Student Services  
Educational Training), graphic design, individualized  
studies, interactive design/video production,  
manufacturing and engineering technology, marine  
motor sports and outdoor power equipment, pharmacy  
technology, plastics engineering technology, plumbing,  
public works, welding

**STUDENT ACTIVITIES:** Program Clubs, Skills  
USA, Student Ambassador, Student Senate, Tech Trek,  
Veterans Club

**HOUSING:** The college does not have on-campus  
student housing. Rental units are close to each campus.

#### Highlights

Hennepin Technical College is the largest stand-alone  
technical college in Minnesota with two campuses  
(Brooklyn Park and Eden Prairie) and offers more than 50  
career and technical programs.

- The lowest tuition rate in the state for a technical institution
- Largest stand-alone technical college in Minnesota offering more than 400 career and technical programs
- Small class sizes with a 25-to-1 student-faculty ratio
- Labs use cutting-edge technology and meet all required industry standards
- More than 300 industry advisory members work with the college to ensure the curriculum meets industry standards
- The Fiscal Year 2015 job placement rate is 94%
- Starting salaries average around \$15 per hour, but can be as high as \$39 per hour
- Industry partners fund scholarships, provide state-of-the-art equipment, and employ graduates
- The college offers many short term programs that can be completed in as few as 16 weeks
- Prior learning assessment is an option for students with lifetime work experience
- Largest customized training division in the metro area
- Brooklyn Park and Eden Prairie campuses have areas that support student success through admissions, financial aid, registration, advising, career and counseling services, disability services, library services, and academic tutoring
- HTC has transfer agreements with four-year universities allowing students more access and opportunities



**Admissions:** (651) 450-3902  
**Toll-Free** 1-866-576-0689  
**TTY:** 1-800-627-3529



**Mailing Address:** 2500 80th St. E.  
Inver Grove Heights, MN 55076  
**City/Population:** Inver Grove Heights / 34,189

**Tuition and Fees (2015-2016):** \$5,288  
**FAFSA Code:** 006935

#### ENROLLMENT:

Total number students served ..... 8,546  
Full-time ..... 35%  
Part-time ..... 65%  
Percent female ..... 59%  
Percent male ..... 40%  
Percent students of color ..... 29%

**DEGREES OFFERED:** Associate of Applied Science  
Associate of Arts, Associate of Science, Associate of  
Fine Arts, Certificate

**LARGEST PROGRAMS:** Associate of arts degree,  
four-year transfer or with emphasis, MANE (Minnesota  
Alliance for Nursing Education), bachelor in nursing - dual  
enrollment, law enforcement, contemporary business,  
paralegal, human service worker, emergency medical  
services (paramedic)

**UNIQUE PROGRAMS:** Network technology and  
security, community paramedic certificate, associate of  
arts entirely online, Adult Success through Accelerated  
Learning (ASAP), Inver Prep, InCollege, engineering  
fundamentals, exercise science, learning communities,  
art, music, theater, associate of arts with nine emphasis  
options: anthropology, biology, chemistry, English, gender  
and women studies, history, mathematics, political science  
and psychology

**EMPHASES and OPTIONS** – Associate of arts with nine  
emphasis areas. The AA with emphasis is designed to  
allow students to thoroughly prepare themselves for the  
major at corresponding baccalaureate programs at several  
public and private four-year colleges and universities.  
Students should work with an advisor or counselor to  
make their transfer plans.

\*Our nine emphasis areas include: anthropology, biology,  
chemistry, English, gender and women studies, history,  
mathematics, political science, psychology

**STUDENT ACTIVITIES:** CRU - Christian Fellowship,  
EMSSA - Emergency Medical Services Association,  
Ethiopian Student Club, Honor's Program/PTK, Learning  
Communities, Muslim Student Association, Online Courses  
& Programs, Phi Theta Kappa, Recreational Sports,  
Scholarships, Somali Student Club, Spanish Club, Student  
Activities Budgeting Committee, Student Ambassadors,  
Student Clubs & Government, Student Org for Leadership  
Development, VIBE - Volunteering

**HOUSING:** Inver Hills has no on-campus student  
housing. Adjacent to the campus, Granite Bluff  
Apartments offers convenient and high-quality housing  
alternatives. Eight additional rental complexes are  
located nearby.

#### Highlights

##### INVER HILLS: THE RIGHT DIRECTION

- Ten minutes south of downtown St. Paul and 10 minutes east of the Mall of America, the Inver Hills campus is one of the most scenic in the Twin Cities
- More than 50 degree and certificate options will prepare you for entering the workforce right after you graduate, or give you the foundation you need for transferring to a four-year college or university
- You can earn an Associate of Arts degree with an emphasis and gain the deeper knowledge you need for pursuing a specific major at a four-year institution
- Transfer agreements with state universities and many private colleges and universities as well as a comprehensive selection of liberal arts and general education courses allow you to complete the first two years of most bachelor's degree programs



**Admissions:** (218) 733-7601  
**Toll-Free:** 1-800-432-2884



**Mailing Address:** 2101 Trinity Road, Duluth, MN 55811  
**City/Population:** Duluth / 86,003

**Tuition and Fees (2014-2015):** \$5,126  
**FAFSA Code:** 005757

#### ENROLLMENT:

Total number students served ..... 8,470  
Full-time ..... 40%  
Part-time ..... 60%  
Percent female ..... 53%  
Percent male ..... 44%  
Percent students of color ..... 12%

**DEGREES OFFERED:** Associate of Applied Science  
Associate of Arts, Associate of Science, Associate of  
Fine Arts, Certificate, Diploma

**LARGEST PROGRAMS:** Associate of arts degree,  
AAS degree nursing, dental hygiene AAS, physical therapist  
assistant AAS, practical nursing diploma, integrated  
manufacturing

**UNIQUE PROGRAMS:** Professional pilot, paralegal  
studies, dialysis patient care technician, fire technology  
and administration, aviation maintenance technician

**INTERCOLLEGIATE SPORTS:** Men's and  
Women's intercollegiate soccer

**STUDENT ACTIVITIES:** American Dental Hygiene  
Association, Art Club, Auto Service Technology Club,  
Aviation Club, Business Professionals of America,  
Campus Crusade for Christ, Choir, College Democrats,  
College Republicans, Computer Technology Club,  
Environmental Club, Fire Technology Club, Grace  
Christian Fellowship, Gus Gus Players (Theatre Club),  
Knitting Club, Literary League, Machine Technology Skills  
Club, Massage Therapy Club, Medical Lab Technology  
Club, Nursing Club, Outdoor Club, Parent Club, Phi  
Theta Kappa, Photo Club, Physical Therapist Assistant  
Club, Rad Tech Club, Resistance Training, Respiratory

Care Club, Ski/Snowboard Club, Spanish Club, Surgical  
Technology Club, Ultimate Frisbee, United Students Club,  
Unity/GLBT, Veterans Club, Vineyard Campus Fellowship

**HOUSING:** Lake Superior College has no on-campus  
housing but provides information to students seeking  
housing in the community.

#### Highlights

Lake Superior College is situated on a wooded campus  
that overlooks Duluth's breath-taking Lake Superior  
harbor and St. Louis River valley. It features award-  
winning architecture, comfortable classrooms, and  
beautiful study and library facilities. The campus  
has a natural setting that includes an urban forest,  
award-winning nature trails, a city-operated disc golf  
course and a designated trout stream. In 2014, a new  
Downtown Center for Integrated Manufacturing opened,  
featuring top-of-the-line machining, welding and CAD/  
CAM training laboratories.

- Lake Superior College offers more than 70 technical majors, programs for transfer, continuing education and customized training for business and industry
- A new FAA-certificated Aviation Maintenance Technician 103-credit AAS degree or 83-credit diploma program is now offered
- New facilities for the college's Center for Advanced Aviation at the Duluth International Airport house both LSC's professional pilot and aviation maintenance technician program
- A long-time provider of online education, the college operates one of the largest and most comprehensive online instructional programs in the Minnesota State Colleges and Universities system



# Minneapolis Community and Technical College

www.minneapolis.edu



**Admissions:** (612) 659-6200

**Toll-Free:** 1-800-247-0911

**TTY:** (612) 659-6731



**Mailing Address:** 1501 Hennepin Ave.

Minneapolis, MN 55403

**City/Population:** Minneapolis / 392,008

**Tuition and Fees (2015-2016):** \$5,366

**FAFSA Code:** 002362

## ENROLLMENT:

Total number students served .....	13,495
Full-time .....	35%
Part-time .....	65%
Percent female .....	53%
Percent male .....	46%
Percent students of color .....	55%

**DEGREES OFFERED:** Associate of Applied Science  
Associate of Arts, Associate of Science, Associate of  
Fine Arts, Certificate, Diploma

**LARGEST PROGRAMS:** Liberal arts, nursing  
careers, business management, human services

**UNIQUE PROGRAMS:** American Indian studies,  
African diaspora studies, apparel technologies, cinema  
studies and production, community development, computer  
forensics, global studies, polysomnography, women's  
studies

**STUDENT ACTIVITIES:** Over 60 clubs and  
organizations including art, theater, music, languages,  
writing and literature, recreational and intramural  
sports. Academic interest clubs focusing on addiction  
counseling, fashion, design, math, media, nursing,  
science and trade skills. Special interest clubs with  
focuses such as ethnic student groups, environmental  
issues, social issues, and more.

**HOUSING:** The college has no on-campus student  
housing, but many rental units are within walking  
distance of the campus. The college helps students find  
rental housing.

## Highlights

Minneapolis Community and Technical College is  
conveniently located downtown with easy access to  
jobs, internships, city life, restaurants, entertainment  
venues and cultural activities just steps away. The  
college provides a welcoming environment for students  
of all ages and at all stages in their professional  
development. With 120 programs in liberal arts, career  
and technical fields, the college offers an array of  
academic and career choices. Classes are offered days,  
evenings, weekends and online. The beautiful campus  
includes a state-of-the-art library, science center,  
Student health clinic, student center and outdoor plaza  
connected to Loring Park.

- Knowledgeable, award-winning faculty members  
committed to student success
- Students from around the world who represent a range  
of ages and backgrounds
- Small class sizes to connect with faculty and  
classmates
- State-of-the-art technical, science and world language  
labs
- Nationally accredited technical programs in high-  
demand fields
- Programs and classes that transfer to the University of  
Minnesota, Metropolitan State University, Augsburg  
College and many public and private colleges
- A variety of student support services, including career  
services, multicultural student services, disability  
services, Veterans Center and Learning Center
- Campus visits available for individuals or groups

# Minnesota State College – Southeast Technical

www.southeastmn.edu



**Admissions:** 1-877-853-8324

**Toll-Free:** 1-877-853-8324

**Campus Visit:** 1-877-853-8324

**TTY:** 1-507-453-2785



**Mailing Address:** 1250 Homer Road

Winona, MN 55987

**City/Population:** Red Wing / 16,480; Winona / 27,782

**Tuition and Fees (2014-2015):** \$5,615

**FAFSA Code:** 002393

## ENROLLMENT:

Total number students served .....	2,940
Full-time .....	51%
Part-time .....	49%
Percent female .....	60%
Percent male .....	40%
Percent students of color .....	13%

**DEGREES OFFERED:** Associate of Applied Science  
Associate of Science, Certificate, Diploma

**LARGEST PROGRAMS:** Nursing, medical support  
careers, accounting, guitar repair, and band instrument  
repair

**UNIQUE PROGRAMS:** Musical instrument repair  
and construction which includes: guitar building and  
repair, band instrument repair and violin repair; massage  
therapy, nanotechnology, diesel maintenance technician  
and cyber information and security

**STUDENT ACTIVITIES:** Delta Epsilon Chi -Winona  
Campus, Phi Theta Kappa Honor Society, SkillsUSA, Student  
Music Association -Red Wing Campus, Student Senate

**HOUSING:** The college has no on-campus housing,  
but numerous rental units are available. Privately owned  
dorm-style housing is available close to the campuses.

## Highlights

Minnesota State College – Southeast Technical  
educates for employment, offering more than 90  
programs in six major fields, including business and  
office, health and human services, liberal arts and  
sciences, musical instrument and creative arts, sales  
and management, technical, trade and industrial.

- Both the Winona and Red Wing campuses offer  
intimate learning environments where instructors know  
students by name
- Learn from the best. Instructors are experts in their  
fields and eager to train the next generation
- Get your hands dirty. Many courses are taught in fully  
operational clinics and labs that simulate real-world job  
settings
- You can complete approved general education courses  
at an affordable price and transfer to other colleges  
and universities through the Minnesota Transfer  
Curriculum
- Become a registered nurse through a two-year  
associate degree program at either the Winona or Red  
Wing campus
- Ninety one percent of the college's graduates find jobs  
in their chosen fields. Area employers specifically seek  
out Southeast Technical grads
- Trade and industrial majors include automotive;  
carpentry; computerized (CNC) precision machining;  
diesel maintenance technician; industrial technology;  
truck driving; and welding
- Technical majors include drafting, electronics,  
computer programming; nanotechnology and  
networking
- Day, evening and online classes offer flexibility for  
nontraditional students



# Minnesota State Community and Technical College

www.minnesota.edu



**Admissions:** 1-877-450-3322  
**Toll-Free:** 1-877-450-3322  
**Campus Visit:** 1-877-450-3322  
**TTY:** 1-800-627-3529



**Mailing Address:** 1414 College Way, Fergus Falls, MN 56537  
**City/Population:** Fergus Falls / 13,228  
Detroit Lakes / 8,763; Moorhead / 38,889; Wadena / 4,088

**Tuition and Fees (2015-2016):** \$5,361  
**FAFSA Code:** 005541

## ENROLLMENT:

Total number students served .....8,312  
Full-time .....48%  
Part-time .....52%  
Percent female .....60%  
Percent male .....39%  
Percent students of color .....15%

**DEGREES OFFERED:** Associate of Applied Science  
Associate of Arts, Associate of Science, Associate of Fine  
Arts, Certificate, Diploma

**LARGEST PROGRAMS:** Liberal arts, nursing,  
business, electrical line worker, dental hygiene

**UNIQUE PROGRAMS:** Gas utility construction  
and service, equine science, PowerSports technology,  
American Sign Language, entrepreneurship, medical  
laboratory technology, mental health behavioral aide II,  
golf management

**INTERCOLLEGIATE SPORTS:** Women's softball,  
volleyball, basketball; Men's baseball, football, golf,  
basketball (all sports offered on the Fergus Falls campus)

**STUDENT ACTIVITIES:** Fine arts (visual arts,  
music and theatre); Student Government Association;  
student and professional organizations including  
Business Professionals of America, Skills USA and  
nursing organizations; Phi Theta Kappa and Mu Alpha  
Theta honor societies; intramural athletics; Student  
Ambassadors

**HOUSING:** All four campus communities have  
off-campus rental units available. Fergus Falls has  
apartment-style campus housing with meal plan options.

## Highlights

Minnesota State Community and Technical College  
offers more than 120 career and liberal arts degrees  
and certificates at locations in the heart of Minnesota's  
beautiful lakes country and the Fargo-Moorhead  
metropolitan area.

- Options – Twenty-five online majors and hundreds of online courses lead to degrees, diplomas and certificates. The Associate of Arts degree is offered on all campuses and online and transfers easily toward a bachelor's degree
- Value Added - M State graduates rank in the top 10 nationally among two-year college graduates for mid-career earnings, according to a 2015 Brookings Institute survey
- Experience – Students enjoy a rich college experience through a wide array of student life activities and travel abroad programs, an opportunity often available only on four-year campuses
- Support – The college's foundations awarded over \$200,000 in scholarships during the 2014-2015 academic year, and 75 percent of all M State students are eligible for some kind of financial aid award
- Focus – Our education is student-centered, with small class sizes, personal instruction and hands-on learning
- Partnerships – Community partnerships provide on-the-job experience so students see career options early in their college life, rather than in the final years of a degree program

# Minnesota West Community and Technical College

www.mnwest.edu



**Admissions:** 1-800-658-2330  
**Toll-Free:** 1-800-658-2330  
**TTY:** 1-800-658-2330



**Mailing Address:** 1450 Collegeway, Worthington, MN 56187  
**City/Population:** Worthington / 12,900; Canby / 1,769;  
Granite Falls / 2,843; Jackson / 3,354; Pipestone / 4,273

**Tuition and Fees (2015-2016):** \$5,673  
**FAFSA Code:** 005263

## ENROLLMENT:

Total number students served .....5,215  
Full-time .....41%  
Part-time .....59%  
Percent female .....54%  
Percent male .....42%  
Percent students of color .....13%

**DEGREES OFFERED:** Advanced Technical  
Certificate, Associate of Applied Science, Associate of  
Arts, Associate of Science, Certificate, Diploma

**LARGEST PROGRAMS:** Liberal arts and sciences  
transfer courses, nursing, healthcare and business career  
programs.

**UNIQUE PROGRAMS:** Agriculture, biofuels  
technology, energy technical specialist, fluid power, allied  
health, power sports, wind energy technology, powerline  
technology, welding, online Associate of Arts degree.  
Several allied health programs offered in a renovated  
hospital for hands-on learning.

**EMPHASIS –** Our top-notch technical programs offer  
the type of hands-on learning, students crave! Students  
don't just read about technical skills, they practice them!  
Always student-focused, with small class sizes and extra-  
curricular activities student success is a priority. We have  
campuses in Canby, Granite Falls, Jackson, Pipestone,  
Worthington, as well as, centers locations in Luverne,  
Marshall and Redwood Falls. We encourage and invite you to  
visit us, and understand why you will Learn with Purpose!

**INTERCOLLEGIATE SPORTS:** Women's  
softball, volleyball, basketball; Men's baseball, football,  
basketball, wrestling

**STUDENT ACTIVITIES:** Art Club, Business  
Professionals of America, Choir, Cosmetology Club,  
Cultural Diversity Club, Drama, Intramurals, Law  
Enforcement Club, Music Club, Phi Theta Kappa,  
Postsecondary Agricultural Student Org, Skills USA,  
Student Ambassadors, Student Government, Theater  
Club, Uncover Magazine,

**HOUSING:** Student housing is available at the Canby  
campus, and private apartment arrangements are  
available at all locations. The college provides students  
with a list of rental housing.

## Highlights

Minnesota West Community and Technical College has  
five campuses and three learning centers in beautiful  
southwest Minnesota. The college offers more than 60  
majors in technical and liberal arts areas.

- State leader in online, distance delivery and technology
- Ranked 13th - 2015 Best Online College in America by **bestcolleges.com**
- On campus wind tower used for both learning and power generation
- NEW state of the art welding lab for hands-on learning
- Leader in allied health programming with learning opportunities in former hospital setting
- Named top 150 colleges in the country by the Aspen Institute
- Military Friendly School
- Students can earn an AA Degree 100% online
- 100% job placement in many program areas
- Hybrid courses available

# Normandale Community College

www.normandale.edu



**Admissions:** (952) 358-8201  
**Toll-Free:** 1-800-481-5412  
**TTY:** (952) 358-8625



**Mailing Address:** 9700 France Ave. S.  
 Bloomington, MN 55431  
**City/Population:** Bloomington / 85,632

**Tuition and Fees (2015-2016):** \$5,736  
**FAFSA Code:** 007954

## ENROLLMENT:

Total number students served ..... 14,197  
 Full-time ..... 42%  
 Part-time ..... 58%  
 Percent female ..... 53%  
 Percent male ..... 43%  
 Percent students of color ..... 33%

**DEGREES OFFERED:** Associate of Applied Science  
 Associate of Arts, Associate of Science, Associate of Fine  
 Arts, Certificate

**LARGEST PROGRAMS:** Liberal arts transfer,  
 business marketing and management, science and  
 engineering, nursing, teacher education

**UNIQUE PROGRAMS:** Advanced dental therapy  
 program collaboration with Metropolitan State University,  
 AFA degrees in music, theatre, art and creative  
 writing, vacuum and thin film technology, engineering  
 foundations, healthcare systems technology, bachelors  
 and master's degree programs in: accounting, business,  
 communications, computer science, dental hygiene,  
 elementary education, engineering, exercise science and  
 nursing

**STUDENT ACTIVITIES:** Over 50 clubs and  
 organizations give students opportunities in academic  
 areas, sports and recreation, leadership programs,  
 community service, performances, diversity and cultural  
 experiences, and many other activities.

**HOUSING:** Normandale does not offer student housing.

## Highlights

Normandale Community College is located at 98th Street  
 and France Avenue South in Bloomington on a wooded  
 90-acre site just 1.5 miles south of Interstate 494.

- The college prepares students for full participation  
 in diverse communities, creates pathways to other  
 college programs and builds community connections.  
 Normandale is committed to quality, affordability,  
 student access and success
- Over 14,000 students from diverse backgrounds attend  
 classes at the college each year, making it one of  
 Minnesota's largest community colleges
- Normandale offers accredited music, theater, art and  
 business programs – rare among two-year colleges in  
 Minnesota and elsewhere
- Normandale awarded nearly \$40 million to students  
 through federal and state financial aid programs in the  
 past year
- Normandale is a top transfer institution to Minnesota  
 State University, Mankato, University of Minnesota,  
 University of St. Thomas and many other colleges and  
 universities
- Normandale is one of only two colleges in the State  
 of Minnesota to be named to the President's Higher  
 Education Community Service honor roll every year  
 since 2006
- Normandale students from the class of 2013-14  
 transferred to colleges or universities in 46 of 50 states  
 in the United States
- Normandale's Partnership Center provides access to  
 bachelor's and master's degree programs through  
 partnering institutions on the Normandale campus

# North Hennepin Community College

www.nhcc.edu



**Admissions:** (763) 424-0724  
**Toll-Free:** 1-800-818-0395  
**TTY:** 1-800-627-3529



**Mailing Address:** 7411 85th Ave. N.  
 Brooklyn Park, MN 55445  
**City/Population:** Brooklyn Park / 77,446

**Tuition and Fees (2015-2016):** \$5,479  
**FAFSA Code:** 002370

## ENROLLMENT:

Total number students served ..... 10,843  
 Full-time ..... 28%  
 Part-time ..... 72%  
 Percent female ..... 57%  
 Percent male ..... 42%  
 Percent students of color ..... 43%

**DEGREES OFFERED:** Associate of Applied Science  
 Associate of Arts, Associate of Science, Associate of Fine  
 Arts, Certificate

**LARGEST PROGRAMS:** Liberal arts, computer  
 science, pre-nursing, business administration, criminal  
 justice

**UNIQUE PROGRAMS:** American Sign  
 Language, building inspection technology, construction  
 management, creative writing, criminal justice, education,  
 entrepreneurship, exercise science, film, health sciences,  
 graphic design, history, histotechnology, law enforcement,  
 math, medical laboratory technology, music, paralegal,  
 pre-engineering, project management, public works,  
 Spanish language, studio arts, theatre, web graphic design  
 and programming and E-commerce

**STUDENT ACTIVITIES:** An array of student clubs  
 and organizations, diversity initiatives, student government  
 and leadership opportunities, honors program, performing  
 and visual art events, health and wellness activities,  
 intramural and extramural sports, literary publications,  
 and more

**HOUSING:** The college has no on-campus housing.

## Highlights

One of the most welcoming and diverse campuses  
 in Minnesota, North Hennepin Community College is  
 conveniently located in the northwest metropolitan area  
 in Brooklyn Park near major highways and directly on the  
 bus line.

- One of the lowest tuition rates in the state
- Over 60 degrees and certificates designed to transfer  
 or prepare students for the workplace
- Baccalaureate offerings with four-year universities  
 at NHCC's campus, including a new Business  
 Administration BS with Metropolitan State University,  
 the first and only public option in the northwest  
 metropolitan area
- Continuing education and customized training packages  
 for businesses and professionals in partnership with  
 Hennepin Technical College
- Flexible class schedule options, including evenings,  
 weekends, accelerated, online, classroom capture, and  
 telepresence
- State-of-the-art facilities, including the Center for  
 Business & Technology and the Bioscience & Health  
 Careers Center featuring STEM labs, high-tech spaces,  
 the latest in multimedia technology, computer lab  
 equipment, and live-streaming classrooms
- Expert faculty, friendly staff, and other student  
 resources, including 1:1 advising, free tutoring, college  
 transition programs, TRIO, a Veterans Resource Center,  
 Counseling and Career Center, and more
- Information sessions and campus tours are available  
 any Monday or Friday at 10:00am or Tuesday at  
 5:30pm

## Northeast Higher Education District

The Northeast Higher Education District is a consortium of five Minnesota State colleges: Hibbing, Itasca, Mesabi Range, Rainy River and Vermilion.



## Hibbing Community College

[www.hibbing.edu](http://www.hibbing.edu)

**Admissions:** (218) 262-7207  
**Toll-Free:** 1-800-224-4422  
**TTY:** (218) 262-7204



**Mailing Address:** 1515 E. 25th St., Hibbing, MN 55746  
**City/Population:** Hibbing / 16,299

**Tuition and Fees (2015-2016):** \$5,309  
**FAFSA Code:** 002355

### ENROLLMENT:

Total number students served .....	1,868
Full-time .....	61%
Part-time .....	39%
Percent female .....	55%
Percent male .....	44%
Percent students of color .....	13%

**DEGREES OFFERED:** Associate of Applied Science  
 Associate of Arts, Associate of Science, Associate of Fine Arts, Certificate, Diploma

**LARGEST PROGRAMS:** Associate of arts degree, associate of fine arts, secretary receptionist, administrative asst., legal administrative asst., medical administrative asst., CISCO networking, IT networking and security, culinary arts, law enforcement, dental assistant, gerontology/eldercare, medical coding, medical lab technician (on campus or online), nursing, nursing assistant, pharmacy technician, automotive technician, diesel mechanic, electrical maintenance, heating & cooling, industrial systems technology, CDL truck driving

**UNIQUE PROGRAMS:** Pharmacy technician, law enforcement, culinary arts, nursing (RN), diesel mechanics, CDL truck driving, medical laboratory technician, electrical maintenance, heating & cooling

### Highlights

Hibbing Community College - Education that Works! HCC offers a mix of traditional liberal arts courses and innovative career programs to prepare students for transfer or immediate employment. Students will find a wide range of opportunities to nurture their strengths and a welcoming environment for all ages and stages of professional development.

- Variety of academic- and career-related clubs, student government, Skills USA, environmental group, service learning, choir, varsity and intramural athletics and more

## Itasca Community College

[www.itascacc.edu](http://www.itascacc.edu)

**Admissions:** (218) 322-2340  
**Toll-Free:** 1-800-996-6422  
**TTY:** (218) 322-2438



**Mailing Address:**  
 1851 E. Highway 169, Grand Rapids, MN 55744  
**City/Population:** Grand Rapids / 10,906

**Tuition and Fees (2015-2016):** \$5,324  
**FAFSA Code:** 002356

### ENROLLMENT:

Total number students served .....	1,551
Full-time .....	71%
Part-time .....	29%
Percent female .....	47%
Percent male .....	52%
Percent students of color .....	15%

**DEGREES OFFERED:** Associate of Applied Science  
 Associate of Arts, Associate of Science, Certificate, Diploma

**LARGEST PROGRAMS:** Liberal arts, engineering, natural resources, wildland firefighting, practical nursing, psychology/human services, business, American Indian studies, geography/geographic info systems, strategic security studies

**UNIQUE PROGRAMS:** Class Act (for students interested in education), engineering, psychology, wildland firefighting, natural resources, power generation, pulp and paper, geographic information systems, strategic security studies

### Highlights

Itasca is the best place to start.

- Itasca's affordable cost, saves you money on your education
- More than \$150,000 in scholarships are awarded to students annually
- Minnesota northwoods location is perfect for outdoor activities
- Itasca's instructors will take time to listen and help you succeed
- Itasca has on-campus housing. A list of available housing in the community is also available
- Women's volleyball, basketball, softball; men's football, basketball, wrestling, baseball
- Itasca is known as a learning community college where students will learn from the faculty, each other and by having an experience that will relate to their chosen field. This may include a practicum, attending a national conference or a class related project

## Mesabi Range College

[www.mesabirange.edu](http://www.mesabirange.edu)

**Admissions:** (218) 749-0313  
**Toll-Free:** 1-800-657-3860  
**TTY:** (218) 749-7783



**Mailing Address:**  
 1001 W. Chestnut St., Virginia, MN 55792  
**City/Population:** Virginia / 8,675; Eveleth / 3,705

**Tuition and Fees (2015-2016):** \$5,311  
**FAFSA Code:** 004009

### ENROLLMENT:

Total number students served .....	2,106
Full-time .....	59%
Part-time .....	41%
Percent female .....	44%
Percent male .....	56%
Percent students of color .....	13%

**DEGREES OFFERED:** Associate of Applied Science  
 Associate of Arts, Associate of Science, Certificate, Diploma

**LARGEST PROGRAMS:** Transfer programs, industrial mechanical technology, nursing and welding.

**UNIQUE PROGRAMS:** Human services, human services - chemical dependency specialist, masonry and graphic design media.

### Highlights

Located in the heart of beautiful northeastern Minnesota, Mesabi Range has small class sizes that lead to personal attention and interaction with other students. MRC offers a wide variety of online classes each semester as well as distance learning through our new immersive telepresence learning platform. Our "Smart Classrooms," simulators, computer labs, software learning programs, and other technology learning tools increase student attention and information retention by providing hands-on, interactive, real-time experiences.

- The college foundation awards \$105,000 in scholarships annually
- Strong tradition of successful athletics, student government and student life
- Women's volleyball, basketball, softball and golf; men's football, basketball, baseball and golf
- International study, student government, theater, Phi Theta Kappa honor society, career program clubs & a strong student life program
- Semi-furnished apartments on the Virginia campus
- Excellent placement rates and high paying jobs in many career programs



**Admissions:** (218) 285-2207  
**Toll-Free:** 1-800-456-3996  
**TTY:** 1-800-627-3529



**Mailing Address:**  
1501 Highway 71, International Falls, MN 56649  
**City/Population:** International Falls / 6,396  
**Tuition and Fees (2015-2016):** \$5,324  
**FAFSA code:** 006775

**Admissions:** (218) 365-7200  
**Toll-Free:** 1-800-657-3608  
**TTY:** 1-800-627-3529



**Mailing Address:**  
1900 E. Camp St., Ely, MN 55731  
**City/Population:** Ely / 3,459  
**Tuition and Fees (2015-2016):** \$5,324  
**FAFSA Code:** 002350

#### ENROLLMENT:

Total number students served .....	414
Full-time .....	76%
Part-time .....	24%
Percent female .....	60%
Percent male .....	40%
Percent students of color .....	21%

**DEGREES OFFERED:** Associate of Applied Science  
Associate of Arts, Associate of Science, Certificate,  
Diploma

**LARGEST PROGRAMS:** Liberal arts and sciences,  
science education, math education, health science,  
industrial maintenance

**UNIQUE PROGRAMS:** Industrial maintenance,  
science education, math education

#### Highlights

Located just five minutes from Voyageur's National Park and the Canadian border, Rainy River Community College offers a great education with small class sizes, affordable tuition, and faculty and staff dedicated to your success!

- More than 90% of RRCC students receive some form of financial aid and we award over \$150,000 in Scholarships every year!
- Transfer-ready and career-direct programs
- Continue to play the sport you love! Athletics include: NJCAA Division III Women's Volleyball, Basketball, and Softball; Men's Basketball and Baseball; ACHA Division II Women's Club Hockey
- Get involved with Student Senate, Phi Theta Kappa honor society, Black Association of Students, Anishinaabe Student Coalition, and other activity-based organizations

#### ENROLLMENT:

Total number students served .....	849
Full-time .....	70%
Part-time .....	30%
Percent female .....	37%
Percent male .....	62%
Percent students of color .....	14%

**DEGREES OFFERED:** Associate of Applied Science  
Associate of Arts, Associate of Science, Certificate,  
Diploma

**LARGEST PROGRAMS:** Associate of Arts degree,  
wildland/wildlife law enforcement, natural resource  
technology, forestry

**UNIQUE PROGRAMS:** Taxidermy, water  
quality science, outdoor therapeutic recreation, park  
management, park ranger training

#### Highlights

It doesn't get any better than this. The outdoor enthusiast will appreciate the many programs and activities that can be offered only on the edge of the Boundary Waters Canoe Area Wilderness.

- Vermilion specializes in environmental programs for students interested in outdoor careers such as forestry, fisheries, wildlife, wilderness management, outdoor leadership and land surveying
- Men's football, basketball, baseball; women's volleyball, basketball, softball
- On-campus apartment-style housing; a full meal plan is available
- Academic and social clubs, including wildlife, wilderness, wingshooters and outdoor pursuits



**Admissions:** (218) 683-8800  
**Toll-Free:** 1-800-959-6282  
**TTY:** 1-800-627-3529



**Mailing Address:** 1101 Highway 1 E. Thief River Falls, MN 56701  
**City/Population:** East Grand Forks / 8,581;  
Thief River Falls / 8,636

**Tuition and Fees (2015-2016):** \$5,534  
**FAFSA Code:** 002385

#### ENROLLMENT:

Total number students served.....	5,215
Full-time .....	45%
Part-time .....	55%
Percent female.....	58%
Percent male.....	42%
Percent students of color.....	16%

**DEGREES OFFERED:** Advanced Technical  
Certificate, Associate of Applied Science, Associate of  
Arts, Associate of Science, Certificate, Diploma

**LARGEST PROGRAMS:** Practical nursing, liberal  
arts, sales, marketing and management, aviation  
maintenance technology, mobility nursing, criminal  
justice and law enforcement, firefighter/paramedic

**UNIQUE PROGRAMS:** Our unmanned aerial  
systems, geospatial intelligence analysis, and imagery  
analysis programs are the first of their kind in the entire  
nation! We also are proud to say that we were ranked  
third in America in the number of practical nursing  
degrees produced. Other niche programs include:  
cardiovascular technology, surgical tech, firefighter/  
paramedic, aviation maintenance, welding and  
commercial vehicle operator training

**EMPHASES – NEW PROGRAMS** coming soon to  
Northland: aviation maintenance technology plus, small  
unmanned aerial systems field service technician,  
precision agriculture equipment technician, dietetic  
technician, patient access specialist, engineering &  
computer-aided design

**INTERCOLLEGIATE SPORTS:** Women's  
basketball, softball, volleyball; Men's baseball, basketball,  
football, wrestling

**STUDENT ACTIVITIES:** Chorus, Community Band,  
Intramural Athletics, Jazz Band, PHI THETA KAPPA,  
Pioneer 90.1 Radio, Student Senate

**HOUSING:** Numerous rental units are available in  
East Grand Forks and Thief River Falls. Both campuses  
maintain lists of housing. The Thief River Falls campus  
has apartment-style housing complexes near campus,  
although the college does not own the campus housing.

#### Highlights

Northland has two campuses and an aerospace site in the beautiful northwestern portion of the state. Campuses are located in East Grand Forks and Thief River Falls with an aerospace site located at the Thief River Falls airport. Northland's campuses offer more than 100 different career programs and degree options.

- Northland has one of the largest liberal arts programs of two-year colleges in northern Minnesota
- Flexible scheduling gives students a variety of enrollment options. Students are able to attend full time or part time, and Northland offers hundreds of online classes each year
- The average class size is 22 students
- We have numerous articulation agreements with four-year institutions so you can transfer seamlessly after you graduate from Northland
- Northland offers a shuttle bus service during the spring and fall semesters for students to ride between the campuses
- Students in the building trades programs work collaboratively build a project house in East Grand Forks





**Admissions:** (218) 333-6600  
**Toll-Free:** 1-800-942-8324  
**TTY:** (218) 333-6691



**Mailing Address:** 905 Grant Ave. S.E.  
Bemidji, MN 56601  
**City/Population:** Bemidji / 13,560

**Tuition and Fees (2015-2016):** \$5,480  
**FAFSA Code:** 005759

#### ENROLLMENT:

Total number students served .....	2,246
Full-time .....	35%
Part-time .....	65%
Percent female .....	72%
Percent male .....	27%
Percent students of color .....	21%

**DEGREES OFFERED:** Associate of Applied Science  
Associate of Science, Certificate, Diploma

**LARGEST PROGRAMS:** Automotive service and motorsports, dental assisting, medical administrative building trades, nursing

**UNIQUE PROGRAMS:** High-performance engine machinist, renewable energy, community health worker

**STUDENT ACTIVITIES:** Direct Wire Club, Industrial Model Making, Intramural Sports through Bemidji State, Native American Student Organization, Phi Theta Kappa Honor Society, Society of Manufacturing Engineers, Student Nurses Association, Student Senate

**HOUSING:** The college is aligned with Bemidji State University, and students are eligible to live in BSU's residence halls and purchase a meal plan. Private housing information is available through the admissions office.

#### Highlights

Situated in the beautiful north woods of Minnesota, Northwest Technical College has a mission to integrate the value of work with educational experiences to develop resourceful lifelong learners.

- Northwest Technical College is just 10 minutes away from its partner institution, Bemidji State University. Their unique relationship extends many benefits of attending a four-year university, including housing, meal plans, the recreation and fitness center, health services, the library, the American Indian Resource Center, clubs and campus activities
- College and university agreements – Credit transfer agreements have been established for many degree programs to transfer to several colleges and universities
- Online education – Multiple programs and a thorough list of courses are available online
- Warm and welcoming – Students experience personal attention, small classes, accessible faculty, learning enrichment services and original artwork on campus
- Campus visit – Campus visits are highly encouraged for students and their families. Visits may be scheduled by calling (218) 333-6600 or by going to the college's website, www.ntcmn.edu



**Admissions:** (320) 629-5100  
**Toll-Free:** 1-800-521-7463  
**TTY:** (320) 629-1030



**Mailing Address:** 900 4th St. S.E.  
Pine City, MN 55063  
**City/Population:** Pine City / 3,084

**Tuition and Fees (2015-2016):** \$5,082  
**FAFSA Code:** 005535

#### ENROLLMENT:

Total number students served .....	1,938
Full-time .....	31%
Part-time .....	69%
Percent female .....	66%
Percent male .....	33%
Percent students of color .....	9%

**DEGREES OFFERED:** Associate of Applied Science, Associate of Arts, Associate of Science, Certificate, Diploma

**LARGEST PROGRAMS:** Automotive technology, business administration, gunsmithing and firearms technology, early childhood development, medical assisting, nursing, advanced manufacturing

**UNIQUE PROGRAMS:** American Sign Language, business technology, gunsmithing and firearms technology, network administration and cyber-security, human services eligibility worker, plastics technology

**STUDENT ACTIVITIES:** Collegiate Entrepreneurs Organization, Computer Club, Ever Green Club, Math Club, Nursing Club, Phi Theta Kappa, Robotics Club, Shooters Association, Skills USA, Student Senate, Student Parent Club, Veterans Club

**HOUSING:** The college does not have on-campus student housing; however, many rental options are available within walking distance of the campus.

#### Highlights

Pine Technical & Community College offers a range of programs with flexible scheduling, small class sizes, industry-focused programs, experienced and knowledgeable instructors, and friendly, helpful staff. Graduates are well-prepared to enter their chosen fields or transfer to a university.

- The Associate of Arts degree allows students to pursue a four-degree, while saving time and money by starting close to home
- Several Associate of Science degree programs provide students the opportunity to begin a four-year degree and take advantage of lower tuition rates and smaller class sizes while immediately focusing on a chosen major
- The AS in Health Science-Broad Field seamlessly transfers to PTCC's partner schools, allowing students to pursue a variety of health-related careers
- The college's technical programs prepare students for job placement and employment. Examples include automotive technology, accounting, practical nursing, medical assistant, computer programming, and more
- The college's use of telecommunications and other distance education tools is a national model for colleges and universities
- PTCC's high-tech, state-of-the-art simulation labs support all nursing and health science programs, including the medical assistant AAS degree, nursing diploma and AS degree, as well as credentials in electrocardiography and phlebotomy
- A vibrant student life environment provides opportunities for students from all disciplines to socialize, network, contribute and participate in the college community



**Admissions:** 320-222-5971  
**Toll-Free:** 1-800-722-1151  
**TTY:** 1-800-627-3529



**Mailing Address:** 2101 15th Ave. N.W.,  
Willmar, MN 56201  
**City/Population:** Hutchinson / 14,034; Willmar / 19,694

**Tuition and Fees (2015-2016):** \$5,402  
**FAFSA Code:** 005252

#### ENROLLMENT:

Total number students served .....	5,329
Full-time .....	61%
Part-time .....	39%
Percent female .....	54%
Percent male .....	46%
Percent students of color .....	13%

**DEGREES OFFERED:** Advanced Technical Certificate, Associate of Applied Science, Associate of Arts, Associate of Science, Certificate, Diploma

**LARGEST PROGRAMS:** Liberal arts and sciences, agriculture, nursing/allied health, administrative support, veterinary technology

**UNIQUE PROGRAMS:** Activity director, advanced collision services, agronomy technology, dairy management, calibration engineering technology, GPS/GIS for agriculture, insurance claim representative, nondestructive testing technology

**INTERCOLLEGIATE SPORTS:** Women's basketball, softball, volleyball; Men's baseball, basketball, football, wrestling

**STUDENT ACTIVITIES:** Anime Club, Audio Production, Auto Body Club, Auto Tech Club, Beliefs, Ideas & Opinions (BIO) Club, Business Professionals of America, Carpentry Club, Chess Club, Choir, Christian Students in Action, Computer Art & Publishing, Computer Systems Technology Club, Cosmetology Club, Criminal Justice Association, Delta Epsilon Chi, Electrician Club, Electronics Club, Health Information Management Club, Helping Hands Club, Intl Assn of Administrative

Professional, Intramural Sports, Medical Assistant Club, Multicultural Club, Multimedia Club, Nondestructive Testing Club, Nursing, Nursing Club, Occupational Skills, Phi Theta Kappa, Photography Club, Postsecondary Ag Student Organization, Pride Respect Individuality Sup Movement, Republican Club, Student Government, Study Abroad, Theatre, Veteran's Center, Veterinary Technology Association, Welding

**HOUSING:** Ridgewater College has no on-campus student housing, but affordable rental units are available within walking distance of each campus. Check local listings, and the college website for housing options.

#### Highlights

Ridgewater College has two campuses, Hutchinson and Willmar, offering more than 40 degree programs.

- Technical programs – Learn a trade and get a great job in two years or less. The college's high career placement rate is evidence that employers love the graduates from the college's more than 40 degree programs
- First two of four – Complete an Associate of Arts or Associate of Science degree at Ridgewater and you'll be well on your way to a bachelor's degree in virtually any major
- Online learning – Ridgewater now offers three completely online associate degrees: liberal arts, computer-aided drafting and design, and law enforcement-peace officer or corrections, along with dozens of stand-alone courses on the way to your degree
- Extraordinary value – Paying for college isn't easy, and you deserve a lot for your dollar. At Ridgewater, your investment in education is taken seriously, and student needs take top priority



**Admissions:** (507) 433-0820  
**Toll-Free:** 1-800-247-5039  
**TTY:** 1-800-627-3529



**Mailing Address:** 1900 8th Ave. N.W., Austin, MN 55912  
**City/Population:** Albert Lea / 18,589; Austin / 24,854; Owatonna / 25,469

**Tuition and Fees (2015-2016):** \$5,539  
**FAFSA Code:** 002335

#### ENROLLMENT:

Total number students served .....	4,412
Full-time .....	40%
Part-time .....	59%
Percent female .....	55%
Percent male .....	43%
Percent students of color .....	17%

**DEGREES OFFERED:** Advanced Technical Certificate, Associate of Applied Science, Associate of Arts, Associate of Science, Associate of Fine Arts, Certificate, Diploma

**LARGEST PROGRAMS:** Liberal arts and sciences, nursing, human services, business, supervisory management, law enforcement, computer technology, accounting, business and office technology

**UNIQUE PROGRAMS:** Associate of arts degree with, global studies, music, or theater emphasis; production technician; wind turbine technician; solar installer; supervisory management online

**INTERCOLLEGIATE SPORTS:** Women's basketball, soccer, softball, volleyball; Men's baseball, basketball, soccer

**STUDENT ACTIVITIES:** Accent-A Literary Magazine, Amnesty International, Christian Fellowship, Criminal Justice Society, Enrollment Checklist, Gaming Club, Gay/Straight Alliance, Home Builders Association, Human Services Club, International Club, International Friendship Club, Left Ear-Art Club, Music-College Choir & Frequency, Phi Theta Kappa, Radiography Club, Riverland Nursing Forum, Riverland Student Ambassadors, Skills USA, Student Senate, Theatre

**HOUSING:** Riverland's student housing offers an opportunity for 84 students to live on the Austin campus.

#### Highlights

Riverland is a comprehensive community college that inspires personal success through education.

- Campuses in Albert Lea, Austin and Owatonna make it convenient to earn the first two years of a bachelor's degree or complete one of more than 50 career program options in accounting, business, business and office technology, construction, computer technology, health, management, manufacturing, service and transportation
- Support services are available to help students improve study skills, locate resources, address personal issues, make strong career decisions or arrange the details of a smooth college transfer
- More than 350 Riverland courses are offered entirely/partially online. Riverland has a growing number of online courses with or seeking Quality Matters certification, a peer review process designed to certify the quality of online courses. Currently, Riverland awards 12 degrees, diplomas and certificates via distance learning (online and interactive TV)
- Discover the River Day is for high school students to experience Riverland. Offered in November, February and April, participants tour campus, hear about student life and meet faculty
- Riverland offers career options in renewable energy, including degrees in wind turbine technician and solar installation
- The college features a Best in Class health science education simulation center for nurses, radiographers and lab technicians

# Rochester Community and Technical College

www.rctc.edu



**Admissions:** (507) 285-7265  
**Toll-Free:** 1-800-247-1296  
**TTY:** 1-800-627-3529



**Mailing Address:** 851 30th Ave. S.E.  
Rochester, MN 55904  
**City/Population:** Rochester / 108,814

**Tuition and Fees (2015-2016):** \$5,628  
**FAFSA Code:** 002373

## ENROLLMENT:

Total number students served .....	8,316
Full-time .....	45%
Part-time .....	55%
Percent female .....	61%
Percent male .....	38%
Percent students of color .....	21%

**DEGREES OFFERED:** Associate of Applied Science, Associate of Arts, Associate of Fine Arts, Associate of Science, Certificate, Diploma

**LARGEST PROGRAMS:** Liberal arts and sciences, nursing, health information technology, business and accounting

**UNIQUE PROGRAMS:** Biotechnology, cardiovascular invasive specialist, clinical neurophysiology technology, dental hygiene, environmental science, equine science, histology technician, horticulture technology, intensive care paramedic, surgical technology, and veterinary technology

**INTERCOLLEGIATE SPORTS:** Women's basketball, golf, soccer, softball, volleyball; Men's baseball, basketball, football, golf, wrestling

**STUDENT ACTIVITIES:** Animal Health Technology Club, Armed Forces and Veterans Club, Art Club, Asian Student Organization, Automotive Technology Club, Building Utilities Mechanic, Campus Activities Board (CAB), Computer Aided Drafting (CAD) Technology, Design Club, Disc Golf Club, Drama Club, ECHO Student Newspaper, Ecology Club, Engineering and Physics Club, Equestrian Club, Gay-Straight Alliance, Golf Course Superintendents' Association, Horticulture

Club, International Club, Law Enforcement Club, Lions Club, Music, Music Technology Club, Muslim Student Association, Phi Theta Kappa, Rochester Collegiate Navigators, Student Nursing Forum, Student Senate, Table Tennis, Theater, Yellowjacket Passport, Yellowjacket Volunteers

**HOUSING:** An apartment complex is located on campus and is available for student housing. Additional privately owned apartments are available throughout Rochester and surrounding communities.

## Highlights

Expect More at RCTC!

- Rochester Community and Technical College was founded in 1915 on a motion by Dr. Charles Mayo to the Rochester School Board and is celebrating 100 years of higher education opportunities in Rochester, Minnesota
- Rochester is Minnesota's oldest public two-year college and one of the nation's oldest original community colleges
- The college serves approximately 8,200 students in credit-based courses and 3,000 students in noncredit courses
- Rochester consistently lands near or at the top of the nation's "Most Livable Cities" lists
- Rochester is Minnesota's third-largest city and home to the world-renowned Mayo Clinic and IBM
- The college offers more than 300 different online classes and 70 credit-based programs with more than 130 credential options in the areas of liberal arts, allied health, business, services and technical career pathways
- RCTC is part of a learning alliance with Winona State University. This long-term collaboration offers certificate programs through master's degrees, all delivered on the Rochester campus

# St. Cloud Technical and Community College

www.sctcc.edu



**Admissions:** (320) 308-5089  
**Toll-Free:** 1-800-222-1009  
**TTY:** (320) 308-5988



**Mailing Address:** 1540 Northway Drive  
St. Cloud, MN 56303  
**City/Population:** St. Cloud / 65,801

**Tuition and Fees (2015-2016):** \$5,326  
**FAFSA Code:** 005534

## ENROLLMENT:

Total number students served .....	6,403
Full-time .....	46%
Part-time .....	54%
Percent female .....	53%
Percent male .....	47%
Percent students of color .....	16%

**DEGREES OFFERED:** Advanced Technical Certificate, Associate of Applied Science, Associate of Arts, Associate of Science, Certificate, Diploma

**LARGEST PROGRAMS:** Liberal arts and sciences, business management, accounting, nursing

**UNIQUE PROGRAMS:** Biomedical technology equipment repair, reverse engineering and rapid prototyping, robotics and automation, sonography, cardiovascular technology, water environment technology, civil engineering, health information technology, energy renewal, nursing mobility, advertising communication and design

**EMPHASES** – St. Cloud Technical & Community College is the college of choice for quality career, technical, and transferable education, focused on highly-skilled employment and life-long learning opportunities. Cutting-edge technology, hands-on application, critical thinking, and citizenship are the hallmarks of an SCTCC education

**INTERCOLLEGIATE SPORTS:** Women's basketball, fast pitch softball, volleyball; Men's baseball, basketball

**STUDENT ACTIVITIES:** American Advertising Federation, American Dental Assisting Association,

American Design and Drafting Association, Business Professionals of America, Central Minnesota Builders Association, Child/Adult Care Education, Creative Arts Club, Distributive Education Clubs of America, English as a Second Language, Health Information Management Club, Instrumentation Society of America, MN Electrical Student Assoc., Nursing Students Club, Phi Theta Kappa Honor Society, SCSU Intramural Sports, Skills USA, Somali Student Club, Sonography Student Club, Spanish Club, Student American Dental Hygienists Association, Student Senate, Water Environment Technology Club

**HOUSING:** St. Cloud Technical & Community College collaborates with St. Cloud State University to provide students with a variety of housing opportunities only a few miles from our campus. In addition, the greater St. Cloud area offers many housing options that are directly on the public transportation line to connect students to the SCTCC campus.

## Highlights

St. Cloud Technical & Community College is a regional treasure located in the heart of Central Minnesota and is the college of choice for quality career, technical and transferable education. Our mission focuses on highly-skilled employment and life-long learning opportunities.

- An Associate of Arts degree in liberal arts and sciences that provides the first two years of a four-year degree
- More than 90 program options that can be completed in two years or less in business management, construction technology, health sciences, information technology, manufacturing, nursing and transportation
- Graduates have had more than a 97% job placement rate in their fields of study over the last three years



**Admissions:** (651) 846-1600  
**Toll-Free:** 1-800-227-6029



**Mailing Address:** 235 Marshall Ave.,  
St. Paul, MN 55102  
**City/Population:** St. Paul / 289,270

**Tuition and Fees (2015-2016):** \$5,479  
**FAFSA Code:** 005533

#### ENROLLMENT:

Total number students served .....	9,690
Full-time .....	41%
Part-time .....	59%
Percent female .....	55%
Percent male .....	45%
Percent students of color .....	60%

**DEGREES OFFERED:** Associate of Applied Science  
Associate of Arts, Associate of Science, Associate of  
Fine Arts, Certificate, Diploma

**LARGEST PROGRAMS:** Liberal Arts and transfer,  
Science, Technology, Engineering and Math (STEM),  
American Sign Language (ASL), health information  
technology, sheet metal, global trade, culinary arts,  
personal trainer, computer graphics and programming,  
medical laboratory technology, esthetics, machining,  
welding, cabinetmaking, and cyber security

**UNIQUE PROGRAMS:** The Power of YOU program  
makes the first two years of college available tuition-free  
at Saint Paul College for eligible students who graduate  
from a public high school in the spring of their senior year  
and meet a family adjusted gross income of less than  
\$75,000. Over 1,600 students from Saint Paul College  
have participated in the Power of YOU since its inception  
in 2006. The College anticipates enrolling nearly 10,000  
students in 2015-16 school year, making their dreams of  
college a reality.

**STUDENT ACTIVITIES:** African American  
Association, All Nations Student Association, American  
Sign Language Interpreting Association, Association for  
Computing Machinery (ACM), Counter Culture Christian  
Club, El Futuro, Environmental Action Society, Ethiopian  
Student Association, Kappa Beta Delta, Mental Health

Peer Support Group, Muslim Student Association, PRISM  
Campus Alliance (People Representing Individuals and  
Sexual Minorities), Somali Student Association, Students  
in Recovery, Phi Theta Kappa (Beta Xi Alpha chapter of  
Saint Paul College), Saint Paul College Student Senate,  
SkillsUSA, Student Honors Program

**HOUSING:** The College has no on-campus student  
housing, but many rental units are within walking  
distance of the campus.

#### Highlights

Saint Paul College was ranked the No. 1 community  
college in the nation in 2010 and 2013 by Washington  
Monthly magazine for student engagement, active and  
collaborative learning, student-faculty interaction and  
support for learning. The college offers 43 associate  
degree programs, including the Associate in Arts degree,  
and 79 career certificate and diploma programs. The  
College is one of the most diverse in Minnesota, with  
60% minority students enrolled.

- For more than 105 years, Saint Paul College has been helping students succeed in high-demand careers
- Transfer agreements with four-year private and public colleges and universities provide pathways for students to transfer and continue their higher education. The college also works with more than 500 business, industry and labor representatives to provide employment opportunities for graduates
- Last year, our students transferred to more than 350 four-year colleges and universities
- The campus is student-oriented, with support services that include academic support and free tutoring, computer labs, academic success services, transfer services, career services and access to free online job postings



**Admissions:** (507) 389-7220  
**Toll-Free:** 1-800-722-9359  
**TTY:** (507) 389-7200



**Mailing Address:** 1920 Lee Blvd.  
North Mankato, MN 56003  
**City/Population:** North Mankato / 53,645; Faribault / 23,436

**Tuition and Fees (2015-2016):** \$5,379  
**FAFSA Code:** 005537

#### ENROLLMENT:

Total number students served .....	5,481
Full-time .....	49%
Part-time .....	51%
Percent female .....	50%
Percent male .....	48%
Percent students of color .....	16%

**DEGREES OFFERED:** Advanced Technical  
Certificate, Associate of Applied Science, Associate  
of Arts, Associate of Science, Associate of Fine Arts,  
Certificate, Diploma

**LARGEST PROGRAMS:** Liberal arts and sciences,  
advanced manufacturing, agribusiness, building and  
design, nursing, allied health, accounting, computer  
careers, office technology, marketing management

**UNIQUE PROGRAMS:** Agribusiness, farm business  
management, culinary arts, multimedia technology, biology  
(2+2), carpentry, civil engineering technology, geographic  
information systems, computer integrated machining,  
mechatronics, welding, intensive care paramedic technician,  
small business management, visual arts

**STUDENT ACTIVITIES:** Business Professionals  
of America, Campus Activities Board, Collegiate DECA,  
CRU, Environmental Action Group, Film Club, Japanese  
Visual Culture/Anime, Phi Theta Kappa, Postsecondary  
Agriculture Student Organization, PRIDE-People Really  
Interested in Diversity Education, Psychology Club,  
SkillsUSA, Society of Leadership and Success, Spotlight  
Student Newspaper, Student Nurses Association, Student  
Senate

**HOUSING:** Off-campus housing is available in the area.

#### Highlights

Discover the Choices, Value and Opportunities at South  
Central College:

- Liberal Arts & Sciences programs enable students to earn a two-year Associate of Arts degree at South Central College and transfer those credits to a four-year university to pursue a Bachelor's degree
- Technical & Professional programs prepare students for a variety of careers in the following areas: Advanced Manufacturing, Agribusiness, Allied Health & Nursing, Automotive, Building & Design and Business Careers
- Programs are added to meet student and employer demand, including two new offerings in fall 2015 - Carpentry and Visual Arts-AFA
- Courses are available at two campuses in Faribault and North Mankato, as well as online
- Smaller class sizes and individualized attention provide the perfect environment for student success
- Abundant academic support services including tutoring and ADA assistance ensure all students thrive
- \$300,000+ in scholarships are awarded annually by South Central College's Foundations
- Extensive relationships between the college and businesses throughout the region provide opportunities for student internships, apprenticeships and permanent employment
- International perspectives are integrated into the curriculum, with several international travel experiences available to students
- Partnerships with educational institutions within the Minnesota State Colleges and Universities system and beyond provide a smooth transition to the next stage of higher education
- Customized training and workforce education options are available through South Central College's Center for Business and Industry





# CHOOSING A State University

Minnesota's seven state universities offer hundreds of academic programs. You can start at one of the seven state universities or transfer from a state college or other colleges and universities.



## Admissions Requirements

The seven state universities generally will accept you as a first-year student if you can answer "yes" to at least one of these questions:

- :: Did you graduate in the top half of your high school class?
- :: Did you score 21 or higher on the ACT standardized test?
- :: Did you receive a combined score of 1,000 or higher on the SAT standardized test?

Some state universities may have slightly different admissions requirements. Check with the university admissions office for details. If you do not meet the minimum requirements, you may be considered for admission under special provisions.



**\$7,999**

Average annual  
MnSCU university  
tuition and fees for a  
full-time student



# State University Undergraduate PROGRAMS

For a complete list of programs,  
visit [www.mnscu.edu](http://www.mnscu.edu).

	Bemidji State	Metropolitan State	Minnesota State, Mankato	Minnesota State Moorhead	St. Cloud State	Southwest Minnesota State	Winona State	MinnesotaOnline.org
Accounting	•	•	•	•	•	•	•	•
Advertising and Public Relations				•				
Agricultural Business and Production						•		
Agricultural Science and Technology						•		
Aircraft Pilot and Navigator			•					
American Indian/Native American Studies	•	•						
Anthropology/Archaeology			•	•				
Art History			•	•	•			
Art/Studio Arts		•	•	•	•	•	•	
Audio Technology/Sound Arts			•					
Aviation Management and Airway Science			•					
Banking and Finance		•	•	•	•	•	•	•
Biological and Natural Sciences	•	•	•	•	•	•	•	
Biotechnology/Biochemistry			•	•	•	•		
Broadcasting, Radio and Television				•		•		
Business Administration and Management	•	•	•	•	•	•	•	•
Chemistry	•	•	•	•	•	•	•	
Cognitive Science			•					
Communication Sciences and Disorders			•	•	•			
Communications Studies		•	•	•	•	•	•	
Community Health Services	•	•	•	•	•	•	•	
Computational Science						•		
Computer Engineering Technology			•					
Computer Networking and System Administration			•					
Computer Programming		•	•					
Computer Science and Information Systems	•	•	•	•	•	•	•	
Computer Security and Forensics/IT Auditing		•	•	•				
Construction Management			•	•				
Counseling - Chemical Dependency	•	•	•	•				
Criminal Justice/Corrections	•	•	•	•	•	•	•	•
Culinary Arts and Food Service						•		
Cytotechnology						•		
Dance			•					
Database Technologies and Administration			•					
Dental Hygienist		•	•					
Digital Arts, Computer Animation and Multimedia				•				
Early Childhood Studies		•						
East Asian Studies				•				
Economics	•	•	•	•	•	•	•	
Education - General						•		
Education - Instructional Technology						•		
Engineering - Automotive			•					
Engineering - Civil and Surveying			•	•				
Engineering - Composite Materials							•	
Engineering - Computer Hardware/Software			•	•				
Engineering - Electrical			•	•				
Engineering - General			•					
Engineering - Manufacturing					•			
Engineering - Mechanical			•	•				

	Bemidji State	Metropolitan State	Minnesota State, Mankato	Minnesota State Moorhead	St. Cloud State	Southwest Minnesota State	Winona State	MinnesotaOnline.org
Engineering Technology - Electronic			•					
Engineering Technology - General	•							•
Engineering Technology - Manufacturing			•					
English - Language, Literature, Writing	•	•	•	•	•	•	•	
Entrepreneurship				•	•			
Environmental and Earth Sciences	•	•	•	•	•	•	•	
Ethnic and Cultural Studies		•	•					
Family Consumer Science			•					
Film Studies			•	•	•	•	•	
Food Processing Safety			•					
Geographical Information Systems (GIS)			•	•				
Geography and Cartography	•	•	•	•				
Gerontology			•	•			•	
Global Studies/International Relations	•	•	•	•	•	•	•	
Graphic Design and Visual Communications	•	•	•					
Health Services Administration			•				•	
Health, Fitness and Sport Science	•	•	•	•	•	•	•	
History	•	•	•	•	•	•	•	
Hotel, Restaurant and Casino Management		•				•		
Human and Community Services		•						
Human Resources Management		•	•				•	•
Humanities	•	•						
Individualized and Multidisciplinary Studies	•	•	•	•	•	•	•	•
Insurance				•				
International Business		•	•	•	•	•	•	
Languages - French			•	•	•			
Languages - German			•	•				
Languages - Spanish	•	•	•	•	•	•	•	
Latin American Studies				•				
Law Enforcement		•	•				•	
Legal Studies						•		
Liberal Arts and Sciences - AA Transfer	•	•	•	•	•	•	•	
Management Information Systems		•		•		•		
Manufacturing and Industrial Technology	•	•		•		•	•	
Manufacturing Operations Management		•	•	•		•	•	
Marketing and Sales	•	•	•	•	•	•	•	
Mass Communications	•	•	•	•	•	•	•	
Mathematics	•	•	•	•	•	•	•	
Medical Technology/Clinical Lab Science	•	•	•	•				
Meteorology				•				
Music	•	•	•	•	•	•	•	
Music Industry Management			•	•		•		
Nuclear Medical Technology				•				
Nursing	•	•	•	•	•	•	•	•
Nursing - Advanced Practice				•			•	
Paralegal			•					
Parks and Recreation			•	•				
Philosophy		•	•	•	•	•	•	
Photography/Photographic Technology				•				

	Bemidji State	Metropolitan State	Minnesota State, Mankato	Minnesota State Moorhead	St. Cloud State	Southwest Minnesota State	Winona State	MinnesotaOnline.org
Physics			•	•	•	•	•	
Political Science	•	•	•	•	•	•	•	
Project Management	•						•	
Psychology	•	•	•	•	•	•	•	•
Psychology - Counseling						•		
Public Administration		•	•		•	•	•	•
Publishing				•				
Radiologic Technology					•			
Real Estate/Property Management					•			
Scandinavian Studies		•						
Screenwriting		•						
Social Sciences/Studies	•	•	•	•	•	•	•	
Social Work	•	•	•	•	•	•	•	•
Sociology	•	•	•	•	•	•	•	
Sports Management	•	•						
Statistics		•	•	•	•	•	•	
Surgical Technology							•	
Teaching - Art			•	•	•	•	•	
Teaching - Biology/Life Sciences		•	•	•	•	•	•	
Teaching - Business Education						•		
Teaching - Career and Technical					•			
Teaching - Chemistry			•	•	•	•	•	
Teaching - Communication Arts and Literature	•	•	•	•	•	•	•	
Teaching - Consumer Science		•						
Teaching - Early Childhood		•	•	•	•	•	•	
Teaching - Elementary	•	•	•	•	•	•	•	•
Teaching - English as a Second Language				•	•	•	•	
Teaching - French Language and Culture		•	•					
Teaching - German Language and Culture		•	•					
Teaching - Health	•	•	•	•	•	•	•	
Teaching - Mathematics	•	•	•	•	•	•	•	
Teaching - Music	•	•	•	•	•	•	•	
Teaching - Physical Education	•	•	•	•	•	•	•	
Teaching - Physical/Earth Science	•	•	•	•	•	•	•	
Teaching - Physics			•	•	•	•	•	
Teaching - Reading/Literacy				•				
Teaching - Social Studies/History	•	•	•	•	•	•	•	
Teaching - Spanish Language and Culture	•	•	•	•	•	•	•	
Teaching - Special Education		•	•	•	•	•	•	
Teaching - Theater Arts/Dance		•						
Technology Studies						•		
Theater Arts and Drama		•	•	•	•	•	•	
Travel Planner/Tourism					•			
Urban Planning/Regional Studies			•			•		
Wilderness Management and Wildland Firefighter	•							
Women and Gender Studies		•	•	•	•	•	•	
Writing - Creative and Technical	•	•	•	•	•	•	•	•



# State University Graduate PROGRAMS

For a complete list of updated programs,  
visit [www.mnscu.edu](http://www.mnscu.edu).

	Bemidji State	Metropolitan State	Minnesota State, Mankato	Minnesota State Moorhead	St. Cloud State	Southwest Minnesota State	Winona State	MinnesotaOnline.org
Accounting			•					
Anthropology/Archaeology			•	•				
Art/Studio Arts			•					
Banking and Finance				•				
Biological and Natural Sciences	•		•	•				
Biomedical Equipment Technology				•				
Biotechnology/Biochemistry				•				
Business Administration and Management		•	•	•	•	•	•	
Communication Sciences and Disorders			•	•	•			
Communications Studies			•				•	
Community Health Services			•				•	
Computer Science and Information Systems	•	•	•					
Computer Security and Forensics/IT Auditing	•		•				•	
Counseling - Chemical Dependency	•		•	•	•	•	•	
Counseling - College				•				
Counseling - K-12			•	•	•	•	•	
Counseling - Marriage and Family			•	•				
Counseling - Rehabilitation			•	•			•	
Criminal Justice/Corrections		•	•	•			•	
Database Technologies and Administration		•	•				•	
Dental Health Specialist		•						
Economics				•				
Education - Administration and Support			•	•	•	•	•	
Education - Curriculum and Instruction			•	•	•			
Education - General	•	•	•	•	•	•	•	
Education - Higher Education Administration				•				
Education - Instructional Technology			•	•			•	
Education - Student Development and Learning			•				•	
Engineering - General		•						
Engineering Management				•				
Engineering Technology - Manufacturing			•					
English - Language, Literature, Writing	•	•	•	•	•	•	•	
Environmental and Earth Sciences	•	•						

	Bemidji State	Metropolitan State	Minnesota State, Mankato	Minnesota State Moorhead	St. Cloud State	Southwest Minnesota State	Winona State	MinnesotaOnline.org
Ethnic and Cultural Studies			•					•
Family Consumer Science				•				
Geographical Information Systems (GIS)			•	•				
Geography and Cartography			•	•				
Gerontology			•	•				
Health Services Administration							•	
Health, Fitness and Sport Science			•	•				
History			•	•				
Human and Community Services			•					
Individualized and Multidisciplinary Studies			•	•				
Languages - French			•					
Languages - Spanish			•	•		•		
Liberal Arts and Sciences - AA Transfer		•						
Management Information Systems		•					•	
Mass Communications				•				
Mathematics			•					
Medical Product Regulation				•				
Medical Technology/Clinical Lab Science				•				
Music			•					
Nanotechnology				•				
Nursing		•		•		•	•	
Nursing - Administration		•				•	•	
Nursing - Adult Health/Geriatric						•	•	
Nursing - Advanced Practice		•	•			•	•	
Nursing - Educator		•	•			•	•	
Parks and Recreation						•		
Physics			•					
Project Management		•	•					
Psychology		•						
Psychology - Clinical			•	•			•	
Psychology - Counseling				•				
Psychology - Industrial and Organizational			•	•				
Psychology - School		•	•					

	Bemidji State	Metropolitan State	Minnesota State, Mankato	Minnesota State Moorhead	St. Cloud State	Southwest Minnesota State	Winona State	MinnesotaOnline.org
Psychology - Sports			•					
Public Administration		•	•	•				•
Publishing				•				
Quality Improvement						•		
Social Work			•	•				
Sociology			•	•				
Sports Management			•	•			•	
Statistics			•	•				
Teaching - Biology/Life Sciences			•					
Teaching - Career and Technical				•			•	
Teaching - Communication Arts and Literature	•	•	•	•	•	•	•	
Teaching - Early Childhood			•	•	•	•	•	
Teaching - Elementary			•	•			•	
Teaching - English as a Second Language			•	•				
Teaching - French Language and Culture			•					
Teaching - Health			•					
Teaching - Humanities/Interdisciplinary			•					
Teaching - Library/Information Media			•	•			•	
Teaching - Mathematics	•	•	•					
Teaching - Music			•					
Teaching - Physical Education						•	•	
Teaching - Physical/Earth Science	•							
Teaching - Physics			•					
Teaching - Reading/Literacy				•	•			•
Teaching - Spanish Language and Culture			•					
Teaching - Special Education	•	•	•	•	•	•	•	
Teaching - Urban Education		•						
Theater Arts and Drama			•					
Urban Planning/Regional Studies			•					
Women and Gender Studies			•					
Writing - Creative and Technical	•	•	•	•				•





**Admissions:** (218) 755-2040  
**Toll-Free:** 1-877-236-4354  
**TTY:** 1-800-627-3529



**Mailing Address:**  
1500 Birchmont Drive N.E. #13, Bemidji, MN 56601  
**City/Population:** Bemidji/13,560

**Tuition and Fees (2015-2016):** \$8,366  
**FAFSA Code:** 002336

#### ENROLLMENT:

Total number students served .....	6,170
Full-time students .....	72%
Part-time students .....	28%
Percent female .....	57%
Percent male .....	43%
Percent students of color .....	10%

**DEGREES OFFERED:** Associate of Arts, Bachelor of Applied Science, Bachelor of Arts, Bachelor of Fine Arts, Bachelor of Science, Certificate, Graduate Certificate, Master of Arts, Master of Arts in Teaching, Master of Business Administration, Master of Science, Master of Special Education

**LARGEST PROGRAMS:** Technological studies, psychology, education, biology, criminal justice, business administration, nursing

**UNIQUE PROGRAMS:** Entrepreneurship/small business management, aquatic biology, environmental studies, applied engineering, clinical laboratory science, Indian studies, creative writing, international business, Ojibwe language, art and design, wildlife biology

#### SPECIAL OPTIONS:

**PROGRAM MINORS** – Applied public policy, chemical dependency, computer forensics, developmental/adapted physical education, earth science, electronic writing, fraud examination, geographic information systems, industrial technology, management information systems, geology, philosophy, women's studies/gender studies, wetlands ecology, human performance, leadership

**EMPHASES and OPTIONS** – Exhibit design, construction management, wetlands ecology, criminalistics, vocal performance, manufacturing technology, studio arts, finance, international business, marketing, medical sciences, accounting information systems, fitness leadership and promotion, medical fitness

**PREPROFESSIONAL PROGRAMS** – Fourteen programs, including chiropractic, dentistry, engineering, law, medicine, mortuary science, occupational therapy, optometry, osteopathy, pharmacy, physical therapy, physician assistant, podiatry, veterinary medicine

**INTERCOLLEGIATE SPORTS:** Women's basketball, cross country, golf, hockey, soccer, softball, tennis, track, volleyball; Men's baseball, basketball, football, golf, hockey

**STUDENT ACTIVITIES:** Nationally recognized Outdoor Program Center offering such activities as kayaking, fishing, hiking, ice climbing, rock climbing and sailing. More than 85 clubs and organizations such as academic clubs, art clubs, band/choir, dance, literary and writing clubs, student government and intramural sports. Many special-interest organizations including Students for the Environment, Council of Indian Students, International Student Organization and more.

**HOUSING:** Six residence halls offer many living options, from standard singles and doubles to single-parent apartments. A suites-style hall includes social spaces with fireplaces, a computer gaming room, a lakeside terrace and fire pits. All halls are connected to an underground walkway system and conveniently located near the fitness and recreation center, university dining and campus convenience stores.

## Highlights

Bemidji State University's lakeside campus offers arts, sciences and professional programs in a personal learning atmosphere focused on the environment, service and the global family.

- **Top tier** – Ranked as a "top-tier" Midwest University by U.S. News and World Report each of the last seven years
- **Nationally recognized** – Named one of the nation's 322 most eco-friendly campuses by The Princeton Review
- **New on campus** – Renovation of Memorial Hall into a state-of-the-art new home for business and accounting; renovation of Decker Hall into a student services hub conveniently located for on-campus residents; recently renovated Birch and Linden residence halls; modern artificial playing surface installed at Chet Anderson Stadium for football and soccer; dramatically increased international students to campus
- **Major opportunities** – More than 60 majors and preprofessional programs, often customizable by adding an emphasis area, concentration or specialization; many online options, including 400 courses and six degree completion programs
- **Small classes** – Nearly half of the university's classes have 19 or fewer students; less than 7 percent of classes have 50 or more students
- **Personal attention** – Low 21-to-1 ratio of students to faculty. Professors are readily available outside of class
- **Affordable tuition** – Students may take 12 to 18 credits for the same rate. Resident or reciprocity tuition rates are available for all undergraduates. Some classes and programs apply differential tuition rates. About 83 percent of students receive some type of financial aid
- **Athletic-academic champions** – Nationally competitive men's hockey team earned a berth in the NCAA's Frozen Four in 2009, made the WCHA semifinals in 2011 and hosted its first WCHA playoff series in 2015. Women's hockey advanced to the 2015 WCHA Final Face-off championship game. Since 2010, BSU has produced nine All-Americans and six Academic All-Americans in all sports
- **Outdoor adventures** – With a lakeside facility, the Outdoor Program Center offers an array of adventures from canoeing, cross-country skiing and hiking locally to backpacking and rock climbing in the western United States







**Admissions:** (651) 793-1302  
**Toll-Free:** 1-844-456-3876  
**TTY:** (651) 772-7687  
disability.services@metrostate.edu



**Mailing Address:**  
700 7th St. E., St. Paul, MN 55106  
**City/Population:** St. Paul / 289,270

**Tuition and Fees (2015-2016):** \$7,566  
**FAFSA Code:** 010374

#### ENROLLMENT:

Total number students served .....	11,497
Full-time students .....	36%
Part-time students .....	64%
Percent female .....	54%
Percent male .....	43%
Percent students of color .....	36%

**DEGREES OFFERED:** Bachelor of Applied Science, Bachelor of Arts, Bachelor of Human Services, Bachelor of Science, Bachelor of Science in Nursing, Bachelor of Science-Dental Hygiene, Bachelor of Social Work, Certificate, Doctor of Business Administration, Doctor of Nursing Practice, Graduate Certificate, Master of Arts, Master of Business Administration, Master of Mgmt Info Systems, Master of Public & Nonprofit Admin, Master of Science, Master of Science Nursing, Master of Science-Advanced Dental Therapy, Professional Science Master's

**LARGEST PROGRAMS:** Individualized studies, accounting, business administration, psychology, nursing

**UNIQUE PROGRAMS:** Applied doctorate in business administration, applied doctorate in nursing practice, bachelor's degree completion program for Peace Corps volunteers, computer forensics, dental hygiene, early childhood education, law enforcement, oral health care practitioner, registered nurse to master's degree in nursing, screenwriting, technical communication, theater, urban elementary education

#### SPECIAL OPTIONS:

**PROGRAM MINORS -** Advertising, anthropology, biology, child psychology, civic engagement, computer forensics, creative writing, criminal justice, disability studies, educational psychology, environmental communication,

experimental intermedia, gender studies, industrial and organizational psychology, media literacy, mental health and psychology, practical ethics, project management, religious studies, social gerontology, theater, violence prevention and intervention

**EMPHASES and OPTIONS -** Individualized bachelor's degree, which includes collaborative programs with community and technical colleges; urban teacher programs for elementary, middle school and secondary licensure; human services bachelor's degree with focus areas, including corrections, disability studies, family studies, human services administration, social gerontology, training and adult development, and violence prevention and intervention

**STUDENT ACTIVITIES:** Accounting Club, African American Student Association, Alcohol and Drug Counseling Student Association, Ambassadors for Campus Engagement, ART Club, Asian Student Organization, Behavioral Science Student Association, Computer Science/Information Technology Club, Cyber Security and Forensics Student Organization, Family Resource Network, Haute Dish Journal of Arts and Literature, Health and Wellness Student Association, Human Services Student Association, International Student Organization, Lavender Bridge, Law Enforcement and Criminal Justice Club, Multifaith Alliance, Muslim Student Organization, Nursing Student Organization, Psychology Club, Pueblo Student Organization, Social Work Student Association, Student Activity Fees Allocation Committee, Student Science Association, Student Senate, Students for Education Reform, The Metropolitan Student Newspaper, The Silver Hand Society, The Walkabout Group, Theater Underground, TriO Student Union, Twin Cities Technical Community (TC3), University Activities Board, Voices of Indian Council for Educational Success (VOICES), Writers' Think Tank

**HOUSING:** The university has no on-campus housing, but rental units are available within walking distance or on local bus lines.

#### Highlights

- Meets the unique educational needs of those living and working in the metropolitan region as the premier urban public comprehensive system university in the Twin Cities
- Focuses on providing high-quality, affordable educational programs and services in a student-centered environment
- Provides more than 50 undergraduate programs and a number of graduate programs, with the option to create individualized degree programs
- Has faculty who bring both practical and theoretical knowledge to their instruction
- Reflects the area's rich diversity in its students, faculty, staff and community partnerships
- Demonstrates unwavering commitment to civic engagement
- Offers daytime, evening, online and weekend classes on two main campuses plus several other locations, with comfortable class sizes and flexible, innovative scheduling (Minneapolis campus co-located with Minneapolis Community and Technical College)
- Awards credits for college-level learning that students gain through non-classroom experience
- Encourages creative learning strategies, such as online learning, internships and independent study
- Collaborates with Hennepin Technical College in Brooklyn Park on the Law Enforcement and Criminal Justice Education Center





**Admissions:** (507) 389-1822

**Toll-Free:** 1-800-722-0544

**TTY:** 1-800-627-3529



**Mailing Address:**

122 Taylor Center, Mankato, MN 56001

**City/Population:** Mankato / 53,645

**Tuition and Fees (2015-2016):** \$7,835

**FAFSA Code:** 002360

**ENROLLMENT:**

Total number students served .....	18,229
Full-time students .....	78%
Part-time students .....	22%
Percent female .....	54%
Percent male .....	46%
Percent students of color .....	13%

**DEGREES OFFERED:** Associate of Arts, Bach Sci-Mechanical Engineering, Bach of Science-Computer Engineering, Bachelor of Arts, Bachelor of Athletic Training, Bachelor of Electrical Engineering, Bachelor of Fine Arts, Bachelor of Music, Bachelor of Science, Bachelor of Science - Civil Engineering, Bachelor of Science in Engineering, Bachelor of Science in Social Work, Certificate, Doctor of Education, Doctor of Nursing Practice, Doctor of Psychology, Graduate Certificate, Master of Accounting, Master of Arts, Master of Arts in Teaching, Master of Business Administration, Master of Fine Arts, Master of Music, Master of Public Administration, Master of Science, Master of Science Nursing, Master of Social Work, Professional Science Master's, Specialist, Specialized Graduate Certificate

**LARGEST PROGRAMS:** Nursing, psychology, biology, elementary education, law enforcement, management, business, marketing, art, finance

**UNIQUE PROGRAMS:** Alcohol & drug studies, American indigenous studies, automotive engineering technology, aviation, dance, ethnic studies, gender & women's studies, music industry, recreation, parks & leisure services, Scandinavian studies, Spanish for professions

**SPECIAL OPTIONS:**

**PROGRAM MINORS** – Many options available, including alcohol & drug studies, astronomy, aviation management, community health education, creative writing, database technologies, developmental/adapted physical education (teaching minor), entrepreneurship and innovation, environmental science, ethnic studies, financial planning, French, gerontology, human resource management, military science/army ROTC, Scandinavian studies, teaching English as a second language, theatre arts, urban and regional studies and more

**EMPHASES and OPTIONS** – Dance therapy (pre-professional), dance generalist (private studio teaching), geographic information science certificate, information security certificate, law enforcement management certificate, music industry certificate, networking technologies certificate, nonprofit leadership certificate, software development certificate, technical communication certificate

**PREPROFESSIONAL PROGRAMS** – Fourteen available: chiropractic medicine, dentistry, engineering, law, medicine, mortuary science, occupational therapy, optometry, osteopathic medicine & surgery, pharmacy, physical therapy, podiatric medicine & surgery, teaching, veterinary science

**INTERCOLLEGIATE SPORTS:** Women's basketball, cross country, golf, hockey, soccer, softball, swimming, tennis, track and field, volleyball; Men's baseball, basketball, cross country, football, golf, hockey, track and field, wrestling

**STUDENT ACTIVITIES:** Art, Cheerleading, Choir, Community Service, Concert Band, Dance Line, Diversity, Ethnic or Cultural Group, Fraternities/Sororities, Honors Program, Intramural Sports, Jazz Ensemble, Lacrosse Club, Leadership Development, Marching Band, Newspaper, Orchestra, Religious Organizations, ROTC, Rugby, Science Fairs or Project, Small Vocal Groups, Soccer Club, Speech Team, Student Events Team, Student Government, Theatre

**HOUSING:** Five residence communities house 3,000 students and include academic, social and dining opportunities. Suite-style living is available in Preska Residence Community, which opened in 2012, and Julia A. Sears Residence Community, built in 2008. Three- and 5-person apartment-style housing is available at Stadium Heights, with a new building available in 2015. Traditional double rooms include additional sinks and air-conditioning. Many off-campus rentals are available within easy walking distance.

**Highlights**

Minnesota State Mankato: Where real-world thinking helps students transform big ideas into rewarding futures.

- One of Midwest's most beautiful campuses: 300 acres overlooking the majestic Minnesota River Valley
- Campus tours every weekday at 9:30 a.m., 10:30 a.m., 1 p.m. and 2 p.m.
- Ranked in top quartile of the nation's four-year colleges and universities (Forbes America's Best Colleges)
- More than 1,000 international students from 90 countries
- More than \$120 million available in scholarships, assistantships, grants, work-study and student loans
- Hundreds of student research opportunities in 20 centers
- Recognized as one of 57 national leaders in undergraduate research by the Council on Undergraduate Research
- Four applied doctorate programs: nursing practice, educational leadership, counselor education, school psychology
- New high-tech campus buildings: Suite-style residence hall, state-of-the-art chemistry building, alternative energy complex, new student union
- TechRec exercise gym: 50 machines with Internet and cable TV
- 2,000-square-foot indoor rock climbing facility, outdoor rock climbing pinnacle and full ropes and challenge course offering teambuilding and leadership development programming
- 4,800-square-foot student weight room, three student basketball and volleyball courts, indoor student walking and running track, racquetball and handball courts, group fitness and dance studios and a martial arts room
- Outdoor recreational facilities include soccer fields, a rugby pitch, lacrosse field, flag football fields, an Ultimate Frisbee field, tennis courts, basketball courts, sand volleyball courts, a cricket pitch, a ropes course and more
- Wireless connectivity throughout campus
- State's premiere college theater: 10 acclaimed musicals and plays per academic year in two theaters; two dance concerts; two touring productions; and four professional summer stock productions
- Nationally renowned men's and women's basketball, NCAA Division I hockey, wrestling, track and swimming
- Home of Vikings Training Camp and Timberwolves mini-camp



**Admissions:** (218) 477-2161

**Toll-Free:** 1-877-678-6463

**TTY:** 1-800-627-3529



**Mailing Address:**

1104 7th Ave. S., Moorhead, MN 56563

**City/Population:** Moorhead / 152,547

**Tuition and Fees (2014-2015):** \$8,094

**FAFSA Code:** 002367

## ENROLLMENT:

Total number students served .....	7,820
Full-time students .....	79%
Part-time students .....	21%
Percent female .....	60%
Percent male .....	39%
Percent students of color .....	9%

**DEGREES OFFERED:** Associate of Arts, Bachelor of Arts, Bachelor of Fine Arts, Bachelor of Music, Bachelor of Science, Bachelor of Science in Nursing, Bachelor of Social Work, Certificate, Doctor of Nursing Practice, Graduate Certificate, Master of Arts, Master of Business Administration, Master of Fine Arts, Master of Health Care Administration, Master of Science, Specialist

**LARGEST PROGRAMS:** Elementary education, business administration, biology, social work, nursing

**UNIQUE PROGRAMS:** Anthropology, athletic training, biotechnology, business analytics, construction management, criminal justice, doing business in China, elementary inclusive education, entrepreneurship, exercise science, film production, geosciences, gerontology, graphic communications, health services administration, international studies, law enforcement, medical physics, music industry, operations management, paralegal, project management, publishing, speech/language/hearing science, sustainability

## SPECIAL OPTIONS:

**PROGRAM MINORS** – Astronomy, biotechnology, coaching, communication studies, East Asian studies, ecology & evolutionary biology, film history/criticism, gerontology, health & medical sciences, juvenile justice, language and literacy, leadership studies, media analysis, media arts, music business entertainment, music technology,

photojournalism, religious studies, Spanish, sports communication, strength and conditioning, teaching English as a second language, theatre dance, vaccinology, wellness, women's health

**EMPHASES** – 3D graphics, actuarial science, astronomy, computation, computer animation and multimedia, digital arts, diplomacy, elder law & probate, energy sustainability, environmental policy, geographical sciences, graphic design, guitar studies, health and medical sciences, health services administration, interactive multimedia, international business, litigation, long-term care administration, medical physics, pictorial illustration, specific learning disabilities, strategic studies, theatre technology

**PREPROFESSIONAL PROGRAMS** – Audiology, chiropractic, dentistry, health, medicine, occupational therapy, optometry, physical therapy, physician assistant, veterinary

## INTERCOLLEGIATE SPORTS:

Women's basketball, cross country, golf, soccer, softball, swimming & diving, tennis, track, volleyball; Men's basketball, cross country, football, track, wrestling

**STUDENT ACTIVITIES:** Campus life buzzes with exciting social and cultural events, concerts, lectures and athletic activities. More than 120 student organizations offer endless opportunities to learn, share, become involved and establish new relationships: Academic, culture and language, honorary, literary, religious, service, sports and recreation, student government and many special interest clubs. Get active, get connected and get involved!

**HOUSING:** Living on campus is affordable, convenient, educational and fun, providing an outstanding opportunity to get involved, meet new people and ensure your academic success. Fifteen Learning Communities give you

opportunities to engage with peers, faculty and staff, and enrich your college experience. On-campus housing options include eight residence halls and an apartment complex. All are within easy walking distance of academic buildings, library, student union, wellness center and more.

## Highlights

- Of MSUM's 2013 graduates who reported being available for employment, 95.4% were hired in a field of their choice
- Fargo-Moorhead is a thriving, close-knit community located off Interstate 94
- Consistently ranked one of the safest and best communities in which to live, it's a bustling college town with more than 30,000 students. The financial services website Nerdwallet.com recently named Moorhead as the Best Small City in America in its 2015 rankings
- In a national survey, students say Minnesota State University Moorhead is committed to their personal and professional success through active, collaborative learning and faculty-mentored research and creative projects
- Students routinely earn honors for their academic achievements, including 12 Goldwater Scholars named in 13 years
- Students regularly win regional and national awards in film, education, music, theater, art and design, advertising, business, journalism and health services administration
- The university boasts 11 Minnesota Professors of the Year in the past 28 years, more than any other university in a five-state area, including the 2010 Outstanding U.S. Master's Universities and Colleges Professor
- Same tuition rate for 12 to 19 credits is a smart investment. Nearly 90 percent of students receive financial assistance, with an average aid package of \$10,300 and average scholarship equal to \$1,905, with a total of \$4.2 million awarded last year
- Professors are advisors and mentors who invest in students' personal experience. Student-faculty ratio of 17-to-1 encourages undergraduates to participate in faculty-mentored research and creative projects, and 82.8 percent of classes have fewer than 30 students
- Flexible offerings include 77 majors with 84 emphases and options, 9 pre-professional studies programs, 12 graduate degrees, 19 certificate programs, 31 areas of teacher licensure preparation, plus online and off-site programs in the Twin Cities
- The Paseka School of Business maintains prestigious accreditation by AACSB International, the hallmark of excellence in business education earned by less than 5% of the world's business programs
- Wellness Center features state-of-the-art equipment, rock climbing wall, exercise studio, track and basketball courts
- Success in athletics includes a highly successful year in 2014-15: historic trip to the NCAA Division II Elite 8 for Men's Basketball, Men's Basketball Coach Chad Walthall earning National DII Coach of the Year; a total of 37 individuals who competed in NCAA national competition; 50 all-conference performers; two All-Americans in track and field and one in wrestling; and the men's cross country team which qualified for the national meet
- Daily campus tours are offered 9:30 a.m. and 1:30 p.m. Monday-Thursday, and Fire Up Fridays are at 9 a.m. and 1 p.m., with select Saturday programs during the year





**Admissions:** (320) 308-2244

**Toll-Free:** 1-877-654-7278

**TTY:** 1-800-627-3529



**Mailing Address:**

720 4th Ave. S., Saint Cloud, MN 56301

**City/Population:** St. Cloud / 65,801

**Tuition and Fees (2015-2016):** \$7,705

**FAFSA Code:** 002377

## ENROLLMENT:

Total number students served .....	19,623
Full-time students .....	62%
Part-time students .....	38%
Percent female .....	53%
Percent male .....	47%
Percent students of color .....	14%

## DEGREES OFFERED:

Associate of Arts  
Associate of Science, Bachelor of Arts, Bachelor of  
Elective Studies, Bachelor of Fine Arts, Bachelor of Music,  
Bachelor of Science, Certificate, Doctor of Education,  
Graduate Certificate, Master of Arts, Master of Business  
Administration, Master of Engineering Management, Master  
of Public Administration, Master of Science, Master of Social  
Work, Professional Science Master's, Specialist

**LARGEST PROGRAMS:** Management, criminal  
justice, finance and accounting, mass communications

**UNIQUE PROGRAMS:** Applied behavior analysis,  
applied clinical research, cultural resource management  
(applied archaeology), engineering management,  
hydrology, land surveying and mapping, Latin American  
studies, meteorology, nuclear medicine technology,  
radiologic technology (X-ray and diagnostic imaging), real  
estate, regulatory affairs and services, small business  
management, statistics, travel and tourism, women's  
studies

## SPECIAL OPTIONS:

**PROGRAM MINORS** – African studies, American Indian  
studies, Chicano/Chicana studies, Asian Pacific American  
studies, community health, computer networking and

applications, dance, data communications, East Asian  
studies, ethnic studies, geographic information science,  
gerontology, human relations, military science, religious  
studies, technology studies, optics, teaching English as a  
second language, heritage preservation, forensic science

**EMPHASES and OPTIONS** – Rehabilitation counseling,  
community counseling, astrophysics, public history,  
public relations, publications, advertising, broadcasting,  
news editorial, linguistics, piano pedagogy, creative  
writing, applied statistics, actuarial science, construction  
management, electro-optics, applied sociology, graphic  
design

**PREPROFESSIONAL PROGRAMS** – Chiropractic, dentistry,  
law, medicine, optometry, physical therapy, physician  
assistant, veterinary, pharmacy, occupational therapy,  
mortuary science

**INTERCOLLEGIATE SPORTS:** Women's soccer,  
softball, basketball, cross country, golf, ice hockey, Nordic  
skiing, swimming, tennis, track & field, volleyball; Men's  
baseball, basketball, football, cross country, diving, golf, ice  
hockey, tennis, track & field, wrestling

**STUDENT ACTIVITIES:** Hundreds of clubs and  
organizations: Academic, professional, culture and  
language, honorary, literary and writing, music, religious,  
service, environmental, political and social issues, and  
sports and recreation clubs, plus student government,  
student radio and many special interest clubs; intramural  
sports and activities including cricket, cycling, hockey,  
broomball, rugby, bowling, dodgeball, fishing, soccer, rock  
climbing, rowing, dance, cheer team, skydiving and more

**HOUSING:** The university has 10 residential communities, each with its own personality. Whether you're looking for a traditional residence hall experience or a more independent apartment-style living environment like Coborn Plaza Apartments, you'll find a space that suits you. If location is critical, know that our residence halls are conveniently located throughout campus.

## Highlights

- More than 200 undergraduate and 60 graduate programs in liberal arts, science and engineering, business, education, health and human services, and public affairs
- Thirty years ago, the Herberger Business School became nationally and internationally accredited
- Minnesota's largest producer of teachers with a national award-winning co-teaching model to enhance classroom-training experience
- \$11.3 million facility holds chemistry, biochemistry, biology, anatomy, immunology, advanced DNA and mammalian cell culture labs
- Multicultural focus includes more than 1,000 students from more than 90 countries on campus
- Thirty-two Education Abroad opportunities
- Award-winning school newspaper, radio station and television station
- Eighty percent of St. Cloud State students received financial aid in 2014-15 which included more than \$122 million in scholarships, grants, loans and work opportunities
- Designated as a National Center of Academic Excellence in Information Assurance Education by the Department of Homeland Security and the National Security Agency
- One hour northwest of the Twin Cities in a metropolitan area of 189,000
- Successful graduates abound, including concept designer TyRuben Ellingson, a 1982 graduate who had a creative hand in developing the visual effects that helped catapult the movie "Avatar" to unparalleled box-office success, and John Stumpf, a 1976 graduate, president and chief executive officer of Wells Fargo, one of the country's largest banks with 275,000 employees and 6,650 locations







**Admissions:** (507) 537-6286

**Toll-Free:** 1-800-642-0684

**TTY:** 1-800-627-3529



**Mailing Address:**

1501 State St., Marshall, MN 56258

**City/Population:** Marshall / 13,619

**Tuition and Fees (2015-2016):** \$8,334

**FAFSA Code:** 002375

**ENROLLMENT:**

Total number students served .....	8,192
Full-time students .....	35%
Part-time students .....	65%
Percent female .....	59%
Percent male .....	41%
Percent students of color .....	9%

**DEGREES OFFERED:** Associate of Arts, Associate of Science, Bachelor of Applied Science, Bachelor of Arts, Bachelor of Science, Bachelor of Science in Nursing, Certificate, Graduate Certificate, Master of Business Administration, Master of Science

**LARGEST PROGRAMS:** Business management, exercise science, early childhood education, finance, elementary Education

**UNIQUE PROGRAMS:** Agricultural education, RN to BSN, culinology, hospitality management, agronomy, agricultural solutions, global studies, radio and TV, professional writing and communication, environmental science, creative writing, ESL, exercise science.

**SPECIAL OPTIONS:**

**PROGRAM MINORS** – Agronomy, advertising design, art/graphic design, biology, computer science, criminal justice, economics, special ed., literature, geology, environmental science, exercise science, finance, history, management, marketing, math, music, philosophy, pre-law, adapted PE, coaching, physics, political science, public administration, psychology, social welfare, sociology, Spanish, speech communication, public relations, theatre, acting/directing, women's studies.

**EMPHASES and OPTIONS** – Sports management, recreation, public relations, farm management, ag. finance, crops, soils, graphic design, human resources management, music management, restaurant management, hotel management, event planning, corporate wellness

**PREPROFESSIONAL PROGRAMS** – Chiropractic, dentistry, engineering, law, medicine, mortuary science, nursing, occupational therapy, optometry, pharmacy, physical therapy, veterinary medicine

**INTERCOLLEGIATE SPORTS:** Coed wheelchair basketball; Women's basketball, golf, soccer, softball, tennis, volleyball, cross country, track & field; Men's baseball, basketball, football, cross country, track & field, wrestling

**STUDENT ACTIVITIES:** More than 90 clubs and organizations: Academic, culture and language, honorary, literary and writing, music, religious, service, environmental, political and social issues, sports and recreation, student government and many special interest clubs; intramural sports and activities including hockey, rugby, bowling, soccer, dance, cheer team, Tae Kwon Do and more

**HOUSING:** Approximately 1,000 students live on campus in residence halls that offer numerous housing options, from single and traditional two-person rooms to apartment-style living. The newest, Sweetland Hall, features two two-person rooms sharing a common shower/restroom, with sinks in each room. Living & Learning Communities, houses whose residents share a common interest, are also available.

## Highlights

Southwest Minnesota State University is a fully accredited liberal arts institution, the youngest of the seven four-year universities within the Minnesota State Colleges and Universities (MnSCU) system. The university offers personal attention other universities can't match, a private school quality education at an affordable public school price. Southwest Minnesota State University is fully accessible and offers 50 undergraduate majors, 46 minors, four associate degree majors and four master's programs. A number of "two-plus-two" programs with community colleges within the MnSCU system makes it seamless to move from an associate degree to a bachelor's degree.

- A challenging and supportive academic environment at a university where professors, not graduate assistants, teach
- A new Agricultural Education major that fills a need across the state and which joins our other ag-related programs
- The world's first bachelor's degree in culinology, approved by the Research Chefs Association
- Coed Living and Learning Communities: residential communities that share an academic or a special interest with the residents of their house. These include culinology house; access, opportunity and success community; fine arts community; exercise science house; and the Mustang Traditions house
- A full complement of ag programs, including agricultural education, agribusiness management, agricultural solutions, agronomy and agriculture (2+2 program)
- SMSU graduates get jobs: Ninety-six percent of our recent grads are employed; 10 percent continue their education following graduation
- SMSU has been honored for both its affordability and its educational return on investment; parents and students appreciate SMSU's bang for the buck
- A versatile Alumni Plaza, a central gathering place for students and a site for a variety of campus events: concerts, barbecues, speakers, performances and out-of-classroom academic and social events
- Renovated, state-of-the-art science labs
- The new Marshall Regional Track and Field Complex, the finest facility of its kind in southwest Minnesota
- Major visit days include SMSU Homecoming Sept. 26; Mustang Days, Oct. 15-16; A Day at SMSU, Nov. 21; Experience SMSU Day/Hawaiian Night, Feb. 6, 2016; Junior Visit Day, March 19, 2016
- A campus wide Undergraduate Research Conference each December, where students' academic achievements and projects are highlighted
- An Academic Commons area that offers academic support services that augment an educational experience that includes small class sizes, a supportive faculty and staff, and opportunities to become involved
- Online course offerings that help those with busy lifestyles earn a degree
- On- and off-campus master's degrees in education, special education, physical education: coaching of sport and business (MBA)
- A campus that embraces diversity; 126 international students from around the globe, representing 26 countries
- An updated wireless network puts you online from anywhere on campus; numerous computer labs and computer kiosks; residence halls are also hard-wired.
- Top students may design their own course of study in the liberal arts through the honors program
- A campus built with accessibility in mind; interconnected academic buildings mean 72 degrees, even in the middle of winter
- A proud and successful athletic tradition; Mustang teams compete in the NCAA Division II Northern Sun Intercollegiate Conference
- A new Museum of Indigenous Americans, which joins the Natural History Museum on campus



**Admissions:** (507) 457-5100  
**Toll-Free:** 1-800-342-5978  
**TTY:** 1-877-627-3848



**Mailing Address:**  
170 West Sanborn Maxwell Hall 106, Winona, MN 55987  
**City/Population:** Winona / 27,782

**Tuition and Fees (2015-2016):** \$8,092  
**FAFSA Code:** 002394

#### ENROLLMENT:

Total number students served .....	9,848
Full-time students .....	85%
Part-time students .....	15%
Percent female .....	62%
Percent male .....	38%
Percent students of color .....	9%

**DEGREES OFFERED:** Associate of Arts, Bachelor of Applied Science, Bachelor of Arts, Bachelor of Music, Bachelor of Science, Bachelor of Science-Teaching, Bachelor of Social Work, Certificate, Doctor of Nursing Practice, Graduate Certificate, Master of Arts, Master of Science, Professional Science Master's, Specialist

**LARGEST PROGRAMS:** Nursing, business administration, elementary education, biology, exercise science

**UNIQUE PROGRAMS:** Professional Science Master's Degree in Applied Research and Management. Online Bachelor of Applied Science degree in Healthcare Leadership and Administration. Nation's first and flagship Child Advocacy Studies program. The only accredited undergraduate program in composite materials engineering in the U.S. The first undergraduate program in Data Science in the Upper Midwest. Master's and doctorate programs in nursing. Programs in paralegal, sustainability, music business, and graphic design.

**SPECIAL OPTIONS:** PROGRAM MINORS – Adventure tourism, business law, dance, electronics, film studies, geography, global studies, intercultural communication, international business, management, professional selling, sustainability, war, peace and terrorism

**EMPHASES and OPTIONS** – Advertising, broadcasting, journalism, photojournalism, public relations, law enforcement, corrections, cell and molecular biology, ecology, water resources management

**PREPROFESSIONAL PROGRAMS** – Dentistry, engineering, law, medicine, mortuary science, optometry, pharmacy, physical therapy, physician assistant, veterinary medicine

**INTERCOLLEGIATE SPORTS:** Women's basketball, cross country, golf, gymnastics, soccer, softball, tennis, track, volleyball; Men's baseball, basketball, cross country, football, golf

**STUDENT ACTIVITIES:** Asian American Club, Band, Black Cultural Awareness Association, Cheerleading (Co-ed), Chinese Student Society, Choir, Dance Team, GLBTA Partnership, Hmong American Student Association, Honors, International Club, Malaysian Student Association, Nepali Club, Newspaper, Orchestra, Radio/Television, Theatre, Visit: [www.winona.edu/sal/clubs.asp](http://www.winona.edu/sal/clubs.asp)

**HOUSING:** More than 2,500 students choose to live on the WSU campus, and on-campus residents enjoy resources & experiences that complement their academic work. The university features six residence halls, including two suite-style halls for upperclassmen that opened in 2010 and the Sustainability Theme House. Three additional residence halls and the University Apartments at East Lake are connected by shuttle bus to the central Winona campus. Off-campus rental housing opportunities are also available.

## Highlights

- **Nationally Ranked:** WSU is ranked as the second public institution in Minnesota by U.S. News & World Report, has been listed among the "Best in the Midwest" by The Princeton Review for a decade straight and has been recognized as one of America's 100 Best College Buys for 18 consecutive years
- **e-Warrior Digital Life and Learning:** WSU is the first public university in the Midwest to offer a tablet and a laptop to all students. Students are provided an iPad mini or Android-based tablet along with a Mac or PC laptop, and enjoy wireless access from anywhere on campus
- **A Tale of Two Villages:** The Education Village in Winona, which received initial funding during the 2013-14 Minnesota legislative session, and the STEM Village in Rochester, currently in the design/build phase of the project, are bold, responsive, community-based initiatives that will provide existing and future teachers with the preparation, support and inspiration they need to be successful in the 21st century classroom
- **A Community of Learners Serving Our World:** Community service is a core university-wide commitment, with more than one million volunteer hours logged by WSU students over the last six years
- **Sustainability @ WSU:** Winona State is all about going green. The university is a signatory of the American Colleges and Universities Presidents Climate Commitment and a partner in Sustain Winona, a community-based initiative dedicated to energy conservation, renewable energy technologies and pollution prevention strategies
- **Starting a Journey of Lifelong Wellness:** The university's state-of-the-art Integrated Wellness Complex aligns health, wellness, and academic and recreational programs and services into a single facility on the university's tobacco-free campus
- **Work-Learn-Earn:** WSU's new Professional Science Master's Degree in Applied Research and Management allows students to pursue advanced training in science or mathematics while remaining employed and earning university credits for work with a partnered employer
- **Healthcare Leadership:** The Bachelor of Applied Science degree in Healthcare Leadership and Administration is an academic and career pathway for allied health professionals who have earned an associate's degree and wish to complete a bachelor's. This new program is fully online, allowing you to continue your education from home or anywhere!
- **WSU-Rochester:** In addition to offering upper-division undergraduate degree programs and courses, the Rochester campus also offers an array of graduate programs in the colleges of education and nursing, including a Doctorate in Nursing Practice
- **Path to Purple:** WSU works with Rochester Community and Technical College to offer programs in which students are able to begin their undergraduate education at the college and transfer to the university's Winona or Rochester campus
- **Visit Winona State University:** Daily campus visits at 9 a.m. and 1 p.m. Monday through Friday. Visits include tours of the campus and residence halls and a meeting with an admissions counselor





# Continuing Education AND CUSTOMIZED TRAINING



Tap into an unparalleled network of experienced instructors, advanced technology and cutting edge equipment to help you succeed in a changing world. Continuing education and customized training programs are offered at all 31 MnSCU colleges and universities. Online options give students the flexibility to learn at convenient times and places. Contact your local college or university for more information.

## 125,000 WORKERS

each year maintain a leading edge in their professions, keeping Minnesota businesses globally competitive.



## 16,000

customized training,  
occupational and  
professional classes



### Continuing Education

Helping learners of all ages to develop their careers, retrain for new or better jobs, or maintain critical certifications and licensures.

### Customized Training

Helping employers quickly adapt to rapidly changing, more global environments while keeping the skills of their employees up-to-date.

## FIND THE BEST EDUCATIONAL FIT

### Next Steps:

- :: Visit [www.mnscu.edu](http://www.mnscu.edu) to explore your options fully
- :: Spend some time on college and university websites to narrow your focus, check out social media sites to get a feel for campus life
- :: Schedule college/university visits and tour the campuses that you are most interested in... ask lots of questions
- :: Apply to the college or university that offers your desired academic program and meets your other selection criteria (price, location, etc.)





**Minnesota**  
STATE COLLEGES  
& UNIVERSITIES

Technical notes: "Tuition and fees" is annual tuition based on a full-time credit load of 15 credits per semester and fees as approved by the system's Board of Trustees in June 2015. Enrollment data is from 2013-2014, the most recent data available. "Total number students served" is unduplicated annual headcount. "Full-time students" are undergraduates enrolled in 12 or more credits per semester. "Part-time students" are undergraduates enrolled in 11 or fewer credits per semester. Percentages for male and female students do not always add to 100% where students do not report their gender. City population figures are from the state demographer's office.

*Sources: Minnesota State Colleges and Universities Research, Planning and Effectiveness; Minnesota Department of Administration*

30 7th St. E., Suite 350  
St. Paul, Mn 55101-7804

**Twin Cities:** (651) 201-1800  
**Toll free:** 1-888-667-2848  
**[www.mnscu.edu](http://www.mnscu.edu)**

For TTY communication, contact Minnesota Relay Service at 7-1-1 or 1-800-627-3529. Upon request, this document is available in alternative formats by calling one of the numbers above. The Minnesota State Colleges and Universities system is an Equal Opportunity Employer and Educator.