

MINNESOTA STATE ARTS BOARD

Fiscal Year 2016 ANNUAL REPORT

July 1, 2015-June 30, 2016



*Ensuring that all Minnesotans
have the opportunity
to participate in the arts*

TABLE OF CONTENTS

This report describes Minnesota State Arts Board activities between July 1, 2015, and June 30, 2016. It is submitted in accordance with Minnesota Statutes, chapter 129D.02, subdivision 5.

| | |
|---|----|
| FY 2016 Year in Review | 3 |
| 25-year Strategic Arts Framework | |
| Vision | 13 |
| Guiding Principles | 14 |
| Goals and Key Strategies | 15 |
| FY 2016 Financial Statement | 16 |
| Minnesota State Arts Board | |
| FY 2016 Summary of Requests and Grants | 17 |
| Regional Arts Councils | |
| FY 2016 Block Grants | 18 |
| FY 2016 Summary of Requests and Grants | 20 |
| Rules Changes | 21 |
| Complaints / Concerns | 21 |
| Minnesota State Arts Board | |
| 2016 Members | 22 |
| Members' Conflicts of Interest | 23 |
| Advisory Panel Members | 24 |
| Advisory Panel Members' Conflicts of Interest | 28 |
| Staff | 31 |

Equal opportunity to participate in and benefit from programs of the Minnesota State Arts Board is provided to all individuals regardless of race, national origin, color, sex, age, religion, sexual orientation, or disability in admission, access, or employment.

Upon request, Minnesota State Arts Board publications will be made available in an alternate format.

All photos supplied by grantee organizations.

FY 2016 YEAR IN REVIEW

“In my own philanthropy and business endeavors, I have seen the critical role that the arts play in stimulating creativity and in developing vital communities.”

—PAUL G. ALLEN, CO-FOUNDER, MICROSOFT

“The arts are not a frill. The arts are a response to our individuality and our nature, and help to shape our identity. What is there that can transcend deep difference and stubborn divisions? The arts. They have a wonderful universality. Art has the potential to unify. It can speak in many languages without a translator. The arts do not discriminate. The arts can lift us up.”

—FORMER TEXAS CONGRESSWOMAN BARBARA JORDAN

Minnesota is unique in many ways, not least in the way that art is interwoven into the very DNA of its people and the heritage we share. In a state that is home to the headwaters of the Mississippi, the national treasure of the Boundary Waters, and cities and communities that lead in measures of education, happiness, and wellness, the value of art and culture is always at the forefront of the conversation.

The arts challenge and delight, spark conversation, and both reflect our selves back to us as well as project them into the world. And in a state that has always understood the importance of the public good, the arts contribute to the health of the state.

Minnesota’s reputation as a thought leader is due in large part to the vibrancy of its arts and culture—a legacy that dates back to the visionary businesspeople behind its major cultural institution and which carries on into the present. A recent study valued the economic impact of the arts in Minnesota at \$1.2 billion per year, a number that has risen even during recessionary times. And while the arts are estimated to support nearly 35,000 jobs in the state, almost half of those are outside the major metropolitan hubs—which means that the arts work for all Minnesotans. Public investment has been key to many of Minnesota’s great success stories, dating back to the 1903 establishment of a Minnesota state arts society, which was the predecessor to today’s Minnesota State Arts Board.

The arts are crucial to inspiring all the people of Minnesota, of all ages, with a vision of what we can be as well as an appreciation of what we are.

Extraordinary Commitment

In 2008, the people of Minnesota passed the Clean Water, Land, and Legacy Amendment. This extraordinary measure wrote into the state constitution a guarantee of public funding for the arts and culture.

The Minnesota State Arts Board, acting on behalf of Minnesota voters and elected officials, relishes its role distributing state-allocated funds through arts and heritage



■ GILDA'S CLUB

YEAR IN REVIEW

grants, including block grants to Minnesota’s eleven regional arts councils. These grants encourage and stimulate the creation, performance, and appreciation of the arts in many forms and mediums throughout the state. These public funds have a direct and appreciable impact on the lives of Minnesotans through:

- Stimulating the existing arts sector in the state
- Fostering possibilities for growth and new creation, leading to economic impact
- Reducing barriers for underserved groups
- Promoting conversation between the many people of the state
- Communicating points of view and appreciation of differences
- Providing lifelong education and stimulation
- Exploring the many types of heritage in the state
- Maintaining Minnesota’s place as a national leader in arts and culture
- Being a crucial part of the greater goal of attracting talent to Minnesota to safeguard its future in education, business, culture, and commerce

A Great Public Investment

The State of Minnesota appropriated \$34,341,000 to the Minnesota State Arts Board for fiscal year 2016. Of that amount, \$7,522,000 came from the state’s general fund and \$26,819,000 came from the arts and cultural heritage fund. This report contains the highlights and stories of how these funds were granted to enhance the lives of Minnesota residents and contribute the health and vitality of their communities.

Arts and Cultural Heritage Fund

The Clean Water, Land, and Legacy Amendment to the Minnesota Constitution, running through 2034, provides 3/8 of 1 percent of the state’s sales tax to be dedicated as follows:

- 33 percent to a clean water fund;
- 33 percent to an outdoor heritage fund;
- 19.75 percent to an arts and cultural heritage fund;
- 14.25 percent to a parks and trails fund.

Minnesota State Arts Board

The Minnesota State Arts Board is led by a statewide citizen board appointed by the Governor and approved by the Senate. The Arts Board is oriented and focused on outcomes, and has consistently approached its responsibility for sound stewardship and conscientious fiscal management of public funds with a sharp goal of producing results for Minnesotans across the state. The Arts Board investment plan for the arts and cultural heritage fund includes grant programs and services designed to make the arts more available, to foster activities designed to engage Minnesotans who have historically lacked access to the arts, and to help sustain the rich landscape of existing Minnesota artists and arts organizations.



■ THE CEDAR, COMMUNITY PLAZA

YEAR IN REVIEW

Grant Making

Grant making is the Minnesota State Arts Board’s primary service to the state. It offers grant programs that are directly aligned with the priorities outlined in the legacy amendment to the Minnesota Constitution. During the fiscal year 2016, the Arts Board received and reviewed more than 1,300 grant applications and awarded 565 grants totaling more than \$23 million.

A complete list of all grants awarded is available on the Arts Board web site at www.arts.state.mn.us/grants/2016/index.htm. The following are grant categories, specific examples of grantees, and their activities during fiscal year 2016.

Grants for Arts and Arts Access

Arts and Arts Access grants advance the Arts Board’s goal of encouraging greater participation in a thriving world of arts and culture in Minnesota. The board offers six grant programs that work toward these goals:

- Arts Access helping identify and break down barriers that prevent underserved groups from participating in the arts;
- Artist Initiative providing grants for individual artists for creative or career development;
- Arts Tour Minnesota supporting arts programs that tour to communities through the state;
- Cultural Community Partnership enhancing the career development of artists of color by supporting collaborative projects with other artists or nonprofits;
- Operating Support providing general support for arts producers and presenters, including established arts organizations, nonprofits that serve artists, and arts education organizations;
- Partners in Arts Participation granting help to human and social service organizations to incorporate the arts into their services and programs.

Arts and Arts Access grants have substantial and broad impact in diverse communities throughout the state of Minnesota. The following are examples of how fiscal year 2016 funds have been invested:

- **Caponi Art Park and Learning Center, Eagan** received a grant of \$19,806 to develop and pilot Creative Adventures@Caponi Art Park, providing hands-on art experiences and interactive performances to 290 low-income preschool children participating in Head Start in Dakota County.
- **Upstream Arts, Inc., Minneapolis** received a \$34,399 grant to provide participatory arts programming



■ MINNESOTA NORTHWOODS WRITERS CONFERENCE

YEAR IN REVIEW

for aging individuals with developmental disabilities at Community Involvement Programs, Midwest Special Services, and Opportunity Partners.

- **Backus Community Center, International Falls** was granted \$41,185 to present four touring shows (one-man, big band, ballet, and Celtic) as well as opportunities for professionals to meet students, the public, and citizen artists through workshops and outreach events in International Falls.
- **Penelope Freeh, Saint Paul** received \$40,600; dancer and choreographer Freeh with composer Jocelyn Hagen will tour the collaborative chamber dance opera *Test Pilot* to five Minnesota communities.
- **Minnesota Northwoods Writers Conference, Bemidji** received a \$22,200 grant to bring award-winning writers of national stature to present craft talks and readings, as well as teach weeklong workshops in poetry, fiction, and creative nonfiction, in Bemidji.
- **Northern Lights Music Festival, Inc., Aurora** was granted \$28,521 to tour Puccini's *Madama Butterfly* to Chisolm and Ely in the Iron Range. A chamber music concert toured to Duluth, Virginia, Chisholm, and Ely, and *Opera Scenes* toured to Crosby-Ironton and Ely.
- **Teatro del Pueblo, Saint Paul** received a \$13,368 grant to expand its touring program by taking its Latino-inspired original production of *Help Wanted* to five venues in northern Minnesota that serve Native American participants, as well as hosting dialogues on the similarities and differences of the Latino and Native American experience in Minnesota.
- **Gilda's Club Twin Cities, Minnetonka** received a \$25,000 grant to collaborate with Stuart Pimsler Dance and Theatre Company to create a performance that conveys the complexities of living with cancer by blending movement, music, and text.
- **Briand M. Morrison, Grand Portage** was granted \$8,000 to work with visual artist Jim Denomie to produce a multimedia production of Denomie's art and Morrison's original jazz compositions. Together they will present a series of public screenings and discussions around Minnesota.
- **The Cedar, Minneapolis** received a \$100,000 grant to host residencies featuring Somali musicians; co-present events with Somali organizations; and conduct ticket giveaways and culturally competent marketing in order to engage Somali audiences and promote intercultural appreciation.
- **Gimaajii Mino Bimaadizyaan, Duluth** received a \$25,000 grant; the American Indian Community Housing Organization will create a range of art opportunities for children and adult residents living in Gimaajii-Mino-Bimaadizimin.
- **Cecilia M. Cornejo, Northfield** was granted \$10,000 to complete the pre-production on a new film exploring issues of displacement and belonging as experienced by the Latino community of Northfield, Minnesota. Multiple public screenings will be held in Northfield.



■ UPSTREAM ARTS

YEAR IN REVIEW

- **Aaron C. Squadroni, Coleraine** received a \$10,000 grant to create a series of copper drawn land portraits that record landmarks and sacred spaces on the Mesabi Iron Range. A workshop at the MacRostie Art Center in Grand Rapids and exhibit at Artistry in Bloomington were held.
- **Courage Kenny Rehabilitation Institute, Golden Valley** was granted \$19,502 to partner with Independent Filmmaker Project MN to provide filmmaking classes for people living with disabilities in its Transitional Rehabilitation Program.
- **Face to Face, Saint Paul** was granted \$25,000 to work with COMPAS to offer arts instruction and engagement opportunities to youth served at SafeZone, Ramsey County's only drop-in center designed for youth experiencing homelessness.
- The MN State Arts Board also provided operating support grants totaling more than \$13 million to 167 organizations including the Barn Theatre, Willmar; Central Lakes College Theatre, Brainerd; Graywolf Press, Minneapolis; Great River Shakespeare Festival, Winona; Itasca Orchestra and Strings Program, Grand Rapids; Intermedia Arts, Minneapolis; Lanesboro Arts, Lanesboro; Minnesota Opera, Minneapolis; Mu Performing Arts, Saint Paul; Walker West Music Academy, Saint Paul; and the Weavers' Guild, Minneapolis.



■ HMONG MUSEUM

Grants for Arts Education

These grants provide investment in lifelong arts learning across the state of Minnesota. Such grant programs include:

- Arts Learning supporting projects that build understanding and skills in arts for lifelong learners;
- Community Arts Schools and Conservatories supporting organizations that make arts education more accessible to Minnesotans of all ages and artistic abilities.

The following are examples of how fiscal year 2016 funds were invested in arts education:

- **AuSM, Saint Paul** was granted \$43,068 to partner with Z Puppets Rosenschnoz to expand sensory-friendly arts and mindfulness programming to the Twin Cities' eastern suburbs, with outreach to previously underserved families.
- **Franconia Sculpture Park, Shafer** received a grant of \$31,185 to provide arts learning programming for rural Minnesota youth through its Rural Arts workshops. The program includes customized guided tours and artmaking activities developed and led by professional teaching artists.
- **Susan E. Feigenbaum, Eden Prairie** was granted \$12,900 to teach clay classes at five senior communities. Independent, assisted, and memory care residents will learn art concepts, art-making skills, engage socially, and share their learning at art exhibits open to the public.
- **Women's Writing Program of Advisory Task Force on the Women and Juvenile Female Offender in Corrections, Elk River** was granted \$6,940 to team short-term incarcerated women with published writers to learn creative writing skills for self-expression and building self-esteem; the program will publish poetry chapbooks for public libraries.

YEAR IN REVIEW

- **Saint Louis County School District, Virginia** received a \$65,614 grant; South Ridge School will partner with Frank Theatre in arts residencies to help students build confidence in their own voice telling their stories, and increase their writing/reading skills through writing exercises, storytelling, and theater games.
- The MN State Arts Board also provided \$150,000 to twelve community arts education organizations or programs offering lifelong learning in the arts in a variety of disciplines such as: Atelier (Minneapolis), Chicago Avenue Fire Arts (Minneapolis), Headwaters School of Music and the Arts (Bemidji), Universal Music Center (Red Wing), and Arts Center of Saint Peter (Saint Peter).

Grants for Arts and Cultural Heritage

Grants under this category build connections between Minnesotans of all backgrounds.

Grant programs include:

- Folk and Traditional Arts celebrating the ethnic and cultural traditions of artists and their work;
- Minnesota Festival Support encouraging community building and showcasing artists of diverse mediums and traditions.



■ FROZEN RIVER FILM FESTIVAL

The following are examples of how fiscal year 2016 funds were invested in arts and cultural heritage:

- **Dakota Wicohan, Morton** was granted \$74,186 for Tawokaga, a Dakota community apprenticeship project. It will engage three tiers of artists (master, assistant, and apprentice) with one hundred community members to transmit three traditional yet endangered Dakota art forms: braintanning, quilling, and quilting.
- **Hmong Museum, Saint Paul** received a grant of \$5,000 to collaborate with Hmong American writers and Hmong elders to host four storytelling sessions that will perpetuate the Hmong oral tradition.
- **Karen Organization of Minnesota, Saint Paul** was granted \$32,650 to implement the Karen Weaving Project to support artists that revive the traditional art of Karen weaving in their new home, through workshops for Karen residents and exhibitions to introduce this folk art to wider audiences.
- **Douglas K. Limón, White Bear Lake** received \$25,000 to implement the Cradle Board Project to revitalize a cultural tradition that is threatened to become a lost art form, by providing workshops that teach the traditional art of making cradleboards.
- **Nordic Center, Duluth** was granted \$5,000 to engage three master artists in the folk and traditional arts to teach workshops in Scandinavian woodcarving, Norwegian heritage clothing construction, and Sami traditional jewelry making.
- **Mizna, Saint Paul** received a \$14,202 grant to help present the Twin Cities Arab Film Festival showcasing the best of independent cinema of the Arab and Arab American world, connecting Minnesota audiences to the perspectives of Minnesota, national, and global Arab filmmakers.

YEAR IN REVIEW

- **North House Folk School, Grand Marais** was granted \$17,500 to increase programming and regional visibility during its 2016 Wooden Boat Show in Grand Marais, inviting artists and visitors to celebrate wooden boats, traditional crafts, hands-on learning, and the joy of summer.
- **Twin Cities Jazz Festival, Saint Paul** received \$75,000 toward its event attracting 40,000 festivalgoers to Saint Paul in June 2016, showcasing 325 Minnesota jazz artists in nineteen venues, including Rice Park and the newly opened CHS Field.
- **Frozen River Film Festival, Winona** received \$34,900 to help present the art of documentary filmmaking to celebrate community and connect audiences with filmmakers and other artists who explore global and local issues that focus on our human connection to the world.

Minnesota's Regional Arts Councils

The eleven regional arts councils cover every area of the state of Minnesota. Together, the Minnesota State Arts Board and the regional arts councils serve all of the state's 87 counties. As directed by statute, the Minnesota State Arts Board issues to the regional councils block grants as well as acting as their fiscal agent. During fiscal year 2016, \$9,822,644 were awarded in the form of block grants to the eleven regional arts councils. With these funds, the councils together provided 1,562 grants reflecting arts services and support tailored to the needs of the people and communities in these geographic regions.

A list of the eleven councils, the geographic areas they serve by county, and the amount of their block grants for fiscal year 2016 can be found in the "Fiscal Year 2016 Block Grants to Regional Arts Councils" section of this Annual Report. The section "Fiscal Year 2016 Summary of Requests and Grants to Regional Arts Councils" presents the number of applications and grants awarded, and the total dollars requested and granted by the regional arts councils.

Partnerships | Service | Professional Development

The Minnesota State Arts Board expands its capacity and extends its reach by working in collaboration with other agencies and organizations that share similar goals and philosophies. The following are key partnerships that were in place during fiscal year 2016:



■ MIZNA, STILL LIFE SYRIA

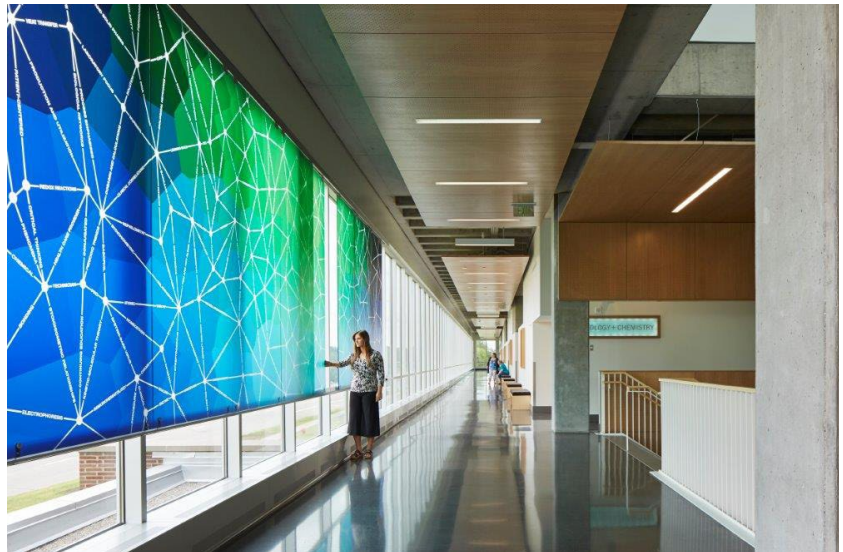
YEAR IN REVIEW

Percent for Art in Public Places

Up to one percent of the total budget appropriated for construction of new or renovated state buildings may be used to purchase or commission works of art. The Percent for Art in Public Places program, established in 1984 by legislative mandate, is under the auspices of the Minnesota Department of Administration and managed by the Minnesota States Arts Board.

During fiscal year 2016 Percent for Art projects included the following:

- Installing **Affinities** by Blessing Hancock (Tucson, Arizona) at the **Bioscience and Health Careers Center, North Hennepin Community College, Brooklyn Park**. Affinities is a vibrant, interactive sculpture that glides along the second-floor curtain wall of the Bioscience and Health Careers Center. The artwork consists of a series of movable panels that visitors are able to arrange into various positions. By giving visitors freedom to rearrange the artwork they will be able to create new visual associations between the disciplines. Affinities speaks to campus diversity and the interdisciplinary fields of study being taught at the center. The surface pattern of the artwork is an overlay of a Delaunay triangulation with a Voronoi diagram. These two computational geometries can be found in both biological and chemical processes. Using principles of science and mathematics, the design engages visitors by offering an ever-changing visual experience based on movement and point-of-view. The project explores how the patterns of science and new technology can be incorporated into contemporary art.
- Developing request for proposals and commissioned schematic design proposal, design development, construction documents, and fabrication of **Chromalume Chime Garden** by **Kevin Dobbe (Rochester, Minnesota)** for the **Academic Partners Classroom Addition, Century College, White Bear Lake**.
- Commissioning schematic design proposals from three artists for **Camp Ripley Education Center, Little Falls**.
- Establishing site selection committee, developing request for proposals, and commissioning a schematic design proposal from one artist for **Central Lakes College, Staples**. Arts Board appointees to selection committee included: Casey Hochhalter, Ely; Pam Collins, Staples.
- Developing request for proposals for the **Oliver Kelley Farm, Minnesota Historical Society, Elk River**.
- Developing request for proposals and facilitating artist selection for the **Mayo Civic Center, Rochester**.
- Commissioning conservation condition assessment and treatment proposals for two artworks by **Terry Hildebrand (Taylors Falls)**, originally installed in 1991 at **Wadena Technical College (currently Minnesota State Community and Technical College, Wadena)**.



■ AFFINITIES BY BLESSING HANCOCK

YEAR IN REVIEW

Poetry Out Loud

Poetry Out Loud is a national poetry recitation competition cosponsored by the National Endowment for the Arts and The Poetry Foundation. Through Poetry Out Loud, high school students learn about great poetry through memorization, recitation, performance, and competition. Fiscal year 2016 was the eleventh year in which Minnesota participated in this initiative. The Arts Board worked in partnership with the Loft Literary Center, Minneapolis, to administer the program.

Students in thirty-eight Minnesota schools participated. These young people represented the communities of Apple Valley, Babbitt, Bemidji, Big Lake, Brooklyn Center, Circle Pines, Duluth, Farmington, Forest Lake, Golden Valley, Hopkins, Kelliher, LaPorte, Marshall, Milaca, Minneapolis, Morris, Northfield, Saint Paul, Wabasha-Kellogg, and Woodbury.

The state competition was held at Open Book (Minneapolis) in March 2016. Abigail Etterson of Harbor City International School (Duluth) was named the winner with her recitation of “Kubla Khan” by Samuel Taylor Coleridge, “The Greatest Grandeur” by Pattiann Rogers, and “No Moon Floods the Memory of That Night,” by Etheridge Knight.

Other Minnesota champions included runners-up Meghan Joyce, Saint Paul Academy and Summit School, Saint Paul; and Awazi Jaafaru, Twin Cities Academy High School, Saint Paul. In May of 2016, Etterson represented Minnesota at the national finals in Washington, DC. She competed with champions from all fifty states, the District of Columbia, the U. S. Virgin Islands, and Puerto Rico.



■ POETRY OUT LOUD WINNER ABIGAIL ETTISON

Turnaround Arts

In May of 2014, Minnesota was selected to participate in the Turnaround Arts program. Four schools were selected to participate: Northside Elementary School, Saint James; Bethune Community School, Minneapolis; Red Lake Middle School, Red Lake; Northport Elementary, Brooklyn Center.

Turnaround Arts strives to transform participating, priority schools through strategic use of the arts. The goal is for all students to engage in a well-rounded education and exude confidence, critical thinking, and creativity. Resources and professional development are provided by the Perpich Center for Arts Education to help schools improve attendance, parent engagement, student motivation, and academic achievement.

This initiative continued in FY 2016. The Art Board provided grants of \$50,000 to each school to plan, implement, and evaluate activities to increase student achievement. Funds could be used to underwrite costs to work with teaching artists; costs for artist or arts organization residencies; costs for partnerships or collaborations with artists or arts organizations; and for costs directly related to planning and implementing activities with artists and arts organizations.



YEAR IN REVIEW

Statewide Arts Information

In July and August of 2015, the Arts Board supported a series of eight workshops that were focused on evaluation capacity building among applicants and grantees of the agency and its regional partners. These workshops were the beginning of a strategy to help all grantees conduct outcome evaluation of their publicly supported projects. A number of the regional arts councils collaborated with the Arts Board to provide logistical and recruitment support for the workshops.

The goals were threefold:

- To introduce and demystify evaluation, and situate it as a useful tool for the grantee, not just an outside accountability requirement;
- To describe the roles and benefits evaluation can play in supporting arts experiences, particularly as tools for planning and learning;
- To provide a brief overview of evaluation methods and practices “beyond the survey,” for expansion in future trainings.

The workshops were conducted by Kate Livingston (Expose Your Museum, LLC, Greenwood Village, CO), and Chris Chopyak (Arlosoul, Denver, CO).

Approximately 150 people participated in the workshops, which were held in Bemidji, Duluth, Mankato, Minneapolis, Rochester, Saint Cloud, Saint Paul, and Winona. Participants included individual artists, artistic and executive directors, development staff, program and education managers, and staff and board members of regional arts councils.

The Minnesota State Arts Board continues to use its web site—www.arts.state.mn.us—as its primary communications vehicle. The site is designed to be user-friendly, and a comprehensive source of information about the Arts Board and about the arts in general.

Among the features that can be found on the web site:

- Arts Board grant program details, application forms, and instructions
- Programs and activities funded by the Arts and Cultural Heritage Fund
- Calendar of grant deadlines and grant review meeting dates
- List of grantees for the current as well as previous years
- Program information including a map of public art that the State of Minnesota has acquired through the Percent for Art program, with information about the art and artists
- Facts about the importance and impact of the arts in Minnesota
- Roster of teaching artists in Minnesota
- An interactive state map linking visitors to each of the eleven regional arts councils
- Links to Minnesota arts organizations’ web sites
- Links to national and state arts research and policy information
- Links to ADA information and resources

25-YEAR STRATEGIC ARTS FRAMEWORK

VISION

In twenty-five years, Minnesotans will have made a significant investment in the arts. As a result ...

In Minnesota, the arts define who we are. This is a place where people are transformed by high-quality arts experiences, and see the arts as essential to their communities. The arts are integrated into all aspects of our lives, connecting people of all ages and cultures, fostering understanding and respect.

Arts and culture are central to Minnesota's educational system and lifelong learning opportunities. The arts develop creative minds that maximize new opportunities and find solutions to life's challenges.

In Minnesota, the arts industry is an integral part of the economy. Because of the arts, Minnesota communities are successful, dynamic, attractive places to live and work.

Minnesota is a recognized national arts leader. It attracts, nurtures, and sustains creative people and organizations and recognizes them as assets. It is a magnet for arts enthusiasts and a destination for tourists. Residents and visitors are assured a world-class, quality arts experience.

Every Minnesotan appreciates, creates, attends, participates and invests in the arts. Minnesota's effective, innovative, vibrant, public-private support for the arts is the strongest in the country. Universal support and appreciation for the arts help ensure the state's exceptional quality of life.

Guiding Principles

To that end, decisions that the Minnesota State Arts Board and the regional arts councils make about how best to use the funds will be grounded in the following guiding principles:

- **STATEWIDE APPROACH** - The needs and interests of the entire state will be considered when determining how best to allocate funds.
- **DEMOGRAPHIC AND GEOGRAPHIC FAIRNESS** - Minnesotans of all types, and in every community, will recognize and experience the tangible results of the arts and cultural heritage fund.
- **COMPREHENSIVE** - The full spectrum of arts providers and arts disciplines will be considered when determining how best to serve Minnesotans with these funds.
- **SUSTAINABLE** - Some arts activities are meant to be one-time or short term; others are meant to exist and thrive over time. All are valuable and will be eligible for support. In the latter case, funds will be allocated strategically so that the activity or organization funded can be successful into the future, beyond the life of the arts and cultural heritage fund. Funds also will be used to create a sustainable climate in which artists can live and work.
- **ANTICIPATORY AND FLEXIBLE** - Decisions about how best to allocate the funds will be reassessed on a regular basis and will adapt as needs and opportunities change.
- **TRANSPARENCY AND PUBLIC INVOLVEMENT** - Broad public input and engagement in decision making will be vital to produce the outcomes that Minnesotans' expect.
- **ACCOUNTABILITY AND STEWARDSHIP** - Public funds belong to Minnesotans. The Arts Board and regional arts councils will use them in the most effective manner possible and will routinely report the outcomes achieved through the uses of the funds.



■ NORTHERN LIGHTS MUSIC FESTIVAL, *MADAMA BUTTERFLY*

Goals And Key Strategies

In order to realize our legacy vision, the Minnesota State Arts Board and the Forum of Regional Arts Councils must work together to accomplish the following goals:

OVERARCHING GOAL The arts are essential to a vibrant society

GOAL STRATEGY **The arts are interwoven into every facet of community life**
Develop strategic relationships and partnerships

GOAL STRATEGY **Minnesotans believe the arts are vital to who we are**
Enhance public understanding of the value of the arts

GOAL STRATEGY **People of all ages, ethnicities, and abilities participate in the arts**
Fully engage with nontraditional and underrepresented participants
Transform everyone’s life by experiencing the arts

GOAL STRATEGY **People trust Minnesota’s stewardship of public arts funding**
Provide an accountable arts support system
Be responsible stewards of public funds

GOAL STRATEGY **The arts thrive in Minnesota**
Foster visionary, skilled arts leaders and organizations statewide
Ensure sufficient resources to sustain the arts and artists
Serve as a clearinghouse of information on best practices and successful programs



■ NORTH HOUSE FOLK SCHOOL

FY 2016 FINANCIAL STATEMENT

REVENUE

| | | |
|---|--|--------------|
| State, Minnesota Legislature | | |
| General Fund - FY 2016 appropriation | | \$7,522,000 |
| Arts and Cultural Heritage Fund - FY 2016 appropriation | | \$26,819,000 |
| Arts and Cultural Heritage Fund - FY 2015 carryforward | | \$234,554 |
| Federal, National Endowment for the Arts | | \$741,100 |
| Private/Other | | \$168,055 |

| | | |
|----------------------|--|---------------------|
| Total Revenue | | \$35,484,709 |
|----------------------|--|---------------------|

EXPENSES

| | | |
|---|--------------|--------------|
| Grants - General Fund | | \$6,936,475 |
| Regional arts council block grants | \$2,139,000 | |
| Operating Support | \$4,525,983 | |
| Artist assistance | \$236,872 | |
| Partnership grants/sponsorships | \$34,620 | |
| Grants - Arts and Cultural Heritage Fund | | \$25,470,667 |
| Regional arts council block grants | \$7,677,183 | |
| Arts access | \$13,992,112 | |
| Arts education | \$2,852,345 | |
| Arts and cultural heritage | \$949,027 | |
| Grants - Federal, National Endowment for the Arts | | \$518,428 |
| Artist assistance | \$204,501 | |
| Cultural Community Partnerships | \$103,927 | |
| Turnaround Arts | \$200,000 | |
| Partnership grants/sponsorships | \$10,000 | |
| Grants - Other | | \$40,000 |
| Partnership Projects | | \$246,353 |
| Operations and Services | | \$1,783,156 |

| | | |
|-----------------------|--|---------------------|
| Total Expenses | | \$34,995,079 |
|-----------------------|--|---------------------|

| | | |
|---|--|-----------|
| General Fund, unobligated, carryforward to FY 2017 | | \$45,076 |
| Arts and cultural heritage fund, unobligated, carryforward to FY 2017 | | \$444,554 |

MINNESOTA STATE ARTS BOARD

FY 2016 Summary of Requests and Grants

| | Number of Applications | Dollars Requested | Number of Grants | Dollars Granted |
|--|------------------------|---------------------|------------------|---------------------|
| ARTS BOARD GRANT PROGRAMS | | | | |
| Artist Initiative | 659 | \$6,260,931 | 142 | \$1,363,544 |
| Cultural Community Partnership | 25 | \$199,927 | 13 | \$103,927 |
| Operating Support | 169 | \$13,205,914 | 166 | \$13,205,914 |
| Wells Fargo Foundation Minnesota, Group 2 | 35 | \$40,000 | 35 | \$40,000 |
| Arts Access | 86 | \$4,105,858 | 39 | \$2,155,284 |
| Arts Learning | 109 | \$4,695,716 | 60 | \$2,698,925 |
| Arts Tour Minnesota | 81 | \$3,599,551 | 31 | \$1,628,478 |
| Community Arts Education Support | 12 | \$150,000 | 12 | \$150,000 |
| Folk and Traditional Arts | 40 | \$1,278,969 | 17 | \$445,109 |
| Minnesota Festival Support | 38 | \$1,414,689 | 12 | \$504,325 |
| Partners in Arts Participation | 71 | \$1,395,078 | 32 | \$607,166 |
| Partnership Grants | 2 | \$44,620 | 2 | \$44,620 |
| Turnaround Arts: Minnesota | 4 | \$200,000 | 4 | \$200,000 |
| Total, Arts Board grant programs | 1,331 | \$36,591,253 | 565 | \$23,147,292 |
| REGIONAL ARTS COUNCIL BLOCK GRANTS | | | | |
| Arts and cultural heritage funds, arts and arts access | 11 | \$6,060,908 | 11 | \$6,060,908 |
| Arts and cultural heritage funds, arts and cultural heritage | 11 | \$405,684 | 11 | \$405,684 |
| Arts and cultural heritage funds, arts education | 11 | \$1,217,052 | 11 | \$1,217,052 |
| General fund | 11 | \$2,139,000 | 11 | \$2,139,000 |
| Total, Regional arts council block grants | 11 | \$9,822,644 | 11 | \$9,822,644 |

This page reflects grants awarded with FY 2016 funds from the State of Minnesota's general fund appropriation and arts and cultural heritage fund appropriation, with additional funding from the National Endowment for the Arts and the Wells Fargo Foundation Minnesota.

A complete list of FY 2016 grantees and grant amounts is available on the Arts Board Web site: www.arts.state.mn.us/grants/2016.

REGIONAL ARTS COUNCILS

FY 2016 Block Grants to Regional Arts Councils

| | | | |
|-----------------|---|-------|------------|
| Region 1 | Northwest Minnesota Arts Council | | |
| | Warren | | |
| | Counties served: Kittson, Marshall, Norman, Pennington, Polk, Red Lake, Roseau | | |
| | General fund block grant | \$ | 85,943 |
| | Arts and cultural heritage fund block grant | \$ | 310,174 |
| | | Total | \$ 396,117 |
| Region 2 | Region 2 Arts Council | | |
| | Bemidji | | |
| | Counties served: Beltrami, Clearwater, Hubbard, Lake of the Woods, Mahnomon | | |
| | General fund block grant | \$ | 83,029 |
| | Arts and cultural heritage fund block grant | \$ | 299,654 |
| | | Total | \$ 382,683 |
| Region 3 | Arrowhead Regional Arts Council | | |
| | Duluth | | |
| | Counties served: Aitkin, Carlton, Cook, Itasca, Koochiching, Lake, Saint Louis | | |
| | General fund block grant | \$ | 161,303 |
| | Arts and cultural heritage fund block grant | \$ | 582,151 |
| | | Total | \$ 743,454 |
| Region 4 | Lake Region Arts Council | | |
| | Fergus Falls | | |
| | Counties served: Becker, Clay, Douglas, Grant, Otter Tail, Pope, Stevens, Traverse, Wilkin | | |
| | General fund block grant | \$ | 122,832 |
| | Arts and cultural heritage fund block grant | \$ | 443,305 |
| | | Total | \$ 566,137 |
| Region 5 | Five Wings Arts Council | | |
| | Staples | | |
| | Counties served: Cass, Crow Wing, Morrison, Todd, Wadena | | |
| | General fund block grant | \$ | 104,353 |
| | Arts and cultural heritage fund block grant | \$ | 376,615 |
| | | Total | \$ 480,968 |

| | | | |
|-----------------------|--|---------------------------|--------------------|
| Region 6E/6W/8 | Southwest Minnesota Arts Council | | |
| | Marshall | | |
| | Counties served: Big Stone, Chippewa, Cottonwood, Jackson, Kandiyohi, Lincoln, Lac qui Parle, Lyon, McLeod, Meeker, Murray, Nobles, Pipestone, Redwood, Renville, Rock, Swift, Yellow Medicine | | |
| | General fund block grant | \$ | 143,307 |
| | Arts and cultural heritage fund block grant | \$ | 517,199 |
| | | Total | \$ 660,506 |
| | | | |
| Region 7E | East Central Regional Arts Council | | |
| | Braham | | |
| | Counties served: Chisago, Isanti, Kanabec, Mille Lacs, Pine | | |
| | General fund block grant | \$ | 102,404 |
| | Arts and cultural heritage fund block grant | \$ | 369,580 |
| | | Total | \$ 471,984 |
| | | | |
| Region 7W | Central Minnesota Arts Board | | |
| | Foley | | |
| | Counties served: Benton, Sherburne, Stearns, Wright | | |
| | General fund block grant | \$ | 167,389 |
| | Arts and cultural heritage fund block grant | \$ | 604,113 |
| | | Total | \$ 771,502 |
| | | | |
| Region 9 | Prairie Lakes Regional Arts Council | | |
| | Waseca | | |
| | Counties served: Blue Earth, Brown, Faribault, LeSueur, Martin, Nicollet, Sibley, Waseca, Watonwan | | |
| | General fund block grant | \$ | 122,641 |
| | Arts and cultural heritage fund block grant | \$ | 442,615 |
| | | Total | \$ 565,256 |
| | | | |
| Region 10 | Southeastern Minnesota Arts Council | | |
| | Rochester | | |
| | Counties served: Dodge, Fillmore, Freeborn, Goodhue, Houston, Olmsted, Mower, Rice, Steele, Wabasha, Winona | | |
| | General fund block grant | \$ | 196,528 |
| | Arts and cultural heritage fund block grant | \$ | 709,278 |
| | | Total | \$ 905,806 |
| | | | |
| Region 11 | Metropolitan Regional Arts Council | | |
| | Saint Paul | | |
| | Counties served: Anoka, Carver, Dakota, Hennepin, Ramsey, Scott, Washington | | |
| | General fund block grant | \$ | 849,271 |
| | Arts and cultural heritage fund block grant | \$ | 3,028,960 |
| | | Total | \$ 3,878,231 |
| | | Total, all regions | \$9,822,644 |

REGIONAL ARTS COUNCILS

FY 2016 Summary of Requests and Grants

| Region | Regional Arts Council | Number of requests | Dollars requested | Number of grants | Dollars granted |
|--|-------------------------------------|--------------------|---------------------|------------------|--------------------|
| 1 | Northwest Minnesota Arts Council | 81 | \$308,268 | 77 | \$290,415 |
| 2 | Region 2 Arts Council | 89 | \$308,725 | 42 | \$136,290 |
| 3 | Arrowhead Regional Arts Council | 310 | \$1,180,372 | 154 | \$555,927 |
| 4 | Lake Region Arts Council | 135 | \$650,115 | 85 | \$291,090 |
| 5 | Five Wings Arts Council | 111 | \$388,640 | 98 | \$348,974 |
| 6E/6E/8 | Southwest Minnesota Arts Council | 147 | \$616,484 | 126 | \$509,972 |
| 7E | East Central Regional Arts Council | 56 | \$353,111 | 48 | \$292,601 |
| 7W | Central Minnesota Arts Board | 212 | \$855,618 | 153 | \$603,547 |
| 9 | Prairie Lakes Regional Arts Council | 219 | \$479,010 | 201 | \$421,125 |
| 10 | Southeastern Minnesota Arts Council | 198 | \$1,026,680 | 138 | \$683,765 |
| 11 | Metropolitan Regional Arts Council | 800 | \$5,599,255 | 440 | \$2,708,527 |
| Total, regional arts council grants | | 2,358 | \$11,766,278 | 1,562 | \$6,842,233 |

RULES CHANGES

Minnesota Statutes 129D.04, subdivision 1, grants the Minnesota State Arts Board authority to promulgate rules. The board's administrative rules are found in Minnesota Rules, chapter 1900.

The board began a rulemaking process during fiscal year 2015 to repeal obsolete rules, clarify and simplify existing rules, and add rules for what had been pilot grant programs.

The draft rules and the dual notice (to adopt the rules without a public hearing unless twenty-five or more persons request a hearing, and notice of hearing if twenty-five or more requests for hearing are received) were published in the *Minnesota State Register* on September 14, 2015. The board did not receive twenty-five requests for a hearing, so proceeded to adopt the rules without a hearing.

The rules were approved by the Office of Administrative Hearings on May 31, 2016; and filed with the Office of the Secretary of State on June 27, 2016.

The notice of Adopted Permanent Rules Relating to Arts Funding was published in the *Minnesota State Register* on July 25, 2016.

COMPLAINTS / CONCERNS

The Arts Board's appeals process is published in Minnesota Rules, chapter 1900, section 1110. The process states, *"There is no right of appeal for disputes of decisions with respect to interpretation of review criteria. An appeal may be made only if it is asserted that the board did not follow its policies and procedures as provided by this chapter."*

In November 2015, the Minnesota Sinfonia appealed the board's decision to not fund the organization's FY 2016 Arts Tour Minnesota grant application.

The board considered the appeal at its January 6, 2016, meeting. After careful consideration, the board voted to deny Minnesota Sinfonia's appeal. The board determined that the concerns raised in Minnesota Sinfonia's appeal related to the panelists' interpretation of the review criteria and the degree to which the application did or did not meet the criteria. The applicant did not outline or provide evidence of how the board had failed to follow its policies and procedures, and therefore did not show sufficient cause for an appeal.

MINNESOTA STATE ARTS BOARD

FY 2016 Members

Eleven private citizens, appointed by the governor for four-year terms, govern the Minnesota State Arts Board. Board members represent one of the state's eight congressional districts or the state at-large. The board meets every other month to establish policies, monitor agency programs, and act upon grant recommendations. During fiscal year 2016, the board or its committees met 12 times for approximately 37 hours.

The following individuals served on the board for all or part of the fiscal year 2016:

Ardell Brede, Rochester

Mayor

TERM: February 2015 – January 2019 (second)

CONGRESSIONAL DISTRICT: One

Peggy Burnet, Wayzata (*)

Entrepreneur / Civic leader

TERM: March 2014 – January 2018 (second)

CONGRESSIONAL DISTRICT: Three

Uri Camerana, Minneapolis

Business consultant

TERM: June 2016 – January 2020 (first)

CONGRESSIONAL DISTRICT: Five

Michael J. Charron, Winona (*)

Dean, School of the Arts, Saint Mary's University of Minnesota

TERM: June 2016 – January 2020 (third)

CONGRESSIONAL DISTRICT: One

Rebecca Davis, Vergas

Arts educator / Arts administrator

TERM: June 2016 – January 2020 (second)

CONGRESSIONAL DISTRICT: Seven

Wendy Dayton, Wayzata (*)

Civic leader / Arts advocate

TERM: February 2015 – January 2019 (second)

CONGRESSIONAL DISTRICT: Three

Sean Dowse, Red Wing (*)

Civic leader

TERM: February 2015 – January 2019 (second)

CONGRESSIONAL DISTRICT: Two

Dave Glenn, Saint Augusta

Visual artist / Nonprofit and arts consultant

TERM: June 2013 – January 2017 (first)

CONGRESSIONAL DISTRICT: Six

Tom Moss, Saint Paul (*)

Consultant, nonprofit and government sectors

TERM: June 2013 – January 2017 (first)

CONGRESSIONAL DISTRICT: Four

Jan Sivertson, Grand Marais

Owner, Sivertson Gallery and Siiviis

TERM: March 2014 – January 2018 (second)

CONGRESSIONAL DISTRICT: Eight

Dobson West, Minneapolis

Senior advisor, Spell Capital

TERM: August 2015 – January 2017 (first)

CONGRESSIONAL DISTRICT: Five

Chris Widdess, Minneapolis

Nonprofit and arts consultant

TERM: June 2016 – January 2019 (first)

CONGRESSIONAL DISTRICT: Five

(*) Served as an officer and member of the board's executive committee during all or part of fiscal year 2016.

MINNESOTA STATE ARTS BOARD

Board members' conflicts of interest

During fiscal year 2016, board members declared conflicts of interest with the following applicants or grantees. If a member has declared a conflict of interest with an artist or organization being considered for a grant, the member recuses him or herself from the process.

| Member | Declared a conflict with... |
|--------------------|--|
| Ardell Brede | <ul style="list-style-type: none"> ▪ Choral Arts Ensemble of Rochester ▪ City of Rochester Music Department ▪ Honors Choirs of Southeast Minnesota ▪ Rochester Art Center ▪ Rochester Civic Theatre ▪ Rochester Symphony Orchestra and Chorale ▪ Southeast Minnesota Youth Orchestras |
| Peggy Burnet | <ul style="list-style-type: none"> ▪ Walker Art Center |
| Michael J. Charron | <ul style="list-style-type: none"> ▪ Great River Shakespeare Festival ▪ Minnesota Conservatory for the Arts ▪ Page Theatre at Saint Mary's University Minnesota |
| Rebecca Davis | <ul style="list-style-type: none"> ▪ Friends of the Minnesota Sinfonia |
| Sean Dowse | <ul style="list-style-type: none"> ▪ Anderson Center for Interdisciplinary Studies ▪ Mu Performing Arts ▪ The Sheldon Theatre ▪ TU Dance |
| David Glenn | <ul style="list-style-type: none"> ▪ Bethune School ▪ Interact Center for the Visual and Performing Arts ▪ Metropolitan Regional Arts Council |
| Jan Sivertson | <ul style="list-style-type: none"> ▪ Grand Marais Arts, Inc. |
| Dobson West | <ul style="list-style-type: none"> ▪ The Saint Paul Chamber Orchestra |

FY 2016 Grant Program Advisory Panel Members

In order to ensure that its grant making is open and fair, and that it represents the diverse interests of Minnesotans, the Arts Board recruits volunteer advisors each year who review grant requests and make recommendations to the board. In fiscal year 2016, the following individuals contributed their time and expertise to the Arts Board's grant making process.

Arts Access

| | |
|------------------------|--------------|
| Kjellgren Alkire | Lake City |
| Heather J. Allen | Saint Cloud |
| Maya J. Beecham | Roseville |
| Ann Benrud | Saint Paul |
| Beth Bromen | Saint Paul |
| Lorene E. Bruns | Maplewood |
| Christina Chang | Saint Paul |
| John Connelly | Grand Rapids |
| Melissa Cuff | Minneapolis |
| Kevin P. Curran | Minneapolis |
| Scott R. Dixon | Lanesboro |
| Kathy Dodge | Grand Rapids |
| Mary E. Flicek | Wabasha |
| Sandy Gillespie | Minneapolis |
| Cheryl Kessler | Eden Prairie |
| Joanna L. Kohler | Minneapolis |
| Fatima Said | Rochester |
| Summer Scharringhausen | Grand Rapids |
| Patrick Serrano | Maple Lake |
| Anat Shinar | Minneapolis |
| Dameun M. Strange | Saint Paul |
| Bob Weisenfeld | Saint Peter |

Diana Joseph
 Alberto Justiniano
 Barry Kleider
 Bob Ouren
 Cydney Y. Perkins
 Gretchen E. Pick
 Peter F. Spooner
 Andrea C. Stanislav
 Daniel Stark
 Joanne Toft
 Yang Yang

Mankato
 Saint Louis Park
 Minneapolis
 Edina
 Rochester
 Minneapolis
 Duluth
 Minneapolis
 Shakopee
 Minneapolis
 Saint Paul Park

Arts Tour Minnesota

Andrea Cheney
 Hal Cropp
 Ann Rosenquist Fee
 Lisa Fuglie
 Dan P. Guida
 Jamil D. Jude
 Jennie Knoebel
 Gina Kundan
 Cheryl L. Larson
 Noelle Lawton
 Natalie Morrow
 Kathleen L. Ray
 Stacy Richardson
 Christopher Taykalo
 Christine Tschida
 Jeanne I. Willcoxon

Minneapolis
 Lanesboro
 Mankato
 Brooklyn Center
 Red Wing
 Saint Louis Park
 Austin
 Minneapolis
 Glenwood
 North Mankato
 Minneapolis
 Barrett
 Minneapolis
 Saint Paul
 Saint Paul
 Northfield

Arts Learning

| | |
|--------------------|--------------|
| Akosua O. Addo | Blaine |
| Brad Althoff | Saint Paul |
| Alyssa E. Baguss | Anoka |
| Scott Bean | Minneapolis |
| David E. Beard | Duluth |
| Camilla G. Berry | Rochester |
| Kris Bigalk | Minnertonka |
| Jeffrey Bleam | Saint Cloud |
| Michael Burgraff | Fergus Falls |
| Todd Carlson | Cannon Falls |
| P.J. Doyle | Minneapolis |
| Joan E. Eisenreich | Cold Spring |
| Robert P. Gardner | Duluth |
| Allie Good | Rochester |
| Robert G. Gurrola | Woodbury |

Community Arts Education Support

Gabrielle Bliss
 Vicki Chepulis
 Candida Gonzalez
 Roxanne Heaton
 Andre-Louis Heywood
 Jennifer A. Nicklay
 Stephen R. Pelkey
 Dawne E. White

Saint Paul
 Wadena
 Minneapolis
 Orono
 Sartell
 Eden Prairie
 Rochester
 Little Canada

Advisory Panel Members

Folk and Traditional Arts

| | |
|------------------|---------------|
| Jewell Arcoren | Minneapolis |
| Rhonda Dass | North Mankato |
| Mary M. Erickson | Mountain Iron |
| Slim Maroushek | Harmony |
| Linda McShannock | Maplewood |
| Scott Pollock | Saint Paul |

Artist Initiative - media arts

| | |
|----------------------|-------------|
| Layla S. Dowlatshahi | Minneapolis |
| Dain Edward | Saint Paul |
| Denise M. Fick | Revere |
| Peter B. Nelson | Northfield |
| Kevin G. Obsatz | Minneapolis |
| Frank Sander | Duluth |

Minnesota Festival Support

| | |
|-----------------------|-------------|
| Nolita R. Christensen | Pine River |
| Richard Hansen | Duluth |
| Leif Larsen | Saint Paul |
| Christian Novak | Minneapolis |
| Carla M. Tamburro | Duluth |

Artist Initiative - music

| | |
|----------------------|---------------|
| J. Anthony Allen | Minneapolis |
| Colleen M. Bertsch | Minneapolis |
| Annie Enneking | Minneapolis |
| Erik Floan | Winona |
| Paul G. Fonfara | Minneapolis |
| DeVon dVRG Gray | Saint Paul |
| Chris Koza | Minneapolis |
| Heidi J. Lord | Duluth |
| Samuel P. Miltich | Grand Rapids |
| Katrina L. Mundinger | Minneapolis |
| Sarah N. Porwoll-Lee | Crystal |
| Joseph J. Tougas | North Mankato |

Partners in Arts Participation

| | |
|-------------------------|-------------|
| William Adams | Erhard |
| Elaine Allen | Saint Paul |
| Janet Brademan | Bemidji |
| Julia K. Donaldson | Saint Paul |
| Selma Fernandez Richter | Minneapolis |
| Roxanne Givens | Bloomington |
| Matthew T. Guidry | Minneapolis |
| Tyra Hughes | Plymouth |
| Jessica O'Brien | Saint Peter |
| Anna Ostendorf | Red Wing |
| Jenea C. Rewertz-Targui | Maplewood |
| Kari Ruth | Minneapolis |
| Sara Sternberger | Eagan |
| Niccu Tafarrodi | Plymouth |
| Jane E. Zilch | Saint Paul |

Artist Initiative - photography

| | |
|---------------------------|-------------|
| Joseph J. Allen | Ogema |
| Hillary A. Berg | Isanti |
| Elizabeth M. Blair | Minneapolis |
| Luke G. Erickson | Minneapolis |
| Linda K. Gammell | Saint Paul |
| Peter M. Happel Christian | Saint Cloud |
| Brett C. Kallusky | Minneapolis |
| Ellie Kingsbury | Minneapolis |
| Suzanne Kosmalski | Minneapolis |
| Jeffrey B. Millikan | Minneapolis |
| Vivienne Morgan | Bemidji |
| Meg Ojala | Dundas |
| Steve Ozone | Minneapolis |
| Carrie Elizabeth Thompson | Minneapolis |
| Paul A. Wegner | Minneapolis |
| Bonnie G. Wilson | Oakdale |

Artist Initiative - dance

| | |
|-----------------------|-------------|
| Penelope A. Freeh | Saint Paul |
| Emily Gastineau | Minneapolis |
| Blake A. Nellis | Minneapolis |
| Melissa C. Rolnick | Saint Peter |
| Abdo Sayegh Rodriguez | Minneapolis |
| Linda J. Shapiro | Minneapolis |

Advisory Panel Members

Artist Initiative - poetry

| | |
|-----------------------|-------------|
| Dore Kiesselbach | Minneapolis |
| Athena O. Kildegaard | Morris |
| Travis J. Lusk | Minneapolis |
| Saara Myrene Raappana | Marshall |
| Lia Rivamonte | Saint Paul |
| Donna A. Salli | Brainerd |
| Yuko Taniguchi | Rochester |
| Ryan W. Vine | Duluth |

| | |
|---------------------|-------------|
| Pamela J. Davis | Ely |
| Betty Devine | Rochester |
| Keya Ganguly | Saint Paul |
| Joseph G. Giannetti | Minneapolis |
| Miigis Gonzalez | Duluth |
| Lori Greene | Saint Paul |
| Paige N. Guggemos | Saint Paul |
| Jenny Jenkins | Minneapolis |
| Sally Johnson | Roseville |
| John G. Larson | Milan |
| Andy Messerschmidt | Ely |
| Anna V. Metcalfe | Minneapolis |
| Chris Monroe | Duluth |
| Anders B. Nilsen | Minneapolis |
| Janet L. Olney | Willmar |
| Carl T. Oltvedt | Minneapolis |
| Jehra Patrick | Minneapolis |
| Sonja D. Peterson | Minneapolis |
| Lynette R. Power | Winona |
| Kate Renee | Burnsville |
| Don K. Sherman | Ortonville |
| Julie A. Sirek | Edina |
| Sam Spiczka | Sauk Rapids |
| Eun-Kyung Suh | Duluth |
| Liza Sylvestre | Minneapolis |
| Willicey Tynes | Waite Park |

Artist Initiative - prose

| | |
|-------------------------|---------------|
| Elizabeth M. Abbott | Minneapolis |
| Eric Braun | Minneapolis |
| Scott Dominic Carpenter | Northfield |
| Amy L. Fladeboe | Minneapolis |
| Nick Healy | Mankato |
| Nicole L. Helget | Saint Peter |
| Sophia E. Kim | Minneapolis |
| W. Scott Olsen | Moorhead |
| Cristina Pippa | Saint Anthony |
| Sanaphay Rattanavong | Minneapolis |
| Kurtis R. Scaletta | Minneapolis |
| Danielle Sosin | Duluth |
| Lisa A. Steinmann | Saint Paul |

Artist Initiative - theater

| | |
|-------------------------|-------------|
| Julie Ahasay | Duluth |
| Richard G. Cook | Saint Paul |
| Daved Driscoll | Chatfield |
| Taous C. Khazem | Minneapolis |
| Rebecca L. Meyer-Larson | Moorhead |
| Perrin L. Post | Minneapolis |
| Liz Schachterle | Minneapolis |

Artist Initiative - visual arts

| | |
|-------------------|----------------|
| Zoe S. Adler | Minneapolis |
| Katayoun Amjadi | Minneapolis |
| Sarah Brokke | Duluth |
| Kim Bromley | Pelican Rapids |
| Nate Burbeck | Robbinsdale |
| Craig J. Campbell | Mahtomedi |
| Patricia Canelake | Knife River |
| John C. Cox | Fergus Falls |



■ MIZNA Jarrar Reading at RAWI

Advisory Panel Members

Cultural Community Partnership

| | |
|--------------------|------------------|
| Romelle M. Adkins | Stillwater |
| Andrea S. Carlson | Minneapolis |
| Cléa M. Galhano | Saint Paul |
| Gita J. Ghei | Saint Paul |
| Amina Z. Harper | Minneapolis |
| Colette M. Illarde | Minneapolis |
| Cana Potter | Saint Louis Park |

Operating Support - advisory review panelists

| | |
|--------------------|------------------|
| Kathy A. Anderson | Moorhead |
| Brooke Barsness | Fergus Falls |
| Emily E. Bhatti | Rochester |
| Kaitlyn Bohlin | Grand Marais |
| Jonathan L. Carter | Brooklyn Park |
| Tony Cuneo | Duluth |
| Thomas Dodge | Truman |
| Helen R. Franczyk | Saint Paul |
| Claudia Fuentes | Minneapolis |
| Amy Giddings | Duluth |
| Robin C. Gillette | Minneapolis |
| Crystal Hegge | Winona |
| Heidi A. Jeub | Little Falls |
| Jon Lewis | Minneapolis |
| Stephen Manuszak | Minneapolis |
| Jill K. Moore | Little Falls |
| Aleshia M. Mueller | Backus |
| Christopher Osgood | Minnetonka |
| Chamath Perera | Saint Paul |
| Sherrie Pugh | Mound |
| Margaret A. Rog | Saint Louis Park |
| Kasey L. Ross | Minneapolis |
| Carrie Wintersteen | Moorhead |
| Andrew Zimney | Saint Paul |
| Patty Zurlo | Saint Paul |

Operating Support - artistic advisors

| | |
|----------------------|-----------------------|
| Jim Bartsch | Minneapolis |
| Ann Benrud | Saint Paul |
| Camilla G. Berry | Rochester |
| Paul B. Boehnke | Saint Paul |
| Melissa Brechon | Little Canada |
| Vicki Chepulis | Wadena |
| Scott R. Dixon | Lanesboro |
| Luanne Fondell | Dawson |
| Helen R. Franczyk | Saint Paul |
| Robin C. Gillette | Minneapolis |
| Crystal Hegge | Winona |
| Nicole L. Helget | Saint Peter |
| Carol L. Jackson | Saint Paul |
| Kate Maurer | Stanchfield |
| Danette Olsen | Marine on Saint Croix |
| Kelly Pratt | Saint Paul |
| Anne Jin Soo Preston | Minneapolis |
| Kathleen L. Ray | Barrett |
| Richard L. Robbins | Mankato |
| Craig R. Seacotte | Minneapolis |
| Linda J. Shapiro | Minneapolis |
| Anat Shinar | Minneapolis |
| Kathleen Spehar | Saint Paul |
| Maya T. Washington | Plymouth |

FY 2016 Percent for Art selection committee members

| | |
|-----------------------|-----------------|
| Century College | |
| Suzi Hudson | White Bear Lake |
| Neil H. Johnston | Shoreview |
| Central Lakes College | |
| Pam Collins | Staples |
| Casey R. Hochhalter | Ely |

Advisory Review Panel Members Conflicts of Interest

The following advisory review panel members (in left column) declared conflicts of interest with the grant applicants listed (in right column).

Arts Access

| Panelist | Declared conflicts |
|------------------|---|
| Kjellgren Alkire | Northern Lightsmn, Inc. |
| Ann Benrud | Juxtaposition Inc. |
| Christina Chang | Juxtaposition Inc. |
| Mary E. Flicek | The Saint Paul Chamber Orchestra |
| Joanna L. Kohler | IFP Minnesota |
| Anat Shinar | The O'Shaughnessy at Saint Catherine University |

Arts Learning

| Panelist | Declared conflicts |
|--------------------|--|
| Akosua O. Addo | Guthrie Theater, Hillcrest Community School, In Progress, Saint Paul Music Academy |
| David E. Beard | City of Minneapolis |
| Michael Burgraff | Stuart Pimsler Dance and Theater |
| Todd Carlson | Luverne Seifert |
| Joan E. Eisenreich | Children's Museum of Southern Minnesota |
| Robert P. Gardner | Stages Theatre Company, Inc. |
| Alberto Justiniano | Pangea World Theater |
| Gretchen E. Pick | Ordway Center for the Performing Arts |
| Joanne Toft | Marcy Open School Parent Council |
| Yang Yang | Iny Asian Dance Theater |

Arts Tour Minnesota

| Panelist | Declared conflicts |
|---------------------|--|
| Ann Rosenquist Fee | Minnesota State University-Mankato |
| Lisa Fuglie | VocalEssence |
| Jamil D. Jude | Theatre Latté-Da |
| Jennie Knoebel | ARENA Dances, The Cedar Cultural Center, Inc., The O'Shaughnessy at Saint Catherine University, Ragamala Dance, Theatre Latté-Da |
| Cheryl L. Larson | Jacqueline Ultan |
| Kathleen L. Ray | Katha Dance Theatre |
| Christopher Taykalo | Arts Midwest, Oratorio Society of Minnesota |
| Christine Tschida | T. B. Sheldon Memorial Theatre, Walker Art Center |
| Jeanne I. Willcoxon | IFP Minnesota |

Community Arts Education Support

| Panelist | Declared conflicts |
|---------------------|---------------------------------|
| Vicki Chepulis | Great River Arts Association |
| Roxanne Heaton | Chicago Avenue Fire Arts Center |
| Jennifer A. Nicklay | Eden Prairie Art Center |
| Dawne E. White | Artaria String Quartet |

Folk and Traditional Arts

| Panelist | Declared conflicts |
|------------------|--|
| Mary M. Erickson | Hmong Museum, Nordic Center |
| Slim Maroushek | Elizabeth Bucheit |
| Scott Pollock | Elizabeth Bucheit, Jessica Hirsch, Ka Joog, Laura MacKenzie, Nordic Center, Saint Olaf College, Nathan White |

Minnesota Festival Support

| Panelist | Declared conflicts |
|-----------------|---------------------------|
| Richard Hansen | EDU Film Festival |
| Leif Larsen | North House Folk School |
| Christian Novak | Art Shanty Projects |

Partners in Arts Participation

| Panelist | Declared conflicts |
|-------------------|--|
| Janet Brademan | Employment Enterprises, Inc. |
| Matthew T. Guidry | Metro Work Center, Inc., Midwest Special Services, Inc., Opportunity Partners, Inc., Partnership Resources, Inc. |
| Kari Ruth | Amherst H. Wilder Foundation |

Artist Initiative

| Panelist | Declared conflicts |
|---------------------------|---|
| Elizabeth M. Abbott | Lara Avery |
| J. Anthony Allen | Patti Cudd |
| Katayoun Amjadi | John Schuerman |
| Colleen M. Bertsch | Milo Fine, Karen Quiroz |
| Scott Dominic Carpenter | Kendra Atleework |
| Richard G. Cook | Joshua Campbell, Terry Hempleman, Daniel Pinkerton |
| Layla S. Dowlatshahi | Anders Holine |
| Daved Driscoll | Lloyd Brant |
| Luke G. Erickson | Laura Migliorino |
| Denise M. Fick | Anthony Falk |
| Erik Floan | Paul Boehnke |
| Paul G. Fonfara | Christopher Hepola, David Hoehn |
| Penelope A. Freeh | Alejandra Iannone, Matthew Keefe, Paula Mann, Ashwini Ramaswamy |
| Emily Gastineau | Chris Schlichting, April Sellers, Laurie Van Wieren |
| Joseph G. Giannetti | Richard Nelson |
| DeVon dVRG Gray | Fletcher Barnhill |
| Paige N. Guggemos | Erik Farseth |
| Peter M. Happel Christian | Christopher Atkins |
| Nick Healy | Cheryl Blackford |
| Jenny Jenkins | Justine Di Fiore, Peter Driessen, Kim Matthews |
| Brett C. Kallusky | Warren Thompson, Michelle Wingard |
| Taos C. Khazem | Aaron Gabriel, Brian Grandison, Kathryn Haddad |
| Athena O. Kildegaard | Michelle Matthees |
| Sophia E. Kim | Emily Strasser |
| Suzanne Kosmalski | Vance Gellert, Laura Migliorino |
| Chris Koza | Channy Leaneagh, Wendy Lewis, Zachary Johnson, Jocelyn Takach |
| John G. Larson | Gary Wahl |

| | |
|---------------------------|---|
| Rebecca L. Meyer-Larson | Joshua Campbell, Tyler Michaels |
| Samuel P. Miltich | Maud Hixson, Sarah Miller, Joshua Parlanti, Paul Seeba |
| Chris Monroe | Peter Driessen, Mary Plaster |
| Saara Myrene Raappana | Todd Boss |
| Blake A. Nellis | Mathew Janczewski, Taja Will |
| Kevin G. Obsatz | Daniel Seman |
| Steve Ozone | Beth Dow, Terry Gydesen, Timothy Piotrowski, Ellen Skoro |
| Sonja D. Peterson | Jennica Kruse |
| Sarah N. Porwoll-Lee | Julie Johnson |
| Perrin L. Post | Aaron Gabriel, Brian Grandison, Kathleen Welch |
| Lynette R. Power | Marion Angelica |
| Sanaphay Rattanaovong | Glenda Reed |
| Lia Rivamonte | Carolyn Williams-Noren |
| Donna A. Salli | Sheila Packa, Tara Sweeney |
| Kurtis R. Scaletta | Emily Benz, Cheryl Blackford, Charles Denton, Mackenzie Epping, Julie Evans, Janna Krawczyk, Emma Lu, Vanessa Ramos, Glenda Reed, Kathryn Savage, Katherine Schaefer, Katherine Stanoch, Eugenia Wychor |
| Liz Schachterle | Shari Aronson, Torry Bend, Lloyd Brant, Catherine Glynn, Daniel Pinkerton |
| Linda J. Shapiro | Karen Charles, Paula Mann, Ashwini Ramaswamy |
| Julie A. Sirek | Jody Williams |
| Danielle Sosin | Sarah Stonich |
| Lisa A. Steinmann | Wendy Brown-Baez, Satish Jayaraj |
| Carrie Elizabeth Thompson | Jen van Kaam |
| Joseph J. Tougas | David Hoehn |
| Ryan W. Vine | Elisabeth Brandt |

Cultural Community Partnership

| Panelist | Declared conflicts |
|--------------------|---------------------------|
| Romelle M. Adkins | Brownbody |
| Andrea S. Carlson | Briand Morrison |
| Gita J. Ghei | East Side Arts Council |
| Colette M. Illarde | Jessica Huang |
| Cana Potter | Jessica Huang |

Operating Support

| Panelist | Declared conflicts |
|-------------------|--------------------------------------|
| Brooke Barsness | Duluth Superior Symphony Association |
| Robin C. Gillette | Jungle Theater, Theatre L'Homme Dieu |
| Jon Lewis | One Voice Mixed Chorus |
| Stephen Manuszak | COMPAS, Inc. |
| Chamath Perera | Arcata Press |

STAFF

The following individuals served on the Arts Board staff during all or part of fiscal year 2016.

| | |
|------------------------|---|
| Jill Bode | Executive assistant |
| Kathee Foran | Program officer |
| Sue Gens | Executive director |
| Richard Hitchler | Program officer |
| Kimberly Hocker | Information systems administrator |
| Dane Hoppe | Work sample coordinator |
| Julie Jackson | Program secretary |
| Natalie Kennedy-Schuck | Program officer |
| Thomas Miller | WebGrants coordinator |
| Ben Owen | Program officer |
| Virginia Padden | Program associate, outreach |
| Justine Pearson | Grants office assistant |
| Julia Peterson | Data management assistant |
| Beth Richardson | Advisory panel coordinator |
| Rina Rossi | Program officer |
| Charles Scheele | Accounting technician |
| Pam Todora | Grants office assistant |
| David White | Director, finance and grants administration |
| Rena Youngs | Director, research and evaluation |



MINNESOTA
STATE ARTS BOARD

MINNESOTA STATE ARTS BOARD
200 Park Square Court
400 Sibley Street
Saint Paul, Minnesota 55101-1928

(651) 215-1600
(800) 866-2787

Minnesota Relay 7-1-1
msab@arts.state.mn.us
www.arts.state.mn.us