

M.L. 2011 Project Abstract

For the Period Ending June 30, 2014

PROJECT TITLE: Native Prairie Stewardship and Native Prairie Bank Acquisition

PROJECT MANAGER: Jason Garms

AFFILIATION: MN DNR

MAILING ADDRESS: 500 Lafayette Rd

CITY/STATE/ZIP: Saint Paul, MN 55155

PHONE: 651-259-5130

E-MAIL: jason.garms@state.mn.us

WEBSITE: www.dnr.state.mn.us/prairierestoration

FUNDING SOURCE: Environment and Natural Resources Trust Fund

LEGAL CITATION: M.L. 2011, First Special Session, Chp. 2, Art.3, Sec. 2, Subd. 04h

APPROPRIATION AMOUNT: \$1,000,000

Overall Project Outcome and Results

A total of 183 acres of native prairie was enrolled in the Native Prairie Bank easement program and permanently protected. The newly acquired easements included 6 easements in the Counties of Redwood, Brown, Pope, Traverse, Swift, and Renville. In total, 22 baseline property reports were written, including 6 baselines for the newly acquired easements. In addition to baseline reports, 22 existing Native Prairie Bank easements were monitored and data entered into the DNR's Conservation Easement Monitoring database.

SNA prairie specialists have completed 20 prescribed burns for 1,268 acres, 1 prairie reconstruction on 17 acres, and 61 invasive species control projects on 813 acres. 50 of these 82 projects involved Conservation Corps of Minnesota (CCM) crews. Boundary signing has been completed on the 6 NPB easements acquired with this appropriation. As part of the SNA Program's adaptive management efforts, management practices at 5 NPB sites were evaluated to determine if initial objectives were met.

SNA staff participated in 6 different events aimed at getting prairie stewardship information to landowners. Both SNA field specialists and acquisition staff engaged 76 different priority prairie landowners to discuss prairie protection and management options for their property. Over 290 landowners who potentially meet eligibility for Prairie Tax Exemption received mailings with Prairie Tax Exemption application forms. These mailings resulted in the certification of 204 new applications and the enrollment or re-enrollment of 6,936 acres in Prairie Tax Exemption. With the assistance of professional consultants, 20 landowners have received comprehensive Prairie Stewardship plans.

Project Results Use and Dissemination

As part of the landowner outreach efforts in project activities 1 and 3, the Native Prairie Bank brochure was updated and re-printed. The new Native Prairie Bank brochure is being made available at public events that target prairie landowners. Over 290 letters were mailed to native prairie landowners informing them of their potential eligibility to participate in the Prairie Tax Exemption Program. Local Technical Teams (LTT's) have been forming in southern and western MN in an effort to coordinate implementation of the MN Prairie Plan (include SWCD, NRCS, USFWS, TNC, BWSR). SNA Prairie Specialists have been working with these LTT's to ensure landowners approached directly by these LTT's are made aware of their prairie stewardship options available through the SNA Program. In total, SNA field specialists have proactively engaged 76 different priority prairie landowners to discuss prairie protection and

management options for their property, as well as provide native prairie stewardship information at 6 public events.



Environment and Natural Resources Trust Fund (ENRTF) M.L. 2011 Work Plan

Date of Status Update: 8/15/2014

Final Report

Date of Work Plan Approval: 6/23/2011

Project Completion Date: 6/30/2014

Is this an amendment request? X

Project Title: Native Prairie Stewardship and Native Prairie Bank Acquisition

Project Manager: Jason Garms

Affiliation: MN DNR

Address: 500 Lafayette Rd, Box 25

City: St Paul **State:** MN **Zip code:** 55155

Telephone Number: (651) 259-5130

Email Address: jason.garms@state.mn.us

Web Address: www.dnr.state.mn.us

Location:

Counties Impacted: Statewide

Ecological Section Impacted: Lake Agassiz Aspen Parklands (223N), Minnesota and Northeast Iowa Morainal (222M), North Central Glaciated Plains (251B), Northern Minnesota and Ontario Peatlands (212M), Northern Minnesota Drift and lake Plains (212N), Northern Superior Uplands (212L), Paleozoic Plateau (222L), Red River Valley (251A), Southern Superior Uplands (212J), Western Superior Uplands (212K)

Total ENRTF Project Budget:	ENRTF Appropriation \$:	1,000,000
	Amount Spent \$:	999,031
	Balance \$:	969

Legal Citation: M.L. 2011, First Special Session, Chp. 2, Art.3, Sec. 2, Subd. 04h

Appropriation Language:

\$500,000 the first year and \$500,000 the second year are from the trust fund to the commissioner of natural resources to acquire native prairie bank easements, prepare baseline property assessments, restore and enhance native prairie sites, and provide technical assistance to landowners. This appropriation is available until June 30, 2014, by which time the project must be completed and final products delivered.

I. PROJECT TITLE: Native Prairie Stewardship and Native Prairie Bank Acquisition

II. FINAL PROJECT STATE:

Overall Project Outcome and Results

A total of 183 acres of native prairie was enrolled in the Native Prairie Bank easement program and permanently protected. The newly acquired easements included 6 easements in the Counties of Redwood, Brown, Pope, Traverse, Swift, and Renville. In total, 22 baseline property reports were written, including 6 baselines for the newly acquired easements. In addition to baseline reports, 22 existing Native Prairie Bank easements were monitored and data entered into the DNR's Conservation Easement Monitoring database.

SNA prairie specialists have completed 20 prescribed burns for 1,268 acres, 1 prairie reconstruction on 17 acres, and 61 invasive species control projects on 813 acres. 50 of these 82 projects involved Conservation Corps of Minnesota (CCM) crews. Boundary signing has been completed on the 6 NPB easements acquired with this appropriation. As part of the SNA Program's adaptive management efforts, management practices at 5 NPB sites were evaluated to determine if initial objectives were met.

SNA staff participated in 6 different events aimed at getting prairie stewardship information to landowners. Both SNA field specialists and acquisition staff engaged 76 different priority prairie landowners to discuss prairie protection and management options for their property. Over 290 landowners who potentially meet eligibility for Prairie Tax Exemption received mailings with Prairie Tax Exemption application forms. These mailings resulted in the certification of 204 new applications and the enrollment or re-enrollment of 6,936 acres in Prairie Tax Exemption. With the assistance of professional consultants, 20 landowners have received comprehensive Prairie Stewardship plans.

Project Results Use and Dissemination

As part of the landowner outreach efforts in project activities 1 and 3, the Native Prairie Bank brochure was updated and re-printed. The new Native Prairie Bank brochure is being made available at public events that target prairie landowners. Over 290 letters were mailed to native prairie landowners informing them of their potential eligibility to participate in the Prairie Tax Exemption Program. Local Technical Teams (LTT's) have been forming in southern and western MN in an effort to coordinate implementation of the MN Prairie Plan (include SWCD, NRCS, USFWS, TNC, BWSR). SNA Prairie Specialists have been working with these LTT's to ensure landowners approached directly by these LTT's are made aware of their prairie stewardship options available through the SNA Program. In total, SNA field specialists have proactively engaged 76 different priority prairie landowners to discuss prairie protection and management options for their property, as well as provide native prairie stewardship information at 6 public events.

III. PROJECT STATUS UPDATES:

Project Status as of December 2011: SNA acquisition staff have approached and begun NPB easement negotiations with 3 different landowners. These projects are considered to be in "stage 2" of the NPB easement enrollment process, meaning project maps and easement terms are being drafted and reviewed. SNA prairie specialists have begun writing burn plans, installed firebreaks, and preparing for the 2012 spring burn season. Work plans are also being developed for 2012 woody encroachment and prairie reconstruction projects. A native prairie landowner outreach event has been planned for January 25th at the Houston Nature Center. Over 25 potential prairie stewardship planning sites have been identified and a Prairie Stewardship Planning RFP is expected to be released in the next 2-months. A state government shutdown combined with a focus on expanding existing ETF funds (i.e. *M.L. 2010, Chp. 362, Sec. 2, Subd. 4b*) has resulted in reduced spending from this appropriation over the last 6-months.

Project Status as of June 2012: SNA acquisition staff are making progress toward completing easements on Swedes Forest 22-1 (20-ac Redwood County site), Appleton 36-1 (20-ac Swift County

site), and Lake Johanna 31-1 (40-ac Big Stone County site). The above sites have either a signed option, or the option has been prepared and is ready for signing. SNA prairie specialists have completed 4 prescribed burns for 38 acres, a 17-acre prairie reconstruction project, and two invasive species control projects on 21-acres. A Root River Watershed landowner outreach event was held with 15 landowners attending resulting in a potential new Native Prairie Bank easement. SNA staff members have engaged 8 different priority prairie landowners to discuss protection and management option for their property. A Request-For-Proposals has been written and it is expected to result in 15 prairie stewardship planning contracts. SNA prairie specialists have also begun collecting information and anticipate writing another 5 prairie stewardship plans this fall and winter.

Project Status as of December 2012: SNA acquisition staff have closed on the Swedes Forest 22-1 NPB easement and have a signed option and a completed survey for Appleton 36-1 NPB. The 66-acre proposed Lake Johanna 31-2 site in Pope County is progressing and an option is being developed. SNA prairie specialists have completed 4 prescribed burns for 38 acres, a 17-acre prairie reconstruction project, and 6 invasive species control projects on 25-acres. In addition, SNA prairie specialists have initiated 15 prescribed burn projects and 16 invasive species projects. January 25th partners from DNR, TPL, and TNC led a landowner meeting at the Houston Nature Center which target Root River Watershed prairie owners. 15 landowners attended the event and it has led to the potential enrollment of a new Native Prairie Bank easement. SNA field staff have engaged 17 different priority prairie landowners to discuss prairie protection and management options for their property, initiated 5 new prairie stewardship plans, and certified 83 new Prairie Tax Exemption applications. In addition, an RFP has resulted in 15 prairie stewardship plans being initiated by private consultants.

Amendment Request (12/31/12):

In general, the requested amendments will reduce the amount funds budgeted for professional/technical contracts, increase funds budgeted for salaries and service contracts, and extend the completion dates to the end of the appropriation. The overall budget for each activity will not change, and the outcomes for each activity will not be decreased.

For Activity 1, the request is to eliminate funding for professional/technical contracts and shift the funds primarily to salaries. The number of qualified contractors who can write baseline reports is limited, and contractors without access to agency land records systems can only partial complete a baseline report. With this amendment, we would have an opportunity to extend an existing temporary position created to write baselines under a different ETF appropriation (*Conservation Easement Stewardship and Enforcement Program*). This person is trained, experienced and has access to DNR system, allowing them to efficiently complete baseline reports. Extending the completion dates until the end of the appropriation will also allow for the completion of active prairie bank easement projects.

For activity 2, the request is to eliminate the 'landowner cost-share' budget item and shift funds to salaries, service contracts and equipment/supplies. Since this budget for this project was developed, the Office of Grants Management considers Landowner Cost-Share Agreements to be official grants. It was never the SNA Program's intent to administer grants with this appropriation, but rather work with landowners to implement management practices on Native Prairie Bank easements. The Office of Grants Management has determined the type of management work the SNA Program conducts on perpetual, state owned conservation easements is not a grant. This amendment will allow the SNA Program to move funding out of 'landowner cost-share' and into budget items like service contracts and salaries so it can be used to implement management practices. The outcomes will all remain the same.

For activity 3, the request is to move some funding for professional/technical and service contracts to salaries and equipment/supplies. Due to a projected cost savings in prairie stewardship contracts there will be a used balance in contract budget items. The request is shift these contract savings to salaries and extend an existing temporary position (same position mentioned in Activity 1). Extending the position, and the completion date, would allow the SNA Program to continue to the Prairie Tax Exemption enrollment work, particularly accelerating the on the ground certification process. The result would be a substantial increase in the number of sites certified for Prairie Tax Exemption.

Project Status as of June 2013: SNA acquisition staff have closed on the Swedes Forest 22-1 NPB and Appleton 36-1 NPB easement. One NPB project has been advanced to the stage of having a signed option and will close soon (66-ac), another landowner has been presented with an option (26-ac), and a new NPB projects have been initiated (131-ac). SNA prairie specialists have completed 14 prescribed burns on 858 acres, a 17-acre prairie reconstruction project, and 14 invasive species control projects are on 82 acres. January 25th partners from DNR, TPL, and TNC led a landowner meeting at the Houston Nature Center which target Root River Watershed prairie owners. 15 landowners attended the event and it has led to the potential enrollment of a new Native Prairie Bank easement. SNA field staff have engaged 31 different priority prairie landowners to discuss prairie protection and management options for their property, completed or initiated 5 new prairie stewardship plans, and certified 116 new Prairie Tax Exemption applications. In addition, contracts have been initiated for 15 prairie stewardship plans to be completed by private consultants.

Project Status as of December 2013: SNA acquisition staff have closed on 2 easements (Swedes Forest 22-1 NPB and Appleton 36-1), have 2 easements optioned and ready to close (Lake Johanna 31-2 site and Eden 19-1), and have the Windsor 12-1 progressing toward a signed option. The balance of remaining funds will be used by Lake Johanna 31-2, Eden 19-1, and Windsor 12-1 projects. A total of 23 baseline property reports have been written for NPB easements, additionally 2 baselines have been started. SNA prairie specialists have completed 15 prescribed burns on 1013 acres, a 17-acre prairie reconstruction project, and 19 invasive species control projects are on 230 acres. Boundary signing has been completed on 5 NPB easements. Three outreach and education events have been completed, reaching nearly 700 individuals with key messages on native prairie protection and management. SNA field staff have also directly engaged 53 different priority prairie landowners to discuss prairie protection and management options for their property, completed or initiated 5 prairie stewardship plans, and certified 124 new Prairie Tax Exemption applications. In addition, contracts with private consultants to write 15 prairie stewardship plans are nearly complete.

Amendment Request (12/31/12): As the project is coming to a close we are recognizing that some shifts of funding between budget items will allow us to more effectively utilize remaining funds. All requested budget shifts are within the same activity and do not change the outcomes of those activities.

For Activity 2: The opportunity to use professional/technical contracts to complete restoration and enhancement projects has not presented itself. Reallocating \$10,000 to service contracts and equip/tools/supplies will allow us to utilize CCM crews on late winter and spring projects.

For Activity 3: The Prairie Stewardship Planning contract costs came in under estimates. Reallocating \$15,000 from professional/technical contracts to salary, service contracts, equip/tools/supplies, and printing will allow us to complete additional Prairie Tax Exemption applications and continue reaching out to and consulting native prairie landowners.

Acquisition/Restoration List: The Lake Traverse Prairie Core Area (as identified by the MN Prairie Plan) has been added to the list.

Amendment Request (8/15/2014): Several of the easement projects had irregular boundaries and required surveys to determine ownership lines and accurately describe the easement perimeter. These surveys incurred higher than average professional services costs and created a significant negative balance. The proposed budget amendments, provided on Attachment A, will correct the negative balance with professional services, as well as other small imbalances within the budget. The budget amendments would impact all three activities.

IV. PROJECT ACTIVITIES AND OUTCOMES:

ACTIVITY 1: Native Prairie Bank Acquisition of Prairie of Biodiversity Significance

Description: The SNA Program will protect and buffer native prairie sites of biodiversity significance by acquisition of NPB conservation easements on ~200 acres. NPB conservation easement baseline reports and monitoring would be completed on about 22 sites; including those sites acquired through these funds (~1-5 sites) and up to 17 existing NPB easement sites. As of March 2010, the SNA Program manages 96 NPB conservation easements of which 13 have baseline property reports; creating a backlog of 83 baseline reports to complete. Priority sites are identified by MCBS and target rare and endangered plant and animal species, high quality plant communities, and key habitats for Species of Greatest Conservation Need (SGCN) identified in the State Wildlife Action Plan (SWAP). Any buffers, or lands needing restoration, will be completed using a combination of funds from Activity 2 below and/or bonding appropriations. It is anticipated that only 10 of the 200 acres acquired will need restoration.

Summary Budget Information for Activity 1:

ENRTF Budget: \$571,450
Amount Spent: \$571,154
Balance: \$ 296

Activity Completion Date:

Outcome	Completion Date	Budget
1. Acquisition of NPB conservation easement ~200 acres of native prairie	6/30/14	\$521,000
2. Baseline property reports & monitoring for ~22 NPB easements	6/30/14	\$49,000

Activity Status as of December 2011: SNA acquisition staff have approached and begun NPB easement negotiations with 3 different landowners – a 20-ac Redwood County site, a 21-ac Swift County site, and a 40-ac Big Stone County site. These projects are considered to be in “stage 2” of the NPB easement enrollment process, meaning project maps and easement terms are being drafted and reviewed. It is anticipated that we will have signed options for these properties within the next 6-months. Contracts for writing baseline property reports are expected to be released this winter and awarded to contractors by spring 2012.

Activity Status as of June 2012: SNA acquisition staff have continue to make progress toward completing easements on Swedes Forest 22-1 (20-ac Redwood County site), Appleton 36-1 (20-ac Swift County site), and Lake Johanna 31-1 (40-ac Big Stone County site). Swedes Forest 22-1 has advanced to “stage 7”, meaning the landowner has signed the option purchase. Lake Johanna 31-1 has advanced to “stage 6”, meaning the option to purchase has been presented to the landowner. Appleton 36-1 has advanced to “stage 5”, meaning internal DNR review of the project is completed and an option to purchase will be drafted soon. SNA staff members have completed 3 baseline reports for the Lund 2, Lund 21 & Walls 7-2 prairie bank easements (existing easements). SNA staff members have also begun initial baseline report development for the Swedes Forest 22-1 project mentioned above. In addition, contractors are expected to complete another 10-15 baseline reports by June 30th, 2013.

Activity Status as of December 2012: SNA acquisition staff have closed on Swedes Forest 22-1 NPB easement including a completed baseline property report that was signed at the closing (20-ac Redwood County site), and have a signed option and a completed survey for Appleton 36-1 NPB (20-ac Swift County site) which should close in March 2013. The Lake Johanna 31-1 site did not progress to a signed option, but the 66-acre proposed Lake Johanna 31-2 site in Pope County (same section different landowner) is progressing and an option is being developed. SNA staff members have completed 4 baseline reports for the recently closed Swedes Forest 22-1 NPB, as well as Lund 2, Lund 21, Walls 7-2, prairie bank easements (existing easements). SNA staff has also initiated 3 baseline reports for existing easements. In addition, we’re working to find qualified contractors who can complete another 10-15 baseline reports.

Activity Status as of June 2013: SNA acquisition staff have closed on the Swedes Forest 22-1 NPB (20-ac Redwood County site) and Appleton 36-1 NPB (20-ac Swift County site) easements including completed baseline property reports. The Lake Johanna 31-2 site (66-ac in Pope County) has a signed option and the project will close once the survey is complete. A new project, Eden 19-1 (26-ac Brown County site), has an option developed that has been presented to the landowner. SNA acquisition staff have also begun negotiations on a new project called Windsor 12-1 (131-ac Traverse County site). SNA staff members have completed 7 baseline reports for the recently closed Swedes Forest 22-1 and Appleton 36-1 NPB's, as well as the Lund 2, Lund 21, Walls 7-2, Blue Mounds 10-1, and Lower Flora 3-1 prairie bank easements (existing easements).

Activity Status as of December 2013: SNA acquisition staff have closed on the Swedes Forest 22-1 NPB (20-ac, Redwood County) and Appleton 36-1 NPB (20-ac, Swift County) easements including completed baseline property reports. The Lake Johanna 31-2 site (66-ac, Pope County) has a signed option and the project is scheduled to close in January 2014. The Eden 19-1 (26-ac Brown County site) project has an option signed and is schedule to close in March or April 2014. SNA acquisition staff have continued negotiations on the Windsor 12-1 (131-ac, Traverse County) project and option will be presented to the landowner this month. The balance of remaining acquisition funds will be used by Lake Johanna 31-2, Eden 19-1, and Windsor 12-1 projects. SNA staff members have completed 2 baseline reports for the closed Swedes Forest 22-1 and Appleton 36-1 easements, initiated baseline reports for the Lake Johanna 31-2 and Eden 19-1 projects, as well as complete 3 baselines for existing NPB easements. Temporary SNA staff hired to complete baselines have completed 18 baselines for existing NPB easements that lacked a baseline report.

Final Report Summary: SNA acquisition staff have closed on 6 Native Prairie Bank Easements for 183 acres. Below is a table with a list of the acquired easements. Of the 6 new easements, 4 have comprehensive Prairie Stewardship plans completed (with this appropriation). Each stewardship plan includes a resource inventory and assessment, goal setting, prairie management recommendations, and an action plan for implementation. Two of the easements just closed in late June and stewardship plans are not completed; these 2 plans will be completed in the next year with new appropriations by the legislature. Eligible Native Prairie Bank lands are prioritized based on factors including: size, quality and diversity of the native prairie habitat; occurrence of, or suitable habitat for rare species; location relative to other native prairie and/or public land; and potential for long-term habitat management and enhancement. The 6 easements acquired with this appropriation were evaluated using the "Native Prairie Bank Evaluation Form" and scored based on these factors. Each of the 6 easements has a Baseline Property Report completed will be monitored following the protocols in the "Scientific & Natural Areas Program Conservation Easement Long-Term Stewardship, Monitoring & Enforcement Plan". The SNA easement plan calls for annual landowner contacts as well as on-the-ground site evaluations every year for the first three years, then once every three years if no violations are found. The SNA Program's easement monitoring efforts are funded by ongoing appropriations from the legislature, including ENRTF and OHF. In addition to the 6 baselines completed for the newly acquired easements above, another 16 baseline property reports were written for existing Native Prairie Bank easements. All baseline reports were entered in the DNR's Conservation Easement Monitoring database and will serve as the baseline condition for future monitoring (list provided below). SNA staff also monitored 22 existing Native Prairie Bank easements in accordance with department and program protocols. The list of 22 easements monitored with this appropriation is found below.

Native Prairie Bank easement projects completed:

Project name	County	Total Acres Protected	Acres funded with this appropriation	Ecological Significance
Swedes Forest 22-1	Redwood	19.6	19.6	B-C quality Southern Wet Prairie, adjacent to calcareous fen, Small

				White Lady Slippers present
Eden North 19-1	Brown	26	26	A-B quality Southern Dry Sand-Gravel Prairie, Plains Prickly Pear cactus present
Lake Johanna 31-2	Pope	65.7	65.7	C-quality Southern Dry-hill Prairie, Poweshiek and Arogos Skippers on adjacent property
Windsor 13-1	Traverse	157.7	62.7	B-quality Southern Dry-hill Prairie, home to 7 species of MN Special Concern, including the Pawnee Skipper
Appleton 36-1	Swift	19.3	7.7	Rare Southern Mesic Prairie, Upland Sandpiper, Marbled Godwit and Regal Fritillary present
Lower Flora 3-1	Renville	23.7	1.2	B-C quality Southern Dry-hill Prairie, Low Milk Vetch and Plains Prickly Pear on property, Western Fox Snake on adjoining property

Native Prairie Bank monitoring completed:	
NPB Name	County
Ann 25-1	Cottonwood
Christiania 31-1	Jackson
Christiania 31-2	Jackson
Altona 31-1	Pipestone
Altona 31-2	Pipestone
Akron 11-1	Big Stone
Akron 13-1	Big Stone
Agassiz 23-1	Lac Qui Parle
Fairfield 31-1	Swift
Clifton 32-1	Lyon
Great Bend 29-1	Cottonwood
Custer 15-1	Lyon
Johnsonville 30-1	Redwood
Holly 17-1	Murray
Petersburg 26-1	Jackson
Petersburg 33-1	Jackson
Mulligan 18-1	Brown
Lower Akron 5-1	Big Stone
Akron 31-1	Big Stone
Odessa 36-1	Big Stone
Big Stone 6-1	Big Stone
Foster 34-1	Big Stone

Baseline Property Reports completed:	
NPB Name	County
Swedes Forest 22-1	Redwood
Appleton 36-1	Swift
Lake Johanna 31-2	Pope
Eden 19-1	Brown
Windsor 13-1	Traverse
Lower Flora 3-1	Renville
Carney	Murray
Northstar 32-1	Brown
Petersen	Brown
Lynd 36 & Lyon 1	Lyon
Belmont 6-1	Jackson
Berner	Blue Earth
Carson 5-1	Cottonwood
Dovray 5-1	Murray
Holly 2-1	Murray
Holly 3-1	Murray
Judson 3-1	Blue Earth
Kiester 20-1	Faribault
Lamberton 13-1	Redwood
Lamberton 15-1	Redwood
Linden 6-1	Brown
Stony Run 10-1	Yellow Medicine

ACTIVITY 2: Native Prairie Restoration & Enhancement

Description: Restoration and enhancement activities would be completed on about 900 acres at up to about 15 NPBs and 5 native prairie stewardship sites. Management practices at ~5 NPB sites would be

measured to evaluate if objectives were met as part of adaptive management. This project will contribute towards implementation of the SWAP through restoration of native prairie needed to support SGCN (also Habitat Recommendation 5 of the SCPP). Restoration and enhancement activities – including bringing sites acquired up to minimum standards – would be carried out through landowner agreements, DNR staff, Conservation Corps Minnesota (CCM), Sentence to Serve (STS), volunteers, and/or contractors. Activities include seed collection, planting, exotics control, woody encroachment removal, boundary signing, prescribed burns, and monitoring. All restorations will use seeds/plants of a local ecotype, collected from onsite or within 25 miles. This activity and its funding would include all work needed to bring up to the Department’s minimum standards those NPB easements acquired through this funding.

Summary Budget Information for Activity 2:

ENRTF Budget: \$251,750
Amount Spent: \$251,546
Balance: \$ 204

Activity Completion Date:

Outcome	Completion Date	Budget
1. 12 acres of prairie reconstruction (restoration)	6/30/14	\$14,000
2. 120 acres of woody removal & exotics species treatment	6/30/14	\$140,000
3. 780 acres of prescribed burns	6/30/14	\$80,000
4. NPB easement boundary signs & development work to meet minimum standards on NPB sites acquired through this funding (~2 sites)	6/30/14	\$5,000
5. adaptive management monitoring on ~5 NPB sites	6/30/14	\$11,000

Activity Status as of December 2011: SNA prairie specialists have begun writing 8 burn plans, installed 2 firebreaks, and continue to prepare for the 2012 spring burn season. Priority sites have been identified and work plans are being developed for 2012 woody encroachment and prairie reconstruction projects.

Activity Status as of June 2012: SNA prairie specialists have completed 4 prescribed burns for 38 acres and continue to prepare for the 2013 spring burn season. A 17-acre prairie reconstruction project has been completed on the Moulton 11-1 native prairie bank easement. Two invasive species control projects are completed; a 6-acre Wild Parsnip and Canada treatment and a 15-acre cedar cutting and removal project. Projects underway include Wild Carrot and Birds Foot Trefoil treatments on the Holly 2 and Custer 15 prairie banks.

Activity Status as of December 2012: SNA prairie specialists have completed 4 prescribed burns for 38 acres and have prepared for the spring 2013 burn season by completing 15 firebreaks. A 17-acre prairie reconstruction project has been completed on the Moulton 11-1 native prairie bank easement. Six invasive species control projects are completed; a 6-acre Wild Parsnip and Canada thistle treatment, a 15-acre cedar cutting and removal project, and several spot treatments for Tansy and Spotted Knapweed. There are also 16 invasive projects underway for additional 148 acres of treatments.

Activity Status as of June 2013: SNA prairie specialists have completed 14 prescribed burns for 858 acres. A 17-acre prairie reconstruction project has been completed on the Moulton 11-1 native prairie bank easement. Fourteen invasive species control projects are completed on 82 acres, including a 6-acre Wild Parsnip and Canada thistle treatment, a 35-acre cedar cutting and removal project, and several spot treatments for Tansy and Spotted Knapweed. There are also a number of invasive projects underway that will be completed in the fall of 2013.

Activity Status as of December 2013: SNA prairie specialists have completed 15 prescribed burns for 1013 acres. A 17-acre prairie reconstruction project has been completed on the Moulton 11-1 native prairie bank easement. Nineteen invasive species control projects are completed on 230 acres. This includes 172 acres of herbaceous treatments for species such as Wild Parsnip, Canada thistle, Birds-Foot Trefoil, Knapweed, and Crown Vetch. Invasive species accomplishments also include 58 acres of woody encroachment removal efforts directed at Red Cedar, Buckthorn, Box elder, and Sumac. Additional invasive projects are underway as well as several prescribed burns being planned – all to be completed by June 2014. Boundary signing has been completed on 5 NPB easements, including 2 easements acquired with this appropriation.

Final Report Summary: SNA prairie specialists have completed 20 prescribed burns for 1268 acres. These burns were implemented with a combination DNR crews and contractors (including CCM). A 17-acre prairie reconstruction project has been completed on the Moulton 11-1 native prairie bank easement (map included with restoration evaluation). This restoration was completed under the guidance provided in the site’s ecological restoration plan. The initial restoration evaluation will be included with this report. Sixty-one invasive species control projects are completed on 813 acres. This includes 189 acres of herbaceous treatments for species such as Wild Parsnip, Canada thistle, Birds-Foot Trefoil, Knapweed, and Crown Vetch. Invasive species accomplishments also include 624 acres of woody encroachment removal efforts directed at Red Cedar, Buckthorn, Box elder, and Sumac. Boundary signing has been completed on the 6 NPB easements acquired with this appropriation. As part of the SNA Program’s adaptive management efforts, management practices at 5 NPB sites were evaluated to determine if initial objectives were met. Over time, the continued evaluation of management actions will help verify whether objectives are being met under certain prescriptions.

Activity	Target	Completed
Prairie reconstruction	12 acres	17 acres
Woody removal & exotics species treatment	120 acres	813 acres
Prescribed burning	780 acres	1268 acres
NPB easement boundary sign & development work	~2	6
Adaptive management monitoring	~5	5

ACTIVITY 3: Native Prairie Landowner Assistance & Incentives

Description: Private landowners will increase their stewardship of native prairie through a suite of strategies. Four prairie management workshops-field days for private landowners and other practitioners will be held. DNR staff will meet with ~20 landowners to provide technical consultation on how to best manage their prairie. At least 20 landowners will receive a comprehensive prairie stewardship plan including an evaluation of their prairie’s condition, identification of management needs, and recommendations for management action. In addition, ~100 native prairie landowners will be contacted and site visits conducted to enroll or recertify them in the Prairie Tax Exemption (PTE) program.

Summary Budget Information for Activity 3:

ENRTF Budget: \$176,800
Amount Spent: \$176,331
Balance: \$ 469

Activity Completion Date:

Outcome	Completion Date	Budget
1. 4 workshops-field days for prairie landowners & practitioners	6/30/14	\$6,500
2. consultations, guidance, mgmt. asst., etc. to 20 landowners	6/30/14	\$30,000
3. prairie stewardship plans provided to 20 prairie landowners	6/30/14	\$70,000

4. 100 landowners enrolled or recertified in Prairie Tax Exemption	6/30/14	\$73,500

Activity Status as of December 2011: An outreach effort has been planned to target native prairie protection in the Root River Watershed. Partners in this effort included DNR-SNA, Trust for Public Land, The Nature Conservancy and DNR-Nongame. The event will be held January 25th at the Houston Nature Center. Over 25 potential prairie stewardship planning sites have been identified and a Prairie Stewardship Planning RFP is expected to be released in the next 2-months. A focus has been placed on expending existing ETF funds (*M.L. 2010, Chp. 362, Sec. 2, Subd. 4b*) for Prairie Tax Exemption enrollment, so no funds have been spent to date on this activity.

Activity Status as of June 2012: On January 25, 2012 partners from DNR, TPL, and TNC led a landowner meeting at the Houston Nature Center which target Root River Watershed prairie owners. 15 landowners attended the event and it has led to the potential enrollment of a new Native Prairie Bank easement. Both SNA field specialists and acquisition staff have engaged 8 different priority prairie landowners to discuss protection and management options for their property. To date none of these contacts has resulted in further action – likely do to competing farm commodity prices and rising land values. A Request-For-Proposals has been written and it is expected to result in 15 prairie stewardship planning contracts. SNA prairie specialists have also begun collecting information and anticipate writing another 5 prairie stewardship plans this fall and winter. With a few ETF funds remaining for Prairie Tax Exemption enrollment (*M.L. 2010, Chp. 362, Sec. 2, Subd. 4b*), no funds from this appropriation have been spent to date on this activity.

Activity Status as of December 2012: January 25, 2012 partners from DNR, TPL, and TNC led a landowner meeting at the Houston Nature Center which target Root River Watershed prairie owners. 15 landowners attended the event and it has led to the potential enrollment of a new Native Prairie Bank easement. Both SNA field specialists and acquisition staff have engaged 17 different priority prairie landowners to discuss prairie protection and management options for their property. To date none of these contacts has resulted in the landowner electing to formal protect their land – likely do to competing farm commodity prices and rising land values. A Request-For-Proposals has been released, resulting in 15 prairie stewardship plans being initiated by private consultants. SNA prairie specialists have collected information and will writing an additional 5 prairie stewardship plans this winter and spring. To date SNA staff have processed and certified 83 new Prairie Tax Exemption applications.

Activity Status as of June 2013: January 25, 2012 partners from DNR, TPL, and TNC led a landowner meeting at the Houston Nature Center which target Root River Watershed prairie owners. 15 landowners attended the event and it has led to the potential enrollment of a new Native Prairie Bank easements. Both SNA field specialists and acquisition staff have engaged 31 different priority prairie landowners (aside from landowners in activity 1) to discuss prairie protection and management options for their property. To date none of these contacts has resulted in the landowner electing to formal protect their land – likely do to competing farm commodity prices and rising land values. Contracts have been initiated that will result in 15 prairie stewardship plans being written by private consultants. These stewardship plans are will be completed by December 31, 2013. SNA prairie specialists have collected information and written an additional 3 prairie stewardship plans and have begun writing 2 more plans. Over 150 landowners who potentially meet eligibility for Prairie Tax Exemption have received mailings with Prairie Tax Exemption application forms. To date SNA staff have worked with County Assessors and certified 116 new Prairie Tax Exemption applications received from landowners. These certifications have led to the enrollment of 3,777 acres in Prairie Tax Exemption. Another 105 landowner letters have also been mail which may result in new applications that will be evaluated and certified by June 30, 2014.

Activity Status as of December 2013: January 25, 2012 partners from DNR, TPL, and TNC led a landowner meeting at the Houston Nature Center which target Root River Watershed prairie owners. 15

landowners attended the event and it has led to the potential enrollment of a new Native Prairie Bank easement. On September 26-27, 2012 SNA staff gave a native prairie protection and management presentation at the SW MN SWCD Environmental Fair in Slayton, MN. Over 650 students and teachers attended the fair over two days. SNA staff also gave native prairie protection presentations at the Watonwan Environmental Awareness Day in St. James, MN (Sept. 19, 2013). Both SNA field specialists and acquisition staff have engaged 53 different priority prairie landowners (aside from landowners in activity 1) to discuss prairie protection and management options for their property. To date, 3 new NPB easement projects and 1 new SNA project have been initiated as a result of these one-on-one consultations. Contracts with private consultants have been executed and 15 prairie stewardship plans are nearly complete. SNA prairie specialists have collected information and written an additional 3 prairie stewardship plans with 2 more plans nearly complete. Over 250 landowners who potentially meet eligibility for Prairie Tax Exemption have received mailings with Prairie Tax Exemption application forms. To date SNA staff have worked with County Assessors and certified 124 new Prairie Tax Exemption applications received from landowners. These certifications have led to the enrollment or re-enrollment of 5366 acres in Prairie Tax Exemption. Between now and June 30, 2014 staff will continue to work with County Assessors to process remaining applications.

Final Report Summary: SNA staff participated in 6 different events aimed at getting prairie stewardship information to landowners. It has proven very effective to use already planned events and incorporate our prairie stewardship messages and materials. The list of events is provided below. Both SNA field specialists and acquisition staff engaged 76 different priority prairie landowners (aside from landowners in activity 1) to discuss prairie protection and management options for their property. As a result of these one-on-one consultations, 4 new NPB easement projects and 1 new SNA project have been initiated. Over 290 landowners who potentially meet eligibility for Prairie Tax Exemption received mailings with Prairie Tax Exemption application forms. In total, SNA staff have worked with County Assessors and certified 204 new Prairie Tax Exemption applications received from landowners. These certifications have led to the enrollment or re-enrollment of 6936 acres in Prairie Tax Exemption. With the assistance of professional consultants, 20 landowners have received comprehensive Prairie Stewardship plans. The list of completed Prairie Stewardship Plans is provided below.

- January 25, 2012 - Partners from DNR, TPL, and TNC led a landowner meeting at the Houston Nature Center which target Root River Watershed prairie owners. 15 landowners attended the event and it has led to the potential enrollment of a new Native Prairie Bank easement.
- August 7, 2012 - SNA provided native prairie protection and management information to landowners at Farm Fest in Morgan, MN. Farm Fest is one of the state’s largest farm shows and attracts many farmers and landowner.
- September 26-27, 2012 - SNA staff gave a native prairie protection and management presentation at the SW MN SWCD Environmental Fair in Slayton, MN. Over 650 students and teachers attended the fair over two days.
- December 14, 2012 – SNA staff gave a presentation and answer Prairie Tax Exemption questions at the SW MN Area County Assessors workshop. With the increased effort to enroll Prairie Tax Exemption parcels, County Assessors have been received many landowner questions. This event provided an opportunity to update County Assessors who help our Prairie Tax Exemption landowners with program enrollment.
- March 16, 2013 - SNA staff operated a booth at the Prairie Enthusiasts Conference in Mankato, MN. The conference attracted landowner from across the southern half of the state and provided an opportunity to engage many prairie landowners.
- September 19, 2013 - SNA staff gave native prairie protection presentations at the Watonwan Environmental Awareness Day in St. James, MN.

Prairie Stewardship Planning Sites:

Site Name	County	Whole Farm Acres	Native Prairie Acres
Holly 17	Murray	80	33

Pilligard Prairie	Murray	183	25
Johnsonville 30	Redwood	80	21
Northfield 25-1	Rice	500	136
Stetz Prairie	Wilkin	64	64
Stately 29-1	Brown	160	107
Moulton 18-1	Murray	200	55
Swede's Forest 27-1	Redwood	54	54
Swedes Forest 22-1	Redwood	20	20
Sherman 17-1	Redwood	160	160
Lower Flora 3-1	Renville	25	25
Wergeland 14-1	Yellow Medicine	160	140
Coon Hill	Goodhue	50	50
Hagen 28-2	Clay	241	241
Minnewaska 1-1	Pope	20	15
Lake Johanna 31-2	Pope	140	140
Lake Johanna 31-3	Pope	74	74
Lower Akron 5-1	Big Stone	80	18
Odessa 36-1	Big Stone	300	113
Appleton 36-1	Swift	160	21

V. DISSEMINATION:

Description: Copies of Stewardship Plans are provided to local DNR managers and used by the landowner with other agencies and programs. Workshops and field days will be listed on the SNA website: <http://www.dnr.state.mn.us/snas/index.html>.

Status as of December 2011: There have been no dissemination efforts during this reporting period.

Status as of June 2012: The landowner meeting held at the Houston Nature Center was advertised locally, as well as priority landowner where invited directly.

Status as of December 2012: Over 100 letters were mailed to native prairie landowners informing them of their potential eligibility to participate in the Prairie Tax Exemption Program. Both SNA field specialists and acquisition staff have proactively engaged 17 different priority prairie landowners to discuss prairie protection and management options for their property.

Status as of June 2013: An additional 105 letters were mailed to native prairie landowners informing them of their potential eligibility to participate in the Prairie Tax Exemption Program. Local Technical Teams (LTT's, which include SWCD, NRCS, USFWS, TNC, BWSR) have been forming in southern and western MN in an effort to coordinate implementation of the MN Prairie Plan. SNA Prairie Specialists have been working with these LTT's to ensure landowners approached directly by these LTT's are made aware of their prairie stewardship options available through the SNA Program. In total, SNA field specialists and acquisition staff have proactively engaged 31 different priority prairie landowners to discuss prairie protection and management options for their property.

Status as of December 2013: Over 250 letters were mailed to native prairie landowners informing them of their potential eligibility to participate in the Prairie Tax Exemption Program. Local Technical Teams (LTT's, which include SWCD, NRCS, USFWS, TNC, BWSR) have been forming in southern and western MN in an effort to coordinate implementation of the MN Prairie Plan. SNA Prairie Specialists have been working with these LTT's to ensure landowners approached directly by these LTT's are made aware of their prairie stewardship options available through the SNA Program. In total,

SNA field specialists and acquisition staff have proactively engaged 53 different priority prairie landowners to discuss prairie protection and management options for their property.

Final Report Summary: As part of the landowner outreach efforts in Activities 1 and 3, the Native Prairie Bank brochure was updated and re-printed. The new Native Prairie Bank brochure is being made available at public events that target prairie landowners. Over 290 letters were mailed to native prairie landowners informing them of their potential eligibility to participate in the Prairie Tax Exemption Program. Local Technical Teams (LTT's) have been forming in southern and western MN in an effort to coordinate implementation of the MN Prairie Plan (include SWCD, NRCS, USFWS, TNC, BWSR). SNA Prairie Specialists have been working with these LTT's to ensure landowners approached directly by these LTT's are made aware of their prairie stewardship options available through the SNA Program. In total, SNA field specialists have proactively engaged 76 different priority prairie landowners to discuss prairie protection and management options for their property, as well as provide native prairie stewardship information at 6 public events.

VI. PROJECT BUDGET SUMMARY:

A. ENRTF Budget:

Budget Category	\$ Amount	Explanation
Personnel:	\$287,100	Mgmt. Coord. (classified) 0.1 FTE; Spec's & Tech's (classified) 2 FTE; Laborers (classified) & Seasonal Crews (unclassified) .4 FTE
Professional/Technical Contracts:	\$50,000	Professional/technical Contractors (state bid process) will be sought for delivering easement baseline property reports, adaptive management monitoring, private Prairie Stewardship Plans, prairie tax exemption certification and enrollment
Service Contracts:	\$142,500	CCM or state bid process for delivering including woody encroachment removal & exotics control, prescribed burning, and site development
Equipment/Tools/Supplies:	\$37,200	Fleet charges for trucks, cars, mowers, seeders, etc; supplies & printing, parts, tools, repair costs & supplies for restoration and enhancement, signs & posts, workshops & events supplies & printing, supplies & printing for landowner consults, stewardship plans & PTE supplies & printing
Easement Acquisition:	\$450,000	DNR-SNA
Professional Services for Acq:	\$25,300	
Printing:	\$1500	
Travel Expenses in MN:	\$6,400	mileage, lodging & meals as per state contracts
TOTAL ENRTF BUDGET:	\$1,000,000	

Explanation of Use of Classified Staff: Consistent with previously approved work plans for previous ENRTF appropriations for the SNA program, this funding will be used to pay project associated costs for classified & unclassified staff paid almost exclusively with special project funds. The Management Coordinator will be responsible for providing technical guidance statewide to assure adherence with program standards, and for developing and administering contracts statewide, following the state bid process and procedures (e.g. consolidated prescribed burn contracts, stewardship plan contracts, etc.). The Specialist and Technician level positions will work directly with landowners to provide prairie management consultation, and design, coordinate and oversee prairie restoration and enhancement projects. Laborer and seasonal positions will be used to implement management activities such as prescribed burning or invasive species treatments. These positions would not exist, but for special

project funding received through the ENRTF and other funds. Each year these positions are assigned work based on the particular combination of soft funding available to address priority SNA Program activities. No funding from this appropriation will be used to cover personnel costs for this work program's Project Manager or for the SNA Program Supervisor.

Explanation of Capital Expenditures Greater Than \$3,500: NA

Number of Full-time Equivalent (FTE) funded with this ENRTF appropriation: 2.5 FTE spread across 8 different positions

B. Other Funds:

Source of Funds	\$ Amount Proposed	\$ Amount Spent	Use of Other Funds
State			
General Fund and other funds as appropriate	\$72,200	\$	Shared Services (operations support governance) are services that DNR relies on in order to conduct business and support the work of the department. These services are more efficient when shared.
General Fund	\$61,200	\$	Division Support Costs that help maintain basic program operations
TOTAL OTHER FUNDS:	\$133,400	\$	

VII. PROJECT STRATEGY:

A. Project Partners: This proposal includes the SNA program's native prairie partnership project work with Habitat Conservation Partnership (instead of a funding proposal through HCP), The Nature Conservancy (native prairie acquisition, restoration, enhancement and associated monitoring), and the Minnesota River Green Corridors Initiative (landowner outreach for potential NPB easement acquisition on MCBS sites in the MN River Valley). These later two partners are submitting separate, but coordinated LCCMR projects. These efforts are complementary not redundant; all accomplishments on joint projects would be prorated.

B. Project Impact and Long-term Strategy: The Division's long-term goal is to permanently protect an additional 30-35,000 acres of quality native prairie either as NPB or SNA. Thus, the Division could utilize support from the Environment and Natural Resources Trust fund of \$1M to \$10M per biennium for native prairie protection and stewardship over the next 25 years. Historically the Scientific and Natural Area program's capacity to protect lands has paralleled the acquisition funding available (i.e. a significant acceleration of protection efforts requires an increase in acquisition capacity). DNR incurs a number of one-time costs upon acquisition of a conservation easement, including costs for preparation of a baseline report to document the condition of the property, as well as recurring costs for periodic monitoring of the easement. Costs may vary widely by easement and depend on factors such as size, location or specific easement terms. Fiscal requirements for long-term stewardship of DNR's conservation easements, including an estimate of periodic monitoring costs, was included in a report submitted February 2011 per the Trust Fund 2008 Work Program for DNR's Conservation Easement Stewardship and Enforcement Program Plan, ML 2008, Chap. 367, Sec. 2, Subd. 5(h).

C. Spending History:

Funding Source	M.L. 2005 or FY 2006-07	M.L. 2006 or FY 2007	M.L. 2007 or FY 2008	M.L. 2008 or FY 2009	M.L. 2009 or FY 2010	M.L. 2010 or FY 2011
ENRTF	\$50,000 (5a) \$100,000		\$50,000 (4b) \$220,000	\$37,500 (3c) \$815,000	\$37,500 4e	\$31,500 (4f) \$1,046,000

	(5d)		(4d)	(3m)		(4b)
OHF						\$650,000
G.O. bonding	\$300,000	\$1,000,000		\$2,000,000		
Landowner and conservation partner donations	\$18,400			\$38,000		

VIII. ACQUISITION/RESTORATION LIST: See attached Acquisition/Restoration List.

IX. MAP(S): See attached map.

X. RESEARCH ADDENDUM: NA

XI. REPORTING REQUIREMENTS:

Periodic work plan status update reports will be submitted not later than June 30th, and December 30th each year starting in 2012. A final report and associated products will be submitted between June 30 and August 1, 2014 as requested by the LCCMR.

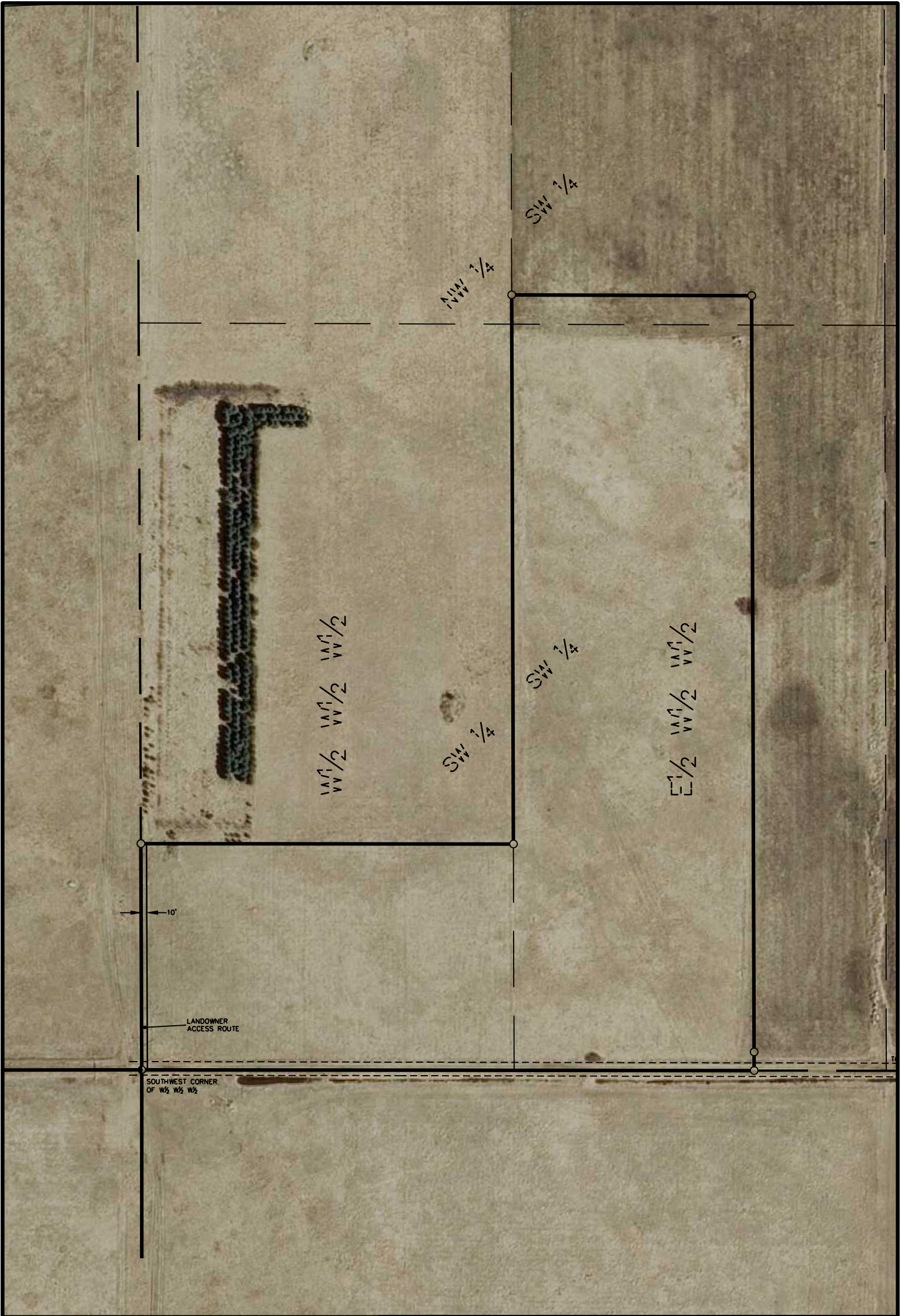
Attachment A: Budget Detail for M.L. 2011 (FY 2012-13) Environment and Natural Resources Trust Fund Projects														
Project Title: Native Prairie Stewardship and Native Prairie Bank Acquisition														
Legal Citation: M.L. 2011, First Special Session, Chp. 2, Art.3, Sec. 2, Subd. 04h														
Project Manager: Jason Garms														
M.L. 2011 (FY 2012-13) ENRTF Appropriation: \$1,000,000														
Project Length and Completion Date: 3 years through June 30, 2014														
Date of Update: August 15, 2013														
ENVIRONMENT AND NATURAL RESOURCES TRUST FUND BUDGET	Activity 1 Budget	Amended Activity 1 Budget	Amount Spent (Dec 2013)	Balance	Activity 2 Budget	Amended Activity 2 Budget	Amount Spent (Dec 2013)	Balance	Activity 3 Budget	Amended Activity 3 Budget	Amount Spent (Dec 2013)	Balance	TOTAL BUDGET	TOTAL BALANCE
BUDGET ITEM	Native Prairie Bank Acquisition				Native Prairie Restoration & Enhancement				Native Prairie Landowner Assistance					
Personnel (Wages and Benefits)	92,200	92,600	92,600	0	82,900	85,550	85,520	30	442,000	114,000	113,910	90	287,100	120
Management Coordinator (contract & proj. mgmt) (.10 FTE for 2 yrs): \$12,800														
Specialists & Technicians (2 FTE spread across 4 people; for 2 yrs): \$246,500														
Laborers & Seasonal Crews (.40 FTE spread across ~ 8 people; for 2 yrs): \$17,800														
Professional/Technical Contracts	0	0	0	0	0	0	0	0	50,000	48,000	47,818	182	50,000	182
Professional/technical Contractors (state bid process) will be sought for deliverable easement baseline property reports, adaptive management monitoring, private Prairie Stewardship Plans, prairie tax exemption certification and enrollment														
Service contracts					437,700	137,100	137,090	10	4,800	3,100	3,014	86	142,500	96
CCM or state bid process for delivering including woody encroachment removal & exotics control, prescribed burning, and site development														
Equipment/Tools/Supplies	1,200	1,200	1,098	102	27,000	27,200	27,110	90	9,000	8,700	8,665	35	37,200	227
Fleet charges for trucks, cars, mowers, seeders, etc; supplies & printing, parts, tools, repair costs & supplies for restoration and enhancement, signs & posts, workshops & events supplies & printing, supplies & printing for landowner consults, stewardship plans & PTE supplies & printing														
Easement Acquisition	450,000	430,100	430,031	69									450,000	69
Professional Services for Acquisition	25,300	46,250	46,237	13									25,300	13
Printing	300	300	278	22					1,200	1,200	1,140	60	1,500	82
Travel expenses in Minnesota	1,000	1,000	910	90	2,400	1,900	1,826	74	3,000	1,800	1,784	16	6,400	180
In-state travel (non-fleet mileage, lodging, & meals) essential to completing project activities														
COLUMN TOTAL	\$570,000	\$571,450	\$571,154	\$296	\$250,000	\$251,750	\$251,546	\$204	\$180,000	\$176,800	\$176,331	\$469	1,000,000	\$969

**Environment and Natural Resources Trust Fund
M.L. 2011 Acquisition/Restoration List**

Project Title: Native Prairie Stewardship and Native Prairie Bank Acquisition
Project Manager Name: Jason Garms
M.L. 2011 ENRTF Appropriation: \$1,000,000

#	Acquisition or Restoration Parcel Name	Geographical Coordinates (Provide Latitude/Longitude OR UTM-X/UTM-Y)		Ecosystem Description	Ecological Significance	Activity Description	# of Acres	# of Shoreline Miles (if applicable)	Proposed Fee Title or Easement Holder (if applicable)	Status
		Latitude or UTM-X	Longitude or UTM-Y							
1	Walls 7-1 NPB	218307	5071521	Dry prairie	Restoration will expand existing remnant prairie habitat for Prairie Moonwort & Missouri milk-vetch rare plant species; Regal Frittilarys and other butterfly, bird and animal species	Reconstruction of prairie adjacent to native prairie	1	NA		Plant material has been collected, site prep done
2	Petersburg 27 NPB	346567	4820187	Dry prairie	Restoration will expand existing prairie habitat for Regal Frittilarys and other butterfly, bird and animal species; restoration will buffer a Threatened Prairie Bush-Clover population and a calcarous fen	Reconstruction of prairie adjacent to native prairie	14	NA		Plant material collection and site prep has begun
3	Moulton 11 NPB	261722	4866949	Dry prairie	Restoration will expand existing native prairie habitat for habitat for the Threatened Dakota Skipper and Regal Frittilarys	Reconstruction of prairie adjacent to native prairie	17	NA		Completed
4	Walls 7-2 NPB	217331	5071209	Dry hill prairie	Restoration will enhance existing remnant prairie habitat for Red Three-awn, soft goldenrod rare plant species; Threatened Dakota skipper, poweshiek skipper, Arogos skipper and other butterfly, bird and animal species	Reconstruction of prairie adjacent to native prairie	2	NA		Plant material has been collected, site prep is done
5	Chanarambie Creek	258042	4866495	Native prairie	Dry gravel, mesic & wet prairies in biggest grassland complex with the highest quality prairie parcels in SW MN	Conservation easement acquisition	40	NA	DNR - SNA	Landowner has expressed interest in pursuing easement options
6	Correll Prairie	245403	5014965	Native prairie	Next to existing DNR and TNC protected native prairies, part of a large macro site with many native prairie tracts; expands habitat for many rare butterfly and bird species	Conservation easement acquisition	150	NA	DNR - SNA	NPB project maps and easement terms are being drafted and reviewed
7	Glacial Lakes & Moraine Prairie	307591	5043821	Native prairie	Dry sand-gravel prairies of the Alexandria Moraine, provides habitat for the Threatened Dakota Skipper as well as the Poweshiek Skipper and Regal Fritillary	Conservation easement acquisition	150	NA	DNR - SNA	The Appleton 36-1 project is complete; Lake Johanna 31-2 project has a option signed
8	Root River Prairies	599661	4851588	Native prairie	Southern Dry Bedrock Bluff (goat) prairies in a complex of bluff prairies and cold streams; habitat for timber rattlesnakes	Conservation easement acquisition	25	NA	DNR - SNA	Landowner has expressed interest in pursuing easement options
9	MN River Bluff Prairies	299289	4963870	Native prairie	MN River River native prairie including oak savanna, wet prairie, rock outcrops; expands habitat for many rare plants, butterflies and birds	Conservation easement acquisition	30	NA	DNR - SNA	Swedes Forest 22-1 project is complete, Eden 19-1 project has an option signed
10	Yellow Medicine Coteau Prairie	232251	4957954	Native prairie	Dry hill prairie, prairie meadow, wet prairie, rare species; part of a large, contiguous prairie macrosite, expands habitat for Western White Prairie Clover and Upland Sandpiper	Conservation easement acquisition	80	NA	DNR - SNA	Landowner has expressed interest in pursuing easement options
11	Lake Traverse Prairie			Native prairie	<u>Dry hill prairie, prairie meadow, rare species; part of a contiguous set of prairie sites along the eastern bluffs of Lake Traverse,</u>	<u>Conservation easement acquisition</u>	120	NA	DNR - SNA	<u>Windsor 12-1 project is having a option developed, an offer to the landowner will be made soon</u>

NOTES:



SCALE: 1"=200'

MINNESOTA DEPARTMENT OF NATURAL RESOURCES

Survey: DIVISION OF ECOLOGICAL AND WATER RESOURCES

Drawn: NOVEMBER 2012
J.R. HENDRICKS

EXHIBIT A

Checked:

Horz Datum:

Sec. 36

APPLETON 36-1
NATIVE PRAIRIE BANK
SWIFT COUNTY NEAR APPLETON

T. 120 N. R. 43 W.

Req. 1790

File

NPB00111

File Sheet



REDWOOD COUNTY R 34 W
 BROWN COUNTY R 33 W

Parcel No. 1
 Acquisition No. 149050
 Morgan Sportsman Club


SCALE: 1" = 400'



MINNESOTA DEPARTMENT OF NATURAL RESOURCES			
Survey: SEPTEMBER 2013 C.L. LAHMAN		ECOLOGICAL AND WATER RESOURCES	
Drawn: NOVEMBER 2013 R.A. LANGNER		EXHIBIT A	
Checked: NOVEMBER 2013 R.A. LANGNER			
Horz Datum: NAD83 (1996 ADJ)		EDEN NORTH 19-1 NATIVE PRAIRIE BANK	
Sec. 19		BROWN COUNTY NEAR FRANKLIN	
T. 112 N.	R. 33 W.	Req. 1875	File NPB01111.00.00.01
		File Sheet	



MINNESOTA DEPARTMENT OF NATURAL RESOURCES	
ECOLOGICAL AND WATER RESOURCES	
EXHIBIT A	
LAKE JOHANNA 31-2	
NATIVE PRAIRIE BANK	
POPE COUNTY NEAR SUNBERG	
Survey: JULY 2013, OCT 2013	File: NPB01112.00.00.01
C.L. LAHMAN	Req. 1867
Drawn: OCT 2013	File
R.A. LANGNER	
Checked: OCT 2013	
R.A. LANGNER	
Horz Datum: NAD83 (1996 ADJ)	
Sec. 31	
T. 123 N. R. 36 W.	


 SCALE: 1" = 300'





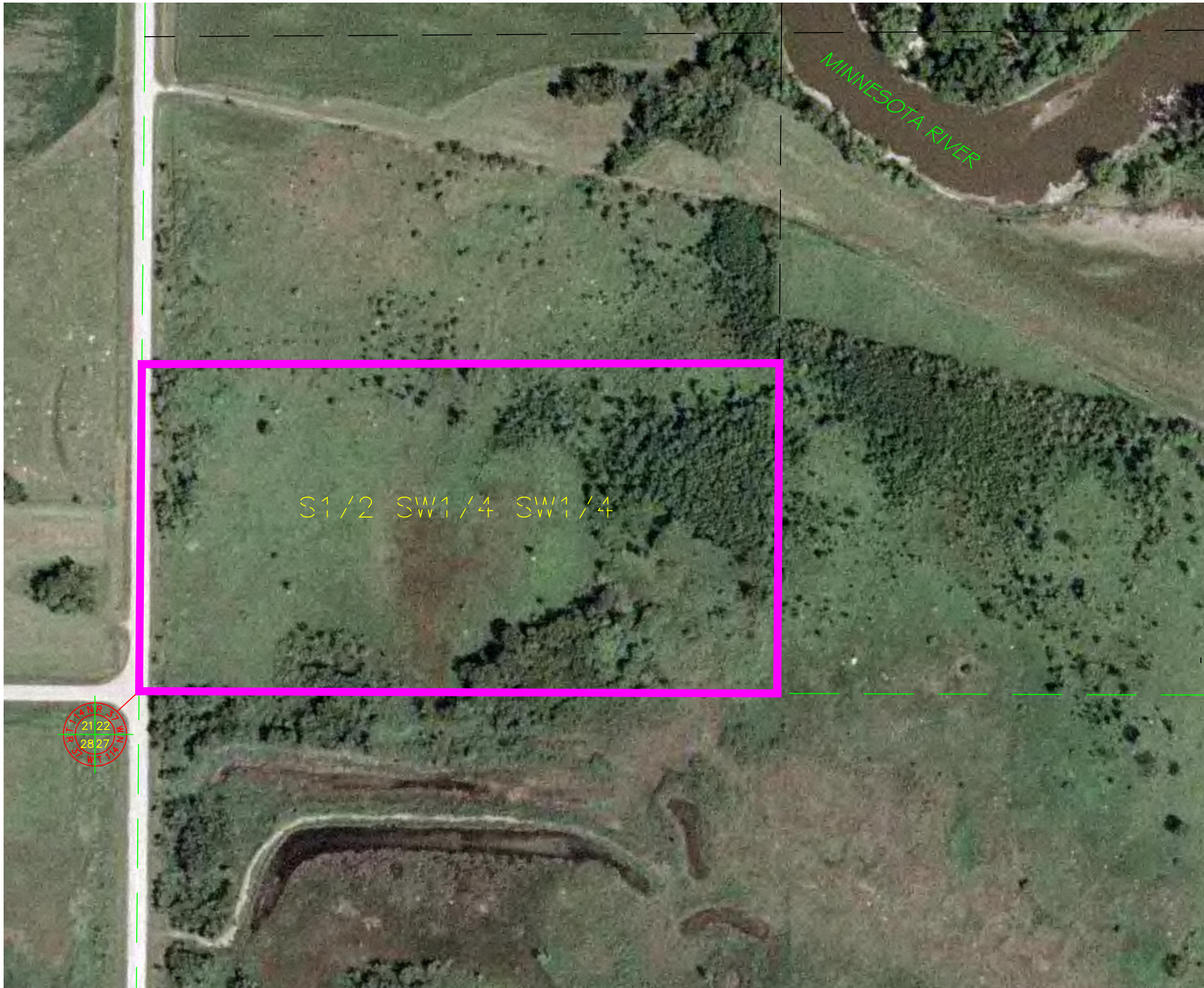
LAND DESCRIPTION-EASEMENT
 LOWER FLORA 3-1 NATIVE PRAIRIE BANK (NPB00108)
 PARCEL 1 -23.66 ACRES
 ACQUISITION NUMBER 146510
 CHARLES A. HAYES, etal

That part of the Southwest Quarter of the Southwest Quarter of Section 34, Township 114 North, Range 36 West and that part of the Northwest Quarter of the Northwest Quarter and the Northeast Quarter of the Northwest Quarter of Section 3, Township 113 North, Range 36 West, Renville County, Minnesota, described as follows:

Commencing at the southwest corner of said Southwest Quarter of the Southwest Quarter; thence on a bearing based on the Renville County Coordinate System (1996 Adjustment) of North 00 degrees 42 minutes 12 seconds West 208.30 feet along the west line of said Southwest Quarter of the Southwest Quarter to the center line of Renville County State Aid Highway Number 15 and the POINT OF BEGINNING; thence continuing North 00 degrees 42 minutes 12 seconds West 323.51 feet along the west line of said Southwest Quarter of the Southwest Quarter to a 3/4 inch by 24 inch rebar with a plastic cap stamped "MN DNR LS 17003" (DNR MON); thence North 88 degrees 01 minute 51 seconds East 210.55 feet to a DNR MON; thence South 48 degrees 59 minutes 49 seconds East 343.28 feet to a DNR MON; thence North 85 degrees 07 minutes 00 seconds East 298.94 feet to a DNR MON; thence South 45 degrees 48 minutes 57 seconds East 221.71 feet to a DNR MON; thence South 18 degrees 01 minute 25 seconds East 134.15 feet to a DNR MON; thence South 80 degrees 04 minutes 21 seconds East 105.64 feet to a DNR MON; thence North 86 degrees 14 minutes 23 seconds East 146.85 feet to a DNR MON; thence South 18 degrees 43 minutes 30 seconds East 278.13 feet to a DNR MON; thence South 36 degrees 17 minutes 49 seconds East 504.15 feet to a DNR MON; thence South 70 degrees 12 minutes 26 seconds East 330.31 feet to a DNR MON; thence South 09 degrees 31 minutes 04 seconds East 402.53 feet to the center line of Renville County State Aid Highway Number 15; thence North 87 degrees 25 minutes 21 seconds West along said center line 31.50 feet; thence westerly along said center line on a tangential curve concave to the north, having a radius of 840.98 feet, central angle 19 degrees 14 minutes 39 seconds, a distance of 282.46 feet; thence North 68 degrees 10 minutes 42 seconds West along said center line tangent to said curve 82.04 feet; thence northwesterly along said center line on a tangential curve concave to the northeast, having a radius of 628.67 feet, central angle 25 degrees 35 minutes 00 seconds, a distance of 280.71 feet; thence North 42 degrees 35 minutes 42 seconds West along said center line tangent to said curve 171.47 feet; thence northwesterly along said center line on a tangential curve concave to the southwest, having a radius of 1251.73 feet, central angle 10 degrees 13 minutes 30 seconds, a distance of 223.39 feet; thence North 52 degrees 49 minutes 12 seconds West along said center line tangent to said curve 1218.87 feet; thence northwesterly along said center line on a tangential curve concave to the southwest, having a radius of 1007.90 feet, central angle 07 degrees 52 minutes 39 seconds, a distance of 138.58 feet, chord bears North 56 degrees 45 minutes 32 seconds West to the point of beginning.




MINNESOTA DEPARTMENT OF NATURAL RESOURCES			
Survey:		DIVISION OF ECOLOGICAL AND WATER RESOURCES	
Drawn: MAY 2013 W.A. LUKACHEK		EXHIBIT A	
Checked:		LOWER FLORA 3-1 NATIVE PRAIRIE BANK	
Horz Datum:		RENVILLE COUNTY NEAR DELHI	
Sec. 3, 34		Req. 1818	File NPB00108
T.113,114	R. 36 W.		File Sheet



Swedes Forest 22-1
NPB00110
Acquisition No. 147860
Parcel No. 1 (±19.63 acres)
Tim M. Werner, et al.
Redwood County

The South Half of the Southwest Quarter of
the Southwest Quarter, Section 22, Township
114 North, Range 37 West, Redwood County,
Minnesota.

 ACQ. NO. 147860



NOTE: THIS DRAWING IS NOT A SURVEY. IT IS MERELY A COMPILATION OF RECORDS FROM VARIOUS SOURCES AND SHOULD BE USED FOR REFERENCES PURPOSES ONLY. THE RELATIONSHIP BETWEEN CERTAIN PHYSICAL FEATURES SHOWN MAY NOT BE IN THEIR TRUE RELATIONSHIP TO THE LINES SHOWN HEREON.

PREPARED BY: R. LANGNER 3/30/2012