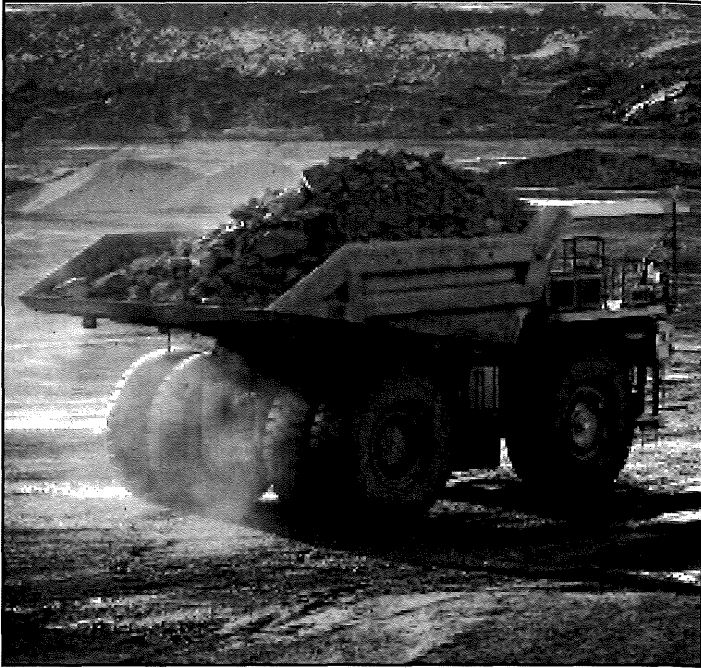


The Annual Report of the Inspector of Mines



2015

Steve Manninen
Mine Inspector
St. Louis County
307 South First Street
Virginia, MN 55792
218-742-9840

Joseph Austin
Safety & Risk Mgmt. Director
St. Louis County
2503 Rice Lake Road
Duluth, MN 55811
218-726-2139

The
ANNUAL REPORT
of the
INSPECTOR OF MINES
St. Louis County, Minnesota

2015

INSPECTOR OF MINES

Steve Manninen

4502 Cedar Island Drive

Eveleth, MN 55734

HOME PHONE: 218-744-2817

OFFICE PHONE: 218-742-9840

CELL PHONE: 218-742-2919

E-MAIL: manninens@stlouiscountymn.gov

FAX: 218-471-7270

SAFETY & RISK MANAGEMENT DIRECTOR

Joseph J. Austin

5888 Sunny Lane

Caribou Lake, MN 55811

OFFICE PHONE: 218-726-2139

CELL PHONE: 218-348-0355

E-MAIL: austinj@stlouiscountymn.gov

FAX: 218-722-8860

ASSISTANT MINE INSPECTOR

Paul Wier

2311 Station 44 Road

Eveleth, MN 55734

HOME PHONE: 218-744-2806

OFFICE PHONE: 218-742-9843

ASSISTANT MINE INSPECTOR

Todd Toman

1015 16th St. N.

Virginia, MN 55792

OFFICE PHONE: 218-742-9841

CELL PHONE: 218-929-3449

OFFICE AT
NORTHLAND OFFICE BUILDING
307 South First Street, Virginia, Minnesota 55792
PHONE: 218-742-9840

THE ST. LOUIS COUNTY BOARD OF COMMISSIONERS

District 1 Frank Jewel, Duluth, Minnesota
District 2 Patrick Boyle, Duluth, Minnesota
District 3 Chris Dahlberg, Duluth, Minnesota
District 4 Tom Rukavina, Ely, Minnesota
District 5 Pete Stauber, Hermantown, Minnesota
District 6 Keith Nelson, Virginia, Minnesota
District 7 Steve Raukar, Kelly Lake, Minnesota

THE ITASCA COUNTY BOARD OF COMMISSIONERS

District 1 Davin Tinquist
District 2 Terry Snyder
District 3 Leo Trunt
District 4 Rusty Eichorn
District 5 Mark Mandich

Jeff Walker Itasca County Auditor
Vic Williams Itasca County Sheriff, Itasca County Mine Inspector

February 12, 2016

THE HONORABLE BOARDS OF COMMISSIONERS

**ST. LOUIS COUNTY
COURT HOUSE
DULUTH, MN 55802-1202**

**ITASCA COUNTY
COURT HOUSE
GRAND RAPIDS, MN 55744**

Dear Chairs Raukar, Eichorn and Commissioners:

The Annual Report of the Inspector of Mines for 2015 is herewith submitted.

Mining activity for 2015 showed a reduced production schedule for both St. Louis and Itasca counties. A total of 34,683,076 tons of natural ore and taconite were shipped from area operations compared to 41,301,098 in 2014. Mining related employment also took a significant down turn and was reported at 4,047, which was a reduction of 340 individuals. This number is not illustrative of the actual situation concerning employment in the area, since it represents the number of employees working while area mining operations were in production and is not corrected for the number employed after operations idled and many miners were sent home. Total work hours reported for area mining operations was 7,882,987 for the year.

Several facilities experienced layoffs in 2015. These include KeeTac, United Taconite and Cliff's Northshore. Mining Resources, Mesabi Nugget and Magnetation Plant 1 were all idled during 2015 and remain in that status to date.

Some progress was made by area operations toward the objective of growth during the coming years. These include Essar Steel's continued construction on their facility near Nashwauk and Polymet (copper/nickel/precious metal mining), who completed the Environmental Impact Statement (EIS) for the Northmet project, released it for public comment and submitted those comments to the DNR for review. Twin Metals continues to move forward toward their objective of semi-precious metal mining close to Ely.

MnDOT broke ground and initiated construction activities associated with the Highway 53 reroute. This project, which is scheduled for completion in 2017, will include a new bridge across the Rouchleau Pit in Virginia.

(Continued on page 3)

During 2015, area mining operations reported a total of 19 lost time or serious accidents which is a significant reduction compared to 2014. Zero fatalities were reported in 2015. The continued commitment to the safety of all those who work in the mining industry is our shared goal.

St. Louis County Mine Inspectors successfully completed all required inspections of area operations, which are mandated by Minnesota State Law Chapter 180, Section 180.03 during 2015.

Acknowledgement and appreciation is extended to both Labor and Management for their continued interest, efforts and cooperation in the field of safety and health throughout the mines and plants in St. Louis and Itasca counties.

Respectfully submitted,



Steven K. Manninen
Inspector of Mines
St. Louis County



Joseph J. Austin MS, MIS, CHMM
Director, Safety and Risk Management
St. Louis County

Excerpts from the Law On

INSPECTOR OF MINES

CHAPTER 180

MINNESOTA STATUTES

SECTION 180.07

INSPECTION REQUESTED, EXAMINATION

When 20 or more persons working in any mine or place where mining is done, or the owner, operator, or agent of any mine, or the certified collective bargaining agent for the employees of said mine, shall notify the inspector of mines in writing that services are needed the inspector shall immediately make an inspection thereof and examine as to the necessary precautions and general safety of the mines and see that all the provisions of this chapter are observed and strictly carried out.

SUMMARY OF STATISTICS

2015

Number of Mining Companies	10
Number of Mines in Operation	8
Number of Plants in Operation	8
Number of Wash Plants	0
Number of Mines Inactive	285
Number of Abandoned Mine Shafts Inspected	66
Total Number of Mines and Plants	294
Total Taconite Products Shipped	32,136,218
Total Ore Shipped	2,546,858
Taconite Mined	107,177,881
Stripping and Waste Removal, Tons	116,271,577
Total Material Moved, Tons Estimate	223,449,458
Total People Employed	4,047
Number of Fatal Accidents, Open Pit	0
Number of Fatal Accidents, Plant	0
Total Number of Fatal Accidents	0
Fatalities per 1,000 People Employed	0
Number of Lost-time and Time Charged Accidents	19
Total Number of Man-hours Worked	7,882,987
Number of Investigations and Inspections	414

2015 WAGE RATES INCENTIVE INCLUDED

Labor Grade	Wage Rate
1	\$24.08
2	\$26.36
3	\$28.99
4	\$30.51
5	\$32.40

Due to Contractual changes the wage structure from mine to mine has changed significantly in recent years resulting in differing methods of payment. This results in different pay scales and different average daily wages from mine to mine. This is an example of what the rates are for the mines in St. Louis and Itasca counties.

YEAR	MINES	TONS SHIPPED	EMPLOYED	INJURED	FATALS	FAT/1000	WAGES
1905-10	(Average per year)		13,320		73	5.44	2.110
1910-11			19,918		78	3.91	2.640
1911-12			15,286		51	3.31	2.575
1912-13			16,048		44	2.74	2.705
1913-14			16,000		43	2.59	2.310
1914-15			11,430		24	2.10	2.421
1915-16			14,639		34	2.32	2.923
1916-17			14,779		22	1.51	3.391
1917-18	(Sliver Cave Disaster)		15,307		60	3.92	4.347
1918-19			14,212		33	2.32	5.645
1919-20	114	25,349,924	14,121		36	2.55	6.010
1920-21	102	27,165,386	12,043		26	2.16	6.037
1921-22	84	13,398,525	9,688		24	3.48	4.062
1923	90	33,147,517	11,896		27	2.27	5.076
1924	75	22,808,875	11,538		21	1.82	5.144
1925	76	29,077,679	10,180		18	1.77	5.126
1926	66	32,583,943	9,225		15	1.63	5.283
1927	70	28,052,363	9,038		22	2.43	5.305
1928	59	29,704,774	8,022		9	1.12	5.230
1929	57	35,680,720	8,008		17	2.12	5.340
1930	50	25,196,155	7,752		13	1.68	5.280
1931	32	12,270,886	4,824		4	0.83	5.260
1932	30	1,773,750	2,243		2	0.89	4.308
1933	35	10,809,167	2,843		1	0.35	4.433
1934	42	11,781,226	4,272		2	0.47	4.830
1935	40	13,703,715	4,079		6	1.47	5.060
1936	42	23,322,975	4,694		6	1.28	4.800
1937	52	36,536,326	6,356		5	0.79	6.200
1938	38	10,976,760	3,773		4	1.06	5.816
1939	43	24,156,258	4,589		3	0.65	6.080
1940	47	36,493,781	5,547		1	0.18	6.400
1941	63	45,874,218	7,097	60	5	0.70	6.820
1942	60	53,923,635	8,101	107	14	1.70	7.030
1943	62	51,753,320	9,597	156	7	0.73	7.440
1944	66	50,532,679	9,390	247	6	0.64	7.750
1945	56	47,544,509	8,495	175	12	1.41	7.720
1946	60	38,380,361	7,100	167	6	0.84	7.720
1947	79	47,293,918	8,715	153	9	1.03	8.720
1948	80	52,020,563	10,286	178	5	0.49	9.480
1949	94	42,406,528	9,680	187	7	0.72	9.480
1950	109	48,671,966	10,257	159	4	0.38	10.480
1951	116	60,249,538	11,884	188	8	0.66	10.480
1952	122	48,192,132	10,838	160	2	0.18	11.480
1953	122	60,776,174	12,079	215	4	0.33	12.160
1954	121	49,845,118	9,925	157	4	0.40	12.560
1955	127	36,137,304	10,381	151	2	0.19	14.850
1956	127	44,493,944	11,017	134	6	0.54	17.560

YEAR	MINES	TONS SHIPPED	EMPLOYED	INJURED	FATALS	FAT/1000	WAGES
1957	124	50,093,275	12,804	144	6	0.47	17.560
1958	90	30,495,093	10,250	83	0	0.00	18.400
1959	89	16,055,353	9,256	93	4	0.43	22.480
1960	95	39,526,879	11,797	132	2	0.16	22.430
1961	85	33,169,291	9,200	51	4	0.43	22.430
1962	46	23,269,349	8,676	57	1	0.11	22.430
1963	61	35,255,178	7,671	30	2	0.26	22.430
1964	42	39,115,088	8,102	26	1	0.12	22.430
1965	54	40,891,345	8,305	53	0	0.00	22.430
1966	49	44,412,473	9,445	56	4	0.43	22.430
1967	51	41,216,870	8,825	52	4	0.44	23.760
1968	53	43,078,879	9,125	55	2	0.22	25.640
1969	51	34,628,234	9,394	58	0	0.00	27.430
1970	49	33,648,268	9,631	71	5	0.52	28.520
1971	50	32,687,511	9,441	58	0	0.00	32.480
1972	46	35,100,156	9,431	63	0	0.00	34.096
1973	47	46,076,814	10,131	58	4	0.40	35.352
1974	49	51,745,763	10,667	60	1	0.09	44.360
1975	51	45,394,814	10,864	71	0	0.00	45.842
1976	52	41,425,833	11,514	77	1	0.09	47.368
1977	24	26,556,566	10,840	82	2	0.19	56.682
1978	26	50,806,547	13,056	138	1	0.08	64.344
1979	26	54,530,338	13,267	164	0	0.00	70.832
1980	18	42,076,497	11,441	107	1	0.09	80.112
1981	12	47,300,056	11,630	96	0	0.00	89.472
1982	11	22,335,570	7,626	44	0	0.00	94.192
1983	9	26,843,983	5,935	50	2	0.34	84.19
1984	9	30,463,941	6,305	55	0	0.00	87.39
1985	9	31,948,722	5,539	29	0	0.00	90.60
1986	9	26,608,769	5,250	33	0	0.00	94.19
1987	9	30,063,909	4,857	26	1	0.21	94.19
1988	9	37,250,243	4,546	41	1	0.18	94.19
1989	9	38,421,803	5,664	55	2	0.35	94.19
1990	9	41,441,888	6,379	40	1	0.16	94.19
1991	10	38,420,014	6,468	49	0	0.00	94.19
1992	10	37,684,439	6,325	110	0	0.00	106.94
1993	9	39,338,920	5,953	133	0	0.00	106.94
1994	9	43,976,323	6,051	97	1	0.17	93.936
1995	9	47,030,820	6,005	87	0	0.00	97.936
1996	8	46,144,621	6,032	96	0	0.00	101.936
1997	8	46,978,014	6,129	84	0	0.00	103.616
1998	8	46,862,734	5,962	114	1	0.17	105.936
1999	9	43,136,042	5,633	99	0	0.00	105.936
2000	9	44,806,128	5,611	77	1	0.18	109.936
2001	8	34,144,559	4,212	60	0	0.00	113.936
2002	8	39,087,907	4,036	60	0	0.00	113.936

YEAR	MINES	TONS SHIPPED	EMPLOYED	INJURED	FATALS	FAT/1000	WAGES
2003	8	35,282,267	4,177	35	0	0.00	121.936
2004	8	42,059,597	3,444	24	0	0.00	145.384
2005	8	40,464,089	3,568	29	0	0.00	178.40
2006	7	39,617,873	3,714	14	1	0.27	178.40
2007	7	38,041,616	3,724	13	2	0.54	187.848
2008	7	40,599,311	3,732	26	0	0.00	182.40
2009	7	18,025,710	2,687	39	0	0.00	201.44
2010	7	37,996,765	3,761	27	0	0.00	238.44
2011	7	40,395,202	4,215	24	0	0.00	188.40
2012	9	41,099,022	4,441	17	0	0.00	221.85
2013	9	40,221,204	4,371	29	0	0.00	226.24
2014	9	41,301,098	4,387	29	0	0.00	226.24
2015	10	34,683,076	4,047	19	0	0.00	231.92

**REPORT OF THE COUNTY INSPECTOR OF MINES — PER MS 180.11
OPERATIONAL SUMMARY
YEAR ENDING DECEMBER 31, 2015**

MINES	TONS OF NATURAL ORE SHIPPED	TONS OF TACONITE PRODUCTS SHIPPED	TOTAL TACONITE MINED	TOTAL IRON ORE TAILINGS MINED	TONS STRIPPING WASTE (Rock & Overburden)	AVERAGE NUMBER PEOPLE EMPLOYED PLANTS / PITS	MAN HOURS	MONTHS WORKED
UNITED TACONITE LLC		3,078,026	8,297,130		10,736,003	355	697,677	8
KEEWATIN TACONITE CO. DIVISION OF USS St. Louis M.O.O. Itasca		1,784,676	446,522 5,452,557		5,560,449 242,290	412	470,848	5
HIBBING TACONITE CO.		8,126,068	29,374,850		32,533,177	731	1,526,207	12
ARCELORMITTAL MINORCA MINE, INC.	Pellets- Pellet Chips-	2,647,142 37,440	8,755,477		5,865,585	355	766,413	12

**REPORT OF THE COUNTY INSPECTOR OF MINES — PER MS 180.11
OPERATIONAL SUMMARY
YEAR ENDING DECEMBER 31, 2015**

MINES	TONS OF NATURAL ORE SHIPPED	TONS OF TACONITE PRODUCTS SHIPPED	TOTAL TACONITE MINED	TOTAL IRON ORE TAILINGS MINED	TONS STRIPPING WASTE (Rock & Overburden)	AVERAGE NUMBER PEOPLE EMPLOYED PLANTS / PITS	MAN HOURS	MONTHS WORKED
NORTH SHORE MINING CO. BABBITT AND SILVER BAY		4,111,025	12,199,690		8,172,956	548	1,065,095	11
USS CORPORATION M.O.O. MINNTAC		12,351,841	42,651,655		53,161,117	1,338	2,761,245	12
TOTALS ST. LOUIS COUNTY		32,136,218	101,725,324		116,029,287			
TOTALS ITASCA COUNTY			5,452,557		242,290			
TOTALS		32,136,218	107,177,881		116,271,577	3,739	7,287,485	

**REPORT OF THE COUNTY INSPECTOR OF MINES — PER MS 180.11
OPERATIONAL SUMMARY
YEAR ENDING DECEMBER 31, 2015**

MINES	TONS OF NATURAL ORE SHIPPED	TONS OF TACONITE PRODUCTS SHIPPED	TOTAL TACONITE MINED	TOTAL IRON ORE TAILINGS MINED	TONS STRIPPING WASTE (Rock & Overburden)	AVERAGE NUMBER PEOPLE EMPLOYED PLANTS / PITS	MAN HOURS	MONTHS WORKED
MAGNETATION LLC								
PLANT 1 - KEEWATIN	269,080			54,639		20	12,069	3
PLANT 2 - BOVEY	889,508			873,359		117	244,905	12
PLANT 4 - COLERAINE	1,388,270			1,455,513		136	273,462	12
MINING RESOURCES, INC.	18,609*			73,577		35	65,066	1
TOTALS ST. LOUIS COUNTY	18,609*			73,577		35	65,606	
TOTALS ITASCA COUNTY	2,546,858			2,383,511		273	530,436	
TOTALS	2,546,858			2,457,088		308	595,502	
Total-stored, not shipped	18,609*							
GRAND TOTALS	2,546,858	32,136,218	107,177,881	2,457,088	116,271,577	4,047	7,882,987	
*Stored, not shipped								

**MINING COMPANIES, MINE OPERATIONS,
SAFETY PERSONNEL AND OTHER AGENCIES**

UNITED STATES STEEL CORPORATION

Minnesota Ore Operations
KEEWATIN TACONITE
P.O. Box 217
Keewatin, Minnesota 55753
Phone: 218-778-8798

Lawrence Sutherland General Manager
Travis Kolari Plant Manager
Cory Hertling Area Manager - Electrical & Mine Maintenance
Sarrah Mattila Area Manager, Mine Operations & Crusher
Kraig Raiber Area Manager - Plant Operations & Maintenance
James Van Buren Interim Manager - Employee Relations
Angelo Sgro Manager - Safety & Industrial Hygiene
Kent Swanson Industrial Hygiene Specialist

* * * * *

UNITED TACONITE LLC

P.O. Box 180
Eveleth, MN 55734
Phone: 218-744-7800

Santi Romani General Manager
Ryan Korpela Area Manager - Plant
Nick Beukema Area Manager - Mine
Jacelyn Govender Area Manager - Maintenance
Todd Nelson Area Manager - Finance
John Baxter Area Manager - Human Resources
Bryan Baird Area Manager - Safety
Candice Maxwell Section Manager - Environmental
Jon Lamusga Section Manager - Materials

HIBBING TACONITE COMPANY

P.O. Box 589
Hibbing, Minnesota 55746
Phone: 218-262-5950

Jack T. Croswell General Manager
Joe Marturano Manager - Asset Management
Todd Nelson Manager - Financial Control
Jared Lubben Manager - Mining
Rally Hess Manager - Plants
Michael P. Kern Manager - Human Resources
Andrea J. Bakk Manager - Safety & Loss Control
Julie C. Lucas Manager - Environmental
Tim Angelo Manager - Procurement

* * * * *

MINING RESOURCES, LLC

P.O. Box 151
Chisholm, Minnesota 55719
Phone: 218-254-0163
Fax: 218-254-9987

David Bednarz Vice President
Mark Lorenz Plant Manager

ARCELORMITTAL MINORCA MINE, INC.
Company Officers and Staff

Minnesota Address

5950 Old U.S. Highway 53 North
P.O. Box 1
Virginia, MN 55792

Main Telephone

(218) 749-5910
(218) 749-3420 Fax

E-mail: jonathan.holmes@arcelormittal.com

Officers

John Brett President and CEO
Andy Harshaw Executive Vice President, Operations
Daniel Mull Executive Vice President, Sales & Marketing
Paul Liebenson General Counsel & Assistant Secretary
Marc Jeske Secretary
Neil Kohlberg Vice President, Finance & Procurement
R. Brian Knaley Controller
Robert Parker Vice President, Human Resources, FCA
Vaidya Sethuraman Vice President, Finance/CFO, FCA
Pat Parker Vice President, Labor Relations
Wendell Carter Vice President, General Manager
Laurent Koenig Treasurer
Ken E. Walker Assistant Treasurer
Christine F. Fleps Assistant Treasurer
Joseph P. Wallace Assistant Treasurer

Managers

Jonathan H. Holmes Vice President/Operations Manager -
ArcelorMittal Minorca Mine
William Bond Manager - Operating Technology
Scott Harrison Manager - Pit
Robb Peterson Manager - Plant
Gary Kleffman Manager - Human Resources/Labor Relations
Karla Heritage-McKenzie Manager - Safety
Thomas Cossalter Manager - Purchasing
Ross Phenning Manager - Electrical/Systems

* * * * *

NORTHSHORE MINING COMPANY

10 Outer Drive
Silver Bay, Minnesota 55614
Phone: 218-226-4125
Fax: 218-226-6037

NORTHSHORE MINING BABBITT MINE

BABBITT, MINNESOTA 55706

Phone: 218-827-2101

Ed Latendresse	General Manager
Chuck Rennwald	Plant Manager
Connor McCue	Mine Manager
Bryon Rusco	Railroad Manager
Ron Holm	Safety Manager
Andrea Hayden	Environmental Manager
Bill Bundschuh	Silver Bay Power Manager
Ken Stocco	Reliability Manager
Carl Kerschen	Human Resource Manager
Chris Tokvam	Purchasing Manager
Scott Deming	Finance Manager
Scott Blood	Plant Safety Representative
Maria Strand	Plant Safety Associate
Rod Lampton	Mine Safety Representative

UNITED STATES STEEL CORPORATION

Minnesota Ore Operations

Minntac

P.O. Box 417

Mt. Iron, MN 55768

Phone: 218-749-7299

Lawrence Sutherland	General Manager
Mike Patton	Plant Manager
Scott Vagle	Division Manager - Mining, Maintenance
Tim Kalisch	Division Manager - Plant
Susan Wiire	Coordinator - Human Resources
Angelo Sgro	Manager - Safety & Industrial Hygiene
Kent Swanson	Industrial Hygiene Specialist
Robert Youngman	Safety & IH Specialist
Mike Levar	Safety & IH Specialist
Jerry Orrell	Safety & IH Specialist

MAGNETATION LLC
102 NE 3rd Street
Suite 120
Grand Rapids, MN 55744
Phone: 218-999-5165
Fax: 218-999-5827

Larry Lehtinen Chairman & CEO
Matt Lehtinen President & COO
Joe Broking CFO
Steve Ellison Safety Manager

* * * * *

POLYMET MINING
P.O. Box 475
6500 County Road 666
Hoyt Lakes, MN 55750
Phone: 218-471-2150

Jon Cherry President and Chief Executive Officer
LaTisha Gietzen Director of Public and Community Relations
James Tieberg Division Manager - Mining
Kevin Pylka Manager of Environmental Permitting & Compliance

* * * * *

ALWORTH LAND & IMPROVEMENT COMPANY

306 W. Superior Street, Suite 1605
Duluth, Minnesota 55802-1816
Phone: 218-722-0816

Nicholas B. Alworth Chairman
John Signorelli Vice Chairman
Steven G. LaFlamme President
Terry F. Netzel Assistant Vice President
George W. Kratzner Treasurer
Patricia S. McGaffey Secretary

CONGDON MINERAL MANAGEMENT INC.

3920 13 Ave. E., Suite 7
Hibbing, Minnesota 55746-3675
Phone: 218-262-0799
Fax: 206-203-0098

David C. Adams President
David G. Meineke Vice President
Ann L. Albrecht Assistant Secretary and Treasurer

EVELETH FEE OFFICE, INC.

301 McKinley Avenue
P.O. Box 521
Eveleth, Minnesota 55734-0521
Phone: 218-744-4646
Fax: 218-744-2149

Daniel L. England President
Thomas J. Malkovich Vice President/Manager of Mines
Lisa A. Williams Administrative Assistant

GREAT NORTHERN IRON ORE PROPERTIES

Office of the Trustees
W-1290 First National Bank Building
332 Minnesota Street
St. Paul, Minnesota 55101-1361
Phone: (651) 224-2385
Fax: (651) 224-2387
www.gniop.com

Engineering & Inspection Office
801 East Howard Street
P.O. Box 429
Hibbing, Minnesota 55746-0429
Phone: 218-262-3886
Fax: 218-262-4295

J.S. Micallef President and CEO
J.A. Swearingen Trustee
R.W. Staehle Trustee
R.A. Stein Trustee
T.A. Janochoski Vice President and CFO
R.P. Johnson Manager of Mines
K.A. Baehr Manager of Accounting

* * * * *

HARTLEY OFFICE
740 East Superior Street
Duluth, Minnesota 55802
Phone: 218-723-8060

Mark Myles Trust Manager

* * * * *

IRON MINING ASSOCIATION OF MINNESOTA

324 West Superior Street
Suite 502
Duluth, Minnesota 55802
Phone: 218-722-7724
Fax: 218-720-6707
www.taconite.org

2015 IMA Staff

Craig Pagel President and Treasurer
Katy Kohlhase Media Manager

2015 IMA Board of Directors

William Bond ArcelorMittal
Jonathan Holmes ArcelorMittal
Marci Knight American Bank of the North
Patrick Bloom Cliffs Natural Resources
Sandy Karnowski Cliffs Natural Resources
Jack Croswell Cliffs Natural Resources - Hibbing Taconite
Todd Nelson Cliffs Natural Resources - Hibbing Taconite
Ed LaTendresse Cliffs Natural Resources -
Northshore Mining Co. (Board Chair)
Santi Romani Cliffs Natural Resources - United Taconite
Jim Perry Furin & Shea
Jim Hoolihan Industrial Lubricant
Randy Abernethy Industrial Weldors and Machinists
Jason Janisch Jasper Engineering
Nels Ojard Krech Ojard & Associates
Larry Lehtinen Magnetation, Inc.
Matt Lehtinen Magnetation, Inc.
Jeff Washburn ME Elecmetal
Margaret Hodnik Minnesota Power
Steve Harms Pit & Quarry Supply
Kevin Petz Steel Dynamics - Mesabi Nugget Delaware LLC
David Bednarz Steel Dynamics - Mining Resources LLC
Mark Lorenz Steel Dynamics - Mining Resources LLC
Dwight Day TUFCO, Inc.
Christina Bartovich U.S. Steel Minnesota Ore Operations
Mike Patton U.S. Steel Minnesota Ore Operations
Larry Sutherland U.S. Steel Minnesota Ore Operations
Travis Kolari U.S. Steel - Keewatin Taconite
Bruce Mars WP & RS Mars Co.

* * * * *

ONONDAGA IRON COMPANY

740 East Superior Street
Duluth, MN 55802
Phone: 218-723-8060

Douglas H. Lewis Chief Financial Officer

* * * * *

MINING MINNESOTA

P.O. Box 16666
Duluth, Minnesota 55816
Phone: 218-393-2301
E-Mail: fongaro@miningminnesota.com

Frank Ongaro Executive Director

* * * * *

MERIDEN ENGINEERING, LLC

A Wholly-Owned Subsidiary of Superior Mineral Resources LLC
1910 East 8th Avenue
P.O. Box 650
Hibbing, Minnesota 55746
Phone: 218-262-6127

Greg D. Lindahl President

Jim A. Hecimovich Vice President

* * * * *

SUPERIOR MINERALS RESOURCES, LLC

1910 East 8th Avenue
P.O. Box 650
Hibbing, Minnesota 55746
Phone: 218-262-6127
www.superiormineral.com

Jim Hecimovich President and Chief Executive Officer

Greg Lindahl Vice President and Chief Operating Officer

* * * * *

MESABI MINERAL ASSOCIATION

By Oneida Realty Company
1605 Alworth Building
306 W. Superior Street
Duluth, Minnesota 55802
Phone: 218-722-0816

R.K. Prescott Chairman

* * * * *

GLOBAL MINERALS ENGINEERING, LLC

3920 13th Ave. E., Suite 7
Hibbing, Minnesota 55746-3672
Phone: 218-262-0799
Fax: 206-203-0098

David G. Meineke President & CEO
Dorothy M. Meineke Vice President & CFO
Michael G. Keppel Mining and Minerals Processing Engineer

* * * * *

MINNESOTA DEPARTMENT OF NATURAL RESOURCES

500 Lafayette Road
St. Paul, Minnesota 55155
(651) 259-5959
FAX (651) 296-5939

Tom Landwehr Commissioner
David Schad Deputy Commissioner
Barb Naramore Assistant Commissioner
Jess Richards Director, Division of Lands and Minerals (LAM)

Division of Lands and Minerals
1525 Third Avenue E.
Hibbing, Minnesota 55746
(218) 231-8443
FAX (218) 262-7328

Peter Clevensline Asst. Director, Division of Lands and Minerals

* * * * *

**STATE OF MINNESOTA
IRON RANGE RESOURCES & REHABILITATION BOARD
MINELAND RECLAMATION**

1003 Discovery Drive
Chisholm, Minnesota 55719
Phone: (218) 274-7000 Fax: (218) 274-7002

D. Jordan Mining and Reclamation Programs Supervisor
Joy Ruedebusch Office & Administration Specialist, Sr.
J. Plummer Laurentian Vision and Real Property Coordinator

* * * * *

IRON RANGE RESOURCES & REHABILITATION BOARD
4261 HIGHWAY 53 SOUTH
P.O. BOX 441
EVELETH, MN 55734
Phone: (218) 735-3000 or 800-765-5043

Mark Phillips Commissioner
Mary Finnegan Deputy Commissioner
Steve Peterson Executive Director of Development
Marianne Bouska Chief Operating Officer
Brian Hiti Senior Policy Advisor - New Mining

* * * * *

RGGS Lands & Minerals LTD., L.P.
P.O. Box 1266
Virginia, MN 57792
Phone: (218) 749-1291
Fax: (218) 749-1294

* * * * *

ST. LOUIS COUNTY
SAFETY AND RISK MANAGEMENT
2503 RICE LAKE ROAD
DULUTH, MINNESOTA 55811-4819
PHONE: 726-2139

Joseph J. Austin Director

ST. LOUIS COUNTY MINE INSPECTORS

Steve Manninen Inspector of Mines
Paul Wier Assistant Mine Inspector
Todd Toman Assistant Mine Inspector

MINE INSPECTOR OFFICE
NORTHLAND OFFICE BUILDING
307 South First Street
Virginia, Minnesota 55792
Phone: 218-742-9840

* * * * *

**UNITED STATES DEPARTMENT OF LABOR
MINE SAFETY AND HEALTH ADMINISTRATION**

515 W. First Street, Room 323

Duluth, MN 55802-1302

Phone: 218-720-5448

Fax: 218-720-5650

DISTRICT OFFICE

Christopher A. Hensler District Manager
Gerald D. Holeman Assistant District Manager
Scott K. Johnson Assistant District Manager
James M. Peck Staff Assistant
George F. Schorr Conference Litigation Representative
Daniel J. Goyen Conference Litigation Representative
Dan L. Venier Conference Litigation Representative
Kenneth L. Bickel Safety Specialist
Stephen D. Cotie Health Specialist
Carol A. Frink Supervisory Management/Program Analyst

DULUTH FIELD OFFICE

William H. Soderlind Supervisory Mine Safety & Health Inspector
Mindy A. Meierbachtol Mine Safety & Health Inspector
Terrance J. Norman Mine Safety & Health Inspector
Richard D. Galarno Mine Safety & Health Inspector
Corey C. Niemi Mine Safety & Health Inspector
Seth A. Sayles Mine Safety & Health Inspector

HIBBING FIELD OFFICE

522 East Howard Street, Suite 201A

Hibbing, MN 55746

Phone: 218-262-5205

Fax: 218-262-1296

David R. Wallin Supervisory Mine Safety & Health Inspector
Richard V. Boeckermann Mine Safety & Health Inspector
John C. Koivisto Mine Safety & Health Inspector
Wilbert W. Koskiniemi, Jr. Mine Safety & Health Inspector
Thaddeus J. Sichmeller Mine Safety & Health Inspector
Jeffrey J. Rausch Mine Safety & Health Inspector

MINNESOTA DEPARTMENT OF REVENUE
600 North Robert Street
St. Paul, Minnesota 55101
Phone: (651) 556-6003 Fax: (651) 297-1939

Myron Frans Commissioner
Gina Amacher Director, Special Taxes Division

Minerals Tax Office
612 Pierce St.
Eveleth, Minnesota 55734-1611
Phone: (218) 744-7424 Fax: (218) 744-7421

Robert Wagstrom Production Tax
Janet Baker Occupation Tax

*** * * * ***

INTERNATIONAL UNION OF OPERATING ENGINEERS

Local No. 49
8381 Enterprise Drive N
Virginia, MN 55792
Phone: 218-741-8190 - Virginia
2829 Anthony Lane South
Minneapolis, Minnesota 55418-3285
Phone: 612-788-9441 - Minneapolis

Glen D. Johnson . Business Manager, Financial Director, Minneapolis
Ryan Davies Area Business Representative, Virginia
Dan Snidarich Area Business Representative, Virginia

UNITED STEEL WORKERS OF AMERICA
DISTRICT 11

MINNEAPOLIS OFFICE
Phone: 612-623-8045

Emil Ramirez Director

EVELETH SUB-DISTRICT OFFICE

Phone: 218-744-2757
Fax: 218-744-7926

John Rebrovich Assistant Director
Cathy Drummond Staff Representative
Michael Woods Staff Representative

**UNITED STEEL WORKERS OF AMERICA
LOCAL UNITS**

**LOCAL #6860
UNITED TACONITE LLC
Phone: 218-744-4480**

Brian Zarn President
Joe Fredrickson Vice President
Amy Hutkowski Recording Secretary
Steve Lere Financial Secretary
Gary Butala Treasurer
Larry Roberts Safety Coordinator
Bryan Sandnas Plant Safety Chairman
Paul Horoshak Mine Safety Chairman

**LOCAL #2660
KEEWATIN TACONITE
Phone: 218-778-6909**

Cliff Tobey President
David Mlakar Safety Chair/Safety Representative
Joe Ferris Safety Representative
Kevin Noonan Area Chair, Concentrator
Jeff Stalboerger Area Chair, Shop
Kelly Peterson Area Chair, Pit
Lorne Middlestead Area Chair, Pond
Tom Damjanovich Area Chair, Crusher
Carl Jeranek Area Chair, Pellet Plant

**LOCAL #2705
HIBBING TACONITE COMPANY**

Phone: 218-254-2492
Fax: 218-254-7100
115 W. Lake Street, Chisholm, MN 55719

Frank Jenko President
Chris Johnson Vice President
Mike Mandich Financial Secretary
Mike Rootes Recording Secretary
Wade Bexell Treasurer
Bill Fredette Union Safety Representative
Bob Brown Chairman, Safety Committee

LOCAL #6115
ARCELORMITTAL MINORCA MINE INC.
Phone: 218-741-3310

Dave Bombich President
Tom French Safety Coordinator
Reed Milos Sub Chair, Safety
Jim Kottke Sub Chair, Safety
Kyle Lamppa Training Coordinator

LOCAL #1938
USS - MINNTAC MINE
Phone: 218-741-0887

Lowell Carlon President
John Arbogast Vice President
Dave Chesser Recording Secretary
Chad Daniels Financial Secretary
Paul Centa Treasurer
Mitch McDonald Safety Committee Chairman
Mark Hagsten Safety Committee Co-Chairman
Matt Robillard Safety Coordinator - Minntac/Keetac
Steve Bonach Full-Time Safety Representative, Mine/Shops
Mitch McDonald Full-Time Safety Representative, Concentrator/
Crushers
Paul Coombe Full-Time Safety Representative,
Agglomerators I, II, III

* * * * *

BUILDING AND CONSTRUCTION LABORERS
LOCAL 1097
712 4th St. North
Virginia, MN 55792
Phone: 218-741-3638

Rick J. Cannata President
Todd Payne Vice President
Timothy G. McGauley Business Manager/Financial Secretary
Jerry F. Strle "E" Board Member
Richard M. Walker "E" Board Member
Mark Towner "E" Board Member
Wayne Monson Recording Secretary
Michael G. Warner Sergeant at Arms
Shelly A. Witanen Office Manager

NON-FATAL LOST-TIME AND SERIOUS ACCIDENTS

MAGNETATION

PLANT 1:

No lost time accidents.

PLANT 2:

Millwright, Date of Accident – February 19, 2015. Employee was holding on to the drive end of a pump while another employee was turning the pump impeller into the shaft. The employee's fingers got pinched when the impeller seated down on the shaft. Days Lost – 1

Millwright, Date of Accident – October 8, 2015. Employee was threading a 2" diameter pipe. The rotating pipe became entangled with the employee's sweatshirt sleeve, throwing the employee to the ground. The employee landed on his left shoulder. Possible left shoulder separation/sprain (waiting on MRI). Days Lost – 11

PLANT 4:

Millwright, Date of Accident – August 11, 2015. Employee was removing a Vic from a 12" slurry feed line when hot steam/water sprayed out causing burns to the employee's left shoulder, left inner elbow, left hand, and left ear. Days Lost – 13

Plant Operator, Date of Accident – August 11, 2015. Employee was removing a Vic from a 12" slurry tank line. While removing the Vic the employee was burned by hot water/steam. The employee sustained burns to both forearms. Days Lost – 21

Millwright, Date of Accident – August 29, 2015. Employee was working in the primary building on primary screen #2 taking off spray bars. While stepping down off the ladder he twisted his knee and it was "a little sore." He was offered rest and an ice pack or medical care and he declined stating it was "no big deal." The employee notified management on 9/29/15 that he had a mildly torn meniscus and may require surgery. Days Lost – 12

Millwright, Date of Accident – October 6, 2015. Employee was ascending the west stair tower close to the control room level when his knee popped and gave out on the employee. He was carrying a small battery powered portaband. The employee caught himself and was able to get to the control room level where he was seated in a chair and our first aid protocol was initiated. Days lost to be determined.

NORTHSHORE MINING COMPANY

No lost time accidents.

USS CORPORATION, MINNESOTA ORE OPERATIONS

MINNTAC:

Utility Technician, Date of Accident – April 2, 2015. The employee was carrying a pail of pellets which were sampled from Line 5 in the Step I-II Agglomerator. The pail weighed approximately 32 pounds. While descending stairs, he felt a sharp pain in the lower abdomen. Days Lost – 1

Utility Technician, Date of Accident – September 15, 2015. The employee was in process of loading rod racks in the step 1 rod bay. He used the monorail crane to position the empty rod rack in the cradle of the rod table. After lowering the rack to the horizontal position, he removed the east ear off the rack studs. While lifting he felt a sharp pain in his groin. Days Lost – 3

KEETAC:

Maintenance Technician, Date of Accident – February 12, 2015. The employee was in the process of rotating a 320 lb. corner cutting edge for installation on the 4367 rubber bull. Employee was using a 2 foot lining bar in an upward curling motion to flip the cutting edge liner in preparation to rig. While pulling upward, the employee felt pain in his right bicep, diagnosed as a right arm strain. Days Lost – 17

Maintenance Technician, Date of Accident – March 4, 2015. The employee was walking to his personal vehicle parked on the south side of the Carpenters' shop, when he stepped on a patch of snow-covered ice and fell to the ground. His lower leg was laterally displaced as a result of the fall. Days Lost – 57

Maintenance Technician, Date of Accident – May 5, 2015. An electrician in the plant sustained first and second degree burn injuries to his arms, face and neck areas as a result of opening the main kiln drive disconnect. When the disconnect was opened, an arc flash occurred. Days Lost – 10

UNITED TACONITE:

Maintenance Technician, Date of Accident – May 13, 2015. The employee was assisting his partner with a bar and slipped and fell injuring his hip. Days Lost – 2

MTE, Date of Accident – November 11, 2015. The employee was installing mini transformer. The transformer support failed during install and tipped. The employee instinctively attempted to catch the falling transformer. The employee began feeling pain in his arm and knee and was sent to the medical provider. Days Lost – 32

HIBBING TACONITE:

Maintenance Mechanic, Date of Accident – May 12, 2015. The employee was exiting the truck box of small fleet pickup by sitting on the tailgate of the truck. Employee was holding on to the side of truck and the tailgate when he began to slide down and left heel landed on uneven ground and rolled. Distance from employee's feet to ground while sitting on the tailgate was approximately 8 inches. Incident resulted in a high ankle sprain. Day Lost – 7

Welder, Date of Accident – July 22, 2015. The employee and another welder were pushing a 4-wheel cart with material to fabricate tail basin weir boxes to the south west corner/work area of the weld shop. 14 sheets of 1/4" plate ranging from 6' x 4' to 6' x 5' (~3,800 lbs. total) had been placed on the cart. While the employee was moving the cart, it tipped forward causing the plates to slide off the front of the cart. This caused the back of the cart to go up in air in the opposite direction of the plates. The employee was struck and knocked over by the cart which landed on top of the employee's legs. Incident resulted in a fractured fibula of the right leg and right ankle sprain. Days Lost – 71

Blaster, Date of Accident – July 30, 2015. The employee was measuring drill holes on the 15-4Z-04 pattern. While backing away from a hole, the employee stepped onto a "football" size rock causing a fall backwards. The employee reached back with the right hand during the fall to catch himself, causing the hand to contact the ground first. Incident resulted in a fracture to the right wrist. Days Lost – 19

HIBBING TACONITE COMPANY (cont)

Service Truck Driver, Date of Accident – September 21, 2015. Employee was manually lifting and removing used shovel teeth off the bed of a boom truck. Employee was standing on the bed and bending over while picking up the used shovel teeth, which weighed approximately 40-60 lbs., and then throwing them to the ground. The employee had thrown ~10-15 teeth to the ground. After completing this task the employee noticed a bulge near the belly button area. Incident resulted in an umbilical hernia. Days Lost – 25

Grader Operator, Date of Accident – October 23, 2015. After fueling, the employee proceeded to check the engine oil level on their equipment. As employee was stepping up on the first foot step with right foot and holding onto the provided grab irons with their right arm, the operator's left foot slipped slightly, causing the employee to put most of their body weight onto the right arm. This caused severe pain in the employee's right bicep region of the upper arm down to the elbow. Incident resulted in a ruptured bicep tendon. Days Lost – 40

MINING RESOURCES:

No lost time accidents.

ARCELORMITTAL MINORCA MINE INC:

Material Handler, Date of Accident – September 23, 2015. Employee was boarding a D10T dozer at the tails dike to conduct the pre-shift inspection and check oil. As he climbed the dozer, he lost his footing and landed on the raised step tread on the push arm on his right side. He heard a snap and felt a sharp pain and was diagnosed with a broken rib. Days Lost – 3