



STATE OF MINNESOTA
Luther W. Youngdahl, *Governor*

Department of Conservation
Chester S. Wilson, *Commissioner*

Tenth Biennial Report

1949-1950

Section V

DIVISION OF STATE PARKS

Lew E. Fiero, *Director*

This Report is published in six sections.

- I. COMMISSIONER'S REPORT, covering general departmental activities in and summarizing the data and recommendations pertaining to the several divisions.
- II. DIVISION OF FORESTRY
- III. DIVISION OF GAME AND FISH
- IV. DIVISION OF LANDS AND MINERALS
- V. DIVISION OF STATE PARKS
- VI. DIVISION OF WATER RESOURCES

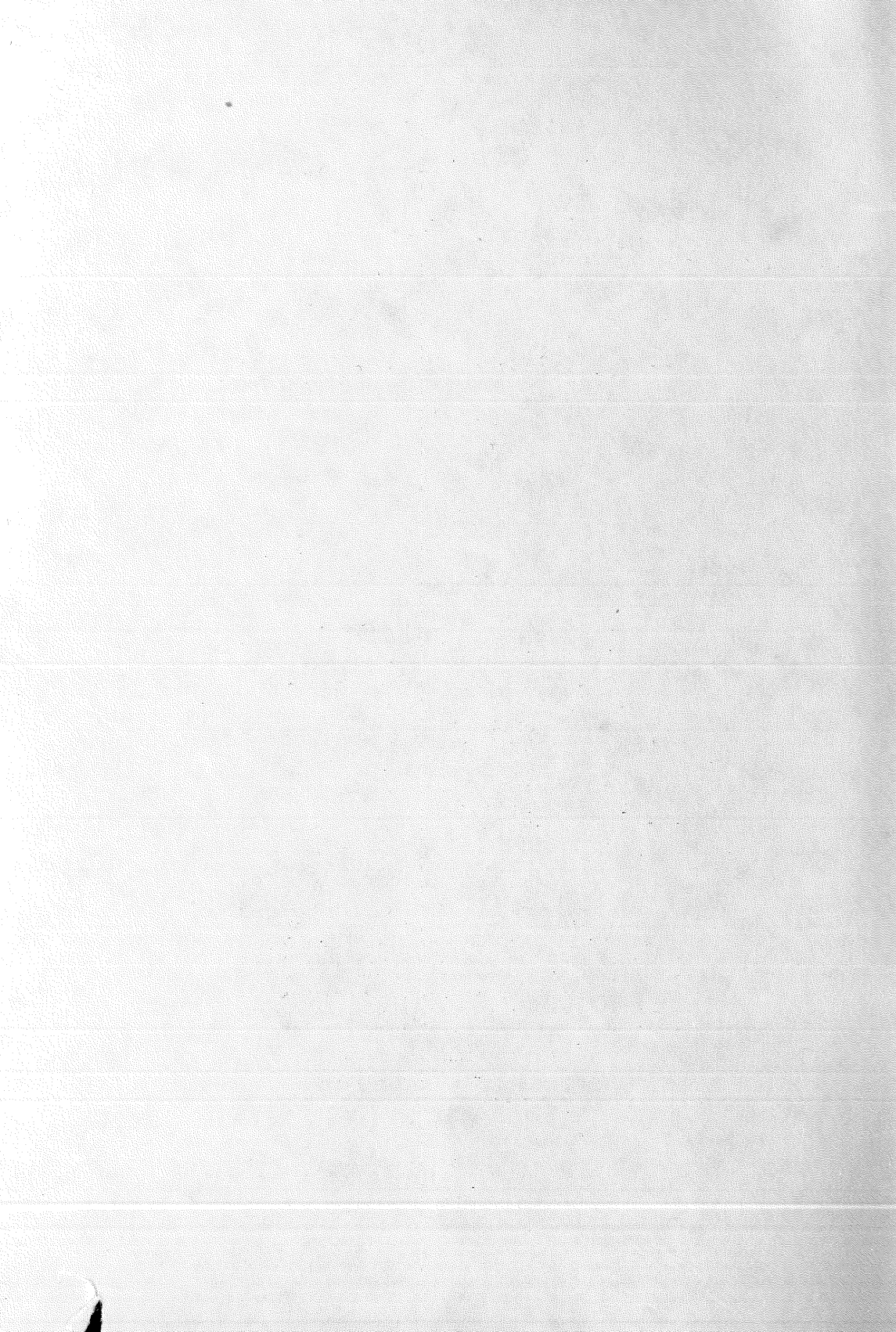
"Our state parks provide opportunities for all our people to enjoy the out-of-doors. Medical men tell us that outdoor recreation is not a luxury but a necessity for health and welfare. It is a potent antidote for juvenile delinquency and an important factor in our youth conservation program. I therefore recommend increased appropriations to meet this urgent need."

From inaugural address of
Governor Luther W. Youngdahl
To the Legislature of 1949

January, 1951



HC
107
.M6
A335
1949/50
sec.
2



STATE OF MINNESOTA
Luther W. Youngdahl, *Governor*

Department of Conservation
Chester S. Wilson, *Commissioner*

Tenth Biennial Report
1949-1950

Section V

DIVISION OF STATE PARKS
Lew E. Fiero, *Director*

This Report is published in six sections.

- I. COMMISSIONER'S REPORT, covering general departmental activities in and summarizing the data and recommendations pertaining to the several divisions.
- II. DIVISION OF FORESTRY
- III. DIVISION OF GAME AND FISH
- IV. DIVISION OF LANDS AND MINERALS
- V. DIVISION OF STATE PARKS
- VI. DIVISION OF WATER RESOURCES

"Our state parks provide opportunities for all our people to enjoy the out-of-doors. Medical men tell us that outdoor recreation is not a luxury but a necessity for health and welfare. It is a potent antidote for juvenile delinquency and an important factor in our youth conservation program. I therefore recommend increased appropriations to meet this urgent need."

From inaugural address of
Governor Luther W. Youngdahl
To the Legislature of 1949

January, 1951

LEGISLATIVE REFERENCE LIBRARY
STATE OF MINNESOTA
P18.2
12365
1949-50

LETTERS OF TRANSMITTAL

To the Honorable Luther W. Youngdahl, Governor
and
To the Legislature of the State of Minnesota:

I have the honor of transmitting herewith the report of the Division of State Parks of the Department of Conservation for the biennium ending June 30, 1950, being Section V of the Tenth Biennial Report of the entire department.

For the convenience of those who may be interested only in certain particular conservation subjects, but not in the entire field, the reports of the commissioner and the five divisions are published separately instead of in a single volume as in former years.

Respectfully submitted,

Chester S. Wilson,
Commissioner of Conservation.

January, 1951.

To Chester S. Wilson
Commissioner of Conservation

I herewith transmit the report of the Division of State Parks for the fiscal years 1949 and 1950.

Respectfully submitted,

Lew E. Fiero, Director,
Division of State Parks.

DEPARTMENT OF CONSERVATION

Division of State Parks

Administrative Staff

Lew E. Fiero, Director

Martha Patwell, Secretary to Director

John H. Martin, Assistant Director

Norvald G. Nygaard, Southern District Park Supervisor

Norman J. Reitan, Northern District Park Supervisor

Ralph E. Welte, District Park Supervisor (Douglas Lodge Manager)

Harold R. Petersen, Engineer

Dorothy M. Farrell, Accountant

CONTENTS

	Page
Letters of Transmittal.....	2
Administrative Staff	3
Contents, Tables and Figures.....	4
Frontispiece, Wegmann Homestead Cabin.....	6
Introduction	7
A Detailed Analysis of State Park Needs.....	8
Itasca State Park.....	9
Whitewater State Park.....	10
Jay Cooke State Park.....	11
Beaver Creek Valley State Park.....	11
Gooseberry Falls State Park.....	11
Lake Bemidji State Park.....	12
Alexander Ramsey State Park.....	13
Lake Carlos State Park.....	13
McCarthy Beach State Park.....	14
Buffalo River State Park.....	15
Camden State Park.....	16
Middle River State Park.....	16
Lake Bronson State Park.....	17
Sibley State Park.....	17
Interstate State Park.....	17
Flandrau State Park.....	19
St. Croix State Park.....	19
Scenic State Park.....	19
New Park Areas.....	20
William O'Brien State Park.....	21
Kilen Woods State Park.....	22
McCarthy Beach State Park.....	22
Nerstrand Woods State Park.....	22
Big Island State Park.....	23
James Carley State Park.....	24
Ray Berglund Memorial.....	24
Planning Section	24
Land Acquisition	26
Mobile Maintenance Unit.....	27
Attendance and Activities.....	29
Cooperative Nature Interpretation Project	
1949 and 1950 Summer Activities.....	31
Personnel	36
Working Capital Fund.....	36
Statistical Data	37

TABLES

Table	Page
1. Park Attendance	30
2. State Park Group Camps.....	35
3. Number of Employees by Classification on State Payroll as of June 30, 1950	35
4. Inventory Value of Tools and Equipment as of June 30, 1950.....	38
5. Expenditures by Division of State Parks for Administration Salaries, Administration Expense, and Maintenance and Improvement of Parks—Fiscal Years 1949 and 1950.....	42
6. Receipts Credited to State Parks Revolving Fund—Fiscal year 1949....	44
Fiscal year 1950....	45
7. Expenditures by Division of State Parks for Facility Operations Under Working Capital Fund—Fiscal Years 1949-1950.....	46
8. Inventory Value of State Park Lands and Improvements as of June 30, 1950	47

FIGURES

Figure	Page
1. Minnesota State Park System.....	39
2. Index of Activities and Facilities Available in State Park Areas.....	40
3. Information Relative to Each State Park Unit.....	41



Original Wegmann Homestead Cabin

State of Minnesota
Department of Conservation
Chester S. Wilson
Commissioner of Conservation

TENTH BIENNIAL REPORT
Division of State Parks
For the Fiscal Years 1949 and 1950
Lew E. Fiero, *Director*

INTRODUCTION

Inception of state park planning in Minnesota dates back to 1892 at which time Theodore Wegmann built his first homestead cabin, post office, and store near the outlet of Itasca Lake and the source of the Mississippi River. Jacob Brower, first Park Commissioner, recognized the historic, scenic, and geographic value of the combination of primeval forests, the lakes and topography of the area as an ideal and outstanding memorial to the rapidly vanishing pioneer conditions of northern Minnesota, and successfully promoted its dedication as a public forest and park. State parks have grown in number until today the state has acquired at public expense and dedicated to public use many of our most attractive, scenic, and historic areas scattered throughout the state.

In the early years, parks were largely established as memorials to historic events and personages and as a general rule each unit was supervised by a local committee. Not until 1935 did the legislature create a state park division as such and place it under a central office supervision.

The recognition, by people who seek use of our state parks, of the need for controls to insure protection to property and maintain sanitary surroundings has been on the increase through the years as the number of people who have sought the parks has been on the increase. Controls of this type call for facilities and improvements which must be provided at public expense. An over-worked park system or one where the means for handling the visiting public does not keep pace with public expectations for service soon becomes a subject of complaints and criticisms by those who use it and a discredit to the state. By way of comparison, there are listed below a few of the states having extensive state park systems and their expenditures for operating, maintenance, and capital improvements for the year 1949. This picture is only approximate, but serves to indicate the attention and public support given the physical and spiritual resources of other states as compared with our own.

DEPARTMENT OF CONSERVATION

**MONEYS EARNED BY REVENUE PRODUCING FACILITIES
FINANCED BY THE WORKING CAPITAL FUND**

Fiscal Years 1949 and 1950

STATE	1950 Operation and Maintenance Appropriations	1949 Operation and Maintenance Appropriations	1949 Capital Improvement Expenditure	1949 Attendance
California	No figure	\$1,703,322	\$4,960,130	5,747,000
Illinois	\$2,500,000	840,157	360,399	8,500,000
Iowa	2,700,000 (2 yrs.)	503,537	429,259	3,680,000
Kentucky	800,000	524,680	66,900	911,000
Michigan	No figure	975,238	611,432	13,107,000
Missouri	450,000	280,000	170,000	1,190,000
New York	5,000,000	3,551,426	2,707,000	22,000,000
	Has spent 121 million dollars since 1945			
North Carolina	1,500,000	153,726	104,576	746,867
Ohio	1,500,000	60,061	542,057	3,647,000
	Development Fund	144,161	59,640	
		44,338		
		248,560	601,697	
Wisconsin	No figure	273,152	85,534	3,070,000
Minnesota	219,940	152,305	34,455	1949 attendance: 1,985,800
	appropriation	appropriation		1950 attendance: 2,080,000
	189,180	182,795		
	operational income	operational income		

A DETAILED ANALYSIS OF STATE PARK NEEDS

Undoubtedly, the most pressing need of our state park system is maintenance. Because of the increasingly intensive use to which the parks have been subjected, the age of the buildings and improvements which were placed in our state parks during the relief years of the thirties, and the inadequate appropriations made available by the legislatures, maintenance has not kept pace with general depreciation and deterioration.

Believing that a list of items in each of the state parks which need attention by the legislature is a more impressive manner to indicate the immediate needs than what a general reference to over-all needs of the system would be, there follows a report of the most pressing needs in each of the state parks subjected to the greatest public use based on investigations completed at the close of the 1950 park season. The recommendations, while they refer mainly to maintenance and upkeep, also include the most pressing needs for expansions in facilities in some of the areas. The detailed reports which follow are designed to bring to the attention of members of the legislature the critical situation which confronts the Division of State Parks in its efforts to operate the state park system with a minimum of criticisms and disappointments from the public who uses the parks.

ITASCA STATE PARK

1. The park structures are in need of repair, paint, and application of preservatives.
2. Complete new primary-secondary power lines to more adequately supply the needs of Douglas Lodge and all other state park facilities. Interruption of power service has aggravated park visitors and vital services for several years.
3. The parking lot facilities at Douglas Lodge and the Mississippi Headwaters area need enlargement to increase accommodation from 1,000 to 1,500 cars daily. This is necessary to insure people having ample space in which to park and enjoy the areas without hazard to others and their cars.
4. Reconstruction of sewage disposal plant to overcome present unsatisfactory conditions because of past inadequate cesspool installations.
5. Five boat docks, continually damaged by ice action in winter, should be replaced with removable docks, thus eliminating annual repairs and relieving much of the hazard to waterfront users.
6. Complete renovation and remodeling of the old park headquarters, with a new roof, foundations, and interior remodeling so it can be devoted to useful purposes and off-set complete deterioration.
7. Log gates and barriers at approaches to hazardous roads, group camps, and in picnic areas where special parking areas are required, should be replaced.
8. Picnic areas and overlooks are essential and should be enlarged to provide elbow room for persons wishing to view special scenic areas at leisure.
9. Glazing in of porch space in Douglas Lodge to enlarge dining room and thus permit serving of meals to hundreds of park visitors who are now turned away, and to protect porch floors from the elements is needed.

New Construction

The Itasca State Park Advisory Committee has recommended a new refectory-shelter building in the vicinity of the Mississippi Headwaters to supply the needs of picnickers and to shelter crowds in inclement weather. Thousands of visitors cannot secure this service now because the refectory space is too limited.

This park is the most extensively used and best known state park in Minnesota because of its location at the source of the Mississippi River. It draws the largest attendance due to the numerous recreational advantages and the scenic interest. Because of this heavy use, greater wear and tear are apparent. This park, to a greater degree than others, reflects to a larger number of people the care and concern the state shows for its own and out-of-state visitors.



Old Timers Cabin

WHITEWATER STATE PARK

1. The cabin used by golf course attendant should be modernized so that indoor toilet for use of golf players may be available.

Note: Outdoor toilets are in danger of contaminating the well used by park visitors for drinking water. Modernizing the cabin with provisions for indoor toilets, cesspool, and pressure tank with disposal field for effluent is about the only answer to correct the situation. Removal of outdoor toilets and decontamination should insure potable water henceforth.

2. Surplus group camp buildings should be removed from group camp area and converted into a park workshop for maintenance purposes and provide a like building for Oronoco Wayside where no workshop or equipment storage building is provided.
3. Replace swimming pool diversion dam to supply water from the White-water River. (The former dam was washed out as the result of flood condition.)
4. Repair rip-rap around piers of the trail foot-bridge across the White-water River, damaged by floods.
5. Picnic ground parking lot guard rails should be replaced with stone curbings. Present wood guard railings are depreciated beyond repair.

6. Shingles on Superintendent's residence and large shelter building must be replaced.
7. Tar-coat the picnic parking lot and repair trails leading from parking lots to major use facilities.
8. Siding and roofing on six group camp buildings are in need of replacement.

JAY COOKE STATE PARK

1. The swinging bridge washed out by the spring flood of 1950 must be replaced as it provides access to the trails on the south banks of the St. Louis River and is a major point of interest.
2. The Oldenberg Shelter Building was severely damaged by vandals, and it should be repaired and reconverted for picnic purposes only.
3. A new camp ground in the swinging bridge area of the park north of the helpers' quarters should be provided. Complete development will require a sanitation building for toilets, showers, and washrooms. Outdoor grills, park tables, and campers' parking lot will also be required to complete the development.

4. Picnic-shelter cesspool needs replacement with an Imhoff tank to provide adequate sewage disposal.

Note: The original cesspool was built of wood and is now deteriorated beyond reasonable repair.

5. Clean up and salvage remaining buildings of the old CCC Camp.
6. Badly deteriorated wooden guard rails and barriers need repair and replacement.
7. Service buildings not cared for in the past season are in need of paint and preservative and the headquarters garage, Fond du Lac cabin, and workshop should be re-roofed.
8. An available CCC building should be moved and remodeled to serve as a shop and storage maintenance building at a new location in the service area.

BEAVER CREEK VALLEY STATE PARK

1. A well must be drilled to replace use of spring water, which has been condemned for public use by the State Board of Health.
2. Install curbing around new parking lots.

GOOSEBERRY FALLS STATE PARK

1. A new well should be drilled to furnish an adequate supply of potable water to public use areas.

Note: Present water is drawn from Lake Superior with annual repair to intake lines and is unsatisfactory to the State Board of Health.

2. Stairway railings must be provided to reduce hazards near lookout area.
3. Enlargement of camp ground facilities, as present accommodations are too limited. This will require additional roadway spur construction, and land acquisition, also installation of electric outlets, grills and tables.
4. Guard rails and curbs in camp and public use parking areas should be reconstructed.

New Construction

1. A new bridge is needed at the Fifth Falls to connect foot trails with more remote sections of the park now inaccessible to the public. Estimated cost of material approximately \$300.

LAKE BEMIDJI STATE PARK

1. Improve park custodian's residence for year around occupancy. This will require installation of a full basement, complete plumbing, complete insulation, refinish exterior, and complete electrical wiring.
2. An automatic pressure water system should be installed utilizing the present well and pipe to serve the custodian's quarters as well as the picnic and camp grounds.
3. The public use buildings are in dire need of painting and repair. The major items consist of complete replacement of the bathhouse dressing rooms walls, windows, and doors within shelter buildings.
3. Electricity should be provided by the extension of primary and secondary power line from the county group camp to park facilities. This will include wiring of present structures to utilize the power line.
5. Badly deteriorated parking lot guard rails and curbs need repair and reconstruction.
6. Additional park tables and fireplace grills should be provided.

Note: Lake Bemidji State Park, established under the Laws of 1923, Chapter 444, was to have been maintained and improved by Beltrami County. The accomplishment of recommended improvements, therefore, would be contingent on a change in this law to authorize the State of Minnesota to maintain and improve this park. It is proposed to transfer to the state 80 acres of land adjoining the state park which now belongs to the county and on which the county operates a seasonal organized camp. The local park committee is actively promoting this transfer.

ALEXANDER RAMSEY STATE PARK

1. The extension of a city water main line from the present terminal near the golf links to the picnic ground area is necessary to supply adequate potable water. The present supply has been taken from springs which are not continuous and which do not provide an adequate supply.
2. A combination garage, storage, and repair shop is available from portable buildings now unused at St. Croix State Park. This building can probably be moved and reconstructed with additional material, hardware, roofing and cement at a cost of approximately \$750.

Note: The present caretaker has occupied his own home located on his own property within the state park boundaries. His imminent retirement, however, requires installation of this garage-storage building to care for park equipment and supply a workshop for park repairs as a headquarters installation.

3. A parking area at Ramsey Falls is necessary in the interests of public safety. This will require installation of guard rails and equipment hire. A large portion of the labor can be accomplished by the caretaker.
4. The combination shelter-kitchen and the park comfort station building are in need of paint.
5. The large deer pens along the river should be eliminated. This will provide additional public use area for picnic ground purposes.
6. Additional park tables and outdoor fireplaces are needed to meet the public demand.
7. The pasture fence enclosing the buffalo should be replaced to remove the hazard from escaping animals and to provide more pasturage.

LAKE CARLOS STATE PARK

1. The present water supply for the park headquarters and superintendent's residence is inadequate and unsatisfactory and must be replaced. A new well is needed to permit the modernization of the superintendent's residence together with the installation of an electric pressure water system.
2. Electrical service should be extended to the public use area and camp ground including secondary lines to electrical outlets.
3. The camp ground road and parking spurs require regrading and surfacing. This job requires approximately 700 yards of gravel and use of heavy equipment.

Note: Present camp grounds area is not adequate to serve the number of campers and trailer visitors who seek these accommodations.

4. Thirty picnic tables and twelve fireplaces should be installed.
5. Wooden docks should be replaced by a sectional type of docks now available which will permit convenient removal and replacement in the fall and spring.

Note: The ice action in winter requires reconstruction of present docks each spring.

6. In order to complete the modernization of the caretaker's residence, now underway, the installation of a hot air heating plant is required.

New Construction

1. A sewage disposal system is needed to replace the temporary cesspool now serving the modern toilet building. A modern Imhoff tank and disposal field to accommodate the greater use of toilet facilities is now required. The cost of this installation based on the past two years' experience will be approximately \$6,500.

McCARTHY BEACH STATE PARK

McCarthy Beach State Park was established by an act of the legislature in 1945. Since that time the acquisition of land and installation of the minimum basic facilities, which included picnic tables, fireplaces, and pit toilets and the dismantling and erection of a building to serve as administrative quarters and bathhouse, have been provided.

No master plan, based on a detailed survey, has been prepared to guide in the improvement of the park in a logical manner for future long-time development. A proposed master plan unsupported by detailed field information has been prepared, and this has served as a general guide in installing facilities that have been provided. Due to the comparative newness of the major structures, no major repairs have been required.

New Construction

1. A complete master plan to fix locations of entrance roads to picnic grounds and bathhouse parking areas.

Note: Initial provisions for parking cars and the necessary park roads must be provided in the interests of public safety and to safeguard the natural forest area to be preserved. A general plan has been developed to indicate the entrance road parking lot location and will be laid out next spring for probable development through the aid of the county. An additional spur from the county road to the proposed superintendent's service area will be a part of this plan.

2. A camp ground is proposed in the southeasterly portion of the park near Side Lake which will be studied as to its potential serviceability. If this is a satisfactory location, portable pit latrines, picnic tables and outdoor fireplaces will be installed.
3. An appropriation has been made for a new shelter building not to exceed \$5,000 in cost.
4. A pressure water system can now be installed to connect the new well with proposed shelter building, bathhouse and camp grounds. The estimated cost of this development is \$1,600.

5. A 20 ft. x 40 ft. combination garage and workshop building is the first unit required in the service area. This is to be provided by the use of surplus CCC buildings now on hand, and supplemental materials and fittings consisting of roofing, cement and hardware. Temporary labor will be required to complete the building. The estimated cost to be \$750.
6. Secondary electrical service will be required to serve the camp ground and provide outlets for trailers.
7. A new flag pole.
8. Construct new boat dock.

Land Acquisition

An additional 15 acres adjacent to the park on the south has been recommended for purchase to protect the state park from undesirable private developments such as night clubs and dance halls and it would furnish additional areas for public use. This acquisition would provide opportunities for recreational development with a minimum of alterations of the natural forest area. The local park advisory committee has investigated and found that this purchase of land can be made for \$2,500.

BUFFALO RIVER STATE PARK

1. A new well should be drilled to replace the present shallow well. The present well has been condemned by the State Board of Health and is inadequate to supply the needs of the public use area.

Note: Repeated attempts have been made to secure a drilled well in the past two seasons, failure being due to lack of heavy equipment to penetrate rock layers. It is estimated that this will cost between \$2,000 and \$3,000.

2. The seasonal caretaker's quarters, which are now in a garage of stone and originally designed as a service building, require finishing of interior walls, linoleum to cover cement floors, and construction of the necessary cupboards for kitchen utility purposes.
3. It will be necessary to extend the secondary electrical wiring throughout the public use area and to wire the buildings in order to utilize electrical power now available.
4. The water control structures should be cleaned and repaired.
5. Signs should be reconditioned and diving dock and park benches should be replaced.

New Construction

Demands of those who wish to camp within the park justify the development of the camp ground. This will involve construction of access road and spurs, two pit toilets, picnic tables, and outdoor fireplaces.

CAMDEN STATE PARK

1. Approximately 750 feet of water main have deteriorated beyond repair and must be replaced in order to utilize a new well.

Note: A new well is now under construction in the headquarters area.

2. Paint and preservative are needed on all park structures.
3. The construction of the foot bridge which supplies access to group camp and south picnic grounds has been planned and materials are on hand to construct in the coming year when manpower is available.

New Construction

A water control structure in the stream supplying the swimming pool is needed to divert flash floods so as to reduce the silt that is deposited in the swimming pool every spring following such floods. This requires a by-pass ditch approximately 4 ft. x 8 ft. for a distance of approximately 400 feet together with control dam and gates.

Note: Silt deposited in the swimming pool requires removal and cleaning each season at considerable expense.

MIDDLE RIVER STATE PARK

1. Construction of a garage-workshop can be provided from sectional CCC buildings available at other locations.

Note: Present garage is inadequate in size to permit proper housing of park equipment and a new truck, and allow adequate space for equipment repairs.

2. Parking lot guard rails which have decayed beyond repair should be replaced.

Note: A granite curbing is recommended as the most suitable type of barrier in the present location and will reduce annual maintenance costs.

3. Twenty park tables for the picnic area and additional fireplaces are needed to meet the demand.
4. The Old Mill must be restored or obliterated. Complete renovation of the old structure is estimated to cost about \$1,000.

New Construction

1. The present refectory is inadequate in size to serve the number of park visitors and an addition is contemplated. It is estimated that this addition will cost approximately \$5,000. It is urgently needed to serve the volume of patrons efficiently.
2. A public camp ground should be constructed to serve the needs of the many campers who annually request camp facilities. A camp access road, two pit toilets, extension of the water main to supply camp needs and the construction and placement of picnic tables and fireplaces.

3. A heating plant is needed to complete the modernization of the custodian's quarters.

LAKE BRONSON STATE PARK

1. The old boathouse should be moved and remodeled at a new location for greater service.
2. The parking lot guard rail which has decayed beyond repair must be replaced.
3. Seven park buildings are in need of painting and preservative treatment.

New Construction

1. A new dwelling is needed for the superintendent. The present quarters consist of a stone building designed and built for a garage and workshop. This building is rated a No. 1 priority in the state park system and is endorsed by the local park committee. It is estimated that an adequate modern residence will cost \$17,500 under present economic conditions.
2. Development of a new camp ground is needed to provide for tourist demands. This will require installation of two pit toilets, extension of the water line, extension of electrical power line, extensions and installation of electrical outlets to complete the camp ground unit. Additional tables and fireplaces will also be needed.
3. A new refectory building is needed to replace the present inadequate bathhouse-refectory structure, which now limits the use of bathhouse activities.
4. A new well should be drilled to supply the needs of the park. The present well is located under the tower building and produces water with fine sand calling for considerable maintenance to pump and fixture. It is recommended that a new well be drilled in a location outside of the tower and thus make the pumping facilities more accessible for operation and maintenance and if possible to produce sand-free water.

SIBLEY STATE PARK

1. The guard rails in the parking lots and camp areas are in need of complete replacement and renovation.
2. Repaint the group camp buildings.
3. Boat docks are affected by fluctuating water levels and ice action and must be replaced each year. It is recommended that a removable type of boat dock be installed to reduce maintenance of structures of this type.

INTERSTATE STATE PARK

1. Bituminous surfacing is required on the trail leading from the pothole parking lot area to the boat dock and boat landing area.

2. Improvement of trails for sightseers along the bluffs of the St. Croix River. The trails have become hazardous and are greatly in need of repair.
3. Continued improvement of hand rail barriers throughout the pothole area are needed in the interests of public safety.



Interstate Park Glacial Garden Railings

FLANDRAU STATE PARK

1. The warehouse and storeroom from the old CCC camp site should be relocated in the park to serve as a district warehouse to provide economical storage and distribution of supplies and materials to other state parks in the Southern District.
2. Buildings which are in need of paint are the bathhouse, shelter building, garage and residence.
3. Additional picnic tables and outdoor fireplaces should be provided.

ST. CROIX STATE PARK

1. The re-siding of buildings in the Head of the Rapids Group Camp which was commenced last year must be completed during the coming year.
2. A more satisfactory source of water for the swimming pool at the Head of the Rapids Camp must be found.

Note: This project involves an engineering study of the supply of the water to the swimming pool and the design of effective measures to overcome if possible the deposition of silt during spring floods. The cost of this project cannot be estimated until engineering studies have indicated a solution.

3. Five water towers and 12 buildings are in need of repairing to off-set deterioration.
4. The relocation and remodeling of present available CCC storage-garage and shelter should be done so as to provide car storage for resident employees.

New Construction

1. An addition to the public use shelter building of a dining room where visitors may secure hot lunches and meals is necessary. Public restaurants are remote from the park for visitors to patronize conveniently. The lack of such accommodations restrict the use of the park. The estimated cost of such an addition is \$5,000.
2. Concrete box culverts at Kennedy Creek and Deer Brook on road to Head of Rapids Camp have proved inadequate.

Note: Damage to the road leading to the Head of the Rapids Group Camp is an annual maintenance item due to the inadequacy of present drainage structures. This improvement will result in considerable reduced maintenance and repair costs for this park. The estimated cost of new culverts is \$6,000.

SCENIC STATE PARK

1. The present camp ground area has proved inadequate to serve public needs. The additional space planned for in the master plan should be provided as an enlargement of this area.

2. A new well is needed to serve the public use area. The present well does not supply sufficient water.
3. The bathhouse should be remodeled to provide a picnic shelter since it no longer serves its original purpose. This will require razing of bathhouse dressing room wing walls, re-roofing, and enlargement of door openings to permit of its use by park visitors in inclement weather.

The parks for which the above detailed listing of needs have been made are the larger parks which are being extensively used by the public and where the need for bringing them up to and maintaining them at operating levels is most urgent. Similar maintenance problems, but to a lesser degree, exist in five additional state parks which have been in operation and use by the public for five years and longer. In addition to these larger areas, there are four state parks, three state recreational reserves, fourteen state waysides and nine monument areas. Although these areas are not subjected to the wear and tear of the more frequented state parks, they nevertheless, all of them, require attention and a reasonable maintenance.

It is emphasized that the progress made in the rehabilitation and maintenance of state parks during the two-year period for which this report is prepared has exceeded that of any similar two-year period in the history of the Division of State Parks. This progress has been materially helped by the increased maintenance appropriations made by the legislature of 1949 and by the restoration of efficient personnel following the disorganizing efforts of the last World War. It should be emphasized, however, that the inadequacy of maintenance in the years prior to this biennium has magnified the need for an intensified stepping-up of maintenance in order to have it catch up with deterioration. If a sustained adequate annual maintenance fund sufficient to take care of current maintenance, plus the gradual bringing up to satisfactory operating conditions of the items listed as essential in the preceding tabulation were provided, the state park system could, within a period of four or five years, be restored to a highly efficient plant capable of meeting public expectations.

NEW PARK AREAS

During the past several sessions the state legislature has acquired and designated a number of areas as state parks, monuments, and waysides. The acquisition by the state of outstanding recreational areas for future public use while they still may be had at a reasonable cost is a commendable policy and should be pursued until sufficient areas have been acquired to give equal opportunities to people from all sections of the state to reach and enjoy the pleasures and privileges of state parks without traveling over too long distances. It should be emphasized, however, that as soon as areas of this kind have been acquired at public expense, the public expects to use them. It follows that for every park created, means must be provided the Division of State Parks from which to institute controls, provide sanitary facilities, and potable drinking water, and other primary necessities. Unless controls are provided and sanitary conditions are assured, much damage

can be done to the choicest of these areas through vandalism and other uncontrolled uses. It is, therefore, important that as the legislature creates new areas, it should follow up this action by providing the division with sufficient funds to place personnel in custody of these areas and to provide the primary facilities to meet public needs.



Winter Scene in Pine Tree State Park

The latest state park areas designated by the legislature include William O'Brien State Park on the St. Croix River, Kilen Woods State Park, Jackson County, McCarthy Beach State Park on Side Lake in St. Louis County, Big Island State Park near Albert Lea, and Nerstrand Woods State Park near Nerstrand. A brief discussion of each of these state parks follows.

WILLIAM O'BRIEN STATE PARK

With the completion of the entrance road, access to the main lower level use area is made possible for thousands of people from the Twin City area.

It will be necessary, however, to extend this road three-quarters of a mile to permit cars to reach the southerly portion of the park. A state aid parkway, if approved, would provide this improvement in 1951-1952. The county has expressed its willingness to cooperate in this development.

Next to the development of the parkway, a suitable water supply will be installed since water made available from impounded springs will not receive the approval of the State Public Health Department.

An allotment of \$4,000 is available in 1951 with which to build a shelter building. Temporary pit toilets will be erected. Adequate parking lot, picnic tables and fireplaces are a next priority for the maintenance crew. An all-year caretaker will be required to insure protection of the park from vandalism.

Although the 180 acres of land donated by Miss Alice O'Brien is a noteworthy start for this park, it is recognized that this area, located only a short distance from the metropolitan area of the Twin Cities, will be wholly inadequate to meet the needs of the large number of visitors who are certain to want to spend a portion of their leisure time in this park. This park should be enlarged by the acquisition of adjacent suitable lands.

The discouragement of the use of this park by the general public until the roads and public use facilities are completed cannot be too strongly emphasized. That is why the usual directional signs have not been placed to guide the public into the area until facilities for controlling the use of the park are completed. Encouragement of visitors prior to such completion hinders the developments and places responsibilities on limited park personnel for protecting and upkeep.

KILEN WOODS STATE PARK

At Kilen Woods State Park drilling of the well, erection of toilets, workshop, garage, and shelter building, construction by the county of the entrance road and the building of picnic tables, and fireplaces provide the primary basic facilities for use by the public of this area, thus require maintenance and operation services in the future.

McCARTHY BEACH STATE PARK

The improvements to date have consisted of the establishment of a temporary bathhouse, several portable latrines, electric line, park tables, and outdoor fireplaces. A caretaker has been employed on a seasonal basis.

During the coming year, development of a parking lot, erecting of flag pole, and boat launching dock, and construction of service roads are slated for improvements. A shelter building with refectory space will be constructed during the current year from appropriations provided by the 1949 legislature.

NERSTRAND WOODS STATE PARK

Nerstrand Woods State Park, located as it is, approximately fifty miles from the Twin Cities, is a possible means of relieving congestion at Interstate State Park by providing additional recreational opportunities of state park caliber for this large metropolitan area. The necessary facilities for

public use should be provided in order to permit and promote the use of this area and in some measure relieve the congestion at Interstate Park.

It is fortunate that a good well exists on the property and basic facilities such as pit toilets, picnic tables, fireplaces and parking facilities can be provided at a reasonable cost. The Nerstrand Woods Park Advisory Committee will be asked to initiate procedure to set up a state aid parkway to provide entrance to the projected public use area.

There has been considerable complaint on the part of the tourists over the difficulty of finding their way into this park. Absence of signs to encourage public use of the park is in conformity with the policy of the division not to publicize use of park until suitable entrance roads, potable water supplies, and sanitation facilities have been provided. Directional signs will then be set up at approaches to the park from highways.

BIG ISLAND STATE PARK

Big Island State Park is located near Albert Lea. Two wells provided through local donations have been installed. These wells and fireplaces, the latter also financed by local contributions, have been completed except for cement curbing for the wells. Picnic tables and two pit toilets have been provided from park maintenance funds and labor furnished by the division's



James A. Carley State Park

maintenance crew. The roads leading to the park are still inadequate to accommodate any large volume of traffic. The local interest originally shown in the establishment of this park will encourage its use, thus requiring seasonal daily maintenance attention.

JAMES CARLEY STATE PARK

Honorable James A. Carley, for many years representing his district in the state senate, graciously donated approximately 211 acres of land for state park purposes which was dedicated as such by the 1949 legislature. This park is located in the most scenic section of the Whitewater River in Wabasha County. A large portion of the tract is covered by an unusual stand of white pine in the valley of the river traversing the area. It has many rock outcroppings. No plans have been made as yet for the development of this area for public use. Development, however, cannot be delayed too long since Whitewater State Park, the closest major park in the area, is experiencing difficulty with over-crowding of park visitors.

RAY BERGLUND MEMORIAL

Through the cooperative efforts of several conservation clubs a tract of 20 acres of land surrounding the mouth of the Onion River on the north shore of Lake Superior was donated to the state in memory of Ray Berglund, a well known conservation leader. This area will be designated a wayside with memorial markers having been proposed to be placed through the cooperation of the State Highway Department. This tract in state ownership will not only perpetuate the memory of Mr. Berglund, but will also provide public access for fishermen to the Onion River, a popular north-shore trout stream.

PLANNING SECTION

Second Priority of Need in the State Park System

A Competent Architect-Engineer a Critical Need

A state park system comprising 63 units distributed over a state as large as Minnesota requires a technical staff to adequately plan and efficiently carry out new construction, alterations, and maintenance activities. Architectural and engineering services have not been adequately provided for in the present administrative staff, requests for such services having been refused by the Department of Administration of the state.

The initial development of many of our state parks was undertaken with the cooperation and technical advice of the National Park Service of the federal government. Master plans of the then existing parks were made based on ground studies and surveys. Structures were planned and located in each of the parks in accordance with these master plans and constructed under the direction of the personnel of both the National Park Service and the Division of State Parks.

It is clear that before any public land acquired for park purposes can be developed for the greatest public use, a master plan complete in all of its details should be made. This requires survey, study, and planning by technical men trained and experienced in this field.

Many state parks in Minnesota were thus master planned during the depression years and physical structures were designed and built throughout the park system. Federal unemployment relief funds were terminated at a time when greater public use began, rapidly exceeding the capacity of many parking lots and camp and picnic grounds to accommodate the crowds that visited Minnesota's parks.

World War II required all labor and materials for essential industry, at the expense of normal expansions, operations, and maintenance. Parks deteriorated to a discouraging degree during this period, leaving Minnesota's parks with an accumulation of almost ten years of repairs, adjustments and development to deal with.

No revisions of master plans to meet current development needs were undertaken because of the lack of experienced technical personnel. Several sewer systems serving camp and picnic areas have proven inadequate and are in constant need of repair and extensions. Water systems have become inadequate and in some instances a public hazard. Power and telephone lines have become incapable of serving the needs. The 525 public buildings of the park system have suffered from dry rot and other effects of weathering. Certain facilities such as refectories have long since become inadequate to meet the needs of camp visitors who demand service. Furthermore, each legislature has established new state parks for areas in parts of the state in need of recreational centers. In face of all this accumulation of needs for expansions, repairs, maintenance of the older parks and for planning for the newer ones, the Division's request for one technically trained and experienced park and landscape engineer as an addition to its staff has been denied. Surely the operation of a plant with an inventory value of \$6,500,000 warrants the employment of one who is trained in the business of planning the needs of such a plant.

LAND ACQUISITION

Third Priority of Need in the State Park System

McCARTHY BEACH STATE PARK

An additional 15 acres adjacent to the south side of the park should be acquired in order to protect the park from encroachment by night clubs and dance halls, and to furnish additional areas for public use. The estimated cost of this acquisition is \$2,500. It has been recommended by the McCarthy Beach State Park Advisory Committee.

GOOSEBERRY FALLS STATE PARK

An additional tract of land should be obtained next to the present camp grounds. Complaints are made by the adjoining property owner that campers are trespassing on his property. The area now devoted for camp ground is inadequate. It would prove impractical and a mistake to develop additional camp ground areas away from the shore of Lake Superior, the chief attraction for campers and picnickers. The trespassing of campers on the property referred to is the result of congestion in the present limited camping area.

WILLIAM O'BRIEN STATE PARK

This small but choice state park is located on an island in the St. Croix River within 35 miles of the metropolitan area of the Twin Cities. Although the 180 acres of land donated by Miss Alice O'Brien is a noteworthy start for this park, it will soon be found to be too small in ground space to meet the needs of the large numbers who are sure to seek this attractive area for recreation. Aggressive action will be necessary to acquire additional adjacent lands in the river valley.

NERSTRAND WOODS STATE PARK

The Nertsand Woods area, for 15 years promoted as an extremely desirable state park, except for a few small tracts, has finally been acquired through land exchange negotiations with the federal government. It was not possible for the federal government to acquire all of the property designated for inclusion in this park area. Because of the property having been subdivided into small woodlots of 10 acres and less, the federal government was unable to get satisfactory title to some of the tracts. There remains about 58 acres of these small tracts to be acquired to consolidate the state ownership of the lands within a closed boundary. Some of this property may revert to the state through tax forfeiture, but probably not before the owners will have removed the timber thereon and thus have destroyed its prime value as park land. An effort should be made to secure an appropriation from the next legislature to purchase the remaining tracts. Current estimates place the value of the property at not to exceed \$5,000.

MOBILE MAINTENANCE UNIT

The Mobile Maintenance Unit provided for by the last legislature is made up of four men—a carpenter foreman, general repairman, and two semi-skilled laborers. This unit was organized by July 15, 1950 with headquarters at St. Croix State Park. The function of this unit is to undertake maintenance and repair jobs in any of the parks where the normal personnel are unable to do the work.

During the first part of 1950 the work of the Maintenance Crew was concerned primarily with remodeling CCC buildings in the Fleming Camp at St. Croix State Park for housing, shop and warehousing facilities. Certain types of work which did not require special equipment, materials, or plans, including several emergency repair projects, were undertaken by the unit in several of the other parks in the first few months. As a start, essential working tools and equipment were purchased and transferred to the unit. Highlights of the Mobile Maintenance Unit for the past year included the following jobs:

A major emergency job developed at Itasca State Park in 1950 where high water threatened roads, necessitating placement of some 1,500 cubic yards of gravel.



*Whitewater State Park
Suspension Bridge Built by Mobile Maintenance Unit*

Two bridge floors with rails and docks were installed at Douglas Lodge, in Itasca State Park. With the assistance of the park crew the unit cleaned up

LEGISLATIVE REFERENCE LIBRARY
STATE OF MINNESOTA

wind damaged timber in St. Croix State Park and salvaged approximately 15,000 board feet of saw logs for lumber.

The crew salvaged approximately 1,500 board feet of oak saw logs in the newly acquired Nerstrand Woods Park.

In the spring of 1950 work was started on the moving of old, rapidly deteriorating buildings located in Jay Cooke State Park to other parks, remodeling them to serve as equipment and work shop buildings. Foundations were laid for these buildings in five individual parks in the spring of 1950.

A winter work program for the shop at St. Croix included the construction of 72 picnic tables and 12 portable pit toilets. These were moved out and erected in several parks in the system including several recently acquired new park areas.



*Interstate Boat Landing Steps
Constructed by the Mobile Maintenance Unit*

The Mobile Maintenance Unit is now functioning quite efficiently and is expected to accomplish a larger volume of work during the coming year. The work of this unit could be much improved if advance planning of a system and program could be furnished them from time to time. Such

detailed plans would take into account available salvage materials, timing of jobs so as to avoid delays from indecision or material shortages and in off-seasons when parks are not in use. Here, too, additional engineering and drafting service is a critical need.

The successful execution of 102 work orders during the past year have demonstrated its value as an economical way of accomplishing work which park superintendents cannot hope to do during the months of the year when the parks are not in use.

ATTENDANCE AND ACTIVITIES

In 1949, the territorial centennial year, the State Highway Department loaned the Division of State Parks six mechanical traffic counters. These were placed in service for short periods in several of the large parks. The information received from the use of these machines was primarily for the purpose of checking against methods used by park personnel in estimating attendance in the several areas. In most instances, it was found that the superintendents and custodians in charge of park areas were underestimating the traffic volume.

It is interesting to note the continued increase in the number of people utilizing state park facilities. In the year 1941, the total estimated number



1949 Centennial Pageant Scene

of park visitors exceeded one million for the first time since attendance estimates were made. During the 1948 and 1949 seasons the number of visitors reached 1,985,000. From these estimates it is safe to assume that state parks will probably be visited annually by two million and more people.

Importance of the total volume of park attendance must not be overestimated. Attendance volume and its trends in each park annually is the only justifiable basis on which to plan current and expansion facilities. Furthermore, comparative statistics on attendance reflect how well existing facilities are meeting public expectations.

The Division of State Parks is again indebted to the University of Minnesota Museum of Natural History for its cooperation in carrying out a nature interpretative program in several of the state parks. A program of guided tours and nature interpretation lectures originally started in Itasca State Park in 1947 has been continued with public acceptance.

PARK ATTENDANCE

TABLE 1

Park Area	1949 Attendance Estimates	1950 Attendance Estimates
Acton Monument	1,000	1,000
Alexander Ramsey	23,500	24,000
Baptism River	1,500	5,000
Beaver Creek Valley.....	17,500	18,000
Big Island.....	4,500	7,500
Birch Coulee.....	16,500	19,500
Brook Park Monument.....	2,000	1,500
Buffalo River	28,500	32,000
Camden.....	52,500	46,000
Camp Release.....	9,500	10,000
Charles A. Lindbergh.....	55,000	40,000
Count Beltrami Monument	500	800
Father Hennepin.....	15,000	24,500
Flandrau	95,000	85,000
Fort Ridgely.....	25,000	25,000
Garvin Heights	10,000	24,500
Gooseberry Falls.....	190,000	185,000
Hinckley Monument.....	9,000	9,000
Inspiration Peak	6,500	7,500
Interstate	250,000	285,000
Itasca	347,500	350,500
Jay Cooke.....	147,000	150,500
John A. Latsch.....	12,750	16,500
Joseph R. Brown.....	750	800
Kaplan Woods	5,000	4,900
Kilen Woods.....	3,000	10,500
Lac qui Parle	22,500	23,000
Lake Bemidji.....	8,500	17,500
Lake Bronson.....	108,750	67,500
Lake Carlos	18,500	14,500
Lake Shetek	49,500	50,000
McCarthy Beach	22,500	19,000
Middle River.....	32,500	33,500
Minneopa	75,400	76,000

Park Area	1949	1950
	Attendance Estimates	Attendance Estimates
Monson Lake	25,400	24,500
Milford Monument	750	1,000
Moose Lake Monument	16,500	17,000
Mound Springs	9,500	16,500
Old Crossing Treaty	6,700	8,000
Oronoco	16,500	17,000
Pine Tree	4,500	6,000
Pomme de Terre	20,000	22,500
St. Croix	27,500	30,500
Sam Brown Monument	7,650	8,000
Scenic	18,900	19,500
Schwandt Monument	500	600
Sibley	32,500	24,500
Sleepy Eye	7,500	12,500
Split Rock Creek	8,700	9,500
Split Rock Wayside	1,000	2,500
Toqua Lakes	8,600	9,500
Traverse des Sioux	8,500	10,000
Watson Wayside	7,500	9,500
Whitewater	65,700	77,500
William O'Brien	1,000	2,500
Wood Lake Monument	750	1,200
Totals	1,985,800	2,015,800

COOPERATIVE NATURE INTERPRETATION PROJECT MINNESOTA STATE PARKS

1949 and 1950 Summer Activities

The need for developing sound attitudes concerning the conservation of our natural resources is becoming increasingly significant. People seriously interested in advancing this type of education believe that a deeper understanding and appreciation of our natural history interrelationships will greatly expedite the movement. As a step in this direction, the Division of State Parks and the Minnesota Museum of Natural History, University of Minnesota, have cooperated during the past four summers in helping state park visitors obtain more information about the wild plants, wild animals, and geological features so abundant and interesting in these recreational areas. The project centers at Itasca State Park with the following activities now well established:

Conducted Trail Walks: The park naturalist conducts scheduled hikes along selected trails, explaining and discussing the trail-side natural history with his guest followers.

1949.....	50 trail walks.....	843 attendance
1950.....	48 trail walks.....	930 attendance

Conducted Auto Caravans: The park naturalist conducts scheduled tours to places of natural history interest in more distant parts of the park, the guests furnishing their own conveyances.

1949.....	8 auto caravans.....	429 attendance
1950.....	34 auto caravans.....	914 attendance



Audubon Tours Conducted in Itasca State Park Were Well Patronized

Roberts Nature Walk: This specially selected trail has many of its natural history features and different habitats indicated by rustic markers. A special leaflet, available to park guests, describes each marked item, making this a self-guiding nature trail.

1949.....	1,527 guests used this trail
1950.....	2,171 guests used this trail

Mississippi Headwaters Museum: This rustic log building contains carefully prepared natural history and historical displays pertinent to the North Woods. The Minnesota Historical Society provides the history materials.

1949.....	50,000 guests visited this museum
1950.....	66,200 guests visited this museum

Evening Entertainments: The park naturalist presents or provides scheduled evening film showings or illustrated talks covering a wide selection of natural history and conservation subjects.

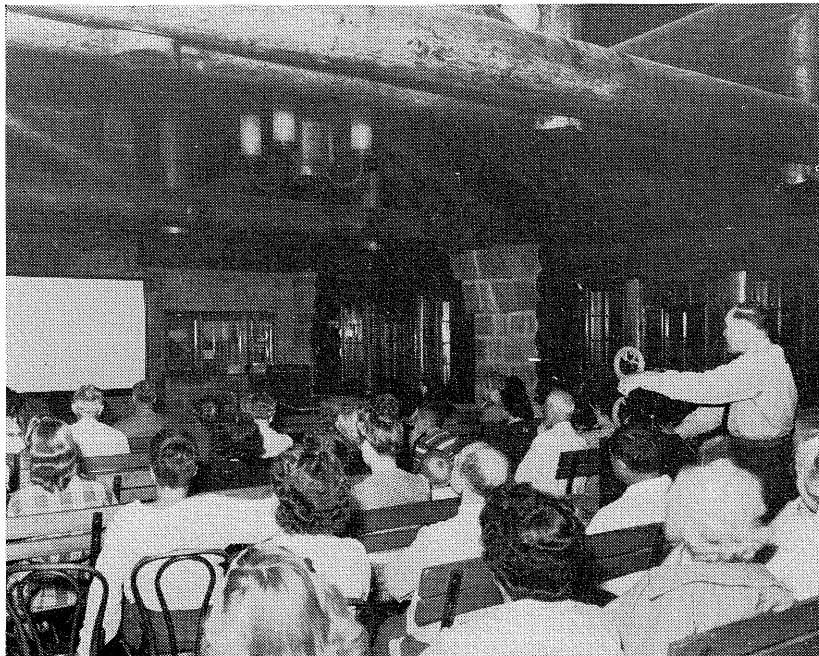
1949.....	45 entertainments.....	2,858 attendance
1950.....	51 entertainments.....	3,701 attendance

Information Booklet Distribution: Through the help of various educational organizations, 10,000 pieces of valuable natural history and conserva-

tion literature were distributed to interested guests during the past two summers.

Summary of Itasca State Park Nature Interpretation Project Attendance:

1949.....	88 days operation.....	56,057 attendance.....	637 daily average
1950.....	88 days operation.....	72,049 attendance.....	820 daily average



Itasca State Park

Typical Illustrated Nature Talks Were Entertaining and Informative

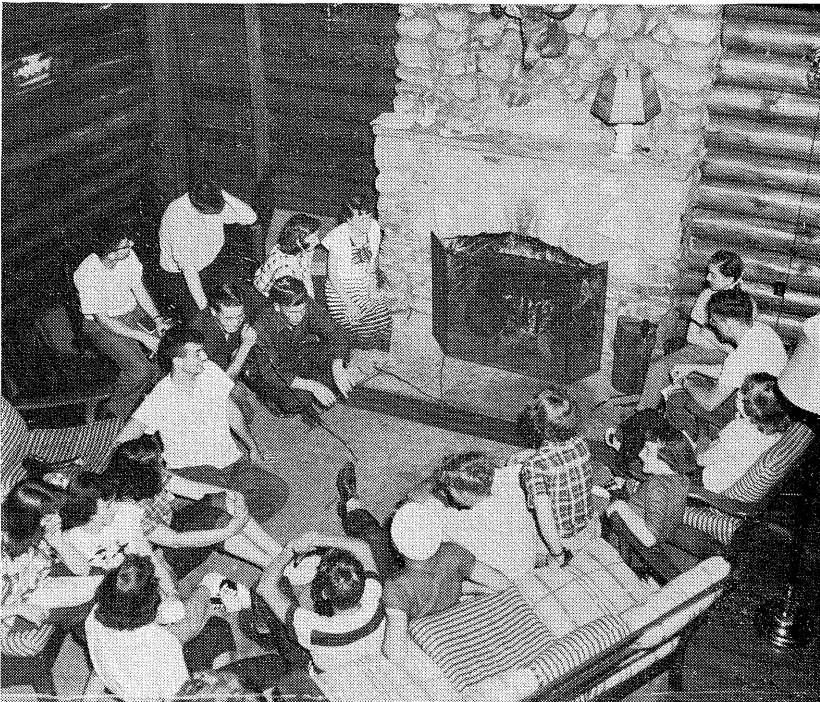
Self-guiding Nature Trails in Other State Parks: This service is now available to visitors at Whitewater, Interstate, St. Croix, Scenic, Gooseberry, and Camden State Parks. Utilization figures are not available, but reports from the various sections indicate that park guests used and appreciated these informative trails to an encouraging extent.

Thus, each year, an increasing number of Minnesota State Park visitors, while on recreation, discover fascinating facts about our natural history and develop new appreciation for our Minnesota wilderness. This in turn should aid materially in advancing the wise use of our natural resources.

In addition to the nature interpretation program which should be continued as a normal public service in the park system and expanded as public interest grows, activities were intensified in a number of parks in con-

nection with the 1949 Territorial Centennial celebration. The most outstanding event of the Centennial was the presentation of an official pageant depicting episodes in Minnesota during the era preceding its establishment as a territory. This pageant was presented July 2 and 3 in Itasca State Park and thereafter at two week intervals at the following parks: Camden, Whitewater, and Lake Bronson. Presentation of these pageants resulted in unprecedented attendance in all of these parks and created major problems in the handling of parking and traffic. In every instance, we are indebted to local National Guard units and the State Highway Patrol, both of which cooperated in the successful management and control of these celebrations. The direct cost of these pageant presentations was born by the centennial appropriations matched by donations from local civic groups. In several instances, the Division of State Parks granted concession permits to civic groups as a means of assisting them in raising funds to aid in the financing for their share of pageant costs.

Public camp ground facilities in tourist camps of the park system as a whole have been filled to capacity during the 1950 season. Camp ground expansions are an outstanding need if the system is to properly provide camping facilities for those who seek them. Overnight cabins now available



Conservation Essay Contest Winners Enjoy the Vacation Stay at Douglas Lodge in Itasca Park

in the system are totally inadequate to serve the numerous requests received for their use.

Organized group camping agencies are utilizing state park facilities to capacity. It has been proved possible to serve virtually all of the agencies requesting accommodation, although not at the time and dates when wanted. If during the coming year it will be possible to restore the mess hall burned down in the Squaw Lake Camp at Itasca State Park, an additional group camp will be available.

TABLE 2
STATE PARK GROUP CAMPS

Camp	Camper Days in 1949	Camper Days in 1950
Camden	194	421
Flandrau	3,850	3,894
Itasca-Elk Lake Camp.....	2,409	1,843
Lake Carlos	281	1,083
Lake Shetek.....	84	64
St. Croix		
Head of the Rapids.....	4,021	1,700
Norway Point	5,117	6,401
St. John's Landing.....	4,260	8,812
Whitewater	3,036	3,374
Total.....	23,252	27,592

TABLE 3
Number of Employees by Classification on State Park Payroll
as of June 30, 1950

1	Director
1	Assistant Director
3	District Park Supervisors
1	Civil Engineer I
1	Accountant I
1	Clerk Stenographer III
1	Clerk Stenographer I — part time
2	Clerk Typists II
4	Clerk Typists I — full and part time
2	Park Superintendents II
15	Park Superintendents I
10	Park Custodians
6	General Repairmen
4	Laborers II — full and part time
70	Laborers I
1	Cook IV
1	Cook I
3	Cooks II
1	Clerk I

- 1 Stores Clerk II
- 1 Custodial Worker II
- 80 Custodial Workers I — full and part time
- 1 Carpenter Foreman
- 7 Life Guards — part time
- 1 Carpenter
- 1 Baker

PERSONNEL

The positions in the traveling Mobile Maintenance Unit are the only major addition in personnel added to the regularly employed staff during the past two years. It is encouraging to note the development of greater reliability in the seasonal personnel employed, particularly in the lower classifications of the custodial workers. The employment of seasonal and part time employees in the labor and custodial worker classification continues to be a problem due to the low salary rate and temporary nature of positions offered. In Itasca State Park, for example, in an effort to obtain employees with better backgrounds for work to be done, rated positions for seasonal personnel were established. This has resulted in a higher degree of stability in responsible positions. Efficient maintenance of revenue producing facilities in the smaller parks creates a problem in that the volume of sales is often too small to justify the employment of personnel to operate the refectory and other of the revenue producing activities. Personnel employed under these conditions often have to work part time and are not as a rule dependable since they will take advantage of an opportunity for employment offering a stable year-round occupation and will leave on short notice. This point has been well proven during the past two years of operations, justifying the additional cost and indicating possible expansion along these lines.

WORKING CAPITAL FUND

The working capital fund is a fund established by the legislature with which the Division is authorized to purchase initial stock for resale and to hire seasonal employees to operate the revenue producing facilities. This fund is to be reimbursed from the earnings of these facilities, and originally all money in excess of \$7,500 in this fund on June 30 of each year was to be deposited in the general revenue fund. The fund was first created in 1941 by the then legislature and re-established at each session thereafter until 1949. In the meantime, the operation by the Division of the concession at Douglas Lodge, Itasca State Park, had been added to its activities, more than doubling the need for the advance purchasing and the stocking of stores for resale. Notwithstanding this increase in demands on the fund, it remained constant at \$7,500 until 1949. The legislature then increased the working capital fund to \$15,000 and authorized the spending of not to exceed 3% of the total earnings for equipment and provided that all of the moneys earned by the parks in excess of \$15,000 shall, on December 31 of each year, be deposited in the general revenue fund.

Since the initial setting aside by the legislature of \$7,500 as a revolving fund from which to finance in advance each year the operational needs of revenue producing facilities, it has earned as of December 31, 1950 a total of \$40,000 which has been deposited in the general revenue fund. Operations under this arrangement, while they seemed acceptable at the outset, through experience developed shortcomings and procedures in the administration of purchases of goods for resale which are unnecessarily complicated.

During the winter months and prior to the opening up of the park season when contracts for all of the stores for resale have to be processed and seasonal help needed for the operation of revenue producing facilities have to be engaged, funds for this purpose in excess of the \$15,000 in the working capital fund have to be encumbered against anticipated revenues which do not begin to come in in any appreciable volume before August 1. Having in mind this unbalanced and rather uncertain method of financing park operations and the fact that the legislature each year appropriates funds from the general revenue fund for park maintenance and improvements, it would seem only good business to reappropriate all of the earnings of state park revenue producing facilities to the Division of State Parks and not into the general revenue fund as at present. If this were done, the Division would be able to so arrange the financing of its operations as to have sufficient funds each year against which to encumber purchases for stores for resale with the balance to apply on park maintenance and improvements.

As has already been indicated herein, the legislature of 1949 authorized the Division to spend not to exceed 3% of the total earnings of the revenue producing facilities for the purchase of new and replacement of old equipment. Experience has indicated that this is wholly inadequate to meet the cost of these items. Wear and tear on appliances, dishes, mattresses, bed linens, and other equipment and supplies used at Douglas Lodge, for instance, depreciate rapidly from hard usage and, as time goes on, more and more of these items have to be replaced with new ones. This is also true to a lesser extent in the other parks where appliances of various kinds have to be kept operating. It is recommended that the 3% of the earnings of the revenue producing facilities now authorized to be used for the purchase of new and replacement of old equipment be increased to 10%.

STATISTICAL DATA

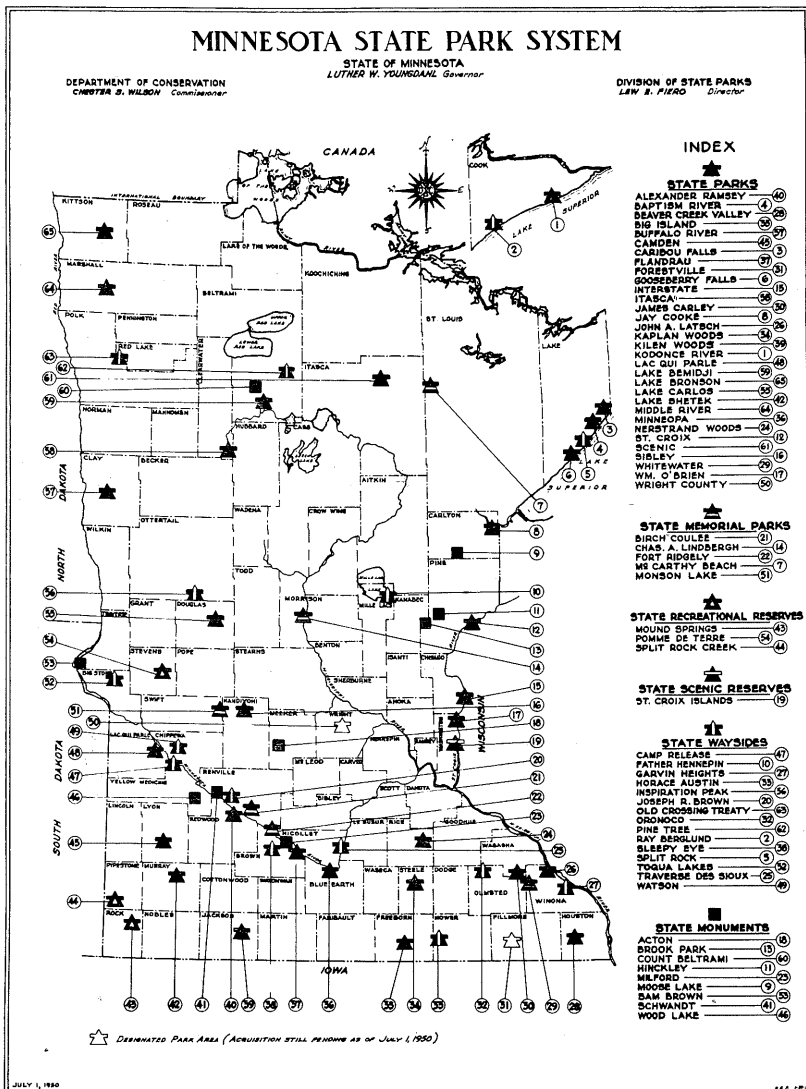
The figures and tables which follow are self-explanatory. An attempt has been made in this portion of the report to show the state-wide distribution of state parks, their chief characteristics, principal facilities in each, value of lands and improvements, inventory value of tools and equipment, and an accounting of expenditures and income.

TABLE 4

Inventory Value of Tools and Equipment—June 30, 1950

Administration	\$ 7,713.41
Alexander Ramsey	2,959.43
Baptism River	281.20
Beaver Creek Valley	566.19
Big Island	333.85
Birch Coulee	632.75
Buffalo River	1,205.76
Camden	4,880.12
Camp Release	183.78
Chas. A. Lindbergh	1,296.13
Count Beltrami	240.00
Father Hennepin	806.86
Flandrau	11,266.89
Fort Ridgely	3,914.94
Gooseberry Falls	8,339.83
Inspiration Peak	118.23
Interstate	7,021.56
Itasca	78,827.37
Horace Austin	330.00
Jay Cooke	9,076.67
John A. Latsch	943.01
Joseph R. Brown	40.00
Kaplan Woods	301.84
Kilen Woods	590.14
Lac qui Parle	2,898.52
Lake Bemidji	1,301.56
Lake Bronson	4,297.22
Lake Carlos	2,522.18
Lake Shetek	6,420.95
McCarthy Beach	5,810.96
Mobile Maintenance Unit	6,904.95
Middle River	2,576.80
Milford Monument	36.50
Minneopa	2,179.48
Monson Lake	283.95
Mound Springs	770.23
Nerstrand Woods	175.00
Old Crossing Treaty	393.06
Oronoco	1,090.16
Pine Tree	636.51
Pomme de Terre	897.70
St. Croix	42,138.63
Scenic	8,971.07
Sibley	5,646.93
Sleepy Eye	395.25
Split Rock Creek	684.86
Toqua Lakes	837.90
Traverse des Sioux	195.20
Whitewater	11,037.81
Wood Lake Monument	50.00
Watson Wayside	26.50
Total	\$251,049.70

FIGURE 1



DIVISION OF STATE PARKS

41

FIGURE 3

INFORMATION RELATIVE TO EACH STATE PARK UNIT																			
NAME OF AREA	DATE ESTABLISHED	COUNTY	ACRES	CHARACTERISTICS															
				Botanical	Geological	Scenic	Historical	Wildlife	River	Lake	Swamp	Palms	Islands						
STATE PARKS																			
Alexander Ramsey	1911	Redwood	185.38																
Baptism River	1945	Lake	706.00																
Beaver Creek Valley	1937	Houston	325.17																
Big Island	1947	Freeborn	112.25																
Buffalo River	1937	Clay	241.86																
Camden	1935	Lyon	469.96																
Caribou Falls	1947	Lake	91.62																
Flindrau	1937	Brown	836.48																
Forestville	1947	Fillmore																	
Gooseberry Falls	1937	Lake	637.83																
Interstate	1895	Chisago	167.50																
Itasca	1891	Clwr, Hubb. & Becker	31,976.00																
Jay Cooke	1915	Carlton	8,366.70																
James Carley	1949	Wabasha	211.00																
John A. Latsch	1925	Winona	350.20																
Kaplan Woods	1935	Steele	180.00																
Killen Woods	1945	Jackson	172.41																
Kodonce River	1947	Cook	127.80																
Lac Qui Parle	1941	Chippewa & Lac Qui Par.	457.49																
Lake Bemidji	1923	Beltrami	205.48																
Lake Bronson	1937	Kittson	745.62																
Lake Carlos	1936	Douglas	403.56																
Lake Shetek	1937	Murray	262.74																
Middle River	1937	Marshall	285.00																
Minneopa	1905	Blue Earth	116.24																
Norstrand Woods	1945	Rice	467.55																
St. Croix	1943	Pine	30,557.40																
Scenic	1921	Itasca	2,121.50																
Sibley	1919	Kandiyohi	378.83																
Whitewater	1919	Winona	666.28																
Wm. O'Brien	1945	Washington	180.30																
Wright County	1947	Wright																	
STATE MEMORIAL PARKS																			
Birch Coulee	1893	Renville	82.00																
Chas. A. Lindbergh	1931	Morrison	110.42																
Fort Ridgely	1911	Nicollet	224.60																
McCarthy Beach	1945	St. Louis	135.00																
Monson Lake	1937	Swift	198.95																
STATE RECREATIONAL RESERVES																			
Mound Springs	1937	Rock	194.90																
Pomme de Terre	1937	Stevens	363.51																
Split Rock Creek	1937	Pipestone	227.64																
STATE SCENIC RESERVES																			
St. Croix Islands	1943	Washington	39.36																
STATE WAYSIDES																			
Camp Release	1889	Lac Qui Parle	17.80																
Father Hennepin	1941	Millie Lacs	129.75																
Garvin Heights	1923	Winona	17.00																
Horace Austin	1913	Mower	50.00																
Inspiration Peak	1931	Ottertail	82.00																
Joseph R. Brown	1937	Renville	3.00																
Old Crossing Treaty	1931	Red Lake	111.00																
Oronoco	1937	Olmsted	105.00																
Pine Tree	1947	Beltrami	21.55																
Ray Berglund	1950	Cook	20.00																
Sleepy Eye	1921	Brown	40.00																
Split Rock	1945	Lake	35.00																
Toqua Lakes	1919	Big Stone	40.00																
Traverse des Sioux	1905	Nicollet	2.27																
Watson	1936	Chippewa	12.00																
STATE MONUMENTS																			
Acton	1909	Meeker	0.10																
Brook Park	1915	Pine	0.25																
Count Beltrami	1945	Beltrami	1.00																
Hinckley	1899	Pine	0.10																
Milford	1929	Brown	1.00																
Moose Lake	1929	Carlton	0.10																
Sam Brown	1929	Traverse	1.00																
Schwandt	1915	Renville	0.10																
Wood Lake	1907	Yellow Medicine	1.00																

* Donated to State in 1950

† Acquisition still pending as of July 1, 1950

Table No. 5

EXPENDITURES BY DIVISION OF STATE PARKS FOR ADMINISTRATION SALARIES, ADMINISTRATION EXPENSE,
AND MAINTENANCE AND IMPROVEMENT OF PARKS

Fiscal Years 1949 and 1950

PARK	Salaries		Other Services		Materials and Supplies		Acquisition of Property		Totals	
	1949	1950	1949	1950	1949	1950	1949	1950	1949	1950
Administration	\$23,370.00	\$35,172.64	\$3,965.07	\$4,686.22	\$3,279.28	\$7,054.66	\$5,383.34	\$1,548.98	\$35,997.69	\$48,462.50
Alexander Ramsey	1,823.82	2,013.00	44.35	150.28	100.08	58.66	5,594.40		7,562.65	2,221.94
Baptism River						107.05				107.05
Beaver Creek Valley	790.00	840.00	1.00	13.27	31.47	189.49			822.47	1,042.76
Big Island		420.00		17.83		115.90			792.81	553.78
Birch Coulee	775.00	855.00		2.00	15.81	3.30				875.20
Brook Park			25.00	65.00					25.00	65.00
Buffalo River	835.54	1,316.34	406.56	255.73	23.35	93.32		97.50	1,265.45	1,762.89
Camden	3,174.00	3,542.70	260.79	322.83	367.44	421.29		571.89	3,802.23	4,858.71
Camp Release		174.58								174.58
Caribou Falls			9.50						9.50	
Chas. A. Lindbergh	1,771.33	1,701.00	250.18	238.27	56.33	98.55		25.77	2,077.84	2,063.59
Count Beltrami	20.95	50.72							20.95	50.72
Douglas Lodge	527.03				7.51	3.54			534.54	3.54
Father Hennepin	700.00	908.16	21.00	76.38		91.42		412.50	812.42	1,628.96
Flandrau	4,038.90	4,426.55	685.57	368.93	416.40	2,019.12	1,890.00		7,030.87	8,814.60
Fort Ridgely	2,568.00	2,856.00	320.64	323.79	370.18	354.14			3,258.82	3,533.93
Garvin Heights		63.21								63.21
Gooseberry Falls	4,108.00	4,369.00	698.15	593.95	482.29	1,087.65			5,288.44	6,050.60
Horace Austin	551.67	70.00				5.01			551.67	75.01
Inspiration Peak	51.45	39.69							51.45	39.69
Interstate	3,457.61	4,313.91	647.30	550.47	758.83	618.03		14.87	4,863.74	5,497.28
Itasca	8,608.17	10,477.76	411.81	342.02	1,372.75	3,226.04		50.00	10,392.73	14,093.82
Jay Cooke	4,945.17	4,656.00	353.67	546.23	590.90	744.36	3,282.15		9,171.89	9,940.59
John A. Latsch	900.00	954.00	94.25	99.00	20.12	101.48			1,014.37	1,154.48
Joseph R. Brown						93.42				93.42
Kaplan Woods	580.00	620.54				6.00			580.00	626.54
Kilen Woods		560.00	19.88	77.22		294.57			19.88	1,879.69
Lac qui Parle	1,790.64	1,689.51	102.71	41.05	103.22	286.49		947.90	1,996.57	2,017.05
Lake Bemidji	660.00	600.69	35.15	56.18	10.30	4.25			605.45	661.12
Lake Bronson	3,118.49	3,267.50	430.39	518.01	94.59	133.65			3,643.47	3,919.16
Lake Carlos	2,485.01	2,949.20	272.59	533.40	29.95	961.48			2,787.55	4,444.08
Lake Shetek	3,224.68	3,401.96	317.35	238.81	218.40	268.85			3,760.43	3,909.62

Table No. 5—Continued

EXPENDITURES BY DIVISION OF STATE PARKS FOR ADMINISTRATION SALARIES, ADMINISTRATION EXPENSE,
AND MAINTENANCE AND IMPROVEMENT OF PARKS

Fiscal Years 1949 and 1950

PARK	Salaries		Other Services		Materials and Supplies		Acquisition of Property		Totals	
	1949	1950	1949	1950	1949	1950	1949	1950	1949	1950
Maintenance Crew.....				925.13		3,710.59		877.85		5,513.57
McCarthy Beach.....	618.49	636.00	94.54	174.63	1.20	24.08		660.25	714.23	1,494.96
Middle River.....	2,020.00	2,329.44	204.23	333.17	158.07	721.58			2,382.30	3,384.19
Milford Monument.....			40.00	81.25					40.00	81.25
Minneopa.....	3,128.00	3,444.00	165.78	167.88	201.55	204.75			3,495.33	3,816.63
Monson Lake.....	700.00	72.50							700.00	72.50
Moose Lake.....		725.00	25.00	65.00					25.00	790.00
Mound Springs.....	630.00	700.00	31.85	71.23	11.28	97.84			673.13	809.07
Old Crossing Treaty.....	349.13	349.13		4.38		4.83			349.13	358.34
Oronoco.....	490.00	636.00		14.67	33.00	27.32			523.00	677.99
Pine Tree.....	279.32	349.15		30.00		4.09		345.60	279.32	729.44
Pomme de Terre.....	727.10	795.00	15.35	17.43	15.88	41.13			758.33	853.56
St. Croix.....	6,982.50	8,501.43	526.95	657.70	1,812.52	5,066.66		5,643.37	9,321.97	19,869.16
Scenic.....	2,712.00	3,352.45	218.32	319.36	424.33	571.62			3,354.65	4,243.43
Sibley.....	2,847.32	3,104.00	260.71	526.10	233.89	229.55			3,341.92	3,850.65
Sleepy Eye.....	344.74	277.84	38.57	32.20					333.31	310.04
Split Rock Creek.....	287.75	560.00	33.06	117.36					330.96	1,112.81
Supervisors.....	7,320.00	7,560.00	2,295.36	2,268.62		435.45			9,615.36	9,828.62
Torqua Lakes.....	461.28	652.02	26.54	9.00	38.07	24.08			525.89	685.10
Traverse des Sioux.....	214.28	157.67	13.40	19.10	98.63	3.83			326.31	180.60
Whitewater.....	4,165.22	4,501.93	417.79	509.00	479.60	415.61		1,556.89	5,062.61	6,984.33
Wood Lake.....		111.72	40.00	20.00					40.00	131.72
William O'Brien.....								7,129.10		7,129.10
Totals 1949.....	\$109,052.59		\$13,822.36		\$11,958.79		\$16,149.89		\$150,983.63	
Totals 1950.....		\$131,124.94		\$16,495.93		\$30,165.83		\$19,882.47		\$197,669.17

DIVISION OF STATE PARKS

Table No. 6
RECEIPTS CREDITED TO STATE PARKS REVOLVING FUND
Fiscal Year 1949

PARK	Totals	Merchandise for Resale Bus Tickets Fishing Licenses Meals	Bathhouse Utilities Other Services	Boat Rentals and Watercraft Permits	Cabin Rentals and Camping	Group Camps	All Other Permits	Commissions	Land Rentals and Ice	Restitutions	Petty Cash Refunds
Alexander Ramsey	\$ 788.10	\$ 758.10			\$ 10.00						\$ 20.00
Beaver Creek Valley	14.25							\$ 14.25			
Buffalo River	1,127.45	1,020.75	\$ 62.70		24.00						20.00
Camden	1,962.65	1,486.70	347.35		17.25	\$ 88.80			\$ 2.55		20.00
Chas. A. Lindbergh	753.49	717.24	.50		15.75						20.00
Douglas Lodge	91,412.63	69,355.43	2,207.50	\$1,017.50	16,520.10		\$138.00	1,840.95	3.15		330.00
Father Hennepin	5.00			5.00							
Flandrau	1,914.94	1,005.19	36.65	47.25	4.00	743.65	48.20				30.00
Fort Ridgely	1,887.48	1,861.61	5.87								20.00
Gooseberry Falls	7,147.35	6,261.18	20.97		800.40				24.80		40.00
Interstate	10,918.47	8,501.92			1,315.25	2.50		61.60	1,007.20		30.00
Itasca	19,834.01	9,722.14	1,718.58	4,087.50	3,217.00	657.81		225.02	158.65		47.31
Jay Cooke	3,870.96	3,465.57	.24		341.00			24.00	.15		40.00
John A. Latsch	34.50				34.50						
Lac qui Parle	4.50			4.50							
Lake Bemidji	341.59	141.74	1.10		178.75						20.00
Lake Bronson	4,680.25	3,458.16	184.05	727.25		80.00		210.79			20.00
Lake Carlos	988.11	358.01	51.85	319.25	70.00	135.75			32.00	\$1.25	20.00
Lake Shetek	4,361.69	2,666.34	473.55	731.25	113.00	299.50		16.20	31.85		30.00
McCarthy Beach	667.81	280.21	1.60	366.00							20.00
Middle River	2,067.65	1,704.80	334.65		7.45				.75		20.00
Minneopa	3,337.52	3,317.52									20.00
Oronoco	280.50	195.00		75.50							10.00
Pomme de Terre	459.73	338.83	81.40	19.50							20.00
St. Croix	7,742.12	2,232.49	311.95	259.75	1,373.75	3,015.00	33.81	100.20	313.52	1.65	100.00
Scenic	4,380.16	1,659.01		938.00	1,626.50			37.50	89.15		30.00
Sibley	3,232.85	2,238.35	127.40	301.25	96.75	317.75		109.25	22.10		20.00
Whitewater	8,579.80	4,757.85	564.40		1,676.25	912.45	473.25	54.10	99.00	2.50	40.00
Totals	\$182,794.81	\$127,504.14	\$6,532.31	\$8,899.50	\$27,441.70	\$6,253.21	\$693.26	\$2,693.86	\$1,784.87	\$5.40	\$987.31

Table No. 6
RECEIPTS CREDITED TO STATE PARKS REVOLVING FUND
Fiscal Year 1950

PARK	Totals	Merchandise for Resale Bus Tickets Fishing Licenses Meals	Bathhouse Utilities Other Services	Boat Rentals and Watercraft Permits	Cabin Rentals and Camping	Group Camps	All Other Permits	Commissions	Land Rentals and Ice & Fuel	Restitutions	Petty Cash Refunds
Alexander Ramsey	\$ 785.75	\$ 759.75			\$ 6.00						\$ 20.00
Buffalo River	1,458.06	1,162.76	\$ 250.05		25.25						20.00
Camden	3,356.08	2,511.91	594.65		68.50	\$126.05		\$ 8.17	\$ 26.80		20.00
Chas. A. Lindbergh	1,030.54	942.79			67.75						20.00
Douglas Lodge	88,715.46	68,021.63	2,560.67	\$ 594.75	15,537.30			1,667.31	3.80		330.00
Father Hennepin	51.75			11.50	10.25						30.00
Flandrau	4,011.34	2,561.15	472.15	217.00	8.00	677.00	\$ 53.15	22.89			
Fort Ridgely	1,892.94	1,862.58	10.36								20.00
Gooseberry Falls	9,093.12	7,961.41	2.40		1,038.75			8.46	42.10		40.00
Interstate	10,780.34	8,157.44			1,500.75		6.40	69.70	1,016.05		30.00
Itasca	21,856.60	12,658.17	1,741.47	3,358.50	3,369.75	326.70	9.50	248.16	140.35	\$4.00	
Jay Cooke	3,527.01	3,126.75	3.36		320.50	2.50		33.90			40.00
John A. Latsch	46.75				46.75						
Lac qui Parle	.50				.50						
Lake Bemidji	353.60	109.35	1.50		222.75						20.00
Lake Bronson	4,706.44	3,784.85	192.55	448.25	5.75	55.00		176.72	13.32		30.00
Lake Carlos	1,256.57	696.77	55.70	254.25	56.00	149.25			22.10	2.50	20.00
Lake Shetek	4,028.93	2,701.23	614.70	551.00	34.75	80.00		8.00	9.25		30.00
McCarthy Beach	843.43	437.58	39.35	346.50							20.00
Middle River	2,853.45	2,242.25	571.95		7.00				.25		32.00
Minneopa	3,311.24	3,291.24									20.00
Monson Lake	96.00							96.00			
Oronoco	148.25	1.50		136.75							10.00
Pomme de Terre	462.66	371.51	56.90	14.25							20.00
St. Croix	8,524.76	2,524.09	448.44	232.00	1,233.00	3,453.60	25.26	92.95	415.42		100.00
Scenic	4,111.63	1,638.28		845.25	1,476.00		.40	45.10	76.60		30.00
Sibley	3,167.84	2,023.39	175.35	404.75	139.25	380.10			24.75	.25	20.00
Whitewater	8,709.93	4,882.10	432.25		1,692.55	756.20	760.50	71.53	74.80		40.00
Totals	\$189,180.97	\$134,430.48	\$8,223.80	\$7,414.75	\$26,867.10	\$6,006.40	\$855.21	\$2,548.89	\$1,865.59	\$6.75	\$962.00

Table No. 7

EXPENDITURES BY DIVISION OF STATE PARKS FOR FACILITY OPERATIONS UNDER WORKING CAPITAL FUND

Fiscal Years 1949 and 1950

PARK	Salaries		Other Services		Materials and Supplies		Acquisition of Property		Merchandise for Resale		Audits and Indemnities		Petty Cash		Totals	
	1949	1950	1949	1950	1949	1950	1949	1950	1949	1950	1949	1950	1949	1950	1949	1950
Administration.....	\$ 6,751.91	\$ 5,351.53	\$ 1,060.54	\$ 870.33	\$ 2,695.72	\$ 4,051.43	\$ 1,188.66	\$ 2,834.82	\$ 1,201.64	\$ 1,224.22	\$898.60	\$1,018.06	\$.....	\$.....	\$ 13,797.07	\$ 15,350.39
Alexander Ramsey.....	216.09	169.80	14.00	14.00	517.88	496.38	20.00	20.00	767.97	700.18
Buffalo River.....	304.71	394.02	16.25	83.66	106.54	721.05	927.68	20.00	20.00	1,129.42	1,464.49
Camden.....	779.59	836.41	63.70	82.94	456.77	106.25	1,040.75	1,335.39	20.00	20.00	2,360.81	2,380.99
Chas. A. Lindbergh.....	225.67	234.51	22.00	45.75	12.00	12.00	682.22	578.92	20.00	20.00	961.89	891.18
Douglas Lodge.....	24,233.19	24,527.58	817.67	857.00	1,886.49	1,681.71	391.24	219.78	29,841.50	24,545.06	330.00	330.00	57,500.09	52,161.13
Father Hennepin.....	11.45	11.45
Flandrau.....	331.88	853.77	209.70	106.10	92.71	187.60	744.98	1,637.25	30.00	30.00	1,409.27	2,814.72
Fort Ridgely.....	309.51	274.18	22.00	73.77	49.56	20.00	1,364.70	1,366.26	20.00	20.00	1,765.77	1,754.21
Gooseberry Falls.....	1,398.40	1,538.35	24.55	84.04	249.01	179.30	3,850.00	5,311.63	40.00	40.00	5,561.96	7,153.32
Interstate.....	2,185.91	2,271.78	215.93	287.68	243.05	156.13	193.62	40.50	7,374.86	5,727.13	30.00	30.00	10,243.37	8,513.22
Itasca.....	13,275.88	12,695.15	2,577.62	2,858.94	4,046.74	7,845.57	2,604.90	821.29	18,967.57	23,226.46	100.00	100.00	41,472.71	47,547.41
Jay Cooke.....	621.13	736.53	32.95	127.06	82.16	94.45	14.95	1,980.90	1,864.42	40.00	40.00	2,772.09	2,862.46
Lake Bemidji.....	292.54	160.24	16.00	13.00	200.34	21.55	20.00	20.00	528.88	214.79
Lake Bronson.....	1,247.75	1,168.52	26.70	64.49	145.00	78.61	2,533.13	2,669.54	20.00	20.00	3,972.58	4,001.16
Lake Carlos.....	353.60	452.81	38.00	34.50	38.70	40.96	436.42	397.04	20.00	20.00	886.72	945.31
Lake Shetek.....	749.36	746.40	22.00	22.00	96.55	78.10	1,656.55	1,632.26	30.00	30.00	2,554.46	2,508.76
Maintenance Crew.....	99.36	99.36
McCarthy Beach.....	417.41	438.31	9.16	14.83	164.55	307.98	20.00	20.00	781.12
Middle River.....	591.00	613.76	12.00	12.00	1,291.03	1,504.33	20.00	20.00	1,914.03	2,150.09
Minneopa.....	583.96	576.10	22.00	22.00	72.00	80.00	10.00	2,154.97	1,814.83	20.00	20.00	2,852.93	2,522.93
Mound Springs.....	12.05	12.05
Oronoco.....	140.00	159.00	10.00	10.00	150.00	169.00
Pomme de Terre.....	391.76	302.84	7.50	32.50	19.25	31.63	304.58	283.90	20.00	20.00	743.09	670.87
St. Croix.....	3,885.40	3,530.20	864.84	1,377.10	183.98	1,228.70	185.00	246.85	1,564.87	1,757.85	100.00	100.00	6,784.09	8,240.70
Scenic.....	673.61	668.47	32.00	48.43	22.38	51.25	1,006.42	1,022.86	30.00	30.00	1,764.41	1,821.01
Sibley.....	823.25	624.07	12.95	100.80	50.26	2.00	2,186.22	1,698.26	20.00	20.00	3,092.68	2,445.13
Supervisors.....	3,840.00	3,960.00	215.29	130.47	4,055.29	4,090.47
Whitewater.....	1,617.19	2,342.79	269.32	307.84	65.90	610.71	449.36	3,389.52	3,132.33	40.00	40.00	5,381.93	6,883.03
Totals 1949.....	\$66,240.70	\$6,569.26	\$10,642.50	\$4,578.37	\$5,176.65	\$898.60	\$940.00	\$175,046.08
Totals 1950.....	\$65,627.12	\$7,561.99	\$16,796.18	\$4,622.60	\$84,483.53	\$1,018.06	\$1,040.00	\$181,149.48

Table No. 8

INVENTORY VALUE OF STATE PARK LANDS AND IMPROVEMENTS

As of June 30, 1950

PARK NAME	LAND		IMPROVEMENTS		Totals
	Purchase	Donations	State	Federal	
Acton Monument.....	\$ 25.00	\$	\$ 2,500.00	\$	\$ 2,525.00
Alexander Ramsey.....	14,409.00	3,317.00	25,947.44	19,902.56	63,576.00
Baptism River.....	15,200.00	15,200.00
Beaver Creek Valley.....	9,532.15	410.00	9,942.15
Big Island.....	9,779.93	600.00	450.00	10,829.93
Birch Coulee.....	7,252.00	1,376.00	10,852.29	21,896.21	41,376.50
Brook Park Monument.....	100.00	2,500.00	2,600.00
Buffalo River.....	15,890.87	10,561.50	64,657.50	91,109.87
Camden.....	21,627.00	600.00	11,304.59	139,706.41	173,238.00
Camp Release.....	330.00	5,400.00	150.00	5,880.00
Caribou.....	1,500.00	1,500.00
Chas. A. Lindbergh.....	9,000.00	32,417.13	32,622.84	74,039.97
Count Beltrami.....	100.00	491.25	591.25
Father Hennepin.....	3,243.75	412.50	3,656.25
Flandrau.....	77,107.47	76,859.55	237,864.21	391,831.23
Fort Ridgely.....	17,391.21	17,276.87	109,417.13	144,085.21
Garvin Heights.....	1,020.00	1,037.82	162.18	2,220.00
Gooseberry Falls.....	25,000.00	2,847.08	283,147.92	310,995.00
Hinckley Monument.....	100.00	2,500.00	2,600.00
Horace Austin.....	5,000.00	12,725.00	17,725.00
Inspiration Peak.....	2,000.00	1,325.00	3,325.00
Interstate.....	3,651.00	24,300.00	30,356.45	59,336.83	117,644.28
Itasca.....	1,192,160.00	582,340.00	155,718.45	570,930.74	2,501,149.19
James A. Carley.....	21,000.00	21,000.00
Jay Cooke.....	113,049.61	69,300.00	72,126.86	178,272.14	432,748.61
John A. Latsch.....	26,265.00	1,665.00	150.00	28,080.00
Joseph R. Brown.....	60.00	60.00
Kaplan Woods.....	15,505.25	650.00	150.00	16,305.25
Kilen Woods.....	10,359.15	1,000.00	11,359.15
Kodonce River.....	6,000.00	6,000.00
Lac qui Parle.....	15,221.00	4,646.14	26,738.86	46,606.00
Lake Bemidji.....	43,056.54	7,470.72	15,439.28	65,966.54
Lake Bronson.....	16,996.26	19,789.89	53,897.26	90,683.41
Lake Carlos.....	8,838.59	16,480.40	27,678.68	52,997.67
Lake Shetek.....	39,404.20	52,562.75	91,777.25	183,744.20
McCarthy Beach.....	24,516.72	24,516.73	2,000.00	51,033.45
Middle River.....	8,996.56	14,687.03	44,161.97	67,845.56
Milford Monument.....	100.00	2,688.00	2,788.00
Minneopa.....	9,350.00	160.11	24,344.04	18,316.00	52,170.15

Table No. 8—Continued

INVENTORY VALUE OF STATE PARK LANDS AND IMPROVEMENTS

As of June 30, 1950

PARK NAME	LAND		IMPROVEMENTS		Totals
	Purchase	Donations	State	Federal	
Monson Lake.....	16,110.00		3,906.04	32,423.96	52,440.00
Moose Lake Monument.....		150.00	2,500.00		2,650.00
Mound Springs.....	15,623.13		6,506.33	23,043.82	45,173.28
Nerstrand Woods.....	21,879.63				21,879.63
Old Crossing Treaty.....			500.00	1,820.00	2,320.00
Oronoco.....	7,500.00		1,279.65	9,933.10	18,712.75
Pine Tree.....		2,450.00	1,150.00		3,600.00
Pomme de Terre.....	18,097.81		15,887.16	48,163.84	82,148.81
St. Croix.....		109,194.42	11,314.43	454,660.00	575,168.85
St. Croix Islands.....		500.00			500.00
Sam Brown Monument.....	2,500.00		2,500.00		5,000.00
Scenic.....	58,195.00		775.00	92,018.00	150,988.00
Schwandt Monument.....		10.00	275.00		285.00
Sibley.....	24,800.00		222.15	162,608.85	187,631.00
Sleepy Eye.....	1,296.50	6,704.00	4,050.00	480.00	12,530.50
Split Rock Creek.....	12,951.22		3,202.92	20,637.08	36,791.22
Split Rock Wayside.....		3,500.00			3,500.00
Toqua Lakes.....	2,733.00		1,440.00	6,600.00	10,773.00
Traverse des Sioux.....	250.00	250.00	1,225.00	150.00	1,875.00
Watson Wayside.....	336.00		903.51	8,236.49	9,476.00
Whitewater.....	9,491.58	4,713.20	18,499.27	186,787.73	219,491.78
William O'Brien.....		25,000.00			25,000.00
Wood Lake Monument.....	250.00		2,500.00		2,750.00
Totals.....	\$1,921,163.38	\$919,970.21	\$702,640.21	\$2,043,938.84	\$5,587,712.64

