



Minnesota Department of **Human Services**

Diversionsary Work Program (DWP) Fifth and 12th Month Outcomes

Data for DWP Cohorts from June 2012 – June 2014

March 2015
Minnesota Department of Human Services
Economic Assistance and Employment Supports Division
P.O. Box 64951
St. Paul, MN 55164-0951

This information is available in accessible formats for individuals with disabilities by calling 651-431-3936, toll free 1-800-366-7895, or by using your preferred relay service. For other information on disability rights and protections, contact the agency's ADA coordinator.

This report is published on the [MFIP Reports](#) page on the DHS website.

For information on this report, please contact:

Leslie Crichton

State Program Administrative Director

Research, Planning and Evaluation Unit

Economic Assistance and Employment Supports Division

651-431-3940

leslie.crichton@state.mn.us

Diversionsary Work Program Fifth and 12th Month Outcomes

Implemented in July 2004, the Diversionsary Work Program (DWP) was designed to provide intensive employment services to family cash assistance applicants with the intention of helping them move into jobs rather than directly onto the Minnesota Family Investment Program (MFIP). DWP cash assistance and employment services cease after four months, at which time, participants may be assessed for MFIP eligibility.

This quarterly report identifies the count of cases in the first month of DWP eligibility in a spell and determines the percent of cases in the cohort for a given month that did not receive MFIP cash assistance in the fifth or 12th month after initial DWP eligibility. Also shown is the percent of cases that did not receive MFIP cash assistance in any month from the fifth through the 12th month after initial DWP eligibility.¹ The report covers 25 cohorts. It is published every six months and covers either December to the December two years later or June to the June two years later.

Figure 1 tracks the statewide percent of cases off MFIP cash in the fifth month, in the 12th month, and in the fifth through the 12th month after the first month of DWP using a 12-month moving average.²

Table 1 shows the cohort count and percent of DWP cases that did not receive MFIP cash in the fifth month, in the 12th month, and in the fifth through the 12th month after their first month of DWP eligibility in a spell, for the past 25 months. Between 60 and 70 percent of all DWP applicants were not receiving MFIP cash benefits in the month immediately following their last month of DWP eligibility in a spell. More than 70 percent were not on MFIP cash in the 12th month after DWP began. Slightly more than half of cases did not receive MFIP cash assistance at any time between the fifth and 12th month after initial DWP eligibility.

The tables on subsequent pages provide monthly data on the fifth and 12th month measures by county for the cohorts starting DWP from June 2012 to June 2014.

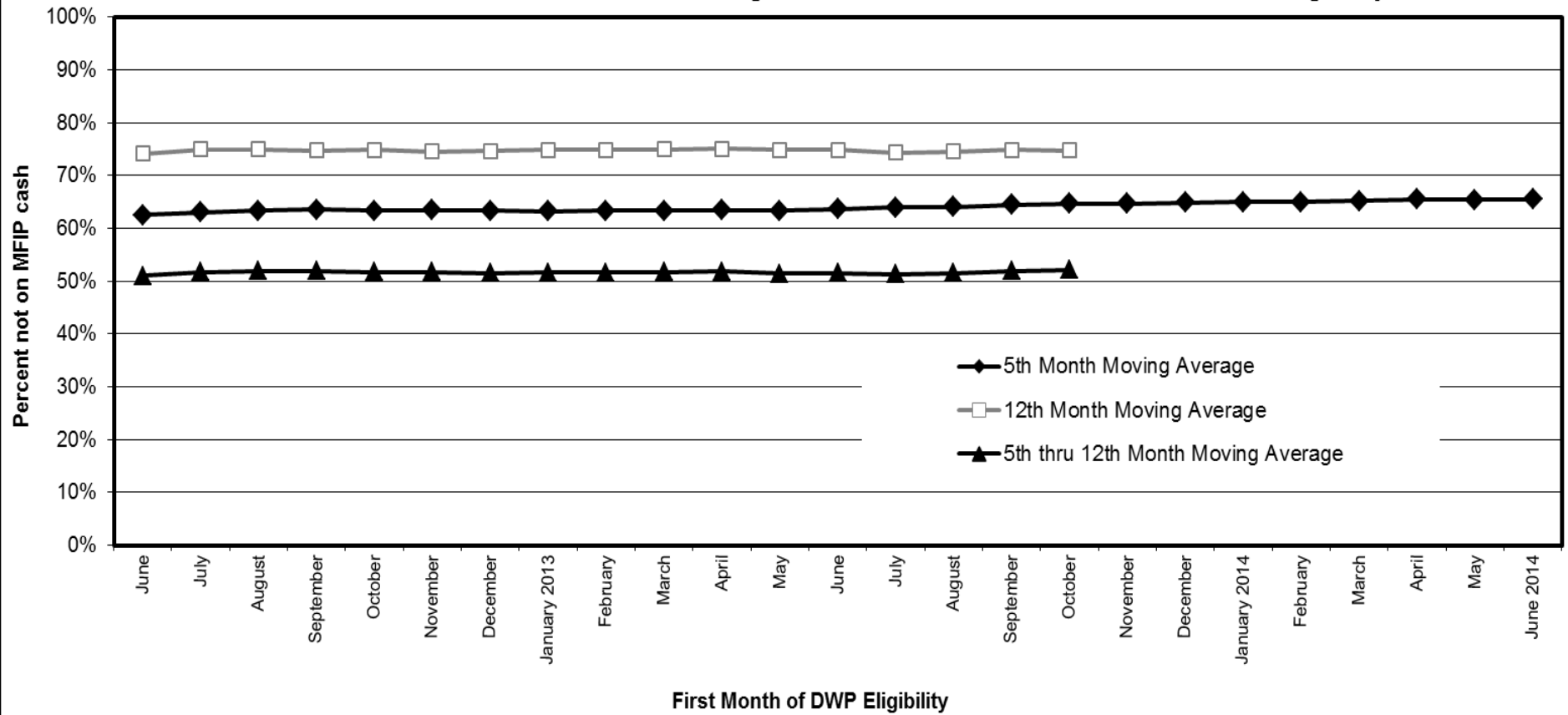
A cash assistance applicant that was not receiving MFIP in the fifth or 12th month after the first month of DWP eligibility was not necessarily diverted into employment by the DWP program. A quasi-comparison group study³ compared pre-DWP MFIP recipients likely to have met DWP eligibility guidelines with an early DWP cohort. While the fifth-month exit rate jumped from approximately 40 percent to 60 percent after the implementation of DWP, the effect was not lasting. By the 12th month, DWP applicants were on MFIP cash in approximately the same proportions as before the implementation of DWP.

¹ This report was revised in July 2013. The original version tracked cases in their first month *ever* on DWP and contained data for the entire history of the program. The revised report includes all cases in their first month of DWP eligibility in a spell, even if they participated in the program in the past. This added about 28 percent more cases to the cohort in an average month (i.e., an average of 28 percent of DWP applicants each month are repeaters). Also, the report includes only 25 months of data rather than the full history to make it more useful and readable.

² The 12-month moving average is used to give a clearer view of the consistency of the data rather than to highlight the seasonality of the monthly numbers. The 12-month moving average calculation includes the reported month and the previous 11 months.

³ Minnesota Department of Human Services. Evaluation Note 16: The Diversionsary Work Program: Caseload and Cost Impact, January 2007.

Figure 1. 12-Month Moving Average of the Percent of DWP Cases Off MFIP Cash in the 5th Month, 12th Month, or 5th through 12th Month after the First Month of DWP Eligibility



**Table 1. Percent of DWP cases not on MFIP cash in the 5th month or 12th month
after first month of DWP eligibility**

<u>First month of DWP eligibility</u>	<u>Number of cases in first month of of DWP eligibility</u>	<u>Percent not on MFIP cash in the 5th month after first month of DWP eligibility</u>	<u>Percent not on MFIP cash in the 12th month after first month of DWP eligibility</u>	<u>Percent not on MFIP cash in the 5th through 12th month after DWP eligibility</u>
June 2012	1,027	64.5%	74.0%	54.4%
June	908	65.3%	76.0%	53.2%
July	1,070	64.7%	80.1%	53.8%
August	1,029	64.5%	73.6%	52.0%
September	926	60.8%	72.4%	48.4%
October	890	59.6%	75.2%	47.5%
November	816	62.0%	73.3%	50.5%
December	764	65.4%	75.7%	51.8%
January 2013	848	63.8%	78.1%	54.4%
February	651	65.7%	75.9%	51.9%
March	737	60.9%	72.3%	51.0%
April	853	63.8%	74.0%	52.9%
May	803	63.9%	71.9%	50.2%
June	849	68.7%	75.6%	54.1%
July	907	68.1%	73.8%	51.7%
August	837	66.7%	76.2%	53.6%
September	806	64.6%	76.4%	53.8%
October	736	62.8%	74.5%	49.9%
November	717	62.2%		
December	713	67.7%		
January 2014	731	64.8%		
February	667	66.0%		
March	668	63.5%		
April	796	66.7%		
May	750	62.9%		
June 2014	805	70.2%		

Table 2. Fifth and Twelfth Month Status of Monthly DWP Case Cohorts - April, May, June 2012

County	April 2012 DWP Eligible			May 2012 DWP Eligible			June 2012 DWP Eligible		
	Total Cases in Cohort	Percent Off MFIP Cash in 5th Month	Percent Off MFIP Cash in 12th Month	Total Cases in Cohort	Percent Off MFIP Cash in 5th Month	Percent Off MFIP Cash in 12th Month	Total Cases in Cohort	Percent Off MFIP Cash in 5th Month	Percent Off MFIP Cash in 12th Month
State	980	62.7%	72.4%	898	64.0%	74.3%	908	65.3%	76.0%
Aitkin	9	77.8%	55.6%	5	60.0%	80.0%	4	75.0%	100.0%
Anoka	62	67.7%	72.6%	59	69.5%	74.6%	60	68.3%	80.0%
Becker	14	78.6%	78.6%	5	100.0%	80.0%	6	66.7%	66.7%
Beltrami	24	41.7%	50.0%	15	60.0%	66.7%	20	75.0%	75.0%
Benton	9	66.7%	88.9%	4	75.0%	50.0%	8	62.5%	87.5%
Big Stone	0			0			1	0.0%	0.0%
Blue Earth	13	61.5%	69.2%	8	75.0%	87.5%	10	70.0%	60.0%
Brown	3	100.0%	100.0%	3	66.7%	100.0%	1	100.0%	100.0%
Carlton	2	50.0%	100.0%	6	83.3%	83.3%	8	75.0%	75.0%
Carver	5	40.0%	60.0%	8	87.5%	87.5%	7	100.0%	100.0%
Cass	7	42.9%	42.9%	11	72.7%	90.9%	15	73.3%	80.0%
Chippewa	3	66.7%	66.7%	3	66.7%	66.7%	0		
Chisago	9	88.9%	88.9%	7	85.7%	100.0%	10	70.0%	80.0%
Clay	14	57.1%	78.6%	17	58.8%	82.4%	14	50.0%	64.3%
Clearwater	1	100.0%	100.0%	1	100.0%	100.0%	2	50.0%	100.0%
Cook	1	100.0%	100.0%	1	100.0%	0.0%	0		
Cottonwood	5	40.0%	60.0%	5	80.0%	60.0%	2	0.0%	50.0%
Crow Wing	21	76.2%	95.2%	10	90.0%	80.0%	16	87.5%	81.3%
Dakota	55	85.5%	80.0%	57	77.2%	84.2%	43	65.1%	76.7%
Dodge	0			3	33.3%	33.3%	3	100.0%	100.0%
Douglas	1	100.0%	100.0%	4	100.0%	100.0%	3	66.7%	66.7%
Faribault	0			4	75.0%	75.0%	3	100.0%	100.0%
Fillmore	5	80.0%	60.0%	1	100.0%	100.0%	4	75.0%	50.0%
Freeborn	7	71.4%	85.7%	12	41.7%	83.3%	7	42.9%	85.7%
Goodhue	1	0.0%	100.0%	3	100.0%	100.0%	8	62.5%	87.5%
Grant	3	100.0%	100.0%	0			1	0.0%	0.0%
Hennepin	220	57.7%	65.5%	196	59.7%	66.3%	188	62.2%	73.4%
Houston	0			2	50.0%	100.0%	3	0.0%	66.7%
Hubbard	6	83.3%	66.7%	3	66.7%	100.0%	1	0.0%	100.0%
Isanti	10	60.0%	70.0%	9	55.6%	55.6%	6	33.3%	66.7%
Itasca	9	55.6%	66.7%	8	50.0%	87.5%	7	71.4%	71.4%
Jackson	1	100.0%	100.0%	0			0		
Kanabec	0			4	50.0%	100.0%	2	100.0%	50.0%
Kandiyohi	9	55.6%	88.9%	16	81.3%	62.5%	14	71.4%	78.6%
Kittson	2	100.0%	100.0%	1	100.0%	100.0%	0		
Koochiching	2	50.0%	50.0%	4	25.0%	50.0%	3	66.7%	66.7%
Lac qui Parle	1	0.0%	0.0%	1	100.0%	0.0%	0		
Lake	1	100.0%	100.0%	3	66.7%	100.0%	0		
Lake of the Woods	1	0.0%	0.0%	1	100.0%	100.0%	0		
LeSueur	1	100.0%	100.0%	7	57.1%	85.7%	5	100.0%	100.0%
Lincoln	0			1	0.0%	0.0%	0		
Lyon	3	66.7%	100.0%	9	88.9%	100.0%	11	54.5%	81.8%
Mcleod	4	100.0%	100.0%	6	66.7%	50.0%	9	66.7%	77.8%
Mahnomen	5	100.0%	100.0%	4	50.0%	75.0%	3	33.3%	66.7%
Marshall	0			1	100.0%	100.0%	0		
Martin	3	100.0%	100.0%	6	83.3%	100.0%	2	100.0%	100.0%
Meeker	5	100.0%	60.0%	2	100.0%	50.0%	1	100.0%	100.0%

Table 2. Fifth and Twelfth Month Status of Monthly DWP Case Cohorts - April, May, June 2012

County	April 2012 DWP Eligible			May 2012 DWP Eligible			June 2012 DWP Eligible		
	Total Cases in Cohort	Percent Off MFIP Cash in 5th Month	Percent Off MFIP Cash in 12th Month	Total Cases in Cohort	Percent Off MFIP Cash in 5th Month	Percent Off MFIP Cash in 12th Month	Total Cases in Cohort	Percent Off MFIP Cash in 5th Month	Percent Off MFIP Cash in 12th Month
Mille Lacs	8	62.5%	87.5%	3	66.7%	100.0%	6	50.0%	50.0%
Morrison	4	75.0%	50.0%	2	50.0%	100.0%	2	50.0%	100.0%
Mower	14	64.3%	64.3%	16	31.3%	62.5%	10	50.0%	40.0%
Murray	0			0			2	100.0%	100.0%
Nicollet	9	44.4%	66.7%	8	37.5%	87.5%	8	87.5%	75.0%
Nobles	6	50.0%	66.7%	3	100.0%	100.0%	4	50.0%	75.0%
Norman	1	100.0%	100.0%	1	100.0%	100.0%	3	66.7%	100.0%
Olmsted	29	44.8%	62.1%	22	68.2%	81.8%	28	78.6%	75.0%
Otter Tail	6	33.3%	83.3%	2	100.0%	100.0%	9	77.8%	88.9%
Pennington	1	100.0%	100.0%	0			1	100.0%	100.0%
Pine	7	85.7%	71.4%	9	66.7%	77.8%	9	55.6%	66.7%
Pipestone	0			4	50.0%	100.0%	2	0.0%	100.0%
Polk	12	83.3%	91.7%	3	66.7%	66.7%	11	54.5%	63.6%
Pope	0			0			1	0.0%	0.0%
Ramsey	155	49.0%	69.7%	129	57.4%	66.7%	119	58.8%	73.9%
Red Lake	2	50.0%	100.0%	0			0		
Redwood	1	100.0%	100.0%	0			3	66.7%	100.0%
Renville	3	100.0%	100.0%	1	100.0%	100.0%	3	66.7%	100.0%
Rice	12	50.0%	75.0%	12	66.7%	83.3%	13	46.2%	69.2%
Rock	1	100.0%	100.0%	2	100.0%	100.0%	2	50.0%	100.0%
Roseau	1	0.0%	0.0%	1	100.0%	100.0%	3	66.7%	66.7%
St. Louis	37	62.2%	59.5%	29	55.2%	62.1%	32	65.6%	78.1%
Scott	15	80.0%	100.0%	14	64.3%	78.6%	18	66.7%	77.8%
Sherburne	12	75.0%	75.0%	7	71.4%	85.7%	8	50.0%	87.5%
Sibley	5	80.0%	80.0%	1	100.0%	100.0%	1	100.0%	100.0%
Stearns	19	63.2%	68.4%	26	61.5%	80.8%	20	65.0%	80.0%
Steele	7	71.4%	100.0%	9	66.7%	66.7%	10	90.0%	80.0%
Stevens	0			2	0.0%	50.0%	2	100.0%	50.0%
Swift	1	100.0%	100.0%	1	100.0%	100.0%	1	100.0%	100.0%
Todd	2	100.0%	100.0%	4	50.0%	100.0%	2	0.0%	50.0%
Traverse	1	100.0%	100.0%	1	100.0%	100.0%	0		
Wabasha	3	33.3%	66.7%	1	100.0%	100.0%	6	66.7%	83.3%
Wadena	0			1	0.0%	0.0%	1	0.0%	0.0%
Waseca	4	75.0%	100.0%	0			1	100.0%	100.0%
Washington	15	80.0%	86.7%	22	63.6%	81.8%	29	75.9%	79.3%
Watonwan	4	50.0%	75.0%	3	66.7%	66.7%	1	100.0%	100.0%
Wilkin	1	100.0%	100.0%	3	100.0%	100.0%	3	100.0%	33.3%
Winona	7	57.1%	71.4%	5	60.0%	80.0%	5	80.0%	100.0%
Wright	17	70.6%	94.1%	14	50.0%	78.6%	18	77.8%	88.9%
Yellow Medicine	1	100.0%	100.0%	1	100.0%	100.0%	0		

Table 3. Fifth and Twelfth Month Status of Monthly DWP Case Cohorts - July, August, September 2012

County	July 2012 DWP Eligible			August 2012 DWP Eligible			September 2012 DWP Eligible		
	Total Cases in Cohort	Percent Off MFIP Cash in 5th Month	Percent Off MFIP Cash in 12th Month	Total Cases in Cohort	Percent Off MFIP Cash in 5th Month	Percent Off MFIP Cash in 12th Month	Total Cases in Cohort	Percent Off MFIP Cash in 5th Month	Percent Off MFIP Cash in 12th Month
State	1070	64.7%	74.7%	1029	64.5%	73.6%	926	60.8%	72.4%
Aitkin	9	55.6%	66.7%	6	83.3%	100.0%	6	50.0%	66.7%
Anoka	88	70.5%	77.3%	67	73.1%	77.6%	63	71.4%	69.8%
Becker	9	77.8%	55.6%	5	60.0%	60.0%	8	62.5%	37.5%
Beltrami	12	58.3%	75.0%	19	36.8%	36.8%	23	52.2%	73.9%
Benton	6	100.0%	66.7%	8	75.0%	87.5%	8	62.5%	62.5%
Big Stone	0			0			2	0.0%	50.0%
Blue Earth	17	64.7%	82.4%	11	63.6%	72.7%	5	100.0%	100.0%
Brown	1	100.0%	100.0%	3	33.3%	66.7%	4	50.0%	50.0%
Carlton	3	66.7%	100.0%	3	33.3%	66.7%	3	66.7%	100.0%
Carver	7	71.4%	100.0%	4	100.0%	100.0%	5	60.0%	80.0%
Cass	9	55.6%	66.7%	10	80.0%	50.0%	11	36.4%	63.6%
Chippewa	0			5	60.0%	100.0%	1	0.0%	0.0%
Chisago	7	85.7%	85.7%	9	55.6%	66.7%	2	50.0%	50.0%
Clay	11	72.7%	81.8%	7	71.4%	85.7%	6	33.3%	66.7%
Clearwater	1	100.0%	100.0%	3	66.7%	66.7%	1	100.0%	100.0%
Cook	0			0			1	0.0%	100.0%
Cottonwood	6	66.7%	66.7%	4	75.0%	75.0%	4	75.0%	75.0%
Crow Wing	16	87.5%	87.5%	13	92.3%	92.3%	5	80.0%	100.0%
Dakota	55	74.5%	81.8%	64	75.0%	78.1%	57	61.4%	82.5%
Dodge	4	100.0%	50.0%	4	100.0%	100.0%	4	75.0%	75.0%
Douglas	4	100.0%	75.0%	1	100.0%	100.0%	2	50.0%	100.0%
Faribault	3	66.7%	66.7%	3	66.7%	100.0%	5	40.0%	60.0%
Fillmore	6	50.0%	100.0%	5	60.0%	80.0%	3	100.0%	100.0%
Freeborn	6	83.3%	83.3%	4	75.0%	75.0%	7	85.7%	85.7%
Goodhue	3	66.7%	66.7%	7	71.4%	71.4%	5	100.0%	100.0%
Grant	2	50.0%	100.0%	0			2	0.0%	50.0%
Hennepin	248	59.7%	65.7%	212	54.2%	67.5%	218	58.7%	72.0%
Houston	4	100.0%	100.0%	3	66.7%	66.7%	6	66.7%	66.7%
Hubbard	1	100.0%	100.0%	1	100.0%	100.0%	4	100.0%	100.0%
Isanti	10	60.0%	60.0%	12	91.7%	83.3%	10	50.0%	40.0%
Itasca	8	75.0%	87.5%	12	75.0%	83.3%	7	28.6%	42.9%
Jackson	4	75.0%	100.0%	3	66.7%	100.0%	1	100.0%	100.0%
Kanabec	1	100.0%	100.0%	4	50.0%	75.0%	5	100.0%	80.0%
Kandiyohi	17	64.7%	70.6%	14	78.6%	85.7%	7	57.1%	57.1%
Kittson	0			0			0		
Koochiching	5	40.0%	60.0%	5	60.0%	80.0%	3	66.7%	33.3%
Lac qui Parle	0			1	100.0%	100.0%	0		
Lake	0			1	100.0%	100.0%	2	100.0%	100.0%
Lake of the Woods	1	100.0%	100.0%	0			0		
LeSueur	7	85.7%	71.4%	6	50.0%	33.3%	6	66.7%	83.3%
Lincoln	0			0			0		
Lyon	4	50.0%	75.0%	5	20.0%	100.0%	5	100.0%	80.0%
Mcleod	5	100.0%	100.0%	3	66.7%	100.0%	6	50.0%	100.0%
Mahnomen	3	66.7%	66.7%	2	100.0%	50.0%	1	100.0%	100.0%
Marshall	2	50.0%	0.0%	0			1	100.0%	100.0%
Martin	4	50.0%	75.0%	3	33.3%	66.7%	7	57.1%	57.1%
Meeker	3	66.7%	66.7%	1	100.0%	100.0%	4	75.0%	50.0%

Table 3. Fifth and Twelfth Month Status of Monthly DWP Case Cohorts - July, August, September 2012

County	July 2012 DWP Eligible			August 2012 DWP Eligible			September 2012 DWP Eligible		
	Total Cases in Cohort	Percent Off MFIP Cash in 5th Month	Percent Off MFIP Cash in 12th Month	Total Cases in Cohort	Percent Off MFIP Cash in 5th Month	Percent Off MFIP Cash in 12th Month	Total Cases in Cohort	Percent Off MFIP Cash in 5th Month	Percent Off MFIP Cash in 12th Month
Mille Lacs	5	80.0%	80.0%	9	66.7%	66.7%	4	75.0%	75.0%
Morrison	2	50.0%	50.0%	3	100.0%	100.0%	0		
Mower	7	57.1%	57.1%	18	66.7%	72.2%	9	55.6%	55.6%
Murray	0			2	100.0%	100.0%	1	0.0%	0.0%
Nicollet	5	40.0%	80.0%	7	71.4%	71.4%	8	37.5%	87.5%
Nobles	3	33.3%	66.7%	9	66.7%	88.9%	5	60.0%	100.0%
Norman	4	100.0%	100.0%	0			1	0.0%	0.0%
Olmsted	33	60.6%	87.9%	30	63.3%	60.0%	25	52.0%	68.0%
Otter Tail	13	61.5%	84.6%	0			7	85.7%	85.7%
Pennington	3	66.7%	66.7%	2	100.0%	100.0%	2	50.0%	100.0%
Pine	6	100.0%	100.0%	7	71.4%	85.7%	13	30.8%	76.9%
Pipestone	2	100.0%	100.0%	2	100.0%	100.0%	5	80.0%	100.0%
Polk	11	90.9%	72.7%	12	66.7%	91.7%	4	50.0%	75.0%
Pope	0			0			0		
Ramsey	191	51.3%	70.2%	191	59.7%	70.2%	140	53.6%	66.4%
Red Lake	1	100.0%	100.0%	1	100.0%	100.0%	4	100.0%	100.0%
Redwood	5	80.0%	60.0%	7	71.4%	71.4%	3	100.0%	100.0%
Renville	2	50.0%	100.0%	3	100.0%	100.0%	4	100.0%	75.0%
Rice	9	66.7%	66.7%	5	60.0%	60.0%	5	40.0%	60.0%
Rock	0			2	100.0%	50.0%	0		
Roseau	0			4	50.0%	100.0%	1	100.0%	100.0%
St. Louis	34	58.8%	85.3%	29	41.4%	65.5%	30	43.3%	70.0%
Scott	19	68.4%	89.5%	21	76.2%	90.5%	15	80.0%	93.3%
Sherburne	13	92.3%	84.6%	12	83.3%	83.3%	15	100.0%	93.3%
Sibley	1	100.0%	100.0%	3	100.0%	100.0%	2	100.0%	100.0%
Stearns	27	66.7%	63.0%	15	66.7%	60.0%	10	70.0%	70.0%
Steele	10	70.0%	80.0%	10	50.0%	70.0%	9	66.7%	88.9%
Stevens	0			0			0		
Swift	1	100.0%	100.0%	0			0		
Todd	3	33.3%	66.7%	5	60.0%	80.0%	5	40.0%	60.0%
Traverse	0			1	100.0%	100.0%	0		
Wabasha	3	66.7%	66.7%	1	100.0%	100.0%	3	66.7%	66.7%
Wadena	1	100.0%	100.0%	2	50.0%	50.0%	5	40.0%	60.0%
Waseca	2	50.0%	100.0%	1	0.0%	100.0%	8	75.0%	87.5%
Washington	15	80.0%	100.0%	24	79.2%	83.3%	23	78.3%	65.2%
Watonwan	3	100.0%	100.0%	6	66.7%	66.7%	2	50.0%	50.0%
Wilkin	0			1	100.0%	0.0%	0		
Winona	6	33.3%	83.3%	7	57.1%	71.4%	8	25.0%	62.5%
Wright	18	83.3%	88.9%	23	82.6%	91.3%	13	92.3%	76.9%
Yellow Medicine	0			1	0.0%	100.0%	1	0.0%	100.0%

Table 4. Fifth and Twelfth Month Status of Monthly DWP Case Cohorts - October, November, December 2012

County	October 2012 DWP Eligible			November 2012 DWP Eligible			December 2012 DWP Eligible		
	Total Cases in Cohort	Percent Off MFIP Cash in 5th Month	Percent Off MFIP Cash in 12th Month	Total Cases in Cohort	Percent Off MFIP Cash in 5th Month	Percent Off MFIP Cash in 12th Month	Total Cases in Cohort	Percent Off MFIP Cash in 5th Month	Percent Off MFIP Cash in 12th Month
State	890	59.6%	75.2%	816	62.0%	73.3%	764	65.4%	75.7%
Aitkin	4	25.0%	100.0%	3	66.7%	66.7%	2	100.0%	100.0%
Anoka	57	59.6%	75.4%	68	63.2%	73.5%	48	62.5%	83.3%
Becker	3	100.0%	33.3%	8	50.0%	62.5%	7	85.7%	100.0%
Beltrami	19	52.6%	73.7%	17	58.8%	82.4%	14	50.0%	71.4%
Benton	5	40.0%	100.0%	2	50.0%	50.0%	9	66.7%	100.0%
Big Stone	0			0			1	0.0%	0.0%
Blue Earth	15	93.3%	93.3%	8	62.5%	75.0%	12	66.7%	91.7%
Brown	4	50.0%	100.0%	7	42.9%	100.0%	4	100.0%	100.0%
Carlton	8	75.0%	87.5%	2	100.0%	100.0%	7	100.0%	85.7%
Carver	3	66.7%	66.7%	8	75.0%	62.5%	6	83.3%	83.3%
Cass	6	66.7%	83.3%	9	44.4%	55.6%	8	75.0%	62.5%
Chippewa	2	50.0%	50.0%	3	100.0%	66.7%	1	0.0%	100.0%
Chisago	3	33.3%	66.7%	3	66.7%	100.0%	5	80.0%	80.0%
Clay	7	42.9%	71.4%	7	85.7%	100.0%	14	57.1%	85.7%
Clearwater	3	100.0%	100.0%	4	50.0%	50.0%	1	0.0%	0.0%
Cook	0			1	100.0%	100.0%	0		
Cottonwood	6	66.7%	83.3%	1	0.0%	100.0%	2	50.0%	50.0%
Crow Wing	8	75.0%	62.5%	13	76.9%	92.3%	6	33.3%	83.3%
Dakota	52	75.0%	73.1%	56	71.4%	82.1%	46	69.6%	82.6%
Dodge	5	60.0%	80.0%	7	71.4%	71.4%	4	100.0%	50.0%
Douglas	5	80.0%	100.0%	5	60.0%	40.0%	2	0.0%	0.0%
Faribault	2	100.0%	100.0%	4	50.0%	75.0%	2	100.0%	100.0%
Fillmore	1	0.0%	0.0%	3	33.3%	33.3%	5	80.0%	80.0%
Freeborn	13	53.8%	84.6%	3	66.7%	100.0%	3	33.3%	66.7%
Goodhue	5	60.0%	80.0%	5	80.0%	100.0%	1	100.0%	100.0%
Grant	1	100.0%	100.0%	0			2	100.0%	100.0%
Hennepin	194	54.6%	67.0%	165	47.3%	66.1%	171	57.3%	70.8%
Houston	3	66.7%	100.0%	2	100.0%	100.0%	1	100.0%	100.0%
Hubbard	5	80.0%	100.0%	5	80.0%	100.0%	2	100.0%	50.0%
Isanti	13	30.8%	84.6%	11	72.7%	81.8%	8	100.0%	100.0%
Itasca	8	50.0%	87.5%	12	75.0%	75.0%	9	77.8%	66.7%
Jackson	1	0.0%	100.0%	1	0.0%	100.0%	4	50.0%	50.0%
Kanabec	3	33.3%	100.0%	4	75.0%	75.0%	4	0.0%	75.0%
Kandiyohi	10	90.0%	90.0%	10	90.0%	80.0%	12	91.7%	91.7%
Kittson	0			0			0		
Koochiching	3	66.7%	33.3%	5	80.0%	60.0%	2	100.0%	100.0%
Lac qui Parle	0			0			2	50.0%	50.0%
Lake	2	100.0%	100.0%	3	33.3%	66.7%	1	0.0%	100.0%
Lake of the Woods	1	100.0%	100.0%	0			2	50.0%	50.0%
LeSueur	3	33.3%	66.7%	4	75.0%	100.0%	4	50.0%	50.0%
Lincoln	1	100.0%	100.0%	0			0		
Lyon	5	80.0%	60.0%	5	100.0%	80.0%	2	0.0%	50.0%
McLeod	3	66.7%	66.7%	4	25.0%	0.0%	5	80.0%	80.0%
Mahnomen	4	75.0%	25.0%	3	33.3%	0.0%	3	66.7%	66.7%
Marshall	1	100.0%	100.0%	0			0		
Martin	7	85.7%	100.0%	3	100.0%	100.0%	2	100.0%	100.0%
Meeker	2	50.0%	50.0%	5	100.0%	100.0%	1	0.0%	100.0%

Table 4. Fifth and Twelfth Month Status of Monthly DWP Case Cohorts - October, November, December 2012

County	October 2012 DWP Eligible			November 2012 DWP Eligible			December 2012 DWP Eligible		
	Total Cases in Cohort	Percent Off MFIP Cash in 5th Month	Percent Off MFIP Cash in 12th Month	Total Cases in Cohort	Percent Off MFIP Cash in 5th Month	Percent Off MFIP Cash in 12th Month	Total Cases in Cohort	Percent Off MFIP Cash in 5th Month	Percent Off MFIP Cash in 12th Month
Mille Lacs	4	75.0%	50.0%	4	25.0%	50.0%	2	100.0%	50.0%
Morrison	4	25.0%	75.0%	1	100.0%	100.0%	0		
Mower	10	50.0%	70.0%	12	66.7%	83.3%	13	69.2%	76.9%
Murray	0			0			2	50.0%	50.0%
Nicollet	7	57.1%	85.7%	2	50.0%	100.0%	2	100.0%	100.0%
Nobles	7	57.1%	100.0%	6	83.3%	83.3%	7	85.7%	100.0%
Norman	0			0			3	33.3%	66.7%
Olmsted	26	65.4%	88.5%	26	53.8%	65.4%	25	80.0%	88.0%
Otter Tail	6	66.7%	83.3%	6	100.0%	66.7%	7	85.7%	85.7%
Pennington	2	100.0%	100.0%	5	100.0%	80.0%	1	100.0%	100.0%
Pine	6	50.0%	66.7%	5	20.0%	80.0%	8	62.5%	75.0%
Pipestone	3	33.3%	33.3%	2	100.0%	100.0%	1	0.0%	100.0%
Polk	7	57.1%	85.7%	10	60.0%	100.0%	3	100.0%	66.7%
Pope	2	100.0%	100.0%	0			2	50.0%	50.0%
Ramsey	139	48.9%	69.8%	110	54.5%	69.1%	113	52.2%	62.8%
Red Lake	0			0			0		
Redwood	2	50.0%	50.0%	6	83.3%	100.0%	2	100.0%	100.0%
Renville	1	100.0%	100.0%	3	66.7%	66.7%	2	50.0%	100.0%
Rice	11	45.5%	72.7%	8	50.0%	75.0%	9	55.6%	88.9%
Rock	0			4	100.0%	100.0%	3	100.0%	66.7%
Roseau	2	100.0%	100.0%	0			3	100.0%	66.7%
St. Louis	30	70.0%	76.7%	17	52.9%	58.8%	29	79.3%	79.3%
Scott	10	70.0%	90.0%	15	86.7%	93.3%	10	100.0%	80.0%
Sherburne	10	40.0%	90.0%	9	100.0%	88.9%	7	71.4%	85.7%
Sibley	2	100.0%	50.0%	0			4	50.0%	100.0%
Stearns	21	57.1%	85.7%	10	40.0%	40.0%	10	50.0%	70.0%
Steele	9	55.6%	77.8%	9	88.9%	77.8%	5	100.0%	60.0%
Stevens	1	0.0%	0.0%	1	100.0%	100.0%	2	100.0%	100.0%
Swift	2	50.0%	50.0%	2	50.0%	100.0%	1	0.0%	100.0%
Todd	6	66.7%	83.3%	2	50.0%	50.0%	4	100.0%	75.0%
Traverse	0			0			0		
Wabasha	3	66.7%	100.0%	5	80.0%	80.0%	0		
Wadena	2	50.0%	50.0%	2	50.0%	50.0%	1	100.0%	100.0%
Waseca	6	66.7%	33.3%	1	0.0%	0.0%	3	100.0%	100.0%
Washington	22	72.7%	95.5%	24	70.8%	79.2%	16	81.3%	75.0%
Watsonwan	2	50.0%	100.0%	1	100.0%	100.0%	1	100.0%	100.0%
Wilkin	1	100.0%	0.0%	2	100.0%	50.0%	1	100.0%	100.0%
Winona	7	57.1%	71.4%	3	33.3%	66.7%	4	50.0%	50.0%
Wright	11	81.8%	81.8%	13	92.3%	84.6%	10	80.0%	80.0%
Yellow Medicine	0			1	0.0%	0.0%	1	0.0%	100.0%

Table 5. Fifth and Twelfth Month Status of Monthly DWP Case Cohorts - January, February, March 2013

County	January 2013 DWP Eligible			February 2013 DWP Eligible			March 2013 DWP Eligible		
	Total Cases in Cohort	Percent Off MFIP Cash in 5th Month	Percent Off MFIP Cash in 12th Month	Total Cases in Cohort	Percent Off MFIP Cash in 5th Month	Percent Off MFIP Cash in 12th Month	Total Cases in Cohort	Percent Off MFIP Cash in 5th Month	Percent Off MFIP Cash in 12th Month
State	848	63.8%	78.1%	651	65.7%	75.9%	737	60.9%	72.3%
Aitkin	1	0.0%	0.0%	2	100.0%	50.0%	2	100.0%	100.0%
Anoka	55	78.2%	87.3%	40	75.0%	75.0%	52	71.2%	76.9%
Becker	5	80.0%	80.0%	4	100.0%	75.0%	4	75.0%	75.0%
Beltrami	18	50.0%	83.3%	12	58.3%	66.7%	24	50.0%	62.5%
Benton	8	100.0%	100.0%	4	50.0%	75.0%	6	66.7%	66.7%
Big Stone	0			0			1	100.0%	0.0%
Blue Earth	8	50.0%	100.0%	10	70.0%	80.0%	10	40.0%	70.0%
Brown	1	100.0%	100.0%	2	100.0%	100.0%	1	100.0%	100.0%
Carlton	1	100.0%	0.0%	5	80.0%	80.0%	6	66.7%	100.0%
Carver	11	100.0%	100.0%	2	100.0%	100.0%	6	100.0%	83.3%
Cass	8	25.0%	12.5%	3	33.3%	33.3%	9	44.4%	77.8%
Chippewa	1	100.0%	0.0%	1	100.0%	100.0%	1	100.0%	100.0%
Chisago	5	100.0%	100.0%	2	50.0%	50.0%	4	100.0%	100.0%
Clay	10	70.0%	60.0%	11	63.6%	81.8%	8	75.0%	100.0%
Clearwater	0			1	100.0%	100.0%	5	80.0%	80.0%
Cook	0			0			2	100.0%	100.0%
Cottonwood	3	100.0%	100.0%	0			1	0.0%	100.0%
Crow Wing	5	80.0%	100.0%	4	75.0%	75.0%	12	58.3%	58.3%
Dakota	61	75.4%	80.3%	40	77.5%	80.0%	34	76.5%	88.2%
Dodge	4	75.0%	75.0%	5	100.0%	100.0%	2	0.0%	100.0%
Douglas	6	66.7%	100.0%	3	100.0%	33.3%	3	100.0%	100.0%
Faribault	1	100.0%	100.0%	3	66.7%	66.7%	4	25.0%	100.0%
Fillmore	3	100.0%	100.0%	0			1	100.0%	100.0%
Freeborn	6	83.3%	50.0%	4	75.0%	75.0%	1	100.0%	0.0%
Goodhue	8	87.5%	87.5%	3	66.7%	66.7%	6	66.7%	66.7%
Grant	1	100.0%	100.0%	0			0		
Hennepin	183	57.4%	73.2%	126	59.5%	70.6%	164	53.0%	61.0%
Houston	1	100.0%	100.0%	2	50.0%	50.0%	5	20.0%	60.0%
Hubbard	4	100.0%	75.0%	1	0.0%	100.0%	3	100.0%	100.0%
Isanti	9	100.0%	100.0%	2	50.0%	50.0%	5	80.0%	100.0%
Itasca	4	50.0%	75.0%	11	63.6%	72.7%	10	30.0%	60.0%
Jackson	1	100.0%	100.0%	1	100.0%	100.0%	0		
Kanabec	4	75.0%	75.0%	3	100.0%	66.7%	4	75.0%	75.0%
Kandiyohi	11	81.8%	72.7%	6	66.7%	83.3%	13	69.2%	53.8%
Kittson	0			1	100.0%	100.0%	0		
Koochiching	4	75.0%	75.0%	3	33.3%	100.0%	4	25.0%	75.0%
Lac qui Parle	0			1	100.0%	100.0%	0		
Lake	1	0.0%	100.0%	0			0		
Lake of the Woods	0			0			0		
LeSueur	4	75.0%	100.0%	6	50.0%	66.7%	2	100.0%	100.0%
Lincoln	0			0			0		
Lyon	3	66.7%	100.0%	3	100.0%	100.0%	4	0.0%	50.0%
Mcleod	5	80.0%	100.0%	3	100.0%	100.0%	7	85.7%	100.0%
Mahnomen	2	100.0%	0.0%	2	0.0%	100.0%	5	60.0%	100.0%
Marshall	1	100.0%	100.0%	0			0		
Martin	2	100.0%	100.0%	4	100.0%	100.0%	3	100.0%	100.0%
Meeker	2	100.0%	100.0%	1	100.0%	100.0%	3	66.7%	100.0%

Table 5. Fifth and Twelfth Month Status of Monthly DWP Case Cohorts - January, February, March 2013

County	January 2013 DWP Eligible			February 2013 DWP Eligible			March 2013 DWP Eligible		
	Total Cases in Cohort	Percent Off MFIP Cash in 5th Month	Percent Off MFIP Cash in 12th Month	Total Cases in Cohort	Percent Off MFIP Cash in 5th Month	Percent Off MFIP Cash in 12th Month	Total Cases in Cohort	Percent Off MFIP Cash in 5th Month	Percent Off MFIP Cash in 12th Month
Mille Lacs	1	100.0%	100.0%	5	40.0%	100.0%	3	66.7%	66.7%
Morrison	5	80.0%	100.0%	2	100.0%	100.0%	3	66.7%	100.0%
Mower	17	52.9%	82.4%	7	85.7%	100.0%	11	54.5%	72.7%
Murray	0			1	0.0%	0.0%	0		
Nicollet	2	100.0%	50.0%	2	50.0%	0.0%	8	62.5%	75.0%
Nobles	7	42.9%	71.4%	6	50.0%	83.3%	4	50.0%	100.0%
Norman	1	0.0%	100.0%	0			2	100.0%	100.0%
Olmsted	32	59.4%	81.3%	20	65.0%	80.0%	20	30.0%	55.0%
Otter Tail	4	50.0%	75.0%	5	80.0%	60.0%	7	85.7%	85.7%
Pennington	0			1	100.0%	100.0%	0		
Pine	11	63.6%	72.7%	9	44.4%	88.9%	7	85.7%	71.4%
Pipestone	5	100.0%	100.0%	4	75.0%	75.0%	3	66.7%	66.7%
Polk	8	75.0%	62.5%	7	71.4%	71.4%	8	50.0%	62.5%
Pope	2	100.0%	100.0%	0			0		
Ramsey	137	43.1%	71.5%	112	56.3%	73.2%	101	55.4%	69.3%
Red Lake	0			1	100.0%	0.0%	0		
Redwood	1	0.0%	0.0%	0			1	100.0%	0.0%
Renville	3	66.7%	100.0%	0			2	100.0%	100.0%
Rice	8	62.5%	75.0%	11	72.7%	72.7%	4	50.0%	25.0%
Rock	0			0			1	100.0%	100.0%
Roseau	2	100.0%	100.0%	1	100.0%	100.0%	0		
St. Louis	35	48.6%	62.9%	36	58.3%	75.0%	22	68.2%	81.8%
Scott	13	84.6%	92.3%	10	80.0%	80.0%	6	83.3%	100.0%
Sherburne	9	55.6%	88.9%	6	83.3%	100.0%	10	70.0%	80.0%
Sibley	2	100.0%	100.0%	1	100.0%	100.0%	3	66.7%	100.0%
Stearns	14	78.6%	92.9%	13	69.2%	84.6%	19	47.4%	68.4%
Steele	10	80.0%	90.0%	9	66.7%	66.7%	10	90.0%	80.0%
Stevens	2	100.0%	100.0%	0			2	50.0%	50.0%
Swift	0			2	50.0%	50.0%	1	0.0%	100.0%
Todd	5	40.0%	100.0%	1	100.0%	100.0%	2	50.0%	100.0%
Traverse	0			0			1	0.0%	100.0%
Wabasha	2	50.0%	50.0%	5	80.0%	100.0%	5	100.0%	100.0%
Wadena	2	100.0%	100.0%	2	0.0%	50.0%	4	100.0%	100.0%
Waseca	3	100.0%	66.7%	3	66.7%	100.0%	0		
Washington	15	66.7%	100.0%	10	80.0%	80.0%	19	63.2%	63.2%
Watsonwan	4	75.0%	75.0%	3	66.7%	100.0%	2	50.0%	100.0%
Wilkin	1	100.0%	100.0%	1	100.0%	100.0%	0		
Winona	5	80.0%	60.0%	3	66.7%	66.7%	2	100.0%	50.0%
Wright	7	57.1%	71.4%	13	76.9%	84.6%	7	85.7%	100.0%
Yellow Medicine	2	50.0%	50.0%	2	50.0%	50.0%	0		

Table 6. Fifth and Twelfth Month Status of Monthly DWP Case Cohorts - April, May, June 2013

County	April 2013 DWP Eligible			May 2013 DWP Eligible			June 2013 DWP Eligible		
	Total Cases in Cohort	Percent Off MFIP Cash in 5th Month	Percent Off MFIP Cash in 12th Month	Total Cases in Cohort	Percent Off MFIP Cash in 5th Month	Percent Off MFIP Cash in 12th Month	Total Cases in Cohort	Percent Off MFIP Cash in 5th Month	Percent Off MFIP Cash in 12th Month
State	853	63.8%	74.0%	803	63.9%	71.9%	849	68.7%	75.6%
Aitkin	4	100.0%	75.0%	4	100.0%	100.0%	5	100.0%	100.0%
Anoka	56	73.2%	80.4%	62	62.9%	69.4%	56	80.4%	83.9%
Becker	1	100.0%	100.0%	6	50.0%	33.3%	4	75.0%	75.0%
Beltrami	19	47.4%	63.2%	20	50.0%	45.0%	13	69.2%	69.2%
Benton	12	66.7%	75.0%	8	87.5%	100.0%	12	58.3%	83.3%
Big Stone	0			2	100.0%	100.0%	1	100.0%	100.0%
Blue Earth	12	41.7%	75.0%	6	83.3%	83.3%	8	75.0%	87.5%
Brown	2	100.0%	100.0%	6	83.3%	83.3%	5	60.0%	80.0%
Carlton	5	100.0%	80.0%	2	100.0%	50.0%	5	60.0%	80.0%
Carver	2	100.0%	100.0%	3	100.0%	100.0%	9	88.9%	77.8%
Cass	11	45.5%	45.5%	7	42.9%	85.7%	11	63.6%	81.8%
Chippewa	2	0.0%	100.0%	2	100.0%	100.0%	1	100.0%	100.0%
Chisago	9	88.9%	100.0%	2	100.0%	100.0%	5	80.0%	80.0%
Clay	11	63.6%	63.6%	10	60.0%	80.0%	13	84.6%	53.8%
Clearwater	3	100.0%	100.0%	0			1	0.0%	100.0%
Cook	2	100.0%	50.0%	0			1	0.0%	0.0%
Cottonwood	1	0.0%	100.0%	6	83.3%	50.0%	6	33.3%	33.3%
Crow Wing	8	75.0%	62.5%	4	75.0%	75.0%	11	72.7%	63.6%
Dakota	47	76.6%	87.2%	57	75.4%	66.7%	70	80.0%	84.3%
Dodge	0			5	80.0%	80.0%	6	83.3%	66.7%
Douglas	6	83.3%	83.3%	5	40.0%	40.0%	5	100.0%	100.0%
Faribault	2	50.0%	50.0%	1	0.0%	0.0%	0		
Fillmore	2	50.0%	100.0%	2	50.0%	50.0%	2	100.0%	100.0%
Freeborn	3	33.3%	33.3%	4	75.0%	100.0%	6	50.0%	83.3%
Goodhue	9	66.7%	77.8%	5	60.0%	60.0%	5	100.0%	80.0%
Grant	4	50.0%	50.0%	0			3	100.0%	100.0%
Hennepin	174	56.9%	65.5%	176	57.4%	71.0%	178	59.0%	69.1%
Houston	3	0.0%	66.7%	7	57.1%	100.0%	2	100.0%	100.0%
Hubbard	2	50.0%	50.0%	2	100.0%	100.0%	3	66.7%	33.3%
Isanti	9	66.7%	100.0%	7	85.7%	85.7%	4	50.0%	50.0%
Itasca	11	63.6%	72.7%	9	77.8%	77.8%	10	80.0%	100.0%
Jackson	1	100.0%	100.0%	1	100.0%	0.0%	2	50.0%	100.0%
Kanabec	5	80.0%	60.0%	1	100.0%	100.0%	2	50.0%	100.0%
Kandiyohi	7	100.0%	100.0%	11	63.6%	81.8%	7	42.9%	57.1%
Kittson	1	100.0%	100.0%	1	100.0%	100.0%	0		
Koochiching	4	75.0%	75.0%	2	100.0%	100.0%	2	0.0%	50.0%
Lac qui Parle	1	0.0%	0.0%	2	100.0%	100.0%	0		
Lake	1	100.0%	100.0%	0			0		
Lake of the Woods	0			0			0		
LeSueur	5	80.0%	80.0%	5	60.0%	80.0%	4	50.0%	75.0%
Lincoln	0			0			0		
Lyon	3	100.0%	33.3%	3	66.7%	66.7%	9	77.8%	77.8%
Mcleod	6	66.7%	100.0%	7	57.1%	85.7%	4	75.0%	50.0%
Mahnomen	2	0.0%	100.0%	1	0.0%	100.0%	2	100.0%	50.0%
Marshall	0			0			2	100.0%	100.0%
Martin	1	100.0%	100.0%	2	50.0%	100.0%	4	75.0%	100.0%
Meeker	4	25.0%	100.0%	1	100.0%	0.0%	3	66.7%	66.7%

Table 6. Fifth and Twelfth Month Status of Monthly DWP Case Cohorts - April, May, June 2013

County	April 2013 DWP Eligible			May 2013 DWP Eligible			June 2013 DWP Eligible		
	Total Cases in Cohort	Percent Off MFIP Cash in 5th Month	Percent Off MFIP Cash in 12th Month	Total Cases in Cohort	Percent Off MFIP Cash in 5th Month	Percent Off MFIP Cash in 12th Month	Total Cases in Cohort	Percent Off MFIP Cash in 5th Month	Percent Off MFIP Cash in 12th Month
Mille Lacs	7	71.4%	85.7%	4	50.0%	50.0%	8	75.0%	87.5%
Morrison	3	66.7%	33.3%	5	80.0%	80.0%	4	75.0%	75.0%
Mower	12	66.7%	75.0%	11	63.6%	72.7%	9	66.7%	66.7%
Murray	0			0			0		
Nicollet	7	85.7%	71.4%	6	66.7%	100.0%	9	88.9%	100.0%
Nobles	8	50.0%	87.5%	6	66.7%	66.7%	3	33.3%	66.7%
Norman	2	100.0%	50.0%	2	100.0%	100.0%	4	75.0%	50.0%
Olmsted	32	56.3%	78.1%	18	61.1%	72.2%	13	61.5%	76.9%
Otter Tail	7	42.9%	71.4%	5	80.0%	80.0%	6	83.3%	100.0%
Pennington	1	100.0%	100.0%	1	100.0%	100.0%	1	100.0%	100.0%
Pine	11	63.6%	81.8%	8	75.0%	75.0%	14	71.4%	85.7%
Pipestone	6	50.0%	66.7%	3	100.0%	100.0%	0		
Polk	6	83.3%	83.3%	8	62.5%	87.5%	6	50.0%	100.0%
Pope	1	0.0%	100.0%	1	0.0%	0.0%	0		
Ramsey	116	51.7%	62.9%	99	48.5%	61.6%	115	60.0%	69.6%
Red Lake	0			0			1	0.0%	100.0%
Redwood	4	100.0%	100.0%	4	75.0%	75.0%	4	75.0%	50.0%
Renville	2	100.0%	100.0%	3	66.7%	66.7%	3	100.0%	66.7%
Rice	4	50.0%	50.0%	15	53.3%	53.3%	8	87.5%	87.5%
Rock	0			2	100.0%	100.0%	2	100.0%	50.0%
Roseau	2	100.0%	100.0%	0			1	100.0%	100.0%
St. Louis	29	62.1%	65.5%	34	61.8%	67.6%	38	60.5%	76.3%
Scott	14	71.4%	85.7%	9	77.8%	88.9%	10	90.0%	90.0%
Sherburne	11	100.0%	100.0%	12	66.7%	66.7%	6	100.0%	83.3%
Sibley	2	50.0%	100.0%	4	75.0%	50.0%	2	50.0%	50.0%
Stearns	27	70.4%	74.1%	18	83.3%	88.9%	26	69.2%	76.9%
Steele	13	69.2%	92.3%	9	77.8%	88.9%	7	71.4%	57.1%
Stevens	0			4	100.0%	75.0%	0		
Swift	1	100.0%	100.0%	2	100.0%	100.0%	1	100.0%	100.0%
Todd	1	0.0%	100.0%	0			4	50.0%	100.0%
Traverse	1	100.0%	100.0%	1	0.0%	100.0%	2	100.0%	100.0%
Wabasha	4	75.0%	75.0%	0			1	0.0%	100.0%
Wadena	0			3	66.7%	100.0%	1	100.0%	100.0%
Waseca	3	66.7%	100.0%	3	33.3%	100.0%	1	0.0%	0.0%
Washington	21	71.4%	71.4%	18	72.2%	83.3%	23	78.3%	69.6%
Watsonwan	3	100.0%	100.0%	2	50.0%	100.0%	2	50.0%	100.0%
Wilkin	0			2	100.0%	100.0%	0		
Winona	7	57.1%	100.0%	4	50.0%	50.0%	2	100.0%	50.0%
Wright	12	83.3%	100.0%	8	62.5%	75.0%	8	87.5%	100.0%
Yellow Medicine	0			2	100.0%	100.0%	2	50.0%	100.0%

Table 7. Fifth and Twelfth Month Status of Monthly DWP Case Cohorts - July, August, September 2013

County	July 2013 DWP Eligible			August 2013 DWP Eligible			September 2013 DWP Eligible		
	Total Cases in Cohort	Percent Off MFIP Cash in 5th Month	Percent Off MFIP Cash in 12th Month	Total Cases in Cohort	Percent Off MFIP Cash in 5th Month	Percent Off MFIP Cash in 12th Month	Total Cases in Cohort	Percent Off MFIP Cash in 5th Month	Percent Off MFIP Cash in 12th Month
State	907	68.1%	73.8%	837	66.7%	76.2%	806	64.6%	76.4%
Aitkin	4	100.0%	50.0%	1	0.0%	0.0%	0		
Anoka	62	77.4%	67.7%	62	72.6%	85.5%	47	78.7%	85.1%
Becker	3	100.0%	33.3%	3	33.3%	33.3%	2	50.0%	50.0%
Beltrami	18	50.0%	50.0%	22	45.5%	59.1%	13	69.2%	69.2%
Benton	11	81.8%	81.8%	7	85.7%	85.7%	9	88.9%	88.9%
Big Stone	2	50.0%	100.0%	0			1	100.0%	100.0%
Blue Earth	14	57.1%	71.4%	15	93.3%	66.7%	5	100.0%	100.0%
Brown	0			6	50.0%	50.0%	5	80.0%	100.0%
Carlton	4	100.0%	100.0%	4	50.0%	75.0%	6	83.3%	83.3%
Carver	10	70.0%	100.0%	1	100.0%	0.0%	9	55.6%	77.8%
Cass	7	42.9%	42.9%	8	25.0%	50.0%	9	66.7%	55.6%
Chippewa	0			1	100.0%	100.0%	1	100.0%	100.0%
Chisago	8	87.5%	100.0%	5	60.0%	60.0%	4	75.0%	100.0%
Clay	9	77.8%	100.0%	15	80.0%	80.0%	15	60.0%	80.0%
Clearwater	0			2	0.0%	0.0%	1	0.0%	0.0%
Cook	2	100.0%	100.0%	0			1	0.0%	100.0%
Cottonwood	2	100.0%	100.0%	4	75.0%	50.0%	4	0.0%	100.0%
Crow Wing	6	83.3%	100.0%	7	85.7%	71.4%	4	75.0%	75.0%
Dakota	77	79.2%	85.7%	48	77.1%	87.5%	53	58.5%	79.2%
Dodge	4	75.0%	75.0%	8	75.0%	100.0%	0		
Douglas	2	100.0%	100.0%	2	100.0%	100.0%	6	66.7%	66.7%
Faribault	3	100.0%	100.0%	6	50.0%	100.0%	3	100.0%	66.7%
Fillmore	3	33.3%	66.7%	1	0.0%	0.0%	6	66.7%	83.3%
Freeborn	5	80.0%	60.0%	13	69.2%	76.9%	6	83.3%	66.7%
Goodhue	4	75.0%	75.0%	6	66.7%	83.3%	3	100.0%	100.0%
Grant	0			1	100.0%	0.0%	2	100.0%	50.0%
Hennepin	223	64.1%	67.7%	156	61.5%	68.6%	166	56.0%	67.5%
Houston	3	66.7%	66.7%	1	100.0%	100.0%	2	50.0%	50.0%
Hubbard	3	33.3%	66.7%	4	50.0%	100.0%	4	25.0%	75.0%
Isanti	7	85.7%	100.0%	11	72.7%	90.9%	4	75.0%	75.0%
Itasca	4	75.0%	75.0%	10	80.0%	70.0%	6	66.7%	50.0%
Jackson	0			0			1	100.0%	100.0%
Kanabec	2	100.0%	50.0%	2	50.0%	50.0%	3	33.3%	100.0%
Kandiyohi	6	33.3%	50.0%	6	100.0%	100.0%	1	100.0%	100.0%
Kittson	0			1	100.0%	100.0%	0		
Koochiching	0			1	0.0%	0.0%	4	25.0%	100.0%
Lac qui Parle	0			1	0.0%	0.0%	0		
Lake	1	0.0%	0.0%	1	100.0%	100.0%	0		
Lake of the Woods	2	50.0%	50.0%	2	50.0%	50.0%	1	100.0%	100.0%
LeSueur	3	66.7%	33.3%	4	75.0%	100.0%	4	75.0%	75.0%
Lincoln	0			0			0		
Lyon	0			3	66.7%	66.7%	4	100.0%	100.0%
McLeod	5	60.0%	80.0%	4	100.0%	100.0%	6	83.3%	100.0%
Mahnomen	6	50.0%	50.0%	3	66.7%	33.3%	5	40.0%	60.0%
Marshall	1	100.0%	100.0%	0			0		
Martin	0			3	66.7%	100.0%	7	71.4%	100.0%
Meeker	1	100.0%	100.0%	4	75.0%	75.0%	1	100.0%	0.0%

Table 7. Fifth and Twelfth Month Status of Monthly DWP Case Cohorts - July, August, September 2013

County	July 2013 DWP Eligible			August 2013 DWP Eligible			September 2013 DWP Eligible		
	Total Cases in Cohort	Percent Off MFIP Cash in 5th Month	Percent Off MFIP Cash in 12th Month	Total Cases in Cohort	Percent Off MFIP Cash in 5th Month	Percent Off MFIP Cash in 12th Month	Total Cases in Cohort	Percent Off MFIP Cash in 5th Month	Percent Off MFIP Cash in 12th Month
Mille Lacs	5	40.0%	80.0%	6	66.7%	66.7%	6	83.3%	100.0%
Morrison	3	33.3%	100.0%	4	50.0%	75.0%	3	66.7%	66.7%
Mower	7	57.1%	14.3%	23	69.6%	78.3%	9	66.7%	100.0%
Murray	1	0.0%	100.0%	2	50.0%	100.0%	1	100.0%	100.0%
Nicollet	5	80.0%	100.0%	7	28.6%	71.4%	5	80.0%	80.0%
Nobles	2	50.0%	100.0%	7	71.4%	100.0%	7	85.7%	85.7%
Norman	1	0.0%	0.0%	0			1	100.0%	100.0%
Olmsted	21	71.4%	81.0%	14	71.4%	92.9%	25	44.0%	80.0%
Otter Tail	2	100.0%	0.0%	3	33.3%	100.0%	6	66.7%	83.3%
Pennington	4	75.0%	75.0%	2	100.0%	100.0%	1	100.0%	100.0%
Pine	12	58.3%	83.3%	9	66.7%	100.0%	10	90.0%	100.0%
Pipestone	2	100.0%	50.0%	2	100.0%	100.0%	3	100.0%	100.0%
Polk	8	62.5%	100.0%	2	50.0%	100.0%	7	85.7%	85.7%
Pope	2	50.0%	50.0%	1	100.0%	0.0%	1	100.0%	100.0%
Ramsey	138	63.8%	77.5%	147	68.0%	78.2%	158	60.1%	68.4%
Red Lake	2	100.0%	50.0%	1	100.0%	100.0%	1	100.0%	100.0%
Redwood	4	75.0%	75.0%	2	50.0%	50.0%	1	100.0%	100.0%
Renville	5	100.0%	100.0%	1	0.0%	0.0%	4	50.0%	75.0%
Rice	3	100.0%	100.0%	5	20.0%	80.0%	12	66.7%	75.0%
Rock	0			0			0		
Roseau	2	100.0%	100.0%	0			0		
St. Louis	38	60.5%	68.4%	34	58.8%	67.6%	22	68.2%	81.8%
Scott	12	50.0%	83.3%	10	60.0%	80.0%	18	94.4%	94.4%
Sherburne	9	77.8%	88.9%	6	83.3%	83.3%	9	77.8%	77.8%
Sibley	3	33.3%	33.3%	4	75.0%	100.0%	2	50.0%	100.0%
Stearns	27	74.1%	70.4%	17	70.6%	70.6%	22	63.6%	81.8%
Steele	7	85.7%	71.4%	6	50.0%	66.7%	3	66.7%	33.3%
Stevens	1	100.0%	100.0%	1	100.0%	0.0%	0		
Swift	3	100.0%	66.7%	1	0.0%	0.0%	1	100.0%	100.0%
Todd	3	100.0%	66.7%	3	100.0%	100.0%	0		
Traverse	1	0.0%	100.0%	1	0.0%	0.0%	0		
Wabasha	3	0.0%	66.7%	1	100.0%	100.0%	2	100.0%	100.0%
Wadena	2	50.0%	50.0%	2	0.0%	100.0%	3	33.3%	100.0%
Waseca	3	66.7%	100.0%	2	50.0%	100.0%	2	50.0%	100.0%
Washington	20	80.0%	75.0%	17	82.4%	70.6%	16	56.3%	75.0%
Watonwan	3	66.7%	66.7%	3	100.0%	100.0%	2	50.0%	50.0%
Wilkin	1	100.0%	100.0%	5	80.0%	100.0%	1	100.0%	100.0%
Winona	5	40.0%	80.0%	7	57.1%	85.7%	4	50.0%	75.0%
Wright	8	75.0%	87.5%	14	71.4%	85.7%	4	100.0%	100.0%
Yellow Medicine	2	100.0%	50.0%	0			0		

Table 8. Fifth and Twelfth Month Status of Monthly DWP Case Cohorts - October, November, December 2013

County	October 2013 DWP Eligible			November 2013 DWP Eligible			December 2013 DWP Eligible		
	Total Cases in Cohort	Percent Off MFIP Cash in 5th Month	Percent Off MFIP Cash in 12th Month	Total Cases in Cohort	Percent Off MFIP Cash in 5th Month	Percent Off MFIP Cash in 12th Month	Total Cases in Cohort	Percent Off MFIP Cash in 5th Month	Percent Off MFIP Cash in 12th Month
State	736	62.8%	74.5%	717	62.2%		713	67.7%	
Aitkin	5	60.0%	80.0%	1	0.0%		5	100.0%	
Anoka	47	66.0%	83.0%	44	75.0%		58	67.2%	
Becker	2	50.0%	50.0%	1	0.0%		2	100.0%	
Beltrami	9	55.6%	77.8%	12	41.7%		2	50.0%	
Benton	5	100.0%	100.0%	6	33.3%		7	71.4%	
Big Stone	2	50.0%	100.0%	0			0		
Blue Earth	7	85.7%	100.0%	6	100.0%		7	57.1%	
Brown	1	100.0%	100.0%	3	66.7%		3	66.7%	
Carlton	3	66.7%	33.3%	2	50.0%		2	50.0%	
Carver	4	75.0%	100.0%	3	100.0%		3	66.7%	
Cass	12	41.7%	66.7%	12	91.7%		3	33.3%	
Chippewa	0			1	100.0%		2	100.0%	
Chisago	5	100.0%	100.0%	8	75.0%		3	100.0%	
Clay	17	64.7%	58.8%	15	60.0%		11	63.6%	
Clearwater	1	0.0%	0.0%	1	100.0%		0		
Cook	2	100.0%	0.0%	0			0		
Cottonwood	2	100.0%	50.0%	1	0.0%		3	33.3%	
Crow Wing	4	25.0%	75.0%	5	40.0%		7	85.7%	
Dakota	43	69.8%	72.1%	55	72.7%		44	86.4%	
Dodge	2	0.0%	100.0%	1	100.0%		6	66.7%	
Douglas	1	100.0%	100.0%	4	75.0%		3	66.7%	
Faribault	1	100.0%	100.0%	2	100.0%		2	100.0%	
Fillmore	1	100.0%	100.0%	3	100.0%		2	0.0%	
Freeborn	3	100.0%	100.0%	5	100.0%		2	50.0%	
Goodhue	3	66.7%	66.7%	2	100.0%		5	80.0%	
Grant	0			1	100.0%		0		
Hennepin	162	54.3%	67.3%	148	56.8%		150	52.7%	
Houston	3	0.0%	100.0%	5	40.0%		1	0.0%	
Hubbard	1	0.0%	0.0%	4	100.0%		7	71.4%	
Isanti	7	57.1%	71.4%	5	20.0%		8	62.5%	
Itasca	5	60.0%	80.0%	12	83.3%		6	66.7%	
Jackson	0			0			1	100.0%	
Kanabec	3	66.7%	66.7%	4	75.0%		2	100.0%	
Kandiyohi	10	80.0%	80.0%	5	80.0%		4	100.0%	
Kittson	0			0			0		
Koochiching	3	66.7%	66.7%	1	0.0%		1	0.0%	
Lac qui Parle	0			0			0		
Lake	0			0			0		
Lake of the Woods	0			0			1	100.0%	
LeSueur	4	50.0%	75.0%	1	100.0%		5	100.0%	
Lincoln	0			0			0		
Lyon	4	50.0%	25.0%	7	57.1%		2	50.0%	
Mcleod	9	88.9%	100.0%	8	62.5%		1	100.0%	
Mahnomen	4	100.0%	75.0%	0			0		
Marshall	0			1	100.0%		1	100.0%	
Martin	4	50.0%	100.0%	2	100.0%		6	100.0%	
Meeker	2	50.0%	100.0%	5	40.0%		1	0.0%	

Table 8. Fifth and Twelfth Month Status of Monthly DWP Case Cohorts - October, November, December 2013

County	October 2013 DWP Eligible			November 2013 DWP Eligible			December 2013 DWP Eligible		
	Total Cases in Cohort	Percent Off MFIP Cash in 5th Month	Percent Off MFIP Cash in 12th Month	Total Cases in Cohort	Percent Off MFIP Cash in 5th Month	Percent Off MFIP Cash in 12th Month	Total Cases in Cohort	Percent Off MFIP Cash in 5th Month	Percent Off MFIP Cash in 12th Month
Mille Lacs	6	50.0%	100.0%	2	0.0%		2	100.0%	
Morrison	0			1	100.0%		3	33.3%	
Mower	14	57.1%	78.6%	12	58.3%		10	70.0%	
Murray	0			0			2	50.0%	
Nicollet	2	100.0%	0.0%	5	40.0%		6	100.0%	
Nobles	5	100.0%	80.0%	3	66.7%		1	100.0%	
Norman	1	0.0%	100.0%	1	0.0%		1	0.0%	
Olmsted	21	71.4%	81.0%	11	63.6%		18	66.7%	
Otter Tail	4	75.0%	25.0%	6	83.3%		5	80.0%	
Pennington	2	50.0%	100.0%	1	100.0%		1	100.0%	
Pine	10	80.0%	90.0%	12	66.7%		8	87.5%	
Pipestone	1	100.0%	100.0%	0			2	50.0%	
Polk	3	66.7%	100.0%	3	100.0%		9	55.6%	
Pope	0			1	100.0%		1	0.0%	
Ramsey	139	56.8%	72.7%	112	51.8%		103	68.0%	
Red Lake	2	100.0%	0.0%	0			1	100.0%	
Redwood	1	100.0%	100.0%	3	33.3%		4	50.0%	
Renville	3	66.7%	66.7%	3	66.7%		2	100.0%	
Rice	4	100.0%	100.0%	5	80.0%		7	85.7%	
Rock	2	100.0%	100.0%	0			2	100.0%	
Roseau	0			5	80.0%		5	60.0%	
St. Louis	36	58.3%	75.0%	24	50.0%		28	50.0%	
Scott	10	60.0%	90.0%	13	69.2%		16	93.8%	
Sherburne	12	75.0%	91.7%	7	71.4%		10	60.0%	
Sibley	1	100.0%	100.0%	1	100.0%		2	100.0%	
Stearns	18	72.2%	77.8%	20	60.0%		13	69.2%	
Steele	2	50.0%	100.0%	4	75.0%		15	73.3%	
Stevens	1	100.0%	100.0%	0			0		
Swift	1	0.0%	0.0%	0			1	100.0%	
Todd	3	33.3%	100.0%	1	100.0%		2	50.0%	
Traverse	0			2	100.0%		1	100.0%	
Wabasha	1	100.0%	100.0%	2	100.0%		3	100.0%	
Wadena	3	100.0%	100.0%	7	42.9%		1	100.0%	
Waseca	1	0.0%	0.0%	5	60.0%		10	80.0%	
Washington	14	71.4%	64.3%	21	52.4%		19	73.7%	
Watsonwan	1	100.0%	100.0%	2	100.0%		0		
Wilkin	2	100.0%	50.0%	0			1	100.0%	
Winona	2	100.0%	100.0%	2	50.0%		4	50.0%	
Wright	5	80.0%	80.0%	14	71.4%		10	80.0%	
Yellow Medicine	0			2	0.0%		4	100.0%	

Table 9. Fifth and Twelfth Month Status of Monthly DWP Case Cohorts - January, February, March 2014

County	January 2014 DWP Eligible			February 2014 DWP Eligible			March 2014 DWP Eligible		
	Total Cases in Cohort	Percent Off MFIP Cash in 5th Month	Percent Off MFIP Cash in 12th Month	Total Cases in Cohort	Percent Off MFIP Cash in 5th Month	Percent Off MFIP Cash in 12th Month	Total Cases in Cohort	Percent Off MFIP Cash in 5th Month	Percent Off MFIP Cash in 12th Month
State	731	64.8%		667	66.0%		667	63.5%	
Aitkin	4	75.0%		5	80.0%		2	0.0%	
Anoka	54	63.0%		46	78.3%		32	62.5%	
Becker	4	75.0%		1	100.0%		3	66.7%	
Beltrami	9	44.4%		16	50.0%		11	27.3%	
Benton	5	60.0%		7	85.7%		6	83.3%	
Big Stone	0			0			1	0.0%	
Blue Earth	6	66.7%		6	50.0%		7	71.4%	
Brown	4	100.0%		3	66.7%		1	100.0%	
Carlton	6	50.0%		6	66.7%		3	100.0%	
Carver	3	66.7%		5	100.0%		5	60.0%	
Cass	12	66.7%		9	44.4%		9	44.4%	
Chippewa	2	50.0%		0			1	0.0%	
Chisago	2	50.0%		5	60.0%		3	100.0%	
Clay	14	85.7%		14	57.1%		10	60.0%	
Clearwater	2	100.0%		0			0		
Cook	1	100.0%		1	100.0%		1	0.0%	
Cottonwood	3	66.7%		5	80.0%		4	50.0%	
Crow Wing	5	60.0%		11	45.5%		4	50.0%	
Dakota	46	80.4%		35	68.6%		40	77.5%	
Dodge	3	100.0%		2	50.0%		6	100.0%	
Douglas	2	100.0%		3	66.7%		4	100.0%	
Faribault	0			0			0		
Fillmore	3	66.7%		4	100.0%		0		
Freeborn	5	60.0%		0			3	66.7%	
Goodhue	3	33.3%		7	100.0%		4	25.0%	
Grant	1	100.0%		1	0.0%		1	100.0%	
Hennepin	146	53.4%		155	60.6%		152	55.3%	
Houston	1	100.0%		0			1	100.0%	
Hubbard	1	100.0%		0			2	0.0%	
Isanti	6	50.0%		5	80.0%		9	55.6%	
Itasca	6	83.3%		3	66.7%		10	70.0%	
Jackson	0			2	100.0%		1	100.0%	
Kanabec	2	50.0%		3	66.7%		2	100.0%	
Kandiyohi	2	100.0%		3	66.7%		10	90.0%	
Kittson	0			1	100.0%		1	100.0%	
Koochiching	1	100.0%		1	0.0%		3	66.7%	
Lac qui Parle	0			0			1	100.0%	
Lake	0			1	100.0%		2	50.0%	
Lake of the Woods	0			1	100.0%		0		
LeSueur	4	100.0%		2	50.0%		6	83.3%	
Lincoln	0			0			1	0.0%	
Lyon	2	100.0%		5	60.0%		3	33.3%	
McLeod	0			5	100.0%		1	0.0%	
Mahnomen	0			1	100.0%		2	50.0%	
Marshall	0			0			0		
Martin	3	100.0%		3	100.0%		5	40.0%	
Meeker	1	0.0%		1	100.0%		1	100.0%	

Table 9. Fifth and Twelfth Month Status of Monthly DWP Case Cohorts - January, February, March 2014

County	January 2014 DWP Eligible			February 2014 DWP Eligible			March 2014 DWP Eligible		
	Total Cases in Cohort	Percent Off MFIP Cash in 5th Month	Percent Off MFIP Cash in 12th Month	Total Cases in Cohort	Percent Off MFIP Cash in 5th Month	Percent Off MFIP Cash in 12th Month	Total Cases in Cohort	Percent Off MFIP Cash in 5th Month	Percent Off MFIP Cash in 12th Month
Mille Lacs	5	40.0%		5	60.0%		3	66.7%	
Morrison	6	50.0%		0			3	100.0%	
Mower	12	58.3%		8	62.5%		9	66.7%	
Murray	0			1	100.0%		1	0.0%	
Nicollet	9	55.6%		6	66.7%		2	50.0%	
Nobles	5	60.0%		4	75.0%		6	66.7%	
Norman	3	66.7%		3	66.7%		2	50.0%	
Olmsted	15	40.0%		15	60.0%		16	56.3%	
Otter Tail	8	75.0%		4	50.0%		3	66.7%	
Pennington	2	100.0%		1	0.0%		1	100.0%	
Pine	6	83.3%		6	83.3%		8	87.5%	
Pipestone	1	100.0%		1	0.0%		0		
Polk	11	90.9%		3	100.0%		5	60.0%	
Pope	1	0.0%		1	100.0%		0		
Ramsey	119	58.8%		113	64.6%		119	63.0%	
Red Lake	1	100.0%		1	100.0%		1	100.0%	
Redwood	2	100.0%		1	0.0%		0		
Renville	3	100.0%		0			2	100.0%	
Rice	6	100.0%		6	83.3%		12	58.3%	
Rock	0			0			0		
Roseau	6	100.0%		2	50.0%		0		
St. Louis	29	55.2%		23	69.6%		23	87.0%	
Scott	12	91.7%		10	80.0%		6	33.3%	
Sherburne	12	75.0%		11	81.8%		8	62.5%	
Sibley	1	100.0%		1	100.0%		1	100.0%	
Stearns	16	56.3%		15	46.7%		14	78.6%	
Steele	8	75.0%		5	80.0%		6	83.3%	
Stevens	0			0			1	100.0%	
Swift	4	25.0%		1	100.0%		1	0.0%	
Todd	1	0.0%		1	0.0%		2	100.0%	
Traverse	1	100.0%		1	0.0%		1	100.0%	
Wabasha	1	100.0%		5	40.0%		2	0.0%	
Wadena	3	33.3%		2	0.0%		3	66.7%	
Waseca	4	25.0%		4	75.0%		2	100.0%	
Washington	18	77.8%		9	77.8%		12	41.7%	
Watsonwan	3	66.7%		1	0.0%		1	100.0%	
Wilkin	1	100.0%		1	0.0%		1	100.0%	
Winona	8	87.5%		5	80.0%		4	75.0%	
Wright	9	100.0%		6	66.7%		11	72.7%	
Yellow Medicine	0			1	100.0%		1	100.0%	
White Earth Nation	5	80.0%		0			1	100.0%	

Table 10. Fifth and Twelfth Month Status of Monthly DWP Case Cohorts - April, May, June 2014

County	April 2014 DWP Eligible			May 2014 DWP Eligible			June 2014 DWP Eligible		
	Total Cases in Cohort	Percent Off MFIP Cash in 5th Month	Percent Off MFIP Cash in 12th Month	Total Cases in Cohort	Percent Off MFIP Cash in 5th Month	Percent Off MFIP Cash in 12th Month	Total Cases in Cohort	Percent Off MFIP Cash in 5th Month	Percent Off MFIP Cash in 12th Month
State	796	66.7%		750	62.9%		805	70.2%	
Aitkin	4	100.0%		2	50.0%		3	100.0%	
Anoka	38	60.5%		42	73.8%		47	80.9%	
Becker	4	100.0%		2	100.0%		1	100.0%	
Beltrami	24	41.7%		19	57.9%		10	40.0%	
Benton	8	100.0%		7	57.1%		5	80.0%	
Big Stone	0			0			0		
Blue Earth	8	87.5%		12	58.3%		4	50.0%	
Brown	2	100.0%		3	66.7%		6	83.3%	
Carlton	9	77.8%		8	62.5%		6	100.0%	
Carver	6	50.0%		2	50.0%		5	80.0%	
Cass	8	50.0%		6	66.7%		3	100.0%	
Chippewa	5	80.0%		1	0.0%		5	60.0%	
Chisago	2	100.0%		3	33.3%		10	90.0%	
Clay	8	62.5%		8	62.5%		12	75.0%	
Clearwater	3	33.3%		1	100.0%		5	60.0%	
Cook	0			0			0		
Cottonwood	6	66.7%		0			6	50.0%	
Crow Wing	7	100.0%		5	80.0%		7	85.7%	
Dakota	48	77.1%		47	74.5%		43	69.8%	
Dodge	3	66.7%		1	100.0%		2	100.0%	
Douglas	4	100.0%		3	66.7%		3	66.7%	
Faribault	0			4	100.0%		2	100.0%	
Fillmore	2	100.0%		5	60.0%		3	66.7%	
Freeborn	8	87.5%		8	62.5%		2	50.0%	
Goodhue	2	0.0%		5	20.0%		3	66.7%	
Grant	2	50.0%		1	100.0%		1	0.0%	
Hennepin	145	55.9%		185	60.0%		189	67.2%	
Houston	1	0.0%		9	55.6%		2	50.0%	
Hubbard	0			1	100.0%		1	100.0%	
Isanti	6	33.3%		5	60.0%		11	81.8%	
Itasca	7	85.7%		5	80.0%		5	80.0%	
Jackson	2	100.0%		0			0		
Kanabec	3	33.3%		2	100.0%		3	100.0%	
Kandiyohi	7	85.7%		6	50.0%		4	50.0%	
Kittson	1	100.0%		1	100.0%		1	100.0%	
Koochiching	4	100.0%		1	100.0%		1	0.0%	
Lac qui Parle	1	100.0%		0			2	100.0%	
Lake	0			3	33.3%		0		
Lake of the Woods	0			0			0		
LeSueur	7	100.0%		2	100.0%		7	57.1%	
Lincoln	0			0			0		
Lyon	2	50.0%		3	66.7%		2	50.0%	
McLeod	10	100.0%		4	75.0%		6	100.0%	
Mahnomen	1	0.0%		3	100.0%		0		
Marshall	0			1	0.0%		0		
Martin	1	100.0%		1	100.0%		6	66.7%	
Meeker	2	100.0%		3	66.7%		5	80.0%	

Table 10. Fifth and Twelfth Month Status of Monthly DWP Case Cohorts - April, May, June 2014

County	April 2014 DWP Eligible			May 2014 DWP Eligible			June 2014 DWP Eligible		
	Total Cases in Cohort	Percent Off MFIP Cash in 5th Month	Percent Off MFIP Cash in 12th Month	Total Cases in Cohort	Percent Off MFIP Cash in 5th Month	Percent Off MFIP Cash in 12th Month	Total Cases in Cohort	Percent Off MFIP Cash in 5th Month	Percent Off MFIP Cash in 12th Month
Mille Lacs	6	100.0%		2	50.0%		1	0.0%	
Morrison	5	60.0%		2	0.0%		5	60.0%	
Mower	4	50.0%		5	60.0%		11	72.7%	
Murray	1	100.0%		1	100.0%		1	100.0%	
Nicollet	6	33.3%		5	60.0%		8	62.5%	
Nobles	7	85.7%		6	66.7%		3	33.3%	
Norman	1	0.0%		1	100.0%		3	33.3%	
Olmsted	19	63.2%		18	61.1%		19	63.2%	
Otter Tail	3	33.3%		5	60.0%		3	66.7%	
Pennington	1	100.0%		0			0		
Pine	8	62.5%		9	77.8%		12	75.0%	
Pipestone	1	0.0%		1	0.0%		0		
Polk	9	66.7%		5	80.0%		1	100.0%	
Pope	0			2	100.0%		1	0.0%	
Ramsey	142	60.6%		105	60.0%		123	62.6%	
Red Lake	1	100.0%		0			1	100.0%	
Redwood	1	100.0%		3	66.7%		7	100.0%	
Renville	5	100.0%		3	33.3%		2	100.0%	
Rice	12	75.0%		10	70.0%		11	63.6%	
Rock	2	50.0%		2	100.0%		2	100.0%	
Roseau	1	0.0%		1	100.0%		0		
St. Louis	38	68.4%		18	55.6%		27	59.3%	
Scott	6	83.3%		8	75.0%		15	93.3%	
Sherburne	12	91.7%		12	75.0%		13	76.9%	
Sibley	3	66.7%		5	80.0%		1	100.0%	
Stearns	25	60.0%		25	40.0%		31	64.5%	
Steele	9	66.7%		4	50.0%		8	87.5%	
Stevens	2	100.0%		0			1	100.0%	
Swift	1	100.0%		1	100.0%		0		
Todd	2	50.0%		1	100.0%		2	50.0%	
Traverse	0			1	0.0%		1	100.0%	
Wabasha	6	83.3%		4	75.0%		2	50.0%	
Wadena	2	50.0%		6	33.3%		3	100.0%	
Waseca	4	75.0%		3	100.0%		5	80.0%	
Washington	14	78.6%		20	55.0%		17	88.2%	
Watsonwan	2	100.0%		3	0.0%		0		
Wilkin	2	50.0%		1	100.0%		3	66.7%	
Winona	5	100.0%		6	83.3%		6	66.7%	
Wright	13	84.6%		9	77.8%		10	80.0%	
Yellow Medicine	1	0.0%		2	100.0%		1	100.0%	
White Earth Nation	3	66.7%		5	60.0%		6	66.7%	