



# Annual Class Size Study

A Report of Class Size Patterns  
2014-2015 School Year

March 2015

Metro ECSU  
2 Pine Tree Drive, Suite 101  
Arden Hills, Minnesota 55112

612-638-1500  
[www.metroecsu.org](http://www.metroecsu.org)

## **FOREWARD**

The Metro ECSU 2014-2015 Class Size Study reports data describing both regional and local norms. We hope that the information contained in this report will be useful to decision makers and interested citizens served by Metro ECSU. Though this data was carefully collected, we wish to caution readers from making assumptions about a district's staffing pattern based on class size statistics alone.

New this year, a trend analysis of the last five school years was included in the study.

Questions or comments about this report should be directed to Julie Schaal at [julie.schaal@metroecsu.org](mailto:julie.schaal@metroecsu.org) or 612-638-1540.

Julie Frame  
Executive Director, Metro ECSU

Cathy Macdonald  
Director of Operations, Metro ECSU

Julie Schaal  
Class Size Study Coordinator, Metro ECSU

## TABLE OF CONTENTS

Introduction .....	1
Glossary .....	3
List of Tables .....	5
Reports with Tables .....	6
A. Regionwide Class Size Statistics & Data Observations: Trends.....	7
B. Regionwide Class Size Statistics.....	11
C. Elementary Class Size Statistics & Data Observations.....	16
D. Junior Secondary Class Size Statistics & Data Observations.....	21
E. Senior Secondary Class Size Statistics & Data Observations.....	28
Appendix .....	35
A. List of Participating Districts .....	36
B. Memo to District Contacts: Directions for the Annual Class Size Study .....	37
C. Data Collection Formats (data was collected electronically in Excel) .....	41

## INTRODUCTION

This report describes class size statistics for thirty-six school districts in the metro Twin Cities area submitting data to Metro ECSU. To enable the reader to interpret this report accurately, it is necessary to describe the report briefly in terms of data collection and reporting procedures.

### Sources of Data

The method of collecting class size information was an electronic format. All metro area Superintendents were sent an invitation to authorize participation and appoint a staff member to be in direct contact with Metro ECSU staff for the study.

District contacts received the “Memo to District Contacts: Directions for the Annual Class Size Study” (page 37-40) and three Excel spreadsheet formats (pages 41-43), one for each school type (elementary, junior secondary and senior secondary). The designated contact person appointed by the Superintendent in each district was responsible for collecting data from each building in the district, aggregating the data in each Excel file, and returning the data to the Metro ECSU for data processing and analysis. More details about this process are available in the memo which is located in the Appendix of this document.

### Organization of the Report

For an overview, please refer to the Table of Contents at the beginning of the study. The Class Size Study contains a glossary (page 3-4) which should be read prior to viewing the tables. The study contains an introduction, a middle section with tables and results and a summary section. The “Reports with Tables” section consists of statistical highlights for metro schools aggregated as “regionwide” data and by school type—elementary, junior secondary and senior secondary. The highlights represent regional norms for all class size categories and are calculated by aggregating local data plus reports focusing on elementary, junior secondary and senior secondary programs.

Data were reported in some cases excluding special education students, and, in others, including special education students. It should also be noted that consistent grade groupings have not been used for each district. (Of special note here is the fact that grades 5 and 6 may be included with elementary or junior secondary data depending upon local district configuration.)

### Limitations

The following considerations should be taken into account when reviewing data in the Annual Class Size Study:

- Class size data included in this report are based on fall student counts submitted as of October 1, 2014.
- At the junior and senior secondary levels, no attempt has been made to include all subjects offered by all schools; only subject areas that are most typically offered at the secondary level have been included.

It is tempting to interpret inter-district comparisons in terms of relationships which suggest cause and effect. The reader should be careful in making such comparisons. Class size data among school districts will be different due to many factors, including educational philosophy, school facility design, school district organizations, economic stability, school district size, management methods, and utilization of specialists or paraprofessionals in conjunction with professional staff. Although the descriptions contained within the tables of this report demonstrate normative comparisons, the data reported simply describe *what* exists, not *why* differences exist among the districts.

## GLOSSARY OF TERMS

### 1. Average (Mean) Class Size

Average (Mean) Class Size represents the class size which equals the arithmetic average of class sizes reported. The average is the total of reported class sizes divided by the number of classes reported. Averages are reported to the nearest one hundredth.

### 2. Class Size

Class Size refers to the number of students in a group or class organized for the purpose of instruction.

### 3. Class Size Range

Class Size Range represents the maximum and minimum class sizes reported for a given grade or subject area.

### 4. Class Types

Class types counted for this study differ for each school type. Class types for each are as follows:

<u>Elementary</u>	<u>Junior Secondary</u>	<u>Senior Secondary</u>
Kindergarten	Art	Art
Grade 1	Business Ed/Marketing	Business Ed/Marketing
Grade 2	Family & Consumer Science	Family & Consumer Science
Grade 3	Health Education	Health Education
Grade 4	Interdisciplinary Courses	Language Arts/English
Grade 5	Language Arts/English	Math
Grade 6	Math	Music
Special Education	Music	Physical Education
Combo or Ungraded	Physical Education	Science
	Science	Social Studies
	Social Studies	Special Education
	Special Education	Technology Ed/Computer Science
	Technology Ed/Computer Science	Work Experience Program
	World Languages	World Languages

### 5. Elementary

This grouping *may* include the following grades: K, 1, 2, 3, 4, 5 and 6. Combination grades/ungraded (elementary) and special education classes may also be included. Depending on individual district grade organization, “elementary” *may not* include grades 5 or 6.

### 6. Grade Group

Grade groups include the school types—elementary, junior secondary and senior secondary, but also part of and combinations of those school type groups. For example, some of the data is reported for a combination of junior and senior secondary as one grade group.

### 7. Junior Secondary

This grouping includes students in middle schools, junior high schools, or the first part of an eight-year secondary program (i.e., grades 5-12).

8. Participating Districts

School districts in the metro Twin Cities area that submitted data for the current year of the study. These districts may or may not be members of Metro ECSU.

9. School Type

School types for this study are Elementary, Junior Secondary, or Senior Secondary.

10. Senior Secondary

This grouping includes students at the senior high school level or in the second part of an eight-year secondary program (i.e., grades 5-12).

## LIST OF TABLES

<b>Table</b>		<b>Page</b>
1	Elementary Regionwide Class Size Trends.....	8
2	Jr. Secondary Regionwide Class Size Trends.....	9
3	Sr. Secondary Regionwide Class Size Trends.....	10
4	Class Size Regionwide by Class Type.....	12
5	Class Size Regionwide by Grade Group (Excluding Special Education).....	13
6	Class Size Regionwide by Grade Group (Including Special Education).....	13
7	Average Class Size by Grade Group (Excluding Special Education).....	14
8	Average Class Size by Grade Group (Including Special Education).....	15
9	Elementary Average Class Size by Class Type.....	17
10	Elementary Maximum/Minimum Class Size by Class Type.....	19
11	Jr. Secondary Average Class Size by Class Type.....	22
12	Jr. Secondary Maximum/Minimum Class Size by Class Type.....	25
13	Sr. Secondary Average Class Size by Class Type.....	29
14	Sr. Secondary Maximum/Minimum Class Size by Class Type.....	32



## **REPORTS WITH TABLES**

## **A. REGIONWIDE CLASS SIZE STATISTICS & DATA OBSERVATIONS: TRENDS**

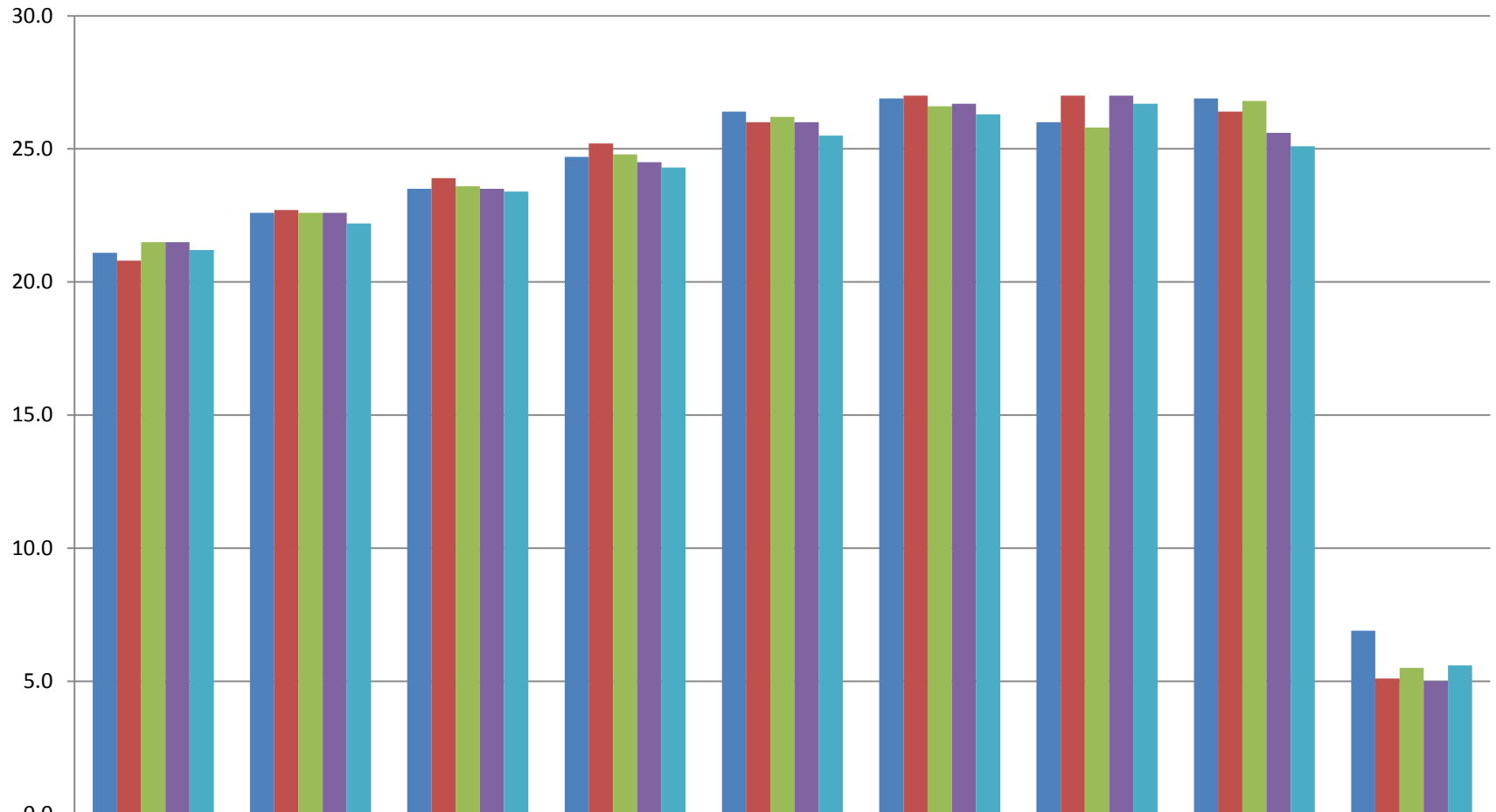
New this year, the regionwide class size averages by class type from the last five years were included in the study. The graphs include data from the 2010-11 school year through the 2014-15 school year.

Table 1 (page 8) reports the average Elementary class sizes for each year by class type. The Elementary regionwide class size trends consistently show that the average class size increases by grade level. When comparing last school year (2013-14) to this school year (2014-15), all Elementary class sizes decreased except for Special Education.

Table 2 (page 9) reports the average Jr. Secondary class sizes for each year by class type. The Jr. Secondary regionwide class size trends show that the core subjects of Math, Science, Social Studies, and Language Arts/English are consistently smaller than those same subjects at the Sr. Secondary level. The data also show that of the core subjects, Science classes have consistently had the highest class sizes at the Jr. Secondary level. When comparing last school year (2013-14) to this school year (2014-15), all Jr. Secondary core subjects decreased in class size.

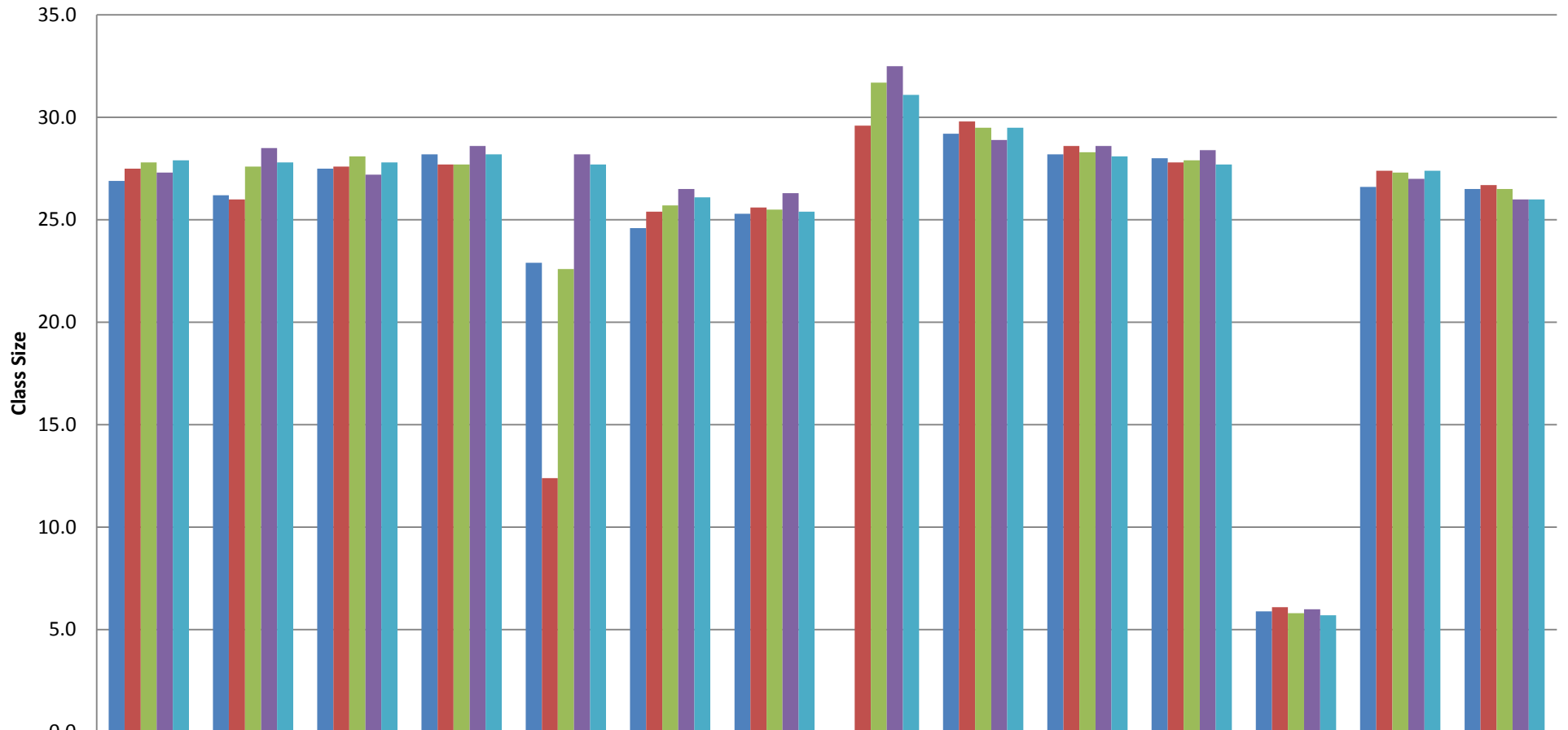
Table 3 (page 10) reports the average Sr. Secondary class sizes for each year by class type. The Sr. Secondary regionwide class size trends show that the core subjects of Math, Science, Social Studies, and Language Arts/English are consistently higher than those same subjects at the Jr. Secondary level. The data also show that of the core subjects, Social Studies classes have consistently had the highest class sizes at the Sr. Secondary level. When comparing last school year (2013-14) to this school year (2014-15), Math, Social Studies, and Language Arts/English classes increased in class size while Science classes decreased.

**Table 1. Elementary Regionwide Class Size Trends**



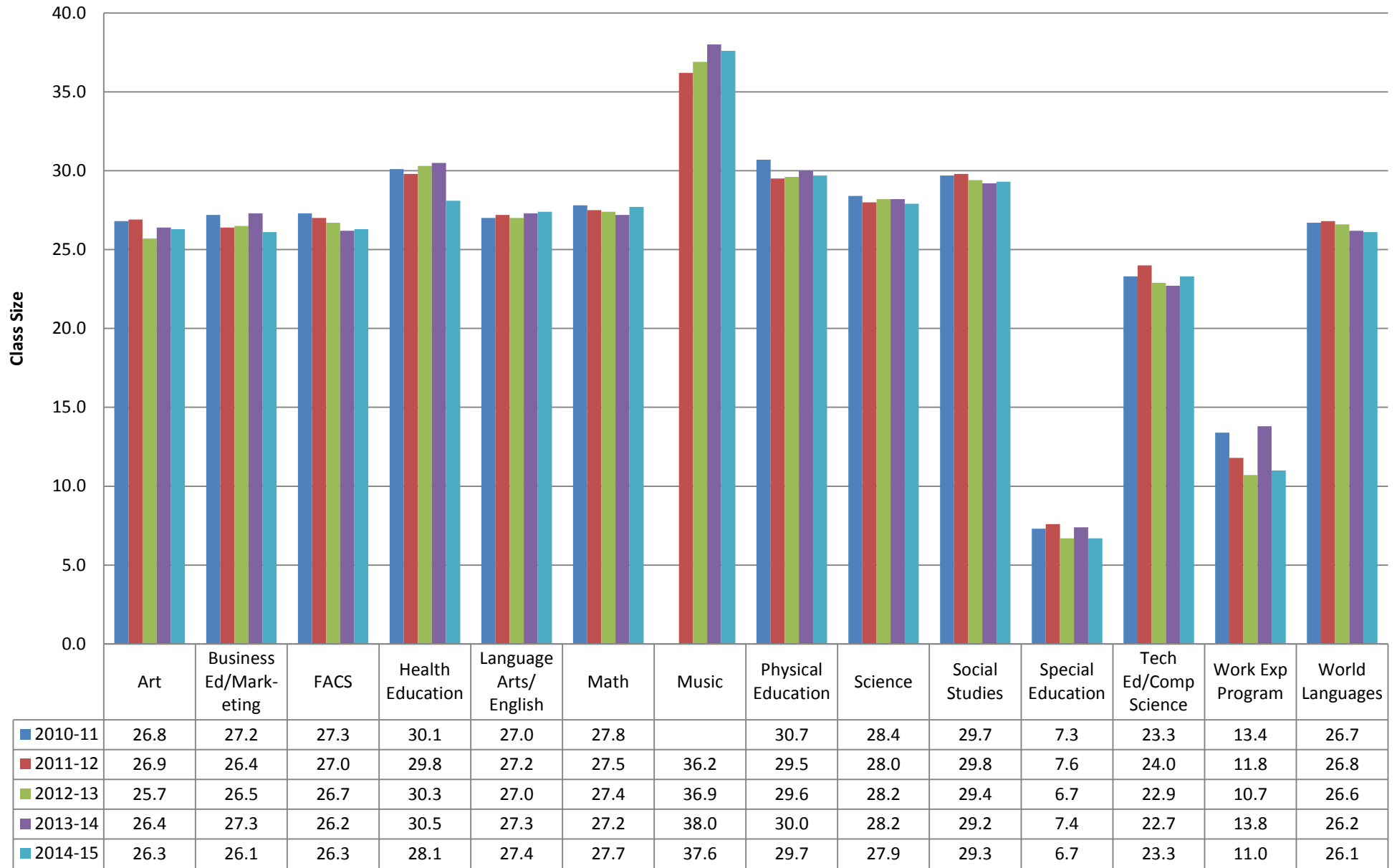
	Kindergarten	1st Grade	2nd Grade	3rd Grade	4th Grade	5th Grade	6th Grade	Combo or Ungraded	Special Ed
2010-11	21.1	22.6	23.5	24.7	26.4	26.9	26.0	26.9	6.9
2011-12	20.8	22.7	23.9	25.2	26.0	27.0	27.0	26.4	5.1
2012-13	21.5	22.6	23.6	24.8	26.2	26.6	25.8	26.8	5.5
2013-14	21.5	22.6	23.5	24.5	26.0	26.7	27.0	25.6	5.0
2014-15	21.2	22.2	23.4	24.3	25.5	26.3	26.7	25.1	5.6

**Table 2. Jr Secondary Regionwide Class Size Trends**



	Art	Business Ed/Marketing	FACS	Health Education	Interdisciplinary Courses	Language Arts/English	Math	Music	Physical Education	Science	Social Studies	Special Education	Tech Ed/Comp Science	World Languages
2010-11	26.9	26.2	27.5	28.2	22.9	24.6	25.3		29.2	28.2	28.0	5.9	26.6	26.5
2011-12	27.5	26.0	27.6	27.7	12.4	25.4	25.6	29.6	29.8	28.6	27.8	6.1	27.4	26.7
2012-13	27.8	27.6	28.1	27.7	22.6	25.7	25.5	31.7	29.5	28.3	27.9	5.8	27.3	26.5
2013-14	27.3	28.5	27.2	28.6	28.2	26.5	26.3	32.5	28.9	28.6	28.4	6.0	27.0	26.0
2014-15	27.9	27.8	27.8	28.2	27.7	26.1	25.4	31.1	29.5	28.1	27.7	5.7	27.4	26.0

**Table 3. Sr Secondary Regionwide Class Size Trends**



## **B. REGIONWIDE CLASS SIZE STATISTICS**

Averages and class size ranges for specific school types and selected subject areas for the participating districts as a whole are reported in Table 4 (page 12). Summary data for the entire region appears in Table 5 and Table 6 (page 13). Special education, which typically has smaller class sizes, was excluded from Table 5.

Average class size data by selected grade groupings (i.e., Elementary, Junior Secondary, Senior Secondary, Junior and Senior Secondary combined, and for all K - 12) for class sizes excluding special education and including special education are shown in Table 7 (page 14) and Table 8 (page 15) respectively. Individual district data are available in these tables by district number (see key on page 36).

**Table 4. Class Size Regionwide by Class Type****Elementary**

<b>Class Type</b>	<b>Avg.</b>	<b>Min.</b>	<b>Max.</b>
Kindergarten	21.2	13	28
Grade 1	22.2	13	29
Grade 2	23.4	13	31
Grade 3	24.3	16	33
Grade 4	25.5	15	35
Grade 5	26.3	16	36
Grade 6	26.7	20	34
Combo or Ungraded	25.0	16	31
Special Education	5.6	1	14

---

**Jr Secondary**

<b>Class Type</b>	<b>Avg.</b>	<b>Min.</b>	<b>Max.</b>
Art	27.9	6	40
Business Ed/Marketing	27.8	19	37
Family & Consumer Science	27.8	9	37
Health Education	28.2	4	42
Interdisciplinary Courses	27.7	12	39
Language Arts/English	26.1	3	39
Math	25.4	1	42
Music	31.1	1	113
Physical Education	29.5	6	44
Science	28.1	6	41
Social Studies	27.7	2	41
Special Education	5.7	1	38
Technology Ed/Computer Science	27.4	7	36
World Languages	26.0	2	41

---

**Sr Secondary**

<b>Class Type</b>	<b>Avg.</b>	<b>Min.</b>	<b>Max.</b>
Art	26.3	2	42
Business Ed/Marketing	26.1	1	40
Family & Consumer Science	26.3	1	40
Health Education	28.1	1	44
Language Arts/English	27.4	3	41
Math	27.7	2	44
Music	37.6	1	211
Physical Education	29.7	1	47
Science	27.9	4	56
Social Studies	29.3	5	49
Special Education	6.7	1	37
Technology Ed/Computer Science	23.3	1	39
Work Experience Program	11.0	1	37
World Languages	26.1	1	42

---

**Table 5. Class Size Regionwide by Grade Group (Excluding Special Education)**

	<b>Avg.</b>	<b>Min.</b>	<b>Max.</b>
<b>Elementary</b>	23.8	13	36
<b>Jr Secondary</b>	27.5	1	113
<b>Sr Secondary</b>	27.8	1	211

**Table 6. Class Size Regionwide by Grade Group (Including Special Education)**

	<b>Avg.</b>	<b>Min.</b>	<b>Max.</b>
<b>Elementary</b>	23.5	1	36
<b>Jr. Secondary</b>	25.0	1	113
<b>Sr. Secondary</b>	25.1	1	211



**Table 7. Average Class Size by Grade Group (Excluding Special Education)**

Elementary		Jr Secondary		Sr Secondary		Jr & Sr Secondary		K-12	
Dist.	Avg.	Dist.	Avg.	Dist.	Avg.	Dist.	Avg.	Dist.	Avg.
271	21.25	271	23.53	716	23.03	717	24.02	717	23.92
276	21.56	280	23.57	717	23.06	138	24.67	271	24.24
277	21.61	284	25.27	138	23.68	271	24.69	716	24.56
721	22.30	625	25.34	6	24.63	716	24.91	138	24.63
200	22.36	717	25.56	110	24.86	6	25.32	720	25.07
720	22.42	720	26.20	720	24.91	280	25.51	284	25.14
13	22.45	832	26.33	624	24.99	284	25.57	6	25.23
284	22.45	622	26.34	284	26.10	720	25.63	280	25.41
717	22.48	6	26.38	271	26.12	625	26.11	625	25.82
624	22.51	197	26.43	278	26.37	832	26.42	624	25.90
716	22.72	270	26.48	276	26.41	624	26.46	276	26.03
15	22.90	281	26.53	832	26.52	281	26.71	281	26.23
719	23.08	138	27.01	277	26.65	276	26.80	832	26.31
281	23.10	273	27.03	282	26.70	110	27.09	110	26.82
197	23.13	276	27.26	625	26.74	283	27.41	270	26.93
278	23.55	283	27.49	281	26.91	282	27.50	283	26.95
623	23.60	719	27.68	831	27.23	277	27.50	277	26.98
270	23.62	13	27.78	283	27.33	278	27.53	831	26.98
282	23.62	831	27.90	280	27.43	622	27.54	197	27.09
283	23.96	624	28.10	721	27.71	197	27.62	282	27.09
831	24.04	623	28.10	200	27.88	270	27.63	278	27.09
622	24.15	716	28.54	622	28.71	273	27.63	622	27.13
625	24.23	277	28.58	12	28.80	831	27.64	15	27.19
138	24.44	282	28.65	272	28.95	13	28.46	273	27.33
192	24.56	15	28.89	273	28.99	719	28.55	13	27.39
11	24.69	278	28.92	13	29.04	200	28.72	623	27.55
834	24.77	110	29.05	197	29.17	721	28.82	719	27.79
6	24.81	192	29.26	719	29.32	623	28.84	721	27.92
14	24.84	200	29.50	623	29.45	15	28.89	200	28.12
273	24.93	272	29.73	14	29.74	272	29.31	272	28.49
110	24.93	194	30.18	270	30.20	192	29.89	192	28.74
280	24.97	721	30.25	192	30.53	12	30.44	834	29.58
12	25.04	11	30.49	834	31.25	14	30.83	12	29.67
194	25.10	834	30.80	11	31.38	11	30.89	11	29.82
832	25.25	12	32.46	194	31.53	194	30.92	194	30.16
272	25.30	14	32.65	<b>Reg wide</b>	<b>27.82</b>	834	31.11	14	30.37
<b>Reg wide</b>	<b>23.76</b>	<b>Reg wide</b>	<b>27.50</b>			<b>Reg wide</b>	<b>27.66</b>	<b>Reg wide</b>	<b>27.07</b>

**Table 8. Average Class Size by Grade Group (Including Special Education)**

Elementary		Jr Secondary		Sr Secondary		Jr & Sr Secondary		K-12	
Dist.	Avg.	Dist.	Avg.	Dist.	Avg.	Dist.	Avg.	Dist.	Avg.
719	18.88	280	20.05	276	19.52	276	20.67	276	20.70
276	20.87	720	21.29	717	20.03	280	21.47	717	21.73
271	21.25	276	22.15	138	20.81	138	21.54	138	21.85
277	21.61	625	22.73	624	21.51	717	21.68	720	21.87
721	21.96	281	23.22	278	21.78	720	21.77	280	21.98
284	22.30	138	23.23	110	22.43	278	22.90	624	22.93
716	22.35	283	23.24	720	22.43	624	22.99	278	22.96
200	22.36	831	23.35	277	22.55	625	23.31	277	23.19
720	22.42	271	23.53	280	22.82	277	23.32	281	23.34
13	22.45	270	24.21	716	22.93	281	23.37	625	23.40
717	22.48	278	24.26	281	23.52	831	23.98	831	23.99
624	22.51	284	24.28	625	23.79	283	24.00	283	24.00
15	22.90	277	24.32	6	24.21	284	24.28	284	24.02
281	23.10	624	24.71	282	24.22	110	24.39	271	24.09
197	23.13	622	24.71	284	24.27	271	24.52	716	24.33
278	23.55	717	24.75	13	24.73	270	24.66	110	24.45
623	23.60	197	24.82	283	24.87	716	24.72	270	24.50
14	23.60	13	25.38	831	25.11	13	25.01	13	24.63
270	23.62	194	25.65	832	25.28	6	25.05	6	24.89
282	23.62	272	25.70	721	25.35	282	25.42	719	25.17
625	23.92	832	25.88	270	25.60	832	25.59	282	25.24
138	23.94	719	25.91	14	25.62	197	26.02	721	25.53
283	23.96	110	26.12	271	25.70	721	26.04	832	25.55
194	24.03	6	26.38	12	26.59	14	26.06	197	25.70
831	24.04	14	26.76	719	26.69	272	26.30	14	25.89
622	24.15	721	26.90	272	26.84	719	26.33	15	25.89
6	24.16	15	26.98	194	27.36	194	26.58	272	26.12
192	24.43	273	27.03	197	27.58	622	26.65	194	26.29
11	24.69	11	27.20	200	27.88	15	26.98	622	26.36
834	24.77	282	27.25	834	28.43	273	27.63	273	27.33
273	24.93	834	27.93	622	28.71	11	27.98	11	27.47
110	24.93	716	28.10	192	28.72	834	28.27	834	27.52
280	24.97	623	28.10	273	28.99	200	28.72	623	27.55
12	25.04	192	28.80	11	28.99	12	28.73	192	27.85
832	25.25	200	29.50	623	29.45	192	28.76	200	28.12
272	25.30	12	31.54			623	28.84	12	28.24
<b>Reg wide</b>	<b>23.47</b>	<b>Reg wide</b>	<b>24.96</b>	<b>Reg wide</b>	<b>25.09</b>	<b>Reg wide</b>	<b>25.02</b>	<b>Reg wide</b>	<b>24.81</b>

## **C. ELEMENTARY CLASS SIZE STATISTICS & DATA OBSERVATIONS**

Elementary class size data are reported for each participating district for grades K, 1, 2, 3, 4, 5, 6, multi-age groups/combination grades, and Special Education.

Table 9 (pages 17-18) reports the average class sizes for each school district. Districts are ranked from low to high according to the average calculated.

Table 10 (pages 19-20) reports class size maximums and minimums for each school district. Districts are ranked from low to high based upon the maximum class size, not the difference between the maximum and minimum class sizes.

Individual districts that did not submit data required for these tables were excluded from that portion of a table(s).

Highest average class sizes generally increased with grade level. For the most part, class size ranges were not as variable as those for Secondary data.

**Table 9. Elementary Average Class Size by Class Type**

Kindergarten		Grade 1		Grade 2		Grade 3		Grade 4	
Dist.	Avg.	Dist.	Avg.	Dist.	Avg.	Dist.	Avg.	Dist.	Avg.
13	18.25	716	19.17	276	20.38	276	21.17	277	22.13
282	18.67	271	19.46	271	20.78	13	21.42	271	22.74
721	18.80	284	20.19	831	21.10	717	21.43	624	23.19
716	18.86	276	20.29	13	21.25	15	21.87	270	23.33
15	19.00	720	20.62	717	21.33	277	22.13	283	23.60
200	19.00	721	20.86	277	21.63	271	22.26	721	23.83
719	19.48	831	21.00	284	21.63	270	22.53	276	23.84
271	19.61	624	21.35	716	21.67	720	22.54	197	23.87
276	19.87	278	21.40	15	21.73	284	22.70	717	24.00
278	19.88	282	21.40	720	21.77	282	23.00	200	24.08
720	20.39	277	21.57	721	22.15	721	23.08	281	24.39
11	20.42	834	21.65	623	22.23	281	23.26	716	24.60
277	20.43	281	21.70	138	22.67	278	23.38	278	24.67
284	20.53	15	21.88	197	22.71	624	23.54	720	24.67
832	20.56	13	21.92	200	22.71	622	23.70	719	24.94
624	20.59	11	21.96	282	22.80	719	23.73	625	25.15
623	20.64	719	22.20	624	22.86	200	23.79	284	25.36
622	20.97	138	22.22	719	23.00	283	23.87	138	25.75
831	21.00	623	22.30	281	23.12	623	24.15	280	25.77
12	21.23	192	22.33	278	23.50	625	24.58	832	25.78
272	21.43	622	22.55	6	23.58	197	24.67	110	25.82
138	21.75	197	22.61	283	23.88	273	24.77	831	25.90
14	21.80	194	22.61	834	23.95	138	25.00	6	26.09
281	21.83	283	22.88	192	24.04	272	25.04	622	26.20
834	21.88	200	22.93	270	24.05	832	25.11	623	26.23
194	22.00	272	23.15	273	24.09	110	25.25	13	26.30
273	22.00	6	23.17	625	24.19	6	25.27	12	26.47
197	22.21	280	23.29	622	24.32	834	25.35	273	26.55
717	22.50	717	23.33	110	24.42	831	25.35	194	26.57
192	22.64	12	23.39	194	24.66	192	25.57	11	27.09
6	22.67	625	23.42	14	24.78	14	25.67	192	27.17
625	22.81	270	23.71	11	25.07	12	25.71	834	27.24
270	23.29	273	24.18	272	25.23	280	26.27	15	27.54
280	23.76	14	25.00	280	25.31	194	26.29	14	28.00
110	23.91	110	25.27	12	25.68	716	26.40	272	28.36
283	24.19	832	25.88	832	27.50	11	27.03	282	29.25
<b>Reg wide</b>	<b>21.22</b>	<b>Reg wide</b>	<b>22.21</b>	<b>Reg wide</b>	<b>23.41</b>	<b>Reg wide</b>	<b>24.33</b>	<b>Reg wide</b>	<b>25.48</b>

**Table 9. Elementary Average Class Size by Class Type**

Grade 5		Grade 6		Combo or Ungraded		Special Education	
Dist.	Avg.	Dist.	Avg.	Dist.	Avg.	Dist.	Avg.
270	22.95	192	23.35	271	20.67	192	4.00
271	23.16	138	24.78	192	22.22	719	4.18
624	24.36	716	25.40	834	22.83	14	5.00
284	24.40	270	25.61	278	23.00	276	5.33
623	24.48	623	26.33	622	23.60	625	6.43
281	24.68	6	27.67	719	23.67	194	6.91
720	24.92	272	28.38	624	25.00	6	7.67
625	25.04	831	28.50	625	25.79	716	8.00
276	25.32	834	28.95	273	27.69	138	8.50
716	25.40	<b>Reg wide 26.65</b>		623	28.00	721	8.50
283	25.69			<b>Reg wide 24.99</b>		284	11.00
280	26.08					<b>Reg wide 5.60</b>	
721	26.17						
6	26.30						
831	26.83						
273	26.86						
13	27.00						
832	27.00						
719	27.32						
834	27.33						
15	27.54						
272	27.59						
278	27.88						
11	28.19						
12	28.67						
622	28.76						
138	28.78						
194	28.82						
192	29.53						
282	30.00						
<b>Reg wide</b>	<b>26.30</b>						

**Table 10. Elementary Maximum/Minimum Class Size by Class Type**

Kindergarten			Grade 1			Grade 2			Grade 3			Grade 4		
Dist.	Max	Min	Dist.	Max	Min	Dist.	Max	Min	Dist.	Max	Min	Dist.	Max	Min
282	20	15	716	20	19	277	22	21	277	23	21	277	23	21
716	20	15	278	22	21	716	22	21	717	23	20	717	24	24
15	21	17	282	22	21	717	22	20	13	24	16	716	25	24
200	21	16	138	23	21	13	23	19	15	24	20	197	26	19
278	21	19	720	23	17	282	23	22	278	24	22	271	26	19
721	21	14	721	23	19	721	23	21	282	24	22	278	26	23
832	21	20	13	24	20	138	24	21	276	25	16	110	27	24
13	22	14	15	24	19	278	24	23	284	25	21	200	27	22
138	22	21	276	24	16	720	24	19	720	25	18	283	27	20
284	22	18	277	24	19	110	25	24	110	26	24	624	27	15
720	22	18	284	24	19	15	25	19	138	26	24	719	27	22
276	23	16	717	24	22	276	25	13	200	26	21	832	27	25
717	23	22	197	25	19	284	25	19	721	26	20	138	28	24
11	24	15	200	25	22	719	25	19	832	26	24	270	28	15
12	24	15	281	25	17	831	25	15	271	27	19	281	28	20
194	24	17	283	25	20	14	26	22	273	27	22	284	28	23
272	24	19	6	25	22	192	26	21	281	27	17	6	28	24
277	24	17	624	25	18	197	26	20	624	27	20	720	28	22
622	24	17	719	25	18	283	26	20	716	27	26	721	28	21
624	24	15	834	25	16	6	26	21	14	28	23	192	29	25
719	24	15	11	26	17	200	27	21	270	28	19	273	29	25
110	25	23	110	26	24	271	27	16	272	28	23	276	29	17
14	25	18	12	26	20	273	27	21	6	28	23	280	29	22
197	25	20	192	26	17	281	27	20	719	28	20	12	30	18
271	25	15	194	26	19	624	27	19	197	29	19	13	30	20
273	25	20	271	26	15	12	28	23	283	29	21	14	30	26
281	25	19	280	26	21	270	28	18	622	29	20	282	30	29
6	25	20	831	26	14	622	28	22	623	29	17	623	30	19
623	25	17	270	27	18	623	28	17	834	29	21	15	31	25
834	25	18	272	27	18	625	28	15	12	30	19	194	31	23
192	26	20	622	27	19	832	28	26	192	30	21	272	31	25
283	26	22	623	27	15	11	29	19	11	31	21	831	31	17
625	26	13	832	27	25	194	30	21	194	31	21	11	34	20
831	26	16	14	28	23	272	30	21	280	31	21	625	34	15
270	27	19	273	28	22	834	30	19	625	31	16	834	34	23
280	28	19	625	29	13	280	31	20	831	33	17	622	35	20
<b>Reg wide</b>	<b>28</b>	<b>13</b>	<b>Reg wide</b>	<b>29</b>	<b>13</b>	<b>Reg wide</b>	<b>31</b>	<b>13</b>	<b>Reg wide</b>	<b>33</b>	<b>16</b>	<b>Reg wide</b>	<b>35</b>	<b>15</b>

**Table 10. Elementary Maximum/Minimum Class Size by Class Type**

Grade 5			Grade 6			Combo or Ungraded			Special Education		
Dist.	Max	Min	Dist.	Max	Min	Dist.	Max	Min	Dist.	Max	Min
716	26	25	138	26	23	271	21	20	192	4	4
270	27	18	192	26	21	278	24	22	276	6	5
284	27	22	716	27	25	834	24	21	14	7	3
832	27	27	270	28	23	624	25	25	6	8	7
281	28	22	6	31	23	719	27	20	625	8	5
6	28	25	623	31	20	192	28	17	716	8	8
624	28	19	272	32	24	623	28	28	721	9	8
278	29	26	831	34	24	622	29	20	194	10	4
280	29	24	834	34	21	273	30	26	719	11	1
720	29	23	<b>Reg wide</b>	<b>34</b>	<b>20</b>	625	31	16	138	14	3
721	29	23				<b>Reg wide</b>	<b>31</b>	<b>16</b>	284	14	5
273	30	24							<b>Reg wide</b>	<b>14</b>	<b>1</b>
276	30	16									
283	30	21									
623	30	16									
625	30	17									
719	30	25									
272	31	24									
282	31	28									
12	32	25									
138	32	27									
15	32	22									
271	32	17									
831	32	20									
11	33	22									
13	33	23									
194	33	22									
834	33	19									
192	35	27									
622	36	22									
<b>Reg wide</b>	<b>36</b>	<b>16</b>									

## **D. JUNIOR SECONDARY CLASS SIZE STATISTICS & DATA OBSERVATIONS**

Junior secondary class size data are reported for each participating district in selected subject areas (see page 3 in the Glossary of Terms for a list).

Table 11 (page 22-24) reports the average class sizes for each school district. Districts are ranked from low to high according to the average calculated.

Table 12 (pages 25-27) reports class size maximums and minimums for each school district. Districts are ranked from low to high based upon the maximum class size, not the difference between the maximum and minimum class sizes.

Individual districts that did not submit data required for these tables were excluded from that portion of a table(s).

Highest average class sizes regionwide were for Health Education, Music, Physical Education, and Science. Class size ranges showed wide variability.



**Table 11. Jr Secondary Average Class Size by Class Type**

Art		Business Ed/Marketing		Family & Consumer Science		Health Education		Interdisciplinary Courses	
Dist.	Avg.	Dist.	Avg.	Dist.	Avg.	Dist.	Avg.	Dist.	Avg.
138	20.00	625	27.05	194	17.50	138	20.00	271	26.83
717	22.91	831	27.20	831	21.29	717	20.33	277	27.89
110	23.50	719	32.00	197	22.50	280	24.50	278	29.13
282	25.20	<b>Reg wide</b>	<b>27.78</b>	832	24.09	719	25.00	14	32.29
273	25.32			717	24.20	271	25.90	<b>Reg wide</b>	<b>27.70</b>
624	25.50			720	24.20	284	26.46		
15	26.00			625	25.29	624	26.82		
284	26.00			282	25.50	832	26.83		
271	26.04			624	25.86	273	27.16		
720	26.06			623	26.09	625	27.41		
716	26.17			270	26.15	276	27.50		
834	26.67			277	26.41	623	27.64		
197	26.70			271	26.42	720	27.88		
270	26.78			273	26.96	831	28.00		
831	26.88			192	27.14	272	28.60		
832	26.92			716	27.30	622	28.64		
13	26.94			281	28.07	270	28.70		
623	27.00			284	28.29	192	28.92		
278	27.13			110	28.50	281	29.29		
276	27.27			200	28.75	200	29.50		
625	27.44			719	28.87	834	29.75		
277	27.50			12	29.22	721	29.86		
283	27.90			276	30.20	110	30.25		
721	28.22			622	30.21	13	31.71		
200	28.25			272	30.60	716	32.33		
192	28.30			11	31.00	15	32.40		
6	28.75			15	32.00	12	32.90		
281	29.08			<b>Reg wide</b>	<b>27.81</b>	14	36.33		
280	29.33					<b>Reg wide</b>	<b>28.16</b>		
272	29.40								
719	29.60								
194	30.71								
11	30.73								
622	31.14								
12	32.00								
14	33.45								
<b>Reg wide</b>	<b>27.92</b>								

**Table 11. Jr Secondary Average Class Size by Class Type**

Language Arts/English		Math		Music		Physical Education		Science	
Dist.	Avg.	Dist.	Avg.	Dist.	Avg.	Dist.	Avg.	Dist.	Avg.
280	20.08	271	19.93	284	20.23	717	23.16	280	22.15
271	20.67	13	20.08	281	25.00	832	25.77	271	24.00
622	21.90	280	20.64	832	25.76	271	25.87	717	24.82
197	22.63	625	22.26	622	26.22	273	26.51	625	26.05
6	22.82	622	22.80	276	26.24	276	27.26	720	26.14
281	23.18	6	23.05	625	26.30	625	27.29	284	26.14
720	23.22	717	23.08	277	26.84	720	27.33	197	26.28
270	24.48	832	23.97	271	26.85	197	27.42	6	26.94
625	24.94	720	24.17	283	27.81	283	27.73	716	27.17
284	25.22	284	24.50	6	28.00	270	28.00	270	27.29
138	25.33	197	24.90	719	28.97	192	28.08	281	27.36
13	25.68	623	24.97	623	29.17	624	28.24	273	27.37
717	26.08	281	25.23	110	29.36	719	28.38	15	27.42
273	26.09	270	25.34	834	30.55	282	28.42	832	27.67
831	26.98	138	25.50	270	31.27	716	29.33	719	27.69
832	27.03	283	25.64	831	32.05	721	29.36	278	28.13
15	27.08	716	25.70	11	32.53	284	29.49	276	28.15
200	27.16	721	25.82	624	32.77	194	29.63	831	28.19
278	27.25	719	25.93	273	33.12	280	29.72	283	28.39
282	27.27	273	26.04	138	33.50	272	29.73	282	28.47
623	27.50	194	26.32	197	34.22	138	29.75	13	28.73
719	27.51	276	26.40	272	34.89	6	30.06	622	28.81
283	27.63	15	26.85	192	35.75	622	30.24	110	28.97
272	28.29	200	26.98	716	36.00	277	30.28	200	29.02
276	28.41	192	27.03	13	38.90	15	30.34	623	29.15
624	28.57	278	27.08	15	39.04	200	30.68	192	29.26
192	28.79	272	27.64	200	39.96	834	30.69	624	29.28
110	28.98	831	27.98	282	40.67	623	31.39	721	29.74
721	29.12	282	28.20	14	42.82	281	31.52	138	29.94
716	29.38	834	28.20	280	43.13	11	31.75	272	30.82
194	29.40	11	28.57	720	43.46	13	31.93	11	30.93
11	29.78	624	29.07	12	48.94	12	32.00	277	31.25
277	30.11	110	29.10	194	49.28	831	32.15	194	31.30
14	31.28	277	29.39	717	50.67	110	32.27	834	32.24
12	31.49	14	31.11	278	70.83	278	36.39	12	32.73
834	32.32	12	31.58	721	96.00	14	36.67	14	32.76
<b>Reg wide</b>	<b>26.07</b>	<b>Reg wide</b>	<b>25.41</b>	<b>Reg wide</b>	<b>31.05</b>	<b>Reg wide</b>	<b>29.46</b>	<b>Reg wide</b>	<b>28.13</b>

**Table 11. Jr Secondary Average Class Size by Class Type**

<b>Social Studies</b>		<b>Special Education</b>		<b>Technology Ed/Computer Science</b>		<b>World Languages</b>	
<b>Dist.</b>	<b>Avg.</b>	<b>Dist.</b>	<b>Avg.</b>	<b>Dist.</b>	<b>Avg.</b>	<b>Dist.</b>	<b>Avg.</b>
271	21.93	276	2.94	625	21.61	717	14.00
280	22.47	277	3.26	138	22.38	138	20.00
717	23.62	278	3.68	716	24.00	278	21.31
622	24.62	197	3.89	717	24.09	720	22.11
284	24.90	282	4.00	110	25.00	197	24.14
720	26.24	831	4.06	273	25.00	282	24.29
197	26.56	624	4.19	12	25.08	270	24.39
15	26.58	720	4.32	831	25.22	624	24.41
832	27.00	14	4.34	624	25.30	276	24.75
273	27.02	110	4.86	270	25.74	280	25.00
625	27.02	272	5.00	197	26.00	625	25.10
281	27.21	284	5.16	721	26.13	831	25.30
719	27.59	719	5.64	277	26.22	273	25.41
282	27.60	194	5.64	720	26.31	284	25.45
283	27.63	138	5.68	276	26.33	6	25.86
278	27.67	192	5.83	6	26.59	271	25.92
276	27.77	717	5.86	832	26.71	13	26.25
270	28.00	280	6.17	192	26.91	283	26.32
623	28.00	281	6.17	284	27.26	14	27.00
831	28.42	270	6.25	200	27.50	721	27.25
624	28.45	721	6.26	282	27.60	832	27.56
716	28.63	832	6.33	271	27.79	272	27.67
13	28.68	625	6.38	278	28.25	281	27.71
200	28.88	15	6.61	15	28.28	623	27.72
110	28.93	13	6.68	14	28.62	110	27.82
721	29.04	11	6.75	281	28.68	719	28.68
192	29.11	834	7.00	719	28.69	622	28.82
6	29.12	283	7.35	280	28.83	716	29.00
138	29.75	622	8.31	283	28.95	834	30.00
194	29.90	716	12.50	194	29.75	11	30.15
272	30.26	12	14.38	623	30.10	192	30.58
11	30.64	<b>Reg wide</b>	<b>5.67</b>	622	30.45	12	31.27
277	30.88			11	30.49	<b>Reg wide</b>	<b>25.97</b>
12	31.36			272	30.80		
834	32.14			13	31.83		
14	33.00			<b>Reg wide</b>	<b>27.39</b>		
<b>Reg wide</b>	<b>27.69</b>						

**Table 12. Jr Secondary Maximum/Minimum Class Size by Class Type**

Art			Business Ed/Marketing			Family & Consumer Science			Health Education			Interdisciplinary Courses		
Dist.	Max	Min	Dist.	Max	Min	Dist.	Max	Min	Dist.	Max	Min	Dist.	Max	Min
138	21	19	719	33	28	194	21	15	138	21	19	278	31	27
15	28	24	831	33	19	282	26	25	717	24	18	14	35	27
717	28	21	625	37	19	197	28	17	831	29	26	277	36	17
832	29	24	<b>Reg wide</b>	<b>37</b>	<b>19</b>	717	28	22	719	31	17	271	39	12
834	29	24				831	28	9	832	31	20	<b>Reg wide</b>	<b>39</b>	<b>12</b>
110	30	14				832	29	20	13	32	30			
282	30	20				272	31	30	272	32	24			
716	30	23				273	31	16	273	32	18			
273	31	15				277	31	19	284	32	20			
721	31	24				281	31	24	624	32	4			
200	32	22				192	32	15	720	32	25			
270	32	15				200	32	26	200	33	27			
272	32	27				270	32	16	280	33	17			
283	32	21				719	32	25	281	33	22			
284	32	15				720	32	13	623	33	17			
192	33	14				15	33	30	721	33	27			
194	33	28				271	33	20	110	34	15			
197	33	10				276	33	25	15	34	29			
276	33	19				284	33	23	192	34	19			
278	33	20				716	33	21	270	34	23			
623	33	19				623	34	15	276	34	16			
719	33	26				11	35	21	716	34	31			
720	33	18				110	35	27	12	35	29			
271	34	18				624	35	10	271	35	17			
277	34	18				625	35	16	622	35	16			
280	34	19				12	37	22	834	35	23			
281	34	19				622	37	12	14	42	31			
13	35	13				<b>Reg wide</b>	<b>37</b>	<b>9</b>	625	42	12			
6	35	25							<b>Reg wide</b>	<b>42</b>	<b>4</b>			
624	35	6												
831	35	15												
11	36	22												
12	36	29												
622	37	24												
625	38	8												
14	40	22												
<b>Reg wide</b>	<b>40</b>	<b>6</b>												

**Table 12. Jr Secondary Maximum/Minimum Class Size by Class Type**

Language Arts/English			Math			Music			Physical Education			Science		
Dist.	Max	Min	Dist.	Max	Min	Dist.	Max	Min	Dist.	Max	Min	Dist.	Max	Min
280	29	11	13	30	13	832	33	20	717	30	10	282	30	22
282	30	23	280	30	12	623	34	22	138	33	27	280	31	12
110	31	26	721	31	3	276	38	11	272	33	26	832	31	21
138	31	18	832	31	9	277	38	6	716	33	26	110	32	23
278	31	23	281	32	15	110	39	24	721	33	16	283	32	22
721	31	27	6	32	8	283	39	12	832	33	19	716	32	22
6	32	8	717	32	10	281	40	10	277	34	14	717	32	10
622	32	3	110	33	25	719	41	13	283	34	17	138	33	24
717	32	22	272	33	21	271	42	12	192	35	10	197	33	14
720	32	11	276	33	13	270	44	15	271	35	17	270	33	15
270	33	13	278	33	18	284	44	4	719	35	16	278	33	18
272	33	20	282	33	23	622	48	3	12	36	23	6	33	20
273	33	15	283	33	14	11	52	15	270	36	13	623	33	13
276	33	13	623	33	15	834	54	14	276	36	16	721	33	26
284	33	7	720	33	9	282	57	31	282	36	21	192	34	24
623	33	18	138	34	15	272	58	15	720	36	15	271	34	12
716	33	26	192	34	14	716	59	20	13	37	20	272	34	23
832	33	20	270	34	13	6	60	11	15	37	10	276	34	15
192	34	18	277	34	24	138	62	10	6	37	26	284	34	16
277	34	25	622	34	2	624	63	18	624	37	17	719	34	20
281	34	7	719	34	10	197	64	17	834	37	21	720	34	12
283	34	19	624	35	17	14	65	28	623	38	20	15	35	14
13	35	13	716	35	8	273	65	16	831	38	24	273	35	18
15	35	14	831	35	18	12	68	31	11	39	17	281	35	16
200	35	14	12	36	16	280	68	26	280	39	17	622	35	16
271	35	10	15	36	14	625	68	5	281	39	11	624	35	15
624	35	19	273	36	16	15	69	13	284	39	9	12	36	24
831	35	13	284	36	10	13	70	16	278	41	31	13	36	13
11	36	16	834	36	16	720	72	18	110	42	24	200	36	22
12	36	24	11	37	16	192	75	14	194	42	15	277	36	27
194	36	8	14	37	26	831	75	7	200	42	16	831	36	14
197	36	10	197	37	13	717	79	15	622	42	13	11	38	19
834	37	28	200	37	14	200	81	13	14	43	30	14	38	27
14	38	21	271	37	10	194	85	1	197	44	15	194	38	14
625	38	3	625	40	6	278	94	55	273	44	13	834	39	22
719	39	18	194	42	1	721	113	62	625	44	6	625	41	6
<b>Reg wide</b>	<b>39</b>	<b>3</b>	<b>Reg wide</b>	<b>42</b>	<b>1</b>	<b>Reg wide</b>	<b>113</b>	<b>1</b>	<b>Reg wide</b>	<b>44</b>	<b>6</b>	<b>Reg wide</b>	<b>41</b>	<b>6</b>

**Table 12. Jr Secondary Maximum/Minimum Class Size by Class Type**

Social Studies			Special Education			Technology Ed/Computer Science			World Languages		
Dist.	Max	Min	Dist.	Max	Min	Dist.	Max	Min	Dist.	Max	Min
280	29	16	282	5	2	716	25	23	717	14	14
717	30	13	832	7	5	717	28	16	138	21	19
282	31	22	278	8	1	721	28	23	282	29	21
832	31	20	14	9	1	110	30	19	720	29	2
110	32	27	276	9	1	278	30	25	716	30	28
271	32	11	717	9	4	282	30	23	721	30	24
720	32	13	138	10	1	831	30	17	13	31	21
138	33	26	197	10	1	138	31	17	6	31	20
15	33	14	720	10	1	273	31	17	110	32	22
200	33	22	272	11	1	277	31	9	197	32	15
270	33	17	277	11	1	720	31	20	280	32	15
283	33	20	831	11	1	832	31	20	624	32	14
6	33	24	15	12	1	200	32	23	832	32	23
623	33	22	192	12	2	270	32	20	270	33	10
721	33	26	834	12	1	281	32	23	272	33	18
192	34	21	719	13	2	283	32	18	281	33	20
273	34	17	13	14	1	6	32	21	284	33	15
276	34	13	280	14	2	623	32	26	623	33	19
278	34	22	716	14	11	15	33	20	831	33	10
622	34	2	110	15	1	192	33	14	192	34	26
716	34	20	270	15	2	271	33	18	271	34	15
272	35	21	283	15	1	272	33	28	273	34	11
281	35	17	625	15	1	276	33	19	276	34	11
284	35	8	284	17	2	280	33	23	283	34	18
624	35	19	11	18	1	719	33	26	11	35	21
719	35	10	281	20	2	12	34	14	12	35	28
12	36	23	721	20	1	194	34	13	622	35	20
194	36	19	622	23	1	284	34	17	719	35	20
197	36	10	12	29	2	197	35	10	14	36	14
277	36	26	624	35	1	624	35	7	278	36	12
831	36	16	194	38	1	625	35	9	834	39	21
834	36	25	<b>Reg wide 38</b>	<b>1</b>		11	36	17	625	41	3
11	37	21				13	36	17	<b>Reg wide 41</b>	<b>2</b>	
13	38	14				14	36	20			
14	38	25				622	36	25			
625	41	6				<b>Reg wide 36</b>	<b>7</b>				
<b>Reg wide 41</b>	<b>2</b>										

## **E. SENIOR SECONDARY CLASS SIZE STATISTICS & DATA OBSERVATIONS**

Senior secondary class size data are reported for each participating district in selected subject areas (see page 3 in the Glossary of Terms for a list).

Table 13 (pages 29-31) reports the average class sizes for each school district. Districts are ranked from low to high according to the average calculated.

Table 14 (pages 32-34) reports class size maximums and minimums for each school district. Districts are ranked from low to high based upon the maximum class size, not the difference between the maximum and minimum class sizes.

Individual districts that did not submit data required for these tables were excluded from that portion of a table(s).

Highest average class sizes regionwide were for Health Education, Music, Physical Education, and Social Studies. Class size ranges showed wide variability.

**Table 13. Sr Secondary Average Class Size by Class Type**

Art		Business Ed/Marketing		Family & Consumer Science		Health Education		Language Arts/English	
Dist.	Avg.	Dist.	Avg.	Dist.	Avg.	Dist.	Avg.	Dist.	Avg.
717	21.38	6	14.50	717	19.40	138	12.00	717	22.11
200	21.93	716	17.83	831	19.64	716	15.50	138	22.83
716	22.50	717	19.00	720	20.67	624	21.44	720	23.75
831	22.67	280	19.20	282	21.00	110	23.00	284	23.88
110	22.78	194	21.95	716	21.20	277	24.08	6	24.16
720	22.87	720	22.00	832	21.75	284	26.29	276	24.90
6	22.93	284	22.72	271	21.81	273	26.50	277	25.00
138	23.50	200	23.25	6	22.20	721	26.63	716	25.13
721	24.20	624	23.43	110	23.17	717	27.20	624	25.23
832	24.33	832	23.50	281	23.58	281	27.63	110	25.76
284	24.42	276	23.56	622	23.59	272	27.83	271	25.86
282	24.56	281	23.70	138	24.33	832	27.83	625	25.91
271	24.94	192	24.57	625	25.83	194	28.57	282	26.04
277	24.94	271	24.60	624	26.25	622	28.71	280	26.34
625	25.01	625	25.89	276	26.30	625	28.94	278	26.53
281	25.38	622	26.04	272	26.33	278	29.00	281	26.65
283	25.50	278	26.31	280	26.50	271	29.20	283	26.72
273	25.60	12	26.33	270	26.67	282	29.67	12	26.77
270	25.67	138	26.50	197	26.70	623	30.50	200	26.84
278	25.67	721	26.88	200	27.67	12	31.29	832	27.00
194	25.88	283	27.25	719	27.89	720	31.67	273	27.50
13	26.20	277	27.67	721	28.67	270	31.83	270	27.59
276	26.43	719	27.67	12	28.75	192	32.25	272	27.64
719	27.18	623	28.43	194	28.82	719	32.36	721	28.22
622	27.21	110	28.50	273	29.50	200	32.91	14	28.76
623	27.75	273	28.75	14	29.67	197	33.40	197	29.43
624	28.06	272	28.89	11	29.77	283	33.50	831	29.50
272	28.13	831	29.70	623	29.92	280	34.50	622	29.63
197	29.57	11	30.53	284	29.93	831	36.00	719	29.66
14	30.13	14	31.00	192	31.10	13	37.00	13	29.88
12	30.17	197	31.33	<b>Reg wide</b>	<b>26.28</b>	834	38.00	192	29.95
280	30.17	13	32.20			<b>Reg wide</b>	<b>28.15</b>	834	30.44
11	30.30	270	32.50					623	30.71
834	31.14	<b>Reg wide</b>	<b>26.08</b>					194	31.92
192	31.31							11	32.70
<b>Reg wide</b>	<b>26.29</b>							<b>Reg wide</b>	<b>27.39</b>



**Table 13. Sr Secondary Average Class Size by Class Type**

Math		Music		Physical Education		Science		Social Studies	
Dist.	Avg.	Dist.	Avg.	Dist.	Avg.	Dist.	Avg.	Dist.	Avg.
716	19.70	6	19.71	716	18.00	717	22.33	110	22.89
6	21.87	622	25.86	194	21.97	720	23.76	717	23.68
717	22.29	14	27.60	624	22.40	716	24.53	716	25.45
138	23.15	625	28.02	717	23.85	138	24.77	138	26.00
110	23.22	721	28.07	284	25.25	110	24.91	271	26.27
720	23.95	281	28.57	110	26.25	278	25.03	720	26.54
278	24.16	831	29.75	720	26.56	832	25.89	284	26.64
282	24.72	280	30.20	282	27.25	283	25.92	277	26.71
831	24.93	138	30.56	270	27.40	276	26.09	6	27.08
271	25.54	283	33.17	832	27.50	280	26.23	276	27.54
832	26.03	271	34.33	138	27.75	624	26.44	832	27.56
624	26.92	284	34.72	6	27.95	284	26.53	283	27.63
277	26.93	110	35.38	271	28.21	6	26.85	278	27.68
284	26.96	624	37.56	273	28.36	625	26.86	624	27.92
197	27.12	197	38.20	12	28.80	12	26.92	200	27.94
276	27.22	276	38.21	276	29.04	271	26.93	273	28.23
625	27.42	832	38.33	721	29.08	281	26.94	282	28.33
281	27.43	278	39.64	283	29.20	721	26.95	721	28.88
280	27.71	13	41.25	719	29.21	282	27.00	625	29.01
270	27.83	834	41.33	200	29.95	200	27.09	281	29.18
721	28.03	277	42.33	831	30.00	272	27.66	272	29.47
12	28.42	200	43.91	622	30.22	831	27.97	280	29.94
13	28.58	270	43.94	278	30.29	277	28.07	831	29.94
283	28.67	719	45.00	272	30.41	197	28.24	13	30.36
719	28.72	282	45.20	281	31.62	623	28.40	719	30.46
200	28.79	192	47.27	280	31.69	273	28.74	12	30.51
272	29.09	720	47.86	623	31.75	719	29.28	622	30.56
192	29.33	11	47.93	625	32.09	192	29.82	270	30.80
14	29.42	272	50.47	14	32.15	834	29.93	623	31.04
623	29.57	716	51.80	277	32.62	14	29.96	834	31.39
622	29.63	194	52.60	11	33.12	622	30.04	192	31.60
11	30.12	717	53.13	834	34.44	13	31.31	197	31.91
273	30.12	273	53.31	192	34.53	11	31.73	11	32.63
834	31.57	12	56.70	197	35.29	270	31.79	14	32.76
194	32.78	<b>Reg wide</b>	<b>37.60</b>	13	38.14	194	33.68	194	34.13
<b>Reg wide</b>	<b>27.73</b>			<b>Reg wide</b>	<b>29.69</b>	<b>Reg wide</b>	<b>27.94</b>	<b>Reg wide</b>	<b>29.30</b>

**Table 13. Sr Secondary Average Class Size by Class Type**

<b>Special Education</b>		<b>Technology Ed/Computer Science</b>		<b>Work Experience Program</b>		<b>World Languages</b>	
<b>Dist.</b>	<b>Avg.</b>	<b>Dist.</b>	<b>Avg.</b>	<b>Dist.</b>	<b>Avg.</b>	<b>Dist.</b>	<b>Avg.</b>
276	2.71	716	13.56	624	3.92	277	22.06
270	2.73	717	15.08	12	4.80	717	22.65
278	2.75	138	15.15	834	5.40	281	23.03
282	4.22	270	16.50	276	5.50	278	23.52
277	4.50	194	18.63	138	9.00	282	23.94
6	5.40	281	19.06	13	9.38	138	24.05
831	5.52	625	20.80	721	10.00	624	24.16
717	5.64	278	21.20	272	10.57	831	24.17
624	5.70	271	21.82	284	12.00	110	24.46
110	5.85	624	23.17	11	12.87	625	24.59
832	5.93	622	23.21	719	13.75	6	24.63
194	6.29	284	23.36	716	16.57	284	24.65
138	6.35	277	23.38	192	20.40	720	24.70
283	6.40	280	23.63	831	21.25	271	24.78
720	6.68	720	23.65	110	24.00	832	24.96
284	6.86	721	23.75	<b>Reg wide</b>	<b>10.98</b>	273	25.26
721	7.03	276	24.33			276	25.47
197	7.24	200	24.39			623	25.54
272	7.43	197	24.55			280	25.78
625	7.52	719	25.60			14	25.85
14	7.65	13	25.82			622	25.94
719	7.73	192	26.00			200	26.30
281	7.97	282	26.00			272	26.33
11	8.11	623	26.72			283	26.37
280	8.18	272	26.85			197	26.58
192	8.35	110	27.50			192	27.48
716	9.00	283	27.67			270	27.79
12	9.53	14	28.27			719	27.79
13	11.00	12	28.33			716	28.00
834	11.63	6	30.00			13	28.91
271	12.60	11	30.06			194	29.10
<b>Reg wide</b>	<b>6.71</b>	<b>Reg wide</b>	<b>23.33</b>			12	29.25
						721	30.23
						11	30.91
						834	33.28
						<b>Reg wide</b>	<b>26.15</b>

**Table 14. Sr Secondary Maximum/Minimum Class Size by Class Type**

<b>Art</b>			<b>Business Ed/Marketing</b>			<b>Family &amp; Consumer Science</b>			<b>Health Education</b>			<b>Language Arts/English</b>		
<b>Dist.</b>	<b>Max</b>	<b>Min</b>	<b>Dist.</b>	<b>Max</b>	<b>Min</b>	<b>Dist.</b>	<b>Max</b>	<b>Min</b>	<b>Dist.</b>	<b>Max</b>	<b>Min</b>	<b>Dist.</b>	<b>Max</b>	<b>Min</b>
716	24	21	6	22	7	717	24	12	138	12	12	276	29	13
721	29	14	717	28	13	282	27	17	716	20	11	12	30	19
110	30	7	832	28	14	720	28	11	273	28	25	138	31	5
138	30	11	110	29	28	832	28	13	110	29	15	284	32	9
272	31	22	271	29	15	138	29	15	832	30	24	720	32	5
276	31	14	280	29	8	276	29	18	278	32	24	271	33	11
282	31	9	200	30	13	110	30	16	282	32	27	272	33	17
284	31	11	716	30	7	197	30	21	717	32	22	716	33	15
717	31	12	720	30	6	280	30	23	272	33	21	832	33	17
720	31	14	276	31	18	281	30	19	12	34	21	273	34	12
200	32	8	192	32	16	6	30	12	277	34	15	277	34	13
270	32	11	278	32	14	200	31	25	284	34	23	6	34	7
832	32	14	284	32	14	622	31	8	624	34	7	717	34	9
271	33	14	624	32	13	272	32	13	720	34	26	278	35	14
278	33	15	719	32	22	623	32	26	721	34	13	280	35	11
280	33	28	721	32	5	716	32	6	280	35	34	281	35	9
283	33	11	12	33	17	719	32	21	281	35	9	197	36	21
622	33	12	138	33	12	831	32	1	283	35	32	200	36	12
277	34	12	273	33	24	271	33	13	623	35	23	270	36	11
6	34	18	831	33	26	273	33	21	719	35	23	282	36	15
12	35	17	14	34	26	284	33	27	270	36	25	624	36	9
13	35	10	272	34	14	721	33	20	271	36	20	831	36	21
197	35	23	623	34	20	14	35	20	831	36	36	14	37	18
831	35	4	197	35	28	270	35	16	192	37	29	192	37	19
14	36	20	281	35	5	12	37	19	197	37	27	622	37	16
623	36	16	283	35	13	192	37	21	13	38	36	623	37	14
624	36	17	622	35	13	624	38	8	200	38	28	719	37	14
719	36	16	13	36	28	625	39	5	622	39	9	834	37	18
834	36	20	270	36	21	11	40	17	834	39	37	283	38	10
11	37	13	625	36	3	194	40	13	194	41	1	13	39	19
192	37	14	194	38	1	<b>Reg wide 40</b>	<b>40</b>	<b>1</b>	625	44	9	11	40	22
273	37	13	11	40	19				<b>Reg wide 44</b>	<b>44</b>	<b>1</b>	721	40	10
281	38	10	277	40	10							110	41	3
194	40	2	<b>Reg wide 40</b>	<b>40</b>	<b>1</b>							194	41	8
625	42	4										625	41	3
<b>Reg wide 42</b>	<b>42</b>	<b>2</b>										<b>Reg wide 41</b>	<b>41</b>	<b>3</b>

**Table 14. Sr Secondary Maximum/Minimum Class Size by Class Type**

<b>Math</b>			<b>Music</b>			<b>Physical Education</b>			<b>Science</b>			<b>Social Studies</b>		
<b>Dist.</b>	<b>Max</b>	<b>Min</b>	<b>Dist.</b>	<b>Max</b>	<b>Min</b>	<b>Dist.</b>	<b>Max</b>	<b>Min</b>	<b>Dist.</b>	<b>Max</b>	<b>Min</b>	<b>Dist.</b>	<b>Max</b>	<b>Min</b>
276	31	16	6	36	8	716	22	11	110	30	17	138	31	14
110	32	15	14	44	6	278	31	29	276	30	13	110	32	8
278	32	7	280	45	22	624	31	4	717	30	15	717	32	13
717	32	11	13	47	34	273	33	22	138	32	8	284	33	16
284	33	13	622	48	2	717	33	11	272	32	20	272	34	18
6	33	6	283	51	17	832	33	19	278	32	10	278	34	7
716	33	10	110	52	8	138	34	15	280	32	12	716	34	8
832	33	16	138	56	4	282	34	20	284	32	22	720	34	15
12	34	18	276	57	15	721	34	23	720	32	8	721	34	10
280	34	19	271	59	11	276	35	14	832	32	13	832	34	21
720	34	7	277	60	22	6	35	19	6	33	13	12	35	20
14	35	16	624	64	11	720	35	17	721	33	6	276	35	15
197	35	18	832	64	7	272	36	18	12	34	20	277	35	14
272	35	8	281	65	6	719	36	24	282	34	9	283	35	12
282	35	10	284	65	15	14	37	17	716	34	14	6	35	14
283	35	12	270	67	25	280	37	23	831	34	22	200	36	14
831	35	2	197	68	17	831	37	21	200	35	14	271	36	14
138	36	7	282	68	18	12	38	15	271	35	13	273	36	13
192	36	17	831	68	6	270	38	18	277	35	15	623	36	19
270	36	20	834	69	13	834	38	31	283	35	10	624	36	15
271	36	10	717	71	36	197	39	29	623	35	16	270	37	16
622	36	9	721	73	1	277	39	23	192	36	14	622	37	13
13	37	15	278	74	7	283	39	12	197	36	19	834	37	16
273	37	12	12	79	35	284	39	12	270	36	18	14	38	11
277	37	21	720	79	5	110	40	15	281	36	10	280	38	22
623	37	15	11	85	11	194	40	1	624	36	12	281	38	18
624	37	12	716	85	6	623	40	14	834	36	17	282	38	18
719	37	11	192	88	12	11	41	21	622	37	10	831	38	9
834	37	21	200	99	21	192	41	24	719	37	16	13	39	16
200	38	15	273	110	35	200	41	16	273	38	17	192	39	17
281	38	11	625	116	5	622	41	20	11	40	14	719	39	18
721	40	9	719	124	14	281	42	20	13	40	10	11	40	17
11	41	13	272	149	17	13	43	32	14	40	12	197	40	15
625	42	3	194	211	5	271	43	10	194	46	14	625	44	5
194	44	7	<b>Reg wide 211</b>	<b>1</b>		625	47	11	625	56	4	194	49	12
<b>Reg wide 44</b>	<b>44</b>	<b>2</b>				<b>Reg wide 47</b>	<b>47</b>	<b>1</b>	<b>Reg wide 56</b>	<b>56</b>	<b>4</b>	<b>Reg wide 49</b>	<b>49</b>	<b>5</b>

**Table 14. Sr Secondary Maximum/Minimum Class Size by Class Type**

<b>Special Education</b>			<b>Technology Ed/Computer Science</b>			<b>Work Experience Program</b>			<b>World Languages</b>		
<b>Dist.</b>	<b>Max</b>	<b>Min</b>	<b>Dist.</b>	<b>Max</b>	<b>Min</b>	<b>Dist.</b>	<b>Max</b>	<b>Min</b>	<b>Dist.</b>	<b>Max</b>	<b>Min</b>
282	6	3	716	23	7	276	7	4	110	29	19
277	8	1	278	25	16	834	8	2	278	31	6
278	8	1	717	25	5	12	9	2	282	31	7
270	9	1	138	26	2	138	9	9	276	32	11
6	9	3	110	28	27	624	9	1	717	32	12
716	9	9	277	28	14	284	12	12	720	32	17
276	10	1	721	28	16	721	14	6	832	32	18
138	12	1	719	29	19	13	21	1	14	33	14
192	13	4	194	30	1	716	22	8	284	33	12
194	13	1	280	30	15	110	24	24	277	34	10
197	13	1	284	30	9	831	24	20	6	34	17
832	13	1	192	31	9	272	25	5	138	35	11
720	15	1	197	31	15	719	31	3	272	35	8
831	15	1	200	31	15	11	32	1	273	35	10
110	16	1	270	31	6	192	37	10	280	35	10
283	16	2	281	31	5	<b>Reg wide</b>	<b>37</b>	<b>1</b>	716	35	10
272	17	3	271	32	10				13	36	14
717	17	1	272	32	20				200	36	16
14	18	1	282	32	17				270	36	20
280	18	3	6	32	28				623	36	9
284	18	1	622	32	14				624	36	6
11	19	1	720	32	14				719	36	19
721	19	1	13	33	15				831	36	1
625	20	1	623	33	10				12	37	18
12	22	2	276	34	12				192	37	12
13	22	3	283	34	21				197	37	13
271	23	10	624	34	13				721	37	21
281	28	1	12	35	21				281	38	5
719	28	1	14	35	23				283	38	10
834	34	1	11	37	14				622	38	11
624	37	1	625	39	3				271	39	12
<b>Reg wide</b>	<b>37</b>	<b>1</b>	<b>Reg wide</b>	<b>39</b>	<b>1</b>				11	40	13
									194	40	1
									834	40	19
									625	42	5
									<b>Reg wide</b>	<b>42</b>	<b>1</b>

## APPENDIX

### 36 PARTICIPATING DISTRICTS

#### **Alphabetical Listing**

11 Anoka-Hennepin  
 716 Belle Plaine  
 271 Bloomington  
 12 Centennial  
 13 Columbia Heights  
 272 Eden Prairie  
 273 Edina  
 192 Farmington  
 831 Forest Lake  
 14 Fridley  
 200 Hastings  
 270 Hopkins  
 717 Jordan  
 194 Lakeville  
 832 Mahtomedi  
 276 Minnetonka  
 721 New Prague  
 138 North Branch  
 622 North St. Paul-Maplewood-Oakdale  
 278 Orono  
 719 Prior Lake-Savage  
 280 Richfield  
 281 Robbinsdale  
 623 Roseville  
 720 Shakopee  
 6 South St. Paul  
 282 St. Anthony-New Brighton  
 15 St. Francis  
 283 St. Louis Park  
 625 St. Paul  
 834 Stillwater  
 110 Waconia  
 284 Wayzata  
 197 West St. Paul  
 277 Westonka  
 624 White Bear Lake

#### **District Number Listing**

6 South St. Paul  
 11 Anoka-Hennepin  
 12 Centennial  
 13 Columbia Heights  
 14 Fridley  
 15 St. Francis  
 110 Waconia  
 138 North Branch  
 192 Farmington  
 194 Lakeville  
 197 West St. Paul  
 200 Hastings  
 270 Hopkins  
 271 Bloomington  
 272 Eden Prairie  
 273 Edina  
 276 Minnetonka  
 277 Westonka  
 278 Orono  
 280 Richfield  
 281 Robbinsdale  
 282 St. Anthony-New Brighton  
 283 St. Louis Park  
 284 Wayzata  
 622 North St. Paul-Maplewood-Oakdale  
 623 Roseville  
 624 White Bear Lake  
 625 St. Paul  
 716 Belle Plaine  
 717 Jordan  
 719 Prior Lake-Savage  
 720 Shakopee  
 721 New Prague  
 831 Forest Lake  
 832 Mahtomedi  
 834 Stillwater



DATE: October 13, 2014  
TO: Class Size Study District Contact Persons  
FROM: Julie Schaal, Class Size Study Coordinator  
Cathy Macdonald, Metro ECSU Director of Operations  
RE: Directions for the Annual Class Size Study 2014-15

Metro ECSU is again collecting school district data for the 7-county metro area Class Size Study. This study will give districts a point of comparison for class size across the metro area for the 2014-2015 school year. Metro ECSU would greatly appreciate your help in collecting the data for this study. All districts that submit data will receive a copy of the Metro ECSU Class Size Study when it is released.

**Class Size Reported as of October 1, 2014:**

Class size data should reflect class sizes as of October 1, 2014. Please do not update your data to reflect changes made after October 1. It is important that all districts report data from the same time period.

**Reporting Format:**

Please find enclosed three different Excel spreadsheets for data reporting. Each file is designed for one school level as follows.

- Elementary (K – 6)
- Junior Secondary, Middle School, or First Part of Six-Year Secondary
- Senior Secondary or Second Part of Six-Year Secondary

Each entry in Excel consists of: District Number, Class Type (elementary grades or secondary subjects), Number of Classes and Class Size. These are called fields.

Each file contains a data entry sample and a list of acceptable values for the Class Type field. Note that the Class Type field has a pop-up list of values from which to choose (click on the up/down arrows); you do not have to type them.

If your school does not have a particular Class Type, do not list the Class Type or enter any data. For example, if your junior secondary school does not offer world languages, skip world languages.

**Example:**

Suppose St. Paul Public Schools (district 625) had the following English classes in a middle school: one class of 18, four classes of 22, and twelve classes of 24.

- Use the Junior Secondary Excel Spreadsheet.
- Enter three lines of data, as follows.

District	Class Type	# Classes	Class Size
625	English	1	18
625	English	4	22
625	English	12	24



**Mode of Collection:**

---

***If data is compiled at the district level*** (as is often the case in smaller districts), use one of each of the three Excel files to record the data.

***If data is collected from a number of building level contacts***, please distribute the appropriate Excel file(s) to each school. Also include a copy of this memo. Instruct building contacts to respond in a timely fashion—we suggest that you give them a due date of November 14, 2014. Data is due to Metro ECSU by November 21, 2014.

Once the data from each building is collected, please aggregate the data for the district into your three different Excel files (elementary, jr. secondary and sr. secondary). Please send only the three *district* aggregate data files (along with any comments) to Metro ECSU.

Aggregate the data by copying the individual buildings' data into your three Excel files. For example, when you receive files from junior secondary schools, proceed as follows.

1. Open your empty district Jr Secondary file.
2. Open the first building's Jr Secondary file.
3. Review the building contact's data entry and make corrections if necessary.
4. Select all of the data entered in columns A-D (not including the titles in row A).
5. Switch to your district Jr Secondary file.
6. Click in the first empty cell in column A and paste in the data that you just copied.
7. Open the next building's Jr Secondary file.
8. Repeat steps 3-7 until you have copied all of the Jr Secondary files into the district file.
9. Save your district Jr Secondary file.

***Do not commingle elementary, junior secondary or senior secondary data.*** Keep each type of data in its respective Excel file.

**DEADLINE:**

---

***Submit your data to Metro ECSU by November 21, 2014.*** Make sure that you include your contact information in the space provided in the Excel files so that we know who to contact with questions about the data.

***If you do not submit your data by November 21, we cannot guarantee that it will be included in the study.*** All districts that submit data will receive a copy of the Metro ECSU Class Size Study when it is released in February.

If you have any questions, please contact Julie Schaal, Class Size Study Coordinator, at [julie.schaal@metroecsu.org](mailto:julie.schaal@metroecsu.org) or 612-638-1540. Thank you for your cooperation and assistance.

## **Guidance for Special Cases**

### **Submitting Data for the Metro ECSU Class Size Study**

#### **What is NOT in this Study**

---

The Metro ECSU Class Size Study does not attempt to include all possible class types. Rather, it is a snapshot of class size types most frequently offered at each grade level across the metro Twin Cities public schools. Examples of Class Types not collected in this study are given below:

- Alternative Learning Programs
- ELL Classes
- Independent Reading Classes
- College Readiness Classes (e.g. AVID)
- Independent Study

Please do not include data for these classes and others not listed in the Excel files because they are currently beyond the scope of this study.

#### **Class Type Options**

---

Provide class size information for the Class Types listed in the drop down menu only. Metro ECSU does not attempt to include all possible Class Types. Do not include any extra classes at the Elementary level such as Gym, Art or Music.

If your school does not have a particular Class Type, do not list the Class Type or enter any data. For example, if your junior secondary school does not offer world languages, skip world languages.

#### **Combo or Ungraded (elementary)**

---

Include classes that combine grade levels (combo) or arrange classes by student achievement level (ungraded).

#### **Interdisciplinary (secondary level)**

---

Include classes that combine 2 or more subject areas (class types) at the secondary level. This is for entire courses, not just units of study.

#### **Multiple Teachers per Group**

---

In situations where there are two or more certified teachers assigned to a section or group of students, this should be reported as if there were multiple sections of the class with one teacher each. It would be assumed that teachers share essentially equal student “loads.” Examples:

- 2 certified teachers/41 students: Report as 1 class of 20 and 1 class of 21
- 4 certified teachers/101 students: Report as 3 classes of 25 and 1 class of 26
- 4 certified teachers + 1 half-time teacher/104 students: Report as 4 classes of 23 and 1 class of 12 (allows for the half-time person to have half the # of students)

$$4n + .5n = 104 \quad n = \# \text{ students for full time teacher}$$

Keep in mind some rounding may be needed to maintain # students (n) as whole numbers.

**Special Education (all levels)**

---

Special education students should be counted with the general education class to which they are assigned. Students in special education classes are counted separately if they are comprised only of special education students who spend the majority of their time in that class.

**Additional Considerations**

---

If circumstances exist which make the reporting of your school's/district's data in this format not comparable to other reported data, please attach a "Comment" sheet to explain the circumstances.

If you have any questions, please contact Julie Schaal, Class Size Study Coordinator, at [julie.schaal@metroecsu.org](mailto:julie.schaal@metroecsu.org) or 612-638-1540. Thank you for your cooperation and assistance.





District Nbr	Class Type	Nbr Classes	Class Size	Class Type Values	Sr Secondary Example Table			
				Art	<b>District Nbr</b>	<b>Class Type</b>	<b>Nbr Classes</b>	<b>Class Size</b>
				Business Ed/Marketing	625	Art	2	18
				Family & Consumer Science	625	Business Ed/Marketing	2	17
				Health Education	625	Business Ed/Marketing	1	19
				Language Arts/English	625	Language Arts/English	2	20
				Math	625	Language Arts/English	2	24
				Music	625	Language Arts/English	1	25
				Physical Education	625	Family & Consumer Science	2	28
				Science	625	Family & Consumer Science	1	24
				Social Studies	625	Technology Ed/Computer Science	1	26
				Special Education	625	Technology Ed/Computer Science	3	25
				Technology Ed/Computer Science	625	Math	2	30
				Work Experience Program	625	Physical Education	4	28
				World Languages	625	Science	2	21
					625	Social Studies	1	21
					625	Social Studies	3	24
					625	Special Education	4	10
					625	Work Experience Program	4	25
					625	World Languages	2	16
					Etc.			
				<b>Please enter your contact information</b>				
				Contact Person Name				
				Position				
				School (or District Office)				
				Phone				
				Email				