



REGION NINE DEVELOPMENT COMMISSION

2014 Annual Report

Your regional partner for progress.

This document is made available electronically by the Minnesota Legislative Reference Library as part of an ongoing digital archiving project. <http://www.leg.state.mn.us/lrl/lrl.asp>

Your regional partner for progress.

MESSAGE FROM THE EXECUTIVE DIRECTOR



Region Nine Development Commission (RNDC) has promoted the development of the region by adding new programs, creating events, and providing technical assistance in FY2014. Examples of this work is provided to you throughout this Annual Report.

Collaboration has played a key role in this year's success. RNDC strives to work closely with our regional partners in ways to help our communities prosper. This collaboration was exemplified with the hiring of a Homeland Security Emergency Manager, our annual Regional Bus Tour, and with the success of the EDA grant for the city of Blue Earth's new industrial park that will break ground soon.

As we move forward to 2015, the staff at RNDC will continue to reach out to our elected officials, community leaders and partner organizations to stay in touch with the region's needs. Staying on top of the current trends and planning for the future will continue to enhance the quality of life in our region.

Thank you to RNDC staff for your exemplary work in FY2014 and to our partners for your continued support.

Nicole Griensewic Mickelson
Executive Director

MESSAGE FROM THE COMMISSION BOARD CHAIR

RNDC has had another successful year and continues to expand its services to the region. We are on the third term of our executive director who continues to get the face of RNDC out to people who can help us expand on our influence with more partners. The agency has had new growth in personnel that have brought new talents and expertise to share with our local entities. Hopefully these additions will help us to offer more services. We have seen an expansion of the Safe Routes to School Grants to many of our area schools with RNDC being the lead in the program. Staff continue to be working more with hazardous mitigation plans for counties, as well as, comprehensive planning. What has been very important to us is that the projects that have been contracted are getting done well and in a timely

manner. This is a real credit to our directors and the staff they supervise.

I continue to be impressed with the engagement of the commissioners on our committees and Board of Directors. It is important that we continue educating our commissioners on the activities of RNDC so we can all take advantage of RNDC services in our communities. We should all be grateful for the time and energy these commissioners put into their efforts.

RNDC is a thriving organization, in part, because of the excellent skills and leadership from our staff, and from the engaged commissioners. Through their continued commitment to excellence, RNDC will be the go-to organization.

Thanks To All For Your Participation,

Jim Swanson

Commission Board Chair



Promote the development of the region through intergovernmental cooperation, community and human development, long-range planning and technical assistance.

Our Mission

FEDERAL EDA GRANT: INDUSTRIAL PARK

In September 2013, the U.S. Economic Development Administration (EDA) awarded \$993,050 in funds to the City of Blue Earth, the Blue Earth Board of Public Works, and the City of Blue Earth Economic Development Authority to construct Phase 1 of the City of Blue Earth's North Industrial Park. This investment is part of a \$1,986,100 project that the grantees estimate will create 108 jobs, retain 12 jobs, and leverage \$12.5 million in private investments. RNDC assisted the city of Blue Earth with the grant application process.



2013 Regional Bus Tour Participants
Jolly Green Giant Statue, Blue Earth, MN

REGIONAL BUS TOUR

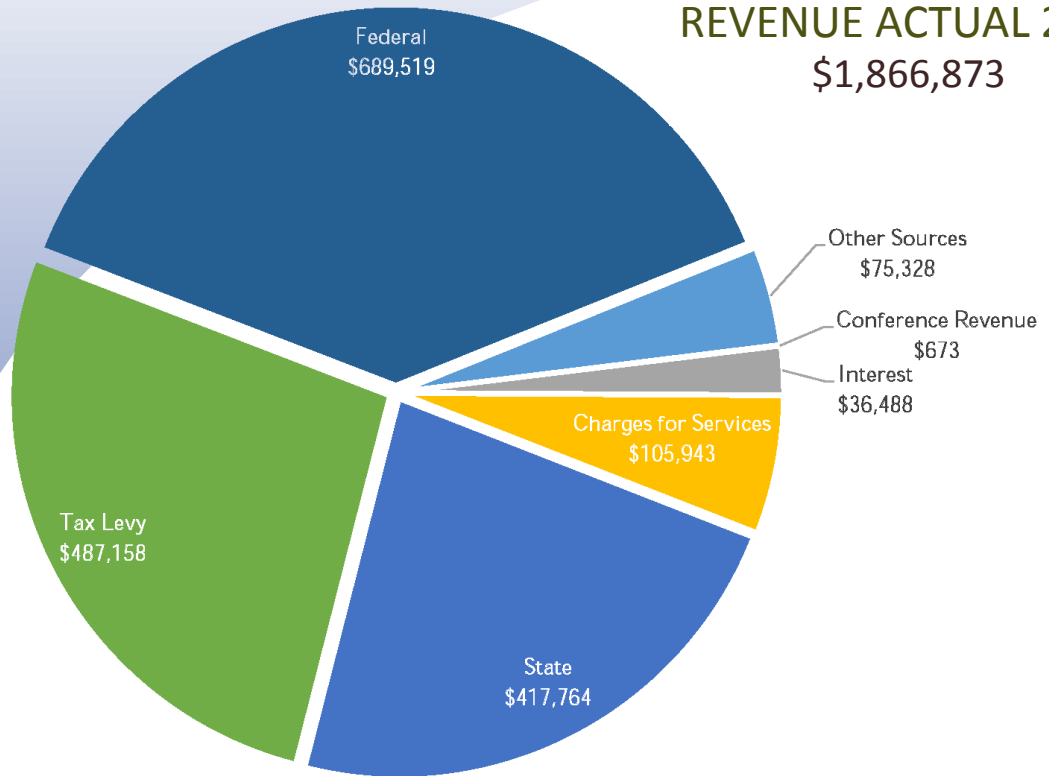
On July 10, 2013, RNDC held the first Annual Regional Bus Tour. The tour showcased Blue Earth and Faribault counties to RNDC commissioners, legislators, representatives from partner organizations, and special guests: Jeannette Tamayo, EDA Regional Director and Joe McKinney, Executive Director of the National Association of Development Organizations.

The tour highlighted:

- The EDA's investments to St. Peter that helped after the 1998 tornado, as well as, flooding disasters.
- The Highway 169 flood mitigation project that will raise the southbound lanes of the highway to be above the 100 year flood mark.
- The City of Blue Earth's creation of a new industrial park which will be built near the intersection of Highway 169 and I90.

Your regional partner for progress.

REVENUE ACTUAL 2014
\$1,866,873



EXPENDITURES

Personnel	\$991,074	Errors & Omissions Insurance	\$16,863
Fringe	\$259,486	Maintenance	\$5,361
Finance / Central Services	\$7,255	Legal	\$6,527
Copying / Printing	\$20,431	Auditing	\$25,200
Public Notice	\$11,952	Equipment / Depreciation	\$129,936
Postage	\$8,838	Service Contracts	\$5,526
Telephone	\$21,360	Capital Overlay	\$15,656
Travel—Staff	\$47,490	Marketing	\$12,020
Travel—Other	\$18,194	Program & Staff Development	\$4,437
Registration	\$9,950	Commission Expense	\$27,527
Supplies	\$42,613	Fund Balance Recovery	\$66,504
Public / Subscrip / Member	\$22,722	Office Space	\$73,041
Miscellaneous	\$4,964	Transfer RNAI	\$10,000
Consultant	\$27,979	Prior Year Adjustment	\$(26,917)
Insurance	\$884	Total Expenditures	\$1,866,873

Indirect Rate for 2014 was 13.08%

Fringe budget was 32.62%, actual was 26.23%



VANDERBERG CLEAN

Joshua Vanderberg and RNDC have a long history together. Vanderberg grew up helping his grandparents with their cleaning business, Sharon's Cleaning Service, which cleaned the RNDC offices. Several years after his grandparents' business closed, Vanderberg began managing the operations of a national franchise cleaning organization which took over the cleaning at RNDC in 2008.



Joshua Vanderberg and his Family

Vanderberg always wanted to own his own business and in 2009 the timing felt right. Following the family tradition of cleaning, and a lifetime of experience and knowledge, a cleaning company was the obvious choice. However, Vanderberg knew he could not do it on his own, and that is when he contacted RNDC about the Revolving Loan Funds.

RNDC administers Revolving Loan Funds (RLF) to assist existing businesses, as well as entrepreneurs, in securing financing they otherwise are unable to secure through traditional channels. The primary goal of the RLF program is to create new jobs in the region. The source of funding for the program is from the Federal

Economic Development Administration. RNDC welcomes partnering with other lenders to assist local area businesses to succeed and thrive. Vanderberg was approved for RLF funding and launched his new business, Vanderberg Clean.

"The funding is so important because it is a life line," explained Vanderberg. "I couldn't have bought new vacuums or expanded without it."

Vanderberg Clean has grown rapidly in its first five years. Starting out with only janitorial services, Vanderberg Clean now also offers residential and commercial carpet cleaning, disaster restoration, and more. Since 2009, the amount of employees has increased 89% with 40+ employees to date. On a weekly basis, 54 different business are serviced by Vanderberg Clean across almost every industry.

Vanderberg's believes that great education and training are a vital part to any business which sets him apart from his competitors. Building his business on the principal of high quality service and workers, Vanderberg Clean is known for its excellent customer service. In 2014, Vanderberg was awarded the *Young Entrepreneur of the Year for Minnesota* award from the U.S. Small Business Administration.



To learn more about
RNDC's Revolving Loan Funds,
visit www.rndc.org/rlf.

Your regional partner for progress.

SOCIAL MEDIA BREAKFAST

Social Media Breakfast New Ulm (SMBNU) was founded in January of 2014 by RNDC, New Ulm Area Chamber of Commerce and Nu-Telecom. SMBNU is an official chapter of the national Social Media Breakfast. SMBNU serves two main purposes:

- **Face-to-face networking:** Bringing together marketers, students, entrepreneurs and social media practitioners and enthusiasts over breakfast.
- **Education:** Through panel discussions, presentations, case studies, debates and breakout sessions attendees will teach, share and learn social media best practices for business.

SMBNU offers an unique opportunity for entrepreneurs to have access to quality training with minimal workday interruption. The early morning events are held on the last Friday of every other month. SMBNU has seen between 25-50 participants at the events who represent entrepreneurs, small business, nonprofits and corporations.



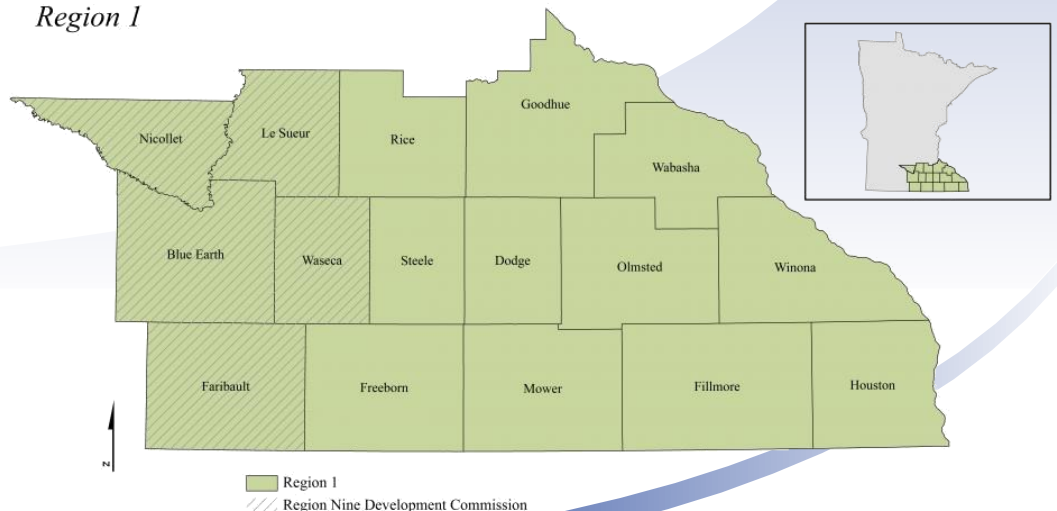
HOMELAND SECURITY EMERGENCY MANAGEMENT

Region Nine has contracted with Southeast Region Homeland Security Emergency Management (SERHSEM) Joint Powers Board to assist with Homeland Security and Emergency Management (HSEM) planning services. The HSEM Regional Planner for Region 1 serves 16 counties in southeastern Minnesota. Disastrous events can threaten lives, property, infrastructure and the economic vitality of a region. A Regional Planner helps the Emergency Managers prepare, from response to recovery, for such an event.

HSEM: Homeland Security and Emergency Management Region 1



Scott Reiten
Regional HSEM Planner





GRANTS OPPORTUNITY FORUM

RNDC hosts bi-annual Grant Opportunity Forums. Each forum includes different speakers who discuss grant opportunities available within their respective organization. Bringing the experts to one location helps to save time versus trying to research various resources across the web.

The 2014 Spring Grants Opportunity Forum featured presenters from the Department of Natural Resources, State Historic Preservation Office, MnDOT, Southern Minnesota Initiative Foundation, Blue Cross Blue Shield and the Bush Foundation. The Forum had over forty participants.



SAFE ROUTES TO SCHOOL

Today, more than ever, schools and communities are facing challenges in protecting the safety of children who walk and bike to school. Many communities struggle with traffic congestion, enforcement, and inadequate infrastructure around schools. Concurrently, children are becoming less physically active, which contributes to the growing epidemic of obesity and health concerns. These problems may seem to be separate issues, but Safe Routes to School (SRTS) programs can address all these challenges through an organized action plan.

In the past year, RNDC staff have completed the SRTS plans for the communities of Le Sueur and Lake Crystal. These plans will help make it possible for more students to safely walk and bike to school.



Your regional partner for progress.



2014 CERTS SEED GRANT AWARD

In October 2013, the Renewable Energy Task Force (RETF) submitted a CERTs Seed Grant application. The grant application was successful and funds have been awarded. The grant will be used to educate and advise the community of Amboy, to develop energy efficiency and renewable energy strategies for possible installations at community owned facilities. A major outcome of this project is to work through a process to develop the implementation of a community solar installation.

GESP/PACE WORKSHOP

The Guaranteed Energy Savings Program (GESP) is a way for counties, cities, towns and school districts to finance energy savings with minimal, or no, capital investment up front. The GESP promotes awareness and implementation of energy efficient and renewable energy measures in public facilities to provide millions of dollars in annual energy savings in Minnesota.

The Property Assessed Clean Energy (PACE) is an innovative way to finance energy efficiency and renewable energy upgrades to private facilities. PACE drives spending in the local communities through the installation of energy efficient equipment and the implementation of renewable energy measures.

Region Nine's Renewable Energy Task Force hosted a GESP and PACE Program Workshop in December.

Guest presenters included:

- Lindsay Wimmer, GESP Outreach Coordinator, Clean Energy Resource Team
- Peter Berger, GESP Program Manager, Department of Commerce
- Bruce Barnum, Field Representative, Southern MN Office of U.S. Senator Al Franken
- Peter Klein, Vice President of Finance, St. Paul Port Authority



REGION NINE



RENEWABLE ENERGY TASK FORCE



PRE-ADMISSION SCREENING

During the 2013 legislative session, changes were made to the Long Term Care Consultation statute (Minnesota Statute, Section 256B.0911) and the Minnesota Board on Aging (MBA) statute (Minnesota Statute, Section 256.975). These changes redesigned and refinanced the federally mandated Pre-Admission Screening (PAS) process.

PAS changes included shifting the role from the counties to the Senior LinkAge Line® as well as removing an exemption for individuals admitted to a nursing facility for less than 30 days. The changes also included moving this telephone and fax-based process to an online referral page which is located at www.mnaging.org.



On November 1, 2013 the Senior LinkAge Line® began processing PAS referrals. Area Agencies on Aging were unable to get new staff hired in time to begin this work. Therefore until new staff could be hired and trained, it was necessary for current staff to absorb the workload.

In December, the Minnesota River Area Agency on Aging, Inc. (MnRAAA) hired and trained two full-time staff to conduct pre-admission screening for the 27 county service area. At the request of MBA, two additional staff were hired for state-wide quality assurance responsibilities. MnRAAA also hired an administrative assistant to help with data entry duties.

DEMENTIA-FRIENDLY COMMUNITIES

When Mankato and North Mankato community stakeholders considered the 11% of people 65 and older living in their communities and the projected increase in people with Alzheimer's, they saw a need for collective understanding and coordination to make their cities dementia-friendly. The desire to coordinate and structure dementia strategies led to the formation of an ACT on Alzheimer's action team. Partners include senior service providers, an aging studies educational institution, the health care community, and local government agencies, including public safety/emergency responders.



At the first team meeting, a public safety official mentioned getting a call from a rural provider about someone with dementia and wishing they were better equipped to know what to do when responding.

The action team believes the Dementia Capable Communities Toolkit will be instrumental in coordinating and directing a policy framework to advance the vision of Mankato and North Mankato becoming model dementia-friendly cities.

The RNDC is the lead organization for the Mankato and North Mankato effort.

Your regional partner for progress.

COMMISSION MEMBERS

BLUE EARTH COUNTY

Brad Ahrenstorff (*Vice Chair*)
Cities under 10,000
Eric Anderson, *City of Mankato*
Drew Campbell, *County Commissioner*
Douglas Schaller, *Township Board*

BROWN COUNTY

Jim Berg, *County Commissioner*
James Broich, *Cities under 10,000*
Drew Campbell, *County Commissioner*
Frederick Juni, *Township Board*
Charles Schmitz, *City of New Ulm*

FARIBAULT COUNTY

Tom Loveall, *County Commissioner*
Darwin Olson, *Township Board*
Bryant Stiernagle, *Cities under 10,000*

LE SUEUR COUNTY

Richard Peterson, *Township Board*
Steve Rohlring, *County Commissioner*
William Wencl, *Cities under 10,000*

MARTIN COUNTY

Elliot Belgard, *County Commissioner*
Darin Rahm, *City of Fairmont*
Jeff Ross, *Cities under 10,000*
Phil Schafer, *Township Board*

NICOLLET COUNTY

Marie Dranttel, *County Commissioner*
Terry Genelin, *Township Board*
Pam Meyer, *Cities under 10,000*
Diane Norland, *City of North Mankato*
Tim Strand, *City of St. Peter*

SIBLEY COUNTY

Peggy Evanson, *Township Board*
Doug Munsch, *Cities under 10,000*
Jim Swanson, (*Chair*)
County Commissioner

WASECA COUNTY

Cindy Coy, *Cities under 10,000*
Dan Kuhns, *County Commissioner*
Gerri Lienke, *Township Board*

WATONWAN COUNTY

Ray Gustafson, *County Commissioner*
Gary Sturm, *Cities under 10,000*
Bill Yock, *Township Board*

SPECIAL INTEREST GROUPS

Laura Elvebak, *MN Valley Council of Gov't*
Candace Fenske, *Health & Human Welfare*
Jim Grabowska, *School Boards*
Mike Pfeil, *School Boards*
Abdi Sabrie, *Minority Populations*

STAFF

ADMINISTRATION



Nicole Griensewic Mickelson
Executive Director

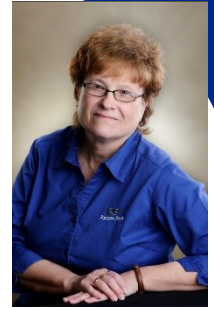


Ashley Aukes
Communications Specialist

FINANCE

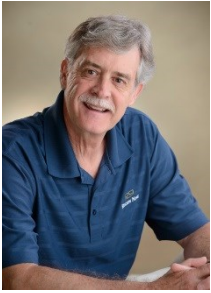


LuAnn Vanderwerf
Finance Director

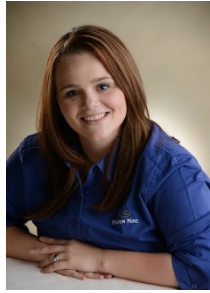


Linda Wallace
Senior Financial Accountant

COMMUNITY DEVELOPMENT



Byron Jost
Community Development Director



Danielle Walchuk
Regional Development Planner



Josh Pearson
Transportation Planner



Scott Reiten
Regional HSEM Planner



Emmanuel Frimpong Boamah
Resource Development Planner

MINNESOTA RIVER AREA AGENCY ON AGING[®], INC.



Linda Giersdorf
Executive Director



Erica Gahlon
Project & IT Coord./ Admin. Assistant



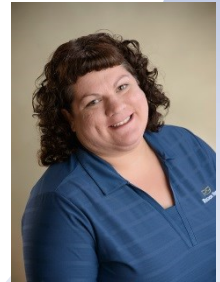
Joyce Prahm
Fiscal Manager



Rhonda Hiller Fjeldberg
Grant/Contract Manager



Robin Thompson
Contact Center & Comm. Outreach Coordinator



Sarah Reiman
Volunteer Coordinator



Gail Gilman-Waldner
Program Developer



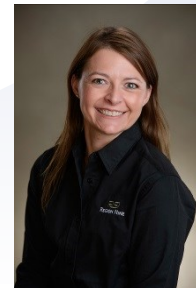
Elaine Spain
Program Developer



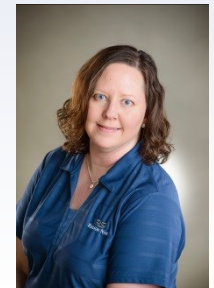
Judy Blume
Administrative Assistant



Sherry Orth
First Contact Nurse Supervisor



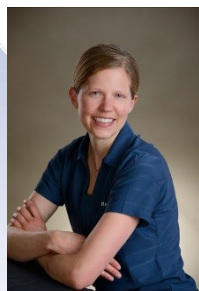
Carrie Sharp
First Contact Client Service Center Specialist



Denise Rahn
PAS Review & Resident Specialist



Denae Hoffman
PAS Review & Resident Specialist



Kristen Mullen
PAS Review & Resident Specialist



Brianna Schmitt
PAS Administrative Assistant



Kaylee Kamm
First Contact Client Service Center Specialist

*Commission & Staff as of June '14

