

MINNESOTA SNOWMOBILE

SAFETY LAWS, RULES & REGULATIONS

This document is made available electronically by the Minnesota Legislative Reference Library as part of an ongoing digital archiving project.
<http://www.leg.state.mn.us/lrl/lrl.asp>

2013-2014



Minnesota Department of Natural Resources

1-888-MINNDNR • www.mndnr.gov





Aluminum Recreational Trailers

Extraordinary value, quality, innovation & a 10 Year Warranty!



www.floeintl.com

***Whether
you are
looking
for a tilt,
ramp or***

***enclosed trailer, FLOE offers you more for your
money. See how FLOE's trailers are...***



Easier, Faster, Smarter!

Want the best? Go with the FLOE!

Paid Advertisement

TABLE OF CONTENTS

This is a summary of Minnesota 2013-2014 snowmobile regulations. For complete regulations, consult the state statutes and rules and check for any local ordinances.

What's New	5
Registering Your Snowmobile	7
Fees	7
How to Register Your Snowmobile	8
Registration Numbers and Validation Decals	8
Snowmobile State Trail Sticker	12
Rules of the Road and Trail	15
Signs	16
Equipment Requirements	18
Safety Training Requirements	19
Youth Operation Requirements	20
General Operation	21
Where You May Ride	21
Where You May Not Ride	22
Other Prohibitions	23
Snowmobiling While Intoxicated	24
Speed Limits	25
Accidents	25
Enforcement	26
Penalties	26
Minnesota Trespass Laws	27
Game Laws Related to Snowmobiling	28
For More Information	29
Grant-In-Aid Program	30
Sunrise/Sunset Table	30

**Town to town.
Trail to trail.
To Canada and back.**



NEVER RUN OUT OF TRAILS AGAIN >>

The Iron Range is home to some of the best trails in the Midwest. Our snowy winters allow for longer seasons, and our landscape offers exciting terrain and incredible scenery, but what really makes our trails special are the long, uninterrupted stretches. Think 30 miles with no driveways, railroads or crossovers. Our local trail systems go from town to town, connecting riders with the nightlife, restaurants and lodging where you can refuel and recharge for another day on the trails.

EASY TRAIL ACCESS AT THESE SELECT PROPERTIES:

BIWABIK, MN



800-843-7434

218-865-4155

villasatgiantsridge.com

VIRGINIA, MN



218-741-7839

americinn.com

EVELETH, MN



218-744-1661

super8.com

CALL FOR A FREE TRAIL MAP TODAY >> 800.777.8497

IronRange.org

Paid Advertisement

What's New!

- Non-Trail Snowmobile Registration is now an option for snowmobilers who do not operate on state or grant-in-aid state trails. The cost for non-trail registration is \$48.50 for three years. A unique non-trail registration number will be assigned which will need to be displayed on the snowmobile. Non-trail registration does not allow for operation on state or grant-in-aid state trails even if you have a one-year trail sticker on the snowmobile. If a road right-of-way is part of a state or grant-in-aid state trail, you cannot operate a non-trail registered snowmobile on it. If a non-trail registered snowmobile is changed to the regular trail registration, new registration numbers will be assigned which will need to be displayed on the snowmobile. Non-trail snowmobile registrations are non-transferrable.
- Effective July 1, 2012, the Snowmobile State Trail Stickers and snowmobile trail registration decals have been combined into one decal. The price of the three-year state trail sticker has been included in the price of snowmobile registration. Snowmobiles that are registered or renewed for trail use will now be issued the new combined registration/state trail decals.
- Snowmobile owners whose registration expires on June 30, 2014 are still required to display a separate State Trail Sticker to operate on state and grant-in-aid trails.

A Message from Your DNR Conservation Officers:



Speed Kills! Slow down when riding, especially after dark. Reduced daylight hours and visibility during the winter months, mixed with speed, are contributing factors in many snowmobile accidents. Snowmobiling and alcohol don't mix. Never consume alcohol before operating a snowmobile. Alcohol affects your judgment and your body's basic motor skills. **Don't Drink & Drive! Ride Safe – Ride Smart – Always!**

2012 Snowmobile Safety Instructor of the Year

Marvin Dorn of Pierz was named the 2012 Volunteer Youth Snowmobile Safety Instructor of the Year. He got involved in snowmobiling in the early 1970s and became a DNR volunteer snowmobile instructor in 1990. Marvin has been a long-time member of the Buckman Trailblazers Snowmobile Club. Thanks for teaching the youth Marvin, you help create safe trails and save lives!

If you are interested in becoming a volunteer DNR youth instructor:



This publication is paid for through the sale of advertising. The State of Minnesota and the Department of Natural Resources can neither endorse products or services advertised nor accept any liability arising from the use of these products or services. Equal opportunity to participate in and benefit from programs of the Minnesota Department of Natural Resources is available to all individuals regardless of race, color, creed, religion, national origin, sex, marital status, public assistance status, age, sexual orientation, disability, or activity on behalf of a local human rights commission. Discrimination inquiries should be sent to MN-DNR, 500 Lafayette Road, St. Paul, MN 55155-4031 or the Equal Opportunity Office, Department of the Interior, Washington, DC 20240.

Copyright 2013, State of Minnesota, Department of Natural Resources.

RECYCLABLE: This coated paper protects your regulations from water and the wear and tear of constant use.

To recycle, remove the staples and then recycle.

This information is available in an alternative format upon request.

WELCOME TO SNOWMOBILING

The sense of freedom you get while riding a snowmobile over Minnesota's snow-covered lands and frozen lakes can be exhilarating. Yet with that freedom comes responsibility. Minnesota's system of more than 22,000 miles of snowmobile trails depends on the cooperation of landowners, non-motorized trail users, other recreationists, and local units of government. The vast majority of trails are groomed and maintained by snowmobile club volunteers.

Keep in mind that trespass is the most frequent complaint landowners have against snowmobilers. Trespass seriously impacts the ability of clubs to get private landowners to allow grant-in-aid trails on their property. We recommend that all recreational users ask first before entering private lands, even if the land is not posted. That simple courtesy will go a long way to improve relationships between landowners and snowmobilers.

Please read this booklet to learn your legal obligations as a snowmobiler. By driving safe, smart, and legal you protect the future of your sport.

Before you ride

- Read your Minnesota snowmobile regulations and your owner's manual.
- Check your snowmobile and equipment.
- Wear a helmet, eye protection, and proper clothing.
- Find out about ice and snow conditions.
- Tell someone where you are going and when you expect to return.

Be sure to

- Let weather, lighting, and trail conditions determine a safe speed.
- Ride straight—no alcohol or drugs.
- Stay to the right on trails and use your headlight and taillight.
- Maintain adequate spacing between machines to avoid collision.
- Reduce your speed when riding at night to less than 40 MPH. Studies have shown speed over 40 MPH results in overdriving your headlights.
- Always yield to other motor vehicles.
- Stay clear of thin ice and lake inlets — never cross open water.
- Never ride alone—use the buddy system.
- Stay on groomed area of trails.

Obey all laws and regulations

- Maximum speed in Minnesota is 50 MPH. (see page 25)
- Display current snowmobile registration.
- Display separate Snowmobile State Trail Sticker, if required, for operation on state or grant-in-aid trails (see pages 12 & 14).
- Stay off the roadway, shoulder, and inside slope of state and county roads (see page 15).
- Be sure any youth operating your snowmobile has a safety certificate.
- Check local ordinances on when and where you may ride.

Registering Your Snowmobile

Snowmobiles operated or transported in Minnesota must be registered with the DNR. If your snowmobile is not registered, you may not operate, transport, or permit it to be operated. You must be at least 18 years old to register a snowmobile.

Snowmobiles do not need to be registered with the DNR if:

- being used to groom a state or grant-in-aid trail
- owned and used by the federal government, an Indian tribal government, another state, or a political subdivision
- if the snowmobile is registered by tribal members through the tribal government.
- registered in a country other than the U.S. being used temporarily in Minnesota
- currently registered in another state and not kept in Minnesota for more than 30 consecutive days
- used exclusively in organized track-racing events
- in transit by a manufacturer, distributor, or dealer
- at least 15 years old in transit by an individual for use on land owned or leased by the individual
- used exclusively for agricultural purposes.

NEW **Non-Trail Snowmobile Registration** is now an option for snowmobilers who do not operate on state or grant-in-aid state trails. A unique non-trail registration number will be assigned which will need to be displayed on the snowmobile. Non-trail registration does not allow for operation on state or grant-in-aid state trails even if you have a one-year trail sticker on the snowmobile. If a road right-of-way is part of a state or grant-in-aid state trail, you cannot operate a non-trail registered snowmobile on it. If a non-trail registered snowmobile is changed to the regular trail registration, new registration numbers will be assigned which will need to be displayed on the snowmobile. Non-trail snowmobile registrations are non-transferrable.

Fees

Snowmobile registration fees:

Type of Registration

Trail Use Registration
Non-trail Registration
Duplicate Registration Card
Duplicate Decal
Transfer – Trail use registration only
Dealer
Manufacturer
Collector Unlimited Use

Fee

\$ 78.50 every three years
\$ 48.50 every three years
\$ 13.50
\$ 1.50
\$ 13.50
\$ 53.50 every year
\$153.50 every year
\$ 9.50

How to Register Your Snowmobile

Register your snowmobile in person at any deputy registrar of motor vehicles or at the DNR License Center in St. Paul. When you register your snowmobile you will need the make, model, year, serial number, engine size, and sales receipt that shows the proof of sales tax payment. Sales between private parties do not require payment of sales tax.

A person may not sell a snowmobile without furnishing the buyer with a bill of sale. Transfers and registration renewals are the responsibility of the owner.

Snowmobiles purchased from a retail dealer must be registered by the purchaser at the dealer. The dealer will issue a temporary 21-day registration.

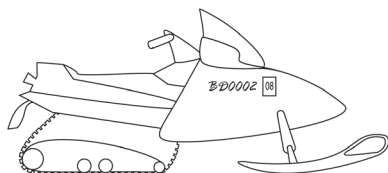
Registration Numbers and Validation Decals

When you register your snowmobile, you will be assigned a snowmobile registration number and receive a registration card. When you receive your registration card, sign it and keep it handy. You do not have to carry it with you, but if an enforcement officer asks to see it, you must produce it within a reasonable amount of time. The current registration number and validation decal must be displayed.

Display of Registration Number and Validation Decals

Where:

- Display in the 3" x 7" space provided by the manufacturer on the cowling or pan, or
- If no space is provided, place on each side of the snowmobile on the upper half, forward of the handlebars in a visible location.



How:

The DNR issued validation decal must be placed to immediately follow your registration numbers.

Numbers and letters must be:

- 1- 7/8" high
- 3/16" stroke width
- contrasting color of the snowmobile
- in the English language
- placed to read left to right.

rMOTION + REV-XS

EASILY ADJUSTABLE. HIGHLY FLEXIBLE. BECAUSE BACKS, HIPS AND KNEES ARE NOT.

Burning trails or carving powder, the Ski-Doo Renegade[®] gives you the most comfortable ride. Adjust the industry-leading travel of the rMotion[™] suspension, featuring a 100% progressive motion ratio. Adjust to more riding positions with the versatile REV-XS[™] platform. It's crossover riding the way you want it. It's technology you'll only find on Ski-Doo sleds.

NOW ON THE
2014 SKI-DOO

RENEGADE

LEARN MORE AT
SKI-DOO.COM



ski-doo



©2013 Bombardier Recreational Products Inc. (BRP). All rights reserved. [™] and the BRP logo are trademarks of BRP or its affiliates. Always ride safely and responsibly.

Leo's South

Lakeville

952-435-5371

www.leosouth.com

Northwood Equipment

Aitkin

218-927-2140

www.northwoodequipment.com

St. Boni Motorsports

St. Bonifacius

952-446-1554

www.stbonimotorsports.com

Luther Honda of St. Cloud

St. Cloud

320-252-4262

www.hondahousestcloud.com

Ollie's Service Inc.

Alexandria

320-763-4455

www.oliesservice.com

Snell Powersports & Equipment

Mankato

507-304-6786

www.snellpse.com

Miller Sellner

Sleepy Eye

507-794-2131

www.millersellner.com

Seaberg Power Sports

Detroit Lakes

218-847-9264

www.seabergpowersport.com

Paid Advertisement

Expiration, Renewal, and Duplicate

The expiration date appears on both the registration card and the registration validation decal. All snowmobile registrations expire on June 30 of the last year the registration is valid.

You should receive a notice by mail to renew your registration. Please notify the DNR of any address change. Whether you are notified or not, you are responsible for renewing your snowmobile registration.

The renewal fee is the same as the first-time registration fee. When you pay it, you will receive new validation decals and a registration card. You may renew your registration at www.mndnr.gov/snowmobiling.

To obtain a duplicate registration card or decal, contact the DNR License Center or your local deputy registrar. For fees see page 7.

Transfer of Ownership

If you buy a snowmobile that is currently registered for trail use in Minnesota, you may use a transferred registration for the time remaining on the previous owner's registration.

Simply obtain the current registration card and bill of sale from the previous owner and send it, along with a transfer application and the transfer fee, to the DNR License Center or a deputy registrar. Transfer applications must be made within 15 days after the transfer or sale actually occurs. A transferred registration is only valid until the previous owner's registration expires. Non-trail registration is non-transferrable. If you buy a snowmobile that is currently registered for non-trail use, you must either apply for a new non-trail or trail registration.

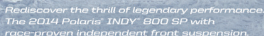
Collector Snowmobile Permit

A special permit may be issued to a person or organization to operate or transport a collector snowmobile without registration for parades or organized group outings, such as races, rallies, and other promotional events, and for up to ten days each year for personal transportation. "Collector snowmobile" means a snowmobile that is 25 years old or older, was originally produced as a separate identifiable make by a manufacturer, and is owned and operated solely as a collector's item.

Optional Collector Registration

Snowmobiles 25 years old or older may be registered for unlimited use. This registration is non-transferable. The collector registration does not expire and is valid until the ownership of the snowmobile is transferred. A snowmobile state trail sticker is required if you operate on a state or grant-in-aid trail.

AROUND EVERY CORNER



See the Ride Like Never Before
TerrainDomination.com

TerrainDomination.com

Polaris recommends that all snowmobile riders take a training course. Do not attempt maneuvers beyond your capability. Always wear a helmet and other safety apparel. Never drink and ride. ©2013 Polaris Industries Inc.

Paid Advertisement

St. Cloud
320-253-7878
www.bristowsinc.com

Jackson
507-847-3977
www.jacksonsports.com

Lakeville
952-465-0500
www.motoprime.net

Maple Plain
763-479-3719
www.tri-ksports.com

Kasota
507-934-4628
www.vetterpolaris.com



IF IT HUGGED THE TRAIL
ANY TIGHTER YOU'D BE
SUED FOR HARASSMENT.

SUED FOR HAINES

Passionate about pushing the limits? Then check out the hottest thing on two skis - the Apex SE. Ultra-powerful and reliable Genesis 4-stroke, the world's first electric power steering, exclusive EXIP exhaust, and all-air suspension. What veteran apex owner Jim Marquardt calls "arm-stretching power, all-day comfort and razor sharp handling." The 2012 Apex SE. One squeeze of the throttle and you'll never let go.

**WORLD'S ONLY
SLEDS WITH
ELECTRIC POWER
STEERING**



YAMAHA

Cambridge
763-689-2760
www.larsonscycle.com

St. Bonifacius
952-446-1554
www.stbonimotorsports.com

Detroit Lakes
218-847-9264
www.seabergpowersport.com

Columbus
651-464-5776
www.waldochsports.com



For the Yamaha dealer nearest you and to find out about Pro Yamaha dealers, visit yamahasnwmobiles.com

For the full terms and conditions of use, please visit www.torobags.com/termsandconditions. This document contains many of Torobags' valuable trademarks. It may also contain trademarks belonging to other companies. Any references to other companies or their products are for identification purposes only, and are not intended to be an endorsement. Rider shown operating a Motor Scooter. Always wear an approved helmet and eye protection. Observe all state and local laws. Respect the rights of others. Ride within your capabilities. Allow extra time and plenty of distance for maneuvering. Do not perform stunts. ©2011 Torobags, a Major Cycle, U.S.A. All rights reserved.

Destroyed, Abandoned, or Stolen Snowmobile

If your snowmobile is destroyed, abandoned, or stolen or you no longer register it in Minnesota, notify the DNR License Center at 500 Lafayette Rd, St. Paul, MN 55155-4026, (651) 296-2316 or 1-800-285-2000 within 15 days.

Dealer and Manufacturer Registration

Dealers must register snowmobiles they own and use for demonstration purposes. A registration plate will be issued along with a registration certificate that must be displayed conspicuously in the place of business. Additional plates are available for \$4.00, plus filing fees.

Manufacturers must register snowmobiles they own and operate for research, testing, experimentation, or demonstration. A registration plate will be issued along with a registration certificate that must be displayed conspicuously in the place of manufacture.

A valid registration number plate must be displayed on snowmobiles operated, or permitted to be operated, by a dealer or manufacturer. The registrations are not transferable. Dealer and manufacturer registrations are valid from July 1 - June 30.

Snowmobile State Trail Sticker

Snowmobiles operating on state and grant-in-aid trails must have a Snowmobile State Trail Sticker. A Snowmobile State Trail Sticker costs \$36.00 and is valid **November 1 – June 30.**

Anyone operating a snowmobile in violation of this law will be required to purchase an annual penalty sticker for \$71.00 in addition to any ticket or fine.

A Snowmobile State Trail Sticker is not required for:

- a snowmobile that is registered or renewed for trail use on or after July 1, 2012.
- a snowmobile while being used to groom a state or grant-in-aid trail
- a snowmobile owned by the federal government, Indian tribal government, state, and political subdivisions
- operating a collector snowmobile with a permit
- operating a snowmobile on portions of a trail owned by the person or the person's spouse, child, or parent.

A majority of the revenue generated from snowmobile registration will be used for snowmobile grant-in-aid trails, trail maintenance, grooming, and easement acquisition.

SNOCAPS

TRAILER ENCLOSURES

763-675-2975

- **SAVE WEIGHT AND INCREASE YOUR M.P.G. OVER OTHER ENCLOSED TRAILERS!**
- **OVER 4000 MADE SINCE 1994**

**PRO SERIES HAS
A 5 YEAR
WARRANTY**



**VISIT OUR WEB SITE AT
WWW.SNOCAPS.NET**

Paid Advertisement



PROTECT YOUR TRAILS JOIN!

***Minnesota United
Snowmobilers Association***

www.mnsnowmobiler.org

Paid Advertisement

Snowmobile owners whose machines are registered to June 30, 2014 are still required to display a separate State Trail Sticker to operate on state and grant-in-aid trails. Trail use snowmobiles that are registered or renewed on or after July 1, 2012, have the price of the trail sticker automatically included in the registration fee.

State Trail Stickers

- One-Year Trail Sticker - \$36.00
- Penalty Annual Trail Sticker - \$71.00 (Required to purchase if found operating on state or grant-in-aid trail without a sticker)
- Dealer/Manufacturer Trail Sticker - \$16.00
- Duplicates - \$2.50

These stickers are available at; Deputy Registrar locations, Game and Fish Licensing agents, DNR License Center, Online www.mndnr.gov or by phone 1-888-MNLICENSE

Note: For Online purchases, add 3% plus a \$1.65 service fee. For phone purchases, add \$3.50

The Snowmobile State Trail Sticker must be displayed in one of the following ways:

- on the forward half of the snowmobile, directly above or below the headlight
- above the expiration year on the top portion of the registration validation decal
- on the lower right corner of a dealer or manufacturer plate.



ATTENTION SNOWMOBILERS:

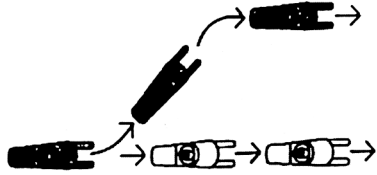
Operating a snowmobile is much more challenging than driving a car. Snowmobiling takes place in unpredictable and uncontrollable natural settings. Statewide and nationwide reports show the consumption of alcohol is a contributing factor in many snowmobile fatalities. That's why DNR Conservation Officers strongly encourage every snowmobiler to practice 'Zero Alcohol' as part of their own regular safe riding habits. Many snowmobilers already choose to ride alcohol free. Practicing 'Zero Alcohol' before and during your ride will save lives and reduce injuries.

'Zero Alcohol,' it's your smart choice for safer snowmobiling.

Rules of the Road and Trail

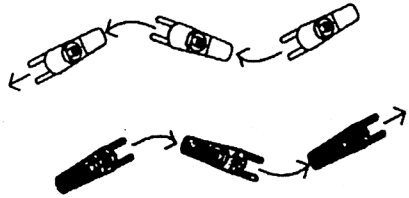
Passing

When overtaking another snowmobile going in the same direction, always pass on the left.



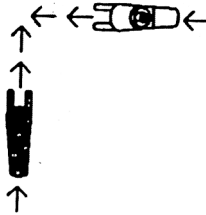
Meeting

When you meet another snowmobile, always slow down and stay to the right.

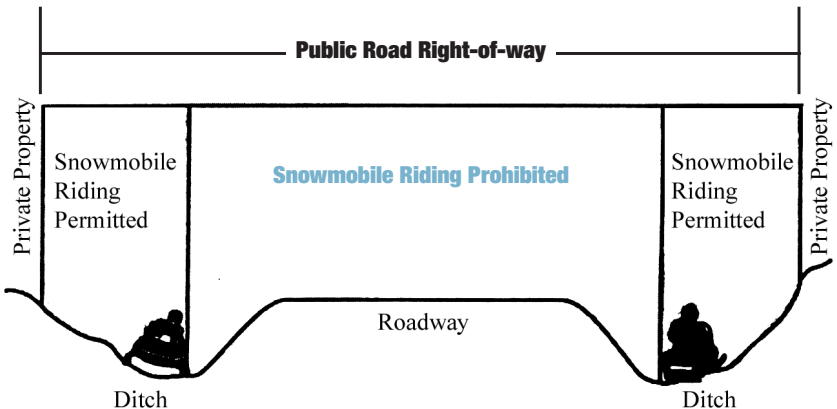


Meeting at an intersection

When meeting at an intersection, the operator to the right has the right of way.



Operation Along State and County Roads



It is illegal to operate on the inside slope, shoulder, and roadway of state or county roads.

Signs

Snowmobile operators should be familiar with the meaning of the following trail signs.

Informational sign:

indicates intersections or major changes in trail direction.



Directional blazer:

indicates changes in trail direction.



Reassuring blazer:

placed at intervals along the trail to reassure users that they are still on the trail.



Stop sign:

placed at a road or highway crossing indicates a snowmobile must come to a complete stop.



No-snowmobiling sign:

indicates a trail or area where snowmobiling is prohibited.



No-studded tracks sign:

indicates no metal traction devices allowed on trail.



Two-way trail sign:

indicates trails with permitted two-way travel during nighttime hours within the public road right-of-way.





LIFELONG MEMORIES. HOW'S THAT FOR VALUE?

Who said long-lasting memories had to come at a huge price? Take for instance the 2014 Arctic Cat® F5 and F570. Great family machines at a great value. And the features you get are also invaluable — Twin Spar chassis, AWS™ VII front suspension and nicely powered power plants. Come in now and let the memories of a lifetime start today.



Cities Edge Motorsports

Shakopee
952-224-2054
www.citiesedge.com

Country Cat

Sauk Centre
320-352-3534
www.countrycat.net

Hamm's Repair

Warren
218-745-4298
www.hammsrepair.net

MotoProz, Inc.

Mazeppa
507-843-2855
www.motoproz.com

Northwood Equipment

Aitkin
218-927-2140
www.northwoodequipment.com

Snell Powersports & Equipment

Mankato
507-304-6786
www.snellpse.com

Thomas Sno Sports

Ogilvie
320-556-3467
www.thomassnosports.com

Waconia Farm Supply

Waconia
1-888-741-FARM
www.waconiaarcticcat.com

Westside Sports

Wadena
218-631-1113
www.westsidesports.biz

treadlightly!®
LEAVING A GOOD IMPRESSION™



Always wear a helmet and don't drink and ride.
©2013 Arctic Cat Sales Inc., Thief River Falls, MN 56701.

Paid Advertisement

Equipment Requirements

All snowmobiles operated on public lands, waters, or roadways must be equipped as follows:

Helmet

- Operators or riders under 18 years of age must wear an approved helmet, except when participating in a parade or operating on land belonging to a parent, grandparent, sibling, uncle, or aunt.

An approved helmet must meet federal law, which requires the helmet to display the symbol DOT. DOT is the manufacturer's certification that the helmet conforms to motor vehicle safety standards. Standard bicycle and hockey helmets are not legal helmets for snowmobiling.

Lights

- Headlights and taillights must be on during hours of darkness.
- Headlights must be able to reveal people and vehicles 100 feet ahead and aimed so they will not blind an oncoming snowmobiler.
- Colored lenses on headlights are NOT lawful when the snowmobile is operated on roads or road rights-of-way, including crossing roads and operating in ditches or outside slopes.
- Red taillights must be visible for 500 feet to the rear of the snowmobile.

Brakes

- Brakes must be able to control movement and to stop and hold the snowmobile track.

Reflector Material

- Snowmobiles must have at least 16 square inches of reflector material on each side forward of the handle bars.
- Any sled, trailer, or other device that is towed by a snowmobile during hours of darkness must display visible reflector material on each side and at the rear.

Mufflers

- Snowmobiles must be equipped with mufflers that are in good working order and that do not produce sharp popping or cracking sounds or excessive or unusual noise. After-market exhaust systems may not meet this requirement and may not be lawful to operate.
- You may not operate or sell a snowmobile built on or after April 1, 1975, that exceeds 78 decibels on the A scale at 50 feet, except under a permit of the DNR or county sheriff.
- No snowmobile shall be modified by any person in any manner that shall amplify or otherwise increase total noise level above that emitted by the snowmobile as originally equipped, regardless of date of manufacture.

The legal definition of a snowmobile is a self-propelled vehicle designed for travel on snow or ice steered by skis or runners.

Safety Training Requirements

Residents born **after December 31, 1976**, must have a snowmobile safety certificate in their possession, or snowmobile safety certificate indicator on their driver's license or on their Minnesota ID card, to operate a snowmobile in Minnesota. To become certified in snowmobile safety, students must pass a Minnesota snowmobile safety training course.

Youth Snowmobile Safety Training

The Youth Snowmobile Safety Course is available to youth ages 11 years and older (Safety training certificates are not valid until age 12). Students now have two options, a **'Traditional'** course or a **'CD Based'** course. They must choose one or the other. Both courses are taught by DNR certified volunteer instructors. The **'Traditional'** course meets two or more times, is at least 8 hours minimum of classroom and includes a riding performance course. The **'CD Based'** course meets twice at the most, student obtains a free CD from the DNR or DNR certified volunteer instructors, completes the CD, and attends a one-day classroom review and riding performance course. Both snowmobile safety courses teach the basics of safe and responsible snowmobiling.

Adult Snowmobile Safety Training

The Adult Snowmobile Safety Training CD is an independent study course on CD. The course is available to persons 16 years of age and older. It looks at the cause of accidents, speed and reaction time, stopping distances, group riding, and rules and regulations. The course is designed for multiple users and includes a written test and send-in certification form. A fee of \$10.00 will be charged to cover costs of material and certification.

Youth classes are taught by DNR certified volunteer instructors, usually between November and March. Courses are announced in communities through schools and the media. To learn the times and dates of classes in your community, or to receive the Adult Snowmobile Safety Training CD, check the DNR website www.mndnr.gov/snowmobiling; or call the DNR Information Center 1-888-646-6367, metro area (651)296-6157, or the Snowmobile Safety Training Program Headquarters at 1-800-366-8917.

Non-residents certified in snowmobile safety training in another state will be recognized in Minnesota.

Replacement snowmobile safety certificates are available for a nominal fee. Online: Go to www.mndnr.gov - click on 'Buy a license,' click 'Purchase' - to make an online purchase of a duplicate Snowmobile Safety certificate. You may also obtain a duplicate certificate at any game and fish licensing agent or by calling 1-888-MNLICENSE. If you are unable to obtain a snowmobile certificate, contact the DNR Information Center at 1-888-646-6367 or the Snowmobile Safety Training Headquarters at 1-800-366-8917 for a certificate to be mailed to you.

Youth Operation Requirements

- The owner or person in lawful control of a snowmobile is jointly responsible for laws broken by a minor on that snowmobile.
- Anyone under 18 years old must wear an approved helmet.
- To register a snowmobile you must be at least 18 years old.

Snowmobile Safety Certificate

Minnesota Residents

Any resident of Minnesota born after **December 31, 1976**, must have a snowmobile safety certificate to operate a snowmobile in Minnesota. Youth must be 11 years old to take a snowmobile safety course, the certificate is not valid until the 12th birthday.

Residents and Non-Residents

Under Age 12 (Without safety certificate)

- May drive snowmobiles on public lands, public waters, or grant-in-aid trails if accompanied by an adult*
- May not drive a snowmobile across state or county roads
- May not drive snowmobiles on streets or highways in a municipality

Ages 12 & 13

- May drive snowmobiles on public lands, public waters, or grant-in-aid trails **IF**
 - Accompanied by an adult* **OR**
 - In possession of a valid snowmobile safety certificate
- May not drive a snowmobile across state or county roads
- May not drive snowmobiles on streets or highways in a municipality

Ages 14 to 18

- May drive a snowmobile across state or county roads **IF** in possession of a snowmobile safety certificate or driver's license or ID card with valid snowmobile indicator
- May drive snowmobiles on public lands, public waters, or grant-in-aid trails **WITH** a snowmobile safety certificate
- May drive snowmobiles on streets or highways in municipalities, if not contrary to ordinance
 - Needs snowmobile certificate if required by ordinance

Over Age 18

- Residents born after December 13, 1976, who operate a snowmobile in Minnesota must possess a valid snowmobile safety certificate or a drivers license or id card with a valid snowmobile indicator.

** Accompanied by an adult means a parent, legal guardian, or other person 18 years of age or older designated by the parent or guardian who needs to be close enough to be able to direct the youth's operation of their snowmobile.*

Exception for Residents and Non-Residents

Without a snowmobile safety certificate, a person under the age of **14 years** may operate a snowmobile only if they are supervised or accompanied by one of the following: parent, legal guardian, or other person 18 years of age or older designated by the parent or guardian. The supervising or accompanying adult needs to be close enough to be able to direct the youth's operation of their snowmobile. This exception does not allow an operator under the age of 14 to cross a public road.

Non-residents who are **18 years old and older** do not need a snowmobile safety certificate.

General Operation

Where You May Ride

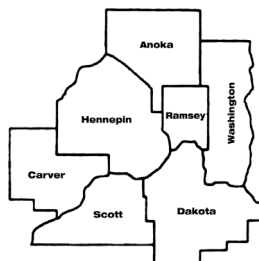
- in the bottom or outside slope of a ditch of a county or state road (see page 15)
- in the same direction as road traffic in the ditch from one-half hour after sunset to one-half hour before sunrise (other than this time, you can ride in either direction)
- one-half hour after sunset to one-half hour before sunrise on two-way snowmobile trails that are located within the ditches or adjacent to streets or highways when specifically permitted by the road authority (look for posted two-way signs, see page 16)
- on a bridge, other than a bridge that is part of the main-traveled lanes of an interstate highway, in order to avoid obstructions to travel when absolutely necessary (the snowmobile must be operated in the extreme right-hand lane, the entrance to the roadway must be made within 100 feet of the bridge, and crossing must be made as quickly as possible)
- on state and local trails (see pages 12-14 for Snowmobile State Trail Sticker requirements)
- on iced-over waters that have legal access (if not restricted by law or local ordinances)
- on township roads when not restricted by local ordinance
- on public lands that are open to motorized vehicles. Land uses vary. Be sure to check all federal, state, and local ordinances.

Inside the seven-county metro area, you may ride:

- on your own land
- on land that is posted with signs stating “snowmobiles allowed”
- on land other than your own, with written or spoken permission of the landowner, occupant, or lessee
- on the groomed area of a snowmobile trail.

Outside the seven-county metro area, you may ride:

- on your own land
- on agricultural land with permission of the landowner
- on land, other than agricultural land, that you have not been told verbally, by written warning, or by posted signs, that riding is prohibited
- on the groomed area of a snowmobile trail.



When making a direct crossing of a street or road, you must :

- bring the snowmobile to a complete stop before crossing, whether there is a stop sign or not
- yield to all oncoming traffic
- have both front and rear lights on when crossing between one-half hour after sunset to one-half hour before sunrise, or during periods of reduced visibility (see page 30 for sunrise/sunset table)
- cross at a 90-degree angle with respect to the road
- cross a divided road at an intersection.

State forest lands classified as “closed” are open to off-trail snowmobile use unless specifically posted closed to snowmobiling.

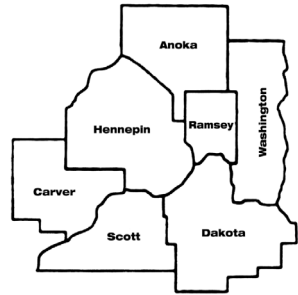
Where You May NOT Ride

- on the roadway, shoulder, or inner slope of the ditch of a state or county road
- on the median of a four-lane roadway
- within the right-of-way of any interstate
- on the right-of-way between opposing lanes of traffic
- against traffic at night within the road right-of-way
- at airports
- in any state park, state recreation area, state historic site, wildlife management area, or state scientific and natural area with the exception of posted snowmobile trails and areas
- in any wildlife management area south of U.S. Highway 2 from Grand Forks east to Bemidji, then south along U.S. Highway 71 to Wadena, then east along U.S. Highway 10 to Staples and U.S. Highway 210 to the eastern boundary of the state, without written permission from the DNR
- on any iced-over waters located in a restricted area or iced-over waters where you don't have legal access
- in any areas restricted by local ordinances or municipalities
- in a tree nursery or planting area
- on state forest lands that are posted or designated closed to snowmobiling
- on state forest lands located in the Boundary Waters Canoe Area Wilderness, including all of Lake Isabella and Insula; and portions of Lake Jeanette and Burntside State Forests.
- in National Wildlife Refuges, Waterfowl Production Areas, or the Boundary Waters Canoe Area Wilderness. For more information, contact your local U.S. Fish and Wildlife Service.

Municipalities, counties, school districts, and other political subdivisions or state agencies may impose further restrictions on snowmobiling on property not owned by the operator. Check local ordinances where you want to ride.

Inside the seven-county metro area, you may **NOT** ride:

- on land that you do not own, unless given written or verbal permission to ride on that land by the owner, occupant, or lessee, or unless signs are posted stating snowmobiling is allowed.



Outside the seven-county metro area, you may **NOT** ride:

- on land that you have been told not to verbally, in writing, or by posted signs
- on agricultural land without the permission of the owner.

Other Prohibitions

It is unlawful to:

- operate your snowmobile in a careless, reckless, or heedless manner that endangers the operator, or property of another, or causes injury or damage (intentionally driving over open water, or water skipping, may be considered careless or reckless unless done as an event under special permit issued by the local sheriff's office)
- litter
- enter or leave lands by cutting wire or tearing down a fence
- mutilate, destroy, damage, or remove any shelter, comfort station, or facility on any state or grant-in-aid trail
- post, damage, or remove any signs on any lands or waters unless you are the landowner, occupant, or lessee of the property
- operate on state forest lands in a manner that causes erosion or rutting, damages or destroys trees or growing crops
- operate on a state forest trail that is posted for non-motorized use

Special Provision - Richard J. Dorer Memorial Hardwood Forest:

Motor vehicles and snowmobiles may operate only on forest roads that are not posted closed and on forest trails that are designated for motorized use. No motorized travel is allowed off designated trails under any circumstances.

- operate a snowmobile with metal traction devices on paved public trails when posted closed by state or local government.

Metal traction device means any metal device, or array of metal devices, attached to a snowmobile track to enhance traction. This includes metal components that extend more than one-fourth inch

from the bottom of the track. Note: Metal cleats affixed perpendicular to the direction of travel of a 1981 or earlier snowmobile are not considered a metal traction device.

Sunken Snowmobiles

Minnesota law requires snowmobiles and motor vehicles (including cars, trucks, watercraft and ATVs) that sink in a lake or river, be removed by the owner within 30 days. Owners must also notify the county sheriff within 48 hours. If the snowmobile or vehicle is not removed, the local unit of government can remove it and charge the owner two to five times the cost of removal.

Snowmobiling While Intoxicated (SWI)

Operating a snowmobile while under the influence of alcohol, a controlled substance or its metabolite, or other hazardous substance is unlawful. Operators who are impaired may be required to submit to tests by an enforcement officer to determine the presence of these substances. There is a separate additional criminal penalty for refusal to submit to the tests, and the person's snowmobiling privileges will be suspended for one year upon refusal. SWI convictions and refusals are recorded on the violator's driver's license record and may affect their driver's license privileges.

An operator who is found to be impaired or has an alcohol concentration of .08 or more, can be charged with a misdemeanor, gross misdemeanor, or felony level Driving While Intoxicated (DWI). Persons convicted of a misdemeanor will be subject to: up to \$1000 fine (plus surcharges); possible jail sentence; and loss of snowmobile operating privileges for one year.

In addition to the above misdemeanor penalties, the following gross misdemeanor penalty provisions may apply if the person has any prior DWI violations, has an alcohol concentration of twice the legal limit, or has a child under 16 years of age with them on the snowmobile:

- up to \$3,000 fine
- longer, mandatory jail time
- chemical use assessment and long-term monitoring programs
- loss of motor vehicle driver's license privileges
- motor vehicle plate impoundment of all motor vehicles owned or leased individually or jointly by the person
- forfeiture of the snowmobile, substantially higher fines, and mandatory jail time.

If a person has three or more DWI convictions or revocations in the last 10 years, or has a prior felony conviction, he or she can be sentenced to 3-7 years in jail, up to \$14,000 fine, or both. Longer license revocations would also be imposed.

Open Bottle Law

It is unlawful for a person to drink or consume alcoholic beverages when operating a snowmobile on a roadway or shoulder of a roadway that is not a part of a designated snowmobile trail.

Speed Limits

It is unlawful to operate a snowmobile in excess of:

- **50 MPH** on any public lands or waters
- the posted speed limits on a trail
- a speed greater than various trail, terrain and visibility conditions dictate
- the posted road speed limit or **50 MPH**, whichever is **LOWER**, while operating in the ditch
- any governmental unit snowmobile speed limit. Governmental units include any city, county, municipality, township, or conservation district.

A county may enact a daytime 65 MPH speed limit for marked trails on frozen lakes that are over 10,000 acres. The county would need to pass an ordinance and receive approval by the DNR Commissioner. Individual counties will have more information on the location and status of any designated 65 MPH trails.

Accidents

Minnesota has worked hard to reduce snowmobiling accidents, injuries, and fatalities through education and safety training programs. The largest contributing factor to crashes is excessive speed, followed by alcohol usage.

If you are involved in a snowmobile accident that results in injury requiring medical attention, death, or damage of more than \$500, you must file an official accident report with the Department of Natural Resources **within 48 hours of the accident**. Accident report forms are available at www.mndnr.gov/enforcement or call 1-800-366-8917.

SEE WILD PLACES!

Subscribe free to the state's premier conservation magazine, *Minnesota Conservation Volunteer*, published by the Department of Natural Resources. Every other month this magazine will bring you spectacular color photographs and stories about Minnesota's woods, waters, and wildlife. Call 888-646-6367 or go to www.mndnr.gov/magazine.



Enforcement

Conservation officers, state troopers, deputy sheriffs, police officers and other peace officers are responsible for the enforcement of Minnesota's snowmobile laws. Whenever an enforcement officer signals you, you must stop. Fleeing an enforcement officer is a felony and the snowmobile used may be forfeited.

Part of a conservation officer's duty is to ensure your safety while snowmobiling. If you need an enforcement officer, contact your nearest State Patrol dispatch center. Your local conservation officer can also be found at www.mndnr.gov/enforcement.

Penalties

Violation of most snowmobile statutes and rules are misdemeanors and carry a fine of up to \$1,000 and imprisonment for up to 90 days. Youth violations may result in snowmobile safety certificate suspension. Also, snowmobiles used in burglaries, fleeing a peace officer, or a DWI, may be subject to seizure and confiscation or forfeiture.

The owner or person in lawful control of a snowmobile is subject to penalties if he or she knowingly allows the snowmobile to be operated by someone physically or mentally unable to drive the vehicle safely, or is under the influence of drugs or alcohol.

A person operating a snowmobile with metal traction devices on any paved trail is guilty of a petty misdemeanor punishable by a civil penalty or criminal fine of \$50 for the first offense, \$200 for the second offense, and \$500 for the third or subsequent offense. Criminal fines will be subject to court surcharges and fees in addition to this penalty amount.

Anyone operating a snowmobile in violation of the Snowmobile State Trail Sticker law will be required to purchase an annual penalty sticker for \$71.00, in addition to any ticket or fine.

Training for Offenders

A person who is convicted of two or more speeding violations in a snowmobile season, or for careless or reckless operation, must successfully complete a snowmobile safety training course before operating a snowmobile.



STAY RIGHT! Trails are two-way, always watch out for others!

Minnesota Trespass Laws

Trespass is the most frequent complaint landowners have against snowmobilers. Always ask for permission before entering private land.



Respect private lands. **ASK FIRST!**

- Always ask first before entering private lands even if it's not posted. You will improve relationships between landowners and snowmobilers.
- Just because property isn't posted that doesn't mean you have a right to enter someone else's private property. The posted signs indicate the landowner's intention to prevent unauthorized entry.

If you violate Minnesota's trespass laws, you will be guilty of a misdemeanor or gross misdemeanor, or may be charged with a civil penalty. A misdemeanor is punishable by fines of up to \$1,000 and a jail sentence of up to 90 days. Civil penalties range from \$50 for a first time violation to \$500 and loss of registration for a third violation.

You are guilty of a gross misdemeanor when you:

- knowingly disregard signs prohibiting trespass
- trespass after the landowner tells you not to
- violate the trespass law twice in three years.

If you are convicted of a gross misdemeanor, you will be subject to fines up to \$3,000 and up to one year in jail, your snowmobile registration will be null and void, and you will lose all hunting privileges for two years.

You must have permission to:

- enter posted land
- enter land inside the seven-county metro area that you do not own, unless given written or verbal permission to ride on that land by the owner, occupant, or lessee, or unless signs are posted stating snowmobiling is allowed
- enter agricultural land. Agricultural land is land that is plowed or tilled; has standing crops or crop residue; is within a maintained fence for enclosing domestic livestock; is planted native or introduced hay land or grassland; or is planted to short rotation woody crops (hybrid poplar and other woody plants that are harvested for their fiber within 15 years of planting).

All planted grassland, hay land, and short rotation woody crop land meet the definition of agricultural land, including grasslands enrolled in the federal Conservation Reserve Program (CRP), Conservation Reserve Enhancement Program (CREP), or the state Reinvest in Minnesota (RIM) Reserve Program. These lands do not need to be posted to prevent unauthorized trespass.

It is unlawful to:

- wound or kill another person's domestic animal or destroy private property
- pass through a closed gate without returning it to the original position
- stray off the groomed portions of marked state trails.

Game Laws Related to Snowmobiling

General Restrictions

- A person may transport an unloaded and uncased shotgun or rifle in a motor vehicle while: 1) at a shooting range with permission; 2) lawfully hunting on public or private land; or 3) traveling to or from a site the person intends to hunt that day or has hunted that day.
- However, a person MAY NOT transport an uncased shotgun or rifle within: 1) Anoka, Hennepin, or Ramsey counties; 2) a city with a population of 2,500 or more; 3) school grounds; 4) game refuges; or 5) as regulated under shining and night vision laws.
- A handgun/pistol cannot be transported uncased without a valid permit to carry. See Minnesota Hunting and Trapping Regulations Handbook for more detailed information.

It is unlawful to:

- use a snowmobile to chase, run over, or kill a wild animal
- shoot or attempt to shoot a wild animal from a snowmobile.

For operation restrictions during firearms deer season, please see the current Minnesota Hunting and Trapping Regulations Handbook.

Heading Out West?

Did you know that almost half of snowmobile avalanche fatalities in mountainous states involve people from the upper Midwest? Prepare for your mountain state trips so you don't become a statistic. Before you leave, check out information on avalanche education, equipment, survival, and U.S. Avalanche Centers at: www.avalanche.org.

Special Permits for Disabled Hunters

A permit may be issued to shoot from a standing motor vehicle including a snowmobile to a licensed hunter who has a permanent physical disability and is unable to step from a vehicle without the aid of wheelchair, crutches, braces, or other mechanical support or prosthetic device; or is required to use supplemental oxygen to assist breathing because they are unable to walk any distance because of a permanent lung, heart, or other internal disease. For more details contact the Department of Natural Resources Information Center in the Twin Cities (651) 296-6157, or toll-free 1-888-MINNDNR (646-6367).

For More Information

For information on snowmobile trails; maps of state parks, forests, and state trails; weekly snow reports; and other information, contact:

DNR Information Center
500 Lafayette Road
St. Paul, MN 55155-4040
Twin Cities: (651)296-6157
Toll-free 1-888-MINNDNR
(646-6367)

Hearing impaired
Twin Cities: (651)296-5484
Toll-free: 1-800-657-3929

DNR Website
www.mndnr.gov

For information about snowmobile registration, contact:

DNR License Center
500 Lafayette Road
St. Paul, MN 55155-4026
(651)296-2316 • Toll-free: 1-800-285-2000

To report a violation, contact:

Your local DNR conservation officer, sheriff's office, police department, or the state patrol. Conservation officers are dispatched through the state patrol. To find your local conservation officer, go to: www.mndnr.gov/officerpatrolareas or call your nearest state patrol headquarters.

For information on scheduled snowmobile safety classes statewide:

- www.mndnr.gov/snowmobiling
- DNR Information Center: Twin Cities (651) 296-6157
Toll-free 1-888-MINNDNR (646-6367)
- Snowmobile Safety Training Program Headquarters
Camp Ripley, Little Falls, MN: 1-800-366-8917.



To find your local conservation officer, visit:

www.mndnr.gov/officerpatrolareas

Connect instantly to the conservation officer locator web page by scanning this code with your smart phone.

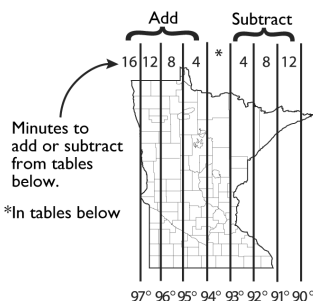
Grant-In-Aid Program

The Grant-in-Aid Program is a cooperative effort between the Minnesota DNR, local governments, local snowmobile organizations, and private landowners who provide the majority of Minnesota's 22,000 miles of snowmobile trails. Funded through snowmobile registration and Snowmobile State Trail Sticker fees and gas taxes, the grant-in-aid program helps local groups and clubs develop and maintain trails.

- Grant-in-aid trails are open each year from December 1 through April 1.
- Many grant-in-aid trails throughout the state run through private property. Stay on good terms with these landowners by staying on marked trails. Don't jeopardize your ability to use private lands.
- Remember you need a Snowmobile State Trail Sticker or a Registration/Trail Sticker combination decal when operating on grant-in-aid trails.

Sunrise/Sunset Table

- Times shown are Central Daylight Saving Time through November 2, 2013 and Central Standard Time thereafter.
- The times in the table are for the longitudinal line running north and south through St. Paul. To use the table to find the sunrise or sunset hours of the area you wish to snowmobile, locate the area on the map to the right and add or subtract the minutes shown above the map to the time in the table.



2013						2014								
OCT.		NOV.		DEC.		JAN.		FEB.		MAR.		APR.		
Rise AM	Set PM	Rise AM	Set PM	Rise AM	Set PM	Rise AM	Set PM	Rise AM	Set PM	Rise AM	Set PM	Rise AM	Set PM	
7:11	6:53	7:52	6:01	7:31	4:33	1	7:51	4:42	7:33	5:21	6:51	6:01	6:54	7:41
7:13	6:51	7:53	6:59	7:32	4:33	2	7:51	4:43	7:32	5:23	6:49	6:02	6:52	7:42
7:14	6:49	6:55	4:58	7:33	4:32	3	7:51	4:44	7:30	5:24	6:47	6:03	6:50	7:43
7:15	6:47	6:56	4:57	7:35	4:32	4	7:51	4:45	7:29	5:25	6:46	6:05	6:48	7:45
7:16	6:46	6:57	4:55	7:36	4:32	5	7:51	4:46	7:28	5:27	6:44	6:06	6:46	7:46
7:18	6:44	6:59	4:54	7:37	4:32	6	7:51	4:47	7:27	5:28	6:42	6:07	6:45	7:47
7:19	6:42	7:00	4:53	7:38	4:32	7	7:51	4:49	7:25	5:30	6:40	6:09	6:43	7:48
7:20	6:40	7:01	4:52	7:39	4:32	8	7:50	4:50	7:24	5:31	6:38	6:10	6:41	7:50
7:21	6:38	7:03	4:51	7:40	4:32	9	7:50	4:51	7:22	5:33	6:37	6:11	6:39	7:51
7:23	6:37	7:04	4:49	7:40	4:32	10	7:50	4:52	7:21	5:34	7:35	6:13	6:37	7:52
7:24	6:35	7:06	4:48	7:41	4:32	11	7:49	4:53	7:20	5:36	7:33	6:14	6:36	7:54
7:25	6:33	7:07	4:47	7:42	4:32	12	7:49	4:54	7:18	5:37	7:31	7:15	6:34	7:55
7:27	6:31	7:08	4:46	7:43	4:32	13	7:49	4:55	7:17	5:38	7:29	7:17	6:32	7:56
7:28	6:29	7:10	4:45	7:44	4:32	14	7:48	4:57	7:15	5:40	7:27	7:18	6:30	7:57
7:29	6:28	7:11	4:44	7:45	4:32	15	7:48	4:58	7:14	5:41	7:25	7:19	6:28	7:59
7:30	6:26	7:12	4:43	7:45	4:33	16	7:47	4:59	7:12	5:43	7:24	7:20	6:27	8:00
7:32	6:24	7:14	4:42	7:46	4:33	17	7:46	5:01	7:11	5:44	7:22	7:22	6:25	8:01
7:33	6:23	7:15	4:41	7:47	4:33	18	7:46	5:02	7:09	5:45	7:20	7:23	6:23	8:02
7:34	6:21	7:16	4:40	7:47	4:34	19	7:45	5:03	7:08	5:47	7:18	7:24	6:22	8:04
7:36	6:19	7:18	4:40	7:48	4:34	20	7:44	5:04	7:06	5:48	7:16	7:26	6:20	8:05
7:37	6:18	7:19	4:39	7:48	4:35	21	7:44	5:06	7:04	5:50	7:14	7:27	6:18	8:06
7:38	6:16	7:20	4:38	7:49	4:35	22	7:43	5:07	7:03	5:51	7:12	7:28	6:17	8:07
7:40	6:14	7:22	4:37	7:49	4:36	23	7:42	5:09	7:01	5:52	7:11	7:29	6:15	8:09
7:41	6:13	7:23	4:37	7:50	4:36	24	7:41	5:10	6:59	5:54	7:09	7:31	6:13	8:10
7:42	6:11	7:24	4:36	7:50	4:37	25	7:40	5:11	6:58	5:55	7:07	7:32	6:12	8:11
7:44	6:10	7:25	4:35	7:50	4:38	26	7:39	5:13	6:56	5:57	7:05	7:33	6:10	8:12
7:45	6:08	7:27	4:35	7:51	4:38	27	7:38	5:14	6:54	5:58	7:03	7:35	6:09	8:14
7:46	6:07	7:28	4:34	7:51	4:39	28	7:37	5:15	6:53	5:59	7:01	7:36	6:07	8:15
7:48	6:05	7:29	4:34	7:51	4:40	29	7:36	5:17			6:59	7:37	6:05	8:16
7:49	6:04	7:30	4:33	7:51	4:41	30	7:35	5:18			6:57	7:38	6:04	8:17
7:51	6:02			7:51	4:42	31	7:34	5:20			6:56	7:40		

48th ANNUAL WORLD'S BIGGEST SNOWMOBILE EVENT



Saturday & Sunday
September 6th & 7th 2014

"WORLD'S LARGEST SNOWMOBILE EVENT"

2015 SNOWMOBILE DISPLAYS

2015 ATV DISPLAYS

200+ DEALER SITES

1000'S OF SWAP VENDORS

ATV DEMO TRACK & RIDES

VINTAGE SLED DISPLAYS

FREE KIDS SNOWMOBILE RAFFLE

DRAWINGS/RAFFLE/ PRIZES

EXTREME EXPO:

SNOWMOBILE, ATV, MC JUMPS & TRICKS

GRASS DRAG RACING STARTS AT 9 AM DAILY

- \$55,000 ESTIMATED PURSE

The Sno-Barons Snowmobile Club has a long-standing commitment of supporting snowmobile, youth and safety in Minnesota. Proceeds from Haydays fund training, trails, charities and club efforts.

Sno-Barons Hotline 763-274-0235

Check Out Our Website: www.snobarons.com



Paid Advertisement

THE XF 9000 SNO PRO PLEDGE



I WILL TAKE YOU PLACES PERFECTLY GROOMED AND PERFECTLY NOT.



Want a sled that's as committed to you as you are to your passion? The 2014 XF Sno Pro[®] knows no boundaries. With its 137" Ripsaw[™] II track, Arctic Race Suspension[™] and FasTrack[®] Slide-Action Rear Suspension[™], it's the one machine that promises to take you places perfectly groomed and perfectly not. To find your nearest dealer, go to arcticcat.com.

**CLUTCH REFINEMENTS
LOWER OPERATING
TEMPS BY 30% FOR
IMPROVED BELT LIFE.**



- » Improved heat treating process for higher quality and consistency on both clutches
- » Deeper fins for improved cooling
- » Improved high temp bearing material for less friction and extended durability
- » Additional body-panel clutch venting

Always wear a helmet and don't drink and ride. Ripsaw[™] is a trademark of Camoplast Inc. Arctic Cat[®], Arctic Race Suspension[™], FasTrack[®], Share Our Passion[™], Slide-Action Rear Suspension[™] and Sno Pro[®] are trademarks of Arctic Cat Inc.
©2013 Arctic Cat Sales Inc., Thief River Falls, MN 56701.



Paid Advertisement