



*we are for the big and the small*

2014

*report to the*  
**COMMUNITY**



MINNESOTA ZOO



*we are for the big and the small*

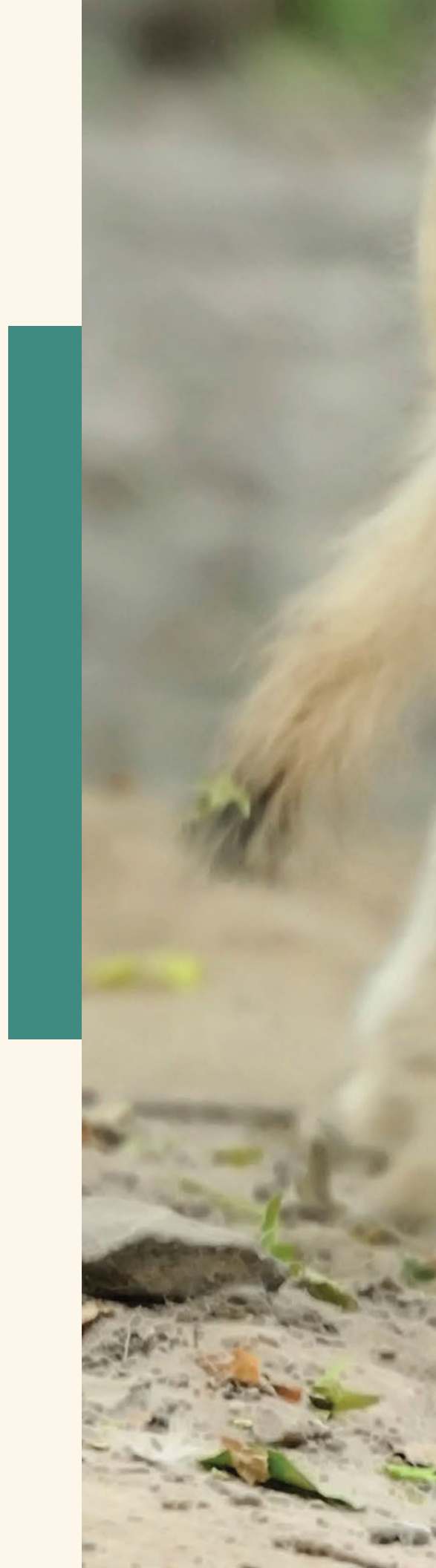
***Saving wildlife is at the heart of what we do at the Minnesota Zoo. And we do it well.*** We connect people with the natural world, awakening in them a sense of awe for all of Earth's creatures.

We connect kids with wolves, brown bears and Asian wild horses, and we educate people—regardless of their size or age—about the challenges faced by wildlife. From the world's most magnificent species to the smallest of creatures, all are inextricably linked with the health of Earth's ecosystems.

We educate people about the perils animals face in the natural world, and we use a portion of our resources to help protect the world's wildlife.

We act to save wildlife. Our scientists and conservation biologists are working in the field to track wolves in northern Minnesota, study wild butterfly populations on Minnesota's vanishing prairies, protect desert black rhinos on the vast and rugged landscape of Namibia, and more.

This is your zoo—Minnesota's zoo. We thank you for joining our efforts to connect guests with wild animals and inspire people of all ages to help save wildlife both here in Minnesota and around the world.







*we are for the big and the small*



# dear FRIENDS

People often tell us we have the best jobs in town. After all, what could be better than working at the Minnesota Zoo, which last year connected wild animals from around the world with more than 1.2 million guests, inspiring them to work with us to save wildlife?

Today, we thank all of you who joined us—members, donors, legislators, educators, conservationists, guests, and so many more who share our belief that zoos, especially our Minnesota Zoo, can make a difference in saving wildlife. We could not do our work without you.

We thank Governor Mark Dayton and the Legislature for their \$12 million investment in our Zoo, including funding for a new exhibit for critically endangered Hawaiian monk seals, one of the rarest marine mammals in the world. In spring 2015 they will make their new home in Discovery Bay, and with their arrival, we celebrate the most significant investment in Discovery Bay since it opened in 1997.

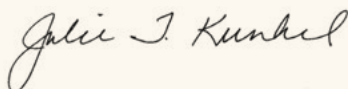
We thank over 3,600 donors who expressed their appreciation for this great zoo with financial support. Together, you contributed nearly \$5.3 million to our Zoo. Most notably, 214 members and donors contributed more than \$1.6 million for a new Conservation Carousel whose net proceeds provide critical conservation and education support for the Minnesota Zoo.

We also thank donors who made gifts totaling \$1.25 million to build a new nature-based play area. The new Hanifl Family Wild Woods, funded in part by the Hanifl Family Foundation and the General Mills Foundation, will open in summer 2015. Twice as big as Woodland Adventure, Wild Woods will give children the opportunity to play and learn outdoors through exploration and discovery. It's just one more way the Minnesota Zoo connects guests with the natural world.

Our Zoo team connects with the natural world every day at the Zoo, throughout Minnesota and around the world. Thanks to funding from the Clean Water, Land & Legacy Amendment, the Zoo is helping to save prairie butterflies like the Poweshiek skipperling and Dakota skipper from extinction through conservation breeding and research. To bring that story to our guests, we opened Big Bugs!, a seasonal exhibit that captivated our guests with 13 animatronic arthropods such as the blue-eyed darter dragonfly and a colossal bombardier beetle. We also included live bugs, including some of the giant featured bugs and some found right in your own backyard.

That's the magic of the Minnesota Zoo. We bring so many people together—students and teachers, families, grandparents and grandchildren, children with special needs, corporate partners and their employees—to learn about our natural world and its wild animals. We thank you for joining us, and we look forward to continuing our work with you to help save wildlife.

**Julie T. Kunkel**  
Chair of the Board  
Minnesota Zoo



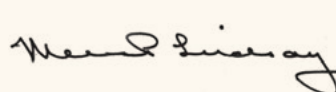
**Eric T. Galler**  
Chair of the Board  
Minnesota Zoo Foundation



**Lee C. Ehmke**  
Director/ President  
Minnesota Zoo



**Melissa Parker Lindsay**  
Executive Director  
Minnesota Zoo Foundation











#### **EDUCATING TO INSPIRE**

*The Wings Financial World of Birds Show is just one of many ways the Zoo delivers up-close and personal encounters with awe-inspiring animals. Experiences like Family Zoo Adventures, Zoo Camp, Zoo Safari sponsored field trips, and Zoomobile inspire people of all ages to learn about, care for, and act on behalf of wildlife. The Zoo's educational programs reached more than a half million people this year!*

# at the zoo

## Conservation-Based Management

As a conservation-based zoo, the Minnesota Zoo is committed to minimizing adverse impacts on animal populations in nature. Nearly all of our animals are born and raised at our zoo or at other zoos. In fact, we work with zoos around the world to maintain healthy, genetically stable and diverse, self-sustaining populations of threatened and endangered species in human care.

We manage many species through Species Survival Plans (SSPs), “genetic insurance policies” against extinction in the wild. As a pioneer in this field, the Minnesota Zoo created one of the first SSPs for the Amur tiger. Today, our zoo participates in nearly 100 SSPs.

We also play a critical role in serving as a home for rescued wildlife. This past summer, we adopted six orphaned moose calves from northeastern Minnesota and five wolf pups orphaned in a wildfire in Alaska. We also provide a home for orphaned black bears from northern Minnesota, and abandoned brown bears and sea otters rescued in Alaska. All of these animals can be seen in our zoo where they serve as ambassadors for their species.

### ACT FOR WILDLIFE

*More than 200 donors contributed \$1.6 million to build our new Conservation Carousel, which opened last June. The net proceeds from this magical ride help protect species through wildlife conservation and educational programs. Located along the Northern Trail, our inspirational carousel features 56 colorful animals and two ADA-accessible chariots, each hand-carved by skilled artisans. Enjoy the ride!*

## educating to inspire

This past year, we brought the Zoo to school classrooms throughout the State and to schools in 26 other states thanks to our live, interactive video conferencing (IVC) program. More than 8,600 students took “virtual trips” to our Zoo, and in real time, they interacted with a Zoo naturalist who introduced them to some of our animals and even took them behind the scenes with zookeepers!

Aligned with Minnesota and national education standards, our STEM-based (science, technology, engineering and math) program called “Wild about Engineering” inspired kids to learn how animals alter their habitats to increase their chances of survival. Another class invited students to explore how nature influences human innovation, design, and construction. *Is steel stronger than spider silk?*

The Zoo’s IVC program was so well received that it was honored with the Pinnacle Award from the Center for Interactive Learning and Collaboration (CILC) in recognition for consistently high reviews and recommendations from participants through CILC’s evaluation system.





**Above**~Kuruk is one of three orphaned black bears from Minnesota's Leech lake area. Kuruk now makes his home on the Zoo's Medtronic Minnesota Trail.



**Below** ~ Unusual tropical fish such as this threatened zebra shark live in Discovery Bay's Shark Reef, home to southern stingrays, green moray eels, sand tiger sharks, and more.

*we are for the big and the small*





# at the zoo

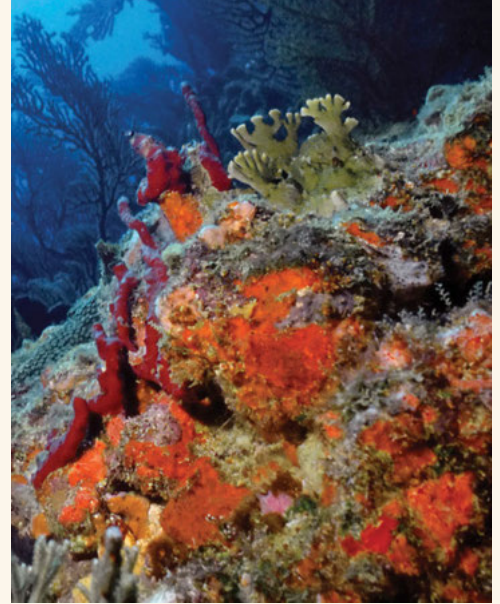
## Green Oceans

Minnesotans love their lakes, rivers and streams, so it's not surprising that they also value the protection of our Earth's oceans. The world's oceans cover more than 70 percent of Earth's surface, contain 97 percent of its water, and provide habitat for 226,000 known animal species. But sadly, plastic waste alone kills up to one million seabirds and 100,000 marine mammals annually, while at the same time, more than 80 percent of the world's fish stock are fully exploited or over-exploited. The Minnesota Zoo is committed to letting people know what's at risk!

One of our signature programs is Fish Smart, which is helping to increase awareness of the health of our oceans by educating people about sustainable seafood and ensuring that it is available in our communities. To aid this effort, we distribute Seafood Watch cards in Discovery Bay, and our food-service vendor, Lancer Food Service, practices sustainable seafood initiatives and promotes them to the public. Thanks to Fish Smart, we have now partnered with more than 30 of the metro area's best restaurants to ensure that only sustainable seafood choices are offered on their menus.

### ACT FOR WILDLIFE

*Sustainable seafood is either wild caught or farm raised in a way that sustains current populations and allows them to thrive long-term. Embracing the use of sustainable seafood is one of the best ways to contribute to the health of our oceans and the wildlife that depends on them. Download the Seafood Watch pocket guide or app from the Zoo's website and join us—and the Twin Cities' top chefs—at Fish Bites, our annual sustainable seafood event.*



## educating to inspire

Discovery Bay continued to be one of the most popular exhibits at the Minnesota Zoo this past year, thanks to the magic of the Atlantic Reef exhibit, the touch tank with real sharks, and remarkable leafy sea dragons. Discovery Bay also provided a breathtaking backdrop for us to tell stories about the importance of oceans to all life, both human and animal.

Thanks to our team of educators, nearly 90,000 students, teachers, and chaperones participated in Zoo classes in 2014, including "Marine Metropolis," which taught students about the rain forests of the sea—coral reefs, which harbor the greatest diversity of life in the ocean. Students also participated in "Come Snore with the Sharks," an overnight experience giving students the chance to learn about these ocean predators.

# in minnesota

## Butterflies and Other Pollinators

The Poweshiek skipperling, once one of Minnesota's most common prairie butterflies, is now nearly extinct with fewer than 500 remaining worldwide. Numbers of Dakota skippers also have plummeted, and this butterfly has disappeared from more than three-fourths of the prairies where it once thrived.

Both of these butterflies were recently listed under the U.S. Endangered Species Act and are among Minnesota's ten endangered, threatened, or special concern butterflies that depend on native prairie. With only one percent of the original prairie remaining, it is no wonder that plants and wildlife once thriving in these prairies have declined or vanished. These butterflies are also indicators that let us know the overall health of the State's prairies. Their message is clear: even our remaining tallgrass prairies are in trouble.

Our Prairie Butterfly Conservation Program, supported by the Environment and Natural Resources Trust Fund, Minnesota's Clean Water Land & Legacy Amendment, Aveda, Morrie's Automotive Group and donations from Zoo guests, is working with many public and private partners to prevent the extinction of prairie butterflies. We are creating the world's first and only "insurance populations" of these endangered butterflies at the Zoo, successfully breeding Dakota skippers at the Zoo for the first time in 2014. We also are studying wild populations to assess their status, define the threats they face, and identify steps to help them long-term.

This past year, Dr. Erik Runquist, head of the Minnesota Zoo Prairie Butterfly Conservation Program, testified before a Minnesota House committee and two public policy forums about the status and conservation needs of these pollinators.

## educating to inspire

Last summer, 13 super-sized, animatronic bugs invaded our Northern Trail. Guests loved our Big Bugs! exhibit and interacting with live insects in the Live Bug House—all while learning about native pollinators and their challenges. More than 4,500 Zoo Camp participants also learned about the importance of pollinators by visiting Big Bugs! and the Aveda Butterfly Garden.

To add to the summer fun, we also brought Zoo guests puppet shows, dancing, music, games and even an infestation of bad bug jokes, all in celebration of Big Bugs!

### ACT FOR WILDLIFE

*Our 485-acre zoo site is home to billions of insects. We are committed to helping them by practicing pollinator-friendly landscaping. You can help these insects by avoiding pesticides in your own garden and by planting native wildflower gardens. Check our Plant for Pollinators webpage at [mnzoo.org/blog/plant-pollinators/](http://mnzoo.org/blog/plant-pollinators/) for more information and a helpful guide on what to plant.*





**Above~***The Minnesota Zoo is home to the world's only conservation breeding program for the Dakota skipper, one of Minnesota's most imperiled prairie butterflies.*



**Below** ~ Zoo guests can now see six orphaned moose from northern Minnesota on the Northern Trail. In Minnesota, moose populations have declined by about 50 percent since 2006.

*we are for the big and the small*





# in minnesota

## Saving the Vanishing Moose

In the last 20 years, Minnesota's northwestern moose population has dropped from over 4,000 to fewer than 100. Since 2006, the northeastern population has declined by 50 percent to about 4,350 individuals. Scientists around the state are working to understand why.

In partnership with the University of Minnesota Duluth and others, this past year we put four of our research scientists to work to unravel this mystery. Dr. Brian Kot placed GPS tracking collars on wolves in northeastern Minnesota to understand where moose may be at highest risk of predation. Dr. Kim VanderWaal collected and analyzed hundreds of samples of deer droppings to find parasites that can cause illness in moose and to determine where moose exposure to these parasites is highest. Dr. Nick McCann analyzed summertime locations of Minnesota moose to understand what these cold-adapted animals need to withstand a warming climate. And Dr. Tiffany Wolf studied moose calf health and causes of mortality in Grand Portage Indian Reservation. Together, data from these and other projects will help us solve the mystery of why moose are disappearing from Minnesota and what can be done about it.



## educating to inspire

Our interactive video conferencing program "Moose Mystery: Minnesota's Vanishing Icon" brought this real-life mystery into the classroom. This science-based program focused on the moose's place in the ecosystem and our ongoing work to explain the gradual disappearance of moose from Minnesota. After examining the evidence and collection methods, students developed their own hypotheses about why moose are vanishing.

This past summer, we added six orphaned moose calves to our Northern Trail exhibit. A total of 44 moose have called the Zoo home over the years, and 17 of those were born here. These popular animals provide us with valuable information, such as how moose respond to wind, temperature and humidity.

### ACT FOR WILDLIFE

*Help Minnesota moose by mitigating your role in climate change and teaching your children about the value of wildlife. Visit our Act for Wildlife webpage at [mnzoo.org/conservation/act-wildlife](http://mnzoo.org/conservation/act-wildlife) to learn how you can make a difference for wildlife, locally and globally.*

# around the world

## Securing a Future for Asian Wild Horses

The Asian wild horse is one of our Zoo's great success stories.

The last wild horse species on Earth went extinct in the wild in the 1960s. Thankfully, zoos rescued some horses before the wild population disappeared. They bred them and released them back to the wild, and today, over 500 Asian wild horses roam free in Mongolia. Over 80 descendants of one of our Minnesota Zoo-born stallions run with wild herds today in Hustai Nuruu National Park, Mongolia.

Today our staff coordinates the Asian Wild Horse Species Survival Plan, managing the breeding and transport of all Asian wild horses in North American zoos. But our work is not done.

This past year, we began a partnership with the Smithsonian Conservation Biology Institute and biologists in Mongolia and China to secure this species' place in the wild. Dr. Kate Jenks, one of our conservation biologists, is working in Hustai Nuruu National Park and will be placing satellite tracking collars on horses to learn where they travel and where they find food and water. This information will be used to help lift wild populations to more secure levels. Jeff Muntifering, another Zoo conservation biologist, is assisting our partners in northwestern China with conservation efforts for another reintroduced population of Asian wild horse.

### ACT FOR WILDLIFE

*Wild populations of the Asian wild horse are still in danger of extinction. That's one reason we launched the True Wild Horse campaign—to raise awareness and funds for their conservation and secure a future for Asian wild horses. You can help ensure the survival of the world's last truly wild horse by making a gift when you visit the Zoo or by visiting [truewildhorse.org](http://truewildhorse.org).*

## educating to inspire

The Minnesota Zoo has been home to Asian wild horses since opening in 1978, and today our guests can enjoy seeing seven Asian wild horses on the Northern Trail, including a foal born last year. Over the years, we have helped preserve these horses, educating our guests about their conservation status and sharing updates on the 44 foals born at the Minnesota Zoo.

In FY14, we offered a number of educational programs for children and adults to learn more about Asian wild horses and their relationships to domestic animals. In our Family Zoo Adventure, children and adults learned about different breeds of horses in "Hooray for Horses!" At Zoo Camps for preschool children, we offered "Horsin' Around" and introduced our young participants to our unique draft horses. And during a Zoo Safari field trip class called "Vanishing Animals," students learned about the role zoos play in the conservation of endangered species such as the Asian wild horse.





**Above~***The Minnesota Zoo has been involved in Asian wild horse population management since 1978, the year the Zoo opened. Thanks to zoos, field conservationists, and range countries, the Asian wild horse has now returned from the brink of extinction.*



**Below** ~Black rhinos are critically endangered; only about 5,000 survive. The Minnesota Zoo is working in Namibia, helping to save the last truly wild population of black rhinos.

*we are for the big and the small*





# around the world

## Saving the Desert Black Rhino

The Minnesota Zoo works with Namibian conservation organization Save the Rhino Trust on one of the world's most successful efforts to save the critically endangered black rhino. The rhinos' plight is critical. Each day in South Africa, more than three rhinos on average are killed to feed the surging black market for rhino horn. Our work is focused in Namibia, home to one third of the world's black rhino. As rhino poaching becomes more difficult in other countries, poachers are turning to Namibia.

Minnesota Zoo Conservation Biologist Jeff Muntiferer works year-round in Namibia's northwestern Kunene region, using science-based analyses to inform rhino management and working with local communities to protect the rhinos on their lands. Thanks to the community-based Rhino Ranger program, 98 percent of the black rhinos living on the region's expansive communal lands are now being monitored and protected. This past year, we trained 20 local Rhino Rangers to monitor black rhinos. We also initiated two responsible rhino tracking tourism activities, which provide further benefits to the local communities for protecting the desert black rhino.

### ACT FOR WILDLIFE

*Although rhinos live halfway around the world, we are proud that Minnesotans have stepped up to help ensure rhinos' survival. Donors contributed more than \$41,000 to support our work in Namibia this year, and they continue to make gifts to ensure that the next generation will be able to see desert black rhinos in the wild. We invite you to join us in these efforts by making a gift to the Desert Black Rhino Project. Learn more at [mnzoo.org/black-rhino](http://mnzoo.org/black-rhino).*



## educating to inspire

While the Minnesota Zoo does not have any critically endangered black rhinos, we have developed a new interactive educational exhibit featuring an adult rhino and calf sculpture near the entrance to the Tropics Trail. We invite guests to view these magnificent creatures while learning about their plight in the wild and the work we are doing to help them survive.

In 2014, we also took our story about the desert black rhino out into the community. The Zoo hosted an event in downtown Minneapolis and invited guests to hear Conservation Biologist Jeff Muntiferer talk about his work to protect and expand the Kunene Region's black rhino population. At the heart of our novel approach of training and working with local Rhino Rangers is the understanding that a future for Africa's wild rhino will only be secured when poaching becomes socially unacceptable at the local level—when rhinos become more valuable alive than dead.

# around the world

## Tigers, Our Keystone Species

No one knows tigers like we do. In 1982, the Minnesota Zoo developed one of the first Species Survival Plans (SSP) in order to preserve breeding populations of tigers in zoos and to raise awareness about their conservation. And we set the standard for keeping tigers in human care.

As a leader in tiger conservation, we launched and today manage the Tiger Conservation Campaign to raise awareness about wild tigers and funding for their survival. And the need is great: tigers once roamed across much of Asia. Today, only 3,200 tigers remain in the wild.

In 2014, we raised more than \$129,000 for the Tiger Conservation Campaign; since it was established in 2012, we have raised more than \$260,000. Gifts to the campaign support six conservation field projects, including work by our partners at the Wildlife Conservation Society on an anti-poaching program in the Russian Far East to protect Amur tigers and an initiative to reduce tiger-human conflicts in the tropical forests of Sumatra.

### ACT FOR WILDLIFE

*AZUL, the Zoo's young professionals organization, raised \$10,000 in support of the Tiger Conservation Campaign this year. Even our youngest Zoo guests have gotten in on the act: three sisters (ages six, nine, and ten) raised \$1,500 for tigers at their own tiger-themed fundraiser last summer.*

*Many products you use in your daily life may impact tiger habitats. You can help preserve tiger habitat by making informed shopping choices. To learn about buying sustainably harvested palm oil and Forest Stewardship Council certified products, view resources for hosting your own tiger fundraiser, or to make a gift in support of tiger conservation, visit our website at [mnzoo.org/tigercampaign](http://mnzoo.org/tigercampaign).*

## educating to inspire

The Minnesota Zoo's Amur tiger exhibit is one of the largest in North America. More than 40 tiger cubs have been born at the Minnesota Zoo through the years, and on any given day, guests can see our tigers roaming in either the Northern Trail tiger exhibit or the "base camp" exhibit.

Our team of educators and naturalists are experts at telling stories and sharing information about tigers and many of the animals at the Zoo. This past year, Zoo members participated in "Strollin' Safari," a guided Northern Trail tour for our littlest guests and their favorite adults who asked—*just what would it feel like to touch a tiger or a bear?* During summer camp for first and second graders, children spent a week of afternoons enjoying "Wolves & Dogs, Tigers & Cats" and learned how these wild predators compare to each other and how they differ from their domestic cousins. And on Math Days for elementary and middle school students, students learned how math is applied in the zoo workplace—*just how much food does a tiger eat per day?*





**Above**~ Vice President for Conservation Dr. Tara Harris visited the Russian Far East to learn about efforts to save the endangered Amur tiger. Along the Sea of Japan, she inspects a long line of tracks left by a tiger.



**Below**~Hawaiian monk seals are critically endangered; they are one of the rarest marine mammals in the world. Their population is currently declining at about four percent annually and is estimated at around 1,200 individuals.

*we are for the big and the small*





# at home and around the world

## Ulysses S. Seal Conservation Grants

Since its inception in 2002, our Ulysses S. Seal Fund has awarded 179 grants totaling nearly \$400,000 to 125 employee-championed wildlife conservation projects in 47 countries. Inspired employees apply for these competitive grants and are awarded funds to support their projects—sometimes they even participate in their projects in the field.

In 2014, the Zoo awarded nearly \$45,000 to 16 employee-championed projects. Nine of these involved Zoo staff actively participating in the project. For example, educator Galen Sjostrom traveled to Taiwan to support the Taiwan Black Bear Conservation Association, which is helping to conserve endangered Formosan black bears through scientific research, partnerships and public education. Zoologist Melanie Oerter traveled to Hawaii to work with several organizations that are helping to save the critically endangered Hawaiian monk seal and learn about conservation initiatives supporting the seals. And closer to home, Zoo veterinarian Tiffany Wolf is working with the Grand Portage Band of Chippewa to understand the timing and causes of moose calf mortality.

### ACT FOR WILDLIFE


*While the Ulysses S. Seal Conservation Grants program is offered only to Zoo staff, there are innumerable ways for you to act for wildlife. Whether it's becoming a citizen scientist or visiting the Zoo and participating in our "Meet A Wildlife Biologist" program, you can become actively engaged in helping to save wildlife.*



## educating to inspire

Kids are never too young to learn how they can make a difference in the world, and no one does it better than our Zoo when it comes to linking children's natural affinity for animals with their innate curiosity about how things work.

One of our most popular education programs, Zoo Safari, connects classroom lessons to the natural world through field trips to the Minnesota Zoo. Developed and coordinated in cooperation with individual school districts, Zoo Safari delivered 445 programs to 11,200 students, teachers and chaperones in 2014, offering unique opportunities to spark interest while promoting academic achievement. For some students, a Minnesota Zoo Safari field trip is their first and only visit to any zoo, and it is all free of charge to the students and the school district thanks to our corporate partners. *Who knows which of these students will be the next wildlife champion?*



**Big Bugs!**~Big Bugs!, sponsored by Think Mutual Bank and the Clean Water Land & Legacy Amendment, attracted guests who discovered 13 larger-than-life animatronic bugs, as well as a live bug exhibit featuring 19 different animal species.

# *this year at* **THE ZOO**

PAGE 24

[This Year at the Zoo] *we are for the curious and the wild at heart...*



~More than 111,000 guests interacted with 40+ different species of North American butterflies and moths at the **Aveda Butterfly Garden**.



**Brew at the Zoo** ~ This year marked the 6th annual Brew at the Zoo. More than 1,200 guests raised a glass for wildlife and contributed over \$82,000 for conservation and education programs at the Zoo.



~**Close Encounters** staff delivered 2,485 programs, reaching more than 150,000 Zoo guests, inviting them to learn about animal enrichment, interact with zookeepers, watch training demonstrations, and touch and observe fascinating critters.

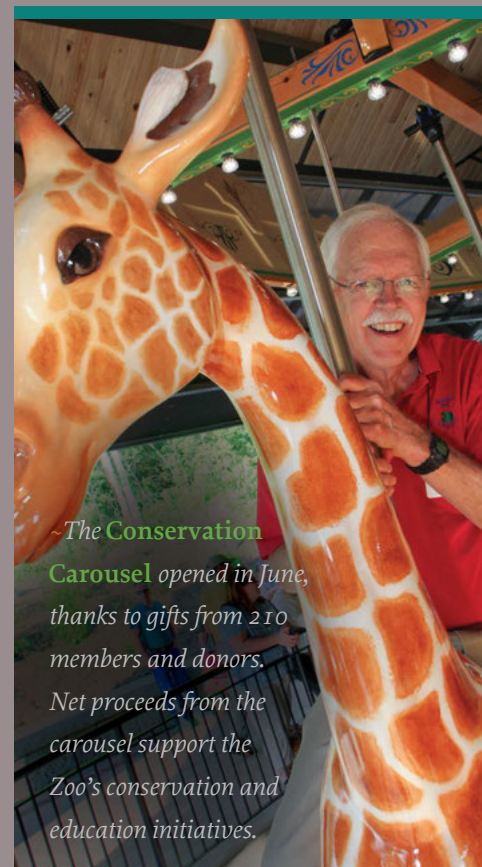


~The Zoo hosted its 26th Annual **Beastly Ball** in celebration of the new Conservation Carousel. "Round and Round, Up and Down" raised nearly \$475,000 for conservation and education programs. Thank you to WCCO TV's Jason DeRusha and Chair Aimée Dayhoff and her husband David, who welcomed 500 guests to the Zoo's premier fundraising gala.



*we are for the big and the small*

~The **Conservation Carousel** opened in June, thanks to gifts from 210 members and donors. Net proceeds from the carousel support the Zoo's conservation and education initiatives.







~**Farm Babies** introduced all sorts of new additions to the Farm—chicks, piglets, lambs, calves, ducklings, goat kids, and bunnies.



~**Math Day** inspires students to learn how math skills are applied in a zoo environment. Through student-led activity stations, 1,000 students answered grade-appropriate math problems related to everyday life at the Minnesota Zoo.



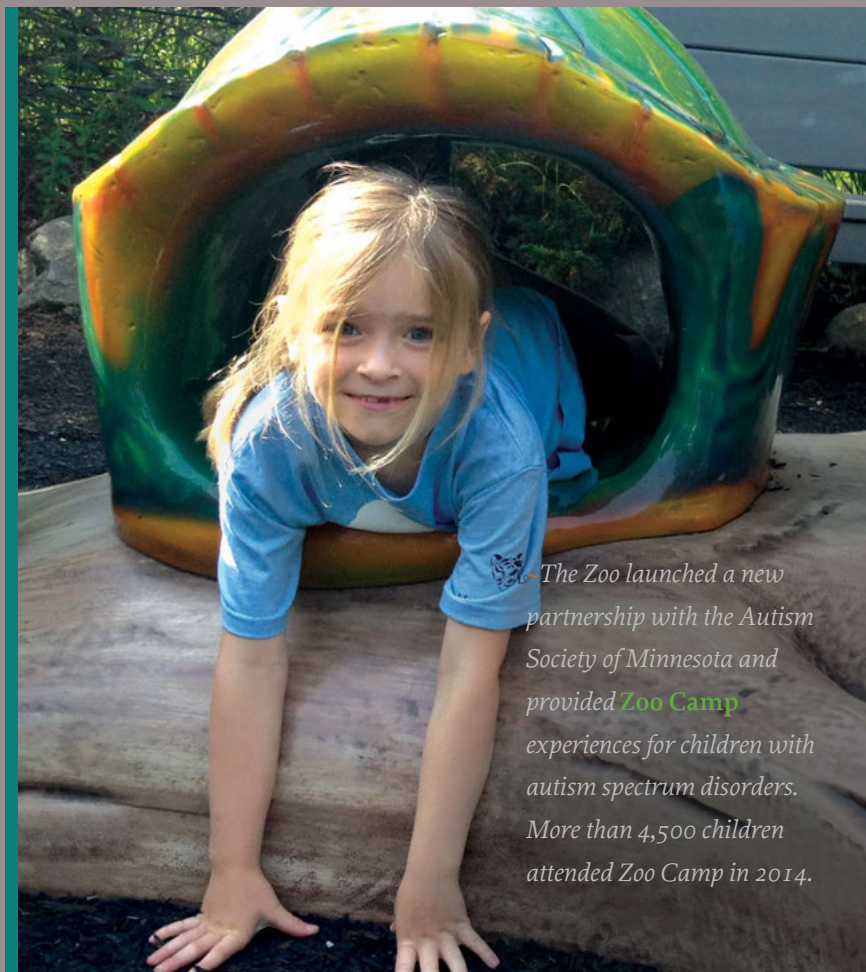
~More than 200 AZUL members and guests attended the third annual **Wild Night** gala at Mill City Nights, with Zoomobile animals, a silent auction, games, music and more.



~**Zoomobile**, the Zoo's premier educational outreach program, boasted a record year: it connected with 53,000 people. The Zoo's three vans traveled 32,500 miles, reaching 55 counties in Minnesota.



The Zoo broke ground on the new **Hanifil Family Wild Woods**, a nature-based play area, thanks to gifts totaling \$1.25 million.



The Zoo launched a new partnership with the Autism Society of Minnesota and provided **Zoo Camp** experiences for children with autism spectrum disorders. More than 4,500 children attended Zoo Camp in 2014.



# by the NUMBERS

*we are for the big and the small*

**4,785**

Total number of animals

**523**

Total number of species



**101**

Total number of endangered and threatened species

**93**

Total number of Minnesota species listed by the State as endangered or threatened



**\$625,000**

Amount provided by the Minnesota Environment and Natural Resources Trust Fund to support butterfly research through the DNR and at the Minnesota Zoo



**542,858**

Total number of participants in educational programs

**128,000**

Number of free admission passes distributed

**600 TONS**

Amount of animal bedding and waste composted on-site



**2**

Number of bison born at the Minnesota Zoo that will be released in a Minnesota State Park in 2015

**269**

Number of native wildlife species recorded on Zoo grounds

**1,116**

Number of volunteers donating time to the Zoo



**113,857**

Number of volunteer hours donated

**\$2,767,863**

Value of donated time

**3,479**

Total number of donors to the Minnesota Zoo Foundation



**175,000**

Number of Wings Financial World of Birds Show participants

# 2014 DONORS

*We thank all donors to the Minnesota Zoo. While every effort is made to ensure the accuracy of our records, if our report contains errors or omissions, please contact us at 952.431.9237 so that we may extend our apologies and correct our records.*

## Individuals and Family Foundations

### \$100,000+

Marilyn C. Benson\*  
Campbell Foundation  
The Paul and Suzanne Hanifl  
Foundation

### \$50,000–\$99,999

Sharon and Chester Ellingson III  
Donald Weesner Charitable Trust

### \$25,000–\$49,999

Edward Dayton Family Fund  
Karyle Hanson  
Joyce Huff  
Peter Maritz and Charlene Jundt  
Walton Family Foundation

### \$10,000–\$24,999

Audrey J. Clay  
Charles H. Clay Family CLAT  
Trust  
Ellie Crosby  
Ken and Linda Cutler  
Christian Dietrich  
Alan and Lollie Eidsness  
The Johnson Family  
Ray and Susan Johnson  
Kelly Family Fund  
John and Paula Kelly  
Julie Kunkel and Thomas Hall  
David and Anne Luther  
McCarthy Bjorklund Foundation  
Susan and Edwin McCarthy  
John and Aedie McEvoy  
Tim Mulcahy  
S. Bartley and Harriet V.K. Osborn  
Richard and Mary Ann Pedtke  
Charitable Foundation  
Bob and Celeste Rekieta  
Jeannine Rivet and Warren  
Herreid II  
The Taishoff Family Foundation  
Zicarelli Foundation

### \$5,000–\$9,999

Fred C. and Katherine B. Andersen  
Foundation  
The Arbogast Family  
Cynthia Arnold and Peter Stahl  
Gordon and Margaret Bailey  
Foundation  
Mathew Beaulieu  
Will and Judy Branning  
Connie Braziel  
Bill Busch  
Gary and Joan Capen

Andrew and Johanna Carrane  
Theodore J. and Alexandra S.  
Christianson  
Chad and Maggie Dayton  
Lee C. Ehmke  
Rodney H. Forristall  
Michael and Patricia Hatch  
James and Laurie Hayes  
Helios Foundation  
The John and Ruth Huss Fund  
Franz and Kersten Jevne  
Chuck and Jill Koosmann  
Ross E. Kramer, Messerli &  
Kramer  
Steven C. Leuthold Family  
Foundation  
Dana Lindsay and Tim Pabst  
Phyllis M. Maritz  
Matrix Foundation  
Dick and Joyce H. McFarland  
Family Fund  
Mary H. and J. Milo Meland  
Family Fund  
Marsha and Herbert Miller  
Mark and Katie Mortenson  
Phil and Cassy Ordway - Nushka  
Fund  
Michael M. Parish Family  
Lynne Rasmussen and Brian  
O'Connell  
Salem Foundation, Inc.  
Nancy Sand  
Pat Slaber and Dick Vogel  
Charitable Fund  
Terhuly Foundation Inc.  
Walker Family Foundation  
The Watchmaker Family  
The Frederick & Margaret L.  
Weyerhaeuser Foundation

### \$2,500–\$4,999

Anonymous  
Kurt and Donna Adams  
Barbara and Joe Ali  
Alkire Family Foundation  
Susan Arneson  
Seth and Nawal Asleson  
Bahl Foundation  
The James Ford Bell Foundation  
Robert and Sandra Burch  
Curtis L. Carlson Family  
Foundation  
Darrell and Lynne Christensen  
Richard and Theresa Davis  
Scott Dayton  
Philip and Donna Dobrzynski  
Eric and Tammy Galler  
Lori and Blake Grams  
Greystone Foundation

Raymond Hall  
Leigh and Judy Johnson  
Joe and Cathy Kalkman  
Steven and Anne Kern  
Donna Lindberg and Del Gerdes  
Melissa and Lynn Lindsay  
Marvin/Kirchner Family Fund of  
The Minneapolis Foundation  
Jane K. Mauer  
James Mayer and Rochelle Gunn  
Jay and Jill Mayer  
The S. and T. McCarthy Fund  
Michael and Lisa McGinn  
Christine M. McKnight  
Greg and DeLonne Miller  
Nicholson Family Foundation  
Paul F. Olson  
Tracy Peterson and Matthew  
Goettsch  
Joseph and Sara Pohlad  
Jennifer and Eric Przybilla  
Chris Roberts and Ric Larson  
The Runice Family  
Jack and Pam Safar  
Becki Sanford  
David Schmidt and Sara Klasky  
Joe C. and Amy Swedberg  
Jodi Standke  
Robert J. Ulrich and Diane Sillik  
Kevin and Laurel Wright  
Margaret and Angus Wurtele

### \$1,000–\$2,499

Anonymous (2)  
Michael Abegg  
Thomas and Amara Abood  
Ken Allen and Margaret Owen  
Sharon Allen and Michael  
Simpson  
Christopher and Collette Appert  
Judee Arnstein and Michael  
Lindsay  
Nancy and Fouad Azzam  
Andrew R. and Audrey L.  
Benjamin  
Matt and Stacy Bogart  
Laura and Brett Bordelon  
Carroll C. Brooks  
Joseph F. Buchan  
Forrest and Renee Burke  
Nicholas Burke and Susan Slattery  
Burke  
Elizabeth and Robert Burns  
Buscher Foundation  
Richard and Marcia Carthaus  
Susan Chin  
David Chizek MD  
Janis Clay and Elam Baer  
Michael Conley



The Cords Family Fund of the Lutheran Community Foundation  
 Kitty and David Crosby  
 Ken Darling  
 Donna J. Daubendiek and Robert K. Samuelson  
 Douglas & Wendy Dayton Foundation  
 Robert J. and Joan Dayton  
 James and Pamela Deal  
 Donald L. and Karen B. DeGenaro  
 The Dellwood Foundation  
 Jan Dickinson and Scott Veatch  
 Doug and Tricia Dirks  
 Mary C. Dolan  
 Kathy H. Drazen and Oliver W. Pittenger  
 Adrienne and Joshua English Scrimshaw  
 Bridget and Sean Ennevor  
 Mark and Shannon Evenstad  
 Kittie Fahey  
 Gary and JoAnn Fink  
 James and Christine Ford  
 Stephen and Jennifer Frenz  
 Katelynne Fulford  
 John and Suzanne Gappa  
 Roger Griffith and Jean Taylor  
 Raymond and Marian Gritche  
 Jim and Sharon Hale  
 Daniel and Diane Hallberg  
 Joshua Hanley and Margaret Stapleton  
 Michael and Shannon Happe  
 The James Hartzell Family Foundation  
 Matthew and Jacqueline Haughey  
 Jim and Joy Hayenga  
 Edwin and Elizabeth Hlavka  
 Darryl and Jo Holmstrom

Stan and Karen Hubbard  
 David and Shirley Hubers  
 Steve and Susie Jedlund  
 Alan R. and Judith E. Johnston  
 Keith and Karen Kaestner  
 Gail and Greg Kenton  
 Scott and Melinda Key  
 James and Michelle King  
 Lynn Kirk  
 Karen Knott and Soni Olson  
 Robert and Dana Kolb  
 Pat Koors  
 Jim and Sandy Kula  
 William and Carol Lahti  
 Greg and Kathy Lea  
 Jean and Laurence Lejeune  
 Ross and Bridget Levin Charitable Gift Fund of The Minneapolis Foundation  
 Longview Foundation  
 Frank J. Loth  
 Richard and Juanita Luis  
 Thomas L. and Susan A. Maggs  
 Steve and Kathi Mahle  
 The Mahley Family Foundation  
 Robert and Polly McCrea Family Fund  
 Clayton and Denise McNeff  
 Mary Ann McNeil and David Higgins  
 Justin and Stephanie McNeilus  
 Pamela Meixell and Chris Wold  
 Minnesota Zoo Volunteers  
 Susan Morisato and Tom Remec  
 Thomas and Diane Moyer  
 Paul Muldoon and Samantha Capen Muldoon  
 Katherine B. and Kingsley H.\* Murphy  
 Brady and Terry Narr  
 Philip and Katherine Nason Fund

of The Saint Paul Foundation  
 Laura and David Newinski  
 Eugene and Julie Ollila  
 Amy Owen  
 Christopher and Danielle Parish  
 Allegra Parker  
 JoAnne Pastel and William Dunlap  
 Patricia Ploetz  
 Prospect Creek Foundation  
 Paul and Molly Reppenhagen  
 Kathy Rice and Greg Loek  
 Ritz Family Foundation  
 Greg and Brandi Rogers  
 John and Lois Rogers  
 David and Jaimi Romans  
 Patricia Ronning Family Foundation  
 Michael M. Roos and Cindy Goplen  
 Hart Rosenblatt  
 Chris and Stephanie Rugg  
 The Rum Fund  
 Sanger Family Foundation  
 Frank and Stacy Sarno  
 Mendon F. Schutt Family Fund of The Minneapolis Foundation  
 Stephen and Mary Beth Seidlitz  
 Greg and Jennifer Sell  
 J. Thomas & Sharon M. Simpson Charitable Fund  
 William and Carin Simpson  
 Helene and Jeff Slocum  
 Jacqueline Smith  
 Rick and Jill Smith  
 Guy M. and Rebecca J. Stinson  
 Stone Pier Foundation on behalf of James G. & Megan M. Dayton  
 John and Diane Tapper  
 Doug and Sally Taylor

Brian Uhlhorn and Melissa Nonnemacher  
 Von Blon Family Charitable Trust  
 Rachelle and Eric Wan  
 Frank and Gina Weidner  
 Karel M. Weigel  
 White Pine Fund  
 The Whitney Foundation  
 Tyler, Tara, Henry, and Helen Young  
 Andy and Ginny Zarras

## \$500–\$999

Anonymous (2)  
 Sara and Ranjit Ahluwalia  
 Thomas and Marilyn Alderman  
 Matthew Allen, Sarah Vernon and Family  
 Bill and Nancy Althoff  
 Michele and Kenneth Alwin  
 David and Stephanie Anderson  
 Andrews Family Foundation  
 John Apitz and Mary Magnuson  
 James W. and Debra K. Arneson  
 David and Kathleen Axtell  
 Baillon Family Foundation, Inc.  
 Ronald and Gay Lynn Baukol  
 Josephine Benz Carpenter  
 Kristin and Tim Bianchi  
 Warren and Christine Bielke  
 Karl and Carol Biewald  
 Michelle H. Biros  
 Heather and Randy Bitzan  
 Susan and Paul Bohnsack  
 Jim and Michelle Bousheé  
 Mary S. Bowman  
 Peter and Maura Brew  
 Richard A. Brimacombe  
 Todd and Tami Brooks  
 Betsy Buckley and Dennis B. McGrath

## donor profile

\*Deceased

# peter maritz, 2013 stewardship award winner



Minnesota Zoo Board Chair Peter Maritz always has been fascinated by zoos. So it was no surprise when Peter accepted the call to join the Minnesota Zoo Board of Directors in 1997. In fact, he was thrilled to join a conservation organization committed to saving wildlife.

Not only is Peter an enthusiastic board member and Zoo supporter, he has also become an expert on zoos. When he got his doctoral degree from Hamline University in Public Administration, his dissertation topic was governance structures of zoos. The history of zoos as public institutions and as part of state government systems fascinated him.

Peter helped lead the Heart of the Zoo campaign, which built the award-winning *Russia's Grizzly Coast*, the new Target Learning Center, and the Cargill Environmental Education Center, and the campaign helped renovate the *Medtronic Minnesota Trail* and Central Plaza. He has served as the co-chair of the Beastly Ball with his wife Charlene Jundt (a former Zoo Board Chair); traveled with Zoo staff to see conservation in action overseas; and advocated for the Zoo at the State Capital.

In gratitude for his generous contributions and tireless leadership over the years, Peter was honored with the Minnesota Zoo's Stewardship Award in September 2013.

When Peter was asked what he is most proud of, he didn't miss a beat: "Seeing the Zoo become an organization dedicated to constantly improving itself," Peter says. "The Zoo is really hitting its stride."

## becki sanford



Over the years, Becki Sanford's passion for photography often brought her to the Minnesota Zoo where she found the perfect subjects for her photos. "There are so many beautiful and unusual animals just waiting to have

their portrait captured," said Becki. Her visits became so frequent that she decided it made sense to buy a Zoo membership. When Becki received an email inviting her to support the new Conservation Carousel, she decided to deepen her involvement and sponsored both the Rocky Mountains panel and the hippo through monthly gifts.

Once she began attending events and learning more about the Zoo's leadership in saving animals in the wild, Becki was inspired. To ensure the Zoo's conservation and education programs continue to teach future generations about the importance of preserving nature, Becki joined the Circle of Life Society by naming the Zoo as a major beneficiary in her will. When asked why she supports the Minnesota Zoo, Becki said, "There are so many worthy causes that one wonders if just one person can even make a difference. By supporting the Minnesota Zoo, I feel I am standing behind the staff in their efforts. They are so passionate and knowledgeable that I feel that they can't help but make a difference in the world. I am very honored to be able to support them."

Michelle Buettner  
Carrie and Brian Buhl  
Michael and Sharon Burstein  
Donna Byrne  
Ronald and Martha Caldwell  
Capen Family Fund  
Laura and Pete Carpenter  
CDF Foundation  
Cecil and Penny Chally  
Shirley Chambers and Felcia Ahrens  
Michael and Alexis Christie  
Karen Cohen  
Michael and Michelle Colbert  
Douglas and Sands Coleman  
Fund of The Minneapolis Foundation  
John and Kathryn Colwell  
Family Fund  
Rebecca and Michael Creglow  
Robert M. Crone and Mary Cameron-Crone  
Lance and Jen Crooks  
Jami and Jon Day

David and Aimée Dayhoff  
Matthew and Tamara Detert  
Mike and Lisa Doyle  
Wallace F. and Susan Hayes Droege Mueller  
Douglas B. Dudgeon  
William Dworsky  
David and Mary Ehmke  
Robin and Pam Ehrlich  
William H. and Carmelita W. Ellis  
Kimberly and Jeffery Engelhardt  
William and Sally Ericksen  
Daniel and Amy Farsht  
Michael and Patricia Feeney  
Adam and Jessica Fitzpatrick  
Donald and Sandra Flamm  
JoAnn M. Fleming  
Ann M. Foss  
Jean and Woody Fountain  
Heidi and John Franceschelli  
Jeffrey Geier and Catherine Brown  
Steven and Bonnie Goldsmith  
Goldstein Gift Fund  
Todd and Jennifer Graham  
Kendall and Suzanne Griffith  
Steve and Jenny Gullickson  
Gene Haaland and Sue Swenson  
Robert and Sharon Halva  
Lisa Hankins  
Wesley and Denise Hanna  
Jack Hansen and Joan Legare Hansen  
Scott Hawkinson  
The Hawn Family Fund of The Minneapolis Foundation  
Jenna and Matthew Haws  
The Head Family Foundation  
Nicole and Shannon Henry  
Gerald and Pam Herbig  
Richard and Carrie Higgins  
Leslie A. Holman  
Corey and Denise Holtz  
Bruce E. and Terry L. Hutchins  
Family Fund of The Minneapolis Foundation  
Eric J. Hyland  
Alfred and Brenda Iversen  
Jackson Family Charitable Fund  
Chris and Val Jackson  
Phyllis and Donald Kahn  
Justin and Susan Kelly  
Brad Kennedy  
Christopher and Michele Kennedy  
Lynette W. Kepp  
Patricia G. Kielb  
Erik and Cheryl Kolz

Armond and Stacey Krech  
Derek and Leslie Kuehn  
Edward and Pat Kuklock  
Chad and Tiffany LaBahn  
Gaetan and Cheryl Lambiase  
Anne Larsen Simonson  
Kimberly and David Larson  
Glenn and Laura Leonberger  
Laura and Timothy Leonhardt  
The Lilja Family Foundation of The Saint Paul Foundation  
Thomas and Mary Lindell  
Ruth Lindeman and Molly Feterl  
Deb and Tom Lindsay  
Jeffrey and Jennifer Little  
Harriet Ludwick  
John Rodriguez and Cynthia Lundheim  
Stephen C. Makousky  
Lori Marco and Bruce Quitmeyer  
Wendy and Larry Marik  
Robert and Caitlin Marlotte  
DeaDotta Martinson  
Thomas and Rebecca Mattison  
Natasha Matza  
Christy and Patrick McCain  
Robert and Kristin T. McClanahan  
Mary McDermott  
Judy and Malcolm W. McDonald  
Family Charitable Account  
Doug and Lori McDougal  
The McGuire Family  
Leo and Donna Meyer  
Wade and Angela Miller  
Gary M. and Joyce C. Miller  
Stephen and Elizabeth Miller  
Phillip and Gail Minerich  
Larry and Krysia Nagel  
Daniel and Victoria Neff  
Eleanor Thomas and Meredith Nelson  
Richard and Joan Newmark  
David and Billie Novy  
Judy and Jim O'Donnell  
Christopher and Stephanie Oleksy  
Gregory and Victoria Olson  
Alice Suchomel Olson and Matthew Olson  
Sandra A. and Kevin R. Ondracek  
Andrew Pann  
Katharine and Michael Pelican  
Jonathan and Erin Penne  
Dale and Jeri Peterson  
Lori A. Peterson  
Michael Pietig and Tara Peyerl  
Bill and Teri Popp  
John and Michele Potts



Nickolas and Judith Priadka  
Jane Prohaska and William Donohue  
Sarah and Doug Psick  
Jeffrey and Laura Putnam  
Butch and Ann Rahn  
Mark and Catherine Reardon  
Elizabeth Redleaf  
Heather Rein and Patrick Hynes  
Jon Reissner and Ann Ferreira  
John Repucci and Debra Patten-Repucci  
Gary and Marcia Richter  
Jim and Suzy Riesterer  
David and Suzy Robertson  
Kelly Rogers-Winston and Jeff Winston  
Scott and Lisa Rollin  
Mike and Toni Rosen Family Fund  
Jerome and Anne Rossi  
Jeffrey and Kjersti Ruehle  
Patricia and Michael Ryan  
Paul and Pat Sackett  
Kerry Sarnoski  
Shawn and Kathy Scovill, KS  
Copyrighting & Marketing Services  
George and Denise Shouse  
Merna Smith  
Michalene F. and Martin Souhrada  
Natalie Stephens  
Kari Storey  
Michael and Erin Strommen  
Regina and Mary Szabady  
Timothy and Naomi Tatarek  
Brian and Carolyn Taylor  
Therese, Gordon, Gracie, Danny, and Josh Tennessen Weil  
Stephen Thompson  
Karen M. Touchi-Peters  
Hugh A. Tyndall  
Robert S. and Mavis A. Voigt  
Melanie and Charlie Wahlquist  
Jeffrey Walker and Carey Becker  
Mark and Kimberly Walker  
Ellen Webster and Dennis Forkey  
Pamela A. Wheelock  
Kevin B. and Kelly J. Willis  
Wendy Willson Legge and Gordon E. Legge  
Genevieve Willson  
Frederick and Eleanor C. Winston  
Rufus R. and Elizabeth E. Winton  
Brenda and Roy Wirth  
Walter and Carol Yee  
Darren and Anupama Young  
Gordon Young  
Raina Young-McGowan and George McGowan

**\$250-\$499**

Anonymous (10)  
Adam and Shelley Abrams  
Deanne and Steven Adams

David and Cheryl Agin  
Jose Aguirre and Jaqueline Reyes  
Thomas and Carol Alberg  
Nathaniel and Jessica Albrecht  
Nanette Aldahondo and Benjamin Keist  
Jeremy and Sarah Alford  
Dominic and Brooke Allocco  
Max and Kim Alschlager  
Sum and Jennifer Ambur  
Brian and Darlene Amdahl  
Jodi and Jon Anderson  
Kristin Anderson and Justin Taylor  
Bill Anderson and Sue Sandvik  
Kapi and Tutu Andrasick  
Joan Andrew  
Sheri and Allan Angen  
Argall/Hibbs Foundation  
John and Karen Arnold  
Gail Astleford and Elizabeth Schlee  
Jane and Elizabeth Astleford  
Joel Ayers and Barbara Foss  
Mary and Lyle Babcock  
Marilyn and Richard Bach  
Ronald and Kay Bach  
John and Mary Bachhuber  
Mark and Carrie Bachman  
Thomas and Susan Bailey  
William Ballard  
Susie and A.J. Balukoff  
Derrick Banks  
Walter and Jane Barry  
Anna and Jon Barsness  
Adam and Tina Barylak  
Nick and Karen Basil  
Michael and Janet Bates  
Debra and Scott Battenfeld  
Rick and Judy Bawek  
Ellie Bayrd  
Theresa Bayrer and Larry DiVito  
Peter Beacom and Stephanie Linde  
Craig and Kay Beal  
Anna Belu and Bruce Lemmons  
Michael and Ellen Bendel-Stenzel  
Pamela Bennett  
Vern and Anne Benson  
Scott and Michele Bentz  
John and Rita Bergen  
David A. Berrien  
Colleen and Marlene Bertino  
Tanya and Joseph Bertrand  
Ted and Heather Bienapfl  
Mark and Christina Bigelow  
Jason and Michelle Bilyeu  
Rebecca and Robert Binder  
Steven and Debra Binder  
Timothy Blackstone and Jolynn Choy  
Crystal and Jon Blaha  
Margaret Blum  
Ben Bonneville and Randy Best  
Boren Family Fund  
Mark and Marie Borgen

Dawn and Tim Borgstahl  
Linda A. and Wolfgang D. Boss  
Robin Bosshart and JoDell Bendickson  
Carol V. Bossman  
Patty Bowman  
Roger and Diane Brack  
Trista and Samuel Brauer  
Rebecca Braun and Peter Goepfrich  
Tim and Claudia Braun  
Kathleen Brennan and Jack Lemmon  
Charles and Alice Bresnahan  
Peter and Katelyn Brewer  
Jeffrey and Kelly Brigham  
Linda Briles  
Brian Brown and Liz Gerlach  
Chris and Mindy Brown  
Diane and Kristin Bruder  
William and Kathy Brummond  
David and Wendy Buche  
Kerry Bundy and Joe Schwartzbauer  
Timothy and Lisa Burke  
Jan Burry and Richard Garcia  
Sean and April Burton  
Susan and Russell Burton  
Russell Butek and Lucy Altenhofen  
Megan and Brian Caauwe  
Mary Cade  
Mathew and Lynnelle Campeau  
Thomas and Sarah Carle  
Thomas and Marilyn Carman  
Nathaniel and Alexandra Caucutt  
Elizabeth and Richard Charbonneau  
Kyle and Lisa Christensen  
Howie and Sheri Christenson  
Nicole Christopher and Michael Stevens  
Chris and Caroline Church  
Sharon and Bill Clapp  
Christopher and Katharine Clark  
Susanne G. and Leonard A. Clark  
Cathleen Clauson  
The Cliff Foundation  
James W. Clifford and Terri D. Barreiro  
Warren and Susanne Cohen  
Mark and Brittney Cohn  
Erik and Rebekah Coleman  
Shelly and Erin Conley  
Debra and Charles Connelly  
Kari and Peter Cook  
Rex and Scott Cooper  
James and Barbara Corcoran  
Matthew and Jennifer Cords  
Kathy and Gerardo Cortes  
David and Robin Councilman  
Gwen and Kenneth Crabb, M.D.  
John and Denise Craig  
Douglas and Julie Craven  
Stewart and Lesley Crosby  
Jason and Kara Cross

John and Eva Cross  
Timothy and Nancy Crothers  
Kevin L. Crudden and Louise Segreto  
Deniz and Margarita Cultu  
Paul and Kathleen Czerniak  
Laurie and David Dahl  
Joanne and David Dalby  
Cecilia M. Dammeyer  
Veronica and Michael Dammeyer  
Matt Daus and Alyssa Gullickson  
Mark and Karen David  
Jeffrey and Joanne Davidson  
Edward and Pamela D'Avignon  
Bruce and Mary Davis  
Ellis R. Davis  
Robert and Shelley Davis  
Tamara Day and Pamela Wiche  
Catherine Deiner  
Robert and Jill DeMaster  
Charles M. Denny, Jr. and Carol E. Denny Fund  
RoyceAnn DesLauriers  
Jennifer DesMarais  
Sean and Brenda Devlin  
Steven and Linda Dias  
Patrick Dillon and DeAnne Dulas  
John and Sandra Dimond  
Sally and Stephen Dischinger  
Robert and Sharon Doane  
Edward and Sandra Doberstein  
Cesar and Annette Dominguez  
Timothy and Barbara Donnegan  
Nicole and Richard Dorsey  
John and Alex Doty  
Vera and Ross Ducept  
Daniel and Cheryl Dulas  
Dana and Amy Dullum  
Spencer and Steve Eddy  
Hannah and David Edwards  
Paul and Katy Ehlen  
Behrnt and Sharon Eid  
Peter Eisenberg and Mary Cajacob  
Nick and Julie Eleftheriou  
Luke Elfner  
Lorraine Eliason  
Laura and Shane Ellenburg  
Jennica and Michael Elliott  
Kelly and Bradley Elvestad  
Edee and Hartley Erickson  
Jessica and Adam Erickson  
Molly Faricy and Peter Sullivan  
William and Kathleen Farley  
Dustin and Sabrina Fay  
Alexandra and Travis Feller  
Derek Fernholz and Matt Erdal  
Benjamin and Rebecca Field  
Ben Findley and Sarah Houle  
Carol Fisher  
Steve and Susan Flack  
Talisyn Flagg and Randall Thorson  
Justin and Elizabeth Fletcher  
Donna and Paul Floyd  
Joseph Francisco

\*Deceased

John and Joan Frank	Glenn S. Haller, M.D.	James and Judith Huddleston
Peter and Terry Frank	Randy and Becky Hanna	Worth L. Hudspeth
Jeff and Jennna Frazee	Diane M. Hanson	Bruce E. and Terry L. Hutchins
Jay and Sheryl Fredericks	Nathan and Rachel Hanson	Family Fund
Robert and Gretchen Freeman	Jerry and Valorie Harlow	Deanna Iesh
Josh and Colette Friedrichs	Steven Harmer	Bart and Jodi Ikens
Aaron From	Tara Harris and Kevin Potts	Kathleen R. and David P.
Angie and Paul Frykman	Joseph and Ashley Hasling	Ingraham
Robert and Ann Furst	Jody and Paul Hassing	Rex and Monica Ingram
Evan and Alison Fust	Larry and Ann Hastings	Taryn Ishaug
Christine and Edward Gage	Nick and Stephanie Hauschild	Troy and Jenna Iverson
Mary Gainey	Robert and Sally Hauser	Raymond and Judy Jackson
Jenna and Susan Galazen	Stephanie and John Hawkins	Paul Jaeb
Stuart E. Gale*	Andrea and Charles Hays	David Jarzyna and Susan White-
Ellen Gallagher	Paige Hays and Brian Hilstrom	Jarzyna
Jeremiah and Karen Gallivan	Christa and Ryan Head	Jennifer Jasinski
Rodney and Christine Garbe	Mark Head and Andrea Nazarian	Brian and Susan Jaskowiak
Maia Garcia	Keith and Beth Heaton	Steven and Susan Jedlund
Meghan and Benjamin Gardner	Jeremy and Megan Hebrink	Mark Jemison
Michele and Michael J. Garrison	Edward and Marla Heffernan	Michael Jendrysik and Melissa
Deborah Garton and Ferdinand	Heidi and David Hegenbarth	Gagner
Schlapper	David and Barbara Hegewald	Ralph Jensen and Catherine
Karen J. Garvin	Harold and Katrina Heinze	Wolfe-Jenson
Kristine and Joseph Gaustad	Donald Helgeson and Sue	Edna Johnson
Pat Gilbertson	Shepard	Gary Johnson
Abra and Scott Gillman	Stefan and Lonnie Helgeson	Guy and Jean Johnson
Marcia E. Glick and Erik Lindberg	Family	James Johnson and Kita McVay
Ehrhard and Bonnie Goebel	Joel and Deb Hendrickson	Jeff and Danyel Johnson
Janet Goehle and Ron Wahlberg	LeeAnn Hendrickson	Jim and Nancy Johnson
Michael and Sharon Goehring	Annette P. Henkel	Kama and Steve Johnson
Michael and Elizabeth Gorman	Peter and Georgene Herlofsky	Matthew and Leslie Johnson
Richard and Pat Goter	Susan Herlofsky and Geoff	Paul Johnson and Jane Hogan
Tim Grady and Catherine Allan	Isaacman	Richard and Bonnie Johnson
Rob and Jenn Graff	John and Diane Herman	Richard Johnson and Mary
Anne and Josh Graham	Kathryn and James Herman	Kalish-Johnson
Andrew and Monica Graham	S. Andrew Heu and	Ryan and Dawn Johnson
Justin, Becky, and Everett	Alyssa K. Vang	Thad and Suzanne Johnson
Grammens	Diane and Jeff Higgins	Todd and Juli Johnson
Susan M. and Robert C. Grant	Bill Hilliard	Heather Johnston and Jason Koch
Terence and Billie Gray	Randall and Teresa Hillson	Michael and Aquarius Jones
Robert and Cynthia Green	Julieanna and Aaron Hinc	Jeff and Suzanne Jones
Greene Family Foundation	Gregg and Diana Hipple	Cynthia Rae Junk and Linda
Michelle and Jason Grey	Dick Hjelseth and Sarah	Brown
Nathan and Melissa Griffin	Schumacher	Lori and Anthony Jurek
Sarah Griffiths	Kara and Patrick Hobart	Susan and Dick Justman
Emily Groebner-Albrecht and	Adam Hoenshell and Maddie	Arthur and Judith Jytyla
Luke Albrecht	Quinn	Daniel and Lori Kadrlík
Katy Gronewold	Becky and Darwin Hofer	Joy and Tatsushi Kamano
Karen Gruetzmacher and Lynn	Nancy and Gregory Hoffmann	Elizabeth Kane and Nick Klebs
Markun	Patti and Laura Hoheisel	Elaine Kaney
Elizabeth and Nathan Grzybek	Randall and Julie Holmes	Rebecca and Nickole Karp
Amy and Julie Gudmestad	Kevin Holzer and Mary Homan	Greg and Karen Karpenko
James and Nancy Guerino	Mark and Lynn Homan	Daniel and Robin Kartes
Jessica and Derek Gunderson	Mildred Homan	Erin and Jared Kary
Sameer Gupta and Rebecca	Stanley and Jane Hooper	Andrew and Virginia Kass
Ameduri	Michael and Elizabeth	Cheryl Kedrowski and Victor
Kyle and Angela Gustafson	Hopfenspirger	Barocas
Mark and Cynthia Haertzen	Mark Howerter and Maria	Daniel and Dana Keeley
Matthew and Kathryn Hajicek	Burgland-Howerter	Cisa and Andrew Keller



Julia Kelley and Charles Sharratt  
 Debra Kendall and Taylor Kendall  
 Will and Linda S. Kenny  
 Laurel and Ryon Kilde  
 Kristen King  
 William A. King  
 Claudia and James Kinville  
 Jan Kispert  
 Carlton Kittleson  
 Brian Kleinke and Erin Winchell  
 Josh and Jackie Kline  
 Sarah Kline-Stensvold and Jim Stensvold  
 Steve and Barb Knapp  
 Thomas Knickelbine and Heidi Chen  
 Robert and Michelle Knight  
 John Knoedler and Maureen Kane  
 Joseph and Nancy Knollenberg  
 Agnes and Bryan Koehn  
 Sarah Kogut and Harold Adams  
 Ted and Marjorie Kolderie  
 Richard and Susan Kopher  
 The Kopitzke Family  
 David and Ann Koppe  
 David Korus  
 Danielle and Demetrios Kouzoukas  
 Tony R. and Beverly D. Krall  
 Mark and Juleen Krings  
 Scott and Stephanie Krischuk  
 Dominique and Jason Kuechle  
 Valerian and Carolyn Kuechle  
 William C. and Diane O. Kuhlmann  
 Robert Kulzer  
 Susan and Don Kunelius  
 David and Wendy Kunz  
 Shelley Kurzeka-Jung and Tom Jung  
 Jonathan C. Lacey  
 Ryan and Gretchen Lake  
 Anne Lambert and Jessica Viestenz  
 Bonnie and John Lang  
 Tom and Virginia Lang  
 Nikolai Langlois and Abigail Leshner  
 Susan Larkin  
 Amber and Mary Larson  
 Gregory Larson  
 Brian and Pam Larson  
 Michelle and Ian Lasics  
 Thomas and Sara Laughlin  
 Tiffany Lederle  
 Mary Lee  
 Rebecca and David Legler  
 William and Sharol Lehnertz  
 Nancy A. Leitch, M.D.  
 Dave and Barbara Leveille  
 Mary Kay and Bruce Lick  
 Brandon and Deborah Lilly  
 Stephen Lillyblad  
 Randall Lindberg and Grace Li  
 Meggen Lindsay Berlute and Peter

Berlute  
 Paul and Kristen Lindstrom  
 Jared Linsly and Marisa Cuneo-Linsly  
 M. Rebecca Loader and Michael Ritchie  
 Nancy and Thomas Loesch  
 Kasey and Scott Lombardi  
 Matthew and Jennifer Lorenz  
 Jennifer and Brian Lorsung  
 Rob, Rochelle and Rylee Lorton  
 Frank Lucchesi  
 Tristan Lundblad and Tiffany Caffey  
 Kevin and Tracy Lundholm  
 Andrew and Amy Maas  
 Audre MacAdam\*  
 Bob and Pam MacDonald  
 Lois M. Mack  
 W. Duncan & Nivin MacMillan Foundation  
 Brent and Mitzi Magid  
 Tasslyn and Dan Magnusson  
 Claus T. and Susan L. Mahler  
 Darcy Malard Johnson and Chad Johnson  
 Richard and Hanae Mansfield  
 Sarah and Matthew Marcus  
 Steven and Carla Marich  
 Marnie and Jordan Marmet  
 Susan and David Marsh  
 Chandra and Lee Marshall  
 Jordan and Cari Martell  
 Gwendolyn Martin and Trisa Scott  
 Susan I. Marvin Fund  
 John Marvin  
 Sarah Marvin and Carolina Smith  
 Rick and Jennifer Mattox  
 Matthew and Sandra McCarthy  
 Peter McCloud and Amy Irvin  
 McCormick Hadley Family Fund  
 Thea McCrossen  
 Aja McCullough Beers and Eric Beers  
 Kimberly and Daniel McDonald  
 McDonald-Watschke Family  
 Paul McGuire  
 Chris McNabney  
 McNeill Family  
 Grant and Ame McRandall  
 Matthew and Jillian Means  
 Anne Meehan and Luis Porrata  
 Deb Melchert and Rich Grundman  
 Karin and Michael Meloch  
 Dale and LeAnn Meyer  
 Jim and Judy Meyer  
 Mark and Patricia Mielke  
 Mark and Sara Migliori  
 Linda Miller  
 Richard and Susan Milteer  
 James Mingus  
 Theresa Mish  
 Jaime Modiano

Naomi and Mark Moeller  
 Daniel Moen and Diane Bastyr  
 Dale and Carol Molback  
 James and Carol Moller  
 Miguel and Tonya Montesinos  
 Judith Montey  
 Becky and Chris Moody  
 Thomas and Christine Moore  
 James and Elizabeth Moore  
 Patrick and Kristina Moore  
 Ian and Beth Moorhead  
 Jayde and Melanie Mord  
 Gary Morgan and Pam Lanning  
 Scott, Sarah, and Axel Morgan  
 Susan H. and Inar Morics  
 Kelly Moritz and Chad Martin  
 Rachel and Justin Morris  
 Jon and Stacy Mrozek  
 Vincent and Susan Muehe  
 John and Charlene Mueller  
 Karen Mueller  
 Ken and Patty Mulcahy  
 William and Chouhei Mullin  
 Rani Murdoch Zappa and James Zappa  
 James Murphy  
 Mary M. Murphy  
 Patty and David Murphy Family Fund  
 Ray and Melissa Murray  
 Rochelle and John Murray  
 Jay and Catherine Myers  
 Karla and Peter B. Myers  
 Patty and Dale Nachman  
 Patrice Nadeau and Stephen Trudeau  
 Bridget and Bennett Nason  
 Brandon and Karen Nathan  
 Seth and Elizabeth Nelsen  
 Dennis G. Nelson and Barbara A. Franta Family Fund  
 Bruce and Jill Nelson  
 Diane M. Nelson  
 Ed Nelson  
 Kenneth and Jennifer Nelson  
 Vonnice Nelson  
 Martin and Barbara Nergaard  
 Nikki Nethercot-Niermann and Micah Niermann  
 Christie and Win Neuger  
 Jason and Hallie Neuhaus  
 Gregory and Suzanne Niemi  
 Christopher Niess  
 Mark E. Niznik  
 Scott and Victoria Nordeen  
 Jeff and Kelly Nowicki  
 Timothy O. O'Connor and Charlene Goeman  
 James and Sonja Odland  
 Kathleen Olona  
 Amy L. Olsen  
 Denise Olsen and Michaela Ohman  
 Arden Olson and Jennifer Oberstar  
 Kevin and Dana Olson

Jeremy and Rachel Olson  
 Thomas and Meredith Olson  
 John and Heather Olufson  
 Dee and Brian O'Malley  
 Ahmad and Ruth Orandi  
 Angie and Dan Oster  
 Darryle and Dawn Owens  
 Jay and Jodi Palda  
 Ann and Paul Palmer  
 Ronald Parish  
 Gregg Parmentier  
 Joseph B. and Dardra Pawlikowski  
 Stephen and Cheryl Pearson  
 Andrea and Rick Pelletier  
 Debra Perry and Lou Riebe  
 Frank and Patricia Pesta  
 Brian and Darla Peters  
 Josh and Allison Peterson  
 Susan and Roland Peterson  
 Ruth Petran and Roger Olsen  
 Doug and MaryKay Pewowaruk  
 Steven and Amy Pfarr  
 David and Jennelle Pickit  
 Susan M. and Andrew Pieper  
 Deb Placek-Peterson and Gregg Peterson  
 Vincent Platt and Anne Uhde-Platt  
 James and Verle Polglase  
 Ryan and Andrea Poppinga  
 Kenneth Preimesberger  
 Jacqueline M. Prince  
 Randall Propp and Randy Nelson  
 Al and Paula Putirskis  
 Shawn and Crystal Quarberg  
 Richard and Lois Quinn  
 Dawn and Joe Raasch  
 Shawn and Chelsea Radke  
 Mike, Jody, Emily and Benjamin Rannow  
 Amy and Peter Reichert  
 Roberta Reilly  
 James and Bonnie Reimann  
 James and Kahoru Reinert  
 Susan B. and Charles O. Reinhart  
 Ralph Reinheimer  
 H. Cris and Linda M. Remucal  
 Jack and Marilyn Rhatigan  
 Shannon Rhatigan and Christopher Olsen  
 Nancy and Kevin Rhein  
 Kathy Rice and Chuck Strinz  
 Willis and Jo Ann Rich  
 Donald and Dorothy Richardson  
 Jerilyn and Tim Rief  
 Timothy and Carol Risdal  
 Karen and Douglas Ritsema  
 Christopher and Amanda Ritz  
 Kelly and Rocky Robbert  
 Jeff and Mary Jo Roberg  
 Mary Beth Robinson  
 Meghan and Jeff Rodgers  
 Robert Roediger and Cheryl Nelson Roediger  
 Julie and Alan Roemen

## the clay family

The Clay family and the Minnesota Zoo have a long history together. Charles (Chuck) Clay was on the Citizens League Board in 1966 when a League report introduced the idea of a modern conservation and science-based metropolitan zoo. The Clays quickly became charter members of the “New Zoo” when it opened in 1978.

The family, which includes Audrey Clay, Sheldon and Carol Clay, Janis Clay and Elam Baer, and Steven and Amy Clay, is honored to continue the support. Janis has served on the Zoo Foundation Board since 2012. When Chuck passed away, his wife Audrey established a charitable trust in his name, inspired by Chuck’s love of nature, culture, education, and social justice. Trustees Sheldon, Janis and Steve find the Zoo’s conservation and education efforts fit that inspiration perfectly.

Audrey was among the first supporters for the new Conservation Carousel, sponsoring the jaguar. The family also sponsored a bench and the ladybug. Audrey captured the family’s enthusiasm in her plaque for the Carousel: “A jaguar in the wild is more fun than a Jaguar in the garage.”



Richard Rogozinski and Diane Torrey  
Kati and Jason Romanowski  
Sheri Rosen and Jeremie Kass  
Robert Rosenbaum and Maggie Gilbert  
Michael Rosow and Mona Peterson Rosow  
Claire and Scott Ross  
Scott and Angela Ross  
Kimberlee and Dale Rosten  
Brent and Lisa Rothgeb  
Judith Rouse  
Charles and Priscilla Ruemping  
Jeff and Kathy Rulland  
Suzanne and Mark Runkel  
Tim and Nicole Russell  
Mark and Nancy Rustad  
Ryan Family Donor Advised Fund  
Tricia and Thomas Ryan  
James and Andrea Sakara  
Dennis and Melva Saliny  
Pamela and Lynn Salmi  
Cathy Sampson  
Elizabeth Sanborn and Nicholas Zimet  
Nick and Maribeth Sandager  
Craig and Becky Sandbulte  
Karey and Eric Sargent  
Camille and Paul Sasik  
Elizabeth Sathers and Rebecca Hanson  
Georgie and Jim Saumweber  
Stacey Scarcella and Donna Laurence  
The Scherer Family  
Kyle and Vanesa Schmidt  
Mark A. Schmidt  
Jeffery Schmitz and Nancy Cuno-Schmitz  
William and Darlene Schneider  
Gary R. Schoener and V. Katherine Gray  
Chris and Cindy Schreier  
Schugel Family  
Dennis and Pamela Schulstad  
Kris Ann, Chris, Noah, Lucy, and Wyatt Schultz  
Gregory Schuur and Bee Wee  
Mary and Chris Schwartz

Melissa and Travis Scoles  
Sarah and John Seger  
Mark O. and Suzanne Senn  
Amber and Brian Sevald  
Paul and Susan Severson  
Katherine Shannon  
Thomas and Margaret Shannon  
Kelly L. and Pete D. Shelquist  
Sonja Short and Mike Vraa  
Willard C. Shull III  
Bill and Sandy Sleck  
Catherine and Dave Smisek  
Arthur Smith and Marcia Thoen  
Dale and Jan Smith  
James and Joanne Smith  
Michele and Tom Smith  
Monica Smith and Duane Heikkinen  
Stacey L. Smith  
Alyssa Sommer Larson and Ed Larson  
Robert and Nancy Sommerdorf  
John and Marsha Soucheray  
Benjamin Speakman and Sigrid Rea  
Sharon M. Sperrick  
The Spurgeon Family - Trent, Diana, Lilly, and Quinn  
Dan and Jacqueline St. Onge  
Helga G. Stambaugh  
Melissa and Wayne Steege  
Michele and Brian Steglich  
George and Linda Steiner  
Amy and Chad Stelzig  
Tamara and John Stern  
Martin and Mary Sterner  
Joe and Georgianna Stibal  
Michael and Shirley Stickle  
Nancy and Denis Stoddard  
Joe and Carol Stoebner  
Robert Story and Ashley Wencel  
Robert and Judith Straub  
Mark and Joan Strobel  
Doris Strong and Jessica and Bill Karaf  
Martin and Erin Stuart  
The Suemnig Family  
Elizabeth Sullivan and Charity Burton  
Amy and John Sutton

Mark Swanson  
Randy Swanson  
Scott and Carmen Swanson  
Jean Sweeney  
Michael and Karlin Symons  
The Alfred E. and Margaret I. Syring Fund  
Samuel and Erin Tashima  
Saul Taylor  
Mark S. and Brenda J. Teats  
Theisen Infinity Foundation  
Kary and Andrew Thelander  
Kim Thomas  
Benjiman and Jennifer Thompson  
Scott and Samantha Thompson  
Nathan Tighe and Ashley Hall  
Ronald L. Tilson\*  
Cesare and Olivia Tise  
Patrick and Sandra Tokach  
Rachael and Marshall Tokheim  
William and Deborah Tomczyk  
Rosalynn Torralba and John Renze  
Mary and Bryan Trandem  
Jon and Donna Tremmel  
Timothy and Anne Trujillo  
Scott and Kimberly Tulgren  
Thomas N. and Virginia Turba  
Cheryl and Kelli Turcotte  
David and Constance Tyler  
Paul and Carissa Tyler  
Rita Ulrich  
Mark and Julia Utz Donor Advised Fund  
Michele Vaillancourt and Brent Wennberg  
Gerhardt and Stephanie VanDerBeek  
Joseph and Karen Vandermark  
Douglas and Patricia Vayda  
James and Katherine Vetter  
Melissa and Jacob Vevea  
James and Cheryl Viera  
Ann and Ansis Viksnins  
Carissa and Bryan Vincent  
David Vogt  
Elisa and Daniel Volk  
Bill Von Bank  
Emily Wacker  
Carla and David Wagner



Thomas and Rose Wahl  
Dennis and Joyce Wahr  
Michael J. Walker  
David and Andrea Walkosz  
Joel and Jessica Wandrey  
Marian A. Watson  
Eugenia A. Way  
Anne Weber-Smith and Steve Smith  
Catherine and Tim Wegener  
David J. Weiner Foundation  
Susan Weingarden  
Joanie Weis  
Diana and William P. Weller  
Christopher and Jennifer Wells  
The Jeffrey and Mary Werbalowsky Philanthropic Fund  
Gary and Mary Wernersbach  
John and Julie Whelan  
Malinda and Jason White  
Andrea Wichmann and Denise Piotrowski  
Charles Willcox  
Annette and Larry Williams  
Joe and Selma Witcher  
Jeff and Natalie Wobbema  
Greg and Kim Wolenberg  
Michael and Michelle Wood  
Sharon L. Wood  
Mathew and Christina Woodlee  
Andrew and Delilah Worcester  
Linda and James Wray  
David Wren and Juliana Daklin-Wren  
Michael and Susie Wuollett  
Mark and Sarah Yamaguchi  
Elizabeth and David Yorek  
Peter and Susanna Young  
David and Christine Yussen  
Helen and Michael Zauha

## Conservation Carousel

**\$2,500+**

Anonymous (2)  
Alexandra O. Bjorklund  
Will and Judy Branning  
Connie Braziel  
Carmen and Jim Campbell  
Gary and Joan Capen  
Andrew and Johanna Carrane  
Audrey J. Clay  
Janis Clay and Elam Baer  
Sheldon and Carol Clay  
Steven and Amy Clay  
Construction Cost Consultants  
Chad and Maggie Dayton  
John W. and Arlene M. Dayton  
Jim and Pam Deal  
Lee C. Ehmke  
Alan and Lollie Eidsness  
Sharon and Chester Ellingson III  
Ernst & Young LLP  
Eric and Tammy Galler

Karyle Hanson  
Michael and Patricia Hatch  
Roberta W. Hedge  
Joyce Huff  
John and Ruth Huss  
Ray and Susan Johnson  
The Johnson Family  
Joe and Cathy Kalkman  
The Kelly Family  
Juliana and Kevin Kelly (Helios Foundation)  
Steven and Anne Kern  
Scott and Melinda Key  
John Kirchner and Katy Marvin Kirchner  
Chuck and Jill Koosmann  
Ross E. Kramer, Messerli & Kramer  
Julie Kunkel and Thomas Hall  
Bridget and Ross Levin  
Donna Lindberg  
Melissa Parker Lindsay  
M. A. Mortenson Company  
Phyllis M. Maritz  
James Mayer and Rochelle Gunn  
Jay and Jill Mayer  
Mary Ann McNeil and David Higgins  
Marsha and Herbert Miller  
Minnesota Zoo Members  
MOM Brands  
Samantha and Paul Muldoon  
The Estate of Tom Opem  
Michael M. Parish Family  
Christopher and Danielle Parish  
Richard and Mary Ann Pedtke  
Pentair  
Joseph and Sara Pohlad  
Jennifer and Eric Przybilla  
Tyler, Jacob and Hadyn Quitmeyer  
Lynne Rasmussen and Brian O'Connell  
Jeannine Rivet and Warren Herreid II  
RMC Learning Solutions  
Chris and Stephanie Rugg  
Jack and Pam Safar  
Nancy Sand  
Becki Sanford  
Sterling State Bank  
Conner, Tyler, Wendy, and Ted Storlie  
The Taishoff Family Foundation  
Target  
The Toro Giving Program  
Uponor  
Richard Vogel and Pat Slaber  
Walker Family Foundation  
Wells Fargo Bank Minnesota  
Zicarelli Family

Lynne Rasmussen and Brian O'Connell

Jeannine Rivet and Warren Herreid II

RMC Learning Solutions  
Chris and Stephanie Rugg

Jack and Pam Safar

Nancy Sand

Becki Sanford

Sterling State Bank

Conner, Tyler, Wendy, and Ted Storlie

The Taishoff Family Foundation  
Target

The Toro Giving Program

Uponor

Richard Vogel and Pat Slaber

Walker Family Foundation

Wells Fargo Bank Minnesota

Zicarelli Family

**\$250–\$2,499**

Affiliated Pediatric Dentists, P.A., Dentistry for Children and Adolescents

Dominic and Brooke Allocco

David and Kathleen Axtell in memory of Victoria Axtell  
Marilyn and Richard Bach  
Karl and Carol Biewald in memory of Heidi Biewald  
Crystal and Jon Blaha  
Allison Blaisdell in honor of Noah and Alex Blaisdell  
Susan and Paul Bohnsack  
Kathleen Brennan and Jack Lemmon  
Robert and Sandra Burch  
Donna Byrne in honor of Adiv Paradise  
Melinda, Patrick, Will, and Matt Conness  
Rebecca and Michael Creglow  
Linda and Bob Ditmore  
Kathy H. Drazen and Oliver W. Pittenger  
David and Mary Ehmke in honor of Lee Ehmke  
Jennica and Michael Elliott in memory of Maggie Jo Elliott  
William and Sally Ericksen in loving memory of Aaron Jothan  
Cooper, Piper, and Jasper Foss  
Rodney and Christine Garbe  
Gemini Incorporated on behalf of The Groenke Family

Girl Scouts MN-WI RV Troop 10170–Kia Birnbaum, Isabel Milano, Amelia Rolf  
Justin, Becky, and Everett Grammens  
Raymond and Marian Gritche  
Elizabeth and Nathan Grzybek in honor of grandchildren Alexis, Matt, Jeremiah, Alecia, and Isaiah  
Wesley and Denise Hanna in honor of Jace, Tate, Collin, Claire, and Caitlin  
Gerald and Pam Herbig  
S. Andrew Heu and Family  
Dick Hjelseth and Sarah Schumacher in honor of Mikaela Hjelseth  
Darryl and Jo Holmstrom  
Corey and Denise Holtz  
Michael and Elizabeth Hopfenspirger in honor of Evan and Marin Hopfenspirger  
In the name of Kate Horwich  
Arthur and Judith Jyttyla  
David Jarzyna and Susan White-Jarzyna in memory of Nellie Steve and Susie Jedlund in memory of Don Schoeller  
Alice Johnson

\*Deceased

## donor profile

### marilyn benson

When generous and long-time donor, former volunteer, and Circle of Life Society member Marilyn Benson came to the Minnesota Zoo, magic happened. Stories came tumbling out so quickly that by the time she was done, breathless with enthusiasm, everyone around her was caught up in her passion for wild animals. Marilyn loved the Minnesota Zoo and visited frequently until she passed away last year.

In her final years, she and her caregiver would come to the Zoo to visit our grizzly bears Kenai, Haines, and Sadie. Shortly before the dolphins' departure, she came to say goodbye to Semo and Allie. She told staff that she wasn't upset about the dolphins' leaving because she knew the Zoo would only do what was best for every animal in its care.

Marilyn was a special education teacher for more than 25 years. She was also a world traveler, an adventurer, a storyteller, and a caring and warm friend. And when it was time for her to say goodbye to her beloved Minnesota Zoo, she remembered it in her will. Marilyn's estate provided nearly a half million dollars to our Zoo, and her generosity has made an extraordinary difference to our work. We miss her dearly. Marilyn will always be a cherished friend of the Minnesota Zoo.

## donor profile

# wings financial



Sometimes things just match up perfectly. Take, for example, Wings Financial, one of the nation's largest credit unions, originally dedicated exclusively to the aviation industry. This past year, Wings Financial became the new sponsor of the

*Wings Financial World of Birds Show*, one of the Zoo's most popular attractions that celebrates animals that fly—birds, of course, many of which fly over guests' heads during the show. The *Wings Financial World of Birds Show* provides extraordinary opportunities to learn about our feathered friends while being entertained by knowledgeable and engaging Zoo staff.

Equally as important as Wings' financial support is the support of its President and CEO Frank Weidner who recently joined the Minnesota Zoo's Board of Trustees. Other Wings Financial employees and members also have shown a commitment to and interest in our Minnesota Zoo. It truly is a match made in heaven, combining the very best of people, corporate generosity, and a commitment to teach about and help save wildlife.

## donor profile

# flint hills

Flint Hills Resources is committed to participating in the education of tomorrow's leaders and to supporting local communities. What better way to demonstrate that commitment to education and community than through its long and generous support of the Zoo and School District 196?



This past year, Flint Hills helped bring more than 2,000 students to the Zoo on all-day field trips. Students, teachers and chaperones received free admission, lunch, and a hands-on, standards-based Zoo class.

In addition, Flint Hills provided a grant that funded overnight programs for those students for whom daytime field trips simply are not feasible due to distance. Selected schools demonstrate financial need. This past year, students from eight schools from throughout the state spent the night at the Zoo while learning about wild animals and our natural world.

*we are for the big and the small*

Edna Johnson  
Mark Robert Johnson  
Peggy A. Johnson  
Jeff and Suzanne Jones in honor of  
Conner William Jones  
Patricia G. Kielb  
Claudia and James Kinville  
The Kopitzke Family  
Derek and Leslie Kuehn, Friends  
of the Zoo  
Gregory Larson in memory of  
Shadow  
Ruth Lindeman and Molly Peterl  
in honor of Karen Knott and  
Soni Olson  
Kasey Lombardi and Mike  
Ruegsegger in loving memory of  
Eric Ruegsegger  
Rob, Rochelle and Rylee Lorton  
Audre MacAdam  
Mayer Law Office in memory of  
Phil and Kathy Mayer  
Thea McCrossen  
The McNeill Family in memory of  
Micki Gamer  
Minnesota Zoo Wednesday  
Volunteers  
Judith Montey in memory of  
Robert C. Montey  
Becky and Chris Moody on behalf  
of Anna Moody  
Patrick and Kristina Moore  
Scott, Sarah, and Axel Morgan  
Larry and Krysia Nagel in honor of  
Andrew and Ronnie  
Seth and Elizabeth Nelsen  
Paideia Academy  
Brian and Darla Peters  
Averee Peterson  
Nickolas and Judith Priadka  
Richard and Lois Quinn  
Emily and Benjamin Rannow  
Willis and Jo Ann Rich  
Christopher and Amanda Ritz in  
honor of Gladys McCarthy  
Greg and Brandi Rogers  
Kelly Rogers-Winston and Jeff  
Winston in loving memory of  
Katie Rogers  
Judith Rouse  
Suzanne and Mark Runkel  
Salem Foundation, Inc.  
The Scherer Family in memory of  
Charlotte Kay Downing  
Kyle and Vanesa Schmidt  
Kris Ann, Chris, Noah, Lucy, and  
Wyatt Schultz  
Sarah and John Seger in memory  
of Karin "Mimi" Frenz  
Dale and Jan Smith  
Jacqueline Smith  
The Spurgeon Family—Trent,  
Diana, Lilly, and Quinn  
Helga G. Stambaugh

The Suemng Family  
Justin Taylor and Kristin  
Anderson in honor of cancer  
patients and their caregivers  
TE Connectivity  
Eleanor Thomas and Meredith  
Nelson  
The Tise Family in memory of Ron  
Tise  
Rosalynn Torralba and John Renze  
Karen and James Touchi-Peters  
Anne Weber-Smith and Steve  
Smith  
Karel M. Weigel  
Michael and Susie Wuollett  
Gordon Young

## Circle of Life Society

Anonymous (2)  
Dennis P. Albrecht  
Marilyn C. Benson\*  
Debbie J. Biddick  
Kimberly J. Bowman  
Ivy S. Celender  
Robert and Sandy Claussen  
Ellie and Tom\* Crosby  
Kenneth and Linda Cutler  
Ken Darling  
Arlene B. Dimond Trust  
Jennifer L. Engh\*  
Edith Ernst  
Harold D. and Mary Ann Feldman  
Rodney H. Forristall  
Kathryn and James Green  
Sheldon I. Greenberg\*  
Margaret H. Gruver\*  
Donald H. Hageman and Ruth A.  
Hageman Trust  
Rae Nan Harmon  
Roberta W. Hedge  
Joyce L. Huff  
Karen Humber  
Bruce E. and Terry L. Hutchins  
The Estate of Kay Kamps  
Chris and Stephanie Kohler  
Mary L. Kolderie  
Pat Koors  
Debra Ludwikowski  
Eric and Christine Martick  
Dick and Joyce H. McFarland  
Mary Ann McNeil and David  
Higgins  
Susan Morisato and Tom Remec  
Wallace and JoAnn Niklaus  
Paul F. Olson  
Karl-Thomas Opem\*  
Phyllis S. Poehler\*  
Helen Pohl\*  
Laurie Pumper  
The Estate of Dr. R. H. Reimer  
Ellis B. Rittmaster\*  
Alison E. Roberts  
Becki A. Sanford

\*Deceased



Mendon F. Schutt Family Fund of  
The Minneapolis Foundation  
Sue Schwartz\*  
Jane J. Sparks  
Estate of Margaret M. Theisen  
Christopher and Jeralyn Thelen  
John E. Tilton Trust  
Maude A. Trask Fund  
Hugh A. Tyndall  
Caroline Vernon and Bruce  
Holcomb  
Karel M. Weigel  
Estate of George Weiss  
Joseph and Pat Yenkosky  
Steven J. Zellmer Estate

## Endowment Funds

Candace Beaulieu Memorial  
Endowment Fund  
Bradley C. Boardman Memorial  
Endowment Fund  
Matthew James Boenigk  
Memorial Endowment Fund  
General Endowment Fund  
Bernard and Fern Granum  
Exhibit Endowment Fund  
Sheldon I. Greenberg Endowment  
Fund  
Eric Edwin Hayes Memorial  
Endowment Fund  
Jones Family Zoomobile  
Endowment Fund  
Kay L. Kamps Endowment Fund  
William David Romans  
Memorial Endowment Fund  
Volunteer Endowment Fund  
Zoomobile Endowment Fund

## Corporations, Organizations and Government

### \$100,000+

Flint Hills Resources  
General Mills Foundation  
Target

### \$50,000–\$99,999

Think Mutual Bank  
Wells Fargo Foundation  
Minnesota and Wells Fargo  
Bank Minnesota  
Wings Financial FCU

### \$25,000–\$49,999

Aveda Corporation  
Cargill Inc.  
The Cities 97 Sampler  
Ecolab, Inc. and Ecolab  
Foundation  
Hormel Foods Corporation  
Medtronic Foundation  
The Valspar Foundation

### \$10,000–\$24,999

3M Company and 3M Foundation  
Ameriprise Financial, Inc.  
Association of Zoos & Aquariums  
Banfield Pet Hospital  
Boston Scientific Foundation  
Dakota Electric Association  
Delta Air Lines, Inc.  
Emerson Process Management -  
Rosemount, Inc.  
Ernst & Young LLP  
Henry Doorly Zoo  
Land O'Lakes Foundation  
Macy's  
Minnesota Pork Producers  
Association  
MOM Brands  
Mortenson Construction  
Nashville Zoo  
The Pentair Foundation  
RMC Learning Solutions  
Service Systems Associates  
Sterling State Bank  
Travelers Foundation  
Treasure Island Resort & Casino  
Union Pacific Foundation

### \$5,000–\$9,999

Andersen Corporate Foundation  
Best Buy Co., Inc.  
Burlington Northern Santa Fe  
Foundation  
Chuck & Don's Pet Food Outlet  
Dickerson Park Zoo  
The Dorsey & Whitney  
Foundation  
Dougherty & Company LLC  
KPMG LLP  
Mayo Clinic  
Minnesota State Lottery  
Naples Zoo  
Oregon Zoo  
Point Defiance Zoo & Aquarium  
Potawatomi Zoological Society  
Sacramento Zoological Society  
Securian Foundation  
Sedgwick County Zoological  
Society  
Sit Investment Associates  
Foundation  
Uponor  
Wells Fargo  
Winthrop & Weinstine

### \$2,500–\$4,999

Associated Bank  
Chaffee Zoological Gardens of  
Fresno  
Cleveland Metroparks Zoo  
Connecticut Zoological Society  
CRAVE  
FOX Sports North  
The Fredrikson & Byron  
Foundation  
General Mills Inc.  
Hubbard Broadcasting  
Foundation

Kohl's  
Ling Family Dentistry  
Messerli & Kramer, P.A.  
Minnesota Timberwolves  
FastBreak Foundation  
Piper Jaffray Companies  
Red Wing Shoe Company  
Foundation  
The Margaret Rivers Fund  
Shakopee Mdewakanton Sioux  
Community  
Stinson Leonard Street LLP  
Tennant Foundation  
Tulsa Zoo  
United Health Group  
Virginia Zoo

### \$1,000–\$2,499

Arizona Zoological Society/  
Phoenix Zoo  
Blank Park Zoo  
Brandywine Zoo  
Friends of the Baton Rouge Zoo  
Construction Cost Consultants  
Cummings Sales Company  
Dakota Zoo  
Emergency Physicians  
Professional Association  
Fort Wayne Zoological Society  
Honolulu Zoological Society  
Jacksonville Zoo and Gardens  
Little Rock Zoo  
Mayer Law Office  
MPC  
PSD, LLC  
RE/MAX Results  
Saint Louis Zoo - University of  
Missouri "Mizzou Tigers for  
Tigers"  
South Florida Chapter AAZK  
Towers Watson  
Toyota 100 Cars for Good

## Matching Gift Companies

3M Foundation  
Allina Hospitals & Clinics  
Allstate Giving Campaign  
Ameriprise Financial Employee  
Gift Matching Program  
Bank of America Matching Gifts  
Boston Scientific Foundation  
The Carolyn Foundation  
H.B. Fuller Company Foundation  
General Mills Foundation  
Home Depot  
IBM Corporation Matching  
Grants Program  
The McKnight Foundation  
Medtronic Foundation  
Microsoft Giving Campaign  
Northwestern Mutual  
Foundation  
NRG Global Giving

The Pepsi Bottling Group  
Foundation, Inc.  
Piper Jaffray Companies  
The Prudential Foundation  
TE Connectivity Matching Gift  
Program  
Thomson Reuters  
Thrivent Financial for Lutherans  
The Toro Giving Program  
U.S. Bancorp Foundation  
UBS  
United Technologies  
Walt Disney Company  
Foundation  
Xcel Energy Foundation  
YourCause, LLC

## Gifts In Kind

3M Foundation  
Bluepearl Veterinary Partners  
Cargill Inc.  
Como Park Zoo and Conservatory  
CRAVE  
Damon Farber Associates  
Davids Photography  
Delta Air Lines, Inc.  
Chester and Sharon Ellingson  
Dustin and Sabrina Fay  
Jonathan and Lee Herum  
Hormel Foods Corporation  
JB Hudson Jewelers  
Ray and Susan Johnson  
Chuck and Jill Koosmann  
Ross E. Kramer, Messerli &  
Kramer  
Lancer Food Service, Inc.  
Lone Oak Companies, Inc.  
Macy's, Inc.  
Joe Mahoney  
Katherine Mann  
Peter Maritz and Charlene Jundt  
Mill City Nights  
Minnesota Resuscitation  
Consortium  
Minnesota Timberwolves  
FastBreak Foundation  
Minnesota Twins Baseball Club  
Morrie's Automotive Group  
Dr. Dennis K. Olivero  
Piccolo  
Pool and Yacht Club  
Jack and Pam Safar  
Southwest Airlines Co.  
Spectacle Shoppe, Inc.  
William Spencer  
Struve Labs International  
Tennant Foundation  
The Toro Giving Program  
Treasure Island Resort & Casino  
Twin Cities Toyota Dealers  
Ralph C. and Patty Weichselbaum  
Wells Fargo

## Memorial and Honorary Gifts Gifts in Honor of ...

Amy, who loves animals  
 Ruby J. Anderson  
 Oliver Badali-Winters  
 Matthias Baese  
 Ellie Bayrd  
 Everett Bexel  
 Noah and Alex Blaisdell  
 Rui Rui Bleifuss  
 Blue, my white tiger  
 Tony Borgman  
 Allison Brieze  
 Richard and Charlotte Buratto  
 Jeannie Burrell  
 Cancer patients and their  
   caregivers  
 Jesus Christ  
 Lisa Citak  
 Celia, Tatum, and Andrew Cox  
 Sandy Coyle  
 Robert M. Crone  
 DAK Lodge Animal Husbandry  
   and Indaba Teams  
 Leah Darst  
 Aimee D. Dayhoff  
 Karen DeBoer  
 The Delianedis Girls  
 Desert Rhino Camp Staff  
 Mary Detlie  
 Cameron Dressler  
 Melissa Dzielski  
 Lee C. Ehmke  
 "Gone But Not Forgotten Pack"  
 Joy Hayenga  
 Mikaela Hjelseth  
 Evan and Marin Hopfenspirger  
 Kate Horwich  
 Conor and Megan Hussey  
 Ella Jedlund  
 Alice Johnson  
 Lee Johnson  
 Susan Johnson  
 Conner W. Jones  
 Karen Knott and Sonia Olson  
 Tyler Krogman  
 Susan Lee  
 Peter E. Maritz  
 Zena V. Martin  
 Gladys McCarthy  
 Christine M. McKnight

Mary Ann McNeil  
 Anna Moody  
 Andrew Nagel and Ronnie Haft  
 Camryn Olberding  
 Anne Oudinot  
 Adiv Paradise  
 Michael M. Parish  
 Jeri Peterson  
 Emily and Benjamin Rannow  
 Jeannine M. Rivet  
 Manuel E. Rodriguz  
 Phil Sheridan  
 Sam and Pete Simpson  
 Kieran Smith  
 Denis and Nancy Stoddard  
 Diane Strom  
 Sabrina & TC  
 Ayres Warren  
 Todd A. Watchmaker  
 Riley White  
 Sheryl Wilhelm  
 Nykee Younghans

## Gifts in Memory of ...

Donald Aho  
 Donna Asleson  
 Victoria Axtell. Mom loved the  
   Zoo and all the world's creatures.  
 Orange Marmaduke Baker  
 Candace E. Beaulieu  
 Charlie Bergeron  
 Heidi Biewald  
 Jared C. Bly and Ethan J. Williams  
 Bryce J. Cameron, a much loved  
   nephew who loved animals  
 Bradley Cayan-Boardman  
 Thomas Crosby  
 Raymond E. Dahl  
 Donna K. DeMars  
 Charlotte K. Downing  
 Maggie Jo Elliott  
 Byron Erck  
 Dean Ernst  
 Marguerite and Bryant Figeroid  
 Barbara J. Fredrickson  
 Karin "Mimi" Frenz, you will be  
   in our hearts forever  
 Grandma & Great Grandma Edna  
   Frey  
 Florence and Frank Fuller  
 Sandra F. Gale  
 Micki Gamer  
 Melvin and Marjorie Garbe

Virginia "Ginny" Haaland—she  
   loved giraffes  
 Richard B. Hagen  
 Joseph L. Harrison  
 Alan Hofer, beloved nephew  
 Keith Holmgren  
 Caitlin Homan  
 Elaine M. Ivey  
 Michael E. Johnson  
 Aaron Jothan  
 Jan Rorbert Kirst  
 Marilyn Kittleson  
 John J. Koblas, father, grandfather  
 Tom Laabs-Cody  
 Katherine Lane  
 Lloyd D. Larson  
 Shadow Larson  
 Rosalyn Lindberg-Lakso  
 Phil Mayer  
 Doris McConnell  
 Carol Morris  
 Lynn Niznik  
 Nyoh  
 Geraldine "Jerry" Olson  
 Joyce Olson  
 Robert Pansch  
 Cameron K. Peterson, a  
   wonderful neighbor and  
   dedicated Zoo volunteer  
 Bruce D. Risnes  
 Katie Rogers  
 William David Romans  
 Eric Ruegsegger  
 Donald Schoeller  
 Matthew Severson. We miss you  
   Matt!  
 Charlotte Sherkow  
 Marvin Sinykin, loving husband  
   and father, loved our Zoo  
 Barbara Sovell  
 Ione Standke and Bernice Schmit  
 James H. Streater  
 William E. Strom  
 Raymond R. Thell  
 Ronald L. Tilson  
 Ron Tise  
 Devon Rose Torgerson  
 Erik Tri  
 Rene Van der Haeghen  
 Eurilla Van Halbeck  
 Nellie (White/Jarzyna pet)  
 Tasha Wiles





*we are for the big and the small*



# minnesota zoological garden

## FINANCIALS

Statement of Revenue and Expenses for the Fiscal Year Ending June 30, 2014, Unaudited

### Revenue

Earned Revenue .....	\$13,608,682
State Appropriation.....	5,585,000
Legacy Appropriation .....	1,750,000
Contributions.....	2,000,000

**TOTAL \$22,943,682**

### Expenses

Salaries and Benefits .....	\$14,931,468
Supplies and Materials.....	1,566,740
Utilities.....	1,735,299
Purchased Services.....	2,103,439
Other .....	1,621,678

**TOTAL \$21,958,624**

### Capital Disbursements

#### Funded from Operations

New Generator Lease Purchase.....	\$210,312
Equipment Purchases .....	65,815
Equipment Lease Purchase .....	106,070
Energy Improvement Debt.....	50,263
Building Improvements.....	36,538

**TOTAL \$468,998**

**Legacy Expenses \$2,202,310**

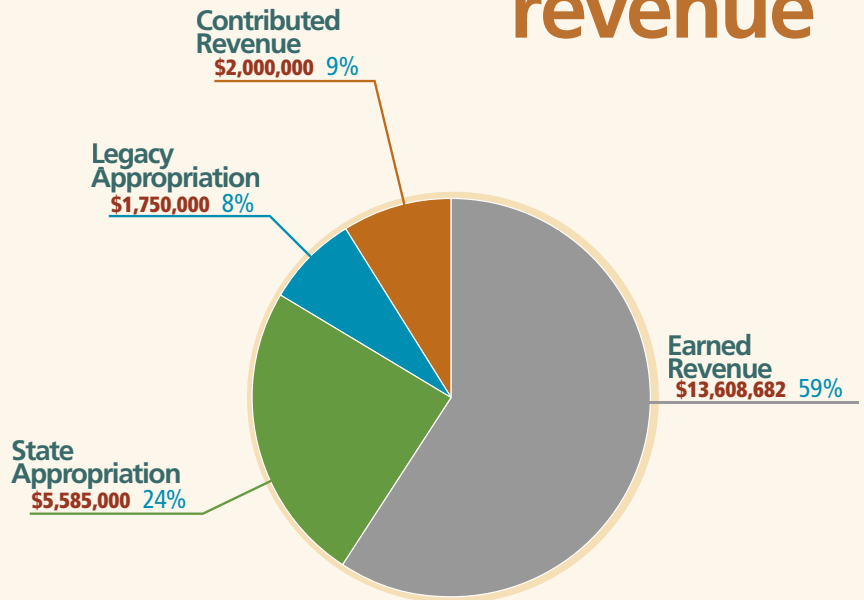
**TOTAL Operating Expenses and Capital Funded from Operations \$24,629,932**

**Net Cash \$-1,686,250**

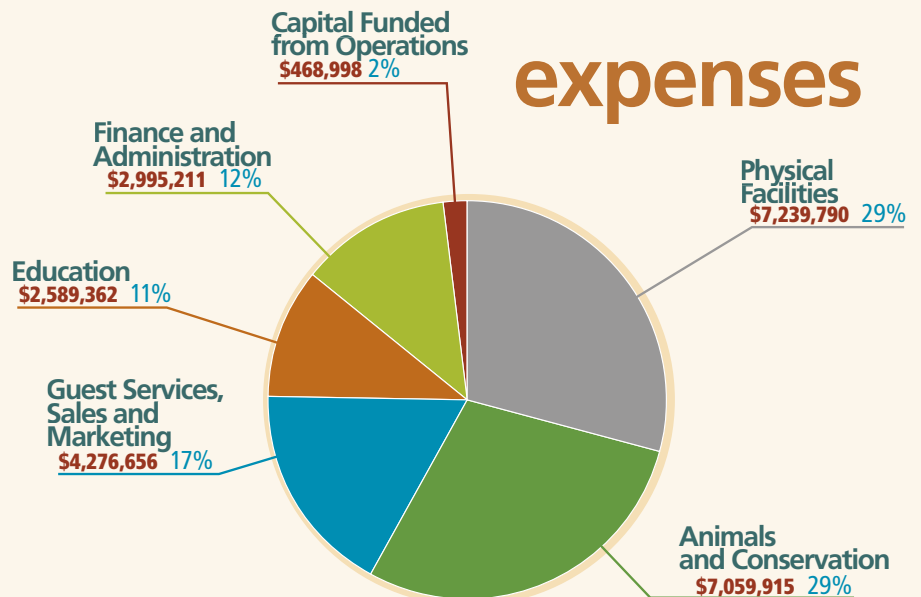
**Fund Balance June 30, 2013 \$3,879,692**

**Fund Balance June 30, 2014 \$2,193,442**

## revenue



## expenses





# minnesota zoo foundation FINANCIALS

Statement of Revenue and Expenses for the Fiscal Year Ending June 30, 2014, Audited

## Revenue

Individuals .....	\$2,434,950
Corporations.....	1,579,408
Foundations .....	41,100
Government, Groups, Schools.....	118,587
Events, net of direct benefit.....	551,041
Other .....	413,796

**TOTAL \$5,138,882**

## Expenses

Grants to the Zoo*.....	\$2,969,908
Other Grants.....	221,793
Program Expenses .....	352,742
General Operations.....	979,332

**TOTAL \$4,523,775**

**Net Expense Over Revenue \*\* \$615,107**

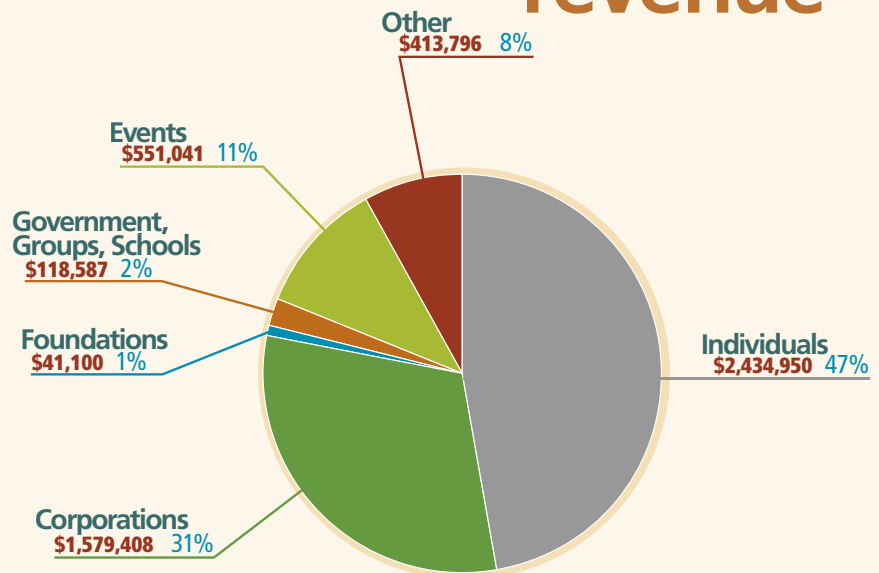
**Net Assets, Beginning of Year \$3,972,064**

**Net Assets, End of Year \$4,587,171**

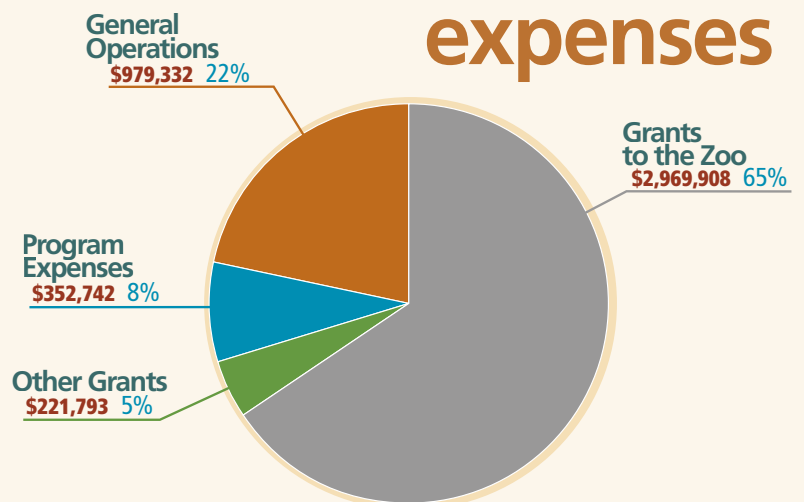
\* Includes in-kind contributions, program support, and capital grants.

\*\*The Foundation has accumulated net assets in prior years due to the recognition of multi-year pledges. These net assets are used in the years that pledge payments are received and expended for grants, program expenses, and operations.

## revenue



## expenses



# STAFF LISTING

## *zoo and foundation*

### Director's Office

Lee Ehmke

Connie Braziel

Deborah Johnson

### Biological Programs

Kevin Willis

Dr. Rachel Thompson Ahlstrom

Karla Anderson

Lindsey Beach Kromann

Jennifer Beem

Cynthia Bjork-Groebner

Shannon Bloemke

Rebecca Brown

Jessica Campbell

Delaina Clemetson

Christine Collins

David Cruz

Leah Darst

Jennifer Drinen

Rebecca Duchild

Amber Dunaway

Emily Beth Endert

Steven Estebo

Anthony Fisher

Whitney Funfar

Diane Fusco

Kelli Gabrielson

Carey Goedel

Terah Grace

Lindsay Haen

Robert Haen

Ryan Hassler

Melissa Hayes

Rebecca Heller

Timothy Hill

Gerald Holzer

Ben Hubred

Karen Humber

Jillian Rae Huwe

Timothy Judy

Adam Keniger

Christopher Kline

Laurie Kokkeler

Sandra Koslowski

Melissa Kusick

Heather LaRock

Janis Liukonen

Janet Long

Ashley Lucht

Allan Maguire

Christine McKnight

Matthew McLaughlin

Steven Miller

Benjamin Minerich

Laurel Mochinski

Kristi Molitor

Thomas Ness

Megan Niemer

Christoph Noetzli

Melanie Oerter

Mary Pederson

Daniel Peterson

Mark Pierce

Robert Predmore

Jennifer Prom

Dr. James Rasmussen

Eric Reece

Maria Reedstrom

Jamie Ries

James Sanford

Catherine Schlegel

Wesley Schmidt

Deborah Schoeberl

Robyn Sigmund

Bridget Smith

Mary St Mary

Taylor Steger

Benjamin Sutton

Frederick Swengel

Dean Treangen

Laura Trechsel

Lawrence Vorwerk

Dawn Walker

Diana Weinhardt

Dr. Tiffany Wolf

Debora Zweifel

### Campus Planning and Management

Ken Kornack

Richard Andres

Benjamin Barthel

Trent Beard

Jean Bernier

James Biesinger

Kevin Brodigan

Roger Broz

Christopher Carlson

Kenneth Clark II

Karalyn Clark

Scott Wallace Clark

Carlos Damian

Jonathan Darsow

Ace Dilly

Kenneth Donovan

Zachary Eling

Oran Evans

Susan Evarts

Matthew Feil

Jason Frederick

Kenneth John Gangi

Michael Gardner

Raymond Gehrke

William Glenz

Melvin Grovenburg

Angela Guggisberg

Daniel Haugen

Rose Henderson

Kenneth Henne

Anthony Hilsngen

Timothy Ingram

Marvin Jeffries

Kirk Johnson

Michael Karich

Michael Kirkland

Michael Koslowski

Erin Krause

Thomas Leitch

Randy Lembrick

William Lindell

Anita Litwitz

Michael Manzara

Rebecca Montalbano

Richard Oestreich

Ernest Opheim

Derik Otten

Andrew Payne

Douglas Pohlen

Patrick Rausch

Robert Raymond

Steven Alan Ready

Charles Reed

Jeff Ruud

Joel Schwichtenberg

Stephen Seigler

Judy Steiner



Douglas Stender  
Matthew Thieding  
Kimberly Thomas  
Mark Thompson  
Anthony Scott Tola  
Thomas Udenberg  
Richard Weiss  
Jennifer Westland

### Conservation

Tara R Harris

Kate Jenks  
Brian Kot  
Jeff Muntifering  
Cale Nordmeyer  
Erik Runquist  
Katie Talbott  
Kimberly VanderWaal

### External Relations

Elizabeth Burns

Tyler Ahnemann  
Keane Amdahl  
Sarah Jean Amidon  
Erikka Anderson  
Judy Armstrong  
Jessica Belcher  
Sandra Belden  
Ann Benusa  
Kristi Berg  
Susan Bleichner  
Amanda Braun  
Tara Breckheimer  
Wendy Buser  
Patricia Clark  
Neil Cole  
Sherri White Commers  
Donald Crook  
Elizabeth Dengate  
Dawn Devens  
Jessica Dodge  
Lucinda Edwards  
Amy Fabry  
Scot Freeman  
Rebecca Gervais  
Michelle Giildenzopf  
Lisa Gonzalez  
Gina Goralski

Stacey Hand  
Michael Ryan Hauser  
Rick Hawley  
Eunice Heimann  
Megan Henning  
James Knaresboro  
Kalpana Kothari  
Tristi Kringle  
Courtney Langeslag  
Julie Lanz-Gonsoski  
Letitia Laske  
Joshua Le  
Kelly Lessard  
Jessica Madole  
Alyssa McDonough  
Rebecca McIntyre  
Debra Mikelson  
Abigail Moore  
Christine Ness

Kristie Nord  
Sally Pieper  
Jane Prohaska  
Kim Quam  
Laura Rand  
Jessica Reelfs  
Heidi Rickert  
Claire Ross  
Tristin Joy Santori  
Jennifer Schultz  
Vicki Sewich  
Molly Sheeley Melton  
David Silvester  
Galen Sjostrom  
Eve Skindelen  
Michele Smith  
Carol Strecker  
Cheryl Tait  
Alexandria Tasa  
Judy Thompson  
Douglas Tiede  
Jill Lindsay Vaughn  
Bill Von Bank  
Kaitlyn Adeline Vossen  
Jennifer Warg  
Melissa Warhol  
Ami Weisbrich  
Kevin Wier  
Kelly Willis

Elizabeth Winover  
Sara Kathryn Wolf

### Finance and Administration

Mary Robison

Kay Buhl  
Kim Chmielewski  
Sarah Dolejs  
Jeffrey Higgins  
Judith Ann Magnon  
Garaad Muse  
Lisa Northagen  
Patricia Raymond  
Sharon Snyder  
Julie Speiker  
Bonnie Suiter

### Human Resources

Joan Blumstein

Francis Blaha  
Richard Douglas Bold  
Jolene Carlson  
Matthew Dionne  
Hayley Heidelberg  
Wilfred Heinrich  
Thomas Hemish  
Jennifer Lacey  
Jennifer Lacey  
Shaella Moloney  
John Ross  
Roger Roth  
Mary Schrader  
Amy Wassmund  
Kenneth Weisenburger  
Ann Zimmermann-Hohn

### Foundation


Melissa Parker Lindsay

Melinda Conness  
Matt Haar  
Megan Hard  
Shannon Mattson  
Amy Olsen  
Shannon Rhatigan  
Brenda Teats  
Anne Weber-Smith









### ACT FOR WILDLIFE

*As the state's largest environmental learning center, the Minnesota Zoo recognizes that people who connect with the natural world are more likely to care about it. We walk our talk. We are committed to reducing our consumption of energy, water, and all of Earth's resources. We reuse and recycle, plant for pollinators, recycle for rainforests, eat sustainable seafood, survey the biodiversity in our woods, and offer you tips on how your everyday activities can help wildlife—in your backyard and around the world. We hope you will join us!*



## 2014 ANNUAL REPORT PRODUCTION

### editor

Melissa Parker Lindsay

### graphic design

Kim Quam

### photographers

Bob Cole

Chet Ellingson

Chris Forslin

Shawn Orton

Personal Touch Photography

Jonette Novak

Kim Quam

Scott Roemhildt

David John Weber

The Carney Group

Universal Soul Photography



### HONORARY TRUSTEES

James R. Campbell  
Edward N. Dayton  
Ross Kramer  
Michael M. Parish

### ZOO BOARD OF TRUSTEES

#### chair

Julie Kunkel

#### vice chair

Joe Swedberg

#### members

Kurt P. Adams  
Cynthia A. Arnold  
Derek Benz  
Laura Bordelon  
Willis E. Branning  
Robert Burch  
William R. Busch  
Eleanor R. Crosby  
Kenneth L. Cutler  
Aimee D. Dayhoff  
Leigh Johnson.  
Chuck Koosmann  
Scott Lambert  
Gregory S. Lea  
David Leveille  
Lois Mack  
Peter Maritz  
Justin McNeilus  
Sarah Psick  
Heather Rein  
Richard L. Smith, Jr.  
Jodi Standke  
Doug Stang  
Mark Utz  
Richard S. Vogel  
Todd A. Watchmaker  
Frank Weidner

#### ex-officio

Lee C. Ehmke

### FOUNDATION BOARD OF TRUSTEES

#### chair

Eric Galler

#### vice chair

Samantha Capen Muldoon

#### treasurer

Ted Christianson

#### secretary

Paul Runice

#### members

Barbara Aiken-Ali  
Renee Burke  
Janis Clay  
Bruce Cords  
Chad Dayton  
Tricia Dirks  
Chet Ellingson  
John Erickson  
Blake Grams  
Danielle Johnson  
Susan Johnson  
Joe Kalkman  
Katy Marvin Kirchner  
Gaetan Lambiase  
Tom Lindell  
Dana Lindsay  
Jim Mayer  
Pam Meixell  
Greg Miller  
Mark Mortenson  
Timothy Mulcahy  
Cassandra Ordway  
Chris Parish  
Matt Pierre  
Paul Reppenhagen  
David Romans  
Andrew Zarras

#### ex-officio

Lee C. Ehmke



ACCREDITED BY THE  
**ASSOCIATION  
OF ZOOS &  
AQUARIUMS**



# MINNESOTA ZOO

Minnesota Zoo  
13000 Zoo Boulevard  
Apple Valley, MN 55124  
952.431.9200  
[mnzoo.org](http://mnzoo.org)