

9005043

Doc 1295

This document is made available electronically by the Minnesota Legislative Reference Library
as part of an ongoing digital archiving project. <http://www.leg.state.mn.us/lrl/lrl.asp>

Auty file

APPENDICES FOR

THE MINNESOTA STATE COLLEGE BOARD

1973-75 BIENNIAL REPORT TO THE GOVERNOR AND THE LEGISLATURE

A RESPONSE TO NEW REALITIES IN THE MANAGEMENT OF EDUCATIONAL CHANGE

ENROLLMENT ANALYSIS

The enrollment situation in the six outstate colleges appears to be entering a period of relative stability after the rapid growth experienced in the late 1960's and the decreases of the early 1970's. While a major factor in this trend is a stabilization in the size of incoming freshman classes (resulting in minimization of the three year "ripple effect" which results from a dramatic entering class size change), other factors have influenced the situation as well: off-campus (and non-traditional) enrollments have increased substantially, graduate enrollments continue their steady growth and the number of individuals enrolling on a part-time basis continues to increase.

	<u>Appropriations</u> <u>Estimate</u>	<u>Actual</u> <u>Enrollment</u>	<u>Difference</u>	<u>%</u>	<u>Change From</u> <u>Previous Year</u>	<u>%</u>
1962-63	13,816	14,404	588	4.2%	1,537	11.95%
1963-64	16,014	16,232	218	1.4%	1,828	12.69%
1964-65	17,423	18,584	1,161	6.7%	2,352	14.49%
1965-66	22,169	22,970	801	3.6%	4,386	23.60%
1966-67	24,831	25,024	193	0.8%	2,054	8.94%
1967-68	28,264	28,578	314	1.1%	3,554	14.20%
1968-69	31,406	32,286	880	2.8%	3,708	12.98%
1969-70	35,555	34,645	(910)	(2.6%)	2,359	7.31%
1970-71	38,735	36,137	(2,598)	(6.7%)	1,492	4.31%
1971-72	37,367	35,695	(1,672)	(4.5%)	(442)	(1.22%)
1972-73	38,900	33,630	(5,270)	(13.5%)	(2,065)	(5.79%)
1973-74	32,000	32,438	438	1.4%	(1,192)	(3.54%)
1974-75 (est)	31,000	31,187	187	0.6%	(1,251)	(3.86%)
1975-76 (est)	31,022	-	-	-	(165)	(0.53%)
1976-77 (est)	31,260	-	-	-	238	0.77%

The above enrollments are expressed in F.T.E. (full-time equivalent) students based on 9 month credit hours divided by the "standard" student load of 45 credit hours per year.

Office of the Chancellor
Minnesota State College System
407 Capitol Square Building
St. Paul, Minnesota 55101



INFORMATION, PROGRAMS-MINNESOTA STATE COLLEGE SYSTEM

WHY ATTEND A STATE COLLEGE?

The seven Minnesota State Colleges—located in Bemidji, Mankato, Marshall, Moorhead, St. Cloud, Winona and the metropolitan area of Minneapolis-St. Paul—primarily serve the state of Minnesota by providing quality undergraduate education at a reasonable cost.

Most of the 33,000 students attending the state colleges are from Minnesota. A large percentage are from within a 50 mile radius of the colleges and a significant number come from the Twin Cities metropolitan area. Almost one-half of these students are from families with incomes under \$8,000. Nearly one-fourth of all state college students obtain one or more types of financial aids that are available through the colleges. These students primarily seek preparation for entry-level professional jobs. A large number of them, as graduates, decide to live and work in Minnesota.

The State Colleges, most of which began as teachers' colleges, have become comprehensive institutions, undergoing continuous change in recent years in response to the emerging needs of students, the community and the state.

Today the colleges offer career and professional educational opportunities:

- Training in health related fields, law enforcement, environmental studies, and other community service programs.
- Two-year technical, vocational and pre-professional programs not otherwise available or accessible to students through a junior college or vocational school, or which the state colleges are uniquely equipped to offer
- Four-year bachelor's degree programs in the liberal arts and sciences, in education, in business, in the fine arts, and in an increasing number of occupational/vocational areas
- Graduate programs leading to the master's degree and beyond in selected fields
- External degree programs for persons in the surrounding regions who may not be able to come to the campus to study, or whose educational objectives may require alternatives to the customary on-campus courses
- A common market student exchange program enabling a student enrolled at any state college to take selected courses at any of the other colleges at no loss of credit
- Internships for academic credit which allow students to supplement classroom learning with professional experience in jobs related to their major fields
- Special programs to help minorities, women, veterans, working people, the disadvantaged and the physically handicapped realize their educational goals

Junior college students transfer to the Minnesota State Colleges with ease

and flexibility. Most transfer students having an Associate in degree from an accredited junior college meet the upper-level general education requirements at the state colleges.

In cooperation with area vocational-technical institutes (AVTI), some colleges have developed new degree programs designed for AVTI graduates who may wish to continue their education. The new programs included transfer of credit for applicable portions of the student's technical training. The state colleges also participate with the military services in a program enabling enlistees to continue educational plans while in service. When entering the military service, persons may open a file at one of the Minnesota State Colleges and request an academic advisor to aid in obtaining college credits for military service.

The Minnesota State Colleges welcome students from minority groups and from among veterans of the U.S. Armed Forces. Services available include special counseling, remedial studies and tutoring, on-campus minority culture centers and special curricula. Several colleges have established programs to supplement the regular financial aids programs that are available to all students on the basis of need. Efforts are being made to employ additional minority faculty members at all the colleges, and special emphasis is being placed on the development of programs to meet the needs of veterans.

Life in the college community enhances the intellectual, cultural, social and recreational needs of students. The state colleges offer students the experience of participation in the governance of the campus and of the State College System. Students have representation on the State College Board under a new law enacted by the 1974 Legislature. Together with the other members of the college community—faculty, administration and professional support staff—students have a voice in the decisions which affect their campus.

Beyond government of the individual campus, the student voice of the State College System is the Minnesota State College Student Association (MSCSA). Formed in 1968, the MSCSA consists of delegates from each college and provides a setting for an exchange of ideas concerning the common problem of all the colleges.

College athletics, fraternities and sororities, religious organizations, music, drama, special events and a wide array of campus activities and clubs exist for students to participate in.

Each of the Minnesota State Colleges remains committed to using its unique strengths and characteristics to respond to the educational needs of its community and region. The colleges also share a commitment to offering their students a kind of learning that permits personal development, intellectual growth and a dedication to human values.

WHICH STATE COLLEGE IS RIGHT FOR YOU?

It should be noted that, although an applicant may not meet all of the particular criteria listed for each college below, it is still possible to be admitted under any of a number of special programs designed by the state colleges for students whose academic background differs from standard entrance requirements.

BEMIDJI STATE COLLEGE

A place to study and learn on an 80 acre campus, with easy access to the excitement provided by Northern Minnesota's woods and waters, in a friendly small city environment is one way to describe Bemidji State College.

Located on the shores of Lake Bemidji in north central Minnesota, approximately 235 miles north of the Twin Cities and 40 miles from the headwaters of the Mississippi, Bemidji State College regards its programs in ecology and environmental technology as an important part of the college curriculum.

In 1970 Bemidji State College established the Center for Environmental Studies which is a research, teaching and community service organization involving interdisciplinary approaches to environmental questions. For an outdoor laboratory the college utilizes a satellite campus, the Bald Eagle Center, in the Chippewa National Forest.

But Bemidji State College is a college for everyone. There are 30 majors and 40 minors offered in the curriculum. These embrace all of the traditional disciplines and some new programs including mass communications, social work, professional recreation, Indian studies, library media technology, technical illustration, commercial design, industrial technology and vocational education.

For recreation, the 4,200 students soon learn the advantages of living in the heart of one of the nation's finest outdoor recreation areas with the adventures of the water and snow scene knowing no limit.

Even out of season, the physical education complex offers the advantages of an olympic-size pool and an ice skating rink both winter and summer.

Don't forget cultural arts! Bemidji State College hosts an annual program of musical events, speakers and drama as a showcase and laboratory for its varied Fine Arts Curriculum which is housed in the Harry F. Bangsberg Complex completed in 1971.

Bemidji State College offers one of the most varied and inclusive summer programs in the nation. A full range of courses are available including academic work for freshmen as well as for graduate students. In addition, the college conducts over 80 short workshops for college credit during the summer.

For further information contact Bemidji State College, Bemidji, Minnesota 56601

ADMISSIONS—Edwin Aalberts, 218-755-2021
FINANCIAL AID—Robert Frazey, 218-755-2071
HOUSING—Larry Mangus, (218) 755-2030

ST. CLOUD STATE COLLEGE

Located in central Minnesota, St. Cloud State College, with approximately 9,000 students, and 500 faculty, offers a wide variety of undergraduate and graduate programs through its six schools.

In addition, St. Cloud State College offers educational opportunities in some new and unusual career fields, such as information media, photographic engineering technology, audiology, traffic safety and urban affairs. Several programs are offered in cooperation with two neighboring colleges—St. John's University and the College of St. Benedict.

The college conducts an honors program to promote scholarly achievement through independent study and small-group seminars. An experimental program allowing selected students to choose their own courses is currently in progress. Many internships offer work experience for St. Cloud students in business, education, government, industry and social service agencies.

Most of St. Cloud State College's 26 buildings have been constructed in recent years, including a learning resources center, student residence hall complex, college center, performing arts center and mathematics-science center.

Students participate in the programs of more than 75 organizations, ranging from professional societies to social fraternities. Some of the nation's most significant speakers and entertainers are brought to the campus each school year. A broad co-curricular program of lectures, films, plays, concerts, intramural sports and varsity athletics supplements classroom learning. Special programming and services are offered through a minority culture center.

To better serve its 40,000 residents, the city of St. Cloud is undergoing an extensive urban renewal program which includes construction of a downtown mall. There are a number of parks and recreational facilities along the Mississippi River and throughout the city. St. Cloud business and industry provide part-time employment for college students.

Two large hospitals, a penal institution, a children's home and other nearby state institutions offer students opportunities for social service, independent study and internships.

For further information contact St. Cloud State College, St. Cloud, Minnesota 56301.

ADMISSIONS—Sherwood Reid, 612-255-2243
FINANCIAL AID—Milford Johnson, 612-255-2047
HOUSING—John Rock, 612-255-2166

MANKATO STATE COLLEGE

Enrolling nearly 11,000 students, Mankato State College is the largest of the Minnesota State Colleges. Established in 1868, the college has expanded from a Valley Campus of 30 acres to include a Highland Campus comprising 350 acres.

Today the upper campus of Mankato continues to expand with a recent addition to the student union, construction of a \$9 million science center and completion of a campus mall. A free commuter bus service provides easy access between the two campuses.

Recommendations of a recent Task Force on Change depicts Mankato State College's willingness to make changes. Curriculum, teaching, life in a college and college management were evaluated throughout Task Force meetings.

Dental hygiene, environmental studies, computer science, urban studies, physical therapy, nursing and medical technology are among the special areas of study available for students of Mankato State College. An experimental studies program provides freshmen with an alternative way of satisfying general education requirements through independent study and seminars.

As the cultural center of the area, Mankato State College provides outstanding programs in the arts and brings nationally-known speakers and entertainers to the campus each quarter.

Sports events are exciting at Mankato State College. The college belongs to the North Central Intercollegiate Athletic Conference. Dramatic productions, musical concerts, lectures, intramural sports, dances and student talent shows aid in developing the social and leadership qualities in students through extra-curricular activities.

Mankato, a city of 40,000, is the largest community of the outstate colleges. Undergoing extensive urban renewal, the city is bordered by the Minnesota River.

For further information contact Mankato State College, Mankato, Minnesota 56001.

ADMISSIONS—Ross Alm, 507-389-1823

FINANCIAL AIDS—Robert Matuska, 507-389-1185

HOUSING—Tom Heaney, (507) 389-1011

MOORHEAD STATE COLLEGE

Specialization and innovation are of major concern to Moorhead State College in developing educational opportunities supplementing present programs. Established in a twin-city community comprising 100,000 people, Moorhead cooperates with Concordia College (Moorhead) and North Dakota State University (Fargo, N.D.) in course offerings and campus events.

SOUTHWEST MINNESOTA STATE COLLEGE

The striking new campus of Southwest Minnesota State College in Marshall is marked by continuing construction and continuing re-evaluation of educational programs. It is the state's only technical and liberal arts college. The first class was graduated in 1971. The Southwest Minnesota State College campus has been designed with physically handicapped in mind. Most buildings have ramps and elevators for those in wheelchairs. The campus has no architectural barriers. Drinking fountains and telephone booths have been lowered and residence hall rooms and classrooms have been modified for these students.

Physically handicapped students receive counseling through the Rehabilitation-Education Services Office which also requires a pre-admittance visit, with few exceptions, of all students who have a disability.

The Movillas illustrate a modern approach to campus living. The residence structures feature apartment living for four students sharing kitchen facilities, living, room, study and sleeping area. Southwest Minnesota State College's Division of Hotel, Restaurant and Institutional Management programs gets into full swing this fall, moving into its new \$750,000 facility. The division begins its four-year degree granting hotel/motel offering this fall and is expanding its restaurant and food service program, which listed two June graduates and 32 majors in 1972. The program prepares students for managerial positions in hotels, motels, resorts, private clubs, hospitals, industrial plants, etc.

The college offers a Bachelor of Engineering Technology and an Associate in Engineering Technology degree through its expanded Division of Engineering Technology. Programs in chemical engineering, electronic engineering, machine design and mechanical engineering are offered.

A Random Access System located in the Instructional Resources Center allows faculty members to tape lectures as they are given in class or to tape special outside materials for many of the 2500 Southwest students to listen to at their leisure by the simple expedient of dialing their telephones.

Located in a community of 10,000, Southwest Minnesota State College relates its curricula to the needs of southwestern Minnesota.

For further information contact Southwest Minnesota State College, Marshall, Minnesota 56258.

ADMISSIONS—Mike Akin, (507) 537-6286

FINANCIAL AIDS—Chuck Johnson, (507) 537-6281

HOUSING—John Welty, (507) 537-6136

WINONA STATE COLLEGE

Minority Group Studies, Hotel-Motel-Resort Management and Social Service courses illustrate flexibility among the traditional courses at Moorhead State College. Students may also organize their own program of study through the Individualized Major program. Internship opportunities are plentiful in Moorhead—a major trade, distribution and medical center.

The New Center for Interdisciplinary Studies represents a new approach to education at Moorhead State College. The Center will offer two-year career oriented programs for students seeking jobs which do not necessarily require a four-year preparation. Admission for the Center will be based primarily on the students' interest rather than academic rank or test scores.

Campus organizations invite student participation in forming campus policies and programs. Intramural and intercollegiate sports, International Relations Club, the Straw Hat Players theatre group and the grand opera are among the student activities offered. Sororities, fraternities, student government and religious organizations also exist.

Recreational facilities in the Moorhead-Fargo area are abundant. The metropolitan community supports two art galleries, a symphony orchestra, a community theatre, several movie theatres, four television stations and five radio stations.

The tallest building in Moorhead is the college's newest residence hall, a 15-story square high-rise featuring wall-to-wall carpeting and a glass-walled lounge and television area. Eight other residence halls aid in housing many of the 4,800 students of Moorhead State College.

Established in 1885 with six acres of land, Moorhead State College has expanded to an attractive campus comprising 27 buildings on 104 acres.

For further information contact Moorhead State College, Moorhead, Minnesota 56560.

ADMISSIONS—Floyd Brown, 218-236-2161

FINANCIAL AIDS—David Anderson, 218-236-2251

HOUSING—Elliot Garb, 218-236-2118

MINNESOTA METROPOLITAN STATE COLLEGE

A 34-year old retail store owner wants to study management, a 25-year old systems analyst wants to work in law enforcement, a 49-year old housewife is interested in opening a day care center, and a 52-year old rehabilitation counselor with an assortment of college credits wants to pull them all together and get a degree in Human Services.

Not exactly within the educational mainstream, these people—and

Winona State College, Minnesota's oldest state college, is located in Winona, a southeastern Minnesota community of 26,000 residents.

Since its establishment in 1858, Winona State College has developed to its present-day dimensions of nearly 40 acres, 20 modern buildings, 3600 students and more than 250 faculty.

Surrounded by picturesque bluffs, the Mississippi River, and lakes, Winona is widely known for its beauty and natural recreational facilities. The college provides an ideal setting for student involvement in ecological studies.

Winona State College has developed a new bachelor's degree program to accept credits from area vocational technical institutes. The Winona program is designed to prepare students with trade specialties for teaching in vocational and technical institutes, or for trade or business management positions.

The four-year nursing program at Winona State College, accredited by the National League for Nursing, continues to expand. Additionally, the college offers Bachelor of Science degree programs in medical technology and a recently-approved physical therapy major. Future plans include two-year offerings in the para-medical field.

Winona State College cooperates both socially and academically with the two private colleges in the community, St. Mary's College and the College of St. Teresa. Course credit is readily transferable from one to another, and students and faculties actively support a successful concerts and lectures program.

More than 50 clubs, sororities and fraternities—representing a variety of interests—are available to students of Winona State.

A new 67,500 square foot, \$2.9 million health and physical education building addition was completed in January, 1972, and a new \$2 million classroom building is expected to be ready for occupancy early in 1973. Approval has been given for future expansion of the student union.

For further information contact Winona State College, Winona, Minnesota 55987.

ADMISSIONS—Charles Bentley, 507-457-2065

FINANCIAL AIDS—Robert Lietzau, 507-457-2049

HOUSING—Jean Woodsend, (507) 457-2039

knowledge, as well as appropriate values, attitudes and understanding in these five areas: basic learning and communications; civic involvement; leisure and recreation; personal growth and assessment; professional and vocational.

Degrees

At MMSC all graduates receive a Bachelor's degree.

The professional and vocational majors presently offered are Business Administration, Public Administration, and Human Ser-

many more like them—have specific educational needs that have not been met at traditional institutions of higher learning.

Where do they go?

Minnesota Metropolitan State College (MMSC) has been established to meet their needs. With an urban-oriented approach to education, MMSC was created to provide alternatives in higher education.

Perhaps the most salient features of MMSC are the absence of a campus and the presence of a 'community' faculty. Students meet with their advisors or instructors all over the Twin Cities area, whenever and wherever necessary to meet the needs of the students. The faculty is drawn from all segments of the community—business and professional leaders, social service workers, housewives. Most of them have full-time jobs and responsibilities unconnected with the college and are actively working and living in

the kinds of settings in which students will be functioning for the rest of their lives.

The college also has a core of thoroughly experienced professional educators as full-time faculty members who do possess the traditional academic credentials. They serve as advisors or 'educational brokers' who assist students in planning a program of study and in locating the human and other resources they need to carry out that program.

At MMSC each student is the major architect in the design of his/her own education. With the aid of an advisor, students negotiate an educational pact with the college setting forth the educational goals and the teaching-learning situations to be utilized. The college places a heavy emphasis on internships, on-the-job experience, individual study, and similar non-classroom activities. Students are free to fulfill the terms of their pacts in ways which make the most sense to them.

Degrees are awarded on the basis of competence, not on the basis of how many hours students have gone to classes and how many credits they have accumulated.

Students are expected to demonstrate minimum levels of skill and

vices.

The Public Administration major includes preparation for careers in federal, state and local government agencies, particularly in fields such as urban planning, mass transportation, recreation, budget and finance and personnel management. The program in Business Administration includes preparation for careers in both business administration and the administration of labor organizations, arts management, and the direction of community service organizations. The programs focus on accounting, marketing, finance, personnel management, labor relations and small business management.

Under Human Services, specific curricula are related to careers in four major areas:

Social Services (care for the aged, social work, corrections and law enforcement)

Rehabilitation Services (vocational evaluation, rehabilitation case management)

Health Services (day care centers, mental health and allied health)

Educational Services (ethnic studies, vocational technical education, urban studies)

Students not pursuing a professional program at the college receive a Bachelor of Arts in Urban Liberal Studies.

For further information contact Minnesota Metropolitan State College, LL-90 Metro Square Building, St. Paul, Minnesota 55101

ADMISSIONS—Elizabeth Shippee, 612-296-4466

FINANCIAL AIDS—George Power, (612) 296-4448

ADMISSIONS POLICIES—Primarily an upper division college (junior and senior year), MMSC is drawing its students in large part from among persons in the seven-county Twin City metropolitan area who do not have college degrees and who are currently working or maintaining a home full-time.

These include transfer students from the area junior colleges and vocational-technical schools and adults who have dropped out of college but who want to complete degrees. MMSC is also designed for adults who have the equivalent of the first two years of college through work or other experience.

To apply, prospective students should obtain an application form from the MMSC admissions office, fill it out and return it along with a copy of all transcripts from post high school training.

HOW TO APPLY FOR ADMISSION

PROCEDURE

1. A prospective student fills out pages 1 and 2 of the Minnesota College Admission Form and attaches the non-refundable \$10 application fee in the form of a check or money order payable to the college he wishes to attend.

2. He then submits the application form and attached fee to his high school principal or counselor for completion of the rest of the form. The high school principal will then forward the application form, the application fee and a copy of the applicant's high school transcript to the college Admissions Office.

programs available through the Minnesota State Colleges may also be obtained from the counselor or principal, or by writing directly to the Financial Aids Officer at the college of the student's choice.

*Financial Aids Available
Through the State Colleges*

*Maximum Amount Awarded
Per School Year*

Loan:

National Direct Student Loan.....\$2,500
Federally Insured Student Loan..... 2,500

Law Enforcement Education Loan 1,800 (Tuition, fees, books &
transportation only)

Nursing Student Loan*..... 2,500

3. Students entering any of the state colleges must submit test scores from the ACT, PSAT, or SAT to the college admissions office. If the prospective student has not taken either of the tests at the time he applies for admission to college, his high school counselor can help him make arrangements to take one at the earliest possible opportunity.

4. A student will be accepted at a state college on the basis of high school rank or his test (ACT, PSAT, SAT) scores. Admission eligibility scores vary somewhat among the colleges. Exact admissions guidelines can be obtained by writing the college admissions office.

5. Following acceptance of the student, the college will request him to undergo a physical examination or to complete a health status questionnaire, to complete a student housing form, and to return the health and housing information to the college at least two weeks prior to registration.

FORMS

The Minnesota College Admission Form can be obtained from high school counselors, or from the Admissions Office of the college.

Other forms related to the admission process, such as medical examination forms and student housing forms will be sent to the prospective student by the college at the appropriate time.

WHEN TO APPLY

Students who apply early have an advantage in obtaining housing, scholarship and grant funds and desirable scheduling. A student may apply as early as October or November for admission for fall quarter of the following year. For the convenience of the student, applications should be submitted five or six weeks prior to the term for which the student wishes to attend.

A GUIDE TO COLLEGE COSTS

A. TUITION—The academic year is divided into three quarters of approximately twelve weeks each. The average load is 15 credits per quarter. Each credit costs \$8.00 which would total \$120.00 per quarter or \$360.00 per year.

For the out of state student the cost is somewhat higher. The same load for the non-resident student costs \$16.25 per credit, \$243.75 per quarter or \$731.25 per year.

B. BOARD AND ROOM—This cost will vary slightly at the various state colleges. The average cost for a double room is \$965 per year. A single room is obtainable for \$1,045 per year.

C. FEES—The student union (\$10), student activity (\$15), student union/program (\$3), and health service (\$8) fees total \$36 per quarter or \$108 per year. (Health insurance is optional for \$16 per quarter.)

D. MISCELLANEOUS—The cost for books, requested program changes, special exams and other incidental costs is approximately \$150 per year.

SUMMARY OF COSTS

	Resident	Non-Resident
Tuition	\$ 360.00	\$ 731.25
Board and room	965.00	965.00
Fees	108.00	108.00
Miscellaneous	150.00	150.00
TOTAL	\$1583.00	\$1954.25

FINANCIAL AIDS INFORMATION

Each of the Minnesota State Colleges has available a number of financial aids programs to assist individuals to obtain a college education who would otherwise be unable to do so because of lack of funds.

A student's college financial assistance program can usually be arranged satisfactorily by using one or more of the various aids listed below in a "package"—if the student maintains a satisfactory academic record. Because tuition and other costs are the same at each college, a student can expect to receive a similar financial aids package from whichever college he decides to attend. The amount of aid he will receive is based on the difference between the annual cost of attending a state college and the annual amount the student or his parents can contribute.

Minnesota residents can obtain information and application forms related to the Minnesota State Scholarship and Grant Program from their guidance counselor or by writing to the Higher Education Coordinating Commission (HECC). Information and applications for financial aids

Gift Aid:

Institutional Scholarship and Grant	Varies
Basic Opportunity Grant	\$1,400 (Less family contribution)
Supplemental Education Opportunity Grant	1,500
Law Enforcement Education Grant	600 (Tuition and fees only)
Nursing Student Scholarship*	2,000

Employment:

Federal College Work-Study Program	Varies
Institutional Student Employment Program	Varies

Other Financial Aids:

Each college offers additional financial aids too numerous to list individually. Further information about these programs can be obtained by writing the Financial Aids Officer at the college of the student's choice.

*Program offered only at Mankato and Winona.

Application Date:

For maximum consideration under the programs listed above, students are encouraged to forward their completed financial aids applications to the college by March 15. Students whose applications are received after March 15 will be considered for assistance but stand a lesser chance of receiving it.

<i>Financial Aids Available Through the Higher Education Coordinating Commission</i>	<i>Maximum Amount Awarded Per School Year</i>
--	---

901 Capitol Square Building
550 Cedar Street
St. Paul, Minnesota 55101

Minnesota State Scholarship Program	\$1,000
Minnesota State Grant-in-Aid Program	\$1,000

Application Date:

February 1 is the absolute deadline for filing a completed application for either the State Scholarship or State Grant-in-Aid programs. Applications received after this deadline cannot be considered.

COMMON MARKET—A PROGRAM OF SHARING

The Common Market program, originally proposed by Chancellor G. Theodore Mitau, began in 1968 with a concept of sharing educational resources among the Minnesota State Colleges.

A number of programs have emerged from this concept of cooperation.

The *Student Exchange Program* enables a student to move from one college to another within the Minnesota State College System to take coursework without loss of credits and without formal transfer.

The *Internship Program* supplements classroom learning by placing students in work-related activities for college credit in government, business, or public service organizations in the United States and abroad.

Under the *Urban Clinical Experience Program* of the Common Market, student teachers may obtain teaching assignments in selected Twin Cities schools. This program includes, in addition to the regular urban teaching responsibilities, seminars for idea exchanges and teaching analysis, tours of educational facilities, and a survey of cultural institutions as a potential for learning resources.

The *Community Resources for Higher Education Program* encourages an exchange of theatre, art and music between the colleges and communities throughout the state.

TRAVEL AND STUDY ABROAD

Many Minnesota State College students participate in foreign study or foreign exchange programs which take them to Norway, England, Cyprus, Mexico, France, Japan and other countries throughout the world. Several programs involve student teaching assignments abroad and may include liberal arts study programs in other disciplines.

There are also opportunities for foreign travel on faculty-student tours at modest rates as well as tours for students who are members of performing groups.

FOR FAST INFORMATION, CALL THE HOTLINE

In the seven-county metropolitan area call 296-6277. The statewide toll free number is 800-652-9000.

MEMBERS OF THE MINNESOTA STATE COLLEGE BOARD

DR. FRANK G. CHESLEY, *President*, Red Wing
MR. ARNOLD ANDERSON, *Vice President/Treasurer*, Montevideo
MR. HOWARD B. CASMEY, *Secretary*, St. Paul
MR. THOMAS P. COUGHLAN, Mankato
MRS. ELIZABETH K. JOHNSON, St. Paul
MRS. FLORINE C. KOOLE, Minneapolis
MR. TIMOTHY J. PENNY, Walters
MR. ORRIN RINKE, Sauk Rapids
MR. KENNON V. ROTHCHILD, St. Paul
REVEREND ALVIN L. STENBERG, East Grand Forks

DR. G. THEODORE MITAU, *Chancellor*, Minnesota State College System

MINNESOTA STATE COLLEGE PRESIDENTS

DR. ROBERT DECKER, Bemidji State College
DR. DOUGLAS R. MOORE, Mankato State College
DR. DAVID SWEET, Minnesota Metropolitan State College, St. Paul
DR. ROLAND DILLE, Moorhead State College
DR. CHARLES J. GRAHAM, St. Cloud State College
DR. JAY JONES, Southwest Minnesota State College, Marshall
DR. ROBERT DUFRESNE, Winona State College

DEGREE PROGRAMS OF THE MINNESOTA STATE COLLEGE SYSTEM

1975 & 1976

COLLEGE	BEMIDJI		MANKATO		MOORHEAD		ST. CLOUD		SOUTHWEST		WINONA	
PROGRAM	MAJOR	MINOR	MAJOR	MINOR	MAJOR	MINOR	MAJOR	MINOR	MAJOR	MINOR	MAJOR	MINOR
ACCOUNTING (see Business Ed)	AS, BS	BS, BA	BS	BS	AA, BA	BA, BS(t)		BS	BA(t), AA BA	BA, BA(t)	BS(t), BA	
ACCOUNTING, PRIVATE INDUS			BS	BS			BS					
ACCOUNTING, PUBLIC			BS	BS			BS					
AGRI BUSINESS MANAGEMENT			BS, BA	BS, BA					AA, BA	BA		
AMERICAN HUMANITIES	BA, BS(t)											
AMERICAN STUDIES			BA, BS(t)		BA		BA, BS(t)	BA, BS(t)				
ANTHROPOLOGY		BA, BS, BS(t)	BA, BS, BS(t)	BS(t), BS, BA	BA	BA	BA	BA		BA, BA(t)		
ART	BS(t), BA	BS(t), BA	BFA, BS, BA, BS(t)	BS(t), BS, BA	BS(t), BS, BA	BS(t), BS, BA	BS(t), BA	BS(t), BA	BA, BA(t)	BA, BA(t)	BS(t), BA	BS(t), BA
ART HISTORY		BS(t), BS, BA					BA					
ASIAN STUDIES		BA, BS										
ASTRONOMY				BA, BS, BS(t)		BA, BS						
ATHLETIC TRAINING				BS, BS(t)								
AUDIO-VISUAL COORDINATION						C		C				C
AUDIO-VISUAL EDUCATION						C		C				
BIOLOGY	BS(t), BA, BS	BS(t), BA, BS	BS(t), BA, BS	BS(t), BA, BS	BS(t), BS	BS(t), BS, BA	BS(t), BA	BS(t), BA	BA, BA(t)	BA, BA(t)	BS(t), BA	BS(t), BA
BOTANY						BS, BA						
BROADCASTING			BS							BA		
BUSINESS, GENERAL			BS, BA	BS, BA			BS	BS				
BUSINESS ADMIN	BS	BS, BA	BS	BS	BA,				BA, AA	BA	BA	BA
BUSINESS ED	BS(t)	BS(t)	BS(t)	BS(t)	BS(t), AA	BS(t)	BS(t)	BS(t)	BA(t)	BA(t)	BS(t)	BS(t)
BUSINESS ED, ACCOUNTING			BS, BS(t)	BS		BS(t)	BS(t)	BS(t)	BA(t)	BA(t)	BS(t)	
BUSINESS ED, BASIC BUS			BS, BS(t)		BS(t)		BS(t)	BS(t)	BA(t)	BA(t)	BS(t)	BS(t)
BUSINESS ED, DISTRIB ED	BS(t)	BS(t)	BS		BS(t)		BS(t)	BS(t)				
BUSINESS ED, MEDICAL SEC.			AA									
BUSINESS ED, SECRETARIAL	BS(t)	BS(t)	BS	C, AA	BS(t)		BS(t)	BS(t)	BA(t)	BA(t)	AA, BS(t)	
BUSINESS ED (with Steno)	BS(t)	BS(t)	BS		BS(t)		BS(t)	BS(t)	BA(t)	BA(t)	BS(t)	
BUSINESS ED (without Steno)	BS(t)		BS		BS(t)				BA(t)	BA(t)	BS(t)	BS(t)
BUSINESS MANAGEMENT	AS		BS	BS	AA		BS	BS	AA, BA	BA		
CHEMICAL TECHNOLOGY									AET, BET			
CHEMISTRY	BS(t), BS, BA	BS(t), BS, BA	BS(t), BS, BA	BS(t), BS, BA	BS(t), BS, BA	BS(t), BS, BA	BS(t), BA	BS(t), BA	BA, BA(t)	BA, BA(t)	BS(t), BA	BS(t), BA
COACHING		BS(t), BA, C		C		BS(t)		C	C	BA(t)		C
COMMERCIAL ART								BA, BS				
COMMUNITY SER WORKER	AA, BS											
COMPUTER SCI (Data Process)		BS(t), BS, BA	BS(t), BS	BS(t), BS, BA	BS, BA	BS, BA	AS, BS, BA	BA, BS				BA
CORRECTIVE THERAPY				C								
CREATIVE STUDIES											BA	
CRIM JUSTICE STUDIES							BA	BA				
DENTAL				C								

DENTAL HYGIENE				AA								
DISTRIBUTIVE EDUCATION			BS(t)		BS(t)		BS(t)					
DRAFTING			BS(t)									
DRAFTING TECHNOLOGY					BS							
DRIVER EDUCATION		C		BS(t)		C		C				C
EARLY CHILDHD EDUCATION				BS(t)		AA, BS(t)						
E. ASIAN STUDIES								BA, BS				
EARTH SCIENCE	BS(t)	BS(t), BS, BA	BS(t), BS, BA	BS(t), BS, BA	BS(t)	BS(t)	BS(t), BA	BA, BS(t)	BA, BA(t)	BA, BA(t)	BA, BS(t)	BA, BS(t)
ECONOMICS	BS, BA	BS, BA BS(t)	BS, BA	BS, BA	BS(t), BA	BS(t), BA	BA	BA	BA, BA(t)	BA, BA(t)	BA	BA
ELECTRONICS TECHNOLOGY							AS		AET, BET			
ELEMENTARY EDUCATION	BS(t)		BS(t)		BS(t)		BS(t)		BA(t)		BS(t)	
ELEMENTARY ED/ART	BS(t)											
ELEMENTARY ED/MUSIC	BS(t)											
ELEMENTARY ED/PHY ED	BS(t)											
ELEMENT ED/READING INST							BS	BS(t)				
ELEMENT ED/REMEDIAL READ								C				
EMERGENCY MED. CARE			A.S.	B.S.								
ENGINEERING TECHNOLOGY			BS				AS, BS		BET, AET			
ENGLISH	BS(t), BA	BS(t), BA	BS(t), BA	BS(t), BA, BS	BS(t), BA	BS(t), BA	BS(t), BA	BS(t), BA	BA, BA(t)	BA, BA(t)	BS(t), BA	BS(t), BA
ENVIRONMENTAL STUDIES	BA, BS, BS(t)		BA, BS, BS(t)	BS			BA					
EXECUTIVE SECRETARIAL									AA			
EXEC SECRETAR ADMIN			BS	BS							AA	
FINANCE			BS	BS	BA		BS	BS				
FRENCH	BS(t), BA	BS(t), BA	BS(t), BA	BS(t), BA, BS	BS(t), BA	BS(t), BA	BS(t), BA	BS(t), BA	BA, BA(t)	BA, BA(t)		
GENERAL EDUCATION	AA				AA		AA				AA	
GEOGRAPHY	BS(t), BA, BS	BS(t), BA BS	BS(t), BA BS	BS(t), BA, BS	BS(t), BA	BS(t), BA	BS(t), BA	BS(t), BA			BS(t), BA	BS(t), BA
GEOLOGY									BA, BA(t)	BA, BA(t)	BS(t), BA	BS(t), BA
GERMAN	BS(t), BA	BS(t), BA	BS(t), BA	BS(t), BA, BS	BS(t), BA	BS(t), BA	BS(t), BA	BS(t), BA	BA, BA(t)	BA, BA(t)	BS(t), BA	BS(t), BA
HEALTH			BS, BS(t)	BS, BS(t)					BA	BA	BS(t)	BS(t)
HEALTH CARE SCI. SEQUENCE							AS, BS					
HEALTH EDUCATION	BS(t)	BS(t), BA BS	BS(t)		BS(t), BA	BS(t), BA	BS(t)	BS(t)	BA(t)	BA(t)	BS(t)	BS(t)
HEALTH & PHY ED (men)	BS(t)				BS(t), BA		BS(t)	BS(t)				
HEALTH & PHY ED (women)	BS(t)				BS(t), BA		BS(t)	BS(t)				
HISTORY	BS(t), BA	BS(t), BS, BA	BS(t), BA	BS(t), BA	BS(t), BA	BS(t), BA	BS(t), BA	BS(t), BA	BA, BA(t)	BA, BA(t)	BS(t), BA	BS(t), BA
HOME EC, GENERAL			BS, BS(t)	BS	AA							
HOME EC, DESIGN HUMAN ENVIRON			BS									
HOME EC, DIETETICS			BS									
HOME EC, FOOD & NUTRITION			BS									
HOME EC, TEX-TILE/CLOTHING			BS									
HOME EC, MERCHANDISING			BS									
HOTEL-MOTEL MANAGEMENT					BS							
HOTEL REST & INSTIT MGMT									BA	BA		
HUMANITIES			BS, BS(t), BA						BA	BA		
INDIAN STUDIES		BA, BS				BA, BS						
INDIVIDUALIZED MAJOR			BS		BS, BA				BA	BA	BA	
INDUSTRIAL ARTS			BS				BS				BA, BS(t)	
INDUSTRIAL ARTS ED	BS(t)	BA	BS(t)				BS(t)				BS(t)	
INDUSTRIAL EDUCATION			BS(t)		BS(t), BA						BS(t), BA	
INDUSTRIAL ENGINEERING	AS						BS, AS					
INDUSTRIAL TECHNOLOGY	BS				BS, AA	BS	AS					
INSTRUCTIONAL COMM						BS(t)						
INSURANCE & REAL ESTATE			BS	BS			BS	BS				
INTERNATIONAL RELATIONS			BA									
JOURNALISM			BS(t), BA, BS	BS(t), BA, BS	BS, BS(t)		BA	BA, BS(t)				

RELIGIOUS STUDIES		BS, BA										
ROMANCE LANGUAGES												BA
RUSSIAN	BS(t), BA	BS(t), BA										
SAFETY EDUCATION				BS(t), BS								
SCANDINAVIAN STUDIES						BS(t), BA						
SCIENCE	BS(t)											
SCIENCE, GENERAL			BS(t)				BS(t)				BS(t)	
SCIENCE, PHYSICAL							BS(t)	BS(t)	BA(t)	BA(t)		
SECONDARY ED/ DEV READING								C				
SECONDARY ED/ READING								C				
SECONDARY ED/ REMEDIAL READ								C				
SECRETARIAL ADMIN			BS	BS			BS(t)		BA, AA BA(t)	BA		
SECRETARIAL PROGRAM	AS		BS, AA	BS	AA				BA,		AA	
SECRETARIAL SCIENCE	AS						BS(t), AA		BA, BA(t)	BA		
SECRETARIAL SERVICES					AA							
SOCIAL SCIENCE	BS(t), BA	BS(t), BA BS					BS(t), BA	BS(t), BA	BA	BA(t)	BS(t), BA	BS(t), BA
SOCIAL SERVICES					BA							
SOCIAL STUDIES	BS(t), BA,	BS(t), BA BS	BS(t), BS	BS(t), BS	BS(t)	BS(t)	BS(t)	BS(t)				
SOCIAL STUDIES, JUNIOR HIGH						BS(t)						
SOCIAL WORK	BS		BS		BA		BA					
SOCIOLOGY	BA	BA, BS(t) BS	BA, BS	BA, BS, BS(t)	BA, BS(t)	BA, BS(t)	BA, BS, BS(t)	BA, BS	BA, BA(t)	BA, BA(t)	BA	BA, BS(t)
SOCIOLOGY, CORRECTIONS			BS									
SPANISH	BS(t), BA	BS(t), BA	BS(t), BA	BS, BA	BS(t), BA		BS(t), BA	BS(t), BA	BA, BA(t)	BA, BA(t)	BS(t), BA	BS(t), BA
SPECIAL ED, COMPRE							BS(t)					
SPECIAL ED, EMOTIONL DIST				BS(t)								C
SPECIAL ED, HEARING IMP							BS(t)					
SPECIAL ED, MENTALLY RET		BS(t)		BS(t)	BS(t), BA	BS(t), BA		BS(t)				C
SPECIAL ED, ORTHOP HANDIC								BS(t)				
SPECIAL ED, READING				C		C						C
SPEECH			BS, BA, BS(t)	BS, BA	BS(t)	BS(t)	BS(t), BA	BS(t), BA	BA, BA(t)	BA, BA(t)	BA, BS(t)	BA, BS(t)
SPEECH CORRECTION			BS(t)			C						
SPEECH PATHOL & AUDIOLOGY			BS(t), BA, BS		BS(t), BA		BS(t), BA					
SPEECH & DRAMA	BS(t)	BS(t)			BS(t)				BA, BA(t)	BA, BA(t)		
SPEECH, PUBLIC ADDRESS					BA	BA, BS(t)	BA, BS(t)	BA, BS(t)		BA, BA(t)	BS(t), BA	BS(t), BA
SPEECH, RADIO & TV										BA		
SPEECH, THEATRE ARTS (see Theatre)	BS(t), BA	BS(t), BA BS			BS(t), BA, BS	BS(t)		BS(t)	BA, BA(t)	BA, BA(t)	BS(t), BA	BS(t), BA
TECHNICAL AID (Industrial Tech)					AA							
TECHNICAL ILLUSTRATION	AS, BS						AS					
THEATRE ARTS (see Speech)			BS(t), BS, BA	BS(t), BS, BA	BA		BS(t), BA	BS(t), BA	BA, BA(t)	BA, BA(t)		
THEATRE PRODUCTION		BS(t), BA BS								BA, BA(t)		
TRAFFIC SAFETY EDUCATION				BS(t)				BS(t)				
TYPING & BOOKKEEPING			BS, AA	BS						BA, BA(t)		BS(t)
URBAN STUDIES			BS	BS, BA			BA					
VOCATIONAL EDUCATION	BS, AS		BS, AS		BS, AS		AA, BS				BS	
WATER QUALITY & POL CONTROL			AS									
ZOOLOGY						BA						

KEY TO PROGRAM SYMBOLS

- C — Certificate
- AS — Associate in Science Degree
- AA — Associate in Arts Degree
- BA — Bachelor of Arts, Non Teaching Degree
- BA(t) — Bachelor of Arts, Teaching Degree
- BS — Bachelor of Science, Non Teaching Degree
- BS(t) — Bachelor of Science, Teaching Degree
- BFA — Bachelor of Fine Arts Degree
- AET — Associate in Engineering Technology Degree
- BET — Bachelor of Engineering Technology Degree
- BM — Bachelor of Music Degree



graduate programs
of the minnesota state colleges

Minnesota State College System/407 Capitol Square/550 Cedar Street, St. Paul, MN. 55101

STATE COLLEGE BOARD MEMBERS

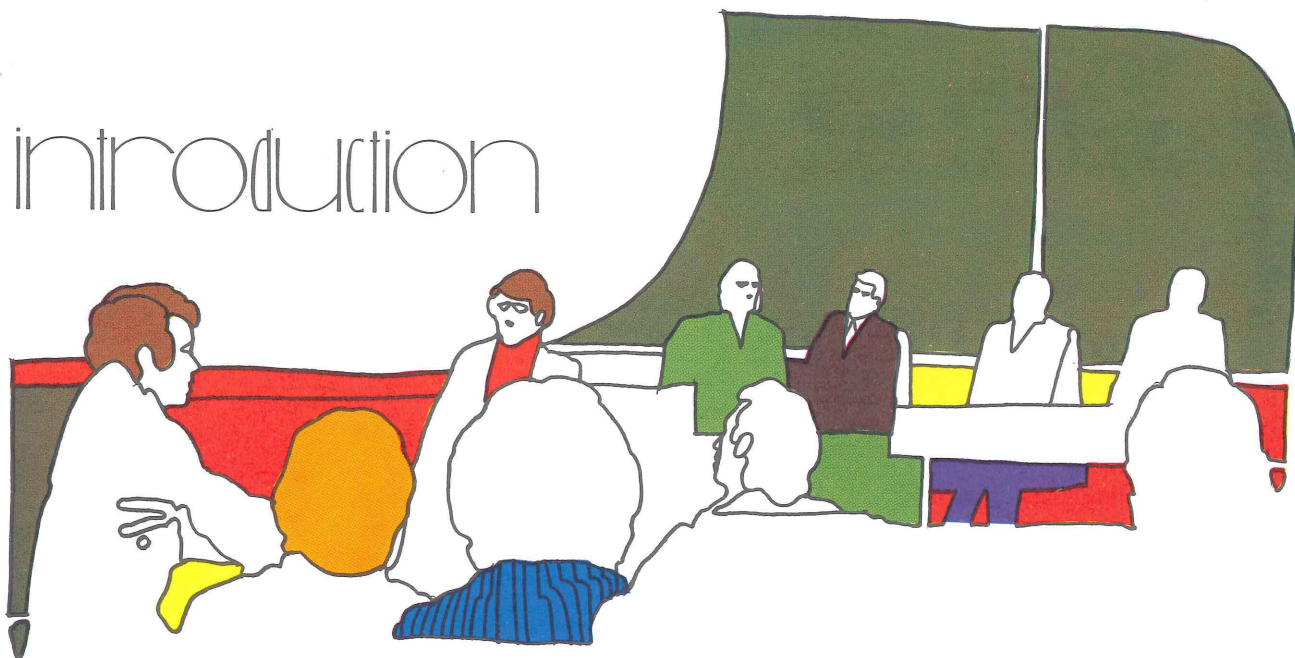
DR. FRANK G. CHESLEY, *President*, Red Wing
MR. ARNOLD ANDERSON, *Vice President/Treasurer*, Montevideo
MR. HOWARD B. CASMEY, *Secretary*, St. Paul
MR. THOMAS P. COUGHLAN, Mankato
MRS. ELIZABETH K. JOHNSON, St. Paul
MRS. FLORINE C. KOOLE, Minneapolis
MR. ORRIN RINKE, Sauk Rapids
MR. KENNON V. ROTHCHILD, St. Paul
REVEREND ALVIN L. STENBERG, East Grand Forks

G. THEODORE MITAU, Chancellor

STATE COLLEGE PRESIDENTS

DR. ROBERT D. DECKER, Bemidji State College
DR. DOUGLAS R. MOORE, Mankato State College
DR. ROLAND DILLE, Moorhead State College
DR. CHARLES J. GRAHAM, St. Cloud State College
DR. ROBERT A. DUFRESNE, Winona State College
DR. DAVID E. SWEET, Minnesota Metropolitan State College
DR. JAY JONES, Southwest Minnesota State College

introduction



Graduate education is a significant and integral part of the mission of the Minnesota State College System. From Master's degrees in education, five of the Minnesota State Colleges have expanded their graduate offerings to include many additional professional and liberal arts programs.

Bemidji, Mankato, Moorhead, St. Cloud and Winona State Colleges collectively offer Master's degree programs in 60 areas. In addition to education, specialties are available in the social sciences, natural sciences, fine arts, business and the humanities.

Responding to requests from superintendents, principals, and other educational administrators for additional training, Mankato, St. Cloud and Winona developed the Specialist degrees in curriculum and instruction, educational administration, and information media.

While the graduate offerings are now comprehensive in nature, teacher education continues to have an important role; for example, two-thirds of all Master's degrees earned in Minnesota in this field are awarded by the state colleges.

Flexible schedules can be arranged by taking evening or off-campus courses. For example, Mankato and St. Cloud cooperatively offer credit for off-campus courses at easily accessible locations in the Metropolitan area.

Graduate study can include internships, seminars, workshops, practicums and television courses, held on or off-campus. Credit is also granted for research work done as independent study.

The state colleges have employed the Common Market concept allowing a student at one college to take advantage of unique programs at the other state colleges. The individual departments at the colleges may accept up to 15 quarter credits (nine maximum at Moorhead) earned at another accredited institution.

Placement services are available to help graduates obtain employment information.

The state colleges offering graduate programs are all accredited by the North Central Association of Colleges and Secondary Schools and the National Council for Accreditation of Teacher Education.

Bemidji State College

Located on the shores of Lake Bemidji near the headwaters of the Mississippi River in Minnesota's famed Paul Bunyan Country, Bemidji State College provides a friendly atmosphere for graduate study.

Its 89-acre campus lies within the city limits of Bemidji, a community of 11,000 people located 235 miles north of the Twin Cities of Minneapolis and St. Paul.

In 1970 Bemidji State College established the Center for Environmental Studies which is a research, teaching and community service organization involving inter-disciplinary approaches to environmental questions. The Environmental-Outdoor Education Program has been set up to provide elementary and secondary teachers and their classes the opportunity to survive and enjoy life in the out-of-doors. For an outside laboratory, the College utilizes a satellite campus, the Bald Eagle Center deep in the Chippewa National Forest.

For recreation, the 4500 students soon learn the advantages of living in the heart of one of the nation's finest outdoor recreation areas with unlimited opportunities for

water and winter sports. The physical education complex offers the advantages of a year around olympic-size pool and an ice skating rink.

For the cultural arts, Bemidji State College hosts an annual program of visiting musical events, speakers, and drama. This supplements a comprehensive music degree program as a showcase and laboratory for its varied Fine Arts Curriculum housed in the Bangsberg Complex.

Bemidji State College offers one of the most varied and inclusive summer programs in the nation located, as it is, in the heart of vacation country. A full range of courses is available including academic work for the freshman through graduate level. In addition, over 80 clinics and workshops are offered for graduate and undergraduate credit during the summer.

For further information, contact Dr. William A. Sellon, Dean of Graduate Studies, Bemidji State College, Bemidji, Minnesota 56601. (218-755-2027)



mankato state college



Established in 1868, Mankato State College has expanded from a Valley Campus of 30 acres to include a Highland Campus comprising 350 acres.

Today the upper campus of Mankato continues to expand with a recent addition to the student union and completion of a \$9 million Trafton Science Center.

The college library system, consisting of four branches, contains an extensive book collection, facilities for auto-tutorial and other self-instructional programs, and a complete data-processing equipment center.

Graduate students at Mankato can choose from more than 70 programs of study. Most of these are at the Master's degree level but two Specialist degree programs are offered in Educational Administration and in Curriculum and Instruction.

Two open graduate programs exist for the student interested in maximum flexibility in planning his program. One of these is the Master of Science in Experiential Education which incorporates outdoor experience and human science components into a very open-ended framework. The other program is the Master of Science in Continuing Studies which encourages interdisciplinary opportunities enabling the student to achieve depth in preparation for a particular job rather than in a traditional discipline.

The Master of Arts in Teaching Degree is open to highly qualified teachers. It enables the student with a liberal arts undergraduate background to earn a Master's degree while meeting teacher certification requirements.

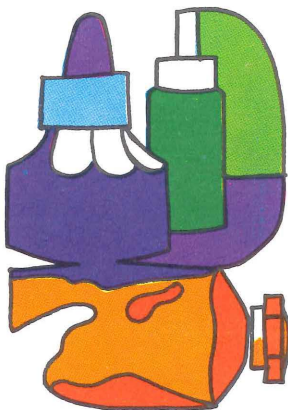
As the cultural center of the area, Mankato State College provides outstanding programs in the arts and brings nationally-known speakers and entertainers to the campus each quarter.

Mankato is a city of 40,000, located on the Minnesota River.

For further information contact, Dr. Winston W. Benson, Dean of Graduate Studies, Mankato State College, Mankato, Minnesota 56001. (507-389-2321)

moorhead state college

Moorhead State College is located in a college-minded community offering a wide range of cultural and recreational opportunities. The twin cities of Moorhead and Fargo, N.D. are part of a metropolitan community of nearly 120,000, situated within the rich farm lands of the Red River Valley.



The community is a major trade, distribution and medical center, and is also the location of two other institutions of higher education — North Dakota State University in Fargo and Concordia College in Moorhead. The three colleges cooperate in a unique educational consortium called the Tri-College University.

Excellent library holdings in the new Moorhead State library are supplemented by the collections of the other institutions. Students may also plan their programs to include courses offered by North Dakota State University at no increase in tuition.

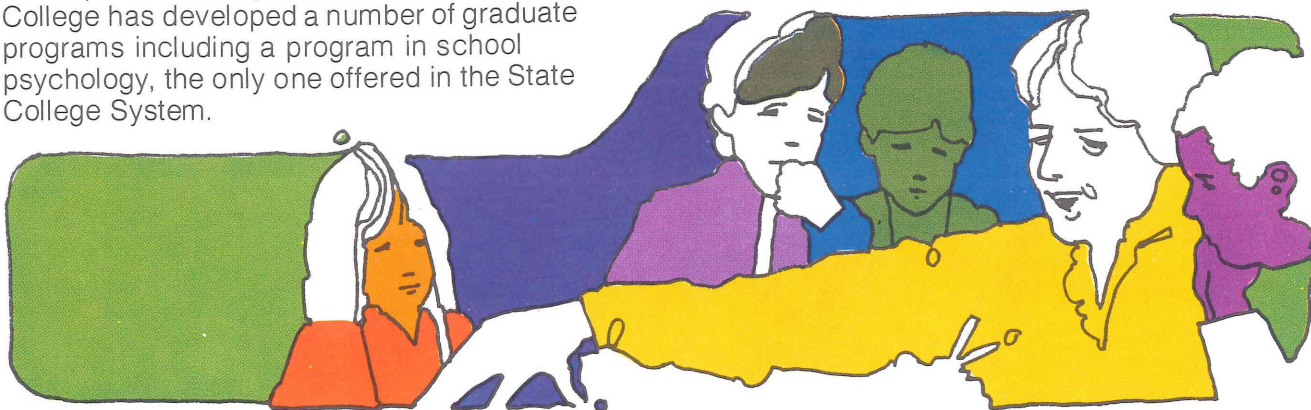
In the past several years, Moorhead State College has developed a number of graduate programs including a program in school psychology, the only one offered in the State College System.



New buildings and modern facilities enhance the programs in graduate education. Among the facilities are a regional television studio, a center for the fine arts, an audio-visual center, and the most modern laboratories for science, psychology and education.

Recreational facilities in the Moorhead-Fargo area are abundant. The metropolitan community supports two art galleries, a symphony orchestra, a community theatre, several movie theatres, four television stations and five radio stations.

For further information, contact Dr. Benjamin W. McCashland, Dean of Graduate Studies, Moorhead State College, Moorhead, Minnesota 56560. (218-236-3127)



St. Cloud State College

St. Cloud State College is located on the Mississippi River near downtown St. Cloud and within a 90-minute drive from downtown Minneapolis or St. Paul. Most of the college's 26 buildings have been constructed in recent years, including a Learning Resources Center, Performing Arts Center, Mathematics-Science Center and Atwood Memorial College Center, which serves as the student union.

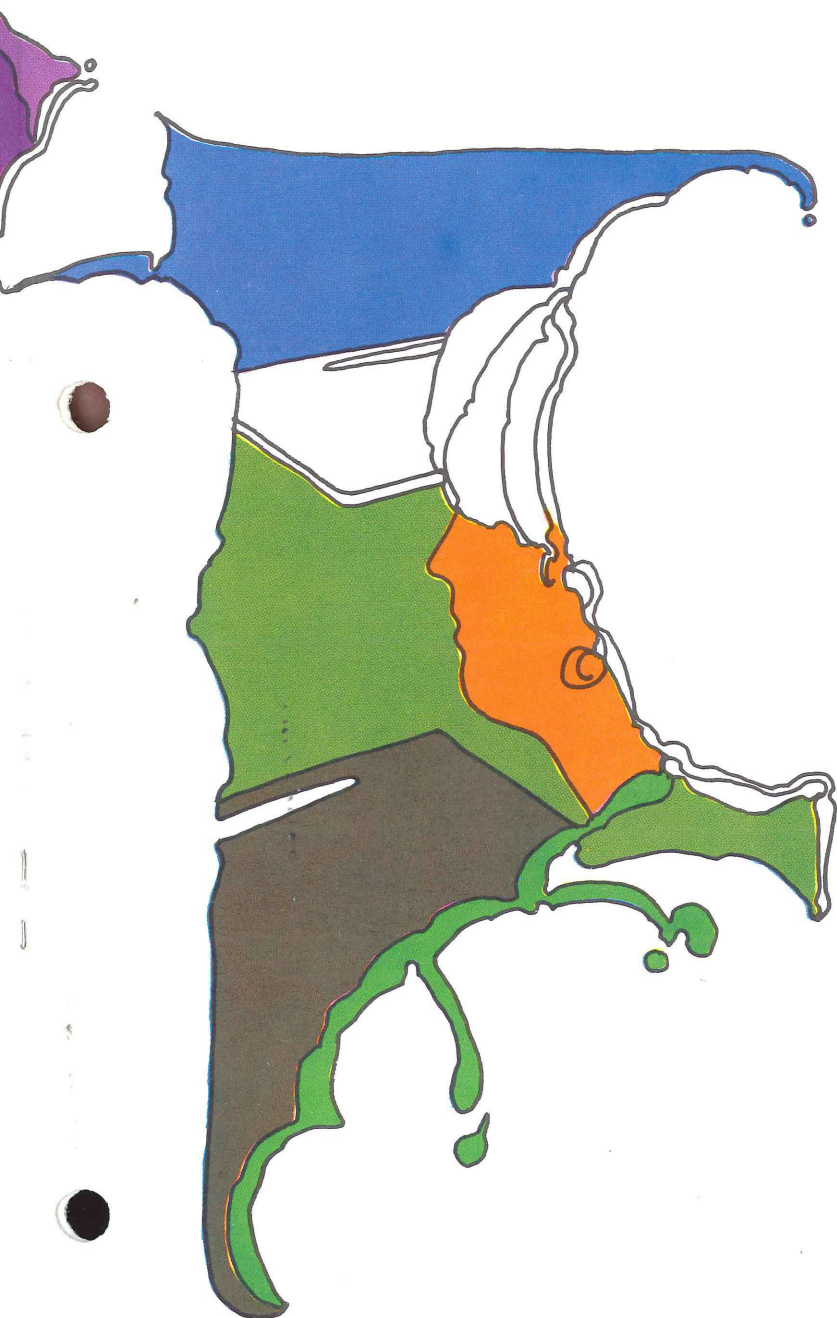
Founded in 1869 as a small normal school, the college has developed into a comprehensive co-educational institution with approximately 10,000 students. About one-third of the students are enrolled in graduate programs.

In addition to a number of Master's degrees, the college awards the Specialist degree, requiring one year of preparation beyond the Master's degree level, in Information Media and Educational Administration.

Graduate study and research are greatly enhanced by the well-equipped, air-conditioned Learning Resources Center. Features include a Random Remote Access Information System, individual study carrels and a Computer Services Center, which is used by graduate students to process research data. The Office of Institutional Research provides graduate students with assistance in designing research projects and information concerning the availability of research funds.

The city of St. Cloud is located in central Minnesota, midway between metropolitan Minneapolis-St. Paul and the scenic and recreational Minnesota northwoods country. Some of the Midwest's most popular summer and winter resort areas are within a short drive. The city itself has many beautiful parks and recreational attractions. Its schools and regional hospital are among the finest in the state. An attractive downtown shopping mall has been developed as part of an extensive urban renewal program. With a population of 40,000, the city expects its controlled growth pattern to continue through the remainder of the century.

For further information, contact Dr. Lowell R. Gillett, Dean of Graduate Studies, St. Cloud State College, St. Cloud, Minnesota 56301. (612-255-2113)



Winona State College

Winona State College was founded 114 years ago by the first State Legislature of Minnesota, and thus became the first state teacher training institution west of the Mississippi River.

The city of Winona rests on the west bank of the Mississippi river and represents the last major city the river passes in Minnesota on its way south. The city is bordered north and south by the imposing hills of the beautiful Hiawatha Valley, a major tourist attraction for many each year. In the spring the area looks fresh and alive. In the summer the cool, interesting valleys beckon to the adventurer. In the fall there is no place that excels the vibrant colors found on the wooded hillsides. In the winter, as all year round, the community and area abound with recreational activities including skiing, skating, swimming, fishing, hunting, tennis, golf and touring.

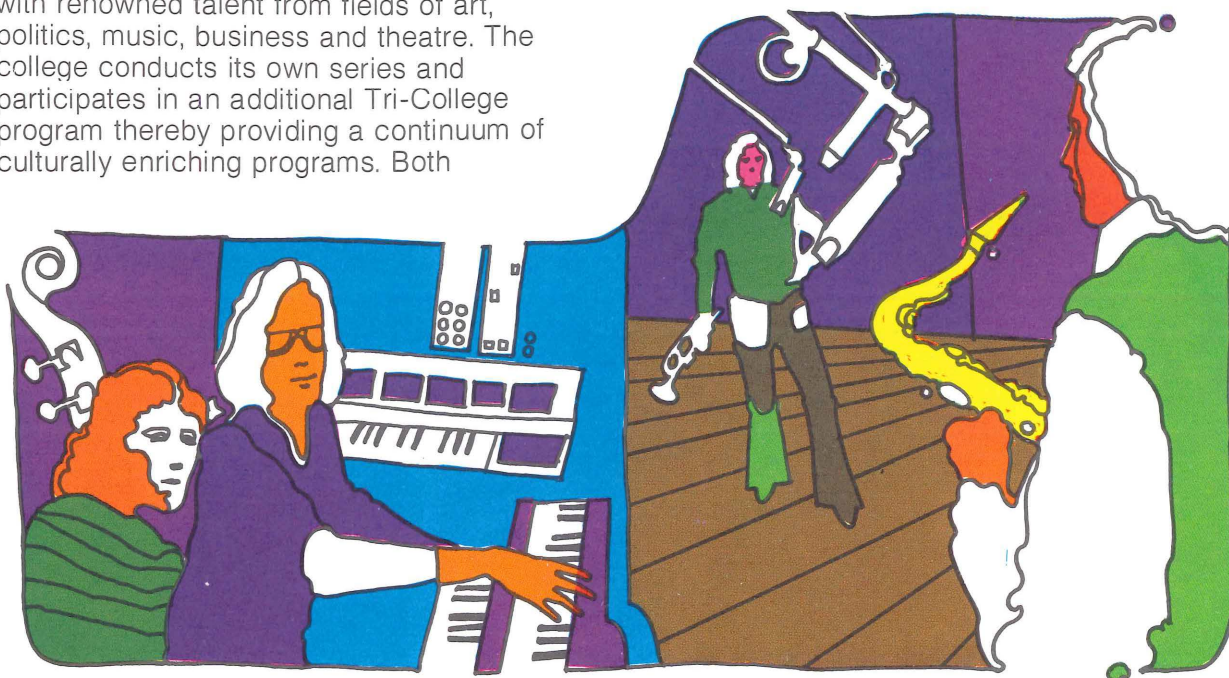
The college promotes a strong concerts and lectures program in an effort culturally to stimulate the students and to acquaint them with renowned talent from fields of art, politics, music, business and theatre. The college conducts its own series and participates in an additional Tri-College program thereby providing a continuum of culturally enriching programs. Both

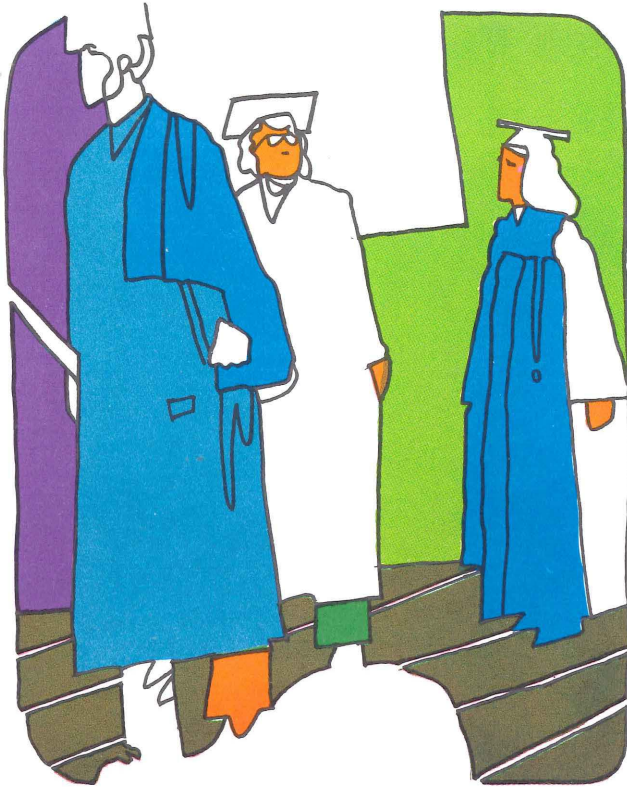
programs are guided by faculty-student committees. The public is invited to attend these functions.

A recent contribution to the city was the development and trial season of WSC-3, a television station created through the efforts of the College's Audio-AVC Department and the American Cablevision Company. The department has been designated one of three regional centers in the State with production responsibilities for educational institutions, private and public, in a 100-mile radius. It is the only college studio in the state, aside from the University of Minnesota, with color broadcast capabilities.

In addition to several Master's degree programs, Winona State College offers the Specialist degree in Educational Administration. This degree is designed for persons who wish to achieve, by a planned program of graduate studies, proficiency beyond the Master's degree level in elementary and secondary school administration and supervision. Candidates may emphasize course work, internships, and field experience related to specific leadership posts such as superintendencies, principalships, directorships, and supervisors. The program is available to persons with or without the Master's degree.

For further information, contact Dr. Daniel Hoyt, Dean of Graduate Studies, Winona State College, Winona, Minnesota 55987. (507-457-2053)





financial aids

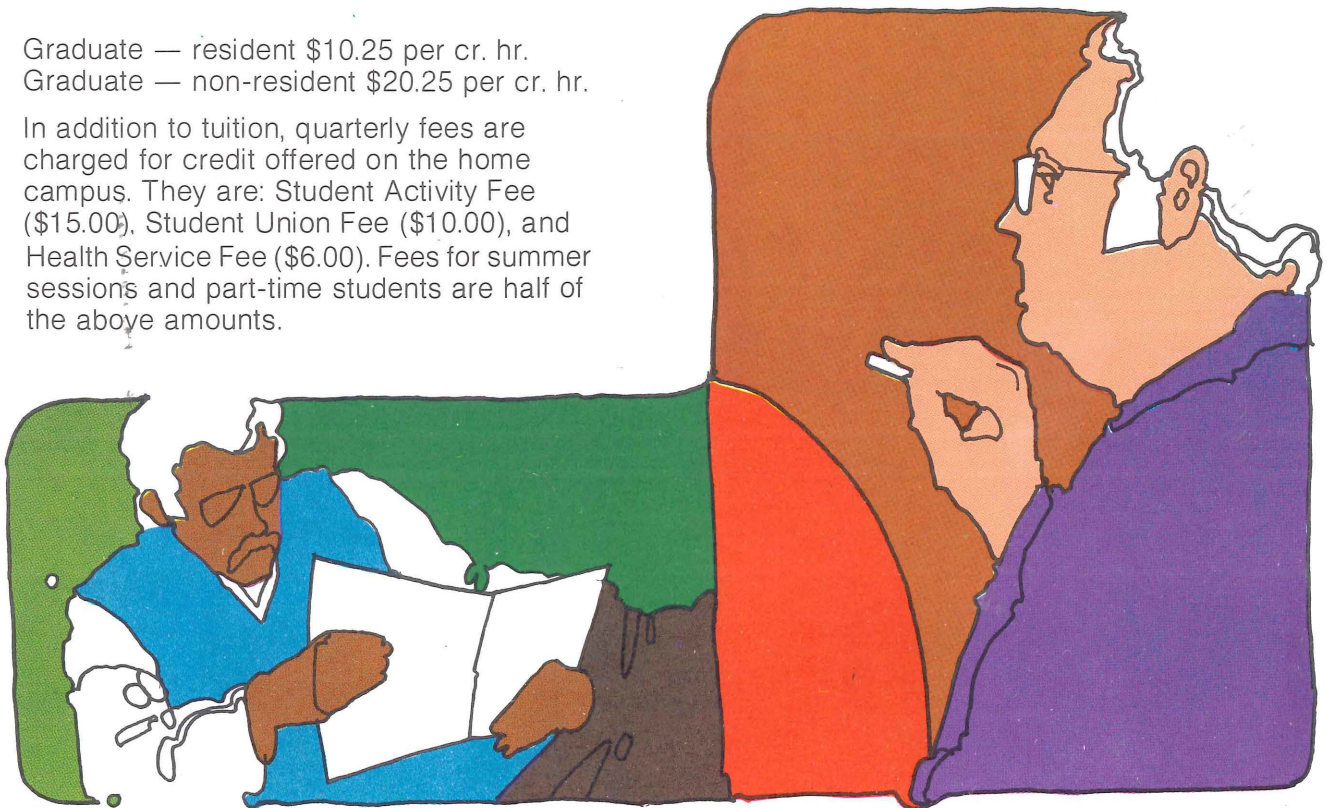
Each of the Minnesota State Colleges has a number of financial aids programs available to assist individuals in obtaining their graduate education. Graduate assistantships and scholarships are available in many of the departments offering graduate programs. These assistantships provide experience in teaching, residence hall supervision, counseling or research.

Loans and employment opportunities also exist. Persons wanting more financial aids information should contact the financial aids officer of a particular college.

tuition

Graduate — resident \$10.25 per cr. hr.
Graduate — non-resident \$20.25 per cr. hr.

In addition to tuition, quarterly fees are charged for credit offered on the home campus. They are: Student Activity Fee (\$15.00), Student Union Fee (\$10.00), and Health Service Fee (\$6.00). Fees for summer sessions and part-time students are half of the above amounts.



degree programs

of the minnesota state college system

PROGRAM	BEMIDJI	MANKATO	MOORHEAD	ST. CLOUD	WINONA
ACCOUNTING		MBA			
ART		MA, MS	MSE	MA, MS	MS
BIOLOGY	MA	MA, MS	MS, MSE	MA, MS	MS
BUSINESS ADMINISTRATION		MBA		MBA	
BUSINESS EDUCATION	MS	MS	MSE	MS	MS
CHEMISTRY	MS	MS, MA	MS, MSE		
COMPUTER SCIENCE		MA, MBA			
CONTINUING STUDIES		MS			
COUN. & GUIDANCE, ELEMENTARY		MS			MS
COUN. & GUIDANCE, SECONDARY	MS	MS	MSE	MS	MS
COUN. & GUIDANCE, GENERAL				MS	
COUN. & GUIDANCE, COL. STUDENT PER.		MS			
COUN. & GUIDANCE, EMPLOYMENT		MS		MS	
COUN. & GUIDANCE, REHABILITATION		MS		MS	
ECONOMICS		MBA, MA			
EDUCATION:					
CURRICULUM & INSTRUCTION		S, MS			
EDU. ADMIN., ELEMENTARY	MS	S, MS	MSE	S, MS	S, MS
EDU. ADMIN., SECONDARY		S, MS		S, MS	S, MS
EDU. ADMIN., GENERAL		S, MS		S	S
EDU. ADMIN., VOC-TECH.		MS			
ELEMENTARY EDUCATION	MS	MS	MSE	MS	MS
EXPERIENTIAL EDUCATION		MS			
JUNIOR H.S. EDUCATION				MS	
READING		MS		MS	
REMEDIAL READING			MSE		
SPECIAL EDUCATION, ADMINISTRATION				MS	
SPECIAL EDUCATION, LEARNING DIS.		MS			
SPECIAL EDUCATION, MENTALLY RETAR.		MS		MS	
SPECIAL EDUCATION, EMOT'L DISTURBED		MS		MS	
ENGLISH	MA, MS	MA, MS	MSE	MA, MS	MA, MS
ENVIRONMENTAL STUDIES		MA			
FINANCE		MBA			
FRENCH		MS			
GEOGRAPHY		MA, MS		MS	
GERMAN		MS			
HEALTH		MS			
HEALTH, PHY. ED. & REC.		MS	MSE	MS	MS
HISTORY		MA, MS		MA, MS	MS
HOME ECONOMICS		MS			
INFORMATION MEDIA		MS		S, MS	
INDUSTRIAL EDUCATION	MS	MS	MSE	MS	MS
MANAGEMENT		MBA			
MARKETING/ MERCHANDISING		MBA			
MATHEMATICS	MS	MA, MS	MSE	MA, MS	MS

degree Program

Key

MA — Master of Arts
 MS — Master of Science
 MSE — Master of Science Education*
 MBA — Master of Business
 Administration
 MM — Master of Music
 S — Specialist

MUSIC	MS	MM	MSE	MS	MS
PHYSICAL EDUCATION	MS	MA, MS			
PHYSICS		MS			
POLITICAL SCIENCE		MA, MS			
PSYCHOLOGY		MA			
PSYCHOLOGY (SCHOOL PSYCH.)			MSE		
PUBLIC ADMINISTRATION		MA			
SCIENCE, GENERAL	MS	MS			
SCIENCE, PHYSICAL				MS	
SOCIAL SCIENCE	MS		MSE	MS	
SOCIAL STUDIES		MS			
SOCIOLOGY		MA, MS			
SPANISH		MS			
SPEECH		MS, MA			
SPEECH PATH. & AUDIOLOGY		MA	MSE	MS	
THEATRE ARTS		MS, MA	MSE		
URBAN STUDIES		MA			

*Moorhead designates education degrees as MSE and academic degrees as MS. The other colleges designate education degrees as MS and academic degrees as MA.