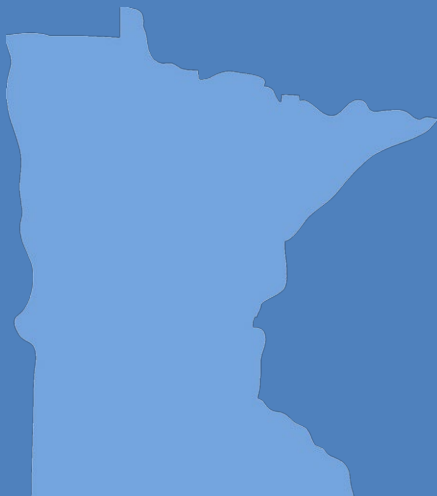


Report on 2012 SCORE Programs

A summary of recycling and waste management in Minnesota



Legislative charge

In 1989, the Legislature adopted comprehensive waste reduction and recycling legislation based on recommendations of the Governor's Select Committee on Recycling and the Environment (SCORE). This set of laws, Minn. Stat. § 115A.551-115A.557, commonly referred to as SCORE, initiated a stable source of state funding for recycling programs, as well as waste reduction and the improved management of household hazardous wastes, yard waste, and problem materials. SCORE legislation provides grant dollars, along with funding to counties and local government for long-term flexible programs.

Authors

Arlene Vee

Contributors/acknowledgements

Wayne Gjerde
Anna Kerr

Editing and graphic design

PIO staff
Graphic design staff
Administrative Staff

Estimated cost of preparing this report (as required by Minn. Stat. § 3.197) including staff time, writing, editing, and printing is \$8,150.

The MPCA is reducing printing and mailing costs by using the Internet to distribute reports and information to wider audience. Visit our website for more information.

MPCA reports are printed on 100% post-consumer recycled content paper manufactured without chlorine or chlorine derivatives.

Minnesota Pollution Control Agency

520 Lafayette Road North | Saint Paul, MN 55155-4194 | www.pca.state.mn.us | 651-296-6300

Toll free 800-657-3864 | TTY 651-282-5332

This report is available in alternative formats upon request, and online at www.pca.state.mn.us .

Document number: w-sw1-28

Contents

- Summary Report 1
- MSW generation in Minnesota 1
- Statewide totals and trends..... 2
- Per capita MSW generation 2
- Efforts to reduce waste in Minnesota 2
- Recycling in Minnesota 3
- Recycling rates 3
- Materials collected for recycling: Tons and trends..... 4
- Recycling by category..... 4
- Recycling Market Development..... 4
- MSW Processing and Disposal 5
- Waste processing/resource recovery 6
- Landfills 6
- Finance and administration of SCORE programs 7
- SCORE block grants 7
- County revenues for SCORE..... 8
- County expenditures for SCORE..... 8
- End of SCORE as we know it... beginning of a new approach... 8
- Appendix A: County Score Survey Responses 10**

Summary Report

In 1989, the Governor's Select Committee on Recycling and the Environment (SCORE) recommended to the Legislature to adopt a comprehensive set of laws, commonly referred to as SCORE. This act initiated a state funding source for recycling programs, as well as waste reduction, management of household hazardous wastes, and problem materials. SCORE legislation and grant dollars, along with funding from counties and local government, provide the basis for long-term, flexible programs.

This *Report on 2012 SCORE Programs* summarizes information submitted by all 87 counties and the Western Lake Superior Sanitary District on waste management efforts, including waste reduction activities, recycling, composting, household hazardous waste programs, problem materials collection, and waste processing and disposal. The report and information on SCORE programs are available at <http://www.pca.state.mn.us/score>.

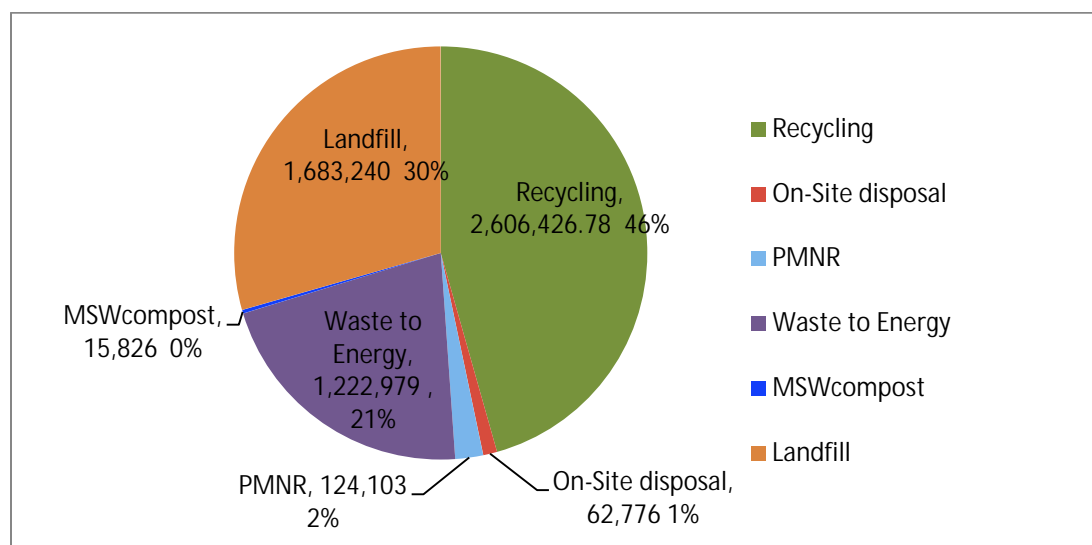
MSW generation in Minnesota

Total generation of the state's municipal solid waste (MSW) includes wastes discarded and recycled, including tons sent to disposal and resource recovery facilities, all materials collected for recycling, and tons disposed of illegally on-site (burn barrels or farm dumps).

Mixed MSW is defined by statute as "garbage, refuse, and other solid waste from residential, commercial, industrial, and community activities that the generator of the waste aggregates for collection." It includes common materials found in household and commercial garbage such as packaging materials, containers, food discards, plastic, paper, etc.

Municipal solid waste does not include auto hulks, street sweepings, ash, construction debris, mining waste, sludges, tree and agricultural wastes, tires, lead acid batteries, motor and vehicle fluids and filters, and other materials collected, processed, and disposed of as separate waste streams (Minn. Stat. § 115A.03, subd. 21).

Figure 1. Total MSW generation in Minnesota



Statewide totals and trends

Overall, since the state first collected SCORE data in 1989, Minnesota has shown a steady growth in MSW, reflected in both the total amount of MSW generated and in the per capita figures.

In 2012, approximately 5.7 million tons of mixed MSW were generated in Minnesota. Statewide, this represents less than a 1% increase over 2011.

Per capita MSW generation

In 2012 waste generation showed a slight increase from 2011 after three consecutive years of decreased generation during the recession (2008 through 2010). This is likely due to the recent improvements in the economy as waste generation historically has increased when the economy is good, and decreased when it is in decline. In 2012, the Minnesota per capita rate increased insignificantly to 1.064 tons per person (2,129 pounds/person/year) from 1.062 tons per person in 2011.

In 2012, Minnesota's population increased by only 0.7% from 2011 to 5,368,972 people an increase of only 36,726.

Efforts to reduce waste in Minnesota

At the top of the waste management hierarchy is preventing waste at its source, the most beneficial waste management strategy, both economically and environmentally. Waste prevented at its source does not need to be managed or recycled, which means fewer costs and less pollution from transporting, recycling, processing, or landfilling wastes. Waste reduction helps sustain the longevity and economic viability of the state's waste management systems, such as lengthening the life of a landfill. Reducing the amount of waste produced increases competitiveness and can boost productivity and efficiencies and cuts cost. Resources and studies are available at <http://www.pca.state.mn.us/pyri7c6> and can assist in giving examples and the means in which to implement this simple and beneficial waste strategy.

Waste reduction is hard to quantify at local levels, however, during the most recent recession a change was seen and showed in reduced tonnages. Some examples are: newspaper size was narrowed; reusable shipping containers replaced disposable ones. Technology has also changed how magazines, books and newspapers are subscribed to and read. Consignment stores were perceived differently with additional interest and customers, revitalizing and ultimately redesigning and marketing reuse. These stores were reorganized and made more appealing for customers, such as boutiques and specialized consignment stores, such as wedding, construction and demolition, and professional, high end clothing.

The Waste Management Act of 1980 and its subsequent amendments call for an integrated approach of various management methods to address solid waste challenges. Reducing the quantity of wastes generated and its toxicity is the statute's stated preferred method, but, for a variety of reasons, has yet to gain the attention and support needed to make it a viable approach that is fully embraced by solid waste management officials. To date, other management methods such as recycling, waste-to-energy, and land disposal consume a disproportionate share of limited resources.

The annual SCORE survey gathers county efforts to reduce waste at the local level. Counties across the state make efforts to bring the message of waste reduction to Minnesota residents and businesses. Although credits that were given prior to 2012 are no longer given to counties reflecting the amount of work given to source reduction, it remains the most beneficial waste management strategy.

Recycling in Minnesota

The heart of SCORE is Minnesota’s recycling efforts; and Minnesota’s recycling programs are among the nation’s most successful. In 2012, the state recycling rate remained virtually unchanged at 45.6 percent. Recycling programs in Minnesota collected over 2.6 million tons of recyclable materials (paper, metals, glass, plastic, food, problem materials, and more), an increase of less than 50,000 tons or 1.9 percent from 2011. Despite this success, a recent study on waste composition in Minnesota (www.pca.state.mn.us/zihy86c) showed that paper, plastics, and organics are still the top three components of our garbage. This presents an opportunity to reduce what is currently disposed of as trash by Minnesota residents and businesses through recycling, composting, and waste prevention.

In measuring county progress toward recycling goals, the MPCA focuses on wastes aggregated for collection as MSW, restricting recyclable materials to those that would otherwise be disposed of in MSW. Recyclable materials excludes wastes that are separated for disposal (such as most nonhazardous industrial wastes), and excludes materials recovered for recycling that are not considered MSW (such as concrete). The MPCA also excludes wastes that historically have been managed and recovered separately, such as auto hulks, most scrap metal, and mill scraps.

Recycling rates

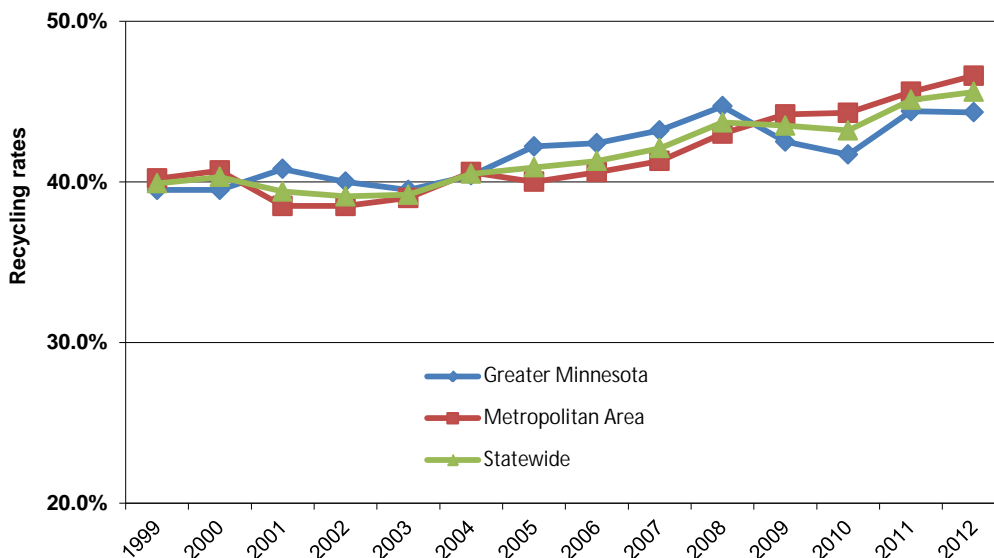
For 2012, the MPCA calculates a statewide recycling rate of nearly 46 percent.

2012 Minnesota’s base recycling rate—tons recycled divided by tons of MSW generated—is 45.6 percent. This calculation uses actual weights of collected recyclables and solid waste, as well as tonnage estimates of wastes that are not recorded—on-site disposal of waste and problem materials that are disposed of improperly.

2012 Legislation session removed credits for yard waste and source reduction from Minn. Stat. 115A.551. The credits were removed as part of the SCORE revision process to report documented numbers rather than relying upon estimates.

As a region, Greater Minnesota recycling rate was 44.32 percent; virtually unchanged at 44.35 percent in 2011. The Metropolitan Area’s 2012 recycling rate was 46.6 percent, up slightly from 45.6 percent in 2011.

Figure 2. Minnesota’s Recycling Rate



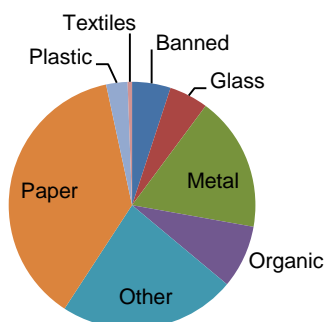
Materials collected for recycling: Tons and trends

Over 2.6 million tons of recyclable materials were collected in 2012, which is a slight increase from the previous year's total of 2.5 million.

Table 1. Material types recycled in tons and change from 2011

Category	Tons	Change from 2011
Banned	124,789.23	7,193.11 tons (5.8%)
Glass	126,022.02	(239.45) tons (-0.2%)
Metal	411,514.97	42,376.87 tons (10.1%)
Organic	197,909.50	(34,601.98) tons (-13.9%)
Other	589,467.86	11,662.19 tons (2.0%)
Paper	902,163.01	18,895.25 tons (2.0%)
Plastics	63,227.90	1,042.99 tons (1.4%)
Textiles	14,953.84	3,484.28 tons (29.8%)

Figure 3. Recycling by Category



Recycling by category

The growth in recycling items like source separated organics, carpet, box springs and mattresses is a testament to the efforts of the state and counties to remove these materials from the disposal stream and create market opportunities for the material. Household hazardous waste and problem material recycling continued to be a top growth material and is a testament to the ever-increasing efforts to collect household hazardous waste and problem materials at the state and local level.

The Minnesota Statewide Waste Characterization Study (2013) found that Minnesota still has the opportunity to recycle more. It costs Minnesota over \$200 million to throw away 1 million tons of recyclable material in 2012. Instead it could have been recycled for an additional estimated value of \$217 million dollars. More information on The Minnesota Statewide Waste Characterization Study can be found at: <http://www.pca.state.mn.us/ac966ux>

Recycling Market Development

MPCA's recycling market development staff maintains recycling industry expertise and a network of contacts serving the public and private sectors in Minnesota. Specifically, MPCA staff offer the following types of assistance:

1. Information on recyclable materials, including glass, plastic, paint, construction-related products, metals, paper, and wood wastes. For a peek at some of the information we can provide, visit our Publications and General Information section.
2. Research into recycling market conditions, manufacturing technology, and product testing.
3. Listings of recyclers, material processors, and product manufacturers. Browse our Recycling Markets Directory to find companies that purchase recyclable materials and the Recycled Products Directory to find companies that manufacture and sell products made from recycled materials.

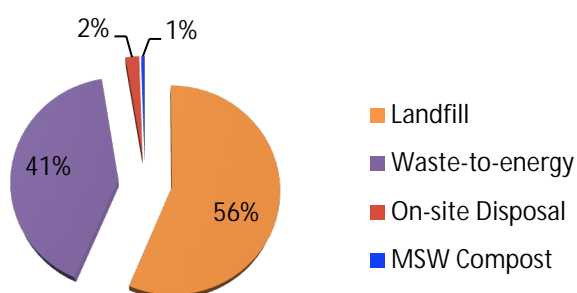
4. Data regarding products made from recycled materials. Our success stories feature recycled products made here in Minnesota.
5. Referrals for financing, business plan development, and facility siting. Minnesota houses a number of Small Business Development Centers that provide technical assistance to all kinds of businesses.

More information on MPCA recycling markets along with Recycling Directories can be found at: <http://www.pca.state.mn.us/qzqh793>

MSW Processing and Disposal

The remainder of the waste generated that is not recycled or composted—approximately 3.1 million tons in 2012—must be disposed of. This 3.1 million includes tons disposed of or processed and estimates for on-site disposal and problem materials not recycled. See below for more information on these components.

Figure 4. MSW disposal



In Minnesota, waste is managed through four main methods:

- 1.2 tons were processed. **Waste processing/resource recovery facilities.** Waste-to-energy incinerators and refuse-derived fuel (RDF) facilities process MSW to create energy; MSW composting facilities turn the organic portion of the waste stream into a useable amendment for soil.
- 1.7 tons were buried at Landfills. **Landfills** bury unprocessed MSW, as well as rejects and residuals from waste processing facilities. Waste from Minnesota goes to landfills in Minnesota and neighboring states—Iowa, Wisconsin, North Dakota, and South Dakota.
- 62,775 tons were estimated to be burnt or buried. **On-site disposal** refers to MSW that is burned or buried illegally on a resident's property. This typically includes burn barrels or farm dumps, which are still used in many parts of the state.
- 124,100 tons were estimated to be disposed and not properly recycled. **Problem Materials Not Recycled (PMNR)** refers to the five banned materials - Major Appliances, Waste Tires, Oil, Oil Filters, and Vehicle Batteries, that were generated but not recycled and were disposed illegally.

Waste processing/resource recovery

In 2012, over 1.22 million tons of MSW was processed through mixed-MSW composting or incineration for energy both in and out of the state. This is 39 percent of the MSW disposed or processed (a nearly 1 percent increase from 2011), and represents nearly 21 percent of the total MSW generated in Minnesota. This total reflects only those tons that were actually burned for energy or composted. Tons that went to processing facilities but were later landfilled as “bypass” or residual waste are in the landfill total.

- 1.2 million tons of MSW generated in the state went to resource recovery facilities in Minnesota—waste-to-energy facilities and mixed-MSW compost facility.
- In addition, nearly 9,900 tons went to a waste-to-energy facility in La Crosse, Wisconsin.

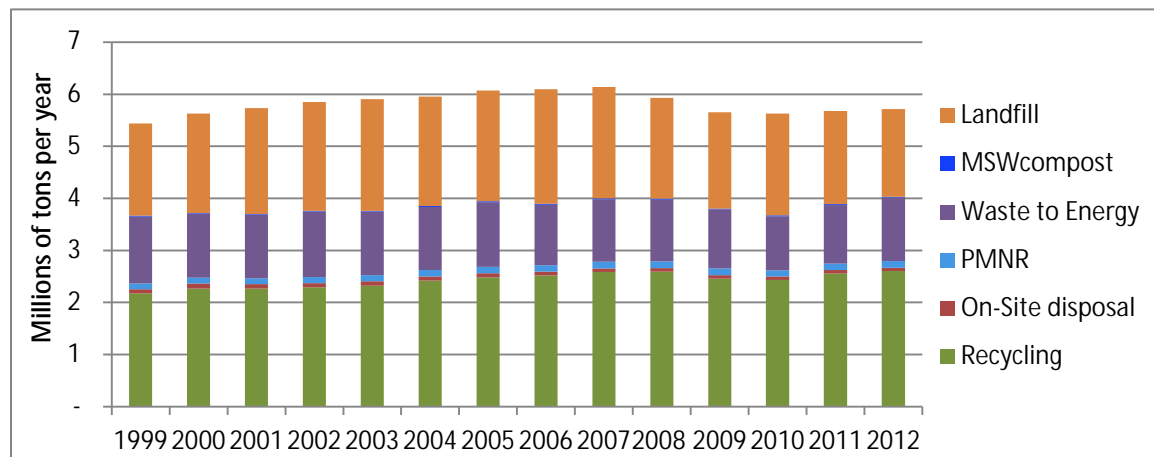
Landfills

In 2012, over 1.7 million tons of the MSW disposed of were sent to landfills both in and out of state. Landfilled MSW included unprocessed MSW and rejects and residuals from MSW processing facilities. This is 56.4 percent of waste disposed of or processed (a decrease from 2011’s 57.2 percent), and represents 30.1 percent of the total MSW generated in Minnesota.

- Nearly 1.4 million tons went to 21 landfills in Minnesota. Counties in the seven-county Metropolitan Area generated 49 percent of this waste, while 51 percent came from counties in Greater Minnesota.
- Over 306,900 tons were sent to 12 out-of-state landfills in Iowa, Wisconsin, North Dakota, and South Dakota, 22 percent came from the Metropolitan Area counties while the other 78 percent came from Greater Minnesota counties.

To sum this up, 18 percent (306,900) of the waste landfilled is sent to out-of-state landfills (Subtitle D landfills) the remaining 82 percent (1.4) is sent to the 21 landfills in Minnesota.

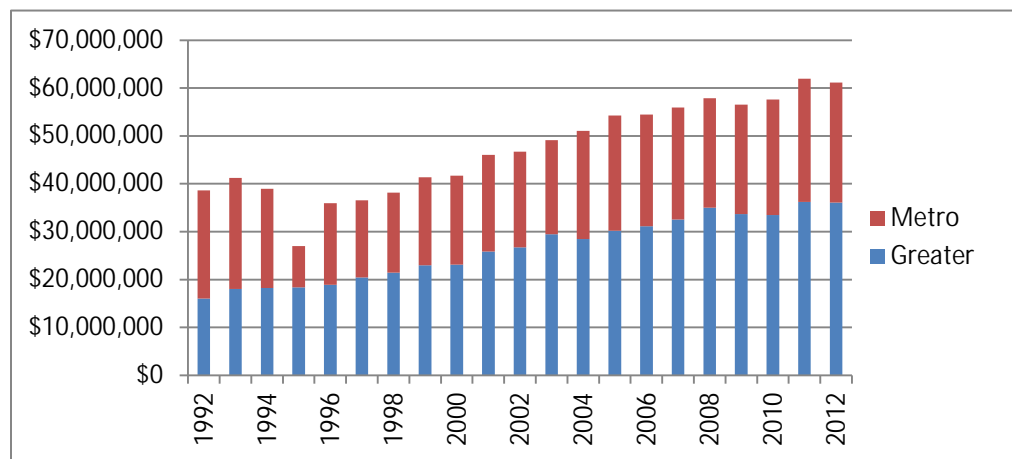
Figure 5. Trends of MSW Integrated Solid Waste Management



Finance and administration of SCORE programs

Minnesota boasts one of the best recycling programs in the nation in large part because of the level of participation by our citizens and businesses along with comprehensive city, county, and state recycling programs. In addition, the continued funding commitments from the Legislature and large investment at the local level provide the significant amount of funding these programs require. In 2012, Minnesota counties spent nearly \$61 million in state and local funds for SCORE-related programs, a decrease of over \$815,000 from 2011. Figure 6 breaks the dollars spent between the Metro and Greater Minnesota Counties; Metro Counties spent \$25 million and Greater Minnesota Counties spent \$36 million.

Figure 6. SCORE Expenditures



SCORE block grants

From the inception of SCORE, dedicated state tax revenue has provided a stable funding source for recycling and waste reduction programs. Originally, the state's sales tax was extended to solid waste collection and disposal services. In 1997, this tax was replaced with a Solid Waste Management Tax, which is applied to charges for garbage service for residential, commercial, and other wastes. Money from the state is passed on to the county level in the form of annual block grants.

The MPCA disbursed the \$14.1 million in SCORE block grants to counties that met the following eligibility requirements.

- Maintain funds in a separate general fund account.
- Spends the funds only on eligible activities.
- Has an approved solid waste management plan or master plan that includes a recycling implementation strategy and a household hazardous waste plan.
- Reports annually to the MPCA on how the money is spent and on resulting improvements in solid waste management practices.
- Provides evidence to the MPCA that local revenues equal to 25 percent of the SCORE block grant received will also be spent on SCORE-related and eligible activities.

County revenues for SCORE

Each county is required to match SCORE block grants with a local contribution of at least 25 percent. In 2012, a total of \$61 million dollars was spent on SCORE programs. In 2012, counties exceeded the required match by contributing over \$47.1 million or 77 percent of the total spent on SCORE-related activities. Counties use a variety of sources to pay for SCORE-eligible programs.

Tip fees are fees charged at solid waste processing facilities.

Service fees, or service charges, are uniform fees paid by all waste generators or property owners. Service fees generally appear as a separate line item on utility bills, MSW haulers' bills, or property tax bills.

General revenue is derived from county general funds.

Counties continue to shift their methods for financing solid waste programs, seeking to provide both waste assurance and reliable funding sources for programs.

County expenditures for SCORE

Within certain guidelines, counties have broad discretion in determining how to spend SCORE block grants and local matching funds. This flexibility allows counties to develop programs that best meet local needs.

In 2012, Minnesota counties spent nearly \$61 million dollars (county revenue plus state grant funds) on a variety of SCORE-related programs. This investment is in addition to undocumented dollars spent by other local units of government such as cities and townships on programs such as recycling, household hazardous waste, and waste education.

The MPCA monitors the county use of SCORE grants to ensure they are used to fund SCORE-eligible programs. Minn. Stat. § 115A.55 authorizes counties to spend SCORE block grants and matching funds on programs in the following areas:

- Source reduction
- Recycling
- Market development
- Management of problem materials
- Waste education
- Litter prevention
- Technical assistance to ensure proper solid waste management
- Waste processing

End of SCORE as we know it... beginning of a new approach...

To understand SCORE going forward a brief history of why the upcoming changes in SCORE reporting and measurement is necessary. It began in 2009 with MN Session Law Chapter 37, Article 1, Section 62 (1, 2), requiring the Commissioner of the MPCA, in consultation with the Association of Minnesota Counties (AMC), the Solid Waste Administrators Association (SWAA), the Solid Waste Management Coordinating Board (SWMCB), and other interested parties to make recommendations that improve and abbreviate the SCORE reporting requirements under Minn. Stat. § 115A.557.

During this consultation period, county representatives, stakeholders and the MPCA met and worked together to identify means to reduce county burden in gathering and reporting its solid waste tonnages in multiple annual reports. In an effort to fully understand the challenges, document them and

recommend changes, the *SCORE Implementation Plan* was drafted. This work provided the opportunity for the Agency to resolve data duplication that resulted when the MPCA/Office of Environmental Assistance (OEA) were two separate agencies.

Going forward, the goal for the SCORE annual reporting process is to reduce the resources counties use to collect the data; provide better and more consistent measurement; improve the clarity of the outcomes measured; and identify the responsible stakeholders to meet the data/measurement needs. Additionally, consistent with the directive of the *SCORE Implementation Plan* only documented numbers, not estimates, will be reported to MPCA

The Agency is moving towards facility reporting through its permit process in an effort to relieve the burden from counties and to put the entities directly in charge of the waste in charge of the reporting to ensure that there is less estimation. The Agency is working with the hauling community to develop a data reporting mechanism that will provide information regarding transport of MSW, recyclables, and organics from generation to facility. Haulers are open to this concept, but would like to have more coordination with regards to the information being requested from counties (standardized reporting), so that they are reporting the same information to all counties. Counties will continue to be responsible for any data that they handle directly, such as drop-off events and materials handled outside of the traditional hauling system. For the final report to the legislature that contains the complete Agency recommendations, go to: <http://www.pca.state.mn.us/pyrie49> (MPCA Contact: *Peder Sandhei*)

Appendix A: County Score Survey Responses

County Survey Responses
Finances: Revenues (part 1)

County	CY2011 revenue carried over	Adjustment to carry over	General revenue	Service fee	Processing facility tip fee	Land disposal facility surcharge
Aitkin	\$267,448	0	\$170,829	\$0	\$0	\$0
Anoka	\$0	0	\$0	\$1,442,886	\$0	\$0
Becker	(\$741,525)	741,525	\$0	\$166,665	\$0	\$0
Beltrami	\$0	0	\$739,500	\$0	\$0	\$0
Benton	\$0	0	\$0	\$147,814	\$0	\$0
Big Stone	\$13,647	0	\$119,254	\$2,926	\$0	\$0
Blue Earth	\$0	0	\$107,099	\$0	\$0	\$0
Brown	\$0	0	\$341,058	\$15,867	\$0	\$0
Carlton	(\$23,737)	23,737	\$0	\$0	\$25,067	\$0
Carver	\$0	0	\$0	\$372,702	\$0	\$0
Cass	\$0	0	\$0	\$831,354	\$0	\$0
Chippewa	\$0	0	\$92,206	\$0	\$0	\$0
Chisago	\$0	0	\$0	\$204,631	\$11,341	\$0
Clay	\$217,825	0	\$0	\$426,444	\$0	\$0
Clearwater	\$0	0	\$0	\$84,436	\$0	\$0
Cook	\$0	0	\$345,740	\$0	\$0	\$0
Cottonwood	\$300,396	0	\$0	\$183,042	\$0	\$0
Crow Wing	\$0	0	\$453,164	\$0	\$87,554	\$0
Dakota	(\$1)	1	\$0	\$0	\$0	\$1,015,846
Dodge	\$1	0	\$195,455	\$65,623	\$32,759	\$0
Faribault	\$0	0	\$405,986	\$0	\$0	\$0
Fillmore	(\$1,605)	1,605	\$0	\$0	\$0	\$0
Freeborn	\$65,190	0	\$329,831	\$0	\$0	\$0
Goodhue	\$0	0	\$291,573	\$0	\$0	\$0
Grant	\$94,106	0	\$37,811	\$130,850	\$0	\$0
Hennepin	\$0	0	\$0	\$5,259,918	\$380,873	\$0
Houston	\$0	0	\$168,693	\$0	\$0	\$0
Hubbard	\$0	0	\$295,124	\$0	\$0	\$0
Isanti	\$108,723	0	\$23,356	\$0	\$0	\$0
Itasca	\$0	0	\$396,447	\$0	\$0	\$0
Jackson	\$160,658	0	\$13,988	\$0	\$0	\$0
Kanabec	\$105,878	0	\$13,868	\$0	\$0	\$0
Kandiyohi	\$0	0	\$21,175	\$195,000	\$0	\$0
Kittson	\$0	0	\$13,988	\$0	\$0	\$0
Koochiching	\$108	0	\$117,377	\$117,376	\$13,090	\$0
Lac qui Parle	\$249,619	0	\$57,952	\$0	\$0	\$0
Lake	\$0	0	\$96,772	\$3,060	\$32,590	\$0
Lake of The Woods	\$0	0	\$219,262	\$0	\$0	\$0
Le Sueur	\$66,538	0	\$130,881	\$0	\$0	\$0
Lincoln	\$16,138	0	\$167,763	\$150	\$0	\$0
Lyon	\$0	0	\$0	\$319,143	\$0	\$110,391
Mahnomen	\$34,658	0	\$13,988	\$0	\$0	\$0
Marshall	\$0	0	\$12,045	\$0	\$0	\$0
Martin	\$0	0	\$800,187	\$0	\$0	\$0
McLeod	\$0	0	\$0	\$2,253	\$364,980	\$698,577
Meeker	\$17,776	0	\$15,000	\$0	\$0	\$0
Mille Lacs	\$104,476	0	\$19,268	\$0	\$0	\$0
Morrison	\$0	0	\$245,331	\$0	\$0	\$0
Mower	\$0	0	\$0	\$271,928	\$0	\$0
Murray	(\$36,048)	36,048	\$13,750	\$0	\$0	\$0

County Survey Responses
Finances: Revenues (part 1)

County	CY2011 revenue carried over	Adjustment to carry over	General revenue	Service fee	Processing facility tip fee	Land disposal facility surcharge
Nicollet	\$15,046	0	\$287,210	\$0	\$0	\$0
Nobles	\$60,361	0	\$500	\$185,026	\$0	\$188,445
Norman	\$0	0	\$59,668	\$0	\$0	\$0
Olmsted	(\$521,090)	521,090	\$0	\$0	\$0	\$0
Otter Tail	\$15,300	0	\$0	\$646,263	\$0	\$0
Pennington	\$156,725	-720	\$13,988	\$0	\$0	\$0
Pine	\$119,968	0	\$70,000	\$0	\$0	\$0
Pipestone	\$0	0	\$242,474	\$0	\$0	\$0
Polk	\$279,095	0	\$0	\$379,629	\$0	\$0
Pope/Douglas	(\$3,359)	3,359	\$321,641	\$0	\$0	\$0
Ramsey	\$626,994	0	\$0	\$4,582,384	\$0	\$0
Red Lake	\$0	0	\$21,209	\$0	\$0	\$0
Redwood	\$374,457	0	\$350,283	\$0	\$0	\$0
Renville	\$109,343	0	\$280,000	\$0	\$3,477	\$0
Rice	(\$197,539)	197,539	\$0	\$647,872	\$0	\$0
Rock	(\$5,802)	5,802	\$68,942	\$0	\$0	\$0
Roseau	\$54,539	0	\$0	\$0	\$0	\$0
Scott	\$578,605	0	\$80,330	\$0	\$0	\$0
Sherburne	\$286,376	0	\$0	\$0	\$0	\$54,546
Sibley	\$24,259	0	\$130,615	\$0	\$0	\$0
St. Louis - partial	\$0	0	\$0	\$689,677	\$0	\$0
Stearns	\$32,934	0	\$0	\$0	\$0	\$0
Steele	\$0	0	\$448,226	\$0	\$0	\$0
Stevens	(\$8,600)	8,600	\$101,355	\$0	\$0	\$0
Swift	(\$46,672)	46,672	\$197,180	\$0	\$0	\$0
Todd	\$0	0	\$0	\$179,765	\$0	\$0
Traverse	(\$63,991)	63,991	\$13,988	\$0	\$0	\$0
Wabasha	\$3,007	0	\$21,995	\$0	\$0	\$0
Wadena	\$0	0	\$0	\$143,161	\$20,098	\$0
Waseca	\$0	0	\$0	\$0	\$0	\$0
Washington	\$0	0	\$0	\$938,960	\$0	\$0
Watonwan	\$380,090	0	\$14,074	\$171,697	\$0	\$0
Wilkin	\$0	0	\$0	\$81,236	\$0	\$0
Winona	(\$50,727)	50,727	\$293,589	\$576,391	\$0	\$0
WLSSD	\$0	0	\$0	\$1,494,748	\$378,267	\$0
Wright	\$895,530	0	\$77,028	\$17,949	\$0	\$0
Yellow Medicine	\$14,655	0	\$0	\$52,984	\$0	\$22,352
Metro Area	\$913,369	\$1	\$0	\$12,596,851	\$380,873	\$1,070,392
Greater Minn.	\$3,236,404	\$1,699,975	\$9,580,017	\$8,434,960	\$969,223	\$1,019,765
Minnesota	\$4,149,773	\$1,699,976	\$9,580,017	\$21,031,811	\$1,350,096	\$2,090,156

**County Survey Responses
Finances: Revenues (part 2)**

County	SCORE pass-through	Grants	HHW funding	Material sales	Other	Total revenue
Aitkin	\$55,950	\$0	\$2,869	\$0	\$6,342	\$503,438
Anoka	\$817,053	\$270,275	\$0	\$15,891	\$68,366	\$2,614,472
Becker	\$80,212	\$0	\$34,271	\$125,491	\$20,170	\$426,809
Beltrami	\$104,660	\$0	\$6,709	\$0	\$0	\$850,869
Benton	\$94,633	\$0	\$486	\$0	\$10,327	\$253,261
Big Stone	\$55,950	\$0	\$2,400	\$0	\$700	\$194,877
Blue Earth	\$157,780	\$0	\$56,463	\$0	\$0	\$321,343
Brown	\$63,470	\$268	\$2,895	\$0	\$12,809	\$436,367
Carlton	\$87,099	\$13,892	\$6,552	\$2,050	\$109	\$134,769
Carver	\$225,057	\$270,261	\$0	\$0	\$177,610	\$1,045,631
Cass	\$70,000	\$0	\$4,227	\$0	\$0	\$905,581
Chippewa	\$55,950	\$0	\$2,400	\$0	\$2,933	\$153,489
Chisago	\$132,491	\$0	\$21,761	\$2,896	\$9,545	\$382,665
Clay	\$145,793	\$0	\$20,439	\$3,765	\$510	\$814,775
Clearwater	\$55,950	\$0	\$1,208	\$0	\$0	\$141,594
Cook	\$0	\$0	\$2,141	\$44,869	\$0	\$392,750
Cottonwood	\$55,950	\$0	\$0	\$3,345	\$62,897	\$605,630
Crow Wing	\$153,908	\$0	\$9,824	\$0	\$5,000	\$709,450
Dakota	\$982,798	\$0	\$200,121	\$0	\$0	\$2,198,765
Dodge	\$55,950	\$0	\$600	\$23,280	\$11,436	\$385,104
Faribault	\$55,950	\$0	\$0	\$0	\$3,404	\$465,340
Fillmore	\$55,950	\$0	\$0	\$0	\$13,988	\$69,938
Freeborn	\$76,699	\$0	\$6,174	\$966	\$4,188	\$483,048
Goodhue	\$113,487	\$0	\$12,845	\$203,302	\$20,865	\$642,072
Grant	\$55,950	\$13,973	\$0	\$0	\$0	\$332,690
Hennepin	\$2,841,158	\$612,468	\$85,289	\$1,398,084	\$88,884	\$10,666,674
Houston	\$55,950	\$0	\$3,750	\$0	\$104,586	\$332,979
Hubbard	\$55,950	\$0	\$3,399	\$0	\$62,719	\$417,192
Isanti	\$93,423	\$0	\$1,404	\$0	\$0	\$226,906
Itasca	\$110,710	\$0	\$4,400	\$4,339	\$0	\$515,895
Jackson	\$55,950	\$0	\$618	\$10,915	\$0	\$242,128
Kanabec	\$55,950	\$0	\$348	\$0	\$15	\$176,059
Kandiyohi	\$103,663	\$0	\$50,966	\$490,795	\$106,643	\$968,242
Kittson	\$55,950	\$0	\$0	\$0	\$70	\$70,008
Koochiching	\$55,950	\$0	\$3,008	\$27,328	\$0	\$334,237
Lac qui Parle	\$55,950	\$0	\$2,400	\$0	\$4,953	\$370,874
Lake	\$55,950	\$0	\$4,035	\$12,284	\$17,081	\$221,772
Lake of The Woods	\$55,950	\$0	\$0	\$13,269	\$0	\$288,481
Le Sueur	\$68,028	\$0	\$3,100	\$33,761	\$18,633	\$320,941
Lincoln	\$55,950	\$0	\$0	\$0	\$32,897	\$272,899
Lyon	\$63,664	\$0	\$50,928	\$127	\$18,626	\$562,879
Mahnomen	\$55,950	\$0	\$2,776	\$0	\$0	\$107,372
Marshall	\$55,950	\$0	\$0	\$0	\$2,200	\$70,195
Martin	\$55,950	\$0	\$0	\$0	\$7,404	\$863,541
McLeod	\$89,879	\$0	\$13,651	\$628,989	\$42,988	\$1,841,315
Meeker	\$57,193	\$0	\$2,941	\$0	\$4,439	\$97,348
Mille Lacs	\$64,024	\$0	\$2,500	\$0	\$0	\$190,268
Morrison	\$81,608	\$0	\$5,245	\$0	\$183,628	\$515,812
Mower	\$96,396	\$0	\$8,207	\$207,817	\$900	\$585,248
Murray	\$55,950	\$0	\$0	\$0	\$37,873	\$107,573

**County Survey Responses
Finances: Revenues (part 2)**

County	SCORE pass-through	Grants	HHW funding	Material sales	Other	Total revenue
Nicollet	\$80,706	\$0	\$6,932	\$0	\$0	\$389,894
Nobles	\$55,950	\$0	\$0	\$0	\$3,934	\$494,216
Norman	\$55,950	\$0	\$2,704	\$0	\$471	\$118,794
Olmsted	\$355,906	\$0	\$123,418	\$0	\$911,155	\$1,390,479
Otter Tail	\$140,761	\$0	\$38,890	\$718,333	\$0	\$1,559,546
Pennington	\$55,950	\$0	\$0	\$0	\$0	\$225,943
Pine	\$72,991	\$0	\$1,134	\$0	\$0	\$264,093
Pipestone	\$55,950	\$0	\$0	\$0	\$0	\$298,424
Polk	\$38,953	\$55,450	\$4,183	\$111,872	\$181,570	\$1,050,752
Pope/Douglas	\$144,733	\$1,999	\$15,150	\$0	\$600	\$484,123
Ramsey	\$1,252,753	\$391,533	\$0	\$0	\$70,426	\$6,924,090
Red Lake	\$55,950	\$0	\$186	\$1,071	\$1,200	\$79,616
Redwood	\$55,950	\$0	\$37,737	\$204,237	\$60,199	\$1,082,862
Renville	\$55,950	\$0	\$1,200	\$0	\$1,014	\$450,984
Rice	\$158,348	\$0	\$38,697	\$457,251	\$74,803	\$1,376,972
Rock	\$55,950	\$0	\$0	\$0	\$18,250	\$143,142
Roseau	\$55,950	\$0	\$841	\$0	\$2,073	\$113,403
Scott	\$321,321	\$0	\$0	\$0	\$0	\$980,256
Sherburne	\$218,063	\$409	\$4,100	\$0	\$0	\$563,493
Sibley	\$55,950	\$0	\$2,011	\$26,339	\$13,911	\$253,084
St. Louis - partial	\$240,834	\$0	\$13,770	\$88,221	\$514,576	\$1,547,078
Stearns	\$370,669	\$361,841	\$0	\$0	\$0	\$765,444
Steele	\$89,838	\$0	\$8,885	\$0	\$1,956	\$548,905
Stevens	\$55,950	\$0	\$0	\$0	\$315	\$157,620
Swift	\$55,950	\$0	\$2,400	\$141,457	\$0	\$396,987
Todd	\$61,096	\$0	\$5,686	\$119,776	\$0	\$366,323
Traverse	\$55,950	\$0	\$0	\$0	\$0	\$69,938
Wabasha	\$55,950	\$0	\$2,058	\$0	\$0	\$83,010
Wadena	\$55,950	\$0	\$0	\$0	\$0	\$219,209
Waseca	\$55,950	\$0	\$5,923	\$199,556	\$2,404	\$263,833
Washington	\$588,339	\$238,566	\$0	\$0	\$189,712	\$1,955,577
Watonwan	\$27,975	\$0	\$2,655	\$0	\$6,523	\$603,014
Wilkin	\$55,950	\$0	\$0	\$119,861	\$1,200	\$258,247
Winona	\$126,385	\$0	\$23,137	\$35,494	\$9,919	\$1,064,915
WLSSD	\$251,163	\$61,046	\$215,791	\$99,885	\$144,937	\$2,645,838
Wright	\$308,111	\$15,676	\$12,011	\$7,770	\$744	\$1,334,819
Yellow Medicine	\$55,950	\$0	\$0	\$0	\$3,151	\$149,091
Metro Area	\$6,925,221	\$1,783,512	\$289,510	\$1,413,975	\$594,999	\$25,968,702
Greater Minn.	\$7,192,560	\$524,145	\$923,337	\$4,170,709	\$2,785,781	\$40,536,876
Minnesota	\$14,117,781	\$2,307,657	\$1,212,847	\$5,584,685	\$3,380,780	\$66,505,578

County Survey Responses
Finances: Revenue summary

County	Adjusted CY2011 revenue (carried over)	CY2012 revenue	Total revenue
Aitkin	\$267,448	\$235,990	\$503,438
Anoka	\$0	\$2,614,472	\$2,614,472
Becker	\$0	\$426,809	\$426,809
Beltrami	\$0	\$850,869	\$850,869
Benton	\$0	\$253,261	\$253,261
Big Stone	\$13,647	\$181,230	\$194,877
Blue Earth	\$0	\$321,343	\$321,343
Brown	\$0	\$436,367	\$436,367
Carlton	\$0	\$134,769	\$134,769
Carver	\$0	\$1,045,631	\$1,045,631
Cass	\$0	\$905,581	\$905,581
Chippewa	\$0	\$153,489	\$153,489
Chisago	\$0	\$382,665	\$382,665
Clay	\$217,825	\$596,950	\$814,775
Clearwater	\$0	\$141,594	\$141,594
Cook	\$0	\$392,750	\$392,750
Cottonwood	\$300,396	\$305,234	\$605,630
Crow Wing	\$0	\$709,450	\$709,450
Dakota	\$0	\$2,198,765	\$2,198,765
Dodge	\$1	\$385,103	\$385,104
Faribault	\$0	\$465,340	\$465,340
Fillmore	\$0	\$69,938	\$69,938
Freeborn	\$65,190	\$417,858	\$483,048
Goodhue	\$0	\$642,072	\$642,072
Grant	\$94,106	\$238,584	\$332,690
Hennepin	\$0	\$10,666,674	\$10,666,674
Houston	\$0	\$332,979	\$332,979
Hubbard	\$0	\$417,192	\$417,192
Isanti	\$108,723	\$118,183	\$226,906
Itasca	\$0	\$515,895	\$515,895
Jackson	\$160,658	\$81,470	\$242,128
Kanabec	\$105,878	\$70,181	\$176,059
Kandiyohi	\$0	\$968,242	\$968,242
Kittson	\$0	\$70,008	\$70,008
Koochiching	\$108	\$334,129	\$334,237
Lac qui Parle	\$249,619	\$121,255	\$370,874
Lake	\$0	\$221,772	\$221,772
Lake of The Woods	\$0	\$288,481	\$288,481
Le Sueur	\$66,538	\$254,403	\$320,941
Lincoln	\$16,138	\$256,761	\$272,899
Lyon	\$0	\$562,879	\$562,879
Mahnomen	\$34,658	\$72,714	\$107,372
Marshall	\$0	\$70,195	\$70,195
Martin	\$0	\$863,541	\$863,541
McLeod	\$0	\$1,841,315	\$1,841,315
Meeker	\$17,776	\$79,572	\$97,348
Mille Lacs	\$104,476	\$85,792	\$190,268
Morrison	\$0	\$515,812	\$515,812
Mower	\$0	\$585,248	\$585,248

County Survey Responses
Finances: Revenue summary

County	Adjusted CY2011 revenue (carried over)	CY2012 revenue	Total revenue
Murray	\$0	\$107,573	\$107,573
Nicollet	\$15,046	\$374,848	\$389,894
Nobles	\$60,361	\$433,855	\$494,216
Norman	\$0	\$118,794	\$118,794
Olmsted	\$0	\$1,390,479	\$1,390,479
Otter Tail	\$15,300	\$1,544,246	\$1,559,546
Pennington	\$156,005	\$69,938	\$225,943
Pine	\$119,968	\$144,125	\$264,093
Pipestone	\$0	\$298,424	\$298,424
Polk	\$279,095	\$771,657	\$1,050,752
Pope/Douglas	\$0	\$484,123	\$484,123
Ramsey	\$626,994	\$6,297,096	\$6,924,090
Red Lake	\$0	\$79,616	\$79,616
Redwood	\$374,457	\$708,405	\$1,082,862
Renville	\$109,343	\$341,641	\$450,984
Rice	\$0	\$1,376,972	\$1,376,972
Rock	\$0	\$143,142	\$143,142
Roseau	\$54,539	\$58,864	\$113,403
Scott	\$578,605	\$401,651	\$980,256
Sherburne	\$286,376	\$277,118	\$563,493
Sibley	\$24,259	\$228,825	\$253,084
St. Louis - partial	\$0	\$1,547,078	\$1,547,078
Stearns	\$32,934	\$732,510	\$765,444
Steele	\$0	\$548,905	\$548,905
Stevens	\$0	\$157,620	\$157,620
Swift	\$0	\$396,987	\$396,987
Todd	\$0	\$366,323	\$366,323
Traverse	\$0	\$69,938	\$69,938
Wabasha	\$3,007	\$80,003	\$83,010
Wadena	\$0	\$219,209	\$219,209
Waseca	\$0	\$263,833	\$263,833
Washington	\$0	\$1,955,577	\$1,955,577
Watonwan	\$380,090	\$222,924	\$603,014
Wilkin	\$0	\$258,247	\$258,247
Winona	\$0	\$1,064,915	\$1,064,915
WLSSD	\$0	\$2,645,838	\$2,645,838
Wright	\$895,530	\$439,289	\$1,334,819
Yellow Medicine	\$14,655	\$134,436	\$149,091
Metro Area	\$913,370	\$25,055,333	\$25,968,702
Greater Minn.	\$4,936,379	\$35,600,497	\$40,536,876
Minnesota	\$5,849,748	\$60,655,830	\$66,505,578

County Survey Responses
Finances: Expenditures by program area (part 1)

County	Planning & administration	Recycling	Yard waste	HHW and problem materials	Source reduction
Aitkin	\$150,526	\$67,976	\$300	\$10,466	\$991
Anoka	\$796,240	\$34,738	\$78,000	\$459,222	\$35,856
Becker	\$139,985	\$256,405	\$0	\$76,334	\$0
Beltrami	\$0	\$822,633	\$0	\$20,979	\$0
Benton	\$77,228	\$253	\$0	\$77,678	\$0
Big Stone	\$69,694	\$108,833	\$0	\$12,628	\$0
Blue Earth	\$65,971	\$166,200	\$457	\$75,163	\$0
Brown	\$52,178	\$337,527	\$0	\$43,446	\$0
Carlton	\$41,961	\$71,188	\$4,882	\$53,079	\$0
Carver	\$459,328	\$71,345	\$40,571	\$378,085	\$0
Cass	\$125,000	\$678,000	\$0	\$102,581	\$0
Chippewa	\$14,126	\$123,320	\$0	\$13,408	\$0
Chisago	\$147,601	\$52,124	\$0	\$152,887	\$0
Clay	\$155,794	\$457,505	\$37,852	\$97,672	\$0
Clearwater	\$20,991	\$93,292	\$1,022	\$23,970	\$0
Cook	\$243,347	\$139,532	\$0	\$9,058	\$0
Cottonwood	\$17,832	\$558,534	\$0	\$1,949	\$0
Crow Wing	\$200,974	\$11,583	\$25,366	\$95,051	\$0
Dakota	\$289,455	\$18,470	\$0	\$1,415,235	\$0
Dodge	\$46,297	\$245,495	\$20,254	\$13,226	\$20,254
Faribault	\$26,454	\$34,079	\$0	\$14,480	\$200
Fillmore	\$0	\$74,032	\$0	\$0	\$0
Freeborn	\$94,024	\$298,344	\$0	\$20,345	\$0
Goodhue	\$381,763	\$221,809	\$0	\$33,498	\$0
Grant	\$0	\$217,160	\$0	\$12,285	\$0
Hennepin	\$2,065,979	\$2,521,504	\$15,381	\$2,692,984	\$32,678
Houston	\$51,318	\$274,799	\$0	\$3,124	\$0
Hubbard	\$39,897	\$259,336	\$5,188	\$106,069	\$0
Isanti	\$62,704	\$50,400	\$0	\$8,190	\$0
Itasca	\$106,208	\$377,174	\$46	\$31,725	\$0
Jackson	\$24,348	\$1,499	\$0	\$16,293	\$0
Kanabec	\$4,314	\$57,280	\$0	\$3,044	\$0
Kandiyohi	\$229,535	\$635,768	\$0	\$102,939	\$0
Kittson	\$32,757	\$0	\$0	\$4,466	\$0
Koochiching	\$115,010	\$188,075	\$2,156	\$22,842	\$0
Lac qui Parle	\$27,268	\$71,243	\$0	\$22,049	\$0
Lake	\$12,059	\$106,722	\$475	\$66,239	\$0
Lake of The Woods	\$4,265	\$260,965	\$1,243	\$21,490	\$0
Le Sueur	\$52,500	\$44,379	\$0	\$68,327	\$0
Lincoln	\$33,778	\$200,995	\$0	\$9,453	\$0
Lyon	\$48,790	\$296,003	\$0	\$166,445	\$4,000
Mahnomen	\$44,115	\$11,681	\$0	\$17,866	\$0
Marshall	\$35,190	\$0	\$0	\$10,006	\$0
Martin	\$37,973	\$342,188	\$920	\$12,282	\$460
McLeod	\$602,838	\$1,039,154	\$26,686	\$92,451	\$0
Meeker	\$11,058	\$16,800	\$0	\$13,690	\$0
Mille Lacs	\$5,950	\$57,904	\$0	\$23,444	\$0
Morrison	\$22,164	\$133,198	\$37,755	\$270,986	\$0
Mower	\$96,530	\$472,817	\$0	\$8,657	\$0

County Survey Responses
Finances: Expenditures by program area (part 1)

County	Planning & administration	Recycling	Yard waste	HHW and problem materials	Source reduction
Murray	\$78,704	\$35,844	\$0	\$3,454	\$0
Nicollet	\$57,650	\$202,000	\$0	\$75,529	\$0
Nobles	\$111,455	\$233,344	\$0	\$55,310	\$0
Norman	\$15,859	\$72,329	\$0	\$29,250	\$0
Olmsted	\$64,672	\$727,489	\$126,813	\$523,876	\$155,810
Otter Tail	\$738,748	\$551,679	\$3,420	\$179,720	\$4,589
Pennington	\$25,338	\$13,995	\$0	\$10,301	\$0
Pine	\$47,278	\$108,207	\$0	\$8,081	\$0
Pipestone	\$26,957	\$420,249	\$0	\$18,868	\$0
Polk	\$64,165	\$569,386	\$8,977	\$66,588	\$0
Pope/Douglas	\$207,647	\$82,452	\$43,322	\$31,299	\$0
Ramsey	\$1,881,450	\$183,264	\$1,079,450	\$1,218,850	\$0
Red Lake	\$23,097	\$49,402	\$0	\$7,117	\$0
Redwood	\$192,230	\$292,412	\$0	\$45,814	\$0
Renville	\$94,350	\$127,200	\$0	\$41,024	\$0
Rice	\$473,088	\$297,043	\$40,200	\$162,769	\$200
Rock	\$69,583	\$93,820	\$500	\$6,467	\$900
Roseau	\$17,508	\$72,000	\$0	\$24,188	\$0
Scott	\$168,053	\$0	\$0	\$21,642	\$0
Sherburne	\$1,197	\$81,704	\$87,646	\$83,999	\$0
Sibley	\$54,347	\$84,864	\$0	\$47,874	\$0
St. Louis - partial	\$276,556	\$906,244	\$22,633	\$272,429	\$13,811
Stearns	\$162,521	\$62,447	\$13,859	\$241,966	\$13,859
Steele	\$93,354	\$424,878	\$0	\$11,797	\$0
Stevens	\$60,811	\$81,112	\$0	\$20,445	\$0
Swift	\$330,690	\$151,858	\$5,200	\$12,068	\$1,410
Todd	\$115,792	\$165,285	\$2,000	\$80,109	\$1,500
Traverse	\$74,159	\$32,458	\$0	\$7,954	\$0
Wabasha	\$16,250	\$44,487	\$0	\$22,273	\$0
Wadena	\$84,546	\$82,735	\$2,563	\$47,503	\$0
Waseca	\$119,095	\$225,546	\$3,319	\$59,670	\$0
Washington	\$315,737	\$8,022	\$0	\$1,201,155	\$1,200
Watsonwan	\$5,444	\$219,968	\$0	\$18,744	\$0
Wilkin	\$34,657	\$169,936	\$4,753	\$47,090	\$1,434
Winona	\$313,090	\$754,428	\$0	\$72,531	\$0
WLSSD	\$1,560,383	\$285,983	\$131,087	\$311,684	\$0
Wright	\$78,763	\$11,399	\$14,643	\$131,053	\$0
Yellow Medicine	\$1,500	\$109,357	\$0	\$3,288	\$0
Metro Area	\$5,809,386	\$2,919,047	\$1,301,048	\$7,449,530	\$69,734
Greater Minn.	\$9,630,653	\$17,696,039	\$587,891	\$4,782,034	\$219,418
Minnesota	\$15,440,039	\$20,615,087	\$1,888,939	\$12,231,564	\$289,152

County Survey Responses
Finances: Expenditures by program area (part 2)

County	Education	Market development	Litter prevention	County grants to other local units of government
Aitkin	\$6,173	\$0	\$0	\$0
Anoka	\$159,032	\$0	\$0	\$1,051,384
Becker	\$6,603	\$0	\$12,000	\$56,501
Beltrami	\$7,257	\$0	\$0	\$0
Benton	\$9,832	\$0	\$0	\$54,491
Big Stone	\$1,730	\$0	\$0	\$0
Blue Earth	\$12,897	\$0	\$656	\$0
Brown	\$2,886	\$0	\$0	\$0
Carlton	\$6,962	\$0	\$0	\$15,000
Carver	\$4,089	\$0	\$16,313	\$75,900
Cass	\$0	\$0	\$0	\$0
Chippewa	\$2,634	\$0	\$0	\$0
Chisago	\$30,052	\$0	\$0	\$0
Clay	\$19,851	\$0	\$0	\$0
Clearwater	\$2,319	\$0	\$0	\$0
Cook	\$813	\$0	\$0	\$0
Cottonwood	\$0	\$0	\$0	\$0
Crow Wing	\$18,798	\$0	\$19,598	\$338,080
Dakota	\$87,194	\$0	\$0	\$388,412
Dodge	\$38,678	\$900	\$0	\$0
Faribault	\$3,078	\$265,389	\$250	\$41,660
Fillmore	\$0	\$0	\$0	\$0
Freeborn	\$0	\$0	\$0	\$0
Goodhue	\$5,002	\$0	\$0	\$0
Grant	\$0	\$0	\$0	\$0
Hennepin	\$496,990	\$0	\$0	\$2,841,158
Houston	\$3,738	\$0	\$0	\$0
Hubbard	\$5,402	\$0	\$1,300	\$0
Isanti	\$0	\$0	\$0	\$2,325
Itasca	\$742	\$0	\$0	\$0
Jackson	\$9,767	\$0	\$0	\$0
Kanabec	\$0	\$0	\$0	\$0
Kandiyohi	\$0	\$0	\$0	\$0
Kittson	\$0	\$0	\$0	\$25,000
Koochiching	\$5,925	\$0	\$121	\$0
Lac qui Parle	\$1,479	\$0	\$0	\$0
Lake	\$36,177	\$0	\$100	\$0
Lake of The Woods	\$517	\$0	\$0	\$0
Le Sueur	\$29,034	\$0	\$0	\$21,743
Lincoln	\$950	\$0	\$0	\$0
Lyon	\$47,641	\$0	\$0	\$0
Mahnomen	\$1,075	\$0	\$0	\$0
Marshall	\$0	\$0	\$0	\$25,000
Martin	\$8,086	\$381,900	\$860	\$11,834
McLeod	\$23,300	\$0	\$6,093	\$50,793
Meeker	\$19,201	\$0	\$0	\$19,205
Mille Lacs	\$5,000	\$0	\$0	\$0
Morrison	\$955	\$0	\$0	\$50,754

County Survey Responses
Finances: Expenditures by program area (part 2)

County	Education	Market development	Litter prevention	County grants to other local units of government
Mower	\$7,244	\$0	\$0	\$0
Murray	\$7,117	\$0	\$0	\$0
Nicollet	\$30,680	\$0	\$0	\$0
Nobles	\$11,863	\$0	\$0	\$0
Norman	\$1,355	\$0	\$0	\$0
Olmsted	\$164,963	\$0	\$0	\$0
Otter Tail	\$60,025	\$0	\$2,645	\$3,420
Pennington	\$396	\$0	\$0	\$0
Pine	\$0	\$0	\$0	\$0
Pipestone	\$5,820	\$0	\$1,455	\$0
Polk	\$8,636	\$0	\$0	\$15,000
Pope/Douglas	\$27,695	\$0	\$0	\$0
Ramsey	\$881,968	\$0	\$0	\$1,053,350
Red Lake	\$0	\$0	\$0	\$0
Redwood	\$4,208	\$0	\$0	\$0
Renville	\$2,918	\$0	\$0	\$0
Rice	\$15,000	\$1,950	\$200	\$0
Rock	\$4,608	\$0	\$0	\$0
Roseau	\$0	\$0	\$0	\$0
Scott	\$109,965	\$0	\$0	\$0
Sherburne	\$48,654	\$2,750	\$0	\$0
Sibley	\$18,324	\$0	\$0	\$31,822
St. Louis - partial	\$44,694	\$0	\$0	\$10,711
Stearns	\$11,648	\$13,859	\$23,859	\$115,765
Steele	\$18,876	\$0	\$0	\$0
Stevens	\$3,767	\$0	\$0	\$0
Swift	\$5,600	\$0	\$0	\$0
Todd	\$1,637	\$0	\$0	\$0
Traverse	\$417	\$0	\$0	\$2,000
Wabasha	\$0	\$0	\$0	\$0
Wadena	\$1,889	\$0	\$0	\$0
Waseca	\$0	\$0	\$0	\$0
Washington	\$43,619	\$0	\$0	\$385,844
Watonwan	\$1,135	\$0	\$0	\$0
Wilkin	\$377	\$0	\$0	\$0
Winona	\$8,719	\$0	\$0	\$0
WLSSD	\$239,916	\$5,811	\$15,315	\$95,659
Wright	\$483	\$0	\$0	\$209,371
Yellow Medicine	\$4,893	\$0	\$0	\$0
Metro Area	\$1,721,547	\$2,750	\$16,313	\$5,796,048
Greater Minn.	\$1,199,422	\$669,809	\$84,452	\$1,196,135
Minnesota	\$2,920,969	\$672,559	\$100,765	\$6,992,182

**County Survey Responses
Finances: Balance Sheet**

County	Total revenues	Total expenditures	Balance
Aitkin	\$503,438	\$236,432	\$267,006
Anoka	\$2,614,472	\$2,614,472	\$0
Becker	\$426,809	\$547,828	(\$121,019)
Beltrami	\$850,869	\$850,869	\$0
Benton	\$253,261	\$219,482	\$33,779
Big Stone	\$194,877	\$192,885	\$1,992
Blue Earth	\$321,343	\$321,343	\$0
Brown	\$436,367	\$436,037	\$330
Carlton	\$134,769	\$193,070	(\$58,301)
Carver	\$1,045,631	\$1,045,631	\$0
Cass	\$905,581	\$905,581	\$0
Chippewa	\$153,489	\$153,489	\$0
Chisago	\$382,665	\$382,665	(\$0)
Clay	\$814,775	\$768,674	\$46,101
Clearwater	\$141,594	\$141,594	(\$0)
Cook	\$392,750	\$392,750	\$0
Cottonwood	\$605,630	\$578,315	\$27,315
Crow Wing	\$709,450	\$709,450	\$0
Dakota	\$2,198,765	\$2,198,766	(\$1)
Dodge	\$385,104	\$385,104	\$0
Faribault	\$465,340	\$385,590	\$79,750
Fillmore	\$69,938	\$74,032	(\$4,094)
Freeborn	\$483,048	\$412,713	\$70,335
Goodhue	\$642,072	\$642,072	\$0
Grant	\$332,690	\$229,445	\$103,245
Hennepin	\$10,666,674	\$10,666,674	\$0
Houston	\$332,979	\$332,979	\$0
Hubbard	\$417,192	\$417,192	\$0
Isanti	\$226,906	\$123,619	\$103,287
Itasca	\$515,895	\$515,895	\$0
Jackson	\$242,128	\$51,906	\$190,222
Kanabec	\$176,059	\$64,638	\$111,421
Kandiyohi	\$968,242	\$968,242	\$0
Kittson	\$70,008	\$62,223	\$7,785
Koochiching	\$334,237	\$334,129	\$108
Lac qui Parle	\$370,874	\$122,038	\$248,836
Lake	\$221,772	\$221,772	\$0
Lake of The Woods	\$288,481	\$288,481	\$0
Le Sueur	\$320,941	\$215,983	\$104,958
Lincoln	\$272,899	\$245,176	\$27,723
Lyon	\$562,879	\$562,879	\$0
Mahnomen	\$107,372	\$74,737	\$32,635
Marshall	\$70,195	\$70,195	(\$0)
Martin	\$863,541	\$796,503	\$67,038
McLeod	\$1,841,315	\$1,841,315	(\$0)
Meeker	\$97,348	\$79,955	\$17,394
Mille Lacs	\$190,268	\$92,298	\$97,970
Morrison	\$515,812	\$515,812	\$0

County Survey Responses
Finances: Balance Sheet

County	Total revenues	Total expenditures	Balance
Mower	\$585,248	\$585,248	(\$0)
Murray	\$107,573	\$125,118	(\$17,545)
Nicollet	\$389,894	\$365,859	\$24,035
Nobles	\$494,216	\$411,972	\$82,244
Norman	\$118,794	\$118,794	\$0
Olmsted	\$1,390,479	\$1,763,623	(\$373,144)
Otter Tail	\$1,559,546	\$1,544,246	\$15,300
Pennington	\$225,943	\$50,030	\$175,913
Pine	\$264,093	\$163,566	\$100,527
Pipestone	\$298,424	\$473,349	(\$174,924)
Polk	\$1,050,752	\$732,754	\$317,998
Pope/Douglas	\$484,123	\$392,415	\$91,708
Ramsey	\$6,924,090	\$6,298,331	\$625,759
Red Lake	\$79,616	\$79,616	\$0
Redwood	\$1,082,862	\$534,663	\$548,199
Renville	\$450,984	\$265,492	\$185,492
Rice	\$1,376,972	\$990,450	\$386,522
Rock	\$143,142	\$175,878	(\$32,736)
Roseau	\$113,403	\$113,696	(\$293)
Scott	\$980,256	\$299,659	\$680,597
Sherburne	\$563,493	\$305,951	\$257,542
Sibley	\$253,084	\$237,231	\$15,853
St. Louis - partial	\$1,547,078	\$1,547,078	\$0
Stearns	\$765,444	\$659,783	\$105,661
Steele	\$548,905	\$548,905	\$0
Stevens	\$157,620	\$166,136	(\$8,516)
Swift	\$396,987	\$506,826	(\$109,839)
Todd	\$366,323	\$366,323	(\$0)
Traverse	\$69,938	\$116,988	(\$47,050)
Wabasha	\$83,010	\$83,010	\$0
Wadena	\$219,209	\$219,236	(\$27)
Waseca	\$263,833	\$407,630	(\$143,797)
Washington	\$1,955,577	\$1,955,577	\$0
Watsonwan	\$603,014	\$245,291	\$357,723
Wilkin	\$258,247	\$258,247	\$0
Winona	\$1,064,915	\$1,148,768	(\$83,853)
WLSSD	\$2,645,838	\$2,645,838	\$0
Wright	\$1,334,819	\$445,712	\$889,107
Yellow Medicine	\$149,091	\$119,038	\$30,053
Metro Area	\$25,968,702	\$25,085,402	\$883,300
Greater Minn.	\$40,536,876	\$36,065,853	\$4,471,023
Minnesota	\$66,505,578	\$61,151,255	\$5,354,323

**County Survey Responses:
Paper collected for recycling (tons)**

County	Computer paper	Corrugated	Magazine/catalog	Mixed paper	Newsprint	Office paper	Other paper	Phone book	Total paper
Aitkin	0	569	0	628	0	0	0	0	1,197
Anoka	2	54,523	852	8,186	13,436	1,266	7,617	1	85,884
Becker	0	3,152	6	1,381	2,034	24	0	0	6,597
Beltrami	0	3,462	0	702	0	46	0	0	4,210
Benton	0	1,623	8,650	371	708	148	559	2	12,060
Big Stone	0	145	0	165	178	0	0	0	488
Blue Earth	0	13,818	1,132	3,325	303	300	0	0	18,879
Brown	0	4,260	0	4,671	774	261	1	0	9,966
Carlton	0	1,619	237	749	484	74	0	0	3,164
Carver	0	6,807	0	14,467	2,837	80	0	0	24,190
Cass	0	3,036	0	402	2,128	233	0	0	5,799
Chippewa	0	1,023	13	31	206	1	0	0	1,274
Chisago	0	2,185	0	17	2,129	423	25	0	4,779
Clay	289	2,244	119	574	1,061	267	40	25	4,619
Clearwater	0	196	0	70	0	0	0	2	268
Cook	0	475	94	37	92	0	0	0	698
Cottonwood	0	1,270	0	0	412	92	0	0	1,774
Crow Wing	0	5,134	127	2,478	591	3	0	0	8,333
Dakota	0	25,683	197	62,697	25,237	1,495	328	0	115,638
Dodge	0	766	12	1,460	0	36	0	0	2,275
Faribault	0	3,452	0	2,745	0	0	0	0	6,197
Fillmore	0	0	0	0	0	0	1,685	0	1,685
Freeborn	0	8,967	0	1,007	0	0	0	0	9,974
Goodhue	0	4,338	220	3,851	1,111	3,056	0	0	12,576
Grant	0	157	20	0	76	40	0	0	293
Hennepin	0	48,667	4,204	38,347	35,312	9,725	39	21	136,315
Houston	0	436	0	243	67	0	0	0	747
Hubbard	0	1,755	0	80	447	0	0	0	2,282
Isanti	0	1,621	8	128	907	7	0	0	2,670
Itasca	23	2,683	91	735	1,370	176	0	0	5,078
Jackson	0	1,166	0	47	263	0	0	0	1,476
Kanabec	0	604	0	30	194	67	0	0	895
Kandiyohi	0	3,605	296	611	597	116	207	14	5,446
Kittson	0	112	68	0	93	2	0	0	274
Koochiching	0	3,575	0	626	81	40	0	0	4,322
Lac qui Parle	0	638	0	0	512	37	0	0	1,187
Lake	0	595	55	33	225	32	136	0	1,076
Lake of The Woods	0	45	0	0	0	0	0	0	45
Le Sueur	0	1,143	0	709	114	32	0	12	2,009
Lincoln	0	329	0	127	136	0	0	0	592
Lyon	0	4,318	0	453	478	0	0	0	5,249
Mahnomen	0	162	9	0	33	0	0	0	204
Marshall	0	63	49	21	100	5	0	2	238
Martin	0	7,244	0	4,225	0	0	0	0	11,469
McLeod	0	2,978	0	250	1,044	85	1,984	0	6,340
Meeker	0	1,271	4	388	217	83	0	0	1,963
Mille Lacs	0	550	6	632	20	0	0	0	1,208
Morrison	0	2,495	718	0	871	857	0	0	4,941

**County Survey Responses:
Paper collected for recycling (tons)**

County	Computer paper	Corrugated	Magazine/catalog	Mixed paper	Newsprint	Office paper	Other paper	Phone book	Total paper
Mower	0	15,767	23	0	779	79	0	6	16,654
Murray	0	523	189	19	652	15	0	0	1,398
Nicollet	38	2,781	0	6,210	909	2,755	47	198	12,937
Nobles	0	2,795	0	492	796	238	0	0	4,321
Norman	0	33	0	4	0	0	0	0	37
Olmsted	0	10,928	253	755	2,991	39,793	4,343	0	59,064
Otter Tail	0	3,618	98	2	717	310	0	0	4,744
Pennington	0	1,141	84	0	0	133	0	172	1,530
Pine	150	548	0	377	0	120	0	0	1,195
Pipestone	0	829	6	335	63	0	0	0	1,234
Polk	0	2,141	0	450	322	0	0	7	2,920
Pope/Douglas	0	3,458	0	3,392	1,382	37	0	0	8,269
Ramsey	0	7,452	1,663	4,809	19,336	6	3,331	388	36,985
Red Lake	0	241	8	0	38	2	0	0	289
Redwood	0	2,244	121	427	201	454	0	0	3,446
Renville	0	523	0	129	605	54	0	1	1,312
Rice	0	13,259	0	3,214	0	0	0	0	16,473
Rock	0	721	0	171	0	0	0	0	892
Roseau	0	2,052	107	0	145	90	0	0	2,394
Scott	632	14,029	137	11,741	2,085	54	887	0	29,565
Sherburne	0	174	0	7,899	0	0	0	0	8,073
Sibley	0	333	0	358	136	3	0	0	830
St. Louis - partial	1	7,584	0	2,325	502	153	0	0	10,565
Stearns	0	8,726	10,970	2,670	2,441	975	113	174	26,069
Steele	0	1,583	0	1,378	0	43	1,839	0	4,843
Stevens	0	526	0	43	173	14	0	11	767
Swift	33	714	69	0	506	106	0	3	1,431
Todd	0	1,699	0	9,223	0	0	0	0	10,922
Traverse	14	119	8	0	68	0	0	0	209
Wabasha	0	1,890	0	377	24	7	0	0	2,297
Wadena	0	1,145	0	107	0	1	0	0	1,253
Waseca	0	3,608	89	33,495	97	1,772	297	10	39,368
Washington	0	18,305	55	15,013	17,886	12,717	116	20	64,113
Watonwan	0	1,457	0	1,259	0	0	0	0	2,716
Wilkin	0	347	12	0	176	55	0	0	590
Winona	0	8,900	0	3,994	2,232	0	0	0	15,126
WLSSD	0	9,597	481	3,103	6,507	1,183	397	0	21,269
Wright	0	12,705	92	1,495	5,034	0	0	0	19,325
Yellow Medicine	0	558	26	0	369	29	0	0	982
Metro Area	634	175,466	7,109	155,260	116,130	25,343	12,319	430	492,691
Greater Minn.	547	224,546	24,569	117,703	47,920	54,962	11,673	639	482,558
Minnesota	1,181	400,011	31,678	272,963	164,050	80,305	23,992	1,069	975,249

County Survey Responses
Metal collected for recycling (tons)

County	Aluminum	Co-mingled alum/steel/tin	Other ferrous & non-ferrous	Steel/tin cans	Total metal
Aitkin	65	0	623	37	724
Anoka	1,941	6,646	21,956	1,168	31,711
Becker	167	62	545	121	895
Beltrami	96	0	0	428	524
Benton	357	652	5,894	405	7,308
Big Stone	14	0	852	21	886
Blue Earth	9,790	398	7,824	2,302	20,314
Brown	249	3,640	9,457	112	13,458
Carlton	185	0	140	136	461
Carver	190	153	3,511	526	4,380
Cass	110	0	0	100	211
Chippewa	40	5	844	30	920
Chisago	261	0	691	216	1,169
Clay	172	8	5,560	82	5,821
Clearwater	18	29	518	0	565
Cook	15	0	112	34	160
Cottonwood	7	338	0	17	362
Crow Wing	218	0	18,049	381	18,647
Dakota	2,525	14,998	15,084	4,126	36,733
Dodge	33	0	1,366	103	1,503
Faribault	300	580	1,106	0	1,986
Fillmore	0	119	1,364	0	1,483
Freeborn	973	1,662	578	0	3,213
Goodhue	400	71	410	195	1,076
Grant	12	0	11	19	41
Hennepin	6,027	978	45,022	2,438	54,465
Houston	83	116	1,104	7	1,310
Hubbard	40	146	267	93	546
Isanti	394	0	8,686	455	9,535
Itasca	114	100	2,676	249	3,139
Jackson	40	0	1,053	27	1,121
Kanabec	2	30	951	16	999
Kandiyohi	321	0	0	96	417
Kittson	5	42	25	0	73
Koochiching	48	76	689	20	832
Lac qui Parle	36	6	92	58	192
Lake	26	0	45	31	102
Lake of The Woods	1	185	1,212	1	1,400
Le Sueur	25	751	1,870	414	3,060
Lincoln	62	0	11	14	87
Lyon	32	7,274	0	48	7,354
Mahnomen	7	0	42	15	64
Marshall	12	144	270	0	426
Martin	1,935	3,276	2,557	0	7,768
McLeod	178	65	549	55	847
Meeker	213	118	450	0	780
Mille Lacs	0	72	0	7	79
Morrison	0	1,464	6,492	0	7,956

County Survey Responses
Metal collected for recycling (tons)

County	Aluminum	Co-mingled alum/steel/tin	Other ferrous & non-ferrous	Steel/tin cans	Total metal
Mower	176	0	29	120	325
Murray	67	110	220	27	424
Nicollet	227	493	1,699	36	2,454
Nobles	35	4,106	0	0	4,141
Norman	12	12	703	10	737
Olmsted	296	302	10,635	439	11,673
Otter Tail	227	0	6,477	113	6,817
Pennington	0	28	0	0	28
Pine	350	0	3,000	64	3,414
Pipestone	1	40	0	0	41
Polk	96	232	3,892	403	4,623
Pope/Douglas	408	47	1,441	1,175	3,071
Ramsey	870	39	8,725	966	10,600
Red Lake	0	17	260	0	277
Redwood	565	0	1,397	55	2,016
Renville	30	480	99	64	673
Rice	214	0	4,561	1,540	6,315
Rock	29	0	665	28	722
Roseau	51	0	1,819	87	1,957
Scott	202	680	1,150	14,520	16,552
Sherburne	0	12,000	0	0	12,000
Sibley	78	1	196	8	283
St. Louis - partial	806	509	42,720	1,159	45,195
Stearns	1,145	19,089	847	1,281	22,363
Steele	31	41	3,076	168	3,316
Stevens	62	0	291	150	503
Swift	139	0	52	100	291
Todd	14	0	161	41	216
Traverse	12	3	210	14	239
Wabasha	63	0	0	170	233
Wadena	0	176	4,621	0	4,797
Waseca	152	0	1,751	31	1,934
Washington	1,911	322	5,131	746	8,110
Watsonwan	31	24	0	0	56
Wilkin	47	0	53	12	113
Winona	685	0	1,486	3,677	5,848
WLSSD	638	0	11,078	553	12,269
Wright	284	0	4,276	947	5,507
Yellow Medicine	2	2,665	0	89	2,756
Metro Area	13,665	23,816	100,579	24,490	162,551
Greater Minn.	24,026	61,805	192,699	18,906	297,437
Minnesota	37,691	85,622	293,278	43,397	459,987

County Survey Responses
Glass collected for recycling (tons)

County	Food & beverage	Other glass	Total glass
Aitkin	237	0	237
Anoka	5,906	33	5,939
Becker	481	0	481
Beltrami	590	9	599
Benton	1,078	414	1,492
Big Stone	130	0	130
Blue Earth	936	0	936
Brown	397	0	397
Carlton	751	0	751
Carver	1,970	0	1,970
Cass	306	0	306
Chippewa	18	0	18
Chisago	836	0	836
Clay	551	0	551
Clearwater	0	0	0
Cook	307	0	307
Cottonwood	108	0	108
Crow Wing	1,190	0	1,190
Dakota	13,742	1,712	15,454
Dodge	493	501	994
Faribault	95	0	95
Fillmore	451	0	451
Freeborn	979	0	979
Goodhue	1,467	0	1,467
Grant	105	0	105
Hennepin	24,756	0	24,756
Houston	201	0	201
Hubbard	412	0	412
Isanti	318	0	318
Itasca	1,098	0	1,098
Jackson	81	0	81
Kanabec	42	0	42
Kandiyohi	299	0	299
Kittson	0	0	0
Koochiching	93	0	93
Lac qui Parle	56	0	56
Lake	94	5	99
Lake of The Woods	0	13	13
Le Sueur	273	0	273
Lincoln	86	0	86
Lyon	303	0	303
Mahnomen	30	0	30
Marshall	0	0	0
Martin	882	0	882
McLeod	415	0	415
Meeker	201	0	201
Mille Lacs	194	0	194
Morrison	509	0	509

County Survey Responses
Glass collected for recycling (tons)

County	Food & beverage	Other glass	Total glass
Mower	306	0	306
Murray	176	0	176
Nicollet	311	0	311
Nobles	332	0	332
Norman	51	0	51
Olmsted	1,096	1,071	2,167
Otter Tail	745	0	745
Pennington	23	0	23
Pine	293	0	293
Pipestone	183	0	183
Polk	449	0	449
Pope/Douglas	2,121	0	2,121
Ramsey	10,061	0	10,061
Red Lake	21	0	21
Redwood	295	0	295
Renville	523	0	523
Rice	1,091	2,031	3,122
Rock	116	0	116
Roseau	0	2,505	2,505
Scott	2,339	0	2,339
Sherburne	2,173	0	2,173
Sibley	71	0	71
St. Louis - partial	1,332	19	1,351
Stearns	3,397	1,280	4,677
Steele	536	19,842	20,378
Stevens	119	0	119
Swift	304	0	304
Todd	134	0	134
Traverse	27	0	27
Wabasha	499	0	499
Wadena	146	0	146
Waseca	83	0	83
Washington	2,922	0	2,922
Watsonwan	153	0	153
Wilkin	66	0	66
Winona	836	0	836
WLSSD	3,809	0	3,809
Wright	2,727	0	2,727
Yellow Medicine	213	0	213
Metro Area	61,696	1,744	63,441
Greater Minn.	(61,696)	27,691	69,541
Minnesota		29,436	132,981

**County Survey Responses:
Plastic collected for recycling (tons)**

County	Film plastic	HDPE	Mixed plastic	Other plastic	PET	Polystyrene	Total Plastic
Aitkin	0	0	105	0	0	0	105
Anoka	288	333	1,205	546	132	14	2,518
Becker	45	0	232	304	0	0	581
Beltrami	44	8	0	22	8	0	82
Benton	15	463	98	171	41	0	788
Big Stone	0	18	0	0	18	0	36
Blue Earth	1,482	24	2,645	67	0	0	4,218
Brown	12	26	689	7	0	0	733
Carlton	35	0	283	7	0	0	324
Carver	45	6	949	0	0	120	1,120
Cass	0	59	131	0	55	0	246
Chippewa	3	0	82	75	2	55	218
Chisago	2	1	307	0	0	0	310
Clay	9	0	203	0	0	0	212
Clearwater	0	0	0	0	0	0	0
Cook	0	0	49	0	0	0	49
Cottonwood	0	10	0	0	13	0	23
Crow Wing	0	0	1,644	0	0	0	1,644
Dakota	162	3	8,117	0	12	0	8,294
Dodge	0	0	108	136	0	0	244
Faribault	3	19	237	0	0	0	259
Fillmore	0	0	119	0	0	0	119
Freeborn	0	0	2,645	0	0	0	2,645
Goodhue	27	118	0	0	119	0	264
Grant	0	0	35	0	0	0	35
Hennepin	0	248	15,377	256	530	0	16,411
Houston	0	0	42	4	0	0	46
Hubbard	9	0	114	0	0	0	122
Isanti	47	5	126	6	1	0	185
Itasca	84	55	176	0	109	0	424
Jackson	0	0	38	0	0	0	38
Kanabec	0	0	304	0	0	0	304
Kandiyohi	52	104	0	87	107	0	350
Kittson	0	0	24	0	0	0	24
Koochiching	0	19	0	5	15	0	38
Lac qui Parle	0	0	53	2	0	0	55
Lake	0	0	68	0	0	0	68
Lake of The Woods	0	0	0	0	0	0	0
Le Sueur	7	0	303	65	10	0	385
Lincoln	0	0	0	23	0	0	23
Lyon	0	0	193	0	0	0	193
Mahnomen	0	0	8	0	0	0	8
Marshall	0	0	26	0	0	0	26
Martin	17	72	937	0	0	0	1,026
McLeod	3,606	166	108	227	101	112	4,321
Meeker	0	0	83	0	0	0	83
Mille Lacs	0	0	153	0	0	0	153
Morrison	58	24	205	68	0	0	355

**County Survey Responses:
Plastic collected for recycling (tons)**

County	Film plastic	HDPE	Mixed plastic	Other plastic	PET	Polystyrene	Total Plastic
Mower	60	68	0	44	67	0	239
Murray	0	0	62	0	0	0	62
Nicollet	0	49	538	164	116	0	866
Nobles	113	1	88	276	1	0	479
Norman	0	0	22	0	0	0	22
Olmsted	172	5	666	226	15	2	1,085
Otter Tail	13	112	0	8	111	0	244
Pennington	20	0	42	11	0	0	72
Pine	16	62	20	14	63	0	176
Pipestone	0	0	70	311	0	0	380
Polk	0	0	114	0	0	0	114
Pope/Douglas	44	1	523	4	0	0	572
Ramsey	326	384	997	844	576	0	3,127
Red Lake	0	0	9	0	0	0	9
Redwood	183	80	218	0	50	0	530
Renville	0	0	51	0	0	0	51
Rice	0	0	1,157	0	0	0	1,157
Rock	0	1	0	40	24	0	64
Roseau	195	0	69	167	0	0	431
Scott	71	89	757	75	179	581	1,753
Sherburne	12	0	934	0	0	0	946
Sibley	0	0	39	40	0	0	80
St. Louis - partial	78	219	67	0	224	27	614
Stearns	183	1,441	317	553	135	0	2,628
Steele	91	1	295	3	1	15	406
Stevens	0	30	0	0	28	0	58
Swift	0	73	0	0	79	0	152
Todd	0	0	57	0	0	0	57
Traverse	0	0	13	0	0	0	13
Wabasha	0	8	139	0	13	0	160
Wadena	14	0	186	0	0	0	200
Waseca	0	34	0	148	35	0	217
Washington	206	18	1,521	0	26	0	1,771
Watonwan	0	0	40	60	0	0	100
Wilkin	0	0	23	0	0	0	23
Winona	0	0	347	0	0	0	347
WLSSD	164	237	713	19	240	4	1,377
Wright	49	1	2,792	0	1	0	2,843
Yellow Medicine	0	0	70	0	0	0	70
Metro Area	1,099	1,081	28,924	1,722	1,455	714	34,994
Greater Minn.	6,962	3,612	22,252	3,361	1,802	216	38,205
Minnesota	8,061	4,693	51,176	5,083	3,256	930	73,199

County Survey Responses
Organics collected for recycling (tons) - Part 1

County	Food to livestock	Food to people	Source-separated organics	Total organics
Aitkin	0	0	0	0
Anoka	4,001	0	100	4,101
Becker	0	65	81	146
Beltrami	0	0	121	121
Benton	0	0	0	0
Big Stone	0	0	111	111
Blue Earth	0	37	172	209
Brown	815	0	36	851
Carlton	0	106	214	320
Carver	9,593	0	1,336	10,928
Cass	0	0	0	0
Chippewa	0	21	133	154
Chisago	276	0	3,183	3,459
Clay	5,700	211	0	5,911
Clearwater	0	0	0	0
Cook	0	0	0	0
Cottonwood	0	0	0	0
Crow Wing	552	0	0	552
Dakota	10,753	1,910	1,048	13,711
Dodge	0	0	39	39
Faribault	0	0	0	0
Fillmore	0	0	0	0
Freeborn	0	0	0	0
Goodhue	206	0	43	249
Grant	0	0	0	0
Hennepin	34,831	0	14,807	49,638
Houston	0	0	0	0
Hubbard	24	0	0	24
Isanti	475	69	78	622
Itasca	0	64	0	64
Jackson	28	0	0	28
Kanabec	0	0	0	0
Kandiyohi	0	66	83	149
Kittson	0	0	0	0
Koochiching	0	0	0	0
Lac qui Parle	490	6	2	498
Lake	0	0	0	0
Lake of The Woods	0	0	13	13
Le Sueur	2,900	0	0	2,900
Lincoln	0	0	7	7
Lyon	0	0	30	30
Mahnomen	0	0	0	0
Marshall	0	0	0	0
Martin	0	0	0	0
McLeod	0	0	1,869	1,869
Meeker	0	59	15	74
Mille Lacs	0	0	0	0
Morrison	0	15	66	80

County Survey Responses
Organics collected for recycling (tons) - Part 1

County	Food to livestock	Food to people	Source-separated organics	Total organics
Mower	0	0	0	0
Murray	0	0	29	29
Nicollet	143	0	0	143
Nobles	151	22	0	173
Norman	0	0	0	0
Olmsted	1,886	177	344	2,407
Otter Tail	5,647	2	45	5,694
Pennington	0	0	0	0
Pine	480	0	50	530
Pipestone	98	6	0	104
Polk	2,548	0	658	3,206
Pope/Douglas	24	45	66	134
Ramsey	41,349	1,414	886	43,649
Red Lake	0	0	0	0
Redwood	1,300	562	0	1,862
Renville	650	321	0	971
Rice	25,305	20	250	25,575
Rock	0	0	0	0
Roseau	0	0	0	0
Scott	0	10	933	943
Sherburne	510	0	167	677
Sibley	0	4,200	0	4,200
St. Louis - partial	0	69	292	361
Stearns	0	0	146	146
Steele	0	0	0	0
Stevens	0	0	15	15
Swift	0	0	1,588	1,588
Todd	0	0	0	0
Traverse	0	0	0	0
Wabasha	0	0	0	0
Wadena	0	0	44	44
Waseca	0	0	0	0
Washington	9,653	1,157	511	11,321
Watsonwan	0	0	0	0
Wilkin	0	0	0	0
Winona	9,466	0	0	9,466
WLSSD	104	571	4,280	4,954
Wright	0	0	0	0
Yellow Medicine	0	0	0	0
Metro Area	110,179	4,491	19,622	134,292
Greater Minn.	59,780	6,711	14,270	80,761
Minnesota	169,959	11,202	33,892	215,053

County Survey Responses
Textiles, other collected for recycling (tons) - Part 2

County	Carpet	Textiles	Mattresses & box springs	Pallets	Unspecified or Other	Total
Aitkin	0	12	0	0	1	13
Anoka	3	2,444	0	1,040	8,225	11,712
Becker	0	219	0	31	16	266
Beltrami	0	0	0	54	0	54
Benton	0	0	0	0	0	0
Big Stone	0	15	0	0	0	15
Blue Earth	7	221	0	13,449	0	13,676
Brown	0	65	0	562	3	630
Carlton	0	83	39	0	0	122
Carver	41	97	0	1,048	0	1,186
Cass	0	20	0	0	1,822	1,842
Chippewa	0	21	0	0	0	21
Chisago	0	99	21	25	0	145
Clay	0	256	3	25	0	284
Clearwater	0	15	0	0	0	15
Cook	0	0	0	0	0	0
Cottonwood	0	0	0	600	0	600
Crow Wing	0	277	92	0	5	375
Dakota	0	5,711	15	13,261	45,060	64,047
Dodge	18	4	0	338	101	461
Faribault	0	16	0	0	0	16
Fillmore	0	23	0	0	0	23
Freeborn	0	1	0	15	0	16
Goodhue	0	0	0	8	0	8
Grant	0	0	0	0	41	41
Hennepin	14	0	143	709	283,544	284,410
Houston	0	0	0	0	0	0
Hubbard	0	101	0	0	0	101
Isanti	0	0	25	123	0	148
Itasca	0	0	0	51	0	51
Jackson	0	17	0	1,150	0	1,167
Kanabec	2	0	9	0	0	11
Kandiyohi	0	0	0	0	0	0
Kittson	0	0	0	0	0	0
Koochiching	0	0	0	0	0	0
Lac qui Parle	0	40	0	210	0	250
Lake	0	0	3	0	0	3
Lake of The Woods	0	0	0	0	0	0
Le Sueur	0	0	0	1,821	0	1,821
Lincoln	0	74	0	1	1	75
Lyon	0	0	0	0	2,501	2,501
Mahnomen	0	0	0	0	0	0
Marshall	0	0	0	0	0	0
Martin	0	0	0	0	0	0
McLeod	0	0	9	379	89	476
Meeker	0	0	0	800	59	859
Mille Lacs	0	0	1	0	0	1

County Survey Responses
Textiles, other collected for recycling (tons) - Part 2

County	Carpet	Textiles	Mattresses & box springs	Pallets	Unspecified or Other	Total
Morrison	0	136	0	1,123	0	1,259
Mower	0	0	0	3,066	0	3,066
Murray	0	148	0	112	0	260
Nicollet	9	12	1	1,424	6	1,451
Nobles	0	480	0	1,949	0	2,429
Norman	0	0	0	0	2	2
Olmsted	0	540	0	1,713	0	2,253
Otter Tail	0	0	31	849	2,641	3,522
Pennington	0	0	0	0	1	1
Pine	0	10	22	0	0	32
Pipestone	0	16	0	2,000	2	2,017
Polk	0	0	0	0	1,901	1,901
Pope/Douglas	120	270	0	0	0	390
Ramsey	0	290	0	604	184,798	185,692
Red Lake	0	0	0	0	0	0
Redwood	22	1,223	7	1,709	3,498	6,459
Renville	20	45	0	10	0	75
Rice	0	220	0	5,587	0	5,807
Rock	0	52	0	308	0	360
Roseau	0	0	0	1,871	0	1,871
Scott	0	0	0	1,265	0	1,265
Sherburne	0	0	0	0	0	0
Sibley	0	0	0	16	4	20
St. Louis - partial	0	36	83	14	131	264
Stearns	0	0	0	845	0	845
Steele	0	0	0	1,376	23	1,399
Stevens	0	20	0	0	0	20
Swift	0	0	0	0	0	0
Todd	0	0	0	0	0	0
Traverse	0	0	0	0	0	0
Wabasha	0	0	0	0	0	0
Wadena	0	0	17	9	0	26
Waseca	0	45	0	111	0	156
Washington	0	11	0	34	2,117	2,162
Watsonwan	0	0	0	0	0	0
Wilkin	0	0	0	0	0	0
Winona	0	0	0	2,279	506	2,785
WLSSD	28	1,415	0	565	770	2,779
Wright	0	3	0	58	0	61
Yellow Medicine	0	105	0	0	137	242
Metro Area	58	8,553	158	17,962	523,745	550,475
Greater Minn.	226	6,355	363	46,635	14,261	67,839
Minnesota	284	14,907	520	64,597	538,006	618,314

County Survey Responses
Problem materials (banned) collected for recycling (tons)

County	Antifreeze	Electronics	Fluorescent & HID lamps	HHW	Latex paint	Major appliances	Used oil	Used oil filters	Vehicle batteries	Waste tires	Total problem mats
Aitkin	2	32	4	5	4	99	80	8	101	147	482
Anoka	81	632	46	5	151	2,020	269	157	2,067	673	6,103
Becker	1	89	6	9	18	198	228	15	3,465	447	4,476
Beltrami	3	168	3	0	8	281	36	21	290	102	912
Benton	0	19	0	1	10	384	31	18	239	78	780
Big Stone	0	19	1	3	3	31	34	5	32	11	139
Blue Earth	40	830	27	34	26	503	626	30	1,112	1,742	4,971
Brown	0	68	0	0	0	153	84	12	157	86	561
Carlton	1	60	3	4	3	213	192	22	218	137	852
Carver	3	440	21	74	86	562	75	44	574	187	2,066
Cass	1	99	6	13	7	170	23	13	174	354	860
Chippewa	0	22	2	0	0	73	15	6	75	107	300
Chisago	4	117	4	40	73	324	45	25	331	150	1,112
Clay	25	135	17	7	17	398	259	35	369	319	1,581
Clearwater	0	21	2	6	0	0	7	4	54	56	150
Cook	0	10	0	3	0	31	8	2	32	10	97
Cottonwood	0	14	1	0	0	70	9	6	72	58	230
Crow Wing	20	212	37	2	23	532	50	33	415	207	1,531
Dakota	110	3,383	44	232	307	2,427	324	189	2,483	809	10,308
Dodge	4	59	0	0	0	121	16	9	124	41	375
Faribault	2	35	1	3	1	100	15	9	91	44	301
Fillmore	3	315	6	0	0	125	17	10	128	42	646
Freeborn	3	83	1	2	8	188	37	14	192	63	590
Goodhue	0	28	0	0	0	278	47	22	285	95	755
Grant	0	13	1	2	2	36	5	3	37	12	110
Hennepin	43	2,743	35	102	730	7,081	944	551	7,244	2,360	21,833
Houston	0	1,953	3	0	0	114	15	9	116	188	2,398
Hubbard	0	0	7	2	1	122	47	10	125	311	625
Isanti	0	99	1	8	0	674	31	18	235	76	1,141
Itasca	3	93	5	0	0	2,898	37	21	277	100	3,435
Jackson	0	15	4	1	2	62	9	5	63	94	255
Kanabec	1	16	0	2	0	97	30	8	99	32	285
Kandiyohi	0	47	0	22	20	254	34	20	260	85	741
Kittson	0	3	1	2	2	27	4	2	28	10	77
Koochiching	0	38	1	3	4	79	11	6	81	26	249
Lac qui Parle	2	28	2	7	11	70	24	3	45	47	238
Lake	2	48	3	0	0	65	60	8	66	80	332
Woods	0	17	2	0	1	35	0	2	0	15	71
Le Sueur	4	134	11	9	8	166	57	13	170	156	728
Lincoln	0	8	1	5	0	35	46	3	39	59	194
Lyon	0	49	21	0	12	156	21	12	159	52	481
Mahnomen	0	6	0	2	0	33	4	3	34	11	93
Marshall	1	6	1	2	1	57	8	5	60	40	181
Martin	4	62	58	11	5	190	38	16	176	101	661
McLeod	1	68	2	292	17	219	29	17	224	73	941
Meeker	0	64	20	2	14	221	67	11	143	157	698
Mille Lacs	0	3	1	7	8	156	21	12	160	52	420
Morrison	6	63	6	0	6	199	235	16	1,661	408	2,601
Mower	0	0	0	0	10	236	31	18	241	79	616
Murray	0	7	1	3	0	52	7	4	53	17	143

County Survey Responses
Problem materials (banned) collected for recycling (tons)

County	Antifreeze	Electronics	Fluorescent & HID lamps	HHW	Latex paint	Major appliances	Used oil	Used oil filters	Vehicle batteries	Waste tires	Total problem mats
Nicollet	123	71	21	10	12	220	50	15	203	91	816
Nobles	35	14	5	5	8	129	46	10	140	69	462
Norman	0	23	2	1	1	41	6	3	42	14	133
Olmsted	9	1,012	57	62	119	883	118	69	903	294	3,526
Otter Tail	1	99	12	43	48	344	46	27	352	129	1,101
Pennington	0	36	5	0	3	84	11	7	86	28	261
Pine	2	31	0	2	2	175	40	14	2,430	86	2,783
Pipestone	0	42	2	2	3	56	26	5	58	36	230
Polk	0	0	2	5	2	189	25	15	205	143	585
Pope/Douglas	0	67	11	103	39	284	38	22	290	176	1,030
Ramsey	14	229	27	48	326	3,283	414	242	3,176	1,047	8,805
Red Lake	0	5	1	2	1	31	10	2	27	41	119
Redwood	39	357	30	26	9	102	369	9	348	1,124	2,413
Renville	20	79	4	0	3	152	12	7	95	163	536
Rice	10	219	5	23	57	388	52	30	412	175	1,372
Rock	0	32	1	1	2	58	8	5	59	306	471
Roseau	4	30	14	5	2	93	31	11	106	95	391
Scott	54	118	11	38	65	800	905	62	818	267	3,139
Sherburne	1	614	2	7	77	537	72	42	549	179	2,079
Sibley	3	16	6	7	7	97	12	7	93	145	394
St. Louis - partial	289	357	42	135	36	713	2,087	175	495	1,561	5,891
Stearns	63	67	1	0	0	910	990	71	930	303	3,335
Steele	0	4	1	0	0	219	29	17	224	73	568
Stevens	0	30	1	9	0	59	8	5	60	20	190
Swift	0	28	3	0	0	58	8	5	59	19	181
Todd	0	43	2	0	2	149	20	12	152	77	457
Traverse	0	0	0	0	0	21	3	2	22	7	54
Wabasha	0	0	0	0	0	130	17	10	133	43	334
Wadena	0	0	1	2	6	83	11	6	91	28	228
Waseca	0	0	19	3	0	115	34	13	118	306	608
Washington	16	860	17	0	252	1,460	195	114	1,493	487	4,893
Watonwan	0	0	0	0	0	67	9	5	69	22	173
Wilkin	0	0	2	1	1	40	5	3	40	13	105
Winona	0	0	0	0	0	309	41	24	316	103	794
WLSSD	51	866	23	59	40	986	96	98	733	239	3,191
Wright	2	73	3	25	28	763	102	59	780	254	2,090
Yellow Medicine	0	0	0	2	0	266	8	5	63	21	365
Metro Area	322	8,405	201	500	1,917	17,632	3,126	1,359	17,855	5,830	57,147
Greater Minn.	787	9,492	548	1,051	831	19,276	7,170	1,374	23,192	12,960	76,680
Minnesota	1,109	17,896	749	1,551	2,748	36,908	10,296	2,733	41,047	18,790	133,828

**County Survey Responses
Tonnages with Plastic Oils**

County	Estimated tons of MSW not collected	Problem mats not collected for recycling	Tons collected for recycling	Tons to MSW - Landfill disposal	Tons to MSW - Processing Facilities	Total tons generated
Aitkin	275	212	2,759	10,055	0	13,301
Anoka	0	8,493	147,968	58,760	132,462	347,683
Becker	294	351	10,604	18,458	0	29,707
Beltrami	0	1,111	6,502	8,084	13,303	29,000
Benton	2,577	922	22,428	6,758	9,363	42,049
Big Stone	630	99	1,805	1,474	127	4,134
Blue Earth	1,184	419	63,202	28,178	19,581	112,564
Brown	1,480	546	26,596	12,033	0	40,655
Carlton	685	660	5,995	11,639	0	18,978
Carver	294	2,360	45,841	44,097	5,556	98,148
Cass	0	488	9,263	1,925	10,147	21,823
Chippewa	1,574	219	2,904	7,765	0	12,462
Chisago	420	1,302	11,810	24,410	1,283	39,224
Clay	193	1,066	18,980	28,423	0	48,662
Clearwater	126	180	1,051	960	2,508	4,825
Cook	29	126	1,311	3,636	0	5,103
Cottonwood	1,006	256	3,098	12,000	0	16,360
Crow Wing	226	1,377	32,272	36,563	0	70,439
Dakota	0	10,201	264,187	183,575	34,281	492,244
Dodge	930	509	5,892	270	7,005	14,605
Faribault	2,180	323	8,854	346	6,220	17,922
Fillmore	2,959	524	4,407	4,598	730	13,219
Freeborn	168	767	17,415	21,241	0	39,591
Goodhue	420	1,156	16,396	5,005	21,314	44,290
Grant	730	149	626	0	1,988	3,494
Hennepin	0	29,763	587,828	299,541	448,929	1,366,061
Houston	168	324	4,701	2,712	6,184	14,089
Hubbard	0	320	4,112	13,488	0	17,920
Isanti	420	907	14,618	23,904	0	39,849
Itasca	371	1,062	13,289	22,773	0	37,494
Jackson	840	185	4,165	4,993	655	10,838
Kanabec	27	384	2,536	7,249	0	10,197
Kandiyohi	210	1,067	7,401	24,773	0	33,452
Kittson	84	112	448	1,610	0	2,254
Koochiching	315	333	5,535	7,340	0	13,523
Lac qui Parle	1,236	117	2,476	3,416	0	7,245
Lake	840	162	1,680	5,644	0	8,326
Lake of The Woods	17	82	1,576	2,626	0	4,301
Le Sueur	1,039	562	11,176	7,318	5,922	26,018
Lincoln	378	56	1,065	1,554	0	3,053
Lyon	730	643	16,111	14,324	0	31,808
Mahnomen	91	139	399	21	1,045	1,694
Marshall	315	214	872	4,739	0	6,139
Martin	2,375	393	21,806	497	8,951	34,022
McLeod	1,962	905	15,208	17,962	0	36,038
Meeker	1,175	386	4,658	10,843	0	17,062
Mille Lacs	1,049	645	2,055	14,927	0	18,677
Morrison	378	344	17,702	12,238	0	30,661
Mower	1,238	991	21,206	19,640	0	43,075
Murray	735	215	2,493	3,578	0	7,021
Nicollet	1,102	763	18,978	6,790	9,489	37,122

**County Survey Responses
Tonnages with Plastic Oils**

County	Estimated tons of MSW not collected	Problem mats not collected for recycling	Tons collected for recycling	Tons to MSW - Landfill disposal	Tons to MSW - Processing Facilities	Total tons generated
Nobles	609	478	12,336	10,130	0	23,553
Norman	22	165	982	545	2,783	4,497
Olmsted	2,373	3,710	82,175	9,861	76,782	174,901
Otter Tail	646	1,430	22,867	11,193	19,957	56,094
Pennington	1,637	355	1,914	10,515	0	14,421
Pine	1,679	680	8,422	16,591	0	27,372
Pipestone	1,196	201	4,190	3,726	0	9,313
Polk	182	700	13,798	7,567	10,024	32,272
Pope/Douglas	592	793	16,154	2,622	26,144	46,305
Ramsey	0	12,858	298,919	92,217	195,271	599,265
Red Lake	8	56	715	1,501	0	2,281
Redwood	711	17	17,021	6,008	0	23,757
Renville	2,057	241	4,141	8,081	0	14,520
Rice	2,309	1,573	59,821	41,381	568	105,651
Rock	420	164	2,626	4,357	0	7,566
Roseau	668	300	9,549	8,650	0	19,167
Scott	10	2,564	55,556	41,670	13,401	113,202
Sherburne	63	2,256	25,948	22,738	19,642	70,646
Sibley	491	260	5,876	5,872	732	13,231
St. Louis - partial	333	37	64,240	52,819	0	117,429
Stearns	1,385	2,954	60,063	29,009	33,188	126,600
Steele	1,007	912	30,910	30,138	0	62,967
Stevens	401	246	1,672	2,995	2,829	8,143
Swift	1,036	241	3,947	3,501	0	8,725
Todd	840	586	11,786	4,212	5,343	22,766
Traverse	504	87	543	885	0	2,018
Wabasha	8	539	3,522	0	4,935	9,004
Wadena	378	341	6,694	836	5,732	13,981
Waseca	63	311	42,366	8,893	1,949	53,583
Washington	0	6,136	95,291	18,631	72,482	192,540
Watonwan	986	282	3,197	6,078	0	10,543
Wilkin	840	166	897	1,220	0	3,123
Winona	881	1,300	35,202	27,021	0	64,405
WLSSD	1,016	2,826	49,648	51,185	0	104,674
Wright	1,007	3,206	32,552	72,084	0	108,850
Yellow Medicine	944	241	4,628	3,751	0	9,564
			2,606,427			
Metro Area	304	72,375	1,495,590	738,492	901,721	3,208,483
Greater Minn.	62,471	51,728	1,110,836	944,748	336,424	2,506,208
Minnesota	62,776	124,103	2,606,427	1,683,240	1,238,805	5,715,350

**County Survey Responses
Rate with no credits**

County	Tons collected for recycling	Total MSW generated	Percent of MSW collected for recycling
Aitkin	2,759	13,301	20.7%
Anoka	147,968	347,683	42.6%
Becker	10,604	29,707	35.7%
Beltrami	6,502	29,000	22.4%
Benton	22,428	42,049	53.3%
Big Stone	1,805	4,134	43.7%
Blue Earth	63,202	112,564	56.1%
Brown	26,596	40,655	65.4%
Carlton	5,995	18,978	31.6%
Carver	45,841	98,148	46.7%
Cass	9,263	21,823	42.4%
Chippewa	2,904	12,462	23.3%
Chisago	11,810	39,224	30.1%
Clay	18,980	48,662	39.0%
Clearwater	1,051	4,825	21.8%
Cook	1,311	5,103	25.7%
Cottonwood	3,098	16,360	18.9%
Crow Wing	32,272	70,439	45.8%
Dakota	264,187	492,244	53.7%
Dodge	5,892	14,605	40.3%
Faribault	8,854	17,922	49.4%
Fillmore	4,407	13,219	33.3%
Freeborn	17,415	39,591	44.0%
Goodhue	16,396	44,290	37.0%
Grant	626	3,494	17.9%
Hennepin	587,828	1,366,061	43.0%
Houston	4,701	14,089	33.4%
Hubbard	4,112	17,920	22.9%
Isanti	14,618	39,849	36.7%
Itasca	13,289	37,494	35.4%
Jackson	4,165	10,838	38.4%
Kanabec	2,536	10,197	24.9%
Kandiyohi	7,401	33,452	22.1%
Kittson	448	2,254	19.9%
Koochiching	5,535	13,523	40.9%
Lac qui Parle	2,476	7,245	34.2%
Lake	1,680	8,326	20.2%
Lake of The Woods	1,576	4,301	36.6%
Le Sueur	11,176	26,018	43.0%
Lincoln	1,065	3,053	34.9%
Lyon	16,111	31,808	50.7%
Mahnomen	399	1,694	23.5%
Marshall	872	6,139	14.2%
Martin	21,806	34,022	64.1%
McLeod	15,208	36,038	42.2%
Meeker	4,658	17,062	27.3%
Mille Lacs	2,055	18,677	11.0%
Morrison	17,702	30,661	57.7%
Mower	21,206	43,075	49.2%
Murray	2,493	7,021	35.5%
Nicollet	18,978	37,122	51.1%
Nobles	12,336	23,553	52.4%

**County Survey Responses
Rate with no credits**

County	Tons collected for recycling	Total MSW generated	Percent of MSW collected for recycling
Norman	982	4,497	21.8%
Olmsted	82,175	174,901	47.0%
Otter Tail	22,867	56,094	40.8%
Pennington	1,914	14,421	13.3%
Pine	8,422	27,372	30.8%
Pipestone	4,190	9,313	45.0%
Polk	13,798	32,272	42.8%
Pope/Douglas	16,154	46,305	34.9%
Ramsey	298,919	599,265	49.9%
Red Lake	715	2,281	31.3%
Redwood	17,021	23,757	71.6%
Renville	4,141	14,520	28.5%
Rice	59,821	105,651	56.6%
Rock	2,626	7,566	34.7%
Roseau	9,549	19,167	49.8%
Scott	55,556	113,202	49.1%
Sherburne	25,948	70,646	36.7%
Sibley	5,876	13,231	44.4%
St. Louis - partial	64,240	117,429	54.7%
Stearns	60,063	126,600	47.4%
Steele	30,910	62,967	49.1%
Stevens	1,672	8,143	20.5%
Swift	3,947	8,725	45.2%
Todd	11,786	22,766	51.8%
Traverse	543	2,018	26.9%
Wabasha	3,522	9,004	39.1%
Wadena	6,694	13,981	47.9%
Waseca	42,366	53,583	79.1%
Washington	95,291	192,540	49.5%
Watsonwan	3,197	10,543	30.3%
Wilkin	897	3,123	28.7%
Winona	35,202	64,405	54.7%
WLSSD	49,648	104,674	47.4%
Wright	32,552	108,850	29.9%
Yellow Medicine	4,628	9,564	48.4%
Minnesota	2,606,427	5,715,350	45.6%
Metro Area	1,495,590	3,209,143	46.6%
Greater Minn.	1,110,836	2,506,208	44.3%