



LEGISLATIVE BUILDING DESIGN SCOPING WORKSHOP #4 SUMMARY

November 12 and November 13, 2013

CPMI+MOCA

DESIGN SCOPING WORKSHOP #4 SUMMARY

INTRODUCTION



The fourth Design Scoping Workshop was held on 11/12/2013 and 11/13/2013.

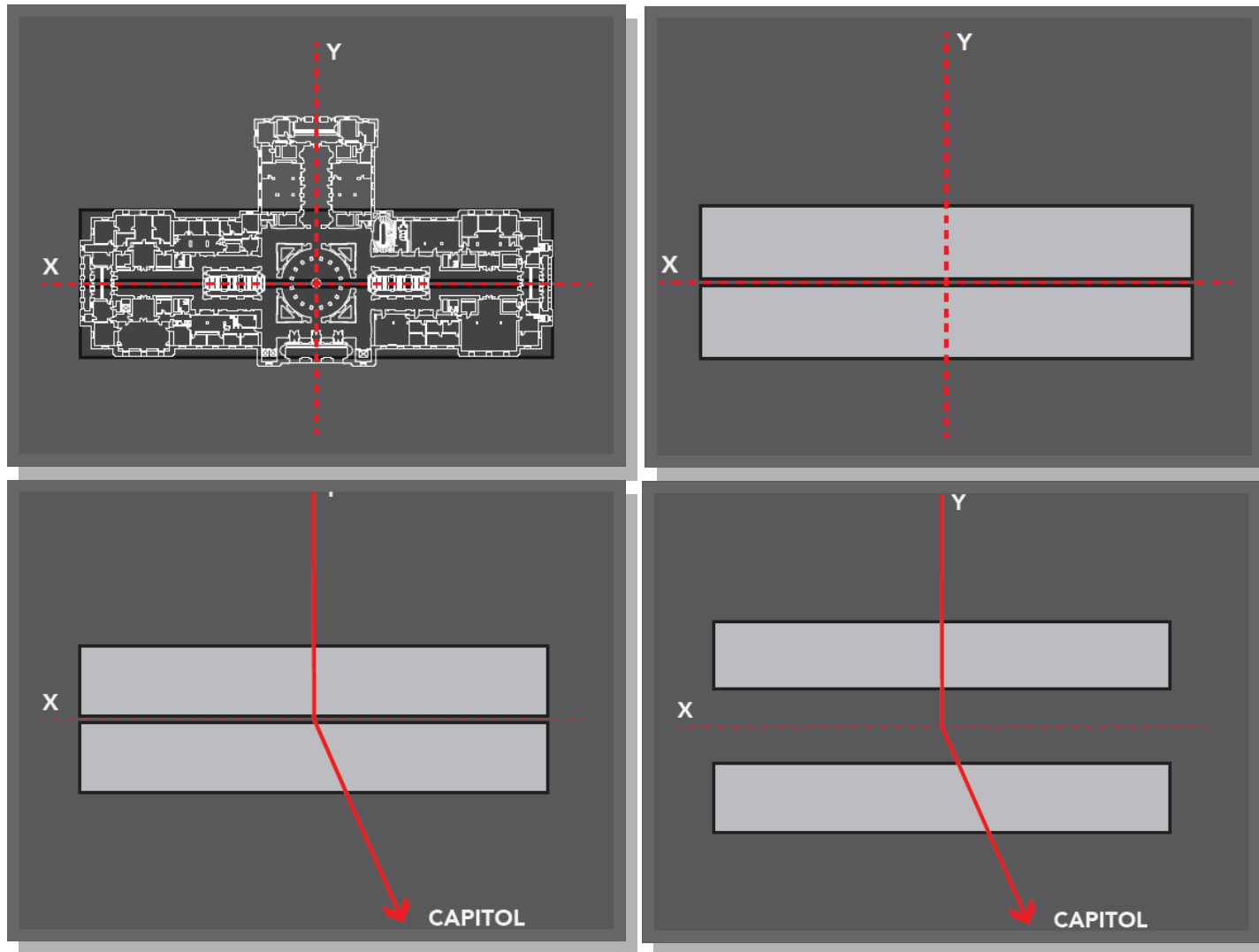
Illustrations of this process are shown throughout this summary, and ideas are recorded in text in the final pages.



COLLABORATION – LEGACY BUILDING – OPEN/CONVENIENT/SECURE

DESIGN SCOPING WORKSHOP #4 SUMMARY

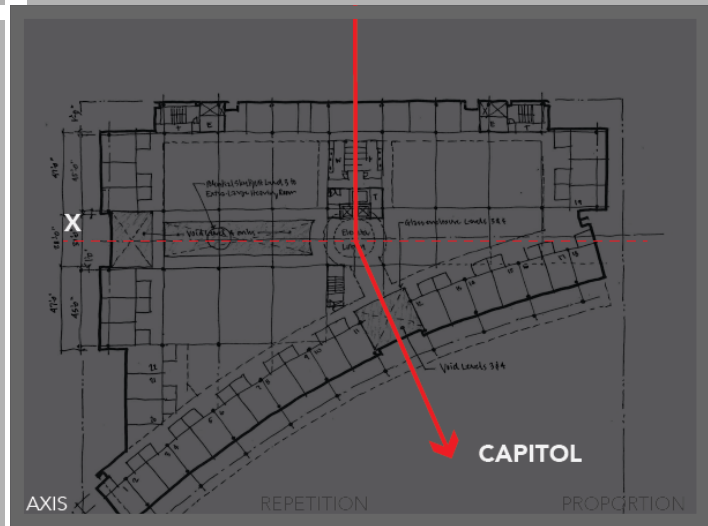
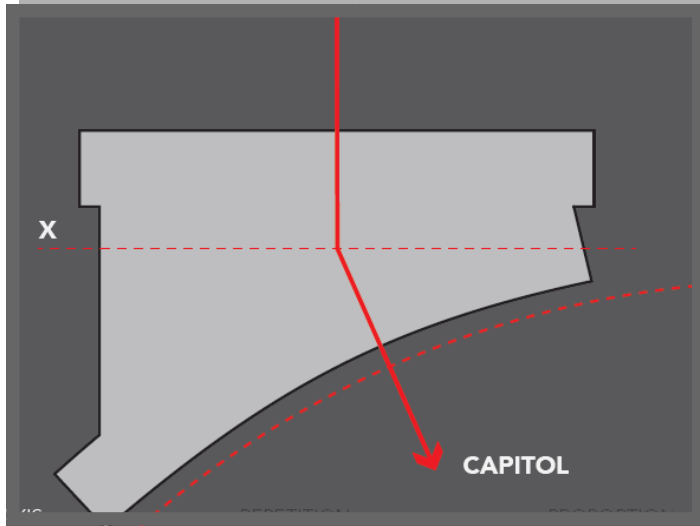
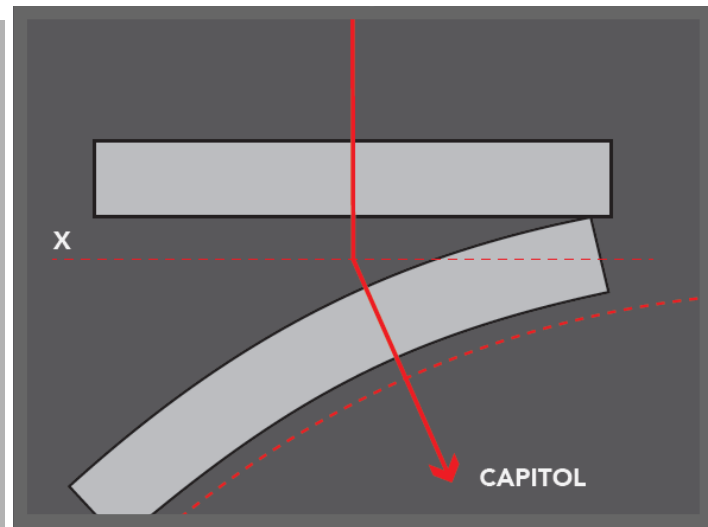
PRESENTATION HIGHLIGHTS



COLLABORATION - LEGACY BUILDING - OPEN/CONVENIENT/SECURE

DESIGN SCOPING WORKSHOP #4 SUMMARY

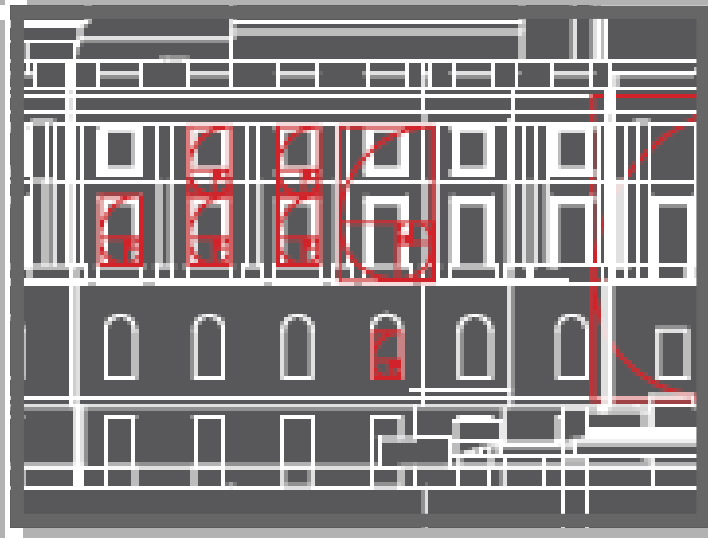
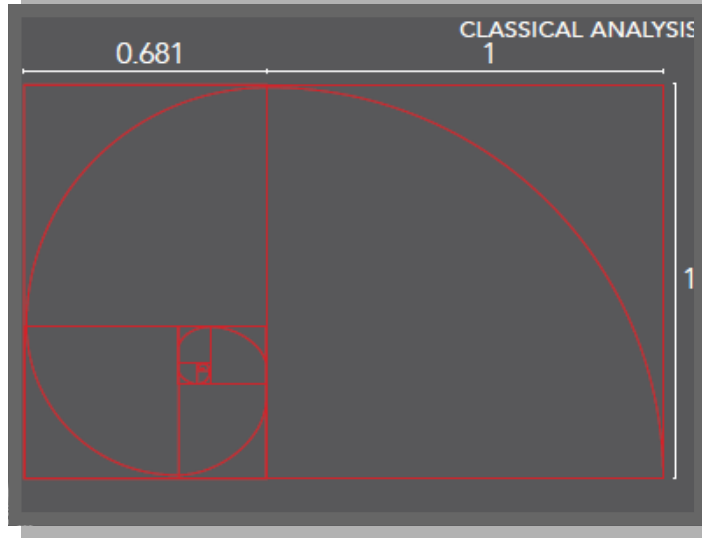
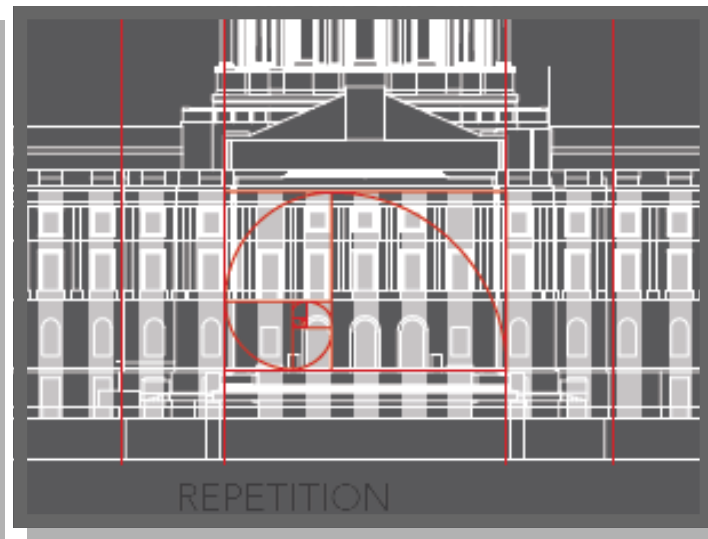
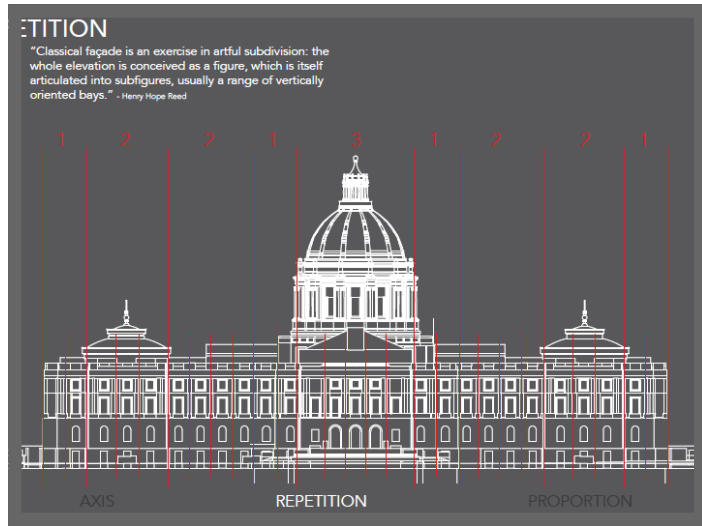
PRESENTATION HIGHLIGHTS



COLLABORATION - LEGACY BUILDING - OPEN/CONVENIENT/SECURE

DESIGN SCOPING WORKSHOP #4 SUMMARY

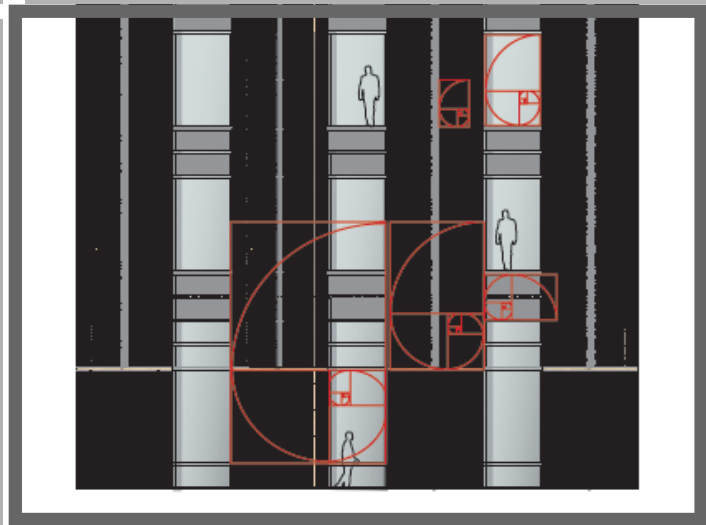
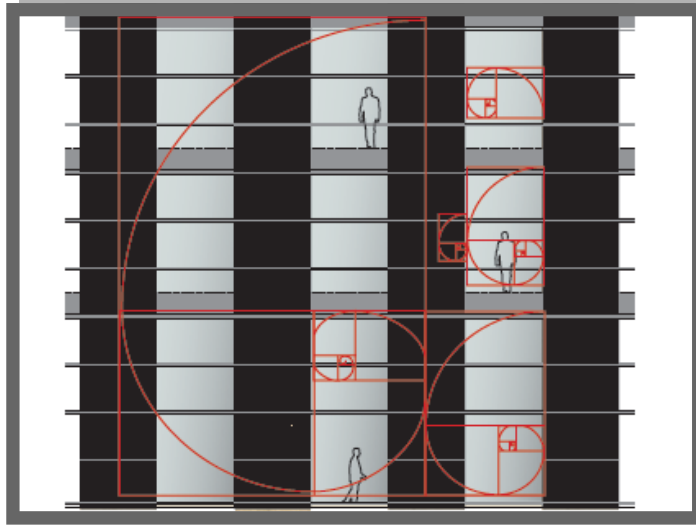
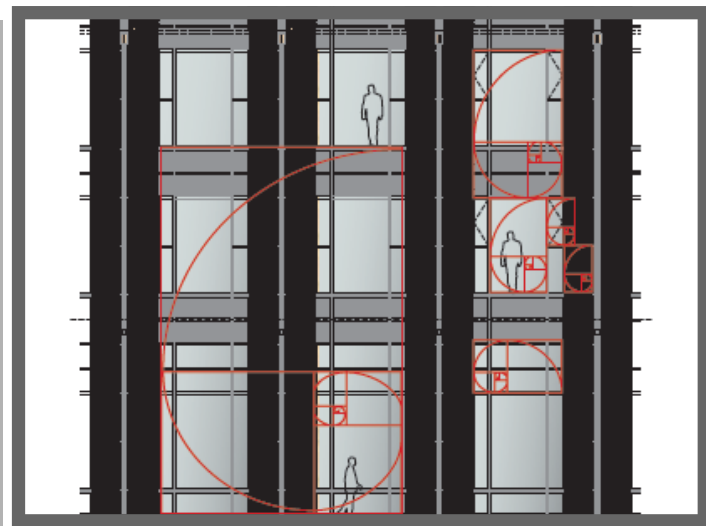
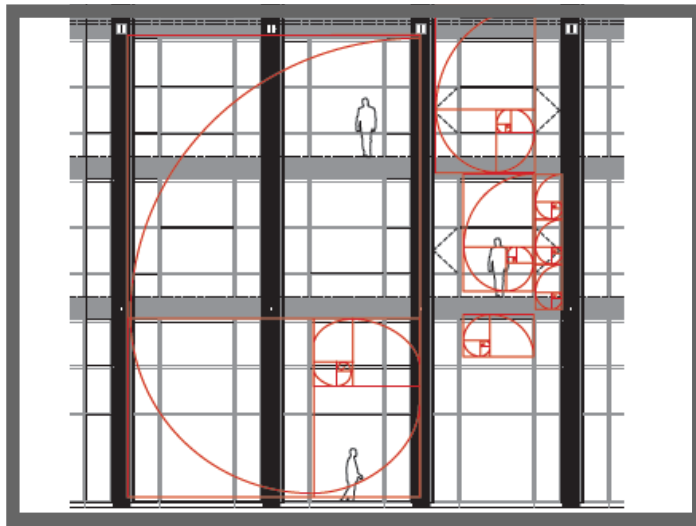
PRESENTATION HIGHLIGHTS



COLLABORATION - LEGACY BUILDING - OPEN/CONVENIENT/SECURE

DESIGN SCOPING WORKSHOP #4 SUMMARY

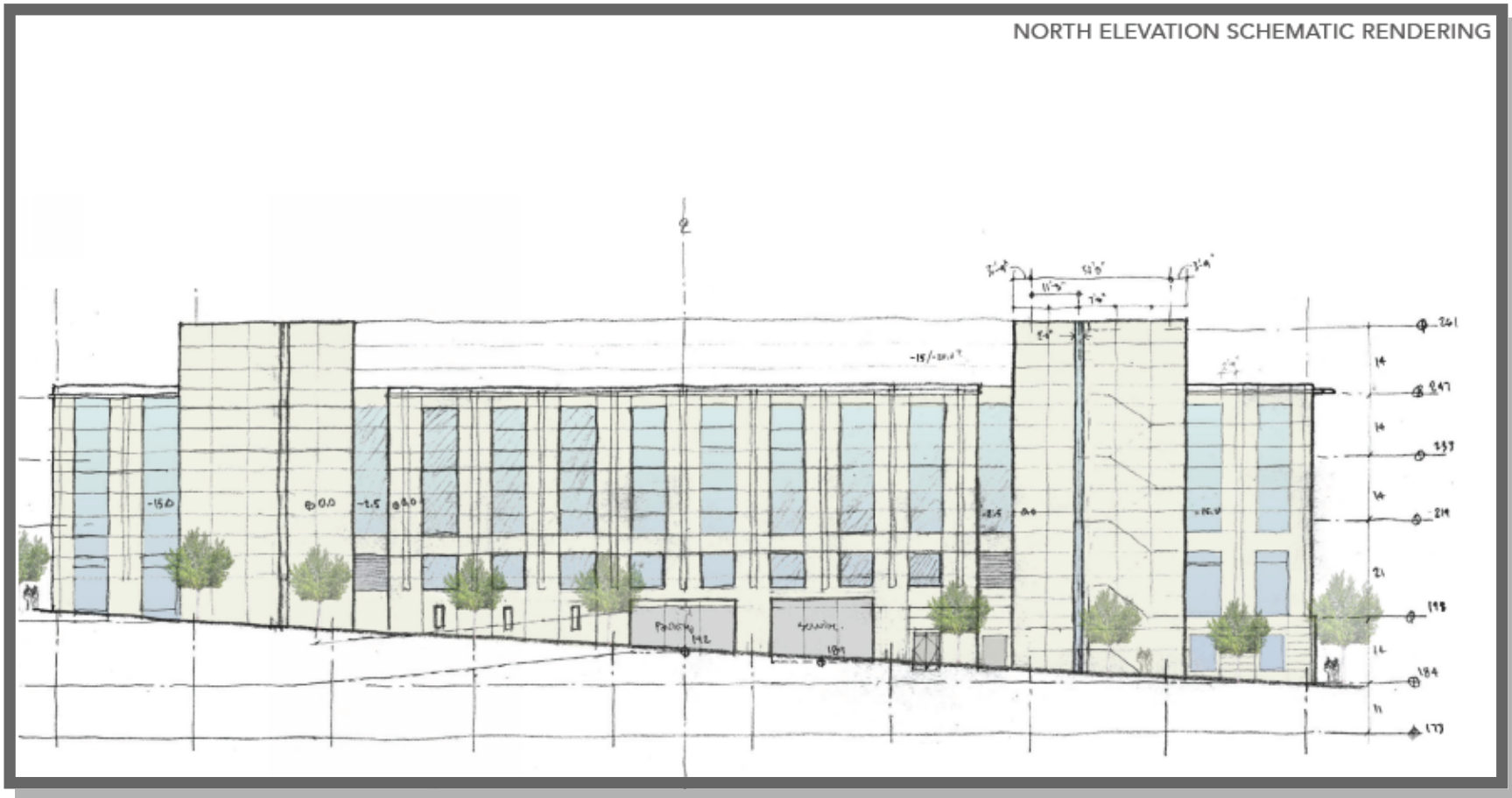
PRESENTATION HIGHLIGHTS



COLLABORATION - LEGACY BUILDING - OPEN/CONVENIENT/SECURE

DESIGN SCOPING WORKSHOP #4 SUMMARY

PRESENTATION HIGHLIGHTS



COLLABORATION - LEGACY BUILDING - OPEN/CONVENIENT/SECURE

DESIGN SCOPING WORKSHOP #4 SUMMARY

PRESENTATION HIGHLIGHTS



COLLABORATION - LEGACY BUILDING - OPEN/CONVENIENT/SECURE

DESIGN SCOPING WORKSHOP #4 SUMMARY

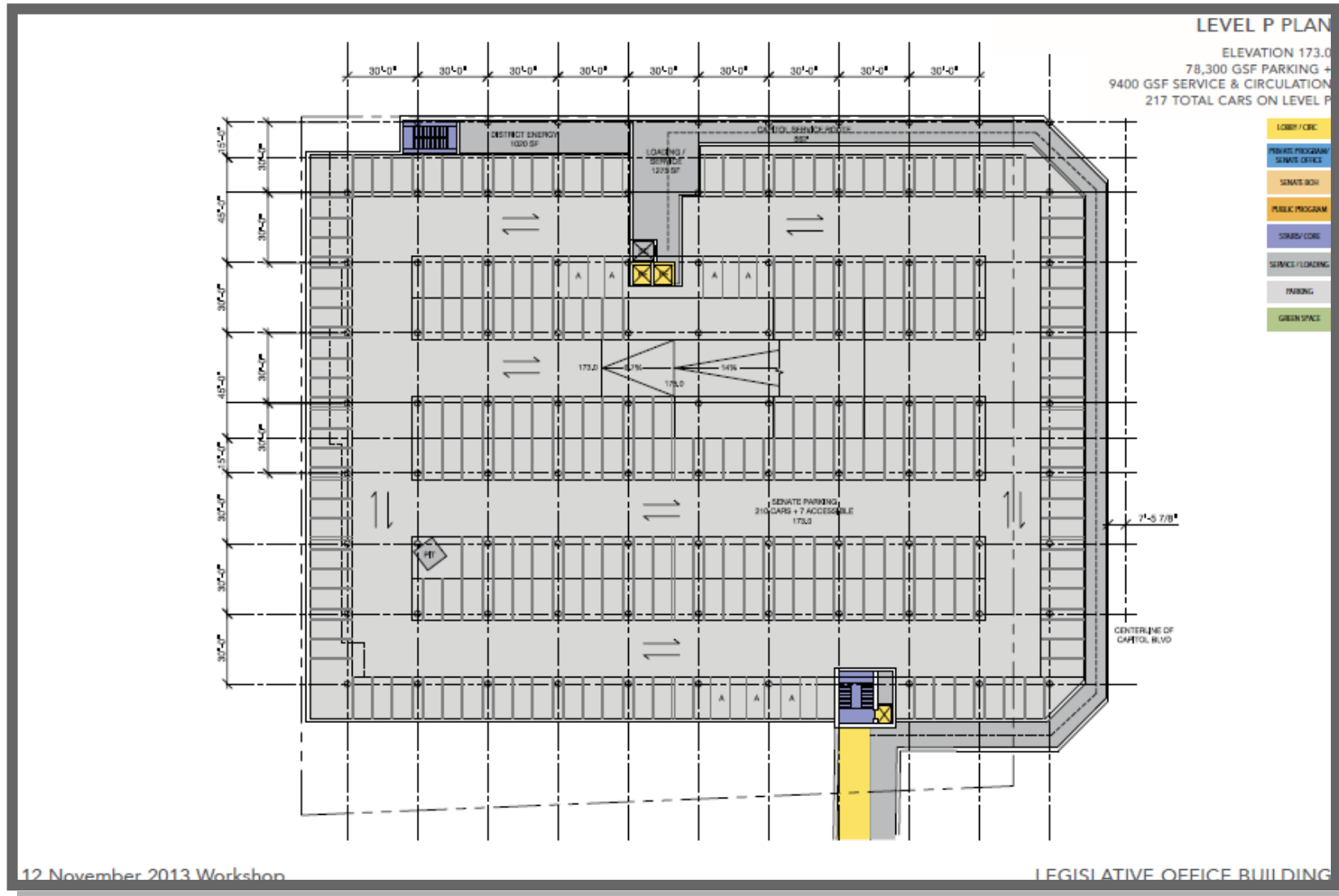
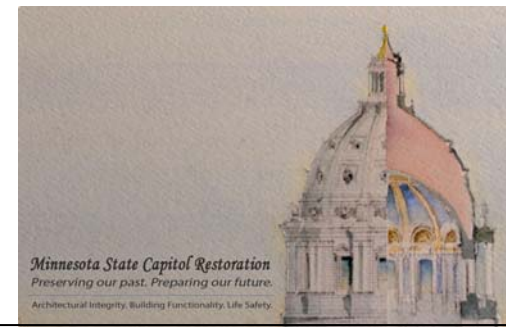
PRESENTATION HIGHLIGHTS



COLLABORATION – LEGACY BUILDING – OPEN/CONVENIENT/SECURE

DESIGN SCOPING WORKSHOP #4 SUMMARY

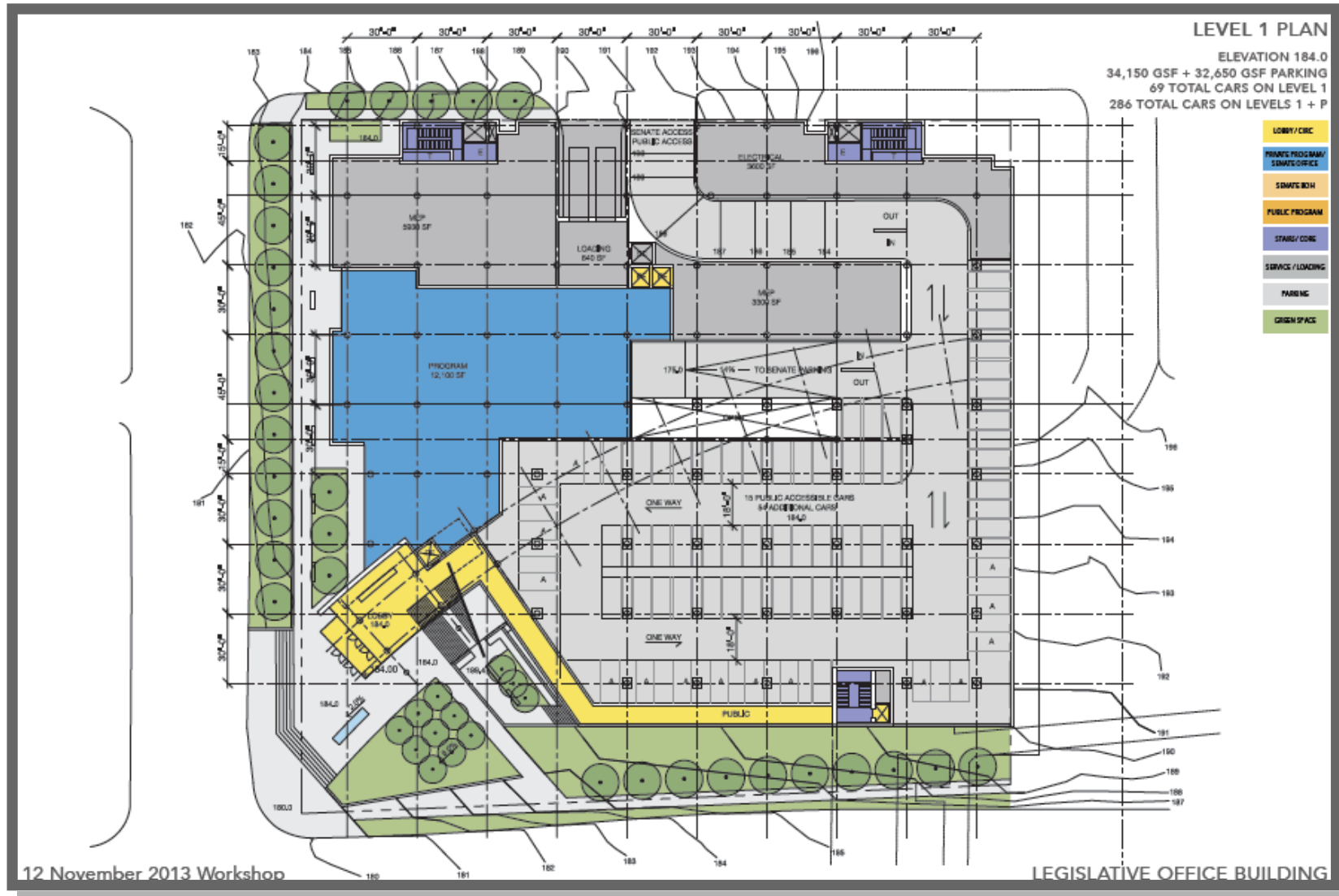
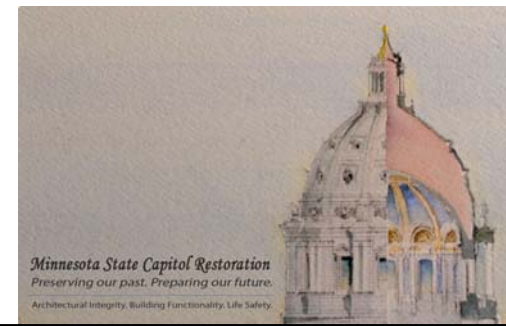
PRESENTATION HIGHLIGHTS



COLLABORATION - LEGACY BUILDING - OPEN/CONVENIENT/SECURE

DESIGN SCOPING WORKSHOP #4 SUMMARY

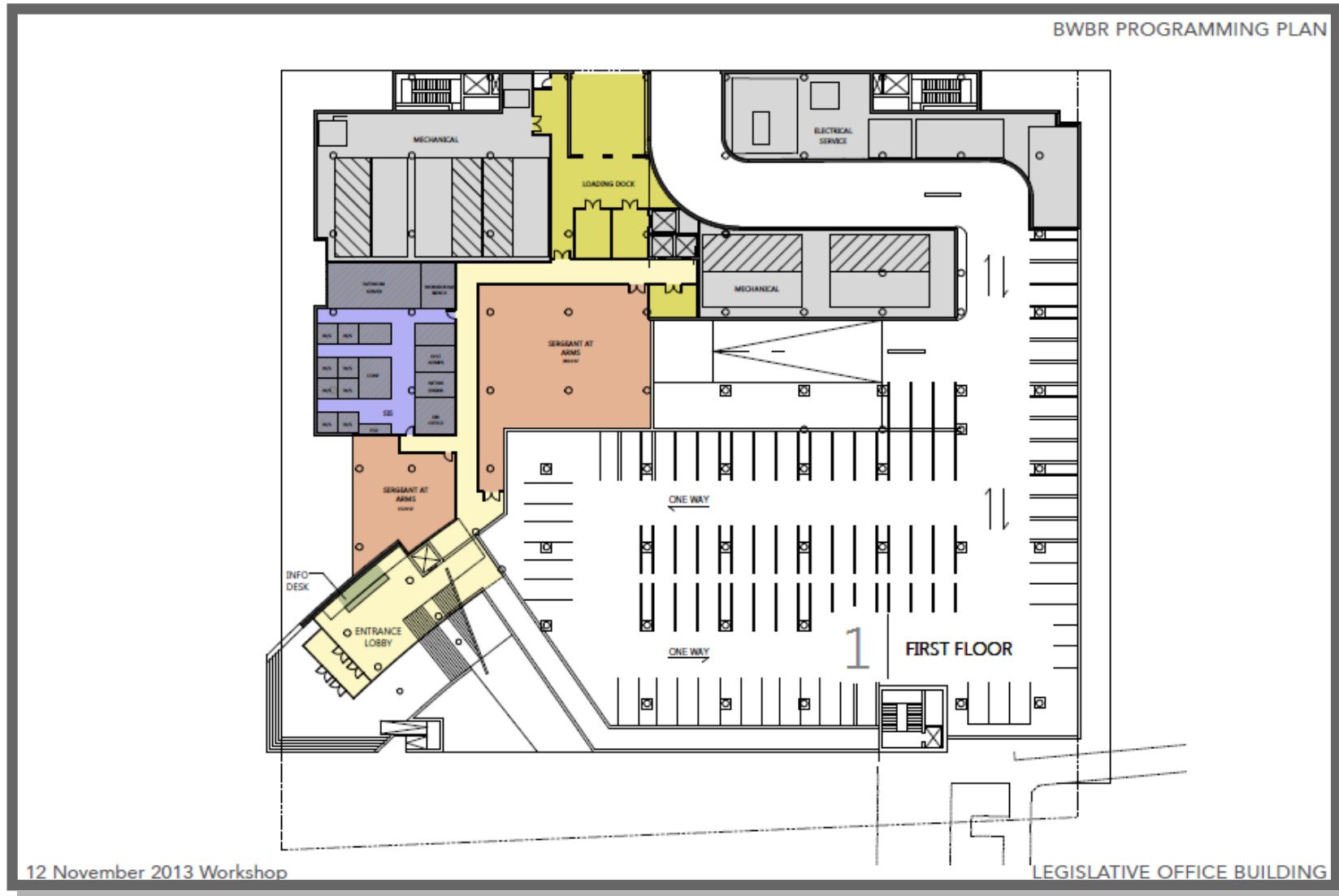
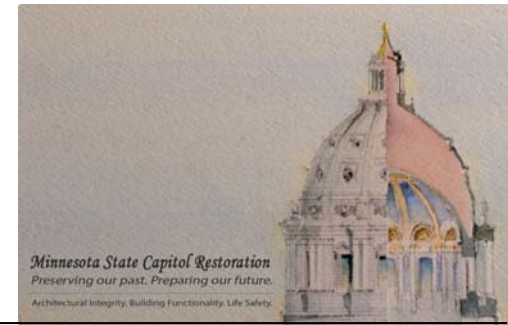
PRESENTATION HIGHLIGHTS



COLLABORATION - LEGACY BUILDING - OPEN/CONVENIENT/SECURE

DESIGN SCOPING WORKSHOP #4 SUMMARY

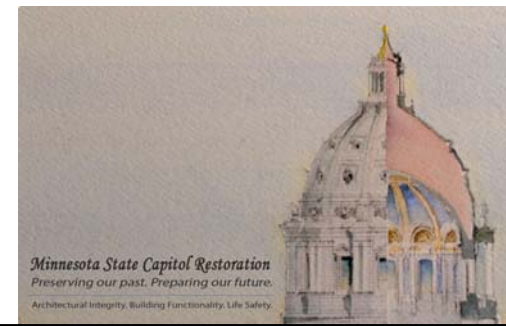
PRESENTATION HIGHLIGHTS



COLLABORATION - LEGACY BUILDING - OPEN/CONVENIENT/SECURE

DESIGN SCOPING WORKSHOP #4 SUMMARY

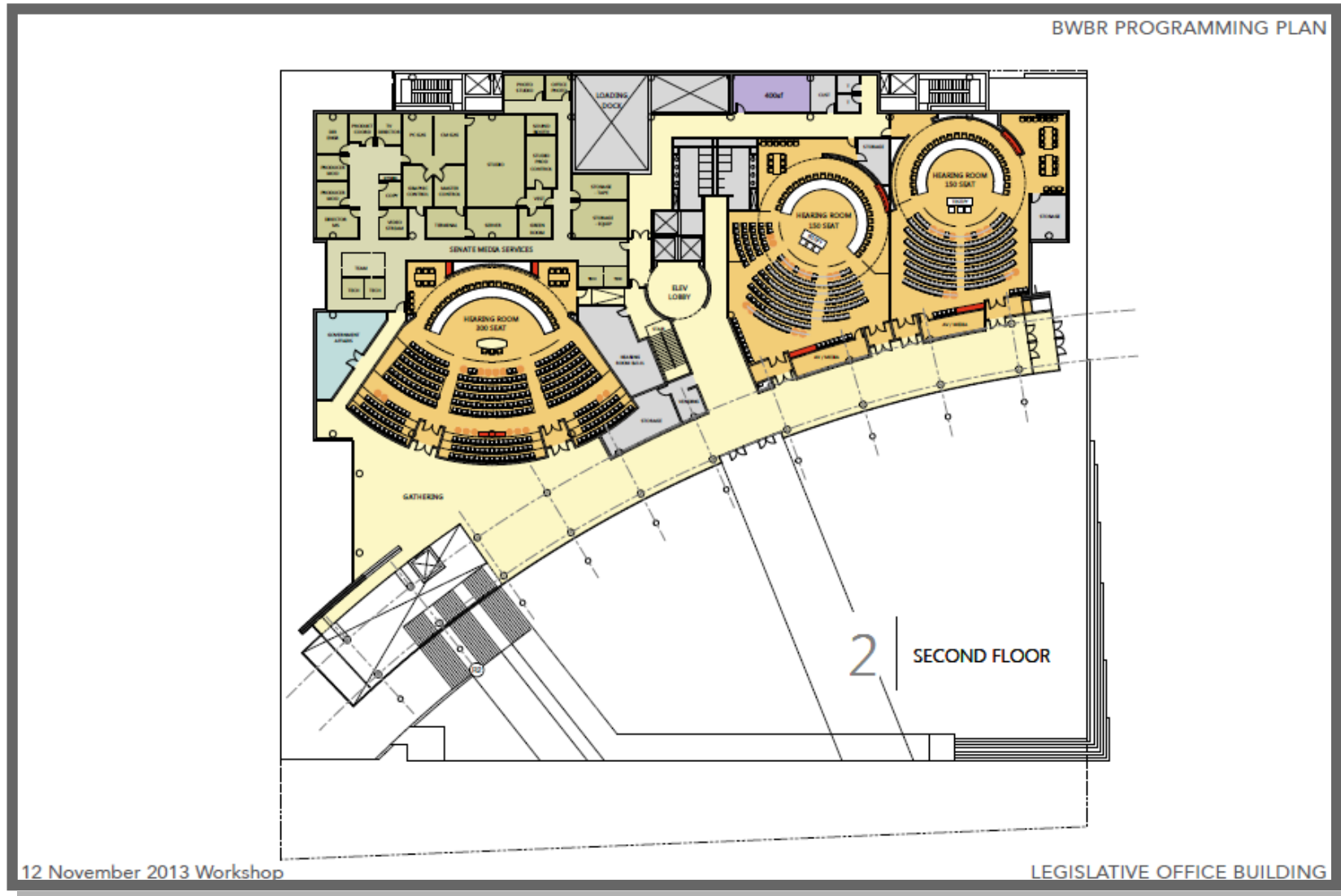
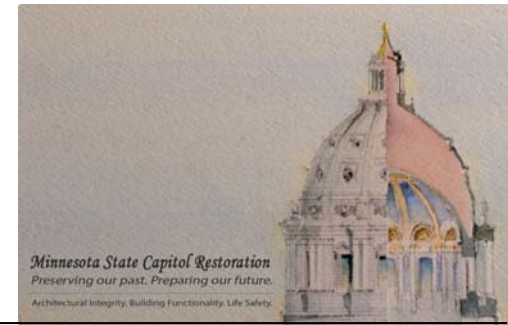
PRESENTATION HIGHLIGHTS



COLLABORATION - LEGACY BUILDING - OPEN/CONVENIENT/SECURE

DESIGN SCOPING WORKSHOP #4 SUMMARY

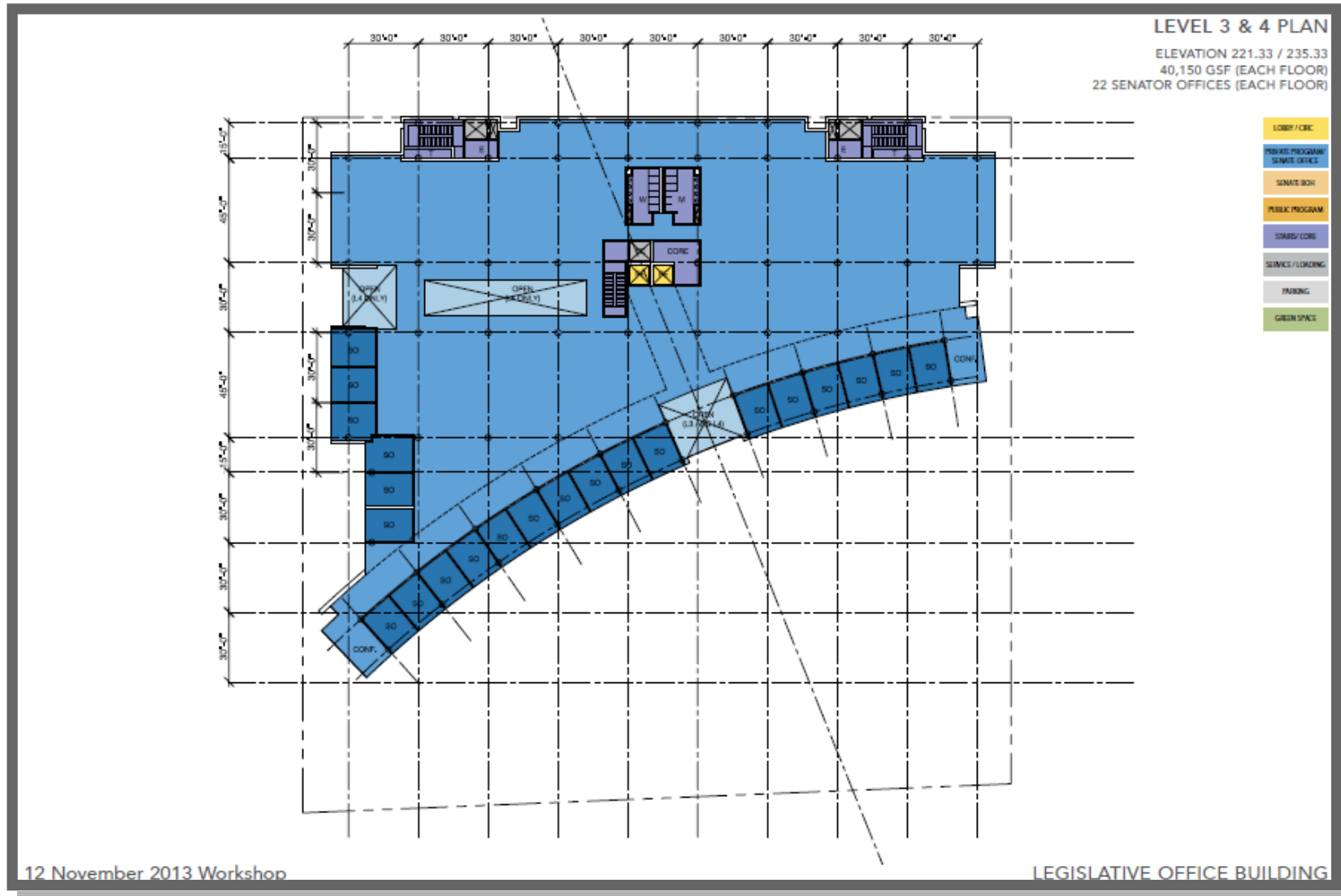
PRESENTATION HIGHLIGHTS



COLLABORATION - LEGACY BUILDING - OPEN/CONVENIENT/SECURE

DESIGN SCOPING WORKSHOP #4 SUMMARY

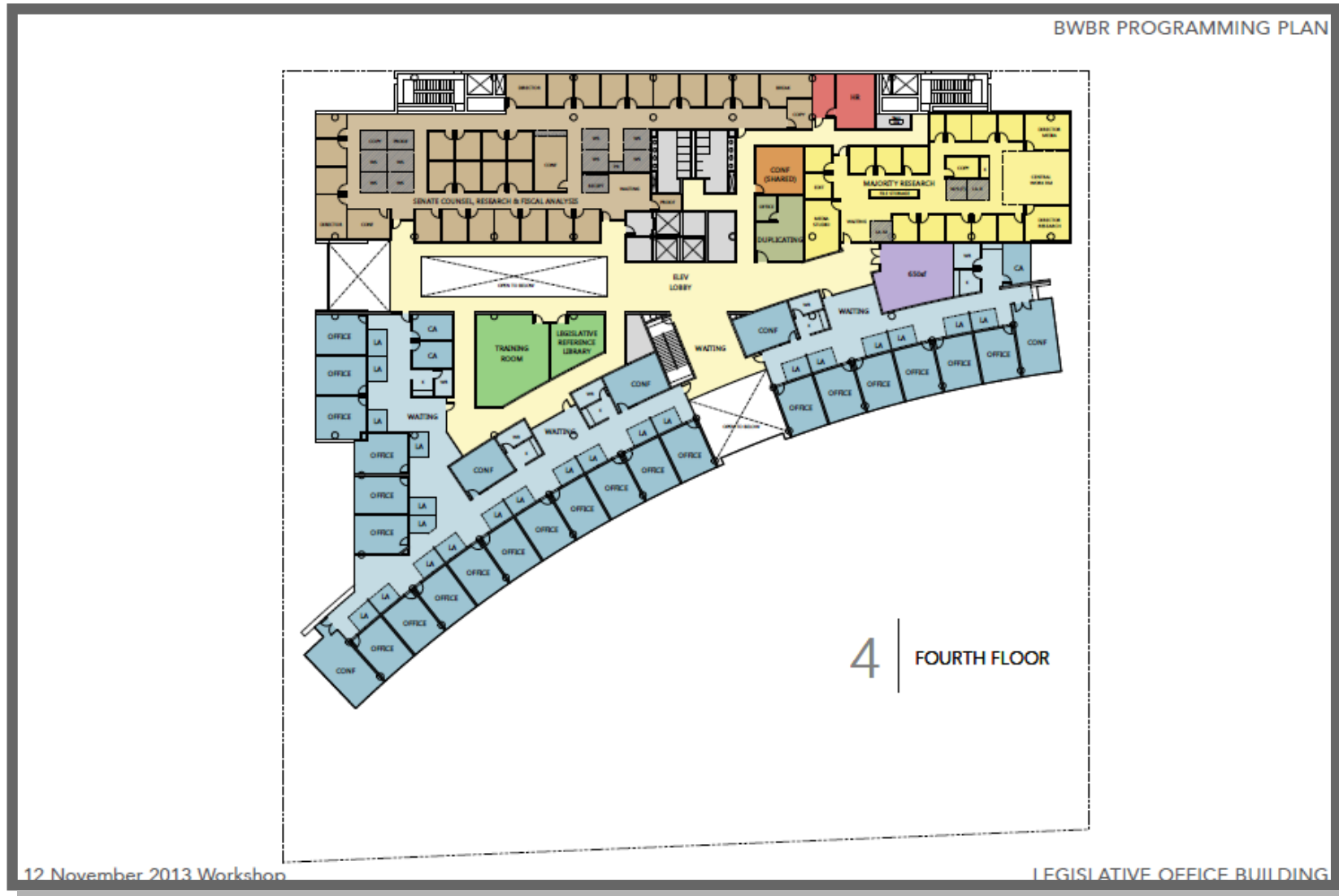
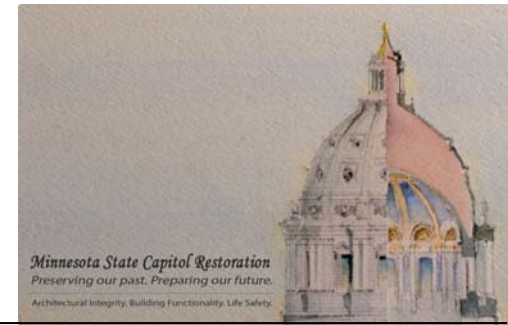
PRESENTATION HIGHLIGHTS



COLLABORATION - LEGACY BUILDING - OPEN/CONVENIENT/SECURE

DESIGN SCOPING WORKSHOP #4 SUMMARY

PRESENTATION HIGHLIGHTS



COLLABORATION - LEGACY BUILDING - OPEN/CONVENIENT/SECURE

DESIGN SCOPING WORKSHOP #4 SUMMARY

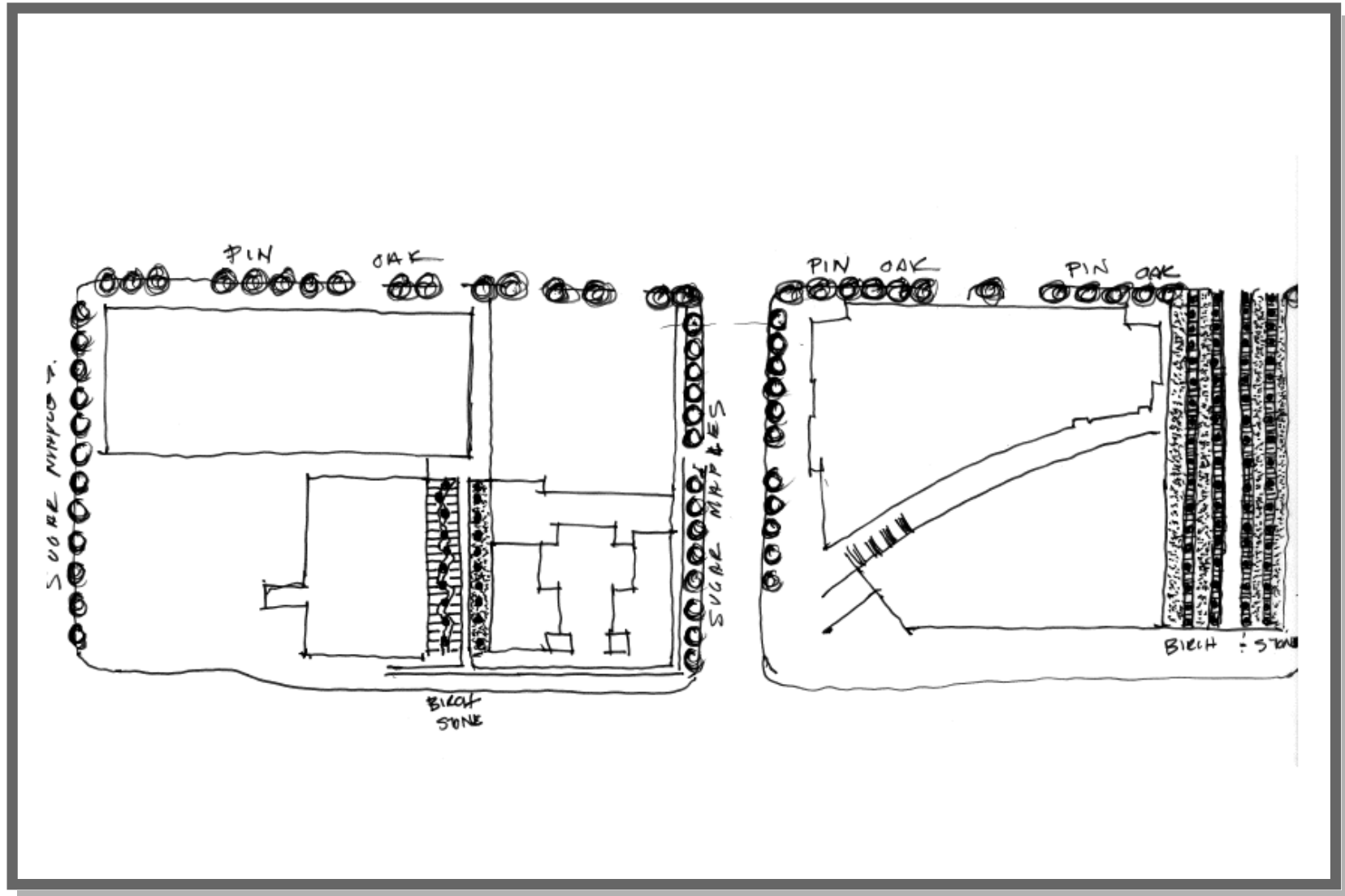
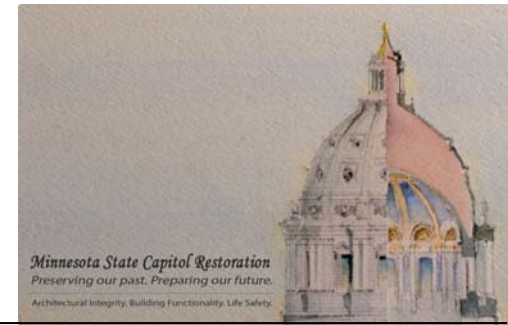
PRESENTATION HIGHLIGHTS



COLLABORATION - LEGACY BUILDING - OPEN/CONVENIENT/SECURE

DESIGN SCOPING WORKSHOP #4 SUMMARY

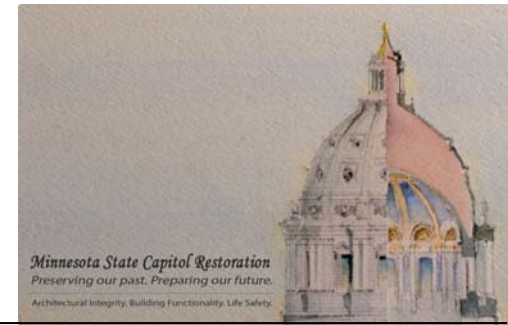
PRESENTATION HIGHLIGHTS



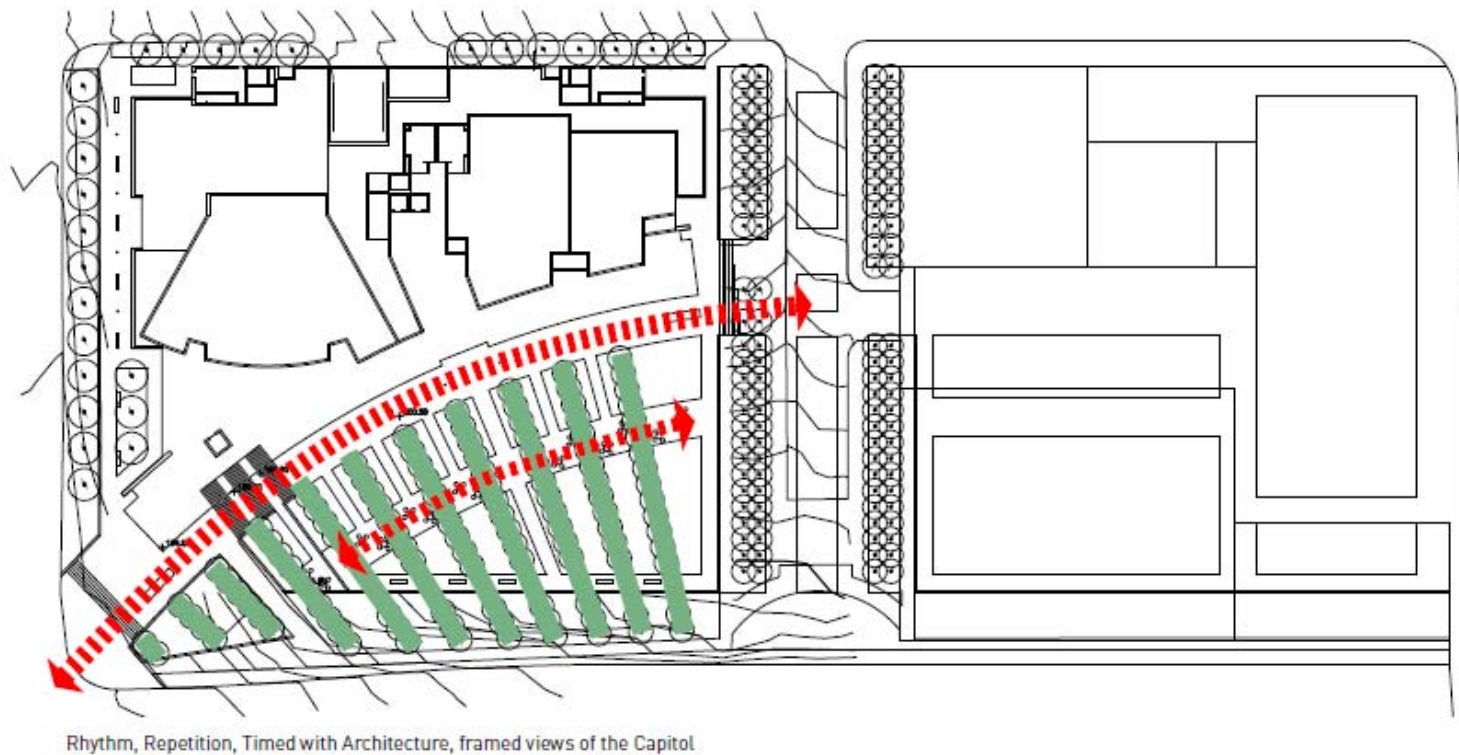
COLLABORATION - LEGACY BUILDING - OPEN/CONVENIENT/SECURE

DESIGN SCOPING WORKSHOP #4 SUMMARY

PRESENTATION HIGHLIGHTS



PLAN 1 CONCEPT DIAGRAM



Rhythm, Repetition, Timed with Architecture, framed views of the Capitol

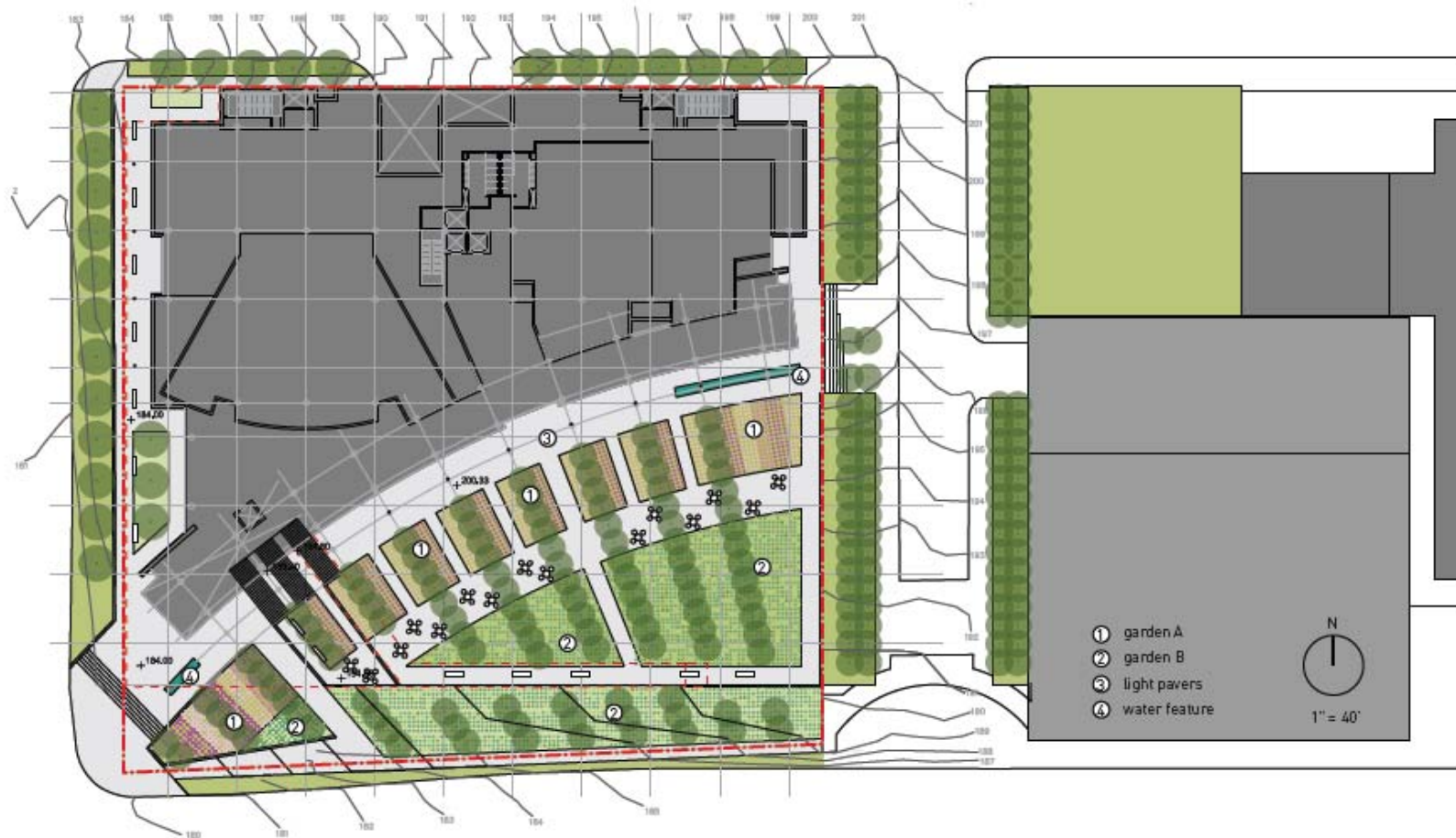
COLLABORATION - LEGACY BUILDING - OPEN/CONVENIENT/SECURE

DESIGN SCOPING WORKSHOP #4 SUMMARY

PRESENTATION HIGHLIGHTS



PLAN 1



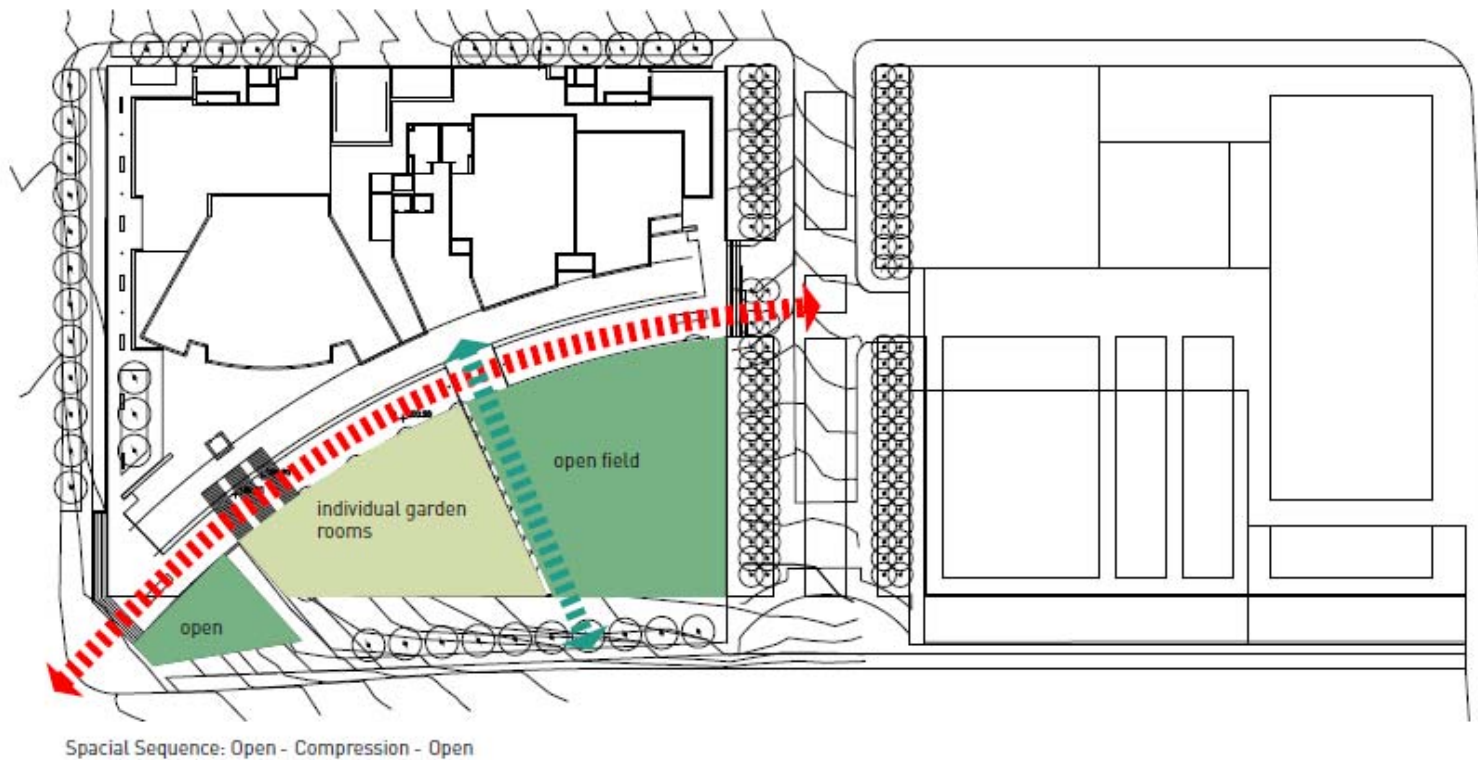
COLLABORATION - LEGACY BUILDING - OPEN/CONVENIENT/SECURE

DESIGN SCOPING WORKSHOP #4 SUMMARY

PRESENTATION HIGHLIGHTS



PLAN 2 CONCEPT DIAGRAM



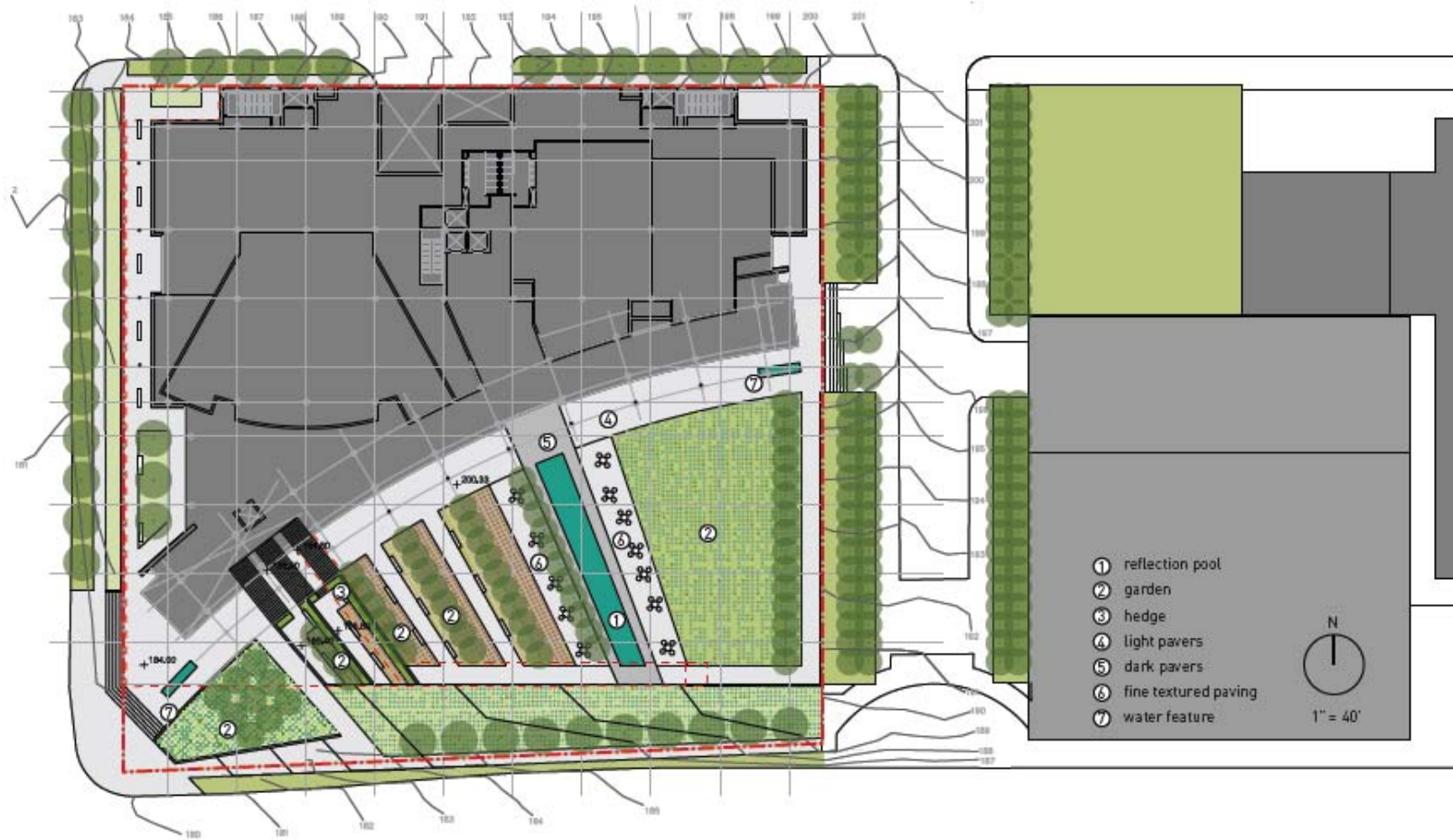
COLLABORATION - LEGACY BUILDING - OPEN/CONVENIENT/SECURE

DESIGN SCOPING WORKSHOP #4 SUMMARY

PRESENTATION HIGHLIGHTS



PLAN 2



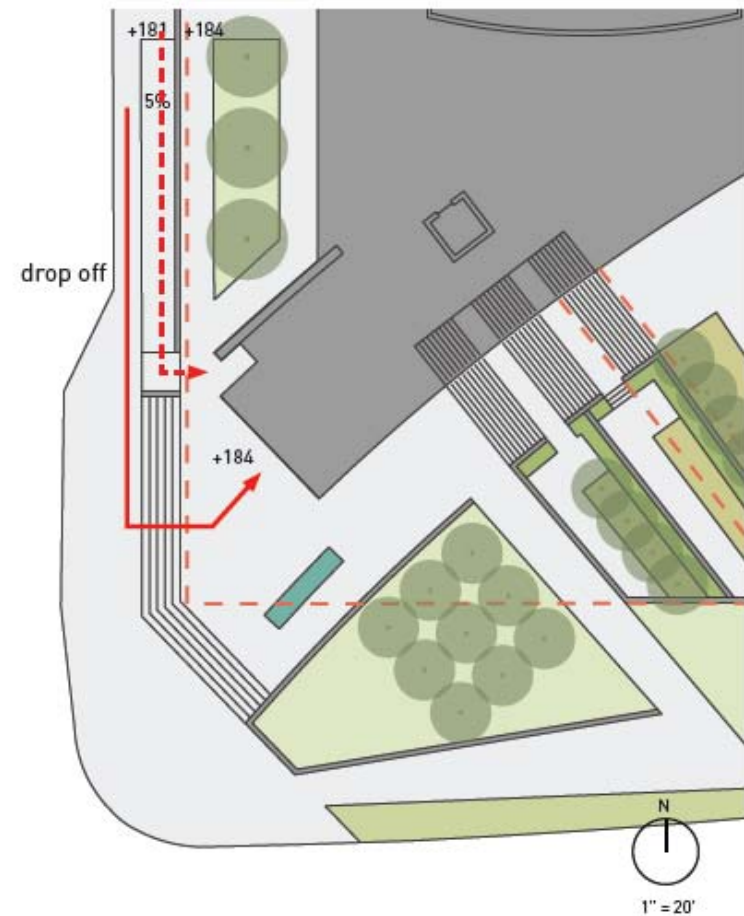
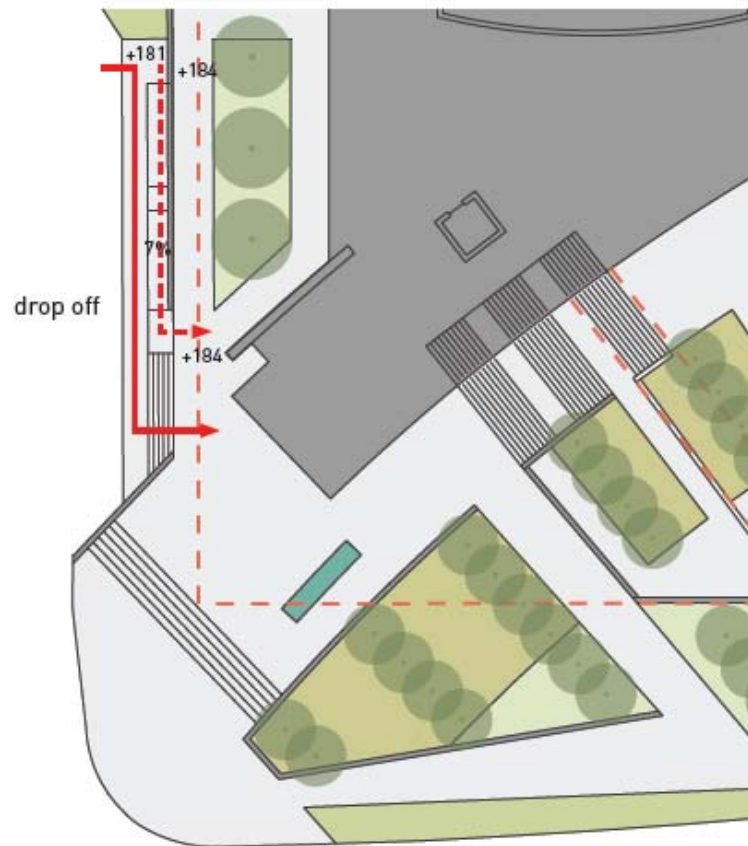
COLLABORATION - LEGACY BUILDING - OPEN/CONVENIENT/SECURE

DESIGN SCOPING WORKSHOP #4 SUMMARY

PRESENTATION HIGHLIGHTS



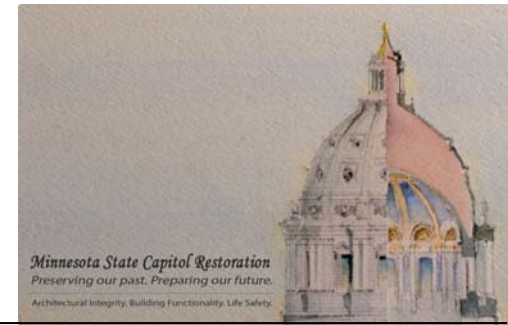
DROP OFF COMPARISON



COLLABORATION - LEGACY BUILDING - OPEN/CONVENIENT/SECURE

DESIGN SCOPING WORKSHOP #4 SUMMARY

PRESENTATION HIGHLIGHTS



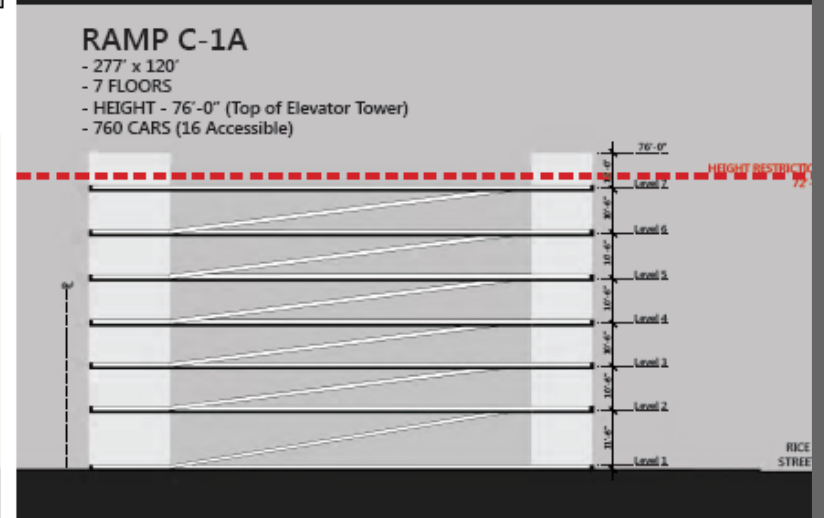
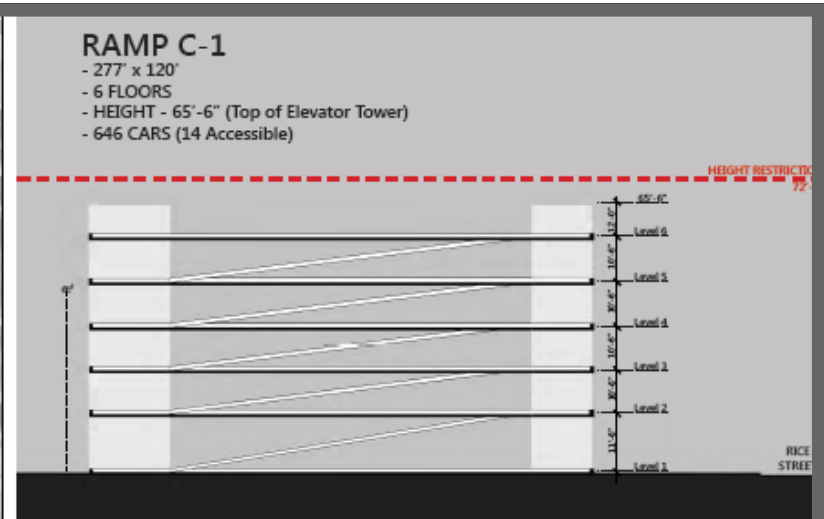
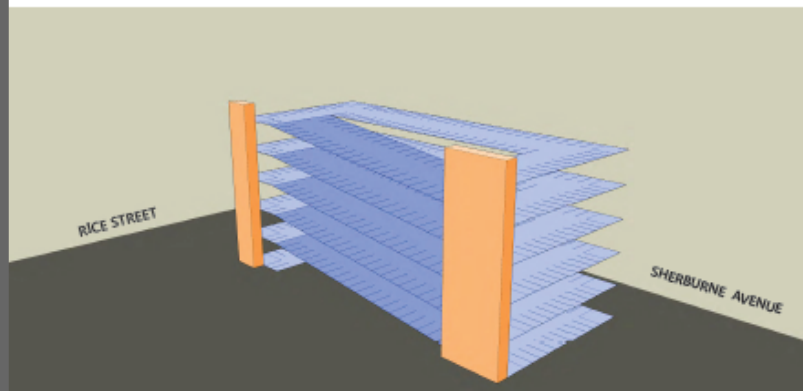
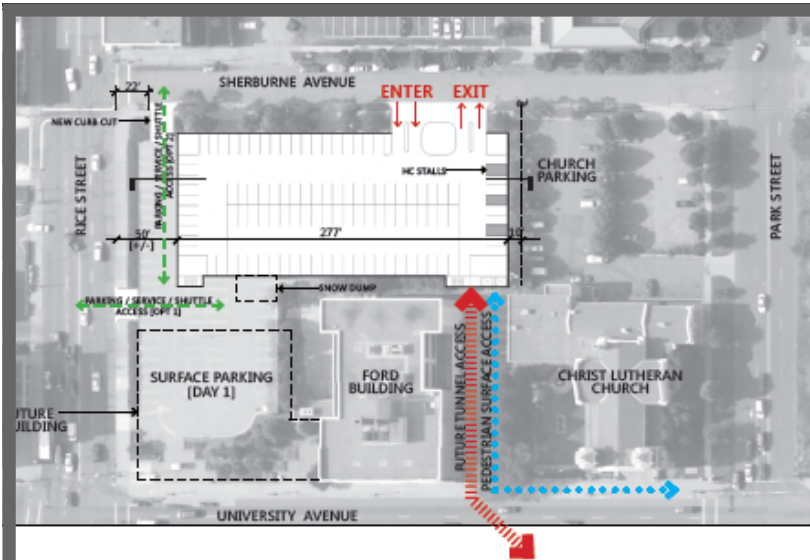
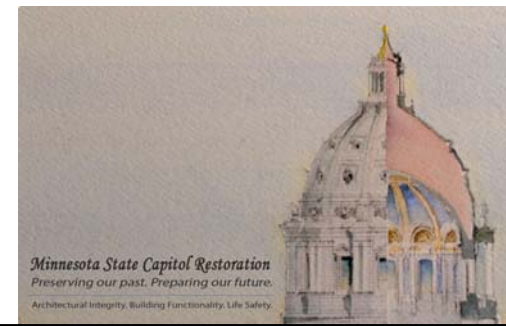
PLAN 2 WITH RAMP ENTRANCE ENLARGEMENT



COLLABORATION - LEGACY BUILDING - OPEN/CONVENIENT/SECURE

DESIGN SCOPING WORKSHOP #4 SUMMARY

PRESENTATION HIGHLIGHTS



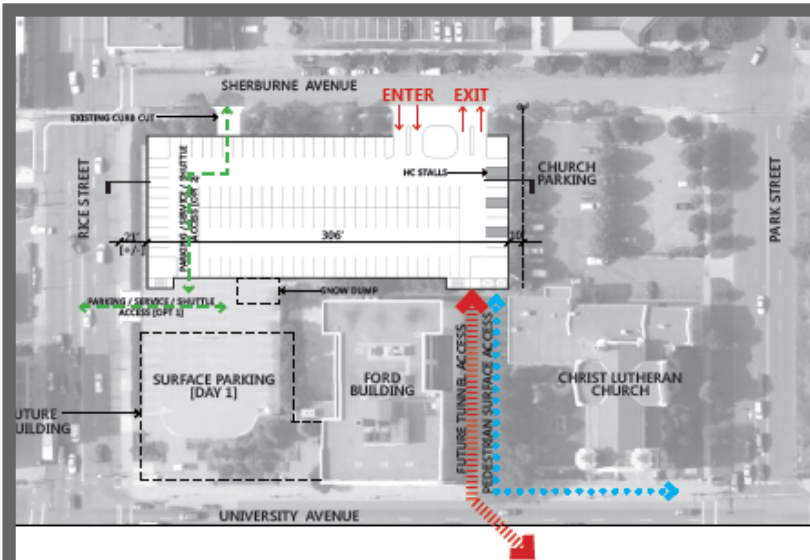
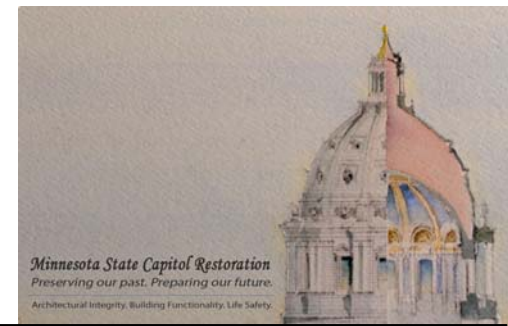
5 October 2012 Workshop

LEGISLATIVE OFFICE BUILDING

COLLABORATION - LEGACY BUILDING - OPEN/CONVENIENT/SECURE

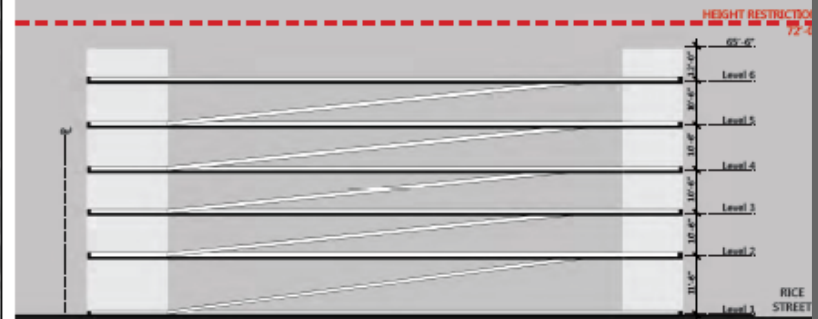
DESIGN SCOPING WORKSHOP #4 SUMMARY

PRESENTATION HIGHLIGHTS



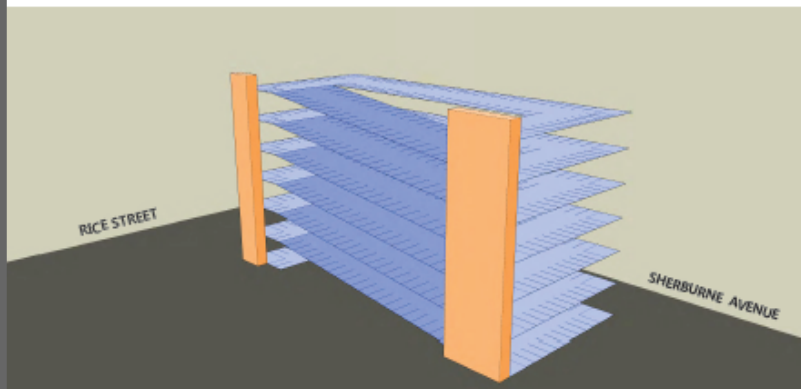
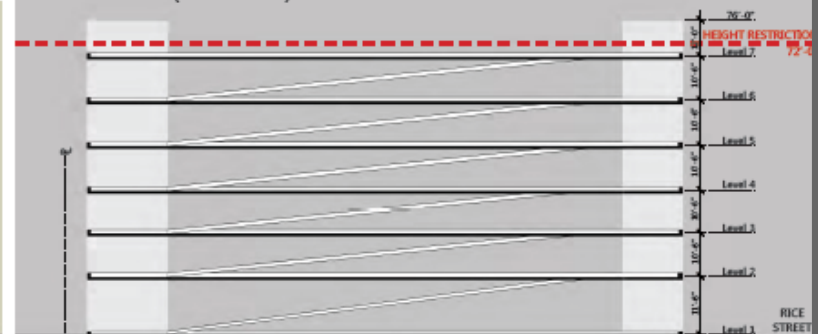
RAMP C-2

- 306' x 120'
- 6 FLOORS
- HEIGHT - 65'-6" (Top of Elevator Tower)
- 717 CARS (16 Accessible)



RAMP C-2A

- 306' x 120'
- 7 FLOORS
- HEIGHT - 76'-0" (Top of Elevator Tower)
- 843 CARS (18 Accessible)



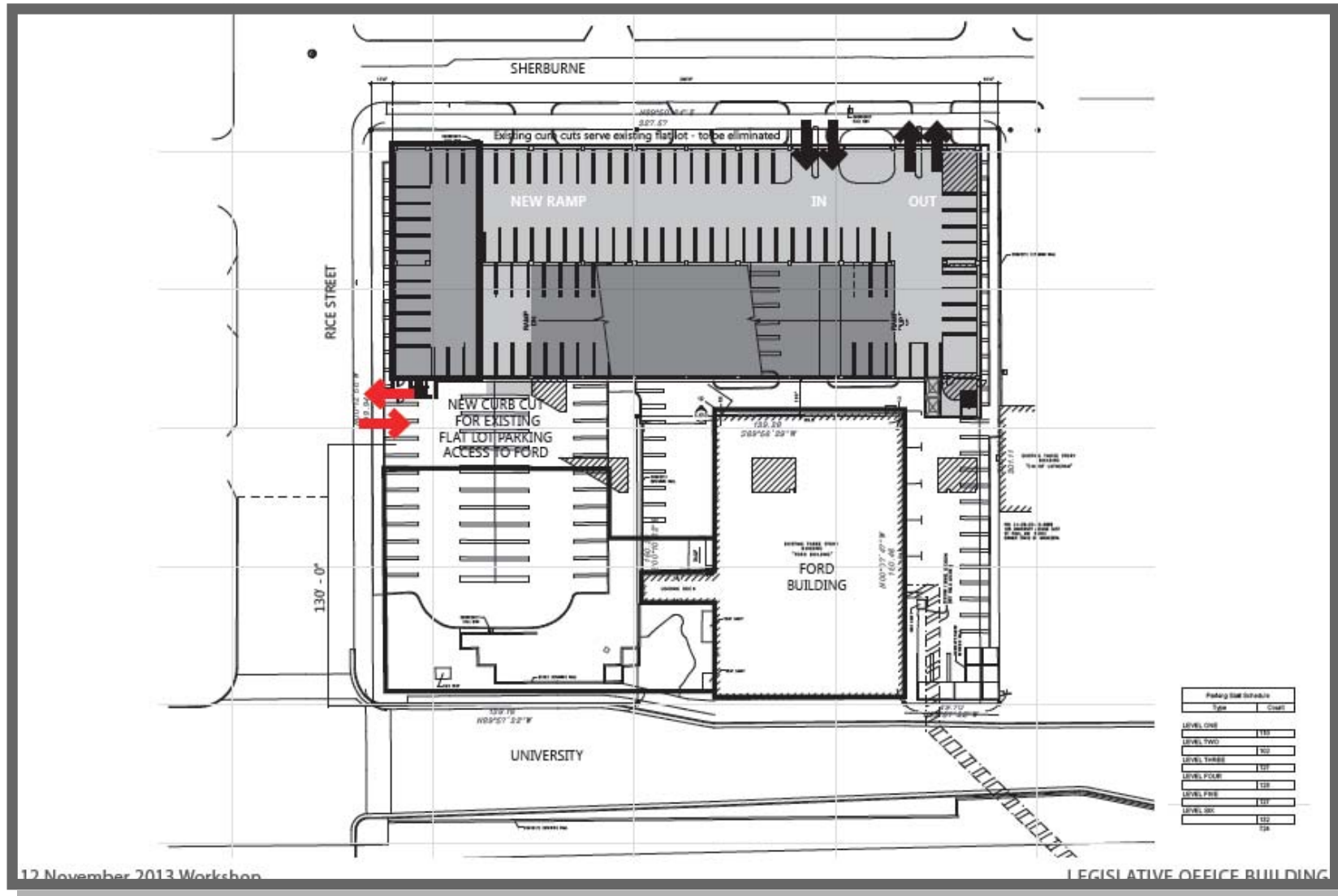
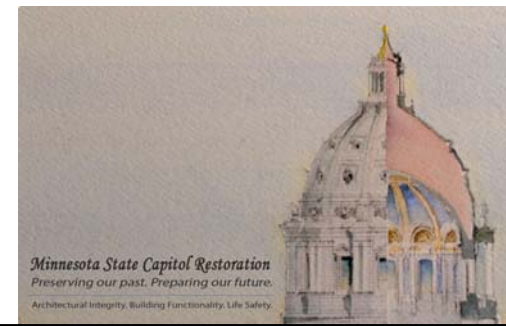
5 October 2012 Workshop

LEGISLATIVE OFFICE BUILDING

COLLABORATION - LEGACY BUILDING - OPEN/CONVENIENT/SECURE

DESIGN SCOPING WORKSHOP #4 SUMMARY

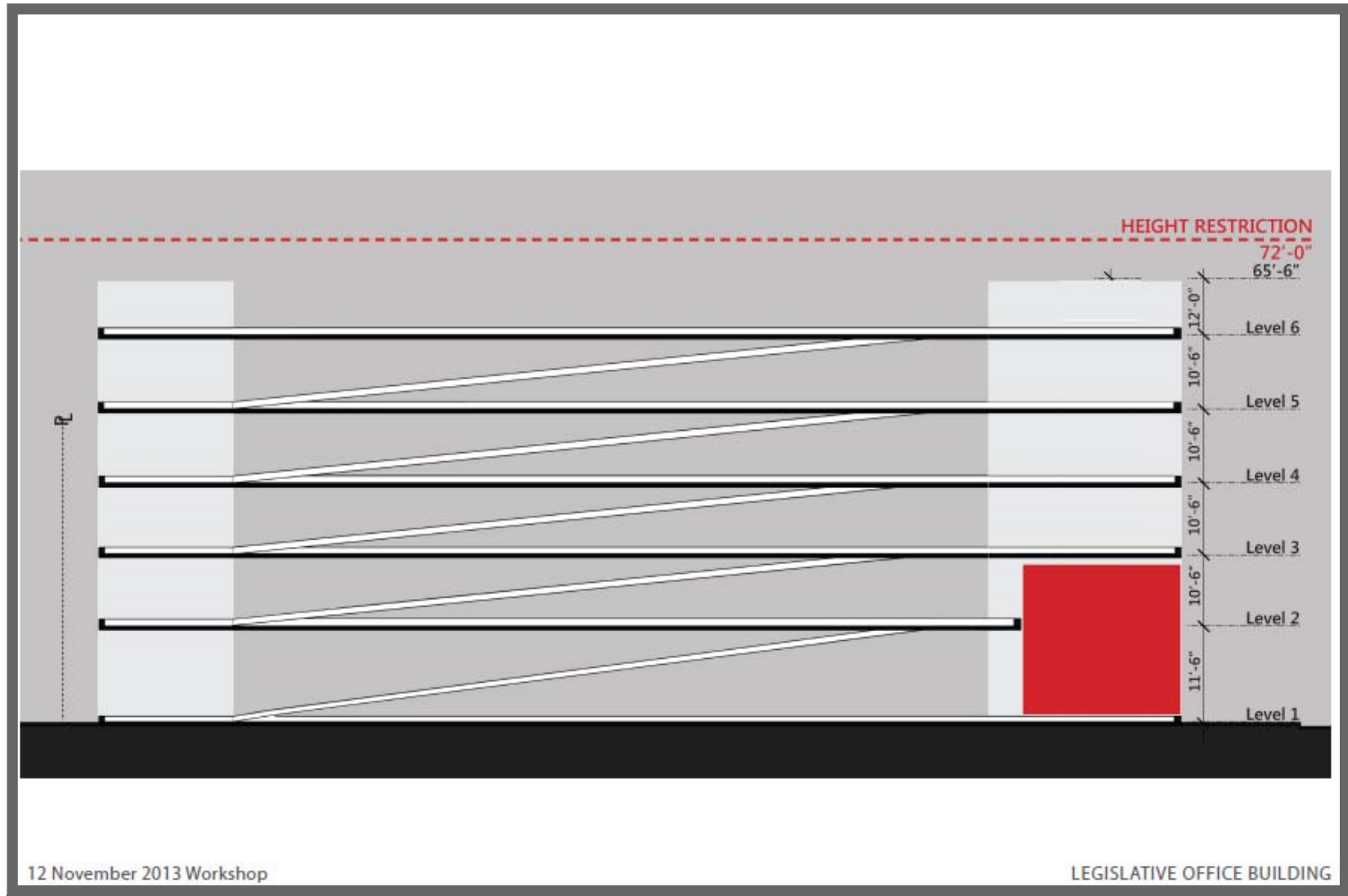
PRESENTATION HIGHLIGHTS



COLLABORATION - LEGACY BUILDING - OPEN/CONVENIENT/SECURE

DESIGN SCOPING WORKSHOP #4 SUMMARY

PRESENTATION HIGHLIGHTS



COLLABORATION - LEGACY BUILDING - OPEN/CONVENIENT/SECURE

DESIGN SCOPING WORKSHOP #4 SUMMARY

PRESENTATION HIGHLIGHTS



COLLABORATION - LEGACY BUILDING - OPEN/CONVENIENT/SECURE

DESIGN SCOPING WORKSHOP #4 SUMMARY

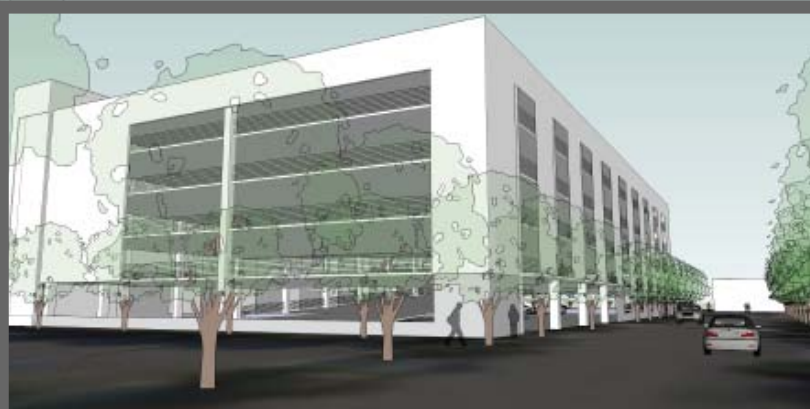
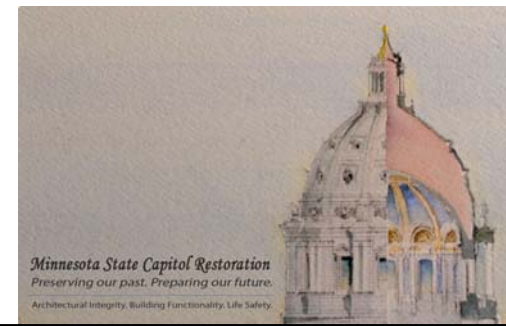
PRESENTATION HIGHLIGHTS



COLLABORATION - LEGACY BUILDING - OPEN/CONVENIENT/SECURE

DESIGN SCOPING WORKSHOP #4 SUMMARY

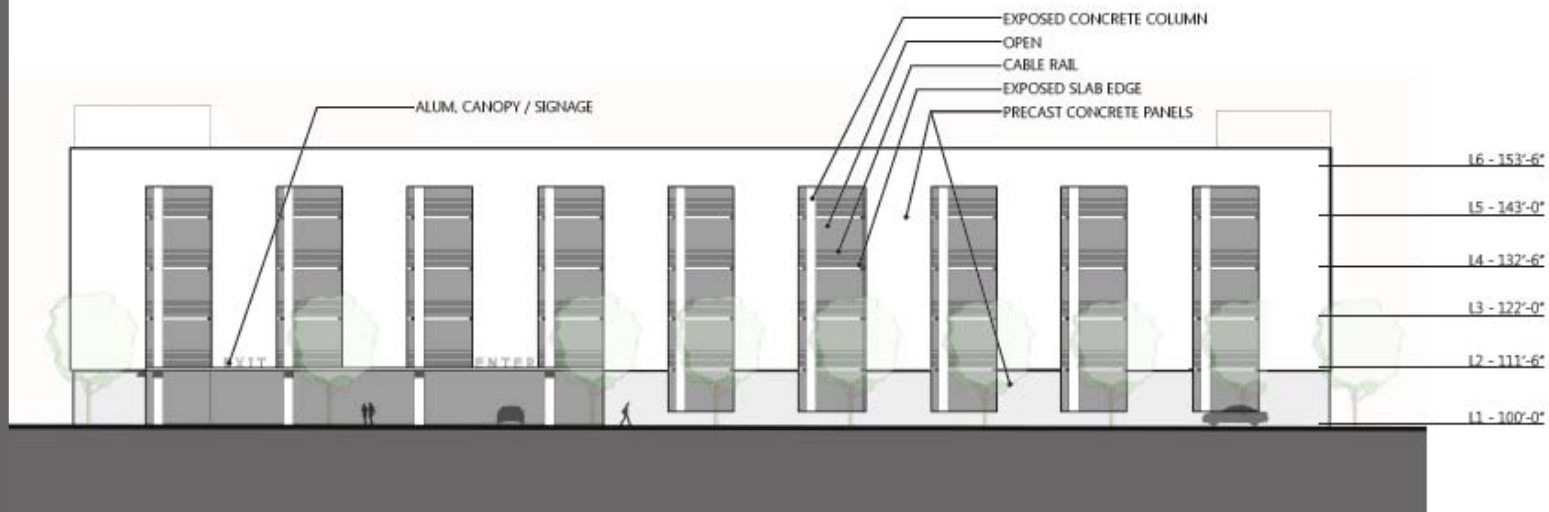
PRESENTATION HIGHLIGHTS



SHERBURNE LOOKING WEST



SHERBURNE LOOKING EAST



OPTION _ A

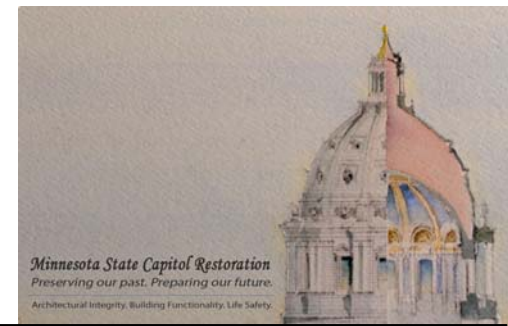
LEGISLATIVE OFFICE BUILDING

12 November 2013 Workshop

COLLABORATION - LEGACY BUILDING - OPEN/CONVENIENT/SECURE

DESIGN SCOPING WORKSHOP #4 SUMMARY

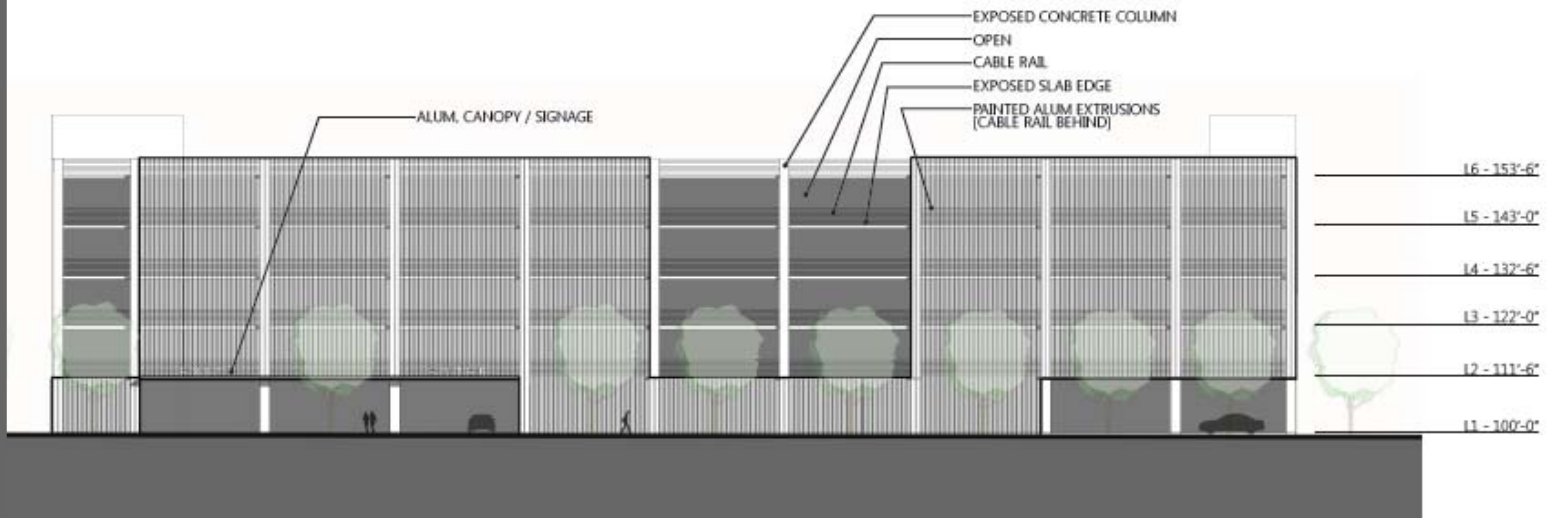
PRESENTATION HIGHLIGHTS



SHERBURNE LOOKING WEST



SHERBURNE LOOKING EAST



OPTION _ B

LEGISLATIVE OFFICE BUILDING

12 November 2013 Workshop

COLLABORATION - LEGACY BUILDING - OPEN/CONVENIENT/SECURE

DESIGN SCOPING WORKSHOP #4 SUMMARY

KEY POINTS FROM DAY ONE (NOVEMBER 12)



Day One, November 12, 2013

The morning session covered Schematic Building Design Development, and Landscaping.

The Afternoon session focused on Lot C, Mechanical and Electrical Issues

The group debated many issues and ultimately came to agreement that a curtain wall on the south side and a high percent of solid façade on the north side would be acceptable, noting that the roof should be viewed as the 5th façade and treated with care.

An element of Natural light to the interior of the building through the roof was discussed and the Mechanical Space was determined to be located on Level 1.

During the Exterior discussion, it was agreed that a glass enclosed walk along university was desired with an opportunity for surface access at Capitol Boulevard.

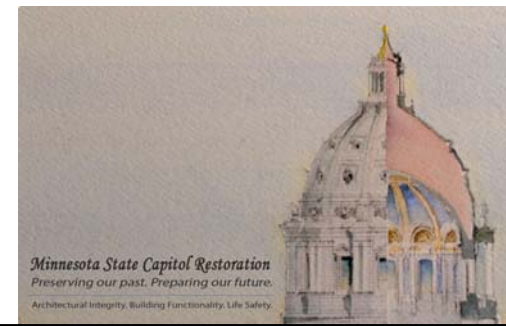
A shallow reflective pool at the plaza was also deemed appropriate by the group.



COLLABORATION – LEGACY BUILDING – OPEN/CONVENIENT/SECURE

DESIGN SCOPING WORKSHOP #4 SUMMARY

DAY ONE FLIP CHART NOTES



BUILDING FORM & EXTERIOR

- South curtain wall
- North - solid high percent / lower percent glass
- Natural light
 - Light columns & solar protection
civic statement
 - Aspen & Birch maintenance
- Roof 5th facade - Elevator access to roof garden
- Mech. on Level 2
 - Operable windows?

Landscape & Plaza

- Enclosed "glass walk" to building from tunnel
- Surface access from Capitol Blvd to tunnel
- Thin film water feature
- Programmed use of plaza?
 - equinox event
 - event power
- Species & sex of trees

COLLABORATION - LEGACY BUILDING - OPEN/CONVENIENT/SECURE

DESIGN SCOPING WORKSHOP #4 SUMMARY

KEY POINTS FROM DAY TWO (NOVEMBER 13)



Day Two, November 13, 2013

The morning session covered Hearing Rooms, offices, and support spaces.

The Afternoon session focused on Furnishing, Fixtures, & Equipment (FF&E) as well as furniture and finishes.

First Floor spaces were reviewed and recognized as appropriate for this floor. Telecom was not shown on plans but verbally confirmed to be housed within the northeast Electrical area.

The hearing rooms proved to be sized appropriately for temporary session rooms for both House and Senate. There was consensus on the location of Senate Media Services on Second floor behind Hearing Rooms.

On the third floor, it was suggested to locate more Senator offices with Capitol views, perhaps by re-designating conference rooms on each end of the south curve.

A permanent caucus room for the Minority party was requested and semi-private restrooms were requested within the Senator office suites.



COLLABORATION – LEGACY BUILDING – OPEN/CONVENIENT/SECURE

DESIGN SCOPING WORKSHOP #4 SUMMARY

KEY POINTS FROM DAY TWO (NOVEMBER 13)



Day Two, November 13, 2013 (Continued)

The fitness room was requested to relocate near the service elevator for increased privacy.

House Majority Leader Erin Murphy strongly encouraged the group to address the need to house all 67 senators and acknowledged that the conversation may need to be brought to leadership.

Spaces were to be categorized in “Levels” or “Zones” to identify furniture and finishes.

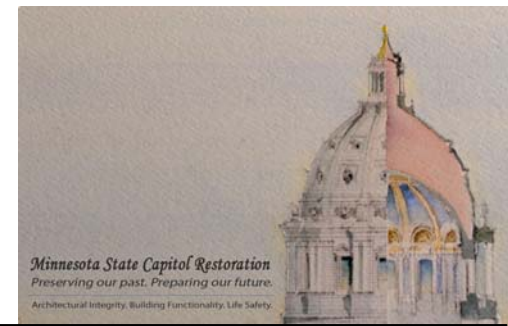
Finishes should include native woods and details should be allowed to be contemporary in nature, keeping in mind that this building would be subservient to the Capitol Building.



COLLABORATION – LEGACY BUILDING – OPEN/CONVENIENT/SECURE

DESIGN SCOPING WORKSHOP #4 SUMMARY

DAY TWO FLIP CHART NOTES



SPACE BLOCKING DIAGRAM

- Locker Room (move to a lower level) closer to elevator
- Elevator - location & capacity for Public Space
- Telecom Room - Elec. Room (from tunnel & south)
- Vestibule at center/plaza entry
- Hearing Rooms 300, 150, 150 (swing chambers)
- Duplicating - satellite location (permanent)

- Change Conf Rooms to be Senate Offices
- West Offices enhanced
- CA Locations spread
- After Swing Min. Caucus Room (30 people)
- Min/Maj. Research parity
- Private Toilet Rooms for Members and Staff
- Plan for 67 in future
- Intern Station
- Storage

COLLABORATION - LEGACY BUILDING - OPEN/CONVENIENT/SECURE

DESIGN SCOPING WORKSHOP #4 SUMMARY

DAY TWO FLIP CHART NOTES



FURNITURE

- GILBERT FURNITURE MOVES

COUCHES & CHAIRS

• Relationship is Integrated

- SOB & CAPITOL

Interior Finishes

• Treatment Zones 1-4, 5

1. Public Areas

2. Hearing Rooms

3. Senate Offices etc.

4. Other Offices/2 use areas

5 MEP Back of House
Durable

COLLABORATION - LEGACY BUILDING - OPEN/CONVENIENT/SECURE