

13 - 0406



# Organizational Profile

## October 2002

# Organizational Profile

October 2002

Minnesota Department of Corrections  
1450 Energy Park Drive, Suite 200  
St. Paul, Minnesota 55108-5219

Phone 651/642-0200

Fax 651/642-0223

TTY 651/643-3589

Website [www.doc.state.mn.us](http://www.doc.state.mn.us)

---

## Contents

Introduction	1	Management Services Division	11
Organization Chart	2	Deputy Commissioner —	
Commissioner's Office	3	Community & Juvenile Services	13
Deputy Commissioner's Office —		Budget	19
Adult Facility Services	5	Adult Inmate Profile	21
Adult Facilities Division	7	Juvenile Profile	23

---

## □ Scope

The Minnesota Department of Corrections was created in 1959 to consolidate state correctional functions under one agency. A service and regulatory agency, the department has a broad scope of activities and responsibilities.

The department currently operates ten correctional facilities including eight for adults and two for juveniles.

Adult prison populations total more than 6,800 inmates; juvenile residents number around 230. About 20,000 adult and juvenile offenders on probation, supervised release, and parole are supervised by department agents. Through the state Community Corrections Act, the department also administers subsidy funds to units of local government for corrections programs.

There are three divisions in the department: adult facilities, community and juvenile services, and management services. Additionally, units exist in the areas of investigations, correctional industries, and medical services. The commissioner's office has direct access to advisory representatives from the state's Attorney General's Office and Department of Finance. Volunteer citizen advisory groups play key roles in the department in areas such as community corrections, woman offender issues, and correctional industries. The department has over 3,700 employees.

## □ Background

Minnesota has a national reputation for operating secure, humane correctional institutions that have low levels of violence and are safe for inmates and staff. Although the adult inmate population in Minnesota has been increasing substantially during the last decade, state correctional institutions are not confronted with the magnitude of prison crowding that is plaguing most states.

Minnesota has had relatively low levels of violent crime for many years. Minnesota's low rate of incarceration is reflected in the correctional system's heavy reliance on local alternatives to prison for less serious offenders. The system is designed to reserve expensive prison space for only those criminals who are dangerous and need to be incarcerated.

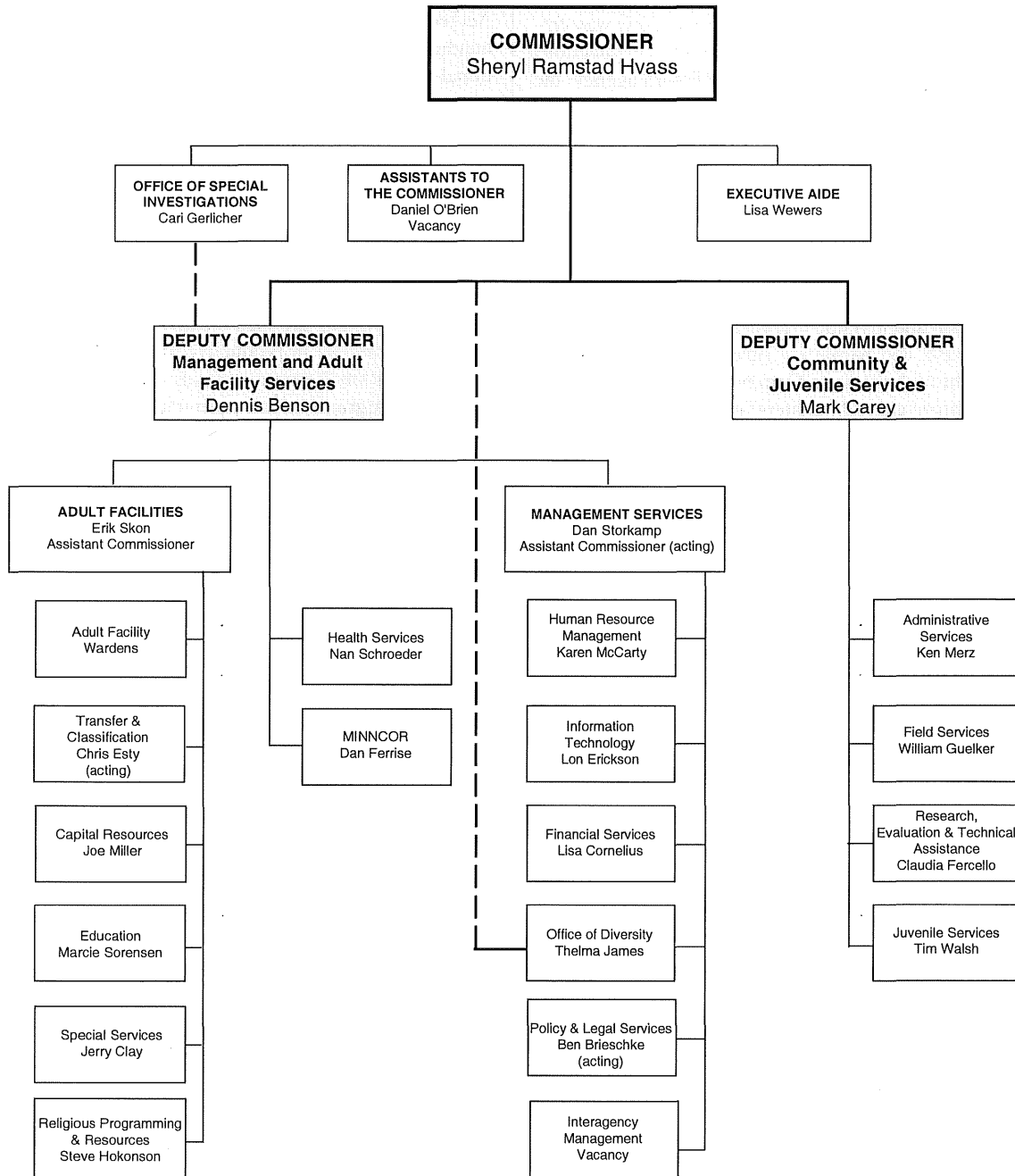
All of the department's correctional institutions are accredited by the American Correctional Association. Accreditation means the facilities are in compliance with hundreds of standards relating to all aspects of institutional operation.

The department's central office, adult and juvenile release functions, and adult and juvenile field services are also accredited.

Inmates in state facilities have access to a variety of work, education, and other program activities. MINNCOR Industries provides positive activities for inmates while they are incarcerated and develops work skills they can use in productive employment after release. Educational programs focus on basic literacy instruction. Programs are also provided for sex offenders and chemically-dependent inmates.

This *Organizational Profile* describes the structure of the department and summarizes the activities of each operational unit.

# Organization Chart



October 2002

**Sheryl Ramstad Hvass, Commissioner**  
phone 651/642-0282, fax 651/642-0414  
sramstadvhass@co.doc.state.mn.us

The commissioner of corrections, as the chief administrative officer of the department, is responsible for operation of adult and juvenile state correctional facilities; provision of probation, supervised release and parole services; administration of the state Community Corrections Act; and provision of assistance and guidance on a statewide basis in the management of criminal justice programs and facilities.

Responsibilities of the commissioner of corrections in Minnesota are much broader than is typical of most other states. For example, Minnesota is one of fewer than a dozen states where the commissioner is responsible for both adult and juvenile facilities. The commissioner is responsible for determinations regarding the parole of first-degree murderers; in most states, this function is the responsibility of a separate parole board. The provision of probation and parole services is also a function of a separate agency in many states.

☐ **Daniel O'Brien, Assistant to the Commissioner**  
phone 651/642-0280, fax 651/642-0414  
dobrien@co.doc.state.mn.us

This office is responsible for administrative duties assigned by the commissioner and deputy commissioners including research of issues, review of all official department documents and reports, and special projects. This office informs the general public, department staff, and criminal justice agencies of the department's activities. The office publishes newsletters, brochures, a biennial report, and a series of backgrounders and issue briefings on a variety of topics. The department's website is the responsibility of this office. This office also coordinates survey and media responses.

☐ **Vacancy, Assistant to the Commissioner**  
phone 651/523-7122, fax 651/643-2575

This office serves as a liaison with members of the legislature and their staff. Responsibilities include monitoring legislative hearings, responding to inquiries on how proposed legislation would affect the agency, and participating in preparation of the biennial and capital budget documents. This office also performs administrative duties assigned by the commissioner and deputy commissioners.

☐ **Office of Special Investigations (OSI)**  
**Cari Gerlicher, Director**  
phone 651/642-0419, fax 651/642-0403  
cgerlicher@co.doc.state.mn.us

The OSI provides the department with a variety of coordinated investigative services.

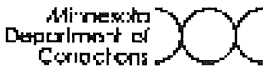
Criminal activity and misconduct by institution visitors or inmates are vigorously investigated. The OSI coordinates such cases to ensure that department resources are used efficiently and productively. In all criminal matters, the OSI works cooperatively with appropriate criminal justice agencies.

The second branch of the OSI is responsible for intelligence gathering within state correctional facilities including information on security threat group activity, escape-risk offenders, and others who threaten facility security.

A third branch coordinates fugitive apprehension efforts. [The fugitive unit has been designated by statute as a law enforcement agency, and staff are licensed peace officers with full authority to arrest department fugitives.]

The OSI is designated as the official liaison with local, state, and federal enforcement entities in investigative and apprehension matters.





# Deputy Commissioner — Management and Adult Facility Services

**Dennis L. Benson, Deputy Commissioner**  
phone 651/642-0290, fax 651/632-5066  
dbenson@co.doc.state.mn.us

This office oversees the day-to-day administration of the management and adult facilities divisions as well as units in the areas of investigations, MINNCOR Industries, and health services.

## Health Services Unit

**Nanette Schroeder, Director**  
phone 651/603-0165, fax 651/523-7139  
nshroeder@co.doc.state.mn.us

This position is responsible for management of inmate health care delivery systems and administration, as well as providing leadership as the department begins more intensive health care planning and cost-containment efforts. It oversees clinical supervision for medical, dental, and mental health services, and supervises the directors of nursing, mental health services, dental, and medical, as well as administrative and contract managers. The director advises the commissioner, deputy commissioners, and institution heads on policy matters related to the delivery of health care to the inmate population.

## MINNCOR Industries

**Dan Ferrise, Chief Executive Officer**  
phone 651/603-0118, fax 651/603-0119  
dferrise@co.doc.state.mn.us

MINNCOR Industries was created in 1994 in order to provide a centralized organizational structure for the correctional industry program, which now operates in eight institutions. While MINNCOR works toward financial self-sufficiency, it continues to balance that objective with maximizing the number of inmates employed, teaching them valuable job skills and work habits.



MINNCOR Industries operates under the following principles as stated in its mission statement. MINNCOR is a customer-driven business contributing to a safer Minnesota by providing:

- Sound management that ensures financial sufficiency
- Quality products on time to build a loyal customer base
- Efficient reduction of inmate idleness that contributes to a secure prison environment
- Work skills training that prepares the offender for release

The MINNCOR administrative office is located at 1450 Energy Park Drive, Suite 110, St. Paul, Minnesota 55108-5219.





**Erik Skon, Assistant Commissioner**  
phone 651/642-0257, fax 651/632-5066  
eskon@co.doc.state.mn.us

This division includes the department's adult correctional facilities and support services such as education, transfer/classification, capital resources, religious programming/resources, and special services. The division operates eight facilities for adult offenders, including seven for males and one female facility. Questions concerning operation of adult institutions should be directed to this division.

☐ **Minnesota Correctional Facility-Stillwater**  
**David Crist, Warden**  
phone 651/779-2700, fax 651/351-3600  
dcrist@stw.doc.state.mn.us

The Minnesota Correctional Facility-Stillwater, 970 Pickett Street North, Bayport, Minnesota 55003-1490, built in 1914 as an industrial prison, is the state's largest close-security, level five institution for adult male felons. Population (8/02) is 1,287.

MINNCOR Industries include metal products, wood products, furniture construction, upholstery/reupholstery, and contract services.

A wide variety of vocational and academic educational programs, a chemical dependency program, and a level one minimum-security unit for selected offenders nearing release are available.

☐ **Minnesota Correctional Facility-St. Cloud**  
**Patt Adair, Warden**  
phone 320/240-3000, fax 320/240-3054  
padair@scl.doc.state.mn.us

The Minnesota Correctional Facility-St. Cloud, 2305 Minnesota Boulevard, St. Cloud, Minnesota 56304, is a level five, close-security institution built in 1889, remodeled and modernized. Population is 832 (8/02). A variety of programs is offered such as individual and group counseling and chemical dependency. The facility serves as the department's intake center for adult males.

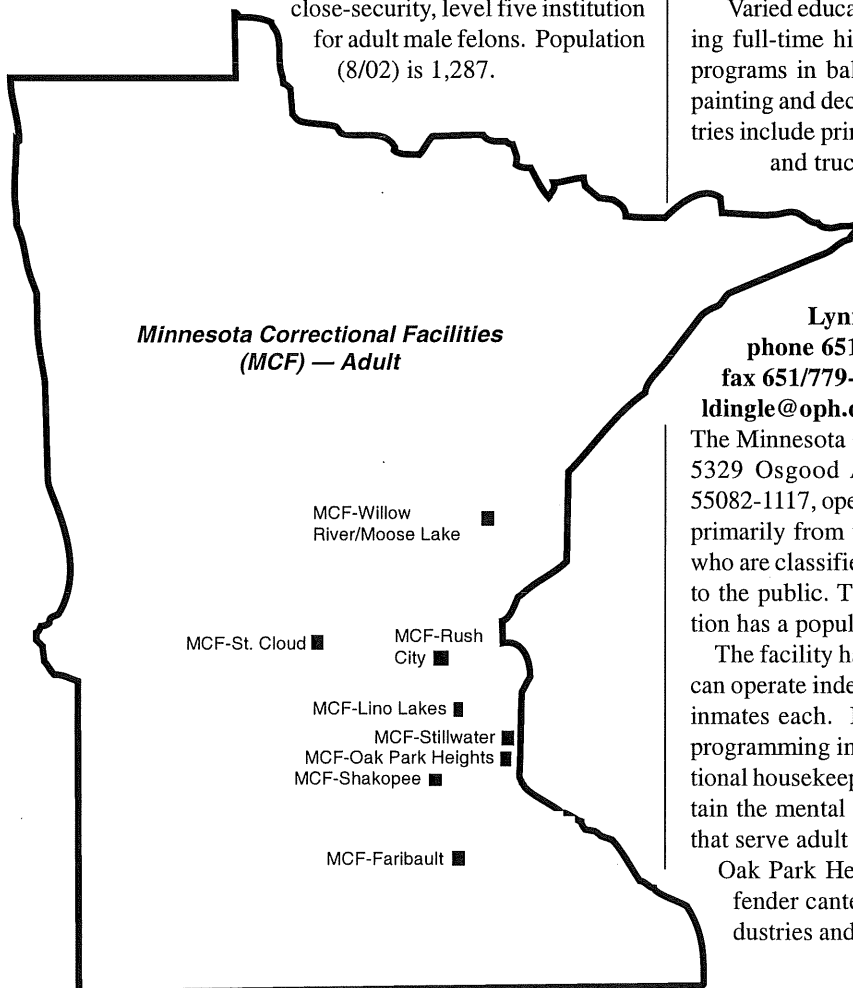
Varied educational opportunities are available including full-time high school and vocational training with programs in baking, barbering, meat-cutting, masonry, painting and decorating, and welding. MINNCOR Industries include printing and production of Minnesota's auto and truck license plates and tabs.

☐ **Minnesota Correctional Facility-Oak Park Heights**  
**Lynn Dingle, Warden (acting)**  
phone 651/779-1400  
fax 651/779-1385  
ldingle@oph.doc.state.mn.us

The Minnesota Correctional Facility-Oak Park Heights, 5329 Osgood Avenue North, Stillwater, Minnesota 55082-1117, opened in 1982, receives inmates transferred primarily from the Stillwater and St. Cloud institutions who are classified as maximum-custody or extreme risks to the public. The level six, maximum-security institution has a population of 356 (8/02).

The facility has eight self-contained complexes which can operate independently. Six are designed to house 52 inmates each. Inmates participate in highly-structured programming including industry, education, and institutional housekeeping. The remaining two complexes contain the mental health and transitional health care units that serve adult male inmates departmentwide.

Oak Park Heights is the site of the consolidated offender canteen service, operated by MINNCOR Industries and servicing all department adult facilities.



☐ **Minnesota Correctional Facility-Lino Lakes**  
**Robert Feneis, Warden**  
phone 651/717-6100, fax 651/717-6105  
rfeneis@ll.doc.state.mn.us

The Minnesota Correctional Facility-Lino Lakes, 7525 Fourth Avenue, Lino Lakes, Minnesota 55014, constructed in 1963, originally served as a juvenile facility. In 1978 the institution was remodeled and converted to a level three, medium-security facility for adult males transferred from the state's higher-security locations who are housed inside a secure perimeter. A level one, minimum-security unit is located outside the perimeter. Population is 1,168 (8/02).

The facility is the primary department treatment center for sex offenders and provides prerelease programming for sex offenders released from the department. Chemical dependency programming is provided in TRIAD, a 300-bed therapeutic community. Additional programming is offered through educational and vocational classes, and work opportunities are available through support services and MINNCOR contract services.

Lino Lakes is also the site of the InnerChange Freedom Initiative, a faith-based program for up to 200 offenders. The program is funded and operated by Prison Fellowship through a partnership with the corrections department.

☐ **Minnesota Correctional Facility-Faribault**  
**Connie Roehrich, Warden**  
phone 507/334-0700, fax 507/332-4538  
croehrich@frb.doc.state.mn.us

The Minnesota Correctional Facility-Faribault, 1101 Linden Lane, Faribault, Minnesota 55021-6400, is a medium-security, level-three facility housing adult males. A level 1 and 2 minimum-security unit is also located outside the secure perimeter. The 1989 Minnesota Legislature initially approved opening of the facility when funds were authorized to convert portions of the Faribault Regional Center to a correctional facility. Population is 1,122 (8/02).

The facility includes ten remodeled buildings used for living quarters. One of the buildings has been adapted to meet the needs of the department's geriatric and special needs populations.

A variety of work, vocational/academic educational, and other programs is offered. MINNCOR Industries include wood furniture manufacturing, heavy vehicle refurbishing, laundry, thermoformed plastics, and assembly operations.

Education programs include adult basic education, literacy, general educational development (GED), and

high school diploma instruction. Vocational diploma/certificate programs contracted through South Central Technical College include cabinetmaking, upholstery, painting/commercial drywall, floor covering installation, carpentry, computer certification, small business management, drafting, and facility maintenance.

The facility also has a treatment unit for alcohol and other drugs.

☐ **Minnesota Correctional Facility-Willow River/  
Moose Lake — Terry Carlson, Warden**  
phone 218/485-5000, fax 218/485-5007  
tcarlson@ml.doc.state.mn.us

The Minnesota Correctional Facility-Willow River/Moose Lake, 1000 Lakeshore Drive, Moose Lake, Minnesota 55767, is a level three, medium-security institution for adult males. The facility has two main locations. One, opened in 1988, is on the grounds of the former Moose Lake Regional Treatment Center. The other is at the institution's original site in Willow River.

The Moose Lake location's population is 959 (8/02). Inmates are transferred from other department institutions to Moose Lake. The facility provides a variety of programs including vocational and academic education, literacy, sex offender programming, and industry. Inmates participate in vocational programs including computer hardware support and barbering, or are employed in MINNCOR Industries which encompass textile/garment, mattress manufacturing, signage, printing, and contract services.

The Willow River location is the site of Phase 1 of the department's Challenge Incarceration Program (CIP), a boot camp mandated by the 1992 Legislature. Phase 1 consists of a short-term, intensive program for up to 90 non-dangerous offenders. The six-month institution phase is highly structured with education, critical thinking skills development, chemical dependency programming, and rigorous physical exercise. The program serves men and women. Phase 2, a highly supervised phase, and Phase 3, a supervised release phase, are both at least six months in duration and are served in the community.

☐ **Minnesota Correctional Facility-Shakopee**  
**Rick Hillengass, Warden (acting)**  
phone 952/496-4440, fax 952/496-4476  
rhillengass@shk.doc.state.mn.us

The Minnesota Correctional Facility-Shakopee, 1010 West Sixth Avenue, Shakopee, Minnesota 55379, opened in 1986, houses adult women offenders committed to the commissioner of corrections. Population is 397 (8/02) at all custody levels. The facility has 10 build-

ings including a core building for administration and inmate activities, a segregation unit with a mental health programming unit connected, six living units, a prerelease independent living center, an industry building, and a heating plant.

MINNCOR Industries provide part or full-time work for the offender population in the areas of data entry, sewing, contract services, and market research. Many inmates also work on institution maintenance crews and in food service. Through the facility's education unit, offenders have access to a variety of academic and vocational educational opportunities. Mental health and treatment services are also available.

□ **Minnesota Correctional Facility-Rush City**

**Bert Mohs, Warden**

**phone 320/358-0400, fax 763/689-7543**

**bmohs@rc.doc.state.mn.us**

The Minnesota Correctional Facility-Rush City, 7600 - 525th Street, Rush City, Minnesota 55069, opened in February 2000. Opening in phases, the close-custody, level-four facility currently houses 651 offenders (8/02) and will eventually house approximately 950 offenders, most of whom will be double-bunked. To accomplish this, offender activities are conducted on a strict schedule, and the time that both offenders are present in the cell is limited mainly to count times and sleeping hours.

MINNCOR Industries at the facility focuses on providing production space and offender labor to the business community through contract services.

Educational programming focuses on basic education, parenting, English as a second language, and transitional programming.

□ **Education**

**Marcie Sorensen, Director**

**phone 651/642-0244, fax 651/603-0150**

**marcie.sorensen@co.doc.state.mn.us**

The central office education unit is responsible for oversight of offender education in adult and juvenile facilities. Adult Basic Education, special education, high school diploma, GED, vocational and academic post secondary, parenting, life skills, critical thinking skills, and transitional programming are all available in correctional education.

To offer the above programs, the department partners with the Department of Children, Families, and Learning; Minnesota State Colleges and Universities; the Department of Economic Security; and many other public and private organizations.

Research, data collection, program development, assessment, and national affiliations for the growth of correctional education are all functions of this unit.

□ **Transfer and Classification Unit**

**Chris Esty, Director (acting)**

**phone 651/642-0319, fax 651/603-0150**

**cesty@co.doc.state.mn.us**

Responsible for inmate classification, administering the facility interstate corrections compact, and provision of offender transportation resources for the agency.

The department's inmate classification system utilizes an objective rating process to balance the classification assignment of inmates at the lowest custody level consistent with an objective assessment of public risk, facility security, and safety of staff and inmates.

The facility interstate corrections compact allows for transfer of inmates between states who are members of the compact.

Transportation provides safe, efficient, and effective movement of supervised release, work release, and CIP violators; interstate corrections compact transfers; and transfer of inmates between department facilities.

□ **Capital Resources**

**Joe Miller, Administrator**

**phone 651/642-0247, fax 651/603-0150**

**jmiller@co.doc.state.mn.us**

The capital resources administrator coordinates capital projects, institution bonding, facility remodeling/renovation, and new institution planning. The administrator serves as a liaison with the Department of Administration, other state agencies, and firms involved in capital improvement projects and construction.

□ **Special Services**

**Jerry Clay, Director**

**pager 612/818-6923, fax 651/632-5066**

**jclay@co.doc.state.mn.us**

This position serves as a resource to adult facilities and other state agencies in the areas of policy/procedure development; security functions such as Special Operations Response Teams (SORT) and canine units; and food service purchasing and contract monitoring. Additionally, this position provides assistance with specialized contract development and implementation.

**Religious Programming and Resources**

**Steve Hokonson, Director**

**phone 651/717-6543, fax 651/717-6137**

**shokonso@ll.doc.state.mn.us**

This unit is responsible for ensuring that incarcerated offenders have reasonable opportunities to pursue lawful individual religious beliefs and practices of the religion or faith of their choice. Religious programming is provided consistent with security practices and principles, rehabilitative goals, health and safety, allocation of limited resources, responsibilities, and needs of the correctional facilities.

**Dan Storkamp, Assistant Commissioner (acting)**  
phone 651/642-0566, fax 651/632-5066  
dstorkamp@co.doc.state.mn.us

This division provides a broad range of management support services throughout the department. Units in the division include human resource management, information technology, financial services, interagency management, diversity office, and policy and legal services.

**☐ Interagency Management Unit  
Vacancy**

This unit manages projects crossing local, state, and national criminal justice entities. Responsibilities include developing, piloting, and implementing statewide supervision (probation and detention) information systems. Additionally, staff of this unit serve as liaison to CriMNet, a statewide criminal justice information system. Specific agency planning efforts and special agency projects, such as adult prison population projections, are also the responsibility of this unit.

**☐ Human Resource Management  
Karen McCarty, Director**  
phone 651/642-0313, fax 651/643-2536  
kmcarty@co.doc.state.mn.us

This unit monitors department personnel transactions to ensure equity and consistency with policies and procedures. It provides consultation and direction concerning interpretation of personnel policies, grievance disputes, discipline matters, staffing patterns and labor relations including the formulation of union negotiation positions. This unit is also responsible for employee development activities and worker compensation coordination.

**Employee Development  
Kent Grandlienard, Director (acting)**  
phone 651/642-0346, fax 651/603-0185  
kgrandlienard@co.doc.state.mn.us

In addition to providing training for all new employees, including a corrections officer academy, and ongoing skill-building training for staff at all levels, this unit provides management development training and organizational development consultation. Services provided include curriculum development, instructor train-the-trainer courses and certification programs, development of e-training opportunities, and oversight of the department's Critical Incident Stress Management initiative.

**☐ Information Technology  
Lon Erickson, Director**  
phone 651/642-0302, fax 651/642-0223  
lerickson@co.doc.state.mn.us

The information technology unit provides technology direction and services to department staff. Technology services include technical consultation, systems planning, and project management.

**☐ Office of Diversity  
Thelma James, Director**  
phone 651/642-0205, fax 651/643-3444  
tjames@co.doc.state.mn.us

This office exists to plan, direct and implement the diversity and equal opportunity/affirmative action program in the following areas:

- Compliance with federal and state laws requiring the development and implementation of the department's Affirmative Action Plan, and policies in the area of equal opportunity;
- Investigate allegations of discrimination and sexual harassment to ensure that the department's employment practices are non-discriminatory and that all employees have a work environment free from discrimination based on race, color, sex, religion, creed, national origin, disability, age, sexual orientation, and marital status;
- Promote an inclusive work environment by ensuring all department employees receive training on professionalism and diverse cultures;
- Implement community and college recruitment to attract a diverse pool of job-seekers to a career in corrections, as well as internship opportunities;
- Ensure that the department provides services, programs, and policies accessible to individuals with physical or mental disabilities; and
- Provide leadership to diversity committees established at each department facility and the community and juvenile services division.

**☐ Financial Services  
Lisa Cornelius, Director (acting)**  
phone 651/642-0216, fax 651/643-3457  
lcornelius@rw.doc.state.mn.us

This unit is responsible for all financial activities within the department. Services include budget development and formulation of fiscal policies and procedures, payroll, internal auditing, purchasing, cost accounting, billings, deposits, contract coordination, grants administration, and

financial reporting. Staff provide consultation services to department program staff and monitor the use of departmental resources.

**□ Policy and Legal Services**

**Ben Brieschke, Director (acting)**

**phone 651/642-0161, fax 651/603-0148**

**bbrieschke@co.doc.state.mn.us**

The policy and legal services section coordinates and oversees a number of functions in the management services division. Responsibilities include administrative review of claims filed by offenders; provision of technical assistance to staff who draft contracts and administrative rules; development and review of department policy; and management and coordination of litigation and legal advice. Offender records are maintained by this section, as well as ensuring compliance with the Data Practices Act. Staff support is provided to the Board of Pardons and Sentencing Guidelines Commission. Additionally, all offender hearings, release plans, and warrants are the responsibility of this section.

***Hearings and Release***

***Jeffrey Peterson***

***phone 651/642-0270, fax 651/642-0417***

***jpeterson@co.doc.state.mn.us***

Responsible for all administrative hearings and reviews to which inmates and those offenders released to the community are entitled, including disciplinary hearings and release revocations. Staff approve plans for supervised release, work release, and parole as well as issue warrants when offenders abscond from supervision. Other responsibilities include reviewing treatment goal progress and making parole decisions for juveniles under the jurisdiction of the commissioner of corrections. Staff also coordinate reviews for inmates serving life sentences.

***Offender Information, Sentence Interpretation, Extradition, Transfers by Treaty, and Detainers***

***Vacancy***

***phone 651/642-0320, fax 651/643-3588***

Responsible for maintenance and security of offender records, including systems development, and coordination of this function with records unit supervisors at all state correctional facilities. This manager is also the department's data practices administrator and serves as a staff resource to ensure department compliance with the provisions of the act. Other responsibilities include activities relating to the Interstate Agreement on Detainers and processing extraditions for persons under the juris-

diction of the department; oversight of OSHA-related cases; review of department investigations; and staff support to the Board of Pardons.

***Litigation and Claims***

***Mary McComb, Director (acting)***

***phone 651/917-4750, fax 651/603-0148***

***mmccomb@co.doc.state.mn.us***

Responsible for tracking all litigation to which the department is a party, coordinating responses to lawsuits filed by offenders and employees against the department, and working with the Attorney General's Office to prepare litigation defenses. This manager serves as a resource to facility litigation coordinators and claims officers. Other responsibilities include review of worker compensation cases; coordinating employee responses to subpoenas; and providing administrative review of personal injury and property claims filed by offenders.

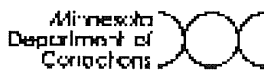
***Policy, Accreditation, Contracts and Rule Review***

***Shelby Richardson***

***phone 651/642-0372, fax 651/603-6770***

***srichardson@co.doc.state.mn.us***

Responsible for review and approval of all department policies. To ensure consistency and accuracy, training and technical assistance are provided to agency staff on development of policy language and format. This manager also oversees accreditation activity of the department's facilities and central office units. Through the accreditation process, each facility or unit is reviewed for compliance with standards set by the American Correctional Association. Other responsibilities include drafting contracts, requests for proposals, and administrative rules.



# Deputy Commissioner — Community & Juvenile Services

**Mark Carey, Deputy Commissioner**  
phone 651/642-0288, fax 651/603-6768  
mark.carey@co.doc.state.mn.us

This division provides probation and supervised release/parole services and special community programs including community service and work release. Research and evaluation including database management, implementation of the Community Corrections Act (CCA), correctional facility inspection, administration of interstate compacts, county probation subsidy, sex offender/chemical dependency services, planning for female offenders, community re-entry and contracts with community-based programs are also responsibilities of the division.

The division also coordinates juvenile services, long-range strategic planning for juvenile offenders, and oversees two juvenile facilities operated by the agency.

## □ Field Services

**William Guelker, Director**  
phone 651/603-0181, fax 651/642-0457  
bguelker@co.doc.state.mn.us

This unit is responsible for administration of the state-wide intensive supervision program, work release, Institution Community Work Crew program, Sentencing to Service, and for probation, supervised release, and parole supervision in designated areas of the state.

Although the 31 counties participating in the Community Corrections Act (CCA) provide services to persons on probation, supervised release or parole, the department provides these services to adult offenders in the remaining 56 counties. Juvenile probation and parole services in non-CCA counties are provided by county probation agents or by state agents under contract to the counties. In either case, the state pays up to 50 percent of the agent's salary.

For specific information about probation, supervised release or parole, contact the following community services staff:

## *Northern Region:*

**Andy Doom, Regional Manager**  
adoom@fs.doc.state.mn.us, phone 320/202-0966, fax 320/654-5272, 810 West St. Germain, Suite 202, Box 1143, St. Cloud, Minnesota 56302

Bruce Besse, bbesse@fs.doc.state.mn.us, phone 218/846-0727, fax 218/846-0740, 211 West Holmes Street, Suite 204, Box 844, Detroit Lakes, Minnesota 56502

Larry Smith, lsmith@fs.doc.state.mn.us, phone 320/255-3900, fax 320/255-3905, 810 West St. Germain, Suite 202, Box 1143, St. Cloud, Minnesota 56302

Rick Thomson, rthomton@fs.doc.state.mn.us, phone 218/755-2980, fax 218/755-4186, 403 4th Street NW, Suite 330, Box 397, Bemidji, Minnesota 56619

Greg Potvin, gpotvin@fs.doc.state.mn.us, phone 218/236-2471, fax 218/236-2072, Juvenile Center Building, 919 Eighth Avenue North, Box 280, Moorhead, Minnesota 56560

## *Southern Region:*

**Jill Carlson, Regional Manager**  
jillcarlson@fs.doc.state.mn.us, phone 507/389-2023, fax 507/389-1644, 12 Civic Center Plaza, Suite 2145, Mankato, Minnesota 56001

James Sop, jsop@fs.doc.state.mn.us, phone 507/389-5794, fax 507/389-1644, 12 Civic Center Plaza, Suite 2145, Mankato, Minnesota 56001

William Weber, wwbeber@fs.doc.state.mn.us, phone 651/257-3337 ext. 226, fax 651/257-8623, 335 Summit Avenue, Box 187, Center City, Minnesota 55012

Linda Aaberg, laaberg@fs.doc.state.mn.us, phone 952/496-4170, fax 952/496-4180, 1275 Ramsey Street, Suite 100, Shakopee, Minnesota 55379

Michael Downey, mdowney@fs.doc.state.mn.us, phone 507/379-3416, fax 507/379-3419, Box 627, Albert Lea, Minnesota 56007

Swantje Willers, swillers@fs.doc.state.mn.us, phone 507/537-7104, fax 507/537-7111, 601 North Highway 59, Marshall, Minnesota 56258

## *Intensive Supervision Program*

**Mike Fall, Supervisor**  
phone 320/202-0966, fax 320/654-5272  
mfall@fs.doc.state.mn.us

This statewide program provides intensive supervision of offenders — seven days a week, 365 days a year — including four face-to-face contacts weekly, electronic home monitoring, mandatory work or school, daily curfews, mandatory restitution, and random drug testing.

Specially trained corrections agents whose caseloads are 15 or less supervise offenders deemed high-risk to the public who are released from department institutions. The department has agents in several locations across the state.

**Institution/Community Work Crew (ICWC)**  
**Ron Solheid, Director**  
phone 651/603-0010, fax 651/642-0457  
rsolheid@co.doc.state.mn.us

ICWC puts minimum-security prison inmates to work in the community under the supervision of a department crew leader. The work done by participants is a benefit to the community and serves as a positive program for the offenders. This unit also supervises the department's work release program and phases 2 and 3 of the challenge incarceration program.

**Work Release**  
**Tom Drobac, Director**  
phone 651/642-0350, fax 651/642-0314  
tdrobac@co.doc.state.mn.us

Work release provides a structured transition period for offenders returning to the community with the intent of better preparing them for a successful, crime-free life. Selection criteria include current and prior criminal behavior, institutional adjustment, and alcohol and chemical dependency history. Offenders are eligible for work release during the last eight months prior to their supervised release date. The program contracts with public and private agencies for residential work release services. Programs provide structured living and close supervision and surveillance.

**Sentencing to Service (STS) Program**  
STS is a sentencing alternative for courts that puts carefully selected, nonviolent offenders to work on community improvement projects. Supervised STS crews work in parks and other public areas, frequently in combination with jail time. STS is operated by the Minnesota Departments of Corrections and Natural Resources, courts, and local governments. For information about STS, contact the following community services staff:

**Northern Region:**

**Andy Doom, Regional Manager**  
adoom@fs.doc.state.mn.us, phone 320/202-0966, fax 320/654-5272, 810 West St. Germain, Suite 202, Box 1143, St. Cloud, Minnesota 56302

Dennis Drury, Region 1  
ddrury@co.doc.state.mn.us, phone 218/755-4090, fax 218/755-4186, 4W Building, P.O. Box 397, Bemidji, Minnesota 56619

Lynn Tracey, Region 2  
ltracey@co.doc.state.mn.us, phone 218/879-0893, fax 218/879-0894, MN/DNR Forestry, 1604 S. Hwy. 33, Cloquet, Minnesota 55720

Vic Moen, Region 3  
vmoen@co.doc.state.mn.us, phone 320/654-5273, fax 320/255-3905, 810 W. St. Germain, P.O. Box 1143, St. Cloud, Minnesota 56302

Mike Stoltman, Region 7  
mstoltman@co.doc.state.mn.us, phone 218/291-4379, fax 218/236-2072, P.O. Box 280, Moorhead, Minnesota 56561

**Southern Region:**

**Jill Carlson, Regional Manager**  
jillcarlson@fs.doc.state.mn.us, phone 507/389-2023, fax 507/389-1644, 12 Civic Center Plaza, Suite 2145, Mankato, Minnesota 56001

Mike Smith, Region 4  
mikesmith@co.doc.state.mn.us, phone 507/389-5796, fax 507/389-1644, 12 Civic Center Plaza, Suite 2145, Mankato, Minnesota 56001

John Radmer, Region 5  
jradmer@co.doc.state.mn.us, phone 651/385-6489, fax 651/385-6498, Goodhue County Government Center, Room 103, 509 W. 5th Street, Red Wing, Minnesota 55066

David Erickson, Region 6  
derickson@co.doc.state.mn.us, phone 651/642-0339, fax 651/642-0457, 1450 Energy Park Drive, Suite 200, St. Paul, Minnesota 55108

Mark Siemers, Region 8  
msiemers@co.doc.state.mn.us, phone 651/642-0361, fax 651/642-0457, 1450 Energy Park Drive, Suite 200, St. Paul, Minnesota 55108

**Administrative Services — Ken Merz, Director**  
phone 651/642-0348, fax 651/603-6768  
kmerz@co.doc.state.mn.us

The administrative services unit is responsible for administration of the CCA, county probation officers subsidy program, sex offender/chemical dependency services, grants and subsidies, interstate compacts, and jail inspections and standards enforcement. The position also pro-



vides administrative assistance to the division's deputy commissioner and serves as legislative liaison for the division.

***Sex Offender/Chemical Dependency Services***

***Steve Huot, Director***

***phone 651/642-0279, fax 651/603-0020***

***shuot@co.doc.state.mn.us***

The sex offender/chemical dependency services unit provides information, support, and training to institution and community services personnel to help deliver quality chemical dependency and sex offender programming. This includes several research projects including the Minnesota Sex Offender Screening Tool and the legislatively-mandated sex offender evaluation project. Unit staff monitor community grants providing sex offender programming for offenders on probation or supervised release.

The unit is also responsible for managing the risk assessment process for inmates subject to the community notification law and for providing information about these inmates to local law enforcement.

***Interstate Compacts***

***Rose Ann Bisch, Director***

***phone 651/642-0311, fax 651/917-4768***

***rbisch@co.doc.state.mn.us***

Responsible for administering adult and juvenile interstate compacts which allow for the transfer of probation and parole supervision to and from Minnesota. This unit also assists in returning both delinquent and nondelinquent runaways to their home state.

***Facilities Inspection and Enforcement***

***Greg Carlson, Director***

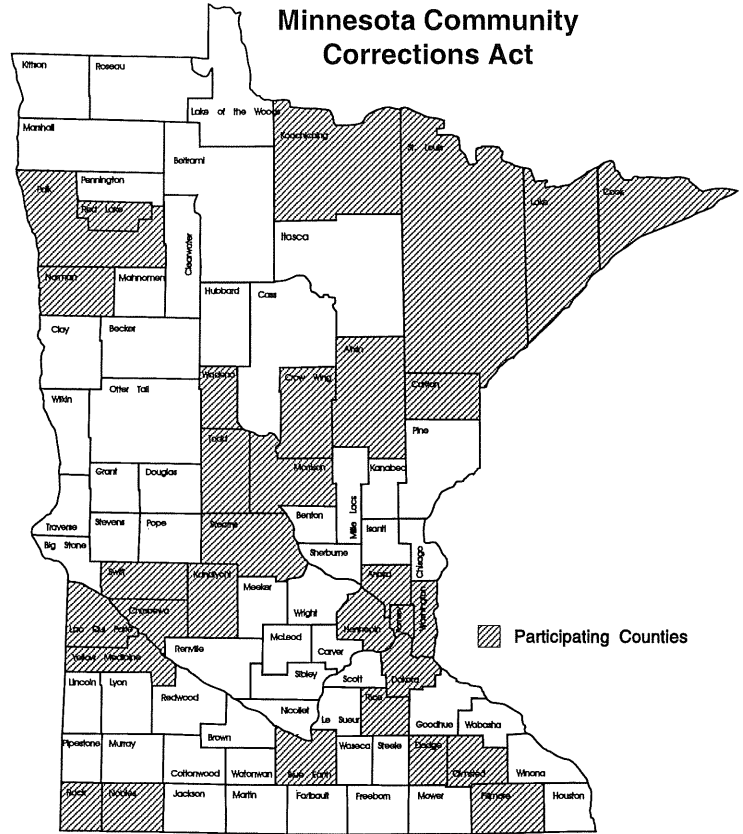
***phone 218/485-5072, fax 218/485-5007***

***gcarlson@co.doc.state.mn.us***

This unit is responsible for inspection and licensing of state and local correctional facilities including jails, lock-ups, holding facilities, adult institutions, group homes, halfway houses, juvenile detention centers and other juvenile correctional residential facilities. In addition, the unit is responsible for certification of facilities for out-of-home/out-of-state placements.

Development and enforcement of facility standards and training of staff overseeing these operations are responsibilities of the unit, which also acts as a clearing-house for architectural and operational planning for new or remodeled state and local correctional facilities.

**Minnesota Community  
Corrections Act**



***Grants, Contracts & the Community Corrections Act***

***Everett Hageman, Director (acting)***

***phone 651/642-0255, fax 651/642-0292***

***ehageman@co.doc.state.mn.us***

This unit administers department contracts with community residential and nonresidential programs to provide halfway house placements, job placements, and other support services. Grants are administered for intensive DWI programs, remote electronic alcohol monitoring programs, juvenile restitution programs, adult felony, sex offender supervision, caseload/workload reduction, female offender, restorative justice, juvenile detention, and continuum of care programs. This unit is also responsible for administration of the statewide extended jurisdiction juvenile partnership program and the juvenile residential placement subsidies and the emergency housing fund.

This unit also administers the Minnesota Community Corrections Act (CCA) of 1973, which authorizes the commissioner of corrections to award subsidy grants to a county or group of counties for the provision of local correctional services. The act is designed to encourage development of a local correctional system which includes sanctions for offenders and a variety of community pro-

grams. Thirty-one counties representing about 70 percent of the state's population participate in the CCA. Areas include:

**Aitkin/Crow Wing/Morrison** - Robert Tepfer, director, Central Minnesota Community Corrections, 218/825-8345, fax 218/825-8370, 611 Oak Street, Brainerd, Minnesota 56401

**Anoka** - Jerry Soma, director, Anoka County Corrections, 763/422-7008, fax 763/422-6987, Courthouse, 325 East Main, Anoka, Minnesota 55303

**Blue Earth** - Gerald Haley, director, Blue Earth County Community Corrections, 507/344-3707, fax 507/344-3737, P.O. Box 3543, Mankato, Minnesota 56002-3543

**Dakota** - Barbara Illsley, director, Dakota County Community Corrections, 651/438-8288, fax 651/438-8340, Judicial Center, 1560 West Highway 55, Hastings, Minnesota 55033-2392

**Dodge/Fillmore/Olmsted** - Patricia Carlson, director, Dodge/Fillmore/Olmsted Community Corrections, 507/285-8164, fax 507/287-2673, 151 Fourth Street Southeast, Government Center, Fourth Floor, Rochester, Minnesota 55904

**Hennepin** - Jan Smaby, director, Hennepin County Community Corrections, 612/348-8981, fax 612/348-6488, C-2353 Government Center, Minneapolis, Minnesota 55487-0533

**Kandiyohi** - Deborah West, director, Kandiyohi County Community Corrections, 320/231-6218, fax 320/231-6292, 1900 Highway 294 NE, Suite 2060, Willmar, Minnesota 56201

**Ramsey** - Joan Fabian, director, Ramsey County Corrections Department, 651/266-2384, fax 651/266-2293, 50 West Kellogg Boulevard, Suite 650, St. Paul, Minnesota 55102

**Red Lake/Polk/Norman** - Susan Mills, director, Tri-County Community Corrections, 218/281-6363, fax 218/281-7947, 600 Bruce Street, Crookston, Minnesota 56716

**Rice** - Jim Haas, director, Rice County Community Corrections, 507/332-6290, fax 507/332-5981, 128 Northwest Third Street, Suite B, Faribault, Minnesota 55021

**Rock/Nobles** - Jay Klein, director, Rock/Nobles Community Corrections, 507/372-8285, fax 507/372-4994, P.O. Box 547, Worthington, Minnesota 56187

**St. Louis/Carlton/Cook/Koochiching/Lake** - Tom Adkins, director, Arrowhead Regional Corrections, 218/726-2650, fax 218/726-2638, 100 North Fifth Avenue West, 319 Courthouse, Duluth, Minnesota 55802-1202

**Stearns** - Mark Sizer, director, Stearns County Community Corrections, 320/656-6420, fax 320/656-6161, 705 Courthouse Square, Room 445, St. Cloud, Minnesota 56303

**Swift/Lac qui Parle/Yellow Medicine/Chippewa** - Midge Christianson, director, 6W Community Corrections, 320/269-6513, fax 320/269-5996, 1215 Black Oak Avenue, P.O. Box 551, Montevideo, Minnesota 56265

**Todd/Wadena** - Kathy Langer, director, Todd/Wadena Community Corrections, 320/732-6165, fax 320/732-6197, 239 Central Avenue, Long Prairie, Minnesota 56347

**Washington** - Russell Reetz, director, Washington County Court Services, 651/430-6900, fax 651/430-6947, 14900 - 61st Street North, Box 6, Stillwater, Minnesota 55082-0006

**□ Research, Evaluation & Technical Assistance**

**Claudia Fercello, Director**

**phone 651/642-0225; fax 651/642-0251**

**cfercello@co.doc.state.mn.us**

This unit provides research services and technical assistance departmentwide and to other criminal justice agencies and outside groups.

**Research & Evaluation**

**Vacancy, Supervisor**

Types of services provided include development of program outcomes and indicators, design and implementation of program evaluations, response to requests for data and information and review of research proposals involving offenders under the jurisdiction of the department or utilizing department resources.

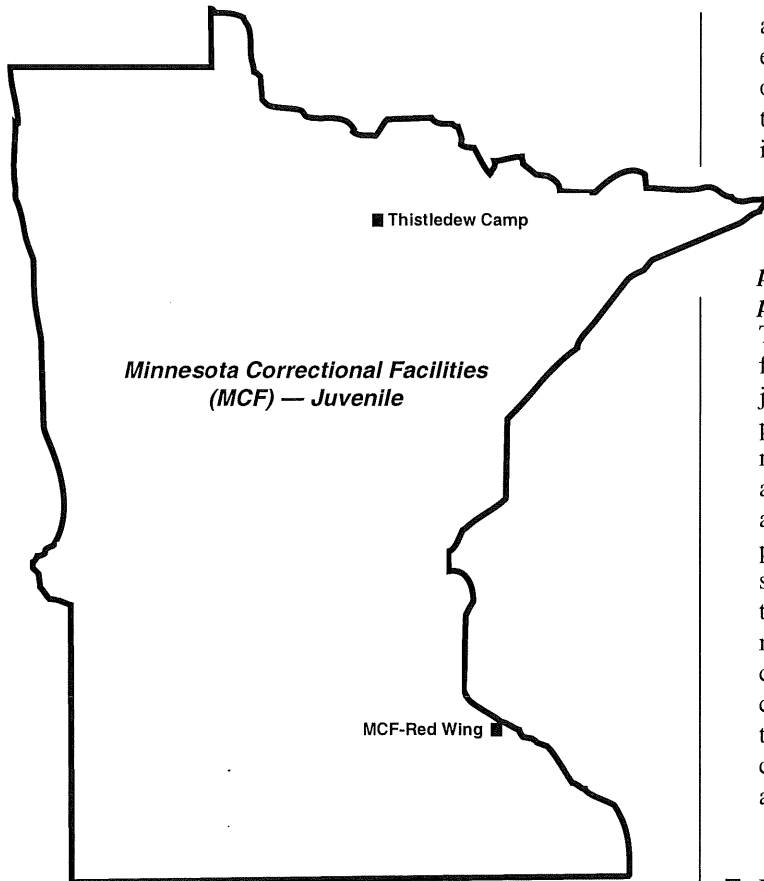
**Technical Assistance**

**Mark Ruohoniemi, Supervisor**

**phone 651/642-0276, fax 651/642-0251**

**mruohoniemi@co.doc.state.mn.us**

Responsible for oversight of technical assistance provision and management of the following areas:



**Restorative Justice**  
**Kay Pranis, Director**  
phone 651/642-0329, fax 651/642-0457  
kpranis@co.doc.state.mn.us

The department works with interested communities assisting them in development of a restorative justice approach to community safety. Restorative justice is a framework for the criminal justice system that involves the community more broadly in the system. In addition to offender accountability through taking responsibility and making amends, restorative justice seeks to address victim needs, offender competencies, and community responsibility in repairing the harm done by crime.

**Minnesota Criminal Justice Resource Center (MCJRC)**  
**Judi Nestrud, Director**  
phone 651/642-0249, fax 651/642-0314  
mcjrc@co.doc.state.mn.us

Initially created through a grant from the National Institute of Corrections in the early 1980s, the MCJRC serves as a clearinghouse to provide leadership and strategic direction to local, state, and national criminal justice-related agencies by providing technical

assistance, facilitating training, accessing research and expertise, and extending resources. The primary goal of the MCJRC is to enhance statewide policy and practice by initiating research-based practices and responding directly to the identified needs of practitioners.

**Planning for Female Offenders Unit**  
**Paula Schaefer, Director (acting)**  
phone 651/603-0157, fax 651/632-0157  
pschaefer@co.doc.state.mn.us

This unit is responsible for planning and advocacy for adult female offenders and at-risk or adjudicated juvenile females. Responsibilities related to these populations include promoting gender and culturally-responsive services; providing training and technical assistance; distributing information and serving as liaison to the legislature and other state, county, and private agencies; coordinating and maintaining a resource center that provides comprehensive information to stakeholders and the general public; and administration of model programming grants and a recidivism reduction project for women at the Shakopee correctional facility. Further, this unit staffs a legislatively-created task force which advises the corrections commissioner on female offender issues and an inter-agency adolescent female subcommittee.

**Juvenile Services**  
**Tim Walsh, Director**  
phone 651/642-0273, fax 651/603-6768  
twalsh@co.doc.state.mn.us

This unit provides the overall planning, administration and direction for the department's juvenile residential facilities. The department's juvenile institution programming and service delivery are coordinated through this unit. Assistance is also provided to coordinate the agency's efforts in regard to juvenile issues, including leadership and direction to juvenile justice policymakers and practitioners.

**Juvenile Services Support**  
**Dave Johnson, Director**  
phone 651/642-0334, fax 651/642-0314  
djohnson@co.doc.state.mn.us

The department's juvenile detention services subsidy program, which is intended to remove juveniles from adult jails, is administered through this unit. The unit administers a legislative appropriation for enhanced juvenile secure detention and secure residential facilities. Staff also participate in a children's mental health initiative collaborative effort involving other state agencies and coordinate training for temporary holdover facility attendants.

**Minnesota Correctional Facility-Red Wing**  
**Otis Zanders, Superintendent**  
**phone 651/267-3600, fax 651/267-3761**  
**ozanders@rw.doc.state.mn.us**

Constructed in 1889, the Minnesota Correctional Facility-Red Wing, 1079 Highway 292, Red Wing, Minnesota 55066, is a fenced facility for male juvenile offenders committed to the commissioner of corrections by juvenile courts. Detention and predispositional evaluation services are also available to the courts. Current population (8/02) is 195.

All juvenile residents participate in the facility's Equip Program which is designed to teach residents to think and act responsibly. Its curriculum includes principles for daily living, cognitive restructuring, anger management, moral reasoning, and social skills development. Residents also participate in academic and vocational programs.

The facility has a substance abuse treatment unit designed to address residents' delinquency and substance abuse.

A continuum of mental health services is provided. The facility also has a 12-bed mental health unit for those residents unable to adjust in a general population unit.

The transition services program is designed to assist residents as they return to the community. Activities focus on education, employment, residency, support groups, and relapse prevention.

**Thistledeew Camp**  
**David Hegg, Superintendent**  
**phone 218/376-4411, fax 218/376-4489**  
**dhegg@thd.doc.state.mn.us**

Thistledeew Camp, 62741 County Road 551, Togo, Minnesota 55723, is available for use on a per diem basis by all Minnesota juvenile county courts and provides court and social service agencies with an alternative residential program. Average daily population is 60.

Thistledeew offers a three-week program and a three-month program, each designed to build confidence in males between 13 and 17 years old. Each program is intended to serve as a treatment resource for boys who have experienced failure in the home, school and community.

**Three-week program — Wilderness Endeavors** is a year-round, 21-day adventure therapy program. It provides students with a safe but challenging environment in which to discover and develop tools for change and personal growth. Wilderness activities such as backpacking, canoeing, and cross-country skiing are used, along with a four-day solo, rock climbing, a teams course, and a high ropes course.

A therapy component helps students process their experiences and transfer them to real-life situations.

Students receive one full year of school credit in experiential education and also one full year in physical education.

**Three-month program** — A student's needs and interests are met through involvement in group living, school, work, special classes, and recreational activities. A student's success is measured through a comprehensive points system included in all areas of the program. Scores provide opportunities for both rewards and consequences. A sense of responsibility is encouraged through a fair and reasonable system of accountability.

The last three weeks of the three-month program are devoted to **Challenge**, the camp's high-adventure wilderness program that stresses self-confidence, leadership abilities, and the important of teamwork.

**Aftercare** — Thistledeew aftercare is a pilot program for the counties of northern Minnesota and is utilized for students in the three-month residential program. An aftercare caseworker meets with the family shortly after the student's arrival at camp. Involvement is continued beyond graduation for approximately three months. The goal of aftercare is successful reunification and reintegration into the school and the community.

**Fiscal Years 2002-03  
General Fund Appropriation  
(based on Laws 2001; dollars in thousands)**

<b>Adult Facilities</b>	<i>FY 2002</i>	<i>FY 2003</i>
Minnesota Correctional Facility (MCF)-Faribault	\$25,848	\$26,429
MCF-Lino Lakes	29,798	30,505
MCF-Oak Park Heights	18,212	18,657
MCF-Rush City	19,234	19,612
MCF-St. Cloud	25,666	26,325
MCF-Shakopee	12,412	12,704
MCF-Stillwater	32,116	32,848
MCF-Willow River/Moose Lake:		
Willow River campus	2,958	3,023
Moose Lake campus	21,247	21,728
Education	381	385
Health Services	27,421	27,767
Support Services	10,072	12,601
Total	<u>\$225,365</u>	<u>\$232,584</u>
 <b>Community and Juvenile Services</b>		
Probation & Supervised Release	\$16,106	\$16,848
Special Supervision	5,546	5,600
Pass-through Grants and Subsidies	76,367	79,579
Community Programs	3,875	3,982
Sentencing to Service	4,222	4,292
Facilities Planning & Inspection	1,938	1,957
Community Services Support	1,198	1,230
MCF-Red Wing	12,111	12,396
Thistledeew Camp	23	23
Juvenile Support Services	1,850	1,864
Total	<u>\$123,236</u>	<u>\$127,771</u>
 <b>Management Services</b>		
Administrative Management	\$1,501	1,425
Policy and Legal Services	2,274	2,347
Interagency Management	1,141	1,150
Financial Services	1,419	1,485
Office Services	1,929	1,982
Human Resource Management	1,443	1,506
Employee Development	718	741
Information Technology	3,155	3,199
Total	<u>\$13,580</u>	<u>\$13,835</u>
 <b>DEPARTMENT TOTAL</b>	 <b>\$362,181</b>	 <b>\$374,190</b>



Data as of 7/1/02 (unless otherwise noted)

**Population:**

Total	6946	
Males	6501	93.6%
Females	445	6.4%

**Commitments:**

	2001	2002	Change
January-June	1625	1851	+13.9%
July-December	1614		
Total	3239		

**Releases - (FY2002):**

Supervised release/parole	3571	84.0%
Intensive community supervision	137	3.2%
Discharge	542	12.8%
Total	4250	

**Admissions - (FY2002):**

New commitments	3329	67.4%
Release return w/o new sent	1469	29.8%
Release return w/new sent	137	2.8%
Total	4935	

**Average Sentence Length** (sentenced in FY02, includes jail credit, excludes lifers): 41.9 months

**Offenses (top six): N=6870**

Drugs	1337	19.5%
Criminal Sexual Conduct	1241	18.1%
Homicide	1065	15.5%
Assault	798	11.6%
Burglary	539	7.8%
Robbery	510	7.4%

**Types of Offenses: N=6870**

Person	3731	54.2%
Drug	1337	19.5%
Property	1097	16.0%
Other/not reported	705	10.3%

**Current Inmates Age 50 or Older:** 470

**Number of Lifers:** 347 (392 including non-Minnesota)

**Certified Juveniles:**

Certified at commitment	144
-------------------------	-----

**Current inmates under age 18:** 14

**Average Population (FY2002):** 6704

**Industry - Inmates employed:** 843

**Race:**

White	3844	55.3%
Black	2504	36.1%
American Indian	445	6.4%
Asian	153	2.2%

(Note: 416 of above are of Hispanic ethnicity)

**Educational Level:**

Grades 0-8	284	4.1%
Grades 9-11	1477	21.3%
High school graduate	1111	16.0%
GED	1061	15.3%
College and up	703	10.0%
Other/unknown	2310	33.3%

**Average Age:** 33.8

**Marital Status:**

Single	4622	66.5%
Married	1057	15.2%
Divorced/separated	1067	15.4%
Other/unknown	200	2.9%

**Religious Affiliation:**

Catholic	1199	17.3%
Baptist	763	11.0%
Lutheran	715	10.3%
Other Christian	1597	23.0%
Muslim	288	4.0%
American Indian religions	299	4.3%
Other religions	213	3.1%

(Note: 27.0% unknown or no preference)

**County of Commitment (top six): N=6946**

Hennepin	2014	29.0%
Ramsey	1275	18.4%
Dakota	301	4.3%
St. Louis	283	4.1%
Anoka	265	3.8%
Olmsted	204	2.9%

**Population by Facility:**

Stillwater	1284	18.5%
Lino Lakes	1183	17.0%
Faribault	1130	16.2%
Willow River/Moose Lake	1043	15.0%
St. Cloud	720	10.4%
Rush City	643	9.3%
Shakopee	409	5.9%
Oak Park Heights	365	5.3%
Work Release	128	1.8%
ICWC/Jail	41	.6%





Data as of 7/1/02 (unless otherwise noted)

<b>MCF-Red Wing Population</b>	
State Commits	85
Non-Commits	<u>76</u>
Total Population	161
<b>Average Population (FY2002):</b>	164

<b>State Commits (85)</b>			
<b>Race:</b>			
White	45	52.9%	
American Indian	16	18.8%	
Black	15	17.6%	
Latin	4	4.7%	
Other/unknown	5	5.9%	
<b>Average Age:</b>	17.8		
<b>Offenses (top five):</b>			
Criminal Sexual Conduct	17	20.0%	
Probation Violation	15	17.6%	
Assault	10	11.8%	
Burglary	8	9.4%	
Auto Theft	7	8.2%	
<b>County of Commitment (top five):</b>			
Hennepin	25	29.4%	
Beltrami	9	10.6%	
Olmsted	5	5.9%	
Wright	5	5.9%	
Rice	4	4.7%	
<b>Admissions (FY2002):</b>			
New commitments	63	91.3%	
Parole return w/o new sentence	0	--	
Parole return w/new sentence	<u>6</u>	8.7%	
Total	69		
<b>Releases (FY2002):</b>			
Parole	41	25.8%	
Discharge	<u>118</u>	74.2%	
Total	159		
<b>Commitments:</b>			
	2001	2002	Change
January-June	37	32	-13.5%
July-December	<u>32</u>		
Total	69		

<b>Non-Commits (76)</b>			
<b>Race:</b>			
White	30	39.5%	
Black	29	38.1%	
American Indian	10	13.2%	
Latin	3	3.9%	
Other/unknown	4	5.3%	
<b>Average Age:</b>	17.2		
<b>Offenses (top five):</b>			
Aggravated Robbery	14	18.4%	
Criminal Sexual Conduct	11	14.5%	
Assault	11	14.5%	
Auto Theft	9	11.8%	
Burglary	8	10.5%	
<b>Admitting County (top four):</b>			
Ramsey	32	42.1%	
Hennepin	20	26.3%	
St. Louis	<u>6</u>	7.9%	
Dakota	3	3.9%	
<b>Admissions (FY2002):</b>			
Court order	77	57.9%	
Hold: Detention	46	34.6%	
Hold: Revocation	5	3.8%	
Federal	5	3.8%	
Total	133		
<b>Releases (FY2002):</b>			
Detention Hold Releases	48		

*Note: On July 1, 2002, there were five girls committed to the commissioner of corrections and housed in contract facilities. They are not reflected in the above profile.*

