



Alcohol
and Gambling
Enforcement

Emergency
Communication
Networks

Bureau of
Criminal
Apprehension

Driver
and Vehicle
Services

Homeland
Security and
Emergency
Management

Minnesota
State Patrol

Office of
Communications

Office of
Justice Programs

Office of
Traffic Safety

State Fire
Marshal and
Pipeline Safety

Office of Traffic Safety

444 Cedar Street • Suite 150 • Saint Paul, Minnesota 55101-5150

Phone: 651.201.7065 • Fax: 651.297.4844 • TTY: 651.282.6555

www.dps.state.mn.us

Memorandum

To: Minnesota Legislative Reference Library

From: Hal Campbell, Ed.D. *HC*

Date: October 15, 2012

Re: Results for Statewide Survey of Belt Use in Minnesota: August 2012

As part of the Evaluation of Contractor Performance for contract #50663 and contract #50665, the final product was a summary report of the *Statewide Survey of Belt Use in Minnesota: August 2012*. The results were obtained from the survey design used in 2011. Beginning in 2012 the National Highway Traffic Safety Administration (NHTSA) required a new survey design that was submitted by the Office of Traffic Safety (OTS) and approved by NHTSA.

The results from the 2011 survey design were compared to the results from the new 2012 seat belt use survey that was conducted in June of 2012. This was done primarily to see if the two survey designs and methodologies resulted in a significantly different seat belt use rate.

Please accept one hard copy of the *Statewide Survey of Belt Use in Minnesota: August 2012* plus a PDF of the report copied to a DVD. If you have any questions, please contact me by phone at (651) 201-7078 or by e-mail at hal.campbell@state.mn.us.

Level K

C12 - 0037

PORTUNITY EMPI

Consultant's Report

Result for Statewide Survey of Belt Use in Minnesota: August 2012

Safety Belt Use Rates and Unweighted Ns as a function of Stratum, Roadway Type, and Overall Statewide Safety Belt Use		
	Percent Use	Unweighted N
Stratum 1 (High, Intersections)	95.4	1,224
Stratum 2 (Hennepin, Intersections)	96.5	2,099
Stratum 3 (Medium, Intersections)	92.9	945
Stratum 4 (Low, Intersections)	90.7	1,181
Stratum 5 (High, Exit Ramps)	94.1	1,281
Stratum 6 (Hennepin, Exit Ramps)	95.3	1,531
Stratum 7 (Medium, Exit Ramps)	90.3	1,462
Stratum 8 (Low, Exit Ramps)	93.4	789
Minnesota, Intersections	92.5	5,449
Minnesota, Exit Ramps	93.7	5,063
STATE OF MINNESOTA	92.9 ± 1.5%*	10,512

* Relative error: 0.8%

Percent Shoulder Belt Use by Stratum (Passenger Cars)		
	Percent Use	Unweighted N
Stratum 1	98.3	539
Stratum 2	97.1	1,072
Stratum 3	95.4	404
Stratum 4	93.3	484
Stratum 5	95.3	670
Stratum 6	97.1	794
Stratum 7	91.3	659
Stratum 8	93.2	364
STATE OF MINNESOTA	94.9 ± 1.4%	4,986

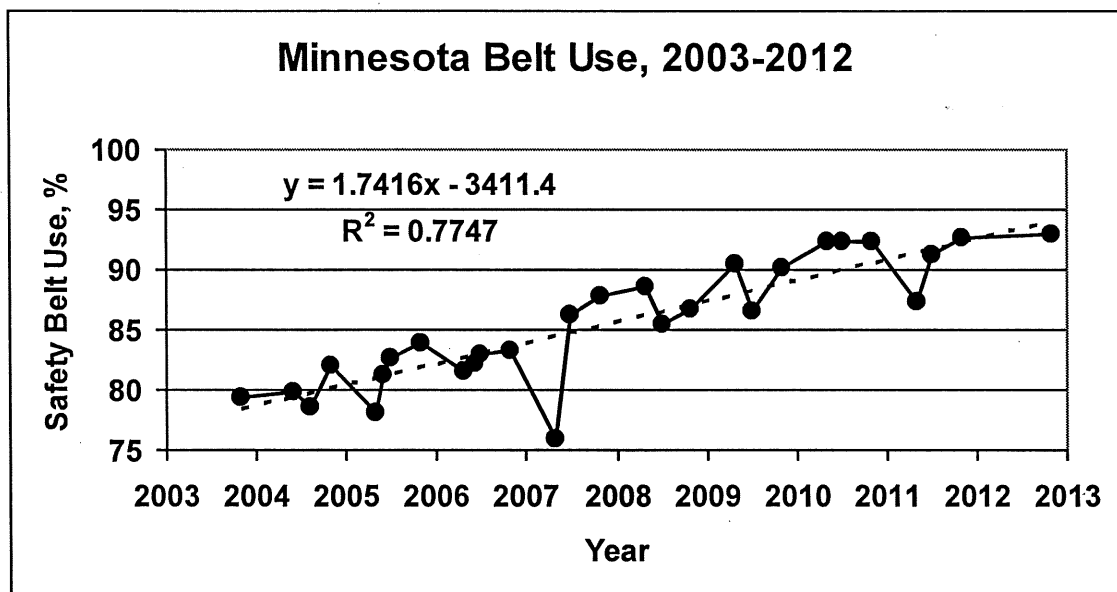
Percent Shoulder Belt Use by Stratum (Sport-Utility Vehicles)		
	Percent Use	Unweighted N
Stratum 1	88.8	306
Stratum 2	96.8	563
Stratum 3	96.9	247
Stratum 4	93.2	267
Stratum 5	94.1	306
Stratum 6	95.9	449
Stratum 7	93.5	324
Stratum 8	96.6	163
STATE OF MINNESOTA	94.5 ± 1.8%	2,625

Percent Shoulder Belt Use by Stratum (Vans/Minivans)		
	Percent Use	Unweighted N
Stratum 1	98.7	150
Stratum 2	95.4	243
Stratum 3	97.0	122
Stratum 4	95.1	143
Stratum 5	95.3	167
Stratum 6	93.0	156
Stratum 7	92.7	209
Stratum 8	96.5	113
STATE OF MINNESOTA	95.7 ± 1.4%	1,303

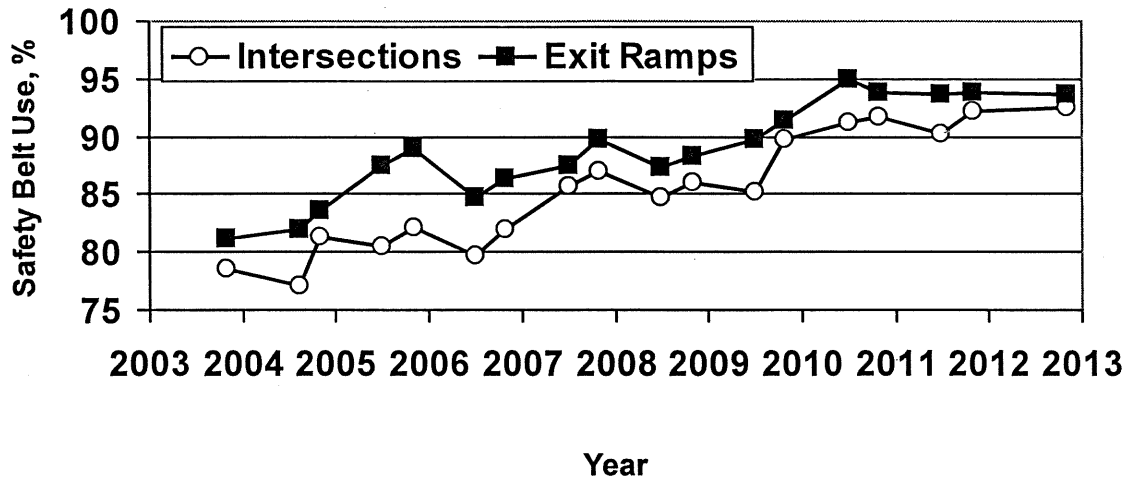
Percent Shoulder Belt Use by Stratum (Pickup Trucks)		
	Percent Use	Unweighted N
Stratum 1	95.2	229
Stratum 2	93.2	221
Stratum 3	82.2	172
Stratum 4	82.4	287
Stratum 5	87.1	138
Stratum 6	86.4	132
Stratum 7	82.2	270
Stratum 8	87.7	149
STATE OF MINNESOTA	85.1 ± 4.1%	1,598

Percent Shoulder Belt Use and Unweighted N by Vehicle Type and Subgroup										
	All Vehicles		Car		SUV		Van/Minivan		Pickup Truck	
	Percent Use	N	Percent Use	N	Percent Use	N	Percent Use	N	Percent Use	N
Overall	92.9	10,512	94.9	4,986	94.5	2,625	95.7	1,303	85.1	1,598
Site Type										
Intersection	92.5	5,449	95.0	2,499	94.3	1,383	96.3	658	84.7	909
Exit Ramp	93.7	5,063	94.7	2,487	95.1	1,242	94.3	645	86.1	689
Time of Day										
7 - 9 a.m.	94.2	1,691	95.7	842	91.3	416	95.3	215	87.8	218
9 - 11 a.m.	88.1	1,723	94.8	826	87.0	429	96.6	217	77.5	251
11 - 1 p.m.	90.2	2,332	91.6	1,079	97.4	547	90.5	317	83.9	389
1 - 3 p.m.	94.0	2,495	95.7	1,163	95.5	645	98.5	283	84.0	404
3 - 5 p.m.	91.5	1,917	95.9	900	93.1	502	90.0	244	79.7	271
5 - 7 p.m.	90.0	354	97.4	176	92.9	86	100	27	80.9	65
Day of Week										
Monday	87.9	750	91.8	283	94.5	174	98.2	101	72.0	192
Tuesday	89.9	1,568	96.4	707	93.4	384	95.1	207	80.2	270
Wednesday	85.7	982	84.5	459	88.4	226	92.6	130	80.2	167
Thursday	85.6	941	97.9	437	96.9	248	92.9	118	83.6	138
Friday	95.7	3,458	97.0	1,766	95.8	865	95.8	413	89.9	414
Saturday	94.6	1,967	93.7	962	97.4	520	97.7	240	90.8	245
Sunday	94.7	846	96.0	372	95.2	208	98.8	94	88.0	172
Weather										
Sunny	93.0	6,607	94.1	3,183	95.1	1,644	96.0	820	82.8	960
Cloudy	92.9	3,278	95.6	1,502	93.2	842	95.2	398	86.5	536
Rainy	72.7	627	73.0	301	70.5	139	77.5	85	67.0	102
Sex										
Male	90.1	5,777	92.4	2,527	95.5	1,270	93.8	679	81.1	1,301
Female	96.1	4,723	97.3	2,453	93.8	1,353	97.3	622	94.9	295
Age										
0 - 10	97.9	27	81.3	8	100	12	70.9	3	88.4	4
11 - 15	98.2	185	100	70	97.8	59	100	34	97.1	22
16 - 29	90.0	2,093	91.7	1,358	89.6	373	96.6	127	77.7	235
30 - 64	93.7	7,147	96.0	2,957	96.8	1,970	95.7	1,005	85.8	1,215
65 - Up	91.5	1,053	96.5	589	79.7	210	94.9	132	84.0	122
Position										
Driver	91.8	8,356	94.0	4,058	93.3	2,029	93.9	974	81.6	1,295
Passenger	94.2	2,156	95.1	928	95.1	596	96.6	329	88.7	303

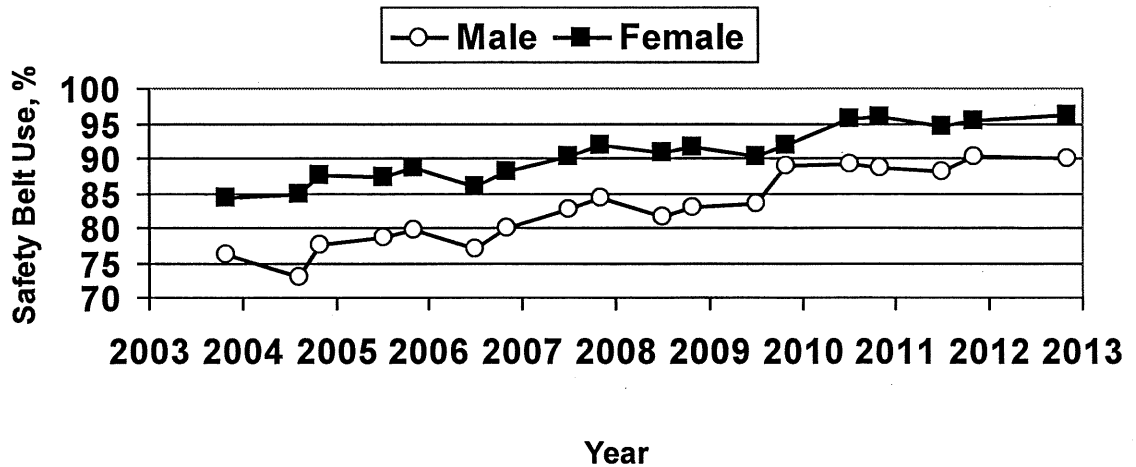
Percent Shoulder Belt Use and Unweighted N by Age and Sex (All Vehicle Types Combined)				
Age Group	Male		Female	
	Percent Use	Unweighted N	Percent Use	Unweighted N
0 - 10	97.3	21	100	6
11 - 15	98.8	83	97.3	102
16 - 29	86.2	1,055	94.4	1,035
30 - 64	90.8	4,047	97.1	3,097
65 - up	89.8	569	94.8	482



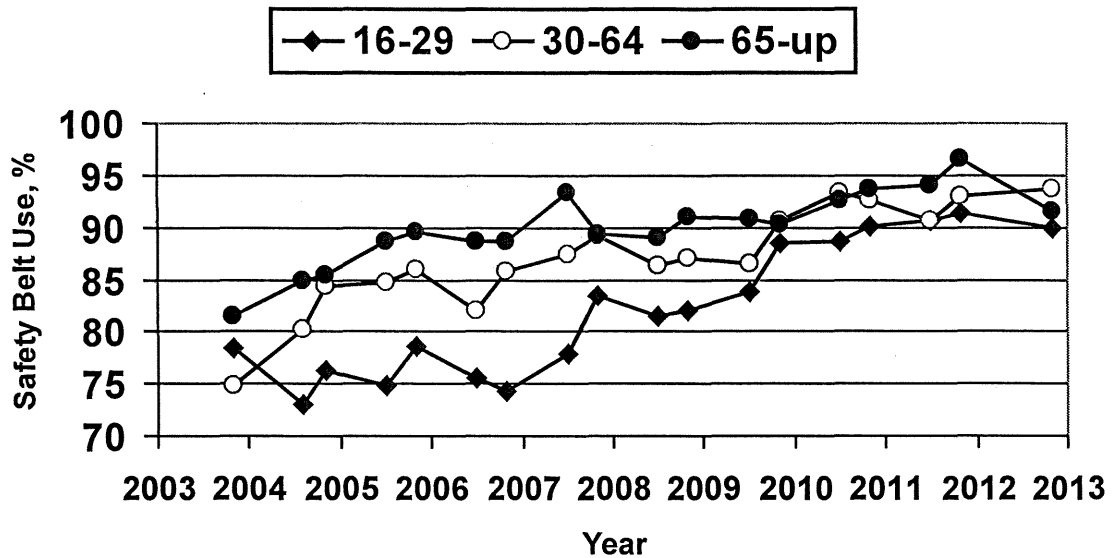
Minnesota Belt Use by Site Type, 2003-2012



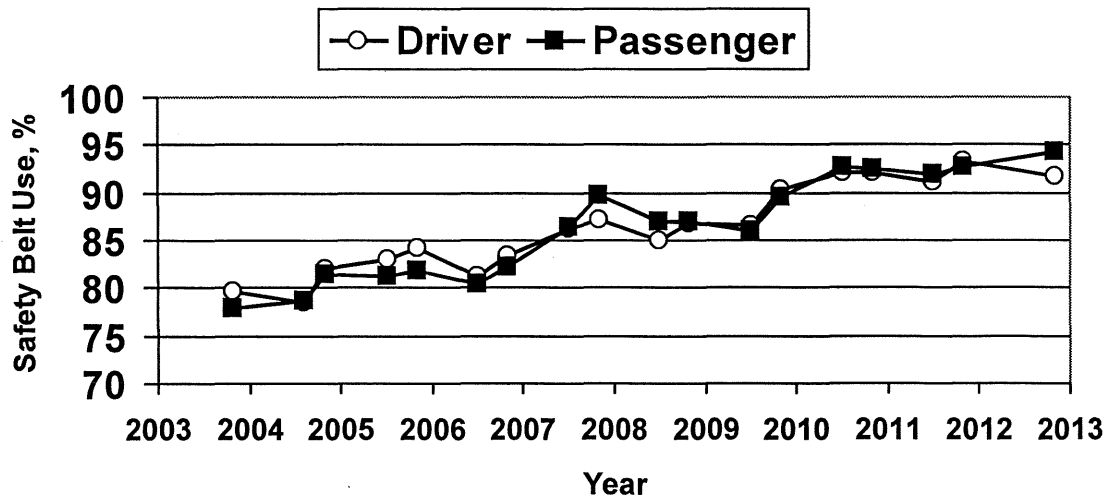
Minnesota Belt Use by Sex, 2003-2012



Minnesota Belt Use by Age, 2003-2012



Minnesota Belt Use by Seating Position, 2003-2012



Minnesota Belt Use by Vehicle Type, 2003-2012

