

# Racial/Ethnic and Immigrant Groups Participating in the Minnesota Family Investment Program and the Diversionary Work Program

*REIS # 16 December 2010*



Transition to Economic Stability Division  
Minnesota Department of Human Services  
October 2011

# Table of Contents

<b>TECHNICAL NOTES .....</b>	<b>2</b>
<b>CHAPTER ONE: MFIP AND DWP CASELOADS .....</b>	<b>3</b>
Chart 1-1. Distribution of MFIP and DWP Cases Active in December 2010.....	4
Chart 1-2. Distribution of MFIP and DWP Cases Active in December 2010 by Racial/Ethnic Groups and Subgroups .....	5
Chart 1-3. MFIP and DWP Active Cases by Race/Ethnicity, December 2005 to December 2010 .....	6
Chart 1-4. Black and Asian Subgroups: Active MFIP and DWP Cases, December 2005 to December 2010.....	7
<b>CHAPTER TWO: POVERTY AND DISPARITY .....</b>	<b>8</b>
Chart 2-1. Minnesota and United States Family Poverty Rates, 2005 - 2009 American Community Survey .....	9
Chart 2-2. Distributions of Minnesota Adults with Minor Children Compared to December 2010 MFIP and DWP Participants .....	10
Chart 2-3. Percent of All Minnesota Adults with Children Participating in December 2010 MFIP and DWP Cases .....	11
Chart 2-4. Disparity Index: Comparing Program Participation by Race/Ethnicity .....	12
<b>CHAPTER THREE: MFIP PARTICIPANT CHARACTERISTICS .....</b>	<b>13</b>
Chart 3-1. Age Distribution of MFIP-eligible Caregivers by Race/Ethnicity and Subgroup, December 2010 .....	14
Chart 3-2. Percent of MFIP-eligible Adults that are Female by Race/Ethnicity, December 2010.....	15
Chart 3-3. MFIP Participants with a High School Diploma Compared to All Minnesotans with Minor Children by Race/Ethnicity, December 2010.....	16
Chart 3-4. MFIP Participants Who Never Married Compared to All Minnesotans with Minor Children by Race/Ethnicity, December 2010 .....	17
<b>CHAPTER FOUR: CHARACTERISTICS OF HOUSEHOLDS RECEIVING MFIP .....</b>	<b>18</b>
Chart 4-1. Number of Children in MFIP Cases and in All Minnesota Households with Minor Children by Race/Ethnicity, December 2010 .....	19
Chart 4-2. Percent of MFIP Cases with Two Caregivers and Two Married Caregivers by Race/Ethnicity, December 2010 .....	20
Chart 4-3. Geographic Region of December 2010 MFIP Eligible-adult Cases by Race/Ethnicity .....	21
Chart 4-4. Adult Serious Mental Health Diagnosis and Adult Chemical Dependency Diagnosis During 2008 to 2010, Caregivers in MFIP Cases by Race/Ethnicity.....	22
Chart 4-5. MFIP Caregiver Involvement with Child Protection Services During 2008 to 2010, Percent of Cases by Race/Ethnicity .....	23
<b>CHAPTER 5: ECONOMIC CHARACTERISTICS OF MFIP CASES .....</b>	<b>24</b>
Chart 5-1. MFIP Time Limit: Average Counted Months and Percent of Cases with 48 or More Counted Months by Race/Ethnicity, December 2010 .....	25

Chart 5-2. Percent of MFIP Cases with at Least One Working Caregiver by Racial/Ethnic Group, December 2005 to 2010.....	26
Chart 5-3. Percent of MFIP Cases with at Least One Working Caregiver by Subgroup, December 2005 to 2010 .....	27
Chart 5-4. Average Reported Earned Income for December 2010 MFIP Cases by Racial/Ethnic Group .....	28
Chart 5-5. Percent of MFIP Cases with an Eligible Adult that are Extended beyond the 60-Month Lifetime Limit, December 2005 to December 2010 .....	29
Chart 5-6. MFIP Extension Reason by Racial/Ethnic Group, December 2010 .....	30
Chart 5-7. Percent of MFIP Cases Eligible for Family Stabilization Services by Race/Ethnicity, December 2010 .....	31
Chart 5-8. Percent of MFIP Cases with Employment Services Sanctions by Racial/Ethnic Group, December 2010 .....	32
Chart 5-9. Percentage of MFIP Families Eligible for the Child Care Assistance Program by Race/Ethnicity, December 2010 .....	33

**APPENDIX: COMPLETE DATA TABLES.....34**

Table 1. Demographic Characteristics of Eligible Adults on December 2010 MFIP Paid Cases by Racial/Ethnic Groups and Subgroups .....	34
Table 2. Demographic Characteristics of Eligible Adults on December 2010 DWP Paid Cases by Racial/Ethnic Groups and Subgroups .....	36
Table 3. Family Composition, Residence, and Challenges of MFIP Paid Cases with Eligible Adults in December 2010 for Racial/Ethnic Groups and Subgroups .....	38
Table 4. Family Composition, Residence, and Challenges of DWP Paid Cases with Eligible Adults in December 2010 by Racial/Ethnic Groups and Subgroups .....	41
Table 5. Economic Characteristics of MFIP Paid Cases with Eligible Adults in December 2010 by Racial/Ethnic Groups and Subgroups .....	44
Table 6. Economic Characteristics of DWP Paid Cases with Eligible Adults in December 2010 by Racial/Ethnic Groups and Subgroups .....	48
Table 7. Selected Characteristics of All Minnesotans with Minor Children, American Community Survey 2007 .....	50

*Please direct questions or comments to:*

Dana DeMaster, Senior Research Analysis Specialist  
 Transition to Economic Stability Division  
 dana.demaster@state.mn.us

## Abbreviations

ACS	American Community Survey
CCAP	Child Care Assistance Program
CSED	Child Support Enforcement Division
DEED	Department of Employment and Economic Development
DHS	Department of Human Services
DWP	Diversionary Work Program
ES	Employment Services
FA	Family Assessment
FI	Family Investigation
FSS	Family Stabilization Services
MAXIS	Not an acronym, DHS' administrative database for cash, food, and health care eligibility
MEC <sup>2</sup>	Minnesota Electronic Child Care information system
MFIP	Minnesota Family Investment Program
MMIS	Medicaid Management Information System
PAID	Program Assessment and Integrity Division
REIS	Racial/Ethnic and Immigrant Studies reports series
SAMHSA	Substance Abuse and Mental Health Services Administration
SSI	Supplemental Security Income
SSIS	Social Services Information System
UI	Unemployment Insurance

## Technical Notes

### **Racial/Ethnic and Immigrant Group Definitions.**

Throughout the report, the race/ethnicity of the case applicant was used to characterize the entire case with these categories: (1) Hispanics of all races; (2) non-Hispanic American Indians; (3) non-Hispanic Asians and Pacific Islanders; (4) non-Hispanic blacks, (5) non-Hispanic whites, and (6) non-Hispanic multiple races. These categories are consistent with reporting by the 2000 U.S. Census. The Asian and black groups were further broken down into subgroups based upon citizenship, immigration status, language, and reported nationality. African Americans and Asian Americans were persons who chose black or Asian as race and had no immigration data known to the Minnesota Department of Human Services (DHS). Immigrant groups were identified by reported nationality or language and reported as Hmong or Other Asian Immigrants and Somali and Other African Immigrants. Persons reporting multiple races or missing race data were included in the totals in each table and chart, but excluded from subgroup analyses.

To protect the privacy of the small number of people in black and Asian subgroups participating in DWP, Asian subgroups are no longer reported and black subgroups are collapsed to report only African Americans and all African immigrants as a group. Chapters 1 and 2 include caseload information about subgroups on DWP, but subsequent chapters only report on MFIP participants.

**Data Sources.** Information in this report parallels the DHS report *Minnesota Family Investment Program and the Diversionary Work Program: Characteristics of December 2010 Cases and Eligible Adults* which analyzes the same data from the perspectives of programs and counties. Data used in both reports were collected through the DHS administrative databases MAXIS, Social Services Information System (SSIS), Minnesota Electronic Child Care information system (MEC<sup>2</sup>) and Medicaid Management Information System (MMIS), as well as from the Child Support Enforcement Division (CSED) and the Department of Employment and Economic Development (DEED). For program policy details and data definitions, please refer to this parallel report, available at <http://www.dhs.state.mn.us> under Economic Supports, MFIP, Reports.

All data pertaining to “all Minnesotans” or “adult Minnesotans with minor children” are from a 2007 American Community Survey (ACS) IPUMS extract except for poverty rates, which are from the 2005 – 2009 ACS 5-Year Estimates.

Chemical dependency and mental health data for all Minnesotan adults is from U.S. Department of Health and Human Services, Substance Abuse and Mental Health Services Administration (SAMHSA), 2005-2006 National Surveys on Drug Use and Health. These data are available at [www.oas.samhsa.gov](http://www.oas.samhsa.gov).

**Data for Report Charts.** Counts, percentages, and means displayed in the report’s charts are taken from tables in the appendix.

## Chapter One: MFIP and DWP Caseloads

The Diversionary Work Program (DWP) is designed to meet specific crisis situations and help families move immediately to employment rather than go on welfare. Families may receive DWP for up to four months. If families do not resolve their financial crisis while participating in DWP, they may apply for the Minnesota Family Investment Program (MFIP). MFIP is a longer-term program, lasting a maximum of 60 months in most circumstances, which provides economic support to poor families and helps them obtain employment with a goal of self-sufficiency. Due to its short-term nature, DWP is a much smaller program than MFIP. In December 2010, 3,551 families were participating in DWP and 37,290 families were participating in MFIP, including child-only cases that have no eligible caregivers. This report examines, by racial/ethnic group and Asian and black subgroups, all DWP-participating families (3,551 families) and MFIP families with an eligible adult (25,881 families).

MFIP and DWP caseloads had fallen steadily since 2002, but have increased each year since December 2007. Since December 2009, the overall caseload increased by 2 percent. All of the racial/ethnic groups and immigrant subgroups except for Hmong and African American increased in the last year. Hmong cases fell by 2 percent and there was no change in the number of African American cases. Asian cases saw the largest increase (12 percent) which was largely due to increases in the Other Asian Immigrants (37 percent increase).

The two largest immigrant groups participating in MFIP and DWP are the Hmong and Somali, although this is changing. A growing number of Burmese and Iraqis are being settled in Minnesota. After receiving about 5,000 refugees each year in 2005 and 2006, Minnesota received 2,666 refugees in 2007, 1,321 in federal fiscal year (FFY) 2008, 993 refugees in FFY 2009, and 2,107 in FFY 2010.<sup>1</sup> The large drop in arrivals was partially caused by the temporary suspension of the Priority Three (P-3) Family Reunification visa program by the U.S. State Department in October 2008 for potential African refugees.

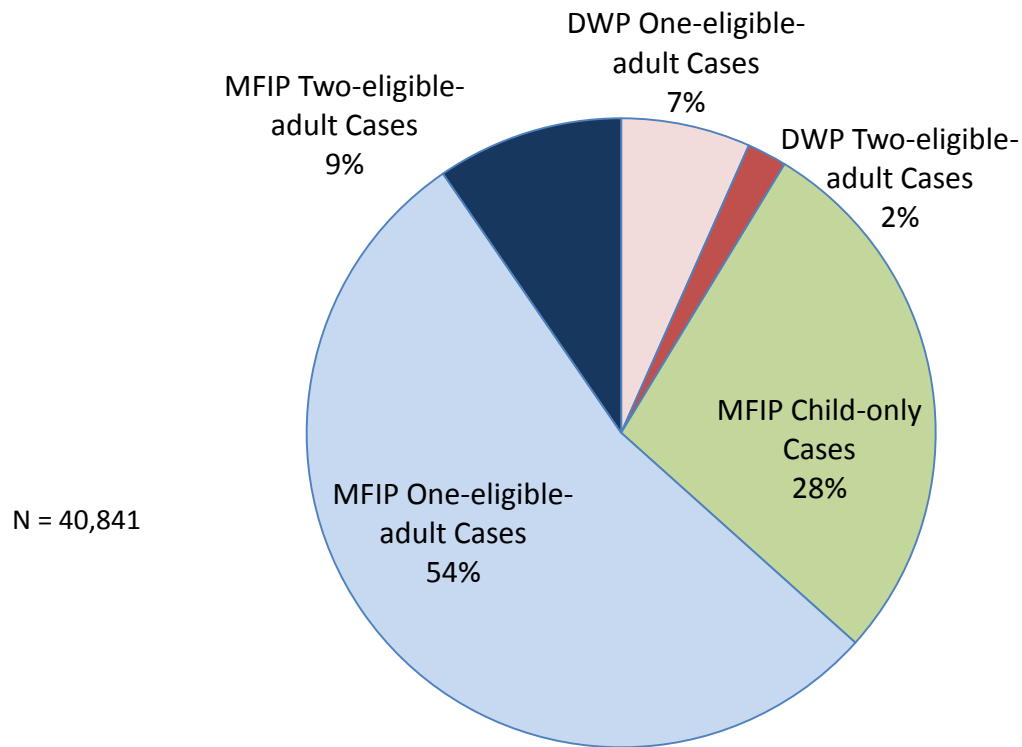
The Mille Lacs American Indian Tribal Council administers MFIP-eligible cases in its jurisdiction, including tribal members who reside in Hennepin, Ramsey, and Anoka Counties. In December 2010, Tribal TANF had 260 cases with 376 eligible adults. These cases are not included in this report.

MFIP and DWP data in this section are from Table 1 of the *Minnesota Family Investment Program and the Diversionary Work Program: Characteristics of December 2010 Cases and Eligible Adults* report and Tables 3 and 4 of this report.

---

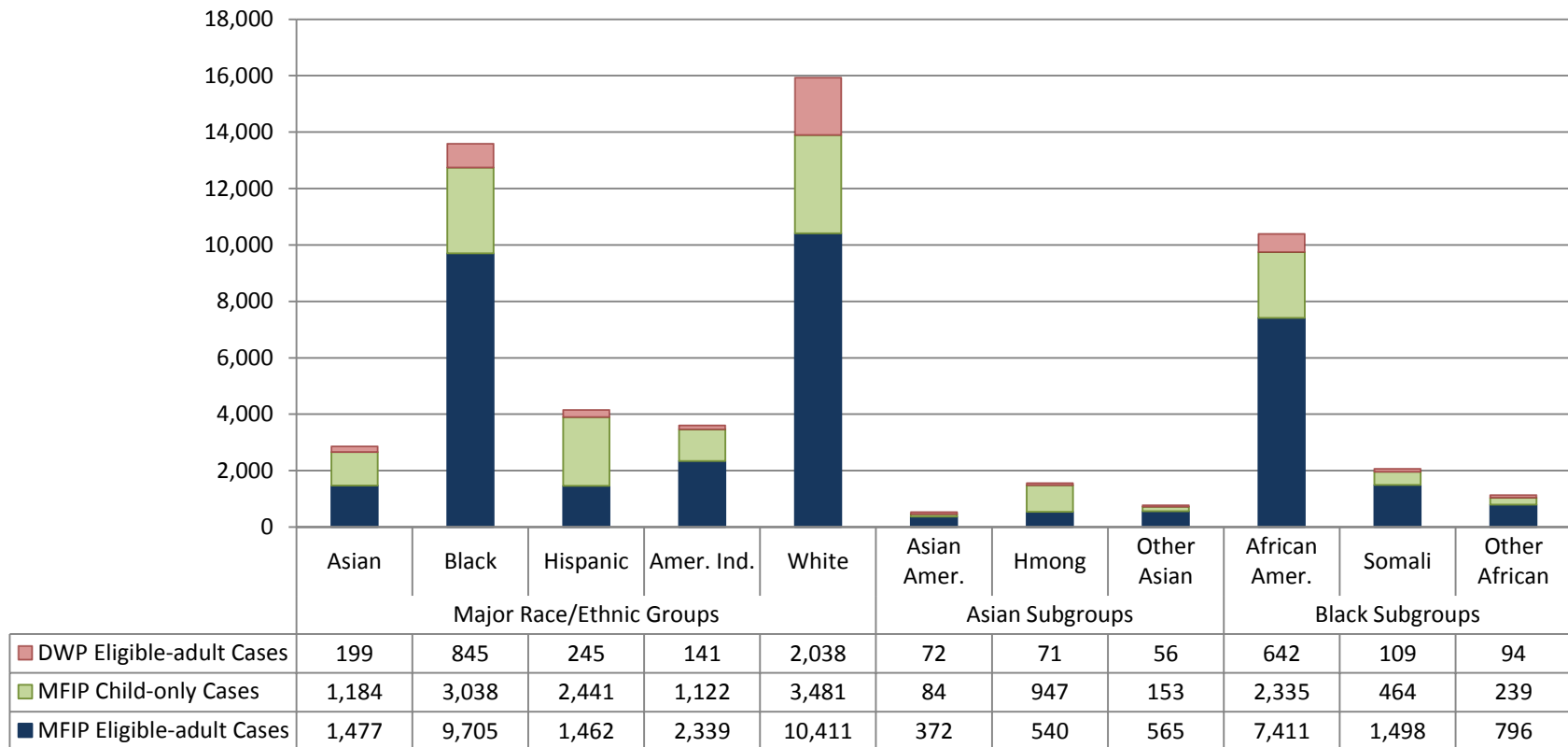
<sup>1</sup> Refugee information was provided by the DHS Resettlement Programs Office.

**Chart 1-1. Distribution of MFIP and DWP Cases Active in December 2010**



Seventy-two percent of all combined MFIP and DWP cases had either one or two adult or teenage caregivers eligible on the case. About 28 percent of MFIP cases were child-only cases or households where the caregivers were not personally eligible for MFIP. The most common reasons for a child-only case were that the adult caregivers were relative caregivers (39 percent of MFIP child-only cases) or parents receiving SSI for a disability (39 percent of MFIP child-only cases).

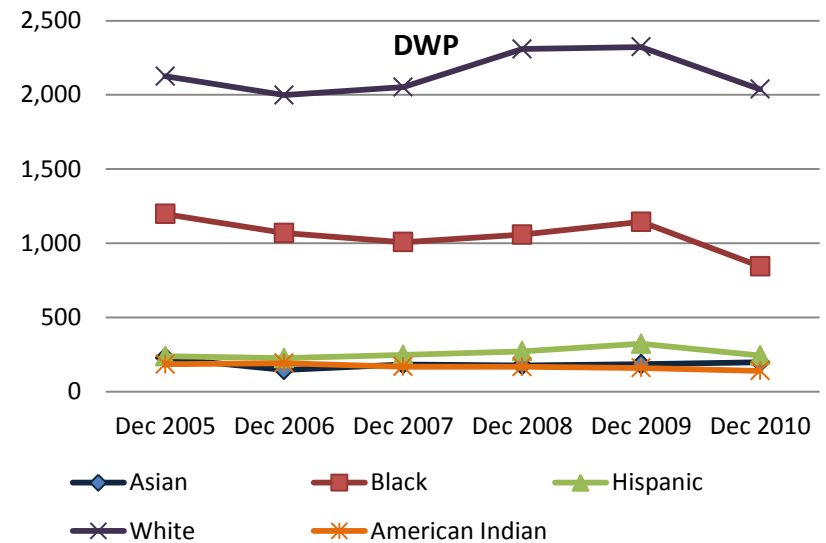
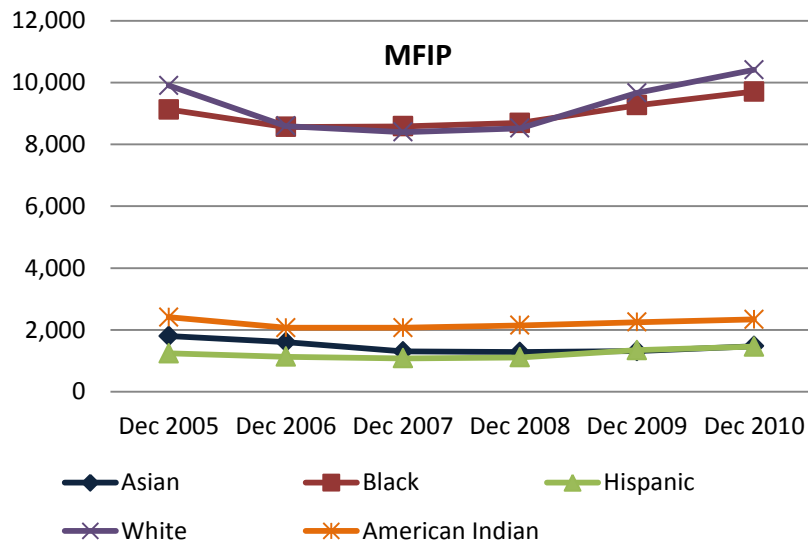
**Chart 1-2. Distribution of MFIP and DWP Cases Active in December 2010 by Racial/Ethnic Groups and Subgroups**



MFIP eligible-adult cases were the most common type within every racial/ethnic group except for Hmong and Hispanic cases. Sixty-one percent of Hmong cases and 59 percent of Hispanic cases were child-only. Hispanic caregivers were most often ineligible due to their citizenship status and Hmong caregivers were most often ineligible due to receipt of SSI for a disability. The rest of this report only includes cases with at least one eligible adult.



**Chart 1-3. MFIP and DWP Active Cases by Race/Ethnicity, December 2005 to December 2010**

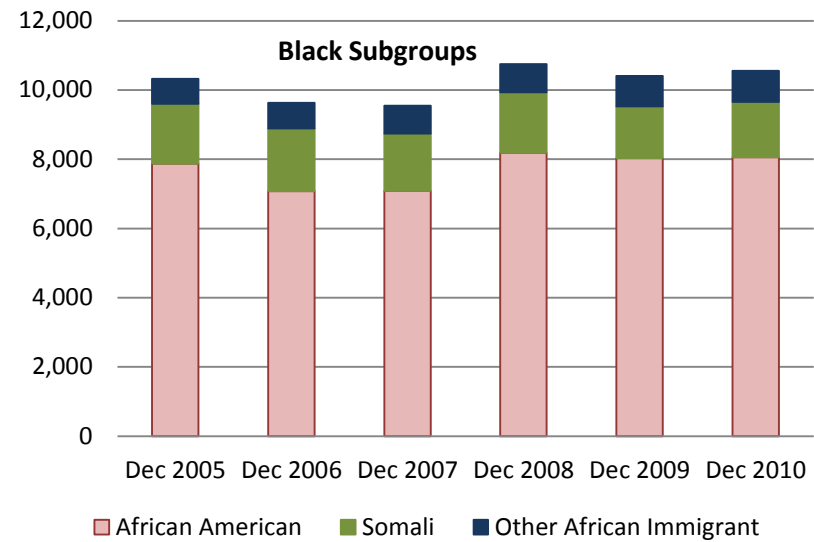
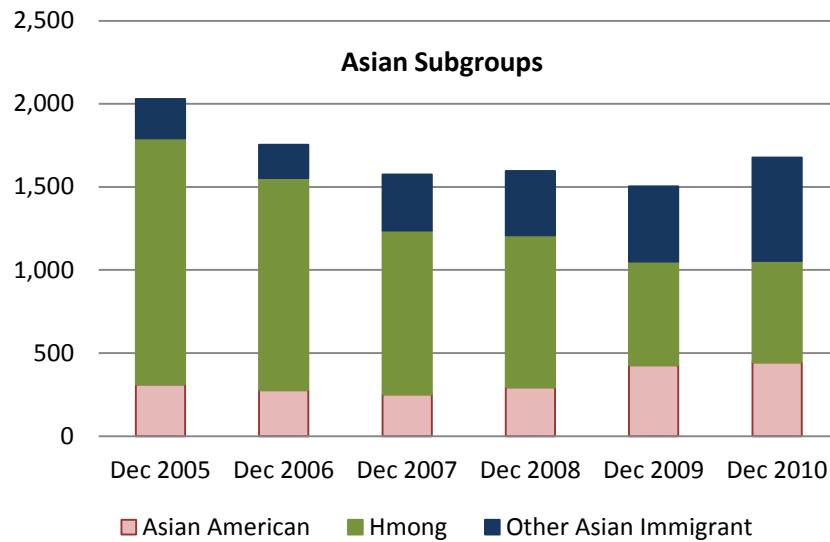


Between December 2006 and December 2008 MFIP participation by blacks and whites has been nearly equal despite very different population numbers in the larger Minnesota population (see Chart 2-2). Since 2009 white cases have increased faster than cases headed by black people.

Whites have made up more than half of DWP participants since the program began in July 2004.

Note: The y-axes of these charts have different scales.

**Chart 1-4. Black and Asian Subgroups: Active MFIP and DWP Cases, December 2005 to December 2010**



While Hmong immigrant families remain the largest Asian subgroup, there has been a large increase in Other Asian Immigrant families in the past three years. The largest ethnic group in the Other Asian Immigrant group is the Burmese Karen. Minnesota resettled 582 Karen people in federal fiscal year (FFY) 2008, 365 people in 2009, and 797 people in FFY 2010. Not all of these people were eligible for DWP or MFIP. While the absolute number remains small, combined MFIP and DWP cases headed by Asian Americans increased by 62 percent since December 2008.

After increasing from December 2007 to December 2008, all black groups have seen either slow or no caseload growth.

Note: The y-axes on these charts have different scales.

## Chapter Two: Poverty and Disparity

“Racial disparity” definitions vary. The World Health Organization defines disparity as, “differences in health which are not only unnecessary and avoidable but, in addition, are considered unfair and unjust,” while the Institutes of Medicine define them as, “racial or ethnic differences in the quality of health-care that are not due to access-related factors or clinical needs, preferences, and appropriateness of intervention.” Other groups define disparities as just “differences” with no value judgment about the difference.<sup>2</sup>

“Disproportionality,” according to the Anne E. Casey Foundation’s Race Matters Consortium, occurs where “a particular racial/ethnic group is represented in a [program] at a different percentage than other racial/ethnic groups...Disproportionality looks at relative ratios.” Finally, “overrepresentation” looks at representation in a program compared to the general population, without regard to other groups.<sup>3</sup>

Regardless of how it is measured, or whether racial/ethnic differences are appraised as disparities, disproportionalities, or overrepresentation, non-white Minnesotans are more likely to be

---

<sup>2</sup> Hebert, Paul L., Sisk, Jane E., & Howell, Elizabeth A. (2008) “When Does Difference Become a Disparity? Conceptualizing Racial and Ethnic Disparities in Health”. *Health Affairs*. 27(2), 374-382.

<sup>3</sup> Race Matters Consortium. (2002) *Defining Disproportionality: A Concept Paper*. Retrieved July 21, 2009, from <http://www.racemattersconsortium.org/dispro.htm>.

poor and more likely to participate in MFIP or DWP than white Minnesotans.

The 2009 [United States Department of Health and Human Services](http://aspe.hhs.gov/poverty/09poverty.shtml)<sup>4</sup> poverty guideline for a family of three people, which is the average size of a family receiving MFIP, is \$18,310 and for a family of four people it is \$22,050.

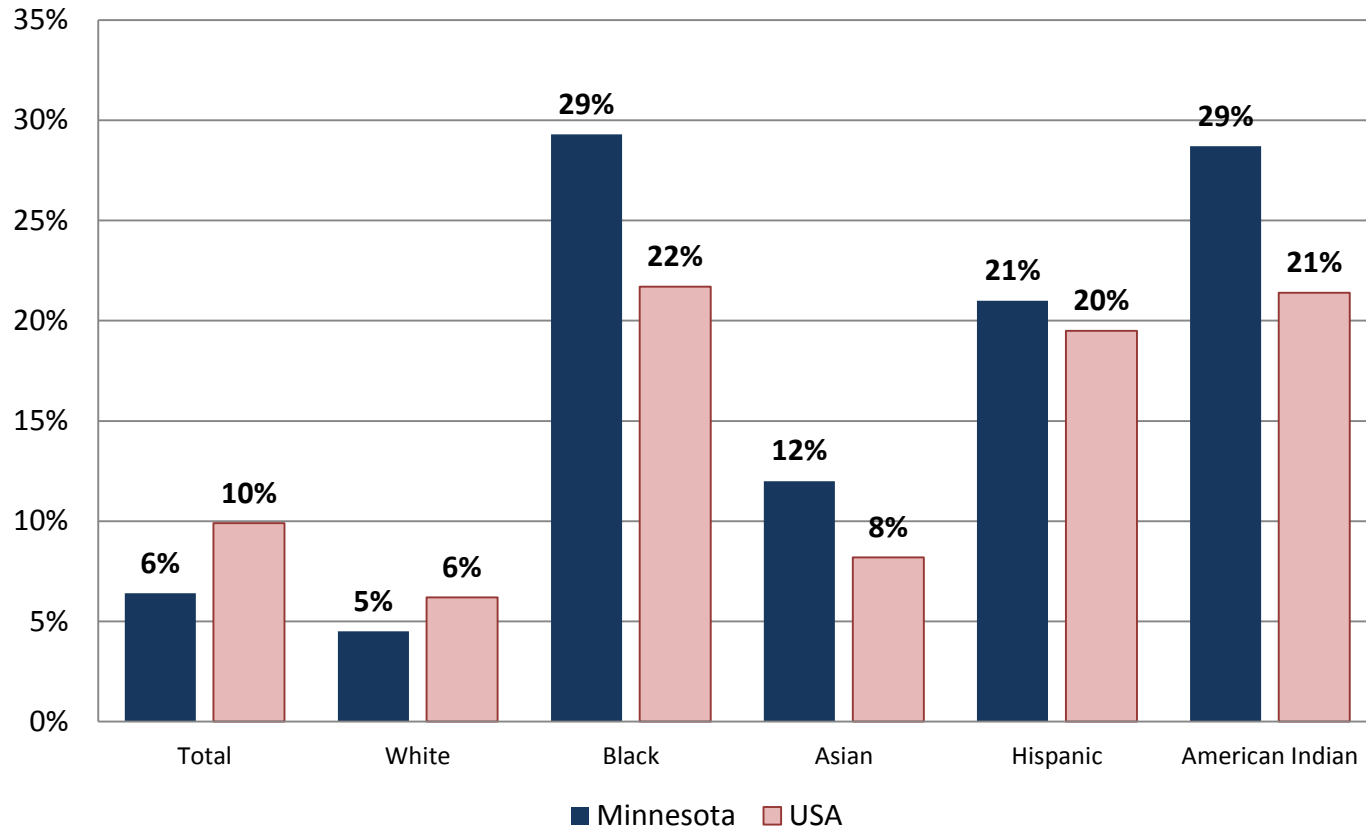
According to ACS 2007 data, 85 percent of Minnesotan adults with minor children are white, 5 percent are black, 4 percent are Hispanic, 4 percent are Asian, and 1 percent are American Indian. These proportions are very different than the proportion of each race or ethnic group that live in poverty or participate in either DWP or MFIP. This section examines poverty in Minnesota and differences in the racial/ethnic make-up of MFIP and DWP compared to the larger Minnesota adult population.

MFIP and DWP data in this section are from Tables 1 and 2 of this report.

---

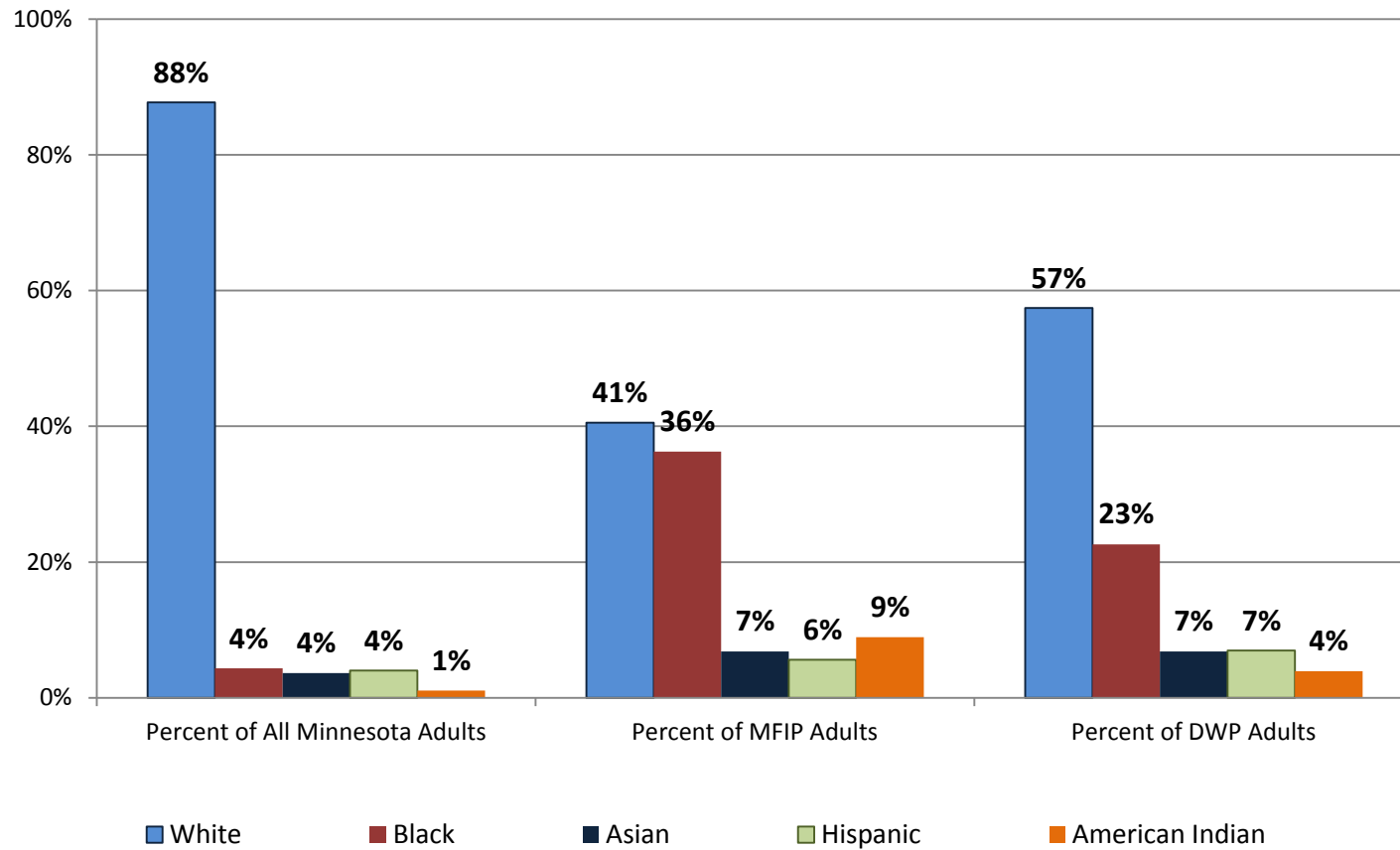
<sup>4</sup> <http://aspe.hhs.gov/poverty/09poverty.shtml>

**Chart 2-1. Minnesota and United States Family Poverty Rates, 2005 - 2009 American Community Survey**



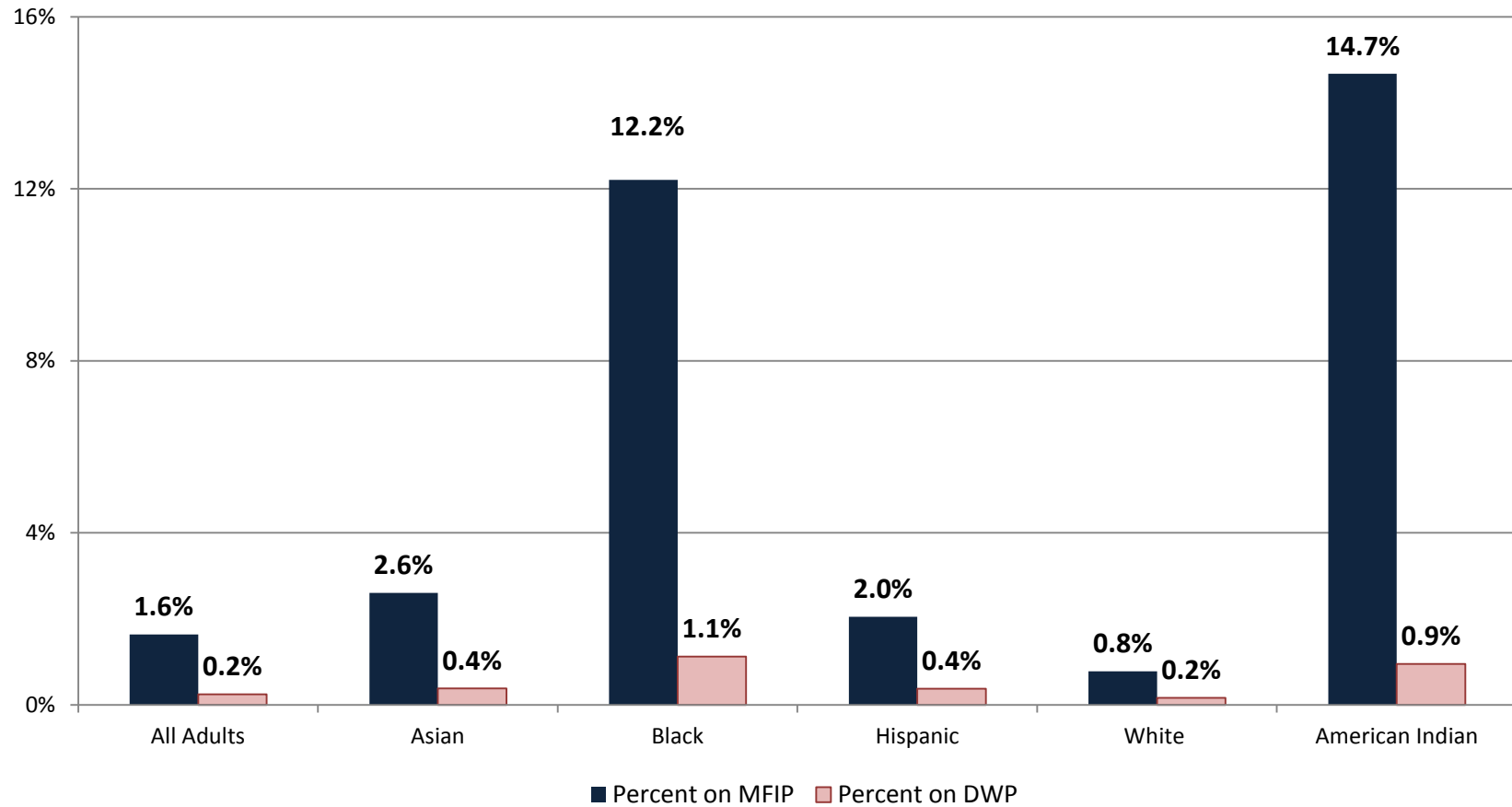
While Minnesota’s overall and white poverty rates for families are lower than that of the United States, a larger percentage of all other racial and ethnic groups live in poverty in Minnesota than nationwide.

**Chart 2-2. Distributions of Minnesota Adults with Minor Children Compared to December 2010 MFIP and DWP Participants**



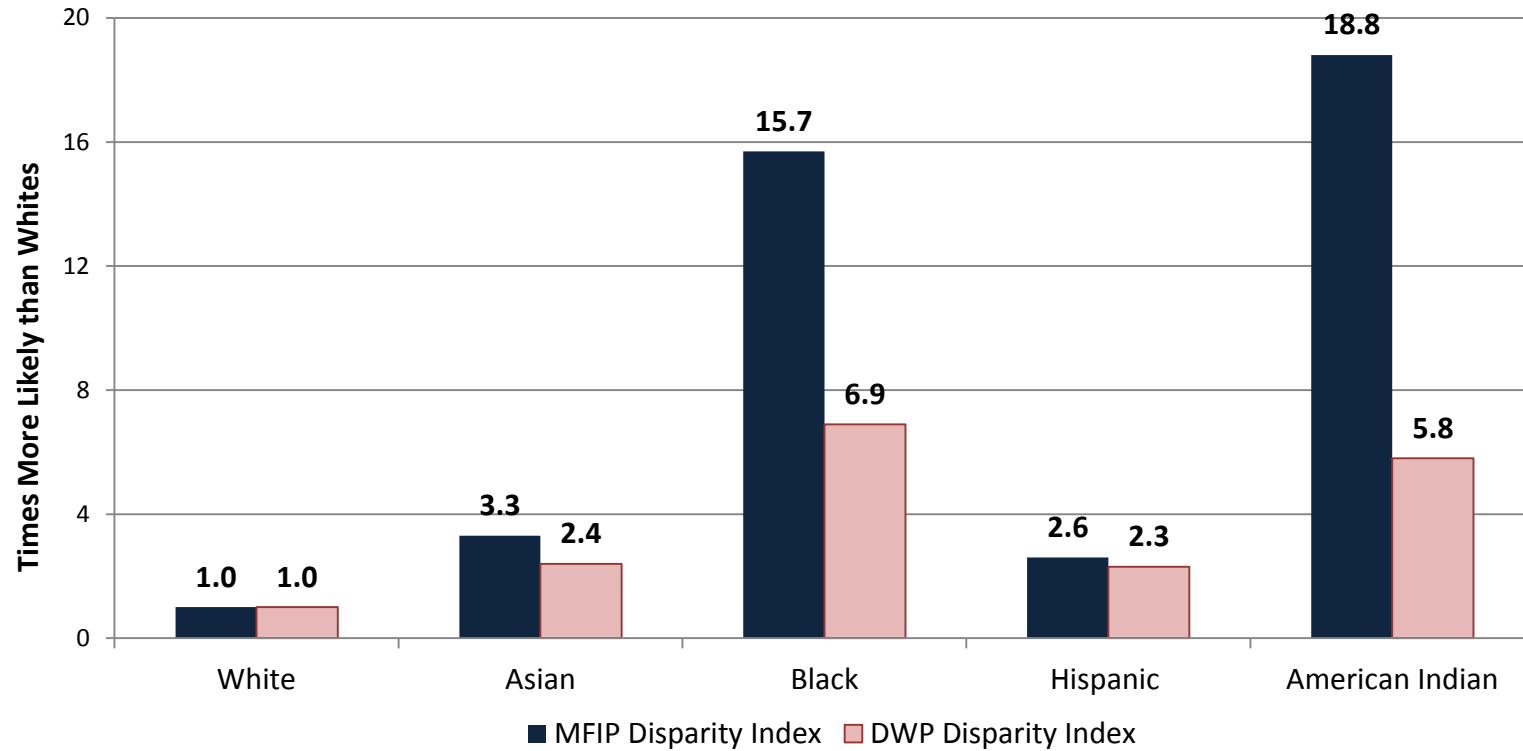
People of color are overrepresented in both MFIP and DWP compared to the entire population of Minnesotan adults with minor children. Total population of Minnesotans is from the 2007 ACS.

**Chart 2-3. Percent of All Minnesota Adults with Children Participating in December 2010 MFIP and DWP Cases**



Dividing MFIP/DWP eligible caregivers by the 2005 – 2009 ACS estimates of the total number of Minnesotan adults by race/ethnicity, shows that a much larger proportion of black and American Indian adults participate in cash assistance than other races/ethnicities.

**Chart 2-4. Disparity Index: Comparing Program Participation by Race/Ethnicity**



The racial/ethnic disparity index is the ratio of the percentage of people from a racial/ethnic group who are participating in the program to the percentage of whites who are participating in that program. For example, for Minnesota adults with children, the disparity index for blacks is 12.2 percent divided by 0.8 percent (figures from Chart 2-3), or 15.7, telling us that a black Minnesota adult with children in Minnesota is 16 times more likely than a white Minnesota adult with children to participate in MFIP. An American Indian adult is 19 more times likely. This measure is a reflection of poverty and need for services in different communities.

## Chapter Three: MFIP Participant Characteristics

Many of the adult and teenage caregivers eligible for MFIP have characteristics that can make obtaining and retaining a job difficult. As the charts in this chapter show, MFIP-eligible adults tend to be younger than other Minnesotans with minor children, less educated, and more likely to have never married. Younger people tend to have less job experience than older people. The less educated tend to have fewer marketable skills than people with more education. Fathers that were married or are married are more likely to provide on-going care and financial support for children<sup>5</sup> and married fathers tend to earn more than non-married fathers.<sup>6</sup>

The charts in this chapter show eligible-adult MFIP participants by race/ethnicity with subgroup. Charts 3-3 and 3-4 show ACS data for all Minnesotans with children by the five major race/ethnicities.

ACS data for all Minnesotan families with minor children are only presented for the five major/racial ethnic groups because the ACS does not break down Asian and black subgroups in the same manner as reported here.

MFIP and DWP data in this section are from Tables 3 and 4 of this report.

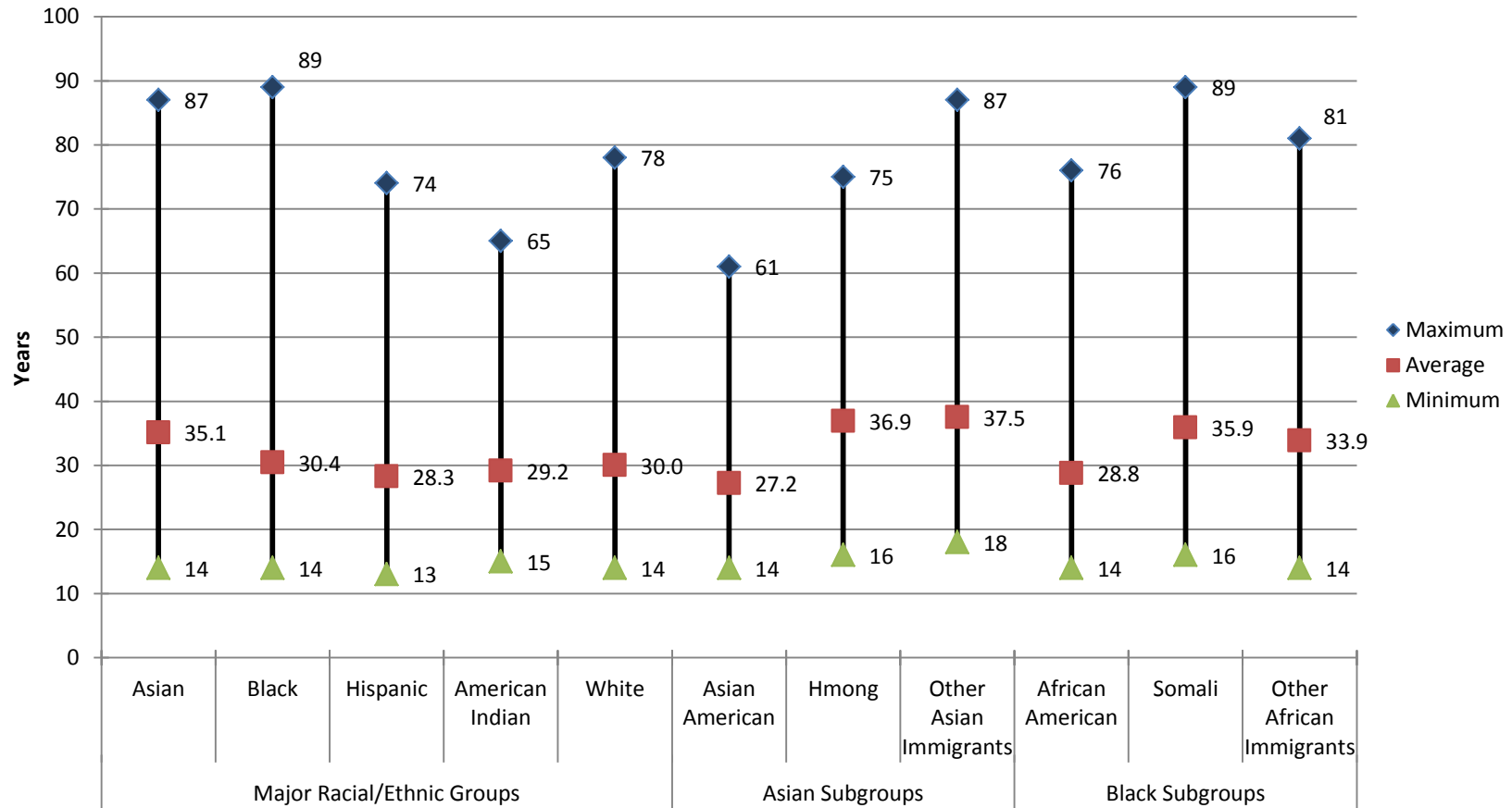
---

<sup>5</sup> Fragile Families Research Brief. (2007) *Parents' Relationship Status Five Years After a Non-Marital Birth*. Retrieved August 18, 2009, from <http://www.fragilefamilies.princeton.edu/briefs/ResearchBrief39.pdf>.

<sup>6</sup> Garfinkel, Irwin, McLanahan, Sarah, Meadows, Sarah, and Mincy, Ronald. (2009) "Unmarried Fathers' Earnings Trajectories: Does Partnership Status Matter?" Working Paper WP09-02-FF. Retrieved July 24, 2009, from [www.crcw.princeton.edu/publications/publications.asp](http://www.crcw.princeton.edu/publications/publications.asp)

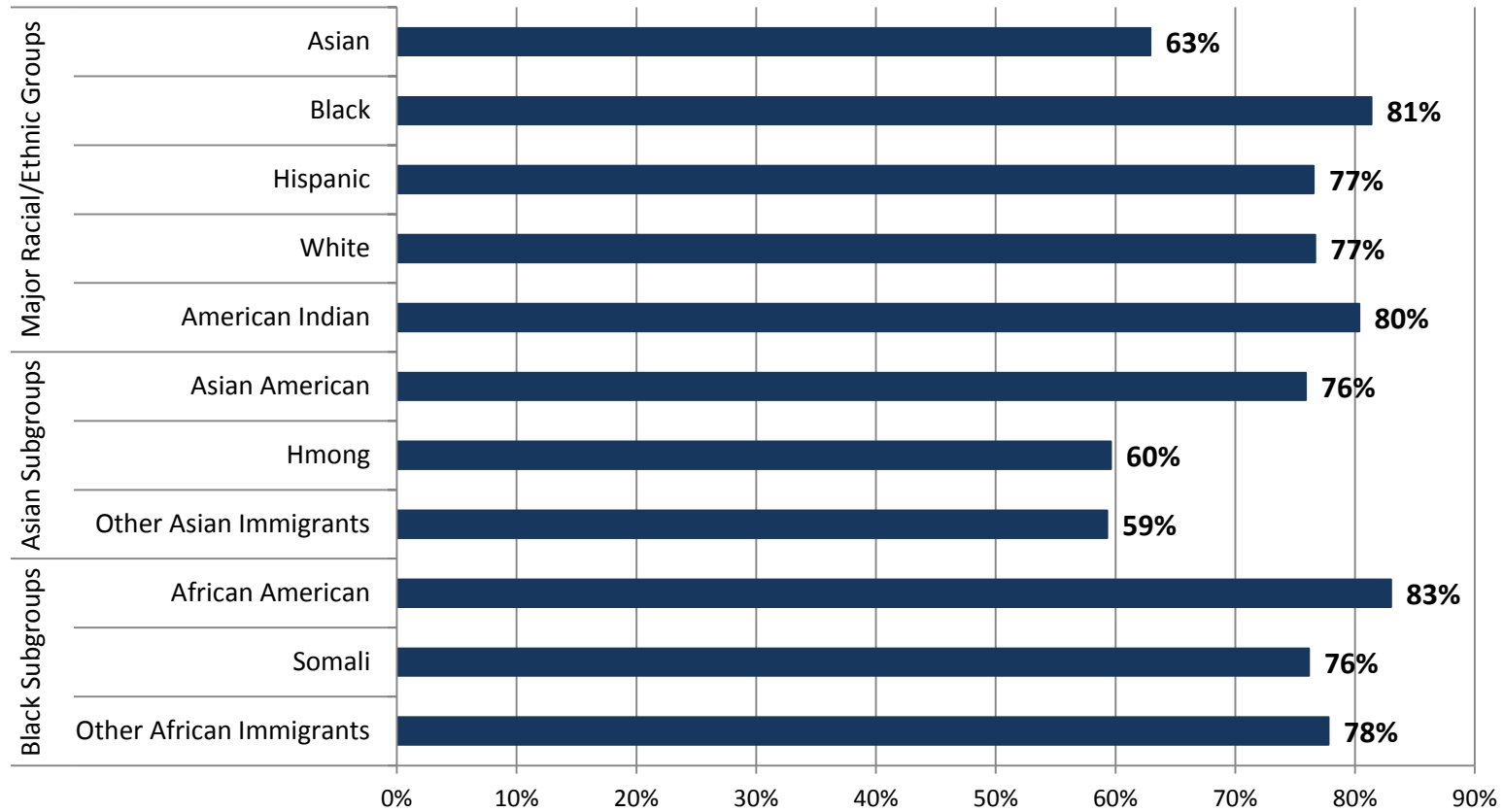


**Chart 3-1. Age Distribution of MFIP-eligible Caregivers by Race/Ethnicity and Subgroup, December 2010**



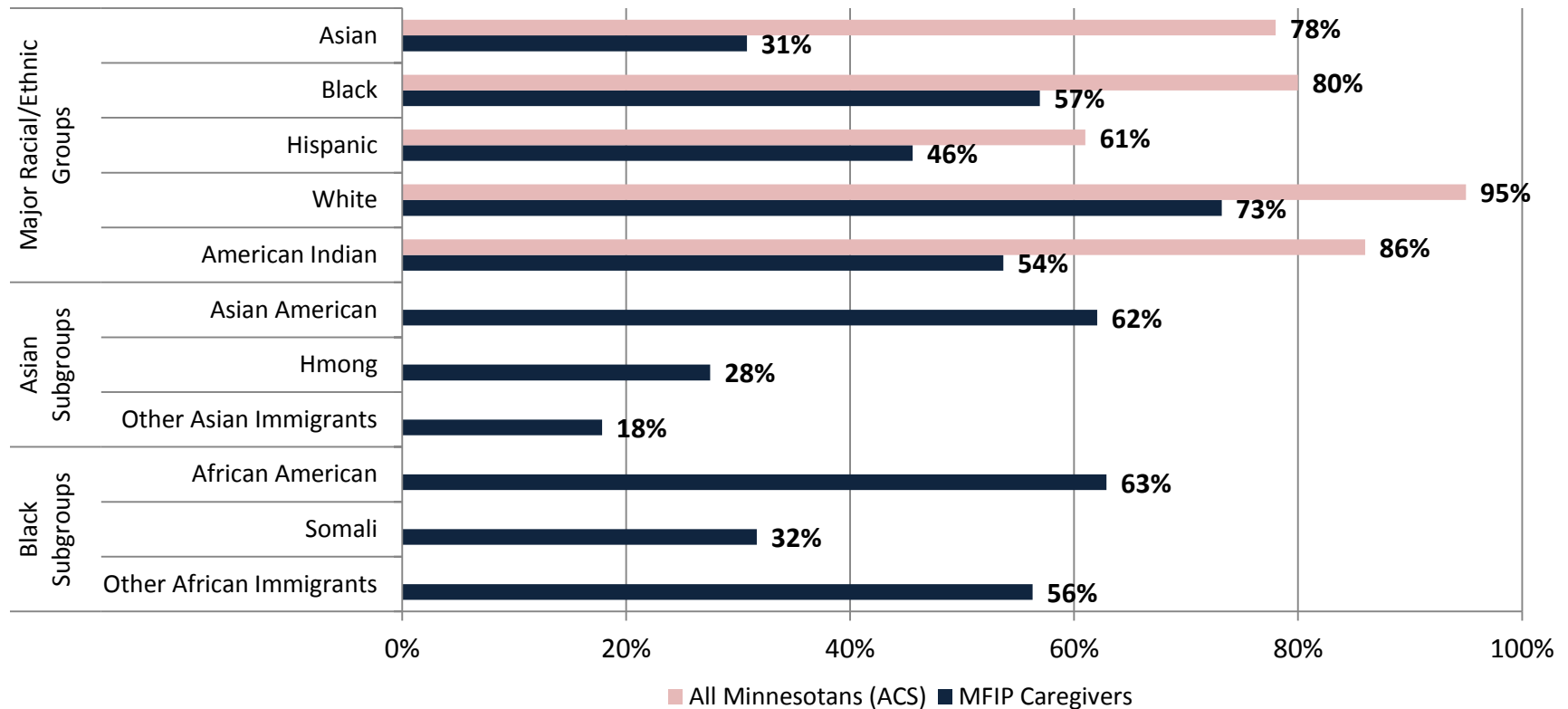
The average age of all Minnesotan adults that live with a child under age 18 was 39 years. MFIP-eligible adults that were immigrants tend to be older on average than native-born MFIP and DWP-eligible adults. The average age of all MFIP-eligible adults was 30 years. Immigrants tend to be older than non-immigrants; Somali adults averaged 36 years, Other Asian Immigrant adults averaged 38 years, and Hmong adults averaged 37 years.

**Chart 3-2. Percent of MFIP-eligible Adults that are Female by Race/Ethnicity, December 2010**



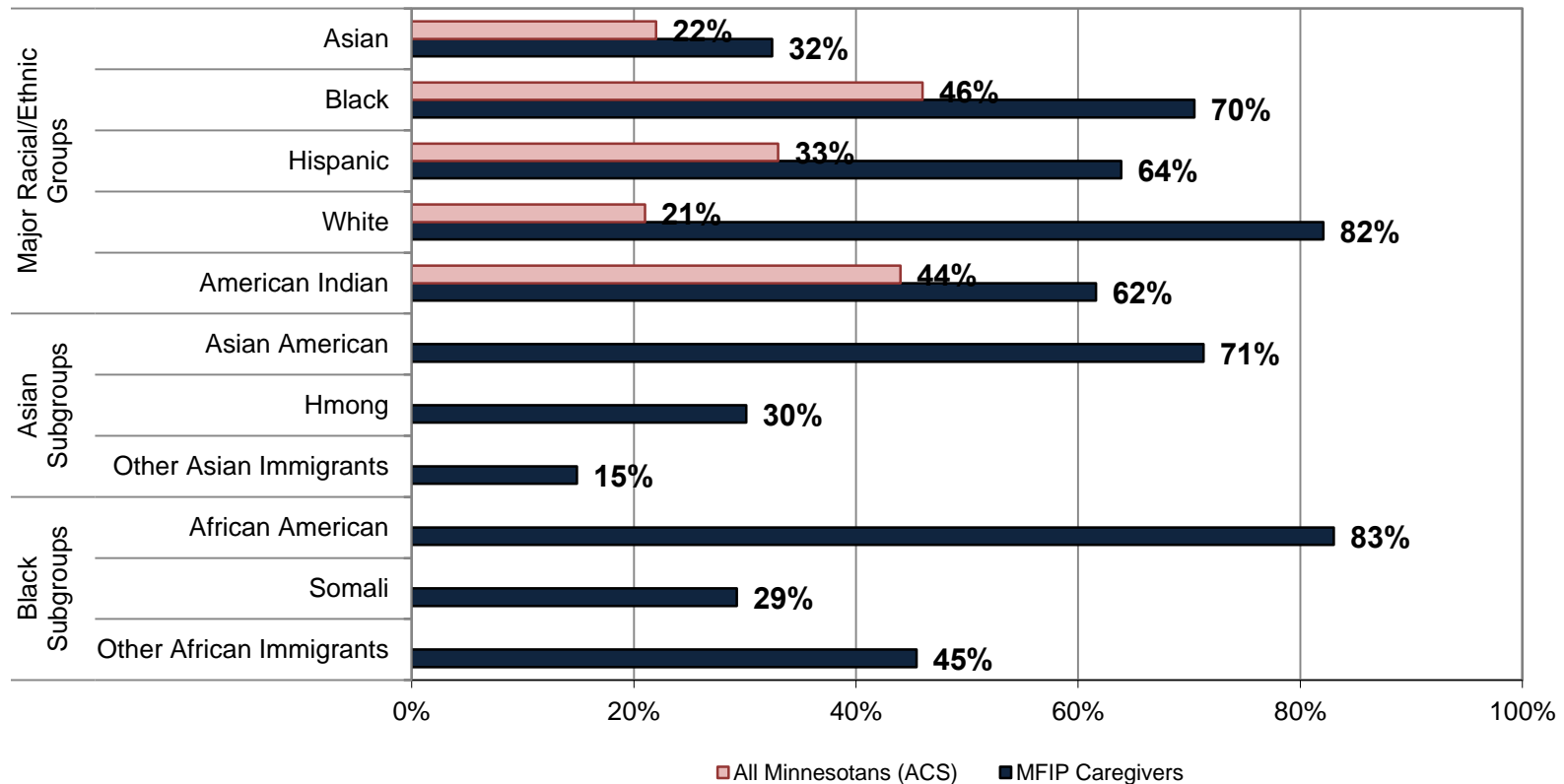
Females dominated all racial/ethnic groups on MFIP, although many Hmong and Other Asian cases had two caregivers (one male and one female).

**Chart 3-3. MFIP Participants with a High School Diploma Compared to All Minnesotans with Minor Children by Race/Ethnicity, December 2010**



Ninety-two percent of all Minnesotan adults with minor children have at least a high school diploma or GED, although, as the lighter bars indicate, this varies by race. MFIP participants had less education than all Minnesotans with 61 percent with at least a high school diploma or GED compared to 92 percent of all Minnesotan adults. Immigrant groups had less education than U.S.-born MFIP participants and all minority groups had less education, on average, than whites.

**Chart 3-4. MFIP Participants Who Never Married Compared to All Minnesotans with Minor Children by Race/Ethnicity, December 2010**



Twenty-three percent of all Minnesota adults with children have never married compared to 65 percent of MFIP-eligible adults. Eighty-three percent of both African American and 82 percent of American Indian MFIP-eligible adults had never married.

While immigrant groups were more likely to have been married, note that Asian Americans on MFIP, many of whom were children of immigrants, had marriage rates similar to those of other U.S.-born MFIP participants.

## Chapter Four: Characteristics of Households Receiving MFIP

Households participating in MFIP have, on average, fewer children than all Minnesotan households with children. They also tend to have younger children (and as shown in Chart 3-1 are younger themselves), live in rural and urban areas with high unemployment, and often face challenges due to a chemical health or serious mental health diagnosis, or child protection involvement.

According to the U.S. Bureau of Labor Statistics, women with children under age 18, and in particular women with children under age one, are more likely to be unemployed than other women and men.<sup>7</sup> In 2002, women with a child under age 1 that were married and living with a partner had an unemployment rate of 6 percent, but women with a child under age 1 that were not married faced a 20 percent unemployment rate. Regardless of marital status, women with minor children had higher rates of unemployment than men (6 percent compared to 4 percent). The numbers in this study only include women actively looking for work.<sup>8</sup>

---

<sup>7</sup> “Unemployment of parents with children under 18.” (2003) *The Editor’s Desk*. U.S. Department of Labor, Bureau of Labor Statistics. Retrieved August 11, 2009, from <http://www.bls.gov/opub/ted/2003/jul/wk2/art02.htm>.  
“Unemployment and marital status of women with young children.” (2003) *The Editor’s Desk*. U.S. Department of Labor, Bureau of Labor Statistics. Retrieved August 11, 2009, from <http://www.bls.gov/opub/ted/2003/jul/wk3/art04.htm>.

<sup>8</sup> See also: Correll, Shelley J., Benard, Stephan, and Paik, In. (2007) “Getting a Job: Is There a Motherhood Penalty?” *American Journal of Sociology*. 112(5): 1297 – 1338.

The Bureau of Labor Statistics also provides maps showing the unemployment rate by county.<sup>9</sup> Minnesota’s unemployment rates (December 2010, not seasonally adjusted) varied greatly by county with rural central and northern Minnesota having the highest unemployment rates. As shown in Chart 4-3, white and American Indian MFIP households tend to reside in rural Minnesota and black and Asian households are concentrated in Hennepin and Ramsey Counties.

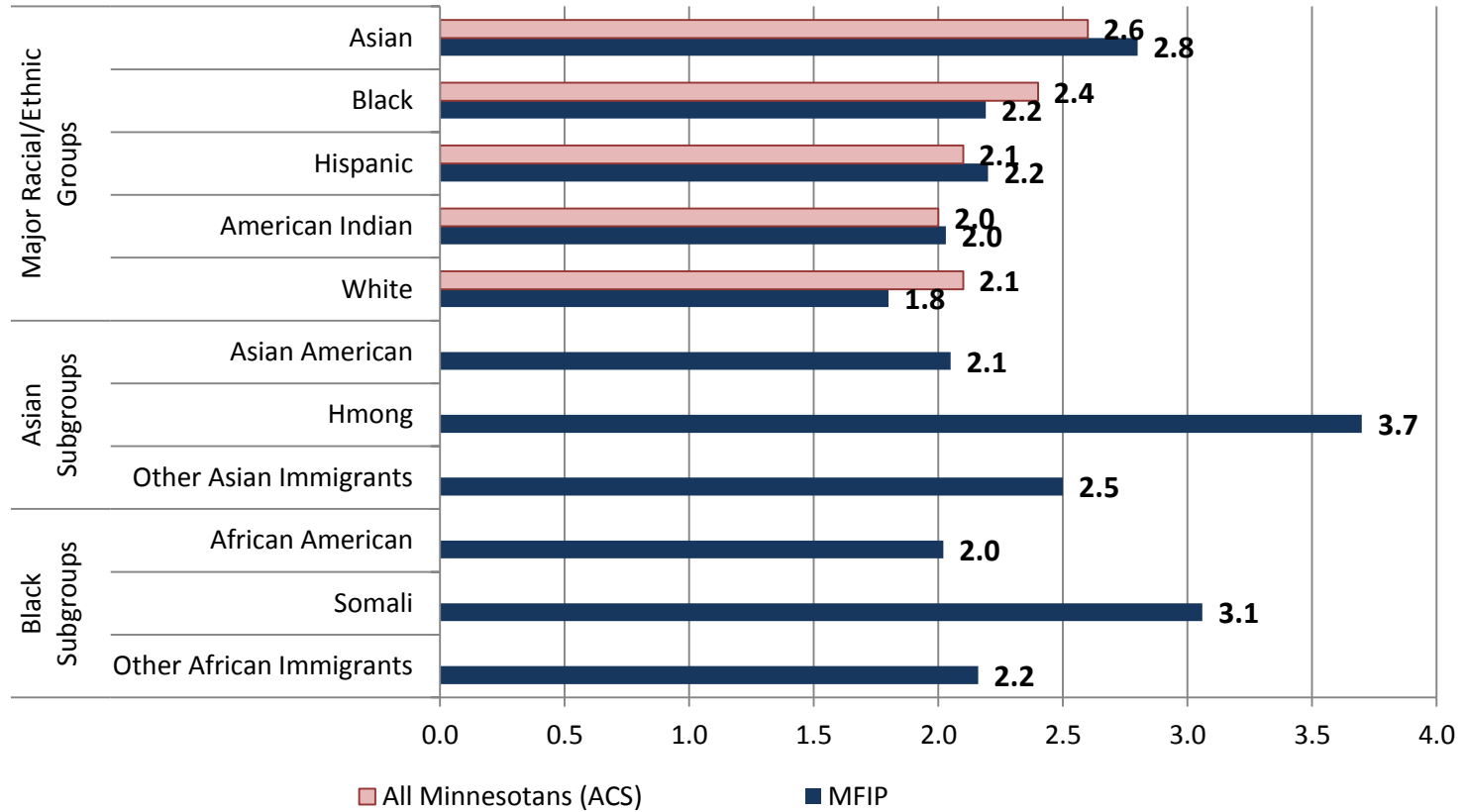
In addition to household size, number of caregivers, and region of residence, this section also provides data on caregiver chemical health and serious mental health diagnoses, and child protection involvement by race/ethnicity..

ACS data are shown in Charts 4-1 and 4-3 for the five major racial/ethnic groups. MFIP and DWP data in this section are from Tables 3 and 4 of this report.

---

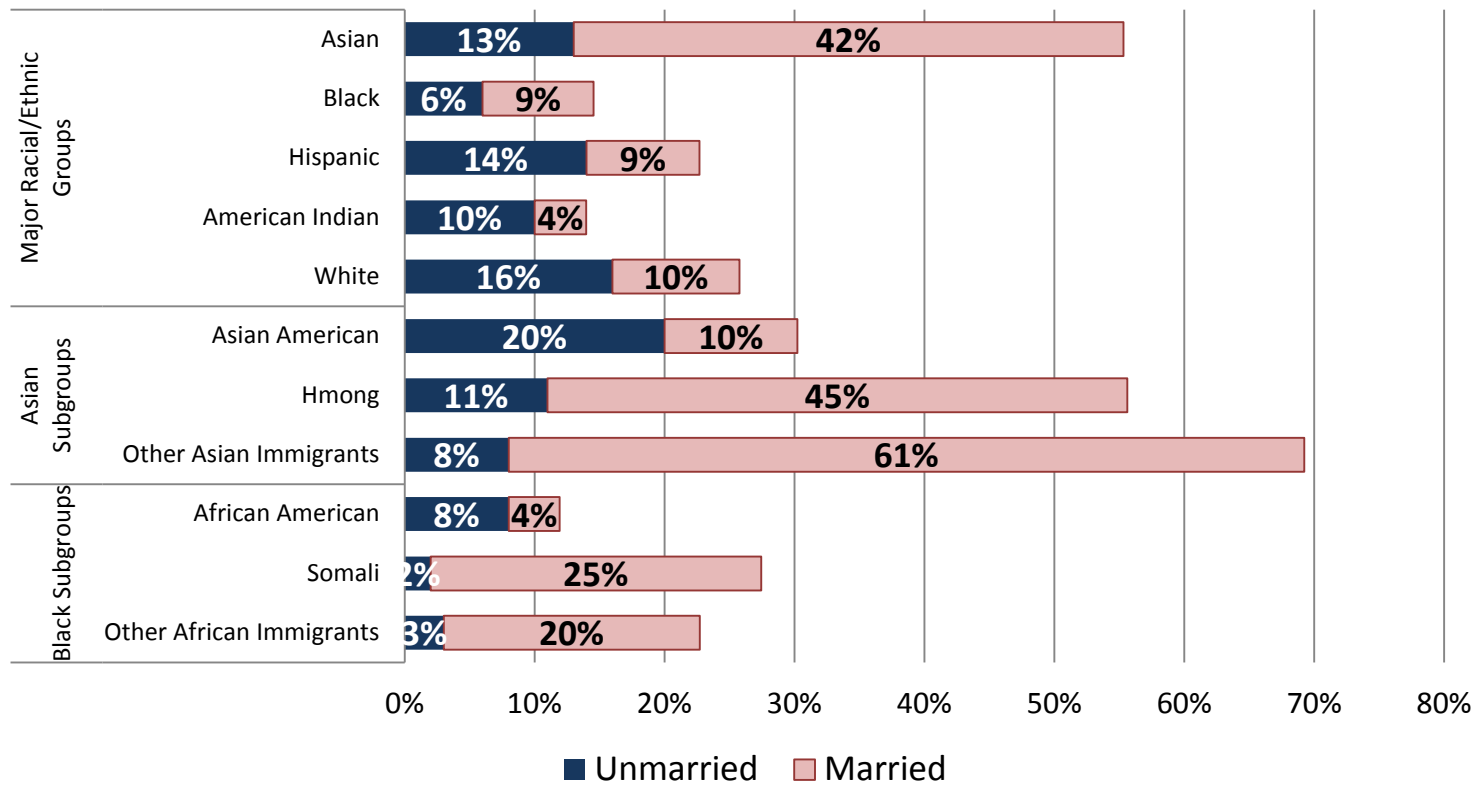
<sup>9</sup> Go to <http://www.bls.gov/lau/home.htm> and scroll down to “Create Customized Maps.”

**Chart 4-1. Number of Children in MFIP Cases and in All Minnesota Households with Minor Children by Race/Ethnicity, December 2010**



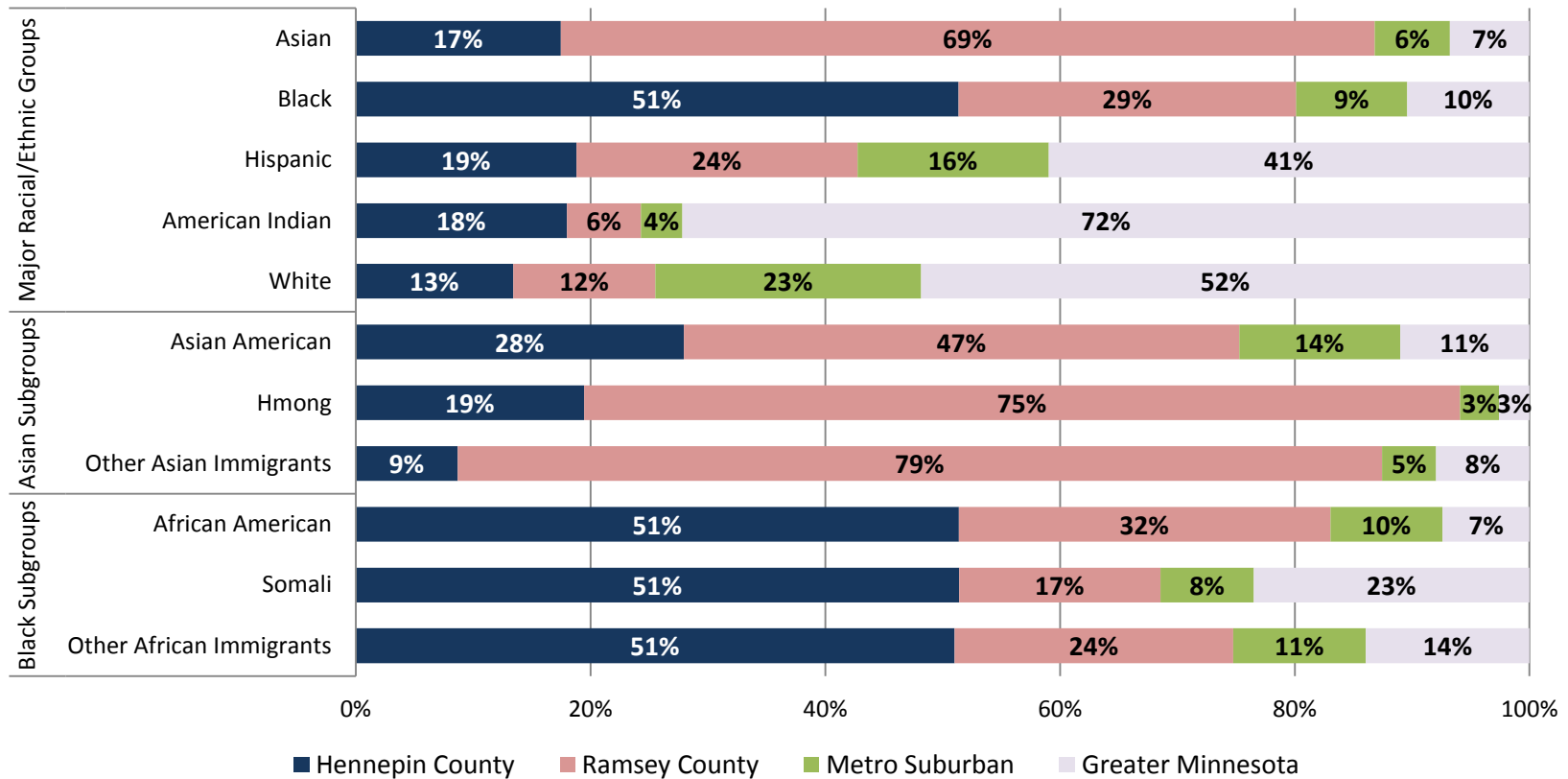
MFIP participants had, on average, a similar number or fewer children as all Minnesotans with children. Adult MFIP participants were, on average, nine years younger than all Minnesotan adults with minor children and, therefore, had more future opportunity to add to their families.

**Chart 4-2. Percent of MFIP Cases with Two Caregivers and Two Married Caregivers by Race/Ethnicity, December 2010**



While Hmong (56 percent) and Other Asian (69 percent) cases were most likely to have two caregivers in the household, about 20 percent Hispanic and White cases also had two caregivers present. African Americans were least likely to have two caregivers (12 percent).

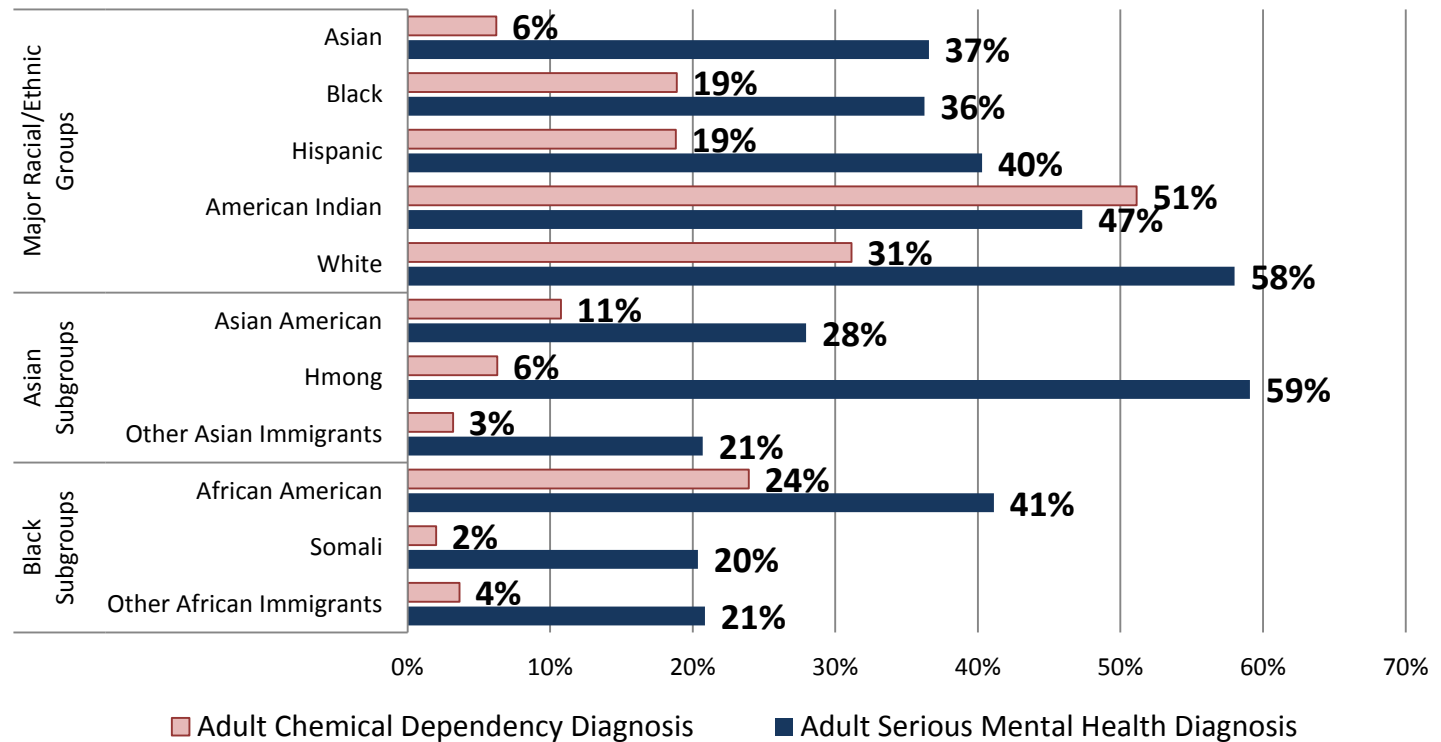
**Chart 4-3. Geographic Region of December 2010 MFIP Eligible-adult Cases by Race/Ethnicity**



MFIP eligible households were concentrated in the core metropolitan area of Hennepin and Ramsey Counties and in Greater Minnesota. Asian and black MFIP participants were concentrated in the core metropolitan area, while whites and American Indian participants were concentrated in Greater Minnesota.

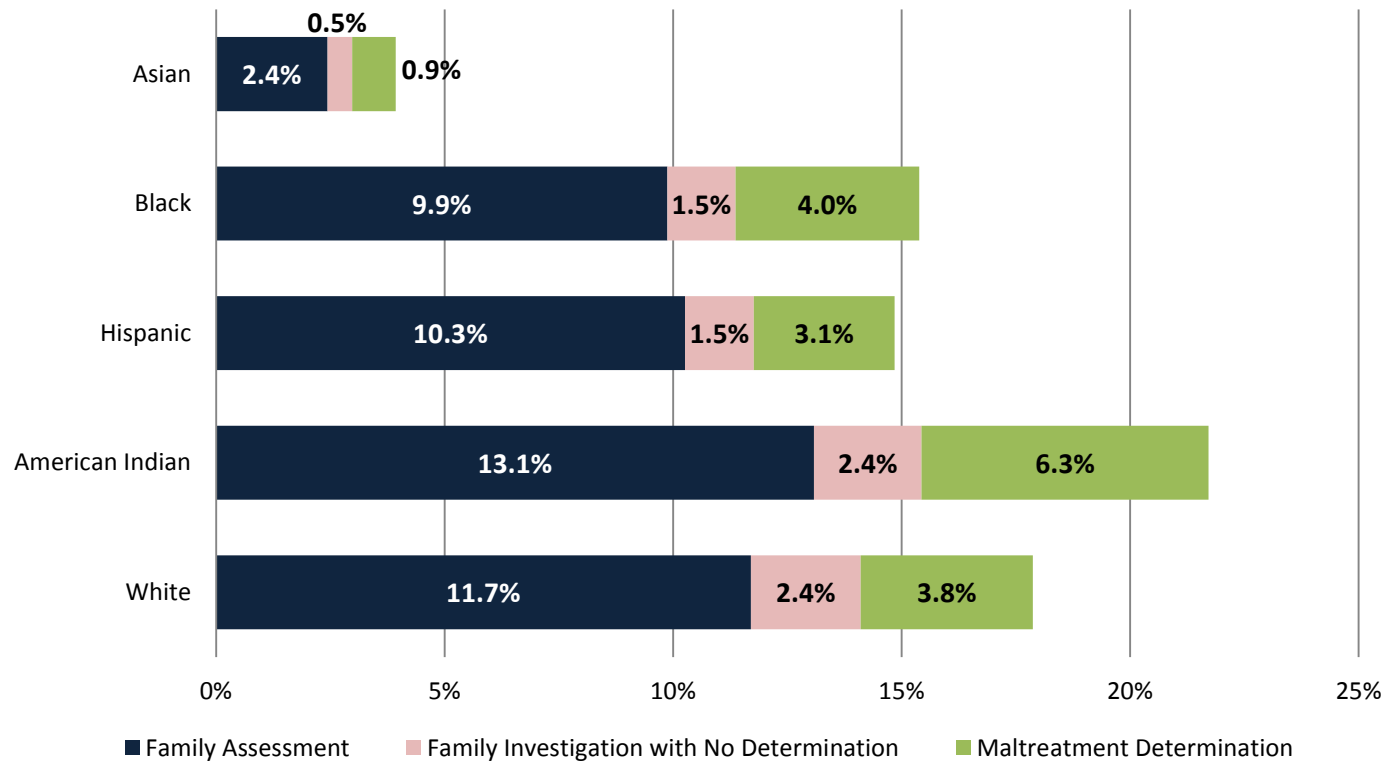


**Chart 4-4. Adult Serious Mental Health Diagnosis and Adult Chemical Dependency Diagnosis During 2008 to 2010, Caregivers in MFIP Cases by Race/Ethnicity**



Nearly 60 percent of both white and Hmong adult MFIP participants had a diagnosis of psychosis, depression, personality disorder, post-traumatic stress disorder, or anxiety-state in the last three years. One-third of white and half of American Indian adult MFIP participants had a chemical dependency diagnosis (excluding tobacco) in the last three years. These data only include diagnoses made while on publicly paid health insurance and do not mean that treatment was received. According to SAMHSA, 11 percent of Minnesotan adults had experienced serious psychological distress and 11 percent had been diagnosed with alcohol or illicit drug dependence or abuse within a year of being surveyed.

**Chart 4-5. MFIP Caregiver Involvement with Child Protection Services During 2008 to 2010, Percent of Cases by Race/Ethnicity**



A Family Assessment (FA) is an alternative to traditional child protection investigation and services for families where the child is not in imminent danger and allegations do not include egregious harm, sexual abuse, or maltreatment in a day care or foster home. In a Family Investigation (FI) county workers interview persons involved with the report and investigate the allegation. If there is a preponderance of evidence that a child has been the victim of maltreatment, the county worker makes a determination that maltreatment has occurred. All categories in this chart are mutually exclusive.

## Chapter 5: Economic Characteristics of MFIP Cases

Chapter 5 looks at factors that may impact a household's MFIP grant size. MFIP grants are calculated using a standard amount based on family size and then adjusted based upon many factors, including income amounts and types.

MFIP has a 60-month time limit for most caregivers between the ages of 18 and 59. When a case reaches the lifetime limit it can be extended for certain documented criteria.<sup>10</sup> Most of the extension reasons are related to employment barriers such as long-term illness, caring for an ill family member, mental illness, or learning disabilities. A case may also be extended if the caregivers are working a minimum number of hours, but not earning enough to exit MFIP. Working cases exit MFIP at 115 percent of the federal poverty guideline. So long as a case meets the extension criteria and has an eligible child, the family may remain active on MFIP.

Family Stabilization Services (FSS) is a MFIP service track for families that are not making significant progress on MFIP due to specific barriers to employment. FSS enrolled its first participants in February 2008 and provides case management and services as an alternative to traditional MFIP Employment Services (ES). These services are intended to help caregivers overcome the barriers that prevent them from retaining employment and then return to traditional ES.

A household may have its MFIP grant sanctioned (reduced) for not complying with Employment Services (ES). Examples of non-compliance are failure to attend a financial services orientation or failure to follow an Employment Plan's mandatory activities. The first sanction is 10 percent of the grant and in subsequent months sanctions are 30 percent. After six sanctioned months a case may be closed. If a case is sanctioned in its 60<sup>th</sup> month, it can never be extended.

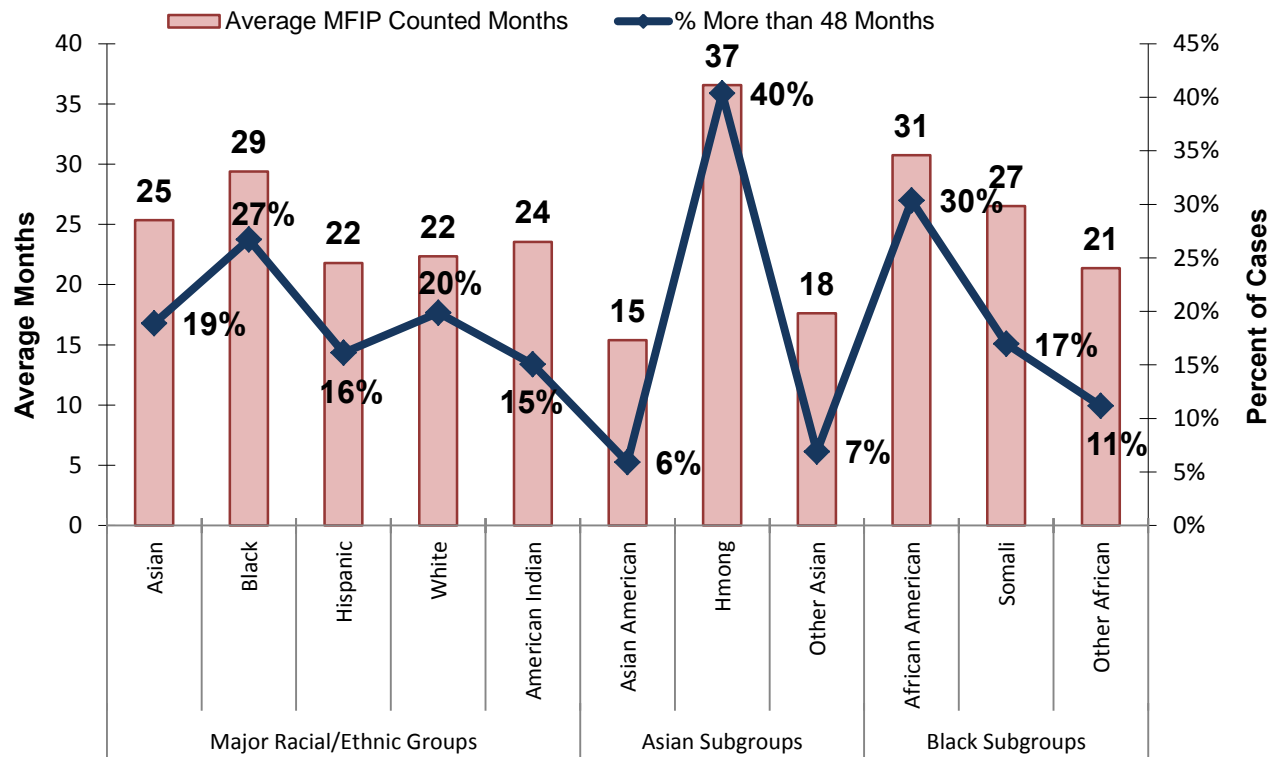
Chapter 5 also looks at cases with working caregivers, their work hours and income, and families eligible for the Child Care Assistance Program (CCAP).

MFIP and DWP data in this section are from Tables 5 and 6 of this report.

---

<sup>10</sup> For more information about MFIP cases that have reach the time limit, see PAID's *At the Limit* report series, available at [http://www.dhs.state.mn.us/id\\_004113](http://www.dhs.state.mn.us/id_004113)

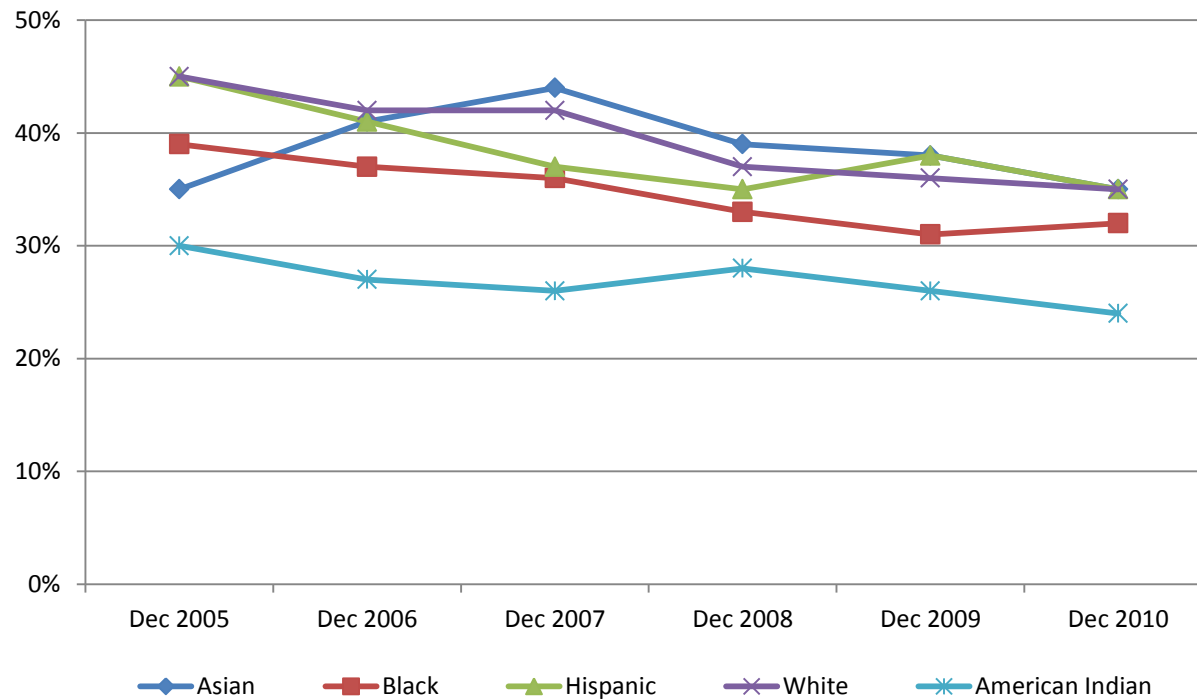
**Chart 5-1. MFIP Time Limit: Average Counted Months and Percent of Cases with 48 or More Counted Months by Race/Ethnicity, December 2010**



Hmong and African American families were more likely than other groups to be nearing the 60-month MFIP time limit with 40 percent of Hmong families and 27 percent African American families within one year of reaching the limit.

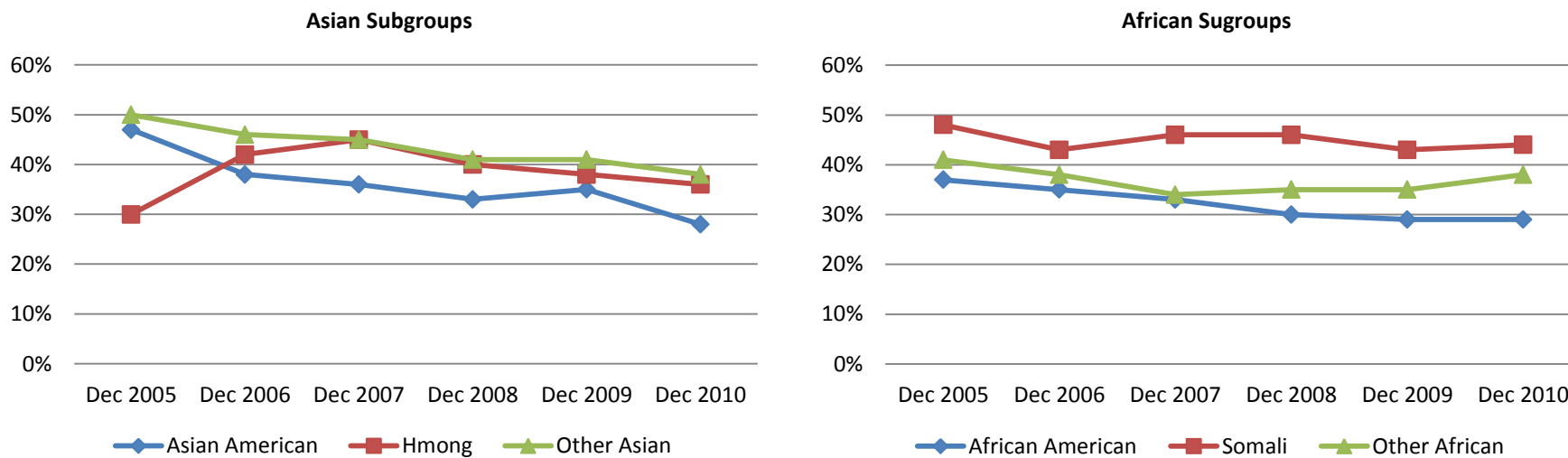
American Indian families had similar average number of counted months as white and Hispanic families. MFIP and TANF policies exempt months for tribal members living on a reservation with a not-employed rate of at least 50 percent from the time limit which for the time period covered by this report were Prairie Island and Red Lake Reservations.

**Chart 5-2. Percent of MFIP Cases with at Least One Working Caregiver by Racial/Ethnic Group, December 2005 to 2010**



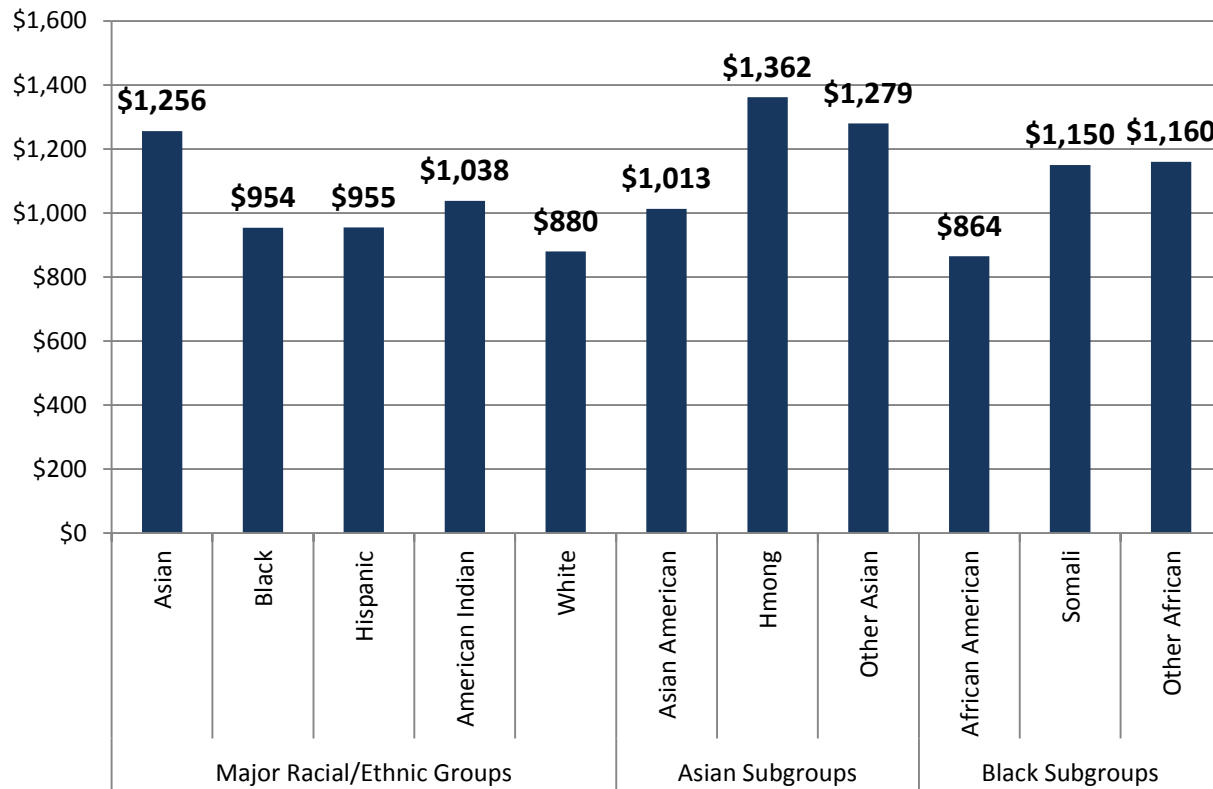
All groups except for cases headed by blacks saw a decrease in working caregivers in the last year. As shown in Chart 5-3, the increase in the percent of cases headed by blacks was due to increases in work by Somali and Other African Immigrants. The percent of African American cases with reported work did not change while Somali cases increased by 1 percentage point and Other African Immigrants by 3 percentage points.

**Chart 5-3. Percent of MFIP Cases with at Least One Working Caregiver by Subgroup, December 2005 to 2010**



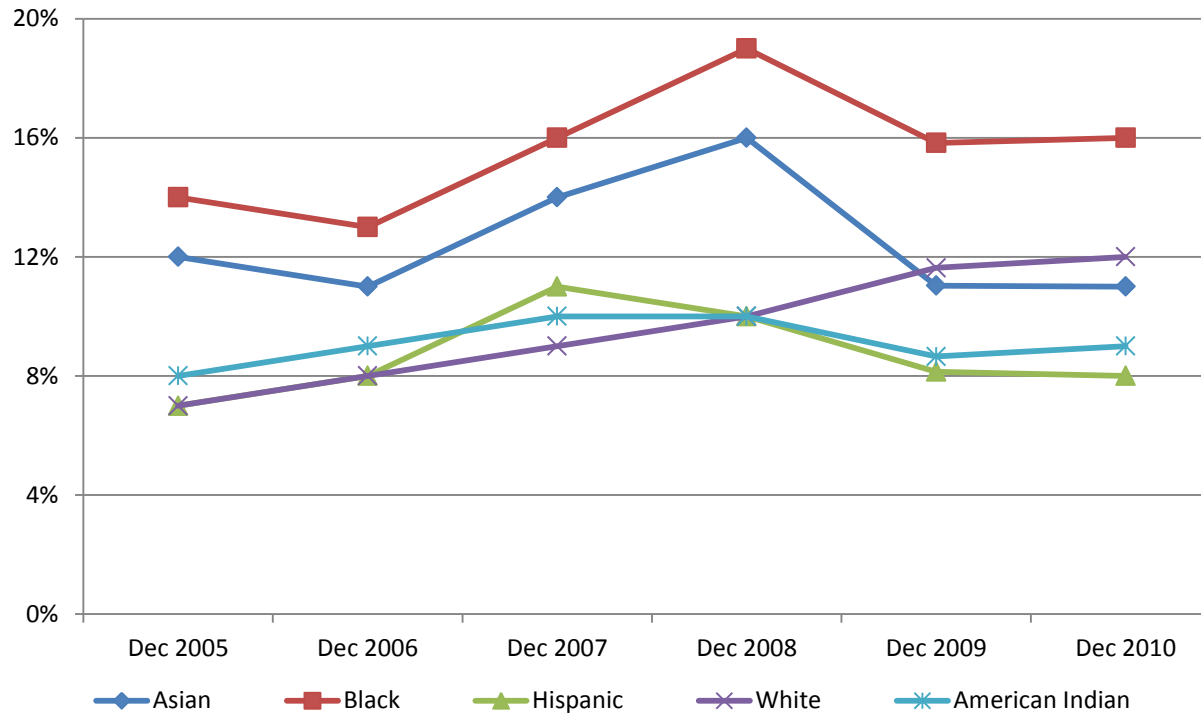
All Asian subgroups have seen declines in work since December 2007 when nearly half of Hmong and Other Asian Immigrant cases were working. Asian American MFIP participants with reported work decreased each year since December 2005 when 47 percent were working.

**Chart 5-4. Average Reported Earned Income for December 2010 MFIP Cases by Racial/Ethnic Group**



Of the five major racial/ethnic groups, Asian cases had the highest average earned income (\$1,256 for December) while whites had the lowest (\$880 for December). Hmong and Other Asian families also were most likely to have two caregivers and, therefore, have potentially more adults available to work. Asian American cases, many of which are headed by children of immigrants, had income similar to that of other major racial/ethnic groups. Average wages only include caregivers with reported wages.

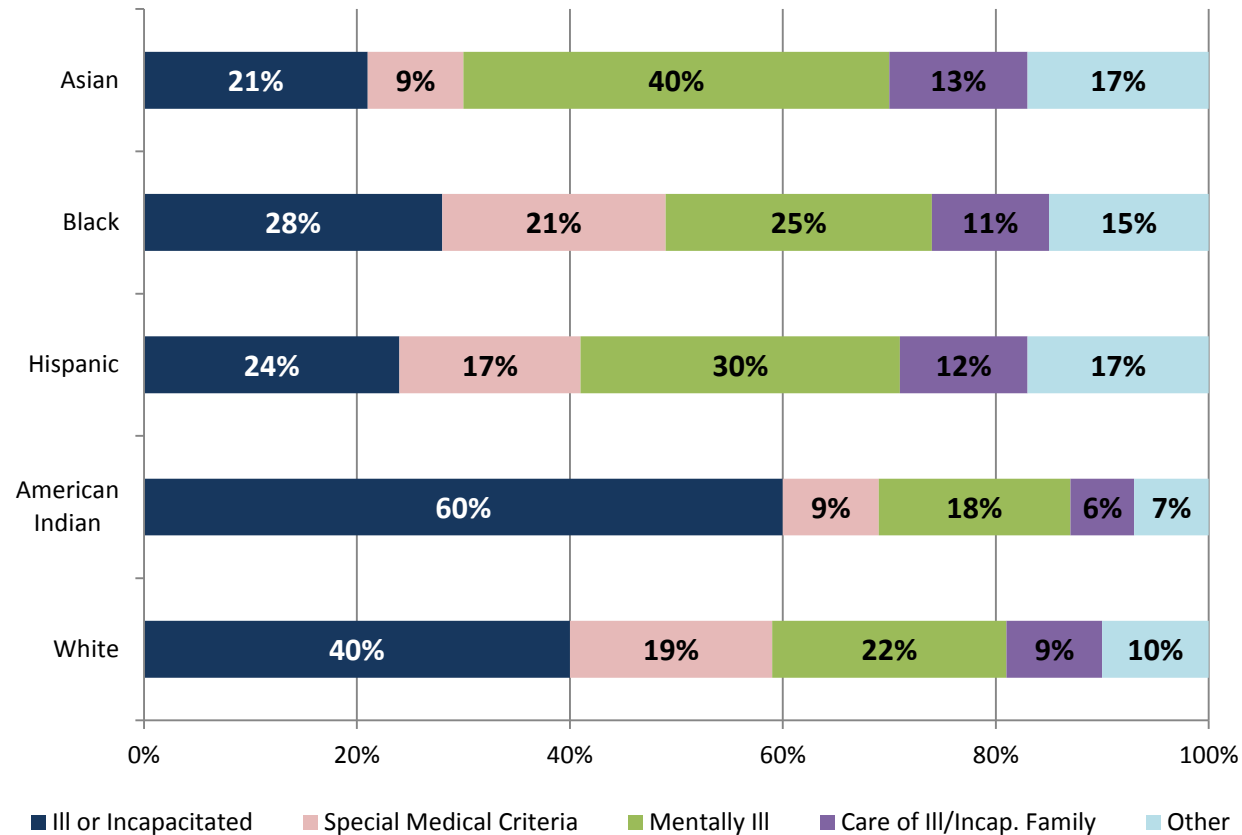
**Chart 5-5. Percent of MFIP Cases with an Eligible Adult that are Extended beyond the 60-Month Lifetime Limit, December 2005 to December 2010**



Over time the percentage of cases in extension will increase as cases newly eligible for extension reach 60 months and ongoing extended cases may stay on the program until their children reach age 18 or 19. The decrease in percentage of extended cases in the last two years was due to an increase in the number of new families becoming eligible for MFIP rather than a sudden decrease in the number of extended cases.

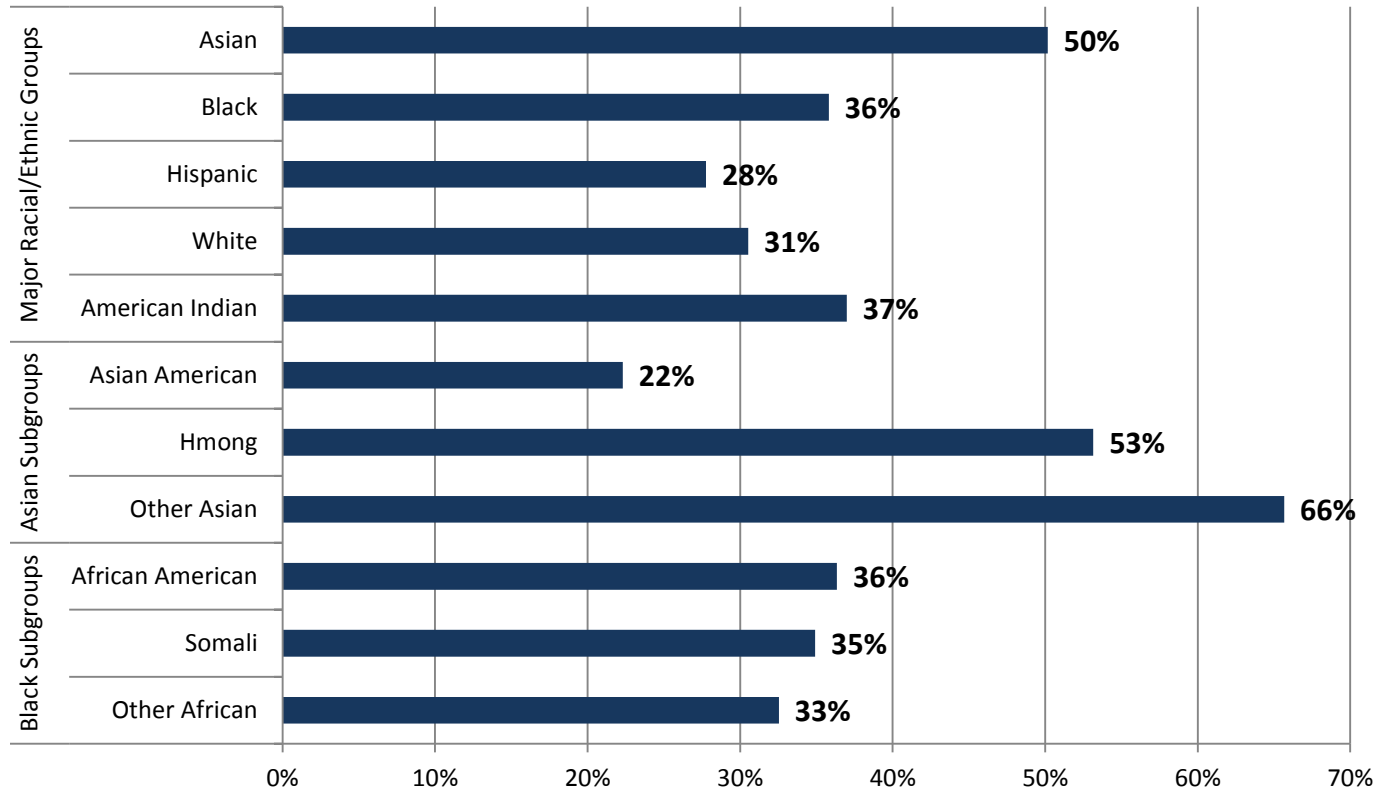


**Chart 5-6. MFIP Extension Reason by Racial/Ethnic Group, December 2010**



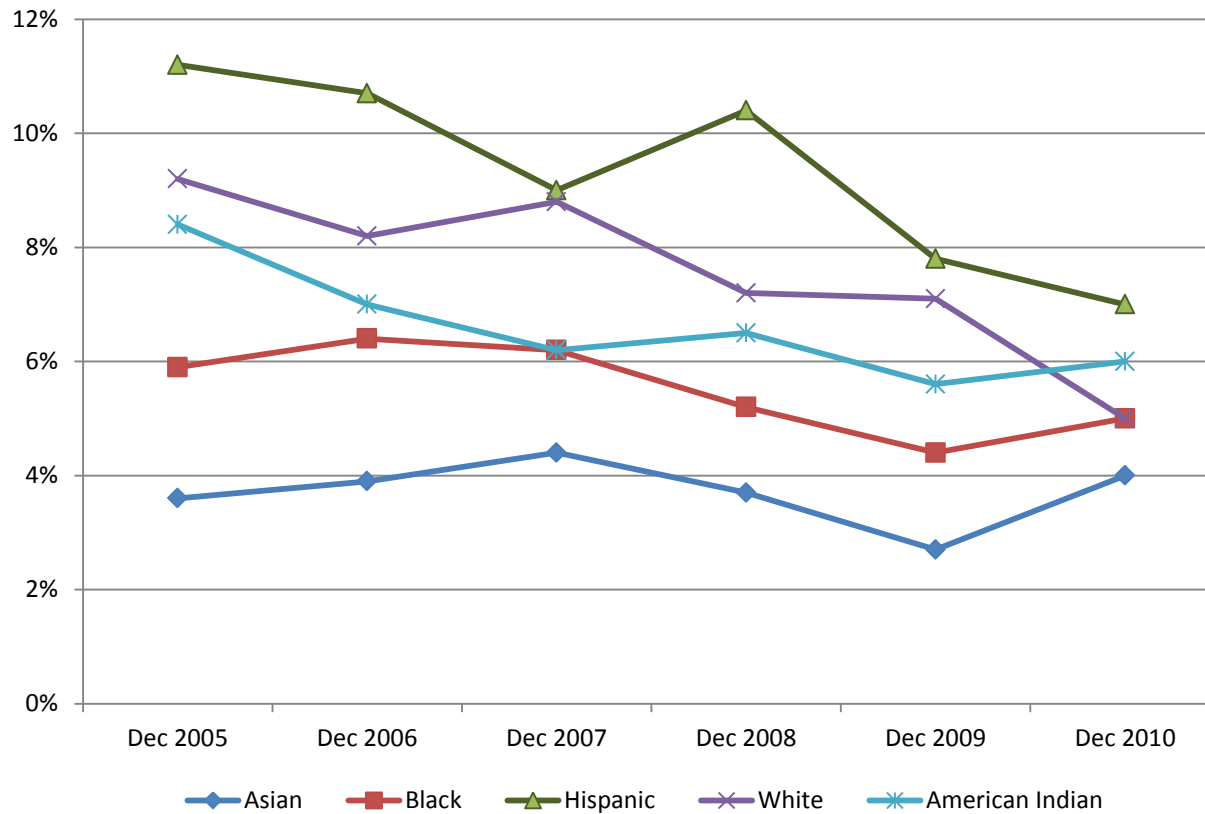
Participants meeting “Special Medical Criteria” are those with an adult or child in the household that meets the criteria for home care services or a home and community-based waiver services programs, severe emotional disturbance, or serious and persistent mental illness. The Other category includes participants who were unemployable, had an IQ less than 80, learning disabled, employed a minimum number of hours per month, experiencing family violence, developmentally disabled, or appealing an extension denial.

**Chart 5-7. Percent of MFIP Cases Eligible for Family Stabilization Services by Race/Ethnicity, December 2010**



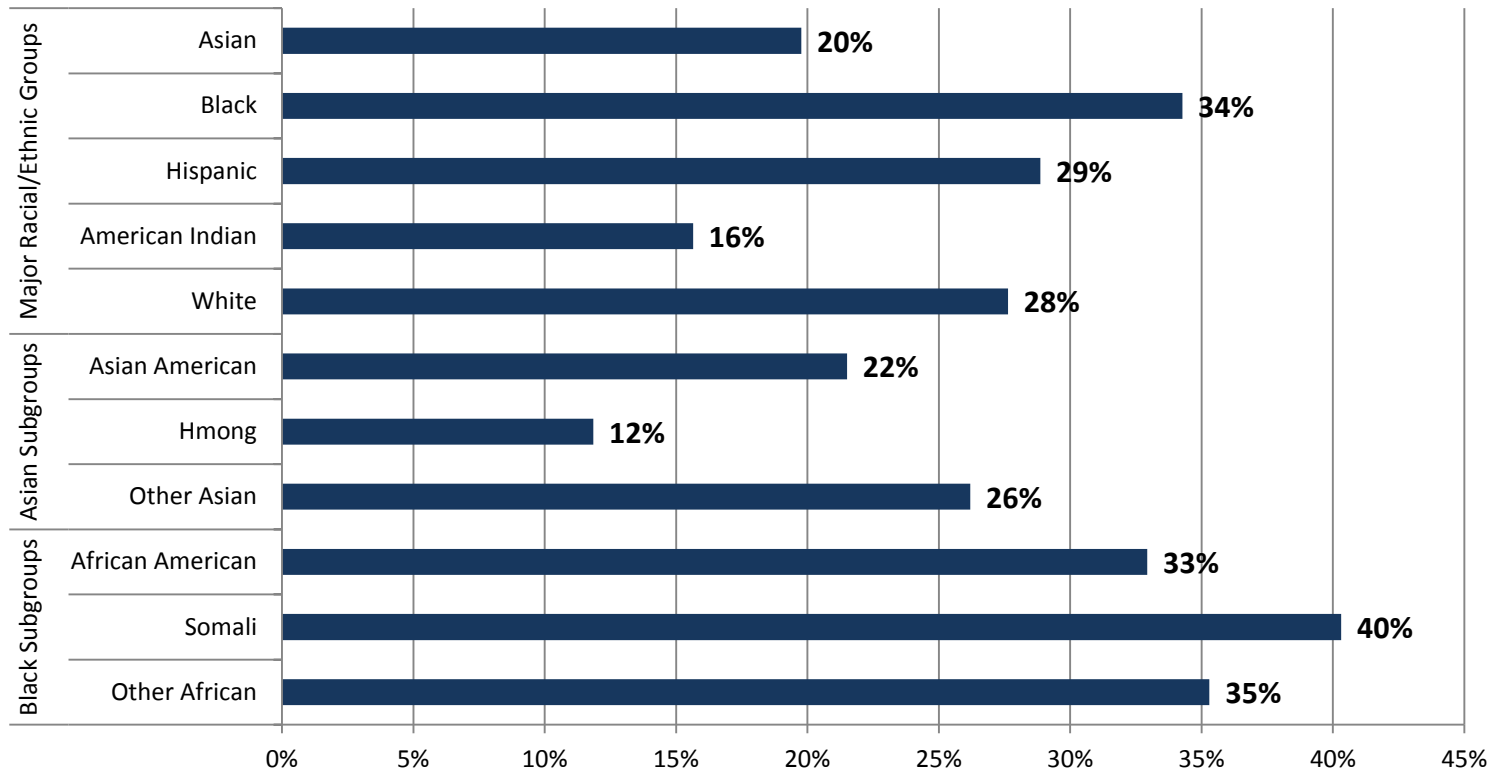
Family Stabilization Services (FSS) is a MFIP service track that provides case management support and services to families that are not making significant progress on MFIP due to specific barriers to employment. Other Asian Immigrants were most likely to be FSS-eligible which is most often due to their recent immigrant status (all immigrants in the United States for less than 12 months are FSS-eligible). Most Hmong families did not immigrate in the last 12 months so they are FSS-eligible for other reasons.

**Chart 5-8. Percent of MFIP Cases with Employment Services Sanctions by Racial/Ethnic Group, December 2010**



All MFIP-eligible and some MFIP-ineligible caregivers must participate in Employment Services (ES). If a caregiver does not follow the ES rules, their MFIP grant may be reduced (sanctioned).

**Chart 5-9. Percentage of MFIP Families Eligible for the Child Care Assistance Program by Race/Ethnicity, December 2010**



This chart shows families that were eligible for the Child Care Assistance Program (CCAP) in December 2010. Families that were eligible and enrolled in CCAP, but did not participate in work activities or paid employment, are included although they did not actually use child care.

## Appendix: Complete Data Tables

Table 1. Demographic Characteristics of Eligible Adults on December 2010 MFIP Paid Cases by Racial/Ethnic Groups and Subgroups

Characteristics of Adults Eligible on December 2010 MFIP Cases		All Eligible Adults	Racial/Ethnic Groups					Asian Subgroups			Black Subgroups		
			Asian	Black	Hispanic	American Indian	White	Asian American	Asian Immigrants Hmong	Asian Immigrants Other	African American	Black Immigrants Somali	Black Immigrants Other
<b>ADULTS</b>	<b>Total</b>	31,096	2,265	11,220	1,860	2,748	12,439	477	847	941	8,310	1,933	977
		100.0%	7.3%	36.1%	6.0%	8.8%	40.0%	1.5%	2.7%	3.0%	26.7%	6.2%	3.1%
<b>AGE</b>	<b>Mean</b>	30.3	35.1	30.4	28.3	29.2	30.0	27.2	36.9	37.5	28.8	35.9	33.9
	<b>Median</b>	28	35	28	27	27	28	24	37	37	27	34	32
	<b>Minimum</b>	13	14	14	13	15	14	14	16	18	14	16	14
	<b>Maximum</b>	89	87	89	74	65	78	61	75	87	76	89	81
	<b>&lt; 18</b>	447	40	158	98	39	96	27	13	0	144	6	8
		1.4%	1.8%	1.4%	5.3%	1.4%	0.8%	5.7%	1.5%	0.0%	1.7%	0.3%	0.8%
	<b>18 - 19</b>	1,978	150	634	204	204	743	81	49	20	568	43	23
		6.4%	6.6%	5.7%	11.0%	7.4%	6.0%	17.0%	5.8%	2.1%	6.8%	2.2%	2.4%
	<b>20 - 29</b>	14,666	648	5,343	869	1,417	6,036	233	196	219	4,362	618	363
		47.2%	28.6%	47.6%	46.7%	51.6%	48.5%	48.8%	23.1%	23.3%	52.5%	32.0%	37.2%
	<b>30 - 39</b>	8,616	595	3,131	465	711	3,596	64	215	316	2,239	571	321
		27.7%	26.3%	27.9%	25.0%	25.9%	28.9%	13.4%	25.4%	33.6%	26.9%	29.5%	32.9%
	<b>40 - 49</b>	4,081	559	1,413	167	293	1,619	50	259	250	785	449	179
	13.1%	24.7%	12.6%	9.0%	10.7%	13.0%	10.5%	30.6%	26.6%	9.4%	23.2%	18.3%	
<b>50 - 59</b>	1,119	227	436	52	78	324	19	94	114	196	183	57	
	3.6%	10.0%	3.9%	2.8%	2.8%	2.6%	4.0%	11.1%	12.1%	2.4%	9.5%	5.8%	
<b>60 and over</b>	189	46	105	5	6	25	3	21	22	16	63	26	
	0.6%	2.0%	0.9%	0.3%	0.2%	0.2%	0.6%	2.5%	2.3%	0.2%	3.3%	2.7%	
<b>GENDER</b>	<b>Female</b>	24,562	1,425	9,130	1,424	2,107	9,997	362	505	558	6,898	1,472	760
		79.0%	62.9%	81.4%	76.6%	76.7%	80.4%	75.9%	59.6%	59.3%	83.0%	76.2%	77.8%
	<b>Male</b>	6,535	840	2,090	436	641	2,442	115	342	383	1,412	461	217
	21.0%	37.1%	18.6%	23.4%	23.3%	19.6%	24.1%	40.4%	40.7%	17.0%	23.8%	22.2%	

Table 1 – Page 2

MFIP Demographic Characteristics		All Eligible Adults	Racial/Ethnic Groups					Asian Subgroups			Black Subgroups			
			Asian	Black	Hispanic	American Indian	White	Asian American	Asian Immigrants Hmong	Other	African American	Black Immigrants Somali	Other	
EDUCATION	None, <1st Grade, Unknown	2,221 7.1%	877 38.7%	945 8.4%	100 5.4%	22 0.8%	262 2.1%	23 4.8%	389 45.9%	465 49.4%	95 1.1%	687 35.5%	163 16.7%	
	Grade School	692 2.2%	216 9.5%	295 2.6%	80 4.3%	22 0.8%	74 0.6%	7 1.5%	57 6.7%	152 16.2%	56 0.7%	167 8.6%	72 7.4%	
	Some High School	9,303 29.9%	475 21.0%	3,591 32.0%	832 44.7%	1,229 44.7%	3,001 24.1%	151 31.7%	168 19.8%	156 16.6%	2,932 35.3%	467 24.2%	192 19.7%	
	High School Graduate	16,222 52.2%	610 26.9%	5,587 49.8%	750 40.3%	1,327 48.3%	7,625 61.3%	253 53.0%	207 24.4%	150 15.9%	4,569 55.0%	568 29.4%	450 46.1%	
	Some Post-Secondary	2,232 7.2%	72 3.2%	683 6.1%	85 4.6%	128 4.7%	1,222 9.8%	34 7.1%	25 3.0%	13 1.4%	588 7.1%	35 1.8%	60 6.1%	
	College Graduate	232 0.7%	6 0.3%	59 0.5%	4 0.2%	13 0.5%	148 1.2%	3 0.6%	0 0.0%	3 0.3%	41 0.5%	2 0.1%	16 1.6%	
	Graduate Degree	195 0.6%	9 0.4%	60 0.5%	9 0.5%	7 0.3%	107 0.9%	6 1.3%	1 0.1%	2 0.2%	29 0.3%	7 0.4%	24 2.5%	
	High School Graduate or Higher	18,881 60.7%	697 30.8%	6,389 56.9%	848 45.6%	1,475 53.7%	9,102 73.2%	296 62.1%	233 27.5%	168 17.9%	5,227 62.9%	612 31.7%	550 56.3%	
	MARITAL STATUS	Divorced	1,756 5.6%	66 2.9%	292 2.6%	101 5.4%	116 4.2%	1,149 9.2%	16 3.4%	25 3.0%	25 2.7%	202 2.4%	65 3.4%	25 2.6%
		Legally Separated	81 0.3%	4 0.2%	18 0.2%	7 0.4%	2 0.1%	49 0.4%	2 0.4%	1 0.1%	1 0.1%	15 0.2%	1 0.1%	2 0.2%
Married, Living with Spouse		5,544 17.8%	317 14.0%	1,702 15.2%	317 17.0%	177 6.4%	2,034 16.4%	78 16.4%	482 56.9%	700 74.4%	606 7.3%	781 40.4%	315 32.2%	
Never Married		20,187 64.9%	735 32.5%	7,907 70.5%	1,188 63.9%	2,255 82.1%	7,663 61.6%	340 71.3%	255 30.1%	140 14.9%	6,897 83.0%	566 29.3%	444 45.4%	
Married, Separated		3,325 10.7%	150 6.6%	1,203 10.7%	240 12.9%	191 7.0%	1,504 12.1%	38 8.0%	68 8.0%	44 4.7%	578 7.0%	453 23.4%	172 17.6%	
Widowed		203 0.7%	50 2.2%	97 0.9%	7 0.4%	7 0.3%	40 0.3%	3 0.6%	16 1.9%	31 3.3%	12 0.1%	67 3.5%	18 1.8%	
CITIZENSHIP		Non-U.S.	4,465 14.4%	1,422 62.8%	2,265 20.2%	383 20.6%	4 0.1%	368 3.0%	0 0.0%	550 64.9%	872 92.7%	0 0.0%	1,493 77.2%	772 79.0%
	U.S.	26,632 85.6%	843 37.2%	8,955 79.8%	1,477 79.4%	2,744 99.9%	12,071 97.0%	477 100.0%	297 35.1%	69 7.3%	8,310 100.0%	440 22.8%	205 21.0%	

Note: Among MFIP-eligible adults in December 2010, 488 (1.6%) selected multiple races and 76 (0.002%) were missing race/ethnicity data. These numbers are included in the statewide total, but were excluded from the racial/ethnic groups.

**Table 2. Demographic Characteristics of Eligible Adults on December 2010 DWP Paid Cases by Racial/Ethnic Groups and Subgroups**

Characteristics of Adults Eligible on December 2010 DWP Cases		All Eligible Adults	Racial/Ethnic Groups					Black Subgroups	
			Asian	Black	Hispanic	American Indian	White	African American	African Immigrants
<b>ADULTS</b>	<b>Total</b>	4,442	307	1,000	333	173	2,529	734	266
		100.0%	5.2%	22.5%	7.5%	3.9%	56.9%	16.5%	6.0%
<b>AGE</b>	<b>Mean</b>	31.7	32.6	31.6	31.6	29.4	31.8	31.1	32.9
	<b>Median</b>	30	31	30	31	28	30	29	31
	<b>Minimum</b>	17	17	18	18	18	17	18	18
	<b>Maximum</b>	64	59	63	64	55	59	58	63
	<b>&lt; 20</b>	118	17	22	12	10	55	18	4
		2.7%	5.5%	2.2%	3.6%	5.8%	2.2%	2.5%	1.5%
	<b>20 - 29</b>	1,986	122	464	146	91	1,117	354	110
		44.7%	47.2%	46.4%	43.8%	52.6%	44.2%	48.2%	41.4%
	<b>30 - 39</b>	1,491	90	334	105	55	871	241	93
		33.6%	30.9%	33.4%	31.5%	31.8%	34.4%	32.8%	35.0%
<b>40 - 49</b>	683	57	139	59	13	400	100	39	
	15.4%	13.4%	13.9%	17.7%	7.5%	15.8%	13.6%	14.7%	
<b>50 and older</b>	164	21	41	11	4	86	21	20	
	3.7%	3.7%	4.1%	3.3%	2.3%	3.4%	2.9%	7.5%	
<b>GENDER</b>	<b>Female</b>	3,238	226	754	229	115	1,876	556	198
		72.9%	62.8%	75.4%	68.8%	66.5%	74.2%	75.7%	74.4%
	<b>Male</b>	1,204	121	246	104	58	653	178	68
		27.1%	37.2%	24.6%	31.2%	33.5%	25.8%	24.3%	25.6%

Note: Due to data privacy concerns, DWP-eligible caregivers and cases cannot be reported for Asian subgroups and the Black immigrant subgroups had to be combined. The small number of participants prevents reporting distributions.

^ Four caregivers were younger than age 18 and 2 were 60 or older.

Table 2 – Page 2

DWP Demographic Characteristics		All Eligible Adults	Racial/Ethnic Groups					Black Subgroups	
			Asian	Black	Hispanic	American Indian	White	African American	African Immigrants
EDUCATION	None, <1st Grade, Unknown	221 5.0%	53 17.3%	65 6.5%	29 8.7%	2 1.2%	67 2.6%	21 2.9%	44 16.5%
	Grade School	65 1.5%	16 5.2%	24 2.4%	10 3.0%	2 1.2%	1 0.0%	7 1.0%	17 6.4%
	Some High School	870 19.6%	173 20.8%	181 18.1%	124 37.2%	60 34.7%	423 16.7%	128 17.4%	53 19.9%
	High School Graduate	2,655 59.8%	146 53.9%	582 58.2%	150 45.0%	98 56.6%	1,616 63.9%	455 62.0%	127 47.7%
	Some Post-Secondary	500 11.3%	20 6.3%	123 12.3%	14 4.2%	9 5.2%	325 12.9%	103 14.0%	20 7.5%
	College Graduate/Graduate Degree	131 2.9%	6 2.0%	44 4.4%	6 1.8%	2 1.2%	85 3.4%	20 2.7%	24 9.0%
	High School Graduate or Higher	3,286 74.0%	172 56.0%	749 74.9%	170 51.1%	109 63.0%	2,026 80.1%	578 78.7%	171 64.3%
	MARITAL STATUS	Divorced	390 8.8%	10 6.7%	47 4.7%	22 6.6%	7 4.0%	294 11.6%	38 5.2%
Legally Separated	16 0.4%	0 0.0%	5 0.5%	1 0.3%	0 0.0%	10 0.4%	3 0.4%	2 0.8%	
Married, Living with Spouse	1,085 24.4%	145 41.6%	196 19.6%	89 26.7%	25 14.5%	613 24.2%	90 12.3%	106 39.8%	
Never Married	2,355 53.0%	122 43.5%	619 61.9%	164 49.2%	128 74.0%	1,264 50.0%	523 71.3%	96 36.1%	
Married, Separated	569 12.8%	24 7.8%	126 12.6%	54 16.2%	11 6.4%	339 13.4%	78 10.6%	48 18.0%	
Widowed	27 0.6%	6 2.0%	7 0.7%	3 0.9%	2 1.2%	9 0.4%	2 0.3%	5 1.9%	
CITIZENSHIP	Non-U.S.	466 10.5%	144 40.9%	183 18.3%	90 27.0%	1 0.6%	39 1.5%	0 0.0%	183 68.8%
	U.S.	3,976 89.5%	163 59.1%	817 81.7%	243 73.0%	172 99.4%	2,490 98.5%	734 100.0%	83 31.2%

Note: Among DWP-eligible adults in December 2010, 56 (0.9%) selected multiple races and 47 (0.9%) were missing race/ethnicity data. These numbers are included in the statewide total, but were excluded from the racial/ethnic groups.



**Table 3. Family Composition, Residence, and Challenges of MFIP Paid Cases with Eligible Adults in December 2010 for Racial/Ethnic Groups and Subgroups**

Family Characteristics of December 2010 MFIP Cases with Eligible Adults		Cases	Racial/Ethnic Groups					Asian Subgroups			Black Subgroups		
			Asian	Black	Hispanic	American Indian	White	Asian American	Asian Immigrants Hmong	Other	African American	Black Immigrants Somali	Other
CASES	Count	25,880	1,477	9,705	1,462	2,339	10,410	372	540	565	7,411	1,498	796
		100%	5.7%	37.5%	5.6%	9.0%	40.2%	1.4%	2.1%	2.2%	28.6%	5.8%	3.1%
FAMILY TYPE	Natural / Adopted / Step Children	24,737	1,421	9,235	1,410	2,119	10,081	361	517	543	7,102	1,383	750
		95.6%	96.2%	95.2%	96.4%	90.6%	96.8%	97.0%	95.7%	96.1%	95.8%	92.3%	94.2%
	Pregnant Only	453	23	110	21	66	221	9	9	5	86	15	9
		1.8%	1.6%	1.1%	1.4%	2.8%	2.1%	2.4%	1.7%	0.9%	1.2%	1.0%	1.1%
Relative Care	Count	690	33	360	31	154	108	2	14	17	223	100	37
		2.7%	2.2%	3.7%	2.1%	6.6%	1.0%	0.5%	2.6%	3.0%	3.0%	6.7%	4.6%
2 ELIGIBLE CAREGIVERS	Count	3,915	552	1,052	174	365	1,708	89	137	326	570	331	151
		15.1%	37.4%	10.8%	11.9%	15.6%	16.4%	23.9%	25.4%	57.7%	7.7%	22.1%	19.0%
2 CAREGIVERS	Count of Cases	5,217	786	1,471	318	463	2,098	105	317	364	849	440	182
		20.2%	53.2%	15.2%	21.8%	19.8%	20.2%	28.2%	58.7%	64.4%	11.5%	29.4%	22.9%
MARRIED	Count of Cases	2,716	625	829	127	93	1,016	38	241	346	291	381	157
	Percent of Two-caregiver Cases	52.1%	79.5%	56.4%	39.9%	20.1%	48.4%	36.2%	76.0%	95.1%	34.3%	86.6%	86.3%
INELIGIBLE CAREGIVERS: PEOPLE COUNTS	SSI	849	209	296	23	37	273	10	169	30	196	82	18
	Percent of Ineligible Caregivers	65.2%	92.9%	70.8%	12.4%	42.0%	75.6%	83.3%	94.9%	78.9%	71.0%	73.2%	60.0%
	Undocumented Non-citizens	199	11	22	148	0	16	0	3	8	0	12	10
		15.3%	4.9%	5.3%	80.0%	0.0%	4.4%	0.0%	1.7%	21.1%	0.0%	10.7%	33.3%
	Reached 60th Month and Opted Out	212	3	85	9	43	63	1	5	0	67	16	2
		16.3%	1.3%	20.3%	4.9%	48.9%	17.5%	8.3%	2.8%	0.0%	24.3%	14.3%	6.7%
	Other	42	2	15	5	8	9	1	1	0	13	2	0
	3.2%	0.9%	3.6%	2.7%	9.1%	2.5%	8.3%	0.6%	0.0%	4.7%	1.8%	0.0%	
Count of Ineligible Caregivers	1,302	225	418	185	88	361	12	178	38	276	112	30	
ALL CHILDREN	Mean	2.1	2.8	2.2	2.2	2.0	1.8	2.1	3.7	2.5	2.0	3.1	2.2
	Median	2	2	2	2	2	2	2	3	2	2	3	2
	Minimum	0	1	1	0	1	1	1	1	1	1	1	1
	Maximum	12	11	12	9	11	10	10	11	8	11	12	10
	0	453	23	110	21	66	221	9	9	5	86	15	9
		1.8%	1.6%	1.1%	1.4%	2.8%	2.1%	2.4%	1.7%	0.9%	1.2%	1.0%	1.1%
	1	11,146	419	3,939	550	967	5,039	155	96	168	3,253	369	317
		43.1%	28.4%	40.6%	37.6%	41.3%	48.4%	41.7%	17.8%	29.7%	43.9%	24.6%	39.8%
	2	7,248	372	2,634	391	656	3,047	117	109	146	2,077	334	223
		28.0%	25.2%	27.1%	26.7%	28.0%	29.3%	31.5%	20.2%	25.8%	28.0%	22.3%	28.0%
3	3,892	229	1,528	283	388	1,402	47	80	102	1,119	275	134	
	15.0%	15.5%	15.7%	19.4%	16.6%	13.5%	12.6%	14.8%	18.1%	15.1%	18.4%	16.8%	
4 - 6	2,859	345	1,341	209	254	679	39	170	136	827	410	104	
	11.0%	23.4%	13.8%	14.3%	10.9%	6.5%	10.5%	31.5%	24.1%	11.2%	27.4%	13.1%	

Table 3 – Page 2

MFIP Family Characteristics	All Cases	Racial/Ethnic Groups					Asian Subgroups			Black Subgroups			
		Asian	Black	Hispanic	American Indian	White	Asian American	Asian Immigrants Hmong	Other Asian	African American	Black Immigrants Somali	Other African	
<b>ALL CHILDREN</b>	<b>7 or More</b>	283 1.1%	89 6.0%	153 1.6%	8 0.5%	8 0.3%	23 0.2%	5 1.3%	76 14.1%	8 1.4%	49 0.7%	95 6.3%	9 1.1%
	<b>Count</b>	51,684	3,966	20,906	3,103	18,023	4,827	912	1,682	1,372	15,328	3,828	1,750
<b>ELIGIBLE CHILDREN</b>	<b>Mean</b>	1.9	2.7	2.0	2.1	1.9	1.7	1.9	3.5	2.5	1.9	2.9	2.1
	<b>Median</b>	2	2	2	2	2	1	2	3	2	2	3	2
	<b>Minimum</b>	0	0	0	0	0	0	0	0	0	0	0	0
	<b>Maximum</b>	12	11	12	9	11	10	10	11	8	10	12	10
	<b>0</b>	923 3.6%	39 2.6%	304 3.1%	31 2.1%	94 4.0%	433 4.2%	17 4.6%	13 2.4%	9 1.6%	261 3.5%	28 1.9%	15 1.9%
	<b>1</b>	11,421 44.1%	426 28.8%	4,098 42.2%	570 39.0%	984 42.1%	5,108 49.1%	155 41.7%	101 18.7%	170 30.1%	3,392 45.8%	379 25.3%	327 41.1%
	<b>2</b>	7,077 27.3%	360 24.4%	2,572 26.5%	402 27.5%	656 28.0%	2,943 28.3%	115 30.9%	103 19.1%	142 25.1%	2,020 27.3%	331 22.1%	221 27.8%
	<b>3</b>	3,688 14.3%	237 16.0%	1,443 14.9%	269 18.4%	367 15.7%	1,314 12.6%	42 11.3%	90 16.7%	105 18.6%	1,037 14.0%	277 18.5%	129 16.2%
	<b>4 - 6</b>	2,534 9.8%	333 22.5%	1,167 12.0%	183 12.5%	231 9.9%	593 5.7%	38 10.2%	162 30.0%	133 23.5%	673 9.1%	399 26.6%	95 11.9%
	<b>7 or More</b>	238 0.9%	82 5.6%	121 1.2%	7 0.5%	7 0.3%	20 0.2%	5 1.3%	71 13.1%	6 1.1%	28 0.4%	84 5.6%	9 1.1%
	<b>Count</b>	49,220	3,851	19,686	2,983	4,639	17,243	884	1,636	1,331	14,258	3,729	1,699
<b>INELIGIBLE CHILDREN:</b>	<b>SSI Children</b>	2,373	100	1,208	116	153	760	21	60	19	1,048	116	44
<b>COUNT OF CHILDREN</b>	<b>Percent of Ineligible Children</b>	95.1%	91.7%	98.0%	81.7%	93.9%	93.7%	84.0%	93.8%	95.0%	98.8%	93.5%	91.7%
	<b>Undocumented Noncitizens</b>	31 1.2%	2 1.8%	12 1.0%	18 12.7%	0 0.0%	3 0.4%	2 8.0%	0 0.0%	0 0.0%	1 0.1%	6 4.8%	1 2.1%
	<b>Other Ineligible Children</b>	92 3.7%	7 6.4%	56 4.5%	8 5.6%	10 6.1%	48 5.9%	2 8.0%	4 6.3%	1 5.0%	12 1.1%	2 1.6%	3 6.3%
	<b>Count</b>	2,496	109	1,233	142	163	811	25	64	20	1,061	124	48
	<b>Percent of All Children</b>	4.8%	2.7%	5.9%	4.6%	0.9%	16.8%	2.7%	3.8%	1.5%	6.9%	3.2%	2.7%

**Table 3 – Page 3**

MFIP Family Characteristics		All Cases	Racial/Ethnic Groups					Asian Subgroups			Black Subgroups		
			American					Asian	Asian Immigrants		African	Black Immigrants	
			Asian	Black	Hispanic	Indian	White	American	Hmong	Other Asian	American	Somali	Other African
AGE OF YOUNGEST CHILD	Mean	4.0	4.6	3.9	3.4	3.7	4.1	2.8	4.9	5.6	3.9	4.2	4.2
	Median	2	3	2	2	2	2	1	3	4	2	2	2
	Minimum	0	0	0	0	0	0	0	0	0	0	0	0
	Maximum	19	19	19	19	19	19	19	17	18	18	19	17
	< 1 Year Old	5,626	276	2,012	370	520	2,315	108	97	71	1,515	330	167
		21.7%	18.7%	20.7%	25.3%	22.2%	22.2%	29.0%	18.0%	12.6%	20.4%	22.0%	21.0%
	1-5 Years Old	13,297	711	5,147	790	1,216	5,156	196	241	274	3,991	743	413
		51.4%	48.1%	53.0%	54.0%	52.0%	49.5%	52.7%	44.6%	48.5%	53.9%	49.6%	51.9%
	6-10 Years Old	3,604	254	1,378	152	305	1,476	43	104	107	1,067	206	105
		13.9%	17.2%	14.2%	10.4%	13.0%	14.2%	11.6%	19.3%	18.9%	14.4%	13.8%	13.2%
11-12 Years Old	955	65	343	51	86	401	5	31	29	248	71	24	
	3.7%	4.4%	3.5%	3.5%	3.7%	3.9%	1.3%	5.7%	5.1%	3.3%	4.7%	3.0%	
13-15 Years Old	1,151	84	411	44	91	507	9	45	30	296	72	43	
	4.4%	5.7%	4.2%	3.0%	3.9%	4.9%	2.4%	8.3%	5.3%	4.0%	4.8%	5.4%	
>15 Years Old	909	73	320	43	65	400	6	17	50	222	62	36	
	3.5%	4.9%	3.3%	2.9%	2.8%	3.8%	1.6%	3.1%	8.8%	3.0%	4.1%	4.5%	
REGION	Hennepin County	7,486	258	4,983	275	421	1,397	104	105	49	3,807	770	406
		28.9%	17.5%	51.3%	18.8%	18.0%	13.4%	28.0%	19.4%	8.7%	51.4%	51.4%	51.0%
	Ramsey County	5,688	1,024	2,793	350	147	1,259	176	403	445	2,347	257	189
		22.0%	69.3%	28.8%	23.9%	6.3%	12.1%	47.3%	74.6%	78.8%	31.7%	17.2%	23.7%
	Metro Suburban	3,760	95	917	238	83	2,358	51	18	26	708	119	90
	14.5%	6.4%	9.4%	16.3%	3.5%	22.7%	13.7%	3.3%	4.6%	9.6%	7.9%	11.3%	
Greater Minnesota	8,947	100	1,012	599	1,688	5,397	41	14	45	549	352	111	
	34.6%	6.8%	10.4%	41.0%	72.2%	51.8%	11.0%	2.6%	8.0%	7.4%	23.5%	13.9%	
FAMILY VIOLENCE	MFIP Exemption or Extension	1,931	31	881	96	176	695	11	16	4	843	19	19
	2000 - 2010	7.5%	2.1%	9.1%	6.6%	7.5%	6.7%	3.0%	3.0%	0.7%	11.4%	1.3%	2.4%
SERIOUS MENTAL HEALTH DIAGNOSIS	2008 - 2010	12,042	540	3,518	589	1,107	6,038	104	319	117	3,047	305	166
		46.5%	36.6%	36.2%	40.3%	47.3%	58.0%	28.0%	59.1%	20.7%	41.1%	20.4%	20.9%
	2010	9,582	484	2,724	443	814	4,918	86	289	109	2,371	231	122
	37.0%	32.8%	28.1%	30.3%	34.8%	47.2%	23.1%	53.5%	19.3%	32.0%	15.4%	15.3%	
CHEMICAL DEPENDENCY DIAGNOSIS	2008 - 2010	6,806	92	1,832	275	1,196	3,242	40	34	18	1,773	30	29
		26.3%	6.2%	18.9%	18.8%	51.1%	31.1%	10.8%	6.3%	3.2%	23.9%	2.0%	3.6%
	2010	4,265	56	1,089	155	751	2,109	20	23	13	1,054	20	15
	16.5%	3.8%	11.2%	10.6%	32.1%	20.3%	5.4%	4.3%	2.3%	14.2%	1.3%	1.9%	
CHILD PROTECTION 2008 - 2010	Family Assessment	2,740	36	958	150	306	1,218	11	20	*	866	56	36
		10.6%	2.4%	9.9%	10.3%	13.1%	11.7%	3.0%	3.7%	*	11.7%	3.7%	4.5%
	Family Investigation	505	8	145	22	55	250	*	*	*	142	*	*
		2.0%	0.5%	1.5%	1.5%	2.4%	2.4%	*	*	*	1.9%	*	*
Child Maltreatment Determination	1,008	14	390	45	147	392	*	*	*	370	*	*	
	3.9%	0.9%	4.0%	3.1%	6.3%	3.8%				5.0%			

\* For data privacy of individuals, certain small cell sizes are not reported.

**Table 4. Family Composition, Residence, and Challenges of DWP Paid Cases with Eligible Adults in December 2010 by Racial/Ethnic Groups and Subgroups**

Family Characteristics of December 2010 DWP Cases with Eligible Adults		All Cases	Racial/Ethnic Groups					Black Subgroups	
			Asian	Black	Hispanic	American Indian	White	African American	African Immigrants
<b>CASES</b>	Count	3,551	199	845	245	141	2,038	642	203
		100%	4.4%	23.8%	6.9%	4.0%	57.4%	18.1%	5.7%
<b>FAMILY TYPE</b>	Natural / Adopted / Step Children	3,225	172	743	226	120	1,888	557	186
		90.8%	92.5%	87.9%	92.2%	85.1%	92.6%	86.8%	91.6%
	Pregnant Only	276	24	79	13	14	139	66	13
		7.8%	7.0%	9.3%	5.3%	9.9%	6.8%	10.3%	6.4%
	Relative Care	50	3	23	6	7	11	19	4
		1.4%	0.5%	0.5%	0.5%	0.5%	0.5%	0.5%	0.5%
<b>2 ELIGIBLE CAREGIVERS</b>	Count	833	96	132	62	34	490	76	56
		23.5%	40.9%	15.6%	25.3%	24.1%	24.0%	11.8%	27.6%
<b>2 CAREGIVERS</b>	Count of Cases	891	103	143	83	36	505	81	62
		25.1%	46.2%	16.9%	33.9%	25.5%	24.8%	12.6%	30.5%
<b>MARRIED</b>	Count of Cases	534	72	93	40	14	306	39	54
	Percent of Two-caregiver Cases	59.9%	65.1%	65.0%	48.2%	38.9%	60.6%	48.1%	87.1%
<b>INELIGIBLE CAREGIVERS: PEOPLE COUNT</b>	SSI	24	6	5	2	1	10	3	2
		41.4%	85.7%	62.5%	7.1%	100.0%	90.9%	100.0%	40.0%
	Undocumented Non-citizens	33	1	3	26	0	1	0	3
		56.9%	14.3%	37.5%	92.9%	0.0%	9.1%	0.0%	60.0%
	Disqualified	1	0	0	0	0	0	0	0
	1.7%	0.0%	0.0%	0.0%	0.0%	0.0%	0.0%	0.0%	
	Count	58	7	8	28	1	11	3	5
<b>ALL CHILDREN</b>	Mean	1.2	2.4	2.0	2.0	1.7	1.7	1.7	2.3
	Median	2	2	2	2	1	2	1	2
	Minimum	0	0	0	0	0	0	0	0
	Maximum	10	10	8	8	6	8	5	8
	0	276	24	79	13	14	139	66	13
		7.8%	7.0%	9.3%	5.3%	9.9%	6.8%	10.3%	6.4%
	1	1,392	39	338	80	59	839	273	65
		39.2%	30.6%	40.0%	32.7%	41.8%	41.2%	42.5%	32.0%
	2	1,068	54	218	85	39	651	167	51
		30.1%	29.6%	25.8%	34.7%	27.7%	31.9%	26.0%	25.1%
	3	516	41	123	40	15	282	94	29
		14.5%	14.0%	14.6%	16.3%	10.6%	13.8%	14.6%	14.3%
	4 - 6	280	36	81	25	14	121	42	39
	7.9%	15.6%	9.6%	10.2%	9.9%	5.9%	6.5%	19.2%	
7 or More	19	5	6	2	0	6	0	6	
	0.5%	2.5%	0.7%	0.8%	0.0%	0.3%	0.0%	3.0%	

Table 4 – Page 2

DWP Family Characteristics		All Cases	Racial/Ethnic Groups					Black Subgroups	
			Asian	Black	Hispanic	American		African American	African Immigrants
						Indian	White		
ELIGIBLE CHILDREN	Mean	1.8	2.4	1.8	2.0	1.7	1.7	1.6	2.3
	Median	2	2	1	2	1	2	1	2
	Minimum	0	0	0	0	0	0	0	0
	Maximum	10	10	8	8	6	8	5	8
	0	311	25	89	13	16	161	73	16
		8.8%	12.6%	10.5%	5.3%	11.3%	7.9%	11.4%	7.9%
	1	1,412	41	343	83	58	849	280	63
		39.8%	21.5%	40.6%	33.9%	41.1%	41.7%	43.6%	31.0%
	2	1,043	51	215	82	40	635	164	51
		29.4%	21.0%	25.4%	33.5%	28.4%	31.2%	25.5%	25.1%
	3	501	41	118	40	14	273	89	29
		14.1%	12.9%	14.0%	16.3%	9.9%	13.4%	13.9%	14.3%
	4 - 6	266	36	74	26	13	114	36	38
	7.5%	13.4%	8.8%	10.6%	9.2%	5.6%	5.6%	18.7%	
7 or More	18	5	17	1	0	6	0	6	
	0.5%	2.5%	2.0%	0.4%	0.0%	0.3%	0.0%	3.0%	
Count	6,296	478	1,479	497	219	3,488	1,005	474	
INELIGIBLE CHILDREN: COUNT OF CHILDREN	SSI Children	138	4	46	4	5	78	38	8
	Percent of Ineligible Children	92.6%	80.0%	97.9%	57.1%	100.0%	92.9%	97.4%	100.0%
	Other Ineligible Children	11	1	1	3	0	6	1	0
		7.4%	20.0%	2.1%	42.9%	0.0%	7.1%	2.6%	0.0%
	Count	149	5	47	7	5	84	39	8
Percent of All Children	2.3%	1.0%	3.1%	1.4%	2.2%	2.4%	3.7%	1.7%	

Table 4 – Page 3

DWP Family Characteristics		All Cases	Racial/Ethnic Groups					Black Subgroups	
			Asian	Black	Hispanic	American Indian	White	African American	African Immigrants
AGE OF YOUNGEST CHILD	Mean	5.6	5.4	5.6	5.8	4.8	5.7	6.0	4.2
	Median	4	4	4	4	3	4	5	2
	Minimum	0	0	0	0	0	0	0	0
	Maximum	19	19	19	19	19	19	19	19
	< 1 Year Old	309	34	55	24	14	177	30	25
		8.7%	16.1%	6.5%	9.8%	9.9%	8.7%	4.7%	12.3%
	1-5 Years Old	1,698	80	415	108	75	973	302	113
		47.8%	48.4%	49.1%	44.1%	53.2%	47.7%	47.0%	55.7%
	6-10 Years Old	725	40	165	57	24	427	133	32
		20.4%	18.3%	19.5%	23.3%	17.0%	21.0%	20.7%	15.8%
11-12 Years Old	197	6	53	15	4	114	46	7	
	5.5%	3.0%	6.3%	6.1%	2.8%	5.6%	7.2%	3.4%	
13-15 Years Old	231	12	52	20	7	135	47	5	
	6.5%	6.0%	6.2%	8.2%	5.0%	6.6%	7.3%	2.5%	
>15 Years Old	181	15	183	11	7	107	30	9	
	5.1%	7.5%	21.7%	4.5%	5.0%	5.3%	4.7%	4.4%	
REGION	Hennepin County	743	38	423	29	21	208	336	87
		20.9%	17.7%	50.1%	11.8%	14.9%	10.2%	52.3%	42.9%
	Ramsey County	530	126	180	38	11	160	154	26
		14.9%	48.4%	21.3%	15.5%	7.8%	7.9%	24.0%	12.8%
	Metro Suburban	737	16	124	47	17	524	88	36
	20.8%	18.8%	14.7%	19.2%	12.1%	25.7%	13.7%	17.7%	
Greater Minnesota	1,541	19	118	131	92	1,146	64	54	
	43.4%	15.1%	14.0%	53.5%	65.2%	56.2%	10.0%	26.6%	
SERIOUS MENTAL HEALTH DIAGNOSIS	2008 - 2010	1,004	32	134	45	42	727	109	25
		28.3%	15.1%	15.9%	18.4%	29.8%	35.7%	17.0%	12.3%
	2010	729	28	85	30	28	540	72	13
	20.5%	9.7%	10.1%	12.2%	19.9%	26.5%	11.2%	6.4%	
CHEMICAL DEPENDENCY DIAGNOSIS	2008 - 2010	540	10	57	24	53	381	*	*
		15.2%	5.0%	6.7%	9.8%	37.6%	18.7%		
	2010	325	*	33	*	31	239	*	*
	9.2%		3.9%		22.0%	11.7%			
CHILD PROTECTION 2008 - 2010	Family Assessment	273	*	44	22	10	183	34	10
		7.7%		5.2%	9.0%	7.1%	9.0%	5.3%	4.9%
	Family Investigation	30	*	*	*	*	21	*	*
		0.8%					1.0%		
Child Maltreatment Determination	70	0	17	*	*	38	17	0	
	2.0%	0.0%	2.0%			1.9%	2.6%	0.0%	

\* Due to data privacy concerns, small cell sizes were removed.

**Table 5. Economic Characteristics of MFIP Paid Cases with Eligible Adults in December 2010 by Racial/Ethnic Groups and Subgroups**

Economic Characteristics of December 2010 MFIP Cases with Eligible Adults		Cases	Racial/Ethnic Groups					Asian Subgroups			Black Subgroups		
			Asian	Black	Hispanic	American Indian	White	Asian American	Asian Immigrants Hmong	Other	African American	Black Immigrants Somali	Other
<b>CASES</b>	Count	25,881	1,477	9,705	1,462	2,339	10,410	372	540	565	7,411	1,498	796
	Percent of All Cases	100%	5.7%	37.5%	5.6%	9.0%	40.2%	1.4%	2.1%	2.2%	28.6%	5.8%	3.1%
<b>COUNTED MFIP MONTHS Sept. 1996 to Dec. 2010</b>	Mean	25.3	25.3	29.4	21.8	22.3	23.5	15.4	36.6	17.6	30.7	26.5	21.4
	Median	20	19	26	15	16	18	8	42	12	28	23	16
<b>Maximum for Eligible Adult on Case</b>	No Counted Months	1,962	135	484	181	429	697	53	39	43	371	67	46
		7.6%	9.1%	5.0%	12.4%	18.3%	6.7%	14.2%	7.2%	7.6%	5.0%	4.5%	5.8%
	1 - 12 Months	7,890	584	2,482	488	565	3,622	161	113	310	1,698	450	334
		30.5%	39.5%	25.6%	33.4%	24.2%	34.8%	43.3%	20.9%	54.9%	22.9%	30.0%	42.0%
	13 - 24 Months	4,922	249	1,741	247	368	2,218	77	63	109	1,287	296	158
		19.0%	16.9%	17.9%	16.9%	15.7%	21.3%	20.7%	11.7%	19.3%	17.4%	19.8%	19.8%
	25 - 36 Months	3,397	143	1,353	179	292	1,365	40	57	46	1,007	244	102
		13.1%	9.7%	13.9%	12.2%	12.5%	13.1%	10.8%	10.6%	8.1%	13.6%	16.3%	12.8%
	37 - 42 Months	1,313	50	547	69	112	508	10	30	10	412	104	31
		5.1%	3.4%	5.6%	4.7%	4.8%	4.9%	2.7%	5.6%	1.8%	5.6%	6.9%	3.9%
	43 - 48 Months	1,169	37	504	62	108	433	9	20	8	385	83	36
		4.5%	2.5%	5.2%	4.2%	4.6%	4.2%	2.4%	3.7%	1.4%	5.2%	5.5%	4.5%
49 - 54 Months	1,003	39	459	66	96	317	2	30	7	366	68	25	
	3.9%	2.6%	4.7%	4.5%	4.1%	3.0%	0.5%	5.6%	1.2%	4.9%	4.5%	3.1%	
55 - 60 Months	4,225	240	2,135	170	369	1,251	20	188	32	1,885	186	64	
	16.3%	16.2%	22.0%	11.6%	15.8%	12.0%	5.4%	34.8%	5.7%	25.4%	12.4%	8.0%	
<b>TIME LIMIT EXEMPTIONS</b>	Count	2,464	128	724	208	746	609	56	45	27	613	68	43
	Percent of All Cases	9.5%	8.7%	7.5%	14.2%	31.9%	5.9%	15.1%	8.3%	4.8%	8.3%	4.5%	5.4%
	Age 18 or 19, Attending High School	924	67	330	103	83	319	32	24	11	288	27	15
	Percent of Exempt Cases	37.5%	52.3%	45.6%	49.5%	11.1%	52.4%	57.1%	53.3%	40.7%	47.0%	39.7%	34.9%
	Living on an Indian Reservation	602	0	2	0	598	1	0	0	0	2	0	0
	Minor Parent	24.4%	0.0%	0.3%	0.0%	80.2%	0.2%	0.0%	0.0%	0.0%	0.3%	0.0%	0.0%
	Family Violence	374	28	132	78	29	97	20	8	0	120	4	8
		15.2%	21.9%	18.2%	37.5%	3.9%	15.9%	35.7%	17.8%	0.0%	19.6%	5.9%	18.6%
	Age 60 or older	459	9	202	24	33	176	3	5	1	194	6	2
	18.6%	7.0%	27.9%	11.5%	4.4%	28.9%	5.4%	11.1%	3.7%	31.6%	8.8%	4.7%	
TIME LIMIT EXTENSIONS	Count	105	24	58	3	3	16	1	8	15	9	31	18
	4.3%	18.8%	8.0%	1.4%	0.4%	2.6%	1.8%	17.8%	55.6%	1.5%	45.6%	41.9%	
<b>TIME LIMIT EXTENSIONS</b>	Count	3,031	163	1,536	119	272	901	14	125	24	1,411	87	38
	Percent of MFIP Cases	11.7%	11.0%	15.8%	8.1%	11.6%	8.7%	3.8%	23.1%	4.2%	19.0%	5.8%	4.8%
	Mean	32.6	49.1	33.7	29.3	29.6	27.8	26.4	53.8	50.8	33.7	35.3	27.6
	Median	27	50	29	21	23	23	20	55	56	29	31	26
	1 - 12 Months	844	60	380	28	75	286	4	52	4	347	20	13
	Percent of Extended Cases	27.8%	36.8%	24.7%	23.5%	27.6%	31.7%	28.6%	41.6%	16.7%	24.6%	23.0%	34.2%
	13 - 24 Months	537	11	257	24	65	174	2	7	2	236	13	8
		17.7%	6.7%	16.7%	20.2%	23.9%	19.3%	14.3%	5.6%	8.3%	16.7%	14.9%	21.1%
	25 - 36 Months	454	16	240	24	36	133	2	9	5	221	13	6
		15.0%	9.8%	15.6%	20.2%	13.2%	14.8%	14.3%	7.2%	20.8%	15.7%	14.9%	15.8%
More than 36 Months	1,196	76	659	43	96	308	6	57	13	607	41	11	
	39.5%	46.6%	42.9%	36.1%	35.3%	34.2%	42.9%	45.6%	54.2%	43.0%	47.1%	28.9%	

Table 5 – Page 2

MFIP Economic Characteristics		Cases	Racial/Ethnic Groups					Asian Subgroups			Black Subgroups		
			Asian	Black	Hispanic	American		Asian American	Asian Immigrants		African American	Black Immigrants	
						Indian	White		Hmong	Other		Somali	Other
EXTENSION REASON	Ill or incapacitated	1,026	34	428	29	162	359	3	26	5	383	31	14
	Percent of Extended Cases	33.9%	20.9%	27.9%	24.4%	59.6%	39.8%	21.4%	20.8%	20.8%	27.1%	35.6%	36.8%
	Special Medical Criteria	551	15	315	20	23	170	3	10	2	299	9	7
	Percent of Extended Cases	18.2%	9.2%	20.5%	16.8%	8.5%	18.9%	21.4%	8.0%	8.3%	21.2%	10.3%	18.4%
	Care of Ill or Incapacitated	302	21	165	14	15	85	2	14	5	148	13	4
	Percent of Extended Cases	10.0%	12.9%	10.7%	11.8%	5.5%	9.4%	14.3%	11.2%	20.8%	10.5%	14.9%	10.5%
	IQ between 70 and 80	117	6	83	4	6	17	0	5	1	75	7	1
	Percent of Extended Cases	3.9%	3.7%	5.4%	3.4%	2.2%	1.9%	0.0%	4.0%	4.2%	5.3%	8.0%	2.6%
	Mentally Ill	740	65	379	36	49	201	6	53	6	359	13	7
	Percent of Extended Cases	24.4%	39.9%	24.7%	30.3%	18.0%	22.3%	42.9%	42.4%	25.0%	25.4%	14.9%	18.4%
	Employment Required Hours	134	18	65	6	6	37	0	14	4	52	11	2
	Percent of Extended Cases	4.4%	11.0%	4.2%	5.0%	2.2%	4.1%	0.0%	11.2%	16.7%	3.7%	12.6%	5.3%
	Family Violence Waiver	91	1	59	6	9	14	0	1	0	58	1	0
	Percent of Extended Cases	3.0%	0.6%	3.8%	5.0%	3.3%	1.6%	0.0%	0.8%	0.0%	4.1%	1.1%	0.0%
	Unemployable	20	1	10	2	1	6	0	0	1	8	1	1
	Percent of Extended Cases	0.7%	0.6%	0.7%	1.7%	0.4%	0.7%	0.0%	0.0%	4.2%	0.6%	1.1%	2.6%
	Learning Disabled	24	1	12	1	1	8	0	1	0	12	0	0
Percent of Extended Cases	0.8%	0.6%	0.8%	0.8%	0.4%	0.9%	0.0%	0.8%	0.0%	0.9%	0.0%	0.0%	
Developmental Disability	19	1	15	1	0	2	0	1	0	13	1	1	
Percent of Extended Cases	0.6%	0.6%	1.0%	0.8%	0.0%	0.2%	0.0%	0.8%	0.0%	0.9%	1.1%	2.6%	
Appeal	7	0	0	0	0	2	0	0	0	4	0	1	
Percent of Extended Cases	0.2%	0.0%	0.0%	0.0%	0.0%	0.2%	0.0%	0.0%	0.0%	0.3%	0.0%	2.6%	
NEW CASES IN 2010	Total of New Cases	5,348	524	1,698	330	321	2,367	123	88	313	1,124	361	213
	Percent of All Cases	20.7%	35.5%	17.5%	22.6%	13.7%	22.7%	33.1%	16.3%	55.4%	15.2%	24.1%	26.8%
	Minnesota Residents	4,009	231	1,063	273	290	2,067	101	61	69	814	117	132
	Percent of New Cases	75.0%	44.1%	62.6%	82.7%	90.3%	87.3%	82.1%	69.3%	22.0%	72.4%	32.4%	62.0%
	Percent of All Cases	15.5%	15.6%	11.0%	18.7%	12.4%	19.9%	27.2%	11.3%	12.2%	11.0%	7.8%	16.6%
	Moved into State in 2010	1,339	293	635	57	31	300	22	27	244	310	244	81
	Percent of New Cases	25.0%	55.9%	37.4%	17.3%	9.7%	12.7%	17.9%	30.7%	78.0%	27.6%	67.6%	38.0%
Percent of All Cases	5.2%	19.8%	6.5%	3.9%	1.3%	2.9%	5.9%	5.0%	43.2%	4.2%	16.3%	10.2%	



Table 5 – Page 3

MFIP Economic Characteristics		Cases	Racial/Ethnic Groups					Asian Subgroups			Black Subgroups		
			Asian	Black	Hispanic	American Indian	White	Asian American	Asian Immigrants Hmong	Other	African American	Black Immigrants Somali	Other
CASH GRANT	Mean	\$357	\$412	\$366	\$365	\$383	\$334	\$373	\$420	\$431	\$368	\$364	\$353
MFIP FOOD PORTION	Mean	\$415	\$522	\$427	\$425	\$429	\$385	\$411	\$593	\$527	\$406	\$530	\$433
FOOD SUPPORT - UNCLE HARRY	Mean of Cases Receiving	\$143	\$160	\$141	\$137	\$144	\$140	\$142	\$165	\$157	\$139	\$154	\$145
	Percent	13.6%	22.6%	15.6%	11.5%	10.2%	11.7%	10.2%	38.1%	15.9%	16.0%	16.2%	10.6%
FOOD SUPPORT - OTHER STAND-ALONE	Mean of Cases Receiving	\$430	\$525	\$443	\$447	\$396	\$421	\$435	\$657	\$472	\$431	\$546	\$366
	Percent	5.5%	3.8%	4.9%	5.5%	4.8%	6.4%	5.4%	3.7%	2.8%	5.1%	4.6%	4.4%
MFIP FOOD-ONLY	Mean	\$337	\$396	\$364	\$327	\$341	\$302	\$303	\$500	\$358	\$314	\$485	\$337
	Count of Cases	3,144	220	1,197	173	179	1,287	267	91	90	740	347	145
	Percent	12.1%	14.9%	12.3%	11.8%	7.7%	12.4%	71.7%	16.9%	15.9%	10.0%	23.2%	18.2%
INCOME FROM WORK	Count of Cases	8,501	515	3,103	514	552	3,664	105	194	216	2,153	651	299
	Percent	32.8%	34.9%	32.0%	35.2%	23.6%	35.2%	28.2%	35.9%	38.2%	29.1%	43.5%	37.6%
EARNED INCOME	Mean of Working Cases	\$944	\$1,256	\$954	\$955	\$1,038	\$880	\$1,013	\$1,362	\$1,279	\$864	\$1,150	\$1,160
	Median	\$803	\$1,192	\$815	\$770	\$953	\$754	\$815	\$1,308	\$1,305	\$720	\$1,045	\$994
BUDGETED EARNINGS	Mean of Working Cases	\$491	\$714	\$514	\$484	\$506	\$442	\$524	\$847	\$692	\$457	\$667	\$545
	Median	\$439	\$708	\$457	\$407	\$480	\$402	\$492	\$768	\$718	\$409	\$627	\$441
WORK HOURS	Mean of Working Cases	101	131	101	100	115	96	102	143	135	92	120	117
	Median	93	132	92	88	112	88	93	153	141	83	112	109
	1 - 79 Hours	3,459	140	1,267	218	179	1,588	39	47	54	993	175	99
	Percent	13.4%	9.5%	13.1%	14.9%	7.7%	15.3%	10.5%	8.7%	9.6%	13.4%	11.7%	12.4%
	80 - 119 Hours	1,910	80	698	113	119	865	25	25	30	461	172	65
	Percent	7.4%	5.4%	7.2%	7.7%	5.1%	8.3%	6.7%	4.6%	5.3%	6.2%	11.5%	8.2%
	120 - 159 Hours	1,536	93	554	92	109	665	19	33	41	367	130	57
	Percent	5.9%	6.3%	5.7%	6.3%	4.7%	6.4%	5.1%	6.1%	7.3%	5.0%	8.7%	7.2%
	160 Hours or More	1,502	198	546	85	138	510	21	88	89	299	171	76
	Percent	5.8%	13.4%	5.6%	5.8%	5.9%	4.9%	5.6%	16.3%	15.8%	4.0%	11.4%	9.5%
UNEMPLOYMENT INSURANCE WAGES FOR QUARTER 2, 2010	Mean of Cases with UI Wages	\$2,345	\$2,807	\$2,336	\$2,414	\$2,325	\$2,304	\$2,521	\$3,178	\$2,500	\$2,114	\$2,972	\$2,990
	Median	\$1,872	\$2,412	\$1,919	\$1,815	\$1,896	\$1,815	\$1,944	\$2,913	\$1,531	\$1,646	\$2,690	\$2,468
	Count	9,344	452	3,200	569	820	4,147	131	201	120	2,377	532	291
	Percent	36.1%	30.6%	33.0%	38.9%	35.1%	39.8%	35.2%	37.2%	21.2%	32.1%	35.5%	36.6%

Table 5 – Page 4

MFIP Economic Characteristics		Cases	Racial/Ethnic Groups					Asian Subgroups			Black Subgroups		
			American					Asian	Asian Immigrants		African	Black Immigrants	
			Asian	Black	Hispanic	Indian	White	American	Hmong	Other	American	Somali	Other
EMPLOYMENT SERVICES SANCTIONS	10% ES Sanction	346	22	109	28	40	142	11	6	5	84	18	7
	30% ES Sanction	996	42	353	76	75	438	21	18	3	292	27	34
	Cases with ES Sanctions	1,342	64	462	104	115	580	32	24	8	376	45	41
	Percent of All Cases	5.2%	4.3%	4.8%	7.1%	4.9%	5.6%	8.6%	4.4%	1.4%	5.1%	3.0%	5.2%
	Six Counted Sanction Months	187	5	66	8	80	22	4	0	1	58	6	2
	Percent of All Cases	0.7%	0.3%	0.7%	0.5%	3.4%	0.2%	1.1%	0.0%	0.2%	0.8%	0.4%	0.3%
HOUSING SUBSIDY	Mean	\$693	\$713	\$769	\$636	\$665	\$577	\$699	\$732	\$652	\$775	\$769	\$698
	Count	6,814	271	3,652	252	373	2,151	53	177	41	2,494	910	248
	Percent of All Cases	26.3%	18.3%	37.6%	17.2%	15.9%	20.7%	14.2%	32.8%	7.3%	33.7%	60.7%	31.2%
GRANT DEDUCTIONS FOR HOUSING SUBSIDY	Count	3,694	83	2,067	149	191	1,141	27	35	21	1,227	676	164
	Percent of All Cases	14.3%	5.6%	21.3%	10.2%	8.2%	11.0%	7.3%	6.5%	3.7%	16.6%	45.1%	20.6%
SSI RECEIPT	Count	2,779	270	1,275	119	165	905	30	194	46	1,041	174	60
	Percent	10.7%	18.3%	13.1%	8.1%	7.1%	8.7%	8.1%	35.9%	8.1%	14.0%	11.6%	7.5%
FAMILY CAP	One Child	2,380	129	1,053	131	306	705	27	85	17	872	128	53
	Two or More Children	682	41	356	37	106	132	2	37	2	259	78	19
	Percent	11.8%	11.5%	14.5%	11.5%	17.6%	8.0%	7.8%	22.6%	3.4%	15.3%	13.8%	9.0%
FAMILY STABILIZATION SERVICES	Count	9,337	741	3,476	406	714	3,850	83	287	371	2,694	523	259
	Percent	36.1%	50.2%	35.8%	27.8%	30.5%	37.0%	22.3%	53.1%	65.7%	36.4%	34.9%	32.5%
CHILD CARE ASSISTANCE PROGRAM ELIGIBILITY	Youngest Child Age Less than 6	6,979	279	3,109	406	354	2,690	76	60	143	2,302	543	264
	Percent	27.0%	18.9%	32.0%	27.8%	15.1%	25.8%	20.4%	11.1%	25.3%	31.1%	36.2%	33.2%
	Youngest Child Ages 6 to 12	451	13	217	16	12	187	4	4	5	139	61	17
	Percent	1.7%	0.9%	2.2%	1.1%	0.5%	1.8%	1.1%	0.7%	0.9%	1.9%	4.1%	2.1%
CHILD SUPPORT DISBURSEMENTS	Current Mean	\$212	\$320	\$203	\$227	\$188	\$215	\$236	\$404	\$285	\$187	\$291	\$260
	Median	\$173	\$283	\$168	\$183	\$154	\$173	\$152	\$377	\$258	\$151	\$272	\$211
	Count	3,101	62	920	148	202	1,712	19	26	17	756	81	83
	Percent of All Cases	12.0%	4.2%	9.5%	10.1%	8.6%	16.4%	5.1%	4.8%	3.0%	10.2%	5.4%	10.4%
	Sum	\$658,558	\$19,811	\$186,862	\$33,559	\$38,030	\$368,294	\$4,477	\$10,494	\$4,840	\$141,717	\$23,564	\$21,581
	Arrears Mean	\$100	\$107	\$97	\$129	\$66	\$104	\$106	\$94	\$115	\$109	\$53	\$84
	Median	\$48	\$52	\$50	\$64	\$33	\$47	\$37	\$47	\$65	\$56	\$37	\$47
	Count	2,040	46	603	113	117	1,128	14	484	65	54	29	4
	Percent of All Cases	7.9%	3.1%	6.2%	7.7%	5.0%	10.8%	3.8%	89.6%	11.5%	0.7%	1.9%	0.5%
	Sum	\$204,789	\$4,927	\$58,635	\$14,574	\$7,774	\$117,002	\$1,481	\$45,323	\$7,453	\$5,859	\$1,540	\$337
	Total Mean	\$233	\$313	\$224	\$270	\$203	\$236	\$275	\$212	\$275	\$272	\$204	\$408
	Median	\$174	\$278	\$167	\$191	\$156	\$174	\$278	\$151	\$210	\$200	\$185	\$346
	Count	3,694	79	1,092	178	226	2,055	23	880	111	101	60	4
	Percent of All Cases	14.3%	5.3%	11.3%	12.2%	9.7%	19.7%	6.2%	163.0%	19.6%	1.4%	4.0%	0.5%
	Sum	\$862,263	\$24,738	\$244,715	\$48,133	\$45,804	\$484,994	\$6,321	\$186,779	\$30,496	\$27,440	\$12,247	\$1,632

**Table 6. Economic Characteristics of DWP Paid Cases with Eligible Adults in December 2010 by Racial/Ethnic Groups and Subgroups**

Economic Characteristics of December 2010 DWP Cases with Eligible Adults		All Cases	Racial/Ethnic Groups					Black Subgroups	
			Asian	Black	Hispanic	American Indian	White	African American	African Immigrants
<b>CASES</b>	<b>Count</b>	3,551	186	845	245	141	2,038	642	203
	<b>Percent of All Cases</b>	100%	4.4%	23.8%	6.9%	4.0%	57.4%	18.1%	5.7%
<b>COUNTED MFIP MONTHS</b> Sept. 1996 to Dec. 2010 Maximum for Eligible Adult on Case	<b>Mean</b>	9.1	7.3	11.4	9.3	12.1	8.1	12.0	9.8
	<b>Median</b>	0	0	2	0	6	0	2	2
	<b>No Counted Months</b>	1,890	128	410	137	53	1,116	310	100
		53.2%	67.2%	48.5%	55.9%	37.6%	54.8%	48.3%	49.3%
	<b>1 - 12 Months</b>	725	29	157	41	39	441	114	43
		20.4%	14.5%	18.6%	16.7%	27.7%	21.6%	17.8%	21.2%
	<b>13 - 24 Months</b>	428	16	115	28	23	236	88	27
		12.1%	9.7%	13.6%	11.4%	16.3%	11.6%	13.7%	13.3%
	<b>25 - 36 Months</b>	244	13	73	19	11	124	54	19
		6.9%	2.7%	8.6%	7.8%	7.8%	6.1%	8.4%	9.4%
	<b>37 - 42 Months</b>	85	4	23	6	5	45	19	4
		2.4%	1.1%	2.7%	2.4%	3.5%	2.2%	3.0%	2.0%
<b>43 - 48 Months</b>	75	3	27	5	3	35	22	5	
	2.1%	2.7%	3.2%	2.0%	2.1%	1.7%	3.4%	2.5%	
<b>49 - 54 Months</b>	55	4	17	7	3	23	16	1	
	1.5%	1.6%	2.0%	2.9%	2.1%	1.1%	2.5%	0.5%	
<b>55 - 60 Months</b>	49	2	23	2	4	18	19	4	
	1.4%	0.5%	2.7%	0.8%	2.8%	0.9%	3.0%	2.0%	
<b>DWP ELIGIBILITY MONTHS</b>	<b>1st Month</b>	901	48	200	70	43	526	148	52
		25.4%	26.9%	23.7%	28.6%	30.5%	25.8%	23.1%	25.6%
	<b>2nd Month</b>	1,010	56	224	64	49	589	169	55
		28.4%	19.9%	26.5%	26.1%	34.8%	28.9%	26.3%	27.1%
	<b>3rd Month</b>	852	45	220	58	26	478	175	45
	24.0%	28.5%	26.0%	23.7%	18.4%	23.5%	27.3%	22.2%	
<b>4th Month</b>	788	50	201	53	23	445	150	51	
	22.2%	24.7%	23.8%	21.6%	16.3%	21.8%	23.4%	25.1%	
<b>NEW CASES IN 2010</b>	<b>Total of New Cases</b>	1,738	123	432	121	53	969	341	91
	<b>Percent of All Cases</b>	48.9%	61.8%	51.1%	49.4%	37.6%	47.5%	53.1%	44.8%
	<b>Minnesota Residents</b>	1,213	75	220	47	15	185	187	33
	<b>Percent of New Cases</b>	69.8%	66.1%	50.9%	38.8%	28.3%	19.1%	54.8%	36.3%
	<b>Percent of All Cases</b>	34.2%	40.9%	26.0%	19.2%	10.6%	9.1%	29.1%	16.3%
	<b>Moved into State in 2010</b>	525	48	212	74	38	784	154	58
	<b>Percent of New Cases</b>	30.2%	33.9%	49.1%	61.2%	71.7%	80.9%	45.2%	63.7%
<b>Percent of All Cases</b>	14.8%	21.0%	25.1%	30.2%	27.0%	38.5%	24.0%	28.6%	

Table 6 – Page 2

DWP Economic Characteristics		All Cases	Racial/Ethnic Groups					Black Subgroups	
			Asian	Black	Hispanic	American Indian	White	African American	African Immigrants
DWP CASH GRANT	Mean	\$369	\$429	\$349	\$372	\$332	\$372	\$341	\$377
FOOD SUPPORT	Mean of Cases Receiving	\$431	\$527	\$434	\$461	\$437	\$417	\$413	\$498
	Percent	94.1%	96.2%	95.1%	93.1%	96.5%	94.1%	95.0%	95.6%
INCOME FROM WORK	Count	1,013	56	192	80	28	638	134	58
	Percent of All Cases	28.5%	30.1%	22.7%	32.7%	19.9%	31.3%	20.9%	28.6%
EARNED INCOME	Mean of Working Cases	\$1,020	\$1,387	\$1,062	\$980	\$910	\$992	\$1,059	\$1,068
	Median	\$825	\$1,026	\$813	\$866	\$886	\$813	\$780	\$862
BUDGETED EARNINGS	Mean of Working Cases	\$545	\$660	\$549	\$532	\$554	\$537	\$555	\$540
	Median	\$445	\$575	\$424	\$406	\$479	\$443	\$427	\$415
WORK HOURS	Mean of Working Cases	100	121	95	111	97	98	92	103
	Median	90	117	80	107	91	88	80	80
	1 - 79 Hours	421	19	87	28	12	266	60	27
		11.9%	10.2%	10.3%	11.4%	8.5%	13.1%	9.3%	13.3%
	80 - 119 Hours	210	9	41	14	5	138	29	12
		5.9%	4.8%	4.9%	5.7%	3.5%	6.8%	4.5%	5.9%
	120 - 159 Hours	147	5	18	18	3	101	15	3
	4.1%	2.7%	2.1%	7.3%	2.1%	5.0%	2.3%	1.5%	
	160 Hours or More	212	23	43	19	8	115	29	14
		6.0%	12.4%	5.1%	7.8%	5.7%	5.6%	4.5%	6.9%
UNEMPLOYMENT INSURANCE WAGES FOR QUARTER 2, 2010	Mean of Cases with UI Wages	\$4,388	\$4,586	\$4,467	\$5,072	\$4,050	\$4,259	\$4,557	\$4,230
	Median	\$3,927	\$4,428	\$4,183	\$4,655	\$3,955	\$3,689	\$4,252	\$3,865
	Count	1,763	94	327	115	67	1,114	237	90
	Percent of All Cases	49.6%	50.5%	38.7%	46.9%	47.5%	54.7%	36.9%	44.3%
SSI RECEIPT	Count	146	10	46	3	6	80	37	9
	Percent	4.1%	5.4%	5.4%	1.2%	4.3%	3.9%	5.8%	4.4%
CHILD CARE ASSISTANCE PROGRAM ELIGIBILITY	Youngest Child Less than Age 6	765	12	189	32	15	500	130	59
	Percent	21.5%	6.5%	22.4%	13.1%	10.6%	24.5%	20.2%	29.1%
	Youngest Child Age 6 to 12 Years	120	2	30	10	1	75	25	5
		3.4%	1.1%	3.6%	4.1%	0.7%	3.7%	3.9%	2.5%
	Any Eligible Child	885	14	219	42	16	575	155	64
		24.9%	7.5%	25.9%	17.1%	11.3%	28.2%	24.1%	31.5%

Table 6 – Page 3

DWP Economic Characteristics		All Cases	Racial/Ethnic Groups					Black Subgroups	
			Asian	Black	Hispanic	American Indian	White	African American	African Immigrants
CHILD SUPPORT DISBURSEMENTS	Current Mean	\$313	\$306	\$270	\$267	\$328	\$191		
	Median	\$270	\$294	\$208	\$279	\$279	\$150		
	Count	555	7	80	25	422	10		
	Percent of Cases	15.6%	3.5%	9.5%	10.2%	20.7%	7.1%		
	Sum	\$173,486	\$2,145	\$21,588	\$6,680	\$138,214	\$1,988		
	Arrears Mean	\$150	\$48	\$85	\$132	\$172	\$125		
	Median	\$61	\$42	\$57	\$76	\$63	\$86		
	Count	262	5	42	10	192	7		
	Percent of Cases	7.4%	2.5%	5.0%	4.1%	9.4%	5.0%		
	Sum	\$39,359	\$240	\$3,590	\$1,316	\$32,978	\$878		
	Total Mean	\$360	\$341	\$300	\$308	\$380	\$261		
	Median	\$287	\$376	\$235	\$319	\$293	\$140		
	Count	591	7	84	26	451	11		
	Percent of Cases	16.6%	3.5%	9.9%	10.6%	22.1%	7.8%		
	Sum	\$212,846	\$2,385	\$25,178	\$7,996	\$171,192	\$2,866		

Table 7. Selected Characteristics of All Minnesotans with Minor Children, American Community Survey 2007

All Minnesotans with Minor Children, ACS 2007	Total Adults with Children	Major Racial/Ethnic Groups				
		Asian	Black	Hispanic	White	American Indian
Individual Characteristics	1,818,142	78,248	88,485	81,789	1,549,865	18,127
Percent with a High School Diploma/GED	92%	78%	80%	61%	95%	86%
Percent Never Married	23%	22%	46%	33%	21%	44%
Household Characteristics	1,203,812	48,259	56,338	52,840	1,034,159	10,951
Minnesota Households with Children						
Average Number of Children	2.1	2.6	2.4	2.1	2.0	2.1
Average Age of Youngest Child	7.3	6.02	6.35	6.02	7.81	9.36
Percent of Households Residing in:						
Core Metro (Minneapolis and St. Paul)	10%	26%	39%	22%	6%	8%
Metro Suburban	52%	60%	54%	47%	53%	26%
Greater Minnesota	38%	14%	7%	32%	42%	66%