

*Your quick,
easy guide to*

Minnesota Workforce Facts

Labor Market Information Helpline

651.259.7384 • 1.888.234.1114

Or visit our website at:

www.positivelyminnesota.com/Data_Publications/Publications

MINNESOTA DEPARTMENT OF EMPLOYMENT
AND ECONOMIC DEVELOPMENT

April 2011

Minnesota Workforce Facts

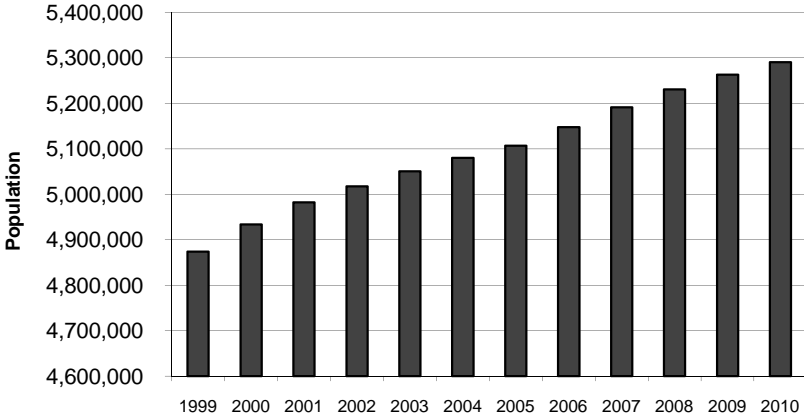
Table of Contents

Population Estimates, Minnesota	1
Number of Employed and Unemployed, Minnesota and United States	2
Average Unemployment Rates, Minnesota and United States	3
Labor Force Participation Rates, Minnesota	4
Labor Force Participation Rates, United States	5
Annual Average Employment by Industry, Minnesota	6
Nonagricultural Employment, Minnesota and United States	7
Employment Projections by Industry, Minnesota and United States	8
Employment Projections by Occupation, Minnesota and United States	9
Top 25 Occupations in Demand, Minnesota	10
Initial Claims for Unemployment Insurance, Minnesota and United States	11
Average Weekly Claims for Unemployment Insurance, Minnesota and U.S.	12
Maximum Weekly Benefit Amount for UI, Minnesota	13
Per Capita Personal Income, Minnesota and United States	14
Current Poverty Guidelines and Lower Living Standard Income Levels	15
Population Living in Poverty, Minnesota and United States	16
Consumer Price Index for All Urban Consumers	17
Reference:	
Useful Websites	18
Definitions of Labor Market Terms	19

Labor Market Information HelpLine: 651.259.7384 or 1.888.234.1114 (Toll Free)

Population Estimates

Minnesota, 1999-2010



Year	Population
1999	4,873,481
2000	4,933,739
2001	4,982,180
2002	5,017,355
2003	5,050,393
2004	5,080,031
2005	5,106,992
2006	5,147,857
2007	5,191,267
2008	5,230,247
2009	5,262,824
2010	5,290,447

Source: U.S. Census Bureau, Preliminary Annual Estimates of the Resident Population for States: April 1, 2000 to July 1, 2010 (NST-PEST2010-01), release date February 2011.

Labor Market Information HelpLine: 651.259.7384 or 1.888.234.1114 (Toll Free)

Number of Employed and Unemployed

Minnesota and United States, 1998-2010

MINNESOTA	Labor Force	Employed	Unemployed
1998	2,711,504	2,636,862	74,642
1999	2,742,201	2,665,747	76,454
2000	2,791,510	2,704,993	86,518
2001	2,841,021	2,731,328	87,176
2002	2,861,744	2,731,101	130,643
2003	2,880,829	2,740,196	140,634
2004	2,882,289	2,748,666	133,624
2005	2,878,560	2,758,379	120,181
2006	2,892,733	2,774,030	118,703
2007	2,910,487	2,776,129	134,358
2008	2,936,747	2,777,598	159,150
2009	2,951,347	2,713,211	238,136
2010	2,963,152	2,746,544	216,608

UNITED STATES	Labor Force (in thousands)	Employed (in thousands)	Unemployed (in thousands)
1998	137,680	131,476	6,204
1999	139,380	133,498	5,882
2000	142,588	136,899	5,689
2001	143,783	136,941	6,842
2002	144,875	136,488	8,387
2003	146,516	137,739	8,777
2004	147,304	139,246	8,142
2005	149,296	141,719	7,577
2006	151,407	144,671	6,996
2007	153,127	146,053	7,070
2008	154,346	145,468	8,878
2009	154,226	139,969	14,257
2010	153,906	139,052	14,854

Source: Local Area Unemployment Statistics (LAUS), Minnesota Department of Employment and Economic Development, Bureau of Labor Statistics, U.S. Department of Labor

Labor Market Information HelpLine: 651.259.7384 or 1.888.234.1114 (Toll Free)

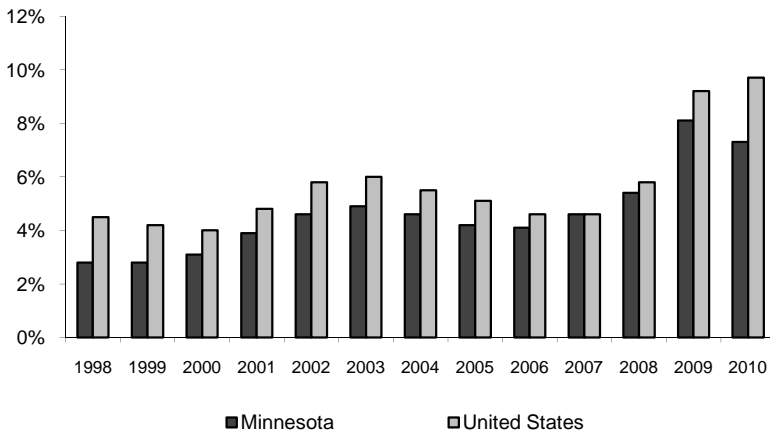
Average Unemployment Rates

Minnesota and United States, 1998-2010

	Minnesota	United States
1998	2.8 %	4.5 %
1999	2.8	4.2
2000	3.1	4.0
2001	3.9	4.8
2002	4.6	5.8
2003	4.9	6.0
2004	4.6	5.5
2005	4.2	5.1
2006	4.1	4.6
2007	4.6	4.6
2008	5.4	5.8
2009	8.1	9.2
2010	7.3	9.7

Source: Local Area Unemployment Statistics (LAUS), Minnesota Department of Employment and Economic Development, Bureau of Labor Statistics, U.S. Department of Labor

Annual Average Unemployment Rates



Labor Market Information HelpLine: 651.259.7384 or 1.888.234.1114 (Toll Free)

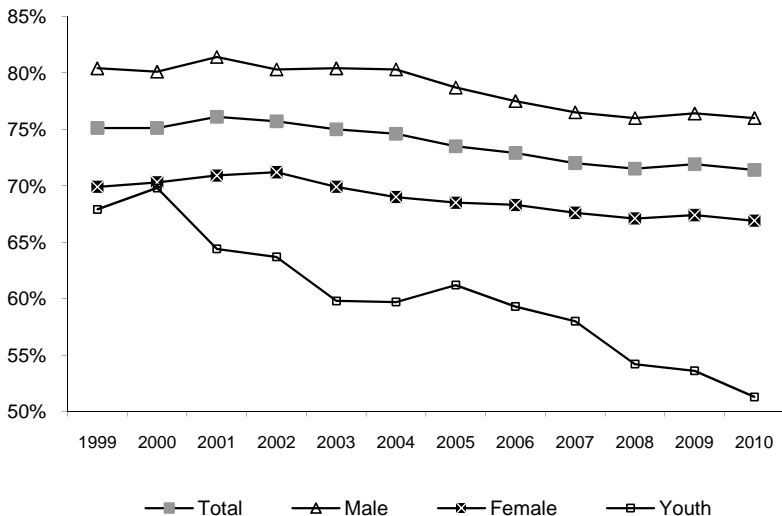
Labor Force Participation Rates

Minnesota, 1999-2010

	Total	Male	Female	Youth (Age 16-19)
1999	75.1 %	80.4 %	69.9 %	67.9 %
2000	75.1	80.1	70.3	69.8
2001	76.1	81.4	70.9	64.4
2002	75.7	80.3	71.2	63.7
2003	75.0	80.4	69.9	59.8
2004	74.6	80.3	69.0	59.7
2005	73.5	78.7	68.5	61.2
2006	72.9	77.5	68.3	59.3
2007	72.0	76.5	67.6	58.0
2008	71.5	76.0	67.1	54.2
2009	71.9	76.4	67.4	53.6
2010	71.4	76.0	66.9	51.3

Source: Current Population Survey, Bureau of Labor Statistics, U.S. Department of Labor

Minnesota Labor Force Participation Rates



Labor Market Information HelpLine: 651.259.7384 or 1.888.234.1114 (Toll Free)

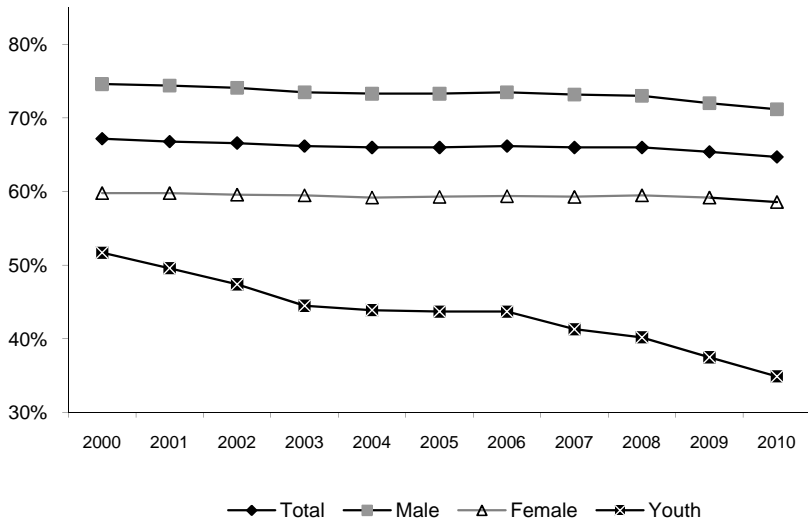
Labor Force Participation Rates

United States, 2000-2010

	Total	Male	Female	Youth (Age 16-19)
2000	67.2 %	74.6 %	59.8 %	51.7 %
2001	66.8	74.4	59.8	49.6
2002	66.6	74.1	59.6	47.4
2003	66.2	73.5	59.5	44.5
2004	66.0	73.3	59.2	43.9
2005	66.0	73.3	59.3	43.7
2006	66.2	73.5	59.4	43.7
2007	66.0	73.2	59.3	41.3
2008	66.0	73.0	59.5	40.2
2009	65.4	72.0	59.2	37.5
2010	64.7	71.2	58.6	34.9

Source: Current Population Survey, Bureau of Labor Statistics, U.S. Department of Labor

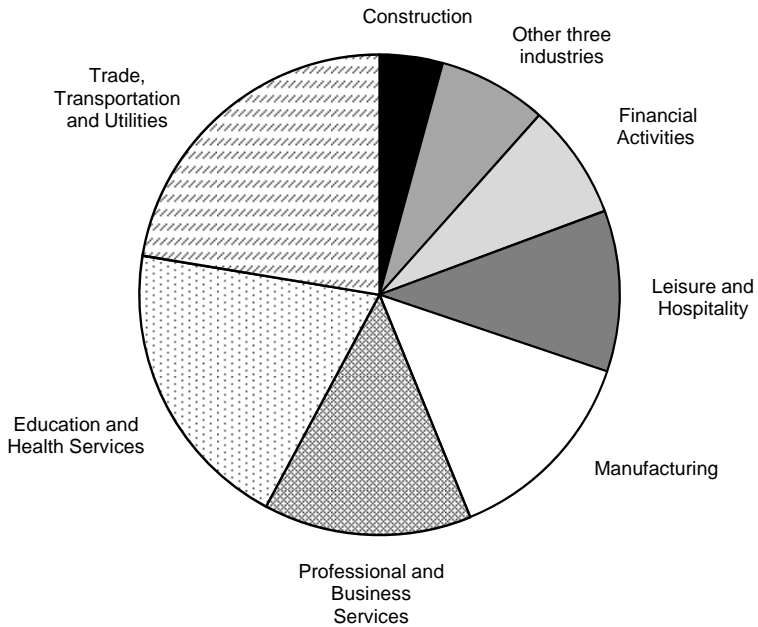
United States Labor Force Participation Rates



Labor Market Information HelpLine: 651.259.7384 or 1.888.234.1114 (Toll Free)

Annual Average Employment by Industry

Minnesota, 2009



Industry	Employment
Trade, Transportation, and Utilities	492,062
Education and Health Services	434,733
Professional and Business Services	307,537
Manufacturing	300,204
Leisure and Hospitality	238,357
Financial Activities	170,593
Construction	93,493
Other Services	83,462
Information	54,945
Natural Resources and Mining	22,489

Source: Quarterly Census of Employment and Wages (QCEW),
Minnesota Department of Employment and Economic Development

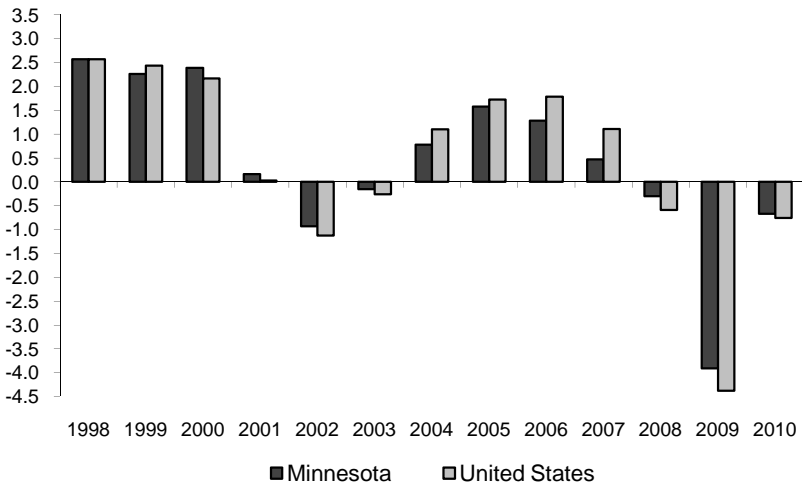
Labor Market Information HelpLine: 651.259.7384 or 1.888.234.1114 (Toll Free)

Nonagricultural Employment

Minnesota and United States, 1997-2010

	Minnesota	United States
1997	2,500,000	122,776,000
1998	2,564,200	125,930,000
1999	2,622,200	128,993,000
2000	2,684,900	131,785,000
2001	2,689,351	131,826,000
2002	2,664,341	130,341,000
2003	2,660,323	129,999,000
2004	2,681,005	131,435,000
2005	2,723,269	133,703,000
2006	2,758,216	136,086,000
2007	2,771,290	137,598,000
2008	2,763,013	136,790,000
2009	2,655,022	130,807,000
2010	2,637,261	129,818,000

Percent Change in Employment



Source: Current Employment Statistics (CES), Minnesota Department of Employment and Economic Development, Bureau of Labor Statistics, U.S. Department of Labor

Labor Market Information HelpLine: 651.259.7384 or 1.888.234.1114 (Toll Free)

Employment Projections by Industry

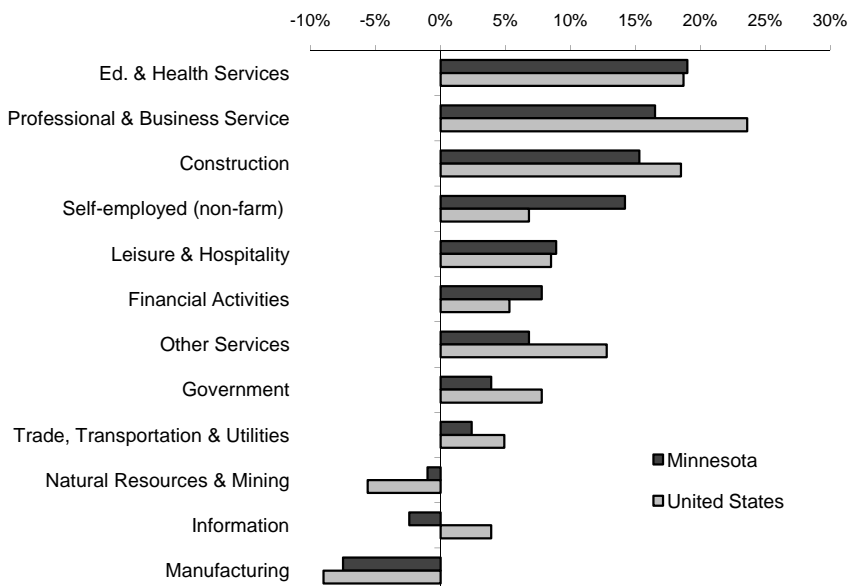
Minnesota and United States, 2009-2019*

Industry	Percent Change in Employment, 2009-2019*	
	Minnesota	United States
Ed. & Health Services	19.0 %	18.7 %
Professional & Business Service	16.5	23.6
Construction	15.3	18.5
Self-employed (non-farm)	14.2	6.8
Leisure & Hospitality	8.9	8.5
Financial Activities	7.8	5.3
Other Services	6.8	12.8
Government	3.9	7.8
Trade, Transportation & Utilities	2.4	4.9
Natural Resources & Mining	-1.0	-5.6
Information	-2.4	3.9
Manufacturing	-7.5	-9.0

*Minnesota projections are for 2009-2019. U.S. projections are for 2008-2018.

Source: Employment Projections, Minnesota Department of Employment and Economic Development,
Bureau of Labor Statistics, U.S. Department of Labor

Percent Change in Number of Jobs, 2009- 2019*



Labor Market Information HelpLine: 651.259.7384 or 1.888.234.1114 (Toll Free)

Employment Projections by Occupation

Minnesota and United States, 2009-2019*

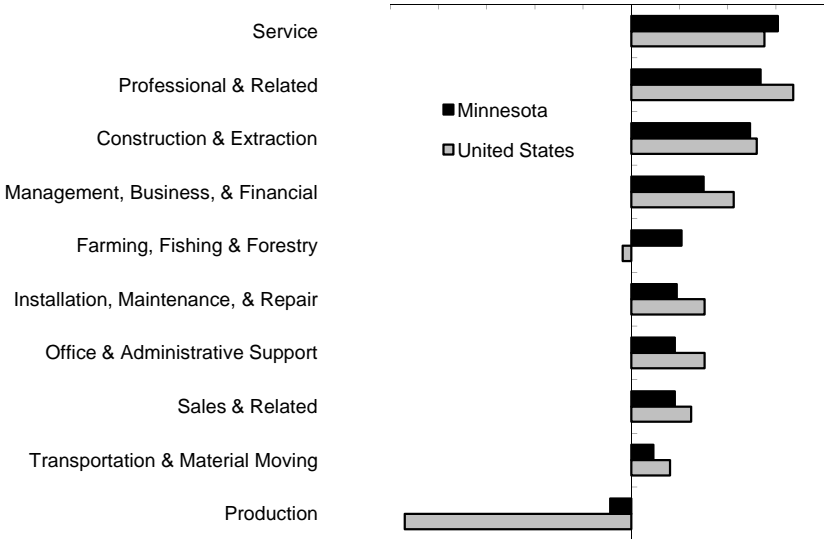
Occupation	Percent Change in Employment, 2009-2019*	
	Minnesota	United States
Service	15.2 %	13.8 %
Professional & Related	13.4	16.8
Construction & Extraction	12.3	13.0
Management, Business, & Financial	7.5	10.6
Farming, Fishing & Forestry	5.2	-0.9
Installation, Maintenance, & Repair	4.7	7.6
Office & Administrative Support	4.5	7.6
Sales & Related	4.5	6.2
Transportation & Material Moving	2.3	4.0
Production	-2.2	-23.5

*Minnesota projections are for 2009-2019. U.S. projections are for 2008-2018.

Source: Employment Projections, Minnesota Department of Employment and Economic Development, Bureau of Labor Statistics, U.S. Department of Labor

Percent Change in Number of Jobs, 2009-2019*

-25% -20% -15% -10% -5% 0% 5% 10% 15% 20%



Labor Market Information HelpLine: 651.259.7384 or 1.888.234.1114 (Toll Free)

Top 25 Occupations in Demand*

Minnesota, 2010

Rank	Occupation	Median Hourly Wage
1	Registered Nurses	\$34.94
2	Home Health Aides	11.30
3	Nursing Aides, Orderlies, and Attendants	12.77
4	Retail Salespersons	9.67
5	Combined Food Preparation and Serving Workers, etc	8.38
6	Office Clerks, General	13.82
7	Licensed Practical and Licensed Vocational Nurses	19.02
8	Bookkeeping, Accounting, and Auditing Clerks	16.92
9	Janitors and Cleaners, Except Maids & Housekeeping	11.91
10	Cashiers	8.77
11	Stock Clerks and Order Fillers	10.28
12	Computer Software Engineers, Applications	42.53
13	Executive Secretaries & Administrative Assistants	21.00
14	Social and Human Service Assistants	13.53
15	Maids and Housekeeping Cleaners	10.02
16	Laborers & Freight, Stock & Material Movers, etc	12.46
17	Computer Systems Analysts	36.32
18	Bill and Account Collectors	16.05
19	Hairdressers, Hairstylists, and Cosmetologists	12.28
20	Truck Drivers, Heavy and Tractor-Trailer	19.12
21	Personal Financial Advisors	26.60
22	Network Systems and Data Communications Analysts	40.47
23	Industrial Engineers	36.90
24	Waiters and Waitresses	9.43
25	Financial Managers	52.16

*Occupations in Demand is a current demand indicator based on the number of job vacancies compared to the number of Unemployment Insurance claimants.

Source: Minnesota Department of Employment and Economic Development,
Bureau of Labor Statistics, U.S. Department of Labor

Labor Market Information HelpLine: 651.259.7384 or 1.888.234.1114 (Toll Free)

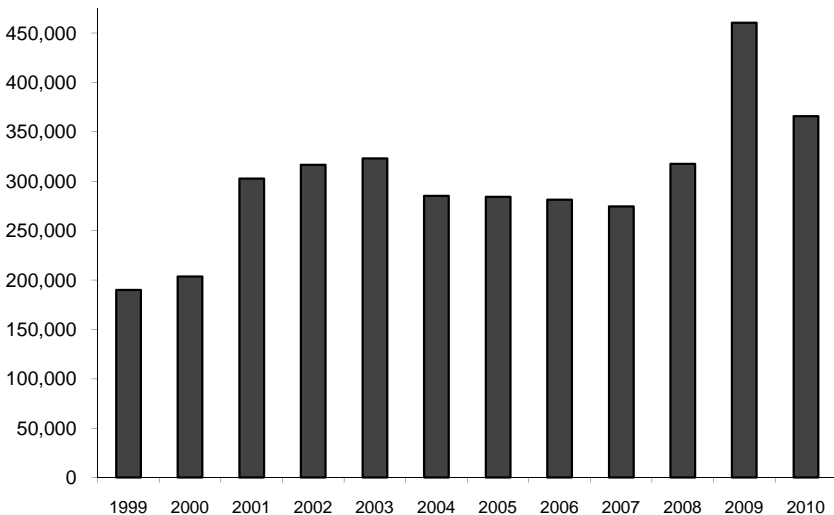
Initial Claims for Unemployment Insurance

Minnesota and United States, 1999-2010

	Minnesota	United States
1999	190,003	15,478,810
2000	203,480	15,646,774
2001	302,676	21,012,173
2002	316,572	21,163,464
2003	323,050	20,973,682
2004	284,948	17,956,673
2005	283,975	17,057,501
2006	281,171	16,354,134
2007	274,311	16,933,706
2008	317,312	22,137,026
2009	460,333	29,451,483
2010	365,626	23,624,531

Source: Minnesota Unemployment Benefits Program, Minnesota Department of Employment and Economic Development, Bureau of Labor Statistics, U.S. Department of Labor

Minnesota Initial Claims for Unemployment Insurance



Labor Market Information HelpLine: 651.259.7384 or 1.888.234.1114 (Toll Free)

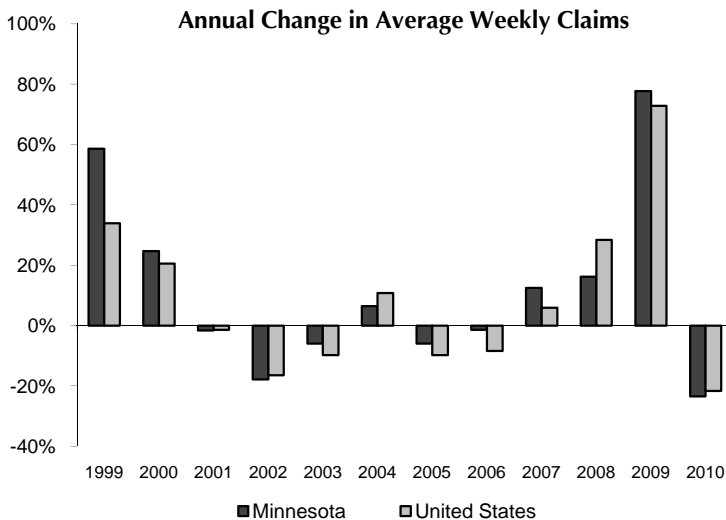
Average Weekly Claims* for Unemployment Insurance

Minnesota and United States, 1999-2010

			Annual Change	
	Minnesota	United States	Minnesota	United States
1999	49,469	2,973,783	58.6 %	33.9 %
2000	61,646	3,585,437	24.6	20.6
2001	60,655	3,532,703	-1.6	-1.5
2002	49,793	2,949,670	-17.9	-16.5
2003	46,797	2,661,797	-6.0	-9.8
2004	49,793	2,949,670	6.4	10.8
2005	46,797	2,661,797	-6.0	-9.8
2006	46,126	2,438,100	-1.4	-8.4
2007	51,899	2,581,519	12.5	5.9
2008	60,300	3,314,648	16.2	28.4
2009	107,142	5,730,000	77.7	72.9
2010	81,968	4,484,234	-23.5	-21.7

*Calculates the number of people claiming unemployment insurance (UI) during an average week. Measures duration of UI and relative importance of unemployment for MN vs. U.S.

Source: Employment and Training Administration, U.S. Department of Labor. Calculations performed by Minnesota Department of Employment and Economic Development.



Labor Market Information HelpLine: 651.259.7384 or 1.888.234.1114 (Toll Free)

Maximum Weekly Benefit Amount for UI

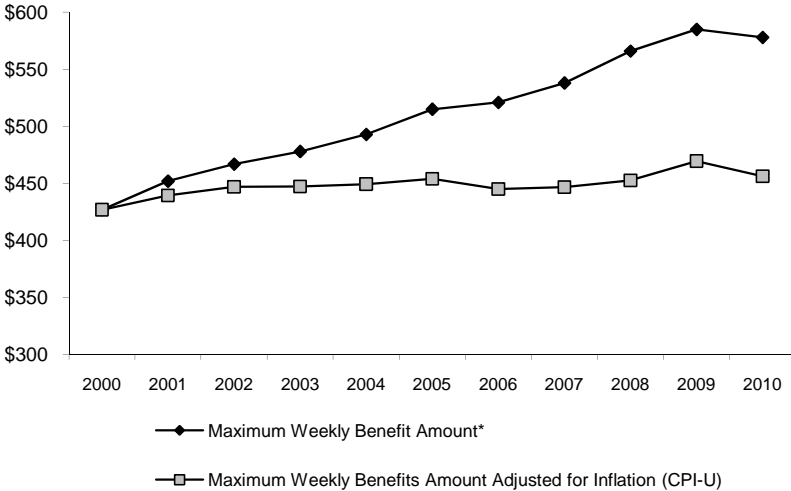
Minnesota, 2000-2010

Year	Maximum Weekly Benefit Amount*
2000	\$427.00
2001	\$452.00
2002	\$467.00
2003	\$478.00
2004	\$493.00
2005	\$515.00
2006	\$521.00
2007	\$538.00
2008	\$566.00
2009	\$585.00
2010	\$578.00

*Effective Aug.1st for every year through 2007; as of 2008, last Sunday in Oct. used as reference point.

Source: Minnesota Unemployment Benefits Program, Minnesota Department of Employment and Economic Development

Minnesota Maximum Weekly Benefit Amount



Labor Market Information HelpLine: 651.259.7384 or 1.888.234.1114 (Toll Free)

Per Capita Personal Income *(not adjusted for inflation)*

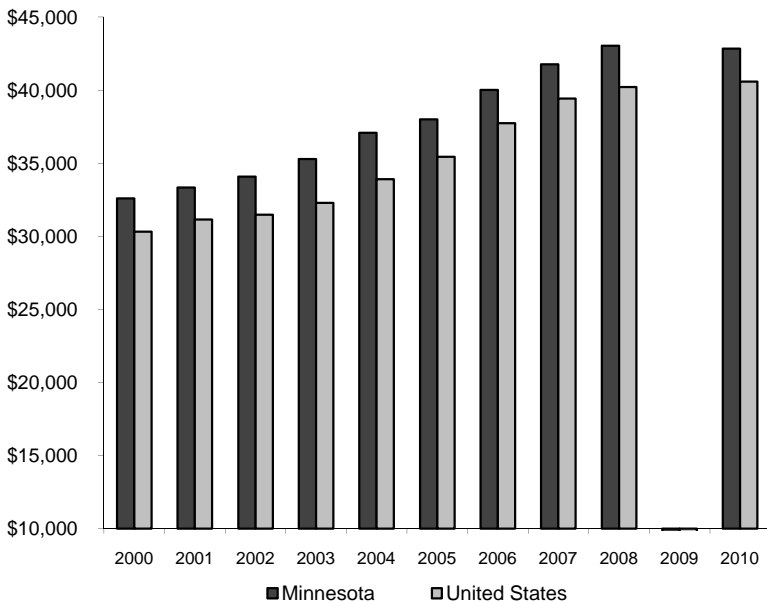
Minnesota and United States, 2000-2010

	Minnesota	United States
2000	\$32,598	\$30,318
2001	\$33,345	\$31,149
2002	\$34,076	\$31,470
2003	\$35,289	\$32,284
2004	\$37,079	\$33,899
2005	\$37,991	\$35,447
2006	\$40,015	\$37,728
2007	\$41,764	\$39,430
2008	\$43,037	\$40,208
2009	NA	NA
2010	\$42,843	\$40,584

Note: Population estimates for 2009 have not yet been incorporated into per capital personal income estimates.

Source: Bureau of Economic Analysis, U.S. Department of Commerce.

Per Capita Personal Income, 2000-2010



Labor Market Information HelpLine: 651.259.7384 or 1.888.234.1114 (Toll Free)

Current Poverty Guidelines and Lower Living Standard Income Levels (LLSIL)

Family Size	Poverty Guidelines for all States*	70% of LLSIL for Midwest, 2009	
	Effective May 7, 2010	Metro Counties**	Non-Metro Counties
1	\$10,830	\$8,609	\$8,329
2	\$14,570	\$14,112	\$13,644
3	\$18,310	\$19,370	\$18,730
4	\$22,050	\$23,913	\$23,118
5	\$25,790	\$28,217	\$27,287
6	\$29,530	\$33,006	\$31,910
7	\$33,270	\$37,795	\$36,533
8	\$37,010	\$42,584	\$41,156

* Except Alaska and Hawaii

** Metro counties in Minnesota include: Anoka, Benton, Carver, Chisago, Clay, Dakota, Hennepin, Houston, Isanti, Olmsted, Polk, Ramsey, Scott, Sherburne, St. Louis, Stearns, Washington, and Wright.

Source: Federal Register, U.S. Department of Health and Human Services, U.S. Department of Labor

Total hourly wage needed at 40 hours per week, 52 weeks per year to meet:

Family Size	Poverty Guidelines	70% of LLSIL for Midwest	
		Metro Counties*	Non-metro Counties
1	\$5.21	\$4.14	\$4.00
2	\$7.00	\$6.78	\$6.56
3	\$8.80	\$9.31	\$9.00
4	\$10.60	\$11.50	\$11.11
5	\$12.40	\$13.57	\$13.12
6	\$14.20	\$15.87	\$15.34
7	\$16.00	\$18.17	\$17.56
8	\$17.79	\$20.47	\$19.79

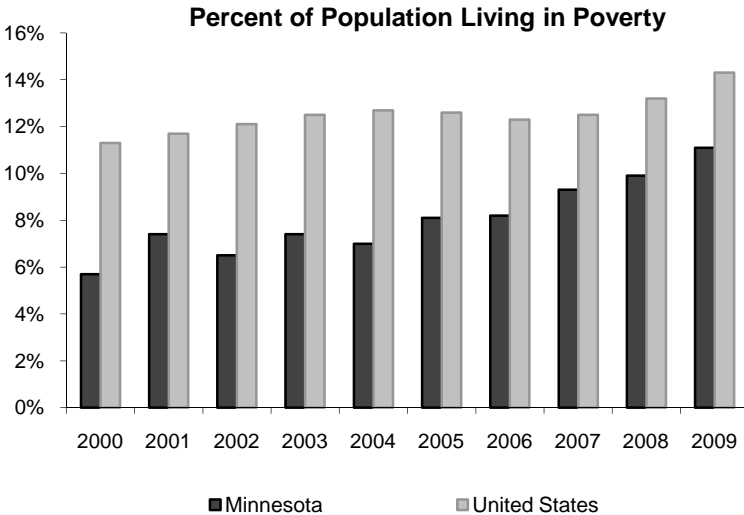
Labor Market Information HelpLine: 651.259.7384 or 1.888.234.1114 (Toll Free)

Percent of Population Living in Poverty

Minnesota and United States, 2000-2009

	Minnesota	United States
2000	5.7 %	11.3 %
2001	7.4	11.7
2002	6.5	12.1
2003	7.4	12.5
2004	7.0	12.7
2005	8.1	12.6
2006	8.2	12.3
2007	9.3	12.5
2008	9.9	13.2
2009	11.1	14.3

Source: U.S. Census Bureau



Labor Market Information HelpLine: 651.259.7384 or 1.888.234.1114 (Toll Free)

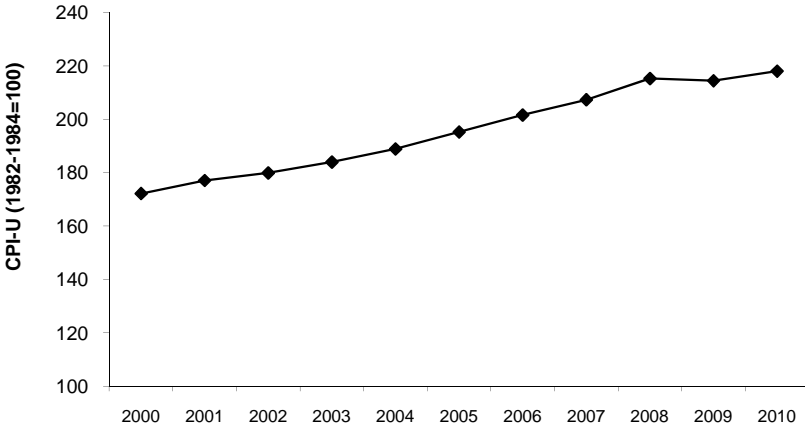
Consumer Price Index for All Urban Consumers

U.S., 2000-2010

	U.S. CPI-U 1982-1984=100	Year to Year Percent Change
2000	172.2	3.4 %
2001	177.1	2.8
2002	179.9	1.6
2003	184.0	2.3
2004	188.9	2.7
2005	195.3	3.4
2006	201.6	3.2
2007	207.3	2.8
2008	215.3	3.8
2009	214.5	-0.4
2010	218.1	1.6

Source: Bureau of Labor Statistics, U.S. Department of Labor

United States Consumer Price Index for All Urban Consumers



Labor Market Information HelpLine: 651.259.7384 or 1.888.234.1114 (Toll Free)

Useful Websites

Minnesota Department of Employment and Economic Development
www.positivelyminnesota.com

Minnesota Labor Market Information & Data Center
www.positivelyminnesota.com/Data_Publications/Data

ISEEK - Minnesota's career, education and job resource
www.iseek.org

Minnesota Community Profiles and Property Search
www.mnprospector.com

Minnesota Demographics Center
www.demography.state.mn.us

Bureau of Labor Statistics, U.S. Department of Labor
www.bls.gov

Bureau of Economic Analysis, U.S. Department of Commerce
www.bea.gov

Federal Reserve Bank of Minneapolis
www.minneapolisfed.org

U.S. Census Bureau, U.S. Department of Commerce
www.census.gov

Statistical Resources on the Web: U of MI Documents Center
www.lib.umich.edu/govdocs/steclab.html

Minnesota Unemployment Insurance Program
www.uimn.org

Labor Market Information HelpLine: 651.259.7384 or 1.888.234.1114 (Toll Free)

Definitions of Labor Market Terms

Bureau of Labor Statistics (BLS):

The BLS is part of the U.S. Department of Labor and functions as the principal data-gathering agency of the federal government in the field of labor economics. The BLS collects, processes, analyzes and disseminates data relating to employment, unemployment, the labor force, productivity, prices, family expenditures, wages, industrial relations, and occupational safety and health.

Civilian Labor Force:

The sum of all employed and unemployed noninstitutionalized persons 16 years of age or older. Members of the armed forces are excluded.

Consumer Price Index (CPI):

The CPI is a measure of the average change in the prices paid by urban consumers for a fixed-market basket of goods and services. There is a separate index for the Minneapolis-St. Paul Metropolitan Statistical Area (MSA) but not for the state of Minnesota.

Quarterly Census of Employment and Wages (QCEW):

A federal/state cooperative program that collects and compiles employment and wage data for workers covered by state unemployment insurance laws and federal civilian workers covered by Unemployment Compensation for Federal Employees.

Initial Claims:

Federal term for initial applications for unemployment benefits; used as an economic indicator to measure emerging unemployment.

Local Area Unemployment Statistics (LAUS) Program:

A federal/state cooperative program that produces employment, labor force, unemployment and unemployment rate estimates for states and local areas.

Metropolitan Statistical Area (MSA):

A term applied by the U.S. Office of Management and Budget to counties that have one or more central cities and meet specified criteria for population density, commuting patterns and social and economic integration.

Unemployment:

An estimate of the number of persons who did not have a job but were available for work and actively seeking work during the calendar week that includes the 12th day of the month.

Unemployment Insurance (UI):

A federal government program in Minnesota that collects taxes (premiums) from employers in order to pay benefits to persons who are unemployed through no fault of their own. The UI program was implemented during the 1930s to help provide economic stability to individuals and communities during times of economic downturn.

Current Employment Statistics (CES) Program:

A federal/state cooperative program that conducts a statistical survey of firms to determine employment level by industry in the nonagricultural sector of the economy. Monthly employment statistics are available by state, MSA, and for the nation.

Labor Market Information HelpLine: 651.259.7384 or 1.888.234.1114 (Toll Free)



Minnesota
Workforce
Facts

MINNESOTA DEPARTMENT OF EMPLOYMENT AND ECONOMIC DEVELOPMENT
Labot Market Information Office

April 2011

www.positivelyminnesota.com/Data_Publications/Publications

Labor Market Information Helpline: 651.259.7384 or 1.888.234.1114 (Toll Free)
