

Annual Use Estimate of the Metropolitan Regional Parks System for 2010

**Based on a four-year average of visitation
data from 2007 through 2010**

April 2011



390 North Robert Street St. Paul, Minnesota 55101

Metropolitan Council Members

	Susan Haigh	Chair	
Roxanne Smith	District 1	Edward Reynoso	District 9
Lona Schreiber	District 2	John Đoàn	District 10
Jennifer Munt	District 3	Sandra Rummel	District 11
Gary Van Eyll	District 4	Harry Melander	District 12
Steven Elkins	District 5	Richard Kramer	District 13
James Brimeyer	District 6	Jon Commers	District 14
Gary L. Cunningham	District 7	Steven T. Chávez	District 15
Adam Duinick	District 8	Wendy Wulff	District 16

The mission of the Metropolitan Council is to develop, in cooperation with local communities, a comprehensive regional planning framework, focusing on transportation, wastewater, parks and aviation systems that guide the efficient growth of the metropolitan area. The Council operates transit and wastewater services and administers housing and other grant programs.

General phone	651-602-1000
Regional Data Center	651-602-1140
TTY	651-291-0904
Metro Info Line	651-602-1888
E-mail	data.center@metc.state.mn.us
Council Web site	www.metrocouncil.org

On request, this publication will be made available in alternative formats to people with disabilities. Please call the Metropolitan Council Data Center at 651-602-1140 or TTY 651-291-0904.

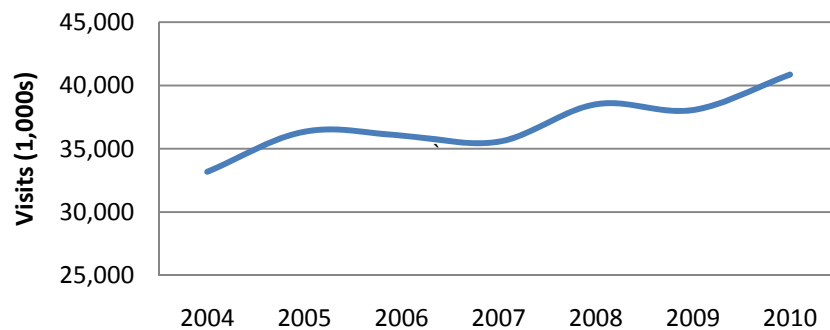
Printed on recycled paper with a minimum of 20% post-consumer waste.

Publication No. 78-11-023

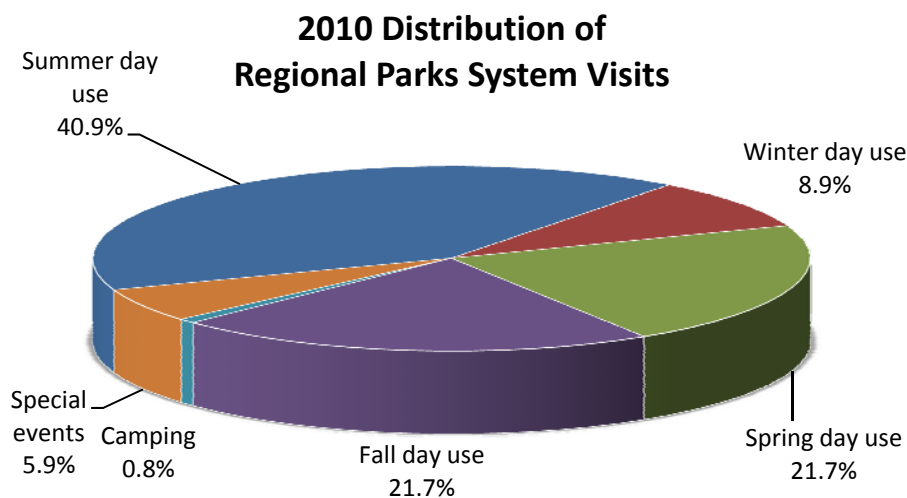
Executive Summary

- An estimated **40,867,500 visits** were made to the Metropolitan Regional Parks System in 2010, which is an increase of 7.4% from 2009. The increase in visitation rates can be partially attributed to:
 - The increase in popularity of newly opened facilities, such as Silverwood, Big Marine Park Reserve, Dakota Rail Regional Trail and Cedar Lake Farm Regional Park
 - Higher than average annual summer counts at facilities including Como Park, Zoo & Conservatory; Mississippi Gorge Regional Park in Minneapolis and Minnehaha Parkway Regional Trail
 - The reclassification of regional trails in Ramsey County to identify entrance points that had not been captured in previous counts
- Estimated annual visits have increased 23 percent since 2004. A total of 89 park and trail units were sampled in 2010 compared to 73 units sampled in 2004.

Total Annual Visits: 2004 to 2010



- The following chart indicates the distribution of estimated visits by seasonal day use, camping and special events:



- The five most-visited regional parks, trails and special recreation features in 2010 were:

<i>Park/Reserve/Trail</i>	<i>2010 Visits</i>
1. Minneapolis Chain of Lakes Regional Park	5,100,800
2. Como Regional Park, Zoo and Conservatory Special Recreation Feature	3,561,700
3. Mississippi Gorge Regional Park (Minneapolis & St. Paul)	2,181,600
4. Minnehaha Parkway Regional Trail	1,602,800
5. Nokomis-Hiawatha Regional Park	1,431,700

- Fifty-five percent of all estimated visits occurred in regional parks and trails in Minneapolis and St. Paul. This reflects a decrease in the share of visits to those parks and trails in the regional system over time (65.7% share in 2000). This is due primarily to the addition of park and trail facilities and population growth occurring outside these two cities.
- Twenty-four percent of all visits in 2010 were to regional trails and 76 percent were visits to regional parks, park reserves and special recreation features. Although Anoka County Riverfront, Minneapolis Chain of Lakes, and Mississippi Gorge are regional parks, the majority of visits to these parks are for trail use. If the trail visits to these regional parks were included in the trail totals, almost 40 percent of all 2010 visits were to trails.
- Fifty-five percent of all visits to regional parks and trails are considered “local” visits. A local visit is defined as a visit to a park or trail by a person who lives within the jurisdiction of the park agency that owns or operates that park or trail. Conversely, 45 percent of all visits to regional parks and trails are “non-local” visits, which clearly demonstrates that the system serves a regional audience.
- Walking and biking are the top activities in the regional parks system, followed by swimming, jogging, picnicking and relaxing. This information is based on data from the [Metropolitan Council Regional Parks and Trails Survey 2008](#).

Acknowledgements

The Metropolitan Regional Parks System is owned and managed by 10 county, city or special park district implementing agencies. Each agency is responsible for conducting the annual counts for their Regional Parks System units. Over 3,760 staff hours across agencies were put into the annual use sample counts for 2010, along with significant amounts of staff training and oversight. Without the help of the implementing agencies, the annual use estimate would not be possible.

The agencies and their count supervisors for 2010 are:

Anoka County – Cindy Higgins

City of Bloomington – Mark Morrison

Carver County – Lenny Schmitz

Dakota County – Doug Gross

Minneapolis Park and Recreation Board – Jennifer Ringold

Ramsey County – Jody Yungers

City of Saint Paul – Cindy Morrison

Scott County – Patricia Freeman

Three Rivers Park District – Jon Nauman and Thomas Mercier

Washington County – Lori Meyers

Metropolitan Parks and Open Space Commission

The Metropolitan Parks and Open Space Commission advises the Metropolitan Council on system-wide policy planning issues regarding the Metropolitan Regional Parks System.

Charles Haas, Chair

Doug Baines	District A	Tom Gamec	District E
Robert Moeller	District B	Daniel Shlaferman	District F
Richard Jabs	District C	Vacant	District G
Jeffrey Lee	District D	Barbara Schmidt	District H

Report prepared by:
Jan Youngquist
Planning Analyst-Parks
Metropolitan Council

Contents

Executive Summary.....	i
Introduction	1
How the annual use estimate is calculated	1

Tables

Table 1: 2010 Visitation Estimate	3
Table 2: Special event counts for 2010.....	9
Table 3: Comparison of 2009 and 2010 visitation	24
Table 4: Comparison of 2009 and 2010 park vs. trail visitation	24
Table 5: Most-visited regional parks and trails - 2010	25
Table 6: Urban parks visitation - 2010.....	25
Table 7: Como visitation – park and zoo/conservatory special recreation feature	25
Table 8: Visitation estimates by agency for operations and maintenance formula purposes.....	26
Table 9: Regional Parks System units sample counted 2010.....	27
Table 10: Comparison of estimated visits at the agency level from 2004 to 2010	28
Table 11: Top activities in the Regional Park System - 2010	29
Table 12: Visitor origin by agency - 2010.....	30
Table 13: Local and non-local visits by agency - 2010	31

Introduction

The Metropolitan Regional Parks System that was sampled for this estimate in 2010 encompassed approximately 54,633 acres of parkland and included 38 regional parks, 12 park reserves, 6 special recreation features and 33 regional trails. These park/trail units are owned and operated by 10 implementing agencies – counties, special park districts and cities. The regional park implementing agencies include:

Anoka County	Ramsey County
City of Bloomington	City of St. Paul
Carver County	Scott County
Dakota County	Three Rivers Park District
Minneapolis Park & Recreation Board	Washington County

This report presents annual use estimates for 89 units sampled in the Regional Parks System from data collected in 2007 through 2010. The information is reported by park/trail units for each implementing agency. Some parks and trails have sub-units that are operated by different implementing agencies, so total use for that park or trail is comprised of the sum of individual agency units.

Use estimates are reported in “visits.” One person entering the park represents one visit. Therefore, if a person visits a particular park once each week for a year, that represents 52 visits to that park.

How the annual use estimate is calculated

The annual use estimate is based on the average of four years (2007 – 2010) of summer counts of bikers, pedestrians, horse-riders, boats, vehicles and charter buses that enter the park through recognized park entrances. People in vehicles and buses are not counted individually. To determine the number of people entering in vehicles or buses, a person-per-vehicle average is multiplied by the number of vehicles or buses in each sample count. The person-per-vehicle averages come from the [Metropolitan Council Regional Parks and Trails Survey 2008](#).

Counts are taken in two-hour samples between Memorial Day and Labor Day. Two-hour samples begin at 8 a.m., 10 a.m., 12 p.m., 2 p.m., 4 p.m. and 6 p.m. The entrances and times are randomly chosen, with the samples split evenly between weekdays and weekends. To accurately estimate summer use, at least 25 samples on weekends and 25 samples on weekdays in each park and trail are necessary, but it is cost-prohibitive to do 50 samples per park and trail every year. Therefore, the samples for the current year and the three previous years are combined to determine the annual use for each park and trail. For each year, at least 16 samples are drawn for each park and trail. The four-year approach results in a minimum of 32 samples on weekends and 32 samples on weekdays, which meets the statistical requirements for estimated visits.

40,867,500

Visits to the
Regional Parks
System in 2010

54,633

Acres of regional parkland

The four-year approach reduces the effect of extreme weather or other anomalies on each park's estimated visitation. It reduces the effects of a temporary closure of a popular facility and from road construction to the facility. The four-year average also somewhat underestimates increased visitation associated with a major new facility such as a swim pond or play structure. By the fourth year of the facility's existence, its visitation is fully represented in the data.

The annual estimate makes no attempt to correct for overestimates for temporary closures or underestimates for facility additions. All agencies in the regional system are adding desirable facilities and experiencing temporary closures of facilities that are being redeveloped. Therefore, it is believed that the four-year average has negligible effects when comparing visitation across agencies.

Summer visitation is calculated by taking the total number of people entering the park during each sample and multiplying it by the number of entrances and time slots that sample represents. Winter, spring and fall seasonal visitation estimates are then calculated from the summer visitation using seasonal multiplier data derived from the [Metropolitan Council Regional Parks and Trails Survey 2008](#).

Camping visits are also added to the annual estimate. A camping visit is defined as a camper in the park for any part of a day, so a family of four who camped one night would be counted as 8 total visits. Special events are also added to the annual use estimate when the attendance was greater than 300 people and the event did not take place during the sample counts. If sample counts occurred during a special event, they were not included in the estimate. Camping and special event data are not averaged across four years since the implementing agencies have records reflecting those types of visits on an annual basis.

38 Regional Parks

12 Park Reserves

6 Special Recreation Features

33 Regional Trails

Table 1: 2010 Visitation Estimate

Agency/Park	Summer	Winter		Spring/Fall		Other *		Total Visits (1,000's)	O & M Grant Adjustments
	visits (1,000's)	use multiplier	visits (1,000's)	use multiplier	visits (1,000's)	Camping (1,000's)	Special Events (1,000's)		
ANOKA COUNTY:									
Anoka Co. Riverfront RP ¹	135.8	0.245	33.2	1.054	143.1	0.0	0.0	312.1	Bunker Beach
Bunker Hills RP	266.7	0.178	47.5	0.957	255.3	25.9	228.5	823.9	-122.4
Central Anoka RT	25.2	0.306	7.7	1.317	33.1	0.0	0.0	66.0	
Coon Rapids Dam RP	263.8	0.178	47.0	0.957	252.4	0.0	17.7	580.9	
Lake George RP	136.5	0.178	24.3	0.957	130.6	0.0	7.6	298.9	
Martin-Island-Linwood Lakes RP	64.6	0.178	11.5	0.957	61.8	0.0	9.3	147.3	
Mississippi River RT	33.2	0.306	10.2	1.317	43.7	0.0	0.0	87.1	
Rice Creek Chain PR	144.6	0.178	25.7	0.957	138.3	31.0	55.3	394.9	
Rice Creek North RT	27.8	0.306	8.5	1.317	36.6	0.0	0.0	72.9	
Rice Creek West RT	148.9	0.306	45.6	1.317	196.1	0.0	0.0	390.5	
Rum River Central RP	44.7	0.178	7.9	0.957	42.7	0.0	0.0	95.3	
RP/PR/SRF subtotals	1,056.6		197.1		1,024.3	56.9	318.3	2,653.2	
RT subtotals	235.0		71.9		309.5	0.0	0.0	616.4	
Subtotal:	1,291.6		269.1		1,333.8	56.9	318.3	3,269.6	3,147.2

Agency/Park	Summer	Winter		Spring/Fall		Other *		Total Visits (1,000's)	O & M Grant Adjustments
	visits (1,000's)	use multiplier	visits (1,000's)	use multiplier	visits (1,000's)	Camping (1,000's)	Special Events (1,000's)		
BLOOMINGTON:									
Bush and Normandale Lakes RP	259.9	0.178	46.3	0.957	248.7	0.0	55.5	610.4	
Subtotal:	259.9		46.3		248.7	0.0	55.5	610.4	610.4

Agency/Park	Summer	Winter		Spring/Fall		Other *		Total Visits (1,000's)	O & M Grant Adjustments
	visits (1,000's)	use multiplier	visits (1,000's)	use multiplier	visits (1,000's)	Camping (1,000's)	Special Events (1,000's)		
CARVER COUNTY:									
Baylor RP	19.0	0.178	3.4	0.957	18.2	19.8	6.3	66.7	
Lake Minnewashta RP	66.7	0.178	11.9	0.957	63.9	0.0	4.8	147.4	
Lake Waconia RP	38.0	0.178	6.8	0.957	36.4	0.0	12.1	93.2	
RP/PR/SRF subtotals	123.8		22.0		118.4	19.8	23.2	307.3	
RT subtotals	0.0		0.0		0.0	0.0	0.0	0.0	
Subtotal:	123.8		22.0		118.4	19.8	23.2	307.3	307.3

Notes:

All visits are listed in units of 1,000 (i.e., "50.5" is equivalent to 50,500 visits).

RP = Regional Park; PR = Park Reserve; RT = Regional Trail; SRF = Special Recreation Feature

* OTHER: Camping is in "visitor-days," where each visit is one person in the park for one day. A family of four staying one night would have 8 visitor-days. Special events include events over 300 and any unusual park-specific situations. Special events and situations are detailed in Table 2.

¹ In this park the majority of users are trail users. The multipliers were adjusted to reflect the mix of trail and park use.

Table 1: 2010 Visitation Estimate

Agency/Park	Summer		Winter		Spring/Fall		Other *		Total Visits (1,000's)	O & M Grant Adjustments
	visits (1,000's)	use multiplier	visits (1,000's)	use multiplier	visits (1,000's)	use multiplier	Camping (1,000's)	Special Events (1,000's)		
DAKOTA COUNTY:										
Big Rivers RT	47.5	0.306	14.5		1.317	62.6	0.0	0.0	124.6	
Lake Byllesby RP	52.9	0.178	9.4		0.957	50.6	23.2	0.0	136.1	
Lebanon Hills RP	172.6	0.178	30.7		0.957	165.2	31.9	59.0	459.5	
Miesville Ravine PR	36.6	0.178	6.5		0.957	35.0	0.0	0.0	78.1	
Mississippi River RT	7.2	0.306	2.2		1.317	9.5	0.0	0.0	18.9	
North Urban RT ^C	12.9	0.306	4.0		1.317	17.0	0.0	0.0	33.9	
Spring Lake PR	32.0	0.178	5.7		0.957	30.7	0.0	13.5	81.9	
RP/PR/SRF subtotals	294.1		52.4		281.5		55.1	72.5	755.5	
RT subtotals	67.6		20.7		89.1		0.0	0.0	177.4	
Subtotal:	361.7		73.0		370.5		55.1	72.5	932.9	932.9

Agency/Park	Summer		Winter		Spring/Fall		Other *		Total Visits (1,000's)	O & M Grant Adjustments
	visits (1,000's)	use multiplier	visits (1,000's)	use multiplier	visits (1,000's)	use multiplier	Camping (1,000's)	Special Events (1,000's)		
MPLS. PARK & RECREATION BOARD:										
Cedar Lake RT	143.6	0.306	43.9		1.317	189.1	0.0	0.0	376.6	
Central Mississippi Riverfront RP	585.4	0.178	104.2		0.957	560.3	0.0	181.2	1,431.1	
Columbia Parkway RT	29.8	0.306	9.1		1.317	39.2	0.0	0.0	78.1	
Kenilworth RT ^C	237.1	0.306	72.5		1.317	312.2	0.0	0.0	621.8	
Luce Line RT ^C	39.2	0.306	12.0		1.317	51.6	0.0	0.0	102.7	
Minneapolis Chain-of-Lakes RP ¹	2,148.8	0.245	526.5		1.054	2,264.8	0.0	160.8	5,100.8	
Minnehaha Parkway RT	604.4	0.306	184.9		1.317	795.9	0.0	17.5	1,602.8	
Minnehaha RP	589.8	0.178	105.0		0.957	564.4	0.0	16.8	1,276.0	
Mississippi Gorge RP	383.8	0.306	117.5		1.317	505.5	0.0	73.0	1,079.8	
Northeast Diagonal RT ^B	66.4	0.306	20.3		1.317	87.5	0.0	0.0	174.2	
Nokomis-Hiawatha RP	651.4	0.178	116.0		0.957	623.4	0.0	40.9	1,431.7	
North Mississippi RP	90.5	0.178	16.1		0.957	86.6	0.0	1.5	194.6	
Ridgeway Parkway RT	7.6	0.306	2.3		1.317	10.0	0.0	0.0	20.0	
St. Anthony Parkway RT	72.1	0.306	22.1		1.317	94.9	0.0	0.0	189.0	
Shingle Creek RT ^A	46.2	0.306	14.1		1.317	60.8	0.0	0.0	121.1	
Theodore Wirth RP	172.6	0.178	30.7		0.957	165.2	0.0	4.0	372.5	
Victory (Wirth) Memorial Parkway RT	226.0	0.306	69.2		1.317	297.7	0.0	2.2	595.1	
RP/PR/SRF subtotals	4,622.4		1,015.9		4,770.2		0.0	478.2	10,886.7	
RT subtotals	1,472.2		450.5		1,938.9		0.0	19.7	3,881.4	
Subtotal:	6,094.6		1,466.4		6,709.1		0.0	498.0	14,768.1	14,768.1

Notes:
All visits are listed in units of 1,000 (i.e., "50.5" is equivalent to 50,500 visits).
 RP = Regional Park; PR = Park Reserve; RT = Regional Trail; SRF = Special Recreation Feature
 * OTHER: Camping is in "visitor-days," where each visit is one person in the park for one day. A family of four staying one night would have 8 visitor-days. Special events include events over 300 and any unusual park-specific situations. Special events and situations are detailed in Table 2.
¹ In this park the vast majority of users are trail users. The multipliers were adjusted to reflect the mix of trail and park use.

^A 1st year sampled
^B 2nd year sampled
^C 3rd year sampled

Table 1: 2010 Visitation Estimate

Agency/Park	Summer		Winter		Spring/Fall		Other *		Total Visits (1,000's)	O & M Grant Adjustments
	visits (1,000's)	use multiplier	visits (1,000's)	use multiplier	visits (1,000's)	use multiplier	Camping (1,000's)	Special Events (1,000's)		
RAMSEY COUNTY										
Bald Eagle-Otter Lake RP	124.1	0.178	22.1	0.957	118.8	0.0	39.7	304.8		
Battle Creek RP	266.5	0.178	47.4	0.957	255.1	0.0	10.7	579.8		
Birch Lake RT	21.2	0.306	6.5	1.317	27.9	0.0	3.5	59.1		
Bruce Vento RT	72.9	0.306	22.3	1.317	96.0	0.0	0.6	191.9		
Grass-Vadnais-Snail Lake RP	272.1	0.178	48.4	0.957	260.4	0.0	4.2	585.1		
Highway 96 RT	123.7	0.306	37.9	1.317	162.9	0.0	3.4	327.9		
Keller RP	143.2	0.178	25.5	0.957	137.1	0.0	1.4	307.3		
Long Lake RP	254.7	0.178	45.3	0.957	243.7	0.0	31.0	574.7		
Rice Creek North RT	88.0	0.306	26.9	1.317	115.8	0.0	0.0	230.7		
Rice Creek West RT	59.4	0.306	18.2	1.317	78.3	0.0	1.0	156.9		
Tony Schmidt RP	147.3	0.178	26.2	0.957	140.9	0.0	3.0	317.4		
Trout Brook RT	29.8	0.306	9.1	1.317	39.2	0.0	0.6	78.8		
RP/PR/SRF subtotals	1,208.0		215.0		1,156.0	0.0	90.0	2,669.0		
RT subtotals	395.0		120.9		520.2	0.0	9.2	1,045.3		
Subtotal:	1,603.0		335.9		1,676.2	0.0	99.2	3,714.3	3,714.3	

Agency/Park	Summer		Winter		Spring/Fall		Other *		Total Visits (1,000's)	O & M Grant Adjustments
	visits (1,000's)	use multiplier	visits (1,000's)	use multiplier	visits (1,000's)	use multiplier	Camping (1,000's)	Special Events (1,000's)		
CITY OF ST. PAUL										
Bruce Vento RT	47.2	0.306	14.5	1.317	62.2	0.0	11.4	135.3		
Cherokee Heights RP	134.6	0.178	24.0	0.957	128.8	0.0	3.9	291.2	Downhill Ski	
Como RP, Zoo & Conservatory SRF	1,466.7	0.178	261.1	0.957	1,403.6	0.0	430.3	3,561.7	-1.3	
Hidden Falls-Crosby Farm RP	193.6	0.178	34.5	0.957	185.3	0.0	9.8	423.2		
Indian Mounds RP	72.5	0.178	12.9	0.957	69.3	0.0	7.4	162.1		
Lilydale-Harriet Island RP	235.7	0.178	42.0	0.957	225.6	0.0	319.3	822.5		
Mississippi Gorge RP	412.9	0.306	126.4	1.317	543.8	0.0	18.6	1,101.7		
Phalen RP	366.4	0.178	65.2	0.957	350.6	0.0	81.1	863.3		
Samuel Morgan RT	101.5	0.306	31.1	1.317	133.7	0.0	1.0	267.2		
RP/PR/SRF subtotals	2,882.4		565.9		2,907.1	0.0	870.3	7,225.7		
RT subtotals	148.7		45.5		195.9	0.0	12.4	402.5		
Subtotal:	3,031.1		611.4		3,103.0	0.0	882.7	7,628.2	7,626.9	

Notes:
 All visits are listed in units of 1,000 (i.e., "50.5" is equivalent to 50,500 visits).
 RP = Regional Park; PR = Park Reserve; RT = Regional Trail; SRF = Special Recreation Feature
 * OTHER: Camping is in "visitor-days," where each visit is one person in the park for one day. A family of four staying one night would have 8 visitor-days. Special events include events over 300 and any unusual park-specific situations. Special events and situations are detailed in Table 2.

Table 1: 2010 Visitation Estimate

Agency/Park	Summer		Winter		Spring/Fall		Other *		Total Visits (1,000's)	O & M Grant Adjustments
	visits (1,000's)	use multiplier	visits (1,000's)	use multiplier	visits (1,000's)	use multiplier	Camping (1,000's)	Special Events (1,000's)		
SCOTT COUNTY										
Cedar Lake Farm RP ^{B 1}	24.7	0.000	0.0		0.160	3.9	0.0	0.0	28.6	
Scott County RT	108.6	0.306	33.2		1.317	143.0	0.0	0.0	284.9	
RP/PR/SRF subtotals	24.7		0.0		3.9		0.0	0.0	28.6	
RT subtotals	108.6		33.2		143.0		0.0	0.0	284.9	
Subtotal:	133.3		33.2		147.0		0.0	0.0	313.5	313.5

Agency/Park	Summer		Winter		Spring/Fall		Other *		Total Visits (1,000's)	O & M Grant Adjustments
	visits (1,000's)	use multiplier	visits (1,000's)	use multiplier	visits (1,000's)	use multiplier	Camping (1,000's)	Special Events (1,000's)		
THREE RIVERS - SCOTT COUNTY										
Cleary Lake RP	103.6	0.178	18.4		0.957	99.1	13.6	2.9	237.6	
Murphy-Hanrehan PR	19.9	0.178	3.5		0.957	19.0	0.8	1.5	44.7	
RP/PR/SRF subtotals	123.4		22.0		118.1		14.4	4.4	282.3	
RT subtotals	0.0		0.0		0.0		0.0	0.0	0.0	
Three Rivers - Scott Subtotal:	123.4		22.0		118.1		14.4	4.4	282.3	282.3

Notes:

All visits are listed in units of 1,000 (i.e., "50.5" is equivalent to 50,500 visits).

RP = Regional Park; PR = Park Reserve; RT = Regional Trail; SRF = Special Recreation Feature

* OTHER: Camping is in "visitor-days," where each visit is one person in the park for one day. A family of four staying one night would have 8 visitor-days. Special events include events over 300 and any unusual park-specific situations. Special events and situations are detailed in Table 2.

^B 2nd year sampled

¹ The regional park was open for small portion of the fall and spring and closed for the winter, so the seasonal multipliers have been adjusted to reflect summer and fall use.

Table 1: 2010 Visitation Estimate

Agency/Park	Summer		Winter		Spring/Fall		Other *		Total Visits (1,000's)	O & M Grant Adjustments
	visits (1,000's)	use multiplier	visits (1,000's)	use multiplier	visits (1,000's)	use multiplier	Camping (1,000's)	Special Events (1,000's)		
THREE RIVERS PARK DISTRICT										
Baker PR	144.4	0.178	25.7	0.957	138.2		87.3	16.0	411.6	
Bassett Creek RT ^B	38.4	0.306	11.8	1.317	50.6		0.0	0.0	100.8	
Bryant Lake RP	197.4	0.178	35.1	0.957	188.9		0.0	0.2	421.6	
Carver PR	107.7	0.178	19.2	0.957	103.0		26.4	19.9	276.2	
Cedar Lake LRT RT	169.1	0.306	51.8	1.317	222.7		0.0	0.4	444.0	
Clifton French RP	213.2	0.178	37.9	0.957	204.0		0.0	7.8	463.0	
Coon Rapids Dam RP	127.9	0.178	22.8	0.957	122.4		0.0	5.5	278.7	
Crow-Hassan PR	23.5	0.178	4.2	0.957	22.5		4.9	0.7	55.8	
Dakota Rail RT ^B	156.2	0.000	0.0	1.317	205.7		0.0	2.0	363.9	
Eagle Lake RP	27.3	0.178	4.9	0.957	26.1		0.0	0.0	58.3	
Elm Creek PR	325.8	0.178	58.0	0.957	311.8		2.8	118.9	817.2	
Fish Lake RP	66.2	0.178	11.8	0.957	63.4		0.0	0.2	141.5	
Gale Woods SRF	32.3	0.178	5.8	0.957	30.9		0.0	24.7	93.7	Downhill ski
Hyland Lake PR	252.4	0.178	44.9	0.957	241.5		3.8	204.8	747.5	-168.7
Lake Independence RT	14.4	0.306	4.4	1.317	19.0		0.0	0.0	37.9	
Lake Minnetonka RP	126.0	0.178	22.4	0.957	120.6		0.0	4.4	273.4	
Lake Minnetonka Islands RP ¹	65.0	n/a	0.0	n/a	0.0		0.0	0.0	65.0	
Lake Minnetonka LRT RT	133.1	0.306	40.7	1.317	175.2		0.0	2.0	351.0	
Lake Rebecca PR	78.2	0.178	13.9	0.957	74.8		5.2	6.5	178.7	
Luce Line RT	72.1	0.306	22.1	1.317	94.9		0.0	0.0	189.1	
Medicine Lake RT	138.5	0.306	42.4	1.317	182.4		0.0	2.0	365.3	
Minnesota River Bluffs LRT RT	112.7	0.306	34.5	1.317	148.5		0.0	0.0	295.7	
Noerenberg Gardens SRF	27.3	0.000	0.0	0.957	26.2		0.0	0.0	53.5	
North Cedar Lake RT	171.6	0.306	52.5	1.317	226.0		0.0	0.0	450.1	
North Mississippi RP	21.0	0.178	3.7	0.957	20.1		0.0	6.6	51.4	
Northeast Diagonal RT ^B	18.9	0.306	5.8	1.317	24.9		0.0	0.0	49.6	
Rush Creek RT	115.9	0.306	35.5	1.317	152.6		0.0	1.3	305.3	
Shingle Creek RT	39.3	0.306	12.0	1.317	51.7		0.0	0.0	103.0	
Silverwood SRF	91.5	0.178	16.3	0.957	87.6		0.0	8.7	204.1	
RP/PR/SRF subtotals	1,927.1		326.6		1,782.0		130.5	432.6	4,591.0	
RT subtotals	1,180.2		313.4		1,554.4		0.0	0.0	3,055.7	
Three Rivers Subtotal:	3,107.3		639.9		3,336.4		130.5	432.6	7,646.7	7,478.0
			3,107.3							
Three Rivers-Scott & Three Rivers Park District Subtotal:	3,230.7		661.9		3,454.5		144.8	437.0	7,929.0	7,760.3

Notes:
All visits are listed in units of 1,000 (i.e., "50.5" is equivalent to 50,500 visits).
 RP = Regional Park; PR = Park Reserve; RT = Regional Trail; SRF = Special Recreation Feature
 * OTHER: Camping is in "visitor-days," where each visit is one person in the park for one day. A family of four staying one night would have 8 visitor-days. Special events include events over 300 and any unusual park-specific situations. Special events and situations are detailed in Table 2.
¹ Lake Minnetonka Islands total annual visitation data is provided from Three Rivers and is not based on the Metropolitan Council sample.
^B 2nd year sampled

Table 1: 2010 Visitation Estimate

Agency/Park	Summer	Winter		Spring/Fall		Other *		Total Visits (1,000's)	O & M Grant Adjustments
	visits (1,000's)	use multiplier	visits (1,000's)	use multiplier	visits (1,000's)	Camping (1,000's)	Special Events (1,000's)		
WASHINGTON COUNTY									
Big Marine PR	110.6	0.178	19.7	0.957	105.9	0.0	3.5	239.7	
Cottage Grove Ravine RP	28.1	0.178	5.0	0.957	26.9	0.0	3.5	63.5	
Hardwood Creek RT	108.1	0.306	33.1	1.317	142.4	0.0	0.3	283.8	
Lake Elmo PR	217.5	0.178	38.7	0.957	208.1	27.4	10.6	502.3	
Pine Point RP	42.0	0.178	7.5	0.957	40.2	0.0	1.3	90.9	
Square Lake SRF	37.2	0.000	0.0	0.957	35.6	0.0	2.3	75.0	
St. Croix Bluffs RP	56.4	0.178	10.0	0.957	54.0	15.6	3.0	139.0	
RP/PR/SRF subtotals	491.7		80.9		470.6	43.0	24.2	1,110.4	
RT subtotals	108.1		33.1		142.4	0.0	0.3	283.8	
Subtotal:	599.8		114.0		613.0	43.0	24.5	1,394.3	1,394.3

REGIONAL TOTALS

Agency/Park	Summer	Winter	Spring/Fall	Other *		Total Visits (1,000's)	O & M Grant Adjustments
	visits (1,000's)	visits (1,000's)	visits (1,000's)	Camping (1,000's)	Special Events (1,000's)		
RP/PR/SRF subtotals	13,014.0	2,544.1	12,880.9	319.7	2,369.2	31,120.1	
RT subtotals	3,715.5	1,089.2	4,893.4	0.0	41.6	9,747.4	
REGIONAL TOTALS	16,729.5	3,633.2	17,774.3	319.7	2,410.8	40,867.5	40,575.1

Notes:

All visits are listed in units of 1,000 (i.e., "50.5" is equivalent to 50,500 visits).

RP = Regional Park; PR = Park Reserve; RT = Regional Trail; SRF = Special Recreation Feature

* OTHER: Camping is in "visitor-days," where each visit is one person in the park for one day. A family of four staying one night would have 8 visitor-days. Special events include events over 300 and any unusual park-specific situations. Special events and situations are detailed in Table 2.

Table 2: Special event counts for 2010

(Note: these events occurred at times that were specifically not sampled to avoid double-counting)

Agency/Park	Date	Event	Visits (1,000s)
ANOKA COUNTY:			
Anoka Co. Riverfront RP		None	-
Bunker Hills RP		TOTAL:	228.5
	Apr 17	North Suburban Striders	0.4
	May 29	Veteran's Memorial Day Event	0.5
	May 30	Seim/Listberger Wedding Reception	0.3
	May 23	Baby Angels	0.6
	May 31	Memorial Day Event	0.4
	Jun 11	Grand Opening Event	1.9
	Jun 28-30	Girl Scout Camp	0.3
	Jul 2	Vang Family Reunion	0.3
	Jul 12	Med Rad Company Picnic	0.3
	Jul 18	Pure Romance Family Picnic	0.3
	Aug 7	Carpenter's Local 851	0.3
	Aug 8	Emmanuel Christian Center	0.3
	Aug 15	Anoka County Employees Club	0.4
	Aug 21	Loubert Wedding	0.3
	Aug 27	Uran Wedding	0.3
	Aug 28	Huelscamp Wedding	0.3
	Sep 11	DFL Fall Festival Event	0.3
	Sep 12	Bunker Prairie Festival	1.4
	Sep 25	Alexandra House Walk	0.6
	Oct 9	Beckey Wedding	0.3
	May-July	Natural Resources Workshop	6.0
	Winter	Cross Country Ski Team Meets	1.7
	Summer Long	Bunker Beach Visitation	122.4
	Summer Long	Bunker Park Stables Usage (entrance not part of regular counts)	24.7
	Year Long	Activity Center Usage (entrance not part of regular counts)	47.4
	Year Long	Archery Center Use (entrance not part of regular counts)	16.5
Central Anoka RT		None	-
Coon Rapids Dam RP		TOTAL:	17.7
	Apr 17	Anoka Hennepin Education Foundation	1.0
	May 1	Randy Bauer Run	0.3
	May 3	Volunteer Planting Event	0.4
	May 15	Adventures Plus Reunion	0.7
	May 16	Kruschke Wedding	0.3
	Jan 15	Trout Opener	0.5
	Jun 10	Concert in the Park	2.2
	Jun 17	Concert in the Park	2.2
	Jun 24	Concert in the Park	2.0
	Jun 26	Du at the Dam	0.3
	Jun 30	Adventures Plus	0.3
	Jul 8	Concert in the Park	1.0
	Jul 15	Concert in the Park	1.3
	Jul 22	Concert in the Park	1.6
	Jul 20	Hortman Wedding	0.3
	Jul 29	Concert in the Park	1.6
	Jul 31	Peak Adventures	0.3
	Sep 5	Twin Cities Hmong Alliance	0.3
	Sep 10	Missing Grace	0.9
	Sep 26	St. Stephen's School Marathon	0.3
Lake George RP		TOTAL:	7.6
	May 19	St Francis High School	0.4
	May 29	St Francis High School	0.4
	Jun 26	YMCA Event	0.3
	Jul 3	Minneman Triathlon	0.7
	Jul 10	YMCA Event	0.3
	Jul 24	YMCA Event	0.3
	Dec 11	Snow Ghosts Snowmobile Testing	0.3
	Summer Long	YMCA Camps	1.7
	Winter	Snowmobile Use through park	3.2
Martin-Island-Linwood Lakes RP		TOTAL:	9.3
	Winter	Snowmobile Use through park	2.7
	Year Long	Camp Salie Usage	6.6
Mississippi River RT		None	-

Table 2: Special event counts for 2010

(Note: these events occurred at times that were specifically not sampled to avoid double-counting)

Agency/Park	Date	Event	Visits (1,000s)
ANOKA COUNTY: continued			
Rice Creek Chain PR		TOTAL:	55.3
	Jan 30	Snow Day	0.5
	Apr 24	Earth Day	0.5
	Jun 26	CMA Group	0.3
	Aug 7	Centerville Park and Rec Event	0.4
	Sep 11-12	Hay Days	0.6
	Nov 13	Diva Dash	0.6
	Winter	Snowmobile Use through park	2.5
	Summer Long	YMCA Day Camp	1.2
	Year Long	Wargo Nature Center Attendance	48.7
Rice Creek North RT		None	-
Rice Creek West RT		None	-
Rum River Central RP		None	-
BLOOMINGTON:			
Bush and Normandale Lakes		TOTAL:	55.5
	Jun 12	Make a Wish Foundation Walk	0.5
	Jun 15	MN Symphonic Winds Concert	0.4
	Jun 27	Sandcastles Event	0.4
	Jun 28	Bandshell rental	0.4
	Jul 3	Summer Fete	40.0
	Jul 8	Monroe Crossing Concert	0.5
	Jul 11	Bandshell Rental	0.5
	Jul 9	Movie in the Park	0.3
	Jul 15	80's Music Event	2.0
	Jul 17	Bandshell Rental	0.3
	Jul 22	Latin Music Event	0.7
	Jul 29	Blues and Bar-B-Q	2.3
	Aug 5	Rock Show	0.5
	Aug 6	Movie in the Park	0.8
	Aug 7	Bandshell Rental	0.8
	Aug 8	Jazz Festival	0.3
	Aug 14	American Cancer Society Walk	1.0
	Aug 18	Bandshell Rental	0.3
	Sep 24	Iron Girl Duathlon	1.0
	Sep 11	United Mitochondrial Disease Foundation Walk	0.7
	Sep 18	PKD Foundation Walk	0.4
	Sep 19	Annual Walk to Live and Breathe	0.5
	Sep 19	Haiti Mission Project Walk	0.3
	Oct 2	Bandshell Rental	0.3
	Oct 16	Pacer Center Run/Walk	0.4
CARVER COUNTY:			
Baylor RP		TOTAL:	6.3
	Aug 29	Running Meet	0.4
	Sep 08	Running Meet	1.5
	All year	Onan Observatory (late evening use)	3.9
	All year	School Groups	0.5
Lake Minnewashta RP		TOTAL:	4.8
	May 22	Tonka Waters Girl Scout Camp	0.3
	Jul 04	Fireworks	0.8
	Jul 28-31	Rive Bluff Girl Scout Jamboree Week 1 (410/day)	1.6
	Aug 4-7	Rive Bluff Girl Scout Jamboree Week 2 (450/day)	1.8
	Sep 19	Tonka Waters Girl Scout Camp - Fall	0.3
Lake Waconia RP		TOTAL:	12.1
	Jan 30	Vintage Snowmobile	4.5
	Jan 31	Vintage Snowmobile	2.8
	Jun 27	Triathlon	1.8
	Jul 04	4th of July celebration	3.0

Table 2: Special event counts for 2010

(Note: these events occurred at times that were specifically not sampled to avoid double-counting)

Agency/Park	Date	Event	Visits (1,000s)
DAKOTA COUNTY:			
Big Rivers RT		None	-
Lake Byllesby RP		None	-
Lebanon Hills RP		TOTAL:	59.0
Summer		Adventure Ropes Course	1.8
School year		VC school groups	2.8
All year		Outdoor Education Programs	5.0
Feb 6		Trails by Candlelight	0.7
Feb 25		School of Environmental Studies Eco-Challenge	0.4
Jun 10		School of Environmental Studies Eco-Challenge	0.4
Dec 31		NYE Event (cancelled due to weather, estimated attendance would have been 900 - 1,000)	-
Year round		Camp Sacajawea (day camp and permit only - not counted in regular counts)	47.9
Miesville Ravine PR		None	-
Mississippi River RT		None	-
North Urban RT		None	-
Spring Lake PR		TOTAL:	13.5
Aug 5		Lifesource Picnic	0.3
All Year		Outdoor Education Programs	0.8
Year round		Spring Lake Youth Camp (day camp and permit only - not counted in regular counts)	12.4
MINNEAPOLIS PARK & RECREATION BOARD:			
Cedar Lake RT		None	-
Central Mississippi Riverfront RP		TOTAL	181.2
Mar 20		Get Lucky & Run Race (split Central Mississippi RP, Mississippi Gorge RP)	1.3
Apr 19		U of Minnesota Law Run / Main Street & Stone Arch	0.8
Apr 25		March of Dimes March for Babies (split Central Mississippi RP, Mississippi Gorge RP)	3.5
Jun 6		Minneapolis Marathon (split Central Mississippi RP, Mississippi Gorge RP, Minnehaha Pkwy RT)	2.0
Jun 7		Concert at Father Hennepin Bluffs	0.3
Jun 12		Dog Day 5K (split Central Mississippi RP, Mississippi Gorge RP)	0.2
Jun 19 - 20		Stone Arch Festival of the Arts	70.0
Jun 20		Solstice River Performance - Stone Arch Bridge	1.0
Jun 26		Pacemaker 5000 (split Central Mississippi RP, Mississippi Gorge RP)	0.4
Jul 3		Movie	0.6
Jul 4		Mpls Red, White & Boom (split Central Mississippi RP, Mississippi Gorge RP)	15.0
Jul 4		Red White & Boom 1/2 Marathon (split Central Mississippi RP, Mississippi Gorge RP)	7.5
Jul 21		Torchlight Run (split Central Mississippi RP, Mississippi Gorge RP)	4.5
Jul 24		Aquatennial Fireworks	50.0
Jul 24		Company Picnic- Boom Island	2.0
Jul 24		Mississippi River Challenge - Bassett's Creek - Rowing Club	0.4
Aug 14 - 15		TC Polish Festival	8.0
Aug 21		Ragnar Relay/Boom Island	3.0
Aug 21		Night Owl Classic (split Central Mississippi RP, Mississippi Gorge RP--Mpls & St Paul)	0.2
Aug 22		13.1 Minneapolis Run (split Central Mississippi RP, Mississippi Gorge RP, Minnehaha Pkwy)	1.2
Aug 24		Picnic- Boom Island	0.7
Aug 29		Downtown Dualthon - (split Central Mississippi RP, Mississippi Gorge RP)	1.5
Aug 10 - 12		Oktoberfest - Main St Parkway	5.0
Sep 6		Keith Ellison Event	0.4
Sep 11		James Page 5K (split Central Mississippi RP, Mississippi Gorge RP)	0.8
Sep 18		Special Olympics 5K (split Central Mississippi RP, Mississippi Gorge RP)	0.5
Sep 26		MS Challenge (split Central Mississippi RP, Mississippi Gorge RP--Mpls & St Paul)	0.2
Oct 9		Historic Riverfront 5K Run Walk (split Central Mississippi RP, Mississippi Gorge RP)	0.3
Columbia Parkway RT		None	-
Kenilworth RT		None	-
Luce Line RT		None	-

Table 2: Special event counts for 2010

(Note: these events occurred at times that were specifically not sampled to avoid double-counting)

Agency/Park	Date	Event	Visits (1,000s)
MINNEAPOLIS PARK & RECREATION BOARD: continued			
Minneapolis Chain-of-Lakes RP		TOTAL	160.8
	Jan 21 - 24	Loppet (split Chain of Lakes and Theodore Wirth RP, Wirth Memorial Pkwy)	0.3
	Feb 13	Valentine's Run/Lake Harriet	1.0
	Feb 20	Red Bull Open Ice Pond Hockey/Lake Calhoun	0.6
	Mar 6	Minneapolis Polar Bear Plunge/Lake Calhoun	4.5
	Mar 13	Irish 5K/Lake Harriet	2.7
	Apr 18	Recycle Run/Lake Harriet	0.5
	May 1	Cystic Fibrosis Walk a Thon/Lake Calhoun	1.0
	May 15	Autism awareness walk	0.9
	May 21	SW High Concert/Lake Harriet	0.3
	May 24	SW High Concert/Lake Harriet	0.3
	May 25	SW High Concert/Lake Harriet	0.3
	May 26	SW High Concert/Lake Harriet	0.3
	May 28	Healthy Nations Canoe Event/Lake Calhoun	0.4
	May 30	Outdoor Church Service/LHB	0.5
	May 31	Concert	2.0
	Jun 1	Concert	0.3
	Jun 2	Concert	0.3
	Jun 3	Concert	0.3
	Jun 4	Concert	0.3
	Jun 5	Concert	0.8
	Jun 4	Barton School - 8th Grade graduation	0.8
	Jun 5	Tour de Cure (split Chain of Lakes, Minnehaha Pkwy, Minnehaha RP)	0.3
	Jun 6	Concert	0.9
	Jun 7	Concert	0.4
	Jun 6	Outdoor Church Service/LHB	0.5
	Jun 8	Concert	0.3
	Jun 9	Concert	0.4
	Jun 10	Concert	0.4
	Jun 11	Wedding	0.3
	Jun 11	Concert	0.8
	Jun 12	Walk for Lupus - Lake Calhoun	0.4
	Jun 12	Concert	0.7
	Jun 13	Concert	0.3
	Jun 14	Concert	0.5
	Jun 13	Outdoor Church Service/ Lake Harriet Bandshell	0.5
	Jun 15	Concert	0.7
	Jun 16	Concert	0.6
	Jun 17	Concert	0.4
	Jun 18	Concert	1.0
	Jun 19	Kids Against Hunger Walk/ Lake Calhoun	0.6
	Jun 19	Concert	0.8
	Jun 20	Concert	1.5
	Jun 20	Outdoor Church Service/ Lake Harriet Bandshell	0.5
	Jun 21	Concert	0.5
	Jun 22	Concert	1.1
	Jun 23	Concert	0.6
	Jun 24	Concert	1.0
	Jun 25	Concert	0.7
	Jun 26	Concert	0.4
	Jun 27	Concert	0.6
	Jun 27	Tri-Loppet (split Chain of Lakes RP, Theodore Wirth RP)	0.1
	Jun 27	Outdoor Church Service -	0.5
	Jun 27	Concert	1.0
	Jun 28	Concert	2.5
	Jun 29	Concert	1.3
	Jun 30	Concert	0.6
	Jul 1	Concert	0.7
	Jul 2	Movie	2.0
	Jul 3	Concert	1.2
	Jul 3	Concert	2.3
	Jul 4	Concert	2.5
	Jul 4	Outdoor Church Service/LHB	0.3
	Jul 6	Concert	1.2
	Jul 7	Concert	0.9
	Jul 8	Concert	1.3
	Jul 9	Concert	0.5
	Jul 10	Concert	0.7
	Jul 10	Concert	2.5
	Jul 11	Concert	1.5
	Jul 10	Triathlon (split Chain of Lakes RP, Minnehaha Pkwy, Nokomis-Hiawatha RP,	
	Jul 11	Mississippi Gorge RP--Mpls & St Paul)	0.5
	Jul 11	Outdoor Church Service/LHB	0.5
	Jul 11	Concert	2.2
	Jul 12	Concert	0.6
	Jul 13	Concert	1.1

Table 2: Special event counts for 2010

(Note: these events occurred at times that were specifically not sampled to avoid double-counting)

Agency/Park	Date	Event	Visits (1,000s)
MINNEAPOLIS PARK & RECREATION BOARD: continued			
Minneapolis Chain of Lakes RP, continued			
	Jul 14	Concert	0.6
	Jul 15	Concert	0.4
	Jul 16	Concert	1.5
	Jul 17	Concert	0.3
	Jul 18	Concert	1.5
	Jul 18	Aquatennial Beach Bash/ Lake Calhoun	6.0
	Jul 18	Outdoor Church Service/LHB	0.5
	Jul 18	Concert	3.0
	Jul 19	Concert	0.3
	Jul 20	Concert	0.3
	Jul 21	Concert	1.0
	Jul 22	Concert	0.4
	Jul 23	Concert	1.0
	Jul 24	Concert	2.3
	Jul 25	Concert	0.5
	Jul 25	Outdoor Church Services	0.5
	Jul 26	Concert	0.3
	Jul 27	Concert	0.3
	Jul 28	Concert	1.1
	Jul 29	Concert	0.3
	Jul 30	Concert	0.4
	Jul 31	Concert	2.6
	Aug 1	Concert	0.8
	Aug 1	Outdoor Church Service / LHB	0.5
	Aug 2	Concert	3.0
	Aug 1	Hennepin - Lake Classic	0.7
	Aug 3	Concert	3.0
	Aug 4	Concert	0.8
	Aug 5	Concert	1.0
	Aug 6	Concert	1.2
	Aug 7	Movie - Top Gun	0.8
	Aug 7	Concert	0.5
	Aug 8	Concert	0.8
	Aug 7	Hagen Financial Advantage 5K Fun Run / Lake Harriet	0.4
	Aug 8	Concert	0.7
	Aug 9	Concert	0.5
	Aug 8	Outdoor Church Service	0.5
	Aug 10	Concert	0.3
	Aug 11	Concert	0.6
	Aug 12	Concert	0.4
	Aug 13	Concert	0.5
	Aug 14	Concert	0.5
	Aug 15	Concert	0.9
	Aug 16	Concert	0.3
	Aug 15	Outdoor Church Service / LHB	0.5
	Aug 15	Domestic Violence Awareness Walk/ Lake Calhoun	0.3
	Aug 16	Concert	0.3
	Aug 17	Concert	0.6
	Aug 18	Concert	0.3
	Aug 19	Concert	0.4
	Aug 20	Concert	1.2
	Aug 21	Concert	1.0
	Aug 20	TC Breast Cancer 3-day (split Chain of Lakes, Mississippi Gorge-Mpls & St. Paul)	1.1
	Aug 21	Walk for Food Allergy/ Lake Calhoun	0.5
	Aug 22	Concert	1.2
	Aug 22	Outdoor Church Service	0.5
	Aug 22	Wheels of Italy- Calhoun Executive Lot	1.2
	Aug 23	Concert	7.0
	Aug 24	Concert	0.3
	Aug 25	Concert	0.3
	Aug 26	Concert	0.4
	Aug 27	Picnic	0.5
	Aug 27	Concert	1.0
	Aug 28	Concert	1.1
	Aug 29	Concert	0.8
	Aug 29	Outdoor Church Service - LHB	0.5
	Aug 30	Concert	0.5
	Aug 31	Concert	0.3
	Sep 1	Concert	0.4
	Sep 2	Concert	0.6
	Sep 3	Concert	1.4
	Sep 4	Concert	0.8
	Sep 5	Concert	0.8
	Sep 5	Outdoor Church Service - LHB	0.5

Table 2: Special event counts for 2010

(Note: these events occurred at times that were specifically not sampled to avoid double-counting)

Agency/Park	Date	Event	Visits (1,000s)
MINNEAPOLIS PARK & RECREATION BOARD: continued			
Minneapolis Chain of Lakes RP, continued			
	Sep 11	Concert	2.0
	Sep 11	TC Fun and Run Walk - Lake Harriet	0.5
	Sep 12	C of L 25 K & Harriet Bandshell 5K - Lakes Harriet and Calhoun	1.7
	Sep 18	Annunciation School Marathon	0.5
	Sep 19	Minneapolis Tour (split Chain of Lakes, Minnehaha RT, Minnehaha RP, Mississippi Gorge RP, Nokomis- Hiawatha, Theodore Wirth, Wirth Memorial)	0.5
	Sep 25	Made in the Shade walk - Lake Calhoun	0.6
	Sep 25	Walk to defeat ALS/Harriet	2.0
	Sep 26	Vision Walk - Lake Harriet	0.7
	Oct 4	Twin Cities Marathon & TC 10 (split Chain of Lakes, Nokomis-Hiawatha, Minnehaha Pkwy, Mississippi Gorge--Mpls & St Paul)	9.0
	Oct 9	City of Lakes Waldorf School Bike-A-Thon / Lake Harriet	0.3
	Oct 16	MN Teen Challenge Walk-A-Thon/ Lake Harriet	1.0
	Oct 17	Police Dept. Running With the Law / Lake Harriet	0.3
	Oct 30	Team Ortho Monster Dash & Half Marathon (split Chain of Lakes, Minnehaha Pkwy)	4.0
	Nov 25	Drumstick Dash - Lake Harriet	0.8
	Dec 4	Reindeer Run	2.2
Minnehaha Parkway RT		TOTAL	17.5
	Jun 5	Tour de Cure (split Chain of Lakes, Minnehaha Pkwy, Minnehaha RP)	0.3
	Jun 6	Minneapolis Marathon (split Central Mississippi RP, Mississippi Gorge RP, Minnehaha Pkwy RT)	2.0
	Jul 10	Triathlon (split Chain of Lakes RP, Minnehaha Pkwy, Nokomis-Hiawatha RP, Mississippi Gorge RP--Mpls & St Paul)	0.5
	Aug 22	13.1 Minneapolis Run (split Central Mississippi RP, Mississippi Gorge RP, Minnehaha Pkwy)	1.2
	Sep 19	Minneapolis Tour (split Chain of Lakes, Minnehaha RT, Minnehaha RP, Mississippi Gorge RP, Nokomis- Hiawatha, Theodore Wirth, Wirth Memorial)	0.5
	Oct 3	Twin Cities Marathon & TC 10 (split Chain of Lakes, Nokomis-Hiawatha, Minnehaha Pkwy, Mississippi Gorge--Mpls & St Paul)	9.0
	Oct 30	Team Ortho Monster Dash & Half Marathon (split Chain of Lakes, Minnehaha Pkwy)	4.0
Minnehaha RP		TOTAL	16.8
	Apr 24	Get In Gear 10K & 2K Run/Walk (split--Minnehaha RP & Mississippi Gorge RP--Mpls & St. Paul)	2.7
	May 2	Walk MS (split--Minnehaha RP & Mississippi Gorge RP--Mpls & St. Paul)	1.3
	May 16	AIDS Walk (split--Minnehaha RP & Mississippi Gorge RP--Mpls & St. Paul)	1.7
	Jun 5	Tour de Cure (split Chain of Lakes, Minnehaha Pkwy, Minnehaha RP)	0.3
	Jun 13	Outdoor Church Service - Falls Bandstand	0.3
	Jun 20	Outdoor Church Service Falls Bandstand	0.3
	Jun 27	Svenskarnas	1.5
	Jul 4	Outdoor Church Service Falls Bandstand	0.3
	Jul 10	Outdoor Church Service Falls Bandstand	0.3
	Jul 12	Norway Days	0.8
	Jul 18	Outdoor Church Service Falls Bandstand	0.3
	Jul 18	Red Ribbon Ride	0.3
	Jul 25	Outdoor Church Service Falls Bandstand	0.3
	Aug 1	Outdoor Church Service Falls Bandstand	0.3
	Aug 8	Outdoor Church Service Falls Bandstand	0.3
	Aug 22	Outdoor Church Service Falls Bandstand	0.3
	Aug 29	Outdoor Church Service Falls Bandstand	0.3
	Aug 12	Stroll for Epilepsy- Minnehaha RP	1.3
	Aug 14	Wedding	0.4
	Aug 14	Wedding Reception	0.5
	Aug 21	Picnic	1.0
	Sep 19	Minneapolis Tour (split Chain of Lakes, Minnehaha RT, Minnehaha RP, Mississippi Gorge RP, Nokomis- Hiawatha, Theodore Wirth, Wirth Memorial)	0.4
	Sep 25	NAMI Walk (Split Minnehaha RP, Mississippi Gorge RP)	0.8
	Sep 26	Women Run the Cities (Split Minnehaha RP, Mississippi Gorge RP--Mpls & St. Paul)	0.7
	Oct 2	Marathon for Non Public Ed (split Minnehaha RP; Mississippi Gorge RP--Mpls & St Paul)	0.2

Table 2: Special event counts for 2010

(Note: these events occurred at times that were specifically not sampled to avoid double-counting)

Agency/Park	Date	Event	Visits (1,000s)
MINNEAPOLIS PARK & RECREATION BOARD: continued			
Mississippi Gorge RP			TOTAL
	Jan 1	Polar Dash	73.0
	Mar 20	Get Lucky & Run Race (split Central Mississippi RP, Mississippi Gorge RP)	0.7
	Apr 25	March of Dimes March for Babies (split Central Mississippi RP, Mississippi Gorge RP)	1.3
	Apr 24	Get In Gear 10K & 2K Run/Walk (split--Minnehaha RP & Mississippi Gorge RP--Mpls & St. Paul)	3.5
	May 2	Walk MS (split--Minnehaha RP & Mississippi Gorge RP--Mpls & St. Paul)	2.7
	May 16	AIDS Walk (split--Minnehaha RP & Mississippi Gorge RP--Mpls & St. Paul)	1.3
	Jun 6	Minneapolis Marathon (split Central Mississippi RP, Mississippi Gorge RP, Minnehaha Pkwy RT)	1.7
	Jun 12	Dog Day 5K (split Central Mississippi RP, Mississippi Gorge RP)	2.0
	Jun 26	Pacemaker 5000 (split Central Mississippi RP, Mississippi Gorge RP)	0.2
	Jul 4	Mpls Red, White & Boom (split Central Mississippi RP, Mississippi Gorge RP)	0.4
	Jul 4	Red White & Boom 1/2 Marathon (split Central Mississippi RP, Mississippi Gorge RP)	15.0
	Jul 10	Triathlon (split Chain of Lakes RP, Minnehaha Pkwy, Nokomis-Hiawatha RP, Mississippi Gorge RP--Mpls & St Paul)	7.5
	Jul 21	Torchlight Run (split Central Mississippi RP, Mississippi Gorge RP)	0.5
	Jul 21 - 24	Wakesurfing Championships	4.5
	Jul 24	Carifest 2010	1.0
	Jul 24	Mississippi River Challenge	1.5
	Aug 20		0.5
	Aug 21	TC Breast Cancer 3-day (split Chain of Lakes, Mississippi Gorge-Mpls & St. Paul)	1.1
	Aug 22	Night Owl Classic (split Central Mississippi RP, Mississippi Gorge RP--Mpls & St Paul)	0.2
	Aug 29	13.1 Minneapolis Run (split Central Mississippi RP, Mississippi Gorge RP, Minnehaha Pkwy)	1.2
	Sep 11	Downtown Dualthon - (split Central Mississippi RP, Mississippi Gorge RP)	1.5
	Sep 18	James Page 5K (split Central Mississippi RP, Mississippi Gorge RP)	0.8
	Sep 19	Special Olympics 5K (split Central Mississippi RP, Mississippi Gorge RP)	0.5
	Sep 25	Minneapolis Tour (split Chain of Lakes, Minnehaha RT, Minnehaha RP, Mississippi Gorge RP, Nokomis- Hiawatha, Theodore Wirth, Wirth Memorial)	0.4
	Sep 26	NAMI Walk (Split Minnehaha RP, Mississippi Gorge RP)	0.8
	Sep 26	Women Run the Cities (Split Minnehaha RP, Mississippi Gorge RP--Mpls & St. Paul)	0.7
	Sep 26	MS Challenge (split Central Mississippi RP, Mississippi Gorge RP--Mpls & St Paul)	0.2
	Oct 2	Marathon for Non Public Ed (split Minnehaha RP; Mississippi Gorge RP--Mpls & St Paul)	0.2
	Oct 3	Twin Cities Marathon & TC 10 (split Chain of Lakes, Nokomis-Hiawatha, Minnehaha Pkwy, Mississippi Gorge--Mpls & St Paul)	9.0
	Oct 9	Historic Riverfront 5K Run Walk (split Central Mississippi RP, Mississippi Gorge RP)	0.3
	Nov 25	Turkey Day 5K	12.0
Northeast Diagonal RT			None
Nokomis-Hiawatha RP			TOTAL
	Jan 21 - 24	Pond Hockey	40.9
	Apr 10	MN Freeze 5K	20.0
	Apr 18	Live Earth Run for Water	0.4
	May 15	Adopt Walk	0.3
	May 23	Crohn's & Colitis Walk	0.3
	May 31	Brian Craft 5K / Nokomis	1.0
	Jun 5 - 6	24hour FANS Run	0.6
	Jun 5	Lymphoma Walk	0.3
	Jun 20	Viking Gridiron Gallup	0.3
	Jul 17	MiracleKids Triathlon	0.5
	Jul 10	Triathlon (split Chain of Lakes RP, Minnehaha Pkwy, Nokomis-Hiawatha RP, Mississippi Gorge RP--Mpls & St Paul)	1.8
	Jul 24	5K/10K - Boston Scientific Heart of Summer	0.5
	Aug 15	YWCA Women's Triathlon	1.5
	Sep 19	Minneapolis Tour (split Chain of Lakes, Minnehaha RT, Minnehaha RP, Mississippi Gorge RP, Nokomis- Hiawatha, Theodore Wirth, Wirth Memorial)	2.0
	Sep 18	Bolder Options Bolder Dash	0.4
	Oct 3	Twin Cities Marathon & TC 10 (split Chain of Lakes, Nokomis-Hiawatha, Minnehaha Pkwy, Mississippi Gorge--Mpls & St Paul)	0.4
	Oct 9	Making Strides Against Breast Cancer Walk	9.0
North Mississippi RP			TOTAL
	Jun 12	Accessibility, Inc. - Rollin Along the River	1.5
	Sep 12	Picnic	0.5
			1.0

Table 2: Special event counts for 2010

(Note: these events occurred at times that were specifically not sampled to avoid double-counting)

Agency/Park	Date	Event	Visits (1,000s)
MINNEAPOLIS PARK & RECREATION BOARD: continued			
Ridgeway Parkway RT		None	-
St. Anthony Parkway RT		None	-
Theodore Wirth RP		TOTAL	4.0
Feb 6 - 7		Loppet (split Chain of Lakes and Theodore Wirth RP, Wirth Memorial Pkwy)	0.4
May 1		Walk for Animals (Split between Theodore Wirth Park and Wirth Parkway)	1.5
Jun 26		Tri-Loppet (split Chain of Lakes RP, Theodore Wirth RP)	0.2
Jul 31		5K Your Way	1.2
Sep 19		Minneapolis Tour (split Chain of Lakes, Minnehaha RT, Minnehaha RP, Mississippi Gorge RP, Nokomis- Hiawatha, Theodore Wirth, Wirth Memorial)	0.4
Sep 18		Trail Loppet	0.3
Victory Memorial (Wirth) Parkway RT		TOTAL	2.2
Feb 6 - 7		Loppet (split Chain of Lakes and Theodore Wirth RP, Wirth Memorial Pkwy)	0.3
May 1		Walk for Animals (Split between Theodore Wirth Park and Wirth Parkway)	1.5
Sep 19		Minneapolis Tour (split Chain of Lakes, Minnehaha RT, Minnehaha RP, Mississippi Gorge RP, Nokomis- Hiawatha, Theodore Wirth, Wirth Memorial)	0.4
RAMSEY COUNTY:			
Bald Eagle-Otter Lakes RP		TOTAL	39.7
May 22		Northern Lakes Run	0.5
Jun 13		National MS Society Charity Bike Ride	3.5
Aug 21		Fishing for Life Shore line fishing contest	0.3
Sep 11		Final Stretch Race Event	0.3
Oct 2		Muskie Inc	0.3
All Year		Tamarack Nature - Formal program attendee (including nature pre-school, ECFE and volunteers)	34.8
Battle Creek RP		TOTAL	10.7
Feb 3		MSHSL Section Meet	0.3
Feb 4		MSHSL Section Meet	0.3
May 22		Krisine Cooley Wedding Reception	0.3
May 29		Eritrean Community Ctr	0.4
Jun 5		Kong Moua	0.3
Jun 19		Donatelle Plastic's Company Picnic	0.5
Jun 20		Thai Vang	0.4
Jun 26		Houa Lee	0.3
Jul 10		Living World Church	0.5
Jul 13		St Paul Fire Fighters	0.4
Jul 24		Bao Xiong	0.5
Jul 27		Xcel Energy	0.3
Aug 15		Amalgamated Transit Union	0.5
Aug 16		UAW Ford Retirees	0.4
Aug 22		Breast Cancer 3-Day (split Battle Creek RP, Indian Mounds RP)	1.6
Aug 21		Anderson Race Management	0.3
Aug 21		St Paul Plumbers	0.5
Aug 22		Wal Mart Woodbury	0.5
Aug 28		Polencheck Joe Wedding	0.3
Aug 29		Pipefitters Local 455	0.5
Sep 1 & 2		Tri Metro Conference Track Meet	0.3
Sep 14		Health East Clinics	0.5
Oct 25		Math and Science Academy Track meet	0.4
Oct 28		Minnehaha Academy TC Conf Champion race	0.4
Birch Lake RT		TOTAL	3.5
Jun 13		National MS Society Charity Bike Ride	3.5
Bruce Vento RT		TOTAL	0.6
Aug 21		Breast Cancer 3-Day (split Bruce Vento RT, Grass-Vadnais-Snail Lake RP, Highway 96 RT, Keller RP, Trout Brook RT)	0.6
Grass-Vadnais-Snail Lake RP		TOTAL	4.2
Apr 24		Paws for People Walk	0.7
May 29		Twin Cities Bike Club	0.5
June 14 - 18		U of M	0.5
Jul 3		Twin Cities Bike Club	0.5
Jul 4		Twin Cities Bike Club	0.5
Aug 21		Breast Cancer 3-Day (split Bruce Vento RT, Grass-Vadnais-Snail Lake RP, Highway 96 RT, Keller RP, Trout Brook RT)	0.6
Sep 11		Corval Group	0.3
Sep 18		RAGOM	0.3
Sep 25		Union Gospel	0.3

Table 2: Special event counts for 2010

(Note: these events occurred at times that were specifically not sampled to avoid double-counting)

Agency/Park	Date	Event	Visits (1,000s)
RAMSEY COUNTY: continued			
Highway 96 RT		TOTAL	3.4
	Apr 24	Paws for People Walk	0.7
	May 29	Twin Cities Bike Club	0.5
	July 3rd	Twin Cities Bike Club	0.5
	Jul 4	Twin Cities Bike Club	0.5
	Aug 21	Breast Cancer 3-Day (split Bruce Vento RT, Grass-Vadnais-Snail Lake RP, Highway 96 RT, Keller RP, Trout Brook RT)	0.6
	Sep 18	RAGOM	0.3
	Sep 25	Union Gospel	0.3
Keller RP			1.4
	Apr 18	John Glenn Middle School	0.8
	Aug 21	Breast Cancer 3-Day (split Bruce Vento RT, Grass-Vadnais-Snail Lake RP, Highway 96 RT, Keller RP, Trout Brook RT)	0.6
Long Lake RP		TOTAL	31.0
	Feb 6	Snowshoe Race	0.3
	Feb 7	New Brighton Sportsmen Ice Fishing Contest	0.5
	May 23	church group - Stephen Endrizzi	0.4
	May 28	Irondale Sr Class Picnic	0.5
	May 29	Al-Amal School	0.3
	May 30	Sing Vang	0.4
	Jun 2	Bethlehem Baptist Church	0.3
	Jun 5	Vacation Sports - NB Triathlon	0.3
	Jun 7	Mpls Postal Workers Union	0.5
	Jun 10	Hmong College prep	0.5
	Jun 12	Childrens Cancer Res Fund	0.5
	Jun 13	Moua Vu Family	0.4
	Jun 16	Bethlehem Baptist Church	0.3
	Jun 17	Boston Scientific	0.4
	Jun 18	Asplundh Tree Experts	0.5
	Jun 19	Xai Vang	0.4
	Jul 23	Bethlehem Baptist Church	0.3
	Jun 26	Zer Vang	0.4
	Jun 27	Jane Fust Debruzzi	0.4
	Jun 30	Bethlehem Baptist Church	0.3
	Jul 4	Shaik Ghouse	0.3
	Jul 6	Tibetan Am Foundation	0.5
	Jul 7	Bethlehem Baptist Church	0.3
	Jul 10	Lee Hue	0.5
	Jul 14	Bethlehem Baptist Church	0.3
	Jul 17	TC Carpet - Local 596	0.3
	Jul 18	Doua Yang	0.4
	Jul 21	Bethlehem Baptist Church	0.3
	Jul 22	General Mills	0.5
	Jul 24	David Chang	0.5
	Jul 25	R & D Systems	0.5
	Jul 28	Bethlehem Baptist Church	0.3
	Jul 29	Boston Scientific	0.7
	Aug 4	Bethlehem Baptist Church	0.3
	Aug 7	Lis Sib Sau family picnic	0.5
	Aug 8	Judith Westlee	0.3
	Aug 11	Bethlehem Baptist Church	0.3
	Aug 12	New Brighton Stockyard Days	1.0
	Aug 13	New Brighton Stockyard Days	1.0
	Aug 14	New Brighton Stockyard Days	5.0
	Aug 15	New Brighton Stockyard Days	5.0
	Aug 21	Tria Chang	0.3
	Aug 25	Bethlehem Baptist Church	0.3
	Aug 27	Boston Scientific	0.5
	Aug 28	Shawn Silvera Memorial Run	0.4
	Aug 29	GCC Local 1-M	0.3
	Sep 1	Bethlehem Baptist Church	0.3
	Sep 9	Boston Scientific	0.7
	Sep 11	Northern Lights Greyhound Adoption Foundation	0.5
	Sep 17	MSRA, Blaine Gartner	0.5
	Sep 18	Kim Byong Moon	0.5
Rice Creek North RT		None	-
Rice Creek West RT			1.0
	Feb 6	Snowshoe Race	0.3
	Jun 5	Vacation Sports - NB Triathlon	0.3
	Aug 28	Shawn Silvera Memorial Run	0.4

Table 2: Special event counts for 2010

(Note: these events occurred at times that were specifically not sampled to avoid double-counting)

Agency/Park	Date	Event	Visits (1,000s)
RAMSEY COUNTY: continued			
Tony Schmidt RP		TOTAL	3.0
Sep 18		Arden Hills Comm Celebration	3.0
Trout Brook RT			0.6
Aug 21		Breast Cancer 3-Day (split Bruce Vento RT, Grass-Vadnais-Snail Lake RP, Highway 96 RT, Keller RP, Trout Brook RT)	0.6
CITY OF ST. PAUL:			
Bruce Vento RT		TOTAL	11.4
Jan 26 - 28		Winter Carnival Treasure Hunt (5,000 on 1/28 and 2,500 on 1/26 and 1/27)	10.0
Apr 14		Spring Parks Cleanup total of 400 divided by 1/9 = (listed only here for all sites)	0.4
Sep 12		St. Paul Classic Bike Tour (1/7 each: Hidden Falls, Indian Mounds, Como; Phalen; Miss Gorge -SP, Sam Morgan RT, Vento RT)	1.0
Cherokee Heights RP		TOTAL	3.9
May 30		KMOJ Radio	0.7
Jul 2-5		Taste of MN - Fireworks (500 on 2,3 and 5 and 1,000 on 4th)	2.5
Jul 4		Parks and Recreation 4th of July Event	0.7
Como RP, Zoo & Conservatory SRF		TOTAL	430.3
All Year		Como Education events/classes	20.4
All Year		Music in the Parks Concert Audiences (larger shows listed below)	6.8
Winter		Como Downhill Ski (Enterprise facility) (cc ski meets and lessons)	1.3
Jan-Feb		Winter Carnival Events	22.9
Jan 17-19		Rainforest Revel	5.1
Jan 24		Winter Carnival Orchid Show	1.9
Jan 25		Winter Carnival Orchid Show	2.5
Jan 30-31		Winter Flower Show	1.0
Feb 13-16		Woo at the Zoo	22.0
Feb 28		MN Parent Camp Fair	4.8
Mar 6-7		Daniel Cox Photo Exhibit Opening	7.3
Mar 7		Medicine for Sick Children Foundation	3.0
Mar 21-22		Spring Fling	4.0
Mar 21-22		Spring Flower Show Opening	12.5
Apr 22-26		Party for the Planet	20.7
May 2-3		Summer Flower Show Opening	14.6
May 9-10		Bonsai Show (over two days)	16.1
May 12		St. Paul Police Patrol Picnic	1.7
May 16		New Life Family Services Walk/Run	0.4
May 16		Twin Cities Marathon Kid's Marathon	1.5
May 16		Vintage Foreign Marque Clubs	3.0
May 16-17		Plant Conservation Day	13.2
May 17		Walmart - Kaspszak	0.5
May 23		Gingerbread Craft Show	1.0
May 24		Gingerbread Craft Show	1.3
May 25		Gingerbread Craft Show	1.2
May 31		Roseville Community Band	0.8
Jun 1		Prairie Seeds Academy	0.5
Jun 2		Applebee's - Myers	0.4
Jun 3		South High School	0.4
Jun 6		Como Pops	0.3
Jun 7		American Lung Assoc of MN	0.5
Jun 7		Q.M.C. Pride Concert	0.8
Jun 8		Noble Academy	0.4
Jun 10		Community School of Excellence	0.3
Jun 11		Dakota Communities Inc picnic	0.6
Jun 12		Corey Anderson Family Reunion	0.3
Jun 13		Urban Partnership and Community Development Walk/Run	0.5
Jun 13		Calhoun Isles Community Band	0.3
Jun 16		Medalist Concert Band	0.3
Jun 18		MELSA Summer Reading	5.8
Jun 20		St. Louis Park Community Band	0.3
Jun 20-21		Blooming Butterflies Opening	28.1
Jun 21		Twin Cities Pride - Tretter	0.5
Jun 23		Como Community Night	6.0
Jun 24		Northland Insurance Company Picnic	0.4
Jun 27		St. Anthony Civic Orchestra	0.3
Jun 28		Brio Brass	0.3
Jun 30		Whistlepigs String Band	0.4
Jul 3		Hmong Freedom Celebration - Lao Family of MN setup	2.0

Table 2: Special event counts for 2010

(Note: these events occurred at times that were specifically not sampled to avoid double-counting)

Agency/Park	Date	Event	Visits (1,000s)
CITY OF ST. PAUL: continued			
Como RP, Zoo & Conservatory SRF continued			
	Jul 4	Pops Ensemble Concert	0.3
	Jul 4	Hmong Freedom Celebration - Lao Family of MN event	42.0
	Jul 5	Minnesota Sinfonia Concert	0.5
	Jul 5	Hmong Freedom Celebration - Lao Family of MN event	45.0
	Jul 6	The Bavarian Musikmeisters	0.6
	Jul 8	RESOURCE, Inc.	0.3
	Jul 8	Rosetown Playhouse	0.9
	Jul 9	Rosetown Playhouse	0.9
	Jul 10	Rosetown Playhouse	0.9
	Jul 11	Beasley's Big Band	0.3
	Jul 11	Pops Ensemble Concert	0.3
	Jul 13	Twin Cities Youth Symphonies	0.6
	Jul 16	South Metro Human Services	0.3
	Jul 17	Preferred One	0.3
	Jul 15	Rosetown Playhouse	0.9
	Jul 16	Rosetown Playhouse	0.9
	Jul 17	Rosetown Playhouse	0.9
	Jul 20	Rein in Sarcoma	0.6
	Jul 21	South Washington County Community Band	0.3
	Jul 22	Thomson Reuters - Kenealy	0.3
	Jul 23	Sunset Affair	0.5
	Jul 22	Hillcrest Community Theater	0.5
	Jul 23	Hillcrest Community Theater	0.4
	Jul 24	Hillcrest Community Theater	0.4
	Jul 24	Crossroads Elementary Picnic	0.3
	Jul 29	Hillcrest Community Theater	0.4
	Jul 30	Hillcrest Community Theater	0.4
	Jul 31	Hillcrest Community Theater	0.4
	Aug 1	Lex-Ham Community Band	0.3
	Aug 4	Minnesota State Band	0.3
	Aug 8	John Phillips Sousa Memorial Band	0.7
	Aug 8	Twin Cities Show Chorus	0.3
	Aug 11	City of Saint Paul Employee Picnic	0.8
	Aug 11	Minnesota State Band	0.3
	Aug 16	Japanese Lantern Lighting Festival	5.8
	Aug 17	Northstar Barbershop Chorus	0.3
	Aug 18	Minnesota State Band	0.3
	Aug 22	Kaposia	0.4
	Aug 22	Kenwood Symphony Orchestra	0.3
	Aug 23	Como Park Lutheran Church	0.3
	Aug 26	Cretin-Derham Hall Picnic	0.3
	Aug 29	Pops Ensemble Concert Benefit Concert	0.3
	Aug 30	Johnny Owen Band	0.3
	Sep 12	St. Paul Classic Bike Tour (1/7 each: Hidden Falls, Indian Mounds, Como; Phalen; Miss Gorge -SP, Sam Morgan RT, Vento RT)	1.0
	Sep 12-13	African Predator Conservation	9.5
	Sep 19	Free to be Green	11.5
	Sep 20	Down Syndrome Association	5.5
	Sep 26	Brain Injury Association Walk	1.0
	Sep 27	AFSP Walk/Run	0.4
	Oct 3	Camp Odayin	0.5
	Oct 4	American Foundation For Suicide Walk/Run	0.4
	Oct 4	Boy Scouts	0.3
	Oct 4	Loaves And Fishes	0.6
	Oct 10	MN Parent Education Resource Fair	2.1
	Oct 10-11	Wolf Awareness	4.4
	Oct 18	The Center For Grief, Loss and Transition Walk/Run	0.3
	Oct 17-18, 23-25	Zoo Boo (5 days)	16.0
	Oct 24	Concordia University Walk/Run	0.3
	Nov 8	Wedding Showcase Open House	0.3
	Nov 5-15	Ikebana Show	10.9
	Nov 14-15	Orangutan Awareness	2.9
	Nov 22	The Sporting Life Walk/Run	0.5
	Nov 26	Charities Challenge	0.7
	Dec 3	Bouquets Wine Tasting	0.4
	Dec 3-4	Winter Flower Show Opening	2.1
	Dec 4-5	Craft Show	0.5
	Dec 3-31	Last Polaroid Show Photo	4.8
	Dec 31	Family New Year's Day	1.5

Table 2: Special event counts for 2010

(Note: these events occurred at times that were specifically not sampled to avoid double-counting)

Agency/Park	Date	Event	Visits (1,000s)
CITY OF ST. PAUL: continued			
Hidden Falls-Crosby Farm RP			9.8
	May 30	TOTAL	0.3
	Jun 12	Grodahl wedding	0.5
	Aug 22	Bio-blitz	3.0
	Sep 12	Anderson Race Management Walk/Run	1.0
	Oct 23-24, 29-31	St. Paul Classic Bike Tour (1/7 each: Hidden Falls, Indian Mounds, Como; Phalen; Miss Gorge -SP, Sam Morgan RT, Vento RT)	5.0
		BareBones Performance (5 days)	
Indian Mounds RP			7.4
	May 16	TOTAL	0.6
	Jul 2-5	Tree climbing championship	3.8
	Aug 22	Taste of MN - Fireworks (2,500 on 7/4 and 750 on 7/2, 3 and 5)	1.6
	Sep 12	Breast Cancer 3-Day (split Battle Creek RP, Indian Mounds RP)	1.0
	Sep 25	St. Paul Classic Bike Tour (7,000 = 1/7 each: Hidden Falls, Indian Mounds, Como; Phalen; Miss Gorge -SP, Sam Morgan RT, Vento RT)	0.4
		The Ain Dah Yung Center Picnic	
Lilydale-Harriet Island RP			319.3
	All year	Padelford Park Excursions	82.0
	All year	Harriet Island Private Events	9.7
	Feb 23	Maddox Memorial	0.5
	Apr 1 - Oct 31	Fossil Hunting Groups	8.1
	Apr 25	Wishes for the Sky	0.5
	May 1	Wedding	0.3
	May 8	Wedding	0.4
	May 20	Lifetrack Resources	0.3
	May 21	High School Dance	0.3
	May 23	Friends of the Mississippi River	0.3
	May 29	KMOJ	0.7
	Jun 5	ADA Bike Ride	0.4
	Jun 11	Wedding	0.3
	Jun 12	Wedding	0.3
	Jun 12	MADD Walk	0.8
	Jun 19	Wedding	0.3
	Jun 26	Time to Fly Charity Run	3.0
	Jun 26	Church Event	1.0
	Jul 2-5	Taste of Minnesota	25.0
	Jul 3	Charities Challenge Walk	0.3
	Jul 16	Wedding	0.3
	Jul 24	Red Bull	95.0
	Jul 25	Friends of the Mississippi River	0.5
	Jul 27	Wildside Caterers	0.3
	Aug 5	People's Inc	0.3
	Aug 6	Wedding	0.3
	Aug 11	Builders Club Event	3.0
	Aug 13-15	Irish Fair	75.0
	Aug 17	Great River Event	0.3
	Aug 20	Vega Productions	1.0
	Aug 21	Wedding	0.3
	Aug 28	MN Military Appreciation Fund	3.0
	Sep 4	Wedding	0.4
	Sep 10	Wedding	0.3
	Sep 16	Wine Tasting	0.3
	Sep 18	Wedding	0.3
	Oct 15	Wedding	0.3
	Oct 16	Wedding	0.3
	Oct 17	MELSA Run	0.3
	Oct 22	Wedding	0.3
	Oct 23	Wedding	0.3
	Oct 23	Halloween Hustle Run	0.5
	Oct 26	Great River Event	0.3
	Oct 28	Great River Event	0.3
	Nov 12	Educator Training	0.3
	Nov 30 - Dec 20	Actor's Theater - Christmas Carol	1.3

Table 2: Special event counts for 2010

(Note: these events occurred at times that were specifically not sampled to avoid double-counting)

Agency/Park	Date	Event	Visits (1,000s)
CITY OF ST. PAUL: continued			
Mississippi Gorge RP		TOTAL	18.6
	Apr 25	Get In Gear 10K & 2K Run/Walk (split--Minnehaha RP & Mississippi Gorge RP--Mpls & St. Paul)	2.7
	May 2	Walk MS (split--Minnehaha RP & Mississippi Gorge RP--Mpls & St. Paul)	1.3
	May 17	AIDS Walk (split--Minnehaha RP & Mississippi Gorge RP--Mpls & St. Paul)	1.7
	Jul 11	Triathlon (split Chain of Lakes RP, Minnehaha Pkwy, Nokomis-Hiawatha RP, Mississippi Gorge RP--Mpls & St Paul)	0.5
	Aug 20	TC Breast Cancer 3-day (split Minneapolis Chain of Lakes, Mississippi Gorge RP--Mpls & St. Paul)	1.1
	Aug 21	Night Owl Classic (split Central Mississippi RP, Mississippi Gorge RP--Mpls & St Paul)	0.2
	Sep 12	St. Paul Classic Bike Tour (7,000 = 1/7 each: Hidden Falls, Indian Mounds, Como; Phalen; Miss Gorge -SP, Sam Morgan RT, Vento RT)	1.0
	Sep 25	MS Challenge (split Central Mississippi RP, Mississippi Gorge RP--Mpls & St Paul)	0.2
	Sep 26	Women Run the Cities (Split Minnehaha RP, Mississippi Gorge RP--Mpls & St. Paul)	0.7
	Oct 3	Marathon for Non Public Ed (split Minnehaha RP; Mississippi Gorge RP--Mpls & St Paul)	0.2
	Oct 6	Twin Cities Marathon & TC 10 (split Chain of Lakes, Nokomis-Hiawatha, Minnehaha Pkwy, Mississippi Gorge--Mpls & St Paul)	9.0
Phalen RP		TOTAL	81.1
	Apr 18	Final Stretch, Inc.	0.5
	Apr 26	U of M Regatta Event - Lynn Waldorf	5.0
	Apr 26	March of Dimes Walk	0.6
	May 2	BDSRA Walk/Run	0.3
	May 17	Solar Regatta	0.3
	May 22	Ramsey-Washington Metro Watershed	1.0
	May 30	Tuberous Sclerosis Walk/Run	0.5
	Jun 13	Local #323 Picnic	0.5
	Jun 17	Merrill Corporation	0.4
	Jun 20	Anderson Race Walk/Run	0.3
	Jun 24	Music in the Park Concert - MN Sinfonia	0.7
	Jun 27	Ingram picnic	0.4
	Jul 10	Dragon Festival	3.0
	Jul 11	Dragon Festival	3.0
	Jul 25	Paul Stoehr - Union Picnic	0.7
	Aug 1	Carpenters Local 87 - Beedle	0.4
	Aug 8	IBEW #110	0.3
	Aug 13	Epilepsy Foundation of MN Walk	0.8
	Aug 15	Millwright Local 548	0.3
	Aug 22	Vacation Sports Triathlon	1.5
	Aug 22	Wedding	0.3
	Sep 12	St. Paul Classic Bike Tour (7,000 = 1/7 each: Hidden Falls, Indian Mounds, Como; Phalen; Miss Gorge -SP, Sam Morgan RT, Vento RT)	1.0
	Sep 12	Vibha Walk	0.3
	Sep 13	India Assoc of MN Festival	2.0
	Sep 19	Sharing Life/The Laura Newmann Foundation Walk	0.5
	Sep 25	Ethiopian Festival	1.0
	Sep 26	Hearing and Service Dogs of MN	0.3
	Sep 27	MMRF	2.8
	Oct 3	Leukemia & Lymphoma Society	2.5
	Nov 23 - Jan 1	Holiday Lights in the Park	50.0
Samuel Morgan RT		TOTAL	1.0
	Sep 12	St. Paul Classic Bike Tour (7,000 = 1/7 each: Hidden Falls, Indian Mounds, Como; Phalen; Miss Gorge -SP, Sam Morgan RT, Vento RT)	1.0
SCOTT COUNTY:			
Cedar Lake Farm RP		None	-
Scott County RT		None	-

Table 2: Special event counts for 2010

(Note: these events occurred at times that were specifically not sampled to avoid double-counting)

Agency/Park	Date	Event	Visits (1,000s)
THREE RIVERS - SCOTT COUNTY:			
Cleary Lake RP		TOTAL	2.9
	Winter	Snowmobile trail use	1.9
	Jun 4	ISD 721 New Prague-Rec Program	0.3
	Jun 11	Scott Highlands Middle School-General Use	0.3
	Sch Yr	School groups @ park	0.4
Murphy-Hanrehan PR		TOTAL	1.5
	Winter	Snowmobile trail use	1.2
	Year round	Formal program visits not counted in regular sample and not part of other special events	0.3
THREE RIVERS PARK DISTRICT:			
Baker PR		TOTAL	16.0
	Winter	Snowmobile trail use	1.2
	Oct 23	Baker Boo	0.4
	Year round	Formal program visits not counted in regular sample and not part of other special events	4.7
	Sch Yr	School groups @ Near-Wilderness Center	9.7
Bassett Creek RT		None	-
Bryant Lake RP		TOTAL	0.2
	Year round	Formal program visits not counted in regular sample and not part of other special events	0.2
Carver PR		TOTAL	19.9
	Winter	Snowmobile trail use	1.8
	Apr 2	Spring Eggstravaganza	0.5
	Apr 3	Spring Eggstravaganza	0.4
	Year round	Formal program visits not counted in regular sample and not part of other special events	5.6
	Sch Yr	School groups @ nature center	11.6
Cedar Lake RT		TOTAL	0.4
	Jun 5	American Diabetes Ride	0.3
	Year round	Formal program visits not counted in regular sample and not part of other special events	0.1
Clifton French RP		TOTAL	7.8
	May 22	MN Stroke Association-Race	0.3
	Year round	Formal program visits not counted in regular sample and not part of other special events	3.2
	Sch Yr	School groups @ visitor center	4.3
Coon Rapids Dam RP		TOTAL	5.5
	Year round	Formal program visits not counted in regular sample and not part of other special events	0.6
	Sch Yr	School groups @ visitor center	4.9
Crow-Hassan PR		TOTAL	0.7
	Winter	Snowmobile trail use	0.6
	Year round	Formal program visits not counted in regular sample and not part of other special events	0.1
Dakota Rail RT		None	2.0
	Feb 27	Celebrate Greater Mound	1.5
	Sep 2	Westonka Public Schools	0.5
Eagle Lake RP		None	-
Elm Creek PR		TOTAL	118.9
	Winter	Snowmobile trail use	1.7
	Winter	Winter Recreation area (manufactured snow area)	93.8
	May 15	Williams Syndrome-Race	0.3
	Jun 5	Mathenge-Picnic	0.3
	Jul 17	Gujarti Samaj of MN-Picnic	0.3
	Jul 18	850 Horizontal Eng-Picnic	0.3
	Aug 8	Grace Fellowship-Picnic	0.3
	Aug 22	Hire a Host-Picnic	0.3
	Oct 2	Doggie Day Expo	0.3
	Oct 2	St Vincent De Paul-Race	0.3
	Oct 9	Autumn Woods Classic-Race	1.9
	Oct 10	Apple Cider Demonstration	0.4
	Year round	Formal program visits not counted in regular sample and not part of other special events	9.2
	Sch Yr	School groups @ nature center	9.5

Table 2: Special event counts for 2010

(Note: these events occurred at times that were specifically not sampled to avoid double-counting)

Agency/Park	Date	Event	Visits (1,000s)
THREE RIVERS PARK DISTRICT: continued			
Fish Lake RP		None	0.2
	Year round	Formal program visits not counted in regular sample and not part of other special events	0.1
	Sch Yr	School groups @ park	0.1
Gale Woods		TOTAL	24.7
	May 15	Jaeger-Reception	0.3
	Apr 9	Farmyard Fun Days	0.3
	Apr 10	Spring into Farming	0.3
	Aug 26	XC Race-Southwest High School	0.3
	Sep 4	Luebke-Reception	0.3
	Sep 10	XC Race-Hopkins High School	1.5
	Sep 21	XC Race-Westonka High School	0.4
	Sep 26	Stages Theater Company-Barn Use	0.5
	Oct 9	Celebrate the Harvest	0.4
	Oct 10	Brakke-Reception	0.3
	Oct 14	XC Race-Classic Lake	0.5
	Oct 27	XC Race-Section 6AA	0.4
	Oct 30	Hegnar-Reception	0.3
	Oct 30	XC Race-Westonka High School	0.3
	Year round	Formal program visits not counted in regular sample and not part of other special events	6.6
	Sch Yr	School groups @ farm	12.0
Hyland Lake PR		TOTAL	204.8
	Winter	Downhill Ski Area Enterprise Facilities	168.7
	May 1	Raptor Release	2.9
	Apr 17	Trail Mix-Race	1.0
	Sep 11	Target Book Festival	7.8
	Sep 25	Alzheimers Walk	4.0
	Oct 1	Chairlift Rides	0.7
	Oct 2	Chairlift Rides	1.0
	Year round	Formal program visits not counted in regular sample and not part of other special events	6.1
	Sch Yr	School groups @ nature center	12.6
Lake Independence RT		None	-
Lake Minnetonka RP		TOTAL	4.4
	Year round	Formal program visits not counted in regular sample and not part of other special events	0.2
	Winter	Snowmobile trail use	1.5
	Sch Yr	School groups @ visitor center	2.7
Lake Minnetonka Islands		None	-
Lake Minnetonka LRT RT		None	2.0
	May 2	Wells Fargo 1/2 Marathon	2.0
Lake Rebecca PR		TOTAL	6.5
	Winter	Snowmobile trail use	1.0
	May 23	Minneapolis Laestadian Church-Picnic	0.3
	Jun 13	Varela-Picnic	0.5
	Jun 26	Kopp-General Use	0.3
	Jun 27	First Apostolic Lutheran-Picnic	0.3
	Jul 24	Thaokue Inc-Picnic	0.4
	Aug 1	Living Word Church-Picnic	2.0
	Aug 14	Mintahoe Catering-Picnic	1.0
	Aug 18	Woodbridge Church-Picnic	0.4
	Year round	Formal program visits not counted in regular sample and not part of other special events	0.1
	Sch Yr	School groups @ park	0.2
Luce Line RT		None	-
Medicine Lake RT		None	2.0
	May 22	Maple Grove 1/2 Marathon	2.0
Minnesota River Bluffs LRT RT		None	-
Noerenberg Gardens SRF		None	-
North Cedar Lake LRT RT		None	-

Table 2: Special event counts for 2010

(Note: these events occurred at times that were specifically not sampled to avoid double-counting)

Agency/Park	Date	Event	Visits (1,000s)
THREE RIVERS PARK DISTRICT: continued			
North Mississippi RP		TOTAL	6.6
	Year round	Formal program visits not counted in regular sample and not part of other special events	1.7
	Sch Yr	School groups @ nature center	4.9
Northeast Diagonal RT		None	-
Rush Creek RT		None	1.3
	Sep 19	Purple Ride	1.3
Shingle Creek RT		None	-
Silverwood SRF		TOTAL	8.7
	Mar 13	Andrews-Reception	0.3
	Jul 16	Madison-Reception	0.3
	Jul 31	Jeske-Reception	0.3
	Aug 21	Newstrom-Reception	0.3
	Dec 18	Candy Cane Hunt	0.3
	Year round	Formal program visits not counted in regular sample and not part of other special events	5.9
	Sch Yr	School groups @ nature center	1.3
WASHINGTON COUNTY:			
Big Marine Park Reserve		TOTAL	3.5
	Jun 01	Christ the Redeemer Church Picnic	0.3
	Jun 09	Spanish Immersion Charter School	0.3
	Jun 17	Boys Youth Sports Picnic	0.3
	Jun 23	WBL Extended Day	0.4
	Jul 12	Washington County Fire and Dive Teams	0.3
	Jul 30	Youth Bass Championship	0.3
	Aug 02	NW Family Y	0.3
	Aug 03	NW Family Y	0.3
	Aug 04	NW Family Y	0.3
	Aug 05	NW Family Y	0.3
	Sep 19	BMPR Triathlon	0.4
Cottage Grove Ravine RP		TOTAL	3.5
	Winter	Snowmobile Use	3.5
Hardwood Creek RT		TOTAL	0.3
	Oct 02	Wilson Tool	0.3
Lake Elmo PR		TOTAL	10.6
	Winter	Snowmobile use	3.5
	May 15	Oakdale Duathlon	0.5
	Jun 11	Museum Magnet	0.3
	Jun 20	Long Her Family	0.3
	Jul 11	Chao Khang Family	0.3
	Jul 25	New York Mint	0.9
	Aug 14	Paul Yang Family	0.3
	Aug 22	Vang Her Family	0.3
	Sep 18	Woodbury GS Picnic	0.5
	Sep 11	Bluegrass Festival	3.0
	Oct 24	Great Pumkin Chase	0.3
	Dec 18	Solstice Ski/Walk	0.4
Pine Point Park RP		TOTAL	1.3
	May 08	MS 60/30	1.0
	Aug 29	Woodbury Days Bike Ride	0.3
Square Lake SRF		TOTAL	2.3
	Jul 24	Lumber Jack Days Race	1.5
	Sep 11	Triathlon	0.5
	Sep 12	Triathlon	0.3
St. Croix Bluffs RP		TOTAL	3.0
	May 16	Apple Blossom Run	0.6
	Jun 15	Oakland Jr. High Picnic/Service Project	0.4
	Jun 24	USAC	0.3
	Jul 24	First Hmong Assembly of God	0.4
	Sep 09	Cross Country Meet	0.4
	Sep 14	Cross Country Meet	0.4
	Oct 19	Cross Country Meet	0.5

Table 3: Comparison of 2009 and 2010 visitation

Agency	2009	2010	# change	% change
	<i>(1,000's)</i>	<i>(1,000's)</i>	<i>(1,000's)</i>	
Anoka	3,280.7	3,269.6	(11.1)	-0.3%
Bloomington ¹	512.6	610.4	97.8	19.1%
Carver	265.5	307.3	41.8	15.7%
Dakota	929.8	932.9	3.2	0.3%
Minneapolis	14,113.0	14,768.1	655.0	4.6%
Ramsey ²	3,057.3	3,714.3	656.9	21.5%
St Paul	7,229.5	7,628.2	398.7	5.5%
Scott County ³	255.1	313.5	58.4	22.9%
Three Rivers (Hennepin Co.)	6,865.8	7,646.7	780.9	11.4%
Three Rivers (Scott County)	292.0	282.3	(9.7)	-3.3%
Washington	1,261.2	1,394.3	133.0	10.5%
Total	38,062.6	40,867.5	2,804.9	7.4%

Notes:

¹ The 2009 estimate for regional parks, which is based on an average of 2006-2009 data, included fewer visitors to Bush Lake in the 2006 counts compared with the 2010 counts. The 2010 estimate is based on an average of 2007-2010 data. With the lower numbers from 2006 dropping from the calculation and being replaced with higher numbers in 2010, the 2010 estimate has increased.

² Regional trails in Ramsey County were reclassified in 2010 to incorporate entrance points that had not been captured in previous counts

³ Cedar Lake Farm Regional Park was open only on weekends during the summer and part of the fall in 2009. The park was seasonally open daily in the summer and a portion of the spring and fall of 2010, which resulted in an increase in total visits.

Table 4: Comparison of 2009 and 2010 park vs. trail visitation

	2009	2010	# change	% change	% of all visits in 2010
	<i>(1,000's)</i>	<i>(1,000's)</i>	<i>(1,000's)</i>		
Trail Visits ¹	8,238.3	9,747.4	1,509.1	18.3%	24%
Park/Reserve/SRF Visits	29,824.2	31,120.1	1,295.9	4.3%	76%
Total Visits	38,062.6	40,867.5	2,804.9	7.4%	100%

Notes:

¹ About 80% of all visits to the Minneapolis Chain of Lakes and Anoka County Riverfront RP are trail visits. Mississippi Gorge Regional Park is also more similar to a parkway with a regional trail than a regional park. However, the above trail totals do not include those trail visits.

If Mississippi Gorge, Minneapolis Chain of Lakes and Anoka County Riverfront RP trail visits are included in the regional trail total, **about 16.26 million, or 39.8% of all visits, are trail visits.**

Table 5: Most-visited regional parks and trails - 2010

Rank by visits	Park/trail	Agency	2010 Visitation (1,000's)	Cumulative percent of total visitation
1	Minneapolis Chain-of-Lakes RP	Minneapolis	5,100.8	12.5%
2	Como RP, Zoo & Conservatory SRF	St. Paul	3,561.7	21.2%
3	Mississippi Gorge RP	Minneapolis/St. Paul	2,181.6	26.5%
4	Minnehaha Parkway RT	Minneapolis	1,602.8	30.5%
5	Nokomis-Hiawatha RP	Minneapolis	1,431.7	34.0%
6	Central Mississippi Riverfront RP	Minneapolis	1,431.1	37.5%
7	Hyland-Bush-Anderson Lakes PR	Three Rivers/Bloomington	1,357.8	40.8%
8	Minnehaha RP	Minneapolis	1,276.2	43.9%
9	Phalen-Keller RP	St. Paul/Ramsey County	1,170.5	46.8%
10	Lilydale-Harriet Island-Cherokee Hts RP	St. Paul	1,113.7	49.5%
11	Coon Rapids Dam RP	Anoka County/Three Rivers	859.5	51.6%
12	Bunker Hills RP	Anoka County	823.9	53.6%
13	Elm Creek PR	Three Rivers	817.2	55.6%
14	Battle Creek/Indian Mounds RP	Ramsey County/St. Paul	741.7	57.4%
15	Kenilworth RT	Minneapolis	621.8	59.0%
16	Victory Memorial Parkway RT	Minneapolis	595.1	60.4%
17	Grass-Vadnais-Snail Lake RP	Ramsey County	585.1	61.8%
18	Long Lake RP	Ramsey County	574.7	63.2%
19	Rice Creek West RT	Anoka County/Ramsey County	547.4	64.6%
20	Lake Elmo PR	Washington County	502.3	65.8%
Total			26,896.6	
Percent of 2010 Visitation			65.8%	

Table 6: Urban parks visitation - 2010

Agency	2010 Visitation (1,000's)
Minneapolis Parks Total	14,768.1
St. Paul Parks Total	7,628.2
Urban Total	22,396.3
Urban Percentage of 2010 visitation	54.8%

Table 7: Como visitation - park and zoo/conservatory

Park Unit	2010 Visitation (1,000's)	2009 %
Como Zoo & Conservatory SRF ¹	2,820.9	79.2%
Como Park (non-zoo/conservatory visits)	740.8	20.8%
Como Total	3,561.7	100%

Notes:

¹ Como Zoo & Conservatory Special Recreation Feature estimates are based on visitor interviews conducted in 2008. That data indicated that 79.2% of all Como visitors were primarily visiting the Zoo & Conservatory. Zoo/Conservatory SRF visitors could possibly use Como RP for secondary activities during their visit, so the total use of Como RP is higher than the 20.8% listed for non-zoo/conservatory visits.

Table 8: Visitation estimates by agency for operations and maintenance funding formula purposes - 2010

Agency	2010 Visitation (1,000's)	Percentage of total ¹
Anoka County ^{2,3}	3,147.2	7.76%
Bloomington	610.4	1.50%
Carver County	307.3	0.76%
Dakota County	932.9	2.30%
Minneapolis Park & Recreation Board	14,768.1	36.40%
Ramsey County	3,714.3	9.15%
St Paul ²	7,626.9	18.80%
Scott County	313.5	0.77%
Three Rivers Park District - Hennepin ²	7,478.0	18.43%
Three Rivers Park District - Scott	282.3	0.70%
Washington County	1,394.3	3.44%
TOTAL	40,575.1	100.00%

Notes:

¹ Percentages are given to the second decimal point for use in the O&M funding formula.

² O&M visitation estimates do not include enterprise facility visitation (Bunker Beach and downhill skiing at Hyland and Como).

³ Counts prior to 2009 at Bunker Hills Regional Park included Bunker Beach as a defined entrance at the park. Beginning in 2009, Anoka County has been reporting visitation to Bunker Beach based on ticket sales for admission. This visitation is now being reported in Table 2 rather in the base summer visitation. Since Bunker Beach is an enterprise facility and its specific visitation is being reported, the O&M visitation estimates have now been adjusted.

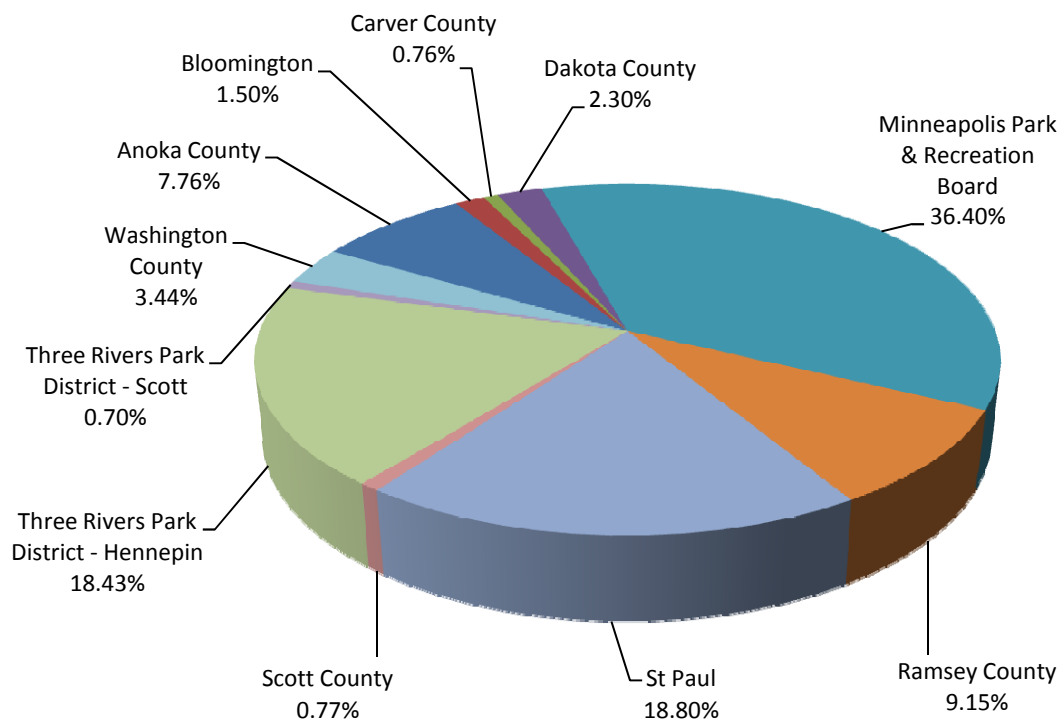


Table 9: Regional Parks System units sample counted 2010

<u>Regional Parks</u>		<u>Park Agency</u>	<u>Regional Trails</u>		<u>Park Agency</u>
1	Anoka County Riverfront RP	Anoka County	1	Central Anoka RT	Anoka County
2	Bunker Hills RP	Anoka County	2	Mississippi River RT (Anoka Co)	Anoka County
3	Lake George RP	Anoka County	3	Rice Creek North RT	Anoka County/Ramsey County
4	Martin-Island-Linwood Lakes RP	Anoka County	4	Rice Creek West RT	Anoka County/Ramsey County
5	Rum River RP	Anoka County	5	Big Rivers RT	Dakota County
6	Coon Rapids Dam RP	Anoka County/Three Rivers	6	Mississippi River RT (Dakota Co)	Dakota County
7	Baylor RP	Carver County	7	North Urban RT	Dakota County
8	Lake Minnewashta RP	Carver County	8	Cedar Lake RT	Minneapolis Park & Rec Board
9	Lake Waconia RP	Carver County	9	Columbia Parkway RT	Minneapolis Park & Rec Board
10	Lake Byllesby RP	Dakota County	10	Kenilworth RT	Minneapolis Park & Rec Board
11	Lebanon Hills RP	Dakota County	11	Luce Line RT	Minneapolis/Three Rivers
12	Central Mississippi Riverfront RP	Minneapolis Park & Rec Board	12	Minnehaha Parkway RT	Minneapolis Park & Rec Board
13	Minneapolis Chain-of-Lakes RP	Minneapolis Park & Rec Board	13	Northeast Diagonal RT	Minneapolis/Three Rivers
14	Minnehaha RP	Minneapolis Park & Rec Board	14	Ridgeway Parkway RT	Minneapolis Park & Rec Board
15	Nokomis-Hiawatha RP	Minneapolis Park & Rec Board	15	St. Anthony Parkway RT	Minneapolis Park & Rec Board
16	Theodore Wirth RP	Minneapolis Park & Rec Board	16	Victory Memorial Parkway RT	Minneapolis Park & Rec Board
17	Mississippi Gorge RP	Minneapolis/St. Paul	17	Birch Lake RT	Ramsey County
18	North Mississippi RP	Minneapolis/Three Rivers	18	Highway 96 RT	Ramsey County
19	Bald Eagle-Otter Lake RP	Ramsey County	19	Trout Brook RT	Ramsey County
20	Long Lake RP	Ramsey County	20	Bruce Vento RT	Ramsey County/St. Paul
21	Snail Lake (Grass-Vadnais-Snail) RP	Ramsey County	21	Samuel Morgan RT	St. Paul
22	Tony Schmidt RP	Ramsey County	22	Scott County RT	Scott County
23	Battle Creek & Indian Mounds RP	Ramsey County/St. Paul	23	Bassett Creek RT	Three Rivers Park District
24	Como RP	St. Paul	24	Cedar Lake LRT RT	Three Rivers Park District
25	Hidden Falls-Crosby Farm RP	St. Paul	25	Dakota Rail RT	Three Rivers Park District
26	Lilydale-Harriet Island & Cherokee Heights RP	St. Paul	26	Lake Independence RT	Three Rivers Park District
27	Phalen-Keller RP	St. Paul/Ramsey County	27	Lake Minnetonka LRT RT	Three Rivers Park District
28	Cedar Lake Farm RP	Scott County	28	Medicine Lake RT	Three Rivers Park District
29	Bryant Lake RP	Three Rivers Park District	29	Minnesota River Bluffs LRT RT	Three Rivers Park District
30	Clifton E. French RP	Three Rivers Park District	30	North Cedar Lake RT	Three Rivers Park District
31	Eagle Lake RP	Three Rivers Park District	31	Rush Creek RT	Three Rivers Park District
32	Fish Lake RP	Three Rivers Park District	32	Shingle Creek RT	Three Rivers Park District
33	Lake Minnetonka Islands RP	Three Rivers Park District	33	Hardwood Creek RT	Washington County
34	Lake Minnetonka RP	Three Rivers Park District			
35	Cleary Lake RP	Three Rivers/Scott County			
36	Cottage Grove Ravine RP	Washington County			
37	Pine Point RP	Washington County			
38	St. Croix Bluffs RP	Washington County			
<u>Park Reserves</u>			<u>Special Recreation Features</u>		
1	Rice Creek Chain-of-Lakes PR	Anoka County	1	Como Conservatory	St. Paul
2	Miesville Ravine PR	Dakota County	2	Como Zoo	St. Paul
3	Spring Lake PR	Dakota County	3	Gale Woods	Three Rivers Park District
4	Baker PR	Three Rivers Park District	4	Noerenberg Gardens SRF	Three Rivers Park District
5	Carver PR	Three Rivers Park District	5	Silverwood SRF	Three Rivers Park District
6	Crow-Hassan PR	Three Rivers Park District	6	Square Lake SRF	Washington County
7	Elm Creek PR	Three Rivers Park District			
8	Lake Rebecca PR	Three Rivers Park District			
9	Hyland-Bush-Anderson L. PR	Three Rivers/Bloomington			
10	Murphy-Hanrehan PR	Three Rivers/Scott County			
11	Big Marine PR	Washington County			
12	Lake Elmo PR	Washington County			
			89	TOTAL UNITS	

Table 10: Comparison of estimated visits from 2005 to 2010

	Visits in 1,000s per year					
	2005	2006	2007	2008	2009	2010
Anoka County	3,170.6	2,820.5	2,943.8	3,280.7	3,280.7	3,269.6
Bloomington	759.9	708.0	450.8	526.8	512.6	610.4
Carver County	305.9	305.3	271.2	265.0	265.5	307.3
Dakota County	1,047.1	873.7	795.0	879.6	929.8	932.9
Mpls Park & Rec. Board	14,063.8	13,868.6	13,404.4	15,442.4	14,113.0	14,768.1
Ramsey County	3,720.8	3,400.3	3,265.9	3,286.2	3,057.3	3,714.3
St. Paul	6,536.2	6,876.4	7,196.1	6,649.7	7,229.5	7,628.2
Scott County	44.0	59.6	90.2	259.9	255.1	313.5
Three Rivers	5,330.4	5,697.0	5,883.9	6,472.6	6,865.8	7,646.7
Three Rivers (Scott County)	274.5	296.7	258.6	302.0	292.0	282.3
Washington County	1,105.2	1,136.8	1,003.8	1,158.4	1,261.2	1,394.3
REGIONAL TOTALS ¹	36,358.4	36,042.9	35,563.7	38,523.3	38,062.5	40,867.5
% annual increase	-	-0.9%	-1.3%	8.3%	-1.2%	7.4%

Notes:

¹ Visitation estimates for 2005-2007 were adjusted to reflect the seasonal multipliers from the *Metropolitan Council Regional Parks and Trails Survey 2008* so that estimates are comparable across all years. Therefore, the estimates shown in Table 10 will not correspond to the published annual use estimates for 2005-2007.

Total Annual Visits: 2005 to 2010

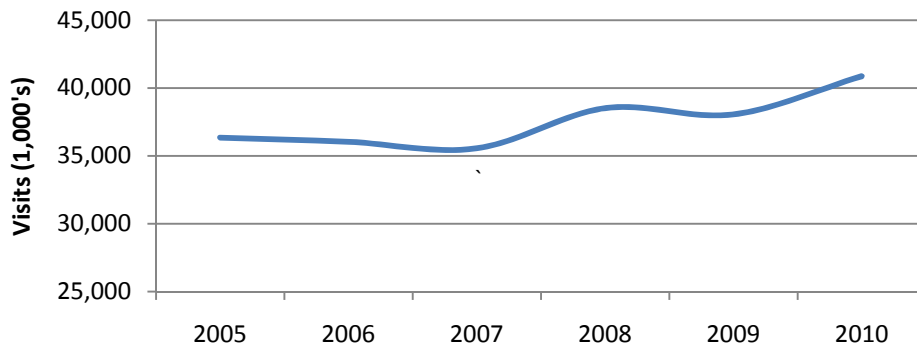


Table 11: Top activities in the Regional Parks System - 2010

Activity	% of park activity occasions ¹	# of park activity occasions	% of trail activity occasions	# of trail activity occasions	Total # of activity occasions	% of total visits
		1,000's		1,000's	1,000's	
Walking/hiking	21%	6,535	30%	2,924	9,459	23%
Biking	10%	3,112	45%	4,386	7,498	18%
Swimming ³	16%	4,979	2%	195	5,174	13%
Picnicking	10%	3,112	0%	-	3,112	8%
Relaxing ²	9%	2,801	2%	195	2,996	7%
Jogging/running	5%	1,556	10%	975	2,531	6%
Playground use ³	7%	2,178	1%	97	2,276	6%
Dog-walking	5%	1,556	7%	682	2,238	5%
Sunbathing ³	6%	1,867	1%	97	1,965	5%
Fishing ³	6%	1,805	1%	97	1,902	5%
Boating	4%	1,245	0%	-	1,245	3%
Zoo visits (Como)	4%	1,245	0%	-	1,245	3%
In-line skating	2%	622	4%	390	1,012	2%
Camping	2%	622	0%	-	622	2%
		Regional Parks		Regional Trails		System-wide
2010 system-wide visits						
(in 1,000's of visits)		31,120.1		9,747.4		40,867.5
% of 2010 visits		76%		24%		100%

Notes:

¹ Activity pattern data of regional park and trail visitors was collected in 2008 and published in the *Metropolitan Council Regional Parks and Trails Survey 2008*. The activity patterns were applied to the 2008 visit estimate to generate this table. Visitors could do more than one activity during their visit to a regional park or trail. Each time they participated in an activity, it was considered an activity occasion. Therefore, the total number of activity occasions is greater than the actual number of visits.

² "Relaxing" was a general activity on a list of activities that park visitors used to indicate what they did during their park visit. This activity was not specifically defined.

³ For trail visits, survey respondents indicated that the trails were providing access to these activities. For example, 2% of trail visits provided access to swimming and 1% of trail visits provided access to fishing.

Table 12: Visitor origin by agency - 2010

Agency	Total visits (1,000s)	Number and percent of visits from people who live in the following agency jurisdictions: (in 1,000s)												
		Anoka County	Bloomington	Carver County	Dakota County	Minneapolis	Ramsey County	St Paul	Scott County	Three Rivers (Hennepin)	Washington County	Greater MN	Out of state	Outside of US
ANOKA COUNTY														
Total Visitation	3,269.6	1,854.9	8.2	4.1	32.6	134.5	644.1	77.5	4.1	232.4	57.1	142.7	77.5	-
Visitation by Percentage	8.0%	56.7%	0.2%	0.1%	1.0%	4.1%	19.7%	2.4%	0.1%	7.1%	1.7%	4.4%	2.4%	0.0%
BLOOMINGTON														
Total Visitation	610.4	4.7	332.5	6.2	29.7	40.6	4.7	15.6	32.8	112.4	3.1	6.2	20.3	1.6
Visitation by Percentage	1.5%	0.8%	54.5%	1.0%	4.9%	6.6%	0.8%	2.6%	5.4%	18.4%	0.5%	1.0%	3.3%	0.3%
CARVER COUNTY														
Total Visitation	307.3	2.4	4.8	146.5	15.8	8.7	0.8	1.6	15.8	62.6	0.8	42.0	5.5	-
Visitation by Percentage	0.8%	0.8%	1.5%	47.7%	5.2%	2.8%	0.3%	0.5%	5.2%	20.4%	0.3%	13.7%	1.8%	0.0%
DAKOTA COUNTY														
Total Visitation	932.9	6.9	18.3	2.3	600.6	51.4	18.3	105.1	9.1	33.1	19.4	37.7	30.8	-
Visitation by Percentage	2.3%	0.7%	2.0%	0.2%	64.4%	5.5%	2.0%	11.3%	1.0%	3.5%	2.1%	4.0%	3.3%	0.0%
MINNEAPOLIS PARK & REC BOARD														
Total Visitation	14,768.1	308.4	325.5	34.3	376.9	7,709.5	342.6	736.7	68.5	4,077.5	68.5	119.9	565.4	34.3
Visitation by Percentage	36.1%	2.1%	2.2%	0.2%	2.6%	52.2%	2.3%	5.0%	0.5%	27.6%	0.5%	0.8%	3.8%	0.2%
RAMSEY COUNTY														
Total Visitation	3,714.3	351.0	4.7	4.7	42.7	66.4	1,992.3	839.6	-	90.1	194.5	42.7	80.6	4.7
Visitation by Percentage	9.1%	9.5%	0.1%	0.1%	1.1%	1.8%	53.6%	22.6%	0.0%	2.4%	5.2%	1.1%	2.2%	0.1%
ST. PAUL														
Total Visitation	7,628.2	228.0	38.0	19.0	684.0	551.0	589.0	3,847.4	38.0	361.0	560.5	256.5	418.0	38.0
Visitation by Percentage	18.7%	3.0%	0.5%	0.2%	9.0%	7.2%	7.7%	50.4%	0.5%	4.7%	7.3%	3.4%	5.5%	0.5%
SCOTT COUNTY / THREE RIVERS														
Total Visitation	595.8	-	8.9	3.9	115.4	5.9	1.0	2.0	412.3	15.8	2.0	18.7	8.9	1.0
Visitation by Percentage	1.5%	0.0%	1.5%	0.7%	19.4%	1.0%	0.2%	0.3%	69.2%	2.6%	0.3%	3.1%	1.5%	0.2%
THREE RIVERS PARK DISTRICT														
Total Visitation	7,646.7	470.0	175.2	374.4	95.6	820.4	71.7	63.7	127.4	4,803.1	31.9	430.1	159.3	23.9
Visitation by Percentage	18.7%	6.1%	2.3%	4.9%	1.3%	10.7%	0.9%	0.8%	1.7%	62.8%	0.4%	5.6%	2.1%	0.3%
WASHINGTON COUNTY														
Total Visitation	1,394.3	81.1	5.3	-	58.2	24.7	123.4	118.1	3.5	30.0	782.6	82.8	82.8	1.8
Visitation by Percentage	3.4%	5.8%	0.4%	0.0%	4.2%	1.8%	8.8%	8.5%	0.3%	2.1%	56.1%	5.9%	5.9%	0.1%
TOTAL VISITATION	40,867.5	3,307.3	921.3	595.4	2,051.5	9,413.2	3,787.9	5,807.2	711.7	9,817.9	1,720.4	1,179.4	1,449.1	105.2
TOTAL VISITATION by PERCENTAGE	100.0%	8.1%	2.3%	1.5%	5.0%	23.0%	9.3%	14.2%	1.7%	24.0%	4.2%	2.9%	3.5%	0.3%

NOTES:

All visits are listed in units of 1,000.

Local visits are defined as visits to a park by visitors who reside in that park agency's jurisdiction. Local visits for each agency are in bold and are highlighted.

Visitor origin data is from the *Metropolitan Council Regional Parks and Trails Survey 2008*. Percentages were adjusted to disregard "unknown" visitor origin and therefore may differ slightly from the survey report

Three Rivers Park District owns and operates two regional parks in Scott County. The amounts shown in this table reflect visits to park and trail units located in Scott County regardless of managing entity.

Table 13: Local and non-local visits by agency - 2010

Agency	Total visits (1,000s)	Number and percent of visits from people who live in the following agency jurisdictions: (in 1,000s)				
		Local Visits	Non-Local Visits			
			Regional	Greater MN	Out of state	Outside of US
ANOKA COUNTY						
Total Visitation	3,269.60	1,854.9	1,194.5	142.7	77.5	-
Visitation by Percentage	8.0%	56.7%	36.5%	4.4%	2.4%	0.0%
BLOOMINGTON						
Total Visitation	610.36	332.5	249.8	6.2	20.3	1.6
Visitation by Percentage	1.5%	54.5%	40.9%	1.0%	3.3%	0.3%
CARVER COUNTY						
Total Visitation	307.27	146.5	113.24	42.0	5.5	-
Visitation by Percentage	0.8%	47.7%	36.9%	13.7%	1.8%	0.0%
DAKOTA COUNTY						
Total Visitation	932.93	600.6	263.8	37.7	30.8	-
Visitation by Percentage	2.3%	64.4%	28.3%	4.0%	3.3%	0.0%
MINNEAPOLIS PARK & RECREATION BOARD						
Total Visitation	14,768.06	7,709.5	6,339.0	119.9	565.4	34.3
Visitation by Percentage	36.1%	52.2%	42.9%	0.8%	3.8%	0.2%
RAMSEY COUNTY						
Total Visitation	3,714.28	1,992.3	1,593.9	42.7	80.6	4.7
Visitation by Percentage	9.1%	53.6%	42.9%	1.1%	2.2%	0.1%
ST. PAUL						
Total Visitation	7,628.22	3,847.4	3,068.4	256.5	418.0	38.0
Visitation by Percentage	18.7%	50.4%	40.2%	3.4%	5.5%	0.5%
SCOTT COUNTY / THREE RIVERS						
Total Visitation	595.80	412.3	154.9	18.7	8.9	1.0
Visitation by Percentage	1.5%	69.2%	26.0%	3.1%	1.5%	0.2%
THREE RIVERS PARK DISTRICT						
Total Visitation	7,646.68	4,803.1	2,230.3	430.1	159.3	23.9
Visitation by Percentage	18.7%	62.8%	29.2%	5.6%	2.1%	0.3%
WASHINGTON COUNTY						
Total Visitation	1,394.27	782.6	444.2	82.8	82.8	1.8
Visitation by Percentage	3.4%	56.1%	31.9%	5.9%	5.9%	0.1%
TOTAL VISITATION	40,867.5	22,481.9	15,651.8	1,179.4	1,449.1	105.2
TOTAL VISITATION by PERCENTAGE	100.0%	55.0%	38.3%	2.9%	3.5%	0.3%

NOTES:

All visits are listed in units of 1,000.

Local visits are defined as visits to a park by visitors who reside in that park agency's jurisdiction. Local visits for each agency are in bold and are highlighted.

Visitor origin data is from the *Metropolitan Council Regional Parks and Trails Survey 2008*. Percentages were adjusted to disregard "unknown" visitor origin and therefore may differ slightly from the survey report