

Biennial Report to the Legislature on the Minnesota Power Plant Siting Act - Minn. Stat. 216E

December 8, 2010

Amended Feb. 22, 2011¹

Minnesota Public Utilities Commission

David C. Boyd, Chair

Phyllis Reha, Vice Chair

Thomas W. Pugh, Commissioner

J. Dennis O'Brien, Commissioner

Betsy Wergin, Commissioner

¹ Errata to page 6 and 7 adding permits issued to Mesaba Energy Project



Contents

Reporting Mandate	3
Focus of this Report	3
Reporting Agency Unit	4
Agency Organization - Commission and Office of Energy Security	4
Program Overview	4
Biennial Expenditures	5
Proposed Budget and Assessment	5
Public Information and Participation	5
Operations and Activities in Biennium	6
Operations: Permits Processed	6
Activities	10
Administrative Rules	11
Conclusions	11
Recommendations	12

Attachments

Attachment 1	Projects Permitted in 2008
Attachment 2	Projects Permitted in 2009
Attachment 3	PPSA Permitting Flow Chart: Full Process
Attachment 4	PPSA Permitting Flow Chart: Alternative Process



Reporting Mandate

216E.18 BIENNIAL REPORT; APPLICATION FEES; APPROPRIATION; FUNDING.

Subdivision 1. **Biennial report.** Before November 15 of each even-numbered year the commission shall prepare and submit to the legislature a report of its operations, activities, findings, and recommendations concerning this chapter. The report shall also contain information on the commission's biennial expenditures, its proposed budget for the following biennium, and the amounts paid in permit application fees and in assessments pursuant to this section. The proposed budget for the following biennium shall be subject to legislative review.

Focus of this Report

This report specifically addresses the Public Utilities Commission's (Commission) responsibilities for the siting and routing of large electric energy facilities.

In 1973 the Minnesota Legislature passed the Power Plant Siting Act. Minnesota Laws 1973, chapter 591, codified at Minnesota Statutes sections 116C.51 – 116C.69, and recodified at 216E in 2005. The Power Plant Siting Act requires that any person who wants to build a Large Electric Power Generating plant (LEPGP) or a High Voltage Transmission Line (HVTL), as those terms are defined in the Act, is required to obtain state approval for a specific site for the plant or a specific route for the transmission line.

The Siting and Routing Permits jurisdiction was transferred by 2005 legislation from the Minnesota Environmental Quality Board (MEQB) to the Commission. The 2005 legislation also transferred jurisdiction for wind farm siting (216F) and pipeline siting (216G) from the MEQB to the Commission. These separate energy related jurisdictions had been administered in conjunction with the power plant siting and transmission line routing jurisdiction under a single program at the MEQB, labeled the Power Plant Siting Program.

The transfer of the siting and routing jurisdiction was made to enhance administrative efficiency. Previously, the determination on whether the energy facility was 'needed' was made by the Commission and the determination on 'where' the facility should be located was determined by the MEQB. The transfer consolidated the multiple permitting and planning requirements for large energy facilities into a single regulatory agency. The previous Commission/MEQB split decision-making authority caused confusion among the public and often led to significant delays. Additionally, enabling the two separate processes to develop in parallel was intended to achieve time and cost efficiencies. Consolidation benefits have arisen from the Commission's jurisdiction of electric generation resource planning (Minn. Stat. 216B.2422) and electric transmission planning (Minn. Stat. 216B.2425), in which environmental and locational factors can be considered jointly.



Reporting Agency Unit

The Commission's Energy Facilities Unit manages state oversight of proposals to construct or modify large energy facilities in Minnesota, which include electric power plants and transmission lines, wind power generation plants, and gas and petroleum facilities. The Commission's jurisdiction encompasses Certificate of Need as well as Site or Route Permits. Applications for projects subject to the Commission's jurisdiction are filed with the Commission in compliance with state statutes and administrative rules. Joint applications for a Certificate of Need and a Site or Route Permit are allowed. The Commission's procedures for review of proposed large energy facilities incorporate compliance with the Minnesota Environmental Policy Act and provide for broad spectrum public participation, including timely public notice and multiple opportunities for public comment. The Commission's decisions preempt local jurisdictional authority. In addition to the review of requested permits for large energy projects, the Public Utilities Commission has specific jurisdiction related to electric transmission planning.

Agency Organization - Commission and Office of Energy Security

At the same time the Power Plant Siting Act jurisdiction was transferred to the Commission (in 2005), the staff supporting the Power Plant Siting Program at the MEQB were moved to the Office of Energy Security (OES) within the Minnesota Department of Commerce. See Minn. Stat. 216E.03, subd. 11. This program and its staff (Energy Facilities Permitting section) are directly administered by the Director of OES but operate under the Commission's procedural rules in conducting the review and analysis of energy facility siting and routing applications. The program staff are responsible for building the Commission's record and making recommendations for Commission decisions on permit applications. In other words, Energy Facilities Permitting staff functions as Commission staff, even though they are administratively housed at OES. The OES staff retains 10 full time employees. Certain environmental review procedures are the exclusive jurisdiction of the Office of Energy Security.

To facilitate this unique dual-agency arrangement, the Commission was also granted authority to create an Energy Facility Permitting unit and added staff to ensure proper administrative processing of record development and decisions, coordinate with the OES, provide public information and assistance and advise the Commissioners prior to decisions. Defense of its decisions in a court appeal remains a Commission responsibility. Commission costs to administer its actions on siting/routing dockets are recovered from fees charged to applicants. Currently the Commission has two full time employees that support this program.

Program Overview

The Office of Energy Security independently manages application fees and the direct assessment, and has provided the following information upon request:



Biennial Expenditures

Expenditures for permitting operations and activities:

Expenditure Type	FY 2009	FY 2010	Total
“Necessary and Reasonable Costs” Incurred by Permitting	\$840,755	\$2,761,833 ²	\$3,602,588
Activity and Program Costs	\$640,287	\$601,978	\$1,242,266
TOTAL	\$1,481,043	\$3,363,811	\$4,844,855

“Necessary and reasonable costs” must be paid by permittees to cover costs incurred by the Commission and the permitting staff at OES in acting on a permit application (for power plants and transmission lines, Minn. Stat. § 216E.18, Subd. 2, Subd. 3; for wind farms, Minn. Stat. § 216F.05, Minn. Rules 7854.1500; for pipelines, Minn. Stat. § 216G.02, Subd. 3, Minn. Rules 7852.4000).

Activity and program costs are paid by an assessment against utilities as authorized by Minn. Stat. § 216E.18, Subd. 4.

Proposed Budget and Assessment

The proposed budget and assessment for the next biennium is anticipated to be similar to the past biennium.

Public Information and Participation

The ‘on-the-ground’ consequences of the state’s policies establishing the public interest in the construction of needed large energy facilities can affect many landowners, communities, governmental agencies and other entities. The Power Plant Siting Act emphasizes a principle of broad spectrum public participation. The Commission, and the staff of the OES Energy Facility Permitting unit, manage the Commission’s siting/routing programs with a strong emphasis on this principle. While the two agencies continue to provide substantial notice via regular mail, web-based information on the Commission’s website contains useful public guidance, and is being continually updated. See <http://energyfacilities.puc.state.mn.us/>. The Commission routinely authorizes the OES to appoint project specific advisory task forces that include affected area residents and officials to assist in the review of a proposed facility when necessary.

² In 2010, active permitting staff and work increased, including use of contract services.



The Power Plant Siting Act also requires the Commission to hold an annual hearing to allow any person to comment on any matter relating to the siting/routing of large energy facilities. Beginning in 2005 when the jurisdiction for this program was transferred from the MEQB, the required annual hearing has been conducted at the Commission. Summary reports of this hearing for the calendar years of 2008 and 2009 are available on the Commission’s website. The 2010 Annual Hearing is scheduled for December 28. The Annual Hearing is intended to advise the public of matters relating to the siting of large electric power generating plants and routing of high voltage transmission lines and to afford interested persons an opportunity to be heard regarding any aspects of the Commission’s activities, duties or policies pursuant to the Power Plant Siting Act.

Operations and Activities in Biennium

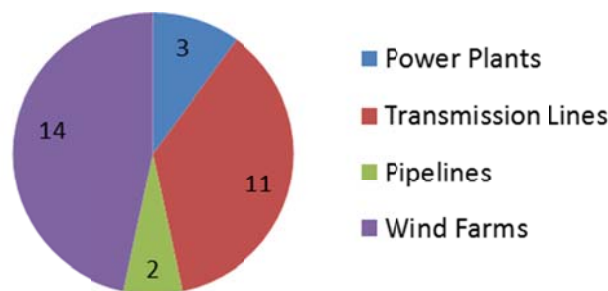
Operations: Permits Processed

The following table shows the number and type of projects permitted for fiscal years 2009 and 2010:

Energy Facility	FY 2009	FY 2010	FY 2009 - 2010
Power Plants	1	2	3
Transmission Lines	8	3	11
Pipelines	2	0	2
Wind Farms	3	11	14
TOTAL	14	16	30

The projects permitted depicted graphically:

Permitted Energy Facilities
FY 2009 - 2010





A list of projects permitted in 2010 (through October 2010) is provided below. Lists of projects permitted in 2008 and 2009 are provided as Attachments 1 and 2 to this report.

January 2010 – October 2010

Project Type & Docket Number	Name	Commission Decision/Project Description	Date
Power Plants			
GS-06-688	Mesaba Energy Project (Excelsior Energy)	Commission issued a site permit and associated route permits for a 1,200 MW integrated gasification combined cycle (IGCC) generating plant in Itasca County.	Mar 12
Transmission Lines			
TL-08-988	Noble Flat Hill 230 kV (Noble Flat Hill Windpark, LLC)	Commission issued a route permit for a 230 kV transmission line associated with the Noble Flat Hill Windpark in Clay County.	Feb 10
TL-09-246	Monticello to St. Cloud 345 kV (CapX 2020)	Commission issued a route permit for a 345 kV transmission line between Monticello and St. Cloud.	July 10
TL-09-601	EcoEnergy 161 kV (EcoEnergy, EcoHarmony West Wind, LLC)	Commission issued a route permit for a 161 kV transmission line associated with the EcoHarmony West Wind Project in Fillmore County.	Jun 10
TL-09-512	Nashwauk Public Utilities Commission / Essar Steel 230 kV Project	Commission issued a route permit for four 230 kV transmission lines and two substations to supply power to the Essar Steel plant.	Aug 10

Biennial Report to the Legislature on the Minnesota Power Plant Siting Act



Project Type & Docket Number	Name	Commission Decision/Project Description	Date
TL-08-1474	Brookings County to Hampton 345 kV (CapX 2020)	Commission issued a route permit for sections of a 345 kV transmission line between Brookings County, South Dakota and Hampton, Minn. The section of the route which includes the eastern crossing of the Minnesota River has yet to be permitted.	Sept 10
TL-07-1237	Bemidji to Grand Rapids 230 kV (Otter Tail Power, Minnkota Power Cooperative, Minnesota Power)	Commission issued a route permit for a 230 kV transmission line between Bemidji and Grand Rapids.	Pending
Pipelines			
No projects permitted			
Wind Farms			
WS-09-553	Elm Creek II Wind Project (Heartland Wind, LLC)	Commission issued a site permit for a 150 MW wind project in Jackson and Martin counties.	Feb 10
WS-08-973	EcoHarmony West Wind Project (EcoEnergy, EcoHarmony West Wind, LLC)	Commission issued a site permit for a 280 MW wind project in Fillmore County	Feb 10
WS-08-1134	Noble Flat Hill Windpark (Noble Flat Hill Windpark, LLC)	Commission issued a site permit a 201 MW wind project in Clay County	Feb 10
WS-09-830	West Stevens Wind Project (West Stevens Wind, LLC)	Commission issued a site permit for a 20 MW wind project in Stevens County.	Feb 10



Project Type & Docket Number	Name	Commission Decision/Project Description	Date
WS-10-119	Oak Glen Wind Project (Oak Glen Wind, LLC)	Commission issued a site permit for a 44 MW wind project in Steele County.	Aug 10
WS-09-1239	Lakefield Wind Project (Lakefield Wind Project, LLC)	Commission issued a site permit for a 205 MW wind project in Jackson County.	Oct 10
WS-09-1197	Pleasant Valley Wind Project (Pleasant Valley Wind, LLC)	Commission issued a site permit for a 300 MW wind project in Dodge and Mower counties.	Oct 10

Operations: Total Permitted Wind Capacity

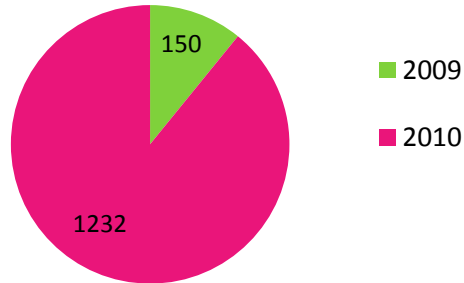
For general information, the table and chart below show the total megawatts permitted wind energy. Minnesota’s current installed wind generation capacity is approximately 1810 MW.³

	FY 2009	FY 2010	FY 2009 - 2010
Permitted Wind Generation Capacity, Megawatts (MW)	150	1232	1282

³ U.S. Department of Energy, Installed Wind Capacity by State, http://www.windpoweringamerica.gov/wind_installed_capacity.asp



Permitted Wind Generation Capacity (MW) FY 2009 - 2010



Activities

Three major areas of program activity over the past biennium are noteworthy for the resources expended:

- 1) **Wind Farm Siting.** The number of wind farms (large wind energy conversion systems, LWECS) permitted by the Commission continues to increase, both in number of projects and generation capacity. Areas of work related to wind farms include:
 - Collaborating with Commission and Department of Natural Resources staff to determine next steps in bird and bat monitoring for wind farms.
 - Working with the Minnesota Department of Health to develop a white paper on the potential health impacts of wind turbines.

- 2) **Transmission Line Routing.** Staff is engaged in permitting several large transmission projects, including the CapX 2020 Phase I transmission lines. Areas of work related to transmission line routing include:
 - Collaborating with the Minnesota Department of Transportation to clarify the co-locating of transmission lines with highways, including interstate highways.

- 3) **Public Participation.** Staff has used new and existing public participation tools to aid participation in the permitting process. New tools include:
 - The Commission's website function that allows citizens to submit comments electronically and directly to the Commission regarding pending projects.
 - An additional public comment period following application acceptance for wind farms. Citizens now have an opportunity to suggest topics for consideration in a draft site permit for proposed wind farms.

- 4) **Other.** Additional activities that have been important in program administration are:
 - Due to the significant volume and scope of work during this time period (2008-2010), professional contractors have been retained to enable timely preparation of environmental review documents, e.g., environmental impact statements.



- Staff has conducted outreach to Minnesota counties, including (1) apprising them of new features on the Commission’s energy facilities permitting website to track projects by county using RSS feeds and to submit public comments directly from the website, (2) assisting them with local review projects, and (3) meeting with them to discuss wind farm siting and county ordinances.
- Staff has also initiated continuing collaborations with state agencies to facilitate their participation and attempt to improve incorporation of other agencies’ interests and associated permitting responsibilities. This effort has particularly focused on working with the departments of Natural Resources, Transportation, Agriculture, Health and the Pollution Control Agency. There is also significant interaction with a multitude of federal agencies.
- Staff is working with the Minnesota Dept. of Administration, Office of Geographic and Demographic Analysis to redesign the Commission’s energy facilities permitting website to improve ease of use, aid public participation, and better integrate the site with the Commission’s electronic docketing system (eDockets).
- Wind Farm Siting staff has developed [guidance for applicants seeking site permits for wind farms](#). The guidance provides applicants with information on how to prepare a complete site permit application, including information on the permitting process, pre-application consultation, and how to submit an application.
- A [fact sheet](#) has been developed as an aid to landowners who may be affected by the construction of energy facilities in Minnesota.
- Staff is working with the Minnesota Geospatial Information Office (MnGEO) to develop web-based, mapping capabilities for energy infrastructure in the state.
- A “How to Participate” fact sheet for citizens to aid their participation in the permitting process has been developed. This information is available in print and electronically; the electronic version is available in English and Spanish.

Administrative Rules

The Commission’s siting/routing rules are in Minn. Rules 7850. The Commission intends to review and propose amendments to these rules in the next biennium. The purpose of these amendments would, among other things, be to obtain greater clarity, eliminate obsolete provisions, and strive for better coordination with the Certificate of Need Rules. Another part of this effort will be an evaluation of the two other authorities that were transferred to the Commission from the MEQB in 2005; i.e., the Wind Energy Conversion Systems Siting authority (Minn. Rule 7854) and the Pipeline Siting authority (Minn. Rule 7852).

Conclusions

Based on its administrative and procedural experience with the provisions of the Power Plant Siting Act, and the separate but corollary wind farm and pipeline siting acts, the Commission observes that the basic procedural model for the Power Plant Siting Act is sound, relevant and in the public interest. The Commission continues to make adjustments to its institutional procedures that support and improve compliance. However, the continuing dual agency role with the OES



administering the Commission's responsibilities has been challenging and continues to be of concern. The OES has provided very capable service to the Commission, but it is the Commission's view that the staffing of this responsibility would better conform to the Commission's institutional operations if the staff were moved to the Commission.

The siting/routing of large energy facilities continues to occasionally engender significant controversy. The Commission observes that, while not assured, public perception often recognizes the legitimacy of the state's policy and prescriptions matters. The credibility of the Commission's role and actions are critical in its management of sometimes controversial projects. It is important to maintain a high degree of professional and experienced competency to support this program.

Recommendations

The Commission's principal recommendation is that the Power Plant Siting staff be moved from the Department of Commerce Office of Energy Security to the Commission. This is a core change that would provide substantial administrative and procedural clarity. Once the staff positions are coordinated in one agency, a continuing evaluation of needs can take place and further recommendations can be offered.

The Commission first raised the issue of this transfer with the Department over a year ago and discussions have continued since then among staff managers of the two agencies. Nonetheless, it will take executive action or a legislative enactment to effect this change in responsibilities and staff positions.

The Commission remains firmly committed to this transfer, seeing it as being in the best interests of the public and accomplishing needed efficiencies in the undertaking of the work that needs to be done on these siting and routing matters. The Commission looks forward to continuing to work with all interested parties to accomplish the required executive action or legislative enactment.



Energy Facility Permitting Completed Projects by Type

December 2007 - December 2008

Project Type	Name (Docket No.)	Commission Decision/Project Description	Date
Generation	Elk River Plant (GRE) CN-07-678 GS-07-715	Public Utilities Commission (Commission) issued a Certificate of Need (CN) and a Site Permit to build a single simple-cycle dual fuel (Natural gas & Fuel Oil) combustion turbine with a capacity of 175 megawatt (MW).	May 08
	Monticello capacity upgrade (Xcel Energy) CN-08-185 GS-07-1567	Commission issued a CN and a Site Permit for a 70 MW increase in the electrical generating capacity of the Monticello Nuclear Generating Plant.	Dec 08
Transmission	Fenton-Nobles 115 kV (Xcel Energy) TL-07-1233	Commission issued a Route Permit for 21 Mile, 115 kV Transmission Line in Murray and Nobles counties. (Part of BRIGO-Buffalo Ridge Outlet-CN.)	May 08
	Chisago 115kV (Xcel Energy) CN-04-1176 TL-06-1677	Commission issued a CN and a Route Permit for a 115 kV transmission line about 20 miles long between the Chisago Substation and St. Croix Falls.	Feb 08 Jun 08
	Rochester 161 kV and Substations (Rochester Public Utilities) TL-07-1366	Commission issued a Route Permit for a seven-mile 161 kV Transmission Line Project in Olmsted County.	Aug 08
	Yankee-Brookings 115 kV Transmission (Xcel Energy) TL-07-1626	Commission issued a Route Permit to construct a six and one-half mile 115 kV segment between the Yankee Substation in Lincoln County and Brookings Substation in Brookings County, South Dakota. (Part of BRIGO-Buffalo Ridge Outlet-CN.)	Aug 08



Completed Projects by Type, December 2007 - December 2008, Page 2

Project Type	Name (Docket No.)	Commission Decision/Project Description	Date
	Mary Lake Transmission Project (Xcel Energy) TL-07-1365	Commission issued a Route Permit to construct a new 115 kV transmission line in Buffalo, Minnesota. The proposed transmission line will be approximately five miles long and will connect the Mary Lake Substation with the Buffalo Substation.	Sep 08
	Lake Yankton to Marshall Transmission Project (Xcel Energy) TL-07-1407	Commission issued a Route Permit for a 15-mile 115 kV transmission line from its Lake Yankton Substation to the Southwest Marshall Substation in Lyon County. Commission subsequently issued a Minor Alteration for a segment in Mankato. (Part of BRIGO-Buffer Ridge Outlet-CN.)	Aug 08 Dec 08
Pipelines			
	Nashwauk - Blackberry Pipeline Project (Nashwauk Public Utilities Commission) GP-06-1481	Commission issue a Route Permit to construct and operate a pipeline in Itasca County, Minnesota. The proposed 24-inch pipeline is designed to deliver natural gas fuel required to operate the Minnesota Steel Nashwauk Taconite Reduction Plant and other industrial customers near the city of Nashwauk.	Apr 08
	Southern Lights Pipeline (Enbridge) CN-07-464 PL-07-360	Commission issued a CN and a Route Permit to construct approximately 108 miles of 20-inch pipeline through the Minnesota counties of Kittson, Marshall, Pennington, Red Lake, Polk, and Clearwater. The pipeline will terminate at the Enbridge existing tank farm and terminal facility near Clearbrook, MN.	Jun 08
	Boswell Pipeline (Minnesota Power) GP-08-586	Commission issued a Route Permit for a high pressure natural gas pipeline originating at the Great Lakes Cohasset Meter Station and terminating at the Boswell Energy Center Gas Delivery Station.	Sep 08



Completed Projects by Type, December 2007 - December 2008, Page 3

Project Type	Name (Docket No.)	Commission Decision/Project Description	Date
	Alberta Clipper Petroleum and Southern Lights Diluent Pipelines (Enbridge) CN-07-465 PL-07-361	Commission issued a CN and a Route Permit to construct 285 miles of 36-inch-diameter underground petroleum pipeline in Kittson, Marshall, Pennington, Red Lake, Clearwater, Hubbard, Cass, Itasca, Aitkin, St. Louis and Carlton counties. The Alberta Clipper Pipeline terminates in Superior, Wisconsin. The Southern Lights Diluent Project, 188 miles of new 20-inch-diameter underground pipeline, will be co-constructed with the Alberta Clipper Project from Superior, Wisconsin to Clearbrook. Permitting is on hold for a section through Fond-du-Lac.	Nov 08
Wind	Comfrey Wind Project (Comfrey Wind Energy, LLC) WS-07-318	Commission Issued Site Permit to construct and operate the 31.5 MW LWECS, approximately one mile west of the city of Comfrey, in Brown and Cottonwood counties, using 15 Suzlon 2.1 MW turbines	Jan 08
	Elm Creek Wind Project (Elm Creek Wind, LLC) WS-07-388	Commission issued a Site Permit to construct and operate the 100 MW Elm Creek Wind Project in Jackson and Martin counties.	Jan 08
	Grand Meadow Wind Farm (enXco/Xcel Energy) CN-07-873 WS-07-839	Commission issued a CN (07) and a Site Permit to enXco to own and operate 100 MW of the 200.5 MW Wapsipinicon Wind Project in Mower County, known as Grand Meadow Wind Farm. Commission transferred Site Permit to Xcel Energy in December	Dec 07 Jan 08 Dec 08
	Wapsipinicon North Wind Project (enXco) WS-07-839	Commission issued a Site Permit for the remaining 100 MW of the Wapsipinicon Wind Project in Mower County, known as Wapsipinicon Wind North	Sep 08



Attachment 2

January 2009 – December 2009

Project Type	Name (Docket No.)	Commission Decision/Project Description	Date
Power Plants			
	Prairie Island Power Uprate and Spent Fuel Storage Expansion (Xcel Energy) ISFSI CN-08-510 Uprate CN-08-509 Uprate GS-08-690	Public Utilities Commission (Commission) issued a certificate of need (CN) and site permit for a 164 megawatt (MW) power uprate and a CN for expansion of spent fuel storage at the Prairie Island independent spent fuel storage installation (ISFSI).	Dec 09
Transmission			
	Big Stone II 345 kV HVTLs (OTP, et al.) CN-05-169 TR-05-1275	Commission issued a route permit for two transmission lines and substation upgrades in Western Minnesota. The lines are a 230 kilovolt (kV) line from the Big Stone Power Plant in South Dakota to Morris, Minn., and a 345 kV line from the Big Stone Power Plant to Granite Falls, Minn.	Mar 09
	Southdale to Searcyville 115 kV (GRE) TL-08-712	Commission issued a route permit for a nine-mile 115 kV transmission line in Crow Wing and Cass counties.	Apr 09
	South Bend – Stoney Creek 115 kV (Xcel Energy) TL-08-734	Commission issued a route permit for an eight-mile 115 kV transmission line in Blue Earth County.	Apr 09
	West New Ulm to Fort Ridgley 115 kV and Substation (Xcel Energy) TL-08-956	Commission issued a route permit for a three-mile 115 kV transmission line in Brown and Nicollet counties.	May 09



Project Type	Name (Docket No.)	Commission Decision/Project Description	Date
	Northstar Transmission 161 kV (Northstar Transmission LLC; Emmet County Energy) CN-08-944 TL-08-1120	Commission issued a route permit for a ten-mile 161 kV transmission line Jackson County. The line connects the Northstar Wind Farm, located in Iowa, to transmission facilities in Minnesota.	Aug 09
Pipelines			
	Alberta Clipper and Southern Lights Diluent Pipelines (Enbridge) CN-07-465 PL-07-361	Commission amended the route permit for the Alberta Clipper and Southern Lights Diluent Pipelines to include passage through the reservation of the Fond du Lac Band of Lake Superior Chippewa in St. Louis and Carlton counties.	Jun 09
Wind			
	Bear Creek Wind (Bear Creek Wind Partners, LLC) WS-07-297	Commission issued a site permit for 47.5 MW wind project in Todd and Otter Tail counties.	Jul 09
	Glacial Ridge (Glacial Ridge Wind, LLC) WS-07-1073	Commission issued a site permit for a 20 MW wind project in Pope County.	Apr 09
	Bent Tree Wind (Alliant Energy) CN 07-1425 WS-08-573	Commission issued a CN for Phase I (200 MW) of the Bent Tree Wind Project. Commission issued a site permit for Phase I (200 MW) of the project and withheld issuance of a site permit for Phase II (200 MW) pending a showing of need.	Oct 09
	Sibley County Wind Project (Sibley Wind Substation, LLC) WS-08-208	Commission issued a site permit for a 20 MW wind project in Sibley County.	Sep 09

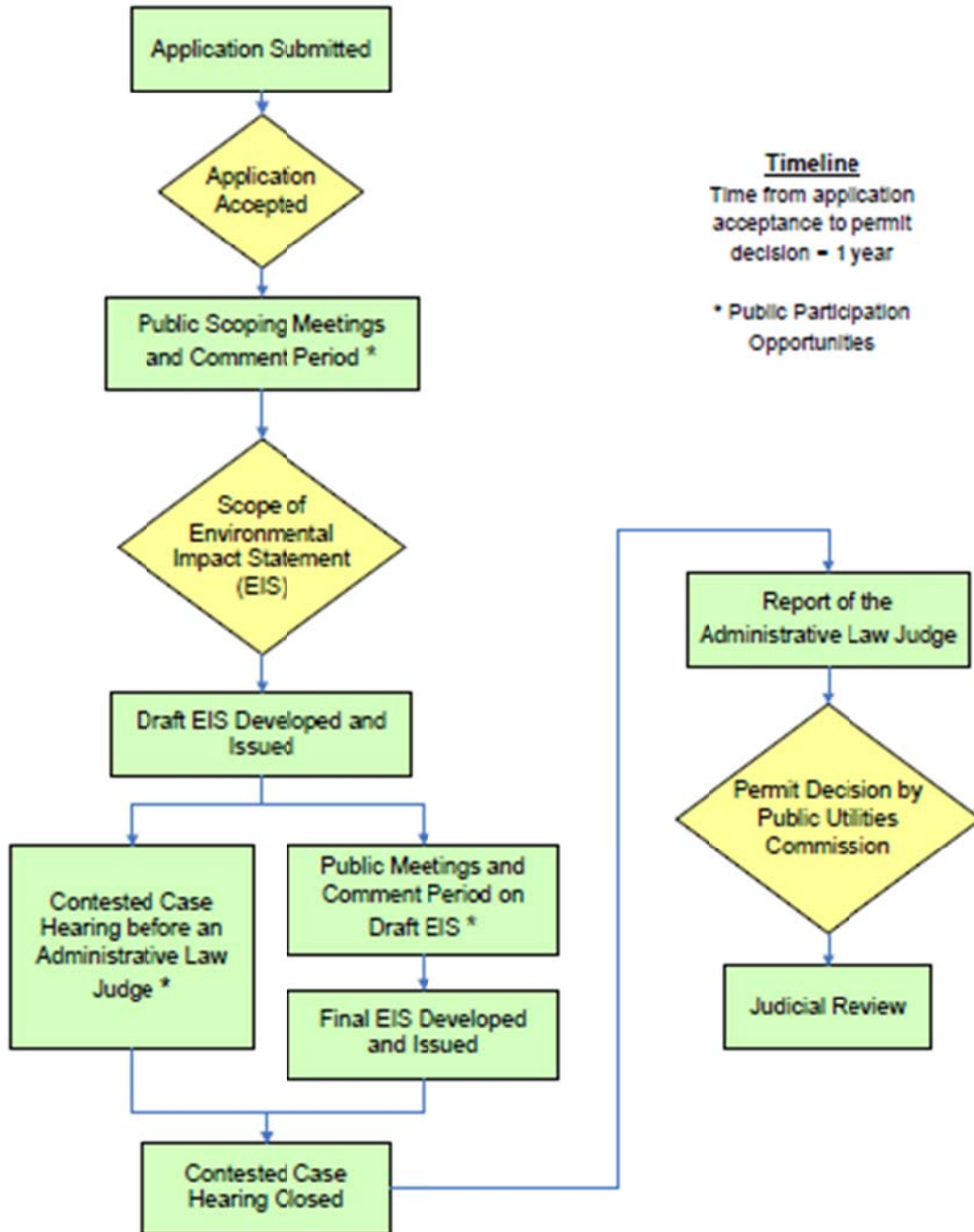


Project Type	Name (Docket No.)	Commission Decision/Project Description	Date
	Lakewind Wind Power Plant (Lakeswind Power Partners, LLC) WS-08-1449	Commission issued a site permit for a 60 MW wind project in Becker, Clay, and Otter Tail counties.	Sep 09
	Community Wind North (Community Wind North, LLC) WS-08-1494	Commission issued a site permit for a 30 MW wind project in Lincoln County.	Apr 09
	Grant County Wind (Grant County Wind, LLC) WS-09-341	Commission issued a site permit for a 20 MW wind project in Grant County.	Oct 09
	Nobles Wind Project (enXco) WS-09-584	Commission issued a site permit for a 201 MW wind project in Nobles County with the permit transferring to Northern States Power (NSP) upon showing that NSP has assumed ownership of the project's development assets.	Dec 09
	Morgan Wind Project (Morgan Wind Acquisition Group) WS-09-360	Commission issued a site permit for a 31.5 MW wind project in Brown and Redwood counties.	Dec 09 (order pending)
	Kenyon Wind Project (Kenyon Wind, LLC) WS-06-1445	Commission amended the site permit for the Kenyon Wind Project, providing a two year extension for obtaining a power purchase agreement and beginning construction.	Feb 09



HVTL Routing and Power Plant Siting Full Permitting Process

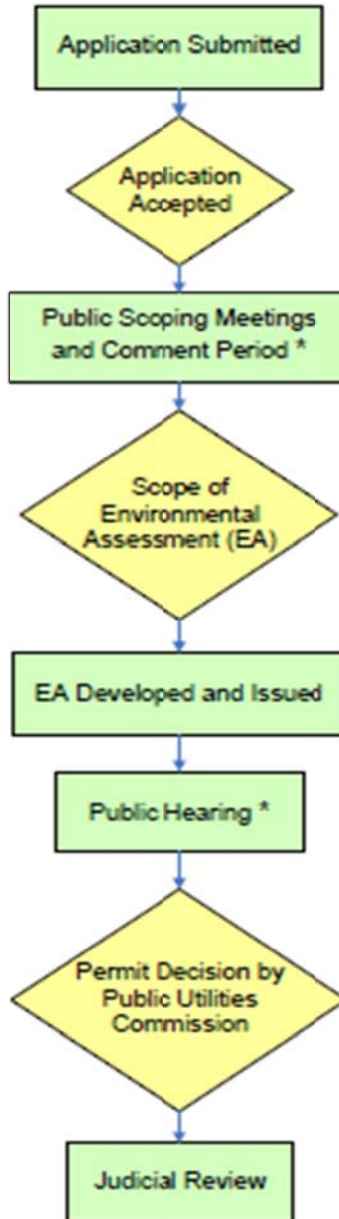
Minnesota Rules 7850





HVTL Routing and Power Plant Siting Alternative Permitting Process

Minnesota Rules 7850



Timeline
Time from application acceptance to permit decision = 6 months

* Public Participation Opportunities