

Swimming Ponds in Minnesota

Report to the Minnesota Legislature 2010

Minnesota Department of Health

December 2010



Commissioner's Office
625 Robert St. N.
P.O. Box 64975
St. Paul, MN 55164-0975
(651) 201-4989
www.health.state.mn.us

Swimming Ponds in Minnesota

December 2010

For more information, contact:

Environmental Health/ Environmental Health Services

625 Roberts Street North

P.O. Box 64975

St. Paul, Minnesota, 55164-0975

Phone: (651) 201-4500

Fax: (651) 201-4572

TDD: (651) 201--5797

As requested by Minnesota Statute 3.197: This report cost approximately \$31,091 to prepare, including staff time, printing and mailing expenses.

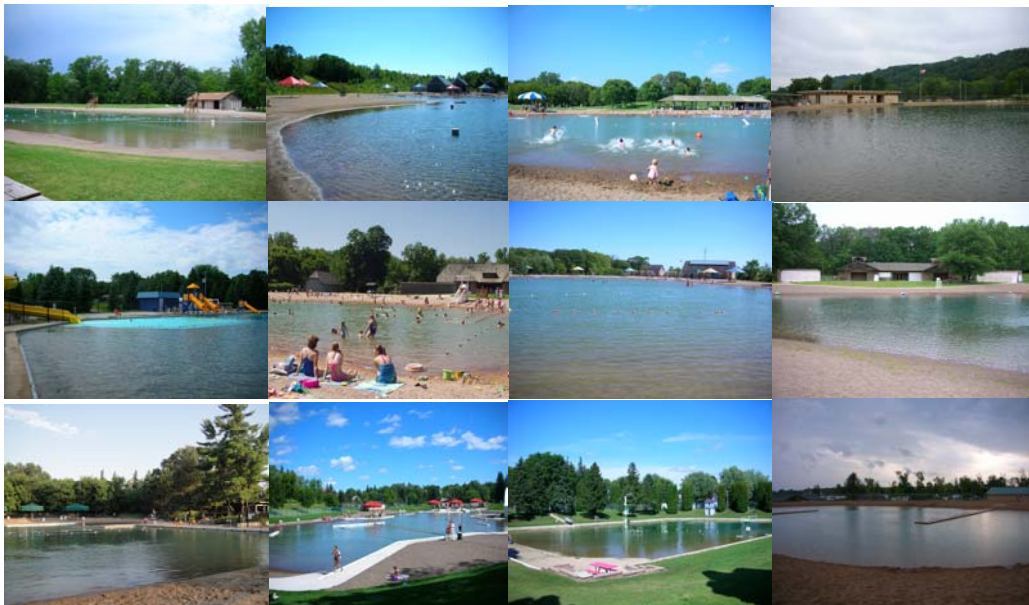
Upon request, this material will be made available in an alternative format such as large print, Braille or cassette tape.
Printed on recycled paper

Table of Contents

Narrative:	Page:
Executive Summary	1
Legislative Charge	2
Background and History	2
Study Process	3
Current Situation	5
MDH Analysis and Recommendation	7
Map: Metro Area Swimming Ponds	9
Map: Greater Minnesota Swimming Ponds	10
Data Reports:	
Buffalo River State Park	12-13
Elm Creek Park Reserve	14-15
Flandrau State Park	16-17
Lake Barbara Swim Pond	18-19
Lake Elmo Park Reserve	20-21
Lake Minnetonka Regional Park	22-23
Pine Springs Swim Pond	24-25
Pinehurst Swim Pond	26-27
SandVenture Aquatic Park	28-29
Spring Lake Park	30-31
The Preserve Association	32-33
Warroad Point Park	34-35
Swim Pond Data Spreadsheet	37-40

Table of Contents

Narrative	Page:
Appendix A: Stakeholder Meeting of March 12, 2010	41
Appendix A-1: Invitation Letter	42
Appendix A-2: Agenda	43
Appendix A-3: Attendance List	44
Appendix A-4: Meeting Minutes	45
Appendix A-5: Brainstorming Session Results	46
Appendix B: Stakeholder Meeting of October 20, 2010	47
Appendix B-1: Invitation Letters (a)	48
Invitation Letters (b)	49
Appendix B-2: Agenda	50
Appendix B-3: Attendance List	51
Appendix C: Inspection Checklists	53
Appendix C-1: Pool Inspection Form	54
Appendix C-2: Swimming Pond Data Form	55



Swimming Ponds in Minnesota

Executive Summary

This report provides information about the swimming ponds in Minnesota, discusses swimming ponds within the context of public pool regulations, and makes a recommendation for further action.

There are 12 swimming ponds operating in Minnesota. They are sources for recreation, exercise and fun for thousands of Minnesotans yearly. A swimming pond is a cross between a natural body of water and a public pool—a hybrid. It is not a natural body of water (lake, river or pond) nor is it a public swimming pool as defined in Minnesota Rule, Chapter 4717.

The Minnesota Legislature has defined a swimming pond as “an artificial body of water contained within a lined, sand-bottom basin, intended for public swimming, relaxation, or recreational use that includes a water circulation system for maintaining water quality and does not include any portion of a naturally occurring lake or stream” (Minnesota Statutes Section 144.1222, Subd. 5).

Stakeholders, including the owners and operators of all of swimming ponds, were provided the opportunity to give information and input to this report.

MDH recommends:

- The continued operation of the existing 12 swimming ponds and allow maintenance will be allowed.
- Clarify the status of swimming ponds by amending Minnesota Statutes, Section 144.1222, Subd. 5 by striking “(d) This subdivision expires June 30, 2011.”
- MDH will not regulate these existing swimming ponds as swimming pools. MDH will retain its statutory authority to investigate water borne outbreaks at existing swimming ponds. (Minnesota Statutes, Section 144.05 and also see Minnesota Rules 4605.7500.).
- Although MDH will not regulate the 12 existing swimming ponds, we will revisit this issue during the review and revision of the state pool code within the next five years.

MDH will not regulate these swimming ponds as swimming pools. MDH will retain its statutory authority to investigate outbreaks at swimming beaches. (Minnesota Statutes, Section 144.05 and also see Minnesota Rules 4605.7500.)

This recommendation is based on the small number of swimming ponds, the cost of regulation and the lower public health risk.

Legislative Charge

During the 2008 Legislative Session, “The Abigail Taylor Pool Safety Act” was unanimously passed. This law required all public pools to meet certain requirements for submerged suction outlets and drains. At that time, the Legislature also directed the Minnesota Department of Health to work with a group of stakeholders to clarify the regulatory status of the 12 existing swimming ponds. As a short-term fix, the Legislature enacted the following language as codified in Minnesota Statutes Section 144.1222, Subd.5:

“Subd. 5. Swimming pond exemption.

- (a) A public swimming pond in existence before January 1, 2008, is not a public pool for purposes of this section and section [157.16](#), and is exempt from the requirements for public swimming pools under Minnesota Rules, chapter 4717.
- (b) Notwithstanding paragraph (a), a public swimming pond must meet the requirements for public pools described in subdivisions 1c and 1d.
- (c) For purposes of this subdivision, a "public swimming pond" means an artificial body of water contained within a lined, sand-bottom basin, intended for public swimming, relaxation, or recreational use that includes a water circulation system for maintaining water quality and does not include any portion of a naturally occurring lake or stream.
- (d) **This subdivision expires June 30, 2011.**” (Emphasis added.)

The Legislature determined that additional study of this issue was needed.

The Minnesota Legislature required the Commissioner of Health to convene a group of stakeholders to make recommendations to the legislature by December 15, 2010 (2008 Minnesota Session Law, Chapter 328). If nothing is done by June 30, 2011, the exemption for swimming ponds will expire.

Background and History

Some swimming ponds started as natural bodies of water. Others were completely constructed by humans.

In all of the cases in Minnesota where the swimming pond started as a natural body of water, the natural body of water has been modified to meet the needs of human recreation. Swimming ponds are the predecessors to today's modern aquatic centers. They were developed to provide opportunities for recreation exercise and fun for residents and visitors. They are seen as combining desirable features of both swimming pools and natural bodies of water. In some cases they were built as part of a large development such as a nature preserve or recreational park. In Minnesota, these ponds developed outside of the regulatory framework for public pools and cannot comply with Minnesota public pool statutory and rule requirements such as water clarity and cleanability issues. Minnesota Rule, Chapter 4717 does not allow for the construction of a new swimming pond.

Study Process

Stakeholder input: All owners of swimming ponds were invited to a meeting on March 12, 2010. The agenda for the meeting is included in Appendix A. During the meeting, the department explained the legislative charge and its plan to comply. Basic information about the construction and operation of the swimming ponds was collected from attendees. The group participated in an exercise to identify issues and possible solutions for swimming ponds. A listing of the issues and solutions are included in Appendix A.

A second meeting of stakeholders was held on October 20, 2010. Copies of the invitation letters and agenda are included in Appendix B. The MDH swimming pool engineers presented information about swimming ponds gathered during the summer inspections. The draft swimming pond report was reviewed and the process for corrections and comments was outlined.

A directed discussion of options for the future of swimming ponds in Minnesota was held. The discussion centered on the options outlined in the draft report:

- Require all existing swimming ponds to comply with the statutory and rule requirements for public pools which would result in the permanent closure of all of the swimming ponds.

- Permanently close all existing swimming ponds and prohibit the construction of any new ones.
- Allow the continued operation of the existing 12 swimming ponds but do not allow any expansion or the construction of any new swimming ponds.
- Allow continued operation of the existing 12 swimming ponds as they currently exist for the life of the swimming pond.
- Allow continued operation of the existing 12 swimming ponds with some additional requirements.

Field Review: The MDH swimming pool engineer and other department staff reviewed all 12 swimming ponds during the summer of 2010. There was an attempt to use the same parameters for inspecting public pools for reviewing these swimming ponds. It was learned that the parameters for the swimming ponds were so different that it was difficult to apply the current pool regulations. The checklist and information sheets are located in Appendix C. The basic information collected during these inspections is summarized in the spreadsheet on pages 37-40 as well as on pages 12-35. All swimming ponds had operators that were certified trained operators as required by the swimming pool code.

Research: Department staff researched other state regulations and practices regarding swimming ponds. There is very little information about large scale swimming ponds in the United States. Many states do not refer to swimming ponds or similar bodies of water on their websites or in their statutes or rules.

Information about a few states was found. Wisconsin does not regulate swimming ponds. Illinois treats them as lakes. Florida will regulate a swimming pond under its “Bathing Places.”

A Google search using the terms “swimming pond” and “swim pond” produced approximately 50 pages of links to sites. The vast majority of these sites were about the construction and maintenance of “natural” swimming ponds for single family homes.

These natural swimming ponds are very different from the swimming ponds in Minnesota in that they are designed and constructed to use plants, algae and fish to keep the pools clean. This type of swimming pond has become very popular in Europe and Australia over the past 20 years.

They mostly are for single family homes but there are some larger public ones. More recently, there has been increased interest in the United States for single family natural swimming ponds.

Current Situation

Swimming ponds are not regulated in Minnesota. They do not comply with current statutory and regulatory requirements for public pools.

The major differences between swimming ponds and public pools are discussed below.

The term "public pool" is defined as any pool, other than a private residential pool, intended to be used collectively by numbers of persons, and operated by any person whether the person be an owner, lessee, operator, or concessionaire, and regardless of whether a fee for use is charged. A public pool includes, but is not limited to, pools operated by a person in a park, school, licensed child care facility, group home, motel, camp, resort, apartment building, club, condominium, hotel, manufactured home park, or political subdivision.

Statutory and rule requirements: There are no specific statutory or regulatory requirements for swimming ponds. Requirements for public pools are contained in Minnesota Statutes, Chapters 144 and 157 and Minnesota Rules, Parts 4717.0150 to 4717.3975 (Minnesota Pool Code).

Minnesota Pool Code requirements include:

- **Plan Review:** The construction or alteration of a pool requires submittal and approval of plans and specifications. Plan review requires a fee. Construction cannot begin before plans are approved.
- **Construction:** Pools must be constructed in accordance with the appropriate construction standards.
- **Personnel Training:** Pools must be operated and maintained by trained personnel.
- **Recordkeeping and Reporting:** Operation and maintenance recordkeeping and reporting is required.
- **Equipment & Signage:** Lifesaving equipment and Signage is required.
- **Access and Fencing:** Access to Pools must be controlled to prevent unintended access.
- **Water Sanitation and Condition:** Pool water must be controlled and maintained in a safe manner.

Description of existing swimming ponds: There are many similarities among the 12 swimming ponds. These include:

- Size: Swimming ponds are large, and are much larger than traditional public pools.
- Safety features: All of the ponds have lifeguards at most times when they are open and basic safety signage and equipment.
- Filtration and Disinfection: All of the ponds use some type of filtration and disinfection system.
- Drain and grate protection: The swimming ponds are in compliance with all state and most federal requirements for submerged suction outlets and drains.
- Bathroom and changing rooms are provided at all of the swimming ponds.

Some differences include:

- Ownership: All except one of the swimming ponds are publicly owned.
- Additional features: Some swimming ponds are very basic, while some have features such as diving boards and water slides.

Differences between swimming ponds and public pools: The most significant differences between a licensed public pool and a swimming pond are:

- Clarity: Most of the swimming ponds have bottoms that are not visible at all depths. This is a problem because a swimmer who is in trouble or who has sunk to the bottom of the pond cannot be seen and helped. However, Minnesota swimming ponds have a very low incidence of drowning. (Minnesota drowning per year: 2-3 in public pools).
- Type of pool bottom: swimming ponds have moveable, uncleanable, sand bottoms. Public pools are required to have impervious, cleanable and fixed bottoms.
- Fencing: The lack of fencing is a concern because it may allow unsupervised access which can then lead to drowning; approximately 58% of the ponds were fenced.

MDH Analysis and Recommendation

Analysis:

- **Small Number:**

The 12 swimming ponds in Minnesota are a slightly greater public health risk than public pools due to the clarity issue. Their uniqueness does not support the cost of a regulatory program for swimming ponds. There are 4000 regulated public pools in Minnesota. There are zero regulated public swimming ponds.

All swimming pond operators used the swimming pool code where applicable as an operational guide and were self regulated.

- **Complexity and Cost of a Swimming Pond Regulatory Program:**

To regulate swimming ponds would require additional funding to develop and administer the program. The department would have to develop and adopt rules and fees for swimming ponds, license and then inspect each pond yearly and respond to complaints. The cost of the program would have to be paid for by the swimming ponds through a yearly license fee.

Recommendations:

- The continued operation of the existing 12 swimming ponds and allow maintenance will be allowed.
- Clarify the status of swimming ponds by amending Minnesota Statutes, Section 144.1222, Subd. 5 by striking “(d) This subdivision expires June 30, 2011.”
- MDH will not regulate these existing swimming ponds as swimming pools. MDH will retain its statutory authority to investigate water borne outbreaks at existing swimming ponds. (Minnesota Statutes, Section 144.05 and also see Minnesota Rules 4605.7500.).
- Although MDH will not regulate the 12 existing swimming ponds, we will revisit this issue during the review and revision of the state pool code within the next five years.

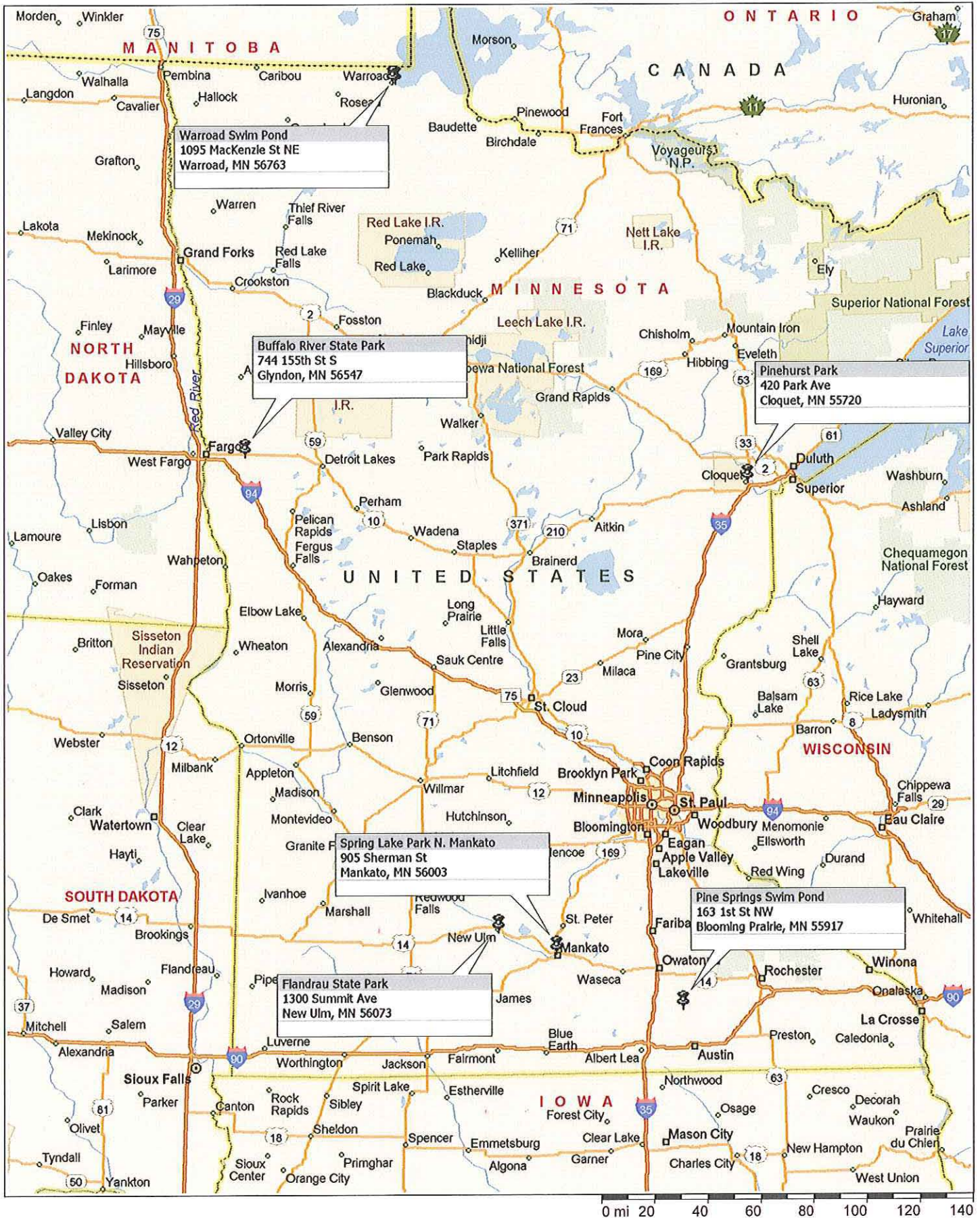
This page was left
blank intentionally

Swim Ponds of Metro Minnesota



Copyright © and (P) 1988–2007 Microsoft Corporation and/or its suppliers. All rights reserved. <http://www.microsoft.com/streets/>
 Certain mapping and direction data © 2007 NAVTEQ. All rights reserved. The Data for areas of Canada includes information taken with permission from Canadian authorities, including: © Her Majesty the Queen in Right of Canada, © Queen's Printer for Ontario. NAVTEQ and NAVTEQ ON BOARD are trademarks of NAVTEQ. © 2007 Tele Atlas North America, Inc. All rights reserved. Tele Atlas and Tele Atlas North America are trademarks of Tele Atlas, Inc.

Swim Ponds of Greater Minnesota



This page was left
blank intentionally

Buffalo River State Park

Pond Address:
565 155th St. So.
Glyndon, MN 56547
County: Clay

Owner: MN DNR
Contact: Brian Nelson
Contact Phone: 218-498-2124



Pond information:

The park is fourteen miles due east on Highway Ten from Moorhead Minnesota, along the Buffalo River. It is about 230 miles from Minneapolis Minnesota.

The park has undergone some great improvements recently, mostly the man made swimming pond with its handicapped access, change rooms, and filtered water system.

The park is a great getaway for naturalists, outdoor lovers and sightseers. There are twelve miles of hiking paths for you to see the hardwoods along the Buffalo River as well as the prairies of the Midwest.

http://www.dnr.state.mn.us/state_parks/buffalo_river/index.html



Buffalo River Swim Pond Data

Original Construction Year	2002
Pond Depth Range	0 to 8 ft.
Pond Surface Area	29,000 sq. ft.
Pond Volume	400,000 gals.
Turnover, at Nominal Filter Flow Rate	8.9 hours
Disinfection System	Sodium Hypochlorite Liquid
Compliant, Abigail Taylor Pool Safety Act	Yes
Life Guard Staffed	Yes - 3
Maximum Capacity Based on MN Pool Code	1,525
Total Seasonal Attendance	108,227
Admission Cost	\$5/vehicle permit
Drowning History	1 / 2005



Elm Creek Park Reserve

Pond Address:
12521 James Deane Parkway
Maple Grove, MN 55369
County: Hennepin

Owner: Three Rivers Park District
Contact: Zach Conway
Contact Phone: 763-694-2062



Pond information:

At 4,900 acres, Elm Creek Park Reserve is the largest of Three Rivers' parks. This park features amenities for almost every outdoor activity, including the **Winter Recreation Area**, **Eastman Nature Center**, miles of hiking and biking trails, a swimming pond, and much more. Elm Creek is also home to a variety of wildlife such as eagles, sand hill cranes, deer, bluebirds, beavers, loons, Trumpeter Swans and hawks.

The man-made swimming pond at Elm Creek offers filtered, chlorinated water, a sand beach, changing shelter, concessions and bathroom facilities.

<http://www.threeriversparks.org/parks/elm-creek-park/elm-creek-swimming-pond.aspx>



Elm Creek Swim Pond Data

Original Construction Year	2003
Pond Depth Range	0 to 6 ft.
Pond Surface Area	63,000 sq. ft.
Pond Volume	1,200,000 gals.
Turnover, at Nominal Filter Flow Rate	5.9 hours
Disinfection System	Sodium Hypochlorite Liquid
Compliant, Abigail Taylor Pool Safety Act	Yes
Life Guard Staffed	Yes - 10
Maximum Capacity Based on MN Pool Code	3,700
Total Seasonal Attendance	126,124
Admission Cost	\$3 per person
Drowning History	None



Flandrau State Park

Pond Address:
1300 Summit Avenue
New Ulm, MN 56073
County: Brown

Owner: MN DNR
Contact: Gary Teipel
Contact: Phone: 507-233-9801



Pond information:

The gentle flowing Big Cottonwood River meanders through this southern park. The sand-bottom swimming pond, picnic area, campgrounds & group center attract many visitors every summer to this very popular state park. The terrain is diverse, offering views of wooded river bottoms, oxbow marshes & open grasslands. Hikers & cross-country skiers enjoy the flat trails on the bottom of the valley or more challenging routes on the oak-shaded bluffs.

Visit historic stone buildings crafted by Works Progress Administration (WPA) crews. Vegetative features include goat prairies, small white lady's slippers, & the floodplain forest.

http://www.dnr.state.mn.us/state_parks/flandrau/index.html



Flandrau Swim Pond Data

Original Construction Year	1937
Pond Depth Range	0 to 7.5 ft.
Pond Surface Area	29,000 sq. ft.
Pond Volume	400,000 gals.
Turnover, at Nominal Filter Flow Rate	7.4 hours
Disinfection System	Cl₂ Gas
Compliant, Abigail Taylor Pool Safety Act	Yes
Life Guard Staffed	Yes - 3
Maximum Capacity Based on MN Pool Code	1,525
Total Seasonal Attendance	74,000
Admission Cost	\$5/vehicle permit
Drowning History	1



Lake Barbara (Girls Scouts)

Pond Address:
10775 237th Ave.
Zimmerman, MN 55398
County: Sherburne

Owner: Girl Scouts of America
Contact: Paul Thorne
Contact: Phone: 612-816-6373



Pond information:

Lake Barbara Swim Pond is located in Zimmerman, MN and is part of Girl Scouts Camp Elk River owned by Girl Scouts of Minnesota and Wisconsin River Valleys.

http://www.girlscoutsrv.org/activities_for_girls/camp/locations/camp_elk_river/



Lake Barbara Swim Pond Data

Original Construction Year	1994
Pond Depth Range	0 to 6 ft.
Pond Surface Area	27,000 sq. ft.
Pond Volume	400,000 gals.
Turnover, at Nominal Filter Flow Rate	8.9 hours
Disinfection System	Cl₂ Gas
Compliant, Abigail Taylor Pool Safety Act	Yes
Life Guard Staffed	Yes
Maximum Capacity Based on MN Pool Code	1,500
Total Seasonal Attendance	1,500
Admission Cost	\$1 per person
Drowning History	None



Lake Elmo Park Reserve

Pond Address:
1515 Keats Avenue North
Lake Elmo, MN 55042
County: Washington

Owner: Washington County
Contact: Mike Polehna
Contact Phone: 651-430-8375



Pond information:

Lake Elmo Park Reserve is a 2,165 acre park which offers a wide variety of terrain, including forest and prairie. Park facilities include modern and equestrian campgrounds, picnic areas, a fishing pier, a boat launch, and a sand bottom, chlorinated swim pond.

The swimming pond includes one-fifth mile of sandy beach. The gradually sloping, sandy bottom makes the pond ideally suited for young waders, as well as serious swimmers. The pond is six feet at its deepest point. In addition, the pond is filtered and disinfected for protection. Clean rest rooms, changing rooms, and a food stand are available in a nearby beach building. A grassy area provides picnicking with tables and grills.

http://www.co.washington.mn.us/info_for_residents/parks_division/parks_and_trails/lake_elmo_park_reserve/#swim



Lake Elmo Swim Pond Data

Original Construction Year	1986
Pond Depth Range	0 to 6 ft.
Pond Surface Area	88,000 sq. ft.
Pond Volume	1,800,000 gals.
Turnover, at Nominal Filter Flow Rate	5.4 hours
Disinfection System	Cl₂ Gas
Compliant, Abigail Taylor Pool Safety Act	Yes
Life Guard Staffed	Yes - 6
Maximum Capacity Based on MN Pool Code	5,175
Total Seasonal Attendance	75,000
Admission Cost	\$5/vehicle permit
Drowning History	4



Lake Minnetonka Regional Park

Pond Address:
4610 Co Rd 44
Minnetrista, MN 55331
County: Hennepin

Owner: Three Rivers Park District
Contact: Dan Harlow
Contact Phone: 763-694-7838

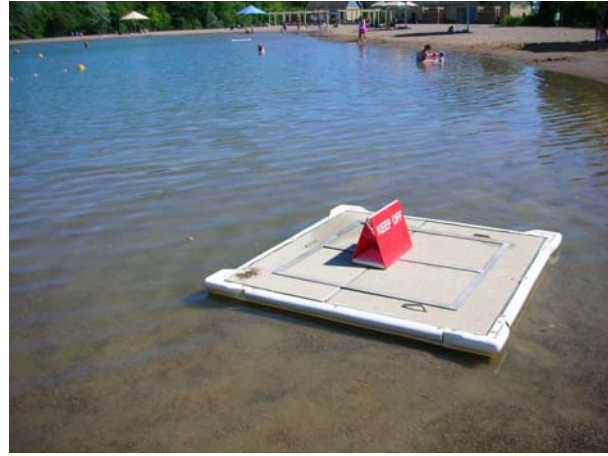


Pond information:

Lake Minnetonka Regional Park is nestled on the shores of scenic Lake Minnetonka. A perfect spot for a family outing, the park offers a large, nautical-themed play area and a chlorinated, sandy-bottom swimming pond.

The 1.75-acre swimming pond at Lake Minnetonka has a maximum depth of six feet and is completely surrounded by sand. The pond features filtered, chlorinated water, a changing shelter, concessions, and large beach umbrellas for shade.

<http://www.threeriversparks.org/parks/lake-minnetonka-park/lake-minnetonka-swimming-pond.aspx>



Lake Minnetonka Swim Pond Data

Original Construction Year	1997
Pond Depth Range	0 to 6 ft.
Pond Surface Area	82,000 sq. ft.
Pond Volume	1,300,000 gals.
Turnover, at Nominal Filter Flow Rate	6.8 hours
Disinfection System	Cl₂ Gas
Compliant, Abigail Taylor Pool Safety Act	Yes
Life Guard Staffed	Yes
Maximum Capacity Based on MN Pool Code	4,800
Total Seasonal Attendance	
Admission Cost	\$3 per person
Drowning History	1



Pine Springs Swim Pond

Pond Address:
1st Ave. and 1st St. NW
Bloomington, MN 55917
County: Steele

Owner: City of Bloomington
Contact: Sue Penkeva
Contact Phone: 507-583-7308



Pond information:

The Pine Springs Pool is the city's public pool. The pool was built by Glenn S. Thorson, better known as "Mr. Bloomington". Mr. Thorson was a local attorney who built and dedicated the pool for public use in 1961.

The pool's water comes from a natural spring located beneath the city block it sits on. Even though the pool is fed from natural spring water, it is still treated with chlorine to keep it from growing natural algae's and bacteria. The chlorine also keeps the pool safe for swimming. The pool has three different parts, 1st, 2nd, and 3rd part. The 1st part is 4 feet deep, the 2nd part is 5 1/2 feet deep, and the 3rd part is 11 feet deep. A swimming test is required to swim in the 2nd and 3rd part areas. The 1st part has a platform for children to swim on and around, and sand boxes that will keep them busy for hours. The 3rd part has a diving board platform for swimmers to swim on and around.

The pool is one of the largest swimming pools in the area, so there is plenty of room for everyone without getting crowded.

http://www.bloomington.com/index.asp?Type=B_BASIC&SEC={D3D4D57B-9F11-4408-AD27-41F61278FD42}



Pine Springs Swim Pond Data

Original Construction Year	1959
Pond Depth Range	0 to 15 ft.
Pond Surface Area	30,000 sq. ft.
Pond Volume	600,000 gals.
Turnover, at Nominal Filter Flow Rate	33 hours
Disinfection System	Cl₂ Gas
Compliant, Abigail Taylor Pool Safety Act	Yes
Life Guard Staffed	Yes
Maximum Capacity Based on MN Pool Code	1,500
Total Seasonal Attendance	2,400
Admission Cost	
Drowning History	1 / 1960



Pinehurst Swim Pond

Pond Address:
Hwy 33 & Carlton Ave
Cloquet, MN 55720
County: Carlton

Owner: City of Cloquet
Contact: Caleb Peterson
Contact Phone: 218-879-6758



Pond information:

The crown jewel of Cloquet Parks is located in the heart of Cloquet at the intersection of Highway 33 and Cloquet Avenue. This park provides our citizens with the most diverse uses of all of its city parks.

Pinehurst Park is a great place to go for a swim [with filtered, chlorinated water and a sand-bottom](#). The clean, cool water is refreshing on a hot summer day. Sunbathers and children will love the sand - it's like a trip to the beach!

The zero entry is great for little ones. Swim lanes and a 6 foot center depth - for swimmers of all levels, changing rooms, kiddy slides, water basketball hoop, sand volleyball court, shade umbrellas, picnic areas and concessions available.

<http://www.cloquet.com/pages/community/pinehurst-swim-pond.php>



Pinehurst Swim Pond Data

Original Construction Year	1928
Pond Depth Range	0 to 6 ft.
Pond Surface Area	31,060 sq. ft.
Pond Volume	630,000 gals.
Turnover, at Nominal Filter Flow Rate	6.8 hours
Disinfection System	Cl₂ Gas
Compliant, Abigail Taylor Pool Safety Act	Yes
Life Guard Staffed	Yes - 6
Maximum Capacity Based on MN Pool Code	1,800
Total Seasonal Attendance	14,038
Admission Cost	\$3 per person
Drowning History	None



SandVenture Aquatic Park

Pond Address:
1101 Adams Street
Shakopee, MN 55379
County: Scott

Owner: City of Shakopee
Contact: Jamie Polley
Contact Phone: 952-233-9514



Pond information:

Whether you're looking for excitement or a quiet place to relax in the sun, SandVenture Aquatic Park will fit the bill.

Our unique pool was modeled after area lakes and offers a sand beach leading out to a sand-bottom, chlorinated pool. Soak up the sun or build sand castles with the kids on a relaxing summer afternoon. Thrill seekers will love the park's 300 foot waterslide; two, 12-foot drop slides; and diving board

Come spend the day with us on your visit. SandVenture offers a picnic area where you can enjoy your own goodies from home or a treat from our concession stand. There also are men's and women's locker rooms and family changing rooms available for guests use.

<http://www.ci.shakopee.mn.us/aquaticpark.cfmv>



SandVenture Swim Pond Data

Original Construction Year	1968
Pond Depth Range	0.5 to 11.5 ft.
Pond Surface Area	43,560 sq. ft.
Pond Volume	1,000,000 gals.
Turnover, at Nominal Filter Flow Rate	5.2 hours
Disinfection System	Cl₂ Gas
Compliant, Abigail Taylor Pool Safety Act	Yes
Life Guard Staffed	Yes - 7
Maximum Capacity Based on MN Pool Code	2,300
Total Seasonal Attendance	17,000
Admission Cost	\$5 to \$7 per person
Drowning History	None



Spring Lake Park

Pond Address:
911 Sherman Street
North Mankato, MN 56003
County: Nicollet

Owner: City of North Mankato
Contact: Todd Mettler
Contact Phone: 507-625-4141



Pond information:

Spring Lake Park is the "heart of Lincolnshire". This park was the first Village Park and has been the site for the annual 4th of July celebration for more than 50 years. What was once an "old fashioned swimming hole", is now a beautiful lake with shallow area for small children and slide for older children.

<http://www.northmankato.com/index.php>



Spring Lake Park Swim Pond Data

Original Construction Year	1969
Pond Depth Range	0.5 to 12 ft.
Pond Surface Area	47,500 sq. ft.
Pond Volume	1,136,000 gals.
Turnover, at Nominal Filter Flow Rate	18 hours
Disinfection System	Cl₂ Gas
Compliant, Abigail Taylor Pool Safety Act	Yes
Life Guard Staffed	Yes
Maximum Capacity Based on MN Pool Code	2,500
Total Seasonal Attendance	19,672
Admission Cost	\$1.50 per person
Drowning History	None



The Preserve Association

Pond Address:
11221 Anderson Lakes Pkwy
Eden Prairie, MN 55344
County: Hennepin

Owner: The Preserve Association
Contact: Susan Dickman
Contact Phone: 952-941-8400



Pond information:

The Mission of the Preserve Association is to create and maintain a desirable place to live with a strong sense of community. A highlight of this planned community includes a filtered, chlorinated natural sand bottom pond with a $\frac{3}{4}$ acre water surface and a 42' x50' dive pool. Special features include lap lanes, an adult beach, a great zero entry beach for kids and families, and friendly, skilled life guards. We also offer top notch swim lessons to the community at reasonable rates.

All Preserve residents have access to the pool plus an additional 85 non-resident summer memberships are available each season. In addition to the pool, members have access to beautiful paved walking trails, tennis courts, tot lots, a picnic area, and rentable party rooms in the Preserve Center "Barn".

<http://www.preserveassociation.com/amenities>



The Preserve Association Swim Pond Data

Original Construction Year	1974
Pond Depth Range	0 to 5 ft.
Pond Surface Area	20,000 sq. ft.
Pond Volume	880,000 gals.
Turnover, at Nominal Filter Flow Rate	11.3 hours
Disinfection System	Sodium Hypochlorite Liquid
Compliant, Abigail Taylor Pool Safety Act	Yes
Life Guard Staffed	Yes - 8
Maximum Capacity Based on MN Pool Code	1,333
Total Seasonal Attendance	14,300
Admission Cost	\$233/year members only
Drowning History	None



Warroad Point Park

Pond Address:
4th Ave & Mackenzie St. NE
Warroad, MN 56763
County: Roseau

Owner: City of Warroad
Contact: Kathy Lovelace
Contact Phone: 218-386-1454



Pond information:

The Warroad Point Park remains a community gathering place and a great place to see the open water of beautiful Lake of the Woods.

Public boat access, ample parking, fishing pier, and heated fish cleaning houses make Warroad Point Park a terrific home base for fishermen. The park also offers newly constructed playground equipment, picnic shelters, campground, and an outdoor swimming pool.

<http://www.warroad.org/index.php?page=attractions>



Warroad Point Park Swim Pond Data

Original Construction Year	1973
Pond Depth Range	0 to 6.5 ft.
Pond Surface Area	22,000 sq. ft.
Pond Volume	250,000 gals.
Turnover, at Nominal Filter Flow Rate	4.2 hours
Disinfection System	Cl₂ Gas
Compliant, Abigail Taylor Pool Safety Act	Yes
Life Guard Staffed	Yes - 3
Maximum Capacity Based on MN Pool Code	1,300
Total Seasonal Attendance	
Admission Cost	\$3 per person
Drowning History	None



This page was left
blank intentionally

Swim Pond Data

FACILITY NAME	County	Jurisdiction	Pond Address	Pond Phone	Owner	Contact #1	Contact #1 Phone
Sand Venture Aquatic Park	Scott	MDH	1101 Adams Street Shakopee, MN 55379	952-233-3840	City of Shakopee	Ms. Jamie Polley	952-233-9514
Warroad Municipal Outdoor Pool	Roseau	MDH	4th Ave & Mackenzie St. NE Warroad, MN 56763	218-386-2371	City of Warroad	Ms. Kathy Lovelace	218-386-1454
Elm Creek Park Reserve	Hennepin	Hennepin	12521 James Deane Parkway Maple Grove, MN 55369	763-559-9000	Three Rivers Park District	Mr. Zach Conway	763-694-2062 c: 612-290-0100
Lake Minnetonka Regional Park	Hennepin	Hennepin	4610 Co Rd 44 Minnetrista, MN 55331	763-694-7838	Three Rivers Park District	Mr. Dan Harlow	763-694-7838 c: 612-490-0917
The Preserve Association	Hennepin	Hennepin	11221 Anderson Lakes Pkwy Eden Prairie, MN 55344	952-941-8400	Preserve Association	Ms. Susan Dickman	952-941-8400
Lake Elmo Park Preserve	Washington	Washington	1515 Keats Avenue North Lake Elmo, MN 55042	651-430-8370	Washington County	Mr. Mike Polehna	651-430-8375
Pinehurst Swim Pond	Carlton	MDH	Hwy 33 & Carlton Ave. Cloquet, MN 55720	218-879-1261	City of Cloquet	Mr. Caleb Peterson	218-879-6758
Buffalo River State Park	Clay	Clay-Wilkin	565 155th St. So. Glyndon, MN 56547	218-498-2124	MN DNR	Mr. Brian Nelson	218-498-2124
Flandrau State Park	Brown	Brown - Nicollet	1300 Summit Avenue New Ulm, MN 56073	507-233-9800	MN DNR	Mr. Gary Teipel	507-233-9801
Spring Lake Park	Nicollet	Brown - Nicollet	911 Sherman Street North Mankato, MN 56003	507-625-4141	City of North Mankato	Mr. Todd Mettler	507-625-4141
Pine Springs Swim Pond	Steele	MDH	1st Ave. and 1st St. N.W. Blooming Prairie, MN 55917	507-583-7401	City of Blooming Prairie	Ms. Sue Penkeva	507-583-7308
Girl Scouts Camp Elk River Lake Barbara	Sherburne	MDH	10775 237th Ave Zimmerman, MN 55398	763-856-4114	Girl Scouts of Minnesota	Mr. Paul Thorne	612-816-6373

Swim Pond Data

FACILITY NAME	Contact #1 Address	Contact #1 Email	Original Construction Year	Major Alterations	Pond Depth Range (feet)	Pond Surface Area (square feet)	Pond Volume (gallons)	Filter Flow Rate (gallons per minute)	Turnover (hours)	Filter Type
Sand Venture Aquatic Park	1255 Fuller Street Shakopee MN 55379	jpolley@ci.shakopee.mn.us	1968	2000, 2007, 2008	0.5 to 11.5	43,560	1,000,000	3,200	5.2	High Rate Sand
Warroad Municipal Outdoor Pool	PO Box 50 Warroad, MN 56763	warroad@mncable.net	1973	2007	0 to 6.5	22,000	250,000	1,000	4.2	High Rate Sand
Elm Creek Park Reserve	12521 James Deane Parkway Maple Grove, MN 55369	zconway@threeriversparkdistrict.org	2003		0 to 6	63,000	1,200,000	3,400	5.9	High Rate Sand
Lake Minnetonka Regional Park	4610 Co Rd 44 Minnetrista, MN 55331	dharlow@threeriversparkdistrict.org	1997	2009	0 to 6	82,000	1,300,000	3,200	6.8	High Rate Sand
The Preserve Association	11221 Anderson Lakes Pkwy Eden Prairie, MN 55344	susan@preserveassociation.com	1974	2002, 2009	0 to 5	20,000	880,000	1,300	11.3	High Rate Sand
Lake Elmo Park Preserve	1515 Keats Avenue North Lake Elmo, MN 55042	mike.polehna@co.washington.mn.us	1986	2001	0 to 6	88,000	1,800,000	5,600	5.4	High Rate Sand
Pinehurst Swim Pond	1301 Cloquet Avenue Cloquet, MN 55720	cpeterson@ci.cloquet.mn.us	1928	1976, 2009	0 to 6	31,060	630,000	1544	6.8	High Rate Sand
Buffalo River State Park	2115 Birchmont Beach Rd NE Bemidji, MN 56601	brian.a.nelson@state.mn.us	2002	2010	0 to 8	29,000	400,000	750	8.9	High Rate Sand
Flandrau State Park	MN DNR 261 Hwy. 15 S. New Ulm, MN 56073-8915	gary.teipel@state.mn.us	1937	1988, 2008	0 to 7.5	29,000	400,000	900	7.4	High Rate Sand
Spring Lake Park	1001 Belgrade Ave P.O. Box 2055 North Mankato, MN 56002-2055	tmettler@northmankato.com	1969	2010	0.5 to 12	47,500	1,136,000	1050	18	D.E.
Pine Springs Swim Pond	138 Hwy. Ave. S. P.O. Box 68	suepenkeva@frontiernet.net	1959		0 to 15	30,000	~ 600,000	~300	33	Gravity Sand
Girl Scouts Camp Elk River Lake Barbara	400 Robert Street S. Saint Paul, MN 55107	paul.thorne@girlscoutsvr.org	1994		0 to 6	27,000	400,000	850	8.9	High Rate Sand

Swim Pond Data

FACILITY NAME	Filter Size (square feet)	Pumps (horse power)	Disinfection System	Submerged Direct Suction	Compliant, Abigail Taylor Pool Safety Act	Life Guards	Diving Boards	Maximum Capacity @ Pool Code	Safety Equipment	Seasonal Attendance	Daily Admission Cost (per person)	Drowning History	Security
Sand Venture Aquatic Park	250	75	Cl ₂ Gas	Yes	Yes	7	10' 2"	2,300	6 rings/ rescue tubes	17,000	\$5 to \$7	None	Yes
Warroad Municipal Outdoor Pool	91	60	Cl ₂ Gas	Yes	No-Secured Manhole Covers	3	No	1,300	rescue tubes		\$3	None	Yes
Elm Creek Park Reserve	314	80	Sodium Hypochlorite Liquid	No	Yes	10	No	3,700	rescue tubes	126,124	\$3	None	No
Lake Minnetonka Regional Park	270	90	Cl ₂ Gas	No	Yes	6	No	4,800	rescue tubes		\$3	1	No
The Preserve Association	85	40	Sodium Hypochlorite Liquid	No	Yes	8	No	1,333	rescue tubes	14,300	\$233/year Members only	None	Yes
Lake Elmo Park Preserve	393	200	Cl ₂ Gas	No	Yes	6	No	5,175	rescue tube	75,000	\$5/vehicle permit	4	No
Pinehurst Swim Pond	144	50	Cl ₂ Gas	Yes	Yes	6	No	1,800	4 ring buoy/rope/ 12' crook	14,038	\$3	None	Yes
Buffalo River State Park	150	25	Sodium Hypochlorite Liquid	No	Yes	3	No	1,525	12' crook/ rescue tube	108,227	\$5/vehicle permit	1/2005	No
Flandrau State Park	300	25	Cl ₂ Gas	No	Yes	3	No	1,525	12' crook/ rescue tube	74,000	\$5/vehicle permit	1	No
Spring Lake Park	840	60	Cl ₂ Gas	Yes	Yes	9	1M-12'	2,500	ring buoy/ rope/rescue tube	19,672	\$1.50	None	Yes
Pine Springs Swim Pond	50	5	Cl ₂ Gas	Yes	No, 4" pipe w/grate @ 15 ft	5	Yes	1,500	rescue tubes	2,400		1/1960	Yes
Girl Scouts Camp Elk River Lake Barbara	324	30	Cl ₂ Gas	No	Yes	3	No	1,500	rescue tubes	1,500	\$1	None	Yes

Swim Pond Data

FACILITY NAME	Swim Pond Web Site								
Sand Venture Aquatic Park	http://www.ci.shakopee.mn.us/aquaticpark.cfm								
Warroad Municipal Outdoor Pool	http://www.warroad.org/index.php?page=attractions								
Elm Creek Park Reserve	http://www.threeriversparks.org/parks/elm-creek-park/elm-creek-swimming-pond.aspx								
Lake Minnetonka Regional Park	http://www.threeriversparks.org/parks/lake-minnetonka-park/lake-minnetonka-swimming-pond.aspx								
The Preserve Association	http://www.preserveassociation.com/amenities								
Lake Elmo Park Preserve	http://www.co.washington.mn.us/info_for_residents/parks_division/parks_and_trails/lake_elmo_park_reserve/#swim								
Pinehurst Swim Pond	http://www.cloquet.com/pages/community/pinehurst-swim-pond.php								
Buffalo River State Park	http://www.dnr.state.mn.us/state_parks/buffalo_river/index.html								
Flandrau State Park	http://www.dnr.state.mn.us/state_parks/flandrau/index.html								
Spring Lake Park	http://www.northmankato.com/index.php								
Pine Springs Swim Pond	http://www.bloomingtonprairie.com/index.asp?Type=B_BASIC&SEC={D3D4D57B-9F11-4408-AD27-41F61278FD42}								
Girl Scouts Camp Elk River Lake Barbara	http://www.girlscoutsvr.org/activities_for_girls/camp/locations/camp_elk_river/								

Appendix A: Stakeholders Meeting March 12, 2010

Appendix A-1: Invitation letter

Appendix A-2: Agenda

Appendix A-3: Attendance List

Appendix A-4: Meeting Minutes

Appendix A-5: Brainstorming Session results

February 4, 2010

Dear _____:

You are cordially invited to join the Minnesota Department of Health (MDH) Swim Pond Stakeholders Committee. The Commissioner of Health is required to convene a group of stakeholders to make recommendations to the legislature by December 2010. As a knowledgeable stakeholder, we would like to have you participate on this committee. The stakeholders' meeting will be held on Friday, March 12, 2010 at 9:00 a.m. in Room B144 at the MDH Freeman Building, 625 Robert Street North, Saint Paul, MN. A map is enclosed.

The committee will be comprised of swim pond owners, industry representatives, and regulatory officials in order to review the exemption for swim ponds which originated in 2008 during the legislative session. Minnesota Statutes Section 144.1222, Subd.5. states:

“Subd. 5. Swimming pond exemption.

(a) A public swimming pond in existence before January 1, 2008, is not a public pool for purposes of this section and section [157.16](#), and is exempt from the requirements for public swimming pools under Minnesota Rules, chapter 4717.

(b) Notwithstanding paragraph (a), a public swimming pond must meet the requirements for public pools described in subdivisions 1c and 1d.

(c) For purposes of this subdivision, a "public swimming pond" means an artificial body of water contained within a lined, sand-bottom basin, intended for public swimming, relaxation, or recreational use that includes a water circulation system for maintaining water quality and does not include any portion of a naturally occurring lake or stream.

(d) This subdivision expires June 30, 2011. “

MDH will use your advice to prepare a swim pond report with recommendations for the 2011 Minnesota legislative session. MDH will be conducting inspections of the 12 swim ponds during the summer of 2010. Information from these swim pond inspections will be presented to the committee at its final meeting in the fall of 2010.

Please RVSP, yes or no, and the number and name of persons attending the meeting to: Margaret Edwards at margaret.edwards@state.mn.us or call her at 651/201-4506. *Please respond by February 19, 2010.* If you do not have the time to participate, you may choose to simply receive the minutes, motions and the final report generated by this committee.

I look forward to your participation and appreciate your consideration of this invitation. If you have questions, please contact Steve Klemm in the Environmental Services Section at steve.klemm@state.mn.us or at 651-201-4503.

Sincerely,



Linda B. Bruemmer, Director
Environmental Health Division
P.O. Box 64975
St. Paul, Minnesota 55164-0975

Swim Pond Meeting Agenda
March 12, 2010
9:00 a.m. – 12:00 noon
Freeman Building, Room 144

1. Welcome – Colleen Paulus, Manger, Environmental Health Services Section
2. Introductions – All Attendees
3. Overview of the Law – Colleen Paulus
4. Small Group Breakout – All Attendees
 - Select a scribe and a spokesperson
 - Small group brainstorm
 - Discuss issues, concerns, possible solutions, etc.
 - List these items on flip chart sheets
5. Reconvene the Full Group -- Attendees
 - Small Group Reports – Small Group Spokespersons
 - Next Steps – All Attendees
6. Adjourn

Swim Pond Meeting
3/12/2010
Attendance List

Name	Organization	Email	Phone
Gary Trepel	MN DNR - Flandrau	gary.trepel@state.mn.us	507-233-9801
Pam Foster	Hennepin County	pam.foster@co.hennepin.mn.us	612-543-5207
Brian Nelson	MN DNR - Buffalo River	brian.a.nelson@state.mn.us	218-498-2124
Susan Dickman	Preserve Association	susan@preserveassociation.com	952-941-8400
Dean Swanson	Preserve Association	dean@preserveassociation.com	952-944-7286
Janelle Ogrins	Preserve Association	janelle@preserveassociation.com	952-941-8400
Tom Haugen	Washington County	tom.haugen@co.washington.mn.us	651-430-7277
Dan Harlow	Three Rivers Park District	धारlow@threeriversparkdistrict.org	763-694-7838
Jim Maland	Bonestroo	jim.makand@bonestroo.com	651-604-4759
Kent Wood	Associated Pool Builders	kentw@associatedpoolbuilders.com	952-922-0554
Bill Deneen	US Aquatics	wgdeneen@usaquaticsinc.com	763-972-5897
Gary Edwards	MDH	gary.edwards@state.mn.us	651-201-4513
Mike Polehna	Washington County	mike.polehna@co.washington.mn.us	651-430-8375
Larry Peterson	DNR	larry.peterson@state.mn.us	651-259-5593
Steven Diaz	MDH	steven.diaz@state.mn.us	651-643-2167
Deb Boyd	MN DNR	deb.boyd@state.mn.us	651-259-5595
Caleb Peterson	Cloquet	cpeterson@ci.cloquet.mn.us	218-879-6758
Trisha Robinson	MDH-ADIC	trisha.robinson@state.mn.us	651-201-5639
Paul Thorne	Girl Scouts	paul.thorne@girlscoutsvr.org	651-227-8835
Justina Pope	Washington County	justina.pope@co.washington.mn.us	651-430-4045
Colleen Paulus	MDH	colleen.paulus@state.mn.us	651-201-4507
Pam Steinbach	MDH	pam.steinbach@state.mn.us	651-201-5634
Maggie Edwards	MDH	margaret.edwards@state.mn.us	651-201-4506
Linda Prail	MDH	linda.prail@state.mn.us	651-201-5792
Steve Klemm	MDH	steve.klemm@state.mn.us	651-201-4503

MINUTES
Swim Pond Meeting
March 12, 2010, 9:00 a.m. – 12:00 noon
Minnesota Department of Health, Freeman Building, Room 144

Attendees: see attached list

Colleen Paulus, Manager, Environmental Health Services Section presented an overview of the current situation:

1. Swim ponds are exempt from regulation under chapter 144.1222 and related rules until June 30, 2011 (Session Law, Chapter 328, Sec. 7).
2. At that time, a swim pond would need to meet the requirements of a “public pool” unless another solution is put in place.
3. It is the understanding of the MDH that the 12 identified swim ponds cannot meet the requirements of Minnesota laws and rules governing public pools.
4. The Legislature has instructed the MDH to convene a meeting of stakeholders and write and submit a report to the Legislature by December 15, 2010.
5. MDH wants to receive input from all stakeholders.
6. This meeting is the first step in this process.
7. MDH will conduct information-gathering inspections of all 12 swim ponds during the summer of 2010.

All attendees participated in general discussion of the current situation. Key points are as follows. All of the swim ponds represented at the meeting:

- are chlorinating and testing the water to public pool standards
- have water filtering and recirculation
- have certified pool operators

Most of the swim ponds have life guards on duty when open.

Major areas where swim ponds cannot meet public pool standards are:

- Cleanability
- flow rate of filter system
- impervious bottom
- fencing
- turbidity/clarity.

The group broke up in to four smaller groups to brainstorm issues and possible solutions. A listing of the groups’ issues and solutions are attached.

Next steps:

1. Minutes from this meeting will be distributed to all attendees and non-attending swim pond owners/operators.
2. Steve Klemm from MDH will be inspecting all swim ponds during the summer months.
3. Information from this meeting, the inspections and other research will be compiled and sent to all meeting attendees and non-attending swim pond owners/operators in September.
4. Another meeting will be held in September or October to discuss issues and recommendations for the MDH report to the Legislature.
5. MDH will write the report and submit to the Legislature by December 15, 2010

Swim Pond Small Groups Brainstorming Results

3/12/2010 Meeting

Waterborne Illness issues

- Who will do investigation if there is a problem?
- Super chlorination and crypto outbreaks

Program that has standards can help protect

- What are those?
- Are they different for different sizes?

Certification

- Should they have a CPO?

Cost

- Are swim ponds less expensive to build than ponds?
-

Turn over rate

Turbidity

Organic matter (bottom of ponds)

How do you define construction (improvements)

We don't meet hard surface regulations

We need language for future refurbishments

Fencing around swim ponds

No advantage to being regulated

Regulate ponds to the items or areas that they can meet

Variable depth – maintenance

Direct suction at skimmers

Lifeguard staffing requirement

Drowning rate verses a pool

Are slides or water features allowed

Should there be a required turnover rate

Recommendation

- Develop a standard for swim ponds separate from the pool code
 - That the majority of existing facilities can meet with an extended sunset date
-

Rule modification-Pool Rules with exemptions

Vs.

Beach classifications

-Turbidity

- Fencing issue for some
- Would be zero depth entry
- Lifeguard reg.

-Turbidity exempt

- Period
- Need to measure
- Nephelometers Units/Maximum
- Sand quality
- Rake beach

Appendix B: Stakeholders Meeting October 20, 2010

Appendix B-1: Invitation Letter (a)

Invitation Letter (b)

Appendix B-2: Agenda

Appendix B-3: Attendance List

Date

Name

Address

Address

Address

Dear *Name*:

You are cordially invited to the second meeting of the Minnesota Department of Health (MDH) Swim Pond Stakeholders Committee. The meeting will be held at the O.L. Freeman Building on October 20, 2010 in Room B-145 from 1:30pm to 3:30pm. The location information and a parking map are enclosed.

MDH staff will report on information gathered from our inspections during the summer of 2010. The main topic for the meeting is discussion of possible recommendations to be included in the report to the Legislature.

Please RVSP, yes or no, and the number and name of persons attending the meeting to: Susan Peterson at susan.peterson@state.mn.us or call her at 651/201-4543. Please respond by Friday, October 15, 2010.

I look forward to your participation in this meeting. If you have questions, please contact Linda Prail in the Environmental Services Section at linda.prail@state.mn.us or at 651-201-5792.

Sincerely,

Colleen Paulus, Manager
Environmental Health Services
Environmental Health Division
P.O. Box 64975
St. Paul, Minnesota 55164-0975

Enclosure

Swim Pond Meeting

You are cordially invited to the second meeting of the Minnesota Department of Health (MDH) Swim Pond Stakeholders Committee. The meeting will be held at the O.L. Freeman Building on October 20, 2010 in Room B-145 from 1:30pm to 3:30pm. The location information and a parking map are enclosed.

MDH staff will report on information gathered from our inspections during the summer of 2010. The main topic for the meeting is discussion of possible recommendations to be included in the report to the Legislature.

Please RVSP, yes or no, and the number and name of persons attending the meeting to: Susan Peterson at susan.peterson@state.mn.us or call her at 651/201-4543. Please respond by Friday, October 15, 2010.

If you have questions, please contact Linda Prail in the Environmental Services Section at linda.prail@state.mn.us or at 651/201-5792.

Enclosures



Swimming Pond Meeting

Wednesday, October 20, 2010

Orville L. Freeman – Room B145

Draft Agenda

1. Welcome and Introductions – Linda Prail, MDH
2. Overview of the Agenda – Linda Prail, MDH
3. Report on Swimming Pond Inspections – Steve Klemm and Pam Steinbach
4. Draft Report to the Legislature – Linda Prail, MDH
 - a. Walk-Through
 - b. Review and Revision Process and Schedule
 - c. Final Report Submittal and Distribution
5. Discussion of Possible Recommendations – All Attendees
6. Next Steps – All Attendees
7. Adjourn

Susan Peterson, MDH
EH Division – EHS Section
651-201-4543
susan.peterson@state.mn.us

Swim Pond Meeting		
10/20/2010		
Attendance List		
Invites who attended		
Title	Name	Organization
Ms.	Barb Krech	MDH - EHS
Mr.	Brian Nelson	MN DNR - Buffalo River
Mr.	Caleb Peterson	City of Cloquet
Ms.	Colleen Paulus	MDH - EHS
Mr.	Dan Harlow	Three Rivers Park District
Ms.	Deb Boyd	MN DNR - Flandrau
Mr.	Gary Edwards	MDH - EHS
Mr.	Gary Teipel	MN DNR - Flandrau
Ms.	Janelle Ogrins	Preserve Association
Ms.	Justina Pope	Washington County
Mr.	Kent Wood	Associated Pool Builders
Ms.	Linda Prail	MDH - EHS
Ms.	Pam Steinbach	MDH - EHS
Mr.	Steve Klemm	MDH - EHS
Ms.	Susan Dickman	Preserve Association
Ms.	Susan Peterson	MDH - EHS
Ms.	Trisha Robinson	MDH-ADIC
Mr.	Joe Jurusik	Hennepin County
Ms.	Lori Meyers	Washington County
Mr.	Todd Besmish	Three Rivers Park District
Mr.	John Elholm	Washington County
Ms.	Sarah Foley	City of Shakopee
Mr.	Mark Schroeder	Bonestroo
Mr.	Tom Schaffer	US Aquatics
Ms.	Jamie Polley	City of Shakopee
Mr.	Zach Conway (Elm Creek)	Three Rivers Park District

This page was left
blank intentionally

Appendix C: Inspection Checklists

Appendix C-1: Pool Inspection Form

Appendix C-2: Swimming Pond Data Form



POOL INSPECTION

CITY/SITE: _____

PLAN#: _____ DATE: _____

IN/OUT PLUNGE Z-D SWIM LAP SPA WADE SPRAY

THERAPY R&R ALT

☐ MIN DEPTH(3'-3'6") ☐ MAX SLOPE(1:10,1:3)

____ OVERALL FIT AND FINISH ☐

☐ SKIMMERS (____)(equalizers)(ALC)(weirs) BALANCE TANK ☐ SURGE WEIRS ☐

☐ SUCTION(____)(size, space) ANSI r9s 12s 18s UNB G DUAL PARA ☐ SS SCREWS ☐

☐ INLETS ____ EYEBALLS, gutter, 20ft, 15 feet >1600 ZERO DEPTH FLOOR INLET ☐

COPING (slope) / HANDHOLD _____ COLOR = WHITE OR LIGHT ☐

☐ STEPS (10X12, accent, rail, non-slip) _____ SPA SEAT ACCENT ☐

☐ LADDERS ____ (3"-5" gap) LEGS ON WALL ☐ _DEEP END ☐ PLASTER FINISH ☐

☐ DEPTH MARKERS (25', ends, FT. IN accurate, @ STRIPE) >6" ACCENT STR ☐

☐ NO DIVING (25', ends+sides 4") _____ CAULK DECK JOINT ☐

DECK 5', surface, slope, drain, indirect, ponding, wet path, carpet _____ FLUSH ☐

☐ SECURITY CK, 5', 11/2 Mesh, 4 in Gap, self-closing, self-latching, lock Tighten Hinge

☐ DECK Lighting 10 30 ft-candle _____ DUSK ☐

VENTILATION (pool, equ.rm, rstrm) _____ DRINKING FOUNTAIN (1600 ft²) ☐

(independent, valved, marked) _____ pH cont {solid liquid gas} Auto Man

☐ PUMPS (size, NSF) ____ @ ____ HP ____ @ ____ HP ____ @ ____ HP

☐ FILTERS # ____ @ sq ft = _____ 100 C 140 C (size, NSF, SG, Gage, Data) [extra cart]

☐ DISINFECT (size) (NSF) RAIN HAY PULS PPG ROLA B&W STEN Ecolab NaCl

☐ GAS Cl (air, gnd level, to outside, sign, anchored, mask, NH₃, wrench) CHEMICAL STORAGE

☐ Q min = _____ gpm ☐ FLOW METER Q=: _____ gpm Cl TO ALL INLETS ☐

☐ Auto Level control THERMOMETER. ☐ CHEM FEED INTERLOCK ☐

☐ WATER RPZ /AIR GAP / HOSE BACKWASH - AIRBREAK ☐ FLOW CAPACITY ☐

☐ WATER Clear ORP (hh) = _____ ORP (c) _____ pH(hh) _____ pH(c) _____ Free

Cl _____ T Cl _____ pH= _____ ALK _____ Ca Hard= _____ Cy Acid _____ ☐ SIGNS

(A=Lifeguard/kids)(LOAD _____)(C= 911)(D= er.use)(E1= CD) Locker room Rules ☐

(E2=cut-infected)(E3=shower)(E4=spitting)(E5=horseplay)(E6=glass)(E7=diving)(E8=pets,)

Hung ☐

☐ SAFETY (____)(ring buoy)(>1.5xW or <60'rope)(, 12'crook)(rescue tube) Equip Hung ☐

☐ LIFEGUARDS (1 or 2 Chairs Req-2250/4000) (phone) (spine board)(first aid kit)

☐ FACILITIES f(x) (fixture count,, soap, coved, locker vent) TEMP _____ F (90-130F) ☐

☐ SPA TIMER ☐ SPA SIGNS (A= preg)(B=C₂H₅ OH)(C=TIME) AGIT SUCTION ☐

☐ ER SHUT OFF ALARM { Y N } _____ COVER ASTM 1346-91 ☐

☐ DIVING BOARD/STARTING BLKS (5') _____ ZERO DEPTH Stanchions ☐

☐ FLUME-DROP (signs)(rail) (beneath) _____ OPERATIONS MAN ☐

☐ TEST KIT _____ Vacuum ☐ CPO: _____ POSTED ☐

LOCAL SAN: _____ Miles: _____ \$\$\$: _____ Time: _____

____ of _____

____ Builder

SWIM POND DATA

Facility Name _____

Original construction year = _____ Last major alteration year = _____

Pond Depth Range = _____ feet to _____ feet deep.

Pond Surface Area = _____ square feet.

Pond Volume = _____,000 gallons.

Nominal filter flow rate = _____ gallons per minute.

Turnover, at nominal flow rate = _____ hours.

Filter Type = _____ Filter Size = _____ square feet

Pumps = _____ at _____ HP _____

Disinfection System = _____ chlorinator.

Does this swim pond have submerged direct suction? _____

Is this swim pond compliant with the Abigail Taylor Pool Safety Act? _____

Life Guards: average day = _____ on duty; peak day = _____ on duty.

Facility Maximum Capacity = _____ persons.

Facility Seasonal Attendance = _____ persons.

Facility Admission Cost = \$ _____ per person

Drowning History of this swim pond _____

This page was left
blank intentionally



Commissioner's Office
625 Robert St. N.
P.O. Box 64975
St. Paul, MN 55164-0975

mm/yy
IC#

Open on this end
(Contact MDH
Mail Services for
appropriate seals
for the size of
document.)

Permit indicia
should be used only
for mailings of 200
or more. For more
information, consult
MDH Mail Services.

(Back Cover)

Spine on this end