

Legislative Charge

In 1989, the Legislature adopted comprehensive waste reduction and recycling legislation based on recommendations of the Governor's Select Committee on Recycling and the Environment (SCORE). This set of laws, Minn. Stat. § 115A.551-115A.557, commonly referred to as SCORE, initiated a stable source of state funding for recycling programs, as well as waste reduction and the improved management of household hazardous wastes, yard waste, and problem materials. SCORE legislation provides grant dollars, along with funding to counties and local government for long-term flexible programs.

Author

Arlene Vee

Contributor

Don Kyser

Editing and Graphic Design

Paul Andre
Theresa Gaffey
Beth Tegdesch

Cover photo:
Paul Andre

Estimated cost of preparing this report (*as required by Minn. Stat. § 3.197*) including staff time, writing, editing, and printing is \$11,348.

The MPCA is reducing printing and mailing costs by using the Internet to distribute reports and information to a wider audience. Visit our Web site for more information.

MPCA reports are printed on 100% post-consumer recycled content paper manufactured without chlorine or chlorine derivatives.

Minnesota Pollution Control Agency

520 Lafayette Road North | Saint Paul, MN 55155-4194 | www.pca.state.mn.us | 651-296-6300
Toll free 800-657-3864 | TTY 651-282-5332

This report is available in alternative formats upon request, and online at www.pca.state.mn.us

Document number: w-sw1-26

Summary

This Report on 2009 SCORE Programs (report) summarizes information submitted by all 87 counties and the Western Lake Superior Sanitary District (WLSSD) on waste management efforts, including waste reduction activities, recycling, household hazardous waste programs, yard waste, and problem materials collection.

In 2009, less municipal solid waste (MSW) was generated, and reported tonnages for all management methods continued to decline from 2008.

MSW generation

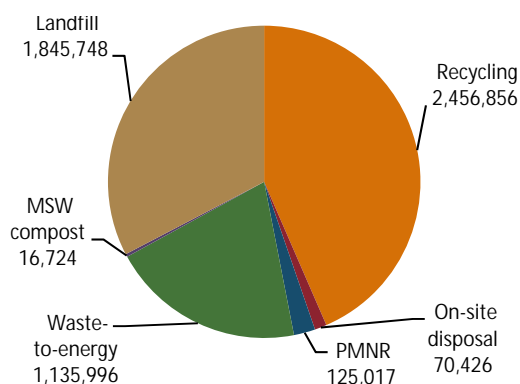
In 2009, while population increased by 0.2 percent, total waste managed dropped by 4.65 percent.

Minnesota's MSW totaled 5,650,780 tons in 2009; this represents the total of recycling, on-site disposal, problem materials not recycled (PMNR), and MSW disposal and processing (landfilled, waste-to-energy (WTE) facilities, refuse derived fuel (RDF) and MSW composting).

In 2009, each Minnesota resident created 2,132 pounds of MSW per year on average.

Figure 1: 2009 generated MSW management methods

(Figures in tons)



Recycling	44%	2,456,856 tons
On-site disposal	1%	70,426 tons
PMNR	2%	125,030 tons
Waste-to-energy	20%	1,135,996 tons
MSW compost	0.3%	16,724 tons
Landfill	32.7%	1,845,748 tons

Recycling

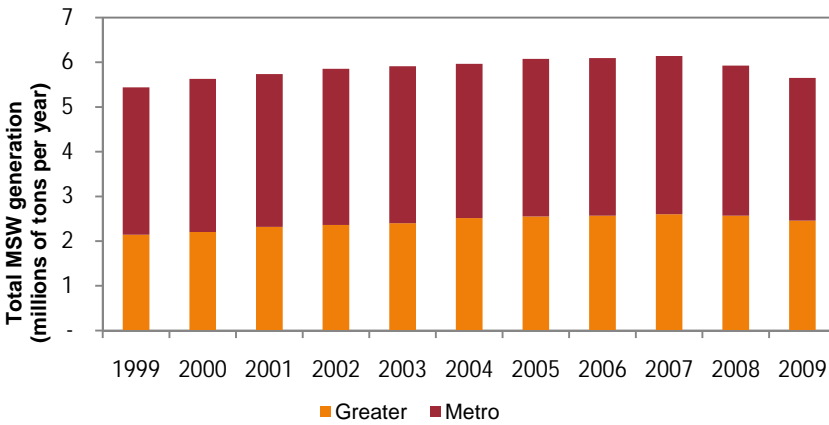
In 2009, 2,456,856 tons were recycled, a decrease of 5.1 percent from 2008. The base recycling rate, a more accurate measure of progress, for 2009 is 43.5 percent of the total managed MSW. With the addition of credits for yard waste recycling and waste reduction efforts, Minnesota's adjusted recycling rate for 2009 is 50.6 percent.

MSW resource recovery and disposal

In Minnesota, waste is managed through resource recovery (MSW composting, RDF, and WTE facilities), landfilling, and on-site disposal. In 2009, MSW amounts processed at resource recovery facilities and disposed of at landfills continued to decrease.

Likewise, the amount of waste leaving Minnesota decreased. In 2009, 479,141 tons collected in Minnesota were delivered to Iowa, Wisconsin, North Dakota, and South Dakota.

Figure 2: Minnesota MSW generation



Greater Minnesota accounted for 43 percent of the state's MSW generation, and the seven-county Metropolitan Area accounted for 57 percent in 2009.

MSW Generation	1999	2000	2001	2002	2003	2004	2005	2006	2007	2008	2009	Change 2008-09
Greater Minnesota	2.14	2.20	2.32	2.37	2.41	2.53	2.56	2.58	2.60	2.57	2.46	(4.35%)
Metropolitan Area	3.30	3.43	3.42	3.49	3.51	3.45	3.52	3.52	3.54	3.36	3.19	(4.88%)
Statewide	5.44	5.63	5.74	5.86	5.92	5.98	6.08	6.10	6.14	5.93	5.65	(4.65%)

Figures in millions of tons

The four centroid areas — Duluth, St. Cloud, Rochester, and the Twin Cities — consisting of 17 counties, generated 70 percent of the waste in Minnesota, or 3,948,507 tons in 2009. This is a decrease of approximately 404,813 tons from 2008. Sixty-nine percent of Minnesota's population live in these 17 counties, or 3,654,889 residents.

Figure 3: Waste generation and disposal in centroid areas

Centroid	Population	Total MSW Generation (tons)	MSW Recycled (tons)	MSW Resource Recovery (MSW composted, RDF and WTE) (tons)	MSW Landfilled (tons)	MSW Not Collected (Est. PMNR and on-site buried or burnt) (tons)
Duluth: Cook, St. Louis, Lake, WLSSD	212,330	225,286	99,964	0	117,492	7,830
St. Cloud: Stearns, Benton, Sherburne	276,938	280,905	142,473	48,567	78,780	11,085
Rochester: Olmsted, Dodge	162,125	142,578	49,022	61,238	25,126	7,192
Twin Cities: Anoka, Carver, Dakota, Hennepin, Scott, Ramsey, Washington, Wright	3,002,496	3,299,739	1,441,016	867,283	915,268	76,172
Totals	3,654,889	3,948,507	1,732,474	977,088	1,136,667	102,279

On-site disposal and problem materials not recycled

On-site disposal of MSW, either burning or burying, is against the law for most people. Some farmers are allowed to burn or bury their household garbage under existing Minn. Stat. §§ 88.171 and 17.135.

In the 2009 SCORE survey, counties estimate that 1.2 percent of the total waste generated, or 70,426 tons, is disposed of on-site — a decrease of 996 tons (1.4 percent) from 2008.

Problem materials not recycled (PMNR) make up 2 percent of the total MSW generation for 2009, or 125,030 tons. Problem materials not recycled include five materials that have been banned from disposal in Minnesota (vehicle batteries, tires, major appliances, motor oil, and oil filters). The PMNR number is that portion of the materials that is not recycled, but is assumed to be disposed of somewhere, legally or not, as they are banned from MSW disposal facilities. It is assumed that they are not being counted in landfill or incinerator tonnages.

Per capita MSW generation

The MPCA calculates the amount of waste that the average Minnesotan creates each year in an attempt to understand if waste growth is coming primarily from an increase in population or increases in consumption.

In 2009, the Minnesota per capita rate decreased (-4.89 percent from 2008) to 1.07 tons per person (2,132 pounds/person/year). This is consistent with the decreases seen in MSW generation (-4.7 percent) and with Minnesota's economy.

In looking at Greater Minnesota versus the Metropolitan Area per capita rate, we find that the Greater Minnesota per capita rate is 1.02 tons (2,031 pounds/person/year), a decrease of approximately 4.43 percent from 2008. In comparison, the Metropolitan Area per capita rate is 1.11 tons (2,217 pounds/person/year), a decrease of 5.26 percent from 2008.

Minnesota's population continues to grow. In 2009, Minnesota's population increased 0.2 percent to 5,300,942 from 2008 population of 5,287,976. Greater Minnesota population increased by 0.1 percent and the Metropolitan Area population by 0.4 percent.

Recycling and Benefits

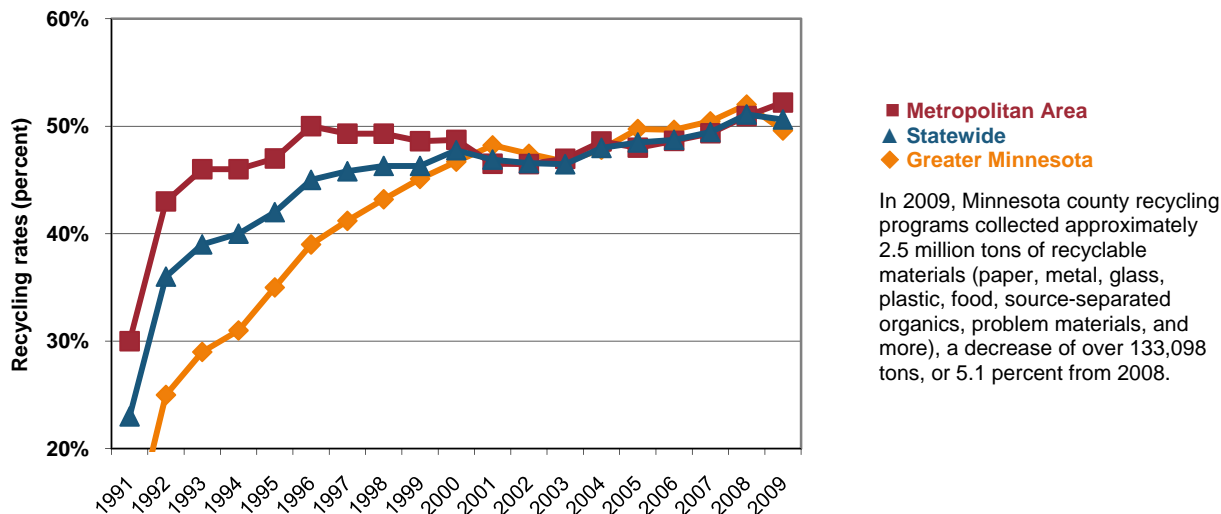
In 2009, 2,456,856 tons were recycled; Minnesota's recycling rate (including credits for yard waste recycling and waste reduction efforts) decreased by 0.5 percentage points over the last year to 50.6 percent.

Recycling rates

The state's base recycling rate is approximately 43.5 percent, a decrease of 0.2 percentage points from 2008. The base recycling rate is a more accurate measure of progress as it is the actual percentage of materials recycled; it does not include the additional source reduction and yard waste credits.

While this recycling rate reflects the significant state, local, and industry investment in Minnesota's recycling system, evidence shows much more needs to be done to recover the millions of tons of discarded recyclable and organic materials still disposed of each year.

Figure 4: Minnesota's recycling progress



Recycling Rates	2002	2003	2004	2005	2006	2007	2008	2009
Greater Minnesota	47.4	46.7	47.8	49.7	49.7	50.5	52.0	49.6
Metropolitan Area	46.5	47.0	48.6	48.0	48.6	49.3	50.9	52.2
Statewide	46.6	46.5	48.0	48.5	48.7	49.5	51.1	50.6

Recycling tonnages

In 2009, Minnesota county recycling programs collected approximately 2.5 million tons of recyclable materials (paper, metals, glass, plastic, food, problem materials, etc.) — a decrease of over 133,098 tons, or 5.1 percent from the previous year.

The total reported recycling tonnages are from documented and estimated sources. Documented tonnages account for 68 percent of the total recycling tonnages. Counties ask for, and the majority of them are able to receive, documented tonnages from their haulers, recyclers, and businesses. This is a difficult task for all counties, especially those in the Metropolitan Area due to the large population and businesses, the number of haulers, along with municipalities that contract for recycling. The amount of staff and time placed into collecting this information enables counties to better identify and receive documented tonnages, which increases the degree of accuracy in annual reporting.

In 2009, the grades of “other” (which consists of materials like pallets, mattresses, box springs, and other unspecified materials) and “metal” saw the largest decreases in reported tonnages from 2008. The decrease seen in “other,” is most likely due to the fact that, in 2009, more counties were given recycling composition breakdowns to calculate single sort tonnages into appropriate grades. Also, beginning in the fall of 2008, metal market prices dropped and continued into 2009. Recycling tonnages are reported in four sectors; residential, documented commercial/industrial/institutional, estimated commercial/industrial/institutional, and mechanical/hand separated.

Banned	126,637.68
Glass	128,433.38
Metal	459,590.12
Organic	177,955.40
Other	583,763.72
Paper	903,869.84
Plastics	57,091.95
Textiles	19,513.92

In 2009, 25 percent of the materials collected for recycling in Minnesota came from residential sources; this is the same as in each of the last five years (2008 to 2004). Commercial, industrial, and institutional recycling, both documented and undocumented industrial sectors, accounts for another 72 percent, and mechanical/hand separated recycling accounts for the remaining 3 percent.

Figure 5: Recycling broken down by sector

Sector	Tonnage	Percentage of 2.5 million tons	Percentage change from 2008
Residential	617,377.98	25%	-10%
Documented commercial/industrial/institutional	989,765.32	40%	1%
Estimated commercial/industrial/institutional	790,842.17	32%	-9%
Mechanical/hand separated	58,870.54	3%	21%

Per capita recycling

Minnesota’s per capita recycling for 2009 is 927 pounds per person. Recycling tonnages had stagnated over the last 10 years; however, 2009 is the first year tonnages have decreased. Counties attribute this to the economic downturn, which had reduced tourism and consumer spending. While improvement in waste reduction efforts may account for some decline, waste generation generally decreases during times of economic recession and increases during an economic expansion.

Economic and environmental benefits of recycling

Recycling is important in Minnesota — both economically and environmentally. Recycling conserves and reuses our resources, along with creating new businesses and jobs. Minnesota’s recycling manufacturers continue to contribute to the state’s economy and add manufacturing jobs tied to companies using recycled material in their manufacturing processes. Millions of dollars of wages are related to recycling activities. In addition to the contributions of these value-added manufacturers, there is economic value related to collecting, processing, and marketing recyclables in Minnesota (which is supported by SCORE dollars).

Additional information on the economic and environmental benefits of recycling can be found on the MPCA’s webpage on Minnesota’s Recycling Industries: Economic Activity Summary, and to the U.S. Recycling Economic Information (REI) Study. www.pca.state.mn.us/index.php/topics/preventing-waste-and-pollution/recycling/recycling-in-minnesota/minnesota-s-recycling-industries-economic-activity-summary.html

Environmental benefits

One measure of Minnesota recycling environmental benefits is the reduction of greenhouse gas emissions compared to other waste management practices. The U.S. Environmental Protection Agency created a tool to measure and track these benefits: the Waste Reduction Model (WARM). Calculations show that by recycling 2.5 million tons of materials in 2009, Minnesota:

- reduced 8.5 million metric tons of carbon dioxide equivalent (MTCO₂E)
- saved enough energy to power 708,000 households or 33 percent of all of the households in Minnesota

WARM is available both as a web-based calculator and as a Microsoft Excel spreadsheet (317K WinZip archive). www.epa.gov/warm

Changes in SCORE reporting

Enacted during the 2009 legislative session, Minn. Law Chapter 37, art. 1, section 62 (1, 2) mandates county SCORE relief. This law requires that the 2009 SCORE survey report be abbreviated in scope and that the

Changes in SCORE reporting

Enacted during the 2009 legislative session, Minn. Law Chapter 37, art. 1, section 62 (1, 2) mandates county SCORE relief. This law requires that the 2009 SCORE survey report be abbreviated in scope and that the MPCA, in consultation with Association of Minnesota Counties, Solid Waste Administrators Association, and the Solid Waste Management Coordinating Board, make recommendations to amend the reporting requirements under Minn. Stat. 115A.557, subd. 3 and submit a report to the Legislators no later than January 15, 2010 in ways that will:

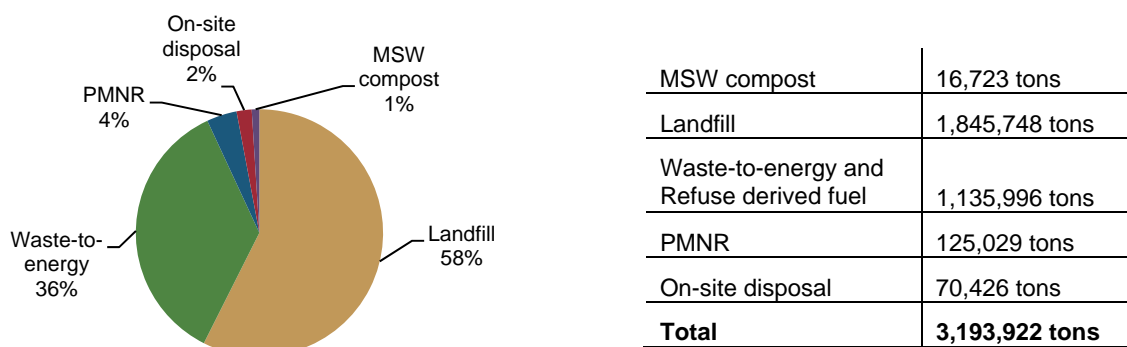
- reduce resources counties employ to collect the data reported, while ensuring data are consistent and accurate, and useful as a guide to solid waste management policy makers
- improve the feasibility and desirability of multi-county reporting

To accomplish this legislative mandate, the MPCA, Association of Minnesota Counties, Solid Waste Administrators Association, and the Solid Waste Management Coordinating Board began meeting in the spring and summer of 2009 to discuss ways to meet these mandates. Efforts will be broken into two phases: Phase I, abbreviate the scope of the 2009 SCORE survey report, and Phase II, compile recommendations to amend the reporting requirements. Phase II continues to work on long-term reform to SCORE reporting.

MSW Resource Recovery and Disposal

In Minnesota, resource recovery consists of MSW composting, refuse-derived fuel (RDF) processing, and waste-to-energy facilities; disposal consists of landfilling, problem materials not recycled (PMNR), and on-site disposal. In 2009, waste that was not recycled or prevented/reduced totaled nearly 3.2 million tons — a decrease of over 142,752 tons (4.3 percent) from 2008.

Figure 6: MSW Resource recovery and disposal in Minnesota



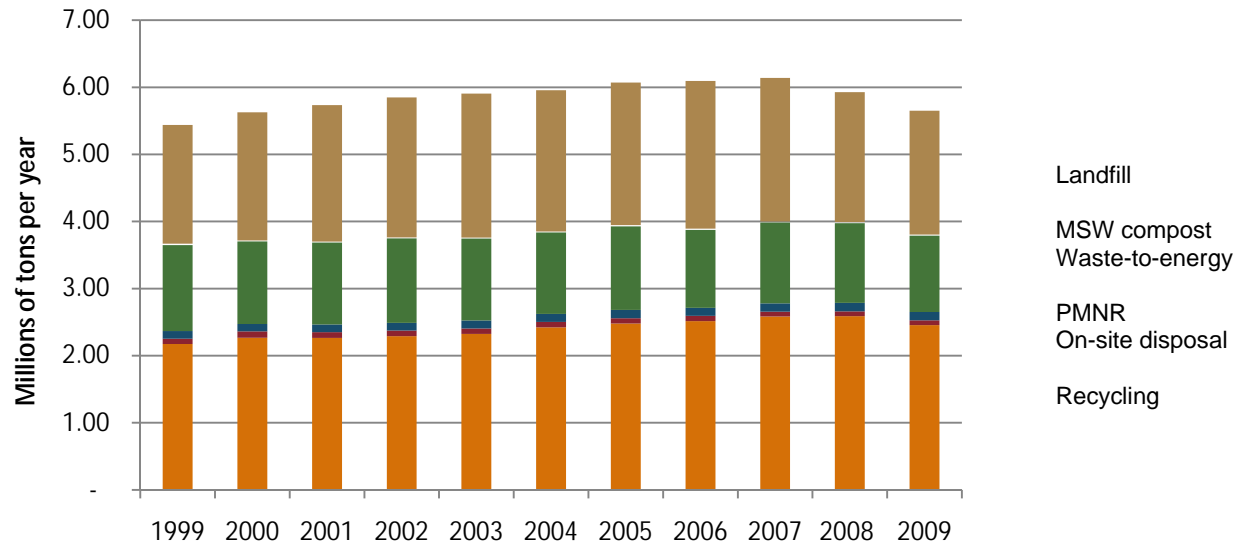
Trends in waste management

Waste management in Minnesota is guided by a hierarchy that prioritizes waste reduction, recycling, composting, and resource recovery. MSW processed and disposed of during 2009:

- MSW composting decreased slightly by 5.1 percent — from 17,630 tons in 2008 to 16,724 in 2009.
- On-site disposal (estimates from county staff on the level of on-site dumping and burning that occurs) decreased by 1.4 percent (more than 997 tons) to 70,426 tons.

- In comparing tonnages from the previous year for WTE, the 2009 tonnage decreased by 4.4 percent (51,684 tons) to 1,135,996 tons. Permitted capacity remained the same in 2009; facility downtime for improvements or repairs accounts for some of the decreases of waste handled by WTE facilities in 2009.
- Landfilling decreased by 89,119 tons, or 4.6 percent to 1,845,748 tons. Landfilling, despite being the least-preferred option, remains the dominant disposal method in Minnesota.
- Problem materials not recycled remains at 125,030 tons. Problem materials not recycled is a calculated tonnage based on population and the amount generated, minus the amount recycled.

Figure 7: Trends in Minnesota waste management methods in tons



Management method	2000	2001	2002	2003	2004	2005	2006	2007	2008	2009	Change 2008-09
Landfill	1.91	2.03	2.11	2.16	2.12	2.12	2.20	2.14	1.94	1.84	(4.6%)
MSW compost	0.01	0.01	0.01	0.01	0.01	0.02	0.02	0.02	0.02	0.02	(5.1%)
Waste-to-energy	1.23	1.22	1.26	1.23	1.21	1.24	1.16	1.20	1.19	1.13	(4.4%)
PMNR	0.11	0.11	0.12	0.12	0.12	0.12	0.12	0.12	0.13	0.13	(0.04%)
On-site disposal	0.10	0.09	0.08	0.08	0.08	0.08	0.08	0.08	0.07	0.07	(1.4%)
Recycling	2.27	2.27	2.29	2.32	2.42	2.49	2.52	2.58	2.59	2.46	(5.1%)
Total	5.63	5.74	5.88	5.92	5.98	6.09	6.10	6.14	5.93	5.65	(4.7%)

Figures in millions of tons

Out-of-state waste flow

In tracking the trends of the amount of waste generated, and where that waste is processed and disposed of, we find that in 2009, 479,141 tons left Minnesota. This means that 16 percent of the total waste landfilled or processed at a WTE facility is taken out of state. To break down that amount further, 10,056 tons were processed at a WTE facility in Wisconsin, and 469,085 tons were landfilled in Iowa, North Dakota, South Dakota, and Wisconsin. In comparing 2009 to 2008, there is a decrease of 136,069 tons (-22 percent) in the amount of MSW leaving Minnesota.

While many factors may contribute to this decline in out-of-state waste flow (facility locations, hauling companies in operation, existing contracts, surcharges and tip fees, and gas prices), the economy and increasing state surcharges from Wisconsin are the primary reasons.

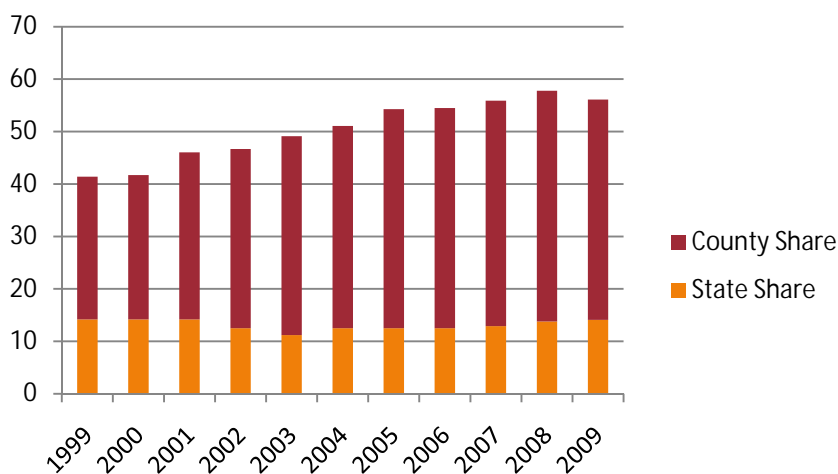
Funding of SCORE Programs

Continued funding commitments from the Legislature and significant investments by local government provide the funding for recycling programs at the township, city, and county levels. In 2009, Minnesota counties spent \$56.1 million for SCORE-related programs, a decrease of \$1,679,316 (-2.9 percent) from 2008.

State funding: SCORE block grants

Money from the state is passed on to the county level in the form of annual block grants as described in Minn. Stat. § 115A.557. SCORE disbursements are appropriated to counties each fiscal year based on population. In the 2007 session, the Legislature and Governor Pawlenty took action to restore SCORE funds to the levels of 2002, or \$14 million per year. In calendar year 2009, \$14.1 million was disbursed, which is approximately 25 percent of the amount spent on SCORE-related programs.

Figure 8: SCORE expenditures



	1999	2000	2001	2002	2003	2004	2005	2006	2007	2008	2009	Change 2008-09
County share	27.2	27.5	31.84	34.19	37.93	38.56	41.78	42	43	44	42	(2%)
State share	14.2	14.2	14.2	12.5	11.2	12.5	12.5	12.5	12.9	13.8	14.1	0.3%
Total	41.4	41.7	46	46.7	49.1	51.1	54.28	54.5	55.9	57.8	56.1	(2.9%)

County funding

Within certain guidelines, counties have broad discretion in determining how to spend SCORE block grants and local matching funds, which gives them flexibility to develop programs that best meet local needs. The MPCA monitors the counties' use of SCORE grants to ensure the money is used to fund SCORE-eligible programs: source reduction, recycling, market development, management of problem materials, waste education, litter prevention, technical assistance to ensure proper solid waste management, and waste processing (Minn. Stat. § 115A.55).

Between 1999 and 2009, overall SCORE expenditures increased by 36 percent. These increases were funded entirely at the local level by counties and cities through use of general revenue dollars, special assessments, or other sources of revenue.

Minn. Stat. § 115A.557 requires each county to match the funding from the Legislature with a local contribution of at least 25 percent. In 2009, county funds continued to exceed this match, spending over \$44 million or 76 percent of the amount spent toward SCORE-related activities. This investment is in addition to undocumented dollars spent by other local units of government, such as cities and townships, on programs such as recycling, household hazardous waste, and waste education.

In 2009, counties' decreased spending by 2 percent, in part, due to economic recession and market price drops experienced in the fall of 2008 and continued to be felt by counties through 2009. However, in 2009, disbursed SCORE dollars went up by 0.3 percent.

In 2009, Greater Minnesota counties decreased expenditures by \$1.6 million (-4.7 percent) and the Metropolitan Area counties decreased their spending by \$50,193 (-0.2 percent) from 2008. Counties continually face growing challenges to collect materials and deliver them to markets. Counties' budgets are not covering their existing recycling programs and have been hard pressed to expand their recycling programs. Counties are aware of the millions of tons of remaining recyclables in the waste stream along with the missed economic and environmental benefits associated with recycling.

Appendix A:

County SCORE Survey Responses

County Survey Responses
Finances: Revenues (part 1)

County	CY2008 revenue carried over	Adjustment to carryover	General revenue	Service fee	Processing facility tip fee	Land disposal facility surcharge
Aitkin	\$179,538	0	\$196,638	\$0	\$0	\$0
Anoka	\$0	0	\$12,933	\$874,636	\$0	\$0
Becker	(\$236,231)	236,231	\$0	\$186,318	\$0	\$0
Beltrami	\$0	0	\$0	\$504,560	\$0	\$0
Benton	\$0	0	\$0	\$233,939	\$0	\$0
Big Stone	(\$44,618)	44,618	\$116,449	\$1,357	\$0	\$0
Blue Earth	\$0	0	\$109,825	\$0	\$0	\$0
Brown	\$0	0	\$306,717	\$0	\$0	\$0
Carlton	(\$43,155)	43,155	\$0	\$0	\$76,639	\$0
Carver	\$0	0	\$0	\$534,692	\$0	\$0
Cass	\$0	0	\$0	\$546,904	\$0	\$0
Chippewa	\$0	0	\$98,371	\$0	\$0	\$0
Chisago	\$0	0	\$0	\$179,388	\$0	\$0
Clay	\$5,653	0	\$0	\$644,051	\$0	\$0
Clearwater	\$0	0	\$0	\$86,300	\$0	\$0
Cook	\$0	0	\$273,161	\$0	\$0	\$0
Cottonwood	\$217,727	0	\$183,750	\$0	\$0	\$0
Crow Wing	\$0	0	\$545,651	\$0	\$85,977	\$0
Dakota	\$0	0	\$0	\$0	\$0	\$916,056
Dodge	\$112,070	0	\$50,423	\$19,114	\$33,366	\$0
Faribault	\$0	0	\$30,437	\$0	\$0	\$0
Fillmore	\$0	0	\$13,868	\$0	\$0	\$0
Freeborn	(\$12,857)	12,857	\$356,105	\$770	\$0	\$0
Goodhue	\$190,449	0	\$381,779	\$0	\$0	\$0
Grant	\$78,344	0	\$38,507	\$124,880	\$0	\$0
Hennepin	\$0	0	\$0	\$5,444,393	\$94,250	\$0
Houston	\$0	0	\$170,352	\$0	\$0	\$0
Hubbard	\$0	0	\$464,733	\$0	\$0	\$0
Isanti	\$109,635	0	\$23,957	\$0	\$0	\$0
Itasca	\$0	0	\$387,884	\$0	\$0	\$0
Jackson	\$157,180	0	\$13,869	\$0	\$0	\$0
Kanabec	\$80,730	0	\$13,869	\$0	\$0	\$0
Kandiyohi	\$0	0	\$0	\$126,027	\$0	\$0
Kittson	\$0	0	\$91,781	\$0	\$49,404	\$0
Koochiching	\$0	0	\$78,496	\$78,496	\$9,770	\$0
Lac qui Parle	\$94,332	0	\$98,610	\$0	\$0	\$0
Lake	(\$30,636)	30,636	\$152,505	\$0	\$0	\$0
Lake of The Woods	\$0	0	\$122,194	\$0	\$0	\$0
Le Sueur	\$0	0	\$101,502	\$0	\$0	\$0
Lincoln	\$27,740	0	\$120,114	\$225	\$0	\$0
Lyon	\$0	0	\$0	\$274,695	\$0	\$100,609
Mahnomen	\$38,557	0	\$13,869	\$0	\$0	\$0
Marshall	\$0	0	\$25,145	\$0	\$0	\$0
Martin	\$47,501	0	\$235,457	\$0	\$0	\$0
McLeod	\$0	0	\$0	\$758	\$220,862	\$980,628
Meeker	\$18,261	0	\$16,000	\$0	\$0	\$0
Mille Lacs	\$48,628	0	\$115,095	\$0	\$0	\$0
Morrison	\$0	0	\$194,740	\$0	\$0	\$0
Mower	\$0	0	\$0	\$297,799	\$0	\$0

County Survey Responses
Finances: Revenues (part 1)

County	CY2008 revenue carried over	Adjustment to carryover	General revenue	Service fee	Processing facility tip fee	Land disposal facility surcharge
Murray	\$21,503	0	\$13,750	\$0	\$0	\$0
Nicollet	\$0	0	\$267,427	\$0	\$0	\$0
Nobles	\$146,337	0	\$4,473	\$140,320	\$0	\$186,810
Norman	\$0	0	\$44,257	\$0	\$0	\$0
Olmsted	\$158,811	0	\$0	\$0	\$0	\$0
Otter Tail	\$15,200	0	\$0	\$830,136	\$0	\$0
Pennington	\$70,908	0	\$13,869	\$0	\$0	\$0
Pine	(\$89,773)	89,773	\$188,990	\$0	\$0	\$0
Pipestone	\$0	0	\$192,855	\$0	\$3,340	\$41,549
Polk	\$190,327	0	\$0	\$275,957	\$0	\$0
Pope/Douglas	\$12,542	0	\$250,000	\$0	\$0	\$0
Ramsey	\$631,990	0	\$0	\$4,012,133	\$0	\$0
Red Lake	\$0	0	\$13,880	\$0	\$0	\$0
Redwood	\$40,553	0	\$343,644	\$750	\$0	\$0
Renville	\$39,649	0	\$197,000	\$0	\$5,762	\$0
Rice	(\$915,647)	915,647	\$0	\$627,272	\$0	\$0
Rock	(\$4,869)	4,869	\$73,314	\$0	\$0	\$0
Roseau	(\$51,894)	51,894	\$0	\$0	\$0	\$0
Scott	\$912,463	0	\$77,538	\$0	\$0	\$0
Sherburne	\$91,295	0	\$0	\$0	\$0	\$118,926
Sibley	\$0	0	\$129,575	\$0	\$0	\$0
St. Louis - partial	\$0	0	\$0	\$787,104	\$0	\$0
Stearns	\$39,299	0	\$72,896	\$139,355	\$0	\$0
Steele	\$0	0	\$16,848	\$366,771	\$0	\$0
Stevens	\$30,871	0	\$33,174	\$0	\$0	\$0
Swift	\$43,770	0	\$145,079	\$0	\$0	\$0
Todd	\$0	0	\$279,269	\$0	\$0	\$0
Traverse	(\$39,751)	39,751	\$13,869	\$0	\$0	\$0
Wabasha	\$0	0	\$66,604	\$0	\$0	\$0
Wadena	\$0	0	\$0	\$258,308	\$14,503	\$0
Waseca	\$0	0	\$0	\$134,527	\$0	\$0
Washington	\$0	0	\$0	\$1,095,917	\$0	\$0
Watonwan	\$403,775	0	\$13,789	\$168,928	\$0	\$0
Wilkin	(\$8,052)	8,052	\$0	\$81,289	\$0	\$0
Winona	\$52,753	0	\$237,697	\$456,244	\$0	\$0
WLSSD	\$0	0	\$0	\$1,531,937	\$338,071	\$0
Wright	\$673,869	0	\$72,579	\$18,957	\$0	\$0
Yellow Medicine	\$0	0	\$0	\$54,004	\$0	\$24,955
Metro Area	\$723,285	\$0	\$12,933	\$11,961,772	\$94,250	\$1,034,982
Greater Minn.	\$2,781,493	\$1,477,483	\$7,904,228	\$9,177,438	\$837,694	\$1,334,551
Minnesota	\$3,504,778	\$1,477,483	\$7,917,161	\$21,139,211	\$931,944	\$2,369,533

**County Survey Responses
Finances: Revenues (part 2)**

County	SCORE pass-through	Grants	HHW funding	Material sales	Other	Total revenue
Nicollet	\$78,767	\$0	\$5,326	\$0	\$7,271	\$358,791
Nobles	\$55,475	\$0	\$0	\$0	\$14,145	\$547,560
Norman	\$55,475	\$0	\$2,777	\$0	\$0	\$102,509
Olmsted	\$345,179	\$0	\$119,420	\$0	\$982,994	\$1,606,404
Otter Tail	\$141,761	\$0	\$32,074	\$475,325	\$0	\$1,494,495
Pennington	\$55,475	\$0	\$0	\$470	\$360	\$141,082
Pine	\$69,535	\$0	\$0	\$0	\$10,987	\$269,512
Pipestone	\$55,475	\$0	\$0	\$0	\$0	\$293,219
Polk	\$76,074	\$0	\$7,477	\$99,361	\$13,016	\$662,212
Pope/Douglas	\$143,972	\$0	\$11,544	\$2,802	\$400	\$421,260
Ramsey	\$1,271,854	\$172,677	\$0	\$0	\$101,108	\$6,189,762
Red Lake	\$55,475	\$0	\$5,337	\$278	\$604	\$75,574
Redwood	\$55,475	\$28,000	\$37,721	\$126,201	\$37,889	\$670,233
Renville	\$55,475	\$0	\$0	\$0	\$0	\$297,886
Rice	\$154,828	\$0	\$23,175	\$497,996	\$97,631	\$1,400,902
Rock	\$55,475	\$0	\$0	\$0	\$10,500	\$139,289
Roseau	\$55,475	\$0	\$6,294	\$17,225	\$12,783	\$91,777
Scott	\$310,150	\$0	\$0	\$0	\$0	\$1,300,151
Sherburne	\$214,187	\$0	\$5,538	\$0	\$4,154	\$434,100
Sibley	\$55,475	\$0	\$2,263	\$3,526	\$10,919	\$201,757
St. Louis - partial	\$230,367	\$0	\$15,602	\$0	\$337,176	\$1,370,249
Stearns	\$360,078	\$0	\$5,693	\$0	\$32,626	\$649,947
Steele	\$90,023	\$0	\$4,172	\$0	\$3,155	\$480,969
Stevens	\$55,475	\$0	\$0	\$0	\$475	\$119,995
Swift	\$55,475	\$0	\$2,400	\$107,510	\$0	\$354,234
Todd	\$59,519	\$0	\$4,794	\$46,645	\$0	\$390,227
Traverse	\$55,475	\$0	\$0	\$0	\$0	\$69,344
Wabasha	\$55,475	\$0	\$2,192	\$264	\$975	\$125,511
Wadena	\$55,475	\$0	\$2,726	\$0	\$0	\$331,012
Waseca	\$55,475	\$0	\$2,855	\$138,498	\$906	\$332,261
Washington	\$574,727	\$115,028	\$0	\$105,795	\$0	\$1,891,467
Watsonwan	\$55,475	\$0	\$2,176	\$0	\$7,921	\$652,064
Wilkin	\$55,475	\$0	\$0	\$70,164	\$1,200	\$208,128
Winona	\$123,149	\$0	\$22,436	\$18,405	\$12,461	\$923,145
WLSSD	\$251,466	\$5,165	\$231,717	\$93,398	\$51,638	\$2,503,393
Wright	\$290,314	\$2,178	\$14,137	\$6,371	\$4,771	\$1,083,175
Yellow Medicine	\$55,475	\$0	\$0	\$0	\$418	\$134,852
Metro Area	\$6,898,583	\$809,374	\$55,351	\$1,040,516	\$545,887	\$23,176,933
Greater Minn.	\$7,216,519	\$211,662	\$907,356	\$3,023,233	\$2,308,570	\$37,180,227
Minnesota	\$14,115,102	\$1,021,036	\$962,707	\$4,063,749	\$2,854,456	\$60,357,161

County Survey Responses
Finances: Revenues (part 2)

County	SCORE pass-through	Grants	HHW funding	Material sales	Other	Total revenue
Aitkin	\$55,475	\$14,640	\$2,859	\$0	\$1,000	\$450,151
Anoka	\$816,375	\$131,521	\$0	\$14,154	\$65,091	\$1,914,711
Becker	\$79,283	\$57,467	\$22,176	\$0	\$15,261	\$360,505
Beltrami	\$107,190	\$0	\$8,170	\$0	\$0	\$619,920
Benton	\$97,271	\$0	\$734	\$0	\$31,777	\$363,721
Big Stone	\$55,475	\$0	\$2,400	\$0	\$500	\$176,181
Blue Earth	\$147,684	\$0	\$52,449	\$0	\$0	\$309,958
Brown	\$64,545	\$978	\$4,066	\$0	\$12,607	\$388,914
Carlton	\$83,750	\$13,358	\$6,761	\$1,260	\$241	\$182,008
Carver	\$218,853	\$90,306	\$0	\$0	\$147,244	\$991,096
Cass	\$70,568	\$0	\$7,125	\$0	\$0	\$624,597
Chippewa	\$55,475	\$0	\$2,400	\$0	\$0	\$156,246
Chisago	\$123,951	\$38,105	\$19,727	\$1,557	\$26,035	\$388,763
Clay	\$136,894	\$0	\$10,647	\$540	\$1,706	\$799,491
Clearwater	\$55,475	\$0	\$5,664	\$9,137	\$0	\$156,577
Cook	\$55,475	\$0	\$0	\$34,506	\$0	\$363,141
Cottonwood	\$55,475	\$0	\$0	\$4,267	\$22,773	\$483,992
Crow Wing	\$151,386	\$0	\$9,792	\$0	\$0	\$792,806
Dakota	\$973,338	\$0	\$0	\$0	\$116,873	\$2,006,267
Dodge	\$55,475	\$0	\$600	\$72,479	\$1,769	\$345,296
Faribault	\$55,475	\$0	\$0	\$0	\$5,449	\$91,361
Fillmore	\$55,475	\$0	\$0	\$0	\$0	\$69,343
Freeborn	\$77,060	\$0	\$6,708	\$725	\$500	\$441,868
Goodhue	\$113,246	\$0	\$12,865	\$96,746	\$0	\$795,084
Grant	\$55,475	\$0	\$0	\$0	\$10,249	\$307,455
Hennepin	\$2,829,249	\$299,841	\$49,813	\$920,567	\$111,417	\$9,749,530
Houston	\$82,975	\$0	\$4,211	\$68,316	\$13,860	\$339,714
Hubbard	\$55,475	\$0	\$0	\$12,479	\$0	\$532,687
Isanti	\$95,826	\$0	\$1,690	\$0	\$0	\$231,108
Itasca	\$109,002	\$0	\$4,834	\$4,092	\$0	\$505,812
Jackson	\$55,475	\$0	\$0	\$8,416	\$692	\$235,632
Kanabec	\$55,475	\$0	\$282	\$0	\$0	\$150,356
Kandiyohi	\$102,601	\$0	\$48,775	\$473,508	\$77,451	\$828,362
Kittson	\$55,475	\$0	\$5,412	\$31,137	\$15,808	\$249,017
Koochiching	\$55,475	\$0	\$3,220	\$26,223	\$830	\$252,510
Lac qui Parle	\$55,475	\$0	\$2,400	\$0	\$503	\$251,320
Lake	\$55,475	\$0	\$6,690	\$8,339	\$665	\$223,674
Lake of The Woods	\$55,475	\$0	\$0	\$20,204	\$0	\$197,873
Le Sueur	\$68,682	\$0	\$3,051	\$4,520	\$13,434	\$191,188
Lincoln	\$55,475	\$13,898	\$0	\$0	\$20,668	\$238,120
Lyon	\$61,233	\$0	\$50,326	\$2,423	\$13,819	\$503,105
Mahnomen	\$55,475	\$0	\$2,793	\$0	\$0	\$110,694
Marshall	\$55,475	\$0	\$0	\$13,024	\$6,785	\$100,429
Martin	\$55,475	\$0	\$0	\$0	\$5,139	\$343,572
McLeod	\$91,497	\$37,873	\$11,088	\$302,596	\$146,773	\$1,792,075
Meeker	\$57,184	\$0	\$3,306	\$0	\$790	\$95,541
Mille Lacs	\$64,632	\$0	\$5,636	\$0	\$0	\$233,991
Morrison	\$80,871	\$0	\$5,787	\$0	\$197,144	\$478,542
Mower	\$94,056	\$0	\$8,406	\$122,301	\$1,100	\$523,662
Murray	\$55,475	\$0	\$0	\$0	\$10,022	\$100,750

County Survey Responses
Finances: Revenue summary

County	Adjusted CY2008 revenue (carried over)	CY2009 revenue	Total revenue
Aitkin	\$179,538	\$270,612	\$450,151
Anoka	\$0	\$1,914,711	\$1,914,711
Becker	\$0	\$360,505	\$360,505
Beltrami	\$0	\$619,920	\$619,920
Benton	\$0	\$363,721	\$363,721
Big Stone	\$0	\$176,181	\$176,181
Blue Earth	\$0	\$309,958	\$309,958
Brown	\$0	\$388,914	\$388,914
Carlton	\$0	\$182,008	\$182,008
Carver	\$0	\$991,096	\$991,096
Cass	\$0	\$624,597	\$624,597
Chippewa	\$0	\$156,246	\$156,246
Chisago	\$0	\$388,763	\$388,763
Clay	\$5,653	\$793,838	\$799,491
Clearwater	\$0	\$156,577	\$156,577
Cook	\$0	\$363,141	\$363,141
Cottonwood	\$217,727	\$266,265	\$483,992
Crow Wing	\$0	\$792,806	\$792,806
Dakota	\$0	\$2,006,267	\$2,006,267
Dodge	\$112,070	\$233,226	\$345,296
Faribault	\$0	\$91,361	\$91,361
Fillmore	\$0	\$69,343	\$69,343
Freeborn	\$0	\$441,868	\$441,868
Goodhue	\$190,449	\$604,635	\$795,084
Grant	\$78,344	\$229,111	\$307,455
Hennepin	\$0	\$9,749,530	\$9,749,530
Houston	\$0	\$339,714	\$339,714
Hubbard	\$0	\$532,687	\$532,687
Isanti	\$109,635	\$121,473	\$231,108
Itasca	\$0	\$505,812	\$505,812
Jackson	\$157,180	\$78,452	\$235,632
Kanabec	\$80,730	\$69,626	\$150,356
Kandiyohi	\$0	\$828,362	\$828,362
Kittson	\$0	\$249,017	\$249,017
Koochiching	\$0	\$252,510	\$252,510
Lac qui Parle	\$94,332	\$156,988	\$251,320
Lake	\$0	\$223,674	\$223,674
Lake of The Woods	\$0	\$197,873	\$197,873
Le Sueur	\$0	\$191,188	\$191,188
Lincoln	\$27,740	\$210,380	\$238,120
Lyon	\$0	\$503,105	\$503,105
Mahnomen	\$38,557	\$72,137	\$110,694
Marshall	\$0	\$100,429	\$100,429
Martin	\$47,501	\$296,071	\$343,572
McLeod	\$0	\$1,792,075	\$1,792,075
Meeker	\$18,261	\$77,280	\$95,541
Mille Lacs	\$48,628	\$185,363	\$233,991
Morrison	\$0	\$478,542	\$478,542

County Survey Responses
Finances: Revenue summary

County	Adjusted CY2008 revenue (carried over)	CY2009 revenue	Total revenue
Mower	\$0	\$523,662	\$523,662
Murray	\$21,503	\$79,247	\$100,750
Nicollet	\$0	\$358,791	\$358,791
Nobles	\$146,337	\$401,223	\$547,560
Norman	\$0	\$102,509	\$102,509
Olmsted	\$158,811	\$1,447,593	\$1,606,404
Otter Tail	\$15,200	\$1,479,295	\$1,494,495
Pennington	\$70,908	\$70,174	\$141,082
Pine	\$0	\$269,512	\$269,512
Pipestone	\$0	\$293,219	\$293,219
Polk	\$190,327	\$471,885	\$662,212
Pope/Douglas	\$12,542	\$408,718	\$421,260
Ramsey	\$631,990	\$5,557,772	\$6,189,762
Red Lake	\$0	\$75,574	\$75,574
Redwood	\$40,553	\$629,680	\$670,233
Renville	\$39,649	\$258,237	\$297,886
Rice	\$0	\$1,400,902	\$1,400,902
Rock	\$0	\$139,289	\$139,289
Roseau	\$0	\$91,777	\$91,777
Scott	\$912,463	\$387,688	\$1,300,151
Sherburne	\$91,295	\$342,805	\$434,100
Sibley	\$0	\$201,757	\$201,757
St. Louis - partial	\$0	\$1,370,249	\$1,370,249
Stearns	\$39,299	\$610,648	\$649,947
Steele	\$0	\$480,969	\$480,969
Stevens	\$30,871	\$89,124	\$119,995
Swift	\$43,770	\$310,464	\$354,234
Todd	\$0	\$390,227	\$390,227
Traverse	\$0	\$69,344	\$69,344
Wabasha	\$0	\$125,511	\$125,511
Wadena	\$0	\$331,012	\$331,012
Waseca	\$0	\$332,261	\$332,261
Washington	\$0	\$1,891,467	\$1,891,467
Watonwan	\$403,775	\$248,289	\$652,064
Wilkin	\$0	\$208,128	\$208,128
Winona	\$52,753	\$870,392	\$923,145
WLSSD	\$0	\$2,503,393	\$2,503,393
Wright	\$673,869	\$409,306	\$1,083,175
Yellow Medicine	\$0	\$134,852	\$134,852
Metro Area	\$723,285	\$22,453,648	\$23,176,933
Greater Minn.	\$4,258,976	\$32,921,251	\$37,180,227
Minnesota	\$4,982,261	\$55,374,899	\$60,357,161

County Survey Responses
Finances: Expenditures by program area (part 1)

County	Planning & administration	Recycling	Yard waste	HHW and problem materials	Source reduction
Aitkin	\$140,328	\$70,121	\$497	\$11,774	\$400
Anoka	\$642,679	\$34,576	\$89,385	\$349,519	\$30,496
Becker	\$13,100	\$2,000	\$0	\$15,950	\$0
Beltrami	\$1	\$580,000	\$0	\$19,217	\$0
Benton	\$140,816	\$2,108	\$0	\$93,770	\$31,790
Big Stone	\$63,504	\$138,646	\$0	\$12,533	\$0
Blue Earth	\$64,887	\$144,249	\$0	\$71,819	\$0
Brown	\$29,301	\$305,034	\$0	\$48,137	\$0
Carlton	\$76,255	\$87,561	\$1,447	\$47,053	\$0
Carver	\$419,813	\$73,480	\$61,327	\$331,531	\$2,712
Cass	\$110,000	\$388,534	\$2,140	\$123,923	\$0
Chippewa	\$28,311	\$123,320	\$0	\$4,136	\$0
Chisago	\$165,716	\$50,584	\$0	\$142,266	\$0
Clay	\$201,789	\$236,873	\$51,060	\$93,884	\$0
Clearwater	\$28,321	\$89,645	\$1,345	\$35,502	\$0
Cook	\$242,108	\$112,336	\$0	\$8,398	\$0
Cottonwood	\$138,090	\$96,617	\$0	\$14,864	\$0
Crow Wing	\$237,717	\$41,220	\$36,031	\$164,451	\$0
Dakota	\$479,022	\$19,442	\$0	\$930,511	\$0
Dodge	\$40,737	\$232,579	\$13,671	\$8,822	\$13,671
Faribault	\$22,105	\$23,810	\$0	\$2,193	\$0
Fillmore	\$0	\$75,326	\$0	\$0	\$0
Freeborn	\$103,874	\$275,100	\$0	\$17,459	\$0
Goodhue	\$396,604	\$106,729	\$0	\$25,749	\$0
Grant	\$0	\$219,863	\$0	\$24,172	\$0
Hennepin	\$1,618,663	\$1,249,332	\$16,950	\$3,479,055	\$173,695
Houston	\$22,031	\$274,180	\$0	\$40,676	\$0
Hubbard	\$71,845	\$260,677	\$1,300	\$176,215	\$0
Isanti	\$42,658	\$54,600	\$0	\$11,420	\$0
Itasca	\$91,534	\$361,364	\$0	\$43,879	\$0
Jackson	\$30,526	\$16,894	\$0	\$14,406	\$0
Kanabec	\$3,387	\$57,906	\$0	\$4,467	\$0
Kandiyohi	\$271,189	\$479,923	\$0	\$77,250	\$0
Kittson	\$34,065	\$367	\$0	\$9,050	\$0
Koochiching	\$109,751	\$106,394	\$8,000	\$22,217	\$0
Lac qui Parle	\$21,065	\$61,669	\$0	\$17,167	\$0
Lake	\$32,778	\$130,942	\$847	\$59,102	\$1
Lake of The Woods	\$5,105	\$166,462	\$1,178	\$24,513	\$0
Le Sueur	\$48,250	\$43,050	\$0	\$52,037	\$0
Lincoln	\$51,448	\$139,707	\$100	\$6,481	\$50
Lyon	\$33,684	\$292,729	\$0	\$126,561	\$0
Mahnomen	\$43,904	\$13,490	\$0	\$20,045	\$0
Marshall	\$31,109	\$0	\$0	\$10,255	\$0
Martin	\$30,301	\$195,588	\$378	\$7,695	\$2,048
McLeod	\$650,558	\$916,070	\$30,255	\$70,382	\$44,130
Meeker	\$10,500	\$17,000	\$0	\$14,387	\$0
Mille Lacs	\$63,485	\$95,456	\$0	\$22,663	\$0
Morrison	\$31,995	\$124,933	\$4,955	\$262,284	\$0
Mower	\$94,445	\$456,294	\$0	\$8,556	\$0

County Survey Responses
Finances: Expenditures by program area (part 1)

County	Planning & administration	Recycling	Yard waste	HHW and problem materials	Source reduction
Murray	\$70,272	\$31,713	\$0	\$2,369	\$0
Nicollet	\$53,500	\$194,077	\$0	\$63,940	\$0
Nobles	\$93,575	\$472,589	\$0	\$27,651	\$0
Norman	\$18,959	\$69,557	\$0	\$12,666	\$0
Olmsted	\$65,297	\$784,565	\$117,491	\$474,525	\$134,025
Otter Tail	\$719,197	\$459,711	\$3,420	\$211,324	\$6,813
Pennington	\$20,180	\$8,631	\$0	\$9,199	\$0
Pine	\$46,400	\$108,600	\$0	\$1,200	\$1,200
Pipestone	\$25,825	\$166,329	\$0	\$3,737	\$0
Polk	\$38,248	\$281,586	\$7,050	\$73,204	\$0
Pope/Douglas	\$175,767	\$192,270	\$48,382	\$12,536	\$0
Ramsey	\$1,902,183	\$274,675	\$825,330	\$1,049,956	\$0
Red Lake	\$19,168	\$50,614	\$0	\$5,767	\$0
Redwood	\$305,378	\$304,228	\$0	\$62,577	\$0
Renville	\$102,729	\$110,785	\$0	\$56,623	\$0
Rice	\$508,867	\$919,368	\$40,000	\$164,217	\$500
Rock	\$67,383	\$52,007	\$3,255	\$12,751	\$900
Roseau	\$22,468	\$0	\$0	\$32,384	\$0
Scott	\$354,490	\$0	\$0	\$292,987	\$0
Sherburne	\$1,810	\$10,113	\$48,000	\$88,907	\$0
Sibley	\$47,670	\$33,884	\$0	\$53,016	\$0
St. Louis - partial	\$211,340	\$843,610	\$7,220	\$220,370	\$19,936
Stearns	\$172,059	\$53,063	\$15,044	\$160,872	\$15,044
Steele	\$115,569	\$335,027	\$0	\$10,270	\$0
Stevens	\$53,834	\$52,324	\$950	\$22,358	\$0
Swift	\$243,870	\$75,836	\$4,770	\$2,710	\$860
Todd	\$127,563	\$190,097	\$2,000	\$63,041	\$1,500
Traverse	\$76,109	\$32,716	\$0	\$7,869	\$0
Wabasha	\$63,741	\$44,800	\$0	\$16,970	\$0
Wadena	\$45,807	\$267,028	\$1,621	\$15,866	\$0
Waseca	\$83,278	\$177,432	\$1,034	\$68,179	\$0
Washington	\$275,934	\$29,205	\$0	\$1,041,307	\$8,146
Watonwan	\$5,514	\$226,846	\$0	\$20,335	\$0
Wilkin	\$28,910	\$130,530	\$3,956	\$43,290	\$0
Winona	\$284,528	\$586,644	\$0	\$71,421	\$0
WLSSD	\$1,402,843	\$385,438	\$108,742	\$334,183	\$0
Wright	\$70,270	\$3,639	\$398	\$84,575	\$0
Yellow Medicine	\$500	\$112,554	\$0	\$1,262	\$0
Metro Area	\$5,340,104	\$1,690,822	\$1,040,993	\$7,270,786	\$215,049
Greater Minn.	\$9,810,285	\$15,426,049	\$518,536	\$4,804,022	\$272,868
Minnesota	\$15,150,389	\$17,116,872	\$1,559,529	\$12,074,808	\$487,916

County Survey Responses
Finances: Expenditures by program area (part 2)

County	County grants to other			
	Education	Market development	Litter prevention	local units of government
Aitkin	\$4,644	\$0	\$0	\$0
Anoka	\$52,731	\$0	\$0	\$715,325
Becker	\$3,969	\$0	\$5,000	\$57,467
Beltrami	\$20,639	\$0	\$0	\$0
Benton	\$28,251	\$0	\$0	\$66,987
Big Stone	\$1,345	\$0	\$0	\$0
Blue Earth	\$29,003	\$0	\$0	\$0
Brown	\$6,441	\$0	\$0	\$0
Carlton	\$6,812	\$0	\$0	\$15,000
Carver	\$5,567	\$0	\$19,645	\$77,023
Cass	\$0	\$0	\$0	\$0
Chippewa	\$479	\$0	\$0	\$0
Chisago	\$30,009	\$0	\$188	\$0
Clay	\$15,879	\$0	\$0	\$0
Clearwater	\$1,765	\$0	\$0	\$0
Cook	\$300	\$0	\$0	\$0
Cottonwood	\$4,947	\$0	\$0	\$0
Crow Wing	\$13,532	\$0	\$267	\$299,588
Dakota	\$190,087	\$0	\$0	\$387,206
Dodge	\$34,916	\$900	\$0	\$0
Faribault	\$2,300	\$0	\$890	\$34,194
Fillmore	\$0	\$0	\$0	\$0
Freeborn	\$15,795	\$0	\$0	\$0
Goodhue	\$5,008	\$0	\$0	\$0
Grant	\$0	\$0	\$0	\$0
Hennepin	\$221,761	\$0	\$0	\$2,990,074
Houston	\$2,827	\$0	\$0	\$0
Hubbard	\$19,920	\$0	\$1,930	\$800
Isanti	\$0	\$0	\$0	\$3,000
Itasca	\$9,035	\$0	\$0	\$0
Jackson	\$10,277	\$0	\$0	\$0
Kanabec	\$1,983	\$0	\$0	\$0
Kandiyohi	\$0	\$0	\$0	\$0
Kittson	\$0	\$0	\$0	\$231,673
Koochiching	\$6,024	\$0	\$124	\$0
Lac qui Parle	\$1,079	\$0	\$0	\$0
Lake	\$1	\$2	\$1	\$0
Lake of The Woods	\$616	\$0	\$0	\$0
Le Sueur	\$30,201	\$0	\$0	\$17,651
Lincoln	\$3,588	\$0	\$100	\$0
Lyon	\$50,131	\$0	\$0	\$0
Mahnomen	\$2,057	\$0	\$0	\$0
Marshall	\$0	\$0	\$0	\$59,065
Martin	\$5,052	\$0	\$1,200	\$12,373
McLeod	\$30,681	\$0	\$62	\$49,937
Meeker	\$22,058	\$0	\$0	\$6,788
Mille Lacs	\$1,750	\$0	\$0	\$0
Morrison	\$669	\$0	\$0	\$53,706

County Survey Responses
Finances: Expenditures by program area (part 2)

County	Education	Market development	Litter prevention	County grants to other local units of government
Mower	\$8,466	\$0	\$0	\$0
Murray	\$4,475	\$0	\$0	\$0
Nicollet	\$47,274	\$0	\$0	\$0
Nobles	\$10,560	\$0	\$0	\$0
Norman	\$1,327	\$0	\$0	\$0
Olmsted	\$190,069	\$0	\$0	\$0
Otter Tail	\$76,086	\$0	\$2,645	\$0
Pennington	\$492	\$0	\$0	\$0
Pine	\$1,500	\$0	\$1,000	\$0
Pipestone	\$2,982	\$0	\$0	\$94,346
Polk	\$8,209	\$0	\$0	\$15,000
Pope/Douglas	\$13,344	\$0	\$0	\$0
Ramsey	\$446,922	\$0	\$0	\$1,050,831
Red Lake	\$25	\$0	\$0	\$0
Redwood	\$5,177	\$0	\$0	\$0
Renville	\$2,454	\$0	\$0	\$0
Rice	\$15,000	\$1,850	\$200	\$0
Rock	\$3,982	\$0	\$0	\$0
Roseau	\$0	\$0	\$0	\$131,030
Scott	\$80,425	\$0	\$0	\$0
Sherburne	\$58,757	\$0	\$0	\$92,905
Sibley	\$14,232	\$0	\$0	\$52,955
St. Louis - partial	\$64,592	\$0	\$0	\$3,181
Stearns	\$35,233	\$15,044	\$15,044	\$146,997
Steele	\$20,103	\$0	\$0	\$0
Stevens	\$6,135	\$0	\$0	\$0
Swift	\$8,305	\$0	\$0	\$0
Todd	\$5,726	\$0	\$300	\$0
Traverse	\$503	\$0	\$0	\$0
Wabasha	\$0	\$0	\$0	\$0
Wadena	\$689	\$0	\$0	\$0
Waseca	\$2,338	\$0	\$0	\$0
Washington	\$182,775	\$0	\$0	\$354,100
Watonwan	\$2,674	\$0	\$0	\$0
Wilkin	\$1,443	\$0	\$0	\$0
Winona	\$15,932	\$0	\$0	\$0
WLSSD	\$155,059	\$26,525	\$0	\$90,603
Wright	\$445	\$0	\$0	\$195,725
Yellow Medicine	\$2,775	\$0	\$0	\$0
Metro Area	\$1,158,601	\$0	\$19,645	\$5,667,464
Greater Minn.	\$1,232,009	\$44,321	\$28,951	\$1,638,067
Minnesota	\$2,390,609	\$44,321	\$48,595	\$7,305,531

**County Survey Responses
Finances: Balance Sheet**

County	Total revenues	Total expenditures	Balance
Aitkin	\$450,151	\$227,765	\$222,386
Anoka	\$1,914,711	\$1,914,711	\$0
Becker	\$360,505	\$97,486	\$263,019
Beltrami	\$619,920	\$619,857	\$63
Benton	\$363,721	\$363,721	\$0
Big Stone	\$176,181	\$216,027	(\$39,846)
Blue Earth	\$309,958	\$309,958	\$0
Brown	\$388,914	\$388,914	(\$0)
Carlton	\$182,008	\$234,128	(\$52,120)
Carver	\$991,096	\$991,096	\$0
Cass	\$624,597	\$624,597	\$0
Chippewa	\$156,246	\$156,246	(\$0)
Chisago	\$388,763	\$388,763	\$0
Clay	\$799,491	\$599,485	\$200,005
Clearwater	\$156,577	\$156,577	\$0
Cook	\$363,141	\$363,141	\$0
Cottonwood	\$483,992	\$254,518	\$229,474
Crow Wing	\$792,806	\$792,806	\$0
Dakota	\$2,006,267	\$2,006,268	(\$1)
Dodge	\$345,296	\$345,296	\$0
Faribault	\$91,361	\$85,492	\$5,869
Fillmore	\$69,343	\$75,326	(\$5,983)
Freeborn	\$441,868	\$412,228	\$29,640
Goodhue	\$795,084	\$534,089	\$260,995
Grant	\$307,455	\$244,035	\$63,420
Hennepin	\$9,749,530	\$9,749,530	\$0
Houston	\$339,714	\$339,714	\$0
Hubbard	\$532,687	\$532,687	\$0
Isanti	\$231,108	\$111,678	\$119,430
Itasca	\$505,812	\$505,812	(\$0)
Jackson	\$235,632	\$72,102	\$163,530
Kanabec	\$150,356	\$67,743	\$82,613
Kandiyohi	\$828,362	\$828,362	\$0
Kittson	\$249,017	\$275,156	(\$26,139)
Koochiching	\$252,510	\$252,510	\$0
Lac qui Parle	\$251,320	\$100,980	\$150,340
Lake	\$223,674	\$223,674	\$0
Lake of The Woods	\$197,873	\$197,873	(\$0)
Le Sueur	\$191,188	\$191,188	\$0
Lincoln	\$238,120	\$201,474	\$36,646
Lyon	\$503,105	\$503,105	\$0
Mahnomen	\$110,694	\$79,496	\$31,197
Marshall	\$100,429	\$100,429	\$0
Martin	\$343,572	\$254,635	\$88,937
McLeod	\$1,792,075	\$1,792,075	\$0
Meeker	\$95,541	\$70,733	\$24,808
Mille Lacs	\$233,991	\$183,354	\$50,637
Morrison	\$478,542	\$478,542	\$0
Mower	\$523,662	\$567,762	(\$44,100)

**County Survey Responses
Finances: Balance Sheet**

County	Total revenues	Total expenditures	Balance
Murray	\$100,750	\$108,828	(\$8,078)
Nicollet	\$358,791	\$358,791	\$0
Nobles	\$547,560	\$604,375	(\$56,815)
Norman	\$102,509	\$102,509	(\$0)
Olmsted	\$1,606,404	\$1,765,972	(\$159,568)
Otter Tail	\$1,494,495	\$1,479,195	\$15,300
Pennington	\$141,082	\$38,502	\$102,580
Pine	\$269,512	\$159,900	\$109,612
Pipestone	\$293,219	\$293,219	\$0
Polk	\$662,212	\$423,297	\$238,915
Pope/Douglas	\$421,260	\$442,299	(\$21,039)
Ramsey	\$6,189,762	\$5,549,898	\$639,864
Red Lake	\$75,574	\$75,574	\$0
Redwood	\$670,233	\$677,360	(\$7,127)
Renville	\$297,886	\$272,591	\$25,295
Rice	\$1,400,902	\$1,650,002	(\$249,100)
Rock	\$139,289	\$140,278	(\$989)
Roseau	\$91,777	\$185,882	(\$94,105)
Scott	\$1,300,151	\$727,901	\$572,249
Sherburne	\$434,100	\$300,493	\$133,607
Sibley	\$201,757	\$201,757	\$0
St. Louis - partial	\$1,370,249	\$1,370,249	\$0
Stearns	\$649,947	\$628,400	\$21,547
Steele	\$480,969	\$480,969	\$0
Stevens	\$119,995	\$135,602	(\$15,607)
Swift	\$354,234	\$336,351	\$17,883
Todd	\$390,227	\$390,227	\$0
Traverse	\$69,344	\$117,197	(\$47,853)
Wabasha	\$125,511	\$125,511	(\$0)
Wadena	\$331,012	\$331,012	(\$0)
Waseca	\$332,261	\$332,261	\$0
Washington	\$1,891,467	\$1,891,467	\$0
Watsonwan	\$652,064	\$255,369	\$396,695
Wilkin	\$208,128	\$208,128	\$0
Winona	\$923,145	\$958,525	(\$35,380)
WLSSD	\$2,503,393	\$2,503,393	(\$0)
Wright	\$1,083,175	\$355,051	\$728,124
Yellow Medicine	\$134,852	\$117,091	\$17,760
Metro Area	\$23,176,933	\$22,403,463	\$773,470
Greater Minn.	\$37,180,227	\$33,775,107	\$3,405,120
Minnesota	\$60,357,161	\$56,178,570	\$4,178,590

**County Survey Responses:
Paper collected for recycling (tons)**

County	Computer paper	Corrugated	Magazine/catalog	Mixed paper	Newsprint	Office paper	Other paper	Phone book	Total paper
Aitkin	0	461	0	357	0	0	0	0	818
Anoka	12	44,245	725	10,026	14,119	688	5,376	32	75,223
Becker	0	5,947	139	326	1,587	732	13	4	8,746
Beltrami	0	3,569	0	847	113	88	146	3	4,766
Benton	0	1,363	8,485	703	427	108	356	19	11,462
Big Stone	0	201	0	389	0	0	0	0	590
Blue Earth	0	16,002	1,367	5,260	3,241	182	0	0	26,052
Brown	0	4,160	0	3,479	913	37	1,775	0	10,364
Carlton	0	2,284	226	616	614	118	0	0	3,857
Carver	0	4,783	0	12,103	2,650	86	0	0	19,622
Cass	0	2,807	12	0	1,724	179	0	0	4,723
Chippewa	0	1,117	9	8	353	10	0	0	1,497
Chisago	0	2,229	0	0	2,408	247	0	25	4,909
Clay	0	2,914	157	562	1,025	317	1	28	5,004
Clearwater	0	199	0	73	0	0	0	2	274
Cook	0	479	91	37	86	0	0	0	693
Cottonwood	0	1,311	18	0	160	47	0	0	1,536
Crow Wing	0	5,281	120	2,265	1,219	2	0	0	8,887
Dakota	0	25,848	137	58,365	15,714	1,021	0	0	101,085
Dodge	0	597	47	788	0	82	5	0	1,519
Faribault	0	3,208	0	2,505	0	2	0	0	5,715
Fillmore	0	241	0	921	0	63	0	0	1,225
Freeborn	0	7,383	208	1	195	404	0	0	8,191
Goodhue	0	4,463	224	3,910	1,076	2,999	0	0	12,673
Grant	0	125	28	0	93	34	0	0	281
Hennepin	0	38,257	4,076	34,397	42,095	9,504	1,129	65	129,523
Houston	0	327	0	456	229	0	0	0	1,012
Hubbard	0	1,819	0	2	467	175	0	0	2,463
Isanti	0	2,238	5	287	964	7	0	0	3,500
Itasca	20	3,885	95	670	1,350	389	0	21	6,431
Jackson	0	1,254	0	0	454	28	0	0	1,735
Kanabec	0	509	0	0	137	0	0	0	646
Kandiyohi	91	3,853	309	740	693	4	53	31	5,774
Kittson	0	86	7	0	98	5	0	1	198
Koochiching	0	1,326	22	234	95	18	0	0	1,694
Lac qui Parle	0	584	0	0	320	52	0	0	957
Lake	0	385	127	29	244	39	0	0	824
Lake of The Woods	0	0	0	0	0	0	0	0	0
Le Sueur	0	1,122	0	732	95	98	0	0	2,047
Lincoln	0	282	0	41	237	0	0	0	560
Lyon	0	5,662	0	1,172	107	1	0	0	6,941
Mahnomen	0	200	5	1	40	0	0	0	245
Marshall	0	70	3	21	117	6	0	1	218
Martin	0	6,561	0	3,889	0	2	0	0	10,452
McLeod	0	2,039	1	126	1,057	27	110	0	3,360
Meeker	0	1,244	11	227	295	80	0	0	1,857
Mille Lacs	0	370	0	134	0	0	0	0	504

**County Survey Responses:
Paper collected for recycling (tons)**

County	Computer paper	Corrugated	Magazine/catalog	Mixed paper	Newsprint	Office paper	Other paper	Phone book	Total paper
Morrison	0	3,230	175	1,517	363	229	0	0	5,514
Mower	252	18,597	88	3	875	1	0	7	19,822
Murray	0	392	14	619	138	25	0	0	1,188
Nicollet	10	2,772	0	4,888	498	2,285	8	230	10,690
Nobles	0	3,854	0	602	188	274	0	0	4,917
Norman	0	37	0	0	30	0	0	1	68
Olmsted	0	11,040	517	7,376	2,047	1,694	5,965	19	28,659
Otter Tail	0	2,360	111	2	742	213	0	0	3,427
Pennington	0	1,223	106	1	227	66	0	0	1,623
Pine	120	856	0	385	0	3	780	0	2,145
Pipestone	0	1,018	1	63	370	0	1	0	1,453
Polk	0	2,179	56	505	0	94	0	7	2,840
Pope/Douglas	0	6,210	0	503	1,476	106	0	0	8,295
Ramsey	0	5,072	1,551	10,809	22,124	1,398	711	371	42,035
Red Lake	0	65	11	0	65	3	0	0	144
Redwood	115	3,026	205	199	267	500	0	0	4,312
Renville	0	398	0	424	607	0	0	0	1,429
Rice	0	10,328	0	4,271	0	2	0	0	14,602
Rock	0	618	0	0	188	32	0	0	837
Roseau	0	1,518	27	0	157	94	0	0	1,796
Scott	1,070	14,096	0	9,656	4,245	4	1,193	4	30,268
Sherburne	95	2,317	1,877	2,414	0	158	0	8	6,870
Sibley	0	112	0	288	101	3	0	0	503
St. Louis - partial	0	4,308	0	3,598	433	209	0	0	8,549
Stearns	0	10,161	8,673	7,739	2,137	1,507	8	58	30,284
Steele	0	2,926	2	2,077	0	65	2,834	0	7,904
Stevens	0	438	9	28	160	15	0	11	661
Swift	30	677	66	0	497	110	0	2	1,382
Todd	0	1,111	0	11,880	0	0	0	0	12,991
Traverse	0	106	26	0	81	17	0	0	230
Wabasha	0	5,362	68	0	680	15	0	0	6,124
Wadena	0	1,043	0	70	0	2	0	0	1,115
Waseca	0	2,977	66	24,615	234	1,462	50	8	29,411
Washington	0	12,060	289	14,175	18,868	11,400	163	94	57,048
Watsonwan	0	602	0	0	884	197	0	0	1,683
Wilkin	50	311	14	0	216	0	0	0	591
Winona	0	4,873	0	7,959	863	0	0	0	13,695
WLSSD	0	10,544	386	2,339	4,897	1,252	444	0	19,861
Wright	0	11,610	76	1,496	4,178	10	0	0	17,370
Yellow Medicine	0	514	0	194	164	10	0	0	882
									0
Metro Area	1,082	144,362	6,777	149,529	119,815	24,102	8,571	566	454,804
Greater MN	783	229,869	24,289	117,863	45,994	17,231	12,550	486	449,066
Minnesota	1,865	374,232	31,066	267,392	165,809	41,332	21,121	1,052	903,870

County Survey Responses
Metal collected for recycling (tons)

County	Aluminum	Co-mingled alum/steel/tin	Other ferrous & non-ferrous	Steel/tin cans	Total metal
Aitkin	116	0	1,048	89	1,253
Anoka	1,134	311	27,918	4,183	33,546
Becker	105	0	0	67	172
Beltrami	90	0	1,817	97	2,004
Benton	200	153	10,236	341	10,930
Big Stone	4	2	72	9	88
Blue Earth	9,585	0	7,658	1,199	18,442
Brown	246	0	3,966	198	4,410
Carlton	179	0	40	119	338
Carver	219	0	4,646	345	5,210
Cass	129	741	0	120	990
Chippewa	12	521	0	47	579
Chisago	270	0	542	220	1,032
Clay	91	6,588	0	97	6,776
Clearwater	17	25	540	0	582
Cook	16	0	100	34	150
Cottonwood	26	0	11	41	78
Crow Wing	221	0	12,370	414	13,005
Dakota	1,753	10,015	18,776	1,510	32,054
Dodge	12	0	2,386	105	2,503
Faribault	256	545	703	0	1,504
Fillmore	43	0	120	127	290
Freeborn	1,071	2,130	582	1,525	5,308
Goodhue	207	70	425	183	885
Grant	10	0	22	18	50
Hennepin	6,101	926	46,955	2,435	56,417
Houston	188	0	700	51	940
Hubbard	312	616	0	72	1,001
Isanti	304	106	3,358	1,703	5,470
Itasca	75	128	980	140	1,323
Jackson	29	0	592	24	645
Kanabec	0	8	45	739	792
Kandiyohi	214	3	5	72	293
Kittson	7	51	21	16	95
Koochiching	55	0	670	18	743
Lac qui Parle	28	146	275	572	1,021
Lake	21	0	0	33	54
Lake of The Woods	0	0	174	0	174
Le Sueur	28	976	806	419	2,228
Lincoln	57	32	10	0	98
Lyon	312	80	4,878	254	5,524
Mahnomen	8	0	50	8	66
Marshall	15	153	243	0	411
Martin	1,776	2,790	3,351	0	7,917
McLeod	102	17	212	59	390
Meeker	174	46	572	65	857
Mille Lacs	0	39	0	0	39
Morrison	0	172	6,941	0	7,114

County Survey Responses
Metal collected for recycling (tons)

County	Aluminum	Co-mingled alum/steel/tin	Other ferrous & non-ferrous	Steel/tin cans	Total metal
Mower	182	0	50	222	454
Murray	68	109	216	31	424
Nicollet	226	115	758	33	1,131
Nobles	76	4,252	0	0	4,328
Norman	12	0	674	0	686
Olmsted	875	1,007	3,746	950	6,577
Otter Tail	290	2,100	542	128	3,059
Pennington	0	44	0	0	44
Pine	155	0	1,106	20	1,281
Pipestone	20	0	112	42	174
Polk	134	64	2,778	0	2,976
Pope/Douglas	1,153	0	430	565	2,147
Ramsey	1,978	4,007	6,998	11,580	24,563
Red Lake	0	26	250	0	276
Redwood	774	0	2,954	56	3,784
Renville	4	592	12	0	608
Rice	559	550	1,242	511	2,862
Rock	23	0	544	20	587
Roseau	63	0	487	91	641
Scott	702	1,265	15,528	534	18,029
Sherburne	189	2,960	14,561	833	18,544
Sibley	6	67	101	84	259
St. Louis - partial	459	2,738	35,227	744	39,168
Stearns	1,115	14,189	28,303	1,225	44,833
Steele	46	0	93	81	219
Stevens	84	0	170	153	407
Swift	138	0	47	99	284
Todd	11	0	270	41	322
Traverse	22	3	300	20	345
Wabasha	70	0	3,000	312	3,381
Wadena	0	130	4,377	0	4,507
Waseca	104	0	786	28	918
Washington	1,590	330	5,100	791	7,811
Watonwan	20	0	0	6	26
Wilkin	28	0	43	14	85
Winona	951	0	10,701	52	11,704
WLSSD	590	1	9,292	458	10,341
Wright	208	297	4,524	841	5,870
Yellow Medicine	13	0	88	43	144
Metro Area	13,477	16,853	125,922	21,378	177,630
Greater Minn.	25,277	45,383	194,303	16,996	281,960
Minnesota	38,754	62,236	320,226	38,375	459,590

County Survey Responses
Glass collected for recycling (tons)

County	Food & beverage	Other glass	Total glass
Aitkin	112	0	112
Anoka	7,382	27	7,409
Becker	444	0	444
Beltrami	573	16	589
Benton	966	270	1,236
Big Stone	87	0	87
Blue Earth	1,090	0	1,090
Brown	454	0	454
Carlton	663	0	663
Carver	1,507	0	1,507
Cass	204	0	204
Chippewa	42	0	42
Chisago	670	0	670
Clay	541	0	541
Clearwater	0	0	0
Cook	201	0	201
Cottonwood	102	0	102
Crow Wing	1,108	183	1,291
Dakota	8,153	1,207	9,360
Dodge	321	315	636
Faribault	88	51	139
Fillmore	526	0	526
Freeborn	1,033	0	1,033
Goodhue	1,473	0	1,473
Grant	96	0	96
Hennepin	22,845	0	22,845
Houston	111	0	111
Hubbard	445	0	445
Isanti	327	85	412
Itasca	1,034	0	1,034
Jackson	113	0	113
Kanabec	0	72	72
Kandiyohi	434	0	434
Kittson	132	0	132
Koochiching	92	0	92
Lac qui Parle	64	0	64
Lake	79	0	79
Lake of The Woods	0	0	0
Le Sueur	325	0	325
Lincoln	83	0	83
Lyon	340	0	340
Mahnomen	23	0	23
Marshall	119	0	119
Martin	881	278	1,159
McLeod	511	0	511
Meeker	198	0	198
Mille Lacs	64	0	64
Morrison	440	0	440
Mower	301	0	301

County Survey Responses
Glass collected for recycling (tons)

County	Food & beverage	Other glass	Total glass
Murray	171	0	171
Nicollet	315	0	315
Nobles	212	0	212
Norman	65	0	65
Olmsted	1,032	1,349	2,381
Otter Tail	748	0	748
Pennington	60	0	60
Pine	302	20	322
Pipestone	134	0	134
Polk	254	0	254
Pope/Douglas	1,303	0	1,303
Ramsey	7,499	0	7,499
Red Lake	114	0	114
Redwood	323	0	323
Renville	507	0	507
Rice	1,105	3,876	4,981
Rock	109	0	109
Roseau	209	3,225	3,434
Scott	1,683	0	1,683
Sherburne	1,991	0	1,991
Sibley	121	0	121
St. Louis - partial	1,332	0	1,332
Stearns	3,946	1,087	5,033
Steele	613	25,722	26,335
Stevens	132	0	132
Swift	274	0	274
Todd	182	0	182
Traverse	33	0	33
Wabasha	526	0	526
Wadena	108	0	108
Waseca	140	0	140
Washington	2,867	0	2,867
Watonwan	51	0	51
Wilkin	47	0	47
Winona	1,092	0	1,092
WLSSD	2,200	662	2,862
Wright	1,151	0	1,151
Yellow Medicine	241	0	241
Metro Area	51,936	1,233	53,170
Greater Minn.	(51,936)	37,212	75,264
Minnesota		38,446	128,433

**County Survey Responses:
Plastic collected for recycling (tons)**

County	Film plastic	HDPE	Mixed plastic	Other plastic	PET	Polystyrene	Total Plastic
Aitkin	0	0	63	0	0	0	63
Anoka	98	271	1,133	372	139	3	2,017
Becker	24	1	106	450	0	0	582
Beltrami	36	128	0	7	1	0	173
Benton	18	482	82	53	20	1	654
Big Stone	0	8	2	0	9	0	20
Blue Earth	1,393	25	120	6	526	57	2,127
Brown	7	0	610	3	0	0	621
Carlton	0	0	455	7	0	0	462
Carver	71	0	721	0	0	50	842
Cass	0	40	42	0	79	0	161
Chippewa	15	3	57	4	1	25	105
Chisago	2	0	294	0	0	0	296
Clay	24	16	149	7	14	0	210
Clearwater	0	0	0	0	0	0	0
Cook	0	0	46	0	0	0	46
Cottonwood	0	5	55	0	0	0	59
Crow Wing	0	0	728	0	0	0	728
Dakota	38	3	5,306	0	2	0	5,349
Dodge	0	0	107	159	0	0	266
Faribault	9	12	228	5	0	0	254
Fillmore	0	0	153	0	0	0	153
Freeborn	13	0	947	0	0	0	961
Goodhue	19	77	29	0	77	0	202
Grant	0	0	31	0	0	0	31
Hennepin	99	76	13,780	0	295	0	14,250
Houston	0	0	395	1	0	0	396
Hubbard	9	0	105	0	0	0	114
Isanti	55	0	131	0	0	0	186
Itasca	40	71	280	7	150	0	549
Jackson	0	0	38	0	0	0	38
Kanabec	0	0	24	0	0	0	24
Kandiyohi	67	86	9	0	99	0	260
Kittson	0	1	19	0	3	0	23
Koochiching	0	18	0	0	16	0	33
Lac qui Parle	0	0	10	0	44	0	54
Lake	0	0	50	0	0	0	50
Lake of The Woods	0	0	0	0	0	0	0
Le Sueur	9	7	119	950	0	0	1,084
Lincoln	0	7	5	0	10	0	22
Lyon	15	0	181	0	1	0	197
Mahnomen	0	0	9	0	0	0	9
Marshall	0	3	21	0	6	0	30
Martin	19	32	842	6	0	0	899
McLeod	1,099	0	266	5	1	108	1,478
Meeker	11	71	0	4	0	0	86
Mille Lacs	0	0	38	0	0	0	38
Morrison	5	24	127	25	24	0	204

**County Survey Responses:
Plastic collected for recycling (tons)**

County	Film plastic	HDPE	Mixed plastic	Other plastic	PET	Polystyrene	Total Plastic
Mower	37	108	0	6	65	0	216
Murray	0	2	68	28	0	0	98
Nicollet	0	61	306	139	162	0	668
Nobles	19	1	319	1,013	0	0	1,352
Norman	0	0	0	0	0	0	0
Olmsted	84	2	527	80	3	26	720
Otter Tail	7	92	0	64	145	0	308
Pennington	6	0	34	0	0	0	40
Pine	13	34	0	113	24	0	184
Pipestone	0	0	80	271	0	0	351
Polk	37	0	93	2	0	0	132
Pope/Douglas	72	1	341	23	1	0	437
Ramsey	107	580	662	10	651	0	2,011
Red Lake	0	0	13	0	0	0	13
Redwood	295	78	130	3	46	0	552
Renville	0	0	89	0	0	0	89
Rice	47	1	1,041	6	1	0	1,095
Rock	0	2	12	6	23	0	43
Roseau	204	0	66	83	0	0	353
Scott	81	1	663	330	101	0	1,176
Sherburne	32	210	409	23	7	0	681
Sibley	0	0	26	0	0	0	26
St. Louis - partial	20	226	12	0	243	0	502
Stearns	128	1,380	456	246	97	156	2,463
Steele	68	0	149	128	0	0	345
Stevens	0	28	0	20	22	0	70
Swift	0	62	0	0	61	0	123
Todd	25	0	55	0	0	0	80
Traverse	0	0	22	0	0	0	22
Wabasha	0	0	255	0	0	0	255
Wadena	12	9	130	4	0	0	155
Waseca	8	34	78	81	63	0	263
Washington	160	4	1,206	0	30	0	1,400
Watonwan	0	0	11	0	0	0	11
Wilkin	0	0	13	0	0	0	13
Winona	0	0	401	0	0	0	401
WLSSD	199	210	730	10	159	3	1,310
Wright	40	0	2,625	11	1	0	2,677
Yellow Medicine	0	0	54	0	0	0	54
Metro Area	654	934	23,471	712	1,219	53	27,044
Greater Minn.	4,241	3,655	15,514	4,058	2,205	375	30,048
Minnesota	4,895	4,590	38,986	4,770	3,424	428	57,092

County Survey Responses
Organics collected for recycling (tons) - Part 1

County	Food to livestock	Food to people	Source- separated organics	Total organics
Aitkin	0	0	0	0
Anoka	3,200	281	0	3,481
Becker	0	0	0	0
Beltrami	0	0	0	0
Benton	0	0	0	0
Big Stone	0	0	89	89
Blue Earth	0	0	0	0
Brown	1,670	0	0	1,670
Carlton	0	0	233	233
Carver	9,740	0	453	10,193
Cass	0	0	0	0
Chippewa	0	0	0	0
Chisago	105	0	0	105
Clay	5,977	80	0	6,056
Clearwater	0	0	0	0
Cook	0	0	0	0
Cottonwood	22	0	0	22
Crow Wing	0	0	2,144	2,144
Dakota	13,897	0	215	14,112
Dodge	0	0	0	0
Faribault	0	0	0	0
Fillmore	0	0	0	0
Freeborn	0	0	0	0
Goodhue	350	0	0	350
Grant	0	0	0	0
Hennepin	36,010	0	6,862	42,872
Houston	0	0	0	0
Hubbard	0	0	0	0
Isanti	486	0	0	486
Itasca	0	0	0	0
Jackson	24	0	0	24
Kanabec	0	0	0	0
Kandiyohi	156	0	0	156
Kittson	17	0	0	17
Koochiching	0	0	0	0
Lac qui Parle	0	0	15	15
Lake	0	0	0	0
Lake of The Woods	0	0	0	0
Le Sueur	5,600	0	0	5,600
Lincoln	0	8	0	8
Lyon	41	97	0	138
Mahnomen	0	0	0	0
Marshall	0	0	0	0
Martin	0	0	0	0
McLeod	0	0	2,091	2,091
Meeker	0	0	0	0
Mille Lacs	0	0	0	0

County Survey Responses
Organics collected for recycling (tons) - Part 1

County	Food to livestock	Food to people	Source- separated organics	Total organics
Morrison	0	0	0	0
Mower	0	0	0	0
Murray	34	5	0	39
Nicollet	175	0	0	175
Nobles	119	24	0	143
Norman	0	0	0	0
Olmsted	534	0	0	534
Otter Tail	0	0	0	0
Pennington	0	0	0	0
Pine	750	0	0	750
Pipestone	82	0	0	82
Polk	2,319	0	0	2,319
Pope/Douglas	2	0	0	2
Ramsey	33,348	500	41	33,889
Red Lake	0	0	0	0
Redwood	1,850	584	0	2,434
Renville	650	240	0	890
Rice	25,942	0	68	26,010
Rock	0	0	0	0
Roseau	0	0	0	0
Scott	896	0	92	988
Sherburne	491	0	50	541
Sibley	5,193	0	0	5,193
St. Louis - partial	0	0	0	0
Stearns	0	0	0	0
Steele	0	0	0	0
Stevens	0	0	0	0
Swift	0	0	1,435	1,435
Todd	0	0	0	0
Traverse	0	0	0	0
Wabasha	4,369	0	0	4,369
Wadena	0	0	0	0
Waseca	0	0	0	0
Washington	4,390	0	0	4,390
Watonwan	0	0	0	0
Wilkin	0	0	0	0
Winona	1,460	0	0	1,460
WLSSD	158	188	2,103	2,449
Wright	2	0	0	2
Yellow Medicine	0	0	0	0
Metro Area	101,482	781	7,663	109,926
Greater Minn.	58,576	1,226	8,228	68,029
Minnesota	160,057	2,007	15,891	177,955

County Survey Responses
Textiles, other collected for recycling (tons) - Part 2

County	Carpet	Textiles	Pallets	Unspecified or Other	Mattresses & box springs	Total
Aitkin	0	13	0	3	0	15
Anoka	0	4,280	1,777	3,253	0	9,309
Becker	0	93	837	0	0	930
Beltrami	0	0	0	0	0	0
Benton	0	0	0	0	0	0
Big Stone	0	7	0	0	0	7
Blue Earth	7	2,100	14,050	0	0	16,157
Brown	0	0	569	301	0	871
Carlton	0	0	0	0	32	32
Carver	40	148	727	0	0	915
Cass	0	45	0	546	0	591
Chippewa	0	0	0	150	0	150
Chisago	0	100	25	0	4	129
Clay	0	266	206	0	3	474
Clearwater	0	15	0	0	0	15
Cook	0	0	0	37	0	37
Cottonwood	0	0	2,400	0	0	2,400
Crow Wing	0	207	0	9	66	282
Dakota	0	3,185	13,787	38,681	0	55,653
Dodge	0	0	257	0	0	257
Faribault	0	15	0	0	0	15
Fillmore	0	9	60	874	0	943
Freeborn	0	1	77	0	0	78
Goodhue	0	26	5	0	0	31
Grant	0	0	0	129	0	129
Hennepin	0	0	22	285,204	65	285,291
Houston	0	30	0	0	0	30
Hubbard	0	158	0	0	0	158
Isanti	0	0	84	0	17	101
Itasca	4	0	0	0	0	4
Jackson	0	78	883	300	0	1,261
Kanabec	0	0	0	296	16	312
Kandiyohi	0	0	0	0	0	0
Kittson	0	0	0	1	0	1
Koochiching	0	0	4	10	0	14
Lac qui Parle	0	34	70	4	0	107
Lake	0	0	0	26	2	28
Lake of The Woods	0	0	0	0	0	0
Le Sueur	0	1	1,040	1	0	1,042
Lincoln	0	66	0	0	0	66
Lyon	8	907	1,291	2,295	0	4,501
Mahnomen	0	0	0	0	0	0
Marshall	0	0	0	0	0	0
Martin	0	6	0	0	0	6
McLeod	0	0	264	1,323	0	1,587
Meeker	0	0	900	130	0	1,030
Mille Lacs	0	0	0	0	6	6
Morrison	0	53	823	3	17	896

County Survey Responses
Textiles, other collected for recycling (tons) - Part 2

County	Carpet	Textiles	Pallets	Unspecified or Other	Mattresses & box springs	Total
Mower	0	120	7,110	0	0	7,230
Murray	0	129	113	1	0	242
Nicollet	0	6	664	1	0	671
Nobles	0	334	1,914	0	0	2,248
Norman	0	0	0	2	0	2
Olmsted	530	494	103	0	0	1,128
Otter Tail	0	0	0	0	0	0
Pennington	0	0	0	0	0	0
Pine	0	0	25	0	15	40
Pipestone	0	215	1,655	0	0	1,870
Polk	0	0	0	5	0	5
Pope/Douglas	120	298	33	0	0	451
Ramsey	0	1,138	2,384	167,846	0	171,368
Red Lake	0	0	0	0	0	0
Redwood	20	1,230	550	6,491	0	8,290
Renville	0	45	0	0	0	45
Rice	0	341	3,278	0	0	3,619
Rock	0	45	448	0	0	493
Roseau	0	0	885	0	0	885
Scott	146	92	4,024	0	0	4,262
Sherburne	0	0	252	0	5	257
Sibley	57	0	11	15	0	83
St. Louis - partial	0	0	0	0	80	80
Stearns	0	0	1,982	0	0	1,982
Steele	0	200	1,765	21	0	1,986
Stevens	0	0	0	0	0	0
Swift	0	0	0	0	0	0
Todd	0	0	0	0	0	0
Traverse	0	0	0	1	0	1
Wabasha	0	0	32	0	0	32
Wadena	0	0	0	0	10	10
Waseca	0	102	97	0	0	199
Washington	0	76	267	3,181	0	3,524
Watonwan	0	0	0	0	0	0
Wilkin	0	0	0	0	0	0
Winona	0	0	3,600	0	0	3,600
WLSSD	50	1,656	500	302	0	2,508
Wright	0	55	0	0	0	55
Yellow Medicine	0	116	0	140	0	256
						0
Metro Area	186	8,917	22,989	498,165	65	530,322
Greater Minn.	796	9,615	48,859	13,413	273	72,956
Minnesota	982	18,532	71,848	511,578	338	603,278

County Survey Responses
Problem materials (banned) collected for recycling (tons)

County	Antifreeze	Electronics	Fluorescent & HID lamps	HHW	Latex paint	Major appliances	Used oil	Used oil filters	Vehicle batteries	Waste tires	Total problem mats
Aitkin	0	24	2	4	2	103	67	9	99	114	423
Anoka	88	312	28	4	90	2,012	268	157	2,058	671	5,687
Becker	1	91	4	2	10	546	43	15	198	148	1,058
Beltrami	3	150	4	19	11	412	35	21	271	163	1,089
Benton	0	19	0	4	5	241	32	19	246	80	647
Big Stone	1	11	2	1	1	33	34	19	34	20	156
Blue Earth	48	0	0	11	11	646	341	124	1,227	1,985	4,393
Brown	0	10	4	24	16	157	147	17	161	57	594
Carlton	4	50	2	3	12	223	255	36	210	174	969
Carver	2	493	8	54	74	547	73	43	560	182	2,036
Cass	0	77	10	17	8	172	23	13	176	360	856
Chippewa	0	0	0	0	0	75	10	6	77	270	438
Chisago	4	108	3	111	55	683	49	24	310	196	1,543
Clay	24	125	12	7	18	461	266	27	348	363	1,650
Clearwater	0	16	5	5	1	49	7	4	52	42	181
Cook	0	0	0	0	0	33	9	3	33	11	89
Cottonwood	0	13	1	1	3	89	9	5	69	159	348
Crow Wing	8	182	24	1	18	472	50	45	411	220	1,430
Dakota	118	5,269	111	82	210	2,404	321	188	2,459	801	11,963
Dodge	0	49	0	0	0	119	16	9	121	54	367
Faribault	2	22	1	2	1	94	12	8	96	37	275
Fillmore	3	302	6	0	18	157	17	11	138	42	692
Freeborn	1	30	2	11	8	187	25	15	191	62	532
Goodhue	0	37	6	0	0	276	37	22	282	92	752
Grant	0	29	2	3	3	36	5	3	37	12	130
Hennepin	36	2,923	32	69	769	7,015	935	546	7,176	2,338	21,839
Houston	0	97	3	4	0	117	16	9	120	197	563
Hubbard	0	243	9	1	1	113	38	9	116	470	1,000
Isanti	0	29	1	3	4	236	31	18	240	78	642
Itasca	2	110	0	0	0	1,200	36	21	274	99	1,742
Jackson	0	14	2	1	2	66	9	5	68	22	189
Kanabec	0	62	2	0	0	138	13	8	100	197	521
Kandiyohi	0	0	0	0	0	250	33	19	256	83	641
Kittson	0	4	1	0	2	28	4	2	28	9	78
Koochiching	0	27	1	2	0	80	11	6	82	27	234
Lac qui Parle	1	5	2	5	8	44	30	3	45	32	175
Lake	2	17	1	4	3	65	55	6	67	22	242
Lake of The Woods	0	0	1	2	1	24	3	2	25	58	115
Le Sueur	2	26	11	3	6	168	47	13	172	135	582
Lincoln	0	19	0	3	0	36	22	3	37	40	160
Lyon	0	22	8	0	0	150	20	12	153	50	415
Mahnomen	0	6	0	0	0	31	4	2	31	10	85
Marshall	1	4	1	1	1	60	8	5	61	40	182
Martin	3	41	23	4	1	136	19	13	152	67	459
McLeod	2	17	0	2,246	14	224	30	17	229	75	2,853
Meeker	0	60	20	9	8	139	19	11	142	46	453
Mille Lacs	0	22	1	8	6	158	21	12	162	53	443
Morrison	3	140	4	0	37	214	129	15	202	398	1,142
Mower	3	16	1	0	15	229	31	18	234	76	622

County Survey Responses
Problem materials (banned) collected for recycling (tons)

County	Antifreeze	Electronics	Fluorescent & HID lamps	HHW	Latex paint	Major appliances	Used oil	Used oil filters	Vehicle batteries	Waste tires	Total problem mats
Murray	0	0	1	3	0	51	7	4	52	17	135
Nicollet	3	105	25	5	7	193	45	15	197	76	672
Nobles	46	17	4	4	4	122	366	15	125	257	960
Norman	0	14	2	0	1	41	5	3	42	14	122
Olmsted	29	952	39	40	32	860	115	67	880	460	3,474
Otter Tail	1	148	5	34	37	341	46	27	349	114	1,102
Pennington	0	23	2	0	4	82	11	6	84	27	240
Pine	1	32	2	0	0	1,266	23	13	174	68	1,578
Pipestone	0	49	5	5	0	85	7	4	72	20	248
Polk	0	53	2	6	7	185	25	14	189	96	577
Pope/Douglas	22	457	22	7	14	284	38	22	290	95	1,250
Ramsey	13	6	28	0	303	3,106	414	242	3,178	1,035	8,327
Red Lake	0	1	1	2	1	25	10	6	26	8	79
Redwood	47	517	31	13	9	230	466	19	472	1,328	3,132
Renville	0	76	5	2	6	224	15	8	105	104	545
Rice	77	160	16	39	48	380	51	30	412	127	1,340
Rock	0	7	1	2	3	57	8	4	58	336	477
Roseau	2	33	10	3	3	294	18	7	108	99	577
Scott	240	513	16	361	117	786	1,184	96	804	262	4,378
Sherburne	1	140	7	0	91	529	70	41	541	176	1,598
Sibley	2	14	5	10	3	94	12	7	93	92	332
St. Louis - partial	218	301	4	89	0	3,587	402	38	494	746	5,878
Stearns	13	160	4	0	0	892	119	69	913	297	2,468
Steele	0	98	6	4	12	221	29	17	226	74	687
Stevens	0	53	2	9	0	58	8	5	60	19	213
Swift	0	20	3	0	0	68	9	5	69	23	197
Todd	1	27	2	0	0	143	19	11	146	50	400
Traverse	0	0	1	0	1	22	3	2	23	7	59
Wabasha	0	0	0	0	0	133	18	10	136	44	342
Wadena	0	24	1	1	3	81	11	6	170	27	325
Waseca	0	56	2	3	0	117	18	16	119	107	438
Washington	10	657	18	0	205	1,422	293	117	1,454	474	4,648
Watonwan	0	1	0	0	3	68	9	5	69	23	178
Wilkin	0	0	2	1	1	40	8	3	40	13	108
Winona	0	59	4	25	21	301	40	23	308	100	882
WLSSD	48	663	24	9	57	694	92	107	710	231	2,634
Wright	2	186	21	26	24	724	97	56	741	241	2,118
Yellow Medicine	0	5	0	3	0	139	8	5	63	21	243
Metro Area	507	10,173	241	569	1,768	17,292	3,487	1,388	17,689	5,764	58,878
Greater MN	632	6,778	439	2,864	701	21,801	4,344	1,377	16,340	12,484	67,760
Minnesota	1,139	16,951	680	3,433	2,468	39,093	7,831	2,765	34,030	18,248	126,638

**County Survey Responses
Wastes generated (tons)**

County	Estimated tons of MSW not collected	Problem mats not collected for recycling	Tons collected for recycling	Tons to MSW - Landfill disposal	Tons to MSW - Processing Facilities	Total tons generated
Aitkin	275	249	2,684	8,907	0	12,115
Anoka	0	8456	136,671	48,390	128,974	322,492
Becker	252	659	11,932	16,602	0	29,445
Beltrami	0	973	8,621	10,332	12,791	32,717
Benton	2673	1012	24,930	8,232	6,939	43,787
Big Stone	840	93	1,036	2,296	0	4,265
Blue Earth	1279	635	68,261	26,309	14,993	111,477
Brown	1480	517	18,982	9,446	617	31,042
Carlton	685	512	6,554	12,471	0	20,221
Carver	294	2301	40,326	40,108	3,659	86,688
Cass	0	484	7,525	14,199	0	22,208
Chippewa	1679	212	2,811	7,134	0	11,836
Chisago	420	1094	8,684	21,960	0	32,158
Clay	833	877	20,711	29,953	0	52,375
Clearwater	126	180	1,052	1,481	2,508	5,347
Cook	29	132	1,215	4,018	0	5,394
Cottonwood	1006	173	4,545	6,044	0	11,769
Crow Wing	239	1353	27,767	35,545	0	64,903
Dakota	0	10104	229,576	173,140	41,748	454,568
Dodge	893	484	5,549	3,349	4,845	15,120
Faribault	2180	345	7,902	312	6,886	17,624
Fillmore	3022	483	3,829	5,088	760	13,182
Freeborn	315	781	16,101	28,524	0	45,720
Goodhue	420	1156	16,366	4,165	21,889	43,995
Grant	742	145	716	0	2,231	3,833
Hennepin	0	29480	573,038	355,077	429,051	1,386,646
Houston	546	331	3,052	377	4,111	8,416
Hubbard	0	298	5,180	14,148	0	19,626
Isanti	1259	987	10,798	21,636	3	34,683
Itasca	371	1049	11,083	26,665	0	39,169
Jackson	840	268	4,004	4,260	608	9,979
Kanabec	27	250	2,367	7,498	0	10,142
Kandiyohi	840	1040	7,559	25,043	0	34,481
Kittson	84	111	544	1,610	0	2,349
Koochiching	315	330	2,811	7,456	0	10,912
Lac qui Parle	1424	139	2,393	2,928	0	6,883
Lake	420	226	1,277	5,487	0	7,410
Lake of The Woods	17	66	289	2,595	0	2,966
Le Sueur	1039	605	12,909	8,892	6,674	30,119
Lincoln	497	98	998	1,636	0	3,228
Lyon	812	630	18,056	15,943	0	35,440
Mahnomen	91	126	427	46	1,076	1,766
Marshall	315	211	961	4,506	0	5,992
Martin	2375	462	20,892	0	9,129	32,858
McLeod	2099	931	12,272	17,801	0	33,102
Meeker	1259	581	4,481	9,299	0	15,620
Mille Lacs	1049	665	1,093	16,469	0	19,277
Morrison	378	442	15,309	12,490	0	28,619

**County Survey Responses
Wastes generated (tons)**

County	Estimated tons of MSW not collected	Problem mats not collected for recycling	Tons collected for recycling	Tons to MSW - Landfill disposal	Tons to MSW - Processing Facilities	Total tons generated
Mower	1238	961	28,645	28,682	0	59,527
Murray	756	210	2,296	2,882	0	6,145
Nicollet	1066	779	14,321	7,426	9,454	33,047
Nobles	944	40	14,161	13,310	0	28,455
Norman	23	165	943	392	2,960	4,481
Olmsted	2373	3443	43,473	21,777	56,393	127,458
Otter Tail	831	1421	8,645	11,378	17,237	39,511
Pennington	1637	346	2,008	9,808	0	13,799
Pine	1679	660	6,299	17,176	0	25,814
Pipestone	1196	216	4,312	4,664	0	10,388
Polk	182	742	9,101	5,961	11,388	27,374
Pope/Douglas	504	1192	13,885	1,880	24,731	42,191
Ramsey	0	13057	289,691	146,075	187,458	636,281
Red Lake	8	98	625	1,470	0	2,202
Redwood	1196	0	22,827	7,173	0	31,196
Renville	2057	298	4,113	7,735	0	14,202
Rice	2560	1576	54,508	41,927	0	100,572
Rock	420	164	2,546	3,923	0	7,053
Roseau	682	298	7,686	8,837	0	17,503
Scott	10	2216	60,783	59,090	7,059	129,159
Sherburne	168	2222	30,481	29,347	15,820	78,039
Sibley	462	311	6,518	5,675	756	13,722
St. Louis - partial	333	985	55,508	51,890	0	108,716
Stearns	1259	3749	87,062	41,200	25,807	159,079
Steele	1007	928	37,476	26,564	0	65,975
Stevens	401	243	1,483	5,646	19	7,792
Swift	1054	266	3,695	3,707	0	8,722
Todd	840	600	13,975	4,303	6,284	26,001
Traverse	504	88	690	1,126	0	2,408
Wabasha	614	548	15,030	0	8,701	24,892
Wadena	378	330	6,220	1,060	6,248	14,235
Waseca	78	400	31,369	4,974	3,231	40,053
Washington	0	5866	81,688	21,329	69,334	178,217
Watonwan	986	275	1,949	8,324	0	11,534
Wilkin	840	157	843	1,423	0	3,263
Winona	1217	1257	32,834	25,117	348	60,773
WLSSD	2796	2909	41,964	56,097	0	103,766
Wright	1343	3044	29,242	72,059	0	105,688
Yellow Medicine	1049	236	1,821	4,477	0	7,583
Metro Area	304	71,480	1,411,774	843,209	867,283	3,194,051
Greater Minn.	70,122	53,549	1,045,082	1,002,540	285,436	2,456,730
Minnesota	70,426	125,030	2,456,856	1,845,748	1,152,720	5,650,780

County Survey Responses
Recycling rate

County	Tons collected for recycling	Total MSW generated	Percent of MSW collected for recycling	Source reduction credit	Yard waste credit	Recycling rate with credits
Aitkin	2,684	12,115	22.2%	3%	5%	30.2%
Anoka	136,671	322,492	42.4%	3%	5%	50.4%
Becker	11,932	29,445	40.5%	3%	5%	48.5%
Beltrami	8,621	32,717	26.3%	0%	5%	31.3%
Benton	24,930	43,787	56.9%	2%	5%	63.9%
Big Stone	1,036	4,265	24.3%	2%	3%	29.3%
Blue Earth	68,261	111,477	61.2%	3%	5%	69.2%
Brown	18,982	31,042	61.1%	1%	0%	62.1%
Carlton	6,554	20,221	32.4%	3%	5%	40.4%
Carver	40,326	86,688	46.5%	3%	5%	54.5%
Cass	7,525	22,208	33.9%	0%	5%	38.9%
Chippewa	2,811	11,836	23.8%	0%	5%	28.8%
Chisago	8,684	32,158	27.0%	3%	5%	35.0%
Clay	20,711	52,375	39.5%	3%	5%	47.5%
Clearwater	1,052	5,347	19.7%	3%	0%	22.7%
Cook	1,215	5,394	22.5%	3%	5%	30.5%
Cottonwood	4,545	11,769	38.6%	1%	5%	44.6%
Crow Wing	27,767	64,903	42.8%	8%	5%	55.8%
Dakota	229,576	454,568	50.5%	3%	5%	58.5%
Dodge	5,549	15,120	36.7%	3%	5%	44.7%
Faribault	7,902	17,624	44.8%	3%	5%	52.8%
Fillmore	3,829	13,182	29.0%	2%	5%	36.0%
Freeborn	16,101	45,720	35.2%	3%	5%	43.2%
Goodhue	16,366	43,995	37.2%	0%	5%	42.2%
Grant	716	3,833	18.7%	0%	5%	23.7%
Hennepin	573,038	1,386,646	41.3%	3%	5%	49.3%
Houston	3,052	8,416	36.3%	3%	5%	44.3%
Hubbard	5,180	19,626	26.4%	3%	5%	34.4%
Isanti	10,798	34,683	31.1%	2%	5%	38.1%
Itasca	11,083	39,169	28.3%	2%	5%	35.3%
Jackson	4,004	9,979	40.1%	3%	5%	48.1%
Kanabec	2,367	10,142	23.3%	2%	5%	30.3%
Kandiyohi	7,559	34,481	21.9%	2%	5%	28.9%
Kittson	544	2,349	23.2%	3%	5%	31.2%
Koochiching	2,811	10,912	25.8%	1%	5%	31.8%
Lac qui Parle	2,393	6,883	34.8%	3%	0%	37.8%
Lake	1,277	7,410	17.2%	1%	5%	23.2%
Lake of The Woods	289	2,966	9.7%	1%	5%	15.7%
Le Sueur	12,909	30,119	42.9%	3%	5%	50.9%
Lincoln	998	3,228	30.9%	3%	5%	38.9%
Lyon	18,056	35,440	50.9%	3%	5%	58.9%
Mahnomen	427	1,766	24.2%	3%	5%	32.2%
Marshall	961	5,992	16.0%	3%	5%	24.0%
Martin	20,892	32,858	63.6%	3%	5%	71.6%
McLeod	12,272	33,102	37.1%	2%	5%	44.1%
Meeker	4,481	15,620	28.7%	3%	5%	36.7%
Mille Lacs	1,093	19,277	5.7%	0%	5%	10.7%
Morrison	15,309	28,619	53.5%	3%	5%	61.5%
Mower	28,645	59,527	48.1%	2%	5%	55.1%
Murray	2,296	6,145	37.4%	3%	5%	45.4%

County Survey Responses
Recycling rate

County	Tons collected for recycling	Total MSW generated	Percent of MSW collected for recycling	Source reduction credit	Yard waste credit	Recycling rate with credits
Nicollet	14,321	33,047	43.3%	3%	5%	51.3%
Nobles	14,161	28,455	49.8%	3%	5%	57.8%
Norman	943	4,481	21.0%	0%	5%	26.0%
Olmsted	43,473	127,458	34.1%	3%	5%	42.1%
Otter Tail	8,645	39,511	21.9%	3%	5%	29.9%
Pennington	2,008	13,799	14.5%	3%	5%	22.5%
Pine	6,299	25,814	24.4%	1%	5%	30.4%
Pipestone	4,312	10,388	41.5%	3%	5%	49.5%
Polk	9,101	27,374	33.2%	3%	5%	41.2%
Pope/Douglas	13,885	42,191	32.9%	3%	5%	40.9%
Ramsey	289,691	636,281	45.5%	3%	5%	53.5%
Red Lake	625	2,202	28.4%	3%	5%	36.4%
Redwood	22,827	31,196	73.2%	3%	5%	81.2%
Renville	4,113	14,202	29.0%	3%	5%	37.0%
Rice	54,508	100,572	54.2%	3%	5%	62.2%
Rock	2,546	7,053	36.1%	3%	5%	44.1%
Roseau	7,686	17,503	43.9%	3%	5%	51.9%
Scott	60,783	129,159	47.1%	3%	5%	55.1%
Sherburne	30,481	78,039	39.1%	3%	5%	47.1%
Sibley	6,518	13,722	47.5%	3%	5%	55.5%
St. Louis - partial	55,508	108,716	51.1%	3%	5%	59.1%
Stearns	87,062	159,079	54.7%	2%	5%	61.7%
Steele	37,476	65,975	56.8%	3%	5%	64.8%
Stevens	1,483	7,792	19.0%	3%	5%	27.0%
Swift	3,695	8,722	42.4%	3%	5%	50.4%
Todd	13,975	26,001	53.7%	2%	5%	60.7%
Traverse	690	2,408	28.7%	2%	5%	35.7%
Wabasha	15,030	24,892	60.4%	2%	5%	67.4%
Wadena	6,220	14,235	43.7%	1%	5%	49.7%
Waseca	31,369	40,053	78.3%	1%	5%	84.3%
Washington	81,688	178,217	45.8%	3%	5%	53.8%
Watonwan	1,949	11,534	16.9%	0%	0%	16.9%
Wilkin	843	3,263	25.8%	1%	5%	31.8%
Winona	32,834	60,773	54.0%	3%	5%	62.0%
WLSSD	41,964	103,766	40.4%	3%	5%	48.4%
Wright	29,242	105,688	27.7%	1%	5%	33.7%
Yellow Medicine	1,821	7,583	24.0%	2%	5%	31.0%
Metro Area	1,411,774	3,194,051	44.20%	3.0%	5.0%	52.2%
Greater Minn.	1,045,082	2,456,730	42.54%	2.3%	4.7%	49.6%
Minnesota	2,456,856	5,650,780	43.48%	2.4%	4.7%	50.6%