



2009-2010 ANNUAL REPORT



2100 Freeway Boulevard
Minneapolis, MN 55430

• 763-560-2262

mshsl.org

2009-2010 MSHSL Board of Directors



Jeff Whisler
Mahtomedi
President



Les Zellman
St. James
Vice President



John Klinnert
Fergus Falls
Treasurer



Kim Algoo
Shakopee



Rick Bleichner
Evansville



Carol Bomben
Eden Prairie



Mark Fredericksen
Waconia



Ray Kirch
Osseo



Chris Laird
Heritage Christian
Academy



Ron Larson
St. Francis



Gary Lee
Fertile-Beltrami



Jill Lofald
Duluth Denfeld



Dean Ogg
Staples-Motley



Brent Robbins
Plymouth



Mike Rusinko
Eden Prairie



John Schumacher
Park Rapids Area



Mindy Sparby
New Richland-H-E-G



Chad Stoskopf
Esko



Luanne Wagner
St. Francis



Bill Webb
Edina

2009-2010 REPRESENTATIVE ASSEMBLY DELEGATES

The rulemaking body of the Minnesota State High School League

CLASS A REGIONS

Region 1A

1. Dr. David Thompson, Superintendent, Stewartville
2. Ed Friesen, Athletic Director, Bethlehem Academy, Faribault
3. Krin Abraham-Berg, Speech Coach, Houston

Region 2A

4. Randy Soma, Athletic Director, Fairmont
5. Jeff Boran, Athletic Director, Waterville-Elysian-Morristown
6. Dave Swanberg, Athletic Director, LeSueur-Henderson

Region 3A

7. Mike Knutson, Athletic Director, Benson
8. Dave Marlette, Superintendent, Tracy-Milroy-Balaton
9. Todd Oye, Athletic Director, Luverne

Region 4A

10. Mike Aurich, Athletic Director, Concordia Academy-Roseville
11. Jeff Wall, Athletic Director, Maranatha Christian Academy, Brooklyn Park
12. Steve Eklund, School Board, Braham

Region 5A

13. Ron Starke, Athletic Director, Annandale
14. Jerry Westphal, Athletic Director, Milaca
15. Dale Decker, Athletic Director, Howard Lake-Waverly-Winstead

Region 6A

16. Paul Weinzierl, Principal, Long Prairie-Grey Eagle
17. Janelle Bright, Coach, Bertha-Hewitt
18. Blaine Novak, Principal, New York Mills

Region 7A

19. Kathy Fredricksen, Athletic Director, Moose Lake
20. James Lah, Fine Arts, Ely
21. Roger Koster, Athletic Director, Silver Bay

Region 8A

22. Bruce Jensen, Superintendent, Kittson Central, Hallock
23. Eldon Sparby, Principal/Activities Director, Greenbush-Middle River
24. Jodi Sandmeyer, Principal, Nevis

CLASS AA REGIONS

Region 1AA

25. Jeff Whitney, Athletic Director, Rochester Mayo
26. Joel Leer, Principal, Northfield
27. Mark Winter, Athletic Director, Winona

Region 2AA

28. Jeff Jeska, Principal, Waconia
29. Paul Szymanski, Activities Director, Hutchinson
30. Brian Fell, Activities Director, Mound-Westonka

Region 3AA

31. Michael Manning, Athletic Director, Rosemount
32. Chris McDonald, Coach, Eagan
33. Mike Sjoberg, Coach, St. Thomas Academy, Mendota Heights

Region 4AA

34. Jodi Loeblein-Lecker, Athletic Director, Cretin-Derham Hall, St. Paul
35. Sue Sajevic, Teacher/Coach, St. Paul Arlington
36. Greg Nelson, Principal, North, North St. Paul

Region 5AA

37. Matt Mattson, Athletic Director, Champlin Park
38. Larry Lawler, Athletic Director, Park Center, Brooklyn Park
39. Bob Madison, Athletic Director, Mounds View

Region 6AA

40. Jamison Rusthovan, Athletic Director, Minneapolis Edison
41. Andy Ewald, Athletic Director, St. Louis Park
42. Dennis Stockmo, Coach, Minneapolis Roosevelt

Region 7AA

43. Joel Olson, Activities Director, Forest Lake
44. Brian Hasleiet, Coach, North Branch
45. Ed Saxton, Superintendent, St. Francis

Region 8AA

46. Andrea Swanberg, Athletic Director, St. Cloud Tech
47. Chris McElroy, Activities Director, St. Cloud Apollo
48. David Hartmann, Athletic Director, Alexandria

MSHSL Administrative Staff

Executive Director David Stead
Executive Assistant Lynne Johnson
Associate Director Lisa Lissimore
Administrative Assistant Sheila Robinson
Associate Director Kevin Merkle
Administrative Assistant Amanda Johnson
Officials' Coordinator Katie Vanderpoel
Associate Director Jody Redman
Administrative Assistant Amie Symens

Associate Director Craig Perry
Administrative Assistant Susi Hollenbeck
Assistant Director Richard Matter
Accounting Assistant Sharon Bahma
Ticket Assistant Nancy Myers
Assistant Director Chris Franson
Web Site Coordinator Nancy Etter
Technology Assistant Tracie Bressler

Director of Information Howard Voigt
Assistant Information Director Ellen Rajkowski
Media Credentialing Assistant Yvonne Walsh
Media Specialist John Millea
Program Specialist Amy Doherty
Office Manager Kristi Vesall
Administrative Assistant Yvonne Walsh
Receptionist Ann Bailey

President's Report



It has truly been an honor and a privilege for me to have served as the president of the MSHSL Board of Directors during the 2009-2010 school year. The economic challenges and the continued financial constraints caused school boards, statewide, to focus on the values of participation in education-based activity programs. During this process, the MSHSL Board of Directors also focused on the economy and continued to provide financial relief for member schools in as many ways as possible.

A number of tournament related proposals and bylaw changes came before the board including recommendations to reduce the number of athletic contests in select sports, limit travel for school practices and scrimmages, and institute a substitution policy for fine arts qualifiers at state events. Following are action items board members approved.

- Limited all sports teams to two scrimmage dates and one jamboree or a total of three scrimmage dates per season.
- Removed the travel restrictions for practices, scrimmages and jamborees, provided that school boards approve the travel.
- Allowed "True Second" competition in tennis and wrestling provided that the competition would end on the same day and that no other day be used for determining advancement.
- Extended the broadcast agreement with KSTC-TV, Channel 45 through the 2020-2021 school year. The contract calls for live web cast of MSHSL tournaments that are not currently televised.
- A new policy that allows golf coaches to coach on the course for regular season and tournament play.
- The purchasing of AED's for the League office in order to provide one deliberator at every tournament site.
- The addition of two new staff positions: one technology position and one media specialist position.
- Redefined the summer no-contact period to one-week in July the week of July 4.
- The purchasing of rules books on an every-other-year basis beginning with the 2010-2011 school year.
- Extended an opportunity to provide the Anyone Can Save a Life material to any state association office and to extend a similar opportunity for churches and local civic associations.

The League staff continues to conduct area meetings throughout the year with all constituent groups, and board members meet with associations they represent to gather information in advance of board meetings as well as to share the results of the board discussion and vote. Administrative groups, coaches associations, and others provide valuable input for members when issues pertaining to individual school programs are addressed.

As I reflect on my four years as a member of the MSHSL Board of Directors, I want to thank Regions 3AA and 4AA for the confidence they placed in me and to assure each member school in all regions throughout the state that your Board listened to the input you provided well in advance of any decision-making process. All decisions were made without regard to personal agendas, and a thoughtful discussion always preceded any action item on the agenda.

The strength of the MSHSL lies in the information you share with the League board and staff members. And, the personal integrity each coach, advisor and administrator displays in making consistent rules determinations provides the foundation upon which the values of participation are reflected in each athlete and fine arts participant, now and in the future.

Thank you, again, for allowing me to serve as your president.

A handwritten signature in blue ink that reads "Jeff Whisler". The signature is fluid and cursive.

Jeff Whisler
Mahtomedi High School
MSHSL Board of Directors, President
2009-2010

Mission

The Minnesota State High School League is a non-profit, voluntary association of public and private schools with a history of service to Minnesota youth since 1916. Its mission is to provide educational opportunities through interscholastic athletic and fine arts programs for students and leadership and support for member schools.

We believe:

- Participation in school activity programs is a privilege and not a right.
- Sportsmanship needs to have a constant presence in all school-based activity programs.
- Students should have an equal opportunity to participate in all activities offered by their school.
- Ethical behavior, dignity and respect are non-negotiable.
- Student participants who choose to be chemically free must be supported.
- Collaborative relationships with parents enhance a school's opportunity to positively impact student success.
- Academic priorities must come before participation in athletic or fine arts activities.
- Positive role models and an active involvement in a student's life by parents and others are critical to student success.
- High school activity programs are designed for student participants and adults must serve in a supportive role.
- The success of the team is more important than individual honors.
- Compliance with school, community and League rules is essential for all activity participants.
- Participation in school-sponsored activities must be inclusive, not exclusive.
- Ethical behavior, fairness, and embracing diversity best serve students and school communities.

History

The Minnesota State High School League was first organized in 1916 by a group of local superintendents. Then called the State High School Athletic Association, its mission was to promote amateur sports for boys and establish uniform rules for interscholastic contests.

In 1929, the Association broadened its scope to include speech and debate, and the Association's name changed to the Minnesota State High School League.

In 1960, the League incorporated under Minnesota Law as a non-profit, voluntary association of high schools. The League added music to its list of sponsored activities in 1965 and girls' athletic programs in 1969.

In 1973, Minnesota statutes provided that membership in the League is available to any high school in Minnesota that satisfied the compulsory attendance requirement under Minnesota Law. Thirty-seven non-public schools joined the League the next year.

A review of the League eligibility rules in 1980 resulted in the creation of TARGET Minnesota, a program that supports chemically free student leaders.

During the 1990's the League became the first activity association in the nation to sponsor girls' ice hockey and adapted athletic programs for students with disabilities.

In 2005, the League embarked on a new, innovative initiative called TeamUp. Through this program the League annually provides educational materials to school administrators to help them create a positive, safe athletic environment.

The Minnesota State High School League Foundation was created in 2007 to promote high school students' participation in interscholastic athletic and fine arts activities. The Foundation has awarded more than a million dollars in grants to fulfill its mission.

Services to Member Schools

The Minnesota State High School League is a service organization providing its membership with publications, training opportunities, recognition programs, post-season tournaments, rules interpretation meetings, and many other services that assist in the administration of interscholastic activities.

The League serves students first and foremost, providing educational experiences through involvement in athletics and fine arts activities. Interscholastic competition leads to state tournament competitions which are conducted by the League. Students also are acknowledged through several recognition programs for academic achievements, community service, and leadership.

The League serves its member schools by providing competitive environments with rules that support fair play and equitable competition. School personnel, from elected local school board members to superintendents,

from principals to athletic/activity directors, are invited twice annually to area meetings throughout the state to share concerns and discuss issues.

The League serves coaches and officials, both integral to equitable competition, by providing educational and training opportunities. Coaches can learn about the science of sport, first aid, and the rules that govern both student eligibility and the activities they oversee. Officials are provided with annual meetings to review contest rules and are provided opportunities for further training in the mechanics of officiating.

The League serves the public in general as a complimentary extension of the classroom by providing activities for high school youth that teach lifelong lessons and develop responsible citizens. Communication with the general public takes many forms, not the least of which is a comprehensive Web site – www.mshsl.org.

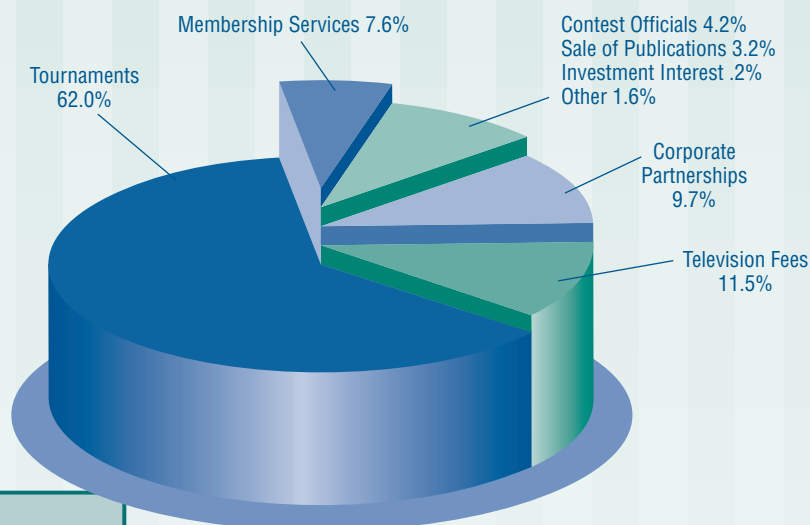
League Finances

The Minnesota State High School League is a non-profit organization. The League operates on an annual budget of about \$7.5 million and receives no funding from the state legislature.

Revenues generated from tournament ticket and merchandise sales, and other tournament related-income make up the majority of the League's operating budget. The remaining portion of the budget comes from corporate sponsorships, publication sales, registration fees, broadcast rights fees, and investment income.

At the end of each fiscal year, revenue remaining after all expenses are paid, is distributed to member schools fortunate enough to have competed at the state level. Those shares of revenue during the past 10 years have averaged \$601,000 each year, an average of \$1,650 per school. For the second consecutive year, the League refunded activity registrations fees of \$403,720 to member schools or \$822.00 per school.

The Office of the State Auditor for Minnesota audits all financial records of the League. The audit report is mailed to League member schools.

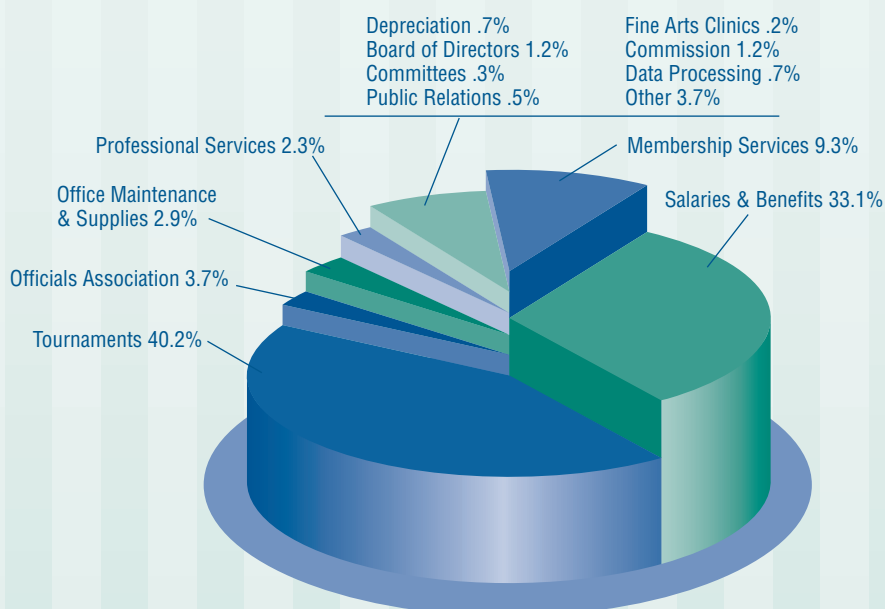


Revenues \$7,355,185

Tournaments \$4,558,336
 Television Fees \$846,670
 Membership Services \$558,280
 Sale of Publications \$237,998
 Contest Officials Registration \$308,554
 Investment Interest \$16,610
 Corporate Partnerships \$715,429
 Other \$113,308

The League pays for and member schools receive—

- Catastrophic insurance coverage for student activity participants
- Educational and training opportunities for coaches and contest officials
- Advisory committees that provide direct information to the Board of Directors
- Certificates, trophies and medals for students participating in League tournaments
- Student recognition programs
- Postage for mailing agendas, minutes of meetings, rule books, newsletters and requested information to member school and to anyone who requests to be on League mailing lists.



Expenses \$7,626,322

Tournaments & School Reimbursements \$3,068,218
 Salaries & Benefits \$2,523,330
 Professional Services \$176,859
 Membership Services \$699,032
 Office Maintenance & Supplies \$223,687
 Other \$282,173
 Board of Directors \$94,830
 Committees \$21,731
 Officials Associations \$285,474
 Depreciation \$56,133
 Fine Arts Programs \$12,257
 Public Relations \$35,925
 Corporate Partnership Commission \$56,400
 Data Processing \$90,273

Tournament	2010**			2009*		
	Revenues	Direct Expenses	Excess (Deficiency) of Revenues Over Direct Expenses	Revenues	Direct Expenses	Excess (Deficiency) of Revenues Over Direct Expenses
Baseball	79,582	79,939	(357)	90,246	71,895	18,351
Boys' Basketball	436,929	228,773	208,156	510,751	219,630	291,121
Girls' Basketball	294,072	196,488	97,584	300,527	194,158	106,369
Cross Country Running	13,049	28,987	(15,938)	13,593	28,187	(14,594)
Football	832,972	323,048	509,924	878,960	342,417	536,543
Golf	12,413	57,035	(44,622)	10,570	44,175	(33,605)
Girls' Gymnastics	48,215	66,096	(17,881)	41,255	65,189	(23,934)
Boys' Hockey	1,352,025	334,242	1,017,783	1,335,456	327,440	1,008,016
Nordic Ski Racing	3,698	21,179	(17,481)	3,474	21,496	(18,022)
Alpine Skiing	3,955	24,090	(20,135)	3,566	24,517	(20,951)
Soccer	157,298	104,279	53,019	177,260	112,672	64,588
Girls' Softball	50,382	47,899	2,483	56,352	50,109	6,243
Boys' Swimming & Diving	48,186	49,120	(934)	46,965	49,047	(2,082)
Girls' Swimming & Diving	50,610	50,370	240	51,235	50,436	799
Boys' Tennis	5,239	28,952	(23,713)	4,833	31,003	(26,170)
Girls' Tennis	5,500	37,104	(31,604)	5,901	35,292	(29,391)
Track and field	107,415	122,297	(14,882)	114,096	121,367	(7,271)
Girls' Volleyball	177,496	144,198	33,298	175,591	140,506	35,085
Wrestling	398,500	239,061	159,439	440,109	232,083	208,026
Synchronized Swimming	0	1,208	(1,208)	0	1,165	(1,165)
Adapted Soccer	6,925	17,422	(10,497)	6,872	17,594	(10,722)
Adapted Floor Hockey	9,760	18,007	(8,247)	10,141	18,001	(7,860)
Adapted Softball	5,920	17,429	(11,509)	6,200	17,040	(10,840)
Adapted Bowling	437	13,328	(12,891)	462	11,781	(11,319)
Debate	0	16,617	(16,617)	0	15,992	(15,992)
Speech	5,185	50,647	(45,462)	5,701	50,266	(44,565)
One Act Play	13,272	19,964	(6,692)	15,526	18,107	(2,581)
Girls' Hockey	251,466	200,634	50,832	249,314	192,153	57,161
Cheerleading	0	1,939	(1,939)	0	4,570	(4,570)
Girls' Dance Team	160,213	92,315	67,898	161,796	94,898	66,898
Lacrosse	27,622	22,145	5,477	29,624	22,520	7,104
Badminton	0	641	(641)	0	640	(640)
Visual Arts	0	645	(645)	0	675	(675)
Total	4,558,336	2,656,098	1,902,238	4,746,376	2,627,021	2,119,355

The tournament direct expenses shown above include only those expenses that are directly associated with conducting the tournaments (i.e. personnel, site and program costs). School expense reimbursement and indirect costs such as membership services, salaries and benefits, postage, and other general administrative costs of the MSHSL have not been allocated to any specific tournaments and therefore, are not included in the schedule shown above.

* From State Auditor's Report ** End of year balance on League financial statements

A 10-Year Comparison of School Reimbursements For Tournament Participation

	Number of Schools Participating	Total Amount Returned	Average Per School
2000-01	357	671,141	1,879
2001-02	359	476,296	1,326
2002-03	360	256,233	712
2003-04	357	669,084	1,874
2004-05	364	671,022	1,843
2005-06	365	600,689	1,645
2006-07	360	692,930	1,925
2007-08	365	870,259	2,384
2008-09	487	1,084,736	2,227
2009-10	489	822,524	1,682

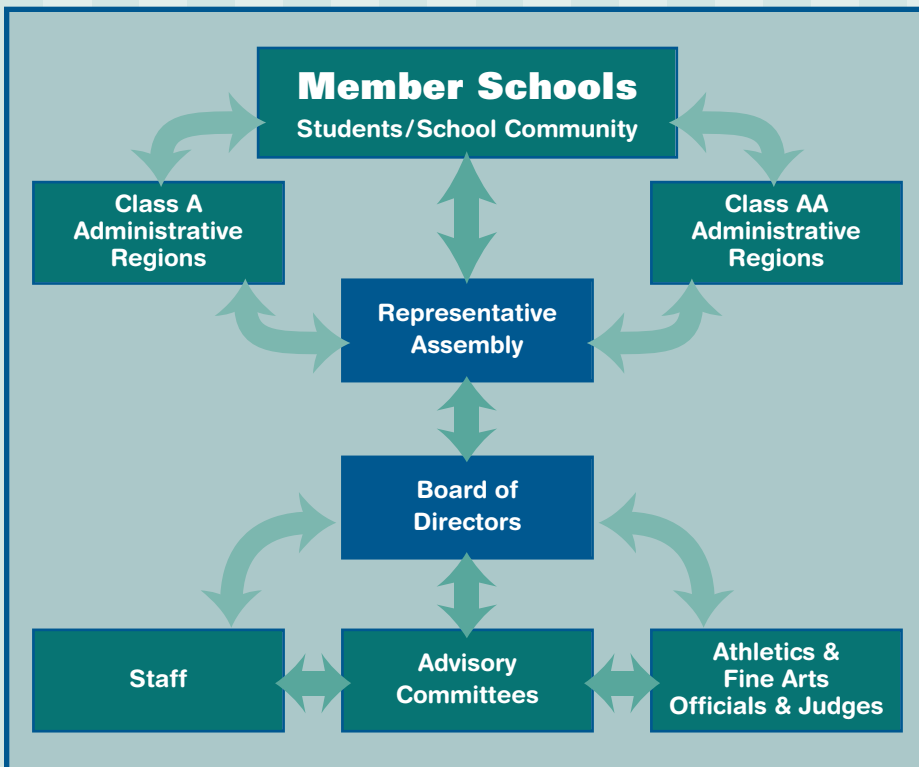
Grassroots Governance

As a non-profit, voluntary association of public and private schools, the League is structured to listen to and respond to its members. Individual school boards decide every year to join the League. Each member school and its composite constituencies—students, parents, coaches, administrators, and school board members—have a voice at the grassroots level known as an administrative region.

A region committee comprised of representatives from League member schools makes decisions about how subsection and section competition is conducted. Each of these 16 committees — eight for schools with an enrollment of fewer than 500 students in grades 10-12 and eight for schools with an enrollment of 500 or more—also elect or appoint three people to serve on the Representative Assembly which acts on bylaws that govern eligibility and the administration of League activities. These committees also review proposed changes to bylaws before consideration by the Representative Assembly. They also report to the 20-member Board of Directors, which oversees the administration of all League activities and events.

Activity Advisory committees provide direct information to the Board of Directors about activity programs. These committees—there's one for each activity the League sponsors—meet once a year to review and recommend changes to athletic and fine arts programs. Activity associations appoint people to serve on the advisory committees. Committee members generally serve two-year terms.

The intent is to involve everyone from students and their parents and coaches to school administrators and their elected school board members, in the League's decision-making process.



2009-2010 Bylaw Changes

Forty-eight people, representing the League's membership, comprise the Representative Assembly, the League's legislative body. The Assembly meets annually to consider all bylaw proposals that come from League member schools, region committees, the Board of Directors, and state athletics and fine arts associations.

League bylaws govern the addition of new activities, season lengths, number of contests, eligibility standards, and amateurism requirements of student athletes and fine arts participants. Bylaws also set requirements for conduct, enrollment, and they give direction to scholarship, student transfers, and many other areas important to the sound administration of high school athletic and fine arts programs.

During the 2009-10 school year, the Representative Assembly approved two amendments that will take effect in 2011 and a third amendment that was effective June 1, 2010.

The first amendment changes the maximum number of soccer (including adapted soccer) games from 18 to 16.

The second amendment allows varsity football games to be played on Thursday of the third week of practice. If the varsity team plays on Thursday then the lower level games, B-squad/junior varsity, may play on Wednesday of the same week.

The third amendment exempts softball and baseball coaches from the seven-day, no-contact period in July.

The Representative Assembly, the League's legislative body, is where local school personnel speak for member schools and develop League bylaws. Regions committees elect or appoint people to the 48-member Representative Assembly. Members generally serve a two-year term.

2010-2011 MSHSL Calendar of Events

Activity

FALL

Girls' Tennis

Oct. 26-29

AA – University Baseline Tennis Center, Minneapolis
A – Reed-Sweatt Family Tennis Center, Minneapolis

Boys' & Girls' Soccer

Oct. 27-29
Nov. 1, 2, 4

Quarterfinals – Various Sites
Semifinals & Finals – Metrodome, Minneapolis

Boys' & Girls' Cross Country Running

Nov. 6

St. Olaf College, Northfield

Girls' Volleyball

Nov. 11-13

Xcel Energy Center, St. Paul

Adapted Soccer

Nov. 19-20

Stillwater Area High School

Football

Nov. 11-13
Nov. 19-20, 26-27

Quarterfinals – Various Sites
Semifinals & Prep Bowl – Metrodome, Minneapolis

Girls' Swimming & Diving

Nov. 18-20

University Aquatic Center, Minneapolis

WINTER

Debate

Jan. 14-15

University of Minnesota, Minneapolis

One Act Play

Feb. 10-11

The O'Shaughnessy, St. Catherine University, St. Paul

Boys' & Girls' Alpine Skiing

Feb. 16

Giants Ridge, Biwabik

Boys' & Girls' Nordic Ski Racing

Feb. 17

Giants Ridge, Biwabik

Girls' Dance Team

Feb. 18-19

Target Center, Minneapolis

Girls' Hockey

Feb. 23-26

Xcel Energy Center, St. Paul

Girls' Gymnastics

Feb. 25-26

University Sports Pavilion, Minneapolis

Wrestling

March 2-5

Xcel Energy Center, St. Paul

Boys' Swimming & Diving

March 3-5

University Aquatic Center, Minneapolis

Boys' Hockey

March 9-12

Xcel Energy Center, St. Paul

Girls' Basketball

March 16-19

Target Center, Minneapolis & Williams Arena, Minneapolis

Adapted Floor Hockey

March 18-19

Bloomington Jefferson High School

Boys' Basketball

March 23-26

Target Center, Minneapolis & Williams Arena, Minneapolis

SPRING

Speech

April 15-16

Chanhassen High School

Adapted Bowling

May 20

Brunswick Zone, Eden Prairie

Adapted Softball

June 3-4

Coon Rapids High School

Boys' & Girls' Lacrosse

June 7-10

TBD

Boys' Tennis

June 7-10

AA – University Baseline Tennis Center, Minneapolis
A – Reed-Sweatt Family Tennis Center, Minneapolis

Girls' Fast-Pitch Softball

June 9-10

Caswell Park, North Mankato

Boys' & Girls' Track & Field

June 10-11

Hamline University, St. Paul

Boys' & Girls' Golf

June 14-15

AAA – Bunker Hills, Coon Rapids

June 15-16

AA – Ridges at Sand Creek, Jordan

June 15-16

A – Pebble Creek, Becker

Baseball

June 16-17

A – Chaska Athletic Park & Mini Met, Jordan
AA – Dick Putz Stadium & Joe Faber Field, St. Cloud

June 18*

AAA – Midway Stadium, St. Paul & Dick Siebert Field, Minneapolis
Championship Games – Target Field, Minneapolis

**Tentative date if championship games are played at Target Field*

Photography Credits: Minnesota Prep Photo / www.MnPrepPhoto.com

This report is a publication of the Minnesota State High School League.

No reproduction of this document is permissible without the express written consent of the Minnesota State High School League.