

Racial/Ethnic and Immigrant Groups Participating in the Minnesota Family Investment Program and the Diversionary Work Program

REIS # 15 December 2009



Program Assessment and Integrity Division
Minnesota Department of Human Services
August 2010

Table of Contents

ABBREVIATIONS.....	1
TECHNICAL NOTES	2
CHAPTER ONE: MFIP AND DWP CASELOADS	3
Chart 1-1. Distribution of MFIP and DWP Cases Active in December 2009.....	4
Chart 1-2. Distribution of MFIP and DWP Cases Active in December 2009 by Racial/Ethnic Groups and Subgroups.....	5
Chart 1-3. MFIP and DWP Active Cases by Race/Ethnicity, December 2004 to December 2009	6
Chart 1-4. Black and Asian Subgroups: Active MFIP and DWP Cases, December 2004 to December 2009.....	7
CHAPTER TWO: POVERTY AND DISPARITY	8
Chart 2-1. Minnesota and United States Family Poverty Rates, 2005 - 2007 American Community Survey	9
Chart 2-2. Distributions of Minnesota Adults with Minor Children Compared to December 2009 MFIP and DWP Participants.....	10
Chart 2-3. Percent of All Minnesota Adults with Children Participating in December 2009 MFIP and DWP Cases	11
Chart 2-4. Disparity Index: Comparing Program Participation by Race/Ethnicity	12
CHAPTER THREE: MFIP PARTICIPANT CHARACTERISTICS	13
Chart 3-1. Age Distribution of MFIP-eligible Caregivers by Race/Ethnicity and Subgroup, December 2009	14
Chart 3-2. Percent of MFIP-eligible Adults that are Female, December 2009	15
Chart 3-3. MFIP Participants with a High School Diploma Compared to All Minnesotans with Minor Children, December 2009.....	16
Chart 3-4. MFIP Participants Who Never Married Compared to All Minnesotans with Minor Children, December 2009	17
CHAPTER FOUR: CHARACTERISTICS OF HOUSEHOLDS RECEIVING MFIP	18
Chart 4-1. Number of Children in MFIP Cases and in All Minnesota Households with Minor Children, December 2009	19
Chart 4-2. Percent of MFIP Cases with Two Caregivers and Two Married Caregivers, December 2009.....	20
Chart 4-3. Geographic Region of December 2009 MFIP Adult Participants Compared to All Minnesota Households with Minor Children.....	21
Chart 4-4. Adult Serious Mental Health Diagnosis and Adult Chemical Dependency Diagnosis During 2007 to 2009, Caregivers in MFIP Cases.....	22
Chart 4-5. MFIP Caregiver Involvement with Child Protection Services During 2007 to 2009, Percent of Cases	23

CHAPTER 5: ECONOMIC CHARACTERISTICS OF MFIP CASES	24
Chart 5-1. Average MFIP Months Counted Toward the 60-Month Time Limit and Percent of MFIP Cases with More than 48 Months Counted Toward the 60-Month Time Limit, December 2009	25
Chart 5-2. Percent of MFIP Cases with at Least One Working Caregiver by Racial/Ethnic Group, December 2009	26
Chart 5-3. Percent of MFIP Cases with at Least One Working Caregiver by Subgroup, December 2009	27
Chart 5-4. Average Reported Earned Income for December 2009 MFIP Cases by Racial/Ethnic Group	28
Chart 5-5. Percent of MFIP Cases with an Eligible Adult that are Extended beyond the 60-Month Lifetime Limit, December 2004 to December 2009	29
Chart 5-6. MFIP Extension Reason by Racial/Ethnic Group, December 2009	30
Chart 5-7. Percent of MFIP Cases Eligible for Family Stabilization Services, December 2009	31
Chart 5-8. Percent of MFIP Cases with Employment Services Sanctions by Racial/Ethnic Group, December 2009	32
Chart 5-9. Percentage of MFIP Families Eligible the Child Care Assistance Program, December 2009	33
APPENDIX: COMPLETE DATA TABLES	34
Table 1. Demographic Characteristics of Eligible Adults on December 2009 MFIP Paid Cases by Racial/Ethnic Groups and Subgroups	34
Table 2. Demographic Characteristics of Eligible Adults on December 2009 DWP Paid Cases by Racial/Ethnic Groups and Subgroups.....	36
Table 3. Family Composition, Residence, and Challenges of MFIP Paid Cases with Eligible Adults in December 2009 for Racial/Ethnic Groups and Subgroups	38
Table 4. Family Composition, Residence, and Challenges of DWP Paid Cases with Eligible Adults in December 2009 by Racial/Ethnic Groups and Subgroups	41
Table 5. Economic Characteristics of MFIP Paid Cases with Eligible Adults in December 2009 by Racial/Ethnic Groups and Subgroups.....	44
Table 6. Economic Characteristics of DWP Paid Cases with Eligible Adults in December 2009 by Racial/Ethnic Groups and Subgroups.....	48
Table 7. Selected Characteristics of All Minnesotans with Minor Children, American Community Survey 2007	50

Please direct questions or comments to:

Dana DeMaster, Senior Research Analysis Specialist

Program Assessment and Integrity Division

651-431-3963

dana.demaster@state.mn.us

Abbreviations

ACS	American Community Survey
CCAP	Child Care Assistance Program
CSED	Child Support Enforcement Division
DEED	Department of Employment and Economic Development
DHS	Department of Human Services
DWP	Diversionary Work Program
ES	Employment Services
FA	Family Assessment
FI	Family Investigation
FSS	Family Stabilization Services
MAXIS	Not an acronym, DHS' administrative database for cash, food, and health care eligibility
MEC ²	Minnesota Electronic Child Care information system
MFIP	Minnesota Family Investment Program
MMIS	Medicaid Management Information System
PAID	Program Assessment and Integrity Division
REIS	Racial/Ethnic and Immigrant Studies reports series
SAMHSA	Substance Abuse and Mental Health Services Administration
SSI	Supplemental Security Income
SSIS	Social Services Information System
UI	Unemployment Insurance

Technical Notes

Racial/Ethnic and Immigrant Group Definitions.

Throughout the report, the race/ethnicity of the case applicant was used to characterize the entire case with these categories: (1) Hispanics of all races; (2) non-Hispanic American Indians; (3) non-Hispanic Asians and Pacific Islanders; (4) non-Hispanic blacks, (5) non-Hispanic whites, and (6) non-Hispanic multiple races. These categories are consistent with reporting by the 2000 U.S. Census. The Asian and black groups were further broken down into subgroups based upon citizenship, immigration status, language, and reported nationality. African Americans and Asian Americans were persons who chose black or Asian as race and had no immigration data known to the Minnesota Department of Human Services (DHS). Immigrant groups were identified by reported nationality or language. Persons reporting multiple races or missing race data were included in the totals in each table and chart, but excluded from subgroup analyses.

To protect the privacy of the small number of people in black and Asian subgroups participating in DWP, Asian subgroups are no longer reported and black subgroups are collapsed to report only African Americans and all African immigrants as a group. Chapters 1 and 2 include caseload information about subgroups on DWP, but subsequent chapters only report on MFIP participants.

Data Sources. Information in this report parallels the DHS report *Minnesota Family Investment Program and the Diversionary Work*

Program: Characteristics of December 2009 Cases and Eligible Adults which analyzes the same data from the perspectives of programs and counties. Data used in both reports were collected through the DHS administrative databases MAXIS, Social Services Information System (SSIS), Minnesota Electronic Child Care information system (MEC²) and Medicaid Management Information System (MMIS), as well as from the Child Support Enforcement Division (CSED) and the Department of Employment and Economic Development (DEED). For program policy details and data definitions, please refer to this parallel report, available at <http://www.dhs.state.mn.us/main/> under Economic Supports, MFIP, Reports.

All data pertaining to “all Minnesotans” or “adult Minnesotans with minor children” are from the 2007 American Community Survey (ACS) except for poverty rates, which are from the 2005 – 2007 ACS 3-Year Estimates.

Chemical dependency and mental health data for all Minnesotan adults is from U.S. Department of Health and Human Services, Substance Abuse and Mental Health Services Administration (SAMHSA), 2005-2006 National Surveys on Drug Use and Health. These data are available at www.oas.samhsa.gov.

Data for Report Charts. Counts, percentages, and means displayed in the report’s charts are taken from tables in the appendix.

Chapter One: MFIP and DWP Caseloads

The Diversionary Work Program (DWP) is designed to meet specific crisis situations and help families move immediately to employment rather than go on welfare. Families may receive DWP for up to four months. If families do not resolve their financial crisis while participating in DWP, they may apply for the Minnesota Family Investment Program (MFIP). MFIP is a longer-term program, lasting a maximum of 60 months in most circumstances, which provides economic support to poor families and helps them obtain employment with a goal of self-sufficiency. Due to its short-term nature, DWP is a much smaller program than MFIP. In December 2009, 4,209 families were participating in DWP and 35,689 families were participating in MFIP, including child-only cases that have no eligible caregivers. This report examines, by racial/ethnic group and Asian and black subgroups, all DWP-participating families (4,209 families) and MFIP families with an eligible adult (24,297 families).

MFIP and DWP caseloads had fallen steadily since 2002, but increased by 2 percent between December 2007 and December 2008 and increased by 8 percent between December 2008 and December 2009. Except for Somali and Hmong families, all of the racial/ethnic groups and the immigrant subgroups saw increases since the last report. The number of Hmong cases decreased by 20 percent and the number of Somali cases decreased by 3 percent. White and Hispanic cases increased the most (20 percent and 11 percent, respectively).

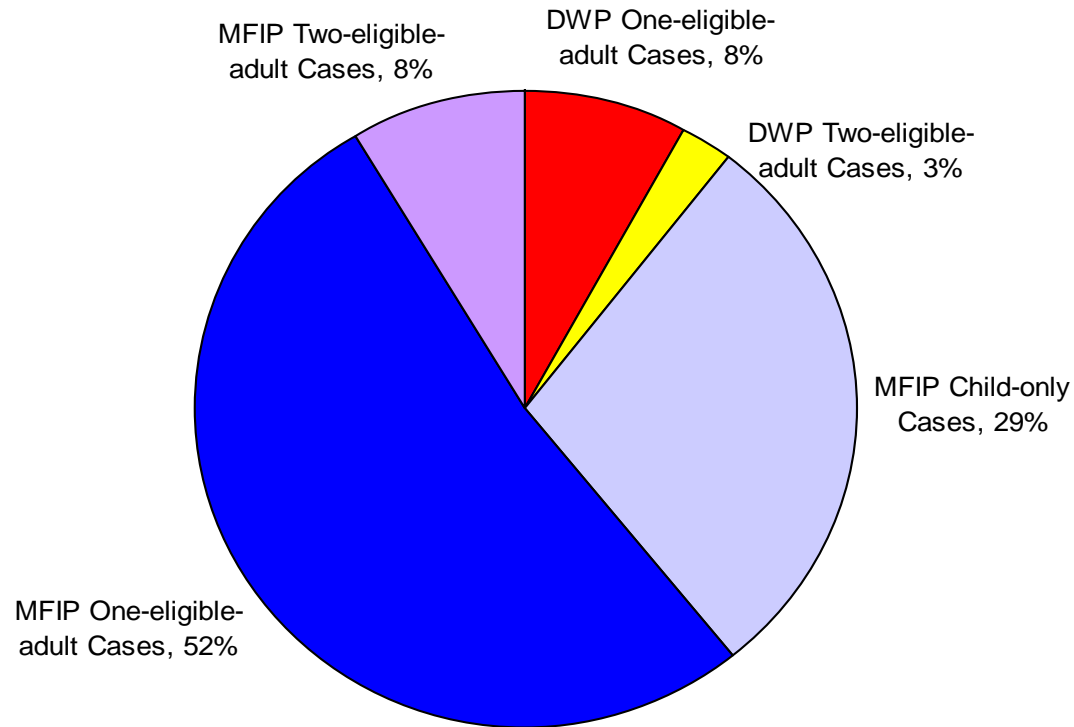
The two largest immigrant groups participating in MFIP and DWP are the Hmong and Somali. These groups typically immigrated to the United States as refugees and many are resettled in Minnesota. As the charts throughout this report show, program participation closely mirrors resettlement patterns. Two major factors have impacted these caseloads in recent years. The first was a large, one-time resettlement of Hmong families in the autumn of 2004. More than 2,000 people were resettled within a matter of months and very few Hmong people have been resettled since. The second was the temporary suspension of the Priority Three (P-3) visa program by the U.S. State Department in October 2008 for potential African refugees. P-3 visas are family reunification visas and this is the only program under which Minnesota accepts primary refugee resettlements. After receiving about 5,000 refugees each year in 2005 and 2006, Minnesota received 2,666 refugees in 2007, 1,112 in 2008, and 1,146 refugees in 2009.¹

The Mille Lacs American Indian Tribal Council administers MFIP-eligible cases in its jurisdiction, including tribal members who reside in Hennepin, Ramsey, and Anoka Counties. In December 2009, Tribal TANF had 243 cases with 306 eligible adults. These cases are not included in this report.

¹ Refugee information was provided by the DHS Resettlement Programs Office.

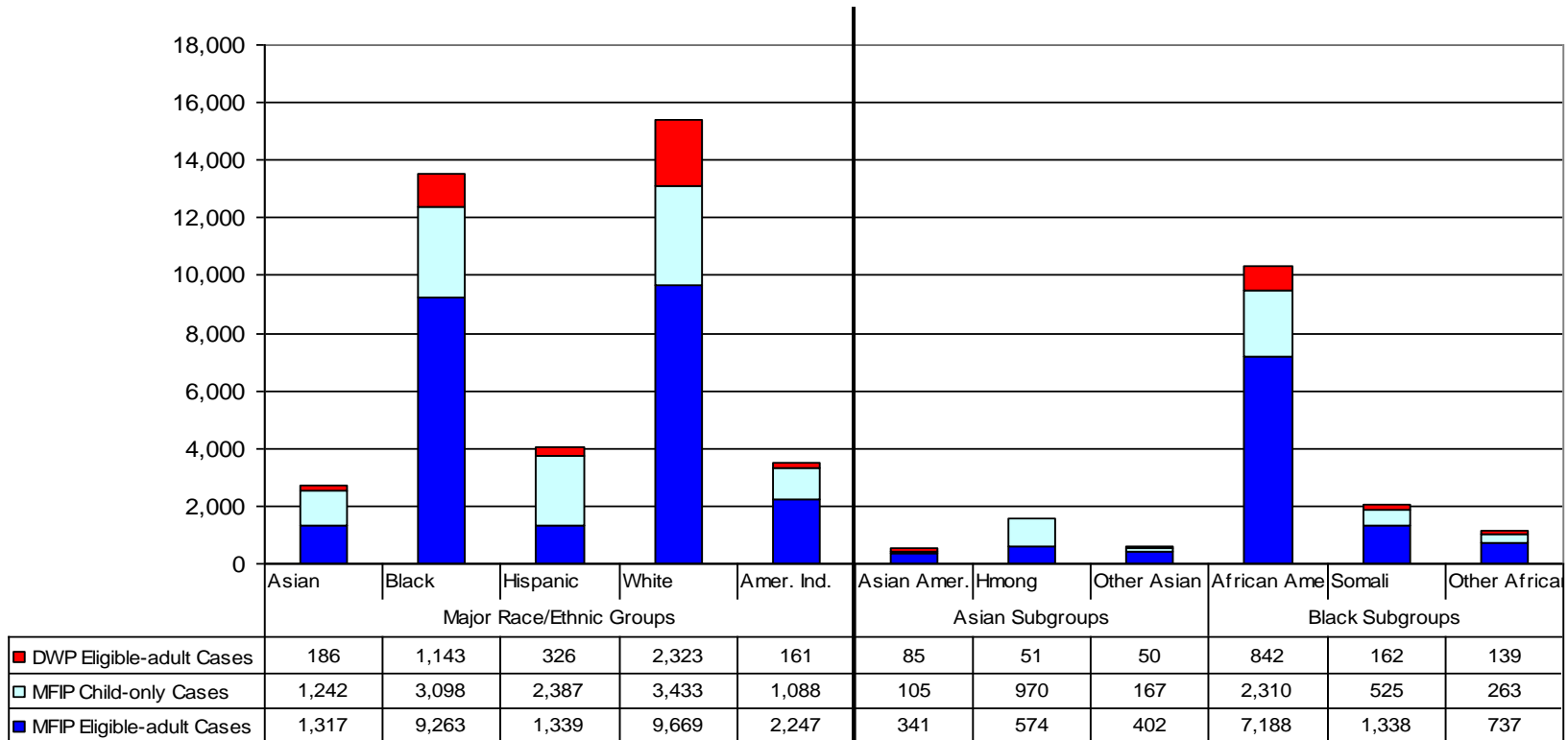
Chart 1-1. Distribution of MFIP and DWP Cases Active in December 2009

N = 39,898



Sixty percent of all combined MFIP and DWP cases had either one or two adult or teenage caregivers eligible on the case. About 30 percent of MFIP cases were child-only cases or households where the caregivers were not personally eligible for MFIP. The most common reasons for a child-only case were that the adult caregivers were relative caregivers (40 percent of MFIP child-only cases) or parents receiving SSI for a disability (39 percent of MFIP child-only cases).

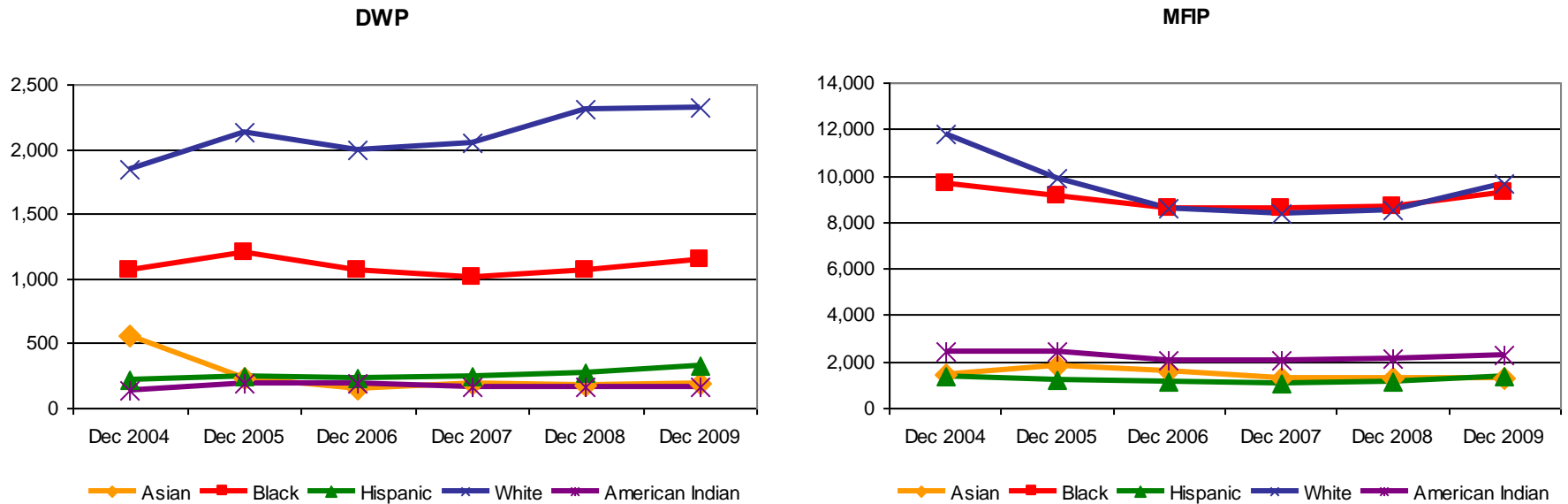
Chart 1-2. Distribution of MFIP and DWP Cases Active in December 2009 by Racial/Ethnic Groups and Subgroups



MFIP eligible-adult cases were the most common type within every racial/ethnic group except for Hmong and Hispanic cases. Sixty percent of Hmong cases and 59 percent of Hispanic cases were child-only. Hispanic caregivers were most often ineligible due to their citizenship status and Hmong caregivers were most often ineligible due to receipt of SSI. The rest of this report only includes cases with at least one eligible adult.

Throughout this report, Asian subgroups total to the Asian Major Race/Ethnicity and the Black subgroups total to the Black Major Race/Ethnicity.

Chart 1-3. MFIP and DWP Active Cases by Race/Ethnicity, December 2004 to December 2009

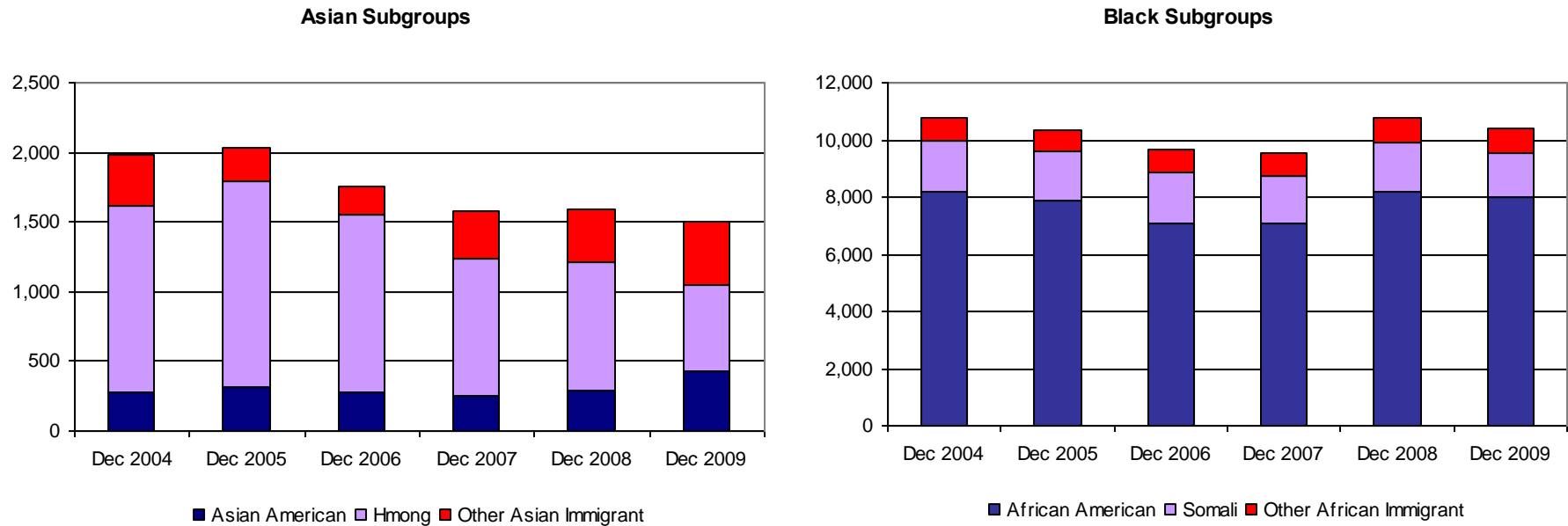


The largest increases in MFIP and DWP participation since December 2008 were in cases headed by Hispanics (20 percent) and whites (11 percent). Since December 2006, MFIP participation by blacks and whites has been nearly equal despite very different population numbers in the larger Minnesota population (see Chart 2-2). Whites have made up more than half of DWP participants since the program began in July 2004.

The relatively large number of Asian DWP participants in December 2004 was due to a sizeable resettlement of Hmong families in the autumn of 2004. Although Asian MFIP participation rose the following December, the relative increase was smaller due to the greater size of the MFIP program.

Note: The x-axes of these charts have different scales.

Chart 1-4. Black and Asian Subgroups: Active MFIP and DWP Cases, December 2004 to December 2009



While Hmong immigrant families remain the largest Asian subgroup, there has been a large increase in Other Asian Immigrant families in the past three years. The largest ethnic group in the Other Asian Immigrant group is the Burmese Karen. Minnesota resettled 619 Karen people in 2007, 593 people in 2008, and 440 people in 2009. Not all of these people were eligible for DWP or MFIP. While the absolute number remains small, combined MFIP and DWP cases headed by Asian Americans increased by 62 percent since December 2008.

Cases headed by Somalis decreased by 3 percent and cases headed by African Americans increased by 9 percent since December 2008.

Note: The x-axes on these charts have different scales.

Chapter Two: Poverty and Disparity

“Racial disparity” definitions vary by who is creating the definition or who is doing the measuring. The World Health Organization defines disparity as, “differences in health which are not only unnecessary and avoidable but, in addition, are considered unfair and unjust,” while the Institutes of Medicine define them as, “racial or ethnic differences in the quality of health-care that are not due to access-related factors or clinical needs, preferences, and appropriateness of intervention.” Other groups define disparities as just “differences” with no value judgment about the difference.²

“Disproportionality,” according to the Anne E. Casey Foundation’s Race Matters Consortium, occurs where “a particular racial/ethnic group is represented in a [program] at a different percentage than other racial/ethnic groups...Disproportionality looks at relative ratios.” Finally, “overrepresentation” looks at representation in a program compared to the general population, without regard to other groups.³

Regardless of how it is measured, or whether racial/ethnic differences are appraised as disparities, disproportionalities, or

overrepresentation, non-white Minnesotans are more likely to be poor and more likely to participate in MFIP or DWP than white Minnesotans.

For 2009 the [United States Department of Health and Human Services](#)⁴ poverty guideline for a family of three people, which is the average size of a family receiving MFIP, is \$18,310 and for a family of four people is \$22,050.

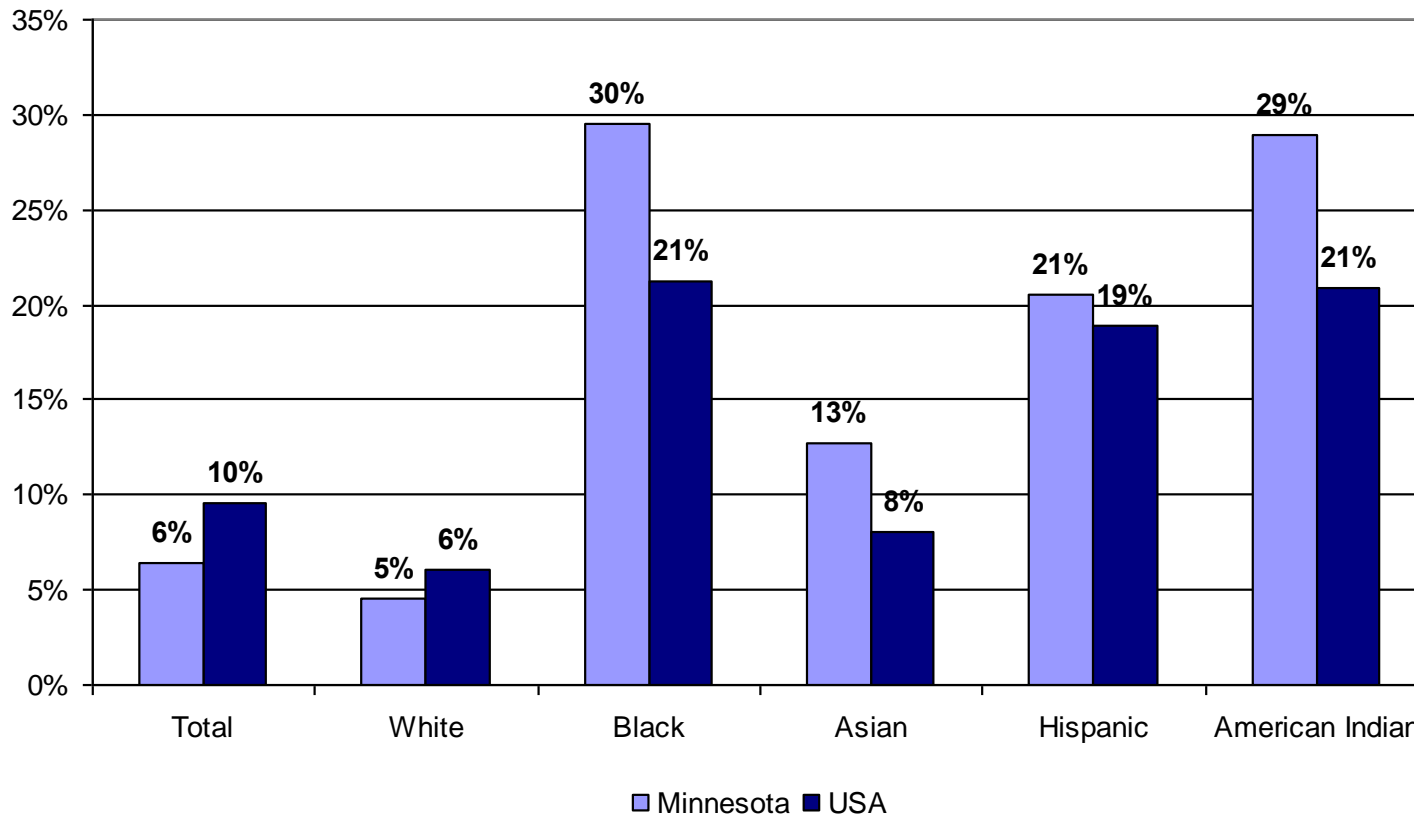
According to ACS 2007 data, 85 percent of Minnesotan adults with minor children are white, 5 percent are black, 4 percent are Hispanic, 4 percent are Asian, and 1 percent are American Indian. These proportions are very different than the proportion of each race or ethnic group that live in poverty or participate in either DWP or MFIP. This section examines poverty in Minnesota and differences in the racial/ethnic make-up of MFIP and DWP compared to the larger Minnesota adult population.

² Hebert, Paul L., Sisk, Jane E., & Howell, Elizabeth A. (2008) “When Does Difference Become a Disparity? Conceptualizing Racial and Ethnic Disparities in Health”. *Health Affairs*. 27(2), 374-382.

³ Race Matters Consortium. (2002) *Defining Disproportionality: A Concept Paper*. Retrieved July 21, 2009, from <http://www.racemattersconsortium.org/dispro.htm>.

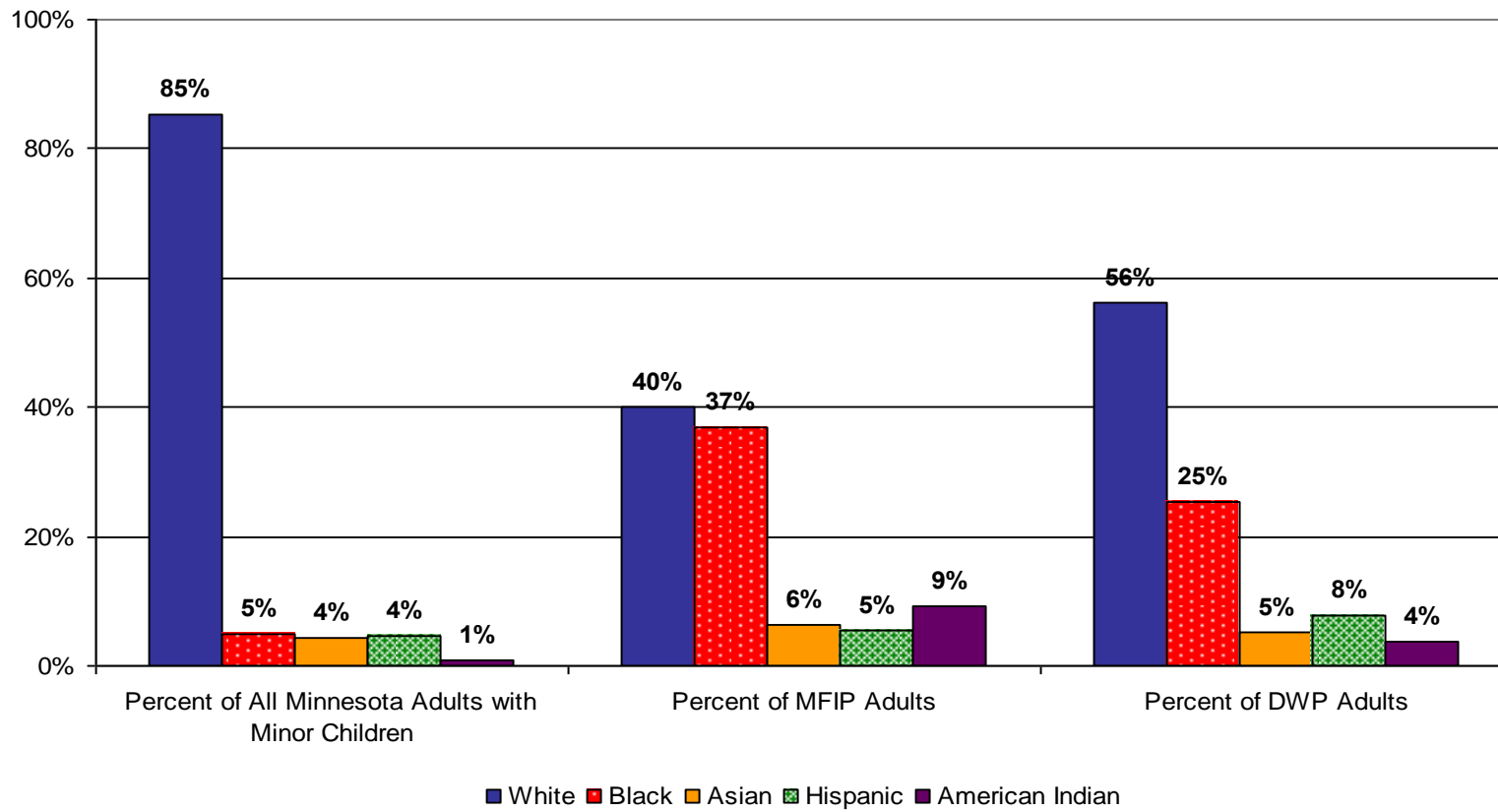
⁴ <http://aspe.hhs.gov/poverty/09poverty.shtml>

Chart 2-1. Minnesota and United States Family Poverty Rates, 2005 - 2007 American Community Survey



While Minnesota’s overall and white poverty rates for families is lower than that of the United States, a larger percentage of all other racial and ethnic groups live in poverty in Minnesota than nationwide.

Chart 2-2. Distributions of Minnesota Adults with Minor Children Compared to December 2009 MFIP and DWP Participants



People of color are overrepresented in both MFIP and DWP compared to the entire population of Minnesotan adults with minor children. Total population of Minnesotans is from the 2005 – 2007 ACS.

Chart 2-3. Percent of All Minnesota Adults with Children Participating in December 2009 MFIP and DWP Cases

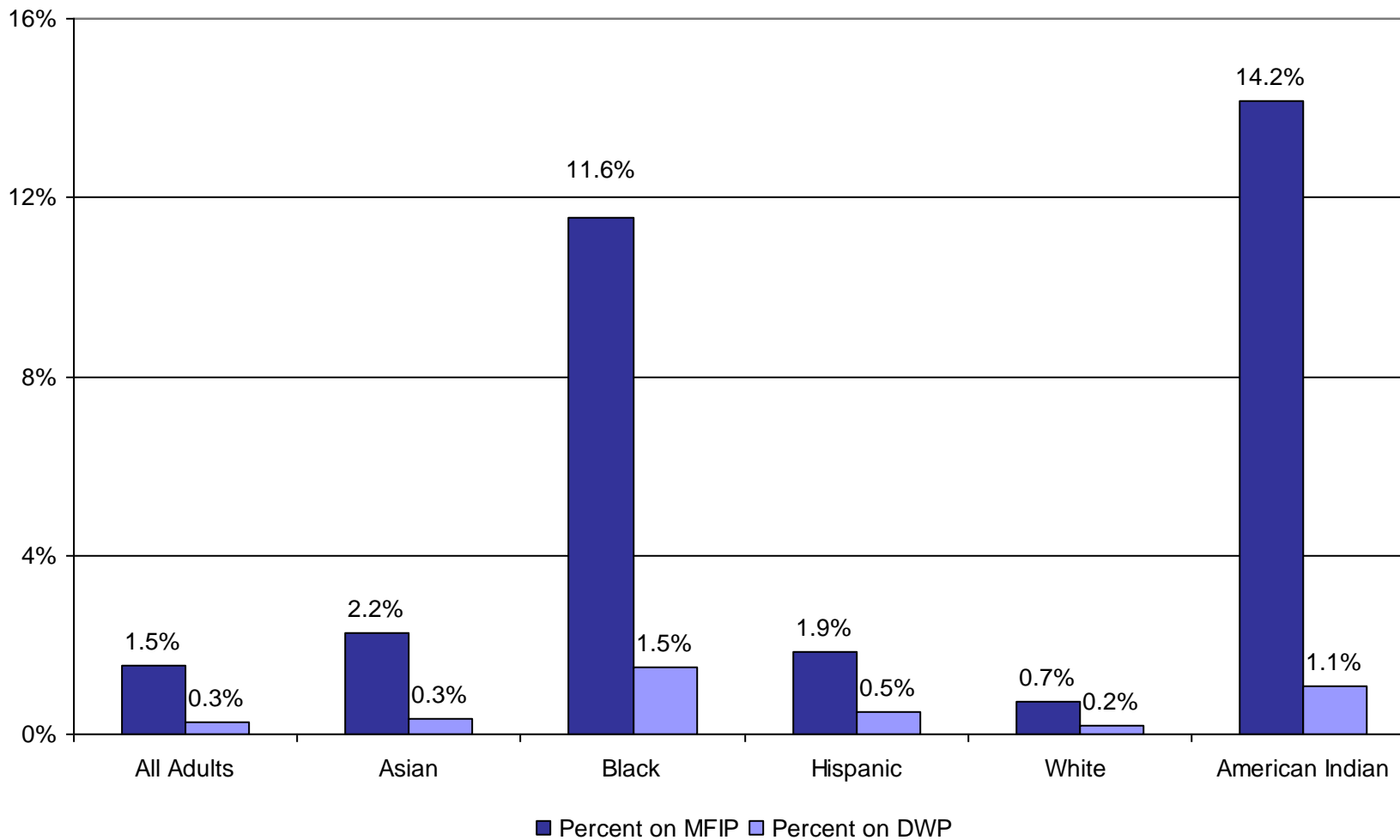
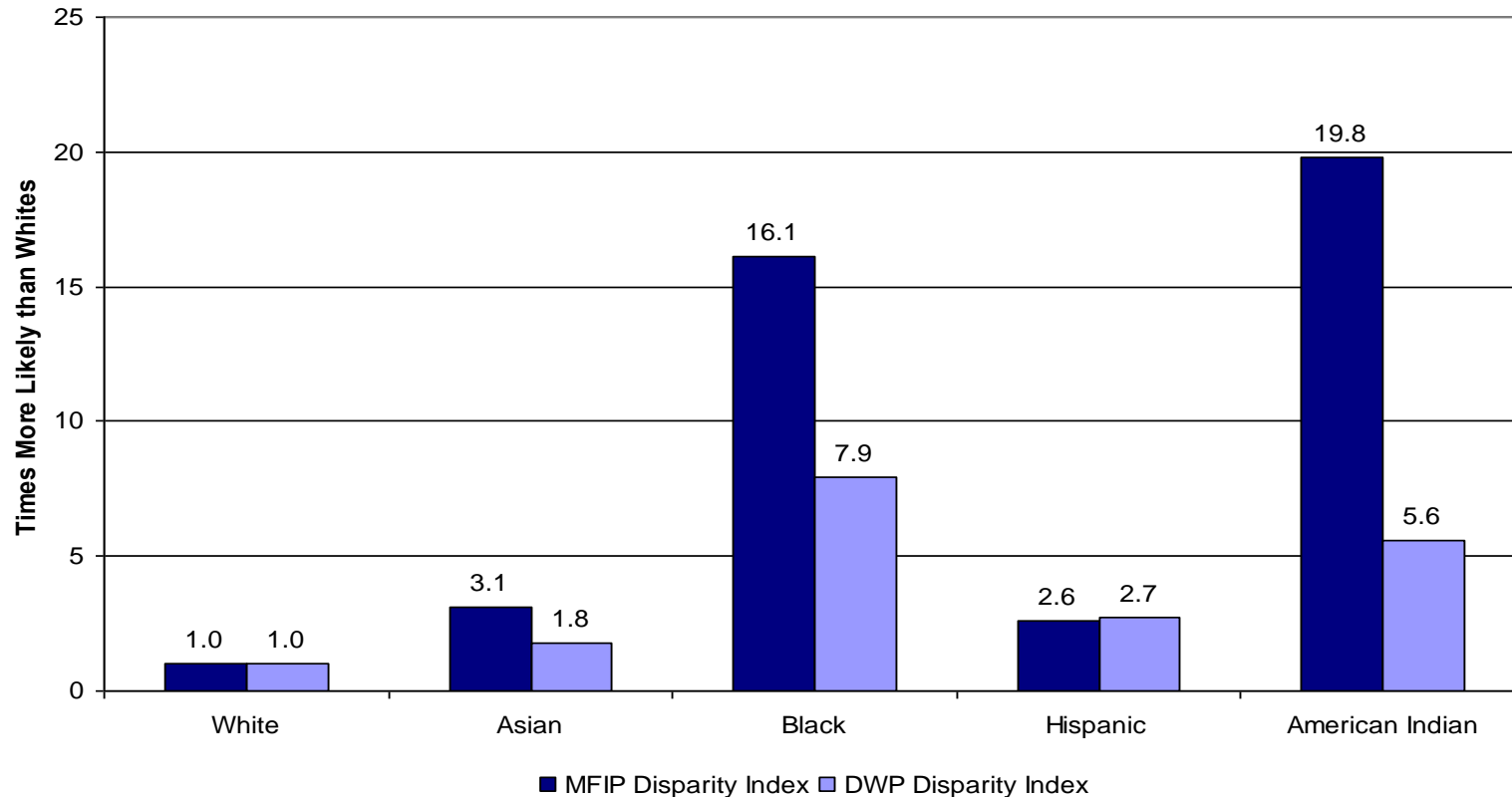


Chart 2-4. Disparity Index: Comparing Program Participation by Race/Ethnicity



The racial/ethnic disparity index is the ratio of the percentage of people potentially eligible for a program from a racial/ethnic group who are participating in the program to the percentage of whites potentially eligible who are participating in that program. For example, for Minnesota adults with children, the disparity index for blacks is 11.6 percent divided by 0.7 percent (figures from Chart 2-3), or 16.1, telling us that a black Minnesota adult with children in Minnesota is 16 times more likely than a white Minnesota adult with children to participate in MFIP. An American Indian adult is 20 more times likely. This measure is a reflection of poverty and need for services in different communities.

Chapter Three: MFIP Participant Characteristics

Many of the adult and teenage caregivers eligible for MFIP have characteristics that can make obtaining and retaining a job difficult. As the charts in this chapter show, MFIP-eligible adults tend to be younger than other Minnesotans with minor children, less educated, and to have never married. Younger people tend to have less job experience than older people. The less educated tend to have fewer marketable skills than people with more education. Fathers that were married or are married are more likely to provide on-going care and financial support for children⁵ and married fathers tend to earn more than non-married fathers.⁶

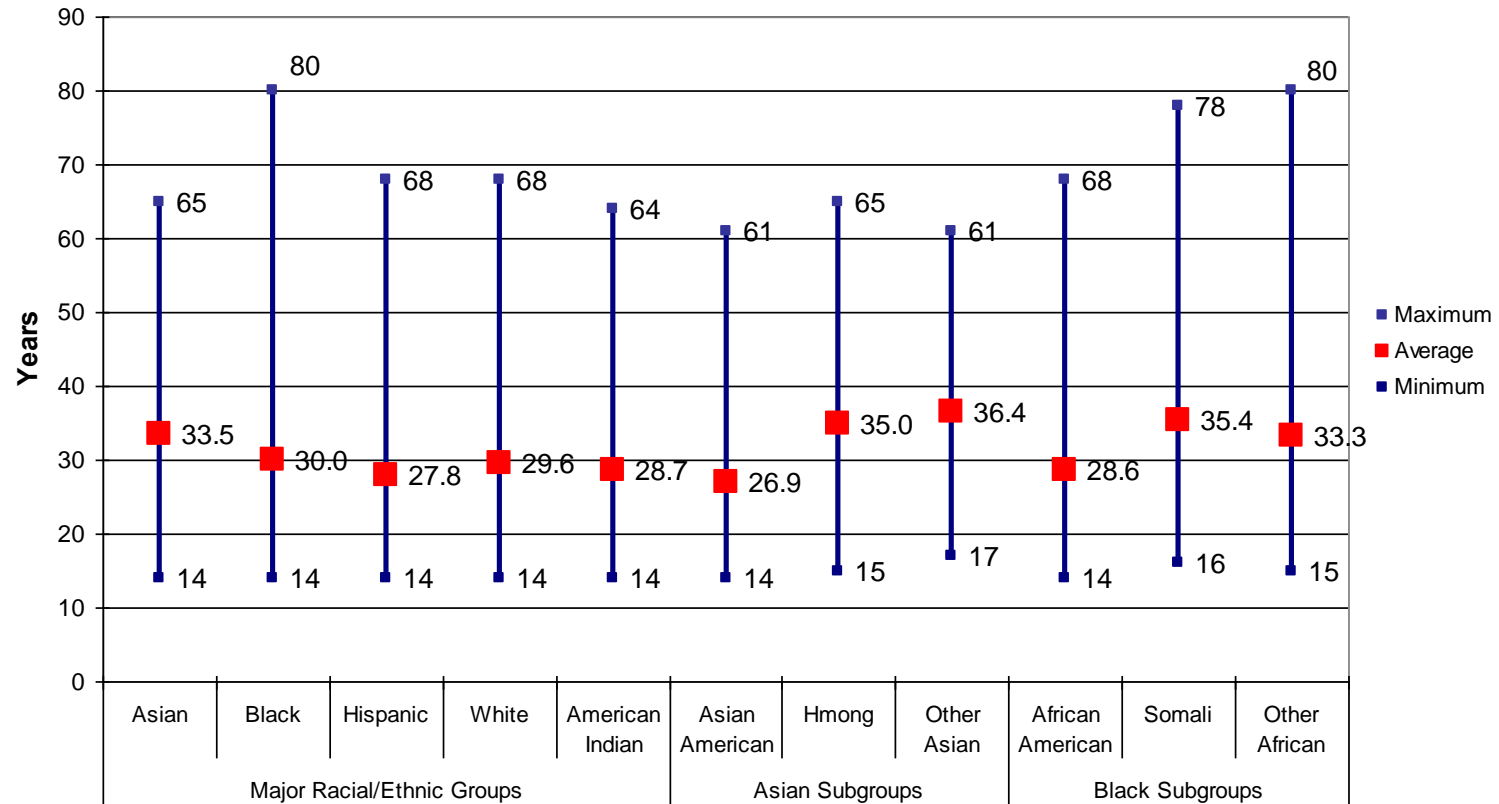
The charts in this chapter show eligible-adult MFIP participants by race/ethnicity with subgroup. Charts 3-3 and 3-4 show ACS data for all Minnesotans with children by the five major race/ethnicities.

ACS data for all Minnesotan families with minor children are only presented for the five major/racial ethnic groups because the ACS does not break down Asian and black subgroups in the same manner as reported here.

⁵ Fragile Families Research Brief. (2007) *Parents' Relationship Status Five Years After a Non-Marital Birth*. Retrieved August 18, 2009, from <http://www.fragilefamilies.princeton.edu/briefs/ResearchBrief39.pdf>.

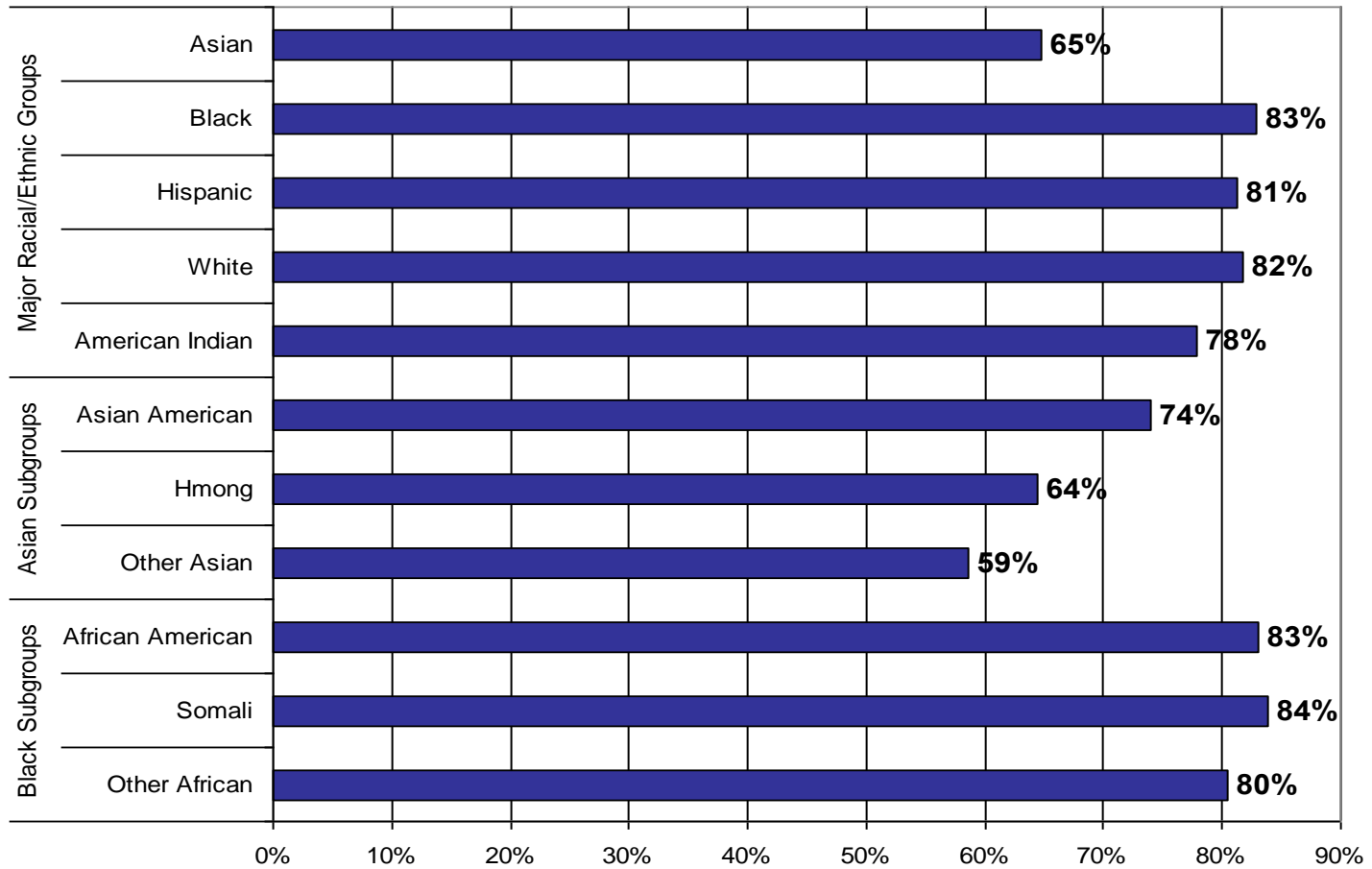
⁶ Garfinkel, Irwin, McLanahan, Sarah, Meadows, Sarah, and Mincy, Ronald. (2009) "Unmarried Fathers' Earnings Trajectories: Does Partnership Status Matter?" Working Paper WP09-02-FF. Retrieved July 24, 2009, from www.crcw.princeton.edu/publications/publications.asp

Chart 3-1. Age Distribution of MFIP-eligible Caregivers by Race/Ethnicity and Subgroup, December 2009



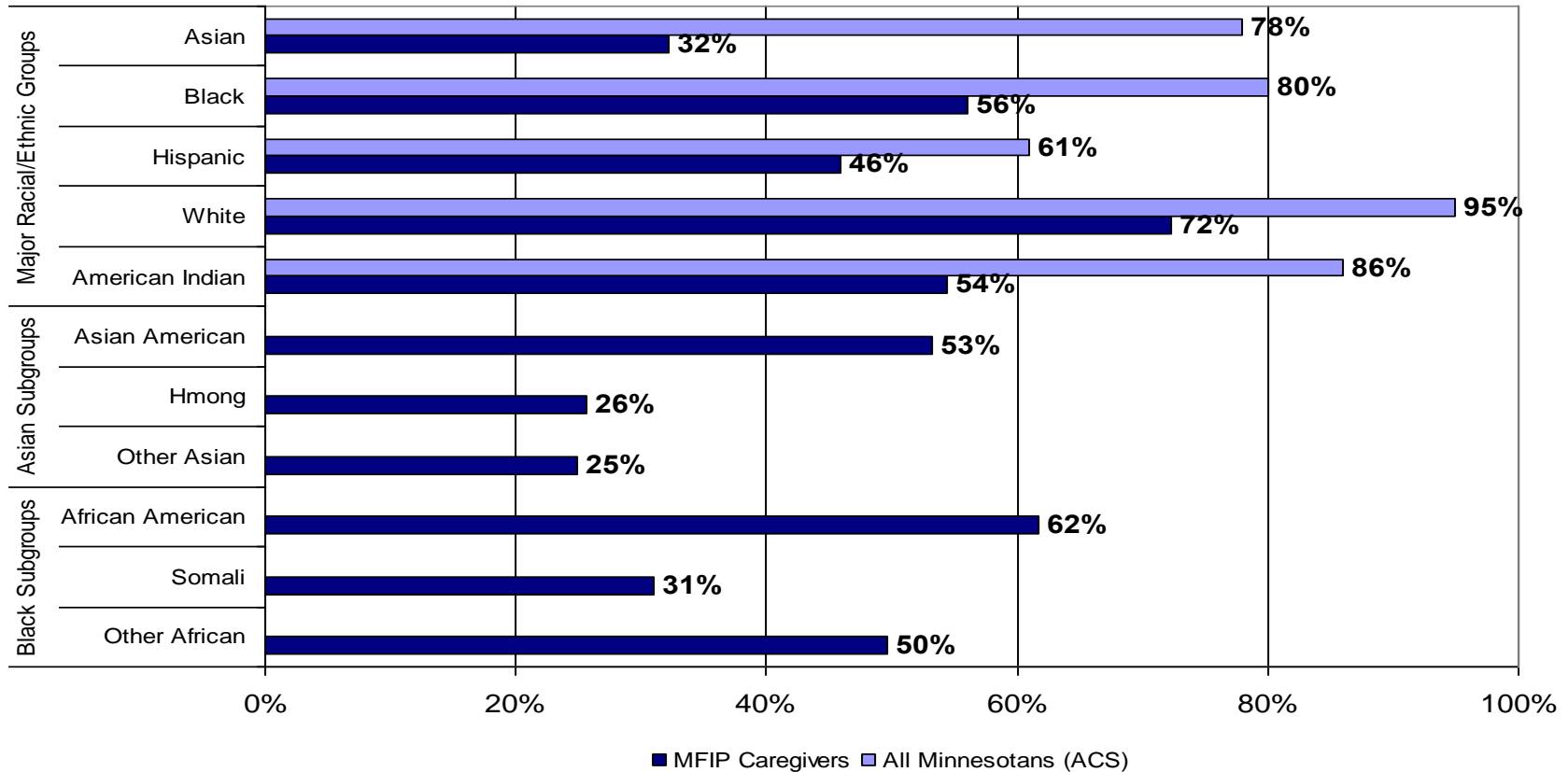
MFIP-eligible adults that were immigrants tend to be older on average than native-born MFIP and DWP-eligible adults. The average age of all MFIP-eligible adults was 30 years. Somali adults averaged 35 years, Other Asian Immigrant adults averaged 36 years, and Hmong adults averaged 35 years. The average age of all Minnesotan adults that live with a child under age 18 was 39 years.

Chart 3-2. Percent of MFIP-eligible Adults that are Female, December 2009



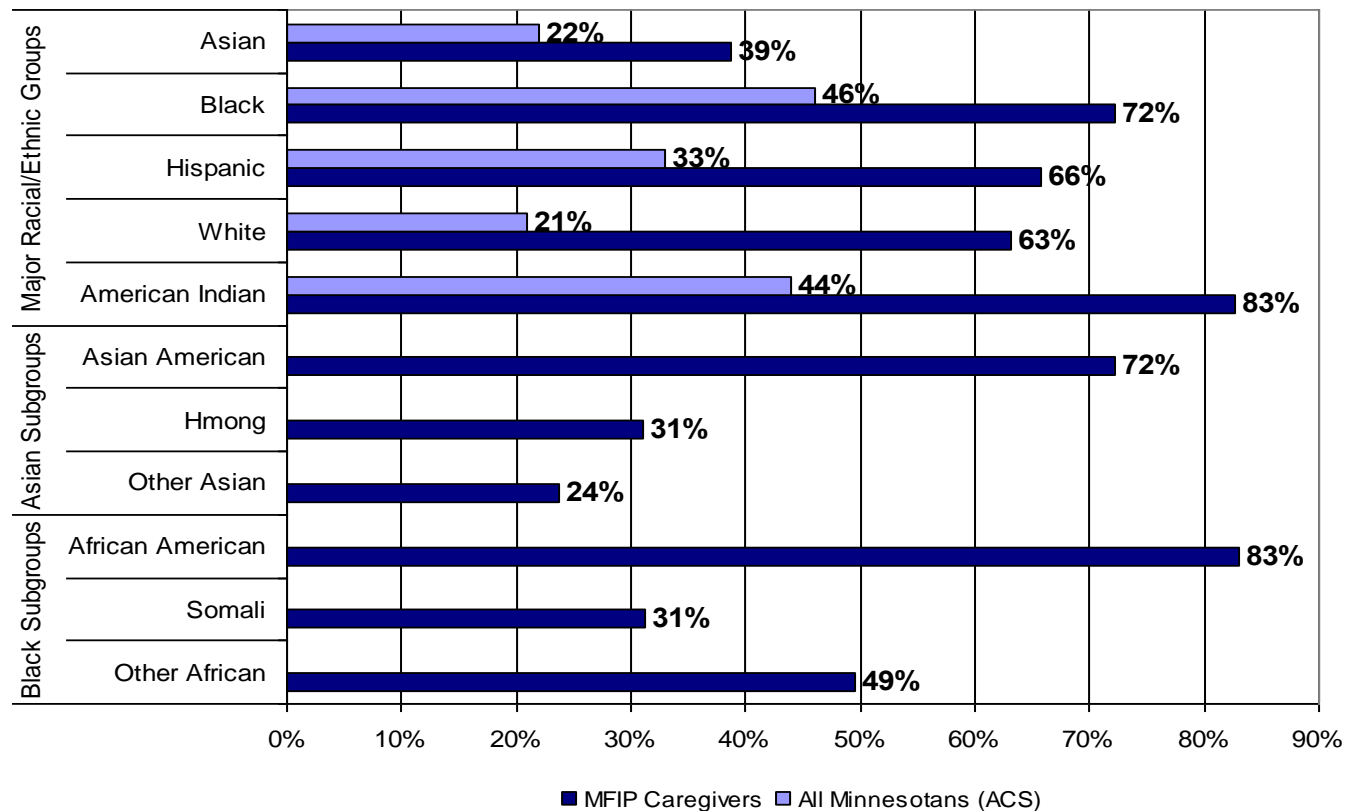
Females dominated all racial/ethnic groups on MFIP, although many Hmong and Other Asian cases had two caregivers (one male and one female).

Chart 3-3. MFIP Participants with a High School Diploma Compared to All Minnesotans with Minor Children, December 2009



Ninety-two percent of all Minnesotan adults with minor children have at least a high school diploma or GED, although, as the light blue bars indicate, this varies by race. MFIP participants had less education than all Minnesotans with 61 percent with at least a high school diploma or GED compared to 92 percent of all Minnesotan adults. Immigrant groups had less education than U.S.-born MFIP participants and all minority groups had less education, on average, than whites.

Chart 3-4. MFIP Participants Who Never Married Compared to All Minnesotans with Minor Children, December 2009



Twenty-three percent of all Minnesota adults with children have never married compared to 67 percent of MFIP-eligible adults. Eighty-three percent of both African American and American Indian MFIP-eligible adults had never married.

While immigrant groups were more likely to have been married, note that Asian Americans on MFIP, many of whom were children of immigrants, had marriage rates similar to those of other U.S.-born MFIP participants.

Chapter Four: Characteristics of Households Receiving MFIP

Households participating in MFIP have, on average, fewer children than all Minnesotan households with children. They also tend to have younger children (and as shown in Chart 3-1 are younger themselves), live in rural and urban areas with high unemployment, and often face challenges due to a chemical health or serious mental health diagnosis, or child protection involvement.

According to the U.S. Bureau of Labor Statistics, women with children under age 18, and in particular women with children under age one, are more likely to be unemployed than other women and men.⁷ In 2002, women with a child under age 1 that were married and living with a partner had an unemployment rate of 6 percent, but women with a child under age 1 that were not married faced a 20 percent unemployment rate. Regardless of marital status, women with minor children had higher rates of unemployment than men (6 percent compared to 4 percent). The numbers in this study only include women actively looking for work.⁸

⁷ “Unemployment of parents with children under 18.” (2003) *The Editor’s Desk*. U.S. Department of Labor, Bureau of Labor Statistics. Retrieved August 11, 2009, from <http://www.bls.gov/opub/ted/2003/jul/wk2/art02.htm>.
“Unemployment and marital status of women with young children.” (2003) *The Editor’s Desk*. U.S. Department of Labor, Bureau of Labor Statistics. Retrieved August 11, 2009, from <http://www.bls.gov/opub/ted/2003/jul/wk3/art04.htm>.

⁸ See also: Correll, Shelley J., Benard, Stephan, and Paik, In. (2007) “Getting a Job: Is There a Motherhood Penalty?” *American Journal of Sociology*. 112(5): 1297 – 1338.

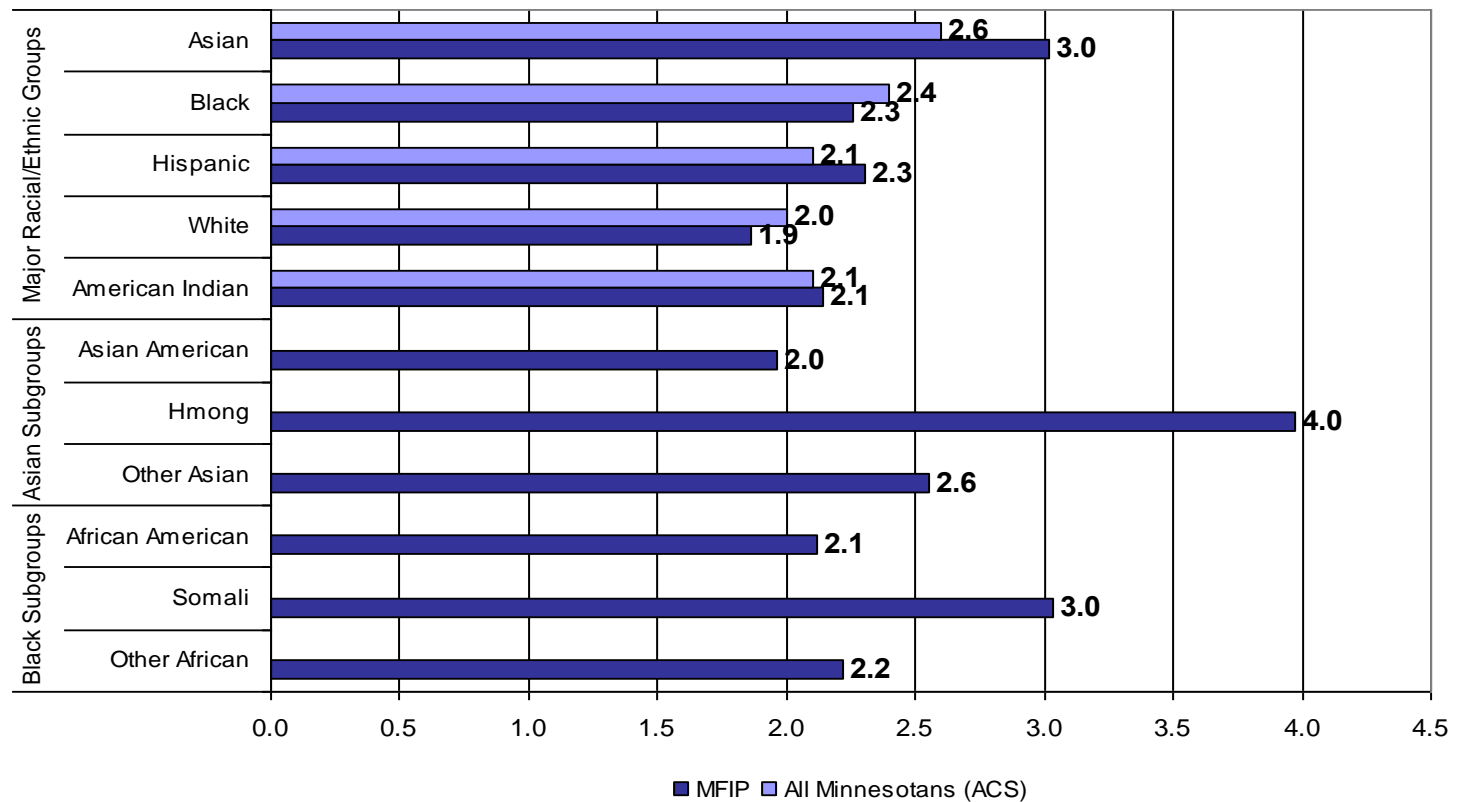
The Bureau of Labor Statistics also provides maps showing the unemployment rate by county.⁹ Minnesota’s unemployment rates (December 2008, not seasonally adjusted) varied greatly by county with rural central and northern Minnesota having the highest unemployment rates. As shown in Chart 4-3, white and American Indian MFIP households tend to reside in rural Minnesota and black and Asian households are concentrated in Hennepin and Ramsey Counties.

In addition to household size, number of caregivers, and region of residence, this section also provides data on caregiver chemical health and serious mental health diagnoses, and child protection involvement by race/ethnicity and subgroup.

ACS data are shown in Charts 4-1 and 4-3 for the five major racial/ethnic groups.

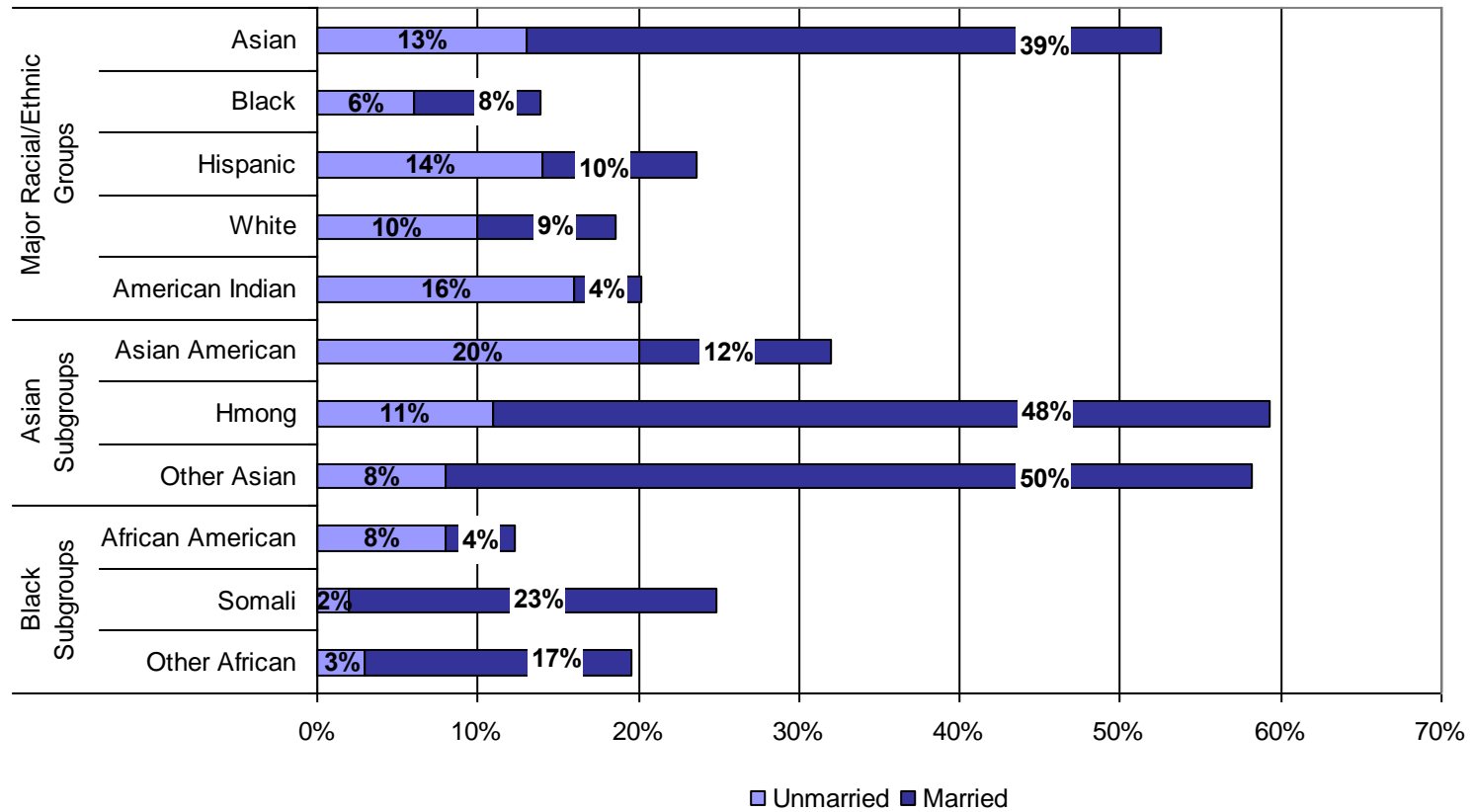
⁹ Go to <http://www.bls.gov/lau/home.htm> and scroll down to “Create Customized Maps.”

Chart 4-1. Number of Children in MFIP Cases and in All Minnesota Households with Minor Children, December 2009



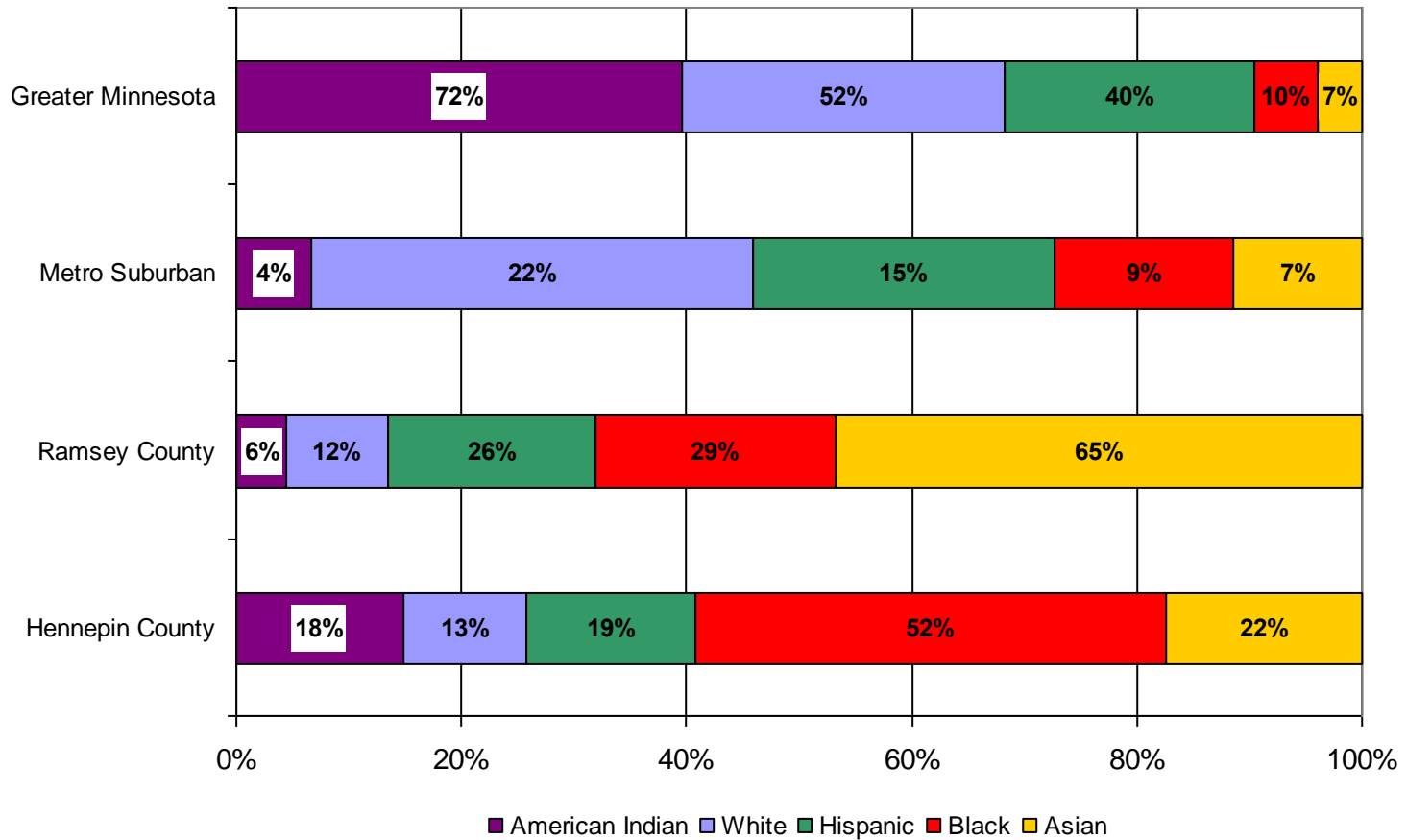
MFIP participants had, on average, a similar number or fewer children as all Minnesotans with children. Adult MFIP participants were, on average, nine years younger than all Minnesotan adults with minor children and, therefore, had more future opportunity to add to their families.

Chart 4-2. Percent of MFIP Cases with Two Caregivers and Two Married Caregivers, December 2009



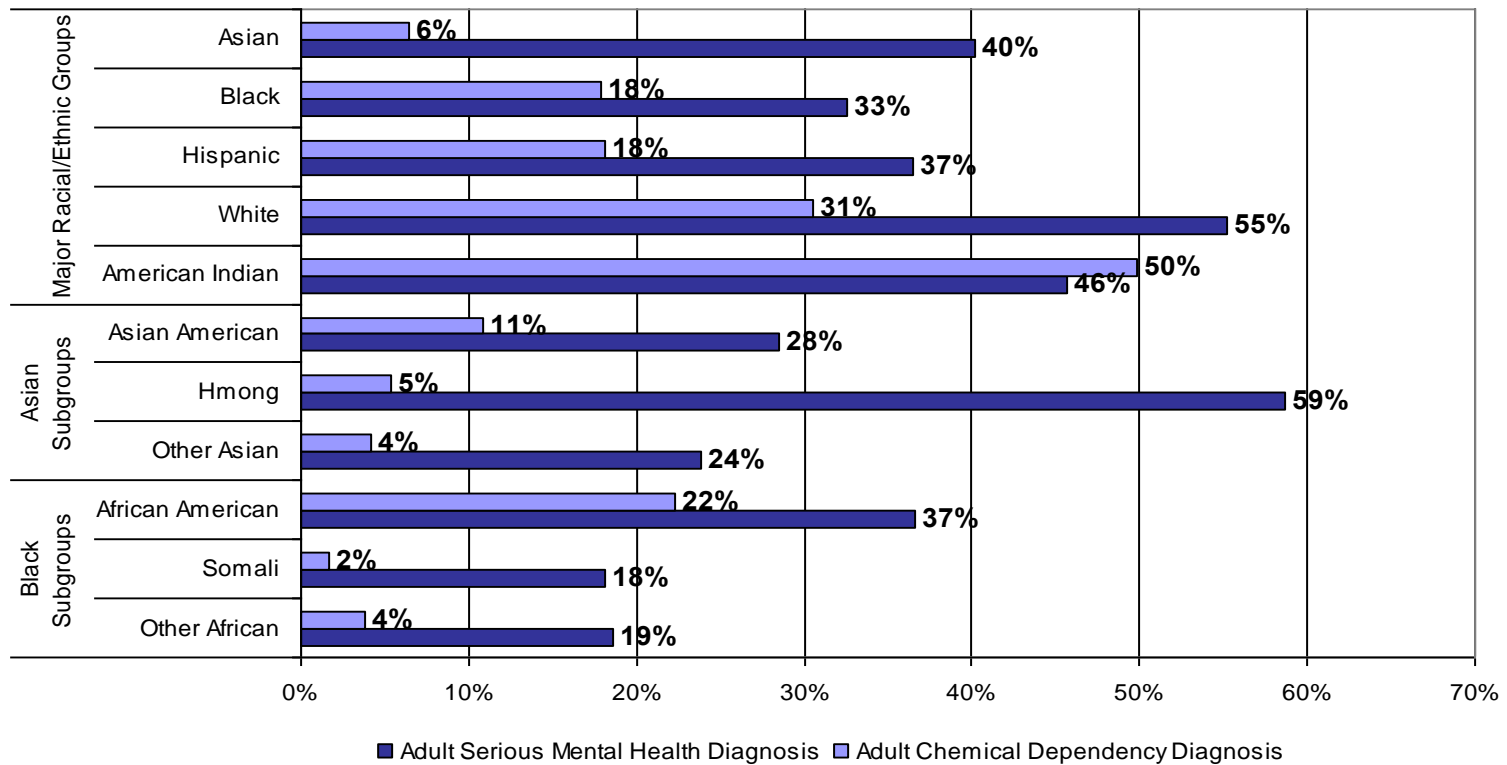
While Hmong and Other Asian cases were more likely to have two caregivers in the household (about 60 percent each), about one in five Hispanic, White, and American Indian cases also had two caregivers present. The caregivers in Asian Immigrant households were much more likely to be married.

Chart 4-3. Geographic Region of December 2009 MFIP Eligible-adult Cases



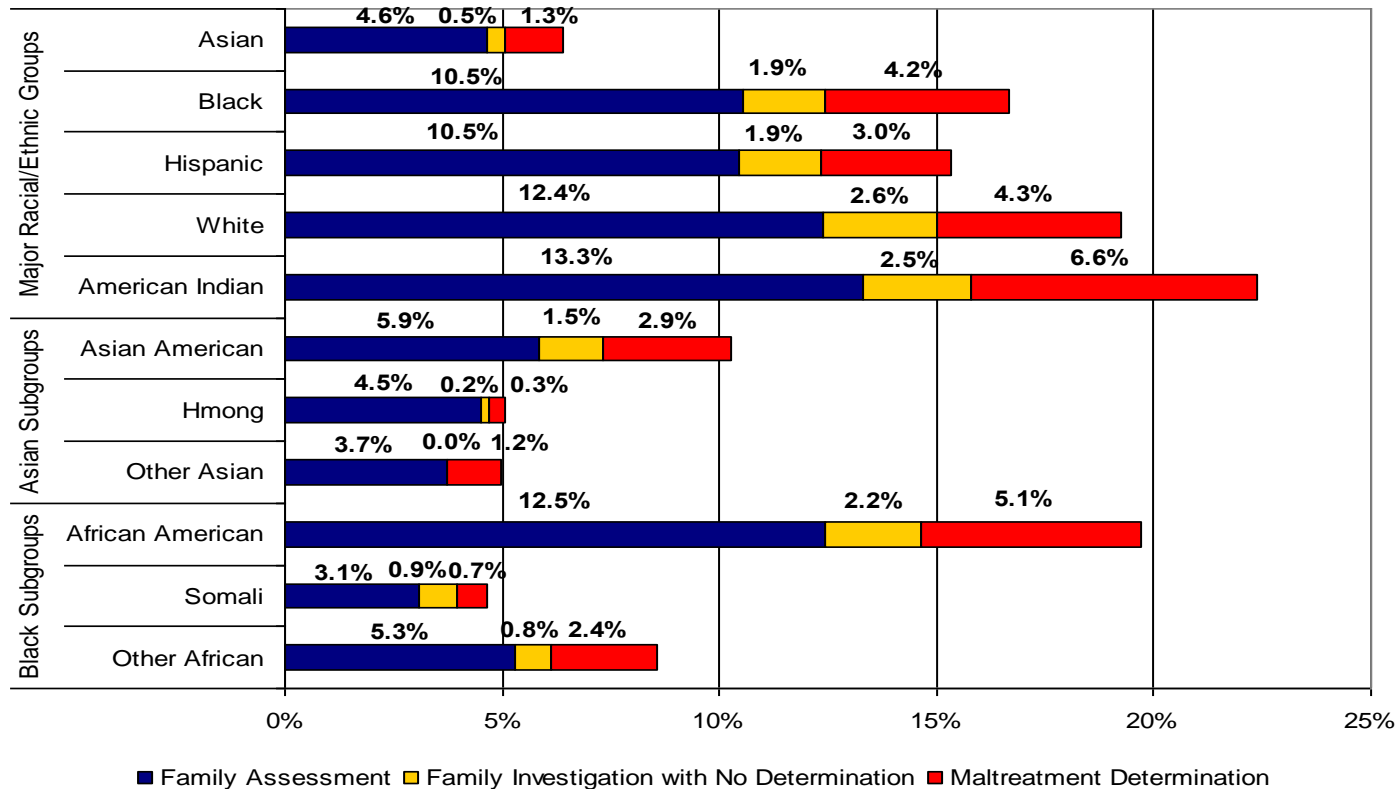
MFIP eligible households were concentrated in the core metropolitan area of Hennepin and Ramsey Counties and in Greater Minnesota. Asian and black MFIP participants were concentrated in the core metropolitan area, while whites and American Indian participants were concentrated in Greater Minnesota.

Chart 4-4. Adult Serious Mental Health Diagnosis and Adult Chemical Dependency Diagnosis During 2007 to 2009, Caregivers in MFIP Cases



More than half of white and Hmong adult MFIP participants had a diagnosis of psychosis, depression, personality disorder, post-traumatic stress disorder, or anxiety-state in the last three years. One-third of white and half of American Indian adult MFIP participants had a chemical dependency diagnosis (excluding tobacco) in the last three years. These data only include diagnoses made while on publicly paid health insurance and do not mean that treatment was received. According to SAMHSA, 11 percent of Minnesotan adults had experienced serious psychological distress and 11 percent had been diagnosed with alcohol or illicit drug dependence or abuse within a year of being surveyed.

Chart 4-5. MFIP Caregiver Involvement with Child Protection Services During 2007 to 2009, Percent of Cases



A Family Assessment (FA) is an alternative to traditional child protection investigation and services for families where the child is not in imminent danger and allegations do not include egregious harm, sexual abuse, or maltreatment in a day care or foster home. In a Family Investigation (FI) county workers interview persons involved with the report and investigate the allegation. If there is a preponderance of evidence that a child has been the victim of maltreatment, the county worker makes a determination that maltreatment has occurred. All categories in this chart are mutually exclusive.

Chapter 5: Economic Characteristics of MFIP Cases

Chapter 5 looks at factors that may impact a household's MFIP grant size. MFIP grants are calculated using a standard amount based on family size and then adjusted based upon many factors, including income amounts and types.

MFIP has a 60-month time limit for most caregivers between the ages of 18 and 59. When a case reaches the lifetime limit it can be extended for certain documented criteria.¹⁰ Most of the extension reasons are related to employment barriers such as long-term illness, caring for an ill family member, mental illness, or learning disabilities. A case may also be extended if the caregivers are working a minimum number of hours, but not earning enough to exit MFIP. Working cases exit MFIP at 115 percent of the federal poverty guideline. So long as a case meets the extension criteria and has an eligible child, the family may remain active on MFIP.

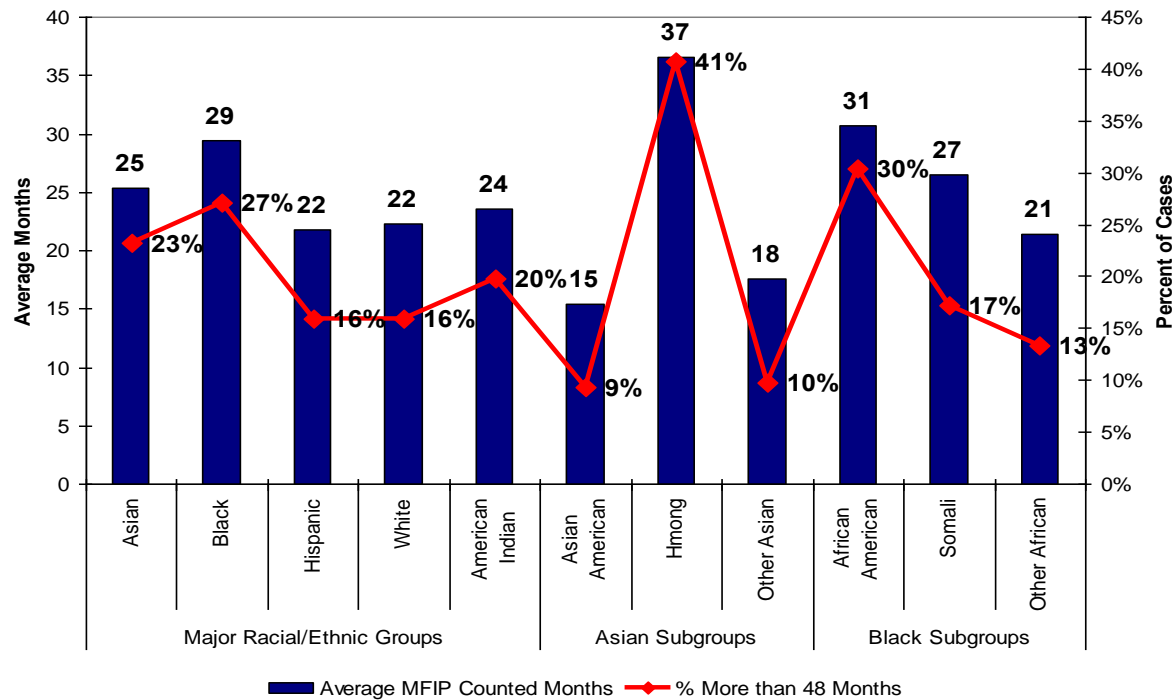
Family Stabilization Services (FSS) is a MFIP service track for families that are not making significant progress on MFIP due to specific barriers to employment. FSS enrolled its first participants in February 2008 and provides case management and services as an alternative to traditional MFIP Employment Services (ES). These services are intended to help caregivers overcome the barriers that prevent them from retaining employment and then return to traditional ES.

A household may have its MFIP grant sanctioned (reduced) for not complying with Employment Services (ES). Examples of non-compliance are failure to attend a financial services orientation or failure to follow an Employment Plan's mandatory activities. For a household with one eligible caregiver, the first sanction is 10 percent of the grant and in subsequent months sanctions are 30 percent. For households with two eligible caregivers that are both in non-compliance, the sanction is 30 percent. After six sanctioned months a case may be closed. If a case is sanctioned in its 60th month, it can never be extended.

Chapter 5 also looks at cases with working caregivers, their work hours and income, and families eligible for the Child Care Assistance Program (CCAP).

¹⁰ For more information about MFIP cases that have reach the time limit, see PAID's *At the Limit* report series, available at http://www.dhs.state.mn.us/id_004113

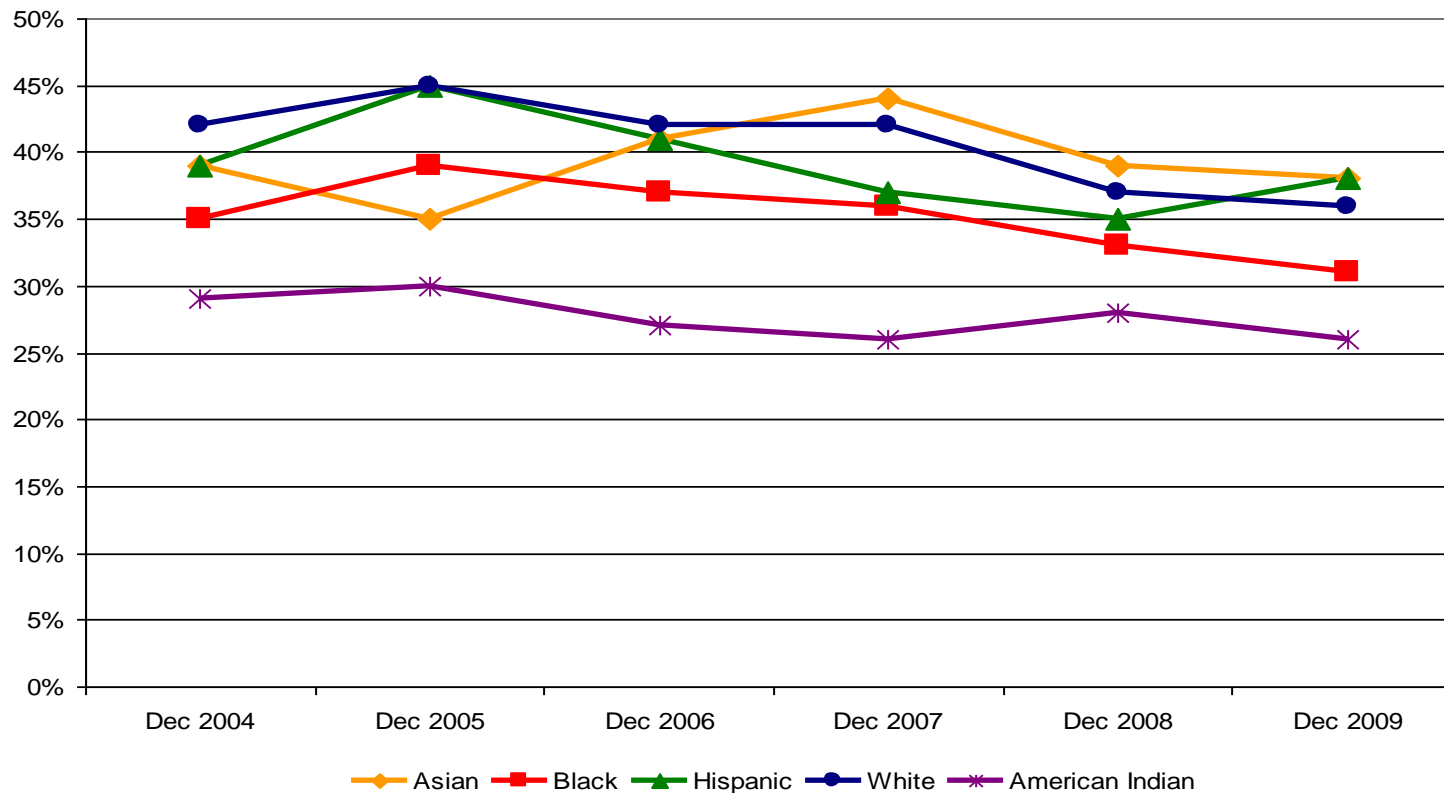
Chart 5-1. Average MFIP Months Counted Toward the 60-Month Time Limit and Percent of MFIP Cases with More than 48 Months Counted Toward the 60-Month Time Limit, December 2009



Hmong and African American families were more likely than other groups to be nearing the 60-month MFIP time limit with 41 percent of Hmong families and 30 percent African American families within one year of reaching the limit.

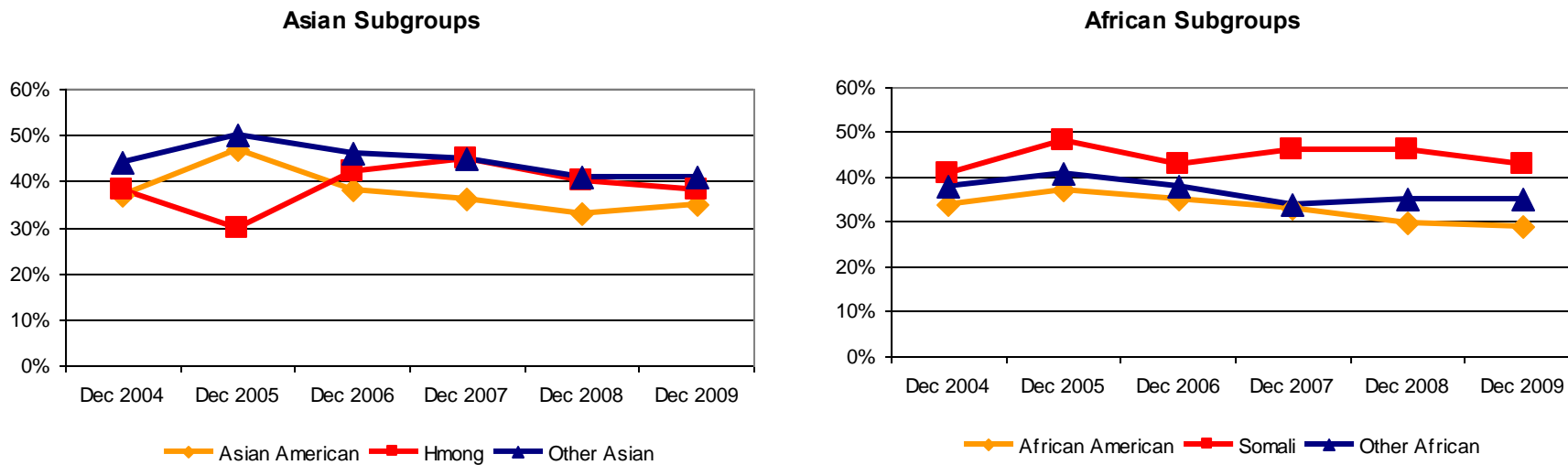
American Indian families had similar average number of counted months as white and Hispanic families. MFIP and TANF policies exempt months for tribal members living in Indian Country with a not-employed rate of at least 50 percent from the time limit which for the time period covered by this report were Prairie Island and Red Lake Reservations.

Chart 5-2. Percent of MFIP Cases with at Least One Working Caregiver by Racial/Ethnic Group, December 2009



All groups except for cases headed by Hispanics saw a decrease in working caregivers in the last year. Most decreases were one or two percentage points. Except for December 2005, the year following the large resettlement of Hmong families, American Indian and black cases have had the lowest percentage of cases with reported work.

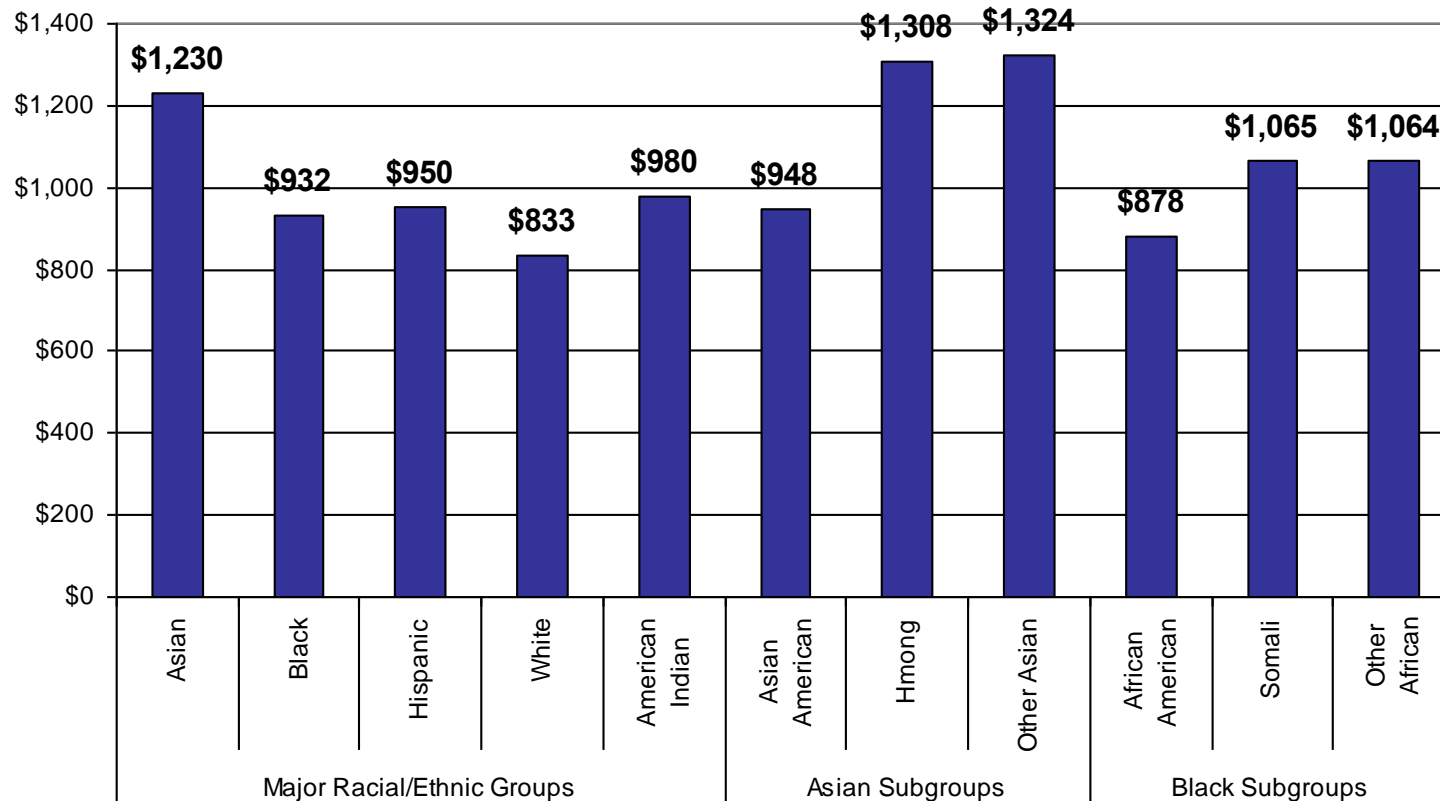
Chart 5-3. Percent of MFIP Cases with at Least One Working Caregiver by Subgroup, December 2009



All Asian subgroups have seen declines in work since December 2007 when nearly half of Hmong and Other Asian Immigrant cases were working. Asian American MFIP participants with reported work decreased each year since December 2005 when 47 percent were working.

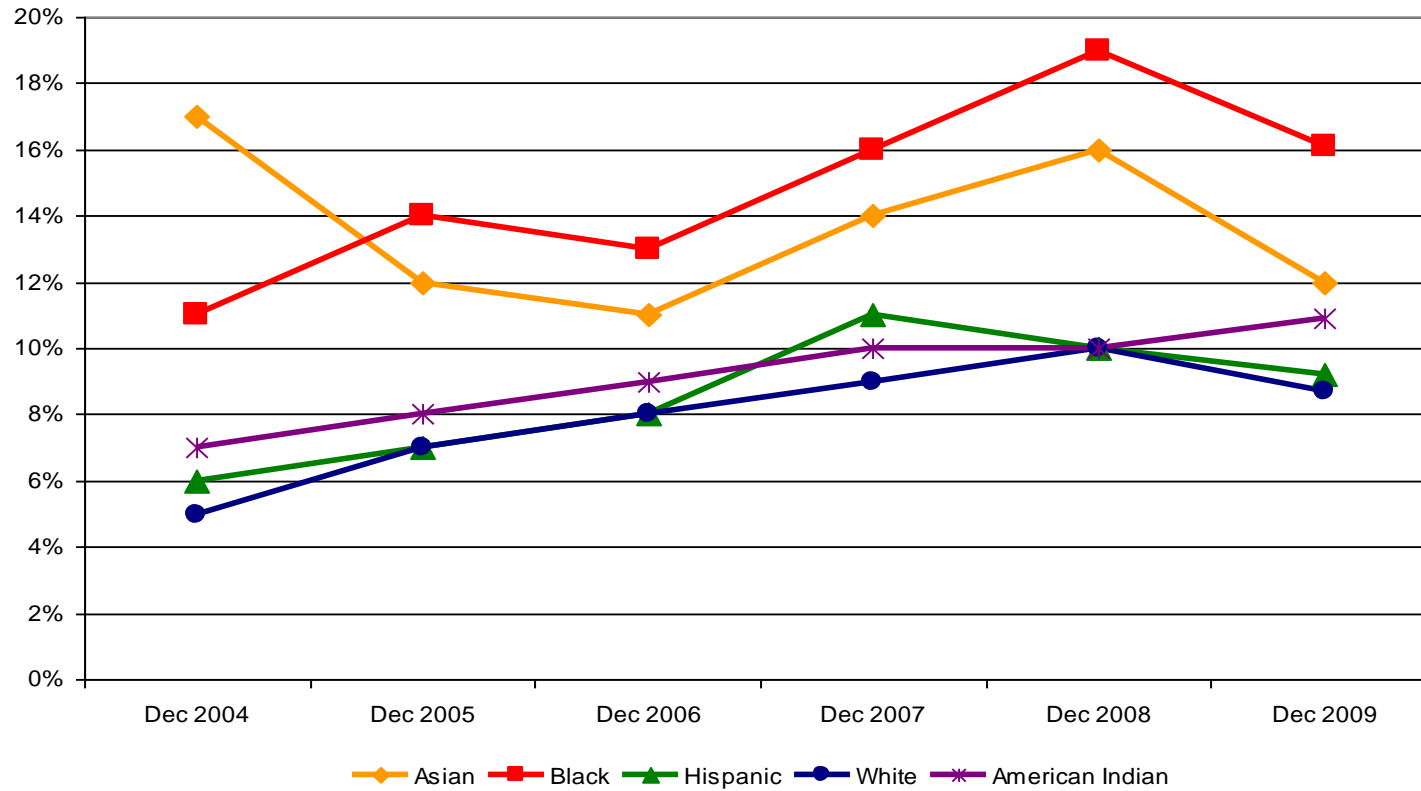
Cases headed by African Americans and Somalis each experienced a slight decrease in reported work since December 2008 while cases headed by other African Immigrants remained the same.

Chart 5-4. Average Reported Earned Income for December 2009 MFIP Cases by Racial/Ethnic Group



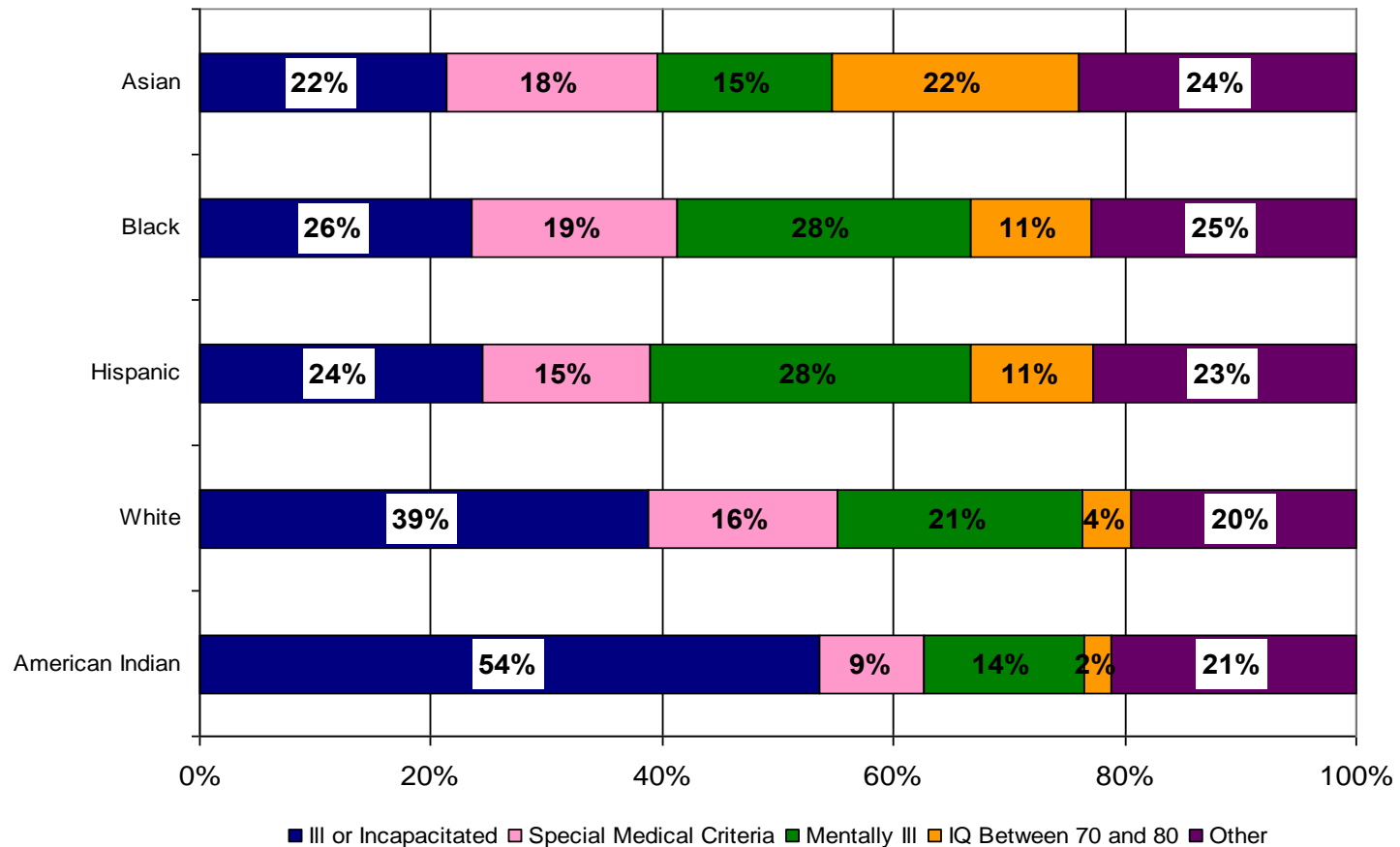
Asian cases had the highest average earned income (\$1,230 for December) of the major racial/ethnic groups while whites had the lowest (\$833 for December). Hmong and Other Asian families also were most likely to have two caregivers and, therefore, have potentially more adults available to work. Asian American cases, many of which are children of immigrants, had income similar to that of other major racial/ethnic groups. Average wages only include caregivers with reported wages.

Chart 5-5. Percent of MFIP Cases with an Eligible Adult that are Extended beyond the 60-Month Lifetime Limit, December 2004 to December 2009



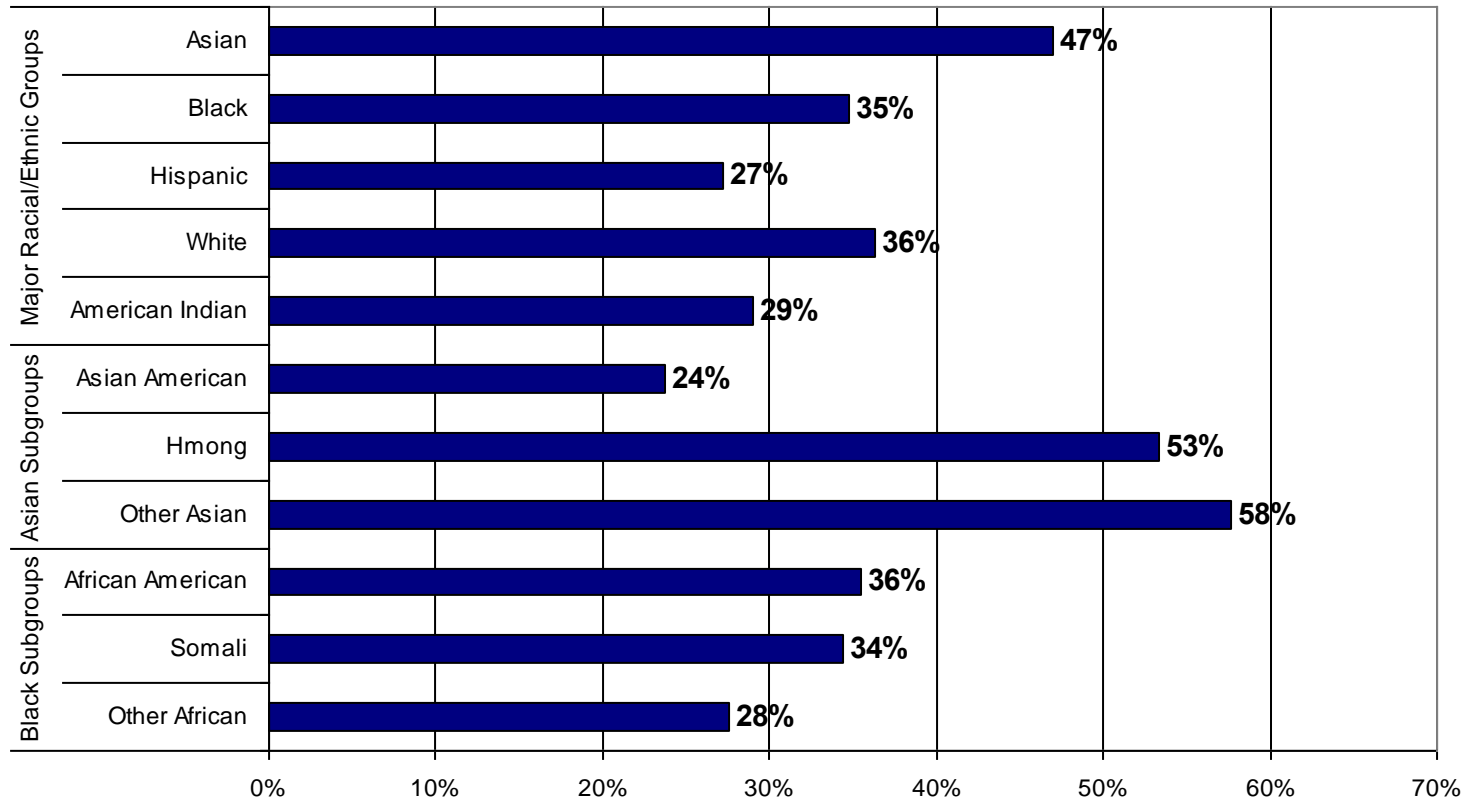
Over time the percentage of cases in extension will increase as cases newly eligible for extension reach 60 months and ongoing extended cases may stay on the program until their children reach age 18 or 19. The decrease in percentage of extended cases in December 2009 was due to an increase in the number of new families entering MFIP rather than a sudden decrease in the number of extended cases.

Chart 5-6. MFIP Extension Reason by Racial/Ethnic Group, December 2009



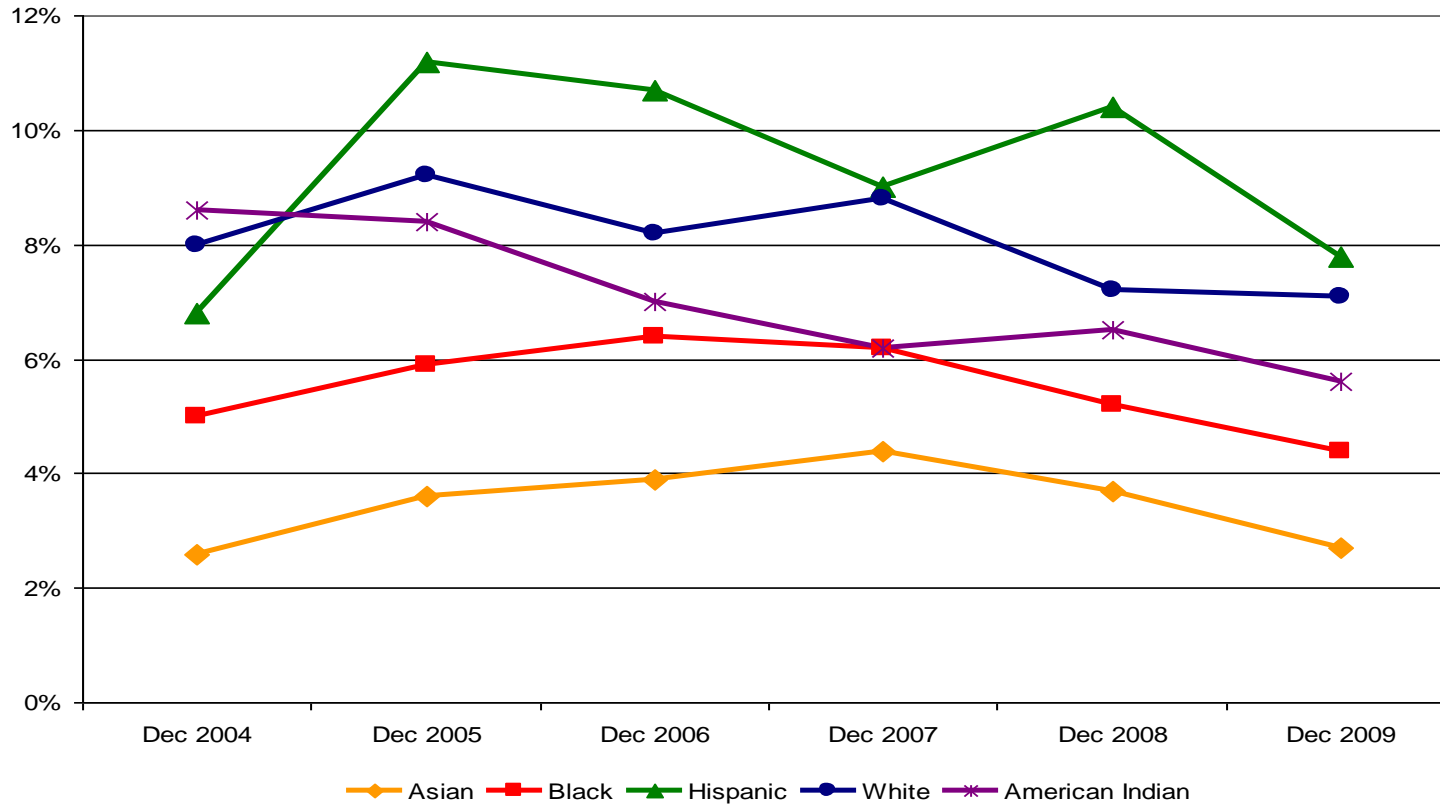
Participants meeting “Special Medical Criteria” are those with an adult or child in the household that meets the criteria for home care services or a home and community-based waiver services programs, severe emotional disturbance, or serious and persistent mental illness. The Other category includes participants who were unemployable, learning disabled, employed a minimum number of hours per month, experiencing family violence, mental retardation, caring for an ill or incapacitated family member, or appealing an extension denial.

Chart 5-7. Percent of MFIP Cases Eligible for Family Stabilization Services, December 2009



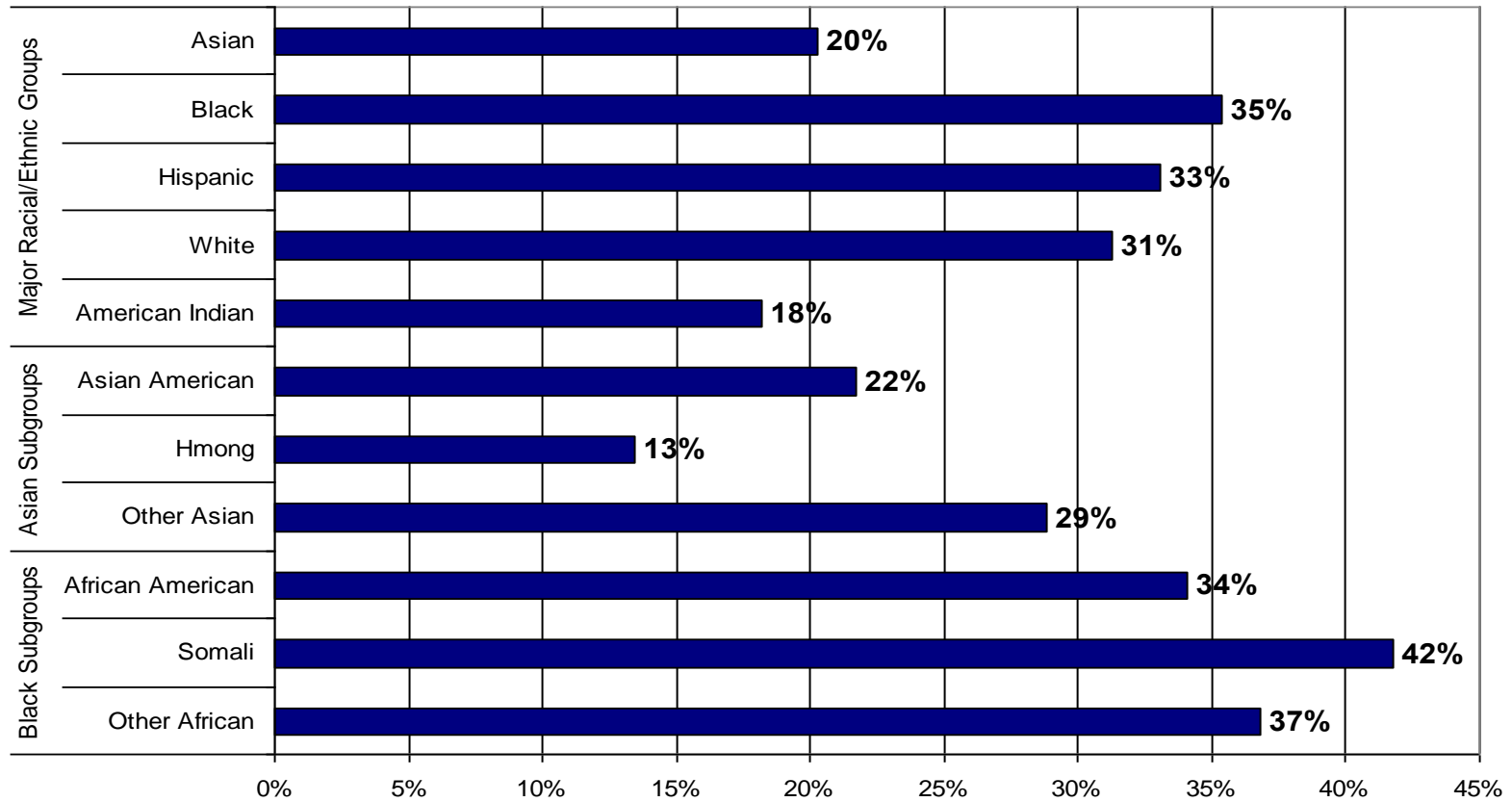
Family Stabilization Services (FSS) is a MFIP service track that provides case management support and services to families that are not making significant progress on MFIP due to specific barriers to employment. All newly arriving immigrants are FSS-eligible so the high percentage of Somali and Other African Immigrant families is not surprising.

Chart 5-8. Percent of MFIP Cases with Employment Services Sanctions by Racial/Ethnic Group, December 2009



All MFIP-eligible and some MFIP-ineligible caregivers must participate in Employment Services (ES). If a caregiver does not follow the ES rules, their MFIP grant may be reduced (sanctioned).

Chart 5-9. Percentage of MFIP Families Eligible for the Child Care Assistance Program, December 2009



This chart shows families that were eligible for the Child Care Assistance Program (CCAP) in December 2009. Families that were eligible, but did not have participate in work activities or paid employment, are included although they did not actually use child care.

Appendix: Complete Data Tables

Table 1. Demographic Characteristics of Eligible Adults on December 2009 MFIP Paid Cases by Racial/Ethnic Groups and Subgroups

Characteristics of Adults Eligible on December 2009 MFIP Cases		All Eligible Adults	Racial/Ethnic Groups					Asian Subgroups			Black Subgroups		
			Asian	Black	Hispanic	White	American Indian	Asian American	Asian Immigrants		African American	Black Immigrants	
									Hmong	Non-Hmong		Somali	Non-Somali
Eligible Adults	Number	27,678	1,760	10,225	1,521	11,092	2,568	438	703	619	7,793	1,553	879
	Percent of Total	100.0%	6.4%	36.9%	5.5%	40.1%	9.3%	1.6%	2.5%	2.2%	28.2%	5.6%	3.2%
Age of Adults	Mean	29.8	33.5	30.0	27.8	29.6	28.7	26.9	35.0	36.4	28.6	35.4	33.3
	Median	28	33	28	26	28	27	23	35	36	27	33	31
	Minimum	14	14	14	14	14	14	14	15	17	14	16	15
	Maximum	80	65	80	68	68	64	61	65	63	68	78	80
Frequency	< 18	507	45	194	66	122	60	28	16	1	173	9	12
		1.8%	2.6%	1.9%	4.3%	1.1%	2.3%	6.4%	2.3%	0.2%	2.2%	0.6%	1.4%
	18 - 19	2,105	141	722	190	763	215	91	37	13	649	31	42
		7.6%	8.0%	7.1%	12.5%	6.9%	8.4%	20.8%	5.3%	2.1%	8.3%	2.0%	4.8%
	20 - 29	13,355	570	4,897	749	5,533	1,314	196	198	176	4,006	551	340
		48.3%	32.4%	47.9%	49.2%	49.9%	51.2%	44.7%	28.2%	28.4%	51.4%	35.5%	38.7%
	30 - 39	7,262	451	2,705	348	3,011	653	59	200	192	2,008	442	255
		26.2%	25.6%	26.5%	22.9%	27.1%	25.4%	13.5%	28.4%	31.0%	25.8%	28.5%	29.0%
	40 - 49	3,442	376	1,256	129	1,392	263	40	181	155	769	341	146
		12.4%	21.4%	12.3%	8.5%	12.5%	10.2%	9.1%	25.7%	25.0%	9.9%	22.0%	16.6%
50 - 59	885	152	375	37	255	60	21	62	69	170	143	62	
	3.2%	8.6%	3.7%	2.4%	2.3%	2.3%	4.8%	8.8%	11.1%	2.2%	9.2%	7.1%	
60 and over	122	25	76	2	16	3	3	9	13	18	36	22	
	0.4%	1.4%	0.7%	0.1%	0.1%	0.1%	0.7%	1.3%	2.1%	0.2%	2.3%	2.5%	
Gender	Female	22,374	1,140	8,480	1,236	9,068	2,001	324	453	363	6,472	1,301	707
		80.8%	64.8%	82.9%	81.3%	81.8%	77.9%	74.0%	64.4%	58.6%	83.0%	83.8%	80.4%
	Male	5,304	620	1,745	285	2,024	567	114	250	256	1,321	252	172
	19.2%	35.2%	17.1%	18.7%	18.2%	22.1%	26.0%	35.6%	41.4%	17.0%	16.2%	19.6%	

Table 1 – Page 2

MFIP Demographic Characteristics		All Eligible Adults	Racial/Ethnic Groups					Asian Subgroups			Black Subgroups			
			Asian	Black	Hispanic	White	American Indian	Asian American	Asian Immigrants		African American	Black Immigrants		
									Hmong	Non-Hmong		Somali	Non-Somali	
Education	None or Pre-1st Grade or Unknown	1,707 6.2%	602 34.2%	830 8.1%	44 2.9%	200 1.8%	18 0.7%	34 7.8%	337 47.9%	231 37.3%	105 1.3%	554 35.7%	171 19.5%	
	Grade School	544 2.0%	159 9.0%	251 2.5%	50 3.3%	62 0.6%	21 0.8%	10 2.3%	51 7.3%	98 15.8%	51 0.7%	142 9.1%	58 6.6%	
	Some High School	8,694 31.4%	432 24.5%	3,421 33.5%	729 47.9%	2,809 25.3%	1,131 44.0%	161 36.8%	135 19.2%	136 22.0%	2,831 36.3%	376 24.2%	214 24.3%	
	High School Graduate	14,377 51.9%	491 27.9%	4,942 48.3%	634 41.7%	6,783 61.2%	1,251 48.7%	199 45.4%	159 22.6%	133 21.5%	4,135 53.1%	444 28.6%	363 41.3%	
	Some Post-Secondary	1,987 7.2%	64 3.6%	671 6.6%	58 3.8%	1,028 9.3%	125 4.9%	28 6.4%	18 2.6%	18 2.9%	597 7.7%	25 1.6%	49 5.6%	
	College Graduate	195 0.7%	4 0.2%	58 0.6%	2 0.1%	114 1.0%	13 0.5%	3 0.7%	1 0.1%	0 0.0%	45 0.6%	4 0.3%	9 1.0%	
	Graduate Degree	174 0.6%	8 0.5%	52 0.5%	4 0.3%	96 0.9%	9 0.4%	3 0.7%	2 0.3%	3 0.5%	29 0.4%	8 0.5%	15 1.7%	
	High School Graduate or Higher	16,733 60.5%	567 32.2%	5,723 56.0%	698 45.9%	8,021 72.3%	1,398 54.4%	233 53.2%	180 25.6%	154 24.9%	4,806 61.7%	481 31.0%	436 49.6%	
	Marital Status	Divorced	1,764 6.4%	63 3.6%	333 3.3%	88 5.8%	1,156 10.4%	96 3.7%	17 3.9%	30 4.3%	16 2.6%	241 3.1%	65 4.2%	27 3.1%
		Legally Separated	68 0.2%	2 0.1%	9 0.1%	4 0.3%	45 0.4%	4 0.2%	1 0.2%	1 0.1%	0 0.0%	6 0.1%	0 0.0%	3 0.3%
Married, Living with Spouse		4,017 14.5%	832 47.3%	1,284 12.6%	204 13.4%	1,515 13.7%	152 5.9%	75 17.1%	364 51.8%	393 63.5%	522 6.7%	511 32.9%	251 28.6%	
Never Married		18,614 67.3%	681 38.7%	7,389 72.3%	1,001 65.8%	7,013 63.2%	2,122 82.6%	316 72.1%	218 31.0%	147 23.7%	6,468 83.0%	486 31.3%	435 49.5%	
Married, Separated		3,023 10.9%	138 7.8%	1,111 10.9%	220 14.5%	1,330 12.0%	183 7.1%	26 5.9%	72 10.2%	40 6.5%	546 7.0%	424 27.3%	141 16.0%	
Widowed		192 0.7%	44 2.5%	99 1.0%	4 0.3%	33 0.3%	11 0.4%	3 0.7%	18 2.6%	23 3.7%	10 0.1%	67 4.3%	22 2.5%	
Citizenship		Non-U.S.	3,579 12.9%	1,113 63.2%	1,987 19.4%	195 12.8%	270 2.4%	6 0.2%	0 0.0%	545 77.5%	568 91.8%	0 0.0%	1,241 79.9%	746 84.9%
	U.S.	24,099 87.1%	647 36.8%	8,238 80.6%	1,326 87.2%	10,822 97.6%	2,562 99.8%	438 100.0%	158 22.5%	51 8.2%	7,793 100.0%	312 20.1%	133 15.1%	

Note: Among MFIP-eligible adults in December 2009, 454 (1.6%) selected multiple races and 58 (0.002%) were missing race/ethnicity data. These numbers are included in the statewide total, but were excluded from the racial/ethnic groups.

Table 2. Demographic Characteristics of Eligible Adults on December 2009 DWP Paid Cases by Racial/Ethnic Groups and Subgroups

Characteristics of Adults Eligible on December 2009 DWP Cases		All Eligible Adults	Racial/Ethnic Groups					Black Subgroups	
			Asian	Black	Hispanic	White	American Indian	African American	African Immigrants
Eligible Adults	Number	5,215	269	1,321	413	2,926	193	927	394
	Percent of Total	100.0%	5.2%	25.3%	7.9%	56.1%	3.7%	17.8%	7.6%
Age of Adults	Mean	30.7	31.1	30.2	30.2	31.1	28.1	29.5	31.9
	Median	29	29	29	29	30	27	28	30
	Minimum	16	16	18	16	17	18	18	18
	Maximum	64	60	64	58	62	53	64	60
Frequency [^]	< 20	191	12	47	24	91	10	40	7
		3.7%	4.5%	3.6%	5.8%	3.1%	5.2%	4.3%	1.8%
	20 - 29	2,507	127	660	193	1,368	114	484	176
		48.1%	47.2%	50.0%	46.7%	46.8%	59.1%	52.2%	44.7%
	30 - 39	1,689	83	421	139	966	54	284	137
		32.4%	30.9%	31.9%	33.7%	33.0%	28.0%	30.6%	34.8%
	40 - 49	704	36	163	47	433	13	104	59
		13.5%	13.4%	12.3%	11.4%	14.8%	6.7%	11.2%	15.0%
50 and older	124	11	30	10	68	2	15	15	
	2.4%	3.7%	2.3%	2.4%	2.3%	1.0%	1.6%	3.8%	
Gender	Female	3,824	169	998	299	2,158	138	693	305
		73.3%	62.8%	75.5%	72.4%	73.8%	71.5%	74.8%	77.4%
	Male	1,391	100	323	114	768	55	234	89
		26.7%	37.2%	24.5%	27.6%	26.2%	28.5%	25.2%	22.6%

Note: Due to data privacy concerns, DWP-eligible caregivers and cases cannot be reported for Asian subgroups and the Black immigrant subgroups had to be combined. The small number of participants prevents reporting distributions.

[^] Ten caregivers were younger than age 18 and 6 were 60 or older.

Table 2 – Page 2

DWP Demographic Characteristics		All Eligible Adults	Racial/Ethnic Groups					Black Subgroups	
			Asian	Black	Hispanic	White	American Indian	African American	African Immigrants
Education	None or Pre-1st Grade or Unknown	273	29	108	29	99	4	28	80
		5.2%	10.8%	8.2%	7.0%	3.4%	2.1%	3.0%	20.3%
	Grade School	73	15	23	16	16	2	3	20
		1.4%	5.6%	1.7%	3.9%	0.5%	1.0%	0.3%	5.1%
	Some High School	1,036	56	282	139	484	60	196	86
		19.9%	20.8%	21.3%	33.7%	16.5%	31.1%	21.1%	21.8%
	High School Graduate	3,162	145	750	195	1,902	108	578	172
		60.6%	53.9%	56.8%	47.2%	65.0%	56.0%	62.4%	43.7%
	Some Post-Secondary	531	17	124	26	339	16	95	29
		10.2%	6.3%	9.4%	6.3%	11.6%	8.3%	10.2%	7.4%
College Graduate	71	3	32	1	48	2	13	19	
	1.4%	1.1%	2.4%	0.2%	1.6%	1.0%	1.4%	4.8%	
Graduate Degree	69	4	18	7	38	1	14	4	
	1.3%	1.5%	1.4%	1.7%	1.3%	0.5%	1.5%	1.0%	
High School Graduate or Higher		3,833	169	924	229	2,327	127	700	224
		73.5%	62.8%	69.9%	55.4%	79.5%	65.8%	75.5%	56.9%
Marital Status	Divorced	421	18	39	23	328	9	28	11
		8.1%	6.7%	3.0%	5.6%	11.2%	4.7%	3.0%	2.8%
	Legally Separated	18	1	1	0	16	0	1	0
		0.3%	0.4%	0.1%	0.0%	0.5%	0.0%	0.1%	0.0%
	Married, Living with Spouse	1,281	112	261	127	736	21	107	154
		24.6%	41.6%	19.8%	30.8%	25.2%	10.9%	11.5%	39.1%
	Never Married	2,784	117	863	188	1,414	146	708	155
		53.4%	43.5%	65.3%	45.5%	48.3%	75.6%	76.4%	39.3%
Married, Separated	695	21	145	75	429	16	78	67	
	13.3%	7.8%	11.0%	18.2%	14.7%	8.3%	8.4%	17.0%	
Widowed	16	0	12	0	3	1	5	7	
	0.3%	0.0%	0.9%	0.0%	0.1%	0.5%	0.5%	1.8%	
Citizenship	Non-U.S.	557	110	110	76	58	0	0	110
		10.7%	40.9%	8.3%	18.4%	2.0%	0.0%	0.0%	27.9%
	U.S.	4,658	159	159	337	2,868	193	119	40
		89.3%	59.1%	12.0%	81.6%	98.0%	100.0%	12.8%	10.2%

Note: Among DWP-eligible adults in December 2009, 46 (0.9%) selected multiple races and 47 (0.9%) were missing race/ethnicity data. These numbers are included in the statewide total, but were excluded from the racial/ethnic groups.

Table 3. Family Composition, Residence, and Challenges of MFIP Paid Cases with Eligible Adults in December 2009 for Racial/Ethnic Groups and Subgroups

Family Characteristics of December 2009 MFIP Cases with Eligible Adults		All Cases	Racial/Ethnic Groups					Asian Subgroups			Black Subgroups			
			Asian	Black	Hispanic	White	American Indian	Asian American	Asian Immigrants		African American	Black Immigrants		
									Hmong	Other Asian		Somali	Other African	
Cases	Count	24,297	1,317	9,263	1,339	9,669	2,247	341	574	402	7,188	1,338	737	
	Percent of MFIP Cases	100%	5.4%	38.1%	5.5%	39.8%	9.2%	1.4%	2.4%	1.7%	29.6%	5.5%	3.0%	
Family Type Count of Cases	Natural / Adopted / Step Children	23,576	1,285	8,994	1,312	9,420	2,118	326	569	390	6,996	1,286	712	
		97.0%	97.6%	97.1%	98.0%	97.4%	94.3%	95.6%	99.1%	97.0%	97.3%	96.1%	96.6%	
	Pregnant Only	23,243	23	132	21	195	52	14	4	5	115	11	6	
		95.7%	1.7%	1.4%	1.6%	2.0%	2.3%	4.1%	0.7%	1.2%	1.6%	0.8%	0.8%	
Relative Care	Count of Cases	333	9	137	6	54	77	1	1	7	77	41	19	
	Percent of Cases	1.4%	0.7%	1.5%	0.4%	0.6%	3.4%	0.3%	0.2%	1.7%	1.1%	3.1%	2.6%	
Two Eligible Adults Cases	Count	3,381	428	923	184	1,433	369	85	146	197	560	244	119	
	Percent of Cases	13.9%	32.5%	10.0%	13.7%	14.8%	16.4%	24.9%	25.4%	49.0%	7.8%	18.2%	16.1%	
Two-caregiver Families	Count of Cases	4,667	683	1,340	325	1,795	458	110	340	233	854	337	149	
	Percent of Cases	19.2%	51.9%	14.5%	24.3%	18.6%	20.4%	32.3%	59.2%	58.0%	11.9%	25.2%	20.2%	
Two Caregivers Married	Count of Cases	2,326	520	737	128	831	94	41	277	202	310	305	122	
	Percent of Two-caregiver Cases	49.8%	76.1%	55.0%	39.4%	46.3%	20.5%	37.3%	81.5%	86.7%	36.3%	90.5%	81.9%	
Ineligible Caregivers: Count of Persons	SSI	854	236	293	25	260	26	31	178	27	201	66	26	
	Percent of Ineligible Caregivers	66.4%	95.2%	69.4%	15.3%	75.6%	32.5%	88.6%	97.8%	79.4%	67.9%	77.6%	63.4%	
	Undocumented Non-citizens	165	6	20	125	9	0	0	1	5	0	7	13	
		12.8%	2.4%	4.7%	76.7%	2.6%	0.0%	0.0%	0.5%	14.7%	0.0%	8.2%	31.7%	
	Reached 60th Month and Opted Out	215	3	94	6	57	46	1	3	2	81	12	1	
		16.7%	1.2%	22.3%	3.7%	16.6%	57.5%	2.9%	1.6%	5.9%	27.4%	14.1%	2.4%	
Other	52	3	15	7	18	8	3	0	0	14	0	1		
	4.0%	1.2%	3.6%	4.3%	5.2%	10.0%	8.6%	0.0%	0.0%	4.7%	0.0%	2.4%		
Count of Ineligible Caregivers	1,286	248	422	163	344	80	35	182	34	296	85	41		
Number of ALL Children in Family & Household	Count of Cases	24,297	1,313	9,264	1,339	9,669	2,247	341	574	402	7,188	1,338	737	
	Mean	2.1	3.0	2.3	2.3	1.9	2.1	2.0	4.0	2.6	2.1	3.0	2.2	
	Median	2	2	2	2	2	2	2	4	2	2	2	2	
	Minimum	0	0	0	0	0	0	0	0	0	0	0	0	
	Maximum	19	19	16	16	16	13	7	19	18	16	12	9	
	Frequency of Cases	0	430	22	130	23	192	53	14	3	5	113	11	6
			1.8%	1.7%	1.4%	1.7%	2.0%	2.4%	4.1%	0.5%	1.2%	1.6%	0.8%	0.8%
	1	Count of Cases	10,000	360	3,599	473	4,495	869	148	75	137	2,954	339	306
		Percent of Cases	41.2%	27.3%	38.9%	35.3%	46.5%	38.7%	43.4%	13.1%	34.1%	41.1%	25.3%	41.5%
	2	Count of Cases	6,869	289	2,559	373	2,864	642	99	80	110	2,046	309	204
Percent of Cases		28.3%	21.9%	27.6%	27.9%	29.6%	28.6%	29.0%	13.9%	27.4%	28.5%	23.1%	27.7%	
3	Count of Cases	3,513	213	1,373	249	1,271	347	59	83	71	1,060	213	100	
	Percent of Cases	14.5%	16.2%	14.8%	18.6%	13.1%	15.4%	17.3%	14.5%	17.7%	14.7%	15.9%	13.6%	
4 - 6	Count of Cases	3,060	326	1,407	208	767	313	64	140	122	956	319	132	
	Percent of Cases	12.6%	24.8%	15.2%	15.5%	7.9%	13.9%	18.8%	24.4%	30.3%	13.3%	23.8%	17.9%	

Table 3 – Page 2

MFIP Family Characteristics		All Cases	Racial/Ethnic Groups					Asian Subgroups			Black Subgroups			
			Asian	Black	Hispanic	White	American Indian	Asian American	Asian Immigrants		African American	Black Immigrants		
									Hmong	Other Asian		Somali	Other African	
Number of ALL Children in Family & Household	7 - 9	366	90	171	14	67	22	12	58	20	76	79	16	
		1.5%	6.8%	1.8%	1.0%	0.7%	1.0%	3.5%	10.1%	5.0%	1.1%	5.9%	2.2%	
	10 or more	59	13	25	6	9	6	0	8	5	14	11	0	
		0.2%	1.0%	0.3%	0.4%	0.1%	0.3%	0.0%	1.4%	1.2%	0.2%	0.8%	0.0%	
Count of All Children		51,684	3,966	20,906	3,103	18,023	4,827	912	1,682	1,372	15,328	3,828	1,750	
Number of Eligible Children in Family & Household	Count of Cases	24,297	1,313	9,264	1,339	9,669	2,247	341	574	402	7,188	1,338	737	
	Mean	2.0	2.9	2.1	2.2	1.8	2.1	1.9	3.8	2.5	2.0	3.0	2.2	
	Median	2	2	2	2	1	2	2	3	2	2	2	2	
	Minimum	0	0	0	0	0	0	0	0	0	0	0	0	
	Maximum	16	16	16	16	16	13	7	12	16	16	12	9	
	Frequency of Cases	0	858	28	304	41	386	82	15	4	9	267	22	15
			3.5%	2.1%	3.3%	3.1%	4.0%	3.6%	4.4%	0.7%	2.2%	3.7%	1.6%	2.0%
		1	10,231	370	3,756	475	4,529	891	153	81	136	3,103	345	308
			42.1%	28.1%	40.5%	35.5%	46.8%	39.7%	44.9%	14.1%	33.8%	43.2%	25.8%	41.8%
		2	6,750	286	2,493	382	2,812	637	98	79	109	1,988	304	201
			27.8%	21.7%	26.9%	28.5%	29.1%	28.3%	28.7%	13.8%	27.1%	27.7%	22.7%	27.3%
		3	3,336	217	1,302	241	1,193	328	59	83	75	982	219	101
			13.7%	16.5%	14.1%	18.0%	12.3%	14.6%	17.3%	14.5%	18.7%	13.7%	16.4%	13.7%
		4 - 6	2,758	320	1,244	190	679	292	62	138	120	811	310	123
			11.4%	24.3%	13.4%	14.2%	7.0%	13.0%	18.2%	24.0%	29.9%	11.3%	23.2%	16.7%
		7 - 9	321	82	148	12	60	17	9	57	16	61	71	16
			1.3%	6.2%	1.6%	0.9%	0.6%	0.8%	2.6%	9.9%	4.0%	0.8%	5.3%	2.2%
	10 or More	43	10	17	5	6	5	0	5	5	7	10	0	
		0.2%	0.8%	0.2%	0.4%	0.1%	0.2%	0.0%	0.9%	1.2%	0.1%	0.7%	0.0%	
Count of Eligible Children		49,220	3,851	19,686	2,983	17,243	4,636	884	1,636	1,331	14,258	3,729	1,699	
Ineligible Children: Count of Children & Percent of Ineligible Children	SSI Children	2,350	101	1,192	108	740	173	17	68	16	1,049	101	42	
	Percent of Ineligible Children	95.7%	94.4%	97.7%	90.0%	94.9%	90.6%	60.7%	147.8%	48.5%	98.0%	102.0%	82.4%	
	Undocumented Noncitizens	18	2	12	5	4	0	0	0	2	0	2	5	
		0.7%	1.9%	1.0%	4.2%	0.5%	0.0%	0.0%	0.0%	6.1%	0.0%	2.0%	9.8%	
	Other Ineligible Children	88	4	56	7	36	18	0	4	0	18	2	1	
		3.6%	3.7%	4.6%	5.8%	4.6%	9.4%	0.0%	8.7%	0.0%	1.7%	2.0%	2.0%	
Count of All Ineligible Children		2,456	107	1,220	120	780	191	28	46	33	1,070	99	51	
Percent of All Children		4.8%	2.7%	5.8%	3.9%	4.3%	4.0%	3.1%	2.7%	2.4%	7.0%	2.6%	2.9%	

Table 3 – Page 3

MFIP Family Characteristics		All Cases	Racial/Ethnic Groups					Asian Subgroups			Black Subgroups		
			Asian	Black	Hispanic	White	American Indian	Asian American	Asian Immigrants		African American	Black Immigrants	
								Hmong	Non-Hmong	Somali	Non-Somali		
Age of Youngest Child (All Children)	Count of Cases	23,867	1,291	9,134	1,318	9,475	2,194	327	570	398	7,075	1,327	731
	Mean	4.1	4.8	4.2	3.3	4.2	3.7	3.0	5.3	5.7	4.1	4.5	4.2
	Median	2	3	2	2	2	2	2	4	4	2	3	2
	Minimum	0	0	0	0	0	0	0	0	0	0	0	0
	Maximum	19	18	19	18	19	18	17	18	18	19	19	19
Frequency of Cases	< 1 Year Old	5,250	238	1,878	358	2,122	554	85	99	54	1,453	279	146
		21.6%	18.1%	20.3%	26.7%	21.9%	24.7%	24.9%	17.2%	13.4%	20.2%	20.9%	19.8%
	1-5 Years Old	12,164	610	4,766	701	4,696	1,107	182	239	189	3,736	645	385
		50.1%	46.3%	51.5%	52.4%	48.6%	49.3%	53.4%	41.6%	47.0%	52.0%	48.2%	52.2%
	6-10 Years Old	3,459	241	1,303	155	1,434	286	40	133	68	1,013	198	92
		14.2%	18.3%	14.1%	11.6%	14.8%	12.7%	11.7%	23.2%	16.9%	14.1%	14.8%	12.5%
	11-12 Years Old	946	54	370	38	387	89	5	31	18	281	63	26
		3.9%	4.1%	4.0%	2.8%	4.0%	4.0%	1.5%	5.4%	4.5%	3.9%	4.7%	3.5%
	13-15 Years Old	1,147	92	464	34	473	77	12	48	32	348	75	41
	4.7%	7.0%	5.0%	2.5%	4.9%	3.4%	3.5%	8.4%	8.0%	4.8%	5.6%	5.6%	
	>15 Years Old	901	60	352	32	363	81	3	20	37	244	67	41
		3.7%	4.6%	3.8%	2.4%	3.8%	3.6%	0.9%	3.5%	9.2%	3.4%	5.0%	5.6%
Region	Hennepin County	7,180	284	4,777	250	1,305	410	99	125	60	3,711	672	394
		29.6%	21.6%	51.6%	18.7%	13.5%	18.2%	29.0%	21.8%	14.9%	51.6%	50.2%	53.5%
	Ramsey County	5,363	851	2,729	344	1,192	140	152	424	275	2,294	276	159
		22.1%	64.6%	29.5%	25.7%	12.3%	6.2%	44.6%	73.9%	68.4%	31.9%	20.6%	21.6%
	Metro Suburban	3,460	87	836	207	2,174	86	48	11	28	647	102	87
	14.2%	6.6%	9.0%	15.5%	22.5%	3.8%	14.1%	1.9%	7.0%	9.0%	7.6%	11.8%	
	Greater Minnesota	8,294	95	921	538	4,998	1,611	42	14	39	536	288	97
		34.1%	7.2%	9.9%	40.2%	51.7%	71.7%	12.3%	2.4%	9.7%	7.5%	21.5%	13.2%
Family Violence	MFIP Exemption or Extension	1,770	34	780	93	643	180	12	17	5	743	17	20
	During 2000 - 2009	7.3%	2.6%	8.4%	6.9%	6.7%	8.0%	3.5%	3.0%	1.2%	10.3%	1.3%	2.7%
Adult Serious Mental Health Diagnosis (All Caregivers)	During 2007 - 2009	10,630	530	3,013	489	5,336	1,027	97	337	96	2,633	243	137
		43.8%	40.2%	32.5%	36.5%	55.2%	45.7%	28.4%	58.7%	23.9%	36.6%	18.2%	18.6%
	During 2009	8,197	451	2,239	371	4,255	713	72	298	81	1,980	167	92
		33.7%	34.2%	24.2%	27.7%	44.0%	31.7%	21.1%	51.9%	20.1%	27.5%	12.5%	12.5%
Adult Chemical Dependency Diagnosis (All Caregivers)	During 2007 - 2009	6,210	85	1,656	243	2,957	1,121	37	31	17	1,606	22	28
		25.6%	6.5%	17.9%	18.1%	30.6%	49.9%	10.9%	5.4%	4.2%	22.3%	1.6%	3.8%
	During 2009	3,773	46	977	135	1,847	682	20	16	10	950	11	16
		15.5%	3.5%	10.5%	10.1%	19.1%	30.4%	5.9%	2.8%	2.5%	13.2%	0.8%	2.2%
Child Protection (All Caregivers)	Family Assessment	2,737	61	975	140	1,197	299	20	26	15	895	41	39
		11.3%	4.6%	10.5%	10.5%	12.4%	13.3%	5.9%	4.5%	3.7%	12.5%	3.1%	5.3%
	Family Investigation	526	6	176	25	253	56	5	1	0	158	12	6
		2.2%	0.5%	1.9%	1.9%	2.6%	2.5%	1.5%	0.2%	0.0%	2.2%	0.9%	0.8%
	Child Maltreatment Determination	1,029	17	391	40	412	148	10	2	5	364	9	18
		4.2%	1.3%	4.2%	3.0%	4.3%	6.6%	2.9%	0.3%	1.2%	5.1%	0.7%	2.4%

Table 4. Family Composition, Residence, and Challenges of DWP Paid Cases with Eligible Adults in December 2009 by Racial/Ethnic Groups and Subgroups

Family Characteristics of December 2009 DWP Cases with Eligible Adults		All Cases	Racial/Ethnic Groups					Black Subgroups		
			Asian	Black	Hispanic	White	American Indian	African American	African Immigrants	
Cases	Count	4,209	186	1,143	326	2,323	161	842	301	
	Percent of MFIP Cases	100%	4.4%	27.2%	7.7%	55.2%	3.8%	20.0%	7.2%	
Family Type Count of Cases	Natural / Adopted / Step Children	3,903	172	1,050	312	2,163	142	773	277	
		92.7%	92.5%	91.9%	95.7%	93.1%	88.2%	91.8%	92.0%	
	Pregnant Only	284	13	82	12	156	16	60	22	
		6.7%	7.0%	7.2%	3.7%	6.7%	9.9%	7.1%	7.3%	
Relative Care		22	1	11	2	4	3	9	2	
		0.5%	0.5%	0.5%	0.5%	0.5%	0.5%	0.5%	0.5%	
Two Eligible Adults Cases	Count	1,006	76	199	81	590	43	116	83	
	Percent of Cases	23.9%	40.9%	17.4%	24.8%	25.4%	26.7%	13.8%	27.6%	
Two-caregiver Families	Count of Cases	1,090	86	218	108	616	44	127	91	
	Percent of Cases	25.9%	46.2%	19.1%	33.1%	26.5%	27.3%	15.1%	30.2%	
Two Caregivers Married	Count of Cases	638	56	133	69	354	13	61	72	
	Percent of Two-caregiver Cases	58.5%	65.1%	61.0%	63.9%	57.5%	29.5%	48.0%	79.1%	
Ineligible Caregivers: Count of Persons	SSI	31	5	13	0	12	0	11	2	
		36.9%	62.5%	61.9%	0.0%	70.6%	0.0%	84.6%	25.0%	
	Undocumented Non-citizens	43	3	4	33	2	0	0	4	
		51.2%	37.5%	19.0%	97.1%	11.8%	0.0%	0.0%	50.0%	
Disqualified		10	0	4	1	3	1	2	2	
		11.9%	0.0%	19.0%	2.9%	17.6%	100.0%	15.4%	25.0%	
Count of Ineligible Caregivers		84	8	21	34	17	1	13	8	
Number of All Children in Family & Household	Count of Cases	4,209	186	1,145	326	2,323	161	842	301	
	Mean	1.9	2.3	2.0	2.3	1.8	1.8	1.9	2.3	
	Median	2	2	2	2	2	1	2	2	
	Minimum	0	0	0	0	0	0	0	0	
	Maximum	11	11	10	11	10	8	10	10	
	Frequency of Cases	0	284	13	81	12	157	17	59	22
			6.7%	7.0%	7.1%	3.7%	6.8%	10.6%	7.0%	7.3%
	1		1,644	57	435	99	952	68	342	93
			39.1%	30.6%	38.1%	30.4%	41.0%	42.2%	40.6%	30.9%
	2		1,233	55	326	86	711	36	246	80
		29.3%	29.6%	28.5%	26.4%	30.6%	22.4%	29.2%	26.6%	
3		577	26	149	81	294	20	108	41	
		13.7%	14.0%	13.0%	24.8%	12.7%	12.4%	12.8%	13.6%	
4 - 6		424	29	133	45	192	18	76	57	
		10.1%	15.6%	11.6%	13.8%	8.3%	11.2%	9.0%	18.9%	

Table 4 – Page 2

DWP Family Characteristics		All Cases	Racial/Ethnic Groups					Black Subgroups		
			Asian	Black	Hispanic	White	American Indian	African American	African Immigrants	
Number of Children in Family & Household	7 - 9	38	3	16	2	15	2	9	7	
		0.9%	1.6%	1.4%	0.6%	0.6%	1.2%	1.1%	2.3%	
	10 or more	9	3	3	1	2	0	2	1	
		0.2%	1.6%	0.3%	0.3%	0.1%	0.0%	0.2%	0.3%	
	Count of All Children	8,119	431	2,288	749	4,239	292	1,594	694	
Number of Eligible Children in Family & Household	Count of Cases	4,209	186	1,145	326	2,323	161	842	301	
	Mean	1.9	2.3	1.9	2.3	1.8	1.8	1.8	2.3	
	Median	2	2	2	2	2	1	1	2	
	Minimum	0	0	0	0	0	0	0	0	
	Maximum	11	11	10	11	10	8	10	10	
	Frequency of Cases	0	322	3	94	13	180	17	71	23
	Percent of Cases		7.7%	1.6%	8.2%	4.0%	7.7%	10.6%	8.4%	7.6%
		1	1,670	40	458	101	950	70	360	98
			39.7%	21.5%	40.1%	31.0%	40.9%	43.5%	42.8%	32.6%
		2	1,220	39	317	86	710	34	241	76
			29.0%	21.0%	27.7%	26.4%	30.6%	21.1%	28.6%	25.2%
		3	549	24	133	78	286	20	93	40
			13.0%	12.9%	11.6%	23.9%	12.3%	12.4%	11.0%	13.3%
	4 - 6	403	25	124	45	180	18	68	56	
		9.6%	13.4%	10.8%	13.8%	7.7%	11.2%	8.1%	18.6%	
	7 - 9	38	3	14	2	16	2	7	7	
		0.9%	1.6%	1.2%	0.6%	0.7%	1.2%	0.8%	2.3%	
	10 or More	7	0	3	1	1	0	2	1	
		0.2%	0.0%	0.3%	0.3%	0.0%	0.0%	0.2%	0.3%	
	Count of Eligible Children	7,918	424	2,184	741	4,160	290	1,501	683	
Ineligible Children: Count of Children & Percent of Ineligible Children	SSI Children	181	7	86	8	77	2	81	5	
	Percent of Ineligible Children	90.0%	100.0%	82.7%	100.0%	97.5%	100.0%	87.1%	45.5%	
	Undocumented Noncitizen Children	2	0	2	0	0	0	0	2	
		1.0%	0.0%	1.9%	0.0%	0.0%	0.0%	0.0%	18.2%	
	Other Ineligible Children	18	0	16	0	2	0	12	4	
		9.0%	0.0%	15.4%	0.0%	2.5%	0.0%	12.9%	36.4%	
	Count of All Ineligible Children	201	7	104	8	79	2	93	11	
	Percent of All Children	2.5%	1.6%	4.5%	1.1%	1.9%	0.7%	5.8%	1.6%	

Table 4 – Page 3

DWP Family Characteristics		All Cases	Racial/Ethnic Groups					Black Subgroups	
			Asian	Black	Hispanic	White	American Indian	African American	African Immigrants
Age of Youngest Child (All Children)	Count of Cases	3,925	173	1,063	314	2,166	144	783	279
	Mean	4.9	4.2	4.6	4.6	5.2	3.7	4.9	3.7
	Median	3	3	3	3	4	3	3	2
	Minimum	0	0	0	0	0	0	0	0
	Maximum	19	18	18	18	19	18	18	18
Frequency of Cases	< 1 Year Old	562	30	148	45	299	28	98	50
		13.4%	16.1%	12.9%	13.8%	12.9%	17.4%	11.6%	16.6%
	1-5 Years Old	2,010	90	587	172	1,040	84	416	171
		47.8%	48.4%	51.4%	52.8%	44.8%	52.2%	49.4%	56.8%
	6-10 Years Old	755	90	186	55	446	23	153	33
		17.9%	18.3%	16.3%	16.9%	19.2%	14.3%	18.2%	11.0%
	11-12 Years Old	198	6	41	13	137	1	35	6
		4.7%	3.2%	3.6%	4.0%	5.9%	0.6%	4.2%	2.0%
13-15 Years Old	235	8	67	14	138	5	53	14	
	5.6%	4.3%	5.9%	4.3%	5.9%	3.1%	6.3%	4.7%	
>15 Years Old	165	6	33	15	106	3	28	5	
	3.9%	3.2%	2.9%	4.6%	4.6%	1.9%	3.3%	1.7%	
Region	Hennepin County	890	33	561	44	209	28	417	144
		21.1%	17.7%	49.1%	13.5%	9.0%	17.4%	49.5%	47.8%
	Ramsey County	610	90	262	58	172	13	217	45
		14.5%	48.4%	22.9%	17.8%	7.4%	8.1%	25.8%	15.0%
	Metro Suburban	907	35	165	46	622	20	120	45
	21.5%	18.8%	14.4%	14.1%	26.8%	12.4%	14.3%	15.0%	
Greater Minnesota	1,802	28	155	178	1,320	100	88	67	
	42.8%	15.1%	13.6%	54.6%	56.8%	62.1%	10.5%	22.3%	
Family Violence	MFIP Exemption or Extension	57	1	13	6	34	3	11	2
	During 2000 - 2009	1.4%	0.5%	1.1%	1.8%	1.5%	1.9%	1.3%	0.7%
Adult Serious Mental Health Diagnosis (All Caregivers)	During 2007 - 2009	1,082	28	139	61	785	56	115	24
		25.7%	15.1%	12.2%	18.7%	33.8%	34.8%	13.7%	8.0%
	During 2009	732	18	92	40	540	35	80	12
	17.4%	9.7%	8.0%	12.3%	23.2%	21.7%	9.5%	4.0%	
Adult Chemical Dependency Diagnosis (All Caregivers)	During 2007 - 2009	622	6	91	34	423	57	88	3
		14.8%	3.2%	8.0%	10.4%	18.2%	35.4%	10.5%	1.0%
	During 2009	334	2	45	16	235	31	44	1
	7.9%	1.1%	3.9%	4.9%	10.1%	19.3%	5.2%	0.3%	
Child Protection 2007 - 2009 (All Caregivers)	Family Assessment	301	9	61	25	185	14	51	10
		7.2%	4.8%	5.3%	7.7%	8.0%	8.7%	6.1%	3.3%
	Family Investigation	39	0	3	2	26	7	2	1
		0.9%	0.0%	0.3%	0.6%	1.1%	4.3%	0.2%	0.3%
Child Maltreatment Determination	74	4	23	3	38	4	22	1	
	1.8%	2.2%	2.0%	0.9%	1.6%	2.5%	2.6%	0.3%	

Table 5. Economic Characteristics of MFIP Paid Cases with Eligible Adults in December 2009 by Racial/Ethnic Groups and Subgroups

Economic Characteristics of December 2009 MFIP Cases with Eligible Adults		All Cases	Racial/Ethnic Groups					Asian Subgroups			Black Subgroups		
			Asian	Black	Hispanic	White	American Indian	Asian American	Asian Immigrants		African American	Black Immigrants	
									Hmong	Non-Hmong		Somali	Non-Somali
Cases	Count	24,297	1,317	9,263	1,339	9,669	2,247	341	574	402	7,188	1,338	737
	Percent of All Cases	100%	5.4%	38.1%	5.5%	39.8%	9.2%	1.4%	2.4%	1.7%	29.6%	5.5%	3.0%
Counted Months: Sept. 1996 to Dec. 2009	Mean	25.3	25.3	29.4	21.8	22.3	23.5	15.4	36.6	17.6	30.7	26.5	21.4
	Median	20	19	26	15	16	18	8	42	12	28	23	16
Frequency of Cases	No Counted Months	1,964	129	500	175	710	399	72	31	26	400	47	53
Percent of All Cases		8.1%	9.8%	5.4%	13.1%	7.3%	17.8%	21.1%	5.4%	6.5%	5.6%	3.5%	7.2%
	1 - 12 Months	7,181	403	2,271	429	3,403	549	137	89	177	1,676	334	261
		29.6%	30.6%	24.5%	32.0%	35.2%	24.4%	40.2%	15.5%	44.0%	23.3%	25.0%	35.4%
	13 - 24 Months	4,675	230	1,728	247	1,999	370	54	68	108	1,226	333	169
		19.2%	17.5%	18.7%	18.4%	20.7%	16.5%	15.8%	11.8%	26.9%	17.1%	24.9%	22.9%
	25 - 36 Months	3,106	131	1,266	155	1,207	288	27	67	37	939	229	98
		12.8%	9.9%	13.7%	11.6%	12.5%	12.8%	7.9%	11.7%	9.2%	13.1%	17.1%	13.3%
	37 - 42 Months	1,235	56	530	67	448	109	12	35	9	408	94	28
		5.1%	4.3%	5.7%	5.0%	4.6%	4.9%	3.5%	6.1%	2.2%	5.7%	7.0%	3.8%
	43 - 48 Months	1,051	63	460	53	366	86	7	50	6	360	70	30
	4.3%	4.8%	5.0%	4.0%	3.8%	3.8%	2.1%	8.7%	1.5%	5.0%	5.2%	4.1%	
49 - 54 Months	951	59	417	39	340	78	7	48	4	344	48	25	
	3.9%	4.5%	4.5%	2.9%	3.5%	3.5%	2.1%	8.4%	1.0%	4.8%	3.6%	3.4%	
55 - 60 Months	4,134	246	2,091	174	1,196	368	25	186	35	1,835	183	73	
	17.0%	18.7%	22.6%	13.0%	12.4%	16.4%	7.3%	32.4%	8.7%	25.5%	13.7%	9.9%	
MFIP Exempt from Time Limit	Count of Cases	2,531	144	781	193	622	729	74	44	26	665	60	56
	Percent of All Cases	10.4%	10.9%	8.4%	14.4%	6.4%	32.4%	21.7%	7.7%	6.5%	9.3%	4.5%	7.6%
Exemption Reason	Age 18 or 19, Attending High School	998	72	350	102	347	96	43	19	10	305	20	25
	Percent of Exempt Cases	39.4%	50.0%	44.8%	52.8%	55.8%	13.2%	58.1%	43.2%	38.5%	45.9%	33.3%	44.6%
	Living on an Indian Reservation	567	0	0	2	0	564	0	0	0	0	0	0
		22.4%	0.0%	0.0%	1.0%	0.0%	77.4%	0.0%	0.0%	0.0%	0.0%	0.0%	0.0%
	Minor Parent	467	41	195	66	115	32	25	14	2	174	10	11
		18.5%	28.5%	25.0%	34.2%	18.5%	4.4%	33.8%	31.8%	7.7%	26.2%	16.7%	19.6%
	Family Violence	408	14	179	21	149	33	4	7	3	175	3	1
		16.1%	9.7%	22.9%	10.9%	24.0%	4.5%	5.4%	15.9%	11.5%	26.3%	5.0%	1.8%
Age 60 or older	91	17	57	2	11	4	2	4	11	11	27	19	
	3.6%	11.8%	7.3%	1.0%	1.8%	0.5%	2.7%	9.1%	42.3%	1.7%	45.0%	33.9%	
MFIP Extensions	Count	2,896	158	1,491	123	840	245	24	106	28	1,351	101	39
	Percent of MFIP Cases	11.9%	12.0%	16.1%	9.2%	8.7%	10.9%	7.0%	18.5%	7.0%	18.8%	7.5%	5.3%
Total Extension Months	Mean	32.6	49.1	33.7	29.3	29.6	27.8	26.4	53.8	50.8	33.7	35.3	27.6
	Median	27	50	29	21	23	23	20	55	56	29	31	26
	1 - 12 Months	750	26	353	37	236	83	10	12	4	325	19	9
	Percent of Extended Cases	25.9%	16.5%	23.7%	30.1%	28.1%	33.9%	41.7%	11.3%	14.3%	24.1%	18.8%	23.1%
	13 - 24 Months	595	21	295	29	199	43	4	13	4	263	23	9
		20.5%	13.3%	19.8%	23.6%	23.7%	17.6%	16.7%	12.3%	14.3%	19.5%	22.8%	23.1%
	25 - 36 Months	453	13	242	15	136	45	4	8	1	216	17	9
	15.6%	8.2%	16.2%	12.2%	16.2%	18.4%	16.7%	7.5%	3.6%	16.0%	16.8%	23.1%	
More than 36 Months	1,098	98	601	42	269	74	6	73	19	547	42	12	
	37.9%	62.0%	40.3%	34.1%	32.0%	30.2%	25.0%	68.9%	67.9%	40.5%	41.6%	30.8%	

Table 5 – Page 2

MFIP Economic Characteristics		All Cases	Racial/Ethnic Groups					Asian Subgroups			Black Subgroups		
			Asian	Black	Hispanic	White	American Indian	Asian American	Asian Immigrants		African American	Black Immigrants	
									Hmong	Non-Hmong		Somali	Non-Somali
Extension Reasons	Ill or incapacitated	259	34	382	30	328	131	7	22	5	348	27	7
	Percent of Extended Cases	8.9%	21.5%	25.6%	24.4%	39.0%	53.5%	29.2%	20.8%	17.9%	25.8%	26.7%	17.9%
	Special Medical Criteria	500	29	286	18	138	22	3	22	4	265	15	6
	Percent of Extended Cases	17.3%	18.4%	19.2%	14.6%	16.4%	9.0%	12.5%	20.8%	14.3%	19.6%	14.9%	15.4%
	Care of Ill or Incapacitated	284	22	149	12	82	15	6	14	2	132	12	5
	Percent of Extended Cases	9.8%	13.9%	10.0%	9.8%	9.8%	6.1%	25.0%	13.2%	7.1%	9.8%	11.9%	12.8%
	IQ between 70 and 80	259	34	167	13	36	6	1	26	7	148	14	5
	Percent of Extended Cases	8.9%	21.5%	11.2%	10.6%	4.3%	2.4%	4.2%	24.5%	25.0%	11.0%	13.9%	12.8%
	Mentally Ill	567	24	290	34	178	34	4	14	6	271	11	8
	Percent of Extended Cases	19.6%	15.2%	19.5%	27.6%	21.2%	13.9%	16.7%	13.2%	21.4%	20.1%	10.9%	20.5%
	Employment Required Hours	149	11	79	2	39	15	1	8	2	63	12	4
	Percent of Extended Cases	5.1%	7.0%	5.3%	1.6%	4.6%	6.1%	4.2%	7.5%	7.1%	4.7%	11.9%	10.3%
	Family Violence Waiver	104	1	60	8	18	16	1	0	0	59	1	0
	Percent of Extended Cases	3.6%	0.6%	4.0%	6.5%	2.1%	6.5%	4.2%	0.0%	0.0%	4.4%	1.0%	0.0%
	Unemployable	38	2	22	1	9	4	1	0	1	15	4	3
	Percent of Extended Cases	1.3%	1.3%	1.5%	0.8%	1.1%	1.6%	4.2%	0.0%	3.6%	1.1%	4.0%	7.7%
	Learning Disabled	60	2	37	5	14	2	0	1	1	33	3	1
Percent of Extended Cases	2.1%	1.3%	2.5%	4.1%	1.7%	0.8%	0.0%	0.9%	3.6%	2.4%	3.0%	2.6%	
IQ Less than 70	25	0	24	0	1	0	0	0	0	21	3	0	
Percent of Extended Cases	0.9%	0.0%	1.6%	0.0%	0.1%	0.0%	0.0%	0.0%	0.0%	1.6%	3.0%	0.0%	
Appeal	2	0	0	0	1	0	0	0	0	1	0	0	
Percent of Extended Cases	0.1%	0.0%	0.0%	0.0%	0.1%	0.0%	0.0%	0.0%	0.0%	0.1%	0.0%	0.0%	
New MFIP Cases in Year 2009	Total of New Cases	4,801	345	1,525	313	2,203	327	123	58	164	1,140	233	152
	Percent of All Cases	19.8%	26.2%	16.5%	23.4%	22.8%	14.6%	36.1%	10.1%	40.8%	15.9%	17.4%	20.6%
	Minnesota Residents	3,872	199	1,066	266	1,956	302	101	51	47	873	92	101
	Percent of New Cases	80.6%	57.7%	69.9%	85.0%	88.8%	92.4%	82.1%	87.9%	28.7%	76.6%	39.5%	66.4%
	Percent of All Cases	15.9%	15.1%	11.5%	19.9%	20.2%	13.4%	29.6%	8.9%	11.7%	12.1%	6.9%	13.7%
	Moved into State in 2009	929	146	459	47	247	25	22	7	117	267	141	51
	Percent of New Cases	19.4%	42.3%	30.1%	15.0%	11.2%	7.6%	17.9%	12.1%	71.3%	23.4%	60.5%	33.6%
Percent of All Cases	3.8%	11.1%	5.0%	3.5%	2.6%	1.1%	6.5%	1.2%	29.1%	3.7%	10.5%	6.9%	

Table 5 – Page 3

MFIP Economic Characteristics		All Cases	Racial/Ethnic Groups					Asian Subgroups			Black Subgroups		
			Asian	Black	Hispanic	White	American Indian	Asian American	Asian Immigrants		African American	Black Immigrants	
									Hmong	Non-Hmong		Somali	Non-Somali
MFIP Cash Grants	Mean	\$351	\$404	\$361	\$355	\$327	\$383	\$357	\$408	\$439	\$365	\$349	\$340
MFIP Food Portion	Mean	\$414	\$534	\$425	\$414	\$385	\$431	\$403	\$630	\$505	\$408	\$514	\$433
Food Support - Uncle Harry Cases	Mean of Cases Receiving Percent of Cases in Column	\$144 13.2%	\$162 23.5%	\$143 15.5%	\$147 10.1%	\$139 10.8%	\$148 10.3%	\$145 11.4%	\$167 38.0%	\$156 13.2%	\$140 16.0%	\$155 15.8%	\$154 9.4%
Food Support - Other Stand Alone	Mean of Cases Receiving Percent of Cases in Column	\$442 5.1%	\$502 3.9%	\$476 4.4%	\$468 6.8%	\$409 6.0%	\$472 3.6%	\$439 5.9%	\$491 1.4%	\$554 6.2%	\$460 4.4%	\$602 4.3%	\$412 4.3%
Food-Only Assistance	Mean	\$335	\$442	\$357	\$309	\$299	\$345	\$303	\$522	\$347	\$306	\$474	\$356
	Count of Cases	3,055	220	1,197	176	1,217	193	39	129	52	753	318	126
	Percent of All Cases	12.6%	16.7%	12.9%	13.1%	12.6%	8.6%	11.4%	22.5%	12.9%	10.5%	23.8%	17.1%
Income / Working	Count of Cases	8,096	504	2,878	514	3,471	582	120	219	165	2,049	569	260
	Percent of All Cases	33.3%	38.3%	31.1%	38.4%	35.9%	25.9%	35.2%	38.2%	41.0%	28.5%	42.5%	35.3%
December Total Earned Income	Mean of Working Cases Median	\$911 \$785	\$1,230 \$1,092	\$932 \$810	\$950 \$800	\$833 \$725	\$980 \$850	\$948 \$817	\$1,308 \$1,176	\$1,324 \$1,153	\$878 \$736	\$1,065 \$948	\$1,064 \$919
December Budgeted Earnings	Mean of Working Cases Median	\$517 \$466	\$730 \$688	\$547 \$494	\$525 \$480	\$452 \$413	\$558 \$511	\$577 \$529	\$844 \$813	\$651 \$588	\$493 \$451	\$693 \$647	\$594 \$523
December Work Hours	Mean of Working Cases Median	98 92	129 122	99 94	99 91	92 85	108 99	103 101	136 139	137 137	93 87	115 112	111 106
Percent of All Cases	1 - 79 Hours	3,233	135	1,089	209	1,531	209	44	51	40	873	134	82
		13.3%	10.3%	11.8%	15.6%	15.8%	9.3%	12.9%	8.9%	10.0%	12.1%	10.0%	11.1%
	80 - 119 Hours	2,003	88	750	120	868	136	27	37	24	517	165	68
		8.2%	6.7%	8.1%	9.0%	9.0%	6.1%	7.9%	6.4%	6.0%	7.2%	12.3%	9.2%
	120 - 159 Hours	1,419	114	513	82	574	108	29	52	33	339	129	45
		5.8%	8.7%	5.5%	6.1%	5.9%	4.8%	8.5%	9.1%	8.2%	4.7%	9.6%	6.1%
	160 Hours or More	1,338	162	487	97	454	122	18	77	67	289	133	65
		5.5%	12.3%	5.3%	7.2%	4.7%	5.4%	5.3%	13.4%	16.7%	4.0%	9.9%	8.8%
Wages Reported for 2nd Quarter 2009 for	Mean of Cases with UI Wages Median	\$2,807 \$2,089	\$3,385 \$2,792	\$2,682 \$1,967	\$2,762 \$1,988	\$2,842 \$2,112	\$2,916 \$2,221	\$2,799 \$2,078	\$3,848 \$3,345	\$3,168 \$2,644	\$2,447 \$1,753	\$3,391 \$2,830	\$3,381 \$2,538
Jobs Covered by Unemployment Insurance	Count of Cases Percent of All Cases	10,094 41.5%	469 35.6%	3,461 37.4%	589 44.0%	4,417 45.7%	974 43.3%	138 40.5%	228 39.7%	105 26.1%	2,594 36.1%	548 41.0%	319 43.3%

Table 5 – Page 4

MFIP Economic Characteristics		All Cases	Racial/Ethnic Groups					Asian Subgroups			Black Subgroups		
			Asian	Black	Hispanic	White	American Indian	Asian American	Asian Immigrants		African American	Black Immigrants	
									Hmong	Non-Hmong		Somali	Non-Somali
Employment Services Sanctions	10% ES Sanction	354	6	86	30	196	29	2	1	3	66	10	10
	30% ES Sanction	1,033	29	322	75	490	96	20	6	3	270	25	27
	Cases with ES Sanctions	1,387	35	408	105	686	125	22	7	6	336	35	37
	Percent of All Cases	5.7%	2.7%	4.4%	7.8%	7.1%	5.6%	6.5%	1.2%	1.5%	4.7%	2.6%	5.0%
Six Counted Sanction Months	Six Counted Sanction Months	187	5	66	8	80	22	4	0	1	58	6	2
	Percent of All Cases	0.8%	0.4%	0.7%	0.6%	0.8%	1.0%	1.2%	0.0%	0.2%	0.8%	0.4%	0.3%
	Mean	\$691	\$654	\$762	\$650	\$583	\$657	\$640	\$660	\$643	\$778	\$734	\$693
Housing Subsidy	Count of Cases	6,909	292	3,740	240	2,178	338	50	202	40	2,589	892	256
	Percent of All Cases	28.4%	22.2%	40.4%	17.9%	22.5%	15.0%	14.7%	35.2%	10.0%	36.0%	66.7%	34.7%
	Housing (Maximum \$50 per case)	4,048	112	2,308	136	1,244	181	23	65	24	1,448	663	193
Deductions to MFIP Grant	Percent of All Cases	16.7%	8.5%	24.9%	10.2%	12.9%	8.1%	6.7%	11.3%	6.0%	20.1%	49.6%	26.2%
	Mean Deduction > \$0	\$50	\$50	\$50	\$50	\$50	\$50	\$50	\$50	\$50	\$50	\$50	\$50
Cases Receiving SSI	Count of Cases	2,658	290	1,207	115	837	164	35	215	40	992	158	57
	Percent of All Cases	10.9%	22.0%	13.0%	8.6%	8.7%	7.3%	10.3%	37.5%	10.0%	13.8%	11.8%	7.7%
Family Cap	One Child	2,705	150	1,239	165	752	336	26	101	23	980	187	72
	Two or More Children	795	62	405	38	151	125	4	54	4	309	75	21
	Percentage of Cases	14.4%	16.1%	17.7%	15.2%	9.3%	20.5%	8.8%	27.0%	6.7%	17.9%	19.6%	12.6%
Family Stabilization Services Eligible	Count of Cases	8,498	619	3,217	364	3,514	651	81	306	232	2,553	461	203
	Percent of All Cases	35.0%	47.0%	34.7%	27.2%	36.3%	29.0%	23.8%	53.3%	57.7%	35.5%	34.5%	27.5%
Cases Eligible for the Child Care Assistance Program	Youngest Child Age Less than 6	7,104	251	3,056	432	2,825	392	65	73	113	2,313	492	251
	Percent of All Cases	29.2%	19.1%	33.0%	32.3%	29.2%	17.4%	19.1%	12.7%	28.1%	32.2%	36.8%	34.1%
	Youngest Child Ages 6 to 12	475	16	223	11	199	16	9	4	3	136	67	20
Child Support Disbursements	Percent of All Cases	2.0%	1.2%	2.4%	0.8%	2.1%	0.7%	2.6%	0.7%	0.7%	1.9%	5.0%	2.7%
	Current Mean	\$313	\$465	\$278	\$366	\$323	\$297	\$458	\$522	\$315	\$258	\$373	\$366
	Median	\$232	\$347	\$212	\$256	\$246	\$200	\$385	\$347	\$296	\$197	\$300	\$302
	Count	3,065	71	935	134	1,663	204	23	35	14	767	97	70
	Percent of All Cases	12.6%	5.4%	10.1%	10.0%	17.2%	9.1%	6.7%	6.1%	3.5%	10.7%	7.2%	9.5%
	Sum	\$959,299	\$33,005	\$260,259	\$49,086	\$537,838	\$60,577	\$10,530	\$18,257	\$4,416	\$197,975	\$36,199	\$25,643
	Arrears Mean	\$124	\$277	\$99	\$158	\$133	\$105	\$75	\$467	\$101	\$90	\$130	\$146
	Median	\$51	\$65	\$51	\$67	\$51	\$46	\$48	\$86	\$89	\$50	\$69	\$70
	Count	2,085	48	639	87	1,144	123	13	24	11	516	67	55
	Percent of All Cases	8.6%	3.6%	6.9%	6.5%	11.8%	5.5%	3.8%	4.2%	2.7%	7.2%	5.0%	7.5%
	Sum	\$259,544	\$13,303	\$63,414	\$13,704	\$152,240	\$12,858	\$973	\$11,215	\$1,115	\$46,578	\$8,682	\$8,051
	Total Mean	\$340	\$576	\$299	\$392	\$352	\$313	\$479	\$730	\$325	\$282	\$359	\$366
	Median	\$231	\$356	\$212	\$233	\$246	\$189	\$424	\$387	\$303	\$203	\$290	\$290
	Count	3,587	80	1,084	160	1,958	234	24	40	17	866	125	92
	Percent of All Cases	14.8%	6.1%	11.7%	11.9%	20.3%	10.4%	7.0%	7.0%	4.2%	12.0%	9.3%	12.5%
Sum	\$1,217,887	\$46,049	\$323,674	\$62,790	\$689,534	\$73,283	\$11,503	\$29,213	\$5,532	\$244,554	\$44,881	\$33,694	

Table 6. Economic Characteristics of DWP Paid Cases with Eligible Adults in December 2009 by Racial/Ethnic Groups and Subgroups

Economic Characteristics of December 2009 DWP Cases with Eligible Adults		All Cases	Racial/Ethnic Groups					Black Subgroups	
			Asian	Black	Hispanic	White	American Indian	African American	African Immigrants
Cases	Count	4,209	186	1,143	326	2,323	161	842	301
	Percent of All Cases	100%	4.4%	27.2%	7.7%	55.2%	3.8%	20.0%	7.2%
Counted Months: Sept. 1996 to Dec. 2009	Mean	8.7	6.5	10.7	9.1	7.7	12.7	11.2	9.3
	Median	0	0	0	0	0	3	0	0
Frequency of Cases Percent of All Cases	No Counted Months	2,357	125	589	178	1,347	73	422	167
		56.0%	67.2%	51.5%	54.6%	58.0%	45.3%	50.1%	55.5%
	1 - 12 Months	780	27	203	66	446	30	147	56
		18.5%	14.5%	17.8%	20.2%	19.2%	18.6%	17.5%	18.6%
	13 - 24 Months	480	18	138	33	265	18	109	29
		11.4%	9.7%	12.1%	10.1%	11.4%	11.2%	12.9%	9.6%
	25 - 36 Months	283	5	105	17	130	21	78	27
		6.7%	2.7%	9.2%	5.2%	5.6%	13.0%	9.3%	9.0%
	37 - 42 Months	91	2	23	11	45	7	19	4
		2.2%	1.1%	2.0%	3.4%	1.9%	4.3%	2.3%	1.3%
	43 - 48 Months	91	5	28	10	44	4	23	5
		2.2%	2.7%	2.4%	3.1%	1.9%	2.5%	2.7%	1.7%
	49 - 54 Months	68	3	31	3	26	4	22	9
	1.6%	1.6%	2.7%	0.9%	1.1%	2.5%	2.6%	3.0%	
55 - 60 Months	59	1	26	8	20	4	22	4	
	1.4%	0.5%	2.3%	2.5%	0.9%	2.5%	2.6%	1.3%	
Months since Start of DWP Eligibility	1st Month	1,068	50	285	92	585	37	208	77
		25.4%	26.9%	24.9%	28.2%	25.2%	23.0%	24.7%	25.6%
	2nd Month	1,129	37	312	86	630	48	236	76
		26.8%	19.9%	27.3%	26.4%	27.1%	29.8%	28.0%	25.2%
	3rd Month	1,079	53	283	84	602	40	199	84
	25.6%	28.5%	24.8%	25.8%	25.9%	24.8%	23.6%	27.9%	
4th Month	933	46	263	64	506	36	199	64	
	22.2%	24.7%	23.0%	19.6%	21.8%	22.4%	23.6%	21.3%	
DWP Cases with No MFIP History	Total of New Cases	2,198	115	610	158	1,199	68	451	159
	Percent of All Cases	52.2%	61.8%	53.4%	48.5%	51.6%	42.2%	53.6%	52.8%
	Minnesota Residents	1,567	76	302	71	189	17	229	73
	Percent of New Cases	71.3%	66.1%	49.5%	44.9%	15.8%	25.0%	50.8%	45.9%
	Percent of All Cases	37.2%	40.9%	26.4%	21.8%	8.1%	10.6%	27.2%	24.3%
	Moved into State in 2009	631	39	308	87	1,010	51	222	86
	Percent of New Cases	28.7%	33.9%	50.5%	55.1%	84.2%	75.0%	49.2%	54.1%
Percent of All Cases	15.0%	21.0%	26.9%	26.7%	43.5%	31.7%	26.4%	28.6%	

Table 6 – Page 2

DWP Economic Characteristics		All Cases	Racial/Ethnic Groups					Black Subgroups	
			Asian	Black	Hispanic	White	American Indian	African American	African Immigrants
DWP Cash Grants	Mean	\$364	\$412	\$344	\$378	\$370	\$346	\$344	\$345
Food Support -	Mean of Cases Receiving	\$0	\$0	\$0	\$0	\$0	\$0	\$0	\$0
Uncle Harry Cases	Percent of Cases in Column	0.0%	0.0%	0.0%	0.0%	0.0%	0.0%	0.0%	0.0%
Food Support -	Mean of Cases Receiving	\$439	\$512	\$444	\$478	\$426	\$437	\$425	\$495
Other Standalone	Percent of Cases in Column	18.7%	93.5%	94.1%	91.1%	93.0%	91.3%	93.7%	94.7%
Working at Latest Report	Count of Cases	1,147	43	210	96	742	33	149	61
	Percent of All Cases	27.3%	23.1%	18.4%	29.4%	31.9%	20.5%	17.7%	20.3%
Earned Income at Latest Report	Mean of Working Cases	\$919	\$1,083	\$951	\$1,028	\$880	\$860	\$964	\$928
	Median	\$793	\$938	\$796	\$870	\$766	\$758	\$766	\$847
December Budgeted Earnings	Mean of Working Cases	\$511	\$597	\$546	\$589	\$483	\$514	\$508	\$631
	Median	\$441	\$502	\$473	\$510	\$418	\$468	\$439	\$546
December Work Hours	Mean of Working Cases	94	100	91	110	92	81	92	91
	Median	83	84	80	100	82	71	81	80
Percent of All Cases	1 - 79 Hours	504	16	98	36	325	19	69	29
		12.0%	8.6%	8.6%	11.0%	14.0%	11.8%	8.2%	9.6%
	80 - 119 Hours	247	10	43	13	171	6	28	15
		5.9%	5.4%	3.8%	4.0%	7.4%	3.7%	3.3%	5.0%
	120 - 159 Hours	175	8	25	19	119	2	19	6
		4.2%	4.3%	2.2%	5.8%	5.1%	1.2%	2.3%	2.0%
	160 Hours or More	196	9	38	23	114	5	28	10
		4.7%	4.8%	3.3%	7.1%	4.9%	3.1%	3.3%	3.3%
Wages Reported for 2nd Quarter 2009 for	Mean of Cases with UI Wages	\$4,876	\$4,892	\$5,202	\$4,879	\$4,822	\$4,147	\$5,050	\$5,451
	Median	\$4,257	\$5,119	\$4,740	\$4,161	\$4,135	\$3,834	\$4,507	\$5,349
Jobs Covered by Unemployment Insurance	Count of Cases	2,221	78	473	160	1,385	90	338	133
	Percent of All Cases	52.8%	41.9%	41.4%	49.1%	59.6%	55.9%	40.1%	44.2%
Cases Receiving SSI	Count of Cases	181	11	79	9	78	2	71	8
	Percent of Cases	4.3%	5.9%	6.9%	2.8%	3.4%	1.2%	8.4%	2.7%
Cases with at Least One Child Eligible for the Child Care Assistance Program	Youngest Child Less than Age 6	1,007	24	294	66	577	29	190	104
	Percent of Cases	23.9%	12.9%	25.7%	20.2%	24.8%	18.0%	22.6%	34.6%
	Youngest Child Age 6 to 12 Years	129	2	36	6	81	2	27	9
		3.1%	1.1%	3.1%	1.8%	3.5%	1.2%	3.2%	3.0%
	Any Eligible Child	1,136	26	330	72	658	31	217	113
		27.0%	14.0%	28.9%	22.1%	28.3%	19.3%	25.8%	37.5%

Table 6 – Page 3

DWP Economic Characteristics		All Cases	Racial/Ethnic Groups					Black Subgroups	
			Asian	Black	Hispanic	White	American Indian	African American	African Immigrants
Child Support Disbursements: Average of Payments > \$0	Current Mean	\$342	\$341	\$325	\$304	\$352	\$294		
	Median	\$304	\$361	\$299	\$292	\$308	\$286		
	Count	667	11	129	36	466	18		
	Percent of Cases	15.8%	5.9%	11.3%	11.1%	20.1%	11.2%		
	Sum	\$228,211	\$3,756	\$41,906	\$10,949	\$163,805	\$5,291		
	Arrears Mean	\$142	\$124	\$120	\$311	\$140	\$89		
	Median	\$78	\$88	\$75	\$78	\$78	\$70		
	Count	340	5	64	15	240	12		
	Percent of Cases	8.1%	2.7%	5.6%	4.6%	10.3%	7.5%		
	Sum	\$48,129	\$620	\$7,660	\$4,663	\$33,664	\$1,069		
	Total Mean	\$398	\$398	\$372	\$422	\$407	\$289		
	Median	\$342	\$384	\$333	\$377	\$342	\$286		
	Count	695	11	133	37	485	22		
	Percent of Cases	16.5%	5.9%	11.6%	11.4%	20.9%	13.7%		
	Sum	\$276,288	\$4,375	\$49,514	\$15,612	\$197,469	\$6,360		

Table 7. Selected Characteristics of All Minnesotans with Minor Children, American Community Survey 2007

All Minnesotans with Minor Children, ACS 2007	Total Adults with Children	Major Racial/Ethnic Groups				
		Asian	Black	Hispanic	White	American Indian
Individual Characteristics	1,818,142	78,248	88,485	81,789	1,549,865	18,127
Percent with a High School Diploma/GED	92%	78%	80%	61%	95%	86%
Percent Never Married	23%	22%	46%	33%	21%	44%
Household Characteristics	1,203,812	48,259	56,338	52,840	1,034,159	10,951
Minnesota Households with Children						
Average Number of Children	2.1	2.6	2.4	2.1	2.0	2.1
Average Age of Youngest Child	7.3	6.02	6.35	6.02	7.81	9.36
Percent of Households Residing in:						
Core Metro (Minneapolis and St. Paul)	10%	26%	39%	22%	6%	8%
Metro Suburban	52%	60%	54%	47%	53%	26%
Greater Minnesota	38%	14%	7%	32%	42%	66%