

**Agency Purpose**

The mission of the Minnesota Pollution Control Agency (MPCA) is to work with Minnesotans to protect, conserve, and improve our environment and enhance our quality of life.

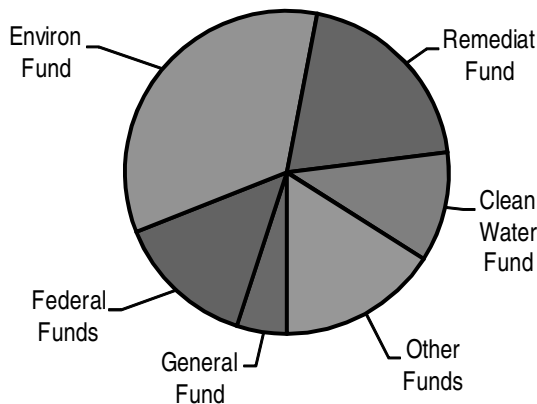
The vision for the MPCA is:

- clean and sustainable surface water and groundwater systems;
- clean and clear air;
- land that supports desired uses;
- excellence in operations; and
- Minnesotans taking responsibility to protect our environment.

**At a Glance**

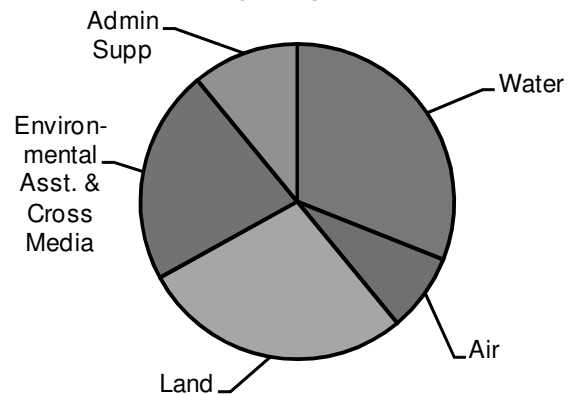
- Leverages partnerships and resources to address environmental issues and achieve results.
- Product stewardship program provides an innovative approach to conserving resources, reducing waste and increasing recycling.
- Addresses complex environmental problems effectively and efficiently through use of technology, technical and financial assistance, prevention, regulation, and cleanup solutions; examples include restoring contaminated soils for future development opportunities.
- Monitors more than 750 sites across the state to determine environmental conditions of air, surface waters and ground water.
- Provides resources to local units of government to reduce air and water pollutants and waste generation, and improve the cost effectiveness of recycling, composting and recovery programs.
- Provides web interface that shares environmental data through programs such as What's in My Neighborhood and Environmental Data Access.
- Performs permitting, inspection, compliance determination, and enforcement actions at sites and facilities whose operations impact the condition of air, water and land.
- Issues over 7,000 water permits, 4,000 air permits and 200 solid and hazardous waste permits, while inspecting and issuing licenses for more than 40,000 sites for hazardous waste generation, feedlots, and tank management.
- Leads state-financed clean-up at 265 contaminated sites and oversees work at an additional 3,000 sites.
- Manages training and certification for over 2,500 wastewater operators, landfill inspectors, tank operators and household hazardous waste facility staff each year.

**Est. FY 2010-11 Expenditures by Fund**



Source: MAPS FY10 Expenditures & FY11 Current Budget

**Est. FY 2010-11 Expenditures by Program**



Source: MAPS FY10 Expenditures & FY11 Current Budget

## Strategies

The MPCA's mission is implemented following these strategies:

- Focus on priorities and manage for environmental results.
- Actively partner to leverage knowledge, ideas, and resources.
- Rely on data for decision making.
- Integrate environmental, economic and social sciences when developing environmental policy.
- Strive for excellence and innovation in service delivery.

## Operations

The MPCA separates its work according to media: water, air and land. Three of the MPCA's five budget programs reflect these three media. Environmental Assistance and Cross-Media, the fourth budget program, includes activities that cross and combine the three major media. Administrative Support, the fifth budget program, encompasses the support services that enable efficient program delivery throughout the agency.

**The Commissioner's Office** sets the strategic direction for the MPCA and provides an essential link to stakeholders and partners. In addition, the MPCA is organized into eight divisions. Programs and services are managed and delivered through MPCA offices in St. Paul, Duluth, Brainerd, Rochester, Mankato, Detroit Lakes, Willmar, and Marshall.

**The Environmental Analysis and Outcomes Division** employs staff to monitor and evaluate the physical, chemical, and biological conditions of Minnesota's environment. The Division identifies environmental threats and potential impacts to human health and ecosystems, helps set environmental goals and measures progress in achieving them, establishes environmental standards, conducts risk assessments, develops the permit limits needed for regulatory work, and makes environmental data available to staff, stakeholders, and citizens. This Division also conducts rulemaking regarding the beneficial use of waters of the state.

**The Prevention and Assistance Division** uses technical and financial assistance to arrive at innovative approaches to environmental problems. Business Assistance staff efforts include product stewardship, market development environmental design, pollution prevention, waste and toxicity reduction as well as operating in compliance. Community development staff builds partnerships with community leaders in topic areas such as low impact designs, green development and sustainability. The Business and Community First Link staff answer regulatory and environmental questions from businesses and citizens about air and water quality, solid and hazardous waste, and storage tank regulation. Services provided through the Information Systems Office includes data management, telecommunications, desktop, Web, GIS, applications development and system security.

**The Remediation Division** is dedicated to cleaning up accidental spills that pollute the soil, water or air through its Emergency Response Section. The Division addresses pollution that occurred over a long period of time through remediation efforts such as the Closed Landfill and Superfund programs, petroleum contaminated site and leaking storage tank cleanup, Brownfield program for land redevelopment, and the voluntary investigation and cleanup programs.

**The Regional Division** enables environmental problem solving at the local level. The Division is focused on building local capacity to restore and improve the environment. Water quality programs specifically include feedlots, watershed protection and restoration management, stormwater, and other efforts targeting nonpoint source pollution. Staff also completes environmental review, disburse clean water partnership grants, and complete total maximum daily load (TMDL) plans and studies under Minnesota's Clean Water Legacy Act.

**The Industrial Division** provides regulatory services for industrial sources of air, water, and land pollution. Permitting, compliance, and enforcement for water and air quality, industrial solid waste, hazardous waste, and industrial stormwater are based in this division as well as the rulemaking for tanks. Recent and significant growth within business sectors prompted the MPCA to form teams to address specific project needs.

**The Municipal Division** provides regulatory services for publicly-owned wastewater treatment facilities and stormwater facilities. The Division provides regulatory services regarding mixed-municipal land disposal facilities, demolition land disposal and recycling facilities, recycling centers, and transfer stations. This Division provides

technical assistance, permitting, compliance and enforcement services regarding sub-surface sewage treatment systems. The Division is responsible for rules and policy governing the MPCA's water and waste regulatory programs.

**The Data Performance Management Division** works to implement data and performance management systems. The Division's focus is on creating accessible and useful data management systems; deploy the MPCA's continuous improvement effort; lead organizational development; and advance sustainable practices to reduce the MPCA's environmental footprint and influence other agencies to do likewise.

**The Operational Support Division** oversees the MPCA's financial management (accounts receivable/payables and grants and contract management) and its business operations (records management, vehicle fleet, equipment and supplies, facilities and leasing, mail and shipping). Further, the Division provides essential support through human resource management and communication services. Division staff is mainly located in St. Paul, although a number of communication professionals work in regional offices.

The MPCA Citizens' Board **is unique to state government and acts on significant and controversial environmental issues.**

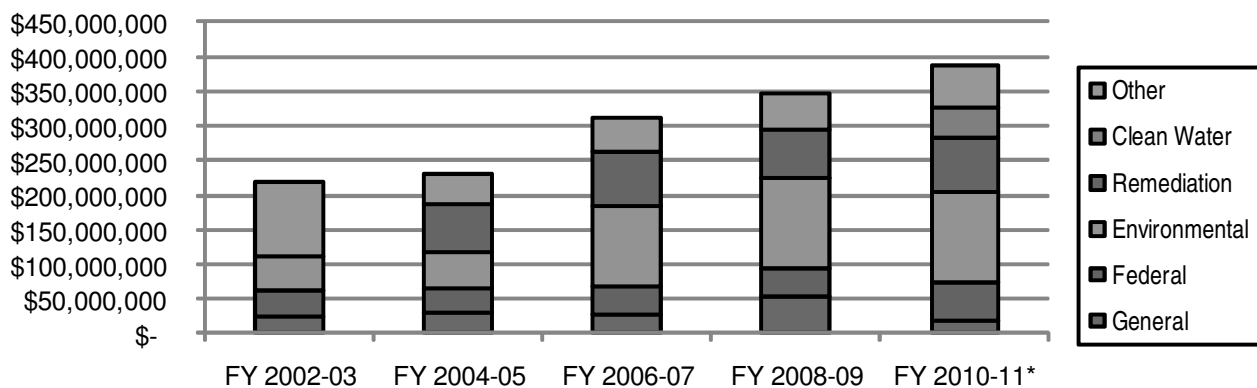
**Budget Trends**

The MPCA managed a number of authorized appropriations for FY 2010-11, including appropriation changes from the 2010 Legislative session, totaling \$387.9 million. The mix of funding is 5% General Fund, 34% Environmental Fund, 20% Remediation Fund, 11% Clean Water Fund, 14% federal and 16% other sources.

The graphs below show the MPCA's budget in terms of its media programs and the specific funds used to support the programs. The Environmental Fund receives most of its revenues through fee-based systems and as such is reflective of economic trends. Program work is impacted by changing federal regulations since it operates a number of regulatory programs on behalf of the U.S. Environmental Protection Agency.

Additionally, a trends analysis has been developed to show how the funding has changed over time. It should be noted that the significant increase in FY2006-2007 reflects the merger of the MPCA with the Office of Environmental Assistance.

**Total Expenditures by Fund**



\* FY 2010-11 is estimated, not actual. Source data for the previous chart is the Minnesota Accounting and Procurement System (MAPS) as of 08/30/10.

**Contact**

For more information, contact Fiscal – Operational Support at (651) 296-6300 or toll-free at 800-657-3864

In addition, visitors can learn more about environmental issues at <http://www.pca.state.mn.us> such as pollution prevention, reuse, recycling, responsible waste management, sustainable practices, as well as regulatory news, rules, public notices, details about environmental quality and current “hot topics.”

MPCA’s strategic plan can be accessed at <http://www.pca.state.mn.us/index.php/about-mpca/mpca-overview/agency-strategy/mpca-strategic-plan.html>

Dollars in Thousands

	Current		Forecast Base		Biennium 2012-13
	FY2010	FY2011	FY2012	FY2013	
<b><u>Direct Appropriations by Fund</u></b>					
<b>Environment &amp; Natural Resource</b>					
Current Appropriation	425	0	0	0	0
<b>Forecast Base</b>	<b>425</b>	<b>0</b>	<b>0</b>	<b>0</b>	<b>0</b>
Change		0	0	0	0
% Biennial Change from 2010-11					-100%
<b>General</b>					
Current Appropriation	10,300	8,917	8,917	8,917	17,834
<b>Forecast Base</b>	<b>10,300</b>	<b>8,917</b>	<b>8,508</b>	<b>8,508</b>	<b>17,016</b>
Change		0	(409)	(409)	(818)
% Biennial Change from 2010-11					-11.5%
<b>State Government Spec Revenue</b>					
Current Appropriation	48	48	48	48	96
<b>Forecast Base</b>	<b>48</b>	<b>48</b>	<b>48</b>	<b>48</b>	<b>96</b>
Change		0	0	0	0
% Biennial Change from 2010-11					0%
<b>Environmental</b>					
Current Appropriation	61,524	62,183	62,126	62,126	124,252
<b>Forecast Base</b>	<b>61,524</b>	<b>62,183</b>	<b>62,076</b>	<b>62,076</b>	<b>124,152</b>
Change		0	(50)	(50)	(100)
% Biennial Change from 2010-11					0.4%
<b>Remediation Fund</b>					
Current Appropriation	11,086	11,086	11,086	7,470	18,556
<b>Forecast Base</b>	<b>11,086</b>	<b>11,086</b>	<b>11,086</b>	<b>7,470</b>	<b>18,556</b>
Change		0	0	0	0
% Biennial Change from 2010-11					-16.3%
<b>Clean Water</b>					
Current Appropriation	23,976	23,130	23,130	23,130	46,260
<b>Forecast Base</b>	<b>23,976</b>	<b>23,130</b>	<b>0</b>	<b>0</b>	<b>0</b>
Change		0	(23,130)	(23,130)	(46,260)
% Biennial Change from 2010-11					-100%
<b><u>Expenditures by Fund</u></b>					
<b>Direct Appropriations</b>					
Environment & Natural Resource	375	11	0	0	0
General	8,920	9,383	8,508	8,508	17,016
State Government Spec Revenue	44	52	48	48	96
Environmental	59,444	59,473	58,561	58,561	117,122
Remediation Fund	9,234	10,507	10,968	7,351	18,319
Clean Water	15,407	31,699	0	0	0
<b>Statutory Appropriations</b>					
Environment & Natural Resource	425	0	0	0	0
Clean Water Revolving Fund	8,742	3,516	4,073	4,073	8,146
State Government Spec Revenue	1	2	2	2	4
Miscellaneous Special Revenue	20,283	24,353	21,769	21,744	43,513
Federal	21,391	31,759	26,965	25,722	52,687
Federal Stimulus	4,891	4,540	648	0	648
Environmental	2,689	3,366	2,535	2,652	5,187
Remediation Fund	27,695	32,041	22,827	17,546	40,373
Gift	1,725	1,054	0	0	0
<b>Total</b>	<b>181,266</b>	<b>211,756</b>	<b>156,904</b>	<b>146,207</b>	<b>303,111</b>

*Dollars in Thousands*

	Current		Forecast Base		Biennium
	FY2010	FY2011	FY2012	FY2013	2012-13
<b><u>Expenditures by Category</u></b>					
Total Compensation	74,243	74,282	67,651	65,261	132,912
Other Operating Expenses	71,292	92,631	59,240	51,269	110,509
Capital Outlay & Real Property	46	0	0	0	0
Local Assistance	26,785	41,921	26,466	26,013	52,479
Other Financial Transactions	8,900	2,922	2,860	2,977	5,837
Transfers	0	0	687	687	1,374
<b>Total</b>	<b>181,266</b>	<b>211,756</b>	<b>156,904</b>	<b>146,207</b>	<b>303,111</b>
<b><u>Expenditures by Program</u></b>					
Water	56,088	71,321	33,331	32,113	65,444
Air	12,971	13,994	13,355	13,457	26,812
Land	51,624	57,569	45,686	36,121	81,807
Environmental Asst Crossmedia	40,926	45,879	42,800	42,784	85,584
Administrative Support	19,657	22,993	21,732	21,732	43,464
<b>Total</b>	<b>181,266</b>	<b>211,756</b>	<b>156,904</b>	<b>146,207</b>	<b>303,111</b>
<b>Full-Time Equivalent (FTE)</b>	<b>921.9</b>	<b>920.0</b>	<b>825.4</b>	<b>785.2</b>	

**Program at a Glance**

- Monitor surface water quality on a watershed basis, including citizen monitoring.
- Monitor groundwater quality and prepare trend analysis.
- Develop water quality standards.
- Provide municipal and industrial wastewater permitting inspections, and enforcement.
- Stormwater program development, permitting, compliance determination, and enforcement.
- Write permits, conduct inspections, and enforce regulations related to feedlots.
- Implement new and developing federal regulatory programs such as ballast permitting and the new pesticide permit program under the National Pollutant Discharge and Elimination System (NPDES)
- Regulate Subsurface Sewage Treatment Systems (SSTS).
- Provide grants through Clean Water Partnership, Clean Water Legacy, and federal Clean Water Act Section 319 grants to local units of government to improve water quality,
- Develop watershed restoration and protection strategies for all the state's major watersheds.

**Program Description**

The MPCA Water Program protects and improves Minnesota's rivers, lakes, wetlands, and ground water so they support human health, rich and diverse populations of aquatic life, and recreational opportunities. The MPCA receives its authority through state statute and delegation of the federal Clean Water Act (CWA) from the U.S. Environmental Protection Agency.

The MPCA establishes designated uses for each water body, such as swimming, drinking, and fishing; sets water quality standards for the pollutants that impact the designated uses; and monitors these waters to determine if they meet standards.

The MPCA evaluates the condition of the state's water resources and uses that information to develop plans to restore waters identified as impaired and to protect those that are unimpaired. This is accomplished by regulating municipal and industrial discharges and septic systems, controlling stormwater runoff, regulating feedlots and land application of manure, working with farmers to reduce pollution from farming operations, and monitoring and assessing water quality to inform social, financial, technical, and environmental management decisions.

The MPCA and our partners are on track to monitor the water quality of 100% of the state's major watersheds on a

10-year cycle. Lake monitoring focuses on the state's larger recreational lakes, and is on track to monitor 100% of lakes 500 acres and larger and at least half of the lakes between 100 and 500 acres. Watershed outlet river monitoring is conducted through the MPCA's Major Watershed Load Monitoring (MWLM) network, in partnership with other agencies. The MWLM network will include monitoring data, computed pollutant loads, and trends for water quality at 82 river sites across the State. Baseline data will be assembled in late 2010. Ongoing biological and chemical monitoring is also being conducted in all of the State's major watersheds on a 10-year cycle. Using the watershed monitoring and analysis, watershed protection and restoration strategies will be developed and implemented for the 81 major watersheds across the state.

The strategic goals for the Water Program are:

- Assessing the condition of Minnesota's groundwater systems and providing information on the effectiveness of best management practices in preventing and reducing degradation of groundwater and supporting groundwater conservation.
- Assessing the chemical, physical and biological integrity of Minnesota's lakes, streams and wetlands to identify if designated uses are being met, and providing information on the condition of waters.
- Protecting and improving the chemical, physical and biological integrity of Minnesota's lakes, streams and wetlands.
- Achieving excellence through appropriate application of tools and best practices.
- Providing a reliable information management system that supports the agency and its partners in effective and efficient environmental work.
- Maintaining its capacity to recognize and address emerging issues that fall within the agency's authority.

**Population Served**

This Program serves all citizens of the state by protecting Minnesota's lakes, streams, wetlands, and groundwater from many kinds of pollution. The goal is to maintain the ability of Minnesotans and visitors to drink, fish, and recreate in Minnesota's abundant water resources. The MPCA works closely with several entities by:

- Regulating a large and diverse array of business and municipal activities in Minnesota;

- Providing grants and loans to local units of government to address pollution problems such as stormwater and feedlot runoff, and failing septic systems;
- Supporting watershed management groups who receive financial and technical assistance from MPCA, and
- Providing information regarding water quality and quantity in relation to economics, health, and recreation for consideration in decisionmaking.

**Services Provided****Monitor/Assess:**

- Monitor watersheds to characterize river, lake, and wetland water quality and identify trends through a combination of state and local projects, remote sensing, and our volunteer monitoring network.
- Assess monitoring data to understand water resource conditions and determine impairment status as required by the CWA.
- Monitor those waters that are not meeting their designated uses to identify the stressor(s) causing the problem.
- Monitor ambient groundwater quality of vulnerable aquifers, to serve as an “early warning system” of pollution problems, working closely with the Minnesota Departments of Agriculture and Health.

**Management:**

- Establish water quality standards to protect Minnesota's waters, set treatment priorities and discharge limits.
- Issue permits, conduct inspections, and complete enforcement follow-up, as necessary, for 926 industrial and 816 domestic wastewater facilities.
- Implement the stormwater program that includes permitting, technical assistance, inspections, and enforcement for ~240 municipalities, ~1,650 industrial facilities, and 1,500-2,500 construction projects per year.
- The MPCA completed the review, public notice, and approval of detailed stormwater pollution prevention programs from 233 municipal stormwater permittees in 2009.
- The MPCA is also developing Minimal Impact Design Standards, as directed in 2009 legislation, to set performance goals and establish methods to credit the pollutant reductions in urban stormwater runoff.
- Develop and implement a pesticide permit program under the CWA that includes permitting, technical assistance, inspections, and enforcement follow-up as necessary for ~4000 potential permittees, including municipalities, industrial facilities, mosquito control districts, and lake management associations.
- Issue permits, conduct inspections and enforcement for over 1,100 animal feedlots, and in conjunction with county governments administer the program for ~25,000 feedlots registered under state law.
- Develop watershed protection and management strategies for 81 major watersheds. The most recent inventory of impaired waters, currently at EPA for approval, identifies 3,049 impairments affecting 1,636 lakes and streams. Slightly less than 47% of the impairments are attributable to mercury.
- The MPCA assesses waters and lists the impaired waters every two years in accordance with the CWA.
- Complete protection and restoration management plans for watersheds including developing the total maximum daily loading (TMDL) for impaired surface waters. As of August 13, 2010, the MPCA has completed 35 TMDLs addressing 188 conventional impairments that have led to clean-up efforts. The MPCA has additional TMDLs underway to determine the sources of 500 additional impairments. The MPCA approved a TMDL that addresses 998 mercury impairments.
- Issued ~300 ballast water permit for ships entering Minnesota ports from the Great Lakes and co-leading the Great Lakes Ballast Water Collaborative to obtain protective federal ballast water discharge standards.

**Protection/Restoration:**

- Provide grant and loan funds to clean up pollution from urban and agricultural runoff, individual sewage treatment systems, and feedlot upgrades.
- Develop strategies to address degradation of surface- and ground-waters by upgrading small community wastewater treatment facilities.
- Develop watershed restoration strategies for impaired waters, protection strategies for those waters not impaired, and implement required reductions at NPDES permitted facilities.



**Historical Perspective**

In the past, the MPCA focused its efforts on regulating industrial and municipal discharges, with a special emphasis on municipal wastewater treatment facilities. At the time, this focus was appropriate because these sources were the largest controllable source of water pollution. Recent emphasis was on gaining new efficiencies, particularly in permitting and enforcement portions of the program and on improved integration with the Minnesota's interagency approach to impaired waters activities. New emphasis is on addressing contaminants of emerging concern and addressing additional pollutant reductions at regulated wastewater and stormwater facilities based on impaired water (TMDL) studies. Another focus is addressing the small unsewered or under-sewered communities, with the priority placed on community straight-pipe discharges.

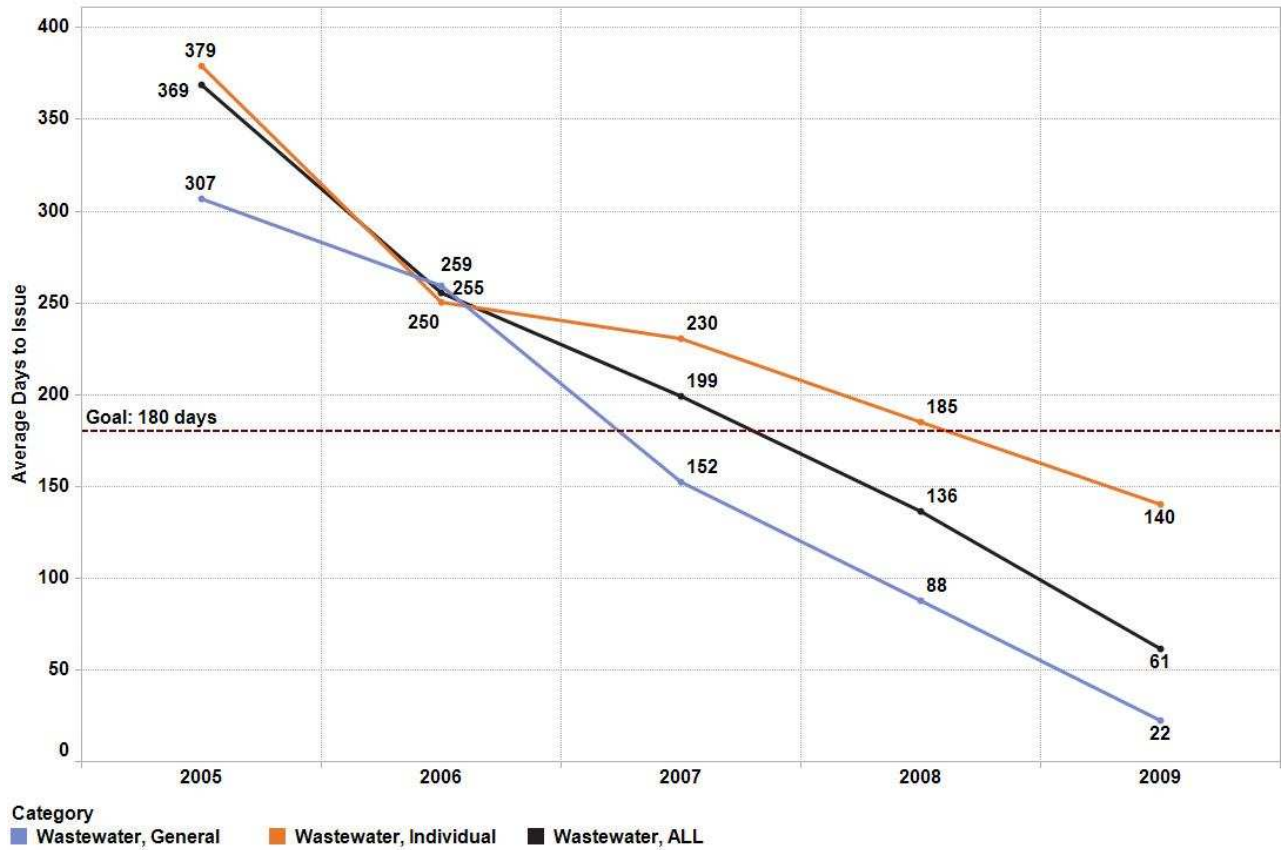
The MPCA continues to address dispersed sources of pollutants, with construction stormwater runoff, agricultural land and drainage systems, individual septic systems, feedlots, and forestry as examples. More emphasis and funding have been directed to these sources of pollutants reaching our waters. Although individual sources are often small, their cumulative impacts may be significant. The emphasis placed on these sources does not replace the work that must continue to be directed at municipal and industrial sources.

The 2010 Industrial Stormwater General Permit requires best management practices and benchmark monitoring for facilities in 29 industrial sectors. Outreach by the MPCA is increasing the number of facilities that apply for permit coverage or no-exposure exclusion above the 1,650 previously regulated facilities.

The Federal Clean Water Act requires states to list impaired waters, and to develop and implement clean-up plans. The 2006 Minnesota Legislature passed the Clean Water Legacy Act and authorized funding for one year. The 2007 Legislature appropriated additional funds for the 2008-09 biennium. The 2009 Legislature appropriated Clean Water funds from the Clean Water, Land, and Legacy Constitutional Amendment of 2008 for the 2010-11 biennium.

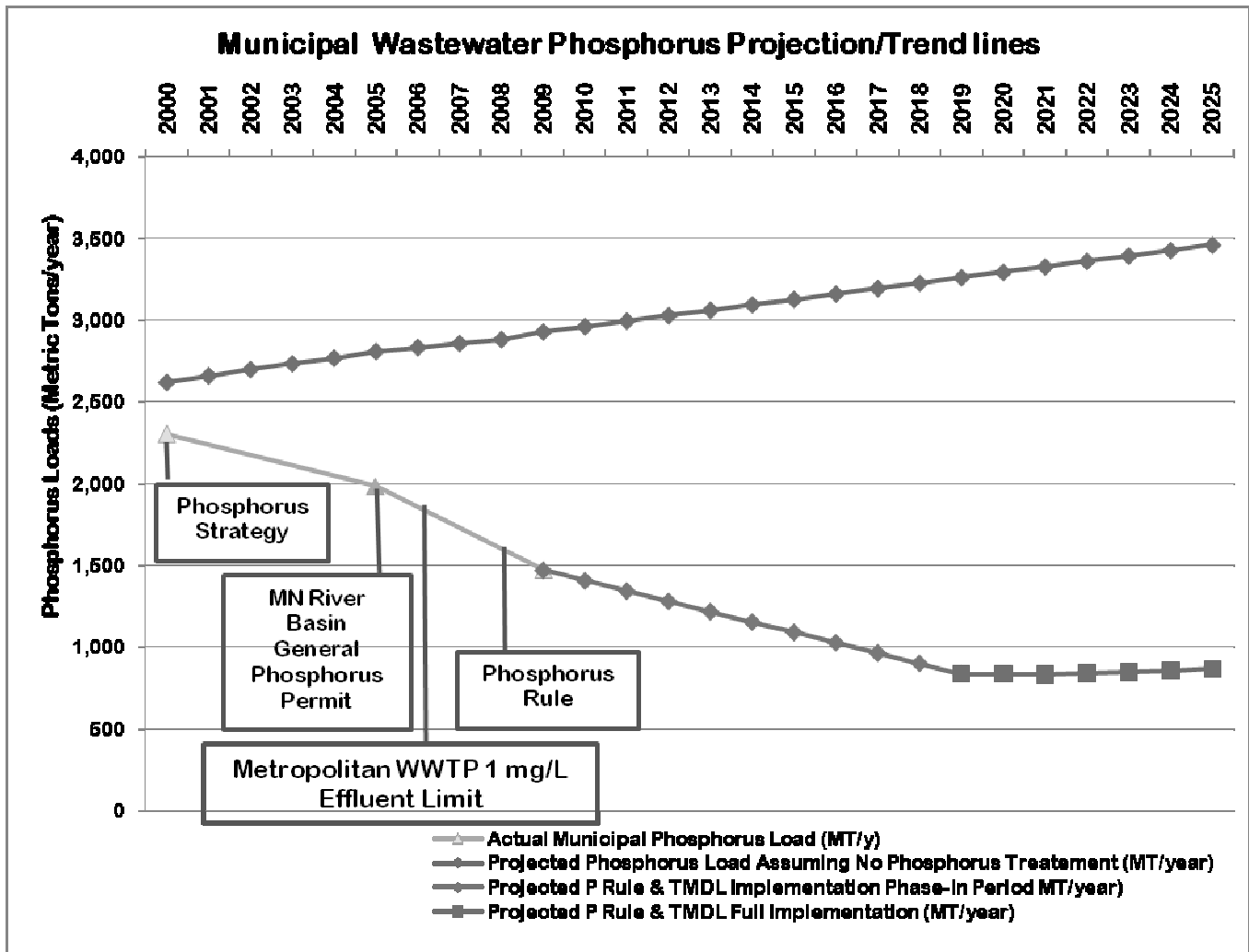
**Key Program Goals & Measures**

**MPCA Permitting, WASTEWATER**



\* General Permits - Permits that are designed to cover more than one facility; that are similar in design or discharge.

\* Individual permits - Permits that are designed to cover a single facility with discharge/emission limits and requirements specific to each facility.



**Program Funding**

Authorized appropriations for the Water Program in FY2010-11 total \$121.7 million. The funding mix: 36% Clean Water Fund, 30% Environmental Fund, 12% federal, 12% General Fund and 10% other sources.

**Contact**

For more information, contact Fiscal – Operational Support at (651) 296-6300 or toll-free at (800) 657-3864.

The MPCA website at: <http://www.pca.state.mn.us> provides useful information about Minnesota’s environment. The types of information available through the site include regulatory news and updates, rules, public notices, agency initiatives, and details about environmental quality and current “hot topics.”

**POLLUTION CONTROL AGENCY**

Program: WATER

Program Summary

*Dollars in Thousands*

	Current		Forecast Base		Biennium
	FY2010	FY2011	FY2012	FY2013	2012-13
<b><u>Direct Appropriations by Fund</u></b>					
<b>Environment &amp; Natural Resource</b>					
Current Appropriation	425	0	0	0	0
<b>Forecast Base</b>	<b>425</b>	<b>0</b>	<b>0</b>	<b>0</b>	<b>0</b>
<b>General</b>					
Current Appropriation	7,764	6,597	6,597	6,597	13,194
<b>Technical Adjustments</b>					
Biennial Appropriations			21	21	42
One-time Appropriations			(450)	(450)	(900)
<b>Forecast Base</b>	<b>7,764</b>	<b>6,597</b>	<b>6,168</b>	<b>6,168</b>	<b>12,336</b>
<b>State Government Spec Revenue</b>					
Current Appropriation	48	48	48	48	96
<b>Forecast Base</b>	<b>48</b>	<b>48</b>	<b>48</b>	<b>48</b>	<b>96</b>
<b>Environmental</b>					
Current Appropriation	18,131	18,666	18,666	18,666	37,332
<b>Technical Adjustments</b>					
One-time Appropriations			(50)	(50)	(100)
<b>Forecast Base</b>	<b>18,131</b>	<b>18,666</b>	<b>18,616</b>	<b>18,616</b>	<b>37,232</b>
<b>Clean Water</b>					
Current Appropriation	23,976	23,130	23,130	23,130	46,260
<b>Technical Adjustments</b>					
One-time Appropriations			(23,130)	(23,130)	(46,260)
<b>Forecast Base</b>	<b>23,976</b>	<b>23,130</b>	<b>0</b>	<b>0</b>	<b>0</b>

# POLLUTION CONTROL AGENCY

Program: WATER

Program Summary

*Dollars in Thousands*

	Current		Forecast Base		Biennium 2012-13
	FY2010	FY2011	FY2012	FY2013	
<b><u>Expenditures by Fund</u></b>					
<b>Direct Appropriations</b>					
General	6,908	7,453	6,168	6,168	12,336
State Government Spec Revenue	44	52	48	48	96
Environmental	17,701	17,407	16,520	16,555	33,075
Clean Water	15,407	31,699	0	0	0
<b>Statutory Appropriations</b>					
Environment & Natural Resource	425	0	0	0	0
Clean Water Revolving Fund	8,742	3,516	4,073	4,073	8,146
Miscellaneous Special Revenue	173	51	25	0	25
Federal	4,203	10,176	6,349	5,269	11,618
Federal Stimulus	2,485	960	148	0	148
Environmental	0	7	0	0	0
<b>Total</b>	<b>56,088</b>	<b>71,321</b>	<b>33,331</b>	<b>32,113</b>	<b>65,444</b>
<b><u>Expenditures by Category</u></b>					
Total Compensation	22,909	22,162	16,420	16,423	32,843
Other Operating Expenses	16,586	26,456	5,985	5,217	11,202
Local Assistance	7,851	20,173	8,396	7,943	16,339
Other Financial Transactions	8,742	2,530	2,530	2,530	5,060
<b>Total</b>	<b>56,088</b>	<b>71,321</b>	<b>33,331</b>	<b>32,113</b>	<b>65,444</b>
<b><u>Expenditures by Activity</u></b>					
Water	56,088	71,321	33,331	32,113	65,444
<b>Total</b>	<b>56,088</b>	<b>71,321</b>	<b>33,331</b>	<b>32,113</b>	<b>65,444</b>
<b>Full-Time Equivalents (FTE)</b>	<b>302.4</b>	<b>285.5</b>	<b>200.8</b>	<b>200.8</b>	

**Program at a Glance**

- Develops and implements strategies to reduce air pollution from small sources of air pollution, including mobile sources
- Monitors air quality, tracks the Air Quality Index (AQI)
- Develops and implements ozone and particulate matter reduction efforts
- Develops and implements strategies to reduce regional and global air pollutants such as mercury, regional haze and emissions that contribute to climate change
- Implements air quality point source permitting, compliance determination, and enforcement
- Issues air emission permits to over 4,000 facilities in the state (350 are major source federal permits)

**Program Description**

The state's air quality is affected by pollution from transportation, energy production, manufacturing, and other activities. Clean and clear air, however, is essential for Minnesota's environmental, social, and economic well-being and is also required by state and federal law. The federal Clean Air Act (CAA) is the national environmental framework for these requirements, and it is the foundation of Minnesota's air quality program.

The CAA has necessitated continuing changes to the air program in Minnesota and nationwide through the assessment of air emission fees, new permit and compliance requirements, adoption of more restrictive air quality standards and activities to control emissions of hazardous air pollutants. The MPCA's major activities in implementing the CAA include tracking emissions from point, area and mobile sources of pollution; monitoring the ambient air around the state; and issuing and tracking compliance with air emission permits. In addition, the CAA

amendments created programs to focus on small sources and vehicles that contribute significantly to air problems.

In the past decade, the EPA has delegated additional programs to the MPCA. For example, the MPCA has developed strategies for reducing regional haze and fine particulate matter. The MPCA is implementing new initiatives to reduce emissions of mercury, a pollutant of particular concern regarding human health and the environment. When released to the air, mercury falls onto surface waters and accumulates in fish tissue, resulting in fish consumption advisories for many Minnesota lakes and streams. As a national leader in mercury reductions, Minnesota lawmakers and the Governor enacted legislation in 2007 that further banned the use of mercury-containing products to restrict mercury from the environment. The MPCA completed a plan to achieve mercury emission reductions from a variety of sources, which includes including improved mercury emission reporting and addressing mercury emissions from new or expanding sources.

EPA has recently adopted or proposed a variety of new ambient air quality standards aimed at better protection of public health. Implementation of these standards will require new and significant efforts on the part of the MPCA, including monitoring, planning, environmental review and permitting.

Finally, policymakers, scientists and citizens are evaluating the impacts of climate change on the Minnesota environment and economy. Greenhouse gas policy and regulation has evolved rapidly over the past 2 years. In 2009, the EPA created a greenhouse gas reporting rule that applied to larger emitters of greenhouse gases. The Minnesota Legislature also passed a law requiring the MPCA to collect greenhouse gas emissions from facilities with a federal air quality permit and larger sources in Minnesota. In 2010, EPA finalized the Greenhouse Gas Tailoring rule, which will ultimately regulate greenhouse gasses under the CAA and require permitting for some facilities beginning in 2011. In accordance with federal mandates, the MPCA has initiated exempt rulemaking to ensure state thresholds for GHGs are in alignment with federal regulations.

The MPCA's strategic goals for the air program are:

- Ensure Minnesota's outdoor air will meet or improve upon all environmental and human health-related federal and state ambient air quality standards.
- Ensure Minnesota's outdoor air quality will meet environmental and human health benchmarks for toxic and other air pollutants.
- Ensure Minnesota reduces its contribution to regional, national and global air pollution.
- MPCA leads the way to minimize its environmental footprint and assist other public entities to do the same.

**Population Served**

The Air Program serves all citizens and industrial operations of the state to facilitate protection of public health, the environment, and welfare through regulatory programs that provide standards for the operation of industries, utilities, and transportation systems that contribute to the social and economic well being of the state.

As a result of their daily activities, citizens are responsible for large amounts of air pollution. About half of most air pollutants in Minnesota are emitted from mobile sources, which include automobiles, trucks, buses, recreational and lawn equipment. More information about air quality in Minnesota is available on the MPCA website at <http://www.pca.state.mn.us/air/index.html>.

The Air Program also regulates industrial sources of air pollution. Many facilities necessitate minor source or registration permits from the state, while larger industries may need major source federal air permits. The MPCA issues joint federal and state permits to these larger facilities. As the new federal Greenhouse Gas tailoring rule is implemented, the MPCA anticipates that approximately 200 additional facilities will need air permits and that approximately 15-25 of those will need major source permits.

**Services Provided****Assessment:**

- Monitor for the air quality index and compliance with ambient air quality standards using 140 monitors located in 54 sites statewide.
- Monitor for compliance with air permits at seven sites and provide assistance at four sites.
- Monitor for toxic air pollutants at 20 locations.
- Develop annual emission inventories for 2,300 companies.
- Conduct air emission risk analysis for about 20 point sources each year.

**Management:**

- Issue federal and state air quality operating permits.
- Issue construction and operating permits for new and expanding facilities.
- Monitor compliance with air quality rules, regulations, and permits.
- Take enforcement action when warranted.
- Maintain daily air quality index for the Twin Cities, Duluth, Rochester, Marshall, Brainerd, Detroit Lakes, Ely and St. Cloud and issue alerts when air quality is expected to exceed health benchmarks.
- Implement 2006 Minnesota Legislation to control utility mercury emissions.
- Implement the Total Maximum Daily Load (TMDL) plan for mercury.
- Implement a process for capping or controlling new sources of mercury.

**Restore/Improve:**

- Develop state implementation plans for maintaining and improving air quality.
- Reduce emissions of pollutants that contribute to regional haze, ozone, fine particulate matter, and toxic air pollutants.
- Reduce emissions that contribute to greenhouse gases.

**Historical**

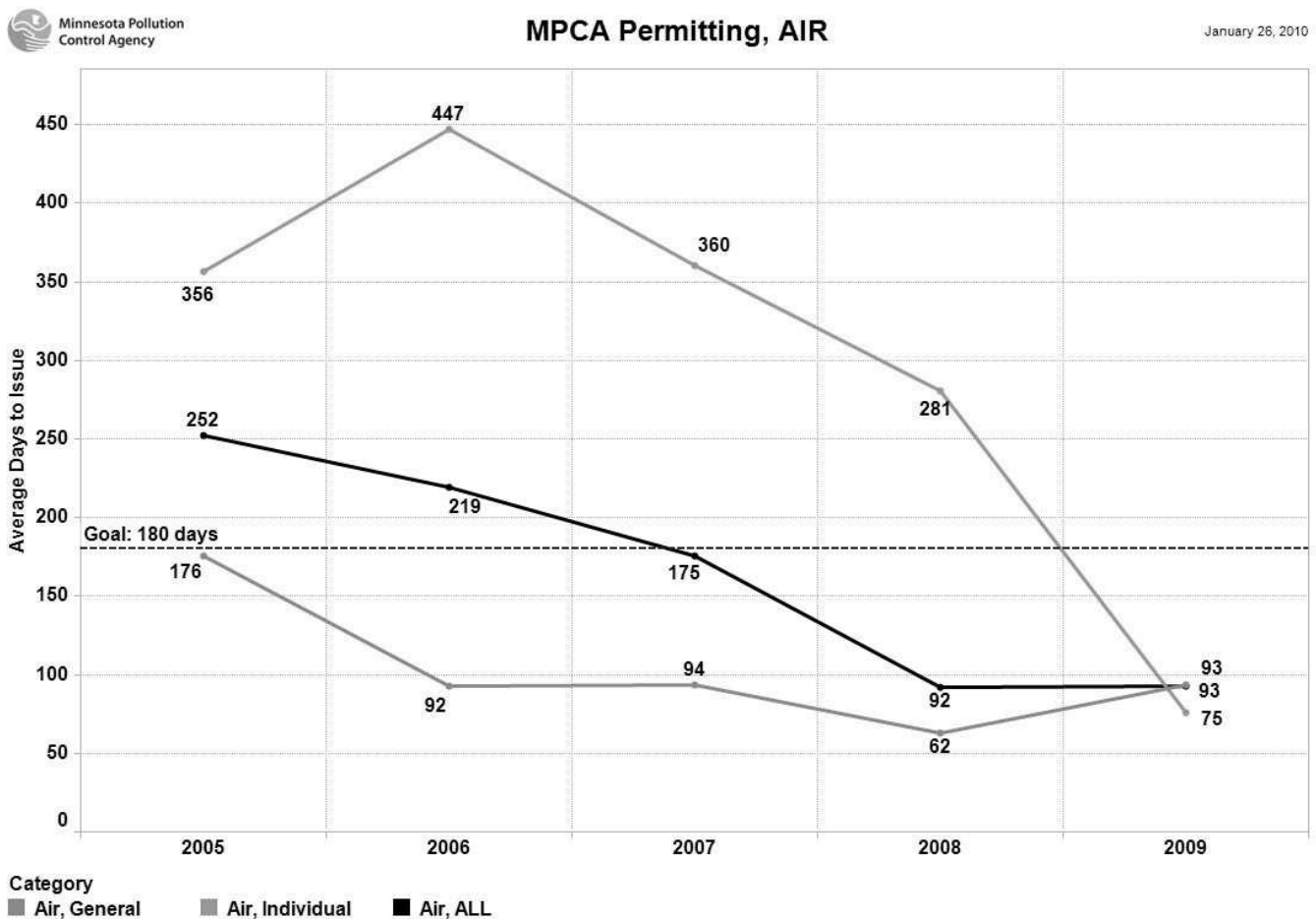
The Clean Air Act, passed in the 1990s, established a national operating permit program known as Title V for large facilities that emit air pollutants. The MPCA issues joint construction and operating permits for existing facility expansions and for new facilities. Permits must be renewed on a 5-year cycle. Detailed rules and regulations, and a more engaged public, have increased the complexity and time required to issue air permits.

Over the past five years, the MPCA has taken considerable efforts to streamline the air permitting process through the use of process improvement tools such as Six Sigma and Lean. Improvements have included the development of standardized forms to minimize application mistakes; the development of external training; and the development of a computerized permit tracking system.

Past efforts by the MPCA and its partners have resulted in emission reductions for many key pollutants and, by most measures, ambient air quality is improving. On the other hand, improving information on how air pollutants impact human health has led to new tighter federal air quality standards for several pollutants. Under the tighter standards, Minnesota air quality is occasionally unhealthy due to elevated ozone (smog) and fine particulate matter. The Twin Cities will likely exceed new federal daily standards for fine particulates and ozone. The MPCA issues air quality alerts when levels exceed health advisory thresholds. Daily air quality readings are available on the MPCA website at <http://aqi.pca.state.mn.us/hourly/>.

**Key Program Goals & Measures**

Figure 1 below shows the average time to issue air permits over a five year period. Figures 2 shows trends in key air pollutants in the Twin Cities area.



\* General Permits - Permits that are designed to cover more than one facility; that are similar in design or discharge.  
 \* Individual permits - Permits that are designed to cover a single facility with discharge/emission limits and requirements specific to each facility.

Figure 1



**Trends in Key Air Pollutants in the Twin Cities Metro Area:1979-2009**

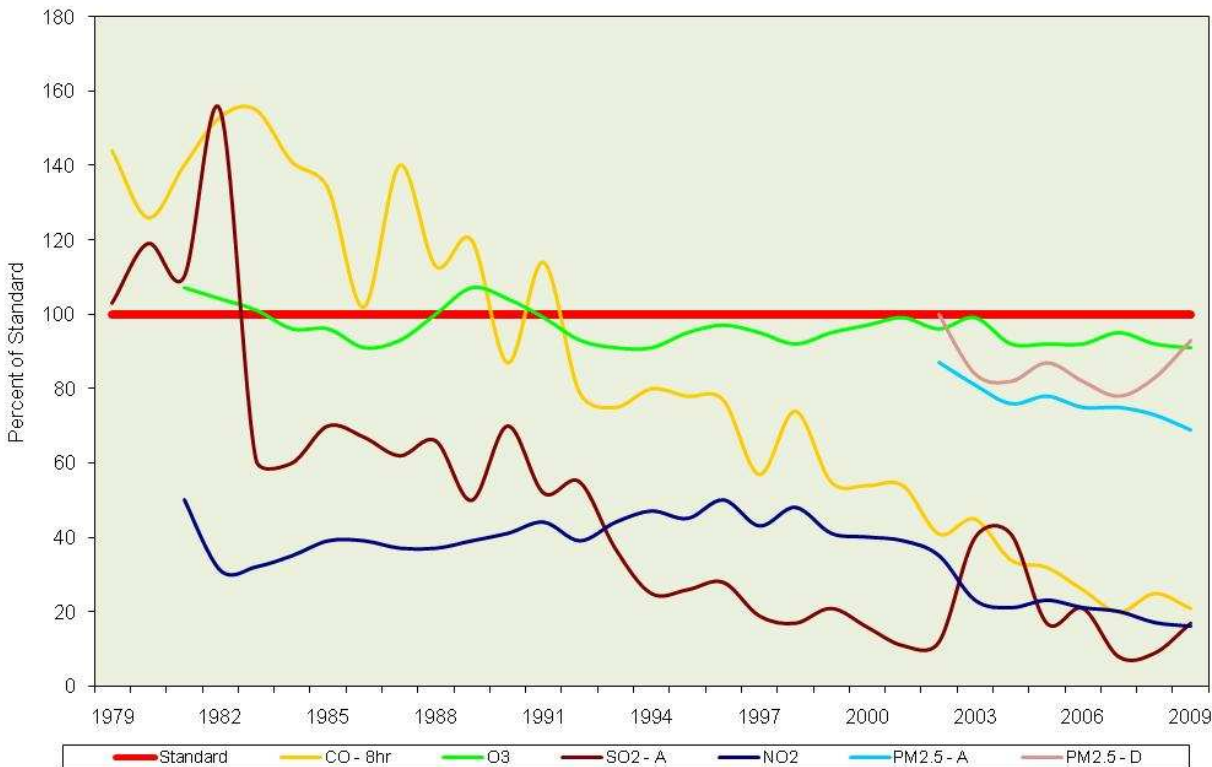


Figure 2

**Program Funding**

Authorized appropriations in FY2010-11 for the MPCA’s Air program totaled \$28.7 million. The mix of funding: 86% Environmental Fund, 10% federal and 4% other sources.

**Contact**

For more information, contact Fiscal – Operational Support at (651) 296-6300 or toll-free at (800) 657-3864.

The MPCA website at <http://www.pca.state.mn.us> provides useful information about Minnesota’s environment. The types of information available through the site include regulatory news and updates, rules, public notices, MPCA initiatives, details about environmental quality and current “hot topics.”

For information on how MPCA measures some of its efforts to meet statewide goals, please visit <http://www.departmentresults.state.mn.us>.

# POLLUTION CONTROL AGENCY

Program: AIR

Program Summary

*Dollars in Thousands*

	Current		Forecast Base		Biennium
	FY2010	FY2011	FY2012	FY2013	2012-13
<b><u>Direct Appropriations by Fund</u></b>					
<b>Environmental</b>					
Current Appropriation	11,871	12,131	12,131	12,131	24,262
<b>Forecast Base</b>	<b>11,871</b>	<b>12,131</b>	<b>12,131</b>	<b>12,131</b>	<b>24,262</b>
<b><u>Expenditures by Fund</u></b>					
<b>Direct Appropriations</b>					
Environmental	11,133	11,612	11,542	11,527	23,069
<b>Statutory Appropriations</b>					
Miscellaneous Special Revenue	457	755	161	161	322
Federal	1,377	1,552	1,552	1,552	3,104
Environmental	4	75	100	217	317
<b>Total</b>	<b>12,971</b>	<b>13,994</b>	<b>13,355</b>	<b>13,457</b>	<b>26,812</b>
<b><u>Expenditures by Category</u></b>					
Total Compensation	8,835	8,629	8,535	8,751	17,286
Other Operating Expenses	4,132	5,292	4,722	4,491	9,213
Other Financial Transactions	4	73	98	215	313
<b>Total</b>	<b>12,971</b>	<b>13,994</b>	<b>13,355</b>	<b>13,457</b>	<b>26,812</b>
<b><u>Expenditures by Activity</u></b>					
Air	12,971	13,994	13,355	13,457	26,812
<b>Total</b>	<b>12,971</b>	<b>13,994</b>	<b>13,355</b>	<b>13,457</b>	<b>26,812</b>
<b>Full-Time Equivalents (FTE)</b>	<b>112.3</b>	<b>110.7</b>	<b>108.5</b>	<b>108.5</b>	

**Program at a Glance**

- Permitting
  - 21 Mixed Municipal Solid Waste (MMSW) landfills
  - 23 industrial solid waste landfills
  - 95 demolition debris landfills
  - 7 MMSW combustor ash landfills
  - 11 solid waste composting facilities
  - 123 transfer stations
  - 23 hazardous waste facilities
  - 243 hazardous waste large quantity generators
  - 90 large petroleum storage tank facilities (> 1M gallons)
- 2000 Petroleum tank inspections/year
- Investigations and Cleanups at contaminated sites
  - 95 active superfund sites
  - 1100 active petroleum release sites
  - 400 brownfield voluntary cleanup actions/year
  - 2500 emergency responses to pollutant spills/year
- Remediation construction projects and maintenance at 112 closed landfills
- Waste-as-a-Resource
  - Recycling 41% of the state's solid waste
  - Burning 19% of solid waste for energy
  - Contributing \$2.98 billion to the state's economy

**Program Description**

The MPCA's Land Program protects the environment, public health, and quality of life of all citizens through the proper management of solid waste, and hazardous materials and waste; by encouraging waste utilization through reduction, recycling, and reuse; and by effectively and efficiently managing the risks at contaminated sites through site cleanup and the restoration of contaminated land to productive use.

Through a combination of federal mandates and state initiatives, the Land Program has undergone significant changes over time to adequately address waste management issues and conserve resources. The Program's integrated system of activities continues to evolve to ensure that hazardous materials, petroleum products, and solid wastes are managed properly throughout the life-cycle of their use, transport, recovery, and disposal.

Because of the connection between the land, surface water and groundwater, the Land Program also plays an important role in protecting the state's surface water and groundwater resources.

**Population Served**

The Land Program serves all the citizens of the state. The MPCA works directly with a large and diverse array of Minnesota businesses and industries. These consist of any facility or entity that creates, treats, stores, uses, manages, or disposes of solid or hazardous wastes or petroleum products. An important aspect of this program is managing

waste-as-a-resource because of the substantial bottom line benefits.

**Services Provided**

**Assessment:**

- License hazardous waste handlers and monitor hazardous waste via a computerized system developed in cooperation with the seven-county metropolitan counties.
- Develop with local government waste management partners a solid waste policy report every two years that summarizes the current status of solid waste management.

**Management:**

- Achieve Minnesota Climate Change Advisory Group (MCCAG) goals and Green House Gas (GHG) reductions through integrated solid waste management (ISWM) activities in the most densely populated areas of the state.
- MPCA must devote increased staff time on the project management of sites that are now the responsibility of the Petroleum Remediation Program (PRP) program. The number of these sites has also increased because responsible parties are unwilling or unable to do the cleanup.
- Distribute grant funds to counties to operate recycling and waste reduction programs and to manage programs for problem materials and household hazardous wastes.
- The preparation of land use plans becomes more urgent as communities seek information to ensure responsible development occurs near closed landfills. Opportunities are also emerging for developing productive uses of the landfill itself, including renewable energy production.

- Partner with counties, businesses, and industries to reduce waste generation, improve the cost effectiveness of recycling, composting and recovery systems, and build stronger regional waste management systems.
- Conduct regulatory and training programs to prevent the release of petroleum, solid waste, and hazardous waste into Minnesota's soil, groundwater, and surface water.
- Issue permits to and inspect solid waste, hazardous waste, and large above ground storage tank facilities, and complete follow-up to ensure compliance as necessary.
- Oversee disposal of debris from natural and man-made disasters.

**Restoration/Improvement:**

- Oversee investigations and corrective actions conducted at contaminated sites by responsible parties; or perform these activities on behalf of the state using contractors when responsible parties do not exist or are unable or unwilling to do such work themselves. Recover costs from responsible parties when possible, reasonable, and appropriate.
- Assist developers in returning contaminated sites to productive use through its Brownfield Programs.
- Retain contractors to conduct cleanups at 112 closed landfills.
- Maintain/manage post-closure care at closed landfill sites.
- Assist industry and local fire and police to develop response action plans focused on preventing spills, supports local fire and police when spills threaten public safety, oversees the cleanups done by spillers, and does direct cleanups when spillers fail to clean up their spills.
- Utilize funding awarded under the American Recovery and Reinvestment Act of 2009 to accelerate storage tank site investigations and cleanups.

**Historical Perspective**

In the past, thousands of locations across the state posed acute or potential risks to human health, land, groundwater, and surface water due to spilling, dumping, or poor management of wastes and petroleum products. The U.S. Congress and the Minnesota Legislature provided legal authorities to the MPCA to ensure risks to the environment and citizens were eliminated or controlled, and established a philosophy to reduce the amount and toxicity of waste and recover materials and energy to reduce dependence on waste disposal facilities.

The Closed Landfill program activity continues to plan for project construction and on-going maintenance at the 112 closed landfills, sites that are the state's responsibility. In addition, the MPCA is directed by statute to prepare a land use plan for the closed landfill sites.

**Key Program Goals & Measures**

A vision for Land Program has been guided by the MPCA's strategic plan, with three primary goals:

- Ensure solid waste is managed to conserve materials, resources, and energy;
- Minimize or reduce the release of contaminants to or from the land; and
- Restore land to productive use by managing risk from contaminated sites.

The Land Program also assists in:

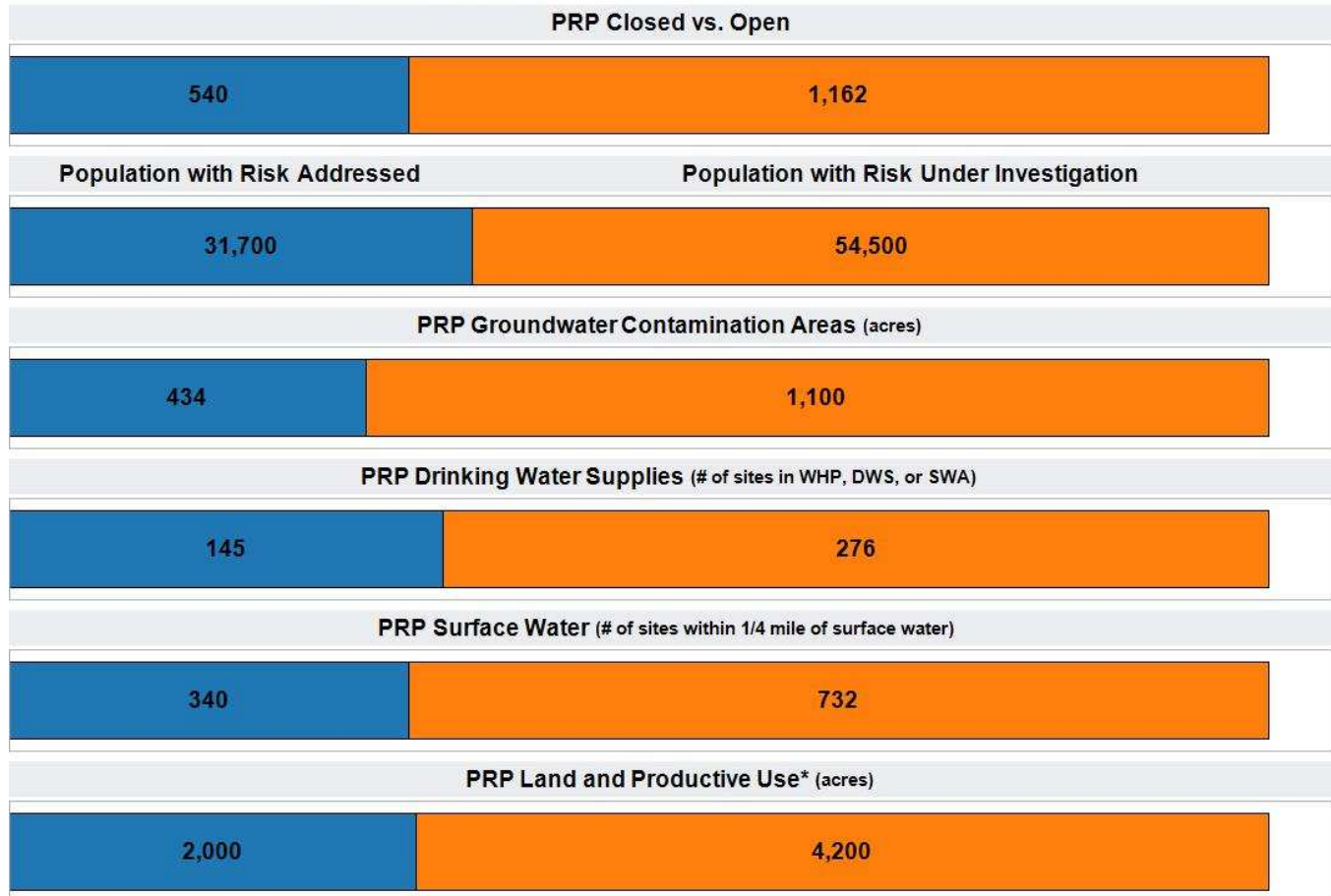
- Assessing the condition of Minnesota's groundwater systems;
- Preventing or reducing the degradation and depletion of groundwater;
- Reducing Minnesota's contribution to regional air pollution; and
- Utilizing and demonstrating green remediation.

The MPCA's Petroleum Remediation Program (PRP) has reduced the number of active sites from over 2,900 in 2000 to less than 1,100 in 2010. Site investigations and closures result in reduction of risk to the population in the vicinity of these sites, protection of drinking water supplies, reduction of risk to groundwater and surface water, and return of contaminated land to the highest value and most productive use. Much of this work was done cooperatively with responsible parties who follow MPCA's site cleanup guidance to secure reimbursement through the state Petroleum Fund. The MPCA's PRP is now responsible for cleanup at an increasing number of sites because responsible parties are unwilling or unable to do the cleanup. The number of these fund-financed sites has increased from approximately zero in 2000 to over 200 in 2010. Funding from the Petroleum Tank Fund for this program ends 6/30/2012.

Key environmental outcomes reported at the end of FY 2010 are displayed below for the PRP, using the reference framework of sites where the completion of investigation and cleanup activities resulted in regulatory file closure (closed sites) and sites where activities were still ongoing at the end of the FY (open sites).

**Goal: L.3 Restore land to productive use by managing risk from contaminated sites.**

SiteType ■ Closed (no longer at risk) ■ Open (at risk)

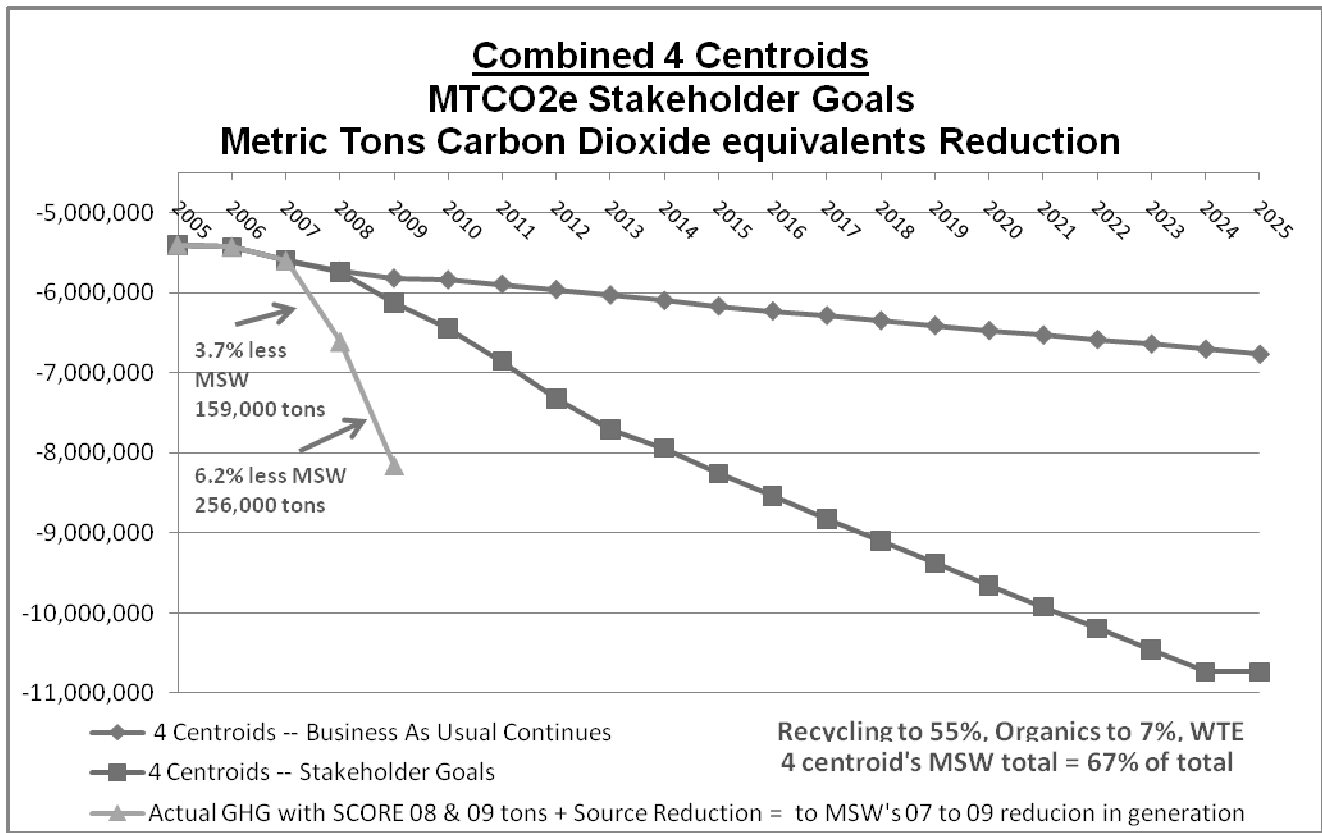


\* Closed sites represent where Site Acreage was returned to productive use. Open sites represent where Productive Use had been Precluded.

The goal of the MPCA’s ISWM activities are to achieve a total reduction of 75 million metric tons of GHG attributed to changes in waste generation, materials conservation, and resource management practices by January 2025. Municipal solid waste (MSW) waste disposal is down by 10 percent. Generators are buying less; manufacturers are using fewer resources. Source reduction has the greatest impact on GHG reduction. Because we are producing less waste, we are also producing less GHG. This decrease is not sustainable because it’s tied to the general economic downturn.

A key focus of ISWM activities is on four centroids, where 70 percent of the state’s MSW is generated:

- 1) Metro centroid – Metro Solid Waste Policy Plan; Governance
- 2) Duluth, Rochester, St. Cloud centroids – Project Development (recycling, composting)



**Program Funding**

Authorized appropriations in FY2010-11 for the Land Program total \$109.4 million. The mix of funding: 70% Remediation Fund, 13% Environmental Fund, 11% federal and 6% other sources.

**Contact**

For more information, contact Fiscal – Operational Support at (651) 296-6300 or toll-free at (800) 657-3864.

The MPCA website at: <http://www.pca.state.mn.us> provides useful information about Minnesota’s environment. The types of information available through the site include regulatory news and updates, rules, public notices, and details about environmental quality and current “hot topics.”

For information on how MPCA measures some of its efforts to meet statewide goals, please visit <http://www.departmentresults.state.mn.us>.

# POLLUTION CONTROL AGENCY

Program: LAND

Program Summary

*Dollars in Thousands*

	Current		Forecast Base		Biennium
	FY2010	FY2011	FY2012	FY2013	2012-13
<b><u>Direct Appropriations by Fund</u></b>					
<b>General</b>					
Current Appropriation	465	435	435	435	870
<b>Forecast Base</b>	<b>465</b>	<b>435</b>	<b>435</b>	<b>435</b>	<b>870</b>
<b>Environmental</b>					
Current Appropriation	6,916	6,916	6,916	6,916	13,832
<b>Forecast Base</b>	<b>6,916</b>	<b>6,916</b>	<b>6,916</b>	<b>6,916</b>	<b>13,832</b>
<b>Remediation Fund</b>					
Current Appropriation	11,086	11,086	11,086	7,470	18,556
<b>Forecast Base</b>	<b>11,086</b>	<b>11,086</b>	<b>11,086</b>	<b>7,470</b>	<b>18,556</b>
<b><u>Expenditures by Fund</u></b>					
<b>Direct Appropriations</b>					
General	0	0	435	435	870
Environmental	6,818	6,715	6,693	6,689	13,382
Remediation Fund	9,234	10,507	10,968	7,351	18,319
<b>Statutory Appropriations</b>					
Miscellaneous Special Revenue	750	779	453	453	906
Federal	3,803	4,050	3,939	3,776	7,715
Federal Stimulus	1,716	2,540	500	0	500
Remediation Fund	27,578	31,924	22,698	17,417	40,115
Gift	1,725	1,054	0	0	0
<b>Total</b>	<b>51,624</b>	<b>57,569</b>	<b>45,686</b>	<b>36,121</b>	<b>81,807</b>
<b><u>Expenditures by Category</u></b>					
Total Compensation	15,359	15,686	15,049	12,156	27,205
Other Operating Expenses	35,858	40,083	29,650	22,978	52,628
Capital Outlay & Real Property	46	0	0	0	0
Local Assistance	361	1,800	300	300	600
Transfers	0	0	687	687	1,374
<b>Total</b>	<b>51,624</b>	<b>57,569</b>	<b>45,686</b>	<b>36,121</b>	<b>81,807</b>
<b><u>Expenditures by Activity</u></b>					
Land	51,624	57,569	45,686	36,121	81,807
<b>Total</b>	<b>51,624</b>	<b>57,569</b>	<b>45,686</b>	<b>36,121</b>	<b>81,807</b>
<b>Full-Time Equivalents (FTE)</b>	<b>188.8</b>	<b>190.2</b>	<b>184.2</b>	<b>144.0</b>	

**Program at a Glance**

- Develop and implement policies that address cross-media issues (e.g. e-waste management and PFCs).
- Review environmental impact of proposed projects.
- Offer technical assistance, training and certification to the regulated community.
- Assess environmental impact of the MPCA's regulatory and cleanup project decisions through monitoring oversight, discharge standards, effluent limits, air quality modeling review, risk assessment, fishkill investigations.
- Promote the use of technology and fuels that reduce air pollution and greenhouse gas emissions.
- Provide grants and loans to promote environmentally-innovative projects
- Through the Minnesota Technical Assistance Program (MnTAP), enable Minnesota companies to save \$4.1 million in operating costs, prevent 6.2 million pounds of waste through reduction or reuse, and conserve 92.2 million gallons of water in the past two years. Every \$1 granted to MnTAP results in approximately \$3 of annual savings for Minnesota businesses.

**Program Description**

The MPCA's Environmental Assistance and Cross-media Program provides services that include environmental condition monitoring and assessment; pollution prevention; waste and toxicity reduction; grants and loans; sustainable development; business assistance and training; environmental impact statements; scientific and technical support to evaluate the environmental risk of proposed projects; pollution trends; emerging environmental issues; and innovation through use of technology.

Program staff assess the impact of pollutants on all media – water, air, and land – rather than one media in isolation. The program staff collect data on environmental conditions and present the data in a form useful to the MPCA Citizens' Board and Senior management, policymakers, and the public. This data enables the MPCA to protect natural resources, regulate pollution sources and effectively clean up contaminated sites. Additionally, Program staff provide direct technical assistance to other MPCA programs and assist in achieving environmental outcomes.

Program staff focus their efforts on trends and emerging environmental issues. Solutions involve the development of partnerships with businesses, communities, local units of government, citizens and other public and private interests. These partnerships include in-depth technical expertise and financial incentives for the implementation of activities, system ideas, approaches and technologies to conserve resources, prevent pollution and protect the environment.

The partnerships also include voluntary assessment of our air and water. With these approaches and resultant data, the program promotes environmentally-sound business development, community development, waste-as-a-resource, clean energy and provides educational and technical support to MPCA staff and its direct customers.

In addition to the strategic goals supported in the specific programs of water, land and air, the MPCA's strategic goals for the Environmental Assistance and Cross-media Program are:

- Minnesotans buy green products and services.
- Minnesota businesses produce green products and provide green services by reducing or eliminating the use of environmentally harmful substances.
- Minnesotans act on their environmental knowledge to support healthy ecosystems.
- MPCA leads the way to minimize its environmental footprint and assist other public entities to do the same.

**Population Served**

- Citizens benefit from information obtained via cross-media environmental assessments and review. Examples include air quality modeling review, ecological risk assessment and fish kill investigations.
- Citizens and decision makers at all levels of government have access to environmental data.
- Citizens benefit from waste and pollution prevention, and toxicity reduction activities.
- Partnerships with businesses, institutions, local governments, schools, community organizations, and individuals through assistance (financial and technical).
- Regulated parties receive training in state and federal requirements, enabling them to comply with existing regulations and improve operations; actively participating in protecting and improving the environment.
- All permitting agencies gain benefits from the MPCA's environmental review activities.



**Services Provided****Assessment:**

- Analyze data on the condition of the environment, describing trends and stressors. This activity processes and makes available valuable data to MPCA, policymakers and citizens.
- Currently 148 air quality monitors at 56 statewide locations monitor a variety of parameters including ozone, carbon monoxide, sulfur dioxide, oxides of nitrogen, lead, particulates, hydrogen sulfide, 56 volatile organic compounds, 7 carbonyl compounds, 15 metals, acid and mercury deposition, and visibility.
- With regard to water quality assessments, the MPCA and its partners have developed a 10 year schedule to monitor surface waters by major watershed. As of 2010, 30% of Minnesota's 81 watersheds have been monitored.
- Complete environmental reviews that allow permittees, including local governments, to initiate requested projects.
- Collection of Toxic Release Inventory data from Minnesota businesses indicates progress in manufacturing sectors.

**Management:**

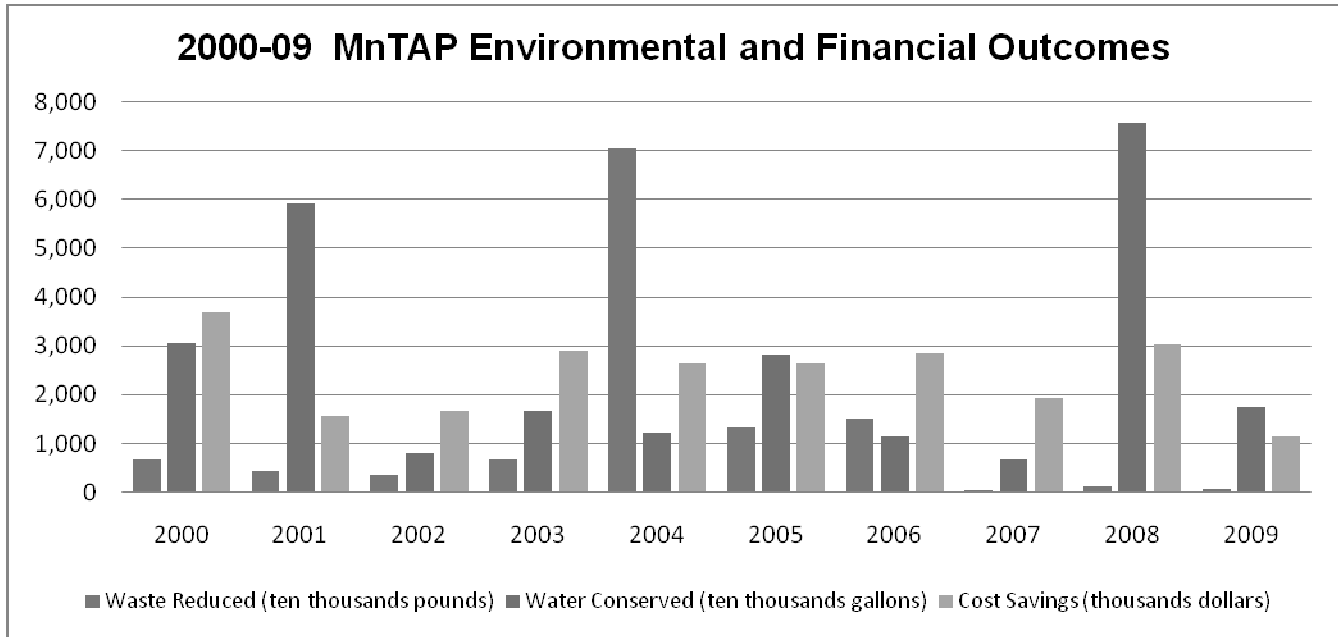
- Use data to set standards and remediation criteria to protect water, air and land resources.
- Conduct risk evaluations and provide technical support to regulatory activities.
- Provide data analysis, and develop reduction and pollution prevention strategies.
- Develop administrative and technical rules.
- The MPCA partners with others to host the Eco-Experience at the Minnesota State Fair. The Eco-Experience building allows visitors to experience environmentally-friendly products and technologies, including the latest in clean energy, transportation alternatives, storm-water best practices through rain gardens, green buildings and composting.
- The major redesign of the MPCA's website included the incorporation of the Living Green webpage, providing information to the public, businesses and government on ways to make a positive difference both in their lives and in their communities to live better, healthier lives with less impact on the environment.
- Assist Minnesota businesses using a multi-faceted approach to pollution prevention, including providing financial assistance for businesses and institutions seeking ways to reduce waste as well as offering technical assistance directly through our Small Business Assistance Program and our technical assistance partnerships. For 2008 and 2009, pollution prevention technical assistance efforts resulted in 6.8 million pounds of waste reduced, 1.3 million pounds of materials reused, 104 million gallons of water saved.
- Maintain current resources on the agency's web site for learning more about pollution prevention, reuse, recycling, responsible waste management, and sustainable practices. The NextStep website (<http://www.nextstep.state.mn.us>) offers resources for finding and sharing information on sustainability.
- Implement state policies directed at managing and treating waste as a resource. Treating waste as a resource reduces pollution, reduces greenhouse gases, saves money, and creates jobs.
- In collaboration with the Department of Commerce and other partners, the MPCA promotes development of clean energy, energy efficiency and the reduction in greenhouse gas emissions. Minnesota's Green Power Campaign encourages Minnesotans to buy wind power from their local utilities.
- Investigate wind and solar power opportunities at closed landfills, and install gas-to-energy systems at closed state-owned landfills to mitigate the impacts of gas generated at those sites.

**Historical Perspective**

The MPCA has made significant progress in environmental protection since the 1960s and continues to maintain ongoing regulatory activities. Minnesotans now need to address the next generation of environmental challenges – the cumulative effects of everyday human activities that present significant environmental problems. Addressing these issues requires new approaches to solving and preventing problems. Staff provide data and information to support environmental permitting and cleanup decisions and develop intervention, reduction, and prevention strategies as issues arise. A cross-media approach, particularly in monitoring key indicators, is critical to a comprehensive approach to minimizing the impacts of human activities.

**Key Program Goals & Measures**

The MPCA partners with the University of Minnesota in the operation of MnTAP, a technical assistance program. Since 2000, MnTAP staff and interns worked with Minnesota business to reduce over 122 million pounds of waste, conserve over 266 million gallons of water and save over \$24 million in business operating costs. In 2009, MnTAP staff and intern work also achieved 13,363 pounds in air emission reductions and conserved 1,743,142 KWH of energy with Minnesota companies.



**Program Funding**

Authorized appropriations in FY2010-11 total \$84.9 million. The funding mix: 64% Environmental Fund, 31% federal, 2% General Fund, and 3% other sources.

**Contact**

For more information, contact Fiscal – Operational Support at (651) 296-6300 or toll-free at (800) 657-3864.

The MPCA website at <http://www.pca.state.mn.us> provides useful information about Minnesota’s environment. The types of information available through the site include regulatory news and updates, rules, public notices, agency initiatives, details about environmental quality, and current “hot topics.”

For information on how this agency measures some of its efforts to meet statewide goals, please visit <http://www.departmentresults.state.mn.us>.

# POLLUTION CONTROL AGENCY

Program: ENVIRONMENTAL ASST CROSSMEDIA

Program Summary

<i>Dollars in Thousands</i>					
	<b>Current</b>		<b>Forecast Base</b>		<b>Biennium</b>
	<b>FY2010</b>	<b>FY2011</b>	<b>FY2012</b>	<b>FY2013</b>	<b>2012-13</b>
<b><u>Direct Appropriations by Fund</u></b>					
<b>General</b>					
Current Appropriation	776	680	680	680	1,360
<b>Technical Adjustments</b>					
Biennial Appropriations			9	9	18
<b>Forecast Base</b>	<b>776</b>	<b>680</b>	<b>689</b>	<b>689</b>	<b>1,378</b>
<b>Environmental</b>					
Current Appropriation	24,606	24,470	24,413	24,413	48,826
<b>Forecast Base</b>	<b>24,606</b>	<b>24,470</b>	<b>24,413</b>	<b>24,413</b>	<b>48,826</b>
<b><u>Expenditures by Fund</u></b>					
<b>Direct Appropriations</b>					
Environment & Natural Resource	375	11	0	0	0
General	731	725	689	689	1,378
Environmental	23,792	23,739	23,806	23,790	47,596
<b>Statutory Appropriations</b>					
Miscellaneous Special Revenue	951	1,403	1,051	1,051	2,102
Federal	12,008	15,981	15,125	15,125	30,250
Federal Stimulus	690	1,040	0	0	0
Environmental	2,379	2,980	2,129	2,129	4,258
<b>Total</b>	<b>40,926</b>	<b>45,879</b>	<b>42,800</b>	<b>42,784</b>	<b>85,584</b>
<b><u>Expenditures by Category</u></b>					
Total Compensation	16,792	17,185	16,987	17,161	34,148
Other Operating Expenses	5,407	8,427	7,811	7,621	15,432
Local Assistance	18,573	19,948	17,770	17,770	35,540
Other Financial Transactions	154	319	232	232	464
<b>Total</b>	<b>40,926</b>	<b>45,879</b>	<b>42,800</b>	<b>42,784</b>	<b>85,584</b>
<b><u>Expenditures by Activity</u></b>					
Ea And Cross-Media	40,926	45,879	42,800	42,784	85,584
<b>Total</b>	<b>40,926</b>	<b>45,879</b>	<b>42,800</b>	<b>42,784</b>	<b>85,584</b>
<b>Full-Time Equivalent (FTE)</b>	<b>197.5</b>	<b>213.7</b>	<b>213.9</b>	<b>213.9</b>	

**Program at a Glance**

- The MPCA Citizens' Board resolves certain controversial matters in the MPCA's regulatory work.
- The Commissioner's Office sets the strategic direction for the MPCA.
- Financial management, human resources, education and development, information management, communication, and business systems support all MPCA environmental programs.

**Program Description**

Administrative Support provides financial and business support services for the MPCA's environmental program delivery from its St. Paul and seven regional offices. Administrative Support includes the Commissioner's Office, legislative relations, accounting and financial management, human resources, information systems management, communication, and business systems. The MPCA Citizens' Board expenses are also paid through this budget program.

Activities funded under this program directly support accomplishment of the Excellence in Operations goals stated in the MPCA's strategic plan. Those goals include:

- Providing a safe and healthy workplace for all employees, volunteers and visitors.
- Managing agency operations to support the agency's environmental work and core operations in effective and efficient manner.
- Achieving excellence through application of appropriate tools and best practices.
- Providing a reliable information management system that supports the agency and its partners in effective and efficient environmental work.
- Maintaining the agency's capacity to recognize and address emerging issues that fall within the agency's authority.

**Population Served**

Administrative Support directly serves the MPCA environmental programs by providing the underlying information and management systems necessary for effective and efficient program operations. In addition to internal customers, Administrative Support directly serves Minnesota citizens and businesses through the MPCA website providing information and transactions, and making public data available for review and use. The MPCA's information and communication serves citizens through the webcasting of board meetings, rule hearings and training events, environmental publications, events and public involvement processes. Providing environmental information directly enables citizens to conduct business electronically, and ensures access to the many programs managed by the MPCA. The MPCA Citizens' Board makes important environmental decisions that ultimately affect individuals, citizen and environmental groups, local governments, business and industry.

**Services Provided**

- The MPCA Citizens' Board makes decisions on complex pollution problems, and provides a venue for public participation in key environmental decisions.
- The Commissioner's Office provides leadership and strategic direction for the MPCA.
- The Administrative Support section maintains a process-improvement emphasis through the integration of continuous improvement tools and methodology to reduce costs and improve service delivery efficiency.
- The Communication section leads strategic communications planning; award winning events; media relations; risk and crisis communications; developing multi-media tools; and community relations.
- The Learning Resource Center and Library responds to thousands of information requests each year.
- The Information Systems section maintains large volumes of data and ensures data security, usability and accessibility to MPCA staff and the public through the website.
- The MPCA also enables direct communication with the public via video conferencing and web broadcasts of MPCA Citizens' Board meetings, rule hearings, and training events.
- The Business Systems staff coordinate cost-effective and environmentally-sound business practices, which include using recycled office supplies, implementing agency-wide recycling efforts, reducing energy use in buildings, using environmentally-preferred products (i.e., recycled carpet, chemically-free cleaning products, low VOC paint), reducing travel for meetings through technology, and reducing fleet size.
- Financial Assistance and Budgeting ensures that funds are spent for authorized purposes and managed according to accepted-government accounting practices.

- The Human Resource Office provides guidance and transactional support related to human resource management issues.

### **Historical Perspective**

The Administrative Support structure for the MPCA has changed over time from a decentralized system housed separately in divisions to one of thoughtful centralization of key functions. Examples of centralized services include contracts, information services, records and document management, fleet management and supply purchasing. From an efficiency perspective combining these functions has provided improved access and response timeliness to the public through backup file management, development of electronic document management, managed websites. To the rest of the MPCA, centralized services have offered the administrative efficiencies inherent in combining separate computer, financial and business systems structures and consequently, reduced the overall administrative charges to the other programs.

### **Key Program Goals & Measures**

MPCA manages its fiscal resources and business systems. In FY 2010:

- The MPCA provided budget information, with quarterly updates on its webpage for access by all citizens
- The MPCA met its federal financial deadlines 100% of the time.
- The Financial Assistance and Budgeting Section established annual operating budgets and ensured MPCA's spending adheres to all authorizing state appropriation language and federal grant requirements.
- The MPCA issued more than 1,000 contracts and work orders valued at more than \$106 million.
- The MPCA reduced its business miles driven by 16 percent.

MPCA provides environmental information to citizens. In FY2010:

- The MPCA reached out to thousands of citizens through its *Minnesota Environment* magazine, a variety of subject-specific electronic newsletters, webcasting its Citizens' Board meetings (12 times per year) and potentially reached millions of Minnesotans with its proactive news releases on environmental topics.
- More than 122,000 pages on the MPCA website were viewed and over 31,000 files were downloaded from MPCA's web-based environmental data portals.
- The MPCA's EcoExperience, hosted in its own building at the state fair, reached more than 350,000 visitors with environmental messages.

MPCA provides secure information systems and a well received and widely used website. In FY2010:

- The MPCA updated its website to improve accessibility for citizens, consolidated websites and refreshed the content provided.
- The MPCA responded to more than 900 requests for information through its weblink "Ask MPCA," answered more than 2,500 data practices requests, and addressed numerous general inquiries from the media and other interested parties.
- More than 7,000 regulated parties used the MPCA's website to apply for permits, submit notifications, or download and print environmental licenses.
- Additionally, web applications for conducting electronic business allow users to 1) apply and pay for a construction and industrial stormwater permits; 2) submit no exposure notifications for industrial sites; and 3) submit petroleum remediation field work notifications.

MPCA manages its human resources:

- In the first two quarters of CY 2010, MPCA lost only eight hours due to qualifying injuries.
- MPCA enjoys a new-hire turnover rate of less than ten percent within the first two years of employment.
- Workforce planning and safety training are supported from this part of the organization.

### **Program Funding**

Authorized appropriations for Administrative Support program in FY2010-11 totaled \$43.1 million. Funding sources: 92% Special Revenue Fund, 6% General Fund and 2% other sources.

**Contact**

For more information, contact Fiscal – Operational Support at (651) 296-6300 or toll-free at (800) 657-3864.

The MPCA, at <http://www.pca.state.mn.us>, provides useful information about Minnesota’s environment. The information includes regulatory news and updates, rules, public notices, details about environmental quality, and guidance on doable individual activities to protect the environment.

For information on how the MPCA measures some of its efforts to meet statewide goals, please visit <http://www.departmentresults.state.mn.us>.

**POLLUTION CONTROL AGENCY**  
 Program: ADMINISTRATIVE SUPPORT

Program Summary

*Dollars in Thousands*

	Current		Forecast Base		Biennium
	FY2010	FY2011	FY2012	FY2013	2012-13
<b><u>Direct Appropriations by Fund</u></b>					
<b>General</b>					
Current Appropriation	1,295	1,205	1,205	1,205	2,410
<b>Technical Adjustments</b>					
Biennial Appropriations			11	11	22
<b>Forecast Base</b>	<b>1,295</b>	<b>1,205</b>	<b>1,216</b>	<b>1,216</b>	<b>2,432</b>
<b><u>Expenditures by Fund</u></b>					
<b>Direct Appropriations</b>					
General	1,281	1,205	1,216	1,216	2,432
<b>Statutory Appropriations</b>					
State Government Spec Revenue	1	2	2	2	4
Miscellaneous Special Revenue	17,952	21,365	20,079	20,079	40,158
Environmental	306	304	306	306	612
Remediation Fund	117	117	129	129	258
<b>Total</b>	<b>19,657</b>	<b>22,993</b>	<b>21,732</b>	<b>21,732</b>	<b>43,464</b>
<b><u>Expenditures by Category</u></b>					
Total Compensation	10,348	10,620	10,660	10,770	21,430
Other Operating Expenses	9,309	12,373	11,072	10,962	22,034
<b>Total</b>	<b>19,657</b>	<b>22,993</b>	<b>21,732</b>	<b>21,732</b>	<b>43,464</b>
<b><u>Expenditures by Activity</u></b>					
Administrative Support	19,657	22,993	21,732	21,732	43,464
<b>Total</b>	<b>19,657</b>	<b>22,993</b>	<b>21,732</b>	<b>21,732</b>	<b>43,464</b>
<b>Full-Time Equivalents (FTE)</b>	<b>120.9</b>	<b>119.9</b>	<b>118.0</b>	<b>118.0</b>	

**POLLUTION CONTROL AGENCY**

Agency Revenue Summary

*Dollars in Thousands*

	<b>Actual FY2010</b>	<b>Budgeted FY2011</b>	<b>Current Law</b>		<b>Biennium 2012-13</b>
			<b>FY2012</b>	<b>FY2013</b>	
<b><u>Non Dedicated Revenue:</u></b>					
<b>Departmental Earnings:</b>					
General	8	8	8	8	16
Petroleum Tank Release Cleanup	5	5	5	5	10
State Government Spec Revenue	40	40	40	40	80
Environmental	23,383	24,684	24,777	24,777	49,554
<b>Other Revenues:</b>					
General	145	1	0	0	0
Environmental	2,294	1,651	1,625	1,588	3,213
Remediation Fund	2,301	2,038	1,722	1,722	3,444
Closed Landfill Investment	41	2	2	2	4
<b>Total Non-Dedicated Receipts</b>	<b>28,217</b>	<b>28,429</b>	<b>28,179</b>	<b>28,142</b>	<b>56,321</b>
<b><u>Dedicated Receipts:</u></b>					
<b>Departmental Earnings:</b>					
Miscellaneous Special Revenue	826	589	459	459	918
Environmental	290	160	160	160	320
Remediation Fund	547	0	640	640	1,280
<b>Grants:</b>					
Clean Water Revolving Fund	0	986	1,543	0	1,543
Miscellaneous Special Revenue	459	642	359	359	718
Federal	21,391	31,759	26,965	25,722	52,687
Federal Stimulus	2,567	3,999	648	0	648
<b>Other Revenues:</b>					
Clean Water Revolving Fund	398	230	230	230	460
Miscellaneous Special Revenue	21,266	20,038	20,923	20,898	41,821
Federal Stimulus	2,324	541	0	0	0
Environmental	51	60	60	60	120
Remediation Fund	3,098	69	55	55	110
Miscellaneous Agency	1	0	0	0	0
Gift	988	1,041	0	0	0
<b>Other Sources:</b>					
Clean Water Revolving Fund	2,684	2,300	2,300	2,300	4,600
Miscellaneous Special Revenue	5	28	28	28	56
Environmental	247	264	264	264	528
<b>Taxes:</b>					
Environmental	2,593	2,037	2,037	2,037	4,074
Remediation Fund	865	680	680	680	1,360
<b>Total Dedicated Receipts</b>	<b>60,600</b>	<b>65,423</b>	<b>57,351</b>	<b>53,892</b>	<b>111,243</b>
<b>Agency Total Revenue</b>	<b>88,817</b>	<b>93,852</b>	<b>85,530</b>	<b>82,034</b>	<b>167,564</b>