

Racial/Ethnic and Immigrant Groups Participating in the Minnesota Family Investment Program and the Diversionary Work Program

REIS # 14 December 2008



Program Assessment and Integrity Division
Minnesota Department of Human Services
November 2009

Table of Contents

ABBREVIATIONS.....	1
TECHNICAL NOTES	2
CHAPTER ONE: MFIP AND DWP CASELOADS.....	3
Chart 1-1. Distribution of MFIP and DWP Cases Active in December 2008.....	4
Chart 1-2. Distribution of MFIP and DWP Cases Active in December 2008 by Racial/Ethnic Groups and Subgroups.....	5
Chart 1-3. MFIP and DWP Active Cases by Race/Ethnicity, December 2004 to December 2008	6
Chart 1-4. Black and Asian Subgroups: Active MFIP and DWP Cases, December 2004 to December 2008.....	7
CHAPTER TWO: POVERTY AND DISPARITY	8
Chart 2-1. Minnesota and United States Family Poverty Rates, 2005 - 2007 American Community Survey	9
Chart 2-2. Distributions of Minnesota Adults with Minor Children Compared to December 2008 MFIP and DWP Participants.....	10
Chart 2-3. Percent of All Minnesota Adults with Children Participating in December 2008 MFIP and DWP Cases	11
Chart 2-4. Disparity Index: Times More Likely that Minorities are MFIP or DWP Participants than Whites	12
CHAPTER THREE: MFIP AND DWP PARTICIPANT CHARACTERISTICS.....	13
Chart 3-1. Average Age of MFIP and DWP-eligible Adults, December 2008.....	14
Chart 3-2. Percent of MFIP and DWP-eligible Adults that are Female, December 2008.....	15
Chart 3-3. MFIP and DWP Participants with a High School Diploma Compared to All Minnesotans with Minor Children, December 2008.....	16
Chart 3-4. MFIP and DWP Participants Who Never Married Compared to All Minnesotans with Minor Children, December 2008	17
CHAPTER FOUR: CHARACTERISTICS OF HOUSEHOLDS RECEIVING MFIP OR DWP	18
Chart 4-1. Number of Children in MFIP and DWP Cases and in All Minnesota Households with Minor Children, December 2008	19
Chart 4-2. Average Age of Youngest Child in MFIP and DWP Households and for All Minnesotans with Minor Children, December 2008	20
Chart 4-3. Geographic Region of December 2008 MFIP and DWP Adult Participants Compared to All Minnesota Households with Minor Children	21
Chart 4-4. Adult Serious Mental Health Diagnosis and Adult Chemical Dependency Diagnosis During 2006 to 2008, MFIP Participants.....	22
Chart 4-5. Caregiver Involvement with Child Protection Services During 2006 to 2008, MFIP Cases	23

CHAPTER 5: ECONOMIC CHARACTERISTICS OF MFIP AND DWP CASES	24
Chart 5-1. Average MFIP Months Counted Toward the 60-Month Time Limit and Percent of MFIP Cases with More than 48 Months Counted Toward the 60-Month Time Limit, December 2008	25
Chart 5-2. Average December 2008 Earned Income and Hours of Working MFIP Families, December 2008	26
Chart 5-3. Percent of MFIP and DWP Households with Reported Work, December 2004 to December 2008	27
Chart 5-4. Percent of MFIP Cases with an Eligible Adult that are Extended beyond the 60-Month Lifetime Limit, December 2004 to December 2008	28
Chart 5-5. Asian and Black Subgroups: Extensions beyond the Time Limit, December 2008.....	29
Chart 5-6. Average MFIP Extension Months, December 2008	30
Chart 5-7. Percent of MFIP Families with Employment Services Sanctions, December 2008	31
Chart 5-8. Asian and Black Subgroups and Total: Percent with Employment Services Sanctions, December 2008	32
Chart 5-9. Families with at Least One Child Subject to the Family Cap, December 2008	33
 APPENDIX: COMPLETE DATA TABLES.....	 34
Table 1. Demographic Characteristics of Eligible Adults on December 2008 MFIP Paid Cases by Racial/Ethnic Groups and Subgroups	34
Table 2. Demographic Characteristics of Eligible Adults on December 2008 DWP Paid Cases by Racial/Ethnic Groups and Subgroups.....	36
Table 3. Family Composition, Residence, and Challenges of MFIP Paid Cases with Eligible Adults in December 2008 for Racial/Ethnic Groups and Subgroups	38
Table 4. Family Composition, Residence, and Challenges of DWP Paid Cases with Eligible Adults in December 2008 by Racial/Ethnic Groups and Subgroups	41
Table 5. Economic Characteristics of MFIP Paid Cases with Eligible Adults in December 2008 by Racial/Ethnic Groups and Subgroups.....	44
Table 6. Economic Characteristics of DWP Paid Cases with Eligible Adults in December 2008 by Racial/Ethnic Groups and Subgroups.....	48
Table 7. Selected Characteristics of All Minnesotans with Minor Children, American Community Survey 2007	50

Please direct questions or comments to:
Dana DeMaster, Senior Research Analysis Specialist
Program Assessment and Integrity Division
651-431-3963 dana.demaster@state.mn.us

Abbreviations

ACS	American Community Survey
CSED	Child Support Enforcement Division
DEED	Department of Employment and Economic Development
DHS	Department of Human Services
DWP	Diversionary Work Program
ES	Employment Services
FA	Family Assessment
MAXIS	Not an acronym, DHS' administrative database for cash, food, and health care eligibility
MFIP	Minnesota Family Investment Program
MMIS	Medicaid Management Information System
PAID	Program Assessment and Integrity Division
SAMHSA	Substance Abuse and Mental Health Services Administration
SSI	Supplemental Security Income
SSIS	Social Services Information System
TI	Traditional Investigation
UI	Unemployment Insurance

Technical Notes

Racial/Ethnic and Immigrant Group Definitions.

Throughout the report, the race/ethnicity of the case applicant was used to characterize the entire case with these categories: (1) Hispanics of all races; (2) non-Hispanic American Indians; (3) non-Hispanic Asians and Pacific Islanders; (4) non-Hispanic blacks, (5) non-Hispanic whites, and (6) non-Hispanic multiple races. These categories are consistent with reporting by the U.S. Census. The Asian and black groups were further broken down into subgroups based upon citizenship, immigration status, language, and reported nationality. African Americans and Asian Americans were persons who chose black or Asian as race and had no immigration data known to the Minnesota Department of Human Services (DHS). Immigrant groups were identified by reported nationality or language. Persons reporting multiple races or missing race data were included in the totals in each table and chart, but excluded from subgroup analyses.

Data Sources. Information in this report parallels the DHS report *Minnesota Family Investment Program and the Diversionary Work Program: Characteristics of December 2008 Cases and Eligible Adults* that analyzes the same data from the perspectives of programs and counties. Data used in both reports were collected through the DHS administrative databases MAXIS, Social Services Information System (SSIS), and Medicaid Management Information System (MMIS), as well as from the Child Support Enforcement Division (CSED) and the Department of Employment and Economic Development (DEED). For

program policy details and data definitions, please refer to this parallel report.

All data pertaining to “all Minnesotans” or “adult Minnesotans with minor children” are from the 2007 American Community Survey (ACS) except for poverty rates, which are from the 2005 – 2007 ACS 3-Year Estimates.

Chemical dependency and mental health data for all Minnesotan adults is from U.S. Department of Health and Human Services, Substance Abuse and Mental Health Services Administration (SAMHSA), 2005-2006 National Surveys on Drug Use and Health. These data are available at www.oas.samhsa.gov.

Data for Report Charts. Counts, percentages, and means displayed in the report’s charts are taken from tables in the appendix.

Chapter One: MFIP and DWP Caseloads

The Diversionary Work Program (DWP) is designed to meet specific crisis situations and help families move immediately to employment rather than go on welfare. Families may receive DWP for up to four months. If families do not resolve their financial crisis while participating in DWP, they may apply for the Minnesota Family Investment Program (MFIP). MFIP is a longer-term program, lasting a maximum of 60 months in most circumstances, which provides economic support to poor families and helps them obtain employment with a goal of self-sufficiency. Due to its short-term nature, DWP is a much smaller program than MFIP. In December 2008, 4,055 families were participating in DWP and 32,855 families were participating in MFIP, including child-only cases that have no eligible caregivers. This report examines, by racial/ethnic group and Asian and black subgroups, all DWP-participating families (4,055 families in December 2008) and MFIP families with an eligible adult (22,222 families in December 2008).

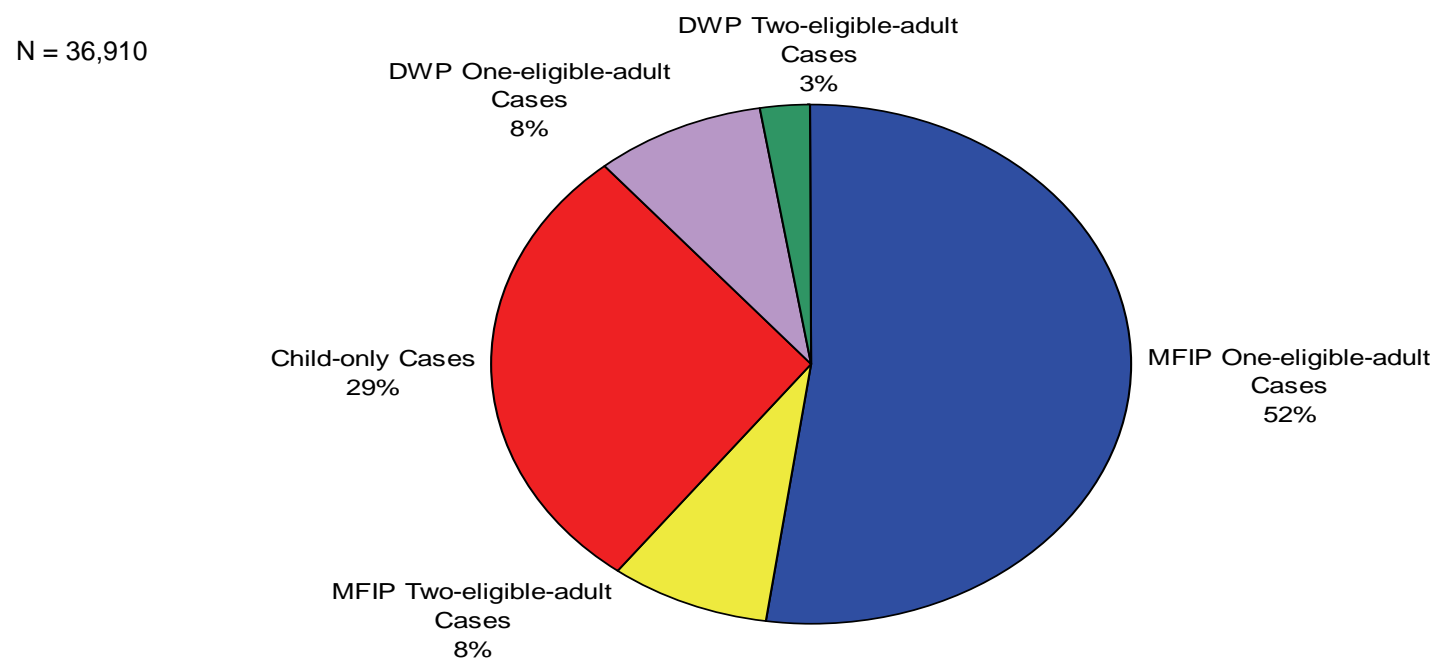
MFIP and DWP caseloads had fallen steadily since 2002, but after remaining level in December 2007, they rose by 2 percentage points in December 2008. Except for Somali and Hmong families, all of the racial/ethnic groups and the immigrant subgroups saw increases since the last report. The number of Hmong cases decreased by 16 percent and the number of Somali cases decreased by 8 percent. Most other racial/ethnic groups saw increases of about 4 percent.

The two largest immigrant groups participating in MFIP and DWP are the Hmong and Somali. These groups typically immigrated to the United States as refugees and many are resettled in Minnesota. As the charts throughout this report show, program participation closely mirrors resettlement patterns. Two major factors have impacted these caseloads in recent years. The first was a large, one-time resettlement of Hmong families in the autumn of 2004. More than 2,000 people were resettled within a matter of months. The second was the temporary suspension of the Priority Three (P-3) visa program by the U.S. State Department in October 2008 for potential African refugees. P-3 visas are family reunification visas and this is the only program under which Minnesota accepts primary refugee resettlements. After receiving about 5,000 refugees each year in 2005 and 2006, Minnesota received 2,666 refugees in 2007 and 1,112 in 2008.¹

The Mille Lacs American Indian Tribal Council administers MFIP-eligible cases in its jurisdiction, including tribal members who reside in Hennepin, Ramsey, and Anoka Counties. In December 2008, Tribal TANF had 271 cases with 336 eligible adults. These cases are not included in this report.

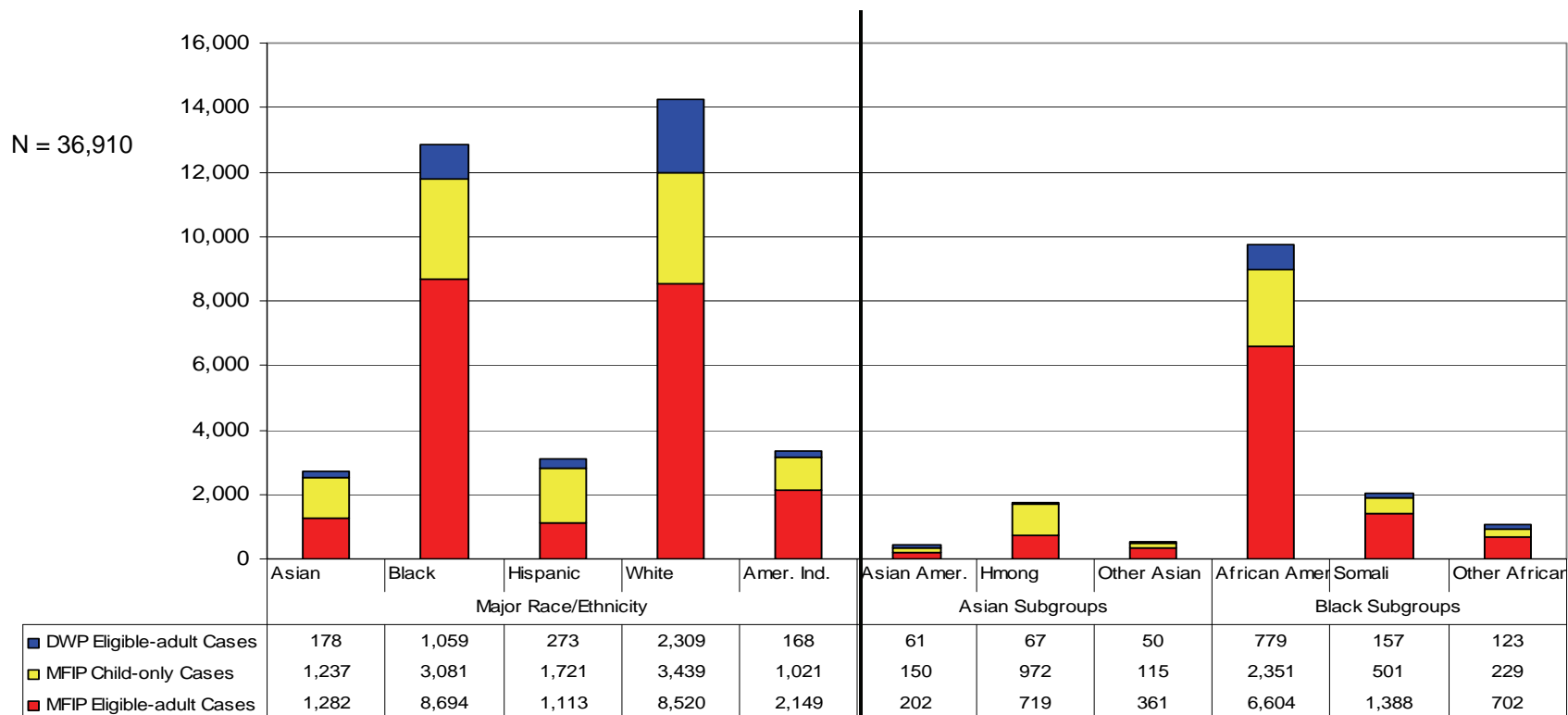
¹ Refugee information was provided by the DHS Resettlement Programs Office.

Chart 1-1. Distribution of MFIP and DWP Cases Active in December 2008



Two-thirds of MFIP and all DWP cases have either one or two adult or teenage caregivers eligible on the case. About one-third of MFIP cases are child-only cases or households where the caregivers are not personally eligible for MFIP. The most common reasons for a child-only case are that the adult caregivers were relative caregivers (44 percent of MFIP child-only) or parents receiving SSI for a disability (41 percent of MFIP child-only).

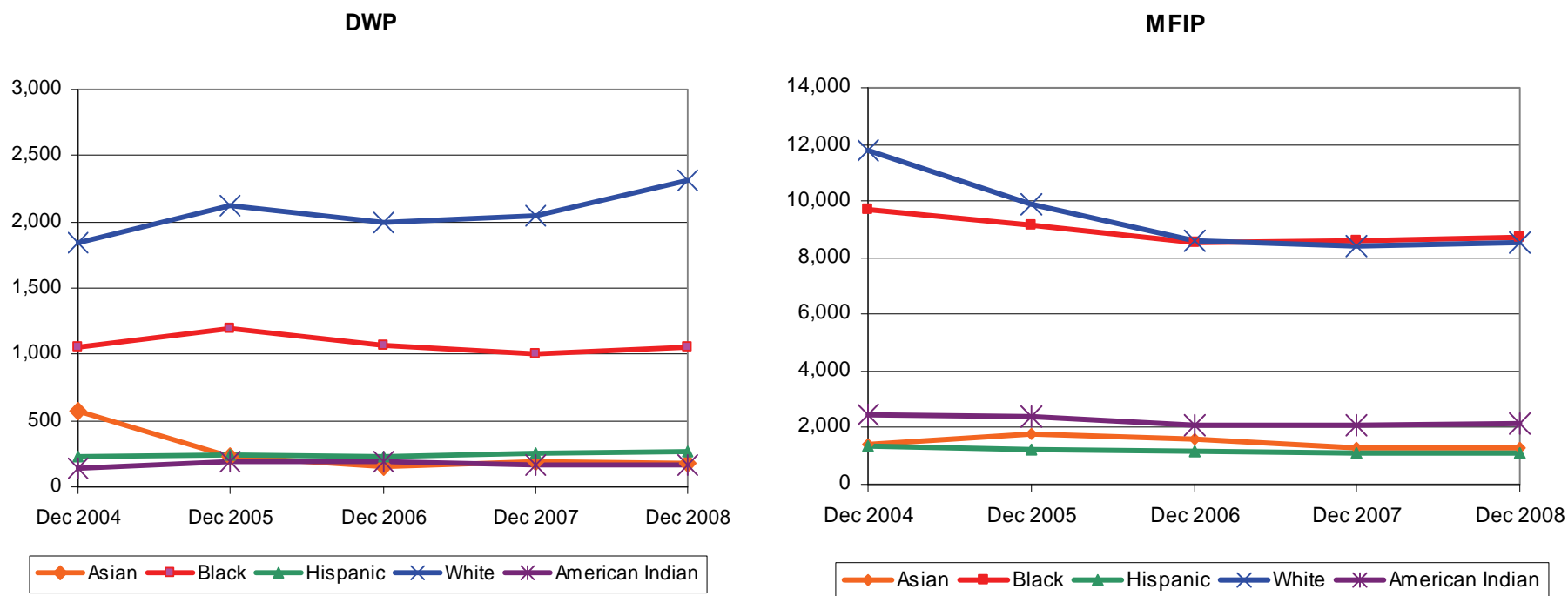
Chart 1-2. Distribution of MFIP and DWP Cases Active in December 2008 by Racial/Ethnic Groups and Subgroups



MFIP eligible-adult cases are the most common type within every racial/ethnic group except for Hmong and Hispanic cases. Fifty-five percent of both Hmong and Hispanic cases are child-only. Hispanic caregivers are most often ineligible due to their citizenship status and Hmong caregivers are most often ineligible due to receipt of SSI. The rest of this report only includes cases with at least one eligible adult.

Throughout this report, Asian subgroups total to the Asian Major Race/Ethnicity and the Black subgroups total to the Black Major Race/Ethnicity.

Chart 1-3. MFIP and DWP Active Cases by Race/Ethnicity, December 2004 to December 2008

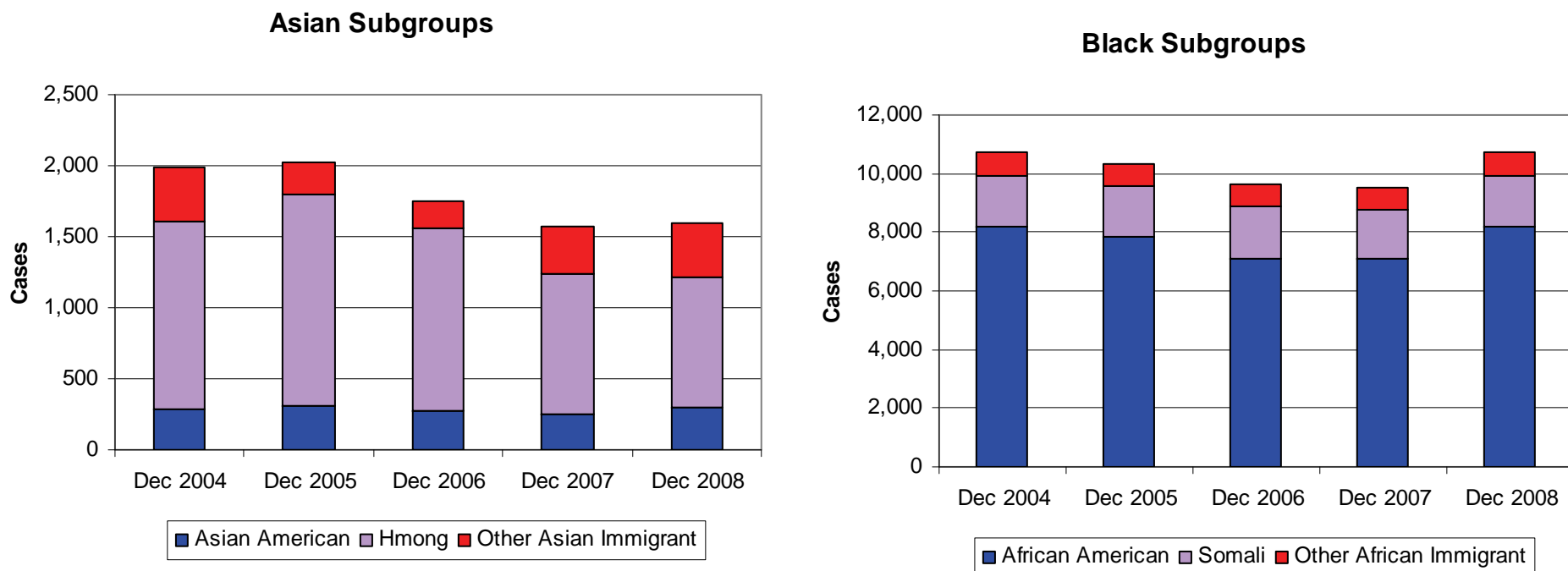


Since December 2006, MFIP participation by blacks and whites has been nearly equal despite very different population numbers in the larger Minnesota population (see Chart 2-2). Whites have made up more than half of DWP participants since the program began in July 2004.

The relatively large number of Asian DWP participants in December 2004 was due to a sizeable resettlement of Hmong families in the autumn of 2004. Although Asian MFIP participation rose the following December, the relative increase was smaller due to the greater size of the MFIP program.

Note: The x-axes of these charts have different scales.

Chart 1-4. Black and Asian Subgroups: Active MFIP and DWP Cases, December 2004 to December 2008



While Hmong immigrant families remain the largest Asian subgroup, there has been a large increase in Other Asian Immigrant families in the past two years. The largest ethnic group in the Other Asian Immigrant group is the Burmese Karen. Minnesota resettled 619 Karen people in 2007 and 593 people in 2008. Not all of these people were eligible for DWP or MFIP.

After experiencing declining caseloads since 2002, the number of African American families participating in MFIP or DWP increased by 4 percent between December 2007 and December 2008. The entire caseload increased by 2 percent.

Note: The x-axes on these charts have different scales.

Chapter Two: Poverty and Disparity

“Racial disparity” definitions vary by who is creating the definition or who is doing the measuring. The World Health Organization defines disparity as, “differences in health which are not only unnecessary and avoidable but, in addition, are considered unfair and unjust,” while the Institutes of Medicine define them as, “racial or ethnic differences in the quality of health-care that are not due to access-related factors or clinical needs, preferences, and appropriateness of intervention.” Other groups define disparities as just “differences” with no value judgment about the difference.²

“Disproportionality,” according to the Anne E. Casey Foundation’s Race Matters Consortium, occurs where “a particular racial/ethnic group is represented in a [program] at a different percentage than other racial/ethnic groups...Disproportionality looks at relative ratios.” Finally, “overrepresentation” looks at representation in a program compared to the general population, without regard to other groups.³

Regardless of how it is measured, or whether racial/ethnic differences are appraised as disparities, disproportionalities, or

overrepresentation, non-white Minnesotans are more likely to be poor and more likely to participate in MFIP or DWP than white Minnesotans.

For 2009 the [United States Department of Health and Human Services](#)⁴ poverty guideline for a family of three people, which is the average size of a family receiving MFIP, is \$18,310 and for a family of four people is \$22,050.

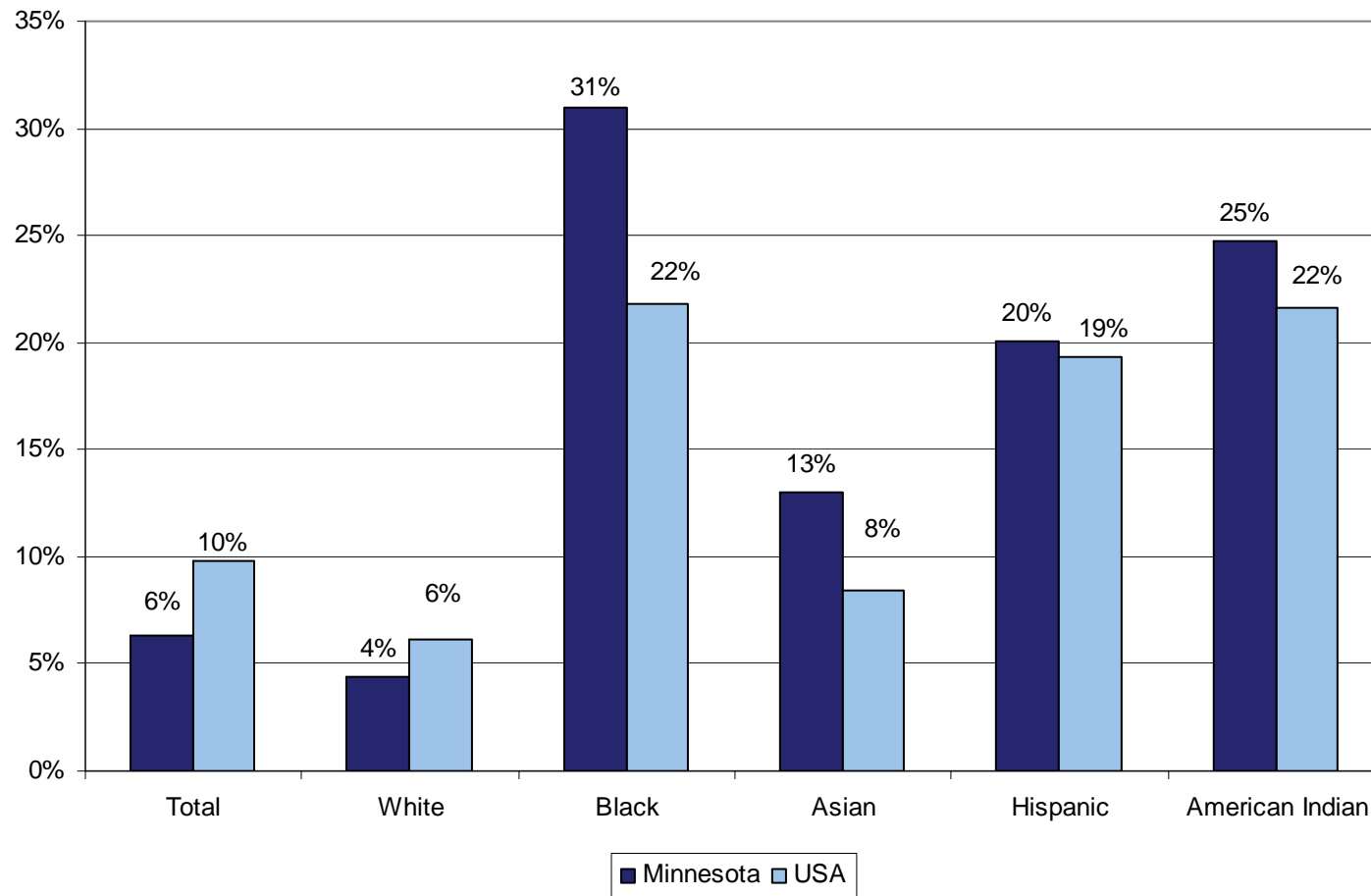
According to ACS 2007 data, 85 percent of Minnesotan adults with minor children are white, 5 percent are black, 4 percent are Hispanic, 4 percent are Asian, and 1 percent are American Indian. These proportions are very different than the proportion of each race or ethnic group that live in poverty or participate in either DWP or MFIP. This section examines poverty in Minnesota and differences in the racial/ethnic make-up of MFIP and DWP compared to the larger Minnesota adult population.

² Hebert, Paul L., Sisk, Jane E., & Howell, Elizabeth A. (2008) “When Does Difference Become a Disparity? Conceptualizing Racial and Ethnic Disparities in Health”. *Health Affairs*. 27(2), 374-382.

³ Race Matters Consortium. (2002) *Defining Disproportionality: A Concept Paper*. Retrieved July 21, 2009, from <http://www.racemattersconsortium.org/dispro.htm>.

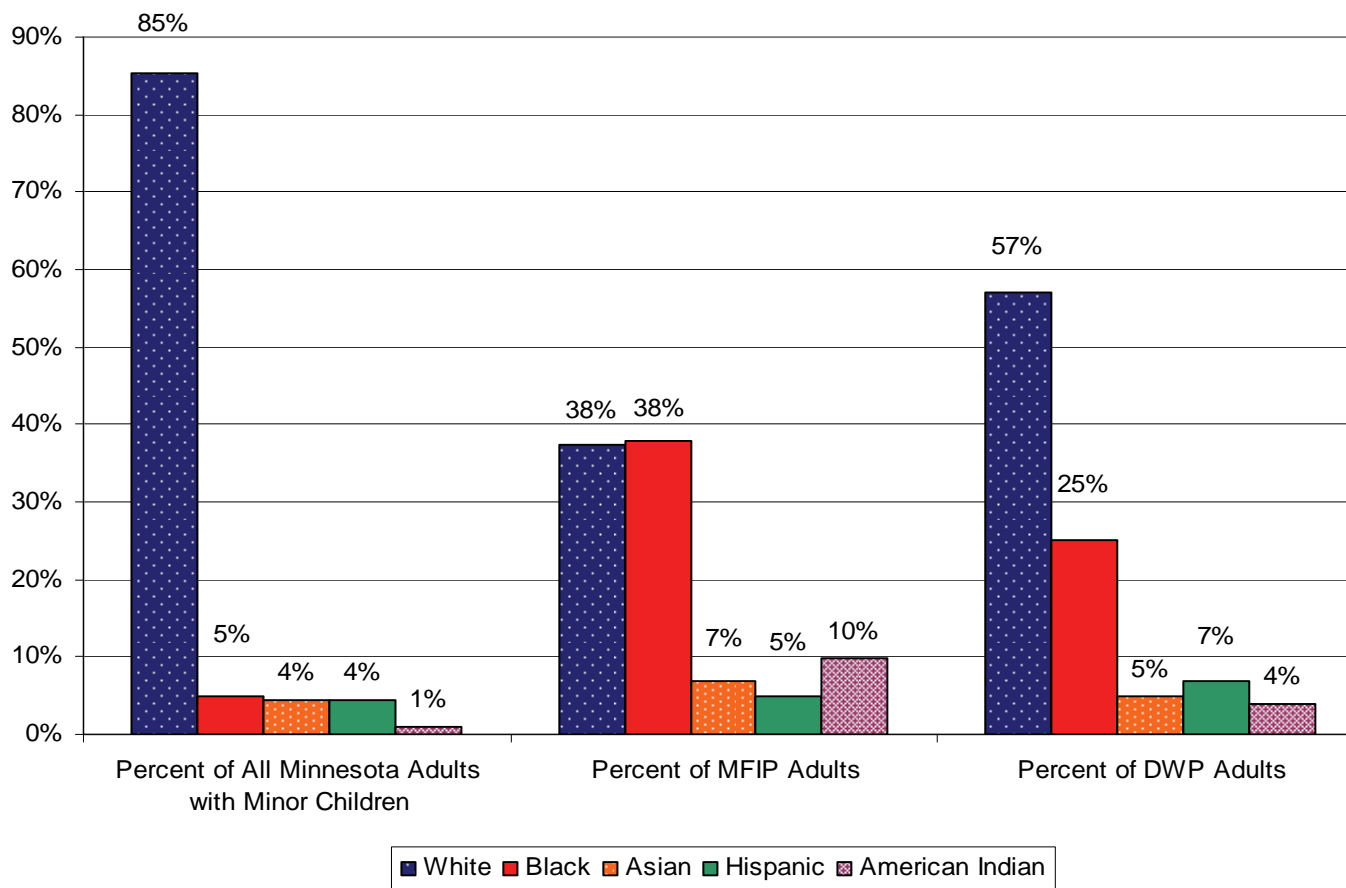
⁴ <http://aspe.hhs.gov/poverty/09poverty.shtml>

Chart 2-1. Minnesota and United States Family Poverty Rates, 2005 - 2007 American Community Survey



While Minnesota's overall poverty rate for families is lower than that of the United States, a larger percentage of all other racial and ethnic groups live in poverty than nationwide.

Chart 2-2. Distributions of Minnesota Adults with Minor Children Compared to December 2008 MFIP and DWP Participants



People of color are overrepresented in both MFIP and DWP compared to the entire population of Minnesotan adults with minor children.

Chart 2-3. Percent of All Minnesota Adults with Children Participating in December 2008 MFIP and DWP Cases

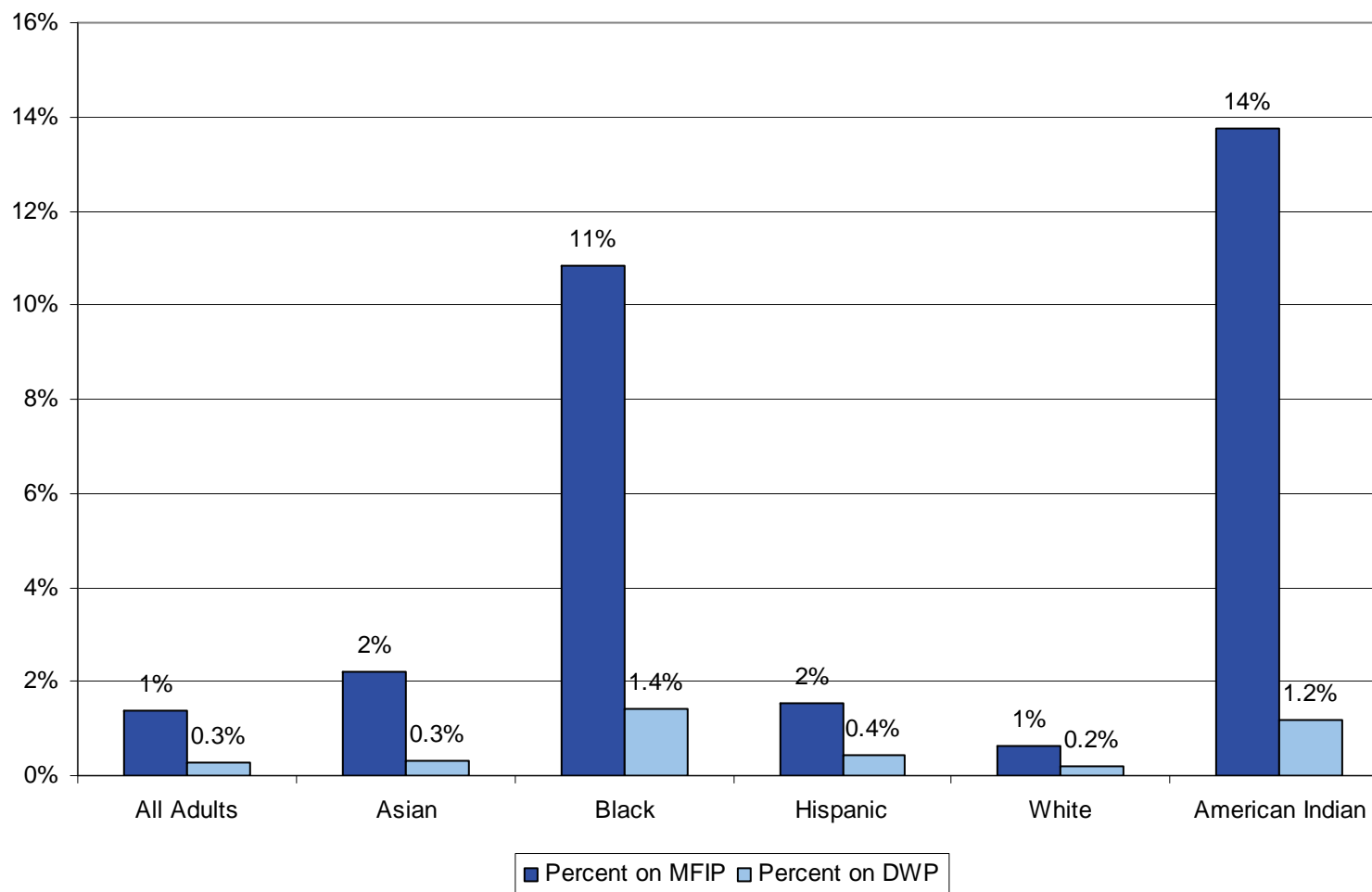
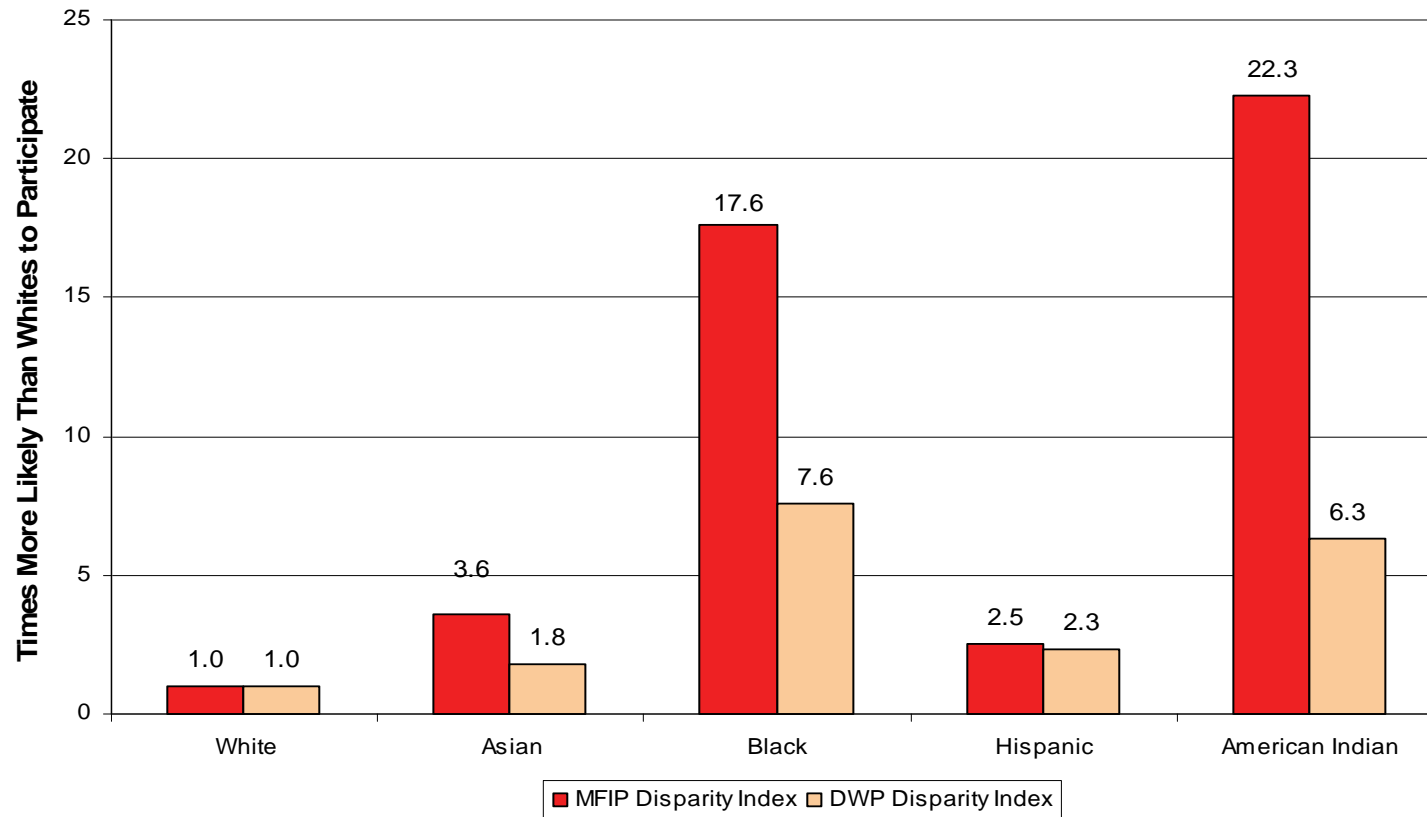


Chart 2-4. Disparity Index: Times More Likely that Minorities are MFIP or DWP Participants than Whites



The disparity index is the ratio of the percentage of adults in a group participating in a program to the percentage of white adults participating in that program. Using the 2007 ACS to determine the percentage of Minnesota adults with children participating in MFIP or DWP, the disparity index tells us that a black adult is 18 times more likely than a white adult to participate in MFIP. An American Indian adult is 22 more times likely.

Chapter Three: MFIP and DWP Participant Characteristics

Many of the adult and teenage caregivers eligible for MFIP or DWP have characteristics that can make obtaining and retaining a job difficult. As the charts in this chapter show, MFIP and DWP-eligible adults tend to be younger than other Minnesotans, less educated, and to have never married. Younger people tend to have less job experience than older people. The less educated tend to have fewer marketable skills than people with more education. Fathers that were married or are married are more likely to provide on-going care and financial support for children⁵ and married fathers tend to earn more than non-married fathers.⁶

MFIP-eligible and DWP-eligible caregivers have different distributions of characteristics. DWP-eligible caregivers are more likely to have the characteristics associated with increased employment, such as being older or having a high school diploma. These differences are largely due to program design. Participants can only receive DWP for four months and those with ongoing needs can apply for MFIP. Families with multiple obstacles may receive MFIP for up to 60 months, or longer in some instances.

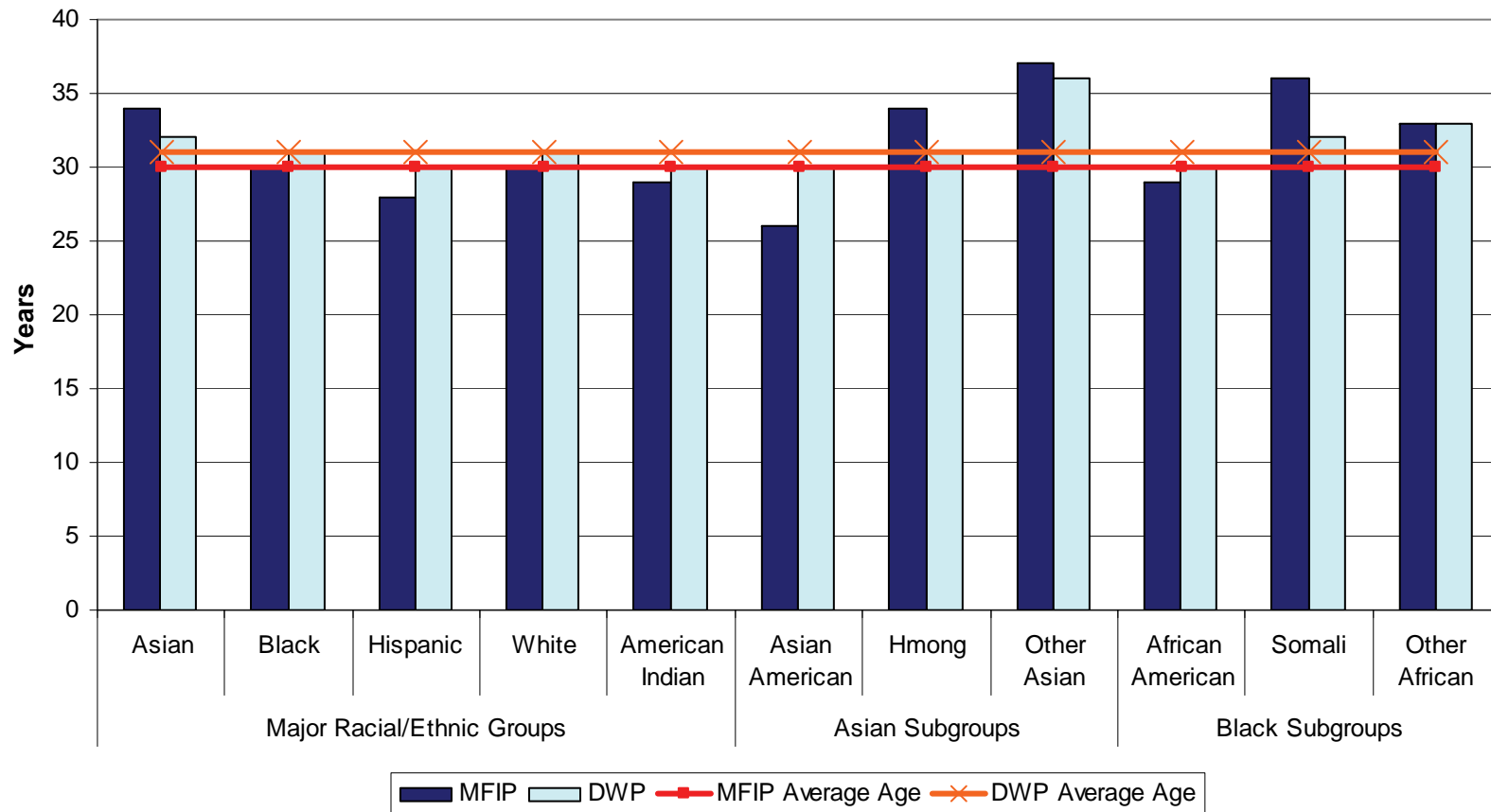
The charts in this chapter show the percentage of each racial or ethnic group that have a characteristic, with MFIP-eligible caregivers in dark bar on the left and DWP-eligible caregivers in the light bar on the right. The average for all caregivers by program is shown with a solid line.

ACS data are shown in Charts 3-4 and 3-5 by race and ethnicity with a line that has a marker at each data point. ACS data for all Minnesotan families with minor children are only presented for the five major/racial ethnic groups because the ACS does not break down Asian and black subgroups in the same manner as reported here.

⁵ Fragile Families Research Brief. (2007) *Parents' Relationship Status Five Years After a Non-Marital Birth*. Retrieved August 18, 2009, from <http://www.fragilefamilies.princeton.edu/briefs/ResearchBrief39.pdf>.

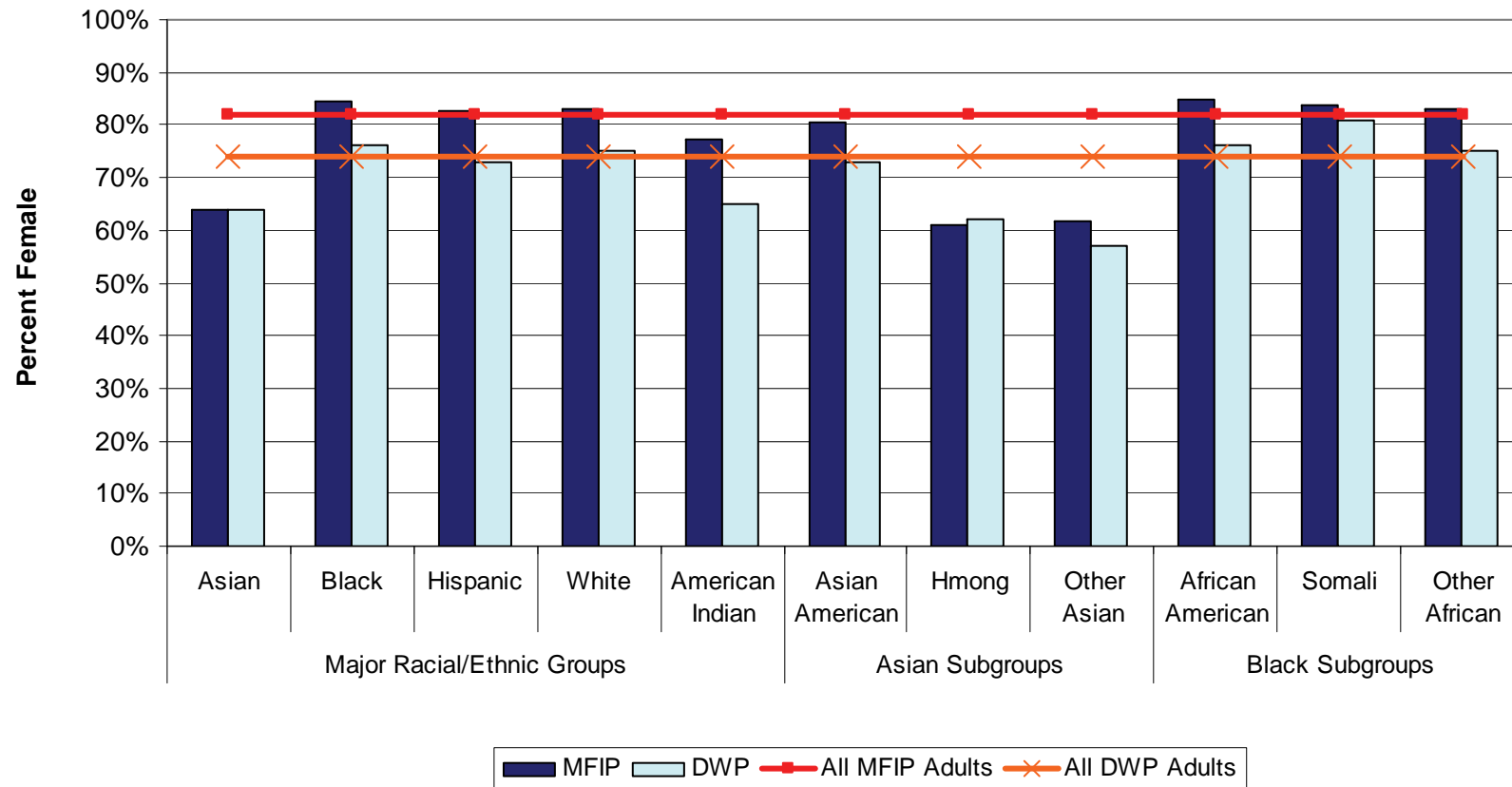
⁶ Garfinkel, Irwin, McLanahan, Sarah, Meadows, Sarah, and Mincy Ronald. (2009) "Unmarried Fathers' Earnings Trajectories: Does Partnership Status Matter?" Working Paper WP09-02-FF. Retrieved July 24, 2009, from www.crcw.princeton.edu/publications/publications.asp

Chart 3-1. Average Age of MFIP and DWP-eligible Adults, December 2008



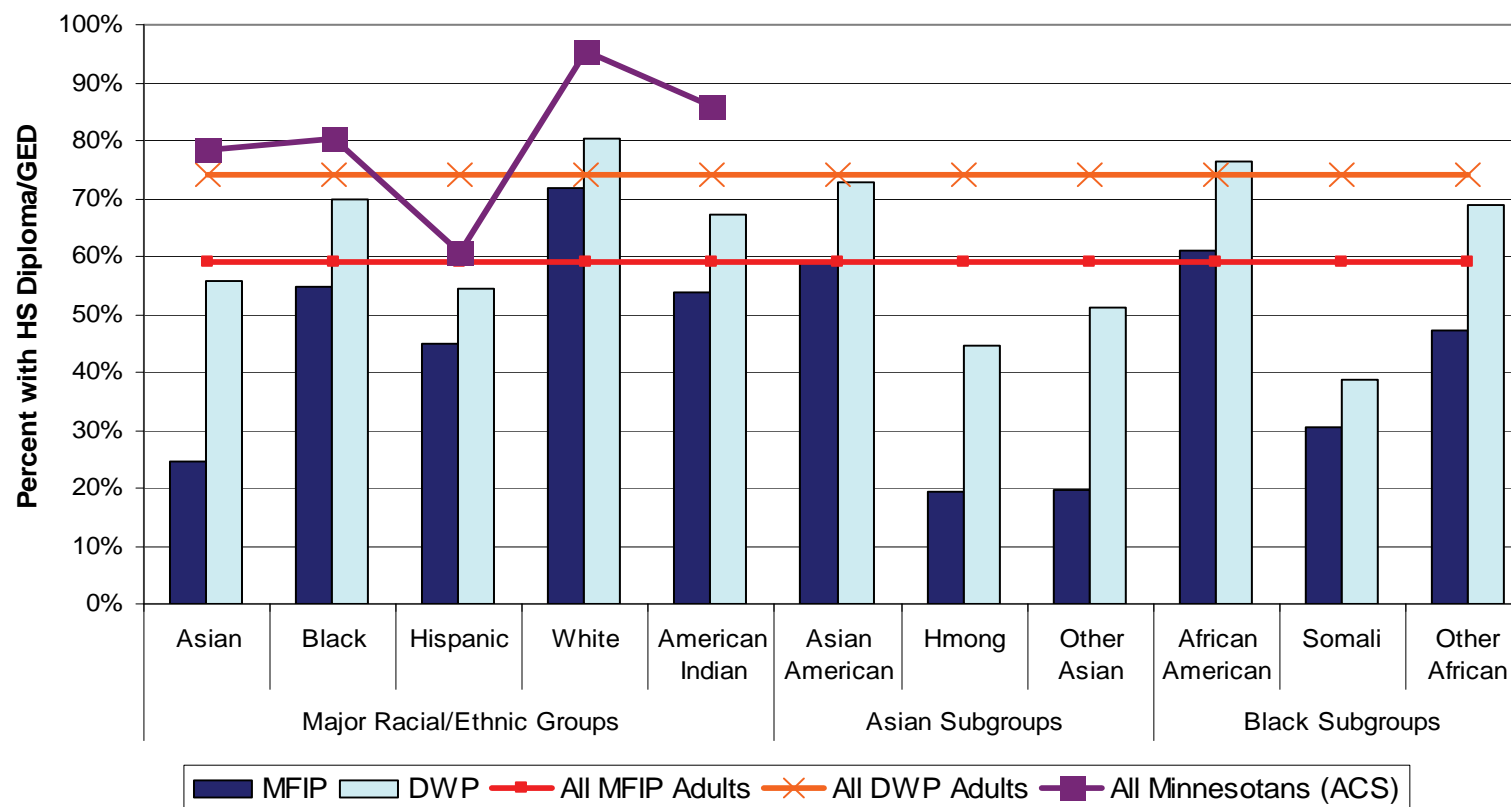
MFIP and DWP-eligible adults that are immigrants tend to be older on average than native-born MFIP and DWP-eligible adults. The average age of all MFIP-eligible adults is 30. Somali adults average 36 years, Other Asian Immigrant adults average 37 years, and Hmong adults average 34 years. The average age of all Minnesotan adults that live with a child under age 18 is 39 years.

Chart 3-2. Percent of MFIP and DWP-eligible Adults that are Female, December 2008



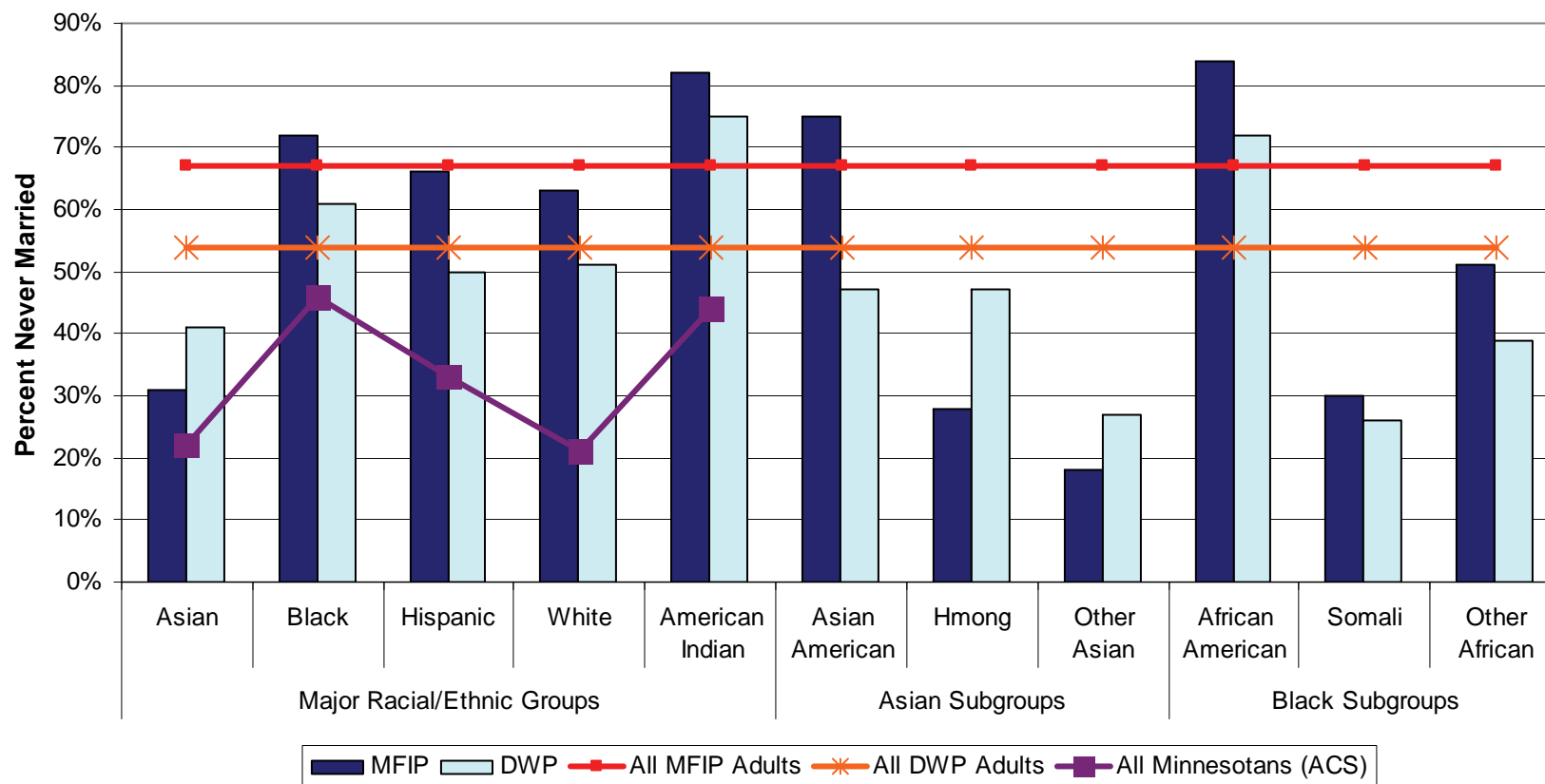
Females predominate in every group for both programs. DWP participants of all races/ethnicities are more likely to be male than MFIP participants. Asian Immigrant participants are also more likely to be male. In both of these situations, the greater number of men is related to a larger proportion of households with two adults rather than more cases with single fathers.

Chart 3-3. MFIP and DWP Participants with a High School Diploma Compared to All Minnesotans with Minor Children, December 2008



Ninety-two percent of all Minnesotan adults with minor children have at least a high school diploma or GED, although, as the line with large squares at the data points shows, this varies by race. Only 59 percent of MFIP participants and 74 percent of DWP participants do. Immigrant groups have less education than U.S.-born MFIP and DWP participants and all minority groups have less education, on average, than whites.

Chart 3-4. MFIP and DWP Participants Who Never Married Compared to All Minnesotans with Minor Children, December 2008



Twenty-three percent of all Minnesota adults with children have never married compared to 67 percent of MFIP and 54 percent DWP participants. Eighty-four percent of African American and 82 percent of American Indian MFIP-eligible adults had never married.

While immigrant groups are more likely to have been married, note that Asian Americans on MFIP, many of whom are children of immigrants, have rates similar to those of other U.S.-born MFIP participants.

Chapter Four: Characteristics of Households Receiving MFIP or DWP

Although households participating in DWP or MFIP have, on average, fewer children than all Minnesotan households with children, they tend to have younger children (and as shown in Chart 3-1 are younger themselves), live in rural and urban areas with high unemployment, and often face challenges due to a chemical health or serious mental health diagnosis or child protection involvement.

According to the U.S. Bureau of Labor Statistics, women with children under age 18, and in particular women with children under age one, are more likely to be unemployed than other women and men.⁷ In 2002, women with a child under age 1 that were married and living with a partner had an unemployment rate of 6 percent, but women with a child under age 1 that were not married faced a 20 percent unemployment rate. Regardless of marital status, women with minor children had higher rates of unemployment than men (6 percent compared to 4 percent). These numbers only include women actively looking for work.⁸

⁷ “Unemployment of parents with children under 18.” (2003) *The Editor’s Desk*. U.S. Department of Labor, Bureau of Labor Statistics. Retrieved August 11, 2009, from <http://www.bls.gov/opub/ted/2003/jul/wk2/art02.htm>.
“Unemployment and marital status of women with young children.” (2003) *The Editor’s Desk*. U.S. Department of Labor, Bureau of Labor Statistics. Retrieved August 11, 2009, from <http://www.bls.gov/opub/ted/2003/jul/wk3/art04.htm>.

⁸ See also: Correll, Shelley J., Benard, Stephan, and Paik, In. (2007) “Getting a Job: Is There a Motherhood Penalty?” *American Journal of Sociology*. 112(5): 1297 – 1338.

The Bureau of Labor Statistics also provides maps showing the unemployment rate by county.⁹ Minnesota’s unemployment rates (December 2008, not seasonally adjusted) varied greatly by county with rural central and northern Minnesota having the highest unemployment rates. As shown in Chart 4-3, white and American Indian MFIP and DWP households tend to reside in rural Minnesota and black and Asian households are concentrated in Hennepin and Ramsey Counties.

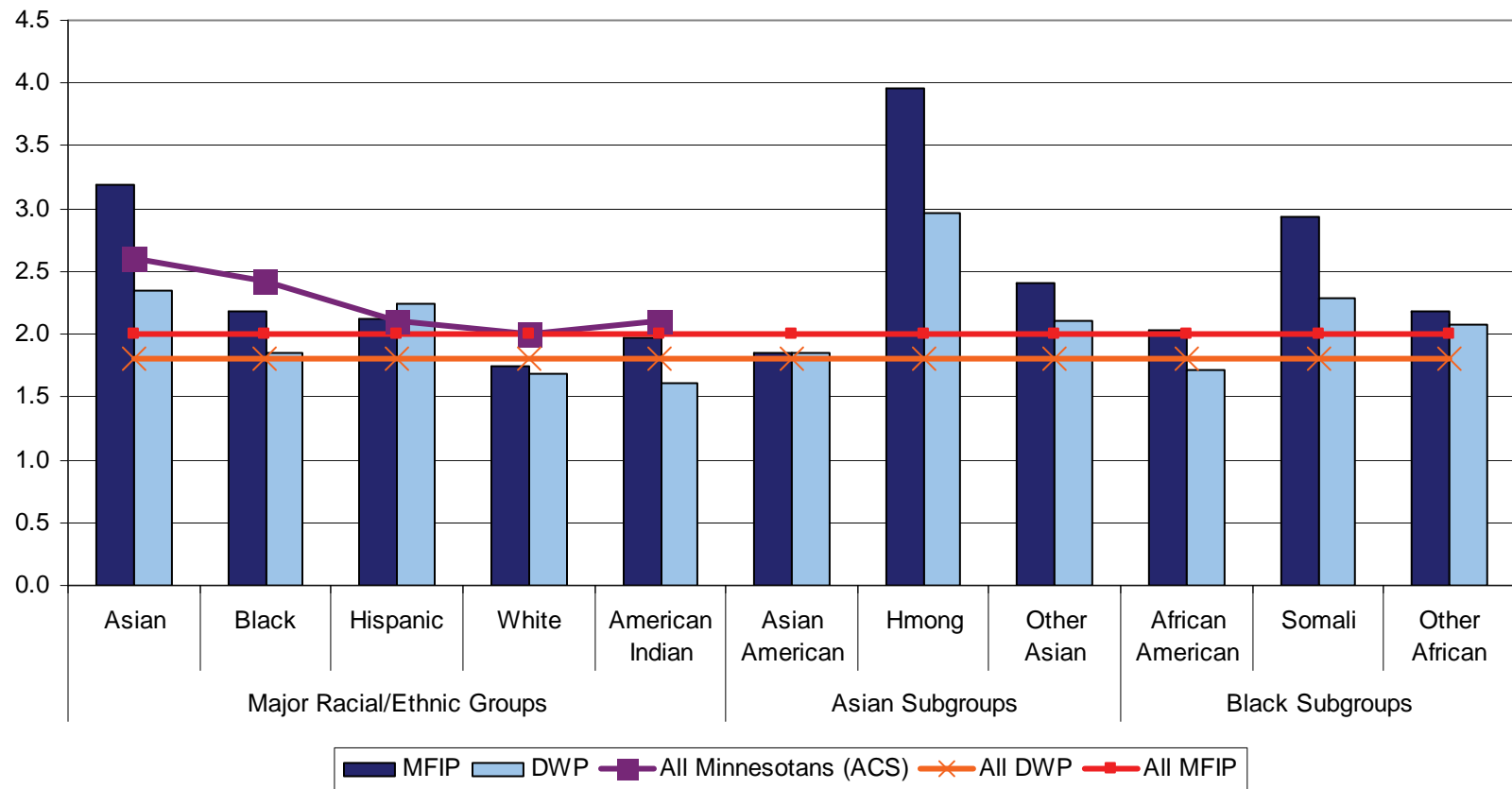
This section also provides data on caregiver chemical health and serious mental health diagnoses and child protection involvement by race/ethnicity and subgroup.

The charts in this chapter show the percentage of each racial or ethnic group that have a characteristic, with MFIP-eligible caregivers in the dark bar on the left and DWP-eligible caregivers in light bar on the right. The average for all caregivers by program is shown with a solid line.

Where ACS data are available, they are shown by race and ethnicity with a line that has a marker at each data point. ACS data for all Minnesotan families with minor children are only presented for the five major racial/ethnic groups because the ACS does not break down Asian and black subgroups in the same manner as reported here.

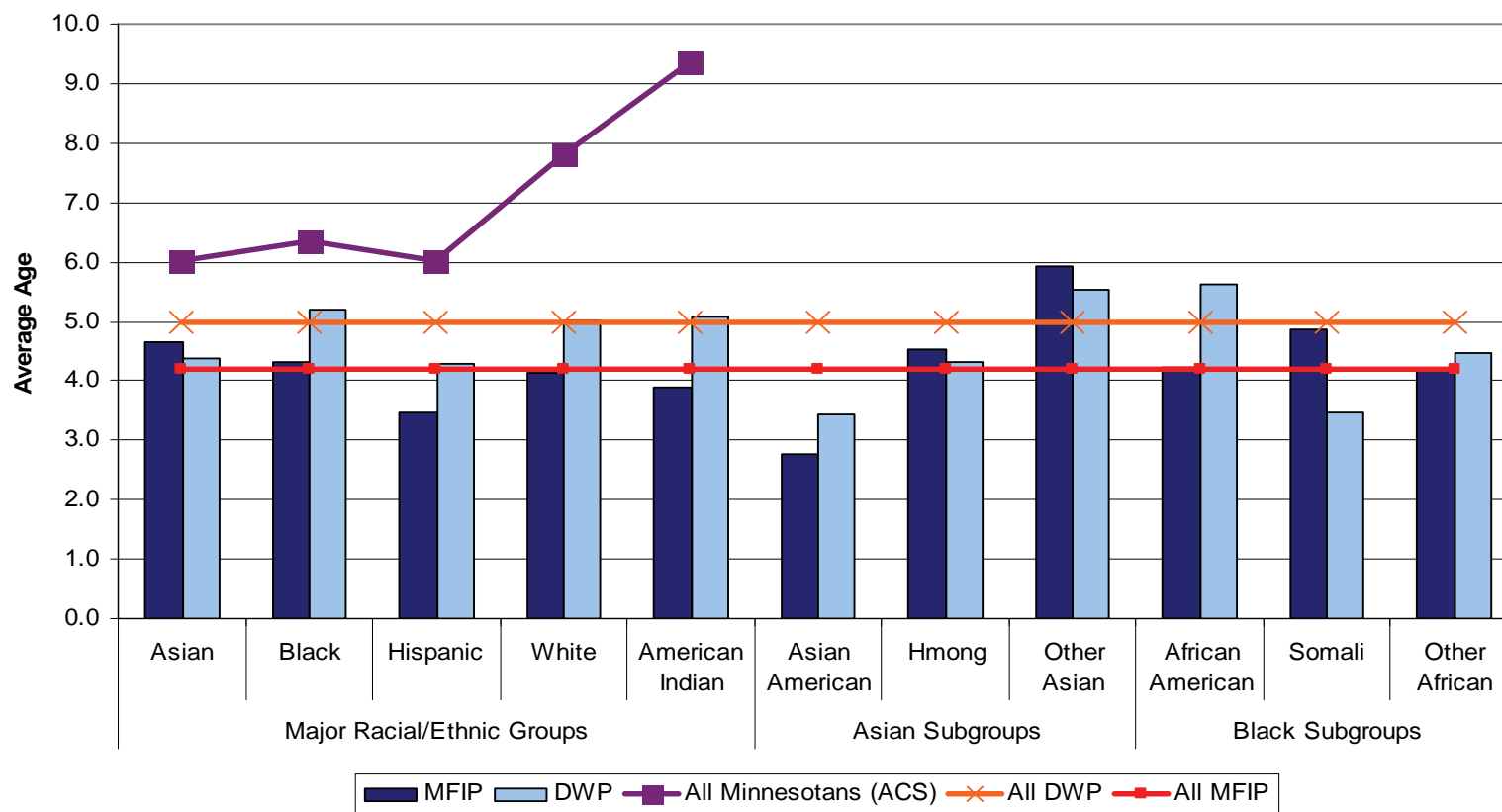
⁹ Go to <http://www.bls.gov/lau/home.htm> and scroll down to “Create Customized Maps.”

Chart 4-1. Number of Children in MFIP and DWP Cases and in All Minnesota Households with Minor Children, December 2008



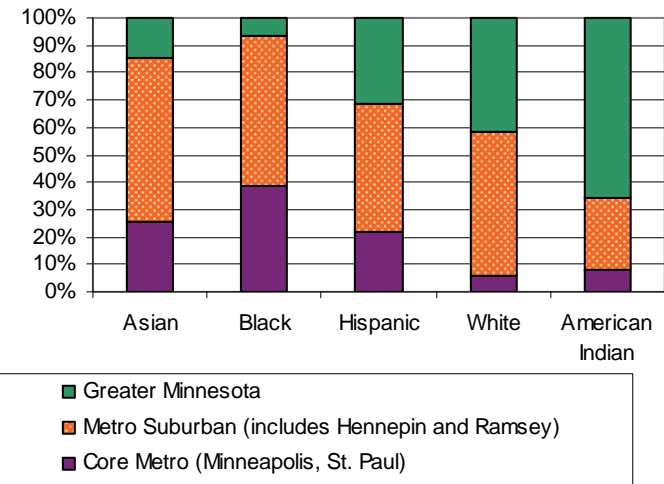
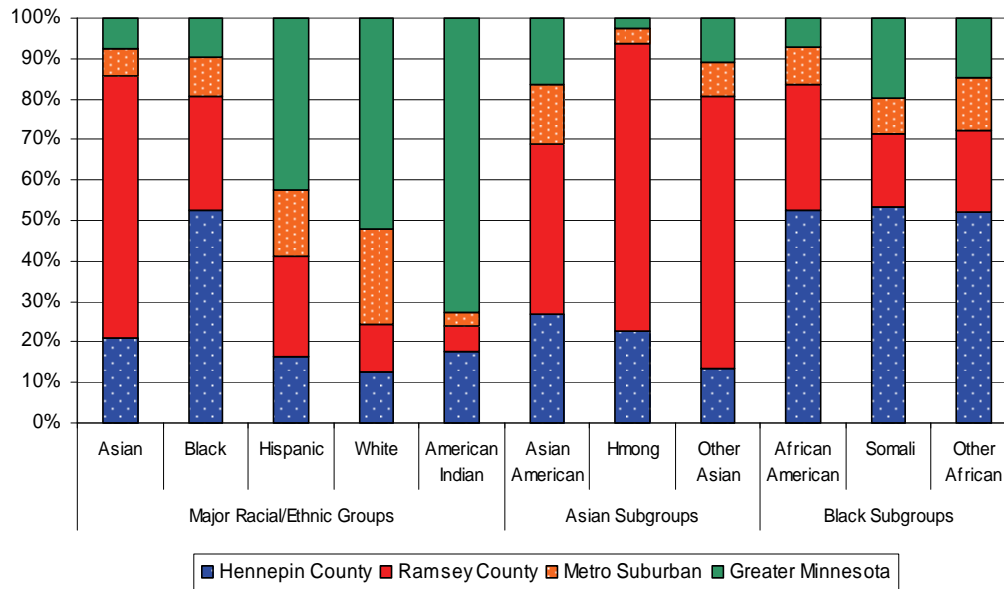
Except for Asian cases participating in MFIP and Hispanic MFIP and DWP cases, participants of both programs have, on average, fewer children than corresponding groups of Minnesota families with minor children. Adult MFIP and DWP participants are, on average, nine years younger than all Minnesotan adults with minor children and, therefore, have more opportunity to add to their families.

Chart 4-2. Average Age of Youngest Child in MFIP and DWP Households and for All Minnesotans with Minor Children, December 2008



The average age of the youngest child in MFIP and DWP cases is younger than those of all Minnesotans with minor children. MFIP and DWP cases tend to be young families, both in terms of the children's ages and the caregivers' ages.

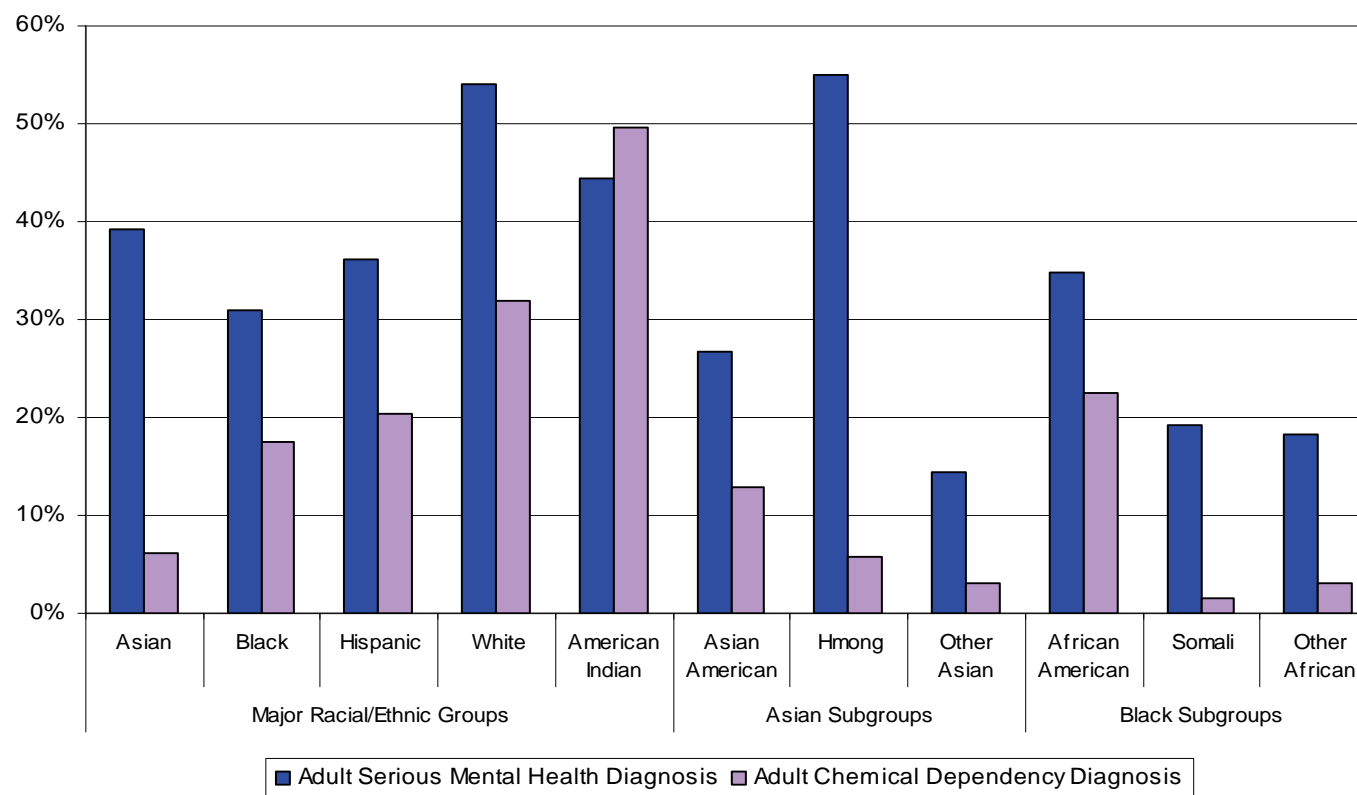
Chart 4-3. Geographic Region of December 2008 MFIP and DWP Adult Participants Compared to All Minnesota Households with Minor Children



MFIP and DWP eligible households are concentrated in the core metropolitan area of Hennepin and Ramsey Counties and in Greater Minnesota while slightly more than half of all Minnesotan families with minor children live in the Metropolitan Suburbs. This effect is slightly overstated as the chart on the left includes all of Hennepin County (Minneapolis) and all of Ramsey County (St. Paul), but the chart on the right only includes each city proper. The chart on the right is ACS data.

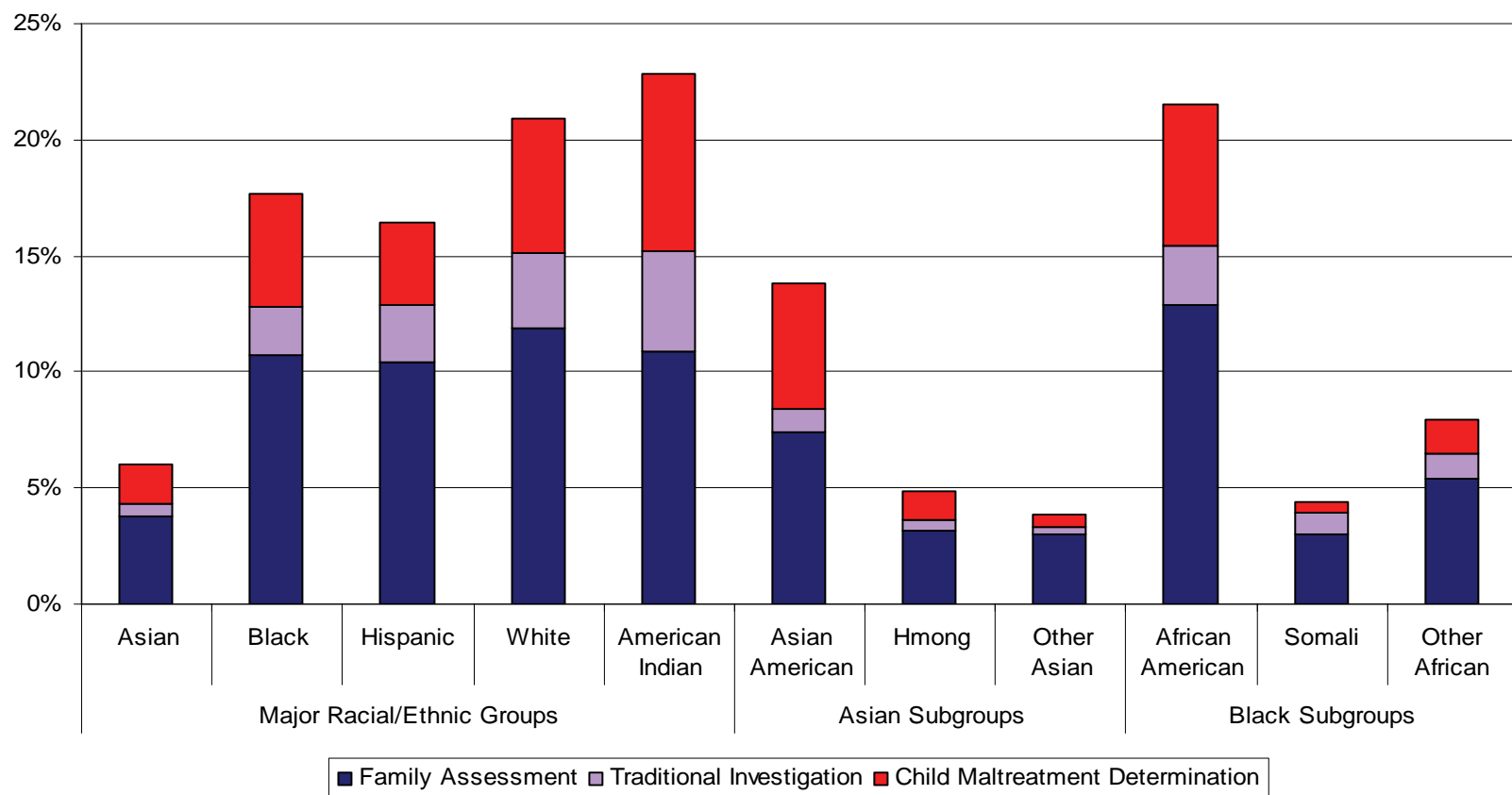
Asian and black MFIP and DWP participants are concentrated in the core metropolitan area, while whites and American Indian participants are concentrated in Greater Minnesota.

Chart 4-4. Adult Serious Mental Health Diagnosis and Adult Chemical Dependency Diagnosis During 2006 to 2008, MFIP Participants



More than half of white and Hmong adult MFIP participants had received a serious mental health diagnosis in the last three years. One-third of white and half of American Indian adult MFIP participants had received a chemical dependency diagnosis in the last three years. These data only include diagnoses made while on publicly paid health insurance and do not mean that treatment was received. According to SAMHSA, 11 percent of Minnesotan adults had experienced serious psychological distress and 11 percent had been diagnosed with alcohol or illicit drug dependence or abuse within a year of being surveyed.

Chart 4-5. Caregiver Involvement with Child Protection Services During 2006 to 2008, MFIP Cases



A Family Assessment (FA) is an alternative to traditional child protection investigation and services for families where the child is not in imminent danger and allegations do not include egregious harm, sexual abuse, or maltreatment in a day care or foster home. In a Traditional Investigation (TI) county workers interview persons involved with the report and investigate the allegation. If there is a preponderance of evidence that a child has been the victim of maltreatment, the county worker makes a determination that maltreatment has occurred. All categories in this chart are mutually exclusive.

Chapter 5: Economic Characteristics of MFIP and DWP Cases

Chapter 5 looks at factors that may impact a household's MFIP or DWP grant size. MFIP and DWP grants are calculated using a standard amount based on family size and then adjusted based upon many factors, including income amounts and types.

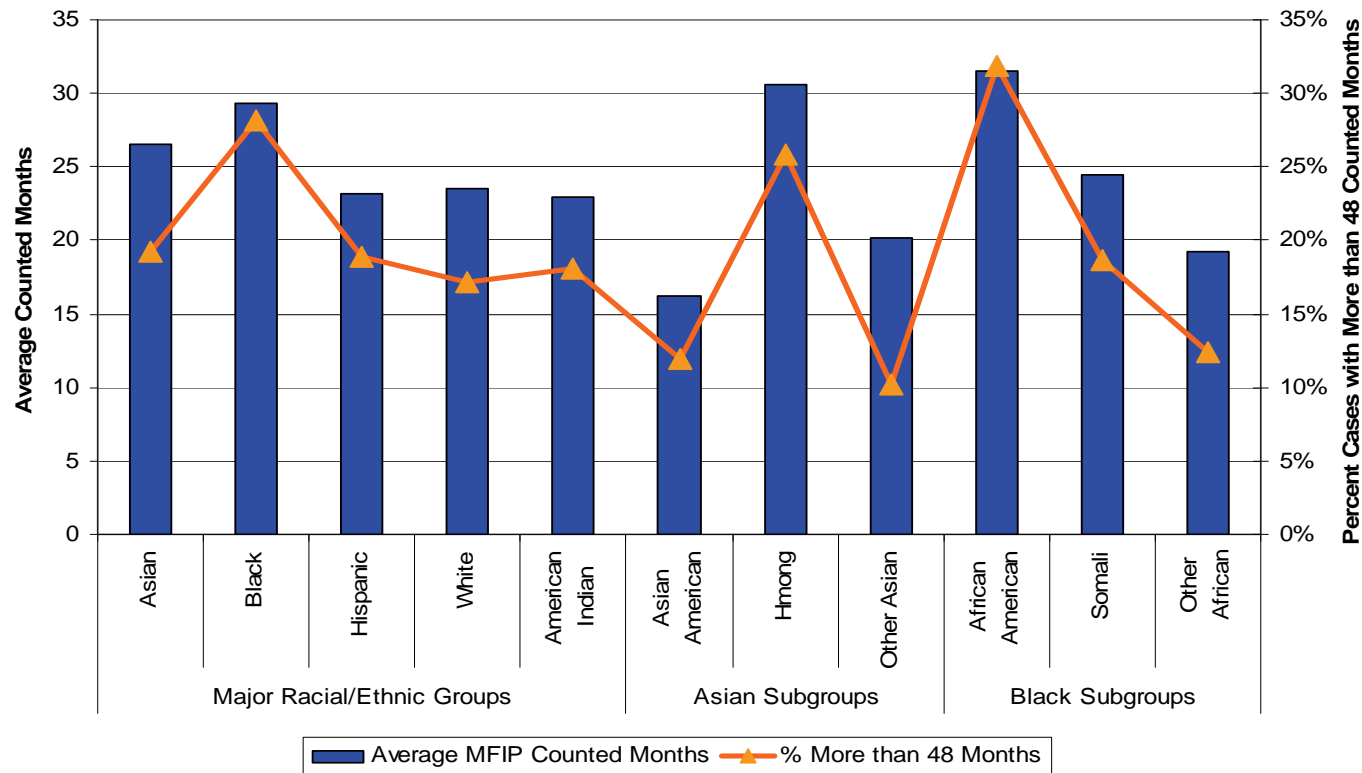
MFIP has a 60-month time limit for most caregivers between the ages of 18 and 59. When a case reaches the lifetime limit it can be extended for certain documented criteria.¹⁰ Most of the extension reasons are related to employment barriers such as long-term illness, caring for an ill family member, mental illness, or learning disabilities. A case may also be extended if the caregivers are working, but not earning enough to exit MFIP. Working cases exit MFIP at 115 percent of the federal poverty guideline. So long as a case meets the extension criteria and has a child aged 19 or younger, the family may remain active on MFIP.

A household may have its MFIP grant sanctioned (reduced) for not complying with Employment Services (ES). Examples of non-compliance are failure to attend a financial services orientation or failure to follow an Employment Plan's mandatory activities. For a household with one eligible caregiver, the first sanction is 10 percent of the grant and in subsequent months sanctions are 30 percent. For households with two eligible caregivers that are both in non-compliance, the sanction is 30 percent. After six sanctioned months a case may be closed. If a case is sanctioned in its 60th month, it can never be extended.

Chapter 5 also looks at cases with working caregivers, their work hours and income, and families impacted by the family cap policy.

¹⁰ For more information about MFIP cases that have reach the time limit, see PAID's *At the Limit* report series, available at http://www.dhs.state.mn.us/id_004113

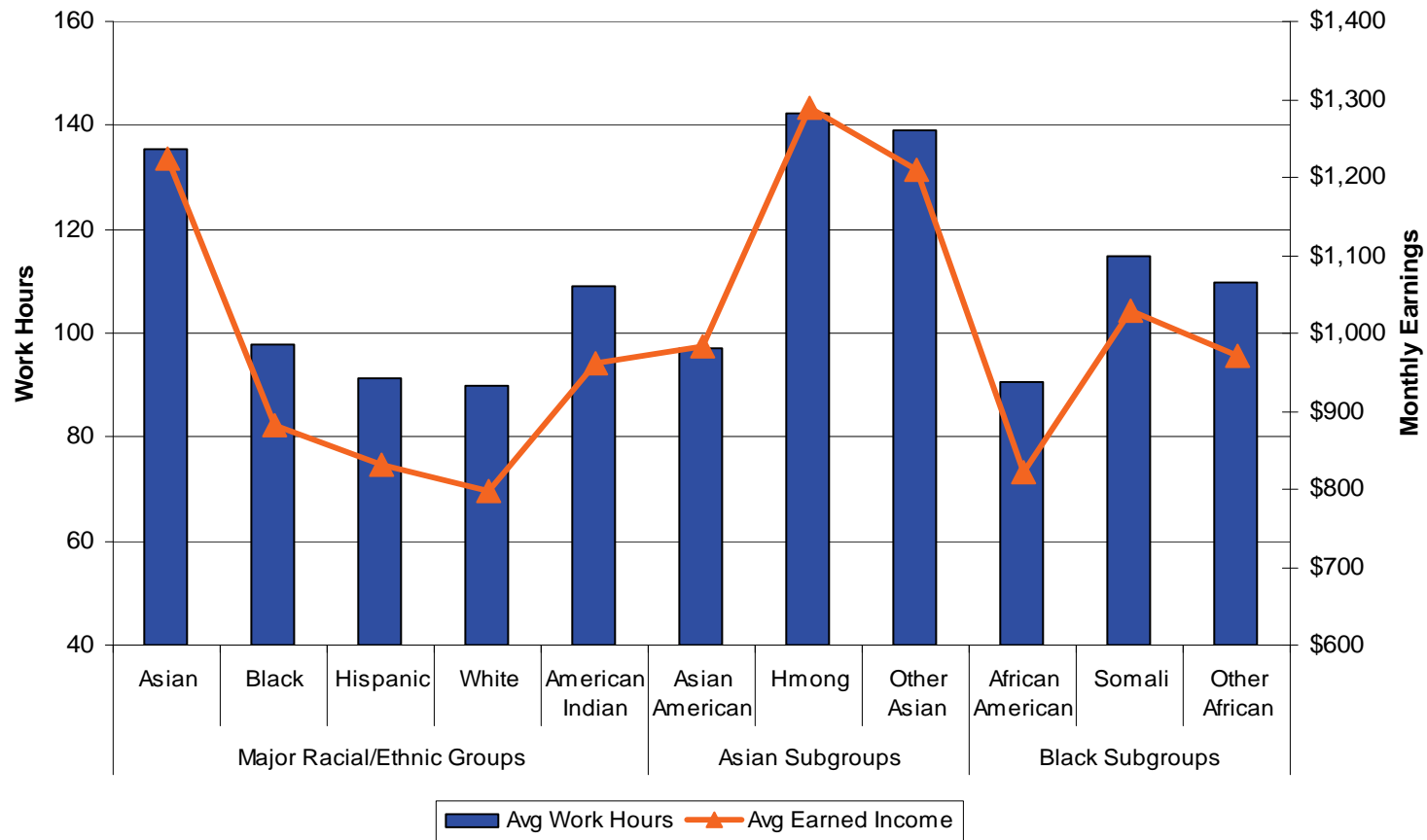
Chart 5-1. Average MFIP Months Counted Toward the 60-Month Time Limit and Percent of MFIP Cases with More than 48 Months Counted Toward the 60-Month Time Limit, December 2008



African American and Hmong families are more likely than other groups to be nearing the 60-month MFIP time limit with one in four Hmong families and one in three African American families within one year of reaching the limit.

American Indian families have the same average number of counted months as white and Hispanic families. MFIP and TANF policies exempt months living in Indian Country with a not-employed rate of at least 50 percent from the time limit.

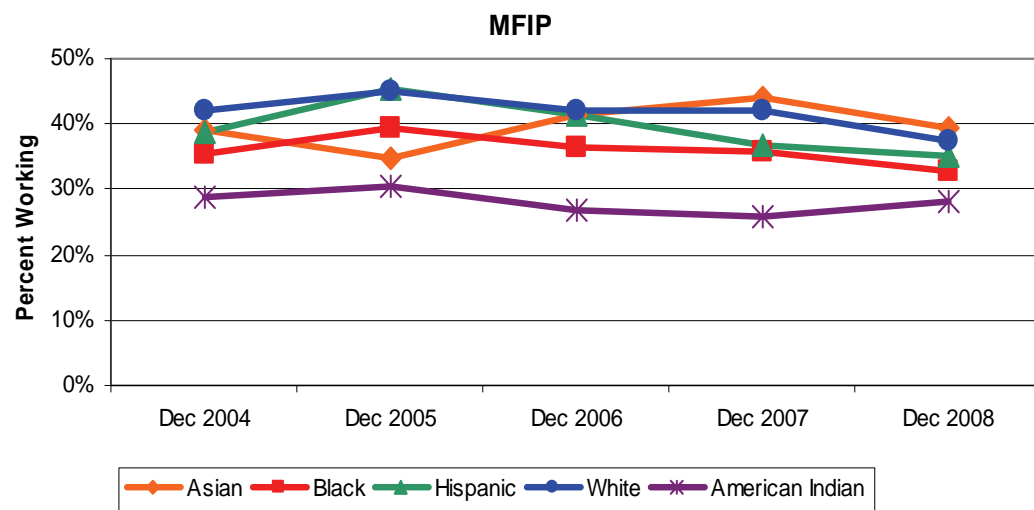
Chart 5-2. Average December 2008 Earned Income and Hours of Working MFIP Families, December 2008



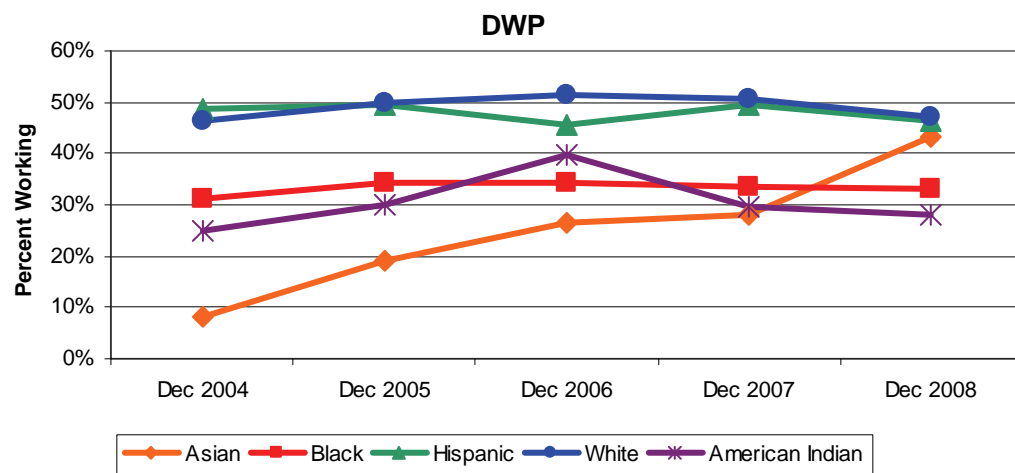
Average income is related to hours worked. Families with two caregivers tend to have more income and hours worked because there are more adults available for work.

The average earnings of all families receiving MFIP was \$872 and the average number of hours worked was 97.

Chart 5-3. Percent of MFIP and DWP Households with Reported Work, December 2004 to December 2008



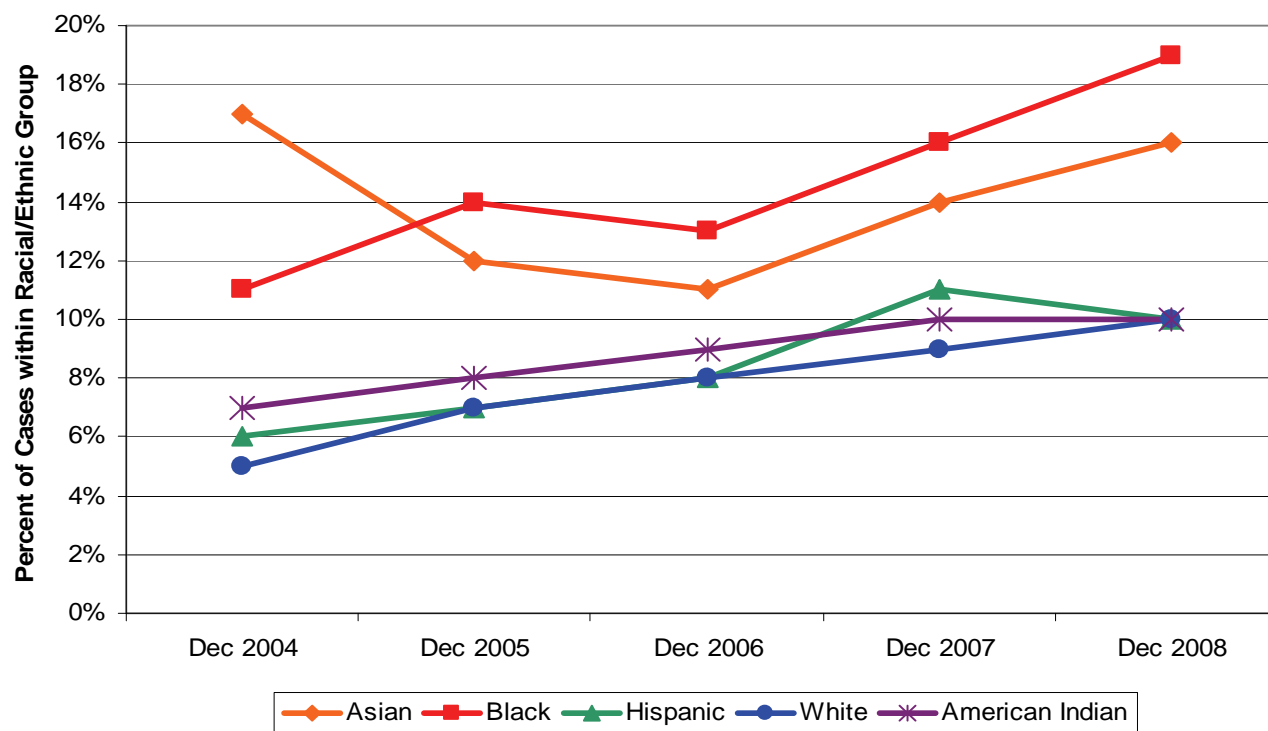
Black and American Indian families are the least likely to have reported work of all five major racial/ethnic groups participating in MFIP and DWP. All groups except for American Indians experienced decreased employment over the last year.



The dramatic increase in reported work for Asian families participating in DWP is related to new Hmong arrivals (the very low percentage in 2004) and the number of two-parent households (two adults can work more hours and earn more than one).

Unlike MFIP, DWP participants not required to report earnings and hours each month. These data are the work status at last report, which may have been any month between September and December.

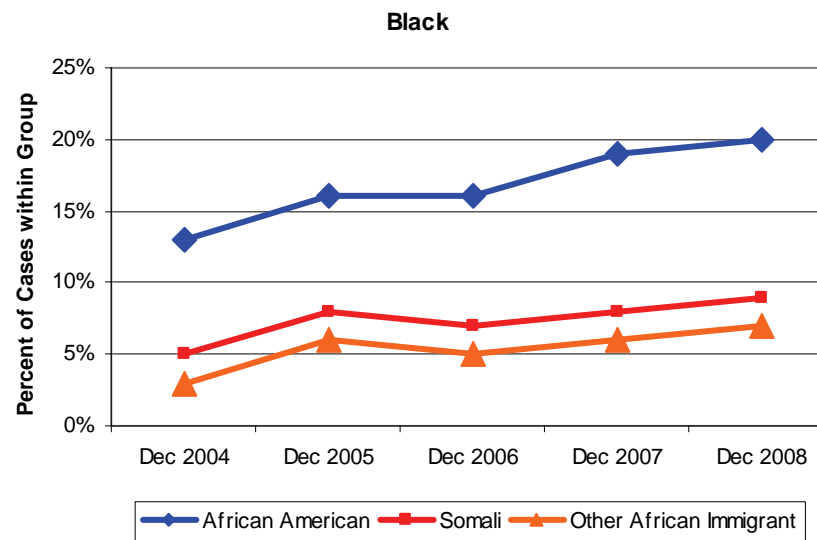
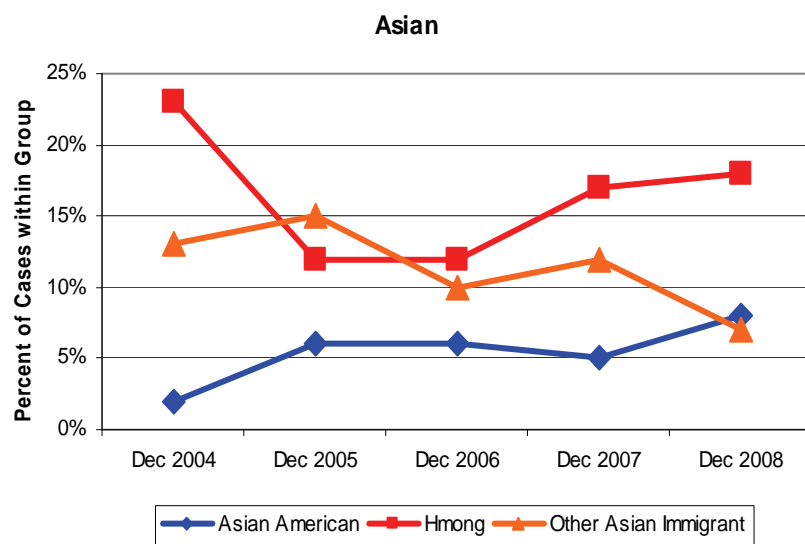
Chart 5-4. Percent of MFIP Cases with an Eligible Adult that are Extended beyond the 60-Month Lifetime Limit, December 2004 to December 2008



Over time the percentage of cases in extension will increase as cases newly eligible for extension reach 60 months and ongoing extended cases may not exit the program until their children reach age 18 or 19.

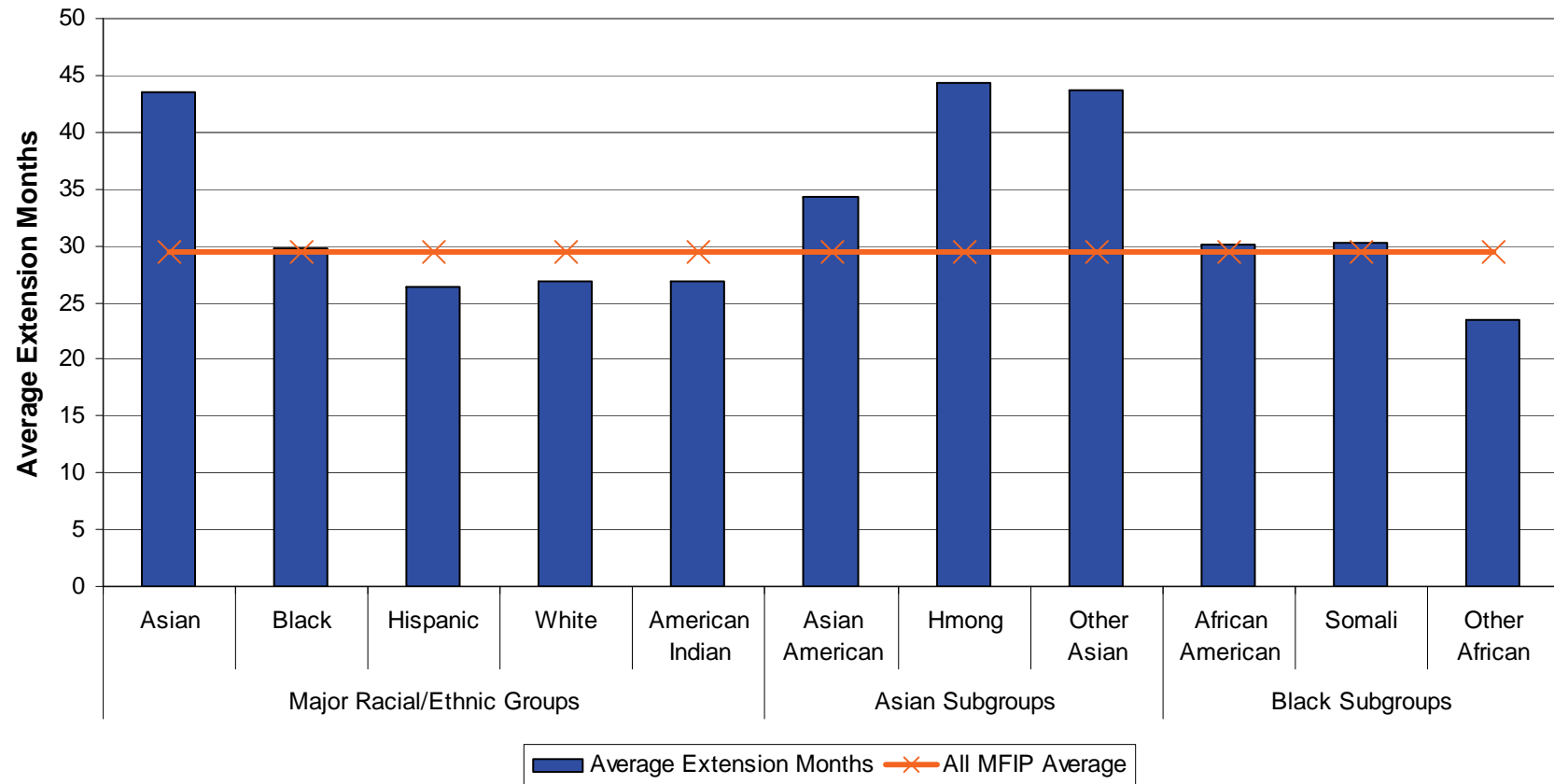
The percentage of Asian families that were extended declined between December 2004 and December 2005 not because fewer families were extended, but because the total number of Asian families participating in MFIP (the denominator) increased greatly due to the large resettlement of Hmong families in the autumn of 2004.

Chart 5-5. Asian and Black Subgroups: Extensions beyond the Time Limit, December 2008



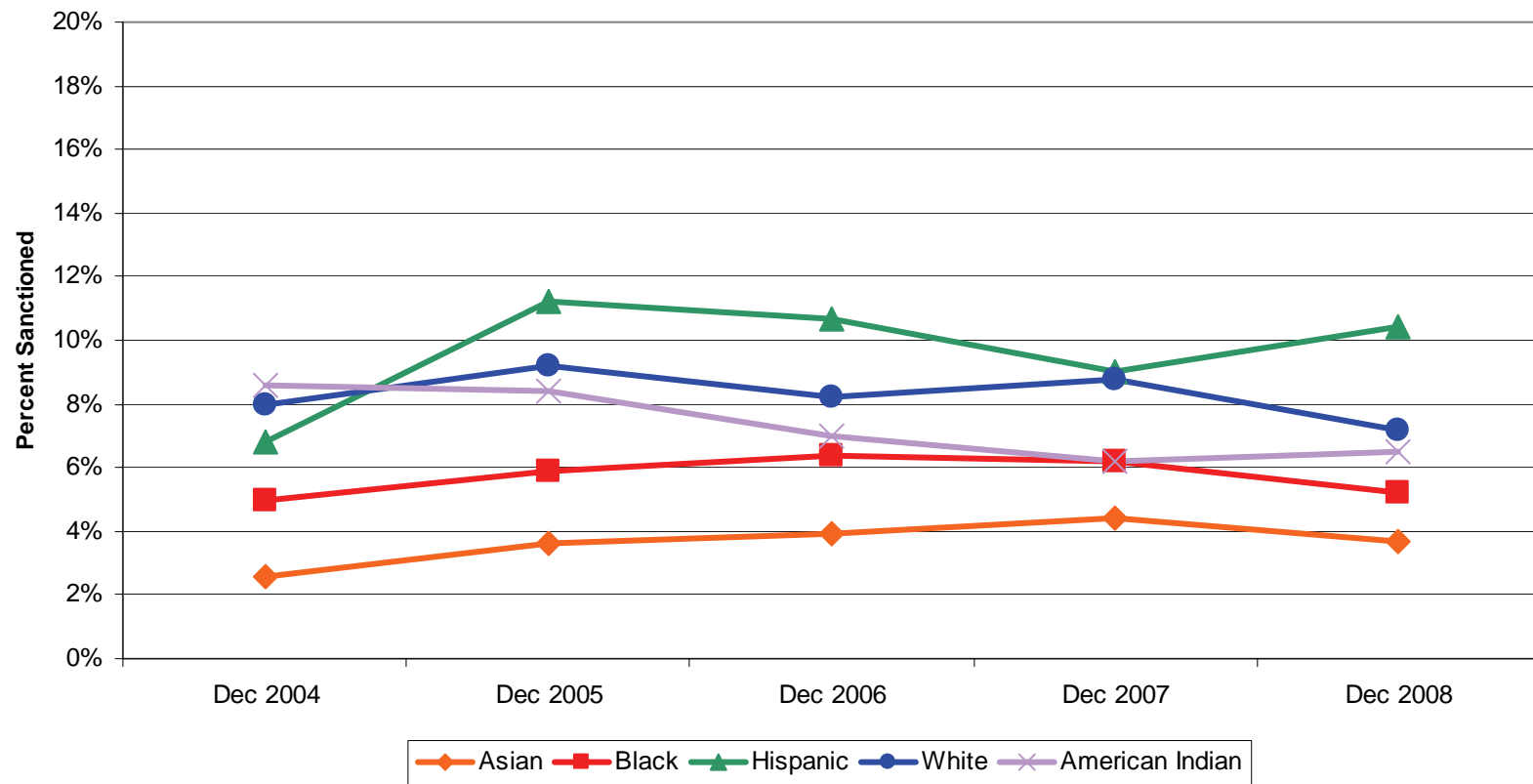
The percentage of Asian Immigrant cases that are extended is sensitive to the number of new arrivals. As explained in Chart 5-1, as the total number of MFIP cases for that group increases, the percentage of extended cases decreases. In addition to the Hmong subgroup in December 2005, this is also apparent in the Other Asian group in December 2008 after the relatively large number of Burmese Karen arrived in 2007.

Chart 5-6. Average MFIP Extension Months, December 2008



The relatively low number of extension months of American Indian families masks the actual time spent on MFIP; many American Indian families' months are not counted due to time limit exemptions when a family lives in Indian Country with a not-employed rate greater than 50 percent. One-third of American Indian cases were exempt from the time limit in December 2008, but this does not indicate whether a case had ever been exempt at some other point in time.

Chart 5-7. Percent of MFIP Families with Employment Services Sanctions, December 2008



All MFIP-eligible and some MFIP-ineligible caregivers must participate in Employment Services (ES). If a caregiver does not follow the ES rules, their MFIP grant may be sanctioned. The sanction rate has remained steady and Hispanics and whites, who also tend to have the highest rates of reported work, have the highest rates of sanction.

Chart 5-8. Asian and Black Subgroups and Total: Percent with Employment Services Sanctions, December 2008

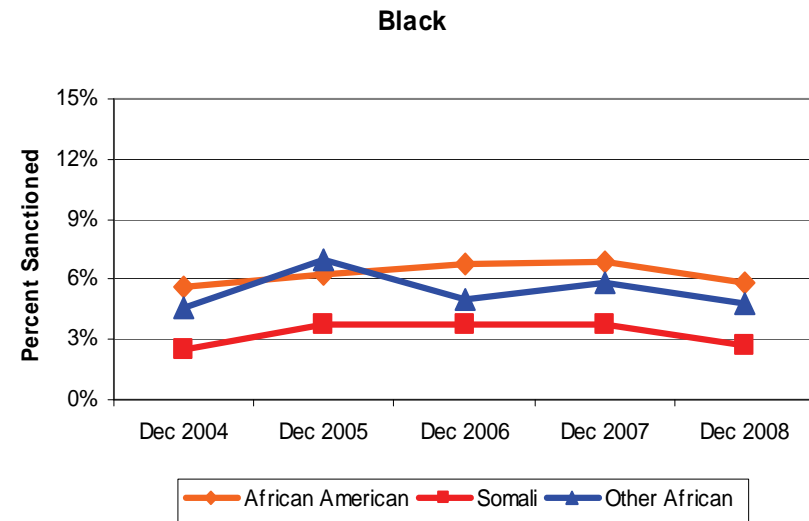
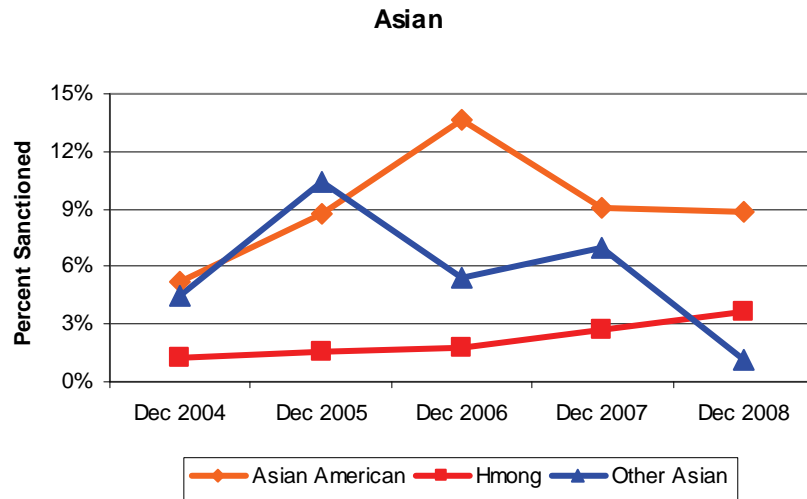
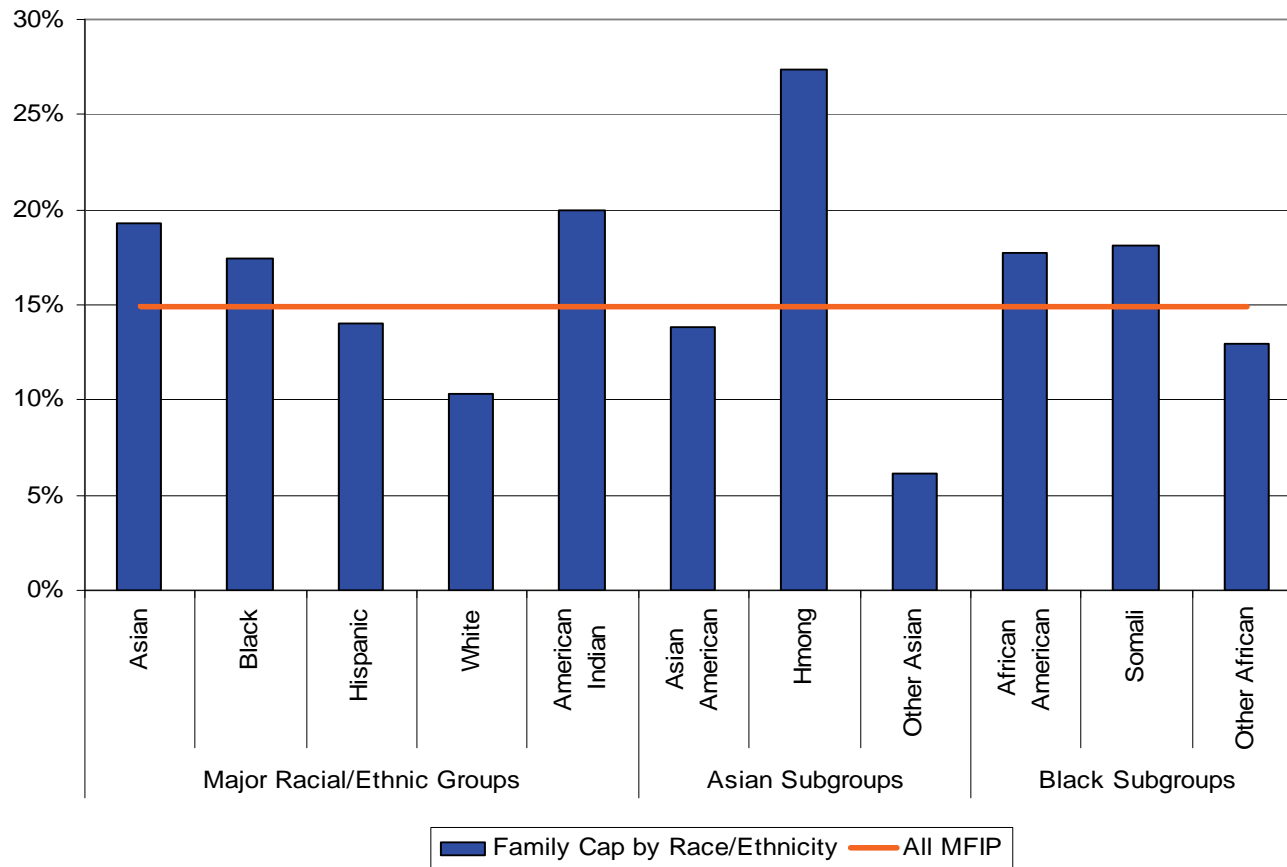


Chart 5-9. Families with at Least One Child Subject to the Family Cap, December 2008



The family cap is a policy where children born after 10 or more months of continuous MFIP receipt do not result in a grant increase. More than one in four Hmong families and one in five American Indian families are impacted by the family cap.

Appendix: Complete Data Tables

Table 1. Demographic Characteristics of Eligible Adults on December 2008 MFIP Paid Cases by Racial/Ethnic Groups and Subgroups

Characteristics of Adults Eligible on December 2008 MFIP Cases		All Eligible Adults	Racial/Ethnic Groups					Asian Subgroups			Black Subgroups		
			Asian	Black	Hispanic	White	American Indian	Asian American	Asian Immigrants		African American	Black Immigrants	
									Hmong	Non-Hmong		Somali	Non-Somali
Eligible Adults	Number	25,160	1,719	9,593	1,269	9,563	2,493	227	940	552	7,210	1,576	807
	Percent of Total	100.0%	6.8%	38.1%	5.0%	38.0%	9.9%	0.9%	3.7%	2.2%	28.7%	6.3%	3.2%
Age of Adults	Mean	29.9	34.0	30.2	28.3	29.6	28.7	25.8	34.2	36.9	28.6	36.1	33.2
	Median	28	33	28	26	27	26	23	33	37	27	34	31
	Minimum	14	14	14	14	14	15	14	15	17	14	15	14
	Maximum	79	77	79	67	74	66	61	77	64	62	77	79
Frequency	< 18	490	38	187	50	130	66	11	26	1	162	10	15
		1.9%	2.2%	1.9%	3.9%	1.4%	2.6%	4.8%	2.8%	0.2%	2.2%	0.6%	1.9%
	18 - 19	1,965	136	708	153	683	227	51	74	11	617	36	55
		7.8%	7.9%	7.4%	12.1%	7.1%	9.1%	22.5%	7.9%	2.0%	8.6%	2.3%	6.8%
	20 - 29	12,010	526	4,545	608	4,782	1,251	109	275	142	3,704	541	300
		47.7%	30.6%	47.4%	47.9%	50.0%	50.2%	48.0%	29.3%	25.7%	51.4%	34.3%	37.2%
	30 - 39	6,422	458	2,475	288	2,477	613	36	237	185	1,824	431	220
		25.5%	26.6%	25.8%	22.7%	25.9%	24.6%	15.9%	25.2%	33.5%	25.3%	27.3%	27.3%
	40 - 49	3,237	383	1,190	134	1,240	262	10	231	142	745	318	127
		12.9%	22.3%	12.4%	10.6%	13.0%	10.5%	4.4%	24.6%	25.7%	10.3%	20.2%	15.7%
	50 - 59	901	149	411	34	235	64	9	81	59	150	194	67
		3.6%	8.7%	4.3%	2.7%	2.5%	2.6%	4.0%	8.6%	10.7%	2.1%	12.3%	8.3%
	60 and over	135	29	77	2	16	10	1	16	12	8	46	23
		0.5%	1.7%	0.8%	0.2%	0.2%	0.4%	0.4%	1.7%	2.2%	0.1%	2.9%	2.9%
Gender	Female	20,565	1,097	8,104	1,048	7,946	1,924	183	574	340	6,113	1,322	669
		81.7%	63.8%	84.5%	82.6%	83.1%	77.2%	80.6%	61.1%	61.6%	84.8%	83.9%	82.9%
	Male	4,595	622	1,489	221	1,617	569	44	366	212	1,097	254	138
		18.3%	36.2%	15.5%	17.4%	16.9%	22.8%	19.4%	38.9%	38.4%	15.2%	16.1%	17.1%

Table 1 – Page 2

MFIP Demographic Characteristics		All Eligible Adults	Racial/Ethnic Groups					Asian Subgroups			Black Subgroups		
			Asian	Black	Hispanic	White	American Indian	Asian American	Asian Immigrants		African American	Black Immigrants	
									Hmong	Non-Hmong		Somali	Non-Somali
Education	None or Pre-1st Grade or Unknown	1,687	710	782	27	123	21	7	481	222	83	538	161
		6.7%	41.3%	8.2%	2.1%	1.3%	0.8%	3.1%	51.2%	40.2%	1.2%	34.1%	20.0%
	Grade School	575	171	287	33	52	28	4	69	98	67	159	61
		2.3%	9.9%	3.0%	2.6%	0.5%	1.1%	1.8%	7.3%	17.8%	0.9%	10.1%	7.6%
	Some High School	8,096	413	3,270	638	2,513	1,105	82	207	124	2,666	400	204
		32.2%	24.0%	34.1%	50.3%	26.3%	44.3%	36.1%	22.0%	22.5%	37.0%	25.4%	25.3%
	High School Graduate	12,838	371	4,636	509	5,828	1,211	116	166	89	3,859	445	332
		51.0%	21.6%	48.3%	40.1%	60.9%	48.6%	51.1%	17.7%	16.1%	53.5%	28.2%	41.1%
	Some Post-Secondary	1,658	47	526	57	869	109	15	15	17	468	25	33
		6.6%	2.7%	5.5%	4.5%	9.1%	4.4%	6.6%	1.6%	3.1%	6.5%	1.6%	4.1%
Marital Status	College Graduate	164	5	49	2	90	16	3	1	1	40	3	6
		0.7%	0.3%	0.5%	0.2%	0.9%	0.6%	1.3%	0.1%	0.2%	0.6%	0.2%	0.7%
	Graduate Degree	142	2	43	3	88	3	0	1	1	27	6	10
		0.6%	0.1%	0.4%	0.2%	0.9%	0.1%	0.0%	0.1%	0.2%	0.4%	0.4%	1.2%
	High School Graduate or Higher	14,802	425	5,254	571	6,875	1,339	134	183	108	4,394	479	381
		58.8%	24.7%	54.8%	45.0%	71.9%	53.7%	59.0%	19.5%	19.6%	60.9%	30.4%	47.2%
	Divorced	1,653	52	309	88	1,077	103	8	30	14	209	67	33
		6.6%	3.0%	3.2%	6.9%	11.3%	4.1%	3.5%	3.2%	2.5%	2.9%	4.3%	4.1%
	Legally Separated	56	3	10	3	36	4	0	1	2	9	0	1
		0.2%	0.2%	0.1%	0.2%	0.4%	0.2%	0.0%	0.1%	0.4%	0.1%	0.0%	0.1%
Citizenship	Married, Living with Spouse	3,625	956	1,077	146	1,244	157	32	547	377	400	485	192
		14.4%	55.6%	11.2%	11.5%	13.0%	6.3%	14.1%	58.2%	68.3%	5.5%	30.8%	23.8%
	Never Married	16,758	530	6,930	833	6,024	2,033	171	260	99	6,046	473	411
		66.6%	30.8%	72.2%	65.6%	63.0%	81.5%	75.3%	27.7%	17.9%	83.9%	30.0%	50.9%
	Married, Separated	2,853	128	1,148	196	1,149	187	16	74	38	528	480	140
		11.3%	7.4%	12.0%	15.4%	12.0%	7.5%	7.0%	7.9%	6.9%	7.3%	30.5%	17.3%
	Widowed	214	50	118	3	33	9	0	28	22	17	71	30
		0.9%	2.9%	1.2%	0.2%	0.3%	0.4%	0.0%	3.0%	4.0%	0.2%	4.5%	3.7%
	Non-U.S.	3,549	1,209	1,939	166	208	6	0	696	513	0	1,247	692
		14.1%	70.3%	20.2%	13.1%	2.2%	0.2%	0.0%	74.0%	92.9%	0.0%	79.1%	85.7%
	U.S.	21,611	505	7,654	1,103	9,355	2,487	222	244	39	7,210	329	115
		85.9%	29.4%	79.8%	86.9%	97.8%	99.8%	97.8%	26.0%	7.1%	100.0%	20.9%	14.3%

Note: Among MFIP-eligible adults in December 2008, 422 (1.7%) selected multiple races and 101 (0.4%) were missing race/ethnicity data. These numbers are included in the statewide total, but were excluded from the racial/ethnic groups.

Table 2. Demographic Characteristics of Eligible Adults on December 2008 DWP Paid Cases by Racial/Ethnic Groups and Subgroups

Characteristics of Adults Eligible on December 2008 DWP Cases		All Eligible Adults	Racial/Ethnic Groups					Asian Subgroups			Black Subgroups		
			Asian	Black	Hispanic	White	American Indian	Asian American	Asian Immigrants		African American	Black Immigrants	
									Hmong	Non-Hmong		Somali	Non-Somali
Eligible Adults	Number	5,025	257	1,252	342	2,868	211	81	94	82	909	186	157
	Percent of Total	100.0%	5.1%	24.9%	6.8%	57.1%	4.2%	1.6%	1.9%	1.6%	18.1%	3.7%	3.1%
Age of Adults	Mean	30.7	32.3	30.9	29.9	30.7	29.8	30.1	31.3	35.5	30.3	31.7	33.1
	Median	29	30	29	28	29	27	27	30	34	29	31	33
	Minimum	16	17	16	18	17	18	17	17	21	16	16	18
	Maximum	61	59	61	59	61	60	59	53	58	58	57	61
Frequency	< 18	5	2	2	0	1	0	1	1	0	1	1	0
		0.1%	0.8%	0.2%	0.0%	0.0%	0.0%	1.2%	1.1%	0.0%	0.1%	0.5%	0.0%
	18 - 19	176	6	43	13	106	6	3	3	0	39	2	2
		3.5%	2.3%	3.4%	3.8%	3.7%	2.8%	3.7%	3.2%	0.0%	4.3%	1.1%	1.3%
	20 - 29	2,433	116	589	176	1,384	118	46	42	28	451	82	56
		48.4%	45.1%	47.0%	51.5%	48.3%	55.9%	56.8%	44.7%	34.1%	49.6%	44.1%	35.7%
	30 - 39	1,581	74	418	108	900	55	19	24	31	285	71	62
		31.5%	28.8%	33.4%	31.6%	31.4%	26.1%	23.5%	25.5%	37.8%	31.4%	38.2%	39.5%
	40 - 49	707	45	170	38	410	28	9	20	16	113	25	32
		14.1%	17.5%	13.6%	11.1%	14.3%	13.3%	11.1%	21.3%	19.5%	12.4%	13.4%	20.4%
	50 - 59	120	14	29	7	66	3	3	4	7	20	5	4
		2.4%	5.4%	2.3%	2.0%	2.3%	1.4%	3.7%	4.3%	8.5%	2.2%	2.7%	2.5%
	60 and over	3	0	1	0	1	1	0	0	0	0	0	1
		0.1%	0.0%	0.1%	0.0%	0.0%	0.5%	0.0%	0.0%	0.0%	0.0%	0.0%	0.6%
Gender	Female	3,709	164	955	250	2,136	137	59	58	47	686	151	118
		73.8%	63.8%	76.3%	73.1%	74.5%	64.9%	72.8%	61.7%	57.3%	75.5%	81.2%	75.2%
	Male	1,316	93	297	92	732	74	22	36	35	223	35	39
		26.2%	36.2%	23.7%	26.9%	25.5%	35.1%	27.2%	38.3%	42.7%	24.5%	18.8%	24.8%

Table 2 – Page 2

DWP Demographic Characteristics		All Eligible Adults	Racial/Ethnic Groups					Asian Subgroups			Black Subgroups		
			Asian	Black	Hispanic	White	American Indian	Asian American	Asian Immigrants		African American	Black Immigrants	
									Hmong	Non-Hmong		Somali	Non-Somali
Education	None or Pre-1st Grade or Unknown	253	50	76	24	89	6	4	35	11	21	42	13
		5.0%	19.5%	6.1%	7.0%	3.1%	2.8%	4.9%	37.2%	13.4%	2.3%	22.6%	8.3%
	Grade School	78	16	28	17	15	2	1	4	11	3	15	10
		1.6%	6.2%	2.2%	5.0%	0.5%	0.9%	1.2%	4.3%	13.4%	0.3%	8.1%	6.4%
	Some High School	977	48	274	115	463	61	17	13	18	191	57	26
		19.4%	18.7%	21.9%	33.6%	16.1%	28.9%	21.0%	13.8%	22.0%	21.0%	30.6%	16.6%
	High School Graduate	3,105	118	704	164	1,928	129	46	37	35	556	71	77
		61.8%	45.9%	56.2%	48.0%	67.2%	61.1%	56.8%	39.4%	42.7%	61.2%	38.2%	49.0%
	Some Post-Secondary	481	19	135	17	291	11	10	5	4	110	0	25
		9.6%	7.4%	10.8%	5.0%	10.1%	5.2%	12.3%	5.3%	4.9%	12.1%	0.0%	15.9%
	College Graduate	72	1	24	3	43	1	1	0	0	20	1	3
		1.4%	0.4%	1.9%	0.9%	1.5%	0.5%	1.2%	0.0%	0.0%	2.2%	0.5%	1.9%
	Graduate Degree	59	5	11	2	39	1	2	0	3	8	0	3
		1.2%	1.9%	0.9%	0.6%	1.4%	0.5%	2.5%	0.0%	3.7%	0.9%	0.0%	1.9%
	High School Graduate or Higher	3,717	143	874	186	2,301	142	59	42	42	694	72	108
		74.0%	55.6%	69.8%	54.4%	80.2%	67.3%	72.8%	44.7%	51.2%	76.3%	38.7%	68.8%
Marital Status	Divorced	421	15	50	25	315	8	6	3	6	39	7	4
		8.4%	5.8%	4.0%	7.3%	11.0%	3.8%	7.4%	3.2%	7.3%	4.3%	3.8%	2.5%
	Legally Separated	19	2	1	4	12	0	2	0	0	1	0	0
		0.4%	0.8%	0.1%	1.2%	0.4%	0.0%	2.5%	0.0%	0.0%	0.1%	0.0%	0.0%
	Married, Living with Spouse	1,208	117	262	84	700	23	29	39	49	122	76	64
		24.0%	45.5%	20.9%	24.6%	24.4%	10.9%	35.8%	41.5%	59.8%	13.4%	40.9%	40.8%
	Never Married	2,699	104	763	170	1,447	159	38	44	22	653	49	61
		53.7%	40.5%	60.9%	49.7%	50.5%	75.4%	46.9%	46.8%	26.8%	71.8%	26.3%	38.9%
	Married, Separated	665	17	172	58	389	20	6	6	5	93	53	26
		13.2%	6.6%	13.7%	17.0%	13.6%	9.5%	7.4%	6.4%	6.1%	10.2%	28.5%	16.6%
	Widowed	12	2	4	1	4	1	0	2	0	1	1	2
		0.2%	0.8%	0.3%	0.3%	0.1%	0.5%	0.0%	2.1%	0.0%	0.1%	0.5%	1.3%
Citizenship	Non-U.S.	487	121	254	74	29	2	0	63	58	0	127	127
		9.7%	47.1%	20.3%	21.6%	1.0%	0.9%	0.0%	67.0%	70.7%	0.0%	68.3%	80.9%
	U.S.	4,538	136	998	268	2,839	209	81	31	24	909	59	30
		90.3%	52.9%	79.7%	78.4%	99.0%	99.1%	100.0%	33.0%	29.3%	100.0%	31.7%	19.1%

Note: Among DWP-eligible adults in December 2007, 54 (1.0%) selected multiple races and 41 (0.8%) were missing race/ethnicity data. These numbers are included in the statewide total, but were excluded from the racial/ethnic groups.

Table 3. Family Composition, Residence, and Challenges of MFIP Paid Cases with Eligible Adults in December 2008 for Racial/Ethnic Groups and Subgroups

Family Characteristics of December 2008 MFIP Cases with Eligible Adults		All Cases	Racial/Ethnic Groups					Asian Subgroups			Black Subgroups		
			Asian	Black	Hispanic	White	American Indian	Asian American	Asian Immigrants		African American	Black Immigrants	
									Hmong	Non-Hmong		Somali	Non-Somali
Cases	Count	22,222	1,282	8,694	1,113	8,520	2,149	202	719	361	6,604	1,388	702
	Percent of MFIP Cases	100%	5.8%	39.1%	5.0%	38.3%	9.7%	0.9%	3.2%	1.6%	29.7%	6.2%	3.2%
Family Type Count of Cases	Natural / Adopted / Step Children	21,126	1,239	8,224	1,068	8,203	1,944	195	694	350	6,309	1,250	665
		95.1%	96.6%	94.6%	96.0%	96.3%	90.5%	96.5%	96.5%	97.0%	95.5%	90.1%	94.7%
	Pregnant Only	437	15	125	16	213	62	4	9	2	100	16	9
		2.0%	1.2%	1.4%	1.4%	2.5%	2.9%	2.0%	1.3%	0.6%	1.5%	1.2%	1.3%
	Relative Care	659	28	345	29	104	143	3	16	9	195	122	28
		3.0%	2.2%	4.0%	2.6%	1.2%	6.7%	1.5%	2.2%	2.5%	3.0%	8.8%	4.0%
Two Eligible Adults Cases	Count	2,937	450	742	127	1,214	346	34	230	186	411	230	101
	Percent of Cases	13.2%	35.1%	8.5%	11.4%	14.2%	16.1%	16.8%	32.0%	51.5%	6.2%	16.6%	14.4%
Two-caregiver Families	Count of Cases	4,396	716	1,264	230	1,625	478	55	451	210	746	381	137
	Percent of Cases	19.8%	55.9%	14.5%	20.7%	19.1%	22.2%	27.2%	62.7%	58.2%	11.3%	27.4%	19.5%
Two Caregivers Married	Count of Cases	2,102	588	607	89	708	89	20	370	198	208	295	104
	Percent of Two-caregiver Cases	47.8%	82.1%	48.0%	38.7%	43.6%	18.6%	36.4%	82.0%	94.3%	27.9%	77.4%	75.9%
Ineligible Caregivers: Count of Persons	SSI	827	243	283	23	234	32	20	206	17	188	78	17
	Percent of Ineligible Caregivers	69.4%	95.7%	73.3%	18.5%	72.4%	42.7%	87.0%	96.3%	77.3%	72.0%	86.7%	48.6%
	Undocumented Non-citizens	119	4	12	90	6	0	0	2	2	0	3	9
		10.0%	1.6%	3.1%	72.6%	1.9%	0.0%	0.0%	0.9%	9.1%	0.0%	3.3%	25.7%
	Reached 60th Month and Opted Out	167	3	61	2	57	37	0	5	3	53	5	3
		14.0%	1.2%	15.8%	1.6%	17.6%	49.3%	0.0%	2.3%	13.6%	20.3%	5.6%	8.6%
	Other	78	4	30	9	26	6	3	1	0	20	4	6
		6.5%	1.6%	7.8%	7.3%	8.0%	8.0%	13.0%	0.5%	0.0%	7.7%	4.4%	17.1%
Count of Ineligible Caregivers		1,191	254	386	124	323	75	23	214	22	261	90	35
Number of ALL Children in Family & Household	Count of Cases	22,222	1,282	8,694	1,113	8,520	2,149	202	719	361	6,604	1,388	702
	Mean	2.0	3.2	2.2	2.1	1.7	2.0	1.8	4.0	2.4	2.0	2.9	2.2
	Median	2	3	2	2	1	2	1	4	2	2	2	2
	Minimum	0	0	0	0	0	0	0	0	0	0	0	0
	Maximum	12	12	10	9	10	11	7	12	9	10	10	8
	Frequency of Cases	0	565	23	161	23	274	6	9	8	124	21	16
			2.5%	1.8%	1.9%	2.1%	3.2%	3.0%	1.3%	2.2%	1.9%	1.5%	2.3%
	1	9,512	330	3,528	418	4,110	893	97	120	113	2,841	407	280
			42.8%	25.7%	40.6%	37.6%	48.2%	48.0%	16.7%	31.3%	43.0%	29.3%	39.9%
	2	6,031	257	2,270	310	2,472	594	54	100	103	1,804	278	188
			27.1%	20.0%	26.1%	27.9%	29.0%	26.7%	13.9%	28.5%	27.3%	20.0%	26.8%
	3	3,206	188	1,303	222	1,096	333	22	107	59	985	234	84
			14.4%	14.7%	15.0%	19.9%	12.9%	10.9%	14.9%	16.3%	14.9%	16.9%	12.0%
	4 - 6	2,595	366	1,280	131	542	243	22	274	70	806	348	126
			11.7%	28.5%	14.7%	11.8%	6.4%	11.3%	38.1%	19.4%	12.2%	25.1%	17.9%

Table 3 – Page 2

MFIP Family Characteristics		All Cases	Racial/Ethnic Groups					Asian Subgroups			Black Subgroups			
			Asian	Black	Hispanic	White	American Indian	Asian American	Asian Immigrants		African American	Black Immigrants		
									Hmong	Non-Hmong		Somali	Non-Somali	
Number of ALL Children in Family & Household	7 - 9	289	108	142	9	24	6	1	99	8	39	95	8	
		1.3%	8.4%	1.6%	0.8%	0.3%	0.3%	0.5%	13.8%	2.2%	0.6%	6.8%	1.1%	
	10 or more	24	10	10	0	2	2	0	10	0	5	5	0	
		0.1%	0.8%	0.1%	0.0%	0.0%	0.1%	0.0%	1.4%	0.0%	0.1%	0.4%	0.0%	
	Count of All Children	45,387	4,088	18,988	2,367	14,895	4,225	373	2,843	872	13,382	4,074	1,532	
Number of Eligible Children in Family & Household	Count of Cases	22,222	1,282	8,694	1,113	8,520	2,149	202	719	361	6,604	1,388	702	
	Mean	2.0	3.1	2.1	2.0	1.7	1.9	1.8	3.8	2.4	1.9	2.9	2.1	
	Median	2	3	2	2	1	2	1	4	2	2	2	2	
	Minimum	0	0	0	0	0	0	0	0	0	0	0	0	
	Maximum	12	12	10	9	10	10	7	12	9	10	10	8	
	Frequency of Cases	0	956	29	325	39	449	100	8	11	10	275	27	23
			4.3%	2.3%	3.7%	3.5%	5.3%	4.7%	4.0%	1.5%	2.8%	4.2%	1.9%	3.3%
	1		9,688	337	3,645	420	4,141	908	100	123	114	2,953	412	280
			43.6%	26.3%	41.9%	37.7%	48.6%	42.3%	49.5%	17.1%	31.6%	44.7%	29.7%	39.9%
	2		5,953	262	2,241	314	2,411	601	51	105	106	1,769	283	189
			26.8%	20.4%	25.8%	28.2%	28.3%	28.0%	25.2%	14.6%	29.4%	26.8%	20.4%	26.9%
	3		3,043	196	1,222	220	1,029	317	23	113	60	902	236	84
			13.7%	15.3%	14.1%	19.8%	12.1%	14.8%	11.4%	15.7%	16.6%	13.7%	17.0%	12.0%
	4 - 6		2,310	349	1,134	114	468	215	19	267	63	674	342	118
			10.4%	27.2%	13.0%	10.2%	5.5%	10.0%	9.4%	37.1%	17.5%	10.2%	24.6%	16.8%
	7 - 9		255	102	120	6	21	6	1	93	8	28	84	8
			1.1%	8.0%	1.4%	0.5%	0.2%	0.3%	0.5%	12.9%	2.2%	0.4%	6.1%	1.1%
	10 or More		17	7	7	0	1	2	0	7	0	3	4	0
			0.1%	0.5%	0.1%	0.0%	0.0%	0.1%	0.0%	1.0%	0.0%	0.0%	0.3%	0.0%
		Count of Eligible Children	43,287	3,975	17,918	2,271	14,255	4,076	361	2,763	851	12,433	3,987	1,498
Ineligible Children: Count of Children & Percent of Ineligible Children	SSI Children	2,050	110	1,054	86	629	139	29	51	30	943	79	32	
	Percent of Ineligible Children	97.6%	97.3%	98.5%	89.6%	98.3%	93.3%	100.0%	104.1%	85.7%	99.1%	94.0%	94.1%	
	Undocumented Noncitizens	17	0	12	7	5	0	0	0	0	0	3	2	
		0.8%	0.0%	1.1%	7.3%	0.8%	0.0%	0.0%	0.0%	0.0%	0.0%	3.6%	5.9%	
	Other Ineligible Children	42	5	56	3	11	10	0	0	5	11	2	0	
		2.0%	4.4%	5.2%	3.1%	1.7%	6.7%	0.0%	0.0%	14.3%	1.2%	2.4%	0.0%	
	Count of All Ineligible Children	2,100	113	1,070	96	640	149	29	49	35	952	84	34	
	Percent of All Children	4.6%	2.8%	5.6%	4.1%	4.3%	3.5%	7.8%	1.7%	4.0%	7.1%	2.1%	2.2%	

Table 3 – Page 3

MFIP Family Characteristics		All Cases	Racial/Ethnic Groups					Asian Subgroups			Black Subgroups		
			Asian	Black	Hispanic	White	American Indian	Asian American	Asian Immigrants		African American	Black Immigrants	
									Hmong	Non-Hmong		Somali	Non-Somali
Age of Youngest Child (All Children)	Count of Cases	21,657	1,259	8,533	1,090	8,246	2,071	196	710	353	6,480	1,367	686
	Mean	4.2	4.6	4.3	3.5	4.1	3.9	2.8	4.5	5.9	4.2	4.9	4.2
	Median	2	3	2	2	2	2	1	3	5	2	2	2
	Minimum	0	0	0	0	0	0	0	0	0	0	0	0
	Maximum	19	19	19	18	19	19	17	18	19	18	18	19
Frequency of Cases	< 1 Year Old	5,013	270	1,800	289	2,005	516	69	150	51	1,329	295	176
		22.6%	21.1%	20.7%	26.0%	23.5%	24.0%	34.2%	20.9%	14.1%	20.1%	21.3%	25.1%
	1-5 Years Old	10,532	555	4,219	569	3,928	1,015	96	314	145	3,289	614	316
		47.4%	43.3%	48.5%	51.1%	46.1%	47.2%	47.5%	43.7%	40.2%	49.8%	44.2%	45.0%
	6-10 Years Old	3,212	232	1,301	131	1,204	296	14	144	74	1,008	205	88
		14.5%	18.1%	15.0%	11.8%	14.1%	13.8%	6.9%	20.0%	20.5%	15.3%	14.8%	12.5%
	11-12 Years Old	884	82	358	19	338	73	8	47	27	258	66	34
		4.0%	6.4%	4.1%	1.7%	4.0%	3.4%	4.0%	6.5%	7.5%	3.9%	4.8%	4.8%
	13-15 Years Old	1,196	79	510	47	440	111	6	41	32	363	103	44
		5.4%	6.2%	5.9%	4.2%	5.2%	5.2%	3.0%	5.7%	8.9%	5.5%	7.4%	6.3%
	>15 Years Old	820	41	345	35	331	60	3	14	24	233	84	28
		3.7%	3.2%	4.0%	3.1%	3.9%	2.8%	1.5%	1.9%	6.6%	3.5%	6.1%	4.0%
Region	Hennepin County	6,760	261	4,583	193	1,179	384	58	159	44	3,459	752	372
		30.4%	20.4%	52.7%	17.3%	13.8%	17.9%	28.7%	22.1%	12.2%	52.4%	54.2%	53.0%
	Ramsey County	5,050	865	2,547	305	1,107	121	85	517	263	2,141	258	148
		22.7%	67.5%	29.3%	27.4%	13.0%	5.6%	42.1%	71.9%	72.9%	32.4%	18.6%	21.1%
	Metro Suburban	3,031	71	754	176	1,872	68	25	23	23	563	110	81
		13.6%	5.5%	8.7%	15.8%	22.0%	3.2%	12.4%	3.2%	6.4%	8.5%	7.9%	11.5%
Family Violence	Greater Minnesota	7,381	85	810	439	4,362	1,576	34	20	31	441	268	101
		33.2%	6.6%	9.3%	39.4%	51.2%	73.3%	16.8%	2.8%	8.6%	6.7%	19.3%	14.4%
	MFIP Exemption or Extension	1,563	19	674	66	585	183	7	11	1	628	21	25
	During 2000 - 2008	7.0%	1.5%	7.8%	5.9%	6.9%	8.5%	3.5%	1.5%	0.3%	9.5%	1.5%	3.6%
	During 2006 - 2008	9,366	502	2,695	402	4,608	956	54	396	52	2,301	266	128
		42.1%	39.2%	31.0%	36.1%	54.1%	44.5%	26.7%	55.1%	14.4%	34.8%	19.2%	18.2%
Adult Serious Mental Health Diagnosis (All Caregivers)	During 2008	7,118	426	1,917	311	3,642	667	42	345	39	1,635	191	91
		32.0%	33.2%	22.0%	27.9%	42.7%	31.0%	20.8%	48.0%	10.8%	24.8%	13.8%	13.0%
	During 2006 - 2008	5,742	79	1,529	226	2,718	1,068	26	42	11	1,487	21	21
		25.8%	6.2%	17.6%	20.3%	31.9%	49.7%	12.9%	5.8%	3.0%	22.5%	1.5%	3.0%
	During 2008	3,490	40	883	128	1,700	661	14	20	6	856	14	13
		15.7%	3.1%	10.2%	11.5%	20.0%	30.8%	6.9%	2.8%	1.7%	13.0%	1.0%	1.9%
Adult Chemical Dependency Diagnosis (All Caregivers)	Family Assessment	2,407	49	933	116	1,016	235	15	23	11	853	42	38
		10.8%	3.8%	10.7%	10.4%	11.9%	10.9%	7.4%	3.2%	3.0%	12.9%	3.0%	5.4%
	Traditional Investigation	599	6	186	28	273	92	2	3	1	166	12	8
		2.7%	0.5%	2.1%	2.5%	3.2%	4.3%	1.0%	0.4%	0.3%	2.5%	0.9%	1.1%
	Child Maltreatment Determination	1,175	22	422	39	494	164	11	9	2	405	7	10
		5.3%	1.7%	4.9%	3.5%	5.8%	7.6%	5.4%	1.3%	0.6%	6.1%	0.5%	1.4%

Table 4. Family Composition, Residence, and Challenges of DWP Paid Cases with Eligible Adults in December 2008 by Racial/Ethnic Groups and Subgroups

Family Characteristics of December 2008 DWP Cases with Eligible Adults		All Cases	Racial/Ethnic Groups					Asian Subgroups			Black Subgroups			
			Asian	Black	Hispanic	White	American Indian	Asian American	Asian Immigrants		African American	Black Immigrants		
									Hmong	Non-Hmong		Somali	Non-Somali	
Cases	Count	4,055	178	1,059	273	2,309	168	61	67	50	779	157	123	
	Percent of MFIP Cases	100%	4.4%	26.1%	6.7%	56.9%	4.1%	1.5%	1.7%	1.2%	19.2%	3.9%	3.0%	
Family Type	Natural / Adopted / Step Children	3,668	166	920	256	2,117	145	54	63	49	682	129	109	
Count of Cases		90.5%	93.3%	86.9%	93.8%	91.7%	86.3%	88.5%	94.0%	98.0%	87.5%	82.2%	88.6%	
	Pregnant Only	314	11	106	13	162	19	7	4	0	76	21	9	
		7.7%	6.2%	10.0%	4.8%	7.0%	11.3%	11.5%	6.0%	0.0%	9.8%	13.4%	7.3%	
	Relative Care	73	1	33	4	30	4	0	0	1	21	7	5	
		1.8%	0.6%	3.1%	1.5%	1.3%	2.4%	0.0%	0.0%	2.0%	2.7%	4.5%	4.1%	
Two Eligible Adults Cases	Count	970	82	150	57	626	39	26	31	25	78	39	33	
	Percent of Cases	23.9%	46.1%	14.2%	20.9%	27.1%	23.2%	42.6%	46.3%	50.0%	10.0%	24.8%	26.8%	
Two-caregiver Families	Count of Cases	1,082	90	178	81	672	44	28	34	28	93	47	38	
	Percent of Cases	26.7%	50.6%	16.8%	29.7%	29.1%	26.2%	45.9%	50.7%	56.0%	11.9%	29.9%	30.9%	
Two Caregivers Married	Count of Cases	608	61	117	47	361	12	15	21	25	45	41	31	
	Percent of Two-caregiver Cases	56.2%	67.8%	65.7%	58.0%	53.7%	27.3%	53.6%	61.8%	89.3%	48.4%	87.2%	81.6%	
Ineligible Caregivers:	SSI	34	7	6	0	19	2	3	2	2	5	1	0	
		38.2%	87.5%	46.2%	0.0%	50.0%	100.0%	100.0%	100.0%	66.7%	83.3%	33.3%	0.0%	
Count of Persons	Undocumented Non-citizens	31	1	4	22	3	0	0	0	1	0	1	3	
		34.8%	12.5%	30.8%	91.7%	7.9%	0.0%	0.0%	0.0%	33.3%	0.0%	33.3%	75.0%	
	Disqualified	24	0	3	2	16	0	0	0	0	1	1	1	
		27.0%	0.0%	23.1%	8.3%	42.1%	0.0%	0.0%	0.0%	0.0%	16.7%	33.3%	25.0%	
	Count of Ineligible Caregivers	89	8	13	24	38	2	3	2	3	6	3	4	
Number of All Children in Family & Household	Count of Cases	4,055	178	1,059	273	2,309	168	61	67	50	779	157	123	
	Mean	1.8	2.3	1.8	2.2	1.7	1.6	1.9	3.0	2.1	1.7	2.3	2.1	
	Median	2	2	2	2	1	1	2	3	2	1	2	2	
	Minimum	0	0	0	0	0	0	0	0	1	0	0	0	
	Maximum	9	8	9	7	8	7	5	8	5	8	8	9	
	Frequency of Cases	0	346	11	117	13	181	19	7	4	0	84	24	9
	Percent of Cases		8.5%	6.2%	11.0%	4.8%	7.8%	11.3%	11.5%	6.0%	0.0%	10.8%	15.3%	7.3%
	1	1,609	48	405	78	979	71	20	10	18	314	44	47	
		39.7%	27.0%	38.2%	28.6%	42.4%	42.3%	32.8%	14.9%	36.0%	40.3%	28.0%	38.2%	
	2	1,186	54	265	77	719	49	17	18	19	208	27	30	
		29.2%	30.3%	25.0%	28.2%	31.1%	29.2%	27.9%	26.9%	38.0%	26.7%	17.2%	24.4%	
	3	563	29	143	63	300	19	10	12	7	106	21	16	
		13.9%	16.3%	13.5%	23.1%	13.0%	11.3%	16.4%	17.9%	14.0%	13.6%	13.4%	13.0%	
	4 - 6	327	31	121	39	123	9	7	18	6	65	37	19	
		8.1%	17.4%	11.4%	14.3%	5.3%	5.4%	11.5%	26.9%	12.0%	8.3%	23.6%	15.4%	

Table 4 – Page 2

DWP Family Characteristics		All Cases	Racial/Ethnic Groups					Asian Subgroups			Black Subgroups			
			Asian	Black	Hispanic	White	American Indian	Asian American	Asian Immigrants		African American	Black Immigrants		
									Hmong	Non-Hmong		Somali	Non-Somali	
Number of All Children in Family & Household	7 - 9	24	4	8	3	7	1	0	5	0	2	4	2	
		0.6%	2.2%	0.8%	1.1%	0.3%	0.6%	0.0%	7.5%	0.0%	0.3%	2.5%	1.6%	
	10 or more	0	0	0	0	0	0	0	0	0	0	0	0	
		0.0%	0.0%	0.0%	0.0%	0.0%	0.0%	0.0%	0.0%	0.0%	0.0%	0.0%	0.0%	
Count of All Children		7,262	417	1,957	612	3,890	270	113	199	105	1,341	360	256	
Number of Eligible Children in Family & Household	Count of Cases	4,055	178	1,059	273	2,309	168	61	67	50	779	157	123	
	Mean	1.8	2.3	1.8	2.2	1.7	1.6	1.8	3.0	2.1	1.6	2.3	2.0	
	Median	2	2	1	2	1	1	2	3	2	1	2	2	
	Minimum	0	0	0	0	0	0	0	0	1	0	0	0	
	Maximum	9	8	9	7	8	7	5	8	5	8	8	9	
	Frequency of Cases	0	374	12	132	13	190	22	7	5	0	98	24	10
	Percent of Cases		9.2%	6.7%	12.5%	4.8%	8.2%	13.1%	11.5%	7.5%	0.0%	12.6%	15.3%	8.1%
	1	1,647	49	421	82	994	72	20	9	20	327	46	48	
		40.6%	27.5%	39.8%	30.0%	43.0%	42.9%	32.8%	13.4%	40.0%	42.0%	29.3%	39.0%	
	2	1,172	52	255	78	719	46	17	18	17	199	28	28	
		28.9%	29.2%	24.1%	28.6%	31.1%	27.4%	27.9%	26.9%	34.0%	25.5%	17.8%	22.8%	
	3	531	30	129	61	284	19	11	12	7	93	19	17	
		13.1%	16.9%	12.2%	22.3%	12.3%	11.3%	18.0%	17.9%	14.0%	11.9%	12.1%	13.8%	
	4 - 6	308	30	115	36	115	8	6	18	6	61	36	18	
		7.6%	16.9%	10.9%	13.2%	5.0%	4.8%	9.8%	26.9%	12.0%	7.8%	22.9%	14.6%	
	7 - 9	23	5	7	3	7	1	0	5	0	1	4	2	
		0.6%	2.8%	0.7%	1.1%	0.3%	0.6%	0.0%	7.5%	0.0%	0.1%	2.5%	1.6%	
	10 or More	0	0	0	0	0	0	0	0	0	0	0	0	
		0.0%	0.0%	0.0%	0.0%	0.0%	0.0%	0.0%	0.0%	0.0%	0.0%	0.0%	0.0%	
	Count of Eligible Children		7,085	413	1,874	599	3,825	261	112	198	103	1,270	353	251
Ineligible Children: Count of Children & Percent of Ineligible Children	SSI Children	157	5	70	10	60	7	3	1	1	2	67	1	
	Percent of Ineligible Children	88.7%	100.0%	89.7%	76.9%	92.3%	77.8%	100.0%	100.0%	100.0%	100.0%	94.4%	20.0%	
	Undocumented Noncitizen	10	0	2	3	1	0	0	0	0	0	0	4	
		5.6%	0.0%	2.6%	23.1%	1.5%	0.0%	0.0%	0.0%	0.0%	0.0%	0.0%	80.0%	
	Other Ineligible Children	10	0	1	0	4	2	0	0	0	0	4	0	
		5.6%	0.0%	1.3%	0.0%	6.2%	22.2%	0.0%	0.0%	0.0%	0.0%	5.6%	0.0%	
	Count of All Ineligible Children	177	5	78	13	65	9	3	1	1	2	71	5	
Percent of All Children		2.4%	1.2%	4.0%	2.1%	1.7%	3.3%	2.7%	0.5%	1.0%	0.1%	19.7%	2.0%	

Table 4 – Page 3

DWP Family Characteristics		All Cases	Racial/Ethnic Groups					Asian Subgroups			Black Subgroups		
			Asian	Black	Hispanic	White	American Indian	Asian American	Asian Immigrants		African American	Black Immigrants	
									Hmong	Non-Hmong		Somali	Non-Somali
Age of Youngest Child (All Children)	Count of Cases	3,709	167	942	260	2,128	149	54	63	50	695	133	114
	Mean	5.0	4.4	5.2	4.3	5.0	5.1	3.4	4.3	5.5	5.6	3.5	4.5
	Median	3	2	3	3	3	3	2	2	3	4	2	3
	Minimum	0	0	0	0	0	0	0	0	0	0	0	0
	Maximum	18	18	18	17	18	18	14	16	18	18	18	18
Frequency of Cases	< 1 Year Old	617	37	147	45	350	26	17	17	3	85	41	21
		15.2%	20.8%	13.9%	16.5%	15.2%	15.5%	27.9%	25.4%	6.0%	10.9%	26.1%	17.1%
	1-5 Years Old	1,772	76	450	135	1,006	69	24	25	27	334	59	57
		43.7%	42.7%	42.5%	49.5%	43.6%	41.1%	39.3%	37.3%	54.0%	42.9%	37.6%	46.3%
	6-10 Years Old	703	26	169	54	416	29	6	10	10	129	21	19
		17.3%	14.6%	16.0%	19.8%	18.0%	17.3%	9.8%	14.9%	20.0%	16.6%	13.4%	15.4%
	11-12 Years Old	191	8	57	5	111	7	4	3	1	44	4	9
		4.7%	4.5%	5.4%	1.8%	4.8%	4.2%	6.6%	4.5%	2.0%	5.6%	2.5%	7.3%
	13-15 Years Old	265	17	75	13	150	7	3	7	7	65	4	6
		6.5%	9.6%	7.1%	4.8%	6.5%	4.2%	4.9%	10.4%	14.0%	8.3%	2.5%	4.9%
	>15 Years Old	161	3	44	8	95	11	0	1	2	38	4	2
		4.0%	1.7%	4.2%	2.9%	4.1%	6.5%	0.0%	1.5%	4.0%	4.9%	2.5%	1.6%
Region	Hennepin County	868	43	546	34	198	29	13	19	11	413	74	59
		21.4%	24.2%	51.6%	12.5%	8.6%	17.3%	21.3%	28.4%	22.0%	53.0%	47.1%	48.0%
	Ramsey County	523	80	209	37	173	18	25	41	14	170	21	18
		12.9%	44.9%	19.7%	13.6%	7.5%	10.7%	41.0%	61.2%	28.0%	21.8%	13.4%	14.6%
	Metro Suburban	923	31	165	54	640	13	14	6	11	115	23	27
		22.8%	17.4%	15.6%	19.8%	27.7%	7.7%	23.0%	9.0%	22.0%	14.8%	14.6%	22.0%
	Greater Minnesota	1,741	24	139	148	1,298	108	9	1	14	81	39	19
		42.9%	13.5%	13.1%	54.2%	56.2%	64.3%	14.8%	1.5%	28.0%	10.4%	24.8%	15.4%
Family Violence	MFIP Exemption or Extension	55	0	8	4	33	1	2	0	0	12	1	2
	During 2000 - 2008	1.4%	0.0%	0.8%	1.5%	1.4%	0.6%	3.3%	0.0%	0.0%	1.5%	0.6%	1.6%
Adult Serious Mental Health Diagnosis (All Caregivers)	During 2006 - 2008	1,021	36	121	54	749	51	13	15	8	98	15	8
		25.2%	20.2%	11.4%	19.8%	32.4%	30.4%	21.3%	22.4%	16.0%	12.6%	9.6%	6.5%
	During 2008	703	24	75	34	532	33	9	10	5	64	8	3
		17.3%	13.5%	7.1%	12.5%	23.0%	19.6%	14.8%	14.9%	10.0%	8.2%	5.1%	2.4%
Adult Chemical Dependency Diagnosis (All Caregivers)	During 2006 - 2008	613	11	81	27	419	63	7	3	1	74	1	6
		15.1%	6.2%	7.6%	9.9%	18.1%	37.5%	11.5%	4.5%	2.0%	9.5%	0.6%	4.9%
	During 2008	360	3	46	9	257	38	3	0	0	44	1	1
		8.9%	1.7%	4.3%	3.3%	11.1%	22.6%	4.9%	0.0%	0.0%	5.6%	0.6%	0.8%
Child Protection 2006 - 2008 (All Caregivers)	Family Assessment	261	9	56	12	162	15	3	4	2	44	3	9
		6.4%	5.1%	5.3%	4.4%	7.0%	8.9%	4.9%	6.0%	4.0%	5.6%	1.9%	7.3%
	Traditional Investigation	86	0	10	6	67	3	0	0	0	10	0	0
		2.1%	0.0%	0.9%	2.2%	2.9%	1.8%	0.0%	0.0%	0.0%	1.3%	0.0%	0.0%
	Child Maltreatment Determination	107	2	20	12	63	8	1	1	0	19	0	1
		2.6%	1.1%	1.9%	4.4%	2.7%	4.8%	1.6%	1.5%	0.0%	2.4%	0.0%	0.8%

Table 5. Economic Characteristics of MFIP Paid Cases with Eligible Adults in December 2008 by Racial/Ethnic Groups and Subgroups

Economic Characteristics of December 2008 MFIP Cases with Eligible Adults		All Cases	Racial/Ethnic Groups					Asian Subgroups			Black Subgroups		
			Asian	Black	Hispanic	White	American Indian	Asian American	Asian Immigrants		African American	Black Immigrants	
									Hmong	Non-Hmong		Somali	Non-Somali
Cases	Count	22,222	1,282	8,694	1,113	8,520	2,149	202	719	361	6,604	1,388	702
	Percent of All Cases	100%	5.8%	39.1%	5.0%	38.3%	9.7%	0.9%	3.2%	1.6%	29.7%	6.2%	3.2%
Counted Months: Sept. 1996 to Dec. 2008	Mean	25.7	26.6	29.3	23.1	23.5	22.9	16.2	30.6	20.2	31.6	24.5	19.3
	Median	20	25	25	16	18	16	9	28	9	30	18	14
Frequency of Cases	No Counted Months	1,937	119	564	127	678	405	33	56	30	421	72	71
Percent of All Cases		8.7%	9.3%	6.5%	11.4%	8.0%	18.8%	16.3%	7.8%	8.3%	6.4%	5.2%	10.1%
	1 - 12 Months	6,440	401	2,055	348	2,937	541	78	113	210	1,431	367	257
		29.0%	31.3%	23.6%	31.3%	34.5%	25.2%	38.6%	15.7%	58.2%	21.7%	26.4%	36.6%
	13 - 24 Months	3,973	180	1,558	204	1,609	334	34	93	53	1,064	349	145
		17.9%	14.0%	17.9%	18.3%	18.9%	15.5%	16.8%	12.9%	14.7%	16.1%	25.1%	20.7%
	25 - 36 Months	2,849	158	1,189	139	1,032	270	23	115	20	877	229	83
		12.8%	12.3%	13.7%	12.5%	12.1%	12.6%	11.4%	16.0%	5.5%	13.3%	16.5%	11.8%
	37 - 42 Months	1,154	90	459	40	425	122	7	74	9	374	55	30
		5.2%	7.0%	5.3%	3.6%	5.0%	5.7%	3.5%	10.3%	2.5%	5.7%	4.0%	4.3%
	43 - 48 Months	1,038	87	420	45	377	88	3	82	2	334	57	29
		4.7%	6.8%	4.8%	4.0%	4.4%	4.1%	1.5%	11.4%	0.6%	5.1%	4.1%	4.1%
	49 - 54 Months	871	22	421	40	292	79	5	13	4	330	69	22
		3.9%	1.7%	4.8%	3.6%	3.4%	3.7%	2.5%	1.8%	1.1%	5.0%	5.0%	3.1%
	55 - 60 Months	3,960	225	2,028	170	1,170	310	19	173	33	1,773	190	65
		17.8%	17.6%	23.3%	15.3%	13.7%	14.4%	9.4%	24.1%	9.1%	26.8%	13.7%	9.3%
MFIP Exempt from Time Limit	Count of Cases	2,120	110	628	115	503	717	35	60	15	486	70	72
	Percent of All Cases	9.5%	8.6%	7.2%	10.3%	5.9%	33.4%	17.3%	8.3%	4.2%	7.4%	5.0%	10.3%
MFIP Extensions	Count	2,823	167	1,466	116	829	208	16	126	25	1,297	123	46
	Percent of MFIP Cases	12.7%	13.0%	16.9%	10.4%	9.7%	9.7%	7.9%	17.5%	6.9%	19.6%	8.9%	6.6%
Total Extension Months	Mean	29.4	43.6	29.8	26.4	26.8	26.9	34.4	44.4	43.8	30.0	30.2	23.4
	Median	25	43	26	20	22	21	34	46	42	26	28	18
	1 - 12 Months	821	19	404	40	275	66	4	12	3	357	32	15
	Percent of Extended Cases	29.1%	11.4%	27.6%	34.5%	33.2%	31.7%	25.0%	9.5%	12.0%	27.5%	26.0%	32.6%
	13 - 24 Months	565	21	286	24	179	49	2	14	5	249	25	12
		20.0%	12.6%	19.5%	20.7%	21.6%	23.6%	12.5%	11.1%	20.0%	19.2%	20.3%	26.1%
	25 - 36 Months	452	20	246	18	131	33	3	15	2	216	23	7
		16.0%	12.0%	16.8%	15.5%	15.8%	15.9%	18.8%	11.9%	8.0%	16.7%	18.7%	15.2%
	More than 36 Months	985	107	530	34	244	60	7	85	15	475	43	12
		34.9%	64.1%	36.2%	29.3%	29.4%	28.8%	43.8%	67.5%	60.0%	36.6%	35.0%	26.1%

Table 5 – Page 2

MFIP Economic Characteristics		All Cases	Racial/Ethnic Groups					Asian Subgroups			Black Subgroups		
			Asian	Black	Hispanic	White	American Indian	Asian American	Asian Immigrants		African American	Black Immigrants	
									Hmong	Non-Hmong		Somali	Non-Somali
Extension Reasons	Ill or incapacitated	1,001	35	460	32	354	102	4	27	4	408	37	15
	Percent of Extended Cases	35.5%	21.0%	31.4%	27.6%	42.7%	49.0%	25.0%	21.4%	16.0%	31.5%	30.1%	32.6%
	Special Medical Criteria	518	39	278	25	147	21	4	31	4	255	15	8
		18.3%	23.4%	19.0%	21.6%	17.7%	10.1%	25.0%	24.6%	16.0%	19.7%	12.2%	17.4%
	Care of Ill or Incapacitated	236	20	112	9	79	13	3	17	0	104	5	3
		8.4%	12.0%	7.6%	7.8%	9.5%	6.3%	18.8%	13.5%	0.0%	8.0%	4.1%	6.5%
	IQ between 70 and 80	407	61	268	21	46	6	2	46	13	235	25	8
		14.4%	36.5%	18.3%	18.1%	5.5%	2.9%	12.5%	36.5%	52.0%	18.1%	20.3%	17.4%
	Mentally Ill	318	2	143	18	125	28	1	1	0	129	9	5
		11.3%	1.2%	9.8%	15.5%	15.1%	13.5%	6.3%	0.8%	0.0%	9.9%	7.3%	10.9%
	Employment Required Hours	133	8	75	2	32	15	1	6	1	57	15	3
		4.7%	4.8%	5.1%	1.7%	3.9%	7.2%	6.3%	4.8%	4.0%	4.4%	12.2%	6.5%
	Family Violence Waiver	68	0	36	2	15	14	0	0	0	35	1	0
		2.4%	0.0%	2.5%	1.7%	1.8%	6.7%	0.0%	0.0%	0.0%	2.7%	0.8%	0.0%
	Unemployable	39	2	23	2	8	4	1	0	1	12	6	5
		1.4%	1.2%	1.6%	1.7%	1.0%	1.9%	6.3%	0.0%	4.0%	0.9%	4.9%	10.9%
	Learning Disabled	81	3	49	4	22	3	0	1	2	47	2	0
		2.9%	1.8%	3.3%	3.4%	2.7%	1.4%	0.0%	0.8%	8.0%	3.6%	1.6%	0.0%
	IQ Less than 70	22	0	20	0	1	0	0	0	0	14	6	0
		0.8%	0.0%	1.4%	0.0%	0.1%	0.0%	0.0%	0.0%	0.0%	1.1%	4.9%	0.0%
	Appeal	0	0	0	0	0	0	0	0	0	0	0	0
		0.0%	0.0%	0.0%	0.0%	0.0%	0.0%	0.0%	0.0%	0.0%	0.0%	0.0%	0.0%
New MFIP Cases in Year 2008	Minnesota Residents	3,511	141	1,033	182	1,765	291	49	65	27	799	123	111
	Percent of New Cases	80.4%	45.0%	72.0%	77.8%	89.8%	93.9%	84.5%	78.3%	15.7%	77.8%	50.8%	66.9%
	Percent of All Cases	15.8%	11.0%	11.9%	16.4%	20.7%	13.5%	24.3%	9.0%	7.5%	12.1%	8.9%	15.8%
	Moved into State in 2008	857	172	402	52	201	19	9	18	145	228	119	55
	Percent of New Cases	19.6%	55.0%	28.0%	22.2%	10.2%	6.1%	15.5%	21.7%	84.3%	22.2%	49.2%	33.1%
	Percent of All Cases	3.9%	13.4%	4.6%	4.7%	2.4%	0.9%	4.5%	2.5%	40.2%	3.5%	8.6%	7.8%
	Total of New Cases	4,368	313	1,435	234	1,966	310	58	83	172	1,027	242	166
	Percent of All Cases	19.7%	24.4%	16.5%	21.0%	23.1%	14.4%	28.7%	11.5%	47.6%	15.6%	17.4%	23.6%

Table 5 – Page 3

MFIP Economic Characteristics		All Cases	Racial/Ethnic Groups					Asian Subgroups			Black Subgroups		
			Asian	Black	Hispanic	White	American Indian	Asian American	Asian Immigrants		African American	Black Immigrants	
									Hmong	Non-Hmong		Somali	Non-Somali
MFIP Cash Grants	Mean	\$349	\$406	\$354	\$357	\$326	\$385	\$350	\$418	\$415	\$361	\$329	\$340
MFIP Food Portion	Mean	\$362	\$489	\$369	\$366	\$333	\$372	\$354	\$549	\$446	\$354	\$435	\$382
Food Support - Uncle Harry Cases	Mean of Cases Receiving Percent of Cases in Column	\$123 12.5%	\$132 25.1%	\$122 14.0%	\$132 9.3%	\$119 10.4%	\$132 9.5%	\$123 13.4%	\$133 33.1%	\$131 15.8%	\$121 14.8%	\$130 12.8%	\$126 8.0%
Food Support - Other Stand Alone	Mean of Cases Receiving Percent of Cases in Column	\$372 5.3%	\$494 2.8%	\$383 4.9%	\$371 5.1%	\$361 6.1%	\$353 4.9%	\$323 3.5%	\$545 2.4%	\$523 3.3%	\$378 5.0%	\$435 4.8%	\$322 4.4%
Food-Only Assistance	Mean	\$297	\$403	\$311	\$285	\$262	\$292	\$319	\$426	\$385	\$265	\$389	\$333
	Count of Cases	2,689	224	1,126	122	1,016	162	26	143	55	653	357	116
	Percent of All Cases	12.1%	17.5%	13.0%	11.0%	11.9%	7.5%	12.9%	19.9%	15.2%	9.9%	25.7%	16.5%
Income / Working	Count of Cases	7,666	505	2,840	392	3,180	607	67	289	149	1,953	643	244
	Percent of All Cases	34.5%	39.4%	32.7%	35.2%	37.3%	28.2%	33.2%	40.2%	41.3%	29.6%	46.3%	34.8%
December Total Earned Income	Mean of Working Cases Median	\$872 \$759	\$1,225 \$1,182	\$881 \$778	\$832 \$733	\$798 \$679	\$962 \$818	\$984 \$829	\$1,289 \$1,240	\$1,209 \$1,196	\$821 \$726	\$1,029 \$943	\$970 \$840
December Budgeted Earnings	Mean of Working Cases Median	\$511 \$457	\$816 \$822	\$543 \$491	\$501 \$467	\$431 \$389	\$520 \$498	\$622 \$641	\$893 \$896	\$705 \$746	\$474 \$427	\$711 \$659	\$579 \$504
December Work Hours	Mean of Working Cases Median	97 92	135 144	98 94	91 86	90 83	109 103	97 84	142 148	139 150	91 87	115 110	110 104
Percent of All Cases	1 - 79 Hours	3,082 13.9%	108 8.4%	1,068 12.3%	173 15.5%	1,459 17.1%	207 9.6%	29 14.4%	47 6.5%	32 8.9%	827 12.5%	163 11.7%	78 11.1%
	80 - 119 Hours	1,919 8.6%	90 7.0%	762 8.8%	86 7.7%	801 9.4%	148 6.9%	14 6.9%	51 7.1%	25 6.9%	505 7.6%	194 14.0%	63 9.0%
	120 - 159 Hours	1,377 6.2%	106 8.3%	542 6.2%	79 7.1%	507 6.0%	115 5.4%	8 4.0%	67 9.3%	31 8.6%	369 5.6%	135 9.7%	38 5.4%
	160 Hours or More	1,181 5.3%	195 15.2%	417 4.8%	50 4.5%	377 4.4%	130 6.0%	16 7.9%	119 16.6%	60 16.6%	217 3.3%	140 10.1%	60 8.5%
Wages Reported for 2nd Quarter 2007 for	Mean of Cases with UI Wages Median	\$2,917 \$2,236	\$3,371 \$3,200	\$2,698 \$2,075	\$2,993 \$2,218	\$3,044 \$2,264	\$2,979 \$2,319	\$2,866 \$2,135	\$3,552 \$3,572	\$3,294 \$2,728	\$2,490 \$1,861	\$3,309 \$2,778	\$3,327 \$2,634
Jobs Covered by Unemployment Insurance	Count of Cases Percent of All Cases	10,655 47.9%	553 43.1%	3,869 44.5%	529 47.5%	4,533 53.2%	949 44.2%	106 52.5%	340 47.3%	107 29.6%	2,895 43.8%	644 46.4%	330 47.0%

Table 5 – Page 4

MFIP Economic Characteristics		All Cases	Racial/Ethnic Groups					Asian Subgroups			Black Subgroups		
			Asian	Black	Hispanic	White	American Indian	Asian American	Asian Immigrants		African American	Black Immigrants	
									Hmong	Non-Hmong		Somali	Non-Somali
Employment Services Sanctions	10% ES Sanction	382	15	107	35	182	30	5	8	2	80	14	13
	30% ES Sanction	1,016	33	344	81	432	110	13	18	2	300	23	21
	Cases with ES Sanctions	1,398	48	451	116	614	140	18	26	4	380	37	34
	Percent of All Cases	6.3%	3.7%	5.2%	10.4%	7.2%	6.5%	8.9%	3.6%	1.1%	5.8%	2.7%	4.8%
	Six Counted Sanction Months	170	11	65	9	62	20	3	7	1	60	4	1
	Percent of All Cases	0.8%	0.9%	0.7%	0.8%	0.7%	0.9%	1.5%	1.0%	0.3%	0.9%	0.3%	0.1%
Housing Subsidy	Mean	\$666	\$660	\$738	\$602	\$556	\$627	\$553	\$681	\$629	\$754	\$719	\$663
	Count of Cases	6,580	291	3,540	224	2,070	343	36	226	29	2,378	898	264
	Percent of All Cases	29.6%	22.7%	40.7%	20.1%	24.3%	16.0%	17.8%	31.4%	8.0%	36.0%	64.7%	37.6%
Deductions to MFIP Grant	Housing (Maximum \$50 per case)	3,877	114	2,189	135	1,190	191	21	77	16	1,341	667	181
	Percent of All Cases	17.4%	8.9%	25.2%	12.1%	14.0%	8.9%	10.4%	10.7%	4.4%	20.3%	48.1%	25.8%
	Mean Deduction > \$0	\$50	\$50	\$50	\$50	\$50	\$50	\$50	\$50	\$50	\$50	\$50	\$50
Cases Receiving SSI	Count of Cases	2,459	303	1,106	93	763	152	26	241	36	910	151	45
	Percent of Cases	11.1%	23.6%	12.7%	8.4%	9.0%	7.1%	12.9%	33.5%	10.0%	13.8%	10.9%	6.4%
Family Cap	One Child	2,650	192	1,186	121	744	337	25	145	22	935	180	71
	Two or More Children	662	55	329	35	132	93	3	52	0	237	72	20
	Percentage of Cases	14.9%	19.3%	17.4%	14.0%	10.3%	20.0%	13.9%	27.4%	6.1%	17.7%	18.2%	13.0%
Child Support Disbursements	Current Mean	\$221	\$296	\$212	\$223	\$230	\$191	\$279	\$320	\$285	\$195	\$290	\$285
	Median	\$195	\$252	\$192	\$196	\$196	\$178	\$265	\$372	\$231	\$172	\$284	\$296
	Count	2,688	54	823	130	1,459	159	21	21	12	674	93	56
	Percent of All Cases	12.1%	4.2%	9.5%	11.7%	17.1%	7.4%	10.4%	2.9%	3.3%	10.2%	6.7%	8.0%
	Sum	\$598,830	\$16,007	\$174,398	\$28,958	\$335,886	\$30,393	\$5,865	\$6,725	\$3,417	\$131,507	\$26,924	\$15,967
	Arrears Mean	\$127	\$150	\$111	\$125	\$137	\$105	\$171	\$140	\$137	\$103	\$153	\$130
	Median	\$85	\$118	\$78	\$84	\$90	\$83	\$128	\$59	\$130	\$72	\$90	\$120
	Count	2,413	47	739	111	1,328	138	17	18	12	594	87	58
	Percent of All Cases	10.9%	3.7%	8.5%	10.0%	15.6%	6.4%	8.4%	2.5%	3.3%	9.0%	6.3%	8.3%
	Sum	\$307,632	\$7,052	\$82,012	\$13,825	\$182,591	\$14,520	\$2,901	\$2,513	\$1,638	\$61,138	\$13,349	\$7,526
	Total Mean	\$270	\$355	\$253	\$271	\$280	\$236	\$381	\$355	\$316	\$237	\$312	\$317
	Median	\$220	\$301	\$208	\$238	\$221	\$189	\$347	\$308	\$250	\$191	\$265	\$318
	Count	3,353	65	1,015	158	1,850	190	23	26	16	812	129	74
	Percent of All Cases	15.1%	5.1%	11.7%	14.2%	21.7%	8.8%	11.4%	3.6%	4.4%	12.3%	9.3%	10.5%
	Sum	\$906,462	\$23,059	\$256,411	\$42,783	\$518,477	\$44,914	\$8,765	\$9,238	\$5,056	\$192,645	\$40,273	\$23,493

Table 6. Economic Characteristics of DWP Paid Cases with Eligible Adults in December 2008 by Racial/Ethnic Groups and Subgroups

Economic Characteristics of December 2008 DWP Cases with Eligible Adults		All Cases	Racial/Ethnic Groups					Asian Subgroups			Black Subgroups		
			Asian	Black	Hispanic	White	American Indian	Asian American	Asian Immigrants		African American	Black Immigrants	
									Hmong	Non-Hmong		Somali	Non-Somali
Cases	Count	4,055	178	1,059	273	2,309	168	61	67	50	779	157	123
	Percent of All Cases	100%	4.4%	26.1%	6.7%	56.9%	4.1%	1.5%	1.7%	1.2%	19.2%	3.9%	3.0%
Counted Months: Sept. 1996 to Dec. 2008	Mean	9.3	6.2	12.8	9.8	7.6	14.3	4.8	7.5	8.2	13.5	12.4	7.1
	Median	0	0	2	2	0	6	0	0	0	3	4	0
Frequency of Cases Percent of All Cases	No Counted Months	2,232	118	510	130	1,362	71	46	40	32	367	68	75
		55.0%	66.3%	48.2%	47.6%	59.0%	42.3%	75.4%	59.7%	64.0%	47.1%	43.3%	61.0%
	1 - 12 Months	739	23	173	62	435	32	5	13	5	119	33	21
		18.2%	12.9%	16.3%	22.7%	18.8%	19.0%	8.2%	19.4%	10.0%	15.3%	21.0%	17.1%
	13 - 24 Months	446	21	134	42	221	19	6	8	7	101	18	15
		11.0%	11.8%	12.7%	15.4%	9.6%	11.3%	9.8%	11.9%	14.0%	13.0%	11.5%	12.2%
	25 - 36 Months	318	9	110	19	159	20	2	3	4	87	17	6
		7.8%	5.1%	10.4%	7.0%	6.9%	11.9%	3.3%	4.5%	8.0%	11.2%	10.8%	4.9%
	37 - 42 Months	103	1	38	5	49	8	1	0	0	29	8	1
		2.5%	0.6%	3.6%	1.8%	2.1%	4.8%	1.6%	0.0%	0.0%	3.7%	5.1%	0.8%
	43 - 48 Months	78	2	32	7	31	5	1	1	0	23	7	2
		1.9%	1.1%	3.0%	2.6%	1.3%	3.0%	1.6%	1.5%	0.0%	3.0%	4.5%	1.6%
	49 - 54 Months	82	4	39	7	26	6	0	2	2	32	6	1
		2.0%	2.2%	3.7%	2.6%	1.1%	3.6%	0.0%	3.0%	4.0%	4.1%	3.8%	0.8%
	55 - 60 Months	57	0	23	1	26	7	0	0	0	21	0	2
		1.4%	0.0%	2.2%	0.4%	1.1%	4.2%	0.0%	0.0%	0.0%	2.7%	0.0%	1.6%
Months since Start of DWP Eligibility	1st Month	1,120	57	252	89	668	38	20	24	13	188	35	29
		27.6%	32.0%	23.8%	32.6%	28.9%	22.6%	32.8%	35.8%	26.0%	24.1%	22.3%	23.6%
	2nd Month	1,179	48	315	73	669	54	15	18	15	229	48	38
		29.1%	27.0%	29.7%	26.7%	29.0%	32.1%	24.6%	26.9%	30.0%	29.4%	30.6%	30.9%
	3rd Month	945	42	265	57	525	42	15	17	10	197	38	30
		23.3%	23.6%	25.0%	20.9%	22.7%	25.0%	24.6%	25.4%	20.0%	25.3%	24.2%	24.4%
	4th Month	811	31	227	54	447	34	11	8	12	165	36	26
		20.0%	17.4%	21.4%	19.8%	19.4%	20.2%	18.0%	11.9%	24.0%	21.2%	22.9%	21.1%
DWP Cases with No MFIP History	Minnesota Residents	1,498	60	296	78	993	47	29	15	16	205	40	51
	Percent of New Cases	72.5%	60.6%	54.1%	66.1%	82.6%	77.0%	69.0%	51.7%	57.1%	51.5%	54.8%	67.1%
	Percent of All Cases	36.9%	33.7%	28.0%	28.6%	43.0%	28.0%	47.5%	22.4%	32.0%	26.3%	25.5%	41.5%
	Moved into State in 2008	567	39	251	40	209	14	13	14	12	193	33	25
	Percent of New Cases	27.5%	39.4%	45.9%	33.9%	17.4%	23.0%	31.0%	48.3%	42.9%	48.5%	45.2%	32.9%
	Percent of All Cases	14.0%	21.9%	23.7%	14.7%	9.1%	8.3%	21.3%	20.9%	24.0%	24.8%	21.0%	20.3%
	Total of New Cases	2,065	99	547	118	1,202	61	42	29	28	398	73	76
	Percent of All Cases	50.9%	55.6%	51.7%	43.2%	52.1%	36.3%	68.9%	43.3%	56.0%	51.1%	46.5%	61.8%

Table 6 – Page 2

DWP Economic Characteristics		All Cases	Racial/Ethnic Groups					Asian Subgroups			Black Subgroups		
			Asian	Black	Hispanic	White	American Indian	Asian American	Asian Immigrants		African American	Black Immigrants	
									Hmong	Non-Hmong		Somali	Non-Somali
DWP Cash Grants	Mean	\$371	\$399	\$364	\$376	\$374	\$342	\$382	\$402	\$415	\$355	\$378	\$401
Food Support -	Mean of Cases Receiving	\$0	\$0	\$0	\$0	\$0	\$0	\$0	\$0	\$0	\$0	\$0	\$0
Uncle Harry Cases	Percent of Cases in Column	0.0%	0.0%	0.0%	0.0%	0.0%	0.0%	0.0%	0.0%	0.0%	0.0%	0.0%	0.0%
Food Support -	Mean of Cases Receiving	\$367	\$452	\$370	\$386	\$356	\$376	\$425	\$517	\$398	\$357	\$432	\$369
Other Standalone	Percent of Cases in Column	90.8%	88.8%	92.0%	90.1%	90.3%	95.2%	88.5%	89.6%	88.0%	91.4%	95.5%	91.1%
Working at Latest Report	Count of Cases	1,718	77	349	127	1,085	47	24	28	25	255	44	50
	Percent of All Cases	42.4%	43.3%	33.0%	46.5%	47.0%	28.0%	39.3%	41.8%	50.0%	32.7%	28.0%	40.7%
Earned Income at Latest Report	Mean of Working Cases	\$934	\$1,192	\$908	\$1,034	\$914	\$926	\$1,116	\$1,191	\$1,265	\$875	\$929	\$1,056
	Median	\$754	\$976	\$705	\$921	\$749	\$634	\$789	\$997	\$1,051	\$654	\$806	\$888
December Budgeted Earnings	Mean of Working Cases	\$565	\$903	\$589	\$796	\$532	\$420	\$1,571	\$580	\$732	\$618	\$517	\$491
	Median	\$485	\$721	\$468	\$635	\$481	\$311	\$1,571	\$580	\$684	\$471	\$448	\$476
December Work Hours	Mean of Working Cases	0	0	0	0	0	0	0	0	0	0	0	0
	Median	0	0	0	0	0	0	0	0	0	0	0	0
Percent of All Cases	1 - 79 Hours	754	11	163	52	477	22	12	7	5	129	14	20
		18.6%	6.2%	15.4%	19.0%	20.7%	13.1%	19.7%	10.4%	10.0%	16.6%	8.9%	16.3%
	80 - 119 Hours	372	7	71	25	246	8	4	10	2	50	9	12
		9.2%	3.9%	6.7%	9.2%	10.7%	4.8%	6.6%	14.9%	4.0%	6.4%	5.7%	9.8%
	120 - 159 Hours	268	9	47	25	165	7	2	4	11	32	11	4
		6.6%	5.1%	4.4%	9.2%	7.1%	4.2%	3.3%	6.0%	22.0%	4.1%	7.0%	3.3%
	160 Hours or More	287	12	57	19	182	9	5	5	6	36	9	12
		7.1%	6.7%	5.4%	7.0%	7.9%	5.4%	8.2%	7.5%	12.0%	4.6%	5.7%	9.8%
Wages Reported for 2nd Quarter 2008 for	Mean of Cases with UI Wages	\$5,096	\$5,885	\$5,041	\$4,970	\$5,076	\$5,378	\$5,830	\$5,990	\$5,814	\$4,885	\$4,582	\$6,376
	Median	\$4,522	\$5,281	\$4,678	\$4,471	\$4,419	\$4,694	\$4,499	\$5,812	\$5,114	\$4,608	\$4,568	\$5,328
Jobs Covered by Unemployment Insurance	Count of Cases	2,482	105	537	166	1,539	94	39	39	27	376	87	74
	Percent of All Cases	61.2%	59.0%	50.7%	60.8%	66.7%	56.0%	63.9%	58.2%	54.0%	48.3%	55.4%	60.2%
Cases Receiving SSI	Count of Cases	172	6	70	8	74	8	2	4	4	62	3	5
	Percent of Cases	4.2%	3.4%	6.6%	2.9%	3.2%	4.8%	3.3%	6.0%	8.0%	8.0%	1.9%	4.1%
Child Support Disbursements:		Current Mean	\$320	\$318	\$286	\$285	\$332	\$267					
		Median	\$281	\$295	\$260	\$246	\$293	\$196					
Average of Payments > \$0		Count	607	9	105	32	435	14					
		Percent of Cases	15.0%	5.1%	9.9%	11.7%	18.8%	8.3%					
		Sum	\$194,218	\$2,861	\$30,000	\$9,119	\$144,497	\$3,736					
		Arrears Mean	\$195	\$255	\$197	\$170	\$196	\$164					
		Median	\$117	\$171	\$122	\$146	\$113	\$119					
		Count	442	8	79	19	316	12					
		Percent of Cases	10.9%	4.5%	7.5%	7.0%	13.7%	7.1%					
		Sum	\$85,999	\$2,042	\$15,571	\$3,233	\$61,847	\$1,968					
		Total Mean	\$423	\$409	\$396	\$386	\$433	\$407					
		Median	\$352	\$355	\$328	\$328	\$358	\$391					
		Count	662	12	115	32	476	14					
		Percent of Cases	16.3%	6.7%	10.9%	11.7%	20.6%	8.3%					
		Sum	\$280,216	\$4,903	\$45,571	\$12,352	\$206,344	\$5,705					

Table 7. Selected Characteristics of All Minnesotans with Minor Children, American Community Survey 2007

All Minnesotans with Minor Children, ACS 2007	Total Adults with Children	Major Racial/Ethnic Groups				
		Asian	Black	Hispanic	White	American Indian
Individual Characteristics	1,818,142	78,248	88,485	81,789	1,549,865	18,127
Percent with a High School Diploma/GED	92%	78%	80%	61%	95%	86%
Percent Never Married	23%	22%	46%	33%	21%	44%
Household Characteristics						
Minnesota Households with Children	1,203,812	48,259	56,338	52,840	1,034,159	10,951
Average Number of Children	2.1	2.6	2.4	2.1	2.0	2.1
Average Age of Youngest Child	7.3	6.02	6.35	6.02	7.81	9.36
Percent of Households Residing in:						
Core Metro (Minneapolis and St. Paul)	10%	26%	39%	22%	6%	8%
Metro Suburban	52%	60%	54%	47%	53%	26%
Greater Minnesota	38%	14%	7%	32%	42%	66%

This information is available in alternative formats to individuals with disabilities by calling (651) 431-3979. TTY users can call through Minnesota Relay at (800) 627-3529. For Speech-to-Speech, call (877) 627-3848. For additional assistance with legal rights and protections for equal access to human services programs, contact your agency's ADA coordinator.