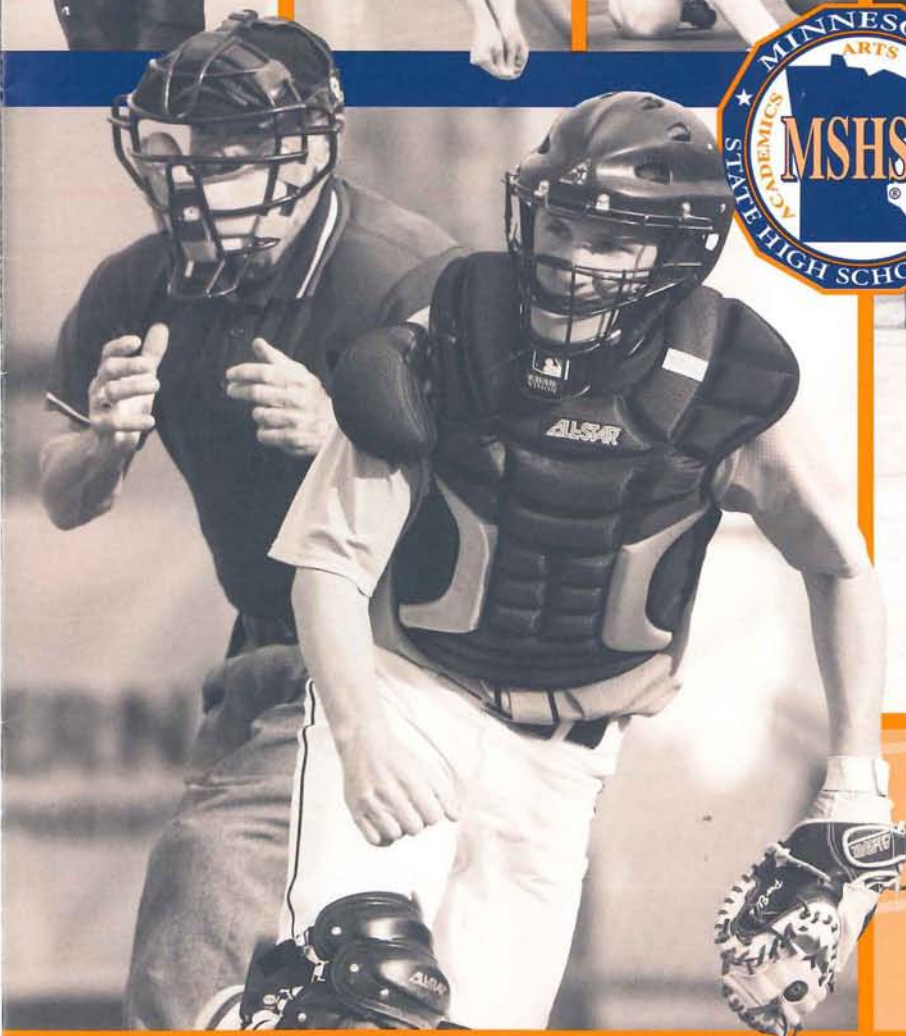
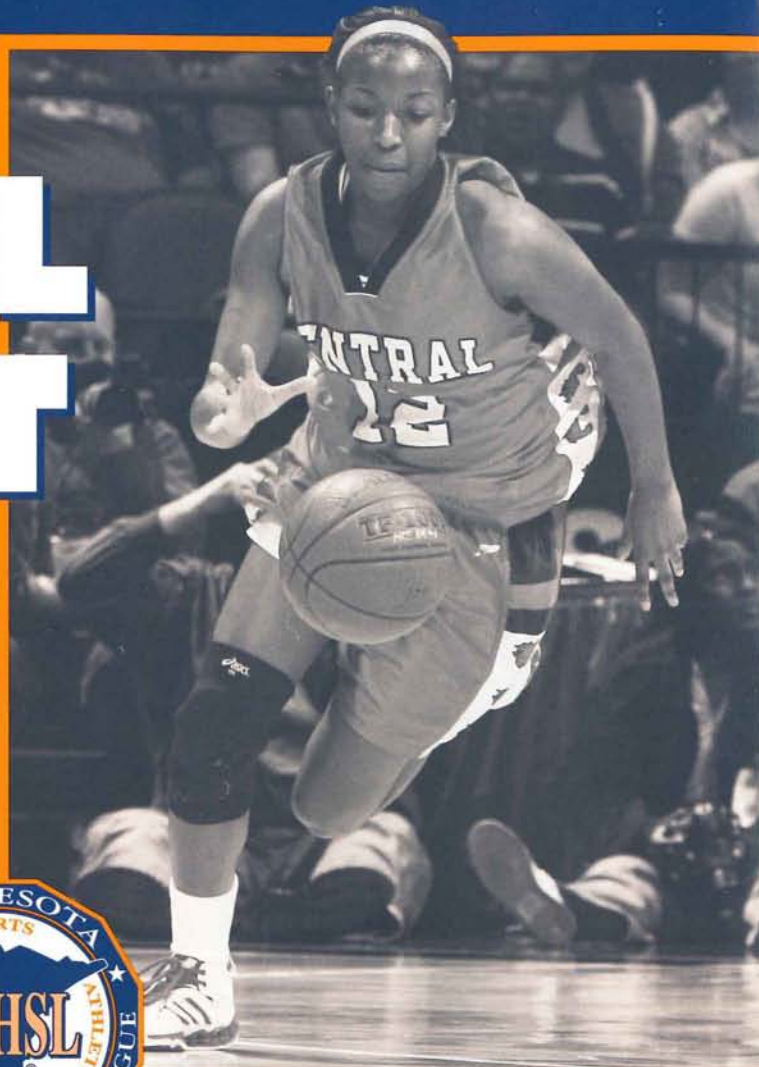
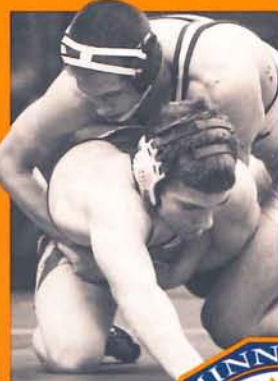
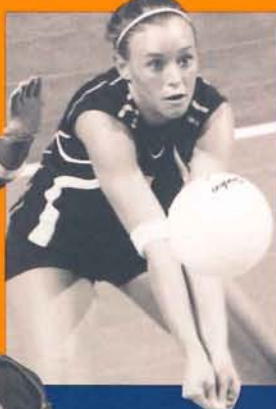


09 - 0986

2007-2008

# ANNUAL REPORT



Minnesota State High School League  
2100 Freeway Boulevard  
Brooklyn Center, Minnesota 55430  
(763) 560-2262 • Fax: (763) 569-0499

[mshsl.org](http://mshsl.org)



# 2007-2008 MSHSL Board of Directors



**Todd Selk**  
Brainerd  
President



**Mark Kuisle**  
Rochester Century  
Vice President



**Darrel Ulferts**  
Southwest Minnesota Christian  
Edgerton - Treasurer



**Dave Alto**  
Spring Lake Park



**Randy Bowen**  
Esko



**Lawrence Ellis**  
Fridley



**Lisa Fobbe**  
Zimmerman



**Michael Hammes**  
Mazeppa



**John Klinnert**  
Fergus Falls



**Becky Leuer**  
North Branch



**Steve Niklaus**  
Annandale



**Dean Ogg**  
Staples-Motley



**Mark Quinlan**  
Centennial, Circle Pines



**Dr. Polly Reikowski**  
Eagan



**Brent Robbins**  
Plymouth



**Mike Rusinko**  
Eden Prairie



**John Schumacher**  
Park Rapids Area



**Bill Webb**  
Edina



**Jeff Whisler**  
Mahtomedi



**Les Zellman**  
St. James

## 2007-2008 REPRESENTATIVE ASSEMBLY DELEGATES

*The rulemaking body of the Minnesota State High School League*

### CLASS A REGIONS

#### Region 1A

1. David Thompson, Superintendent, Stewartville
2. Ed Friesen, Athletic Director, Bethlehem Academy, Faribault
3. Dave Runningen, Coach, Houston

#### Region 2A

4. Randy Soma, Activities Director, Fairmont
5. Craig Morgan, Athletic Director, Minnesota Valley Lutheran, New Ulm
6. Dave Swanberg, Athletic Director, LeSueur-Henderson

#### Region 3A

7. Bob Grey, Athletic Director, Montevideo
8. Bill Tauer, Athletic Director, Tracy-Milroy-Balaton
9. Steve Wiertzema, Athletic Director, Hills-Beaver Creek

#### Region 4A

10. Mike Aurich, Athletic Director, Concordia Academy, Roseville
11. Steve Jensen, Athletic Director, West Lutheran, Plymouth
12. Steve Eklund, School Board, Brahman

#### Region 5A

13. Rick Fischer, Athletic Director, Sauk Centre
14. Emmett Keenan, Athletic Director, St. Cloud Cathedral
15. Dave Schroeder, Athletic Director, Maple Lake

#### Region 6A

16. Phil Jensen, Superintendent, Hawley
17. Lori Meissner, School Board, Brandon
18. Timothy Bjorge, Principal/AD, Wadena-Deer Creek

#### Region 7A

19. Kathy Fredricksen, Athletic Director, Moose Lake
20. James Lah, Athletic Director, Ely
21. Roger Koster, Athletic Director, Silver Bay

#### Region 8A

22. Vern Johnson, Athletic Director, Grygla-Gatzke
23. Gary Gauldin, School Board, Park Rapids
24. Mike Kolness, Principal/AD, Ada-Borup

### CLASS AA REGIONS

#### Region 1AA

25. Byron Olson, Athletic Director, Lakeville North
26. Joel Leer, Principal, Northfield
27. Ken Hubert, Activities Director, Faribault

#### Region 2AA

28. Jeff Jeska, Activities Director, Waconia
29. Todd Waterbury, Activities Director, Mankato East
30. Perry Thinesen, Activities Director, Dassel-Cokato

#### Region 3AA

31. Michael Manning, Athletic Director, Rosemount
32. Chris McDonald, Coach, Eagan
33. Mike Sjoberg, Coach, St. Thomas Academy, Mendota Heights

#### Region 4AA

34. Jodi Loeblein-Lecker, Athletic Director, Cretin-Derham Hall, St. Paul
35. Lee Alger, Activities Director, Tartan, Oakdale
36. John Brodrick, School Board, St. Paul Public Schools

#### Region 5AA

37. Doug Austin, Athletic Director, Irondale, New Brighton
38. Larry Lawler, Athletic Director, Park Center, Brooklyn Park
39. Adam Holm, Athletic Director, Osseo

#### Region 6AA

40. Brandon Phillips, Athletic Director, Minneapolis Edison
41. Amber Hegland, Coach, Wayzata
42. Mike Grant, Athletic Director, Eden Prairie

#### Region 7AA

43. Joel Olson, Activities Director, Forest Lake
44. Mark Krysiak, Activities Director, Duluth Denfeld
45. Ed Saxton, Superintendent, St. Francis

#### Region 8AA

46. Harvey Crable, Activities Director, Bemidji
47. Lisa Johnson, Activities Director, Monticello
48. Mike Olson, Activities Director, Little Falls

## MSHSL ADMINISTRATIVE STAFF

Executive Director ..... Dave Stead  
Executive Assistant ..... Lynne Johnson  
Associate Director ..... Lisa Lissimore  
Administrative Assistant ..... Sheila Robinson  
Associate Director ..... Craig Perry  
Administrative Assistant ..... Susi Hollenbeck  
Associate Director ..... Jody Redman  
Administrative Assistant ..... Amie Symens

Associate Director ..... Kevin Merkle  
Administrative Assistant ..... Amanda Johnson  
Officials' Coordinator ..... Katie Vanderpoel  
Director of Information ..... Howard Voigt  
Assistant ..... Ellen Giloy  
Media Credentialing Assistant ..... Yvonne Walsh  
Assistant Director ..... Chris Franson  
Web Site Coordinator ..... Nancy Etter

Assistant Director ..... Richard Matter  
Accounting Assistant ..... Sharon Bahma  
Ticket Assistant ..... Nancy Myers  
Program Specialist ..... Amy Doherty  
Office Manager ..... Kristi Vesall  
Administrative Assistant ..... Yvonne Walsh  
Receptionist ..... Katie Bergdahl



# President's Report



It has been an extreme pleasure serving as your president this past year. As I reflect on the 2007-08 school year, it will be remembered as a year of economic challenges as the high cost of fuel and other financial constraints caused all of us to closely evaluate the way we deliver programs and services. Throughout this process the members of the Board of Directors focused on doing *what is right* for our schools and the thousands of athletic and fine arts participants who are served by the activity programs they sponsor.

Many proposals came before the Board of Directors this year including recommendations to reduce the weight classes for the sport of wrestling; changes to the state tournament qualifying procedures for several sports; and plans to improve consistency in Section and Sub-Section tournaments. Following is a list of the action items the Board approved.

- ◆ The League's membership in the Officials' Education Consortium which consists of eight states that meet annually to develop education/training materials for contest officials.
- ◆ "Pace of Play" policy for the sport of golf.
- ◆ The use of a 35-second clock in the sport of basketball.
- ◆ Contract extension solidifying Hamline University as the site of the State Track and Field Meet.
- ◆ A weather policy for sub-section, section, and state level tournaments.
- ◆ Five year contracts with Target Center, Xcel Arena, and the University of Minnesota which guarantees League activities first class facilities for state tournament play.
- ◆ A new three-year agreement with Wells Fargo to continue as the League's premier corporate partner.
- ◆ A standardized seeding process for state tournaments.
- ◆ Game ending procedures for the sports of basketball and football.
- ◆ A checklist for membership responsibilities beginning with the 2008-09 school year.

The Board and League staff also conducted meetings throughout the year with school board members, superintendents, principals, legislators, athletic/activity directors and coaches to share concerns and to discuss issues that impact the administration of interscholastic activities.

The League is often referenced using the words "they" or "them" and those doing the referencing use "I" or "we". After four years on the Board of Directors I can say the word being used by all should be "us". You are the League. We are the League. Member schools are the League.

Thank you for allowing me to serve as your president,

A handwritten signature in black ink that reads "Todd Selk". The signature is fluid and cursive, with the first name "Todd" and last name "Selk" clearly distinguishable.

Todd Selk, Board of Directors  
President, 2007-08





# Mission

The Minnesota State High School League is a non-profit, voluntary association of public and private schools with a history of service to Minnesota youth since 1916. Its mission is to provide educational opportunities through interscholastic athletic and fine arts programs for students and leadership and support for member schools.

## We believe:

- ♦ Participation in school activity programs is a privilege and not a right.
- ♦ Sportsmanship needs to have a constant presence in all school-based activity programs.
- ♦ Students should have an equal opportunity to participate in all activities offered by their school.
- ♦ Ethical behavior, dignity and respect are non-negotiable.
- ♦ Student participants who choose to be chemically free must be supported.
- ♦ Collaborative relationships with parents enhance a school's opportunity to positively impact student success.
- ♦ Academic priorities must come before participation in athletic or fine arts activities.
- ♦ Positive role models and an active involvement in a student's life by parents and others are critical to student success.
- ♦ High school activity programs are designed for student participants and adults must serve in a supportive role.
- ♦ The success of the team is more important than individual honors.
- ♦ Compliance with school, community and League rules is essential for all activity participants.
- ♦ Participation in school-sponsored activities must be inclusive, not exclusive.
- ♦ Ethical behavior, fairness, and embracing diversity best serve students and school communities.

## History

The Minnesota State High School League was first organized in 1916 by a group of local superintendents. Then called the State High School Athletic Association, its mission was to promote amateur sports for boys and establish uniform rules for interscholastic contests.

In 1929, the Association broadened its scope to include speech and debate, and the Association's name changed to the Minnesota State High School League.

In 1960, the League incorporated under Minnesota Law as a non-profit, voluntary association of high schools. The League added music to its list of sponsored activities in 1965 and girls' athletic programs in 1969.

In 1973, Minnesota statutes provided that membership in the League is available to any high school in Minnesota that satisfied the compulsory attendance requirement under Minnesota Law. Thirty-seven non-public schools joined the League the next year.

During the 1990's the League became the first activity association in the nation to sponsor girls' ice hockey and adapted athletic programs for students with disabilities.

For more than 90 years, the Minnesota State High School League, through the cooperative efforts of its member schools, has provided educational opportunities for students through participation in athletics and fine arts activities.

## Services to Member Schools

The Minnesota State High School League is a service organization providing its membership with publications, training opportunities, recognition programs, tournaments, rules interpretation meetings, and many other services that assist in the administration of interscholastic activities.

The League serves students first and foremost, providing educational experiences through involvement in athletics and fine arts activities. Interscholastic competition leads to state tournament competitions which are conducted by the League. Students also are acknowledged through several recognition programs for academic achievements, community service, and leadership.

The League serves its member schools by providing competitive environments with rules that support fair play, dignity and respect. School personnel, from elected local school board members to superintendents, from principals to

athletic/activity directors, are invited twice annually to area meetings throughout the state to share concerns and discuss issues.

The League serves coaches and officials, both integral to equitable competition, by providing educational and training opportunities. Coaches can learn about the science of sport, first aid, and the rules that govern both student eligibility and the activities they oversee. Officials are provided with annual meetings to review contest rules and are provided opportunities for further training in the mechanics of officiating.

The League serves the public in general as a complimentary extension of the classroom by providing activities for high school youth that teach lifelong lessons and develop responsible citizens. Communication with the general public takes many forms, not the least of which is a comprehensive Web site – [www.mshsl.org](http://www.mshsl.org).

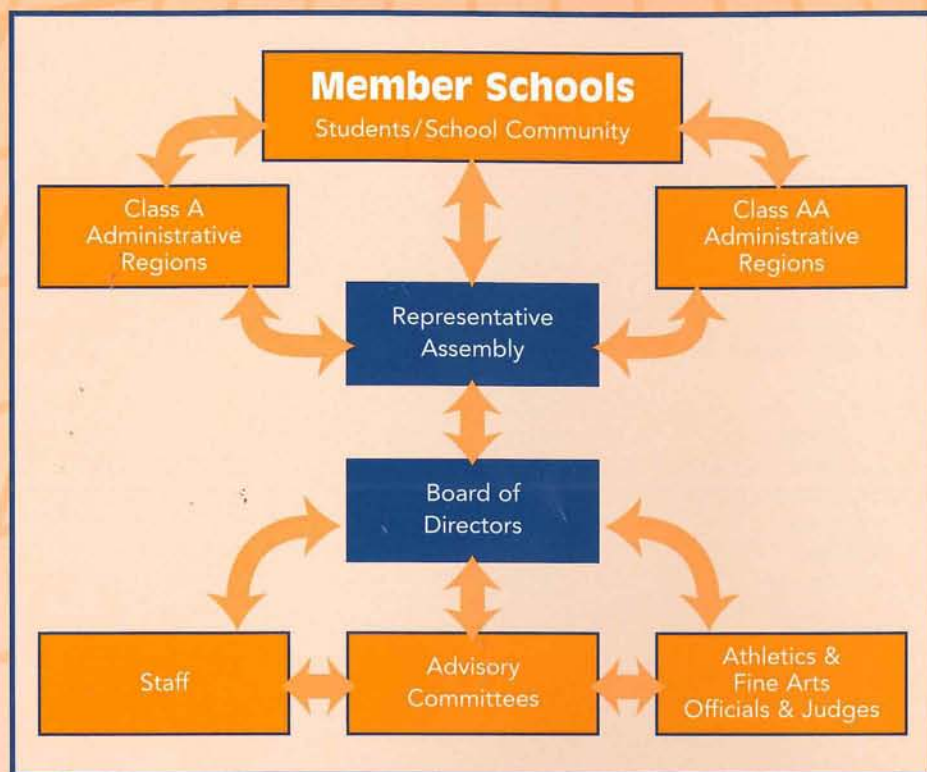


# Grassroots Governance

As a non-profit, voluntary association of public and private schools, the League is structured to listen to and respond to its members. Individual school boards decide every year to join the League. Each member school and its composite constituencies—students, parents, coaches, administrators, and school board members—have a voice at the grassroots level known as an administrative region.

A region committee comprised of representatives from League member schools makes decisions about how subsection and section competition is conducted. Each of these 16 committees—eight for schools with an enrollment of fewer than 500 students in grades 10-12 and eight for schools with an enrollment of 500 or more—also elect or appoint three people to serve on the Representative Assembly which acts on bylaws that govern eligibility and the administration of League activities. These committees also review proposed changes to bylaws before consideration by the Representative Assembly. They also report to the 20-member Board of Directors, which oversees the administration of all League activities and structures the conduct of state tournaments.

Activity Advisory committees provide direct information to the Board of Directors about activity programs. These committees—there's one for each activity the League sponsors



—meet once a year to review and recommend changes to athletic and fine arts programs. Activity associations appoint people to serve on the advisory committees. Committee members generally serve two-year terms.

The intent is to involve everyone from students and their parents and coaches to school administrators and their elected school board members, in the League's decision-making process.

## 2007-08 Bylaw Changes

Forty-eight people, representing the League's membership, comprise the Representative Assembly, the League's legislative body. The Assembly meets annually to consider all bylaw proposals that come from League member schools, region committees, the Board of Directors, and state athletics and fine arts associations.

League bylaws govern the addition of new activities, season lengths, number of contests, eligibility standards, and amateurism requirements of student athletes and fine arts participants. Bylaws also set requirements for conduct, enrollment, and they give direction to scholarship, student transfers, and many other areas important to the sound administration of high school athletic and fine arts programs.

During the 2007-08 school year, the Representative Assembly unanimously approved two amendments that impact the number of games that may be played at girls' volleyball tournaments and a third amendment that extends the lacrosse season by two weeks.

**The Representative Assembly, the League's legislative body, is where local school personnel speak for member schools and develop League bylaws. Region committees elect or appoint people to the 48-member Representative Assembly. Members generally serve a two-year term.**

The first volleyball amendment adds an exception to the daily player participation limit by allowing teams to play two matches in one day. Both matches still count toward the team maximum of 17 matches per season. The second amendment increases the number of volleyball games that may be played in non-League tournaments from 12 to 15 games.

The lacrosse amendment expands the sport's season from nine weeks to 11 weeks. The amendment also allows teams to add an additional game to their schedules—increasing the maximum number of games per season to 13.



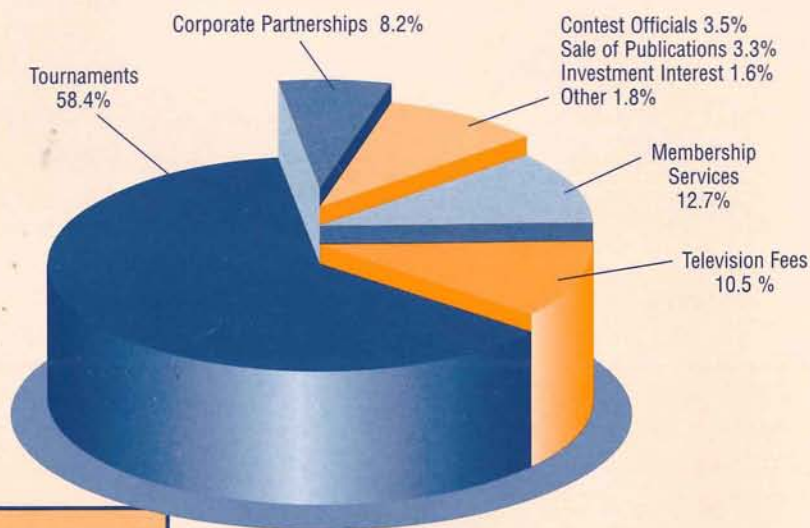
# League Finances

The Minnesota State High School League is a non-profit organization. The League operates on an annual budget of about \$7.5 million and receives no funding from the state legislature.

Revenues generated from tournament ticket sales, broadcast rights fees, and other tournament related-income make up the majority of the League's operating budget. The remaining portion of the budget comes from corporate sponsorships, publication sales, registration fees, and investment income.

At the end of each fiscal year, revenue remaining after all expenses are paid, is distributed to member schools fortunate enough to have competed at the state level. Those shares of revenue during the past 10 years have averaged \$648,000 each year, an average of \$1,800 per school.

The Office of the State Auditor for Minnesota audits all financial records of the League. The audit report is mailed to League member schools.

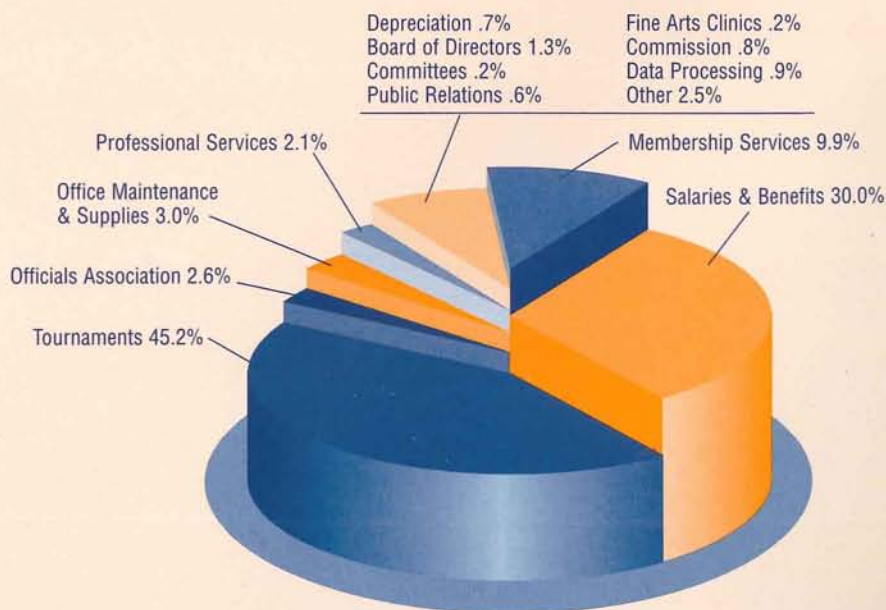


## The League pays for and member schools receive—

- ♦ Catastrophic insurance coverage for student activity participants
- ♦ Tournament liability insurance
- ♦ Educational and training opportunities for coaches and contest officials
- ♦ Advisory committees that provide direct information to the Board of Directors
- ♦ Certificates, trophies and medals for students participating in League tournaments
- ♦ Student recognition programs
- ♦ Postage for mailing agendas, minutes of meetings, rule books, newsletters and requested information to member school and to anyone who requests to be on League mailing lists.

## Revenues \$7,576,853

Tournaments	\$4,422,712
Television Fees	\$798,297
Membership Services	\$965,550
Sale of Publications	\$250,253
Contest Officials Registration	\$262,169
Investment Interest	\$121,781
Corporate Partnerships	\$619,000
Other	\$137,091



## Expenses \$7,436,386

Tournaments & School Reimbursements	\$3,362,265
Salaries & Benefits	\$2,233,164
Professional Services	\$152,829
Membership Services	\$737,929
Office Maintenance & Supplies	\$220,755
Other	\$186,784
Board of Directors	\$94,973
Committees	\$15,836
Officials Associations	\$192,604
Depreciation	\$49,250
Fine Arts Programs	\$15,185
Public Relations	\$45,277
Corporate Partnership Commission	\$61,500
Data Processing	\$68,035



# Comparative Schedule of Tournament Revenues and Direct Expenses

FOR THE YEARS ENDED JULY 31, 2008 AND 2007

Tournament	2008**			2007*		
	Revenues	Direct Expenses	Excess (Deficiency) of Revenues Over Direct Expenses	Revenues	Direct Expenses	Excess (Deficiency) of Revenues Over Direct Expenses
Baseball	84,503	74,552	9,951	101,612	73,864	27,748
Boys' Basketball	486,770	214,488	272,282	542,979	207,670	335,309
Girls' Basketball	289,849	194,129	95,720	280,279	186,492	93,787
Cross Country Running	13,503	30,062	(16,559)	14,045	28,709	(14,664)
Football	887,689	326,332	561,357	813,257	296,609	516,648
Golf	10,106	57,865	(47,759)	5,761	33,312	(27,551)
Girls' Gymnastics	46,055	68,542	(22,487)	39,700	94,373	(54,673)
Boys' Hockey	1,221,944	289,563	932,381	1,177,391	289,081	888,310
Nordic Ski Racing	3,049	19,914	(16,865)	2,923	21,396	(18,473)
Alpine Skiing	3,118	21,943	(18,825)	3,099	23,757	(20,658)
Soccer	168,414	107,444	60,970	160,271	101,667	58,604
Girls' Softball	46,403	51,311	(4,908)	56,363	52,386	3,977
Boys' Swimming & Diving	48,093	48,616	(523)	29,305	38,186	(8,881)
Girls' Swimming & Diving	48,776	48,147	629	50,620	49,327	1,293
Boys' Tennis	5,374	30,205	(24,831)	3,910	29,839	(25,929)
Girls' Tennis	4,993	35,357	(30,364)	5,045	32,056	(27,011)
Track and field	112,023	122,856	(10,833)	121,862	117,560	4,302
Girls' Volleyball	176,449	117,082	59,367	142,875	112,230	30,645
Wrestling	364,251	212,989	151,262	322,401	197,941	124,460
Synchronized Swimming	0	997	(997)	0	1,142	(1,142)
Adapted Soccer	7,249	17,647	(10,398)	6,568	16,549	(9,981)
Adapted Floor Hockey	9,076	17,274	(8,198)	9,526	17,346	(7,820)
Adapted Softball	5,655	17,501	(11,846)	6,111	15,666	(9,555)
Adapted Bowling	581	11,220	(10,639)	405	12,064	(11,659)
Debate	142	15,745	(15,603)	186	15,066	(14,880)
Speech	5,704	46,199	(40,495)	5,022	46,604	(41,582)
One Act Play	14,683	18,696	(4,013)	15,706	17,025	(1,319)
Girls' Hockey	183,989	163,321	20,668	185,606	161,109	24,497
Cheerleading	0	6,672	(6,672)	0	6,447	(6,447)
Girls' Dance Team	149,500	88,561	60,939	143,501	84,640	58,861
Lacrosse	24,771	21,276	3,495	23,598	19,531	4,067
Badminton	0	640	(640)	0	645	(645)
Visual Arts	0	640	(640)	(34)	129	(163)
<b>Total</b>	<b>4,422,712</b>	<b>2,497,786</b>	<b>1,924,926</b>	<b>4,269,893</b>	<b>2,400,418</b>	<b>1,869,475</b>

The tournament direct expenses shown above include only those expenses that are directly associated with conducting the tournaments (i.e. personnel, site, and program costs). School expense reimbursement and indirect costs such as membership services, salaries and benefits, postage, and other general administrative costs of the MSHSL have not been allocated to any specific tournaments and therefore, are not included in the schedule shown above.

\* From State Auditor's Report

\*\* End of year balance on League financial statements

## A 10-Year Comparison of School Reimbursements For Tournament Participation

	Number of Schools Participating	Total Amount Returned	Average Per School
1998-99	357	918,296	2,572
1999-00	352	650,581	1,848
2000-01	357	671,141	1,879
2001-02	359	476,296	1,326
2002-03	360	256,233	712
2003-04	357	669,084	1,874
2004-05	364	671,022	1,843
2005-06	365	600,689	1,645
2006-07	360	692,930	1,925
2007-08	365	870,259	2,384



# 2008-09 MSHSL Calendar of Events

## Fall

Girls' Tennis	Oct. 22-25	AA – Baseline Tennis Center, Minneapolis A – Reed-Sweatt Family Tennis Center, Minneapolis
Boys' & Girls' Soccer	Oct. 22-24 Oct. 27, 28 & 30	Quarterfinals – Various Sites Metrodome, Minneapolis
Boys' & Girls' Cross Country Running	Nov. 1	St. Olaf College, Northfield
Girls' Volleyball	Nov. 6-8	Xcel Energy Center, St. Paul
Adapted Soccer	Nov. 14-15	Stillwater Area High School
Football	Nov. 6-8 Nov. 14-15 Nov. 28-29	Quarterfinals – Various Sites Semifinals – Metrodome, Minneapolis Prep Bowl – Metrodome, Minneapolis
Girls' Swimming & Diving	Nov. 20-22	University Aquatic Center, Minneapolis

## Winter

Debate	Jan. 23-24	U of M Coffman Union, Minneapolis
One Act Play	Feb. 12-13	The O'Shaughnessy, College of St. Catherine, St. Paul
Boys' & Girls' Alpine Skiing	Feb. 12	Giants Ridge, Biwabik
Boys' & Girls' Nordic Ski Racing	Feb. 13	Giants Ridge, Biwabik
Girls' Dance Team	Feb. 13-14	Target Center, Minneapolis
Girls' Hockey	Feb. 25-28	Xcel Energy Center, St. Paul
Girls' Gymnastics	Feb. 26-27	University Sports Pavilion, Minneapolis
Wrestling	March 4-7	Xcel Energy Center, St. Paul
Boys' Swimming & Diving	March 5-7	University Aquatic Center, Minneapolis
Boys' Hockey	March 11-14	Xcel Energy Center, St. Paul
Girls' Basketball	March 18-21	Target Center, Minneapolis & Williams Arena, Minneapolis
Adapted Floor Hockey	March 20-21	Bloomington Jefferson High School
Boys' Basketball	March 25-28	Target Center, Minneapolis & Williams Arena, Minneapolis

## Spring

Speech	April 17-18	Site TBD
Adapted Bowling	May 15	Site TBD
Adapted Softball	May 29-30	Coon Rapids High School
Girls' & Boys' Lacrosse	June 2-5	Hopkins & Mounds View High Schools
Boys' & Girls' Golf	June 2-3 June 3-4 June 3-4	AAA – Bunker Hills, Coon Rapids AA – Ridges at Sand Creek, Jordan A – Pebble Creek at Becker
Boys' Tennis	June 2-5	AA – Baseline Tennis Center, Minneapolis A – Reed-Sweatt Family Tennis Center, Minneapolis
Girls' Fast-Pitch Softball	June 4-5	Caswell Park, North Mankato
Boys' & Girls' Track & Field	June 5-6	Hamline University, St. Paul
Baseball	June 11-12	AAA – Midway Stadium, St. Paul & Dick Siebert Field, Minneapolis AA – Dick Putz Stadium & Joe Faber Field, St. Cloud A – Athletic Park, Chaska & Mini Met, Jordan

Photography Credits: Minnesota Prep Photo / [www.MnPrepPhoto.com](http://www.MnPrepPhoto.com)