

The Minnesota Utility Data Book

**A Reference guide to Minnesota
electric and natural-gas utilities
1965-2006**



MINNESOTA
DEPARTMENT OF
COMMERCE

Introduction	3
Section I: Electric Utilities	4
Overview	4
Introduction to Electric Tables	5
Table 1: Minnesota Historical Electric Consumption.....	7
Table 1A: Electric Consumption for Investor-Owned Utilities.....	8
Table 1B: Electric Consumption for Cooperative Utilities.....	9
Table 1C: Electric Consumption for Municipal Utilities.....	10
Table 2: Number of Minnesota Electric Customers	12
Table 2A: Number of Electric Customers for Investor-Owned Utilities.....	13
Table 2B: Number of Electric Customers for Cooperative Utilities.....	14
Table 2C: Number of Electric Customers for Municipal Utilities.....	15
Table 3: Minnesota Electric Sales Revenue	16
Table 3A: Electric Sales Revenue for Investor-Owned Utilities.....	17
Table 3B: Electric Sales Revenue for Cooperative Utilities.....	18
Table 3C: Electric Sales Revenue for Municipal Utilities.....	19
Table 4: Minnesota Electric Consumption by Utility.....	20
2006 Electric Consumption for Investor-Owned Utilities (Megawatt-Hours).....	20
2006 Electric Consumption for Cooperative Utilities (Megawatt-Hours).....	20
2006 Minnesota Electric Consumption for Municipal Utilities.....	23
Table 5: Number of Minnesota Electric Customers by Utility	27
2006 Number of Minnesota Electric Customers for Investor-Owned Utilities.....	27
2006 Number of Minnesota Electric Customers for Cooperative Utilities.....	27
2006 Number of Minnesota Electric Customers for Municipal Utilities	30
Table 6: Minnesota Electric Sales Revenue by Utility	34
2006 Minnesota Electric Sales Revenue for Investor-Owned Utilities.....	34
2006 Minnesota Electric Sales Revenue for Cooperative Utilities.....	34
2006 Minnesota Electric Sales Revenue for Municipal Utilities	37
Table 7: Minnesota Residential Electric Space Heating Customers.....	41
2006 Minnesota Electric Space Heating Customers for Investor-Owned Utilities.....	41
2006 Minnesota Electric Space Heating Customers for Cooperative Utilities.....	41
2006 Minnesota Electric Space Heating Customers for Municipal Utilities.....	44
Table 8: Minnesota Electric Consumption by County.....	48
Table 9: Utility-Owned Electric Generating Plants Serving Minnesota.....	50
Table 10: Net Generation and Fuel Consumption for Utility-Owned Electric Generating Plants Serving Minnesota.....	83
Section II: Natural Gas Utilities	123
Overview	123
Introduction to Natural Gas Tables	125
Table 11: Total Minnesota Historical Natural Gas Consumption	126
Table 12: Number of Minnesota Natural Gas Customers.....	128
Table 13: Minnesota Natural Gas Consumption by Company	129
Table 14: Minnesota Natural Gas Customers by Company.....	131

Table 15: Minnesota Natural Gas Revenue by Company.....	133
Section III: Attachments.....	136
General Notes on Data.....	136
Glossary of Terms and Abbreviations.....	137

Introduction

The Minnesota Department of Commerce regulates the financial services industries and promotes and implements policies regarding energy and telecommunications. We work with other state agencies to provide education, information and programs to the public and work to enhance Minnesota's environment and quality of life. This report is one tool in that process.

The *Minnesota Utility Data Book* compiles information reported by electric and natural-gas utilities serving Minnesota. Most of Minnesota's energy use occurs through service provided by various investor-owned, cooperative and municipal and private utilities. To track energy trends, the Minnesota Department of Commerce uses data in its Regional Energy Information System (REIS), which contains information collected through Minnesota Rules parts 7610.0100 to 7610.1130.

The 2006 *Minnesota Utility Data Book* provides aggregate information reported by Minnesota utilities through 2006. It also provides data reported by individual companies for the year 2006.

The tables in this report may use certain assumptions that are not obvious to the reader. Where feasible, this report lists assumptions either at the bottom of relevant pages or in the General Notes on Data section.

Staff contributing to the preparation of this report include Steve Loomis, Theresa Staples, Susan Medhaug, and Rochelle Barnhart. If you have any questions about the report, please contact Susan Medhaug at 651-297-2103.

We hope that the 2006 *Minnesota Utility Data Book* will promote discussion, inquiries and interest about energy consumed through Minnesota's natural-gas and electric utilities. To obtain this report in an alternative format (i.e., large print, Braille, CD-ROM), please see our website at <http://www.commerce.state.mn.us> or call our Energy Information Center at 651-296-5175. If you are outside the Twin Cities area, please dial 1-800-657-3710. Our TAM toll free number is 1-800-657-3599. The Information Center may also be contacted through e-mail at: energy.info@state.mn.us.

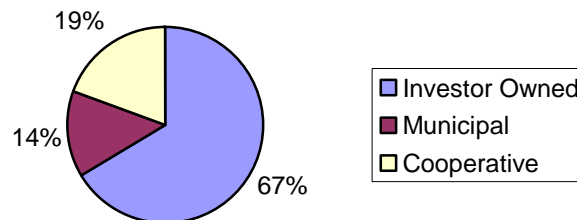
Section I: Electric Utilities

Overview

Minnesota's electric utilities are classified as investor-owned utilities (IOUs), cooperative utilities (co-ops), or municipal utilities (munis). The Minnesota Public Utilities Commission regulates the rates of all IOUs. Co-ops' and munis' rates are not regulated unless they choose such regulation. (Dakota Electric Association is the only utility that has chosen such regulation.)

As shown below, of the electricity sold to retail customers by electric utilities, most of Minnesota's electric consumers buy their electricity from IOUs. The remaining customers buy almost equally from co-ops and munis.

Figure 1: Minnesota Electric Consumption by Type of Utility



There are five investor-owned electric utilities serving customers in Minnesota. In 2006 there were five generation and transmission cooperatives, 47 distribution cooperatives and 126 municipal electric utilities serving customers in Minnesota.

Introduction to Electric Tables

The tables in this section provide both aggregate and individual company information reported by electric utilities serving Minnesota. Tables 1 through 3 provide overall electric consumption, numbers of electric customers and electric revenues in Minnesota. These tables also show this information for the general types of companies: investor-owned utilities, cooperative utilities, and municipal utilities.

According to Table 1, 2006 electric consumption in the residential sector was higher than 2005 consumption. As Figure 2 indicates, when adjusted for weather, electric consumption per residential customer, though fairly steady in recent years, is showing a distinct upward trend.

Figure 2: Weather-Normalized Electric Use Per Residential Customer

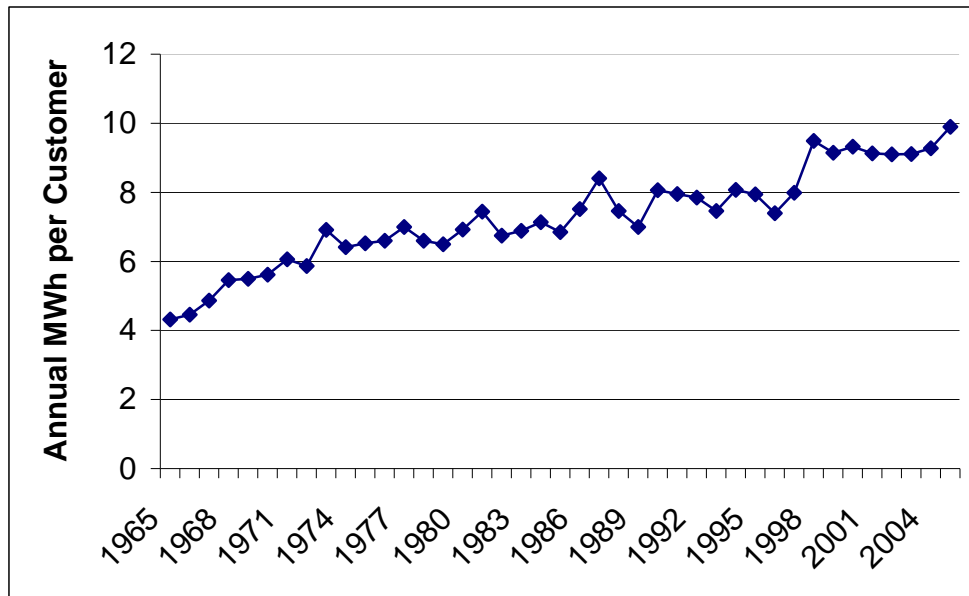


Table 4 through Table 7 provide 2006 electric consumption, numbers of electric customers, electric revenues, and data on residential space heating reported by each electric utility serving Minnesota. Table 8 lists utility megawatt-hours sold at retail to Minnesota customers by county and provides each county's consumption and population rank (1 represents the highest total consumption/population and 87 represents the lowest).

Table 9 contains general descriptions of utility-owned generation plants serving Minnesota during the 2006 calendar year;

Table 10 provides net generation and fuel consumption for utility-owned generation plants producing energy during calendar year 2006 for the following utilities:

Adrian Public Utilities	Marshall Municipal Utilities
Alexandria Light & Power	Melrose Public Utilities
Alliant Energy-Interstate Power Co.	Minnesota Power
Austin Utilities	Minnkota Power Cooperative
Benson Municipal Utilities	Moorhead Public Service
Blooming Prairie Public Utilities	Moose Lake Water and Light Comm.
Blue Earth Light & Water Dept.	Mora Municipal Utilities
Dairyland Power Cooperative	New Prague Utilities Commission
Delano Municipal Utilities	New Ulm Public Utilities
Detroit Lakes Public Utility	North Branch Water & Light
East Grand Forks Water & Light Dept.	Otter Tail Power Company
Elk River Municipal Utilities	Princeton Public Utilities
Fairfax Municipal	Redwood Falls Public Utilities
Fairmont Public Utilities	Rochester Public Utilities
Glencoe Light & Power Commission	St. James Municipal Light & Power
Grand Marais Public Utilities	Sleepy Eye Public Utility
Granite Falls, City of	Southern MN Municipal Power Agency
Great River Energy	Spring Valley Public Utilities Comm.
Hastings, City of	Springfield Public Utilities
Hawley Public Utilities	Steele Waseca Cooperative Electric
Hibbing Public Utilities Commission	Thief River Falls Municipal Utilities
Hutchinson Utilities Commission	Two Harbors, City of
Janesville Municipal Utility	Virginia Dept. of Public Utilities
Kenyon Municipal Utilities	Warren, City of
Lake Crystal Municipal Utilities	Wells Public Utilities
Lakefield, City of	Willmar Municipal Utilities
Lanesboro Public Utilities	Windom Municipal Utility
Litchfield Public Utilities	Worthington Public Utilities
Madelia Municipal Light & Power	Xcel Energy

Table 1: Minnesota Historical Electric Consumption

Total Electric Consumption for Minnesota (Gigawatt-Hours)

Year	Farm	Non-Farm Residential	Commercial	Industrial	Total
1965	1,526	4,036	2,552	4,804	12,917
1967	1,710	4,632	3,005	6,157	15,503
1969	1,949	5,588	3,603	8,027	19,166
1971	2,250	6,381	4,185	9,201	22,017
1973	2,472	7,029	4,781	11,309	25,591
1975	2,891	7,651	5,028	11,281	26,852
1976	3,107	7,997	5,473	12,236	28,813
1977	3,452	7,855	5,524	12,562	29,393
1978	3,375	8,538	5,767	14,916	32,596
1979	3,527	8,777	6,004	16,217	34,524
1980	3,351	8,988	6,056	15,704	34,098
1981	3,294	8,910	6,094	16,142	34,439
1982	3,509	9,320	6,408	14,684	33,921
1983	3,447	9,676	6,599	16,046	35,769
1984	3,517	9,682	7,067	17,960	38,226
1985	3,502	9,908	7,290	17,886	38,586
1986	3,517	10,169	7,488	17,442	38,616
1987	3,397	10,490	7,863	18,919	40,669
1988	3,609	11,657	8,397	22,090	45,753
1989	3,689	11,265	9,293	22,619	46,866
1990	3,560	11,475	9,626	23,436	48,097
1991	3,380	12,436	9,048	23,951	48,815
1992	2,910	11,761	9,189	23,429	47,289
1993	2,962	12,583	9,270	24,288	49,104
1994	2,753	13,296	9,667	25,335	51,051
1995^	2,979	14,101	10,163	26,701	53,964
1996	3,148	14,152	10,883	27,046	55,229
1997	3,033	14,169	10,832	27,825	55,859
1998	2,911	14,584	11,098	28,382	56,975
1999	2,930	15,170	11,717	27,866	57,683
2000	2,956	15,738	12,224	29,043	59,962
2001*	2,995	16,446	20,675	20,396	60,511
2002	2,969	17,478	19,969	21,948	62,364
2003	2,868	17,777	19,849	22,146	62,641
2004	3,251	17,316	20,107	23,187	63,867
2005	3,025	18,744	21,638	23,161	66,567
2006	3,006	19,096	22,261	23,667	68,029

Table 1A: Electric Consumption for Investor-Owned Utilities

Electric Consumption (Gigawatt-Hours)

Year	Farm	Non-Farm Residential	Commercial	Industrial	Total
1965	207	3,076	1,734	4,360	9,378
1967	224	3,521	2,049	5,660	11,455
1969	238	4,236	2,469	7,392	14,335
1971	257	4,760	2,842	8,378	16,237
1973	267	5,156	3,178	10,318	18,920
1975	286	5,527	3,280	10,199	19,291
1976	294	5,709	3,548	11,046	20,597
1977	301	5,662	3,570	11,227	20,760
1978	298	5,881	3,726	13,487	23,391
1979	314	5,985	3,867	14,697	24,862
1980	317	6,085	3,961	14,120	24,482
1981	345	5,960	3,980	14,473	24,758
1982	361	6,208	4,244	12,915	23,728
1983	354	6,497	4,298	14,198	25,347
1984	358	6,464	4,550	16,053	27,425
1985	352	6,593	4,697	15,909	27,551
1986	350	6,777	4,804	15,298	27,229
1987	334	6,989	5,025	16,710	29,058
1988	347	7,786	5,365	19,664	33,162
1989	339	7,401	6,117	20,067	33,925
1990	344	7,445	6,257	20,818	34,864
1991	359	7,842	5,592	21,089	34,882
1992	116	7,442	5,712	20,425	33,695
1993	119	7,817	5,687	21,061	34,684
1994	77	8,065	5,952	21,886	35,981
1995	78	8,615	6,218	23,099	38,009
1996	78	8,520	6,811	23,231	38,640
1997	76	8,511	6,634	23,768	38,989
1998	74	8,764	6,699	23,993	39,531
1999	75	9,038	6,852	23,494	39,459
2000	74	9,372	7,279	24,270	40,995
2001*	76	9,654	15,516	15,598	40,843
2002	73	10,185	14,650	17,005	41,912
2003	108	10,210	14,479	16,978	41,774
2004	118	9,977	14,791	17,643	42,530
2005	121	10,615	16,228	17,259	44,223
2006	119	10,654	16,624	17,487	44,884

Table 1B: Electric Consumption for Cooperative Utilities

Electric Consumption (Gigawatt-Hours)

Year	Farm	Non-Farm Residential	Commercial	Industrial	Total
1965	1,306	201	150	57	1,714
1967	1,473	259	177	74	1,983
1969	1,696	363	210	149	2,417
1971	1,976	490	264	200	2,930
1973	2,191	635	325	293	3,443
1975	2,590	759	363	338	4,049
1976	2,796	851	395	378	4,421
1977	3,134	722	402	437	4,694
1978	3,059	1,101	389	500	5,049
1979	3,193	1,203	400	563	5,359
1980	3,013	1,317	376	586	5,292
1981	2,927	1,384	392	629	5,332
1982	3,125	1,455	410	657	5,647
1983	3,070	1,474	498	625	5,667
1984	3,136	1,514	672	546	5,868
1985	3,129	1,588	713	556	5,986
1986	3,143	1,672	777	551	6,144
1987	3,040	1,723	844	588	6,196
1988	3,237	1,951	1,091	557	6,836
1989	3,326	1,951	1,173	587	7,036
1990	3,193	2,124	1,226	633	7,177
1991	3,002	2,577	1,298	712	7,590
1992	2,773	2,469	1,328	761	7,331
1993	2,807	2,810	1,419	823	7,859
1994	2,656	3,218	1,460	843	8,178
1995	2,879	3,350	1,609	898	8,736
1996	3,047	3,466	1,740	981	9,235
1997	2,936	3,502	1,821	1,062	9,320
1998	2,814	3,654	2,049	1,125	9,642
1999	2,832	3,896	2,280	1,119	10,127
2000	2,861	4,076	2,301	1,318	10,556
2001	2,900	4,391	2,432	1,346	11,069
2002	2,877	4,781	2,572	1,433	11,662
2003	2,909	4,878	2,614	1,587	11,988
2004	3,110	4,813	2,643	1,776	12,342
2005	2,883	5,429	2,667	1,957	12,937
2006	2,867	5,629	2,784	2,027	13,306

Table 1C: Electric Consumption for Municipal Utilities

Electric Consumption (Gigawatt-Hours)

Year	Farm	Non-Farm Residential	Commercial	Industrial	Total
1965	13	759	668	386	1,825
1967	13	852	778	423	2,065
1969	14	989	925	486	2,414
1971	17	1,130	1,080	623	2,849
1973	14	1,238	1,278	699	3,228
1975	16	1,366	1,386	745	3,512
1976	17	1,437	1,530	812	3,796
1977	17	1,471	1,552	898	3,938
1978	19	1,556	1,652	930	4,157
1979	20	1,589	1,737	957	4,303
1980	21	1,586	1,719	998	4,324
1981	22	1,566	1,722	1,040	4,350
1982	23	1,658	1,754	1,113	4,547
1983	23	1,705	1,803	1,224	4,755
1984	23	1,704	1,845	1,361	4,932
1985	22	1,727	1,880	1,421	5,049
1986	23	1,719	1,907	1,593	5,243
1987	23	1,778	1,993	1,621	5,415
1988	24	1,920	1,941	1,869	5,755
1989	23	1,914	2,003	1,965	5,905
1990	23	1,906	2,143	1,984	6,056
1991	20	2,016	2,158	2,150	6,344
1992	21	1,850	2,148	2,244	6,263
1993	37	1,956	2,164	2,404	6,561
1994	20	2,013	2,254	2,606	6,893
1995^	23	2,136	2,336	2,705	7,219
1996	22	2,166	2,331	2,834	7,353
1997	22	2,157	2,376	2,995	7,550
1998	22	2,165	2,349	3,265	7,802
1999	23	2,237	2,585	3,253	8,097
2000	21	2,291	2,644	3,455	8,410
2001	20	2,401	2,727	3,451	8,599
2002	20	2,513	2,747	3,509	8,789
2003	21	2,536	2,778	3,582	8,915
2004	23	2,526	2,674	3,768	8,995
2005	21	2,700	2,743	3,944	9,408
2006	19	2,814	2,853	4,154	9,839

Notes for Table 1 through 1C

^For 1995, Barnesville Municipal Electric reported total consumption, not consumption by customer class.

*Xcel Energy redefined its commercial and industrial customer classifications in 2001. Commercial = Small Commercial

and Industrial requiring less than 1000 kW. Industrial = Large Commercial and Industrial requiring at least 1000 kW.

Table 2: Number of Minnesota Electric Customers

Total Number of Electric Customers for All Minnesota Utilities

Year	Farm	Non-Farm Residential	Commercial	Industrial	Total
1965	182,634	907,946	126,583	6,296	1,223,459
1967	183,968	945,521	128,114	6,295	1,263,898
1969	188,194	994,230	128,791	6,390	1,317,605
1971	193,405	1,041,982	132,487	6,592	1,374,466
1973	199,334	1,100,014	137,467	6,711	1,443,526
1975	210,508	1,143,377	140,298	7,050	1,501,234
1976	214,495	1,168,812	143,221	7,153	1,533,769
1977	245,769	1,165,178	152,962	7,286	1,571,195
1978	227,972	1,223,595	154,089	7,720	1,613,365
1979	223,361	1,265,978	157,247	7,630	1,654,216
1980	213,669	1,300,534	159,499	7,938	1,681,640
1981	214,173	1,323,682	162,882	8,280	1,709,017
1982	216,228	1,336,314	164,789	8,509	1,725,840
1983	217,479	1,361,892	168,586	8,316	1,756,273
1984	218,519	1,385,883	173,001	8,171	1,785,574
1985	217,688	1,402,671	175,653	8,243	1,804,255
1986	219,261	1,429,570	182,959	9,773	1,841,563
1987	220,058	1,469,279	183,175	8,778	1,881,290
1988	221,326	1,505,857	185,693	8,956	1,921,832
1989	227,254	1,520,556	186,773	9,337	1,943,922
1990	226,962	1,546,818	190,508	9,973	1,974,261
1991	192,976	1,591,515	197,845	9,400	1,991,736
1992	177,054	1,616,882	196,290	14,235	2,004,462
1993	170,848	1,650,291	198,256	14,073	2,033,464
1994	154,529	1,701,134	203,786	13,680	2,073,129
1995	165,961	1,732,544	210,695	10,016	2,119,216
1996	174,090	1,747,628	217,803	10,125	2,149,646
1997	173,001	1,788,247	217,731	10,949	2,189,927
1998	173,891	1,814,547	221,844	11,875	2,222,159
1999	169,327	1,853,118	230,521	12,479	2,265,444
2000	171,664	1,877,092	230,334	11,524	2,290,611
2001*	163,043	1,921,332	244,987	5,208	2,334,570
2002	160,310	1,966,536	250,730	5,311	2,382,887
2003	165,383	1,997,741	253,769	6,026	2,422,938
2004	202,926	2,006,585	257,462	7,800	2,474,769
2005	159,956	2,060,519	253,807	7,634	2,481,916
2006	159,874	2,096,224	260,530	7,813	2,524,441

Table 2A: Number of Electric Customers for Investor-Owned Utilities

Year	Farm	Non-Farm Residential	Commercial	Industrial	Total
1965	20,362	673,394	85,140	3,492	782,388
1967	19,682	699,106	84,826	3,650	807,264
1969	18,592	731,149	86,287	3,804	839,832
1971	17,678	759,814	88,277	3,921	869,690
1973	17,055	792,467	90,449	4,147	904,118
1975	16,532	818,759	92,216	4,301	931,808
1976	16,226	832,472	93,619	4,213	946,530
1977	17,108	840,143	102,756	4,475	964,482
1978	16,287	860,957	104,535	4,619	986,398
1979	16,240	882,200	106,274	4,899	1,009,613
1980	16,283	897,461	108,124	5,074	1,026,942
1981	17,388	908,504	110,114	5,123	1,041,129
1982	17,318	915,153	111,468	5,219	1,049,158
1983	17,431	930,135	114,321	5,213	1,067,100
1984	17,223	946,476	116,833	5,347	1,085,879
1985	16,204	953,019	118,113	5,427	1,092,763
1986	16,169	972,878	120,116	5,799	1,114,962
1987	15,867	993,950	123,638	5,970	1,139,425
1988	15,928	1,018,232	125,431	6,239	1,165,830
1989	15,844	1,024,483	125,126	6,496	1,171,949
1990	15,793	1,037,478	128,479	6,911	1,188,661
1991	7,466	1,049,354	131,660	6,776	1,195,256
1992	5,749	1,068,031	128,506	10,701	1,212,987
1993	5,699	1,074,498	129,250	10,928	1,220,375
1994	5,943	1,089,167	132,515	11,034	1,238,659
1995	6,047	1,104,346	137,574	7,322	1,255,289
1996	6,021	1,112,703	141,579	7,353	1,267,656
1997	5,992	1,139,620	140,953	8,073	1,294,638
1998	6,058	1,151,585	143,660	8,529	1,309,832
1999	6,113	1,165,707	152,742	9,036	1,333,598
2000	5,758	1,178,863	145,286	8,122	1,338,029
2001*	6,018	1,195,910	157,203	1,780	1,360,911
2002	2,981	1,222,164	162,223	1,789	1,389,157
2003	4,376	1,235,558	161,518	2,036	1,403,488
2004	5,098	1,255,489	165,030	2,036	1,427,653
2005	5,043	1,243,196	162,502	1,948	1,412,689
2006	4,951	1,262,933	165,581	1,924	1,435,389

Table 2B: Number of Electric Customers for Cooperative Utilities

Year	Farm	Non-Farm Residential	Commercial	Industrial	Total
1965	159,424	73,667	14,403	497	247,991
1967	161,400	80,886	15,138	594	258,018
1969	166,741	91,890	14,218	704	273,553
1971	172,487	106,291	15,319	861	294,958
1973	179,475	123,780	16,516	1,011	320,782
1975	191,235	132,547	17,274	1,239	342,295
1976	197,093	138,870	17,616	1,725	355,304
1977	227,390	122,558	17,846	1,427	369,221
1978	210,382	155,397	15,684	1,808	383,270
1979	205,797	170,926	16,793	1,566	395,082
1980	196,289	189,164	17,628	1,747	404,828
1981	195,677	198,501	18,147	1,988	414,313
1982	197,569	203,107	18,549	1,982	421,207
1983	198,731	210,087	19,367	1,690	429,875
1984	199,924	215,399	20,463	1,272	437,058
1985	200,170	223,644	21,607	1,256	446,677
1986	201,664	233,389	22,282	1,435	458,770
1987	202,725	244,405	23,306	1,219	471,655
1988	203,806	253,648	23,591	996	482,041
1989	209,822	259,124	24,233	1,046	494,225
1990	209,533	270,282	24,590	1,105	505,510
1991	184,694	299,541	28,816	951	514,002
1992	169,765	308,760	29,613	1,390	509,528
1993	161,521	335,390	30,426	1,247	528,584
1994	147,083	358,789	31,204	699	537,775
1995	158,373	371,121	33,094	723	563,311
1996	166,538	374,086	34,234	724	575,582
1997	165,478	385,524	36,117	774	587,893
1998	166,291	397,550	37,329	771	601,943
1999	161,526	418,559	36,443	805	617,333
2000	164,465	425,666	42,115	825	633,071
2001	155,624	446,451	44,393	732	647,200
2002	155,974	461,986	45,386	728	664,074
2003	159,609	474,179	47,404	1,151	682,343
2004	196,423	458,655	46,751	2,621	704,450
2005	153,483	517,433	44,877	2,672	718,465
2006	153,564	529,646	47,899	2,674	733,784

Table 2C: Number of Electric Customers for Municipal Utilities

Year	Farm	Non-Farm Residential	Commercial	Industrial	Total
1965	2,848	160,885	27,040	2,300	193,073
1967	2,886	165,529	28,149	2,044	198,608
1969	2,861	171,191	28,285	1,875	204,212
1971	3,240	175,877	28,890	1,803	209,810
1973	2,804	183,767	30,501	1,546	218,618
1975	2,741	192,071	30,807	1,503	227,123
1976	1,176	197,470	31,985	1,208	231,927
1977	1,271	202,477	32,359	1,377	237,484
1978	1,303	207,241	33,869	1,286	243,689
1979	1,324	212,852	34,179	1,158	249,513
1980	1,097	213,909	33,746	1,111	249,863
1981	1,108	216,677	34,620	1,163	253,568
1982	1,341	218,054	34,771	1,301	255,467
1983	1,317	221,670	34,897	1,404	259,288
1984	1,372	224,008	35,704	1,543	262,627
1985	1,314	226,008	35,932	1,551	264,805
1986	1,428	223,303	40,560	2,530	267,821
1987	1,466	230,924	36,230	1,580	270,200
1988	1,592	233,977	36,670	1,712	273,951
1989	1,588	236,949	37,413	1,786	277,738
1990	1,636	239,058	37,438	1,948	280,080
1991	816	242,620	37,368	1,664	282,468
1992	1,540	240,091	38,168	2,137	281,937
1993	3,628	240,403	38,578	1,894	284,499
1994	1,503	253,178	40,067	1,943	296,691
1995	1,541	257,077	40,026	1,968	300,612
1996	1,531	260,839	41,990	2,048	306,408
1997	1,531	263,103	40,657	2,093	307,383
1998	1,542	265,412	40,853	2,567	310,374
1999	1,688	268,852	41,331	2,630	314,500
2000	1,441	272,563	42,933	2,577	319,511
2001	1,401	278,971	43,391	2,696	326,459
2002	1,355	282,386	43,121	2,794	329,656
2003	1,398	288,004	44,847	2,839	337,107
2004	1,405	292,441	45,681	3,143	342,666
2005	1,430	299,890	46,428	3,014	350,762
2006	1,359	303,645	47,050	3,215	355,257

Note for Table 2 through 2C

*Xcel Energy redefined its commercial and industrial customer classifications in 2001.

Commercial = Small Commercial and Industrial requiring less than 1000 kW.

Industrial = Large Commercial and Industrial requiring at least 1000 kW.

Table 3: Minnesota Electric Sales Revenue

Total Electric Sales Revenue for Minnesota (\$1,000)

Year	Farm	Non-Farm Residential	Commercial	Industrial	Total
1984	232,027	611,797	390,742	786,113	2,020,679
1985	236,127	631,401	409,851	791,767	2,069,146
1986	237,084	650,794	460,137	779,793	2,127,808
1987	235,338	683,285	454,258	846,161	2,219,041
1988	244,458	785,261	500,716	924,932	2,455,367
1989	246,765	754,543	533,586	926,797	2,461,692
1990	243,489	805,504	572,487	1,005,617	2,627,096
1991	229,340	860,661	548,827	1,019,014	2,657,842
1992	196,865	791,726	536,962	994,308	2,519,861
1993	190,991	892,646	566,233	1,069,229	2,719,098
1994	185,170	955,753	601,097	1,105,409	2,848,923
1995	197,573	1,030,079	634,946	1,153,268	3,015,867
1996	204,889	1,031,011	668,436	1,156,750	3,061,085
1997	199,101	1,046,107	676,971	1,207,639	3,129,818
1998	195,014	1,083,805	698,625	1,266,957	3,244,402
1999	195,866	1,141,166	737,432	1,275,500	3,349,963
2000	203,207	1,197,915	778,742	1,322,920	3,502,784
2001*	206,953	1,268,771	1,250,166	933,914	3,659,804
2002	215,701	1,315,785	1,186,304	922,033	3,639,822
2003	220,125	1,363,179	1,223,555	974,907	3,781,163
2004	231,918	1,394,390	1,264,713	1,076,959	3,970,234
2005	233,169	1,564,770	1,461,450	1,130,853	4,392,460
2006	238,618	1,670,059	1,539,034	1,246,306	4,696,269

Table 3A: Electric Sales Revenue for Investor-Owned Utilities

Electric Sales Revenue (\$1,000)

Year	Farm	Non-Farm Residential	Commercial	Industrial	Total
1984	20,009	398,105	250,782	687,480	1,356,377
1985	20,727	407,556	257,782	690,248	1,376,313
1986	20,825	423,028	304,285	673,289	1,421,426
1987	19,660	442,578	286,873	740,501	1,489,613
1988	20,878	514,687	315,582	808,983	1,660,130
1989	19,912	480,220	337,250	801,167	1,638,549
1990	22,370	518,143	367,859	874,366	1,782,738
1991	23,072	533,082	337,806	874,923	1,768,884
1992	7,082	504,114	340,177	855,644	1,707,017
1993	7,311	558,342	353,902	915,252	1,834,806
1994	5,073	583,344	371,386	938,232	1,898,036
1995	5,200	641,934	393,842	982,290	2,023,264
1996	5,489	638,779	422,022	977,195	2,043,486
1997	5,645	653,611	423,229	1,022,192	2,104,678
1998	5,600	677,718	431,912	1,064,415	2,179,645
1999	5,528	707,299	445,387	1,074,562	2,232,775
2000	5,630	729,660	471,002	1,098,337	2,304,628
2001*	5,951	763,300	923,252	703,791	2,396,294
2002	5,995	770,046	846,702	687,852	2,310,596
2003	8,019	788,096	869,130	724,342	2,389,588
2004	9,107	792,583	910,181	790,697	2,502,569
2005	6,929	854,294	1,064,233	748,199	2,673,655
2006	9,636	949,265	1,143,180	902,899	3,004,980

Table 3B: Electric Sales Revenue for Cooperative Utilities

Electric Sales Revenue (\$1,000)

Year	Farm	Non-Farm Residential	Commercial	Industrial	Total
1984	210,781	128,567	48,928	35,715	423,991
1985	213,724	131,323	52,551	34,480	432,078
1986	214,988	137,223	56,345	33,589	442,145
1987	214,416	144,954	62,458	33,937	455,765
1988	222,219	162,697	77,217	32,587	494,720
1989	225,500	164,166	81,842	33,791	505,299
1990	219,750	174,661	83,194	35,912	513,518
1991	205,144	208,957	88,184	40,079	542,364
1992	188,393	187,884	86,127	41,610	504,014
1993	181,233	221,491	90,721	44,875	538,320
1994	178,644	245,366	93,880	42,452	560,342
1995	190,740	253,351	100,634	43,430	588,154
1996	197,823	256,263	106,434	44,613	605,133
1997	191,918	255,834	110,557	46,797	605,106
1998	187,887	266,397	122,436	50,759	627,479
1999	188,579	288,666	137,147	48,039	662,432
2000	196,099	313,456	143,050	58,110	710,714
2001	199,569	340,202	154,074	59,160	753,006
2002	208,224	371,741	166,143	63,052	809,160
2003	210,509	393,194	171,787	71,928	847,414
2004	221,083	418,354	176,218	89,270	904,926
2005	221,536	467,141	180,506	101,451	970,633
2006	227,169	498,239	193,056	103,290	1,021,754

Table 3C: Electric Sales Revenue for Municipal Utilities

Electric Sales Revenue (\$1,000)

Year	Farm	Non-Farm Residential	Commercial	Industrial	Total
1984	1,236	85,125	91,032	62,918	240,311
1985	1,676	92,521	99,519	67,039	260,755
1986	1,271	90,542	99,508	72,915	264,236
1987	1,262	95,752	104,928	71,722	273,664
1988	1,360	107,877	107,917	83,363	300,518
1989	1,353	110,158	114,493	91,839	317,843
1990	1,369	112,699	121,433	95,338	330,840
1991	1,123	118,622	122,838	104,012	346,594
1992	1,390	99,728	110,658	97,054	308,830
1993	2,448	112,813	121,610	109,101	345,972
1994	1,453	127,043	135,832	124,726	390,545
1995	1,633	134,795	140,471	127,549	404,448
1996	1,577	135,969	139,980	134,942	412,467
1997	1,538	136,662	143,185	138,650	420,035
1998	1,527	139,690	144,278	151,783	437,277
1999	1,597	145,363	154,897	152,899	454,756
2000	1,479	154,799	164,690	166,473	487,441
2001	1,433	165,269	172,839	170,963	510,505
2002	1,482	173,997	173,459	171,128	520,066
2003	1,598	181,888	182,638	178,638	544,161
2004	1,728	183,452	178,313	196,992	562,739
2005	2,245	204,845	192,531	218,771	620,611
2006	1,812	222,556	202,798	240,117	669,535

Note for Table 3 through 3C

*Xcel Energy redefined its commercial and industrial customer classifications in 2001.

Commercial = Small Commercial and Industrial requiring less than 1000 kW.

Industrial = Large Commercial and Industrial requiring at least 1000 kW.

Table 4: Minnesota Electric Consumption by Utility

2006 Electric Consumption for Investor-Owned Utilities (Megawatt-Hours)

2006	Farm	Non-Farm Residential	Commercial	Industrial	Total
Alliant Energy-Interstate Power & Light Co	35,932	282,601	182,773	334,903	836,209
Minnesota Power	43,403	968,296	1,283,320	6,782,975	9,077,994
Northwestern Wisconsin Elec Co	171	185	191	0	547
Otter Tail Power Company	39,921	525,885	281,451	1,239,109	2,086,366
Xcel Energy	0	8,876,544	14,876,226	9,129,744	32,882,514
Total: Investor-Owned Utilities	119,427	10,653,511	16,623,961	17,486,731	44,883,630

2006 Electric Consumption for Cooperative Utilities (Megawatt-Hours)

2006	Farm	Non-Farm Residential	Commercial	Industrial	Total
Dairyland Power Cooperative					
Heartland Power Cooperative	894	0	0	0	894
Freeborn Mower Coop Services	0	104,484	29,322	62,471	196,277
Peoples Coop Power Assoc., Inc.	49,978	146,010	34,852	0	230,840
Tri-Co Electric Cooperative	171,166	1,838	35,521	45,340	253,865
Total: Dairyland Power Cooperative	222,038	252,332	99,695	107,811	681,876
East River Electric Cooperative					
H-D Electric Cooperative, Inc.	108	89	0	0	197
Lyon-Lincoln Electric Cooperative	56,795	8,253	*	*	81,611
Renville Sibley Coop Power Assn	43,402	3,517	2,247	112,551	161,717
Traverse Electric Cooperative	28,347	1,447	*	*	37,859
Total: East River Electric Cooperative	128,652	13,306	24,447	114,979	281,384

2006 Electric Consumption for Cooperative Utilities, Continued

2006	Farm	Non-Farm Residential	Commercial	Industrial	Total
Great River Energy					
Agralite Cooperative	90,308	0	34,230	53,799	178,337
Arrowhead Electric Cooperative	0	37,170	23,652	0	60,822
BENCO Electric Cooperative	86,764	80,644	90,460	0	257,868
Connexus Energy	9,757	1,173,806	690,298	110,730	1,984,591
Brown Co Rural Electric Assn	63,616	1,417	16,816	33,928	115,777
Coop Lt & Pwr Assoc of Lake Co	0	46,339	*	*	86,988
Crow Wing Coop Power & Light	54,825	324,542	135,652	0	515,019
Dakota Electric Association	11,900	936,937	61,590	820,316	1,830,743
East Central Energy	3,308	490,392	250,777	103,101	847,578
Federated Rural Electric Assn	75,118	4,699	44,248	44,676	168,741
Goodhue Co Coop Electric Assn	50,098	29,279	3,449	1,140	83,966
Itasca-Mantrap Coop Electric	15,856	96,617	*	*	192,246
Kandiyohi Power Cooperative	30,666	71,555	36,008	6,208	144,437
Lake Country Power	0	454,476	108,496	57,820	620,792
Lake Region Coop Electric Assc	119,134	166,757	*	*	346,441
McLeod Coop Power Association	103,583	0	11,989	48,329	163,901
Meeker Coop Light & Power Assn	60,342	65,813	25,006	0	151,161
Mille Lacs Electric Cooperative	308	109,624	47,716	27,101	184,749
Minnesota Valley Electric Coop	0	380,640	245,312	0	625,952
Nobles Coop Electric	87,896	913	18,691	43,113	150,613
North Itasca Electric Cooperative	0	36,158	*	*	52,196
Redwood Electric Cooperative	45,739	0	7,912	0	53,651
Runestone Electric Association	73,533	97,422	21,361	10,435	202,751
South Central Electric Assn	67,284	0	31,087	79,231	177,602
Stearns Coop Electric Assn	132,276	201,865	66,855	20,349	421,345
Steele Waseca Coop Electric	110,535	1,692	37,217	68,015	217,459
Todd Wadena Electric Coop	118,863	3,210	22,687	5,619	150,379
Wright Hennepin Coop Elec Assn	44,391	443,443	281,566	68,425	837,825
Total: Great River Energy	1,456,100	5,255,410	2,430,897	1,681,523	10,823,930

2006 Electric Consumption for Cooperative Utilities, Continued

2006	Farm	Non-Farm Residential	Commercial	Industrial	Total
Minnkota Power Cooperative					
Beltrami Electric Cooperative	281,511	2,574	69,323	0	353,408
Clearwater-Polk Electric Coop	0	61,088	10,207	0	71,295
North Star Electric Cooperative	74,813	2,404	35,247	0	112,464
PKM Electric Cooperative, Inc	67,187	0	20,313	0	87,500
Red Lake Electric Cooperative	93,700	0	*	*	115,595
Red River Valley Coop Power	94,538	0	22,802	0	117,341
Roseau Electric Cooperative	107,703	4,185	16,329	27,560	155,777
Wild Rice Electric Cooperative	163,340	33,660	*	*	230,850
Total: MPC - Cooperative	882,792	103,911	212,025	45,501	1,244,230
Other Cooperatives					
Iowa Lakes Electric Cooperative	0	271	58	0	329
Minnesota Valley Coop Lt & Pwr	116,923	1,180	13,328	49,103	180,534
Sioux Valley Southwestern	60,413	2,615	3,169	27,777	93,974
Total: Other Cooperatives	177,336	4,066	16,555	76,880	274,837
Total: Cooperatives	2,866,918	5,629,025	2,783,619	2,026,694	13,306,257

2006 Minnesota Electric Consumption for Municipal Utilities

2006	Farm	Non-Farm Residential	Commercial	Industrial	Total
Central Minnesota Municipal Power Agency					
Blue Earth Light & Water Dept	0	13,826	6,577	35,960	56,363
Delano Municipal Utilities	0	16,705	4,300	27,976	48,981
Fairfax Municipal	61	6,332	3,880	2,036	12,309
Glencoe Light & Power Comm	0	21,535	29,080	24,586	75,200
Granite Falls, City of	0	12,385	14,885	2,086	29,356
Janesville Municipal Utility	0	7,315	4,008	0	11,323
Kasson City Of	0	18,921	11,842	0	30,763
Kenyon Municipal Utilities	0	6,335	3,301	7,998	17,633
Lake Crystal Municipal	196	8,333	8,076	0	16,605
Madelia Municipal Light & Power	0	7,527	10,579	9,351	27,457
Mountain Lake Municipal Utilities	1,252	7,432	4,935	9,264	22,883
New Ulm Public Utilities	0	43,987	74,794	81,279	200,060
Sleepy Eye Public Utility	0	13,372	13,852	19,455	46,679
Springfield Public Utilities	0	9,195	4,058	14,553	27,806
Truman Municipal Utility	765	5,832	6,964	0	13,561
Windom Municipal Utility	0	19,959	15,405	31,722	67,086
Total: CMMPA	2,274	218,991	216,535	266,266	704,066
Heartland Consumers Power District					
Marshall Municipal Utilities	0	61,037	33,364	509,619	604,020
Tyler Municipal Light & Power	211	8,315	2,000	0	10,526
Total: Heartland	211	69,352	35,364	509,619	614,546
Minnesota Municipal Power Agency					
Anoka City Of	0	78,982	86,430	102,062	267,474
Arlington City Of	0	8,117	*	*	18,285
Brownton Municipal Light & Power	0	3,660	951	230	4,841
City of Chaska-Utility Dept	0	73,421	19,355	193,934	286,710
Le Sueur Municipal Utilities	493	12,557	14,354	80,197	107,601
North St Paul City Of	0	43,297	31,857	0	75,154
Olivia City Of	0	12,213	4,964	12,447	29,624
Shakopee Public Utilities	721	142,873	11,143	229,584	384,321
Winthrop City Of	200	5,794	*	*	15,499
Total: MMPA	1,414	380,914	181,831	625,350	1,189,509

2006 Minnesota Electric Consumption for Municipal Utilities, Continued

2006	Farm	Non-Farm Residential	Commercial	Industrial	Total
Missouri River Energy Services					
Adrian Public Utilities	0	6,555	6,068	590	13,213
Alexandria Light & Power	0	70,944	40,693	154,943	266,580
Barnesville Municipal Electric	109	13,219	3,427	2,008	18,763
Benson Municipal Utilities	*	15,068	7,041	*	36,071
Breckenridge Public Utilities	0	19,607	10,250	10,921	40,778
Detroit Lakes Public Utility	0	60,638	30,928	79,787	171,353
Elbow Lake Municipal Electric	0	6,100	10,019	0	16,119
Henning Electric Department	0	8,237	604	0	8,841
Jackson Electric Light & Power	0	13,543	5,981	25,258	44,782
Lake Park Public Utilities	0	3,974	3,153	0	7,127
Lakefield City of	17	7,843	6,897	0	14,757
Luverne Public Utilities	122	21,412	10,189	44,818	76,541
Madison Municipal Utilities	0	8,608	4,644	5,068	18,320
Moorhead Public Service	0	152,668	39,672	207,031	399,371
Ortonville City Of	0	12,943	14,664	0	27,607
St. James City of	*	18,872	28,979	*	64,854
Sauk Centre Public Utilities	0	18,875	10,878	27,453	57,206
Staples City of	0	9,525	6,906	6,171	22,602
Wadena Light & Water	0	22,225	7,244	38,933	68,402
Westbrook Mun Light & Power	242	4,117	1,531	1,658	7,548
Worthington Municipal Power	0	35,734	61,928	91,634	189,296
Total: MRES	572	530,707	311,696	727,156	1,570,131
Northern Municipal Power Agency					
Bagley Public Utility	0	7,719	4,923	14,607	27,249
Baudette City Of	0	4,686	*	*	22,440
Fosston Municipal Utility	0	10,384	*	*	32,138
Halstad Municipal Utilities	0	4,555	4,253	0	8,808
Hawley Public Utilities	0	10,256	8,284	0	18,540
Roseau Municipal Water & Light	0	15,121	8,546	18,496	42,163
Stephen Electric Dept	0	4,027	3,790	0	7,817
Thief River Falls Mun Utilities	0	45,339	55,170	41,674	142,183
Warren City Of	0	8,178	9,792	0	17,970
Warroad Municipal Light & Power	0	8,603	15,236	34,559	58,398
Total: NMPA	0	118,868	135,319	123,519	377,706

2006 Minnesota Electric Consumption for Municipal Utilities, Continued

2006	Farm	Non-Farm Residential	Commercial	Industrial	Total
Other Municipals					
Ada Water & Light Dept	0	11,474	6,790	3,192	21,456
Aitkin Public Utilities	0	13,186	7,063	14,753	35,002
Alpha City of	49	752	448	0	1,249
Alvarado Electric Dept	670	2,189	667	0	3,526
Bigelow City of	489	760	1,085	0	2,334
Biwabik Water Light & Power	0	3,648	3,269	0	6,917
Brainerd Public Utilities	0	49,127	78,566	119,892	247,585
Brewster Electric Light & Power	53	2,140	722	950	3,865
Buffalo City Of	8	37,630	55,935	10,868	104,441
Buhl Pub Utilities	0	3,570	3,327	0	6,897
Caledonia Mun Light & Power	100	10,310	4,332	11,238	25,980
Ceylon Public Utilities	0	1,712	805	0	2,517
Darwin Electric Dept	0	2,126	222	0	2,348
Dundee Electric Utility	0	340	369	0	708
Dunnell Electric Department	0	689	607	0	1,296
East Grand Forks Water & Light	0	36,128	34,480	68,178	138,786
Eitzen Public Utilities	0	1,313	418	297	2,028
Elk River Municipal Utilities	203	74,311	21,662	98,799	194,975
Ely Water & Light Dept	0	13,329	20,367	0	33,696
Gilbert Water & Light	0	5,859	4,714	0	10,573
Grand Rapids Public Utilities	0	44,650	*	*	159,521
Grove City Electric Dept	0	4,019	2,248	1,574	7,841
Harmony Electric Dept	0	4,793	5,273	489	10,555
Hibbing Public Utilities Comm	0	48,817	64,578	14,905	128,300
Hutchinson Utilities Commission	0	52,558	18,790	235,075	306,423
Kandiyohi Municipal Utilities	0	2,662	1,000	0	3,662
Kasota Electric Light	0	3,645	0	0	3,645
Keewatin Public Utilities	0	5,588	538	0	6,126
Lanesboro Public Utilities	0	2,961	3,780	0	6,741
Mabel City of	0	2,538	2,878	0	5,416
Melrose Public Utilities	2,459	18,266	18,204	68,495	107,424
Moose Lake Water & Light Comm	0	5,069	13,419	10,668	29,156
Mountain Iron Water & Light	0	9,840	7,346	1,475	18,661
Nashwauk Public Utilities	0	4,090	4,014	0	8,104
Newfolden Electric	0	2,088	2,398	0	4,486
Nielsenville Village Light System	0	387	179	0	566
Peterson Public Utilities	0	1,365	0	0	1,365
Pierz Utilities	0	4,000	5,000	1,000	10,000

2006 Minnesota Electric Consumption for Municipal Utilities, Continued

2006	Farm	Non-Farm Residential	Commercial	Industrial	Total
Other Municipals (continued)					
Proctor Public Utilities	0	11,913	*	*	23,625
Randall City of	*	3,112	1,900	*	5,082
Round Lake Electric Dept	0	1,816	763	4,820	7,399
Rushford City of	0	6,985	*	*	15,078
Rushmore City of	0	1,653	445	0	2,098
Shelly Municipal Light Dept.	0	1,628	751	0	2,379
Spring Grove Municipal Electric	249	4,286	4,830	7,317	16,682
St Charles Light & Water	*	14,960	15,922	*	39,563
Two Harbors City of	0	10,794	5,515	12,868	29,177
Virginia Dept of Public Utilities	0	34,090	73,007	0	107,097
Whalan City of	0	198	100	0	298
Willmar Municipal Utilities	0	68,510	93,814	121,687	284,011
Total: Other Municipals	4,384	647,874	705,337	839,066	2,196,660
Southern Minnesota Municipal Power Agency					
Austin Utilities	6,080	75,430	*	*	332,892
Blooming Prairie Utilities	0	6,834	16,989	0	23,823
Fairmont Public Utilities	3,720	38,963	52,178	53,317	148,178
Grand Marais Public Utilities	0	7,473	14,027	0	21,500
Lake City Utility Board	48	19,960	18,388	101,385	139,781
Litchfield Public Utilities	492	34,850	40,334	46,168	121,844
Mora Municipal Electric Utility	0	12,249	8,839	33,028	54,116
New Prague Municipal Utilities	0	18,563	*	*	64,197
North Branch Mun Water & Light	0	12,230	12,818	4,907	29,955
Owatonna Public Utilities	0	84,385	90,278	199,789	374,452
Preston Public Utilities	124	5,396	3,706	3,676	12,903
Princeton Public Utilities	0	16,120	14,966	19,066	50,152
Redwood Falls Public Utilities	0	30,175	19,531	22,846	72,552
Rochester Public Utilities	0	411,517	785,080	351,210	1,547,807
Spring Valley Pub Utilities Comm	0	8,805	11,621	0	20,426
St Peter Municipal Utilities	0	27,973	37,613	24,472	90,058
Waseca Utility	0	27,356	37,579	0	64,935
Wells Public Utilities	0	8,672	8,682	0	17,354
Total: SMMPA	10,464	846,951	1,266,884	1,062,625	3,186,925
Total: Municipal Utilities	19,319	2,813,657	2,852,966	4,153,601	9,839,543
Total: Minnesota	3,005,664	19,096,193	22,260,545	23,667,026	68,029,430

Note for Table 4

* Withheld to avoid disclosure of individual company data. Data included in totals.

Table 5: Number of Minnesota Electric Customers by Utility

2006 Number of Minnesota Electric Customers for Investor-Owned Utilities

2006	Farm	Non-Farm Residential	Commercial	Industrial	Total
Investor-Owned Utilities					
Alliant Energy-Interstate Power & Light Co	1,654	34,673	7,091	271	43,689
Minnesota Power	1,813	115,783	21,165	451	139,212
Northwestern Wisconsin Elec Co	31	43	21	0	95
Otter Tail Power Company	1,453	47,097	9,550	741	58,841
Xcel Energy	0	1,065,337	127,754	461	1,193,552
Total: Investor-Owned Utilities	4,951	1,262,933	165,581	1,924	1,435,389

2006 Number of Minnesota Electric Customers for Cooperative Utilities

2006	Farm	Non-Farm Residential	Commercial	Industrial	Total
Dairyland Power Cooperative					
Heartland Power Cooperative	40	0	0	0	40
Freeborn Mower Coop Services	0	5,872	79	8	5,959
Peoples Coop Power Assoc., Inc.	3,839	11,215	288	0	15,342
Tri-Co Electric Cooperative	10,522	1,790	387	2	12,701
Total: Dairyland Power Coop	14,401	18,877	754	10	34,042
East River Electric Cooperative					
H-D Electric Cooperative, Inc.	6	5	0	0	11
Lyon-Lincoln Electric Cooperative	3,175	528	286	1	3,990
Renville Sibley Coop Power Assn	1,718	189	55	6	1,968
Traverse Electric Cooperative	1,309	350	67	1	1,727
Total: East River Electric Cooperative	6,208	1,072	408	8	7,696

Number of Minnesota Electric Customers for Cooperative Utilities in 2006, Continued

2006	Farm	Non-Farm Residential	Commercial	Industrial	Total
Great River Energy					
Agralite Cooperative	4,571	0	257	3	4,831
Arrowhead Electric Cooperative	0	3,491	405	0	3,896
BENCO Electric Cooperative	6,581	5,929	603	0	13,113
Connexus Energy	309	112,347	8,504	13	121,173
Brown County Rural Electric Assn	3,201	115	466	59	3,841
Coop Lt & Power Assoc of Lake Co	0	5,156	519	1	5,676
Crow Wing Coop Power & Light	1,075	37,374	2,047	0	40,496
Dakota Electric Association	278	92,018	4,306	2,323	98,925
East Central Energy	107	47,420	4,406	9	51,942
Federated Rural Electric Assn	3,818	692	438	3	4,951
Goodhue Co Coop Electric Assn	2,283	2,302	178	8	4,771
Itasca-Mantrap Coop Electric	959	9,115	796	1	10,871
Kandiyohi Power Cooperative	1,724	4,139	936	3	6,802
Lake Country Power	0	45,096	2,740	3	47,840
Lake Region Coop Electric Assc	6,669	16,812	2,054	1	25,536
McLeod Coop Power Association	6,177	0	269	5	6,451
Meeker Coop Light & Power Assn	2,805	4,971	535	0	8,311
Mille Lacs Electric Cooperative	20	13,338	1,059	70	14,487
Minnesota Valley Electric Coop	0	29,299	2,938	0	32,237
Nobles Cooperative Electric	4,324	454	256	2	5,036
North Itasca Electric Cooperative	0	4,855	327	1	5,183
Redwood Electric Cooperative	2,318	0	157	0	2,475
Runestone Electric Association	4,343	8,213	659	3	13,218
South Central Electric Assn	3,540	0	360	3	3,903
Stearns Cooperative Electric Assn	4,576	17,031	1,355	3	22,965
Steele Waseca Coop Electric	7,932	567	457	9	8,965
Todd Wadena Electric Cooperative	6,755	997	386	2	8,140
Wright Hennepin Coop Elec Assn	3,139	36,319	4,795	8	44,261
Total: Great River Energy	77,504	498,050	42,208	2,533	620,296

Number of Minnesota Electric Customers for Cooperative Utilities in 2006, Continued

2006	Farm	Non-Farm Residential	Commercial	Industrial	Total
Minnkota Power Cooperative					
Beltrami Electric Cooperative	17,065	1,101	1,348	0	19,514
Clearwater-Polk Electric Coop	0	3,962	294	0	4,256
North Star Electric Cooperative	4,453	1,325	569	0	6,347
PKM Electric Cooperative, Inc	3,357	0	247	0	3,604
Red Lake Electric Cooperative	4,683	0	314	50	5,047
Red River Valley Coop Power	4,210	0	474	0	4,684
Roseau Electric Cooperative	6,023	364	296	2	6,685
Wild Rice Electric Cooperative	8,893	3,898	666	1	13,458
Total: MPC - Cooperative	48,684	10,650	4,208	53	63,595
Other Cooperatives					
Iowa Lakes Electric Cooperative	0	17	3	0	20
Minnesota Valley Coop Lt & Power	4,228	805	223	2	5,258
Sioux Valley Southwestern	2,539	175	95	68	2,877
Total: Other Cooperatives	6,767	997	321	70	8,155
Total: Cooperatives	153,564	529,646	47,899	2,674	733,784

2006 Number of Minnesota Electric Customers for Municipal Utilities

2006	Farm	Non-Farm Residential	Commercial	Industrial	Total
Central Minnesota Municipal Power Agency					
Blue Earth Light & Water Dept	0	1,685	327	61	2,073
Delano Municipal Utilities	0	1,961	303	82	2,346
Fairfax Municipal	4	575	103	6	688
Glencoe Light & Power Comm	0	2,455	388	3	2,848
Granite Falls City of	0	1,384	254	7	1,645
Janesville Municipal Utility	0	1,053	412	0	1,465
Kasson City Of	0	2,224	246	0	2,470
Kenyon Municipal Utilities	0	822	108	26	956
Lake Crystal Municipal	18	1,031	182	0	1,231
Madelia Municipal Light & Power	0	1,029	208	11	1,248
Mountain Lake Municipal Utilities	38	852	177	12	1,079
New Ulm Public Utilities	0	5,930	1,049	7	6,986
Sleepy Eye Public Utility	0	1,536	353	14	1,903
Springfield Public Utilities	0	1,013	201	12	1,226
Truman Municipal Utility	12	516	85	29	642
Windom Municipal Utility	0	2,083	336	20	2,439
Total: CMMPA	72	26,149	4,732	290	31,245
Heartland Consumers Power District					
Marshall Municipal Utilities	0	5,463	882	89	6,434
Tyler Municipal Light & Power	11	511	119	0	641
Total: Heartland	11	5,974	1,001	89	7,075
Minnesota Municipal Power Agency					
Anoka City Of	0	10,434	1,287	17	11,738
Arlington City Of	0	971	159	1	1,131
Brownton Municipal Light & Power	0	348	45	5	398
City of Chaska-Utility Dept.	0	7,621	892	240	8,753
Le Sueur Municipal Utilities	193	1,646	295	56	2,190
North St Paul City Of	0	5,702	632	0	6,334
Olivia City Of	0	1,087	201	86	1,374
Shakopee Public Utilities	27	13,890	922	436	15,275
Winthrop City Of	12	674	118	1	806
Total: MMPA	232	42,373	4,551	842	47,999

Number of Minnesota Electric Customers for Municipal Utilities, Continued

2006	Farm	Non-Farm Residential	Commercial	Industrial	Total
Missouri River Energy Services					
Adrian Public Utilities	0	535	106	2	643
Alexandria Light & Power	0	7,379	1,559	166	9,104
Barnesville Municipal Electric	3	1,051	120	12	1,186
Benson Municipal Utilities	3	1,525	234	49	1,811
Breckenridge Public Utilities	0	1,551	279	21	1,851
Detroit Lakes Public Utility	0	5,339	1,054	115	6,508
Elbow Lake Municipal Electric	0	670	106	0	776
Henning Electric Dept	0	500	48	0	548
Jackson Electric Light & Power	0	1,574	268	46	1,888
Lake Park Public Utilities	0	408	85	0	493
Lakefield City of	2	873	153	0	1,028
Luverne Public Utilities	8	2,072	311	111	2,502
Madison Municipal Utilities	0	835	158	29	1,022
Moorhead Public Service	0	13,609	1,576	187	15,372
Ortonville City Of	0	1,070	1,170	0	2,241
St. James City of	3	1,881	378	1	2,263
Sauk Centre Public Utilities	0	1,919	362	72	2,353
Staples City of	0	1,068	212	7	1,287
Wadena Light & Water	0	2,167	469	112	2,748
Westbrook Mun Light & Power	19	337	76	2	434
Worthington Municipal Power	0	4,402	789	7	5,198
Total: MRES	38	50,765	9,513	939	61,256
Northern Municipal Power Agency					
Bagley Public Utility	0	554	143	63	760
Baudette City Of	0	572	185	1	758
Fosston Municipal Utility	0	718	218	10	946
Halstad Municipal Utilities	0	266	66	0	332
Hawley Public Utilities	0	882	188	0	1,070
Roseau Municipal Water & Light	0	1,131	200	76	1,407
Stephen Electric Dept	0	299	94	0	393
Thief River Falls Municipal Utilities	0	3,808	690	31	4,529
Warren City Of	0	668	145	0	813
Warroad Municipal Light & Power	0	759	134	4	897
Total: NMPA	0	9,657	2,063	185	11,905

Number of Minnesota Electric Customers for Municipal Utilities, Continued

2006	Farm	Non-Farm Residential	Commercial	Industrial	Total
Other Municipals					
Ada Water & Light Dept	0	874	174	32	1,080
Aitkin Public Utilities	0	1,488	343	53	1,884
Alpha City of	2	62	14	0	78
Alvarado Electric Dept	5	184	41	0	230
Bigelow City of	16	98	21	0	135
Biwabik Water Light & Power	0	634	91	0	725
Brainerd Public Utilities	0	6,399	1,291	33	7,723
Brewster Electric Light & Power	4	220	31	2	257
Buffalo City Of	2	4,543	737	15	5,297
Buhl Public Utilities	0	540	44	0	584
Caledonia Municipal Light & Power	8	1,328	187	73	1,596
Ceylon Public Utilities	0	189	46	0	235
Darwin Electric Dept	0	182	25	0	207
Dundee Electric Utility	0	50	16	0	66
Dunnell Electric Department	0	90	31	0	121
East Grand Forks Water & Light Dept	0	3,513	513	11	4,037
Eitzen Public Utilities	0	132	20	3	155
Elk River Municipal Utilities	19	7,564	816	163	8,562
Ely Water & Light Dept	0	1,749	357	0	2,106
Gilbert Water & Light	0	910	80	0	990
Grand Rapids Public Utilities	0	5,279	1,442	1	6,722
Grove City Electric Dept	0	400	63	2	465
Harmony Electric Dept	0	513	151	8	672
Hibbing Public Utilities Commission	0	6,170	894	15	7,079
Hutchinson Utilities Commission	0	6,004	817	122	6,943
Kandiyohi Municipal Utilities	0	265	35	0	300
Kasota Electric Light	0	326	0	0	326
Keewatin Public Utilities***	0	547	11	0	558
Lanesboro Public Utilities	0	453	152	0	605
Mabel City of	0	386	91	0	477
Melrose Public Utilities	53	1,288	247	2	1,590
Moose Lake Water & Light Comm	0	755	269	2	1,026
Mountain Iron Water & Light	0	1,108	113	5	1,224
Nashwauk Public Utilities	0	469	59	0	528
Newfolden Electric	0	180	33	0	213
Nielsville Village Light System	0	50	7	0	57
Peterson Public Utilities	0	115	0	0	115
Pierz Utilities	0	399	74	18	491

Number of Minnesota Electric Customers for Municipal Utilities, Continued

2006	Farm	Non-Farm Residential	Commercial	Industrial	Total
Other Municipals (continued)					
Proctor Public Utilities	0	1,265	88	1	1,354
Randall City of	1	256	48	2	307
Round Lake Electric Dept	0	188	34	2	224
Rushford City Of	0	835	130	1	966
Rushmore City of	0	202	18	0	220
Shelly Municipal Light Dept.	0	125	11	0	136
Spring Grove Municipal Electric	5	629	140	3	777
St Charles Light & Water	1	1,545	221	1	1,768
Two Harbors City of	0	1,694	211	44	1,949
Virginia Dept of Public Utilities	0	4,294	951	0	5,245
Whalan City of	0	47	8	0	55
Willmar Municipal Utilities	0	7,870	1,243	31	9,144
Total: Other Municipals	116	74,406	12,439	645	87,604
Southern Minnesota Municipal Power Agency					
Austin Utilities	644	9,869	1,935	1	12,449
Blooming Prairie Utilities	0	837	191	0	1,028
Fairmont Public Utilities	224	4,963	832	15	6,034
Grand Marais Public Utilities	0	892	320	0	1,212
Lake City Utility Board	2	2,725	443	6	3,176
Litchfield Public Utilities	16	2,790	446	6	3,258
Mora Municipal Electric Utility	0	1,637	232	31	1,900
New Prague Municipal Utilities***	0	2,068	244	1	2,313
North Branch Mun Water & Light	0	1,656	237	8	1,901
Owatonna Public Utilities	0	10,195	1,000	57	11,252
Preston Public Utilities	4	674	195	13	886
Princeton Public Utilities	0	2,148	305	27	2,480
Redwood Falls Public Utilities	0	2,293	519	55	2,867
Rochester Public Utilities	0	41,926	4,505	2	46,433
Spring Valley Public Utility	0	1,281	200	0	1,481
St Peter Municipal Utilities	0	3,683	425	3	4,111
Waseca Utility	0	3,557	527	0	4,084
Wells Public Utilities	0	1,127	195	0	1,332
Total: SMMPA	890	94,321	12,751	225	108,197
Total: Municipal Utilities	1,359	303,645	47,050	3,215	355,257
Total: Minnesota	159,874	2,096,224	260,530	7,813	2,524,454

Note for Table 5

*** Data is from 2003.

Table 6: Minnesota Electric Sales Revenue by Utility

2006 Minnesota Electric Sales Revenue for Investor-Owned Utilities

2006	Farm	Non-Farm Residential	Commercial	Industrial	Total
Investor-Owned Utilities					
Alliant Energy-Interstate Power & Light Co	3,474	28,490	18,194	24,048	74,207
Minnesota Power	3,443	68,077	80,099	281,175	432,793
Northwestern Wisconsin Elec Co	19	20	22	0	61
Otter Tail Power Company	2,700	39,886	21,758	68,649	132,993
Xcel Energy	0	812,792	1,023,108	529,027	2,364,926
Total: Investor-Owned Utilities	9,636	949,265	1,143,180	902,899	3,004,980

2006 Minnesota Electric Sales Revenue for Cooperative Utilities

2006	Farm	Non-Farm Residential	Commercial	Industrial	Total
Dairyland Power Cooperative					
Heartland Power Cooperative	77	0	0	0	77
Freeborn Mower Coop Services	0	9,796	1,850	2,460	14,106
Peoples Coop Power Assoc., Inc.	4,966	14,509	2,843	0	22,318
Tri-Co Electric Cooperative	17,519	310	2,895	1,611	22,335
Total: Dairyland Power Coop	22,562	24,615	7,588	4,071	58,837
East River Electric Cooperative					
H-D Electric Cooperative, Inc	9	8	0	0	17
Lyon-Lincoln Electric Cooperative	4,235	615	*	*	5,863
Renville Sibley Coop Power Assn	3,181	272	178	4,284	7,915
Traverse Electric Cooperative	2,312	198	*	*	3,063
Total: East River Electric Coop	9,737	1,094	1,579	4,448	16,858

Minnesota Electric Sales Revenue for Cooperative Utilities, Continued

2006	Farm	Non-Farm Residential	Commercial	Industrial	Total
Great River Energy					
Agralite Cooperative	8,388	0	2,127	2,409	12,924
Arrowhead Electric Cooperative	0	3,429	1,904	0	5,333
BENCO Electric Cooperative	7,631	7,093	6,024	0	20,747
Brown Co Rural Electric Assn	4,790	114	1,123	1,964	7,991
Connexus Energy	811	106,172	47,037	5,728	159,748
Coop Lt & Power Assc of Lake Co	0	4,216	*	*	6,881
Crow Wing Coop Power & Light	4,469	26,983	9,595	0	41,411
Dakota Electric Association	756	80,157	5,553	45,745	132,211
East Central Energy	312	49,885	18,767	4,966	73,961
Federated Rural Electric Assn	4,922	344	2,477	2,039	9,783
Goodhue Co Coop Electric Assn	4,404	2,730	311	96	7,541
Itasca-Mantrap Coop Electric	1,274	7,496	*	*	13,164
Kandiyohi Power Cooperative	2,439	5,970	2,675	308	11,392
Lake Country Power	0	42,264	8,291	3,158	53,714
Lake Region Coop Electric Assc	10,656	15,387	*	*	31,028
McLeod Coop Power Association	8,807	0	831	2,313	11,950
Meeker Coop Light & Power Assn	5,019	5,531	1,973	0	12,522
Mille Lacs Electric Cooperative	30	10,740	3,421	1,715	15,905
Minnesota Valley Electric Coop	0	32,295	14,299	0	46,593
Nobles Cooperative Electric	6,363	118	1,163	2,196	9,841
North Itasca Electric Cooperative	0	4,029	*	*	4,885
Redwood Electric Cooperative	4,090	0	687	0	4,778
Runestone Electric Association	6,116	8,353	1,653	588	16,711
South Central Electric Assn	5,496	0	2,014	3,255	10,766
Stearns Coop Electric Assn	9,604	14,811	4,554	1,167	30,136
Steele Waseca Coop Electric	11,502	266	3,237	3,398	18,404
Todd Wadena Electric Cooperative	9,916	425	1,582	286	12,208
Wright Hennepin Coop Elec Assn	3,518	35,154	18,241	3,876	60,789
Total: Great River Energy	121,314	463,962	168,936	89,074	843,286

Minnesota Electric Sales Revenue for Cooperative Utilities, Continued

2006	Farm	Non-Farm Residential	Commercial	Industrial	Total
Minnkota Power Cooperative					
Beltrami Electric Cooperative	18,678	410	4,435	0	23,523
Clearwater-Polk Electric Coop	0	4,424	646	0	5,070
North Star Electric Cooperative	5,529	638	2,318	0	8,486
PKM Electric Cooperative, Inc	5,192	0	1,272	0	6,464
Red Lake Electric Cooperative	6,241	0	*	*	7,533
Red River Valley Coop Power	6,640	0	1,571	0	8,212
Roseau Electric Cooperative	7,063	378	1,118	1,299	9,859
Wild Rice Electric Cooperative	11,692	2,412	*	*	16,223
Total: MPC - Cooperative	61,035	8,262	13,805	2,268	85,370
Other Cooperatives					
Iowa Lakes Electric Cooperative	0	27	5	0	32
Minnesota Valley Coop Lt & Power	8,103	94	890	1,838	10,925
Sioux Valley Southwestern	4,418	185	253	1,592	6,447
Total: Other Cooperatives	12,521	306	1,148	3,430	17,404
Total: Cooperatives	227,169	498,239	193,056	103,290	1,021,754

2006 Minnesota Electric Sales Revenue for Municipal Utilities

2006	Farm	Non-Farm Residential	Commercial	Industrial	Total
Central Minnesota Municipal Power Agency					
Blue Earth Light & Water Dept	0	1,267	594	2,658	4,519
Delano Municipal Utilities	0	1,876	492	2,640	5,008
Fairfax Municipal	4	383	272	124	782
Glencoe Light & Power Commission	0	2,517	3,218	2,468	8,203
Granite Falls City of	0	1,133	1,433	141	2,707
Janesville Municipal Utility	0	966	506	0	1,472
Kasson City Of	0	1,568	804	0	2,372
Kenyon Municipal Utilities	0	860	382	934	2,175
Lake Crystal Municipal	18	771	605	0	1,394
Madelia Municipal Light & Power	0	788	1,007	729	2,524
Mountain Lake Municipal Utilities	132	794	379	739	2,044
New Ulm Public Utilities	0	5,725	7,252	7,921	20,898
Sleepy Eye Public Utility	0	1,164	1,155	1,490	3,809
Springfield Public Utilities	0	1,003	408	1,118	2,528
Truman Municipal Utility	17	458	151	396	1,021
Windom Municipal Utility	0	1,558	1,190	2,348	5,095
Total: CMPA	170	22,830	19,848	23,704	66,553
Heartland Consumers Power District					
Marshall Municipal Utilities	0	3,545	2,169	21,745	27,459
Tyler Municipal Light & Power	14	572	138	0	724
Total: Heartland	14	4,117	2,307	21,745	28,183
Minnesota Municipal Power Agency					
Anoka City Of	0	7,209	6,450	6,318	19,976
Arlington City Of	0	722	*	*	1,655
Brownton Municipal Light & Power	0	253	75	20	348
City of Chaska-Utility Dept.	0	5,519	1,302	12,373	19,194
Le Sueur Municipal Utilities	321	1,457	627	5,594	7,999
North St Paul City Of	0	4,165	2,815	0	6,980
Olivia City Of	0	582	247	643	1,473
Shakopee Public Utilities	67	12,041	1,060	17,046	30,214
Winthrop City Of	16	546	*	*	1,218
Total: MMPA	404	32,494	13,669	42,473	89,057

Minnesota Electric Sales Revenue for Municipal Utilities, Continued

2006	Farm	Non-Farm Residential	Commercial	Industrial	Total
Missouri River Energy Services					
Adrian Public Utilities	0	521	451	52	1,024
Alexandria Light & Power	0	5,052	2,695	7,908	15,656
Barnesville Municipal Electric	6	1,011	186	126	1,329
Benson Municipal Utilities	3	978	489	774	2,244
Breckenridge Public Utilities	0	1,087	588	638	2,314
Detroit Lakes Public Utility	0	3,819	1,936	4,142	9,897
Elbow Lake Municipal Electric	0	440	588	0	1,028
Henning Electric Dept	0	525	33	0	558
Jackson Electric Light & Power	0	960	400	810	2,170
Lake Park Public Utilities	0	291	198	0	489
Lakefield City of	1	443	395	0	839
Luverne Public Utilities	10	1,737	782	2,224	4,753
Madison Municipal Utilities	0	396	235	189	820
Moorhead Public Service	0	9,264	2,671	9,862	21,797
Ortonville City Of	0	811	706	0	1,517
St. James City of	2	1,059	*	*	3,503
Sauk Centre Public Utilities	0	1,092	654	1,420	3,166
Staples City of	0	764	558	340	1,662
Wadena Light & Water	0	1,387	395	2,095	3,877
Westbrook Mun Light & Power	19	297	117	106	539
Worthington Municipal Power	0	2,444	4,093	4,412	10,949
Total: MRES	41	34,379	19,812	35,900	90,131
Northern Municipal Power Agency					
Bagley Public Utility	0	475	309	934	1,718
Baudette City Of	0	378	*	*	1,539
Fosston Municipal Utility	0	706	836	730	2,273
Halstad Municipal Utilities	0	303	255	0	558
Hawley Public Utilities	0	754	574	0	1,328
Roseau Municipal Water & Light	0	977	510	1,035	2,522
Stephen Electric Dept	0	305	232	0	537
Thief River Falls Municipal Utilities	0	2,566	2,863	2,235	7,664
Warren City Of	0	549	578	0	1,127
Warroad Municipal Light & Power	0	611	*	*	2,782
Total: NMPA	0	7,625	7,889	6,535	22,048

Minnesota Electric Sales Revenue for Municipal Utilities, Continued

2006	Farm	Non-Farm Residential	Commercial	Industrial	Total
Other Municipals					
Ada Water & Light Dept	0	588	493	141	1,223
Aitkin Public Utilities	0	910	651	1,021	2,582
Alpha City of	3	63	36	0	102
Alvarado Electric Dept	38	172	40	0	250
Bigelow City of	21	55	79	0	155
Biwabik Water Light & Power	0	227	204	0	431
Brainerd Public Utilities	0	3,477	5,295	6,279	15,051
Brewster Electric Light & Power	4	139	47	86	275
Buffalo City Of	1	3,438	5,126	687	9,252
Buhl Public Utilities	0	215	197	0	411
Caledonia Mun Light & Power	9	871	267	647	1,793
Ceylon Public Utilities	0	98	46	0	144
Darwin Electric Dept	0	142	36	0	178
Dundee Electric Utility	0	32	26	0	58
Dunnell Electric Department	0	47	51	0	98
East Grand Forks Water & Light Dept	0	3,091	2,578	4,684	10,354
Eitzen Public Utilities	0	111	36	23	170
Elk River Municipal Utilities	20	6,591	1,744	7,139	15,494
Ely Water & Light Dept	0	1,013	1,524	0	2,537
Gilbert Water & Light	0	375	304	0	679
Grand Rapids Public Utilities	0	3,133	*	*	10,216
Grove City Electric Dept	0	333	182	104	619
Harmony Electric Dept	0	226	447	42	715
Hibbing Public Utilities Commission	0	4,048	4,935	991	9,975
Hutchinson Utilities Commission	0	5,144	1,790	16,700	23,634
Kandiyohi Municipal Utilities	0	169	63	0	232
Kasota Electric Light	0	358	0	0	358
Keewatin Public Utilities	0	403	32	0	435
Lanesboro Public Utilities	0	294	364	0	658
Mabel City of	0	187	211	0	398
Melrose Public Utilities	120	875	1,039	2,667	4,700
Moose Lake Water & Light Comm	0	427	1,079	816	2,322
Mountain Iron Water & Light	0	702	643	121	1,466
Nashwauk Public Utilities	0	221	235	0	456
Newfolden Electric	0	156	135	0	291
Nielsville Village Light System	0	36	15	0	50
Peterson Public Utilities	0	120	0	0	120
Pierz Utilities	0	213	227	80	520

Minnesota Electric Sales Revenue for Municipal Utilities, Continued

2006	Farm	Non-Farm Residential	Commercial	Industrial	Total
Other Municipals (continued)					
Proctor Public Utilities	0	706	*	*	1,361
Randall City of	*	179	147	*	331
Round Lake Electric Dept	0	131	55	404	589
Rushford City of	0	644	*	*	1,292
Rushmore City of	0	126	33	0	159
Shelly Municipal Light Dept.	0	107	65	0	171
Spring Grove Municipal Electric	19	334	301	280	934
St Charles Light & Water	*	903	947	*	2,212
Two Harbors City of^	-	-	-	-	2,237
Virginia Dept of Public Utilities	0	2,870	5,420	0	8,290
Whalan City of	0	18	24	0	42
Willmar Municipal Utilities	0	5,275	6,110	6,805	18,190
Total: Other Municipals	2490	49,991	50,181	51,560	154,210
Southern Minnesota Municipal Power Agency					
Austin Utilities	592	7,108	*	*	23,282
Blooming Prairie Utilities	0	562	1,195	0	1,757
Fairmont Public Utilities	296	3,081	3,517	3,121	10,014
Grand Marais Public Utilities	0	700	1,170	0	1,870
Lake City Utility Board	5	1,836	1,521	5,290	8,652
Litchfield Public Utilities	40	2,081	2,372	1,978	6,472
Mora Municipal Electric Utility	0	1,111	2,149	2,393	5,653
New Prague Municipal Utilities	0	1,540	*	*	4,696
North Branch Mun Water & Light	0	1,149	1,070	360	2,579
Owatonna Public Utilities	0	7,322	6,427	11,767	25,516
Preston Public Utilities	10	428	289	267	994
Princeton Public Utilities	0	1,997	1,203	1,881	5,082
Redwood Falls Public Utilities	0	1,560	1,467	1,138	4,165
Rochester Public Utilities	0	33,538	51,648	17,183	102,369
Spring Valley Public Utilities Comm	0	801	937	0	1,738
St Peter Municipal Utilities	0	3,041	3,221	1,808	8,071
Waseca Utility	0	2,457	2,353	0	4,810
Wells Public Utilities	0	805	830	0	1,635
Total: SMMPA	942	71,119	89,092	58,201	219,354
Total: Municipal Utilities	1,812	222,556	202,798	240,117	669,535
Total: Minnesota	238,616	1,670,059	1,539,034	1,246,306	4,696,269

Notes for Table 6

* Withheld to avoid disclosure of individual company data. Data included in totals.

^ Data not provided by customer class.

Table 7: Minnesota Residential Electric Space Heating Customers

2006 Minnesota Electric Space Heating Customers for Investor-Owned Utilities

2006	Customers	Megawatt-Hours
Investor-Owned Utilities		
Alliant Energy-Interstate Power & Lt Co	1,505	17,076
Minnesota Power	12,051	155,037
Otter Tail Power Company	7,314	124,092
Xcel Energy	28,125	350,900
Total: Investor-Owned Utilities	48,995	647,105

2006 Minnesota Electric Space Heating Customers for Cooperative Utilities

2006	Customers	Megawatt-Hours
Dairyland Power Cooperative		
Freeborn Mower Electric Cooperative	527	5,557
Heartland Power Cooperative	5	60
Peoples Coop Power Assoc., Inc.	1,145	17,935
Tri-Co Electric Cooperative	1,660	48,226
Total: Dairyland Power	3,337	71,778
East River Electric Cooperative		
H-D Electric Cooperative, Inc	2	4
Lyon-Lincoln Electric Cooperative	805	9,368
Renville Sibley Cooperative Power	286	3,687
Traverse Electric Cooperative	754	13,000
Total: East River Electric	1,847	26,059

Minnesota Electric Space Heating Customers for Cooperative Utilities in 2006, Cont.

2006	Customers	Megawatt-Hours
Great River Energy		
Agralite Cooperative	1,208	9,581
Arrowhead Electric Cooperative	940	15,907
BENCO Electric Cooperative	418	6,796
Brown County Rural Electric Assn	359	3,806
Connexus Energy	594	7,069
Coop Light & Power Assoc of Lake Co	687	12,572
Crow Wing Cooperative Power & Light	7,163	72,238
Dakota Electric Association	1,404	22,170
East Central Electric Association	5,390	3,540
Federated Rural Electric Association	786	12,580
Goodhue County Coop Electric Assn	108	1,679
Itasca-Mantrap Cooperative Electric	1,762	27,438
Kandiyohi Cooperative Electric Power	1,535	10,827
Lake Country Power	13,708	150,929
Lake Region Cooperative Electric Assc*	3,152	25,669
McLeod Cooperative Power Association	842	7,342
Meeker Cooperative Light & Power Assn	2,312	33,400
Mille Lacs Electric Cooperative	2,130	19,500
Minnesota Valley Electric Cooperative	4,294	431
Nobles Cooperative Electric	453	11,685
North Itasca Electric Cooperative	616	7,203
Redwood Electric Cooperative	463	5,073
Runestone Electric Association	3,268	61,446
South Central Electric Association	275	4,800
Stearns Cooperative Electric Assn	3,265	77,395
Steele Waseca Cooperative Electric	719	8,013
Todd Wadena Cooperative	2,280	27,360
Wright Hennepin Cooperative Electric	3,881	33,869
Total: Great River Energy	64,012	680,318

Minnesota Electric Space Heating Customers for Cooperative Utilities in 2006, Cont.

2006	Customers	Megawatt-Hours
Minnkota Power Cooperative		
Beltrami Electric Cooperative	6,875	157,780
Clearwater-Polk Electric Cooperative	1,613	19,039
North Star Electric Cooperative	2,337	34,783
PKM Electric Cooperative	1,592	34,119
Red Lake Electric Cooperative	2,181	27,852
Red River Valley Cooperative Power	2,120	30,871
Roseau Electric Cooperative	2,938	43,943
Wild Rice Electric Cooperative	817	12,410
Total: MPC – Cooperative	20,473	360,797
Other Cooperatives		
Iowa Lakes Electric Cooperative	2	35
Minnesota Valley Coop Light & Power	251	2,961
Sioux Valley Southwestern Electric	619	21,742
Total: Other Cooperatives	872	24,738
Total: Cooperatives	90,541	1,163,690

2006 Minnesota Electric Space Heating Customers for Municipal Utilities

2006	Customers	Megawatt-Hours
Central Minnesota Municipal Power Agency		
Blue Earth Light & Water Department	67	607
Delano Municipal Utilities	92	908
Fairfax Municipal	110	1,665
Glencoe Light & Power Commission	107	1,364
Granite Falls City of	120	200
Kasson City Of	33	418
Kenyon Municipal Utilities	21	227
Lake Crystal Municipal	62	585
Madelia Municipal Light & Power	3	431
New Ulm Public Utilities	6	424
Sleepy Eye Public Utility	6	102
Truman Municipal Utility	34	325
Windom Municipal Utility	42	900
Total: CMMPA	771	9,013
Heartland Consumers Power District		
Marshall Municipal Utilities	1,549	22,736
Tyler Municipal Light & Power	100	3,400
Total: Heartland	1,649	26,136
Minnesota Municipal Power Agency		
Anoka City Of	86	1,433
Arlington City Of	10	242
Brownton Municipal Light & Power	31	281
Chaska City of	32	3,911
Le Sueur Municipal Utilities	6	74
North St Paul City Of	17	192
Olivia City Of	147	2,174
Shakopee Public Utilities	381	4,096
Winthrop City Of	3	110
Total: MMPA	713	12,513

Minnesota Electric Space Heating Customers for Municipal Utilities in 2006, Cont.

2006	Customers	Megawatt-Hours
Missouri River Energy Services		
Adrian Public Utilities	63	1,780
Alexandria Public Works	1,062	15,116
Barnesville Municipal Electric	329	5,447
Benson Municipal Utilities	123	835
Breckenridge Public Utilities	399	7,222
Detroit Lakes Public Utility	1,081	18,240
Elbow Lake Municipal Electric	110	1,950
Henning Electric Dept	84	1,293
Jackson Electric Light & Power	203	1,758
Lake Park Public Utilities	35	220
Lakefield City of	45	564
Luverne Municipal Utilities	256	3,644
Madison Municipal Utilities	115	1,724
Moorhead Public Service	749	11,140
Ortonville City Of	168	1,935
St. James City of	213	2,640
Sauk Centre Water Light & Power	232	3,116
Staples City of	47	429
Wadena Light & Water	345	6,177
Worthington Municipal Power	209	1,705
Total: MRES	5,868	86,935
Northern Municipal Power Agency		
Bagley Public Utility	222	3,438
Baudette City Of	110	1,307
Fosston Municipal Utility	324	3,804
Halstad Municipal Utilities	591	8,765
Hawley Public Utilities	160	1,418
Roseau Municipal Water & Light	356	8,285
Stephen Electric Dept	87	1,422
Thief River Falls Municipal Utilities	452	5,997
Warren City Of	115	2,140
Warroad Municipal Light & Power	147	1,670
Total: NMPA	2,564	38,246

Minnesota Electric Space Heating Customers for Municipal Utilities in 2006, Cont.

2006	Customers	Megawatt-Hours
Other Municipals		
Ada Water & Light Dept	189	3,000
Aitkin Public Utilities	182	3,502
Alpha City of	2	38
Alvarado Electric Dept	32	418
Biwabik Water Light & Power	37	3,886
Brainerd Public Utilities	493	5,668
Buffalo City Of	280	2,832
Buhl Public Utilities	11	340
Caledonia Municipal Light & Power	7	319
Darwin City of	24	358
Dundee City of	2	20
East Grand Forks Water & Light Dept	531	6,575
Eitzen Public Utilities	16	209
Elk River Municipal Utilities	295	4,252
Ely Water & Light Dept	49	607
Gilbert Water & Light	2	51
Grand Rapids Public Utilities	114	2,202
Hibbing Public Utilities Commission	584	5,489
Hutchinson Utilities Commission	263	2,629
Keewatin Public Utilities	4	980
Lanesboro Public Utilities	19	50
Mabel City of	11	105
Melrose Municipal Utilities	422	6,935
Moose Lake Water & Light Commission	104	1,051
Mountain Iron Water & Light	291	3,088
Nashwauk Public Utilities	6	80
Newfolden Electric	31	494
Peterson Public Utilities	15	130
Pierz Utilities	5	50
Proctor Public Utilities	173	2,020

Minnesota Electric Space Heating Customers for Municipal Utilities in 2006, Cont.

2006	Customers	Megawatt-Hours
Other Municipals, continued		
Randall Electric	6	160
Round Lake Electric Dept	3	262
Rushford City of	52	1,222
Rushmore City of	8	100
Shelly Municipal Light Dept.	30	376
St Charles Light & Water	135	1,354
Two Harbors City of	8	136
Virginia Dept of Public Utilities	355	6,684
Willmar Municipal Utilities	285	9,417
Total: Other Municipals	5,166	79,791
Southern Minnesota Municipal Power Agency		
Austin Utilities	190	1,056
Blooming Prairie Utilities	10	211
Fairmont Public Utilities	126	2,455
Grand Marais Utilities	128	2,322
Lake City Utility Board	53	478
Litchfield Public Utilities	444	8,459
Mora Municipal Electric Utility	88	815
New Prague Municipal Utilities	68	508
North Branch Municipal Water & Light	11	112
Owatonna Public Utilities	106	1,060
Preston Public Utilities	17	660
Princeton Public Utilities	45	1,117
Redwood Falls Pub Utilities	524	10,424
Rochester Public Utilities	1,543	14,712
Spring Valley Public Utilities Comm	5	298
St Peter Municipal Utilities	86	603
Waseca Water & Light Dept	105	709
Wells Public Utilities	76	476
Total: SMMPA	3,625	46,475
Total: Municipal Utilities	20,356	299,109
Total: Minnesota	159,892	2,109,904

Notes for Table 7

* 2006 data not submitted. Data is from 2005.

Table 8: Minnesota Electric Consumption by County

Minnesota Electric Consumption in 2006

County	MWH	Consumption Rank*	Population Rank*
Aitkin	201,847	57	57
Anoka	2,572,800	5	4
Becker	409,716	34	34
Beltrami	555,147	23	23
Benton	859,228	12	26
Big Stone	69,887	85	81
Blue Earth	825,327	15	15
Brown	349,646	37	37
Carlton	439,426	33	31
Carver	851,073	14	11
Cass	499,897	28	36
Chippewa	175,430	65	62
Chisago	365,638	36	22
Clay	601,902	20	17
Clearwater	242,813	50	75
Cook	82,326	81	84
Cottonwood	182,383	63	63
Crow Wing	958,248	10	16
Dakota	4,773,321	4	3
Dodge	193,704	61	51
Douglas	449,674	32	28
Faribault	238,740	51	55
Fillmore	181,588	64	46
Freeborn	398,187	35	29
Goodhue	570,579	22	19
Grant	73,250	84	80
Hennepin	13,506,928	1	1
Houston	170,720	66	48
Hubbard	296,332	44	50
Isanti	285,326	45	33
Itasca	579,920	21	20
Jackson	129,774	73	66
Kanabec	129,513	75	59
Kandiyohi	524,746	24	21
Kittson	148,443	67	82
Koochiching	524,682	25	58
Lac Qui Parle	130,444	72	76
Lake	197,770	58	69
Lake of the Woods	78,985	82	85
Le Sueur	331,222	40	39
Lincoln	67,198	86	79
Lyon	722,121	16	40
McLeod	520,097	26	25
Mahnomen	75,438	83	83
Marshall	196,733	60	70

Minnesota Electric Consumption in 2006, Continued

County	MWH	Consumption Rank*	Population Rank*
Martin	315,819	41	44
Meeker	284,840	46	42
Mille Lacs	233,581	53	43
Morrison	455,162	31	30
Mower	455,736	30	24
Murray	96,761	78	74
Nicollet	336,352	38	35
Nobles	332,481	39	47
Norman	90,011	79	77
Olmstead	1,509,302	8	8
Otter Tail	720,809	17	13
Pennington	207,410	56	61
Pine	233,661	52	38
Pipestone	120,150	76	72
Polk	469,807	29	32
Pope	129,750	74	67
Ramsey	5,932,282	3	2
Red Lake	141,915	69	86
Redwood	224,974	55	53
Renville	301,238	42	52
Rice	651,280	18	14
Rock	139,746	71	73
Roseau	257,237	48	54
St. Louis	7,324,771	2	6
Scott	1,272,839	9	10
Sherburne	890,476	11	12
Sibley	197,296	59	56
Stearns	1,745,732	7	7
Steele	510,859	27	27
Stevens	140,556	70	71
Swift	190,202	62	64
Todd	297,234	43	41
Traverse	50,321	87	87
Wabasha	274,942	47	45
Wadena	230,748	54	60
Waseca	247,209	49	49
Washington	2,201,974	6	5
Watonwan	147,037	68	65
Wilkin	86,546	80	78
Winona	605,375	19	18
Wright	852,571	13	9
Yellow Medicine	117,344	77	68

Note for Table 8

* Ranking is highest to lowest (1 is highest, 87 is lowest).

Table 9: Utility-Owned Electric Generating Plants Serving Minnesota

2006	Plant Profile				
	Unit Type	Fuel Type	Capacity		Year Installed
			Summer (MW)	Winter (MW)	
Adrian Public Utilities					
Adrian Power Plant Nobles County, MN					
Unit 4	Int Comb	Oil #2	0.600	0.640	1957
Unit 5	Int Comb	Oil #2	2.000	2.000	2005
Alliant Energy-Interstate Power and Light Company					
Agency Street Gas Turbine Des Moines County, IA					
Unit 1	Gas Turbine	Gas/Oil #2	16.400	17.600	1989
Unit 2	Gas Turbine	Gas/Oil #2	15.800	17.000	1989
Unit 3	Gas Turbine	Gas/Oil #2	16.200	17.000	1989
Unit 4	Gas Turbine	Gas/Oil #2	16.300	17.800	1989
Ames Diesel Story County, IA					
Unit 1	Int Comb	Oil #2	1.000	1.000	1960
Unit 2	Int Comb	Oil #2	1.000	1.000	1960
Anamosa Hydro Jones County, IA					
Unit 1	Hydro	Water	0.100	0.100	1924
Burlington Gas Turbine Des Moines County, IA					
Unit 1	Gas Turbine	Gas	17.000	0.000	1995
Unit 2	Gas Turbine	Gas	15.500	0.000	1995
Unit 3	Gas Turbine	Gas	18.400	0.000	1995
Unit 4	Gas Turbine	Gas	16.000	0.000	1996
Burlington Generating Station Des Moines County, IA					
Unit 1	Steam	Coal/Gas	209.300	212.900	1968
Centerville Diesel Apanoose County, IA					
Unit 1	Int Comb	Oil #2	2.200	2.200	1963
Unit 2	Int Comb	Oil #2	2.100	2.100	1963
Unit 3	Int Comb	Oil #2	2.100	2.100	1963

2006	Plant Profile				
	Unit Type	Fuel Type	Capacity		Year Installed
			Summer (MW)	Winter (MW)	
Alliant Energy-Interstate Power and Light Company, continued					
Centerville Gas Turbine Appanoose County, IA					
Unit 1	Gas Turbine	Oil #2	21.800	26.000	1990
Unit 2	Gas Turbine	Oil #2	26.100	30.300	1990
Duane Arnold Energy Center Benton County, IA					
Unit 1	Nuclear	Uranium	406.400	420.000	1974
Dubuque Internal Combustion Dubuque County, IA					
Unit 1	Int Comb	Oil #2	2.200	2.200	1966
Unit 2	Int Comb	Oil #2	2.200	2.200	1966
Dubuque Steam Dubuque County, IA					
Unit 2	Steam	Coal/Gas	13.100	14.200	1929
Unit 3	Steam	Coal/Gas	30.100	30.300	1952
Unit 4	Steam	Coal/Gas	35.300	36.000	1959
Emery Cerro Gordo County, IA					
Unit 1	Gas Turbine	Gas	160.000	168.000	2004
Unit 2	Gas Turbine	Gas	160.000	168.000	2004
Unit 3	Steam	Gas	237.300	249.800	2004
Fox Lake Gas Turbine Martin County, MN					
Unit 4	Gas Turbine	Oil #2	0.000	0.000	1974
Fox Lake Steam Martin County, MN					
Unit 1	Steam	Gas/Oil #6	12.600	0.000	1950
Unit 2	Steam	Gas/Oil #6	0.000	0.000	1951
Unit 3	Steam	Coal/Gas/Oil #6	84.600	86.000	1962
Grinnell Gas Turbine Poweshiek County, IA					
Unit 1	Gas Turbine	Gas	25.000	0.000	1990
Unit 2	Gas Turbine	Gas	22.400	0.000	1990

2006	Plant Profile				
	Unit Type	Fuel Type	Capacity		Year Installed
			Summer (MW)	Winter (MW)	
Alliant Energy-Interstate Power and Light Company, continued					
Hills Internal Combustion Rock County, MN					
Unit 1	Int Comb	Oil #2	2.000	2.000	1996
Unit 2	Int Comb	Oil #2	2.000	2.000	1960
Iowa Falls Hydro Hardin County, IA					
Unit 1	Hydro	Water	0.500	0.500	1928
Lansing Internal Combustion Allamakee County, IA					
Unit 1	Int Comb	Oil #2	1.000	1.000	1970
Unit 2	Int Comb	Oil #2	1.000	1.000	1971
Lansing Steam Allamakee County, IA					
Unit 1	Steam	Coal/Oil #2	0.000	0.000	1948
Unit 2	Steam	Coal/Oil #2	11.100	12.400	1949
Unit 3	Steam	Coal/Oil #2	36.500	36.800	1957
Unit 4	Steam	Coal/Oil #2	261.100	262.000	1977
Lime Creek Cerro Gordo County, IA					
Unit 1	Gas Turbine	Oil #2	35.100	40.700	1991
Unit 2	Gas Turbine	Oil #2	34.100	39.700	1991
Louisa Station No. 1 (4% share) Louisa County, IA					
Unit 1	Steam	Coal/Gas	28.000	28.000	1983
M.L. Kapp Steam Clinton County, IA					
Unit 1	Steam	Gas	8.800	0.000	1947
Unit 2	Steam	Coal/Gas	211.000	215.000	1967
Maquoketa Hydro Jackson County, IA					
Unit 1	Hydro	Water	0.600	0.600	1924
Unit 2	Hydro	Water	0.600	0.600	1924

2006	Plant Profile				
	Unit Type	Fuel Type	Capacity		Year Installed
			Summer (MW)	Winter (MW)	
Alliant Energy-Interstate Power and Light Company, continued					
Marshalltown Gas Turbine Marshall County, IA					
Unit 1	Gas Turbine	Oil #2	53.400	60.600	1977
Unit 2	Gas Turbine	Oil #2	54.500	62.000	1977
Unit 3	Gas Turbine	Oil #2	55.600	62.500	1977
Montgomery Gas Turbine LeSueur County, MN					
Unit 1	Gas Turbine	Oil #2	19.800	23.600	1974
Neal No. 3 Woodbury County, IA					
Unit 3	Steam	Coal	144.200	144.200	1975
Neal No. 4 (jointly owned) Woodbury County, IA					
Unit 4	Steam	Coal/Oil #2	165.500	165.500	1979
Ottumwa Generating Station Wappello County, IA					
Unit 1	Steam	Coal/Oil #2	322.700	322.700	1981
Prairie Creek Linn County, IA					
Unit 1	Steam	Coal	0.100	0.100	1997
Unit 2	Steam	Coal	19.100	20.200	1950
Unit 3	Steam	Coal	41.500	42.300	1958
Unit 4	Steam	Coal	124.100	128.000	1968
Red Cedar Linn County, IA					
Unit 1	Gas Turbine	Gas	16.200	18.300	1996
Sixth Street Station Linn County, IA					
Unit 1	Steam	Coal	0.000	0.000	1921
Unit 2	Steam	Coal/Gas/REF	3.300	3.800	1930
Unit 4	Steam	Coal/Gas/REF	7.200	6.400	1941
Unit 6	Steam	Coal	0.000	0.000	1925
Unit 7	Steam	Coal/Gas/REF	19.300	12.200	1944
Unit 8	Steam	Coal/Gas/REF	24.900	25.000	1950

2006	Plant Profile				
			Capacity		
	Unit Type	Fuel Type	Summer (MW)	Winter (MW)	Installed
Alliant Energy-Interstate Power and Light Company, continued					
Sutherland Station Marshall County, IA					
Unit 1	Steam	Coal/Gas	30.500	30.500	1955
Unit 2	Steam	Coal/Gas	31.000	31.100	1955
Unit 3	Steam	Coal/Gas	82.400	83.200	1961
Austin Utilities					
DT Plant Mower County, MN					
Unit 1	Steam	Gas	5.000	5.000	1940
Unit 2	Steam	Gas	3.500	3.500	1935
Unit 3	Steam	Gas	7.500	7.500	1946
Unit 4	Steam	Gas	10.000	10.000	1955
Unit 5	Gas Turbine	Gas	5.000	5.000	1961
Northeast Plant Mower County, MN					
Unit 1	Steam	Coal/Gas	31.500	31.500	1971
Benson Municipal Utilities					
Benson Municipal Utilities Swift County, MN					
Unit 5	Int Comb	Oil #2	0.900	0.900	1947
Unit 6	Int Comb	Oil #2	1.300	1.300	1954
Unit 7	Int Comb	Oil #2	1.800	1.800	2002
Unit 8	Int Comb	Oil #2	1.800	1.800	2002
Unit 9	Int Comb	Oil #2	1.800	1.800	2002
Unit 10	Int Comb	Oil #2	1.800	1.800	2002
Unit 11	Int Comb	Oil #2	1.800	1.800	2002
Blooming Prairie Public Utilities					
Blooming Prairie Plant Steele County, MN					
Unit 1	Int Comb	Diesel	1.600	1.600	1957
Unit 2	Int Comb	Diesel	1.300	1.300	1975
Unit 3	Int Comb	Diesel	0.600	0.600	1947
Unit 4	Int Comb	Diesel	0.300	0.300	1937
Unit 5	Int Comb	Diesel	2.000	2.000	2003

2006	Plant Profile				
	Unit Type	Fuel Type	Capacity		Year Installed
			Summer (MW)	Winter (MW)	
Blue Earth Light & Water Dept					
Blue Earth City Plant Faribault County, MN					
Unit 1	Int Comb	Oil #2/Gas	1.500	1.500	1960
Unit 3	Int Comb	Oil #2	1.600	1.600	1993
Unit 4	Int Comb	Oil #2	1.600	1.600	1993
Unit 5	Int Comb	Oil #2	1.600	1.600	1993
Unit 6	Int Comb	Oil #2	1.825	1.825	1995
Dairyland Power Cooperative*					
Alma Station Buffalo County, WI					
Unit 1	Steam	Coal/Oil #2	15.000	15.000	1947
Unit 2	Steam	Coal/Oil #2	15.000	15.000	1947
Unit 3	Steam	Coal/Oil #2	15.000	15.000	1950
Unit 4	Steam	Coal/Oil #2	54.000	54.000	1957
Unit 5	Steam	Coal/Oil #2	82.000	82.000	1960
Elk Mound Combustion Turbine Rusk County, WI					
Unit 1	Gas Turbine	Gas	36.000	48.000	2001
Unit 2	Gas Turbine	Gas	36.000	47.000	2001
Flambeau Hydroelectric Rusk County, WI					
Unit 1	Hydro	Water	6.000	6.000	1951
Unit 2	Hydro	Water	6.000	6.000	1951
Unit 3	Hydro	Water	6.000	6.000	1951
Genoa 3 (half sold to GRE) Vernon County, WI					
Unit 1	Steam	Coal/Oil #2	320.000	350.000	1969
JP Madgett Buffalo County, WI					
Unit 1	Steam	Coal/Oil #2	358.000	358.000	1979

2006	Plant Profile				
	Unit Type	Fuel Type	Capacity		Year Installed
			Summer (MW)	Winter (MW)	
Delano Municipal Utilities					
Delano Municipal Plant Wright County, MN					
Unit 1	Int Comb	Oil #2	0.840	0.840	1946
Unit 3	Int Comb	Oil #2	1.136	1.136	1951
Unit 4	Int Comb	Gas/Oil #2	1.140	1.140	1972
Unit 5	Int Comb	Gas/Oil #2	1.365	1.365	1973
Unit 6	Int Comb	Oil #2	1.250	1.250	1989
Unit 7	Int Comb	Oil #2	3.000	3.000	1994
Unit 8	Int Comb	Oil #2	3.125	3.125	1998
Unit 9	Int Comb	Oil #2	12.000	12.000	2002
Detroit Lakes Public Utility					
Jet Plant Becker County, MN					
Unit 1	Gas Turbine	Diesel	9.200	9.200	1968
East Grand Forks Water and Light Dept					
Distribution Service Center Polk County, MN					
Unit 1	Int Comb	Diesel	0.800	0.800	2002
Water Treatment Plant Polk County, MN					
Unit 1	Int Comb	Diesel	0.750	0.750	2002
Elk River Municipal Utilities					
Elk River Municipal Utilities Diesel Plant Sherburne County, MN					
Unit 1	Int Comb	Diesel	0.500	0.500	1948
Unit 2	Int Comb	Diesel	0.500	0.500	1948
Unit 3	Int Comb	Diesel/Gas	3.000	3.000	1962
Unit 4	Int Comb	Diesel/Gas	5.000	5.000	1972
Fairfax Municipal					
Fairfax Municipal Power Plant Renville County, MN					
Unit 2A	Int Comb	Oil #2	1.820	1.820	2001

2006	Plant Profile				
	Unit Type	Fuel Type	Capacity		Year Installed
			Summer (MW)	Winter (MW)	
Fairmont Public Utilities					
Fairmont Power Plant Martin County, MN					
Unit 3	Steam	Gas	5.000	5.000	1945
Unit 4	Steam	Gas	5.000	5.000	1949
Unit 5	Steam	Gas	12.500	12.500	1959
Unit 6	Int Comb	Gas/Oil #2	6.000	6.000	1975
Unit 7	Int Comb	Gas/Oil #2	6.000	6.000	1975
Glencoe Light and Power Commission					
Glencoe Municipal Electric Plant McLeod County, MN					
Unit 5	Int Comb	Oil #2/Gas	1.100	1.100	1957
Unit 6	Int Comb	Oil #2/Gas	1.100	1.100	1961
Unit 7	Int Comb	Oil #2/Gas	3.900	3.900	1966
Unit 8	Int Comb	Oil #2/Gas	5.600	5.600	1969
Unit 9	Int Comb	Oil #2/Gas	7.100	7.100	1973
Unit 10	Int Comb	Diesel	6.700	6.700	1985
Unit 11	Int Comb	Diesel	4.600	4.600	1998
Unit 12	Int Comb	Diesel	4.600	4.600	1998
Grand Marais Public Utilities					
Grand Marais Power Plant Cook County, MN					
Unit 1	Int Comb	Oil #2	2.250	2.250	2004
Unit 2	Int Comb	Oil #2	1.800	1.800	2004
Unit 3	Int Comb	Oil #2	1.800	1.800	2004
Granite Falls, City of					
Granite Falls Municipal Hydroelectric Yellow Medicine County, MN					
Unit 1	Hydro	Water	0.300	0.300	1940
Unit 2	Hydro	Water	0.250	0.250	1932
Unit 3	Hydro	Water	0.867	0.867	1986

2006	Plant Profile				
	Unit Type	Fuel Type	Capacity		Year Installed
			Summer (MW)	Winter (MW)	
Granite Falls Municipal Utilities, continued					
Granite Falls Diesel Yellow Medicine County, MN					
Unit 1	Int Comb	Diesel	2.200	2.200	2002
Unit 2	Int Comb	Diesel	2.200	2.200	2002
Unit 3	Int Comb	Diesel	2.200	2.200	2002
Great River Energy					
Cambridge Gas Turbine Plant Isanti County, MN					
Unit 1	Gas Turbine	Oil #2	21.000	28.000	1978
Coal Creek Diesel McLean County, ND					
Unit 1	Int Comb	Diesel	2.100	2.100	1979
Coal Creek Station McLean County, ND					
Unit 1	Steam	Coal	551.000	549.000	1979
Unit 2	Steam	Coal	563.000	561.000	1980
Elk River Station Sherburne County, MN					
Unit 1	Steam	RDF/Gas/Oil #2	9.100	9.100	1951
Unit 2	Steam	RDF/Gas/Oil #2	9.200	9.200	1951
Unit 3	Steam	RDF/Gas/Oil #2	15.200	15.200	1959
Lakefield Junction Martin County, MN					
Unit 1	Gas Turbine	Gas/Oil #2	85.000	97.000	2001
Unit 2	Gas Turbine	Gas/Oil #2	84.000	97.000	2001
Unit 3	Gas Turbine	Gas/Oil #2	83.000	94.000	2001
Unit 4	Gas Turbine	Gas/Oil #2	82.000	95.000	2001
Unit 5	Gas Turbine	Gas/Oil #2	84.000	97.000	2001
Unit 6	Gas Turbine	Gas/Oil #2	85.000	95.000	2001
Maple Lake Wright County, MN					
Unit 1	Gas Turbine	Oil #2	19.000	25.000	1978

2006	Plant Profile				
	Unit Type	Fuel Type	Capacity		Year Installed
			Summer (MW)	Winter (MW)	
Great River Energy, continued					
Pleasant Valley Station Mower County, MN					
Unit 11	Gas Turbine	Gas/Oil #2	150.000	172.000	2001
Unit 12	Gas Turbine	Gas/Oil #2	150.000	167.000	2001
Unit 13	Gas Turbine	Gas/Oil #2	121.000	128.000	2002
Rock Lake Pine County, MN					
Unit 1	Gas Turbine	Oil #2	20.000	26.000	1978
St. Bonifacious Power Plant Carver County, MN					
Unit 1	Gas Turbine	Oil #2	53.000	68.000	1978
Stanton Station Steam Plant Mercer County, ND					
Unit 1	Steam	Coal/Oil #2	187.700	187.700	1966
Hastings Public Utilities Commission					
Hastings Hydroelectric Facility Dakota County, MN					
Unit 1	Hydro	Water	2.200	2.200	1987
Unit 2	Hydro	Water	2.200	2.200	1987

2006	Plant Profile				
	Unit Type	Fuel Type	Capacity		Year Installed
			Summer (MW)	Winter (MW)	
Hawley Public Utilities					
Hawley Plant Clay County, MN					
Unit 1	Int Comb	Oil #2	0.100	0.100	1932
Unit 2	Int Comb	Oil #2	0.700	0.700	1957
Unit 3	Int Comb	Oil #2	0.100	0.100	1938
Unit 4	Int Comb	Oil #2	0.300	0.300	1947
Unit 5	Int Comb	Oil #2	0.300	0.300	1947
Hibbing Public Utilities Commission					
Hibbing Public Utilities Plant St. Louis County, MN					
Unit 3	Steam	Coal/Gas	11.500	11.500	1965
Unit 5	Steam	Coal/Gas	20.500	20.500	1984
Unit 6	Steam	Coal/Gas	1.500	6.000	1996
Hutchinson Utilities Commission					
Hutchinson Municipal Plant No. 1 McLeod County, MN					
Unit 2	Int Comb	Gas/Oil #2	1.970	1.970	1958
Unit 3	Int Comb	Gas/Oil #2	3.900	3.900	1968
Unit 4	Int Comb	Gas/Oil #2	3.900	3.900	1968
Unit 5	Int Comb	Oil #2	1.740	1.740	1941
Unit 6	Int Comb	Oil #2	1.740	1.740	1942
Unit 7	Int Comb	Gas/Oil #2	4.500	4.500	1965
Unit 8	Comb Cycle	Gas/Oil #2	11.000	13.300	1971
Hutchinson Municipal Plant No. 2 McLeod County, MN					
Unit 1	Comb Cycle	Gas	41.000	41.000	1994
Unit 2	Comb Cycle	Steam	10.000	10.000	1994
Unit 9	Gas Turbine	Gas/Oil #2	22.000	24.000	1977

2005	Plant Profile				
	Unit Type	Fuel Type	Capacity		Year Installed
			Summer (MW)	Winter (MW)	
Janesville Municipal Utility					
Janesville Municipal Plant Waseca County, MN					
Unit 1	Int Comb	Oil #2/Gas	1.300	1.300	1972
Unit 2	Int Comb	Oil #2/Gas	1.100	1.100	1964
Unit 3	Int Comb	Oil #2/Gas	0.600	0.600	1955
Unit 4	Int Comb	Oil #2	1.800	1.800	1998
Kenyon Municipal Utility					
Kenyon Municipal Plant Goodhue, MN					
Unit 5	Int Comb	Oil #2	1.825	1.825	1997
Unit 6	Int Comb	Oil #2	1.825	1.825	1997
Unit 7	Int Comb	Oil #2	1.825	1.825	1997
Lake Crystal Municipal Utilities					
Lake Crystal Plant Blue Earth County, MN					
Unit 1	Int Comb	Gas/Oil #2	0.700	0.700	1952
Unit 3	Int Comb	Gas/Oil #2	2.100	2.100	1971
Unit 4	Int Comb	Gas/Oil #2	1.300	1.300	1955
Unit 5	Int Comb	Oil #2	1.800	1.800	1999
Lakefield, City of					
Lakefield Power Plant Jackson County, MN					
Unit 5	Int Comb	Fuel Oil #2	1.000	1.000	1986
Unit 6	Int Comb	Fuel Oil #2	2.000	2.200	2003
Lanesboro Public Utilities					
Lanesboro Power Plant Fillmore County, MN					
Nordberg	Int Comb	Diesel	0.800	0.800	1968
Fairbanks	Int Comb	Diesel	2.200	2.300	2004
Lanesboro Power Plant - Hydroelectric Fillmore County, MN					
Unit 1	Hydro	Water	0.200	0.200	1923

2006	Plant Profile				
	Unit Type	Fuel Type	Capacity		Year Installed
			Summer (MW)	Winter (MW)	
Litchfield Public Utilities					
Litchfield Power Plant Meeker County, MN					
Unit 1	Int Comb	Diesel/Gas	2.100	2.100	1962
Unit 2	Int Comb	Diesel/Gas	2.100	2.100	1962
Luverne, City of					
Luverne Power Plant Rock County, MN					
Unit 1	Int Comb	Diesel	3.500	3.500	1967
Madelia Municipal Light & Power					
Madelia Municipal Plant Watonswan County, MN					
Unit 1	Int Comb	Oil #2/Gas	2.800	3.160	2001
Unit 2	Int Comb	Oil #2/Gas	1.700	2.000	1966
Unit 3	Int Comb	Oil #2/Gas	0.800	0.800	1959
Unit 4	Int Comb	Oil #2/Gas	3.750	4.000	1973
Unit 5	Int Comb	Oil #2/Gas	1.200	1.200	1954
Marshall Municipal Utilities					
Marshall Power Plant Lyon County, MN					
Unit 6	Gas Turbine	Oil #2	15.000	19.000	1969
Melrose Public Utilities					
Melrose Power Plant Stearns County, MN					
Unit 1	Int Comb	Oil #2	0.750	0.750	1945
Unit 2	Int Comb	Oil #2	0.825	0.825	1948
Unit 3	Int Comb	Oil #2/Gas	3.000	3.000	1969
Unit 4	Int Comb	Oil #2/Gas	3.000	3.000	1969
Minnesota Power Company					
Blanchard Hydroelectric Station Morrison County, MN					
Unit 1	Hydro	Water	5.500	5.500	1925
Unit 2	Hydro	Water	5.500	5.500	1925
Unit 3	Hydro	Water	5.500	5.500	1988

2006	Plant Profile				
	Unit Type	Fuel Type	Capacity		Year Installed
			Summer (MW)	Winter (MW)	
Minnesota Power Company, continued					
Boswell EC Itasca County, MN					
Unit 1	Steam	Coal/Oil #2	69.000	69.000	1958
Unit 2	Steam	Coal/Oil #2	69.000	69.000	1960
Unit 3	Steam	Coal/Oil #2	350.000	350.000	1973
Unit 4	Steam	Coal/Oil #2	428.000	428.000	1980
Fond Du Lac Hydroelectric Station St. Louis County, MN					
Unit 1	Hydro	Water	11.000	11.000	1924
Knife Falls Hydro Station Carlton County, MN					
Unit 1	Hydro	Water	0.600	0.600	1922
Unit 2	Hydro	Water	0.600	0.600	1922
Unit 3	Hydro	Water	0.700	0.700	1922
Laskin EC St. Louis County, MN					
Unit 1	Steam	Coal/Oil #2	55.000	55.000	1953
Unit 2	Steam	Coal/Oil #2	55.000	55.000	1953
Little Falls Hydro Station Morrison County, MN					
Unit 1	Hydro	Water	0.800	0.800	1919
Unit 2	Hydro	Water	0.800	0.800	1919
Unit 3	Hydro	Water	1.000	1.000	1920
Unit 4	Hydro	Water	1.200	1.200	1979
Unit 5	Hydro	Water	0.300	0.300	1906
Unit 6	Hydro	Water	0.300	0.300	1906
M.L. Hibbard Steam Station St. Louis County, MN					
Unit 3	Steam	Coal/Wood	33.795	33.795	1949
Unit 4	Steam	Coal/Wood	20.376	15.454	1951
Pillager Hydro Station Cass County, MN					
Unit 1	Hydro	Water	0.800	0.800	1917
Unit 2	Hydro	Water	0.900	0.900	1917

2006	Plant Profile				
	Unit Type	Fuel Type	Capacity		Year Installed
			Summer (MW)	Winter (MW)	
Minnesota Power Company, continued					
Prairie River Hydroelectric Station Itasca County, MN					
Unit 1	Hydro	Water	0.400	0.400	1921
Unit 2	Hydro	Water	0.300	0.300	1921
Rapids Energy Center Itasca County, MN					
Unit 4	Hydro	Water	0.750	0.750	1917
Unit 5	Hydro	Water	1.500	1.500	1948
Unit 6	Steam	Gas/Wood/Coal	13.600	13.600	1969
Unit 7	Steam	Gas/Wood/Coal	14.600	14.420	1980
Sappi Cloquet Turbine Generator 5 Carlton County, MN					
Unit 5	Steam	Wood/Gas	22.097	22.097	2001
Scanlon Hydroelectric Station Carlton County, MN					
Unit 1	Hydro	Water	0.300	0.300	1923
Unit 2	Hydro	Water	0.300	0.300	1923
Unit 3	Hydro	Water	0.400	0.400	1923
Unit 4	Hydro	Water	0.400	0.400	1923
Sylvan Hydroelectric Station Cass County, MN					
Unit 1	Hydro	Water	0.600	0.600	1913
Unit 2	Hydro	Water	0.600	0.600	1913
Unit 3	Hydro	Water	0.600	0.600	1931
Taconite Harbor Cook County, MN					
Unit 1	Steam	Coal/Oil #2	65.000	72.000	1953
Unit 2	Steam	Coal/Oil #2	68.000	74.000	1953
Unit 3	Steam	Coal/Oil #2	67.000	74.000	1954

2006	Plant Profile				
	Unit Type	Fuel Type	Capacity		Year Installed
			Summer (MW)	Winter (MW)	
Minnesota Power Company, continued					
Thomson Hydro Station Carlton County, MN					
Unit 1	Hydro	Water	12.100	12.100	1907
Unit 2	Hydro	Water	10.800	10.800	1907
Unit 3	Hydro	Water	10.600	10.600	1907
Unit 4	Hydro	Water	13.400	13.400	1914
Unit 5	Hydro	Water	12.200	12.200	1918
Unit 6	Hydro	Water	12.200	12.200	1949
Winton Hydro Station Lake County, MN					
Unit 2	Hydro	Water	2.000	2.000	1923
Unit 3	Hydro	Water	2.000	2.000	1923
Minnkota Power Cooperative, Inc.					
Coyote Station Mercer County, ND					
Unit 1	Steam	Coal/Oil #2	298.900	298.900	1981
Grand Forks Diesel Plant Grand Forks County, ND					
Unit 1	Int Comb	Oil #2	0.679	0.679	1941
Unit 2	Int Comb	Oil #2	0.679	0.679	1941
Unit 3	Int Comb	Oil #2	0.679	0.679	1941
Unit 4	Int Comb	Oil #2	0.970	0.970	1946
Unit 5	Int Comb	Oil #2	0.970	0.970	1946
Unit 6	Int Comb	Oil #2	0.970	0.970	1946
Unit 7	Int Comb	Oil #2	1.067	1.067	1949
Unit 8	Int Comb	Oil #2	1.067	1.067	1949
Unit 9	Int Comb	Oil #2	1.067	1.067	1949
Unit 10	Int Comb	Oil #2	1.067	1.067	1949
Unit 11	Int Comb	Oil #2	1.067	1.067	1949
Harwood Diesel Plant Cass County, ND					
Unit 1	Int Comb	Oil #2	1.455	1.455	1957
Unit 2	Int Comb	Oil #2	1.552	1.552	1947
Unit 3	Int Comb	Oil #2	1.552	1.552	1947

2006	Plant Profile				
	Unit Type	Fuel Type	Capacity		Year Installed
			Summer (MW)	Winter (MW)	
Minnkota Power Coop, Inc., continued					
Infinity Wind Valley City Grand Forks County, ND					
Unit 1	Wind Turbine	Wind	0.900	0.900	2002
Infinity Wind Petersburg Grand Forks County, ND					
Unit 1	Wind Turbine	Wind	0.900	0.900	2002
Milton R. Young (29% share of Unit 2) Oliver County, ND					
Unit 1	Steam	Coal/Oil #2	250.000	250.000	1970
Unit 2	Steam	Coal/Oil #2	448.000	455.000	1977
Moorhead, City of					
Moorhead Power Plant Clay County, MN					
Unit 6	Gas Turbine	Oil #2	10.000	10.000	1960
Unit 8	Wind Turbine	Wind	0.750	0.750	1999
Unit 9	Wind Turbine	Wind	0.750	0.750	2001
Moose Lake Water & Light Commission					
Moose Lake Municipal Plant Carlton County, MN					
Unit 1	Int Comb	Oil #2	1.360	1.360	1973
Unit 2	Int Comb	Oil #2	1.136	1.136	1953
Unit 4	Int Comb	Oil #2	1.360	1.360	1962
Unit 1 South	Int Comb	Oil #2	2.000	2.000	2005
Unit 2 South	Int Comb	Oil #2	2.000	2.000	2005
Unit 3	Int Comb	Oil #2	2.000	2.000	2005
Mora Municipal Utilities					
Mora Power Plant Kanabec County, MN					
Unit 2	Int Comb	Diesel/Gas	1.200	1.200	1947
Unit 5	Int Comb	Diesel/Gas	5.800	5.800	1971
Unit 6	Int Comb	Diesel/Gas	6.400	6.400	1974

2006	Plant Profile				
			Capacity		
	Unit Type	Fuel Type	Summer (MW)	Winter (MW)	Year Installed
New Prague Utilities Commission					
New Prague Power Plant LeSueur County, MN					
Unit 1	Int Comb	Diesel	0.900	0.900	1949
Unit 2	Int Comb	Diesel/Gas	4.400	4.400	1974
Unit 3	Int Comb	Diesel/Gas	2.400	2.400	1963
Unit 4	Int Comb	Diesel/Gas	3.500	3.500	1968
Unit 5	Int Comb	Gas	0.400	0.400	1943
Unit 6	Int Comb	Diesel/Gas	6.000	6.000	1981
New Ulm Public Utilities					
New Ulm Gas Turbine Plant Brown County, MN					
Unit 5	Gas Turbine	Oil #2	23.000	25.400	1975
Unit 7	Gas Turbine	Oil #2	25.000	27.000	2001
New Ulm Steam Plant Brown County, MN					
Unit 3	Steam	Coal/Gas	4.700	4.700	1957
Unit 4	Steam	Coal/Gas	13.200	13.200	1963
Unit 6	Steam	Coal/Gas	4.700	4.300	1947
North Branch Water & Light					
North Branch Plant Chisago County, MN					
Unit 1	Int Comb	Diesel/Gas	0.900	0.900	1960
Unit 2	Int Comb	Diesel/Gas	1.300	1.300	1971
Unit 3	Int Comb	Diesel	2.000	2.000	2003
Unit 4	Int Comb	Diesel	2.000	2.000	2003

2006	Plant Profile				
	Unit Type	Fuel Type	Capacity		Year Installed
			Summer (MW)	Winter (MW)	
Otter Tail Power Company					
Bemidji Hydroelectric Beltrami County, MN					
Unit 1	Hydro	Water	0.175	0.170	1907
Unit 2	Hydro	Water	0.583	0.550	1907
Big Stone Plant Grant County, SD					
Unit 1	Steam	Coal/RDF	247.617	256.025	1975
Unit 2	Int Comb	Oil #2	0.625	0.629	1975
Coyote Station (35% share) Mercer County, ND					
Unit 1	Steam	Coal/Oil #2	149.450	149.450	1981
Dayton Hollow Hydro Otter Tail County, MN					
Unit 1	Hydro	Water	0.549	0.562	1909
Unit 2	Hydro	Water	0.478	0.468	1919
Fergus Control Center Otter Tail County, MN					
Unit 1	Int Comb	Oil #2	2.088	2.091	1995
Hoot Lake Hydroelectric Otter Tail County, MN					
Unit 1	Hydro	Water	0.790	0.753	1914
Hoot Lake Steam Plant Otter Tail County, MN					
Unit 2	Steam	Coal/Oil #2	61.975	59.875	1959
Unit 2A	Int Comb	Oil #2	0.255	0.252	1959
Unit 3	Steam	Coal/Oil #2	84.000	84.000	1964
Unit 3A	Int Comb	Oil #2	0.168	0.182	1964
Jamestown Turbine Stutsman County, ND					
Unit 1	Int Comb	Oil #2	23.072	28.710	1976
Unit 2	Int Comb	Oil #2	23.119	28.800	1978
Lake Preston Turbine Kingsbury County, SK					
Unit 1	Int Comb	Oil #2	21.911	27.560	1978

2006	Plant Profile				
	Unit Type	Fuel Type	Capacity		Year Installed
			Summer (MW)	Winter (MW)	
Otter Tail Power Company, continued					
Pisgah Hydroelectric Otter Tail County, MN					
Unit 1	Hydro	Water	0.708	0.750	1918
Potlatch Cogeneration Beltrami County, MN					
Unit 1	Steam	Wood Waste/REF	5.862	5.862	1992
Solway Beltrami County, MN					
Unit 1	Gas Turbine	Gas/Oil #2	42.555	48.769	2003
Taplin Gorge Hydroelectric Otter Tail County, MN					
Unit 1	Hydro	Water	0.520	0.529	1925
Wright Hydroelectric Otter Tail County, MN					
Unit 1	Hydro	Water	0.503	0.502	1922
Preston Public Utilities					
Preston Power Plant Fillmore County, MN					
Unit 4	Int Comb	Diesel	0.600	0.600	1949
Unit 5	Int Comb	Diesel	1.000	1.000	1957
Unit 6	Int Comb	Diesel/Gas	2.000	2.000	1973
Princeton Public Utilities					
Princeton Power Plant Mille Lacs County, MN					
Unit 3	Int Comb	Oil #2	2.400	2.400	1977
Unit 4	Int Comb	Oil #2	1.200	1.200	1967
Unit 5	Int Comb	Oil #2	1.000	1.000	1953
Unit 6	Int Comb	Oil #2	2.700	2.700	1963
Unit 7	Int Comb	Oil #2/Gas	5.000	5.000	2002

2006	Plant Profile				
			Capacity		
	Unit Type	Fuel Type	Summer (MW)	Winter (MW)	Year Installed
Redwood Falls Public Utilities Commission					
Redwood Falls Power Plant Redwood County, MN					
Unit 1A	Hydro	Water	0.500	0.500	1930
Unit 7	Int Comb	Diesel/Gas	5.800	5.800	1974
Southside Substation Plant Redwood County, MN					
Unit 2	Int Comb	Diesel	2.250	2.250	1968
Unit 3	Int Comb	Diesel	2.000	2.000	2002
Unit 4	Int Comb	Diesel	2.000	2.000	2002
Unit 5	Int Comb	Diesel	2.000	2.000	2002
Rochester Public Utilities					
Cascade Creek Olmsted County, MN					
Unit 1	Gas Turbine	Gas/Oil #6	31.000	31.000	1974
Unit 2	Gas Turbine	Gas/Oil #6	49.500	49.500	2002
Lake Zumbro Hydro Wabasha County, MN					
Unit 1	Hydro	Water	1.300	1.000	1984
Unit 2	Hydro	Water	1.300	1.000	1984
Silver Lake Steam Plant Olmsted County, MN					
Unit 1	Steam	Coal/Gas	9.000	9.000	1949
Unit 2	Steam	Coal/Gas	14.000	14.000	1953
Unit 3	Steam	Coal/Gas	24.000	24.000	1962
Unit 4	Steam	Coal/Gas	59.000	59.000	1969
St. Charles Light & Water					
St. Charles Power Plant Winona County, MN					
Unit 1	Int Comb	Diesel	47.760	11.940	2004
Unit 2	Int Comb	Diesel	15.760	3.940	2004
Unit 3	Int Comb	Diesel	47.680	11.920	2004
Unit 4	Int Comb	Diesel	47.440	11.860	2004

2006	Plant Profile				
			Capacity		
	Unit Type	Fuel Type	Summer (MW)	Winter (MW)	Year Installed
St. James Municipal Light & Power					
Diesel Generation Plant Watowan County, MN					
Unit 1	Int Comb	Diesel	2.000	2.000	2002
Unit 2	Int Comb	Diesel	2.000	2.000	2002
Unit 3	Int Comb	Diesel	2.000	2.000	2002
Unit 4	Int Comb	Diesel	2.000	2.000	2002
Unit 5	Int Comb	Diesel	2.000	2.000	2002
Unit 6	Int Comb	Diesel	2.000	2.000	2002
Sleepy Eye Public Utility					
Sleepy Eye Power Plant Brown County, MN					
Unit 1	Int Comb	Oil #2	1.800	1.800	1999
Unit 2	Int Comb	Oil #2	1.800	1.800	2001
Unit 3	Int Comb	Oil #2	1.500	1.500	1961
Unit 4	Int Comb	Oil #2	1.800	1.800	1995
Unit 5	Int Comb	Oil #2	1.800	1.800	1996
Southern Minnesota Municipal Power Agency					
Blooming Prairie Plant Steele County, MN					
Unit 1	Int Comb	Oil #2/Gas	1.000	1.000	1957
Unit 2	Int Comb	Oil #2/Gas	1.300	1.300	1975
Unit 3	Int Comb	Oil #2/Gas	0.400	0.400	1975
Unit 5	Int Comb	Oil #2/Gas	2.000	2.000	2003
Fairmont Wind Farm Martin County, MN					
Unit 1	Wind Turbine	Wind	1.000	1.000	2003
Unit 2	Wind Turbine	Wind	1.000	1.000	2003
Unit 3	Wind Turbine	Wind	1.650	1.650	2004
Unit 4	Wind Turbine	Wind	1.650	1.650	2005
Owatonna Downtown Steele County, MN					
Unit 6	Steam	Gas	22.470	22.470	1969

2006	Plant Profile				
			Capacity		
	Unit Type	Fuel Type	Summer (MW)	Winter (MW)	Year Installed
Southern Minnesota Municipal Power Agency, continued					
Owatonna West Sub. Steele County, MN					
Unit 7	Gas Turbine	Gas	17.720	20.700	1982
Redwood Falls Wind Farm Redwood County, MN					
Unit 1	Wind Turbine	Wind	1.650	1.650	2004
Unit 2	Wind Turbine	Wind	1.650	1.650	2005
St. Peter Nicollet County, MN					
Units 1 - 6	Int Comb	Oil #2	12.000	12.000	2003
Sherburne Steam Plant (41% share) Sherburne County, MN					
Unit 3	Steam	Coal/Oil #2	362.440	365.310	1988
Spring Valley Public Utilities Commission					
Spring Valley Plant Fillmore County, MN					
Unit 1	Int Comb	Gas/Oil #2	0.840	0.840	1949
Unit 2	Int Comb	Gas/Oil #2	1.136	1.136	1952
Unit 3	Int Comb	Gas/Oil #2	2.000	2.000	1960

2005	Plant Profile				
	Unit Type	Fuel Type	Capacity		Year Installed
			Summer (MW)	Winter (MW)	
Steele Waseca Cooperative Electric*					
Windmills Co-Generators Steele County, MN					
Unit 1	Wind	Wind	0.004	0.004	1984
Unit 2	Wind	Wind	0.018	0.018	1984
Unit 3	Wind	Wind	0.025	0.025	1996
Unit 4	Wind	Wind	0.035	0.035	1997
Unit 5	Wind	Wind	0.039	0.039	2002
Unit 6	Wind	Wind	0.039	0.039	2002
Unit 7	Wind	Wind	0.039	0.039	2002
Unit 8	Wind	Wind	0.020	0.020	2002
Unit 9	Wind	Wind	0.039	0.039	2002
Unit 10	Wind	Wind	0.039	0.039	2002
Unit 11	Wind	Wind	0.039	0.039	2003
Unit 12	Wind	Wind	0.039	0.039	2003
Thief River Falls Municipal Utilities					
Thief River Falls Municipal Power Plant Pennington County, MN					
Unit 1	Hydro	Water	0.250	0.250	1927
Unit 2	Hydro	Water	0.300	0.300	1927
Thief River Falls Municipal Power Plant Pennington County, MN					
Unit 1	Int Comb	Oil #2	1.300	1.300	1956
Unit 2	Int Comb	Oil #2	1.100	1.100	1953
Unit 3	Int Comb	Oil #2	1.270	1.270	2000
Unit 4	Int Comb	Oil #2	2.000	2.000	1946

2006	Plant Profile				
	Unit Type	Fuel Type	Capacity		Year Installed
			Summer (MW)	Winter (MW)	
Two Harbors, City of					
Two Harbors Plant Lake County, MN					
Unit 1	Int Comb	Diesel	2.000	2.000	1971
Virginia Dept of Public Utilities					
Virginia Power Plant St. Louis County, MN					
Unit 1	Steam	Coal/Gas	4.000	4.000	1947
Unit 5	Steam	Coal/Gas	8.300	8.300	1953
Unit 6	Steam	Coal/Gas	18.500	18.500	1971
Wells Public Utilities					
Wells Plant Fairbault County, MN					
Unit 1	Int Comb	Oil #2/Gas	1.400	1.400	1953
Unit 2	Int Comb	Oil #2/Gas	1.500	1.500	1957
Unit 3	Int Comb	Oil #2/Gas	1.000	1.000	1950
Unit 4	Int Comb	Oil #2/Gas	2.300	2.300	1966
Unit 5	Int Comb	Oil #2/Gas	2.200	2.200	1975

2006	Plant Profile				
			Capacity		
	Unit Type	Fuel Type	Summer (MW)	Winter (MW)	Year Installed
Westbrook Public Utilities					
Westbrook Plant Cottonwood County, MN					
Unit 4	Int Comb	Oil #2	0.700	0.700	1955
Unit 5	Int Comb	Oil #2	2.200	2.200	2001
Willmar Municipal Utilities					
Willmar Plant Kandiyohi County, MN					
Unit 2	Steam	Coal/Gas	7.000	7.000	1952
Unit 3	Steam	Coal/Gas	16.000	8.000	1959
Unit 4	Int Comb	Oil #2	12.000	12.000	2000
Windom Municipal Utility					
Windom Gas Turbine Cottonwood County, MN					
Unit 1	Gas Turbine	Oil #2	2.500	3.000	1980
Unit 2	Int Comb	Oil #2	1.700	1.800	2001
Unit 3	Int Comb	Oil #2	1.700	1.800	2001
Unit 4	Int Comb	Oil #2	1.700	1.800	2001
Worthington Public Utilities					
Worthington Diesel Generating Plant Nobles County, MN					
Unit 1	Int Comb	Diesel	14.000	14.000	2002
Xcel Energy					
Allen S. King Washington County, MN					
Unit 1	Steam	Coal/Wood/Gas	528.000	528.000	1968
Alliant Tech Systems Hennepin County, MN					
Unit 1 & 2	Int Comb	Oil #2	1.670	1.670	1993
Angus Anson Minnehaha County, SD					
Unit 2	Gas Turbine	Gas/Oil #2	111.600	128.000	1994
Unit 3	Gas Turbine	Gas/Oil #2	114.500	128.000	1994
Unit 4	Gas Turbine	Gas/Oil #2	158.400	180.000	2005

2006	Plant Profile				
	Unit Type	Fuel Type	Capacity		Year Installed
			Summer (MW)	Winter (MW)	
Xcel Energy, continued					
Apple River Hydro St. Croix County, WI					
Unit 1	Hydro	Water	0.970	0.970	1900
Unit 2	Hydro	Water	1.060	1.060	1900
Unit 3	Hydro	Water	1.110	1.110	1900
Bayfront Steam Ashland County, WI					
Unit 3	Steam	Wood/Coal/Gas	22.000	22.000	1949
Unit 4	Steam	Wood/Coal/Gas	22.000	22.000	1952
Unit 5	Steam	Wood/Coal/Gas	29.000	29.000	1957
Big Falls Hydroelectric Rusk County, WI					
Unit 1	Hydro	Water	2.500	2.500	1922
Unit 2	Hydro	Water	2.400	2.500	1922
Unit 3	Hydro	Water	2.490	2.490	1925
Black Dog Steam Dakota County, MN					
Unit 2	Steam	Coal/Gas	102.800	105.800	1954
Unit 3	Steam	Coal/Gas	3.000	107.030	1955
Unit 4	Steam	Coal/Gas	175.000	175.000	1960
Unit 5	Gas Turbine	Gas	195.000	205.000	2002
Blue Lake Gas Turbine Scott County, MN					
Unit 1	Gas Turbine	Oil #2	41.470	55.570	1974
Unit 2	Gas Turbine	Oil #2	41.400	55.000	1974
Unit 3	Gas Turbine	Oil #2	39.400	55.000	1974
Unit 4	Gas Turbine	Oil #2	52.000	67.000	1974
Unit 7	Gas Turbine	Oil #2	158.830	163.770	2005
Unit 8	Gas Turbine	Oil #2	156.970	161.660	2005
Cedar Falls Hydro Dunn County, WI					
Unit 1	Hydro	Water	2.640	2.640	1910
Unit 2	Hydro	Water	2.280	2.280	1911
Unit 3	Hydro	Water	2.330	2.330	1915

2006	Plant Profile				
			Capacity		
	Unit Type	Fuel Type	Summer (MW)	Winter (MW)	Year Installed
Xcel Energy, continued					
Chippewa Falls Hydro Chippewa County, WI					
Unit 1	Hydro	Water	3.790	3.790	1928
Unit 2	Hydro	Water	4.010	4.010	1928
Unit 3	Hydro	Water	3.890	3.890	1928
Unit 4	Hydro	Water	3.890	3.890	1928
Unit 5	Hydro	Water	3.880	3.880	1928
Unit 6	Hydro	Water	4.010	4.010	1928
Cornell Hydroelectric Chippewa County, WI					
Unit 1	Hydro	Water	10.330	10.330	1976
Unit 2	Hydro	Water	10.690	10.690	1976
Unit 3	Hydro	Water	11.430	11.430	1976
Unit 4	Hydro	Water	0.730	0.730	1976
Dells Hydroelectric Eau Claire County, WI					
Unit 1	Hydro	Water	2.490	2.490	1923
Unit 2	Hydro	Water	1.340	1.340	1924
Unit 3	Hydro	Water	1.340	1.340	1930
Unit 4	Hydro	Water	1.340	1.340	1930
Unit 5	Hydro	Water	1.340	1.340	1930
Unit 6	Hydro	Water	0.740	0.740	1916
Unit 7	Hydro	Water	0.740	0.740	1907
Flambeau Price County, WI					
Unit 1	Gas Turbine	Gas/Oil #2	13.000	19.000	1969
French Island Gas Turbine La Crosse County, WI					
Unit 3	Gas Turbine	Oil #2	73.530	94.830	1974
Unit 4	Gas Turbine	Oil #2	73.170	94.830	1974
French Island Steam Plant La Crosse County, WI					
Unit 1	Steam	Wood/Gas/RDF	15.000	15.000	1969
Unit 2	Steam	Wood/Gas/RDF	14.000	15.000	1969

2006	Plant Profile				
	Unit Type	Fuel Type	Capacity		Year Installed
			Summer (MW)	Winter (MW)	
Xcel Energy, continued					
Granite City Gas Turbine Sherburne County, MN					
Unit 1	Gas Turbine	Gas/Oil #2	14.000	19.000	1969
Unit 2	Gas Turbine	Gas/Oil #2	15.000	19.000	1969
Unit 3	Gas Turbine	Gas/Oil #2	15.000	19.000	1969
Unit 4	Gas Turbine	Gas/Oil #2	15.000	19.000	1969
Hayward Hydroelectric Sawyer County, WI					
Unit 1	Hydro	Water	0.200	0.200	1925
Hennepin Island Hydro Hennepin County, MN					
Unit 1	Hydro	Water	2.400	2.400	1954
Unit 2	Hydro	Water	2.340	2.340	1954
Unit 3	Hydro	Water	2.300	2.300	1954
Unit 4	Hydro	Water	2.300	2.300	1954
Unit 5	Hydro	Water	2.700	2.700	1955
High Bridge Steam Ramsey County, MN					
Unit 5	Steam	Coal/Gas	99.000	99.000	1956
Unit 6	Steam	Coal/Gas	172.100	172.100	1959
Holcombe Hydroelectric Chippewa County, WI					
Unit 1	Hydro	Water	11.760	11.760	1950
Unit 2	Hydro	Water	11.750	11.750	1950
Unit 3	Hydro	Water	11.760	11.760	1950
Inver Hills Gas Turbine Dakota County, MN					
Unit 1	Gas Turbine	Gas/Oil #2	58.500	71.000	1972
Unit 2	Gas Turbine	Gas/Oil #2	56.000	70.450	1972
Unit 3	Gas Turbine	Gas/Oil #2	58.000	70.400	1972
Unit 4	Gas Turbine	Gas/Oil #2	58.000	70.450	1972
Unit 5	Gas Turbine	Gas/Oil #2	58.530	70.430	1972
Unit 6	Gas Turbine	Gas/Oil #2	61.000	70.400	1972
Unit 7	Int Comb	Oil #1	1.830	1.830	1994
Unit 8	Int Comb	Oil #1	1.830	1.830	1994

2006	Plant Profile				
	Unit Type	Fuel Type	Capacity		Year Installed
			Summer (MW)	Winter (MW)	
Xcel Energy, continued					
Jim Falls Hydroelectric Chippewa County, WI					
Unit 1	Hydro	Water	27.960	27.960	1988
Unit 2	Hydro	Water	28.260	28.260	1988
Unit 3	Hydro	Water	0.500	0.500	1986
Key City Gas Turbine Blue Earth County, MN					
Unit 1	Gas Turbine	Gas/Oil #2	15.000	19.000	1969
Unit 2	Gas Turbine	Gas/Oil #2	15.000	19.000	1969
Unit 3	Gas Turbine	Gas/Oil #2	15.000	19.000	1969
Unit 4	Gas Turbine	Gas/Oil #2	16.000	19.000	1969
Ladysmith Hydroelectric Rusk County, WI					
Unit 1	Hydro	Water	0.890	0.890	1940
Unit 2	Hydro	Water	0.860	0.860	1940
Unit 3	Hydro	Water	1.110	1.110	1983
Menomonie Hydro Dunn County, WI					
Unit 1	Hydro	Water	2.660	2.660	1958
Unit 2	Hydro	Water	2.720	2.720	1958
Minnesota Valley Steam Chippewa County, MN					
Unit 3	Steam	Coal/Gas/Oil #2	45.400	47.200	1953
Monticello Nuclear Wright County, MN					
Unit 1	Nuclear	Uranium	572.000	595.300	1971
Prairie Island Nuclear Goodhue County, MN					
Unit 1	Nuclear	Uranium	523.000	546.000	1973
Unit 2	Nuclear	Uranium	522.000	546.000	1974
Red Wing Steam Goodhue County, MN					
Unit 1	Steam	RDF/Gas	10.000	10.000	1949
Unit 2	Steam	RDF/Gas	10.000	10.000	1949

2006	Plant Profile				
	Unit Type	Fuel Type	Capacity		Year Installed
			Summer (MW)	Winter (MW)	
Xcel Energy, continued					
Riverdale Hydroelectric St. Croix County, WI					
Unit 1	Hydro	Water	0.330	0.330	1905
Unit 2	Hydro	Water	0.300	0.300	1905
Riverside Steam Hennepin County, MN					
Unit 7	Steam	Coal/Gas/Oil #2	144.250	144.250	1987
Unit 8	Steam	Coal/Oil #2	237.000	237.000	1964
Saxon Falls Hydro Jackson County, WI					
Unit 1	Hydro	Water	0.700	0.550	1913
Unit 2	Hydro	Water	0.800	0.650	1913
Sherburne County Steam (59% share of Unit 3) Sherburne County, MN					
Unit 1	Steam	Coal/Oil #2	697.000	697.000	1976
Unit 2	Steam	Coal/Oil #2	682.000	682.000	1977
Unit 3	Steam	Coal/Oil #2	503.860	503.860	1987
St. Croix Falls Hydro Polk County, WI					
Unit 1	Hydro	Water	3.290	3.290	1905
Unit 2	Hydro	Water	2.990	2.990	1905
Unit 3	Hydro	Water	2.990	2.990	1905
Unit 4	Hydro	Water	2.990	2.990	1905
Unit 5	Hydro	Water	3.390	3.390	1910
Unit 6	Hydro	Water	3.290	3.290	1910
Unit 7	Hydro	Water	3.390	3.390	1923
Unit 8	Hydro	Water	3.190	3.190	1923
Superior Falls Hydro Gogebic County, MI					
Unit 1	Hydro	Water	0.950	0.750	1917
Unit 2	Hydro	Water	0.900	0.700	1917
Thornapple Hydro Rusk County, WI					
Unit 1	Hydro	Water	0.810	0.810	1929
Unit 2	Hydro	Water	0.860	0.860	1929

2006	Plant Profile				
	Unit Type	Fuel Type	Capacity		Year Installed
			Summer (MW)	Winter (MW)	
Xcel Energy, continued					
Trego Hydroelectric Washburn County, WI					
Unit 1	Hydro	Water	0.880	0.880	1927
Unit 2	Hydro	Water	0.610	0.610	1927
United Health Care Hennepin County, MN					
Unit 1&2	Gas Turbine	Oil #2	3.660	3.660	1993
United Hospital Ramsey County, MN					
Unit 1	Gas Turbine	Oil #2	4.800	4.800	1992
West Faribault Jet Engine Rice County, MN					
Unit 2	Gas Turbine	Gas	15.930	19.930	1965
Unit 3	Gas Turbine	Gas	13.530	17.930	1965
Wheaton Chippewa County, WI					
Unit 1	Gas Turbine	Oil #2/Gas	56.390	71.000	1973
Unit 2	Gas Turbine	Oil #2/Gas	64.990	71.400	1973
Unit 3	Gas Turbine	Oil #2/Gas	56.130	70.300	1973
Unit 4	Gas Turbine	Oil #2/Gas	55.810	70.300	1973
Unit 5	Gas Turbine	Oil #2/Gas	59.650	79.800	1973
Unit 6	Gas Turbine	Oil #2/Gas	60.2710	79.870	1973
White River Hydroelectric Ashland County, WI					
Unit 1	Hydro	Water	0.420	0.300	1907
Unit 2	Hydro	Water	0.420	0.300	1907
Wilmarth Steam Blue Earth County, MN					
Unit 1	Steam	RDF/Gas	9.000	9.000	1948
Unit 2	Steam	RDF/Gas	9.450	9.490	1951

2006	Plant Profile				
			Capacity		
	Unit Type	Fuel Type	Summer (MW)	Winter (MW)	Year Installed
Xcel Energy, continued					
Wissota Hydroelectric					
Chippewa County, WI					
Unit 1	Hydro	Water	6.090	6.090	1917
Unit 2	Hydro	Water	6.220	6.220	1917
Unit 3	Hydro	Water	6.090	6.090	1917
Unit 4	Hydro	Water	6.090	6.090	1917
Unit 5	Hydro	Water	5.990	5.990	1917
Unit 6	Hydro	Water	6.090	6.090	1917

Table 10: Net Generation and Fuel Consumption for Utility-Owned Electric Generating Plants Serving Minnesota

2006	Fuel Used						
	Net MWh	Coal	Nat Gas	Fuel Oil #2**	Fuel Oil #6	Nuclear	Other***
	Generation*	(Tons)	(MCF)	(Gallons)	(Gallons)	(Mbtu)	(Tons)
Adrian Public Utilities							
Adrian Power Plant Nobles County, MN							
Units 3 - 5	8			491			
Alliant Energy-Interstate Power Company							
Agency Street Gas Turbine Des Moines County, IA							
Unit 1	157		4,487	19			
Unit 2	226		6,459	27			
Unit 3	557		15,917	66			
Unit 4	276		7,888	33			
Ames Diesel Story County, IA							
Units 1 and 2	0			0			
Anamosa Hydro Jones County, IA							
Unit 1	920						

2006	Fuel Used						
	Net MWh	Coal	Nat Gas	Fuel Oil #2**	Fuel Oil #6	Nuclear	Other***
	Generation*	(Tons)	(MCF)	(Gallons)	(Gallons)	(Mbtu)	(Tons)
Alliant Energy-Interstate Power Company, continued							
Burlington Gas Turbine Des Moines County, IA							
Unit 1	700		15,329				
Unit 2	600		13,139				
Unit 3	790		17,300				
Unit 4	540		11,826				
Burlington Steam Des Moines County, IA							
Unit 1	1,147,982	748,963	12,277				
Centerville Diesel Appanoose County, IA							
Units 1 - 3	-179			3,150			
Centerville Gas Turbine Appanoose County, IA							
Units 1 and 2	4,461			872,592			
Duane Arnold Energy Center (70% share) Benton County, IA							
Unit 1****	264,322					2,883,753	
Dubuque Internal Combustion Dubuque County, IA							
Unit 1	-21			3,024			
Unit 2	-21			1,974			
Dubuque Steam Dubuque County, IA							
Unit 2	448		15,578				
Unit 3	148,722	107,945	4,614	2,898			
Unit 4	152,974	111,031	4,746	2,982			

2006	Fuel Used						
	Net MWh	Coal	Nat Gas	Fuel Oil #2**	Fuel Oil #6	Nuclear	Other***
	Generation*	(Tons)	(MCF)	(Gallons)	(Gallons)	(Mbtu)	(Tons)
Alliant Energy-Interstate Power Company, continued							
Emery Cerro Gordo County, IA							
Unit 1	455,782		5,505,480		46,914		
Unit 2	354,614		4,283,781		36,498		
Unit 3	523,787						
Fox Lake Gas Turbine Martin County, MN							
Unit 1	386			75,516			
Fox Lake Steam Martin County, MN							
Unit 1	2,822		26,174				
Unit 2	-525		4,869				
Unit 3	48,483		449,671		900,774		
Grinnell Gas Turbine Poweshiek County, IA							
Units 1 & 2	221		12,727				
Hills Internal Combustion Rock County, MN							
Unit 1	-68			1,092			
Unit 2	-90			672			
Iowa Falls Hydro Hardin County, IA							
Unit 1	829						

2006	Fuel Used						
	Net MWh	Coal	Nat Gas	Fuel Oil #2**	Fuel Oil #6	Nuclear	Other***
	Generation*	(Tons)	(MCF)	(Gallons)	(Gallons)	(Mbtu)	(Tons)
Alliant Energy-Interstate Power Company, continued							
Lansing Internal Combustion Allamakee County, IA							
Unit 1	10			882			
Unit 2	11			882			
Lansing Steam Allamakee County, IA							
Unit 1	-1,330	609		8,736			
Unit 2	1,190	808		7,770			
Unit 3	116,736	75,351		68,922			
Unit 4	1,196,876	843,877		94,416			
Lime Creek Cerro Gordo County, IA							
Unit 1	17,113			1,766,478			
Unit 2	16,719			1,752,198			
Louisa Station No. 1 (4% share) Louisa County, IA							
Unit 1	208,209	128,413	4,834	168			
M.L. Kapp Steam Clinton County, IA							
Unit 1	373		8,790				
Unit 2	912,794	624,559	19,186				
Maquoketa Hydro Jackson County, IA							
Units 1 and 2	2,522						

2006	Fuel Used						
	Net MWh	Coal	Nat Gas	Fuel Oil #2**	Fuel Oil #6	Nuclear	Other***
	Generation*	(Tons)	(MCF)	(Gallons)	(Gallons)	(Mbtu)	(Tons)
Alliant Energy-Interstate Power Company, continued							
Marshalltown Gas Turbine Marshall County, IA							
Unit 1	13,940			1,459,668			
Unit 2	1,174			122,934			
Unit 3	13,535			1,417,248			
Montgomery Gas Turbine LeSueur County, MN							
Unit 1	1,347			222,474			
Neal No. 3 Woodbury County, IA							
Unit 1	1,122,474	686,980	12,903				
Neal No. 4 (22% share) Woodbury County, IA							
Unit 4	1,327,380	784,235		125,958			
Ottumwa Generating Station Wappello County, IA							
Unit 1	1,814,325	1,208,882		271,698			
Prairie Creek Linn County, IA							
Unit 1A	53,358	49,328	4,903	630			
Unit 2	89	53,228	8	0			
Unit 3	75,745	74,632	6,960	882			
Unit 4	591,621	232,856	54,367	6,762			29,071

2005	Fuel Used						
	Net MWh	Coal	Nat Gas	Fuel Oil #2**	Fuel Oil #6	Nuclear	Other***
	Generation*	(Tons)	(MCF)	(Gallons)	(Gallons)	(Mbtu)	(Tons)
Alliant Energy-Interstate Power Company, continued							
Red Cedar Linn County, IA							
Unit 1	-1,512		31,001				
Sixth Street Station Linn County, IA							
Unit 2	5,201	5,900	27,113				
Unit 4	11,299	12,819					
Unit 7	61,426	69,687					
Unit 8	22,690	25,742					
Sutherland Station Marshall County, IA							
Unit 1	199,224	148,668	18,708				
Unit 2	198,487	153,891	18,638				
Unit 3	595,250	329,202	55,895				
Austin Utilities							
Downtown Plant Mower County, MN							
Units 1 – 5	2,569		47,713				
Northeast Plant Mower County, MN							
Unit 1	114,771	57,928	96,684				

2006	Fuel Used						
	Net MWh	Coal	Nat Gas	Fuel Oil #2**	Fuel Oil #6	Nuclear	Other***
	Generation*	(Tons)	(MCF)	(Gallons)	(Gallons)	(Mbtu)	(Tons)
Benson Municipal Utilities							
Benson Municipal Utilities Swift County, MN							
Unit 5	22			1,827			
Unit 6	26			1,809			
Unit 7	49			3,035			
Unit 8	54			3,378			
Unit 9	32			1,969			
Unit 10	35			2,168			
Unit 11	37			2,369			
Blooming Prairie Public Utilities							
Blooming Prairie Power Plant Steele County, MN							
Unit 2	32			1,282			
Unit 3	1			56			
Unit 4	3			124			
Unit 5	180			3,732			
Blue Earth Lt & Water Dept							
Blue Earth City Plant Faribault County, MN							
Unit 1	10		0	743			
Unit 3	47			3,394			
Unit 4	42			3,491			
Unit 5	47			3,138			
Unit 6	37			3,106			

2006	Fuel Used						
	Net MWh	Coal	Nat Gas	Fuel Oil #2**	Fuel Oil #6	Nuclear	Other***
	Generation*	(Tons)	(MCF)	(Gallons)	(Gallons)	(Mbtu)	(Tons)
Dairyland Power Cooperative^^							
Alma Station Buffalo County, WI							
Unit 1	37,279	22,792		13,450			
Unit 2	38,812	23,773		14,000			
Unit 3	37,114	22,695		13,390			
Unit 4	279,490	141,143		12,610			
Unit 5	351,170	172,020		7,380			
Elk Mound Combustion Turbine Rusk County, WI							
Unit 1	4,618		43,368				
Unit 2	3,292		39,484				
Flambeau Hydroelectric Rusk County, WI							
Unit 1	27,628						
Unit 2	33,060						
Unit 3	17,136						
Genoa 3 Vernon County, WI							
Unit 1	2,316,162	1,037,883		271,000			
JP Madgett Buffalo County, WI							
Unit 1	2,270,170	1,421,123		424,000			

2006	Fuel Used						
	Net MWh	Coal	Nat Gas	Fuel Oil #2**	Fuel Oil #6	Nuclear	Other***
	Generation*	(Tons)	(MCF)	(Gallons)	(Gallons)	(Mbtu)	(Tons)
Delano Municipal Utilities							
Delano Municipal Plant Wright County, MN							
Unit 1	14			1,194			
Unit 3	21			1,710			
Unit 4	20			1,715			
Unit 5	95			1,970			
Unit 6	16			1,430			
Unit 7	50			4,245			
Unit 8	51			4,180			
Unit 9	0			0			
Detroit Lakes Public Utilities							
Jet Plant Becker County, MN							
Unit 1	10			13,860			
East Grand Forks Water and Light Dept							
Distribution Service Center Polk County, MN							
Unit 1	0			675			
Water Treatment Plant Polk County, MN							
Unit 1	0			958			

2006	Fuel Used						
	Net MWh	Coal	Nat Gas	Fuel Oil #2**	Fuel Oil #6	Nuclear	Other***
	Generation*	(Tons)	(MCF)	(Gallons)	(Gallons)	(Mbtu)	(Tons)
Elk River Municipal Utilities							
Elk River Mun. Diesel Plant Sherburne County, MN							
Unit 1	1			105			
Unit 2	1			105			
Unit 3	49		5	3,874			
Unit 4	106			7,560			
Fairfax Municipal							
Fairfax Municipal Power Plant Renville County, MN							
Unit 2A	3			230			
Fairmont Public Utilities							
Fairmont Power Plant Martin County, MN							
Unit 3	132		2,624				
Unit 4	627		12,497				
Unit 5	681		13,556				
Unit 6	1,776		15,772	21,712			
Unit 7	1,541		14,415	14,165			
Glencoe Light and Power Commission							
Glencoe Municipal Electric Plant McLeod County, MN							
Units 5 - 12	1,046			64,658			

2006	Fuel Used						
	Net MWh	Coal	Nat Gas	Fuel Oil #2**	Fuel Oil #6	Nuclear	Other***
	Generation*	(Tons)	(MCF)	(Gallons)	(Gallons)	(Mbtu)	(Tons)
Grand Marais Public Utilities							
Grand Marais Power Plant Cook County, MN							
Unit 1	38			4,500			
Unit 2	29			2,310			
Unit 3	29			2,310			
Granite Falls, City of							
Granite Falls Municipal Hydroelectric Yellow Medicine County, MN							
Unit 1	554						
Unit 2	943						
Unit 3	2,276						
Granite Falls Municipal Diesel Yellow Medicine County, MN							
Unit 1	20			1,440			
Unit 2	31			2,140			
Unit 3	29			2,040			
Great River Energy							
Cambridge Gas Turbine Plant Isanti County, MN							
Unit 1	150			18,860			

2006	Fuel Used						
	Net MWh	Coal	Nat Gas	Fuel Oil #2**	Fuel Oil #6	Nuclear	Other***
	Generation*	(Tons)	(MCF)	(Gallons)	(Gallons)	(Mbtu)	(Tons)
Great River Energy, Continued							
Coal Creek Station McLean County, ND							
Units 1 and 2	9,137,885	8,129,847			152,160		
Elk River Station Sherburne County, MN							
Units 1 - 3	148,668		129,896	120			241,971
Lakefield Junction Martin County, MN							
Unit 1	46,240		547,452	16,000			
Unit 2	48,351		578,947	48,750			
Unit 3	31,417		373,840	69,270			
Unit 4	51,612		711,696	44,870			
Unit 5	46,321		551,928	26,390			
Unit 6	41,381		504,281	24,060			
Maple Lake Wright County, MN							
Unit 1	289			39,940			
Pleasant Valley Station Mower County, MN							
Unit 11	175,670		1,860,622	180,400			
Unit 12	100,853		1,129,768	69,600			
Unit 13	51,048		589,236	278,770			

2006	Net MWh Generation*	Fuel Used					
		Coal	Nat Gas	Fuel Oil #2**	Fuel Oil #6	Nuclear	Other***
		(Tons)	(MCF)	(Gallons)	(Gallons)	(Mbtu)	(Tons)
Great River Energy, continued							
Rock Lake Pine County, MN							
Unit 1	206			23,870			
St. Bonifacious Power Plant Carver County, MN							
Unit 1	2,136			220,810			
Stanton Station Steam Plant Mercer County, ND							
Unit 1	1,232,540	703,220		86,930			
Hastings Public Utilities Commission							
Hastings Hydro Facility Dakota County, MN							
Unit 1	11,934						
Unit 2	12,496						
Hawley Public Utilities							
Hawley Plant Clay County, MN							
Unit 1	0			37			
Unit 2	1			260			
Unit 3	0			37			
Unit 4	1			104			
Unit 5	1			105			

2006	Fuel Used						
	Net MWh	Coal	Nat Gas	Fuel Oil #2**	Fuel Oil #6	Nuclear	Other***
	Generation*	(Tons)	(MCF)	(Gallons)	(Gallons)	(Mbtu)	(Tons)
Hibbing Public Utilities Commission							
Hibbing Public Utilities Plant St. Louis County, MN							
Unit 3	15,359	22,433					
Unit 5	26,480	38,706					
Unit 6	21,015	30,799					
Hutchinson Utilities Commission							
Hutchinson Municipal Plant No. 1 McLeod County, MN							
Unit 2	14			1,179			
Unit 3	218		1,572	4,128			
Unit 4	202		1,092	8,078			
Unit 5	0			158			
Unit 6	0			39			
Unit 7	123		688	4,098			
Unit 8	30		689				
Hutchinson Municipal Plant No. 2 McLeod County, MN							
Unit 1G	15,160		171,199				
Unit 1S	1,635						
Unit 9	2,283		35,649				

2006	Fuel Used						
	Net MWh	Coal	Nat Gas	Fuel Oil #2**	Fuel Oil #6	Nuclear	Other***
	Generation*	(Tons)	(MCF)	(Gallons)	(Gallons)	(Mbtu)	(Tons)
Janesville Municipal Utility							
Janesville Municipal Plant Waseca County, MN							
Unit 1	1		2,931	160			
Unit 2	1		960	40			
Unit 3	1		1,163	80			
Unit 4	2			2,700			
Kenyon Municipal Utilities							
Kenyon Municipal Plant Goodhue County, MN							
Unit 5	42			3,320			
Unit 6	34			2,620			
Unit 7	54			4,100			
Lake Crystal Municipal Utilities							
Lake Crystal Plant Blue Earth County, MN							
Unit 1	9			660			
Unit 3	80		1	2,202			
Unit 4	33			2,555			
Unit 5	83			5,850			
Lakefield, City of							
Lakefield Power Plant Jackson County, MN							
Unit 5	6			389			
Unit 6	10			680			

2006	Fuel Used						
	Net MWh	Coal	Nat Gas	Fuel Oil #2**	Fuel Oil #6	Nuclear	Other***
	Generation*	(Tons)	(MCF)	(Gallons)	(Gallons)	(Mbtu)	(Tons)
Lanesboro Public Utilities							
Lanesboro Power Plant - Diesel Fillmore County, MN							
Unit 4	2			115			
Unit 5	79			6,034			
Lanesboro Power Plant - Hydro Fillmore County, MN							
Unit 1	111						
Litchfield Public Utilities							
Litchfield Power Plant Meeker County, MN							
Units 1 - 2	2		94,540	3,729			
Madelia Municipal Light & Power							
Madelia Municipal Plant Watsonwan County, MN							
Unit 1	44		1,841	790			
Unit 2	25		1,065	1,698			
Unit 3	1		0	91			
Unit 4	25		1,047	1,510			
Unit 5	8		410	520			

2006	Fuel Used						
	Net MWh	Coal	Nat Gas	Fuel Oil #2**	Fuel Oil #6	Nuclear	Other***
	Generation*	(Tons)	(MCF)	(Gallons)	(Gallons)	(Mbtu)	(Tons)
Marshall Municipal Utilities							
Marshal Power Plant Lyon County, MN							
Unit 6	222			23,198			
Melrose Public Utilities							
Melrose Power Plant Stearns County, MN							
Unit 1	5			1,220			
Unit 2	9			1,910			
Unit 3	28			5,055			
Unit 4	29			6,867			
Minnesota Power							
Blanchard Hydroelectric Station Morrison County, MN							
Unit 1	16,909						
Unit 2	35,489						
Unit 3	19,993						
Boswell EC (79% share Unit 4) Itasca County, MN							
Unit 1	519,059	308,870		37,420			
Unit 2	504,269	294,935		44,159			
Unit 3	2,393,730	1,403,222		197,239			
Unit 4	3,707,884	2,234,244		264,726			

2006	Fuel Used						
	Net MWh	Coal	Nat Gas	Fuel Oil #2**	Fuel Oil #6	Nuclear	Other***
	Generation*	(Tons)	(MCF)	(Gallons)	(Gallons)	(Mbtu)	(Tons)
Minnesota Power, continued							
Fond Du Lac Hydro Station St. Louis County, MN							
Unit 1	30,824						
Knife Falls Hydro Station Carlton County, MN							
Unit 1	1,749						
Unit 2	3,800						
Unit 3	2,680						
Laskin EC St. Louis County, MN							
Unit 1	350,568	238,049		3,586			
Unit 2	273,400	185,335		2,817			
Little Falls Hydro Station Morrison County, MN							
Unit 1	5,334						
Unit 2	6,615						
Unit 3	7,682						
Unit 4	5,442						
Unit 6	424						
M.L. Hibbard Steam Station St. Louis County, MN							
Unit 3	55,517	31,450					19,020
Unit 4	24,214	31,450					19,020

2006	Fuel Used						
	Net MWh	Coal	Nat Gas	Fuel Oil #2**	Fuel Oil #6	Nuclear	Other***
	Generation*	(Tons)	(MCF)	(Gallons)	(Gallons)	(Mbtu)	(Tons)
Minnesota Power, continued							
Pillager Hydro Station Cass County, MN							
Unit 1	4,067						
Unit 2	4,371						
Prairie River Hydro Station Itasca County, MN							
Unit 1	861						
Unit 2	0						
Rapids Energy Center Itasca County, MN							
Unit 4	2,926						
Unit 5	4,690						
Unit 6	35,257	11,261	31,268				53,049
Unit 7	92,909	5,491					26,171
Sappi Cloquet Turbine Generator 5 Carlton County, MN							
Unit 5	104,364		213,946				23,772
Scanlon Hydro Station Carlton County, MN							
Unit 1	1,282						
Unit 2	1,200						
Unit 3	1,967						
Unit 4	916						

2006	Net MWh Generation*	Fuel Used					
		Coal (Tons)	Nat Gas (MCF)	Fuel Oil #2** (Gallons)	Fuel Oil #6 (Gallons)	Nuclear (Mbtu)	Other*** (Tons)
Minnesota Power, continued							
Sylvan Hydro Station Cass County, MN							
Unit 1	3,789						
Unit 2	3,090						
Unit 3	3,150						
Taconite Harbor Cook County, MN							
Unit 1	503,374	304,035		21,270			
Unit 2	469,783	272,816		20,284			
Unit 3	494,190	294,866		24,157			
Thomson Hydro Station Carlton County, MN							
Unit 1	32,169						
Unit 2	25,653						
Unit 3	26,982						
Unit 4	23,839						
Unit 5	30,550						
Unit 6	31,504						
Winton Hydro Station Lake County, MN							
Unit 2	8,386						
Unit 3	6,275						

2006	Fuel Used						
	Net MWh	Coal	Nat Gas	Fuel Oil #2**	Fuel Oil #6	Nuclear	Other***
	Generation*	(Tons)	(MCF)	(Gallons)	(Gallons)	(Mbtu)	(Tons)
Minnkota Power Cooperative, Inc.							
Coyote Station (30% share) Mercer County, ND							
Unit 1	2,825,872	2,299,312		645,929			
Grand Forks Diesel Plant Grand Forks County, ND							
Unit 1	2,231			209			
Unit 2	2,425			216			
Unit 3	2,231			205			
Unit 4	3,395			283			
Unit 5	4,171			308			
Unit 6	5,238			283			
Unit 7	0			0			
Unit 8	6,208			477			
Unit 9	2,037			190			
Unit 10	6,111			458			
Unit 11	6,402			520			
Harwood Diesel Plant Cass County, ND							
Unit 1	0			0			
Unit 2	2,813			246			
Unit 3	2,910			253			
Infinity Wind Petersburg Grand Forks County, ND							
Unit 1	2,794						

2006	Fuel Used						
	Net MWh	Coal	Nat Gas	Fuel Oil #2**	Fuel Oil #6	Nuclear	Other***
	Generation*	(Tons)	(MCF)	(Gallons)	(Gallons)	(Mbtu)	(Tons)
Minnkota Power Cooperative, Inc., continued							
Infinity Wind Valley City Grand Forks County, ND							
Unit 1	2,772						
Milton R. Young (29% share Unit 2) Oliver County, ND							
Unit 1	1,671,593	1,437,337		376,945			
Unit 2	3,189,843	278,998		647,390			
Moorhead Public Service							
Moorhead Power Plant Clay County, MN							
Unit 6	65			3,235			
Unit 8 - wind	1,432						
Unit 9 - wind	1,552						
Moose Lake Water & Light Commission							
Moose Lake Muni Plant Carlton County, MN							
Unit 1	1			530			
Unit 2	1			300			
Unit 3	2			1,010			
Unit 4	1			430			
Unit 1 South	2			1,003			
Unit 2 South	2			1,032			

2006	Fuel Used						
	Net MWh	Coal	Nat Gas	Fuel Oil #2**	Fuel Oil #6	Nuclear	Other***
	Generation*	(Tons)	(MCF)	(Gallons)	(Gallons)	(Mbtu)	(Tons)
Mora Municipal Utilities							
Mora Municipal Plant Kanabec County, MN							
Unit 2	287		10,110^^	2,174			
Unit 5	955			14,220			
Unit 6	347			24,006			
New Prague Utilities Commission							
New Prague Power Plant Scott County, MN							
Unit 1	53			4,027			
Unit 2	1,590		11,567	13,428			
Unit 3	931		9,116	8,151			
Unit 4	625		5,718	5,849			
Unit 5	35		757				
Unit 6	2,637		16,878	12,950			
New Ulm Public Utilities							
New Ulm Gas Turbine Plant Brown County, MN							
Unit 5	339			35,353			
Unit 7	302			33,423			
New Ulm Steam Plant Brown County, MN							
Unit 3	627		11,286				
Unit 4	10,993		148,400				
Unit 6	4,125		74,246				

2006	Fuel Used						
	Net MWh	Coal	Nat Gas	Fuel Oil #2**	Fuel Oil #6	Nuclear	Other***
	Generation*	(Tons)	(MCF)	(Gallons)	(Gallons)	(Mbtu)	(Tons)
North Branch Water & Light							
North Branch Power Plant Chisago County, MN							
Unit 1	139		2,936	5,628			
Unit 2	216		3,541	13,674			
Unit 3	99			6,823			
Unit 4	108			6,962			
Otter Tail Power Company							
Bemidji Hydroelectric Beltrami County, MN							
Unit 1	462						
Unit 2	462						
Big Stone Plant (54% share) Grant County, SD							
Unit 1	1,669,981	1,888,147		63,529			13,411
Coyote Station (35% share) Mercer County, ND							
Unit 1	981,478	853,210		226,075			
Dayton Hollow Hydroelectric Otter Tail County, MN							
Unit 1	4,268						
Unit 2	4,268						

2006	Fuel Used						
	Net MWh	Coal	Nat Gas	Fuel Oil #2**	Fuel Oil #6	Nuclear	Other***
	Generation*	(Tons)	(MCF)	(Gallons)	(Gallons)	(Mbtu)	(Tons)
Otter Tail Power Company, continued							
Fergus Control Center Otter Tail County, MN							
Unit 1	20			1,170			
Hoot Lake Hydroelectric Otter Tail County, MN							
Unit 1	3,196						
Hoot Lake Steam Plant Otter Tail County, MN							
Unit 1	0						
Unit 2	400,527	244,586		11,682			
Unit 3	469,881	289,685		39,518			
Jamestown Turbine Plant Stutsman County, ND							
Unit 1	1,747			258,860			
Unit 2	1,382			201,919			
Lake Preston Turbine Plant Kingsbury County, SK							
Unit 1	502			91,913			
Pisgah Hydroelectric Otter Tail County, MN							
Unit 1	1,850						
Potlatch Cogeneration Beltrami County, MN							
Unit 1	20,389						not reported

2006	Fuel Used						
	Net MWh	Coal	Nat Gas	Fuel Oil #2**	Fuel Oil #6	Nuclear	Other***
	Generation*	(Tons)	(MCF)	(Gallons)	(Gallons)	(Mbtu)	(Tons)
Otter Tail Power Company, continued							
Solway Beltrami County, MN							
Unit 1	28,099		416,950	55,184			
Taplin Gorge Hydroelectric Otter Tail County, MN							
Unit 1	3,847						
Wright Hydroelectric Otter Tail County, MN							
Unit 1	2,034						
Princeton Public Utilities							
Princeton Power Plant Mille Lacs County, MN							
Unit 3	181			13,389			
Unit 4	32			2,230			
Unit 5	64			4,140			
Unit 6	157			11,100			
Unit 7	353			24,915			

2005	Fuel Used						
	Net MWh	Coal	Nat Gas	Fuel Oil #2**	Fuel Oil #6	Nuclear	Other***
	Generation*	(Tons)	(MCF)	(Gallons)	(Gallons)	(Mbtu)	(Tons)
Redwood Falls Public Utilities							
Redwood Falls Hydro Plant Redwood County, MN							
Unit 1A	1,216						
Unit 7	1,128		8,266	16,861			
Southside Substation Redwood County, MN							
Unit 2	83			5,740			
Unit 3	96			7,000			
Unit 4	90			6,590			
Unit 5	48			3,500			
Rochester Public Utilities							
Cascade Creek Olmsted County, MN							
Unit 1	49		941				
Unit 2	42,473		450,122		465		
Lake Zumbro Hydroelectric Wabasha County, MN							
Unit 1	7,123						
Unit 2	6,288						
Silver Lake Steam Plant Olmsted County, MN							
Unit 1	9,504	6,243	20,211				
Unit 2	21,541	14,278	24,156				
Unit 3	75,520	52,963	66,622				
Unit 4	144,305	76,452	103,624				

2006	Fuel Used						
	Net MWh	Coal	Nat Gas	Fuel Oil #2**	Fuel Oil #6	Nuclear	Other***
	Generation*	(Tons)	(MCF)	(Gallons)	(Gallons)	(Mbtu)	(Tons)
St. James Municipal Light & Power							
Diesel Generation Plant Watonwan County, MN							
Unit 1	0			1,241			
Unit 2	0			1,660			
Unit 3	0			1,681			
Unit 4	0			1,419			
Unit 5	0			1,406			
Unit 6	0			1,386			
Sleepy Eye Public Utility							
Sleepy Eye Power Plant Brown County, MN							
Unit 1	22			1,694			
Unit 2	29			2,155			
Unit 3	33			2,690			
Unit 4	23			1,691			
Unit 5	22			1,610			

2005	Fuel Used						
	Net MWh	Coal	Nat Gas	Fuel Oil #2**	Fuel Oil #6	Nuclear	Other***
	Generation*	(Tons)	(MCF)	(Gallons)	(Gallons)	(Mbtu)	(Tons)
Southern Minnesota Municipal Power Agency							
Fairmont Wind Farm Martin County, MN							
Units 1 - 4	14,068						
Grand Marais Cook County, MN							
Units 5 - 9	162			12,041			
Owatonna Downtown Steele County, MN							
Units 5, 6 & 7	7,216		71,798				
Preston Municipal Plant Fillmore County, MN							
Units 1 - 6	280		2,030	5,628			
Redwood Falls Wind Farm Redwood County, MN							
Units 1 & 2	5,573						
St. Peter Nicollet County, MN							
Units 1 - 6	322			31,164			
Sherburne Steam Plant (41% share) Sherburne County, MN							
Unit 3	2,773,775	1,615,648					

2006	Fuel Used						
	Net MWh	Coal	Nat Gas	Fuel Oil #2**	Fuel Oil #6	Nuclear	Other***
	Generation*	(Tons)	(MCF)	(Gallons)	(Gallons)	(Mbtu)	(Tons)
Spring Valley Public Utilities Commission							
Spring Valley Plant Fillmore County, MN							
Unit 1	0						
Unit 2	270		11,209	2,167			
Unit 3	537		145,449	13,547			
Springfield Public Utilities^^							
Springfield Municipal Plant Brown County, MN							
Units 5-9	86			5,968			
Steele Waseca Cooperative Electric							
Windmills Steele County, MN							
Unit 3	26,560						
Unit 4	46,920						
Unit 5	53,320						
Unit 6	32,520						
Unit 7	16,857						

2006	Fuel Used						
	Net MWh	Coal	Nat Gas	Fuel Oil #2**	Fuel Oil #6	Nuclear	Other***
	Generation*	(Tons)	(MCF)	(Gallons)	(Gallons)	(Mbtu)	(Tons)
Thief River Falls Mun Utilities							
Thief River Falls Hydro Plant Pennington County, MN							
Unit 1	1,128						
Unit 2	1,401						
Municipal Power Plant Pennington County, MN							
Unit 1	2			399			
Unit 2	1			97			
Unit 3	1			81			
Unit 4	1			152			
Two Harbors, City of							
Two Harbors Plant Lake County, MN							
Unit 1	212		1,852	2,022			
Virginia Dept of Pub Utilities							
Virginia Power Plant St. Louis County, MN							
Units 1, 5 & 6	33,867	70,062					
Wells Public Utilities							
Wells Plant Faribault County, MN							
Unit 1	211		1,966	5,720			
Unit 2	233		2,679	1,600			
Unit 3	42		125	2,920			
Unit 4	353		3,774	2,980			

Unit 5	85		0	6,365		
--------	----	--	---	-------	--	--

2006	Fuel Used						
	Net MWh	Coal	Nat Gas	Fuel Oil #2**	Fuel Oil #6	Nuclear	Other***
	Generation*	(Tons)	(MCF)	(Gallons)	(Gallons)	(Mbtu)	(Tons)
Willmar Municipal Utilities							
Willmar Plant Kandiyohi County, MN							
Unit 2	2,252		786				
Unit 3	36,061	45,105	27,257				
Unit 4	204			14,897			
Windom Municipal Utility							
Windom Gas Turbine Cottonwood County, MN							
Unit 1	19			3,210			
Unit 2	29			2,045			
Unit 3	30			2,068			
Unit 4	29			1,984			
Worthington Public Utilities							
Worthington Diesel Generating Plant Nobles County, MN							
Unit 1	93			6,611			

2006	Fuel Used						
	Net MWh	Coal	Nat Gas	Fuel Oil #2**	Fuel Oil #6	Nuclear	Other***
	Generation*	(Tons)	(MCF)	(Gallons)	(Gallons)	(Mbtu)	(Tons)
Xcel Energy							
Allen S. King Washington County, MN							
Unit 1	1,665,905	947,198	1,202				
Alliant Tech Systems Hennepin County, MN							
Units 1 & 2	-50			1,190			
Angus Anson Minnehaha County, SD							
Units 2 - 4	208,102		2,685,519	151,135			
Apple River Hydroelectric St. Croix County, WI							
Units 1 - 4	11,062						
Bayfront Steam Ashland County, WI							
Units 4 - 6	300,693	103,848	489,480				168,203
Big Falls Hydroelectric Rusk County, WI							
Units 1 - 3	26,853						
Black Dog Steam Dakota County, MN							
Unit 2	145,649						
Unit 3	539,591	361,092	46,551				
Unit 4	1,062,387	647,694	35,795				
Unit 5	341,648		3,823,384				

2006	Fuel Used						
	Net MWh	Coal	Nat Gas	Fuel Oil #2**	Fuel Oil #6	Nuclear	Other***
	Generation*	(Tons)	(MCF)	(Gallons)	(Gallons)	(Mbtu)	(Tons)
Xcel Energy, continued							
Blue Lake Gas Turbine Scott County, MN							
Units 1 - 4, 7 & 8	146,148		1,459,903	1,517,721			
Cedar Falls Hydroelectric Dunn County, WI							
Units 1 - 3	26,589						
Chippewa Falls Hydro Chippewa County, WI							
Units 1 - 6	45,485						
Cornell Hydroelectric Chippewa County, WI							
Units 1 - 4	56,203						
Dells Hydroelectric Eau Claire County, WI							
Units 1 - 7	32,430						
Flambeau Price County, WI							
Unit 1	2,764		51,050	346			
French Island Gas Turbine La Crosse County, WI							
Units 3 & 4	14,279			1,850,953			
French Island Steam Plant La Crosse County, WI							
Units 1 & 2	70,076		2,594				52,472
Units 3 & 4	19,895			2,286,453			

2006	Fuel Used						
	Net MWh	Coal	Nat Gas	Fuel Oil #2**	Fuel Oil #6	Nuclear	Other***
	Generation*	(Tons)	(MCF)	(Gallons)	(Gallons)	(Mbtu)	(Tons)
Xcel Energy, continued							
Granite City Gas Turbine Sherburne County, MN							
Units 1 - 4	2,894		44,268	1,162			
Hayward Hydroelectric Sawyer County, WI							
Unit 1	1,435						
Hennepin Island Hydro Hennepin County, MN							
Units 1 - 5	58,998						
High Bridge Steam Ramsey County, MN							
Unit 5	488,779	318,293	27,552				
Unit 6	722,219	417,866	71,383				
Holcombe Hydroelectric Chippewa County, WI							
Units 1 - 3	64,078						
Inver Hills Gas Turbine Dakota County, MN							
Units 1 - 6	61,134		1,071,132	332,469			
Jim Falls Hydroelectric Chippewa County, WI							
Units 1 & 2	81,767						

2006	Fuel Used						
	Net MWh	Coal	Nat Gas	Fuel Oil #2**	Fuel Oil #6	Nuclear	Other***
	Generation*	(Tons)	(MCF)	(Gallons)	(Gallons)	(Mbtu)	(Tons)
Xcel Energy, continued							
Key City Gas Turbine Blue Earth County, MN							
Units 1 - 4	2,877		56,844				
Ladysmith Hydroelectric Rusk County, WI							
Units 1 - 3	8,171						
Menomonie Hydro Dunn County, WI							
Units 1 & 2	18,270						
Minnesota Valley Steam Chippewa County, MN							
Unit 3	-37		1				
Monticello Nuclear Wright County, MN							
Unit 1	5,072,550					52,854,415	
Prairie Island Nuclear Goodhue County, MN							
Unit 1	4,098,466					42,892,779	
Unit 2	4,012,401					42,672,355	
Red Wing Steam Goodhue County, MN							
Units 1 & 2	97,593		29,335				162,849

2006	Fuel Used						
	Net MWh	Coal	Nat Gas	Fuel Oil #2**	Fuel Oil #6	Nuclear	Other***
	Generation*	(Tons)	(MCF)	(Gallons)	(Gallons)	(Mbtu)	(Tons)
Xcel Energy, continued							
Riverdale Hydroelectric St. Croix County, WI							
Units 1 & 2	2,204						
Riverside Steam Hennepin County, MN							
Unit 7	727,965	477,733	17,810				
Unit 8	1,033,588	516,581		66,729			
Saxon Falls Hydroelectric Jackson County, WI							
Units 1 & 2	10,498						
Sherburne Cnty Steam (59% share Unit 3) Sherburne County, MN							
Unit 1	4,823,259	2,932,424		253,092			
Unit 2	4,101,904	2,477,423		227,055			
Unit 3	3,947,613	2,320,789		292,107			
St. Croix Falls Hydroelectric Polk County, WI							
Units 1 - 8	90,631						
Superior Falls Hydroelectric Gogebic County, MI							
Units 1 & 2	11,421						

2006	Fuel Used						
	Net MWh	Coal	Nat Gas	Fuel Oil #2**	Fuel Oil #6	Nuclear	Other***
	Generation*	(Tons)	(MCF)	(Gallons)	(Gallons)	(Mbtu)	(Tons)
Xcel Energy, continued							
Thornapple Hydroelectric Rusk County, WI							
Units 1 & 2	7,297						
Trego Hydroelectric Washburn County, WI							
Units 1 & 2	5,910						
United Health Care Hennepin County, MN							
Units 1 & 2	-38			1,826			
United Hospital Ramsey County, MN							
Units 1 - 3	-165			3,614			
West Faribault Jet Engine Rice County, MN							
Units 2 & 3	-187		0				
Wheaton Chippewa County, WI							
Units 1 - 6	33,680		304,983	2,558,289			
White River Hydroelectric Ashland County, WI							
Units 1 & 2	3,904						

2005	Fuel Used						
	Net MWh	Coal	Nat Gas	Fuel Oil #2**	Fuel Oil #6	Nuclear	Other***
	Generation*	(Tons)	(MCF)	(Gallons)	(Gallons)	(Mbtu)	(Tons)
Xcel Energy, continued							
Wilmarth Steam Blue Earth County, MN							
Units 1 & 2	111,678		35,993				178,828
Wissota Hydroelectric Chippewa County, WI							
Units 1 - 6	90,797						
PUBLIC UTILITY TOTALS	87,617,150	44,610,959	30,409,839	23,711,471	1,136,811	141,303,302	987,837

Notes for Table 10

* Net generation values of zero indicate less than one MWh of production; however, values are included in the Public Utility Total. Negative net generation values indicate that the station electric consumption exceeded the gross generation of the plant. However, these plants did produce positive amounts of energy during the year.

** Fuel Oil #2 includes Diesel Fuel.

*** "Other" fuels include landfill gas, wood, wook by-products, tire- and refuse-derived fuel.

**** Nuclear Mbtu is estimated.

^^ Data is from 2005.

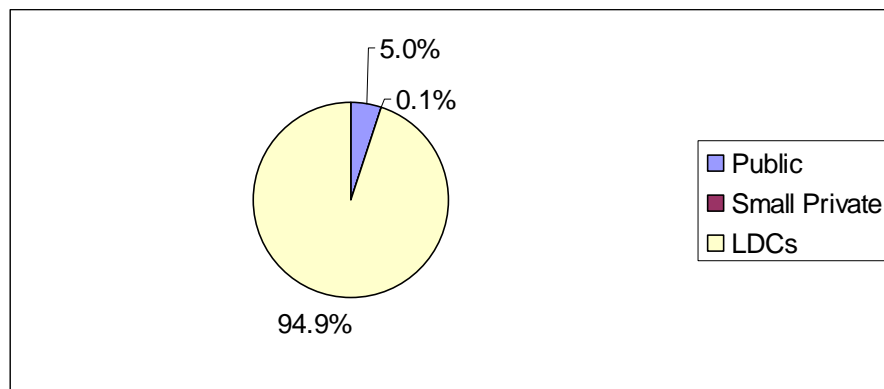
^^^ Total for all units.

Section II: Natural Gas Utilities

Overview

Natural gas companies in Minnesota are owned both privately and publicly. These distribution companies deliver gas to customers, regardless of whether the utility or a third party¹ purchases the gas for the customer. The Minnesota Public Utilities Commission regulates the rates of large privately-owned local distribution companies (LDCs). The Commission generally does not regulate rates of publicly-owned utilities. The Commission also does not regulate rates of privately-owned companies that are smaller than legislatively set limits. As Figure 3 below shows, LDCs distribute most of Minnesota's natural gas.

Figure 3: Natural Gas Throughput Reported by Type of Utility²



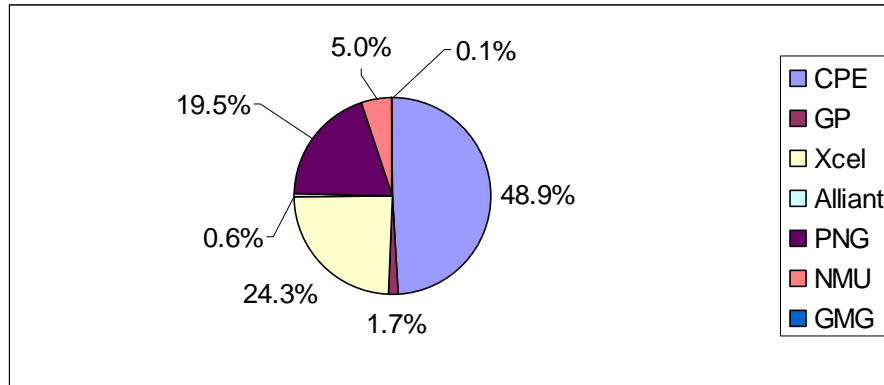
In 2006 there were seven investor-owned local distribution companies serving customers in Minnesota. There were four small privately-owned and 29 municipal gas utilities serving Minnesota customers.

¹ Certain customers can purchase natural gas supplies from companies that are not regulated by state authorities. However, these customers must still transport the gas through their state-regulated local natural gas companies.

² See Table 13 for consumption by company.

As Figure 4 shows, CenterPoint Energy is the largest investor-owned utility, followed by Xcel Energy and Minnesota Energy Resources Corp-PNG. The investor-owned company with the smallest Minnesota consumption in 2006 was Greater Minnesota Gas Inc.

Figure 4: Natural Gas Consumption Reported by Investor-Owned Utilities



Investor-Owned Natural Gas Companies³

- CPE:** CenterPoint Energy
- GP:** Great Plains Natural Gas Co.
- Xcel:** Xcel Energy
- Alliant:** Interstate Power & Light Company
- NMU:** Minnesota Energy Resources Corp.-Northern Minnesota Utilities
- PNG:** Minnesota Energy Resources Corp.-Peoples Natural Gas
- GMG:** Greater Minnesota Gas Inc.

³ See Table 13 for consumption by company.

Introduction to Natural Gas Tables

The tables in this section provide both aggregate and individual company information reported by natural gas companies serving Minnesota. Tables 11 and 12 provide overall natural gas consumption and numbers of natural gas customers in Minnesota.

Tables 13 and 14 provide natural gas consumption and numbers of natural gas customers reported by each natural gas company serving Minnesota in 2006. Table 15 provides revenues reported by the natural gas companies.

Table 11 indicates that 2006 consumption of natural gas in the residential sector was 7.5 percent lower than 2005 consumption. As Figure 5 below indicates, residential consumption of natural gas on a weather-normalized basis has declined since 1973 but has remained relatively steady in recent years.

Figure 5: Weather-Normalized Natural Gas Use Per Residential Customer

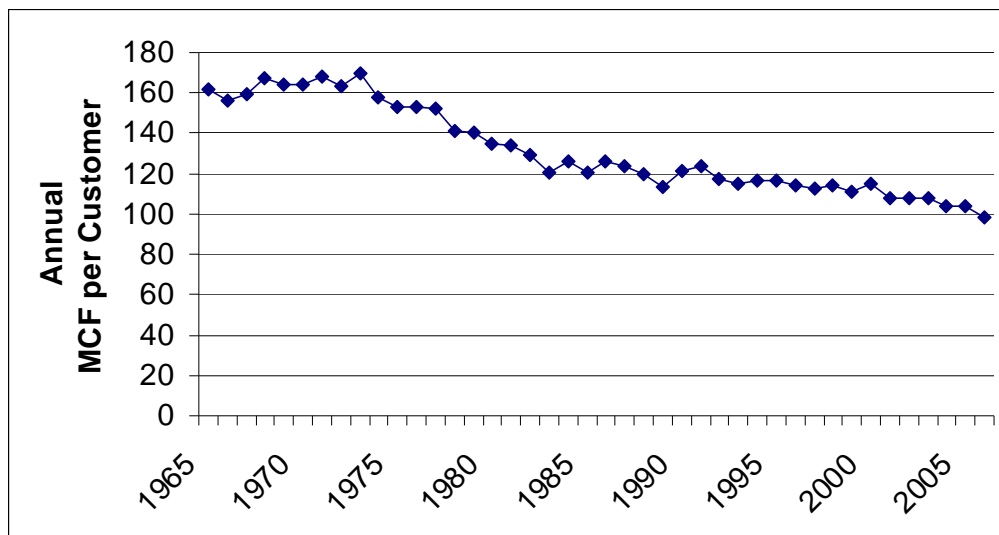


Table 11: Total Minnesota Historical Natural Gas Consumption

Minnesota Natural Gas Consumption (1,000 MCF)

Year	Residential	Commercial	Industrial*	Company Use	Unaccounted For	Deliveries to Transportation^	Total
1965	87,309	52,121	107,914	952	524	0	248,821
1966	87,586	51,739	124,548	1,027	898	0	265,798
1967	89,671	61,014	130,519	1,076	1,002	0	283,282
1968	91,597	63,783	149,646	1,228	845	0	307,098
1969	97,181	69,359	147,976	1,218	726	0	316,460
1970	102,625	74,096	149,782	1,099	1,040	0	328,642
1971	103,291	74,081	155,428	1,195	1,009	0	335,004
1972	112,303	79,578	140,631	1,247	1,007	0	334,765
1973	98,547	80,111	159,942	1,396	256	0	340,253
1974	102,861	79,637	143,553	1,333	625	0	328,009
1975	104,377	78,752	121,772	1,158	122	0	306,181
1976	106,415	74,651	103,545	2,657	765	0	288,033
1977	101,361	72,167	84,873	225	158	0	258,784
1978	106,238	77,378	86,263	335	1,488	0	271,701
1979	111,917	79,599	95,839	570	(1,227)	0	286,699
1980	103,208	80,845	90,551	342	1,650	0	276,596
1981	95,969	77,263	84,288	304	58	0	257,882
1982	107,478	83,208	64,473	463	(1,957)	0	253,664
1983	97,359	79,025	59,101	231	3,746	0	239,470
1984	101,868	82,770	64,584	258	(587)	0	248,893
1985	106,870	85,273	63,096	213	1,515	0	256,967
1986	103,139	80,382	52,364	238	(3,278)	0	232,846
1987	89,919	70,581	51,064	275	19	11,736	223,594
1988	108,423	85,462	41,344	284	1,060	32,916	269,489

Table 11, continued: Minnesota Natural Gas Consumption (1,000 MCF)

Year	Residential	Commercial	Industrial*	Company Use	Unaccounted For	Deliveries to Transportation^	Total
1989	112,496	84,155	41,804	275	965	40,567	280,262
1990	106,894	85,978	44,635	217	(2,790)	48,843	283,777
1991	117,229	86,312	39,586	223	2,098	59,221	304,668
1992	113,160	83,255	36,977	430	3,260	57,086	294,169
1993	124,114	85,505	43,331	225	2,288	51,129	306,592
1994	121,450	80,888	42,452	335	1,014	59,177	305,317
1995	128,458	86,473	37,945	257	1,860	76,072	331,065
1996	142,268	94,824	44,429	333	1,938	61,007	344,799
1997	129,182	96,089	42,294	305	1,054	64,380	333,304
1998	110,934	84,596	43,837	194	1,673	63,934	305,168
1999	118,941	90,294	42,454	344	2,001	64,457	318,490
2000	128,327	95,888	41,314	142	2,441	64,273	332,385
2001	125,984	95,662	37,915	159	2,691	51,024	313,435
2002	134,665	98,443	36,122	148	356	65,162	334,896
2003	137,622	97,539	39,080	201	1,062	58,626	334,130
2004	132,909	93,936	33,026	201	2,068	62,404	324,545
2005	128,883	92,825	41,751	168	2,752	62,576	328,956
2006**	119,125	85,914	35,518	181	5,268	70,756	316,850

Notes for Table 11

* Industrial data includes natural gas sold to produce electricity.

^ Some natural gas customers can purchase gas supplies from unregulated natural gas suppliers and transport this gas through regulated utilities' systems.

** Figures for some categories may not equal the corresponding figures in Table 13 due to reporting discrepancies.

Table 12: Number of Minnesota Natural Gas Customers

Year	Residential Firm	Commercial Firm*	Commercial Interruptible*	Industrial Firm*	Industrial Interruptible*	Total
1965	513,568	40,432	3,324	709	725	558,758
1966	529,405	42,649	3,540	728	797	577,119
1967	546,115	45,352	3,799	758	932	596,956
1968	563,641	47,825	4,047	795	1,022	617,330
1969	577,380	49,670	4,179	818	1,044	633,091
1970	591,584	51,649	4,300	825	1,085	649,443
1971	603,357	53,230	4,418	838	1,137	662,980
1972	615,681	55,198	4,487	849	1,167	677,382
1973	631,314	56,701	4,670	861	1,210	694,756
1974	653,376	59,660	4,796	882	1,262	719,976
1975	666,996	60,972	4,789	967	1,270	734,994
1976	678,811	61,993	4,895	953	1,231	747,883
1977	691,089	62,778	4,910	929	1,249	760,955
1978	710,498	64,665	4,874	867	1,160	782,064
1979	732,503	66,974	4,556	855	1,224	806,112
1980	767,457	70,997	4,283	881	1,209	844,827
1981	785,008	73,204	4,168	972	1,136	864,488
1982	792,088	75,016	3,529	1,012	1,011	872,656
1983	803,542	76,605	3,374	979	881	885,381
1984	822,509	79,032	3,371	1,098	950	906,960
1985	841,760	82,256	3,417	1,072	983	929,488
1986	860,695	85,063	3,581	1,023	800	951,162
1987	884,476	86,887	3,523	1,036	823	976,745
1988	904,515	88,675	3,452	1,067	783	998,492
1989	935,252	91,628	3,371	1,085	788	1,032,124
1990	962,006	94,214	3,264	1,088	797	1,061,369
1991	979,426	95,641	3,263	1,072	702	1,080,104
1992	1,008,912	97,810	3,272	1,118	749	1,111,861
1993	1,034,433	98,917	3,174	1,074	526	1,138,124
1994	1,060,692	100,952	3,359	987	667	1,166,657
1995	1,091,477	102,097	3,343	814	672	1,198,403
1996	1,124,739	105,158	3,471	842	773	1,234,983
1997	1,151,421	107,223	3,422	772	753	1,263,591
1998	1,176,228	109,220	3,718	610	832	1,290,612
1999	1,201,349	115,901	3,875	473	986	1,340,315
2000	1,238,679	114,271	3,917	659	898	1,358,424
2001	1,263,214	116,640	3,951	693	853	1,385,351
2002	1,293,734	119,032	3,974	697	785	1,418,222
2003	1,323,721	120,598	3,882	729	809	1,449,739
2004	1,354,242	122,898	3,823	741	815	1,482,519
2005	1,378,515	123,659	3,903	746	770	1,507,593
2006	1,402,701	126,056	3,808	703	783	1,534,051

Note for Table 12

*Sales and transportation customers are combined.

Table 13: Minnesota Natural Gas Consumption by Company

Minnesota Natural Gas Consumption (MCF) by Company in 2006

2006	Residential	Commercial	Industrial	Company Use	Unaccounted For	Deliveries to Transportation Customers	Electric Generation	Total
Alliant Energy	793,221	567,631	333,971	0	0	69,270	0	1,764,093
Argyle, City of	15,598	12,087	0	0	0	0	0	27,685
Austin Utilities	1,145,232	291,630	*	15,879	0	0	*	2,337,043
Bagley Public Utilities	17,647	38,302	0	0	0	0	0	55,949
CenterPoint Energy	61,749,831	48,284,742	11,436,167	70,584	2,927,708	18,028,263	4,231,559	146,729,154
Circle Pines Utility dba Centennial Utilities	207,543	129,914	0	4,721	(5,748)	0	0	336,430
Cohasset, City of	100,942	15,446	31,726	0	0	0	0	148,114
Community Utilities Co. Inc.	63,169	24,861	14,000	0	0	0	0	102,030
Duluth Dept of Public Works & Utilities	2,301,716	1,662,845	306,976	0	17,097	82,412	0	4,371,046
Eagle Bend/Clarissa	27,169	66,648	0	0	0	0	0	93,817
Fairfax Municipal Utility	31,211	11,161	15,843	2,130	0	8,350	0	68,695
Fosston Municipal Utilities	15,497	14,905	64,190	0	0	0	0	94,592
Goodhue PUC	29,446	20,699	0	0	0	0	0	50,144
Great Plains Nat Gas Co	1,346,381	1,390,796	*	6,373	0	1,240,202	*	4,989,576
Greater Minnesota Gas, Inc.	220,877	21,835	43,301	0	0	54,938	0	340,950
Hallock, City of	43,940	16,094	0	1,212	0	0	0	61,246
Hawley Public Utilities	33,081	29,857	0	0	858	0	0	63,796
Henning Municipal Gas	28,896	21,812	0	0	0	0	0	50,708
Hibbing PUC	335,798	*	0	0	0	0	*	599,640
Hutchinson Util Comm	411,032	361,833	605,223	9,306	(23,253)	0	211,102	1,575,243
Lake Park Public Utilities	17,572	11,333	0	0	0	0	0	28,905

Table 13, continued: Minnesota Natural Gas Consumption (MCF) by Company in 2006

2006	Residential	Commercial	Industrial	Company Use	Unaccounted For	Deliveries to Transportation Customers	Electric Generation	Total
MN Energy Resources-NMU^^	3,297,586	3,159,742	598,224	0	0	7,972,633	0	15,028,185
MN Energy Resources-PNG^^	13,633,698	9,036,350	1,250,996	0	0	35,176,179	0	59,097,222
Morgan Natural Gas Srvices	15,451	5,065	7,096	0	0	0	0	27,612
New Ulm Public Utilities	397,445	176,695	*	19,308	0	489,668	*	1,412,798
New York Mills Mun Gas	37,991	36,335	0	0	15,361	0	0	89,681
NW Gas of Cass County	11,776	16,754	35,151	0	0	0	0	63,681
NW Natural Gas LLC	99,401	34,415	31,118	0	0	0	0	165,543
NW Nat Gas of Murray County, Inc	40,486	26,842	32,118	0	0	0	0	99,446
Owatonna Public Utilities	796,855	538,605	697,689	4,742	0	0	46,144	2,084,035
Perham, City of	192,190	155,418	643,642	0	0	0	0	991,250
Randall Municipal Gas	18,498	*	*	0	0	0	0	29,114
Round Lake, City of	10,773	6,419	7,727	0	652	0	0	25,571
Stephen Municipal Gas	16,592	9,842	0	0	4,126	0	0	30,560
Two Harbors Mun Gas	146,991	97,477	163,635	13,125	0	0	0	421,228
Tyler, City of^								39,729
Virginia Public Utilities	131,420	*	0	0	0	0	*	334,568
Warren, City of	39,095	43,558	0	0	0	0	0	82,653
Westbrook Public Utilities	33,952	0	0	0	0	0	0	33,952
Xcel Energy	31,316,643	19,102,235	11,117,889	16,110	2,320,251	7,633,570	1,351,945	72,858,643
TOTAL	119,124,782	85,913,571	29,511,039	163,490	5,257,152	70,755,485	5,991,326	316,804,334

Notes for Table 13

* Withheld to avoid disclosure of individual company information. Data included in totals.

^ Data by customer class not provided.

^^ MN Energy Resources Corp. acquired Aquila Networks-NMU and Aquila networks-PNG on July 1, 2006

Table 14: Minnesota Natural Gas Customers by Company

2006	Residential Firm	Commercial Firm*	Commercial Interruptible*	Industrial Firm*	Industrial Interruptible*	Electric Generation *	Total
Alliant Energy	9,334	1,179	39	10	11	-	10,573
Argyle, City of	202	41	-	-	-	-	243
Austin Utilities	10,268	55	29	1	3	1	10,357
Bagley Public Utilities	355	102	-	-	-	-	457
CenterPoint Energy	722,033	62,810	2,551	235	325	20	787,974
Circle Pines Utility dba Centennial Utilities	2,756	163	3	-	-	-	2,922
Cohasset, City of	634	35	-	5	-	-	674
Community Utilities Co. Inc.	680	81	-	9	-	-	770
Duluth Dept of Public Works & Utilities	23,526	1,869	77	17	10	-	25,499
Eagle Bend/Clarissa	454	91	-	-	-	-	545
Fairfax Municipal Utility	518	27	-	4	-	-	549
Fosston Municipal Utilities	371	82	-	3	-	-	456
Goodhue PUC	429	16	-	-	-	-	445
Great Plains Nat Gas Co	18,002	2,599	130	-	19	1	20,751
Greater Minnesota Gas, Inc.	2,899	252	-	6	23	-	3,180
Hallock, City of	419	10	-	-	-	-	429
Hawley Public Utilities	507	83	-	-	-	-	590
Henning Municipal Gas	348	43	-	-	-	-	391
Hibbing PUC	3,368	372	14	-	-	1	3,755
Hutchinson Utilities Commission	4,700	506	-	2	1	2	5,211

Table 14, continued: Minnesota Natural Gas Customers by Company in 2006

2006	Residential Firm	Commercial Firm*	Commercial Interruptible*	Industrial Firm*	Industrial Interruptible*	Electric Generation*	Total
Lake Park Pub Utilities	271	52	-	-	-	-	323
MN Energy Resources-NMU^^	34,156	5,333	136	50	13	-	39,688
MN Energy Resources-PNG^^	152,663	15,481	366	150	100	-	168,760
Morgan Natural Gas Services	245	35	-	5	-	-	285
New Ulm Public Utilities	5,427	545	28	16	-	1	6,017
New York Mills Municipal Gas	441	55	-	16	-	-	514
Northwest Gas of Cass County	198	79	-	10	-	-	287
NW Natural Gas LLC	1,475	165	-	-	16	-	1,656
NW Natural Gas of Murray County, Inc.	667	86	-	-	12	-	765
Owatonna Pub Utilities	9,145	765	-	-	61	9	9,980
Perham, City of	2,410	353	-	1	23	-	2,787
Randall Municipal Gas	239	34	1	1	-	-	275
Round Lake, City of	155	26	1	4	1	-	187
Stephen Municipal Gas	206	55	-	-	-	-	261
Two Harbors Municipal Gas	1,462	198	6	29	-	-	1,659
Tyler, City of	333	67	-	-	-	-	400
Virginia Public Utilities	1,426	309	1	-	-	1	1,737
Warren, City of	509	109	-	-	-	-	618
Westbrook Public Utilities	292	-	-	-	-	-	292
Xcel Energy	389,178	31,893	426	129	123	6	421,755
TOTAL	1,402,701	126,056	3,808	703	741	42	1,534,051

Notes for Table 14

* Sales and transportation customers are combined.

^^ MN Energy Resources Corp. acquired Aquila Networks-NMU and Aquila networks-PNG on July 1, 2006

Table 15: Minnesota Natural Gas Revenue by Company

2006	Residential	Commercial Firm	Commercial Interruptible	Industrial Firm^^	Industrial Interruptible	Total
Alliant Energy	\$9,031,249	\$4,191,356	\$1,393,653	\$179,637	\$2,407,946	\$17,203,841
Argyle, City of	\$185,275	\$180,249	\$0	\$0	\$0	\$365,524
Austin Utilities	\$13,151,213	\$794,057	\$2,657,200	\$965,345	\$3,592,137	\$21,159,952
Bagley Public Utilities	\$208,131	\$411,837	\$0	\$0	\$0	\$619,968
CenterPoint Energy	\$719,616,523	\$306,836,014	\$176,591,885	\$6,091,806	\$118,100,757	\$1,327,236,985
Circle Pines Utility dba Centennial Utilities	\$2,666,959	\$777,249	\$575,417	\$0	\$0	\$4,019,625
Cohasset, City of	\$368,790	\$78,294	\$0	\$115,452	\$0	\$562,536
Community Utilities Co. Inc.	\$874,113	\$340,007	\$0	\$124,491	\$0	\$1,338,611
Duluth Dept of Public Works & Utilities	\$29,347,828	\$11,797,141	\$5,427,648	\$359,788	\$2,374,948	\$49,307,353
Eagle Bend/Clarissa	\$327,556	\$661,256	\$0	\$0	\$0	\$988,812
Fairfax Municipal Utility	\$360,357	\$367,090	\$0	\$0	\$8,350	\$735,797
Fosston Municipal Util	\$194,458	\$167,227	\$0	\$582,370	\$0	\$944,055
Goodhue PUC	\$434,633	\$302,033	\$0	\$0	\$0	\$736,666
Great Plains Nat Gas Co	\$16,181,708	\$9,606,372	\$4,596,258	*	*	\$37,600,675
Greater Minnesota Gas, Inc.	\$2,670,740	\$264,226	\$0	\$251,117	\$205,020	\$3,391,102
Hallock, City of	\$522,895	\$153,554	\$0	\$0	\$0	\$676,449
Hawley Public Utilities	\$454,901	\$377,168	\$0	\$0	\$0	\$832,069
Henning Municipal Gas	\$400,647	\$275,451	\$0	\$0	\$0	\$676,098
Hibbing PUC	\$5,392,993	\$591,591	\$23,836	\$0	\$0	\$6,008,420
Hutchinson Utilities Comm.	\$4,080,123	\$3,421,933	\$0	*	*	\$12,135,597
Lake Park Pub Utilities	\$259,951	\$146,827	\$0	\$0	\$0	\$406,778

Table 15, continued: Minnesota Natural Gas Revenue by Company in 2006

2006	Residential	Commercial Firm	Commercial Interruptible	Industrial Firm^^	Industrial Interruptible	TOTAL
MN Energy Resources Corp-NMU^^^	\$34,780,191	\$16,358,562	\$0	\$8,430,635	\$12,200,279	\$71,769,667
MN Energy Resources Corp-PNG^^^	\$141,786,195	\$45,534,283	\$0	\$25,842,978	\$24,146,268	\$237,309,724
Morgan Natural Gas Srvc	\$233,005	\$65,594	\$0	\$60,545	\$0	\$359,144
New Ulm Public Utilities	\$5,423,267	\$2,022,676	\$46,514	\$3,365,462	\$236,805	\$11,094,724
New York Mills Mun Gas	\$492,963	\$453,798	\$0	\$181,880	\$0	\$1,128,642
NW Gas of Cass County	\$158,763	\$209,182	\$0	\$344,313	\$0	\$712,258
NW Natural Gas LLC	\$1,356,546	\$432,176	\$341,875	\$0	\$0	\$2,130,597
NW Nat Gas of Murray County, Inc.	\$553,110	\$326,930	\$343,596	\$0	\$0	\$1,223,635
Owatonna Public Utilities	\$10,176,010	\$5,939,732	\$0	\$0	\$6,823,593	\$22,939,335
Perham, City of	\$2,336,873	*	\$0	*	\$5,507,129	\$9,283,280
Randall Municipal Gas	\$213,384	\$91,451	*	*	\$0	\$346,657
Round Lake, City of	\$117,506	\$37,124	*	\$27,231	*	\$262,586
Stephen Municipal Gas	\$226,942	\$125,836	\$0	\$0	\$0	\$352,778
Two Harbors Municipal Gas	\$1,606,098	\$580,738	\$429,700	\$1,455,741	\$0	\$4,072,277
Tyler, City of**						\$473,930
Virginia Public Utilities	\$1,577,860	*	*	\$0	\$0	\$3,825,587
Warren, City of	\$518,893	\$552,618	\$0	\$0	\$0	\$1,071,511
Westbrook Public Utilities	\$400,369	\$0	\$0	\$0	\$0	\$400,387
Xcel Energy***	\$363,880,534	\$169,096,230	\$27,784,471	\$22,555,584	\$67,333,579	\$651,996,976
TOTAL	\$1,372,569,551	\$586,663,316	\$220,533,479	\$75,362,136	\$250,751,598	\$2,507,700,608

Notes for Table 15

^ Includes natural gas sales and transportation.

^^ May include electric generation.

^^^ MN Energy Resources Corp. acquired Aquila Networks-NMU and Aquila networks-PNG on July 1, 2006.

* Withheld to avoid disclosure of individual company information. Data included in totals.

** 2006 data not provided by customer class.

*** Sales revenue from transportation customers by customer class not reported.

Section III: Attachments

General Notes on Data

1) **Consumption.** In general, electric companies report retail electric consumption as follows:

Farm. Electricity supplied to farm households and for agricultural purposes.

Residential. Electricity supplied to non-farm private households.

Commercial. Electricity supplied to small commercial and industrial power accounts. May include use by some apartment dwellers.

Industrial. Electricity supplied to large commercial and industrial power accounts, including mining accounts.

2) **Missing Data.** Although all utilities are required to report data used in this report annually, some utilities have provided either partial information or no information. In some places, this report notes where these utilities have not reported information. In other places, for the general purpose of comparing 2006 data to previous years' data, this report shows the most recent comparable data for non-reporting companies.

3) **Accuracy of Data.** While the Department does not audit the records supporting the data companies provide, we do check the reasonableness of the data. We also correct errors in reported data where feasible. However, some data reported by smaller companies may contain a few errors or inconsistencies. These errors should not significantly affect the totals.

Glossary of Terms and Abbreviations

Btu: British thermal unit; the amount of heat required to raise the temperature of one pound of water one degree Fahrenheit under stated conditions of pressure and temperature (equal to 252 calories, 778 foot-pounds, 1,005 joules and 0.293 watt-hours). It is the U.S. customary unit of measuring the quality of heat, such as the heat content of fuel.

cf: cubic foot; the U.S. customary unit of measurement of gas volume. It is the amount of gas required to fill a volume of one cubic foot under stated conditions of temperature, pressure and water vapor. One cubic foot of natural gas equals 1,000 British thermal units under standard conditions of atmosphere (one) and temperature (60 degrees Fahrenheit).

Ccf: one hundred cubic feet.

Cooperative utility: a utility owned and operated by its members.

Department of DOC: the Minnesota Department of Commerce.

Gas turbine: a type of electric generation plant that relies on turbines driven by the combustion of natural gas or diesel fuel to produce electricity.

GWh: gigawat-hour; the unit of energy equal to that expended in one hour at a rate of one billion watts. One GWh equals 1,000 megawatt-hours.

Hydro: a type of electric generation plant that relies on a water wheel to convert falling water into electricity.

Int. comb. (Internal Combustion): a type of electric generation unit that relies on an internal combustion engine to convert burned diesel, fuel oil, gasoline, or natural gas into electricity.

Investor-owned utility (IOU): Common term for an electric privately-owned utility regulated by the Minnesota Public Utilities Commission.

kW: one kilowatt or one thousand watts.

Local Distribution Company (LDC): Common term for a gas privately-owned utility regulated by the MPUC.

Mcf: one thousand cubic feet; a unit of measure of gas volume.

Minnesota Public Utilities Commission (Commission): the state agency with regulatory jurisdiction over certain Minnesota utilities.

MWh: megawatt-hour; the unit of energy equal to that expended in one hour at a rate of one million watts. One MWh equals 3,414,000 Btus.

Natural Gas (gas): a mixture of hydrocarbon compounds and small quantities of various non-hydrocarbons existing in the gaseous phase or in solution with crude oil in natural underground reservoirs. It comes from the ground with or without crude oil and is generally much higher in heat content than manufactured gas.

Net generation: the total amount of electric energy produced by a generating unit less the electricity consumed by the generating station.

Nuclear: a type of electric generation plant that uses energy obtained by fission, fusion or by radioactive decay to drive the turbines.

Number 2 fuel oil: a distillate fuel oil used for domestic heating and in moderate capacity commercial or industrial burners as well as for generating electricity.

Number 6 fuel oil: a residual fuel oil that is heavier than distillate fuel oil and is used to generate electricity as well as in industrial burners.

Plant capacity: the amount of electric load, measured in megawatts or kilowatts, for which a generating unit is rated either by the user or the manufacturer.

Privately-owned utilities: utility corporations owned by shareholders. Large privately-owned utilities are regulated by the Minnesota Public Utilities Commission.

Publicly-owned utilities: utilities owned, operated and regulated by the city or legal entity in which it resides.

REIS: Regional Energy Information System; the Minnesota Department of Commerce's computerized state energy data collection and information system. It includes energy data the DOC collects directly from energy suppliers as well as data collected by other state departments such as the Minnesota Department of Revenue, Petroleum Tax Division.

RDF: refuse-derived fuel, composed of garbage, that is used in some electric generation plants.

Steam: a type of electric generation plant that relies on steam-driven turbines to generate electricity. Steam is produced in a boiler heated by several combinations of fossil, refuse-derived, or wood-waste fuels.

Transportation (of natural gas): the action taken by a retail customer who purchases natural gas supplies directly from a supplier or marketer and then moves or transports the gas through a utility's distribution system to the customer's destination.

Watt: the unit of measure for electric power or rate of doing work. The rate of energy transfer equivalent to one ampere flowing under pressure of one volt.

Weather-normalized information: information adjusted to remove fluctuation due to changes in weather.

Wind: a type of electric generation plant that uses turbines powered by wind to generate electricity.