



2007 Annual Report

Aitkin County

Carlton County

Cook County

Itasca County

Koochiching
County

Lake County

St. Louis
County



**Arrowhead Regional
Development Commission
221 West First St.
Duluth, MN 55802**

**Phone: 218-722-5545
Fax: 218-529-7592
MN/WI Toll Free: 1-800-232-0707
www.ardc.org**



TABLE OF CONTENTS

Aitkin County
Carlton County
Cook County
Itasca County
Koochiching County
Lake County
St. Louis County

A Few Words From the Chair.....3
America’s Byways Resources5
Arrowhead Area Agency on Aging8
Metropolitan Interstate Council..... 12
Regional Planning 18
Financial Statement22
Board and Commission.....23

We would like to acknowledge that photos throughout this report have been provided by the individual departments: Area Agency on Aging, America’s Byways®Resource Center, Metropolitan Interstate Council and Regional Planning.



A Few Words from the Chair...

Aitkin County

Carlton County

Cook County

Itasca County

Koochiching
County

Lake County

St. Louis
County

OFFICERS:

Richard J. Brenner,
Chair

Robert Fenwick,
Vice President

Allen Rasmussen,
Treasurer

Peg Sweeney,
Secretary

John Chell,
Executive Director

Mary Zaroni,
HR Manager/Board
Coordinator

Members of the Arrowhead Regional Development Commission Board and staff are pleased to present this 2007 Annual Report for your information and review.

The Arrowhead Regional Development Commission is the designated planning commission for the seven counties in the Arrowhead Region of Minnesota. As outlined in Minnesota statute, ARDC Board and Commission membership ensures representation by the following cross-section of elected officials and regional interests:

- ◆ Communities over 10,000 in population
- ◆ Communities under 10,000 in population
- ◆ County Commissioners
- ◆ Tribal Councils
- ◆ School Boards
- ◆ Township Officials
- ◆ Advisory Committees
- ◆ At Large positions

The ARDC Board meets monthly and is comprised of 12 members of the total 30 members of the ARDC Commission which meets quarterly.

Representation from the entire region allowed ARDC to address several critical regional issues in 2007. We initiated discussion related to Geographic Information Services (GIS), planning services to small cities and towns, regional land use and comprehensive planning, services to senior citizens and planning services to the two country metropolitan area of Duluth, MN and Superior, WI. The agency also provided national technical training to citizens interested in establishing Scenic Byways across America.

ARDC's mission is to serve the people of the Arrowhead



A Few Words from the Chair...

Aitkin County

Carlton County

Cook County

Itasca County

Koochiching
County

Lake County

St. Louis
County

OFFICERS:

Richard J. Brenner,
Chair

Robert Fenwick,
Vice President

Allen Rasmussen,
Treasurer

Peg Sweeney,
Secretary

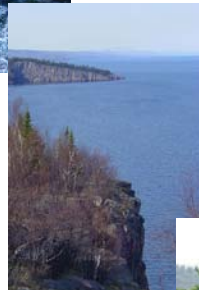
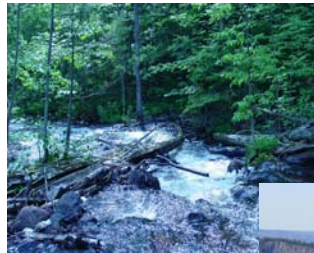
John Chell,
Executive Director

Mary Zandoni,
HR Manager/Board
Coordinator

Region by providing local units of government and citizen groups a means to work cooperatively in identifying needs, solving problems, and fostering local leadership.

We look forward to continuing to serve the needs of the citizens of the Arrowhead Region of Minnesota.

Richard J. Brenner, Chair



*And her majesty is seen
in every tree, stream
and rock...*



America's Byways® Resource Center



Michelle Johnson
Director

Henry Hanka
Special Projects
Manager

Chel Ethun
Training Manager

Leah Kohlts
Events and Commu-
nications Manager

Jeanine Buck
Administrative Assis-
tant

Jasmine Hale
Office Assistant

Jeff Plunkett
Technology Coordina-
tor

Mark Conley
Federal Lands Scenic
Byway Coordinator

Curt Pianalto
Byways Specialist

Susan Koschak
Byways Specialist

Bonnie Hundrieser
Byways Specialist

Dennis Adams
Byways Specialist

Scott Sufficool,
Tribal Liaison

The year 2007 proved to be a productive one for the America's Byways Resource Center. Some of its most noteworthy accomplishments include the kick-off of a new training program, a sold-out national conference in Baltimore, Maryland, and the launching of a new website for byway training and education opportunities.

Training Program

In 2007, the Resource Center launched a completely new training and education platform for the byway community. The new concept included more topics, more resources and more ways to access the information. The new program took into account the various topics that byway groups encounter while managing their byway, and it offers a full array of learning materials, Web links, contacts, publication, Tele-Workshops, classroom-style workshops and podcasts. Upcoming training opportunities are featured on www.bywaysresourcecenter.org. Look for even more ways to access our trainings in 2008.



2007 National Scenic Byways Conference

Nearly 450 people convened in Baltimore to find new directions, ideas and best practices for byways through workshops, general sessions and networking. A surprising fact: first-time attendees comprised over one-third of the total attendance. "Our conference provides a great opportunity for those involved in byways to network and attend quality learning sessions," said America's Byways Resource Center Director Michelle Johnson. "There were many ways to meet new people and learn about new techniques." Aside from the quality learning



America's Byways® Resource Center



Michelle Johnson
Director

Henry Hanka
Special Projects
Manager

Chel Ethun
Training Manager

Leah Kohlts
Events and Commu-
nications Manager

Jeanine Buck
Administrative Assis-
tant

Jasmine Hale
Office Assistant

Jeff Plunkett
Technology Coordina-
tor

Mark Conley
Federal Lands Scenic
Byway Coordinator

Curt Pianalto
Byways Specialist

Susan Koschak
Byways Specialist

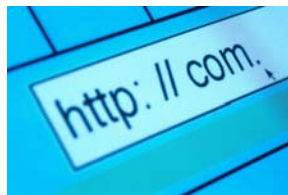
Bonnie Hundrieser
Byways Specialist

Dennis Adams
Byways Specialist

Scott Sufficool,
Tribal Liaison

and networking opportunities, other conference highlights included: keynote speaker and *Last Child in the Woods* author Richard Louv; a mock-radio show with radio personality and 2001 National Scenic Byways Conference keynote speaker Tom Bodett; the first-ever Byways 2021 Symposium, featuring congressional and national policy leaders who will be involved in surface transportation legislation due in 2009; and a celebration of the achievements of the 2007 Scenic Byway Awards Winners.

Mark your calendars for the 2009 National Scenic Byways Conference, August 23-26, in Denver, Colorado.



New Resource Center Website

The National Scenic Byways Program and the America's Byways Resource Center were pleased to announce in May 2007 that three websites now serve the byway community: www.byways.org, www.bywaysonline.org, and the latest addition www.bywaysresourcecenter.org.

These three websites all serve distinct audiences and purposes to provide users more direct access to information they need:

Byways.org is designed with the website traveler and interested media in mind. It's a one-stop shop to facilitate trip planning or spark the imagination of armchair travelers. Visitors to the site will find maps and activity-specific information to help them plan their trip.

Bywaysonline.org is the official website for the National Scenic Byways Program and supports the agency's core functions of grants, nominations and national marketing. Here practitioners can find information on how to nominate their byway for national designation, apply for grant funding, and learn more about the marketing of the America's Byways® collection.



America's Byways® Resource Center



Michelle Johnson
Director

Henry Hanka
Special Projects
Manager

Chel Ethun
Training Manager

Leah Kohlts
Events and Commu-
nications Manager

Jeanine Buck
Administrative Assis-
tant

Jasmine Hale
Office Assistant

Jeff Plunkett
Technology Coordina-
tor

Mark Conley
Federal Lands Scenic
Byway Coordinator

Curt Pianalto
Byways Specialist

Susan Koschak
Byways Specialist

Bonnie Hundrieser
Byways Specialist

Dennis Adams
Byways Specialist

Scott Sufficool,
Tribal Liaison

NEW! Bywaysresourcecenter.org, the newest web-
site, was developed and maintained by the America's Byways
Resource Center. The site is designed to provide byway audi-
ences with resources on topics they deal with every day. Arti-
cles, publications, tools, training opportunities and Web links to
assist with byway management are filed under the core areas
of *Corridor Management*, *Byway Organization*, *Finances* and
Visitor Experience. Website highlights include:

- ◆ Podcasts of Tele-Workshops that can be listened to at your convenience, right on your computer
- ◆ Electronic articles in an easy, print-and-go format
- ◆ Publications, websites and training opportunities sorted by topic
- ◆ Calendar of conferences, events and workshop of importance to byways
- ◆ A library of Resource Center publications available for download

Together, these websites offer byways users easy access to the information they need.

In addition to the 2007 accomplishments highlighted above, the Resource Center continues to serve as a hub of information and services for people involved with nationally designated scenic byways. Throughout the year, Resource Center staff worked to:

- ◆ Direct byways to resources
- ◆ Facilitate networking within the byway community
- ◆ Help byways identify problems and find solutions
- ◆ Provide personalized assistance to byways in the areas of Corridor Management, Finances, Byway Organization, Visitor Experience, Tribal byways and Federal lands

The staff of the America's Byways Resource Center looks forward to serving customers in even more ways in the year to come.



Arrowhead Area Agency on Aging



Catherine Sampson,
Division Director

Marjori Bottila,
Outreach Specialist/
Volunteer Coordinator

Barb Caskey, Sr.
Planner & Coord., EDP

Cindy Conkins, Aging
Services Senior
Planner

Kara Edwards,
Division Secretary

Mary Hellman, Sr.
Outreach Specialist

Barb Highland, Sr.
Outreach Specialist

Kristen Jansen, Aging
Services Planner

Paula Kenemore,
Dementia Prog. Coord.

Deb Laine, Faith-
based Prog. Coord.,
EDP

Tricia Martin, Aitkin Cty
EDP Prog. Coord.

Bob Preston, Sr.
Outreach Specialist

Sara Prosen, Aging
Services Planner

Karen Tveit, Sr.
Outreach Specialist,
Koochiching County

CAREGIVER SUPPORT

Supporting Families and Friends as They Care for Elderly

Sara is a wife, mother, daughter and teacher. Her own mother has recently died. Sara's father is grief stricken, has several chronic conditions himself and is now experiencing memory loss. After careful consideration, Sara's family has decided that Dad should come live with them. Sara feels good about the decision, but worries how she will juggle the demands of being mother, wife, employee and now primary caregiver to her father.

With changing demographics and the aging of the baby boomers, families throughout NE Minnesota are increasingly finding themselves in a care giving role. State and national policy makers have identified the issue of developing adequate support for family caregivers as a key strategy for surviving and thriving during the coming age wave.

TECHNICAL ASSISTANCE OFFERED TO CARE- GIVER PROGRAMS

ARDC Area Aging on Aging staff provided technical assistance to caregiver support programs in the region by offering quarterly networking meetings where participants could hear about best practices, share resources and connect to training opportunities on numerous topics including caregiver assessment and consumer directed service models.

The AAAA also supported the efforts of many of the community based caregiver support programs in the region as they formally strengthen their ties to medical providers.

For more information on Caregiver Support program development, call Cindy Conkins at 218-529-7542.



Arrowhead Area Agency on Aging



Catherine Sampson,
Division Director

Marjori Bottila,
Outreach Specialist/
Volunteer Coordinator

Barb Caskey, Sr.
Planner & Coord., EDP

Cindy Conkins, Aging
Services Senior
Planner

Kara Edwards,
Division Secretary

Mary Hellman, Sr.
Outreach Specialist

Barb Highland, Sr.
Outreach Specialist

Kristen Jansen, Aging
Services Planner

Paula Kenemore,
Dementia Prog. Coord.

Deb Laine, Faith-
based Prog. Coord.,
EDP

Tricia Martin, Aitkin Cty
EDP Prog. Coord.

Bob Preston, Sr.
Outreach Specialist

Sara Prosen, Aging
Services Planner

Karen Tveit, Sr.
Outreach Specialist,
Koochiching County

CAREGIVER SUPPORT PROGRAMS GROW WITH OLDER AMERICANS ACT FUNDING

Older American Act Caregiver Support grants to a variety of local governmental and non-profit organizations support the development of local caregiver support programs. Grants totaled approximately \$180,000.

Caregiver support services offered through these programs included:

SERVICE	NUMBER OF PROGRAMS FUNDED	NUMBER OF CARE-GIVERS SERVED	SERVICE UNITS
Respite – offering a break for caregivers from their caregiving role	7	149	12,197 Hours
One-to one Advice and Guidance - from a staff person trained to help caregivers navigate services.	4	262	1,143 Sessions
Group Services - support groups, group education	5	420	96 Sessions
One-to one Caregiver Training - disease management, hands on care	1	12	70 Sessions
TOTAL		843	13,506



Arrowhead Area Agency on Aging



Catherine Sampson,
Division Director

Marjori Bottila,
Outreach Specialist/
Volunteer Coordinator

Barb Caskey, Sr.
Planner & Coord., EDP

Cindy Conkins, Aging
Services Senior
Planner

Kara Edwards,
Division Secretary

Mary Hellman, Sr.
Outreach Specialist

Barb Highland, Sr.
Outreach Specialist

Kristen Jansen, Aging
Services Planner

Paula Kenemore,
Dementia Prog. Coord.

Deb Laine, Faith-
based Prog. Coord.,
EDP

Tricia Martin, Aitkin Cty
EDP Prog. Coord.

Bob Preston, Sr.
Outreach Specialist

Sara Prosen, Aging
Services Planner

Karen Tveit, Sr.
Outreach Specialist,
Koochiching County

WORKING WITH FAITH COMMUNITIES

Over the past few years, the Area Agency on Aging has had a person on staff providing technical assistance to faith communities in the arrowhead region providing technical assistance on how they might effectively serve the seniors in their congregations and/or neighborhoods within their respective missions. Some accomplishments include the development of a database containing information on about 500 faith communities, work with 18 Ministerial Organizations and completion of major projects with 9 of them, guiding 3 churches through the process of developing an older adult ministry program, assisting 3 communities with establishing Sunday transportation, and using the GIS resources of the Regional Planning division to determine the greatest concentrations of 50-70 year olds and those 70+ throughout the Arrowhead Region.

For more information on working with faith communities in our region, call Deb Laine at 218-529-7534.

DEMENTIA CARE program and service development continued to be a primary focus of the Area Agency on Aging in 2007 with a Dementia Care Coordinator on staff for most of the year. A key focus for the Coordinator has been improving the memory care competency among health care organizations and community care services throughout northeastern Minnesota and specific memory care sites were developed at the St. Luke's Denfeld Clinic and the SMDC Ely Clinic. In addition, multiple educational programs were provided in various health-care settings around the region, reaching hundreds of health-care providers. Concurrently, dementia care work groups were formed around the area to promote quality of life for individuals and families affected by dementia and to foster "dementia competent communities" by creating opportunities for professional development, support, networking and education.

For more information on dementia care service development in the arrowhead region, call Jill Sparrow at 218-529-7552



Arrowhead Area Agency on Aging



Catherine Sampson,
Division Director

Marjori Bottila,
Outreach Specialist/
Volunteer Coordinator

Barb Caskey, Sr.
Planner & Coord., EDP

Cindy Conkins, Aging
Services Senior
Planner

Kara Edwards,
Division Secretary

Mary Hellman, Sr.
Outreach Specialist

Barb Highland, Sr.
Outreach Specialist

Kristen Jansen, Aging
Services Planner

Paula Kenemore,
Dementia Prog. Coord.

Deb Laine, Faith-
based Prog. Coord.,
EDP

Tricia Martin, Aitkin Cty
EDP Prog. Coord.

Bob Preston, Sr.
Outreach Specialist

Sara Prosen, Aging
Services Planner

Karen Tveit, Sr.
Outreach Specialist,
Koochiching County



SENIOR LINKAGE LINE®
answered 6,892 unduplicated
calls in 2007, made 7,944
contacts (education/outreach
sessions, health fairs, etc.) and
served 3,909 persons – in
person or over the phone – to
resolve complex Medicare and
health insurance issues, assess
the needs of caregivers,
connect caregivers to resources
and answer many other
questions and concerns from
housing to foreclosure to
transportation.





Duluth-Superior Metropolitan Interstate Council (MIC)



Ron Chicka,
Division Director

Holly Butcher,
Senior Planner

Andrea Grygo
Diamond,
GIS Specialist

James Gittemeier,
Planner

Robert Herling,
Planner

Andy McDonald,
Principal Planner

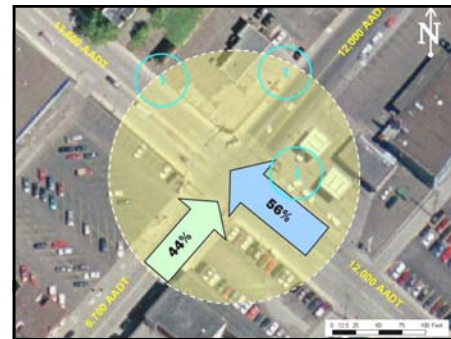
Rondi Watson,
Division Secretary

Guiding the Future of Transportation for the Twin Ports Area

The MIC provides an inter-jurisdictional forum for transportation and infrastructure issues of regional significance. Activities include neighborhood and corridor studies, regional impact studies, and involvement in harbor, transit and statewide planning initiatives. The following are some of the major projects completed during 2007:

Crash Analysis / Transportation Systems Management

The aim of Transportation Systems Management (TSM) is to address and improve conditions in the transportation network that will result in improved safety and acceptable levels of service. TSM strategies involve the use of lower-cost treatments to reduce crashes while improving efficiency. MIC staff worked closely with Minnesota and Wisconsin jurisdictions first to determine the methodology used in the analysis, then to identify locations of concern and potential treatments that may be programmed to address them. Input from those meetings was incorporated into the final reports, which were both approved by the MIC Policy Board on December 12.



*Diagram of over-all crash pattern at
E 4th St. & 6th Ave. E in Duluth*

Munger Bike Trail Extension Plan

The goal of this planning process was to identify a trail alignment to connect the Munger Trail from its current terminus at 75th Avenue West to the Lakewalk in the Canal Park area. A final document with the preferred alignment map was produced



Duluth-Superior Metropolitan Interstate Council (MIC)



Ron Chicka,
Division Director

Holly Butcher,
Senior Planner

Andrea Grygo
Diamond,
GIS Specialist

James Gittemeier,
Planner

Robert Herling,
Planner

Andy McDonald,
Principal Planner

Rondi Watson,
Division Secretary

and distributed to City of Duluth staff. The final plan also included trail history, the value of trails, cost estimates and potential funding sources. MIC staff will be compiling some marketing materials based on the final document and maps. These marketing materials will be used in public outreach efforts and in the search for funding for the trail.



Sections of the new Munger trail would parallel existing rail lines and utilize abandoned rail lines where possible.

Phase 2 On-Street Bike Routes

The overall three-phase on-street bike route project will create a completely signed bike route system within Duluth, Superior, St. Louis County, Hermantown, and Proctor. Phase 1 was completed in early 2002 and bike routes in Duluth, Hermantown, and St. Louis County were identified and marked with wayfinding and “share the road” signage. Work on Phase 2 was begun to complete the bike route system on the Minnesota side of the MIC planning area, by identifying and placing signage along routes in Duluth, St. Louis County, and Proctor. Due to the colder temperatures, implementation of this project was put on hold for the



Typical bike route sign marking the on-street bike routes throughout the Twin Ports.



Duluth-Superior Metropolitan Interstate Council (MIC)



Ron Chicka,
Division Director

Holly Butcher,
Senior Planner

Andrea Grygo
Diamond,
GIS Specialist

James Gittemeier,
Planner

Robert Herling,
Planner

Andy McDonald,
Principal Planner

Rondi Watson,
Division Secretary

winter months. The project will continue in the spring of 2008 with the installation of signage. Phase 3 will then begin in 2008 to identify on-street routes and signage placement in the City of Superior.

Proctor Master Trail Plan

Based on goals set forth in the 1998 update to the City of Proctor's Comprehensive plan, the Master Trail Plan was developed to identify an interconnected system of on- and off-street multiple-use trails. It also calls for the creation of a network of non-motorized trails connecting neighborhoods, natural areas, community assets, and regional attractions. The Trail Plan was finalized and approved by the MIC board in December.



Bridge along the planned trail connection between the Munger Trail and the City of Proctor.

Harbor Planning / HTAC

The Harbor Technical Advisory Committee (HTAC) is an advisory committee to the MIC Policy Board and is made up of more than 30 port and harbor stakeholders representing state, federal, county, city, environmental, and industry interests. Its mission is to provide a forum for the discussion of harbor related issues and concerns,



A group of HTAC stakeholders tours the harbor aboard the LL Smith Jr. research vessel.



Duluth-Superior Metropolitan Interstate Council (MIC)



Ron Chicka,
Division Director

Holly Butcher,
Senior Planner

Andrea Grygo
Diamond,
GIS Specialist

James Gittemeier,
Planner

Robert Herling,
Planner

Andy McDonald,
Principal Planner

Rondi Watson,
Division Secretary

to promote the harbor's economic and environmental importance to the community and to provide sound planning and management recommendations to the MIC.

The HTAC met quarterly in 2007 and meeting topics included current Ballast Water Treatment Research in Superior, an update on the Duluth-Superior Harbor Accelerated Corrosion Research, a progress report on the St. Louis River Interlake/Duluth Tar Superfund Site, and a description of the annual Dredging Operations in the Duluth-Superior Harbor.

Erie Pier Management Plan

The HTAC also includes several ad-hoc working groups to address specific issues identified by the member stakeholders. The Dredging Subcommittee began working intensively to develop a long-term Erie Pier Management Plan for the harbor's confined disposal facility (CDF). The goal of this plan is to outline how Erie Pier could begin to function instead as a recycling facility, with strategies to market and beneficially reuse dredge materials, instead of simply disposing of them.

The Dredging Subcommittee completed work on the management plan in May and the HTAC approved the plan at their June 6th meeting and recommended that the MIC adopt the plan. The MIC approved the plan along with a resolution of support and directed staff to send the resolution, plan and cover letter to area jurisdictions responsible for road construction projects.

A marketing plan for Erie Pier dredged material was one spin-off of the MIC's planning effort, undertaken by the University of



A bulldozer at Erie Pier moves dredged material to ready it for reuse. The material was hydraulically sorted



Duluth-Superior Metropolitan Interstate Council (MIC)



Ron Chicka,
Division Director

Holly Butcher,
Senior Planner

Andrea Grygo
Diamond,
GIS Specialist

James Gittemeier,
Planner

Robert Herling,
Planner

Andy McDonald,
Principal Planner

Rondi Watson,
Division Secretary

Minnesota Duluth Business School, examining facility costs and developing a market analysis for converting Erie Pier from a disposal facility to a recycling facility. Information from this study will be utilized in the marketing plan.

MIC staff also began work on a Noxious Weed Control operating plan for Erie Pier. A work group was organized and an initial meeting was scheduled for January, 2008.

Safe Routes to School (SRTS) Plans Implementation

Two SRTS plans, one for Superior schools, completed in January 2005 and another for Duluth, completed in July 2006, identify key routes to selected “walkable” elementary and middle schools and propose measures to make them more pedestrian and bicycle friendly.

In September 2007, MIC staff received an award in the category “Outstanding Planning or Urban Design Plan” from the Minnesota Chapter of the American Planning Association (MnAPA) for our Duluth and Superior Safe Routes to School plans. During October and November the Duluth Safe Routes to School steering committee reconvened to recommend specific improvements for Stowe Elementary School in Duluth’s Gary New-Duluth neighborhood and a grant application was submitted to MnDOT in November for funding to address the safety issues identified by an extensive public process.



MIC staff prepared a Safe Routes to School (SRTS) grant application for funding to address key safety problems at Stowe Elementary School, such as this crossing on Commonwealth Avenue (T.H. 23). The SRTS planning process gathered input from the PTA, school administration, the City of Duluth and parent and student surveys.



Duluth-Superior Metropolitan Interstate Council (MIC)



Ron Chicka,
Division Director

Holly Butcher,
Senior Planner

Andrea Grygo
Diamond,
GIS Specialist

James Gittemeier,
Planner

Robert Herling,
Planner

Andy McDonald,
Principal Planner

Rondi Watson,
Division Secretary

Duluth Heights Traffic Circulation Plan—Implementation

The goal of this plan, completed in August 2006, was to document the amount of traffic that cuts through traffic to the Miller Hill Mall commercial district and to identify solutions to lessen impacts on the neighborhood. Final recommendations included a system of solutions, including a new roadway (Joshua Avenue), temporary traffic calming, and minor improvements to current roadways.



A temporary half closure was installed at Eklund Ave and Swan Lake Road in Duluth Heights to deter traffic from cutting through the neighborhood.

In May 2007, a survey was mailed to study area residents to obtain their opinions about the half closure that was installed. A total of 875 surveys were mailed with a response rate of 32%. Results of the survey indicate that area residents have seen a decrease in neighborhood cut through traffic. Some area residents have to drive farther on their work and shopping trips and residents are witnessing drivers illegally going around the half closure. The final question on whether they support the half closure was split almost evenly. MIC staff will meet with City of Duluth staff to review the survey results in detail and to decide the next steps in implementing the study recommendations.



Arrowhead Regional Planning



Andy Hubley,
Arrowhead
Planning,
Division Director

Bryan
Anderson,
Planner

Ellen Pillsbury,
Planner

Josh Bergstad,
Planner

Kara Kent,
GIS Specialist

Ben Van
Tassel,
Planner

Leah Berg,
Division
Secretary

Regional Planning Takes the Lead in Community Preparedness

A major economic expansion is on the horizon in the Arrowhead Region with the possibility of several large scale projects being located on the Iron Range and in other areas of Northeast Minnesota. These project will put demands on transportation, housing, infrastructure, and workforces. Regional Planning has assisted the Region's communities in preparing for the impact of those changes. Several communities have completed their comprehensive plans this year and are moving ahead with further planning activities to enhance their quality of life along with preparation for influxes of construction workers and future workers for the large scale projects. ARDC's Regional Planning Staff has an integral role with the **Range Readiness** (www.rangereadiness.com) Housing and Community Readiness Teams. ARDC facilitated the **Itasca Community Readiness Plan**, a document outlining strategies that Itasca County cities and towns should undertake to be better prepared for the impacts of major projects.



Arrowhead Trails and Safe Routes to Schools

Interest in improving, continuing or creating new trails has continued into 2007. Many communities are embracing connectivity of trails and the growing interest in outdoor activities for not only their residents, but visitors. Some of the trail plans Regional Planning assisted with are:

- Arrowhead Regional Bike Trail Connection Plan—a regional effort to complete a plan for local connections to regional trails throughout the Arrowhead
- Safe Routes to Schools—a national program with a local focus, the SRTS program assists school districts in developing safe walking and biking routes in an effort to get children active.





Arrowhead Regional Planning



Andy Hubley,
Arrowhead
Planning,
Division Director

Bryan
Anderson,
Planner

Ellen Pillsbury,
Planner

Josh Bergstad,
Planner

Kara Kent,
GIS Specialist

Ben Van
Tassel,
Planner

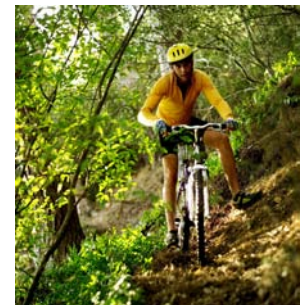
Leah Berg,
Division
Secretary



The **Northeastern Minnesota Active Community Assessment and Engagement** got underway in Cook County and the northeast section of Carlton County. ARDC spent this past year determining the current environment, behavior, local policies and public perception related active living in six pilot

communities. The results were presented to six pilot communities and used by ARDC regional planners and public health staff associated with Northeast Minnesota Obesity Prevention Project to develop a Regional Active Living Community Vision and Principles. The Vision Statement will be finalized at a meeting on January 10, 2008 with the intent for local communities to use the Vision and principles as a guide and ultimately adopt into their comprehensive plans.

The second phase of the **Arrowhead Regional Bike Trail Connection Plan** was completed. In phase two, ARDC worked with five communities to complete a more detailed plan for local connections to regional trails in their respective areas. Those communities were Esko, International Falls, Hibbing, Hoyt Lakes and Mountain Iron.



The **Laurentian GIS Collaboration** has continued working at updating the Arrowhead Region's road base map. This on-going project will play a vital role when the large industrial projects are moved into construction stages.



Arrowhead Regional Planning



Andy Hubley,
Arrowhead
Planning,
Division Director

Bryan
Anderson,
Planner

Ellen Pillsbury,
Planner

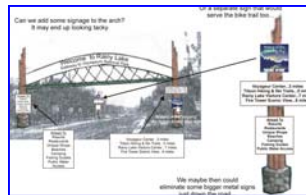
Josh Bergstad,
Planner

Kara Kent,
GIS Specialist

Ben Van
Tassel,
Planner

Leah Berg,
Division
Secretary

HelmetHero Bicycle Education was a great success and received national recognition. This 30 minute program was taught in 21 elementary schools throughout northeast Minnesota. A total of 1,053 third graders went through the bicycle education training this year with each student receiving a helmet. ARDC has obtained funding for the 2008-2009 school year and will start contacting schools in the fall of 2008.



Voyageurs National Park and the City of International Falls joined forces in **The International Falls Gateway Corridor Project**. The project will identify a list of priority needs for the improvement of International Falls as the gateway to the national park. Some items to be looked

at during this process will be improvements to the entrance and streetscape of the highways leading to the park, a welcome center, access to the park and ways to generate a tourist friendly atmosphere. A task force has been created and is actively working on recommendations for the Corridor.

Regional Planning's program, "**Planner on Retainer**," has been continued with the City of Two Harbors. For this program, a Division planner is asked to work off-site providing planning services to the City. Several other cities and towns have shown an interest in participating in the program and Regional Planning is hoping to extend this offer to one or two more entities in 2008. This year's efforts have resulted in the City of Two Harbor planning a twelve mile non-motorized trail system with engineering and contraction hoping to be completed in 2008.



Arrowhead Regional Planning



Andy Hubley,
Arrowhead
Planning,
Division Director

Bryan
Anderson,
Planner

Ellen Pillsbury,
Planner

Josh Bergstad,
Planner

Kara Kent,
GIS Specialist

Ben Van
Tassel,
Planner

Leah Berg,
Division
Secretary

Continued funding has been received for staffing of the **North Shore Scenic Drive Council** and the **North Shore Management Board**. Through these positions, Regional Planning provides guidance and assistance with expertise in planning and zoning as well as being a scenic byways resource. Further support is provided by Regional Planning's GIS specialist as projects arise along Lake Superior's Shoreline.

With the possibility of several large industrial projects being developed on the Iron Range, the need for sufficient housing for construction workers, housing for the permanent employees, school enrollment increases, additional utility requirements has come to the forefront. The **Itasca County Community Readiness Assessment** was developed to identify the impact these changes in part or whole will on their strengths and weaknesses in meeting these possible future needs.

Some completed projects this year have been:

- Kabetogama Township Comprehensive Plan
- Grand lake Township Road Plan
- Mesabi Trail Kiosk maps
- Edge of the Wilderness Comprehensive Plan
- Mountain Iron Comprehensive Plan
- Safe Routes to Schools—Hill City





Aitkin County
 Carlton County
 Cook County
 Itasca County
 Koochiching County
 Lake County
 St. Louis County

Sr. Mary
 Matthew
 Morrisroe,
 Finance
 Director

Linda Vokes,
 Finance
 Manager

Josh Halvorson
 IS Specialist

Elizabeth
 Sarabia,
 Administrative
 Services
 Specialist

**Summary of Revenue, Expenditures and Changes
 in Fund Balance - Unaudited
 Year Ended December 31, 2007**

	General Fund	Revolving Loan Fund	Grants & Contracts	Total
Revenues				
Tax Levy	460,728			460,728
Grants & Contracts			7,208,803	7,208,803
Program Income		172,629		172,629
Interest Earned	11,552			11,552
Miscellaneous	20,270			20,270
Total Revenue	492,550	172,629	7,208,803	7,873,982
Expenditures	218,457	142,880	7,337,834	7,699,171
Revenue Expenditures Over/Under	274,093	29,749	(129,031)	174,811
Other Financing Sources (Uses)-Local Match	(129,031)		129,031	
Revenue and Other Sources (Uses)-Local Match	145,062	29,749		174,811
Fund Balance 1/1/2007	370,981	416,574		787,555
Fund Balance 12/31/2007	516,043	446,323		962,366

**ARDC Revolving Loan Fund
 Loans Approved and Disbursed in 2007**

All Sports Insurance	\$30,000
White Bear Technology	<u>75,000</u>
Total	\$105,000



Board of Directors 2007-2008

Chair	Dick Brenner	Treasurer	Allen Rasmussen
Vice Chair	Robert Fenwick	Secretary	Peg Sweeney

Aitkin County

Carlton County

Cook County

Itasca County

Koochiching County

Lake County

St. Louis County

Member	County Commissioner	Catherine McLynn	
Member	County Commissioner	Paul Bailey	
Member	County Commissioner	Scott Larson	
Member	County Commissioner	Steve Raukar	
Member	County Commissioner	Wade Pavleck	
Member	Native American Tribal Council	Jason Holliday	
Member	At Large	Margaret Sherman	
Member	At Large	Rev. Bogdan Zjalic	
Member	Advisory Committees	Earl Elde	
Member	Advisory Committees	Lowell Bartel	

Commission Members 2006-2007

County Commissioners

Dick Brenner – *Carlton*
 Robert Fenwick – *Cook*
 Paul Bailey- *Aitkin*
 Catherine McLynn - *Itasca*
 Scott Larson - *Lake*
 Wade Pavleck – *Koochiching*
 Steve Raukar – *St. Louis*
 Peg Sweeney – *St. Louis*

Township Officials

Kevin Adee – Koochiching County
 Clayton Kauppila – *Blackhoof* – Carlton County
 Steven Kniefel – *Fayal* – St. Louis County
 Michael Hoops– *Silver Creek* – Lake County
 Vacant – Aitkin County
 Diane Parker – Cook County
 Bob Norgord – Itasca County

Communities under 10,000

Vacant – Koochiching County
 Marlene Pospeck– *Hoyt Lakes* – St. Louis County
 Eric Howe, Sr.– *Palisade* – Aitkin County
 Randy Bolen, Jr.– *Two Harbors* – Lake County
 Dave Limmer - *Scanlon* – Carlton County
 Bill Lenz – *Grand Marais* – Cook County
 Tom Sampson– *Keewatin*—Itasca County

continued on page 24



Commission Members 2007-2008

Aitkin County

Carlton County

Cook County

Itasca County

Koochiching County

Lake County

St. Louis County

Communities over 10,000

Frank Bigelow – *Hibbing* – St. Louis County

Bruce Ahlgren - *Cloquet* – Carlton County

Louis Russo – *Virginia* – St. Louis County

Jim Stauber – *Duluth* – St. Louis County

School Boards

Martha Lentz – *ISD #2*

Harlan Tardy - *ISD #319*

Native American Tribal Council

Jason Hollinday – *Fond du Lac*

Lorraine Wipson – *Grand Portage*

Andy Datko – *Bois Forte*

At Large

Kelly Cooke

Kevin Downey

Wayne Dupuis

Lars Kuehnow

Allen Rasmussen

Margaret Sherman

Tom Wagner

Rev. Bogdan Zjalic

Advisory Committees

Dennis Henkel – *Advisory Committee on Aging*

Earl Elde – *Metropolitan Interstate Council*

Catherine McLynn – *Regional Transportation Advisory Committee*

The Arrowhead Regional Development Commission
is an Equal Opportunity Employer.