



Minnesota Pollution Control Agency

# Report on 2006 SCORE Programs

A summary of waste management in Minnesota

December 2007



Minnesota Pollution Control Agency  
520 Lafayette Road North  
Saint Paul, MN 55155-4194  
651-296-6300 or 800-657-3864 toll free  
<http://www.pca.state.mn.us>

## Author

Principal Author/Data Analysis: Arlene Vee

## Contributors

Ginny Black  
Angela Bourdaghs  
Linda Countryman  
Wayne Gjerde  
Garth Hickle  
Mark Rust

## Editing and Graphics

Paul Andre  
Theresa Gaffey  
Glenn Krocheski-Meyer  
Gail Skowronek

*The total cost of preparing the Report on 2006 SCORE Programs was \$10,600  
including staff time, writing, editing, and printing.*

*The MPCA is reducing printing and mailing costs by using the Internet to distribute reports  
and information to a wider audience. For additional information on recycling, waste prevention,  
and waste management, check out the SCORE Web site: <http://www.pca.state.mn.us/score>*

*This report was printed on recycled paper manufactured without the use of elemental chlorine  
(cover: 30% post-consumer; body: 100% post-consumer).*

# Table of Contents

<b>Introduction</b> .....	<b>1</b>
<b>MSW Generation in Minnesota</b> .....	<b>1</b>
<i>Totals and trends</i> .....	1
<i>On-site and problem materials not recycled</i> .....	2
<i>Per capita MSW generation</i> .....	3
<b>Recycling and Waste Reduction</b> .....	<b>3</b>
<i>Electronic waste</i> .....	4
<i>Source reduction</i> .....	4
<i>Environmental and economic benefits of recycling</i> .....	5
<b>MSW Processing and Disposal</b> .....	<b>6</b>
<i>Trends in waste disposal</i> .....	6
<b>Funding of SCORE Programs</b> .....	<b>8</b>
<i>State funding: SCORE block grants</i> .....	8
<i>County funding</i> .....	9

## Figures

<i>Figure 1: Minnesota MSW Generation</i> .....	2
<i>Figure 2: Minnesota's Recycling Progress</i> .....	4
<i>Figure 3: MSW Disposal and Processing in Minnesota 2005</i> .....	6
<i>Figure 4: Trends in Minnesota Waste Management</i> .....	7
<i>Figure 5: SCORE Expenditures</i> .....	9

lrp-p2s-3sy08

## Introduction

---

In 1989, based on recommendations of the Governor's Select Committee on Recycling and the Environment (SCORE), the Legislature adopted comprehensive legislation to launch Minnesota's statewide recycling efforts in earnest. This set of laws, commonly referred to as SCORE, initiated a stable source of state funding for recycling programs, as well as waste reduction and the improved management of household hazardous wastes and problem materials. SCORE legislation and grant dollars, along with funding from counties and local government provide the basis for long-term, flexible programs.

This *Report on 2006 SCORE Programs* summarizes information submitted by all 87 counties and the Western Lake Superior Sanitary District on waste management efforts, including waste reduction activities, recycling, household hazardous waste programs, and problem materials collection.

The Minnesota Pollution Control Agency (MPCA) uses this information to calculate the state's recycling rates and the cost of managing waste and recycling, and to detail trends in waste generation and disposal. While data collection began in 1989, the MPCA typically uses calendar year 1991 as a baseline for trend analysis. In 1991, counties began collecting data on a calendar year basis, instead of a fiscal year basis, and by that point, data collection and format had greatly improved, making the quality of the data that much better.

This report and information on the SCORE Program are available on the MPCA's Web site at <http://www.pca.state.mn.us/score>.

Every other year, the MPCA expands on the annual Report on SCORE Programs and makes solid waste policy recommendations to the Legislature in the form of a solid waste policy report. The *2007 Solid Waste Policy Report* highlights policy recommendations and discusses other subsequent recommendations. See <http://www.pca.state.mn.us> for more details.

## MSW Generation in Minnesota

---

Since 1989, Minnesota has shown a steady growth in municipal solid waste (MSW) generation. This growth is reflected in both the total amount of MSW generated and in the per capita figures (total waste generated divided by the state's population). During the robust years of 1994 to 1998, Minnesota saw a 4.62 percent increase in MSW generation and a 3.4 percent increase in per capita generation. In 1999, those rates began to slow during a downturn in the economy. After an increase in 2005 of nearly 2 percent, 2006 MSW generation growth slowed to an all-time low—increasing just 0.4 percent. Per capita generation of MSW remained roughly the same (1.167 tons in 2005 and 1.166 tons in 2006).

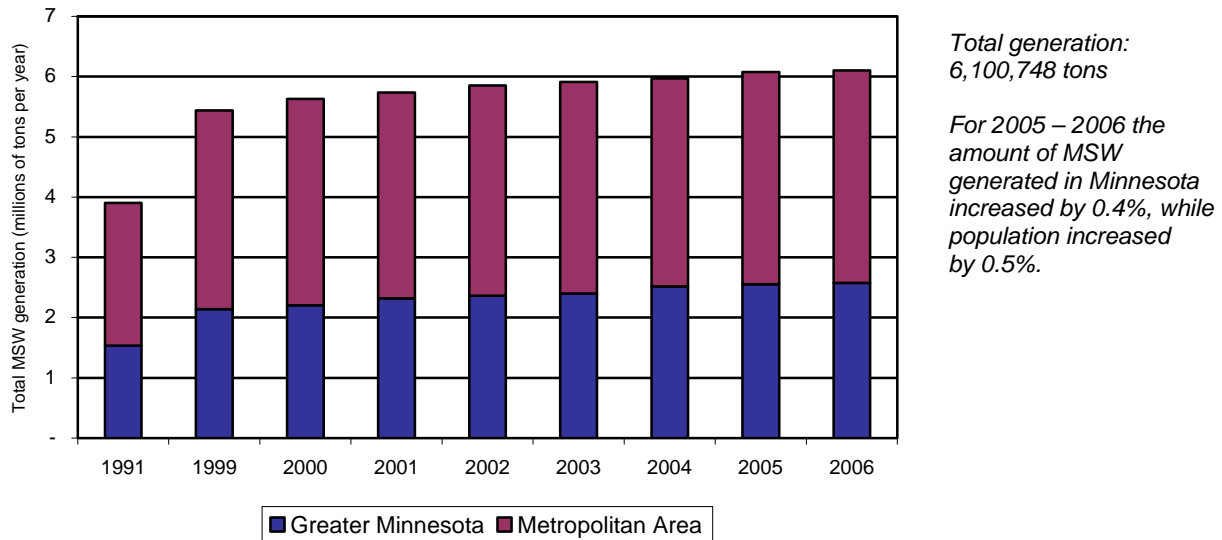
Mixed MSW is defined by statute as “garbage, refuse, and other solid waste from residential, commercial, industrial, and community activities that the generator of the waste aggregates for collection.” It includes common materials found in household and commercial garbage, such as packaging materials, containers, food discards, and other compostable materials, plastic, paper, etc. MSW does *not* include auto hulks, street sweepings, ash, construction debris, mining waste, sludge, tree and agricultural wastes, tires, lead acid batteries, motor and vehicle fluids and filters, and other materials collected, processed, and disposed of as separate waste streams (Minn. Stat. § 115A.03, subd. 20). MSW *does* include wastes recycled, discarded (including tons sent to disposal and resource recovery facilities), tons disposed of on-site (burn barrels or farm dumps), and problem materials not recycled (PMNR).

### Totals and trends

Minnesota MSW generation totaled 6,100,748 tons in 2006, a slight increase from 2005's 6,076,789. Statewide, this represents only a 0.4 percent increase over the previous year. Greater Minnesota accounted for 42 percent of the state's MSW generation, and the seven-county Metropolitan Area accounted for 58 percent in 2006.

Since 1991, MSW generation has grown on average by 3 percent per year. After the period of biggest growth (1989-1997), the average increase in MSW generation over the last nine years dropped to 2 percent (1998-2006) and just over 1 percent over each of the past four years (2003-2006). While improvement in waste reduction efforts may account for some decline, waste generation generally decreases during times of economic recession and increases during an economic upsurge.

**Figure 1: Minnesota MSW Generation**



	1991	1999	2000	2001	2002	2003	2004	2005	2006	Changes 2005-06
Greater Minnesota	1.54	2.14	2.21	2.32	2.37	2.41	2.53	2.56	2.58	1%
Metropolitan Area	2.37	3.30	3.42	3.42	3.49	3.51	3.45	3.52	3.52	0.0
Minnesota	3.90	5.44	5.63	5.74	5.86	5.92	5.98	6.09	6.10	0.4%

Figures in millions of tons. For full data for 1991-2006, refer to Appendices

## On-site and problem materials not recycled

On-site disposal of MSW, either burning or burying, has been a practice used for generations and still is being used. Although it is against the law for most people, some farmers are allowed to burn or bury their household garbage, under existing Minn. Stat. §§ 88.171 and 17.135.

In the 2006 SCORE survey, counties estimate that 1.3 percent of the total waste generated is disposed of on-site. This number may be conservative. According to a 2005 study of backyard garbage burning in Minnesota, 45 percent (estimated at a minimum of 920,000 people) of rural residents statewide still burn or bury on-site. This presents a significant health and environmental threat to all Minnesotans. U.S. Environmental Protection Agency (EPA) research shows that burn barrels are the primary source of dioxin in the United States. Just one burn barrel can produce as much or more than a full-scale municipal waste combustor burning 200 tons per day (*Inventory of Sources of Dioxin in the U.S.*, March 2001).

“Problem materials not recycled” (PMNR) makes up 2 percent of the total MSW generation. PMNR includes five materials that have been banned from disposal in Minnesota (vehicle batteries, tires, major appliances, motor oil, and oil filters). The PMNR number is that portion of the materials that is not recycled, but is assumed to be disposed of somewhere, legally or not, as they are banned from MSW disposal facilities. It is assumed that they are not being counted in landfill or incinerator tonnages.

## Per capita MSW generation

The MPCA calculates the amount of waste that the “average” Minnesotan creates each year in an attempt to understand if waste growth is coming primarily from an increase in population or increases in consumption.

In 2006, the Minnesota per capita rate decreased insignificantly (-0.11 percent from 2005) to 1.166 tons per person (2,332 pounds/person/year). This is consistent with the small increases seen in MSW generation (0.4%) and with Minnesota’s economy. In looking at greater Minnesota versus the Metro Area per capita rate, we find that the greater Minnesota per capita rate is 1.07 tons (2,140 pounds/person/year), an increase of approximately 0.37 percent from 2005. In comparison, the Metro Area per capita rate is 1.249 tons (2,498 pounds/person/year), a decrease of 0.44 percent from 2005. Greater Minnesota per capita rate has increased steadily since 1991. However, the Metro Area began to see a decrease beginning in 2001.

Minnesota’s population continues to grow. In 2006, Minnesota’s population increased to 5,231,106 from 2005 population of 5,205,091, only a 0.5 percent increase—greater Minnesota by 0.6 percent and the Metro Area by 0.4 percent. In the last five years Minnesota’s population increased approximately 55,000 per year; however in 2006 the population increased by 26,000. From 1991 to 2006, Minnesota’s population grew 18.5 percent—greater Minnesota increased 14.9 percent and the Metro Area increased by 21.7 percent.

## Recycling and Waste Reduction

---

Minnesota’s recycling programs are among the nations most successful, reflecting the strong local and state investment and public participation. In 2006, Minnesota’s recycling rate (including credits for yard waste recycling and waste reduction efforts) increased by 0.2 percentage points to 48.7 percent. The state’s base recycling rate is approximately 41.4 percent, an increase of nearly half of a percentage point. The base recycling rate is a more accurate measure of progress as it the actual percentage of materials recycled and does not include the additional source reduction and yard waste credits. While this growth reflects the significant state, local, and industry investment in our recycling system, as well as strong material markets, evidence suggests much more could be done to recover the millions of tons of discarded recyclable and organic material still disposed of each year.

In 2006, 1.3 million tons of recyclable material remained in the waste stream, worth \$312 million. Market prices for paper, plastic, and metal were high in 2006; however, at the same time we saw a drop in paper, plastic, and metal being recycled from 2005: paper was down 1,491 tons, plastic was down 876 tons, and metal was down 72.6 tons. Minnesota residents do not see financial advantages to recycle more during times the recycling markets are high. Businesses that have large quantities of recyclables and their own means to collect and market them see financial advantages of recycling when recycling market prices are high. The majority of the small businesses, however, do not see the financial advantages, and at times, their haulers may offer financial incentives not to recycle.

In 2006, recycling programs collected over 2.5 million tons of recyclable materials (paper, metals, glass, plastic, food, problem materials, etc.)—an increase of over 43,000 tons, or 1.7 percent, from the previous year. Since the SCORE legislation was enacted in 1989, the tons of materials collected for recycling in Minnesota have more than tripled, and the statewide recycling rate has increased by more than 25 percentage points, moving from approximately 23 percent to 48.7 percent.

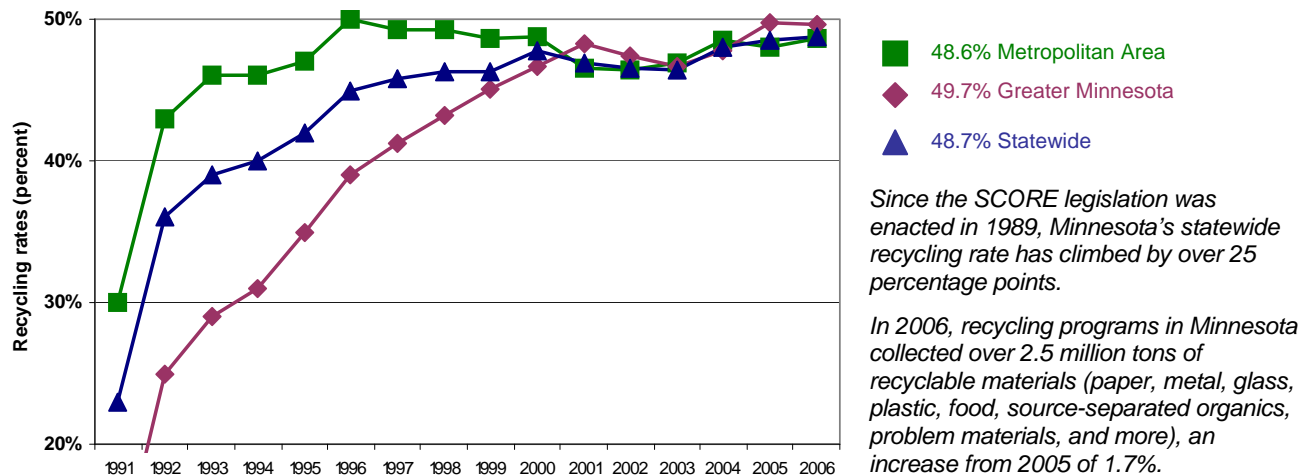
In 2006, for the first time, source-separated compostables counted toward recycling. Source-separated compostable materials are defined as mixed municipal solid waste that is:

- separated at the source by waste generators for the purpose of preparing it for use as compost.
- collected separately from other mixed municipal solid wastes.
- composed of food wastes, fish and animal waste, plant materials, diapers, sanitary products, and paper that is not recyclable.
- delivered to a facility to undergo controlled microbial degradation to yield a humus-like product.



Of the total 179,043 tons of organics recycled, 166,966 tons were recovered as food to animals (food waste that is fed to livestock), 4,427 tons were recovered as food to people (food recovered for people through food banks), and the remaining 7,650 tons consisted of source-separated compostables.

**Figure 2: Minnesota's Recycling Progress**



## Electronic waste

Although the 2006 Legislature failed to pass the Electronic Waste Bill, the disposal ban of cathode-ray-tube-(CRT) containing products became effective July 1, 2006. The ban spurred counties and other entities to expand the number of collection options for waste electronics. According to the SCORE survey data, the amount of electronics collected has risen from 2000 to 2006 by 287 percent.

In 2006, 10,385 tons of electronics were recycled, and only four counties out of the 87 did not report recycled volumes. In the year 2000, only 2,686 tons of waste electronics were reported recycled with only 29 counties reporting recycling volumes. The greatest increase occurred between 2005 (7,027 tons were recycled) and 2006 (10,385 tons were recycled).

## Source reduction

The MPCA works with Minnesota residents, schools, government, and other organizations to increase recycling, reduce waste generation, foster environmentally friendly purchasing practices, reduce the use of toxic cleaners, and conserve energy. The activities of two of these programs, Environmental Preferable Purchasing and the Healthy Sustainable Schools Project, are described here. Additional information on these programs and others can be obtained by going to <http://www.pca.state.mn.us>.

### Environmentally preferable purchasing

In 2006, environmentally preferable purchasing (EPP) workshops took place throughout Minnesota; including the northeast, southwest, and metro regions. These half-day workshops were tailored to the purchasing needs of workshop attendees—from office administrators to public works staff to fleet managers. Breakout sessions covered multiple areas, including office supply procurement, fleet and building maintenance, and EPP information for schools. Informational workshops such as these are great ways for local governments to jumpstart interest in EPP and get the word out to the different departmental purchasers and product users that need the information.

Future EPP projects include working with the Solid Waste Management Coordinating Board to update the comprehensive online EPP Guide (<http://greenguardian.org>). The MPCA encourages counties to model and share this new and updated resource next year as part of a more comprehensive program to increase EPP across the state of Minnesota. In regards to policy, state and federal governments have supported efforts to increase EPP on the local level by setting the example with the passage of state mandates [16B.121 and 16B.122 (1989)] and federal executive orders [EO 13423(2007)].

More information can be obtained through the Environmentally Preferable Purchasing Guide that can be found at <http://greenguardian.com> or by contacting MPCA at 800-657-3864, <http://www.pca.state.mn.us/epp>.

### **Healthy Sustainable Schools Project**

Under an EPA grant, the MPCA conducted a Healthy Sustainable Schools Project from 2004 to 2006. This project demonstrated that a dedicated coordinator and team in a school or district can make changes that benefit schools by enhancing student health and performance, attaining higher performing buildings, reducing environmental impacts, increasing attendance, reducing operating and maintenance costs, and increasing staff satisfaction.

Demonstrations were conducted in five districts with assistance from three coordinators: Houston K-12, Hutchinson High School, Becker High School, and the districts of Pine Point Elementary and Foley Schools. Eight school buildings were audited in many areas and the following results were achieved:

- Reduced energy costs of \$16,326 in two schools.
- Changed to less toxic cleaners in four schools.
- Added energy controls as the most common energy quick fix.
- Reduced paper use by moving to double-sided printing and copying.
- Changed to efficient T-8 lamps or reduced excessive lighting.
- Recycled more than 87 tons per year in two schools.
- Removed more than 6.87 pounds of mercury at four sites.
- Added vermi-composting or considering food to pigs for reducing waste costs.

Much greater waste reduction and recycling could be accomplished if these efforts were expanded across the state. School officials are encouraged to select from a variety of actions from the *Healthy Sustainable Schools Guide* to improve their facilities, while reducing labor and costs over time. To download the guide or for more information, visit <http://www.healthyschools.state.mn.us> or contact Project Coordinator Linda Countryman at 651-215-0269.

In the future, the MPCA plans to streamline agency assistance to schools by conducting surveys of superintendents and others to determine the most effective and efficient ways to help schools implement environmental practices.

## **Environmental and economic benefits of recycling**

Recycling is important in Minnesota—both economically and environmentally. Minnesota’s recycling manufacturers contribute an estimated \$2.98 billion to the state’s economy; 9,000 manufacturing jobs are tied to companies using recycled material in their manufacturing processes. \$760 million in wages is related to recycling activities. In addition to the contributions of these value-added manufacturers, there is economic value related to collecting, processing, and marketing recyclables in Minnesota (which is supported by SCORE dollars).

Recycling’s environmental benefits can be quantified using the National Recycling Coalition’s (NRC) Environmental Benefits Calculator, based on tons of materials recycled, landfilled, and incinerated in Minnesota using the 2006 data submitted by its 87 counties and Western Lake Superior Sanitary District (WLSSD).



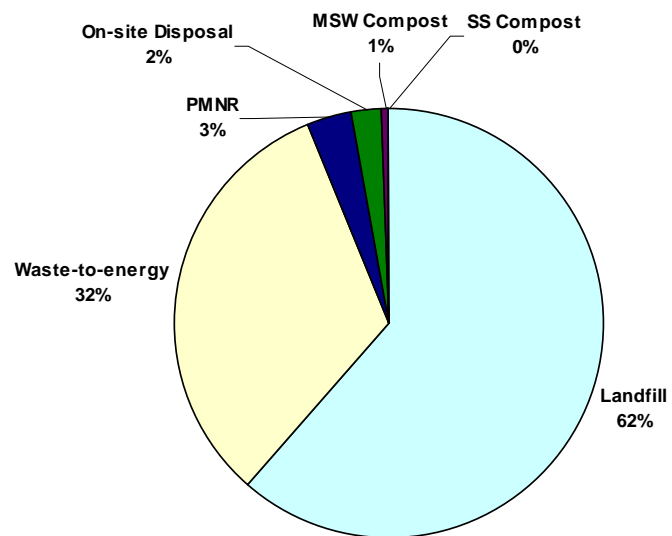
(For more information on recycling benefits, checkout the *Minnesota's Recycling Industries: Economic Activity Summary* at <http://www.pca.state.mn.us/oea/market/economic.cfm> and National Recycling Coalition at <http://www.nrc-recycle.org>.)

- By recycling 2.5 million tons, Minnesota reduced its greenhouse gas emissions by 1.7 million metric tons carbon equivalent compared to disposal. This is equal to taking nearly 1.3 million passenger cars off the road.
- By recycling, Minnesotans avoided the use of nearly 46 trillion BTUs of energy, which is equal to the energy use of almost 410,574 households.
- Recycling saves \$539 million in electricity use.
- By recycling 306,604 tons of steel in Minnesota, we saved a total of 616,274 tons of resources—383,255 tons of iron ore, 214,623 tons of coal, and 18,396 tons of limestone (<http://www.recycle-steel.org>).
- More than 6.8 million trees were saved by recycling over 503,150 tons of newsprint, mixed, and office paper in 2006 (<http://www.conservatree.org>).

## MSW Processing and Disposal

In Minnesota, waste is managed through four main methods: landfills, MSW composting, resource recovery facilities, and on-site disposal. In 2006, waste that was not recycled or prevented/reduced and, therefore, must be disposed of totaled nearly 3.6 million tons—a decrease of over 19,000 tons (-0.5 percent) from 2005. This number includes waste landfilled and processed, as well as estimates for on-site disposal and PMNR.

**Figure 3: MSW Disposal and Processing in Minnesota, 2006**



### Trends in waste disposal

Waste management in Minnesota is guided by a hierarchy that prioritizes waste reduction, recycling, composting, and resource recovery. During 2006:

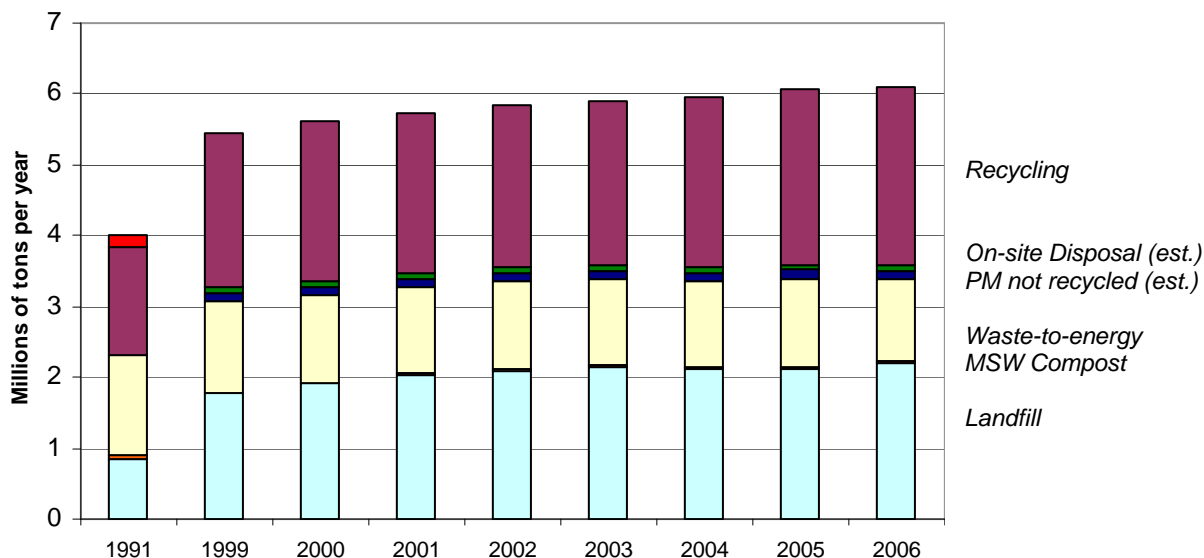
- MSW composting increased by 1 percent—from 17,742 tons in 2005 to 17,912 tons in 2006.
- On-site disposal (estimates from county staff on the level of on-site dumping and burning that occur) decreased by almost 3 percent (more than 2,000 tons) to 76,586 tons.
- Waste-to-energy (WTE) decreased by 6.7 percent (84,000 tons) to 1,161,066 tons. Facility down time for improvements accounted for some of the decrease since permitted capacity remains the same. At its peak in 1993, WTE handled 57 percent of the waste stream, but that share eroded to just 32 percent in 2006.

		Change 2005-06
Landfill	62.0%	3.6%
Waste-to-energy	32.0%	(6.7%)
PMNR (est.)	3.0%	(1.7%)
On-site Disposal (est.)	2.0%	(3.0%)
MSW Compost	1.0%	1.0%

Percentages of total waste disposal; excluding recycling. Decreases indicated by parentheses (x%).

- The amount of waste sent to landfills increased by 75,000 tons or 3.6 percent to 2,200,457 tons. Despite being the least-preferred option, landfilling has become the dominant disposal method in Minnesota (62 percent), more than double its share in 1993 (28 percent).

**Figure 4: Trends in Minnesota Waste Management in Tons**



	1991	1999	2000	2001	2002	2003	2004	2005	2006	Change 2005-06
Source-separated Compost					0.004	0.005	0.01	0.01	0	(100%)
Recycling	1.2	2.18	2.27	2.27	2.29	2.32	2.42	2.49	2.52	1.7%
On-site Disposal (est.)		0.08	0.10	0.09	0.08	0.08	0.08	0.08	0.08	(3.0%)
PM not recycled (est.)		0.11	0.11	0.11	0.12	0.12	0.12	0.12	0.12	(1.7%)
Waste-to-Energy	1.41	1.28	1.23	1.22	1.26	1.23	1.21	1.24	1.16	(6.7%)
MSW Compost	0.07	0.02	0.01	0.01	0.01	0.01	0.01	0.02	0.02	1.0%
Landfill	.84	1.77	1.91	2.03	2.11	2.16	2.12	2.12	2.20	3.6%
<b>Total</b>	<b>3.69</b>	<b>5.44</b>	<b>5.63</b>	<b>5.74</b>	<b>5.88</b>	<b>5.92</b>	<b>5.98</b>	<b>6.09</b>	<b>6.10</b>	<b>4.6%</b>

Figures in millions of tons. PM = Problem Materials. Decreases indicated by parentheses (x%).

\* Unknown destination waste totals were only reported during the early years of SCORE (1989-1994).

### Out-of-state waste flow

In 2006, there was a decrease of 72,000 tons (-9 percent) in the amount of MSW leaving Minnesota—from 812,379 in 2005 to 740,269 tons in 2006. 2005 was the first time since 2002 that there was a decrease in the amount of MSW leaving the state. While many factors may have contributed to this decline in out-of-state waste flow (facility locations, hauling companies in operation, existing contracts, surcharges and tip fees, and gas prices), increasing state surcharges from Wisconsin and rising transportation costs likely have had the most impact. The price of gasoline is probably the largest reason for the decline in MSW leaving Minnesota. Since 2003, gas prices have increased nearly 73 percent (from \$1.786 per gallon in 2003 to \$3.083 in 2006; [http://tonto.eia.doe.gov/dnav/pet/hist/mg\\_tt\\_usw.htm](http://tonto.eia.doe.gov/dnav/pet/hist/mg_tt_usw.htm)).

#### MSW leaving Minnesota

2001	671,954 tons
2002	614,002 tons
2003	702,131 tons
2004	850,204 tons
2005	812,380 tons
2006	740,269 tons

Wisconsin received the majority of the 740,269 tons of waste going out-of-state. Iowa received 23 percent; North Dakota received 14 percent; and South Dakota received a fraction of a percent (0.2 percent).

**Minnesota MSW going out-of-state**

	2005	2006	Change in tons	Change in %
<b>Wisconsin</b>	519,875	467,538	(52,337)	-10 percent
<b>North Dakota</b>	87,684	103,384	15,701	18 percent
<b>South Dakota</b>	1,498	1,405	(93)	-6 percent
<b>Iowa</b>	203,323	167,941	(35,382)	-17 percent

Of the total waste going out-of-state, 1.3 percent (9,544 tons) was taken to the NRG Facility in La Crosse, Wisconsin, privately owned by Xcel Energy. The remaining 98.7 percent (730,725 tons) was taken to landfills, of which 87 percent are privately owned and 13 percent are publicly owned. Five of Wisconsin’s privately owned landfills received 404,960 tons, and two publicly owned landfills received 53,035 tons. In North Dakota, one privately-owned landfill received 61,731 tons and two publicly-owned landfills received 41,653 tons. In South Dakota, one publicly-owned landfill received 1,405 tons. In Iowa, three privately-owned landfills received 167,941 tons.

## Funding of SCORE Programs

Minnesota boasts one of the best recycling rates in the nation due to the level of participation by our residents and businesses, along with comprehensive recycling programs at the township, city, and county levels—programs funded by local government and state revenues. In 2006, Minnesota counties spent over \$54.5 million for SCORE-related programs, an increase of about \$300,000 (0.6 percent) from 2005. Continued funding commitments from the Legislature and significant investments at the local level provide the funding for these programs.

### State funding: SCORE block grants

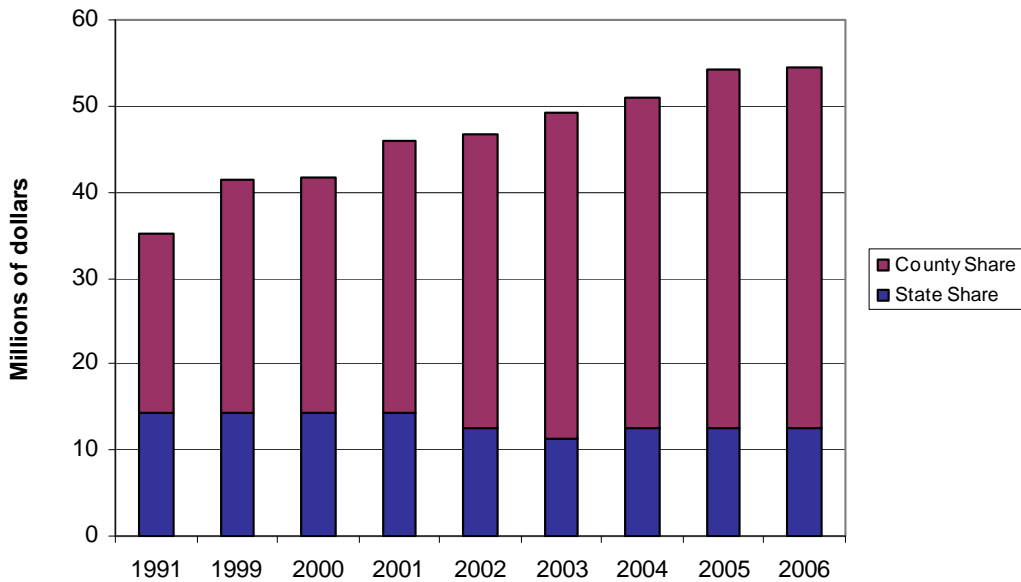
From the inception of SCORE, state tax revenue has provided a long-standing funding source for recycling and waste reduction programs. Money from the state is passed on to the county level in the form of annual block grants. SCORE disbursement dollars had been consistently \$14.2 million per year, until 2002 when the Legislature cut SCORE block grant dollars by 10 percent, dropping the figure to \$12.6 million. To handle a budget shortfall in 2003, the governor enacted a one-time general revenue un-allotment, and available SCORE dollars fell further to \$11.2 million. This downward trend reversed beginning in 2004, when block grants rose to \$12.5 million. (Subsequently, in the 2007 Session, the Legislature and Governor took action to restore SCORE funds to the levels of 2002, or \$14 million per year.)

Within certain guidelines, counties have broad discretion in determining how to spend SCORE block grants and local matching funds, which gives them flexibility to develop programs that best meet local needs. The MPCA monitors the county use of SCORE grants to ensure the money is used to fund SCORE-eligible programs: source reduction, recycling, market development, management of problem materials, waste education, litter prevention, technical assistance to ensure proper solid waste management, and waste processing (Minn. Stat. § 115A.55).

Despite the economic value of the recycling industry to the state’s economy, Minnesota’s recycling infrastructure faces challenges. Some counties are dealing with budget reductions by closing down recycling centers or limiting the types of materials they collect. Plastic and glass recycling have been eliminated in some communities. Rural recycling programs, in particular, are facing more obstacles in getting materials to distant markets. The MPCA continues to explore ways to better support county recycling programs and secondary markets, recover more recyclable and organic material from the waste stream, and identify more opportunities to reduce, reuse, and recycle in the manufacturing and business sectors.

Restoring SCORE grant dollars to previous levels and looking into additional funding (incentive based) would show the state’s renewed commitment to recycling and offer counties the ability to restore their reduced or cut programs. The additional funding would also enhance the ability to remove usable materials from the disposal system and capture energy and economic benefits for the state. While we will talk more about SCORE grant dollars in the *Report on 2007 SCORE Programs*, the Legislature did increase SCORE funds to previous levels, to \$14 million. For more information on state SCORE funding and recommendations for the 2008 legislative session, see the MPCA’s *2007 Solid Waste Policy Report*.

**Figure 5: SCORE Expenditures (millions of dollars)**



## County funding

Between 1992 and 2006, overall SCORE expenditures have increased by 41 percent. These increases have been funded entirely at the local level by counties and cities through use of general revenue dollars, special assessments, or other sources of revenue. In 2006, a total of \$54.5 million was spent on SCORE expenditures. Greater Minnesota counties *increased* expenditures by \$1 million (3.4 percent) and the metro counties *decreased* their spending by \$750,000 (-3.1 percent) from 2005.

	1991	1999	2000	2001	2002	2003	2004	2005	2006	Change 2005-06
Greater Minnesota	14.4	23.0	23.1	25.8	26.7	29.5	28.5	30.22	31.25	3.4%
Metropolitan Area	20.8	18.4	18.6	20.2	19.9	19.7	22.6	24.06	23.35	(3.1%)
Total	35.2	41.4	41.7	46.0	46.7	49.1	51.1	54.28	54.60	0.6%

Decreases indicated by parentheses (x%). The annual SCORE survey includes only county spending; local units of government also fund programs for waste management, reduction, and recycling.

Each county is required to match the funding from the Legislature with a local contribution of at least 25 percent. In 2006, counties continued to exceed this match, spending over \$42 million of county funds toward SCORE-related activities. This investment is in addition to undocumented dollars spent by other local units of government, such as cities and townships on programs such as recycling, household hazardous waste, and waste education.

Counties continue to see their dollars not keeping up with inflation. Rural recycling programs, in particular, face growing challenges to collect materials and deliver them to markets. These challenges are seen by significantly reduced volumes of materials collected and its residents discouraged from recycling. Counties' declining dollars are not covering their existing recycling programs and have been hard pressed to expand their recycling programs. Counties are aware of the million of tons of recyclables remaining in the waste stream and of the missed economic and environmental benefits associated with recycling.

In looking closer at how the decreasing dollars affect local staff and programs along with how the counties are obtaining the necessary dollars to pay for their programs, we looked at years prior to 2002, when the Legislature permanently reduced SCORE block grant dollars, to 2006.

In 2000, there were a total of 572 full-time equivalent (FTE) county, township and city staff people working on SCORE related activities compared to in 2006, 528 FTEs. This drop began in 2003 when the FTE went down to 540 FTE.

In looking closer at the counties' revenues as reported in "Revenues and Expenditures" in the SCORE survey report, it was found that during this same time period, 2000 to 2006, the counties had increased tipping fees, surcharges, and service fees to make up the lost revenue from SCORE and MPCA grants and to keep up with inflation. In 2006, SCORE disbursements were down 11 percent and MPCA grant dollars were down 23 percent from 2000. In response, general revenue (which is from county special assessments, levy, and property taxes) increased 115 percent, from \$3.3 million in 2000 to \$7.1 million in the year 2006.

Revenues received from material sales and other sources increased during this same time period. Material sales increased by 28 percent. In 2000, counties received \$3.6 million and, in 2006, \$4.6 million. The majority of this increase has been since 2003.

In comparison to the decrease in SCORE disbursements and grant dollars, MPCA funding to household hazardous waste (HHW) programs continued. In the year 2000, counties received \$428,790 from MPCA, in 2006, \$518,959. However, in 2006, dollars received for county HHW programs decreased from 2003's disbursement of \$600,661, or by 14 percent.

# **Appendix A:**

## **County SCORE Survey Responses**



**County Survey Responses**  
**Finances: Revenues (part 1)**

County	CY2005 revenue carried over	Adjustment to carryover	General revenue	Service fee	Processing facility tip fee	Land disposal facility surcharge
Aitkin	\$126,812	0	\$184,173	\$700	\$31,166	\$0
Anoka	\$0	0	\$69,472	\$926,652	\$0	\$0
Becker	\$0	0	\$0	\$169,728	\$0	\$0
Beltrami	\$0	0	\$0	\$548,172	\$0	\$0
Benton	\$0	0	\$0	\$132,470	\$0	\$0
Big Stone	\$281	0	\$117,711	\$551	\$0	\$0
Blue Earth	\$0	0	\$127,682	\$0	\$0	\$0
Brown	\$1,999	0	\$0	\$305,663	\$0	\$0
Carlton	\$0	0	\$20,356	\$0	\$58,860	\$0
Carver	\$0	0	\$0	\$524,202	\$0	\$0
Cass	\$0	0	\$0	\$766,227	\$0	\$0
Chippewa	\$0	0	\$119,848	\$0	\$0	\$0
Chisago	\$36,074	0	\$0	\$76,209	\$0	\$0
Clay	\$189,664	0	\$0	\$472,024	\$0	\$0
Clearwater	\$0	0	\$0	\$47,079	\$0	\$0
Cook	\$0	0	\$187,017	\$0	\$0	\$0
Cottonwood	\$123,671	0	\$183,347	\$0	\$0	\$0
Crow Wing	\$0	0	\$503,626	\$0	\$74,275	\$0
Dakota	\$0	0	\$0	\$0	\$0	\$1,099,272
Dodge	\$27,947	0	\$153,825	\$0	\$23,965	\$0
Faribault	\$0	0	\$24,783	\$0	\$0	\$0
Fillmore	\$24,901	0	\$12,280	\$0	\$0	\$0
Freeborn	\$0	0	\$313,430	\$1,075	\$0	\$0
Goodhue	\$67,526	0	\$291,826	\$0	\$0	\$0
Grant	\$8,264	0	\$0	\$160,993	\$0	\$0
Hennepin	\$0	0	\$0	\$7,483,962	\$293,213	\$0
Houston	\$0	0	\$194,713	\$0	\$0	\$0
Hubbard	\$0	0	\$765,707	\$0	\$0	\$0
Isanti	\$101,730	0	\$20,657	\$0	\$0	\$0
Itasca	\$0	0	\$393,829	\$0	\$0	\$0
Jackson	\$98,729	0	\$27,849	\$0	\$0	\$0
Kanabec	\$87,918	0	\$12,270	\$0	\$0	\$0
Kandiyohi	\$0	0	\$0	\$253,691	\$0	\$0
Kittson	\$0	0	\$32,675	\$0	\$41,828	\$0
Koochiching	\$0	0	\$69,436	\$69,436	\$4,928	\$0
Lac qui Parle	\$68,318	0	\$20,294	\$0	\$0	\$0
Lake	(\$142,303)	142,303	\$76,495	\$0	\$6,273	\$0
Lake of The Woods	\$0	0	\$58,576	\$0	\$0	\$0
Le Sueur	\$0	0	\$107,478	\$0	\$0	\$0
Lincoln	\$54,664	0	\$49,609	\$9,236	\$0	\$0
Lyon	\$0	0	\$0	\$92,089	\$0	\$105,279
Mahnomen	\$40,372	0	\$12,270	\$0	\$0	\$0
Marshall	\$0	0	\$30,309	\$0	\$0	\$0
Martin	\$0	0	\$234,206	\$0	\$0	\$0
McLeod	\$0	0	\$0	\$0	\$151,010	\$670,484
Meeker	\$28,990	0	\$15,000	\$0	\$0	\$0
Mille Lacs	(\$3,639)	3,639	\$115,000	\$0	\$0	\$0
Morrison	\$0	0	\$45,188	\$0	\$0	\$0

**County Survey Responses  
Finances: Revenues (part 1)**

County	CY2005 revenue carried over	Adjustment to carryover	General revenue	Service fee	Processing facility tip fee	Land disposal facility surcharge
Mower	\$0	0	\$0	\$252,536	\$0	\$0
Murray	\$33,849	0	\$13,750	\$0	\$0	\$0
Nicollet	\$0	0	\$257,471	\$0	\$0	\$0
Nobles	\$121,499	0	\$14,870	\$175,877	\$0	\$159,861
Norman	\$0	0	\$12,270	\$0	\$0	\$0
Olmsted	(\$145,539)	145,539	\$0	\$0	\$475,274	\$0
Otter Tail	\$15,200	0	\$0	\$573,560	\$0	\$0
Pennington	\$0	0	\$12,270	\$0	\$0	\$0
Pine	(\$21,306)	0	\$120,867	\$0	\$0	\$0
Pipestone	\$0	0	\$123,016	\$0	\$0	\$0
Polk	\$107,661	0	\$0	\$265,586	\$0	\$0
Pope/Douglas	(\$17,277)	0	\$200,000	\$0	\$0	\$0
Ramsey	\$577,668	0	\$0	\$4,006,480	\$0	\$0
Red Lake	\$0	0	\$16,537	\$0	\$0	\$0
Redwood	\$0	0	\$0	\$204,701	\$0	\$0
Renville	\$110,870	0	\$183,530	\$0	\$19,622	\$0
Rice	(\$22,331)	22,331	\$0	\$415,652	\$0	\$0
Rock	(\$6,518)	6,518	\$62,459	\$0	\$0	\$0
Roseau	(\$64,856)	64,856	\$0	\$0	\$0	\$0
Scott	\$518,470	0	\$123,302	\$0	\$0	\$0
Sherburne	\$129,831	0	\$0	\$0	\$0	\$44,891
Sibley	\$0	0	\$128,974	\$0	\$0	\$0
St. Louis - partial	\$0	0	\$0	\$448,890	\$0	\$0
Stearns	\$79,243	0	\$83,556	\$119,174	\$0	\$0
Steele	\$0	0	\$0	\$315,887	\$0	\$0
Stevens	\$13,111	0	\$48,308	\$0	\$0	\$0
Swift	(\$12,581)	12,581	\$107,693	\$0	\$0	\$0
Todd	\$0	0	\$153,291	\$0	\$0	\$0
Traverse	(\$29,064)	29,064	\$12,270	\$0	\$0	\$0
Wabasha	(\$21,647)	21,647	\$92,042	\$0	\$0	\$0
Wadena	\$0	0	\$81,690	\$0	\$14,269	\$0
Waseca	\$0	0	\$0	\$139,982	\$0	\$0
Washington	\$0	0	\$0	\$779,575	\$0	\$0
Watonwan	\$353,691	0	\$12,981	\$131,012	\$0	\$0
Wilkin	\$0	0	\$0	\$67,795	\$0	\$0
Winona	\$34,458	0	\$632,202	\$0	\$0	\$0
WLSSD	\$0	0	\$0	\$1,090,648	\$372,316	\$0
Wright	\$615,654	0	\$29,907	\$23,998	\$0	\$116,666
Yellow Medicine	\$22,840	0	\$12,325	\$53,906	\$0	\$24,520
<b>Metro Area</b>	<b>\$707,499</b>	<b>\$0</b>	<b>\$69,472</b>	<b>\$13,720,871</b>	<b>\$293,213</b>	<b>\$1,144,163</b>
<b>Greater Minn.</b>	<b>\$2,627,343</b>	<b>\$448,478</b>	<b>\$7,057,047</b>	<b>\$7,384,548</b>	<b>\$1,273,786</b>	<b>\$1,076,809</b>
<b>Minnesota</b>	<b>\$3,334,842</b>	<b>\$448,478</b>	<b>\$7,126,519</b>	<b>\$21,105,420</b>	<b>\$1,566,999</b>	<b>\$2,220,973</b>

**County Survey Responses**  
**Finances: Revenues (part 2)**

County	SCORE pass through	Grants	HHW funding	Material sales	Other	Total Revenue
Aitkin	\$49,079	\$3,240	\$3,166	\$0	\$0	\$398,336
Anoka	\$716,189	\$139,879	\$0	\$1,949	\$142,593	\$1,996,733
Becker	\$70,915	\$0	\$38,056	\$314	\$0	\$279,013
Beltrami	\$94,614	\$0	\$8,107	\$0	\$0	\$650,893
Benton	\$85,238	\$0	\$1,099	\$0	\$14,530	\$233,337
Big Stone	\$49,079	\$0	\$2,400	\$0	\$0	\$170,021
Blue Earth	\$129,850	\$0	\$50,415	\$0	\$54,469	\$362,416
Brown	\$59,533	\$0	\$2,939	\$0	\$11,237	\$381,371
Carlton	\$75,545	\$12,048	\$6,547	\$0	\$0	\$173,356
Carver	\$185,738	\$88,774	\$0	\$6,318	\$132,160	\$937,192
Cass	\$63,799	\$0	\$7,247	\$0	\$0	\$837,273
Chippewa	\$49,079	\$0	\$2,400	\$6	\$12,194	\$183,526
Chisago	\$108,943	\$4,971	\$21,422	\$3,165	\$25,799	\$276,582
Clay	\$119,076	\$0	\$11,340	\$0	\$9,106	\$801,209
Clearwater	\$49,079	\$0	\$5,664	\$0	\$0	\$101,822
Cook	\$49,079	\$0	\$0	\$53,353	\$0	\$289,448
Cottonwood	\$49,079	\$0	\$0	\$6,282	\$23,613	\$385,992
Crow Wing	\$133,162	\$0	\$9,831	\$0	\$0	\$720,894
Dakota	\$855,694	\$0	\$0	\$0	\$62,550	\$2,017,516
Dodge	\$49,079	\$0	\$2,011	\$148,028	\$21,602	\$426,457
Faribault	\$49,079	\$0	\$0	\$0	\$6,966	\$80,828
Fillmore	\$49,119	\$3,868	\$4,663	\$0	\$0	\$94,831
Freeborn	\$71,158	\$0	\$8,431	\$1,416	\$0	\$395,510
Goodhue	\$51,196	\$0	\$14,600	\$155,566	\$0	\$580,715
Grant	\$49,079	\$0	\$0	\$0	\$9,080	\$227,416
Hennepin	\$2,555,482	\$300,045	\$22,940	\$513,248	\$162,438	\$11,331,328
Houston	\$49,079	\$0	\$3,256	\$174,516	\$6,690	\$428,254
Hubbard	\$49,079	\$0	\$3,366	\$0	\$0	\$818,152
Isanti	\$82,629	\$0	\$1,659	\$0	\$0	\$206,674
Itasca	\$99,172	\$0	\$4,640	\$0	\$0	\$497,641
Jackson	\$49,079	\$0	\$0	\$0	\$5,760	\$181,417
Kanabec	\$49,079	\$0	\$0	\$884	\$0	\$150,150
Kandiyohi	\$92,295	\$0	\$58,678	\$374,163	\$102,779	\$881,606
Kittson	\$49,079	\$0	\$5,412	\$35,418	\$20,248	\$184,660
Koochiching	\$49,079	\$0	\$3,566	\$29,423	\$0	\$225,867
Lac qui Parle	\$49,079	\$0	\$2,400	\$0	\$0	\$140,092
Lake	\$122,698	\$4,711	\$4,918	\$21,507	\$1,280	\$237,882
Lake of The Woods	\$49,079	\$0	\$0	\$59,628	\$735	\$168,018
Le Sueur	\$61,510	\$0	\$2,535	\$27,438	\$16,078	\$215,039
Lincoln	\$49,079	\$11,187	\$0	\$0	\$375	\$174,151
Lyon	\$55,662	\$0	\$49,327	\$0	\$20,282	\$322,639
Mahnomen	\$49,079	\$0	\$2,788	\$0	\$0	\$104,509
Marshall	\$49,079	\$0	\$5,815	\$21,212	\$5,520	\$111,935
Martin	\$49,079	\$0	\$0	\$0	\$78,389	\$361,674
McLeod	\$81,107	\$328,392	\$11,365	\$353,895	\$28,418	\$1,624,670
Meeker	\$51,982	\$0	\$4,276	\$0	\$404	\$100,652
Mille Lacs	\$56,359	\$0	\$2,247	\$0	\$0	\$173,606
Morrison	\$73,146	\$0	\$5,339	\$0	\$400,626	\$524,299
Mower	\$86,800	\$0	\$9,135	\$183,439	\$1,402	\$533,312
Murray	\$49,079	\$0	\$0	\$0	\$18,666	\$115,344

**County Survey Responses**  
**Finances: Revenues (part 2)**

County	SCORE pass through	Grants	HHW funding	Material sales	Other	Total Revenue
Nicollet	\$69,701	\$0	\$5,146	\$0	\$10,632	\$342,950
Nobles	\$49,079	\$0	\$0	\$0	\$7,942	\$529,128
Norman	\$49,079	\$0	\$2,792	\$0	\$0	\$64,141
Olmsted	\$301,541	\$0	\$116,399	\$0	\$884,114	\$1,777,328
Otter Tail	\$130,644	\$0	\$35,705	\$678,063	\$32,661	\$1,465,833
Pennington	\$49,079	\$0	\$0	\$0	\$0	\$61,349
Pine	\$62,939	\$0	\$0	\$0	\$0	\$162,500
Pipestone	\$49,079	\$0	\$0	\$0	\$8,801	\$180,896
Polk	\$69,166	\$0	\$7,477	\$60,152	\$6,417	\$516,459
Pope/Douglas	\$126,706	\$0	\$12,231	\$0	\$500	\$322,160
Ramsey	\$1,147,699	\$171,619	\$0	\$0	\$62,984	\$5,966,450
Red Lake	\$49,079	\$0	\$5,337	\$2,437	\$0	\$73,390
Redwood	\$49,079	\$0	\$33,417	\$134,924	\$0	\$422,121
Renville	\$49,079	\$0	\$0	\$0	\$0	\$363,101
Rice	\$135,983	\$0	\$26,307	\$431,884	\$74,857	\$1,084,684
Rock	\$49,079	\$0	\$0	\$0	\$10,440	\$121,978
Roseau	\$49,079	\$0	\$6,294	\$28,053	\$4,611	\$88,037
Scott	\$254,555	\$0	\$0	\$0	\$0	\$896,327
Sherburne	\$179,565	\$0	\$3,102	\$0	\$3,113	\$360,502
Sibley	\$49,079	\$0	\$2,328	\$21,408	\$10,283	\$212,071
St. Louis - partial	\$209,997	\$7,390	\$18,402	\$401,338	\$7,040	\$1,093,057
Stearns	\$315,705	\$0	\$6,717	\$0	\$51,648	\$656,042
Steele	\$78,866	\$0	\$4,735	\$0	\$5,603	\$405,091
Stevens	\$49,079	\$0	\$0	\$0	\$140	\$110,638
Swift	\$49,079	\$0	\$2,400	\$114,307	\$0	\$273,479
Todd	\$54,866	\$0	\$5,025	\$96,877	\$0	\$310,059
Traverse	\$49,079	\$0	\$0	\$0	\$0	\$61,349
Wabasha	\$49,661	\$0	\$2,615	\$0	\$1,425	\$145,744
Wadena	\$49,079	\$0	\$2,828	\$235	\$5	\$148,106
Waseca	\$49,079	\$0	\$0	\$141,851	\$507	\$331,419
Washington	\$492,459	\$112,987	\$0	\$0	\$55,228	\$1,440,249
Watsonwan	\$49,079	\$0	\$2,047	\$0	\$3,365	\$552,176
Wilkin	\$49,079	\$0	\$0	\$230,050	\$1,600	\$348,524
Winona	\$111,083	\$0	\$22,636	\$56,367	\$10,594	\$867,340
WLSSD	\$231,374	\$21,000	\$260,008	\$90,640	\$95,870	\$2,161,857
Wright	\$242,244	\$854	\$9,674	\$1,124	\$26,850	\$1,066,971
Yellow Medicine	\$49,079	\$0	\$0	\$0	\$1,355	\$164,025
<b>Metro Area</b>	<b>\$6,132,826</b>	<b>\$813,304</b>	<b>\$26,042</b>	<b>\$521,515</b>	<b>\$621,065</b>	<b>\$24,049,969</b>
<b>Greater Minn.</b>	<b>\$6,383,699</b>	<b>\$397,661</b>	<b>\$971,579</b>	<b>\$4,139,360</b>	<b>\$2,153,508</b>	<b>\$33,913,820</b>
<b>Minnesota</b>	<b>\$12,516,525</b>	<b>\$1,210,965</b>	<b>\$997,621</b>	<b>\$4,660,875</b>	<b>\$2,774,574</b>	<b>\$57,963,789</b>

**County Survey Responses**  
**Finances: Revenue summary**

County	Adjusted CY2005 Revenue (carried over)	CY2006 Revenue	Total Revenue
Aitkin	\$126,812	\$271,524	\$398,336
Anoka	\$0	\$1,996,733	\$1,996,733
Becker	\$0	\$279,013	\$279,013
Beltrami	\$0	\$650,893	\$650,893
Benton	\$0	\$233,337	\$233,337
Big Stone	\$281	\$169,740	\$170,021
Blue Earth	\$0	\$362,416	\$362,416
Brown	\$1,999	\$379,372	\$381,371
Carlton	\$0	\$173,356	\$173,356
Carver	\$0	\$937,192	\$937,192
Cass	\$0	\$837,273	\$837,273
Chippewa	\$0	\$183,526	\$183,526
Chisago	\$36,074	\$240,509	\$276,582
Clay	\$189,664	\$611,546	\$801,209
Clearwater	\$0	\$101,822	\$101,822
Cook	\$0	\$289,448	\$289,448
Cottonwood	\$123,671	\$262,321	\$385,992
Crow Wing	\$0	\$720,894	\$720,894
Dakota	\$0	\$2,017,516	\$2,017,516
Dodge	\$27,947	\$398,511	\$426,457
Faribault	\$0	\$80,828	\$80,828
Fillmore	\$24,901	\$69,930	\$94,831
Freeborn	\$0	\$395,510	\$395,510
Goodhue	\$67,526	\$513,188	\$580,715
Grant	\$8,264	\$219,152	\$227,416
Hennepin	\$0	\$11,331,328	\$11,331,328
Houston	\$0	\$428,254	\$428,254
Hubbard	\$0	\$818,152	\$818,152
Isanti	\$101,730	\$104,945	\$206,674
Itasca	\$0	\$497,641	\$497,641
Jackson	\$98,729	\$82,688	\$181,417
Kanabec	\$87,918	\$62,232	\$150,150
Kandiyohi	\$0	\$881,606	\$881,606
Kittson	\$0	\$184,660	\$184,660
Koochiching	\$0	\$225,867	\$225,867
Lac qui Parle	\$68,318	\$71,773	\$140,092
Lake	\$0	\$237,882	\$237,882
Lake of The Woods	\$0	\$168,018	\$168,018
Le Sueur	\$0	\$215,039	\$215,039
Lincoln	\$54,664	\$119,487	\$174,151
Lyon	\$0	\$322,639	\$322,639
Mahnomen	\$40,372	\$64,137	\$104,509
Marshall	\$0	\$111,935	\$111,935
Martin	\$0	\$361,674	\$361,674
McLeod	\$0	\$1,624,670	\$1,624,670
Meeker	\$28,990	\$71,662	\$100,652
Mille Lacs	\$0	\$173,606	\$173,606
Morrison	\$0	\$524,299	\$524,299

**County Survey Responses**  
**Finances: Revenue summary**

County	Adjusted CY2005 Revenue (carried over)	CY2006 Revenue	Total Revenue
Mower	\$0	\$533,312	\$533,312
Murray	\$33,849	\$81,495	\$115,344
Nicollet	\$0	\$342,950	\$342,950
Nobles	\$121,499	\$407,629	\$529,128
Norman	\$0	\$64,141	\$64,141
Olmsted	\$0	\$1,777,328	\$1,777,328
Otter Tail	\$15,200	\$1,450,633	\$1,465,833
Pennington	\$0	\$61,349	\$61,349
Pine	(\$21,306)	\$183,806	\$162,500
Pipestone	\$0	\$180,896	\$180,896
Polk	\$107,661	\$408,798	\$516,459
Pope/Douglas	(\$17,277)	\$339,437	\$322,160
Ramsey	\$577,668	\$5,388,782	\$5,966,450
Red Lake	\$0	\$73,390	\$73,390
Redwood	\$0	\$422,121	\$422,121
Renville	\$110,870	\$252,231	\$363,101
Rice	\$0	\$1,084,684	\$1,084,684
Rock	\$0	\$121,978	\$121,978
Roseau	\$0	\$88,037	\$88,037
Scott	\$518,470	\$377,857	\$896,327
Sherburne	\$129,831	\$230,671	\$360,502
Sibley	\$0	\$212,071	\$212,071
St. Louis - partial	\$0	\$1,093,057	\$1,093,057
Stearns	\$79,243	\$576,799	\$656,042
Steele	\$0	\$405,091	\$405,091
Stevens	\$13,111	\$97,527	\$110,638
Swift	\$0	\$273,479	\$273,479
Todd	\$0	\$310,059	\$310,059
Traverse	\$0	\$61,349	\$61,349
Wabasha	\$0	\$145,744	\$145,744
Wadena	\$0	\$148,106	\$148,106
Waseca	\$0	\$331,419	\$331,419
Washington	\$0	\$1,440,249	\$1,440,249
Watonwan	\$353,691	\$198,485	\$552,176
Wilkin	\$0	\$348,524	\$348,524
Winona	\$34,458	\$832,882	\$867,340
WLSSD	\$0	\$2,161,857	\$2,161,857
Wright	\$615,654	\$451,317	\$1,066,971
Yellow Medicine	\$22,840	\$141,185	\$164,025
<hr/>			
Metro Area	\$707,499	\$23,342,471	\$24,049,969
Greater Minn.	\$3,075,822	\$30,837,998	\$33,913,820
Minnesota	\$3,783,320	\$54,180,469	\$57,963,789



**County Survey Responses**  
**Finances: Expenditures by program area (part 1)**

County	Planning & administration	Recycling	Yard waste	HHW and problem materials	Source reduction
Aitkin	\$134,918	\$106,640	\$500	\$30,734	\$200
Anoka	\$550,346	\$22,857	\$77,341	\$407,972	\$19,606
Becker	\$181,721	\$128,745	\$15,458	\$74,095	\$0
Beltrami	\$0	\$390,620	\$0	\$278,871	\$0
Benton	\$102,598	\$167	\$2,000	\$53,380	\$0
Big Stone	\$46,840	\$122,345	\$0	\$8,731	\$0
Blue Earth	\$64,861	\$160,985	\$0	\$90,395	\$0
Brown	\$32,019	\$299,693	\$0	\$43,983	\$0
Carlton	\$56,301	\$93,902	\$3,030	\$62,328	\$0
Carver	\$323,759	\$62,097	\$118,399	\$344,601	\$2,488
Cass	\$106,257	\$618,401	\$6,171	\$100,238	\$0
Chippewa	\$27,753	\$123,320	\$0	\$30,970	\$0
Chisago	\$105,680	\$62,691	\$0	\$72,423	\$0
Clay	\$201,981	\$262,293	\$29,458	\$81,021	\$0
Clearwater	\$25,293	\$46,925	\$1,202	\$26,918	\$0
Cook	\$203,729	\$75,916	\$0	\$9,385	\$0
Cottonwood	\$147,113	\$93,597	\$0	\$11,902	\$0
Crow Wing	\$172,187	\$25,850	\$23,138	\$221,661	\$0
Dakota	\$860,033	\$29,778	\$0	\$731,482	\$0
Dodge	\$24,231	\$241,602	\$18,851	\$34,139	\$18,851
Faribault	\$20,882	\$22,562	\$0	\$4,536	\$232
Fillmore	\$13,609	\$47,497	\$0	\$22,543	\$0
Freeborn	\$82,327	\$292,914	\$343	\$13,009	\$0
Goodhue	\$328,252	\$281,803	\$0	\$34,973	\$0
Grant	\$0	\$175,909	\$0	\$27,891	\$0
Hennepin	\$1,774,666	\$1,299,951	\$22,288	\$5,064,042	\$149,235
Houston	\$19,583	\$401,385	\$0	\$6,485	\$0
Hubbard	\$79,259	\$573,597	\$1,546	\$145,600	\$0
Isanti	\$51,765	\$39,923	\$0	\$9,660	\$0
Itasca	\$108,945	\$321,121	\$0	\$63,832	\$0
Jackson	\$30,203	\$19,035	\$0	\$13,277	\$0
Kanabec	\$7,758	\$59,915	\$0	\$3,595	\$0
Kandiyohi	\$246,556	\$495,212	\$0	\$139,838	\$0
Kittson	\$30,732	\$0	\$0	\$1,030	\$0
Koochiching	\$104,734	\$84,505	\$5,850	\$22,769	\$0
Lac qui Parle	\$33,451	\$49,500	\$0	\$13,127	\$0
Lake	\$83,040	\$127,592	\$9,340	\$22,887	\$0
Lake of The Woods	\$2,770	\$139,108	\$1,066	\$22,321	\$0
Le Sueur	\$51,056	\$48,795	\$0	\$59,257	\$0
Lincoln	\$48,012	\$54,216	\$0	\$6,736	\$0
Lyon	\$44,303	\$99,131	\$0	\$130,262	\$5,737
Mahnomen	\$42,124	\$8,610	\$0	\$17,925	\$0
Marshall	\$24,697	\$0	\$0	\$9,383	\$0
Martin	\$30,682	\$182,510	\$165	\$67,911	\$264
McLeod	\$292,856	\$1,003,423	\$26,512	\$113,917	\$0
Meeker	\$12,100	\$20,646	\$0	\$23,084	\$0
Mille Lacs	\$57,160	\$100,688	\$0	\$9,142	\$0
Morrison	\$46,178	\$125,739	\$17,058	\$245,471	\$0

**County Survey Responses**  
**Finances: Expenditures by program area (part 1)**

County	Planning & administration	Recycling	Yard waste	HHW and problem materials	Source reduction
Mower	\$96,211	\$424,737	\$0	\$6,105	\$0
Murray	\$47,169	\$25,060	\$0	\$1,973	\$0
Nicollet	\$54,701	\$169,606	\$0	\$75,952	\$0
Nobles	\$90,159	\$199,349	\$0	\$66,365	\$0
Norman	\$17,008	\$40,107	\$0	\$8,663	\$0
Olmsted	\$69,477	\$928,921	\$170,293	\$413,434	\$130,062
Otter Tail	\$617,884	\$500,039	\$3,420	\$243,114	\$6,283
Pennington	\$0	\$35,186	\$0	\$7,201	\$0
Pine	\$36,882	\$107,198	\$500	\$1,400	\$0
Pipestone	\$22,007	\$151,838	\$0	\$2,705	\$0
Polk	\$29,654	\$217,644	\$3,825	\$59,273	\$0
Pope/Douglas	\$160,888	\$122,726	\$0	\$29,849	\$0
Ramsey	\$2,317,367	\$96,817	\$1,282,821	\$416,196	\$0
Red Lake	\$14,821	\$53,494	\$0	\$4,808	\$0
Redwood	\$209,458	\$306,595	\$0	\$8,364	\$3,300
Renville	\$62,073	\$170,406	\$0	\$7,663	\$0
Rice	\$516,119	\$507,193	\$37,000	\$132,188	\$500
Rock	\$50,792	\$48,232	\$2,011	\$12,407	\$700
Roseau	\$14,116	\$0	\$0	\$24,334	\$0
Scott	\$151,522	\$0	\$0	\$91,538	\$0
Sherburne	\$4,188	\$25,577	\$2,198	\$40,083	\$0
Sibley	\$43,250	\$35,004	\$0	\$51,798	\$0
St. Louis - partial	\$142,656	\$688,687	\$0	\$209,406	\$16,390
Stearns	\$147,943	\$48,345	\$14,220	\$137,768	\$34,220
Steele	\$102,690	\$260,838	\$0	\$17,899	\$0
Stevens	\$42,947	\$29,341	\$950	\$15,247	\$0
Swift	\$185,268	\$77,580	\$2,425	\$11,514	\$740
Todd	\$118,657	\$155,043	\$1,500	\$27,056	\$1,300
Traverse	\$53,640	\$31,234	\$0	\$6,881	\$0
Wabasha	\$56,077	\$75,072	\$0	\$14,595	\$0
Wadena	\$22,519	\$102,386	\$0	\$26,563	\$0
Waseca	\$84,647	\$200,403	\$202	\$44,397	\$0
Washington	\$261,594	\$33,132	\$0	\$633,678	\$9,549
Watonwan	\$12,071	\$110,460	\$0	\$10,639	\$0
Wilkin	\$36,735	\$265,386	\$3,610	\$39,596	\$2,300
Winona	\$237,139	\$540,689	\$0	\$61,734	\$0
WLSSD	\$758,881	\$281,517	\$168,400	\$601,259	\$0
Wright	\$30,331	\$24,560	\$14,824	\$149,652	\$0
Yellow Medicine	\$2,989	\$77,005	\$0	\$3,980	\$0
<b>Metro Area</b>	<b>\$6,091,954</b>	<b>\$1,570,209</b>	<b>\$1,503,046</b>	<b>\$7,638,055</b>	<b>\$180,878</b>
<b>Greater Minn.</b>	<b>\$7,865,896</b>	<b>\$14,640,909</b>	<b>\$584,868</b>	<b>\$5,108,953</b>	<b>\$221,079</b>
<b>Minnesota</b>	<b>\$13,957,850</b>	<b>\$16,211,118</b>	<b>\$2,087,914</b>	<b>\$12,747,008</b>	<b>\$401,957</b>

**County Survey Responses**  
**Finances: Expenditures by program area (part 2)**

County	Education	Market development	Litter prevention	County grants to other local units of government
Aitkin	\$4,576	\$0	\$0	\$0
Anoka	\$126,083	\$0	\$0	\$712,928
Becker	\$8,410	\$0	\$7,500	\$58,250
Beltrami	\$0	\$0	\$0	\$0
Benton	\$25,300	\$0	\$0	\$49,892
Big Stone	\$868	\$0	\$0	\$0
Blue Earth	\$44,717	\$0	\$1,459	\$0
Brown	\$5,676	\$0	\$0	\$0
Carlton	\$1,982	\$0	\$0	\$14,956
Carver	\$8,495	\$0	\$3,475	\$73,878
Cass	\$6,206	\$0	\$0	\$0
Chippewa	\$1,483	\$0	\$0	\$0
Chisago	\$19,591	\$0	\$0	\$0
Clay	\$25,327	\$0	\$0	\$0
Clearwater	\$1,484	\$0	\$0	\$0
Cook	\$418	\$0	\$0	\$0
Cottonwood	\$3,201	\$0	\$0	\$0
Crow Wing	\$20,168	\$0	\$35,290	\$222,600
Dakota	\$302,830	\$0	\$0	\$93,393
Dodge	\$27,971	\$900	\$0	\$0
Faribault	\$1,536	\$0	\$354	\$30,689
Fillmore	\$8,947	\$0	\$0	\$0
Freeborn	\$14,548	\$0	\$0	\$0
Goodhue	\$5,283	\$0	\$0	\$0
Grant	\$0	\$0	\$0	\$0
Hennepin	\$259,356	\$31,013	\$0	\$2,730,777
Houston	\$800	\$0	\$0	\$0
Hubbard	\$16,900	\$0	\$300	\$950
Isanti	\$0	\$0	\$0	\$0
Itasca	\$3,742	\$0	\$0	\$0
Jackson	\$7,919	\$0	\$0	\$0
Kanabec	\$1,785	\$0	\$201	\$0
Kandiyohi	\$0	\$0	\$0	\$0
Kittson	\$0	\$0	\$0	\$152,898
Koochiching	\$7,848	\$0	\$160	\$0
Lac qui Parle	\$3,519	\$0	\$0	\$0
Lake	\$4,221	\$0	\$0	\$0
Lake of The Woods	\$2,753	\$0	\$0	\$0
Le Sueur	\$40,787	\$0	\$0	\$15,144
Lincoln	\$3,804	\$0	\$64	\$0
Lyon	\$43,206	\$0	\$0	\$0
Mahnomen	\$1,469	\$0	\$0	\$0
Marshall	\$0	\$0	\$0	\$77,855
Martin	\$5,816	\$0	\$375	\$10,989
McLeod	\$74,584	\$0	\$0	\$113,379
Meeker	\$22,649	\$0	\$0	\$3,016
Mille Lacs	\$0	\$0	\$0	\$0
Morrison	\$3,625	\$0	\$0	\$86,228

**County Survey Responses**  
**Finances: Expenditures by program area (part 2)**

County	Education	Market development	Litter prevention	County grants to other local units of government
Mower	\$6,259	\$0	\$0	\$0
Murray	\$3,971	\$0	\$0	\$1,155
Nicollet	\$42,691	\$0	\$0	\$0
Nobles	\$7,208	\$0	\$0	\$0
Norman	\$1,266	\$0	\$0	\$0
Olmsted	\$188,908	\$0	\$0	\$0
Otter Tail	\$77,248	\$0	\$2,645	\$0
Pennington	\$0	\$0	\$0	\$0
Pine	\$17,362	\$0	\$17,252	\$0
Pipestone	\$4,347	\$0	\$0	\$0
Polk	\$13,937	\$0	\$0	\$15,000
Pope/Douglas	\$16,734	\$0	\$0	\$0
Ramsey	\$314,942	\$0	\$0	\$968,276
Red Lake	\$266	\$0	\$0	\$0
Redwood	\$8,663	\$0	\$0	\$0
Renville	\$3,088	\$0	\$0	\$0
Rice	\$17,300	\$1,820	\$100	\$0
Rock	\$8,707	\$0	\$0	\$0
Roseau	\$0	\$0	\$0	\$87,837
Scott	\$39,208	\$0	\$0	\$0
Sherburne	\$40,388	\$5,550	\$0	\$96,351
Sibley	\$32,908	\$0	\$0	\$49,110
St. Louis - partial	\$35,918	\$0	\$0	\$0
Stearns	\$42,198	\$14,220	\$14,220	\$141,595
Steele	\$23,664	\$0	\$0	\$0
Stevens	\$3,499	\$0	\$0	\$0
Swift	\$5,029	\$0	\$0	\$0
Todd	\$6,503	\$0	\$0	\$0
Traverse	\$542	\$0	\$0	\$4,000
Wabasha	\$0	\$0	\$0	\$0
Wadena	\$675	\$0	\$0	\$0
Waseca	\$1,770	\$0	\$0	\$0
Washington	\$147,470	\$0	\$0	\$354,826
Watonwan	\$3,254	\$0	\$0	\$0
Wilkin	\$898	\$0	\$0	\$0
Winona	\$6,210	\$0	\$0	\$0
WLSSD	\$249,813	\$3,355	\$18,047	\$80,585
Wright	\$11,343	\$0	\$0	\$209,006
Yellow Medicine	\$6,356	\$0	\$0	\$0
<b>Metro Area</b>	<b>\$1,199,564</b>	<b>\$36,563</b>	<b>\$3,475</b>	<b>\$5,030,429</b>
<b>Greater Minn.</b>	<b>\$1,360,863</b>	<b>\$20,295</b>	<b>\$97,966</b>	<b>\$1,425,133</b>
<b>Minnesota</b>	<b>\$2,560,426</b>	<b>\$56,858</b>	<b>\$101,441</b>	<b>\$6,455,562</b>

**County Survey Responses**  
**Finances: Balance Sheet**

County	Total Revenues	Total Expenditures	Balance
Aitkin	\$398,336	\$277,569	\$120,767
Anoka	\$1,996,733	\$1,917,133	\$79,600
Becker	\$279,013	\$474,178	(\$195,165)
Beltrami	\$650,893	\$669,491	(\$18,598)
Benton	\$233,337	\$233,337	\$0
Big Stone	\$170,021	\$178,784	(\$8,763)
Blue Earth	\$362,416	\$362,416	(\$0)
Brown	\$381,371	\$381,371	(\$0)
Carlton	\$173,356	\$232,498	(\$59,142)
Carver	\$937,192	\$937,192	\$0
Cass	\$837,273	\$837,273	\$0
Chippewa	\$183,526	\$183,526	\$0
Chisago	\$276,582	\$260,384	\$16,198
Clay	\$801,209	\$600,080	\$201,130
Clearwater	\$101,822	\$101,822	(\$0)
Cook	\$289,448	\$289,448	\$0
Cottonwood	\$385,992	\$255,813	\$130,179
Crow Wing	\$720,894	\$720,894	\$0
Dakota	\$2,017,516	\$2,017,516	\$0
Dodge	\$426,457	\$366,544	\$59,914
Faribault	\$80,828	\$80,791	\$37
Fillmore	\$94,831	\$92,596	\$2,234
Freeborn	\$395,510	\$403,141	(\$7,631)
Goodhue	\$580,715	\$650,310	(\$69,596)
Grant	\$227,416	\$203,800	\$23,616
Hennepin	\$11,331,328	\$11,331,328	\$0
Houston	\$428,254	\$428,254	(\$0)
Hubbard	\$818,152	\$818,152	\$0
Isanti	\$206,674	\$101,348	\$105,327
Itasca	\$497,641	\$497,641	\$0
Jackson	\$181,417	\$70,433	\$110,984
Kanabec	\$150,150	\$73,254	\$76,896
Kandiyohi	\$881,606	\$881,606	\$0
Kittson	\$184,660	\$184,660	\$0
Koochiching	\$225,867	\$225,867	\$0
Lac qui Parle	\$140,092	\$99,597	\$40,495
Lake	\$237,882	\$247,080	(\$9,198)
Lake of The Woods	\$168,018	\$168,018	\$0
Le Sueur	\$215,039	\$215,039	(\$0)
Lincoln	\$174,151	\$112,832	\$61,319
Lyon	\$322,639	\$322,639	\$0
Mahnomen	\$104,509	\$70,128	\$34,381
Marshall	\$111,935	\$111,935	(\$0)
Martin	\$361,674	\$298,712	\$62,962
McLeod	\$1,624,670	\$1,624,670	(\$0)
Meeker	\$100,652	\$81,494	\$19,158
Mille Lacs	\$173,606	\$166,990	\$6,616
Morrison	\$524,299	\$524,299	\$0
Mower	\$533,312	\$533,312	\$0

**County Survey Responses  
Finances: Balance Sheet**

County	Total Revenues	Total Expenditures	Balance
Murray	\$115,344	\$79,328	\$36,016
Nicollet	\$342,950	\$342,950	\$0
Nobles	\$529,128	\$363,081	\$166,047
Norman	\$64,141	\$67,044	(\$2,903)
Olmsted	\$1,777,328	\$1,901,095	(\$123,767)
Otter Tail	\$1,465,833	\$1,450,633	\$15,200
Pennington	\$61,349	\$42,387	\$18,962
Pine	\$162,500	\$180,594	(\$18,094)
Pipestone	\$180,896	\$180,896	\$0
Polk	\$516,459	\$339,333	\$177,126
Pope/Douglas	\$322,160	\$330,197	(\$8,037)
Ramsey	\$5,966,450	\$5,396,419	\$570,031
Red Lake	\$73,390	\$73,390	\$0
Redwood	\$422,121	\$536,380	(\$114,259)
Renville	\$363,101	\$243,230	\$119,871
Rice	\$1,084,684	\$1,212,220	(\$127,536)
Rock	\$121,978	\$122,849	(\$871)
Roseau	\$88,037	\$126,287	(\$38,250)
Scott	\$896,327	\$282,268	\$614,059
Sherburne	\$360,502	\$214,335	\$146,166
Sibley	\$212,071	\$212,071	(\$0)
St. Louis - partial	\$1,093,057	\$1,093,057	\$0
Stearns	\$656,042	\$594,729	\$61,313
Steele	\$405,091	\$405,091	\$0
Stevens	\$110,638	\$91,984	\$18,654
Swift	\$273,479	\$282,556	(\$9,077)
Todd	\$310,059	\$310,059	\$0
Traverse	\$61,349	\$96,297	(\$34,948)
Wabasha	\$145,744	\$145,744	\$0
Wadena	\$148,106	\$152,142	(\$4,036)
Waseca	\$331,419	\$331,419	\$0
Washington	\$1,440,249	\$1,440,249	\$0
Watonwan	\$552,176	\$136,423	\$415,753
Wilkin	\$348,524	\$348,524	\$0
Winona	\$867,340	\$845,772	\$21,568
WLSSD	\$2,161,857	\$2,161,857	\$0
Wright	\$1,066,971	\$439,717	\$627,253
Yellow Medicine	\$164,025	\$90,330	\$73,695
<b>Metro Area</b>	<b>\$24,049,969</b>	<b>\$23,254,172</b>	<b>\$795,797</b>
<b>Greater Minn.</b>	<b>\$33,913,820</b>	<b>\$31,325,961</b>	<b>\$2,587,859</b>
<b>Minnesota</b>	<b>\$57,963,789</b>	<b>\$54,580,133</b>	<b>\$3,383,656</b>



**County Survey Responses**  
**Paper collected for recycling (tons)**

County	Computer paper	Corrugated	Magazine/catalog	Mixed paper	Newsprint	Office paper	Other paper	Phone book	Total Paper
Aitkin	0	561	0	386	0	0	0	0	947
Anoka	2	38,921	515	23,666	15,626	300	6,014	33	85,077
Becker	1,184	7,755	93	1,069	1,629	60	0	10	11,800
Beltrami	41	3,342	23	914	116	66	41	5	4,548
Benton	0	1,854	12,469	15	730	92	810	5	15,975
Big Stone	0	229	0	230	0	0	0	0	460
Blue Earth	0	17,880	1,670	7,914	5,344	521	0	0	33,329
Brown	0	4,352	0	7,532	996	12	1,861	0	14,752
Carlton	0	1,891	92	687	535	0	3	0	3,208
Carver	0	7,609	119	11,732	755	1,603	465	1	22,285
Cass	0	3,030	59	106	3,670	181	0	0	7,047
Chippewa	0	1,272	6	50	452	1	0	0	1,782
Chisago	0	2,350	0	2,387	0	285	0	25	5,046
Clay	0	3,210	131	310	999	291	0	23	4,964
Clearwater	0	227	0	65	0	0	0	2	294
Cook	0	465	134	0	118	38	0	0	754
Cottonwood	0	1,108	23	0	182	23	0	0	1,336
Crow Wing	0	5,041	133	10,109	1,437	10	0	29	16,759
Dakota	0	14,189	126	34,805	12,435	3,863	2,900	3	68,321
Dodge	0	862	92	903	0	0	9	0	1,865
Faribault	0	2,467	0	1,923	0	0	0	0	4,390
Fillmore	0	233	136	72	529	36	0	0	1,006
Freeborn	0	5,080	191	2,397	2	0	0	0	7,670
Goodhue	0	4,232	248	2,999	883	1,168	0	0	9,529
Grant	0	154	27	0	125	24	0	0	330
Hennepin	0	35,532	4,371	33,409	49,078	9,441	1,601	176	133,607
Houston	0	224	0	144	231	0	0	0	600
Hubbard	0	2,011	0	0	571	101	0	0	2,683
Isanti	0	2,580	2	1	568	0	0	9	3,161
Itasca	20	2,946	62	2,655	1,290	202	0	0	7,175
Jackson	0	1,361	0	0	362	95	0	0	1,818
Kanabec	0	503	0	0	146	0	0	0	649
Kandiyohi	0	3,836	345	371	747	168	60	14	5,541
Kittson	0	102	6	4	103	4	0	1	219
Koochiching	0	1,469	43	272	100	19	0	0	1,903
Lac qui Parle	0	382	0	0	189	19	9	0	599
Lake	0	485	93	88	253	57	0	0	976
Lake of The Woods	0	96	0	0	0	0	0	0	96
Le Sueur	0	1,606	0	324	290	79	0	0	2,299
Lincoln	0	101	0	26	201	30	0	0	358
Lyon	0	3,635	0	691	50	12	0	0	4,388
Mahnomen	0	104	8	54	0	0	0	0	165
Marshall	0	82	1	35	124	5	0	1	248
Martin	0	6,239	0	3,501	0	0	0	0	9,740
McLeod	0	3,089	1	18	150	272	87	0	3,615
Meeker	0	1,080	11	280	57	81	0	0	1,509
Mille Lacs	0	886	0	216	0	0	0	0	1,102

**County Survey Responses:  
Paper collected for recycling (tons)**

County	Computer paper	Corrugated	Magazine/catalog	Mixed paper	Newsprint	Office paper	Other paper	Phone book	Total Paper
Morrison	0	2,657	106	0	335	1,095	0	0	4,193
Mower	221	5,213	114	0	1,008	240	0	4	6,800
Murray	0	493	23	46	463	196	0	0	1,221
Nicollet	0	2,241	0	8,740	67	286	0	0	11,334
Nobles	0	3,863	0	0	369	929	0	0	5,161
Norman	0	67	0	0	41	0	0	2	110
Olmsted	0	12,301	100	3,651	3,129	1,066	9,236	25	29,509
Otter Tail	0	4,362	103	179	1,345	244	0	0	6,233
Pennington	0	1,372	44	0	207	113	0	20	1,756
Pine	0	1,126	0	1,482	0	0	0	0	2,608
Pipestone	0	889	0	0	304	0	0	0	1,193
Polk	0	2,023	0	0	481	48	0	7	2,559
Pope/Douglas	0	10,113	291	205	1,420	0	0	0	12,029
Ramsey	0	5,735	1,565	13,889	20,366	9	2,108	688	44,359
Red Lake	0	12	9	0	69	3	0	0	93
Redwood	98	2,223	182	217	367	245	0	15	3,347
Renville	0	285	4	253	438	0	0	0	980
Rice	0	7,787	0	0	2,348	0	0	29	10,164
Rock	0	597	0	0	231	41	0	0	868
Roseau	0	2,078	28	0	162	140	0	0	2,408
Scott	0	19,854	447	13,068	3,729	26	296	0	37,421
Sherburne	0	2,547	223	1,383	2,452	45	47	216	6,914
Sibley	0	493	0	332	93	5	0	0	924
St. Louis - partial	0	5,406	0	4,040	229	37	0	0	9,712
Stearns	0	11,432	10,441	4,947	3,000	2,390	116	54	32,379
Steele	0	3,051	29	1,900	0	14	1,944	0	6,939
Stevens	0	364	12	20	163	10	0	5	574
Swift	29	650	65	0	468	111	0	2	1,325
Todd	0	1,484	0	15,357	183	0	0	0	17,024
Traverse	0	104	22	0	84	16	0	0	226
Wabasha	0	4,686	40	0	757	68	0	0	5,551
Wadena	0	270	0	26	0	0	0	0	296
Waseca	0	2,487	89	1,975	213	30,231	147	0	35,142
Washington	0	16,146	503	15,280	21,960	13,183	0	60	67,133
Watsonwan	0	840	0	0	1,108	1	0	0	1,948
Wilkin	0	381	17	0	257	13	0	0	668
Winona	0	7,297	0	383	5,428	0	0	0	13,108
WLSSD	0	12,855	649	13,244	1,021	1,416	726	0	29,910
Wright	4	8,348	15	14	3,192	5	0	0	11,578
Yellow Medicine	0	580	24	195	64	16	0	0	880
<b>Metro Area</b>	<b>2</b>	<b>120,678</b>	<b>7,422</b>	<b>134,163</b>	<b>122,673</b>	<b>28,445</b>	<b>13,135</b>	<b>1,177</b>	<b>427,695</b>
<b>Greater MN</b>	<b>1,597</b>	<b>240,697</b>	<b>28,954</b>	<b>119,023</b>	<b>55,952</b>	<b>42,954</b>	<b>15,345</b>	<b>285</b>	<b>504,806</b>
<b>Minnesota</b>	<b>1,600</b>	<b>361,375</b>	<b>36,375</b>	<b>253,186</b>	<b>178,625</b>	<b>71,399</b>	<b>28,480</b>	<b>1,462</b>	<b>932,501</b>

**County Survey Responses**  
**Metal collected for recycling (tons)**

County	Aluminum	Co-mingled alum/steel/tin	Other ferrous & non-ferrous	Steel/tin cans	Total Metal
Aitkin	124	0	549	37	710
Anoka	555	639	33,375	641	35,210
Becker	49	118	0	0	166
Beltrami	101	0	740	475	1,316
Benton	1,816	175	10,014	64	12,069
Big Stone	58	0	239	39	337
Blue Earth	6,165	4,050	3,912	1,188	15,315
Brown	174	1,696	1,435	130	3,435
Carlton	207	0	6	164	377
Carver	61	253	3,932	399	4,646
Cass	94	1,076	44	48	1,262
Chippewa	10	26	0	53	89
Chisago	353	0	616	152	1,120
Clay	46	0	134	76	256
Clearwater	22	13	446	0	481
Cook	20	0	307	36	363
Cottonwood	9	0	226	38	273
Crow Wing	155	0	8,369	303	8,827
Dakota	1,423	9,857	11,478	249	23,006
Dodge	29	0	2,259	52	2,340
Faribault	167	406	424	0	997
Fillmore	30	0	36	122	188
Freeborn	552	2,750	0	2,358	5,659
Goodhue	172	639	61	228	1,100
Grant	12	0	10	21	42
Hennepin	4,521	1,831	46,251	1,709	54,311
Houston	186	0	588	66	840
Hubbard	1,031	0	971	93	2,094
Isanti	631	169	131	1,614	2,546
Itasca	85	105	1,340	140	1,670
Jackson	61	0	235	78	374
Kanabec	0	87	0	22	109
Kandiyohi	222	4	0	90	316
Kittson	9	60	43	0	111
Koochiching	78	0	735	25	838
Lac qui Parle	37	0	269	333	639
Lake	23	24	561	42	650
Lake of The Woods	13	0	479	12	504
Le Sueur	24	262	2,265	159	2,710
Lincoln	3	31	0	1	35
Lyon	130	3,493	7	189	3,818
Mahnomen	9	0	48	8	65
Marshall	2	55	175	0	232
Martin	1,200	2,364	3,300	0	6,864
McLeod	81	4	1,071	2	1,159
Meeker	84	60	711	5	860
Mille Lacs	0	106	0	0	106
Morrison	0	122	4,621	0	4,744

**County Survey Responses**  
**Metal collected for recycling (tons)**

County	Aluminum	Co-mingled alum/steel/tin	Other ferrous & non-ferrous	Steel/tin cans	Total Metal
Mower	212	0	100	87	399
Murray	56	106	6	25	192
Nicollet	61	10	1,807	95	1,973
Nobles	117	154	0	0	271
Norman	19	0	596	98	713
Olmsted	456	404	8,304	2,007	11,171
Otter Tail	340	720	4,194	157	5,411
Pennington	0	84	0	0	84
Pine	0	823	983	0	1,806
Pipestone	25	0	96	36	156
Polk	265	0	2,515	256	3,036
Pope/Douglas	1,387	0	346	988	2,721
Ramsey	1,103	389	56,825	812	59,129
Red Lake	4	46	225	0	275
Redwood	610	0	3,025	60	3,695
Renville	0	45	76	580	701
Rice	474	30	1,724	560	2,788
Rock	26	0	2,607	39	2,673
Roseau	56	0	437	73	566
Scott	707	1,461	20,319	973	23,459
Sherburne	1,171	489	16,621	1,938	20,219
Sibley	8	0	251	194	452
St. Louis - partial	415	2,917	41,169	937	45,438
Stearns	1,298	771	31,076	736	33,880
Steele	66	0	136	357	559
Stevens	61	0	382	137	580
Swift	123	0	58	84	265
Todd	18	160	220	44	442
Traverse	23	0	44	13	80
Wabasha	64	4	103	324	495
Wadena	0	305	7,000	0	7,305
Waseca	178	0	1,025	31	1,234
Washington	1,992	275	5,000	895	8,161
Watonwan	37	0	0	64	100
Wilkin	57	0	66	9	132
Winona	836	200	3,931	0	4,967
WLSSD	395	508	12,092	108	13,103
Wright	67	4	194	558	823
Yellow Medicine	4	250	15	44	313
<b>Metro Area</b>	<b>10,826</b>	<b>13,732</b>	<b>173,482</b>	<b>6,642</b>	<b>204,682</b>
<b>Greater Minn.</b>	<b>22,738</b>	<b>26,895</b>	<b>192,494</b>	<b>18,135</b>	<b>260,263</b>
<b>Minnesota</b>	<b>33,564</b>	<b>40,627</b>	<b>365,977</b>	<b>24,778</b>	<b>464,946</b>

**County Survey Responses**  
**Glass collected for recycling (tons)**

County	Food & beverage	Other glass	Total Glass
Aitkin	186	0	186
Anoka	5,433	96	5,528
Becker	500	0	500
Beltrami	995	26	1,021
Benton	431	379	810
Big Stone	58	0	58
Blue Earth	785	0	785
Brown	443	0	443
Carlton	604	0	604
Carver	1,167	0	1,167
Cass	173	0	173
Chippewa	239	0	239
Chisago	791	0	791
Clay	466	0	466
Clearwater	0	0	0
Cook	138	0	138
Cottonwood	103	0	103
Crow Wing	931	0	931
Dakota	4,766	0	4,766
Dodge	247	440	686
Faribault	82	68	150
Fillmore	398	0	398
Freeborn	1,888	0	1,888
Goodhue	1,429	0	1,429
Grant	121	0	121
Hennepin	21,878	0	21,878
Houston	141	0	141
Hubbard	419	0	419
Isanti	187	0	187
Itasca	935	0	935
Jackson	159	0	159
Kanabec	57	0	57
Kandiyohi	344	0	344
Kittson	147	0	147
Koochiching	68	0	68
Lac qui Parle	122	0	122
Lake	507	0	507
Lake of The Woods	500	0	500
Le Sueur	0	184	184
Lincoln	55	0	55
Lyon	194	0	194
Mahnomen	31	0	31
Marshall	147	0	147
Martin	920	370	1,290
McLeod	337	0	337
Meeker	183	0	183
Mille Lacs	137	0	137
Morrison	424	0	424
Mower	329	0	329

**County Survey Responses**  
**Glass collected for recycling (tons)**

County	Food & beverage	Other glass	Total Glass
Murray	160	0	160
Nicollet	0	238	238
Nobles	203	0	203
Norman	67	0	67
Olmsted	1,349	1,099	2,449
Otter Tail	534	2	536
Pennington	11	0	11
Pine	507	0	507
Pipestone	141	0	141
Polk	192	0	192
Pope/Douglas	1,163	0	1,163
Ramsey	7,324	0	7,324
Red Lake	130	0	130
Redwood	309	0	309
Renville	177	0	177
Rice	649	3,820	4,469
Rock	0	0	0
Roseau	190	3,655	3,845
Scott	1,077	0	1,077
Sherburne	1,105	334	1,440
Sibley	0	210	210
St. Louis - partial	1,218	0	1,218
Stearns	2,108	1,125	3,234
Steele	553	30,455	31,008
Stevens	118	0	118
Swift	249	0	249
Todd	105	0	105
Traverse	30	0	30
Wabasha	351	0	351
Wadena	154	0	154
Waseca	220	0	220
Washington	3,354	0	3,354
Watsonwan	297	0	297
Wilkin	52	0	52
Winona	758	0	758
WLSSD	3,196	0	3,196
Wright	917	0	917
Yellow Medicine	207	0	207
<b>Metro Area</b>	<b>45,027</b>	<b>430</b>	<b>45,457</b>
<b>Greater Minn.</b>	<b>34,745</b>	<b>42,071</b>	<b>76,816</b>
<b>Minnesota</b>	<b>79,772</b>	<b>42,502</b>	<b>122,274</b>

**County Survey Responses**  
**Plastic collected for recycling (tons)**

County	Film plastic	HDPE	Mixed plastic	Other plastic	PET	Polystyrene	Total Plastics
Aitkin	0	0	69	0	0	0	69
Anoka	155	357	1,200	68	443	0	2,224
Becker	0	0	107	0	0	0	107
Beltrami	0	0	0	0	0	0	0
Benton	18	177	32	105	39	0	371
Big Stone	0	1	39	0	0	0	40
Blue Earth	147	19	2,169	180	502	59	3,076
Brown	11	0	424	303	0	0	737
Carlton	0	0	158	0	0	0	158
Carver	0	0	1,210	0	0	0	1,210
Cass	0	0	54	0	0	0	54
Chippewa	10	2	72	0	0	38	121
Chisago	2	0	284	0	0	0	286
Clay	0	0	133	0	0	0	133
Clearwater	0	0	0	0	0	0	0
Cook	0	0	41	0	0	0	41
Cottonwood	0	5	43	0	0	0	47
Crow Wing	0	0	230	25	0	0	256
Dakota	39	0	3,496	0	0	0	3,535
Dodge	0	0	216	0	0	0	216
Faribault	2	3	222	0	0	0	227
Fillmore	0	47	0	0	35	0	82
Freeborn	0	0	944	0	0	0	944
Goodhue	0	105	55	0	92	0	252
Grant	0	0	28	0	0	0	28
Hennepin	0	106	14,101	0	216	0	14,423
Houston	0	0	145	1	0	0	146
Hubbard	0	0	105	0	0	0	105
Isanti	0	0	142	0	0	0	142
Itasca	0	39	288	0	47	0	374
Jackson	0	0	68	0	0	0	68
Kanabec	0	0	23	0	0	0	23
Kandiyohi	0	64	0	0	67	0	132
Kittson	0	1	18	0	6	0	26
Koochiching	0	10	0	0	38	0	48
Lac qui Parle	0	0	0	0	28	0	28
Lake	0	0	63	0	0	0	63
Lake of The Woods	0	0	6	0	0	0	6
Le Sueur	0	0	60	24	61	0	145
Lincoln	0	20	0	0	10	0	30
Lyon	0	0	131	0	0	0	131
Mahnomen	0	0	5	0	0	0	5
Marshall	0	3	25	0	1	0	29
Martin	6	12	766	0	0	0	784
McLeod	2,785	0	158	0	0	220	3,163
Meeker	0	52	0	0	0	0	52
Mille Lacs	0	0	39	0	0	0	39
Morrison	2	0	104	1	0	0	107

**County Survey Responses:  
Plastic collected for recycling (tons)**

County	Film plastic	HDPE	Mixed plastic	Other plastic	PET	Polystyrene	Total Plastics
Mower	53	66	0	0	58	0	177
Murray	0	5	61	1	0	0	67
Nicollet	0	123	47	125	80	0	374
Nobles	0	172	0	0	147	0	319
Norman	0	0	0	0	0	0	0
Olmsted	0	0	709	0	0	44	754
Otter Tail	0	139	0	58	98	0	295
Pennington	0	0	12	0	0	0	12
Pine	0	0	17	0	0	0	17
Pipestone	0	0	469	0	0	0	469
Polk	0	0	108	0	0	0	108
Pope/Douglas	0	0	292	0	0	0	292
Ramsey	100	417	722	0	552	0	1,791
Red Lake	0	0	12	0	6	0	18
Redwood	70	25	158	0	6	0	259
Renville	0	0	37	0	0	0	37
Rice	35	300	70	0	298	0	703
Rock	0	12	0	1	39	0	53
Roseau	288	0	75	104	0	0	467
Scott	68	48	215	8	146	0	485
Sherburne	35	115	268	80	25	0	522
Sibley	0	1	38	0	8	0	46
St. Louis - partial	0	113	0	0	106	0	219
Stearns	132	632	538	560	259	0	2,121
Steele	20	0	121	6	0	0	147
Stevens	0	20	0	0	24	0	44
Swift	0	49	0	0	62	0	111
Todd	1	15	20	0	27	0	63
Traverse	0	0	13	0	0	0	13
Wabasha	0	0	126	0	0	0	126
Wadena	0	0	128	0	0	0	128
Waseca	0	24	52	38	60	0	174
Washington	165	14	1,085	0	15	0	1,278
Watonwan	0	0	88	0	0	0	88
Wilkin	0	0	14	0	0	0	14
Winona	0	0	450	0	0	0	450
WLSSD	83	0	968	0	0	0	1,052
Wright	0	0	237	0	6	0	244
Yellow Medicine	0	0	25	0	0	0	25
<b>Metro Area</b>	<b>493</b>	<b>1,010</b>	<b>22,083</b>	<b>148</b>	<b>1,249</b>	<b>0</b>	<b>24,983</b>
<b>Greater Minn.</b>	<b>3,733</b>	<b>2,301</b>	<b>12,570</b>	<b>1,540</b>	<b>2,356</b>	<b>361</b>	<b>22,862</b>
<b>Minnesota</b>	<b>4,227</b>	<b>3,311</b>	<b>34,653</b>	<b>1,688</b>	<b>3,605</b>	<b>361</b>	<b>47,845</b>



**County Survey Responses**  
**Organics, textiles, other collected for recycling (tons) - Part 1**

County	Food to livestock	Food to people	Source-separated organics	Total
Aitkin	0	0	0	0
Anoka	3,485	0	0	3,485
Becker	0	0	0	0
Beltrami	0	0	0	0
Benton	31	0	0	31
Big Stone	0	0	84	84
Blue Earth	0	0	0	0
Brown	2,973	0	0	2,973
Carlton	0	0	0	0
Carver	9,735	0	0	9,735
Cass	0	0	0	0
Chippewa	0	0	0	0
Chisago	0	0	0	0
Clay	6,383	95	0	6,478
Clearwater	0	0	0	0
Cook	0	0	0	0
Cottonwood	0	0	0	0
Crow Wing	569	0	0	569
Dakota	16,394	0	1	16,395
Dodge	0	0	387	387
Faribault	0	0	0	0
Fillmore	0	0	0	0
Freeborn	0	0	0	0
Goodhue	350	0	0	350
Grant	0	0	0	0
Hennepin	53,994	0	482	54,476
Houston	0	0	0	0
Hubbard	84	0	0	84
Isanti	123	0	0	123
Itasca	0	0	0	0
Jackson	0	0	0	0
Kanabec	0	0	0	0
Kandiyohi	156	0	0	156
Kittson	105	0	0	105
Koochiching	0	0	0	0
Lac qui Parle	0	0	0	0
Lake	0	0	0	0
Lake of The Woods	0	0	76	76
Le Sueur	4,300	0	0	4,300
Lincoln	0	0	0	0
Lyon	0	0	0	0
Mahnomen	0	0	0	0
Marshall	0	0	0	0
Martin	0	0	0	0
McLeod	0	0	2,079	2,079
Meeker	0	15	0	15
Mille Lacs	0	0	0	0

**County Survey Responses**  
**Organics, textiles, other collected for recycling (tons) - Part 1**

County	Food to livestock	Food to people	Source- separated organics	Total
Morrison	0	3	0	3
Mower	0	0	0	0
Murray	0	0	450	450
Nicollet	0	0	0	0
Nobles	113	0	0	113
Norman	0	0	0	0
Olmsted	2,126	0	1	2,127
Otter Tail	8,522	0	0	8,522
Pennington	0	0	0	0
Pine	135	0	0	135
Pipestone	0	0	0	0
Polk	2,308	0	0	2,308
Pope/Douglas	0	0	0	0
Ramsey	21,709	0	27	21,736
Red Lake	0	0	0	0
Redwood	250	490	0	740
Renville	0	0	890	890
Rice	24,010	0	200	24,210
Rock	0	0	0	0
Roseau	0	0	0	0
Scott	0	0	941	941
Sherburne	502	0	0	502
Sibley	2,923	0	0	2,923
St. Louis - partial	0	0	0	0
Stearns	1,618	0	0	1,618
Steele	0	0	0	0
Stevens	0	0	0	0
Swift	0	0	964	964
Todd	0	0	0	0
Traverse	0	0	0	0
Wabasha	0	3,710	0	3,710
Wadena	0	0	0	0
Waseca	0	0	0	0
Washington	2,721	0	0	2,721
Watonwan	0	0	0	0
Wilkin	0	0	0	0
Winona	1,027	0	0	1,027
WLSSD	323	113	1,069	1,505
Wright	0	0	0	0
Yellow Medicine	0	0	0	0
Metro Area	108,540	-	510	109,050
Greater Minn.	58,426	4,427	7,140	69,993
Minnesota	166,966	4,427	7,650	179,043

**County Survey Responses**  
**Organics, textiles, other collected for recycling (tons) - Part 2**

County	Carpet	Textiles	Pallets	Unspecified or Other	Mattresses & box springs	Total
Aitkin	0	0	0	16	0	16
Anoka	0	3,257	1,955	4,456	0	9,668
Becker	0	0	0	39	0	39
Beltrami	0	0	0	0	0	0
Benton	0	0	0	0	0	0
Big Stone	0	5	0	0	0	5
Blue Earth	0	952	20,020	0	0	20,972
Brown	0	0	2,786	175	0	2,960
Carlton	0	0	0	0	15	15
Carver	0	5	684	678	0	1,367
Cass	0	21	0	0	0	21
Chippewa	0	0	0	152	0	152
Chisago	0	97	25	0	7	129
Clay	0	234	128	0	2	365
Clearwater	0	10	0	0	0	10
Cook	0	10	0	23	0	33
Cottonwood	0	0	1,500	2,400	0	3,900
Crow Wing	0	202	0	19,005	22	19,229
Dakota	0	368	10,808	46,066	0	57,243
Dodge	0	0	29	1	0	30
Faribault	0	0	0	0	0	0
Fillmore	0	12	9	364	0	385
Freeborn	0	2	60	0	0	62
Goodhue	0	16	4	0	0	21
Grant	0	0	0	172	0	172
Hennepin	0	131	9,659	289,072	0	298,863
Houston	0	21	0	0	0	21
Hubbard	0	176	0	0	0	176
Isanti	0	0	642	0	16	658
Itasca	0	0	2,625	0	0	2,625
Jackson	0	78	634	304	0	1,016
Kanabec	0	0	1	0	289	290
Kandiyohi	0	0	0	0	0	0
Kittson	0	0	0	0	0	0
Koochiching	0	0	48	0	0	48
Lac qui Parle	0	0	0	0	0	0
Lake	0	0	0	0	2	2
Lake of The Woods	0	0	0	0	0	0
Le Sueur	0	0	672	0	0	672
Lincoln	0	9	0	0	0	9
Lyon	0	273	0	6,374	0	6,647
Mahnomen	0	0	0	0	0	0
Marshall	0	0	0	0	0	0
Martin	0	75	1,600	0	0	1,675
McLeod	0	0	563	3,087	0	3,650
Meeker	0	0	858	211	0	1,069
Mille Lacs	0	0	0	0	3	3
Morrison	0	62	1,213	10	50	1,335

**County Survey Responses**  
**Organics, textiles, other collected for recycling (tons) - Part 2**

County	Carpet	Textiles	Pallets	Unspecified or Other	Mattresses & box springs	Total
Mower	0	0	9,911	0	0	9,911
Murray	0	159	57	0	0	216
Nicollet	0	3	399	0	0	402
Nobles	0	93	117	0	0	210
Norman	0	0	0	0	0	0
Olmsted	0	571	1,015	0	0	1,586
Otter Tail	0	214	288	727	0	1,228
Pennington	0	0	43	0	0	43
Pine	0	0	0	0	0	0
Pipestone	0	75	1,500	0	0	1,575
Polk	0	0	0	1,775	0	1,775
Pope/Douglas	120	8	0	0	0	128
Ramsey	0	4,148	4,693	151,279	0	160,120
Red Lake	0	0	0	0	0	0
Redwood	16	905	800	3,321	0	5,042
Renville	0	45	0	0	0	45
Rice	0	90	1,698	3	0	1,791
Rock	0	20	861	0	0	881
Roseau	0	0	1,140	0	0	1,140
Scott	80	402	2,334	0	0	2,816
Sherburne	0	0	274	22	0	296
Sibley	0	0	73	0	0	73
St. Louis - partial	0	0	0	0	60	60
Stearns	0	1,300	6,448	2,413	0	10,161
Steele	0	190	5,537	11	0	5,738
Stevens	0	0	0	0	0	0
Swift	0	0	0	0	0	0
Todd	0	0	0	0	0	0
Traverse	0	0	0	0	0	0
Wabasha	0	4	4,160	0	0	4,164
Wadena	0	0	0	0	0	0
Waseca	0	143	0	75	0	218
Washington	0	197	182	3,003	0	3,383
Watonwan	0	0	0	0	0	0
Wilkin	0	0	0	0	0	0
Winona	0	0	3,059	0	0	3,059
WLSSD	0	1,661	2,725	135	67	4,588
Wright	0	0	1	0	0	1
Yellow Medicine	0	0	0	255	0	255
						0
Metro Area	-	8,107	28,255	494,577	-	530,939
Greater Minn.	216	8,137	75,582	41,049	534	125,518
Minnesota	216	16,244	103,837	535,626	534	656,457

**County Survey Responses**  
**Problem materials (banned) collected for recycling (tons)**

County	Antifreeze	Electronics	Fluorescent & HID lamps	HHW	Latex paint	Major appliances	Used oil	Used oil filters	Vehicle batteries	Waste tires	Total problem mats
Aitkin	0	26	1	3	5	150	78	8	102	164	536
Anoka	11	230	22	4	97	1,972	263	154	2,017	657	5,425
Becker	0	26	2	17	10	194	26	15	198	65	553
Beltrami	3	97	2	0	0	400	34	20	265	120	941
Benton	0	1	0	0	3	233	31	18	238	78	602
Big Stone	0	1	1	0	0	33	16	5	34	50	140
Blue Earth	50	122	34	22	13	646	143	83	1,107	2,008	4,228
Brown	0	3	5	19	13	159	21	12	163	53	448
Carlton	1	16	1	0	0	205	27	16	210	68	545
Carver	6	127	3	36	59	517	69	40	529	172	1,558
Cass	1	30	4	9	5	268	23	14	178	233	764
Chippewa	0	11	1	0	0	106	10	6	78	1,145	1,358
Chisago	5	37	3	37	42	302	40	23	309	101	898
Clay	18	73	7	20	18	329	232	26	337	363	1,423
Clearwater	0	7	2	4	0	56	7	4	52	66	198
Cook	0	0	0	0	0	32	4	3	33	11	84
Cottonwood	0	10	0	2	2	71	27	6	73	69	261
Crow Wing	9	172	26	2	17	643	49	36	402	131	1,488
Dakota	70	851	110	47	203	2,350	313	185	2,404	783	7,315
Dodge	0	31	1	0	0	121	16	10	124	40	343
Faribault	1	20	4	1	2	92	12	7	95	31	265
Fillmore	8	8	2	0	14	152	18	10	135	44	392
Freeborn	6	18	1	12	14	244	520	17	214	325	1,371
Goodhue	0	20	9	0	0	277	37	22	283	92	739
Grant	0	5	2	4	2	37	5	3	37	12	107
Hennepin	38	2,266	1	0	561	6,915	922	539	7,074	2,305	20,621
Houston	0	58	2	3	0	305	16	9	122	179	695
Hubbard	0	70	4	6	3	380	34	9	116	357	978
Isanti	0	0	0	3	5	231	31	18	236	77	600
Itasca	2	35	3	0	0	1,300	35	21	272	89	1,757
Jackson	0	8	4	1	1	67	9	5	69	22	188
Kanabec	2	367	0	7	0	598	55	8	100	109	1,246
Kandiyohi	0	0	0	0	0	250	33	19	256	83	642
Kittson	0	2	1	0	1	29	4	2	29	10	77
Koochiching	0	0	2	2	0	83	11	6	85	28	216
Lac qui Parle	0	7	0	3	2	45	22	4	46	15	143
Lake	8	27	2	10	7	67	244	13	68	117	562
Lake of The Woods	0	0	1	2	1	27	4	3	27	43	108
Le Sueur	18	69	5	8	5	229	22	13	171	67	607
Lincoln	0	3	1	1	0	38	21	3	39	29	135
Lyon	0	22	0	0	0	150	20	12	154	121	479
Mahnomen	0	0	0	0	0	31	4	2	31	10	79
Marshall	1	1	1	4	2	60	8	5	61	40	183
Martin	9	450	12	37	8	275	25	11	134	78	1,039
McLeod	0	45	8	45	26	1,318	30	17	227	74	1,791
Meeker	4	35	19	0	10	141	19	11	144	47	429
Mille Lacs	0	5	0	5	0	156	21	12	160	52	412
Morrison	1	26	10	0	8	221	356	15	203	370	1,210
Mower	3	12	4	0	5	234	31	18	239	78	624

**County Survey Responses**  
**Problem materials (banned) collected for recycling (tons)**

County	Antifreeze	Electronics	Fluorescent & HID lamps	HHW	Latex paint	Major appliances	Used oil	Used oil filters	Vehicle batteries	Waste tires	Total problem mats
Murray	0	0	0	0	0	55	15	4	56	25	155
Nicollet	6	41	10	2	21	337	26	15	196	115	769
Nobles	13	0	13	7	3	123	16	10	126	41	352
Norman	0	14	1	2	1	42	6	3	43	14	127
Olmsted	45	2,593	0	0	29	829	111	65	848	276	4,796
Otter Tail	0	78	0	32	24	364	49	32	372	165	1,116
Pennington	0	4	1	3	2	82	11	6	84	27	221
Pine	0	0	0	0	0	1,153	23	13	174	76	1,439
Pipestone	0	0	3	3	0	57	8	4	58	19	152
Polk	0	19	2	2	1	219	25	15	191	94	568
Pope/Douglas	0	0	22	26	14	280	306	22	287	93	1,050
Ramsey	15	178	15	0	242	3,092	412	241	3,163	1,031	8,388
Red Lake	0	0	0	1	0	26	3	2	27	9	68
Redwood	59	741	13	13	7	145	510	25	560	842	2,915
Renville	0	35	3	4	3	159	14	8	105	124	455
Rice	68	102	14	17	28	411	50	29	409	125	1,253
Rock	0	5	2	2	1	57	8	4	59	346	483
Roseau	4	3	6	0	2	99	13	12	108	47	294
Scott	275	210	16	172	95	718	2,601	89	910	239	5,324
Sherburne	12	166	8	0	19	510	68	40	522	170	1,515
Sibley	1	12	2	0	9	115	12	7	94	87	340
St. Louis - partial	513	63	8	71	0	3,508	513	38	494	893	6,101
Stearns	59	28	3	0	0	867	777	67	887	1,075	3,762
Steele	0	119	10	3	12	217	29	17	222	72	701
Stevens	0	13	4	6	0	59	8	5	60	20	174
Swift	0	0	2	0	0	69	9	5	70	23	179
Todd	0	16	1	0	1	227	20	12	151	102	530
Traverse	0	0	1	1	1	29	3	2	23	8	66
Wabasha	0	9	1	4	7	135	18	10	138	45	366
Wadena	0	22	0	0	0	84	11	6	251	27	401
Waseca	0	0	2	3	0	118	16	9	120	39	307
Washington	12	59	9	0	174	1,369	182	107	1,400	456	3,768
Watonwan	0	0	1	0	2	69	9	5	71	23	181
Wilkin	0	0	2	0	0	88	10	10	45	35	190
Winona	0	0	0	22	19	300	40	23	306	100	811
WLSSD	48	384	11	11	85	695	93	147	711	232	2,416
Wright	1	22	2	30	45	689	92	54	705	230	1,869
Yellow Medicine	0	0	0	0	0	64	8	5	65	21	163
Metro Area	163	3,876	167	87	1,354	16,724	2,230	1,304	17,109	5,575	48,590
Greater MN	1,243	6,509	343	725	657	23,469	7,895	1,384	16,683	13,071	71,980
Minnesota	1,406	10,386	510	812	2,011	40,193	10,125	2,688	33,792	18,646	120,570

**County Survey Responses**  
**Wastes generated (tons)**

County	Estimated tons of MSW not collected	Problem mats not collected for recycling	Tons to MSW disposal/processing facilities	Tons collected for recycling	Total tons generated
Aitkin	275	187	9,281	2,465	12,208
Anoka	0	8,288	183,009	146,618	337,914
Becker	252	813	18,729	13,165	32,959
Beltrami	0	988	22,349	7,826	31,163
Benton	2,827	978	19,119	29,857	52,781
Big Stone	910	88	2,579	1,124	4,701
Blue Earth	1,343	800	37,848	77,706	117,697
Brown	2,267	664	14,637	25,750	43,318
Carlton	685	863	13,137	4,907	19,592
Carver	294	2,175	52,682	41,969	97,120
Cass	0	512	17,365	9,321	27,198
Chippewa	1,679	201	8,736	3,741	14,357
Chisago	420	1,268	23,377	8,270	33,335
Clay	833	943	26,289	14,084	42,149
Clearwater	126	158	4,095	983	5,362
Cook	30	135	4,745	1,412	6,322
Cottonwood	1,006	231	5,601	5,920	12,758
Crow Wing	246	1,408	40,478	48,058	90,190
Dakota	0	9,875	223,192	180,581	413,647
Dodge	875	491	8,741	5,868	15,974
Faribault	2,180	385	7,573	6,029	16,167
Fillmore	3,022	503	5,443	2,452	11,421
Freeborn	420	0	27,294	17,594	45,308
Goodhue	420	1,162	30,023	13,421	45,026
Grant	753	153	2,015	799	3,719
Hennepin	0	29,066	982,230	598,179	1,609,475
Houston	504	331	5,273	2,443	8,551
Hubbard	0	278	15,039	6,539	21,856
Isanti	1,931	969	22,721	7,416	33,037
Itasca	466	1,052	26,497	14,536	42,551
Jackson	942	280	4,831	3,623	9,676
Kanabec	1,259	267	8,192	2,374	12,092
Kandiyohi	840	1,051	28,118	7,131	37,140
Kittson	90	118	1,653	684	2,545
Koochiching	315	341	8,069	3,121	11,846
Lac qui Parle	1,679	173	3,607	1,531	6,990
Lake	252	22	6,667	2,760	9,701
Lake of The Woods	17	75	2,692	1,289	4,072
Le Sueur	1,028	651	17,792	10,918	30,389
Lincoln	1,007	115	2,102	622	3,846
Lyon	812	559	20,112	15,657	37,141
Mahnomen	217	127	1,325	346	2,015
Marshall	315	230	4,622	839	6,006
Martin	2,375	443	9,854	21,392	34,064
McLeod	2,099	879	19,140	15,793	37,910
Meeker	588	591	9,129	4,116	14,423
Mille Lacs	1,679	657	13,030	1,798	17,165
Morrison	378	216	13,169	12,018	25,781
Mower	1,301	978	26,078	18,241	46,598

**County Survey Responses**  
**Wastes generated (tons)**

County	Estimated tons of MSW not collected	Problem mats not collected for recycling	Tons to MSW disposal/processing facilities	Tons collected for recycling	Total tons generated
Murray	877	201	2,998	2,461	6,538
Nicollet	1,049	706	17,756	15,090	34,601
Nobles	1,154	516	7,364	6,629	15,664
Norman	21	173	3,008	1,017	4,219
Olmsted	579	3,486	87,183	52,390	143,638
Otter Tail	965	1,398	34,404	23,342	60,110
Pennington	1,637	345	13,113	2,126	17,220
Pine	1,767	653	19,718	6,512	28,650
Pipestone	1,196	237	4,553	3,686	9,673
Polk	189	720	17,063	10,545	28,517
Pope/Douglas	496	908	30,846	17,384	49,635
Ramsey	0	12,987	408,757	302,847	724,590
Red Lake	8	104	1,560	583	2,256
Redwood	1,891	0	8,045	16,307	26,243
Renville	2,183	299	8,015	3,285	13,782
Rice	2,560	1,508	46,800	45,378	96,246
Rock	546	164	4,019	4,957	9,686
Roseau	682	389	10,208	8,720	19,999
Scott	0	1,137	70,572	71,523	143,231
Sherburne	1,259	2,144	51,004	31,407	85,814
Sibley	443	306	5,875	4,968	11,593
St. Louis - partial	331	817	54,039	62,748	117,935
Stearns	1,198	2,196	73,269	87,155	163,819
Steele	1,049	912	32,839	45,092	79,892
Stevens	403	244	5,394	1,490	7,532
Swift	1,078	290	4,036	3,093	8,497
Todd	1,049	526	10,970	18,164	30,709
Traverse	504	90	1,297	415	2,306
Wabasha	614	566	9,281	14,763	25,224
Wadena	378	335	8,329	8,283	17,325
Waseca	78	494	10,307	37,295	48,175
Washington	0	5,753	101,509	89,797	197,058
Watonwan	1,049	289	7,148	2,615	11,101
Wilkin	840	130	2,127	1,056	4,153
Winona	1,217	1,258	25,891	24,180	52,546
WLSSD	3,652	2,914	64,505	55,770	126,840
Wright	1,511	2,895	50,400	15,432	70,239
Yellow Medicine	1,175	263	4,956	1,843	8,238
Metro Area	294	69,279	2,021,951	1,431,513	3,523,036
Greater Minn.	76,292	51,814	1,357,484	1,092,122	2,577,712
Minnesota	76,586	121,093	3,379,435	2,523,635	6,100,748



**County Survey Responses**  
**Recycling rate**

County	Tons collected for recycling	Total MSW generated	Percent of MSW collected for recycling	Source reduction credit	Yard waste credit	Recycling rate with credits
Aitkin	2,465	12,208	20.2%	3%	5%	28.2%
Anoka	146,618	337,914	43.4%	3%	5%	51.4%
Becker	13,165	32,959	39.9%	3%	5%	47.9%
Beltrami	7,826	31,163	25.1%	1%	5%	31.1%
Benton	29,857	52,781	56.6%	2%	5%	63.6%
Big Stone	1,124	4,701	23.9%	2%	3%	28.9%
Blue Earth	77,706	117,697	66.0%	3%	5%	74.0%
Brown	25,750	43,318	59.4%	3%	5%	67.4%
Carlton	4,907	19,592	25.0%	3%	5%	33.0%
Carver	41,969	97,120	43.2%	3%	5%	51.2%
Cass	9,321	27,198	34.3%	2%	5%	41.3%
Chippewa	3,741	14,357	26.1%	0%	5%	31.1%
Chisago	8,270	33,335	24.8%	3%	5%	32.8%
Clay	14,084	42,149	33.4%	3%	5%	41.4%
Clearwater	983	5,362	18.3%	2%	0%	20.3%
Cook	1,412	6,322	22.3%	3%	5%	30.3%
Cottonwood	5,920	12,758	46.4%	2%	5%	53.4%
Crow Wing	48,058	90,190	53.3%	7%	5%	65.2%
Dakota	180,581	413,647	43.7%	3%	5%	51.7%
Dodge	5,868	15,974	36.7%	3%	5%	44.7%
Faribault	6,029	16,167	37.3%	3%	5%	45.3%
Fillmore	2,452	11,421	21.5%	3%	5%	29.5%
Freeborn	17,594	45,308	38.8%	3%	5%	46.8%
Goodhue	13,421	45,026	29.8%	1%	5%	35.8%
Grant	799	3,719	21.5%	0%	5%	26.5%
Hennepin	598,179	1,609,475	37.2%	3%	5%	45.2%
Houston	2,443	8,551	28.6%	3%	5%	36.6%
Hubbard	6,539	21,856	29.9%	3%	5%	37.9%
Isanti	7,416	33,037	22.4%	3%	5%	30.4%
Itasca	14,536	42,551	34.2%	3%	5%	42.2%
Jackson	3,623	9,676	37.4%	3%	5%	45.4%
Kanabec	2,374	12,092	19.6%	2%	5%	26.6%
Kandiyohi	7,131	37,140	19.2%	2%	5%	26.2%
Kittson	684	2,545	26.9%	3%	5%	34.9%
Koochiching	3,121	11,846	26.3%	1%	5%	32.3%
Lac qui Parle	1,531	6,990	21.9%	3%	5%	29.9%
Lake	2,760	9,701	28.5%	3%	5%	36.5%
Lake of The Woods	1,289	4,072	31.6%	1%	5%	37.6%
Le Sueur	10,918	30,389	35.9%	3%	5%	43.9%
Lincoln	622	3,846	16.2%	3%	5%	24.2%
Lyon	15,657	37,141	42.2%	0%	5%	47.2%
Mahnomen	346	2,015	17.1%	3%	5%	25.1%
Marshall	839	6,006	14.0%	3%	5%	22.0%
Martin	21,392	34,064	62.8%	3%	5%	70.8%
McLeod	15,793	37,910	41.7%	2%	5%	48.7%
Meeker	4,116	14,423	28.5%	3%	5%	36.5%
Mille Lacs	1,798	17,165	10.5%	1%	5%	16.5%
Morrison	12,018	25,781	46.6%	3%	5%	54.6%
Mower	18,241	46,598	39.1%	3%	5%	47.1%
Murray	2,461	6,538	37.6%	3%	5%	45.6%

**County Survey Responses**  
**Recycling rate**

County	Tons collected for recycling	Total MSW generated	Percent of MSW collected for recycling	Source reduction credit	Yard waste credit	Recycling rate with credits
Nicollet	15,090	34,601	43.6%	3%	5%	51.6%
Nobles	6,629	15,664	42.3%	3%	5%	50.3%
Norman	1,017	4,219	24.1%	0%	0%	24.1%
Olmsted	52,390	143,638	36.5%	3%	5%	44.5%
Otter Tail	23,342	60,110	38.8%	3%	5%	46.8%
Pennington	2,126	17,220	12.3%	3%	5%	20.3%
Pine	6,512	28,650	22.7%	3%	5%	30.7%
Pipestone	3,686	9,673	38.1%	3%	5%	46.1%
Polk	10,545	28,517	37.0%	3%	5%	45.0%
Pope/Douglas	17,384	49,635	35.0%	3%	5%	43.0%
Ramsey	302,847	724,590	41.8%	3%	5%	49.8%
Red Lake	583	2,256	25.9%	3%	5%	33.9%
Redwood	16,307	26,243	62.1%	3%	5%	70.1%
Renville	3,285	13,782	23.8%	3%	5%	31.8%
Rice	45,378	96,246	47.1%	3%	5%	55.1%
Rock	4,957	9,686	51.2%	3%	5%	59.2%
Roseau	8,720	19,999	43.6%	3%	5%	51.6%
Scott	71,523	143,231	49.9%	3%	5%	57.9%
Sherburne	31,407	85,814	36.6%	3%	5%	44.6%
Sibley	4,968	11,593	42.9%	3%	5%	50.9%
St. Louis - partial	62,748	117,935	53.2%	3%	5%	61.2%
Stearns	87,155	163,819	53.2%	3%	5%	61.2%
Steele	45,092	79,892	56.4%	2%	5%	63.4%
Stevens	1,490	7,532	19.8%	3%	5%	27.8%
Swift	3,093	8,497	36.4%	3%	5%	44.4%
Todd	18,164	30,709	59.1%	2%	5%	66.1%
Traverse	415	2,306	18.0%	3%	5%	26.0%
Wabasha	14,763	25,224	58.5%	3%	5%	66.5%
Wadena	8,283	17,325	47.8%	1%	5%	53.8%
Waseca	37,295	48,175	77.4%	1%	5%	83.4%
Washington	89,797	197,058	45.6%	3%	5%	53.6%
Watowan	2,615	11,101	23.6%	0%	0%	23.6%
Wilkin	1,056	4,153	25.4%	3%	5%	33.4%
Winona	24,180	52,546	46.0%	3%	5%	54.0%
WLSSD	55,770	126,840	44.0%	3%	5%	52.0%
Wright	15,432	70,239	22.0%	3%	5%	30.0%
Yellow Medicine	1,843	8,238	22.4%	1%	5%	28.4%
Metro Area	1,431,513	3,523,036	40.63%	3.0%	5.0%	48.6%
Greater Minn.	1,092,122	2,577,712	42.37%	2.5%	4.8%	49.7%
Minnesota	2,523,635	6,100,748	41.37%	2.6%	4.8%	48.7%