

08 - 0158

Regional

Regional

Report

Participation in the Livable Communities Act Local Housing Incentives Account – 2008

February 1, 2008

**A Report to the
Legislature Fulfilling
Minnesota Statute 473.254
Section 5, Subsection 9**



Metropolitan Council

390 Robert Street North, St. Paul, Minnesota 55101

Metropolitan Council Members

| | |
|-------------------------------|--------------------|
| Peter Bell | Chair |
| Roger Scherer | District 1 |
| Tony Pistilli | District 2 |
| Mary Hill Smith | District 3 |
| Craig Peterson | District 4 |
| Russ Susag | District 5 |
| Peggy Leppik | District 6 |
| Annette Meeks | District 7 |
| Lynette Wittsack | District 8 |
| Natalie Haas Steffen | District 9 |
| Kris Sanda | District 10 |
| Georgeanne Hilker | District 11 |
| Sherry Broecker | District 12 |
| Rick Aguilar | District 13 |
| Kirstin Sersland Beach | District 14 |
| Daniel Wolter | District 15 |
| Brian McDaniel | District 16 |

| | |
|----------------------|---|
| General phone | 651-602-1000 |
| Data Center | 651-602-1140 |
| TTY | 651-291-0904 |
| E-mail | <i>data.center@metc.state.mn.us</i> |
| Web site | <i>www.metrocouncil.org</i> |

Publication No. 78-08-008

Printed on recycled paper with at least 20% post-consumer waste.

On request, this publication will be made available in alternative formats to people with disabilities. Call the Metropolitan Council Data Center at 651 602-1140 or TTY 651 291-0904.

INTRODUCTION

The Metropolitan Livable Communities Act (LCA) requires the Metropolitan Council to report by February 1 of every year which municipalities elected to participate and which did not elect to participate in the local housing incentive account (LHIA) program for that calendar year (Minnesota Statutes 473.254, section 5, subsection 9).

LCA PARTICIPATION

The LCA supports regional policy which calls for the expansion of the opportunities for affordable and life-cycle housing throughout the region, creative planning that links jobs, transportation and housing, and revitalization of the region's older cities. Communities within the seven-county area that participate in the local housing incentives account program may receive grants or loans from the three funding accounts of the LCA Fund. These funds are the tax base revitalization account, livable communities demonstration account, and the local housing incentives account. Only LCA participating communities may apply for and receive grants from the polluted sites clean-up program administered by the Minnesota Department of Employment and Economic Development. In addition, the law says the Council "shall give consideration to a municipality's participation" in the Local Housing Incentives Account program when making discretionary funding decisions.

At the beginning of 2007, 105 communities were participants in the LCA's local housing incentives program. There was no change in the communities participating in the LCA during 2007.

**MUNICIPALITIES PARTICIPATING
IN THE METROPOLITAN LIVABLE COMMUNITIES ACT
LOCAL HOUSING INCENTIVES PROGRAM IN 2008**

ANOKA COUNTY

Anoka
Blaine
Centerville
Circle Pines
Columbia Heights
Columbus
Coon Rapids
Fridley
Hilltop
Lexington
Lino Lakes
Oak Grove
Ramsey
St. Francis
Spring Lake Park

CARVER COUNTY

Carver
Chanhassen
Chaska
Cologne
Hamburg
Mayer
New Germany
Norwood/Young
 America
Victoria
Waconia
Watertown

DAKOTA COUNTY

Apple Valley
Burnsville
Eagan
Empire Twp.
Farmington
Hastings
Inver Grove Heights
Lakeville
Mendota Heights
Rosemount

South St. Paul
Sunfish Lake
West St. Paul

HENNEPIN COUNTY

Bloomington
Brooklyn Center
Brooklyn Park
Champlin
Crystal
Dayton
Eden Prairie
Edina
Excelsior
Golden Valley
Hopkins
Long Lake
Loretto
Maple Grove
Maple Plain
Medina
Minneapolis
Minnetonka
Minnetonka Beach
Mound
New Hope
Orono
Osseo
Plymouth
Richfield
Robbinsdale
Rogers
St. Anthony
St. Bonifacius
St. Louis Park
Wayzata

RAMSEY COUNTY

Arden Hills
Falcon Heights
Lauderdale
Little Canada

Maplewood
Mounds View
New Brighton
North St. Paul
Roseville
St. Paul
Shoreview
Vadnais Heights
White Bear Twp.
White Bear Lake

SCOTT COUNTY

Belle Plaine
Elko-New Market
Jordan
Prior Lake
Savage
Shakopee

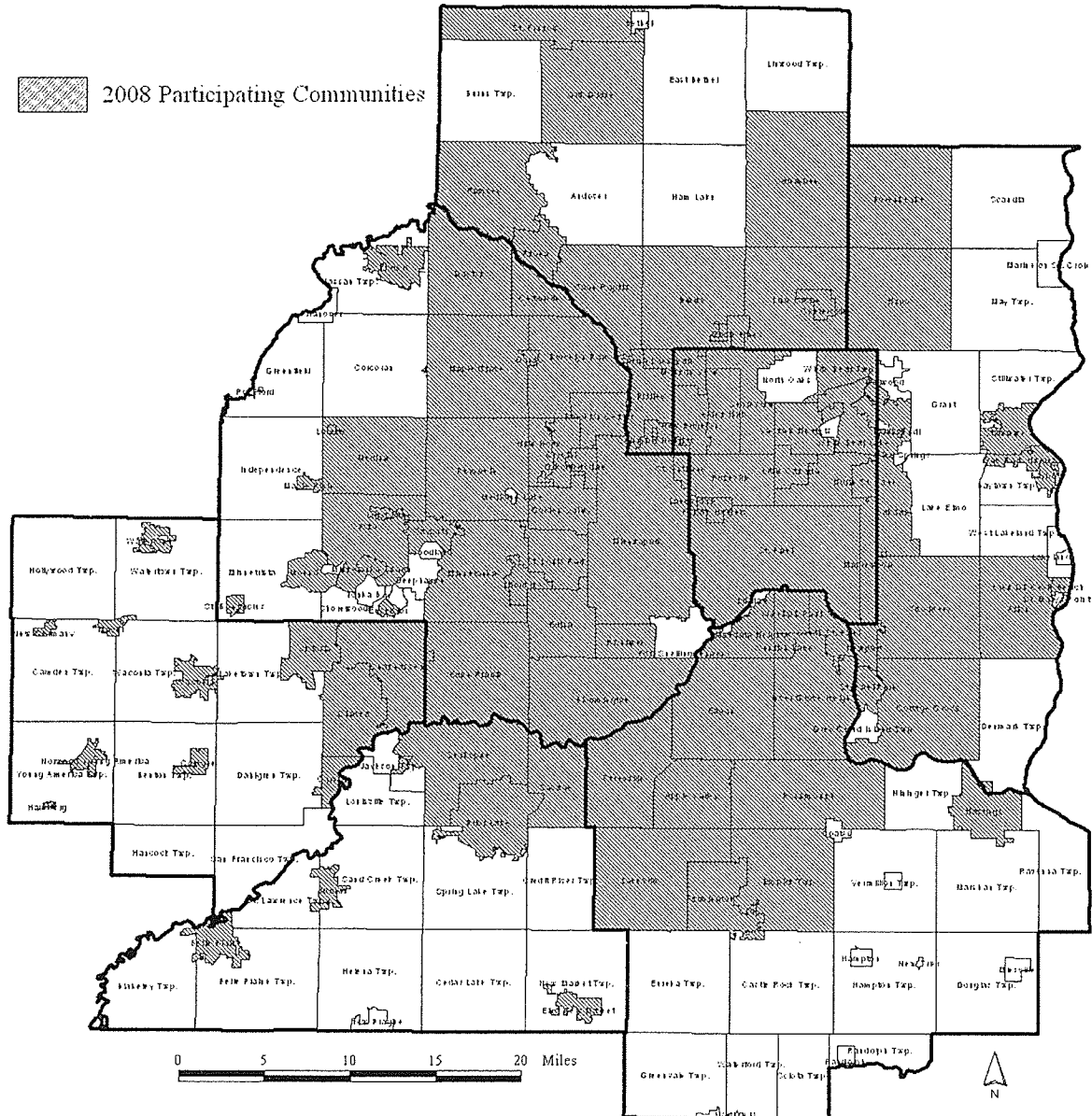
**WASHINGTON
COUNTY**

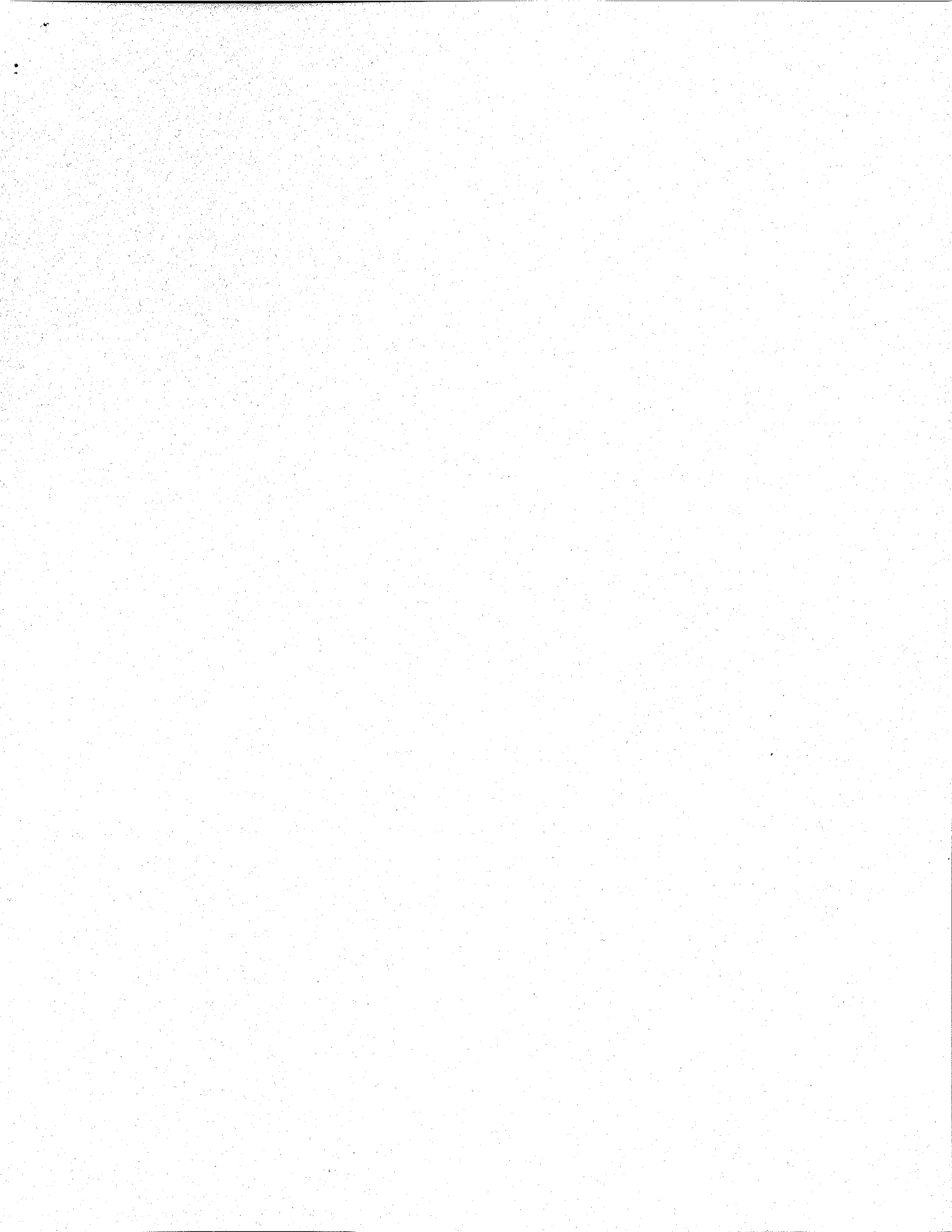
Afton
Bayport
Cottage Grove
Forest Lake
Hugo
Lake St. Croix Beach
Landfall
Mahtomedi
Newport
Oakdale
Oak Park Heights
St. Paul Park
Stillwater
Willernie
Woodbury


**MUNICIPALITIES NOT PARTICIPATING IN THE
LOCAL HOUSING INCENTIVES PROGRAM IN 2008**

| | |
|-------------------|---------------------|
| Andover | Lakeland |
| Baytown Twp. | Lakeland Shores |
| Belle Plaine Twp. | Laketown Twp. |
| Benton Twp. | Lilydale |
| Bethel | Linwood Twp. |
| Birchwood | Louisville Twp. |
| Blakeley Twp. | Marine on St. Croix |
| Burns Twp. | Marshan Twp. |
| Camden Twp. | May Twp. |
| Castle Rock Twp. | Medicine Lake |
| Cedar Lake Twp. | Mendota |
| Coates | Miesville |
| Corcoran | Minnetrissa |
| Credit River Twp. | New Market Twp. |
| Dahlgren Twp. | New Trier |
| Dellwood | New Scandia |
| Deephaven | Nininger Twp. |
| Denmark Twp. | North Oaks |
| Douglas Twp. | Pine Springs |
| East Bethel | Randolph |
| Eureka Twp. | Randolph Twp. |
| Gem Lake | Ravena Twp. |
| Grant | St. Lawrence Twp. |
| Greenfield | St. Mary's Point |
| Greenvale Twp. | San Francisco Twp. |
| Greenwood | Sand Creek Twp. |
| Grey Cloud Twp. | Sciota Twp. |
| Ham Lake | Shorewood |
| Hampton | Spring lake Twp. |
| Hampton Twp. | Spring Park |
| Hancock Twp. | Stillwater Twp. |
| Hassan Twp. | Tonka Bay |
| Helena Twp. | Vermillion |
| Hollywood Twp. | Vermillion Twp. |
| Independence | Waconia Twp. |
| Jackson Twp. | Waterford Twp. |
| Lake Elmo | Watertown Twp. |
| | West Lakeland Twp. |
| | Woodland |
| | Young America Twp. |

Twin Cities Metropolitan Area Livable Communities Act Participants, 2008





 **Metropolitan Council**

390 N. Robert St.
St. Paul, Minnesota 55101-1805

(651) 602-1000

TTY • 291-0904

E-mail • data.center@metc.state.mn.us

Website • www.metrocouncil.org

Upon request, this publication will be made available in
alternative formats to people with disabilities.

