



Metropolitan Council  
2007 Annual Report



Moving Us  
*Forward*

transportation  
water resources  
regional parks  
planning  
housing



Contact Information

General Offices – Regional Administration  
651-602-1000  
TTY 651-291-0904

Chair and Regional Administrator’s Offices  
651-602-1390  
Fax 651-602-1358

Environmental Services  
651-602-1005

Metro Transit  
612-349-7400

Metro Mobility Service Center  
651-602-1111  
TTY 651-221-9886  
Customer information for transit services  
for certified riders with disabilities

Transit Information Center  
612-373-3333

Metro Transit Rideshare  
612-373-3333, Option 4  
Commuting options, employer trip-planning  
and travel-demand management

Metro HRA  
651-602-1428  
Housing Choice vouchers for low-income  
families and individuals

Regional Data Center  
651-602-1140  
Maps, CD-ROMs, reports and publications  
Email: data.center@metc.state.mn.us

Public Comment Line  
651-602-1500  
24-hour voice mail for comments, ideas,  
suggestions

www.metrocouncil.org for regional info  
www.metrotransit.org for transit, rideshare,  
and employer program information

Contents

Page 1.....Chair’s Letter

Page 2.....Transportation

Page 6.....Water Resources

Page 10.....Parks

Page 14.....Planning

Page 16.....Housing

Page 18.....Council Members

Page 20.....2007 Budget

Council Mission

The mission of the Metropolitan Council is to develop, in cooperation with local communities, a comprehensive regional planning framework, focusing on transportation, wastewater, parks and aviation systems, that guides the efficient growth of the metropolitan area. The Council operates transit and wastewater services, and administers housing and other grant programs.

## Recalling our past, shaping our future



Last year marked the 40th anniversary of the Metropolitan Council's creation. Our anniversary provided an opportunity to reflect on the problems that led to the Council's creation and the considerable progress that has been made, as well as some of the challenges that lie ahead.

We did this through a half-hour documentary produced in cooperation with Twin Cities Public Television, a Regional Policy Conference conducted with the support of The McKnight Foundation and other activities throughout the year.

However, 2007 was much more than a year of introspection. The Council moved forward aggressively on a number of fronts. Major milestones included:

- Securing federal funding to begin construction of the region's first commuter rail line in the Northstar corridor, and moving forward with plans for our second light-rail line in the Central corridor.
- Winning a \$133 million federal grant to improve transit and ease traffic congestion in the Twin Cities metro area.
- Gaining approval of legislation authorizing a new Regional Parks Foundation to solicit funds from the private sector and accelerate the acquisition of land for our regional parks system.
- Increasing our use of renewable fuels and partnering with the University of Minnesota on research aimed at developing new sources of renewable energy.

These and other accomplishments are detailed in the pages that follow. In many cases, they would not have been possible without the active support of project partners at the local, state and national levels. The Council looks forward to continued collaboration with our partners as we seek solutions to the problems that lie ahead.

Peter Bell  
Chair  
Metropolitan Council

## Council Members

<i>District 1</i>	Roger Scherer, Plymouth 763-557-9749 roger.scherer@metc.state.mn.us
<i>District 2</i>	Tony Pistilli, Brooklyn Park 763-228-1867 tony.pistilli@metc.state.mn.us
<i>District 3</i>	Mary Hill Smith, Wayzata 952-475-1388 mary.smith@metc.state.mn.us
<i>District 4</i>	Vacant
<i>District 5</i>	Russ Susag, Richfield 612-259-2927 russ.susag@metc.state.mn.us
<i>District 6</i>	Peggy Leppik, Golden Valley 763-546-3328 peggy.leppik@metc.state.mn.us
<i>District 7</i>	Annette Meeks, Minneapolis 612-341-8168 annette.meeks@metc.state.mn.us
<i>District 8</i>	Lynette Wittsack, Minneapolis 612-788-1235 lynette.wittsack@metc.state.mn.us
<i>District 9</i>	Natalie Steffen, Ramsey 763-753-4298 natalie.steffen@metc.state.mn.us
<i>District 10</i>	Kris Sanda, Blaine 763-757-1962 kris.sanda@metc.state.mn.us
<i>District 11</i>	Georgie Hilker, White Bear Lake 651-426-1750 georgie.hilker@metc.state.mn.us
<i>District 12</i>	Sherry Broecker, Forest Lake 651-486-0816 sherry.broecker@metc.state.mn.us
<i>District 13</i>	Richard Aguilar, West St. Paul 651-665-0633 rick.aguilar@metc.state.mn.us
<i>District 14</i>	Kirstin Sersland Beach, St. Paul 651-224-8334 kirsten.beach@metc.state.mn.us
<i>District 15</i>	Daniel Wolter, Eagan 651-882-7814 dan.wolter@metc.state.mn.us
<i>District 16</i>	Brian McDaniel, Apple Valley 952-239-3612 brian.mcdaniel@metc.state.mn.us





# *Transit improvement projects gain momentum*

In a recent survey, 55 percent of metro area residents said they believe it is “very important” to invest in new rail transit options. Substantial percentages also consider it very important to expand the bus system, add new express bus routes and increase the number of park-and-ride lots.

The good news is that this region is moving forward on all fronts. In 2007, the region made progress toward the development of four bus and rail “transitways” in heavily traveled corridors:

- Northstar commuter rail
- Central Corridor light-trail transit (LRT)
- I-35W bus rapid transit (BRT)
- Cedar Avenue BRT

All of these projects are part of the Council’s 2030 plan to expand the bus system, develop a network of transitways and slow the growth in traffic congestion.

# transportation

## Northstar on track to open in 2009

A \$158.6 million federal grant for Northstar will help build the region's first commuter-rail line between downtown Minneapolis and Big Lake, and purchase the rolling stock needed to begin service in late 2009.

In 2007, the Council and project partners broke ground for the line's maintenance facility in Big Lake, began a four-block extension of the Hiawatha LRT line, and ordered four remanufactured locomotives and 17 passenger cars. They will feature colors reminiscent of the Hiawatha LRT vehicles, while retaining the "north star" icon that has long been associated with the project.

The \$320 million line will feature stations in Big Lake, Elk River, Anoka, Coon Rapids and a new intermodal station in downtown Minneapolis. The line will serve a projected 5,900 riders per weekday by 2030 and provide a predictable, 41-minute commute downtown in one of the region's fastest-growing corridors.

## Central Corridor LRT project advances



The Central Corridor LRT project moved forward in 2007 with the establishment of a project office, the hiring of staff and key consultants, and the formation of several advisory committees to provide public input during preliminary engineering.

As originally proposed, the line would feature 16 stations between downtown St. Paul and Minneapolis, plus five shared stations with the Hiawatha line in down-

town Minneapolis. It would terminate at the new intermodal station near the Twins new ballpark, which is scheduled to open in 2010.

During preliminary engineering, some features of the proposed line may have to be changed to reduce its cost and meet federal cost-effectiveness requirements. The goal is to complete preliminary engineering in 2008, win federal approval to begin final design and complete construction by 2014. The line will carry a projected 38,000 riders each weekday by 2020 and 43,000 riders by 2030.



## Region wins UPA grant

This region was one of five metro areas to win funding last year under the U.S. Department of Transportation's new Urban Partnership Agreement (UPA) program. Grantees agree to use aggressive congestion reduction strategies under the umbrella of four T's – tolling, transit, telecommuting and technology.

### The Twin Cities' \$133 million federal grant will help fund:

- Dynamically priced shoulder lanes – a new concept for this region – on I-35W from 46th Street to downtown Minneapolis.
- Conversion of the High Occupancy Vehicle (HOV) lane to High Occupancy Toll (HOT) lane on I-35W south of 46th Street, including the Crosstown section now under construction, to Burnsville Parkway.
- Development of three new park-and-ride lots in the I-35W corridor and the acceleration of several planned lots in the Cedar Avenue corridor.
- Construction of double-lane dedicated bus lanes in downtown Minneapolis on Marquette and Second Avenues, along with wider sidewalks, improved passenger waiting shelters, improved lighting and streetscaping.



## Regional transit ridership soars



Fueled by high gasoline prices and traffic congestion, Metro Transit ridership for 2007 was on pace to top 77 million, the highest level since 1982. The region's core bus system carried an average of 220,000 riders per weekday and the Hiawatha LRT line served another 28,000 per weekday, exceeding the line's pre-construction estimates for the year 2020.

Ridership on suburban transit authority buses and the Council's contracted regular-route buses experienced similar increases. Total ridership on those services grew

from 6.7 million rides in 2006 to an estimated 7.2 million rides in 2007, a jump of more than 6 percent

Meanwhile, Metro Transit ramped up its efforts to protect the environment and improve the security of its passengers.

Metro Transit took delivery of 19 hybrid electric buses, the first of 169 that will be added to its fleet over the next five years. These buses get 22 percent better mileage and produce 90 percent lower emissions than the vehicles they replace. For its conventional diesel buses, Metro Transit made the switch in August from a 5 percent biodiesel fuel to a 10 percent blend and will go to a 20 percent blend in the summer months starting in 2008.

To enhance security, Metro Transit added four police officers and four community service officers to its police force, increased the bus presence of transit police by 500 percent, retrofitted 260 buses with high-tech digital surveillance cameras and made this the standard for all new buses.



## Other transportation highlights:

- The Council approved a \$2.5 billion regional Transportation Improvement Program for 2008-11 to acquire land and build new roads, maintain existing ones and fund transit projects.
- Use of park-and-ride lots increased 11 percent in the 12 months ending October 2007. The Council continued to expand the region's park-and-ride facilities, opening or starting construction of ramps or lots ranging from 550 to 1,450 spaces in Minnetonka, Brooklyn Center and Bloomington.
- Participation continued to grow in Metropass, the Council's employer-subsidized transit program. Some 170 employers now make the pass available to nearly 148,000 employees. Ridership by Metropass users was up more than 15 percent for 2007.
- Metro Mobility in 2007 provided a projected 1.15 million rides to people with disabilities while maintaining an on-time performance rate of more than 97 percent.





# *water resources*

Most people don't think twice about being able to turn a faucet to get clean drinking water or flush a toilet to get rid of wastewater.

That's because the Metropolitan Council and other government agencies work hard to ensure an adequate, safe supply of water for the growing region and to build, operate and maintain a wastewater collection and treatment system that protects the public health and the environment.

The Council moved forward on several fronts in 2007 to help effectively manage the region's water resources:

- Achieved outstanding performance at its wastewater treatment plants.
- Worked in partnership with communities to reduce inflow and infiltration of stormwater into sanitary sewers.
- Made progress toward achieving a 15 percent reduction in energy use by 2010 in the wastewater collection and treatment system.
- Laid the groundwork for development of a regional water supply master plan by the end of 2008.



*Protecting  
the region's  
water  
resources*



## Wastewater plants are tops in nation

The Metropolitan Council's Environmental Services Division (MCES) maintains about 600 miles of regional wastewater collection pipes and operates eight regional wastewater treatment plants, treating more than 250 million gallons of wastewater each day from 104 communities. Two of those plants are among the top 11 in the nation when measured by consecutive years of full compliance with their clean water discharge permits.

In 2007, the National Association of Clean Water Agencies (NACWA) recognized the Hastings and St. Croix Valley Wastewater Treatment Plants for 16 and 15 consecutive years, respectively, of full compliance with environmental permits (based on their 2006 performance). The Seneca Plant earned a Platinum 6 Award for recording its sixth consecutive year of full compliance.

In addition to the awards for sustained compliance, NACWA gave Gold Awards to plants that achieved full compliance in 2006, and Silver Awards for plants with no more than five permit exceedances. Earning Gold Awards were Blue Lake, Eagles Point and Rosemount; earning Silver Awards were Empire and Metro.

## Keeping clear water out of sewers

The Council's program to reduce the inflow and infiltration (I/I) of stormwater into sanitary sewers in the region produced solid results in 2007.

All 46 of the region's communities with excessive I/I took action to reduce the problem. For the second year, the Council in 2008 will defer proposed surcharges on community wastewater bills because of further commitments made by the communities to reduce I/I to acceptable levels.

The Council initiated a grant program to provide matching funds for local spending to disconnect foundation drains from the sanitary sewer system, a significant source of I/I. Communities are eligible for grants up to half the cost of individual disconnections, with a cap of \$1,000 for each disconnection. A total of \$700,000 is available in 2008.

The overall I/I reduction program has become a national model for addressing the problem before it becomes a crisis. Excess clear water robs the regional wastewater collection and treatment system of capacity needed for future growth, and accelerates the need for expensive infrastructure improvements. It also can cause sewer backups, resulting in threats to human health and the environment.



Wastewater collection and treatment is an energy-intensive business, and for many years MCES has worked to achieve greater energy efficiencies. Last year, MCES set an ambitious goal to reduce, or offset by renewable energy purchased, the net non-renewable energy needed for MCES facilities by 15 percent by 2010.

Energy activities undertaken in 2007 will result in an annual energy savings of four gigawatt hours, or 15 percent of MCES' 2010 goal. The savings go beyond previous gains, including savings from the start-up of the Metro Plant's new Solids Management Building. The reduction in energy use, combined with utility rebates received in 2007, saved the Council approximately \$360,000 over 2006.

The Council will continue to pursue energy reduction efforts, among them:

- Work in-house, with Xcel Energy and with other consultants to identify and implement a variety of energy-saving projects at the treatment plants.
- Join with the University of Minnesota to research the feasibility of growing algae in wastewater effluent as a renewable fuel source.
- Collaborate with the Metro Counties Energy Task Force on a wind generation initiative.
- Work with the State Interagency Energy Team.





Although the Twin Cities metro area is a relatively water-rich region, steady population growth – and the emerging issue of climate change – require careful planning to ensure an adequate supply of water for future generations. The 2005 Minnesota Legislature directed the Council to develop a base of technical information for water supply planning decisions and to prepare a regional water supply master plan.

In early 2007, the Council completed the first phase of its work and submitted a report to the Legislature. As a result, the Legislature acted on a recommendation in the report to clarify agency roles in the regional and state review of local water supply plans. The Council and Minnesota Department of Natural Resources are working to further improve and streamline the water supply decision-making process.

The second phase of the Council's work is laying the groundwork for completion of the water supply master plan by the end of 2008. The Council developed an online water conservation toolbox to help communities implement best management practices, improve water use efficiencies and meet water permitting requirements. The Council and its partners also are developing a new groundwater flow model designed to evaluate resource availability and develop options where local issues are identified.

The Council continues to work with federal and state agencies, local officials and other stakeholders to evaluate and support activities that improve the safety, security and reliability of local water systems. The Council is guided by a 13-member Metropolitan Water Supply Advisory Committee comprised of state agency, city and county representatives.







# *parks*

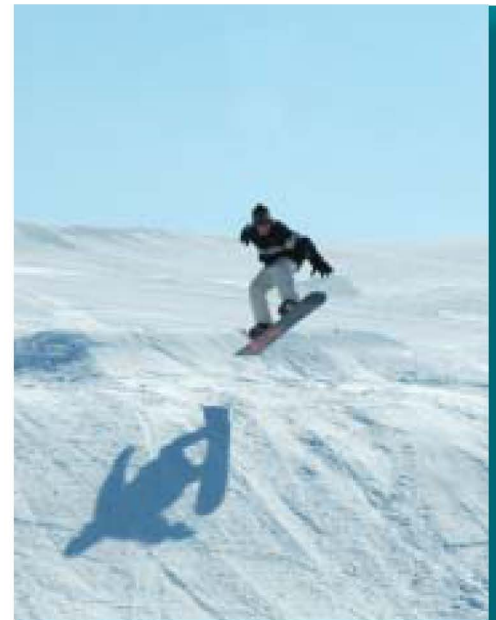
*Hike a prairie trail.  
Fish a placid lake.  
Ski through pristine forest.  
Splash in a giant wave pool.  
Enjoy a sumptuous picnic.*

The seven-county metropolitan area's network of regional parks and trails is the envy of urban areas around the country. The system:

- Has 49 regional parks, 177 miles of regional trails and six special recreation areas
- Protects 52,600 total acres of park land that includes lakeshore, wetlands, hardwood forests and native prairies
- Attracts more than 33 million visitors each year

A recent survey shows that 34 percent of metro area residents identify parks, trails and the natural environment as the region's single-most attractive feature; 78 percent say it is important to purchase land now for future regional parks and park expansion.









## Raising private funds for parks

Achieving the Council's vision for a regional park system to serve the seven-county metro area in 2030 and beyond is the challenge.

The Council proposes to add:

- 7 new regional parks, identified in partnership with local, regional and state planners
- 17,400 acres of new park land and 700 miles of trails

The cost of acquiring the remaining park lands is estimated at \$300 million in today's dollars. Opportunities for purchasing future park land will be lost if acquisition funds are not available as land goes on the market. Current and anticipated funding by the state and Metropolitan Council are not adequate to fund this expansion. Additional funding from private sources would complement the public sources, and serve as an incentive to achieve matching public funds.

In 2007 the Minnesota Legislature authorized the Metropolitan Council to establish a Regional Parks Foundation to serve as a park advocate and benefactor.

The Foundation will partner with other nonprofit conservation and parks organizations, such as the Parks and Trails Council of Minnesota, to promote, encourage and solicit private funds. It will coordinate efforts with the regional park agencies that own, manage and steward the region's parks, and it will seek out and encourage private landowners to make conservation donations at below-market prices.





## A park for the future

The Council approved an acquisition master plan for Cedar Lake Farm, a new regional park in southern Scott County, and provided \$1 million from the Regional Park Acquisition Opportunity Fund to help acquire land for the proposed park. The Council also will allow up to \$3.5 million in acquisition costs to be eligible for reimbursement consideration in a future regional parks capital improvement program. The park will not be developed for many years.



## State funding to acquire and maintain parks

In 2007, the Minnesota Legislature appropriated \$2.5 million of Environment and Natural Resources Trust Funds to the Council's Regional Parks Acquisition Opportunity Fund, as recommended by the Legislative Citizens Commission on Minnesota Resources. The Council issued \$1.66 million of regional bonds to match the appropriation, for a total addition of \$4.16 million to the fund. During 2007 the Council granted \$1.2 million of that amount to help purchase 62 acres for Cedar Lake Farm Regional Park, noted above, and 8 acres for the future Grey Cloud Island Regional Park in Washington County.



The 2007 Legislature also appropriated \$4.05 million of general funds and \$4.57 million in lottery revenue to help pay for operation and maintenance of the regional parks. These funds were distributed to the 10 regional park implementing agencies using a state-sanctioned formula. The funds financed 9.7% of the 2007 budgeted costs to operate and maintain the park system.

## Council changes funding formula

The Council changed the formula for distribution of its regional parks capital improvement program funds for 2008-09. The total amount appropriated will be split among the 10 regional park implementing agencies based on population (70%) and number of visits to the parks from people living outside a given agency's jurisdiction (30%). The park agencies rank their projects for funding; the projects must be consistent with Council-approved master plans.

# planning



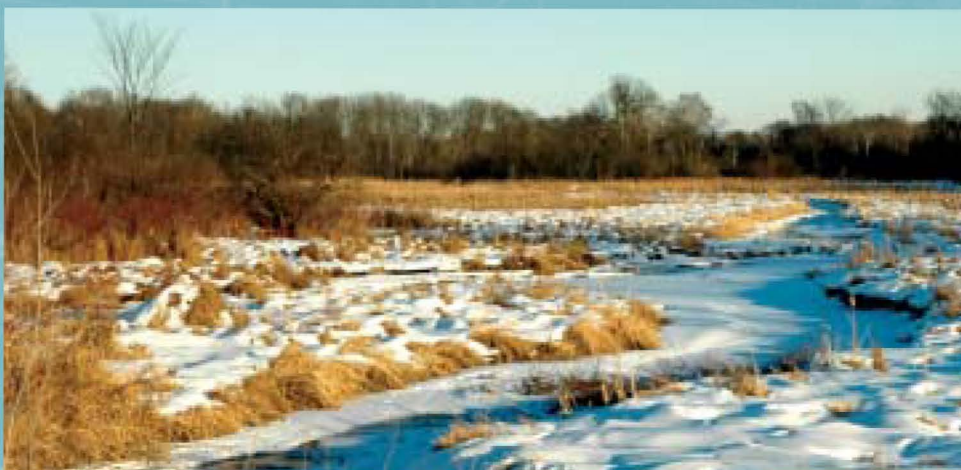
## Comprehensive plan updates due in 2008

From St. Francis in northern Anoka County to Randolph in southern Dakota County, communities in the seven-county metro region are laying out their visions for what they will look like in the year 2030.

Under state law, each the region's 189 municipalities and seven counties must update its local comprehensive plan at least once every 10 years. Looking into the future, the plans address land use, transportation, water supply, stormwater and wastewater management, parks and open space, and a variety of other issues.

In 2007, Council staff sector representatives held numerous meetings and phone consultations with local communities to provide guidance and information in the planning process. The Council also provided both financial and technical tools to communities engaged in updating their plans, among them:

- Planning grants of up to \$20,000 for single communities or \$50,000 to counties or groups of communities.
- The award-winning, online Local Planning Handbook, which features all the forecasts and forms that communities need to complete their plans.
- The Guide for Transit-Oriented Development, an online resource to aid communities in capitalizing on the economic development potential of transit corridors.



Internally, the Council's Planning and Growth Management Department is the pilot project for the Council's new Electronic Content Management System. The Council is digitally scanning each submitted comprehensive plan so that the relevant sections can get to staff reviewers more quickly. Smaller communities that expect little change in their plans may also request that their previous plan be scanned so they can update the plans easily.

All 2030 plan updates are due to the Council by the end of 2008.

The Council will review the plans for consistency with the *2030 Regional Development Framework* and the regional system plans for transportation, water resources, and parks and open space.



## New online mapping tools

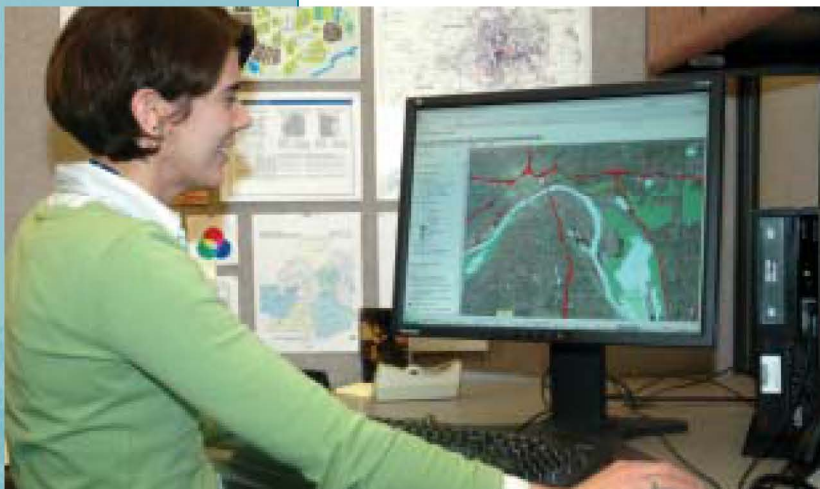
In 2007, the Council launched new online mapping services. An interactive map allows users to build their own maps about the population, demographics, land use, resources and infrastructure of the metro area as a whole or for a smaller area such as a city or county. Users can also access and integrate aerial photos into maps.

## Investments help keep communities vital

The Council approved more than \$3.3 million in Livable Communities grants to clean up polluted land for redevelopment in six metro area communities. The grants will help to clean up 73 acres, with resulting redevelopment creating and retaining an expected 3,653 full- and part-time jobs and increasing the net tax capacity by \$6 million. The funds are expected to leverage \$310 million in private investment. Another \$3.3 million in 2007 Tax Base Revitalization Account funds are available to be awarded in January 2008.

The Council awarded more than \$5.9 million to seven projects in five cities that demonstrate land uses that link housing, jobs and services, including transit. Grants went to projects that demonstrate:

- Good development strategies for two challenging sites along transit corridors.
- Good mix of uses and appropriate density for a redevelopment to help a community transition from an agricultural to more urban downtown.
- More intensive development at a key location on the Central Corridor light-rail transit line.
- Model partnerships to create a senior housing development integrated into a large mixed-use development.
- Integration of open space and stormwater elements in an infill development.
- Redesign of a 1960s apartment complex in a first-ring suburb, including a stormwater management upgrade, and adding more housing at the site.





# *housing*



## Council helps meet housing needs

For the first time in five years, the Council's Metropolitan Housing and Redevelopment Authority (Metro HRA) opened its Section 8 and public housing waiting lists in May 2007. The response was overwhelming:

- 15,000 requests came in over four Tuesdays through telephone calls, emails and faxes.
- Because requests were often made on behalf of multiple households, for both waiting lists, Metro HRA sent out 25,000 applications.
- Metro HRA added 5,000 names from the completed applications, drawn randomly, to the Section 8 waiting list, and 1,000 names to the public housing list.



Because the demand is so great and the federal funding limited, applicants who made the lists could still wait several years before actually receiving a voucher or a public housing unit.

While opening the waiting lists was notable, the Council continued its day-to-day work to help meet the region's need for housing affordable to families with low and moderate incomes.

**Housing choice vouchers.** Metro HRA operates the state's largest Section 8 rent assistance program





for 100 suburban communities. As it has for several successive years, Metro HRA in 2007 achieved full use of its available tenant-based federal rent subsidy funding, assisting an average of 5,885 households monthly. Rental assistance payments were made to more than 2,300 property owners, injecting \$54 million of federal, state and local funds into the regional economy. The program's waiting list comprised about 5,500 households.

**Scattered site rental housing.** Metro HRA also uses federal funds to operate a scattered-site affordable rental housing program. The Council owns 150 homes in 11 suburban communities in Anoka, Hennepin and Ramsey Counties. The program houses low- to extremely low-income families, who pay 30 percent of their income for rent and utilities.

**Housing assistance to communities.** The Council in 2007 awarded a total of nearly \$1.9



*The Conley family of Minnetonka is among the 150 households that live in one of the Council's Family Affordable Housing Program units. Pictured are (from left) Daisha, Yolanda and Dierre.*

million to support affordable housing initiatives in Minneapolis, St. Paul, six suburbs and a multi-community land trust. The funds will assist in the development or rehabilitation of 253 rental units affordable to lower-income households, and 5 new and 35 rehabilitated affordable ownership units. The grants were made from the Local Housing Incentives Account of the Livable Communities Fund, and will leverage an additional \$53.6 million in total development investments.



*Peter Bell, Chair*  
 Minneapolis  
 651-602-1390  
 peter.bell@metc.state.mn.us



*District 1*  
 Roger Scherer, Plymouth  
 763-557-9749  
 roger.scherer@metc.state.mn.us



*District 9*  
 Natalie Steffen, Ramsey  
 763-753-4298  
 natalie.steffen@metc.state.mn.us



*District 2*  
 Tony Pistilli, Brooklyn Park  
 763-228-1867  
 tony.pistilli@metc.state.mn.us



*District 10*  
 Kris Sanda, Blaine  
 763-757-1962  
 kris.sanda@metc.state.mn.us



*District 3*  
 Mary Hill Smith, Wayzata  
 952-475-1388  
 mary.smith@metc.state.mn.us



*District 11*  
 Georgie Hilker, White Bear Lake  
 651-426-1750  
 georgie.hilker@metc.state.mn.us



*District 12*  
 Sherry Broecker, Forest Lake  
 651-486-0816  
 sherry.broecker@metc.state.mn.us

*District 4*  
 Vacant





*District 5*  
Russ Susag, Richfield  
612-259-2927  
russ.susag@metc.state.mn.us



*District 13*  
Richard Aguilar, West St. Paul  
651-665-0633  
rick.aguilar@metc.state.mn.us



*District 6*  
Peggy Leppik, Golden Valley  
763-546-3328  
peggy.leppik@metc.state.mn.us



*District 14*  
Kirstin Sersland Beach, St. Paul  
651-224-8334  
kirsten.beach@metc.state.mn.us



*District 7*  
Annette Meeks, Minneapolis  
612-341-8168  
annette.meeks@metc.state.mn.us



*District 15*  
Daniel Wolter, Eagan  
651-882-7814  
dan.wolter@metc.state.mn.us



*District 8*  
Lynette Wittsack, Minneapolis  
612-788-1235  
lynette.wittsack@metc.state.mn.us



*District 16*  
Brian McDaniel, Apple Valley  
952-239-3612  
brian.mcdaniel@metc.state.mn.us

## Metropolitan Council 2007 Budget

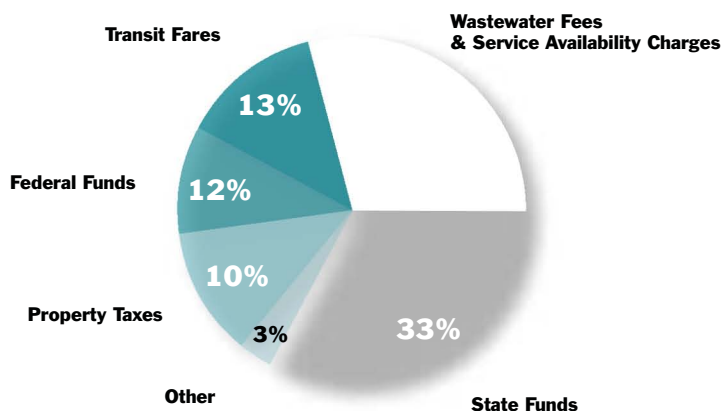
The Metropolitan Council serves the public in five principal areas:

- 1) Providing and coordinating regional transit services and travel demand management through Metro Transit and regional route service; working with transit providers, transportation agencies and businesses to reduce traffic congestion and improve air quality; and providing transportation service to people with disabilities through Metro Mobility.
- 2) Conserving and protecting vital natural resources, principally water, by collecting and treating wastewater, and coordinating water supply planning and monitoring water quality; and open space, helping to plan, acquire and develop a system of regional parks.
- 3) Providing affordable housing choices by working with communities and employers to increase the supply of affordable housing, and providing affordable housing opportunities to low- and moderate-income families through the Metro Housing and Redevelopment Authority.
- 4) Providing resources and planning assistance to communities throughout the region to support coordinated, cost-effective growth.
- 5) Increasing efficiency of regional services and investments by maintaining a AAA credit rating, making efficient and effective capital improvements, and providing cost-competitive services.

### 2007 Budget Revenue

Total = \$655,793,188

Wastewater Fees and Service Availability Charges	\$189,961,000
Transit Fares	\$ 83,006,296
Property Taxes	\$ 67,404,805
Federal Funds	\$ 81,434,149
Other	\$ 18,655,814
State Funds	\$215,331,124

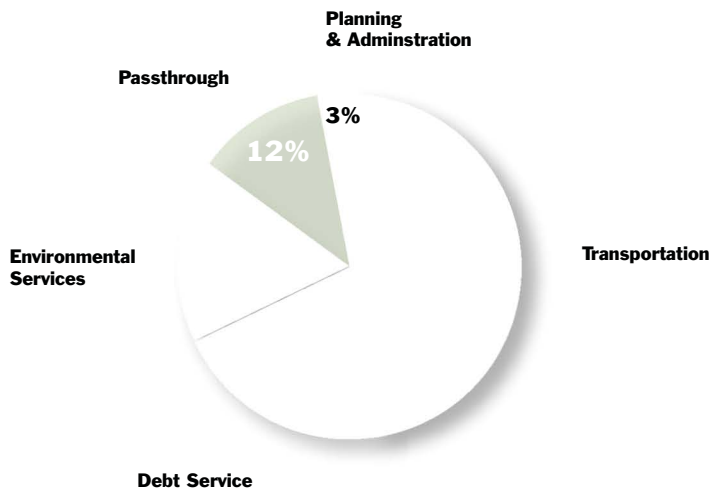


### 2007 Budget Expenditures

Total = \$662,278,418

Transportation	\$324,612,878
Environmental Services	\$110,869,445
Debt Service	\$129,943,303
Pass Through	\$ 79,409,683
Planning and Administration	\$ 17,443,109

Note: Revenues and expenditures for pass-through and debt-service funds rarely match on an annual basis. In 2007, the Council used reserves to make up the difference in revenues and expenditures.







**Regional Administrator**

Tom Weaver

**General Manager, Metro Transit**

Brian Lamb

**General Manager, Environmental Services**

Bill Moore

**Director, Metropolitan Transportation Services**

Arlene McCarthy

**Director, Community Development**

Guy Peterson

**Director, Finance and Administration**

Beth Widstrom-Anderson

**Director, Public Affairs**

Steve Dornfeld

Publication number 14-08-001

Upon request, this publication will be made available in alternative formats to people with disabilities. An annual report is required by statute.

Concept and design: Linda White.

Writing and photos: Jeanne Landkamer and Jeff Syme.

The graphic preparation and printing of this publication cost \$4,961 for a total of 2,000 copies. This publication is printed on recyclable paper.





**Metropolitan Council  
2007 Annual Report  
Appendices**



# Metropolitan Council

390 North Robert Street, St. Paul, Minnesota 55101

## Metropolitan Council Members

Peter Bell	Chair
Roger Scherer	District 1
Tony Pistilli	District 2
Mary Hill Smith	District 3
Craig Peterson	District 4
Russ Susag	District 5
Peggy Leppik	District 6
Annette Meeks	District 7
Lynette Wittsack	District 8
Natalie Haas Steffen	District 9
Kris Sanda	District 10
Georgeanne Hilker	District 11
Sherry Broecker	District 12
Rick Aguilar	District 13
Kirstin Sersland Beach	District 14
Daniel Wolter	District 15
Brian McDaniel	District 16
Tom Weaver	Regional Administrator

General phone	651 602-1000
Regional Data Center	651-602-1140
TTY	651 291-0904
E-mail	<a href="mailto:data.center@metc.state.mn.us">data.center@metc.state.mn.us</a>
Web site	<a href="http://www.metrocouncil.org">www.metrocouncil.org</a>

Publication no. 14-08-002

The graphic preparation and printing of this report cost \$208.00 for 100 copies.

Printed on recycled paper with at least 20 percent post-consumer waste.

On request, this publication will be made available in alternative formats to people with disabilities. Call the Metropolitan Council Data Center at 651 602-1140 or TTY 651 291-0904.



## **Contents**

<b>Appendix A. Studies and Recommendations .....</b>	<b>A-1</b>
<b>Appendix B. Policy Plans and Amendments Adopted in 2007 and Related Review Comments of Affected Metropolitan Agencies .....</b>	<b>B-1</b>
<b>Appendix C. 2008 Budget and Program Information .....</b>	<b>C-1</b>
<b>Appendix D. 2008 Legislative Program .....</b>	<b>D-1</b>
<b>Appendix E. Plans, Projects and Applications Submitted to the Metropolitan Council, January 1 through December 31, 2007 .....</b>	<b>E-1</b>





## **Appendix A. Studies and Recommendations**

### **Summary: 2006 Metro Residents Survey**

**Published February 2007**

Each year, the Metropolitan Council conducts the Metro Residents Survey, an annual effort dating back to the early 1980s. The Council conducts the survey to gauge what the region's residents think about quality of life, leading regional issues, problems and solutions, and the Council's portfolio of program responsibilities. The survey heightens understanding of regional issues and provides evidence that the Council can use to make the case for regional solutions.

The survey results are summarized below.

#### **■ *Transportation and crime top list of resident concerns***

Transportation and crime led the region's list of problems in an annual survey conducted by the Metropolitan Council, both as the region's most important issue and as one of the top three issues facing the region.

When asked to name the region's "single most important problem," 35 percent of area residents mentioned traffic congestion and transportation.

Public concern about crime increased from 17 percent in 2004 to 26 percent in 2005.

#### **■ *Traffic congestion leads transportation concerns***

While this is the consecutive top ranking for transportation, fewer people were concerned about transportation in 2005 than in 2003 and 2004. One interpretation is that drivers have become accustomed to traffic conditions. Transportation system research has shown that road congestion in the region may have leveled off since 2003.

#### **■ *Growing concerns about growth***

While most residents continue to feel that the region as a whole is growing at about the right pace, residents are increasingly concerned about growth in their own community. Since 2000, the percentage of residents concerned about local growth has increased from 26 percent to 38 percent.

#### **■ *Regional quality of life good, but declining?***

Positive feeling about the Twin Cities region has been consistent over 23 years of Council surveys. Ninety-six percent of survey participants said the region is a better place to live than other metropolitan areas.

However, only 14 percent of those surveyed felt the region's quality of life improved during the past year, while 31 percent said it has declined.

#### **■ *Parks and open space highly valued***

In response to a question on the "most attractive feature" of the region, 37 percent of residents identified parks, trails, lakes and the environment. The region's arts and culture scene attracted 8 percent of those surveyed; an equal number cited good neighborhoods. The region's diverse variety of things to do and shopping opportunities were each mentioned by 7 percent of those surveyed.

#### **■ *Meeting transportation needs***

A majority of the region's residents say it is very important to expand the commuter/light-rail-transit system and to pursue multiple solutions to long-term transportation needs. It's not a matter of roads or transit; it's roads AND transit.

■ **Metropolitan Council performance**

Positive public opinion about the Metropolitan Council remained steady compared to 2004, and is greatly improved from five years ago.

Sixty-nine percent of those surveyed said they have heard about the Metropolitan Council; 37 percent of those who had heard about the Council said it is doing a good or very good job.

■ ***Importance of Council programs***

At least 90 percent of those surveyed considered Council programs to monitor water quality, plan for regional growth and treat the region's wastewater to be moderately or very important. At least 70 percent of respondents gave similar ratings to all of the Metropolitan Council programs considered by the survey.

***Methodology***

Results are based on responses from 1,082 survey participants, collected in October and November 2005 by Metropolitan Council research staff. Participants were randomly selected from adult residents of the seven-county region. Responses are weighted to reflect demographic and geographic distribution. Estimates have a margin of error of plus or minus 3 percent.

***Recommendations:*** None



## **Summary: Annual Use Estimate of the Metropolitan Regional Parks System for 2006**

Published July 2007

- An estimated 33,171,200 visits were made to the Metropolitan Regional Parks System in 2006. Visitation experienced a decrease of 0.8 percent, or about 265,800 visits, from the 2005 estimate. Visitation estimates for 2005 indicated an unprecedented increase of 9.6 percent, or approximately 2.9 million visits, from 2004. The modest decrease in visitor use can partially be attributed to the impacts of seasonal weather, including the lack of snow in 2006 which impacted winter recreational activities.
- Estimated annual visits have increased 39 percent since 1995, when visits were estimated at 23.9 million. A total of 82 park and trail units were sampled in 2006 compared to 68 units sampled in 2000, and 54 in 1995.
- The following list indicates the distribution of estimated visits by seasonal day use, camping and special events:

Summer day use	43%
Special events	8%
Fall day use	21%
Winter day use	6%
Spring day use	21%
Camping	1%
- The five most visited regional parks, trails and special recreation features in 2006 were:

1. Minneapolis Chain of Lakes Regional Park	5,549,300 visits
2. Como Regional Park, Zoo and Conservatory Special Recreation Feature	2,375,000
3. Mississippi Gorge Regional Park ( <i>Minneapolis and St. Paul</i> )	2,035,700
4. Minnehaha Parkway Regional Trail	1,713,100
5. Nokomis-Hiawatha Regional Park	1,370,100
- Fifty-nine percent of all estimated visits occurred in regional parks and trails in Minneapolis and St. Paul. This reflects a decrease in the share of visits to those parks and trails in the regional system over time (65.7% share in 2000). This is due primarily to more park and trail facilities and population growth occurring outside these two cities.
- Twenty-two percent of all visits in 2006 were to regional trails and 78 percent were visits to regional parks, park reserves and special recreation features.
- Although Minneapolis Chain of Lakes and Mississippi Gorge are regional parks, the majority of visits to these parks include trail use. When trail visits to these parks are included in the total trail visit calculations, 42 percent of all 2006 visits are to trails.
- Walking is the top activity in the regional parks system (34 percent of all visits involved walking as an activity), followed by biking (19 percent), swimming (17 percent) and picnicking (13 percent) based on data collected in 1998-1999 in the Metropolitan Regional Parks and Trails Study.

**Recommendations:** None.

## **Summary: 2006 Study of the Water Quality of 186 Metropolitan Area Lakes**

**Published May 2007**

This study is the latest in a continuing series that summarize results of the Metropolitan Council's annual lake monitoring program. The Council has collected water quality data on area lakes since 1980.

The Metropolitan Council's lake monitoring programs (including the Council staff and the volunteer monitoring programs) have provided an important tool for making informed lake management decisions. Data from the Council's regional lake monitoring programs are frequently used to determine possible trends in lake water quality, to estimate expected ranges in water quality of unmonitored lakes, to examine intra-and interregional differences, to determine potential impairments due to water quality, and to investigate the relationships between land use and water quality.

This report contains data from 186 lakes sampled in 2006. Seventy-six of the 186 lakes monitored in 2006 are listed by the Minnesota Pollution Control Agency as impaired waters due to excessive phosphorus, which affects the lakes' ability to support their designated recreational uses.

- The greatest percentage of the lake sites monitored – 38 percent – received an overall grade of “C”. The water quality of these lakes is considered average as compared to others in the seven-county metropolitan area.
- When comparing the percentage of above-average lakes, those receiving grades of “A” or “B”, (24%) to below-average lakes, those receiving “D” or “F” (38%), more lakes were below average.
- Water quality data from the 141 lake sites monitored in both 2005 and 2006 seem to indicate that the metro area lakes experienced slightly worse water quality conditions in 2006 as compared to 2005. This continued a trend noted in 2005, when the lake monitoring program revealed slightly worse lake water quality than that recorded during the 2004 monitoring year.

**Recommendations:** None.



## **Summary: Water Supply Planning in the Twin Cities Metropolitan Area**

Published January 2007

The 2005 Minnesota Legislature directed the Metropolitan Council to “carry out planning activities addressing the water supply needs of the metropolitan area” (Minnesota Statutes, Section 473.1565). Specifically, the Council is charged with developing a base of technical information for water supply planning decisions and to prepare a metropolitan area master water supply plan.

The legislature also established a Water Supply Advisory Committee to assist the Council in its planning activities, and directed the Council to submit regular reports to the legislature detailing progress. This report satisfies the requirement of Minnesota Statutes, Section 473.1565, Subdivision 3, as the first report to the legislature; subsequent reports are due to the legislature every five years hereafter.

To address the legislature’s directive, the Council organized its efforts in two phases. During the first phase, culminating in a report to the Legislature, the Council undertook several activities to assess water supply availability, evaluate the decision-making and approval process and address water supply safety, security and reliability.

Through these activities, the Council has identified next steps and recommendations for improving and streamlining the water resource evaluation, planning and decision-making and approval process. Implementation of these steps and recommendations will result in a process for evaluating water resource availability prior to growth and early in the decision-making process, as part of the master water supply plan development.

The master water supply plan will include an assessment of water resources availability and water demand projections based on regional growth forecasts and evaluated on a regional/sub-regional scale to identify areas with potential supply limitations.

As a first step toward developing the base of technical information needed for sound water supply decisions, the Council collected water supply system and resource monitoring location information from throughout the region. The Council also performed an initial analysis of regional water demand projections and water resource availability. While the region’s water supplies are relatively abundant, this initial analysis highlighted areas in the region where uncertainty exists regarding whether water supplies are adequate to serve projected growth.

- With guidance from the Water Supply Advisory Committee and input from stakeholders, the Council evaluated the current water supply decision-making and approval process and agency roles.

The Department of Natural Resources (DNR), Minnesota Department of Health (MDH), and the Council each play a unique role in the water supply decision-making and approval process. While coordination exists among these agencies, opportunities were identified for improving coordination and streamlining the process. Another issue identified was overlapping community water supply plan requirements.

**Recommendation #1:** Approve changes clarifying agency roles in water supply plan review and consolidating into one statute the requirements of community water supply plans in the metropolitan area. Link water supply planning to comprehensive planning.

### **Action Steps:**

- Formalize the current Council/DNR community water supply planning review process.
- Support the DNR’s efforts to streamline water emergency and conservation plans and evaluate and implement the 10-year permit process.

- Develop a water conservation toolbox to help communities implement best management practices, improve water use efficiencies, and meet requirements of the 10-year permit.
  - Work with the DNR and MDH to develop a process for multi-agency water supply system/water appropriation approvals.
- The Council evaluated a range of safety, security and reliability issues as part of its first phase activities. Contamination (both intentional and accidental in both the distribution system and the source water area), loss of power, and natural disasters were identified as the most significant short-term risks to the region's water supplies.

While a number of federal and state regulations and programs are already in place requiring communities to identify and establish protocols for protecting the safety, security and reliability of their water supplies, there may be an opportunity in some areas to improve the protection of water supplies through a regional approach.

**Recommendation #2:** Upon the request of local governmental units, support an appropriate level of state funding for interconnections and other physical water system improvements to ensure water supply reliability, natural resource protection, and/or safety and security, including economic security, of the region and state. Consistent with this recommendation, support an appropriate level of state funding for the proposed Minneapolis and St. Paul water supply systems interconnection.

**Action Steps:**

- Evaluate and support state/regional activities that improve safety, security and reliability of local water systems.
  - Support source water protection efforts and impaired waters initiatives.
- A preliminary analysis of funding and institutional arrangements was conducted in this first phase of activity. There was general agreement among stakeholders, the Advisory Committee and the Council that a strategy for ongoing support will be necessary to make the current long-term water supply planning effort effective. In addition, there may be a need for alternate institutional arrangements to ensure the sustainability and reliability of water supplies.

**Action Steps:**

- Work closely with local jurisdictions and the Advisory Committee to explore and identify governance mechanisms to implement improvements and programs if needed.
- Develop strategies for ongoing and long-term funding for metropolitan area water supply planning activities and capital improvements.



## **Appendix B. Policy Plans and Amendments Adopted in 2006 and Related Review Comments of Metropolitan Agencies**

### **Summary: Regional Water Resources Policy Plan Amendment for the City of Oak Grove Adopted Aug. 22, 2007**

The Metropolitan Council revised the policy plan to include only areas south and east of Cedar Creek in the long-term wastewater service area.

The long-term wastewater service area map in the regional wastewater system plan had designated Oak Grove as an area with potential for sewered development. The amendment designates the portion of Oak Grove that is most feasible for future sewered development with wastewater service provided by the proposed East Bethel Water Reclamation Facilities.

The proposed wastewater treatment plant will be located in southwest East Bethel, approximately one mile from Oak Grove, and has been designated as a potential regional plant that could serve communities beyond East Bethel. Criteria used to determine the potential area of future sewered development include:

1. Potential capacity of proposed East Bethel water reclamation plant and groundwater recharge system;
2. Transportation system, including Hwy 65 (north-south), Viking Boulevard (east-west), and Hanson Boulevard (south);
3. Preservation of major natural resources, including surface waters, wetlands, and parks/wildlife areas;
4. Proximity to proposed East Bethel water reclamation plant; and
5. Reasonably contiguous undeveloped land parcels of  $\geq 10$  acres more.

The amendment to the policy plan defines a long-term wastewater service area in southeast Oak Grove with approximately 1,300 acres of developable land located one to two miles from the site of the proposed East Bethel wastewater treatment plant.

**Comments from Metropolitan Agencies: None.**



## Appendix C. 2008 Budget and Program Information

The Metropolitan Council's 2008 unified operating budget, to be submitted to the Minnesota Legislature in January 2008, contains detailed budget information and a general description of the Council's proposed program of work in 2008.

The financial objectives underlying the 2007 budget include:

- Effectively managing fund balances and reserves,
- Maintaining AAA bond rating, and
- Keeping the tax levy's impact flat on taxpayers.

The 2008 budget addresses multiple financial challenges facing the Council. These challenges include a Council commitment to maintaining a flat property tax impact to taxpayers, increasing transit demand and managing increased diesel fuel and utility costs.

### ***Operating Budget Categories***

The 2008 Unified Operating Budget is \$700.9 million, an increase of 5.3 percent from the 2007 adopted budget. The Council's unified operating budget is composed of three major categories:

- **Operating expenditures** are expenditures incurred to support the Council's primary service activities. 2008 operating expenditures are expected to be \$482.1 million, up 6.7 percent from the 2007 adopted budget. The increased expenditures are driven primarily by increased labor, diesel fuel and utility costs.
- **Pass-through grants and loans** are funds received by the Council, which are then granted, loaned or passed on to another agency, organization or individual for a specified use. 2008 pass-through grant and loan expenditures is \$80.8 million, up .5 percent from \$80.4 million in 2007, driven primarily by increased federal HUD funding.
- **Debt service** consists of expenditures required to pay both the principal and the interest on bonds, notes, certificates, and loans. 2008 debt service expenditures are \$138.1 million, up 3.6 percent from \$133.2 million in 2007, driven primarily by capital projects in MCES.

### ***2008 Program Priorities***

The Council is organized into three operating divisions – Transportation, Environmental Services, and Community Development – and supporting central administrative units.

#### **Transportation**

The 2008 transportation budget focuses on maintenance of the existing transit system, yet oriented toward continuing reasonable growth once funds become available. The 2008 budget includes \$92 million from a State General Fund appropriation for transit support. The Metropolitan Council operates or provides funding to five types of transit programs:

- **Metro Transit:** Provided roughly 64.4 million bus trips and nearly 9.4 million rail trips in 2006. The total of 73.8 million trips was the highest number of passengers since 1984.
- **Metro Mobility:** This program serves persons with disabilities that prevent them from using the regular-route transit system. This service provided 1.3 million rides in 2006.
- **Contracted Regular Routes:** Approximately 50 regular routes are contracted out to private and nonprofit organizations. This service provided an estimated 2.3 million rides in 2006.
- **Community Programs:** Dial-a-ride service is provided to rural areas and a number of cities through contracts with counties, cities and nonprofit organizations. In 2006, 500,000 rides were provided by this program through contracts with 17 transit service providers.



- **Suburban Transit Providers:** Thirteen communities provide their own transit services. The Council provides capital funding for these programs and passes through operating funds from the state. In 2006, these programs provided 4.3 million rides.

### **Environmental Services**

Metropolitan Council Environmental Services (MCES) collects and treats an average of 300 million gallons of wastewater each day from 104 communities, achieving near-perfect compliance with federal and state clean water standards. It also provides water resources monitoring and analysis for the region, and partners with numerous public and private groups committed to a clean environment. Wastewater operations and debt service are 100 percent funded by user fees.

The Environmental Services division annual budget focuses on meeting the objectives and expected outcomes that align with the strategic goals of the Council and the division. The following considerations were the top priorities in the development of the 2008 MCES budget:

- Meeting regulatory requirements
- Retaining competitive fees and rates
- Meeting customer expectations for quality and level of service
- Addressing watershed capacity and pollutant load issues
- Fully funding the current cost of all programs

### **Community Development**

The Community Development Division conducts planning and policy development to support regional growth and reinvestment. The unit awards grants to local governments and provides technical assistance to help them carry out their comprehensive plans. It also provides housing assistance to lower-income households.

In 2008, Community Development will focus its resources, tools and incentives on implementation of the Regional Development Framework, the Council's regional growth plan. The Regional Development Framework is a comprehensive strategy for focusing regional policies and investments on integrating transportation, housing, development, and environmental protection to support the region's quality of life.

The Housing and Redevelopment Authority includes two major programs – the Rent Assistance program providing more than 6,800 HUD Section 8 rental vouchers and the Family Affordable Housing Program, which rents 150 housing units owned and operated by the Council to low-income households.

## **Appendix D. 2008 Legislative Program**

The Metropolitan Council's legislative proposals for the 2008 session are still under development as of Jan. 15, 2008. The Council is working with the Governor's office and the state departments on proposals regarding appropriations, bonding, policy issues and statutory housekeeping matters.





## **Appendix E. Plans, Projects and Applications Submitted to the Metropolitan Council, January 1 through December 31, 2007**

### **Contents**

- Federal Direct Projects
- Federal Grant and Loan Requests
- Independent and Metropolitan Agency Plans and Programs
- Local Government Plans and Projects
- System Statement Matters
- Miscellaneous Reviews
- State Grant and Loan Requests

**Federal Direct Projects****Dept. of Transportation****Airport Projects**

<b>No.</b>	<b>Applicant/Description</b>	<b>Council Action</b>
20093-1	U.S. DEPARTMENT OF THE AIR FORCE DRAFT EA & FONSI - F16C DEPLOYMENT - DULUTH TO 133AW (MSP)	Favorable

**Federal Grant and Loan Requests****U.S. Dept. of Agriculture****Housing Programs**

<b>No.</b>	<b>Applicant/Description</b>	<b>Council Action</b>
19938-1	MINNEAPOLIS BLUE GOOSE APARTMENTS/FAMILY TREE COOP	Favorable

**U.S. Dept. of Housing & Urban Development****Water Program**

<b>No.</b>	<b>Applicant/Description</b>	<b>Council Action</b>
20044-1	EDEN PRAIRIE DRAFT NONDEGRADATION PLAN 2007	Favorable
20123-1	ANDOVER DRAFT NONDEGRADATION ASSESSMENT - PHASE II PERMIT	
20135-1	MINNETONKA NONDEGRADATION REPORT TO MPCA - MS4 PERMIT REQUIREMENTS	
20143-1	MAPLEWOOD NONDEGRADATION REPORT - MS 4 PERMIT	Favorable
20147-1	EDINA DRAFT NONDEGRADATION REPORT 2007 - MS4 PERMIT	
20148-1	CHANHASSEN NONDEGRADATION ASSESSMENT - MS4	

**U.S. Dept. of Transportation****Airport Program**

<b>No.</b>	<b>Applicant/Description</b>	<b>Council Action</b>
20122-1	METROPOLITAN AIRPORTS COMMISSION ENVIRONMENT REVIEW PROCESS - MAC CIP 2008-2014	Favorable

**Independent & Metro Agency Plans & Programs****Water Management Plans**

<b>No.</b>	<b>Applicant/Description</b>	<b>Council Action</b>
2004-1	LILLYDALE LILLYDALE WATER RESOURCES MANAGEMENT JUNE 2007	
19942-1	SAVAGE COMPREHENSIVE WATER RESOURCES MGMT. PLAN UPDATE	
19943-1	SHAKOPEE COMPREHENSIVE WATER RESOURCES MGMT. PLAN UPDATE	
19949-1	CHASKA LOCAL SURFACE WATER MANAGEMENT PLAN	
19959-1	DAYTON LOCAL SURFACE WATER MANAGEMENT PLAN	
20000-1	ROGERS 2007 SURFACE WATER MANAGEMENT PLAN	Unfavorable
20032-1	ROSEMOUNT SURFACE WATER MANAGEMENT PLAN - FINAL DRAFT 2007	Favorable
20054-1	STILLWATER LOCAL SURFACE WATER MANAGEMENT PLAN 2007	
20058-1	NEW GERMANY STORM WATER MANAGEMENT PLAN 2007	
20089-1	JORDAN WATER EMERGENCY AND CONSERVATION PLANS	
20091-1	MOUNDS VIEW WATER EMERGENCY AND CONSERVATION PLAN	
20103-1	HASSAN LOCAL SURFACE WATER MANAGEMENT PLAN 2007	Unfavorable
20112-1	WACONIA WATER CONSERVATION AND SUPPLY	
20130-1	EXCELSIOR STORM WATER MANAGEMENT PLAN	
20136-1	ELKO/NEW MARKET SURFACE WATER MANAGEMENT PLAN 2007	Unfavorable
20142-1	RICHFIELD COMPREHENSIVE SURFACE WATER MANAGEMENT	



## Independent & Metro Agency Plans & Programs

### Watershed District Plans

<b>No.</b>	<b>Applicant/Description</b>	<b>Council Action</b>
19741-2	GUN CLUB LAKE WATERSHED MANAGEMENT ORGANIZATION REVISED PLAN 2007	
19966-1	MINNEHAHA CREEK WATERSHED DISTRICT FINAL COMPREHENSIVE WATER RESOURCES MGMT PLAN 2007	
19969-1	SOUTH WASHINGTON WATERSHED DISTRICT 2006 WATERSHED PLAN UPDATE 2006	
19986-1	VADNAIS LAKES AREA WATER MANAGEMENT ORGANIZATION FINAL DRAFT PLAN	
19990-1	CARNELIAN MARINE WATERSHED DISTRICT WETLAND MANAGEMENT PLAN AND SILVER CREEK CORRIDOR PLAN 2004	
20033-1	RICHFIELD-BLOOMINGTON WATERSHED MANAGEMENT DRAFT PLAN 2007	
20083-1	RICE CREEK WATERSHED DISTRICT DITCH 4 REPAIR AND SOURCE MANAGEMENT PLAN (INCLUDING DITCH 15)	
20098-1	CARNELIAN - MARINE WATERSHED DISTRICT AMENDMENT - MANAGEMENT PLAN REVISED	
20111-1	RILEY PURGATORY BLUFF CREEK WATERSHED DISTRICT WATER MANAGEMENT PLANNING STAKEHOLDERS DRAFT	
20113-1	RICHFIELD-BLOOMINGTON WATERSHED MANAGEMENT ORGANIZATION WATERSHED MANAGEMENT PLAN 2007	
20119-1	CARNELIAN - MARINE WATERSHED DISTRICT WELL AND MANAGEMENT PLAN 2007	

**Local Government Plans & Projects****Comprehensive Plan Amendments**

<b>No.</b>	<b>Applicant/Description</b>	<b>Council Action</b>
14835-13	STILLWATER FAIRWAY VILLAS - 7.17 ACRES	Favorable
16243-11	RICHFIELD 66TH ST. E. & PORTLAND AVE. SOUTH - .84 ACRES	Favorable
16294-13	HUGO DEVELOPMENT AND SEWER STAGING PLAN AMENDMENT - 5,613 ACRES	Favorable
16483-11	WATERTOWN WOODFIELD AMENDMENT - 87 ACRES	Favorable
16500-14	CHANHASSEN URBAN SERVICES AREA AMEND. - OLD VILLAGE HALL - .54 ACRES	Favorable
16500-15	CHANHASSEN THE ARBORS - 2.77 ACRES	Favorable
16535-5	LILYDALE CHANGE FROM PARK/OPEN SPACE TO MULTIFAMILY - .85 ACRES	
16845-3	LITTLE CANADA ST. JUDE MEDICAL COMPLEX - 47.22 ACRES	Favorable
16907-23	BURNSVILLE CIP 2007-2011	
16907-24	BURNSVILLE LAND-USE CHANGE OF .95 ACRES ON WEST PRESERVE BLVD.	Favorable
16946-14	WACONIA INTERLAKEN AMENDMENT - 552 ACRES	Favorable
16958-19	LAKEVILLE MEADOW WREN FIRST ADDITION - 2.86 ACRES	Favorable
16959-12	CARVER CITY CHRISTY'S BLUFF - 14.52 ACRES URBAN SERVICE EXPANSION	
16959-13	CARVER CITY 105 BADE LANE AMENDMENT - EXTEND URBAN SERVICES	Favorable
16963-20	APPLE VALLEY 30 ACRES - COBBLESTONE LAKE RETAIL	
16963-21	APPLE VALLEY INDUSTRIAL LAND-USE STUDY AREA "A" - 15.2 ACRES	Favorable
16963-22	APPLE VALLEY INDUSTRIAL LAND-USE STUDY AREA "B" - 154 ACRES	Favorable
16963-23	APPLE VALLEY INDUSTRIAL LAND-USE STUDY AREA "C" - 23.7 ACRES	Favorable

## Local Government Plans & Projects

### Comprehensive Plan Amendments

<b>No.</b>	<b>Applicant/Description</b>	<b>Council Action</b>
16999-18	ROSEMOUNT ROSEMOUNT FAMILY HOMES - 0.6 ACRES	Favorable
17012-9	FOREST LAKE AMENDED HOUSING PLAN CHAPTER - TEXT ONLY	Favorable
17055-17	BLAINE NORTHEAST AREA PLAN - 1,560 ACRES	Favorable
17055-18	BLAINE PLEASANT RIDGE LAND USE/MUSA CHANGE - 340 ACRES	
17974-33	ST. LOUIS PARK 3515 BELTLINE BLVD. - 3.87 ACRES	Favorable
18028-11	EMPIRE TWP. MINERAL EXTRACTION OVERLAY EXPANSION - 80 ACRES	
18081-11	ANOKA CITY 2020 LAND USE MAP AMENDMENT - 40.1 ACRES	
18081-12	ANOKA CITY PUBLIC/OPEN SPACE TO LOW-DENSITY RESIDENTIAL - 83.63 ACRES	
18103-19	BLOOMINGTON RICHDAL GROUP - AMEND LAND USE TO HIGH-DENSITY RESIDENTIAL - 9.6 ACRES	
18105-7	CHASKA STONE ROSE DEVELOPMENT - 20 ACRES	Favorable
18119-3	HASSAN TWP FRICKE & ROBINSON PHASE I, STONES THROW - 77 ACRES	Favorable
18148-7	OAKDALE PLATINUM BANK - 3.86 ACRE SITE	Favorable
18153-3	MAPLEWOOD GLADSTONE NEIGHBORHOOD - 195 ACRES	Favorable
18158-25	ANDOVER ANOKA CO. PUBLIC SAFETY CAMPUS - MUSA EXP. - 26.97 ACRES	
18160-26	RAMSEY CITY EBONY WOODS (1.1 ACRES) AND TSM (1.8 ACRES)	
18160-28	RAMSEY CITY TSM - 1.8 ACRES	
18166-7	COON RAPIDS LAND-USE CHANGE FROM HIGH DENSITY TO OFFICE - 1.12 ACRES	Favorable
18166-8	COON RAPIDS LAND-USE CHANGE - OFFICE TO MEDIUM-DENSITY - 5 ACRES	

## Local Government Plans & Projects

### Comprehensive Plan Amendments

<b>No.</b>	<b>Applicant/Description</b>	<b>Council Action</b>
18166-9	COON RAPIDS SHAMROCK DEVELOPMENT - .31 ACRES	
18170-12	COTTAGE GROVE GATEWAY LAND MODIFICATION & MUSA EXPANSION - 63.8 ACRES	Favorable
18202-2	FRIDLEY UNIVERSITY BUSINESS CENTER - 4.3 ACRES	Favorable
18202-3	FRIDLEY VAN AUKEN ADDITION - 1475 & 1485 73RD AVENUE - 1 ACRE	Favorable
18202-4	FRIDLEY BRADES PLACES - 6160 5TH STREET - 1.18 ACRES	Favorable
18208-30	PLYMOUTH TRILLIUM WOODS - 33.7 ACRES	Favorable
18208-31	PLYMOUTH AMENDMENT TO THE CITY'S TRANSPORTATION PLAN	Favorable
18241-16	SHAKOPEE BLUFFS OF MARYSTOWN - ANNEX LAND FROM JACKSON TWP. - 321 ACRES	Favorable
18274-19	EAGAN MANLEY COMMONS - 2.88 ACRES	Favorable
18304-18	MAPLE GROVE FIELDSTONE MEADOWS - 1.1 ACRES	
18304-19	MAPLE GROVE GROVE CORPORATE PARK - 12 ACRES	Favorable
18320-2	EDINA REMODEL BUILDING AT 6446 XERXES	Favorable
18392-5	ORONO MUSA AMENDMENT - MYRTLEWOOD AREA - 33 ACRES	Favorable
18452-13	WOODBURY WATERS EDGE TOWNHOMES - MUSA EXPANSION - 4 ACRES	Favorable
18452-14	WOODBURY SOUTH WASHINGTON SCHOOL DIST. - THIRD HIGH SCHOOL & BIELENBERG SPORTS - 160 ACRES	Favorable
18495-35	INVER GROVE HEIGHTS TWIN CITY MARINA - .48 ACRES	
18495-36	INVER GROVE HEIGHTS NORTHWEST AREA PARK AND TRAIL PLAN - 3,140 ACRES	Favorable
18495-37	INVER GROVE HEIGHTS ARGENTA HILLS - 69.9 ACRES	



## Local Government Plans & Projects

### Comprehensive Plan Amendments

<b>No.</b>	<b>Applicant/Description</b>	<b>Council Action</b>
18495-38	INVER GROVE HEIGHTS MUNICIPAL WELL #9 - CHANGE 1.38 ACES FROM LOW-DENSITY RESIDENTIAL TO PUBLIC/INSTITUTIONAL	Favorable
18586-10	LINO LAKES ST. PAUL REGIONAL WATER SERVICES - PELTIER AND CENTERVILLE LAKE - 4 ACRES	Favorable
18586-11	LINO LAKES HODGSON ROAD/COUNTY ROAD J - 60 ACRES	Favorable
18795-18	EDEN PRAIRIE PRESBYTERIAN HOMES REDEVELOPMENT - 11.6 ACRES	Favorable
19078-5	COLUMBUS TWP. SEWER STAGING AMENDMENT - S.E. CORNER - 73.65 ACRES	Favorable
19744-2	EAST BETHEL CPU 2008 REVISED	
19985-1	HUGO AMENDMENT TO 1996 SUPPLY PLAN	
20034-1	BELLE PLAINE COMPREHENSIVE PLAN UPDATE 2008	
20138-1	CARVER CITY SURFACE WATER MANAGEMENT 2007	

### Revised Comprehensive Plans

<b>No.</b>	<b>Applicant/Description</b>	<b>Council Action</b>
20094-1	MAYER COMPREHENSIVE PLAN UPDATE 2007	
20139-1	ST. ANTHONY VILLAGE COMPREHENSOVE PLAN UPDATE 2008	

## Local Government Plans & Projects

### Water Supply Plans

<b>No.</b>	<b>Applicant/Description</b>	<b>Council Action</b>
19957-1	DAYTON WATER EMERGENCY CONSERVATION PLAN	
19976-1	BLOOMINGTON DRAFT COMPREHENSIVE WATER RESORUCE MANAGEMENT PLAN UPDATE	
19993-1	PLYMOUTH WATER EMERGENCY AND CONSERVATION PLAN 2007	
20003-1	WOODBURY WATER SUPPLY PLAN 2007	
20048-1	EDEN PRAIRIE 2007 WATER EMERGENCY AND CONSERVATION PLAN	
20063-1	BROOKLYN PARK WATER EMERGENCY AND CONSERVATION PLAN DRAFT 2007	
20071-1	LAKELAND WATER EMERGENCY AND CONSERVATION PLAN 2007	
20072-1	CIMARRON PARK WATER EMERGENCY AND CONSERVATION PLAN	
20076-1	COLUMBIA HEIGHTS WATER EMERGENCY AND CONSERVATION PLANS 2007	
20099-1	LINO LAKES WATER SUPPLY PLAN 2007	
20100-1	BAYPORT WATER SUPPLY PLAN 2007	
20105-1	COON RAPIDS WATER EMERGENCY AND CONSERVATION PLAN 2007	
20106-1	VICTORIA WATER SUPPLY PLAN 2007	
20108-1	WHITE BEAR TWP. WATER EMERGENCY AND CONSERVATION PLANS	
20109-1	WHITE BEAR LAKE 2ND GENERATION WATER SUPPLY PLAN	
20114-1	MINNETONKA WATER EMERGENCY AND CONSERVATION PLAN 2007	
20115-1	NEW BRIGHTON WATER SUPPLY PLN	
20116-1	BROOKLYN PARK WATER EMERGENCY AND CONSERVATION PLAN 2007	

## **Local Government Plans & Projects**

### **Water Supply Plans**

<b>No.</b>	<b>Applicant/Description</b>	<b>Council Action</b>
20117-1	EAGAN EMERGENCY AND CONSERVATION PLAN 2007	
20120-1	OAKDALE WATER EMERGENCY AND CONSERVATION PLAN	
20121-1	EAGAN EMERGENCY WATER CONSERVATION PLAN 2007	
20145-1	CARVER CITY WATER EMERGENCY AND CONSERVATION PLANS	

### **System Statement Matters**

#### **Metropolitan System Statement Reconciliation**

<b>No.</b>	<b>Applicant/Description</b>	<b>Council Action</b>
19678-2	NEW GERMANY RESOLUTION 2007-09 SYSTEM STATEMENT	

**Miscellaneous Reviews**

**Critical Area Plans and Projects**

**Critical Area Review - Permit**

<b>No.</b>	<b>Applicant/Description</b>	<b>Council Action</b>
19984-1	MINNESOTA POLLUTION CONTROL AGENCY BAE SYSTEMS AND FMC CORP. - 4800 EAST RIVER ROAD	No Comment by Council



**Miscellaneous Reviews****Housing Bond Plans and Programs****Housing Bond Program**

<b>No.</b>	<b>Applicant/Description</b>	<b>Council Action</b>
1998-1	RICHFIELD RICHFIELD HOUSING PROGRAM	
19935-1	MINNETONKA PROPOSE HSG. PROGRAM - HAMMER RESIDENCES AND SHERIDAN HILLS	Favorable
19937-1	ST. PAUL SHOLOM HOME EAST INC.	Favorable
19944-1	SCOTT COUNTY 2007 HOUSING BOND PROGRAM	Favorable
19945-1	WASHINGTON COUNTY BOND PROGRAM 2007	Favorable
19951-1	MINNEAPOLIS 2007 SINGLE-FAMILY HSG. FINANCE PRGM. - MPLS. & ST. PAUL	Favorable
19953-1	BELLE PLAINE HOUSING BOND PROGRAM - MULTIFAMILY HSG. DEVELOPMENT "HOST CITY"	Favorable
19953-2	BELLE PLAINE ELYSIAN AND GREEN ISLE "HOST CITY" REVISED	Favorable
19955-1	HASTINGS HOUSING BONDS - AUGUSTANA APARTMENT PROJECT	
19979-1	MINNEAPOLIS 2215 - 2312 BLAISDELL AVENUE HOUSING BOND	Favorable
19980-1	ST. PAUL ST. PAUL COMMERCE APT. PROJECT - 10 EAST FOURTH STREET	Favorable
19982-1	BROOKLYN PARK HOUSING BOND PROGRAM - AUTUMM PARK APARTMENTS	Favorable
19994-1	COLUMBIA HEIGHTS AMENDED AND RESTATED - CREST VIEW	
20012-1	DAKOTA COUNTY REGENT AT BURNSVILLE	Favorable
20013-1	ROSEVILLE HOUSING PROGRAM - CENTENIAL GARDENS EAST PROJECT	Favorable
20013-2	ROSEVILLE AMENDED HOUSING PGRM. - CENTENNIAL GARDENS EAST	Favorable
20017-1	MINNEAPOLIS 5341, 5345 AND 5359 MINNEHAHA AVENUE APARTMENTS	Favorable
20019-1	BLOOMINGTON SUMMERHOUSE PROJECT - 9850 LYNDAL AVE. SOUTH	Favorable

**Miscellaneous Reviews****Housing Bond Plans and Programs****Housing Bond Program**

<b>No.</b>	<b>Applicant/Description</b>	<b>Council Action</b>
20023-1	ST. PAUL MULTIFAMILY HOUSING - 852-886 RICE STREET	Favorable
20023-2	ST. PAUL REVISED VERSION OF HSG. PROGRAM - WINNIPEG APARTMENTS	
20024-1	NORTH OAKS PRESBYTERIAN HOMES OF NORTH OAKS INC. PHASE II	Favorable
20039-1	MAPLEWOOD VILLAGE ON WOODLYNN PROJECT	Favorable
20041-1	DAKOTA COUNTY SENIOR HSG. PROGRAM 2007	Favorable
20043-1	SCOTT COUNTY GLENDALE PLACE PROJECT	Favorable
20046-1	MINNEAPOLIS 1822 PARK AVENUE - 18 UNITS - HOUSING BOND	Favorable
20077-1	ST. PAUL HIGHLAND POINTE LOFTS - WEST 7TH DAVERN AND MUENSTER AVE.	Favorable
20084-1	MINNEAPOLIS 852-886 RICE STREET - ST. PAUL WINNIPEG APTS. - LIMITED PARTNERSHIP	Favorable
20086-1	OAKDALE 1745 GRENADA AVENUE	Favorable
20131-1	MINNEAPOLIS CATHOLIC ELDERCARE CORP. PROJ. - 1101 MAIN STREET N.E.	Favorable
20141-1	MINNEAPOLIS-ST. PAUL HOUSING FINANCE BOARD SINGLE-FAMILY HOUSING PROGRAM 2008	Favorable
20150-1	SPRING PARK PREBYTERIAN HOMES - HOUSING & ASSISTED LIVING	Favorable
20151-1	DAKOTA COUNTY DOWNTOWN ROSEMOUNT PROJECT - MULTIFAMILY HOUSING	Favorable

**Miscellaneous Reviews****Regional Park Master Plans & Budgets****Regional Park Master Plan**

<b>No.</b>	<b>Applicant/Description</b>	<b>Council Action</b>
20001-1	SCOTT COUNTY ACQUISITION MASTER PLAN - CEDAR LAKE FARM REGIONAL PARK 2007	
20010-1	THREE RIVERS PARK DISTRICT MASTER PLAN - MURPHY-HANREHAN - 2007 DRAFT	
20035-1	RAMSEY COUNTY TONY SCHMIDT REGIONAL PARK MASTER PLAN 2007	
20042-1	WASHINGTON COUNTY COTTAGE GROVE RAVINE REGIONAL PARK MASTER PLAN 2007	
20057-1	ANOKA COUNTY MISSISSIPPI RIVER REGIONAL TRAIL NORTHERN ALIGNMENT MASTER PLAN	
20140-1	ANOKA COUNTY CENTRAL ANOKA COUNTY REGIONAL TRAIL EAST ALIGNMENT MASTER PLAN	
20144-1	THREE RIVERS PARK DISTRICT RUSH CREEK REGIONAL TRAIL MASTER PLAN	

**Miscellaneous Reviews****Solid Waste Plans and Reports****Solid Waste Facility Permits**

<b>No.</b>	<b>Applicant/Description</b>	<b>Council Action</b>
19948-1	MINNESOTA POLLUTION CONTROL AGENCY BROADWAY RESOURCE RECOVERY CONSTRUCTION - 111 22ND AVE. NORTH	No Comment by Council
20030-1	MINNESOTA POLLUTION CONTROL AGENCY SKB RICH VALLEY DEMOLITION WASTE MANAGEMENT	Favorable

**State Disposal System Permit**

<b>No.</b>	<b>Applicant/Description</b>	<b>Council Action</b>
19940-1	MINNESOTA POLLUTION CONTROL AGENCY LONG LAKE INLET DREDGE - RICE CREEK WATERSHED DISTRICT	No Comment by Council
19971-1	MINNESOTA POLLUTION CONTROL AGENCY VILLAGE GREEN NORTH MOBILE HOME PARK	No Comment by Council
19977-1	MINNESOTA POLLUTION CONTROL AGENCY TURTLE RUN SOUTH	No Comment by Council
19991-1	MINNESOTA POLLUTION CONTROL AGENCY CEDAR BLUFF HOMESTEAD WASTEWATER TREATMENT PLANT	No Comment by Council
20016-1	MINNESOTA POLLUTION CONTROL AGENCY MULTEK FLEXIBLE CIRCUITS INC. - DAKOTA COUNTY	No Comment by Council
20038-1	MINNESOTA POLLUTION CONTROL AGENCY WASTEWATER TREATMENT PLANT DISCHARGE TO SUBSURFACE WATER	
20066-1	MINNESOTA POLLUTION CONTROL AGENCY FHR OXYGEN PIPELINE INSTALLATION PROJECT	Favorable
20068-1	MINNESOTA POLLUTION CONTROL AGENCY STAR ENVIRONMENTAL LLC	Favorable
20069-1	MINNESOTA POLLUTION CONTROL AGENCY MINCO PRODUCTS INC.	Favorable
20070-1	MINNESOTA POLLUTION CONTROL AGENCY FLINT HILLS FORMER HAZARDOUS WASTE LAND TREATMENT FACILITY	Favorable
20127-1	MINNESOTA POLLUTION CONTROL AGENCY MONTEREY HEIGHTS AND SOUTH PASSAGE	

**Miscellaneous Reviews****Special Permits****Corps of Army Engineer - Permit**

<b>No.</b>	<b>Applicant/Description</b>	<b>Council Action</b>
19939-1	U.S. ARMY CORPS OF ENGINEERS RLK INC. - XYLITE STREET	No Comment by Council
19941-1	U.S. ARMY CORPS OF ENGINEERS HAM LAKE - EMILYS WATERS	No Comment by Council
19958-1	U.S. ARMY CORPS OF ENGINEERS DIRTWORK INC. - DEVELOP WETLAND BANK SITE	No Comment by Council
19997-1	U.S. ARMY CORPS OF ENGINEERS ST. PAUL DISTRICT ARMY CORPS PROPOSAL TO REISSUE PERMIT	No Comment by Council
20004-1	US ARMY CORPS OF ENGINEERS CENTEX - GLENN MEADOWS	No Comment by Council
20021-1	U.S. ARMY CORPS OF ENGINEERS LANDBORG WETLAND MITIGATION BANK	Favorable
20050-1	U.S. ARMY CORPS OF ENGINEERS THE WOODS OF QUAIL CREEK - DREDGE AND FILL	Favorable
20056-1	U.S. ARMY CORPS OF ENGINEERS TH41 TIER I DRAFT EIS	Favorable
20132-1	U.S. ARMY CORPS OF ENGINEERS NINE MILE CREEK WATERSHED DREDGE AND FILL ALONG MINNESOTA RIVER	



**Miscellaneous Reviews****Special Permits****National Pollution Discharge Elimination Permit**

<b>No.</b>	<b>Applicant/Description</b>	<b>Council Action</b>
19936-1	MINNESOTA POLLUTION CONTROL AGENCY ASHLAND DISTRIBUTION - 395 JAMES AVENUE	No Comment by Council
19947-1	MINNESOTA POLLUTION CONTROL AGENCY NSP NATURAL GAS PIPELINE AND UTILITY SERVICE AREA	No Comment by Council
19952-1	MINNESOTA POLLUTION CONTROL AGENCY INTEK PLASTICS INC. - HASTINGS - EXTRUSION OF PLASTIC COMPONENTS	No Comment by Council
19956-1	MINNESOTA POLLUTION CONTROL AGENCY MAGELLAN PIPELINE - MPLS. COMPLEX - JONES LAKE ROSEVILLE	No Comment by Council
19960-1	MINNESOTA POLLUTION CONTROL AGENCY UNITED AND CHILDREN'S HOSPITAL	No Comment by Council
19961-1	MINNESOTA POLLUTION CONTROL AGENCY HB FULLER - DISCHARGE INTO WILLOW LAKE	No Comment by Council
19963-1	MINNESOTA POLLUTION CONTROL AGENCY OWENS CORNING ROOFING AND ASPHALT - 1901 49TH AVE. N.	No Comment by Council
19970-1	MINNESOTA POLLUTION CONTROL AGENCY NSP - 414 NICOLLET MALL	No Comment by Council
19988-1	MINNESOTA POLLUTION CONTROL AGENCY CARGILL AGHORIZONS - EAST ELEVATOR	No Comment by Council
19989-1	MINNESOTA POLLUTION CONTROL AGENCY CARGIL AGHORIZONS - WEST ELEVATOR DREDGE	No Comment by Council
19995-1	MINNESOTA POLLUTION CONTROL AGENCY WEST BANK LIBRARY ACCESS CENTER	No Comment by Council
20002-1	MINNESOTA POLLUTION CONTROL AGENCY MINN. PIPELINE CO. PERMIT	No Comment by Council
20011-1	MINNESOTA POLLUTION CONTROL AGENCY TWIN CITY TANNING	Favorable
20018-1	MINNESOTA POLLUTION CONTROL AGENCY FLINT HILLS RESOURCES	No Comment by Council
20022-1	MINNESOTA POLLUTION CONTROL AGENCY CENTERPOINT ENERGY - NAURAL GAS PIPELINE DISTRIBUTION SYSTEM	Favorable
20026-1	MINNESOTA POLLUTION CONTROL AGENCY FSI INTERNATIONAL	Favorable
20028-1	MINNESOTA POLLUTION CONTROL AGENCY MILL POND DREDGE	Favorable
20037-1	MINNESOTA POLLUTION CONTROL AGENCY REISSUE PERMITS FOR WASTEWATER TREATMENT PLANTS	Favorable

**Miscellaneous Reviews****Special Permits****National Pollution Discharge Elimination Permit**

<b>No.</b>	<b>Applicant/Description</b>	<b>Council Action</b>
20053-1	MINNESOTA POLLUTION CONTROL AGENCY BP PIPELINE NORTH AMERICA INC.	Favorable
20055-1	MINNESOTA POLLUTION CONTROL AGENCY RAHR MALTING CO.	Favorable
20060-1	MINNESOTA POLLUTION CONTROL AGENCY BONGARD'S CREAMERIES INC.	Favorable
20067-1	MINNESOTA POLLUTION CONTROL AGENCY LIFECORE BIO MEDICAL INC.	Favorable
20081-1	MINNESOTA POLLUTION CONTROL AGENCY PEPSI BOTTLING GROUP	No Comment by Council
20090-1	U.S. ARMY CORPS OF ENGINEERS DISCHARGE AND FILL 3.31 ACRES - FRANK FRATTALONE	Favorable
20107-1	MINNESOTA POLLUTION CONTROL AGENCY BUNGE NORTH AMERICA INC. - SAVAGE ELEVATOR DREDGE	No Comment by Council
20110-1	MINNESOTA POLLUTION CONTROL AGENCY MARATHON PETROLEUM CO.	No Comment by Council
20118-1	MINNESOTA POLLUTION CONTROL AGENCY HONEYWELL INC.	No Comment by Council
20124-1	MINNESOTA POLLUTION CONTROL AGENCY AGGREGATE INDUSTRIES - LARSON QUARRY	
20126-1	MINNESOTA POLLUTION CONTROL AGENCY ST. PAUL PORT AUTHORITY - SOUTHPORT CHANNEL DREDGE	
20134-1	MINNESOTA POLLUTION CONTROL AGENCY BELLE PLAINE WASTEWATER TREATMENT PLANT	
20149-1	MINNESOTA POLLUTION CONTROL AGENCY NINE MILE CREEK WSD - WQ IMPROVEMENT PROJECT	

**Miscellaneous Reviews****Special Permits****Well Permit**

<b>No.</b>	<b>Applicant/Description</b>	<b>Council Action</b>
18740-2	SPRING LAKE PARK WELLHEAD PROTECTION PLAN PART II	
19733-2	HOPKINS WELLHEAD PROTECTION PLAN PART II	
19934-1	ST. PAUL WELLHEAD PROTECTION PLAN PART II	
19934-2	ST. PAUL WELLHEAD PROTECTION PLAN PART II UPDATE	
19967-1	HASTINGS WELLHEAD PROTECTION PLAN PART II	
19968-1	FARMINGTON WELLHEAD PROTECTION PLAN PART II	
19975-1	RICHFIELD WELLHEAD PROTECTION PLAN PART II	
19981-1	GREENFIELD WELLHEAD PROTECTION PLAN PART I	
19996-1	HAMPTON WELLHEAD PROTECTION PLAN PART I	
20040-1	HAMBURG WELLHEAD PROTECTION PLAN PART I	
20062-1	COON RAPIDS WELLHEAD PROTECTION PLAN PART II 2007	
20078-1	PRIOR LAKE WELLHEAD PROTECTION PLAN PARTS I AND II 2007	
20079-1	BLAINE WELLHEAD PROTECTION PLAN PARTS I AND II 2007	
20082-1	DAYTON WELLHEAD PROTECTION PLAN PARTS I AND II	Information Only
20085-1	CENTERVILLE WELLHEAD PART II	
20085-2	CENTERVILLE WELLHEAD PROTECTION PLAN PART I	
20101-1	MAYER WELLHEAD PROTECTION PLAN PART I	
20102-1	MAYER WELLHEAD PROTECTION PLAN PART II	

**Miscellaneous Reviews****Special Permits****Well Permit**

<b>No.</b>	<b>Applicant/Description</b>	<b>Council Action</b>
20152-1	BAYPORT WELLHEAD PROTECTION PLAN PART I	

**Special Transportation Projects****Controlled Access Highway**

<b>No.</b>	<b>Applicant/Description</b>	<b>Council Action</b>
19964-1	DAKOTA COUNTY CONTROLLED ACCESS TO CSAH70/I-35 INTERCHANGE	Favorable
19972-1	MINNESOTA DEPARTMENT OF TRANSPORTATION CONST. FREEWAY ON TH65 BETWEEN 121ST AVE. & PAUL PKWY. AND 129TH AVE.	Favorable
20065-1	MINNESOTA DEPARTMENT OF TRANSPORTATION CONTROLLED ACCESS I-94 AND RADIO DRIVE (CSAH13)	Favorable
20087-1	ELKO/NEW MARKET WELLHEAD PROTECTION PLANT PART I	Favorable

**Miscellaneous Reviews****State and Federal Assessments & Statements****Environmental Assessment Worksheet - State**

<b>No.</b>	<b>Applicant/Description</b>	<b>Council Action</b>
2005-6	WOODBURY NEGATIVE DECLARATION/FINDINGS AND FACTS - SOUTH WASHINGTON SCHOOL	
18181-11	COLUMBIA HEIGHTS 4800 BLOCK OF CENTRAL AVE. - 6.9 ACRES	Favorable
19854-2	MINNETONKA EAW NEGATIVE DECLARATION - UNITED HEALTH GROUP DATA PARK EXPANSION	Information Only
19862-2	ANOKA COUNTY NEGATIVE DECLARATION - CSAH14	Information Only
19884-2	LINO LAKES NATURE'S REFUGE RESIDENTIAL SUBDIVISION - NEGATIVE DECLARATION	Information Only
19888-2	PRIOR LAKE FINAL RESPONSE & COMMENTS - RYAN CONSTRUCTION SAND & GRAVEL	Information Only
19928-2	LILYDALE RECORD OF DECISION - NEGATIVE DECLARATION - ONE RIVERFRONT VIEW	Information Only
19946-1	EDEN PRAIRIE HENNEPIN VILLAGE ROADWAY ALTERNATIVES	Other
19946-2	EDEN PRAIRIE HENNEPIN VILLAGE ALTERNATIVE ANALYSIS - NEGATIVE COMMENTS AND RESPONSE	Information Only
19950-1	MINNESOTA POLLUTION CONTROL AGENCY COLOGNE WASTEWATER TREATMENT PLANT	No Comment by Council
19954-1	ST. LOUIS PARK MINNEHAHA CREEK RESTORATION - METHODIST HOSPITAL	Favorable
19973-1	EDEN PRAIRIE FLYING CLOUD CORPORATION CENTER - 47.6 ACRES	Favorable
19973-2	EDEN PRAIRIE FACTS, FINDING AND DECISION - FLYING CLOUD CORP. CAMPUS	Information Only
19974-1	ROSEMOUNT ROSEMOUNT BUSINESS PARK EAW - 41.4 ACRES	Favorable
19974-2	ROSEMOUNT RESPONSE TO COMMENTS/NEGATIVE FINDINGS - ROSEMOUNT BUSINESS PARK	Information Only
19987-1	MINNESOTA POLLUTION CONTROL AGENCY NORTHEAST DAYTON AREA TRUNK & LATERAL SEWER PROJECT	Favorable
19987-2	MINNESOTA POLLUTION CONTROL AGENCY FINDINGS AND FACTS - NORTHEAST DAYTON AREA TRUNK & LATERAL SEWER	Information Only



**Miscellaneous Reviews****State and Federal Assessments & Statements****Environmental Assessment Worksheet - State**

<b>No.</b>	<b>Applicant/Description</b>	<b>Council Action</b>
20005-1	WOODBURY SOUTH WASHINGTON COUNTY SCHOOL DISTRICT #833 - THIRD HIGH SCHOOL - 170 ACRES	Favorable
20005-2	WOODBURY NEGATIVE DECLARATION - SOUTH WASHINGTON SCHOOL DIST.	Information Only
20007-1	MINNESOTA POLLUTION CONTROL AGENCY FLAGSTAFF AVE. TRUNK SEWER LINE PROJECT	Favorable
20007-2	MINNESOTA POLLUTION CONTROL AGENCY FINDINGS & FACT - NEG. DECLARATION FOR FLAGSTAFF AVE. TRUNK SEWER LINE	Information Only
20008-1	LAKE ELMO OLD VILLAGE SANITARY SEWER EXTENSION	Favorable
20008-2	LAKE ELMO NEGATIVE DECISION - OLD VILLAGE SANITARY SEWER EXTENSION	Information Only
20009-1	NEW GERMANY TROPHY LAKE ESTATES IV PROJECT - 160 ACRES - ANNEX FROM HOLLYWOOD TWP.	Favorable
20009-2	NEW GERMANY NEGATIVE DECLARATION & RECORD OF DECISION FOR TROPHY LAKE ESTATES IV	Information Only
20015-1	NORTHWESTERN COLLEGE AND RADIO MASTER PLAN PROJECT - ROSEVILLE & ARDEN HILLS	Unfavorable
20020-1	PLYMOUTH TRILLIUM WOODS EAW - 46.36 ACRES	Favorable
20020-2	PLYMOUTH RECORD OF DECISION ON EAW - TRILLIUM WOODS	Information Only
20029-1	EUREKA TWP. PROPOSED MINING OPERATION FOR EUREKA SAND & GRAVEL	Favorable
20029-2	EUREKA TWP. NEGATIVE FINDINGS AND RECORD OF DECISION - EUREKA SAND & GRAVEL	
20045-1	MINNESOTA POLLUTION CONTROL AGENCY RAHR MALLING CO. AND KODA ENERGY LLC	Favorable
20045-2	MINNESOTA POLLUTION CONTROL AGENCY NEGATIVE DECLARATION - RAHR MALTING CO. & KODA ENERGY	Information Only
20049-1	NINE MILE CREEK WATERSHED DISTRICT ANDERSON LAKES DRAWDOWN	Favorable
20049-2	NINE MILE CREEK WATERSHED DISTRICT DRAWDOWN OF ANERSON LAKES	Information Only

**Miscellaneous Reviews****State and Federal Assessments & Statements****Environmental Assessment Worksheet - State**

<b>No.</b>	<b>Applicant/Description</b>	<b>Council Action</b>
20059-1	LITTLE CANADA ST. JUDE MEDICAL TECHNOLOGY CENTER - 47.22 ACRES	Favorable
20059-2	LITTLE CANADA RECORD OF DECISION - ST. JUDE MEDICAL CAMPUS EXPANSION	Information Only
20092-1	BLOOMINGTON RICHDAL GROUPS AT 5100 WEST 82ND STREET - 9.6 ACRES	Favorable
20092-2	BLOOMINGTON EAW - RICHDAL GROUP - NEGATIVE FINDINGS AND FACTS	Information Only
20095-1	CENTERVILLE DOWNTOWN REDEVELOPMENT - 37.41 ACRES	Favorable
20095-2	CENTERVILLE RECORD OF DECISION - EAW CENTERVILLE DOWNTOWN REDEVELOPMENT	Information Only
20096-1	EDEN PRAIRIE PRESBYTERIAN HOMES REDEVELOPMENT	
20128-1	MINNESOTA DEPARTMENT OF TRANSPORTATION FRONTAGE ROAD ON US52 AND ACCESS CLOSURES	Favorable
20129-1	CARVER COUNTY CSAH18 RECONSTRUCTION FROM TH41 TO CSAH17	Favorable
20153-1	SAVAGE DAN PATCH TRAIL RESIDENTIAL DEVELOPMENT - 108 ACRES	

**Miscellaneous Reviews****State and Federal Assessments & Statements****Environmental Assessment or Statement - Federal**

<b>No.</b>	<b>Applicant/Description</b>	<b>Council Action</b>
18540-2	ROSEVILLE DRAFT AUAR UPDATE - TWIN LAKES BUSINESS PARK - 275 ACRES	Favorable
18555-5	HOPKINS AUAR - EXCELSIOR CROSSING DEVELOPMENT - NEGATIVE DECLARATION	Information Only
18640-3	HUGO FINAL AUAR - EVERTON AVENUE NEIGHBORHOOD STUDY AREA	No Action by Design
18640-4	HUGO RESPONSE TO COMMENTS ON EVERTON AVENUE	
18845-4	NEW BRIGHTON NORTHWEST QUADRANT - 104 ACRES	Favorable
18845-5	NEW BRIGHTON FINAL AUAR - NORTHWEST QUADRANT DEVELOPMENT	No Action by Design
19529-4	INVER GROVE HEIGHTS NORTHWEST EXPANSION AREA - AUAR UPDATE REVIEW	Unfavorable
19587-2	MAPLEWOOD AUAR - FINAL GLADSTONE AREA REDEVELOPMENT MASTER PLAN 2007	Favorable
19782-3	EAGAN CEDAR GROVE REDEVELOPMENT AREA UPDATE	
19855-2	CARVER CITY FINAL AUAR - CARVER NORTHWEST	Information Only
19856-2	CARVER CITY FINAL AUAR - CARVER NORTHWEST	Favorable
19922-2	SAVAGE PRIOR LAKE AGGREGATES INC. - FINAL AUAR	Favorable
19929-2	ST. LOUIS PARK FINAL AUAR - WEST END	Favorable
19962-1	HASSAN TWP. DRAFT AUAR - STONES THROW S.W. OF TOWN	Unfavorable
19962-2	HASSAN FINAL AUAR - STONES THROW - 630 ACRES	Unfavorable
19965-1	MINNEAPOLIS 3227 PENN AVE. NORTH PROJECT	Favorable
19978-1	MINNEAPOLIS 3113 & 3117 6TH STREET NORTH PROJECT	Favorable
19983-1	BURNSVILLE TH13/CSAH5 INTERCHANGE PROJECT	Favorable

**Miscellaneous Reviews****State and Federal Assessments & Statements****Environmental Assessment or Statement - Federal**

<b>No.</b>	<b>Applicant/Description</b>	<b>Council Action</b>
19999-1	MINNEAPOLIS DUNDY HOUSE/DAYTON - 1829 5TH AVENUE SOUTH	Favorable
20006-1	WASHINGTON COUNTY CSAH15 RECONSTRUCTION FROM HWY. 36	Favorable
20014-1	RICHFIELD CSAH53/66TH STREET AT CSAH35/PORTLAND	Favorable
20014-2	RICHFIELD FONSI APPROVAL FOR CSAH53/66 <sup>TH</sup> ST. AT CSAH35/PORTLAND	
20052-1	EDINA DRAFT AUAR - GATEWAY STUDY AREA - 135 ACRES	Unfavorable
20052-2	EDINA FINAL AUAR - GATEWAY STUDY AREA	Favorable
20061-1	MINNESOTA DEPARTMENT OF TRANSPORTATION I-694/I-35E TO I-35W IMPROVEMENT PROJECT	Favorable
20064-1	MINNEAPOLIS NAT'L HISTORIC PRESERVATION VANTAGE FLATS - MINNEHAHA AVENUE	Favorable
20073-1	MINNEAPOLIS FY 2007 CONSOLIDATED PLAN FOR HOUSING AND COMMUNITY DEVELOPMENT	Favorable
20075-1	APPLE VALLEY FISCHER SAND & AGGREGATE LLP/CASE NO. PC06-33E	Favorable
20075-2	APPLE VALLEY FINAL AUAR - FISCHER SAND & AGGREGATE	No Action by Design
20125-1	MINNEAPOLIS WELLSTONE PROJECT - 1931 PORTLAND AVE AND 612, 616 AND 620 EAST FRANKLIN	Favorable

**Environmental Impact Statement - State**

<b>No.</b>	<b>Applicant/Description</b>	<b>Council Action</b>
19576-4	HENNEPIN COUNTY DRAFT EIS - THE MINNESOTA URBAN BALLPARK	Favorable
19576-5	HENNEPIN COUNTY FINAL EIS - MINNESOTA URBAN BALLPARK	Favorable
19821-2	SCOTT COUNTY FEIS - CSAH21 EXTENSIONS FROM CSAH18 TO CSAH42 AND TRANSIT STATION	
20031-1	MINNESOTA POLLUTION CONTROL AGENCY DRAFT EIS - TH41 MINNESOTA RIVER CROSSING	Unfavorable

**State Grant and Loan Requests**

**Dept. of Transportation**

**Miscellaneous Programs**

<b>No.</b>	<b>Applicant/Description</b>	<b>Council Action</b>
20080-1	NORTHERN STATES POWER COMPANY THREE 345KV TRANSMISSION LINE PROJECTS WITH ASSOCIATION SYSTEM CONNECT	Unfavorable
20097-1	MINNESOTA POLLUTION CONTROL AGENCY SIEMENS WATER TECHNOLOGIES CORP. STORAGE AND TREATMENT	Favorable